

1 **High feasibility of salivary therapeutic drug monitoring in linezolid, but less in**
2 **tedizolid: A single-dose study in healthy subjects**

3

4 Hitoshi Kawasuji,^a Yasuhiro Tsuji,^b Keiko Miyaki,^b Takahiko Aoyama,^b Fumihiko Kurosaki,^b
5 Masayoshi Ezaki,^a Yuki Koshiyama,^a Yusuke Takegoshi,^a Makito Kaneda,^a Yushi Murai,^a
6 Kou Kimoto,^a Kentaro Nagaoka,^a and Yoshihiro Yamamoto^{a*}

7

8 ^a Department of Clinical Infectious Diseases, Toyama University Graduate School of
9 Medicine and Pharmaceutical Sciences, Toyama, Japan

10 ^b Laboratory of Clinical Pharmacometrics, School of Pharmacy, Nihon University, Funabashi,
11 Chiba, Japan

12

13 ***Corresponding author**

14 Yoshihiro Yamamoto, MD, PhD

15 Department of Clinical Infectious Diseases

16 Graduate School of Medicine and Pharmaceutical Sciences

17 University of Toyama

18 2630 Sugitani, Toyama 930-0194 Japan

19 Phone: +81-76-434-7245

20 Fax: +81-76-434-5018

21 E-mail: yamamoto@med.u-toyama.ac.jp

22

23 **Running title:** Salivary therapeutic drug monitoring in linezolid and tedizolid

24

25 **ABSTRACT**

26 **Background**

27 Salivary therapeutic drug monitoring (TDM) offers the potential to reduce the risks, burden,
28 time, and costs of blood-based TDM, but its feasibility in oxazolidinone antibiotics and the
29 influence of food intake remain unknown.

30 **Methods**

31 A total of 12 healthy volunteers participated in this study. Linezolid and tedizolid were
32 intravenously administered to 6 participants each. Saliva samples were taken at 15 time
33 points and peripheral venous blood samples were also taken at 12 time points
34 simultaneously with saliva. Total and unbound serum and saliva concentrations of linezolid
35 and tedizolid were measured using high-performance liquid chromatography.

36 **Results**

37 Individual concentration–time curves in saliva versus serum (total and unbound) were similar
38 in linezolid, but different in tedizolid. Saliva concentrations were significantly correlated with
39 total and unbound serum concentrations in both agents. However, concentrations in each
40 case and area under the concentration–time curve from 0 to 10 h (AUC_{0-10}) in saliva were
41 correlated with those in total or unbound serum for linezolid, but not for tedizolid. The mean
42 saliva-to-serum (total and unbound) concentration and AUC_{0-10} ratios were 0.90 and 0.90 in
43 total and 1.09 and 0.99 in unbound. Food intake did not influence these correlations in
44 linezolid.

45 **Conclusions**

46 The analysis of linezolid in saliva is applicable for TDM as a promising alternative to
47 conventional serum sampling without correlation factors, but application of tedizolid is less
48 feasible. Easy sampling using a noninvasive technique may facilitate TDM even in
49 underdeveloped countries with limited resources and specific patient categories.

50

51 **Key words:** linezolid; tedizolid; serum; saliva; therapeutic drug monitoring

52

53 INTRODUCTION

54 Linezolid has been widely used in methicillin-resistant *Staphylococcus aureus* (MRSA)
55 (1, 2) and vancomycin-resistant *Enterococcus faecium* (VRE) infections (3), and has recently
56 gained a greater role in treatment regimens for multidrug-resistant or extensively
57 drug-resistant *Mycobacterium tuberculosis*, or *Mycobacterium abscessus* (4-6). Patients
58 should be closely monitored due to time- and concentration-dependent serious adverse
59 effects of linezolid, including myelosuppression and neuropathy (7). In spite of linezolid
60 being a drug with a very narrow therapeutic window (8), linezolid shows large
61 pharmacokinetic variability, and drug–drug interactions also contribute to the high
62 inter-individual variability in linezolid pharmacokinetics (9).

63 Therapeutic drug monitoring (TDM) serves as an efficient patient management tool by
64 contributing to assessment of treatment response, helping to reduce toxicity and minimizing
65 antibiotic resistance while ensuring adequate drug exposure (10). Several findings have
66 provided evidence for the proper application of TDM for linezolid as an effective tool to
67 predict serious adverse events and prevent discontinuation in advance (11-14).

68 Conventional venipuncture, the sampling currently used in clinical practice for TDM, is
69 an invasive procedure with several logistical restrictions, such as the requirement of trained
70 phlebotomists and appropriate materials, immediate storage in a refrigerator or freezer after
71 collection, and cold chain transport to maintain the biospecimen integrity (15). Blood
72 sampling is undesirable for some patient groups because of limited blood supply (e.g.,
73 neonates), less accessible veins (e.g., elderly), or religious objections (15). Alternatives to
74 regular blood sampling (e.g., saliva) are therefore being studied.

75 Saliva sampling could reduce the risks, burden, time, and costs of blood sampling (16).
76 Self-sampling at home would be advantageous, especially in TB-endemic countries, and
77 would enable multiple sample collection (17). Dried blood spot (DBS) sampling is another
78 less invasive method (18). However, DBS sampling can be painful, is more complicated, and

79 has higher failure rates than saliva sampling (15). The drug concentrations in DBS are
80 influenced by the hematocrit value, blood volume, sampling paper, and chromatographic
81 effects (15, 18). In addition, unbound drug concentrations are not determinable in DBS;
82 salivary concentrations are generally used to represent the unbound drug concentrations
83 (15).

84 Serum contains unbound and bound drugs, whereas saliva generally contains only
85 unbound drugs. Measuring the concentrations of unbound drugs may be important in
86 pharmacokinetic studies, because only unbound drugs are pharmacologically active (19).
87 This means that salivary concentrations of drugs may be more strongly associated with
88 therapeutically active drug concentrations than total serum/plasma concentrations (19).

89 Previously, a few studies described linezolid concentrations in saliva and found that
90 saliva is a suitable matrix for TDM in healthy individuals or MDR-TB patients (15, 17, 20-22).
91 Salivary concentrations can be translated to plasma or serum concentrations with a
92 correction factor of 1.0–1.2 (15, 20, 22). However, there has been no human study
93 measuring unbound concentrations of linezolid and assessing the correlation between saliva
94 and unbound serum/plasma concentrations. Only about 3–7 time points are generally used
95 for linezolid measurement (15, 20, 21), and thus the data for linezolid pharmacokinetics in
96 saliva and serum remain scarce.

97 Tedizolid is a second-generation oxazolidinone which has shown similar efficacy to
98 linezolid in acute bacterial skin and soft tissue infections, with reduced adverse side effects
99 (23, 24). Tedizolid has also shown high activity against *M. tuberculosis* including MDR
100 strains (25) and species of nontuberculous mycobacteria (NTM) (26); thus, tedizolid is
101 gaining recognition as an attractive alternative to linezolid for MDR-TB and NTM (27-29).
102 Plasma protein binding differs between tedizolid and linezolid and is reported as 70–90%
103 (29) and 18% (30) in humans; therefore the pharmacokinetics of these two drugs is
104 considered to be different. However, there is scarce information regarding the

105 pharmacokinetics in clinical practice. Furthermore, while there has been one study
106 measuring salivary concentrations of tedizolid in rats (31), there has been no such study in
107 humans.

108 In addition, salivary properties are known to be influenced by food intake (16), but it is
109 unclear whether diet may also affect salivary drug concentrations in linezolid or tedizolid.
110 The aim of this study was to explore the feasibility of saliva-based TDM of linezolid and
111 tedizolid in clinical settings, including the requirement for dietary control for saliva collection.
112 To this end, we investigated the correlations of saliva and total and unbound serum
113 concentrations in healthy volunteers, and assessed these correlations before and just after
114 food intake.

115

116 **Participants and Methods**

117 This study was registered at UMIN (UMIN000046556) and approved by the ethical
118 review board of the University of Toyama (approval nos. R2012133 and R2020147) and the
119 Nihon University (approval nos. 20-005 and 23A-005). Written informed consent was
120 obtained from all participants.

121 A total of 12 healthy volunteers participated in this study. Linezolid was administered to
122 6 participants and tedizolid to 6 participants. Linezolid (Zyvox[®] IV bag 600 mg / 300 mL)
123 and tedizolid phosphate (Sivectro[®] 200mg vial) for infusion were purchased from Pfizer
124 (Tokyo) and MSD (Tokyo), respectively. Linezolid 600 mg/300 mL bag and tedizolid
125 phosphate reconstituted with 4 mL of sterile water and further dissolved with 250 mL of 0.9%
126 sterile saline were infused intravenously for 1 h.

127 Saliva samples were taken at 15 time points according to a preset schedule (**Table S1**)
128 consisting of a sample before and at 0.25, 0.5, 0.75, 1, 1.25, 1.5, 2, 2.5, 3, 4, 5, 6, 8, and 10
129 h after the start of the infusion. To collect saliva samples, participants were asked to drink 50
130 mL of distilled water to promote saliva secretion before saliva collection. Subsequently, the
131 saliva samples were collected by chewing on a cotton roll and processed using Salivette
132 (Sarstedt, Nu[®]mbrecht, Germany) in combination with centrifugation (3000×g for 2 min)
133 according to the manufacturer's instructions. Peripheral venous blood samples were also
134 taken simultaneously with saliva, before and at 0.5, 1, 1.5, 2, 2.5, 3, 4, 5, 6, 8, and 10 h after
135 the start of the infusion, through a short venous catheter inserted in the forearm opposite the
136 infusion site. The serum samples were centrifuged at 3000×g for 10 min. All samples were
137 stored at -80°C until analysis. During the study, participants ate the same food at the
138 specified times (linezolid, food consumption between 4 and 5 h (4–5 h) after the start of the
139 infusion; tedizolid, at 3–4, 6–8, and 8–10 h after the start of the infusion) and drank only
140 water, which was unrestricted, from the start to the end of sampling.

141 Total and unbound serum concentrations of linezolid and tedizolid were measured

142 using the improved methodology based on our previously published high-performance liquid
143 chromatography (HPLC) methods (30, 32). Saliva samples were applied in the same
144 manner as serum to measure saliva concentration.

145 Linezolid bulk powder (CAS No. 165800033) was purchased from Toronto Research
146 Chemicals (North York, Canada), and tedizolid bulk powder (CAS No. 856867-55-5) was
147 purchased from LKT Laboratories (Saint Paul, MN). Tedizolid was used as an internal
148 standard (IS) for linezolid. L-tryptophan methyl ester hydrochloride was purchased from
149 Tokyo Chemical Industry Co. (Tokyo) and used as an IS for tedizolid. All other reagents were
150 of analytical grade and were commercially available. Linezolid and tedizolid concentrations
151 were determined using an HPLC system (Shimadzu Corporation, Kyoto, Japan). High
152 linearity was exhibited over a concentration range for linezolid and tedizolid ($R^2 > 0.999$). The
153 lower limit of quantifications (LLOQ) of linezolid and tedizolid were 0.1 and 0.001 mg/L,
154 respectively. All concentration levels met the pre-set criteria for accuracy and precision (bias
155 and coefficient of variation [CV] $< 15\%$; at LLOQ both $< 20\%$).

156 Area under the concentration–time curve from 0 to 10 h (AUC_{0-10}) in serum and saliva
157 was calculated using the trapezoidal rule. $AUC_{10-\infty}$ was determined using the equation
158 $C_{10}/\text{elimination rate constant (ke)}$. ke was determined by using log-linear regression of the
159 concentrations in the terminal period. $AUC_{0-\infty}$ was calculated by adding AUC_{0-10} and $AUC_{10-\infty}$.
160 Half-life ($t_{1/2}$) was calculated using the equation $0.693/ke$. C_{max} was defined as the highest
161 observed concentration and T_{max} as the corresponding time of C_{max} .

162 PK analyses, including determination of the C_{max} , T_{max} , AUC_{0-10} , $AUC_{0-\infty}$, and $t_{1/2}$ of
163 linezolid and tedizolid, were performed in R (v4.3.3) applying the ggplot2 package (v3.5.0)
164 (22) in a tidyverse framework (v2.0.0).

165 Passing–Bablok regression and Bland–Altman plots were used to analyse results.
166 Pearson's correlation and the Wilcoxon signed-rank test were applied to other comparisons.
167 Statistical significance between different groups was defined as $P < 0.05$. Statistical analysis

168 and figure construction were performed using JMP Pro version 17.0.0 software (SAS
169 Institute, Cary, NC) and GraphPad Prism version 9.5.1 (GraphPad Software, San Diego,
170 CA). Data are expressed as mean with standard deviation (SD) or median with interquartile
171 range (IQR).

172

173

174 **RESULTS**

175 Participant demographics and the pharmacokinetic parameters (AUC_{0-10} , $AUC_{0-\infty}$, C_{max} ,
176 T_{max} , $t_{1/2}$, protein binding rate) of linezolid are shown in **Table 1**. Individual linezolid
177 concentration–time curves in saliva versus serum (total and unbound) were similarly shaped
178 (**Fig. 1A**) and T_{max} in saliva was not delayed (**Table 1**), which suggested that penetration of
179 linezolid into saliva is fast. The linezolid AUC_{0-10} , $AUC_{0-\infty}$, and $t_{1/2}$ in saliva were similar to
180 those in unbound serum, but C_{max} in saliva was similar to that in total serum rather than that
181 in unbound serum.

182 Pearson's test revealed that the total and unbound serum concentrations were
183 significantly correlated with saliva concentration in total (**Fig. 2A and 2B**) and in each
184 individual (**Fig. S1**) for linezolid. Passing–Bablok analysis also showed that the linear
185 regression line of linezolid saliva concentration = $-0.38 + 0.95 \times$ total serum concentration
186 with 95%CI of intercept $-0.99-0.11$; 95%CI of slope $0.88-1.02$; $R = 0.75$, and $P < 0.001$. A
187 linear relationship between unbound serum and saliva concentrations of linezolid was also
188 observed: saliva concentration = $-0.55 + 1.15 \times$ unbound serum concentration with 95%CI of
189 intercept $-1.34-0.10$; 95%CI of slope $1.04-1.25$; $R = 0.66$, and $P < 0.001$, respectively.

190 For AUCs, Pearson's test also revealed that the total and unbound serum AUC_{0-10} and
191 $AUC_{0-\infty}$ were correlated with saliva AUC_{0-10} and $AUC_{0-\infty}$, except for unbound serum $AUC_{0-\infty}$
192 (**Fig. 3A**). Passing–Bablok regression also showed a good relationship between the saliva
193 AUC_{0-10} and total serum AUC_{0-10} with a slope estimate of 0.86 (95%CI, $-0.33-2.86$) and an
194 intercept estimate of 5.44 (95%CI, $-154.0-98.5$), and unbound serum AUC_{0-10} with a slope
195 estimate of 1.48 (95%CI, $0.14-2.52$) and an intercept estimate of -26.6 (95%CI,
196 $-109.4-75.3$), respectively.

197 Bland–Altman assessment demonstrated good agreement between analyses of
198 linezolid concentrations in saliva and serum (total and unbound). The mean saliva to total
199 serum concentration, AUC_{0-10} , and $AUC_{0-\infty}$ ratios were 0.90 (95%CI $0.67-1.13$), 0.90

200 (95%CI 0.80–1.00), and 0.76 (95%CI 0.60–0.93), respectively (**Fig. 4A–C**), and the mean
201 saliva to unbound serum concentration, AUC_{0-10} , and $AUC_{0-\infty}$ ratios were 1.07 (95%CI
202 0.74–1.40), 1.09 (95%CI 0.94–1.23), and 0.99 (95%CI 0.63–1.35), respectively (**Fig. 4D–F**).
203 Regarding the influence of diet, at 5 h after administration after food intake, the total and
204 unbound serum concentrations were significantly correlated with saliva concentration (**Fig.**
205 **S2**) and the biases (ranges) of saliva to total and unbound serum concentration ratios were
206 0.86 (95%CI 0.64–1.10) and 1.05 (95%CI 0.75–1.35), respectively. These results suggested
207 that the correlation between serum and saliva may not be affected by food intake.

208 Participant demographic and pharmacokinetic parameters of tedizolid are also shown
209 in **Table 1**. Although the tedizolid AUC_{0-10} , $AUC_{0-\infty}$, C_{max} , and $t_{1/2}$ in saliva were more similar
210 to those in unbound serum than in total serum, individual tedizolid concentration–time
211 curves in saliva versus serum (total and unbound) were differently shaped (**Fig. 1B**).
212 Pearson's test revealed that the total and unbound serum concentrations of tedizolid were
213 significantly correlated with total saliva concentration (**Fig. 2C and 2D**). However, in the
214 individual evaluations, 3 out of 6 participants showed no correlation between saliva and total
215 or unbound tedizolid concentration (**Fig. S3 and S4**), which was due to the inconsistent
216 results for T_{max} in saliva and serum; in 5 out of 6 participants (all but participant 2), peaks of
217 saliva concentration were not observed and T_{max} in saliva was different from T_{max} in serum
218 (**Fig. S3 and S4**). These difference seemed not to be due to the diet because T_{max} values in
219 serum or saliva were measured before food intake (at 3–4, 6–8, and 8–10 h after the start of
220 the infusion).

221 Passing–Bablok analysis showed that the linear regression line of tedizolid saliva
222 concentration = $0.0055 + 0.053 \times$ total serum concentration with 95%CI of intercept
223 $-0.0047-0.03208$; 95%CI of slope $0.040-0.064$; $R = 0.54$, and $P < 0.001$. The unbound
224 serum concentrations of tedizolid were also linearly correlated with saliva concentrations
225 with equation saliva concentration = $0.0067 + 0.36 \times$ unbound serum concentration with

226 95%CI of intercept -0.005–0.021; 95%CI of slope 0.29–0.43; R = 0.50, and P < 0.001,
227 respectively. However, for AUCs, Pearson’s test revealed that the total and unbound serum
228 AUCs (AUC_{0-10} and $AUC_{0-\infty}$) were all uncorrelated with saliva AUCs (**Fig. S5**), which does
229 not favour saliva as a sampling matrix for TDM. The mean (range) saliva to total and
230 unbound serum tedizolid concentration rates were 0.060 (0.012–0.108) and 0.39
231 (0.07–0.74), respectively.

232

233

234 **DISCUSSION**

235 This study is the first to investigate the relationship between saliva and unbound serum
236 concentration with multiple time points and to measure saliva tedizolid concentrations in
237 humans. We also investigated the influence of diet on the correlation between saliva and
238 total or unbound serum concentrations, because while salivary properties are known to
239 change according to food intake (16), the effect of diet on salivary drug concentrations has
240 not been unclarified.

241 Saliva contains only the unbound fraction of drugs, since only the unbound fraction is
242 able to infiltrate through the salivary tissues, including the capillary wall, the basement
243 membrane, and the membrane of the salivary gland epithelial cells (33). Thus, salivary
244 concentrations generally represent the unbound drug concentrations (15). Regarding
245 linezolid, as we expected, the time-courses of linezolid saliva concentrations were similarly
246 shaped with unbound concentrations in serum, and the mean saliva-to-serum concentration,
247 AUC_{0-10} , and $AUC_{0-\infty}$ ratios were closer to 1 for those to unbound serum compared to those
248 to total serum. The mean saliva to unbound serum concentration, AUC_{0-10} , and $AUC_{0-\infty}$
249 ratios were 1.07, 1.09, and 0.99, respectively (**Fig. 4D–F**).

250 To date, no human study has compared linezolid saliva and unbound concentrations in
251 serum or plasma. Based on the previous studies conducted in TB patients, Bolhuis et al.
252 reported the mean oral fluid/total serum concentration or AUC from 0 to 12 h (AUC_{0-12}) ratios
253 were 1.03 and 0.97, respectively (20). Van den Elsen et al. also showed that the median
254 saliva/total serum concentration and AUC_{0-24} ratios were 0.76 and 0.81, respectively (17).
255 They also suggested a correlation factor of 1.2 when translated to serum AUC_{0-24} using
256 saliva AUC_{0-24} , which may be due to the difference between the total and saliva
257 concentrations, the latter of which represent the unbound concentrations, and it seemed that
258 the values of saliva AUC_{0-24} and unbound serum AUC_{0-24} would be approximately the same.
259 In the present study, the mean saliva-to-total serum concentration, AUC_{0-10} , and $AUC_{0-\infty}$

260 ratios were 0.90, 0.90, and 0.76, respectively (**Fig. 4A–C**), and the mean saliva-to-serum
261 concentration, AUC_{0-10} , and $AUC_{0-\infty}$ ratios were closer to 1 for unbound serum
262 concentrations than for the total serum concentrations. Although there were slight
263 differences in saliva-to-total serum concentrations or AUC ratios in these studies, which
264 might be attributable to differences in sampling methods, processing or storage, salivary
265 TDM of linezolid indeed might indeed be feasible with good reproducibility and is ready for
266 validation in a clinical setting.

267 Salivary properties are known to change according to food intake (16). To improve the
268 feasibility of salivary linezolid TDM, we investigated the effects of food intake on salivary
269 linezolid concentrations and the correlation with total and unbound serum concentrations. In
270 the present study, even after food intake, total and unbound serum concentrations were
271 significantly correlated with saliva concentration (**Fig. S2**) and the biases (ranges) of saliva
272 to total and unbound serum concentration ratios were 0.86 (0.64–1.10) and 1.05 (0.75–1.35),
273 respectively. These results suggested that the correlation between serum and saliva
274 linezolid concentrations may not be affected by diet, and dietary control may not be
275 necessary when collecting saliva.

276 For tedizolid, the mean (range) tedizolid saliva-to-unbound serum concentration ratio
277 was 0.39 (0.07–0.74), suggesting lower passage into the saliva than linezolid. As in previous
278 studies (29, 32), the serum protein-binding rates were different between linezolid and
279 tedizolid in the present study. The median (IQR) serum protein-binding rates are 18.2
280 (15.8–19.8) in linezolid and 60.3 (48.0–71.1) in tedizolid, respectively (**Table 1**). It is thought
281 that the significant difference in serum-protein binding between linezolid and tedizolid affects
282 drug passage into the saliva. In addition to serum-protein binding, pH and pKa, lipid solubility,
283 charge, molecular weight and spatial configuration, dose and clearance of the drug, salivary
284 flow rate and pH, and salivary-binding proteins and salivary enzymes capable of
285 metabolizing the drug would also affect the results (16, 34). Based on these many variables,

286 the analysis of oxazolidinone concentrations in saliva and serum must be validated in
287 humans, not animals. In fact, however, there has been only one study measuring salivary
288 concentrations of tedizolid, and that study used a rat model; the results showed that the
289 serum-protein binding and salivary pH values were different from those of humans (31). The
290 study also demonstrated a strong correlation between saliva and plasma concentrations of
291 tedizolid and suggested that saliva is a useful matrix for TDM of not only linezolid but also
292 tedizolid (31). However, in the present study in humans, although correlations between
293 saliva and total and unbound serum tedizolid concentrations were observed in participants
294 overall, these correlations were not observed in 3 of the 6 participants (**Fig. S3**). A possible
295 explanation for the observed nonlinear relationship might be the low tedizolid concentrations,
296 higher interindividual variability, and the absence or delayed saliva concentration peak after
297 infusion (**Fig. S3 and S4**). In addition, the total and unbound serum AUCs (AUC_{0-10} and
298 $AUC_{0-\infty}$) were all uncorrelated with saliva AUCs in tedizolid (**Fig. S5**). Based on these results,
299 saliva seems not to be useful in TDM for tedizolid.

300 Salivary TDM could be an attractive alternative method for traditional linezolid TDM
301 using plasma or serum, and feasibility improvements will likely be a focus of future studies,
302 including stability studies for transport at room temperature and cross-validation of existing
303 analytical methods in saliva (17). However, with respect to tedizolid our data do not support
304 saliva as a suitable matrix for TDM using the described method. As shown in a previous
305 systematic review (15), saliva will likely not be a universal but only a selective matrix for
306 TDM.

307 Saliva sampling is easy and noninvasive, and requires only a small sample volume
308 (100 μ L) for measurement, thus allows for the collection of multiple samples, while avoiding
309 the risks associated with blood drawing. As with other drugs reported in previous studies (15,
310 35), the linezolid concentrations in saliva represent the unbound concentrations in the serum,
311 and therefore salivary concentrations may be considered more closely related to

312 therapeutically active unbound concentrations at the site of action than total serum
313 concentrations. Saliva sampling might even reduce costs due to the higher level of training
314 of personnel needed for blood sampling and because less time is needed. Moreover, saliva
315 sampling might even take place at home. If collected saliva is stable for a certain period (e.g.,
316 a few weeks) even under low or high temperature, salivary TDM would allow children, elderly,
317 and people with disabilities the option to sample themselves at any location and afterward
318 bring their saliva samples to a local health post (15). To further improve feasibility of salivary
319 TDM in clinical settings, the applicability of saliva and/or collection devices other than the
320 Salivette (Sarstedt, Leicester, United Kingdom) for pharmacokinetic analysis and therapeutic
321 drug monitoring in patients should be clinically validated (20).

322 There were several limitations in the present study. First, salivary pH values which
323 could influence drug penetration into saliva were not measured. Second, we included only
324 healthy volunteers in the present study and did not investigate children or patients,
325 especially those with disease affecting the saliva composition. Third, we did not evaluate the
326 time-stability of saliva samples under room temperature conditions.

327 In conclusion, the analysis of linezolid (with no correction factor) in saliva is applicable
328 for TDM as a promising alternative to conventional serum sampling. Easy sampling using a
329 noninvasive technique may facilitate therapeutic drug monitoring for specific patient
330 categories.

331

332 **Transparency declaration**

333 **Data availability**

334 The data presented in this study are available upon request from the corresponding author.

335 **Conflicts of interest**

336 We have no conflicts of interest to declare.

337 **Funding**

338 This study was supported by research grants from the Japanese Society of Chemotherapy
339 Foundation (the 8th Uehara Infectious Disease and Chemotherapy Research Award to H.K.)
340 and the Japan Society for the Promotion of Science KAKENHI program (grant number
341 JP22K08597 to Y.Y.). The funding bodies played no role in the study design, collection,
342 analysis, or interpretation of data, and no role in writing the manuscript.

343 **Acknowledgments**

344 We thank Kai Kurihara, Risa Sakurai, and Rei Yasukochi for their assistance with the sample
345 collections.

346 **Author contributions:** Conceptualization: H.K., Y. Tsuji, and Y.Y.; Methodology: H.K. and Y.
347 Tsuji; Validation: H.K. and Y. Tsuji; Formal Analysis: H.K. and Y. Tsuji; Investigation: H.K., Y.
348 Tsuji, K.M., T.A., F.K., M.E., Y.K., Y. Takegoshi, M.K., Y.M., K.K., and K.N.; Data Curation:
349 H.K. and Y. Tsuji; Writing—Original Draft Preparation: H.K. and Y. Tsuji; Writing—Review and
350 Editing: H.K. and Y. Tsuji; Visualization: H.K. and Y. Tsuji; Supervision: Y. Tsuji and Y.Y.;
351 Project Administration: Y. Tsuji and Y.Y.; Funding acquisition: H.K. and Y.Y.

352

353 **Figure legends:**

354 **Figure 1. Concentration–time curves for linezolid and tedizolid in total and unbound**
355 **serum and saliva**

356 **(A)** Concentration–time curves in total (red) and unbound serum (orange) and saliva (blue)
357 for linezolid (n = 6). **(B)** Concentration–time curves in total (red) and unbound serum
358 (orange) and saliva (blue) for tedizolid (n = 6). Data are presented as means and standard
359 deviations.

360

361 **Figure 2. Correlation between total or unbound serum and saliva concentrations of**
362 **linezolid and tedizolid**

363 The relationship between saliva concentrations and **(A)** total or **(B)** unbound serum
364 concentrations of linezolid (n = 6). The relationship between saliva concentrations and **(C)**
365 total or **(D)** unbound serum concentrations of tedizolid (n = 6). Each dot represents the
366 concentration measured at one time point for one individual. The Pearson correlation was
367 calculated, and the *P* value and *r* value and general linear regression lines are shown.

368

369 **Figure 3. Correlation between saliva and total or unbound serum AUCs of linezolid**

370 The relationship of area under the concentration–time curve from 0 to 10 h (AUC_{0-10})
371 between in saliva and in **(A)** total or **(C)** unbound serum for linezolid (n = 6). The relationship
372 of AUC extrapolated to infinity ($AUC_{0-\infty}$) between in saliva and in **(B)** total or **(D)** unbound
373 serum for linezolid (n = 6). Each dot represents an individual value. The Pearson correlation
374 was calculated, and the *P* value and *r* value and general linear regression lines are shown.

375

376 **Figure 4. Bland-Altman plot of linezolid concentration, AUC_{0-10} , and $AUC_{0-\infty}$ ratios in**
377 **saliva versus total or unbound serum**

378 Bland-Altman plot of ratios of **(A)** concentrations, **(B)** AUC_{0-10} , and **(C)** $AUC_{0-\infty}$ between

379 saliva and total serum compared to the average of those in saliva and total serum.
380 Bland-Altman plot of ratios of **(D)** concentrations, **(E)** AUC_{0-10} , and **(F)** $AUC_{0-\infty}$ between in
381 saliva and unbound serum compared to the average of those in saliva and unbound serum.
382 Solid line: the bias. Dashed lines: the 95% limits of agreement.

383

384 **Figure S1. Correlation between total or unbound serum and saliva concentrations of**
385 **linezolid in each individual**

386 The relationship between saliva concentrations and total (red) or unbound serum
387 concentrations (orange) of linezolid in participant 1 to 6. Each dot represents the
388 concentration measured at each time point for each individual. The Pearson correlation was
389 calculated, and the *P* value and *r* value and general linear regression lines are shown.

390

391 **Figure S2. Correlation between total or unbound serum and saliva concentrations of**
392 **linezolid before and after food intake**

393 **(A)** The relationship between saliva concentrations and total (red) or unbound serum
394 concentrations (orange) of linezolid until food intake (0–4 h after infusion). **(B)** The
395 relationship between saliva concentrations and total (red) or unbound serum concentrations
396 (orange) of linezolid after food intake (5–10 h after infusion). Each dot represents the
397 concentration measured at one time point for one individual. The Pearson correlation was
398 calculated, and the *P* value and *r* value and general linear regression lines are shown.

399

400 **Figure S3. Concentration–time curves for tedizolid in total and unbound serum and**
401 **saliva of each individual**

402 Concentration–time curves in total (red) and unbound serum (orange) and saliva (blue) for
403 tedizolid (*n* = 6) in participants 1 to 6. Each dot represents the concentration measured at
404 one time point for one individual.

405

406 **Figure S4. Correlation between total or unbound serum and saliva concentrations of**
407 **tedizolid in each individual**

408 The relationship between saliva concentrations and total (red) or unbound serum
409 concentrations (orange) of tedizolid in participants 1 to 6. Total and unbound serum
410 concentrations at T_{max} (vertical dotted line) are shown for each individual. Each dot
411 represents the concentration measured at one time point for one individual. The Pearson
412 correlation was calculated, and the P value and r value and general linear regression lines
413 are shown.

414

415 **Figure S5. Correlation between saliva and total or unbound serum AUCs of tedizolid**

416 The relationship of the area under the concentration–time curve from 0 to 10 h (AUC_{0-10})
417 between in saliva and in **(A)** total or **(C)** unbound serum for tedizolid ($n = 6$). The relationship
418 of AUC extrapolated to infinity ($AUC_{0-\infty}$) between in saliva and in **(B)** total or **(D)** unbound
419 serum for tedizolid ($n = 6$). Each dot represents an individual value. The Pearson correlation
420 was calculated, and the P value and r value and general linear regression lines are shown.

421

422

423 **Table 1. Pharmacokinetic parameters of linezolid and tedizolid in serum (total and**
 424 **unbound) and in saliva (n = 6)**

Drug and parameter	Median value (IQR) for sample type		
	Total	Unbound	Saliva
Linezolid			
Participants	6		
Age (years)	31.0 (27.0–48.0)		
Body weight (kg)	67.0 (59.5–71.3)		
AUC _{0–10} (mg · h/L)	86.8 (81.9–105.3) ^b	73.9 (67.4–84.2) ^a	79.9 (73.1–89.7)
AUC _{0–∞} (mg · h/L)	197.4 (173.5–250.6) ^b	164.5 (139.6–191.3) ^a	148.6 (129.2–183.5) ^a
	^c		
C _{max} (mg/L)	15.6 (13.3–17.0) ^b	12.7 (10.9–13.6) ^{a, c}	15.5 (14.2–16.9) ^b
T _{max} (h)	1.0 (1.0–1.0)	1.0 (1.0–1.0)	1.0 (1.0–1.0)
t _{1/2} (h)	11.4 (10.1–12.1) ^c	10.9 (9.0–12.0)	9.0 (7.4–10.0) ^a
Protein-binding rate (%)	18.2 (15.8–19.8)		–
Tedizolid			
Participants	6		
Age (years)	29.0 (28.5–35.8)		
Body weight (kg)	72.0 (65.3–77.8)		
AUC _{0–10} (mg · h/L)	16.3 (15.1–18.3) ^c	2.5 (2.3–2.9)	1.0 (0.8–1.3) ^a
AUC _{0–∞} (mg · h/L)	27.4 (25.0–31.6) ^c	3.8 (3.4–4.6)	1.5 (1.1–2.0) ^a
C _{max} (mg/L)	4.9 (3.7–6.0) ^c	0.9 (0.6–1.0)	0.2 (0.1–0.3) ^a
T _{max} (h)	1.0 (1.0–1.1)	1.0 (0.9–1.1)	2.0 (1.0–3.0)

$t_{1/2}$ (h)	8.6 (7.7–9.1)	6.5 (6.0–7.4)	6.1 (4.1–7.6)
Protein-binding rate (%)	60.3 (48.0–71.1)		–

425 ^a, $P < 0.05$ versus total, as determined by Fisher's exact test.

426 ^b, $P < 0.05$ versus unbound, as determined by Fisher's exact test.

427 ^c, $P < 0.05$ versus saliva, as determined by Fisher's exact test.

428

429

430

431 **Table S1 Time schedule of linezolid study**

Time (h) after infusion	Infusion	Collection		Comment
		Saliva	Serum	
0	Linezolid (Zyvox [®] IV bag 600 mg / 300 mL) were infused intravenously for 1 h.	X	X	Just before infusion
0.25		X		
0.5		X	X	
0.75		X		
1		X	X	At the end of infusion
1.25		X		
1.5		X	X	
2		X	X	
2.5		X	X	
3		X	X	
4		X	X	
4–5			Food intake	
5	X	X		
6	X	X		
8	X	X		
10	X	X		

432 Saliva samples were taken at 15 time points (X) just before and after the start of the linezolid
433 infusion. To collect saliva samples, participants were asked to drink 50 mL of distilled water
434 to promote saliva secretion before saliva collection. Subsequently, the saliva samples were
435 collected by chewing on a cotton roll and processed using Salivette (Sarstedt, Nu[®]mbrecht,
436 Germany). Peripheral venous blood samples were also taken simultaneously with saliva at
437 12 time points (X) just before and after the start of the infusion, through a short venous

438 catheter inserted in the forearm opposite the infusion site. During the study, participants ate
439 the same food between 4 and 5 h (4–5 h) after the start of the infusion and drank only water,
440 which was unrestricted, from the start to the end of sampling.

441

442

443 **Table S2 Time schedule of tedizolid study**

Time (h) after infusion	Infusion	Collection		Comment
		Saliva	Serum	
0	Tedizolid phosphate (Sivectro [®] 200mg) were infused intravenously for 1 h.	X	X	Just before infusion
0.25				
0.5		X	X	
0.75		X		
1		X	X	At the end of infusion
1.25		X		
1.5		X	X	
2		X	X	
2.5		X	X	
3		X	X	
3–4		Food intake		
4		X	X	
5		X	X	
6		X	X	
6–8		Food intake		
8	X	X		
8–10	Food intake			
10	X	X		

444 Saliva samples were taken at 15 time points (X) just before and after the start of the tedizolid
 445 infusion. To collect saliva samples, participants were asked to drink 50 mL of distilled water
 446 to promote saliva secretion before saliva collection. Subsequently, the saliva samples were

447 collected by chewing on a cotton roll and processed using Salivette (Sarstedt, Nußm
448 Germany). Peripheral venous blood samples were also taken simultaneously with saliva at
449 12 time points (X) just before and after the start of the infusion, through a short venous
450 catheter inserted in the forearm opposite the infusion site. During the study, participants ate
451 the same food at 3–4, 6–8, and 8–10 h after the start of the infusion and drank only water,
452 which was unrestricted, from the start to the end of sampling.

453

454

455 **REFERENCES**

- 456 1. Turner NA, Sharma-Kuinkel BK, Maskarinec SA, Eichenberger EM, Shah PP,
457 Carugati M, Holland TL, Fowler VG. 2019. Methicillin-resistant *Staphylococcus*
458 *aureus*: an overview of basic and clinical research. *Nature Reviews Microbiology*
459 17:203-218.
- 460 2. Kawasuji H, Nagaoka K, Tsuji Y, Kimoto K, Takegoshi Y, Kaneda M, Murai Y, Karaushi
461 H, Mitsutake K, Yamamoto Y. 2023. Effectiveness and Safety of Linezolid Versus
462 Vancomycin, Teicoplanin, or Daptomycin against Methicillin-Resistant
463 *Staphylococcus aureus* Bacteremia: A Systematic Review and Meta-Analysis.
464 *Antibiotics (Basel)* 12.
- 465 3. Cairns KA, Udy AA, Peel TN, Abbott IJ, Dooley MJ, Peleg AY. 2023. Therapeutics for
466 Vancomycin-Resistant Enterococcal Bloodstream Infections. *Clinical Microbiology*
467 *Reviews* 36:e00059-22.
- 468 4. World Health Organization (WHO) (2019) WHO consolidated guidelines on
469 drug-resistant tuberculosis treatment. WHO G.
- 470 5. Agyeman AA, Ofori-Asenso R. 2016. Efficacy and safety profile of linezolid in the
471 treatment of multidrug-resistant (MDR) and extensively drug-resistant (XDR)
472 tuberculosis: a systematic review and meta-analysis. *Ann Clin Microbiol Antimicrob*
473 15:41.
- 474 6. Daley CL, Iaccarino JM, Lange C, Cambau E, Wallace RJ, Jr, Andrejak C, Böttger EC,
475 Brozek J, Griffith DE, Guglielmetti L, Huitt GA, Knight SL, Leitman P, Marras TK,
476 Olivier KN, Santin M, Stout JE, Tortoli E, van Ingen J, Wagner D, Winthrop KL. 2020.
477 Treatment of Nontuberculous Mycobacterial Pulmonary Disease: An Official
478 ATS/ERS/ESCMID/IDSA Clinical Practice Guideline. *Clinical Infectious Diseases*
479 71:e1-e36.
- 480 7. Garrabou G, Soriano À, Pinós T, Casanova-Mollà J, Pacheu-Grau D, Morén C,
481 García-Arumí E, Morales M, Ruiz-Pesini E, Catalán-García M, Milisenda JC, Lozano
482 E, Andreu AL, Montoya J, Mensa J, Cardellach F. 2017. Influence of Mitochondrial
483 Genetics on the Mitochondrial Toxicity of Linezolid in Blood Cells and Skin Nerve
484 Fibers. *Antimicrob Agents Chemother* 61.
- 485 8. Wasserman S, Meintjes G, Maartens G. 2016. Linezolid in the treatment of
486 drug-resistant tuberculosis: the challenge of its narrow therapeutic index. *Expert Rev*
487 *Anti Infect Ther* 14:901-15.
- 488 9. Bandín-Vilar E, García-Quintanilla L, Castro-Balado A, Zarra-Ferro I,
489 González-Barcia M, Campos-Toimil M, Mangas-Sanjuan V, Mondelo-García C,
490 Fernández-Ferreiro A. 2023. Correction: A Review of Population Pharmacokinetic
491 Analyses of Linezolid. *Clinical Pharmacokinetics* 62:1331-1331.
- 492 10. Mabilat C, Gros MF, Nicolau D, Mouton JW, Textoris J, Roberts JA, Cotta MO, van

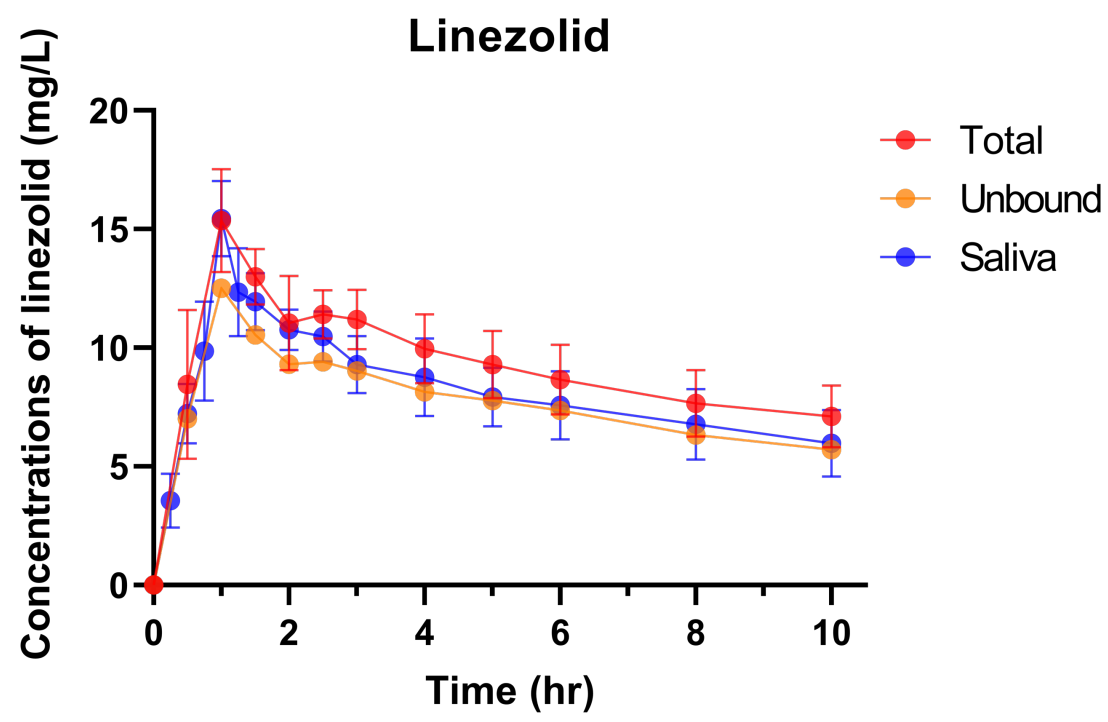
- 493 Belkum A, Caniaux I. 2020. Diagnostic and medical needs for therapeutic drug
494 monitoring of antibiotics. *European Journal of Clinical Microbiology & Infectious*
495 *Diseases* 39:791-797.
- 496 11. Pea F, Viale P, Cojutti P, Del Pin B, Zamparini E, Furlanut M. 2012. Therapeutic drug
497 monitoring may improve safety outcomes of long-term treatment with linezolid in adult
498 patients. *J Antimicrob Chemother* 67:2034-42.
- 499 12. Cojutti PG, Merelli M, Bassetti M, Pea F. 2019. Proactive therapeutic drug monitoring
500 (TDM) may be helpful in managing long-term treatment with linezolid safely: findings
501 from a monocentric, prospective, open-label, interventional study. *J Antimicrob*
502 *Chemother* doi:10.1093/jac/dkz374.
- 503 13. Kawasuji H, Tsuji Y, Ogami C, Kimoto K, Ueno A, Miyajima Y, Kawago K, Sakamaki I,
504 Yamamoto Y. 2021. Proposal of initial and maintenance dosing regimens with
505 linezolid for renal impairment patients. *BMC Pharmacology and Toxicology* 22:13.
- 506 14. Kawasuji H, Tsuji Y, Ogami C, Kaneda M, Murai Y, Kimoto K, Ueno A, Miyajima Y,
507 Fukui Y, Sakamaki I, Yamamoto Y. 2021. Initially Reduced Linezolid Dosing Regimen
508 to Prevent Thrombocytopenia in Hemodialysis Patients. *Antibiotics (Basel)* 10.
- 509 15. van den Elsen SHJ, Oostenbrink LM, Heysell SK, Hira D, Touw DJ, Akkerman OW,
510 Bolhuis MS, Alffenaar JC. 2018. Systematic Review of Salivary Versus Blood
511 Concentrations of Antituberculosis Drugs and Their Potential for Salivary Therapeutic
512 Drug Monitoring. *Ther Drug Monit* 40:17-37.
- 513 16. Davies Forsman L, Kim HY, Nguyen TA, Alffenaar J-WC. 2024. Salivary Therapeutic
514 Drug Monitoring of Antimicrobial Therapy: Feasible or Futile? *Clinical*
515 *Pharmacokinetics* 63:269-278.
- 516 17. van den Elsen SHJ, Akkerman OW, Jongedijk EM, Wessels M, Ghimire S, van der
517 Werf TS, Touw DJ, Bolhuis MS, Alffenaar JC. 2020. Therapeutic drug monitoring
518 using saliva as matrix: an opportunity for linezolid, but challenge for moxifloxacin. *Eur*
519 *Respir J* 55.
- 520 18. Zailani NNB, Ho PC-L. 2023. Dried Blood Spots—A Platform for Therapeutic Drug
521 Monitoring (TDM) and Drug/Disease Response Monitoring (DRM). *European Journal*
522 *of Drug Metabolism and Pharmacokinetics* 48:467-494.
- 523 19. Seyfinejad B, Ozkan SA, Jouyban A. 2021. Recent advances in the determination of
524 unbound concentration and plasma protein binding of drugs: Analytical methods.
525 *Talanta* 225:122052.
- 526 20. Bolhuis MS, van Altena R, van Hateren K, de Lange WCM, Greijdanus B, Uges DRA,
527 Kosterink JGW, van der Werf TS, Alffenaar JWC. 2013. Clinical Validation of the
528 Analysis of Linezolid and Clarithromycin in Oral Fluid of Patients with
529 Multidrug-Resistant Tuberculosis. *Antimicrobial Agents and Chemotherapy*
530 57:3676-3680.

- 531 21. Hara S, Uchiyama M, Yoshinari M, Matsumoto T, Jimi S, Togawa A, Takata T,
532 Takamatsu Y. 2015. A simple high-performance liquid chromatography for the
533 determination of linezolid in human plasma and saliva. *Biomed Chromatogr*
534 29:1428-31.
- 535 22. Anonymous. Pfizer 2005. Zyvoxid. Product information. Pfizer, New York, NY.
- 536 23. Moran GJ, Fang E, Corey GR, Das AF, De Anda C, Prokocimer P. 2014. Tedizolid for
537 6 days versus linezolid for 10 days for acute bacterial skin and skin-structure
538 infections (ESTABLISH-2): a randomised, double-blind, phase 3, non-inferiority trial.
539 *Lancet Infect Dis* 14:696-705.
- 540 24. Lee AS, de Lencastre H, Garau J, Kluytmans J, Malhotra-Kumar S, Peschel A,
541 Harbarth S. 2018. Methicillin-resistant *Staphylococcus aureus*. *Nature Reviews*
542 *Disease Primers* 4:18033.
- 543 25. Ruiz P, Causse M, Vaquero M, Casal M. 2019. *In Vitro* Activity of Tedizolid against
544 *Mycobacterium tuberculosis*. *Antimicrobial Agents and Chemotherapy*
545 63:10.1128/aac.01939-18.
- 546 26. Brown-Elliott BA, Wallace RJ. 2017. *In Vitro* Susceptibility Testing of Tedizolid against
547 Nontuberculous Mycobacteria. *Journal of Clinical Microbiology* 55:1747-1754.
- 548 27. Ruth MM, Koeken VACM, Pennings LJ, Svensson EM, Wertheim HFL, Hoefsloot W,
549 van Ingen J. 2019. Is there a role for tedizolid in the treatment of non-tuberculous
550 mycobacterial disease? *Journal of Antimicrobial Chemotherapy* 75:609-617.
- 551 28. Kumar K, Daley CL, Griffith DE, Loebinger MR. 2022. Management of
552 *Mycobacterium avium* complex and *Mycobacterium*
553 *abscessus* pulmonary disease: therapeutic advances and emerging treatments.
554 *European Respiratory Review* 31:210212.
- 555 29. Iqbal K, Milioudi A, Wicha SG. 2022. Pharmacokinetics and Pharmacodynamics of
556 Tedizolid. *Clinical Pharmacokinetics* 61:489-503.
- 557 30. Tsuji Y, Holford NHG, Kasai H, Ogami C, Heo YA, Higashi Y, Mizoguchi A, To H,
558 Yamamoto Y. 2017. Population pharmacokinetics and pharmacodynamics of
559 linezolid-induced thrombocytopenia in hospitalized patients. *Br J Clin Pharmacol*
560 83:1758-1772.
- 561 31. Inoue Y, Sato Y, Kashiwagi H, Nashimoto S, Sugawara M, Takekuma Y. 2023.
562 Monitoring Salivary Concentrations of Tedizolid and Linezolid Using Rats. *Eur J Drug*
563 *Metab Pharmacokinet* 48:387-395.
- 564 32. Tsuji Y, Numajiri M, Ogami C, Kurosaki F, Miyamoto A, Aoyama T, Kawasuji H,
565 Nagaoka K, Matsumoto Y, To H, Yamamoto Y. 2021. Development of a simple method
566 for measuring tedizolid concentration in human serum using HPLC with a fluorescent
567 detector. *Medicine (Baltimore)* 100:e28127.
- 568 33. Elmongy H, Abdel-Rehim M. 2016. Saliva as an alternative specimen to plasma for

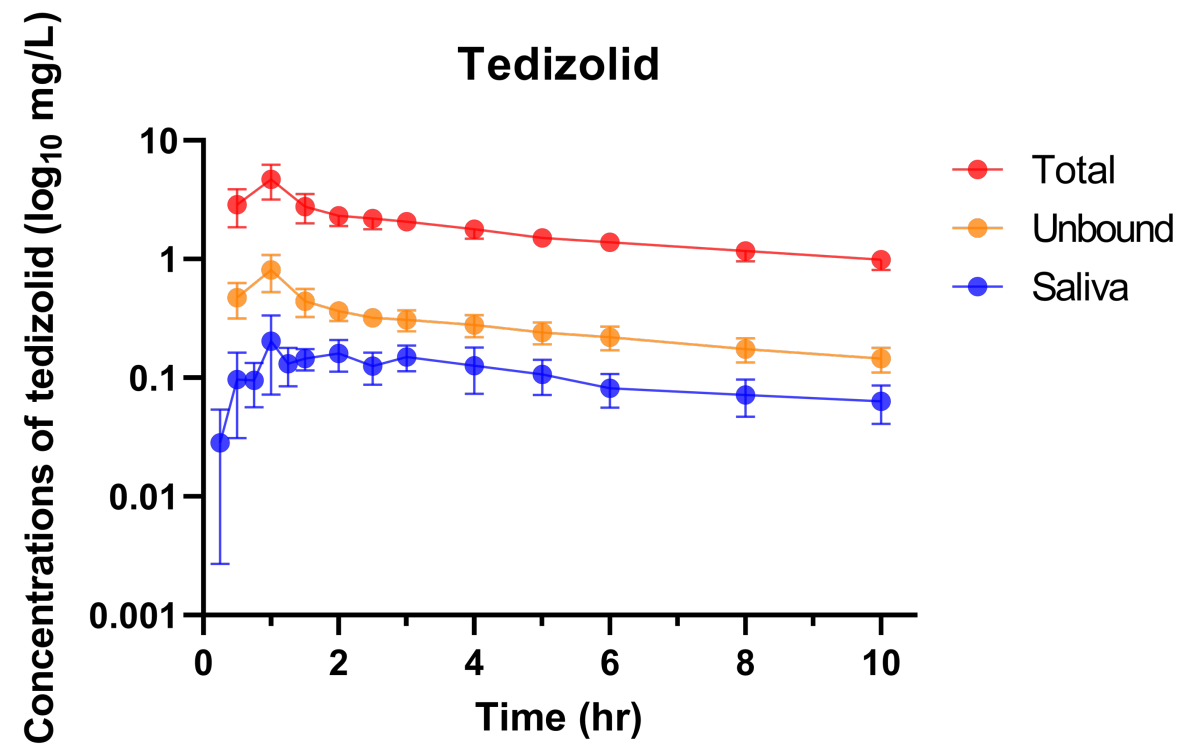
- 569 drug bioanalysis: A review. *TrAC Trends in Analytical Chemistry* 83:70-79.
- 570 34. Aps JK, Martens LC. 2005. Review: The physiology of saliva and transfer of drugs
571 into saliva. *Forensic Sci Int* 150:119-31.
- 572 35. Patsalos PN, Berry DJ. 2013. Therapeutic drug monitoring of antiepileptic drugs by
573 use of saliva. *Ther Drug Monit* 35:4-29.
- 574

Figure 1

A



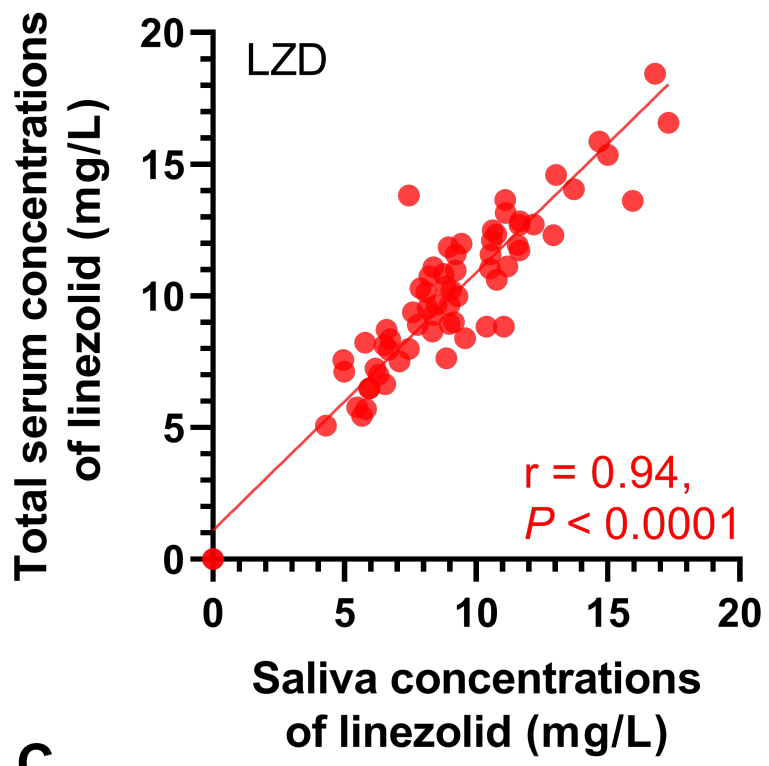
B



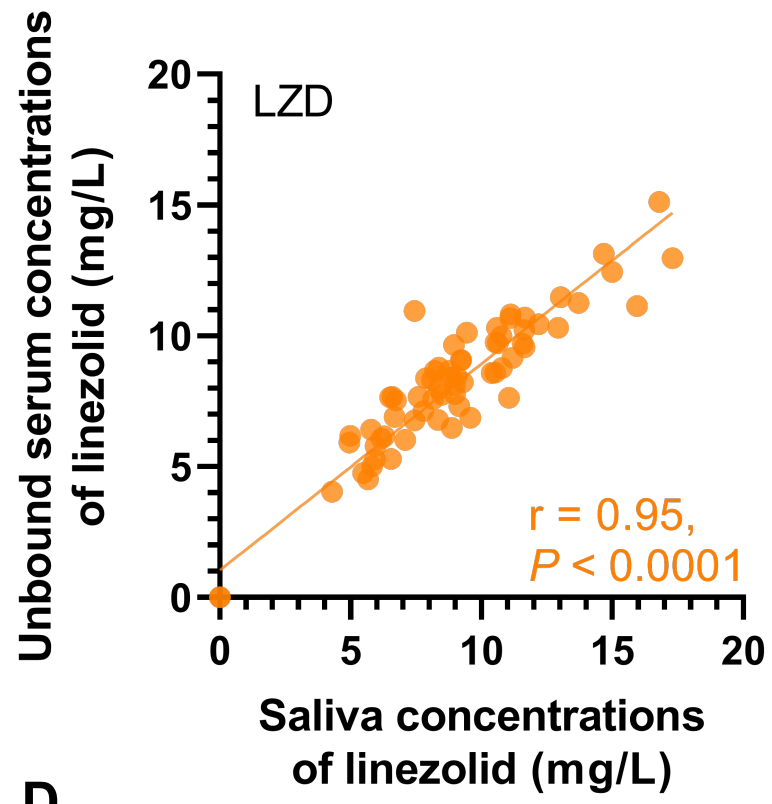
medRxiv preprint doi: <https://doi.org/10.1101/2024.06.30.24309749>; this version posted July 1, 2024. The copyright holder for this preprint (which was not certified by peer review) is the author/funder, who has granted medRxiv a license to display the preprint in perpetuity. It is made available under a [CC-BY-NC-ND 4.0 International license](https://creativecommons.org/licenses/by-nc-nd/4.0/).

Figure 2

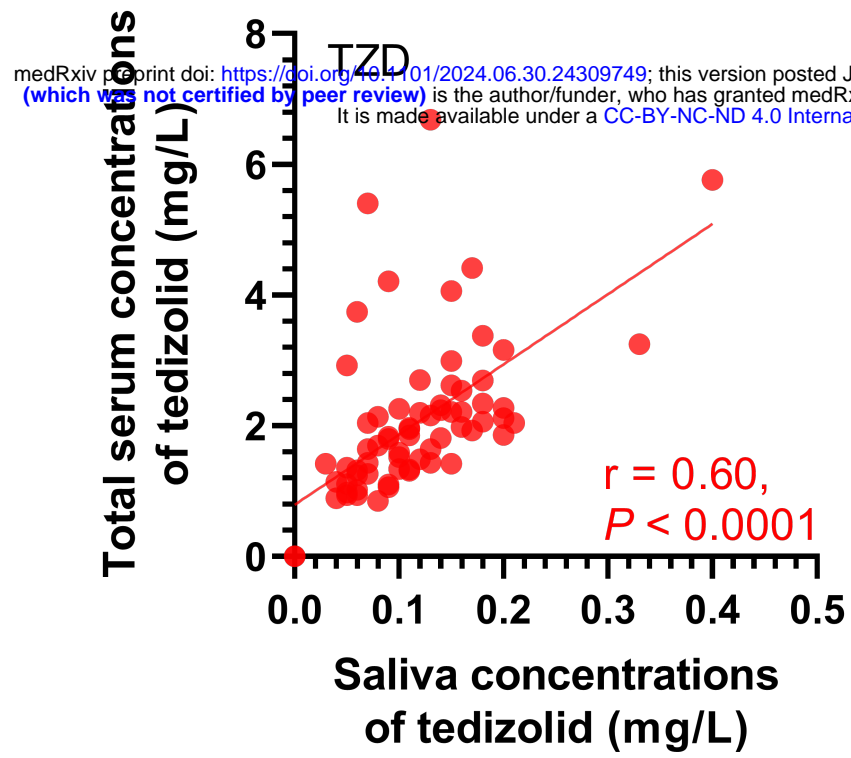
A



B



C



D

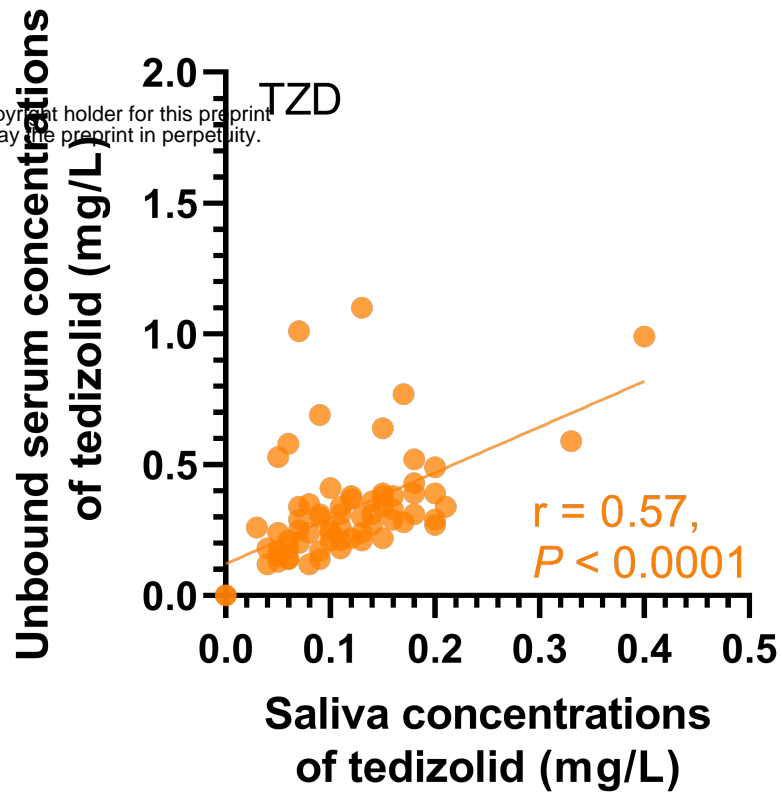


Figure 3

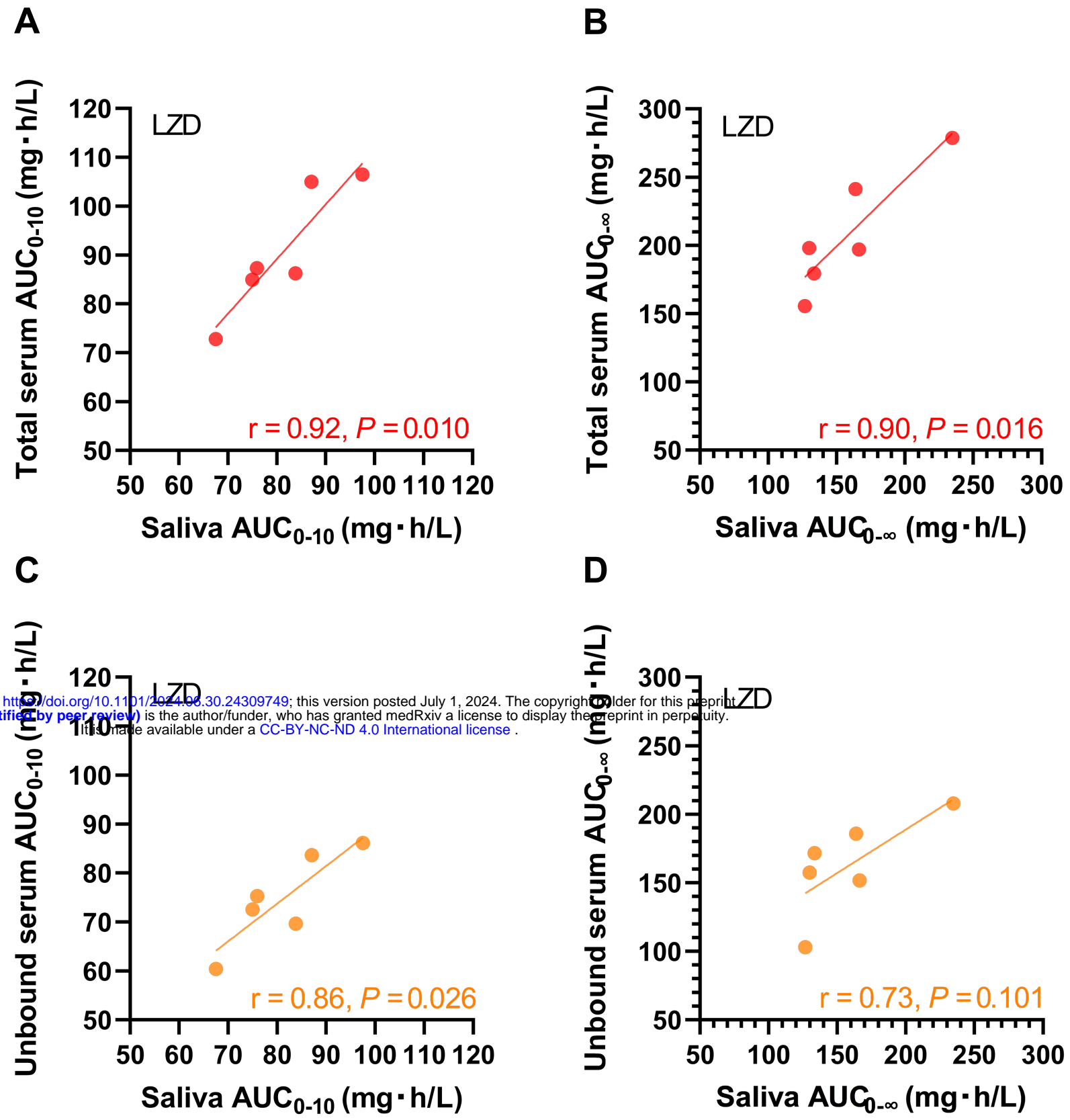


Figure 4

