

1 Cross-sectional and longitudinal associations of smoking behavior with
2 central arterial hemodynamic measures: The Framingham Heart Study

3 Leroy L. Cooper,^{1*} Sana Majid,² Na Wang,³ Jessica L. Fetterman,^{2,4} Joseph N. Palmisano,
4 Emelia J. Benjamin,^{2,4,6,7,8} Ramachandran S. Vasan,^{6,9,10} Gary F. Mitchell,¹¹ and Naomi M.
5 Hamburg^{2,4}

6 ¹Biology Department, Vassar College, Poughkeepsie, New York, United States of America

7 ²Evans Department of Medicine, Boston Medical Center, Boston, Massachusetts, United States
8 of America

9 ³Biostatistics and Epidemiology Data Analytics Center, Boston University School of Public
10 Health, Boston, Massachusetts, United States of America

11 ⁴Whitaker Cardiovascular Institute, Boston University Chobanian & Avedisian School of
12 Medicine, Boston, Massachusetts, United States of America

13 ⁵Department of Biostatistics, Boston University School of Public Health, Boston, Massachusetts

14 ⁶Boston University and NHLBI's Framingham Study, Framingham, Massachusetts, United
15 States of America

16 ⁷Cardiology and Preventive Medicine Sections, Department of Medicine, Boston University
17 Chobanian & Avedisian School of Medicine, Boston, Massachusetts, United States of America

18 ⁸Department of Epidemiology, Boston University School of Public Health, Boston,
19 Massachusetts, United States of America

20 ⁹The University of Texas School of Public Health San Antonio, San Antonio, Texas, United
21 States of America

22 ¹⁰The University of Texas Health Science Center, San Antonio, Texas, United States of America

23 ¹¹Cardiovascular Engineering, Inc., Norwood, Massachusetts, United States of America

24 *Corresponding author

25 E-mail: lcooper@vassar.edu (LLC)

26 **Abstract**

27 **Background**

28 Cigarette smoking is a leading modifiable cardiovascular disease risk factor. Cross-
29 sectional studies demonstrated variable relations of smoking behavior with measures of
30 vascular function. Additionally, the impact of persistent versus changes in smoking behaviors on
31 alterations in central arterial function is unclear.

32 **Methods and Results**

33 We assessed associations of smoking behavior and intensity with measures of central
34 arterial hemodynamics in 6597 participants (51.5% never smoked, 34.8% formerly quit, 4.3%
35 recent quit, and 9.3% currently smoking) of the Framingham Heart Study (N=3606 [55%]
36 women). In cross-sectional models, central vascular measures were different across categories
37 of smoking behavior. For example, augmentation index was higher among participants who
38 formerly quit smoking (least squares mean±standard error=14.1±0.4%; $P<0.001$) and were
39 currently smoking (18.1±0.5%; $P<0.001$) compared to participants who never smoked
40 (12.6±0.3%). Among participants who were currently smoking, higher cigarettes per day
41 (estimated $B=1.41$; 95% CI, 0.47—2.34; $P=0.003$) was associated with higher augmentation
42 index. Among participants who had quit smoking, higher pack-years was associated with higher
43 augmentation index (est. $B=0.85$; 95% CI, 0.60—1.14) and central pulse pressure (est. $B=0.84$;
44 95% CI, 0.46—1.21). Using restricted cubic splines, we observed a negative linear association
45 for augmentation index, but a distinct nonlinear association for characteristic impedance and
46 central pulse pressure, with higher time since quit (all $P<0.001$). In longitudinal models, we
47 observed higher increases in augmentation index among participants who persistently quit
48 (4.62±0.41%; $P<0.001$) and persistently smoked (5.48±0.70%; $P=0.002$) compared to
49 participants who persistently never smoked (3.45±0.37%).

50 **Conclusion**

51 Central arterial measures are sensitive to smoking status and intensity and changes in
52 smoking behavior. Longer smoking cessation may partially revert central arterial measures to
53 levels comparable to those with lower smoking exposure.

54

55 **Introduction**

56 Cigarette smoking is a leading modifiable risk factor for cardiovascular disease (CVD) and
57 contributes to nearly half a million deaths annually in the United States [1, 2]. Smoking duration
58 and intensity are known to contribute to the toxicologic burden of CVD and increase disease risk
59 [3-5]. For example, smoking contributes to a range of cardiovascular consequences, including
60 endothelial dysfunction and inflammation, as well as conditions such as coronary artery disease,
61 myocardial infarction, heart failure, stroke, aneurysms, and peripheral vascular disease [6].
62 Conversely, smoking cessation is associated with reduction of morbidity and mortality and
63 improvement to cardiovascular health [7-9]. Measures of vascular central hemodynamics and
64 aortic stiffness are preclinical predictors of CVD events [10-14]. Several cross-sectional studies
65 have shown inconsistent associations of smoking status and intensity with vascular
66 hemodynamic measures that contribute to CVD that were assessed in various vascular beds
67 [15-22]. Additionally, the impact of changes in smoking behaviors on central arterial
68 hemodynamic measures have yet to be elucidated in well-characterized cohorts with
69 longitudinal tracking of smoking status and comprehensive vascular hemodynamics. Thus, the
70 putative effects of continuous and changes in smoking behavior (intensity, cessation, and
71 relapse) on central arterial hemodynamics are not defined. We aimed to assess the cross-
72 sectional and longitudinal associations of smoking behavior with measures of central arterial
73 hemodynamics in samples of the Framingham Heart Study (FHS).

74

75 **Materials and Methods**

76 Our study followed the Strengthening the Reporting of Observational Studies in
77 Epidemiology (STROBE) reporting guidelines [23]. The procedures for requesting data from the
78 Framingham Heart Study can be found at <https://www.framinghamheartstudy.org/>.

80 **Study Sample**

81 The study samples were drawn from the Framingham FHS Offspring, New Offspring
82 Spouses, Generation 3, Omni 1, and Omni 2 cohorts, which have been described in detail
83 previously [24-26]. Participants who attended examinations when both smoking data and
84 measures of vascular function were reliably collected for the index examination visit and a
85 follow-up visit were eligible for this investigation (examinations 8 [08-03-2005 to 25-01-2008]
86 and 9 [11-04-2011 to 24-04-2014] for Offspring; examinations 2 [27-05-2008 to 14-03-2011] and
87 3 [11-04-2016 to 30-04-2019] for New Offspring Spouses, Generation 3, and Omni 2; and
88 examinations 3 [02-02-2007 to 10-01-2008] and 4 [24-08-2011 to 24-03-2014] for Omni 1). 7119
89 participants were eligible for this investigation at the index examination visit. We excluded 522
90 due to missing data or a quit history of less than 1 year (among participants who reported
91 quitting) to censor for unsuccessful quit attempts and relapses. Three participants with
92 inconsistent self-reported smoking behavior were classified among those with missing smoking
93 data. At follow-up, 1243 participants were further excluded due to loss to follow-up, death, or
94 missing smoking data. All protocols were approved by the Boston University Medical Center's
95 Institutional Review Board, and all participants provided written informed consent.

97 **Smoking Status and Intensity**

98 At each examination, participants were categorized by smoking status based on their
99 responses to a self-report questionnaire. We defined currently smoking as smoking regularly
100 within 12 months of each respective examination. We defined smoking cessation (or quitting)
101 behavior for participants who 1) responded “no” when asked if they smoke cigarettes regularly
102 in the last year; 2) responded “no” when asked if they were currently smoking (as of 1 month
103 ago); 3) indicated current or regular smoking at a prior visit; and 4) provided an age if they have
104 stopped smoking completely. To better capture the effects of smoking cessation, we further
105 categorized participants by their quit history as recently quit (participants who reported regular
106 cigarette use at prior visits but had quit by the index examination visit) and formerly quit
107 (participants who reported no regular cigarette use at or before the visit prior to the index
108 examination visit) based on responses given for the questionnaire. We defined “never smoked”
109 when participants reported never having smoked. Participants who were currently smoking and
110 those who quit were asked their age when they started smoking, cigarettes smoked per day
111 when smoking or when they smoked, and age at quitting (if smoking ceased). For these
112 questions, we assessed smoking duration, cumulative pack years, and years since quitting.
113 Using the same questionnaire, we assessed change in smoking status between the two exam
114 cycles for longitudinal analyses.

115

116 **Hemodynamic assessment with arterial tonometry**

117 Hemodynamic assessment with arterial tonometry and pulsed doppler electrocardiography
118 was performed as previously described [27, 28]. We obtained non-invasive arterial tonometry
119 with simultaneous electrocardiography from supine participants for the brachial, radial, femoral,
120 and carotid arteries using a custom tonometer. During the tonometric assessment of the carotid
121 artery, we performed pulsed Doppler of the left ventricular outflow tract to assess aortic flow. We
122 digitized and transferred tonometric data and Doppler electrocardiography data to a core

123 laboratory (Cardiovascular Engineering, Inc., Norwood, MA) for blinded analyses. We signal-
124 averaged and synchronized tonometry waveforms using the electrocardiographic R-wave and
125 then calculated mean arterial pressure (MAP) as the integral of the signal-averaged brachial
126 pressure tonometry waveform [28]. We estimated pulse wave velocities from tonometry
127 waveforms and body surface measurements that adjusted for parallel transmission in the aortic
128 arch and brachiocephalic artery as previously described [29]. We calculated the carotid-femoral
129 pulse wave velocity (CFPWV), carotid-brachial pulse wave velocity, and carotid-radial pulse
130 wave velocity as the ratios of the adjusted transit distance and the pulse transit time difference
131 between carotid and the femoral, brachial, and radial sites, respectively. We calculated the
132 pulse wave velocity ratio as the CFPWV divided by the carotid-brachial pulse wave velocity. We
133 calculated central pulse pressure as the difference between carotid systolic and diastolic blood
134 pressures. We defined forward pressure wave amplitude (FWA) as the difference between
135 pressure at the foot and at the peak of the forward pressure waveform by performing time
136 domain wave separation analysis using central pressure and flow [30]. The global reflection
137 coefficient was defined as backward wave amplitude divided by FWA. We calculated
138 augmentation index (AI) as the fraction of central pulse pressure attributable to late systolic
139 pressure. Characteristic impedance was calculated in the time domain as the ratio of the
140 pressure increase and the flow increase during the time interval between flow onset and 95% of
141 peak flow [30].

142

143 **Clinical evaluation and covariates**

144 Medical history was acquired, and a physical examination was performed routinely at each
145 examination visit. Age, sex, use of antihypertensive and hyperlipidemia medications, and CVD
146 history were assessed through questionnaires. Height (meters) and weight (kilograms) were
147 assessed during the examination. Body mass index was calculated as weight in kilograms

148 divided by height in meters squared. Heart rate and blood pressures were assessed during
149 tonometry. Serum cholesterol levels were measured from fasting blood test. Criteria for diabetes
150 were a fasting glucose level of ≥ 126 mg/dL (7.0 mmol/L) or treatment with insulin or an oral
151 hypoglycemic agent.

152

153 **Statistical analysis**

154 We tabulated characteristics for the study sample. CFPWV was inverted to limit
155 heteroscedasticity, then multiplied by -1000 to convert units to ms/m and rectify the
156 directionality of associations with aortic stiffness. We selected covariates *a priori* as follows:
157 age, age², sex, cohort, body mass index, heart rate, mean arterial pressure, total to high-density
158 lipoprotein cholesterol ratio, triglycerides, prevalent CVD, lipid-lowering medication use,
159 hypertension treatment, and prevalent diabetes. The triglycerides variable was natural
160 logarithmically transformed to normalize its skewed distribution. To maximize sample sizes, we
161 excluded participants missing individual tonometry measures on an analysis-by-analysis basis.

162 In cross-sectional analyses, we used multivariable linear regression models to relate
163 smoking status (currently smoking, formerly quit, recently quit, and never smoked) with central
164 arterial hemodynamic measures. The never smoked group was the reference group. We
165 estimated least squares means based on regression models with central arterial hemodynamic
166 measures as dependent variables and smoking status groups as independent variables,
167 adjusting for the above-mentioned covariates. In secondary analyses, we used multivariable
168 linear regression models to relate smoking status with peripheral arterial hemodynamic
169 measures. To assess the association of smoking intensity among participants who ever
170 smoked, we used multivariable linear regression models to relate cigarettes per day (among
171 participants who were currently smoking) and pack-years (among participants who had quit

172 smoking) with central arterial measures. We estimated multivariable-adjusted nonlinear relations
173 of time since quit with central arterial measures using restricted cubic splines.

174 For longitudinal analyses, we calculated change from the index examination visit to the
175 follow-up exam in central arterial measures for each of the groups as follows: persistently never
176 smoked, persistently quit, recently quit, and persistently smoking. Participants in a change in
177 smoking status group with a low sample size were excluded from the analysis. We assessed the
178 association of changes of central arterial measures with smoking status in the longitudinal
179 sample using multivariable linear regression adjusted for the aforementioned covariates and
180 central arterial hemodynamic values at the index examination visit. We estimated least squares
181 means based on regression models with change in vascular measures as dependent variables
182 and smoking status groups as independent variables, adjusting for the above-mentioned
183 covariates. All analyses were performed with SAS version 9.4 for Windows (SAS Institute, Cary,
184 NC). Bonferroni-adjusted, 2-sided *P* values were used to assess statistical significance.

185

186 **Results**

187 We included 6597 participants (3606 [55%] women) in the analyses. A flow diagram for the
188 analysis samples is presented in Fig 1, and clinical characteristics and arterial hemodynamic
189 measures of the study participants stratified by smoking category at the index examination visit
190 are presented in Table 1 and S1 Table, respectively. Participants with a shorter quit history
191 (recently quit) had a median time since quit of 3.2 years, and participants with a longer quit
192 history (formerly quit) had a median time since quit of 23.1 years.

193

194 **Fig 1. Flow diagram of the Framingham Heart Study cohorts comprising the analytic**
195 **samples**

196

197 **Table 1. Clinical characteristics at the index examination visit.**

Variable	Overall N=6597	Never Smoked N=3399	Formerly Quit N=2299	Recently Quit N=284	Currently Smoking N=615
Age, y	55.3±13.1	52.7±13.2	60.4±12.0	52.2±12.3	52.2±11.6
Women, n (%)	3606 (55)	1888 (56)	1246 (54)	153 (54)	319 (52)
Body mass index, kg/m ²	28.0±5.6	27.8±5.6	28.4±5.4	29.4± 5.7	27.6±6.0
Heart rate, beats per minute	63±10	62±10	62±10	64±10	66±10
Mean arterial pressure, mm Hg	92±13	91±13	94±12	92±13	91±12
Total-to-HDL cholesterol ratio	3.4±1.1	3.4±1.1	3.4±1.0	3.6±1.2	3.7±1.3
Triglycerides, mg/dL	97 [70, 136]	94 [68, 131]	98 [72, 137]	106 [74, 159]	104 [76, 147]
Prevalent cardiovascular disease, n (%)	557 (8)	174 (5)	288 (13)	36 (13)	59 (10)
Lipid-lowering medications, n (%)	1825 (28)	765 (23)	833 (36)	77 (27)	150 (24)
Prevalent hypertension, n (%)	2502 (38) ^a	1106 (33)	1096 (48)	102 (36)	198 (32)
Hypertension treatment, n (%)	2046 (31)	899 (26)	918 (40)	78 (28)	151 (25)
Prevalent diabetes, n (%)	600 (9)	250 (7)	276 (12)	29 (10)	45 (7)
Age of smoking initiation, y	17.7±3.8 ^b	---	17.7±3.7	18.0±4.2	17.3±4.0
Smoking duration, y	21.0±13.5 ^b	---	17.1±11.5	26.9±13.5	32.9±12.7
Cumulative pack-years, y	20.7±20.3 ^b	---	17.6±18.3	22.0±22.7	31.7±22.4
Years since quitting	22.5±12.3 ^c	---	24.8±11.1	4.2±3.3	---

Cigarettes per day, n	13.5±9.4 ^d	---	---	---	13.5±9.4
-----------------------	-----------------------	-----	-----	-----	----------

198 HDL, high-density lipoprotein. Values are mean±standard deviation, number (%), or median

199 [25th, 75th percentile].

200 ^aN=6595.

201 ^bN ranges from 3058 to 3195.

202 ^cN=2582.

203 ^dN=612.

204

205 We present comparisons of least squares means estimates of central arterial hemodynamic
 206 measures according to smoking status at Visit 1 in Table 2. Compared to participants who never
 207 smoked, participants who formerly quit and were currently smoking had higher augmentation
 208 index. Participants who formerly quit had higher mean global reflection coefficient, and
 209 participants who were currently smoking had higher mean central pulse pressure, global
 210 reflection coefficient, and peak aortic flow rate compared to those who never smoked. We
 211 observed no significant cross-sectional differences for other central vascular measures by
 212 smoking status. We present comparisons of least squares means estimates of peripheral
 213 arterial hemodynamic measures according to smoking status at Visit 1 in S2 Table. Compared
 214 to participants who never smoked, participants who were currently smoking had lower carotid-
 215 brachial pulse wave velocity. We observed no significant cross-sectional differences for other
 216 peripheral vascular measures by smoking status.

217

218 **Table 2. Estimated least squares means of central arterial hemodynamic measures**
 219 **according to smoking status at Visit 1.**

Outcome Variable	Never Smoked	Formerly Quit	Recently Quit	Currently Smoking
------------------	--------------	---------------	---------------	-------------------

Augmentation index, %	12.6±0.3 (reference)	14.1±0.4 (<0.001)	14.5±0.7 (0.003)	18.1±0.5 (<0.001)
niCFPWV, ms/m	-128±1 (reference)	-128±1 (0.58)	-127±1 (0.49)	-130±1 (0.05)
Central pulse pressure, mm Hg	61.5±0.4 (reference)	62.3±0.5 (0.02)	63.4±0.9 (0.01)	64.8±0.7 (<0.001)
Forward pressure wave, mmHg	51.8±0.4 (reference)	51.9±0.4 (0.95)	52.8±0.8 (0.17)	52.3±0.6 (0.33)
Characteristic impedance, dyne•sec/cm ⁵	223±2 (reference)	219±2 (0.04)	216±4 (0.10)	215±3 (0.01)
Global reflection coefficient, %	36.1±0.2 (reference)	36.7±0.2 (<0.001)	36.4±0.4 (0.49)	38.1±0.3 (<0.001)
Peak aortic flow rate, mL/sec	307±2 (reference)	308±2 (0.38)	317±4 (0.004)	316±3 (<0.001)

220 niCFPWV, negative inverse carotid-femoral pulse wave velocity. We present least squares
 221 means estimates±standard deviation (*P*) based on regression models. Participants who formerly
 222 quit, recently quit, and were currently smoking are compared to participants who never smoked.
 223 Bonferroni-adjusted *P* values ($P=0.05/21=0.0024$) were used to assess significance of
 224 associations. Multivariable models adjusted for age, age² sex, cohort, body mass index,
 225 tonometry heart rate, mean arterial pressure, total to high-density lipoprotein cholesterol ratio,
 226 triglycerides, prevalent cardiovascular disease, lipid-lowering medication use, hypertension
 227 treatment, and prevalent diabetes.

228
 229 We present multivariable cross-sectional associations of central arterial hemodynamic
 230 measures with surrogates of smoking intensity in Table 3. Among participants who were

231 currently smoking, higher cigarettes per day (estimated $B=1.41$; 95% CI, 0.47—2.34; $P=0.003$)
 232 was associated with higher augmentation index but was not associated with other central
 233 arterial measures. Among participants who had quit smoking, higher pack-years was associated
 234 with higher augmentation index (est. $B=0.85$; 95% CI, 0.60—1.14) and central pulse pressure
 235 (est. $B=0.84$; 95% CI, 0.46—1.21) but was not associated with other central arterial measures.
 236 Fig 2 depicts multivariable-adjusted restricted cubic splines plots of the relations of time since
 237 quit with select central arterial hemodynamic measures. We observed a steep, linear negative
 238 association for augmentation index ($P<0.001$) with higher time since quit. However, we
 239 observed distinct nonlinear associations of time since quit with characteristic impedance
 240 ($P<0.001$) and central pulse pressure ($P<0.001$). Among participants with shorter quit history,
 241 characteristic impedance was similar, but we observed progressively higher characteristic
 242 impedance after 25 years of smoking cessation. Among participants with shorter quit history,
 243 central pulse pressure was progressively lower until after 25 years of smoking cessation when
 244 central pulse pressure was progressively higher among those with longer quit history.

245

246 **Table 3. Multivariable cross-sectional associations of central arterial hemodynamic**
 247 **measures with smoking intensity at Visit 1.**

Outcome Variable	Cigarettes per day ^a		Pack-years ^b	
	Est. B (95% CI)	P	Est. B (95% CI)	P
Augmentation index, %	1.41 (0.47, 2.34)	0.003	0.85 (0.60, 1.14)	<0.001
niCFPWV, ms/m	0.18 (-1.44, 1.79)	0.83	0.59 (0.06, 1.13)	0.03
Central pulse pressure, mm Hg	0.38 (-0.75, 1.51)	0.51	0.84 (0.46, 1.21)	<0.001
Forward pressure wave, mm Hg	0.20 (-0.80, 1.20)	0.70	0.33 (0.00, 0.66)	0.06

Characteristic impedance, dyne•sec/cm ⁵	-1.33 (-6.89, 4.22)	0.64	-0.90 (-2.85, 1.04)	0.36
Global reflection coefficient, %	0.0006 (-0.0044, 0.0056)	0.81	0.0015 (-0.0001, 0.0032)	0.06
Peak aortic flow rate, mL/sec	3.52 (-1.48, 8.52)	0.17	1.37 (-0.24, 2.98)	0.09

248 CFPWV, carotid-femoral pulse wave velocity. niCFPWV, negative inverse carotid-femoral pulse
 249 wave velocity. Regression estimates (*B*) in native units followed by the standard error (95% CI,
 250 confidence interval) and *P* values. Bonferroni-adjusted *P* values ($P=0.05/14=0.0036$) were used
 251 to assess significance of associations. All continuous outcome variables expressed as change
 252 per standard deviation of the independent variables. All models were adjusted for age, age² sex,
 253 cohort, body mass index, tonometry heart rate, mean arterial pressure, total to high-density
 254 lipoprotein cholesterol ratio, triglycerides, prevalent cardiovascular disease, lipid-lowering
 255 medication use, hypertension treatment, and prevalent diabetes.

256 ^aAssessed among participants who were currently smoking.

257 ^bAssessed among participants who had quit smoking; models were further adjusted for time
 258 since quit.

259

260 **Fig 2. Multivariable-adjusted spline illustrates the associations of time since quit with**
 261 **central arterial hemodynamic measures.** Restricted cubic splines (red solid lines) with 95%
 262 confidence intervals (dotted lines) derived from associating time since quit with (A)
 263 augmentation index, (B) negative inverse carotid-femoral pulse wave velocity (niCFPWV), (C)
 264 characteristic impedance, and (D) central pulse pressure. The x-axis ranges from currently
 265 smoking (minimum) to never smoked (maximum), and the values captured among participants
 266 who have quit based on time since smoking cessation. We placed knots at the 25th, 50th, and
 267 100th percentiles of the distribution of time since quit. All models were adjusted for age, age²,
 268 sex, cohort, body mass index, heart rate, mean arterial pressure, total to high-density lipoprotein

269 cholesterol ratio, triglycerides, prevalent cardiovascular disease, lipid-lowering medication use,
 270 hypertension treatment, and prevalent diabetes. *P* for overall association is <0.001 for
 271 augmentation index; 0.07 for niCFPWV; <0.001 for characteristic impedance; and <0.001 for
 272 central pulse pressure. *P* for non-linearity is 0.08 for augmentation index; 0.93 for niCFPWV;
 273 and 0.02 for characteristic impedance; and <0.001 for central pulse pressure.

274

275 We present a comparison of least squares means estimates of the longitudinal change in
 276 central arterial hemodynamic measures between two examination visits by smoking behavior in
 277 Table 4. We excluded participants who exhibited a change in smoking status with low sample
 278 sizes (never smoked to quit, never smoked to currently smoking, and quit to currently smoking).
 279 Compared to participants who persistently never smoked, participants who persistently quit and
 280 persistently smoked had higher increases in augmentation index. Changes in smoking behavior
 281 were not associated with longitudinal change in other arterial hemodynamic measures. We
 282 present the observed (unadjusted) values of central arterial hemodynamic measures between
 283 two visits for the longitudinal sample in S3 Table.

284

285 **Table 4. Longitudinal change in central arterial hemodynamic measures between two**
 286 **examination visits by smoking behavior.**

Outcome Variable	Persistently Never Smoked	Persistently Quit	Recently Quit	Persistently Smoking
Augmentation index, %	3.45±0.37 (reference)	4.62±0.41 (<0.001)	4.78±0.83 (0.09)	5.48±0.70 (0.002)
niCFPWV, ms/m	11.34±0.63 (reference)	11.58±0.69 (0.63)	13.99±1.39 (0.04)	12.87±1.18 (0.15)

Central pulse pressure, mm Hg	4.41±0.53 (reference)	5.70±0.59 (0.003)	5.47±1.21 (0.35)	6.00±1.01 (0.09)
Forward pressure wave, mm Hg	1.29±0.42 (reference)	1.99±0.46 (0.04)	1.92±0.95 (0.49)	2.37±0.79 (0.14)
Characteristic impedance, dyne•sec/cm ⁵	14.5±2.6 (reference)	13.9±2.9 (0.77)	12.55±5.87 (0.72)	13.60±4.90 (0.84)
Global reflection coefficient, %	0.019±0.002 (reference)	0.021±0.003 (0.30)	0.023±0.005 (0.41)	0.018±0.004 (0.77)
Peak aortic flow rate, mL/sec	-20.2±1.8 (reference)	-17.6±2.0 (0.08)	-15.9±4.1 (0.26)	-16.8±3.4 (0.28)

287 niCFPWV, negative inverse carotid-femoral pulse wave velocity. We present least squares
 288 means estimates±standard errors (*P*) based on regression models. Participants who formerly
 289 quit, recently quit, and were currently smoking are compared to participants who never smoked.
 290 Bonferroni-adjusted *P* values ($P=0.05/21=0.0024$) were used to assess significance of
 291 associations. Multivariable models adjusted for age, age² sex, cohort, body mass index,
 292 tonometry heart rate, mean arterial pressure, total to high-density lipoprotein cholesterol ratio,
 293 triglycerides, prevalent cardiovascular disease, lipid-lowering medication use, hypertension
 294 treatment, and prevalent diabetes, and vascular measure value at the index examination visit.
 295 Participants with a change in smoking status of never smoked to quit, never smoked to currently
 296 smoking, and quit to currently smoking were excluded from the analysis due to low statistical
 297 power to resolve differences.

298

299 Discussion

300 We investigated the cross-sectional and longitudinal relations of smoking behavior and
 301 intensity with measures of central arterial hemodynamics in 2 generations of the community-

302 based Framingham Heart Study. In cross-sectional models, participants who formerly quit and
303 were currently smoking had a higher augmentation index compared to participants who never
304 smoked. Compared to participants who never smoked, participants who currently smoked had
305 higher mean central pulse pressure, global reflection coefficient, and peak aortic flow rate.
306 Higher smoking intensity (cigarettes per day and pack-years) was associated with higher
307 augmentation index and central pulse pressure. The association of smoking cessation (time
308 since quit) with augmentation index, characteristic impedance, and central pulse pressure
309 diminished among participants with longer duration of smoking cessation. Between exam visits,
310 augmentation index increased more among participants who were persistently smoking and
311 who had persistently quit smoking compared to participants who had never smoked. Central
312 arterial hemodynamic measures, particularly indices related to central wave reflection and
313 pressure augmentation, are sensitive to smoking status and intensity and changes in smoking
314 behavior. Longer smoking cessation may partially restore central arterial measures to levels
315 akin to those observed in individuals with lower smoking exposure.

316 Previous studies examining the acute and chronic effects of smoking on arterial stiffening
317 are controversial and mixed; however, many studies consistently suggest that chronic changes
318 in arterial hemodynamics substantially affect peripheral vessels [20, 31-42]. In a recent
319 Gutenberg Health Cohort Study, researchers observed that smoking status and smoking
320 intensity were positively associated with peripheral arterial stiffness and wave reflection
321 (assessed by digital photoplethysmography and digital plethysmography, respectively) in the
322 community [35]. Our data suggest that higher levels of central wave reflection substantially
323 contribute to the aortic hemodynamic physiologic state in the setting of current, chronic
324 smoking. These findings align with previous research conducted within a young, healthy sample
325 by Mahmud and Feely, who reported higher aortic augmentation index in participants who were
326 actively, chronically smoking compared to non-smoking participants [38, 43]. Additionally, higher
327 smoking intensity was associated with higher central augmentation index indicating a potential

328 dose-response relation of smoking with wave reflection. In healthy, young arteries, there is a
329 progressive increase in arterial stiffness from the highly elastic aorta to the smaller resistance
330 arteries, which creates an impedance mismatch and partial reflection of the forward pressure
331 wave [44, 45]. We had hypothesized that smoking may increase the peripheral arterial stiffness
332 relative to central aortic stiffness, thereby shifting reflecting sites more proximal to the heart.
333 Higher impedance mismatch would increase wave reflection and contribute to higher levels of
334 wave reflection (higher augmentation index and global reflection coefficient), as reflecting sites
335 shift more proximal to the heart among participants who ever smoked compared with
336 participants who never smoked. However, in secondary analyses of muscular and peripheral
337 arterial hemodynamics (S2 Table), we observed lower carotid-brachial pulse wave velocity
338 among participants who were currently smoking compared to participants who never smoked.
339 These results suggest that smoking-related differences in central-to-peripheral arterial
340 impedance gradient were not the underlying factor behind our observations.

341 Smoking is known to affect vascular function and may contribute to differences and
342 longitudinal changes in central arterial hemodynamics across smoking behaviors. Smoking-
343 induced reactive oxygen species production leads to oxidative stress and contributes to
344 endothelial dysfunction [46, 47], which impairs vascular tone [31, 32, 48, 49]. A hallmark of
345 endothelial dysfunction is lower nitric oxide bioavailability, a characteristic of healthy individuals
346 who smoke [50]. Endothelial dysfunction impairs regulation of small arteries, which can increase
347 wave reflections from peripheral sites [51]. Our study suggests that among individuals who
348 smoke, wave reflections return to the central aorta more prominently, raising the central
349 pressure augmentation without significantly affecting central aortic stiffness. Kelly et al. showed
350 that aortic augmentation index, but not aortic pulse wave velocity, is sensitive to vasoactive
351 drugs [52], which suggest that dysregulation of vascular tone affects wave reflection
352 independently of aortic stiffness. We observed no differences in aortic stiffness and no to
353 modest differences in peripheral arterial stiffness across smoking behavior groups. It is likely

354 that smoking-associated differences in vascular tone regulation (in the absence of major
355 differences in arterial stiffness) is the major contributor to higher augmentation index [53]. Thus,
356 differential dysregulation of small arterial tone may underlie the relatively higher augmentation
357 index (and its increase over time) in participants who have smoked compared to participants
358 who never smoked. Indeed, multiple studies have shown that vascular endothelium-dependent
359 relaxation [46, 54-64] and downstream microvascular function [64-68] are impaired in individuals
360 who smoke. However, the differences and changes to measures of small and microvascular
361 arterial function due to chronic smoking and changes in smoking behaviors warrants further
362 investigation. In the current study, quitting smoking may gradually reduce the influence of
363 smoking on central wave reflection, indicating that the potential effect of smoking may be
364 partially reversible with longer periods since quitting. However, the impact of past smoking may
365 persist, particularly with a shorter duration since quitting. This concept is underscored in the
366 current longitudinal analysis, which showed that participants who consistently quit smoking still
367 experienced a higher increase in central augmentation index than those who had never
368 smoked, although the increase was less than that of individuals who continued to smoke.

369 Smoking status and smoking intensity contribute to elevated aortic pressure pulsatility. We
370 observed higher central wave reflection and augmented central pulse pressure among
371 participants who currently smoked compared to participants who never smoked. Similar to
372 augmentation index, the association of smoking with central pulse pressure also demonstrated
373 a dose-response relation. Taken together, higher pressure pulsatility and the earlier arrival of
374 central wave reflection during systole (instead of diastole) may impair coronary perfusion [69,
375 70]. Higher central pulse pressure increases afterload and may alter cardiac geometry
376 maladaptively as concentric remodeling for individuals who smoke [71-75]. While the traditional
377 view relates elevated central pressure with concentric remodeling due to pressure overload,
378 animal studies have shown that smoking or nicotine exposure contributes to eccentric or mixed
379 cardiovascular remodeling patterns [76-78]. Similar to the current study, Markus et al. observed

380 in two separate cohorts that participants who were currently smoking had higher mean central
381 systolic blood pressure, augmentation index, and left ventricular mass compared to participants
382 who did not smoke [41]. Additionally, in their longitudinal analyses, participants who were
383 currently smoking showed a significant increase in left ventricular mass index, with both an
384 increase in left ventricular wall thickness and end-diastolic diameter; whereas, LV end-diastolic
385 diameter decreased among participants who did not smoke, consistent with aging-associated
386 concentric remodeling [41]. Recently, Fried et al. showed a phenotypic shift from concentric
387 hypertrophy to eccentric hypertrophy in nicotine-exposed, hemodynamically-stressed mice [78].
388 Thus, higher central aortic pressure and enhanced wave reflection in the setting of smoking may
389 contribute to eccentric remodeling and subsequent decompensation to incident CVD. Our study
390 reveals that quitting smoking may reduce the putative effect of smoking on central pulse
391 pressure in a non-linear pattern, so, similar to wave reflection, the higher hemodynamic burden
392 from smoking might be partially reversed over time. Further studies that assess the mechanisms
393 of smoking and smoking cessation on vascular dysfunction and CVD pathogenesis and
394 prevention of CVD events are warranted.

395 Despite differences in other central arterial hemodynamic measures, aortic stiffness was
396 similar in participants who never smoked compared to participants who ever smoked in our
397 sample, as indicated by no significant differences in the carotid-femoral pulse wave velocity
398 among smoking behavior groups. This observation is consistent with prior work in assessing
399 differences in chronic smoking [19, 79, 80]. However, our observations are in contrast with other
400 studies that assessed aortic stiffness via MRI or ultrasound methods [40, 81, 82]. For example,
401 in the Multi-Ethnic Study of Atherosclerosis Study, researchers observed higher aortic stiffness
402 (assessed via MRI) among participants who were currently smoking compared to participants
403 who had quit smoking and had never smoked [40]. Assessing aortic stiffness with MRI involves
404 calculating the change in aortic cross-sectional area with pulsatile blood flow and normalizing
405 this by the brachial pulse pressure. This method does not directly measure the pulse wave in

406 the aorta (like arterial tonometry), which may contribute to differences between the MRI
407 investigations and the current study. Additionally, areas of aortic calcification can interfere with
408 the accuracy of MRI measurements, and errors in blood pressure measurements can
409 significantly affect the aortic distensibility calculation, particularly when brachial pressures are
410 used to estimate aortic pulse pressure [83, 84]. Although epidemiologic studies have shown that
411 higher pulse pressure is associated with lower aortic root diameter [85-87], multiple studies
412 show that smoking is associated with higher aortic diameter [86, 88-91].

413 A recent mechanistic study in mice revealed significant interactions between nicotine
414 exposure and hypertension on aortic diameter and cross-sectional area consistent with
415 eccentric remodeling of the aorta [76]. A transition from concentric to eccentric remodeling may
416 reflect the ongoing adaptation of the aorta to fluctuating and evolving physiological demands
417 and stressors due to smoking. The higher cross-sectional area in individuals who chronically
418 smoke is consistent with our observation of higher peak aortic flow rates in currently smoking
419 participants compared to participants who never smoked. Additionally, we observed a significant
420 non-linear association of time since quitting smoking and characteristic impedance, suggesting
421 a threshold effect after about 25 years. While carotid-femoral pulse wave velocity shows limited
422 sensitivity to changes in aortic diameter, characteristic impedance demonstrates a high degree
423 of sensitivity to variations in the aortic diameter [92]. Considering the inverse relation of
424 characteristic impedance with aortic cross-sectional area, our observations suggest that a
425 relatively longer period of smoking cessation could partially reverse the smoking-induced effects
426 on characteristic impedance. Smoking also increases blood viscosity [93-95], which raises
427 characteristic impedance. However, blood viscosity has limited direct effect on characteristic
428 impedance, which is dominated by inertial rather than viscous effects [96]. Additionally,
429 Shimada et al. reported that blood viscosity was markedly reduced in only a few months after
430 smoking cessation [97]. Given that we observed differences in characteristic impedance only
431 after an extended period of smoking cessation, it appears that the probable recovery of

432 characteristic impedance may be attributed to changes in aortic structure rather than to
433 restoration of blood viscosity. However, future observational and animal experimental research
434 is needed to provide further insight into the effect of smoking and smoking cessation on central
435 arterial hemodynamics and vascular remodeling.

436

437 **Limitations**

438 Our study has limitations that should be considered. Although we were able to establish a
439 temporal relation in our longitudinal analyses, the observational nature of the study limits causal
440 inference. The gold standard for establishing causality is randomized, blinded placebo-
441 controlled trials, but studying smoking exposures as a randomized study in humans would be
442 unethical. Additionally, we cannot dismiss the possibility of residual confounding by unknown or
443 unmeasured factors. We used self-reported smoking data, and cotinine levels were not
444 measured in FHS, preventing us from validating smoking behaviors, which may lead to
445 misclassification of participants who underreport or inaccurately recall or report their smoking
446 behaviors. In particular, time since quitting and the amount of smoking may be misclassified.
447 We did not account for e-cigarettes, cigars, and hookah (waterpipe or shisha) or cannabis use;
448 therefore, our study may underestimate the total tobacco and smoking exposure of the
449 participants. In the longitudinal analyses, participants with a change in smoking status of never
450 smoked to quit (n=3), never smoked to currently smoking (n=5), and quit to currently smoking
451 (n=41) were excluded from the analysis due to low statistical power to resolve differences.
452 Although our sample includes participants of the Omni 1 and Omni 2 cohorts from
453 underrepresented racial and ethnic groups, most participants were White individuals of
454 European ancestry; therefore, our findings may not be generalizable to other ethnic or racial
455 groups. Similarly, our sample comprised middle-aged to older participants, so our findings may
456 not be generalizable to younger individuals.

457

458 **Conclusion**

459 We examined the cross-sectional and longitudinal relations of smoking behavior and
460 intensity with central arterial hemodynamic measures in middle-aged to older participants of the
461 Framingham Heart Study. Our results suggest that smoking is associated with increases in
462 relative wave reflection, aortic pressure pulsatility, and aortic flow, with associations more
463 pronounced among those who are currently smoking and have smoked compared to those who
464 never smoked, with higher levels among those with greater smoking intensity. However, longer
465 smoking cessation may be associated with reduced relations over time, indicating a potential
466 restoration of vascular function toward levels observed in individuals who never smoked.
467 Relative wave reflection notably was associated with continuing to smoke or quitting compared
468 to those who never smoked after one exam cycle, emphasizing the association of smoking and
469 cessation on central arterial function in a relatively short time. Our study underscores the
470 connection between smoking and cessation on central arterial hemodynamics, highlighting the
471 sensitivity of vascular function to smoking behaviors and intensity.

472

473 **Acknowledgements**

474 We thank the Framingham Heart Study of the National Heart Lung and Blood Institute of
475 the National Institutes of Health and Boston University Chobanian and Avedisian School of
476 Medicine. We thank Dr. Kathryn Barger whose expertise in statistical analysis profoundly
477 enhanced the quality of this research.

478

479 **References**

- 480 1. Benjamin EJ, Blaha MJ, Chiuve SE, Cushman M, Das SR, Deo R, et al. Heart disease and
481 stroke statistics-2017 update: a report from the American Heart Association. *Circulation*.
482 2017;135(10):e146-e603. Epub 20170125. doi: 10.1161/CIR.0000000000000485.
- 483 2. Martin SS, Aday AW, Almarzooq ZI, Anderson CAM, Arora P, Avery CL, et al. 2024 heart
484 disease and stroke statistics: a report of US and global data from the American Heart
485 Association. *Circulation*. 2024;149(8):e347-e913. Epub 20240124. doi:
486 10.1161/CIR.0000000000001209.
- 487 3. United States. Public Health Service. Office of the Surgeon General. The health
488 consequences of smoking--50 years of progress : a report of the surgeon general. Rockville,
489 MD: U.S. Department of Health and Human Services, Public Health Service, Office of the
490 Surgeon General; 2014. 2 volumes p.
- 491 4. Lubin JH, Couper D, Lutsey PL, Woodward M, Yatsuya H, Huxley RR. Risk of
492 cardiovascular disease from cumulative cigarette use and the impact of smoking intensity.
493 *Epidemiology*. 2016;27(3):395-404. doi: 10.1097/EDE.0000000000000437.
- 494 5. Al Rifai M, DeFilippis AP, McEvoy JW, Hall ME, Acien AN, Jones MR, et al. The relationship
495 between smoking intensity and subclinical cardiovascular injury: The Multi-Ethnic Study of
496 Atherosclerosis (MESA). *Atherosclerosis*. 2017;258:119-30. Epub 20170119. doi:
497 10.1016/j.atherosclerosis.2017.01.021.
- 498 6. Kondo T, Nakano Y, Adachi S, Murohara T. Effects of tobacco smoking on cardiovascular
499 disease. *Circ J*. 2019;83(10):1980-5. Epub 20190829. doi: 10.1253/circj.CJ-19-0323.
- 500 7. Duncan MS, Freiberg MS, Greevy RA, Jr., Kundu S, Vasan RS, Tindle HA. Association of
501 smoking cessation with subsequent risk of cardiovascular disease. *JAMA*. 2019;322(7):642-
502 50. doi: 10.1001/jama.2019.10298.
- 503 8. Cole TB. Smoking cessation and reduction of cardiovascular disease risk. *JAMA*.
504 2019;322(7):651. doi: 10.1001/jama.2019.11166.

- 505 9. Lightwood JM, Glantz SA. Short-term economic and health benefits of smoking cessation:
506 myocardial infarction and stroke. *Circulation*. 1997;96(4):1089-96. doi:
507 10.1161/01.cir.96.4.1089.
- 508 10. Ben-Shlomo Y, Spears M, Boustred C, May M, Anderson SG, Benjamin EJ, et al. Aortic
509 pulse wave velocity improves cardiovascular event prediction: an individual participant meta-
510 analysis of prospective observational data from 17,635 subjects. *J Am Coll Cardiol*.
511 2014;63(7):636-46. Epub 20131113. doi: 10.1016/j.jacc.2013.09.063.
- 512 11. Hansen TW, Staessen JA, Torp-Pedersen C, Rasmussen S, Li Y, Dolan E, et al. Ambulatory
513 arterial stiffness index predicts stroke in a general population. *J Hypertens*.
514 2006;24(11):2247-53. doi: 10.1097/01.hjh.0000249703.57478.78.
- 515 12. Mitchell GF, Hwang SJ, Vasan RS, Larson MG, Pencina MJ, Hamburg NM, et al. Arterial
516 stiffness and cardiovascular events: the Framingham Heart Study. *Circulation*.
517 2010;121(4):505-11. Epub 20100118. doi: 10.1161/CIRCULATIONAHA.
- 518 13. Sutton-Tyrrell K, Najjar SS, Boudreau RM, Venkitachalam L, Kupelian V, Simonsick EM, et
519 al. Elevated aortic pulse wave velocity, a marker of arterial stiffness, predicts cardiovascular
520 events in well-functioning older adults. *Circulation*. 2005;111(25):3384-90. Epub 20050620.
521 doi: 10.1161/CIRCULATIONAHA.104.483628.
- 522 14. Cooper LL, Rong J, Benjamin EJ, Larson MG, Levy D, Vita JA, et al. Components of
523 hemodynamic load and cardiovascular events: the Framingham Heart Study. *Circulation*.
524 2015;131(4):354-61; discussion 61. doi: 10.1161/CIRCULATIONAHA.114.011357.
- 525 15. Omvik P. How smoking affects blood pressure. *Blood Press*. 1996;5(2):71-7. doi:
526 10.3109/08037059609062111.
- 527 16. Green MS, Jucha E, Luz Y. Blood pressure in smokers and nonsmokers: epidemiologic
528 findings. *Am Heart J*. 1986;111(5):932-40. doi: 10.1016/0002-8703(86)90645-9.
- 529 17. Hata K, Nakagawa T, Mizuno M, Yanagi N, Kitamura H, Hayashi T, et al. Relationship
530 between smoking and a new index of arterial stiffness, the cardio-ankle vascular index, in

- 531 male workers: a cross-sectional study. *Tob Induc Dis.* 2012;10(1):11. Epub 20120728. doi:
532 10.1186/1617-9625-10-11.
- 533 18. Tomiyama H, Hashimoto H, Tanaka H, Matsumoto C, Odaira M, Yamada J, et al.
534 Continuous smoking and progression of arterial stiffening: a prospective study. *J Am Coll*
535 *Cardiol.* 2010;55(18):1979-87. doi: 10.1016/j.jacc.2009.12.042.
- 536 19. Rehill N, Beck CR, Yeo KR, Yeo WW. The effect of chronic tobacco smoking on arterial
537 stiffness. *Br J Clin Pharmacol.* 2006;61(6):767-73. doi: 10.1111/j.1365-2125.2006.02630.x.
- 538 20. Tsuru T, Adachi H, Enomoto M, Fukami A, Kumagai E, Nakamura S, et al. Augmentation
539 index (AI) in a dose-response relationship with smoking habits in males: The Tanushimaru
540 study. *Medicine (Baltimore).* 2016;95(51):e5368. doi: 10.1097/MD.0000000000005368.
- 541 21. Camplain R, Meyer ML, Tanaka H, Palta P, Agarwal SK, Aguilar D, et al. Smoking behaviors
542 and arterial stiffness measured by pulse wave velocity in older adults: The Atherosclerosis
543 Risk in Communities (ARIC) Study. *Am J Hypertens.* 2016;29(11):1268-75. Epub 20151210.
544 doi: 10.1093/ajh/hpv189.
- 545 22. Kool MJ, Hoeks AP, Struijker Boudier HA, Reneman RS, Van Bortel LM. Short- and long-
546 term effects of smoking on arterial wall properties in habitual smokers. *J Am Coll Cardiol.*
547 1993;22(7):1881-6. doi: 10.1016/0735-1097(93)90773-t.
- 548 23. von Elm E, Altman DG, Egger M, Pocock SJ, Gotsche PC, Vandenbroucke JP, et al.
549 Strengthening the reporting of observational studies in epidemiology (STROBE) statement:
550 guidelines for reporting observational studies. *BMJ.* 2007;335(7624):806-8. doi:
551 10.1136/bmj.39335.541782.AD.
- 552 24. Kannel WB, Feinleib M, McNamara PM, Garrison RJ, Castelli WP. An investigation of
553 coronary heart disease in families. The Framingham offspring study. *Am J Epidemiol.*
554 1979;110(3):281-90. Epub 1979/09/01.
- 555 25. Splansky GL, Corey D, Yang Q, Atwood LD, Cupples LA, Benjamin EJ, et al. The Third
556 Generation Cohort of the National Heart, Lung, and Blood Institute's Framingham Heart

- 557 Study: design, recruitment, and initial examination. *Am J Epidemiol.* 2007;165(11):1328-35.
558 doi: 10.1093/aje/kwm021.
- 559 26. Quan SF, Howard BV, Iber C, Kiley JP, Nieto FJ, O'Connor GT, et al. The Sleep Heart
560 Health Study: design, rationale, and methods. *Sleep.* 1997;20(12):1077-85.
- 561 27. Mitchell GF, Izzo JL, Jr., Lacourciere Y, Ouellet JP, Neutel J, Qian C, et al. Omapatrilat
562 reduces pulse pressure and proximal aortic stiffness in patients with systolic hypertension:
563 results of the conduit hemodynamics of omapatrilat international research study. *Circulation.*
564 2002;105(25):2955-61. doi: 10.1161/01.cir.0000020500.77568.3c.
- 565 28. Mitchell GF, Hwang SJ, Vasan RS, Larson MG, Pencina MJ, Hamburg NM, et al. Arterial
566 stiffness and cardiovascular events: The Framingham Heart Study. *Circulation.*
567 2010;121(4):505-11. doi: Doi 10.1161/Circulationaha.109.886655.
- 568 29. Mitchell GF, Parise H, Benjamin EJ, Larson MG, Keyes MJ, Vita JA, et al. Changes in
569 arterial stiffness and wave reflection with advancing age in healthy men and women: the
570 Framingham Heart Study. *Hypertension.* 2004;43(6):1239-45. Epub 2004/05/05. doi:
571 10.1161/01.HYP.0000128420.01881.aa.
- 572 30. Mitchell GF, Wang N, Palmisano JN, Larson MG, Hamburg NM, Vita JA, et al.
573 Hemodynamic correlates of blood pressure across the adult age spectrum: noninvasive
574 evaluation in the Framingham Heart Study. *Circulation.* 2010;122(14):1379-86. doi:
575 10.1161/CIRCULATIONAHA.109.914507.
- 576 31. Celermajer DS, Sorensen KE, Gooch VM, Spiegelhalter DJ, Miller OI, Sullivan ID, et al.
577 Non-invasive detection of endothelial dysfunction in children and adults at risk of
578 atherosclerosis. *Lancet.* 1992;340(8828):1111-5. doi: 10.1016/0140-6736(92)93147-f.
- 579 32. Lekakis J, Papamichael C, Vemmos C, Nanas J, Kontoyannis D, Stamatelopoulos S, et al.
580 Effect of acute cigarette smoking on endothelium-dependent brachial artery dilatation in
581 healthy individuals. *Am J Cardiol.* 1997;79(4):529-31. doi: 10.1016/s0002-9149(96)00805-3.

- 582 33. Arosio E, De Marchi S, Rigoni A, Prior M, Lechi A. Effects of smoking on cardiopulmonary
583 baroreceptor activation and peripheral vascular resistance. *Eur J Clin Invest*.
584 2006;36(5):320-5. doi: 10.1111/j.1365-2362.2006.01628.x.
- 585 34. Fu S, Wu Q, Luo L, Ye P. Relationships of drinking and smoking with peripheral arterial
586 stiffness in Chinese community-dwelling population without symptomatic peripheral arterial
587 disease. *Tob Induc Dis*. 2017;15:39. Epub 20171025. doi: 10.1186/s12971-017-0144-9.
- 588 35. Hahad O, Schmitt VH, Arnold N, Keller K, Prochaska JH, Wild PS, et al. Chronic cigarette
589 smoking is associated with increased arterial stiffness in men and women: evidence from a
590 large population-based cohort. *Clin Res Cardiol*. 2023;112(2):270-84. Epub 20220906. doi:
591 10.1007/s00392-022-02092-1.
- 592 36. Kubozono T, Miyata M, Ueyama K, Hamasaki S, Kusano K, Kubozono O, et al. Acute and
593 chronic effects of smoking on arterial stiffness. *Circ J*. 2011;75(3):698-702. Epub 20101224.
594 doi: 10.1253/circj.cj-10-0552.
- 595 37. Failla M, Grappiolo A, Carugo S, Calchera I, Giannattasio C, Mancina G. Effects of cigarette
596 smoking on carotid and radial artery distensibility. *J Hypertens*. 1997;15(12 Pt 2):1659-64.
597 doi: 10.1097/00004872-199715120-00069.
- 598 38. Mahmud A, Feely J. Effect of smoking on arterial stiffness and pulse pressure amplification.
599 *Hypertension*. 2003;41(1):183-7. doi: 10.1161/01.hyp.0000047464.66901.60.
- 600 39. Li H, Srinivasan SR, Berenson GS. Comparison of the measures of pulsatile arterial function
601 between asymptomatic younger adult smokers and former smokers: the Bogalusa Heart
602 Study. *Am J Hypertens*. 2006;19(9):897-901. doi: 10.1016/j.amjhyper.2006.02.004.
- 603 40. Malayeri AA, Natori S, Bahrami H, Bertoni AG, Kronmal R, Lima JA, et al. Relation of aortic
604 wall thickness and distensibility to cardiovascular risk factors (from the Multi-Ethnic Study of
605 Atherosclerosis [MESA]). *Am J Cardiol*. 2008;102(4):491-6. Epub 20080524. doi:
606 10.1016/j.amjcard.2008.04.010.

- 607 41. Markus MR, Stritzke J, Baumeister SE, Siewert U, Baulmann J, Hannemann A, et al. Effects
608 of smoking on arterial distensibility, central aortic pressures and left ventricular mass. *Int J*
609 *Cardiol.* 2013;168(3):2593-601. Epub 20130415. doi: 10.1016/j.ijcard.2013.03.045.
- 610 42. Sassalos K, Vlachopoulos C, Alexopoulos N, Gialernios T, Aznaouridis K, Stefanadis C. The
611 acute and chronic effect of cigarette smoking on the elastic properties of the ascending
612 aorta in healthy male subjects. *Hellenic J Cardiol.* 2006;47(5):263-8.
- 613 43. Chami HA, Diab M, Zaouk N, Arnaout S, Mitchell GF, Isma'eel H, et al. Central and
614 peripheral hemodynamics in young adults who use water pipes and the acute effects of
615 water-pipe use. *Chest.* 2023;164(6):1481-91. Epub 20230802. doi:
616 10.1016/j.chest.2023.07.070.
- 617 44. Taylor M. Wave-travel in a non-uniform transmission line, in relation to pulses in arteries.
618 *Phys Med Biol.* 1965:539 –50. doi:10.1088/0031-9155/10/4/308.
- 619 45. London GM, Asmar RG, O'Rourke MF, Safar ME, Investigators RP. Mechanism(s) of
620 selective systolic blood pressure reduction after a low-dose combination of
621 perindopril/indapamide in hypertensive subjects: comparison with atenolol. *J Am Coll*
622 *Cardiol.* 2004;43(1):92-9. doi: 10.1016/j.jacc.2003.07.039.
- 623 46. Celermajer DS, Sorensen KE, Georgakopoulos D, Bull C, Thomas O, Robinson J, et al.
624 Cigarette smoking is associated with dose-related and potentially reversible impairment of
625 endothelium-dependent dilation in healthy young adults. *Circulation.* 1993;88(5 Pt 1):2149-
626 55. doi: 10.1161/01.cir.88.5.2149.
- 627 47. Heitzer T, Just H, Munzel T. Antioxidant vitamin C improves endothelial dysfunction in
628 chronic smokers. *Circulation.* 1996;94(1):6-9. doi: 10.1161/01.cir.94.1.6.
- 629 48. Zhang JY, Cao YX, Xu CB, Edvinsson L. Lipid-soluble smoke particles damage endothelial
630 cells and reduce endothelium-dependent dilatation in rat and man. *BMC Cardiovasc Disord.*
631 2006;6:3. Epub 20060119. doi: 10.1186/1471-2261-6-3.

- 632 49. Chalon S, Moreno H, Jr., Benowitz NL, Hoffman BB, Blaschke TF. Nicotine impairs
633 endothelium-dependent dilatation in human veins in vivo. *Clin Pharmacol Ther.*
634 2000;67(4):391-7. doi: 10.1067/mcp.2000.105153.
- 635 50. Kiowski W, Linder L, Stoschitzky K, Pfisterer M, Burckhardt D, Burkart F, et al. Diminished
636 vascular response to inhibition of endothelium-derived nitric oxide and enhanced
637 vasoconstriction to exogenously administered endothelin-1 in clinically healthy smokers.
638 *Circulation.* 1994;90(1):27-34. doi: 10.1161/01.cir.90.1.27.
- 639 51. McEniery CM, Wallace S, Mackenzie IS, McDonnell B, Yasmin, Newby DE, et al.
640 Endothelial function is associated with pulse pressure, pulse wave velocity, and
641 augmentation index in healthy humans. *Hypertension.* 2006;48(4):602-8. Epub 20060828.
642 doi: 10.1161/01.HYP.0000239206.64270.5f.
- 643 52. Kelly RP, Millasseau SC, Ritter JM, Chowienczyk PJ. Vasoactive drugs influence aortic
644 augmentation index independently of pulse-wave velocity in healthy men. *Hypertension.*
645 2001;37(6):1429-33. doi: 10.1161/01.hyp.37.6.1429.
- 646 53. Stoner L, Young JM, Fryer S. Assessments of arterial stiffness and endothelial function
647 using pulse wave analysis. *Int J Vasc Med.* 2012;2012:903107. Epub 20120514. doi:
648 10.1155/2012/903107.
- 649 54. Halvorsen B, Lund Sagen E, Ueland T, Aukrust P, Tonstad S. Effect of smoking cessation
650 on markers of inflammation and endothelial cell activation among individuals with high risk
651 for cardiovascular disease. *Scand J Clin Lab Invest.* 2007;67(6):604-11. doi:
652 10.1080/00365510701283878.
- 653 55. Caponnetto P, Russo C, Di Maria A, Morjaria JB, Barton S, Guarino F, et al. Circulating
654 endothelial-coagulative activation markers after smoking cessation: a 12-month
655 observational study. *Eur J Clin Invest.* 2011;41(6):616-26. Epub 20101229. doi:
656 10.1111/j.1365-2362.2010.02449.x.

- 657 56. Puls M, Schroeter MR, Steier J, Stijohann L, Hasenfuss G, Konstantinides S, et al. Effect of
658 smoking cessation on the number and adhesive properties of early outgrowth endothelial
659 progenitor cells. *Int J Cardiol.* 2011;152(1):61-9. Epub 20101120. doi:
660 10.1016/j.ijcard.2010.07.007.
- 661 57. Umeda A, Kato T, Yamane T, Yano H, Ieiri T, Miyagawa K, et al. Does smoking cessation
662 with varenicline worsen vascular endothelial function? *BMJ Open.* 2013;3(6). Epub
663 20130621. doi: 10.1136/bmjopen-2013-003052.
- 664 58. Sugiura T, Dohi Y, Hirowatari Y, Yamashita S, Ohte N, Kimura G, et al. Cigarette smoking
665 induces vascular damage and persistent elevation of plasma serotonin unresponsive to 8
666 weeks of smoking cessation. *Int J Cardiol.* 2013;166(3):748-9. Epub 20121016. doi:
667 10.1016/j.ijcard.2012.09.173.
- 668 59. Kato T, Umeda A, Miyagawa K, Takeda H, Adachi T, Toyoda S, et al. Varenicline-assisted
669 smoking cessation decreases oxidative stress and restores endothelial function. *Hypertens*
670 *Res.* 2014;37(7):655-8. Epub 20140320. doi: 10.1038/hr.2014.52.
- 671 60. Ikonomidis I, Marinou M, Vlastos D, Kourea K, Andreadou I, Liarakos N, et al. Effects of
672 varenicline and nicotine replacement therapy on arterial elasticity, endothelial glycocalyx
673 and oxidative stress during a 3-month smoking cessation program. *Atherosclerosis.*
674 2017;262:123-30. Epub 20170513. doi: 10.1016/j.atherosclerosis.2017.05.012.
- 675 61. Xue C, Chen QZ, Bian L, Yin ZF, Xu ZJ, Zhang AL, et al. Effects of smoking cessation with
676 nicotine replacement therapy on vascular endothelial function, arterial stiffness, and
677 inflammation response in healthy smokers. *Angiology.* 2019;70(8):719-25. Epub 20190528.
678 doi: 10.1177/0003319719853458.
- 679 62. Klonizakis M, Gumber A, McIntosh E, Brose LS. Short-term cardiovascular effects of e-
680 cigarettes in adults making a stop-smoking attempt: a randomized controlled trial. *Biology*
681 *(Basel).* 2021;10(11). Epub 20211119. doi: 10.3390/biology10111208.

- 682 63. Hashimoto H, Maruhashi T, Yamaji T, Harada T, Han Y, Takaeko Y, et al. Smoking status
683 and endothelial function in Japanese men. *Sci Rep*. 2021;11(1):95. Epub 20210108. doi:
684 10.1038/s41598-020-80012-x.
- 685 64. Ijzerman RG, Serne EH, van Weissenbruch MM, de Jongh RT, Stehouwer CD. Cigarette
686 smoking is associated with an acute impairment of microvascular function in humans. *Clin*
687 *Sci (Lond)*. 2003;104(3):247-52. doi: 10.1042/CS20020318.
- 688 65. Hamburg NM, Keyes MJ, Larson MG, Vasan RS, Schnabel R, Pryde MM, et al. Cross-
689 sectional relations of digital vascular function to cardiovascular risk factors in the
690 Framingham Heart Study. *Circulation*. 2008;117(19):2467-74. doi:
691 10.1161/CIRCULATIONAHA.107.748574.
- 692 66. Mitchell GF, Vita JA, Larson MG, Parise H, Keyes MJ, Warner E, et al. Cross-sectional
693 relations of peripheral microvascular function, cardiovascular disease risk factors, and aortic
694 stiffness: the Framingham Heart Study. *Circulation*. 2005;112(24):3722-8. doi:
695 10.1161/CIRCULATIONAHA.105.551168.
- 696 67. Gullu H, Caliskan M, Ciftci O, Erdogan D, Topcu S, Yildirim E, et al. Light cigarette smoking
697 impairs coronary microvascular functions as severely as smoking regular cigarettes. *Heart*.
698 2007;93(10):1274-7. Epub 20070513. doi: 10.1136/hrt.2006.100255.
- 699 68. Rossi M, Pistelli F, Pesce M, Aquilini F, Franzoni F, Santoro G, et al. Impact of long-term
700 exposure to cigarette smoking on skin microvascular function. *Microvasc Res*. 2014;93:46-
701 51. Epub 20140311. doi: 10.1016/j.mvr.2014.03.001.
- 702 69. Laurent S, Cockcroft J, Van Bortel L, Boutouyrie P, Giannattasio C, Hayoz D, et al. Expert
703 consensus document on arterial stiffness: methodological issues and clinical applications.
704 *Eur Heart J*. 2006;27(21):2588-605. Epub 20060925. doi: 10.1093/eurheartj/ehl254.
- 705 70. Vinereanu D, Nicolaidis E, Boden L, Payne N, Jones CJ, Fraser AG. Conduit arterial
706 stiffness is associated with impaired left ventricular subendocardial function. *Heart*.
707 2003;89(4):449-50. doi: 10.1136/heart.89.4.449.

- 708 71. Cheng S, Xanthakis V, Sullivan LM, Lieb W, Massaro J, Aragam J, et al. Correlates of
709 echocardiographic indices of cardiac remodeling over the adult life course: longitudinal
710 observations from the Framingham Heart Study. *Circulation*. 2010;122(6):570-8. Epub
711 20100726. doi: 10.1161/CIRCULATIONAHA.110.937821.
- 712 72. Gidding SS, Xie X, Liu K, Manolio T, Flack JM, Gardin JM. Cardiac function in smokers and
713 nonsmokers: the CARDIA study. The Coronary Artery Risk Development in Young Adults
714 Study. *J Am Coll Cardiol*. 1995;26(1):211-6. doi: 10.1016/0735-1097(95)00118-j.
- 715 73. Gardin JM, Arnold A, Gottdiener JS, Wong ND, Fried LP, Klopfenstein HS, et al. Left
716 ventricular mass in the elderly. The Cardiovascular Health Study. *Hypertension*.
717 1997;29(5):1095-103. doi: 10.1161/01.hyp.29.5.1095.
- 718 74. Heckbert SR, Post W, Pearson GD, Arnett DK, Gomes AS, Jerosch-Herold M, et al.
719 Traditional cardiovascular risk factors in relation to left ventricular mass, volume, and
720 systolic function by cardiac magnetic resonance imaging: the Multiethnic Study of
721 Atherosclerosis. *J Am Coll Cardiol*. 2006;48(11):2285-92. Epub 20061109. doi:
722 10.1016/j.jacc.2006.03.072.
- 723 75. Nadruz W, Jr., Claggett B, Goncalves A, Querejeta-Roca G, Fernandes-Silva MM, Shah
724 AM, et al. Smoking and cardiac structure and function in the elderly: The ARIC Study
725 (Atherosclerosis Risk in Communities). *Circ Cardiovasc Imaging*. 2016;9(9):e004950. doi:
726 10.1161/CIRCIMAGING.116.004950.
- 727 76. Colombo ES, Davis J, Makvandi M, Aragon M, Lucas SN, Paffett ML, et al. Effects of
728 nicotine on cardiovascular remodeling in a mouse model of systemic hypertension.
729 *Cardiovasc Toxicol*. 2013;13(4):364-9. doi: 10.1007/s12012-013-9217-z.
- 730 77. Zornoff LA, Matsubara LS, Matsubara BB, Okoshi MP, Okoshi K, Dal Pai-Silva M, et al.
731 Beta-carotene supplementation attenuates cardiac remodeling induced by one-month
732 tobacco-smoke exposure in rats. *Toxicol Sci*. 2006;90(1):259-66. Epub 20051230. doi:
733 10.1093/toxsci/kfj080.

- 734 78. Fried ND, Oakes JM, Whitehead AK, Lazartigues E, Yue X, Gardner JD. Nicotine and novel
735 tobacco products drive adverse cardiac remodeling and dysfunction in preclinical studies.
736 *Front Cardiovasc Med.* 2022;9:993617. Epub 20221006. doi: 10.3389/fcvm.2022.993617.
- 737 79. Filipovsky J, Ticha M, Cifkova R, Lanska V, Stastna V, Roucka P. Large artery stiffness and
738 pulse wave reflection: results of a population-based study. *Blood Press.* 2005;14(1):45-52.
739 doi: 10.1080/08037050510008814.
- 740 80. Taquet A, Bonithon-Kopp C, Simon A, Levenson J, Scarabin Y, Malmejac A, et al. Relations
741 of cardiovascular risk factors to aortic pulse wave velocity in asymptomatic middle-aged
742 women. *Eur J Epidemiol.* 1993;9(3):298-306. doi: 10.1007/BF00146267.
- 743 81. Nakanishi N, Suzuki K, Kawashimo H, Nakamura K, Tatara K. Risk factors for the incidence
744 of aortic stiffness by serial aortic pulse wave velocity measurement in middle-aged
745 Japanese men. *Environ Health Prev Med.* 1998;3(3):168-74. doi: 10.1007/BF02931709.
- 746 82. Nguyen QM, Srinivasan SR, Xu JH, Chen W, Berenson GS. Racial (black-white) divergence
747 in the association between adiponectin and arterial stiffness in asymptomatic young adults:
748 The Bogalusa Heart Study. *Am J Hypertens.* 2008;21(5):553-7. Epub 20080221. doi:
749 10.1038/ajh.2008.14.
- 750 83. Bianchini E, Lonnebakken MT, Wohlfahrt P, Piskin S, Terentes-Printzios D, Alastruey J, et
751 al. Magnetic resonance imaging and computed tomography for the noninvasive assessment
752 of arterial aging: a review by the VascAgeNet COST Action. *J Am Heart Assoc.*
753 2023;12(10):e027414. Epub 20230515. doi: 10.1161/JAHA.122.027414.
- 754 84. Guala A, Tosello F, Leone D, Sabia L, D'Ascenzo F, Moretti C, et al. Multiscale
755 mathematical modeling vs. the generalized transfer function approach for aortic pressure
756 estimation: a comparison with invasive data. *Hypertens Res.* 2019;42(5):690-8. Epub
757 20181210. doi: 10.1038/s41440-018-0159-5.
- 758 85. Vasan RS, Larson MG, Levy D. Determinants of echocardiographic aortic root size: The
759 Framingham Heart Study. *Circulation.* 1995;91(3):734-40. doi: 10.1161/01.cir.91.3.734.

- 760 86. Agmon Y, Khandheria BK, Meissner I, Schwartz GL, Sicks JD, Fought AJ, et al. Is aortic
761 dilatation an atherosclerosis-related process? Clinical, laboratory, and transesophageal
762 echocardiographic correlates of thoracic aortic dimensions in the population with
763 implications for thoracic aortic aneurysm formation. *J Am Coll Cardiol*. 2003;42(6):1076-83.
764 doi: 10.1016/s0735-1097(03)00922-7.
- 765 87. Farasat SM, Morrell CH, Scuteri A, Ting CT, Yin FC, Spurgeon HA, et al. Pulse pressure is
766 inversely related to aortic root diameter implications for the pathogenesis of systolic
767 hypertension. *Hypertension*. 2008;51(2):196-202. Epub 20071224. doi:
768 10.1161/HYPERTENSIONAHA.107.099515.
- 769 88. Chen T, Yang X, Fang X, Tang L, Zhang Y, Weng Y, et al. Potential influencing factors of
770 aortic diameter at specific segments in population with cardiovascular risk. *BMC Cardiovasc*
771 *Disord*. 2022;22(1):32. Epub 20220205. doi: 10.1186/s12872-022-02479-y. PubMed PMID:
772 35120453; PubMed Central PMCID: PMCPMC8817600.
- 773 89. Lee SH, Kim YJ, Lee HJ, Kim HY, Kang YA, Park MS, et al. Comparison of CT-determined
774 pulmonary artery diameter, aortic diameter, and their ratio in healthy and diverse clinical
775 conditions. *PLoS One*. 2015;10(5):e0126646. Epub 20150508. doi:
776 10.1371/journal.pone.0126646.
- 777 90. Mensel B, Hesselbarth L, Wenzel M, Kuhn JP, Dorr M, Volzke H, et al. Thoracic and
778 abdominal aortic diameters in a general population: MRI-based reference values and
779 association with age and cardiovascular risk factors. *Eur Radiol*. 2016;26(4):969-78. Epub
780 20150725. doi: 10.1007/s00330-015-3926-6.
- 781 91. Wolak A, Gransar H, Thomson LE, Friedman JD, Hachamovitch R, Gutstein A, et al. Aortic
782 size assessment by noncontrast cardiac computed tomography: normal limits by age,
783 gender, and body surface area. *JACC Cardiovasc Imaging*. 2008;1(2):200-9. doi:
784 10.1016/j.jcmg.2007.11.005.

- 785 92. Mitchell GF, Lacourciere Y, Ouellet JP, Izzo JL, Jr., Neutel J, Kerwin LJ, et al. Determinants
786 of elevated pulse pressure in middle-aged and older subjects with uncomplicated systolic
787 hypertension: the role of proximal aortic diameter and the aortic pressure-flow relationship.
788 *Circulation*. 2003;108(13):1592-8. Epub 20030915. doi:
789 10.1161/01.CIR.0000093435.04334.1F. PubMed PMID: 12975261.
- 790 93. Levenson J, Simon AC, Cambien F, Beretti C. [Effect of smoking on blood viscosity and
791 arterial rigidity in normal and hypertensive subjects]. *Arch Mal Coeur Vaiss*. 1987;80(6):794-
792 8.
- 793 94. Yarnell JW, Sweetnam PM, Rogers S, Elwood PC, Bainton D, Baker IA, et al. Some long
794 term effects of smoking on the haemostatic system: a report from The Caerphilly and
795 Speedwell Collaborative Surveys. *J Clin Pathol*. 1987;40(8):909-13. doi:
796 10.1136/jcp.40.8.909.
- 797 95. Yamori Y, Kihara M, Horie R, Note S, Tsunematsu T, Fukase M. Epidemiological analysis
798 on the mechanism of cigarette smoking as a risk factor in cardiovascular diseases. *Jpn Circ*
799 *J*. 1980;44(12):965-70. doi: 10.1253/jcj.44.965.
- 800 96. Cho YI, Cho DJ. Hemorheology and microvascular disorders. *Korean Circ J*.
801 2011;41(6):287-95. Epub 20110630. doi: 10.4070/kcj.2011.41.6.287.
- 802 97. Shimada S, Hasegawa K, Wada H, Terashima S, Satoh-Asahara N, Yamakage H, et al.
803 High blood viscosity is closely associated with cigarette smoking and markedly reduced by
804 smoking cessation. *Circ J*. 2011;75(1):185-9. Epub 20101107. doi: 10.1253/circj.cj-10-0335.

805

806 **Supporting information**

807 **S1 Table. Observed arterial hemodynamic measures stratified by smoking status at the**
808 **index examination visit.** CFPWV, carotid-femoral pulse wave velocity. niCFPWV, negative

809 inverse carotid-femoral pulse wave velocity. CBPWV, carotid-brachial pulse wave velocity.
810 CRPWV, carotid-radial pulse wave velocity. Values are mean±standard deviation or number
811 (%).

812 **S2 Table. Estimated least squares means of peripheral arterial hemodynamic measures**

813 **according to smoking status at Visit 1.** PWV, pulse wave velocity. We present least squares

814 means estimates±standard deviation (*P*) based on regression models. Participants who formerly

815 quit, recently quit, and were currently smoking are compared to participants who never smoked.

816 Bonferroni-adjusted *P* values ($P=0.05/12=0.0042$) were used to assess significance of

817 associations. Multivariable models adjusted for age, age² sex, cohort, body mass index,

818 tonometry heart rate, mean arterial pressure (except where mean arterial pressure is the

819 dependent variable), total to high-density lipoprotein cholesterol ratio, triglycerides, prevalent

820 cardiovascular disease, lipid-lowering medication use, hypertension treatment, and prevalent

821 diabetes.

822 **S3 Table. Observed central arterial hemodynamic measures between two visits for the**

823 **longitudinal sample.** CFPWV, carotid-femoral pulse wave velocity. niCFPWV, negative inverse

824 carotid-femoral pulse wave velocity. Values are mean±standard deviation.

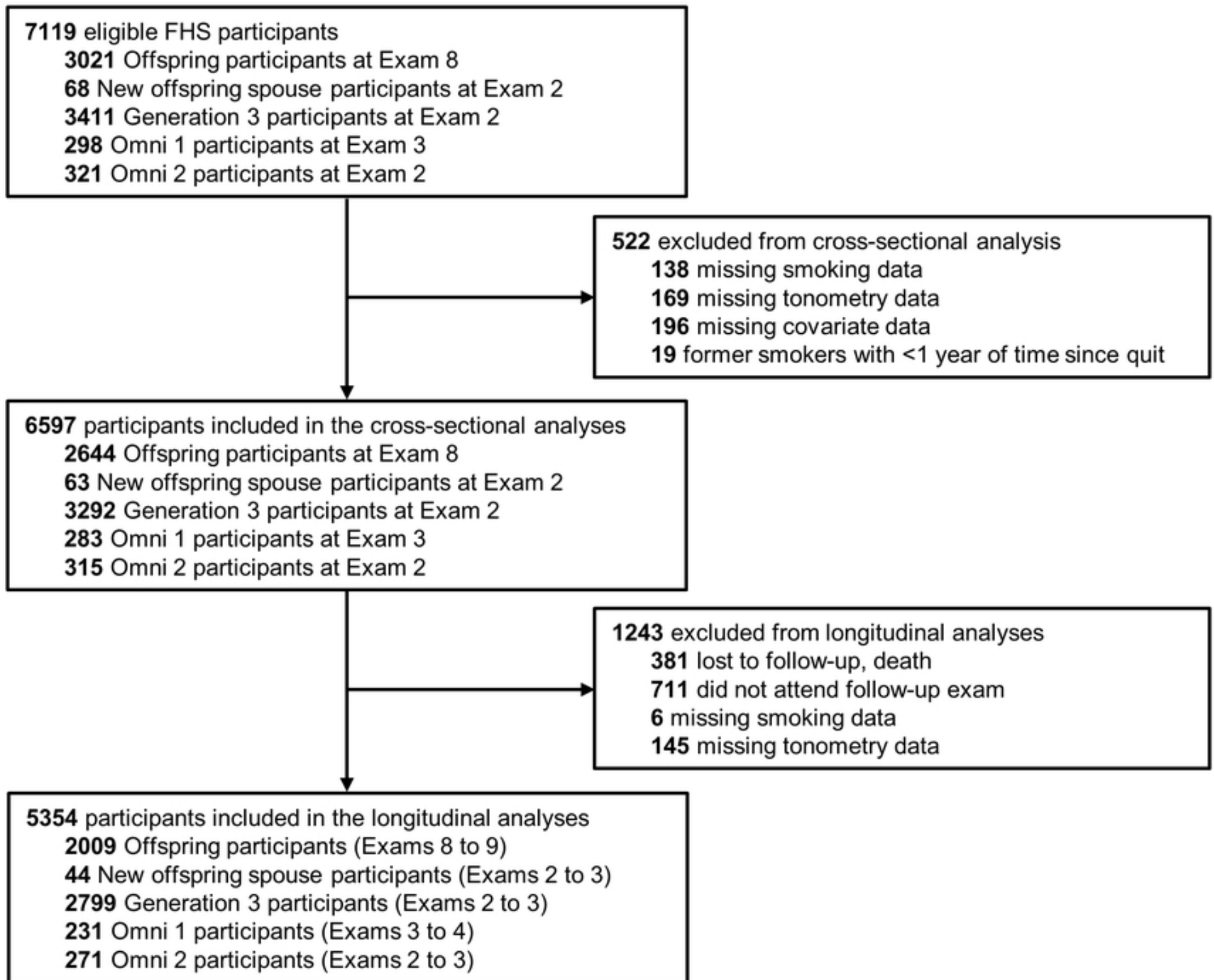


Fig 1

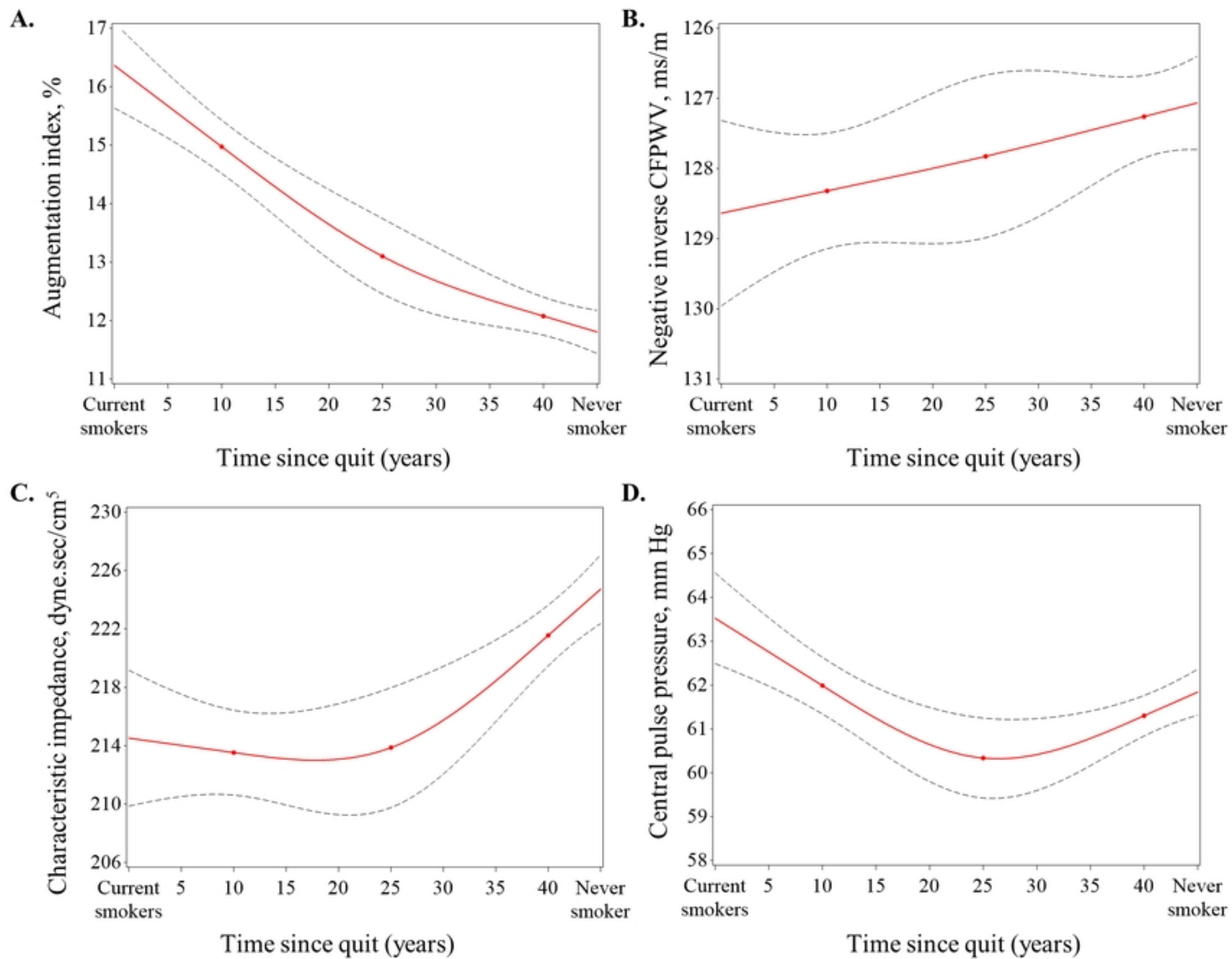


Fig 2