

1  
2  
3  
4  
5  
6  
7  
8  
9  
10  
11  
12  
13  
14  
15  
16  
17  
18  
19  
20  
21  
22  
23  
24

Does time awareness coaching support hybrid workers’ wellbeing?: Protocol for  
a pilot randomized controlled trial

Anna Navin Young<sup>1¶\*</sup>, Zelda Di Blasi<sup>1&</sup>, Sarah Foley<sup>1&</sup>, & Eithne Hunt<sup>2&</sup>

<sup>1</sup> School of Applied Psychology, University College Cork, Ireland

<sup>2</sup> Department of Occupational Science and Occupational Therapy, University College Cork,  
Ireland

\* Corresponding author

E-mail: [anavinyoung@ucc.ie](mailto:anavinyoung@ucc.ie)

¶ These authors contributed equally to this work.

## 25 **Abstract**

## 26 **Background**

27 High rates of poor employee mental health and wellbeing have spurred growing demands for  
28 initiatives that support wellbeing in the workplace. The promotion of positive mental health  
29 and wellbeing is an essential component of workplace wellbeing initiatives, focusing on  
30 enhancing positive aspects of work, workers' capacities, and positive behaviors. As one of  
31 the fastest growing practices in personal and professional development, coaching is found to  
32 improve workers' wellbeing and performance through reflection, awareness, and meaningful  
33 goal pursuit. As time-related challenges exacerbate workplace stressors and threaten  
34 wellbeing, specific time-focused coaching approaches are essential to the promotion of  
35 positive mental health and wellbeing in the workplace. Effectively addressing work-time  
36 challenges is especially critical for hybrid workers, who divide their work-time across  
37 multiple onsite and remote locations.

## 38 **Methods**

39 The current paper is a protocol for a pilot three-armed randomized controlled trial that aims  
40 to evaluate the effectiveness of a time awareness coaching (TAC) intervention to support  
41 hybrid workers' wellbeing. Sixty hybrid working participants will be randomized to either the  
42 TAC intervention, reflective time tracking (active control), or a passive control group.  
43 Professional coaches will be recruited and trained to facilitate the TAC intervention. Pre-post  
44 intervention measures of chronic time pressure, perceived control of time, perceived stress,  
45 wellbeing, and self-efficacy will be evaluated and compared across intervention arms.  
46 Qualitative feedback from participants and coaches will be collected to assess the  
47 intervention's acceptability and implementation.

## 48 **Discussion**

49 The results of the study will offer insights into intervention effectiveness as well as the  
50 feasibility of critical intervention elements such as recruitment, retention, and  
51 implementation. The findings will inform recommendations for the use of TAC in future  
52 research studies and workplace wellbeing initiatives.

53

## 54 **Introduction**

55 Beyond its impacts on absenteeism, job retention, impaired quality of life, and  
56 decreased productivity and performance, poor mental health is a leading cost in worker  
57 compensation systems and is estimated to cost the global economy \$1 trillion annually [1-4].  
58 The World Health Organization [5] defines mental health as, “a state of mental well-being  
59 that enables people to cope with the stresses of life, realize their abilities, learn well and work  
60 well, and contribute to their community”. In recent years, workplace mental health and  
61 wellbeing has become a billion-dollar industry populated with an array of unregulated  
62 offerings [1,7]. As a result, various governments and global organizations have sought to  
63 develop policy and practice guidelines to help regulate and facilitate consistent and effective  
64 initiatives across workplaces [3,7,8]. Thus, it is essential that mental health and wellbeing  
65 services are validated and evidence-based to ensure they can be effectively implemented.

66 A recent umbrella review of workplace mental health interventions identified three  
67 main types of interventions: protection from harm, promotion of mental health and wellbeing,  
68 and addressing needs of those at increased risk [1]. The promotion of mental health and  
69 wellbeing has gained increasing attention in past decades, with promising results for  
70 individuals and organizations [9-11]. Interventions that aim to promote mental health and  
71 wellbeing typically focus on developing positive aspects of work, positive worker capacities,  
72 and positive behaviors [6, 12-15]. By focusing on factors such as employee strengths,  
73 resilience, participatory job crafting, and intentional work habits, these promotion-focused

74 interventions aim to enhance positive outcomes such as wellbeing, engagement, self-efficacy,  
75 and optimal functioning [1, 9, 12]. Furthermore, the positive outcomes that arise from  
76 promotion-based interventions can in turn buffer against negative mental health consequences  
77 [9, 16].

78 As one of the fastest growing approaches to learning and development within  
79 organizations [17], coaching has great potential as an evidence-based initiative to promote  
80 mental health and wellbeing in the workplace. Across industries, coaching is already a widely  
81 implemented approach to supporting employee wellbeing and performance [18]. Previous  
82 meta-analyses evaluating the effectiveness of coaching in the workplace found positive  
83 impacts on a wide array of wellbeing and performance outcomes [19-21].

84 Rather than taking a prescriptive approach to defining program success, coaching is  
85 fundamentally a person-centered approach [22, 23]. As a person-centered approach, coaching  
86 places emphasis on the coachee's active role in shaping the coaching experience, seeing  
87 personal values, experiences, and goals as core drivers of the coaching work [23, 24]. This  
88 person-centered approach prompts positive outcomes such as enhanced self-regulation and  
89 self-efficacy through self-reflection, self-awareness, and positive behavior change [19, 20,  
90 23].

91

## 92 Time Awareness Coaching

93 Time-focused initiatives are an essential component of supporting wellbeing in the  
94 workplace. How workers objectively use and subjectively experience their time have  
95 important implications for their wellbeing [25-27]. Work intensification is a well-studied  
96 example of this, characterized by a faster pace of work, tighter deadlines, a reduction in idle  
97 and undisturbed time, and instances of engaging with multiple work tasks simultaneously  
98 [28]. These work intensification characteristics are enacted both through time use (e.g.,

99 multitasking) and perceptions of time (e.g., faster pace) and may involve feeling chronically  
100 pressed for time and out of control of time [26, 29, 30]. These patterns in time use and  
101 subjective experiences of time are becoming widely recognized as an occupational hazard  
102 and an important psychosocial risk in the workplace due to their impacts on worker  
103 wellbeing, mental health, motivation, performance, and functioning [29, 31].

104 Time researchers suggest that building awareness of current time habits and their  
105 impacts is a critical step to becoming more intentional and in control of our time [25, 27].  
106 Using reflection and self-awareness, coaching can support coachees to recognize their current  
107 work-time habits and how they may be helping or hindering their wellbeing. Additionally,  
108 coaching is designed to support personally meaningful behavior change, thus enabling  
109 workers to apply their insights as appropriate to enhance their wellbeing at work. A coaching  
110 approach specifically designed to facilitate a coachee's awareness of their time habits in  
111 connection to their personal and professional goals, values, experiences, and wellbeing may  
112 thus serve as a valuable initiative in the promotion of mental health and wellbeing in the  
113 workplace. Previous studies have suggested the usefulness of the time awareness coaching  
114 approach, [32, 33], however further evidence is needed to evaluate its effectiveness in a  
115 workplace context.

116

## 117 **Hybrid Workers**

118 The topic of time-use and subjective experiences is particularly relevant to address in  
119 the shifting landscape of office-based work. Hybrid work, for example, has become  
120 increasingly common and desirable since the COVID-19 pandemic expedited organizations'  
121 adoption of nontraditional work models [34]. Hybrid work refers to a role where work time is  
122 divided between in-person (e.g., onsite) and remote (e.g., home) locations [35].

123           The hybrid work model reflects an increased flexibility of spatial and temporal work  
124 characteristics, and available literature indicates that efficient time and attention management  
125 are critical predictors of job performance and affective outcomes in hybrid workers [34].  
126 Though the available literature is still scarce, it appears that work-time practices that enable  
127 workers to autonomously manage their time, set and maintain work-time boundaries, and  
128 effectively manage distractions and interruptions will play critical roles in enabling workers  
129 to work well and sustain their wellbeing while hybrid working [34-36]. Thus, the current  
130 study aims to evaluate whether a time awareness coaching intervention can effectively  
131 support hybrid workers' work-time practices and wellbeing.

132

133

## 134 **Materials and methods**

### 135 **Study aims and design**

136           The study is a pilot three-arm pilot randomized controlled trial consisting of an  
137 experimental group (time awareness coaching; TAC), an active control group (reflective time  
138 journaling), and a passive control group. The trial is designed to evaluate the effectiveness of  
139 the TAC intervention in comparison with the active and passive control groups among a  
140 population of hybrid workers. Participant outcomes will be assessed pre- and post-  
141 intervention to evaluate chronic time pressure, perceived control of time, self-efficacy,  
142 perceived stress, and wellbeing. The reporting of this protocol has been informed by the  
143 SPIRIT checklist (Standard Protocol Items: Recommendations for Interventional Trials; see  
144 S1 Checklist) [37].

145

146 **Inclusion criteria**

147 Individuals will be eligible to participate if they are (1) 18 years or older, (2) currently  
148 work in a hybrid work environment, and (3) are English speaking. In this study, hybrid work  
149 is classified as a position someone fulfills whilst dividing their work time between in-person  
150 (office) and remote (e.g. at home) environments [35]. Using convenience and snowball  
151 sampling, authors will recruit participants through social media platforms (e.g. LinkedIn) and  
152 through recruitment calls via their professional networks.

153

## 154 Exclusion criteria

155 Anyone working in a fully remote or fully onsite role will be ineligible to participate  
156 in this study. People experiencing severe mental health conditions are excluded as the  
157 coaching intervention is not designed to address these conditions. To address this exclusion  
158 criteria in the study, we observe current involvement in work as an indicator of a lack of  
159 severe mental health condition [3, 5].

160

## 161 **Coach practitioner involvement**

162 Coaching practitioners will be recruited and trained to facilitate the TAC intervention.  
163 Approximately 6-8 coaches will be recruited. Practitioners will be eligible to participate if  
164 they are members of a professional coaching body such as the Association for Coaching  
165 (AC), International Coach Federation (ICF), and the European Mentoring and Coaching  
166 Council (EMCC). Membership with a professional body indicates a standardized level of  
167 practitioner training, commitment to continued professional development (CPD), and  
168 adherence to ethical codes of conduct. Coaches will be recruited through social media  
169 platforms (e.g. LinkedIn) and through convenience and snowball sampling where authors  
170 share a recruitment call through their networks.

171

## 172 Practitioner training

173           Once coaches are recruited, they will be trained to facilitate the TAC intervention for  
174 this study. Training will involve a half-day virtual group training program facilitated by the  
175 first author, and the provision of client contact email templates and coaching session  
176 guidelines. The development of the training program has been informed by the procedures for  
177 TAC practitioner training [32], with specific tailoring for the trial context (e.g., overview of  
178 trial and context of intervention – hybrid work-time habits and wellbeing). Coaches will have  
179 ongoing contact with the first author to ensure they feel comfortable and confident adhering  
180 to the intervention procedures.

181

## 182 Practitioner data collection

183           After completing the training program, coaches will be instructed to complete a brief  
184 online survey to collect basic demographic information and background information  
185 regarding their coaching experience (see Figure 1). Demographic information such as age and  
186 gender will be collected, along with professional information such as number of years  
187 practicing as a coach and with which professional body they hold membership. This  
188 information will be summarized in the final trial write up. At the end of the trial when  
189 coaches have concluded their work with participants, they will again be instructed to  
190 complete a final online survey. This survey will ask them about their experiences of training  
191 in and facilitating the TAC intervention. Coaches will be asked whether they would use the  
192 TAC approach with their own clients outside of the study context, and whether they would  
193 recommend the approach to other coaching practitioners. This feedback will inform the  
194 study's overall implications regarding future research and practice using the TAC approach.

195

196 **Fig 1. Flow chart of coach involvement.**



197

## 198 **Procedures**

199           Participation in this experiment involves three stages: (1) initial survey, (2) time  
200 awareness activity (three intervention arms), and (3) post-time awareness activity survey (see  
201 Figure 2). All participant involvement will take place online and virtually. Survey data  
202 collection will be facilitated using Qualtrics [38]. Participants will obtain access to the first  
203 survey after they have been presented with an information-consent form and indicated their  
204 consent. When participants complete the first survey, they are randomized to one of the three  
205 intervention arms and receive the relevant instructions. They are encouraged to contact the  
206 research team should they have any questions regarding the activity they are meant to  
207 complete (and are provided with contact information).

208           At each stage of participant involvement, participants are provided with both text-  
209 based and video-based instructions. For example, when participants click into the first survey,  
210 the information-consent form is provided in text and is also read out by the first author in a  
211 short video. When participants receive email reminders to prompt them to continue with their  
212 intervention, the emails contain a brief written reminder as well as a link to a video reminder.  
213 With the aim of establishing consistency and supporting retention, the first author is the main  
214 subject of all video recordings, the videos remain visually consistent (same digital  
215 background), and participants are welcomed in each video with a reminder of the study's  
216 purpose (to investigate hybrid workers' work-time practices and wellbeing).

217

218 **Fig 2. Flow chart of participant involvement.**

219

220 **Randomization**

221           When participants complete the first survey, they will be randomized to one of the  
222 three intervention arms using Qualtrics' randomization features [38]. After completing the  
223 first survey and being randomized into their intervention arm, participants will then receive  
224 instructions for completing their relevant time awareness intervention. The first author will  
225 facilitate coach-participant pairings by polling coaches for availability, assigning numbers,  
226 and rolling a die to randomly select an available coach to pair with each new experimental  
227 participant.

228

## 229 **Interventions**

### 230 Time Awareness Coaching (TAC; experimental group)

231           When randomized to the experimental group, participants receive instructions and  
232 materials to complete a reflective time tracking activity. Participants are introduced to the  
233 digital reflective time journal (see S1 Appendix) and instructed on how to track their work  
234 time using the six columns of the journal. Participants are also instructed to use the time  
235 journal to record any reflections, insights, and feelings that arise for them as they track their  
236 work time and consider any patterns they notice in how they use and experience their time.

237           The reflective time journal template is provided as a “view only” spreadsheet. On the  
238 first tab of the spreadsheet, participants are provided instructions on how to either copy or  
239 download the template in order to create an editable file. The template consists of seven  
240 additional tabs, each representing one day of the tracking period. Each tab contains the same  
241 six-columned time tracking table (see S1 Appendix). Through video instructions, participants  
242 are provided with an overview of the template and how to track their time in 30-minute  
243 increments over the seven-day tracking period. While tracking, participants are instructed to  
244 distinguish between main activities that occur in each 30-minute increment as opposed to

245 other activities that also may occur (these could include interruptions and distractions, for  
246 example). Additional columns in the time journal encourage participants to document their  
247 location, and their subjective rating of quality of time (on a scale of 1-low quality to 10-high  
248 quality). Finally, participants are encouraged to use the notes sections throughout the  
249 template to record any insights, thoughts, and feelings that arise throughout the tracking  
250 process.

251 Participants are instructed to complete the reflective time journal for a period of seven  
252 days and receive two email reminders throughout the week to encourage them to continue  
253 with the activity. TAC participants are additionally advised that they will be paired with a  
254 coaching practitioner and will receive two virtual coaching sessions to support them to apply  
255 insights from the reflective time journal into meaningful changes in their lives. Participants  
256 are provided with the following overview to explain the coaching component of the  
257 intervention:

258 *“In addition to completing the time journal, you have the opportunity to work with a*  
259 *coaching practitioner. The coaching space is an opportunity to reflect on your insights*  
260 *from the time journal and receive support from a trained professional to put these*  
261 *insights into meaningful action. Through two virtual coaching sessions, your coach will*  
262 *support you to reflect on your time habits, identify desired changes, and pursue these*  
263 *changes to improve your work time and wellbeing.”*

264 Participants are then informed that they will be paired with a coach, who will contact  
265 them to schedule their coaching sessions. Participants are also provided with a coaching  
266 agreement document that outlines the scope of the coaching relationship. Contracting is a  
267 critical component of coaching and serves to establish clear expectations for the professional  
268 service as well as build rapport between the coach and client [39].

269           When a coach is paired with a participant, they will first have a brief phone call,  
270 known as the chemistry session, which serves as an opportunity for the coach and participant  
271 to get to know each other, confirm the scope of the coaching relationship, and clarify any  
272 confusions or questions before proceeding with the coaching sessions. These initial  
273 conversations are seen as a critical component of developing a trusting and effective coaching  
274 relationship [39]. After the chemistry session, and after the participant has completed the  
275 reflective time journaling, the coach and participant schedule two coaching sessions,  
276 approximately one week apart. At the end of the second coaching session, the coach provides  
277 the participant with the link to the follow-up survey. After participants complete the follow-  
278 up survey, they receive a debriefing message regarding the nature of the trial and the  
279 intervention arms.

280

#### 281 Reflective time journaling (active control group)

282           When randomized to the active control group, participants receive the same  
283 instructions and materials as the TAC group and are encouraged to complete the seven-day  
284 time tracking activity. Unlike the TAC group, those randomized to the active control group  
285 do not receive coaching as part of their intervention. Two automated email reminders are sent  
286 throughout the week of tracking. Participants receive another email at the end of the seven-  
287 day period with a link to the follow-up survey. A final email is sent ten days after the  
288 completion of the first survey, reminding participants to complete the follow-up survey.  
289 When participants have completed the follow-up survey, they receive a debriefing message  
290 outlining the nature of the trial and the three intervention arms.

291

#### 292 “Think about your time” (passive control group)

293 Participants randomized to the passive control group will receive the following  
294 instructions:

295 *“For the next week, please pay attention to your work-time habits. Pay attention to any*  
296 *patterns you start to notice in when, where, and how you work, and how you feel while*  
297 *working.”*

298 Participants receive two email reminders throughout the week, reminding them to pay  
299 attention to their work-time habits. At the end of the seven-day period, participants receive  
300 another email with a link to the follow-up survey. Ten days after completing the first survey,  
301 participants receive a final email with a reminder to complete the follow-up survey if they  
302 have not yet done so. After completing the follow-up survey, participants are then debriefed  
303 on the nature of the trial and the three intervention arms. They receive the instructions and  
304 materials for the reflective time journaling and are encouraged to complete this activity for  
305 their own benefit should they wish to do so.

306

## 307 **Measures and outcomes**

308 The initial survey will collect demographic information from participants, including  
309 age, gender, living arrangements, family and relationship status, and highest level of  
310 education.

### 311 **Hybrid work characteristics**

312 Alongside the demographic characteristics, the initial survey will also collect  
313 information regarding participants’ hybrid work contexts and preferences. Information  
314 gathered will include average days per week working in-person and remotely, average  
315 weekly work hours when working in-person and remotely, physical work setup in in-person

316 and remote environments, level of personal control over where they work, and level of  
317 satisfaction with their current hybrid work schedule.

318 To contribute to the growing hybrid work literature, open-ended questions will  
319 encourage participants to provide further detail regarding their hybrid work experiences and  
320 preferences. These questions ask about factors that influence participants' preferences for  
321 working in-person and remotely, the greatest benefits and challenges of working in-person  
322 and remotely, and qualities of their ideal work environment. The aim of including these open-  
323 ended questions is to collect nuanced insight into participants' experiences to supplement the  
324 interpretation of quantitative responses.

### 325 Outcome measures

326 Self-reported measures will be collected using the Chronic Time Pressure Inventory  
327 [40], the Perceived Control of Time Scale [41], the General Self-Efficacy Scale (GSE) [42],  
328 the Perceived Stress Scale (PSS) [43], and the WHO-5 Well-Being Index [44]. These  
329 measures will be repeated in both the initial and follow-up surveys.

### 330 Time pressure

331 Time pressure is measured using the 13-item Chronic Time Pressure Inventory [40].  
332 Items are measured on a five-point Likert scale from 1 (strongly disagree) to 5 (strongly  
333 agree). The item scores can be added up for a total chronic time pressure score ranging from  
334 13 to 65. Items can also be divided across two factors: 'feeling harried' and 'cognitive  
335 awareness of time shortage' and summed to reach sub-scores. An example item of 'feeling  
336 harried' is: 'The days fly by without me ever getting everything done.' An example item of  
337 'cognitive awareness of time shortage' is: 'There aren't enough hours in the day.' Cronbach's  
338 alphas demonstrated good internal consistency for the total scale ( $\alpha = 0.85$ ), for the 'feeling  
339 harried sub-scale ( $\alpha = 0.795$ ), and for the 'cognitive awareness of time shortage' sub-scale ( $\alpha$   
340 = 0.80) [40].

### 341 Perceived control of time

342           The Perceived Control of Time Scale is a 5-item scale that assesses how respondents  
343 perceive their ability to directly affect and manage their time [41]. The scale takes a work-  
344 specific perspective to control of time, with reference to work-time in four of the five scale  
345 items [41]. Items are measured on a 5-point Likert scale from 1 (do not agree at all) to 5  
346 (completely agree). On a range of five to 25, a higher total score indicates a higher level of  
347 perceived control of time. Sample items include: ‘I feel in control of my time,’ and ‘I often  
348 have little control of what is happening at work.’ The Cronbach’s alpha was 0.73 [41].

### 349 Self-efficacy

350           Schwarzer and Jerusalem’s General Self-Efficacy Scale is a widely used scale that  
351 consists of 10 items ranked from 1 (not at all true) to 4 (exactly true) [42]. The scale aims to  
352 assess respondents’ belief in their ability to cope with adversity and perform new or difficult  
353 tasks [45]. Total scores range from 10 to 40, with a higher score indicating a higher level of  
354 self-efficacy. A sample item is: ‘When I am confronted with a problem, I can usually find  
355 several solutions.’ Cronbach alphas have ranged from 0.76 to 0.9 [42, 46].

### 356 Perceived stress

357           The Perceived Stress Scale (PSS) [43] is the most widely used instrument for  
358 measuring appraisals of stress. The instrument assesses how respondents perceive their lives  
359 as stressful, particularly in how unpredictable, uncontrollable, and overloaded they perceive  
360 their lives to be. The PSS is a 10-item scale with items scored from 0 (never) to 4 (very  
361 often). A sample item is: ‘In the last month, how often have you felt that you were unable to  
362 control the important things in your life?’ When added up, total scores range between 0 and  
363 40, with scores between 0 and 13 indicating low perceived stress, scores between 14 and 26  
364 indicating moderate stress, and scores between 27 and 40 indicating high stress. Cronbach’s  
365 alpha ranged from 0.84 to 0.86 in initial instrument testing [43].

## 366 Well-being

367 The WHO-5 Well-being Index is one of the most widely used measures to assess  
368 subjective well-being [47]. The Index consists of five statements which are responded to from  
369 0 (at no time) to 5 (all of the time) [44]. The total raw score ranges from 0 to 25 and is then  
370 multiplied by four to represent a final well-being score. Higher scores represent higher well-  
371 being. National general population averages range from 54-70 [47]. A sample item on the  
372 index includes, “I have felt cheerful and in good spirits.” Cronbach’s alphas have ranged  
373 from 0.83 to 0.95 across various participant populations [48,49].

## 374 Post-intervention experiences

375 In the follow-up survey, participants in the experimental and active control groups  
376 will also receive open-ended questions asking about their experiences of their respective time  
377 awareness activity. In addition to asking them to share their overall experience, specific  
378 questions will ask participants to reflect on anything that surprised them, any changes they  
379 made to their time use in response to the intervention, and anything they learned through their  
380 involvement in the intervention.

381

## 382 **Sample size**

383 The present pilot study aims to evaluate whether the TAC intervention enhances  
384 hybrid workers’ wellbeing, self-efficacy, and perceived control of time while diminishing  
385 their chronic time pressure and perceived stress. The study aims to compare the TAC  
386 intervention’s effectiveness to that of the active (reflective time tracking) and passive control  
387 groups.

388 An a priori power analysis was calculated using G\*Power 3.1 [50, 51] to determine  
389 the required sample size. Assuming a power ( $1 - \beta$ ) of 90%, and a significance level ( $\alpha$ ) of  
390 0.05, the sample size was determined as 18 participants per group (54 participants total). To



391 account for potential attrition (rate set at 10%), the total sample size for the study was set at  
392 60 participants.

393

## 394 **Data management plan**

395 All data generated in this study will be securely stored on university-approved storage  
396 services using password-protected files. Only the research team (listed authors) will have  
397 access to the raw data and materials involved in this study. Each participant is instructed to  
398 generate a code at the beginning of the first survey. They will input this code again at the  
399 beginning of the follow-up survey to allow for pre/post analyses. At the beginning of the first  
400 survey, participants are asked whether they consent for their data to be used in future  
401 research. Should participants consent to future data use, only completely anonymized data  
402 will be made available in data repositories. These data management practices will adhere to  
403 FAIR guidelines [52].

404

## 405 **Data analysis**

406 The primary objective of this intervention development pilot study is to investigate  
407 critical elements of the intervention (e.g., recruitment, retention, acceptability) and to provide  
408 transparent reporting of intervention design and implementation to promote replicability.  
409 Descriptive data will be presented on the feasibility of recruitment and retention.  
410 Acceptability will be examined through qualitative feedback from coaches and participants.  
411 Coaches will be asked to provide feedback on the acceptability of the training program, the  
412 TAC intervention within the trial, and how useful and practical they feel the TAC program  
413 would be for coaching clients beyond the trial context. In the post-survey, TAC participants  
414 will be asked about their experiences of the intervention using open-ended questions. The  
415 active control group will also be asked about their experiences of the time tracking

416 intervention. As appropriate, reflexive thematic analysis will be used to analyze participants  
417 open-ended responses to better understand their experiences of the intervention [53, 54].

418 Analyses will adhere to ‘intention-to-treat’ procedures with the inclusion of data from  
419 all randomized participants [55, 56]. Descriptive and demographic data collected in the pre-  
420 survey will be reported to present an overview of participants and their hybrid work  
421 environments. We will conduct mixed between-within analyses of variance to evaluate the  
422 effect of the TAC intervention on participants’ wellbeing, perceived stress, self-efficacy,  
423 chronic time pressure, and perceived control of time, and to further compare the TAC  
424 intervention to the active and passive control groups.

425

## 426 **Ethics approval**

427 The study has received approval from the University’s ethics committee [Log number  
428 2023-101; full details will be provided after peer review]. Participation is voluntary and  
429 informed consent will be obtained. When recruited, coaches will provide written consent to a  
430 coaching contract, outlining their involvement and their maintenance of client confidentiality.  
431 When coaches and participants are paired in the experimental group, they will verbally agree  
432 to a coaching agreement outlining the scope of the coaching relationship.

433

## 434 **Status and timeline**

435 In February 2024, coaches were recruited and trained to facilitate the time awareness  
436 coaching intervention. Participant recruitment began on February 14th, 2024. The pilot trial is  
437 currently ongoing.

438

## 439 **Discussion**

440 Evidence-based interventions are needed to effectively address high rates of poor  
441 employee mental health and wellbeing [1-8]. Specifically, further evidence is needed in the  
442 area of sustainable wellbeing promotion [1,9,10]. As coaching emerges as a fast-growing and  
443 effective approach in the workplace, further evaluation of specific coaching interventions will  
444 provide guidance for future workplace wellbeing initiatives. The aim of the current pilot  
445 randomized controlled trial is to evaluate the effectiveness, feasibility, and acceptability of a  
446 time awareness coaching intervention to support hybrid workers' work-time practices and  
447 wellbeing. Specifically, the pilot trial will evaluate the time awareness coaching in relation to  
448 participants' chronic time pressure, perceived control of time, perceived stress, wellbeing,  
449 and self-efficacy. The study will further collect qualitative feedback from participants to  
450 assess their experiences of the intervention. Additionally, the pilot trial will collect feasibility  
451 and acceptability information from the coaches recruited and trained to facilitate the  
452 intervention within the trial. This input can further inform recommendations for the practical  
453 use of the intervention.

454 The pilot study is a necessary step to investigate the novel intervention and will  
455 provide robust foundations for future research and practice initiatives [57]. The three-arm  
456 comparator design is a strength of the current study as it provides a realistic evaluation of  
457 critical study elements such as recruitment, randomization, retention, and intervention  
458 implementation [57]. Furthermore, the presentation of the current protocol aims to promote  
459 transparency and replicability in accordance with best practices in intervention reporting [37,  
460 58]. The pilot study's findings regarding effectiveness, feasibility, and acceptability will play  
461 a critical role in informing the design and implementation of future large-scale studies while  
462 also providing preliminary suggestions for workplace wellbeing initiatives that wish to  
463 incorporate coaching approaches.

464

## 465 **Supporting Information**

466 **S1 Checklist.** SPIRIT Checklist - Standard Protocol Items: Recommendations for  
467 Interventional Trials.

468 **S1 Appendix.** One day of reflective time journal template.

469

## 470 **References**

471 1. Rugulies R, Aust B, Greiner BA, Arensman E, Kawakami N, LaMontagne AD, Madsen  
472 IEH. Work-related causes of mental health conditions and interventions for their  
473 improvement in workplaces. *Lancet* 2023 Oct 14;402: 1368-81.

474 2. Rosch PJ. The quandary of job stress compensation. *Health and Stress: The Newsletter of*  
475 *The American Institute of Stress* 2001 Mar;3: 1-4.

476 [https://workplacepsychology.wordpress.com/wp-content/uploads/2016/07/the-](https://workplacepsychology.wordpress.com/wp-content/uploads/2016/07/the-quandary-of-job-stress-compensation_rosch.pdf)  
477 [quandary-of-job-stress-compensation\\_rosch.pdf](https://workplacepsychology.wordpress.com/wp-content/uploads/2016/07/the-quandary-of-job-stress-compensation_rosch.pdf)

478 3. World Health Organization. Guidelines on mental health at work. World Health  
479 Organization. 2022 Sept 28 [cited 2024 June 1]. Available from:  
480 <https://www.who.int/publications/i/item/9789240053052>

481 4. Cocker F, Sanderson K, LaMontagne AD. Estimating the economic benefits of eliminating  
482 job strain as a risk factor for depression. *Journal of Occupational and Environmental*  
483 *Medicine* 2017 Jan;59(1): 12-17.

484 5. World Health Organization. Mental health. World Health Organization. 2022 June 17  
485 [cited 2024 June 1]. Available from: [https://www.who.int/news-room/fact-](https://www.who.int/news-room/fact-sheets/detail/mental-health-strengthening-our-response)  
486 [sheets/detail/mental-health-strengthening-our-response](https://www.who.int/news-room/fact-sheets/detail/mental-health-strengthening-our-response)

- 487 6. Pollitz K, Rae M. Workplace wellness programs characteristics and requirements. KFF.  
488 2016 May 19 [cited 2024 June 1]. Available from: <https://www.kff.org/private->  
489 [insurance/issue-brief/workplace-wellness-programs-characteristics-and-requirements/](https://www.kff.org/private-insurance/issue-brief/workplace-wellness-programs-characteristics-and-requirements/)
- 490 7. Stevenson D, Farmer P. Thriving at work: The Stevenson/Farmer review of mental health  
491 and employers. 2017 October [cited 2024 June 1]. Available from:  
492 [https://assets.publishing.service.gov.uk/media/5a82180e40f0b6230269acdb/thriving-at-](https://assets.publishing.service.gov.uk/media/5a82180e40f0b6230269acdb/thriving-at-work-stevenson-farmer-review.pdf)  
493 [work-stevenson-farmer-review.pdf](https://assets.publishing.service.gov.uk/media/5a82180e40f0b6230269acdb/thriving-at-work-stevenson-farmer-review.pdf)
- 494 8. International Organization for Standardization. Occupational health and safety  
495 management: Psychological health and safety at work – guidelines for managing  
496 psychosocial risks. 2021 June [cited 2024 June 1]. Available from:  
497 <https://www.iso.org/standard/64283.html>
- 498 9. Meyers MC, van Woerkom M, Bakker AB. The added value of the positive: A literature  
499 review of positive psychology interventions in organizations. *European Journal of*  
500 *Work and Organizational Psychology* 2013;22(5): 618-32.
- 501 10. Page KM, Milner AJ, Martin A, Rurrell G, Giles-Corti B, LaMontagne AD. Workplace  
502 stress: What is the role of positive mental health? *J Occup Environ Med* 2014;56: 814-  
503 19.
- 504 11. Sakuraya A, Imamura K, Watanabe K, Asai Y, Ando E, Eguchi H, et al. What kind of  
505 intervention is effective for improving subjective well-being among workers? A  
506 systematic review and meta-analysis of randomized controlled trials. *Frontiers in*  
507 *Psychology* 2020;11: 528656. doi: 10.3389/fpsyg.2020.528656.
- 508 12. Donaldson SI, Lee JY, Donaldson SI. Evaluating positive psychology interventions at  
509 work: A systematic review and meta-analysis. *International Journal of Applied Positive*  
510 *Psychology* 2019;4: 113-34.

- 511 13. Warren MA, Donaldson SI, Luthans F. Taking positive psychology to the workplace:  
512 Positive organizational psychology, positive organizational behavior, and positive  
513 organizational scholarship. In: Warren MA, Donaldson SI, editors. Scientific advances  
514 in positive psychology. Santa Barbara: Praeger; 2017. p. 195-227.
- 515 14. Donaldson SI, Ko I. Positive organizational psychology, behavior, and scholarship: A  
516 review of the emerging literature and evidence base. *Journal of Positive Psychology*  
517 2010;5: 177-91.
- 518 15. Luthans F. Positive organizational behavior: Developing and managing psychological  
519 strengths. *Academy of Management Perspectives* 2002;16(1): 57-72.
- 520 16. Keyes CL. Mental illness and/or mental health? Investigating axioms of the complete  
521 state model of health. *J Consult Clin Psychol* 2005;73: 539-48.
- 522 17. Willis R. 3 trends that will shape the future of coaching. International Coach Federation.  
523 2021 Jan 4 [Cited 2024 June 9]. Available from: [https://coachingfederation.org/blog/3-](https://coachingfederation.org/blog/3-trends-that-will-shape-the-future-of-coaching)  
524 [trends-that-will-shape-the-future-of-coaching](https://coachingfederation.org/blog/3-trends-that-will-shape-the-future-of-coaching)
- 525 18. Kaiser Family Foundation. (2023). Health Research and Educational Trust: Employer  
526 Health Benefits Survey. [Cited 2024 June 9]. Available from:  
527 <https://www.kff.org/health-costs/report/2023-employer-health-benefits-survey/>
- 528 19. Theeboom T, Beersma B, van Vianen AEM. Does coaching work? A meta-analysis on  
529 the effects of coaching on individual level outcomes in an organizational context. *The*  
530 *Journal of Positive Psychology* 2014;9(1): 1-18.
- 531 20. Wang Q, Lai YL, Xu X, McDowall A. The effectiveness of workplace coaching: A meta-  
532 analysis of contemporary psychologically informed coaching approaches. *Journal of*  
533 *Work-Applied Management* 2022; 14(1): 77-101.

- 534 21. De Haan E, Nilsson VO. What can we know about the effectiveness of coaching? A  
535 meta-analysis based only on randomized controlled trials. *Academy of Management*  
536 *Learning & Education* 2023;22(4): 1-21.
- 537 22. Josphe S, Bryant-Jeffries R. Person-centred coaching psychology. 2<sup>nd</sup> ed. In: Palmer S,  
538 Whybrow A, editors. *Handbook of coaching psychology: A guide for practitioners*.  
539 London: Routledge; 2018. p. 131-143.
- 540 23. Whybrow A. Coaching psychology approaches and models: Humanistic, integrative, and  
541 constructivist. In: O’Riordan S, Palmer, S, editors. *Introduction to Coaching*  
542 *Psychology*. Oxon: Routledge; 2021. p. 52-65.
- 543 24. Grant AM. Autonomy support, relationship satisfaction and goal focus in the coach-  
544 coachee relationship: Which best predicts coaching success? *Coaching: An*  
545 *International Journal of Theory, Research and Practice* 2013;7(1): 18-38.
- 546 25. Rudd M. Feeling short on time: Trends, consequences, and possible remedies. *Current*  
547 *Opinion in Psychology* 2019;26: 5-10.
- 548 26. Whillans A. *Time smart: How to reclaim your time and live a happier life*. Boston:  
549 Harvard Business Review Press; 2020.
- 550 27. Holmes C. *Happier Hour: How to beat distraction, expand your time, and focus on what*  
551 *matters most*. New York: Gallery Books; 2022.
- 552 28. Paškvan M, Kubicek B. The intensification of work. In: Korunka C, Kubicek B, editors.  
553 *Job demands in a changing world of work: Impact on workers’ health and performance*  
554 *and implications for research and practice*. Cham: Springer; 2017. p.25-43.
- 555 29. Mauno S, Herttalaampi M, Minkkinen J, Feldt T, Kubicek B. Is work intensification bad  
556 for employees? A review of outcomes for employees over the last two decades. *Work*  
557 *& Stress* 2022;37(3): 1-26.

- 558 30. Strazdins L, Griffin A, Broom DH, Banwell C, Korda R, Dixon J, et al. Time scarcity:  
559 Another health inequality? *Environment and Planning* 2011;43: 545-559.
- 560 31. Blanco-Donoso LM, Hodzic S, Garrosa E, Carmona-Cobo I, Kubicek B. Work  
561 intensification and its effects on mental health: The role of workplace curiosity. *J*  
562 *Psychol.* 2023;157(7): 423-450.
- 563 32. Young AN. What then is time?: A case sample of teaching time and engaging in temporal  
564 reflexivity using a reflective time journal activity. *Time & Society* 2023;32(3): 259-  
565 271.
- 566 33. Young AN, Foley S, Di Blasi Z. “Claim back time for the things that really matter”: A  
567 qualitative examination of tracking leisure time and technology use in a reflective time  
568 journal. *European Journal of Applied Positive Psychology* 2023;7(2): 1-17.
- 569 34. Allen KS, Grelle D, Lazauris EM, Popp E, Gutierrez, SL. Hybrid is here to stay: Critical  
570 behaviors for success in the new world of work. *Personality and Individual Differences*  
571 2024;217:112459. doi:10.1016/j.paid.2023.112459.
- 572 35. McPhail R, Chan XW, May R, Wilkinson A. Post-COVID remote working and its impact  
573 on people, productivity, and the planet: An exploratory scoping review. *The*  
574 *International Journal of Human Resource Management* 2024;35(1): 154-182.
- 575 36. Allen TD, Merlo K, Lawrence RC, Slutsky J, Gray CE. Boundary management and work-  
576 nonwork balance while working from home. *Applied Psychology: An International*  
577 *Review* 2021;70(1): 60-84.
- 578 37. Chan AW, Tetzlaff JM, Altman DG, Laupacis A, Gøtzsche PC, Krleža-Jerić K, et al.  
579 SPIRIT 2013 statement: Defining standard protocol items for clinical trials. *Ann Intern*  
580 *Med.* 2013;158(3): 200-207.
- 581 38. Qualtrics (2020). *Qualtrics* (June 2024). <https://www.qualtrics.com>.



- 582 39. Henderson A, Palmer S. The coach-coachee relationship. O’Riordan S, Palmer S, editors.  
583 In: Introduction to Coaching Psychology. Oxon: Routledge; 2021. p. 18-34.
- 584 40. Denovan A, Dagnall N. Development and evaluation of the chronic time pressure  
585 inventory. *Front. Psychol.* 2019;10. doi:10.3389/fpsyg.2019.02717.
- 586 41. Claessens BJ, Van Eerde W, Rutte CG, Roe RA. Planning behavior and perceived control  
587 of time at work. *Journal of Organizational Behavior* 2004;25: 937-950.
- 588 42. Schwarzer R, Jerusalem M. Generalized Self-Efficacy scale. In Weinman J, Wright S,  
589 Johnston M, editors. *Measures in health psychology: A user’s portfolio. Causal and*  
590 *control beliefs.* NFER-NELSON; 1995. p. 35-37.
- 591 43. Cohen S, Kamarck T, Mermelstein R. A global measure of perceived stress. *Journal of*  
592 *Health and Social Behavior* 1983;24(4): 385-396.
- 593 44. World Health Organization. Wellbeing measures in primary health care – The DepCare  
594 project. Stockholm: World Health Organization Regional Office for Europe; 1998 Feb.  
595 <https://iris.who.int/handle/10665/349766>
- 596 45. Schwarzer R., editor. *Self-efficacy: Thought control of action.* Washington, DC:  
597 Hemisphere; 1992.
- 598 46. Schwarzer R, Born A. Optimistic self-beliefs: Assessment of general perceived self-  
599 efficacy in thirteen cultures. *World Psychology* 1997;3(1-2): 177-190.
- 600 47. Topp CW, Dinesen Østergaard S, Søndergaard S, Bech P. The WHO-5 Well-Being  
601 Index: A Systematic Review of the Literature. *Psychotherapy and Psychosomatics*  
602 2015;84(3): 167–176.
- 603 48. Krieger T, Zimmermann J, Huffziger S, Ubl B, Diener C, Kuehner C, Grosse Holtforth  
604 M. Measuring depression with a well-being index: Further evidence for the validity of  
605 the WHO Well-Being Index (WHO-5) as a measure of the severity of depression.  
606 *Journal of Affective Disorders* 2014;156: 240-44.

- 607 49. Lara-Cabrera ML, Pernille Mundal I, De Las Cuevas C. Patient-reported well-being:  
608 Psychometric properties of the world health organization well-being index in  
609 specialised community mental health settings. *Psychiatry Research* 2020;291: 113268.  
610 doi: 10.1016/j.psychres.2020.113268.
- 611 50. Faul F, Erdfelder E, Lang AG, Buchner A. G\*Power 3: A flexible statistical power  
612 analysis program for the social, behavioral, and biomedical sciences. *Behavior*  
613 *Research Methods*;39: 175-91.
- 614 51. Heinrich Heine Universität Düsseldorf. *G\*Power* (3.1). 2020.  
615 [https://www.psychologie.hhu.de/arbeitsgruppen/allgemeine-psychologie-und-](https://www.psychologie.hhu.de/arbeitsgruppen/allgemeine-psychologie-und-arbeitspsychologie/gpower)  
616 [arbeitspsychologie/gpower](https://www.psychologie.hhu.de/arbeitsgruppen/allgemeine-psychologie-und-arbeitspsychologie/gpower)
- 617 52. Wilkinson M, Dumontier M, Aalbersberg I, Appleton G, Axton M, Baak A, et al. The  
618 FAIR guiding principles for scientific data management and stewardship. *Sci Data*  
619 2016;3:160018. doi: 10.1038/sdata.2016.18.
- 620 53. Braun V, Clarke V. Using thematic analysis in psychology. *Qualitative Research in*  
621 *Psychology* 2006;3(2): 77-101.
- 622 54. Braun V, Clarke V. Reflecting on reflexive thematic analysis. *Qualitative Research in*  
623 *Sport, Exercise and Health* 2019;11(4): 589-597.
- 624 55. Kendal JM. Designing a research project: Randomised controlled trials and their  
625 principles. *Emergency Medicine Journal* 2003;20(2): 164-8.
- 626 56. Van Zyl LE, Efendic E, Rothmann S, Shankland R. Best practice guidelines for positive  
627 psychological research designs. In van Zyl LE, Rothmann S, editors. *Positive*  
628 *psychological intervention design and protocols for multi-cultural contexts.*  
629 *Switzerland: Springer; 2019. p.1-32.*
- 630 57. Leon AC, Davis LL, Kraemer HC. The role and interpretation of pilot studies in clinical  
631 research. *J Psychiatr Res* 2011;45(5): 626-9.

- 632 58. Hoffman TC, Glasziou PP, Boutron I, Milne R, Perera R, Moher D, et al. Better reporting  
633 of interventions: Template for intervention description and replication (TIDieR)  
634 checklist and guide. BMJ 2014;348: g1687. doi: 10.1136/bmj.g1687.

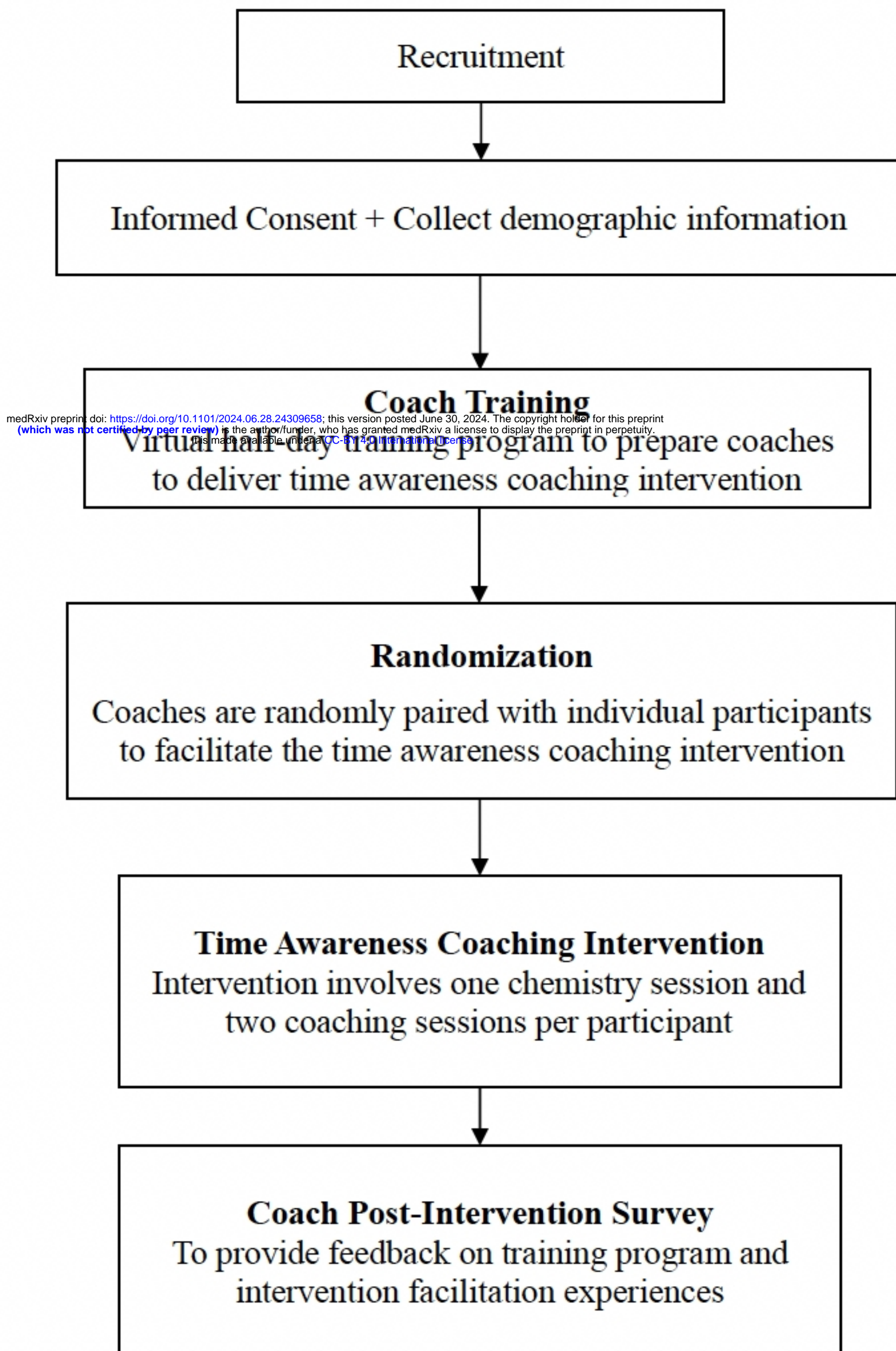


Figure 1

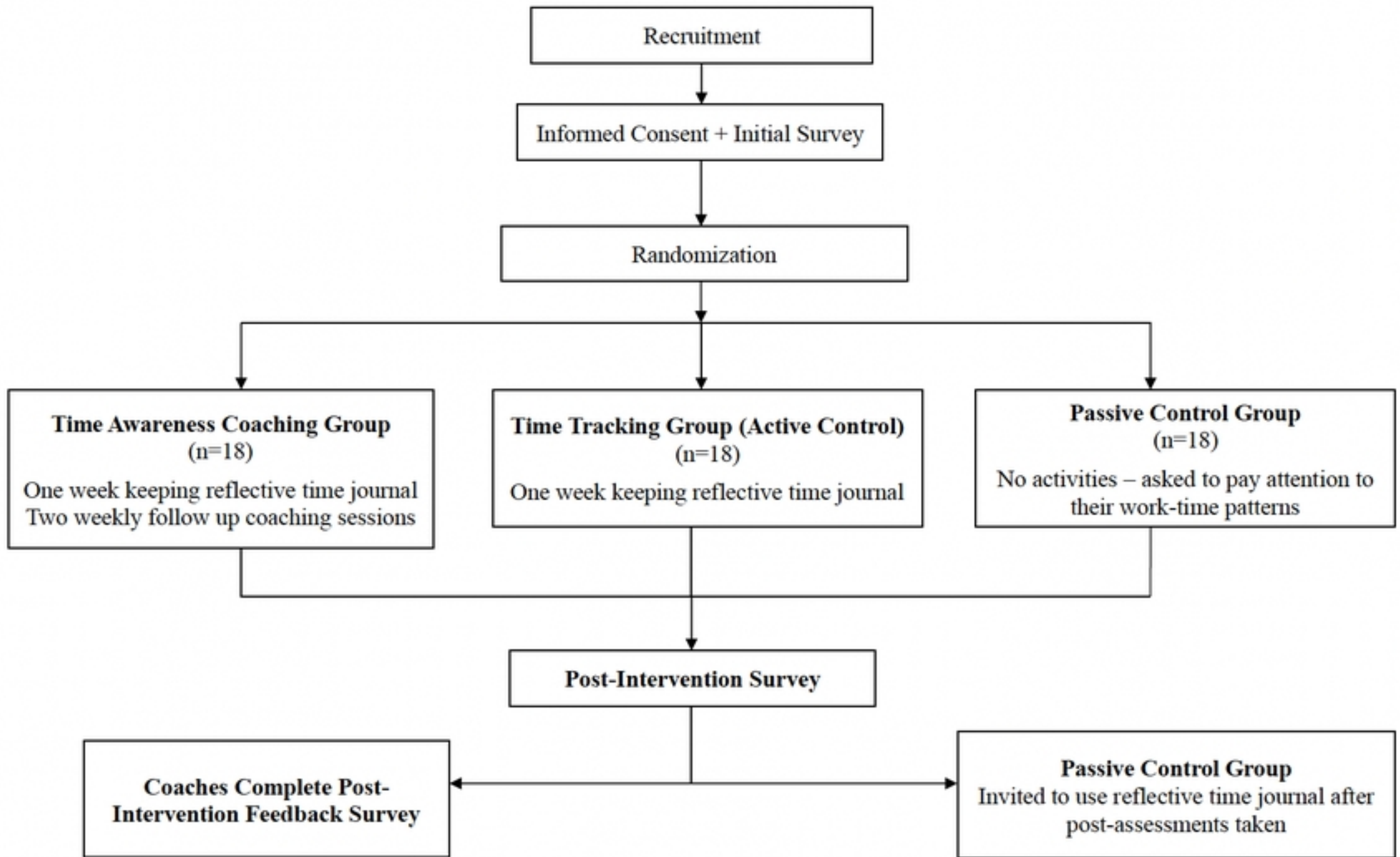


Figure 2