

1 **Risk reduction in SARS-CoV-2 infection and reinfection conferred by humoral antibody**  
2 **levels among essential workers during Omicron predominance**

3  
4 James Hollister<sup>1\*</sup>, Cynthia Porter<sup>1</sup>, Ryan Sprissler<sup>2</sup>, Shawn C Beitel<sup>1</sup>, James K. Romine<sup>1</sup>, Jennifer  
5 L. Uhrlaub<sup>4</sup>, Lauren Grant<sup>3</sup>, Young M. Yoo<sup>3</sup>, Ashley Fowlkes<sup>3</sup>, Amadea Britton<sup>5</sup>, Lauren E. W.  
6 Olsho<sup>6</sup>, Gabriella Newes-Adeyi<sup>6</sup>, Sammantha Fuller<sup>6</sup>, Pearl Q. Zheng<sup>6</sup>, Manjusha Gaglani<sup>7,8</sup>,  
7 Spencer Rose<sup>7</sup>, Kayan Dunnigan<sup>7</sup>, Allison L. Naleway<sup>9</sup>, Lisa Gwynn<sup>10</sup>, Alberto Caban-  
8 Martinez<sup>10</sup>, Natasha Schaefer Solle<sup>10</sup>, Harmony L. Tyner<sup>11</sup>, Andrew L. Philips<sup>12</sup>, Kurt T  
9 Hegmann<sup>12</sup>, Sarang Yoon<sup>12</sup>, Karen Lutrick<sup>13</sup>, Jefferey L. Burgess<sup>1</sup>, Katherine D. Ellingson<sup>1</sup>

10  
11 Author affiliations

12 <sup>1</sup> Mel and Enid Zuckerman College of Public Health, University of Arizona, Tucson, Arizona

13 <sup>2</sup> University of Arizona Genetics Core – Center for Applied Genetics and Genomic Medicine,  
14 University of Arizona, Tucson, Arizona

15 <sup>3</sup> Influenza Division, National Center for Immunization and Respiratory Diseases, Centers for  
16 Disease Control and Prevention, Atlanta, Georgia<sup>4</sup> Immunobiology, College of Medicine –  
17 Tucson, University of Arizona, University of Arizona Health Sciences, Tucson, Arizona

18 <sup>5</sup> Coronavirus and Other Respiratory Viruses Division, National Center for Immunization and  
19 Respiratory Diseases, Centers for Disease Control and Prevention, Atlanta, Georgia

20 <sup>6</sup> Abt Associates, Rockville, Maryland

21 <sup>7</sup> Baylor Scott & White Health, Temple, Texas

22 <sup>8</sup> Texas A&M University College of Medicine, Temple, Texas

23 <sup>9</sup> Kaiser Permanente Center for Health Research, Portland, Oregon

24 <sup>10</sup> Leonard M. Miller School of Medicine, University of Miami, Miami, Florida

25 <sup>11</sup> St. Luke's Regional Health Care System, Duluth, Minnesota

26 <sup>12</sup> Rocky Mountain Center for Occupational and Environmental Health, Department of Family  
27 and Preventive Medicine, University of Utah Health, Salt Lake City, Utah

28 <sup>13</sup> Family and Community Medicine, College of Medicine – Tucson, University of Arizona  
29 Health Sciences, Tucson, Arizona

30  
31  
32 \* Corresponding author

33 E-mail: [jameshollister@arizona.edu](mailto:jameshollister@arizona.edu)

## 47 **Abstract**

48           The extent to which semi-quantitative antibody levels confer protection against SARS-  
49 CoV-2 infection in populations with heterogenous immune histories is unclear. Two nested case-  
50 control studies were designed within the multisite HEROES/RECOVER prospective cohort of  
51 frontline workers to study the relationship between antibody levels and protection against first-  
52 time post-vaccination infection and reinfection with SARS-CoV-2 from December 2021 to  
53 January 2023. All participants submitted weekly nasal swabs for rRT-PCR testing and blood  
54 samples quarterly and following infection or vaccination. Cases of first-time post-vaccination  
55 infection following a third dose of monovalent (origin strain WA-1) mRNA vaccine (n=613) and  
56 reinfection (n=350) were 1:1 matched to controls based on timing of blood draw and other  
57 potential confounders. Conditional logistic regression models were fit to estimate infection risk  
58 reductions associated with 3-fold increases in end titers for receptor binding domain (RBD). In  
59 first-time post-vaccination and reinfection study samples, most were female (67%, 57%), non-  
60 Hispanic (82%, 68%), and without chronic conditions (65%, 65%). The odds of first-time post-  
61 vaccination infection were reduced by 21% (aOR=0.79, 95% CI=[0.66-0.96]) for each 3-fold  
62 increase in RBD end titers. The odds of reinfection associated with a 3-fold increase in RBD end  
63 titers were reduced by 23% (aOR=0.77, 95% CI=[0.65-0.92]) for unvaccinated individuals and  
64 58% (aOR=0.42, 95% CI=0.22-0.84) for individuals with three mRNA vaccine doses following  
65 their first infection. Frontline workers with higher antibody levels following a third dose of  
66 mRNA COVID-19 vaccine were at reduced risk of SARS-CoV-2 during Omicron predominance.  
67 Among those with previous infections, the point estimates of risk reduction associated with  
68 antibody levels was greater for those with three vaccine doses compared to those who were  
69 unvaccinated.

## 70 **Introduction**

71           The Coronavirus Disease 2019 (COVID-19) pandemic has transitioned from a phase  
72 defined by acute morbidity and mortality in immunologically naïve populations to one defined  
73 by post-vaccination infections and reinfections in populations with various combinations of  
74 infection- and vaccine-induced immunity. Emergence of highly transmissible Omicron  
75 subvariants of severe acute respiratory syndrome coronavirus 2 (SARS-CoV-2) accelerated  
76 transmission despite high levels of population immunity to the prior strains and subvariants [1].  
77 The first vaccine trials established that higher post-vaccine antibody levels were correlated with  
78 increased protection against SARS-CoV-2 infection [2]. Other cohort studies have demonstrated  
79 variable response to the vaccines based on individual history of infection [3-5]. It is critical to  
80 understand the relationship between antibody levels and protection against Omicron post-  
81 vaccination infections and reinfections in populations with heterogenous infection and  
82 vaccination histories [6].

83           Conceptually, establishing and validating specific antibody levels that correlate with  
84 protection against SARS-CoV-2 infection could result in biomarkers that are reliably predictive  
85 of vaccine effectiveness [7]. For influenza, hemagglutination inhibition (HI) assay titers have  
86 proven useful in comparing different vaccines, with HI end titers of 1:40 generally accepted to be  
87 associated with a 50% reduction in risk of influenza [8, 9]. However, establishing SARS-CoV-2  
88 antibody correlates of protection is complicated by the rapid emergence of variants and  
89 subvariants, differences in assays used to quantify antibody levels, and differential waning of  
90 antibody levels over time relative to immune conferring events [3, 10]. Nonetheless, calls for  
91 SARS-CoV-2 correlates of protection persist as questions remain regarding the durability of

92 immunity over time given the evolution of subvariants capable of evading acquired immune  
93 responses [11, 12].

94         Uncertainties also remain in determining optimal timing for future COVID-19 vaccine  
95 doses [13]. This report examined the relationship between humoral antibody levels and the risks  
96 of 1) first-time post-vaccination infection following a third dose of an origin strain WA-1  
97 monovalent mRNA vaccine; and 2) reinfection among individuals with one previous infection  
98 stratified by vaccination status at the time of reinfection (i.e., unvaccinated or had received two  
99 to three doses of mRNA vaccine) during early Omicron predominance.

## 100 **Materials and methods**

### 101 **Study design**

102         Two nested case-control studies were designed within a prospective cohort of frontline  
103 workers from eight locations in the United States (US) to study the relationship between  
104 antibody levels and SARS-CoV-2 infections during early Omicron predominance (defined here  
105 as December 2021 through September 2022). The first study defined cases as those with a first-  
106 time SARS-CoV-2 post-vaccination infection following a third dose of COVID-19 origin strain  
107 WA-1 monovalent mRNA vaccine. The second defined cases as those infected with SARS-CoV-  
108 2 after one previous infection; at the time of reinfection, cases were either unvaccinated or had  
109 received two to three doses of COVID-19 origin strain WA-1 monovalent mRNA vaccine.

### 110 **Participants**

111         Beginning on July 27, 2020, frontline workers were followed in prospective cohorts  
112 through the Arizona Healthcare, Emergency Response, and Other Essential workers Study  
113 (HEROES) and the Research on the Epidemiology of SARS-CoV-2 in Essential Response

114 Personnel (RECOVER) sites in Arizona, Florida, Minnesota, Oregon, Texas, and Utah [14, 15].  
115 Briefly, eligible participants included adults who worked at least 20 hours per week in  
116 occupations that required frequent direct contact with non-household members (i.e., healthcare  
117 workers, first responders, and other essential workers). Recruitment ended on April 15, 2023.  
118 Upon enrollment, participants completed a survey to collect baseline information about  
119 characteristics related to sociodemographic, occupation, health status, health-related behaviors,  
120 and prior SARS-CoV-2 infection. COVID-19 vaccination information was self-reported through  
121 surveys and validated through state vaccine registries or medical records. Additional surveys  
122 were completed upon infection, and self-reported information on mask use and exposures was  
123 collected monthly.

124 Each week and at onset of symptoms, participants provided a mid-turbinate nasal  
125 specimen that was tested at the Marshfield Clinic Laboratory (Marshfield, WI) via real time  
126 reverse transcription-polymerase chain reaction (rRT-PCR) for the presence of SARS-CoV-2.  
127 Additionally, participants were asked to submit blood samples at three frequencies: (1) upon  
128 enrollment, (2) quarterly, and (3) 28 days after any immunity-conferring event (SARS CoV-2  
129 infection or COVID-19 vaccination). All study protocols were reviewed and approved by each  
130 site's Institutional Review Boards. Study participants provided informed written consent for all  
131 study activities.

## 132 **Study inclusion criteria and case definition**

133 For the first analytic study sample, cases of first-time post-vaccination infections were  
134 defined as individuals with an incident SARS-CoV-2 infection occurring at least 14 days after a  
135 third dose origin strain WA-1 monovalent Pfizer-BioNTech COVID-19 mRNA vaccine,  
136 Moderna COVID-19 mRNA-1273 or a combination of the two vaccines among individuals with

137 no history of previous infection. Infection history prior to enrollment was ascertained via self-  
138 report upon study enrollment and confirmed with a qualitative result from the baseline blood  
139 draw, if available, among only those unvaccinated at the time of enrollment by examining S2 and  
140 RBD (S3 and S4 Figs). If a participant was vaccinated at the time of their baseline blood draw,  
141 then we solely relied on self-reported data for pre-study infection history. Although nucleocapsid  
142 (N) titers were available for all participants with a baseline blood collection, they were unable to  
143 be used to detect prior SARS-CoV-2 infections due to low specificity and sensitivity. Variant of  
144 infection was confirmed by whole-genome sequencing for eligible specimens, or estimated by  
145 using the state-specific predominant variant at the time of infection according to Centers for  
146 Disease Control and Prevention data [16]. To be included in this study, participants had to have  
147 submitted a nasal specimen at least 80% of weeks and collected blood draws per the study  
148 protocol during the study period with no evidence of SARS-CoV-2 infection at the time of the  
149 blood draw following their third dose of vaccine. Cases were defined as participants who tested  
150 positive for SARS-CoV-2 after the blood draw and prior to any additional vaccine dose (Fig 1).  
151 Third vaccine doses occurred from June 2021 to April 2022, blood draws occurred from June  
152 2021 to August 2022, and Omicron infections occurred from December 2021 and September  
153 2022.

154  
155 **Fig 1. Flowcharts showing inclusion and exclusion criteria for nested case-control studies**  
156 **within the HEROES/RECOVER cohort of frontline workers: 613 cases of first-time post-**  
157 **vaccination infection following a third dose of COVID-19 origin strain WA-1 monovalent**  
158 **mRNA vaccine were matched 1:1 to controls based on site and time between vaccination**  
159 **and blood draw.**

160

161           Within the second analytic study sample, reinfection cases were defined as one of three

162 groups (1) participants who had a previous infection but were unvaccinated, (2); participants

163 with a previous infection followed by completion of two doses of a monovalent COVID-19

164 mRNA vaccine (primary series only); or (3) participants with a previous infection followed by

165 three doses of a monovalent COVID-19 mRNA vaccine (primary series and a third monovalent

166 dose). Reinfections were defined as Omicron infections occurring at least 90 days after a

167 previous Omicron SARS-CoV-2 infection or at least 45 days after a previous infection of a

168 distinct variant (e.g., WA-1 vs. Delta vs. Omicron). Variant of first infection and reinfection was

169 confirmed by either whole-genome sequencing for eligible specimens, or estimated by using the

170 state-specific predominant variant at the time of infection according to Centers for Disease

171 Control and Prevention data [16]. Those receiving a Janssen Ad26.COVID-19 vaccine

172 and those with only one mRNA vaccination were ineligible, thus included cases had none, two,

173 or three immunizations. Participants were eligible for the reinfection study sample set if they: (1)

174 had either reported testing positive for SARS-CoV-2 prior to enrollment or tested positive by

175 rRT-PCR during the study period prior to COVID-19 vaccination, and (2) had a blood draw at

176 any time after their last immune conferring event (first infection for unvaccinated participants or

177 last vaccine dose for vaccinated participants). For this group, a case was defined as a participant

178 with a confirmed reinfection after the blood draw (Fig 2). Initial infections occurred from March

179 2020 to August 2022, blood draws occurred from August 2020 to November 2022, and

180 reinfections occurred from December 2021 to January 2023.

181

182 **Fig 2. Flowcharts showing inclusion and exclusion criteria for nested case-control studies**  
183 **within the HEROES/RECOVER cohort of frontline workers: 350 cases of reinfection were**  
184 **matched 1:1 to controls based on site, vaccination status, variant of first infection, and time**  
185 **between immune conferring event (either vaccine or infection) and blood draw.**

186

## 187 **Matching**

188 The final analytic samples were created by matching eligible cases to controls in a 1:1  
189 ratio. Matched controls for the first-time post-vaccination cases included individuals with no  
190 history of infection who were matched by study site and days between the third origin strain  
191 WA-1 monovalent COVID-19 mRNA vaccine and blood draw. Matched controls for reinfection  
192 cases included individuals with a history of one infection who were matched to cases by: study  
193 site, variant of first infection (origin strain WA-1, Delta, or Omicron), vaccination status at the  
194 time of blood draw, and days between last immune conferring event (first infection for  
195 unvaccinated participants or last A vaccine dose for vaccinated participants) and blood draw. For  
196 both groups, time windows were used to match days between immune conferring events and  
197 blood draws rather than exact matches. For blood samples that were collected less than 150 days  
198 since the last immune conferring events, time difference windows of 3, 7, 14, and 21 days were  
199 each attempted to find the highest match quality. For blood samples collected at least 150 days  
200 since the last immune conferring events, no strict time differences were used.

## 201 **Semi-quantitative serological measures**

202 All sera from all sites were sent to the University of Arizona Genetics Core laboratory for  
203 testing using a locally-developed and validated semi-quantitative enzyme-linked immunosorbent  
204 assay (ELISA) to measure antibody binding to the receptor binding domain (RBD) and S2



205 subunit domain (S2) of the SARS-CoV-2 Washington-1 spike protein, as previously described  
206 [17]. Five 3-fold dilutions of immune sera were made starting at a 1:60 dilution and ending at  
207 1:4860. End titer values represent the first dilution in which an immune response was no longer  
208 detected. Those with immune response still detected at the final dilution were imputed to 1:9720.  
209 Additionally, RBD and S2 antibody levels were measured as the area under the serial dilution  
210 curve (AUC). This continuous measurement represents a weighted sum of the optical density  
211 value at each dilution. Both end titer and AUC measurements of RBD and S2 were included in  
212 the present analysis.

## 213 **Statistical analysis**

214 Analyses were conducted using SAS Studio v9.4, GraphPad Prism v9.5.1, and R v4.2.0.  
215 Demographic information and measured antibody response for cases and controls was compared  
216 using paired t tests and univariate conditional logistic regression for continuous and categorical  
217 variables. The outcomes of first-time post-vaccination infection and reinfection with Omicron  
218 were modeled using conditional logistic regression to assess the unadjusted and adjusted effects  
219 of RBD and S2 humoral antibody levels. Adjusted odds ratios were calculated with models  
220 including the following variables that were selected a priori as putative confounders: gender, age  
221 (18-49 or over 50 years), presence of at least one chronic condition (i.e. asthma, chronic lung  
222 disease, cancer, diabetes, heart disease, hypertension, immunosuppression, kidney disease, liver  
223 disease, neurologic or neuromuscular disease or disorder, and autoimmune disease), high  
224 exposure to individuals infected with SARS-CoV-2 (above the cohort mean number of weekly  
225 hours), high reported mask use in the community (above the cohort mean percentage), and high  
226 reported personal protective equipment (PPE) adherence at work (above the cohort mean  
227 percentage), where reported PPE adherence at work was defined as the percentage of time in

228 which an individual uses the PPE recommended by their employer when in direct contact with  
229 people. For the reinfection study sample, separate models were fit for each category of  
230 vaccination status: unvaccinated, 2 doses, and 3 doses of the origin strain WA-1 monovalent  
231 COVID-19 mRNA vaccine. In addition, we conducted a likelihood ratio test to assess the  
232 interaction term between vaccination status and antibody titer within the reinfection sample.  
233 AUC antibody values were standardized by z-scores prior to modeling for ease of  
234 interpretation. For end titer data, a log base 3 transformation was used due to the three-fold  
235 dilution assay and was treated as a continuous value. Curves displaying the estimated percent  
236 reduction in risk were estimated for both first-time post-vaccination infection and reinfection  
237 models using an end titer level of 1:60 as the reference. The estimated percent reduction in risk  
238 was calculated at each titer level. The 95% confidence interval bounds on the curves were  
239 estimated when percent reduction in risk at each titer level was statistically significant at the 0.05  
240 alpha level [2, 18]. Using risk reduction curves, we estimated the titer level for a 50% reduction  
241 in risk and reported the titer levels used in the ELISA in which the estimate fell between, as is  
242 standard in a typical correlates of protection analysis [8, 18, 19].

## 243 **Results**

### 244 **First-time post-vaccination infection with Omicron following third** 245 **dose of COVID-19 origin strain WA-1 monovalent mRNA vaccine**

246 The incidence of first-time vaccine post-vaccination infections with the Omicron variant  
247 following a third dose of origin strain WA-1 monovalent COVID-19 mRNA vaccine was 1.68  
248 per 1000 person-days (830 infections) in the HEROES/RECOVER cohort. In the sample set of  
249 613 first-time post-vaccination cases and 613 matched controls, most participants were female

250 (67%), white and non-Hispanic (82%), healthcare workers (64%), and had no chronic conditions  
 251 (65%) (Table 1). There was a small but statistically significant difference in days between third  
 252 vaccination and blood draw (41.4 days for cases and 42.4 days for controls,  $p=0.003$ ). Compared  
 253 to cases, controls were slightly older (46y vs. 43y,  $p<0.001$ ), and had modestly higher reported  
 254 mask use in the community (61.1% vs. 57.2%) and higher reported PPE adherence at work  
 255 (81.6% v. 77.0%) (Table 1).

256  
 257 **Table 1. Demographic and health characteristics for nested case-control samples within the**  
 258 **HEROES/RECOVER prospective cohort of frontline workers: the first-time post-**  
 259 **vaccination sample was matched by site and days between booster vaccine and blood draw,**  
 260 **and the reinfection sample was matched on site, vaccination status, variant of first**  
 261 **infection, and days between most recent immune conferring event and blood draw.**

262

	Sample					
	First-time post-vaccination infection			Reinfection		
	Cases (n=613)	Controls (n=613)	p-value <sup>a</sup>	Cases (n=350)	Controls (n=350)	p-value <sup>a</sup>
<b>Site, n (%)</b>			1.00			1.00
Tucson, AZ	145 (23.7)	145 (23.7)		123 (35.1)	123 (35.1)	
Phoenix, AZ	73 (11.9)	73 (11.9)		46 (13.1)	46 (13.1)	
Other, AZ	37 (6.0)	37 (6.0)		28 (8.0)	28 (8.0)	
Florida	22 (3.6)	22 (3.6)		50 (14.3)	50 (14.3)	
Minnesota	132 (21.5)	132 (21.5)		30 (8.6)	30 (8.6)	
Oregon	37 (6.0)	37 (6.0)		5 (1.4)	5 (1.4)	
Texas	33 (5.4)	33 (5.4)		22 (6.3)	22 (6.3)	
Utah	134 (21.9)	134 (21.9)		46 (13.1)	46 (13.1)	
<b>Vaccination status<sup>b</sup></b>			1.00			1.00
Unvaccinated	0 (0.0)	0 (0.0)		157 (44.9)	157 (44.9)	
2 Doses	0 (0.0)	0 (0.0)		95 (27.1)	95 (27.1)	

3 Doses	613 (100.0)	613 (100.0)		98 (28.0)	98 (28.0)	
<b>Variant of first infection</b>			NA			1.00
Origin strain WA-1	NA	NA		267 (76.3)	267 (76.3)	
Delta	NA	NA		48 (13.7)	48 (13.7)	
Omicron	613 (100)	NA		35 (10.0)	35 (10.0)	
<b>Days from ICE to blood draw, mean (SD)<sup>c</sup></b>	41.4 (39.8)	42.4 (40.6)	0.0003	113.2 (108.9)	129.3 (136.3)	<0.001
<b>Age (y), mean (SD)</b>	43.0 (10.0)	46.4 (11.9)	<0.001	45.6 (11.1)	44.3 (11.6)	0.10
<b>Gender, n (%)</b>			0.60			0.16
Female	415 (67.7)	406 (66.2)		189 (54.0)	208 (59.4)	
Male	197 (32.1)	205 (33.4)		159 (45.4)	142 (40.6)	
Other	1 (0.2)	2 (0.3)		0 (0.0)	0 (0.0)	
Missing	0 (0.0)	0 (0.0)		2 (0.6)	0 (0.0)	
<b>Race/ethnicity, n (%)</b>			0.24			0.41
Non-Hispanic, White	489 (79.8)	512 (83.5)		232 (66.3)	245 (70.0)	
Hispanic	72 (11.7)	52 (8.5)		89 (25.4)	72 (20.6)	
Non-Hispanic, Black	18 (2.9)	19 (3.1)		11 (3.1)	10 (2.9)	
Non-Hispanic, Asian	18 (2.9)	23 (3.8)		3 (0.9)	7 (2.0)	
Other	8 (1.3)	5 (0.8)		4 (1.1)	5 (1.4)	
Missing	8 (1.3)	2 (0.3)		11 (3.1)	11 (3.1)	
<b>Occupation, n (%)<sup>d</sup></b>			0.06			0.06
Healthcare Worker	376 (61.3)	411 (67.0)		125 (35.7)	145 (41.4)	
First Responder	79 (12.9)	60 (9.8)		117 (33.4)	92 (26.3)	
Other Essential Worker	158 (25.8)	142 (23.2)		108 (30.9)	113 (32.3)	
<b>Chronic conditions, n (%)<sup>e</sup></b>			0.91			0.24
None	403 (65.7)	397 (64.8)		237 (67.7)	216 (61.7)	
One	114 (18.6)	113 (18.4)		73 (20.9)	74 (21.1)	
Two Or More	93 (15.2)	98 (16.0)		33 (9.4)	44 (12.6)	
Missing	3 (0.5)	5 (0.8)		7 (2.0)	16 (4.6)	
<b>Immunosuppressive medication, n (%)<sup>f</sup></b>			0.70			0.82
Yes	14 (2.3)	12 (2.0)		11 (3.1)	10 (2.9)	
No	590 (96.2)	592 (96.6)		330 (94.3)	320 (91.4)	
Missing	9 (1.5)	9 (1.5)		9 (2.6)	20 (5.7)	
<b>Days from ICE to infection, mean (SD)<sup>g</sup></b>	183.0 (80.6)	NA	NA	341.0 (180.6)	NA	NA
<b>Avg weekly hrs. exposed to COVID, mean (SD)<sup>g</sup></b>	4.8 (9.9)	5.0 (10.4)	0.74	7.0 (12.0)	6.2 (10.5)	0.51
<b>Avg % adherence to PPE rules at work, mean (SD)<sup>h</sup></b>	77.0 (26.4)	81.6 (24.3)	0.001	58.2 (31.7)	62.3 (32.1)	0.09
<b>Avg % time masked in public, mean (SD)</b>	57.2 (29.1)	61.1 (29.7)	0.01	41.7 (28.7)	47.3 (32.6)	0.02

263

264 <sup>a</sup>From paired t-test and conditional logistic regression for continuous and categorical variables, respectively.

265 <sup>b</sup>All vaccine doses are monovalent origin strain WA-1 mRNA vaccines.

266 <sup>c</sup>ICE (immune conferring event) is the third vaccine dose for the first-time post-vaccination infection with Omicron  
267 case-control cohort and the 3 dose strata within the reinfection case-control cohort, the second vaccine dose for the 2  
268 dose strata within the reinfection case-control cohort, and the initial SARS-CoV-2 infection for the unvaccinated  
269 strata within the reinfection case-control cohort.

270 <sup>d</sup>Other essential workers include occupation sectors with potentially high exposures to SARS-CoV-2 such as  
271 education, agriculture, public transportation services, waste collection, delivery, utilities, community-based services,  
272 childcare, and others

273 <sup>e</sup>Chronic conditions include asthma, chronic lung disease, cancer, diabetes, heart disease, hypertension,  
274 immunosuppression, kidney disease, liver disease, neurologic or neuromuscular disease or disorder, and  
275 autoimmune disease.

276 <sup>f</sup>Participants are asked “Are you currently taking prednisone or other ongoing steroid medications (excluding  
277 inhaled steroids and one-time injections) or any other medications that may suppress your body's ability to fight  
278 infection?”.

279 <sup>g</sup>Exposure to individuals infected with SARS-CoV-2.

280 <sup>h</sup>Reported personal protective equipment (PPE) adherence at work was defined as the percentage of time in which an  
281 individual uses the PPE recommended by their employer when in direct contact with people

282

283 For cases, the mean number of days between the third vaccine dose and infection was 183  
284 days. Compared to cases, a higher percentage of controls had the maximum end titer values  
285 (1:9720) for RBD (65.1% vs. 56.9%,) and S2 (41.1% vs. 32.0%), but the distribution between  
286 cases and controls for RBD end titer values was not statistically significant. Controls had  
287 significantly higher mean RBD (0.0124 vs. 0.0118) and S2 (0.0102 vs. 0.0097) AUC values  
288 compared to cases (Table 2, S1 Fig).

289

290  
 291  
 292 **Table 2. Quantitative antibody results, including end titers and area under the curve**  
 293 **(AUC) calculations for SARS-CoV-2 receptor-binding domain (RBD) and (S2) spike**  
 294 **protein subunits in nested case-control samples from the HEROES/RECOVER prospective**  
 295 **cohort of frontline workers.**  
 296

Variable	Sample					
	First-time post-vaccination			Reinfection		
	Cases (n=613)	Controls (n=613)	p-value <sup>a</sup>	Cases (n=350)	Controls (n=350)	p-value <sup>a</sup>
<b>RBD End Titer, n (%)</b>			0.08			0.003
1:60	4 (0.7)	3 (0.5)		36 (10.3)	19 (5.4)	
1:180	5 (0.8)	3 (0.5)		31 (8.9)	25 (7.1)	
1:540	14 (2.3)	13 (2.1)		43 (12.3)	38 (10.9)	
1:1620	45 (7.3)	39 (6.4)		55 (15.7)	51 (14.6)	
1:4860	196 (32.0)	156 (25.4)		66 (18.9)	77 (22.0)	
1:9720 <sup>b</sup>	349 (56.9)	399 (65.1)		119 (34.0)	140 (40.0)	
<b>RBD AUC, mean (SD)</b>	0.0118 (0.003)	0.0124 (0.003)	<0.0001	0.0088 (0.005)	0.0098 (0.005)	0.0002
<b>S2 End Titer, n (%)</b>			0.002			0.003
1:60	7 (1.1)	2 (0.3)		9 (2.6)	2 (0.6)	
1:180	8 (1.3)	6 (1.0)		3 (0.9)	4 (1.1)	
1:540	24 (3.9)	21 (3.4)		26 (7.4)	25 (7.1)	
1:1620	120 (19.6)	90 (14.7)		95 (27.1)	64 (18.3)	
1:4860	258 (42.1)	242 (39.5)		95 (27.1)	124 (35.4)	
1:9720 <sup>b</sup>	196 (32.0)	252 (41.1)		122 (34.9)	131 (37.4)	
<b>S2 AUC, mean (SD)</b>	0.0097 (0.003)	0.0102 (0.003)	0.0003	0.0102 (0.004)	0.0110 (0.003)	0.0005

298 <sup>a</sup>From paired t-test and conditional logistic regression for continuous and categorical variables, respectively.

299 <sup>b</sup>Samples where antibody response was still detected at the final dilution were imputed to 1:9720.

300

301 Unadjusted and adjusted conditional logistic regression models for first-time vaccine-  
302 post-vaccination infection with Omicron infection following a third dose of an origin strain WA-  
303 1 monovalent COVID-19 mRNA vaccine showed statistically significant protective effects for  
304 RBD and S2 end titers. Each three-fold increase in RBD end titer reduced the odds of first-time  
305 post-vaccination infection with Omicron by 21% (aOR: 0.79, 95% CI: [0.66, 0.96]). Each three-  
306 fold increase in S2 end titer reduced the odds of post-vaccination infection by 25% (aOR: 0.75,  
307 95% CI: [0.63, 0.91]) (Table 3). Compared to the reference end titer (no antibodies detected at  
308 the 1:60 dilution), estimated risk reduction was 50% at RBD and S2 end titers between 1:540 and  
309 1:1620 (Fig 2). Models including AUC data as our antibody measurement had similar results.  
310 Full results including estimates for all variables included in the models can be found in the  
311 supplemental material (S3 and S4 Tables).

312

313 **Table 3. Unadjusted and adjusted odds ratios (ORs) generated by conditional logistic**  
314 **regression models for a nested sample of individuals with first-time post-vaccination**  
315 **infection following third COVID-19 origin strain WA-1 monovalent mRNA vaccine dose**  
316 **and matched controls (n=1226) and for a nested sample of individuals with reinfection and**  
317 **matched controls, stratified by vaccination status (n=700) from the HEROES/RECOVER**  
318 **prospective cohort of frontline workers.**

319

Study Sample	N	Outcome	Predictor	RBD		S2	
				Unadjusted OR (95% CI)	Adjusted OR (95% CI)	Unadjusted OR (95% CI)	Adjusted OR (95% CI)

Never Infected, 3 doses origin strain WA-1 monovalent mRNA vaccine <sup>a</sup>	1226	Post-Vaccination Omicron Infection	End Titer	0.82 (0.68, 0.98)*	0.79 (0.66, 0.96)*	0.74 (0.63, 0.87)*	0.75 (0.63, 0.88)*
			AUC	0.78 (0.69, 0.88)*	0.77 (0.67, 0.88)*	0.80 (0.70, 0.90)*	0.79 (0.69, 0.90)*
Prior Infection, Unvaccinated <sup>b</sup>	314	Reinfection	End Titer	0.77 (0.66, 0.91)*	0.77 (0.65, 0.92)*	0.80 (0.63, 1.01)	0.82 (0.64, 1.04)
			AUC	0.63 (0.46, 0.88)*	0.64 (0.44, 0.93)*	0.75 (0.59, 0.96)*	0.72 (0.54, 0.94)*
Prior Infection + 2 doses origin strain WA-1 monovalent mRNA vaccine <sup>c</sup>	190	Reinfection	End Titer	0.75 (0.47, 1.21)	0.73 (0.44, 1.21)	0.89 (0.59, 1.35)	0.84 (0.54, 1.30)
			AUC	0.86 (0.56, 1.32)	0.91 (0.55, 1.50)	0.83 (0.58, 1.19)	0.91 (0.61, 1.34)
Prior Infection + 3 doses origin strain WA-1 monovalent mRNA vaccine <sup>d</sup>	196	Reinfection	End Titer	0.39 (0.20, 0.77)*	0.42 (0.22, 0.84)*	0.41 (0.22, 0.79)*	0.41 (0.21, 0.80)*
			AUC	0.45 (0.25, 0.81)*	0.51 (0.28, 0.94)*	0.51 (0.32, 0.83)*	0.56 (0.34, 0.92)*

320

321 Abbreviations: OR: odds ratio; CI: confidence interval

322 Adjusted models include age, gender, presence of at least 1 chronic condition, weekly exposure to individuals infected with SARS-CoV-2,  
323 personal protective equipment (PPE) usage at work and in the community.

324 Odds ratio represents odds of being a case for each 3-fold increase in end titer.

325 <sup>a</sup>Cases were defined as individuals who became infected with Omicron after receiving three origin strain WA-1 monovalent COVID-19 vaccine  
326 doses and no prior infections. Cases and controls were matched on number of days between blood draw and third vaccine dose, and study site.

327 <sup>b</sup>Cases were defined as individuals who became reinfected with SARS-CoV-2 while unvaccinated. Both cases and controls were unvaccinated at  
328 the time of their blood draw.

329 <sup>c</sup>Cases were defined as individuals who became reinfected with SARS-CoV-2. Both cases and controls were unvaccinated at time of initial  
330 infection, then received 2 doses of an origin strain WA-1 monovalent COVID-19 vaccine prior to any potential reinfection. Blood draw for both  
331 cases and controls occurred after the 2nd dose.

332 <sup>d</sup>Cases were defined as individuals who became reinfected with SARS-CoV-2. Both cases and controls were unvaccinated at time of initial  
333 infection, then received 3 doses of an origin strain WA-1 monovalent COVID-19 vaccine prior to any potential reinfection. Blood draw for both  
334 cases and controls occurred after the 3rd dose.

335 \*Statistically significant at alpha = 0.05

336

337 **Fig 3. Adjusted relative risk reduction for first-time post-vaccination infection with**  
338 **Omicron following a third dose of an origin strain WA-1 monovalent mRNA COVID-19**  
339 **vaccine among frontline workers in the HEROES/RECOVER cohort with 95% confidence**  
340 **intervals using an end titer level of 1:60 as the reference.**



341 Samples where antibody response was still detected at the final dilution were imputed to 1:9720.

342 The estimated percent reduction was 50% near the 1:1620 dilution for RBD and between the

343 1:540 and 1:1620 dilution for S2.

344

## 345 **Reinfection**

346 The sample set of 350 cases of reinfection and 350 matched controls included 157 pairs

347 who were unvaccinated, 95 pairs who had completed the primary series of two doses of COVID-

348 19 origin strain WA-1 monovalent mRNA vaccine, and 98 pairs who had received 3 doses. In the

349 general HEROES/RECOVER cohort, the incidence of reinfections with the Omicron variant for

350 individuals who were unvaccinated, had 2 doses, and had 3 doses was 0.98, 0.71, and 0.71 per

351 1000 person-days, respectively. Overall, most participants were female (57%), white and non-

352 Hispanic (68%), and had no chronic conditions (65%). Most cases and controls were first

353 infected with the origin strain WA-1 strain of SARS-CoV-2 (76%) (Table 1). Although cases and

354 controls were matched on the interval between the most recent immune conferring event (first

355 infection or vaccination) and the date of their blood draw, there was a nominal but statistically

356 significant difference (113 days for cases and 129 days for controls,  $p < 0.001$ ) (Table 1) due to

357 being matched on intervals as described previously in the methods. Compared to cases, controls

358 had a higher percentage of individuals at the highest imputed end titer level (1:9720) (RBD:

359 40.0% vs. 34.0%; S2: 37.4% vs. 34.9%) and had higher mean AUC values for RBD (0.0098 vs.

360 0.0088) and S2 (0.0110 vs. 0.0102) (Table 2 and S2 Fig). Demographic information stratified by

361 vaccination status can be found in the supplemental material (S1 and S2 Tables).

362 In unadjusted and adjusted conditional logistic regression models stratified by

363 vaccination status, the strongest protective effects of humoral antibody levels against reinfection

364 were noted among those with a third dose of vaccine; among those unvaccinated or with two  
365 doses of vaccine, protective effects of antibody levels were suggested but statistical significance  
366 was not consistent across all groups. Likelihood ratio tests assessing the interaction between  
367 vaccination status and antibody titers had p-values of 0.12 and 0.07 for RBD and S2 end titer,  
368 respectively, indicating evidence of a potential difference by vaccination status. For  
369 unvaccinated individuals, each three-fold increase in RBD and S2 end titer value was estimated  
370 to reduce the odds of reinfection by 23% and 18%, respectively, although the estimate for S2 was  
371 not statistically significant (RBD aOR: 0.77, 95% CI: [0.65, 0.92]; S2 aOR: 0.82, 95% CI: [0.64,  
372 1.04]) (Table 3). For unvaccinated individuals, compared to an RBD end titer value of 1:60, risk  
373 was reduced by 50% between end titer values of 1:540 and 1:1620, respectively (Fig 3).

374

375 **Fig 4. Adjusted relative risk reduction in reinfection with Omicron among frontline**  
376 **workers in the HEROES/RECOVER cohort infection by humoral antibody titer levels with**  
377 **95% confidence intervals<sup>a</sup> using end titer level of 1:60 as the reference and stratified by**  
378 **number of origin strain WA-1 monovalent mRNA COVID-19 vaccine doses.**

379 Samples where antibody response was still detected at the final dilution were imputed to 1:9720.

380 Among unvaccinated individuals, the estimated percent reduction was 50% between the 1:540

381 and 1:1620 dilution for RBD. Among individuals with 3 prior COVID-19 vaccine doses, the

382 estimated percent reduction was 50% between the 1:60 and 1:180 dilution.

383 <sup>a</sup>95% confidence interval only available for models with a statistically significant coefficient for

384 end titer when alpha is 0.05.

385

386 For individuals vaccinated with two doses of vaccine following their first infection, each  
387 three-fold increase in RBD and S2 end titer value was estimated to reduce the odds of reinfection  
388 by 27% and 16%, respectively; however, both of these estimates were not statistically significant  
389 (RBD aOR: 0.73, 95% CI: [0.44, 1.21]; S2 aOR: 0.84, 95% CI: [0.54, 1.30]) (Tables 3).

390 For individuals with three origin strain WA-1 monovalent COVID-19 mRNA vaccine  
391 doses following their first infection, each three-fold increase in RBD and S2 end titer values  
392 reduced the estimated odds of reinfection by 58% and 59%, respectively (RBD aOR: 0.42, 95%  
393 CI: [0.22, 0.84]; S2 aOR: 0.41, 95% CI: [0.21, 0.80]) (Table 3). Compared to RBD and S2 end  
394 titer values of 1:60, risk was reduced by 50% at end titer values between 1:60 and 1:180 for each  
395 (Fig 3). Models including AUC data as our antibody measurement had similar results. Full  
396 results including estimates for all variables included in the models can be found in the  
397 supplemental material (S5 and S6 Tables).

## 398 Discussion

399 In this analysis of frontline workers from eight US locations, higher levels of RBD  
400 antibodies were associated with protection against first-time post-vaccination infection and  
401 reinfection with Omicron. The risk of first-time post-vaccination infection with Omicron  
402 following a third dose of monovalent mRNA vaccine was reduced by 21% for each three-fold  
403 increase in RBD end titer, with estimated 50% risk reductions achieved at end titers between  
404 1:540 and 1:1620. The magnitude of risk reduction against reinfection depended on vaccination  
405 status, with some evidence that this difference was significant based on p-values from likelihood  
406 ratio tests of 0.12 and 0.07 for RBD and S2 end titers, respectively. For unvaccinated individuals  
407 with a prior infection, a 3-fold increase in RBD reduced reinfection risk by 23%. There were no  
408 statistically significant protective effects for those with a previous infection and two origin strain

409 WA-1 monovalent COVID-19 mRNA doses following infection. However, for individuals with  
410 three vaccine doses following their first infection, a 3-fold increase in RBD end titer value  
411 reduced reinfection risk by 58%, with estimated 50% reductions in SARS-CoV-2 reinfection risk  
412 occurring at end titers between 1:60 and 1:180. The protective effect of higher antibody levels  
413 was robust in those with a third dose of vaccine, regardless of previous infection status.  
414 However, those with previous infection showed a 50% reduction in risk at lower titers compared  
415 to those who were not previously infected, though we could not test this difference for statistical  
416 significance [4].

417         These findings build on previous literature reporting correlates of protection against  
418 SARS-CoV-2 infection in different populations and at different points during the pandemic.  
419 Early vaccine efficacy trials in the US found higher post-vaccination end titers in vaccine  
420 recipients to be associated with higher vaccine efficacy [2]. Similarly, early SARS-CoV-2 post-  
421 vaccination infections associated with the Alpha variant among healthcare workers in Israel were  
422 associated with lower neutralizing antibody titers in the peri-infection period [20]. In a household  
423 transmission study of Delta variant infections, both quantitative ELISA and neutralizing antibody  
424 titers were protective against secondary Delta infection, with titers over 1:1000 providing an  
425 immunologic threshold for protection [21]. Other studies examining the role of antibody levels  
426 and functional protection against Omicron infection have shown mixed results [22, 23]. One  
427 potential explanation as to why serologic antibody levels could be less protective against  
428 Omicron infection is that, compared to previous variants, Omicron is relatively confined to the  
429 upper respiratory tract and therefore higher mucosal antibody threshold levels could be required  
430 to prevent infection [24]. This provides a potential explanation for why 50% risk reductions in  
431 this study were achieved at higher end titer levels for individuals with three vaccines and no

432 previous infection compared to lower titer levels for those with a previous infection followed by  
433 three vaccine doses. These findings in combination with previous studies underscore the  
434 importance of considering both vaccination and infection history, as well as number of immune  
435 conferring events, when estimating functional protection against SARS-CoV-2 infection [25-29].

436 This study is subject to several limitations. First, because the semi-quantitative ELISA  
437 assessed only five dilutions, and many individuals had an immune response at the highest  
438 dilution, ability to differentiate individuals with a response above the highest dilution is limited.  
439 Additionally, treating this outcome as a continuous measure assumes linearity in the log-odds for  
440 each 3-fold increase in titer level. However, our models with AUC as the outcome, which is less  
441 sensitive to any potential ceiling effects, had similar results to the models using end titer data (S3  
442 and S5 Tables), which helps confirm our end titer results [30]. Second, neutralizing antibodies  
443 are typically the gold standard in assessing correlates of protection, and for these analyses, a  
444 surrogate measure of semi-quantitative ELISA was used. However, antibodies measured via the  
445 semi-quantitative ELISA assay used in this study are known to correlate closely with  
446 neutralization of live SARS-CoV-2 virus [17, 31]. We only ran ELISAs against the origin strain  
447 WA-1 strain of SARS-CoV-2, meaning that specific antibodies against the Omicron variant may  
448 differ from the results found here. Third, although the reinfection study data were matched on the  
449 interval between the most recent immune conferring event (first infection or vaccination) and  
450 blood draw, the residual differences in those times between the cases and controls may have  
451 provided some residual confounding. Additionally, differences in mean time intervals between  
452 the two analytic samples, as well as waning antibodies for samples that were further away from  
453 the previous immune-conferring event, may affect direct comparisons in results. Fourth, the  
454 HEROES/RECOVER cohort consists of frontline workers, and therefore these findings may not

455 be generalizable beyond relatively healthy populations and populations with regular exposure to  
456 SARS-CoV-2. Due to this healthy population, we were unable to evaluate severe disease as an  
457 outcome. Finally, participants are subject to misclassification when determining eligibility for  
458 the two case-control cohorts and case or control status. Since we were limited to using RBD and  
459 S2 when determining prior infection at baseline, we solely relied on self-reported data for  
460 individuals who were vaccinated at baseline, and misclassification could occur if any of these  
461 participants incorrectly reported or failed to report a pre-study infection. Strengths of this study  
462 include its large sample size, its representativeness of Hispanic/Latino populations consistent  
463 with US demographic trends, and weekly active surveillance for infections regardless of  
464 symptoms.

465         In a population of frontline workers with diverse immunological histories, those with  
466 higher antibody levels had consistently lower risk of Omicron infection. Antibody correlates of  
467 protection against first-time post-vaccination infection and reinfection could be estimated for  
468 individuals who had received a third dose of a vaccine: odds of first-time post-vaccination  
469 infection were reduced by 21% for each 3-fold increase in RBD end titers, while the odds of  
470 reinfection were reduced by 58% for each 3-fold increase in RBD end titers for individuals with  
471 three mRNA vaccine doses following their first infection. Although we were able to estimate  
472 these reductions separately for each group, we were unable to statistically compare these two  
473 cohorts. Findings underscore the importance of immunologic heterogeneity, and contribution of  
474 hybrid immunity, when estimating functional protection against SARS-CoV-2 infection. Future  
475 studies could assess the Omicron-specific correlates of protection using surrogate or authentic  
476 neutralization assays, which could enable more credible interpretations about functional

477 protection against currently circulating strains, especially with the continued updates to COVID-  
478 19 vaccines [32].

479

## 480 **Acknowledgments**

481 CDC: Eduardo Azziz-Baumgartner, Melissa L. Arvay, William Brannen, Stephanie Bialek,  
482 Allison Ciesla, Alicia M. Fry, Aron Hall, Adam MacNeil, Clifford McDonald, Sue Reynolds,  
483 Robert Slaughter, Matthew J. Stuckey, Rose Wang, Ryan Wiegand; Abt Associates: Steve  
484 Pickett, Rekha Balachandran, Kim Groover, Deanna Fleary, Peenaz Mistry; BSWH: Kayan  
485 Dunnigan, Nicole Calhoun, Leah Odame-Bamfo, Clare Mathenge, Michael E. Smith,  
486 Kempapura Murthy, Tnelda Zunie, Eric Hoffman, Martha Zayed, Ashley Graves, Joel Blais,  
487 Jason Ettlinger, Sharla Russell, Natalie Settele, Tiya Searcy, Rupande Patel, Elisa Priest, Jennifer  
488 Thomas, Muralidhar Jatla, Madhava Beeram, Javed Butler, Alejandro Arroliga; KPNW: Holly  
489 Groom, Yolanda Prado, Daniel Sapp, Mi Lee, Chris Eddy, Matt Hornbrook, Donna Eubanks,  
490 Danielle Millay, Dorothy Kurdyla, Kristin Bialobok, Ambrosia Bass, Kristi Bays, Kimberly  
491 Berame, Cathleen Bourdoin, Rashyra Brent, Carlea Buslach, Lantoria Davis, Stephen Fortmann,  
492 Jennifer Gluth, Kenni Graham, Tarika Holness, Kelley Jewell, Enedina Luis, Abreeanah  
493 Magdaleno, DeShaun Martin, Joyce Smith-McGee, Martha Perley, Sam Peterson, Aaron Peipert,  
494 Krystil Phillips, Joanna Price, Ana Reyes, Sperry Robinson, Katrina Schell, Emily Schield,  
495 Natosha Shirley, Anna Shivinsky, Valencia Smith, Britta Torgrimson-Ojerio, Brooke  
496 Wainwright, Shawn Westaway; Marshfield Clinic Research Laboratory: Saydee Benz, Adam  
497 Bissonnette, Krystal Boese, Emily Botten, Jarod Boyer, Michaela Braun, Julianne Carlson, Caleb  
498 Cravillion, Amber Donnerbauer, Tim Dziedzic, Joe Eddy, Heather Edgren, Alex Ermeling,  
499 Kelsey Ewert, Connie Fehrenbach, Rachel Fernandez, Wayne Frome, Sherri Guzinski, Mitch

500 Hertel, Garrett Heuer, Erin Higdon, Cressa Huotari, Lynn Ivacic, Lee Jepsen, Steve Kaiser,  
501 Bailey Keffer, Tammy Koepel, Sarah Kohn, Alaura Lemieux, Carrie Marcis, Megan Maronde,  
502 Isaac McCready, Nidhi Mehta, Dan Miesbauer, Collin Nikolai, Brooke Olson, Jeremy Olstadt,  
503 Lisa Ott, Cory Pike, Nicole Price, Chris Reardon, Alex Slenczka, Elisha Stefanski, Lydia  
504 Sterzinger, Kendra Stoltz, Melissa Strupp, Lyndsay Watkins, Roxann Weigel, Ben  
505 Zimmerman; University of Miami: Damena Gallimore-Wilson, Roger Noriega, Cynthia Beaver,  
506 Alexandra Cruz, Annabel Reyes, Brigitte Madan, Addison Testoff, John Jones; St. Luke's:  
507 Jessica Lundgren, Karley Respet, Angela Hunt, Jennifer Viergutz, Daniel Stafki, Mary  
508 Robinson, Elizabeth Kaplan, Jill Dolezilek, Leiah Hoffman, Tyna O'Connor, Abbigail Hagen,  
509 Catherine Diluzio, Samantha Kendrick, Marilyn J. Odean; University of Arizona: Ariyah  
510 Armstrong, Nora Baccam, Zoe Baccam, Tatum Butcher, Shelby Capell, Andrea Carmona,  
511 Karysa Carson, Alissa Coleman, Hannah Cowling, Carly Deal, Kiara Earley, Sophie Evans, Julia  
512 Fisher, Ashlyn Flangos, Joe K. Gerald, Lynn Gerald, Anna Giudici, Erika Goebert, Taylor  
513 Graham, Sofia Grijalva, Hanna Hanson, Olivia Healy, Chloe Hendrix, Katherine Herder,  
514 Adrianna Hernandez, Raven Hilyard, Rezwana Islam, Krystal S. Jovel, Caroline Klinck, Karl  
515 Krupp, Karla Ledezma, Sally Littau, Amelia Lobos, Ashley Lowe, Jeremy Makar, Natalya  
516 Mayhew, Kristisha Mevises, Flavia Nakayima Miiro, Cierra Morris, Sarah Murray,  
517 Janko Nikolich-Žugich, Assumpta Nsengiyunva, Kennedy Obrien, Mya Pena, Riley Perlman,  
518 Celia Pikowski, Ferris A. Ramadan, Patrick Rivers, Jen Scott, Priyanka Sharma, Alison Slocum,  
519 Saskia Smidt, Lili Steffen, Jayla Sowell, Danielle Stea, Xiaoxiao Sun, Nicholas Tang, Gianna  
520 Taylor, Ta'Nya Tomas, Heena Timsina, Italia Trejo, April Yingst; University of Utah: Rachel T.  
521 Brown, Matthew Bruner, Riley Campbell, Aniyah Colston, Brianna Cottam, Chapman Cox,  
522 Kendal Chatard, Ben Cragun, Daniel Dawson, Anika Dsouza, Emilee Eden, Amanda Flanagan,



523 Colton Fox, Adriele Fugal, Nikki Gallacher, Michelle Gillette, Joshua Griffin, Christian  
524 Guzman, Isaac Hansen, Addie Hunsaker, Iman Ibrahim, Nada Jabbouri, Junny Jeong, Ryder  
525 Jordin, Tori Joy, Michael Langston, Alexis Lowe, Katie Luong, Aurianna Martin, Gretchen  
526 Maughan, Jinyi Mao, Jeanmarie Mayer, Katy McCone, Renee McEntire, Jacob McKell, Tiana  
527 Miller, Max Minoughan, Naveen Naveed, Jessica Olsen, Christina Pick, Timina Powaukee,  
528 Jenna Praggastis, Lily Prentice, Seon Reed, Amber Rhodes, Griffin Rost, Camie Schaefer,  
529 Ashmita Shanthakumar, Madeleine Smith, Joseph Stanford, Grace Stewart, Pasha Stinson,  
530 Trevor Stubbs, Marcus Stucki, Madison Tallman, Sydney Taylor, Kathy Tran, Fiona  
531 Tsang, Irene Tucker, Maya Wheeler, Megan Wilson, Jesse Williams, Derrick Wong,  
532 Jenna Vo, Hannah Whiting, Iris Yang, Karly Anderson, Ian Arlington, Arlyne Arteaga,  
533 Braydon Black, Brock Bourdelle.

534

535 Special thanks to the firefighters, healthcare workers, and frontline and essential workers who  
536 participated in this cohort study.

537

## 538 **References**

- 539 1. Reynolds CJ, Gibbons JM, Pade C, Lin K-M, Sandoval DM, Pieper F, et al. Heterologous  
540 infection and vaccination shapes immunity against SARS-CoV-2 variants. *Science*.  
541 2022;375(6577):183-92.
- 542 2. Gilbert PB, Montefiori DC, McDermott AB, Fong Y, Benkeser D, Deng W, et al.  
543 Immune correlates analysis of the mRNA-1273 COVID-19 vaccine efficacy clinical trial.  
544 *Science*. 2022;375(6576):43-50.

- 545 3. Herring MK, Romine JK, Wesley MG, Ellingson KD, Yoon SK, Caban-Martinez AJ, et  
546 al. Severe Acute Respiratory Syndrome Coronavirus 2 Infection History and Antibody Response  
547 to 3 Coronavirus Disease 2019 Messenger RNA Vaccine Doses. *Clinical Infectious Diseases*.  
548 2022;ciac976.
- 549 4. Gilboa M, Regev-Yochay G, Mandelboim M, Indenbaum V, Asraf K, Fluss R, et al.  
550 Durability of Immune Response After COVID-19 Booster Vaccination and Association With  
551 COVID-19 Omicron Infection. *JAMA Network Open*. 2022;5(9):e2231778.
- 552 5. Fu J, Shen X, Anderson M, Stec M, Petratos T, Cloherty G, et al. Correlation of Binding  
553 and Neutralizing Antibodies against SARS-CoV-2 Omicron Variant in Infection-Naïve and  
554 Convalescent BNT162b2 Recipients. *Vaccines*. 2022;10(11):1904.
- 555 6. Spinardi JR, Srivastava A. Hybrid Immunity to SARS-CoV-2 from Infection and  
556 Vaccination—Evidence Synthesis and Implications for New COVID-19 Vaccines.  
557 *Biomedicines*. 2023;11(2):370.
- 558 7. Koup RA, Donis RO, Gilbert PB, Li AW, Shah NA, Houchens CR. A government-led  
559 effort to identify correlates of protection for COVID-19 vaccines. *Nature Medicine*.  
560 2021;27(9):1493-4.
- 561 8. Coudeville L, Bailleux F, Riche B, Megas F, Andre P, Ecochard R. Relationship between  
562 haemagglutination-inhibiting antibody titres and clinical protection against influenza:  
563 development and application of a bayesian random-effects model. *BMC Med Res Methodol*.  
564 2010;10:18.
- 565 9. Nakaya HI, Hagan T, Duraisingham SS, Lee EK, Kwissa M, Roupheal N, et al. Systems  
566 Analysis of Immunity to Influenza Vaccination across Multiple Years and in Diverse Populations  
567 Reveals Shared Molecular Signatures. *Immunity*. 2015;43(6):1186-98.

- 568 10. Ridgway JP, Tideman S, French T, Wright B, Parsons G, Diaz G, et al. Odds of  
569 Hospitalization for COVID-19 After 3 vs 2 Doses of mRNA COVID-19 Vaccine by Time Since  
570 Booster Dose. *JAMA*. 2022;328(15):1559.
- 571 11. Plotkin SA. Correlates of protection induced by vaccination. *Clin Vaccine Immunol*.  
572 2010;17(7):1055-65.
- 573 12. Dadras O, Seyedalinalaghi SA, Karimi A, Shojaei A. COVID-19 Vaccines' Protection Over  
574 Time and the Need for Booster Doses; a Systematic Review. *Archives of Academic Emergency*  
575 *Medicine*. 2022;10(1).
- 576 13. Nealon J, Cowling BJ. Uncertainties About the Optimal Timing of Fourth Dose of  
577 COVID-19 Vaccines. *JAMA Network Open*. 2022;5(7):e2223096-e.
- 578 14. Lutrick K, Ellingson KD, Baccam Z, Rivers P, Beitel S, Parker J, et al. COVID-19  
579 Infection, Reinfection, and Vaccine Effectiveness in Arizona Frontline and Essential Workers:  
580 Protocol for a Longitudinal Cohort Study. *JMIR Res Protoc*. 2021;10(6):e28925.
- 581 15. Edwards LJ, Fowlkes AL, Wesley MG, Kuntz JL, Odean MJ, Caban-Martinez AJ, et al.  
582 Research on the Epidemiology of SARS-CoV-2 in Essential Response Personnel (RECOVER):  
583 Protocol for a Multisite Longitudinal Cohort Study. *JMIR Res Protoc*. 2021;10(12):e31574.
- 584 16. Prevention CfDca. COVID data tracker: variant proportions 2023 [cited 2023 Aug 28].
- 585 17. Ripperger TJ, Uhrlaub JL, Watanabe M, Wong R, Castaneda Y, Pizzato HA, et al.  
586 Orthogonal SARS-CoV-2 Serological Assays Enable Surveillance of Low-Prevalence  
587 Communities and Reveal Durable Humoral Immunity. *Immunity*. 2020;53(5):925-33.e4.
- 588 18. Ng S, Fang VJ, Ip DK, Chan KH, Leung GM, Peiris JS, et al. Estimation of the  
589 association between antibody titers and protection against confirmed influenza virus infection in  
590 children. *J Infect Dis*. 2013;208(8):1320-4.

- 591 19. Black S, Nicolay U, Vesikari T, Knuf M, Del Giudice G, Della Cioppa G, et al.  
592 Hemagglutination Inhibition Antibody Titers as a Correlate of Protection for Inactivated  
593 Influenza Vaccines in Children. *The Pediatric Infectious Disease Journal*. 2011;30(12):1081-5.
- 594 20. Bergwerk M, Gonen T, Lustig Y, Amit S, Lipsitch M, Cohen C, et al. Covid-19  
595 Breakthrough Infections in Vaccinated Health Care Workers. *New England Journal of Medicine*.  
596 2021;385(16):1474-84.
- 597 21. Regev-Yochay G, Lustig Y, Joseph G, Gilboa M, Barda N, Gens I, et al. Correlates of  
598 protection against COVID-19 infection and intensity of symptomatic disease in vaccinated  
599 individuals exposed to SARS-CoV-2 in households in Israel (ICoFS): a prospective cohort study.  
600 *The Lancet Microbe*. 2023;4(5):e309-e18.
- 601 22. Asamoah-Boaheng M, Goldfarb DM, Karim ME, SF OB, Wall N, Drews SJ, et al. The  
602 Relationship Between Anti-Spike SARS-CoV-2 Antibody Levels and Risk of Breakthrough  
603 COVID-19 Among Fully Vaccinated Adults. *J Infect Dis*. 2023;227(3):339-43.
- 604 23. Lee J, Park S, Kim JY, Lim SY, Chang E, Bae S, et al. No correlation of neutralizing  
605 antibody titers against the Omicron variant after a booster dose of COVID-19 vaccines with  
606 subsequent breakthrough Omicron infections among healthcare workers. *Journal of Infection*.  
607 2022;85(6):e177-e80.
- 608 24. Hui KPY, Ho JCW, Cheung MC, Ng KC, Ching RHH, Lai KL, et al. SARS-CoV-2  
609 Omicron variant replication in human bronchus and lung ex vivo. *Nature*. 2022;603(7902):715-  
610 20.
- 611 25. Dimeglio C, Miguères M, Chapuy-Regaud S, Da-Silva I, Jouglu I, Pradere C, et al.  
612 Comparative effects of mRNA vaccine booster and natural Omicron infection on the neutralizing  
613 antibody response. *Journal of Infection*. 2022;85(1):e4-e6.

- 614 26. Dphil NB. Protective effectiveness of previous SARS-CoV-2 infection and hybrid  
615 immunity against the omicron variant and severe disease: a systematic review and meta-  
616 regression. 2023;23.
- 617 27. de Gier B, Huiberts AJ, Hoeve CE, den Hartog G, van Werkhoven H, van Binnendijk R,  
618 et al. Effects of COVID-19 vaccination and previous infection on Omicron SARS-CoV-2  
619 infection and relation with serology. *Nature Communications*. 2023;14(1):4793.
- 620 28. Wei J, Matthews PC, Stoesser N, Newton JN, Diamond I, Studley R, et al. Protection  
621 against SARS-CoV-2 Omicron BA.4/5 variant following booster vaccination or breakthrough  
622 infection in the UK. *Nature Communications*. 2023;14(1):2799.
- 623 29. Wei J, Pouwels KB, Stoesser N, Matthews PC, Diamond I, Studley R, et al. Antibody  
624 responses and correlates of protection in the general population after two doses of the ChAdOx1  
625 or BNT162b2 vaccines. *Nature Medicine*. 2022;28(5):1072-82.
- 626 30. Yu X, Gilbert PB, Hioe CE, Zolla-Pazner S, Self SG. Statistical approaches to analyzing  
627 HIV-1 neutralizing antibody assay data. *Stat Biopharm Res*. 2012;4(1):1-13.
- 628 31. Stone M, Grebe E, Sulaeman H, Di Germanio C, Dave H, Kelly K, et al. Evaluation of  
629 Commercially Available High-Throughput SARS-CoV-2 Serologic Assays for Serosurveillance  
630 and Related Applications. *Emerg Infect Dis*. 2022;28(3):672-83.
- 631 32. Benkeser D, Montefiori DC, McDermott AB, Fong Y, Janes HE, Deng W, et al.  
632 Comparing antibody assays as correlates of protection against COVID-19 in the COVE mRNA-  
633 1273 vaccine efficacy trial. *Science Translational Medicine*. 2023;15(692):eade9078.

634

## 635 **Supporting information**

636

637 **S1 Table. Demographic information for reinfection correlates of protection nested case-**  
638 **control cohort from AZHEROES/RECOVER, stratified by vaccination status.**

639 <sup>a</sup>All vaccine doses are monovalent origin strain WA-1 mRNA vaccines.

640 <sup>b</sup>Other essential workers include occupation sectors with potentially high exposures to SARS-  
641 CoV-2 such as education, agriculture, public transportation services, waste collection, delivery,  
642 utilities, community-based services, childcare, and others.

643 <sup>c</sup>Chronic conditions include asthma, chronic lung disease, cancer, diabetes, heart disease,  
644 hypertension, immunosuppression, kidney disease, liver disease, neurologic or neuromuscular  
645 disease or disorder, and autoimmune disease.

646 <sup>d</sup>Participants are asked “Are you currently taking prednisone or other ongoing steroid  
647 medications (excluding inhaled steroids and one-time injections) or any other medications that  
648 may suppress your body's ability to fight infection?”.

649 <sup>e</sup>ICE (immune conferring event) is the third vaccine dose for the first-time post-vaccination  
650 infection with Omicron cohort and the 3 dose strata within the reinfection cohort, the second  
651 vaccine dose for the 2 dose strata within the reinfection cohort, and the initial SARS-CoV-2  
652 infection for the unvaccinated strata within the reinfection cohort.

653 <sup>f</sup>Exposure to individuals infected with SARS-CoV-2.

654 <sup>g</sup>Reported personal protective equipment (PPE) adherence at work was defined as the percentage  
655 of time in which an individual uses the PPE recommended by their employer when in direct  
656 contact with people.

657

658 **S2 Table. Count and descriptive statistics of quantitative antibody results for reinfection**  
659 **correlates of protection cohort from AZHEROES/RECOVER, stratified by vaccination**  
660 **status.**

661  
662 **S3 Table. Results from conditional logistic regression model with RBD and S2 AUC values**  
663 **for first-time post-vaccination infection with Omicron following third COVID-19 origin**  
664 **strain WA-1 monovalent mRNA vaccine dose correlates of protection cohort from**  
665 **AZHEROES/RECOVER (n=1226).**

666 Abbreviations: OR: odds ratio; CI: confidence interval.

667 Odds ratio represents odds of being a case for each standard deviation increase in AUC.

668 Cases were defined as individuals who became infected with Omicron after receiving three  
669 origin strain WA-1 monovalent COVID-19 vaccine doses and no prior infections. Cases and  
670 controls were matched on number of days between blood draw and third vaccine dose, and study  
671 site.

672 \*Statistically significant at alpha = 0.05.

673  
674 **S4 Table. Results from conditional logistic regression model with RBD and S2 AUC values**  
675 **for the reinfection correlates of protection cohort from HEROES/RECOVER.**

676 Abbreviations: OR: odds ratio; CI: confidence interval.

677 Odds ratio represents odds of being a case for each standard deviation increase in AUC.

678 <sup>a</sup>Cases were defined as individuals who became reinfected with SARS-CoV-2 while  
679 unvaccinated. Both cases and controls were unvaccinated at the time of their blood draw.

680 <sup>b</sup>Cases were defined as individuals who became reinfected with SARS-CoV-2. Both cases and  
681 controls were unvaccinated at time of initial infection, then received 2 doses of an origin strain  
682 WA-1 monovalent COVID-19 vaccine prior to any potential reinfection. Blood draw for both  
683 cases and controls occurred after the 2nd dose.

684 <sup>c</sup>Cases were defined as individuals who became reinfected with SARS-CoV-2. Both cases and  
685 controls were unvaccinated at time of initial infection, then received 3 doses of an origin strain  
686 WA-1 monovalent COVID-19 vaccine prior to any potential reinfection. Blood draw for both  
687 cases and controls occurred after the 3rd dose.

688 <sup>d</sup>At least one chronic condition versus no chronic conditions.

689 <sup>e</sup>Above cohort mean versus below cohort mean.

690 \*Statistically significant at alpha = 0.05.

691

692 **S5 Table. Unadjusted and adjusted odds ratios (ORs) generated by conditional logistic**  
693 **regression models for a nested sample of individuals with first-time post-vaccination**  
694 **infection with Omicron following third COVID-19 origin strain WA-1 monovalent mRNA**  
695 **vaccine dose and matched controls from the HEROES/RECOVER prospective cohort of**  
696 **frontline workers (n=1226).**

697 Abbreviations: OR: odds ratio; CI: confidence interval.

698 Odds ratio represents odds of being a case for each 3-fold increase in end titer. Cases were  
699 defined as individuals who became infected with Omicron after receiving three COVID-19  
700 vaccine doses. Cases and controls were matched on number of days between blood draw and  
701 third vaccine dose, and study site.

702 <sup>a</sup>At least one chronic condition versus no chronic conditions



703 <sup>b</sup>Above cohort mean versus below cohort mean

704 \*Statistically significant at alpha = 0.05

705

706 **Table S6. Unadjusted and adjusted odds ratios (ORs) generated by conditional logistic**  
707 **regression models for a nested sample of individuals with reinfection and matched controls,**  
708 **stratified by vaccination status, from the HEROES/RECOVER prospective cohort of**  
709 **frontline workers (n=740).**

710 Abbreviations: OR: odds ratio; CI: confidence interval.

711 Odds ratio represents odds of being a case for each 3-fold increase in end titer.

712 <sup>a</sup>Cases were defined as individuals who became reinfected with SARS-CoV-2 while  
713 unvaccinated. Both cases and controls were unvaccinated at the time of their blood draw.

714 <sup>b</sup>Cases were defined as individuals who became reinfected with SARS-CoV-2. Both cases and  
715 controls were unvaccinated at time of initial infection, then received 2 doses of an origin strain  
716 WA-1 monovalent COVID-19 vaccine prior to any potential reinfection. Blood draw for both  
717 cases and controls occurred after the 2nd dose.

718 <sup>c</sup>Cases were defined as individuals who became reinfected with SARS-CoV-2. Both cases and  
719 controls were unvaccinated at time of initial infection, then received 3 doses of an origin strain  
720 WA-1 monovalent COVID-19 vaccine prior to any potential reinfection. Blood draw for both  
721 cases and controls occurred after the 3rd dose.

722 <sup>d</sup>At least one chronic condition versus no chronic conditions.

723 <sup>e</sup>Above cohort mean versus below cohort mean.

724 \*Statistically significant at alpha = 0.05.

725

726 **S1 Fig. Comparison of RBD (panel A) and S2 (panel B) AUC values between cases and**  
727 **controls in first-time post-vaccination infection with Omicron nested case-control cohort,**  
728 **with difference in means evaluated by paired t-test.**

729

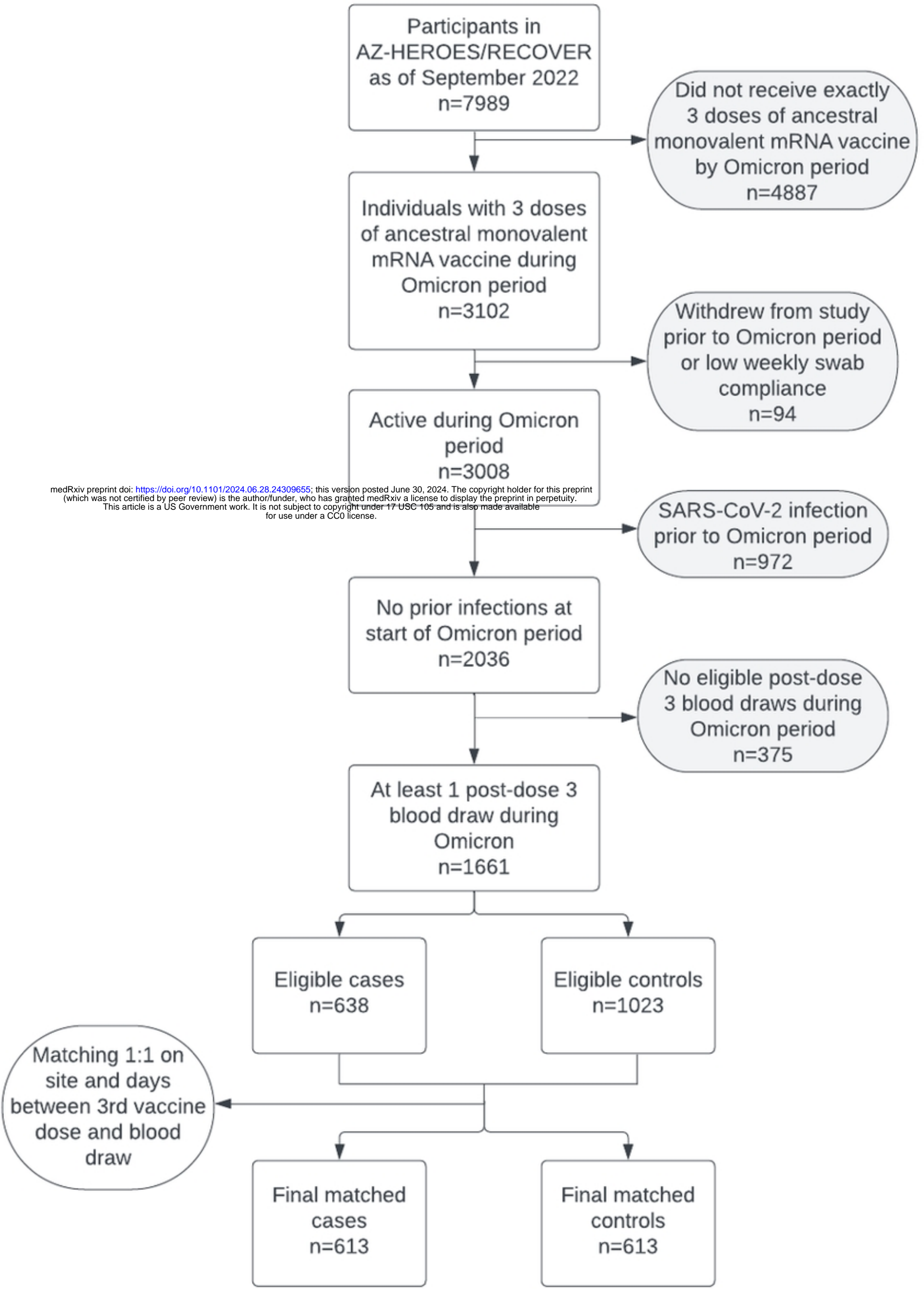
730 **S2 Fig. Comparison of mean RBD (panel A) and S2 (panel B) AUC values between cases**  
731 **and controls in reinfection Omicron infection nested case-control cohort, stratified by**  
732 **number of origin strain WA-1 monovalent mRNA COVID-19 vaccine doses.**

733

734 **S3 Fig. Flowchart for determining qualitative antibody result using RBD and S2 optical**  
735 **density values.**

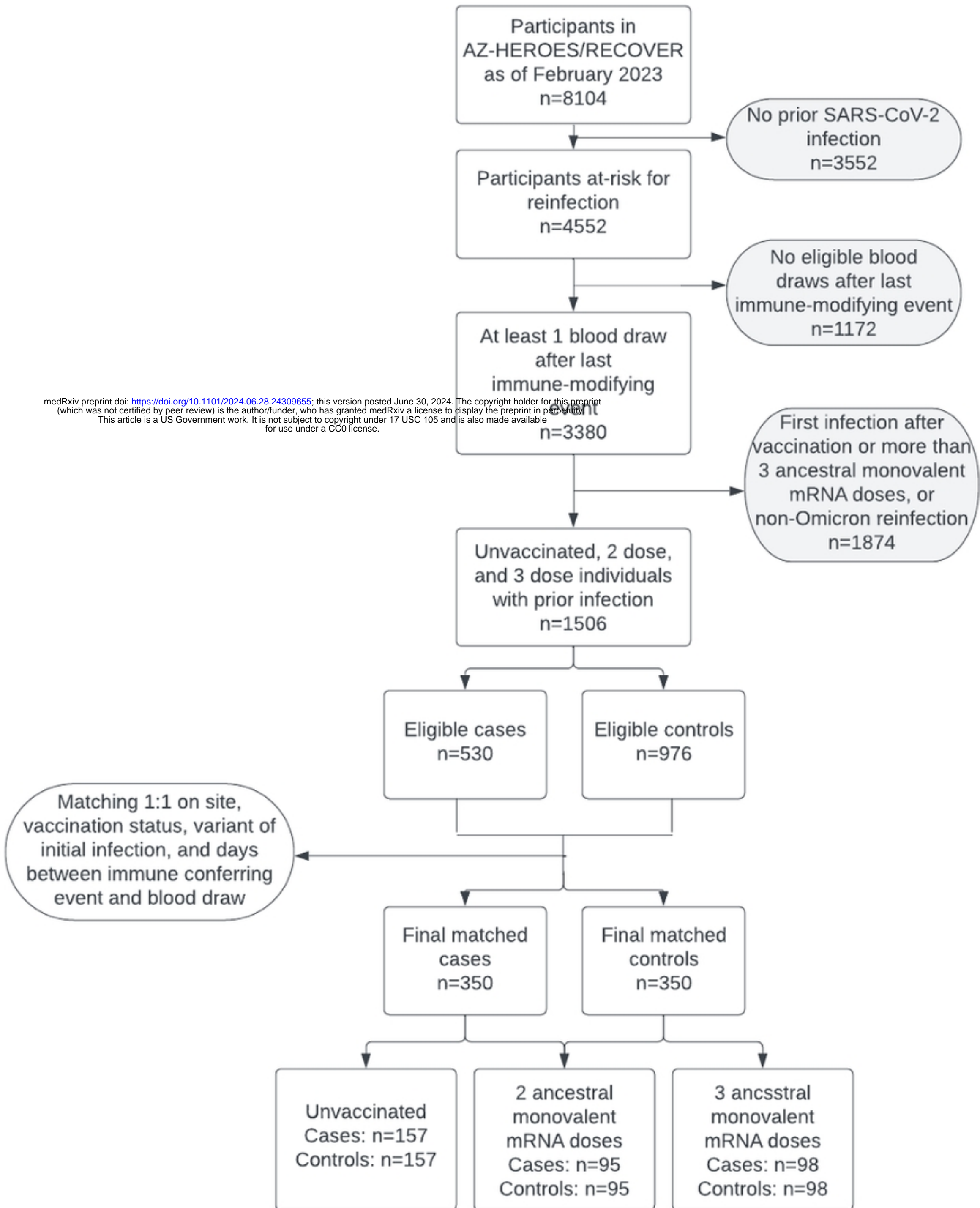
736

737 **S4 Fig. Flowchart for determining pre-enrollment infections in the HEROES-RECOVER**  
738 **cohort.**



medRxiv preprint doi: <https://doi.org/10.1101/2024.06.28.24309655>; this version posted June 30, 2024. The copyright holder for this preprint (which was not certified by peer review) is the author/funder, who has granted medRxiv a license to display the preprint in perpetuity. This article is a US Government work. It is not subject to copyright under 17 USC 105 and is also made available for use under a CC0 license.

Fig1



medRxiv preprint doi: <https://doi.org/10.1101/2024.06.28.24309655>; this version posted June 30, 2024. The copyright holder for this preprint (which was not certified by peer review) is the author/funder, who has granted medRxiv a license to display the preprint in perpetuity. This article is a US Government work. It is not subject to copyright under 17 USC 105 and is also made available for use under a CC0 license.

Fig2

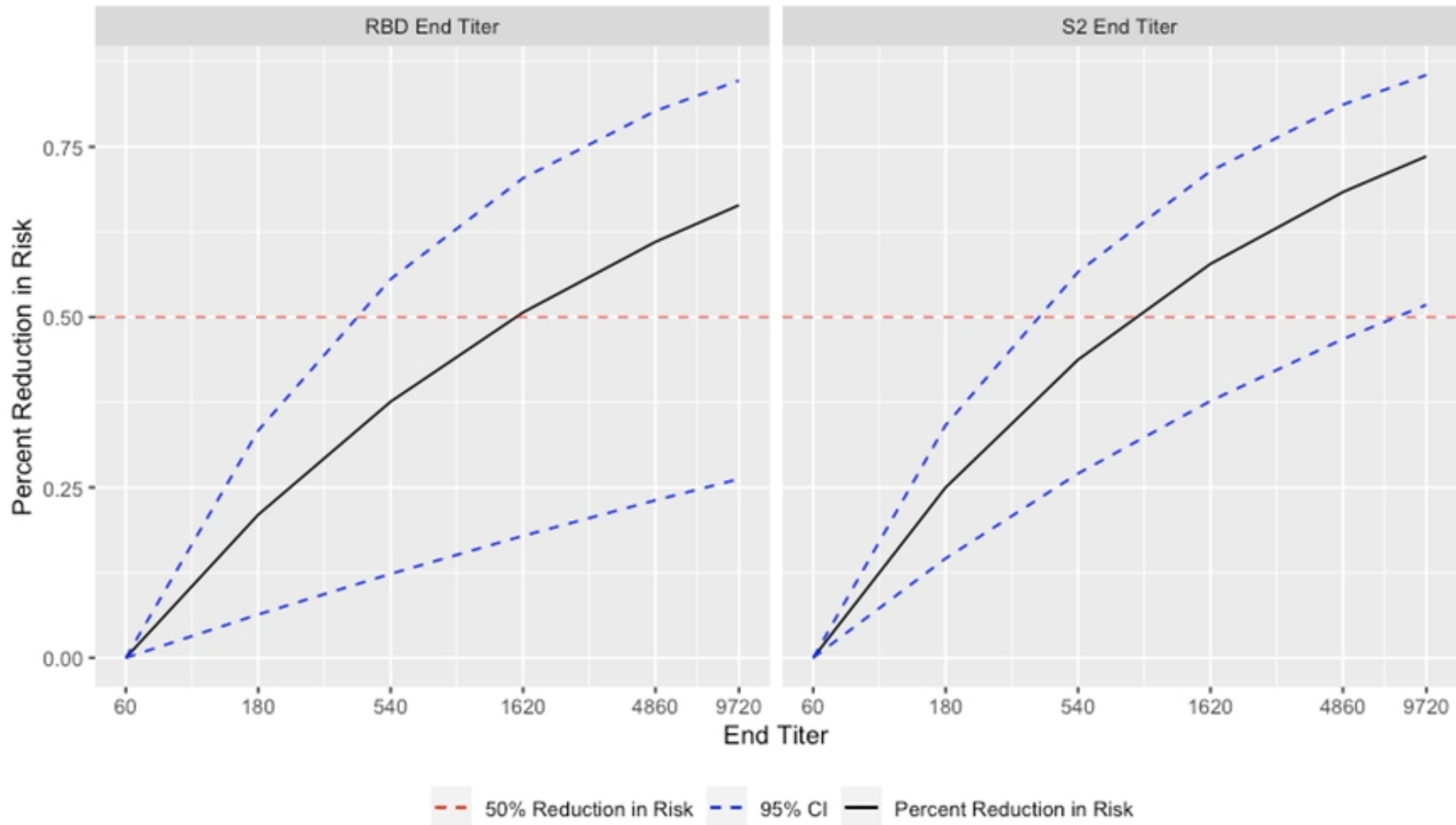


Fig3

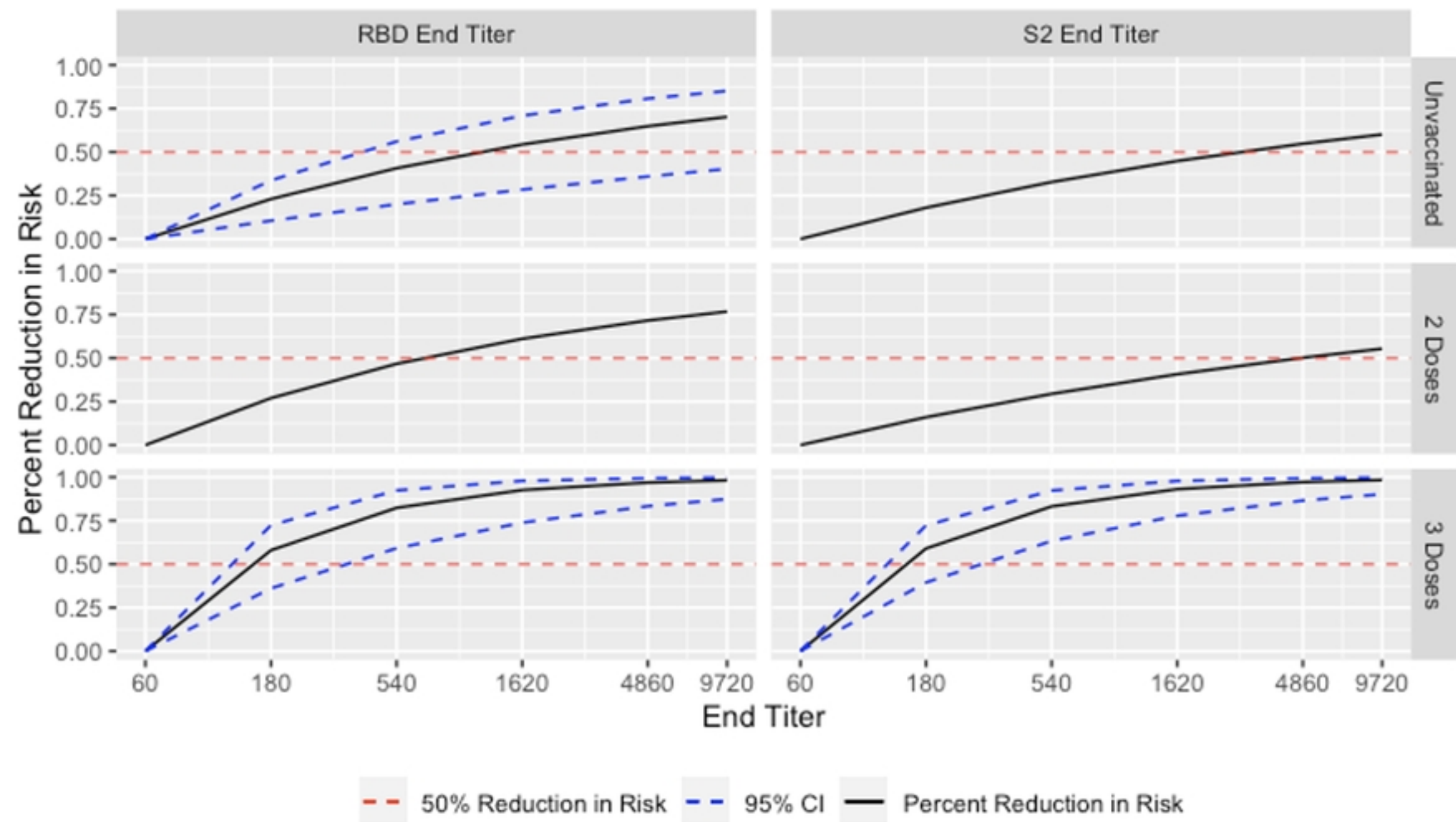


Fig4