

1  
2  
3  
4  
5  
  
6  
7  
8  
9  
10  
11  
12  
13  
14  
15  
16  
17  
18  
19  
20  
21  
  
22  
  
23

## The COVID-19 pandemic in Canada’s provinces: mitigation measures and outcomes

Paul Grootendorst

Leslie Dan Faculty of Pharmacy  
University of Toronto  
Toronto ON, Canada

Department of Economics  
McMaster University  
Hamilton ON, Canada

\* corresponding author  
[paul.grootendorst@utoronto.ca](mailto:paul.grootendorst@utoronto.ca)

## 24 Abstract

25 The rapid spread of SARS-CoV-2 in early 2020 forced provincial health authorities  
26 across Canada to quickly institute infection control measures. It is now four years since  
27 the start of the global pandemic, and an opportune time to consider how Canada's  
28 provinces compared in their SARS-CoV-2 containment policies and the resulting  
29 impacts on mortality and economic activity. I compare provincial exposure to SARS-  
30 CoV-2 using data on the number out-of-province arrivals into each province. I compare  
31 the key containment measures used in each province, the length of time that these  
32 measures were imposed, and the uptake of COVID-19 vaccines by province. Using  
33 Statistics Canada data, I also estimate the impact of the COVID-19 pandemic on  
34 provincial crude death rates during 2020-2023, and life expectancy and gross domestic  
35 product during 2020-2022. I find substantial provincial variation in pandemic responses  
36 and outcomes. The provinces varied in their use of the most stringent public health  
37 measures. Uptake of the primary COVID vaccinations varied from 76% to 92%; booster  
38 vaccination uptake varied even more. There was also marked provincial variation in  
39 mortality and economic outcomes. While this study does not estimate the impacts of  
40 provincial response stringency and COVID vaccine uptake on mortality and other  
41 outcomes, it does provide suggestive evidence that can be formally assessed in future  
42 research.

43

## 44 Introduction

45 The rapid spread of the severe acute respiratory syndrome coronavirus 2 (SARS-CoV-  
46 2) in early 2020 challenged governments and public health authorities in Canada and  
47 globally. The first known diagnosis of SARS-CoV-2 infection in Canada was made on  
48 January 25, 2020.[1,2] Less than seven weeks later, on March 11, the World Health  
49 Organization (WHO) declared the novel coronavirus disease (COVID-19) outbreak a  
50 global pandemic.[3] (COVID-19 is the name of the disease caused by SARS-CoV-2.)  
51 Authorities in each province and territory quickly decided how to best contain the spread  
52 of SARS-CoV-2 in their jurisdictions using school and business closures and other  
53 mitigation measures;[4] the federal government, meanwhile, was responsible for  
54 international border controls,[5] and procuring testing kits, face masks, and other  
55 protective equipment.

56 Four years after the WHO declared the global pandemic, it is now an opportune time to  
57 consider how Canada's provinces compared in their SARS-CoV-2 containment policies  
58 and the resulting impacts on mortality and economic activity. Data on the number of  
59 international and domestic arrivals into each province is used to compare their initial  
60 exposure to SARS-CoV-2. I assess key containment measures used in each province,  
61 the length of time that these measures were imposed, and the uptake of COVID-19  
62 vaccines after these became widely available in early 2021. Using newly available data,  
63 I also estimate the impact of the COVID-19 pandemic on provincial crude death rates,  
64 life expectancy and gross domestic product. The paper builds on the work of McGrail

65 [6] who reported province-level COVID excess mortality (estimated by Statistics  
66 Canada) and COVID-attributed deaths during the first 19 months of the pandemic. I do  
67 not attempt to formally link outcomes to public health mitigation measures and vaccine  
68 uptake, although the data presented here provides some suggestive evidence.

69

## 70 Methods

### 71 Travel patterns

72 As SARS-CoV-2 originated outside of Canada, the provinces that were the most  
73 common destinations of trips originating outside of Canada were, at least initially, most  
74 susceptible to viral spread. To assess this risk, I used Canada Border Services Agency  
75 data, compiled by Statistics Canada, on the number of individuals (both residents of  
76 Canada and non-residents) entering Canada by air, land or water.[7] These data are  
77 stratified by the province and month of entry. I use Statistics Canada's National Travel  
78 Survey (NTS) trip file, [8] to assess the volume of travel within Canada. Each year, the  
79 NTS samples Canadian households and within households, a household member to  
80 provide basic information, including the trip destination, on all his or her trips (domestic  
81 and international) that ended in the reference month. Sampling weights are provided to  
82 render estimates representative of the residential population. I use the NTS trip file data  
83 to determine, by quarter, the number of interprovincial trips, by province of destination  
84 and quarter.

85

## 86 Non-pharmaceutical containment measures

87 The Oxford Coronavirus Government Response Tracker (OxCGRT) group collected  
88 information on nine key policy responses that governments in 185 countries have taken  
89 to increase social distancing during the pandemic.[9] These policy responses are  
90 school closures; workplace closures; cancellation of public events; restrictions on public  
91 gatherings; closures of public transport; stay-at-home requirements; public information  
92 campaigns; restrictions on internal movements; and international travel controls.

93 OxCGRT gathered information on each type of policy response daily from January 2020  
94 to December 2022. Responses were measured on an ordinal scale with higher values  
95 representing higher levels of restriction. For instance, the stay-at-home response levels  
96 are: 0 (no measures), 1 (a public advisory to stay home), 2 (a stay-at-home mandate  
97 with exceptions for “daily exercise, grocery shopping, and ‘essential’ trips”) and 3 (a  
98 mandate with only very limited exceptions). If the restrictions were not generally  
99 applied, but were instead targeted by geography or along other dimensions, then  
100 response levels were adjusted downwards. The nine adjusted responses were  
101 aggregated to create a daily government “stringency index”. [10]

102

103 Analysts at the Bank of Canada (BOC) adapted the OxCGRT stringency index to  
104 capture provincial policy responses each day from January 1, 2020 to July 19, 2022.

105 [11] The BOC and OxCGRT stringency indices differ in several ways. First, the BOC  
106 index replaces the OxCGRT “restrictions on internal movements” response with two  
107 responses capturing separately restrictions on intra-provincial travel and inter-provincial

108 travel. The BOC index also adds two policy responses not found in the OxCGRT  
109 index; these capture separate enforcement mechanisms for individuals and for firms  
110 violating public health orders. The BOC index adds more targeting dimensions than the  
111 OxCGRT index; for example, the “cancellation of public events” response is adjusted  
112 downwards if only indoor events are cancelled. Finally, the BOC adjusted the number  
113 of levels for some policy responses. [11] Each of the 12 policy responses were  
114 measured on a scale from 0, no restrictions, to 100, representing the highest level with  
115 no targeting adjustments. The overall BOC stringency index is a simple average of the  
116 12 subindices.

117

118 I used these data to graph, by province, the weekly average BOC stringency index, and  
119 the number of new COVID cases per 100,000 reported by the Public Health Agency of  
120 Canada (PHAC) during 2020-2022.[12] These graphs reveal how provincial policy  
121 makers adjusted stringency levels in response to changes in COVID infection. I also  
122 identify, for each province, the timing and duration of 5 particularly stringent policy  
123 responses. These include: 1) a stay-at-home order index value of 66 or more, where 66  
124 reflects a province-wide stay home order with exceptions allowed for daily exercise,  
125 grocery shopping and essential trips; 2) a school and university closure index value of  
126 58 or more, where 58 reflects closure of some but not all types of institutions (such as  
127 elementary schools but not universities) with an allowance made for on-line learning; 3)  
128 a workplace closure index of 66 or more, where 66 reflects closing (or work from home)  
129 for all but a broad set of essential workplaces, albeit with an allowance for business  
130 curbside pickups; 4) a restrictions on private gatherings index of 80 or more, where 80

131 reflects a restriction limit on gatherings of 15 people or less; and 5) a restrictions on  
132 interprovincial travel index value of 55 or more, where 55 reflects a quarantine  
133 requirement for interprovincial travellers with exceptions given to arrivals from  
134 designated provinces. I graphed for each province the weeks during which each of  
135 these types of restrictions were in effect, and superimposed the number of new COVID  
136 deaths per 100,000 reported by PHAC. The 7 other policy responses contained in the  
137 BOC stringency index, such as the cancelling of public events, and information  
138 campaigns, tend to be implied by the policy responses I focus on.

139

## 140 Vaccination campaigns

141 I used data from PHAC [13] to graph, by province, the percentage of the population that  
142 completed their primary COVID vaccination series by week from January 2021 (the first  
143 full month of vaccine rollout) to June 2022. I graph vaccine uptake separately by sex  
144 (male, female) and again by age group (age 18-29, 40-49, 60-69, 80+). Most of the  
145 vaccines used in Canada require two doses; the Janssen Ad26.COV2.S is the sole  
146 single-shot vaccine. I also graph PHAC data on the percentage of the population that  
147 received their first and second COVID booster vaccinations by sex and week from July  
148 2021 to June 2023.

149

## 150 Economic outcomes

151 I graphed, for each province, Statistics Canada annual data on real (i.e. inflation-  
152 adjusted) provincial gross domestic product (GDP), measured in 2017 dollars.[14] GDP  
153 was expressed in per capita terms using the Statistics Canada population data  
154 described earlier. To estimate the impact of COVID on GDP, I extrapolated the trend  
155 line in GDP during the 5 pre-pandemic years, 2015-2019, into the pandemic period,  
156 2020-2022, and compared to actual GDP during this period. I estimated the changes  
157 for each year, along with their 95% confidence intervals.

158

## 159 Mortality outcomes

160 Next, I graphed province-specific excess mortality rates as estimated by Statistics  
161 Canada.[15] These estimates are provided weekly from the January 2020 to August  
162 2023. Note that this “excess mortality” approach captures the net effect of the  
163 pandemic. This is the mortality from SARS-CoV-2 infection plus any deleterious effects  
164 of lockdowns, such as delayed access to healthcare [16] less any offsets due to the  
165 COVID era lockdowns and other social distancing measures, such as a reduction in  
166 road traffic collisions [17] and the reduced mortality from seasonal influenza and other  
167 infectious disease. I also present the crude all-cause mortality rate, by sex, province  
168 and week during the years 2010-2023 that Statistics Canada used to estimate excess  
169 mortality. To calculate mortality rates, I used weekly death counts and annual  
170 population counts, specific for each sex and province; these data were collected by  
171 Statistics Canada.[18,19]



172

173 To assess the impact of COVID-19 on age-specific mortality, I used Statistics Canada's  
174 annual estimates of life expectancy at birth and age 65, by sex and province. This  
175 statistic estimates, for each year, the number of years an individual of a specific age (in  
176 this case 0 or 65) can expect to live if they face in future years the same annual  
177 mortality probabilities that older individuals – of the same sex and province –  
178 experienced during the year. [20] (These mortality probabilities are obtained from  
179 Statistics Canada's period life tables. [21]) Life expectancy at 65 during a pandemic  
180 year thus reflects the annual mortality probabilities of those aged 65 or older in the  
181 same year. Statistics Canada did not release life expectancy values for Prince Edward  
182 Island because the province's small population renders the values highly variable. To  
183 estimate the impact of COVID on life expectancy, I used the same extrapolation  
184 approach as was used for real per capita GDP. Analyses were conducted using Stata  
185 v17.[22]

186

## 187 Results

### 188 Travel patterns

189 Fig 1 presents data on the number of individuals entering Canada, by province of entry  
190 and month. Prior to the pandemic, Ontario, British Columbia and Quebec received by  
191 far the largest number of arrivals. The border restrictions imposed by the federal  
192 government drastically reduced arrivals in the first months of the pandemic. Despite

193 these restrictions, however, 353,000 individuals entered Ontario from abroad in April  
194 2020, the first full month of the pandemic. Arrivals into British Columbia and Quebec in  
195 the same month were 94,000 and 70,000. Arrivals into the other provinces were much  
196 smaller. Fig 2 displays the total of international arrivals and arrivals from other  
197 provinces, by province of arrival and quarter. Ontario, British Columbia, Alberta and  
198 Quebec received the largest number of arrivals; arrivals into the other provinces were  
199 markedly lower.

200

201 **Fig 1. Number of international arrivals, by province and month of arrival, 2010m1**  
202 **to 2024m1.** Data source: Statistics Canada. Table 24-10-0053-01 International  
203 travellers entering or returning to Canada, by type of transportation and traveller type.  
204 Vertical line indicates the month that the WHO declared the global COVID-19 pandemic.  
205

206 **Fig 2. Total of international arrivals and arrivals from other provinces, by province**  
207 **and quarter of arrival, 2019q1 to 2022q4.** Data source: International arrivals: Statistics  
208 Canada. Table 24-10-0053-01 International travellers entering or returning to Canada,  
209 by type of transportation and traveller type. Domestic arrivals: Statistics Canada  
210 National Travel Survey. Vertical line indicates the quarter that the WHO declared the  
211 global COVID-19 pandemic.  
212

## 213 Overall stringency of provincial public health measures

214 The provincial stringency indices, displayed in Fig 3, varied with the different waves of  
215 the pandemic; these waves are illustrated by the periodic increases in new COVID  
216 cases per 100,000. The provinces tended to impose the most stringent controls at the  
217 start of a wave of infection, especially the first wave in March 2020, and then ease these  
218 restrictions until the next wave occurred, at which point restrictions were again  
219 tightened.[5,23–25] The degree of restriction at the start of a wave, however, tended to

220 decline after the summer of 2021, about 6 months into the COVID vaccination  
221 campaign. By July 2022, most restrictions were eased. The provinces varied in the  
222 degree of restriction across the pandemic. The three westernmost provinces tended to  
223 have lower stringency index values at a given date, especially after the first wave,  
224 compared to the other provinces.

225

226 **Fig 3. Bank of Canada stringency index values, by province and week, January**  
227 **2020 - July 2022 and new COVID cases per 100,000, by province and week,**  
228 **January 2020 - December 2022.** Data source: Bank of Canada; Public Health Agency  
229 of Canada COVID-19 epidemiology update: Summary. Bank of Canada stringency  
230 index (left hand side y-axis) in blue; new COVID-19 cases per 100,000 population (right  
231 y-axis) in red. Each graph plots stringency indices for each province, but bolds the index  
232 for just one province. Note the scale of COVID cases (right y-axis) varies by province.  
233

234 Fig 4 provides insights into the timing and duration of the most restrictive provincial  
235 infection mitigation measures: school and workplace closures (respectively, shaded  
236 orange with dashed border, and shaded green with long-dash border), stay-at-home  
237 orders (shaded blue with a solid border), 15 person or less limit on gatherings (shaded  
238 gray with dotted border), and quarantine requirements for domestic arrivals from other  
239 provinces (shaded yellow). I call these “type 1 restrictions” for brevity. The figure  
240 highlights the weeks during which each of these type 1 restrictions were in effect; the  
241 COVID-attributed mortality rate is superimposed.

242

243 **Fig 4. Weeks with social distancing restrictions in effect, by restriction type,**  
244 **province, and week, January 2020 - July 2022, and new COVID-attributed deaths**  
245 **per 100,000 population, by province, and week, January 2020 - December 2022.**  
246 Data source: Bank of Canada; Public Health Agency of Canada. Left hand side y-axis  
247 reflect weeks during which restriction levels greater than or equal to a minimum level of  
248 stringency were in place. Gray with dotted border: restriction limit on private gatherings

249 of 15 people or less. Orange with dashed border: some educational institutions closed.  
250 Green with long-dash border: closing (or work from home) for all but a broad set of  
251 essential workplaces, with an exception for curbside pickups. Blue with solid border:  
252 stay at home order with some exceptions for daily exercise, grocery shopping, and  
253 'essential' trips. Yellow: quarantine requirement for interprovincial travellers with  
254 exceptions given to arrivals from designated provinces. New deaths attributed to  
255 COVID-19 per 100,000 population (right hand side y-axis) represented by the purple  
256 line.  
257

258 The four provinces in the Atlantic region – New Brunswick, Nova Scotia, Prince Edward  
259 Island and Newfoundland – had low numbers of arrivals from outside of this region  
260 during the first quarter of 2020. Nevertheless, authorities used school and workplace  
261 closures that extended until the fall of 2020 to limit infection during the first wave of the  
262 pandemic. The region also used border controls that extended up to 22 months into the  
263 pandemic; those that entered the region were required to self-isolate.[26] Indeed,  
264 travel into the Atlantic region was so low during the pandemic (Fig 2) that airlines  
265 discontinued service to the area. [27] With strict border controls in place, the four  
266 Atlantic provinces surgically applied type 1 restrictions to reduce infection during  
267 subsequent waves. This strategy kept COVID infection and mortality in the Atlantic  
268 region very low, at least until border controls and other type 1 restrictions were removed  
269 in March 2022. After this, COVID-attributed mortality rates grew markedly. Indeed,  
270 New Brunswick experienced several weeks with 10 COVID-attributed deaths per  
271 100,000 in the fall of 2022.

272

273 The pandemic evolved differently in other provinces. In the first quarter of 2020, Ontario  
274 and Quebec were common destinations of trips originating outside of Canada. Perhaps  
275 because of the inflow of individuals infected with SARS-CoV-2, Ontario and especially

276 Quebec experienced large surges in mortality during the first wave of the pandemic  
277 despite school and workplace closures. These stringent restrictions were eased after  
278 the first wave but were quickly reinstated as mortality again grew in the late fall of 2020.  
279 Authorities in these provinces used type 1 policies, including stay-at-home orders, for  
280 relatively long periods of time to mitigate the spread of infection in subsequent waves of  
281 the pandemic. Mortality rates were relatively low by the start of summer of 2021,  
282 resulting in an easing of restrictions, but infection and mortality again increased in the  
283 fall of 2021, causing restrictions to be tightened over the holiday season. Mortality rates  
284 subsequently declined over the winter of 2022.

285  
286 Manitoba was able to control the first wave with school and workplace closures and  
287 quarantine requirements for visitors. These restrictions were relaxed by July 2020. But  
288 mortality rates increased markedly in the late fall 2020, prompting authorities to again  
289 impose workplace closures until mortality rates dropped, in February 2021. Thereafter,  
290 Manitoba re-imposed quarantine requirements for visitors, and in the face of an  
291 increase in COVID infection and mortality in the spring of 2021, imposed a restriction on  
292 the size of private gatherings. All type 1 restrictions were removed in early 2022; after  
293 this time, the province experienced a marked increase in COVID attributed mortality.

294  
295 Alberta and Saskatchewan successfully limited first wave mortality using school and  
296 workplace closures. These restrictions were relaxed by June 2020 in Alberta and by  
297 September 2020 in Saskatchewan. Infection rates and mortality increased during the  
298 fall, causing Alberta to reintroduce strict limits on gatherings and workplace closures

299 that extended until June 2021. Saskatchewan responded to the fall 2021 infection  
300 surge by briefly restricting private gatherings in the spring of 2021. Thereafter, neither  
301 province used type 1 restrictions to quell several subsequent waves of COVID infection.

302  
303 British Columbia, despite the flow of international arrivals from Asia and elsewhere in  
304 the first months of 2020, successfully navigated the first wave of the pandemic using  
305 school closures and quarantine requirements for out of province visitors; these  
306 restrictions were in effect for just 10 weeks. Indeed, compared to Alberta and  
307 Saskatchewan, British Columbia used type 1 restrictions more sparingly, and for shorter  
308 durations; overall policy stringency, however, was higher in British Columbia. Infection  
309 rates and mortality increased during the fall and these were met with strict limits on  
310 private gatherings that were in effect until spring of 2021. Infection rates and mortality  
311 increased again in the fall of 2021, again resulting in restrictions on gatherings and a  
312 brief school closure in early 2022.

313

## 314 COVID vaccine uptake

315 The federal government received its first COVID vaccine shipments in late 2020 and  
316 distributed these vaccines to provincial authorities who, in turn, launched mass  
317 vaccination campaigns. Overall, 81% of Canadians received their primary COVID  
318 vaccination series; most primary vaccinations had been administered within 12 months  
319 of the start of the vaccine rollout (Fig 5). The vaccinated percentage at June 30, 2022  
320 varied by province and sex. Vaccination rates were highest in Newfoundland (around

321 92%) and lowest in Alberta (76%) and Saskatchewan (77%). Vaccination rates for  
322 females were about 2-3 percentage points higher than for males. Vaccination rates  
323 tended to increase with age (Fig 6). Older individuals also tended to be vaccinated first,  
324 reflecting a prioritization of vaccine access to older individuals, especially those residing  
325 in long term care facilities. [23,28]

326

327 **Fig 5. Percentage of population that completed primary vaccination series, by**  
328 **province, sex and date, January 1, 2021 - June 30, 2022.** Data source: Public Health  
329 Agency of Canada. Canadian COVID-19 vaccination coverage report. Red line:  
330 females. Blue line: males. Each graph plots vaccine uptake for each province and both  
331 sexes, but bolds the uptake for just one province or for Canada.

332

333 **Fig 6. Percentage of population that completed primary vaccination series, by**  
334 **province, age group (18-29, 40-49, 60-69, 80+) and date, January 1, 2021 - June 30,**  
335 **2022.** Data source: Public Health Agency of Canada. Canadian COVID-19 vaccination  
336 coverage report. Green line: 18-29 years. Blue line: 40-49 years. Purple line: 60-69  
337 years. Red line: 80+ years. Each graph plots vaccine uptake for each province and all  
338 four age groups, but bolds the uptake for just one province or for Canada.

339

340 About half of Canadians received the first COVID booster and about one quarter  
341 received the second COVID booster vaccine by July 2023 (Fig 7). Booster uptake  
342 among females was about 5-6 percentage points higher than for males. There was  
343 marked interprovincial variation in booster uptake; uptake was about 20 percentage  
344 points lower in Alberta than in Newfoundland.

345

346 **Fig 7. Percentage of population that received booster vaccinations, by province,**  
347 **booster number (first and second), sex and date, July 1, 2021 - June 30, 2023.**  
348 Data source: Public Health Agency of Canada. Canadian COVID-19 vaccination  
349 coverage report. Red line: females. Blue line: males. First booster series values appear  
350 above the second booster series values. Each graph plots booster vaccine uptake for

351 each province and each sex, but bolds the uptake for just one province or for Canada.  
352 Data for Quebec unavailable after August 2022.  
353

## 354 Economic activity

355 The lockdowns during the first three years of the pandemic inevitably reduced both  
356 productivity and the sale of goods and services. What effect did this have on real per  
357 capita GDP? In most provinces, the effects were comparable to those experienced  
358 during the 2008 global financial crisis (Fig 8). The estimated post-COVID reductions in  
359 real per capita GDP, illustrated in S1 Fig, and reported in S1 Table, varied by province  
360 and year. The average annual GDP reduction in Alberta during the period 2020-2022,  
361 estimated by comparing actual GDP each year during this period to the counterfactual  
362 obtained by extrapolating the 2015-2019 trend line, and then averaging, was \$4,554  
363 (2017 dollars). The estimated reductions in New Brunswick, Nova Scotia and Prince  
364 Edward Island were less than half this amount. Table 1 provides estimates for other  
365 provinces.

366

367 **Fig 8. Real per capita gross domestic product, in thousands of 2017 dollars, by**  
368 **province and year, 2000-2022.** Data source: GDP: Statistics Canada. Table 36-10-  
369 0222-01 Gross domestic product, expenditure-based, provincial and territorial, annual,  
370 measured in chained (2017) dollars. Population data: Statistics Canada. Table 17-10-  
371 0005-01 Population estimates on July 1, by age and gender. Vertical line indicates the  
372 year that WHO declared the global COVID-19 pandemic. Each graph plots real per  
373 capita GDP for each province, but bolds the real per capita GDP for just one province.  
374

375 Table 1. Estimated effects of the COVID-19 pandemic on real per capita gross domestic  
376 product, life expectancy at birth and life expectancy at 65



average annual reduction, 2020-2022, relative to pre-COVID trend

province	real per capita GDP	life expectancy at birth		life expectancy at 65	
		females	males	females	males
British Columbia	\$ 1,885	0.6	1.1	0.5	0.6
Alberta	\$ 4,554	1.2	1.8	0.4	0.8
Saskatchewan	\$ 3,068	1.5	2.1	0.9	0.7
Manitoba	\$ 2,988	0.5	0.9	0.3	0.5
Ontario	\$ 2,719	0.5	0.6	0.3	0.3
Quebec	\$ 2,090	0.5	0.5	0.3	0.4
New Brunswick	\$ 1,930	0.2	0.1	(0.1)	(0.2)
Nova Scotia	\$ 2,050	(0.1)	0.5	(0.0)	0.2
Prince Edward Island	\$ 1,629				
377 Newfoundland and Labrador	\$ 3,464	1.2	1.2	0.7	0.6

378 Pandemic-attributed changes in the outcome in 2020, 2021 and 2022 were estimated  
 379 by comparing actual outcome values each year to the counterfactual value obtained by  
 380 extrapolating the 2015-2019 trend line. Province and year-specific changes are  
 381 reported in S1 Table.  
 382

### 383 Mortality

384 Fig 9 presents Statistics Canada estimates of COVID-era excess mortality by week and  
 385 province. Given the large weekly variation in provincial mortality rates, I fit median spline  
 386 curves through the data; these help to illustrate seasonal and annual trends. The  
 387 COVID-attributed mortality rate is superimposed, as is the rate of new COVID cases.  
 388 Several patterns emerge from these data. First, there was *negative* estimated excess  
 389 mortality in the Atlantic region during most of the first two years of the pandemic, when  
 390 strict border controls and other social distancing measures were in place. Second,  
 391 COVID-era excess mortality typically exceeds the COVID-attributed mortality reported  
 392 to public health authorities. Third, estimated excess mortality tended to be highest after  
 393 the most stringent social distancing measures were relaxed in July 2022. This mortality

394 surge appears to have been caused by the immune-evasive BA.4 and BA.5 sublineages  
395 of the Omicron variant of SARS-CoV-2. [24,29] In some provinces, like New  
396 Brunswick, the post-July 2022 surges in excess mortality coincided with surges in  
397 COVID-attributed mortality reported by public health authorities. In other provinces, like  
398 Newfoundland, rates of COVID-attributed mortality were very low despite high rates of  
399 excess mortality.

400

401 **Fig 9. New COVID cases and COVID-attributed deaths per 100,000, by province**  
402 **and week, January 2020 - December 2023 and estimated excess deaths per**  
403 **100,000, by province and week, January 2020 - August 2023.** New COVID cases per  
404 100,000 (left-hand side axis) in green. Estimated excess mortality per 100,000 and  
405 median spline fit to these data (right hand side axis) in red. COVID-attributed deaths  
406 per 100,000 (right-hand side axis) in blue. Data source: Public Health Agency of  
407 Canada COVID-19 epidemiology update: Summary. Estimated excess deaths:  
408 Statistics Canada. Table 13-10-0784-01 Provisional weekly estimates of the number of  
409 deaths, expected number of deaths and excess mortality, inactive. All-cause mortality  
410 rates: Statistics Canada. Table 13-10-0768-01 Provisional weekly death counts, by age  
411 group and sex. Population data: Statistics Canada. Table 17-10-0005-01 Population  
412 estimates on July 1, by age and gender.

413

414

415 Fig 10 displays province-level weekly trends in rates of all-cause mortality by sex over  
416 the period 2010-2023. Again, I fit median spline curves to the data given the marked  
417 weekly and seasonal variation. The figure reveals that in several provinces, notably  
418 British Columbia and Ontario, COVID-era excess mortality was higher for males than for  
419 females.

420

421 **Fig 10. Median spline curves fit to province and sex stratified data on all-cause**  
422 **mortality rates per 100,000 population, by week, 2010-2023.** Data source: Statistics  
423 Canada. Table 13-10-0768-01 Provisional weekly death counts, by age group and sex.

424 Population data: Statistics Canada. Table 17-10-0005-01 Population estimates on July  
425 1, by age and gender. Blue line: fitted spline for males. Red line: fitted spline for  
426 females. Vertical line indicates the week that WHO declared the global COVID-19  
427 pandemic.  
428

429 Figs 11 and 12 show trends in life expectancy at birth and at 65, respectively, providing  
430 insights into the sex and age differentiated mortality impacts of the COVID pandemic.

431 Alberta and Saskatchewan experienced the largest reductions in life expectancy at birth  
432 (Fig 11). The estimated reductions, illustrated in Appendix 4 and reported by year in S1  
433 Table and as 3-year averages in Table 1, are also generally larger for males than for  
434 females. For instance, in Alberta, the average annual reduction in life expectancy at  
435 birth during the three pandemic years was 1.8 years for males but 1.2 years for females.

436 The reduction in life expectancy by year in Fig 11 generally matches the spikes in  
437 COVID-attributed observed earlier. For instance, the surge in COVID-attributed  
438 mortality in New Brunswick observed after the easing of controls in 2022 (Fig 6) is  
439 reflected in the reduction in life expectancy for that year. There were exceptions,

440 however. The reductions in life expectancy in Newfoundland were not observed in the  
441 COVID-attributed mortality data. There was also marked variation across provinces in  
442 the impacts of COVID on life expectancy at 65 (Fig 12 and S1 Table). As was the case  
443 for life expectancy at birth, the declines in life expectancy at 65 were largest in  
444 Saskatchewan.

445

446 **Fig 11. Life expectancy at birth, by sex, province and year, 2000-2022.** Data source:  
447 Statistics Canada. Table 13-10-0837-01 Life expectancy and other elements of the  
448 complete life table, single-year estimates, Canada, all provinces except Prince Edward  
449 Island. Blue line: males. Red line: females. Vertical line indicates the year that WHO

450 declared the global COVID-19 pandemic. Each graph plots life expectancy for all 9  
451 provinces, but bolds the life expectancy for just one province or for Canada.  
452

453 **Fig 12. Life expectancy at 65, by sex, province and year, 2000-2022.** Data source:  
454 Statistics Canada. Table 13-10-0837-01 Life expectancy and other elements of the  
455 complete life table, single-year estimates, Canada, all provinces except Prince Edward  
456 Island. Blue line: males. Red line: females. Vertical line indicates the year that WHO  
457 declared the global COVID-19 pandemic. Each graph plots life expectancy for all 9  
458 provinces, but bolds the life expectancy for just one province or for Canada.  
459

## 460 Interpretation

461 Razak and colleagues found that during the first two years of the pandemic (2020 and  
462 2021), compared to its peers, Canada used relatively stringent public health measures,  
463 performed better than most in terms of COVID vaccination rates and excess mortality,  
464 but experienced the largest percentage declines in per capita GDP. [1]

465  
466 This paper uses longer term data to provide insights into provincial level variation in  
467 pandemic responses and outcomes. The provinces varied in their use of the most  
468 stringent public health measures. Compared to Alberta and Saskatchewan, Ontario and  
469 Quebec used stay-at-home orders, strict limits on gatherings and other restrictive public  
470 health measures for longer periods throughout the pandemic. The Atlantic provinces  
471 received the lowest volume of international arrivals in the months prior to the official  
472 start of the pandemic. These provinces were able to contain the pandemic using strict  
473 border controls and short, judiciously applied lockdowns. This perhaps explains why  
474 this region experienced the smallest GDP reductions. The uptake of the primary COVID

475 vaccinations varied from 76% (in Alberta) to 92% (in Newfoundland). Uptake of the  
476 booster vaccinations during 2022 and 2023 was much lower than for the primary series;  
477 there was also greater interprovincial variation. Excess mortality and economic  
478 outcomes differed markedly by province. For example, average annual estimated  
479 changes in female life expectancy at 65 during the years 2020-2022 varied from a small  
480 (0.1 year) increase in New Brunswick to a 0.9 year decrease in Saskatchewan.

481  
482 While this study does not formally estimate the impacts of provincial response  
483 stringency and COVID vaccine uptake on mortality and other outcomes, it does provide  
484 suggestive evidence. The higher excess mortality among males than females – also  
485 observed outside Canada [30] – could be due to the lower male vaccination rates.  
486 Uptake of the primary COVID vaccinations and the booster vaccinations among males  
487 were, respectively, about 2-3 percentage points and 5-6 percentage points lower than  
488 for females. Again, these findings are merely suggestive. These mortality differences  
489 could also be due to sex differences in immune responses to SARS-CoV-2 infection or  
490 compliance with public health restrictions. [31]

491  
492 The data presented here also suggests that the most stringent provincial infection  
493 control measures were effective. The reason is that surges in COVID-attributed  
494 mortality abated after the imposition of these measures. Moreover, outside of Ontario  
495 and Quebec, rates of excess mortality tended to be highest after most stringent infection  
496 control measures were eased in the first half of 2022. At the national level, the lowest  
497 pandemic-era life expectancy values, both at birth and at 65, were observed in 2022.

498 This study also finds the highest excess mortality in Alberta and Saskatchewan,  
499 provinces with the lowest response stringency levels after the first wave of the  
500 pandemic. Compared to Alberta and Saskatchewan, Ontario and Quebec used the  
501 most restrictive public health measures for longer periods throughout the pandemic.  
502 Ontario and Quebec also experienced much lower excess mortality. Again, other  
503 factors could be at play: Alberta and Saskatchewan also had the lowest vaccination  
504 uptake (both primary and booster doses).

505  
506 This study corroborates findings reported elsewhere about apparent underestimation of  
507 COVID mortality rates reported by public health authorities in some provinces. [6] For  
508 instance, the surge in excess mortality in Newfoundland in 2022 was not reflected in the  
509 COVID-attributed mortality data reported by the provincial health authorities.

510  
511 Research on the impacts of provincial infection mitigation strategies and vaccine  
512 uptake, some of which is already appearing in the literature, [32,33] will help to inform  
513 government responses to future pandemics. This research enterprise should use  
514 methods that overcome the limitations of the excess mortality approach used in this  
515 study. In some provinces, the variability in GDP and life expectancy in the years before  
516 the pandemic makes it challenging to predict what outcomes would have been in the  
517 absence of the pandemic. The excess mortality approach also cannot distinguish the  
518 causes of pandemic-era excess mortality and whether these causes of death were  
519 influenced by the pandemic. For instance, it is unclear to what extent excess mortality

520 is due to opioid toxicity and whether these tragic deaths were in part caused by the  
521 pandemic or would have occurred anyways.

522

## 523 Conclusion

524 Canada's provinces used markedly different approaches to controlling the spread of  
525 SARS-CoV-2 infection; rates of primary COVID vaccine uptake also varied across  
526 provinces. The provinces also experienced markedly different excess mortality and  
527 economic outcomes. These outcomes appear to be related to provincial responses. To  
528 better prepare for future pandemics, additional research should help elucidate the  
529 mechanisms linking these province-level responses to outcomes.

530

## 531 Acknowledgments

532 The author thanks seminar participants at the Institute for Pandemics (University of  
533 Toronto) and especially Mehdi Ammi, Nelson Lee, Alexander Meek, and Sharifa  
534 Nasreen for helpful comments.

535

## 536 References

537 1. Razak F, Shin S, Naylor CD, Slutsky AS. Canada's response to the initial 2 years  
538 of the COVID-19 pandemic: a comparison with peer countries. CMAJ Canadian

- 539 Medical Association Journal. 2022;194: E870–E877.  
540 doi:10.1503/CMAJ.220316/TAB-RELATED-CONTENT
- 541 2. Silverstein WK, Stroud L, Cleghorn GE, Leis JA. First imported case of 2019  
542 novel coronavirus in Canada, presenting as mild pneumonia. *Lancet*. 2020;395:  
543 734. doi:10.1016/S0140-6736(20)30370-6
- 544 3. Cucinotta D, Vanelli M. WHO Declares COVID-19 a Pandemic. *Acta Biomed*.  
545 2020;91: 157–160. doi:10.23750/ABM.V91I1.9397
- 546 4. Cameron-Blake E, Breton C, Tatlow H, Hale T, Wood A, Smith J, et al. Variation  
547 in the Canadian provincial and territorial responses to COVID-19. 2021. Report  
548 No.: BSG-WP 2021/039. doi:10.1038/s41562-021-01079-8
- 549 5. Detsky AS, Bogoch II. COVID-19 in Canada: Experience and Response. *JAMA*.  
550 2020;324: 743–744. doi:10.1001/JAMA.2020.14033
- 551 6. McGrail K. Excess mortality, COVID-19 and health care systems in Canada.  
552 *CMAJ*. 2022;194: E741–E745. doi:10.1503/CMAJ.220337
- 553 7. Statistics Canada. Table 24-10-0053-01 International travellers entering or  
554 returning to Canada, by type of transportation and traveller type. [cited 4 May  
555 2024]. Available: <https://doi.org/10.25318/2410005301-eng>
- 556 8. Statistics Canada. National Travel Survey, 2022: Trip file [Canada]. [cited 2 May  
557 2024]. Available: [https://odesi.ca/en/details?id=/odesi/doi\\_\\_10-  
558 5683\\_SP3\\_LEVP0M.xml](https://odesi.ca/en/details?id=/odesi/doi__10-5683_SP3_LEVP0M.xml)
- 559 9. Hale T, Angrist N, Goldszmidt R, Kira B, Petherick A, Phillips T, et al. A global  
560 panel database of pandemic policies (Oxford COVID-19 Government Response



- 561 Tracker). *Nature Human Behaviour* 2021 5:4. 2021;5: 529–538.
- 562 doi:10.1038/s41562-021-01079-8
- 563 10. Methodology for calculating indices. COVID policy tracker · GitHub. [cited 26 Mar  
564 2024]. Available: [https://github.com/OxCGRT/covid-policy-](https://github.com/OxCGRT/covid-policy-tracker/blob/master/documentation/index_methodology.md)  
565 [tracker/blob/master/documentation/index\\_methodology.md](https://github.com/OxCGRT/covid-policy-tracker/blob/master/documentation/index_methodology.md)
- 566 11. Cheung C, Lyons J, Madsen B, Miller S, Sheikh S. The Bank of Canada  
567 COVID-19 stringency index: measuring policy response across provinces. 2021  
568 [cited 24 Mar 2024]. doi:10.34989/SAN-2021-1
- 569 12. Public Health Agency of Canada. COVID-19 epidemiology update: Summary.  
570 [cited 26 Mar 2024]. Available: [https://health-](https://health-infobase.canada.ca/src/data/covidLive/covid19-download.csv)  
571 [infobase.canada.ca/src/data/covidLive/covid19-download.csv](https://health-infobase.canada.ca/src/data/covidLive/covid19-download.csv)
- 572 13. Public Health Agency of Canada. Canadian COVID-19 vaccination coverage  
573 report. In: Ottawa: Public Health Agency of Canada [Internet]. [cited 24 Mar 2024].  
574 Available: <https://health-infobase.canada.ca/covid-19/vaccination-coverage/>
- 575 14. Statistics Canada. Table 36-10-0222-01 Gross domestic product, expenditure-  
576 based, provincial and territorial, annual (x 1,000,000). [cited 24 Mar 2024].  
577 doi:<https://doi.org/10.25318/3610022201-eng>
- 578 15. Statistics Canada. Provisional weekly estimates of the number of deaths,  
579 expected number of deaths and excess mortality, inactive. [cited 21 Jun 2024].  
580 doi:<https://doi.org/10.25318/1310078401-eng>
- 581 16. Tam DY, Qiu F, Manoragavan R, Fremes SE, Hassan A, Ko DT, et al. The Impact  
582 of the COVID-19 Pandemic on Cardiac Procedure Wait List Mortality in Ontario,  
583 Canada. *Can J Cardiol*. 2021;37: 1547–1554. doi:10.1016/J.CJCA.2021.05.008

- 584 17. Yasin YJ, Grivna M, Abu-Zidan FM. Global impact of COVID-19 pandemic on  
585 road traffic collisions. *World Journal of Emergency Surgery*. 2021;16: 1–14.  
586 doi:10.1186/S13017-021-00395-8/TABLES/2
- 587 18. Statistics Canada. Table 13-10-0768-01 Provisional weekly death counts, by age  
588 group and sex. [cited 24 Mar 2024]. doi:<https://doi.org/10.25318/1310076801-eng>
- 589 19. Statistics Canada. Table 17-10-0005-01 Population estimates on July 1, by age  
590 and gender. [cited 24 Mar 2024]. doi:<https://doi.org/10.25318/1710000501-eng>
- 591 20. Statistics Canada. Methods for Constructing Life Tables for Canada, Provinces  
592 and Territories. [cited 9 May 2024]. Available:  
593 <https://www150.statcan.gc.ca/n1/pub/84-538-x/84-538-x2023001-eng.htm>
- 594 21. Statistics Canada. Table 13-10-0837-01 Life expectancy and other elements of  
595 the complete life table, single-year estimates, Canada, all provinces except Prince  
596 Edward Island. [cited 24 Mar 2024]. doi:<https://doi.org/10.25318/1310083701-eng>
- 597 22. StataCorp. *Stata Statistical Software: Release 17*. College Station, TX: StataCorp  
598 LLC.; 2021.
- 599 23. Detsky AS, Bogoch II. COVID-19 in Canada: Experience and Response to Waves  
600 2 and 3. *JAMA*. 2021;326: 1145–1146. doi:10.1001/JAMA.2021.14797
- 601 24. Detsky AS, Bogoch II. COVID-19 in Canada—The Fourth Through Seventh  
602 Waves. *JAMA Health Forum*. 2022;3: e224160–e224160.  
603 doi:10.1001/JAMAHEALTHFORUM.2022.4160
- 604 25. Ogden NH, Turgeon P, Fazil A, Clark J, Gabriele-Rivet V, Tam T, et al.  
605 Counterfactuals of effects of vaccination and public health measures on COVID-

- 606 19 cases in Canada: What could have happened? *Can Commun Dis Rep.*  
607 2022;48: 292. doi:10.14745/ccdr.v48i78a01
- 608 26. Where provinces and territories stand on travel restrictions as Omicron concerns  
609 rise | CBC News. [cited 4 Apr 2024]. Available:  
610 [https://www.cbc.ca/news/canada/provinces-territories-travel-restrictions-covid-](https://www.cbc.ca/news/canada/provinces-territories-travel-restrictions-covid-1.6284713)  
611 [1.6284713](https://www.cbc.ca/news/canada/provinces-territories-travel-restrictions-covid-1.6284713)
- 612 27. WestJet cutting flights to Atlantic Canada, laying off staff | CTV News. [cited 30  
613 Mar 2024]. Available: [https://atlantic.ctvnews.ca/westjet-cutting-flights-to-atlantic-](https://atlantic.ctvnews.ca/westjet-cutting-flights-to-atlantic-canada-laying-off-staff-1.5144448)  
614 [canada-laying-off-staff-1.5144448](https://atlantic.ctvnews.ca/westjet-cutting-flights-to-atlantic-canada-laying-off-staff-1.5144448)
- 615 28. Kholina K, Harmon SHE, Graham JE. An equitable vaccine delivery system:  
616 Lessons from the COVID-19 vaccine rollout in Canada. *PLoS One.* 2022;17:  
617 e0279929. doi:10.1371/JOURNAL.PONE.0279929
- 618 29. Lee N, Nguyen L, Austin PC, Brown KA, Grewal R, Buchan SA, et al. Protection  
619 Conferred by COVID-19 Vaccination, Prior SARS-CoV-2 Infection, or Hybrid  
620 Immunity Against Omicron-Associated Severe Outcomes Among Community-  
621 Dwelling Adults. *Clinical Infectious Diseases.* 2024;78: 1372–1382.  
622 doi:10.1093/CID/CIAD716
- 623 30. Peckham H, de Gruijter NM, Raine C, Radziszewska A, Ciurtin C, Wedderburn  
624 LR, et al. Male sex identified by global COVID-19 meta-analysis as a risk factor  
625 for death and ITU admission. *Nat Commun.* 2020;11. doi:10.1038/S41467-020-  
626 19741-6

- 627 31. Gebhard C, Regitz-Zagrosek V, Neuhauser HK, Morgan R, Klein SL. Impact of  
628 sex and gender on COVID-19 outcomes in Europe. *Biology of Sex Differences*  
629 2020 11:1. 2020;11: 1–13. doi:10.1186/S13293-020-00304-9
- 630 32. Meek A. Effects of non-pharmaceutical interventions on the death rates from  
631 COVID-19 in Canada. *Social Sciences & Humanities Open*. 2023;7.  
632 doi:10.1016/J.SSAHO.2023.100449
- 633 33. Ammi M, Desson ZW, Doumbia MZ. Non-pharmaceutical interventions and  
634 vaccination during COVID-19 in Canada: Implications for COVID and non-COVID  
635 outcomes. *Health Policy Technol*. 2024;13: 100801.  
636 doi:10.1016/J.HLPT.2023.100801  
637

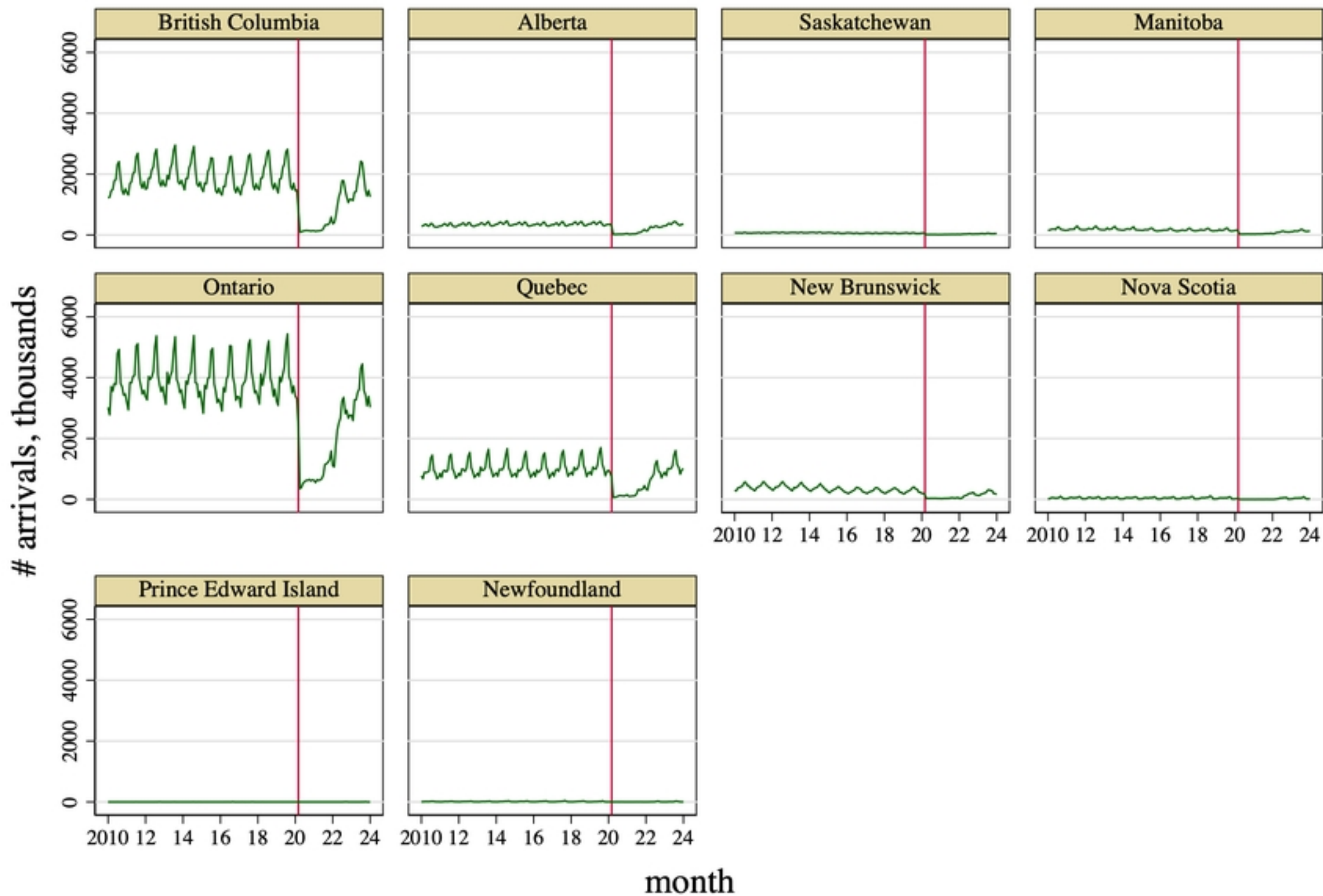
## 638 Supporting information

639 **S1 Fig. Real per capita gross domestic product, by province and year, 2010-2022,**  
640 **and projected real per capita gross domestic product during 2020-2022 based on**  
641 **2015-2019 trend line.** Data source: GDP: Statistics Canada. Table 36-10-0222-  
642 01 Gross domestic product, expenditure-based, provincial and territorial, annual.  
643 Population data: Statistics Canada. Table 17-10-0005-01 Population estimates on July  
644 1, by age and gender. Green line: 2015-2019 trend. Vertical line indicates the year that  
645 WHO declared the global COVID-19 pandemic. Each graph plots real per capita GDP  
646 for each province, but bolds the real per capita GDP for just one province.  
647

648 **S2 Fig. Life expectancy at birth, by sex, province and year, 2010-2022, and**  
649 **projected life expectancy at birth during 2020-2022 based on 2015-2019 trend line.**  
650 Data source: Statistics Canada. Table 13-10-0837-01 Life expectancy and other  
651 elements of the complete life table, single-year estimates, Canada, all provinces except  
652 Prince Edward Island. Blue line: males. Red line: females. Green line: 2015-2019 trend.  
653 Vertical line indicates the year that WHO declared the global COVID-19 pandemic.  
654 Each graph plots life expectancy for each province, but bolds life expectancy for just  
655 one province.  
656

657 **S3 Fig. Life expectancy at 65, by sex, province and year, 2010-2022, and projected**  
658 **life expectancy at 65 during 2020-2022 based on 2015-2019 trend line.** Data source:  
659 Statistics Canada. Table 13-10-0837-01 Life expectancy and other elements of the  
660 complete life table, single-year estimates, Canada, all provinces except Prince Edward  
661 Island. Blue line: males. Red line: females. Green line: 2015-2019 trend. Vertical line  
662 indicates the year that WHO declared the global COVID-19 pandemic. Each graph  
663 plots life expectancy for each province, but bolds life expectancy for just one province.  
664

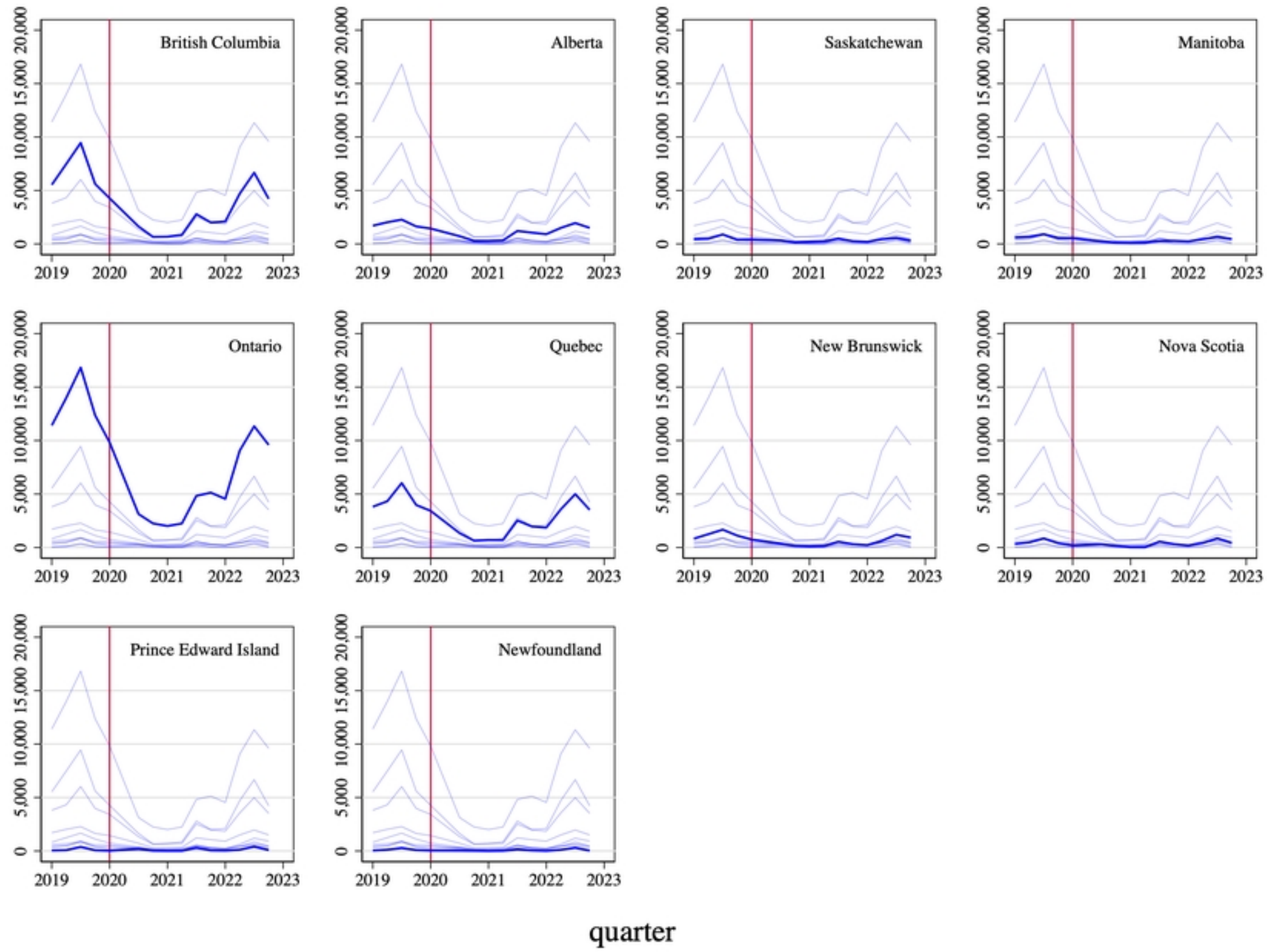
665 **S1 Table. Estimated post-pandemic changes in outcomes along with 95%**  
666 **confidence intervals, by province, year, 2020-2022, and outcome (real per capita**  
667 **gross domestic product, life expectancy at birth, life expectancy at 65).** Note: the  
668 province-year estimates were obtained by estimating, using annual data from 2015-  
669 2022 for each province, a linear regression of the outcome variable on a linear time  
670 trend and separate indicator variables for 2020, 2021 and 2022 years.  
671



Graphs by destination province

Figure

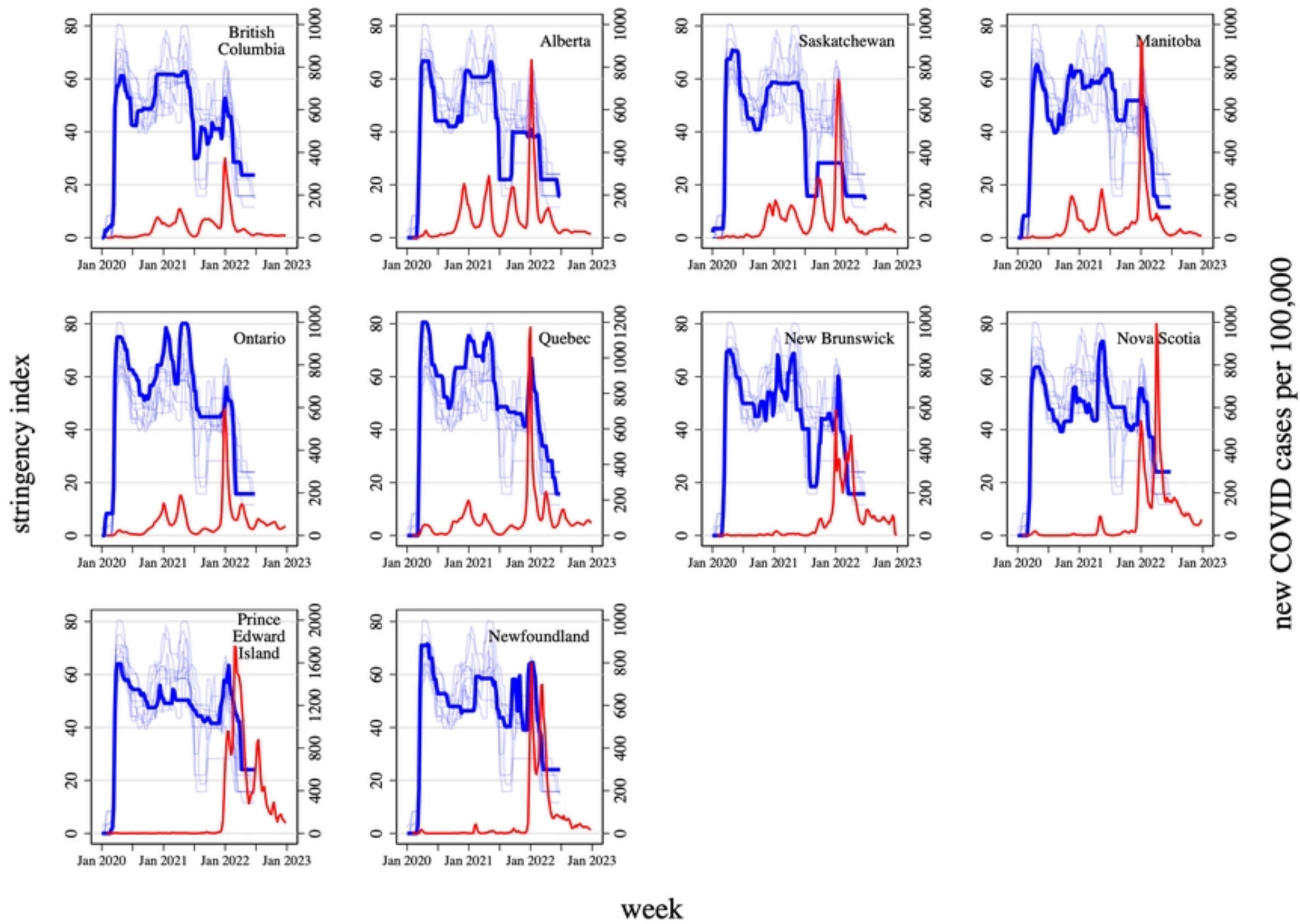
# arrivals into province, thousands



quarter

Figure

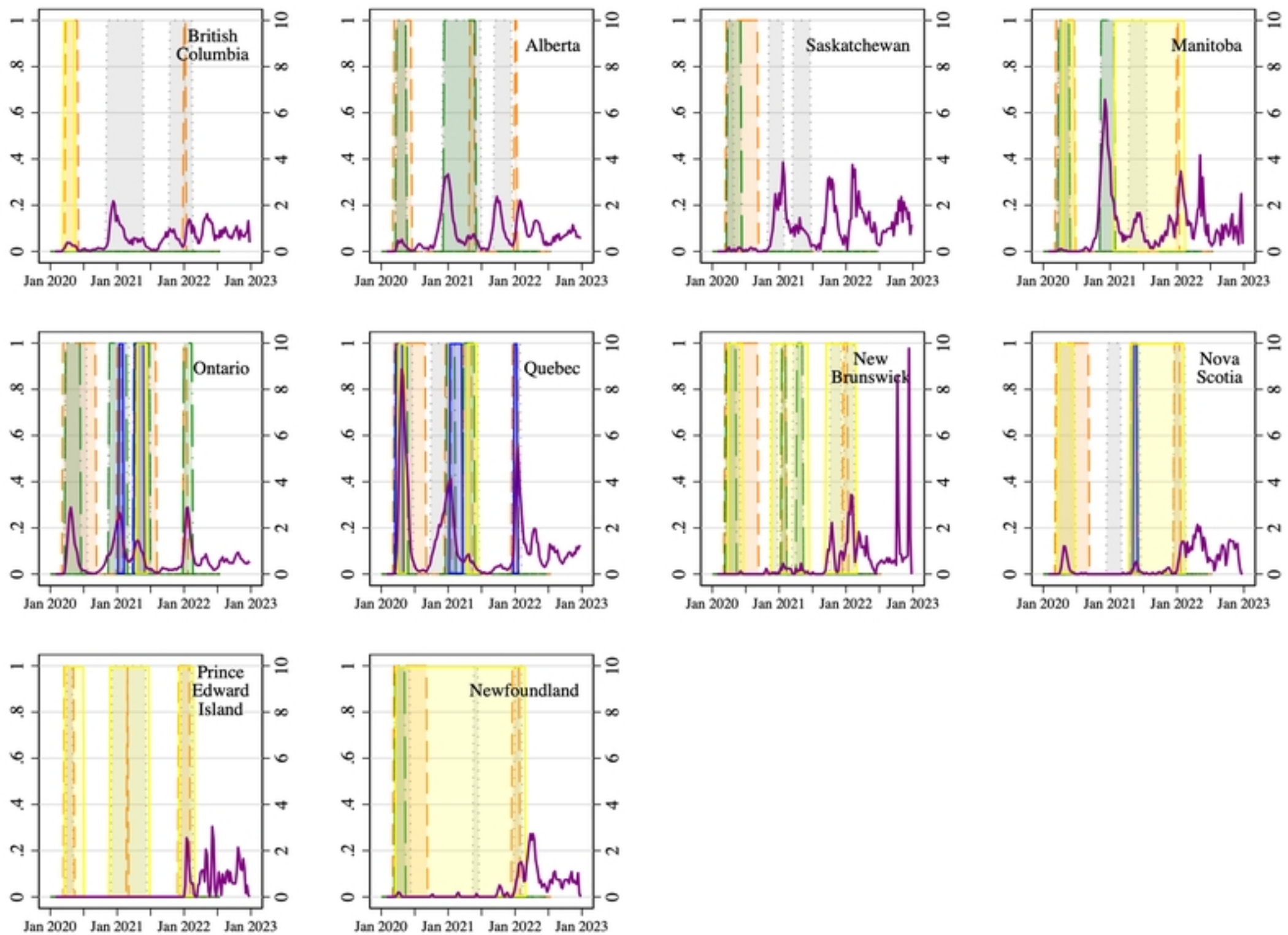




Figure



weeks with restrictions in place

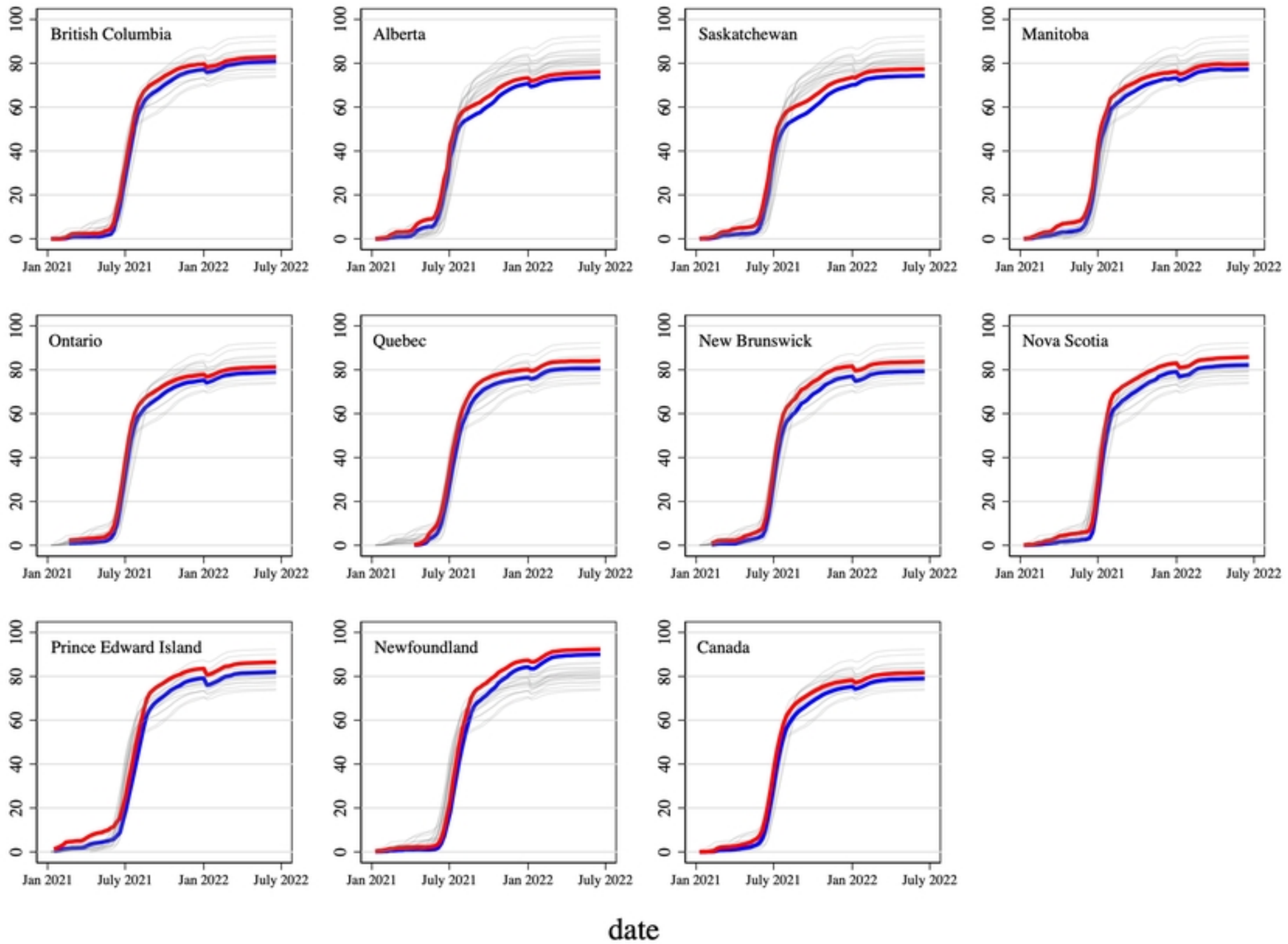


week

new COVID deaths per 100,000

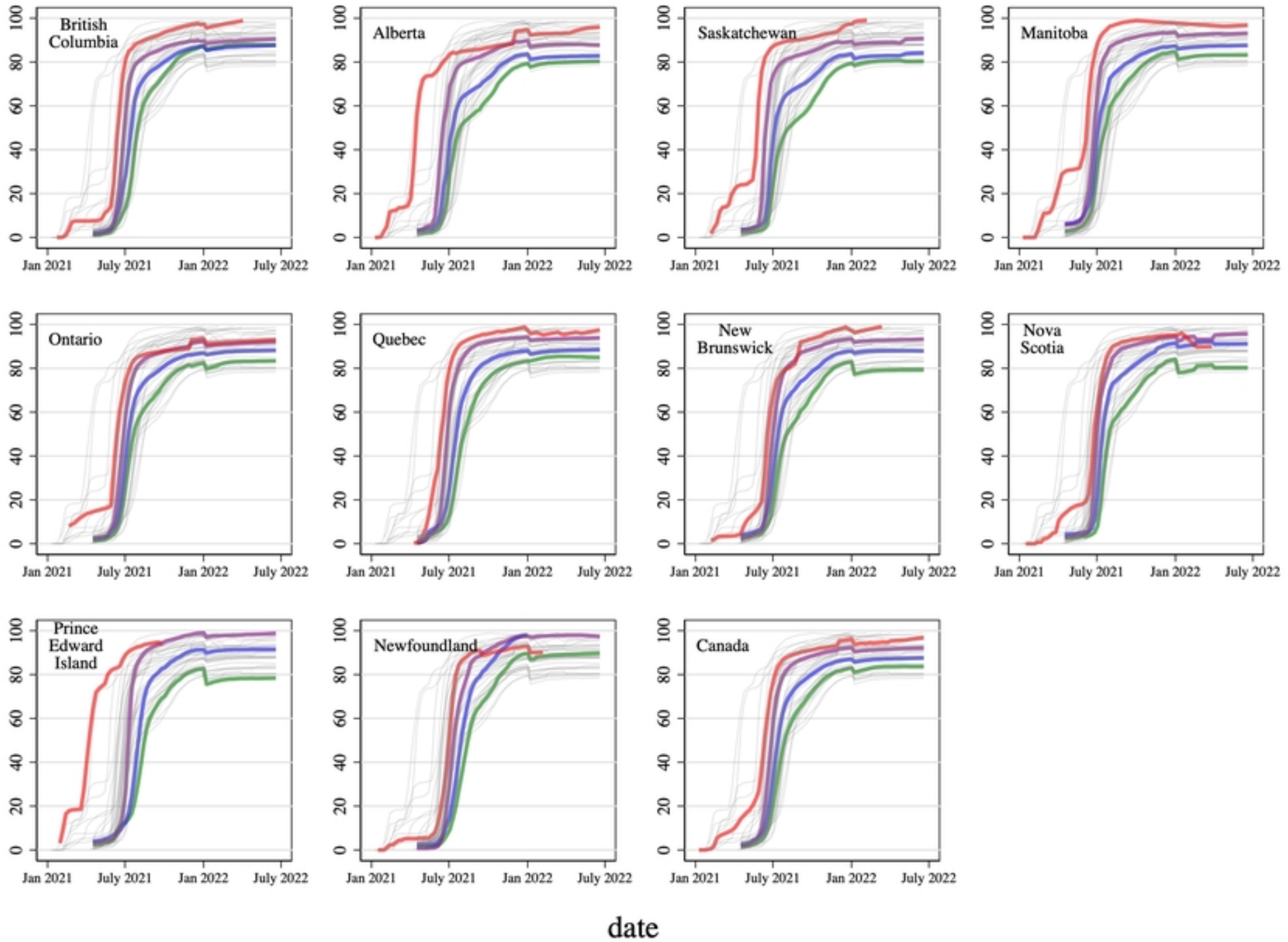
Figure

percentage fully vaccinated



Figure

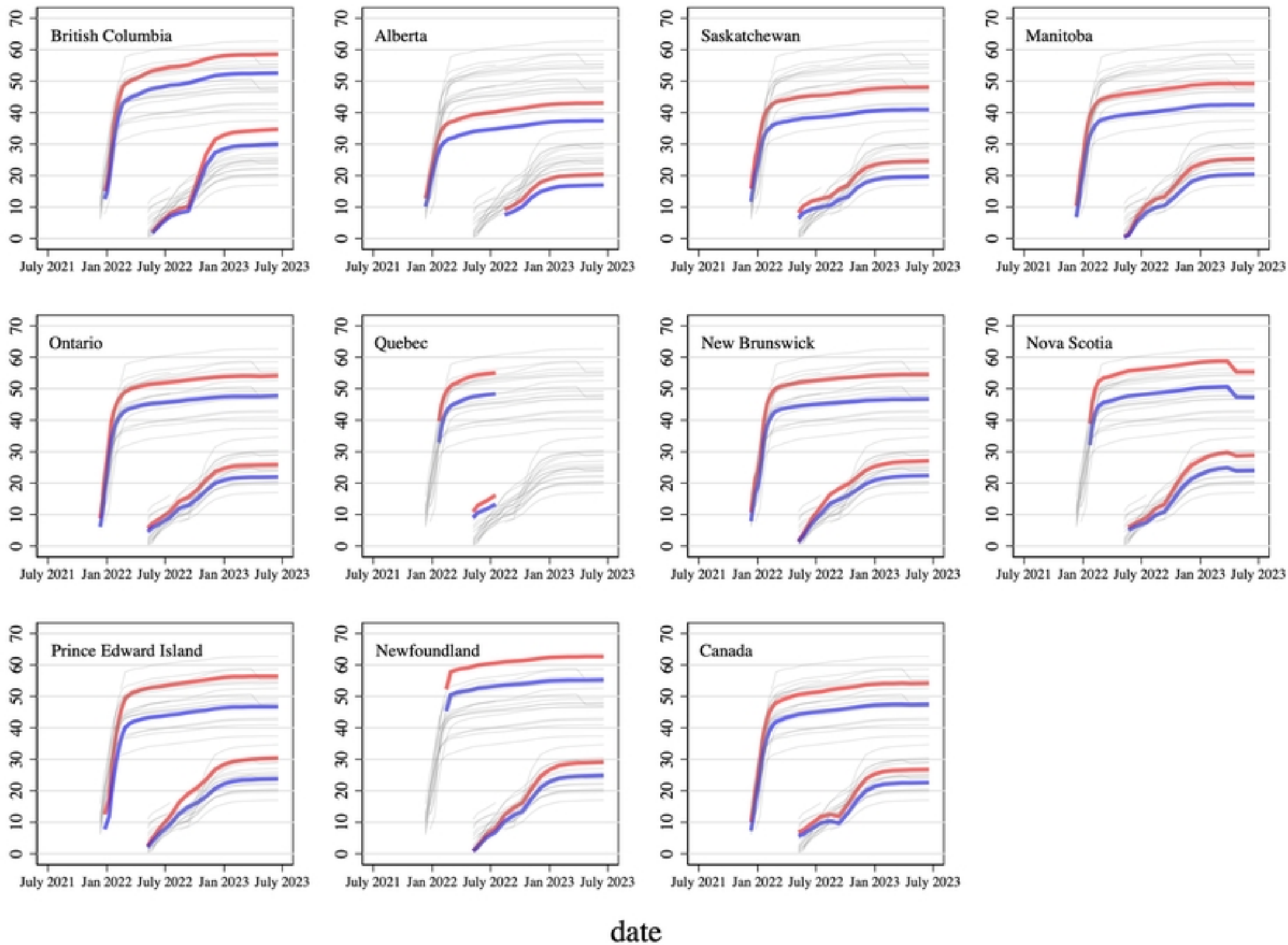
percentage fully vaccinated



Figure

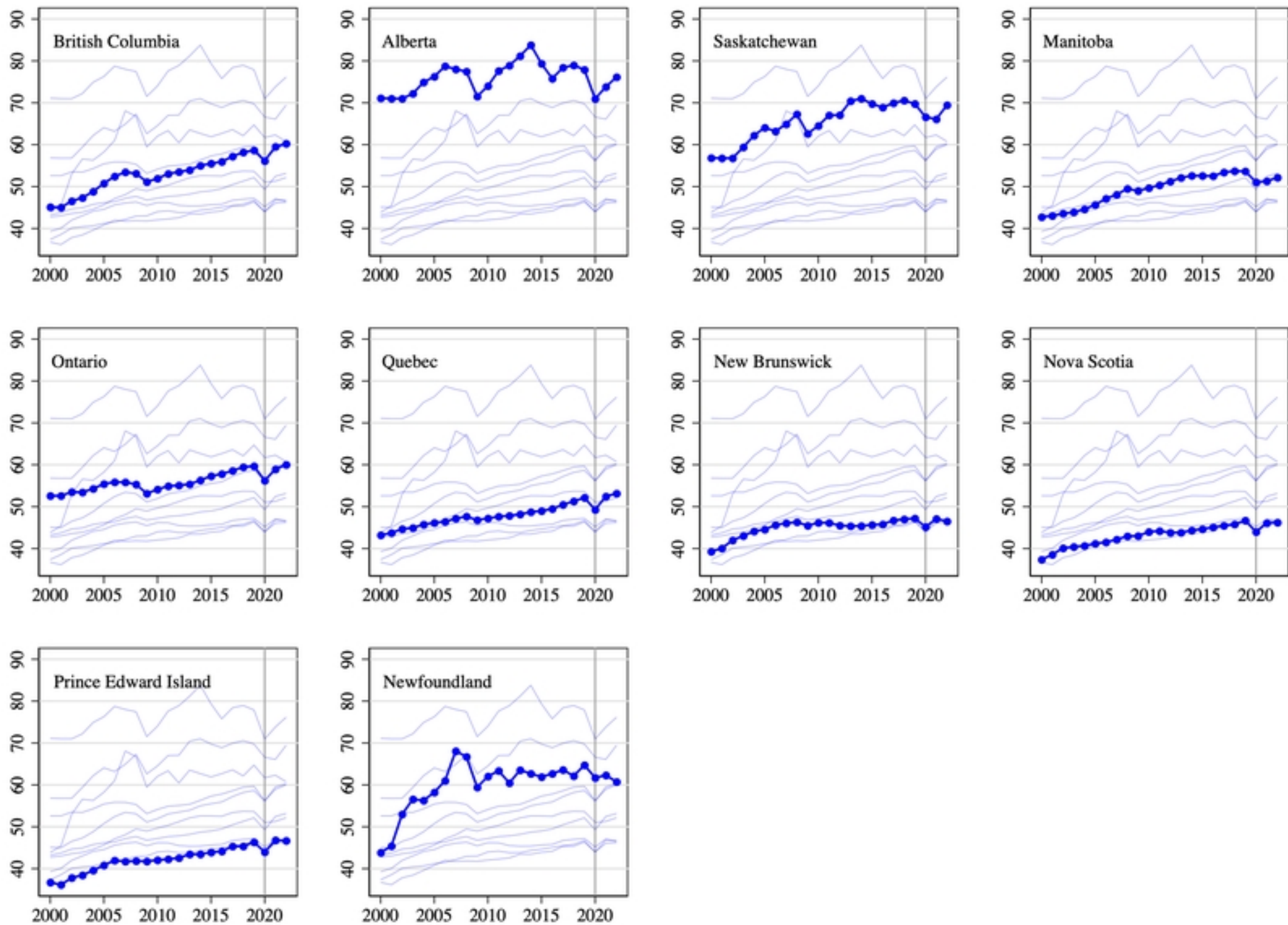


percentage with boosters



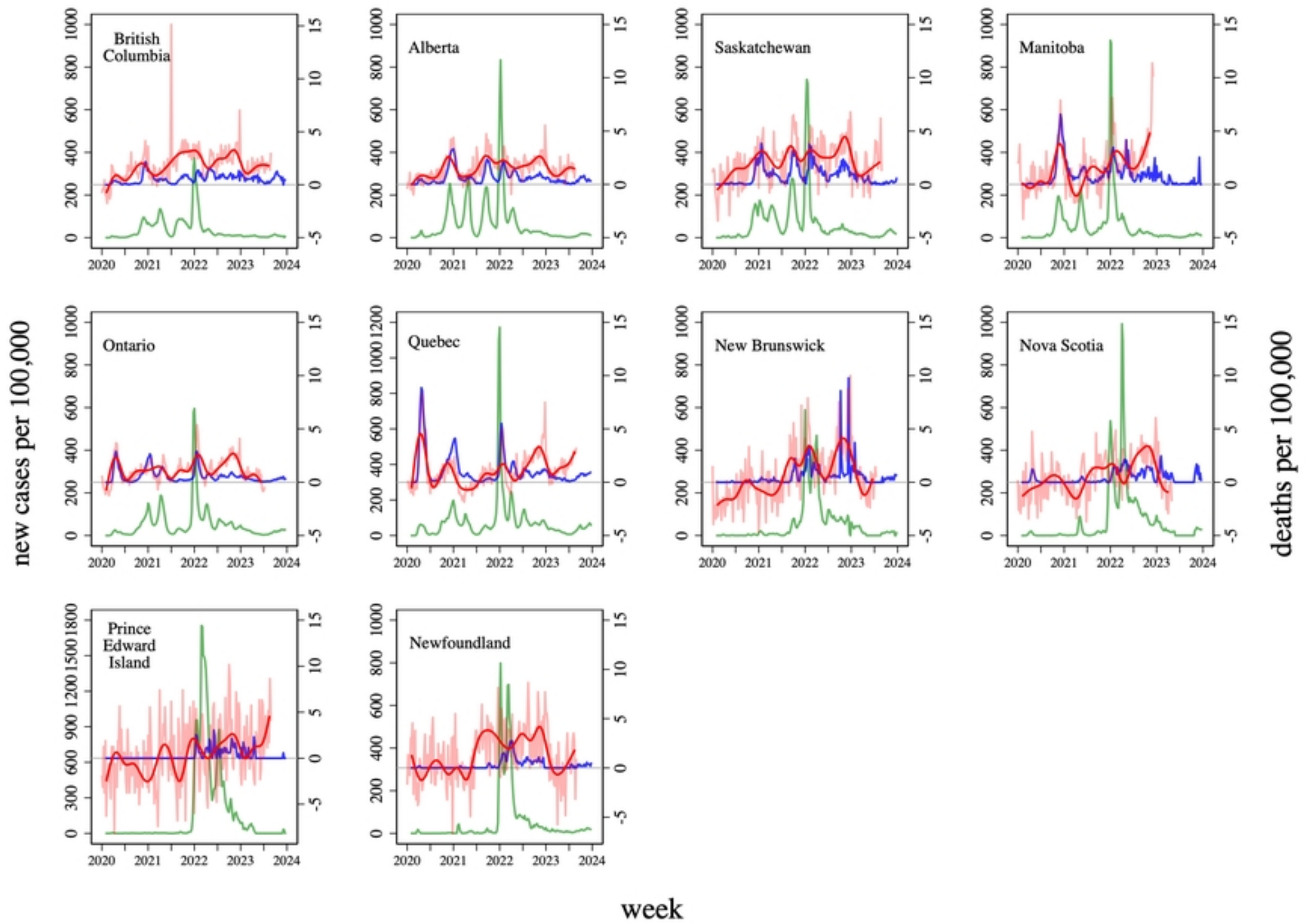
Figure

per capita gross domestic product  
thousands of 2017 dollars



year

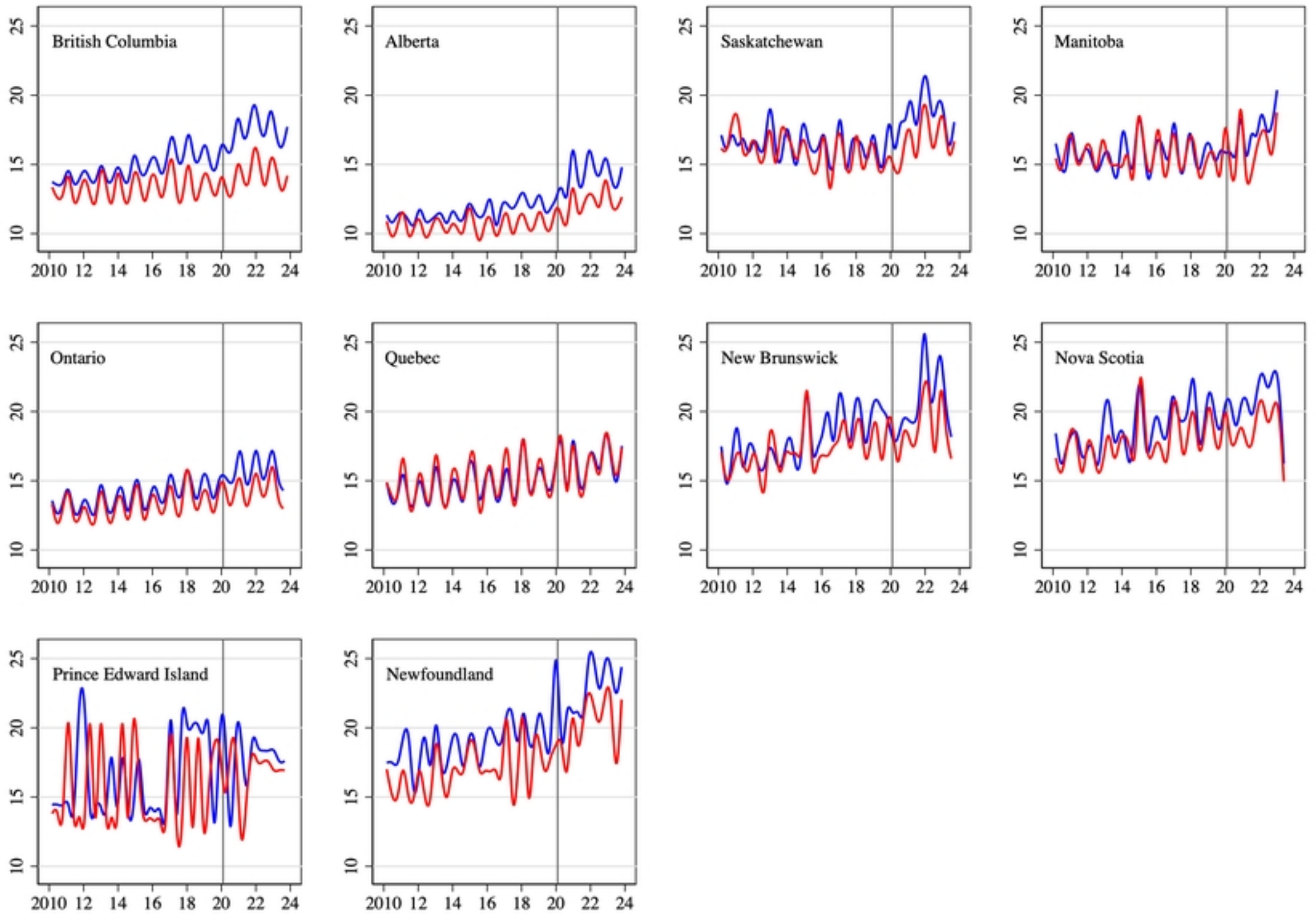
Figure



Figure



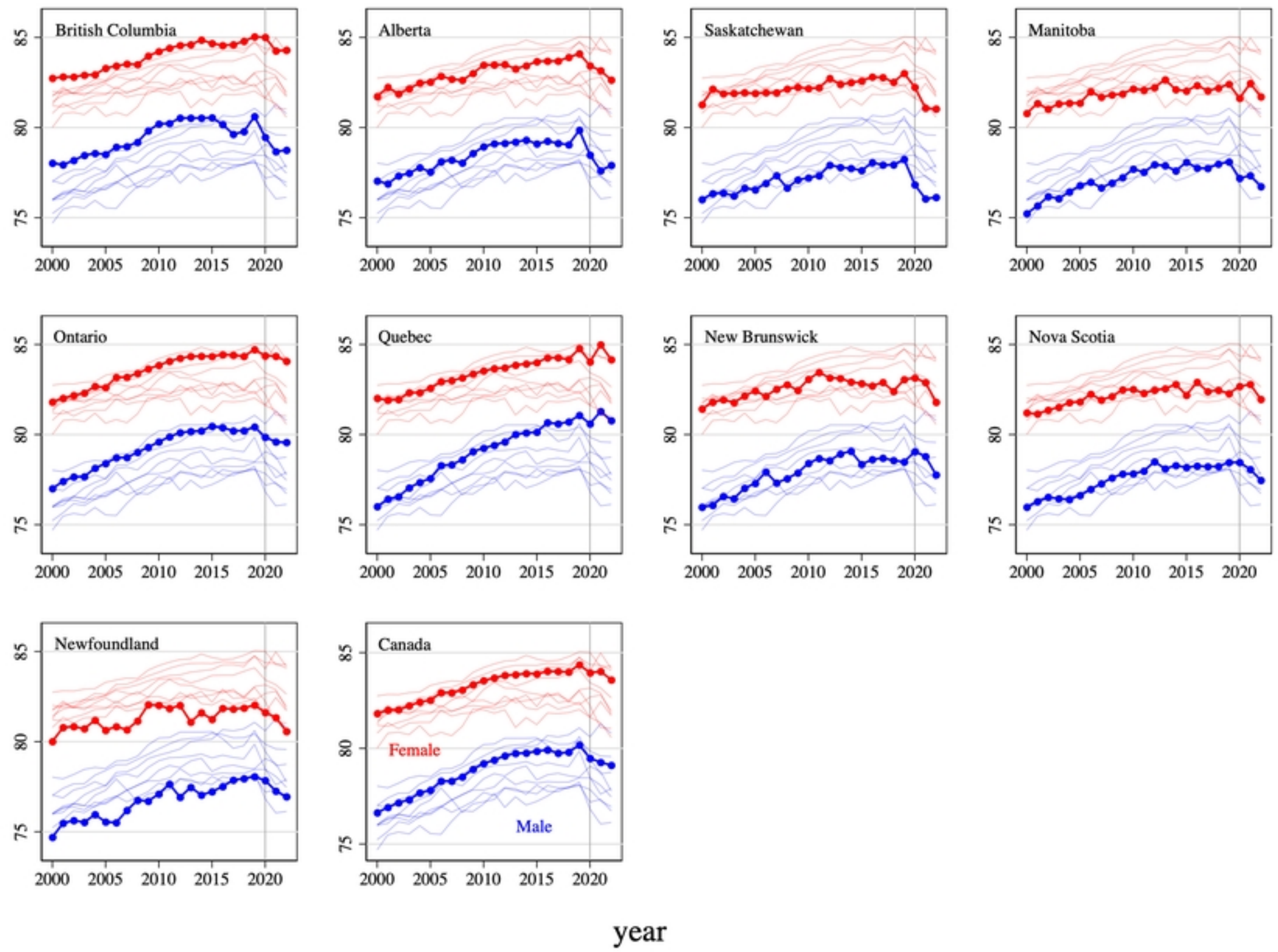
mortality rate per 100,000



week

Figure

life expectancy at birth

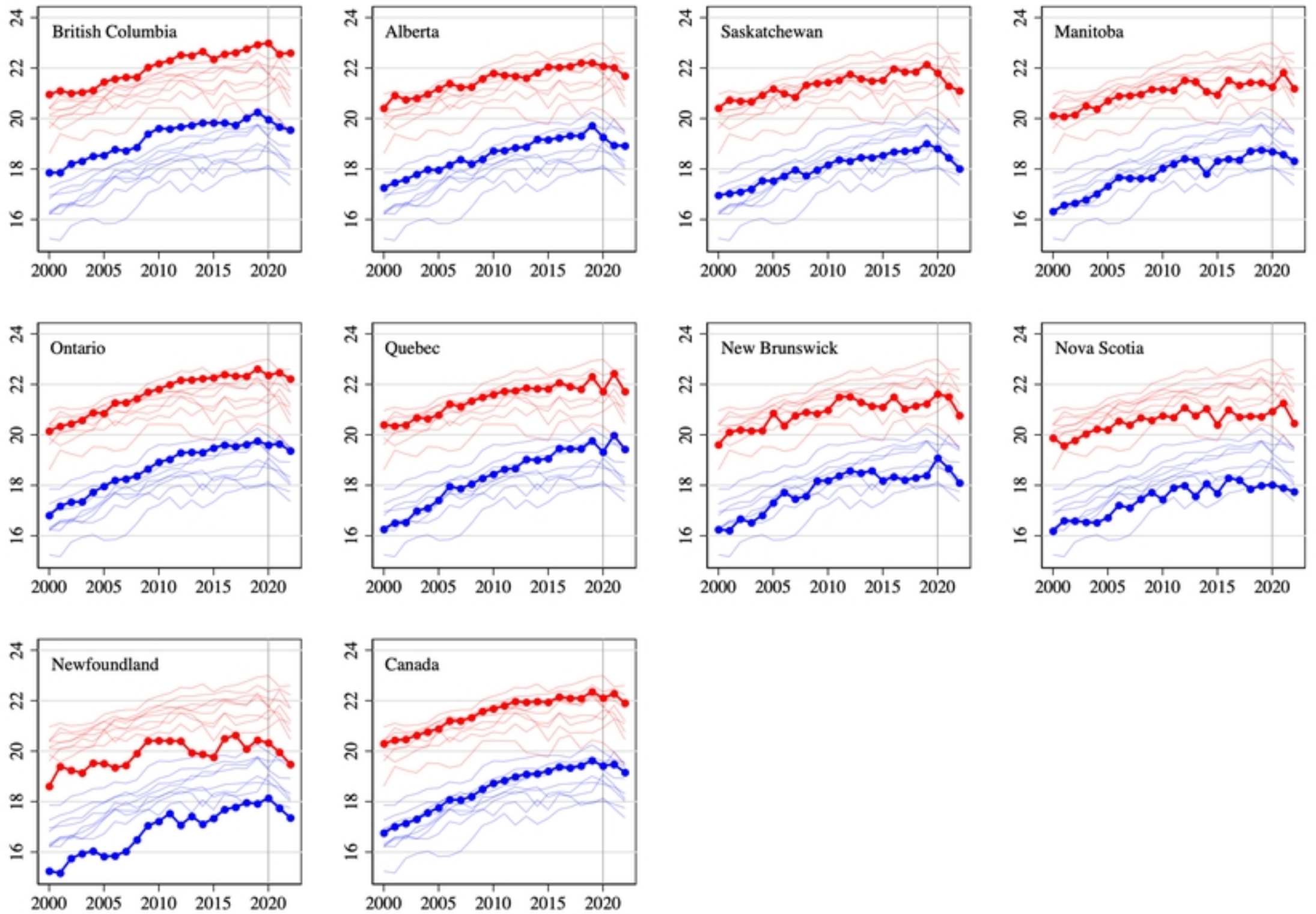


year

Figure



life expectancy at 65



year

Figure