

1 **Misalignment between circadian preference and accelerometer-derived actual sleep-**
2 **wake cycle is associated with increased risk of cardiometabolic diseases: a prospective**
3 **cohort study in UK Biobank**

4 Yue Chen¹, MSc; Tingting Geng², MD, PhD; Xinming Xu¹, B.S.; Zhicheng Zhang¹, MSc;
5 Lili Huang¹, PhD; Haiyang Dong¹, B.S.; Huan Yu^{4,5,6}, MD, PhD; Xiang Gao^{1*}, MD, PhD;
6 Liang Sun^{1*}, MD, PhD;

7

8 ¹ Department of Nutrition and Food Hygiene, School of Public Health, Institute of Nutrition,
9 Clinical Research Unit, Institute of Clinical Medicine, Zhongshan Hospital, Fudan
10 University, Shanghai, China

11 ² Department of Epidemiology and Biostatistics, Ministry of Education Key Laboratory of
12 Environment and Health, School of Public Health, Tongji Medical College, Huazhong
13 University of Science and Technology, Wuhan, Hubei Province, China

14 ³ Sleep and Wake Disorders Center of Fudan University, Shanghai, China

15 ⁴ Department of Neurology, Huashan Hospital, Fudan University, Shanghai, China

16 ⁵ National Center for Neurological Disorders, Huashan Hospital, Fudan University, Shanghai,
17 China

18

19 * Corresponding authors:

20 Liang Sun, MD, PhD

21 Department of Nutrition and Food Hygiene, School of Public Health, Institute of Nutrition,

22 Clinical Research Unit, Institute of Clinical Medicine, Zhongshan Hospital, Fudan

NOTE: This preprint reports new research that has not been certified by peer review and should not be used to guide clinical practice.

23 University, 130 Dongan Rd, Shanghai 200032, China; Email: sun_liang@fudan.edu.cn

24 Xiang Gao, MD, PhD

25 Department of Nutrition and Food Hygiene, School of Public Health, Institute of Nutrition,

26 Clinical Research Unit, Institute of Clinical Medicine, Zhongshan Hospital, Fudan

27 University, 130 Dongan Rd, Shanghai 200032, China; Email: xiang_gao@fudan.edu.cn

28

29

30 **Short title:** circadian misalignment and cardiometabolic diseases

31 **Word count:** 8436 (including Title Page, Abstract, Text, References, Tables and Figures

32 Legends)

33 **Abstract (349 words)**

34 **Background:** Evidence has linked several circadian disruption indicators, such as social
35 jetlag and shift work, to adverse health outcomes, however, associations of misalignment
36 between circadian preference and actual sleep-wake cycle with cardiometabolic diseases
37 (CMDs) remains unclear. We aimed to prospectively investigate the associations of the
38 circadian misalignment with CMDs including type 2 diabetes (T2D), chronic heart diseases
39 (CHD), and stroke, and to uncover potential mechanisms linking circadian misalignment and
40 CMDs.

41 **Methods:** A total of 60,965 participants from the UK Biobank study without baseline CMDs
42 and followed-up for an average of 7.9 years were included in the current analysis. Circadian
43 misalignment was defined as discrepancies between self-reported chronotype and
44 accelerometer-derived midpoint of sleep to detect its association with CMDs. Incident CMDs
45 were derived from primary care, hospital inpatient, death registry, and self-reported source of
46 data. Cox proportional hazards regression models were used to compute the hazard ratio (HR)
47 and confidence intervals (CIs) on the association between circadian misalignment (quintiles
48 of residuals of midsleep on chronotype) and incident CMDs.

49 **Results:** U-shaped associations were found of the circadian misalignment with incident T2D
50 and CHD after adjusting the potential confounders. Compared to individuals with aligned
51 midsleep and circadian preferences (Q3), those with advanced and delayed circadian
52 misalignment had higher risks of T2D [HR (95%CI) 1.22 (1.03, 1.45) in Q1 and 1.39 (1.18,
53 1.62) in Q5]. However, only delayed circadian misalignment was significantly associated
54 with an increased risk of CHD [HR (95%CI) 1.15 (1.01, 1.31) in Q4 and 1.16 (1.02, 1.33) in

55 Q5]. Liver function, lipid and glucose metabolism, and inflammatory markers partially
56 explained the observed circadian misalignment and CMDs association (mediation proportion
57 12.3-44.6% for T2D, 8.8-20.5% for CHD). Moreover, the association between delayed
58 circadian misalignment and CMDs was more prominent in women (for T2D, $P_{interaction}=0.03$)
59 and in younger adults (for CHD, $P_{interaction}=0.02$) compared to their counterparts.
60 Additionally, early chronotype [HR (95%CI): 1.19 (1.06, 1.34)] rather than late chronotype
61 was associated with an increased risk of incident T2D.

62 **Conclusion:** Both advanced and delayed circadian misalignment were associated with
63 increased risks of CMDs, suggesting potential benefits of aligning actual sleep-wake cycles
64 with individual circadian preferences.

65

66 **Keywords:** circadian misalignment, chronotype, diabetes, cardiometabolic diseases, UK
67 Biobank

68

69

70 **Novelty and Significance**

71 **What is known?**

- 72 • Cardiometabolic diseases such as type 2 diabetes, coronary heart disease, and
73 cerebrovascular diseases have become major concerns in global public health over
74 recent decades.
- 75 • Evidence has linked several circadian disruption indicators to adverse health
76 outcomes: People living with late chronotype (circadian preference), late sleep
77 timing, long social jetlag (the difference between midsleep on work-free days and
78 work days), and shift work were prone to introduce circadian disruptions and had
79 higher risks of cardiometabolic diseases.
- 80 • Little is known about whether and how the misalignment between circadian
81 preference and actual sleep-wake cycle is associated with cardiometabolic
82 diseases, particularly in large prospective cohort studies.

83 **What New Information Does This Article Contribute?**

- 84 • This is the first study to propose a new metrics (misalignment between circadian
85 preference and actual sleep-wake cycle) to shed some lights on quantifying human
86 circadian disruption in general population of differed work schedule and in
87 population with less disrupted circadian rhythm.
- 88 • Both advanced and delayed sleep-wake cycle comparing to individual circadian
89 preference were associated with increased risks of cardiometabolic diseases.

90 Population may benefit from keeping an actual sleep-wake cycle in accordance

91 with their circadian preference.

92 • Early chronotype rather than late chronotype were found to associate with an

93 increased risk of incident T2D, independent of actual sleep-wake cycle.

94 • Age and sex modified the associations between circadian misalignment and

95 cardiometabolic diseases, while liver function, lipid and glucose metabolism, and

96 inflammatory markers partially mediated the associations.

97 **Introduction**

98 Cardiometabolic diseases (CMDs) such as type 2 diabetes (T2D), coronary heart
99 disease (CHD), and cerebrovascular diseases have become major concerns in global
100 public health over recent decades¹. The multifactorial nature of the etiology of these
101 diseases involves a complex interplay of genetic, lifestyle, and environmental factors,
102 presenting great challenges on the prevention and prognosis of CMDs². Therefore,
103 more efforts are needed to develop potential strategies to combat this escalating
104 phenomenon.

105 Circadian disruption indicated a wide range of misalignment upon individual
106 internal-internal timing as well as internal-external rhythm³. In field-based studies,
107 metrics for circadian disruption mainly rely on rest-activity measurement and
108 disrupted sleep behavior, e.g., social jetlag and shift work³. Epidemiological evidence
109 suggested that people living with late chronotype (circadian preference), late sleep
110 timing, long social jetlag (the difference between midsleep on work-free days and
111 work days), and shift work were prone to introduce circadian disruptions⁴ and had
112 higher risks of CMDs⁵⁻⁹. However, current widely used proxies for circadian
113 disruption (such as social jetlag and shift work) either largely require regular work
114 schedule, or lack of generalizability to the general population who works non-shift
115 and less deviated from internal clock¹⁰. In addition, the majority of prior
116 epidemiological studies on circadian disruptions and CMDs were cross-sectional
117 designs^{6, 11, 12}, only very limited prospective analysis was conducted in large
118 population¹³. Furthermore, advancements in sensor element technology and

119 accelerometer now allow the objective measurement of human sleep-wake cycle,
120 physical activity, and ambient environmental zeitgebers. Unlike biomarkers that
121 objectively measured human circadian rhythm requiring repeated or invasive
122 procedures^{14, 15}, accelerometers enable a non-intrusive way to consistent tracking rest-
123 activity cycles¹⁴⁻¹⁶. Notably, over 80% population in a large database (the Munich
124 ChronoType Questionnaire database) reported using an alarm clock and accumulated
125 sleep debts during working week¹⁷, indicating a large proportion of population suffer
126 from misalignment between circadian preference and their actual sleep-wake cycle.
127 However, little is known about whether and how the misalignment between circadian
128 preference and actual sleep-wake cycle is associated with CMDs, particularly in large
129 prospective cohort studies.

130 Thus, based on a large-scale cohort study, the UK Biobank, we used the
131 information on accelerometer-derived sleep-wake cycle, the self-reported circadian
132 preference, and comprehensive diseases diagnosis resources 1) to prospectively
133 analyze the association of circadian misalignment with CMDs such as T2D, CHD,
134 and stroke, and 2) to reveal the potential mechanism underlying the relationship
135 between circadian misalignment and CMDs, through mediation analysis by plasma
136 biomarkers and anthropometric indices.

137

138 **Methods**

139 **Study design and participants**

140 The UK Biobank, initiated in 2006-2010, is a large-scale prospective cohort study

141 containing comprehensive health information from over half a million adult UK
142 participants. The UK Biobank was granted ethical approval from the North West
143 Multi-center Research Ethical Committee (reference # 11/NW/0382) and research is
144 performed in accordance with the Declaration of Helsinki. This research has been
145 conducted using the UK Biobank Resource under application number 96083.

146 Among 502,505 participants at baseline in the UK Biobank, 74,123 participants
147 with complete and valid information on both baseline sleep questionnaire and
148 accelerometer derived information were included, after further excluding 7,052
149 participants with prevalent diabetes, stroke, or CHD at the time of monitoring activity,
150 389 participants with baseline random glucose level ≥ 11.1 mmol/L or HbA1c ≥ 48
151 mmol/mol, 5,418 participants reported jobs involves shift work, and 299 participants
152 with measured sleep duration < 4 hours or > 12 hours, 60,965 participants were
153 included in final analysis (**Figure 1**).

154

155 **Sleep assessment**

156 Sleep status was evaluated through both subjective touchscreen sleep questionnaires
157 and objective actigraphy monitors.

158 *Sleep questionnaire*

159 At baseline recruitment, information on personal chronotype, 24h sleep duration,
160 snoring, insomnia, and daytime sleepiness was collected by a self-administrated
161 touchscreen sleep questionnaire. They were collected by the following questions: “Do
162 you consider yourself to be? (definitely a ‘morning’ person, more a ‘morning’ person

163 than an ‘evening’ person, more an ‘evening’ person than a ‘morning’ person,
164 definitely an ‘evening’ person, do not know, prefer not to answer)”, “About how many
165 hours sleep do you get in every 24 hours? (please include naps)”, “Does your partner
166 or a close relative or friend complain about your snoring? (yes, no, do not know,
167 prefer not to answer)”, “Do you have trouble falling asleep at night or do you wake up
168 in the middle of the night? (never/rarely, sometimes, usually, prefer not to answer)”,
169 How likely are you to doze off or fall asleep during the daytime when you don’t mean
170 to? (e.g., when working, reading or driving) (never/rarely, sometimes, often, do not
171 know, prefer not to answer, all of the time)”. For all the above questions, answers with
172 “do not know”, “prefer not to answer” were considered as missing. Healthy sleep
173 quality score was calculated from questionnaire derived chronotype, insomnia, snore,
174 daytime sleepiness, and sleep duration, see **Supplementary TableS1**.

175

176 *Actigraphy*

177 During June 2013 and January 2016, physical activity and sleep measurements were
178 recorded via a wrist-worn accelerometer (Axivity AX3), which is a commercial
179 version of the Open Movement AX3 open-source sensor
180 (<https://github.com/digitalinteraction/openmovement>) designed by Open Lab,
181 Newcastle University. Exquisite processes on data collection and curation have been
182 described previously¹⁸. Briefly, participants were instructed to wear the accelerometer
183 upon receipt and proceed with their usual routines, affixing it to their dominant wrist.
184 They were notified that the device would activate automatically upon delivery and

185 deactivate after a week. At the end of this period, participants returned the device to
186 the central office using a provided pre-paid envelope. R package GGIR was used to
187 clearing, calibrating, and deriving information on timing of sleep, moderate to
188 vigorous physical activity, and light exposure^{19, 20}.

189

190 **Ascertainment of circadian misalignment**

191 The morning-evening preference, chronotype, was collected by one validated question
192 from the Horne and Östberg Morningness-Eveningness Questionnaire (MEQ)²¹. This
193 question indicated a good correlation with the overall score of the MEQ ($r = 0.72$)²²,
194 and was also employed in other large cohort studies to indicate individual circadian
195 preference^{13, 23}. Additionally, information on participants timing of onset and end of
196 sleep was collected by wearing an actigraphy on dominant wrist through seven
197 consecutive days and derived by R package GGIR. Nighttime sleep duration was
198 calculated as the difference between time point of sleep end and sleep onset. Midsleep
199 of weekdays, weekend, and weekly average can be calculated using the following
200 formula, using the average value of sleep onset and sleep duration on weekdays,
201 weekend, and the whole week, respectively.

$$Midsleep = sleep_{onset} + \frac{1}{2} sleep_{duration}$$

202 The misalignment between circadian preference (chronotype) and midsleep was
203 calculated as the residuals of midsleep on chronotype or the difference between
204 midsleep and chronotype (subtracting group numbers of chronotype from midsleep)²⁴,
205 detailed calculation and categorization can be found in **Supplementary Method**.

206

207 **Cardiometabolic outcomes**

208 Newly onset of T2D, CHD, and stroke (including ischemic stroke and hemorrhage
209 stroke subtypes) were individually evaluated and collectively considered when
210 calculating CMD incidence. Data on data showcase-first occurrence (Category 1712)
211 were used to derive the first occurrence date of diseases. Two main classification
212 systems of clinical coding were used in the linked health data: International
213 Classification of Diseases (ICD) and Read. Information on primary cares (Read v2
214 and Read CTV3), hospital inpatient (ICD10 and ICD9), death register (ICD10),
215 cancer register (ICD10 and ICD9), and self-reported medical condition were gathered
216 and mapped to 3-character ICD-10 to ascertain the source and date of the first
217 occurrence of diseases. Detailed method can be found here
218 (https://biobank.ndph.ox.ac.uk/showcase/ukb/docs/first_occurrences_outcomes.pdf).

219 ICD code and field ID of outcomes were described in **Supplementary table S2**.

220 Incident cases were defined as cases with a later date of first occurrence in
221 comparison with the date of measurement of baseline information and accelerometer.

222

223 **Covariates**

224 Baseline information on demographic and socioeconomic status (age, sex, education,
225 Townsend deprivation index, region, ethnic group, employment status) and family
226 history of diseases were collected in assessment center when participants were
227 initially recruited. Lifestyle factors including drinking and smoking status, tea and

228 coffee intake, as well as a detailed 29-item food frequency questionnaire on dietary
229 intakes were also evaluated in assessment center by touchscreen questionnaire. Diet
230 intake information was converted to a Mediterranean diet score to indicate dietary
231 quality²⁵.
232 Additionally, baseline body weight, height, waist circumference, hip circumference,
233 and blood pressure were measured in assessment center under standard process. Body
234 mass index was calculated as weight (kg) divided by height (m) squares, and waist-
235 hip-ratio was also calculated. Blood samples were collected at recruitment, separated
236 by components and stored at UK Biobank (-80°C and LN2). Sample collection and
237 processing has been previously described in detail
238 (https://biobank.ndph.ox.ac.uk/showcase/ukb/docs/biomarker_issues.pdf). A range of
239 key biochemistry markers (hepatic and renal function, inflammatory cytokines, lipids
240 and glucose metabolism) were used in the current analysis. Levels of glucose and
241 HbA1c at baseline were employed to identify participants with prevalent diabetes.
242 Levels of Low-Density Lipoprotein was also used in analysis, as it was closely related
243 to cardiometabolic outcomes²⁶.

244

245 **Statistical analysis**

246 All statistical analyses were performed using SAS 9.4 (SAS Institute Inc) and R
247 version 3.4.2. Two-sided $P < 0.05$ were regarded as the level of significance.
248 Descriptive data of participants at baseline were shown as number (%) for categorical
249 variables and mean (standard deviation) for continuous variables. See

250 **Supplementary Method** for the adjusted circadian misalignment according to
251 baseline characteristics and selection of covariates in the following models.

252 Cox proportional hazard models were used to investigate the associations
253 between circadian misalignment (quintiles of residuals of midsleep on chronotype)
254 and incident cardiometabolic events. All cox models have passed the proportional
255 hazards assumption by Schoenfeld Residuals Test. Model 1 was adjusted for age
256 (tertiles), sex (men/women), and ethnic group (White British/Non-White British), and
257 Model 2 was additionally adjusted for region (urban/town/village), Townsend
258 deprivation index (tertiles), employment (in-paid employment/retired/without fixed
259 employment), qualification (college or university degree/A levels or equivalent/O
260 levels or GCSEs or equivalent/none of the above), and ambient noise level (tertiles).
261 Model 3 (main model) was further adjusted for smoking status (never/ever/current),
262 drinking status (never/ever/current), tea consumption (<2/2-4/≥5 cups), coffee
263 consumption (0/0-2/≥3 cups), accelerometer-derived moderate to vigorous physic
264 activity (tertiles), and healthy sleep quality score (<2/2-3/>3). All continuous
265 covariates were converted to tertiles to clearer show their relationship with circadian
266 misalignment (Figure S1) and CMDs. Since missing values for all covariates were
267 less than 6% (5.9% for healthy sleep quality score, and 1.2% for ambient noise level,
268 and less than 0.2% for other covariates), they were imputed as the mode¹². Plots on
269 restricted cubic splines (four knots on 0.05, 0.35, 0.65, and 0.95, respectively) and *P*
270 for nonlinear (ANOVA test²⁷) were used to show the nonlinear relationship between
271 circadian misalignment and cardiometabolic events. Moreover, risk of

272 cardiometabolic events were also evaluated by circadian misalignment using
273 difference between midsleep and chronotype (advanced/intermediate/delayed group),
274 as well as chronotype and midsleep individually. When investigating the association
275 of midsleep and chronotype with CMDs, they were further mutually adjusted.

276 Sensitivity analyses were conducted by 1) recategorizing the main exposure,
277 circadian misalignment (residuals of midsleep on chronotype), into three groups
278 [advanced (Q1), intermediate (Q2+Q3+Q4), delayed (Q5) group]; 2) recalculating the
279 main exposure, circadian misalignment, as the absolute value of the residuals of
280 midsleep on chronotype, and categorized it into tertiles. The linear trend of HRs over
281 tertiles was assessed by χ^2 test using these tertile numbers as continuous variables; 3)
282 based on main model (Model 3), additionally adjusted for family history of diabetes
283 (when outcome is T2D), family history of cardiovascular diseases (when outcome is
284 stroke and CHD), or family history of diabetes and cardiovascular diseases (when
285 outcome is CMDs), and time span between baseline recruitment and accelerometer
286 assessment, as they were suggested confounders in previous studies. Age was adjusted
287 in the form of continuous variable to reduce potential residual confounding; 4) Based
288 on main model, further adjusted for BMI, LDL, and SBP, as they may act both as
289 underlying mediators and confounders; 5) excluding upper and lower 0.5% value of
290 residuals of midsleep on circadian preference; 6) calculating propensity score to
291 balance the distribution of baseline characteristics among differed circadian
292 misalignment group. Propensity score weights for multiple treatments and average
293 treatment effect on the treated was calculated by the R package Twang and using the

294 method of gradient boosting machine^{29,30}; 7) using ICD-10 code E11 instead of
295 pooling E11 and E14 together to define T2D; and 8) including participants who
296 worked with shift work in analysis, as shift work was an important contributor of
297 circadian misalignment.

298 In secondary analysis, causal mediation analyses were conducted by R package
299 CMAverse²⁸. Average total effect hazard ratio, nature direct hazard ratio, nature
300 indirect hazard ratio, and proportion mediated by potential mediators were shown.
301 Mediators were log-transformed and standardized to show HRs (95% CI) per standard
302 deviation. Proportional hazards assumptions were also confirmed. See
303 **Supplementary Method** for the selection of potential mediators. Furthermore,
304 subgroup analyses were conducted by age (<57 /≥57 years (median)), sex
305 (women/men), ethnic (White British/non-White British), residence (Urban/town or
306 village), socioeconomic status (<median/≥median), and healthy sleep quality score
307 (<4/≥4). The multiplicative interaction between characteristics and circadian
308 misalignment was also detect by additionally adding an interaction term to the model.
309

310 **Results**

311 **Baseline characteristics and risk factors of delayed circadian misalignment**

312 60,965 participants aged 39 to 70 years at baseline were included in analysis.
313 Compared to advanced circadian misalignment group, participants of delayed
314 circadian misalignment group were prone to be older, women, and non-White British.
315 They were more likely to live in urban areas and be exposed to higher ambient noise

316 level, have lower education levels and socioeconomic status, and work without pay.
317 In terms of lifestyle, participants predisposed to delayed circadian misalignment
318 tended to be current smokers and drinkers, engage in less moderate to vigorous
319 physical activity, drink more tea and less coffee, and have worse sleep quality (**Table**
320 **1 and Figure S1**).

321

322 **Association between circadian misalignment and incident cardiometabolic events**

323 During an average follow-up of 7.86 years, 1,526 (2.50%), 684 (1.12%), and 2,186
324 (3.59%) participants developed incident T2D, stroke, and CHD, respectively, yielding
325 an overall 4,084 (6.70%) participants developing CMDs in total.

326 After fully adjustment in main model (Model 3), compared to individuals with
327 matched midsleep and circadian preferences (Q3), both the advanced and delayed
328 circadian misalignment were associated with higher type 2 diabetes [HR (95%CI)
329 1.22 (1.03, 1.45) in Q1 and 1.39 (1.18, 1.62) in Q5] and CMDs [HR (95%CI) 1.12
330 (1.02, 1.25) in Q1 and 1.21 (1.10, 1.33) in Q5]. However, only delayed circadian
331 misalignment (Q4 and Q5) was significantly related to increased risk of CHD [HR
332 (95%CI) 1.15 (1.01, 1.31) in Q4 and 1.16 (1.02, 1.33) in Q5] (**Table 2**). Circadian
333 misalignment was not associated with incidence of stroke or stroke subtypes (**Table 2**
334 and **Table S3**). When calculating circadian misalignment by the difference between
335 midsleep and chronotype, participants with delayed circadian misalignment had
336 higher risk of developing T2D [HR (95%CI): 1.19 (1.06, 1.33)] and CMD [HR
337 (95%CI): 1.10 (1.03, 1.17)]. Consistently, neither type of circadian misalignment was

338 associated with incidence of stroke (**Figure 2**).

339 The “U-shaped” nonlinear associations of circadian misalignment with T2D
340 ($P_{nonlinear}<0.001$), CHD ($P_{nonlinear}=0.03$), and CMD ($P_{nonlinear}<0.001$) were significantly
341 revealed through RCS plots (**Figure S2**). To detect the robustness of the relationship
342 between circadian misalignment and cardiometabolic outcomes, sensitivity analyses
343 were conducted and yielded consistent results (**Table S4, Table S5, Figure S3**).
344 In stratified analysis, consistent results among different ethnicity, residence,
345 socioeconomic status, and sleep quality subgroups were displayed. Notably, the
346 association between delayed circadian misalignment and CMDs was more prominent
347 in women (for T2D, $P_{interaction}=0.03$) or in population aged younger than 57 years, the
348 average age (for CHD, $P_{interaction}=0.02$) compared to their counterparts (**Figure S4**).

349

350 **Mediation analysis on the relationship between circadian misalignment and** 351 **incident cardiometabolic events**

352 Mediation analysis indicated that liver function, blood lipid and glucose metabolism,
353 inflammatory factors, and anthropometric indices were associated with both circadian
354 misalignment and CMDs, independent of demographic, socioeconomics, and lifestyle
355 factors (**Table S6-S8**). Among them, anthropometric indices including BMI, WHR,
356 and blood pressure introduced the largest proportion of mediation effect (44.6%)
357 between circadian misalignment and T2D, whereas liver function, blood lipids and
358 glucose metabolism, and inflammatory factors mediated 12.3%, 24.5%, 20.0%
359 association between circadian misalignment and T2D, respectively (**Table 3**). As for

360 CHD, liver function, blood lipids and glucose metabolism, inflammatory factors, and
361 anthropometric indices introduced 8.8%, 9.1%, 13.7%, and 20.5% of mediation
362 effects between circadian misalignment and CHD, respectively (**Table 3**).

363

364 **Association between other circadian rhythm proxies and incident**

365 **cardiometabolic events**

366 After multiple adjustments, early chronotype [HR (95%CI): 1.19 (1.06, 1.34)] and late
367 midsleep [1.21 (1.07, 1.36)] were both associated with increased risk of incident T2D.

368 Meanwhile, neither chronotype nor midsleep was associated with CHD or stroke

369 (**Figure 2**). Notably, the significant association [HR (95%CI) 1.22 (1.03, 1.44)]

370 between late chronotype and T2D disappeared after further adjusting for midsleep

371 [1.08 (0.91, 1.28)].

372 **Discussion**

373 In this large-scale population-based cohort study, we proposed a new metrics for
374 circadian misalignment by calculating the discrepancy between circadian preference
375 and accelerometer-derived actual sleep-wake cycle, and prospectively revealed a U-
376 shaped association of circadian misalignment with T2D and CHD. Our results
377 indicated that both advanced and delayed sleep-wake cycle in relation to individual
378 circadian preference were associated with increased risks of CMDs, although the
379 association was stronger in the delayed than the advanced group.

380 Our findings on the relationship between circadian misalignment and CMDs
381 were consistent with previous cross-sectional studies regarding circadian disruption
382 (social jetlag⁶, shift work¹¹, or alignment between light cycle and sleep cycle¹²),
383 although circadian misalignment in this study was measured by different metrics.
384 Additionally, the Nurses' Health Study also revealed similar prospective association
385 between circadian misalignment (chronotype and shift work) and T2D^{13, 23}. Unlike
386 most studies that focusing on chronotype⁹ and shift work⁷ individually, the Nurses'
387 Health Study¹³ was the first large cohort study to detect circadian misalignment by
388 examining the interaction between chronotype and shift work, revealing that an
389 increased risk of T2D was predominantly emerged in nurses with long night shifts and
390 an early chronotype, and was also seen in participants with long daytime work but a
391 late chronotype. However, it remains unclear whether the mismatch between
392 chronotype and actual sleep-wake cycle was associated with adverse health outcomes,
393 especially in population working non-shift and less-deviated from their internal clock.

394 Our findings by considering both circadian preference and actual sleep-wake cycle,
395 were in line with, and further expanded these discoveries in a more quantified manner
396 regarding circadian disruption and in both men and women population.

397 To date, shift work and social jetlag were the most commonly used proxies for
398 circadian disruption in large scale population-based studies³. Other less-employed
399 metrics such as composite phase deviation¹⁰ and delayed onset of melatonin either
400 lack employment in large population or imposed considerable burdens on study
401 subjects^{14, 15}. Participants working night shift^{11, 31} is a commonly used metrics for
402 circadian disruption, not only for its easily-collected nature but also for having the
403 highest levels of deviation relative to internal clock³. Night shifts represent the most
404 strenuous shift for most individuals, however, the association of circadian disruption
405 on diseases for vast non-shift workers with less disturbed disruption also merits to be
406 explored. On the other hand, since put forward in 2006, social jetlag has been widely
407 used as a good proxy for circadian disruption, and has been associated with various
408 adverse health outcomes³². It was defined by the discrepancy between social clock
409 and biological clock while employ midpoint of sleep on work days and work-free
410 days to respectively indicate the above two clocks. However, sleep compensation³³
411 made it hard to accurately indicate biological clock by midsleep on work-free days.
412 Moreover, it is not suitable for population of retired or without fixed work. The
413 metrics of circadian misalignment in our analyses was defined by the discordance
414 between self-reported circadian preference and actual sleep-wake cycle, it could be
415 analyzed as a continuous variable to detect the U-shaped relationship between

416 circadian misalignment and CMDs. It is also able to characterize circadian disruption
417 on population of non-shiftwork, retired, and without fixed work.

418 We additionally revealed that early chronotype, rather than late chronotype, was
419 associated with increased risk of T2D, which was inconsistent with previous
420 evidence^{23, 34}. Cross-sectional studies^{35, 36} and limited prospective cohort study²³
421 revealed that late or evening chronotype were associated with higher risk of disrupted
422 glucose homeostasis and T2D. However, to our knowledge, most existing studies^{35, 36}
423 did not explore if the relationship between chronotype and health outcomes was
424 independent of actual sleep-wake cycle. Our analysis indicated that after adjusting for
425 sleep-wake cycle, the risk association of late chronotype decreased to null.

426 Meanwhile, one large prospective analysis also revealed that participants reporting a
427 "definite evening" chronotype were more likely to exhibit unhealthy lifestyle, which
428 might largely explain the association with increased diabetes risk²³. Thus, the
429 association between late chronotype and T2D may at least partially explained by late
430 sleep-wake cycle. Notably, a previous analysis conducted in UKB population also
431 suggested that "definite morning" was associated with higher risk of CMDs, when
432 classifying participants into four groups (definite morning, morning, evening, definite
433 evening)³⁷. However, most studies^{8, 13} generally categorized the chronotype into two
434 or three groups, making it challengeable to reveal the nonlinear relationship between
435 chronotype and health outcomes, which are needed to be confirmed in future studies.

436 The potential mechanism between circadian misalignment and CMDs remains
437 unclear. A recent compendium highlighted several diurnal and circadian mechanisms

438 underlying cardiovascular and cerebrovascular diseases³⁸: Circadian misalignment
439 may affect immune function to promote systemic inflammation and exacerbate
440 cardiovascular damage³⁹. There is also evidence that circadian misalignment increases
441 the risk of cardiovascular events by causing hypoxia and myocardial ischemia-
442 reperfusion injury⁴⁰. Besides, molecular and physiological processes that regulate
443 cardiovascular metabolism could also be associated with circadian misalignment
444 through the interaction of circadian genes (*CLOCK*, *BMAL1*, *period*, *timeless*, *CRY*,
445 etc.) and signaling pathways such as classic signal-response coupling (termed
446 reactionary mechanisms) or temporally orchestrate metabolic pathways in
447 preparation for predicted stimuli/stresses (termed anticipatory mechanisms)⁴¹. We
448 found that the association between circadian misalignment and CMDs may at least
449 partially mediated by liver function, lipid metabolism, inflammatory factors, and most
450 prominently, BMI and WHR, which may shed some light on the potential mechanism
451 linking circadian misalignment with cardiometabolic health outcomes. Moreover,
452 effect modification of sex on the relationship of circadian misalignment with CHD
453 and T2D was also revealed, which may be due to the sexual dimorphism of the
454 metabolism that contributed to sex differences in CMDs⁴². Meanwhile, age-related
455 variations in gut microbiota and metabolic profiling⁴³ may partially explain the
456 modulatory role of age on the circadian misalignment-CMD associations.
457 Additionally, we also found that women and older participants were more likely to
458 have delayed circadian misalignment in our study, which was associated with
459 increased risk of CMDs.

460 To our knowledge, this is the first study to examine the association between
461 misalignment of circadian preference and actual sleep-wake cycle and
462 cardiometabolic events. Moreover, validated accelerometers were employed to
463 objectively measure participants' sleep-wake cycles, whereas previous measurements
464 of sleep-wake cycles, especially in prospective studies, were mostly based on the
465 questionnaires⁴⁴.

466 Despite the above strengths, several limitations were also worth noting. In
467 addition to the relatively older age as well as higher socioeconomic status of UKB
468 participants, measurement bias may generate from accelerometer derived sleep-
469 timing, as accelerometer detected inactivity time rather than sedentary time⁴⁵.
470 However, good agreements (89-97%) between accelerometer-derived sleep status and
471 polysomnography have been verified⁴⁶, and comparing to waist-worn, the wrist-worn
472 placement could improve capability of assessing sleep behaviors⁴⁷. Moreover, self-
473 reported circadian preference based on a single question from MEQ was employed.
474 As a most widely used and easily collected circadian indicator, validity of MEQ score
475 in relation to objectively measured circadian markers⁴⁸, as well as that of this question
476 to overall score²² has been fully investigated. Another limitation is that there is an
477 average 5.8 years of difference between the measurement of circadian preference and
478 real sleep-wake cycle. However, evidence has revealed circadian preference is a
479 relatively stable characteristic for human being⁵. Besides, we included the time gap
480 between them as a potential confounder in sensitivity analysis and also tested the
481 interaction between the time gap and major exposures, which resulted no effect

482 modification. A previous study in UK Biobank also indicated most of basic
483 characteristics did not change overtime⁴⁹. Moreover, because only one measurement
484 on actual sleep-wake cycle was conducted, eternal time bias may happen when
485 participants change their usual sleep-wake time. In addition, using a simple time point
486 on midsleep to indicate sleep-wake cycle may lose detailed information on the phase
487 and amplitude of this cycle. Nevertheless, it is an easy way to refer to sleep-wake
488 cycle and subsequently to calculate circadian misalignment, and is appropriate for
489 conducting circadian measurement on large-scale population studies¹⁷. Lastly, due to
490 the observational nature and the possibility of residual confounding, our study could
491 not establish causality.

492 In conclusion, both advanced or delayed circadian misalignment were associated
493 with increased risk of cardiometabolic events. Population may benefit from keeping
494 an actual sleep-wake cycle in accordance with their circadian preference. This study
495 proposed a new metrics regarding circadian disruption, and may shed some light on
496 the prevention and management of population with high risk of developing
497 cardiometabolic events. Our results are needed to be confirmed by further studies that
498 objectively measure personal circadian preference.

499

500 **Author contribution:**

501 YC, XG, and LS conceived and designed this study. YC, XX, ZZ, and HD researched
502 data. YC, XX and LH analyzed the data. YC, TG, HY, XG and LS interpreted the
503 results and drafted the manuscript. XG and LS supervised the study. All authors

504 contributed to the review and revision of the manuscript and agree to be accountable
505 for all aspects of work ensuring integrity and accuracy.

506

507 **Acknowledgement:**

508 The most important acknowledgement is to the participants in UK Biobank and the
509 members of the UK Biobank teams, as well as to all members of team of the current
510 analysis for their valuable help. The authors also appreciate the helpful comments on
511 this manuscript provided by the reviewers and editors.

512

513 **Sources of funding:**

514 This study was funded by the Major Project of the Ministry of Science and
515 Technology of China (2023YFC2506704) and the Startup grant from Fudan
516 University (JIF201068Y and IDF201026Y).

517

518 **Disclosures:**

519 The authors declare no conflict of interest.

520

521 **Data availability:**

522 This research has been conducted using the UK Biobank Resource under Application
523 Number 96083. Data from UK Biobank is accessible to eligible researchers via
524 applying to www.ukbiobank.ac.uk.

525

526 **Ethic approval:**

527 The UK Biobank was granted ethical approval from the North West Multi-center

528 Research Ethical Committee (reference # 11/NW/0382) and research is performed in

529 accordance with the Declaration of Helsinki.

530 **Reference**

- 531 1. Stefan N and Schulze MB. Metabolic health and cardiometabolic risk clusters:
532 implications for prediction, prevention, and treatment. *Lancet Diabetes Endocrinol.*
533 2023;11:426-440.
- 534 2. Poveda A, Chen Y, Brändström A, Engberg E, Hallmans G, Johansson I, Renström F,
535 Kurbasic A and Franks PW. The heritable basis of gene-environment interactions in
536 cardiometabolic traits. *Diabetologia.* 2017;60:442-452.
- 537 3. Vetter C. Circadian disruption: What do we actually mean? *The European journal of*
538 *neuroscience.* 2020;51:531-550.
- 539 4. Fishbein AB, Knutson KL and Zee PC. Circadian disruption and human health. *The*
540 *Journal of clinical investigation.* 2021;131.
- 541 5. Roenneberg T, Pils LK, Zerbini G and Winnebeck EC. Chronotype and Social Jetlag: A
542 (Self-) Critical Review. *Biology.* 2019;8.
- 543 6. Cespedes Feliciano EM, Rifas-Shiman SL, Quante M, Redline S, Oken E and Taveras
544 EM. Chronotype, Social Jet Lag, and Cardiometabolic Risk Factors in Early Adolescence.
545 *JAMA pediatrics.* 2019;173:1049-1057.
- 546 7. Kecklund G and Axelsson J. Health consequences of shift work and insufficient sleep.
547 *BMJ (Clinical research ed).* 2016;355:i5210.
- 548 8. Lin K, Song M and Giovannucci E. Evening Chronotype, Circadian Misalignment, and
549 Metabolic Health: Implications for Diabetes Prevention and Beyond. *Annals of internal*
550 *medicine.* 2023;176:1422-1423.
- 551 9. Reutrakul S, Hood MM, Crowley SJ, Morgan MK, Teodori M, Knutson KL and Van

- 552 Cauter E. Chronotype is independently associated with glycemic control in type 2 diabetes.
553 *Diabetes care*. 2013;36:2523-9.
- 554 10. Fischer D, Vetter C and Roenneberg T. A novel method to visualise and quantify
555 circadian misalignment. *Scientific reports*. 2016;6:38601.
- 556 11. Sooriyaarachchi P, Jayawardena R, Pavey T and King NA. Shift work and the risk for
557 metabolic syndrome among healthcare workers: A systematic review and meta-analysis.
558 *Obesity reviews : an official journal of the International Association for the Study of Obesity*.
559 2022;23:e13489.
- 560 12. Xiao Q, Durbin J, Bauer C, Yeung CHC and Figueiro MG. Alignment Between 24-h Light-
561 Dark and Activity-Rest Rhythms Is Associated With Diabetes and Glucose Metabolism in a
562 Nationally Representative Sample of American Adults. *Diabetes care*. 2023;46:2171-2179.
- 563 13. Vetter C, Devore EE, Ramin CA, Speizer FE, Willett WC and Schernhammer ES.
564 Mismatch of Sleep and Work Timing and Risk of Type 2 Diabetes. *Diabetes care*.
565 2015;38:1707-13.
- 566 14. Braun R, Kath WL, Iwanaszko M, Kula-Eversole E, Abbott SM, Reid KJ, Zee PC and
567 Allada R. Universal method for robust detection of circadian state from gene expression.
568 *Proceedings of the National Academy of Sciences of the United States of America*.
569 2018;115:E9247-e9256.
- 570 15. Wittenbrink N, Ananthasubramaniam B, Munch M, Koller B, Maier B, Weschke C, Bes F,
571 de Zeeuw J, Nowozin C, Wahnschaffe A, Wisniewski S, Zaleska M, Bartok O, Ashwal-Fluss R,
572 Lammert H, Herzel H, Hummel M, Kadener S, Kunz D and Kramer A. High-accuracy
573 determination of internal circadian time from a single blood sample. *The Journal of clinical*

- 574 *investigation*. 2018;128:3826-3839.
- 575 16. Meyer N, Harvey AG, Lockley SW and Dijk DJ. Circadian rhythms and disorders of the
576 timing of sleep. *Lancet (London, England)*. 2022;400:1061-1078.
- 577 17. Roenneberg T. How can social jetlag affect health? *Nature reviews Endocrinology*.
578 2023;19:383-384.
- 579 18. Doherty A, Jackson D, Hammerla N, Plötz T, Olivier P, Granat MH, White T, van Hees
580 VT, Trenell MI, Owen CG, Preece SJ, Gillions R, Sheard S, Peakman T, Brage S and
581 Wareham NJ. Large Scale Population Assessment of Physical Activity Using Wrist Worn
582 Accelerometers: The UK Biobank Study. *PloS one*. 2017;12:e0169649.
- 583 19. Migueles J, Rowlands A, Huber F, Sabia S and van Hees V. GGIR: A Research
584 Community-Driven Open Source R Package for Generating Physical Activity and Sleep
585 Outcomes From Multi-Day Raw Accelerometer Data. *Journal for the Measurement of Physical
586 Behaviour*. 2019;2:188-196.
- 587 20. van Hees VT, Sabia S, Anderson KN, Denton SJ, Oliver J, Catt M, Abell JG, Kivimäki M,
588 Trenell MI and Singh-Manoux A. A Novel, Open Access Method to Assess Sleep Duration
589 Using a Wrist-Worn Accelerometer. *PloS one*. 2015;10:e0142533.
- 590 21. Horne JA and Ostberg O. A self-assessment questionnaire to determine morningness-
591 eveningness in human circadian rhythms. *International journal of chronobiology*. 1976;4:97-
592 110.
- 593 22. Megdal SP and Schernhammer ES. Correlates for poor sleepers in a Los Angeles high
594 school. *Sleep medicine*. 2007;9:60-3.
- 595 23. Kianersi S, Liu Y, Guasch-Ferré M, Redline S, Schernhammer E, Sun Q and Huang T.

- 596 Chronotype, Unhealthy Lifestyle, and Diabetes Risk in Middle-Aged U.S. Women : A
597 Prospective Cohort Study. *Annals of internal medicine*. 2023;176:1330-1339.
- 598 24. Chatterjee S, Cook RD and Weisberg S. Residuals and Influence in Regression. 1982.
- 599 25. Trichopoulou A, Costacou T, Bamia C and Trichopoulos D. Adherence to a
600 Mediterranean diet and survival in a Greek population. *The New England journal of medicine*.
601 2003;348:2599-608.
- 602 26. Holmes MV, Ala-Korpela M and Smith GD. Mendelian randomization in cardiometabolic
603 disease: challenges in evaluating causality. *Nature reviews Cardiology*. 2017;14:577-590.
- 604 27. Jianhua ZH, Charles K, Charles JS and Young KT. Functional ANOVA modeling for
605 proportional hazards regression. *The Annals of Statistics*. 2000;28:961-999.
- 606 28. Shi B, Choirat C, Coull BA, VanderWeele TJ and Valeri L. CMAverse: A Suite of
607 Functions for Reproducible Causal Mediation Analyses. *Epidemiology (Cambridge, Mass)*.
608 2021;32:e20-e22.
- 609 29. McCaffrey DF, Griffin BA, Almirall D, Slaughter ME, Ramchand R and Burgette LF. A
610 tutorial on propensity score estimation for multiple treatments using generalized boosted
611 models. *Statistics in medicine*. 2013;32:3388-414.
- 612 30. Griffin BA, Sanchez R, Cefalu M, Ayer L, Coffman DL, Vegetabile BG, Pane JD, Burgette
613 LF and McCaffrey DF. Toolkit for Weighting and Analysis of Nonequivalent Groups. *Santa
614 Monica, Calif: RAND Corporation, TL-A570-2*. 2020.
- 615 31. Drake CL, Roehrs T, Richardson G, Walsh JK and Roth T. Shift work sleep disorder:
616 prevalence and consequences beyond that of symptomatic day workers. *Sleep*.
617 2004;27:1453-62.

- 618 32. Wittmann M, Dinich J, Mellow M and Roenneberg T. Social jetlag: misalignment of
619 biological and social time. *Chronobiology international*. 2006;23:497-509.
- 620 33. Arora T, Chen MZ, Cooper AR, Andrews RC and Taheri S. The Impact of Sleep Debt on
621 Excess Adiposity and Insulin Sensitivity in Patients with Early Type 2 Diabetes Mellitus.
622 *Journal of clinical sleep medicine : JCSM : official publication of the American Academy of*
623 *Sleep Medicine*. 2016;12:673-80.
- 624 34. Fan M, Sun D, Zhou T, Heianza Y, Lv J, Li L and Qi L. Sleep patterns, genetic
625 susceptibility, and incident cardiovascular disease: a prospective study of 385 292 UK
626 biobank participants. *Eur Heart J*. 2020;41:1182-1189.
- 627 35. Lotti S, Pagliai G, Colombini B, Sofi F and Dinu M. Chronotype Differences in Energy
628 Intake, Cardiometabolic Risk Parameters, Cancer, and Depression: A Systematic Review with
629 Meta-Analysis of Observational Studies. *Advances in nutrition (Bethesda, Md)*. 2022;13:269-
630 281.
- 631 36. Tan X, Ciuculete DM, Schiöth HB and Benedict C. Associations between chronotype,
632 MTNR1B genotype and risk of type 2 diabetes in UK Biobank. *Journal of internal medicine*.
633 2020;287:189-196.
- 634 37. Knutson KL and von Schantz M. Associations between chronotype, morbidity and
635 mortality in the UK Biobank cohort. *Chronobiology international*. 2018;35:1045-1053.
- 636 38. Lo EH and Faraci FM. Circadian Mechanisms in Cardiovascular and Cerebrovascular
637 Disease. *Circulation research*. 2024;134:615-617.
- 638 39. Zeng Q, Oliva VM, Moro MÁ and Scheiermann C. Circadian Effects on Vascular
639 Immunopathologies. *Circulation research*. 2024;134:791-809.

- 640 40. Sartor F, Ferrero-Bordera B, Haspel J, Sperandio M, Holloway PM and Merrow M.
641 Circadian Clock and Hypoxia. *Circulation research*. 2024;134:618-634.
- 642 41. Lal H, Verma SK, Wang Y, Xie M and Young ME. Circadian Rhythms in Cardiovascular
643 Metabolism. *Circulation research*. 2024;134:635-658.
- 644 42. Couch CA, Ament Z, Patki A, Kijpaisalratana N, Bhave V, Jones AC, Armstrong ND,
645 Cushman M, Kimberly WT and Irvin MR. Sex-Associated Metabolites and Incident Stroke,
646 Incident Coronary Heart Disease, Hypertension, and Chronic Kidney Disease in the
647 REGARDS Cohort. *J Am Heart Assoc*. 2024;13:e032643.
- 648 43. Yoshimoto S, Mitsuyama E, Yoshida K, Odamaki T and Xiao JZ. Enriched metabolites
649 that potentially promote age-associated diseases in subjects with an elderly-type gut
650 microbiota. *Gut microbes*. 2021;13:1-11.
- 651 44. Roenneberg T, Allebrandt KV, Merrow M and Vetter C. Social jetlag and obesity. *Current*
652 *biology : CB*. 2012;22:939-43.
- 653 45. Gao Z, Liu W, McDonough DJ, Zeng N and Lee JE. The Dilemma of Analyzing Physical
654 Activity and Sedentary Behavior with Wrist Accelerometer Data: Challenges and
655 Opportunities. *Journal of clinical medicine*. 2021;10.
- 656 46. Chase JD, Busa MA, Staudenmayer JW and Sirard JR. Sleep Measurement Using Wrist-
657 Worn Accelerometer Data Compared with Polysomnography. *Sensors (Basel, Switzerland)*.
658 2022;22.
- 659 47. Fairclough SJ, Noonan R, Rowlands AV, Van Hees V, Knowles Z and Boddy LM. Wear
660 Compliance and Activity in Children Wearing Wrist- and Hip-Mounted Accelerometers.
661 *Medicine and science in sports and exercise*. 2016;48:245-53.

662 48. Kennaway DJ. The dim light melatonin onset across ages, methodologies, and sex and

663 its relationship with morningness/eveningness. *Sleep*. 2023;46.

664 49. Strain T, Wijndaele K, Dempsey PC, Sharp SJ, Pearce M, Jeon J, Lindsay T, Wareham

665 N and Brage S. Wearable-device-measured physical activity and future health risk. *Nature*

666 *medicine*. 2020;26:1385-1391.

667

Table1. Baseline characteristics of 60965 study participants from UK Biobank according to circadian misalignment^a

	Circadian misalignment ^b		
	Advanced group (N=12358)	Intermediate group (N=36464)	Delayed group (N=12143)
Basic information and lifestyle factors			
Women (%)	7088 (57.4)	22449 (61.6)	7466 (61.5)
Urban area (%)	10141 (82.9)	30038 (83.1)	10283 (85.6)
Age at baseline (years)	54.4 (8.2)	56.1 (7.8)	57.5 (7.2)
Townsend deprivation index^c	-1.7 (2.8)	-1.9 (2.7)	-1.5 (2.9)
Level of education (%)			
College or University degree	5522 (44.7)	17084 (46.9)	5231 (43.1)
A levels/AS levels or Equivalent	1674 (13.6)	4837 (13.3)	1595 (13.1)
O levels/GCSEs or Equivalent	2504 (20.3)	7343 (20.1)	2448 (20.2)
None of the above	2658 (21.5)	7200 (19.8)	2869 (23.6)
White British (%)	11956 (96.8)	35551 (97.5)	11667 (96.1)
Family history of diabetes (%)	2367 (19.2)	7019 (19.3)	2358 (19.4)
Family history of cardiovascular diseases (%)	6726 (54.4)	20796 (57.0)	7196 (59.3)
On-paid work (%)	8331 (67.4)	22289 (61.1)	6361 (52.4)
Drinking status (%)			
Never drinker	372 (3.0)	952 (2.6)	371 (3.1)
Ever drinker	365 (3.0)	817 (2.2)	382 (3.2)
Current drinker	11621 (94.0)	34695 (95.2)	11390 (93.8)
Smoking status (%)			
Never smoker	7212 (58.4)	21802 (59.8)	6627 (54.6)
Ever smoker	4302 (34.8)	12619 (34.6)	4427 (36.5)
Current smoker	844 (6.8)	2043 (5.6)	1089 (9.0)
Daily average coffee intake (cups)	2.0 (2.0)	1.9 (1.9)	2.0 (2.0)
Daily average tea intake (cups)	3.2 (2.7)	3.3 (2.6)	3.4 (2.8)
Mediterranean dietary score (points)	2.9 (1.4)	2.9 (1.4)	2.9 (1.4)
Daily average time on moderate to vigorous physical activity per day^d (min)	117.0 (53.2)	115.4 (50.5)	104.9 (50.1)
Daily average ambivalent Light exposure^e (lux)	781.2 (161.6)	803.7 (149.0)	788.3 (154.7)
Daily average ambivalent noise^f (dB)	51.2 (4.2)	51.1 (4.1)	51.2 (4.3)
Circadian and sleep			
Chronotype			
Early	2960 (24.0)	9262 (25.4)	3449 (28.4)
Intermediate early	4702 (38.1)	14507 (39.8)	3936 (32.4)
Intermediate late	3485 (28.2)	9944 (27.3)	3334 (27.5)
Late	1211 (9.8)	2751 (7.5)	1424 (11.7)
Weekly average midsleep^g (hh:mm)	02:06 (00:48)	03:18 (00:30)	04:24 (00:48)
Midsleep on weekdays (hh:mm)	02:06 (00:54)	03:18 (00:30)	04:36 (00:54)
Midsleep on weekends (hh:mm)	02:12 (01:24)	03:24 (00:48)	04:42 (01:06)
Social jetlag^h (hours)	0.1 (1.6)	0.2 (0.8)	0.1 (1.2)

Residuals of midsleep on chronotype^b	-1.2 (0.7)	0.0 (0.4)	1.3 (0.6)
Healthy sleep quality score (points)ⁱ	3.2 (0.9)	3.3 (0.9)	3.1 (0.9)

^a Values are mean and standard deviation or number and percentage.

^b Circadian misalignment was calculated by the residuals of midsleep on chronotype, while the negative or positive value of circadian misalignment indicated an advanced or delayed real sleep-wake cycle comparing to circadian preference. The first quintile of residuals of midsleep on chronotype was defined as the advanced group, demonstrating an advanced sleep-wake cycle relative to their circadian preference. Conversely, the fifth quintile was defined as the delayed group, which indicated a delayed sleep-wake cycle in comparison to circadian preference. The remaining quintiles (Q2, Q3, Q4) combined together were defined as the intermediate group.

^c Townsend deprivation index is calculated based on the preceding national census output areas. Each participant is assigned a score corresponding to the output area in which their postcode is located. Higher value indicated a poorer socioeconomic status.

^d Accelerometer-derived time on moderate or vigorous activity per day, weighted by weekends and weekdays based on R package GGIR¹⁹.

^e Accelerometer-derived mean waking hours' light exposure per day based on R package GGIR¹⁹.

^f Day-evening-night equivalent noise level: A-weighted local environment annual average noise level measured over the 24-hour period.

^g Accelerometer-derived time on average midpoint between sleep onset and sleep end, derived and weighted by weekends and weekdays based on R package GGIR¹⁹.

^h Difference between accelerometer-derived time of midsleep on weekends and workdays, derived and weighted by weekends and weekdays based on R package GGIR¹⁹.

ⁱ The healthy sleep quality score is calculated by the sum of five components (chronotype, 24-hour sleep duration, insomnia, snoring, and daytime sleepiness) from a touchscreen sleep questionnaire. It ranges from 0-5, with a higher score indicating a better sleep quality.

Table 2. Associations between quintiles of circadian misalignment and cardiometabolic outcomes by Cox proportionate hazard models ^a

	Incidence density (events/person-years)	Model 1^b	Model 2^c	Model 3^d
Type 2 diabetes				
Q1	300/94667	1.30 (1.10, 1.54)	1.26 (1.07, 1.50)	1.22 (1.03, 1.45)
Q2	244/94046	1.01 (0.84, 1.20)	1.01 (0.85, 1.21)	1.02 (0.85, 1.22)
Q3	243/94917	Reference	Reference	Reference
Q4	310/96293	1.19 (1.01, 1.41)	1.18 (1.00, 1.39)	1.17 (0.99, 1.38)
Q5	429/95528	1.59 (1.36, 1.87)	1.51 (1.29, 1.77)	1.39 (1.18, 1.62)
Coronary heart disease				
Q1	423/92171	1.14 (1.00, 1.31)	1.13 (0.99, 1.30)	1.12 (0.98, 1.29)
Q2	364/91674	0.98 (0.85, 1.13)	0.98 (0.85, 1.13)	0.98 (0.85, 1.13)
Q3	391/92489	Reference	Reference	Reference
Q4	482/93398	1.16 (1.02, 1.33)	1.15 (1.01, 1.32)	1.15 (1.01, 1.31)
Q5	526/92501	1.25 (1.09, 1.42)	1.22 (1.07, 1.39)	1.16 (1.02, 1.33)
Stroke				
Q1	130/94424	1.06 (0.83, 1.35)	1.06 (0.83, 1.35)	1.04 (0.82, 1.33)
Q2	114/93768	0.91 (0.71, 1.17)	0.92 (0.71, 1.18)	0.92 (0.72, 1.19)
Q3	133/94636	Reference	Reference	Reference
Q4	160/95895	1.11 (0.89, 1.40)	1.11 (0.88, 1.39)	1.10 (0.88, 1.39)
Q5	147/95220	0.99 (0.78, 1.25)	0.97 (0.76, 1.22)	0.91 (0.72, 1.16)
Cardiometabolic events				
Q1	780/91496	1.16 (1.05, 1.29)	1.15 (1.03, 1.27)	1.12 (1.02, 1.25)
Q2	675/91071	0.98 (0.88, 1.09)	0.98 (0.88, 1.09)	0.98 (0.89, 1.09)
Q3	714/91852	Reference	Reference	Reference
Q4	884/92598	1.17 (1.06, 1.29)	1.16 (1.05, 1.28)	1.15 (1.04, 1.27)
Q5	1031/91626	1.33 (1.21, 1.46)	1.29 (1.17, 1.41)	1.21 (1.10, 1.33)

^a Circadian misalignment was categorized by quintiles of residuals of midsleep on chronotype, while the negative or positive value of circadian misalignment indicated an advanced or delayed real sleep-wake cycle comparing to circadian preference. Values are hazard ratio and 95% confidence intervals.

^b Adjusted for age, sex, and ethnic group;

^c Further adjusted for region, social economic status, employment, education, and ambient noise level;

^d Further adjusted for smoking status, drinking status, tea consumption, coffee consumption, moderate to vigorous physic activity, and healthy sleep quality score (calculated from chronotype, insomnia, snore, daytime sleepiness, and sleep duration).

Table 3. Multiple mediation models of potential mediators in the association between circadian misalignment and T2D as well as CHD^a

Potential mediators	Total effect		Natural direct effect		Natural indirect effect		Proportion mediated	
	HR (95%CI)	<i>P</i>	HR (95%CI)	<i>P</i>	HR (95%CI)	<i>P</i>	% (95%CI)	<i>P</i>
T2D								
Liver function								
Alanine aminotransferase (U/L)	1.15 (1.08, 1.21)	<.001	1.14 (1.07, 1.20)	<.001	1.01 (1.00, 1.01)	<.001	6.2 (3.1, 12.6)	<.001
Alkaline phosphatase (U/L)	1.16 (1.08, 1.23)	<.001	1.15 (1.08, 1.22)	<.001	1.01 (1.00, 1.01)	<.001	4.6 (2.4, 8.4)	<.001
Aspartate aminotransferase (U/L)	1.15 (1.08, 1.23)	<.001	1.15 (1.08, 1.22)	<.001	1.00 (1.00, 1.01)	0.02	3.0 (0.8, 6.0)	0.02
Gamma glutamyl transferase (U/L)	1.15 (1.08, 1.21)	<.001	1.13 (1.06, 1.19)	<.001	1.01 (1.01, 1.02)	<.001	9.1 (5.3, 18.7)	<.001
Total bilirubin (μmol/L)	1.16 (1.09, 1.22)	<.001	1.16 (1.09, 1.21)	<.001	1.00 (1.00, 1.01)	<.001	2.4 (1.1, 5.0)	0.001
Overall	1.15 (1.09, 1.23)	<.001	1.14 (1.07, 1.21)	<.001	1.02 (1.01, 1.02)	<.001	12.3 (7.1, 20.0)	<.001
Lipid and glucose metabolism								
HDL-C (mmol/L)	1.17 (1.09, 1.23)	<.001	1.15 (1.08, 1.21)	<.001	1.01 (1.01, 1.02)	<.001	10.0 (6.1, 18.5)	<.001
Triglycerides (mmol/L)	1.15 (1.09, 1.22)	<.001	1.14 (1.07, 1.20)	<.001	1.01 (1.01, 1.02)	<.001	9.8 (4.8, 20.1)	<.001
Apolipoprotein A (g/L)	1.16 (1.09, 1.23)	<.001	1.15 (1.08, 1.22)	<.001	1.01 (1.00, 1.01)	<.001	5.9 (3.1, 11.0)	0.001
HbA1c (%)	1.15 (1.07, 1.22)	<.001	1.12 (1.05, 1.19)	<.001	1.02 (1.01, 1.04)	<.001	16.9 (5.2, 34.0)	<.001
Overall	1.15 (1.09, 1.24)	<.001	1.11 (1.05, 1.20)	<.001	1.03 (1.02, 1.05)	<.001	24.5 (12.3, 41.1)	<.001
Inflammatory biomarkers								
C-reactive protein (mg/L)	1.16 (1.10, 1.22)	<.001	1.14 (1.07, 1.19)	<.001	1.02 (1.02, 1.03)	<.001	15.5 (11.0, 28.1)	<.001
White blood cell count (x10 ⁹ /L)	1.16 (1.09, 1.22)	<.001	1.15 (1.07, 1.20)	<.001	1.01 (1.01, 1.02)	<.001	8.8 (6.2, 17.4)	<.001
Overall	1.16 (1.09, 1.23)	<.001	1.13 (1.06, 1.20)	<.001	1.03 (1.02, 1.04)	<.001	20.0 (13.9, 37.0)	<.001
Anthropometric indices								
Systolic blood pressure (mmHg)	1.16 (1.09, 1.23)	<.001	1.15 (1.08, 1.22)	0.02	1.01 (1.00, 1.01)	0.02	3.7 (1.1, 8.3)	0.002
Body mass index (kg/m ²)	1.15 (1.07, 1.22)	<.001	1.10 (1.03, 1.16)	0.02	1.05 (1.04, 1.06)	<.001	35.2 (23.9, 62.2)	<.001

Waist-hip ratio	1.16 (1.08, 1.23)	<.001	1.11 (1.04, 1.18)	<.001	1.04 (1.03, 1.05)	<.001	27.1 (17.7, 47.7)	<.001
Overall	1.15 (1.08, 1.23)	<.001	1.08 (1.01, 1.15)	0.02	1.06 (1.05, 1.07)	<.001	44.6 (31.7, 81.8)	<.001
CHD								
Liver function								
Alanine aminotransferase (U/L)	1.09 (1.03, 1.16)	<.001	1.09 (1.03, 1.15)	<.001	1.00 (1.00, 1.00)	<.001	1.5 (0.3, 4.2)	<.001
Alkaline phosphatase (U/L)	1.09 (1.03, 1.16)	0.02	1.09 (1.03, 1.15)	0.02	1.00 (1.00, 1.01)	<.001	4.4 (1.8, 12.7)	0.02
Gamma glutamyl transferase (U/L)	1.09 (1.03, 1.16)	<.001	1.09 (1.03, 1.15)	<.001	1.00 (1.00, 1.00)	<.001	3.4 (1.5, 11.0)	<.001
Albumin (g/L)	1.10 (1.02, 1.16)	0.04	1.09 (1.02, 1.16)	0.04	1.00 (1.00, 1.00)	<.001	2.1 (0.5, 6.9)	0.04
Overall	1.09 (1.04, 1.15)	<.001	1.08 (1.03, 1.14)	<.001	1.01 (1.01, 1.01)	<.001	8.8 (5.0, 22.6)	<.001
Lipid and glucose metabolism								
HDL-C (mmol/L)	1.10 (1.04, 1.16)	0.02	1.09 (1.03, 1.15)	0.02	1.01 (1.00, 1.01)	<.001	6.2 (2.7, 14.8)	0.02
Triglycerides (mmol/L)	1.10 (1.04, 1.16)	0.02	1.09 (1.03, 1.16)	0.02	1.01 (1.00, 1.01)	<.001	4.0 (1.6, 9.9)	0.02
Apolipoprotein A (g/L)	1.10 (1.04, 1.16)	0.02	1.09 (1.03, 1.16)	0.02	1.01 (1.00, 1.01)	<.001	4.5 (1.7, 13.1)	0.02
HbA1c (%)	1.09 (1.03, 1.16)	0.02	1.09 (1.03, 1.15)	0.02	1.00 (1.00, 1.00)	<.001	2.8 (0.4, 7.5)	0.02
Overall	1.09 (1.04, 1.17)	<.001	1.09 (1.03, 1.16)	<.001	1.01 (1.00, 1.01)	<.001	9.1 (4.5, 20.6)	<.001
Inflammatory biomarkers								
C-reactive protein (mg/L)	1.10 (1.04, 1.16)	<.001	1.09 (1.03, 1.15)	<.001	1.01 (1.01, 1.01)	<.001	10.7 (6.2, 27.1)	<.001
White blood cell count (x10 ⁹ /L)	1.09 (1.04, 1.16)	<.001	1.09 (1.03, 1.15)	<.001	1.01 (1.00, 1.01)	<.001	5.8 (2.7, 14.5)	<.001
Overall	1.09 (1.03, 1.16)	<.001	1.08 (1.02, 1.14)	<.001	1.01 (1.01, 1.02)	<.001	13.7 (7.1, 38.5)	<.001
Anthropometric indices								
Systolic blood pressure (mmHg)	1.10 (1.04, 1.16)	0.02	1.09 (1.03, 1.16)	0.02	1.00 (1.00, 1.01)	0.02	4.6 (0.7, 12.7)	0.04
Body mass index (kg/m ²)	1.09 (1.03, 1.16)	0.02	1.08 (1.02, 1.14)	0.04	1.01 (1.01, 1.02)	<.001	16.8 (9.3, 44.2)	0.02
Waist-hip ratio	1.09 (1.03, 1.16)	0.02	1.08 (1.02, 1.15)	0.04	1.01 (1.01, 1.01)	<.001	11.9 (6.0, 29.7)	0.02
Overall	1.09 (1.03, 1.15)	0.02	1.08 (1.01, 1.13)	0.02	1.02 (1.01, 1.02)	<.001	20.3 (11.5, 63.7)	0.02

^a Models were adjusted for age, sex, region, ethnic group, social economic status, employment, education, daily average noise level, smoking status, drinking status, tea consumption, coffee consumption, moderate to vigorous physic activity, and healthy sleep quality score. The levels of biomarkers were nature log transformed. Mediation analyses were conducted by R package CMAverse.

Abbreviation: T2D, type 2 diabetes, CHD, coronary heart diseases, HR (95%CI), hazard ratio (95% confidence limit).

Figure 1. Flow chart of the study

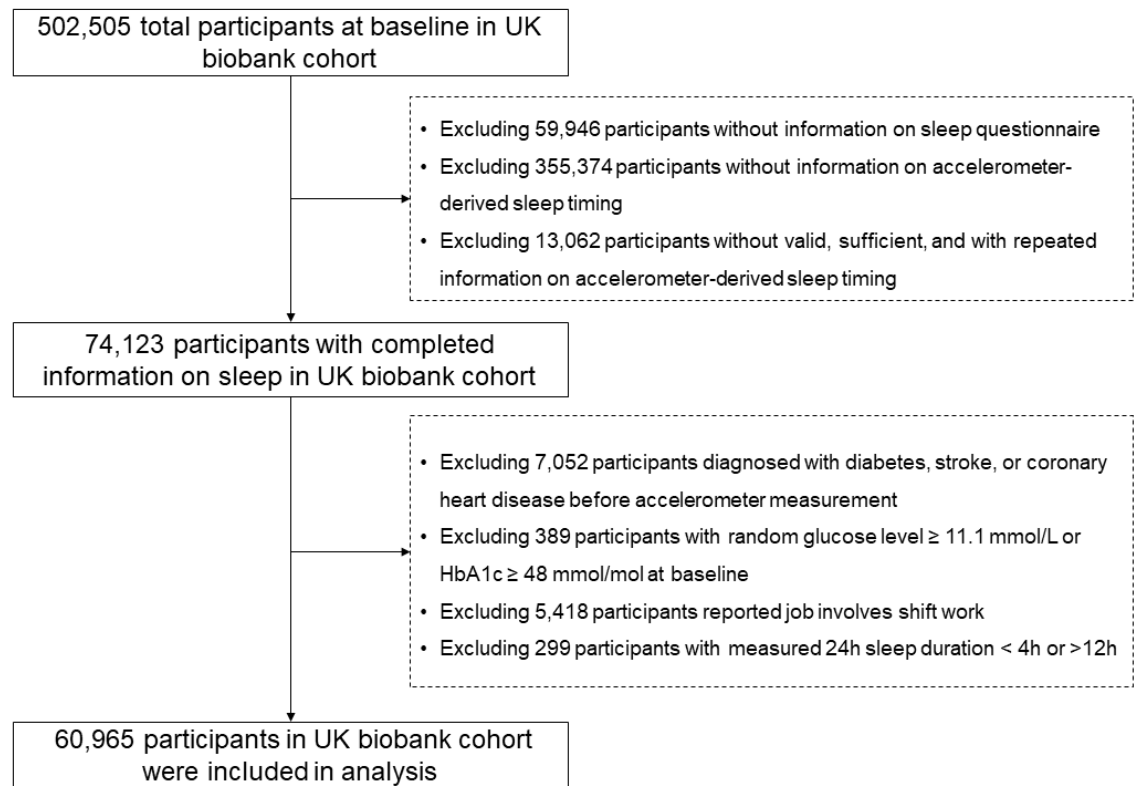
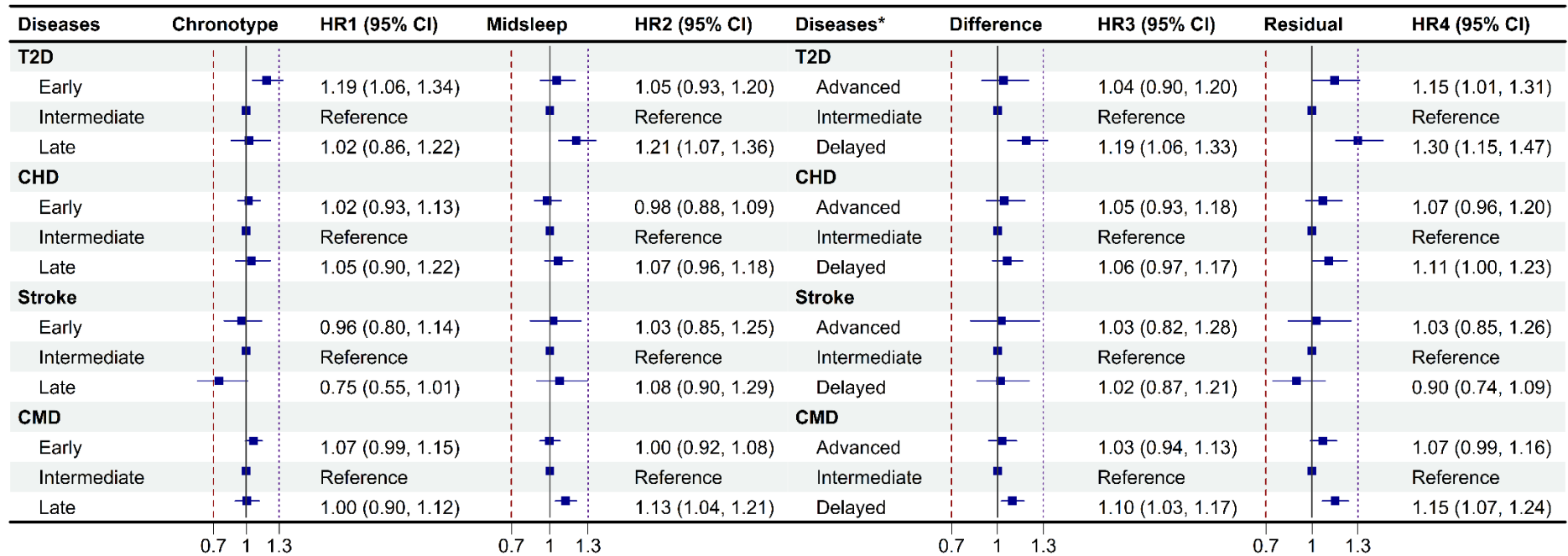


Figure 2 The risk of circadian preference, midsleep, and circadian misalignment on cardiometabolic outcomes



Chronotype indicated circadian preference of participants. Difference was calculated by subtracting chronotype group (early, intermediate, and late) from midsleep group (early, intermediate, and late), while Residual was calculated by the residuals of midsleep (continuous variable) on chronotype. Models were adjusted for age, sex, region, social economic status, employment, education, ethnic group, daily average noise level, smoking status, drinking status, tea consumption, coffee

consumption, moderate to vigorous physical activity, and healthy sleep quality score (chronotype was omitted from healthy sleep quality score when analyzing the association between chronotype and cardiometabolic outcomes). Chronotype and midsleep were also mutually adjusted.

*The category of circadian difference and residuals are different from chronotype and midsleep. Participants can be categorized into early, intermediate, and late group by chronotype and midsleep, whereas they were categorized into advanced, intermediate, and delayed sleep-wake cycle group compare to their chronotype. Abbreviation: T2D, Type 2 diabetes; CHD, coronary heart diseases; CMD, cardiometabolic diseases (incident of any of T2D, CHD, and Stroke), HR (95%CI), hazard ratio and 95% confidence limit.