

1 **Highly multiplexed cytokine analysis of bronchoalveolar lavage and plasma reveals age-**  
2 **related dynamics and correlates of inflammation in children.**

3 Shivanthan Shanthikumar<sup>1,2,3</sup>, Liam Gubbels<sup>1</sup>, Karen Davies<sup>4</sup>, Hannah Walker<sup>1,2,5</sup>, Anson Tsz  
4 Chun Wong<sup>1,2</sup>, Eric Levi<sup>4,6</sup>, Richard Saffery<sup>1,2</sup>, Sarath Ranganathan<sup>1,2,3</sup>, Melanie R.  
5 Neeland<sup>1,2</sup>.

6 <sup>1</sup> Infection, Immunity and Global Health, Murdoch Children's Research Institute, Parkville,  
7 VIC, Australia.

8 <sup>2</sup> Department of Paediatrics, University of Melbourne, Parkville, VIC, Australia.

9 <sup>3</sup> Respiratory and Sleep Medicine, Royal Children's Hospital, Parkville, VIC, Australia.

10 <sup>4</sup> Otolaryngology, Royal Children's Hospital, Parkville, VIC, Australia.

11 <sup>5</sup> Children's Cancer Centre, Royal Children's Hospital, Parkville, VIC, Australia.

12 <sup>6</sup> Clinical Sciences, Murdoch Children's Research Institute, Parkville, VIC, Australia.

13 Corresponding author:

14 A/Prof Melanie R. Neeland

15 Murdoch Children's Research Institute, Royal Children's Hospital, VIC, Australia

16 E: melanie.neeland@mcri.edu.au

17

18 **ABSTRACT**

19 Despite the central role of cytokines in mediating inflammation that underlies a range of  
20 childhood diseases, cytokine testing remains primarily limited to research settings and  
21 surrogate markers of inflammation are often used to inform clinical diagnostic and treatment  
22 decisions. There are currently no reference ranges available for cytokines in healthy children,  
23 either systemically (in blood) or at sites of disease (such as the lung). In our study, we aimed  
24 to develop an openly accessible reference of cytokines in the airways and blood of healthy  
25 children spanning 1 to 16 years of age. We examined how cytokine concentration changes  
26 during childhood and assessed whether a core set of cytokine markers could be used to  
27 indirectly evaluate the response of a broad spectrum of inflammatory analytes. To develop  
28 our reference, a total of 78 unique analytes were measured in cell-free bronchoalveolar lavage  
29 (BAL) and plasma from 78 children. We showed that age profoundly impacts soluble  
30 immune analyte concentration in both sample types and identified a highly correlative core  
31 set of 10 analytes in BAL and 11 analytes in plasma capable of indirectly evaluating the  
32 response of up to 34 inflammatory mediators. This study addresses an urgent need to develop  
33 reference ranges for cytokines in healthy children to aid in diagnosis of disease, to determine  
34 eligibility for, and to monitor the effects of, cytokine-targeted monoclonal antibody therapy.

## 35 **INTRODUCTION**

36 While some established circulating blood markers, such as c-reactive protein (CRP),  
37 erythrocyte sedimentation rate (ESR) and ferritin, are used clinically to assess inflammation  
38 in children, cytokine testing is primarily limited to research settings (1). As a result, clinicians  
39 often use surrogate markers of cytokines to inform diagnostic and treatment decisions. For  
40 example, CRP level is often used as a surrogate of IL-6 and in patients with severe COVID-  
41 19 pneumonia and paediatric multisystem inflammatory syndrome temporarily associated  
42 with SARS-CoV-2 (PIMS-TS), CRP is used to inform treatment with tocilizumab (an anti-IL-  
43 6 monoclonal antibody) (2, 3). Other monoclonal antibodies such as those that target IL-4,  
44 IL-5, IL-13 and thymic stromal lymphopoietin (TSLP) are used for children with severe  
45 asthma, however surrogate markers such as blood eosinophil count or fractional exhaled  
46 nitric oxide are used to determine eligibility for these treatments (4). There is therefore a clear  
47 and urgent need to develop reference ranges for cytokines in healthy children to aid in  
48 diagnosis of disease, to determine eligibility for, and to monitor the effects of,  
49 immunomodulatory treatments (5).

50 The development of reference ranges for systemic cytokines will have wide applicability, as  
51 blood is currently used to assess for inflammation as well as for alterations in immune cell  
52 populations in a range of childhood immune-related conditions (6-8). For diseases that affect  
53 specific organs, reference values that reflect the local tissue are also needed to inform  
54 targeted treatment strategies. For example, respiratory diseases such as asthma and acute  
55 respiratory tract infections are major sources of morbidity and hospitalisation for children  
56 worldwide, yet treatment options are limited and often confer little to no clinical benefit (9).  
57 The development of disease modifying or curative treatment strategies in these children relies  
58 on a better understanding of immunity in the early healthy airway.

59 To address this, we aimed to develop an age-specific and extensive reference of cytokines  
60 and other soluble immune analytes in the airways and blood of children. We also aimed to  
61 investigate how immune analyte concentration changes during childhood and whether a  
62 specific core set of markers could be used to reflect inflammation both locally and  
63 systemically.

## 64 **RESULTS**

### 65 **1. Establishing a reference for immune analytes the lower airway and blood of** 66 **children.**

67 We sampled bronchoalveolar lavage (BAL) from 24 children and blood from 66 children  
68 undergoing general anaesthesia at the Royal Children's Hospital Melbourne (Figure 1A). The  
69 clinical indications for these procedures are provided in Table 1, with 92% (22/24) of the  
70 BAL cohort undergoing a procedure for investigation of stridor, and 70% (46/66) of the blood  
71 cohort undergoing a procedure for obstructive sleep apnoea (OSA). All children were  
72 clinically well at the time of sample collection. Medical history and information on  
73 respiratory status from parent questionnaires are also provided in Table 1. All BAL samples  
74 were assessed for pathogens as per standard clinical testing in the RCH clinical microbiology  
75 laboratory, which included standard culture for bacteria and fungi.

76 Participants were aged between 0.5 and 16 years, and we performed age stratification across  
77 infancy (0-2 years), preschool period (3-5 years), childhood (6-10 years), and adolescence  
78 (11-16 years). Of the 24 children with BAL samples, 12 had paired blood samples permitting  
79 a cross-tissue comparison of analyte levels across the two locations. A total of 78 unique  
80 analytes were measured in both the cell-free BAL and blood (plasma) samples using the 48-  
81 plex Bio-Plex Pro™ Human Cytokine Screening panel and the 37-plex Bio-Plex Pro™  
82 Human Inflammation panel. All data are openly available for reuse in the data repository.

### 83 **2. Landscape of immune analytes in BAL and plasma.**

84 Of the 78 analytes measured, 32 were detected in both samples, 30 were only detectable in  
85 BAL, 3 were only detectable in plasma, and 13 were not detectable in either sample type  
86 (Figure 1A, Supplemental Table 1). The cytokines that were undetectable in plasma in our  
87 study were also undetectable in another study using the same multiplex panel in plasma of a  
88 smaller number of healthy subjects (10). To understand and compare the landscape of soluble  
89 immune factors in BAL and plasma, we grouped analytes based on their functional  
90 properties.

91 This showed that while the concentrations of analytes differ between the blood and lung, the  
92 patterns of relative expression are similar between the two sample types, with CXCL10 and  
93 CXCL12 among the most abundant chemokines (Figure 1B), TNFSF13B, sTNF-R1, and  
94 sTNF-R2 the most abundant of the TNF superfamily (Figure 1C), sIL-6Ra, sIL-6Rb, and IL-

95 1Ra the most abundant of the interleukin superfamily (Figure 1D), and inflammatory markers  
96 sCD163, SCGF-beta and Osteopontin also highly expressed in both sample types (Figure 1E).

97 There were 12 children in our cohort with paired BAL and plasma samples, enabling intra-  
98 individual analysis of analytes across both tissues (Figure 1F). This revealed that there were  
99 22 analytes significantly more abundant in plasma compared to BAL (all FDR- $p < 0.01$ , Figure  
100 1F). There were 3 analytes (IL-1Ra, G-CSF, MIF) significantly more abundant in BAL  
101 compared to plasma (all FDR- $p < 0.01$ , Figure 1F).

102 To help develop age-specific references for immune analytes in BAL and plasma, the median  
103 and range of each analyte are reported by clinically relevant age groups (infancy, preschool,  
104 childhood, adolescence) and presented in Tables 2-3.

### 105 **3. Immune analyte dynamics over the first 16 years of life.**

106 Principal components analysis (PCA) of BAL analyte data was conducted including age, sex,  
107 and BAL pathogen status as demographic variables. This showed that sex and pathogen status  
108 did not significantly contribute to variation in our dataset, however age trended towards  
109 correlation with the first dimension PC-1 ( $R=0.238$ ,  $p=0.13$ ) which explained 36.96% of the  
110 variation (Figure 2A). To explore this further, we performed two-tailed spearman correlation  
111 analyses of the BAL analyte data which showed 21 analytes were significantly associated  
112 with age (raw  $p < 0.05$ , Figure 2B). The BAL concentration of TNFSF14 and VEGF increased  
113 with age, while the concentration of IL-16, FGF2, beta-NGF, IL-4, IL-8, HGF, CXCL1,  
114 GCSF, CXCL9, CXCL10, CCL3, IL-2Ralpha, CCL7, CCL27, CCL2, CCL4, SCF, MCSF,  
115 and IL-1beta decreased with age. Protein-protein interaction (PPI) and enrichment analysis  
116 using STRING revealed that these 21 analytes were highly connected, showing enrichment of  
117 pathways associated with chemokine expression and binding, as well as PI3K-Akt signaling  
118 (Figure 2C). Of these 21 analytes, only TNFSF14, IL-16 and FGF-2 were significantly  
119 associated with age after correction for the false discovery rate (all FDR- $p < 0.05$ ). Individual  
120 dot plots depicting correlations for each of these 21 analytes are presented in Supplementary  
121 Figure 1.

122 PCA of plasma analyte data was also conducted, including age and sex as demographic  
123 variables. This showed that sex did not significantly contribute to variation in the plasma  
124 dataset, however age was strongly correlated with the first two dimensions PC-1 ( $R=0.32$ ,  
125  $p=0.00002$ ) and PC-2 ( $R = 0.16$ ,  $p=0.009$ ) which together explained 36.6% of the variation  
126 (Figure 2D). Two-tailed spearman correlation analyses of the plasma analyte data showed 17

127 analytes were significantly and negatively correlated with age (raw  $p < 0.05$ , Figure 2E). PPI  
128 and enrichment analysis using STRING revealed that these 17 analytes were highly  
129 connected with enrichment of three pathways: chemokine expression and binding, JAK/STAT  
130 signaling, and TNFR2 non-canonical NF $\kappa$ B activation (Figure 2F). Of these 17 analytes, 14  
131 remained significantly associated with age after correction for the false discovery rate (all  
132 FDR- $p < 0.05$ ). These were: TNFRSF8, IL-2Ralpha, GCSF, CXCL9, IFN-gamma, IL-18,  
133 MCSF, sTNF-R2, CXCL10, IFN-beta, CCL11, TNF-beta, TNFSF12, CCL4 (Figure 2E).  
134 Individual dot plots depicting correlations for all 17 analytes are presented in Supplementary  
135 Figure 2.

#### 136 **4. Sex and pathogen status of BAL do not largely modify immune analyte** 137 **concentration in childhood.**

138 While sex and BAL pathogen status did not appear to contribute to variation by PCA, we  
139 wanted to confirm this by directly comparing analyte concentration in males and females for  
140 both the BAL and plasma data, as well as pathogen vs no pathogen detected for the BAL  
141 data. This revealed that BAL concentrations of IL-9 and IL-10 were slightly higher in males  
142 compared to females, and that BAL TNFRSF8 was slightly lower in females compared to  
143 males (Supplementary Figure 3A). Plasma concentrations of SCGF-beta, TNFSF13B and  
144 IFN-beta were higher in males compared to females (Supplementary Figure 3B). Of these six  
145 analytes, only plasma SCGF-beta was significantly different between males and females after  
146 correction for the false discovery rate (FDR- $p = 0.005$ ) (Supplementary Figure 3B). There  
147 were no significant differences in BAL analyte concentration in samples with a pathogen  
148 detected compared to samples without a pathogen detected. A list of pathogens detected in  
149 our cohort is provided in Supplemental Table 2.

#### 150 **5. Discovery of a core set of highly correlated analytes to facilitate clinical application.**

151 While our comprehensive analysis has provided new insights into the soluble immune  
152 response in both BAL and plasma of children, not all analytes identified will have clinically  
153 accessible tests or a known clinical effect. To address this, we explored the feasibility of  
154 identifying a core group of analytes within each tissue that exhibit high correlation. This core  
155 set could then be measured in clinical settings to indirectly evaluate the response of other  
156 analytes. We also explored whether plasma analyte concentration correlated with BAL  
157 analyte concentration in individuals who had both sample types collected, with the goal of

158 identifying markers that could act as proxies for the lung to reduce the need for invasive  
159 bronchoscopy for investigation of lung inflammation.

160 Intra-sample correlation analyses revealed robust correlation among analytes in BAL (Figure  
161 3A), all with an FDR- $p < 0.001$ . Based on these highly correlated analytes, we identified a set  
162 of 10 core analytes that could estimate the concentrations of 34 other BAL analytes (Figure  
163 3B). The core set of analytes comprises CCL2, Chitinase 3-like 1, FGF2, HGF, IL-17, IL-  
164 1alpha, IL-4, IL-5, sTNFR1, and TNFRSF8. Collectively, these analytes exhibit strong  
165 correlations with 34 other unique analytes: CCL27, CCL3, CCL4, CCL7, CXCL1, CXCL10,  
166 CXCL9, GCSF, IFN-gamma, IL-15, IL-16, IL-18, IL-1beta, IL-1ra, IL-2, IL-2Ralpha, IL-34,  
167 IL-6, IL-8, IL-9, LIF, MCSF, Pentraxin-3, sCD163, SCF, sIL-6Ra, sIL-6Rb, sTNFR2, TNF-  
168 alpha, TNF-beta, TNFSF10, TNFSF12, TNFSF14, and TNFSF13B.

169 Intra-sample correlation analyses also revealed high correlation among analytes in plasma  
170 (Figure 3C), all with an FDR- $p < 0.001$ . Based on these highly correlated analytes, we  
171 identified a set of 11 core analytes that could estimate the concentrations of 23 other plasma  
172 analytes (Figure 3D). The core set of analytes comprises CCL27, CXCL9, IFN-beta, IFN-  
173 gamma, IL-16, IL-2Ralpha, IL-32, Osteopontin, sIL-6Rb, sTNFR1, and TNF-beta.  
174 Collectively, these analytes exhibit strong correlations with 23 other unique analytes: CCL11,  
175 CCL2, CCL4, CCL5, Chitinase 3-like 1, CXCL10, CXCL12, GCSF, HGF, IL-18, IL-1ra, IL-  
176 9, MCSF, MIF, MMP2, Osteocalcin, Pentraxin-3, sCD163, SCGF-beta, sIL-6Ra, sTNFR2,  
177 TNFRSF8, TNFSF13B.

178 Cross-tissue correlation analyses of paired BAL and plasma samples revealed no significant  
179 correlations in analyte levels between the two tissue types in healthy children.

## 180 **DISCUSSION**

181 We developed an extensive and openly accessible reference of soluble immune analytes in  
182 BAL and plasma of healthy children spanning 1 to 16 years of age. We showed that age  
183 profoundly impacts soluble immune analyte concentration in both sample types, highlighting  
184 the importance of developing age-specific reference datasets for immune responses in the  
185 airways and blood of children. We identified a highly correlative core set of 10 analytes in  
186 BAL and 11 analytes in plasma that could be measured to indirectly evaluate the response of  
187 a broad spectrum of inflammatory analytes, emphasising potential clinical feasibility of this  
188 work.

189 We showed that early life represents an increased state of inflammation compared to later  
190 childhood, with a significant number of analytes decreasing throughout childhood in both the  
191 airways and circulation. This reflects what has been observed previously in other studies of  
192 children and adults, where plasma analytes including CCL4, IL-18, IL-2Ralpha, CXCL9 and  
193 IFN-gamma were also shown to reduce with age (10, 11). Immune pathways associated with  
194 analytes that changed with age in our plasma data included chemokine receptor binding,  
195 JAK-STAT signaling and TNFR2 non-canonical NFκB activation. Increased JAK/STAT  
196 signaling is associated with several atopic conditions that are more common in children than  
197 adults (12). Furthermore, unregulated JAK/STAT signaling is a potential risk factor for  
198 chronic inflammation in the elderly (13). Non-canonical NFκB signaling regulates cell  
199 survival, maturation, and proliferation, as well as plays a key role in the development of  
200 immune tissues, highlighting the importance of these pathways in early life (14). We also  
201 recently showed that proportions of immune cell types associated with JAK/STAT and NFκB  
202 signaling, including conventional dendritic cells, monocytes, and B cells, also reduced with  
203 age in blood of children (15), providing a potential further link between these pathways and  
204 immune development in childhood.

205 To our knowledge, we are the first to report age-related changes in immune analyte  
206 concentration in BAL of healthy children. Like plasma, many analytes reduced with age in  
207 BAL, while two (TNFSF14 and VEGF) increased with age. Immune pathways associated  
208 with analytes that changed with age in our BAL data include chemokine receptor binding and  
209 PI3K-Akt signaling. The PI3K-AKIT signaling pathway has been shown to mediate growth  
210 and survival during early lung development in mouse models, and dysregulation of this  
211 pathway is associated with the development of lung fibrosis in later life (16-19).

212 Understanding the normal trajectory of BAL cytokines as children age will allow clinical  
213 teams to identify aberrations that occur in different disease states, including the key pathways  
214 identified above, and facilitate the use of cytokines as diagnostic biomarkers.

215 We identified a highly correlative core set of 10 analytes in BAL and 11 analytes in plasma  
216 that could be measured to indirectly evaluate the response of a broad spectrum of  
217 inflammatory analytes. We developed these core sets of analytes as it is unlikely that all  
218 analytes investigated in our study will have a clinically available test and the ability to test a  
219 core set of markers as a surrogate for a broad array of immunological features is more  
220 clinically feasible. Using such an approach is not implausible, as CRP is currently used as a  
221 surrogate for IL-6 concentration, and a high level of CRP is used in clinical decision making  
222 around anti-IL6 medication (2, 3). Our core set of 11 plasma analytes allows evaluation of 34  
223 total plasma markers, including IL-18, a key feature of childhood conditions including  
224 hemophagocytic lymphohistiocytosis (HLH) and juvenile idiopathic arthritis (20, 21), the  
225 TNF and IFN superfamilies which are biomarkers of several autoimmune and inflammatory  
226 diseases for which monoclonal antibody therapies are available (22), and osteopontin which  
227 has been proposed as a potential biomarker in paediatric cancer patients (23). Our core set of  
228 10 BAL analytes allows evaluation of 44 total BAL markers, including IL-6 which is a key  
229 feature of multi system inflammatory syndrome following SARS-CoV-2 infection in children  
230 (24), IL-4, Pentraxin-3, and IL-5 which have all been associated with wheezing and asthma in  
231 children (25, 26), HGF and FGF2 which are key markers of pulmonary fibrosis seen in  
232 paediatric lung diseases of genetic (i.e. disorders of surfactant metabolism) or acquired (i.e.  
233 chemotherapy, hypersensitivity pneumonitis, radiation) origin (27, 28), and the chemokine  
234 ligand family which are key players in lung diseases that involve inflammatory cell  
235 infiltration including paediatric cystic fibrosis (29).

236 Interestingly, we observed no significant correlation in analyte levels between plasma and  
237 BAL in children who had paired samples. This indicates that, in healthy children, systemic  
238 cytokine levels may not reflect those in the lung, although we acknowledge the smaller  
239 number of participants with matched samples for this analysis. These findings are similar to  
240 our previous work that showed no significant correlation in immune cell type proportions  
241 between healthy paediatric blood and airway samples (15). While our data suggest that  
242 circulating immune markers may not be good proxies for the lung immune response in  
243 healthy children, studies investigating respiratory conditions such as asthma, severe COVID-



244 19 and cystic fibrosis have shown that blood markers, including IL-6 and eosinophils,  
245 positively correlate with those in BAL during disease (29-31).

246 We acknowledge our samples were collected as part of clinically indicated procedures, which  
247 means that not all samples can be considered ‘healthy’. All children were clinically well at  
248 the time of sample collection. The main indication in our plasma cohort was OSA, with 70%  
249 of samples obtained from children exhibiting or undergoing investigation for this indication.  
250 The effect of this underlying condition on our results obtained in plasma is unclear. A recent  
251 review revealed conflicting evidence of immune alterations in adult and paediatric OSA, with  
252 some studies reporting an inflammatory effect while others reported normal systemic immune  
253 responses in these patients (32). The main indication in our BAL cohort was stridor (>90% of  
254 the BAL cohort), a sign that affects the upper airway and not the lung and thus should not  
255 affect the BAL cytokine profile, and only 1 participant in the BAL cohort had a parent report  
256 of ever having asthma. Parent questionnaires revealed that the majority of children in this  
257 cohort had never been prescribed respiratory medications (inhaled or oral steroids), and of  
258 those prescribed, rates of medication use were similar to what is observed in the Australian  
259 community for children aged 0-15years (33). As general anaesthesia is required to collect  
260 BAL in children, creating control datasets from healthy children in the community is not  
261 feasible. Nevertheless, our cytokine reference can be used as control data for clinical samples  
262 collected from children with acute, rare, and chronic respiratory conditions.

263 In this study, we have shown age-related changes in cytokine concentration in both blood and  
264 BAL. We identified a core set of cytokines in each tissue that facilitates the clinical  
265 translation of our findings. Our work addresses a current knowledge gap regarding age-  
266 related trends in systemic and tissue specific cytokine levels that is important to address in  
267 the current era of cytokine targeted monoclonal antibody therapy for children in a range of  
268 diseases. Our findings will help improve our understanding of the role of inflammation in  
269 disease pathogenesis and develop improved biomarkers for disease diagnosis and therapeutic  
270 intervention.

## 271 **MATERIALS AND METHODS**

### 272 **Study participants**

273 This study took place at the Royal Children's Hospital (RCH, Melbourne Australia) and  
274 involved analysis of 90 samples (24 BAL, 66 plasma) from 78 children (Table 1) aged  
275 between 1 and 16 years. Samples were collected at the time of clinically indicated procedures  
276 (bronchoscopy, tonsillectomy and/or adenoidectomy). Reasons for procedures, medical  
277 history, and respiratory status of the cohort are documented in Table 1. All children were  
278 clinically well at the time of the procedure.

### 279 **Ethics statement**

280 The studies involving human participants were reviewed and approved by Royal Children's  
281 Hospital Human Research Ethics Committee (HREC #25054 and # 88144). Written informed  
282 consent to participate in the studies was provided by the participants' legal guardian/next of  
283 kin.

### 284 **Collection and processing of samples**

285 For BAL samples, bronchoscopy and bronchoalveolar lavage were performed as previously  
286 described where indicated for investigation of stridor (34). This study used BAL from  
287 aliquots two and three from the right middle lobe. BAL was assessed for pathogens as per  
288 standard clinical testing in the RCH clinical microbiology laboratory, which included  
289 standard culture for bacteria and fungi. Up to 7mL of venous blood was collected in EDTA  
290 tubes at the time of the procedure. BAL samples were transferred on ice to the laboratory  
291 immediately upon collection. Blood samples were kept at room temperature and processed  
292 immediately after collection. BAL samples were centrifuged at 300xg for 7 minutes at 4°C  
293 and the cell-free BAL supernatant collected and stored at -80°C. EDTA blood was centrifuged  
294 at 700xg for 7 minutes at room temperature and the supernatant (plasma) stored at -80°C.

### 295 **Analyte quantification using Bio-Plex Pro panels**

296 Cell-free BAL supernatant and plasma samples were thawed, and cytokines were measured  
297 using the 48-plex Bio-Plex Pro™ Human Cytokine Screening panel (Bio-Rad, California,  
298 USA) and the 37-plex Bio-Plex Pro™ Human Inflammation panel (Bio-Rad, California,  
299 USA) according to the manufacturer's instructions. BAL supernatants were run undiluted and  
300 plasma samples were diluted 1:5 in phosphate-buffered saline (PBS) as per manufacturers

301 recommendations. The full list of the 78 analytes measured is provided in Supplementary  
302 Table 1. Data were acquired on the Bio-Plex 200 system and data QC was done using the  
303 Bio-Plex Manager™ 6.1 software (Bio-Rad). For data QC, standard curve outliers were  
304 removed, and individual standards were adjusted to achieve a recovery rate of  $100 \pm 5\%$   
305 (observed concentration/expected concentration). A fit probability greater than 0.9 was  
306 achieved for each standard curve. The concentration values of each analyte control were then  
307 compared to the expected concentration range specified on the assay data sheet for the control  
308 lot. Analytes that were not detected in >50% of samples were excluded from further analysis.  
309 For each analyte included in the analysis, samples that fell below the detection range were  
310 arbitrarily reported as half the lower limit of detection of the assay as previously described  
311 for this assay (35). Samples were run over 5 plates for the 48-plex panel, and samples were  
312 run over 3 plates for the 37-plex panel. Plate (batch) was included as a variable in the  
313 analysis, detailed below.

#### 314 **Data analysis**

315 To identify sources of variation in our data, principal components analysis (PCA) was  
316 conducted on log transformed analyte data using the FactoMineR package, including age,  
317 sex, plate (batch), and respiratory pathogen status (for BAL data only) as variables. For  
318 respiratory pathogen status of BAL samples, this included ‘yes’ or ‘no’ for bacteria and/or  
319 fungi detected on culture at the RCH microbiology laboratory (there were no fungi detected  
320 in this cohort, see supplement for bacteria detected). As batch contributed significantly to the  
321 variation in both the BAL and plasma data (Supplementary Figure 4), we used the ComBat  
322 package to adjust for this batch effect. PCA analysis of ComBat-corrected data revealed that  
323 batch was effectively adjusted for, and the contribution of other factors including age, sex,  
324 and respiratory pathogen status remained unchanged (Supplementary Figure 4). Batch  
325 corrected values were used for all analysis presented herein however both uncorrected and  
326 batch corrected values are provided in the data repository. For age-specific immune analyte  
327 reference ranges (Tables 2-3), the median concentration (pg/mL) was calculated for each  
328 immune analyte within each age group (0-2years, 3-5 years, 6-10 years, 11-16 years) and the  
329 ranges also reported. There were 12 children in our cohort with paired BAL and plasma  
330 samples, enabling intra-individual analysis of analytes across both tissues. Wilcoxon signed-  
331 rank tests were used to compare the concentration of analytes between BAL and plasma in  
332 children who had both sample types collected (Figure 1F). FDR-corrected p-values are  
333 reported and  $FDR-p < 0.05$  was considered significant. FDR adjustment was done using the

334 Benjamini and Hochberg approach (36). Age correlations were determined using two-tailed  
335 spearman tests (Figure 4B-E). Both raw ( $p < 0.05$ ) and FDR-corrected ( $FDR-p < 0.05$ ) p-values  
336 are reported. Analytes that were significantly correlated with age underwent protein-protein  
337 interactions (PPI) and pathway analysis using STRING (version 12) (37) (Figure 4C-F).  
338 Mann-Whitney U-tests were used to compare the concentration of analytes between males  
339 and females (Supplementary Figure 3, raw p-values reported,  $p < 0.05$  was considered  
340 significant) and BAL samples with a pathogen vs no pathogen detected (there were no  
341 significant differences). For intra sample type correlations (Figure 3), this was done using  
342 two-tailed spearman tests and FDR-corrected p-values are reported. To ensure the reliability  
343 of our findings, we present only analytes with  $FDR-p < 0.001$  for this analysis, which were  
344 used to generate the ‘core set’ of highly correlative analytes.

## 345 REFERENCES

- 346 1. S. B. Ali *et al.*, Can C-reactive protein be used as a surrogate marker of IL-6 in a  
347 broad array of clinical entities? *Biomark Med* **17**, 1001-1010 (2023).
- 348 2. X. Mariette *et al.*, Effectiveness of Tocilizumab in Patients Hospitalized With  
349 COVID-19: A Follow-up of the CORIMUNO-TOCI-1 Randomized Clinical Trial.  
350 *JAMA Internal Medicine* **181**, 1241-1243 (2021).
- 351 3. Immunomodulatory therapy in children with paediatric inflammatory multisystem  
352 syndrome temporally associated with SARS-CoV-2 (PIMS-TS, MIS-C;  
353 RECOVERY): a randomised, controlled, open-label, platform trial. *The Lancet. Child*  
354 *& adolescent health* **8**, 190-200 (2024).
- 355 4. G. G. Brusselle, G. H. Koppelman, Biologic Therapies for Severe Asthma. *The New*  
356 *England journal of medicine* **386**, 157-171 (2022).
- 357 5. C. Liu *et al.*, Cytokines: From Clinical Significance to Quantification. *Adv Sci*  
358 *(Weinh)* **8**, e2004433 (2021).
- 359 6. Y. Ding *et al.*, Reference values for peripheral blood lymphocyte subsets of healthy  
360 children in China. *J Allergy Clin Immunol* **142**, 970-973.e978 (2018).
- 361 7. E. Blanco *et al.*, Age-associated distribution of normal B-cell and plasma cell subsets  
362 in peripheral blood. *J Allergy Clin Immunol* **141**, 2208-2219.e2216 (2018).
- 363 8. F. Tosato *et al.*, Lymphocytes subsets reference values in childhood. *Cytometry. Part*  
364 *A : the journal of the International Society for Analytical Cytology* **87**, 81-85 (2015).
- 365 9. H. J. Zar, T. W. Ferkol, The global burden of respiratory disease-impact on child  
366 health. *Pediatric pulmonology* **49**, 430-434 (2014).
- 367 10. G. Kleiner, A. Marcuzzi, V. Zanin, L. Monasta, G. Zauli, Cytokine Levels in the  
368 Serum of Healthy Subjects. *Mediators of Inflammation* **2013**, 434010 (2013).
- 369 11. L. Sepiashvili *et al.*, Complex biological patterns of soluble cytokines and CD163 in  
370 childhood necessitating age-specific reference intervals for evidence-based clinical  
371 interpretation. *Clinical biochemistry* **98**, 35-41 (2021).
- 372 12. S. Ferreira, E. Guttman-Yassky, T. Torres, Selective JAK1 Inhibitors for the Treatment  
373 of Atopic Dermatitis: Focus on Upadacitinib and Abrocitinib. *Am J Clin Dermatol* **21**,  
374 783-798 (2020).
- 375 13. X. Hu, J. Li, M. Fu, X. Zhao, W. Wang, The JAK/STAT signaling pathway: from  
376 bench to clinic. *Signal Transduct Target Ther* **6**, 402 (2021).
- 377 14. B. N. Rodriguez, H. Huang, J. J. Chia, A. Hoffmann, The noncanonical NFκB  
378 pathway: Regulatory mechanisms in health and disease. *WIREs Mech Dis*, e1646  
379 (2024).
- 380 15. S. Shanthikumar *et al.*, A cross-tissue, age-specific flow cytometry reference for  
381 immune cells in the airways and blood of children. *medRxiv : the preprint server for*  
382 *health sciences*, 2024.2005.2008.24307019 (2024).
- 383 16. J. Wang *et al.*, PI3K-AKT pathway mediates growth and survival signals during  
384 development of fetal mouse lung. *Tissue Cell* **37**, 25-35 (2005).
- 385 17. D. Khattar *et al.*, PI3K signaling specifies proximal-distal fate by driving a  
386 developmental gene regulatory network in SOX9+ mouse lung progenitors. *Elife* **11**,  
387 e67954 (2022).
- 388 18. J. P. Margaria, L. Moretta, J. C. Alves-Filho, E. Hirsch, PI3K Signaling in  
389 Mechanisms and Treatments of Pulmonary Fibrosis Following Sepsis and Acute Lung  
390 Injury. *Biomedicines* **10**, (2022).
- 391 19. J. Wang *et al.*, Targeting PI3K/AKT signaling for treatment of idiopathic pulmonary  
392 fibrosis. *Acta Pharm Sin B* **12**, 18-32 (2022).

- 393 20. M. Mizuta *et al.*, Clinical significance of interleukin-18 for the diagnosis and  
394 prediction of disease course in systemic juvenile idiopathic arthritis. *Rheumatology*  
395 **60**, 2421-2426 (2020).
- 396 21. J. M. Krei, H. J. Møller, J. B. Larsen, The role of interleukin-18 in the diagnosis and  
397 monitoring of hemophagocytic lymphohistiocytosis/macrophage activation  
398 syndrome - a systematic review. *Clin Exp Immunol* **203**, 174-182 (2021).
- 399 22. M. Croft *et al.*, TNF superfamily in inflammatory disease: translating basic insights.  
400 *Trends Immunol* **33**, 144-152 (2012).
- 401 23. G. Karpinsky *et al.*, Osteopontin: its potential role in cancer of children and young  
402 adults. *Biomark Med* **11**, 389-402 (2017).
- 403 24. N. A. Nakra, D. A. Blumberg, A. Herrera-Guerra, S. Lakshminrusimha, Multi-System  
404 Inflammatory Syndrome in Children (MIS-C) Following SARS-CoV-2 Infection:  
405 Review of Clinical Presentation, Hypothetical Pathogenesis, and Proposed  
406 Management. *Children* **7**, 69 (2020).
- 407 25. H. H. De Keyser, B. Chipps, C. Dinakar, Biologics for Asthma and Allergic Skin  
408 Diseases in Children. *Pediatrics* **148**, (2021).
- 409 26. M. R. Neeland *et al.*, Pulmonary immune profiling reveals common inflammatory  
410 endotypes of childhood wheeze and suppurative lung disease. *Mucosal Immunol*,  
411 (2024).
- 412 27. A. P. Laddha, Y. A. Kulkarni, VEGF and FGF-2: Promising targets for the treatment  
413 of respiratory disorders. *Respir Med* **156**, 33-46 (2019).
- 414 28. E. M. DeBoer *et al.*, Imaging of pulmonary fibrosis in children: A review, with  
415 proposed diagnostic criteria. *Pediatric pulmonology* **59**, 845-854 (2024).
- 416 29. S. Shanthikumar, S. C. Ranganathan, R. Saffery, M. R. Neeland, Mapping Pulmonary  
417 and Systemic Inflammation in Preschool Aged Children With Cystic Fibrosis.  
418 *Frontiers in immunology* **12**, 733217 (2021).
- 419 30. R. Saji *et al.*, Combining IL-6 and SARS-CoV-2 RNAemia-based risk stratification  
420 for fatal outcomes of COVID-19. *PLoS One* **16**, e0256022 (2021).
- 421 31. T. Guiddir *et al.*, Neutrophilic Steroid-Refractory Recurrent Wheeze and Eosinophilic  
422 Steroid-Refractory Asthma in Children. *The journal of allergy and clinical*  
423 *immunology. In practice* **5**, 1351-1361.e1352 (2017).
- 424 32. K. Ludwig, T. Huppertz, M. Radsak, H. Gouveris, Cellular Immune Dysfunction in  
425 Obstructive Sleep Apnea. *Front Surg* **9**, 890377 (2022).
- 426 33. A. I. o. H. a. Welfare, Asthma. (2023).
- 427 34. P. D. Sly *et al.*, Risk factors for bronchiectasis in children with cystic fibrosis. *N Engl*  
428 *J Med* **368**, 1963-1970 (2013).
- 429 35. N. L. Messina *et al.*, Off-target effects of bacillus Calmette-Guérin vaccination on  
430 immune responses to SARS-CoV-2: implications for protection against severe  
431 COVID-19. *Clin Transl Immunology* **11**, e1387 (2022).
- 432 36. Y. Benjamini, Y. Hochberg, Controlling the False Discovery Rate - a Practical and  
433 Powerful Approach to Multiple Testing. *J R Stat Soc B* **57**, 289-300 (1995).
- 434 37. D. Szklarczyk *et al.*, STRING v11: protein-protein association networks with  
435 increased coverage, supporting functional discovery in genome-wide experimental  
436 datasets. *Nucleic acids research* **47**, D607-d613 (2019).

437

438

439 **CONFLICT OF INTEREST**

440 The authors declare no conflicts of interest.

441 **ACKNOWLEDGEMENTS**

442 This work was funded by Chan Zuckerberg Initiative Single-Cell Biology Grants (2021-  
443 237883, 2020-217531). We thank the children and parents who participated in our studies,  
444 without whom this work would not exist.

445 **Table 1.** Demographics and clinical characteristics of the study cohort.

	<b>BAL cohort</b>	<b>Plasma cohort</b>
<b>Total number</b>	24	66
<b>Age: years, median (range)</b>	3.31 (0.48-12.36)	6.3 (0.48-16.27)
<b>Sex: male, n (%)</b>	19 (79.2)	40 (60.6)
<b>Reason for procedure, n (%)</b>		
-OSA	1 (4.2)	46 (69.7)
-stridor	22 (91.6)	10 (15.15)
-other (hearing concerns, nasal obstruction, tonsillitis)	1 (4.2)	10 (15.15)
<b>Familial atopy, n (%)</b>	7 (29.2)	37 (56.1)
<b>Personal atopy, n (%)</b>	4 (16.2)	25 (37.8)
<b>Parent report of doctor-diagnosed asthma, n (%)</b>	1 (4.2)	18 (27.2)
<b>Any smoke exposure, n (%)</b>	3 (12.5)	16 (24.2)
<b>Antibiotic use past 12 months, n (%)</b>	9 (37.5)	22 (33.3)
<b>Inhaled steroid use past 12 months, n (%)</b>	7 (29.2)	8 (12.1)
<b>Oral steroid use past 12 months, n (%)</b>	7 (29.2)	14 (21.2)

446

447



448 **Table 2.** Immune analyte concentration in BAL cell-free fluid from children aged 0-12 years.

449

Analyte pg/mL [median, (range)]	Infant (0-2years, n=9)	Preschool (3-5 years, n=7)	Childhood (6-12 years, n=8)
beta-NGF	2.28 (0.14-4.57)	0.49 (0.14-2.48)	0.28 (0.14-1.68)
CCL11	1.57 (0.51-5.62)	1.60 (0.75-13.18)	1.37 (0.45-4.79)
CCL2	11.61(3.57-39.58)	9.06 (2.12-13.55)	5.71 (1.07-29.18)
CCL27	7.85 (2.97-14.65)	5.47 (0.51-8.50)	4.81(3.13-12.49)
CCL3	1.56 (0.52-28.47)	0.72 (0.10-4.77)	0.64 (0.05-2.63)
CCL4	15.26 (2.04-133.97)	7.84 (2.12-52.03)	4.68 (0.58-22.74)
CCL7	1.72 (0.16-4.50)	1.15(0.24-1.67)	0.84 (0.38-2.24)
Chitinase 3-like 1	8767.81 (954.10-11894.44)	2864.00 (703.30-8587.37)	3385.45 (839.46-14951.47)
CXCL1	1493.99 (237.68-3093.06)	303.11 (60.76-1122.80)	234.58 (96.67-7357.27)
CXCL10	183.82 (6.50-40684.16)	61.06 (11.02-362.29)	23.78 (8.68-572.92)
CXCL12	8.07 (3.57-18.02)	12.66 (6.60-22.12)	9.45 (1.79-25.59)
CXCL9	102.39 (9.60-2293.80)	55.80 (8.08-248.97)	14.78 (0.40-142.37)
FGF2	6.23 (1.41-18.51)	1.50 (0.03-3.89)	1.14 (0.03-5.24)
G-CSF	474.44 (48.84-2019.92)	151.18 (61.40-1144.81)	92.42 (25.30-369.67)
gp130/sIL-6Rb	5403.32 (1858.12-14458.50)	5711.40 (2976.97-11110.45)	4328.44 (1369.89-21613.27)
HGF	30.89 (3.22-98.99)	26.29 (5.13-159.49)	11.02 (5.13-29.43)
IFN gamma	8.69 (1.05-26.90)	4.48 (0.08-17.63)	5.29 (0.08-12.96)
IL-1 alpha	7.31 (2.35-27.47)	5.33 (0.39-45.19)	3.89 (2.39-12.01)
IL-1 beta	7.27 (0.03-47.24)	0.90 (0.03-9.20)	0.46 (0.03-8.89)
IL-10	2.08 (0.40-5.41)	2.17 (0.40-4.24)	1.94 (0.95-3.35)
IL-12 (p40)	18.35 (2.84-33.53)	9.13 (2.84-25.08)	8.05 (2.84-29.40)
IL-13	0.85 (0.39-2.06)	0.64 (0.36-1.15)	0.82 (0.30-1.34)
IL-15	84.58 (8.71-194.31)	77.20 (51.35-132.44)	98.45 (34.35-173.07)
IL-16	71.13 (45.09-519.98)	29.91 (11.98-184.16)	14.85 (5.32-177.58)
IL-17	2.71 (1.65-4.08)	2.32 (0.78-7.75)	1.56 (0.38-5.06)
IL-18	9.16 (4.37-35.41)	7.31 (0.62-21.76)	5.58 (1.53-25.90)
IL-1ra	841.48 (305.87-3460.55)	503.83 (253.67-1973.83)	531.47 (199.02-2576.00)
IL-2	1.62 (1.29-3.73)	1.62 (0.68-2.79)	1.13 (0.35-6.59)
IL-2Ralpha	3.34 (0.22-7.32)	1.82 (0.55-4.60)	2.04 (0.55-4.35)
IL-3	0.31 (0.01-1.69)	0.03 (0.01-0.78)	0.04 (0.01-0.51)
IL-32	26.61 (2.91-37.78)	24.66 (13.08-63.10)	31.60 (16.33-64.43)
IL-34	6.77 (6.06-25.49)	16.71 (6.06-35.06)	12.09 (6.06-70.04)
IL-4	0.82 (0.10-2.08)	0.47 (0.05-1.46)	0.34 (0.05-1.03)
IL-5	32.45(5.50-235.57)	22.78 (11.47-232.32)	69.31 (5.50-232.32)

IL-6	3.07 (1.29-74.55)	1.29 (0.51-11.76)	2.16 (1.29-5.55)
IL-7	18.13 (9.13-34.54)	25.46 (10.41-76.64)	14.03 (4.56-28.44)
IL-8	206.62 (16.36-1979.35)	28.71 (11.40-466.63)	18.39 (1.66-508.75)
IL-9	3.93 (2.92-18.31)	6.43 (0.98-10.17)	4.52 (0.98-8.79)
LIF	8.45 (3.08-24.23)	9.72 (4.17-23.77)	8.69 (4.55-27.80)
M-CSF	5.94 (2.39-14.02)	4.14 (2.22-6.59)	2.91 (0.88-10.55)
MIF	2309.53 (671.98-4427.52)	1407.09 (582.55-2632.62)	1557.91 (458.98-3935.37)
MMP3	130.69 (25.81-719.08)	130.69 (130.69-1370.04)	110.66 (25.81-207.94)
Osteocalcin	12.66 (12.66-61.51)	43.19 (13.97-190.37)	12.66 (4.81-161.20)
Osteopontin	591.14 (143.74-1061.32)	425.09 (143.74-775.14)	681.92 (557.04-877.56)
PDGF-BB	27.12 (3.50-46.90)	11.29 (1.80-43.16)	14.32 (3.56-52.21)
Pentraxin-3	251.90 (49.75-2144.92)	215.50 (31.71-3812.99)	131.30 (12.44-779.66)
sCD163	16062.05 (2655.74-26156.78)	6774.56 (3050.64-13078.39)	9152.16 (2594.73-39100.43)
SCF	11.75 (7.29-41.50)	9.62 (4.39-24.44)	8.12 (3.86-24.00)
SCGF-beta	1002.49 (59.20-2993.31)	1234.21 (511.18-2660.58)	833.74 (29.60-1649.17)
sIL-6Ra	196.55 (47.65-434.82)	194.61 (27.94-420.01)	181.16 (20.03-577.74)
sTNF-R1	214.24 (75.85-301.29)	200.16 (62.47-397.03)	172.97 (78.42-405.91)
sTNF-R2	33.53 (11.31-46.82)	28.42 (21.93-58.37)	29.22 (20.38-46.82)
TNF-alpha	14.41 (4.67-32.43)	12.04 (4.47-34.44)	10.61 (4.47-20.24)
TNF-beta	2.74 (0.22-11.26)	3.42 (0.22-8.80)	1.76 (0.22-4.60)
TNFRSF8	3.62 (1.36-14.01)	4.46 (1.36-21.95)	4.49 (1.36-11.90)
TNFSF10	30.41 (6.43-264.37)	25.00 (1.81-61.10)	14.16 (3.29-71.33)
TNFSF12	24.80 (6.57-33.94)	17.42 (12.00-46.36)	22.80 (8.80-124.91)
TNFSF13	40392.59 (23946.35-226916.66)	20846.51 (5411.46-77494.32)	34998.56 (4174.88-119099.10)
TNFSF13B	1027.60 (99.88-4744.95)	827.25 (462.14-4396.61)	654.38 (236.40-2213.60)
TNFSF14	0.31 (0.31-7.16)	5.43 (0.31-7.16)	7.16 (0.61-12.30)
TSLP	0.20 (0.10-10.34)	1.66 (0.10-7.31)	1.51 (0.10-8.11)
VEGF	12.13 (1.73-167.73)	82.71 (1.73-209.38)	56.49 (25.99-205.07)

450

451

452 **Table 3.** Immune analyte concentration in plasma from children aged 0-16 years.

Analyte pg/mL [median, (range)]	Infant (0-2years, n=10)	Preschool (3-5 years, n=21)	Childhood (6-10 years, n=22)	Adolescence (11-16 years, n=13)
CCL11	23.18 (9.58-84.99)	19.38 (1.10-45.87)	13.15 (5.50-57.09)	9.98 (1.10-36.13)
CCL2	23.49 (5.58-44.37)	17.15 (3.39-51.76)	15.99 (1.74-30.91)	13.66 (1.74-30.91)
CCL27	198.40 (117.10-293.63)	173.03 (100.03-399.09)	162.13 (104.22-331.70)	145.79 (72.49-320.53)
CCL4	172.80 (119.46-214.33)	192.20 (97.87-234.36)	153.79 (112.18-263.28)	144.31 (101.71-201.84)
CCL5	4177.71 (2713.73-8015.05)	4202.67 (1033.84-8204.98)	3983.05 (2143.14-7582.60)	2829.16 (1048.29-6880.26)
Chitinase 3-like 1	2596.10 (1552.31-7024.70)	2516.86 (733.91-3752.57)	2373.99 (1384.95-4157.89)	2742.96 (619.10-8551.33)
CXCL10	212.05 (96.42-543.98)	228.10 (26.77-820.49)	122.72 (47.46-380.63)	77.61 (47.46-294.65)
CXCL12	408.73 (160.90-820.30)	451.94 (195.36-1200.98)	421.68 (233.94-613.11)	398.93 (257.78-749.61)
CXCL9	430.80 (93.85-1071.94)	269.87 (50.77-2985.30)	155.22 (58.26-678.40)	88.07 (41.55-219.88)
G-CSF	116.57 (24.76-152.22)	103.97 (16.80-461.44)	54.95 (16.80-229.13)	44.63 (16.80-103.97)
gp130/sIL-6Rb	43169.60 (31111.97-66378.76)	42195.48 (16316.25-57797.16)	42237.24 (26541.97-88045.70)	42245.00 (27559.36-98784.15)
HGF	212.31 (160.90-484.38)	191.34 (77.71-393.44)	182.28 (116.16-498.00)	209.38 (97.01-302.33)
IFN-b	27.89 (17.93-47.31)	23.09 (2.38-40.77)	18.21 (11.02-44.00)	20.47 (6.14-28.63)
IFN-y	19.96 (4.86-107.49)	15.45 (2.43-83.70)	12.02 (2.43-39.02)	4.86 (2.43-19.46)
IL-16	42.84 (31.28-110.58)	61.34 (21.87-293.72)	69.82 (15.40-319.00)	58.40 (24.99-161.52)
IL-18	61.82 (24.97-153.02)	45.29 (7.76-215.64)	26.99 (0.83-84.66)	27.53 (9.58-56.16)
IL-1ra	286.16 (173.27-543.33)	294.71 (149.56-556.97)	328.53 (119.09-503.00)	303.63 (50.45-520.95)
IL-2Ralpha	109.62 (85.51-336.83)	94.91 (40.24-192.19)	68.78 (25.12-126.38)	49.05 (17.79-95.79)
IL-32	87.05 (35.12-141.98)	60.58 (17.77-129.91)	64.98 (12.41-117.79)	56.28 (5.31-100.00)
IL-9	445.69 (327.58-578.53)	480.18 (241.67-561.13)	385.53 (259.31-698.90)	388.27 (288.37-624.03)
M-CSF	13.90 (7.50-35.84)	10.57 (1.60-36.80)	7.62 (1.60-23.62)	6.90 (1.60-16.63)
MIF	726.01 (428.10-1290.45)	939.32 (205.67-1809.94)	876.66 (385.50-2257.42)	1049.03 (207.09-1700.9)
MMP2	17340.48 (8729.47-36734.68)	16119.55 (6708.58-27039.07)	12801.61 (5844.31-34301.90)	16114.69 (1750.16-34558.64)
Osteocalcin	4043.32 (2792.44-5887.91)	3970.84 (1702.10-8338.08)	4057.51 (1304.42-7272.78)	4106.13 (1332.68-8915.56)
Osteopontin	47020.08 (33621.91-99030.07)	41887.55 (16300.23-70515.61)	44788.74 (24948.42-81080.82)	46935.05 (20099.78-111027.38)
Pentraxin-3	12686.39 (6965.05-26118.35)	9822.07 (1796.25-23211.50)	11127.18 (4714.23-27852.32)	8256.14 (1383.34-31842.04)
sCD163	56866.33 (32788.18-183229.97)	43004.83 (12842.22-142352.08)	37352.46 (19757.93-102636.90)	41664.56 (17482.61-93158.19)
SCGF-beta	38390.39 (28917.70-57447.48)	35604.97 (16248.82-47686.49)	28505.78 (13325.99-46096.23)	32903.42 (12856.50-54756.44)
sIL-6Ra	6605.90 (5614.23-15726.64)	7915.80 (1820.17-14690.32)	6852.21 (3829.03-12435.15)	8314.40 (3028.12-10335.88)
sTNF-R1	448.58 (250.07-897.30)	264.12 (116.94-562.76)	289.89 (133.21-612.06)	267.18 (43.34-771.93)
sTNF-R2	299.79 (243.75-461.46)	262.02 (108.98-368.96)	231.30 (179.17-357.47)	237.42 (139.83-370.86)
TNF-beta	312.84 (211.90-385.36)	291.32 (172.50-406.08)	255.43 (164.04-456.77)	231.05 (166.32-327.68)
TNFRSF8	2982.19 (1900.97-8806.88)	2800.79 (505.38-7161.09)	1727.14 (681.48-2687.69)	1019.36 (449.76-1790.75)
TNFSF12	184.89 (79.94-271.97)	166.51 (70.70-241.90)	169.01 (103.07-274.80)	144.77 (56.60-323.16)
TNFSF13B	5291.65 (3620.37-9854.53)	4879.07 (1975.04-7382.17)	5058.65 (2458.21-9941.11)	4794.56 (3013.45-11110.11)



## 454 **FIGURE LEGENDS**

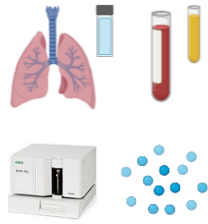
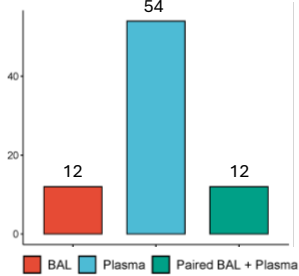
455 **Figure 1. Landscape of soluble immune analytes in bronchoalveolar lavage (BAL) and**  
456 **plasma of healthy children. (A)** Overview of the experimental design and a venn diagram  
457 depicting the overlap in the number of analytes detected in BAL vs plasma. Median  
458 concentration (pg/mL) of **(B)** chemokine family analytes, **(C)** interferon / TNF superfamily  
459 analytes, **(D)** interleukin superfamily analytes and **(E)** growth factors in BAL (n=24) and  
460 plasma (n=66). **(F)** Ballon plot depicting intra-individual comparison of analyte concentration  
461 between BAL and plasma for the 32 analytes detected across both samples in children who  
462 had both sample types collected (n=12). \*Depicts significant difference by Wilcoxon signed-  
463 rank test and correction for the false discovery rate using the Benjamini Hochberg approach  
464 (FDR-p<0.05 was considered significant).

465 **Figure 2. Immune analyte dynamics over the first 16 years of life. (A)** Principal  
466 components analysis (PCA) of BAL immune analyte data highlighting age as a significant  
467 contributor to the first dimension. **(B)** Spearman coefficient and p-values for BAL analytes  
468 that were significantly associated with age. \*Indicates analytes that were significant after  
469 correction for the false discovery rate (FDR). **(C)** Protein-Protein Interaction (PPI) analysis  
470 using STRING reveals significant interactions between BAL analytes associated with age  
471 (the strength of the line indicates the confidence of the interaction) and shows enrichment of  
472 pathways associated with chemokine receptor binding and PI3K-Akt signaling. **(D)** PCA of  
473 plasma immune analyte data highlighting age as a significant contributor to the first  
474 dimension. **(E)** Spearman coefficient and p-values for plasma analytes that were significantly  
475 associated with age. \*Indicates analytes that were significant after FDR correction. **(F)** PPI  
476 analysis using STRING reveals significant interactions between plasma analytes associated  
477 with age and shows enrichment of pathways associated with chemokine receptor binding,  
478 JAK/STAT signaling and TNFR2 non-canonical NFκB activation. Correlation p-values were  
479 determined by two-tailed spearman test and p<0.05 was considered significant.

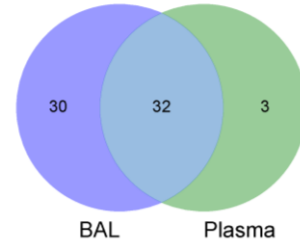
480 **Figure 3. Discovery of a core set of highly correlated analytes. (A)** Spearman correlation  
481 analyses of analytes within BAL. The red circles indicate a significant correlation after  
482 correction for the false discovery rate (all FDR-p<0.001). The strength of the colour indicates  
483 the strength of the correlation (spearman rho). **(B)** Chord plot depicting the BAL analytes  
484 with the highest number of correlations. This core set of analytes (right hand side) strongly  
485 correlate with 34 other unique analytes (left hand side). **(C)** Spearman correlation analyses of

486 analytes within plasma. The red circles indicate a significant correlation after correction for  
487 the false discovery rate (all FDR- $p < 0.001$ ). The strength of the colour indicates the strength  
488 of the correlation (spearman rho). **(D)** Chord plot depicting the plasma analytes with the  
489 highest number of correlations. This core set of analytes (right hand side) strongly correlate  
490 with 23 other unique analytes (left hand side).

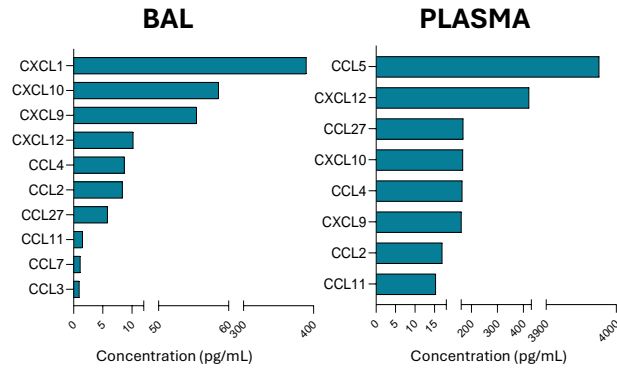
## A 78 children: 90 samples



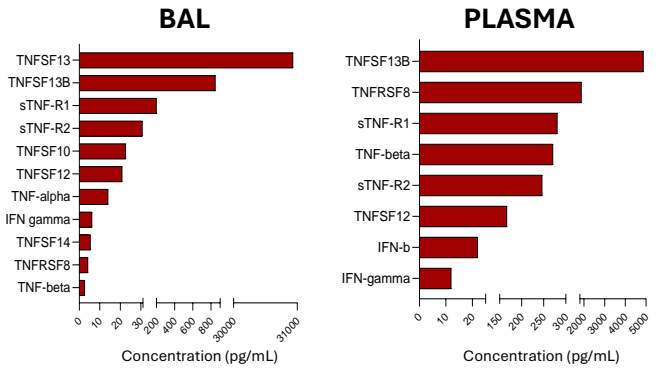
**BAL cell-free fluid**  
**Plasma**  
**Multiplex immunoassays:**  
**78 immune analytes**



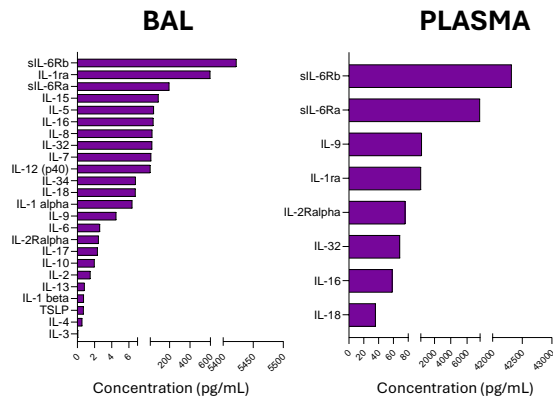
## B Chemokines



## C Interferon / TNF superfamily



## D Interleukin superfamily



## E Growth factors / other analytes

