

# 1 **Diverging Patterns of Cognitive Decline by Sex and Race-Ethnicity** 2 **in Seriously Ill Older Americans**

3 Iván Mejía-Guevara, PhD<sup>1,2</sup>, and V.S. Periyakoil, MD<sup>1,2</sup>

4 <sup>1</sup>Department of Medicine/Primary Care and Population Health, Stanford University School of  
5 Medicine, Stanford, CA, United States;<sup>2</sup> Longevity, Equity, and Aging Research Consortium  
6 (LEARN), Stanford University School of Medicine, Palo Alto, CA, United States

7 Main text word count: 4079; No. of References: 46; No. of data elements: 4 (2 Figures, 2 Tables)

## 8 **Abstract**

9 **Objectives** Differences in Cognitive decline are common in older adults in the last years of life,  
10 but differences across sex and race-ethnicity are poorly understood. This study investigated if sex  
11 and/or race-ethnicity moderated changes in cognitive function in older adults in the last years of  
12 life.

13 **Methods** Data from the Health and Retirement Study (HRS) from 1993 to 2016 were used to  
14 analyze imputed cognition summary scores for total word recall and mental status of older adults  
15 aged 60-99. Loss of cognitive function was estimated using a multilevel mixed-effects model and  
16 accelerated cognitive decline was approximated by incorporating a change-point model using a  
17 restricted sample of decedent respondents who died aged 65-99.

18 **Results** Notable disparities were seen in the rates of cognitive decline across sex and race-ethnic  
19 groups in the last years of life. Women consistently scored lower than men in word recall but  
20 higher in mental status, regardless of race-ethnicity. Non-Hispanic White respondents, men and  
21 women, consistently outperformed Hispanic and Black respondents in word recall tasks and  
22 mental status.

23 **Conclusions** Our study shows that sex and race-ethnicity moderate cognitive decline in older  
24 adults during the last years of life. Older adults from underserved communities are at higher risk  
25 of cognitive decline. Our study could inform clinical practice and policy focused on mitigating  
26 the adverse impact of cognitive decline experienced by marginalized populations of older adults  
27 in the last years of life.

28 **KEYWORDS:** *word recall, mental status, survivors, decedents, cognitive decline, age patterns*  
29

## 30 **Introduction**

31 **The impact of aging on cognition is clear, but sex differences in cognitive changes over time**  
32 **in older adults are unclear** (Miller & Halpern, 2014). Older women may have higher cognitive  
33 reserve but faster cognitive decline than older men (Levine et al., 2021). Older women also  
34 perform better than men in most standardized cognitive tests, except for spatial ability  
35 (McCarrey, 2016; Miller & Halpern, 2014). In addition, mixed results have been found regarding  
36 cognitive decline by race among older adults without dementia, some reporting no race  
37 differences in cognitive decline (Castora-Binkley et al., 2015; Karlamangla et al., 2009). Race  
38 and ethnic differences in cognitive decline are known, with Black Americans and Hispanic or  
39 Latino individuals showing a higher incidence of dementia than non-Hispanic White (NHW)  
40 populations (Mehta & Yeo, 2017). A recent study has identified significant race and ethnic  
41 differences in mild cognitive impairment and dementia, with Hispanic or Latino groups showing  
42 higher risk than NHW and Black or African American groups (Wright et al., 2021), although  
43 cognitive impairment data on Hispanic or Latino individuals are more limited.

44 **Little is known about sex and race-ethnic combined differences in seriously ill older**  
45 **adults in the last years of life.** There is a well-established survival advantage of females relative  
46 to males, and mortality disparities across racial and ethnic groups in old age (Crimmins, 2018).  
47 Knowledge about cognitive patterns in the last years of life will serve as a critical piece of data  
48 as we seek to mitigate late-life disparities in seriously ill older adults.

49 Dementia in older adults strongly predicts death, there is a competing risk of death that may  
50 affect the accuracy of estimates of cognitive function and decline (Hayes-Larson et al., 2020).  
51 Selective survival has been described as a phenomenon wherein individuals with specific  
52 characteristics disproportionately survive to old age while those characteristics are also associated

53 with dementia risk (Hayes-Larson et al., 2020; Shaw et al., 2021a). It is also known that  
54 cognition declines in the last years of life (Riegel & Riegel, 1972; Wilson et al., 2003). In this  
55 study, we sought to explore the relationships between cognitive decline and its impact (if any) on  
56 mean age trajectories of cognitive function by sex and race-ethnicity using a national sample of  
57 older survivors and decedents.

## 58 **Method**

### 59 **Study design and participants**

60 The Health and Retirement Study (HRS) is a comprehensive, nationally representative  
61 longitudinal survey encompassing over 43,000 Americans aged 50 and older (HRS, 2022). Its  
62 primary objective is to monitor changes in the health, wealth, social structure, and functional  
63 abilities of its participants as they age.

64 For this study, we retrieved information on demographics, cognitive function scores, and  
65 mortality status for respondents aged 50 and older from eleven survey years (biennially 1996-  
66 2016) of the latest version of the RAND HRS Longitudinal File 2020 (v1, March 2023), which  
67 contains information from Core and Exit Interviews of the HRS, and revised cognitive scores  
68 during this period (Health and Retirement Study, 2023; RAND HRS Longitudinal File 2020 (V1),  
69 2023). Our analysis focused on alive and decedent respondents aged 65-99, with decedents dying  
70 between the ages of 65-99 years in three self-reported racial and ethnic groups: Hispanic or  
71 Latino, non-Hispanic White, and non-Hispanic Black or African American (hereafter Hispanic,  
72 White, and Black, respectively). Mortality status was ascertained based on an interview status  
73 variable indicating whether the respondent had passed away between the last and the current  
74 interview or before a previous wave (Health and Retirement Study, 2023). Since our analysis  
75 focused on respondents aged 65-99 at the time of measurement, disregarding observations from

76 individuals younger or older than this age range, the total number of respondents between 1996  
77 and 2016 was 113,139 participants, 46,844 survivors, and 66,295 deceased, after these  
78 exclusions (**Table 1**).

## 79 **Ethics Review**

80 This study relied on publicly available data and no review process was needed.

## 81 **Outcomes**

82 We considered two primary outcomes in this paper: (1) a total word summary score (TR20,  
83 range 0-20), calculated as the sum of immediate and delayed word recall scores; and (2) a mental  
84 status summary score (MSTOT, range 0-15), derived from a series of tests that evaluated  
85 knowledge, that included serial 7's, backwards counting, date naming, object naming, and  
86 naming the President and Vice President of the United States (see Appendix for details of the  
87 cognitive tests). All these scores were retrieved from the HRS imputations of cognitive  
88 functioning (McCammon et al., 2022).

## 89 **Mortality and cognitive decline in the last phase of life**

90 To investigate the relation of death to changes in cognitive function, we included mortality status  
91 to account for the impact of mortality on decedents' outcomes to construct age trajectories of  
92 cognition. Further, our goal was to investigate the influence (if any) of approaching mortality on  
93 cognition (Wilson et al., 2003). Specifically, we built on previous research to estimate the onset  
94 time of cognitive decline in the last phase of life relative to the time of death and the rates of  
95 cognitive decline and cognitive scores during two distinct phases, a phase of cognitive decline  
96 and a phase of accelerated cognitive decline, demarcated by this initial timing (Sliwinski et al.,  
97 2006; Wilson et al., 2018, 2020). For this latter analysis, we restricted the analytic sample to all  
98 decedent respondents who died between 1996 and 2016, aged between 65 and 99. Additionally,

99 we stratified the sample by sex and race-ethnicity to examine potential sub-group variations of  
100 cognitive decline before death. We used the term sex here because in HRS, sex and gender are  
101 used interchangeable (Hanes & Clouston, 2021).

## 102 **Non-modifiable and modifiable risk factors**

103 We account for non-modifiable risk factors, including sex, age, race-ethnicity, and years of  
104 school, as self-reported by participants (Bloomberg et al., 2021). We also considered the APOE  
105 isoform, directly genotyped when available and imputed otherwise, which has three major  
106 isoforms ( $\epsilon 2$ ,  $\epsilon 3$ , and  $\epsilon 4$ ), determined by two SNPs, rs7412 and rs429358. We inferred the  
107 APOE isoform based on the combination of these major isoforms and categorized it into six  
108 pairs:  $\epsilon 2/\epsilon 2$ ,  $\epsilon 2/\epsilon 3$ ,  $\epsilon 2/\epsilon 4$ ,  $\epsilon 3/\epsilon 3$ ,  $\epsilon 3/\epsilon 4$ , and  $\epsilon 4/\epsilon 4$  (Faul et al., 2021). We recoded the  
109 APOE isoform as a binary factor, where respondents with one or two copies of the  $\epsilon 4$  allele  
110 ( $\epsilon 2/\epsilon 4$ ,  $\epsilon 3/\epsilon 4$ ,  $\epsilon 4/\epsilon 4$ ) were assigned a value of one, while those without the  $\epsilon 4$  allele  
111 ( $\epsilon 2/\epsilon 2$ ,  $\epsilon 2/\epsilon 3$ ,  $\epsilon 3/\epsilon 3$ ) were assigned a value of zero. We referred to this resulting variable as  
112 APOE-4, which has been significantly associated with Alzheimer’s disease and dementia in  
113 various studies (Safieh et al., 2019; Tang et al., 1998).

114 Modifiable factors, such as alcohol consumption (measured by the number of drinks per week),  
115 current smoking status, and body mass index (calculated as weight in kilograms divided by  
116 height in meters squared), and chronic diseases (diabetes, high blood pressure, heart disease, and  
117 stroke, using indicators that stipulated whether a doctor had ever diagnosed the respondent with  
118 any of these conditions) were included in the analysis (Health and Retirement Study, 2022;  
119 RAND HRS Longitudinal File 2018 (V2), 2022).

## 120 **Statistical Analysis**

121 To assess changes in cognitive function/decline across ages before death, we utilized a mixed-  
122 effects change point model (see Appendix A in the Supplementary Material for a detailed  
123 analytic description of the model) (Hall et al., 2000; Karr et al., 2018; Sliwinski et al., 2006;  
124 Walter et al., 2016). This model combines elements from mixed-effects and change-point models  
125 to capture both fixed and random effects effectively. It aims to identify potential shifts in  
126 cognitive function at two different stages relative to the end of life, including the phase when  
127 cognitive decline accelerates before death.

### 128 *Mixed-Effect Model: age trajectories of cognitive decline*

129 To build age trajectories of cognition, we build up this model hierarchically, first estimating an  
130 intercept and age slope of cognition for each individual and then estimating the determinants of  
131 the person-specific intercepts and age coefficients (Karr et al., 2018; Walter et al., 2016). In our  
132 first model (equation 1 in Appendix A), we consider all survivors and decedents, ignoring the  
133 potential impact of accelerated cognitive decline before death; that is, we assume cognitive  
134 decline only depends on the chronological age, regardless of the time of death, where the onset  
135 time of the last phase relative to the time of death (represented by  $\tau$  along the article) is equal to  
136 zero (see equation 1 in Appendix A with  $\tau=0$ ). In this model, we accounted for the age of each  
137 respondent over time, and for all covariates described in the previous section (except sex and  
138 race-ethnicity), including person-level variables (education, APOE) and those that can change  
139 with age for every individual (risk factors and health conditions). We included death status as an  
140 explanatory factor to account for the impact of mortality on the outcome of decedents in our  
141 model. The influence of sex and race-ethnicity is modelled by specifying individual intercepts  
142 and age slopes in the model (see equations 2-3 in Appendix A).

### 143 *Change Point Model: cognitive decline acceleration in the last phase of life*

144 To evaluate the potential acceleration of cognitive decline preceding death, we restricted the  
145 sample to all decedent respondents, and we relied on the change point model specification of  
146 equation 1 (Appendix A), which provides an adequate index of time to death, as opposed to  
147 traditional approaches that use the chronological age or time from birth (Sliwinski et al., 2006;  
148 Wilson et al., 2020). Therefore, the first model (see equation 1 in Appendix A, with  $\tau \neq 0$ )  
149 represents two change processes: a decline phase and a phase of accelerated variation. The  
150 decline phase uses chronological age to index normative age-related processes. In contrast, the  
151 accelerated phase represents two effects, one capturing normative age effects and those related to  
152 the progressive pathologies that lead to death (Sliwinski et al., 2006). To estimate the influence  
153 of age, sex, and race-ethnic differences in cognitive function before death during the decline and  
154 accelerated phases, we continued using the models specified in equations 1-3 (Appendix A).  
155 Further details about the statistical model and estimation process are in Appendix A. All analyses  
156 were performed using ®Stata/SE 16.1 for Mac (StataCorp, College Station, TX).

### 157 *Sensitivity Analysis*

158 We conducted two sensitivity analyses. First, we replicated the statistical analysis by  
159 incorporating respondents with the APOE-4 variant into the change point model (equations 1-3)  
160 to assess differences in the rate of cognitive decline during the early and accelerated phases.  
161 Second, to evaluate the robustness and generalizability of our model, we employed a 10-fold  
162 cross-validation approach. This involved replicating the original sex and race-ethnic stratified  
163 analyses using the change point model to estimate rates of cognition change during the early and  
164 accelerated phases. This method relies on out-of-sample predictions to assess the consistency of  
165 coverage across validation sets, providing evidence of the stability and generalizability of the  
166 model. Further details of this procedure are provided in Appendix A of the Supplementary

167 Material.

## 168 **RESULTS**

### 169 **Descriptive data**

170 We collected data on total word recall and mental status from the RAND-HRS biennial dataset  
171 from 1996 to 2016 (waves 3-13) after excluding waves 1 and 2, due to a different approach used  
172 in constructing the summary scores, and waves 14 and 15 due to the lack of updated reports on  
173 these specific indicators, which are under current revision in the latest version of RAND-HRS  
174 (Health and Retirement Study, 2023). About 58% of respondents were women, 88.2% of total  
175 respondents were White, 7.8% were Black, and 4.0% were Hispanic (**Table 1**).

176 During the study period, the median number of cognitive reports per respondent was 6  
177 (interquartile range (IQR): 4-8). The mean word recall score across all waves was 10.1 (standard  
178 deviation [SD] = 3.2) for survivors and 8.2 (SD = 3.7) for decedents, while the mean mental  
179 status score for survivors was 13.1 (SD = 2.1) and 12.3 (SD = 2.8) for decedents. The median  
180 age across all mental status reports was 71 (IQR: 68-76) for survivors and 76 (71-82) for  
181 decedents (**Table 1**).

182 **[Table 1 about here]**

183 Regarding risk factors, decedents were more likely than survivors to be less educated, and  
184 exhibit higher prevalence of modifiable risk factors, including smoking, higher blood pressure,  
185 heart disease, stroke, cancer, and depression (**Table 1**)

### 186 **Functional cognitive decline: age trajectories by sex and race-ethnicity**

187 **Figure 1** depicts the relationship between age and cognitive function, with higher scores  
188 indicating better performance. The results show that cognitive function significantly declines  
189 with age. Irrespective of race and ethnicity, women outperformed men in word recall at all ages,



190 while men scored higher than women in total mental status. Additionally, there were significant  
191 differences in cognition across ages among different racial and ethnic groups. Regardless of sex,  
192 White respondents exhibited higher word recall and mental status than Hispanic and Black  
193 respondents of all ages. Although Hispanic respondents had higher scores than Black  
194 respondents, the gap between the scores of White and Hispanic groups was more significant than  
195 those between Hispanic and Black respondents, even for men's total mental status, where the gap  
196 between Hispanic and Black respondents was the highest (Figure 1). Figure S1 (in Appendix B  
197 in the Online Supplementary file) displays the associations by sex and race-ethnicity separately,  
198 confirming that women's total word recall was higher than men's, while men's mental status was  
199 higher than women's at all ages. In addition, it also confirms racial-ethnic differences in both  
200 scores. All these results were obtained after controlling for explanatory factors, the risk of  
201 mortality, and the APOE-4 variant.

202 **[Figure 1 about here]**

203 **Early and accelerated stages of cognitive decline: sex and race-ethnic differences**

204 Since the HRS does not provide the dementia status of all respondents in the sample, which  
205 could significantly bias the results of cognitive function/decline, we excluded respondents with  
206 the APOE-4 variant, as this gene variant has been highly associated with dementia in the  
207 literature. Table 2 presents the results of these models, including estimated rates during the early  
208 and accelerated phases of cognitive decline in stratified models by sex and race-ethnicity of  
209 deceased respondents. The table presents estimates of the onset time of the accelerated phase  
210 relative to the time of death ( $\tau$ ) for individuals without the APOE-4 variant. On average, the  
211 onset time of accelerated decline for word recall was 10 years for all race-ethnic groups, except  
212 for Hispanic women and White men whose rate was 9 years. During the early phase, the

213 cognitive decline rates were significantly negative for both scores and all race-ethnic groups.  
214 However, these rates accelerated for all groups after the onset or during the accelerated phase,  
215 resulting in a total negative effect. For instance, White and Black women experienced around a  
216 20% decline in total word recall during the early phase, which increased to 36% decline for  
217 White women and 31% for Black women during the accelerated phase. In relative terms, the  
218 annual rate of accelerated decline (ARAD = accelerated decline rate/ $\tau$ ) during the latter phase for  
219 White women was 3.6%, the highest rate observed among all race-ethnic and gender groups.  
220 Regarding mental status in women, Black women had the highest ARAD at 3.0%, with an  
221 additional cognitive decline of 27% attributable to accelerated phase, while the respective  
222 ARADs for White and Hispanic women were 2.8% and 2.2%. When combining women's and  
223 men's decline rates, White respondents exhibited more significant rates of cognitive decline  
224 during the accelerated phase for word recall, but closely followed by Black respondents in the  
225 case of mental status (Table 2).

226 **[Table 2 about here]**

227 **Figure 2** illustrates the predicted mean word recall and mental status scores around age 75  
228 during the early and accelerated phases. For both scores and two phases, White women's and  
229 men's scores outperformed their Hispanic and Black counterparts. In addition, word recall  
230 remained high for women than men for all race-ethnic groups during the early and accelerated  
231 phases, while men outperformed women in total mental status during both phases as well. All  
232 these differences were significant for white groups while less precise for minoritized groups in  
233 some cases, perhaps due to the much larger sample of white respondents in the HRS study.

234 **[Figure 2 about here]**

235 **Sensitivity analysis**

236 For the sensitivity analysis, we included deceased participants with the APOE-4 variant and  
237 replicated the results from Table 2 and Figure 2 using validation samples. Upon inclusion of  
238 respondents with the APOE-4 variant, certain groups exhibited minor variations in the  $\tau$  value  
239 and rates of early and accelerated cognitive decline, although to a lesser extent regarding mental  
240 status (Table S1). This outcome was anticipated as we intentionally included individuals with a  
241 higher likelihood of cognitive impairment, given the strong relationship between APOE-4 and  
242 dementia. However, the predicted values for mental scores at age 75, stratified by race-ethnicity  
243 and gender groups (Figure S2), remained largely unchanged compared to those presented in  
244 Figure 2. The results were also consistent at all ages, with those obtained in the original analysis,  
245 as reported in Table S2 in Appendix B of the Supplementary file.

246 The sensitivity analysis conducted after applying 10-fold cross-validation to replicate the results  
247 shown in Figure 1 consistently confirmed the differences in cognitive function and rates of  
248 decline among different race-ethnic and gender groups, as initially predicted in the original  
249 analysis. These findings are depicted in Figure S3 and Table S2.

## 250 **DISCUSSION**

251 This study has three salient findings. First, it shows sex and race-ethnic significant differences in  
252 cognitive function among older U.S. individuals. Irrespective of race-ethnicity, women perform  
253 better in word recall, while men exhibit higher mental status scores. Regardless of sex, Black  
254 respondents had lower performance in both word recall and mental status than Hispanic and  
255 White respondents. Second, we identified minor sex and race-ethnic differences in the estimated  
256 onset time of accelerated cognitive decline before death, but more significant differences in the  
257 rates of cognitive decline during both the early and accelerated phases. Third, we found  
258 compelling evidence that sex differences persist until the end of life, with women outperforming

259 men in word recall and men surpassing women in mental status in both the early and accelerated  
260 phases of cognitive decline.

261 Our findings align with previous research indicating that women have lower performance levels  
262 in active skills like spatial and numerical ability, whereas men have lower levels in passive  
263 activities, such as verbal meaning, word fluency, and inductive reasoning (B. Bosworth, 1999;  
264 Levine et al., 2021; McCarrey, 2016). Our findings were obtained after controlling for non-  
265 modifiable and modifiable risk factors, including educational level, race, vascular risk factors,  
266 health conditions associated with increased risk of cognitive decline and dementia, mortality  
267 status, and APOE-4 gene variants (Bloomberg et al., 2021; Levine et al., 2020, 2021; Miller &  
268 Halpern, 2014; Takeda et al., 2020). Additionally, these findings also align with previous  
269 research indicating that African American and Hispanic residents are more likely to experience  
270 cognitive decline compared to non-Hispanic White residents, highlighting the presence of  
271 significant decline differences across race-ethnic groups. Black and Hispanic groups bear a  
272 higher burden of chronic conditions and adverse social determinants of health, which predict  
273 worse cognitive outcomes, including Subjective Cognitive Decline (SCD), SCD-associated  
274 functional limitations, cognitive function, or dementia incidence (Díaz-Venegas et al., 2016;  
275 Gupta, 2021; Kornblith et al., 2022; Wooten, 2023). Our results further contribute to this  
276 evidence by showing that racial-ethnic disparities persist irrespective of sex, although the  
277 differences in mental status scores between Hispanic and Black women are significantly less  
278 pronounced, with scores consistently lower than those of NHW women across all age groups.  
279 Our results also confirm previous findings that cognitive decline accelerates in the last years of  
280 life (MacDonald et al., 2011; Riegel & Riegel, 1972; Sliwinski et al., 2006; Wilson et al., 2003,  
281 2020). The decline rates are more significant among women maybe because of their higher

282 longevity and prevalence of Alzheimer’s disease than men (Karlamanla et al., 2009; Levine et  
283 al., 2021; Shaw et al., 2021b; Alzheimer’s Association, 2023). Differences across race-ethnic  
284 groups varied depending on sex, outcome, and phase, but irrespective of sex, NHW respondents  
285 exhibited more significant rates of cognitive decline in the last years of life (Karlamanla et al.,  
286 2009; Weuve et al., 2018). Finally, the sensitivity analysis of including individuals with the  
287 APOE-4 variant had a minor impact on the results on cognitive decline rates and the onset time  
288 of accelerated cognitive decline among minoritized groups, and it did not change the main  
289 conclusions regarding average cognitive differences and the evidence of accelerated cognitive  
290 decline among all demographic groups.

291 Much has been written about Medicare expenses in the last phase of life, with estimates ranging  
292 from 13% to 25% during the last year, contingent on various methodologies and assumptions  
293 (Aldridge & Kelley, 2015; Duncan et al., 2019; Riley & Lubitz, 2010). Given the rising  
294 proportion of older adult individuals due to population aging, and particularly the increasing  
295 representation of underrepresented populations in population projections, (Colby & Ortman,  
296 2015) healthcare spending has emerged as a critical concern for the sustainability of the  
297 healthcare system. Our work shows all respondents undergo cognitive decline and especially  
298 during the final phase of life, imposing an additional burden on healthcare systems that may not  
299 be adequately prepared to handle the anticipated surge in demand for care and medical expenses.

300 For patients to get goal-concordant care, the Advanced Care Planning (ACP) process should start  
301 much earlier. Especially for racial-ethnic minoritized groups, who exhibited lower cognitive  
302 levels compared to NHW residents during the early and accelerated phases of cognitive decline.  
303 We need to implement culturally respectful systems of care to support older adults from diverse  
304 communities age and die at home despite cognitive decline that will happen in the last phase of

305 life.

306 This article relied on HRS data, a longitudinal nationally representative study that provides  
307 objective measures of cognitive function. Our HRS data contained a large sample of repeated  
308 measures during 20 years of follow-up that allowed us to build statistically robust trajectories of  
309 cognitive function for both women and men and racial-ethnic survivors and decedents. We used  
310 a multilevel approach that accounted for within and between individual cognitive variation. To  
311 estimate the onset time of accelerated cognitive decline, we utilized a change-point model to  
312 investigate the relationship between cognitive decline and the timing of death. Our analysis  
313 included the mortality status and restricted the sample to individuals without the APOE-4 variant  
314 to account for the influence of mortality on the outcome of decedents and selective survival. The  
315 results and conclusions remained unchanged when we tested the performance and generalization  
316 ability of our model using a well-established technique in statistics and machine learning for out-  
317 of-sample prediction.

## 318 **Limitations**

319 There are some limitations in this article that should be noted: 1) since HRS data is reported  
320 biennially and we grouped age in 5-year bins to improve the statistical power of our estimates,  
321 perhaps resulted in less detailed trajectories of cognitive decline and the onset time of the  
322 accelerated decline phase; 2) the sex and race-ethnic differences and age trajectories in cognition  
323 were primarily based on word recall and mental status scores; therefore, these findings might not  
324 necessarily apply to other cognitive or dementia outcomes, which could exhibit different  
325 patterns; 3) although our statistical models were robust and convergence was not an issue, it is  
326 worth mentioning that the sample sizes for Hispanic and Black respondents were substantially  
327 smaller compared to those for NHW respondents, and this was reflected in the precision of our

328 estimates for underrepresented groups; and 4) although we made efforts to incorporate mortality  
329 status into the analysis and conducted sensitivity checks, there may still be persistent effects on  
330 sex and race-ethnic disparities due to the competing risk of death and selective survival (Shaw et  
331 al., 2021b; Tan et al., 2021).

## 332 **CONCLUSION**

333 This paper shows gender and race-ethnic differences in cognitive decline across ages, with  
334 women performing better than men in word recall but men better than women in mental status,  
335 irrespective of race-ethnicity. In contrast, Black respondents, irrespective of sex, generally  
336 demonstrated lower performance in both word recall and mental status compared to Hispanic and  
337 White respondents. Moreover, the study presents robust evidence of accelerated cognitive  
338 decline, wherein cognition rates decreased at an accelerated pace in the years leading up to death.  
339 The onset time, rates of decline, and levels of cognitive function differ not only between men and  
340 women but also among different racial-ethnic groups. This research has potential clinical and  
341 policy implications. It can help identify and address biases or discriminatory practices, allocate  
342 resources effectively to areas or communities in greatest need, and facilitate the development of  
343 evidence-based interventions to reduce disparities and improve end-of-life care for individuals of  
344 all backgrounds. However, to better understand the underlying causes of these observed  
345 differences in cognitive decline before death, further research is warranted.

346

347

348 **REFERENCES**

349 Aldridge, M. D., & Kelley, A. S. (2015). The Myth Regarding the High Cost of End-of-Life  
350 Care. *American Journal of Public Health, 105*(12), 2411–2415.

351 <https://doi.org/10.2105/AJPH.2015.302889>

352 Alzheimer’s Association. (2023). *2023 Alzheimer’s Disease Facts and Figures. 19*(4),

353 Alzheimers Dement. <https://doi.org/10.1002/alz.13016>.

354 B. Bosworth, K. W. S., Hayden. (1999). Survival Effects in Cognitive Function, Cognitive Style,  
355 and Sociodemographic Variables in the Seattle Longitudinal Study. *Experimental Aging*

356 *Research, 25*(2), 121–139. <https://doi.org/10.1080/036107399244057>

357 Bloomberg, M., Dugravot, A., Dumurgier, J., Kivimaki, M., Fayosse, A., Steptoe, A., Britton,

358 A., Singh-Manoux, A., & Sabia, S. (2021). Sex differences and the role of education in  
359 cognitive ageing: Analysis of two UK-based prospective cohort studies. *The Lancet*

360 *Public Health, 6*(2), e106–e115. [https://doi.org/10.1016/S2468-2667\(20\)30258-9](https://doi.org/10.1016/S2468-2667(20)30258-9)

361 Castora-Binkley, M., Peronto, C. L., Edwards, J. D., & Small, B. J. (2015). A longitudinal

362 analysis of the influence of race on cognitive performance. *The Journals of Gerontology.*

363 *Series B, Psychological Sciences and Social Sciences, 70*(4), 512–518.

364 <https://doi.org/10.1093/geronb/gbt112>

365 Colby, S. L., & Ortman, J. M. (2015). *Projections of the Size and Composition of the U.S: 2014-*  
366 *2060* (Current Population Reports P25-1143). U.S. Census Bureau.

367 <https://www.census.gov/library/publications/2015/demo/p25-1143.html>

368 Crimmins, E. (2018). Trends in Mortality, Disease, and Physiological Status in the Older

369 Population. In *Future Directions for the Demography of Aging: Proceedings of a*



- 370            *Workshop* (Mark D. Hayward and Malay K. Majmundar). The National Academies Press.  
371            <https://doi.org/10.17226/25064>.
- 372    Díaz-Venegas, C., Downer, B., Langa, K. M., & Wong, R. (2016). Racial and ethnic differences  
373            in cognitive function among older adults in the USA. *International Journal of Geriatric*  
374            *Psychiatry*, *31*(9), 1004–1012. <https://doi.org/10.1002/gps.4410>
- 375    Duncan, I., Ahmed, T., Dove, H., & Maxwell, T. L. (2019). Medicare Cost at End of Life.  
376            *American Journal of Hospice and Palliative Medicine*®, *36*(8), 705–710.  
377            <https://doi.org/10.1177/1049909119836204>
- 378    Faul, J., Collins, S., Smith, J., Zhao, W., Kardina, S., & Weir, D. (2021). *APOE and Serotonin*  
379            *Transporter Alleles – Early release*. Survey Research Center, Institute for Social  
380            Research, University of Michigan. [https://hrsdata.isr.umich.edu/data-products/apoe-and-](https://hrsdata.isr.umich.edu/data-products/apoe-and-serotonin-transporter-alleles)  
381            [serotonin-transporter-alleles](https://hrsdata.isr.umich.edu/data-products/apoe-and-serotonin-transporter-alleles)
- 382    Gupta, S. (2021). Racial and ethnic disparities in subjective cognitive decline: A closer look,  
383            United States, 2015–2018. *BMC Public Health*, *21*(1), 1173.  
384            <https://doi.org/10.1186/s12889-021-11068-1>
- 385    Hall, C. B., Lipton, R. B., Sliwinski, M., & Stewart, W. F. (2000). A change point model for  
386            estimating the onset of cognitive decline in preclinical Alzheimer’s disease. *Statistics in*  
387            *Medicine*, *19*(11–12), 1555–1566. [https://doi.org/10.1002/\(SICI\)1097-](https://doi.org/10.1002/(SICI)1097-0258(20000615/30)19:11/12<1555::AID-SIM445>3.0.CO;2-3)  
388            [0258\(20000615/30\)19:11/12<1555::AID-SIM445>3.0.CO;2-3](https://doi.org/10.1002/(SICI)1097-0258(20000615/30)19:11/12<1555::AID-SIM445>3.0.CO;2-3)
- 389    Hanes, D. W., & Clouston, S. A. P. (2021). Ask Again: Including Gender Identity in  
390            Longitudinal Studies of Aging. *The Gerontologist*, *61*(5), 640–649.  
391            <https://doi.org/10.1093/geront/gnaa107>

- 392 Hayes-Larson, E., Ackley, S. F., Zimmerman, S. C., Ospina-Romero, M., Glymour, M. M.,  
393 Graff, R. E., Witte, J. S., Kobayashi, L. C., & Mayeda, E. R. (2020). The competing risk  
394 of death and selective survival cannot fully explain the inverse cancer-dementia  
395 association. *Alzheimer's & Dementia*, *16*(12), 1696–1703.  
396 <https://doi.org/10.1002/alz.12168>
- 397 Health and Retirement Study. (2022). (*RAND HRS Longitudinal File 2018 (V2)*) public use  
398 dataset. Produced and distributed by the University of Michigan with funding from the  
399 National Institute on Aging (grant number NIA U01AG009740).
- 400 Health and Retirement Study. (2023). (*RAND HRS Longitudinal File 2020 (V1)*) public use  
401 dataset. Produced and distributed by the University of Michigan with funding from the  
402 National Institute on Aging (grant number NIA U01AG009740).
- 403 HRS. (2022). *Health and Retirement Study 2020 Tracker Early. Data Description and Usage*.
- 404 Karlamangla, A. S., Miller-Martinez, D., Aneshensel, C. S., Seeman, T. E., Wight, R. G., &  
405 Chodosh, J. (2009). Trajectories of Cognitive Function in Late Life in the United States:  
406 Demographic and Socioeconomic Predictors. *American Journal of Epidemiology*, *170*(3),  
407 331–342. <https://doi.org/10.1093/aje/kwp154>
- 408 Karr, J. E., Graham, R. B., Hofer, S. M., & Muniz-Terrera, G. (2018). When does cognitive  
409 decline begin? A systematic review of change point studies on accelerated decline in  
410 cognitive and neurological outcomes preceding mild cognitive impairment, dementia, and  
411 death. *Psychology and Aging*, *33*, 195–218. <https://doi.org/10.1037/pag0000236>
- 412 Kornblith, E., Bahorik, A., Boscardin, W. J., Xia, F., Barnes, D. E., & Yaffe, K. (2022).  
413 Association of Race and Ethnicity With Incidence of Dementia Among Older Adults.  
414 *JAMA*, *327*(15), 1488–1495. <https://doi.org/10.1001/jama.2022.3550>

- 415 Levine, D. A., Gross, A. L., Briceño, E. M., Tilton, N., Giordani, B. J., Sussman, J. B., Hayward,  
416 R. A., Burke, J. F., Hingtgen, S., Elkind, M. S. V., Manly, J. J., Gottesman, R. F., Gaskin,  
417 D. J., Sidney, S., Sacco, R. L., Tom, S. E., Wright, C. B., Yaffe, K., & Galecki, A. T.  
418 (2021). Sex Differences in Cognitive Decline Among US Adults. *JAMA Network Open*,  
419 4(2), e210169. <https://doi.org/10.1001/jamanetworkopen.2021.0169>
- 420 Levine, D. A., Gross, A. L., Briceño, E. M., Tilton, N., Kabeto, M. U., Hingtgen, S. M.,  
421 Giordani, B. J., Sussman, J. B., Hayward, R. A., Burke, J. F., Elkind, M. S. V., Manly, J.  
422 J., Moran, A. E., Kulick, E. R., Gottesman, R. F., Walker, K. A., Yano, Y., Gaskin, D. J.,  
423 Sidney, S., ... Galecki, A. T. (2020). Association Between Blood Pressure and Later-Life  
424 Cognition Among Black and White Individuals. *JAMA Neurology*, 77(7), 810–819.  
425 <https://doi.org/10.1001/jamaneurol.2020.0568>
- 426 MacDonald, S. W. S., Hultsch, D. F., & Dixon, R. A. (2011). Aging and the Shape of Cognitive  
427 Change Before Death: Terminal Decline Or Terminal Drop? *The Journals of*  
428 *Gerontology: Series B*, 66B(3), 292–301. <https://doi.org/10.1093/geronb/gbr001>
- 429 McCammon, R., Fisher, G., Hassan, H., Faul, J., Rogers, W., & Weir, D. (2022). *Health and*  
430 *Retirement Study Imputation of Cognitive Functioning Measures: 1992-2018*. Survey  
431 Research Center, University of Michigan.
- 432 McCarrey, A. C. (2016). Sex differences in cognitive trajectories in clinically normal older  
433 adults. *Psychology and Aging*, 31(2), 166. <https://doi.org/10.1037/pag0000070>
- 434 Mehta, K. M., & Yeo, G. W. (2017). Systematic review of dementia prevalence and incidence in  
435 United States race/ethnic populations. *Alzheimer's & Dementia*, 13(1), 72–83.  
436 <https://doi.org/10.1016/j.jalz.2016.06.2360>

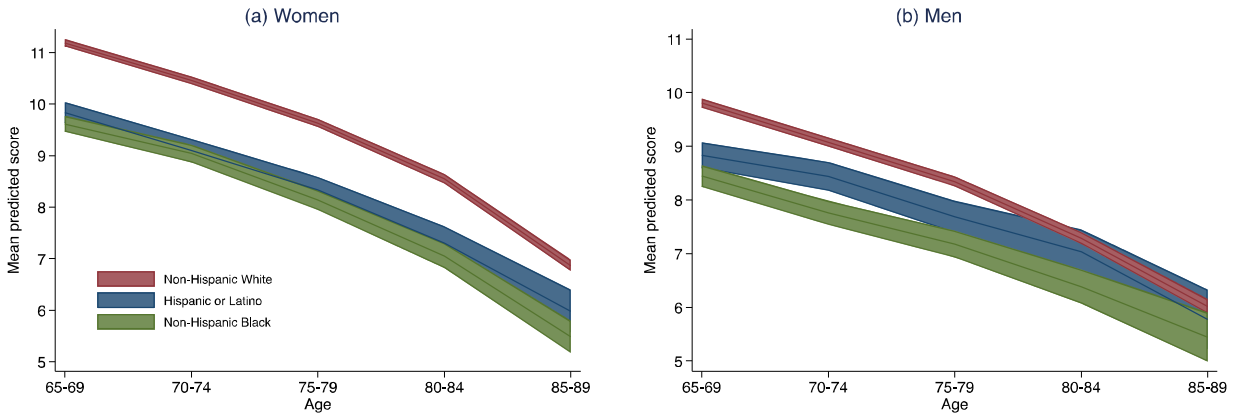
- 437 Miller, D. I., & Halpern, D. F. (2014). The new science of cognitive sex differences. *Trends in*  
438 *Cognitive Sciences*, 18(1), 37–45. <https://doi.org/10.1016/j.tics.2013.10.011>
- 439 RAND HRS Longitudinal File 2018 (V2). (2022). *Produced by the RAND Center for the Study*  
440 *of Aging, with funding from the National Institute on Aging and the Social Security*  
441 *Administration.*
- 442 RAND HRS Longitudinal File 2020 (V1). (2023). *Produced by the RAND Center for the Study*  
443 *of Aging, with funding from the National Institute on Aging and the Social Security*  
444 *Administration.*
- 445 Riegel, K. F., & Riegel, R. M. (1972). Development, drop, and death. *Developmental*  
446 *Psychology*, 6, 306–319. <https://doi.org/10.1037/h0032104>
- 447 Riley, G. F., & Lubitz, J. D. (2010). Long-Term Trends in Medicare Payments in the Last Year  
448 of Life. *Health Services Research*, 45(2), 565–576. <https://doi.org/10.1111/j.1475->  
449 [6773.2010.01082.x](https://doi.org/10.1111/j.1475-6773.2010.01082.x)
- 450 Safieh, M., Korczyn, A. D., & Michaelson, D. M. (2019). ApoE4: An emerging therapeutic  
451 target for Alzheimer’s disease. *BMC Medicine*, 17(1), 64. <https://doi.org/10.1186/s12916->  
452 [019-1299-4](https://doi.org/10.1186/s12916-019-1299-4)
- 453 Shaw, C., Hayes-Larson, E., Glymour, M. M., Dufouil, C., Hohman, T. J., Whitmer, R. A.,  
454 Kobayashi, L. C., Brookmeyer, R., & Mayeda, E. R. (2021a). Evaluation of Selective  
455 Survival and Sex/Gender Differences in Dementia Incidence Using a Simulation Model.  
456 *JAMA Network Open*, 4(3), e211001.  
457 <https://doi.org/10.1001/jamanetworkopen.2021.1001>
- 458 Shaw, C., Hayes-Larson, E., Glymour, M. M., Dufouil, C., Hohman, T. J., Whitmer, R. A.,  
459 Kobayashi, L. C., Brookmeyer, R., & Mayeda, E. R. (2021b). Evaluation of Selective

- 460 Survival and Sex/Gender Differences in Dementia Incidence Using a Simulation Model.  
461 *JAMA Network Open*, 4(3), e211001.  
462 <https://doi.org/10.1001/jamanetworkopen.2021.1001>
- 463 Sliwinski, M. J., Stawski, R. S., Hall, C. B., Katz, M., Verghese, J., & Lipton, R. (2006).  
464 Distinguishing preterminal and terminal cognitive decline. *European Psychologist*, 11,  
465 172–181. <https://doi.org/10.1027/1016-9040.11.3.172>
- 466 Takeda, S., Rakugi, H., & Morishita, R. (2020). Roles of vascular risk factors in the pathogenesis  
467 of dementia. *Hypertension Research: Official Journal of the Japanese Society of*  
468 *Hypertension*, 43(3), 162–167. <https://doi.org/10.1038/s41440-019-0357-9>
- 469 Tan, S. C., Gamaldo, A. A., Brick, T., Thorpe, R. J., Jr, Allaire, J. C., & Whitfield, K. E. (2021).  
470 The Effects of Selective Survival on Black Adults' Cognitive Development. *The Journals*  
471 *of Gerontology: Series B*, 76(8), 1489–1498. <https://doi.org/10.1093/geronb/gbab003>
- 472 Tang, M.-X., Stern, Y., Marder, K., Bell, K., Gurland, B., Lantigua, R., Andrews, H., Feng, L.,  
473 Tycko, B., & Mayeux, R. (1998). The APOE- $\epsilon$ 4 Allele and the Risk of Alzheimer  
474 Disease Among African Americans, Whites, and Hispanics. *JAMA*, 279(10), 751–755.  
475 <https://doi.org/10.1001/jama.279.10.751>
- 476 Walter, S., Mejía-Guevara, I., Estrada, K., Liu, S. Y., & Glymour, M. M. (2016). Association of  
477 a Genetic Risk Score With Body Mass Index Across Different Birth Cohorts. *JAMA*,  
478 316(1), 63. <https://doi.org/10.1001/jama.2016.8729>
- 479 Weuve, J., Barnes, L. L., Mendes de Leon, C. F., Rajan, K. B., Beck, T., Aggarwal, N. T.,  
480 Hebert, L. E., Bennett, D. A., Wilson, R. S., & Evans, D. A. (2018). Cognitive Aging in  
481 Black and White Americans: Cognition, Cognitive Decline, and Incidence of Alzheimer

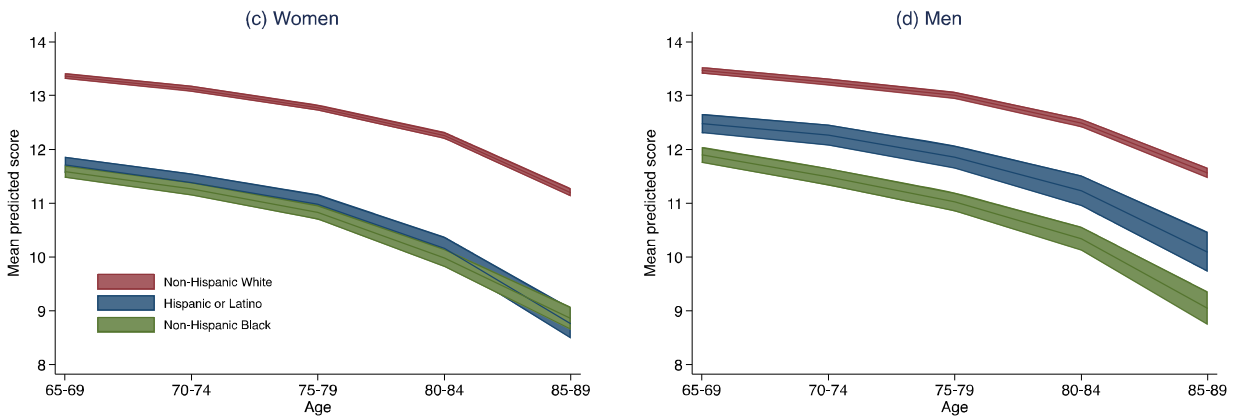
- 482 Disease Dementia. *Epidemiology*, 29(1), 151–159.
- 483 <https://doi.org/10.1097/EDE.0000000000000747>
- 484 Wilson, R. S., Beckett, L. A., Bienias, J. L., Evans, D. A., & Bennett, D. A. (2003). Terminal  
485 decline in cognitive function. *Neurology*, 60(11), 1782–1787.
- 486 <https://doi.org/10.1212/01.WNL.0000068019.60901.C1>
- 487 Wilson, R. S., Rajan, K. B., Barnes, L. L., Jansen, W., Amofa, P., Weuve, J., & Evans, D. A.  
488 (2018). Terminal decline of episodic memory and perceptual speed in a biracial  
489 population. *Aging, Neuropsychology, and Cognition*, 25(3), 378–389.
- 490 <https://doi.org/10.1080/13825585.2017.1306020>
- 491 Wilson, R. S., Yu, L., Leurgans, S. E., Bennett, D. A., & Boyle, P. A. (2020). Proportion of  
492 cognitive loss attributable to terminal decline. *Neurology*, 94(1), e42–e50.
- 493 <https://doi.org/10.1212/WNL.00000000000008671>
- 494 Wooten, K. G. (2023). Racial and Ethnic Differences in Subjective Cognitive Decline—United  
495 States, 2015–2020. *MMWR. Morbidity and Mortality Weekly Report*, 72.
- 496 <https://doi.org/10.15585/mmwr.mm7210a1>
- 497 Wright, C. B., DeRosa, J. T., Moon, M. P., Strobino, K., DeCarli, C., Cheung, Y. K., Assuras, S.,  
498 Levin, B., Stern, Y., Sun, X., Rundek, T., Elkind, M. S. V., & Sacco, R. L. (2021).  
499 Race/Ethnic Disparities in Mild Cognitive Impairment and Dementia: The Northern  
500 Manhattan Study. *Journal of Alzheimer's Disease*, 80(3), 1129–1138.
- 501 <https://doi.org/10.3233/JAD-201370>
- 502
- 503

504 **LEGENDS**

(a) Total Word Recall

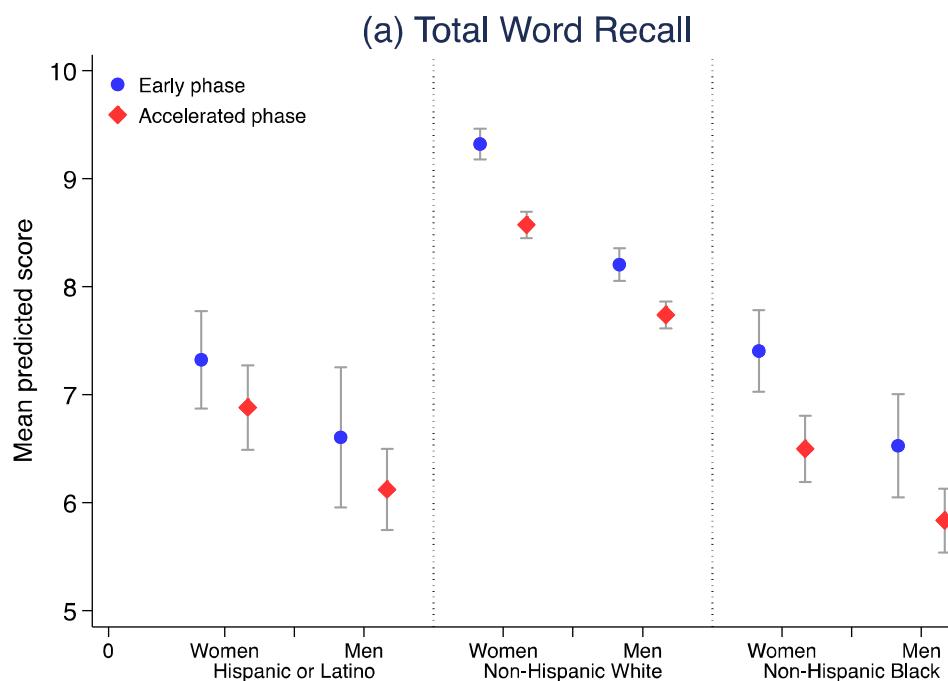


(b) Total Mental Status

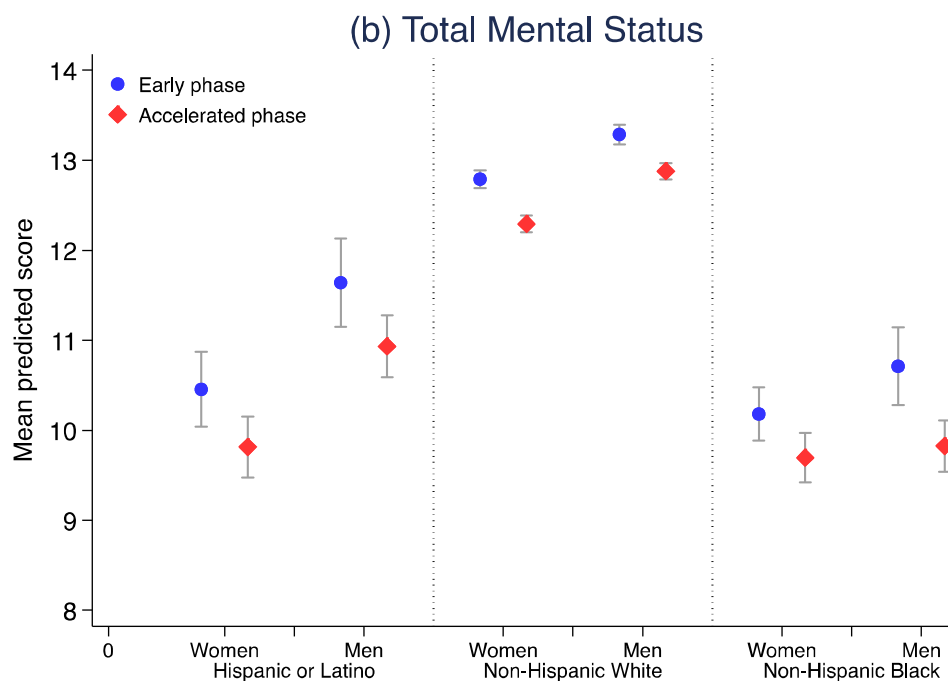


505 **Figure 1** Predicted summary scores for the total word recall, and total mental status by age, sex,  
506 and race-ethnicity  
507 Note: Age trajectories of cognition were estimated using the model specification of equations 1-3 in Appendix A,  
508 but with  $\tau=0$ .

509



510



511

512 **Figure 2.** Mean predicted word and mental scores at age 75 from HRS decedents by sex and  
513 race-ethnicity.

514 Note: Values predicted cognition were estimated using the change-point model specification from equations 1-3 in  
515 Appendix A, and excluding respondents with the APOE-4 gene variant.



516 **Tables**517 **Table 1.** Sample size and descriptive values for survivors' and decedents' cognitive scores, exposure, and risk factors.

<b>Variable</b>	<b>Total</b>	<b>Survivor</b>	<b>Decedent*</b>
No. respondents by wave			
Total 1996-2016	<b>113,139</b>	<b>46,844</b>	<b>66,295</b>
1996	8,049	731	7,318
1998	10,425	1616	8,809
2000	10,379	1999	8,380
2002	10,581	2743	7,838
2004	10,768	3464	7,304
2006	11,065	4316	6,749
2008	11,025	5067	5,958
2010	10,635	5749	4,886
2012	10,439	6366	4,073
2014	10,077	7010	3,067
2016	9,696	7783	1,913
Age at first cognition report, median (IQR)			
Total word recall	67 (65-73)	66 (65-67)	71 (66-75)
Total mental status	67 (65-73)	65 (66-67)	71 (66-75)
Weighted mean cognitive score (SD) across all Cognitive scores			
Total word recall	9.1 (3.6)	10.1 (3.2)	8.2 (3.7)
Total mental status	12.7 (2.5)	13.1 (2.1)	12.3 (2.8)
No. cognition reports, median (IQR)			
Total word recall	6 (4-8)	7 (4-9)	6 (3-8)
Total mental status	6 (4-8)	7 (4-9)	6 (3-8)
<b>Non-modifiable factors</b>			

No. observation in each age category at baseline (weighted %)			
65-69	1469 (5.9)	369 (30.2)	1100 (4.4)
70-74	2020 (24.5)	200 (32.6)	1820 (24.6)
75-79	2115 (32.8)	111 (25.9)	2004 (33.9)
80-84	1471 (21.4)	40 (9)	1431 (21.9)
85-89	814 (10.9)	9 (2.1)	805 (11.2)
90-99	337 (4.5)	2 (0.3)	335 (3.9)
Age across all cognition reports, median (IQR)			
Total word recall	74 (69-80)	71 (68-76)	76 (71-82)
Total mental status	74 (69-80)	71 (68-76)	76 (71-82)
Sex, N at baseline (weighted %)			
Women	4585 (57.8)	446 (66.2)	4139 (56.6)
Men	3464 (42.2)	285 (33.8)	3179 (43.4)
Race/ethnicity, N at baseline (weighted %)			
Hispanic or Latino	496 (4)	51 (5.7)	445 (3.9)
non-Hispanic White	6504 (88.2)	608 (87.2)	5896 (88.3)
non-Hispanic Black or African American	1046 (7.8)	71 (7)	975 (7.8)
Education, N (weighted %)			
Less than HS or GED	3445 (41.2)	226 (32.1)	3219 (41.8)
HS graduate	2361 (29.9)	220 (30.2)	2141 (30.2)
Some college	1256 (16.2)	151 (20.9)	1105 (15.8)
College and above	986 (12.7)	134 (17.5)	852 (12.2)
APOE-4, mean across all waves (95% CI)	23.7 (20.6 - 27.1)	17.6 (11.7 - 25.7)	25.1 (21.5 - 29)

<b>Modifiable factors, weighted percentage across all measures (95% CI)</b>			
Current cigarette smoking	9.3 (8.6 - 10.1)	7.7 (7 - 8.6)	10.9 (10 - 11.8)
Alcohol drinks, No./wk.			
None	67.8 (66.3 - 69.4)	61.4 (59.4 - 63.3)	73.4 (71.9 - 74.9)
1-6	19.9 (18.8 - 21.1)	25.1 (23.6 - 26.6)	15.4 (14.4 - 16.5)
7-13	6.3 (5.9 - 6.7)	7.1 (6.6 - 7.6)	5.6 (5.1 - 6.1)
>=14	6 (5.6 - 6.4)	6.5 (5.9 - 7.1)	5.6 (5.1 - 6.1)
Body mass index			
< 18.5	2.3 (2.1 - 2.5)	1.1 (0.9 - 1.3)	3.3 (2.9 - 3.6)
18.5-25	34.1 (33 - 35.2)	28.5 (27.2 - 29.9)	38.9 (37.6 - 40.1)
25-30	37.8 (37.2 - 38.5)	40.2 (39 - 41.4)	35.8 (35 - 36.6)
>=30	25.8 (24.8 - 26.8)	30.1 (28.9 - 31.4)	22.1 (21.1 - 23.1)
High blood pressure	4.2 (4.1 - 4.4)	4 (3.8 - 4.2)	4.4 (4.3 - 4.6)
Diabetes	2.5 (2.4 - 2.7)	2.6 (2.4 - 2.8)	2.5 (2.4 - 2.7)
Hearth disease	4.2 (4 - 4.3)	3.3 (3.1 - 3.4)	5 (4.8 - 5.2)
Stroke	2.1 (2.1 - 2.2)	1.2 (1.1 - 1.3)	3 (2.9 - 3.2)
Cancer	2.7 (2.6 - 2.9)	2 (1.8 - 2.2)	3.4 (3.2 - 3.6)
Depression (CES-D score)	1.4 (1.4 - 1.4)	1.1 (1.1 - 1.2)	1.7 (1.6 - 1.7)

518 \* Values and estimates for decedents correspond to observations provided when they were alive in the specific period.

519 **Table 2.** Point estimates of the onset time of the accelerated and rates of early and accelerated  
 520 cognitive decline across sex and race-ethnic groups.

Cognition Score	Phase 1: Early cognitive decline phase	Phase 2: Accelerated cognitive decline phase	Mean time in years of accelerated cognitive decline (Phase 2)	Annual Rate of Accelerated Decline (ARAD)
<b>Total Word Recall</b>				
Hispanic women	-0.19** (-0.22, -0.17)	-0.26** (-0.31, -0.22)	9	-2.9
Hispanic men	-0.14** (-0.18, -0.11)	-0.24** (-0.28, -0.20)	10	-2.4
White women	-0.20** (-0.20, -0.19)	-0.36** (-0.37, -0.35)	10	-3.6
White men	-0.16** (-0.17, -0.15)	-0.30** (-0.31, -0.29)	9	-3.3
Black women	-0.19** (-0.21, -0.17)	-0.31** (-0.34, -0.28)	10	-3.1
Black men	-0.15** (-0.17, -0.13)	-0.23** (-0.26, -0.2)	10	-2.3
<b>Total Mental Status</b>				
Hispanic women	-0.14** (-0.16, -0.11)	-0.22** (-0.26, -0.19)	10	-2.2
Hispanic men	-0.09** (-0.12, -0.07)	-0.21** (-0.25, -0.18)	9	-2.4
White women	-0.08** (-0.09, -0.08)	-0.26** (-0.26, -0.25)	9	-2.8
White men	-0.06** (-0.07, -0.05)	-0.20** (-0.21, -0.19)	9	-2.2
Black women	-0.12** (-0.14, -0.11)	-0.27** (-0.30, -0.25)	9	-3.0
Black men	-0.09** (-0.12, -0.07)	-0.22** (-0.25, -0.19)	10	-2.2

521 Note: For this analysis, we excluded respondents with the APOE-4 gene variant. The onset time refers to the  
 522 accelerated cognitive decline phase relative to the time of death ( $\tau$ ). The ARAD is estimated as the rate of  
 523 accelerated decline dividend by the onset time of accelerated decline. Levels of significance: \*( $p < 0.05$ ), \*\*( $p < 0.01$ ).