

# Body fat and human cardiovascular ageing

Vladimir Losev<sup>1</sup>, Chang Lu<sup>1</sup>, Deva S Senevirathne<sup>1</sup>, Paolo Inglese<sup>1</sup>, Wenjia Bai<sup>5,6</sup>, Andrew P King<sup>4</sup>, Mit Shah<sup>1</sup>, Antonio de Marvao<sup>1,2,3</sup>, Declan P O'Regan<sup>1</sup> ✉

<sup>1</sup>MRC Laboratory of Medical Sciences, Imperial College London, Hammersmith Hospital Campus, London, UK; <sup>2</sup>Department of Women and Children's Health, King's College London, London, UK; <sup>3</sup>British Heart Foundation Centre of Research Excellence, School of Cardiovascular and Metabolic Medicine and Sciences, King's College London, London, UK; <sup>4</sup>School of Biomedical Engineering & Imaging Sciences, King's College London, London, UK; <sup>5</sup>Department of Computing, Imperial College London, London, UK; <sup>6</sup>Department of Brain Sciences, Imperial College London, London, UK

✉ Corresponding author:  
declan.oregan@imperial.ac.uk

Address for correspondence:  
MRC Laboratory of Medical  
Sciences, Imperial College  
London, Hammersmith Campus,  
London W12 0HS

## Abstract

**Objective:** Cardiovascular ageing is a progressive loss of physiological reserve, modified by environmental and genetic risk factors, that contributes to multi-morbidity due to accumulated damage across diverse cell types, tissues and organs. Obesity is implicated in premature ageing but the effect of body fat distribution in humans is unknown. Here we assessed the association between image-derived adiposity phenotypes on cardiovascular age in men and women.

**Methods:** We analysed data from 21,241 participants in UK Biobank. Machine learning was used to predict cardiovascular age from 126 image-derived traits of vascular function, cardiac motion and myocardial fibrosis. An age-delta was calculated as the difference between predicted age and chronological age. The volume and distribution of body fat was assessed from whole body imaging. The association between adiposity phenotypes and cardiovascular age-delta was assessed using multivariable linear regression with age and sex as co-covariates, reporting  $\beta$  coefficients with 95% confidence intervals (CI). Two-sample Mendelian randomisation was used to assess causal associations.

**Results:** Visceral adipose tissue volume ( $\beta = 0.656$ , [95% CI, 0.537 - 0.755],  $P < 0.0001$ ), muscle adipose tissue infiltration ( $\beta = 0.183$ , [95% CI, 0.122 - 0.244],  $P = 0.0003$ ), and liver fat fraction ( $\beta = 1.066$ , [95% CI 0.835 - 1.298],  $P < 0.0001$ ) were the strongest predictors of increased cardiovascular age-delta for both sexes. Abdominal subcutaneous adipose tissue volume ( $\beta = 0.688$ , [95% CI, 0.64 - 1.325],  $P < 0.0001$ ) was associated with increased age-delta only in males. Genetically-predicted gluteo-femoral fat showed an association with decreased age-delta.

**Conclusion:** This work demonstrates the contribution of sex-dependent patterns of visceral adipose tissue and subcutaneous fat distribution to biological cardiovascular ageing in middle aged adults. This highlights the potential for strategies to attenuate ageing through modifying adipose tissue function.

## Introduction

---

Obesity is a chronic complex condition characterised by excessive fat deposits that are detrimental to health. Globally 43% of adults, affecting men and women in equal proportions, are overweight with a rising prevalence.<sup>1</sup> It is a multifactorial and heterogeneous disease related to obesogenic environments, psycho-social influences and genetic risk factors. Individuals with similar body mass index (BMI) may have distinct metabolic and cardiovascular disease (CVD) risk profiles, therefore susceptibility to obesity-related cardiovascular complications is not mediated solely by overall body mass but may be strongly influenced by variation in fat distribution.<sup>2</sup> For instance, visceral fat confers a higher risk of adverse outcomes,<sup>3</sup> promotes systemic and vascular inflammation,<sup>4,5</sup> and is independently linked with dysmetabolic profiles.<sup>6</sup>

Obesity, as a systemic syndrome of adipose tissue dysfunction, can be considered a pro-inflammatory process of accelerated cardiovascular ageing with which it shares common genetic, epigenetic, immunological and metabolic mechanisms.<sup>7,8</sup> Recently, imaging and physiological parameters have been used to assess environmental and genetic risk factors for accelerated biological ageing which point to complex inter-organ ageing networks that are regulated by genes involved in inflammation, tissue elasticity and pro-fibrotic pathways.<sup>9,10</sup> Relatively less is known about drivers of sexual dimorphism in cardiovascular ageing, although cellular and molecular mechanisms of ageing may be better maintained in women until the menopause.<sup>11</sup> Sex hormones modify key aspects of nutrient sensing, metabolism and fat depot regulation - with men tending to have more visceral fat, whereas women have greater fat deposition in the lower body.<sup>12</sup> The role of sex-specific fat distribution on accelerated cardiovascular ageing is not known, but could be a key modifiable mediator of obesity-related risk.

In this study, we use machine learning techniques to predict biological age from multiple image-derived cardiovascular traits that assess the structure, function and tissue characteristics of the heart and circulation. We then express how an individual's cardiovascular system has aged relative to a normative population using an "age-delta". Through assessing body fat distributions with whole body image phenotyping, as well as circulating biomarkers and sex hormones, we aimed to understand the relationship between fat distribution and cardiovascular ageing in over 20,000 middle aged men and women.

## Methods

---

### Study overview

UK Biobank comprises approximately 500,000 community-dwelling participants aged 40–69 years who were recruited across the United Kingdom between 2006 and 2010.<sup>13</sup> All participants provided written informed consent for participation in the study, which was approved by the National Research Ethics Service (11/NW/0382). Our study was conducted under terms of access approval number 40616.

An outline of the methods is shown in Figure 1. We used a pre-trained model to predict cardiovascular age from 126 image-derived traits of vascular function, cardiac motion and myocardial fibrosis. Cardiovascular age-delta was calculated as the difference between predicted age and chronological age.<sup>9</sup> We combined data from body imaging to assess phenotypes of fat volume and distribution including visceral adipose tissue, abdominal subcutaneous adipose tissue, muscle adipose tissue infiltration, liver proton density fat fraction, total abdominal adipose tissue, android adipose tissue mass and gynoid adipose tissue mass, as well as total trunk and whole body fat mass.

We used multivariable linear regression modelling stratified by sex to assess the association of fat phenotypes with cardiovascular ageing. Additionally, the relationship between BMI categories and fat phenotypes by sex was assessed.

### Cardiac image acquisition

A standardised cardiac magnetic resonance (CMR) imaging protocol was followed to acquire two-dimensional, retrospectively-gated cine imaging on a Siemens MAGNETOM Aera 1.5-T scanner (Siemens Healthineers, Erlangen, Germany).<sup>14</sup> Short-axis cine imaging comprised a contiguous stack of images from the left ventricular base to apex, and long axis cine imaging was performed in the two and four chamber planes. Cine sequences consisted of 50 cardiac phases with an acquired temporal resolution of 31 ms.<sup>14</sup> Transverse cine imaging of the ascending and descending thoracic aorta was also performed. Native T1 mapping within a single breath hold was performed at mid-ventricular level using a shortened modified Look-Locker inversion recovery (ShMOLLI) sequence. Imaging phenotypes all underwent quality control prior to use in analysis.<sup>15</sup>

### Cardiac image analysis

Automated segmentation of the short-axis and long-axis cine images in UK Biobank was performed using fully convolutional networks.<sup>16</sup> Volumes (end-diastolic, end-systolic, and stroke volume) and ejection fraction were determined for both ventricles. Myocardial volumes were used to compute left ventricular myocardial mass assuming a density of 1.05 g.ml<sup>-1</sup>. Atrial volumes were calculated using biplane area-length. Central vascular function was assessed by measuring aortic distensibility from central blood pressure estimates and dynamic aortic imaging.<sup>17</sup> The aorta

was segmented on the cine images with a spatio-temporal neural network,<sup>18</sup> from which maximum and minimum cross-sectional areas were derived. Distensibility was calculated using central blood pressure estimates obtained using peripheral pulse-wave analysis (Vicorder, Wuerzburg, Germany).<sup>17</sup>

Diastolic function, which is a key feature of the ageing heart, was assessed using motion analysis to derive end diastolic strain rates.<sup>16</sup> Non-rigid image registration between successive frames enabled motion tracking on greyscale images.<sup>19</sup> Registration errors were minimised by tracking motion in both backwards and forwards directions from end-diastole, resulting in an averaged displacement field,<sup>17</sup> which was then used to warp segmentations from end-diastole to successive adjacent frames. Circumferential ( $E_{cc}$ ) and radial ( $E_{rr}$ ) strains were calculated using short axis cines. Longitudinal ( $E_{ll}$ ) strain was calculated from long-axis four-chamber motion tracking measured at basal, mid-ventricular, and apical levels. Segmental and global peak strains were then calculated. Strain rate was computed as the first derivative of strain and thereafter peak early diastolic strain rate in radial (PDSR<sub>rr</sub>) and longitudinal (PDSR<sub>ll</sub>) directions calculated. We assessed diffuse myocardial fibrosis, an early feature of natural ageing,<sup>20</sup> using native T1 mapping of the interventricular septum.<sup>21</sup> The ShMOLLI T1 maps were analysed using probabilistic hierarchical segmentation with automated quality control defining a region of interest within the interventricular septum as previously validated.<sup>21</sup> Blood pool T1 was used as a linear correction of myocardial T1 values.<sup>21,22</sup>

In total, 126 quantitative imaging phenotypes characterising structure, function and tissue characteristics were generated for each participant.

## Cardiovascular age prediction

We used a model to predict cardiovascular age from image-derived phenotypes that was pre-trained on 5,065 healthy individuals, not included in the current study, that were free of cardiac, metabolic or respiratory disease and had a body mass index below 30. The development and performance of the model has been previously reported (Supplementary Methods).<sup>9</sup> Briefly, we used CatBoost, a machine learning algorithm based on decision trees and gradient boosting, to estimate the age of each participant from a joint analysis of all cardiac image-derived phenotypes. Similar to brain age modelling, we addressed the correlation between age-delta and chronological age using a linear regression analysis between the initial unadjusted cardiovascular age-delta and chronological age. Subsequently, an offset was determined by multiplying the chronological age by the slope of the regression line and adding the intercept. This offset was then subtracted from the initial unadjusted predicted age to yield the corrected predicted age.<sup>9</sup>

## Body adipose tissue analysis

Abdominal and body adipose tissue assessment was performed on the same 1.5T scanner using a dual-echo Dixon Vibe imaging protocol, enabling a comprehensive evaluation of the entire body from the neck to the knees.<sup>23</sup> This imaging protocol generated a dataset with water and fat components separated, facilitating the analysis of body fat composition. In brief, 6 overlapping sections were acquired that underwent calibration, stacking, fusion, and segmentation. Body composition analyses were carried out using the AMRA Profiler™ (AMRA AB, Linköping, Sweden). Values for android and gynoid adipose tissue mass were acquired from over 20,000 subjects UK Biobank dataset with multi sequence magnetic resonance and dual-energy X-ray absorptiometry (DXA) scans, using self-supervised, multi-modal alignment for whole body medical imaging, and transferring segmentation maps from DXA to MRI scans achieving high accuracy in matching different-modality scans without requiring ground-truth magnetic resonance examples.<sup>24</sup>

We also utilised datasets for liver proton density fat fraction employing the gradient echo protocol from the UK Biobank, specifically the LMS (Liver MultiScan) Dixon method. The LMS Dixon proton density fat fraction captures images during a single breath-hold, reducing motion artifacts and ensuring consistent measurements. Analysis involves three 15 mm circular regions of interest in the liver parenchyma, calculating proton density fat fraction, liver iron concentration, and iron-corrected T1 (cT1). Proton density fat fraction, a reliable measure of liver fat, is determined using water-fat separation masks, with values over 5% indicating fatty liver disease.<sup>25</sup>

Standing height without shoes was assessed using a Seca (Hamburg, Germany) 202 height measure. Weight, without shoes or outer clothing, was assessed with a Tanita (Tokyo, Japan) body composition analyser. Each BMI was calculated as weight in kilograms divided by height in metres<sup>2</sup>.

## Circulating bio-markers

We assessed 9 cardiometabolic and endocrine circulating biomarkers (triglycerides, direct low-density lipoprotein (direct LDL) cholesterol, high density lipoprotein (HDL) cholesterol, cholesterol (total), apolipoprotein A and B, sex hormone binding globulin (SHBG), oestradiol (E2), testosterone (free form)) as potential modifiers of cardiovascular ageing. The collection of these biomarkers involved standardised venous blood sampling followed by serum separation and storage at -80°C to ensure stability. The samples were then analysed using validated biochemical assays to quantify levels of each biomarker.<sup>26</sup>

## Mendelian randomisation

Mendelian randomisation (MR) was performed to investigate the potential causality of adipose tissue volumes on cardiovascular age-delta. We used large-scale genome wide association studies of image-derived visceral, abdominal subcutaneous, and gluteofemoral adipose tissue volumes after adjustment with BMI and height,<sup>27</sup> as well as of the cardiovascular age-delta.<sup>9</sup>

We used the R package `TwoSampleMR` to perform the analysis.<sup>28</sup> Independent genetic instruments were selected at the conventional genome wide significance threshold of  $P < 5 \times 10^{-8}$ , using the 1000G genomes European population as reference for linkage disequilibrium (LD) with an  $r^2$  threshold of 0.001. Exposure and outcome statistics were harmonised to allow consistency of alleles for MR analysis. Palindromic single nucleotide polymorphisms (SNPs) with intermediate allele frequencies were removed before MR. For each analysis, we performed MR with 5 methods,<sup>28</sup> including the inverse variance-weighted method that assumes all genetic variants are valid IVs, the MR Egger regression as a check for horizontal pleiotropy, the weighted median method, which is additionally robust in the presence of outliers, the simple mode and weighted mode methods which clusters SNPs into groups based on similarity of causal effects.

## Statistics

Analysis was performed in R (version 4.2.3) and Python. Variables were expressed as percentages and frequencies if categorical, mean  $\pm$  standard deviation (SD) if continuous and normal, and median  $\pm$  inter-quartile range (IQR) if continuous and non-normal. Comparison of independent groups was performed with a two sample  $t$  test. Multivariable linear regression was used to estimate the association between age-delta (as the dependent variable), and adiposity phenotypes and cardiometabolic biomarkers (as independent variables) using age, age<sup>2</sup>, and sex as covariates. Additionally, the model was adjusted for height<sup>2</sup> to account for variation in stature (Supplementary Methods).<sup>29</sup> Standardised  $\beta$  coefficients are reported for continuous predictors, each with 95% confidence intervals (CI). Fat mass was categorised using centile ranges of each BMI group and then compared with alluvial plots (see Supplementary Methods and Supplementary Figure 1). We applied the Benjamini-Hochberg procedure to control the false discovery rate. Statistical significance was considered at  $P \leq 0.05$  (two-sided).

## Results

### Sex-dependent associations of body fat with chronological age

In total 21,241 participants were included in the analysis (Table 1). Females had more abdominal subcutaneous fat ( $8.3 \pm 3.5$  L vs  $6.0 \pm 2.5$  L,  $P < 0.0001$ ), muscle adipose tissue infiltration ( $7.9 \pm 1.9$  % vs  $6.9 \pm 1.7$  %,  $P < 0.0001$ ) and gynoid fat ( $4.8 \pm 1.6$  kg vs  $3.6 \pm 1.2$  kg,  $P = 0.0001$ ), whereas males predominantly had greater volumes of visceral fat ( $5.1 \pm 2.3$  L vs  $2.8 \pm 1.5$  L,  $P < 0.0001$ ), android fat ( $2.8 \pm 1.2$  kg vs  $2.3 \pm 1.2$  kg,  $P = 0.0002$ ), and whole body fat mass ( $23.9 \pm 8.6$  kg vs  $20.1 \pm 7.0$  kg,  $P < 0.0001$ ) (Figure 2). Muscle adipose tissue infiltration increased by an average of 11.7% per decade in females and 9.8% in males. Visceral fat increased more with age in males, rising by an average of 8.2% each decade compared to 5.3% in females. Abdominal subcutaneous fat showed a modest decrease of 5.4% in females and 4.3% in males per decade (Figure 3). Adipose phenotype distribution by ancestry is shown in Supplementary Figure 2 and Supplementary Table 1.

### Association of cardiovascular age-delta and body fat phenotypes

Visceral adipose tissue ( $\beta = 0.656$ , [95% CI, 0.537 - 0.775],  $P < 0.0001$ ), muscle adipose tissue infiltration ( $\beta = 0.448$ , [95% CI, 0.112 - 0.224],  $P = 0.0005$ ), liver fat fraction ( $\beta = 1.066$ , [95% CI, 0.835 - 1.298],  $P < 0.0001$ ), and total abdominal adipose tissue ( $\beta = 0.615$ , [95% CI, 0.499 - 0.732],  $P < 0.0001$ ) were associated with adverse changes in cardiovascular age-delta for both sexes. For males, an increased age-delta was associated with android ( $\beta = 0.983$ , [95% CI, 0.64 - 1.326],  $P < 0.0001$ ) and gynoid fat ( $\beta = 0.688$ , [95% CI, 0.33 - 1.046],  $P = 0.0066$ ) (Figure 4A). Conversely, in females, gynoid fat ( $\beta = -0.499$ , [95% CI, -0.85 - -0.149],  $P = 0.0003$ ), total trunk fat mass ( $\beta = -0.403$ , [95% CI, -0.821 - -0.14],  $P = 0.0061$ ), and whole-body fat mass ( $\beta = -0.389$ , [95% CI, -0.732 - -0.254],  $P = 0.0043$ ) were associated with beneficial changes in cardiovascular age-delta (Table 2). BMI was a weaker predictor of age-delta than body fat in females ( $\beta = -0.85$ , [95% CI, -0.115 - -0.055],  $P = 0.0092$ ) and males ( $\beta = 0.063$ , [95% CI, 0.026 - 0.1],  $P = 0.0813$ ).

The relationship between fat distribution and cardiovascular age-delta remained mainly independent of height<sup>2</sup>. Visceral adipose tissue ( $\beta = 0.432$ , [95% CI, 0.296 - 0.567],  $P < 0.0001$ ), liver fat fraction ( $\beta = 0.207$ , [95% CI, 0.154 - 0.261],  $P < 0.0001$ ), muscle adipose tissue infiltration ( $\beta = 0.21$ , [95% CI, 0.055 - 0.364],  $P = 0.0078$ ) and total abdominal adipose tissue ( $\beta = 0.326$ , [95% CI, 0.165 - 0.487],  $P < 0.0001$ ) remained the strongest predictors for increased age-delta in the overall cohort. However in females muscle adipose tissue infiltration ( $\beta = 0.08$ , [95% CI, -0.116 - 0.277],  $P = 0.4235$ ), total trunk ( $\beta = 0.003$ , [95% CI, -0.068 - 0.075],  $P = 0.9276$ ) and whole body fat mass ( $\beta = -0.004$ , [95% CI, -0.042 - 0.034],  $P = 0.8255$ ) became insignificant, while gynoid fat mass ( $\beta = -0.499$ , [95% CI, -0.85 - -0.149],  $P = 0.0052$ ) showed a stronger negative association with age-delta (Supplementary Figure 3).

### Mendelian randomisation analysis

Using 17, 14, and 25 genetically independent instruments, we tested the causal association of image-derived fat phenotypes with cardiovascular age-delta (Supplementary Table 2). We observed genetic associations of gluteofemoral adipose tissue to cardiovascular age-delta ( $\beta = -0.96$ , [95% CI, -0.39 - -1.52],  $P = 8.7 \times 10^{-4}$ ) from inverse variance-weighted two-sample MR, suggesting a potentially protective role against increasing cardiovascular age-delta. Two other fat traits, visceral and abdominal subcutaneous adipose tissue, did not have significant association with age-delta

but had the opposite effect directions to gluteofemoral adipose tissue (Supplementary Table 3 and Supplementary Figure 4).

### Relationship between circulating biomarkers and cardiovascular age-delta

We found significant associations between increased cardiovascular age-delta and apolipoprotein B ( $\beta = 0.336$ , [95% CI, 0.224 - 0.448],  $P < 0.0001$ ), total cholesterol ( $\beta = 0.304$ , [95% CI, 0.191 - 0.417],  $P < 0.0001$ ), and direct LDL cholesterol ( $\beta = 0.287$ , [95% CI, 0.176 - 0.399],  $P < 0.0001$ ) while HDL cholesterol showed a decrease in cardiovascular age-delta ( $\beta = -0.187$ , [95% CI, -0.311 - -0.0063],  $P = 0.0071$ ) across both sexes. Notably, no significant changes between sexes were observed (Figure 4B).

Oestradiol (E2) was associated with increased cardiovascular age-delta in males ( $\beta = 0.481$ , [95% CI, 0.245 - 0.717],  $P < 0.0001$ ) while in all-age females it did not show a significant association ( $\beta = -0.061$ , [95% CI, -0.685 - -0.558],  $P = 0.0871$ ). However, in females aged  $\leq 55$  years, oestradiol was associated with a weak effect on decreased cardiovascular age-delta ( $\beta = -0.000499$ , [95% CI, -0.000772 to -0.000226],  $P = 0.0001$ ) (Table 2). An association between sex hormone-binding globulin (SHBG) and increased age-delta was seen in females ( $\beta = 0.360$ , [95% CI, -0.245 - 0.965],  $P = 0.0437$ ). Free testosterone was associated with a decrease in cardiovascular age-delta in both sexes (males:  $\beta = -0.081$ , [95% CI, -0.109 - -0.052],  $P < 0.0001$ ; females:  $\beta = -0.04$ , [95% CI, -0.066 - -0.014],  $P = 0.0071$ ) (Figure 4C).

### Comparison of body mass index with fat mass

Categorising body composition by the same centile ranges as BMI-defined normal, overweight and obese categories we showed that 31% ( $n=1141/3681$ ) of overweight female participants fell into the “normal” range for whole body fat mass. Among overweight male participants, 11% ( $n=537/4882$ ) were reclassified to “normal” whole body fat mass, and 23% ( $n=1123$ ) into the “obese” range (Figure 5).

## Discussion

Obesity is a leading cause of CVD independent of other risk factors,<sup>30</sup> and in animal models causes a state of accelerated biological ageing of the heart and circulation through up-regulation of pro-fibrotic and inflammatory factors.<sup>31,32</sup> Here we show that fat distribution may underlie premature ageing of the human cardiovascular system and that phenotypic differences between sexes modify these processes. This work demonstrates the key role played by visceral adipose tissue and the distribution of subcutaneous fat in regulating biological age and highlights the potential value for novel therapies intended to extend health span through modifying adipose tissue function.

Adipose tissue is a metabolically active distributed organ system composed of a variety of cell types that store energy and also contribute to the regulation of diverse biological functions through secretion of cytokines, chemokines, and hormones.<sup>33</sup> Adipose tissue is morphologically heterogeneous with white, beige and brown fat possessing increasing thermogenic adipocytes.<sup>34</sup> Visceral and subcutaneous white adipose tissue depots are also developmentally distinct,<sup>35</sup> with visceral adiposity associated with insulin resistance, local and systemic inflammation, and dyslipidemia.<sup>36</sup> We showed that absolute visceral fat volume in women is 54% of that seen in men while subcutaneous fat is 38% higher than men. In middle aged adults, while whole body fat remains relatively stable with age there is a progressive increase in muscle fat infiltration, a small rise in visceral fat volume and a decline in subcutaneous fat in both sexes. Such age-related changes in adipose tissue are thought to involve a redistribution of fat depots and changes in their cellular composition, alongside a functional decline of adipocyte progenitors and accumulation of senescent cells.<sup>37</sup> In animal models, widespread activation of immune cells is especially pronounced with the earliest signs present in white adipose depots during middle age as part of an asynchronous pattern of inter-organ ageing.<sup>38</sup>

We used non-invasive imaging to provide an estimate of how an individual's cardiovascular system has aged relative to a normative population and explore the association with fat phenotypes.<sup>9</sup> We found that BMI was a weak predictor of age-delta in either sex reflecting that accelerated ageing is not predicted by overall body mass. BMI also showed a sex bias in terms of over-representing women with normal fat mass as overweight and *vice versa* for men. Our data showed that visceral adipose tissue, liver fat, and to a lesser extent, muscle fat infiltration all predicted an increased age-delta in both sexes. Visceral adipose tissue promotes abnormal secretion of adipose-derived inflammatory cytokines and bioactive peptides which are thought to promote premature brain ageing,<sup>39,40</sup> and here we show a potential shared mechanism with accelerated ageing of the heart and circulation that is independent of sex. We also found key sex differences with a gynoid fat distribution appearing protective for ageing in females and a potential causal association of genetically-determined gluteofemoral fat on attenuated cardiovascular ageing. Gluteofemoral fat is negatively correlated with cardiometabolic disease risk factors,<sup>41</sup> and while the mechanism remains unclear it may be partially mediated by secretion of adiponectin which enhances insulin sensitivity.<sup>41</sup> However, gynoid fat was only associated with attenuated ageing in women suggesting that hormonal factors that regulate fat distribution could also directly influence ageing.<sup>42</sup> Oestradiol plays a key role in the biology of ageing across organ systems,<sup>11,43,44</sup> and we found that it might attenuate cardiovascular ageing in women until the menopause.

Our observation that visceral fat promotes ageing of the heart and circulation in humans provides support for the potential role of emerging treatments that target adipose tissue function to extend health-span. Glucagon-like peptide-1 receptor agonists (GLP-1 RAs), a class of antihyperglycemic drugs, are used to manage type 2 diabetes mellitus,

but also have pleiotropic effects on protecting against age-related oxidative stress, cellular senescence and chronic inflammation. They also substantially reduce visceral and liver fat in those with or without diabetes.<sup>45</sup> Therefore they may reduce both the volume of visceral fat as well as suppress secreted pro-inflammatory mediators of ageing.<sup>46,47</sup> For age-associated diseases and lifespan, ERK, AMPK and mTORC1 represent critical modifiable pathways.<sup>48</sup> In animal models of ageing IL11 is progressively up-regulated in liver, skeletal muscle, and fat to stimulate an ERK/AMPK/mTORC1 axis of cellular, tissue and organismal ageing pathologies. Anti-IL11 therapy may reactivate age-repressed metabolic function in adipose tissue and is a potential therapeutic target for extending mammalian healthspan.<sup>49</sup> Together, this shows the potential for treatments that target “inflamm-ageing” through mechanisms that include reprogramming of adipose tissue function.

Our study has limitations. Older age groups and persons living in less socioeconomically deprived areas are under-represented in UK Biobank.<sup>50</sup> The population is predominantly European and further work is required in people of diverse ancestries and social groups. People of Asian ancestry in particular may have different sex-dependent distributions of fat compared to other ancestries.<sup>51</sup> Phenotyping is derived at a single time-point in this cross-sectional study, and we could not assess within-person trajectories nor fully account for differential cohort and periodic effects.

In conclusion, sex-dependent fat phenotypes are related to biological cardiovascular ageing in humans which highlight adipose tissue distribution and function as potential targets for interventions to extend healthy lifespan.

## **Funding**

The study was supported by the Medical Research Council (MC\_UP\_1605/13); the British Heart Foundation (RG/19/6/34387, RE/18/4/34215, CH/P/23/80008); and the National Institute for Health Research (NIHR) Imperial College Biomedical Research Centre. For the purpose of open access, the authors have applied a Creative Commons Attribution (CC BY) licence to any author accepted manuscript version arising.

## **Author contributions**

Conceptualization: D.P.O’R.; Methodology: V.L., P.I.; Formal Analysis: V.L., C.L.; Resources: A.P.K., M.S., A. de M., W.B.; Software: P.I., D.S., V.L.; Writing – Original Draft: V.L., D.P.O’R.; Writing – Review & Editing: (all authors); Funding Acquisition: D.P.O’R.

## **Data availability**

The scripts for data analysis are publicly available [https://github.com/ImperialCollegeLondon/adiposity\\_aging](https://github.com/ImperialCollegeLondon/adiposity_aging). Data from UK Biobank is available for approved research.

## References

1. World Health Organization. Obesity and Overweight. 2024. URL: <https://www.who.int/news-room/fact-sheets/detail/obesity-and-overweight>.
2. Powell-Wiley TM, Poirier P, Burke LE, Després JP, Gordon-Larsen P, Lavie CJ, Lear SA, Ndumele CE, Neeland IJ, Sanders P, et al. Obesity and Cardiovascular Disease: A Scientific Statement From the American Heart Association. *Circulation*. 2021;143:e984–e1010. DOI: [10.1161/cir.0000000000000973](https://doi.org/10.1161/cir.0000000000000973).
3. Neeland IJ, Turer AT, Ayers CR, Berry JD, Rohatgi A, Das SR, Khera A, Vega GL, McGuire DK, Grundy SM, et al. Body fat distribution and incident cardiovascular disease in obese adults. *J Am Coll Cardiol*. 2015;65:2150–1. DOI: [10.1016/j.jacc.2015.01.061](https://doi.org/10.1016/j.jacc.2015.01.061).
4. Pou KM, Massaro JM, Hoffmann U, Vasan RS, Maurovich-Horvat P, Larson MG, Keaney J. F. J, Meigs JB, Lipinska I, Kathiresan S, et al. Visceral and subcutaneous adipose tissue volumes are cross-sectionally related to markers of inflammation and oxidative stress: the Framingham Heart Study. *Circulation*. 2007;116:1234–41. DOI: [10.1161/circulationaha.107.710509](https://doi.org/10.1161/circulationaha.107.710509).
5. Alexopoulos N, Katritsis D, and Raggi P. Visceral adipose tissue as a source of inflammation and promoter of atherosclerosis. *Atherosclerosis*. 2014;233:104–12. DOI: [10.1016/j.atherosclerosis.2013.12.023](https://doi.org/10.1016/j.atherosclerosis.2013.12.023).
6. Raheem J, Sliz E, Shin J, Holmes MV, Pike GB, Richer L, Gaudet D, Paus T, and Pausova Z. Visceral adiposity is associated with metabolic profiles predictive of type 2 diabetes and myocardial infarction. *Commun Med (Lond)*. 2022;2:81. DOI: [10.1038/s43856-022-00140-5](https://doi.org/10.1038/s43856-022-00140-5).
7. Pérez LM, Pareja-Galeano H, Sanchis-Gomar F, Emanuele E, Lucia A, and Gálvez BG. 'Adipaging': ageing and obesity share biological hallmarks related to a dysfunctional adipose tissue. *J Physiol*. 2016;594:3187–207. DOI: [10.1113/jp271691](https://doi.org/10.1113/jp271691).
8. Frasca D. Several areas of overlap between obesity and aging indicate obesity as a biomarker of accelerated aging of human B cell function and antibody responses. *Immun Ageing*. 2022;19:48. DOI: [10.1186/s12979-022-00301-z](https://doi.org/10.1186/s12979-022-00301-z).
9. Shah M, Inácio MHdA, Lu C, Schiratti PR, Zheng SL, Clement A, de Marvao A, Bai W, King AP, Ware JS, et al. Environmental and genetic predictors of human cardiovascular ageing. *Nat Commun*. 2023;14:4941. DOI: [10.1038/s41467-023-40566-6](https://doi.org/10.1038/s41467-023-40566-6).
10. Tian YE, Cropley V, Maier AB, Lautenschlager NT, Breakspear M, and Zalesky A. Heterogeneous aging across multiple organ systems and prediction of chronic disease and mortality. *Nat Med*. 2023;29:1221–31. DOI: [10.1038/s41591-023-02296-6](https://doi.org/10.1038/s41591-023-02296-6).
11. Hägg S and Jylhävä J. Sex differences in biological aging with a focus on human studies. *Elife*. 2021;10. DOI: [10.7554/eLife.63425](https://doi.org/10.7554/eLife.63425).
12. Boulet N, Briot A, Galitzky J, and Bouloumié A. The Sexual Dimorphism of Human Adipose Depots. *Biomedicines*. 2022;10. DOI: [10.3390/biomedicines10102615](https://doi.org/10.3390/biomedicines10102615).
13. Bycroft C, Freeman C, Petkova D, Band G, Elliott LT, Sharp K, Motyer A, Vukcevic D, Delaneau O, O'Connell J, et al. The UK Biobank resource with deep phenotyping and genomic data. *Nature*. 7726 2018;562:203–9. DOI: [10.1038/s41586-018-0579-z](https://doi.org/10.1038/s41586-018-0579-z).
14. Petersen SE, Matthews PM, Francis JM, Robson MD, Zemrak F, Boubertakh R, Young AA, Hudson S, Weale P, Garratt S, et al. UK Biobank's cardiovascular magnetic resonance protocol. *J Cardiovasc Magn Reson*. 1 2015;18. DOI: [10.1186/s12968-016-0227-4](https://doi.org/10.1186/s12968-016-0227-4).
15. Bai W, Sinclair M, Tarroni G, Oktay O, Rajchl M, Vaillant G, Lee AM, Aung N, Lukaschuk E, Sanghvi MM, et al. Automated cardiovascular magnetic resonance image analysis with fully convolutional networks. *J Cardiovasc Magn Reson*. 1 2018;20. DOI: [10.1186/s12968-018-0471-x](https://doi.org/10.1186/s12968-018-0471-x).
16. Thanaj M, Mielke J, McGurk KA, Bai W, Savioli N, de Marvao A, Meyer HV, Zeng L, Sohler F, Lumbers RT, et al. Genetic and environmental determinants of diastolic heart function. *Nat Cardiovasc Res*. 2022;1:361–71. DOI: [10.1038/s44161-022-00048-2](https://doi.org/10.1038/s44161-022-00048-2).
17. Bai W, Suzuki H, Huang J, Francis C, Wang S, Tarroni G, Guitton F, Aung N, Fung K, Petersen SE, et al. A population-based phenome-wide association study of cardiac and aortic structure and function. *Nat Med*. 10 2020;26:1654–62. DOI: [10.1038/s41591-020-1009-y](https://doi.org/10.1038/s41591-020-1009-y).
18. Bai W, Suzuki H, Qin C, Tarroni G, Oktay O, Matthews PM, and Rueckert D. Recurrent Neural Networks for Aortic Image Sequence Segmentation with Sparse Annotations. In: *Med Image Comput Comput Assist Interv – MICCAI*. Ed. by Frangi AF, Schnabel JA, Davatzikos C, Alberola-López C, and Fichtinger G. Springer International Publishing, 2018:586–94. DOI: [10.1007/978-3-030-00937-3\\_67](https://doi.org/10.1007/978-3-030-00937-3_67).
19. Rueckert D, Sonoda L, Hayes C, Hill D, Leach M, and Hawkes D. Nonrigid registration using free-form deformations: application to breast MR images. *IEEE Trans Med Imaging*. 1999;18:712–21. DOI: [10.1109/42.796284](https://doi.org/10.1109/42.796284).

20. Sangaralingham SJ, Huntley BK, Martin FL, McKie PM, Bellavia D, Ichiki T, Harders GE, Chen HH, and Burnett Jr JC. The aging heart, myocardial fibrosis, and its relationship to circulating C-type natriuretic peptide. *Hypertension*. 2011;57:201–7. DOI: [10.1161/HYPERTENSIONAHA.110.160796](https://doi.org/10.1161/HYPERTENSIONAHA.110.160796).
21. Puyol-Antón E, Ruijsink B, Baumgartner CF, Masci PG, Sinclair M, Konukoglu E, Razavi R, and King AP. Automated quantification of myocardial tissue characteristics from native T1 mapping using neural networks with uncertainty-based quality-control. *J Cardiovasc Magn Reson*. 2020;22:1–15. DOI: [10.1186/s12968-020-00650-y](https://doi.org/10.1186/s12968-020-00650-y).
22. Nickander J, Lundin M, Abdula G, Sörensson P, Rosmini S, Moon JC, Kellman P, Sigfridsson A, and Ugander M. Blood correction reduces variability and gender differences in native myocardial T1 values at 1.5 T cardiovascular magnetic resonance—a derivation/validation approach. *J Cardiovasc Magn Reson*. 2017;19:1–11. DOI: [10.1186/s12968-017-0353-7](https://doi.org/10.1186/s12968-017-0353-7).
23. West J, Dahlqvist Leinhard O, Romu T, Collins R, Garratt S, Bell JD, Borga M, and Thomas L. Feasibility of MR-Based Body Composition Analysis in Large Scale Population Studies. *PLoS One*. 2016;11:e0163332. DOI: [10.1371/journal.pone.0163332](https://doi.org/10.1371/journal.pone.0163332).
24. Windsor R, Jamaludin A, Kadir T, and Zisserman A. Self-Supervised Multi-Modal Alignment For Whole Body Medical Imaging. *arXiv*. 2021:2107.06652. DOI: [10.48550/arXiv.2107.06652](https://doi.org/10.48550/arXiv.2107.06652).
25. McCracken C, Raisi-Estabragh Z, Veldsman M, Raman B, Dennis A, Husain M, Nichols TE, Petersen SE, and Neubauer S. Multi-organ imaging demonstrates the heart-brain-liver axis in UK Biobank participants. *Nat Commun*. 2022;13:7839. DOI: [10.1038/s41467-022-35321-2](https://doi.org/10.1038/s41467-022-35321-2).
26. Elliott P and Peakman TC. The UK Biobank sample handling and storage protocol for the collection, processing and archiving of human blood and urine. *Int J Epidemiol*. 2008;37:234–44. DOI: [10.1093/ije/dym276](https://doi.org/10.1093/ije/dym276).
27. Agrawal S, Wang M, Klarqvist MDR, Smith K, Shin J, Dashti H, Diamant N, Choi SH, Jurgens SJ, Ellinor PT, et al. Inherited basis of visceral, abdominal subcutaneous and gluteofemoral fat depots. *Nat Commun*. 2022;13:3771. DOI: [10.1038/s41467-022-30931-2](https://doi.org/10.1038/s41467-022-30931-2).
28. Hemani G, Zheng J, Elsworth B, Wade KH, Haberland V, Baird D, Laurin C, Burgess S, Bowden J, Langdon R, et al. The MR-Base platform supports systematic causal inference across the human phenome. *Elife*. 2018;7. DOI: [10.7554/eLife.34408](https://doi.org/10.7554/eLife.34408).
29. De Simone G and Galderisi M. Allometric normalization of cardiac measures: producing better, but imperfect, accuracy. *J Am Soc Echocardiogr*. 2014;27:1275–8. DOI: [10.1016/j.echo.2014.10.006](https://doi.org/10.1016/j.echo.2014.10.006).
30. Luo H, Liu Y, Tian X, Zhao Y, Liu L, Zhao Z, Luo L, Zhang Y, Jiang X, Liu Y, et al. Association of obesity with cardiovascular disease in the absence of traditional risk factors. *Int J Obes (Lond)*. 2024;48:263–70. DOI: [10.1038/s41366-023-01408-z](https://doi.org/10.1038/s41366-023-01408-z).
31. Sawaki D, Czibik G, Pini M, Ternacle J, Suffee N, Mercedes R, Marcelin G, Surenaud M, Marcos E, Gual P, et al. Visceral Adipose Tissue Drives Cardiac Aging Through Modulation of Fibroblast Senescence by Osteopontin Production. *Circulation*. 2018;138:809–22. DOI: [10.1161/CIRCULATIONAHA.117.031358](https://doi.org/10.1161/CIRCULATIONAHA.117.031358).
32. Ziegler AK, Damgaard A, Mackey AL, Schjerling P, Magnusson P, Olesen AT, Kjaer M, and Scheele C. An anti-inflammatory phenotype in visceral adipose tissue of old lean mice, augmented by exercise. *Sci Rep*. 2019;9:12069. DOI: [10.1038/s41598-019-48587-2](https://doi.org/10.1038/s41598-019-48587-2).
33. Coelho M, Oliveira T, and Fernandes R. Biochemistry of adipose tissue: an endocrine organ. *Arch Med Sci*. 2013;9:191–200. DOI: [10.5114/aoms.2013.33181](https://doi.org/10.5114/aoms.2013.33181).
34. Kajimura S, Spiegelman BM, and Seale P. Brown and Beige Fat: Physiological Roles beyond Heat Generation. *Cell Metab*. 2015;22:546–59. DOI: [10.1016/j.cmet.2015.09.007](https://doi.org/10.1016/j.cmet.2015.09.007).
35. Chau YY, Bandiera R, Serrels A, Martinez-Estrada OM, Qing W, Lee M, Slight J, Thornburn A, Berry R, McHaffie S, et al. Visceral and subcutaneous fat have different origins and evidence supports a mesothelial source. *Nat Cell Biol*. 2014;16:367–75. DOI: [10.1038/ncb2922](https://doi.org/10.1038/ncb2922).
36. Chait A and den Hartigh LJ. Adipose Tissue Distribution, Inflammation and Its Metabolic Consequences, Including Diabetes and Cardiovascular Disease. *Front Cardiovasc Med*. 2020;7:22. DOI: [10.3389/fcvm.2020.00022](https://doi.org/10.3389/fcvm.2020.00022).
37. Ou MY, Zhang H, Tan PC, Zhou SB, and Li QF. Adipose tissue aging: mechanisms and therapeutic implications. *Cell Death Dis*. 2022;13:300. DOI: [10.1038/s41419-022-04752-6](https://doi.org/10.1038/s41419-022-04752-6).
38. Schaum N, Lehallier B, Hahn O, Palovics R, Hosseinzadeh S, Lee SE, Sit R, Lee DP, Losada PM, Zardeneta ME, et al. Ageing hallmarks exhibit organ-specific temporal signatures. *Nature*. 2020;583:596–602. DOI: [10.1038/s41586-020-2499-y](https://doi.org/10.1038/s41586-020-2499-y).
39. Ishii M and Iadecola C. Adipocyte-derived factors in age-related dementia and their contribution to vascular and Alzheimer pathology. *Biochim Biophys Acta*. 2016;1862:966–74. DOI: [10.1016/j.bbadis.2015.10.029](https://doi.org/10.1016/j.bbadis.2015.10.029).
40. Kim S, Yi HA, Won KS, Lee JS, and Kim HW. Association between Visceral Adipose Tissue Metabolism and Alzheimer’s Disease Pathology. *Metabolites*. 2022;12. DOI: [10.3390/metabo12030258](https://doi.org/10.3390/metabo12030258).



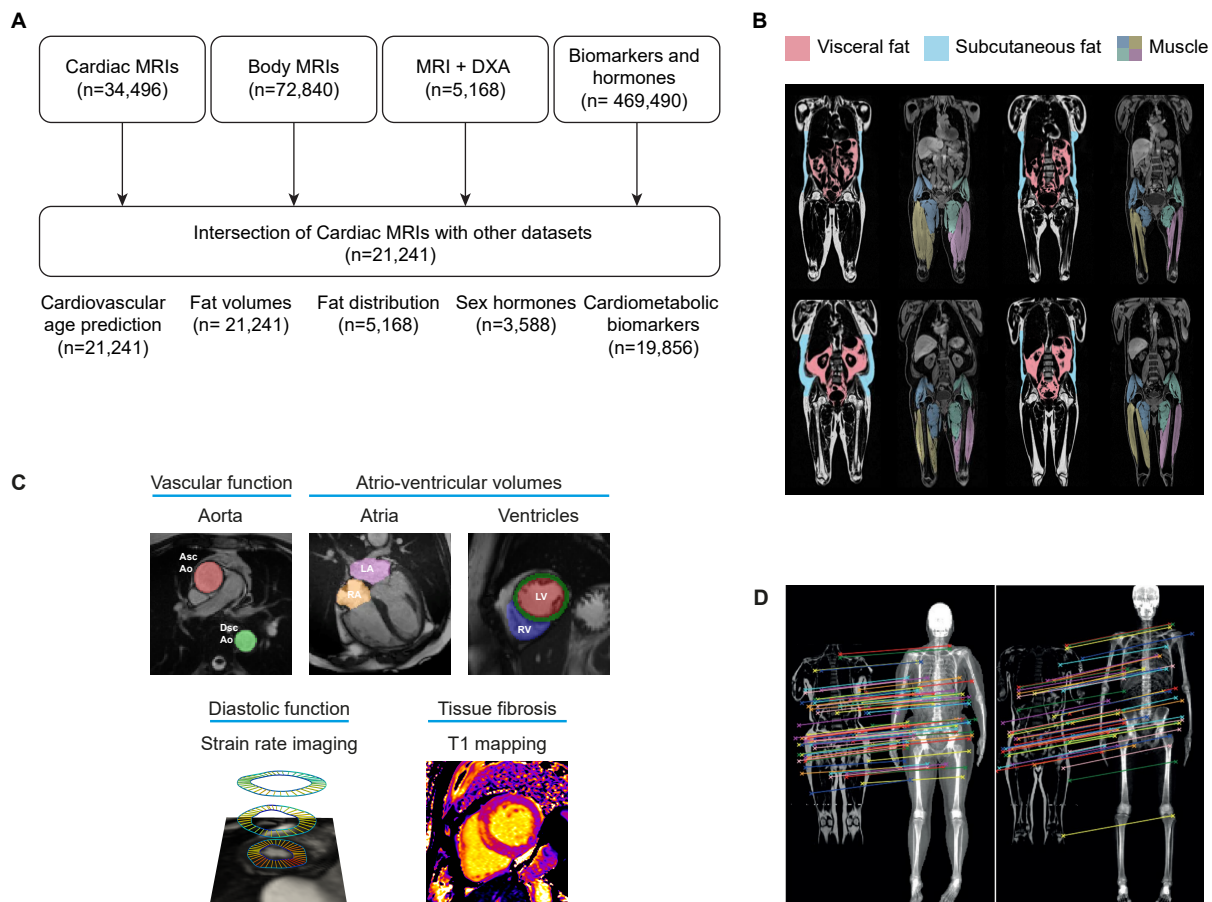
41. Gradidge PJ, Jaff NG, Norris SA, Toman M, and Crowther NJ. The negative association of lower body fat mass with cardiometabolic disease risk factors is partially mediated by adiponectin. *Endocr Connect*. 2022;11. DOI: [10.1530/ec-22-0156](https://doi.org/10.1530/ec-22-0156).
42. Lee MJ and Fried SK. Sex-dependent Depot Differences in Adipose Tissue Development and Function; Role of Sex Steroids. *J Obes Metab Syndr*. 2017;26:172–80. DOI: [10.7570/jomes.2017.26.3.172](https://doi.org/10.7570/jomes.2017.26.3.172).
43. Morrison JH, Brinton RD, Schmidt PJ, and Gore AC. Estrogen, menopause, and the aging brain: how basic neuroscience can inform hormone therapy in women. *J Neurosci*. 2006;26:10332–48. DOI: [10.1523/jneurosci.3369-06.2006](https://doi.org/10.1523/jneurosci.3369-06.2006).
44. Jurić J, Kohrt WM, Kifer D, Gavin KM, Pezer M, Nigrovic PA, and Lauc G. Effects of estradiol on biological age measured using the glycan age index. *Aging (Albany NY)*. 2020;12:19756–65. DOI: [10.18632/aging.104060](https://doi.org/10.18632/aging.104060).
45. Liao C, Liang X, Zhang X, and Li Y. The effects of GLP-1 receptor agonists on visceral fat and liver ectopic fat in an adult population with or without diabetes and nonalcoholic fatty liver disease: A systematic review and meta-analysis. *PLoS One*. 2023;18:e0289616. DOI: [10.1371/journal.pone.0289616](https://doi.org/10.1371/journal.pone.0289616).
46. Peng W, Zhou R, Sun ZF, Long JW, and Gong YQ. Novel Insights into the Roles and Mechanisms of GLP-1 Receptor Agonists against Aging-Related Diseases. *Aging Dis*. 2022;13:468–90. DOI: [10.14336/ad.2021.0928](https://doi.org/10.14336/ad.2021.0928).
47. Kreiner FF, von Scholten BJ, Kurtzhals P, and Gough SCL. Glucagon-like peptide-1 receptor agonists to expand the healthy lifespan: Current and future potentials. *Aging Cell*. 2023;22:e13818. DOI: [10.1111/acer.13818](https://doi.org/10.1111/acer.13818).
48. Herranz N, Gallage S, Mellone M, Wuestefeld T, Klotz S, Hanley CJ, Raguz S, Acosta JC, Innes AJ, Banito A, et al. mTOR regulates MAPKAPK2 translation to control the senescence-associated secretory phenotype. *Nat Cell Biol*. 2015;17:1205–17. DOI: [10.1038/ncb3225](https://doi.org/10.1038/ncb3225).
49. Widjaja AA, Lim WW, Viswanathan S, Chothani S, Corden B, Goh JWT, Tan J, Pua CJ, Lim R, Singh BK, et al. Inhibition of an immunometabolic axis of mTORC1 activation extends mammalian healthspan. *bioRxiv*. 2023:2023.07.09.548250. DOI: [10.1101/2023.07.09.548250](https://doi.org/10.1101/2023.07.09.548250).
50. Fry A, Littlejohns TJ, Sudlow C, Doherty N, Adamska L, Sprosen T, Collins R, and Allen NE. Comparison of Sociodemographic and Health-Related Characteristics of UK Biobank Participants With Those of the General Population. *Am J Epidemiol*. 2017;186:1026–34. DOI: [10.1093/aje/kwx246](https://doi.org/10.1093/aje/kwx246).
51. Iliodromiti S, McLaren J, Ghouri N, Miller MR, Dahlqvist Leinhard O, Linge J, Ballantyne S, Platt J, Foster J, Hanvey S, et al. Liver, visceral and subcutaneous fat in men and women of South Asian and white European descent: a systematic review and meta-analysis of new and published data. *Diabetologia*. 2023;66:44–56. DOI: [10.1007/s00125-022-05803-5](https://doi.org/10.1007/s00125-022-05803-5).

**Table 1. Study population characteristics.** Baseline cardiac MRI and adipose tissue parameters by sex.

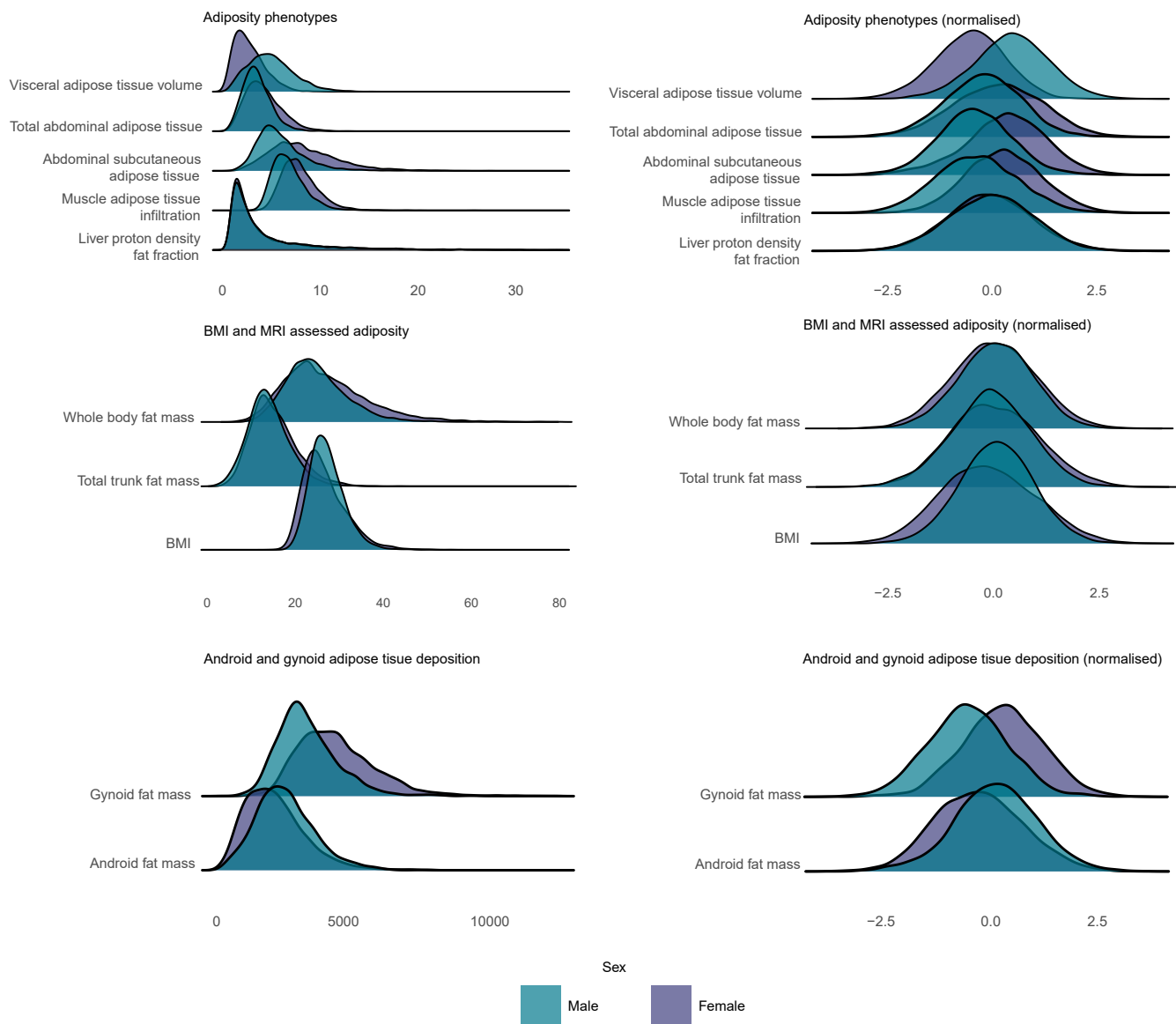
	Female (n = 10558) Mean ± SD, or n (%)	Male (n = 10683) Mean ± SD, or n (%)	P value
<b>Baseline characteristics</b>			
Age at MRI (years)	62.5 ± 7.5	65.9 ± 7.6	<0.0001
White ancestry (n/%)	9690/91.7	9822/91.9	0.68
Black ancestry (n/%)	181/1.7	226/2.1	0.037
Asian ancestry (n/%)	386/3.7	296/2.8	0.0009
Mixed ancestry (n/%)	301/2.9	359/3.2	0.18
Body mass index	26.6 ± 4.9	27.3 ± 3.9	<0.0001
Systolic blood pressure (mmHg)	131 ± 17	139 ± 18	<0.0001
Diastolic blood pressure (mm Hg)	77 ± 8	82 ± 8	<0.0001
Pulse rate (bpm)	75 ± 7	71 ± 8	<0.0001
Diabetes mellitus (n/%)	745/7.1	1088/10.2	<0.0001
Hypercholesterolaemia (n/%)	975/9.2	1749/16.3	<0.0001
Hypertension (n/%)	2129/20.2	3082/28.8	<0.0001
Coronary artery disease (n/%)	583/5.6	1162/10.8	<0.0001
Obesity (n/%)	2491/23.6	2826/26.5	<0.0001
Current smoker (n/%)	583/5.6	508/4.8	<0.0001
Current alcohol consumption (n/%)	358/3.2	483/4.5	<0.0001
<b>Cardiac parameters from CMR</b>			
Left ventricular ejection fraction (LVEF) (%)	60.7 ± 5.7	58.2 ± 6.2	<0.0001
Left ventricular end-diastolic volume (LVEDV) (ml)	133.6 ± 26.5	164.3 ± 33.6	<0.0001
Left ventricular end-systolic volume (LVESV) (ml)	52.8 ± 14.9	69.2 ± 20.2	<0.0001
Left ventricular stroke volume (LVSV) (ml)	80.8 ± 16.0	95.1 ± 19.7	<0.0001
Left ventricular cardiac output (LVCO) (ml)	5.1 ± 1.1	5.9 ± 1.3	<0.0001
Left ventricle mass (LVM) (g)	74.5 ± 16.1	100.0 ± 20.3	<0.0001
Right ventricular ejection fraction (RVEF) (%)	58.8 ± 5.7	55.7 ± 6.1	<0.0001
Right ventricular end-diastolic volume (RVEDV) (ml)	138.9 ± 29.3	175.6 ± 35.5	<0.0001
Right ventricular end-systolic volume (RVESV) (ml)	57.6 ± 16.5	78.2 ± 20.6	<0.0001
Right ventricular stroke volume (RVSV) (ml)	81.3 ± 17.0	97.3 ± 20.5	<0.0001
<b>Adiposity parameters from MRI</b>			
Visceral adipose tissue (VAT) (L)	2.76 ± 1.5	5.1 ± 2.3	<0.0001
Abdominal subcutaneous adipose tissue (ASAT) (L)	8.3 ± 3.5	6.0 ± 2.5	<0.0001
Muscle adipose tissue infiltration (MATI) (%)	7.9 ± 1.9	6.9 ± 1.7	<0.0001
Liver proton density fat fraction (PDFF) (%)	4.8 ± 4.3	4.6 ± 4.4	0.60
Whole body fat mass (WBFM) (kg)	20.1 ± 7.0	23.9 ± 8.6	<0.0001
Total trunk fat mass (TTFM) (kg)	14.4 ± 5.0	12.0 ± 4.8	<0.0001
Gynoid fat mass (kg)	4.8 ± 1.6	3.6 ± 1.2	0.0001
Android fat mass (kg)	2.5 ± 1.2	2.8 ± 1.2	0.0002

**Table 2. Association of adiposity phenotypes, cardiometabolic and endocrine biomarkers with cardiovascular age-delta.** Sex stratified  $\beta$  coefficients, 95% confidence intervals and  $P$  values for each predictor with age-delta as the dependent variable in a linear regression model with age and age<sup>2</sup> as covariates.

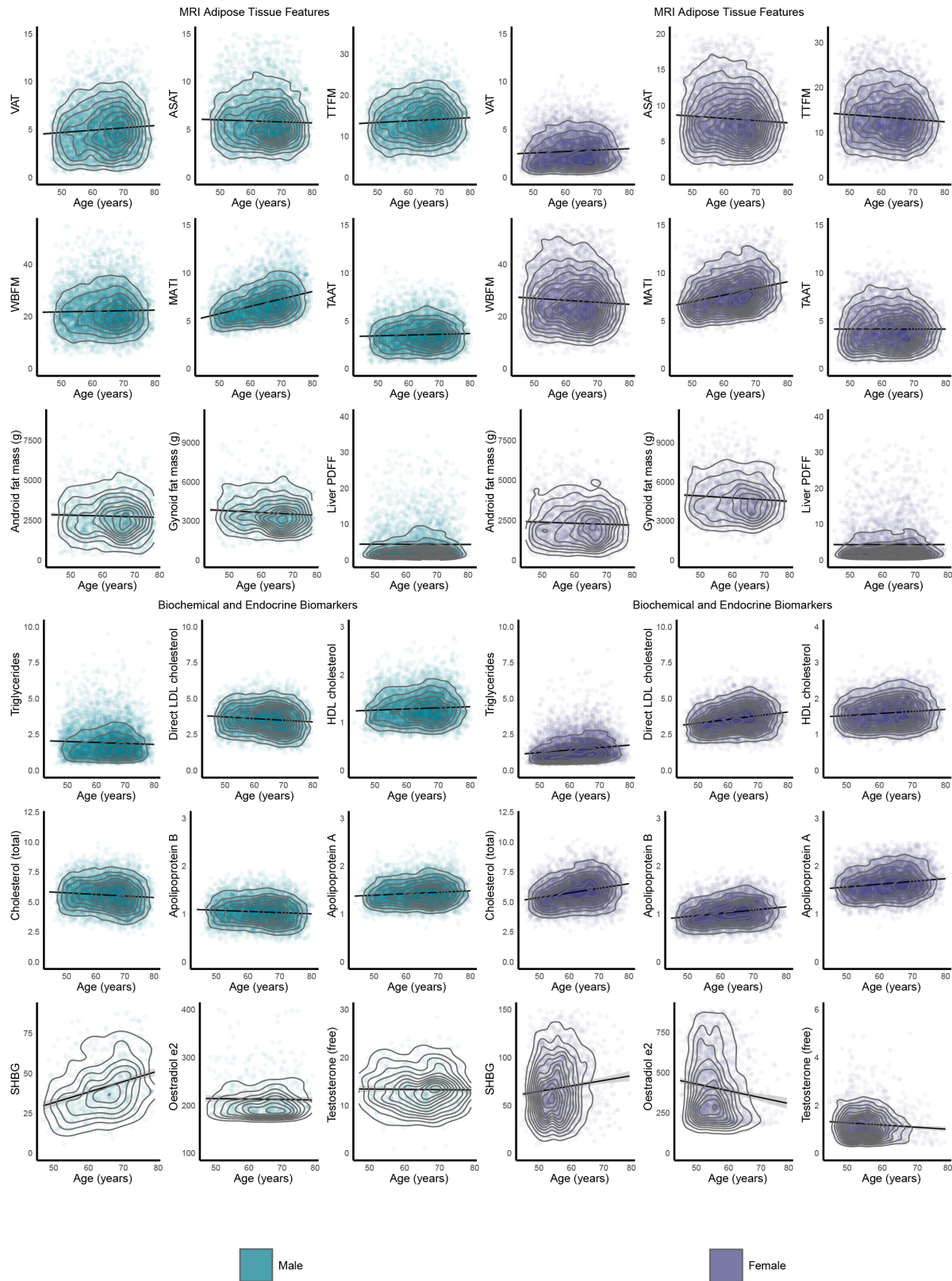
Trait		$\beta$ coefficient	95% CI	$P$ value
<b>Body fat phenotypes</b>				
Visceral adipose tissue (VAT)		0.656	0.537 - 0.775	< 0.0001
	Female	0.497	0.323 - 0.671	0.0007
Abdominal subcutaneous adipose tissue (ASAT)	Male	0.739	0.577 - 0.9	< 0.0001
	Female	0.154	0.045 - 0.264	0.0069
Muscle adipose tissue infiltration (MATI)	Male	-0.099	-0.246 - 0.047	0.1981
	Female	0.432	0.269 - 0.596	< 0.0001
Liver proton density fat fraction (PDFF)	Male	0.183	0.112 - 0.224	0.0003
	Female	0.482	0.321 - 0.692	< 0.0001
Total abdominal adipose tissue (TAAT)	Male	0.285	0.198 - 0.376	0.0007
	Female	1.066	0.835 - 1.298	< 0.0001
Android adipose tissue mass	Male	0.991	0.675 - 1.306	< 0.0001
	Female	1.13	0.788 - 1.472	< 0.0001
Gynoid adipose tissue mass	Male	0.615	0.499 - 0.732	< 0.0001
	Female	0.355	0.205 - 0.505	0.0007
Total trunk fat mass	Male	0.949	0.767 - 1.132	< 0.0001
	Female	0.527	0.292 - 0.761	0.0002
Whole body fat mass	Male	0.121	-0.199 - 0.441	0.4727
	Female	0.983	0.64 - 1.326	< 0.0001
Body mass index	Male	0.077	-0.175 - 0.329	0.5479
	Female	-0.499	-0.85 - -0.149	0.0003
Body mass index	Male	0.688	0.33 - 1.046	0.0066
	Female	-0.15	-0.165 - 0.41	0.0408
Whole body fat mass	Male	-0.403	-0.821 - -0.14	0.0061
	Female	0.415	0.032 - 0.211	0.0343
Body mass index	Male	0.011	-0.12 - 0.02	0.0431
	Female	-0.389	-0.732 - -0.254	0.0043
Body mass index	Male	0.428	0.071 - 0.114	0.0191
	Female	-0.025	-0.048 - -0.001	0.0430
Body mass index	Male	-0.85	-0.115 - -0.055	0.0092
	Female	0.063	0.026 - 0.1	0.0813
<b>Cardiometabolic biomarkers</b>				
Apolipoprotein A		-0.003	-0.125 - 0.12	0.9673
	Female	-0.12	-0.293 - 0.053	0.1946
Apolipoprotein B	Male	0.09	-0.084 - 0.257	0.3413
	Female	0.336	0.224 - 0.448	< 0.0001
Direct low-density Lipoprotein	Male	0.209	0.052 - 0.33	0.0117
	Female	0.214	0.058 - 0.37	0.0117
High-density lipoprotein cholesterol	Male	0.287	0.176 - 0.399	< 0.0001
	Female	0.15	0.029 - 0.388	0.0423
Triglycerides	Male	0.18	0.024 - 0.336	0.0310
	Female	-0.187	-0.511 - -0.063	0.0071
Cholesterol (total)	Male	-0.351	-0.535 - -0.1	0.0053
	Female	-0.261	-0.435 - -0.088	0.0072
Cholesterol (total)	Male	0.569	0.459 - 0.679	0.0062
	Female	0.652	0.485 - 0.858	0.0073
Cholesterol (total)	Male	0.671	0.485 - 0.858	0.0072
	Female	0.304	0.191 - 0.417	< 0.0001
Cholesterol (total)	Male	0.183	0.048 - 0.373	0.0219
	Female	0.197	0.04 - 0.353	0.0207
<b>Endocrine biomarkers</b>				
Sex hormone binding globulin (SHBG)		0.107	-0.356 - 0.57	0.6497
	Female	0.36	-0.245 - 0.965	0.0437
Testosterone (free form)	Male	-0.362	-1.068 - 0.344	0.3546
	Female	-0.063	-0.082 - -0.043	< 0.0001
Oestradiol (E2)	Male	-0.04	-0.066 - -0.014	0.0071
	Female	-0.0811	-0.109 - -0.052	< 0.0001
Oestradiol (E2)	Female	0.189	-0.259 - 0.679	0.0862
	Female	-0.061	-0.685 - 0.558	0.0871
Oestradiol (E2)	Female aged 55 and younger	-0.00499	-0.000772 - -0.000226	0.0001
	Female aged 55 and older	0.000301	-0.000105 - 0.000707	0.1424
Oestradiol (E2)	Male	0.481	0.245 - 0.717	< 0.0001



**Figure 1. Analysis of fat phenotypes and cardiovascular aging.** **A** Flowchart of analyses performed in UK Biobank participants. **B** Fat phenotyping was performed by segmentation of whole body MRI into visceral, subcutaneous and muscle compartments (credit: AMRA Medical). **C** Phenotypes derived from cardiac MRI were used for age prediction. These included automated time-resolved segmentations of the aorta and cardiac chambers, as well as strain rate analysis and T1 mapping. **D** Integration of MRI and DXA enabled regional body composition analysis. (credit: Rhydian Windsor,<sup>24</sup> under Creative Commons Attribution License CC BY 4.0). MRI, magnetic resonance imaging; DXA, dual X-ray absorptiometry; Asc Ao, ascending aorta; Dsc Ao, descending aorta.

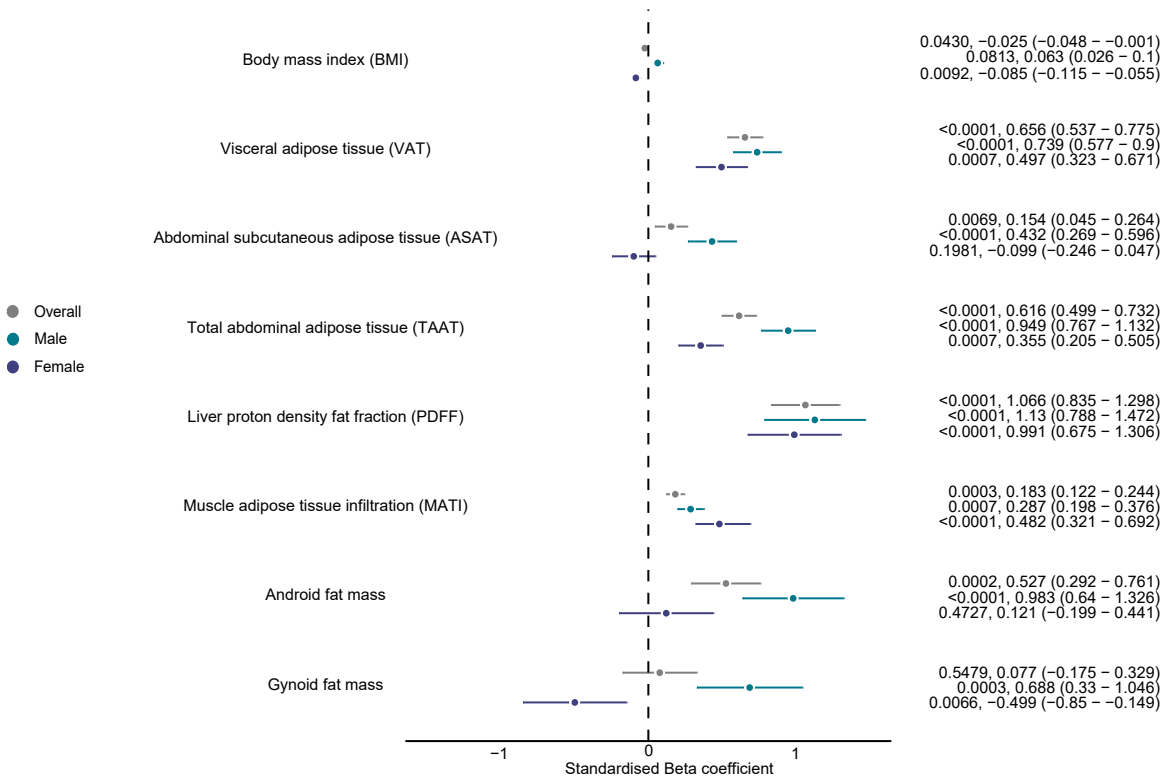


**Figure 2. Distribution of fat phenotypes and association with cardiovascular age-delta.** Ridge plots summarizing the distribution densities of adiposity phenotypes. Unadjusted and normalised values shown. Body mass index, BMI; Magnetic resonance imaging, MRI; Adiposity phenotypes n = 21,241; BMI and MRI assessed adiposity n = 21,241; Android and gynoid adipose tissue deposition n = 5,168.

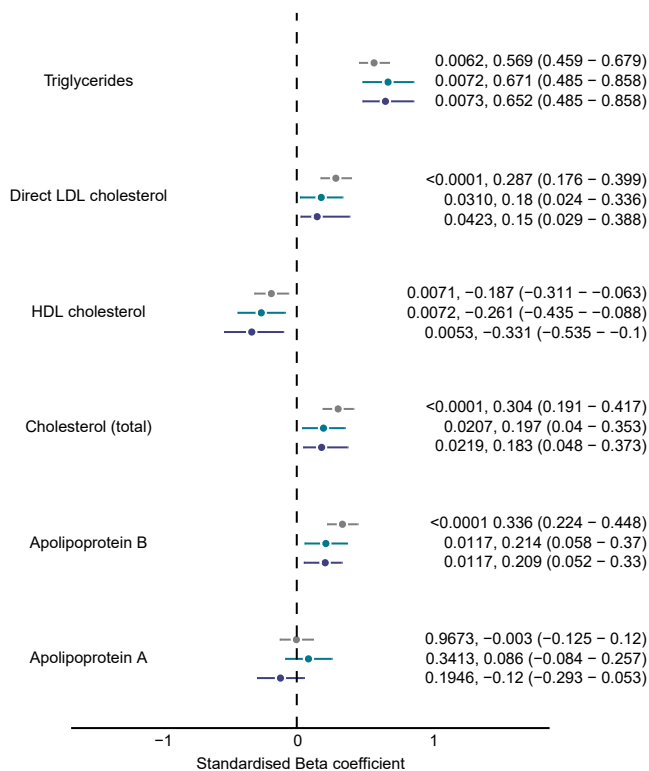


**Figure 3. Adiposity and biomarker associations with chronological age.** A selection of representative phenotypes grouped by MRI-derived adipose features ( $n=21,241$ ), android and gynoid fat mass ( $n=5,168$ ), circulating biomarkers ( $n=19,856$ ) and hormones ( $n=3,588$ ) are shown with their relationship to chronological age at the time of imaging (ages jittered, density contours, point colours represent coefficient of determination ( $R^2$ )). VAT, visceral adipose tissue; ASAT, abdominal subcutaneous adipose tissue; TTFM total trunk fat mass; WBFM, whole body fat mass; MATI, muscle adipose tissue infiltration; TAAT, total abdominal adipose tissue; PDFF, proton density fat fraction (of the liver); LDL, low density lipoprotein; HDL, high density lipoprotein; SHBG, sex hormone-binding globulin.

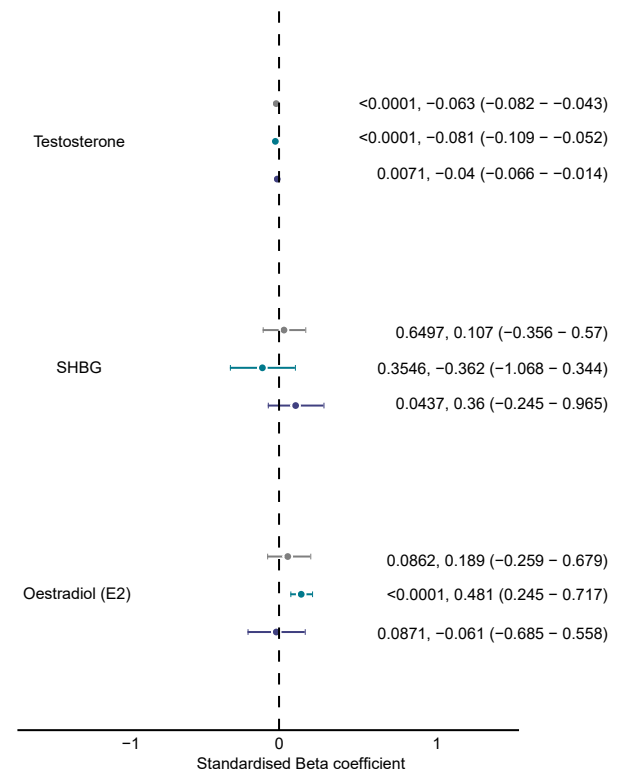
A



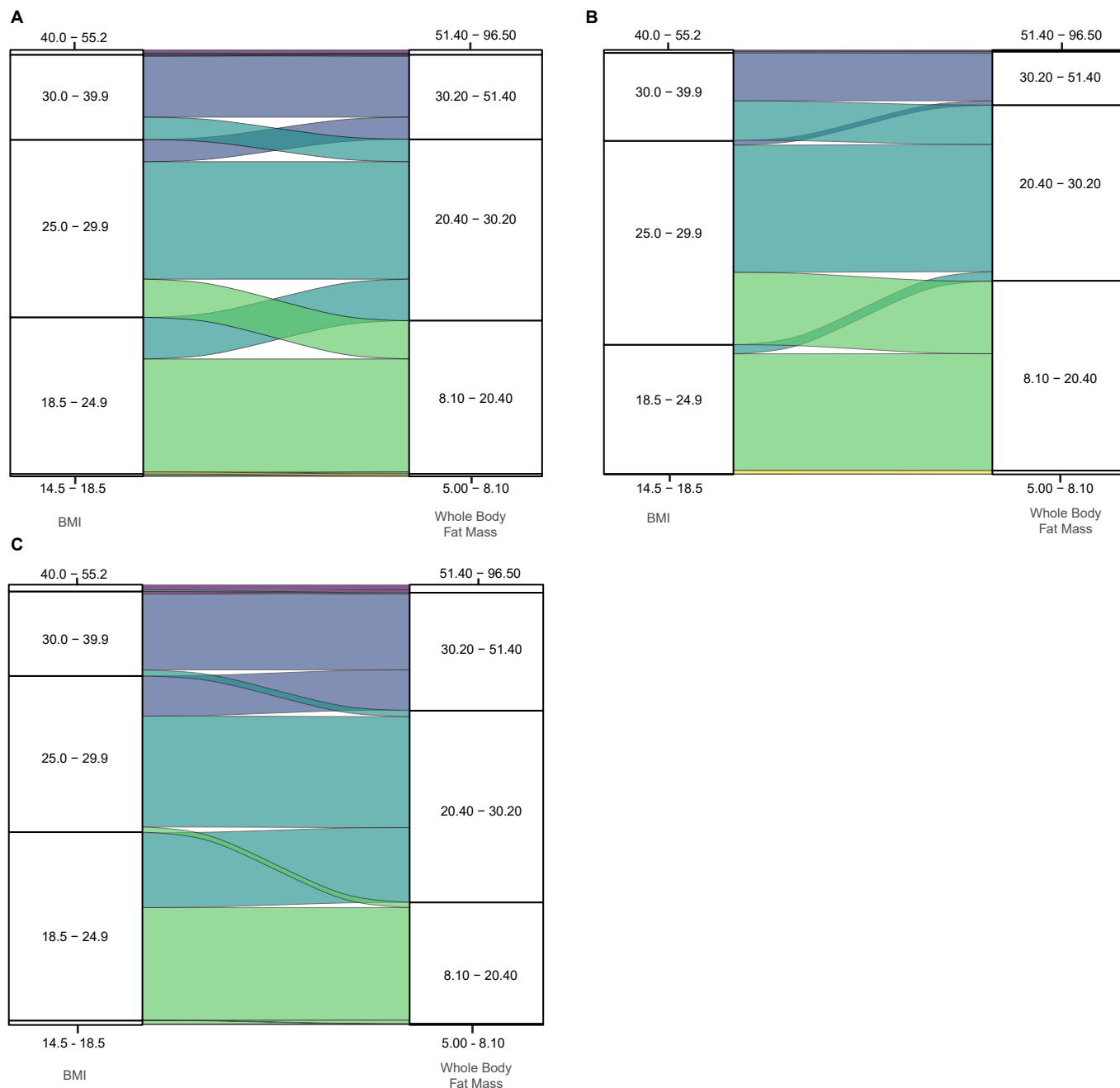
B



C



**Figure 4. Adiposity phenotype, cardiometabolic and endocrine associations with cardiovascular age-delta.** **A** Linear regression analysis of quantitative adipose tissue traits (n=21,241, of which 5,168 had android and gynoid fat mass values) with cardiovascular age-delta as the dependent variable. *P* values, standardised beta-coefficient point estimates, and 95% confidence intervals shown stratified by sex. Linear regression analysis of **B** circulating lipids (n=19,856) and **C** sex hormones (n=3,588) with cardiovascular age-delta as the dependent variable. *P* values, standardised beta-coefficient point estimates, and 95% confidence intervals shown stratified by sex. LDL, low density lipoprotein; HDL, high density lipoprotein; SHBG, sex hormone-binding globulin.



**Figure 5. Reclassification of body mass index groups by whole body fat mass.** Series of alluvial plots that show the redistribution of participants in each body mass index (BMI) group to equivalent centile ranges of whole body fat mass. **A** Overall population (n=21,241), **B** females (n=10,558), and **C** males (n=10,683).