

## **How to Detect the Early Cardiac Functional Change and Predict Heart Failure in Paroxysmal Atrial Fibrillation? A Prospective Cohort Study**

Lei Cheng MD<sup>1</sup>, Lilian Bao MD<sup>1,2</sup>, Xinyu Zhuang PhD<sup>1</sup>, Fangying Yan PhD<sup>1</sup>, Xiufang Gao PhD<sup>1</sup>, Peng Zhou MD<sup>1</sup>, Yikai Zhao MD<sup>1</sup>, Ke Yang MD<sup>1</sup>, Qi Zhang MD<sup>1</sup>, Guoqian Huang PhD<sup>1\*</sup>, Liwen Bao PhD<sup>1\*</sup>

Department of Cardiovascular Disease, Huashan Hospital, Fudan University, Shanghai, China<sup>1</sup>

Department of Cardiovascular Disease, Zhongshan Hospital, Fudan University, Shanghai, China<sup>2</sup>

Lei Cheng and Lilian Bao contributed equally to the article

Liwen Bao and Guoqian Huang were corresponding authors to the article

**Short title:** Elevated GWW in PAF and Lower LAEF prediction for HF

### **Corresponding author:**

Liwen Bao, PhD

Institution and address: 12 Wu Lu Mu Qi Zhong Road, Huashan Hospital, Fudan University, Shanghai, China

Email: blw\_betty@163.com

Guoqian Huang, PhD

Institution and address: 12 Wu Lu Mu Qi Zhong Road, Huashan Hospital, Fudan University, Shanghai, China

E-mail: 18121015910@163.com

The total word count of the manuscript:6872

## How to Detect the Early Cardiac Functional Change and Predict Heart Failure in Paroxysmal Atrial Fibrillation? A Prospective Cohort Study

### Abstract

**Backgrounds:** 20-30% atrial fibrillation (AF) may result in heart failure (HF). Noninvasive left ventricle myocardial work (LVMW) is a fairly new method for detecting LV function. We aimed to evaluate whether LVMW could detect the LV change function in paroxysmal atrial fibrillation (PAF) and predict HF incident.

**Methods:** In this prospective cohort study, 146 PAF subjects and 63 non-PAF subjects matched by age and gender set as the controls were enrolled. Noninvasive LVMW parameters, including global work index, global constructive work, global wasted work (GWW) and global work efficiency (GWE) were obtained from LV pressure-strain loop by 2D speckle tracking imaging. LA volume index (LAVI) was measured by 3D echocardiography. AF burden (AFB) was evaluated by questionnaire. The primary outcome was the incident HF. AFB deterioration was evaluated at the end of follow up. Stata15.0 and R4.1 were used for data analysis and description.

**Results:** The average age was  $66.2 \pm 11.4$  years and comprised 55% males in PAF. Compared with the controls, PAF had significantly elevated GWW ( $143.7 \pm 88.3 \text{ mmHg\%}$  vs  $115.5 \pm 59.6 \text{ mmHg\%}$ ,  $p < 0.001$ ) and impaired GWE ( $92.3 \pm 7.5\%$  vs  $93.8 \pm 2.8\%$ ,  $p = 0.035$ ) and they were correlated with increased LAVI<sub>max</sub> and LAVI<sub>min</sub>. Those with higher AFB showed significantly decreased LAEF and increased LAVI<sub>min</sub>. During the average 40.5 months follow-up, 9.9% PAF developed HF and ablation reduced the HF occurrence. In the non-ablation subgroup, baseline decreased LAEF rather than LVMW was a strong predictor for HF. As expected, AFB deterioration was strongly associated with HF incident.

**Conclusions:** Elevated GWW was detected by LVMW and it was strongly correlated with LA dilation in PAF. Higher AFB had adverse effect on LAVI<sub>min</sub>. Restoring sinus rhythm was significant for HF prevention, especially for PAF with lower LAEF.

**Key words:** Paroxysmal Atrial Fibrillation, Noninvasive Left Ventricle Myocardial Work, Left Atrial Remodeling, Atrial Fibrillation Burden, Heart Failure Incident

### Clinical Perspective

#### What is new?

- Although GLS and LVEF remained normal, subtle LV dysfunction of elevated GWW and impaired GWE could be detected by LVMW in the early stage of PAF.
- Increased LAVI<sub>min</sub>, rather than LAEF, was strongly associated with elevated GWW and higher AF burden in PAF.
- Restoring sinus rhythm was important to early stage of PAF for HF prevention, especially in PAF with lower LAEF.

**What are the clinical implications?**

- It is significant for PAF to protect LV function by maintaining sinus rhythm or keeping AFB at minimal-mild stage, even from the very early stage.
- Increased LAVI<sub>min</sub> is an important indicator for detecting LV dysfunction in PAF and the underlying mechanism needs to be discovered.

Non-standard Abbreviations and Acronyms

AF	Atrial Fibrillation
PAF	Paroxysmal Atrial Fibrillation
HF	Heart Failure
AFB	Atrial Fibrillation Burden
ARIC	Atherosclerosis Risk in Communities
CRT	Cardiac Resynchronization Therapy
DT	Deceleration Time
ECG	12-lead Electrocardiogram
LVMW	Left Ventricle Myocardial Work
GWI	LV Global Work Index
GCW	LV Global Constructive Work
GWW	LV Global Wasted Work
GWE	LV Global Work Efficiency
LVEF	Left Ventricle Ejection Fraction
GLS	LV Global Longitudinal Strain
PSD	Peak Strain Dispersion
LA	Left Atrial
LAVI	LA Volume Index
LV	Left Ventricle
LVDD	Left Ventricular End-diastolic Diameter

LVSD	Left Ventricular End-systolic Diameter
IVSd	Interventricular Septum
LVPWd	Left Ventricular Posterior Wall
LVMi	Left Ventricular Mass Index
LVEDV	Left Ventricular End-diastolic Volume
LVESV	Left Ventricular End-systolic Volume
LVP	Left Ventricle Pressure
TTE	Transthoracic Echocardiography
TDI	Tissue Doppler Image
2DE	Two-dimensional Echocardiography
3DE	Three-dimensional Echocardiography
HTN	Hypertension
T2DM	Type 2 diabetes mellitus
ICC	Intraclass Correlation Coefficient

## Introduction

The prevention for stroke and embolism in atrial fibrillation (AF) has accumulated numerous evidence and practice in these years<sup>1</sup>. However, the detection and treatment implement for the prevention of heart failure (HF), another major clinical consequence of AF, remains to be discovered. Recent cohort in Denmark revealed that patients with AF had twice the risk of developing into HF as stroke<sup>2</sup>. Studies have revealed that when AF is concurrent with HF, the risk of cardiovascular death may be tripled than those without HF<sup>3</sup>. Thus, it is of great importance for us to detect the left ventricle (LV) function impairment in the early phase of AF and search for the effective prevention methods for HF in AF.

Noninvasive left ventricle myocardial work (LVMW), a fairly new method, hosts the ability to evaluate the LV function thoroughly in cardiovascular diseases introduced by Russel et al<sup>4</sup>. LVMW index, including LV global work index (GWI), LV global constructive work (GCW), LV global wasted work (GWW), and LV global work efficiency (GWE), can be obtained from LV pressure-strain loop analysis incorporating peripheral arterial blood pressure and LV global longitudinal strain (GLS) deriving from the two-dimensional speckle tracking echocardiography, and leads us to understand LV performance still further. Previous work has demonstrated that, compared with the left ventricle ejection fraction (LVEF), the GLS parameter

can provide more sensitive and accurate evaluation to assess LV function in different types of HF and some subclinical LV impairment condition<sup>5, 6</sup>. However, data also showed that GLS is strongly affected by the LV afterload, such as elevated blood pressure, which may decompensate the GLS ability to evaluate the real LV function in clinical practice. LVMW is taken dynamic blood pressure into consideration and measured during the whole cardiac cycle. Thus, LVMW provides us a novel chance to a deeper observation of LV performance and even earlier detection of LV dysfunction in case of subclinical phase compared with the LVEF and GLS.

Paroxysmal atrial fibrillation (PAF) lies in the early stage throughout the AF period. We find it difficult to figure out the LV dysfunction in PAF detected by GLS and LVEF. In this way, we consider LVMW may be a sensitive evaluation method for us to evaluate the early LV dysfunction in PAF. To our knowledge, LVMW has not been utilized to evaluate the LV function in PAF without HF till now. It may provide us a precious opportunity to take a closer look at how LV perform even in the early stage of PAF.

In addition, left atrial (LA) plays an important role in cardiac performance and LA dysfunction acts as a cornerstone for developing HF in AF. Our previous work has also depicted three major distinctions of LA function change in PAF<sup>7</sup>. In this way, the cross-talk between LVMW and LA remodeling in PAF needs to be investigated. In addition, recent guidelines recommended evaluating AF burden (AFB) upon diagnosing PAF to guide treatment decisions. LA remodeling is associated with AFB<sup>8</sup> and whether LVMW is also related to AFB remains unknown. Limited researches had been done to discover the correlation between AFB and LV function impairment in early phase of PAF so far.

Above all, whether LVMW or LA remodeling could predict the HF incident also needs to be figured out. If these parameters are valuable to predict HF occurrence, they will provide significant evidential treatment method for us.

Here, a prospective cohort study would be implemented to figure out: 1) LVMW's value in detecting early LV dysfunction in PAF; 2) the correlation between LVMW parameters and LA remodeling; 3) whether the impaired LVMW and LA remodeling were associated with the AFB severity; 4) whether the LVMW or LA remodeling could predict HF incident and the role of AFB deterioration.

## **Methods**

## **Ethical statements**

This research complies with the guidelines for human studies according to Helsinki Declaration. The study protocol had been approved by the institute's committee on human research from Huashan Hospital, Fudan University (2020-788).

## **Study design and population**

This was a single-center prospective cohort study. After consent forms assigned, PAF patients diagnosed by 12-lead electrocardiogram (ECG) or 24-hour Holter monitor from March 2019 to Dec 2019 and Sept 2020 to March 2021 (continuing enrollment was subjected to Cov-19 pandemic) were enrolled in this study from the outpatient or inpatient department of Huashan Hospital. Subjects without AF or major cardiovascular diseases other than short-term mild hypertension or diabetes matched by age and gender were enrolled as the controls for baseline comparison. LVMW and LA remodeling parameters with the PAF subjects. Exclusion criteria were set as below: moderate and severe mitral/tricuspid/aortic stenosis or regurgitation, heart failure, acute myocardial infarction within 6 months, acute pulmonary embolism within 3 months.

## **Clinical data recording**

Clinical data at baseline including general health information, current medical treatment and related cardiovascular disease history were collected by reviewing patients' official medical recordings or by questionnaires.

## **Echocardiography**

### **Conventional LV examination**

Comprehensive transthoracic echocardiography (TTE) was performed by an experienced technician using the GE Vivid E95 zoographic system (GE Vingmed, Horten, Norway) with 4Vc-D 4D (1.5-4.0 MHz) matrix cardiac probes. The blood pressure was measured in sitting position before echocardiography implementing, and demographic details including gender, height, weight and measured blood pressure would be input into the echo device. PAF subjects at sinus rhythm were placed in the left lateral decubitus position and monitored with ECG. Two-dimensional echocardiography (2DE), color Doppler flow imaging, continuous- and pulsed-wave Doppler spectrum, and tissue Doppler image (TDI) on the bilateral mitral annulus were performed in accordance with the current American Society of

Echocardiography guidelines. The system settings were optimized to ensure the best image quality with the 2DE image frame rate ranged in 50-70 frames/sec. The loops of 3-4 cardiac cycles were acquired for every standard view and saved digitally for further analysis.

Left ventricular end-diastolic diameter (LVDD), left ventricular end-systolic diameter (LVSD), interventricular septum (IVSd) and left ventricular posterior wall (LVPWd) thickness, left ventricular mass index (LVMI) were calculated with M mode methods. Left ventricular end-diastolic volume (LVEDV), left ventricular end-systolic volume (LVESV), left ventricular ejection fraction (LVEF) were calculated with bi-plane Simpson's methods. The mitral valve inflow map was recorded by pulsed-wave Doppler echocardiography to obtain early (E) and late (A) diastolic inflow velocity, E to A ratio and deceleration time (DT) of E wave. The peak early (e') and late (a') diastolic mitral annular velocities were measured from the TDI at both septal and lateral sides of mitral ring, and the average E/e' were calculated to assess the LV filling pressure.

### **LVMW evaluation**

LV GLS was analyzed by a commercially available software package (EchoPAC, ver2.0; GE Medical Systems Vingmed Ultrasound, Horten, Norway). With the AFI option, the software would automatically detect the LV endocardial border and depict LV regional speckle tracking on the three 2D apical long-axis views respectively. Manual correction should be done for inaccurate endocardial borders' delineation. LV GLS would be calculated as the average of the peak regional systolic longitudinal strain values of the 17 LV segments. Appropriately selected ROI according to the myocardial thickness would be used to obtain accurate speckle tracking of each view. Patients were excluded if the endocardial border delineation was not ideally tracked for one or more segments. Afterwards, LVMW parameters would be calculated automatically according to the GLS data and blood pressure recordings. The peak systolic LV pressure was assumed equal to peak arterial pressure. Right brachial cuff blood pressure would be measured simultaneously by electronic sphygmomanometer at 5-min resting sitting-position just before the TTE examination. LVMW parameters<sup>9</sup> including GCW, GWW, GWI, GWE depicted in table and figures (Table S1, Figure 1).

### **LA remodeling measurement**

LA diameters in suprainferior, mediolateral and anteroposterior directions were

measured at the end of LV systole by 2D methods. The full volume image of LA was acquired by 3-dimensional echocardiography (3DE) on the apical 4-chamber view with 4Vc-D 4D (1.5-4.0 MHz) matrix cardiac probe. Care must be taken during one beat acquisition to ensure that the complete LA is included, and that the volume rate exceeds 12 volumes per second for adequate temporal assessment. LA volume index (LAVI) was analyzed using the 4-dimensional automated LA quantification (4D Auto LAQ) option of the same software package, which would automatically track the LA border and calculate the real time LV volume change during the cardiac cycle. Landmark position needs to be adjusted in order to assure that it was placed at the center of the mitral valve at the annulus level and the image position and angle should also be adjusted correctly so that the vertical line could intersect the mitral valve center as well as the apex of the LA. If tracking is not available, automatic tracking of atrial boundary at times and manual adjustment would be done.

The results provided an overview of LA remodeling in terms of the various parameters, which were calculated and rendered as data report by the software, and also as the LA volume-time curve:

- LA Vmin = Minimum atrial volume
- LA VImin = Minimum atrial volume/calculated body surface area
- LA Vmax = Maximum atrial volume
- LA VImax = Maximum atrial volume /calculated body surface area
- LA VpreA = Volume at onset of atrial contraction
- LA EV = Ejection Volume (LA Vmax – LA Vmin)
- LA EF = Ejection fraction (LA EV / LA Vmax)

### **AFB evaluation by questionnaire**

A questionnaire including 5 questions, cited from previous researches was used to evaluate the AFB in our study and the questionnaire was finished guiding by the researcher on each subject (Table S2).

Additionally, AFB questionnaire would be used again to evaluate the AFB of enrolled PAF at the end of the follow up for the second time to determine whether the AFB would change. **AFB deterioration** was defined as the AFB stage changed from the minimal-mild stage to moderate-severe stage or to the persistent AF, or the AFB stage changed from the moderate-severe stage to the persistent AF.

### **Primary endpoint**



The primary endpoint of prospective cohort study was HF incident at the end of the follow up. The definition of HF incident included subjects who experienced symptoms such as shortness of breath, fatigue and nocturnal sitting breathing with NT-proBNP elevation greater than 300pg/ml in emergency room or outpatient department evidenced by medical records.

### **Statistical analysis**

Normally distributed continuous variables were presented as mean±SD, whereas non-normally distributed data were expressed as median and interquartile range. Categorical variables were expressed as percentages. T-test was used for comparison between the PAF group and the control or in subgroups analysis if the data were normally continuous distributed. Chi-square test or Fisher's exact test as appropriate was performed in categorical data comparison. The correlation between LVMW and LA parameters were performed using the Pearson coefficient method if data were normally distributed or the Spearman coefficient if the data were skewed. The same operator as well as a different observer repeat the offline analysis in three months after the initial measurements. Logistic regression analysis was used to reveal the odds ratio of LVMW and LA remodeling for HF occurrence. At last, 60 subjects from the PAF group and 30 datasets from the control group were selected to assess the operation reproducibly. The intraclass correlation coefficient (ICC) was used to assess reproducibility. Stata 15.0 and R 4.1 were used for statistical analysis and p value < 0.05 was considered statistically significant.

## **Results**

### **Baseline characteristics of enrolled PAF and the controls subjects**

In the study, 169 PAF patients were enrolled and 23 of them were excluded because of valvular disease (n=12), heart failure (n=3), recent myocardial infarction (n=3) and low segment tracking quality (n=5). 146 PAF patients were finally included in the analysis and 38 males and 25 females were matched as the controls for baseline analysis (Table 1).

There were no statistically differences in terms of age, gender, BMI and diastolic blood pressure. Subjects in the PAF group were older than the controlled group. Systolic blood pressure was statistically higher in the PAF group compared with it in the control group. Besides, the patients with history of hypertension, diabetes, coronary artery disease, stroke and peripheral vascular disease were more in the PAF

group.

### **LV structure & function and LA remodeling in PAF and the controls**

The interventricular septum and LV posterior wall were thicker in PAF compared with the controls, while the LVMI between two groups was nearly consistent. In terms of LV volume, LVEDV and LVESV were significantly larger in PAF than the controls. Compared with the control group, the PAF group had higher mitral E velocity and statistically increased E/A ratio. Whereas, E/e' was significantly higher in the PAF group, indicating increased LV filling pressure in the PAF group. LVEF and GLS remained nearly consistent in the two groups. The peak strain dispersion (PSD) of LV 17 segments significantly increased in the PAF group, indicating impaired LV synchrony in PAF group. Diastolic dysfunction degree 1-3 were more prevalent in PAF compared with the controls (Table 2).

LA was significantly dilated in PAF group, LA diameters of the 3 directions, and the 3DE measurements of the maximal and minimal LA volume and LAVI were all significantly larger than those in the control group. Additionally, significantly reduced LAEF was observed in PAF group compared with it in the control group (Table 2).

### **Elevated GWW and impaired GWE in PAF**

As depicted, LVMW is composed of GCW, GWW, GWE and GWI, so that all of the 4 parameters had been evaluated in enrolled subjects. Compared with the control group, GCW and GWI of the PAF group showed slightly reduced trend, but had no statistical significance ( $2244.4 \pm 659.8$  mmHg% vs  $2237.5 \pm 473.1$  mmHg%,  $p=0.94$ ;  $2021.1 \pm 400.7$  mmHg% vs  $2003.3 \pm 403.6$  mmHg%,  $p=0.77$ ) after adjusted by age, gender, HTN and T2DM. However, significantly elevated GWW was showed in PAF group as compared with the controlled group ( $115.5 \pm 59.6$  mmHg% vs  $143.7 \pm 88.3$  mmHg%,  $p=0.0065$ ) even after adjusted by age, gender, HTN and T2DM. Referring to GWE, it was also significantly reduced in PAF group ( $93.8 \pm 2.8\%$  vs  $92.3 \pm 7.5\%$ ,  $p=0.0035$ ) (Figure 2 and Table S3).

### **Significant correlation between elevated GWW and LAVImax or LAVImin**

As discussed above, left ventricle function closely counteracts with LA especially in PAF so that we evaluate the correlation between LVMW and LA remodeling. The significant correlation between elevated GWW and enlarged LAVImax or LAVImin

( $r=0.21$ ,  $p=0.014$ ;  $r=0.19$ ,  $p=0.023$ ) was discovered. Furthermore, there was also a significant correlation between GCW ( $r=0.23$ ,  $p<0.01$ ) or GWI ( $r=0.18$ ,  $p=0.034$ ) and LAVImax. No significant correlations were showed between LVMW and LAEF (Figure 3 and Table S4).

### **LVMW parameters comparison in the subgroups of interest**

In the subgroups analysis, significantly elevated GWW ( $157.3\pm 95.4$  mm Hg% vs  $123.6\pm 74.5$  mm Hg%,  $p=0.04$ ) and impaired GWE ( $92.3\pm 2.6\%$  vs  $93.6\pm 3.7\%$ ,  $p=0.04$ ) were showed in the hypertension group compared with the non-hypertension group (Table S5). There were no differences of LVMW parameters in the subgroups of age dichotomous, gender and type 2 diabetes.

### **The correlation between AFB and LVMW & LA remodeling**

Whether AFB in PAF had influence on the LVMW or LA remodeling was important. 146 PAF subjects were required to complete the questionnaire and 17 of them couldn't finish the questionnaire because of defective understanding. 133 subjects were enrolled in the analysis at last, and were classified into minimal-mild stage ( $n=51$ , 38.3%) or moderate-severe stage ( $n=82$ , 61.7%).

Compared with the minimal-mild stage, LAEF significantly reduced in moderate-severe stage ( $41.1\pm 9.2$  vs  $46.8\pm 9.6$ ,  $p=0.004$ ). Besides, LAVImin, rather than LAVImax, was significantly larger in moderate-severe stage than it in minimal-mild stage ( $17.6\pm 5.7$  vs  $15.4\pm 5.6$ ,  $p=0.049$ ). However, the LVMW parameters had no significant difference between the AFB stages (Table 3).

### **The heart failure incident and AFB deterioration**

At the average follow-up of 40.5 months, 111 patients (76.03%) have finished the follow-up by telephone or at outpatient department and 35 patients were lost because of no respond to the follow-up telephone or telephone number changing. 41(36.9%) of them received ablation treatment after enrollment and 5 subjects received ablation during the follow-up because of the AFB deterioration. At the end of the follow-up, 43 patients of whom received ablation maintained sinus rhythm.

At last, 9.9% of 111 patients developed into heart failure, (2.7% of whom received ablation and 13.7% of whom didn't receive ablation) and 20.9% of them had the AFB deterioration (12.8% of whom received ablation and 25.0% of whom didn't receive

ablation) (table S6).

In the logistic regression, LVMW parameters showed no correlation with HF occurrence. In the ablation group, both LVMW parameters and LA remodeling showed no correlation with HF occurrence. However, in the non-ablation group, baseline lower LAEF was significantly correlated for HF incident (OR=0.91, p=0.04) (Figure 4, Table S7). Importantly, AFB was strongly correlated with HF incidence adjusted by age, gender, HTN and T2DM (OR=38.2, p<0.001) (Figure 5).

### **Reproducibility of GLS and LVMW parameters**

60 PAF subjects and 30 controls were selected randomly to assess the reproducibility of the GLS and LVMW in terms of the interobserver and intraobserver variability. No significant differences were found in interobserver and intraobserver variability analysis (Table S8). The reproducibility of LA parameters was compared in our previous study<sup>7</sup>.

### **Discussions**

Cardiac function is of great concern in cardiovascular disease management. LVMW, a thorough assessment for LV function, has been suggested as a novel noninvasive method for LV function evaluation in various cardiovascular diseases. This prospective cohort study is sought to discover the distinctions of LVMW impairment in early stage of AF to provide significant information for HF prevention.

In the study, we discovered that the elevated GWW is one of the major changes in PAF and it was significantly correlated with enlarged LAVImin and LAVImax. Enlarged LAVImin as well as lower LAEF was associated with higher AFB. The incidence of HF was 9.9% in our study and great differences were found between the ablation and the non-ablation group. Lower LAEF rather than elevated GWW in the non-ablation group has the ability for HF incident prediction. AFB deterioration was strongly associated with the HF occurrence.

### **Elevated GWW accompanied with impaired GWE in PAF**

First of all, significantly reduced diastolic function of LV was displayed in PAF compared with the controls. It might attribute to the history of hypertension, diabetes, CAD or older age in the PAF group.

Secondly, although GLS and LVEF were similar in PAF and the controls, we revealed that PAF patients had significantly elevated GWW and reserved GCW,

resulting in significantly impaired GWE in the PAF patients compared with the controls.

Previous data have demonstrated that noninvasive GWW could be viewed as a method to evaluate the synchronization performance in LV, which is the same as PSD<sup>10</sup>. As analyzed, PSD remained the same trend as GWW in both groups. It was reported that the GWW coincides with GCW in myocardium for accomplishing excitation-contraction coupling, overcoming myocardial resistance and maintaining ventricle tension, respectively<sup>11</sup>. In this case, elevated GWW indicated that negative work had already existed in PAF with normal heart function and exceeded the positive work in LV, representing increased left ventricle pressure (LVP) and wasted force on LV segment in PAF. This change revealed that insidious impaired myocardial work had already existed in the early stage of PAF. Elevated GWW with decreased synchronism may be a symbol of LV dysfunction although the LV maintained a relatively normal function in PAF. In this way, heart function protection needs to be taken into consideration before the occurrence of HF in PAF. GCW implies for mechanical work force to impetus for cardiac output originated from ventricle systolic pressure. GCW is mainly affected by myocardium strength, afterload and preload of left ventricle<sup>5</sup>. No significant differences were found in GCW between the PAF and the controls, indicating reserved stroke work in PAF.

In all, it is more sensitive and meaningful of using LVMW parameters rather than LVEF and GLS to reveal the LV dysfunction in PAF. Recent evidence highlights that LVMW is valuable for investigating LV function in various cardiovascular diseases. Voigt et al demonstrated that the acute redistribution of regional LVMW is a strong prediction of response to cardiac resynchronization therapy (CRT). Skulstad et al revealed LVMW was superior to LVEF as well as GLS in identifying patients with acute coronary occlusion in non-ST segment elevation myocardial infarction<sup>12</sup>. In cardiac amyloidosis, LVMW was also used to predict the prognosis<sup>6</sup>. Russell et al even illustrated the LVMW may associated with myocardium glucose metabolism in the enrolled subjects.

Our data compensated the missing studies in AF area. This study is one of the very first attempts to take advantage of LVMW to evaluate LV function in PAF to our knowledge.

Additionally, subjects with hypertension revealed impaired LVMW compared with the non-hypertension group. Accordingly, GWE, measuring the ratio of LV

mechanical work per minute, was also found significantly reduced in PAF with hypertension<sup>13</sup>. This trend wasn't showed in diabetes subgroup. Combined with the discoveries of elevated GWW and impaired GWE in all PAF even adjusted by HTN, we hypothesis that enlarged LA volume and asynchronism of LV depicted by increased PSD may contribute to these changes. The study of larger sample size in the future could be implemented to figure out the underlying mechanism.

### **The correlation between elevated GWW and enlarged LA volume index**

The correlation between LVMW and LA remodeling had been investigated. The enlarged GWW was significantly associated with enlarged LAVImin and LAVImax rather than LAEF. Furthermore, decreased GWI and GWE were strongly correlated with LAVImax.

LA plays central role in LV performance, especially in AF<sup>14</sup>. Our previous study demonstrated that significant impaired LA function and enlarged LA volume index in AF, including sophisticated remodeling in LA structure, slightly increasing in LA volume and imperceptible impairment in LA function<sup>7</sup>. Interestingly, according to this study, LAVImin and LAVImax seemed to stand in the center of the association with LVMW, other than LAEF. LAVImax was proved to be associated with LV function in various circumstances. Less work has been done in LAVImin.

Recently, LAVImin has been reported to be a stronger association with increased LV filling pressure in patients with myocardial infarction so that the investigator suggested that LAVImin should be measured alongside with the LAVImax<sup>15</sup>. As depicted before, elevated GWW is strongly associated with increased LV end-diastolic pressure so that the findings suggested that the LAVImin might be physiologically relevant with GWW.

### **Higher AFB significantly associated with enlarged LAVImin**

AF burden (AFB) was another major concern affecting cardiac function in AF. In AF with HF, accumulating data demonstrated that lowering AFB of rhythm control therapy by catheter ablation or medication turns out to have better clinical outcomes (mortality, stroke and cardiovascular hospitalization risk) than rate control<sup>12, 16, 17</sup>. CASTLE-AF study<sup>18</sup> showed that, in persistent-AF with LV dysfunction, absolutely reduced risk of worsening HF was found in catheter ablation treatment group compared with the conventional treatment.

The questionnaire we used to assess the AFB in this study was proved consistent with the impaired LA function in our previous work<sup>7</sup>. By using the questionnaire,

significantly reduced LAEF and enlarged LAVImin were found in subjects with higher AFB. Besides, the trend of elevated GWW and impaired GWE with non-significance were also found in moderate-severe AFB stage.

In TACTIC-AF study, AFB had been used to guide intermittent anticoagulation or persistent anticoagulation treatment in PAF and the same thromboembolic/stroke risk reduction and less bleeding risk were found in the intermittent anticoagulation treatment<sup>19</sup>. Less work had been done to reveal the association between AFB and cardiac function in PAF without prevalent HF. Our study filled the gaps.

We found out that enlarged LAVImin and reduced LAEF in PAF were strongly associated with higher AFB. In terms of LAVImin, Solomon et al once proved that LAVImin was more predictive of cardiovascular death and HF hospitalization in HF with preserved ejection fraction<sup>20</sup>. In patients with myocardial infarction, both enlarged LAVImin and LAVImax were independent predictors of MACE, especially for LAVImin<sup>15</sup>. LAVImin rather than LAVImax was found to strongly predict the incident HF or death in the Atherosclerosis Risk in Communities (ARIC) cohort<sup>21</sup>. LAVImin deserves more investigation in the future.

In this way, we concluded that the LA remodeling may attribute to higher AFB in the early stage of AF. As previous analysis, LA remodeling was significantly associated with elevated GWW and LV filling pressure. However, the AFB didn't directly influence the GWW or other LVMW parameters and the underlying mechanism needs further investigation.

### **The HF incident in PAF and the LVMW's prediction for HF**

In the average of 40.5 months follow-up, 9.9% subjects developed into heart failure. There were 40.5% of subjects received ablation therapy. Decreased LAEF at baseline rather than LAVImin or LAVImax was correlated with HF incidence in non-ablation group. This finding combined with the discovery of AFB negatively correlated with LAEF suggested that AFB may be associated with the occurrence of HF.

Afterwards, we also found out that AFB deterioration was significant correlated with HF occurrence and the ablation therapy might have the ability to prevent PAF subjects from incident HF and AFB deterioration, respectively. The findings were identical to the subgroup analysis of the CASTLE-AF, which revealed that higher AFB rather than AF reoccurrence after catheter ablation or medication treatment was referred to higher risk of all-cause mortality and worsening HF in AF with HF<sup>22</sup>.



The result of this prospective study supplemented the data in the early stage of AF for HF prevention and we concluded that maintaining AFB to minimal-moderate stage and keeping sinus rhythm were fairly important to protect the cardiac function, especially in PAF with lower LAEF.

### **Limitations**

This single center prospective study had some limitations. First of all, small sample size of the study and missing data in the follow up may weaken the power of the conclusion. Secondly, AFB assessment by questionnaire may have the problem of recall bias due to the sophisticated questionnaire design as well as time consuming distinction.

### **Conclusions**

LVMW could be viewed as a new method to thoroughly and deeply evaluate the LV dysfunction in PAF. Subtle LV dysfunction of elevated GWW and impaired GWE were found and they were strongly correlated with increased LA volume index. Enlarged LAVI<sub>min</sub> rather than LVMW was found in subjects with moderate-severe AFB so that LAVI<sub>min</sub> assessment should be taken into consideration for cardiac function evaluation in PAF. Above all, maintaining sinus rhythm or keeping AFB at minimal-mild stage was significant for HF prevention in PAF, especially in PAF with lower LAEF. The underlying mechanism of LA and LV functional changes needs more investigation in the future.

### **Acknowledgments**

This work was supported by the grant from Science and Technology Commission of Shanghai Municipality. We would like to appreciate all the authors' contributions to this work from cohort design to enrollment, follow up, statistical analysis and manuscript creation.

### **Sources of Funding**

This work was supported by the grant from Science and Technology Commission of Shanghai Municipality (23Y11903000).

### **Disclosures**

The authors have no conflict of interest to declare.



## References

1. Hindricks G, Potpara T, Dagres N, Arbelo E, Bax JJ, Blomstrom-Lundqvist C, Boriani G, Castella M, Dan GA, Dilaveris PE, Fauchier L, Filippatos G, Kalman JM, La Meir M, Lane DA, Lebeau JP, Lettino M, Lip GYH, Pinto FJ, Thomas GN, Valgimigli M, Van Gelder IC, Van Putte BP, Watkins CL and Group ESCSD. 2020 ESC Guidelines for the diagnosis and management of atrial fibrillation developed in collaboration with the European Association for Cardio-Thoracic Surgery (EACTS): The Task Force for the diagnosis and management of atrial fibrillation of the European Society of Cardiology (ESC) Developed with the special contribution of the European Heart Rhythm Association (EHRA) of the ESC. *Eur Heart J*. 2021;42:373-498.
2. Vinter N, Cordsen P, Johnsen SP, Staerk L, Benjamin EJ, Frost L and Trinquant L. Temporal trends in lifetime risks of atrial fibrillation and its complications between 2000 and 2022: Danish, nationwide, population based cohort study. *BMJ (Clinical research ed)*. 2024;385:e077209.
3. Cerit L. The Paradox of Heart Failure and Atrial Fibrillation. *Journal of the American College of Cardiology*. 2016;68:1252-1253.
4. Russell K, Eriksen M, Aaberge L, Wilhelmsen N, Skulstad H, Remme EW, Haugaa KH, Opdahl A, Fjeld JG, Gjesdal O, Edvardsen T and Smiseth OA. A novel clinical method for quantification of regional left ventricular pressure-strain loop area: a non-invasive index of myocardial work. *European Heart Journal*. 2012;33:724-733.
5. El Mahdiui M, van der Bijl P, Abou R, Ajmone Marsan N, Delgado V and Bax JJ. Global Left Ventricular Myocardial Work Efficiency in Healthy Individuals and Patients with Cardiovascular Disease. *Journal of the American Society of Echocardiography*. 2019;32:1120-1127.
6. Clemmensen TS, Eiskjær H, Mikkelsen F, Granstam S-O, Flachskampf FA, Sørensen J and Poulsen SH. Left Ventricular Pressure-Strain-Derived Myocardial Work at Rest and during Exercise in Patients with Cardiac Amyloidosis. *Journal of the American Society of Echocardiography*. 2020;33:573-582.
7. Bao L, Cheng L, Gao X, Yan F, Fan H, Shan Y, Li Y, Shi H, Huang G and Bao L. Left atrial morpho-functional remodeling in atrial fibrillation assessed by three dimensional speckle tracking echocardiography and its value in atrial fibrillation screening. *Cardiovasc Ultrasound*. 2022;20:13.

8. Gupta DK, Shah AM, Giugliano RP, Ruff CT, Antman EM, Grip LT, Deenadayalu N, Hoffman E, Patel I, Shi M, Mercuri M, Mitrovic V, Braunwald E, Solomon SD and Effective aNticoagulation with factor x AnGiAFTIMIESI. Left atrial structure and function in atrial fibrillation: ENGAGE AF-TIMI 48. *Eur Heart J*. 2014;35:1457-65.
9. Chan J, Edwards NFA, Khandheria BK, Shiino K, Sabapathy S, Anderson B, Chamberlain R and Scalia GM. A new approach to assess myocardial work by non-invasive left ventricular pressure-strain relations in hypertension and dilated cardiomyopathy. *European heart journal Cardiovascular Imaging*. 2019;20:31-39.
10. Russell K, Eriksen M, Aaberge L, Wilhelmsen N, Skulstad H, Gjesdal O, Edvardsen T and Smiseth OA. Assessment of wasted myocardial work: a novel method to quantify energy loss due to uncoordinated left ventricular contractions. *American Journal of Physiology-Heart and Circulatory Physiology*. 2013;305:H996-H1003.
11. Roemer S, Jaglan A, Santos D, Umland M, Jain R, Tajik AJ and Khandheria BK. The Utility of Myocardial Work in Clinical Practice. *Journal of the American Society of Echocardiography*. 2021;34:807-818.
12. Lustosa RP, Butcher SC, van der Bijl P, El Mahdiui M, Montero-Cabezas JM, Kostyukevich MV, Rocha De Lorenzo A, Knuuti J, Ajmone Marsan N, Bax JJ and Delgado V. Global Left Ventricular Myocardial Work Efficiency and Long-Term Prognosis in Patients After ST-Segment–Elevation Myocardial Infarction. *Circulation: Cardiovascular Imaging*. 2021;14.
13. Sørensen J, Harms HJ, Aalen JM, Baron T, Smiseth OA and Flachskampf FA. Myocardial Efficiency. *JACC: Cardiovascular Imaging*. 2020;13:1564-1576.
14. Donal E, Cameli M and Sade LE. The atrium: central part of a building—a definition, cardiologists should not forget. *European Heart Journal - Cardiovascular Imaging*. 2020;21:873-875.
15. Prasad SB, Guppy-Coles K, Stanton T, Armstrong J, Krishnaswamy R, Whalley G, Atherton JJ and Thomas L. Relation of Left Atrial Volumes in Patients With Myocardial Infarction to Left Ventricular Filling Pressures and Outcomes. *The American journal of cardiology*. 2019;124:325-333.
16. Packer DL, Mark DB, Robb RA, Monahan KH, Bahnson TD, Poole JE, Noseworthy PA, Rosenberg YD, Jeffries N, Mitchell LB, Flaker GC, Pokushalov E, Romanov A, Bunch TJ, Noelker G, Ardashev A, Revishvili A, Wilber DJ, Cappato R, Kuck K-H, Hindricks G, Davies DW, Kowey PR, Naccarelli GV, Reiffel JA, Piccini

JP, Silverstein AP, Al-Khalidi HR, Lee KL and Investigators fIC. Effect of Catheter Ablation vs Antiarrhythmic Drug Therapy on Mortality, Stroke, Bleeding, and Cardiac Arrest Among Patients With Atrial Fibrillation: The CABANA Randomized Clinical Trial. *JAMA*. 2019;321:1261-1274.

17. Kirchhof P, Camm AJ, Goette A, Brandes A, Eckardt L, Elvan A, Fetsch T, van Gelder IC, Haase D, Haegeli LM, Hamann F, Heidbüchel H, Hindricks G, Kautzner J, Kuck KH, Mont L, Ng GA, Rekosz J, Schoen N, Schotten U, Suling A, Taggeselle J, Themistoclakis S, Vettorazzi E, Vardas P, Wegscheider K, Willems S, Crijns H and Breithardt G. Early Rhythm-Control Therapy in Patients with Atrial Fibrillation. *The New England journal of medicine*. 2020;383:1305-1316.

18. Sohns C, Zintl K, Zhao Y, Dagher L, Andresen D, Siebels J, Wegscheider K, Sehner S, Boersma L, Merkely B, Pokushalov E, Sanders P, Schunkert H, Bänsch D, Mahnkopf C, Brachmann J and Marrouche NF. Impact of Left Ventricular Function and Heart Failure Symptoms on Outcomes Post Ablation of Atrial Fibrillation in Heart Failure: CASTLE-AF Trial. *Circulation Arrhythmia and electrophysiology*. 2020;13:e008461.

19. Waks JW, Passman RS, Matos J, Reynolds M, Thosani A, Mela T, Pederson D, Glotzer TV and Zimetbaum P. Intermittent anticoagulation guided by continuous atrial fibrillation burden monitoring using dual-chamber pacemakers and implantable cardioverter-defibrillators: Results from the Tailored Anticoagulation for Non-Continuous Atrial Fibrillation (TACTIC-AF) pilot study. *Heart rhythm*. 2018;15:1601-1607.

20. Shin SH, Claggett B, Inciardi RM, Santos ABS, Shah SJ, Zile MR, Pfeffer MA, Shah AM and Solomon SD. Prognostic Value of Minimal Left Atrial Volume in Heart Failure With Preserved Ejection Fraction. *Journal of the American Heart Association*. 2021;10:e019545.

21. Inciardi RM, Claggett B, Minamisawa M, Shin SH, Selvaraj S, Gonçalves A, Wang W, Kitzman D, Matsushita K, Prasad NG, Su J, Skali H, Shah AM, Chen LY and Solomon SD. Association of Left Atrial Structure and Function With Heart Failure in Older Adults. *Journal of the American College of Cardiology*. 2022;79:1549-1561.

22. Brachmann J, Sohns C, Andresen D, Siebels J, Sehner S, Boersma L, Merkely B, Pokushalov E, Sanders P, Schunkert H, Bänsch D, Dagher L, Zhao Y, Mahnkopf C, Wegscheider K and Marrouche NF. Atrial Fibrillation Burden and Clinical Outcomes

in Heart Failure: The CASTLE-AF Trial. *JACC Clinical electrophysiology*. 2021;7:594-603.

**Tables:**

Table 1: Baseline characteristics of enrolled subjects

	<b>Control</b> <b>n=63</b>	<b>PAF</b> <b>n=146</b>	<b>p value</b>
Age	63.6±9.8	66.2±11.4	0.096
Gender(male)	60.3%	55%	0.41
Height(cm)	165.5±7.3	165.9±8.1	0.71
Weight(kg)	66.1±9.9	66.9±10.6	0.58
BMI(kg/m <sup>2</sup> )	23.9±3.1	24.1±2.9	0.37
SBP(mmHg)	129±14.4	134.7±16.8	<b>0.012</b>
DBP(mmHg)	79.4±8.3	79.7±11.4	0.81
Hypertension	22%	60%	<b>&lt;0.001</b>
Diabetes	7%	16%	<b>&lt;0.001</b>
CAD	/	18%	/
Stroke	/	12%	/
PVD	/	1%	/
AF duration (month)	/	25(2,65)	/
Ablation therapy	/	13%	/
CHA <sub>2</sub> DS <sub>2</sub> -VASc score	/	2(1,4)	/
RAS inhibitor	20%	52%	<b>&lt;0.001</b>
CCB	12%	32%	<b>&lt;0.001</b>
Anticoagulation	/	57%	/
Antiarrhythmic	/	75.6%	/

BMI: body mass index, SBP: systolic blood pressure, DBP: diastolic blood pressure, CAD: coronary artery disease, PVD: peripheral vascular disease, RAS: Renal Angiotensin System, CCB: Calcium Chanel Blocker

Table 2: Echocardiography parameters' comparison in two groups

<b>Parameters</b>	<b>Control</b> <b>n=63</b>	<b>PAF</b> <b>n=146</b>	<b>p value</b>
LVDD(mm)	47.5±4.5	48.1±4.5	0.44

IVSD(mm)	28.8±2.9	30.1±3.8	0.07
IVSd(mm)	8.9±0.9	9.4±1.2	<b>0.006</b>
LVPWd(mm)	8.4±0.8	8.8±0.9	<b>0.007</b>
LVMl(g/m <sup>2</sup> )	85.1±24.7	86.1±18.2	0.77
LVEDV(ml)	68.3±16.3	76.4±24	<b>0.0046</b>
LVESV(ml)	25.3±7.5	29.1±11	<b>0.003</b>
E(cm/sec)	67.7±13.4	73±16.9	<b>0.015</b>
A(cm/sec)	84.5±18.2	80±20.7	0.11
E/A	0.8±0.2	1±0.4	<b>&lt;0.001</b>
DT time(sec)	236.0±57.0	230.8±60.7	0.56
E/e'	8.3±1.8	9.1±2.6	<b>0.011</b>
LVEF (%)	63.2±5.4	61.7±5.4	0.15
GLS	-19.6±8.2	-20.1±2.2	0.42
PSD	52.4±14.9	57.9±21.7	<b>0.03</b>
Diastolic dysfunction			
0	90.4%	65.8%	<b>&lt;0.001</b>
1	6.4%	25.0%	<b>&lt;0.001</b>
2	3.2%	8.6%	<b>&lt;0.001</b>
3	0%	0.6%	<b>0.003</b>
LAanteroposterior diameter(mm)	35.7±4.9	37.6±4.6	<b>0.0079</b>
LA suprainferior diameter(mm)	47.7±5.3	50.7±6.9	<b>&lt;0.001</b>
LA mediolateral diameter(mm)	34.8±4.8	37.4±5.4	<b>&lt;0.001</b>
LAEV(ml)	22.1±6.5	21.3±7.3	0.47
LA Vmax(ml)	41.3±11	50±13.7	<b>&lt;0.001</b>
LA Vmin(ml)	19.2±5.9	28.7±9.7	<b>&lt;0.001</b>
LA VpreA(ml)	31.5±9.4	40.9±12.1	<b>&lt;0.001</b>
LAEF (%)	53.8±6.9	43±9.6	<b>&lt;0.001</b>
LA VImax (ml/m <sup>2</sup> )	23.8±6.3	28.6±7.6	<b>&lt;0.001</b>
LA VImin (ml/m <sup>2</sup> )	11.1±3.4	16.5±5.6	<b>&lt;0.001</b>

Table 3: Noninvasive LV myocardial work and LA remodeling in different AFB stages

LVMW and LA	Minimal-Mild	Moderate-Severe	p value
-------------	--------------	-----------------	---------

remodeling	(n=51)	(n=82)	
GCW (mm Hg%)	2231.2±373.3	2218.4±537.1	0.90
GWW (mm Hg%)	141.3±77.3	147.2±99.1	0.75
GWE (%)	92.7±3.1	91.8±3.6	0.71
GWI (mm Hg%)	2010.0±351.4	1977.8±416.4	0.68
LAEF(%)	46.8±9.6	41.1±9.2	<b>0.004</b>
LAVImax(ml/m <sup>2</sup> )	28.0±7.2	29.5±7.9	0.36
LAVImin(ml/m <sup>2</sup> )	15.4±5.6	17.6±5.7	<b>0.049</b>

### Figures and figure legends:

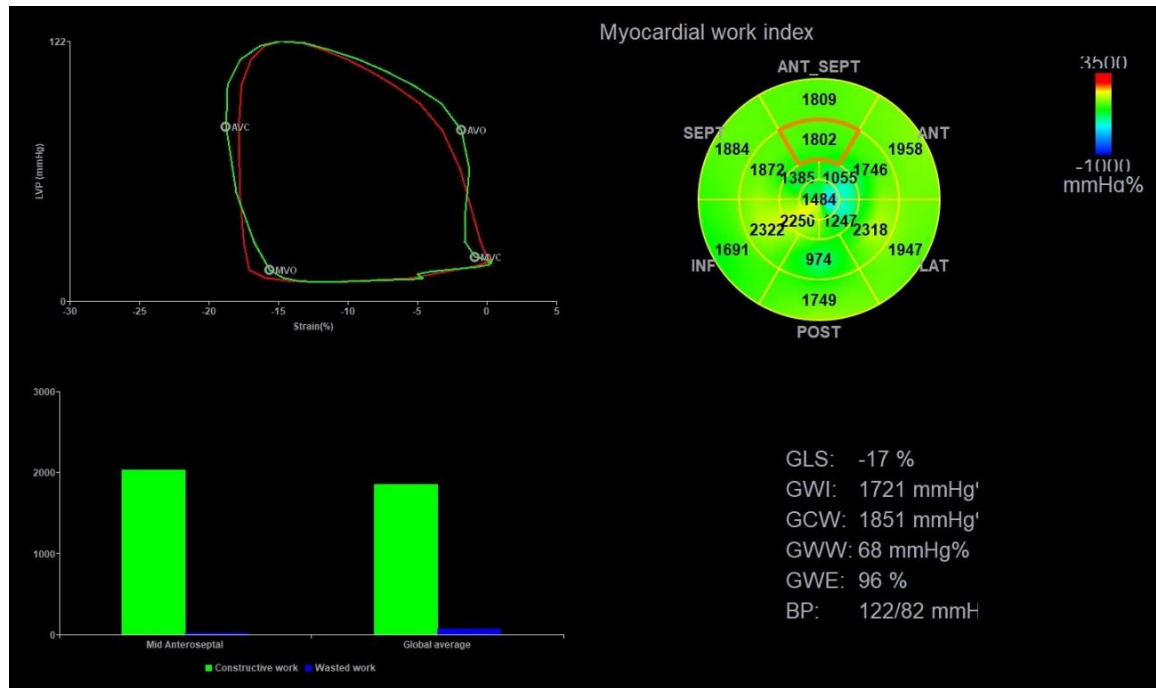
Figure 1: Figure description in the PAF subject and the control subject of LVMW parameters and LA remodeling. 1-a: LVMW parameters of PAF, 1-b: LVMW parameters of the control. Although the GLS of two enrollments were similar, the GWW in PAF significantly elevated compared with the control one and the GWE of PAF was significantly lower than that of the control. 1-c: LA remodeling of PAF, 1-d: LA remodeling of control. LA volume index including LAVI min, LAVI max and LAVpre were fairly larger in the PAF, and LAEF was significantly lower in the PAF compared with the control one.

Figure 2: Noninvasive LVMW comparison between the PAF and the controls. Elevated GWW and impaired GWE were found in PAF group.

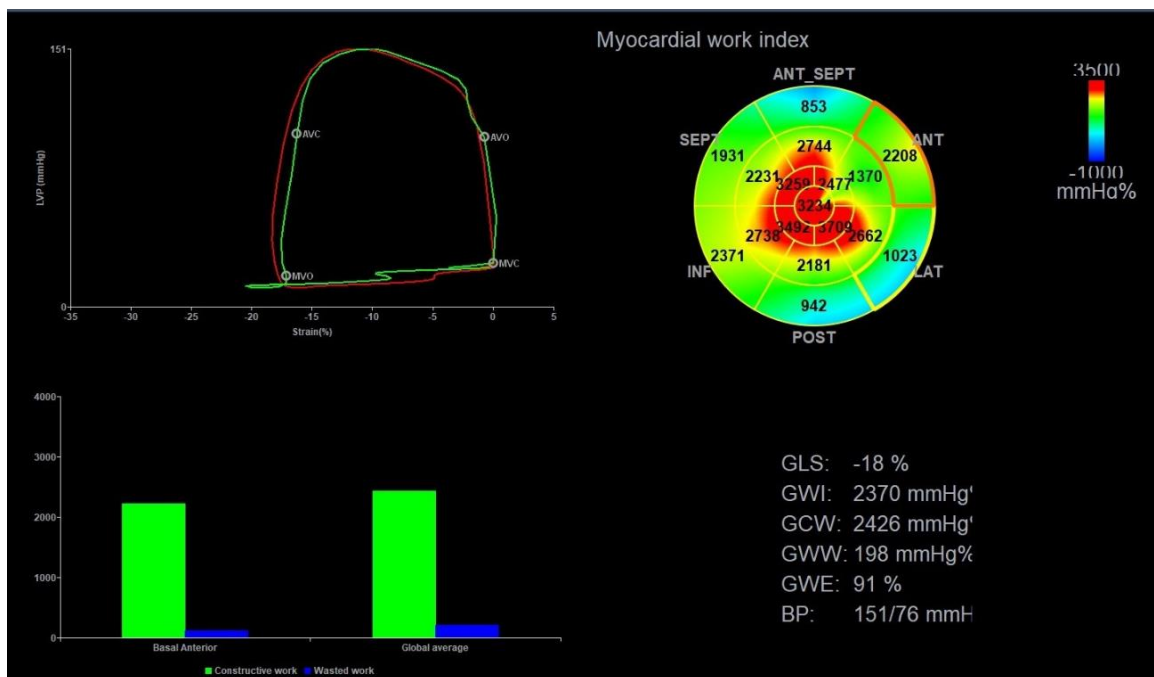
Figure 3: Correlation between LVMW and LAVImax/LAVImin displayed by figures. Elevated GWW was significantly associated with enlarged LAVImax or LAVImin. Significant correlation between GCW or GWI and LAVImax were also discovered.

Figure 4: Odds ratio of LVMW parameters and LA remodeling index for HF incident. Lower LAEF was a strong indicator for HF incidence in the non-ablation group.

Figure 5: Odds ratio of AFB deterioration for HF incident adjusted by age, gender, HTN and T2DM. AFB deterioration was strongly associated with incident HF.



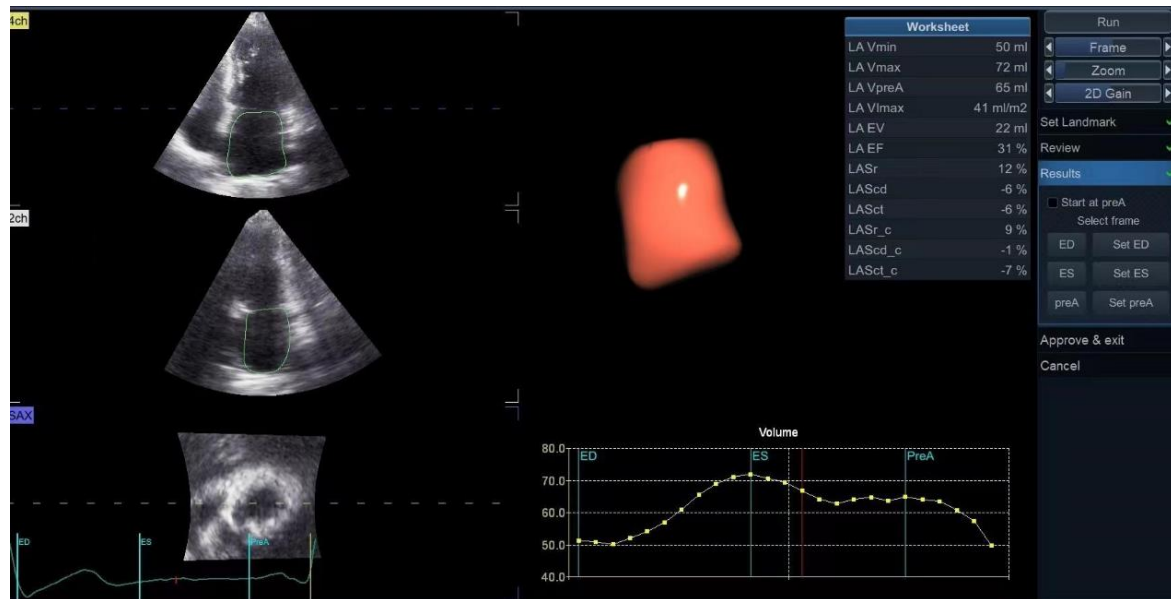
a- PAF subject



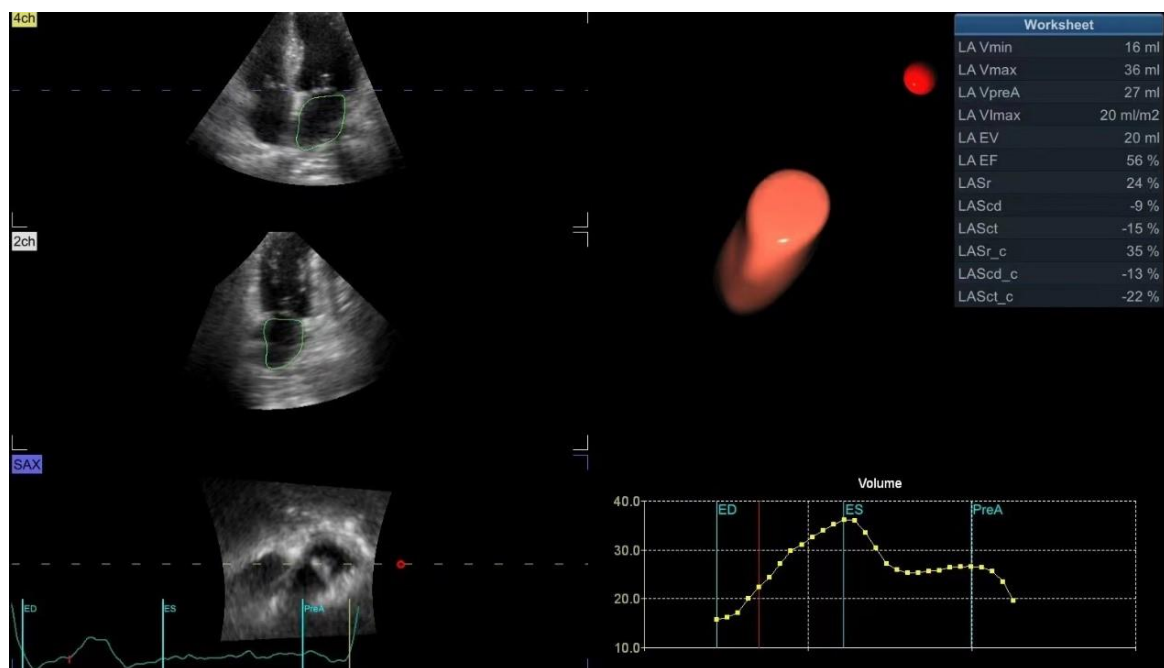
b-control subject

Figure 1 : LVMW parameters and figure description of enrolled subject





c- PAF subject



d- control subject

Figure 1: LA remodeling index and figure description of enrolled subject



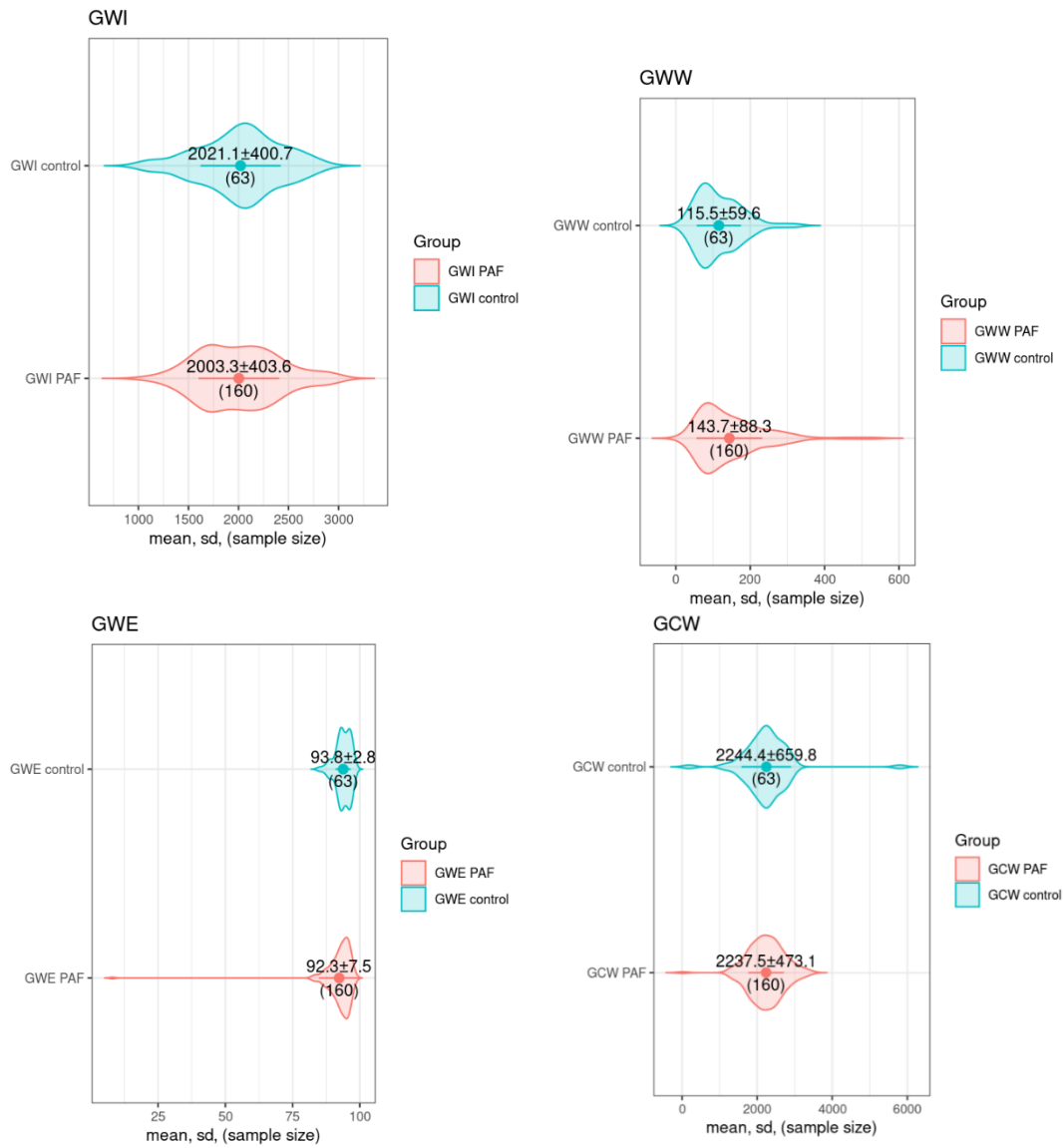


Figure 2: Noninvasive LVMW comparison between the PAF and the controls

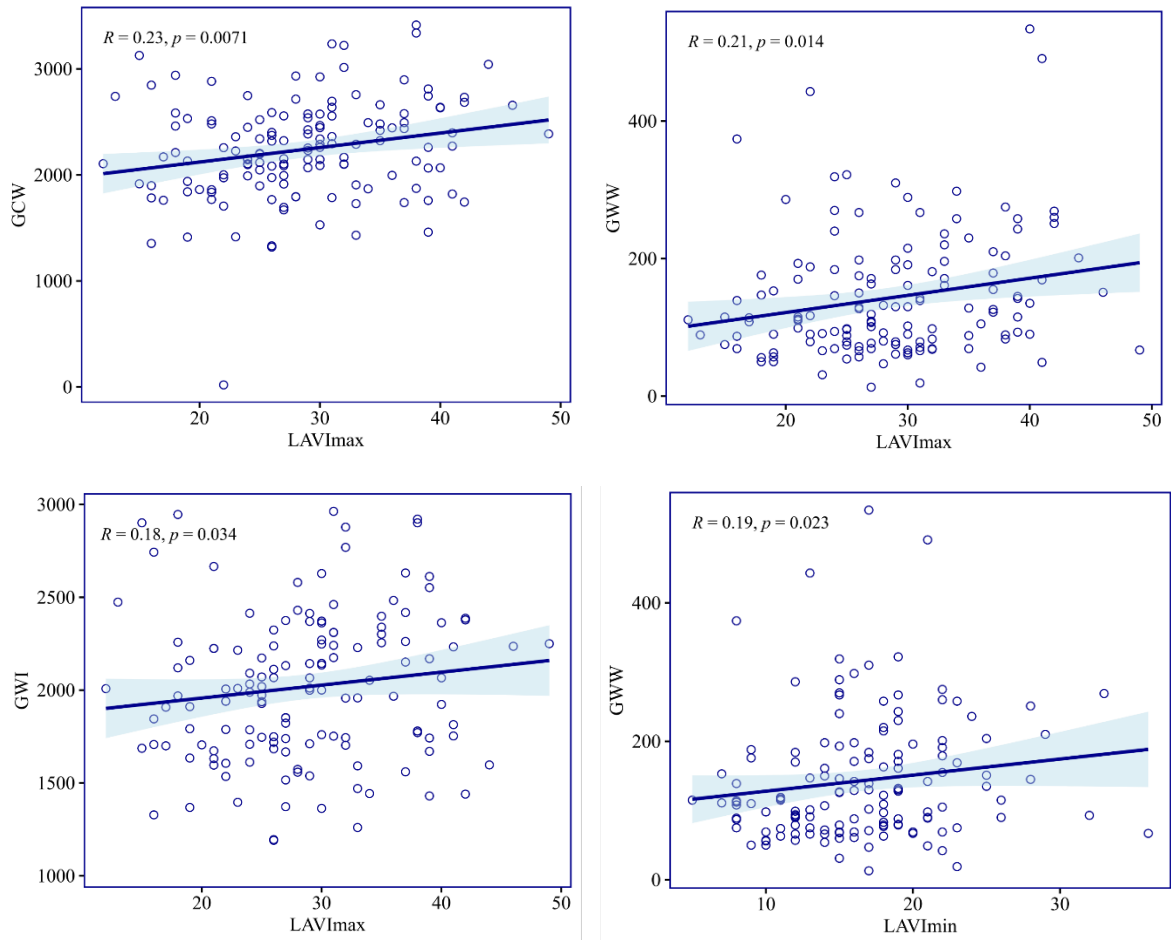


Figure 3: Correlation between LVMW and LAVIImax/LAVImin displayed by figures

Indicator	Group	est	lower	upper	p.value
GCW (mm Hg%)	All	1.00	0.99	1.00	0.350
GCW (mm Hg%)	Ablation group	1.00	0.99	1.00	0.720
GCW (mm Hg%)	Non-ablation group	1.00	0.99	1.00	0.820
GWW (mm Hg%)	All	0.99	0.99	1.00	0.380
GWW (mm Hg%)	Ablation group	1.00	0.99	1.00	0.900
GWW (mm Hg%)	Non-ablation group	0.99	0.99	1.00	0.620
GWE (%)	All	1.25	0.98	1.60	0.910
GWE (%)	Ablation group	1.38	0.53	3.62	0.510
GWE (%)	Non-ablation group	1.15	0.87	1.51	0.150
GWI (mm Hg%)	All	0.99	0.99	1.00	0.720
GWI (mm Hg%)	Ablation group	0.99	0.99	1.00	0.610
GWI (mm Hg%)	Non-ablation group	0.99	0.99	1.00	0.460
LAEF (%)	All	0.95	0.90	1.01	0.130
LAEF (%)	Ablation group	1.03	0.84	1.27	0.800
LAEF (%)	Non-ablation group	0.91	0.83	0.99	0.040
LAVImax (ml/m <sup>2</sup> )	All	1.06	0.98	1.14	0.180
LAVImax (ml/m <sup>2</sup> )	Ablation group	1.05	0.81	1.36	0.700
LAVImax (ml/m <sup>2</sup> )	Non-ablation group	1.02	0.93	1.11	0.680
LAVImin (ml/m <sup>2</sup> )	All	1.09	0.98	1.20	0.104
LAVImin (ml/m <sup>2</sup> )	Ablation group	1.03	0.74	1.44	0.860
LAVImin (ml/m <sup>2</sup> )	Non-ablation group	1.08	0.96	1.21	0.210
LAVpre (ml)	All	1.04	0.99	1.10	0.089
LAVpre (ml)	Ablation group	1.06	0.89	1.26	0.500
LAVpre (ml)	Non-ablation group	1.03	0.97	1.09	0.270

Figure 4: Odds ratio of LVMW parameters and LA remodeling index for HF incident

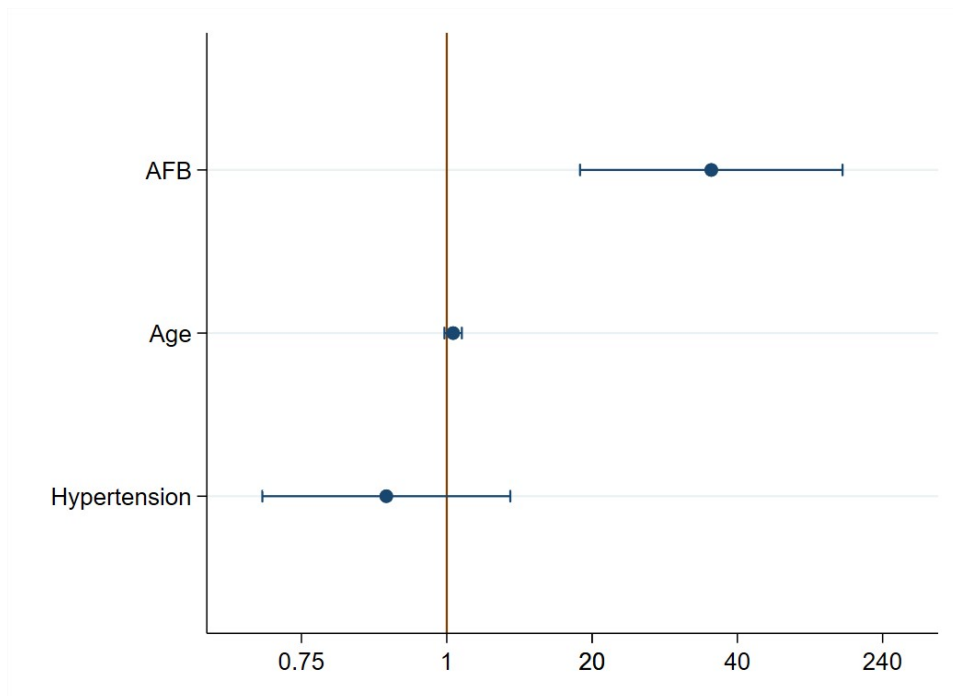


Figure 5: Odds ratio of AFB deterioration for HF incident adjusted by age, gender, HTN and T2DM

**Tables:**

Table 1: Baseline characteristics of enrolled subjects

	<b>Control</b> <b>n=63</b>	<b>PAF</b> <b>n=146</b>	<b>p value</b>
Age	63.6±9.8	66.2±11.4	0.096
Gender(male)	60.3%	55%	0.41
Height(cm)	165.5±7.3	165.9±8.1	0.71
Weight(kg)	66.1±9.9	66.9±10.6	0.58
BMI(kg/m <sup>2</sup> )	23.9±3.1	24.1±2.9	0.37
SBP(mmHg)	129±14.4	134.7±16.8	<b>0.012</b>
DBP(mmHg)	79.4±8.3	79.7±11.4	0.81
Hypertension	22%	60%	<b>&lt;0.001</b>
Diabetes	7%	16%	<b>&lt;0.001</b>
CAD	/	18%	/
Stroke	/	12%	/
PVD	/	1%	/
AF duration (month)	/	25(2,65)	/
Ablation therapy	/	13%	/
CHA <sub>2</sub> DS <sub>2</sub> -VASc score	/	2(1,4)	/
RAS inhibitor	20%	52%	<b>&lt;0.001</b>
CCB	12%	32%	<b>&lt;0.001</b>
Anticoagulation	/	57%	/
Antiarrhythmic	/	75.6%	/

BMI: body mass index, SBP: systolic blood pressure, DBP: diastolic blood pressure, CAD: coronary artery disease, PVD: peripheral vascular disease, RAS: Renal Angiotensin System, CCB: Calcium Chanel Blocker

Table 2: Echocardiography parameters' comparison in two groups

<b>Parameters</b>	<b>Control</b> <b>n=63</b>	<b>PAF</b> <b>n=146</b>	<b>p value</b>
LVDD(mm)	47.5±4.5	48.1±4.5	0.44
IVSD(mm)	28.8±2.9	30.1±3.8	0.07
IVSd(mm)	8.9±0.9	9.4±1.2	<b>0.006</b>
LVPWd(mm)	8.4±0.8	8.8±0.9	<b>0.007</b>

LVMl(g/m <sup>2</sup> )	85.1±24.7	86.1±18.2	0.77
LVEDV(ml)	68.3±16.3	76.4±24	<b>0.0046</b>
LVESV(ml)	25.3±7.5	29.1±11	<b>0.003</b>
E(cm/sec)	67.7±13.4	73±16.9	<b>0.015</b>
A(cm/sec)	84.5±18.2	80±20.7	0.11
E/A	0.8±0.2	1±0.4	<b>&lt;0.001</b>
DT time(sec)	236.0±57.0	230.8±60.7	0.56
E/e'	8.3±1.8	9.1±2.6	<b>0.011</b>
LVEF (%)	63.2±5.4	61.7±5.4	0.15
GLS	-19.6±8.2	-20.1±2.2	0.42
PSD	52.4±14.9	57.9±21.7	<b>0.03</b>
Diastolic dysfunction			
0	90.4%	65.8%	<b>&lt;0.001</b>
1	6.4%	25.0%	<b>&lt;0.001</b>
2	3.2%	8.6%	<b>&lt;0.001</b>
3	0%	0.6%	<b>0.003</b>
LAanteroposterior diameter(mm)	35.7±4.9	37.6±4.6	<b>0.0079</b>
LA suprainferior diameter(mm)	47.7±5.3	50.7±6.9	<b>&lt;0.001</b>
LA mediolateral diameter(mm)	34.8±4.8	37.4±5.4	<b>&lt;0.001</b>
LAEV(ml)	22.1±6.5	21.3±7.3	0.47
LA Vmax(ml)	41.3±11	50±13.7	<b>&lt;0.001</b>
LA Vmin(ml)	19.2±5.9	28.7±9.7	<b>&lt;0.001</b>
LA VpreA(ml)	31.5±9.4	40.9±12.1	<b>&lt;0.001</b>
LAEF (%)	53.8±6.9	43±9.6	<b>&lt;0.001</b>
LA VImax (ml/m <sup>2</sup> )	23.8±6.3	28.6±7.6	<b>&lt;0.001</b>
LA VImin (ml/m <sup>2</sup> )	11.1±3.4	16.5±5.6	<b>&lt;0.001</b>

Table 3: Noninvasive LV myocardial work and LA remodeling in different AFB stages

LVMW and LA remodeling	Minimal-Mild (n=51)	Moderate-Severe (n=82)	p value
GCW (mm Hg%)	2231.2±373.3	2218.4±537.1	0.90
GWW (mm Hg%)	141.3±77.3	147.2±99.1	0.75

GWE (%)	92.7±3.1	91.8±3.6	0.71
GWI (mm Hg%)	2010.0±351.4	1977.8±416.4	0.68
LAEF(%)	46.8±9.6	41.1±9.2	<b>0.004</b>
LAVImax(ml/m <sup>2</sup> )	28.0±7.2	29.5±7.9	0.36
LAVImin(ml/m <sup>2</sup> )	15.4±5.6	17.6±5.7	<b>0.049</b>

---

### **Figures and figure legends:**

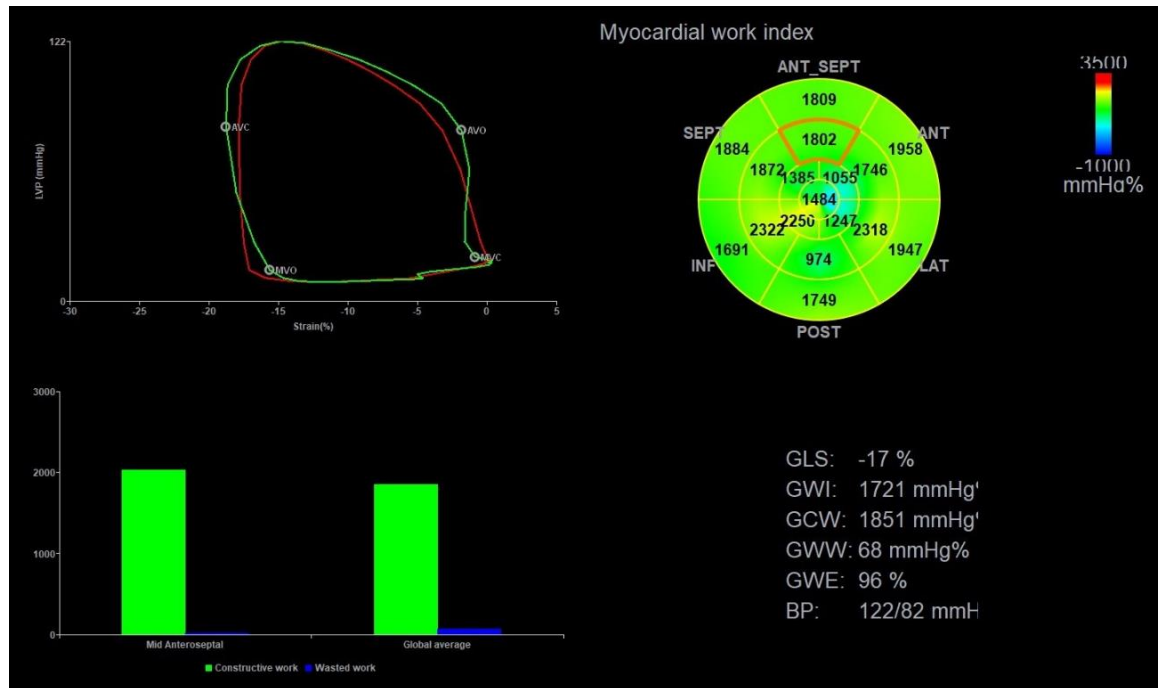
Figure 1: Figure description in the PAF subject and the control subject of LVMW parameters and LA remodeling. 1-a: LVMW parameters of PAF, 1-b: LVMW parameters of the control. Although the GLS of two enrollments were similar, the GWW in PAF significantly elevated compared with the control one and the GWE of PAF was significantly lower than that of the control. 1-c: LA remodeling of PAF, 1-d: LA remodeling of control. LA volume index including LAVI min, LAVI max and LAVpre were fairly larger in the PAF, and LAEF was significantly lower in the PAF compared with the control one.

Figure 2: Noninvasive LVMW comparison between the PAF and the controls. Elevated GWW and impaired GWE were found in PAF group.

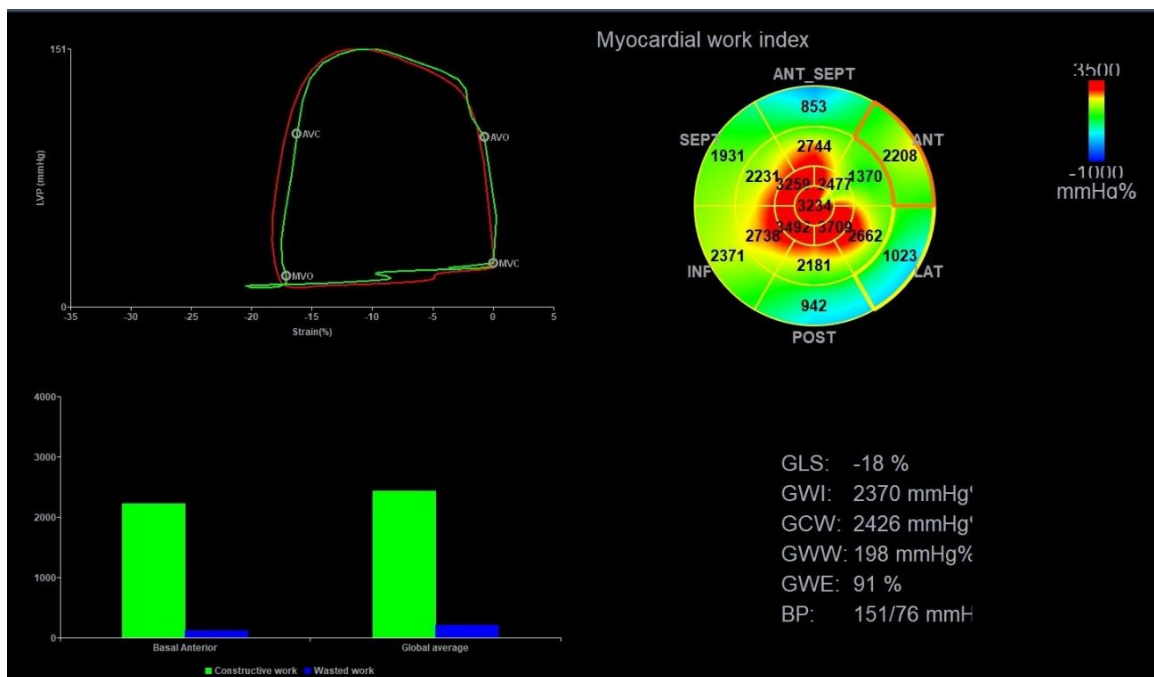
Figure 3: Correlation between LVMW and LAVI<sub>max</sub>/LAVI<sub>min</sub> displayed by figures. Elevated GWW was significantly associated with enlarged LAVI<sub>max</sub> or LAVI<sub>min</sub>. Significant correlation between GCW or GWI and LAVI<sub>max</sub> were also discovered.

Figure 4: Odds ratio of LVMW parameters and LA remodeling index for HF incident. Lower LAEF was a strong indicator for HF incidence in the non-ablation group.

Figure 5: Odds ratio of AFB deterioration for HF incident adjusted by age, gender, HTN and T2DM. AFB deterioration was strongly associated with incident HF.



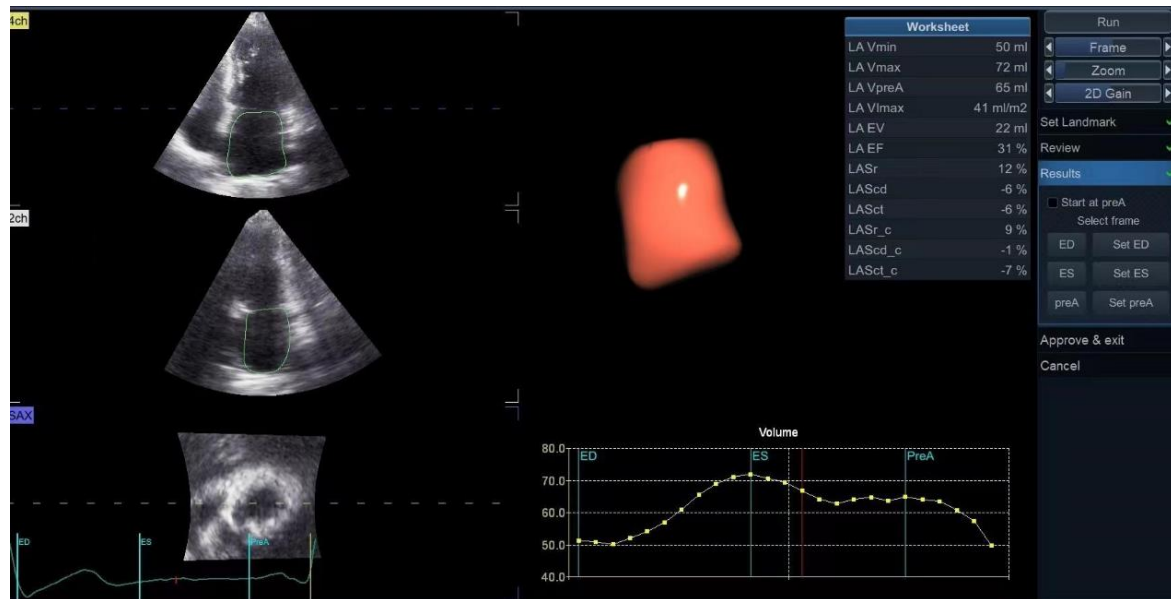
a- PAF subject



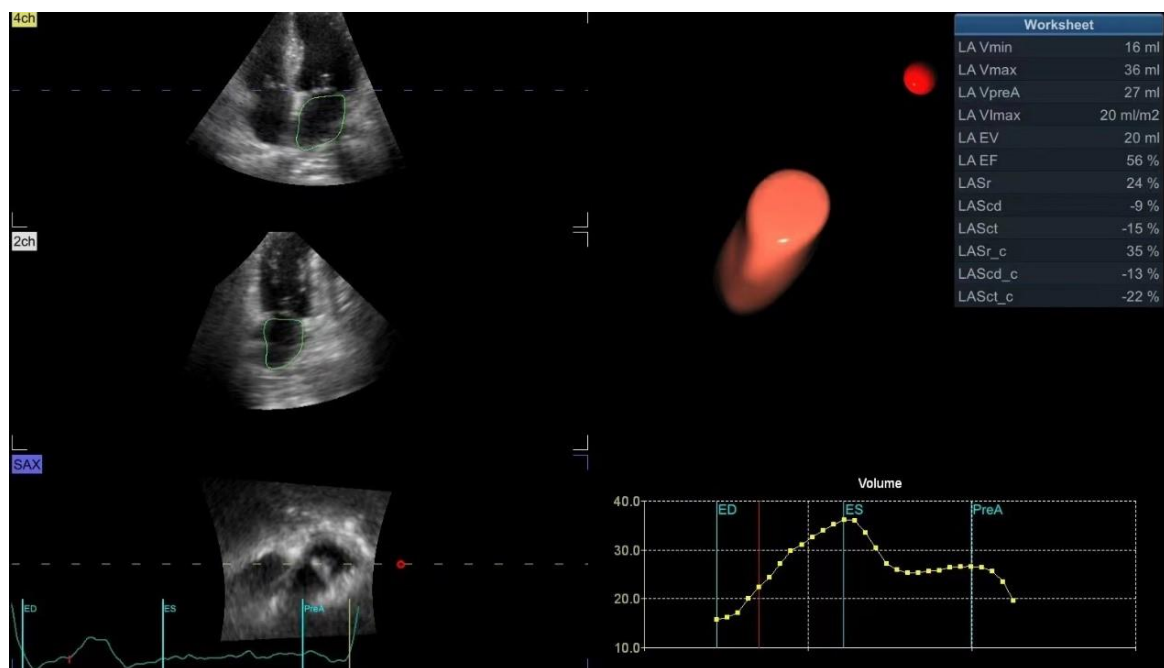
b-control subject

Figure 1 : LVMW parameters and figure description of enrolled subject





c- PAF subject



d- control subject

Figure 1: LA remodeling index and figure description of enrolled subject

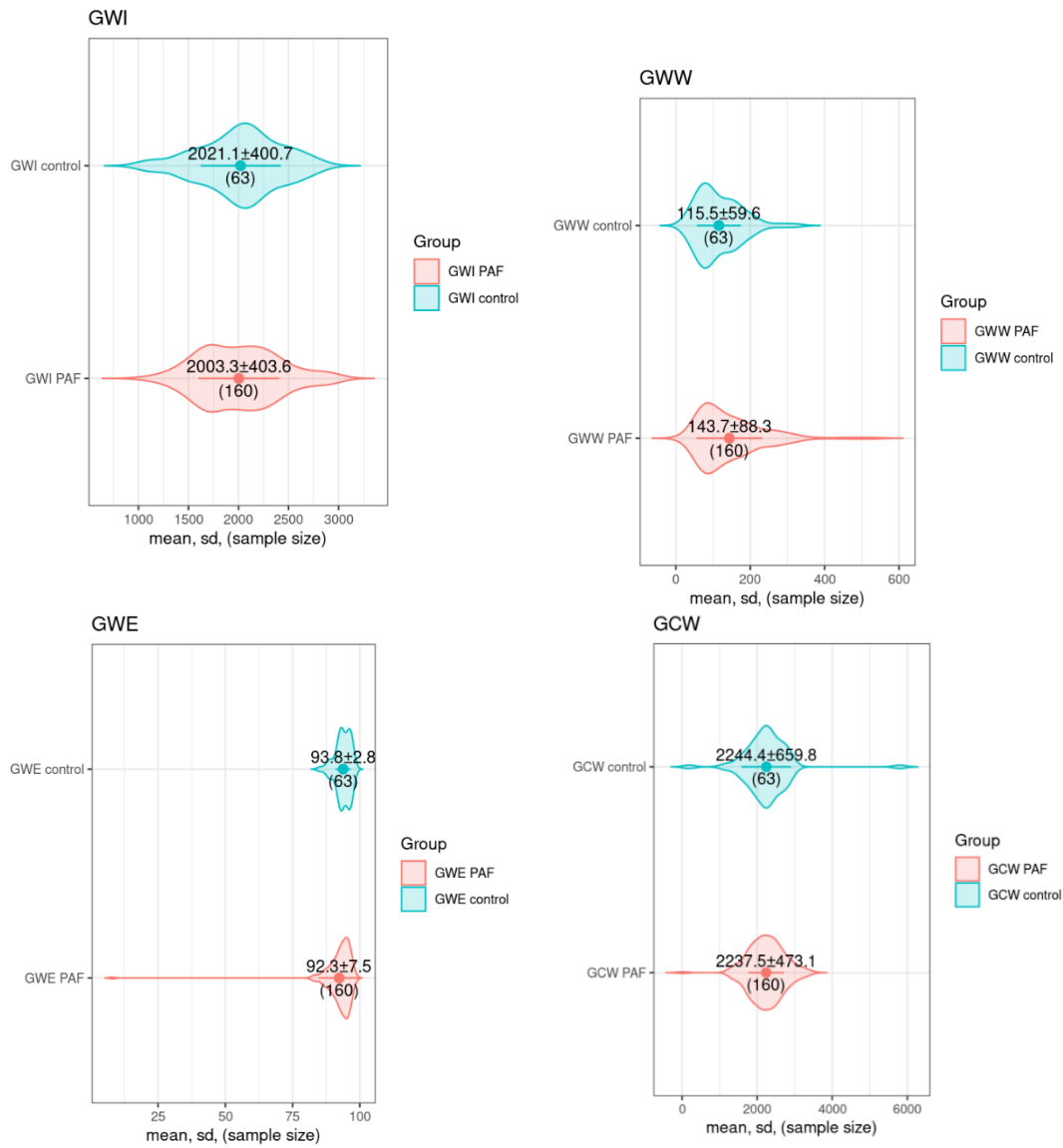


Figure 2: Noninvasive LVMW comparison between the PAF and the controls

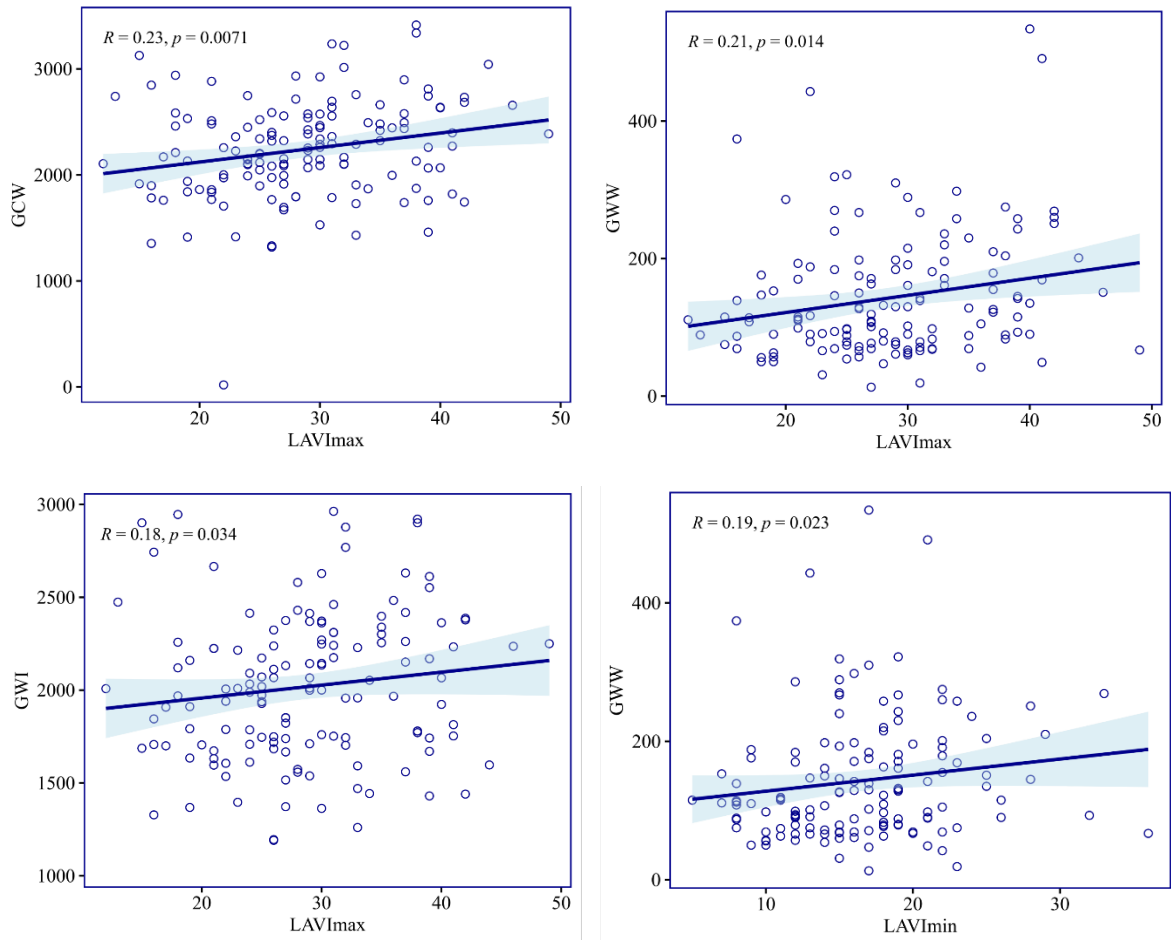


Figure 3: Correlation between LVMW and LVIImax/LVIImin displayed by figures

Indicator	Group	est	lower	upper	p.value
GCW (mm Hg%)	All	1.00	0.99	1.00	0.350
GCW (mm Hg%)	Ablation group	1.00	0.99	1.00	0.720
GCW (mm Hg%)	Non-ablation group	1.00	0.99	1.00	0.820
GWW (mm Hg%)	All	0.99	0.99	1.00	0.380
GWW (mm Hg%)	Ablation group	1.00	0.99	1.00	0.900
GWW (mm Hg%)	Non-ablation group	0.99	0.99	1.00	0.620
GWE (%)	All	1.25	0.98	1.60	0.910
GWE (%)	Ablation group	1.38	0.53	3.62	0.510
GWE (%)	Non-ablation group	1.15	0.87	1.51	0.150
GWI (mm Hg%)	All	0.99	0.99	1.00	0.720
GWI (mm Hg%)	Ablation group	0.99	0.99	1.00	0.610
GWI (mm Hg%)	Non-ablation group	0.99	0.99	1.00	0.460
LAEF (%)	All	0.95	0.90	1.01	0.130
LAEF (%)	Ablation group	1.03	0.84	1.27	0.800
LAEF (%)	Non-ablation group	0.91	0.83	0.99	0.040
LAVImax (ml/m <sup>2</sup> )	All	1.06	0.98	1.14	0.180
LAVImax (ml/m <sup>2</sup> )	Ablation group	1.05	0.81	1.36	0.700
LAVImax (ml/m <sup>2</sup> )	Non-ablation group	1.02	0.93	1.11	0.680
LAVImin (ml/m <sup>2</sup> )	All	1.09	0.98	1.20	0.104
LAVImin (ml/m <sup>2</sup> )	Ablation group	1.03	0.74	1.44	0.860
LAVImin (ml/m <sup>2</sup> )	Non-ablation group	1.08	0.96	1.21	0.210
LAVpre (ml)	All	1.04	0.99	1.10	0.089
LAVpre (ml)	Ablation group	1.06	0.89	1.26	0.500
LAVpre (ml)	Non-ablation group	1.03	0.97	1.09	0.270

Figure 4: Odds ratio of LVMW parameters and LA remodeling index for HF incident

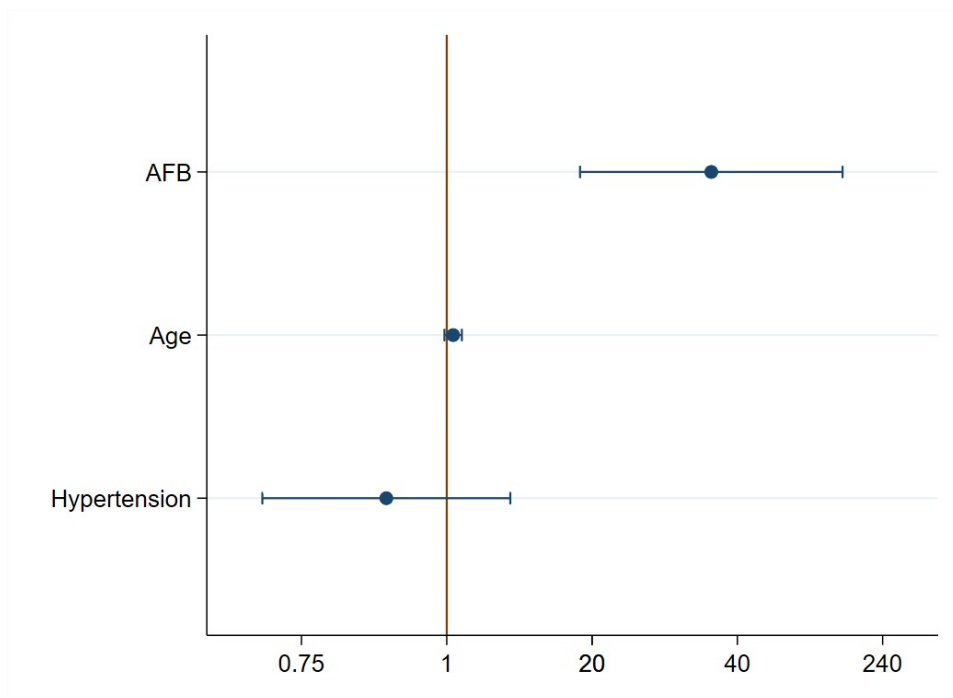


Figure 5: Odds ratio of AFB deterioration for HF incident adjusted by age, gender, HTN and T2DM.