

Voting Patterns, Mortality, and Health Inequalities in England

Philip M. Clarke¹, Charles Rahal^{1,2}, Josh Knight³, Veline L'Esperance⁴, and Melinda C. Mills^{1,2}

¹Nuffield Department of Population Health, University of Oxford

²Nuffield College, University of Oxford

³Statistically Speaking, Melbourne

⁴King's College London

July 2, 2024

Objectives: To replicate an analysis conducted just prior to the 1997 UK General Election on the relationship between voting patterns at the constituency level, correlations between voting patterns, measured inequality, and age standardised mortality.

Design: Observational study using data from the Office of National Statistics. Setting: England, UK.

Participants: The health and mortality co-variables come from the English population across multiple publicly available datasets from the Office of National Statistics and are cross-tabulated against members of the public who voted in the 2019 UK General Election in constituencies in England.

Main Outcome Measures: Age-standardised mortality rate (ASMR) for 2021, Health Deprivation and Disability (HDD) and Index of Multiple Deprivation (IMD) for 2019, Slope Indices of Inequality (2001-20), Healthy Life Expectancy (2011-20).

Results: When observing the proportion of the eligible vote for Labour at the constituency level, there was a strong correlation with higher ASMR in both males ($r=0.707$, $p<0.0001$) and females ($r=0.6505$, $p<0.0001$). There is a strong correlation between Labour vote share ranks and deprivation, with Spearman's rank correlation coefficients of $\rho=-0.687$ ($p<0.0001$) for deprivation as measured by the HDD and $\rho=-0.695$ ($p<0.0001$) for the IMD ranks. Slope indices of inequality (SII) remain high for males and are increasing for females. Healthy life expectancies remain stratified, and differentials across deprivation remain wide and unchanged.

Conclusions: Health inequalities across constituencies and socio-economic indicators such as IMD remain high. New approaches are likely to be required to reduce inequalities in the UK.

Trial Registration: N/A.

Keywords: *Political Economy, Health Inequalities, Healthcare Data Science*

For Correspondence: Professor Philip Clarke, Health Economics Research Centre, Nuffield Department of Population Health, Old Road Campus, OX3 7LF, University of Oxford, United Kingdom. Email: philip.clarke@ndph.ox.ac.uk. Phone: 01865 743 660. **Replication Materials:** Replication materials (including a data availability statement and details of the relevant GNU GPL 3.0 license) are available at github.com/crahal/replicating_smith_and_dorling. **Acknowledgements:** Funding is gratefully acknowledged from the Health Foundation (REAL Demand Unit), the Leverhulme Trust (Grant RC-2018-003) for the Leverhulme Centre for Demographic Science, Nuffield College, and from the Economics and Social Research Council and MapIneq (101061645). **Contributors:** PMC lead on the initial conception and drafting of the manuscript. CR lead on all data analysis, visualisation, and replication materials. JK undertook additional data analysis. VL contributed to drafting of policy section and MCM contributed to drafting the manuscript. All authors contributed to the revision of the manuscript.

NOTE: This preprint reports new research that has not been certified by peer review and should not be used to guide clinical practice.

38 1 Introduction

39 In the lead-up to the 1997 election, the BMJ published an article looking at the relationship between mortality
40 rates, deprivation, and voting patterns in English and Welsh constituencies during the three prior electoral
41 cycles of 1983, 1987, and 1992 [1]. The study found a very strong, statistically significant bivariate relationship
42 between voting patterns and standardised mortality ratios, a measure of relative mortality. Proportions of
43 Conservative electoral votes within a constituency were inversely correlated (1983, -0.76; 1987, -0.74; 1992
44 -0.74) with higher mortality; conversely, there were large and significant positive correlations (0.76; 0.77;
45 0.73) with the proportion of votes won by the Labour Party (all $p < 0.0001$). Since the publication of the
46 Acheson Report in 1998 [2], there have been more than twenty subsequent reports and inquiries into health
47 inequalities. These document the large variation in health across England and propose a wide range of public
48 health and related strategies to reduce structural inequalities. Several contained specific targets, such as the
49 Labour Government's ambition in 2001 to 'reduce by at least 10 per cent the gap between the quintile of
50 areas with the lowest life expectancy at birth and the population as a whole' [3], with some evidence that this
51 goal was achieved [4]. In 2022, the Conservative Government's Levelling Up agenda had an explicit mission
52 that 'By 2030, the gap in Healthy Life Expectancy between local areas where it is highest and lowest will
53 have narrowed, and by 2035, Healthy Life Expectancy will rise by five years' [5]. The opposition Labour
54 party in the run up to 2024 election has committed itself to 'Improve healthy life expectancy for all and
55 halve the gap in healthy life expectancy between different regions of England' [6]. Almost three decades after
56 the publication of the original British Medical Journal article on voting patterns and mortality [1], we again
57 explore where things stand regarding both the political geography of health inequalities and changes in the
58 overall level of health inequalities in England

59 2 Data and Methods

60 This study is based on official published statistics of both health inequalities and voting patterns and in-
61 volves a descriptive analysis to understand how levels of mortality vary across geographically based electoral
62 constituencies and examines trends in commonly used measures of health inequalities over time.

63 2.1 Data

64 To represent constituency voting patterns, data from the Westminster House of Commons Library for the most
65 recent (2019) elections was analysed based on the proportion of eligible votes cast for the Labour candidate in
66 all 533 constituencies. Three measures of mortality were included in the analysis: age standardised mortality
67 was used across constituencies, healthy life expectancy (HLE) at birth was used over time (2011-2020), and we
68 also utilised the Slope Index of Inequality (2010-2020). The ASMR data was age-standardised based on the
69 2013 European Standard Population and provided as per 100,000 rates by sex. The year of death was based
70 on the date of the registration of the death. Measures of inequality based on life-expectancy at birth were
71 based on three-year overlapping annual periods to enable a sufficiently reliable and accurate measurement
72 of life expectancy for local areas. For data by constituency, deaths were allocated to specific constituencies
73 based on the postcode of the decedent and only for registrations in the year 2021. HLE adjust the years
74 of life to reflect the period when individuals perceive their general health to be 'very good' or 'good', and
75 therefore, it incorporates quality of life alongside the length of life. Two measures of deprivation were also
76 included in the analysis; Index of Multiple Deprivation (IMD) and the Health Deprivation and Disability
77 (HDD) domain. The IMD is based on seven dimensions of deprivation which are calculated at and aggregated
78 up from the lower layer Super Output Areas (LSOAs) which represent approximately 1,500 individuals each.
79 The IMD is used in two formats in the analysis. First, as a population-weighted average of the deprivation
80 scores for the LSOAs in each constituency, and second by grouping the population by deprivation decile. The
81 HDD is also an area-based rank metric and measures the risk of death and the impairment of quality of life
82 through poor physical or mental health. It measures morbidity, disability and premature mortality, but not
83 aspects of behaviour or environment that may be predictive of future health deprivation. The slope index
84 of inequality (SII) is a commonly used epidemiological approach to measuring inequality across measures of
85 socioeconomic status within a given time period [7]. SIIs are calculated by taking the difference between the
86 minimum (representing the most deprived area) and the maximum points (the least deprived) on a fitted
87 slope of best fit. An SII can be interpreted as an absolute measure of the difference between the most and
88 least deprived areas. To account for any variation in the size of the categories SSI are weighted to account
89 for the population. All references to constituency boundaries are to those which were in place at the 2019
90 elections.

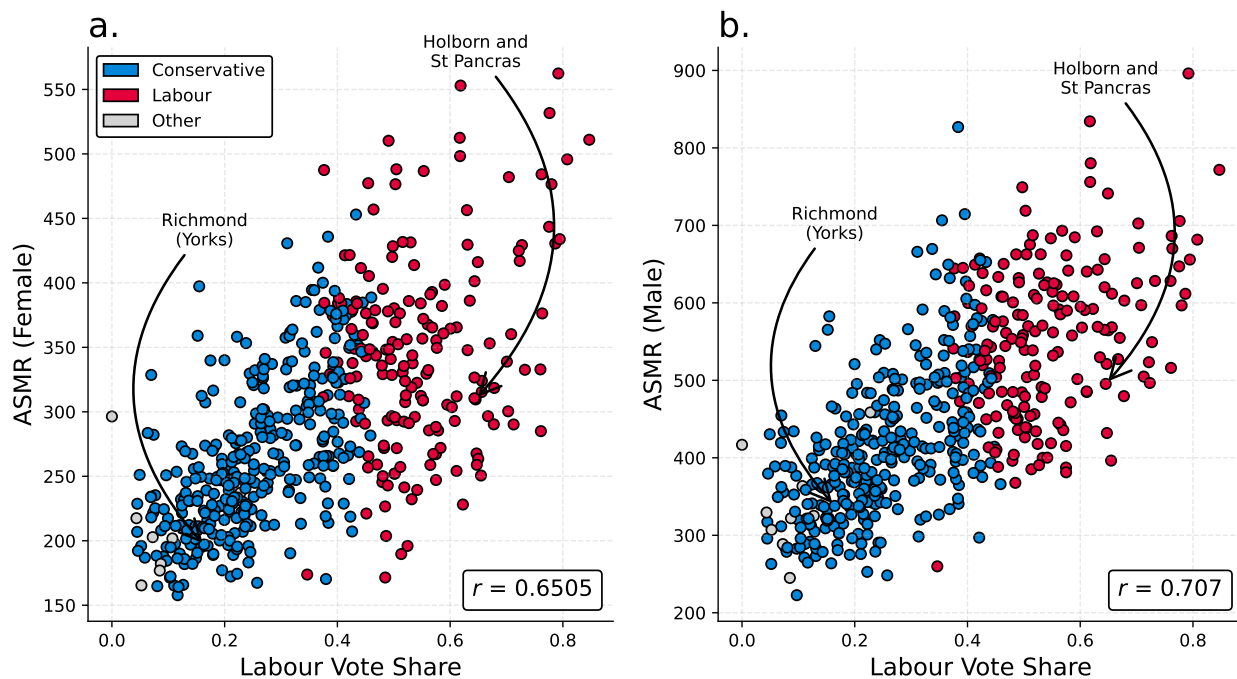


Figure 1: Correlations between voting behaviour and mortality at the constituency level. Subfigures ‘a.’ and ‘b.’ show the correlation between Labour vote share across constituencies in 2019 and ASMR in 2021 for females and males respectively. Vote share data comes from the House of Commons Library, and mortality data comes from the Office for National Statistics. r indicates Pearson’s correlation coefficient ($p < 0.001$). Supplementary Material shows correlations between other party vote shares. .

91 2.2 Methods

92 The relationship between voting patterns and ASMR by electorate was assessed using Pearson’s correlation
 93 coefficient (r) was calculated for males and females separately. Bivariate choropleths were used to
 94 display the relationship between voting patterns and HDD and IMD, with Spearman’s rank correlation
 95 coefficients (ρ) calculated for constituencies as a whole. To observe trends in the association between mortality
 96 and inequalities over time, the SIIs were plotted for the period 2001 to 2020. HLEs were plotted over time
 97 and across three deciles; the most deprived, median deprived, and least deprived for the period in which these
 98 statistics are available 2011 to 2020.

99 3 Results

100 3.1 Re-examining the relationship between mortality, deprivation and voting

101 Figure 1 illustrates the contemporary relationship between voting patterns and mortality based on age-
 102 standardised mortality rate data across the 533 English constituencies contested at the 2019 general election.
 103 The average ASMR across all constituencies was 293 deaths per 100,000 for females and 462 for males,
 104 where higher values represent greater age standardised mortality. The mean values for constituencies that
 105 elected a Labour representative ($n=179$) were 554.1 and 345.7 per 100,000 males and females respectively,
 106 compared to 413.5 and 264.9 for Conservative constituencies ($n=345$). The ASMR for Richmond (Yorks)
 107 – Rishi Sunak’s constituency – is 196.3 (95% CI 159.9-232.7) for females, and 338 (95% CI 289.5-386.6)
 108 for males. In comparison – Kier Stammer’s constituency Holborn and St Pancras – the ASMR is 309.6
 109 (95% CI 256.6- 362.5) and 495.4 (95% CI 425.9- 564.9) for females and males respectively: both are around
 110 50% greater than Sunak’s in relative terms. Despite large changes in voting patterns in the last election [8],
 111 correlations between premature mortality and the proportion of eligible votes cast for Labour were substantial
 112 for both males (Pearson’s $r=0.707$, $p < 0.0001$) and females ($r=0.6505$, $p < 0.0001$); a similar magnitude to
 113 those seen during the 1983-92 elections [1]. Figure 2 illustrates the relationship between Labour vote share
 114 ranks and deprivation. A strong correlation is seen Spearman’s rank correlation coefficients of $\rho=-0.687$
 115 ($p < 0.0001$) for deprivation as measured by the HDD and $\rho=-0.695$ ($p < 0.0001$) for the IMD ranks. In terms

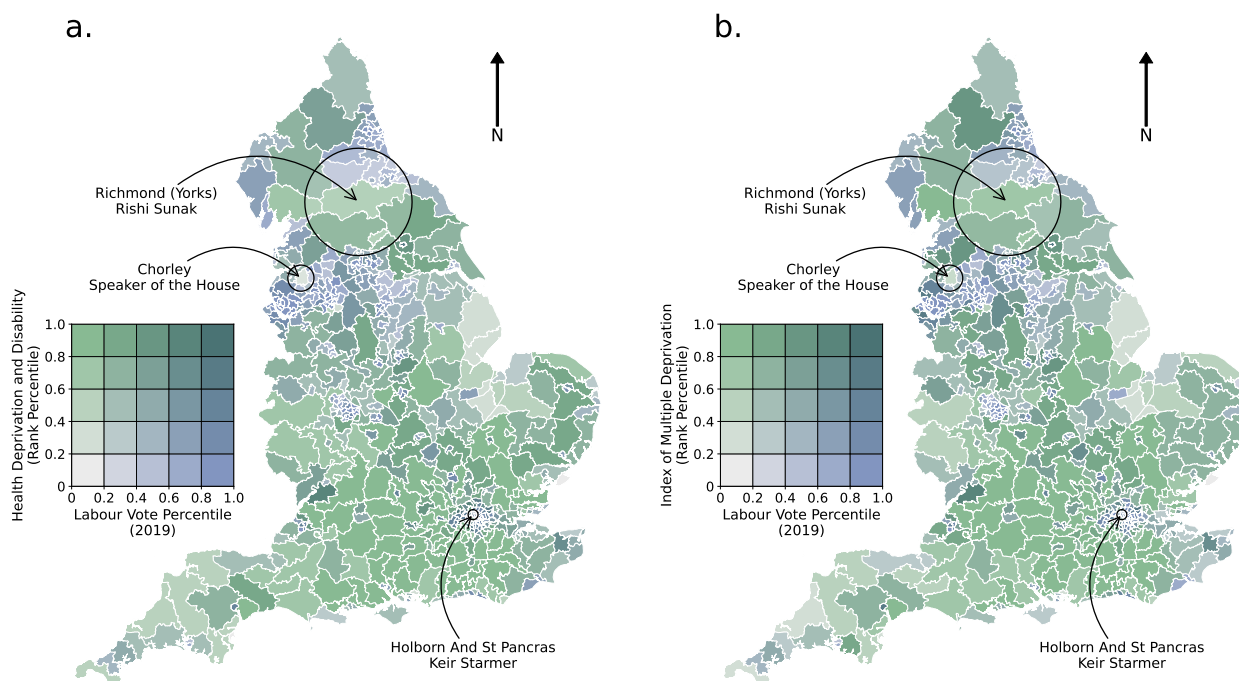


Figure 2: Correlations between voting behaviour and deprivation at the constituency level. Subfigures ‘a.’ and ‘b.’ show the correlation between Labour vote share in 2019 across constituencies and ‘Health Deprivation and Disability’ and the ‘Index of Multiple Deprivation’ (2019) respectively. Vote share data comes from the House of Commons Library, and deprivation data comes from the Office for National Statistics. Supplementary material shows correlations between other party vote shares.

116 of constituencies, Richmond (Yorks) is in the least deprived quintile, while Holborn and St Pancras is in the
 117 second most deprived quintile.

118 3.2 Changes in inequalities in mortality over time

119 Figure 3a shows that between 2001-2003 and 2018-2020, the largest gap in life expectancy at birth observed
 120 between the most and least deprived in males in England was 9.7 years (in the two periods of 2006-08 and
 121 2018-2020), with a minimum gap of 9 years between 2011-2013. Despite relatively minor fluctuations over
 122 this time period, the gap for men remains high and within a relatively narrow range between 9 and 10
 123 years. For females, there has been a continual increase in the gap in life expectancy at birth between the
 124 most and least, rising from 6.3 (2001-2003) to 7.9 years (2018-2020); a 25.4% increase over the observed 20
 125 years. Figures 3b and c show the relationship between HLE and deprivation deciles. In the earliest period
 126 available (2011-2013), the difference in HLE between those living in the most and least deprived deciles of
 127 England was 18.5 years for females (Figure 3b), whereas it was 18.3 years in 2018-2020. For men (Figure 3c),
 128 the differences in 2011-2013 and 2018-20 were 18 and 18.2 years respectively. Across these two measures of
 129 mortality – life expectancy at birth and HLE – the gap between the least and most deprived in England has
 130 either maintained or increased over the last decade.

131 4 Discussion

132 4.1 Policy Context

133 Correlations between mortality and the proportion of eligible votes cast for Labour were substantial, and of a
 134 similar magnitude to those seen during the 1983-92 elections [1]. These patterns are likely to be influenced by
 135 the strong correlation between vote share and deprivation. The current gap in differences in life expectancy
 136 at birth across levels of IMD is around 10 years for males, and 8 years for females. Compared with 2001-3
 137 this gap has increase by more than one and half year for females and there have been no changes for males.
 138 A similar analysis finds no significant relationship between voting patterns and mortality in Australia [9].

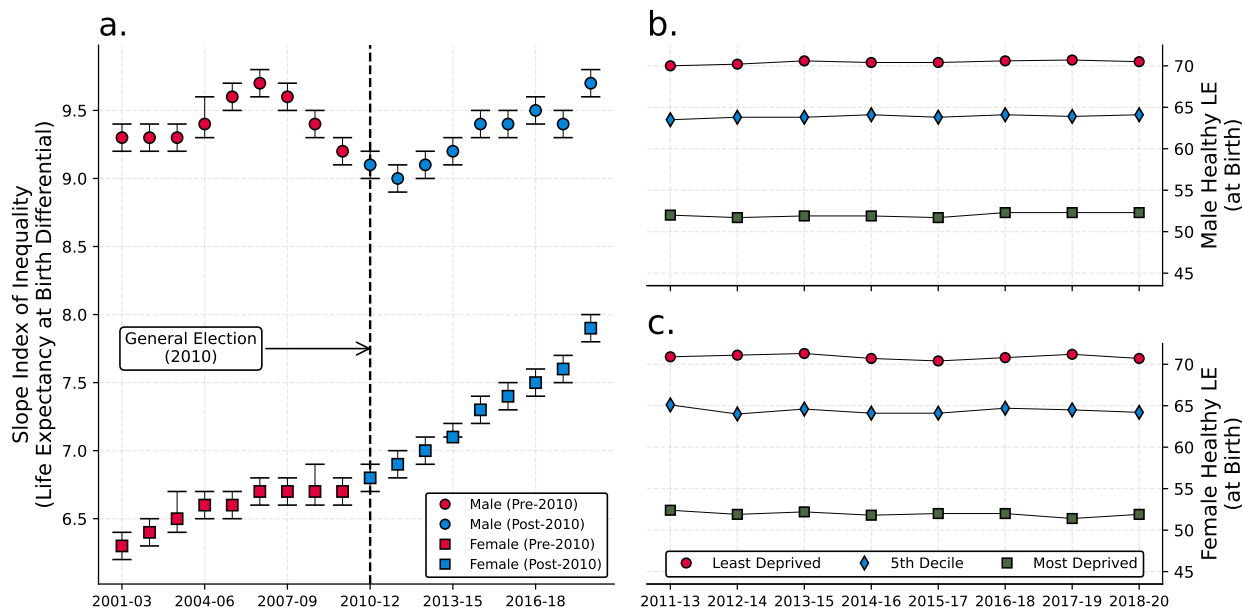


Figure 3: Inequalities Over Time. Subfigure ‘a.’ shows the slope index of inequality (SII) for life expectancy at birth for females and males based on data from the Office for National Statistics. Colours denote Labour (red) and Conservative (blue) governments. Subfigures ‘b.’ and ‘c.’ show Healthy Life Expectancy over time and between three deprivation deciles (highest, median, and lowest) for males and females respectively.

139 Counties that voted Republican in the 2016 US elections had overall worse health outcomes than those that
 140 voted Democrat; however, only a 2% decrease in median life expectancy was observed [10].

141 4.2 Policy Implications

142 Recent commitments from both the Conservative [5] and Labour [6] aim to reduce inequalities in health
 143 life healthy life expectancy (HLE). Given the large and persistent socio-economic differences in health and
 144 mortality at both an individual and regional level across England and indeed all nations of the United
 145 Kingdom, new strategies and policies are required. Avenues that should be explored are discussed below.

146 Improving data, linkage, and integration to allow targeted interventions for the creation 147 of an improved evidence base

148 While there have been considerable improvements in data linkage in the UK in recent years, the integration
 149 of data across multiple sectors will be required to fully identify underserved and excluded populations for
 150 research, public health monitoring, and enrolment in initiatives designed to address health inequalities [11].
 151 This may require improvements in identification of under-represented populations and in legislative frame-
 152 works that will facilitate the routine use of linked data. Recent initiatives such as the New Zealand Integrated
 153 Data Infrastructure have been able to provide an overall picture of disadvantage by combining health, justice,
 154 and welfare data [12] which follows similar approaches to integration in Scandinavia. There is also the poten-
 155 tial to make greater use of administrative data as outcomes in clinical studies, including randomized trials.
 156 For example, the long-term linkage of hospital administrative data and the UKPDS has recently shown the
 157 benefits of improved glycaemic control in reducing mortality for people with Type 2 diabetes [13].

158 Developing an evidence-based policy road map

159 The empirical and simulated modelling of various ‘what-if’ scenarios using linked data combined with evidence
 160 from epidemiological studies and clinical trials would enable an understanding of the resources required and
 161 the potential gains of pursuing different strategies. This roadmap would range from health system improve-
 162 ments, including population interventions, health system improvements such as risk-modifying medications
 163 in those at high risk of CVD [14] and strategies targeting high-risk populations (e.g., those in prisons and the
 164 general population [15]), as well as reinforcing existing strategies such as those focused on tobacco control.

165 Reducing disparities in health system use

166 It is important to recognise that a key challenge in reducing health inequalities is to reduce inequalities in the
167 uptake of effective prevention and treatment interventions. For example, ONS statistics reveal substantial
168 ethnic disparities in COVID-19 vaccinations in England; by the end of 2021 over 96% of those over 50 years of
169 age classified as white British had received at least one COVID vaccination, compared with 74% among those
170 classified as Black Caribbean [16]. Around the same time, overall COVID vaccine coverage in the United
171 States was comparatively lower, but White, Hispanic, and Black ethnic groups ended up with a similar level
172 of uptake. [17] Exploring the potential role of informational nudges and incentives both at the patient and
173 General Practice level could represent ways to help address these disparities.

174 Explicitly incorporating a range of diverse health equity considerations into decision- 175 making procedures

176 While bodies such as the National Institute for Health and Care Excellence try to consider health inequalities
177 alongside cost-effectiveness, emerging health economic methods such as Distributional Cost-Effectiveness
178 analysis allow interventions that can reduce health inequities to be formally incorporated into evaluations [18].
179 It is important to recognise that targeting interventions at underserved populations to address inequalities
180 is likely to require additional and potentially reallocated resources, combined with effective implementation
181 strategies including targets and incentives.

182 5 Conclusion

183 This study has two main limitations. First, as it is based on official statistics, there are differences between
184 the health inequality measures used in this study (i.e., ASMR for premature mortality) and those reported
185 in a previous BMJ study (i.e., standardized mortality ratios for all-cause mortality). While an analysis from
186 Australia – which used both measures – found a similar relationship with voting patterns, it would be valuable
187 to explore correlations and causal mechanisms across a wider variety of health measures by constituency in
188 future research. Second, the IMD is an area-based measure of socio-economic status, which is likely to
189 show smaller differences in health and mortality levels compared to individual measures of socio-economic
190 status, such as education and equalized household income [19]. Integrating large scale administrative data
191 on health, tax, and education would allow individual measures of socio-economic status to be routinely used
192 in official statistics alongside traditional area-based measures like the IMD. Despite numerous efforts, health
193 inequalities as measured by mortality and life expectancy have remained, and, in some case, recently increased
194 in England. Finding effective strategies to reduce health inequalities is an ongoing challenge that should be
195 a primary focus of all UK politicians.

196 References

- 197 [1] George Davey Smith and Daniel Dorling. “I’m all right, John”: Voting patterns and mortality in England
198 and Wales, 1981–92. *Bmj*, 313(7072):1573–1577, 1996.
- 199 [2] Donald Acheson et al. Independent inquiry into inequalities in health report. 2001.
- 200 [3] Mary Shaw, George Davey Smith, and Danny Dorling. Health inequalities and New Labour: how the
201 promises compare with real progress. *Bmj*, 330(7498):1016–1021, 2005.
- 202 [4] Ben Barr, James Higgerson, and Margaret Whitehead. Investigating the impact of the english health
203 inequalities strategy: time trend analysis. *BMJ*, 358, 2017.
- 204 [5] C Bambra, KE Smith, C Nwaru, N Bennett, V Albani, A Kingston, A Todd, and F Matthews. Targeting
205 Health Inequalities: Realising the Potential of Targets in Reducing Health Inequalities. 2023.
- 206 [6] Build an NHS fit for the future. [https://labour.org.uk/change/
207 build-an-nhs-fit-for-the-future/](https://labour.org.uk/change/build-an-nhs-fit-for-the-future/). Accessed: 2024-06-11.
- 208 [7] Office for Health Improvements and Disparities. Public Health Outcomes Framework: Method for the
209 Slope Index of Inequality Indicators. pages 1–6, 2024.

- 210 [8] Cutts, David and Goodwin, Matthew and Heath, Oliver and SurrIDGE, Paula. Brexit, the 2019 general
211 election and the realignment of British politics. *The Political Quarterly*, 91(1):7–23, 2020.
- 212 [9] Philip Clarke, Michelle Tew, Sarah McDonald, and John Glover. Mortality by commonwealth electoral
213 divisions in australia. *Public Health Information Development Unit, Torrens University Australia and*
214 *Centre for Health Policy, University of Melbourne*, 2016.
- 215 [10] Tymor Hamamsy, Michael Danziger, Jonathan Nagler, and Richard Bonneau. Viewing the us presidential
216 electoral map through the lens of public health. *Plos one*, 16(7):e0254001, 2021.
- 217 [11] Lindsay A Pearce, Rohan Borschmann, Jesse T Young, and Stuart A Kinner. Advancing cross-sectoral
218 data linkage to understand and address the health impacts of social exclusion: challenges and potential
219 solutions. *International Journal of Population Data Science*, 8(1), 2023.
- 220 [12] Leah S Richmond-Rakerd, Stephanie D’Souza, Signe Hald Andersen, Sean Hogan, Renate M Houts,
221 Richie Poulton, Sandhya Ramrakha, Avshalom Caspi, Barry J Milne, and Terrie E Moffitt. Clustering
222 of health, crime and social-welfare inequality in 4 million citizens from two nations. *Nature Human*
223 *Behaviour*, 4(3):255–264, 2020.
- 224 [13] Amanda I Adler, Ruth L Coleman, Jose Leal, William N Whiteley, Philip Clarke, and Rury R Holman.
225 Post-trial monitoring of a randomised controlled trial of intensive glycaemic control in type 2 diabetes
226 extended from 10 years to 24 years (ukpds 91). *The Lancet*, 2024.
- 227 [14] Peter Ueda, Thomas Wai-Chun Lung, Yuan Lu, Joshua A Salomon, Kazem Rahimi, Philip Clarke, and
228 Goodarz Danaei. Treatment gaps and potential cardiovascular risk reduction from expanded statin use
229 in the us and england. *PLoS One*, 13(3):e0190688, 2018.
- 230 [15] Mihai Picior. Tackling health inequalities through integrated care in english police custodies: an inclusion
231 perspective and model of care. *Journal of Integrated Care*, 32(2):131–144, 2024.
- 232 [16] Vahé Naflyan, C Gaughan, and Jasper Morgan. Coronavirus and vaccination rates in people aged 70
233 years and over by socio-demographic characteristic, england: 8 december 2020 to 9 may 2021. office for
234 national statistics, 2021, 2021.
- 235 [17] Elizabeth C Ohlsen, David Yankey, Clelia Pezzi, Jennifer L Kriss, Peng Jun Lu, Mei Chuan Hung, Maria
236 I Dionicio Bernabe, Gayathri S Kumar, Emily Jentes, Laurie D Elam-Evans, et al. Coronavirus disease
237 2019 (covid-19) vaccination coverage, intentions, attitudes, and barriers by race/ethnicity, language of
238 interview, and nativity—national immunization survey adult covid module, 22 april 2021–29 january
239 2022. *Clinical Infectious Diseases*, 75(Supplement_2):S182–S192, 2022.
- 240 [18] Richard Cookson, Susan Griffin, Ole F Norheim, Anthony J Culyer, and Kalipso Chalkidou. Distribu-
241 tional cost-effectiveness analysis comes of age. *Value in Health*, 24(1):118–120, 2021.
- 242 [19] Philip Clarke and Andrew Leigh. Death, dollars and degrees: socio-economic status and longevity in
243 australia. *Economic Papers: A journal of applied economics and policy*, 30(3):348–355, 2011.