

1 **Clinical Utility of the Molecular Microscope Diagnostic System in a Real-World**
2 **Transplant Cohort: Moving Towards a New Paradigm**

3

4 Andrea Fernandez Valledor¹ * MD, Cathrine M. Moeller¹ * MD, MSc, Gal Rubinstein¹,
5 Salwa Rahman¹ MD, Daniel Oren¹ MD MSc, Julia Baranowska¹ MD, Changhee Lee¹
6 BS, Ruben Salazar¹ MD, Carolyn Hennecken¹ MD, Afsana Rahman¹ MD, Boaz
7 Elad¹ MD, Dor Lotan¹ MD, Ersilia M. DeFilippis¹ MD, Adil Yunis¹ MD, Justin Fried¹
8 MD, Jayant Raihkelkar¹ MD, Kyung T. Oh¹, David Bae¹ MD, Edward Lin¹ MD, Sun
9 Hi. Lee¹ MD, Matthew Regan² MSN, MD, Melana Yuzelpolskaya¹ MD, Paolo
10 Colombo¹ MD, David T. Majure² MD, Farhana Latif ¹ MD, Kevin D. Clerkin ¹ MD,
11 Gabriel T. Sayer ¹ ** MD, Nir Uriel ¹ ** MD, MSc.

12

13 *Equally contributed

14 ** Co-senior authorship

15 ¹Division of Cardiology. Advanced Cardiac Care. Columbia University Irving Medical
16 Center.

17 ²Division of Cardiology, Department of Medicine, Weill Cornell Medicine, New York,
18 New York.

19

20 The institution receives grant support from Abbott, Abiomed and CareDx. Dr. Uriel is
21 on the medical advisory board for Livemetric, Leviticus and Revamp. Dr. Sayer has
22 been a consultant for Abbott and is on the medical advisory board for CareDx. K.J.C
23 receives NIH grant support (K23HL148528). D.B. receives institutional grant support
24 from Abiomed.

25

NOTE: This preprint reports new research that has not been certified by peer review and should not be used to guide clinical practice.

26 **RUNNING TITLE:** Clinical utility of the Molecular Microscope Diagnostic System in
27 Heart Transplantation

28

29 **Corresponding author:**

30 Nir Uriel MD, MSc. FACC.

31 Professor of Medicine.

32 Director of New York Presbyterian Heart Failure,

33 Heart Transplant and Mechanical Circulatory Support Programs.

34 Columbia University Irving Medical Center. Weill Cornell Medicine.

35 Email: nu2126@cumc.columbia.edu

36 X: @NirUrielMD

37

38 **WORD COUNT: 4085**

39

40

41

42

43

44

45

46

47

48

49

50

51 **ABSTRACT**

52 **Objectives:** To evaluate the clinical implications of adjunctive molecular gene
53 expression analysis (MMDx) of biopsy specimens in heart transplant (HT) recipients
54 with suspected rejection.

55 **Introduction:** Histopathological evaluation remains the standard method for
56 rejection diagnosis in HT. However, the wide interobserver variability combined with
57 a relatively common incidence of “biopsy-negative” rejection has raised concerns
58 about the likelihood of false-negative results. MMDx, which uses gene expression to
59 detect early signs of rejection, is a promising test to further refine the assessment of
60 HT rejection.

61 **Methods:** Single-center prospective study of 418 consecutive *for-cause*
62 endomyocardial biopsies performed between November 2022 and May 2024. Each
63 biopsy was graded based on histology and assessed for rejection patterns using
64 MMDx. MMDx results were deemed positive if borderline or definitive rejection was
65 present. The impact of MMDx results on clinical management was evaluated.
66 Primary outcomes were 1-year survival and graft dysfunction following MMDx-guided
67 clinical management. Secondary outcomes included changes in donor-specific
68 antibodies, MMDx gene transcripts, and donor-derived cell-free DNA (dd-cfDNA)
69 levels.

70 **Results:** We analyzed 418 molecular samples from 237 unique patients. Histology
71 identified rejection in 32 cases (7.7%), while MMDx identified rejection in 95 cases
72 (22.7%). Notably, in 79 of the 95 cases where MMDx identified rejection, histology
73 results were negative, with the majority of these cases being antibody-mediated
74 rejection (62.1%). Samples with rejection on MMDx were more likely to show a

75 combined elevation of dd-cfDNA and peripheral blood gene expression profiling than
76 those with borderline or negative MMDx results (36.7% vs 28.0% vs 10.3%;
77 $p < 0.001$). MMDx results led to the implementation of specific antirejection protocols
78 or changes in immunosuppression in 20.4% of cases, and in 73.4% of cases where
79 histology was negative and MMDx showed rejection. 1-year survival was better in
80 the positive MMDx group where clinical management was guided by MMDx results
81 (87.0% vs 78.6%; log rank $p = 0.0017$).

82 **Conclusions:** In our cohort, MMDx results more frequently indicated rejection than
83 histology, often leading to the initiation of antirejection treatment. Intervention guided
84 by positive MMDx results was associated with improved outcomes.

85

86 **Abbreviations:** HT: heart transplantation; MMDx: Molecular Microscope Diagnostic
87 System; EMB: endomyocardial biopsy; dd-cfDNA: donor-derived cell free DNA,
88 pGEP: peripheral gene-expression profiling; DSA: donor specific antibodies. ABMR:
89 antibody-mediated rejection on MMDx; TCMR: T-cell mediated rejection on MMDx;
90 pAMR pathological antibody-mediated rejection; ACR: acute cellular rejection
91 (histology).

92

93 **INTRODUCTION:**

94 Heart transplantation (HT) remains the preferred therapy for patients with advanced
95 heart failure who do not exhibit features of myocardial recovery and lack
96 contraindications (1). Despite refinements in immunosuppressive schemes, allograft
97 rejection remains a compelling cause of morbidity in the initial stages, and one of the
98 leading determinants of long-term graft survival (1-4). Although the gold standard for
99 rejection diagnosis is the histological assessment of the endomyocardial biopsy

100 (EMB), its reliability is hindered by the reliance on expertise in pattern recognition,
101 the lack of consensus on complement-independent antibody-mediated rejection
102 pathways, and the high prevalence of biopsy-negative rejection (5-8).

103

104 Over the past few years, we have witnessed a rise in the adoption of novel rejection
105 surveillance tools, such as donor-derived cell-free DNA (dd-cfDNA) and the
106 Molecular Microscope Diagnostic System (MMDx, One Lambda, CA) (6,9-13). These
107 advancements have enabled the early detection of rejection even before histological
108 changes become apparent (14). As a result, physicians increasingly encounter
109 situations with discrepant results in which the role of the clinician becomes more
110 indispensable than ever, as multiple variables need to be incorporated into
111 therapeutic decision-making. The molecular diagnosis provided by MMDx offers a
112 probabilistic assessment of rejection independent of histological findings, enhancing
113 diagnostic accuracy with high precision (6). Supervised molecular classifiers have
114 demonstrated superior predictive ability for molecular rejection, with areas under the
115 curve > 0.87 , compared to histologic rejection < 0.78 (11). Previous research has
116 examined the correlation between MMDx and histology as well as the association
117 between dd-cfDNA and MMDx-rejection related transcripts (15-18). However, there
118 is still limited understanding of how integrating MMDx into clinical decision-making
119 processes can impact patient care. Therefore, we aimed to assess the clinical utility
120 of MMDx analysis in a cohort of heart transplant recipients undergoing EMB for
121 clinical indication.

122

123

124 **METHODS:**

125 *Study design and population:*

126 Consecutive HT recipients that underwent EMB due to suspected rejection between
127 November 2022 and May 2024 at our institution were prospectively included. This
128 study was approved by the Institutional Review Board with a waiver of informed
129 consent. Causes for biopsy included: 1) clinical symptoms compatible with rejection
130 (e.g. heart failure symptoms or chest pain); 2) de-novo allograft dysfunction [defined
131 as left ventricular ejection fraction (LVEF) less than 50%, or a decline in LVEF >10%
132 from the previous echocardiography (TTE); 3) elevated dd-cfDNA levels ($\geq 0.12\%$,
133 Allosure, CareDX); 4) de novo or rising donor specific antibodies (DSA), 5) elevated
134 biomarkers (NT-proBNP and/or high-sensitivity troponin T), and/or 6) follow-up on
135 recently treated rejection. EMB was performed in the standard fashion with 5-6
136 samples obtained. Three tissue samples were sent for histological evaluation and
137 immunohistochemistry, 1 sample was sent for immunofluorescence and between
138 one to two samples were sent for molecular analysis (MMDx).

139

140 *Data collection:*

141 Baseline characteristics, transplant data information, current immunosuppressive
142 regimen, echocardiography assessment, presence and type of DSA, cardiac
143 biomarkers and hemodynamics at the time of biopsy, were systematically collected
144 for each sample. This also included paired dd-cfDNA levels and peripheral blood
145 gene-expression profiling (pGEP). Viral polymerase chain reactions for Epstein-Barr
146 virus (EBV), BK and cytomegalovirus (CMV) were also systematically checked at the
147 time of pGEP/ dd-cfDNA screening.

148

149 *Non-invasive monitoring:*

150 Since 2019, our center has used a non-invasive rejection surveillance protocol in
151 which dd-cfDNA and pGEP testing are standard of care, commencing at the 6th
152 week for dd-cfDNA and at the 8th week for pGEP. These tests are conducted
153 monthly during the first-year post-transplant and then shift to a quarterly schedule
154 until the 3rd year post-transplant. After the first two years, additional dd-cfDNA and
155 pGEP samples are collected as clinically indicated. At our institution, positive dd-
156 cfDNA levels were defined as $\geq 0.12\%$. For the purposes of this study, we report
157 results for the $\geq 0.12\%$ threshold as well as the $\geq 0.20\%$ threshold, which has been
158 used to define rejection in other studies. We used two thresholds for pGEP positivity:
159 >30 within the first 5 months after transplant and >34 for ≥ 6 months post-transplant.
160 Only dd-cfDNA levels and pGEP results obtained within 31 days of biopsy and those
161 from single organ recipients were included in the analysis.

162

163 *Donor specific antibodies (DSA):*

164 Our protocol includes the evaluation of DSA at specific intervals: weeks 1, 4, and
165 months 3, 6, 9, 12, followed by every six months after the first year using the
166 Luminex assay. The threshold for antibody detection is set at medium fluorescence
167 intensity (MFI) > 1000 . DSA were classified as class I or II antibodies and further
168 categorized based on MFI levels as follows: low (<4000), moderate (4000-10000),
169 high (10000-20000) and very high (>20000). We also routinely screened patient for
170 major histocompatibility complex class I chain-related gene A (MIC-A) antibodies.

171

172 *Hemodynamics:*

173 At the time of EMB, right heart catheterization was routinely performed, with
174 standard assessment of hemodynamics and using the assumed Fick method to

175 calculate cardiac output. Abnormal hemodynamics were defined as a cardiac index
176 $<2.2 \text{ l/min}\cdot\text{m}^2$, mean pulmonary pressures $> 24 \text{ mmHg}$, pulmonary capillary wedge
177 pressure $>15 \text{ mmHg}$ or right atrial pressure $>8 \text{ mmHg}$.

178

179 *Histological assessment:*

180 Histological evaluation was performed by three pathologists who were blinded to
181 clinical information. All biopsies were routinely evaluated for histopathologic
182 evidence of acute cellular rejection (ACR), and antibody-mediated rejection (pAMR).
183 All biopsies were screened for complement deposition (C4d) and intravascular
184 monocyte presence (CD68). Biopsies were graded based on the criteria outlined in
185 the International Society of Heart and Lung Transplant (ISHLT) 2004 guidelines (19)
186 for acute cellular rejection and the revised 2013 guidelines for AMR (20-21).
187 Histological rejection was identified as positive if ISHLT grading $>1R/1A$ rejection was
188 present and/or pAMR > 0 . In cases where positive results were followed by
189 treatment, a repeat biopsy was typically conducted within two weeks for ACR and
190 within four to eight weeks after antibody-mediated rejection treatment.

191

192 *Molecular Microscope Diagnostic System (MMDx):*

193 MMDx is a central diagnostic system that uses microarrays to measure mRNA levels
194 in transplants biopsies. Archetype scores for normal (NRI), T-cell mediated rejection
195 (TCMR), antibody-mediated rejection (ABMR) and injury that go from 0 to 1 are
196 given for each biopsy. The models translate these archetypes into rejection
197 probabilities. Generally, a definitive diagnosis is established when the probability
198 exceeds 0.6. Intermediate cases in which the inflammation does not reach the extent
199 to be considered as definite rejection are defined as borderline rejection. The MMDx

200 report provides additional molecular data including pathogenesis-based transcript set
201 scores and transcript expression scores relating to the different rejection subtypes
202 and parenchymal injury. For each score, a normal limit is given, defined as the 95th
203 percentile score in the normal biopsies (6). "Rejection" or "definitive rejection" on
204 MMDx was defined as the presence of TCMR, ABMR, or mixed rejection. "Positive"
205 MMDx results included borderline rejection along with definitive rejection due to the
206 similarities of borderline cases to those with definitive rejection. Cases classified as
207 normal (NRI) or with parenchymal injury were considered negative MMDx.

208

209 *Clinical decision making:*

210 The multidisciplinary care team integrated clinical presentation, histological and
211 molecular results, dd-cfDNA levels and pGEP scores, biomarkers, graft function and
212 hemodynamics, presence and trajectory of DSA, history of rejection episodes and
213 past treatments to determine subsequent treatment plans. The final decision is not
214 protocolized and is left to the discretion of clinicians. **Figure 1.**

215

216 *Outcomes:*

217 We evaluated how the implementation of MMDx influenced clinical management and
218 its impact on outcomes. Specifically, we compared 1-year survival rates and the
219 incidence of graft dysfunction based on MMDx results and subsequent MMDx-
220 guided interventions. Graft dysfunction was defined as a new occurrence of LVEF
221 <50% or a decline in LVEF >10% during the follow-up period. Patients already
222 exhibiting graft dysfunction at the time of MMDx were censored from this analysis.

223 Secondary outcomes included changes in MFI levels of DSA, MMDx-transcripts, and
224 dd-cfDNA in the subsequent screening following treatment adjustment based on
225 MMDx results. Improvement in DSA was defined as a reduction in MFI category
226 (e.g., from high to moderate) or a 25% reduction in MFI levels if the baseline MFI
227 was >4000. We also monitored the development of de novo DSA if MFI was >2000.
228 Additionally, we measured changes in kidney function, and infection rates within
229 three months following the increase in immunosuppression.

230

231 *Data Analysis and Statistical Methods:*

232 Statistical analysis was performed using R Core Team (2020): A language and
233 environment for statistical computing, R Foundation for Statistical Computing,
234 Vienna, Austria version 4.1.3. Scatter and bar plots were created using Microsoft
235 Office Excel. The Shapiro-Wilk test was performed on all continuous variables to
236 determine normality. Gaussian distributed continuous variables were reported as
237 means and standard deviations. Non-gaussian distributed variables were reported as
238 median and interquartile range. Categorical variables were summarized as n (%) and
239 compared using Fisher's Exact Test or chi square test as appropriate for
240 independent variables or McNemar's test for paired variables. Parametric variables
241 were compared using independent two-sample or paired sample t-test as
242 appropriate. Non-parametric variables were compared using Kruskal-Wallis test for
243 independent samples, and Friedman test for dependent samples. A p-value of 0.05
244 was considered statistically significant. Survival analysis was conducted using the
245 Kaplan Meier method to identify overall survival and freedom from graft dysfunction
246 at 1- year stratified based on the MMDx result and management. A log-rank test was
247 employed to evaluate the difference between the survival curves.

248

249 **RESULTS:**

250 During the study period, 441 paired histology and MMDx EMB samples were
251 identified. Of these, 23 were excluded as they were performed as part of our
252 surveillance monitoring protocol. The final cohort consisted of 418 samples from 248
253 heart transplant recipients. **Figure 2.**

254

255 *Baseline Characteristics*

256 Patient baseline characteristics are represented in **Table 1S**. The leading indication
257 for biopsy was an elevated dd-cfDNA levels in 40.2% of the cases, followed by
258 symptoms (21.1%), rising DSA level (13.4%), de-novo or worsening allograft
259 dysfunction (12.2%), follow-up on recently treated rejection (11.2%) and elevated
260 biomarkers (1.9%).

261

262 *Concordance and Discordance between Histology and MMDx*

263 Concordance and discordance between histology and MMDx are shown in **Figure**
264 **3A**. Histological analysis detected rejection in 32 samples (7.7%), whereas MMDx
265 identified rejection in 95 samples (22.7%). The overall concordance between
266 histology and MMDx was 76.8% (S=318), primarily driven by negative concordance
267 (73.2%; S=303). Of the 96 samples with discordant results (23.2%), 79 samples
268 (82.3%) had negative histology, but rejection detected by MMDx. In this group,
269 MMDx identified ABMR in 48 samples (60.7%), TCMR in 26 samples (32.9%), and
270 mixed rejection in 5 samples (6.3%). **Figure 3A**. Of the 17 cases (16.0%) with
271 positive histology and negative MMDx, 9 (53.0%) exhibited low-grade rejection on
272 histology (2 cases of 1B rejection and 7 cases of pAMR=1i). **Table 2S.**

273 A trend towards a higher prevalence of DSA was observed when both histology and
274 MMDx indicated rejection (77.3%), compared to cases where only histology (64.7%)
275 or only MMDx (44.3%) indicated rejection ($p=0.07$). However, the presence of
276 moderate-level or greater DSA (MFI >4000) was more common when both
277 techniques detected rejection compared to cases where only one method detected
278 rejection ($p<0.001$). **Table 2S**.

279

280

281 *Concordance and Discordance between dd-cfDNA and MMDx*

282 Concordance and discordance between dd-cfDNA levels at 0.12% and 0.20%
283 thresholds with MMDx are depicted in **Figures 3B** and **3C** respectively. When
284 comparing positive MMDx results to dd-cfDNA levels, the concordance was higher
285 using the 0.20% threshold (70.1%) compared to the 0.12% threshold (64.6%). This
286 improvement in concordance was mainly due to an increase in negative
287 concordance at the higher threshold.

288

289 *MMDx results*

290 Samples in which MMDx showed rejection were further out from transplant and had
291 a higher prevalence of prior treated rejections than samples with borderline or
292 negative MMDx results. **Table 1**. Positive dd-cfDNA results were observed in 92.6%
293 and 83.8% of cases with rejection on MMDx at $\geq 0.12\%$ and $\geq 0.20\%$ thresholds,
294 respectively. dd-cfDNA levels were also higher in cases of definitive rejection (0.61%
295 [0.27-1.40]) compared to those with borderline (0.33% [0.19-0.59]) or negative
296 MMDx results (0.20% [0.14-0.34]; $p<0.001$). **Figure 1S**. That contrast with histology,

297 where dd-cfDNA levels did not significantly differ between rejection and no-rejection
298 samples (0.44% [0.20-1.70] vs. 0.24% [0.11-0.52]; $p=0.06$).

299 When combined with pGEP, samples with rejection on MMDx had higher rates of
300 combined (+)pGEP/(+)dd-cfDNA (36.7%) compared to samples with borderline
301 (28.0%) or negative MMDx results (10.3%); $p<0.001$. Specifically, samples with
302 (+)pGEP/(+)dd-cfDNA had three times higher rates of definitive rejection detected by
303 MMDx (36.7% vs 10.3%; $p<0.001$). Furthermore, when compared to samples with (-
304)pGEP/(-)dd-cfDNA, the presence of (+)pGEP/(+)dd-cfDNA was associated with a
305 fourfold increase in the rates of definitive rejection on MMDx (36.7% vs 8.3%;
306 $p<0.001$). **Table 2.**

307 The prevalence of positive DSA and moderate strength or greater DSA was similar
308 between cases of definitive rejection and borderline MMDx results (49.5% vs. 57.1%;
309 $p = 0.30$ and 28.4% vs. 34.5%; $p = 0.38$, respectively). However, these prevalences
310 were significantly higher compared to samples with negative MMDx ($p=0.045$ for
311 DSA and $p=0.02$ for higher MFI); **Table 2.** The presence of de-novo graft dysfunction
312 ($p=0.82$) or abnormal hemodynamics ($p=0.34$) at the time of biopsy was similar
313 between the groups. **Table 3S.** Samples with rejection were more commonly from
314 patients receiving belatacept (27.4% vs 10.7% vs 7.9%; $p<0.001$) or undergoing
315 extracorporeal photopheresis (ECP) (7.4% vs 3.6% vs 0.8%; $p=0.006$) as part of
316 their immunosuppressive regimen compared to samples with borderline or negative
317 MMDx results. **Table 3S.**

318

319 *MMDx and clinical decision making:*

320 The addition of MMDx results altered clinical management in 20.3% of cases
321 (84/414). **Figure 4.** In instances of negative histology and rejection on MMDx
322 (N=79), immunosuppressive therapy was altered in 73.4% of cases (58/79).
323 Specifically, 17 patients (29.3%) underwent acute ABMR protocols, which included
324 bortezomib, plasmapheresis (PLEX), and intravenous immunoglobulin (IVIg) in 11
325 cases; thymoglobulin, PLEX, IVIg, and rituximab in 2 cases; or rituximab and IVIg in
326 4 cases. Sixteen patients (27.6%) received pulse steroids alone, and 25 patients
327 (43.1%) had their chronic immunosuppression regimen intensified. In 15 patients, a
328 new drug or therapy was introduced (ECP in 6 patients, IVIg in 4 patients,
329 mycophenolate in 3 patients and reinitiation of calcineurin inhibitor therapy in 2
330 patients). The remaining 10 patients had the dosing of existing therapies increased.
331 Among the samples with borderline rejection, 18 (85.7%) patients had their
332 immunosuppression increased, 2 (9.5%) received steroid pulse and in 1 case (4.8%)
333 the patient was not weaned off prednisone. All the cases with changes to treatment
334 had elevated dd-cfDNA levels.

335 Conversely, in cases where histological rejection was present, the absence of
336 rejection on MMDx also influenced clinical decisions. Specifically, in 3 out of 17 such
337 cases, we either abstained from treatment or adopted a less aggressive approach
338 based on MMDx results. This included 2 cases of pAMR 1i and 1 case of pAMR 2.

339 **Figure 4.**

340

341 *Survival and graft function*

342 At the 1-year follow-up, patients who had positive MMDx results and whose
343 treatment was guided by those results (N=81) showed a survival rate of 87.0%,
344 which was comparable to the survival rate of patients with negative MMDx results

345 (89.0%). Conversely, among patients with positive MMDx results who did not
346 undergo a change in therapy (N=98), the survival rate was significantly lower at
347 78.6% (log-rank $p=0.02$). **Figure 6**. No significant differences were observed in the
348 occurrence of graft dysfunction between the groups (log-rank test; $p = 0.66$).

349

350 *Change in dd-cfDNA, DSA levels, and incidence of rejection during follow-up*

351 An improvement in dd-cfDNA levels, defined as a 25% reduction following treatment,
352 was observed in 76% of patients who were treated based on MMDx results.
353 Conversely, only 36% of patients with positive MMDx who did not receive treatment
354 showed a reduction in dd-cfDNA levels ($p=0.04$). Improvement in DSA was observed
355 in 28% of cases in the active intervention group compared to 10% in the group
356 without active treatment ($p=0.012$). The median time from MMDx to follow-up DSA
357 was comparable between the groups: 29 days [19-58] in the intervention group vs 36
358 days [24-73.5] in the non-intervention group ($p=0.126$). The rates of rejection during
359 follow-up were similar between the groups, both by histology (6.25% vs 6.45%;
360 $p=0.66$) and by MMDx (33.3% vs 37.5%; $p=0.91$).

361

362 *Change in gene expression transcripts:*

363 32 episodes of rejection on MMDx with a follow-up MMDx were identified. Following
364 treatment, cases of TCMR showed significant improvement in TCMR's rejection
365 scores, all TCMR-related transcripts (**Figure 5; Table 4S**), and injury-related
366 transcripts (QCMAT and HT1) on the following MMDx sample. Similarly, in cases of
367 ABMR, all transcript-related clusters associated with ABMR (**Figure 5, Table 5S**)
368 decreased after treatment. **Figure 2S** represents the remaining transcript set.

369

370 *Kidney function*

371 Median eGFR values at the time of biopsy for patients who received treatment based
372 on MMDx were 72.5 mL/min/1.73m² [50.3 – 90.0]. No significant differences were
373 found in eGFR values at 1 month (75.7 [49.0 – 90.0]) or 3 months during follow-up
374 (70.0 [51.3 – 90.0]; p=0.74). **Figure 3S.**

375

376 *Infection and malignancy*

377 Among the 81 episodes of rejection treated based on MMDx results, 5 patients
378 (6.2%) experienced a subsequent infection within 3 months requiring hospitalization.
379 The infections included line-associated bacteremia related to ECP, infectious
380 diarrhea, urinary tract infection, and soft-tissue cellulitis. Additionally, 7 patients
381 (8.6%) experienced active viremia post-treatment, that did not require further
382 intervention: 3 patients had BK viremia, 3 had EBV viremia, and 1 had CMV viremia,
383 with a median viral load of 340 [130-385] copies/mL. One patient, who had initially
384 been treated with pulse steroids due to TCMR was diagnosed with localized lung
385 adenocarcinoma 13 months later.

386

387 **DISCUSSION:**

388 To our knowledge, this is the first evaluation of the clinical utility of MMDx in a cohort
389 of heart transplant recipients with suspected rejection. Our major findings are as
390 follows: 1) MMDx detected rejection three times more frequently than histology; 2) A
391 pattern in dd-cfDNA levels was observed across cases with definitive, borderline,
392 and negative MMDx results; the rates of rejection detected by MMDx were four times
393 higher when both dd-cfDNA and pGEP levels were elevated; 3) Overall,
394 immunosuppression was modified in response to MMDx in 20% of the cases and in

395 73% of the instances where histology was negative and MMDx showed rejection; 4)
396 For patients with a positive MMDx, survival was superior in patients who underwent
397 treatment guided by MMDx compared to those who did not receive treatment based
398 on MMDx findings; 5) In the active treatment group, both dd-cfDNA levels, DSA and
399 MMDx rejection-related transcripts showed significant improvement during follow-up.

400 While histological assessment has been pivotal in understanding rejection patterns
401 and crucial for the evolution of transplantation, its limitations have become evident
402 (5,7). The incorporation of new tools like dd-cfDNA and MMDx, combined with the
403 high incidence of biopsy-negative rejection in clinical practice, has highlighted the
404 need to reassess how we determine the presence of rejection in the contemporary
405 era (6, 22-23). Several studies have shown that dd-cfDNA elevations precede
406 histological rejection and that elevated dd-cfDNA levels correlates more strongly with
407 molecular diagnosis than with conventional histology (9, 16, 18). This highlights the
408 superior diagnostic precision of MMDx, especially in cases where there are
409 discrepancies between histological and molecular findings, underscoring the
410 enhanced accuracy of MMDx over histology (11, 22, 25). The recently published
411 SHORE (Surveillance HeartCare Outcomes Registry) (24) highlighted the diagnostic
412 utility of combining dd-cfDNA and pGEP in identifying ACR on histology. Notably,
413 only 9.3% of samples with both elevated dd-cfDNA and pGEP showed histological
414 evidence of rejection. Whether these low rates reflect a lack of specificity of dd-
415 cfDNA or the low sensitivity of histology for detecting rejection remains a subject of
416 debate. Our study found that the utilization of MMDx resulted in a rejection rate
417 nearly three times higher than traditional histology (22.7% vs 7.7%). This significant
418 increase suggests that MMDx may be more sensitive in detecting rejection than
419 conventional histology. Moreover, samples with rejection identified by MMDx

420 exhibited higher rates of positive dd-cfDNA results and elevated dd-cfDNA levels
421 compared to those with negative MMDx results. This contrasts with histology, where
422 dd-cfDNA levels did not significantly differ between rejection and no-rejection states.
423 Interestingly, a trend in dd-cfDNA levels was observed across definitive rejection,
424 borderline rejection, and negative MMDx cases, suggesting that rejection might be
425 better understood as a continuous spectrum of myocardial injury rather than a binary
426 condition. This is further supported by the observation that samples with rejection
427 detected by both MMDx and histology exhibited the highest dd-cfDNA levels
428 compared to samples where only one method detected rejection. This implies that
429 MMDx may be more effective in capturing this continuum of myocardial injury than
430 traditional histology, potentially providing a more nuanced and accurate assessment
431 of rejection.

432 The similarity in the presence of DSA and higher MFI antibody titers between cases
433 of definitive and borderline rejection, despite lower levels of dd-cfDNA and rejection
434 rates on histology in borderline cases, suggests that borderline changes may
435 represent an early stage of rejection rather than a benign finding (14,18). Indeed, in
436 our cohort, cases of borderline rejection were followed by treatment in approximately
437 1 out of 3 cases. This continuum perspective aligns with findings from the Trifecta-
438 Heart study (18), which reported higher dd-cfDNA levels in definitive rejection cases
439 compared to those with borderline changes or negative MMDx. These results mirror
440 previous observations from kidney biopsies (17,25), reinforcing the correlation
441 between non-invasive markers and molecular diagnostics.

442

443 In our cohort, the presence of a combined (+)pGEP/(+)dd-cfDNA was associated
444 with a 4-fold increase in the rates of rejection on MMDx compared to samples with
445 both negative results (36.7% vs 8.3%). Likewise, a (+)pGEP/(+)dd-cfDNA was nearly
446 three times more frequent in samples with borderline rejection than those with
447 normal MMDx (28.0% vs 10.3%; $p < 0.001$). These data suggest that the combination
448 of both tests may provide an improved performance over each test alone, similar to
449 what was previously described in the SHORE registry (24).

450

451 In cases where histology was negative and MMDx showed rejection, ABMR was
452 detected nearly twice as frequently as TCMR. This finding aligns with the
453 INTERHEART study, which demonstrated that many biopsies initially classified as
454 negative or having low-grade rejection based on histology actually exhibited some
455 ABMR changes (14).

456 In our cohort, in nearly 75% of cases where histology was negative and MMDx
457 detected rejection, patients were subsequently treated based on MMDx results. 29%
458 of those cases received ABMR specific protocols. The increasing detection of ABMR
459 is of particular interest, given the well-known limitations of histology in detecting
460 pAMR. Improving the detection of ABMR may provide a key to addressing incipient
461 inflammation and injury, potentially ameliorating or averting the progression of
462 cardiac allograft vasculopathy (CAV). Although our study was underpowered to
463 evaluate the impact of interventions on CAV outcomes due to the reduced follow-up
464 time, patients whose treatment was guided by positive MMDx results demonstrated
465 improved 1-year survival rates. In these cases, treatment was followed by a
466 significant reduction in dd-cfDNA levels, DSA strength and MMDx-rejection

467 transcripts. Importantly, this treatment approach did not adversely impact kidney
468 function, and the rates of clinically relevant infectious complications were acceptable.

469 Taken together, these findings highlight the potential role of MMDx in guiding
470 therapeutic interventions and question whether histology should remain the gold
471 standard for rejection diagnosis. Nevertheless, longer follow-up and carefully
472 designed trials are necessary to corroborate our findings. Future research should
473 focus on whether acting on early signs of rejection will play a crucial role in
474 preserving graft function and preventing the initiation and/or progression of CAV.

475 This study has several limitations. First, this is a single-center analysis which may
476 limit its external generalizability. Second, we did not have a single pathologist review
477 all histology, but the pathologists were blinded to MMDx results and clinical data in
478 all cases. Third, dd-cfDNA/pGEP levels were not sent concurrently with biopsy in
479 most cases although we limited the separation between these labs and MMDx to 31
480 days. Lastly, the response to MMDx results was not protocolized and was left up to
481 the discretion of individual clinicians.

482

483 **Conclusion:** Our results highlight the potential of MMDx to provide complementary
484 information aiding in the diagnosis of allograft rejection and guiding clinical
485 management. These data raise concerns about whether histology should continue to
486 be used as the gold standard for rejection surveillance.

487

488

489 **Conflict of interest:** The institution receives grant support from
490 Abbott, Abiomed and CareDx. Dr. Uriel is on the medical advisory board

491 for Livemetric, Leviticus and Revamp. Dr. Sayer has been a consultant for Abbott
492 and is on the medical advisory board for CareDx. K.J.C receives NIH grant support
493 (K23HL148528). D.B. receives institutional grants support from Abiomed. All other
494 authors report non-financial contributions or conflicts of interest. Dr. Moeller receives
495 a grant from ISHLT and CareDx. This study was approved by the Columbia
496 University Institutional Review Board with a waiver of informed consent.

497

498 **Author contributions:** all authors contributed significantly to the production of this
499 manuscript and all authors have offered final approval of the submitted version.

500

501 **Acknowledgements:** Andrea Fernandez Valledor received grant support by the
502 Alfonso Martin Escudero Foundation.

503

504

505

506

507 REFERENCES

508

509 1. Koomalsingh K, Kobashigawa JA. The future of cardiac transplantation. *Ann*
510 *Cardiothorac Surg.* 2018;7:135–142.

511 2. Mehra MR. Heart transplantation at 50. *Lancet.* 2017;390:e43–e45.

512 3. Khush KK, Hsich E, Potena L, Cherikh WS, Chambers DC, Harhay MO, et al. The
513 International Thoracic Organ Transplant Registry of the International Society for
514 Heart and Lung Transplantation: Thirty-eighth adult heart transplantation report —
515 2021; Focus on recipient characteristics. *J Hear Lung Transplant.* Elsevier Inc.;
516 2021;40:1035–49.

517 4. Colvin MM, Cook JL, Chang P, Francis G, Hsu DT, Kiernan MS, et al. Antibody-
518 mediated rejection in cardiac transplantation: Emerging knowledge in diagnosis and

- 519 management: A scientific statement from the American Heart Association: Endorsed
520 by the international society for heart and lung transplantation. *Circulation*. 2015.
- 521 5. Shanes JG, Ghali J, Billingham ME, Ferrans VJ, Fenoglio JJ, Edwards WD, et al.
522 Interobserver variability in the pathologic interpretation of endomyocardial biopsy
523 results. *Circulation*. 1987 Feb;75(2):401–5.(6)
- 524 6. Halloran PF, Potena L, Van Huyen JD, et al. Building a tissue-based molecular
525 diagnostic system in heart transplant rejection: the heart Molecular Microscope
526 Diagnostic (MMDx) System. *J Heart Lung Transplant*. 2017;36:1192–1200.
- 527 7. Furness PN, Taub N, Assmann KJ, et al. International variation in histologic
528 grading is large, and persistent feedback does not improve reproducibility. *Am J*
529 *Surg Pathol*. 2003;27:805–810.
- 530 8. Crespo-Leiro MG, Zuckermann A, Bara C, et al. Concordance among pathologists
531 in the second cardiac allograft rejection gene expression observational study
532 (CARGO II). *Transplantation*. 2012;94:1172–1177.
- 533 9. Madill-Thomsen KS, Reeve J, Aliabadi-Zuckermann A, et al. Assessing the
534 Relationship Between Molecular Rejection and Parenchymal Injury in Heart
535 Transplant Biopsies. *Transplantation*. 2022;106:2205.
- 536 10. Halloran PF, Madill-Thomsen KS. The Molecular Microscope Diagnostic System:
537 Assessment of Rejection and Injury in Heart Transplant Biopsies. *Transplantation*.
538 2023 Jan 1;107(1):27–44.
- 539 11. Parkes MD, Aliabadi AZ, Cadeiras M, et al. An integrated molecular diagnostic
540 report for heart transplant biopsies using an ensemble of diagnostic algorithms. *J*
541 *Heart Lung Transplant*. 2019;38:636–646.
- 542 12. Khush KK, Patel J, Pinney S, Kao A, Alharethi R, DePasquale E, Ewald G,
543 Berman P, Kanwar M, Hiller D, Yee JP, Woodward RN, Hall S, Kobashigawa J.

- 544 Noninvasive detection of graft injury after heart transplant using donor-derived cell-
545 free DNA: A prospective multicenter study. *Am J Transplant*. 2019
- 546 13. Agbor-Enoh S, Shah P, Tunc I, Hsu S, Russell S, Feller E, et al. Cell-Free DNA
547 to Detect Heart Allograft Acute Rejection. *Circulation*. 2021 Mar 23;143(12):1184–97.
- 548 14. Halloran PF, Madill-Thomsen K, Aliabadi-Zuckermann AZ, et al. Many heart
549 transplant biopsies currently diagnosed as no rejection have mild molecular
550 antibody-mediated rejection-related changes. *J Heart Lung Transplant*.
551 2022;41:334–344.
- 552 15. Alam A, Van Zyl J, Paul Milligan G, Michelle McKean S, Patel R, Anne Hall S.
553 Evolving the surveillance and workup of heart transplant rejection: A real-world
554 analysis of the Molecular Microscope Diagnostic System. *Am J Transplant*. 2022
555 Oct;22(10):2443–50.
- 556 16. Lee DH, Usmani A, Wu R, et al. Relationship Between Donor Derived Cell-Free
557 DNA and Tissue-Based Rejection-Related Transcripts In Heart Transplantation. *J*
558 *Heart Lung Transplant*. 2024:S1053-2498(24)00055-X.
- 559 17. Halloran PF, Reeve J, Madill-Thomsen KS, et al.; Trifecta Investigators. The
560 Trifecta study: comparing plasma levels of donor-derived cell-free DNA with the
561 molecular phenotype of kidney transplant biopsies. *J Am Soc Nephrol*. 2022;33:387–
562 400.
- 563 18. Halloran PF, Reeve J, Mackova M, Madill-Thomsen KS, Demko Z, Olymbios M,
564 Campbell P, Melenovsky V, Gong T, Hall S, Stehlik J. Comparing Plasma Donor-
565 derived Cell-free DNA to Gene Expression in Endomyocardial Biopsies in the
566 Trifecta-Heart Study. *Transplantation*. 2024
- 567 19. Billingham M, Kobashigawa JA. The revised ISHLT heart biopsy grading scale. *J*
568 *Heart Lung Transplant*. 2005;24:1709.

- 569 20. Berry GJ, Burke MM, Andersen C, et al. The 2013 International Society for Heart
570 and Lung Transplantation Working Formulation for the standardization of
571 nomenclature in the pathologic diagnosis of antibody-mediated rejection in heart
572 transplantation. *J Heart Lung Transplant*. 2013;32:1147–1162.
- 573 21. Berry GJ, Angelini A, Burke MM, et al. The ISHLT working formulation for
574 pathologic diagnosis of antibody-mediated rejection in heart transplantation:
575 evolution and current status (2005-2011). *J Heart Lung Transplant*. 2011;30:601–
576 611.
- 577 22. De Vlaminc I, Valantine HA, Snyder TM, Strehl C, Cohen G, Luikart H, et al.
578 Circulating Cell-Free DNA Enables Noninvasive Diagnosis of Heart Transplant
579 Rejection. *Science Translational Medicine*. 2014 Jun 18;6(241):241ra77-241ra77.
- 580 23. Kim PJ, Olymbios M, Siu A, et al. A novel donor-derived cell-free DNA assay for
581 the detection of acute rejection in heart transplantation. *J Heart Lung Transplant*.
582 2022;41:919–927.
- 583 24. Khush K, Hall S, Kao A, Raval N, Dhingra R, Shah P, Bellumkonda L,
584 Ravichandran A, Van Bakel A, Uriel N, Patel S, Pinney S, DePasquale E, Baran DA,
585 Pinney K, Oreschak K, Kobulnik J, Shen L, Teuteberg J. Surveillance with dual
586 noninvasive testing for acute cellular rejection after heart transplantation: Outcomes
587 from the Surveillance HeartCare Outcomes Registry. *J Heart Lung Transplant*. 2024
588 25. Madill-Thomsen K, Perkowska-Ptasińska A, Böhmig GA, Eskandary F, Einecke
589 G, Gupta G, et al. Discrepancy analysis comparing molecular and histology
590 diagnoses in kidney transplant biopsies. *Am J Transplant*. 2020 May;20(5):1341–50.
591
592
593

594

595

596

597 **Tables**

598 **Table 1: sample characteristics stratified by MMDx results**

	Negative (S=239)	Borderline (S=84)	Definitive (S=95)	P-value
Time OHT to MMDX (m)	21.0 [4.00, 78.0]	20.0 [10.0, 49.0]	50.0 [17.8, 94.3]	0.01
Prior ACR	109 (45.6%)	51 (60.7%)	62 (65.3%)	0.002
Prior pAMR	40 (16.7%)	30 (35.7%)	42 (44.2%)	<0.001
LVEF%	53.5 [40.0, 60.0]	55.0 [42.5, 63.0]	55.0 [47.0, 60.0]	0.42
Non-HLA Ab	88 (37.4%)	39 (47.0%)	52 (54.7%)	0.03
NA	5 (2.1%)	1 (1.2%)	0 (0%)	
Positive Histology	8 (3.3%)	9 (10.7%)	15 (15.8%)	0.002
ACR>1R/1A	1 (0.4%)	5 (6.0%)	4 (4.2%)	0.10
pAMR>0	6 (2.5%)	5 (6.0%)	11 (11.6%)	0.02
pAMR>1	4 (1.7%)	3 (3.6%)	4 (4.2%)	0.34
MMDX Results				-
Rejection score	0.14 [0.05-0.25]	0.470 [0.42, 0.56]	0.780 [0.64, 0.93]	
ABMR	0 (0%)	0 (0%)	59 (62.1%)	
TCMR	0 (0%)	0 (0%)	30 (31.6%)	
MIXED	0 (0%)	0 (0%)	6 (6.3%)	
BORDERLINE	0 (0%)	84 (100%)	0 (0%)	
INJURY	30 (12.6%)	0 (0%)	0 (0%)	
NRI	209 (87.4%)	0 (0%)	0 (0%)	

599

600 **ABMR:** antibody mediated rejection; **ACR:** acute cellular rejection; **M:** months; **NRI:**
 601 normal; **pAMR:** pathological antibody mediated rejection; **TCMR:** T-cell mediated
 602 rejection.

603

604

605

606

607

608 **Table 2: non-invasive biomarkers and DSA stratified based on MMDx results**

	Negative (S=239)	Borderline (S=84)	Definitive (S=95)	P-value
dd-cfDNA\geq 0.12%	75 (58.6%)	48 (82.7%)	63 (92.6%)	<0.001
dd-cfDNA\geq 0.20%	51 (39.8%)	44 (75.9%)	57 (83.8%)	<0.001
NA	111 (46.4%)	26 (31.0%)	27 (28.4%)	
dd-cfDNA levels [%]	0.16 [0.10, 0.26]	0.33 [0.19, 0.59]	0.61 [0.27, 1.40]	<0.001
Time dd-cfDNA to EMB (d)	10.0 [6.00, 18.3]	12.0 [8.0, 16.0]	10.5 [6.00, 16.3]	0.52
pGEP levels	31.0 [27.0, 34.0]	33.0 [29.0, 35.0]	33.0 [31.8, 36.0]	<0.001
Positive pGEP	22 (20.0%)	20 (39.2%)	26 (43.3%)	0.002
NA	129 (54.0%)	33 (39.3%)	35 (36.8%)	
Time pGEP to EMB (d)	10.0 [6.00, 15.8]	11.0 [7.50, 16.0]	11.5 [6.75, 16.0]	0.41
HeartCare				<0.001
(-)pGEP/(-)dd-cfDNA	50 (46.7%)	6 (12.0%)	5 (8.3%)	<0.001
(-)pGEP/(+)dd-cfDNA	35 (32.7%)	24 (48.0%)	29 (48.3%)	0.07
(+)pGEP/(-)dd-cfDNA	13 (5.4%)	6 (12.0%)	4 (6.7%)	0.51
(+)pGEP/(+)dd-cfDNA	11 (10.3%)	14 (28.0%)	22 (36.7%)	<0.001
NA	129 (54.0%)	33 (39.3%)	35 (36.8%)	
DSA	100 (41.8%)	48 (57.1%)	47 (49.5%)	0.045
Class I	39 (16.3%)	22 (26.2%)	23 (24.2%)	0.09
Class II	87 (36.4%)	44 (52.4%)	39 (41.1%)	0.049
MFI>4000	48 (20.1%)	29 (34.5%)	27 (28.4%)	0.02
Time DSA to EMB (d)	8.00 [2.00, 20.0]	9.00 [0.750, 16.0]	8.00 [3.00, 20.5]	0.46

609

610 **D:** days; **dd-cfDNA:** donor-derived cell-free DNA; **DSA:** donor specific antibodies;

611 **EMB:** endomyocardial biopsy; **pGEP:** peripheral gene-expression profiling; **MFI:**

612 medium fluorescence intensity.

613

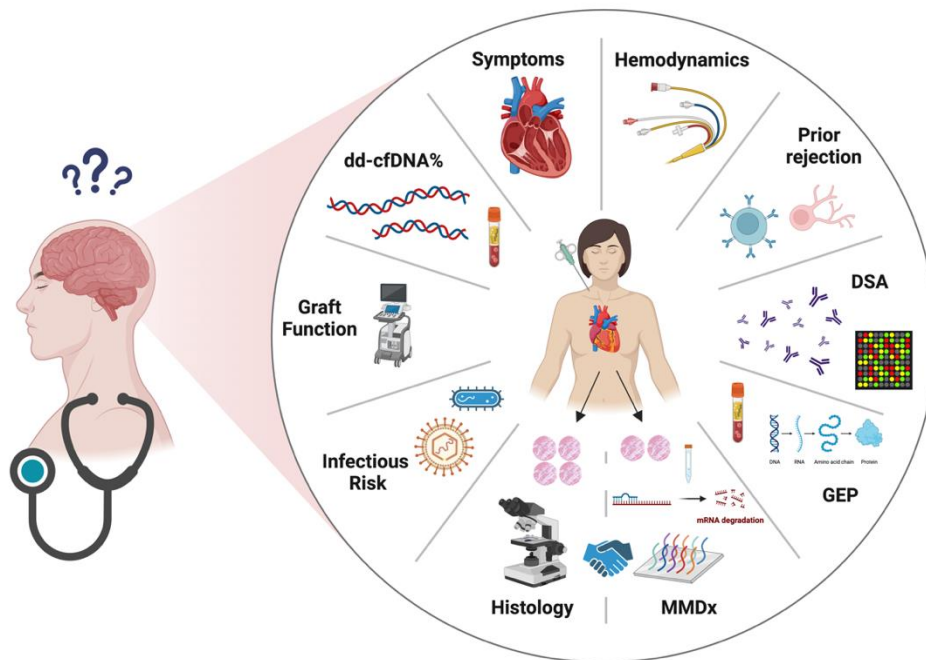
614

615

616

617

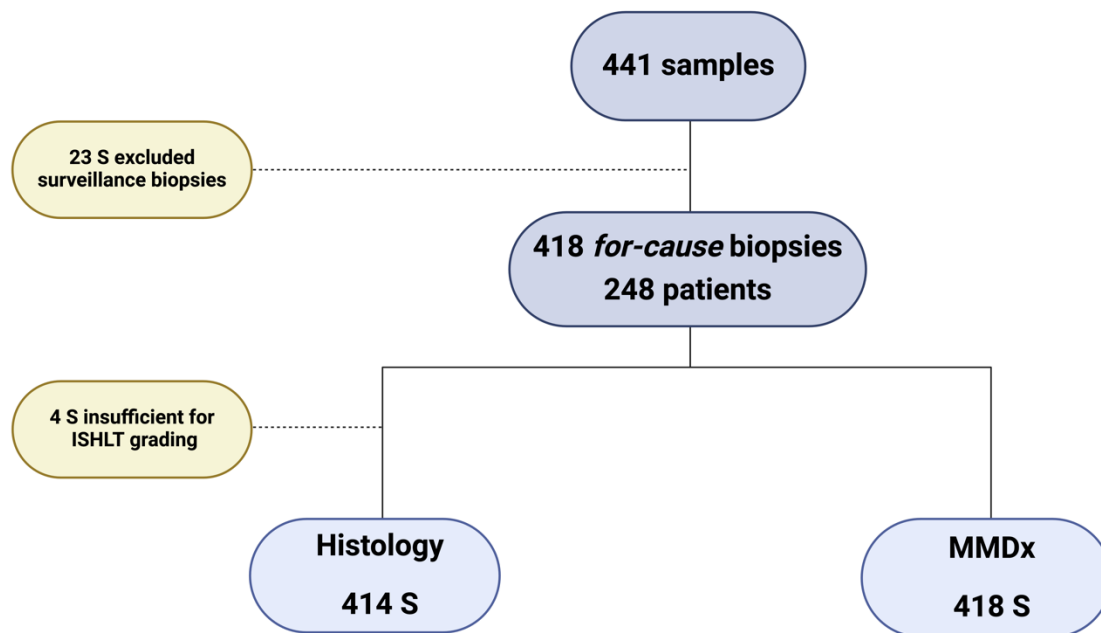
618 **Figures and legends**



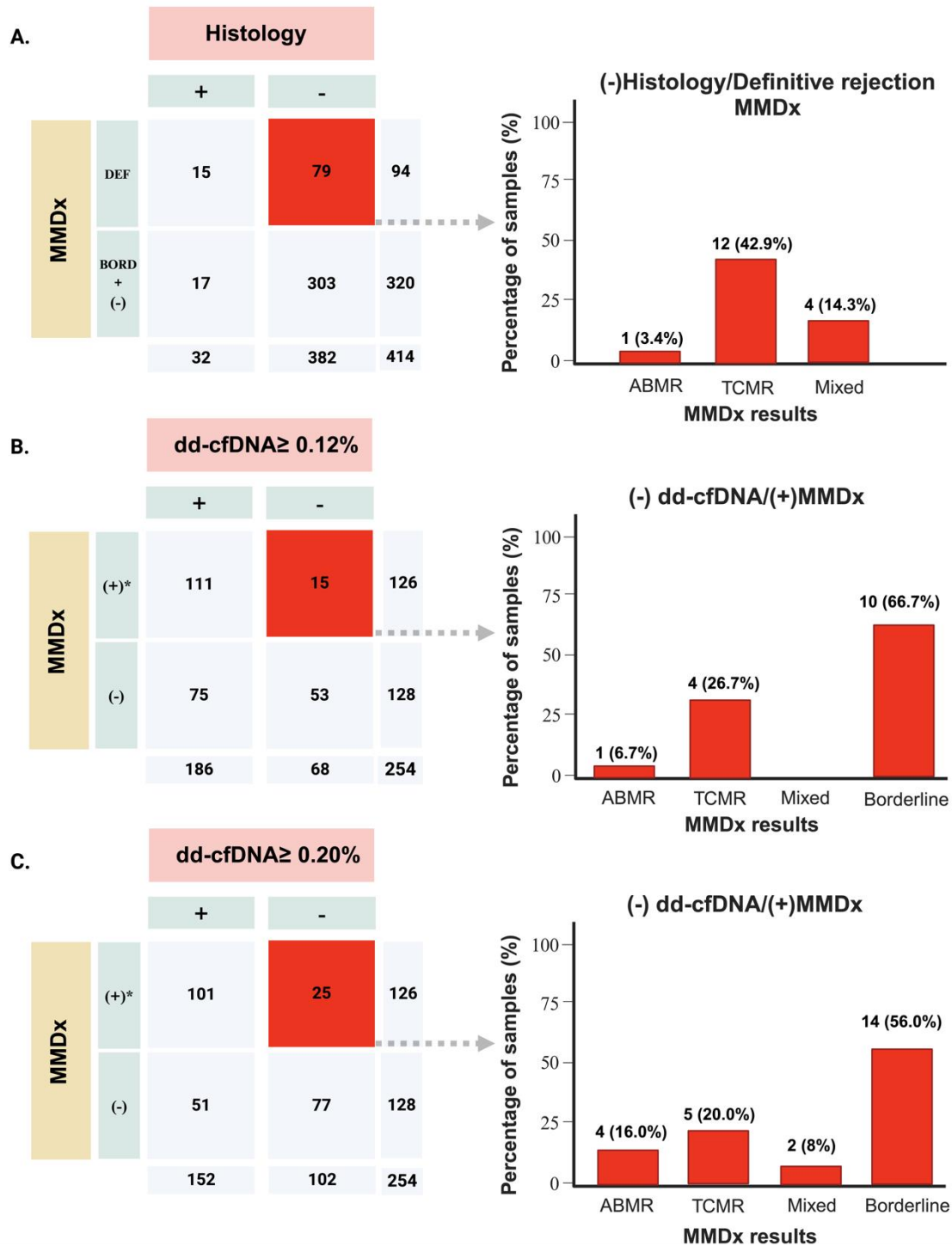
619

620 **Figure 1:** multifaceted rejection approach.

621

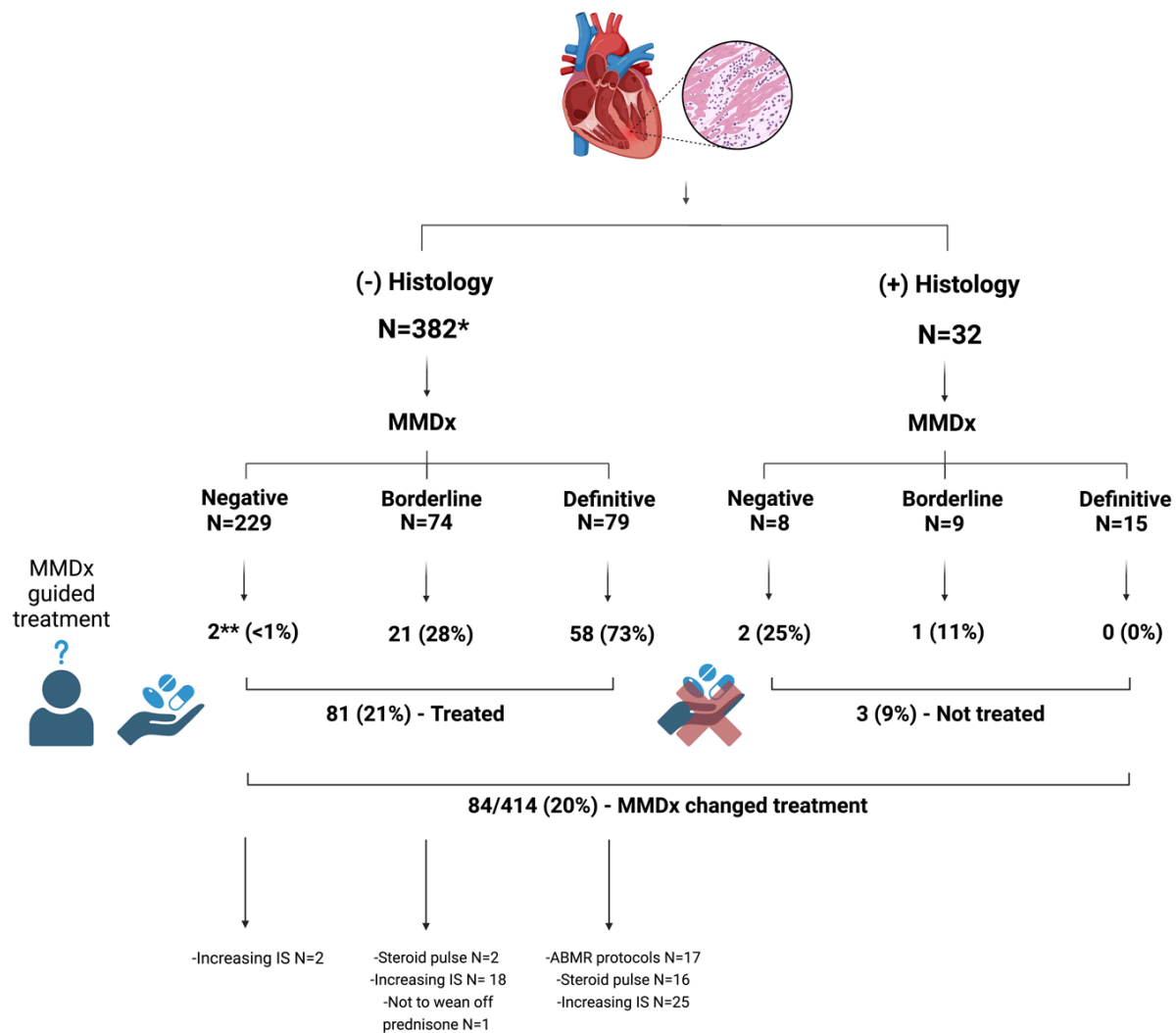


622
623 **Figure 2:** flow chart.



624

625 **Figure 3:** (A) illustrates the concordance between histology and MMDx results as well as
 626 between dd-cfDNA levels and MMDx results at both thresholds [$\geq 0.12\%$ (B) and $\geq 0.20\%$ (C)];
 627 "DEF" accounts for definitive rejection, which includes ABMR, TCMR, and mixed rejection cases,
 628 while "BORD" refers to borderline rejection. *(+) MMDx results include definitive and borderline
 629 rejection cases, whereas (-) MMDx includes cases of normal results and parenchymal injury.



630

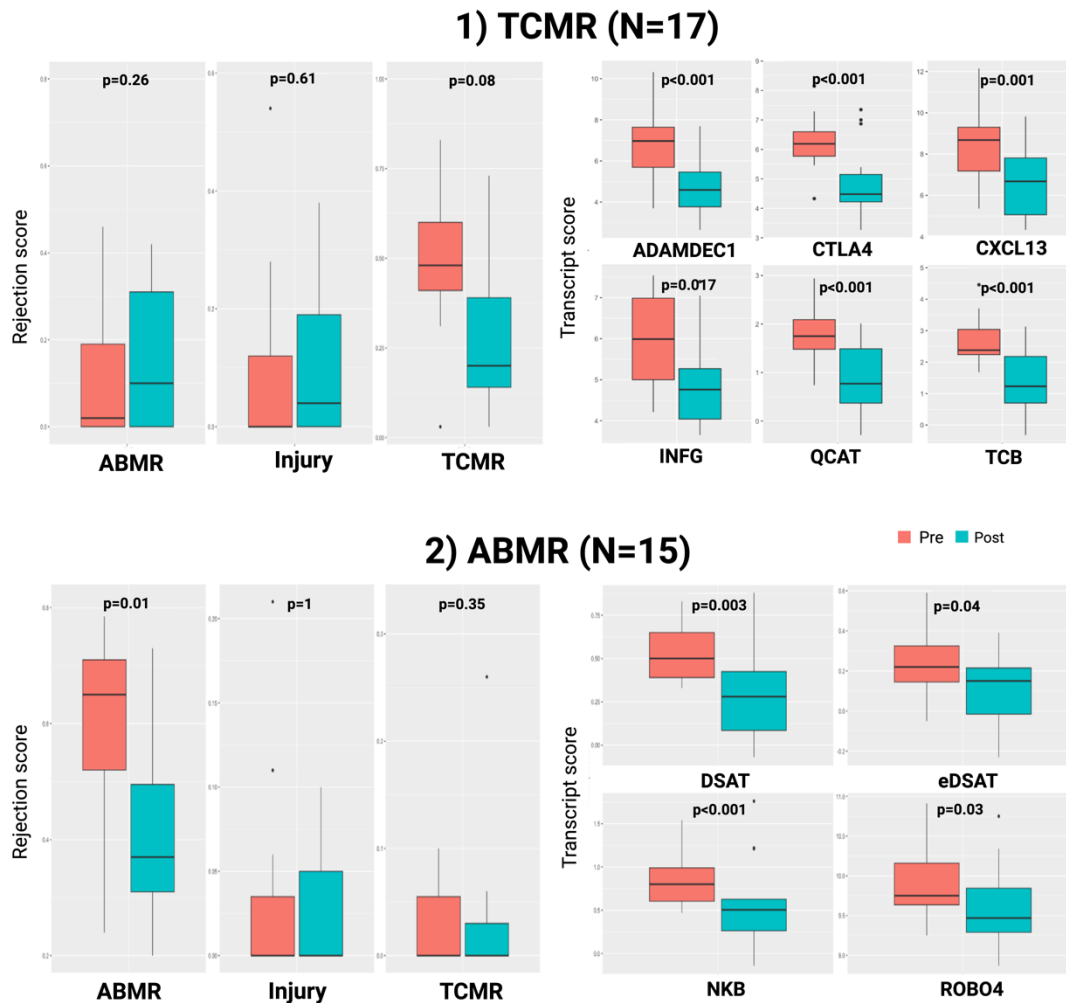
631

632 **Figure 4:** Histology and MMDx results. Treatment guided by MMDx results. IS: 633 immunosuppression; *4 samples insufficient for ISHLT grading. **2 cases of parenchymal injury.

634

635

Impact of treatment on MMDx Rejection scores and Rejection-related transcripts



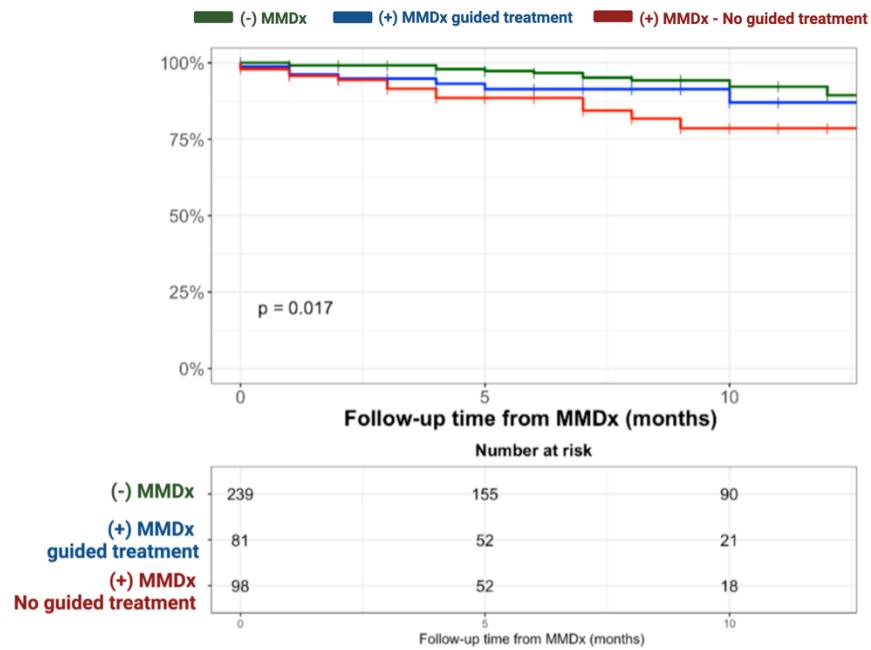
636

637

638 **Figure 5** illustrates the changes in transcripts in the follow-up MMDx after treatment. The left
639 panel represents overall rejection scores, including antibody-mediated rejection (ABMR), injury,
640 and T-cell-mediated rejection (TCMR). The upper right panel shows a subset of transcripts
641 related to TCMR (ADAMDEC1, CTLA4, CXCL12, INFG, QCAT, and TCB). The lower right panel
642 displays a subset of transcripts related to ABMR (DSAT, eDSAT, NKB, ROBO4). All transcripts
643 show improvement after treatment in their respective rejection groups.

Overall survival

Based on MMDx results and treatment






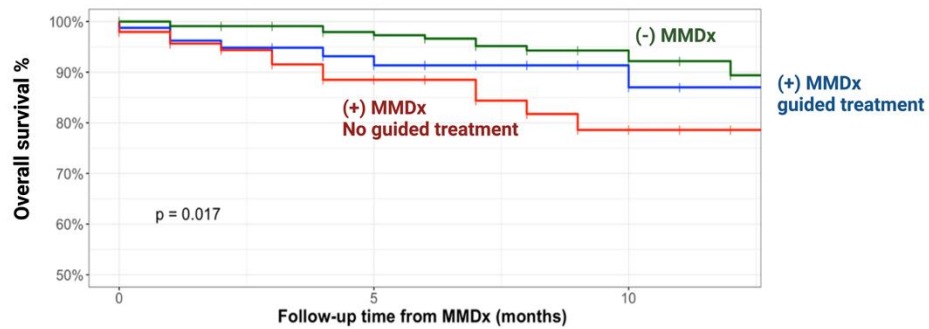
644

645 **Figure 6:** survival outcomes stratified based on MMDx results and MMDx-guided treatment.

646

Molecular Microscope Diagnostic System (MMDx)

	Negative MMDX		Positive MMDX		
	Negative N=239	Borderline N=84	Definitive N=95		p-value
					
dd-cfDNA%	0.16 [0.10-0.26]	0.33 [0.19-0.59]	0.61 [0.27-1.40]		p<0.001
(+)pGEP/(+)dd-cfDNA	10.3%	28.0%	36.7%		p<0.001
DSA	41.8%	57.1%	49.5%		p=0.045
(+) Histology	3.3%	10.7%	15.8%		p=0.02
MMDx changed treatment	2/239 (<1%)	22/84 (26%)	59/95 (73%)		p<0.001
	239		81/179		



647

648 **Graphical abstract.**

649

650

651

652

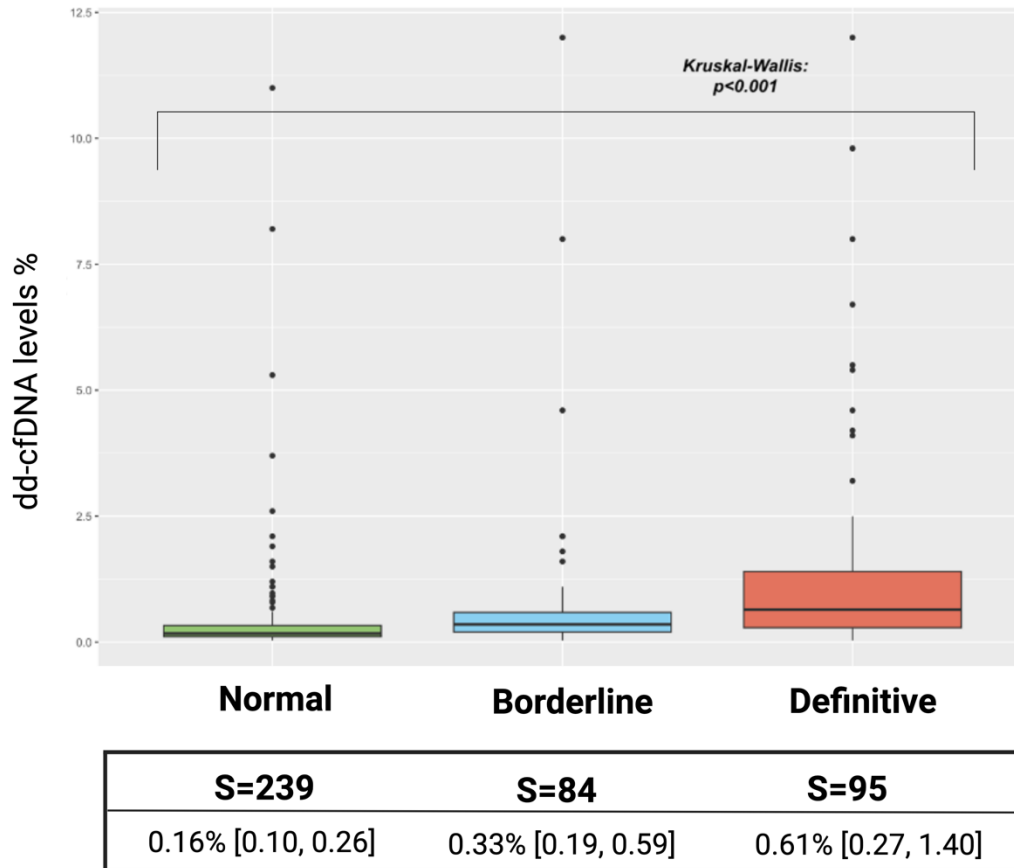
653

654

655

656 **Supplementary material**

657 **Figure 1S:** dd-cfDNA% levels according to MMDx results.



658

659

660

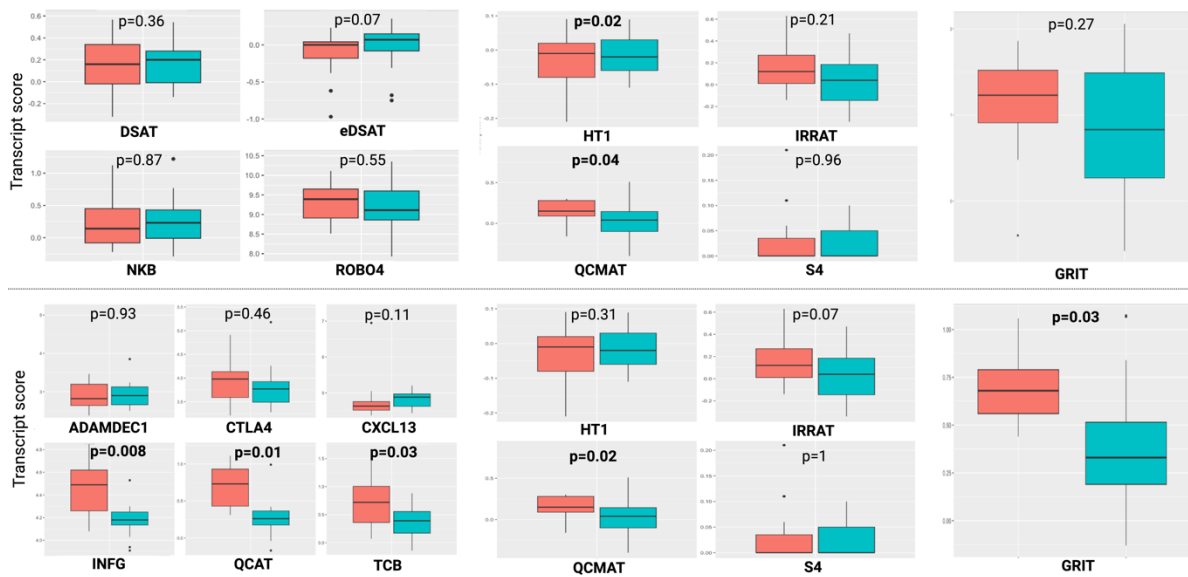
661

662

663

664

665 **Figure 2S:** [Continuation of Figure 5]. Changes in Transcripts After Treatment; Upper group
 666 TCMR (N=17); Lower group: ABMR (N=15).

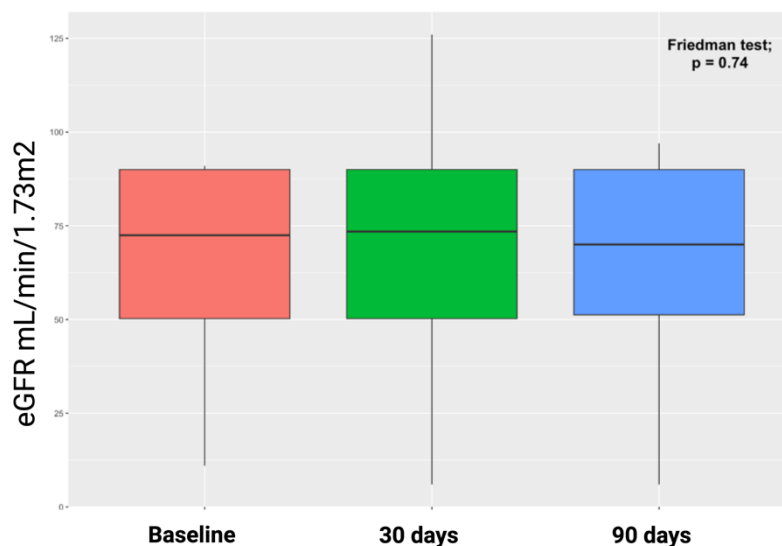


667

668 **ABMR-related transcripts:** DSAT, eDSAT, NKB, ROBO4; **TCMR-related transcripts:**
 669 ADAMDEC1, CTLA4, CXCL12, INFG, QCAT, TCB; **Injury-related transcripts:** HT1, IRRAT,
 670 QCMAT, S4 **Rejection-related transcript:** GRIT.

671

672 **Figure 3S:** eGFR trends in the cohort of treated patients based on MMDx results at
 673 1 month and 3 months after increasing immunosuppression.



674

675

676

677 **Table 1S:** Baseline characteristics

Baseline characteristics	N=248
Age at transplant (years)	51.0 [39.5, 59.0]
BMI (kg/m²)	26.7 [22.8, 30.3]
Female sex	74 (29.8%)
Race/ethnicity	
White	120 (48.4%)
Black/Afro-American	69 (24.6%)
Hispanic/Latino	35 (14.1%)
Asian	12 (4.8%)
Other	4 (1.6%)
Declined	8 (3.2%)
Multiorgan	31 (12.5%)
Re-transplants	13 (5.2%)
NICM	197 (79.4%)
HTN	170 (68.5%)
HLD	133 (53.6%)
DM	88 (35.5%)
CKD	102 (41.1%)
LVAD	64 (25.8%)
tMCS	78 (31.5%)
High-risk CMV	41 (16.5%)
Donor age (years)	33.0 [26.5, 38.8]
Induction therapy	67 (27.0%)
PGD	27 (10.9%)
ECMO-postHT	26 (10.5%)
cPRA>10%	42 (16.9%)
Procurement method - DCD	11 (4.4%)
Ischemic time (hours)	3.21 [2.47, 3.97]
CAV	108 (43.5%)
CAV ISHLT grade	
0	79 (31.9%)
1	89 (35.9%)
2	8 (3.2%)
3	11 (4.4%)

IMT MAX (mm) CAV 0	0.40 [0.28, 0.64]
---------------------------	-------------------

678 **CAV:** Coronary Allograft Vasculopathy; **CKD:** Chronic Kidney Disease; **cPRA:** Calculated Panel
679 Reactive Antibodies; **DCD:** Donation after Circulatory Death; **DM:** Diabetes Mellitus; **ECMO-**
680 **postHT:** Extracorporeal Membrane Oxygenation post-transplant; **HLD:** Hyperlipidemia; **HTN:**
681 Hypertension; **IMT:** Intima-Media Thickness; **LVAD:** Left Ventricular Assist Device; **PGD:**
682 Primary Graft Dysfunction; **tMCS:** Temporary Mechanical Circulatory Support

683

684

685

686

687

688

689

690

691

692

693

694

695

696

697

698

699

700

701

702

703

704

705

706

707

708

709 **Table 2S:** concordance and discordance between histology and MMDx

	NR-MMDx (-) Histology (N=303)	NR-MMDx (+) Histology (N=17)	R-MMDx (-) Histology (N=79)	R-MMDx (+) Histology (N=15)	p-value
dd-cfDNA\geq 0.12%	114 (66.7%)	7 (70.0%)	54 (91.5%)	8 (88.9%)	<0.001
dd-cfDNA\geq 0.20%	81 (47.4%)	6 (60.0%)	49 (83.0%)	8 (88.9%)	<0.001
NA	132 (43.6%)	7 (41.3%)	20 (25.3%)	6 (40.0%)	
(+) pGEP	40 (13.2%)	2 (11.8%)	22 (27.8%)	4 (26.7%)	0.04
NA	151 (49.8%)	9 (52.9%)	27 (34.2%)	7 (46.7%)	
dd-cfDNA %	0.19 [0.11, 0.37]	0.28 [0.13, 0.43]	0.59 [0.27, 1.30]	0.78 [0.44, 4.60]	<0.001
LVEF<50%	57 (18.8%)	5 (29.4%)	13 (16.5%)	3 (20.0%)	0.67
De-novo LVEF<50%	12 (3.9%)	3 (17.6%)	4 (5.1%)	1 (6.7%)	0.82
DSA	136 (44.9%)	11 (64.7%)	35 (44.3%)	11 (73.3%)	0.07
DSA Class I	51 (16.8%)	9 (52.9%)	16 (20.3%)	6 (40.0%)	<0.001
DSA Class II	122 (40.3%)	8 (47.1%)	28 (35.4%)	10 (66.7%)	0.15
>4000 MFI	67 (22.1%)	9 (52.9%)	16 (20.3%)	10 (66.7%)	<0.001
Histology results					
ACR>1R/1A	0 (0%)	6 (35.3%)	0 (0%)	4 (26.7%)	
pAMR>0	0 (0%)	11 (58.8%)	0 (0%)	11 (73.3%)	
pAMR>1	0 (0%)	7 (41.2%)	0 (0%)	4 (26.7%)	
MMDx results					
ABMR	0 (0%)	0 (0%)	48 (60.8%)	11 (73.3%)	
TCMR	0 (0%)	0 (0%)	26 (32.9%)	4 (26.7%)	
Mixed	0 (0%)	0 (0%)	5 (6.3%)	0 (0%)	
Borderline	73 (24.1%)	9 (52.9%)	0 (0%)	0 (0%)	
Injury	25 (8.3%)	3 (17.6%)	0 (0%)	0 (0%)	
Normal	205 (67.6%)	5 (29.4%)	0 (0%)	0 (0%)	

710

711 * **R:** definitive rejection on MMDx (TCMR, ABMR, Mixed Rejection); **NR:** no-definitive rejection on

712 MMDx (borderline, and negative MMDx).

713

714

715

716

717

718

719 **Table 3S:** sample characteristics stratified by MMDx results

	1 – Negative (S=239)	2 - Borderline (S=84)	3 – Definitive (S=95)	p-value
ImmuKnow levels	338 [227, 512]	288 [183, 446]	283 [199, 430]	0.01
Time ImmuKnow to MMDx (d)	7.50 [2.00, 15.0]	8.00 [3.00, 15.0]	8.50 [3.00, 14.0]	0.002
eGFR mL/min/1.73m²	66.0 [44.0, 90.0]	84.0 [56.0, 90.0]	68.0 [41.0, 90.0]	<0.001
Time eGFR to MMDx (d)	0 [0, 4.50]	0 [0, 5.25]	1.00 [0, 7.50]	<0.001
NT-proBNP pg/dl	882 [341, 3100]	628 [270, 2070]	875 [384, 2630]	0.40
Time NT-proBNP to MMDx (d)	4 [1.00, 10.0]	4 [0, 11.0]	6.00 [1.00, 12.0]	0.31
Hs-Troponin T (TnT) ng/l	38 [15.3, 81.5]	32 [0.19, 57.5]	17.0 [11.0, 35.0]	<0.001
Time hs-TnT to EMB (d)	3.00 [1.00, 12.0]	7.00 [0.50, 14.0]	6.00 [1.00, 12.0]	0.70
Abnormal RHC	64 (27.0%)	19 (22.6%)	33 (35.1%)	0.34
Graft dysfunction	49 (20.5%)	13 (15.5%)	17 (17.9%)	0.57
De-novo LVEF<50%	26 (10.2%)	7 (8.3%)	6 (6.3%)	0.56
IS Treatment at MMDx				
Tacrolimus	209 (87.4%)	74 (88.1%)	85 (89.5%)	0.88
Mycophenolate	199 (83.3%)	71 (84.5%)	78 (82.1%)	0.91
Prednisone	190 (79.5%)	64 (76.2%)	79 (83.2%)	0.91
mTOR inhibitors	35 (14.6%)	10 (11.9%)	21 (22.1%)	0.13
Cyclosporin	24 (10.0%)	10 (11.9%)	7 (7.4%)	0.58
Belatacept	19 (7.9%)	9 (10.7%)	26 (27.4%)	<0.001
IVIG	17 (7.1%)	13 (15.5%)	12 (12.6%)	0.06
ECP	2 (0.8%)	3 (3.6%)	7 (7.4%)	0.006

720

721 **D:** days; **ECP:** Extracorporeal Photopheresis; **eGFR:** estimated glomerular filtration rate; **hs-TnT:**
 722 Highly Sensitive Troponin T; **IS:** Immunosuppressive Treatment; **IVIG:** Intravenous
 723 Immunoglobulins; **mTOR inhibitors:** Inhibitors of Mammalian Target of Rapamycin; **RHC:** Right
 724 Heart Catheterization

725

726

727

728

729

730

731 **Table 4S:** Changes in transcripts in follow-up MMDx after treatment in the TCMR cohort.

732

	1 - Before (N=17)	2 - After (N=17)	p-value
DSAT	0.160 [-0.0200, 0.340]	0.220 [-0.0100, 0.280]	0.36
eDSAST	0 [-0.180, 0.0400]	0.0700 [-0.0800, 0.150]	0.072
NKB	0.140 [-0.0800, 0.450]	0.230 [-0.0100, 0.430]	0.87
ROBO4	9.39 [8.91, 9.65]	9.11 [8.86, 9.60]	0.55
QCAT	1.61 [1.19, 2.00]	0.770 [0.370, 1.70]	<0.001
TCB	2.35 [2.14, 2.82]	1.26 [0.750, 2.39]	<0.001
ADAMDEC1	6.03 [5.49, 7.50]	4.89 [4.01, 6.34]	<0.001
CXCL13	8.68 [7.18, 9.12]	7.01 [5.61, 7.81]	0.0011
IFNG	5.93 [4.77, 6.43]	4.82 [4.07, 5.27]	0.017
CTLA4	5.96 [5.59, 6.49]	4.69 [4.36, 5.88]	<0.001
GRIT	1.23 [0.910, 1.52]	0.830 [0.270, 1.49]	0.27
HT1	-0.200 [-0.270, -0.100]	-0.120 [-0.420, -0.0200]	0.022
IRRAT	0.330 [0.200, 0.630]	0.390 [0.0500, 0.600]	0.21
S4	0 [0, 0.120]	0.0400 [0, 0.190]	0.96
QCMAT	0.640 [0.420, 0.840]	0.380 [0.0700, 0.920]	0.045
ABMR_SCORE	0.0200 [0, 0.190]	0.100 [0, 0.310]	0.26
TCMR_SCORE	0.480 [0.410, 0.600]	0.200 [0.140, 0.390]	0.008
INJURY_SCORE	0 [0, 0.120]	0.0400 [0, 0.190]	0.61

733

734 **ABMR-related transcripts:** DSAT, eDSAT, NKB, ROBO4; **TCMR-related transcripts:**
 735 ADAMDEC1, CTLA4, CXCL12, IFNG, QCAT, TCB; **Injury-related transcripts:** HT1, IRRAT,
 736 QCMAT, S4 **Rejection-related transcript:** GRIT.

737

738

739

740

741

742

743

744

745 **Table 5S:** Changes in transcripts in follow-up MMDx after treatment in the ABMR group.

746

	1 - Before (N=15)	2 - After (N=15)	p-value
DSAT	0.500 [0.390, 0.650]	0.280 [0.0850, 0.425]	0.034
eDSAST	0.220 [0.145, 0.325]	0.150 [-0.0150, 0.215]	0.044
NKB	0.800 [0.605, 0.990]	0.505 [0.263, 0.628]	<0.001
ROBO4	9.75 [9.64, 10.2]	9.47 [9.29, 9.85]	0.031
QCAT	0.730 [0.430, 0.930]	0.260 [0.175, 0.365]	0.0097
TCB	0.720 [0.360, 1.01]	0.390 [0.170, 0.555]	0.029
ADAMDEC1	2.82 [2.64, 3.20]	2.90 [2.66, 3.13]	0.93
CXCL13	4.63 [4.52, 4.76]	4.88 [4.63, 4.97]	0.11
IFNG	4.49 [4.26, 4.62]	4.18 [4.14, 4.25]	0.0084
CTLA4	3.98 [3.59, 4.14]	3.77 [3.49, 3.93]	0.46
GRIT	0.680 [0.560, 0.790]	0.330 [0.190, 0.515]	0.0034
HT1	-0.0100 [-0.0800, 0.0200]	-0.0200 [-0.0600, 0.0300]	0.31
IRRAT	0.120 [0.0100, 0.270]	0.0400 [-0.145, 0.185]	0.069
S4	0 [0, 0.0350]	0 [0, 0.0500]	1
QCMAT	0.150 [0.0900, 0.280]	0.0400 [-0.100, 0.145]	0.02
ABMR_SCORE	0.650 [0.520, 0.710]	0.370 [0.310, 0.495]	0.0097
TCMR_SCORE	0 [0, 0.0550]	0 [0, 0.0300]	0.35
INJURY_SCORE	0 [0, 0.0350]	0 [0, 0.0500]	1

747

748 **ABMR-related transcripts:** DSAT, eDSAT, NKB, ROBO4; **TCMR-related transcripts:**

749 ADAMDEC1, CTLA4, CXCL12, IFNG, QCAT, TCB; **Injury-related transcripts:** HT1, IRRAT,

750 QCMAT, S4 **Rejection-related transcript:** GRIT.