

1 **Title: Neuroanatomical Features of NAA10- and NAA15-Related Neurodevelopmental**  
2 **Syndromes**

3 Rahi Patel<sup>1,#</sup>, Rikhil Makwana<sup>1,#</sup>, Carolina Christ<sup>1</sup>, Elaine Marchi<sup>1</sup>, Nathaniel Ung<sup>1</sup>, Randie  
4 Harpell<sup>1</sup>, Christina Y. Miyake<sup>2,3</sup>, Andrea L. Gropman<sup>4,5</sup>, Gholson J. Lyon<sup>1,6,7\*</sup>, Matthew T.  
5 Whitehead<sup>8,9\*</sup>

6 <sup>1</sup>Department of Human Genetics, New York State Institute for Basic Research in Developmental  
7 Disabilities, Staten Island, New York, United States of America

8 <sup>2</sup>Department of Pediatrics, Division of Cardiology, Texas Children's Hospital

9 <sup>3</sup>Department of Molecular Physiology and Biophysics, Baylor College of Medicine, 6651 Main  
10 Street, Houston, TX 77003, USA. Electronic address: [cymiyake@bcm.edu](mailto:cymiyake@bcm.edu).

11 <sup>4</sup>Division of Neurogenetics and Neurodevelopmental Pediatrics, Children's National Health  
12 System, Washington, DC, USA.

13 <sup>5</sup>Department of Neurology, George Washington University, Washington, DC, US

14 <sup>6</sup>George A. Jervis Clinic, New York State Institute for Basic Research in Developmental  
15 Disabilities, Staten Island, New York, United States of America

16 <sup>7</sup>Biology PhD Program, The Graduate Center, The City University of New York, New York,  
17 United States of America

18 <sup>8</sup>Division of Neuroradiology, Children's Hospital of Philadelphia, Philadelphia, PA, USA

19 <sup>9</sup>Department of Radiology Perelman School of Medicine, University of Pennsylvania,  
20 Philadelphia, PA, USA

21 # Co-first authors

22 \* Co-Corresponding authors

23 E-mail: [gholsonjlyon@gmail.com](mailto:gholsonjlyon@gmail.com) / [gholson.j.lyon@opwdd.ny.gov](mailto:gholson.j.lyon@opwdd.ny.gov) (GJL)

24 or

25 [whiteheadm@chop.edu](mailto:whiteheadm@chop.edu) (MTW)

26

27

28

29

30 **ABSTRACT**

31 **Background:** *NAA10*-related (Ogden Syndrome) and *NAA15*-related neurodevelopmental  
32 syndromes present with varying degrees of intellectual disability, hypotonia, congenital cardiac  
33 abnormalities, seizures, and delayed speech and motor development. While there is much data on  
34 the clinical manifestations of these conditions, there are few radiologic reports describing the  
35 neuroanatomical abnormalities present on imaging.

36 **Objective:** Our goal was to provide neuroimaging analyses for a subset of probands with  
37 *NAA10*- and *NAA15*-related neurodevelopmental symptoms and assess severity, common  
38 radiologic anomalies, and changes over time to better understand the pathophysiology of these  
39 disease processes.

40 **Materials and Methods:** Neuroimaging studies from 26 probands (18 with pathogenic variants  
41 in *NAA10*, 8 with pathogenic variants in *NAA15*) were collected and analyzed. Size of the  
42 cerebrum, brainstem, and cerebellum, as well as myelination, brain malformations, globus  
43 pallidus hyperintensity, brain lesions, 4th ventricle size, tegmentovermian angle, cisterna magna  
44 size, pituitary size, olfactory tract, palate arch, and choroid plexus abnormalities were analyzed.  
45 In depth medical histories were also collected on all probands, including genetic testing results  
46 and social, cognitive, and developmental history. The Vineland 3 Adaptive Behavior Scale was  
47 also administered to the parents to assess functional status of the probands.

48 **Results:** On average, individuals with Ogden Syndrome had 5.7 anatomical abnormalities  
49 (standard deviation (SD) = 3.0), whereas those with *NAA15* related neurodevelopmental  
50 syndrome had 2.8 (SD = 2.3) ( $p = .02$ ). Probands who had more anatomical abnormalities tended  
51 to score worse on Vineland assessments, suggesting a possible correlation between the two.  
52 Structural-functional anatomic differences seen were preserved such that individuals with greater

53 defects on, for example, motor regions of their scans tested worse on motor portions of the  
54 Vineland. Probands followed longitudinally demonstrated several changes between scans, most  
55 commonly in the cerebellum, brainstem, and degree of myelination. Such changes were only  
56 observed for probands with *NAA10* variants in our cohort.

57 **Conclusion:** Despite clinical imaging being reported as being predominantly "normal" during  
58 routine clinical care, this analysis of a cohort of patients with *NAA10*-related (Ogden Syndrome)  
59 and *NAA15*-related neurodevelopmental syndrome by one neuroradiologist has established a  
60 range of subtle abnormalities. We hope these findings guide future research and diagnostic  
61 studies for this patient population.

62

## 63 **INTRODUCTION:**

64 The N-acetyltransferase A (NatA) complex functions as an N-terminus Ala, Val, Ser, Thr, and  
65 Cys residue acetyltransferase [1]. It is composed of the N- $\alpha$ -acetyltransferase 10 (NAA10)  
66 catalytic subunit and the NAA15 auxiliary subunit and its function is modulated when expressed  
67 with several other auxiliary or chaperone proteins [1–4]. Pathogenic variants of *NAA10* and  
68 *NAA15* lead to the syndromes NAA10-related neurodevelopmental syndrome, colloquially  
69 known as Ogden Syndrome, and NAA15-related neurodevelopmental syndrome, respectively.  
70 NAA10-related neurodevelopmental syndrome is primarily X-linked in inheritance, leading to  
71 more severe manifestations in males. While there are some similarities between these diseases,  
72 such as variable developmental delay [5–10], Ogden syndrome is usually much more severe,  
73 possibly due to variants impacting the enzyme domain of NAA10 directly, in comparison to  
74 variants in NAA15, where only one copy of NAA15 is affected, as *NAA15* is an autosomal gene.  
75 Another possibility is that the NAA10 catalytic subunit might have functions outside of the NatA

76 complex [11, 12]. Both NAA10 and NAA15-related neurodevelopmental syndromes are  
77 associated with intellectual disability, autism, dystonia, and congenital heart disease [13–19].  
78 Ogden Syndrome also presents with various cardiac, neurologic, anatomical, and developmental  
79 manifestations that are dependent on the specific pathogenic variant of the individual [1, 5–7,  
80 10–12, 20–32].

81 Intellectual disability is a common neurologic sequela of these variants, with the NAA10  
82 cohort also sometimes developing epilepsy [5, 6]. Despite this, there are few radiologic or  
83 histopathologic reports on the neuroanatomical abnormalities present in these syndromes. Ogden  
84 Syndrome has been reported to be associated with enlarged ventricles, ocular globe  
85 abnormalities, and cerebral dysgenesis [5, 8]. Abnormal MRIs have also been reported in  
86 individuals with NAA15-related neurodevelopmental syndrome [13]. This study aims to add to  
87 the current body of literature describing the presence or lack of characteristic neuroanatomic  
88 variations associated with NAA10 and NAA15-related neurodevelopmental syndromes and  
89 correlate their significance to adaptive behavior scores to contribute to better characterization of  
90 the disorders and the development of further diagnostic criteria.

91

## 92 **METHODS AND MATERIALS:**

93 Neuroimaging studies from 26 probands (18 with pathogenic variants in NAA10, 8 with  
94 pathogenic variants in NAA15) were collected from families or from medical facilities,  
95 following a secure video conference interview or in-person assessment. Thorough medical  
96 histories were collected on all probands, including genetic testing results and social, cognitive,  
97 and developmental history. Pathogenicity of the variants was confirmed by clinical exome  
98 sequencing. One patient, proband 3 (VI-10), was first described in a 2014 paper by Esmailpour et

99 al<sup>25</sup>. Thus, this proband was not directly interviewed, but medical information and imaging was  
100 retrospectively collected and reviewed. Patient 25 was an NAA10 mosaic (76% mutant allele).  
101 More information about this patient is available in **Supplementary Note 1**. All supplementary  
102 information is available upon request for the MedRxiv preprint.

103

#### 104 Imaging

105 All imaging was performed during routine clinical care. Usually, participants underwent 1.5 or  
106 3.0 tesla MRI of the brain and spine without the use of intravenous contrast. MR pulse sequences  
107 included T1, T2, T2 FLAIR, diffusion weighted imaging and, in some cases, proton density. The  
108 neuroimaging consisted of DICOM files obtained from the families or hospitals, which were  
109 analyzed in a blinded manner by a fellowship-trained neuroradiologist (M.T.W.) with American  
110 Board of Radiology subspecialty certificate in neuroradiology and 12 years of clinical experience  
111 after board certification. Imaging studies were qualitatively examined for all visible  
112 abnormalities involving the brain and its coverings, head and neck, and spine. We used the term  
113 “brain parenchymal volume loss” to encompass both hypoplasia (underdevelopment) and  
114 atrophy (wasting). Cerebellar hypoplasia was diagnosed according to definitions of cerebellar  
115 atrophy and hypoplasia, as defined by Barkovich<sup>33</sup>. Skull base hypoplasia was diagnosed  
116 subjectively based on the appearance of the occipital bone relative to the sizes of posterior fossa  
117 CSF spaces and parenchyma. Emphasis was placed upon the cerebrum, brainstem, cerebellum,  
118 globus pallidus, pituitary, olfactory bulb, palate, ventral tegmental area, ventricles, and choroid  
119 plexus. Additionally, myelination, malformations, and lesions were assessed. Anatomical regions  
120 were described based on their size (normal, increased, or decreased) and the severity of the  
121 changes (mild, moderate, or severe) based on a combination of objective two-dimensional

122 measurements compared to published aged-matched normative data (fronto-occipital diameter,  
123 corpus callosum thickness, brainstem diameter, height and AP diameter of the vermis) and  
124 subjective measurements (based on clinical expertise), respectively [33–36].

125

### 126 Cognitive Assessment

127 Twenty-one probands (16 NAA10, 5 NAA15) were administered the Vineland Adaptive  
128 Behavioral Scales assessment, third edition (Vineland). The Vineland is composed of three core  
129 domains—Communication, Daily Living Skills, and Socialization—with an optional fourth  
130 motor domain. These core domains are each divided into three sub-domains, while motor is  
131 divided into two sub-domains. A composite score (ABC) is then calculated based on the overall  
132 results. The Vineland was administered by two trained assessors at various points in the  
133 probands' lives. Vineland is not officially validated for use in individuals under the age of eight.  
134 However, to better characterize the motor components of the disease, it was administered to all  
135 participants regardless of their age, as long as they were able to perform the minimum tasks  
136 required for assessment. All probands with any Vineland scores were included in the analysis.

137

### 138 Analysis

139 Anatomical features and severity were coded numerically and tabulated in an Excel spreadsheet  
140 and combined with the Vineland data. Single tailed ANOVA were calculated comparing specific  
141 anatomic abnormalities with correlated Vineland domain data. Variations in cortical volume loss  
142 and severity of cortical malformations were compared against the composite ABC score.  
143 Cerebellar and globus pallidus abnormalities were compared against the motor domain. Variation  
144 in white matter were compared against all Vineland domains due to its importance across all

145 brain functions. Variations in cortical volume loss were then clustered together such that those  
146 with normal or mild cortical thinning were grouped and those with moderate or marked thinning  
147 were grouped. These were then compared against participants who were classified as mildly  
148 dysfunctional (corresponding to Vineland scores of 100-50) and those who were classified as  
149 severely dysfunctional (scores of 49-0). While the Vineland manual provides ranges to help  
150 designate categories for levels of adaptive behavior, the study sample was too low functioning to  
151 match their categories. Instead, clusters were formed to help increase power due to low small  
152 sample sizes. Fisher exact tests were then performed to compare associations of cortical thinning,  
153 cerebellar volume, and globus pallidus hyperintensities and categories of clinical dysfunction as  
154 defined by Vineland scores. Two tailed, unequal variance t-tests were also performed between  
155 individuals with NAA10-related neurodevelopmental syndrome and NAA15-related  
156 neurodevelopmental syndrome to assess differences between groups. Alpha was set at .05 for all  
157 calculations except for the white matter comparisons with the Vineland functional domains. This  
158 ANOVA included 16 comparisons (one per Vineland domain and subdomain), necessitating a  
159 Bonferroni correction to reduce the risk of false positives arising from multiple sequential  
160 comparisons using the same data. The modified alpha for the white matter calculation was set at  
161 .003 ( $m = 16$ ).

162 Participants who were imaged longitudinally were also compared to their previous scans.  
163 Neuroanatomical deficits were then correlated with the probands' behavior based on in-depth  
164 interviews conducted by GJL that corresponded with the approximate time of imaging.

165

166 **RESULTS:**

167 Neuroimaging from a total of 26 probands with either Ogden Syndrome (n=18) or NAA15-  
168 related neurodevelopmental syndrome (n=8) ranging in age from 0 to 40 years old was analyzed,  
169 with several probands being analyzed longitudinally. A demographic breakdown of the probands  
170 included can be seen in **Table 1**. Full mutation information by proband number can be viewed in  
171 **Supplemental Table 1**.

172 On average, probands with Ogden Syndrome had 5.7 anatomical abnormalities (standard  
173 deviation (SD) = 3.0) and those with NAA15 related neurodevelopmental syndrome had 2.8 (SD  
174 = 2.3). This difference was significant ( $p = .02$ ). Individuals with Ogden Syndrome were also  
175 significantly more likely to experience decreased cortical volume ( $p = .01$ ), hyperintensities of  
176 the globus pallidus ( $p = .02$ ), and abnormalities of the olfactory bulb ( $p = .004$ ), as compared to  
177 those with NAA15 related neurodevelopmental syndrome. A breakdown of the specific  
178 neuroradiologic abnormalities observed in the NAA10 and NAA15 cases can be seen in **Table 2**.  
179 Full patient neuroimaging data is available in Supplemental **Table 2**.

180 Abnormalities in brain volume were observed across a spectrum of severity in probands  
181 diagnosed with Ogden syndrome, as illustrated in **Figure 1**. Some probands, including patient  
182 13, also had abnormal parenchymal growth over time. This patient had normal cerebellar volume  
183 at age [0-4] years, but later scans showed mild hypoplasia of the cerebellar vermis (**Figure 2**).

184 Globus pallidus signal hyperintensity on T2-weighted MRI was observed in five  
185 probands (**Figure 3**). While some globus pallidus signal can be an age-related physiological  
186 finding, the degree of hyperintensity in these probands was abnormal for their age.

187 Out of the 26 probands, 4 presented with brain lesions visible on imaging. Patient 3  
188 (NAA10) had left posterior frontal corona radiata gliosis at [10-14] years. Patient 8 (NAA10)  
189 had mild right posterior frontal deep and peri-atrial parietotemporal gliosis on multiple MRIs.



190 Probands 10 (NAA15) and 11 (NAA15) had multiple punctate hyperintense frontal and parietal  
191 white matter lesions and gliosis. There was also variation in the relative size of the 4th ventricle  
192 and cisterna magna between probands. These enlargements were observed without concomitant  
193 supratentorial ventriculomegaly or dilation of the cerebral aqueduct.

194 Several probands exhibited changes between scans, as exhibited in **Supplemental Table**  
195 **3**. Seven NAA10 probands (39%) and 3 NAA15 probands (38%) had more than one scan  
196 available for analysis for changes over time. Please refer to **Supplementary Note 2** for more  
197 details on individual cases.

198 Of those with neuroimaging analyzed, 21 (16 NAA10, 5 NAA15) probands had Vineland  
199 assessments performed. Individuals with normal cortical volume (n = 5), mild cortical thinning  
200 (n = 13), moderate cortical thinning (n = 2), and severe cortical thinning (n = 1) were compared.  
201 Those with normal cortical volume had the highest mean ABC score of 60.2 (standard deviation  
202 (SD) = 16.2). Those with mild, moderate, and severe decreases in cortical volume had mean  
203 scores of 50.6 (SD =21.0), 32.5 (SD = 7.5), and 31, respectively, which correlates with  
204 increasing severity. This downward trend was not statistically significant. Individuals with mild  
205 adaptive behavioral dysfunction (Vineland ABC scores 100 – 50, n = 11) were compared to  
206 those with severe dysfunction (scores 49- 0, n = 9). Of those with mild dysfunction, all of them  
207 had normal or mild levels of cortical thinning. Of those with severe dysfunction, 6 had normal or  
208 mild levels of cortical thinning and 3 had moderate or marked levels of cortical thinning. These  
209 differences were not significant (p = .07). Full Vineland results and developmental notes are  
210 available in **Supplemental Table 4**.

211 Probands with normal cerebellar volume (n=8) and mild decreases in cerebellar volume  
212 (n=3) were also assessed to identify potential differences in motor Vineland scores. The mean

213 motor domain score for probands with normal cerebellar volume was 51.8 (SD = 22.0). With  
214 mild decreases in cerebellar volume, the mean score was 29.7 (SD = 13.7). However, once again,  
215 this was not a statistically significant difference. After clustering individuals by adaptive  
216 behavioral dysfunction, there were no significant differences between groups with normal or  
217 mildly decreased cerebellar volume ( $p = .2$ ). Those with mild motor dysfunction all had normal  
218 cerebellar volume ( $n = 5$ ). Those with severe motor dysfunction had either normal ( $n = 3$ ) or  
219 mildly decreased ( $n = 3$ ) cerebellar volume. When comparing motor scores of individuals with  
220 absent globus pallidus hyperintensities ( $n = 4$ ) to those with globus pallidus hyperintensities ( $n =$   
221  $7$ ), there was also no significant difference between the scores [mean = 38 (SD = 13.4) versus  
222 33.3 (SD = 16.8), respectively]. After clustering individuals by adaptive behavioral dysfunction,  
223 there were no significant differences between groups and the presence of globus pallidus  
224 hyperintensities ( $p = .06$ ). Of those with mild motor dysfunction, 2 had globus pallidus  
225 hyperintensities and 5 did not. Of those with severe motor dysfunction, 6 had globus pallidus  
226 hyperintensities and 5 did not.

227 In comparing written sub-domain scores between those with normal white matter ( $n = 18$ ,  
228 mean = 4.8, SD = 3.8) and those without ( $n = 3$ , mean = 1, SD = 0), there was a significant  
229 difference between the written sub-domain scores ( $p = .002$ ). No other comparisons showed  
230 statistically significant differences.

231

## 232 **DISCUSSION:**

233 Both NAA10 and NAA15-related neurodevelopmental syndromes are systemic disorders  
234 affecting multiple systems. Shared features include variable neurodevelopmental disability,  
235 motor dysfunction, and cardiovascular abnormalities. In addition to being more severe than

236 NAA15-related neurodevelopmental syndrome, Ogden Syndrome is also more strongly  
237 associated with craniofacial, gastrointestinal, and metabolic dysfunction, whereas such  
238 abnormalities are often absent or less severe in NAA15-related neurodevelopmental syndrome  
239 [5, 37].

240 Further evidence for the increased severity of Ogden Syndrome compared to NAA15  
241 related neurodevelopmental syndrome was showcased by the significantly greater number of  
242 neuroanatomical malformations associated with the former than the latter. Cortical thinning has  
243 been associated with decreased adaptive functioning in autism spectrum disorder, which could be  
244 an explanation for why those with NAA10 related neurodevelopmental syndrome tend to receive  
245 lower ABC standard scores, on average, than those with NAA15 related neurodevelopmental  
246 syndrome [9, 38, 39]. The findings of lower ABC scores in groups that were considered to have  
247 more severe levels of cortical volume loss supports this observation. However, cortical volume  
248 loss comparisons were made by grouping NAA10 and NAA15 probands together, rather than  
249 analyzing them separately, due to small sample sizes. Further experimentation with larger  
250 samples should be planned to better discriminate the effects of cortical thinning in NAA10 and  
251 NAA15 separately as opposed to individually.

252 The globus pallidus is both an anatomical and functional component of the basal ganglia  
253 that helps modulate movement and goal-oriented behavior [40]. Hyperintensities of the globus  
254 pallidus carry a broad differential diagnosis, including delayed or abnormal myelination,  
255 neoplasm, neurodegenerative disease, ischemia, metabolic disease, toxins, and infection [41].  
256 Those with Ogden Syndrome were more likely to have hyperintensities of the globus pallidus  
257 than those with NAA15 related neurodevelopmental syndrome, potentially reflecting delayed  
258 myelination in this region. Additionally, those with hyperintensities of the globus pallidus were

259 more likely to score lower on the motor portions of the Vineland. Decreased motor scores were  
260 also observed in probands with cerebellar hypoplasia, as opposed to those without [42]. Small  
261 sample sizes may be underlying the lack of statistical significance in both cases.

262 The olfactory bulb is a key component of the signal transduction pathway for olfaction,  
263 which continues to develop postnatally until the age of two [43]. There is preliminary evidence  
264 in rodent models that suggests olfaction also plays a role in child-parent socialization behaviors  
265 [44]. The increased incidence of olfactory bulb hypoplasia in NAA10-related  
266 neurodevelopmental syndrome versus NAA15-related neurodevelopmental syndrome could help  
267 explain poorer socialization in that cohort.

268 White matter is the network of fibers that connects grey matter in the brain, allowing for  
269 communication, feedback loops, and parallel processing to occur [45]. Those with white matter  
270 hypoplasia or abnormalities of their white matter scored significantly lower than those without  
271 white matter abnormalities on the written sub-domain (reading and writing skills) portion of the  
272 Vineland exam. Current literature suggests white matter volume is correlated with the acquisition  
273 of language development in various disease states [46, 47]. Written language requires the  
274 coordination of several cortical and sub-cortical areas, so proper flow of information is required  
275 for proper written language learning [48]. However, the cohort with diminished white matter  
276 volume was significantly smaller than the normal white matter cohort, and additional studies are  
277 needed to determine if white matter hypoplasia is associated with NAA10 and NAA15 related  
278 neurodevelopmental syndromes and if there is a dosimetric response correlating white matter  
279 volume with written language abilities.

280 Changes between scans were not observed in any probands with NAA15 variants in our  
281 cohort (n=7 NAA10, 3 NAA15) (**Supplementary Table 2**). This is interesting to note, given that

282 NAA10 mutations are generally regarded as causing more severe phenotypes. These findings  
283 may serve as a preliminary suggestion that NAA10 variants cause more progressive phenotypic  
284 changes on imaging, compared to a more stable phenotype seen in NAA15 variants.

285         One of the limitations of this study is the small sample size, which may have contributed  
286 to the lack of significance of many of our findings. Another limitation of the study is the  
287 difference in time between when behavioral testing and imaging was performed. Further  
288 experimentation should aim to align behavioral testing with the time of imaging to ensure that  
289 there is no change in between when the two take place. Additionally, only a single board  
290 certified neuroradiologist analyzed the images, so it is possible that there might be different  
291 interpretations between multiple neuroradiologists. Furthermore, due to the rare nature of the  
292 disease, participant scans were collected from institutions across the world. This increase in the  
293 diversity of participant backgrounds which helps broaden the applicability of results. However, it  
294 also increases the likelihood for minor differences in MRI protocol that may exist on an  
295 institution-by-institution basis. Additional prospective studies could possibly address each of  
296 these issues to cross-validate these results. Lastly, 3D volumetric analysis of the imaging data  
297 was not performed. This prevents comparisons of cortical and sub-cortical thickness that could  
298 have helped differentiate if decreases in brain volume were due to brain growth being delayed  
299 compared to the general population or if there are neurodegenerative processes occurring.

300

### 301 **CONCLUSIONS:**

302 Neuroanatomic deformities were generally more pronounced in probands with NAA10 variants,  
303 compared to those with variants in NAA15, consistent with previous data suggesting the former  
304 produces more severe phenotypes than the latter. More significant radiologic findings seem to

305 correlate with poorer performance on Vineland testing, most notably with regards to motor skills.

306 Some neuroanatomical deformities showed evolution over time, but additional imaging and

307 testing will need to be performed to determine their significance.

308

309 **SUPPLEMENTAL INFORMATION (available upon request):**

310 **Supplemental Table 1.** Proband Mutations and Syndromes by Number.

311 **Supplemental Table 2.** Full Patient Neuroimaging Data.

312 **Supplemental Table 3.** Neuroimaging Data for Probands with Changes Between Scans.

313 **Supplemental Table 4.** Clinical manifestations and Vineland-3 scores of 5 participants in our

314 cohort with severe brain abnormalities as per their MRI results.

315 **Supplemental Note 1.** Patient 25 Case Summary and Occupational Therapy Evaluation Notes

316 **Supplemental Note 2. Further Information on Probands with Changes Between Scans.**

317

318

319 **Ethical Approval**

320 Both oral and written patient consent were obtained for research and publication, with

321 approval of protocol #7659 for the Jervis Clinic by the New York State Psychiatric Institute -

322 Columbia University Department of Psychiatry Institutional Review Board.

323

324 **Data Availability**

325 All data are deidentified to protect patient privacy, and the underlying data cannot be

326 shared due to these same privacy restrictions.

327

328 **Funding**

329            This work is supported by New York State Office for People with Developmental  
330    Disabilities (OPWDD) and NIH NIGMS R35-GM-133408.

331

332    **Competing Interests**

333            The authors declare that they have no competing interests or personal relationships that  
334    could have influenced the work reported in this paper.

335 **Figures and Tables**

336 **Table 1.** Demographic Information for NAA10 and NAA15 Probands.

<b>Characteristics</b>	<b>NAA10 (n=18)</b>	<b>NAA15 (n=8)</b>
<b>Sex</b>		
Male	5	2
Female	13	6
<b>Race</b>		
Caucasian	16	8
Asian	1	0
African American	1	0
<b>Ethnicity</b>		
Hispanic	1	0
Non-Hispanic	17	8
<b>Age Range</b>	0 years - 40 years	1 year - 15 years
<b>Country of Residence</b>		
USA	12	6
Australia	1	2
United Kingdom	2	0
Finland	1	0
Austria	1	0
China	1	0

337

338



339 **Table 2.** Summary of Neuroanatomical Variations Observed in NAA10 versus NAA15 Related  
 340 Neurodevelopmental Syndromes in Most Recent Scan. \*Asterisk indicates that imaging finding  
 341 switched from another result on a previous scan.

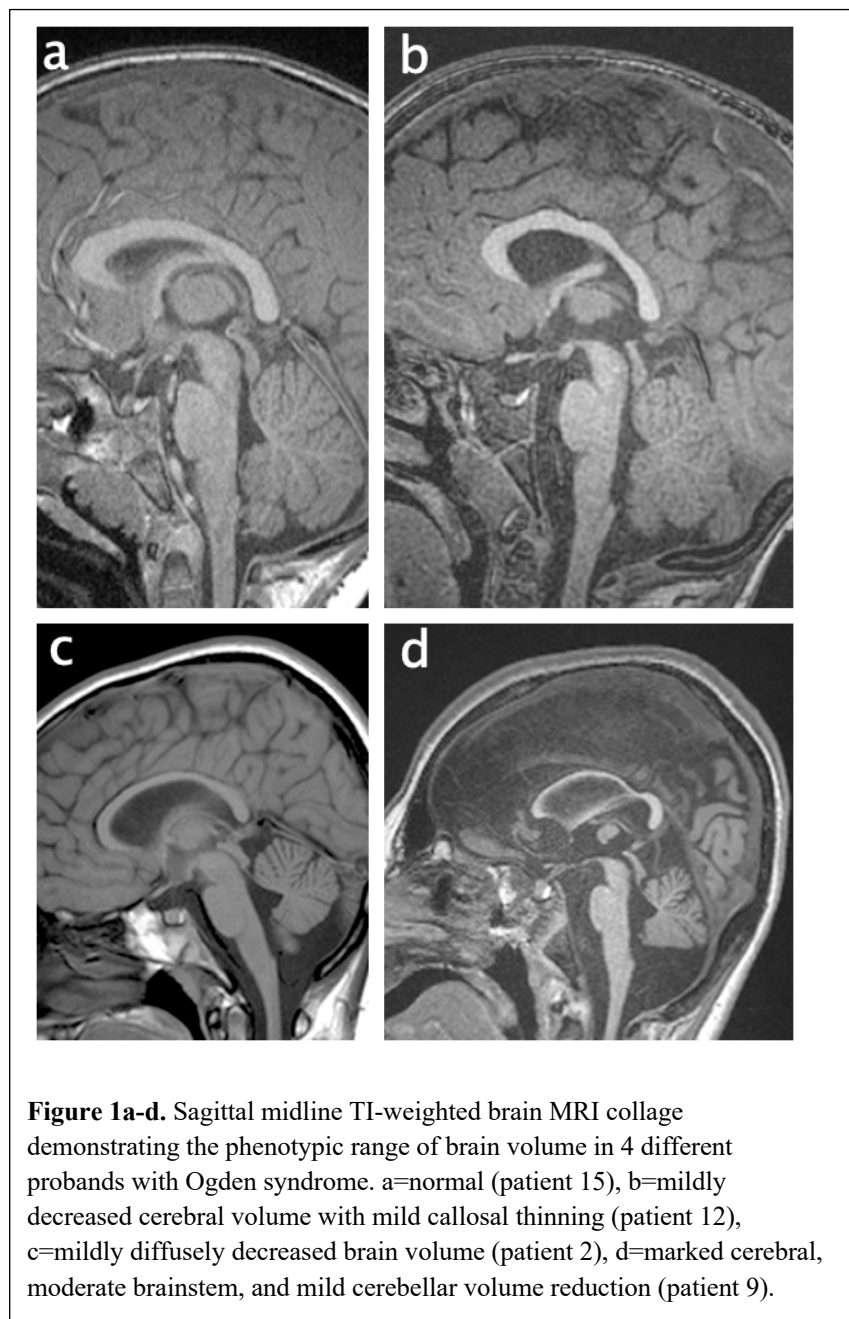
<b><i>Brain Structures affected</i></b>	NAA10 (n=18)	NAA15 (n = 8)
<b><i>Cerebrum volume</i></b>		
Normal	3	6
Cerebral white matter hypoplasia and/or diffuse volume loss	12	2
Cerebral white matter hypoplasia and/or posterior-predominant volume loss	2	0
Cerebral volume loss +/- hypoplasia	1	0
<b><i>Brainstem volume</i></b>		
Normal	9	5
Diffuse volume loss and/or hypoplasia	3*	0
Midbrain volume loss and/or hypoplasia	1	0
Midbrain and pons volume loss and/or hypoplasia	1	0
Pons volume loss and/or hypoplasia	4*	3
Medulla volume loss and/or hypoplasia	0	0
<b><i>Cerebellum Volume</i></b>		
Normal	8	7
Diffuse volume loss and/or hypoplasia	4*	0
Volume loss	1	0
Hypoplasia	0	0
Vermis hypoplasia	2*	0
Vermis volume loss	0	1
Hemisphere hypoplasia	3*	0
Hemisphere volume loss	0	0
<b><i>Myelination</i></b>		
Normal	15*	8
Delayed and/or hypomyelination	3	0
<b><i>Malformation</i></b>		

None	17	6
Mild gyral simplification	1	1
Malformations of cortical development (MCD)	0	1
<b><i>Globus Pallidus Hyperintensity</i></b>		
No	13*	8
Yes	5	0
<b><i>Brain Lesions</i></b>		
No	16	6
Yes	2	2
<b><i>Fourth Ventricle Size</i></b>		
Normal	5	5
Mild enlargement	12	3
Moderate enlargement	1	0
<b><i>Tegmento-Vermian Angle (TVA)</i></b>		
Normal	8	5
Mild increase	10	3
<b><i>Cisterna Magna Size</i></b>		
Normal	4	5
Mild enlargement	14	3
<b><i>Pituitary</i></b>		
Normal	16	7
Hypoplastic	2	1
<b><i>Olfactory</i></b>		
Normal	11	8
Hypoplastic	7	0
<b><i>Palate</i></b>		
Normal	16	8
High Arch	2	0
<b><i>Choroid Plexus in Left Ventricle</i></b>		
Normal	13	7
Mild Cystic	5	1

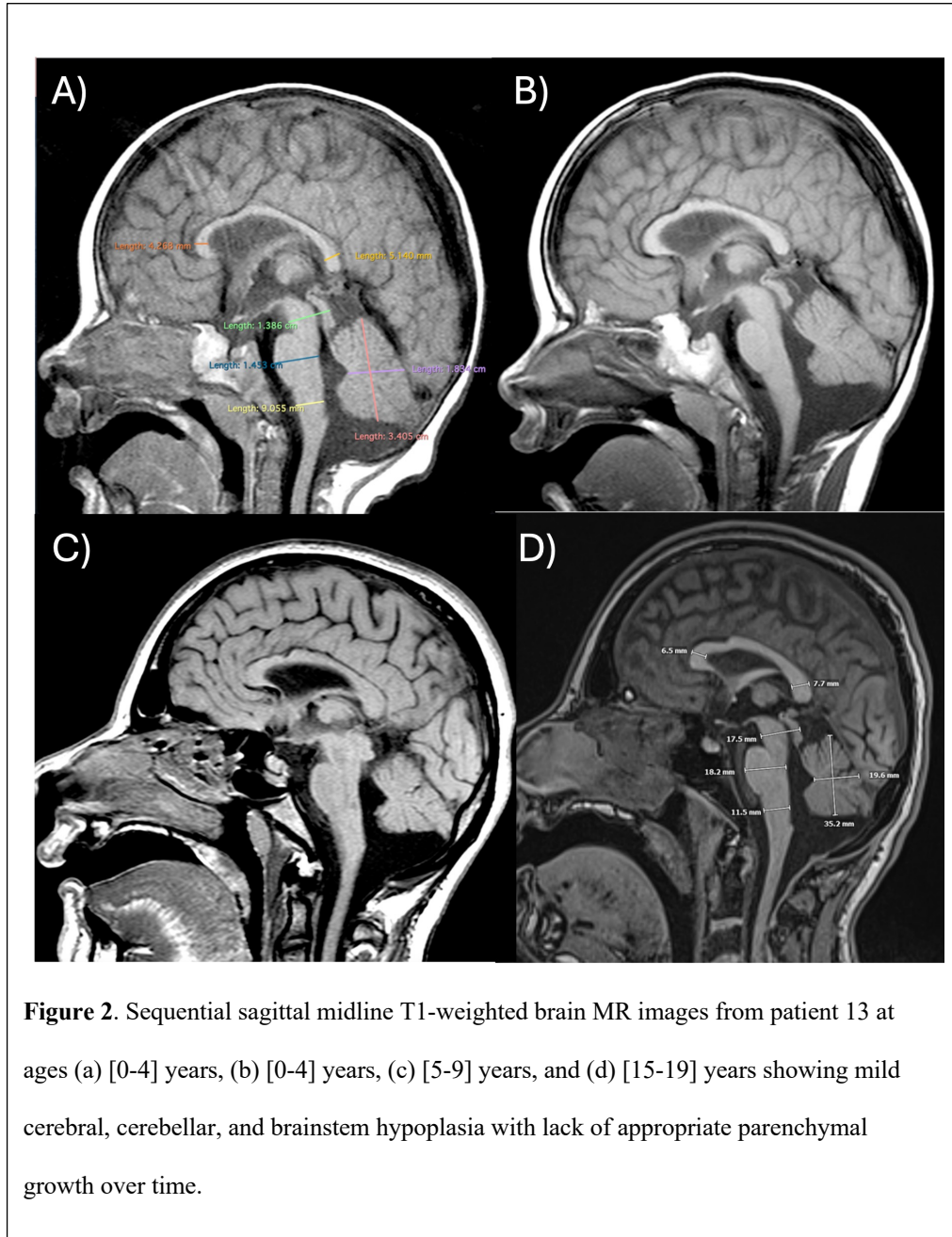
342

343

344

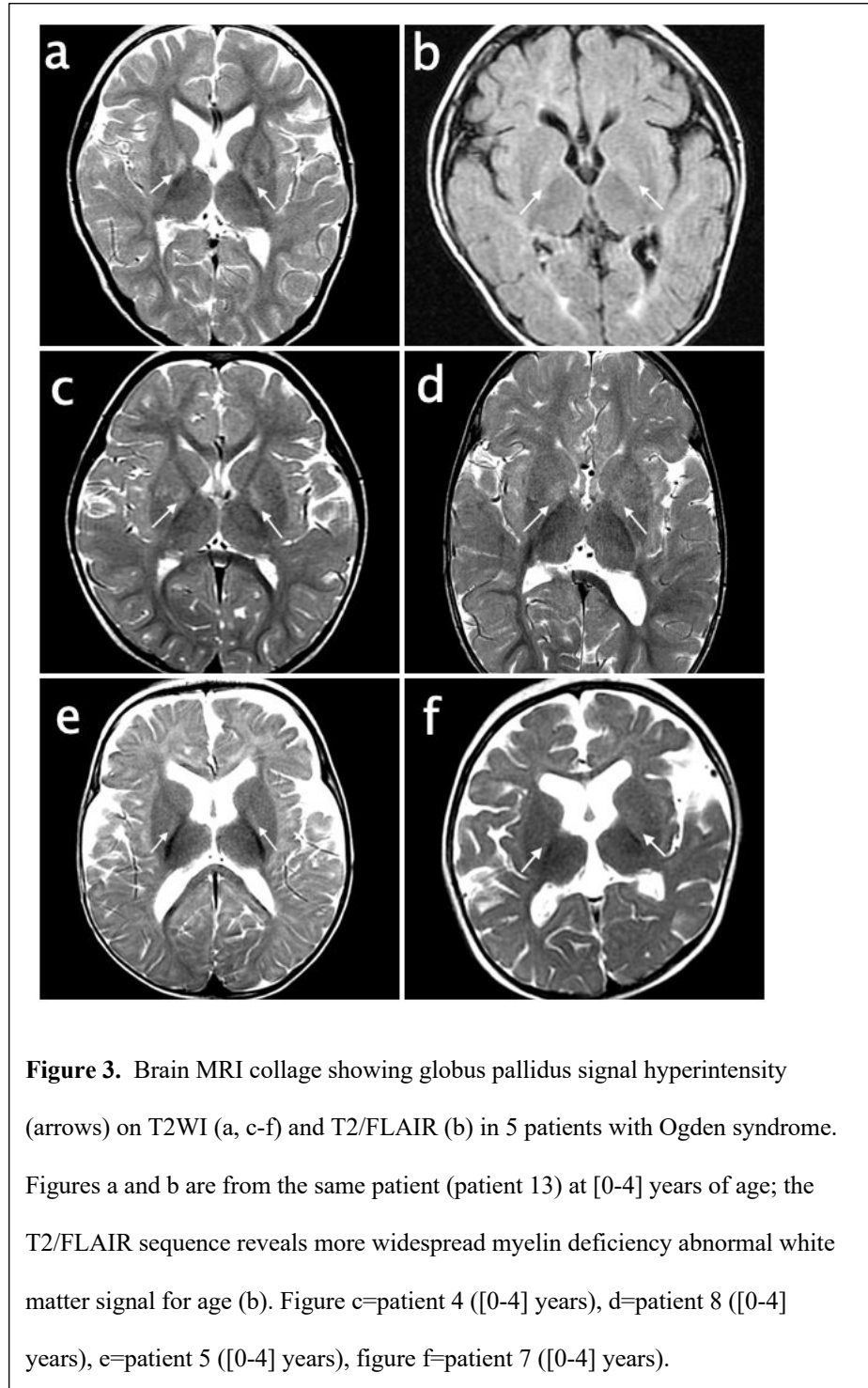


363



383

384



## 386 References

- 387 1. Dörfel MJ, Lyon GJ (2015) The biological functions of Naa10 - From amino-terminal  
388 acetylation to human disease. *Gene* 567:103–131. <https://doi.org/10.1016/j.gene.2015.04.085>
- 389 2. Arnesen T, Van Damme P, Polevoda B, et al (2009) Proteomics analyses reveal the  
390 evolutionary conservation and divergence of N-terminal acetyltransferases from yeast and  
391 humans. *Proc Natl Acad Sci U S A* 106:8157–8162. <https://doi.org/10.1073/pnas.0901931106>
- 392 3. Arnesen T, Starheim KK, Van Damme P, et al (2010) The Chaperone-Like Protein  
393 HYPK Acts Together with NatA in Cotranslational N-Terminal Acetylation and Prevention of  
394 Huntingtin Aggregation. *Mol Cell Biol* 30:1898–1909. <https://doi.org/10.1128/MCB.01199-09>
- 395 4. Kuhns KJ, Zhang G, Wang Z, Liu W (2018) ARD1/NAA10 acetylation in prostate  
396 cancer. *Exp Mol Med* 50:1–8. <https://doi.org/10.1038/s12276-018-0107-0>
- 397 5. Lyon GJ, Vedaie M, Beisheim T, et al (2023) Expanding the phenotypic spectrum of  
398 NAA10-related neurodevelopmental syndrome and NAA15-related neurodevelopmental  
399 syndrome. *Eur J Hum Genet* 31:824–833. <https://doi.org/10.1038/s41431-023-01368-y>
- 400 6. Wu Y, Lyon GJ (2018) NAA10-related syndrome. *Exp Mol Med* 50:1–10.  
401 <https://doi.org/10.1038/s12276-018-0098-x>
- 402 7. Cheng H, Gottlieb L, Marchi E, et al (2019) Phenotypic and biochemical analysis of an  
403 international cohort of individuals with variants in NAA10 and NAA15. *Hum Mol Genet*  
404 28:2900–2919. <https://doi.org/10.1093/hmg/ddz111>
- 405 8. Patel R, Park AY, Marchi E, et al (2024) Ophthalmic Manifestations of NAA10-Related  
406 and NAA15-Related Neurodevelopmental Syndrome: Analysis of Cortical Visual Impairment  
407 and Refractive Errors. *medRxiv* 2024.02.01.24302161.  
408 <https://doi.org/10.1101/2024.02.01.24302161>
- 409 9. Makwana R, Christ C, Marchi E, et al (2024) Longitudinal Adaptive Behavioral  
410 Outcomes in Ogden Syndrome by Seizure Status and Therapeutic Intervention. *medRxiv*  
411 2024.02.23.24303144. <https://doi.org/10.1101/2024.02.23.24303144>
- 412 10. Dörfel MJ, Fang H, Crain J, et al (2017) Proteomic and genomic characterization of a  
413 yeast model for Ogden syndrome. *Yeast* 34:19–37. <https://doi.org/10.1002/yea.3211>
- 414 11. McTiernan N, Tranebjærg L, Bjørheim AS, et al (2022) Biochemical analysis of novel  
415 NAA10 variants suggests distinct pathogenic mechanisms involving impaired protein N-terminal  
416 acetylation. *Hum Genet* 141:1355–1369. <https://doi.org/10.1007/s00439-021-02427-4>
- 417 12. McTiernan N, Støve SI, Aukrust I, et al (2018) NAA10 dysfunction with normal NatA-  
418 complex activity in a girl with non-syndromic ID and a de novo NAA10 p.(V111G) variant - a  
419 case report. *BMC Med Genet* 19:47. <https://doi.org/10.1186/s12881-018-0559-z>
- 420 13. Cheng H, Dharmadhikari AV, Varland S, et al (2018) Truncating Variants in NAA15 Are  
421 Associated with Variable Levels of Intellectual Disability, Autism Spectrum Disorder, and  
422 Congenital Anomalies. *Am J Hum Genet* 102:985–994.  
423 <https://doi.org/10.1016/j.ajhg.2018.03.004>



- 424 14. Ritter A, Berger JH, Deardorff M, et al (2021) Variants in NAA15 cause pediatric  
425 hypertrophic cardiomyopathy. *Am J Med Genet A* 185:228–233.  
426 <https://doi.org/10.1002/ajmg.a.61928>
- 427 15. Danti FR, Sarmiento IJK, Moloney PB, et al (2024) Childhood-Onset Lower Limb Focal  
428 Dystonia Due to a NAA15 Variant: A Case Report. *Mov Disord*.  
429 <https://doi.org/10.1002/mds.29732>
- 430 16. Zhao JJ, Halvardson J, Zander CS, et al (2018) Exome sequencing reveals NAA15 and  
431 PUF60 as candidate genes associated with intellectual disability. *Am J Med Genet B*  
432 *Neuropsychiatr Genet* 177:10–20. <https://doi.org/10.1002/ajmg.b.32574>
- 433 17. Yubero D, Martorell L, Nunes T, et al (2022) Neurodevelopmental Gene-Related  
434 Dystonia: A Pediatric Case with NAA15 Variant. *Mov Disord* 37:2320–2321.  
435 <https://doi.org/10.1002/mds.29241>
- 436 18. Ward T, Tai W, Morton S, et al (2021) Mechanisms of Congenital Heart Disease Caused  
437 by NAA15 Haploinsufficiency. *Circ Res* 128:1156–1169.  
438 <https://doi.org/10.1161/CIRCRESAHA.120.316966>
- 439 19. Tian Y, Xie H, Yang S, et al (2022) Possible Catch-Up Developmental Trajectories for  
440 Children with Mild Developmental Delay Caused by NAA15 Pathogenic Variants. *Genes*  
441 13:536. <https://doi.org/10.3390/genes13030536>
- 442 20. Afrin A, Prokop JW, Underwood A, et al (2020) NAA10 variant in 38-week-gestation  
443 male patient: a case study. *Cold Spring Harb Mol Case Stud* 6:a005868.  
444 <https://doi.org/10.1101/mcs.a005868>
- 445 21. Bader I, McTiernan N, Darbakk C, et al (2020) Severe syndromic ID and skewed X-  
446 inactivation in a girl with NAA10 dysfunction and a novel heterozygous de novo NAA10  
447 p.(His16Pro) variant - a case report. *BMC Med Genet* 21:153. [https://doi.org/10.1186/s12881-](https://doi.org/10.1186/s12881-020-01091-1)  
448 [020-01091-1](https://doi.org/10.1186/s12881-020-01091-1)
- 449 22. Belbachir N, Wu Y, Shen M, et al (2023) Studying Long QT Syndrome Caused by  
450 NAA10 Genetic Variants Using Patient-Derived Induced Pluripotent Stem Cells. *Circulation*  
451 148:1598–1601. <https://doi.org/10.1161/CIRCULATIONAHA.122.061864>
- 452 23. Casey JP, Støve SI, McGorrian C, et al (2015) NAA10 mutation causing a novel  
453 intellectual disability syndrome with Long QT due to N-terminal acetyltransferase impairment.  
454 *Sci Rep* 5:16022. <https://doi.org/10.1038/srep16022>
- 455 24. Duong NX, Nguyen T, Le M-K, et al (2024) NAA10 gene expression is associated with  
456 mesenchymal transition, dedifferentiation, and progression of clear cell renal cell carcinoma.  
457 *Pathol Res Pract* 255:155191. <https://doi.org/10.1016/j.prp.2024.155191>
- 458 25. Esmailpour T, Riazifar H, Liu L, et al (2014) A splice donor mutation in NAA10 results  
459 in the dysregulation of the retinoic acid signalling pathway and causes Lenz microphthalmia  
460 syndrome. *J Med Genet* 51:185–196. <https://doi.org/10.1136/jmedgenet-2013-101660>
- 461 26. Maini I, Caraffi SG, Peluso F, et al (2021) Clinical Manifestations in a Girl with NAA10-  
462 Related Syndrome and Genotype-Phenotype Correlation in Females. *Genes (Basel)* 12:900.  
463 <https://doi.org/10.3390/genes12060900>

- 464 27. Myklebust LM, Van Damme P, Støve SI, et al (2015) Biochemical and cellular analysis  
465 of Ogden syndrome reveals downstream Nt-acetylation defects. *Hum Mol Genet* 24:1956–1976.  
466 <https://doi.org/10.1093/hmg/ddu611>
- 467 28. Popp B, Støve SI, Endelev S, et al (2015) De novo missense mutations in the NAA10 gene  
468 cause severe non-syndromic developmental delay in males and females. *Eur J Hum Genet*  
469 23:602–609. <https://doi.org/10.1038/ejhg.2014.150>
- 470 29. Saunier C, Støve SI, Popp B, et al (2016) Expanding the Phenotype Associated with  
471 NAA10-Related N-Terminal Acetylation Deficiency. *Hum Mutat* 37:755–764.  
472 <https://doi.org/10.1002/humu.23001>
- 473 30. Sidhu M, Brady L, Tarnopolsky M, Ronen GM (2017) Clinical Manifestations  
474 Associated With the N-Terminal-Acetyltransferase NAA10 Gene Mutation in a Girl: Ogden  
475 Syndrome. *Pediatr Neurol* 76:82–85. <https://doi.org/10.1016/j.pediatrneurol.2017.07.010>
- 476 31. Støve SI, Blenski M, Stray-Pedersen A, et al (2018) A novel NAA10 variant with  
477 impaired acetyltransferase activity causes developmental delay, intellectual disability, and  
478 hypertrophic cardiomyopathy. *Eur J Hum Genet* 26:1294–1305. [https://doi.org/10.1038/s41431-](https://doi.org/10.1038/s41431-018-0136-0)  
479 [018-0136-0](https://doi.org/10.1038/s41431-018-0136-0)
- 480 32. Valentine V, Sogawa Y, Rajan D, Ortiz D (2018) A case of de novo NAA10 mutation  
481 presenting with eyelid myoclonias (AKA Jeavons syndrome). *Seizure* 60:120–122.  
482 <https://doi.org/10.1016/j.seizure.2018.06.008>
- 483 33. Chen Y, Wang W, Wang J, et al (2022) Normal range of ocular biometry in healthy  
484 children: A systemic review and meta-analysis of 33,559 individuals under seven years of age.  
485 *Ophthalmic Physiol Opt* 42:1264–1275. <https://doi.org/10.1111/opo.13043>
- 486 34. Garel C, Cont I, Alberti C, et al (2011) Biometry of the corpus callosum in children: MR  
487 imaging reference data. *AJNR Am J Neuroradiol* 32:1436–1443.  
488 <https://doi.org/10.3174/ajnr.A2542>
- 489 35. Jandeaux C, Kuchcinski G, Ternynck C, et al (2019) Biometry of the Cerebellar Vermis  
490 and Brain Stem in Children: MR Imaging Reference Data from Measurements in 718 Children.  
491 *AJNR Am J Neuroradiol* 40:1835–1841. <https://doi.org/10.3174/ajnr.A6257>
- 492 36. Raininko R, Autti T, Vanhanen SL, et al (1994) The normal brain stem from infancy to  
493 old age. A morphometric MRI study. *Neuroradiology* 36:364–368.  
494 <https://doi.org/10.1007/BF00612119>
- 495 37. Hsieh T-C, Bar-Haim A, Moosa S, et al (2022) GestaltMatcher: Overcoming the limits of  
496 rare disease matching using facial phenotypic descriptors. *Nat Genet* 54:349–357.  
497 <https://doi.org/10.1038/s41588-021-01010-x>
- 498 38. Pretzsch CM, Schäfer T, Lombardo MV, et al (2022) Neurobiological Correlates of  
499 Change in Adaptive Behavior in Autism. *AJP* 179:336–349.  
500 <https://doi.org/10.1176/appi.ajp.21070711>
- 501 39. Makwana R, Christ C, Marchi E, et al (2024) A Natural History of NAA15-related  
502 Neurodevelopmental Disorder Through Adolescence



- 503 40. Javed N, Cascella M (2024) Neuroanatomy, Globus Pallidus. In: StatPearls. StatPearls  
504 Publishing, Treasure Island (FL)
- 505 41. Hegde AN, Mohan S, Lath N, Lim CCT (2011) Differential diagnosis for bilateral  
506 abnormalities of the basal ganglia and thalamus. *Radiographics* 31:5–30.  
507 <https://doi.org/10.1148/rg.311105041>
- 508 42. Jimshelishvili S, Dididze M (2024) Neuroanatomy, Cerebellum. In: StatPearls.  
509 StatPearls Publishing, Treasure Island (FL)
- 510 43. Branigan B, Tadi P (2024) Physiology, Olfactory. In: StatPearls. StatPearls Publishing,  
511 Treasure Island (FL)
- 512 44. Dudas A, Nakahara TS, Pellissier LP, Chamero P (2024) Parenting behaviors in mice:  
513 Olfactory mechanisms and features in models of autism spectrum disorders. *Neuroscience &*  
514 *Biobehavioral Reviews* 161:105686. <https://doi.org/10.1016/j.neubiorev.2024.105686>
- 515 45. Sharma R, Sekhon S, Cascella M (2024) White Matter Lesions. In: StatPearls. StatPearls  
516 Publishing, Treasure Island (FL)
- 517 46. Pawełczyk A, Łojek E, Żurner N, et al (2021) The correlation between white matter  
518 integrity and pragmatic language processing in first episode schizophrenia. *Brain Imaging Behav*  
519 15:1068–1084. <https://doi.org/10.1007/s11682-020-00314-6>
- 520 47. Rollins CK, Asaro LA, Akhondi-Asl A, et al (2017) White Matter Volume Predicts  
521 Language Development in Congenital Heart Disease. *J Pediatr* 181:42-48.e2.  
522 <https://doi.org/10.1016/j.jpeds.2016.09.070>
- 523 48. Planton S, Longcamp M, Péran P, et al (2017) How specialized are writing-specific brain  
524 regions? An fMRI study of writing, drawing and oral spelling. *Cortex* 88:66–80.  
525 <https://doi.org/10.1016/j.cortex.2016.11.018>  
526

527