

Stress-mediating Inflammatory Cytokine Profiling Reveals Unique Patterns in Malaria and Typhoid Fever Patients

MacDonald Bin Eric^{1, 2, 4}, Palmer Masumbe Netongo^{1, 2, 3, 4, *}, Severin Donald Kamdem^{2, 6}, Nzuno Christine^{2, 9}, Tchoutang Ange Maxime^{1, 2, 4}, Tchoupe Kamoua Eric Berenger^{2, 7}, Bongkiyung Donald Buri^{1, 2}, Ngum Leslie NGum^{2, 4, 7, 8}, Jean Paul Chedjou^{4, 5}, Akindeh Mbu Nji^{1, 4}, Wilfred Fon Mbacham^{1, 4}

1. Department of Biochemistry, University of Yaoundé 1, Yaoundé, Cameroon, 2. Molecular Diagnostics Research Group, Biotechnology Centre, University of Yaoundé 1, Yaoundé, Cameroon, 3. School of Science, Navajo Technical University, Crownpoint, USA, 4. Laboratory for Public Health Research Biotechnologies, University of Yaoundé 1, Yaoundé, Cameroon, 5. Department of Biochemistry, Faculty of Science, University of Buea, Buea, Cameroon, 6. Department of Pathology, University of Utah School of Medicine, Utah, USA, 7. Faculty of Medicine and Biomedical Sciences, University of Yaoundé 1, Yaoundé, Cameroon, 8. Institute for Medical Research and Medicinal Plants Studies, Yaoundé, Cameroon, 9. Department of Medical Laboratory Sciences, University of Buea, Buea, Cameroon.

* masumben@gmail.com

1 Abstract

2 Background

3 Malaria and typhoid fever are known to cause severe morbidity and mortality if miss-treated or left untreated. The
4 oxidant/antioxidant and immune responses to these diseases involve a complex interplay of stress-mediating
5 inflammatory cytokines which orchestrate a coherent response that leads to pathogen clearance and recovery. This study
6 investigated the stress-mediated cytokine profiles in patients attending the Obala District Hospital, Yaoundé, Cameroon
7 and diagnosed with malaria and/or typhoid fever.

8 Methods

9 In this cross-sectional observational study, we measured the levels of cortisol and stress-mediating inflammatory
10 cytokines in peripheral blood samples collected from 55 malaria and/or typhoid fever patients, along with a healthy
11 control group (n = 15) using commercial ELISA kits. The psychological stress of the voluntary participants over the
12 past 30 days was assessed using a 10-item Perceived Stress Scale (PSS) questionnaire.

13 **Results**

14 Compared to the control group, patients with co-infection showed significant differences in anemia, thrombocytopenia,
15 and monocytosis. Psychological stress levels were insignificantly higher in patients with typhoid fever (18.20±5.5)
16 compared to control (15.0±2.43), malaria (15.80±4.39), and comorbidity (15.40±5.26) groups. Cortisol levels were
17 significantly (p<0.001) higher in all patient groups compared to the control group, with the typho-malaria group showing
18 a 2.5-fold increase. Cytokine levels were also elevated in patients with malaria and typhoid comorbidity, particularly
19 IL-1 β , IL-2, TNF- α , and IFN- γ . While IL-6 concentrations were significantly higher in patients with malaria and typho-
20 malaria comorbidity, IL-10 levels were reduced in the typho-malaria group but still higher than in the control group.
21 The TNF- α /IL-10 ratio was significantly higher in the co-infected group, indicating a more intense inflammatory
22 response. Interestingly, there was a positive correlation between perceived stress scores and IL-2 (r = 0.365, p=0.002),
23 IFN- γ (r = 0.248, p=0.03) and IL-6 (r = 0.412, p=0.0001) in the typho-malaria group. Beside IL-6, no significant
24 correlation was found between stress index and the other anti-inflammatory cytokines IL-4 (r = 0.204, p=0.09) and IL-
25 10 (r = 0.153, p=0.20) in coinfecting individuals.

26 **Conclusion**

27 These results suggest that stress response may play a crucial role in shaping the inflammatory landscape during malaria
28 and typhoid fever. Exposed to severe stressors may disrupt immune response and contribute to negative health
29 outcomes. Understanding the immunopathogenesis of these diseases could potentially pave the way for the development
30 of novel therapeutic strategies targeting the stress-cytokine axis.

31 **Keywords:** *malaria, typhoid, cytokine, stress*

32 Introduction

33 Malaria is a serious disease that affects millions of people worldwide and is caused by parasites transmitted through the
34 bite of *Plasmodium*-infected mosquitoes. According to recent data from the World Health Organization, there were an
35 estimated 249 million malaria cases in 2022, resulting in approximately 608 000 deaths (1). It remains a leading cause
36 of morbidity and mortality in many parts of the world. The *Salmonella enterica serotypes Typhi, Paratyphi A, B, and C*
37 cause potentially severe and occasionally life-threatening bacteremic illnesses collectively referred to as enteric fever.
38 Typhoid fever outbreaks have been reported in many developing countries, particularly in areas with large populations
39 and inadequate health infrastructures (2). In addition, the emergence of antibiotic-resistant strains of *Salmonella* species
40 has made controlling the disease more challenging. WHO in 2021 estimates about 11–21 million cases of typhoid fever
41 and 5 million cases of paratyphoid fever worldwide each year, causing an estimated 135 000 – 230 000 deaths.

42 Malaria and typhoid fever are two of the most common infectious diseases that impact a significant portion of the global
43 population including Cameroon. The burden of these diseases includes not only the physical suffering experienced by
44 those infected with the disease but also the economic and social impacts on the communities affected, particularly in
45 developing countries where healthcare infrastructures are often limited and are characterized by poor sanitation and
46 limited access to clean water or food. For individual patients, both malaria and typhoid fever typically cause a wide
47 range of overlapping symptoms, including fever, headache, muscle aches, fatigue, and abdominal pain (3). In rare cases,
48 patients may develop life-threatening complications. This homology in clinical feature of the two diseases pushes
49 individuals who practice symptom-base treatment without prior diagnosis to treat one disease for the other (4).

50 Cytokines, as key components of the immune system, play a crucial role in the body's response to malaria and typhoid
51 fever. However, the immunopathogenesis of these diseases is still not well elucidated. During *Plasmodium* infections,
52 pro-inflammatory cytokines like tumor necrosis factor (TNF), interleukin-1 (IL-1), and interleukin-6 (IL-6) are released
53 from immune cells in response to the parasite antigens (5,6). Elevated levels of these cytokines have been associated
54 with the severity of malaria symptoms and complications like cerebral malaria (5). TNF in particular has been shown
55 to mediate pathological effects during severe malaria by increasing vascular permeability, activating endothelial cells,
56 and promoting leukocyte adhesion (7). For typhoid fever, pro-inflammatory cytokines including IFN- γ , IL-6, IL-10,
57 TNF- α and TNF are also produced in large amounts (8,9). High concentrations of these cytokines have been linked to

58 typhoid fever complications (10). Thus, an excessive inflammatory response mediated by cytokines like TNF, IL-1, and
59 IL-6 likely contributes to the tissue damage and organ dysfunction observed in severe malaria and typhoid fever.

60 A recent study demonstrated a fundamental relationship between the immune and endocrine systems to modulate an
61 adequate response to physiological and psychological stressors (11). Although the exact mechanisms governing the
62 interplay between cortisol and cytokines are still not fully elucidated, the reciprocal interaction between cortisol and
63 inflammatory cytokines is crucial for maintaining the delicate balance between the hypothalamic–pituitary–adrenal
64 (HPA) axis and the immune system, ensuring optimal functioning of both systems during infection. This study was
65 designed to investigate the effect of malaria and typhoid comorbidity on stress-mediated cytokine concentration in
66 patients diagnosed with typhoid fever and/or malaria.

67 **Research methods**

68 **Study design**

69 We conducted a cross-sectional observational study involving patients diagnosed with malaria and/or typhoid fever
70 seeking medical attention at the Obala District (rural) hospital in Yaoundé, Cameroon from September, 2022 to June,
71 2023.

72 **Sample size**

73 In order to balance between study feasibility and statistical power, minimise risk of dropouts, a convenient sample size
74 of 70 participants (55 malaria and/or typhoid fever confirmed cases and 15 healthy controls) were recruited.

75 **Patient Selection and clustering**

76 We included voluntary participants of age 10 years and above, who provided written informed consent and assent. The
77 patients were selected based on their infectious status of either malaria or typhoid fever (**Figure 1**). A stratified random
78 sampling technique was used where the population was divided into four groups (strata): Malaria (Mal⁺), Typhoid
79 (Typ⁺), (TypMal⁺) and Healthy control (TypMal⁻). Individuals with similar characteristics suffering from different
80 diseases were paired to help control for confounding variables. We excluded pregnant women, patients with severe

81 complications of malaria or typhoid fever, HIV-positive patients, other comorbidities such as diabetes, hepatitis. These
82 conditions can influence the stress/immune responses in patients with typhoid fever and/or malaria by altering the
83 disease severity.

84 **Data collection**

85 Participants' data were collected by trained clinical personnel using a standardized case report form (CRF). Data
86 collected included demographic information, patient history, symptoms & signs (type and severity), co-morbidities,
87 initial diagnosis, drugs and test prescribed, laboratory results and care pathway (hospitalization or outpatient care).

88 **Stress event measurements**

89 We collected information about stressful life events which had occurred in the previous month using a 10-item Perceived
90 Stress Scale (PSS) (12) over the past 30 days on a 5-point scale (0 = never, 1 = almost never, 2 = once in a while, 3 =
91 often, 4 = very often). A perceived stress score ranging from 0-13 was considered “low stress”, 14-26 as “moderate
92 stress” and 27-40 as high perceived stress.

93

94

95 **Figure 1:** The study flowchart indicating the strategy of selection and clustering of participants.

96 **Sample collection and laboratory analysis**

97 Patients with signs and symptoms presumptive of malaria and/or typhoid fever were clinically screened and suspected
98 participants were prescribed both malaria and typhoid fever tests. After the patient had been clinically diagnosed for
99 malaria and/or typhoid fever, about 15 ml of blood sample were collected. Blood samples were then distributed in
100 EDTA, dry and blood culture tubes. All laboratory analyses were performed by competent laboratory personnel.

101 **Diagnosis and confirmation of *Plasmodium* infection**

102 Malaria diagnosis was done using standard diagnostic methods as described elsewhere (4). Malaria Rapid Diagnostic
103 Tests were used to detect the presence of *Plasmodium* antigens in the patient's blood in accordance with the
104 manufacturer's instructions. Thick and thin blood films were also prepared and stained with Giemsa for a confirmatory
105 diagnosis of malaria and parasite count using microscopy. Two experienced laboratory personnel independently
106 examined the slides for the presence of *Plasmodium* parasites.

107 **Diagnosis and confirmation of typhoid fever**

108 **Rapid diagnosis of typhoid fever**

109 Package inserted protocol instructions were followed. The laboratory screening of typhoid fever was done using the
110 OnSite Typhoid IgG/IgM Combo rapid test (CTK Biotech Inc, USA), a lateral flow chromatographic immunoassay that
111 detects and distinguishes IgG and IgM antibodies to *Salmonella typhi* and *S. paratyphi* in human blood. Results were
112 interpreted as described elsewhere (13).

113 **Widal agglutination test**

114 Widal test was performed on acute serum using Sanofi qualitative agglutination test kits (Bio-Rad) containing coated
115 somatic (O) and flagella (H) antigens of *S. typhi* and *S. Paratyphi A, B and C*. Analysis was initially carried out as
116 described previously (4). All positive results obtained through a slide test were confirmed and quantify by the tube
117 agglutination method. A positive Widal test was considered as one that gave a reaction titre greater or equal to 1/200
118 for *Salmonella* somatic and flagella antibodies, after the prescribed incubation time (14). However, the last test showing
119 signs of agglutination was taken as the titre for that patient (15).

120 **Culture and identification of *Salmonella* spp**

121 About 4 ml of venous blood sample collected from each participant was immediately inoculated into bottle containing
122 46 ml triptic soya broth medium (Himedia, India) and incubated for 7 days. The cultured bottle which showed growth
123 were further sub cultured on MacConky agar (Deben diagnostic Ltd) and blood agar media (Biomark, India laboratories)
124 after 48 h. Negative broth culture were incubated for seven days and sub cultured before reported negative. Specific
125 antisera were used to determine *Salmonella* spp.

126 **Estimation of inflammatory cytokines levels**

127 Blood samples were transferred to the Molecular Diagnostic Research (MDR) Laboratory (Yaoundé, Cameroon) and
128 Laboratory for Public Health Research Biotechnologies (LAPHER BIOTECH) at the Biotechnology Centre (University
129 of Yaoundé I, Cameroon) within 2 h, in cooled bags, then centrifuged for 10 min at 3500 rpm at 4 °C to allow plasma
130 and serum collection. Seven inflammatory cytokines were assayed in duplicate using ELISA: interleukin (IL)-1 β (Cat
131 #: EKHU-0083, Melsin, China), IL-2 (Cat #: EKHU-0144, Melsin, China), IL-4 (Cat #: EKHU-0014, Melsin, China),
132 IL-6 (Cat #: EKHU-0140, Melsin, China), IL-10 (Cat #: EKHU-0155, Melsin, China), tumor necrotic factor (TNF)- α
133 (Cat #: EKHU-0110, Melsin, China), and interferon (IFN) - γ (Cat #: EKHU-1695, Melsin, China).

134 **Assessment of stress response**

135 The level of cortisol was estimated using commercially available enzyme-linked immunosorbent assay (ELISA) kit
136 (Cat #: ARG8139, Arigo BioLaboratories, Taiwan). All blood parameters were tested following the manufacturer's
137 instructions.

138 **Ethical considerations**

139 This study was conducted in compliance with the national and international ethical standards for research involving
140 human participants. The study protocol was reviewed and approved by ethical review committee and regulatory
141 authorities: the Centre Regional Ethics Committee for Human Health Research (Ref. #: 0226/CRERSHC/2022) and the
142 Centre Regional Delegation of Public Health under the ministry of Public Health in Cameroon (Ref. #:
143 1392/AAR/MINSANTE/SG/DRSPC). Written informed consent/assent was obtained from all participants before
144 enrollment, confidentiality and privacy was maintained, and any potential risks or adverse effects were greatly
145 minimized.

146 **Data analysis**

147 Statistical analysis was performed using SPSS (V.26) and GraphPad (Prism Software 9.0.0). Cytokine levels were
148 compared among the groups. Statistical analyses were performed to determine the significance of any observed

149 differences. Comparisons between the groups were performed with ANOVA as appropriate for continuous variables,
150 and with chi-square test or Fisher exact test as appropriate for categorical variables. The changes in cytokine levels were
151 then correlated with other clinical parameters. The differences were considered statistically significant if $p < 0.05$.

152 **Results**

153 **Assessment of general demographic characteristics of the study population**

154 The general demographic characteristics of patients (n=55) and healthy controls (n=15) are presented in Table 1. Among
155 eligible febrile patients, the ratio of females is to males was 1.04, with a mean (\pm SD) age of 25.06 (\pm 11.56) years;
156 whereas among controls the ratio of females is to males was 1.5, with a mean (\pm SD) age of 30.60 (\pm 12.19) years.
157 Aside from fever, the most frequently occurring symptoms were headache (54.55%), dizziness (49.09%) in study
158 population. The mean time from onset of symptoms to admission was highest in typhoid fever mono-infections, 4.95
159 (\pm 2.54) days. On admission, the mean (SD) perceived stress of the coinfecting group was about one and a half times
160 greater than the control group and almost similar to the typhoid fever group with no significant difference between
161 groups.

162 **Table 1:** Baseline Characteristics of the study population

<i>Characteristics</i> (<i>N</i> = 70)	Healthy control (<i>n</i> = 15)	Malaria mono (<i>n</i> = 20)	Typhoid mono (<i>n</i> = 20)	Typho-malaria (<i>N</i> = 15)	<i>p</i> -value
<i>Mean age (±SD)/years</i>	30.60 (± 12.19)	22.35 (± 14.54)	27.50 (± 9.50)	25.33 (±10.65)	0.228
<i>Gender</i>	Male, <i>n</i> (%)	6 (40.00)	12 (60.00)	7 (35.00)	0.211
	Female, <i>n</i> (%)	9 (60.00)	8 (40.00)	13 (65.00)	
<i>Core temperature (SD)°C</i>	36.7 (±0.38)	38.44 (±0.67)*	38.55 (±1.09)*	39.07 (±1.18)*	<0.001
<i>Clinical presentation on admission</i>					
<i>Headache, n (%)</i>	/	11 (55.00)	8 (40.00)	11 (73.33)	0.224
<i>Anorexia, n (%)</i>	/	9 (45.00)	5 (25.00)	7 (46.67)	0.157
<i>Sweating, n (%)</i>	/	2 (10.00)	3 (15.00)	4 (26.67)	0.212
<i>Dizziness, n (%)</i>	/	8 (40.00)	9 (45.00)	10 (66.67)	0.084
<i>Body pain, n (%)</i>	/	7 (35.00)	4 (20.00)	10 (66.67)*	0.024
<i>Vomiting, n (%)</i>	/	4 (20.00)	2 (10.00)	3 (20.00)	0.131
<i>Diarrhea, n (%)</i>	/	4 (20.00)	3 (15.00)	9 (60.00)*	0.029
<i>Abdominal pain, n (%)</i>	/	2 (10.00)	6 (30.00)	8 (53.33)	0.214
<i>Anaemia, n (%)</i>	/	6 (30.00)*	2 (3.64)	6 (10.91)*	<0.001
<i>Mean onset of symptoms (SD)/days</i>	-	2.10 (±1.55)	4.95 (±2.54)	4.00 (±1.73)	0.147
<i>Average weight (SD)/kg</i>	64.64 (±10.59)	50.97 (±19.19)	64.34 (±10.57)*	57.46 (±13.33)	0.042
<i>Mean systolic BP (SD) /mmHg</i>	115.53 (±3.85)	108.80 (±6.46)*	109.60 (±8.04)*	114.07 (±6.97)	<0.01
<i>Mean diastolic BP/mmHg</i>	65.73 (±2.96)	59.85 (±5.95)*	64.35 (±5.81)	62.80 (±8.11)	0.027
<i>Median parasite density (range)/µl</i>	/	1850.00 (105 - 103025)	/	12850 (1035 – 122045)*	<0.001

163 *Data represented as count (percentage, %), mean (standard deviation) and range (min. - max.) where the asterisk (*) corresponds*
 164 *to statistical significance at p<0.05.*

165 **Laboratory findings**

166 **Hematological parameters**

167 The results of hematological parameters are shown in **Table 2**. Malaria patients in this study showed a mild state
 168 lymphocytopenia with less than 1000 lymphocytes per microliter of blood. Anemia, thrombocytopenia and monocytosis
 169 were equally recorded in the co-infected groups with significant difference from the control group.

170 **Table 2:** Hematological parameters associated with malaria, typhoid and typho-malaria comorbidity

<i>Blood parameter</i>	<i>Control</i> <i>n=15</i>	<i>Malaria mono</i> <i>n=20</i>	<i>Typhoid mono</i> <i>n=20</i>	<i>Typho-malaria</i> <i>co-infection,</i> <i>n=15</i>	<i>p-value</i>
<i>Leukocyte (SD) x10⁹/L</i>	4.51 (±0.51)	5.08 (±0.78)*	4.17 (±1.03)	4.46 (±1.15)	0.021
<i>Hematocrit, (SD) %</i>	43.78 (±2.70)	40.8 (±2.75)	41.9 (±2.36)	38.47 (±3.54)*	<0.001
<i>Neutrophils (SD) x10⁹/L</i>	1.97 (±0.24)	2.13 (±0.37)	1.95 (±0.29)	1.84 (±0.37)	0.079
<i>Lymphocytes (SD) x10⁹/L</i>	1.52 (±0.50)	0.95 (±0.27)*	1.19 (±0.35)	0.98 (±0.21)*	<0.001
<i>Monocytes (SD) x10⁹/L</i>	0.63 (±0.33)	0.82 (0.48)	0.99 (±0.48)	1.15 (±0.37)*	0.009
<i>Eosinophils (SD) x10⁹/L</i>	0.20 (±0.12)	0.077 (±0.04)*	0.11 (±0.06)	0.09 (0.06)*	<0.001
<i>Platelets (SD) x10⁹/L</i>	158.33 (±28.74)	135.15 (±19.48)	132.6 (±25.01)	113.4 (±14.2)*	<0.001
<i>Hemoglobin (SD), g/dL</i>	14.22 (±1.68)	12.11 (±1.61)	12.46 (±1.50)	10.81 (±1.34)*	<0.001

171 *Data represented as mean (standard deviation) where the asterisk (*) corresponds to statistical significance.*

172 **Stress response in the study groups**

173 The stress response was evaluated by estimating the cortisol within the study population and the result are shown in
 174 **Figure 2A** below. The overall mean baseline cortisol levels were significantly higher in all patient groups especially in
 175 typho-malaria group, 43.27 (±8.12) compared to the malaria group, 38.39 (±11.80), typhoid fever group, 33.70 (±11.83)
 176 control, 17.01 (±11.30).

178 **Figure 2:** Comparison of cortisol levels and perceived stress score in the study groups

179 *Data represented as concentration of cortisol in $\mu\text{g/dl}$ and psychological stress score on a scale of 40 measured on admission prior*
180 *to treatment and the asterisks denote a statistical significance at (*): $p < 0.05$ [0.01 – 0.01]; (**): $p < 0.01$ [0.0001 – 0.001] and*
181 *(***): $p < 0.0001$.*

182 Psychological stress results (**Figure 2B**) showed that patients with typhoid fever reported an insignificantly ($p > 0.05$)
183 higher perceived stress levels (18.20 ± 5.5) compared to the control group (15.0 ± 2.43), patients with malaria
184 (15.80 ± 4.39), and comorbidity (15.40 ± 5.26). Thematic analysis of the qualitative data revealed that patients with
185 typhoid fever experienced more anxiety and fear related to the possibility of complications and treatment failure.

186 **Immunological features of the study groups**

187 On admission, the concentrations of IL-1 β ($p < 0.01$), IL-2 ($p < 0.001$), TNF- α ($p < 0.001$), and IFN- γ ($p < 0.001$) were
188 significantly upregulated in patients with malaria and typhoid comorbidity, comparing to healthy controls (**Figure 3**).
189 Aside from the significant difference in IL-6 level recorded in the malaria mono and typho-Malaria groups ($p < 0.01$),
190 there were no statistically significant variation in IL-6 levels within the other groups (**Figure 3c**).

191
192 **Figure 3:** Comparison of pro-inflammatory cytokine levels in the study groups: **(A)** IL-1 β ; **(B)** IL-2; **(C)** IL-6; **(D)**
193 TNF- α and **(E)** IFN- γ among the different groups: Malaria⁺ (n = 20), Typhoid⁺ (20) Typo-Malaria⁺ (n = 15) and Control
194 (n = 15).

195 *Data represented as concentration in pg/ml measured on admission prior to treatment and the asterisks denote a statistical*
196 *significance at (*): $p < 0.05$ [0.01 – 0.01]; (**): $p < 0.01$ [0.001 – 0.01]; (**): $p < 0.001$ [0.0001 – 0.001]; and (****): $p < 0.0001$.*

197 Anti-inflammatory cytokine levels on admission varied significantly across the groups (**Figure 4**). Generally, IL-4
198 concentrations were significantly higher in the Typhoid mono and Typho-Malaria groups compared the control (**Figure**
199 **4a**). On the other hand, IL-10 levels were slightly reduced in the Typho-Malaria group (255.3 ± 177.0) (**Figure 4b**)
200 compared to the mono- malaria (293.1 ± 106.8) and typhoid fever (2262.6 ± 131.9) groups, but significantly higher when
201 compared with control (130.9 ± 51.56). In spite the insignificant variation among groups, the malaria group showed a
202 very strong significant rise in IL-10 ($p < 0.001$) compared to the healthy control.

203

204 **Figure 4:** Comparison of anti-inflammatory cytokine levels in the study groups: **(A)** IL-4 and **(B)** IL-10: Malaria⁺ (n =
205 20), Typhoid⁺ (20) TypoMalaria⁺ (n = 15) and Control (n = 15).
206 *Data represented as concentration in pg/ml measured on admission prior to treatment and the asterisks denote a statistical*
207 *significance at (*): $p < 0.05$ [0.01 – 0.01]; (**): $p < 0.01$ [0.001 – 0.01]; (***): $p < 0.001$ [0.0001 – 0.001].*

208 **Pro- and anti-inflammatory ratio compared**

209 Disbalances in pro- and anti-inflammatory cytokines were observed in the study population. Therefore, we chose pro-
210 inflammatory cytokines (IL-2, TNF- α and IFN- γ) which act as key actors in the regulation of infections with statistical
211 significance ($p < 0.001$) and divided the expression by IL-10 which was the key anti-inflammatory cytokine identified
212 in the study group ($p < 0.05$) to calculate a pro- and anti-inflammatory cytokine expression ratio. Results of these ratios
213 where equally compared between groups as shown in **Figure 5**.

214
215 **Figure 5:** Comparison of the pro/anti-inflammatory cytokine ratios in the study groups: **(A)** TNF- α /IL-10; **(B)** IL-2/IL-
216 10; **(C)** IFN- γ /IL-10. Data are presented as mean plots and p-values are derived from Mann-Whitney U test.

217 **Discussion**

218 The pathogeneses of malaria and typhoid fever are quite complex and incompletely elucidated. In the present study, we
219 investigated the interplay between stress response and inflammatory cytokine profiles in patients with malaria, typhoid
220 fever, and co-infection with both diseases. Our findings revealed distinct clinical and blood parameters among the
221 patient groups compared to healthy participants. There was no significant difference in age and gender between the
222 study groups. the absence of significant differences in age and gender between the study groups minimizes bias and
223 enable us to attribute observed differences to the pathogens rather than extraneous variables, which is essential for
224 understanding the interplay between stress response and inflammatory cytokine profiles in patients with these diseases.
225 Results of this present investigation revealed, highly significant differences in core temperature ($p < 0.001$), systolic
226 ($p = 0.007$) and diastolic ($p = 0.027$) blood pressure, and most of the hematological parameters (**Table 2**). These findings
227 suggest that the pathophysiological mechanisms of *Plasmodium* and *Salmonella spp* in co-existence may trigger distinct

228 thermoregulatory patterns and different levels of cardiovascular instability which could be related to severity. Malaria
229 patients in this study showed a mild state lymphocytopenia with less than 1000 lymphocytes per microliter of blood.
230 Anemia, thrombocytopenia and monocytosis were equally recorded in the co-infected groups with significant difference
231 from the control group. Leukopenia, anemia, and thrombocytopenia have been reported to be significantly associated
232 with malaria and estimated to be specific for the diagnosis of malaria (16–19). The cause of thrombocytopenia in malaria
233 and typhoid fever is poorly understood but, platelet indices could be useful predictors of disease severity (20,21).
234 Correlation analysis revealed that duration of pre-admission symptoms in typho-malaria showed strong positive
235 correlation with diastolic blood pressure ($r=0.421$, $p=0.001$) and Perceived Stress index ($r=0.369$, $p = 0.006$). This
236 implies that prolonged exposure to the pathogens may lead to increased psychological and cardiovascular stress, which
237 could trigger or worsen hypertension and exacerbate the physical symptoms. This highlights the importance of
238 considering the psychological toll and duration of symptoms when evaluating patients with malaria and/or typhoid
239 fever.

240 Additionally, in the typho-malaria group, perceived (psychological) stress index gave strong positive correlation with
241 parasite density ($r=0.613$, $p<0.001$) and eosinophil count ($r=0.303$, $p=0.01$) while core temperature and eosinophil
242 count were negatively correlated ($r=-0.343$, $p=0.004$). This implies that stress may play a role in modulating the immune
243 response to infection during co-infections, potentially allowing for greater parasite growth. Eosinophils are a type of
244 white blood cell that play a role in fighting parasitic infections. Thus, the decreased eosinophil counts recorded in
245 patients with malaria and typho-malaria is likely to be associated with an impaired immune response, reduced
246 inflammatory response, and increased risk of severe disease during plasmodium infection with less effect during typhoid
247 fever. This finding highlights the importance of considering the psychological factors that may influence stress and
248 immune response in patients with malaria.

249 An approximately three-fold increase in parasitemia in typho-malaria group compared to those patients with malaria
250 only (geometric mean parasitaemia of 34711.2 versus 12744.1 per μ l of blood, p value of <0.001) was observed. A
251 similar significantly high parasitemia was reported previously by Netongo *et al.*, in 2022 (4). This implies that co-
252 infection may enhance the replication of the malaria parasites, impaired immune response or suppression of immune
253 cells by the salmonella bacteria or other factors, and a potential for increased transmission. This highlights the
254 importance of simultaneous diagnosis of both malaria and typhoid fever. Correlation analysis revealed a significant

255 negative correlation between parasite density and hemoglobin count in both the malaria mono ($r = -0.356$, $p = 0.005$) and
256 coinfecting groups ($r = -0.457$, $p < 0.001$). This is consistent with the known effects of *Plasmodium* parasites on red blood
257 cell production and destruction. It could be suggested here that the *Salmonella* organism contributes to parasite-mediated
258 hemolysis and disruption of erythropoiesis, consistent with the known immunosuppressive effects of malaria on the
259 bone marrow (22). Thus, by monitoring parasite density and hemoglobin levels, clinicians may be able to identify
260 patients at high risk of developing anemia and provide targeted interventions earlier. A similar result was recently
261 reported in malaria patients by Antwi-Bafour *et al.*, 2023 (23).

262 For a better understanding of the physiological stress response to infection in patients with malaria and typho-malaria,
263 we measured the concentration of cortisol in all study groups. The baseline cortisol levels were significantly higher in
264 all patient groups when compared to the control ($p < 0.001$). The overall mean cortisol level in the typho-malaria group
265 was over 2.5 times greater than that of the control (43.27 versus 17.01). This is contrary to the report of Ibrahim EA *et al.*,
266 in 2011 (24) who recorded no significant difference in mean cortisol levels in patients with malaria in comparison
267 with the control group. It could thus be suggested that the stress response is activated in patients with malaria and
268 typhoid fever and in an attempt to cope with this threat, a physiological response is triggered. Also, elevated cortisol
269 levels may indicate dysregulation of the hypothalamus/pituitary/adrenal axis (HPA) axis, which is responsible for
270 regulating the body's response to stress. This can favour the development of complications and/or contribute to treatment
271 failures. Thus, clinicians may need to consider the possibility of hypercortisolism when managing patients with these
272 conditions as medications that target the HPA axis could be used to regulate cortisol levels and alleviate symptoms.
273 Elevated cortisol levels have been attributed to increased risk of complications in recent studies, such as hyperglycemia
274 (25), hypertension (26), and impaired immune function (27).

275 Correlation analysis revealed that rise in serum cortisol level had a positive correlation with core temperature in all
276 patient group with the strongest correlation in the typho-malaria group ($r = 0.492$, $p < 0.0001$) and thus can be useful to
277 predict the severity in malaria and typhoid fever comorbidity. A current investigation confirmed that temperature
278 interfered with the cortisol secretion; suggesting stimulation of this hormone in malaria patients (28). On the other hand,
279 cortisol levels showed a strong negatively correlation with hemoglobin ($r = -0.352$, $p = 0.003$) and platelet counts ($r =$
280 -0.373 , $p = 0.02$) in the typho-malaria group, with an insignificant positive correlation with leukocyte ($r = 0.144$, $p = 0.23$).
281 This finding implies that cortisol levels may be contributing to the hemolytic anemia and thrombocytopenia commonly

282 seen in patients with malaria and typhoid fever. In the malaria mono group, cortisol levels were equally negatively
283 correlated with lymphocyte counts ($r=-0.336$, $p=0.004$). This could be due to the immunosuppressive effects of cortisol,
284 which can inhibit the activity of lymphocytes and other immune cells. Contrarily, in the typhoid mono group, there was
285 a weak positive correlation between cortisol and leukocyte counts ($r=0.312$, $p=0.04$) which could be due to the
286 stimulatory effects of cortisol on the bone marrow, which can lead to increased production of leukocytes. However,
287 reports highlighting the role of cortisol in typhoid fever pathogenesis are scarce.

288 It has been documented that the blood-stage cycle of the malaria parasite is characterized by an upregulation of
289 inflammatory cytokines like IL-6, IFN- γ , and TNF- α , which play a pivotal role in controlling the growth of the parasite
290 and its elimination (29). The protective immune responses to *Salmonella* infection are complex and involve both
291 humoral and cellular immune responses (30,31), even though the role of humoral immunity in protection remains
292 undefined (10). Due to the ability of *Salmonella* to persist intracellularly, cell-mediated immunity is critical to clearance
293 of infection. In this study, the concentrations of pro and anti-inflammatory cytokines varied considerably from one
294 group to another. IL-1 β levels in the malaria mono and typhoid mono groups showed no significant variation when
295 compared to the control but were significantly lower in these groups compared to the typho-malaria group ($p<0.05$)
296 **(Figure 3b)**. This suggests that co-infection triggered immune suppression in our study which is consistent with the
297 idea that co-infection can lead to immune exhaustion, where the immune system is unable to effectively respond to one
298 or both of the pathogens. Interleukin (IL)-1 β as a pro-inflammatory cytokine has a role in disease-related inflammation,
299 including malaria and typhoid fever (32). However, reports on the effect of IL-1 β on malaria severity are inconsistent.
300 Lyke *et al.*, in 2004 (33) reported no significant change in IL-1 β attributing this to the downregulation by IL-10 levels.
301 This could also explain why the IL-1 β level in this present study was highest in typho-malaria group with a lower IL-
302 10 level. On the contrary, the level of IL-1 β was significantly lower in the malaria group with a higher level of IL-10.

303 It has been established that during early *Salmonella* infection, inflammatory monocytes produce anti-microbial factors
304 such as TNF- α and IL-1 β (34). In the study, we observed a significant rise in TNF- α levels in the both the typhoid mono-
305 and co-infected groups compared to the control. Unlike in the report of Lyke *et al.*, in 2004 (33) who reported an
306 insignificant difference in TNF- α level in malaria patients, we obtained a rather very high significant difference in this
307 group compared to the control. In the malaria group, there was a strong positive correlation between IL-1 β levels and
308 TNF α ($\rho=0.589$, $p=0.006$). The concentrations of IL-2 ($p<0.001$) were also significantly upregulated in patients with

309 malaria and typhoid comorbidity, comparing to healthy controls in which there was a weak negative correlation between
310 IL-2 and TNF- α ($\rho=-0.467$, $p=0.03$). TNF- α elevation has been previously associated with anemia and high-density *P.*
311 *falciparum* infection (35), whereas reduced IL-10 demonstrated in African children with severe malaria-induced
312 anemia. In our study, the mean concentration of IL-10 was significantly higher in patients with malaria only, 293.12
313 (± 106.80), compared to those with comorbidity, 255.30 (± 176.95) and healthy controls 130.93 (± 51.56). In the typhoid
314 fever group, IL-2 was equally strongly and positively correlated to IL-6 ($r=-0.464$, $p=0.01$). In the malaria and typhoid
315 fever co-morbidity group, a positive correlation was recorded between IL-2/TNF α ($r=0.515$, $p=0.03$), IL-2/IL-6 ($r=0.536$,
316 $p=0.02$) and IL-6/TNF- α ($r=0.664$, $p=0.007$). Correlation between these cytokines suggests a complex interaction
317 between immune cells in the malaria and typhoid fever co-morbidity which might contribute to disease severity as seen
318 in the significant increase in TNF- α levels and the decrease in IL-10 levels in patients with malaria and typhoid
319 comorbidity compared to those with malaria only.

320 In line with a previous report (36), we recorded a significant rise in IFN- γ levels in all patient groups with more
321 significant increase in malaria patients with higher parasite densities and typho-malaria comorbidity. The level of IFN- γ
322 in typhoid fever patient was also significantly high and confirming the report by Sheikh *et al.*, in 2011 (37) confirming
323 that IFN- γ responses against *S. Typhi* antigens are elevated in both acute and convalescent stages of human infection
324 compared with healthy controls. Correlation analysis in this study revealed that IL-2 equally gave a strong negative
325 correlation with IFN- γ in the typho-malaria group ($r=-0.577$, $p<0.008$). The strong negative correlation between IL-2
326 and IFN- γ suggests that these two cytokines have opposing effects in the immune response to typho-malaria.

327 The interplay between inflammatory and cortisol responses modulates an appropriate response to a stressor(11). Our
328 study revealed a critical link between stress and the inflammatory response, particularly in the co-infected group. We
329 observed a positive correlation between stress scores and pro-inflammatory cytokines IL-2, IFN- γ , and IL-6. This
330 suggests that psychological stress might exacerbate the inflammatory response in patients with malaria and typhoid co-
331 infection. A previous work revealed that, after controlling for demographic factors, a rise in IL-6 was related to increased
332 cortisol in other conditions (11). In contrast, the correlation between perceived stress and anti-inflammatory cytokines
333 IL-4 and IL-10 was not statistically significant in the co-infected group. A. Wolkow *et al.*, in 2015 (11) observed a less
334 pronounced association between TNF-a, IL-10, IL-4, and cortisol. This suggests that the relationship between stress and

335 anti-inflammatory cytokines may be more complex and influenced by various factors. Further investigation is needed
336 to elucidate the underlying mechanisms by which stress modulates the cytokine profile specifically in co-infections.

337 Unlike in the mono infected patients, cortisol level in the typho-malaria group showed a negative correlation with IL-6
338 levels ($r=-0.411$, $p=0.03$), and TNF- α levels ($r=-0.413$, $p=0.01$) suggesting a possible dampening effect of cortisol on
339 inflammation in the co-infected group possibly due to the overwhelming immune response to the dual infection. In
340 contrast, there was a weak positive correlation between cortisol levels and IL-4 ($r=0.389$, $p=0.03$) in the same group.
341 The positive correlation between cortisol and IL-4 in Typho-malaria might be related to a specific immune pathway
342 activated in response to the co-infection. Cortisol can sometimes have immunomodulatory effects, influencing the
343 immune system in both pro- and anti-inflammatory (38) ways depending on the context. In this scenario, the initial
344 stress response might trigger cortisol release, which then leads to some IL-4 production. However, in co-infection, this
345 feedback loop might be dysregulated, leading to a paradoxical increase in both cortisol and IL-4. A compensatory
346 mechanism could also occur wherein increased pro-inflammatory response due to the co-infection might trigger cortisol
347 release to dampen inflammation. However, this might also indirectly stimulate IL-4 production as a secondary anti-
348 inflammatory response. Data on the association between cortisol and IL-4 in typhoid fever and/or malaria is scarce.
349 There was no significant correlation between the stress marker, cortisol and inflammatory cytokines in the typhoid
350 mono and malaria mono-infection groups. This suggests a switch in immune response when the body deals with only
351 typhoid or malaria. The delay in presentation for medical examination by some participants especially in the typhoid
352 mono (mean, 4.95 days) and typhoid co-infected (mean, 4.95 days) groups may have contributed to the snapshot of
353 cytokine patterns observed at the time of admission.

354 Inflammatory cytokines are essential mediators during parasitic infection and the balance between pro- and anti-
355 inflammatory cytokines may be important for the clinical outcome of both malaria and typhoid fever. Previous reports
356 suggest that the balance between pro- and anti-inflammatory cytokines determines parasite load and disease outcome
357 (39–41). In contrast, other evidences suggest that disease outcome depends on cytokine overproduction and not on the
358 balance between them, since high levels of anti-inflammatory as well as pro-inflammatory cytokines may be associated
359 with disease severity and mortality (42). Our findings revealed a clear distinction in the immune response between the
360 different clusters. Patients with malaria or typhoid fever alone exhibited a lower ratio of TNF- α to IL-10. This suggests
361 a potentially well-regulated immune response, characterized by controlled inflammation to combat the infection while

362 minimizing tissue damage. In contrast, the co-infected group displayed a significantly higher TNF- α /IL-10 ratio,
363 indicative of a more robust and potentially detrimental inflammatory response. This heightened inflammatory state
364 might be the body's attempt to address the dual challenge which might lead to complications. Interestingly, the co-
365 infection group showed a higher IL-2/IL-10 and IFN- γ /IL-10 ratios, indicating a more pronounced effort to activate T-
366 cells and macrophages and an overreaction might potentially provoke a collateral damage. These findings collectively
367 suggest that co-infection with malaria and typhoid fever leads to a more severe and dysregulated immune response
368 compared to single infections. The observed imbalance between pro-inflammatory and anti-inflammatory responses in
369 co-infection could contribute to the development of complications. Furthermore, understanding these distinct cytokine
370 profiles may hold promise for the development of targeted immunomodulatory therapies to manage co-infections more
371 effectively.

372 **Conclusion**

373 In conclusion, our study sheds light on the intricate relationship between stress, cortisol levels, and the immune response
374 in patients with malaria, typhoid fever, and co-infections. The findings suggest that stress may exacerbate inflammation
375 in co-infected individuals, while cortisol may have anti-inflammatory effects in this group. The differences in cytokine
376 profiles between mono-infected and co-infected individuals highlight the complexity of the immune response in these
377 diseases. Moreover, exposed to severe stressors may disrupt this immune response and contribute to negative health
378 outcomes. Our research underscores the importance of understanding the interplay between infectious diseases, stress,
379 and the immune system for developing effective treatment strategies. Future studies should further explore the
380 mechanisms by which stress influences cytokine expression and investigate the potential therapeutic benefits of stress
381 management strategies in conjunction with conventional treatments for malaria and typhoid fever. Ultimately, by
382 delving deeper into this complex relationship, we can better understand the immunopathogenesis of these diseases and
383 improve patient outcomes.

384 **Conflict of Interest**

385 The authors declare no conflicts of interest.

386 **Data availability**

387 The data collected in this study are available upon request to the corresponding author.

388 **Acknowledgments**

389 We remain grateful to all the participants and personnel from the Obala District and Etoug-Ebe Baptist Hospitals for
390 the collaboration. We thank the staff of the Regional Delegation of Public Health, Cameroon for the approval and
391 monitoring of the research.

392 **Authors' contributions**

393 **Conceptualization:** Palmer Masumbe Netongo, Wilfred Fon Mbacham

394 **Formal analysis:** Severin Donald Kamdem, MacDonald Bin Eric, Tchoutang Ange Maxime

395 **Funding acquisition:** Palmer Masumbe Netongo

396 **Investigation:** MacDonald Bin Eric, Tchoutang Ange Maxime, Nzuno Christine

397 **Software:** Tchoutang Ange Maxime, Tchoupe Kamoua Eric Berenger

398 **Supervision:** Palmer Masumbe Netongo, Wilfred Fon Mbacham

399 **Writing – original draft:** Palmer Masumbe Netongo, MacDonald Bin Eric

400 **Writing – review & editing:** Nzuno Christine, Ngum Leslie Ngum, Bongkiyung Donald Buri, Jean Paul Chedjou,
401 Severin Donald Kamdem, Palmer Masumbe Netongo, Wilfred Fon Mbacham, Akindeh Mbu Nji.

402 **References**

- 403 1. Organization WH. World malaria World malaria report report. 2023.
- 404 2. Hancuh M, Walldorf J, Minta AA, Tevi-benissan C, Christian KA, Nedelec Y, et al. Typhoid Fever Surveillance , Incidence
405 Estimates , and Progress Toward Typhoid Conjugate Vaccine Introduction — Worldwide , 2018 – 2022. 2023;72(7):171–
406 6.
- 407 3. Ekesiobi AO, Igbodika MC, Njoku OO. CO-INFECTION OF MALARIA AND TYPHOID FEVER IN A TROPICAL
408 COMMUNITY. Anim Res Int. 2008;5(3):888–91.

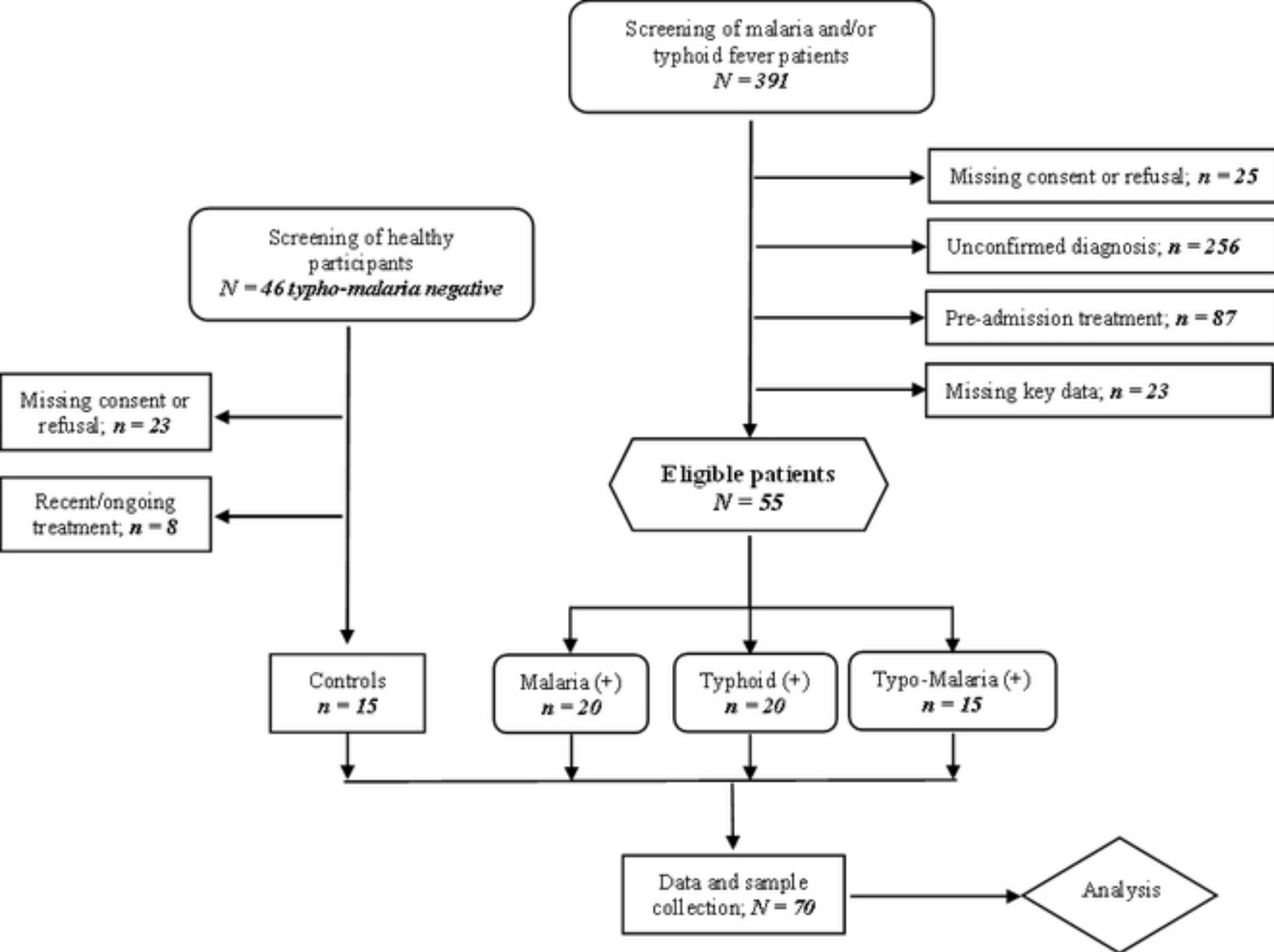
- 409 4. Netongo PM, Eric M Bin, Chedjou JP, Kamdem SD, Achonduh-atijegbe O, Mbacham WF. Malaria and Typhoid Fever Co-
410 infection Amongst Febrile Patients in Yaoundé , Cameroon : Implication in the Genetic Diversity of Plasmodium falciparum
411 To cite this article : 2022;7(2):47–53.
- 412 5. Wilairatana P, Mala W, Milanez GDJ, Masangkay FR, Kotepui KU, Kotepui M. Increased interleukin - 6 levels associated
413 with malaria infection and disease severity : a systematic review and meta - analysis. Sci Rep [Internet]. 2022;1–24.
414 Available from: <https://doi.org/10.1038/s41598-022-09848-9>
- 415 6. Id MK, Mala W, Kwankaew P, Kotepui KU, Masangkay FR, Wilairatana P. Distinct cytokine profiles in malaria
416 coinfections : A systematic review. 2023;1–19. Available from: <http://dx.doi.org/10.1371/journal.pntd.0011061>
- 417 7. Bradle J. TNF-mediated inflammatory disease. J Pathol. 2008;214:149–60.
- 418 8. Butler T, Ho MAY, Acharya G, Tiwari M, Gallati H. Interleukin-6 , Gamma Interferon , and Tumor Necrosis Factor
419 Receptors in Typhoid Fever Related to Outcome of Antimicrobial Therapy. 1993;37(11):2418–21.
- 420 9. Bhuiyan S, Sayeed A, Khanam F, Leung DT, Bhuiyan TR, Sheikh A, et al. Cellular and Cytokine Responses to Salmonella
421 enterica Serotype Typhi Proteins in Patients with Typhoid Fever in Bangladesh. Am J Trop Med Hyg. 2014;90(6):1024–
422 30.
- 423 10. Sztejn MB, Salerno-goncalves R, Mcarthur MA. Complex adaptive immunity to enteric fevers in humans : lessons learned
424 and the path forward. Front Genet [Internet]. 2014;5(October):516. Available from: doi: 10.3389/fimmu.2014.0051
- 425 11. Wolkow A, Aisbett B, Reynolds J, Ferguson SA, Main LC. Relationships between inflammatory cytokine and cortisol
426 responses in firefighters exposed to simulated wildfire suppression work and sleep restriction. Physiol Rep.
427 2015;3(11):12604.
- 428 12. Chan SF, La Greca AM. Perceived Stress Scale (PSS) [Internet]. In: Gellman, M.D., Turner, J.R. (eds) Encyclopedia of
429 Behavioral Medicine. Springer, New York. 2013. Available from: https://doi.org/10.1007/978-1-4419-1005-9_773
- 430 13. Achonduh-Atijegbe OA, Mfuh KO, Mbang AHE, Chedjou JP, Taylor DW, Nerurkar VR, et al. Prevalence of malaria,
431 typhoid, toxoplasmosis and rubella among febrile children in Cameroon. BMC Infect Dis [Internet]. 2016;16(1):1–9.
432 Available from: <http://dx.doi.org/10.1186/s12879-016-1996-y>
- 433 14. Nsutebu E F, Ndumbe P M AD. The distribution of anti-Salmonella antibodies in the sera of blood donors in Yaoundé,
434 Cameroon. Trans R Soc Trop Med Hyg. 2002;96(1):68–9.
- 435 15. Noorbakhsh S, Rimaz S, Rahbarimanesh AA MS. Interpretation of the Widal Test in Infected Children. Iran J Public Health.
436 2003;32(1):35–7.
- 437 16. Awoke N, Arota A. Profiles of hematological parameters in Plasmodium falciparum and Plasmodium vivax malaria patients
438 attending Tercha General. Infect Drug Resist. 2019;12:521–7.

- 439 17. Ndako JA, Dojumo VT, Akinwumi JA, Fajobi VO, Owolabi AO, Olatinsu O. Changes in some haematological parameters
440 in typhoid fever patients attending Landmark University Medical Center , Omuaran-Nigeria. *Heliyon* [Internet]. 2020;6:1–
441 5. Available from: <https://doi.org/10.1016/j.heliyon.2020.e04002>
- 442 18. Nlinwe NNO, Tang B. Assessment of Hematological Parameters in Malaria, among Adult Patients Attending the Bamenda
443 Regional Hospital. *Hindawi*. 2020;1–8.
- 444 19. Kotepui M, Piwkhram D, Phunphuech B, Phiwklam N. Effects of Malaria Parasite Density on Blood Cell Parameters. *PLoS*
445 *One*. 2015;10(3):1–11.
- 446 20. Bayleyegn B, Asrie F, Yalew A, Woldu B. Role of Platelet Indices as a Potential Marker for Malaria Severity. *Hindawi*.
447 2021;1–8.
- 448 21. Lacerda MVG, Mourão MPG, Coelho HC, Santos JB. Thrombocytopenia in malaria: Who cares? Vol. 106, *Memorias do*
449 *Instituto Oswaldo Cruz*. 2011. p. 52–63.
- 450 22. Shaikh MS, Ali B, Janjua M, Akbar A, Haider SA, Moiz B, et al. Plasmodium in the bone marrow : case series from a
451 hospital in Pakistan , 2007 – 2015. *Malar J* [Internet]. 2021;20(254):1–6. Available from: [https://doi.org/10.1186/s12936-](https://doi.org/10.1186/s12936-021-03792-1)
452 [021-03792-1](https://doi.org/10.1186/s12936-021-03792-1)
- 453 23. Baffour SA, Mensah BT, Johnson G, Naa D, Armah O, Mustapha SA, et al. Haematological parameters and their correlation
454 with the degree of malaria parasitaemia among outpatients attending a polyclinic. *Malar J* [Internet]. 2023;22:1–8. Available
455 from: <https://doi.org/10.1186/s12936-023-04710-3>
- 456 24. Ibrahim EA, Kheir MM, Elhardello OA, Almahi WA, Ali NI, Elbashir MI IA. Cortisol and uncomplicated Plasmodium
457 falciparum malaria in an area of unstable malaria transmission in eastern Sudan. *Asian Pac J Trop Med*. 2011;146–7.
- 458 25. Vedantam D, Poman DS, Motwani L, Asif N, Patel A, Anne KK. Stress-Induced Hyperglycemia: Consequences and
459 Management. *Cureus*. 2022;1(7):14.
- 460 26. Whitworth JA, Williamson PM, Mangos G, Kelly JJ. Cardiovascular consequences of cortisol excess. *Vasc Health Risk*
461 *Manag*. 2005;1(4):291–9.
- 462 27. Glaser R, Kiecolt-Glaser JK. Stress-induced immune dysfunction: implications for health. *Nat Rev Immunol* [Internet].
463 2005;5(3):243–51. Available from: <https://doi.org/10.1038/nri1571>
- 464 28. Sandeep BR, Bhutto MG, P SBK. Study of serum cortisol levels in complicated and uncomplicated Plasmodium vivax
465 malaria patients. *Int J Res Med Sci* |. 2021;9(1):254–61.
- 466 29. Popa GL, Popa MI. Recent Advances in Understanding the Inflammatory Response in Malaria : A Review of the Dual Role
467 of Cytokines. *J Immunol Res*. 2021;2021:10–2.
- 468 30. Sztejn MB. Cell-mediated immunity and antibody responses elicited by attenuated Salmonella enterica serovar Typhi strains

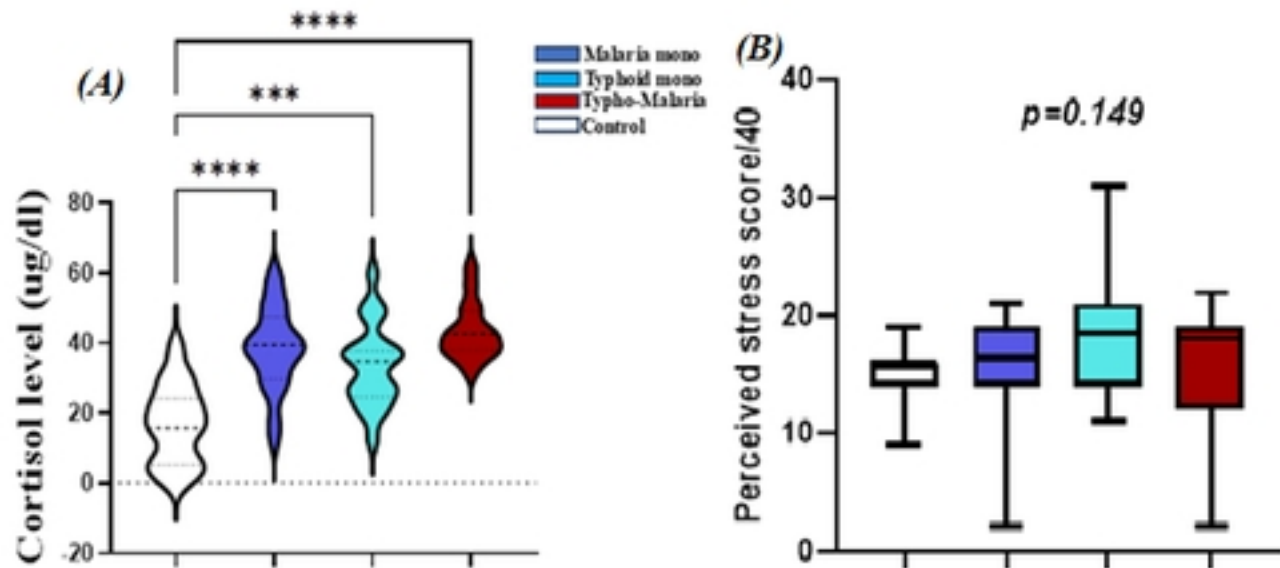
- 469 used as live oral vaccines in humans. *Clin Infect Dis*. 2007;15–9.
- 470 31. Levine MM, Tacket CO, Sztein MB. Host – Salmonella interaction : human trials. *Microbes Infect*. 2001;3:1271–9.
- 471 32. Mahittikorn A, Kwankaew P, Rattaprasert P, Kotepui KU. Elevation of serum interleukin - 1 β levels as a potential indicator
472 for malarial infection and severe malaria : a meta - analysis. *Malar J* [Internet]. 2022;1–11. Available from:
473 <https://doi.org/10.1186/s12936-022-04325-0>
- 474 33. Lyke KE, Burges R, Cissoko Y, Sangare L, Dao M, Diarra I, et al. Serum Levels of the Proinflammatory Cytokines
475 Interleukin-1 Beta (IL-1 β), IL-6 , IL-8 , IL-10 , Tumor Necrosis Factor Alpha , and IL-12 (p70) in Malian Children with
476 Severe *Plasmodium falciparum* Malaria and Matched Uncomplicated Malaria or Healthy Co. *Infect Immun*.
477 2004;72(10):5630–7.
- 478 34. Pham OH, McSorley SJ. Protective host immune responses to Salmonella infection. *Natl Inst Heal*. 2015;10:101–10.
- 479 35. Shaffer N, Grau GE, Hedberg K, Davachi F, Lyamba B, Hightower AW, et al. Tumor necrosis factor and severe malaria.
480 *he J Infect Dis*. 1991;1(163):96–101.
- 481 36. Oyegue-liabagui SL, Bouopda-tuedom AG, Kouna LC, Maghendji-Nzondo S, Nzoughe H, Tchitoula-makaya N, et al. Pro-
482 and anti-inflammatory cytokines in children with malaria in Franceville , Gabon. *Am J Clin Exp Immunol*. 2017;6(2):9–
483 20.
- 484 37. Sheikh A, Khanam F, Sayeed A, Rahman T, Pacek M, Hu Y, et al. Interferon- gamma and Proliferation Responses to
485 *Salmonella enterica* Serotype Typhi Proteins in Patients with *S. Typhi* Bacteremia in Dhaka, Bangladesh. *PLoS Negl Trop*
486 *Dis*. 2011;5(6):1193.
- 487 38. Coutinho AE, Chapman KE. The anti-inflammatory and immunosuppressive effects of glucocorticoids, recent
488 developments and mechanistic insights. *Mol Cell Endocrinol*. 2011;335(1):2–13.
- 489 39. Winkler S, Willheim M, Baier K, Schmid D, Aichelburg A, Graninger W, et al. Reciprocal Regulation of Th1- and Th2-
490 Cytokine-Producing T Cells during Clearance of Parasitemia in *Plasmodium falciparum* Malaria. *Infect Immun*.
491 1998;66(12):6040–4.
- 492 40. Sarangi A, Mohapatra PC, Dalai RK, Sarangi AK. Serum IL-4 , IL-12 and TNF-alpha in malaria : a comparative study
493 associating cytokine responses with severity of disease from the Coastal Districts of Odisha. *J Parasit Dis*. 2014;38(2):143–
494 7.
- 495 41. Punnath K, Dayanand KK, Chandrashekhar VN, Achur RN, Kakkilaya SB, Ghosh SK, et al. Association between
496 inflammatory cytokine levels and anemia during *Plasmodium falciparum* and *Plasmodium vivax* infections in Mangaluru:
497 A Southwestern Coastal Region of India. *Trop Parasitol*. 2019;9(2):98–107.
- 498 42. Day NP, Hien TT, Schollaardt T, Loc PP, Chuong L V., Chau TT, et al. The prognostic and pathophysiologic role of pro-

499 and antiinflammatory cytokines in severe malaria. *J Infect Dis.* 1999;180(4):1288–1297.

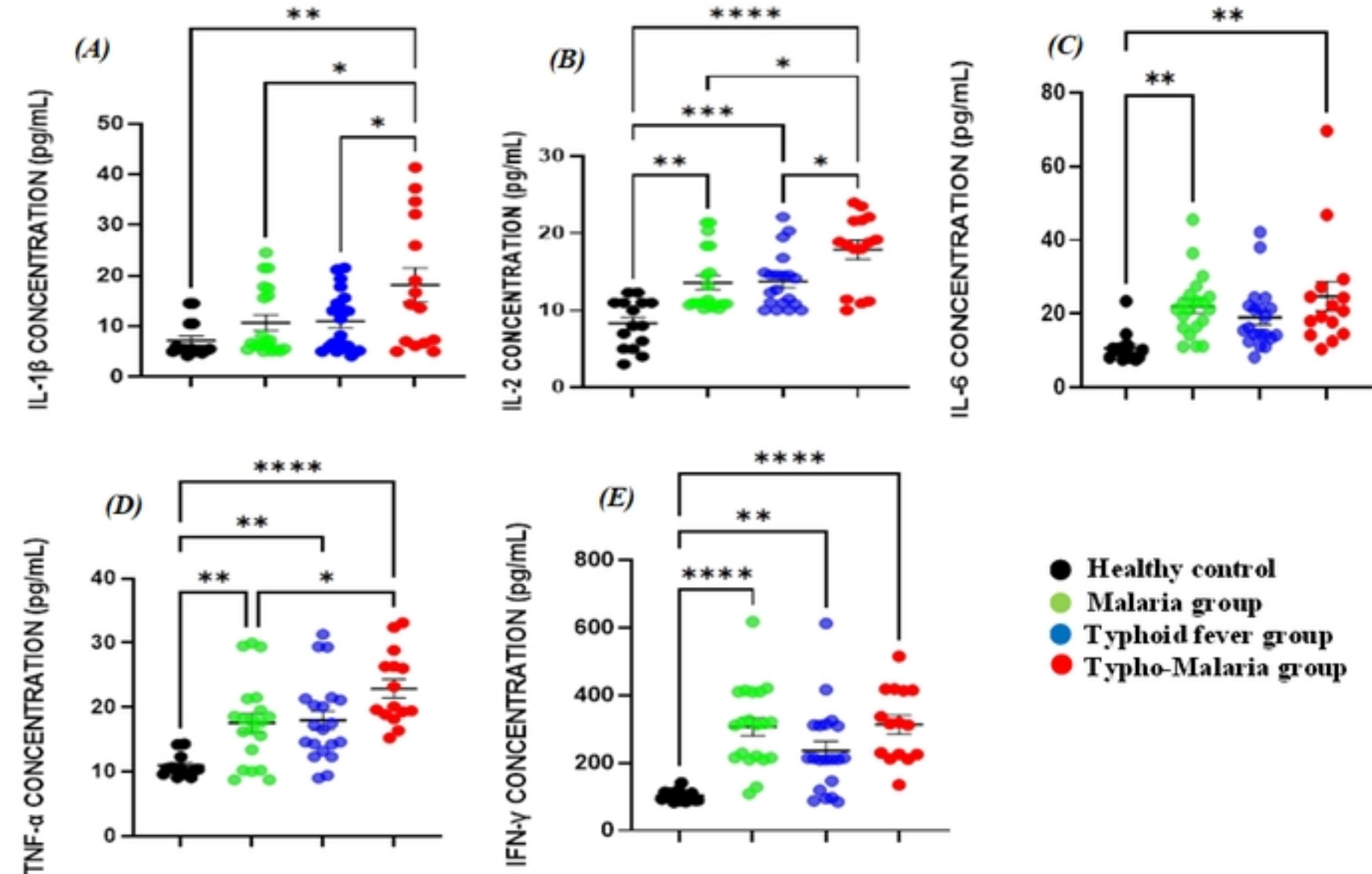
500



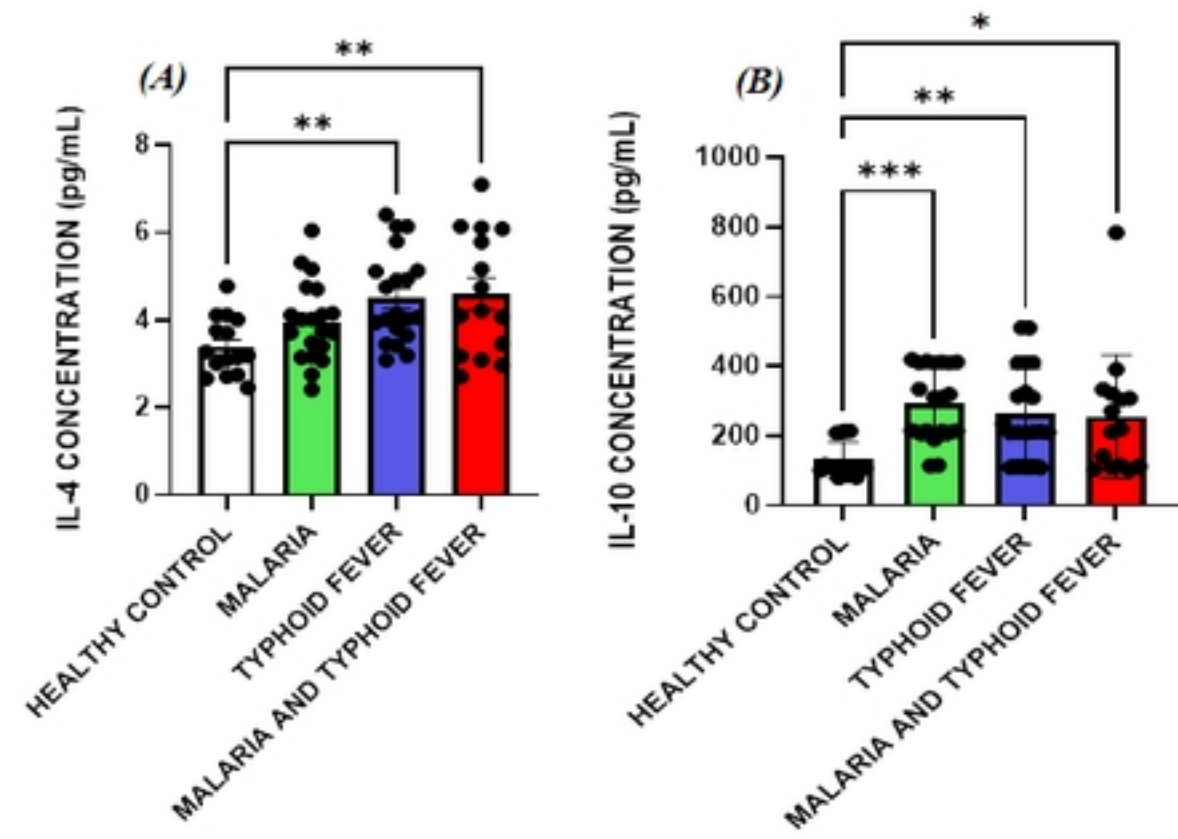
Figure



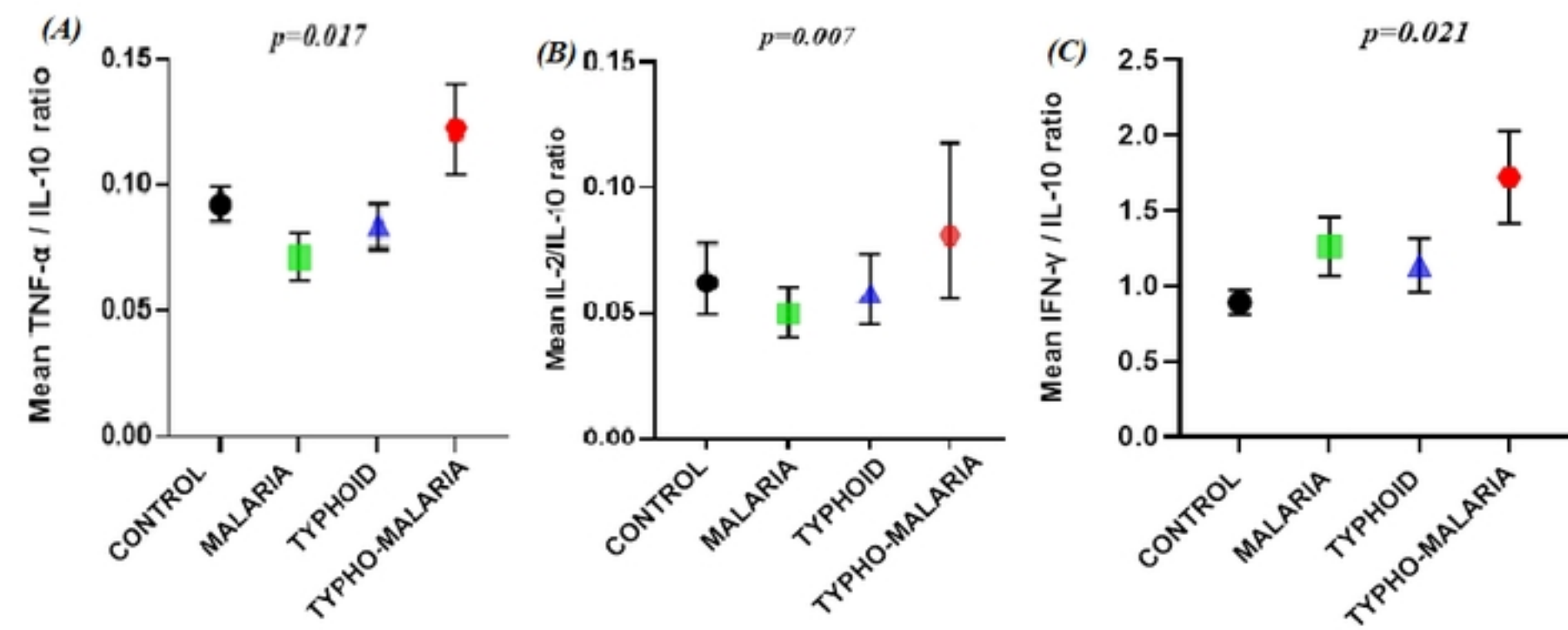
Figure



Figure



Figure



Figure