

1 Age- and sex- differences in efficacy of treatments for  
2 type 2 diabetes: Network meta-analysis of aggregate  
3 and individual level data  
4

5 Peter Hanlon<sup>1\*</sup>, Elaine Butterly<sup>1\*</sup>, Lili Wei<sup>1</sup>, Heather Wightman<sup>1</sup>, Saleh Ali M Almazam<sup>1</sup>, Khalid  
6 Alsallumi<sup>1</sup>, Jamie Crowther<sup>1</sup>, Ryan McChrystal<sup>1</sup>, Heidi Rennison<sup>1</sup>, Katherine Hughes<sup>3</sup>, Jim  
7 Lewsey<sup>1</sup>, Robert Lindsay<sup>4</sup>, Stuart McGurnaghan<sup>2</sup>, John Petrie<sup>1</sup>, Laurie A Tomlinson<sup>5</sup>, Sarah  
8 Wild<sup>6</sup>, Amanda Adler<sup>7</sup>, Naveed Sattar<sup>8</sup>, David M Phillippo<sup>9</sup>, Sofia Dias<sup>10</sup>, Nicky J Welton<sup>9</sup>,  
9 David A McAllister<sup>1</sup>

10

11 \*These authors contributed equally

12

- 13 1. School of Health and Wellbeing, University of Glasgow, Glasgow, UK
- 14 2. Institute of Genetics and Molecular Medicine, University of Edinburgh, Edinburgh, UK
- 15 3. Department of Diabetes, Glasgow Royal Infirmary, NHS Greater Glasgow and Clyde,  
16 Glasgow, Glasgow, UK
- 17 4. University of Glasgow BHF Glasgow Cardiovascular Research Centre, Glasgow,  
18 Glasgow, UK
- 19 5. Epidemiology and Population Health, London School of Hygiene and Tropical  
20 Medicine, London, UK
- 21 6. Usher Institute, University of Edinburgh, Edinburgh, UK
- 22 7. Diabetes Trials Unit, University of Oxford, Oxford, UK
- 23 8. Institute of Cardiovascular and Medical Sciences, University of Glasgow, Glasgow,  
24 UK
- 25 9. Population Health Sciences, Bristol Medical School, University of Bristol, Bristol, UK
- 26 10. Centre for Reviews and Dissemination, University of York, York, UK

27

28 Word count (manuscript text): 2960

29

30 **Corresponding author:**

31 Dr Peter Hanlon  
32 Clarice Pears Building,  
33 University of Glasgow,  
34 Byres Road,  
35 Glasgow,  
36 United Kingdom  
37  
38 Peter.hanlon@glasgow.ac.uk

## 39 Abstract

### 40 Importance

41 Sodium glucose cotransporter 2 inhibitors (SGLT2i), glucagon-like peptide-1 receptor  
42 analogues (GLP1ra) and dipeptidyl peptidase-4 inhibitors (DPP4i) improve hyperglycaemia  
43 and, in the case of SGLT2i and GLP1ra, reduce the risk of major adverse cardiovascular  
44 events (MACE) in type 2 diabetes. It is not clear whether efficacy varies by age or sex.

### 45 Objective

46 Assess whether age or sex are associated with differences in efficacy of SGL2i, GLP1ra and  
47 DPP4i.

### 48 Data sources

49 Medline, Embase and clinical trial registries.

### 50 Study selection

51 Two independent reviewers screened for randomised controlled trials of  
52 SGLT2i/GLP1ra/DPP4i, compared to placebo/active comparator, in adults with type 2  
53 diabetes.

### 54 Data extraction and synthesis

55 We sought individual participant data (IPD) all eligible studies. Where IPD were available, we  
56 modelled age- and sex-treatment interactions for each trial. Otherwise, we assessed age-  
57 sex distributions along with results from aggregate trial data. IPD and aggregate findings  
58 were combined in a Bayesian network meta-analysis.

### 59 Main outcome measures

60 HbA1c and MACE.

### 61 Results

62 We identified 616 eligible trials (604 reporting HbA1c, 23 reporting MACE) and obtained IPD  
63 for 75 trials (6 reporting MACE). Mean age was 59.0 (10.7) years and 64.0 (8.6) in HbA1c  
64 and MACE trials, respectively. Proportions of female were 43.1% and 44.0% in HbA1c and  
65 MACE trials, respectively. SGLT2i reduced HbA1c by 0.5-1.0% overall compared to placebo.

66 This reduction versus placebo was attenuated in older participants (change in HbA1c 0.25  
67 percentage-points less for 75-year-olds compared to 45-year-olds). SGLT2i showed greater  
68 relative efficacy in MACE risk reduction among older than younger people. This finding was  
69 sensitive to the exclusion of one of the IPD MACE trials, however, in all sensitivity analyses,  
70 SGLT2i were either as efficacious or more efficacious in older participants. There was no  
71 consistently significant difference in efficacy by age for GLP1ra or DPP4i for HbA1c or  
72 MACE, nor were there consistent significant sex differences for any class.

### 73 Conclusion

74 Newer glucose-lowering drugs are efficacious across age and sex groups. SGLT2i are more  
75 cardioprotective in older than younger people despite smaller HbA1c reductions. Age alone  
76 should not be a barrier to treatments with proven cardiovascular benefit providing they are  
77 well tolerated align with patient priorities.

78

79

## 80 Introduction

81 Over the past two decades, newer glucose lowering agents have transformed the  
82 management of type 2 diabetes. The efficacy of agents such as SGLT2 inhibitors (SGLT2i)  
83 and GLP1 receptor agonists (GLP1ra) in reducing cardiovascular and kidney outcomes is  
84 now well established,<sup>1,2</sup> leading to their widespread use in clinical practice and prominence  
85 in clinical guidelines.<sup>3</sup> Questions remain, however, over how to optimise treatment decisions  
86 for individuals, including how characteristics such as age and sex might influence treatment  
87 recommendations.<sup>4-6</sup>

88 Almost half of those with type 2 diabetes are aged over 65 years.<sup>5</sup> Moreover, age-related  
89 functional limitations and conditions such as frailty typically manifest earlier in people with  
90 type 2 diabetes.<sup>7</sup> The risk of complications of diabetes increases with age, potentially  
91 increasing the absolute benefits of treatment. Conversely, older adults may also be more  
92 susceptible to harms of intensive glycaemic targets.<sup>8,9</sup> Among women, absolute risk of type 2  
93 diabetes and cardiovascular disease are lower than in men, but diabetes is associated with  
94 a greater relative increase in cardiovascular risk in women than men.<sup>10,11</sup> Women also have  
95 different patterns of cardiovascular complications and less intensive management of  
96 cardiovascular risk factors from men.<sup>12</sup> It is therefore important for clinicians, patients and  
97 policy makers to understand whether and how responses to treatment differ by age and sex.  
98 Clinical guidelines do not currently recommend different treatments for men and women, nor  
99 across different age-groups. They have, however, highlighted the uncertainty that comes  
100 from the under-representation of women and older people within trials.<sup>3,13</sup>

101 Addressing this uncertainty is challenging. Analyses of variation in treatment effects using  
102 individual trials (even where there is access to individual-level data) often lacks statistical  
103 power.<sup>14</sup> Although meta-analyses increase power to detect differences in efficacy across  
104 participant characteristics, they can produce misleading results due to aggregation bias, that  
105 is, making improper inferences about units of analysis (the individual patient) that were not

106 actually analysed.<sup>15</sup> Individual participant data (IPD) meta-analyses, which pool individual-  
107 level data from multiple trials, largely overcome both these deficiencies, but due to legal and  
108 practical constraints it is rarely possible to obtain IPD for all relevant trials, limiting gains in  
109 power and increasing the risk of selection bias.

110 We aimed to address these problems via a systematic review and meta-analysis of both  
111 aggregate and IPD trial data. Using a meta-analysis technique not susceptible to  
112 aggregation bias, we estimated whether the efficacy of newer glucose lowering medications  
113 for type 2 diabetes differs according to age and sex.

## 114 **Methods**

115 This systematic review and network meta-analysis followed a prespecified protocol  
116 (PROSPERO:CRD42020184174).<sup>16</sup> The protocol covers a wider project for calibration of the  
117 network meta-analysis to a community sample. This manuscript presents findings from the  
118 assessment of age- and sex-treatment interactions (prior to calibration). Findings are  
119 reported according to Preferred Reporting In Systematic Reviews and Meta-analyses  
120 (PRISMA) guidelines.<sup>17</sup>

## 121 **Eligibility criteria and search strategy**

122 Eligible studies were randomised trials that recruited adults ( $\geq 18$  years) with type 2 diabetes,  
123 and which assessed efficacy of either SGLT2i, GLP1ra, or DPP4 inhibitors (DPP4i) on  
124 either glycated haemoglobin (HbA1c) or major adverse cardiovascular events (MACE,  
125 defined as death from cardiovascular causes, non-fatal myocardial infarction or non-fatal  
126 stroke) compared with either placebo or an active comparator of any other drug class. We  
127 excluded within-class comparisons and trials that were not registered.

128 We searched two electronic databases (Medline and Embase) using both keywords and  
129 Medical Subject Headings (full search terms shown in the appendix) as well as the United  
130 States and Chinese clinical trial registries. All titles and abstracts were screened, retaining all  
131 potentially eligible studies for full text review. All stages of screening were completed by two  
132 reviewers working independently, with conflicts resolved by consensus and involving a third  
133 reviewer where required.

134 For all eligible trials, we assessed whether IPD were available for analysis by third party  
135 researchers through the Vivli repository, and applied to the independent steering committee  
136 for access where this was the case.

## 137 Data extraction

138 Drug names, doses and regimens were extracted from text strings obtained from  
139 clinicaltrials.gov and published documents (papers and clinical study reports). Age and sex  
140 at baseline were obtained from published documents. HbA1c results were extracted from  
141 clinicaltrials.gov where available or published documents if not. For MACE, results were  
142 obtained via manual extraction from published documents (including age- and sex-  
143 subgroups). For IPD trials, data were cleaned and harmonised in the Vivli repository.

144 We assessed risk of bias in each study using the Cochrane Risk of Bias tool.<sup>18</sup>

## 145 Statistical analysis

146 Detailed description of the statistical analysis is in the supplementary appendix, and  
147 summarised briefly here. All data (IPD-summaries and aggregate level) are available at the  
148 project github repository

149 [https://github.com/Type2DiabetesSystematicReview/nma\\_agensex\\_public](https://github.com/Type2DiabetesSystematicReview/nma_agensex_public).

150 First, we summarised the age- and sex- distribution for each trial using IPD where available,  
151 or from published summary statistics otherwise. Then, for each outcome (HbA1c and MACE)  
152 we fitted multilevel network meta-regression (ML-NMR) models using the multinma package  
153 in R.<sup>19</sup> These models are described in more detail in our protocol paper and in more  
154 technical detail in the original methods paper.<sup>16,19</sup> This modelling approach was chosen as i)  
155 it does not disrupt randomisation ii) it makes less stringent assumptions than standard NMA  
156 and iii) it can (without causing aggregation bias) accommodate IPD, aggregate-level trial  
157 data and subgroup-level trial data in models estimating treatment-covariate interactions.

158 For HbA1c, we separately fit network meta-analyses for trials of mono-, dual- and triple-  
159 therapy, reflecting different indications for the drugs in question. All MACE trials were in  
160 people already established on treatment. We dropped treatment arms evaluating the

161 combined effect of two or more treatments. For the SGLT2i, GLP1ra, DPP4i and metformin,  
162 treatment arms were uniquely identified using drug and dose. Insulin, in which dose is  
163 titrated, was modelled as a single category. For the remaining drug classes, arms within the  
164 same trial with different doses but the same drug were collapsed into a single arm. For all  
165 models, placebo was the reference treatment.

166 In trials for which we had IPD, we fitted trial-level regression models of each outcome by  
167 age, sex and treatment, as well as assessing age-treatment and sex-treatment interactions.  
168 For HbA1c we fitted linear regression models (additionally including HbA1c at baseline as a  
169 covariate). Where participants did not complete the trial we carried forward the last recorded  
170 value. For the MACE outcomes we fitted Cox regression models. We checked proportional  
171 hazards assumption by plotting scales Schofield residuals. These IPD estimates were then  
172 meta-analysed along with aggregate trial-level and (for MACE) subgroup-level data on trial  
173 outcomes and on the age- and sex-distributions of each trial (as described in the  
174 supplementary appendix). Placebo was used as the reference category in all models.  
175 Models were summarised using the posterior mean and 95% credible interval for both the  
176 main effect and both age-treatment and sex-treatment interactions.



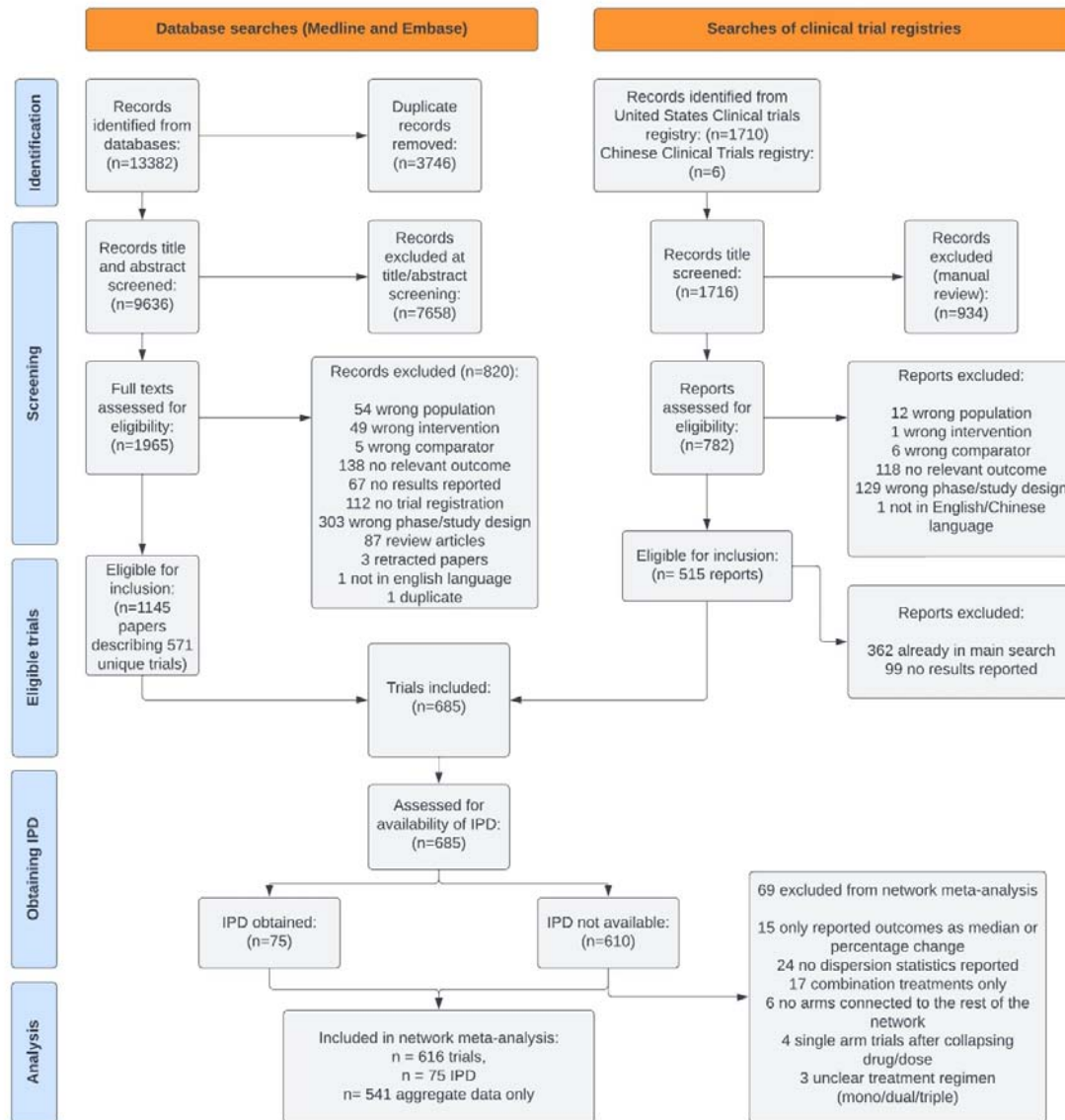
## 177 Results

### 178 Systematic review results

179 We identified 685 eligible trials, of which 616 were included in the network meta-analyses  
180 (Figure 1). There were a total of 541 aggregate level and 75 IPD trials, including 230,608  
181 and 75,850 participants, respectively. Trial-level details and risk of bias are shown in the  
182 online repository.

183 Table 1 shows the total number of included trials reporting HbA1c for each class along with  
184 aggregate baseline characteristics. Characteristics were similar for trials with IPD and those  
185 with aggregate trials. For trials reporting MACE, trial-level details are shown in table 2. For  
186 both HbA1c and MACE reporting trials, almost all trial participants were in the 40 to 80 year  
187 age range, including trials targeted at older people (supplementary figures S1). For trials  
188 reporting HbA1c where IPD was available, age was similarly distributed.

189



190

191 **Figure 1: PRISMA diagram of included studies**

192 **Table 1: Trials reporting HbA1c, comparisons and characteristics**

Classes	Dipeptidyl peptidase 4 inhibitors		Glucagon-like peptide-1 analogues		Sodium-glucose co-transporter 2 inhibitors		Total trials	
	Aggregate	IPD	Aggregate	IPD	Aggregate	IPD	Aggregate	IPD
Total	252	33	178	20	150	29	530	74
Placebo	128	22	84	10	102	18	309	47
<b>Specific drugs of the following classes</b>								
Dipeptidyl peptidase 4 (DPP-4) inhibitors	-	-	20	2	19	6	284	41
Glucagon-like peptide-1 (GLP-1) analogues	27	2	-	-	9	0	246	32
Sodium-glucose co-transporter 2 (SGLT2) inhibitors	20	9	9	0	-	-	183	51
Sulfonylureas	27	4	8	1	12	3	46	7
Biguanides (metformin only)	24	9	4	1	3	3	30	13
Thiazolidinediones	15	0	5	1	4	0	22	1
Alpha glucosidase inhibitors	12	1	2	0	1	0	14	1
'Other blood glucose lowering drugs, excl. insulins', eg repaglinide	2	0	3	0	0	0	4	0
<b>Any drug of the following class</b>								
Insulins and analogues (eg "any insulin")	5	0	42	6	1	0	46	6
Blood glucose lowering drugs, excl. insulins (eg "any oral antidiabetic drug")	1	0	3	0	0	0	4	0
2 arms	219	18	124	10	115	10	427	34
3 arms	25	9	43	7	28	15	82	30
4 or 5 arms	8	6	11	3	5	4	21	10

Participants	111580	27563	88302	21280	44794	33277	229115	75850
Male n (%)	64333 (57.7%)	15414 (55.9%)	49179 (55.7%)	12707 (59.7%)	25272 (56.6%)	19727 (59.3%)	130154 (56.9%)	44557 (58.7%)
Age, years (sd) [5 <sup>th</sup> to 95 <sup>th</sup> centile]	58.7 (10.8) [40.3-75.8]	57.2 (11.1) [36.8-74.9]	57.7 (10.3) [40.4-74.2]	60.0 (10.8) [41.1-76.4]	61.2 (10.7) [42.7-78.0]	56.8 (11.3) [35.2-74.6]	59.0 (10.7) [40.9-75.9]	57.9 (11.2) [37.1-75.3]
The number of trials in each class do not sum to the total because some trials include more than one class.								

193  
194

195 **Table 2: MACE Trials, characteristics**

(a) Asterisk indicates trial without a placebo arm. AGG aggregate level data only, SG subgroup level data only, IPD IPD available.

Class	Trial	Data level	Arms	Participants	Follow-up (years)	Male (%)	Age, years mean(SD)[5-95th centile]
Dipeptidyl peptidase 4 DPP-4inhibitors	TECOS NCT00790205	AGG	sitagliptin 100 milligram	14671	5.0	70.7	65.6 (8.0) [53.2-79.4]
	SAVOR-TIMI-53 NCT01107886	SG	saxagliptin 5 milligram	16492	2.9	66.9	65.2 (8.5) [51.1-79.1]
	CAROLINA NCT01243424	SG	glimepiride 1 milligram vs linagliptin 5 milligram*	6033	8.3	60.0	64.0 (9.7) [47.2-80.1]
	NCT01703208	AGG	omarigliptin 25 milligram	4202	3.4	70.2	63.6 (8.6) [49.8-77.7]
	CARMELINA NCT01897532	SG	linagliptin 5 milligram	6979	4.3	62.9	65.8 (9.0) [50.9-80.5]
	EXAMINE NCT00968708	IPD	alogliptin 25 milligram	5384	3.3	67.9	60.8 (9.9) [44.6-77.2]
Glucagon-like peptide-1 receptor GLP-1analogues	EXSCEL NCT01144338	SG	exenatide 2 milligram	14752	7.5	62.0	61.7 (9.5) [46.3-77.3]
	ELIXA NCT01147250	AGG	lixisenatide 20 microgram	6068	3.9	69.3	60.1 (9.7) [44.0-75.9]
	LEADER NCT01179048	SG	liraglutide 1.8 milligram	9340	5.0	64.2	64.3 (7.2) [52.9-76.8]
	REWIND NCT01394952	SG	dulaglutide 1.5 milligram	9901	8.0	53.7	66.2 (6.6) [55.4-77.3]
	FREEDOM CVO NCT01455896	AGG	itca650 60 microgram	4156	2.0	63.3	63.0 (7.7) [50.2-75.8]
	SUSTAIN 6 NCT01720446	AGG	semaglutide 0.5/1 milligram	3297	2.1	60.7	64.8 (7.2) [53.4-77.2]
	PIONEER 6 NCT02692716	SG	semaglutide 14 milligram	3183	1.6	68.4	65.9 (6.9) [54.6-77.7]
	AMPLITUDE-O	SG	efpeglenatide 4_6 NA	4076	2.6	67.0	64.5 (8.1) [51.0-

	NCT03496298						78.0]
	HARMONY NCT02465515	IPD	albiglutide 30 milligram	9461	2.7	69.4	64.0 (8.7) [49.7-78.3]
Sodium-glucose co-transporter 2 inhibitors	DECLARE-TIMI58 NCT01730534	SG	dapagliflozin 10 milligram	17160	5.2	62.6	63.9 (6.7) [52.9-75.1]
	VERTIS CV NCT01986881	SG	ertugliflozin 5/15 pooled milligram	8246	6.0	70.0	64.4 (8.1) [51.0-77.6]
	SCORED NCT03315143	AGG	sotagliflozin 200 mg	10584	2.5	55.1	68.2 (8.5) [54.2-82.2]
	SOLOIST-WHF NCT03521934	AGG	sotagliflozin 200 mg	1222	1.8	66.2	68.7 (9.1) [52.6-82.7]
	CANVAS NCT01032629	IPD	canagliflozin 100 milligram vs canagliflozin 300 milligram	4330	8.0	66.1	60.8 (8.1) [47.4-74.0]
	EMPA-REG OUTCOME NCT01131676	IPD	empagliflozin 10 milligram vs empagliflozin 25 milligram	7064	4.6	71.5	63.1 (8.7) [48.7-77.5]
	CANVAS-R NCT01989754	IPD	canagliflozin 100 milligram	5813	3.0	62.8	62.5 (8.6) [48.6-76.6]
	CREDENCE NCT02065791	IPD	canagliflozin 100 milligram	4401	4.6	66.1	56.4 (9.2) [45.0-75.0]

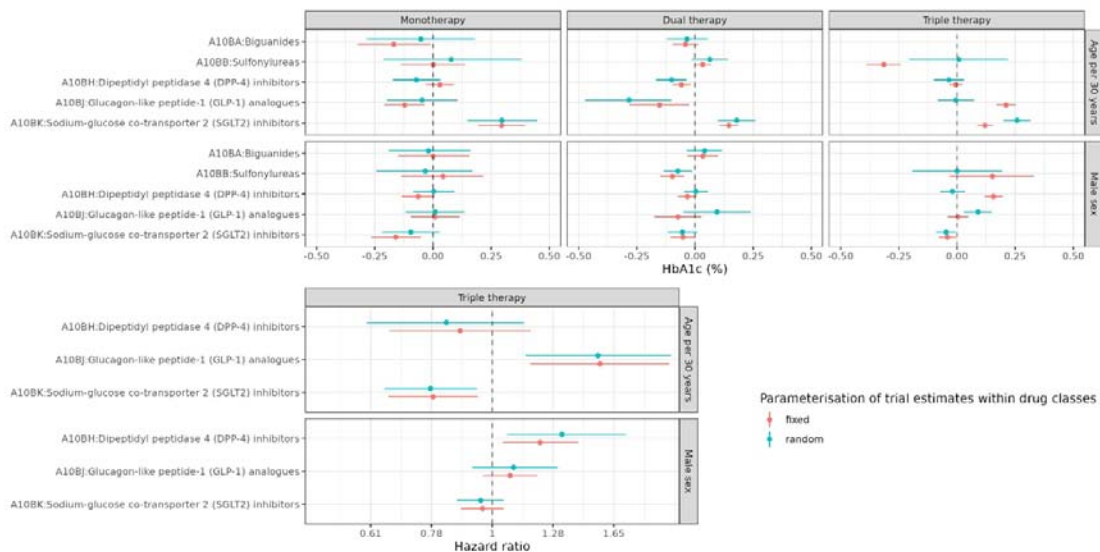
## 197 Main treatment effects

198 The main treatment effects comparing each treatment versus placebo are shown in  
199 supplementary figure S2 for HbA1c for a standard network meta-analysis without covariates.  
200 Most treatments reduced HbA1c with a range of absolute reductions of -0.5% to -1.5%.

201 Supplementary figure S3 shows the same analysis for MACE, showing the expected result  
202 of reduced hazard of MACE for SGLT2i compared to placebo, with null findings for DPP4i  
203 and for some agents within the GLP1ra class (consistent with trial-level findings for these  
204 agents which did not show superiority to placebo).

## 205 Age-treatment and sex-treatment interactions

206 Figure 2 shows the age-treatment and sex-treatment interactions, assessing differences in  
207 the efficacy of treatment by age and sex, for HbA1c (panel a) and MACE (panel b). For  
208 HbA1c, interactions are on the absolute scale showing change in HbA1c in units of percent.  
209 Across all three networks, SGLT2-inhibitors were less efficacious with increasing age; a 30-  
210 year increment in age was associated with an attenuation in effect on Hba1c (%) of around  
211 0.25 percentage points on the absolute scale (equivalent to about a quarter to half of the  
212 overall treatment effect). There was also some evidence of a sex-treatment interaction for  
213 HbA1c across networks for SGLT-2 inhibitors, although this was small in magnitude (around  
214 0.05 percentage points) and the upper range of the credible intervals included the null. No  
215 consistent differences across networks were apparent for any other age-treatment or sex-  
216 treatment interactions.



217

218 **Figure 2: Covariate-treatment interactions for HbA1c and MACE:** This figure shows the  
 219 covariate-treatment interaction estimates for age and sex represented as dots, both for a)  
 220 HbA1c (top panels) and b) MACE (bottom panel). Horizontal lines show the 95% credible  
 221 interval. Age was modelled as a continuous variable and divided by 30 (so that the  
 222 coefficient reflects the difference in efficacy over a 30-year age difference). Estimates below  
 223 the line of no effect (dashed vertical line) indicate that the treatment is more efficacious in  
 224 older age/in male sex. Estimates above this line indicate the inverse.

225 For MACE, there was evidence of greater relative efficacy in older people for SGLT-2i. For  
 226 GLP-1ra, there was some evidence of lower efficacy in older people. There was also some  
 227 evidence of an age-treatment interaction for DPP-4 inhibitors, with higher efficacy in older  
 228 people (however the main effect in this class was null). When modelling sex-treatment  
 229 interactions in MACE trials, DPP-4i appeared to be less efficacious in men, although this  
 230 association was less evident in trials which included sex-subgroup data and absent on  
 231 excluding the sole DPP-4i trial for which we had access to IPD. For GLP-1ra and SGLT-2i  
 232 there was no evidence of any sex-treatment interactions.

233 In sensitivity analyses including/excluding age- and sex-subgroup data in the model, and  
 234 dropping each trial in turn, the greater efficacy in older people for SGLT2i persisted whether  
 235 or not age-subgroup data were included in the modelling, but was not found after excluding  
 236 one of the four SGLT2i IPD trials (NCT01131676, EMPA-REG OUTCOME, see



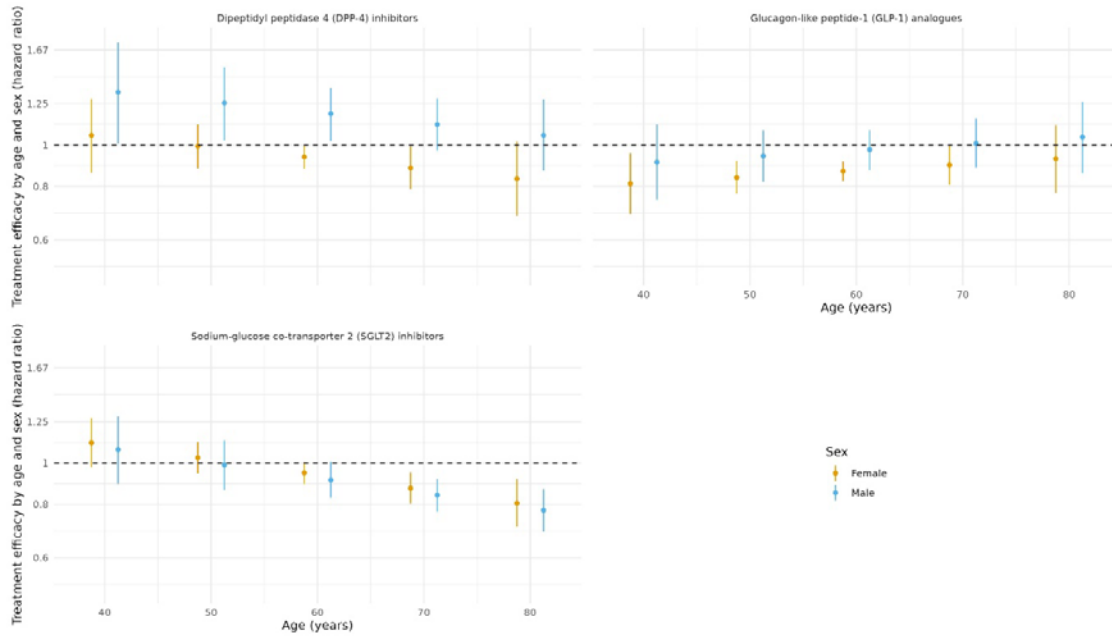
237 supplementary figure S4). Less equivocally, for older people, despite the finding of  
238 attenuated effects of SGLT-2i on HbA1c the reduction in the MACE risk was preserved or  
239 greater in all of the sensitivity analyses.

240 Particular caution is needed in interpreting the GLP-1ra and DPP-4i findings for MACE, as  
241 results differed depending on the inclusion/exclusion of the single trials of each agent for  
242 which we had IPD (HARMONY NCT02465515 and EXAMINE NCT00968708 for GLP-1ra  
243 and DPP4i respectively) and/or the inclusion/exclusion of subgroup data (Supplementary  
244 figure S4).

### 245 Age and sex-specific effects for MACE trials

246 Figure 3 shows the impact of the age-treatment and sex-treatment interactions on the overall  
247 age- and sex-specific relative efficacy versus placebo for each class.

248 Consistent with the findings reported above for DPP-4 inhibitors (that they were not  
249 efficacious overall compared to placebo, but with some evidence of differential effect by age  
250 and sex), DPP4i were associated with increased risk of MACE in men and younger women  
251 but decreased risk in older women. GLP-1ra (which again were inefficacious overall but with  
252 differential efficacy by sex) were not associated with significant reduction in MACE in men  
253 and in older people, but were associated with decreased risk of MACE in younger women.  
254 SGLT2i were associated with lower MACE in older people regardless of sex with equivocal  
255 findings for people younger than 60 years. For all three classes, however, some caution is  
256 needed in interpreting findings given the sensitivity of the interaction estimates to the  
257 inclusion of particular trials. Less equivocally, SGLT-2i were associated with reduced MACE  
258 in older men and older women.



259

260

261 **Figure 3: Relative effects for MACE:** This figure is based on a model including all available  
262 trials, including sex-subgroup data as well as aggregate data and IPD. It shows age- and  
263 sex- specific estimates of the effect of each treatment compared to placebo on the hazard of  
264 MACE.

## 265 Discussion

266 This network meta-analysis of 616 trials, including IPD from 75 trials, assessed whether the  
267 efficacy of three newer drug classes (SGLT2i, GLP1ra and DPP4i) varied by age or sex in  
268 people with type 2 diabetes. For HbA1c, SGLT2i showed modestly reduced efficacy with  
269 increasing age, with attenuation of the treatment effect compared to placebo by  
270 approximately one quarter at 75 compared with 45 years of age. In contrast, the reduction in  
271 MACE with SGLT2i was greater in older compared to younger people. This finding was  
272 sensitive to the exclusion of IPD from the EMPAREG-OUTCOME study, however even after  
273 excluding this the relative cardiovascular efficacy of SGLT2i preserved for older people. For  
274 GLP1ra there was some evidence that cardiovascular efficacy was greater among younger  
275 women, but with much greater uncertainty than that seen for SGLT2i.

276 Previous studies assessing heterogeneity in efficacy, that is, interaction, of type 2 diabetes  
277 treatment by age or sex have generally used aggregate or subgroup data from randomised  
278 controlled trials, or relied on observational (i.e., non-randomised) data. A meta-analysis of  
279 differences between men and women in the efficacy of SGLT2i and GLP1ra found no  
280 statistically significant difference in efficacy for cardiovascular outcomes but speculated on  
281 possible reduced cardiovascular efficacy among women due to the greater statistical  
282 uncertainty in the estimates for this group.<sup>4</sup> Our analysis, including a larger and more  
283 comprehensive group of studies and incorporating IPD, provides greater precision and more  
284 clearly demonstrated that sex is not associated with any difference in the efficacy of these  
285 classes of medication.

286 A recent network meta-analysis assessed the efficacy of type 2 diabetes treatment across a  
287 range of clinical outcomes, including outcomes such as heart failure, end-stage kidney  
288 disease, and medication related-harms that we did not include in this analysis.<sup>2</sup> This recent  
289 network meta-analysis showed that, in addition to MACE, SGLT2i and GLP1ra reduce the  
290 risk of admission to hospital with heart failure and of end-stage kidney disease, with SGLT2i

291 showing superior efficacy for the latter. Harms with treatment were generally class-specific  
292 and included genital infections with SGLT2i and gastrointestinal complications with GLP1ra.  
293 This previous analysis, however, did not assess heterogeneity by age and sex, and did not  
294 include analysis of IPD.

295 One likely explanation for the reduction in glycaemic efficacy of SGLT2i with older age is  
296 age-related decline in kidney function. For example, the recent TriMaster study (a double-  
297 blind three-way crossover study comparing DPP4i with SGLT2i) demonstrated that  
298 participants with estimated glomerular filtration rates 60-90 ml/min/1.73m<sup>2</sup>, compared to  
299 those >90 ml/min/1.73m<sup>2</sup>, had lower HbA1c on DPP4 inhibitors than SGLT2 inhibitors.<sup>20</sup> In  
300 this context, it is notable that the reductions in MACE with SGLT2i were greater in older  
301 people, despite lower glycaemic efficacy. This highlights the limitation of surrogate outcomes  
302 such as HbA1c in determining the risks of harder endpoints such as MACE for which  
303 hyperglycaemia is a less important risk factor than hypertension or dyslipidaemia.<sup>21</sup> The  
304 findings also suggest SGLT2i are working to prevent hard outcomes by pathways largely  
305 unrelated to conventional risk factors or dysglycemia. Current clinical guidelines recommend  
306 less stringent glycaemic targets in older people living with multiple long-term conditions or  
307 frailty due to greater risks of adverse events.<sup>3,22</sup> While caution around pursuing surrogate  
308 markers is well founded, this may also lead to clinicians not initiating therapies with other  
309 (e.g. cardiovascular) benefits who may have potential to benefit. Our findings highlight the  
310 need to also consider cardioprotective effects agents such as SGLT2i (in addition to safety,  
311 tolerability and patient's priorities) when agreeing optimal treatment strategies for older  
312 people.

313 The primary strength of this analysis is in the use of individual participant data to estimate  
314 age- and sex-treatment interactions. This improves statistical power and allows integration of  
315 individual participant data and aggregate data within network meta-analysis to preserve  
316 randomisation and avoid aggregation bias. We also followed rigorous systematic review

317 methodology to identify eligible studies, and have made all model outputs and analysis code  
318 publicly available to facilitate replication of our findings. However, despite the inclusion of a  
319 large volume of IPD, this was not available for all trials. Furthermore, the trials for which we  
320 did have IPD were not a random sample of the included trials as their availability depended  
321 on the data sharing arrangements put in place by the sponsor. We dropped trial arms with  
322 multiple drug classes as the software does not allow for explicit modelling of components  
323 within arms, and our focus was on class-level interactions. While we assessed glycaemic  
324 and cardiovascular efficacy, which are clinically relevant outcomes, our analysis did not  
325 include other clinical endpoints (such as kidney events) or analysis of adverse events and  
326 safety, which would be relevant outcomes for future analyses.

327 While our findings demonstrate similar or better cardiovascular efficacy among older people  
328 within these trials, trials rarely enrol people over 80 years of age. Furthermore, age-  
329 associated states such as frailty, which increase the risk of both cardiovascular events and  
330 also of complications,<sup>8,23</sup> are not quantified in these trials. This analysis does not, therefore,  
331 assess whether efficacy is similar in people of much higher ages (i.e. over 80 years) or living  
332 with frailty. This is a group in which the balance of risks and benefits is most uncertain, and  
333 as such several complementary strands of evidence are needed. Retrospective assessment  
334 of frailty within trial IPD (e.g. using the cumulative deficit frailty index) can allow assessment  
335 of frailty within trial participants,<sup>24</sup> but those with most severe frailty are likely to be excluded  
336 from the trial altogether. Routine healthcare data may be used to model natural history and  
337 rates of complications across a range of ages and health states, allowing modelling of  
338 overall benefit. Observational analyses using causal inference methods may also be utilised  
339 to assess safety, including in people who may be under-represented in trials. However,  
340 biases such as confounding by indication remain a significant challenge in such analyses.  
341 Finally, where uncertainty remains, there is a need for trials that recruit and retain older  
342 people and those living with frailty, and which explicitly measure and report functional status.

343 In conclusion, the efficacy of newer glucose lowering agents is broadly consistent between  
344 men and women. The glycaemic efficacy of SGLT2i is modestly reduced with increasing  
345 age, but cardiovascular event reduction is preserved. Indeed, incorporating analyses of IPD  
346 within our meta-analysis demonstrated that the reduction in MACE seen in with SGLT2i  
347 versus placebo was greater among older people. Antidiabetic agents are beneficial on a  
348 number of end points, and we demonstrate that those benefits may vary substantially and  
349 differently with age. Treatment decisions based on glycaemia alone could potentially lead to  
350 removal of agents with cardiovascular benefit. Guidelines should emphasise approaches  
351 where antidiabetic drugs such as SGLT2i are used to reduce cardiovascular risk as the aim  
352 – as agreed with patients – rather than overemphasising glycaemic targets.

353

## 354 Acknowledgements

355 Data access and provision: This manuscript is based on research using data from data  
356 contributors Lilly, Boehringer Ingelheim, Sanofi, Takeda, GlaxoSmithKline, AstraZeneca and  
357 Johnson & Johnson that has been made available through Vivli, Inc. Vivli has not contributed  
358 to or approved, and is not in any way responsible for, the contents of this publication.

359 Funding: This study was funded by the Medical Research Council (Grant reference  
360 MR/T017112/1). The funder had no role in the design, conduct or interpretation of the  
361 analysis. The pharmaceutical companies that provided the data did not provide any funding  
362 or support to the study and had no role in the design, conduct or interpretation of the  
363 analysis.

364 Author contributions: PH, EB and DM conceived the study. EB, LW and PH performed the  
365 literature search and screened articles for inclusion. EB, PH, LW, JC, HR, SA and KA  
366 extracted aggregate data from the included studies. DM, HW, JC, RM and PH accessed and  
367 processed the individual-level data. DM wrote the statistical analysis plan with DP, SD and  
368 NW providing statistical input. DM performed the analysis with input from DP, SD, NW and  
369 PH on analysis outputs. PH wrote the first draft. EB, LW, HW, SA, KA, JC, RM, HR, KH, JL,  
370 RL, SM, JP, LT, SW, AA, NS, DP, SD, NW and DM reviewed this and subsequent drafts  
371 providing critical input. All authors approved the final version for submission.

372 Data availability: Individual-level participant data was obtained through the Vivli project,  
373 subject to a data sharing agreement. Data are available on application to the data holder via  
374 Vivli's application process. All aggregate data, as well as summary data from all analyses of  
375 individual participant data, are available at  
376 [https://github.com/Type2DiabetesSystematicReview/nma\\_agesex\\_public](https://github.com/Type2DiabetesSystematicReview/nma_agesex_public), along with  
377 analysis code for all the analyses presented in the manuscript and supplementary  
378 appendices.

## 379 **Declarations of interest**

380 John Petrie reports personal fees (via his employing institution) from Merck KGaA  
381 (Lectures), research support from Merck KGaA (Grant), personal fees from Novo Nordisk  
382 (Lectures/ Advisory) and personal fees from IQVIA (Boehringer Ingelheim Adjudication  
383 Committees) - all outside the submitted work. Dr Petrie has received non-financial support  
384 as co-PI of a JDRF-funded trial (NCT03899402) from Astra Zeneca (donation of  
385 investigational medicinal product to US site only) and Novo Nordisk [donation of  
386 investigational medicinal product to UK site only; supplementary financial support (to  
387 mitigate a budget cut during the COVID-19 pandemic)].

388 Robert Lindsey reports Event registration paid for by Novo Nordisk 2021, no personal fees.  
389 And is current local PI for SOUL study (Novo Nordisk)- no personal fees.

390 Amanda Adler's trials unit is undertaking a trial funded by NovoNordisk. The indication is not  
391 diabetes.

392 Naveed Sattar declares grant funding from AstraZeneca, Boehringer Ingelheim, Novartis,  
393 and Roche Diagnostics; consulting fees from Abbott Laboratories, AbbVie, Amgen,  
394 AstraZeneca, Boehringer Ingelheim, Eli Lilly, Hanmi Pharmaceuticals, Janssen, Menarini-  
395 Ricerche, Novartis, Novo Nordisk, Pfizer, Roche Diagnostics, and Sanofi; payment for  
396 lectures or presentations from Abbott Laboratories, AbbVie, AstraZeneca, Boeringer  
397 Ingelheim, Eli Lilly, Janssen, Novo Nordisk, and Sanofi. All work was unrelated to this  
398 manuscript.

399 All other authors declare no conflicts of interest.



## 400 References

- 401 1. Palmer SC, Tendal B, Mustafa RA, et al. Sodium-glucose cotransporter protein-2  
402 (SGLT-2) inhibitors and glucagon-like peptide-1 (GLP-1) receptor agonists for type 2  
403 diabetes: systematic review and network meta-analysis of randomised controlled trials. *BMJ*  
404 2021; **372**: m4573.
- 405 2. Shi Q, Nong K, Vandvik PO, et al. Benefits and harms of drug treatment for type 2  
406 diabetes: systematic review and network meta-analysis of randomised controlled trials. *BMJ*  
407 2023; **381**: e074068.
- 408 3. Davies MJ, Aroda VR, Collins BS, et al. Management of hyperglycemia in type 2  
409 diabetes, 2022. A consensus report by the American Diabetes Association (ADA) and the  
410 European Association for the Study of Diabetes (EASD). *Diabetes care* 2022; **45**(11): 2753-  
411 86.
- 412 4. Singh AK, Singh R. Gender difference in cardiovascular outcomes with SGLT-2  
413 inhibitors and GLP-1 receptor agonist in type 2 diabetes: a systematic review and meta-  
414 analysis of cardio-vascular outcome trials. *Diabetes & Metabolic Syndrome: Clinical*  
415 *Research & Reviews* 2020; **14**(3): 181-7.
- 416 5. Bellary S, Kyrrou I, Brown JE, Bailey CJ. Type 2 diabetes mellitus in older adults:  
417 clinical considerations and management. *Nature Reviews Endocrinology* 2021; **17**(9): 534-  
418 48.
- 419 6. Bellary S, Barnett AH. SGLT2 inhibitors in older adults: overcoming the age barrier.  
420 *The Lancet Healthy Longevity* 2023; **4**(4): e127-e8.
- 421 7. Hanlon P, Fauré I, Corcoran N, et al. Frailty measurement, prevalence, incidence,  
422 and clinical implications in people with diabetes: a systematic review and study-level meta-  
423 analysis. *The Lancet Healthy Longevity* 2020.
- 424 8. Nguyen TN, Harris K, Woodward M, et al. The Impact of Frailty on the Effectiveness  
425 and Safety of Intensive Glucose Control and Blood Pressure-Lowering Therapy for People  
426 With Type 2 Diabetes: Results From the ADVANCE Trial. *Diabetes Care* 2021; **44**(7): 1622-  
427 9.
- 428 9. Miller ME, Williamson JD, Gerstein HC, et al. Effects of randomization to intensive  
429 glucose control on adverse events, cardiovascular disease, and mortality in older versus  
430 younger adults in the ACCORD trial. *Diabetes Care* 2014; **37**(3): 634-43.
- 431 10. Peters SA, Huxley RR, Woodward M. Diabetes as a risk factor for stroke in women  
432 compared with men: a systematic review and meta-analysis of 64 cohorts, including 775 385  
433 individuals and 12 539 strokes. *The Lancet* 2014; **383**(9933): 1973-80.
- 434 11. Peters SA, Huxley RR, Woodward M. Diabetes as risk factor for incident coronary  
435 heart disease in women compared with men: a systematic review and meta-analysis of 64  
436 cohorts including 858,507 individuals and 28,203 coronary events. *Diabetologia* 2014; **57**:  
437 1542-51.
- 438 12. Peters SA, Woodward M. Sex differences in the burden and complications of  
439 diabetes. *Current diabetes reports* 2018; **18**: 1-8.
- 440 13. Clemens KK, Woodward M, Neal B, Zinman B. Sex disparities in cardiovascular  
441 outcome trials of populations with diabetes: a systematic review and meta-analysis. *Diabetes*  
442 *Care* 2020; **43**(5): 1157-63.
- 443 14. Brookes ST, Whitely E, Egger M, Smith GD, Mulheran PA, Peters TJ. Subgroup  
444 analyses in randomized trials: risks of subgroup-specific analyses;: power and sample size  
445 for the interaction test. *Journal of clinical epidemiology* 2004; **57**(3): 229-36.
- 446 15. Geissbühler M, Hincapié CA, Aghlmandi S, Zwahlen M, Jüni P, da Costa BR. Most  
447 published meta-regression analyses based on aggregate data suffer from methodological  
448 pitfalls: a meta-epidemiological study. *BMC Medical research methodology* 2021; **21**(1): 123.
- 449 16. Butterly E, Wei L, Adler AI, et al. Calibrating a network meta-analysis of diabetes  
450 trials of sodium glucose cotransporter 2 inhibitors, glucagon-like peptide-1 receptor

- 451 analogues and dipeptidyl peptidase-4 inhibitors to a representative routine population: a  
452 systematic review protocol. *BMJ open* 2022; **12**(10): e066491.
- 453 17. Page MJ, McKenzie JE, Bossuyt PM, et al. Updating guidance for reporting  
454 systematic reviews: development of the PRISMA 2020 statement. *Journal of Clinical  
455 Epidemiology* 2021; **134**: 103-12.
- 456 18. Higgins J, Altman D, Sterne J. Assessing risk of bias in included studies. In: Higgins  
457 J, Churchill R, Chandler J, Cumpston M, eds. *Cochrane Handbook for Systematic Reviews  
458 of Interventions* version 520 (updated June 2017): Cochrane.
- 459 19. Phillippo DM. multinma: An R package for Bayesian network meta-analysis of  
460 individual and aggregate data. *Evidence Synthesis and Meta-Analysis in R Conference  
461 2021; 2021; 2021*.
- 462 20. Shields BM, Dennis JM, Angwin CD, et al. Patient stratification for determining  
463 optimal second-line and third-line therapy for type 2 diabetes: the TriMaster study. *Nat Med  
464 2023; 29*(2): 376-83.
- 465 21. Yudkin JS, Lipska KJ, Montori VM. The idolatry of the surrogate. *Bmj* 2011; **343**.
- 466 22. Strain WD, Down S, Brown P, Puttanna A, Sinclair A. Diabetes and frailty: an expert  
467 consensus statement on the management of older adults with type 2 diabetes. *Diabetes  
468 Therapy* 2021; **12**: 1227-47.
- 469 23. Hanlon P, Jani BD, Butterly E, et al. An analysis of frailty and multimorbidity in 20,566  
470 UK Biobank participants with type 2 diabetes. *Communications Medicine* 2021; **1**(1): 1-9.
- 471 24. Hanlon P, Butterly E, Lewsey J, Siebert S, Mair FS, McAllister DA. Identifying frailty  
472 in trials: an analysis of individual participant data from trials of novel pharmacological  
473 interventions. *BMC Med* 2020; **18**(1).
- 474