

1 **Deep Learning Phenotyping of Tricuspid Regurgitation for Automated High Throughput**
2 **Assessment of Transthoracic Echocardiography**

3
4 Amey Vrudhula M.D.^{a,b}, Milos Vukadinovic B.S.^{a,c}, Christiane Haeffle M.D.^d, Alan C. Kwan
5 M.D.^a, Daniel Berman M.D.^a, David Liang M.D., Ph.D.^d, Robert Siegel, M.D., Susan Cheng,
6 M.D., M.M.Sc., M.P.H.^a, David Ouyang M.D.^{a,c}

7
8
9 a) Department of Cardiology, Smidt Heart Institute, Cedars-Sinai Medical Center, Los
10 Angeles, CA

11 b) Icahn School of Medicine at Mt Sinai, New York, NY

12 c) Department of Bioengineering, University of California Los Angeles, Los Angeles, CA

13 d) Department of Medicine, Division of Cardiology, Stanford University, Palo Alto, CA

14 e) Division of Artificial Intelligence in Medicine, Cedars-Sinai Medical Center, Los
15 Angeles, CA

16
17 **Short Title/Running Title:** Deep Learning Phenotyping of Tricuspid Regurgitation

18 **Institutions:** Cedars-Sinai Medical Center, Stanford University

19 **Total Word Count:** 3094

20 **Correspondence:**

21 David Ouyang M.D.

22 Assistant Professor

23 Smidt Heart Institute

24 Cedars-Sinai Medical Center

25 127 S. San Vicente Blvd.

26 AHSP Pavilion Suite A3100,

27 Los Angeles, CA 90048

28 Telephone: [310-423-3475](tel:310-423-3475)

29 Fax: [310.423.0127](tel:310.423.0127)

30 Email: David.Ouyang@cshs.org

31 Twitter Handle: [@David_Ouyang](https://twitter.com/David_Ouyang)

1
2
3
4
5
6
7
8
9
10
11
12
13
14
15
16
17
18
19
20
21
22
23
24
25
26
27
28
29
30
31

Abstract

Background and Aims: Diagnosis of tricuspid regurgitation (TR) requires careful expert evaluation. This study developed an automated deep learning pipeline for assessing TR from transthoracic echocardiography.

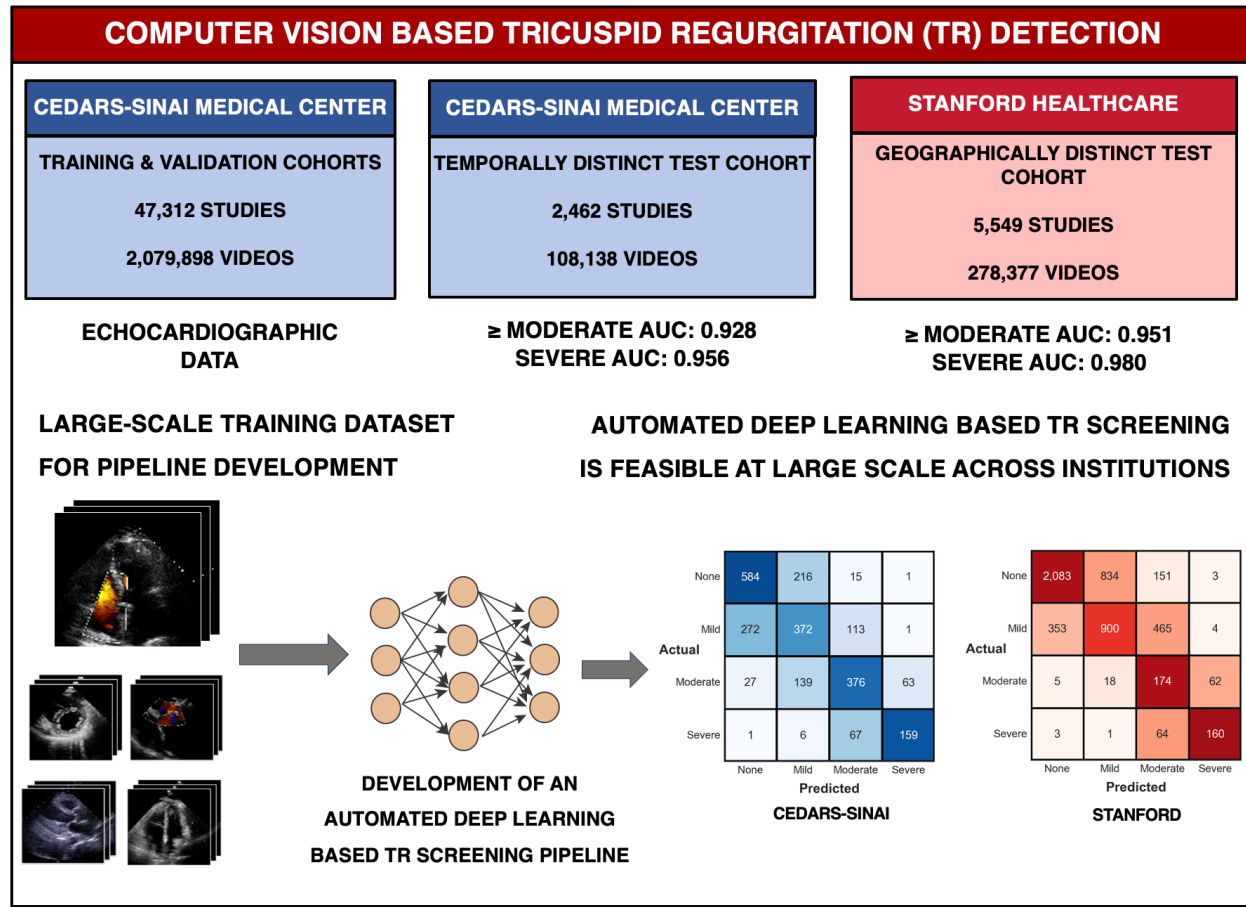
Methods: An automated deep learning workflow was developed using 47,312 studies (2,079,898 videos) from Cedars-Sinai Medical Center (CSMC) between 2011 and 2021. The pipeline was tested on a temporally distinct test set of 2,462 studies (108,138 videos) obtained in 2022 at CSMC and a geographically distinct cohort of 5,549 studies (278,377 videos) from Stanford Healthcare (SHC).

Results: In the CSMC test dataset, the view classifier demonstrated an AUC of 1.000 (0.999 – 1.000) and identified at least one A4C video with colour Doppler across the tricuspid valve in 2,410 of 2,462 studies with a sensitivity of 0.975 (0.968-0.982) and a specificity of 1.000 (1.00-1.000). In the CSMC test cohort, moderate-or-severe TR was detected with an AUC of 0.928 (0.913 - 0.943) and severe TR was detected with an AUC of 0.956 (0.940 - 0.969). In the SHC cohort, the view classifier correctly identified at least one TR colour Doppler video in 5,268 of the 5,549 studies, resulting in an AUC of 0.999 (0.998 – 0.999), a sensitivity of 0.949 (0.944 - 0.955) and specificity of 0.999 (0.999 – 0.999). The AI model detected moderate-or-severe TR with an AUC of 0.951 (0.938 - 0.962) and severe TR with an AUC of 0.980 (0.966 - 0.988).

Conclusions: We developed an automated pipeline to identify clinically significant TR with excellent performance. This approach carries potential for automated TR detection and stratification for surveillance and screening.

Keywords: Tricuspid Regurgitation, Artificial Intelligence, Deep Learning, Echocardiography

1 **Structured Graphical Abstract**
 2



3
 4
 5 **Key Question**

6 Can an automated deep learning model assess tricuspid regurgitation severity from
 7 echocardiography?

8
 9
 10
 11 **Key Finding**

12 We developed and validated an automated tricuspid regurgitation detection algorithm pipeline
 13 across two healthcare systems with high volume echocardiography labs. The algorithm correctly
 14 identifies apical-4-chamber view videos with colour Doppler across the tricuspid valve and
 15 grades clinically significant TR with strong agreement to expert clinical readers.
 16

17
 18 **Take Home message**

1 A deep learning pipeline could automate TR screening, facilitating reproducible accurate
2 assessment of TR severity, allowing rapid triage or re-review and expand access in low-resource
3 or primary care settings.

4

1
2
3
4
5
6
7
8
9
10
11
12
13
14
15
16
17
18
19
20
21
22
23
24
25
26
27
28
29
30
31

Introduction

Accurate and reliable assessment of tricuspid regurgitation (TR) severity remains an ongoing challenge. Once considered a benign consequence of co-existing heart disease, tricuspid regurgitation has received more recent recognition as an independent risk factor for morbidity and mortality¹⁻³. While recent findings highlight the need for earlier diagnosis and monitoring, early TR rarely presents with symptoms in the absence of co-existing cardiac disease. With high temporal resolution, transthoracic echocardiography is the most common test of choice for characterizing TR, however accurate diagnosis requires expert assessment as there is significant intra-observer variability^{4,5}. As new therapeutic options for treating TR like percutaneous repair emerge, early and accurate diagnosis of tricuspid regurgitation continues to become more important.

Recent advances in computer vision and artificial intelligence (AI) have enabled precision phenotyping of structure and function in cardiac ultrasound⁶. AI applied to echocardiography can precisely estimate wall thickness⁷, assess mitral regurgitation severity⁸, and left ventricular ejection fraction (LVEF)^{9,10}, as well as detect cardiac amyloidosis^{7,11}, HCM¹², and diastolic dysfunction¹³. Application of deep learning for tricuspid regurgitation has lagged behind, with most machine learning approaches using structured tabular data to characterize and prognosticate TR rather than evaluating the underlying images themselves^{14,15,16,17}. AI guidance has been developed for both image acquisition and interpretation^{9,18}, and given the increasing prevalence of TR in an aging population with co-morbid heart failure, AI could aid in TR screening and surveillance¹⁹⁻²³.

In the present study, we developed and evaluated a deep learning pipeline to detect and assess TR severity from transthoracic echocardiogram studies. Automating the entire process of view selection, identification of tricuspid regurgitation by colour Doppler, and assessment of severity, we hypothesized that a deep learning approach could assess TR severity with high-throughput automation. This pipeline was evaluated with data from two geographically distinct sites, including temporally distinct test cohort distinct from the training and validation cohorts (**Figure 1**). Combined with other echocardiography AI algorithms, like those enabling novices to obtain point of care echocardiographic images¹⁸, such an approach could be used for serial surveillance and screening of tricuspid regurgitation.

1
2
3
4
5
6
7
8
9
10
11
12
13
14
15
16
17
18
19
20
21
22
23
24
25
26
27
28
29
30
31

Methods

Study Population and Data Source

Cedars-Sinai Medical Center (CSMC) Cohort: Transthoracic echocardiography (TTE) studies at Cedars-Sinai Medical Center (CSMC) between October 04, 2011 and December 31, 2021 were used to train our deep learning pipeline (‘EchoNet-TR’) for high-throughput TR identification and grading. Studies were initially sourced from Digital Imaging and Communications in Medicine (DICOM) files and underwent de-identification, view classification, and pre-processing into AVI files as previously described⁸, yielding 2,079,898 videos from 47,312 studies from 31,708 patients. From these videos, 57,701 A4C videos with colour Doppler across the tricuspid valve were manually curated and used to train a deep learning pipeline for TR phenotyping.

Studies were randomly split on a patient level into train (95%) and internal validation (5%) cohorts to train deep neural networks for TR phenotyping.²⁴ Identical patient-level splits were maintained training both the TR severity and view classification models. The trained models were evaluated serially as a single pipeline on a held-out temporal test set of 2,462 TTE studies (101,455 videos) from 2,170 patients receiving care at CSMC between January 01, 2022 and June 04, 2022. Patients in the training and validation sets were excluded from the training set.

Stanford Healthcare (SHC) Cohort: The pipeline was evaluated on 5,549 studies (containing a total of 278,377 videos) from SHC’s high-volume echocardiography lab. The automated view classification pipeline was compared with manual curation of videos within those studies to evaluate specificity. All videos identified by the view classifier were used for downstream TR severity model validation. Model output was compared with TR severity determined by expert cardiologists from the clinical reports. This study was approved by the Institutional Review Boards at Cedars-Sinai Medical Center and Stanford Healthcare. Informed consent was waived as the study involved secondary analysis of existing data without patient contact.

AI Model Training

The model pipeline consisted of a view classifier capable of detecting A4C videos with colour Doppler across the tricuspid valve from full echocardiographic studies and a TR severity

1 classification model. The PyTorch Lightning deep learning framework was used to train deep
2 learning models. Video-based convolutional neural networks of the R2+1D architecture were used
3 for view classification and TR severity assessment.²⁵ The view classification model was initialized
4 with random weights while the TR severity model was initialized with weights from Echo-Net
5 Dynamic⁹. Both models were trained using a cross-entropy loss function for up to 100 epochs, an
6 ADAM optimizer, an initial learning rate of 1e-2, and a batch size of 24 on an NVIDIA RTX 3090
7 GPU. Early stopping was performed based on the validation loss.

8 The view classifier was trained using the 57,701 manually curated A4C videos with colour
9 Doppler across the tricuspid valve as cases and 421,679 controls from the same studies. Controls
10 consisted of any videos that were not A4C videos with colour Doppler across the tricuspid valve
11 and included videos of both A4C and other echocardiographic views (both with and without colour
12 Doppler information). The TR severity model was trained using 57,701 manually curated videos,
13 which consisted of 14,318 videos with no TR, 16,507 videos with mild TR, 19,820 videos with
14 moderate TR, and 7,056 videos with severe TR. TR severity for each study was determined based
15 on the clinical echocardiographic reports from CSMC's high-volume echocardiography lab, where
16 severity was assessed in accordance with ASE guidelines.²⁶ When TR was characterized as an
17 intermediate category (ie. "trace to mild" or "mild to moderate" or "moderate to severe"), videos
18 were placed in the more severe category. Studies with concomitant tricuspid stenosis, prosthetic
19 valves, and heart failure were also included in both training and validation datasets.

20

21 **Statistical Analysis**

22 The pipeline was then evaluated on two test sets not seen during model training: 2,462
23 studies obtained at CSMC in 2022 (temporally distinct from the training and validation studies and
24 with no patient overlap) and 5,549 studies obtained at SHC in 2018. This process is summarized
25 in **Figure 1**. Confusion matrices and area under the receiver operating characteristic curve (AUC)
26 were used to assess model performance, and statistics related to TR model performance were
27 calculated on a study level. When a study had more than one A4C video with Doppler information
28 across the tricuspid valve, the video that resulted in the greatest predicted TR severity was used
29 for analysis. When multiple videos resulted in the same maximal predicted severity, the video with
30 the highest prediction probability for the given level of TR severity was used. In both the internal
31 and external test sets, AUC, F1-score, recall (sensitivity), positive predictive value (PPV), and

1 negative predictive value (NPV) were calculated for clinically significant TR, which was defined
2 as greater than moderate TR and severe TR. AUC was also calculated for relevant subsets in the
3 CSMC test cohort. Statistical analysis was performed in Python (version 3.8.0). Confidence
4 intervals were computed via bootstrapping with 10,000 samples. Reporting of study results is
5 consistent with guidelines put forth by CONSORT-AI.^{27,28}

6 Subgroup analysis was conducted to assess model performance in patients with different
7 ranges of right and left ventricular ejection fraction, pulmonary artery pressure, associated co-
8 morbidities (\geq mild right atrial dilation, \geq mild mitral regurgitation, \geq moderate aortic stenosis, \geq
9 moderate aortic regurgitation), study characteristics, associated co-morbidities and other clinical
10 characteristics. Echocardiogram study quality was determined by clinicians and extracted from the
11 clinical report. Studies where clinicians commented on technical difficulty, poor study quality, or
12 where one or more major cardiac structures (left ventricle, right ventricle, pulmonary artery, etc.)
13 were not well visualized were classified as technically difficult.

14
15

16 **Model Explainability**

17 Features identified by the TR severity model were evaluated using saliency mapping,
18 generated using the Integrated Gradients method.²⁹ This method generated a heatmap for every
19 frame of the video, summarized as a final 2-dimensional heatmap generated by using the maximum
20 value along the temporal axis for each pixel location in the video. Pixels brighter in intensity and
21 closer to yellow were more salient to model predictions, while those darker in colour were less
22 important to the model's final prediction. When assessing videos with no TR, heatmaps were
23 obtained by taking the maximum of saliency maps for the moderate and severe class output
24 neurons for each pixel location.

25

26 **Results:**

27 **Study Population**

28 Patient characteristics are shown in **Tables 1 & 2**. In the CSMC training, validation, and test sets,
29 patients had similar characteristics. Meanwhile, the CSMC and SHC test cohorts differed. The
30 SHC test cohort contained lower numbers of studies from patients with moderate TR (5.0% vs.
31 25.0%) and severe TR (4.4% vs. 10.0%). The SHC cohort also had a lower proportion of videos

1 from Black patients (4.5 % vs. 14.5%), and a higher proportion of videos from Asian patients
2 (25.2% vs. 9.8%).

4 **View Classifier Performance Across Two Institutions**

5 On a test set of 2,462 TTEs (101,415 videos) from CSMC not seen during model training,
6 the view classifier had an AUC of 1.000 (0.999-1.000) and at a threshold of 0.800, identified an
7 A4C video with colour doppler across the tricuspid valve in 2,410 studies in the test set with a
8 sensitivity of 0.979 (0.973-0.985) and a specificity of 1.000 (1.000 – 1.000). To evaluate
9 generalization of the view classification model at a geographically distinct site, we evaluated its
10 performance on 5,549 studies (278,377 videos) from SHC. In this external validation set, the view
11 classifier picked up at least one A4C tricuspid Doppler video in 5,268 studies for a sensitivity of
12 0.949 (0.944 - 0.955) and a specificity of 1.000 (0.999 – 1.000)

14 **Tricuspid Regurgitation Severity Performance Across Two Institutions**

15 The TR severity model showed strong performance in TR detection (**Figure 2**). In the
16 temporally distinct CSMC test set, the model detected at least moderate TR with an AUC of 0.928
17 (0.913 - 0.943) and detected severe TR with AUC of 0.956 (0.940 - 0.969). Severe TR was ruled
18 out with an NPV of 0.966 (0.955 - 0.977) and at least moderate TR was excluded with an NPV of
19 0.893 (0.871 - 0.914). Further information on TR model performance is presented in **Table 3**.
20 Strong model performance was preserved across institutions. In the 2018 SHC cohort, the model
21 identified severe TR with an AUC of 0.980 (0.966 – 0.989) and moderate/severe TR (defined as
22 at least moderate TR) with an AUC of 0.951 (0.938 - 0.962). In this cohort, the model demonstrated
23 an NPV of 0.987 (0.982 – 0.991) for severe TR and an NPV of 0.994 (0.990 – 0.997) for \geq
24 moderate TR.

26 **Subset Analysis**

27 The TR severity model showed strong performance across test set subgroups (**Table 4**). In
28 studies with normal, mildly depressed, or moderately/severely depressed RV function,
29 moderate/severe TR was detected with AUC of 0.923 (0.902-0.942), 0.904 (0.847 – 0.951), and
30 0.861 (0.848 – 0.952) respectively. Meanwhile severe TR was identified with AUC of 0.962 (0.940
31 – 0.979), 0.924 (0.872 – 0.966), and 0.882 (0.873 – 0.966). Performance was similar across

1 different LVEF ranges. The model also performed similarly well in studies from patients with a
2 history of pre-existing atrial fibrillation, right atrial dilation, and co-existing left sided valvular
3 heart disease, with moderate/severe TR detection ranging from 0.886 (0.804 – 0.954) to 0.918
4 (0.848 – 0.973) and severe TR detection ranging from 0.917 (0.975 – 0.952) to 0.961 (0.908 –
5 0.997).

6 7 **MRI Comparison**

8 Model predictions of TR severity were compared with assessments using cardiac magnetic
9 resonance (CMR) imaging, another imaging modality capable of assessing valvular function. The
10 MRI comparison cohort was composed of 748 studies from 572 patients. The cohort consisted of
11 468 studies (62.6%) with no TR, 243 studies (32.5%) with mild TR, 25 studies (3.3%) with
12 moderate TR, and 12 studies (1.6%) with severe TR (**Supplemental Table 1**). Model predicted
13 TR severity showed strong concordance with CMR assessment of TR severity for moderate/severe
14 TR (AUC: 0.896 (0.822 – 0.948)) and severe TR (AUC: 0.949 (0.845 – 0.999)) (**Supplemental**
15 **Table 2**). Similarly, cardiologist-determined TR severity from echo also agreed with cardiologist-
16 determined severity using MRI for moderate/severe TR 0.820 (0.686 – 0.966) and severe TR 0.841
17 (0.480 – 0.997) (Supplemental Table 3). Meanwhile, the difference in AUC between AI model
18 predictions and cardiologist-based echo prediction vs. MRI were not significantly different for at
19 least moderate TR (DeLong test, $p = 0.11$) or severe TR (DeLong test, $p = 0.08$) (**Supplemental**
20 **Table 4**). Full results are shown in **Supplemental Figure 1**.

21 22 23 **Model Explainability**

24 The Integrated Gradients method was used to create saliency maps that identified regions of
25 interest in each video contributing the most to detection of TR severity (**Figure 3**).²⁹ Saliency maps
26 for the TR severity model demonstrated that the clinically relevant imaging features of TR were
27 important for model predictions, with activation signal localizing to pixels in the colour Doppler
28 window and primarily highlighting the TR jet, indicating that the model used appropriate,
29 physiologic features of TR to make predictions. **Supplementary Videos S1-S4** contain frame-by-
30 frame visualizations of saliency maps.

1 **Discussion**

2 The current work presents a comprehensive, automated pipeline capable of characterizing
3 tricuspid regurgitation from echocardiogram studies. From full studies, the algorithm
4 automatically selects A4C videos with colour Doppler across the tricuspid valve and assesses TR
5 severity. In a temporally distinct test cohort, the pipeline demonstrated strong performance in
6 severe and \geq moderate TR screening, with $AUC > 0.928$ and $NPV > 0.893$. Moreover, this
7 automated workflow robustly generalized to thousands of studies from a large, geographically
8 distinct cohort. Given these characteristics, our results suggest a deep learning model could aid in
9 the preliminary assessment of TR, facilitate review of institutional databases, or expand access for
10 screening in low-resource settings.

11 In AI applied to echocardiography, the right heart is still under-represented. While prior
12 work have shown AI model's ability to characterize LVEF, LVH, and left sided valvular lesions,
13 ^{7,30,8} there has been little work on TR. The present work applies a state-of-the-art video-based
14 architecture for TR detection on a large training dataset to show such an approach produces a
15 generalizable assessment of regurgitant severity. Despite relying on a single view, the performance
16 of EchoNet-TR reliably matches expert cardiologists' assessments across entire studies. TR
17 assessment is a complex task, reliant multiple echocardiographic views, however the current
18 pipeline proposed here performs well even when using the A4C view alone, suggesting a richness
19 of ancillary information (right atrial enlargement, right ventricular systolic function, etc.) possibly
20 related to TR severity. This potential use of this information mimics clinical decision making,
21 where cardiologists often integrate conflicting metrics from different views and ancillary
22 information to arrive at a final TR severity.

23 While the current work is promising, limitations should be considered. The regurgitant TR
24 jet is 3-dimensional, and a combination of multiple echocardiographic views offers comprehensive
25 visualization. Despite the strong performance, reliance on the A4C view alone could result in
26 information loss that could still lead to incorrect predictions, especially if the TR is acute. Future
27 work could focus on automatic quantification of valve leaflet thickness, orifice area, and other
28 quantitative metrics of TR severity and risk stratification for tricuspid valve intervention.
29 Similarly, with prior works using AI to guide novices to obtain videos of standard view
30 echocardiogram views, the current algorithm could potentially be used with existing models to
31 guide imaging acquisition to increase access to TR screening.^{18,31} Future work could focus on

1 automatically quantifying parameters related to TR, high-throughput phenotyping aetiology based
2 classification of TR, or precision medicine based stratification for intervention on the tricuspid
3 valve.

4 In summary, we introduce a model for TR screening from single-view TTE videos. In
5 doing so, we provide a workflow for isolating tricuspid valve colour Doppler videos and assessing
6 TR severity with strong AUC and in two distinct test cohorts. Given its excellent performance and
7 generalizability, the deep learning pipeline could aid point-of-care TR screening or enable
8 retrospective institutional database review.

9

1
2
3
4
5
6
7
8
9
10
11
12
13
14
15
16
17
18

Acknowledgements: At the time of part of this work, A.V. was a research fellow supported by the Sarnoff Cardiovascular Research Award.

Funding: At the time of part of this work, A.V. was a research fellow supported by the Sarnoff Cardiovascular Research Award. D.O. reports research grants R00 HL157421 and R01HL173526 and support from AstraZeneca Alexion, as well as consulting from EchoIQ, Ultromics, Pfizer, and InVision.

Disclosure of Interest: D.O. reports research grants R00 HL157421 and R01HL173526 and support from AstraZeneca Alexion, as well as consulting from EchoIQ, Ultromics, Pfizer, and InVision. A.C.K. reports support consulting fees from InVision.

Data Availability: The dataset of videos and reports used to train and test EchoNet-TR is not publicly available due to its potentially identifiable nature.

Code Statement: Our code and model weights are available at <https://github.com/echonet/TR>

References

1. Chorin E, Rozenbaum Z, Topilsky Y, Konigstein M, Ziv-Baran T, Richert E, Keren G, Banai S. Tricuspid regurgitation and long-term clinical outcomes. *Eur Heart J Cardiovasc Imaging* 2020;**21**:157–165.
2. Nishiura N, Kitai T, Okada T, Sano M, Miyawaki N, Kim K, Murai R, Toyota T, Sasaki Y, Ehara N, Kobori A, Kinoshita M, Koyama T, Furukawa Y. Long-term clinical outcomes in patients with severe tricuspid regurgitation. *J Am Heart Assoc* 2023;**12**:e025751.
3. Rao VN, Giczewska A, Chiswell K, Felker GM, Wang A, Glower DD, Gaca JG, Parikh KS, Vemulapalli S. Long-term outcomes of phenoclusters in severe tricuspid regurgitation. *Eur Heart J* 2023;**44**:1910–1923.
4. Alexander B, Datta P, Dasari S, Bhatt H, Mackensen GB, Brovman E, Roberts SM, Price LL, Cobey F. Interobserver Variation in Echocardiographic Measurements and Grading of Tricuspid Regurgitation Based on a Novel Web-Based Assessment Environment. *J Cardiothorac Vasc Anesth* 2022;**36**:3501–3508.
5. Hahn RT, Thomas JD, Khalique OK, Cavalcante JL, Praz F, Zoghbi WA. Imaging assessment of tricuspid regurgitation severity. *JACC Cardiovasc Imaging* 2019;**12**:469–490.
6. Wehbe RM, Katsaggelos AK, Hammond KJ, Hong H, Ahmad FS, Ouyang D, Shah SJ, McCarthy PM, Thomas JD. Deep learning for cardiovascular imaging: A review. *JAMA Cardiol* 2023;**8**:1089–1098.
7. Duffy G, Cheng PP, Yuan N, He B, Kwan AC, Shun-Shin MJ, Alexander KM, Ebinger J, Lungren MP, Rader F, Liang DH, Schnittger I, Ashley EA, Zou JY, Patel J, Witteles R, Cheng S, Ouyang D. High-Throughput Precision Phenotyping of Left Ventricular Hypertrophy With Cardiovascular Deep Learning. *JAMA Cardiol* 2022;**7**:386–395.
8. Vrudhula A, Duffy G, Vukadinovic M, Liang D, Cheng S, Ouyang D. High throughput deep learning detection of mitral regurgitation. *bioRxiv*.
9. Ouyang D, He B, Ghorbani A, Yuan N, Ebinger J, Langlotz CP, Heidenreich PA, Harrington RA, Liang DH, Ashley EA, Zou JY. Video-based AI for beat-to-beat assessment of cardiac function. *Nature* 2020;**580**:252–256.
10. He B, Kwan AC, Cho JH, Yuan N, Pollick C, Shiota T, Ebinger J, Bello NA, Wei J, Josan K, Duffy G, Jujjavarapu M, Siegel R, Cheng S, Zou JY, Ouyang D. Blinded, randomized trial of sonographer versus AI cardiac function assessment. *Nature* 2023;**616**:520–524.
11. Goto S, Mahara K, Beussink-Nelson L, Ikura H, Katsumata Y, Endo J, Gaggin HK, Shah SJ, Itabashi Y, MacRae CA, Deo RC. Artificial intelligence-enabled fully automated detection of cardiac amyloidosis using electrocardiograms and echocardiograms. *Nat Commun* 2021;**12**:2726.

- 1 12. Sangha V, Dhingra LS, Oikonomou E, Aminorroaya A, Sikand NV, Sen S, Krumholz HM,
2 Khera R. Identification of hypertrophic cardiomyopathy on electrocardiographic images
3 with deep learning. *medRxiv* 2023.
- 4 13. Lee E, Ito S, Miranda WR, Lopez-Jimenez F, Kane GC, Asirvatham SJ, Noseworthy PA,
5 Friedman PA, Carter RE, Borlaug BA, Attia ZI, Oh JK. Artificial intelligence-enabled ECG
6 for left ventricular diastolic function and filling pressure. *NPJ Digit Med* 2024;**7**:4.
- 7 14. Zhao C, Chan NF, Chan RNC, Lee AP-W. Unsupervised machine learning in
8 echocardiography of functional tricuspid regurgitation. *J Am Coll Cardiol* 2024;**83**:2152.
- 9 15. Chorin E, Topilsky Y. The synergy between tricuspid regurgitation and machine learning.
10 *European heart journal*.
- 11 16. Deb B, Scott C, Pislaru SV, Nkomo VT, Kane GC, Alkhouli M, Crestanello JA, Arruda-
12 Olson A, Pellikka PA, Anand V. Machine learning facilitates the prediction of long-term
13 mortality in patients with tricuspid regurgitation. *Open Heart* 2023;**10**.
- 14 17. Heitzinger G, Spinka G, Koschatko S, Baumgartner C, Dannenberg V, Halavina K,
15 Mascherbauer K, Nitsche C, Dona C, Koschutnik M, Kammerlander A, Winter M-P, Strunk
16 G, Pavo N, Kastl S, Hülsmann M, Rosenhek R, Hengstenberg C, Bartko PE, Goliash G. A
17 streamlined, machine learning-derived approach to risk-stratification in heart failure patients
18 with secondary tricuspid regurgitation. *Eur Heart J Cardiovasc Imaging* 2023;**24**:588–597.
- 19 18. Narang A, Bae R, Hong H, Thomas Y, Surette S, Cadieu C, Chaudhry A, Martin RP,
20 McCarthy PM, Rubenson DS, Goldstein S, Little SH, Lang RM, Weissman NJ, Thomas JD.
21 Utility of a Deep-Learning Algorithm to Guide Novices to Acquire Echocardiograms for
22 Limited Diagnostic Use. *JAMA Cardiol* 2021;**6**:624–632.
- 23 19. Nkomo VT, Gardin JM, Skelton TN, Gottdiener JS, Scott CG, Enriquez-Sarano M. Burden
24 of valvular heart diseases: a population-based study. *Lancet* 2006;**368**:1005–1011.
- 25 20. Martin A-C, Bories M-C, Tence N, Baudinaud P, Pechmajou L, Puscas T, Marijon E,
26 Achouh P, Karam N. Epidemiology, Pathophysiology, and Management of Native
27 Atrioventricular Valve Regurgitation in Heart Failure Patients. *Front Cardiovasc Med*
28 2021;**8**:713658.
- 29 21. Avierinos J-F, Tribouilloy C, Grigioni F, Suri R, Barbieri A, Michelena HI, Ionico T,
30 Rusinaru D, Ansaldi S, Habib G, Szymanski C, Giorgi R, Mahoney DW, Enriquez-Sarano
31 M, Mitral regurgitation International DATabase (MIDA) Investigators. Impact of ageing on
32 presentation and outcome of mitral regurgitation due to flail leaflet: a multicentre
33 international study. *Eur Heart J* 2013;**34**:2600–2609.
- 34 22. Grave C, Tribouilloy C, Tuppin P, Weill A, Gabet A, Juillièrè Y, Cinaud A, Oliè V.
35 Fourteen-Year Temporal Trends in Patients Hospitalized for Mitral Regurgitation: The
36 Increasing Burden of Mitral Valve Prolapse in Men. *J Clin Med Res* 2022;**11**.

- 1 23. Mitchell E, Walker R. Global ageing: successes, challenges and opportunities. *Br J Hosp*
2 *Med* 2020;**81**:1–9.
- 3 24. Zhang J, Gajjala S, Agrawal P, Tison GH, Hallock LA, Beussink-Nelson L, Lassen MH,
4 Fan E, Aras MA, Jordan C, Fleischmann KE, Melisko M, Qasim A, Shah SJ, Bajcsy R, Deo
5 RC. Fully automated echocardiogram interpretation in clinical practice. *Circulation*
6 2018;**138**:1623–1635.
- 7 25. Tran D, Wang H, Torresani L, Ray J, LeCun Y, Paluri M. A Closer Look at Spatiotemporal
8 Convolutions for Action Recognition. *arXiv [cs.CV]*.
- 9 26. Zoghbi WA, Adams D, Bonow RO, Enriquez-Sarano M, Foster E, Grayburn PA, Hahn RT,
10 Han Y, Hung J, Lang RM, Little SH, Shah DJ, Shernan S, Thavendiranathan P, Thomas JD,
11 Weissman NJ. Recommendations for noninvasive evaluation of native valvular
12 regurgitation. *J Am Soc Echocardiogr* 2017;**30**:303–371.
- 13 27. Selvaraju RR, Cogswell M, Das A, Vedantam R, Parikh D, Batra D. Grad-CAM: Visual
14 explanations from deep networks via gradient-based localization. *Int J Comput Vis*
15 2020;**128**:336–359.
- 16 28. Saito T, Rehmsmeier M. The precision-recall plot is more informative than the ROC plot
17 when evaluating binary classifiers on imbalanced datasets. *PLoS One* 2015;**10**:e0118432.
- 18 29. Sundararajan M, Taly A, Yan Q. Axiomatic attribution for deep networks. *arXiv [cs.LG]*.
- 19 30. Holste G, Oikonomou EK, Mortazavi BJ, Coppi A, Faridi KF, Miller EJ, Forrest JK,
20 McNamara RL, Ohno-Machado L, Yuan N, Gupta A, Ouyang D, Krumholz HM, Wang Z,
21 Khara R. Severe aortic stenosis detection by deep learning applied to echocardiography. *Eur*
22 *Heart J* 2023.
- 23 31. Chiu I-M, Lin C-HR, Yau F-FF, Cheng F-J, Pan H-Y, Lin X-H, Cheng C-Y. Use of a Deep-
24 Learning Algorithm to Guide Novices in Performing Focused Assessment With Sonography
25 in Trauma. *JAMA Netw Open* 2023;**6**:e235102.

26

1 **Table 1**
2

	Derivation Cohorts		Test Cohorts	
	Train	Val	CSMC Test Cohort	SHC Test Cohort
Patients	30,125 (88.92)	1,583 (4.67)	2,170 (6.41)	5,014
Studies	44,908	2,404	2,462	5,549
Videos	453,787	24,484	101,415	278,377
Male	23,552 (53.0)	1,282 (53.3)	1,286 (52.2)	1,057 (52.7)
HTN	27,743 (61.8)	1,477 (61.4)	1,295 (52.6)	953 (47.6)
CAD	18,983 (42.3)	999 (41.6)	903 (36.7)	721 (36.0)
AF	14,612 (32.5)	856 (35.6)	515 (20.9)	550 (27.4)
EF	56.9 (15.4)	57.0 (15.1)	57.2 (15.1)	57.4 (11.0)*
LAVI	35.5 (15.7)	36.1 (16.0)	31.8 (15.5)	N/A
TR Severity				
Control	12297 (27.4)	627 (26.1)	829 (33.7)	3,223 (58.1)
Mild	13286 (29.6)	710 (29.5)	770 (31.3)	1,808 (32.6)
Moderate	14363 (32.0)	785 (32.7)	617 (25.1)	275 (5.0)
Severe	4962 (11.0)	282 (11.7)	246 (10.0)	243 (4.4)
Race				
White	31,117 (69.3)	1,698 (70.6)	1,559 (63.3)	1,097 (54.8)
Black	6,004 (13.4)	288 (12.0)	358 (14.5)	90 (4.5)
Asian	3,459 (7.7)	192 (8.0)	241 (9.8)	504 (25.2)
Other	4,328 (9.6)	226 (9.4)	304 (12.3)	311 (15.5)

3 *2003 studies in the SHC test cohort had information on comorbidities, demographics, and EF.*
4

1 **Table 2**
2

	Derivation Cohorts		Test Cohorts	
	Train	Val	CSMC Test Cohort	SHC Test Cohort
Patients	30125 (88.92)	1583 (4.67)	2,132 (6.41)	4,798
Studies	44,908	2,404	2,412	5,280
Videos	453,787	24,484	3,392	7,233
Male	23,552 (53.0)	1,282 ()	1263 ()	1,057 (52.7)
HTN	27,743 (61.8)	1,477 (61.4)	1271 (52.7)	898 (47.3) *
CAD	18,983 (42.3)	999 (41.6)	884 (36.7)	674 (35.5) *
AF	14,612 (32.5)	856 (35.6)	499 (20.7)	520 (27.4) *
EF	56.9 (15.4)	57.0 (15.1)	57.2 (16.9)	57.5 (10.8)*
EF ≥ 35	39,294 (89.5)	2,111 (90.0)	2105 (89.1)	1,796 (93.7) *
EF < 35	4,616 (10.5)	236 (10.0)	255 (10.8)	120 (6.3) *
EF ≥ 50	35,287 (80.4)	1,889 (80.5)	1924 (81.5)	1,585 (82.7) *
EF < 50	8623 (19.6)	458 (19.5)	436 (18.5)	331 (17.2) *
LAVI	35.5 (15.7)	36.1 (16.0)	31.8 (15.3)	N/A
TR Severity				
Control	12297 (27.4)	627 (26.1)	829 (33.7)	816 (33.8)
Mild	13286 (29.6)	710 (29.5)	770 (31.3)	758 (31.4)
Moderate	14363 (32.0)	785 (32.7)	617 (25.1)	605 (25.1)
Severe	4962 (11.0)	282 (11.7)	246 (10.0)	233 (9.7)
Race				
White	31,117 (69.3)	1,698 (70.6)	1,559 (63.3)	1,097 (54.8)
Black	6,004 (13.4)	288 (12.0)	358 (14.5)	90 (4.5)
Asian	3,459 (7.7)	192 (8.0)	241 (9.8)	504 (25.2)
Other	4,328 (9.6)	226 (9.4)	304 (12.3)	311 (15.5)
RV Dysfunction				
Mildly Depressed	7,433 (13.6)	374 (12.8)	415 (12.3)	N/A
Moderately/Severely Depressed	6,027 (11.0)	301 (10.3)	409 (12.1)	N/A
Pulmonary Artery Pressure				
PA Pressure > 35 mm Hg	17,646 (44.6)	976 (46.1)	822 (39.7)	N/A
PA Pressure ≤ 35 mm Hg	21,866 (55.4)	1,140 (53.9)	1,245(60.2)	N/A
PA Pressure > 25 mm Hg	29,638 (75.0)	1,616 (76.4)	1,445 (70.0)	N/A
PA Pressure ≤ 25 mm Hg	9,895 (25.0)	500 (23.6)	622 (30.0)	N/A
Mitral Regurgitation	26,412 (48.6)	1,438 (49.6)	1028 (42.6)	76 (4.0) *
Aortic Regurgitation	4,602 (8.5)	232 (8.0)	144 (6.0)	29 (1.5) *
Aortic Stenosis	3,668 (6.8)	218 (7.5)	155 (6.4)	209 (11.0) *
Difficult Study	7,566 (13.8)	446 (15.3)	179 (7.4)	N/A

3 *1916 studies in the SHC test cohort had information on Demographics and EF. 1897 studies in the SHC
4 test cohort that had information on comorbidities.

5
6
7
8

1
2
3

Table 3 - Model Performance

<u>Site</u>	<u>Class</u>	<u>AUROC</u>	<u>PPV</u>	<u>NPV</u>	<u>Recall</u>	<u>F1-Score</u>
CSMC	≥ Moderate TR	0.928 (0.913 - 0.943)	0.836 (0.799 - 0.871)	0.893 (0.871 - 0.914)	0.794 (0.753 - 0.831)	0.814 (0.784 - 0.843)
	Severe TR	0.956 (0.940 - 0.969)	0.710 (0.622 - 0.791)	0.966 (0.955 - 0.977)	0.682 (0.596 - 0.765)	0.696 (0.622 - 0.759)
Stanford	≥ Moderate TR	0.951 (0.938 - 0.962)	0.427 (0.383 - 0.466)	0.994 (0.990 - 0.997)	0.945 (0.914-0.971)	0.586 (0.544 - 0.626)
	Severe TR	0.980 (0.966 - 0.989)	0.699 (0.614 - 0.780)	0.987 (0.982 - 0.991)	0.702 (0.616 - 0.784)	0.700 (0.630 - 0.763)

4
5

1 **Table 4 – TR Model Subset Analysis**

2

Subset	Number of Studies	TR Severity Model Performance
RV Function		
Normal Function	1845	Moderate/Severe: 0.923 (0.902 - 0.942) Severe: 0.962 (0.940 - 0.979)
Mildly Depressed	285	Moderate/Severe: 0.904 (0.847-0.951) Severe: 0.924 (0.872 - 0.966)
Moderately/Severely Depressed	266	Moderate/Severe: 0.861 (0.848 - 0.952) Severe: 0.882 (0.873 - 0.966)
LV Systolic Function		
LVEF \geq 50	1924	Moderate/Severe: 0.930 (0.913 – 0.947) Severe: 0.962 (0.944 – 0.977)
LVEF < 50	436	Moderate/Severe: 0.897 (0.851 – 0.937) Severe: 0.920 (0.876 – 0.957)
LVEF \geq 35	2105	Moderate/Severe: 0.932 (0.915 – 0.947) Severe: 0.960 (0.943 – 0.974)
LVEF < 35	255	Moderate/Severe: 0.860 (0.787 – 0.923) Severe: 0.917 (0.857 – 0.964)
Atrial fibrillation	499	Moderate/Severe: 0.908 (0.869 - 0.941) Severe: 0.917 (0.875 – 0.952)
RA Dilation	505	Moderate/Severe: 0.892 (0.847 – 0.931) Severe: 0.920 (0.882 – 0.952)
Pulmonary Artery Pressure		
PA Pressure > 25 mm Hg	1,445	Moderate/Severe: 0.892 (0.871 – 0.916) Severe: 0.929 (0.905 – 0.950)
PA Pressure \leq 25 mm Hg	622	Moderate/Severe: 0.920 (0.835 – 0.982) Severe: 0.998 (0.990 - 1.000)
PA Pressure > 35 mm Hg	822	Moderate/Severe: 0.850 (0.806 – 0.890) Severe: 0.881 (0.841 – 0.916)
PA Pressure \leq 35 mm Hg	1,245	Moderate/Severe: 0.915 (0.880 – 0.945) Severe: 0.990 (0.975 - 0.999)
Mitral Regurgitation	357	Moderate/Severe: 0.896 (0.869 - 0.922) Severe: 0.945 (0.920 – 0.966)
Aortic Stenosis	155	Moderate/Severe: 0.918 (0.848 - 0.973) Severe: 0.959 (0.901 - 0.996)
Aortic Regurgitation	144	Moderate/Severe: 0.886 (0.804 - 0.954) Severe: 0.961 (0.908-0.997)
Study Quality	253	Moderate/Severe: 0.927 (0.826 - 0.989) Severe: 0.982 (0.932 – 1.000)

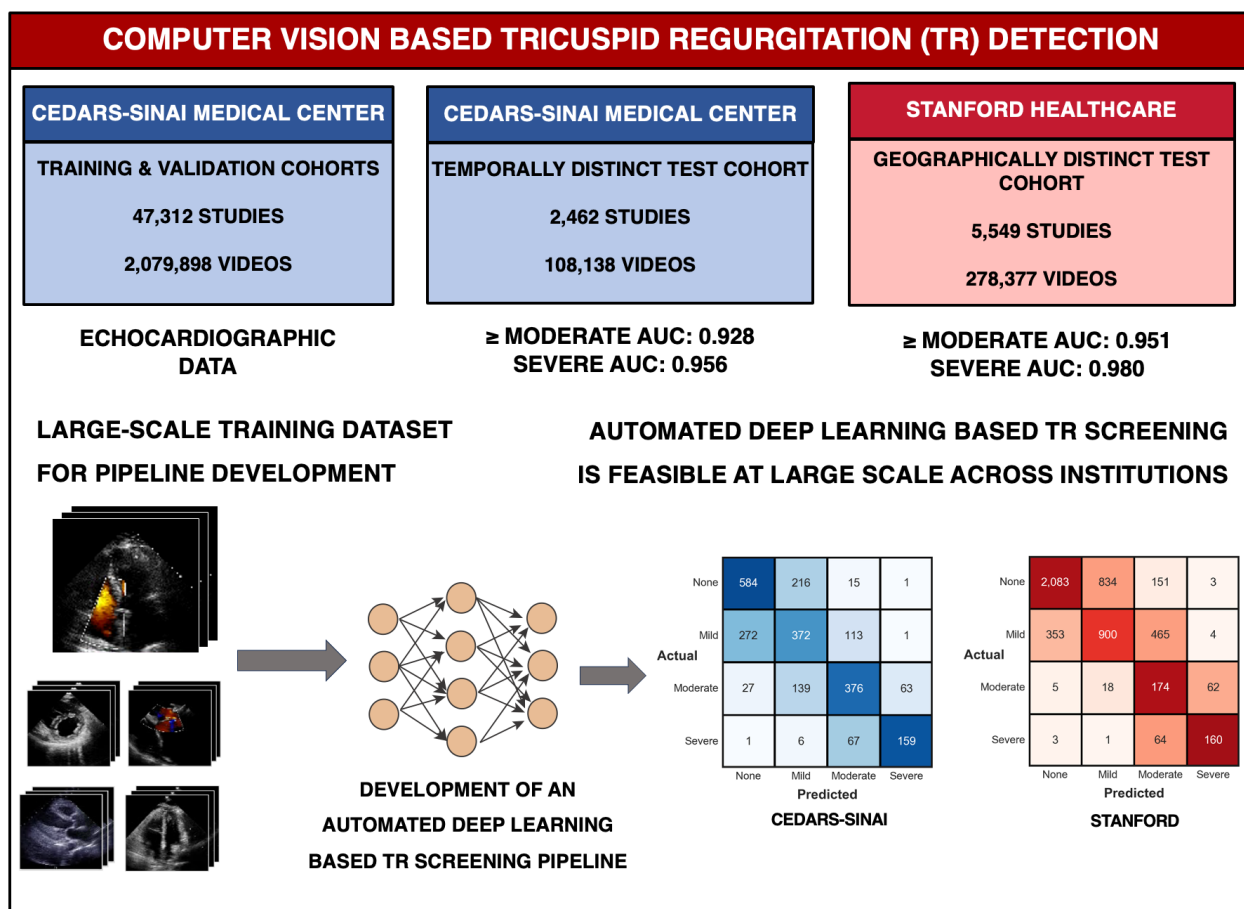
3

4

5

1

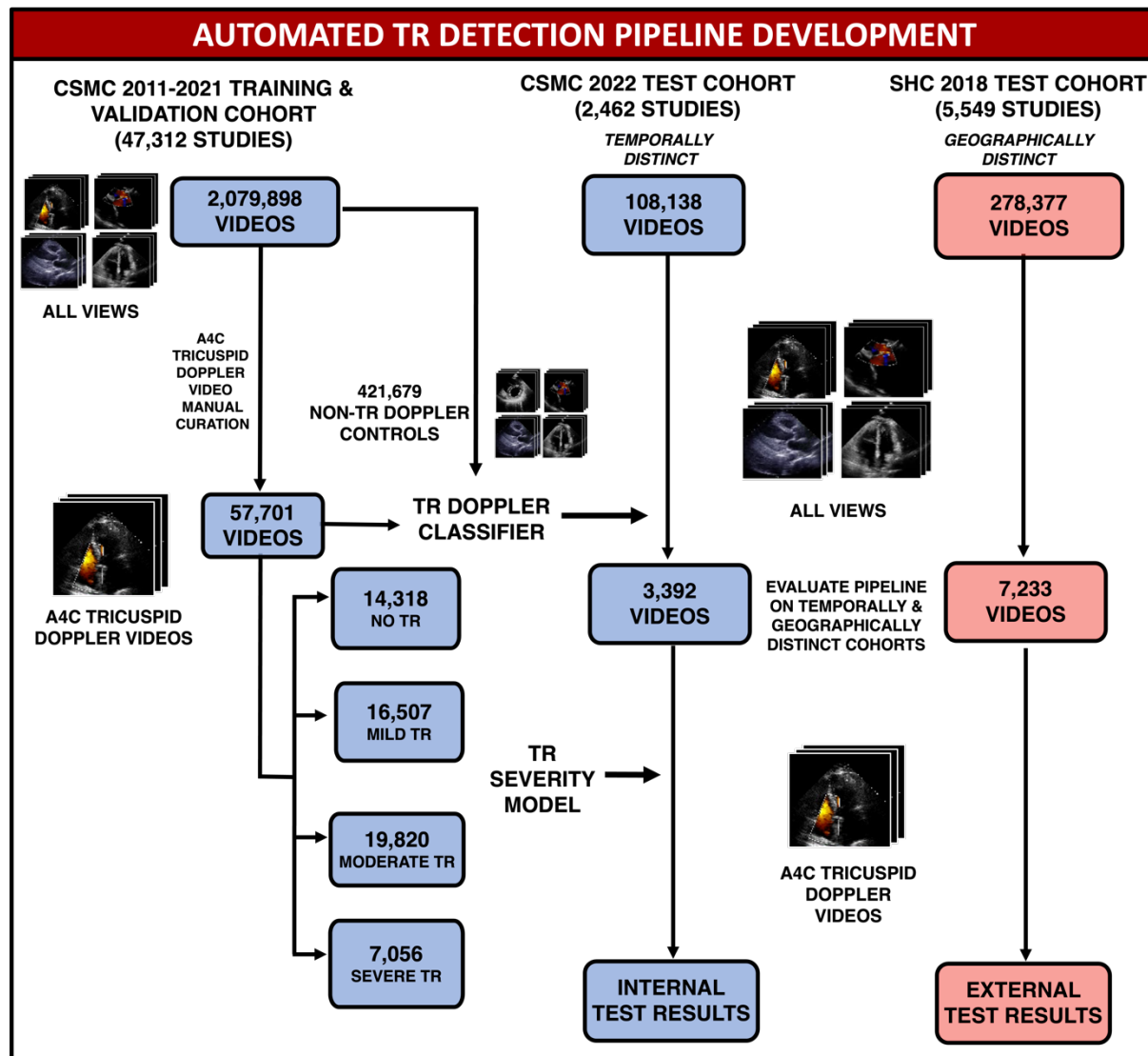
2 **Figures**



3

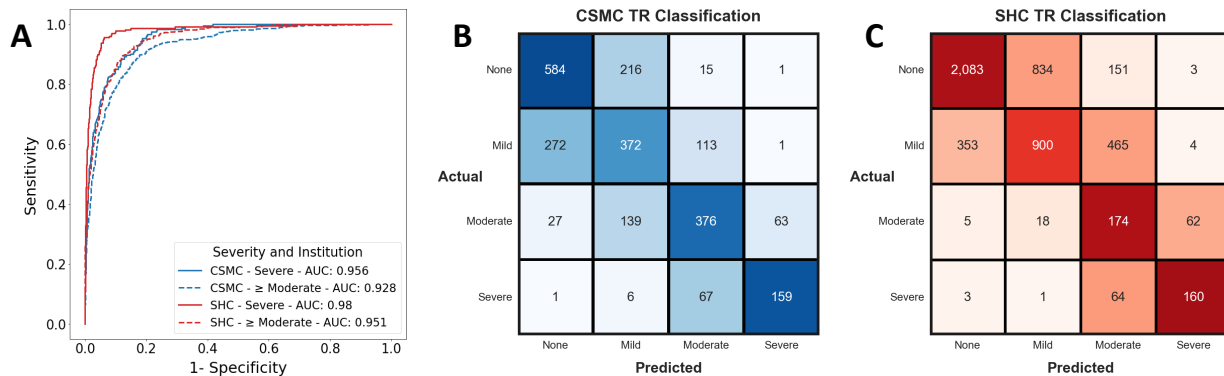
4 **Structured Graphical Abstract:** Computer Vision Based Tricuspid Regurgitation (TR)
 5 Detection: An automated deep learning pipeline was trained to stratify tricuspid regurgitation
 6 severity using large-scale data in the form of A4C TTE videos with colour Doppler across the
 7 tricuspid valve. The pipeline generalized across two geographically distinct test sets from CSMC
 8 and SHC, demonstrating the pipeline’s ability to detect clinically significant TR using single-
 9 view TTE videos with Doppler information. These results open the door to potential TR point-
 10 of-care screening.

11



1
 2 **Figure 1: CSMC and Stanford Dataset Isolation** - 57,701 A4C videos were manually curated
 3 from 47,312 studies with varying TR severity and used to train deep learning models for view
 4 classification and TR severity stratification. A pipeline consisting of these models was then
 5 benchmarked on a temporally distinct cohort of 2,462 studies from CSMC and a geographically
 6 distinct cohort of 5,549 studies from SHC.

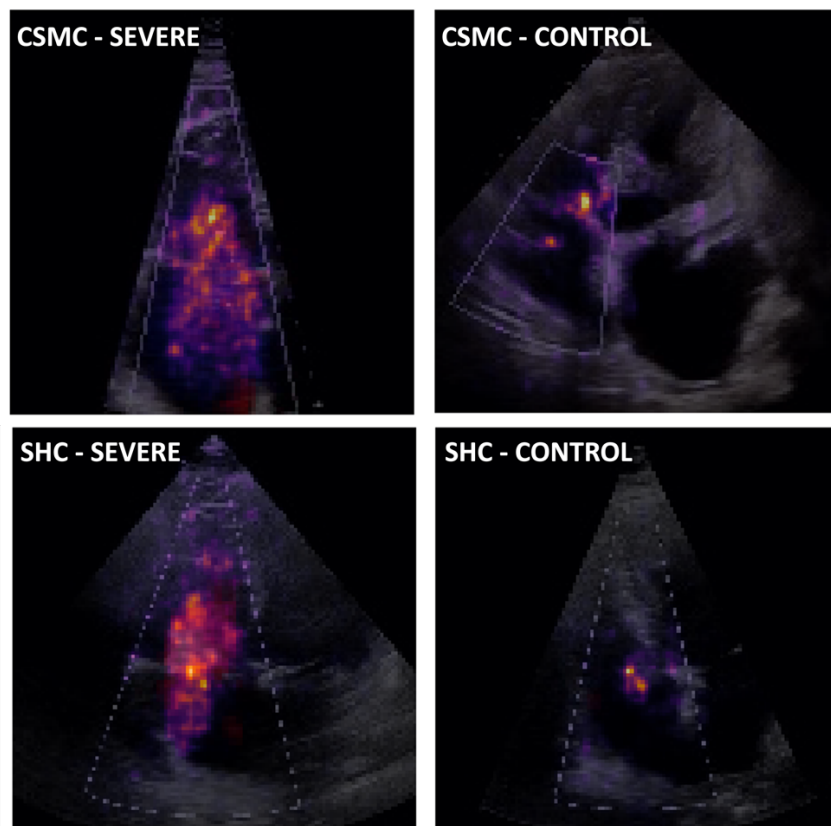
7



1
2
3
4 **Figure 2: Model Performance Across Severity and Institution** - A. Receiver operating
5 characteristic (ROC) curves for detection of Severe or \geq Moderate TR at CSMC and Stanford. ">
6 Moderate" included moderate, moderate to severe, and severe TR. 3B and 3C: TR Classification
7 on test set videos from CSMC and Stanford, respectively. Confusion matrix colourmap values
8 were scaled based on the proportion of actual disease cases in each class that were predicted in
9 each possible disease category. This was done to allow for relative comparison of model
10 performance across disease classes (None, Mild, Moderate, and Severe) given class imbalance.
11 Statistics and confusion matrices are reported on a study level. When a study had multiple TR
12 Doppler videos, the video with the max predicted TR severity was used. When multiple videos
13 lead to the same maximum severity model prediction, the video with the highest prediction
14 probability for that severity of TR was used.

15

16



1
2
3 **Figure 3: Saliency Map Visualization for TR classification models** - Videos with severe TR
4 from CSMC (top left) and SHC (bottom left) and videos with no TR from CSMC (top right) and
5 SHC (bottom right) are included. Saliency maps were computed using the Integrated Gradients
6 method. The maximum value along the temporal axis for each pixel location was used to
7 generate the final 2-dimensional heatmap. In the colourmap, pixels more salient to model
8 predictions are brighter in colour and closer to yellow. Pixels darker in colour are less influential
9 to the model's final prediction. Severe TR videos were assessed by using the activation function
10 for severe TR output neuron to generate a heatmap. When assessing controls (cases with no TR),
11 heatmaps were generated by stacking heatmaps for severe and moderate TR output neurons and
12 taking the maximum between the two at each pixel location.
13