

1 **Assessing Antimicrobial Use Patterns in Christian Health Association of Malawi (CHAM)**

2 **Health Facilities: A Cross-Sectional Study Protocol**

3

4 **Authors:**

5 Evans Chimayi Chirambo^{1,2,3*}, Dumisani Nkhoma¹, Francis Chiumia^{3*}, Sharon Odeo⁴, Patience

6 Khomani⁵, Innocent Chibwe⁶, Simon Matchado⁷, Pacharo Matchere¹, Beatrice Chiweza¹, Elled

7 Mwenyekonde¹, Elizabeth Kampira³, Collins Mitambo⁶, & Happy Makala¹.

8

9 **Affiliations**

10 1. Christian Health Association of Malawi (CHAM).

11 2. Malawi-Liverpool Wellcome Programme (MLW).

12 3. Kamuzu University of Health Sciences (KUHES; formerly University of Malawi, College of

13 Medicine)

14 4. Ecumenical Pharmaceutical Network (EPN)

15 5. Ekwendeni College of Health Sciences (ECOHS)

16 6. Ministry of Health-Antimicrobial Resistance National Coordinating Centre (MOH-AMR-NCC)

17 7. Pharmacy and Medicines Regulatory Authority (PMRA)

18

19 **Email addresses of authors**

20 ECC: ecchirambo@mlw.mw

21 DN: dnkhoma@cham.org.mw

22 FC: fkchiumia@kuhes.ac.mw

23 SO: sodeo@epnetwork.org

24 PK: khomanipatience@gmail.com

25 IB: inno.chibwe@gmail.com

26 SM: smatchado@pmra.mw

27 PC: pmatchere@cham.org.mw

28 BC: bchiweza@cham.org.mw

29 EM: emwenyekonde@yahoo.com

30 EK: ekampira@medcol.mw

31 CM: collins.mitambo@health.gov.mw

32 HM: hmakala@cham.org.mw

33

34 **Key Words:**

35 Antimicrobial resistance, Antimicrobial use, Christian Health Association of Malawi, under-
36 served population

37

38 **Running title:**

39 A study protocol for Assessing Antimicrobial Use Patterns in Christian Health Association of
40 Malawi

41

42 **Corresponding Author**

43 Evans Chimayi Chirambo, Christian Health Association of Malawi, Lilongwe, and Malawi-
44 Liverpool Wellcome Programme, Blantyre, Malawi

45 ecchirambo@mlw.mw

46

47 **Alternative corresponding author**

48 Francis Chiumia, Pharmacy Department, School of Life Sciences and Allied Health Professions,
49 College of Medicine, Kamuzu University of Health Sciences, Private Bag 360, Blantyre 3,
50 Malawi

51 fkchiumia@kuhes.ac.mw

52

53 **Funding**

54 This work is funded by Ministry of Health Antimicrobial Resistance National Coordinating Centre
55 (AMR-NCC). The funders were not involved in the design of the study. Additionally, they will not
56 play any role in the implementation of this project from data collection, analysis and decision to
57 disseminate data.

58

59 The sponsor for the study is Christian Health Association of Malawi (CHAM). The study
60 sponsors were not involved in designing of the study and will not be involved in data collection,
61 analysis and dissemination.

62

63 **Competing Interest**

64 The authors declare no conflict of interest.

65

66 **Data Availability**

67 This is not applicable at the moment. However, data will be made available in future.

68

69 **Abstract**

70 *Introduction*

71 The threat of antimicrobial resistance (AMR) in Malawi is high with reported mortality of 19,300
72 annually, the 23rd highest age-standardised mortality. One of the drivers of AMR is misuse of
73 antibiotics, a phenomenon that has not been adequately researched in Malawi. This study aims
74 to investigate antimicrobial use patterns using prescribing, patient and facility indicators
75 Christian Health Association of Malawi (CHAM) health facilities.

76

77 *Methods*

78 This will be a multiple cross-sectional study which will collect data from facility (194), patients
79 (388), and prescriptions (3,104). Data will be collected using KoboToolbox v2021, and exported
80 into Microsoft Excel version 2016 for cleaning and coding. Variables will be categorized
81 according to the antimicrobial use indicators. The study will use STATA Version 14 statistical
82 software for data analysis. Subsequently, facilities will be put in GPS map to show hotspots of
83 irrational antimicrobial use. The study will run from January 2024 to December 2025.

84

85 *Discussion*

86 This study will provide detailed information on frequently used antimicrobials, the cost of
87 antimicrobials relative to medicine budget, the intensity of exposure to antimicrobials, the
88 availability of antimicrobials, patients' understanding of antimicrobials use, and availability of
89 important documents for antimicrobial use. Secondly, the study will unravel the prevalence of
90 irrational antimicrobial use, the main factors contributing to it, and location where irrational use
91 is most prevalent. These findings will inform the national antimicrobial stewardship action plan,
92 aiming to safeguard the available antimicrobials.

93

94 *Ethics and Dissemination*

95 The protocol has been approved by Malawi's College of Medicine Research Ethics Committee
96 (COMREC) [Protocol # P.04/24-0651]. Participation in the study will be voluntary, and consent
97 and assent will be sought during data collection. Data will be handled confidentially, with
98 findings disseminated in conferences, to key AMR focused stakeholders, and finally through
99 manuscript publication in a peer reviewed journal.

100

101 *Registration details*

102 N/A

103

104 **Introduction**

105 Antimicrobial resistance (AMR) has emerged as a global health crisis, posing a significant threat
106 to the effective treatment of infectious diseases. World Health Organisation (WHO) estimates
107 that 1.27 million annual deaths are directly linked to bacterial AMR while 4.97 million annual
108 deaths are associated with bacterial AMR (1). It is further predicted that the global annual
109 mortality rate will reach 10 million by 2050 if no measures are taken to curb AMR (2). In Malawi,
110 3,600 deaths are directly caused by bacterial AMR annually and 15,700 deaths associated with
111 bacterial AMR, the 23rd highest age-standardised mortality rate per 100,000 population
112 associated with AMR across 204 countries (3). Unfortunately, drivers of AMR such as irrational
113 antimicrobial use are not well elucidated in Malawi.

114 Christian Health Association of Malawi (CHAM), established in 1966, is a faith-based non-
115 governmental organization which runs 194 health facilities. These health facilities are
116 categorized as full-fledged hospitals which are similar to a district hospital and offer specialised
117 healthcare services, community hospital which are mid-level hospitals with very few or no
118 specialised healthcare services, and health centres which provide basic healthcare services.
119 The health facilities are distributed in 27 of 28 Malawi's political districts except Mwanza District,
120 and offers up to 30% of the national healthcare services, second only to the State, with more
121 focus on poor people in hard-to-reach areas (4).

122 CHAM is one of the highest consumers of antimicrobials in Malawi. However, data is lacking on
123 antimicrobial use in CHAM's health facilities. Specifically, no study has looked at antimicrobial
124 use patterns such as prescribing indicators, facility indicators and patient indicators for any of
125 CHAM's health facilities. This study aims to investigate antimicrobial use in CHAM health
126 facilities using facility, patient and prescribing indicators. Understanding the patterns of
127 antimicrobial use within CHAM will facilitate the development of targeted interventions to
128 promote appropriate prescribing and facility practices and optimize patient outcomes.

129

130 **Objectives**

131 *The broad objective*

132 To investigate whether antimicrobials are properly used using prescribing, facility and patient
133 indicators.

134

135 *The specific objectives*

136 1. To find out the extent of antimicrobial use based on prescribing, facility and patient indicators.

137 2. To measure the prevalence of irrational use of antimicrobials using facility, prescribing, and
138 patient indicators.

139 3. To identify two for each of facility, patient and prescribing indicators that increase irrational
140 use of antimicrobials.

141 4. To map-out health facilities with irrational use (irrational use above WHO set percentage of
142 irrational use) of antimicrobial.

143

144 **Methods**

145 *Study Aim*

146 This study seeks to identify shortcomings and areas for improvement in antimicrobial use
147 practices. The insights gained from this analysis will be invaluable in guiding the development
148 and implementation of targeted interventions aimed at optimizing antimicrobial usage,
149 combating AMR, and ultimately enhancing patient care outcomes. Additionally, the study will
150 provide a basis for formulation of key policies and intensification of regulations in antimicrobial
151 use.

152

153 *Study Design:*

154 This will be a multiple cross-sectional study design. The study will collect primary data on
155 prescribing indicator, facility indicator and patient indicator as per inclusion and exclusion
156 criteria.

157 *Study Setting and sites*

158 The study will collect data from CHAM health facilities. These health facilities are located in 27
159 of 28 political districts of Malawi (**Figure 1**). These health facilities are evenly distributed in the
160 throughout country, with the majority located at an average distance of over eight kilometres
161 from the nearest health facility (be it CHAM or State's owned). Ninety-percent. Ninety percent
162 of these health facilities are located in rural and hard-to-reach areas.

163

164 The study will be coordinated from CHAM Secretariat in Lilongwe, the Capital City of Malawi.
165 Additionally, data cleaning, analysis and dissemination will be planned and executed from the
166 Secretariat.

167

168 *Participants Characteristics (Sample Size and Selection)*

169 The study will collect data from the 194 CHAM health facilities for facility indicator. As for
170 prescribing indicator, the sample size is 3,104 prescriptions, 16 per health facility. The 3,000
171 prescriptions are as per World Health Organisation (WHO) recommendation for a cross-
172 sectional study of a prescribing indicator study (5) and the 104 are for withdrawal of consent,
173 incomplete responses, and closure of the facilities as well as collecting data from 16
174 prescriptions per facility. The 3,104 prescriptions will provide enough data to determine extent of
175 antimicrobial use and detect irrational prescribing of antimicrobial in CHAM health facilities.
176 Patient indicator sample size is 275 patients as per cross-sectional study formula (6) with
177 assumptions of standard normal variate (Z) of 1.96, expected proportion from previous study of
178 0.763 (7) and precision of 5%. The overage of 113 patients for patient indicator for withdrawal of

179 consent, closure of facility and incomplete data, and to collect data from 2 patients per facility.

180 This leads to a total of 388 patients for patient indicator data.

181

182 The study will collect data from all facilities for facility indicator data while systematic random

183 sampling will be implemented for prescribing and patient indicators' data. For prescription

184 indicator data, each ward will contribute an equal number of participants, chosen from every

185 even number of patient until the 16th prescriptions. The patient indicator data will be collected

186 from every odd number of the prescribing indicator data. Subsequent patient indicator data

187 collection will utilize a new set of odd numbers for each facility. For example, if 1 and 3 were

188 initially selected, the next round would include 5 and 7, then 9 and 11, restarting the cycle upon

189 reaching the 15th number out of the 16 prescriptions per facility.

190

191 *Data collection*

192 Two trained personnel will collect data for each facility; pharmacy profession will collect

193 prescribing and facility indicators data while a clinician will collect patient data. The study will

194 use three online questionnaires, one for each indicator, on KoboToolbox v2021.2.4. Facility

195 indicator data will be the first to collect. This will followed by simultaneous collection of patient

196 and prescribing indicators' data.

197

198 The study will collect data from a facility which will be opened and operational on the day of data

199 collection (all facilities closed or suspended services during data collection). Additionally,

200 prescribing indicator data will come from legible patient files less than a month and for patients

201 aged 6 and above. The age for prescribing indicator will be inclusion for patient indicators' data.

202 Patients in intensive care will be excluded from the study.

203

204 *Study Outcome*

205 For prescribing indicator, the study will provide the extent of antimicrobial use through
206 percentage of hospitalization with one or more antimicrobial used and average number of
207 antimicrobials prescribed per hospitalization in which antimicrobials were prescribed.
208 Furthermore, the findings will include average cost of antimicrobials prescribed per
209 hospitalization, average duration of prescribed antimicrobial treatment for intensity of exposure
210 to antimicrobial, percentage of antimicrobials prescribed consistent with the hospital formulary
211 list and by generic name to measure the degree of conformity to national prescribing policies,
212 and average number of drug encounter to measure the degree of polypharmacy.

213
214 The patient indicator data outcome are percentage of prescribed antimicrobials actually
215 administered or dispensed to a patient, average consultation and dispensing time, percentage
216 of medicines actually dispensed, percentage of medicines adequately labelled, and percentage
217 of patients' correct dose. The facility indicator will provided existence of Standard Treatment
218 Guidelines (STG) and Essential Medicines List (EML), availability of key antimicrobials in the
219 hospital, average number of days that a set of key antimicrobials is out of stock, and percentage
220 antimicrobial expenditure of hospital medicines cost.

221
222 Overall, the study will provide prevalence of irrational use of antimicrobial, main drivers of
223 irrational antimicrobial use, and geographical distribution of irrational use of antimicrobials in
224 CHAM health facilities.

225 226 *Data Management Plan*

227 This data from KoboToolbox v2021.2.4 will be downloaded to Microsoft Excel Version 2016,
228 cleaned and coded. The data will be stored on a password-protected computer, and access will
229 be restricted to only study team, and relevant authority under full authorization of the PI. The
230 data will not be connected to patients as numbers and letters will be used to identify

231 participants. Data will be archived for any future research and participants will assent and
232 consent to the future use of data for research purposes.

233

234 *Safety Plan*

235 This is an observational study hence there are no direct safety concerns from the study
236 approach. However, data collecting team will call upon clinical team to attend to any patient
237 requiring clinical attention while responding to the study.

238

239 *Data Type and Statistical Analysis*

240 Statistical analysis will be performed using STATA SE version 14. The data analysis will include
241 frequencies, mean, standard deviation (SD) and percentage to describe data distribution and
242 spread. Additionally, the study will use one-way analysis of variance (ANOVA) for numerical
243 data and Pearson's chi-squared or fisher's exact (depending on the cell number) tests for
244 categorical data, to check for association among different variables. P-value less than 0.05 will
245 be considered statistically significant at 95% confidence interval for all data.

246

247 *Ethical Considerations and Declarations*

248 The protocol has been approved by College of Medicine Research Ethics Committee
249 (COMREC) on 15th May 2024 [protocol number P.04/24-0651]. Prescriptions, patients and
250 health facilities will be identified by numbers. Consent will be sought from adults while assent
251 will be obtained for children. Participation in the study will be voluntary. Additionally, before
252 commencing data collection, data collecting team will get approval from each health facility
253 management team. The study team will also get approvals from the facility in-charges before
254 commencement of the study.

255

256 *Study Status and Timeline*

257 The study will run from January 2024 to December 2025. Currently, the implementation is at
258 preparatory stage which will be followed by pre-testing the questionnaires then data collection
259 up-to data dissemination (**Figure 2**).

260 **Discussion**

261 *Study Limitations and Challenges*

262 The study will involve self-reporting and review of documents which might introduce errors
263 because of the knowledge level of the reporter or the quality of documentation, possibly
264 affecting the accuracy and quality of collected data. To overcome this, multiple data sources
265 such as patients, patient file, health passport and input from the clinical team will be used.
266 Additionally, data from patient files and health passport may be incomplete or inaccurate
267 because of unclear handwriting or poorly recorded information. This will be addressed by
268 excluding prescriptions with poor handwriting or incomplete records.

269
270 Logistics challenge is a concern for CHAM health facilities which are mostly in remote areas.
271 This will be addressed by effective planning and communication, using a combination of multiple
272 communication channels. Additionally, the study involves managing and analyzing large volume
273 of data. This will be mitigated by thoroughly training data reporters to ensure collected data
274 requires minimal cleaning, and by using KoboToobox to reduce most of the manual work
275 required for data entry.

276

277 *Dissemination plan*

278 The findings will be shared to all CHAM facilities at CHAM Annual General Meeting (AGM), the
279 MOH AMR Sub technique working group (TWG) and Kamuzu University of Health Sciences
280 (KUHES) Research Dissemination Conference. Additionally, the study will be presented in other
281 local and international conferences on AMR. Finally, the study findings will be considered for
282 publication in peer reviewed journals.

283

284 *Study Amendment and Termination*

285 Study alterations will be done in full consultation with all study investigators with approval from
286 ethical oversight committee. In the end, we will provide reports and communication to all key
287 stakeholders in the project following termination of the study.

288

289 **Authors Contribution**

290 ECC will lead and coordinate all activities as the chief investigator. DN and FC will handle all
291 write-ups, project planning and implementation. SO, PK, SM will review, collect and analyse,
292 and draft report and journal article. PM, EM, EK,CM, and HM will serve as overall study
293 supervisors, providing leadership, reviews and coordinating resources for the study.

294

295 **Acknowledgements**

296 We thank CHAM's management for authorizing the implementation of this study in the
297 organisation's health facilities.

298

299 **Support Information**

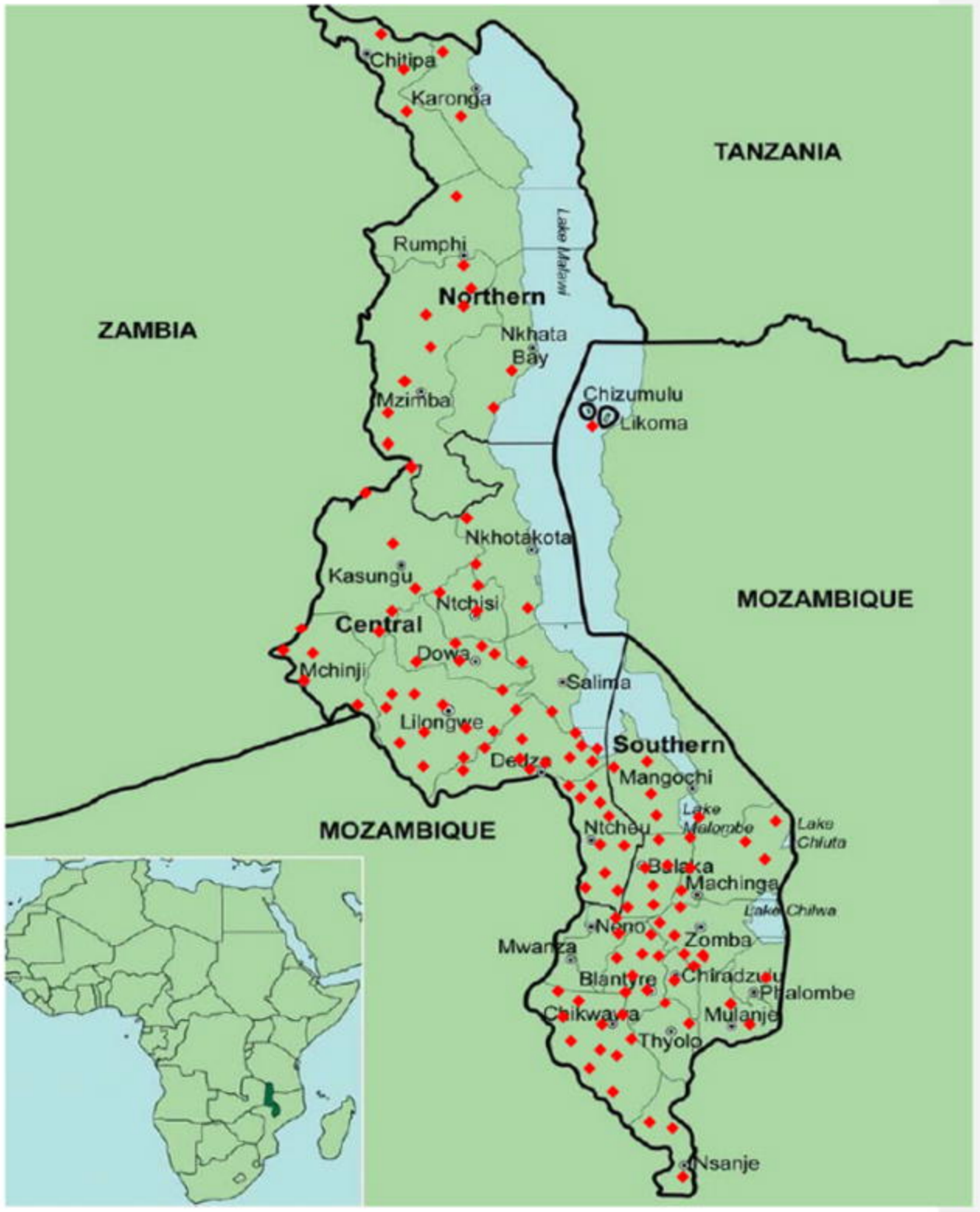
300 Ethical approvals from Malawi's COMREC, and authorization letter from CHAM to conduct the
301 study in the organisation's health facilities.

302

303 **References**

304. Antimicrobial Resistance: Briefing to WHO Member States. World Health Organisation
305 [Internet]. 2023 March 22. Available from: chrome-
306 extension://efaidnbmnnnibpcajpcgiclfefindmkaj/[https://apps.who.int/gb/MSPI/pdf_files/2023/03/It
em1_22-03.pdf](https://apps.who.int/gb/MSPI/pdf_files/2023/03/It
307 em1_22-03.pdf).

302. O'Neill J. Antimicrobial resistance: tackling a crisis for the health and wealth of nations. Rev
309 Antimicrob Resist. 2014.
310. The burden of antimicrobial resistance (AMR) in Malawi. University of Washington [Internet].
311 2023. Available from: chrome-
312 extension://efaidnbmnnnibpcajpcgiclfendmkaj/<https://www.healthdata.org/sites/default/files/2023-09/Malawi.pdf>.
313 [3-09/Malawi.pdf](https://www.healthdata.org/sites/default/files/2023-09/Malawi.pdf).
314. Malawi CHAo. About CHAM Lilongwe: Christian Health Association of Malawi; 2023 [updated
315 31 March 2021; cited 2024 1 January]. Available from: <https://cham.org.mw/about-cham/>.
316. Organisation WH. How to Investigate Drug Use in Health Facilities 1993 28 June 2023 [cited
317 2023 28 June]. Available from: chrome-
318 extension://efaidnbmnnnibpcajpcgiclfendmkaj/https://apps.who.int/iris/bitstream/handle/10665/60519/WHO_DAP_93.1.pdf.
319 [0519/WHO_DAP_93.1.pdf](https://apps.who.int/iris/bitstream/handle/10665/60519/WHO_DAP_93.1.pdf).
320. Charan J, Biswas T. How to calculate sample size for different study designs in medical
321 research? Indian J Psychol Med. 2013;35(2):121-6.
322. Mboya EA, Sanga LA, Ngocho JS. Irrational use of antibiotics in the Moshi Municipality Northern
323 Tanzania: a cross sectional study. Pan Afr Med J. 2018;31:165.



◆ A CHAM health facility

Figure 1: CHAM health facilities distributed across Malawi including facilities at Likoma Island.

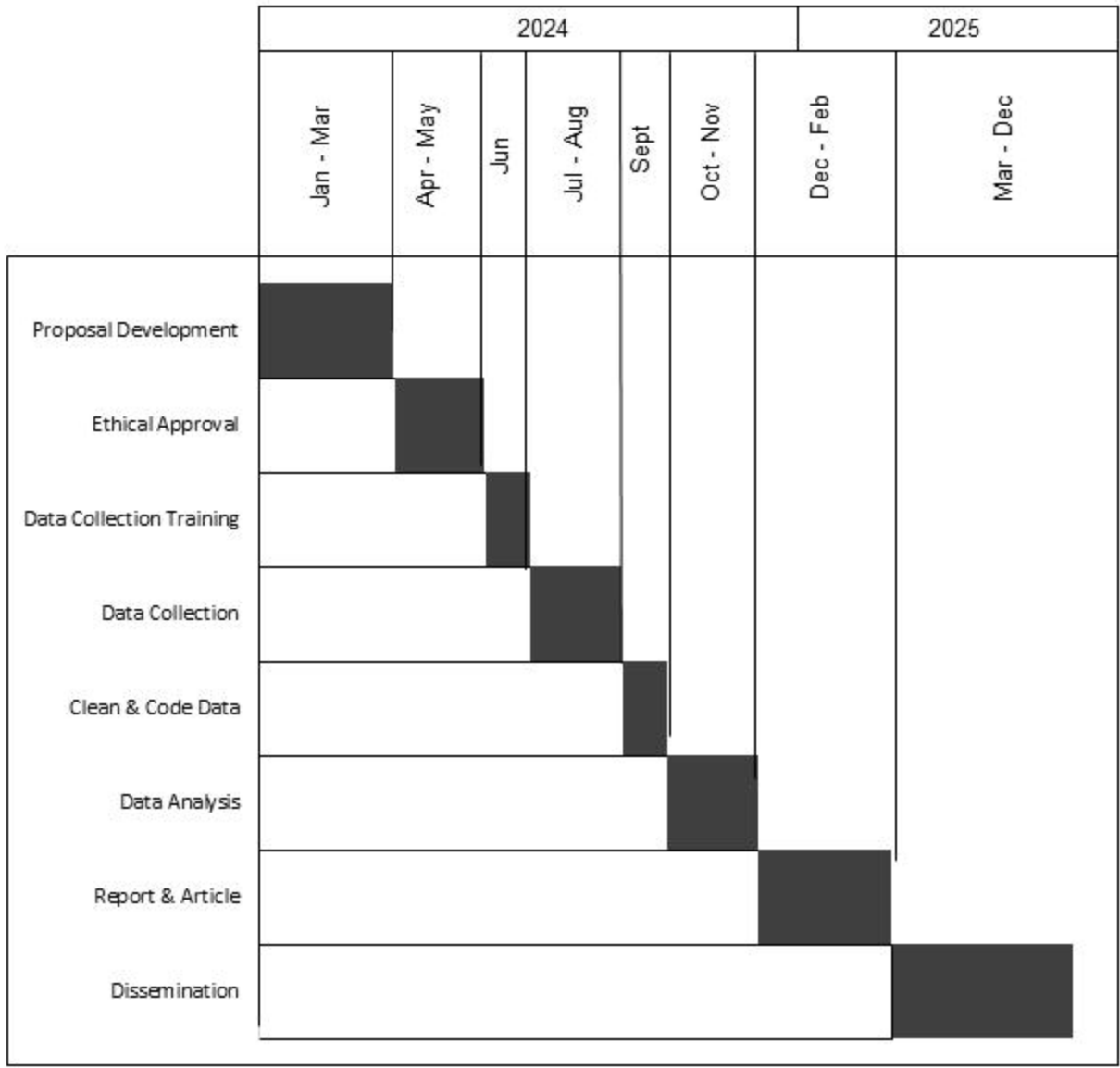


Figure 2: Gantt chart of the study timelines.