

1 **Impact of increasing CD4 count threshold eligibility for antiretroviral therapy initiation**  
2 **on advanced HIV disease and tuberculosis prevalence and incidence in South Africa: an**  
3 **interrupted time series analysis**

4 **Authors:** Kwabena Asare<sup>1,2</sup>, Lara Lewis<sup>1</sup>, Johan van der Molen<sup>1</sup>, Yuktेशwar Sookrajh<sup>3</sup>,  
5 Thokozani Khubone<sup>3</sup>, Thulani Ngwenya<sup>4</sup>, Mkhize Siyabonga Ntokozo<sup>4</sup>, Richard J Lessells<sup>1,5</sup>,  
6 Kogieleum Naidoo<sup>1,6</sup>, Phelelani Sosibo<sup>3</sup>, Christian Bottomley<sup>7</sup>, Nigel Garrett<sup>1,8</sup> and Jienchi  
7 Dorward<sup>1,9</sup>

8 **Institutions**

- 9 1. Centre for the AIDS Programme of Research in South Africa (CAPRISA), Durban,  
10 KwaZulu-Natal, South Africa  
11 2. Department of Non-Communicable Disease Epidemiology, London School of  
12 Hygiene & Tropical Medicine, London, United Kingdom  
13 3. eThekweni Municipality Health Unit, eThekweni Municipality, Durban, KwaZulu-  
14 Natal, South Africa  
15 4. Bethesda Hospital, uMkhanyakude District, KwaZulu-Natal, South Africa  
16 5. KwaZulu-Natal Research and Innovation Sequencing Platform (KRISP), University  
17 of KwaZulu-Natal, Durban, KwaZulu-Natal, South Africa  
18 6. South African Medical Research Council (SAMRC)-CAPRISA-TB-HIV  
19 Pathogenesis and Treatment Research Unit, Nelson R Mandela School of Medicine,  
20 University of KwaZulu-Natal, Durban, KwaZulu-Natal, South Africa  
21 7. Department of Infectious Disease Epidemiology, London School of Hygiene &  
22 Tropical Medicine, London, United Kingdom  
23 8. Discipline of Public Health Medicine, School of Nursing and Public Health,  
24 University of KwaZulu-Natal, Durban, KwaZulu-Natal, South Africa  
25 9. Nuffield Department of Primary Care Health Sciences, University of Oxford,  
26 Oxfordshire, United Kingdom  
27

28 **Corresponding author:** Kwabena Asare, PhD. Centre for the AIDS Programme of Research  
29 in South Africa. Doris Duke Medical Research Institute, Nelson R Mandela School of  
30 Medicine, University of KwaZulu-Natal, Private Bag X7, Congella, 4013, Durban, South  
31 Africa. Telephone: +27 31 260 4453; E-mail: kwabena.asare@caprisa.org  
32

33 **Abstract**

34 **Introduction.** We investigated the impact of increasing CD4 count eligibility for  
35 antiretroviral-therapy (ART) initiation on advanced HIV and tuberculosis (TB) prevalence  
36 and incidence among people living with HIV (PLHIV) in South Africa.

37 **Methods.** We conducted an interrupted time series analysis with de-identified data of PLHIV  
38 aged  $\geq 15$  initiating ART between April-2012 and February-2020 at 65 primary healthcare  
39 clinics in KwaZulu-Natal, South Africa. Outcomes included monthly proportions of new ART  
40 initiators presenting with advanced HIV (CD4 count  $< 200$  cells/ $\mu$ l) and TB disease. We  
41 created a cohort of monthly ART initiators without TB and evaluated the cumulative  
42 incidence of TB within 12 months follow-up. We used segmented binomial regression models  
43 to estimate relative risks (RR) of outcomes, allowing for a step and slope change after  
44 expanding the ART initiation CD4 count eligibility from  $< 350$  to  $< 500$  cells/ $\mu$ l in January-  
45 2015 and following Universal-Test-and-Treat (UTT) implementation in September-2016.

46 **Results.** Among 187,544 participants, median age was 32 (27-39), and 125,065 (66.7%) were  
47 female. After January-2015, risk of advanced HIV at initiation decreased by 24.5%  
48 (RR=0.745, 95%CI 0.690-0.800) and further reduced by 26.2% following UTT  
49 implementation (RR=0.738, 95%CI 0.688-0.788). Risk of TB at initiation also decreased by  
50 28.7% after January-2015 (RR=0.713, 95%CI 0.644-0.782) and further decreased by 17.6%  
51 after UTT implementation (RR=0.824, 95%CI 0.703-0.945) but remained stable among  
52 initiators with advanced HIV. Among the incidence cohort, the risk of new TB decreased by  
53 31.9% (RR=0.681, 95%CI 0.441-0.921) following UTT implementation. Among the  
54 incidence cohort with advanced HIV, there was weak evidence of a decrease in risk of new  
55 TB (RR=0.755, 95%CI 0.489-1.021), but it gradually decreased per month (slope change per  
56 month 9.7%, RR=0.903, 95%CI 0.872-0.934) following UTT implementation.

57 **Conclusions.** Our data supports the added benefit of decreased TB co-burden with expanded  
58 ART access. Early diagnosis and immediate linkage to care should be prioritised among  
59 PLHIV.

60 **Keywords:** HIV, Antiretroviral Therapy, CD4 count, Universal Test and Treat, Tuberculosis.

## 61 INTRODUCTION

62 During the HIV epidemic, there has been a gradual expansion of the CD4 count eligibility  
63 criteria for initiating people living with HIV (PLHIV) on antiretroviral therapy (ART) in  
64 South Africa. Before August 2011, the initiation CD4 count eligibility was <200 cells/ $\mu$ l.[1]  
65 From August 2011, it was expanded to <350 cells/ $\mu$ l and then to <500 cells/ $\mu$ l from January  
66 2015.[1] In September 2016, the World Health Organisation's (WHO) Universal-Test-and-  
67 Treat (UTT) policy was implemented in South Africa, allowing ART initiations regardless of  
68 CD4 count level or clinical stage of HIV disease.[2, 3] Likewise, from April 2012, even  
69 before UTT, all PLHIV with active tuberculosis disease (TB) in South Africa became eligible  
70 for ART initiation, irrespective of the CD4 count level.[4] These policy changes were  
71 informed by evidence of the efficacy of early ART initiation on viral suppression[5] and the  
72 efficacy of combining ART with TB treatment in reducing all-cause mortality.[6]

73 After implementing these policies, access to ART increased, and a higher proportion of  
74 PLHIV in South Africa and other LMICs initiated ART at higher CD4 counts.[7-9]  
75 Consequently, a higher proportion of people receiving ART have achieved viral  
76 suppression[10, 11], and population-level HIV incidence has reduced.[12] The life  
77 expectancy of PLHIV has also improved[13], and the burden of opportunistic co-infections  
78 such as TB has reduced.[14] However, these positive health outcomes are likely due to more  
79 PLHIV starting ART earlier at higher CD4 counts due to the expansion of initiation CD4  
80 count eligibility over time. A number of cohort and cross-sectional studies have demonstrated  
81 the positive health related impacts of expanded ART access[9, 14-18] in LMICs but there is  
82 limited evidence on the stepwise impact of ART eligibility expansion on trends in advanced  
83 HIV disease and the risk of common causes of death, such as TB disease in PLHIV initiating  
84 and receiving ART.

85 We aimed to determine the impact of increasing the ART initiation CD4 count eligibility from  
86 <350 to <500 cells/ $\mu$ l in January 2015 and then to UTT implementation in September 2016  
87 on trends in advanced HIV disease at ART initiation, TB prevalence at ART initiation and  
88 cumulative TB incidence within 12 months follow-up. We aimed to evaluate these objectives  
89 among ART initiators and in a sub-cohort of ART initiators with advanced HIV disease from  
90 April 2012 to February 2020 in South Africa.

91

92

## 93 **METHODS**

### 94 **Study design and setting**

95 We conducted a segmented interrupted time series analysis with de-identified routinely  
96 collected data from 65 public primary healthcare facilities in KwaZulu-Natal, South Africa,  
97 from 2012 to 2020. Fifty-six clinics were in the eThekweni District, and the remaining 9  
98 fixed and mobile primary care clinics in the rural uMkhanyakude district. Based on prevailing  
99 clinical guidelines, ART initiation was predicated by clinical assessment for pregnancy in  
100 females, and CD4 count testing and screening for TB disease.[19, 20] The guidelines  
101 recommend screening for TB and pregnancy in females during the follow-up clinic visits. TB  
102 screening involves assessments for TB symptoms followed with GeneXpert testing among  
103 symptomatic participants.[19-21] But all pregnant women are recommended to received  
104 GeneXpert testing regardless of TB symptoms, due to the lower sensitivity of the TB  
105 symptom screen in pregnant women.[19] TB preventive therapy (TPT) is recommended for  
106 participants for whom active TB is reasonably ruled out based on TB symptom screening.[19,  
107 20] Follow-up clinic visits were usually between 1 to 3 months apart and viral load testing  
108 were usually performed 1 to 2 times yearly.

109 We selected the study period to start in April 2012, when PLHIV who had TB became  
110 eligible for ART initiation, regardless of CD4 count in South Africa.[4] We chose February  
111 2020 as the study endpoint to exclude the COVID-19 lockdown period in South Africa,  
112 which started in March 2020.[22]

### 113 **Data sources and data management**

114 We used data from South Africa's TIER.Net electronic database containing demographic and  
115 clinical data on PLHIV receiving ART and TB care in public sector healthcare clinics.[23]  
116 The information captured includes ART and TB treatment dates and regimens, laboratory  
117 results including CD4 count, clinic visits and TB status at ART initiation and at each follow-  
118 up clinic visit.

### 119 **Participants**

120 For the main cohort, we included all PLHIV aged  $\geq 15$  years initiating ART at the study  
121 clinics from April 2012 to February 2020. Additionally, we analyzed an incidence cohort  
122 comprising a sub-group of the main cohort who initiated ART without TB from April 2012 to  
123 February 2019. For the incidence cohort, the time frame of ART initiation was to allow a

124 minimum of 365 days follow-up duration for all participants before the end of the study  
125 period in February 2020. Participants entered the incidence cohort at ART initiation and  
126 exited at the earliest of (1) outcome onset (i.e., status change to “on TB treatment” within 12  
127 months), (2) end of the 12 months follow-up or (3) censored within 12 months (lost to  
128 follow-up, died, or transferred out as we could not access or link participants to data at other  
129 clinics). We also analyzed sub-cohorts of the main and incidence cohorts for each category of  
130 age (15-24, 25-34, 35-44, 45-54 and 55+ years), gender (Male and Female), and advanced  
131 HIV disease at initiation.

### 132 **Outcomes**

133 The study outcomes were the monthly number of new ART initiators (main cohort), the  
134 monthly proportion of new ART initiators with advanced HIV disease (main cohort), the  
135 monthly number and proportion of new ART initiators with active TB disease (main cohort)  
136 and the number and proportion of monthly new ART initiators developing new active TB  
137 disease within 12 months follow-up (incidence cohort).

138 We estimated the monthly number of new ART initiators (excluding participants who were  
139 transferring in from another clinic) by counting the number of new ART initiation dates per  
140 month and, among these, the number with TB and the number with advanced HIV disease  
141 (i.e., having a CD4 count <200 cells/ $\mu$ l). TB at ART initiation meant the participant was on  
142 TB treatment at the start of ART. We calculated the monthly proportion of new ART initiators  
143 with advanced HIV disease as the number of new ART initiators with advanced HIV disease  
144 divided by the monthly number of new ART initiators. We calculated the monthly proportion  
145 of new ART initiators with TB as the number of new ART initiators with TB disease divided  
146 by the monthly number of new ART initiators. Thus, the monthly proportion of new ART  
147 initiators with TB includes participants with unascertained TB status and hence captures the  
148 proportion of initiators with a known TB status.

149 Among the incidence cohort, new TB meant that the participant’s status changed to “on TB  
150 treatment” within 12 months follow-up after ART initiation. In the incidence cohort, we  
151 counted the monthly number of ART initiators and of these counted the number that  
152 developed new TB within 12 months of follow-up (new TB cases). We estimated the  
153 proportion of new TB within 12 months as the number of new TB cases divided by the  
154 monthly number of ART initiators. Thus, the proportion of monthly ART initiators developing

155 new TB includes participants with unascertained new TB status and hence captures the  
156 proportion of initiators with a known new TB status.

### 157 **Statistical analyses**

158 We calculated descriptive summaries of participant demographics, clinic data and crude  
159 summaries of the primary outcomes from the main and incidence cohorts among participants  
160 initiating ART in each CD4 count eligibility period. The demographic variables included in  
161 the descriptive summaries were age, gender, pregnancy status in females and district  
162 settlement type of the clinics (rural uMkhanyakude and urban eThekweni). We included the  
163 most recent available CD4 count recorded from before 180 and up to 30 days after ART  
164 initiation.

165 We fitted segmented time series regression models of all outcomes. The time series started  
166 from a baseline period of April 2012 to December 2014 when the initiation CD4 count  
167 eligibility was <350 cells/ $\mu$ l and allowing for step and slope changes from January 2015 to  
168 capture the impact of expanding the initiation CD4 count eligibility to <500 cells/ $\mu$ l and from  
169 September 2016 to capture the impact of UTT implementation. We conducted linear  
170 regression of the monthly number of new ART initiators, monthly number of new ART  
171 initiators with TB and number of monthly new ART initiators developing new TB within 12  
172 months follow-up using the Prais-Winsten method to account for serial autocorrelation of the  
173 errors.[24] We performed binomial regression of the monthly proportion of new ART  
174 initiators with advanced HIV disease, monthly proportion of new ART initiators with TB and  
175 proportion of monthly new ART initiators developing new TB within 12 months follow-up.  
176 We used a log link for the binomial regression models and exponentiated the coefficients to  
177 estimate relative risks (RR) and used Newey-West standard errors with lags up to 3 to  
178 calculate confidence intervals.[25, 26]

179 We included the following predictor variables in each model: a time variable measured in  
180 months (i.e., the month of ART initiation), dummy variables indicating pre or post  
181 implementation date of each CD4 count eligibility expansion (i.e., January 2015 for  
182 expansion to <500 cells/ $\mu$ l and September 2016 for UTT implementation) to capture the step  
183 change in outcomes after each date, a variable indicating time in months since January 2015  
184 (zero for the months before) and time in months since September 2016 (zero for the months  
185 before) to capture the slope changes in outcomes, and 2 Fourier terms consisting of two pairs

186 of sine and cosine transformations of a 12-month cycle to adjust for seasonal trends in  
187 outcomes.[27]

188 We plotted the segmented interrupted time series graphs from each regression model. We  
189 included the counterfactual scenarios for each model, defined as situations where only the  
190 previous initiation CD4 count eligibility criteria were implemented. The counterfactuals were  
191 estimated by predicting the outcomes from the segmented regression models, using a  
192 modified dataset as: (A) the pre-post January 2015 and pre-post September 2016 dummy  
193 variables = No and time since January 2015 and time since September 2016 variables = 0 to  
194 predict the counterfactuals from January 2015 to August 2016 and, (B) the pre-post  
195 September 2016 dummy variable = No and time since September 2016 variable = 0 to predict  
196 the counterfactuals after UTT implementation).

197 We conducted sub-cohort analyses of the segmented regression and interrupted time series by  
198 age category (15-24, 25-34, 35-44, 45-54 and 55+ years), gender (Male and Female), and  
199 among initiators with advanced HIV disease. We performed all statistical analyses using R  
200 4.2.2 (R Foundation for Statistical Computing, Vienna, Austria).[28]

## 201 **Patients and public involvement**

202 We used de-identified routinely collected data with no contacts to the patients. Hence patients  
203 and public involvement in the design, conduct, reporting or dissemination of our research was  
204 not applicable.

## 205 **RESULTS**

### 206 **Characteristics of participants at ART initiation**

207 From April 2012 to February 2020, 187,544 PLHIV aged  $\geq 15$  years initiated ART at the  
208 clinics (Table 1a). The median age was 32 years (interquartile range [IQR] 27-39). In total,  
209 125,065 (66.7%) were female, of whom 24,447 (19.5%) were pregnant at the time of ART  
210 initiation. The median CD4 count at ART initiation per period was 227 cells/ $\mu\text{l}$  (IQR 130-  
211 313) from April 2012 to December 2014, when the initiation CD4 count eligibility was  $< 350$   
212 cells/ $\mu\text{l}$ , 306 cells/ $\mu\text{l}$  (IQR 176-425) from January 2015 to August 2016 when the initiation  
213 CD4 count eligibility was  $< 500$  cells/ $\mu\text{l}$  and 368 cells/ $\mu\text{l}$  (IQR 211-557) from September  
214 2016 to February 2020 during UTT implementation. The number and proportion of initiators  
215 with CD4 count  $< 200$  cells/ $\mu\text{l}$  was 21,839 (42.6%) when the initiation CD4 count eligibility



216 was <350 cells/ $\mu$ l, 13,700 (29.2%) when the initiation CD4 count eligibility was <500  
217 cells/ $\mu$ l and 20,830 (23.3%) during UTT implementation. The number and proportion of  
218 initiators with TB were 7,835 (15.3%) when the initiation CD4 count eligibility was <350  
219 cells/ $\mu$ l, 5,318 (11.3%) when the initiation CD4 count eligibility was <500 cells/ $\mu$ l and 6,911  
220 (7.7%) during UTT implementation. Among initiators with advanced HIV disease, the  
221 number and proportion with TB was 4,538 (20.8%) when the initiation CD4 count eligibility  
222 was <350 cells/ $\mu$ l, 2,875 (21.0%) when the initiation CD4 count eligibility was <500 cells/ $\mu$ l  
223 and 3,839 (18.4%) during UTT implementation.

#### 224 **Interrupted time series of new ART initiations from April 2012 to February 2020**

225 From the segmented linear regression and interrupted time series analyses (Table 2A, Figure  
226 1A), the monthly number of ART initiators was gradually rising, although with weak  
227 evidence of an increasing trend from April 2012 to December 2014 when the initiation CD4  
228 count eligibility was <350 cells/ $\mu$ l. With the expansion of the initiation CD4 count eligibility  
229 to <500 cells/ $\mu$ l in January 2015, there was an immediate increase in the monthly number of  
230 ART initiators (Coeff 915.7, 95% confidence interval (CI) 422.3, 1409.1) and, thereafter, the  
231 slope decreased until August 2016 (Coeff -48.0, 95% CI -89.3, -6.7). From September 2016,  
232 when UTT was implemented, there was a further step increase in the monthly number of ART  
233 initiators (Coeff 832.9, 95% CI 369.9, 1295.9) with no evidence of a slope change until  
234 February 2020 (Coeff 3.7, 95% CI -34.8, 42.2). Among initiators with advanced HIV disease  
235 (Table 2A, Figure 1B), the monthly number of ART initiators was stable over time when the  
236 initiation CD4 count eligibility was <350 cells/ $\mu$ l and continued to remain stable with no step  
237 change (Coeff 77.2, 95% CI -33.1, 187.5) and no slope change (Coeff 0.0, 95% CI -8.6, 8.6)  
238 after the CD4 count eligibility was changed to <500 cells/ $\mu$ l. It further remained stable from  
239 September 2016, when UTT was implemented, with no evidence of a step change (Coeff  
240 14.4, 95% CI -88.1 to 116.9) or slope change until February 2020 (Coeff -6.0, 95% CI -14.1,  
241 2.1).

#### 242 **Interrupted time series of advanced HIV disease prevalence at ART initiation from** 243 **April 2012 to February 2020**

244 The segmented binomial regression and interrupted time series analyses of the proportion of  
245 initiators with advanced HIV disease are presented in Table 2B and Figure 1C. The results  
246 show a decreasing trend in the proportion of initiators with advanced HIV disease by 1.2%



247 (Relative risk [RR] RR 0.988, 95% CI 0.986, 0.990) from April 2012 to December 2014  
248 when the initiation CD4 count eligibility was <350 cells/ $\mu$ l. Afterwards, when the initiation  
249 CD4 count eligibility was expanded to <500 cells/ $\mu$ l in January 2015, there was a step  
250 decrease by 25.5% (RR 0.745, 95% CI 0.690, 0.800) and a slope decrease by 2.3% (RR  
251 1.023, 95% CI 1.019, 1.027) until August 2016. Subsequently, when UTT was implemented  
252 in September 2016, there was a further step decrease by 26.2% (RR 0.738, 95% CI 0.688,  
253 0.788) and a slope decrease by 1.2% until February 2020 (RR 0.988, 95% CI 0.983, 0.993).  
254 The differences in step and slope changes in the proportion of initiators with advanced HIV  
255 disease were similar by gender and by age group following expansion of the initiation CD4  
256 count eligibility from <350 to <500 cells/ $\mu$ l and following UTT implementation.

257

258

259 **Interrupted time series of active TB disease prevalence at ART initiation from April**  
260 **2012 to February 2020**

261 From April 2012 to December 2014, when the initiation CD4 count eligibility was <350  
262 cells/ $\mu$ l, the monthly number of initiators with TB was gradually rising (Table 2C, Figure 2A,  
263 Coeff 2.3, 95% CI 1.1, 3.5). There was no evidence of a step change in January 2015, when  
264 the initiation CD4 count eligibility was increased to <500 cells/ $\mu$ l (Coeff 23.0, 95% CI -13.9,  
265 59.9). But afterwards, the slope decreased until August 2016 (Coeff -5.1, 95% CI -7.9, -2.3).  
266 There were no observed change in step but saw weak evidence of a slope decrease in the  
267 monthly number of initiators with TB after the introduction of UTT (Coeff -1.8, 95% CI -4.5,  
268 0.9). Among initiators with advanced HIV disease (Table 2C, Figure 2B), the monthly  
269 number of initiators with TB was stable (Coeff 0.1, 95% CI -0.6, 0.8) when the initiation CD4  
270 count eligibility was <350 cells/ $\mu$ l. Afterwards, there was no evidence of a step change (Coeff  
271 15.2, 95% CI -5.6, 36.0) following the expansion of the initiation CD4 count eligibility to  
272 <500 cells/ $\mu$ l in January 2015 and no evidence of a slope change until August 2016 (Coeff -  
273 0.9, 95% CI -2.5, 0.7). After UTT was implemented, there was no evidence of a step change  
274 (Coeff 4.6, 95% CI -14.6, 23.8) but weak evidence of a slope decrease until February 2020  
275 (Coeff -1.5, 95% CI, -3.0, -0.0).

276 The monthly number of initiators with TB is a function of the number of people initiating  
277 ART (which changes over time), so we also present analyses of the proportion of initiators

278 with TB. Table 2D and Figure 2C show that the proportion of initiators with TB was stable  
279 when the initiation CD4 count eligibility was <350 cells/ $\mu$ l. It then decreased by 28.7% (RR  
280 0.713, 95% CI 0.644, 0.782) from January 2015 when the initiation CD4 count eligibility was  
281 expanded to <500 cells/ $\mu$ l but the slope remained stable until August 2016 (RR 1.001 95% CI  
282 0.996, 1.006). Following UTT implementation in September 2016 there was a further step  
283 decrease of 17.6% (RR 0.824, 95% CI 0.703, 0.945) and a slope decline of 1.5% until  
284 February 2020 (RR 0.985 95% CI 0.978, 0.992). The proportion of initiators with TB across  
285 age groups and across gender were similar following the initiation CD4 count eligibility  
286 expansion from <350 to <500 cells/ $\mu$ l and following UTT implementation. Among initiators  
287 with advanced HIV disease (Table 2D and Figure 2D), the proportion with TB was stable  
288 over time when the initiation CD4 count eligibility was <350 cells/ $\mu$ l. With the expansion of  
289 the initiation CD4 count eligibility to <500 cells/ $\mu$ l, there was no evidence of a step change  
290 (RR 0.996, 95% CI 0.912, 1.080), but the slope decreased by 0.8% until August 2016 (RR  
291 0.992, 95% CI 0.987, 0.997). Following the implementation of UTT from September 2016,  
292 there was no evidence of a step change (RR 1.061, 95% CI 0.947, 1.175) but weak evidence  
293 of a slope decrease until February 2020 (RR 0.995, 95% CI 0.989, 1.001).

#### 294 **Characteristics of the incidence cohort and follow-up outcomes within 12 months**

295 The incidence cohort involved 99,452 participants with no active TB disease at ART  
296 initiation from April 2012 to February 2019 (Table 1b). The median age was 32 years (IQR  
297 27-38), and 69,069 (69.4%) were female, of whom 13,337 (20.5%) were pregnant at the time  
298 of ART initiation. The median CD4 count was 300 cells/ $\mu$ l (IQR 181-445), and 28,384  
299 (28.5%) started ART with advanced HIV disease. The number and proportion with CD4  
300 count <200 cells/ $\mu$ l was 12,235 (40.7%) when the initiation CD4 count eligibility was <350  
301 cells/ $\mu$ l, 7,672 (26.4%) when the initiation CD4 count eligibility was <500 cells/ $\mu$ l and 8,477  
302 (21.0%) during UTT implementation. The incidence cohort made a median of 8.0 (IQR, 5.0-  
303 9.0) follow-up clinic visits within 12 months, and 93,718 (94.2%) made at least one follow-  
304 up clinic visit within the 12 months. Participants attending at least one follow-up clinic visit  
305 within 12 months received a median of 7.0 TB screening tests (IQR, 4.0-10.0) and 90,790  
306 (96.9%) received at least one screening test for TB. The number and proportion of  
307 participants developing new TB within 12 months follow-up were 370 (1.2%) when the  
308 initiation CD4 count eligibility was <350 cells/ $\mu$ l, 488 (1.7%) when the initiation CD4 count  
309 eligibility was <500 cells/ $\mu$ l and 197 (0.5%) during UTT implementation. The median days to

310 developing new TB within 12 months follow-up were 87 (49-176) when the initiation CD4  
311 count eligibility was <350 cells/ $\mu$ l, 84 (51-160) when the initiation CD4 count eligibility was  
312 <500 cells/ $\mu$ l and 78 (33-119) during UTT implementation.

313 **Interrupted time series of the proportion of monthly ART initiators in the incidence**  
314 **cohort developing new TB within 12 months follow-up**

315 Results from the segmented linear regression and interrupted time series analyses (Table 3A  
316 and Figure 3A) demonstrate no evidence of a changing trend in the number of initiators per  
317 month developing new TB within 12 months follow-up when the initiation CD4 count  
318 eligibility was <350 cells/ $\mu$ l. Following the expansion of the initiation CD4 count eligibility  
319 to <500 cells/ $\mu$ l in January 2015, there was a step increase (Coeff 11.9, 95% CI 7.0, 16.8) but  
320 no evidence of a slope change until August 2016 (Coeff -0.2, 95% CI -0.6, 0.2). With the  
321 implementation of UTT from September 2016, there was a step decrease (Coeff -6.9, 95% CI  
322 -11.7, -2.1) and a slope decrease until February 2019 (Coeff -0.6, 95% -1.0, -0.2). Among the  
323 incidence cohort with advanced HIV disease (Table 3A and Figure 3B), the number  
324 developing new TB within 12 months of follow-up exhibited a stable trend when the  
325 initiation CD4 count eligibility was <350 cells/ $\mu$ l. Following the expansion of the initiation  
326 CD4 count eligibility to <500 cells/ $\mu$ l in January 2015, there was weak evidence of a step  
327 increase (Coeff 2.1, 95% CI -1.1, 5.3) and weak evidence of a slope increase until August  
328 2016 (Coeff 0.3, 95% CI 0.1, 0.5). However, following UTT implementation from September  
329 2016, there was a step decrease (Coeff -7.7, 95% CI -11.1, -4.3) and a slope decrease until  
330 February 2019 (Coeff -0.7, 95% CI, -0.7, -0.9).

331 Results from the segmented binomial regression and interrupted time series analyses (Table  
332 3B and Figure 3C) demonstrate that the proportion of monthly initiators developing new TB  
333 within 12 months of follow-up was stable when the initiation CD4 count was <350 cells/ $\mu$ l.  
334 When the initiation CD4 count was increased to <500 cells/ $\mu$ l in January 2015, there was no  
335 evidence of a step change (RR 1.221, 95% CI 1.010, 1.432) and no evidence of a slope  
336 change until August 2016 (RR 0.998, 95% CI 0.983, 1.013). However, following the  
337 implementation of UTT in September 2016, there was a step decrease by 31.9% (RR 0.681,  
338 95% CI 0.441, 0.921) and a slope decrease by 8.8% until February 2019 (RR 0.912, 95% CI  
339 0.887, 0.937). Among the incidence cohort with advanced HIV disease, the results (Table 3B  
340 and Figure 3D) show no evidence of a changing trend in the proportion of monthly initiators  
341 developing new TB within 12 months follow-up when the initiation CD4 count was <350

342 cells/ $\mu$ l. Subsequently, when the initiation CD4 count eligibility was expanded to <500 in  
343 January 2015, there was no evidence of a step change (RR 1.220, 95% CI 0.915, 1.525) and  
344 no evidence of a slope change until August 2016 (RR 1.003, 95% CI 0.980 to 1.026).  
345 However, from September 2016, when UTT was implemented, there was weak evidence of a  
346 step change (RR 0.755 95% CI 0.489, 1.021), and the slope decreased by 9.7% until February  
347 2019 (RR 0.903, 95% CI 0.872, 0.934).

## 348 **DISCUSSION**

349 We present results from an interrupted time series analysis of de-identified large-scale  
350 routinely collected clinic data from South Africa's ART programme between April 2012 and  
351 February 2020. The findings show that, following the expansion of the ART initiation CD4  
352 count eligibility from <350 to <500 cells/ $\mu$ l in January 2015 and the subsequent  
353 implementation of UTT in September 2016, ART initiations immediately increased but  
354 thereafter declined approaching the counterfactual levels associated with previous CD4 count  
355 eligibility criteria. The declining trend in new ART initiations was partly due to the existing  
356 backlog of ART naïve PLHIV who immediately became eligible for initiation, that gradually  
357 cleared over time. Additionally, the monthly proportion of ART initiators with advanced HIV  
358 disease decreased although about a quarter of people still started ART with advanced HIV  
359 disease after increasing the CD4 eligibility for ART initiation to <500 cells/ $\mu$ l in January  
360 2015 and during the UTT era. The pooled prevalence of advanced HIV disease among ART-  
361 naïve patients from a systematic review of 53 studies conducted between 2010 to 2022  
362 (majority before 2016) was 43.4% (95% CI 40.1–46.8%). This pooled prevalence is  
363 consistent with the prevalence of advanced HIV disease in our study from April 2012 to  
364 January 2015 during when the CD4 count eligibility for ART initiation was <350 cells/ $\mu$ l.  
365 Additionally, our estimate of advanced HIV disease in the UTT era is consistent with results  
366 from the studies that were conducted from 2016 onwards.[29, 30] We also found that TB  
367 prevalence among all initiators declined following expansion of CD4 count eligibility criteria  
368 but remained stable among the subset of initiators with advanced HIV disease. Finally, among  
369 initiators without TB disease, the cumulative incidence of TB within 12 months of follow-up  
370 declined following UTT implementation, in the whole cohort and in the cohort of individuals  
371 that initiated with advanced HIV disease. Generally, the impact of expanded ART access on  
372 the prevalence of advanced HIV disease at initiation, TB prevalence at initiation and TB  
373 incidence within 12 months follow-up were similar by gender and age.

374 Some studies have previously assessed the impact of expanded initiation CD4 count  
375 eligibility on new ART initiations, advanced HIV disease and TB disease burden among  
376 people initiating and receiving ART from routine care settings.[9, 14-16, 18] Results from a  
377 cohort study among adult participants in the rural Hlabisa HIV treatment programme in  
378 KwaZulu-Natal, South Africa, demonstrated increased new ART initiations in PLHIV but did  
379 not change among initiators with advanced HIV disease following expansion of the initiation  
380 CD4 count eligibility from <200 to <350 cells/ $\mu$ l in August 2011.[15] Other studies in South  
381 Africa have reported higher mean initiation CD4 count[8] and a lower proportion of initiators  
382 with advanced HIV disease[9] after UTT implementation than before. Additionally, the  
383 African cohort study in four countries reported increased new ART initiations at higher  
384 initiation CD4 count following the implementation of policies and guidelines that expanded  
385 initiation CD4 count eligibility in the selected countries from 2006 to 2019.[31]

386 Regarding the impact of expanded ART access on TB burden, our results are consistent with  
387 a large scale study in South Africa that showed lower risk of recently diagnosed TB cases in  
388 communities with higher ART coverage.[18] We found a cluster randomised trial in Uganda  
389 that evaluated a UTT intervention involving population-level HIV testing and patient-centred  
390 linkage to ART versus population-level HIV testing in the control communities. At the end of  
391 the trial, the one-year cumulative incidence of TB infection was 16% in the intervention and  
392 22% in the control communities.[14] Likewise, the risk of new TB infection was 27% lower  
393 with the UTT intervention.[14] Another study investigated the impact of the UTT policy on  
394 TB incidence in a cohort of adults receiving ART in public health facilities in Ethiopia from  
395 2014 to 2019.[16] The study reported TB incidence of 6.23 cases per 100 person-years before  
396 UTT implementation versus 2.10 cases per 100 person-years after UTT.[16] Furthermore,  
397 estimates from WHO's 2022 global tuberculosis report have shown a declining trend in the  
398 population-level incidence of TB co-burden in PLHIV in the WHO African Region[32] and  
399 in South Africa[33] after 2010.

400 We used large-scale data from routine ART clinics in a resource-limited setting. Therefore,  
401 our results are representative and relevant for ART programmes in resource-limited settings.  
402 The findings are reassuring of the positive impact of expanded ART access for reducing the  
403 risk of advanced HIV disease and opportunistic co-infections which could improve the health  
404 and well-being of PLHIV. Our findings indicate that extending the initiation CD4 count from  
405 <350 to <500 cells/ $\mu$ l in January 2015 allowed more PLHIV to start ART than previously.  
406 Later on, removing the initiation CD4 count testing requirement and eligibility criteria with

407 UTT implementation saw further decreases in new ART initiations. However, our results  
408 show that despite these gains, about 23.3% of PLHIV still presented with advanced HIV  
409 disease at initiation, although this likely underestimates advanced HIV disease prevalence as  
410 our definition was only based on CD4 count threshold. People who initiate ART with  
411 advanced HIV disease in the UTT era are more likely to have missed the opportunity for  
412 early HIV diagnosis. Our findings, therefore, emphasise the continuing urgency for health  
413 systems in resource-limited settings to prioritise access to routine HIV testing services,  
414 especially among higher-risk populations such as younger people, pregnant women and their  
415 male partners. This will help facilitate early HIV diagnosis and immediate linkage to care to  
416 exploit the full potential of UTT policy implementation.

417 Moreover, our study demonstrates the positive impact of expanded ART access on TB co-  
418 burden in PLHIV. Our findings suggest that people initiating ART currently in the UTT era  
419 are less likely to present with TB. This is due to more people initiating ART at higher CD4  
420 counts with more robust immune functions[15, 34, 35], reducing the risk of opportunistic co-  
421 infections such as TB.[36-38] Our findings also indicate that people initiating ART without  
422 TB in the UTT era are less likely to develop new TB while on ART compared to the pre-UTT  
423 period. This could be attributed to early ART initiation[15, 34, 35], ensuring early viral  
424 suppression, which enhances consistent and prolonged immune functioning.[11, 39, 40]  
425 Furthermore, we found a trend towards a decrease in TB incidence among initiators with  
426 advanced HIV disease. This suggests the positive impact of expanded ART access on TB  
427 transmission risk among PLHIV due to reduced exposure to TB bacterium as fewer people  
428 initiate ART without TB. We did not observe any impact of expanding the initiation CD4  
429 count eligibility from <350 to <500 cells/ $\mu$ l in January 2015 on decreased TB disease  
430 incidence but this could be due to the shorter duration of the criteria change (21 months)  
431 before UTT implementation in September 2016. It is therefore likely that the decreased TB  
432 incidence observed after UTT implementation represents the cumulative impact of the overall  
433 expanded ART access over time (all initiation CD4 count criteria expansions).

434 Our study had some limitations. Although our data set was large, it came from only one  
435 province in South Africa. We, therefore, acknowledge that outcomes could be different from  
436 other settings. Also, data quality, correctness and completion rates in TIER.Net has improved  
437 overtime compared to the early years after implementation in 2010 which could bias our  
438 results.[41] We also acknowledge the potential confounding of our study outcomes by other  
439 concurrent interventions that could have contributed to better outcomes in the UTT era such



440 as more efficacious and tolerable ART regimens and improvements in TB preventive  
441 therapy.[42, 43] Therefore, participants who initiated ART recently or during the UTT era are  
442 more likely to have initiated more effective and tolerable regimens. Hence, they are more  
443 likely to be retained in care[44], virally suppress[45, 46] and consequently less likely to  
444 develop new TB during ART. Moreover, the implementation of Central Chronic Medication  
445 Dispensing and Distribution programme in Kwazulu-Natal in 2016[47] could have reduced  
446 patient volumes and hence reduced exposure to TB at the clinics contributing to the declining  
447 TB burden we observed in the UTT era.

448 In conclusion, expansion of the CD4 count eligibility for ART initiation over time has led to  
449 expanded access to ART and a healthier population of PLHIV with stronger immunity and  
450 reduced risk for co-TB disease. Health systems in resource-limited and HIV-endemic settings  
451 should prioritise population-level early HIV diagnosis to maximise the full potential of UTT  
452 policy implementation. Tailored interventions focusing on people with advance HIV disease  
453 at ART initiation and during ART are also needed to improve treatment outcomes and reduce  
454 opportunistic co-infections like TB disease.



455 **Acknowledgements.** We acknowledge staff, patients and primary care clinics run by the  
456 eThekweni Municipality Health Unit and Bethesda Hospital in the uMkhanyakude district in  
457 South Africa.

458 **Contributors.** The study was conceptualised by KA, LL, JvdM, YS, TK, TN, MSN, RJL,  
459 KN, PS, CB, NG, and JD. YS, TK, TN, MSN and PS managed data collection. KA, LL,  
460 JvdM, YS, TK, TN, MSN, NG and JD had full access to the data in the study. KA, LL, JvdM,  
461 and JD conducted the data analyses. KA drafted the manuscript. All authors reviewed and  
462 approved the final version.

463 **Funding.** This study was supported with funding from the Bill & Melinda Gates Foundation  
464 (INV-051067). JD is an academic clinical lecturer (CL-2022-13-005) funded by the UK  
465 National Institute of Health and Social Care Research (NIHR). The views expressed in this  
466 publication are those of the author (s) and not necessarily those of the Bill & Melinda Gates  
467 Foundation or NIHR.

468 **Competing interest.** None declared.

469 **Patient consent for publication.** Not required.

470 **Ethics approval.** The study was approved by the Biomedical Research Ethics Committee of  
471 the University of Kwazulu-Natal (BE646/17), the KwaZulu-Natal Provincial Health Research  
472 Ethics Committee (KZ\_201807\_021), the eThekweni Municipality Health Unit and the  
473 Bethesda Hospital Ethics Committee, with a waiver for informed consent for the analysis of  
474 de-identified data.

475 **Data availability statement.** We cannot publicly share the data used for this study due to  
476 legal and ethical requirements regarding using routinely collected clinical data in South  
477 Africa. Interested parties can request access to the data from the eThekweni Municipality  
478 Health Unit in Durban and Bethesda Hospital in the uMkhanyakude District, South Africa.

## REFERENCES

1. Govere SM, Chimbari MJ. The evolution and adoption of World Health Organization policy guidelines on antiretroviral therapy initiation in sub-Saharan Africa: A scoping review. *Southern African Journal of HIV Medicine*. 2020;21(1).
2. South African National Department of Health. Implementation of universal test and treat strategy for HIV positive patients and differentiated care for stable patients. 2016 [Available from: <https://sahivsoc.org/Files/22%208%2016%20Circular%20UTT%20%20%20Decongestion%20CCMT%20Directorate.pdf>].
3. World Health Organisation. Progress Report 2016. Prevent HIV, Test and Treat All. WHO support for country impact. 2016 [Available from: <https://apps.who.int/iris/bitstream/handle/10665/251713/WHO-HIV-2016.24-eng.pdf>].
4. South African Government. National Strategic Plan on HIV, STIs and TB 2012-2016. 2012 [Available from: [https://www.gov.za/sites/default/files/gcis\\_document/201409/national-strategic-plan-hiv-stis-and-tb0.pdf](https://www.gov.za/sites/default/files/gcis_document/201409/national-strategic-plan-hiv-stis-and-tb0.pdf)].
5. Cohen MS, Chen YQ, Mccauley M, Gamble T, Hosseinipour MC, Kumarasamy N, et al. Prevention of HIV-1 Infection with Early Antiretroviral Therapy. *New England Journal of Medicine*. 2011;365(6):493-505.
6. Abdool Karim SS, Naidoo K, Grobler A, Padayatchi N, Baxter C, Gray A, et al. Timing of initiation of antiretroviral drugs during tuberculosis therapy. *N Engl J Med*. 2010;362(8):697-706.
7. Kaplan R, Hermans S, Caldwell J, Jennings K, Bekker L-G, Wood R. HIV and TB co-infection in the ART era: CD4 count distributions and TB case fatality in Cape Town. *BMC Infectious Diseases*. 2018;18(1).
8. Yapa HM, Kim HY, Petoumenos K, Post FA, Jiamsakul A, De Neve JW, et al. CD4+ T-Cell Count at Antiretroviral Therapy Initiation in the "Treat-All" Era in Rural South Africa: An Interrupted Time Series Analysis. *Clin Infect Dis*. 2022;74(8):1350-9.
9. Zaniewski E, Dao Ostinelli CH, Chammartin F, Maxwell N, Davies MA, Euvrard J, et al. Trends in CD4 and viral load testing 2005 to 2018: multi-cohort study of people living with HIV in Southern Africa. *J Int AIDS Soc*. 2020;23(7):e25546.
10. Filiatreau LM, Edwards JK, Masilela N, Gómez-Olivé FX, Haberland N, Pence BW, et al. Understanding the effects of universal test and treat on longitudinal HIV care outcomes among South African youth: a retrospective cohort study. *BMC Public Health*. 2023;23(1).
11. Hoenigl M, Chaillon A, Moore DJ, Morris SR, Mehta SR, Gianella S, et al. Rapid HIV Viral Load Suppression in those Initiating Antiretroviral Therapy at First Visit after HIV Diagnosis. *Scientific Reports*. 2016;6(1):32947.
12. Johnson LF, Meyer-Rath G, Dorrington RE, Puren A, Seathlodi T, Zuma K, et al. The Effect of HIV Programs in South Africa on National HIV Incidence Trends, 2000–2019. *JAIDS Journal of Acquired Immune Deficiency Syndromes*. 2022;90(2):115-23.
13. Burger C, Burger R, Van Doorslaer E. The health impact of free access to antiretroviral therapy in South Africa. *Social Science & Medicine*. 2022;299:114832.
14. Marquez C, Atukunda M, Nugent J, Charlebois ED, Chamie G, Mwangwa F, et al. Community-Wide Universal Human Immunodeficiency Virus (HIV) Test and Treat Intervention Reduces Tuberculosis Transmission in Rural Uganda: A Cluster-Randomized Trial. *Clinical Infectious Diseases*. 2024.
15. Plazy M, Dabis F, Naidu K, Orme-Gliemann J, Barnighausen T, Dray-Spira R. Change of treatment guidelines and evolution of ART initiation in rural South Africa: data of a large HIV care and treatment programme. *BMC Infectious Diseases*. 2015;15(1).

16. Girus T, Yasin F, Dessu S, Zeleke B, Geremew M. “Universal test and treat” program reduced TB incidence by 75% among a cohort of adults taking antiretroviral therapy (ART) in Gurage zone, South Ethiopia. *Tropical Diseases, Travel Medicine and Vaccines*. 2020;6(1).
17. Kitenge MK, Fatti G, Eshun-Wilson I, Aluko O, Nyasulu P. Prevalence and trends of advanced HIV disease among antiretroviral therapy-naive and antiretroviral therapy-experienced patients in South Africa between 2010-2021: a systematic review and meta-analysis. *BMC Infect Dis*. 2023;23(1):549.
18. Tomita A, Smith CM, Lessells RJ, Pym A, Grant AD, de Oliveira T, et al. Space-time clustering of recently-diagnosed tuberculosis and impact of ART scale-up: Evidence from an HIV hyper-endemic rural South African population. *Sci Rep*. 2019;9(1):10724.
19. The South African National Department of Health. 2019 ART Clinical Guidelines for the management of HIV in Adults, Pregnancy, Adolescents, Children, Infants and Neonates. Pretoria 2019 [Available from: <https://www.health.gov.za/wp-content/uploads/2020/11/2019-art-guideline.pdf>].
20. The South African National Department of Health. The South African Antiretroviral Treatment Guidelines. 2013 [Available from: <https://sahivsoc.org/Files/2013%20ART%20Treatment%20Guidelines%20Final%2025%20M%20arch%202013%20corrected.pdf>].
21. Churchyard GJ, Stevens WS, Mametja LD, McCarthy KM, Chihota V, Nicol MP, et al. Xpert MTB/RIF versus sputum microscopy as the initial diagnostic test for tuberculosis: a cluster-randomised trial embedded in South African roll-out of Xpert MTB/RIF. *Lancet Glob Health*. 2015;3(8):e450-e7.
22. Dorward J, Khubone T, Gate K, Ngobese H, Sookrajh Y, Mkhize S, et al. The impact of the COVID-19 lockdown on HIV care in 65 South African primary care clinics: an interrupted time series analysis. *Lancet HIV*. 2021;8(3):e158-e65.
23. Osler M, Hilderbrand K, Hennessey C, Arendse J, Goemaere E, Ford N, et al. A three-tier framework for monitoring antiretroviral therapy in high HIV burden settings. *Journal of the International AIDS Society*. 2014;17(1):18908.
24. Bottomley C, Ooko M, Gasparrini A, Keogh RH. In praise of Prais-Winsten: An evaluation of methods used to account for autocorrelation in interrupted time series. *Stat Med*. 2023;42(8):1277-88.
25. Bernal JL, Cummins S, Gasparrini A. Interrupted time series regression for the evaluation of public health interventions: a tutorial. *Int J Epidemiol*. 2017;46(1):348-55.
26. Bottomley C, Scott JAG, Isham V. Analysing Interrupted Time Series with a Control. *Epidemiologic Methods*. 2019;8(1).
27. Wagner AK, Soumerai SB, Zhang F, Ross-Degnan D. Segmented regression analysis of interrupted time series studies in medication use research. *Journal of Clinical Pharmacy and Therapeutics*. 2002;27(4):299-309.
28. R Core Team. R: A language and environment for statistical computing Vienna, Austria: R Foundation for Statistical Computing; 2023 [Available from: <https://www.R-project.org/>].
29. Cassidy T, Cornell M, Makeleni B, Horsburgh CR, Duran LT, de Azevedo V, et al. Attrition from Care Among Men Initiating ART in Male-Only Clinics Compared with Men in General Primary Healthcare Clinics in Khayelitsha, South Africa: A Matched Propensity Score Analysis. *AIDS Behav*. 2023;27(1):358-69.
30. Bock P, Fatti G, Ford N, Jennings K, Kruger J, Gunst C, et al. Attrition when providing antiretroviral treatment at CD4 counts >500cells/ $\mu$ L at three government clinics included in the HPTN 071 (PopART) trial in South Africa. *PLoS One*. 2018;13(4):e0195127.

31. Esber AL, Coakley P, Ake JA, Bahemana E, Adamu Y, Kiweewa F, et al. Decreasing time to antiretroviral therapy initiation after HIV diagnosis in a clinic-based observational cohort study in four African countries. *J Int AIDS Soc.* 2020;23(2):e25446.
32. World Health Organisation. Global tuberculosis report 2022. 2022 [Available from: <https://www.who.int/publications/i/item/9789240061729>].
33. World Health Organisation. Tuberculosis profile: South Africa. 2022 [Available from: [https://worldhealthorg.shinyapps.io/tb\\_profiles/?inputs &entity\\_type=%22country%22&iso2=%22ZA%22&lan=%22EN%22](https://worldhealthorg.shinyapps.io/tb_profiles/?inputs &entity_type=%22country%22&iso2=%22ZA%22&lan=%22EN%22)].
34. Bor J, Ahmed S, Fox MP, Rosen S, Meyer-Rath G, Katz IT, et al. Effect of eliminating CD4-count thresholds on HIV treatment initiation in South Africa: An empirical modeling study. *PLOS ONE.* 2017;12(6):e0178249.
35. Russell A, Verani AR, Pals S, Reagon VM, Alexander LN, Galloway ET, et al. Impact of HIV treat-all and complementary policies on ART linkage in 13 PEPFAR-supported African countries. *BMC Health Services Research.* 2023;23(1).
36. Lawn SD, Kranzer K, Wood R. Antiretroviral therapy for control of the HIV-associated tuberculosis epidemic in resource-limited settings. *Clin Chest Med.* 2009;30(4):685-99, viii.
37. McLaren ZM, Sharp A, Brouwer E, Nanoo A. The Impact of Anti-Retroviral Therapy on Tuberculosis Detection at the National Level in South Africa. *Am J Trop Med Hyg.* 2018;99(6):1407-14.
38. Suthar AB, Lawn SD, Del Amo J, Getahun H, Dye C, Sculier D, et al. Antiretroviral Therapy for Prevention of Tuberculosis in Adults with HIV: A Systematic Review and Meta-Analysis. *PLoS Medicine.* 2012;9(7):e1001270.
39. Dorward J, Sookrajh Y, Gate K, Khubone T, Mtshaka N, Mlisana K, et al. HIV treatment outcomes among people with initiation CD4 counts >500 cells/ $\mu$ L after implementation of Treat All in South African public clinics: a retrospective cohort study. *J Int AIDS Soc.* 2020;23(4):e25479.
40. Eamsakulrat P, Kiertiburanakul S. The Impact of Timing of Antiretroviral Therapy Initiation on Retention in Care, Viral Load Suppression and Mortality in People Living with HIV: A Study in a University Hospital in Thailand. *J Int Assoc Provid AIDS Care.* 2022;21:23259582221082607.
41. Etoori D, Wringe A, Kabudula CW, Renju J, Rice B, Gomez-Olive FX, et al. Misreporting of Patient Outcomes in the South African National HIV Treatment Database: Consequences for Programme Planning, Monitoring, and Evaluation. *Front Public Health.* 2020;8:100.
42. Kanters S, Vitoria M, Zoratti M, Doherty M, Penazzato M, Rangaraj A, et al. Comparative efficacy, tolerability and safety of dolutegravir and efavirenz 400mg among antiretroviral therapies for first-line HIV treatment: A systematic literature review and network meta-analysis. *EClinicalMedicine.* 2020;28:100573.
43. World Health Organisation. WHO consolidated guidelines on tuberculosis: tuberculosis preventive treatment: Module 1: prevention Geneva: World Health Organization; 2020 [
44. Alhaj M, Amberbir A, Singogo E, Banda V, van Lettow M, Matengeni A, et al. Retention on antiretroviral therapy during Universal Test and Treat implementation in Zomba district, Malawi: a retrospective cohort study. *J Int AIDS Soc.* 2019;22(2):e25239.
45. Dorward J, Sookrajh Y, Khubone T, Van Der Molen J, Govender R, Phakathi S, et al. Implementation and outcomes of dolutegravir-based first-line antiretroviral therapy for people with HIV in South Africa: a retrospective cohort study. *The Lancet HIV.* 2023.
46. Asare K, Sookrajh Y, van der Molen J, Khubone T, Lewis L, Lessells RJ, et al. Clinical outcomes with second-line dolutegravir in people with virological failure on first-

line non-nucleoside reverse transcriptase inhibitor-based regimens in South Africa: a retrospective cohort study. *Lancet Glob Health*. 2023.

47. KwaZulu-Natal Department of Health. Launch of the Central Chronic Medication Dispensing and Distribution programme. 2016 [Available from: <https://www.kznhealth.gov.za/Launch-CCMDD-10062016.htm>].

## Figure legends.

**Figure 1** Segmented interrupted time series of (A) monthly number of new ART initiators, (B) monthly number of new ART initiators with advanced HIV disease and (C) monthly proportion of new ART initiators with advanced HIV disease. The time series spans three periods of different initiation CD4 count eligibility with two interruptions (vertical dashed lines) indicating the change points. Period 1 is from April 2012 to December 2014, when the initiation CD4 count eligibility was  $<350$  cells/ $\mu$ l. Period 2 is from January 2015 to August 2016, when the initiation CD4 count eligibility was changed to  $<500$  cells/ $\mu$ l. Period 3 is from September 2016 to February 2020 during UTT implementation.

\*Each counterfactual scenario represents the situation where only the previous initiation CD4 count expansion (s) was implemented. Abbreviations: ART, Antiretroviral therapy; PLHIV, people living with HIV; UTT, Universal Test and Treat.

**Figure 2:** Segmented interrupted time series of (A) monthly number of new ART initiators with TB disease, (B) monthly number of new ART initiators with advanced HIV with TB disease, (C) monthly proportion of new ART initiators with TB disease, (D) monthly proportion of new ART initiators with advanced HIV with TB disease. The time series spans three periods of different initiation CD4 count eligibility with two interruptions (vertical dashed lines) indicating the change points. Period 1 is from April 2012 to December 2014, when the initiation CD4 count eligibility was  $<350$  cells/ $\mu$ l. Period 2 is from January 2015 to August 2016, when the initiation CD4 count eligibility was changed to  $<500$  cells/ $\mu$ l. Period 3 is from September 2016 to February 2020 during UTT implementation.

\*Each counterfactual scenario represents the situation where only the previous initiation CD4 count expansion was implemented. Abbreviations: ART, Antiretroviral therapy; TB, Tuberculosis; PLHIV, people living with HIV; UTT, Universal Test and Treat.

**Figure 3:** Segmented interrupted time series among the incidence cohort of initiators without TB disease: (A) monthly number developing new TB disease within 12 months follow-up, (B) monthly number with advanced HIV developing new TB disease within 12 months follow-up, (C) monthly proportion developing new TB disease within 12 months follow-up and (D) monthly proportion with advanced HIV developing new TB disease within 12 months follow-up. The time series spans three periods of different initiation CD4 count eligibility with two interruptions (vertical dashed lines) indicating the change points. Period 1

is from April 2012 to December 2014, when the initiation CD4 count eligibility was <350 cells/ $\mu$ l. Period 2 is from January 2015 to August 2016, when the initiation CD4 count eligibility was changed to <500 cells/ $\mu$ l. Period 3 is from September 2016 to February 2019 during UTT implementation.

\*Each counterfactual scenario represents the situation where only the previous initiation CD4 count expansion was implemented. Abbreviations: ART, Antiretroviral therapy; TB, Tuberculosis; PLHIV, people living with HIV; UTT, Universal Test and Treat



of participants and TB prevalence at ART initiation

	<b>Time-period and CD4 count eligibility for</b>		
	<b>Overall, N = 187,544</b>	<b>April 2012 to December 2014, (&lt;350 cells/μl), N = 51,229</b>	<b>January 2015 to August 2016, (&lt;500 cells/μl), N = 46,930</b>
	32 (27-39)	32 (27-39)	32 (27-39)
	30,028 (16.0%)	6,915 (13.5%)	7,268 (15.5%)
	85,476 (45.6%)	22,935 (44.8%)	21,800 (46.5%)
	49,060 (26.2%)	14,349 (28.0%)	12,127 (25.8%)
	17,217 (9.2%)	5,337 (10.4%)	4,342 (9.3%)
	5,763 (3.1%)	1,693 (3.3%)	1,393 (3.0%)
	62,479 (33.3%)	16,879 (32.9%)	15,492 (33.0%)
	125,065 (66.7%)	34,350 (67.1%)	31,438 (67.0%)
<b>females only)</b>	24,447 (19.5%)	6,999 (20.4%)	7,209 (22.9%)
	5,847 (3.1%)	2,332 (4.6%)	1,505 (3.2%)
	181,697 (96.9%)	48,897 (95.4%)	45,425 (96.8%)
<b>CD4 count (cells/μl)<sup>#</sup></b>			
	299 (172-453)	227 (130-313)	306 (176-425)
	56,369 (30.1%)	21,839 (42.6%)	13,700 (29.2%)
<b>CD4 count at ART initiation</b>			
	20,064 (10.7%)	7,835 (15.3%)	5,318 (11.3%)
	105,795 (56.4%)	30,034 (58.6%)	29,097 (62.0%)
	55,962 (29.8%)	9,836 (19.2%)	10,890 (23.2%)
1 test done	476 (0.3%)	222 (0.4%)	108 (0.2%)
1 test not done	2 (0.0%)	0 (0.0%)	1 (0.0%)
none	3,531 (1.9%)	2,389 (4.7%)	820 (1.7%)
	1,714 (0.9%)	913 (1.8%)	696 (1.5%)
<b>CD4 count at initiation (CD4 count &lt;200 cells/μl)</b>			
	11,252 (20.0%)	4,538 (20.8%)	2,875 (21.0%)
	29,760 (52.8%)	12,235 (56.0%)	7,672 (56.0%)
	13,480 (23.9%)	3,703 (17.0%)	2,770 (20.2%)
1 test done	153 (0.3%)	97 (0.4%)	24 (0.2%)
1 test not done	0 (0.0%)	0 (0.0%)	0 (0.0%)
none	1,201 (2.1%)	640 (4.3%)	180 (1.4%)

---

retroviral therapy; IQR, interquartile range; UTT, Universal Test and Treat; TB, tuberculosis disease.

CD4 count recorded from before 180 and up to 30 days after ART initiation.

includes ART initiators without TB disease from April 2012 to February 2019 to allow 12 months follow-up by the end of t

---

using CD4 count eligibility threshold for ART initiation on new ART initiations, advanced HIV disease at initiation and a 2012 to February 2020.

of the monthly initiators.	Time-period and CD4 count eligibility for ART initiation			
	April 2012 to December 2014 (<350 cells/ $\mu$ l)	January 2015 to August 2016 (<500 cells/ $\mu$ l)		September 2016 (<500 cells/ $\mu$ l)
	Baseline slope Coefficient (95% CI)	Step change Coefficient (95% CI)	Slope change Coefficient (95% CI)	Step change Coefficient (95% CI)
	13.5 (-4.5, 31.5)	915.7 (422.3, 1409.1)	-48.0 (-89.3, -6.7)	832.9 (369.9, 1295.8)
	9.4 (-3.2, 22.0)	651.5 (311.0, 992.0)	-37.5 (-66.4, -8.6)	644.5 (324.4, 964.6)
	4.2 (-1.2, 9.6)	249.6 (92.5, 406.7)	-9.4 (-22.0, 3.2)	172.4 (25.8, 319.0)
	4.4 (1.1, 7.7)	132.9 (43.0, 222.8)	-9.4 (-17.1, -1.7)	160.8 (76.2, 245.4)
	7.0 (-0.8, 14.8)	405.4 (181.5, 629.3)	-19.8 (-37.9, -1.7)	337.1 (127.9, 546.3)
	2.3 (-2.0, 6.6)	225.8 (102.2, 349.4)	-11.3 (-21.3, -1.3)	191.7 (76.2, 307.2)
	-0.1 (-1.9, 1.7)	105.4 (56.2, 154.6)	-4.9 (-9.1, -0.7)	90.3 (44.0, 136.6)
	-0.1 (-0.9, 0.7)	35.9 (13.8, 58.0)	-1.4 (-3.2, 0.4)	32.4 (11.8, 53.0)
t <200 cells/ $\mu$ l	-2.1 (-5.8, 1.6)	77.2 (-33.1, 187.5)	0.0 (-8.6, 8.6)	14.4 (-88.1, 116.9)

of the monthly initiators with known HIV-1 infection.	Time-period and CD4 count eligibility for ART initiation			
	April 2012 to December 2014 (<350 cells/ $\mu$ l)	January 2015 to August 2016 (<500 cells/ $\mu$ l)		September 2016 (<500 cells/ $\mu$ l)
	Baseline slope RR (95% CI)	Step change RR (95% CI)	Slope change RR (95% CI)	Step change RR (95% CI)
	0.988 (0.986, 0.990)	0.745 (0.690, 0.800)	1.023 (1.019, 1.027)	0.738 (0.688, 0.788)
	0.983 (0.981, 0.985)	0.749 (0.667, 0.831)	1.029 (1.023, 1.035)	0.708 (0.642, 0.774)
	0.994 (0.993, 0.995)	0.761 (0.727, 0.795)	1.012 (1.009, 1.015)	0.818 (0.757, 0.879)
	0.974 (0.970, 0.978)	0.842 (0.734, 0.950)	1.037 (1.030, 1.044)	0.752 (0.647, 0.857)
	0.986 (0.985, 0.987)	0.745 (0.672, 0.818)	1.027 (1.021, 1.033)	0.744 (0.672, 0.816)
	0.993 (0.991, 0.995)	0.753 (0.682, 0.824)	1.016 (1.010, 1.022)	0.759 (0.698, 0.820)
	0.998 (0.995, 1.001)	0.687 (0.618, 0.756)	1.013 (1.008, 1.018)	0.668 (0.553, 0.783)
	0.993 (0.990, 0.996)	0.610 (0.507, 0.713)	1.027 (1.019, 1.035)	0.740 (0.610, 0.870)

of the monthly initiators with known HIV-1 infection.	Time-period and CD4 count eligibility for ART initiation			
	April 2012 to December 2014 (<350 cells/ $\mu$ l)	January 2015 to August 2016 (<500 cells/ $\mu$ l)		September 2016 (<500 cells/ $\mu$ l)
	Baseline slope Coefficient (95% CI)	Step change Coefficient (95% CI)	Slope change Coefficient (95% CI)	Step change Coefficient (95% CI)
	2.3 (1.1, 3.5)	23.0 (-13.9, 59.9)	-5.1 (-7.9, -2.3)	21.7 (-12.5, 55.5)
	0.7 (-0.0, 1.4)	19.1 (-2.4, 40.6)	-3.1 (-4.8, -1.4)	17.7 (-2.4, 37.8)
	1.6 (1.0, 2.2)	2.5 (-17.3, 22.3)	-1.9 (-3.4, -0.4)	3.3 (-15.0, 21.6)
	0.4 (0.2, 0.6)	0.8 (-6.2, 7.8)	-0.6 (-1.1, -0.1)	5.2 (-1.2, 11.6)

Increasing CD4 count eligibility threshold for ART initiation on cumulative TB incidence within 12 months follow-up among

Duration <sup>π</sup> of the number of initiators developing new TB disease follow-up.	Time-period and CD4 count eligibility for ART initiation			
	April 2012 to December 2014 (<350 cells/μl)	January 2015 to August 2016 (<500 cells/μl)		September 2016 (U)
	Baseline slope Coefficient (95% CI)	Step change Coefficient (95% CI)	Slope change Coefficient (95% CI)	Step change Coefficient (95% CI)
	0.1 (-0.1, 0.3)	11.9 (7.0, 16.8)	-0.2 (-0.6, 0.2)	-6.9 (-11.7, -2.1)
	0.0 (-0.1, 0.1)	9.0 (6.0, 12.0)	-0.2 (-0.4, 0.0)	-2.6 (-5.6, 0.4)
	0.1 (0.0, 0.2)	2.6 (-0.4, 5.6)	0.1 (-0.1, 0.3)	-4.9 (-7.9, -1.9)
	0.0 (-0.0, 0.0)	1.1 (-0.1, 2.3)	0.0 (-0.1, 0.1)	-0.8 (-2.0, 0.4)
	0.0 (-0.1, 0.1)	6.4 (3.8, 9.0)	0.0 (-0.2, 0.2)	-4.8 (-7.4, -2.2)
	0.0 (-0.1, 0.1)	1.5 (-1.5, 4.5)	0.0 (-0.2, 0.2)	-2.2 (-5.1, 0.7)
	0.0 (-0.1, 0.1)	1.9 (0.2, 3.6)	-0.1 (-0.2, 0.0)	-0.2 (-1.9, 1.5)
	0.0 (-0.0, 0.0)	1.3 (0.6, 2.0)	-0.1 (-0.2, -0.0)	0.8 (0.1, 1.5)
<200 cells/μl	0.1 (0.0, 0.2)	2.1 (-1.1, 5.3)	0.3 (0.1, 0.5)	-7.4 (-10.5, -4.3)

Duration <sup>λ</sup> of the number of newly ART initiators within 12 months	Time-period and CD4 count eligibility for ART initiation			
	April 2012 to December 2014 (<350 cells/μl)	January 2015 to August 2016 (<500 cells/μl)		September 2016 (U)
	Baseline slope Coefficient (95% CI)	Step change RR (95% CI)	Slope change RR (95% CI)	Step change RR (95% CI)
	1.005 (1.001, 1.009)	1.221 (1.010, 1.432)	0.998 (0.983, 1.013)	0.681 (0.441, 0.921)
	1.000 (0.992, 1.008)	1.490 (1.271, 1.709)	0.993 (0.978, 1.008)	0.705 (0.463, 0.947)
	1.012 (1.002, 1.022)	0.971 (0.593, 1.349)	1.001 (0.971, 1.031)	0.708 (0.279, 1.137)
	1.000 (0.950, 1.050)	1.285 (0.230, 2.340)	1.005 (0.937, 1.073)	0.695 (-0.128, 1.518)
	1.003 (0.992, 1.014)	1.422 (1.176, 1.668)	1.001 (0.978, 1.024)	0.664 (0.358, 0.970)
	1.009 (0.994, 1.024)	0.839 (0.394, 1.284)	1.010 (0.976, 1.044)	0.604 (0.236, 0.972)
	1.019 (0.997, 1.041)	1.185 (0.524, 1.846)	0.975 (0.930, 1.020)	0.690 (-0.144, 1.524)
	0.982 (0.943, 1.021)	5.023 (3.923, 6.123)	0.911 (0.821, 1.001)	5.236 (4.098, 6.374)
<200 cells/μl	1.016 (1.010, 1.022)	1.220 (0.915, 1.525)	1.003 (0.980, 1.026)	0.755 (0.489, 1.021)

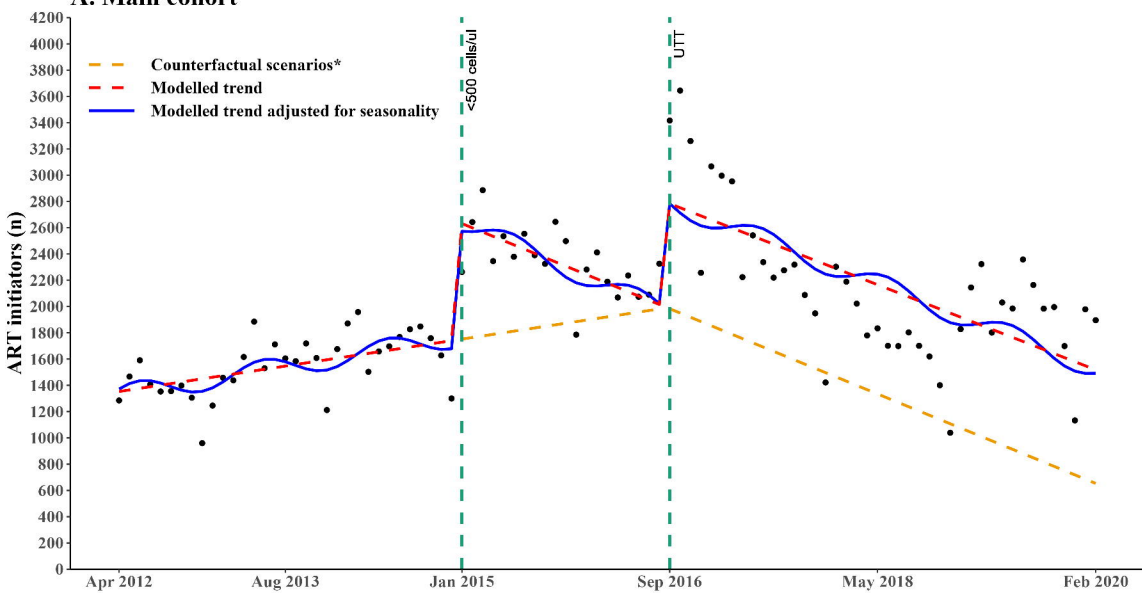
Results from the analysis among participants in the stated cohort.

ART, antiretroviral therapy; CI, Confidence interval; RR, risk ratio; UTT, Universal Test and Treat.

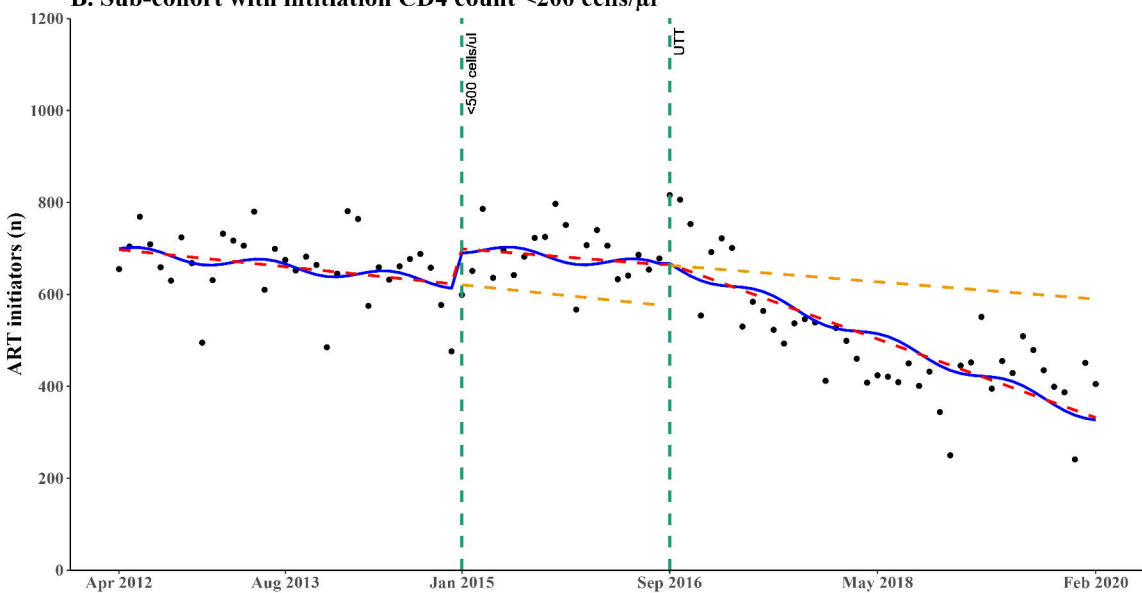
The cohort involves ART initiators without TB disease from April 2012 to February 2019 to allow 12 months follow-up by the end of the study.

The generalized method of moments was used to account for serial autocorrelation of the error terms.

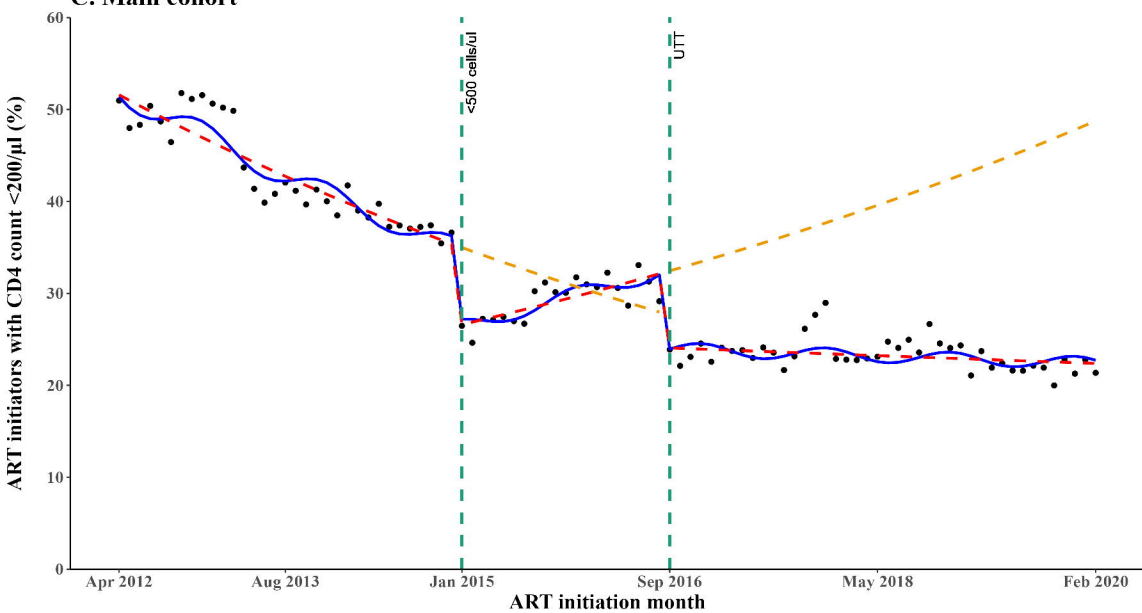
### A. Main cohort

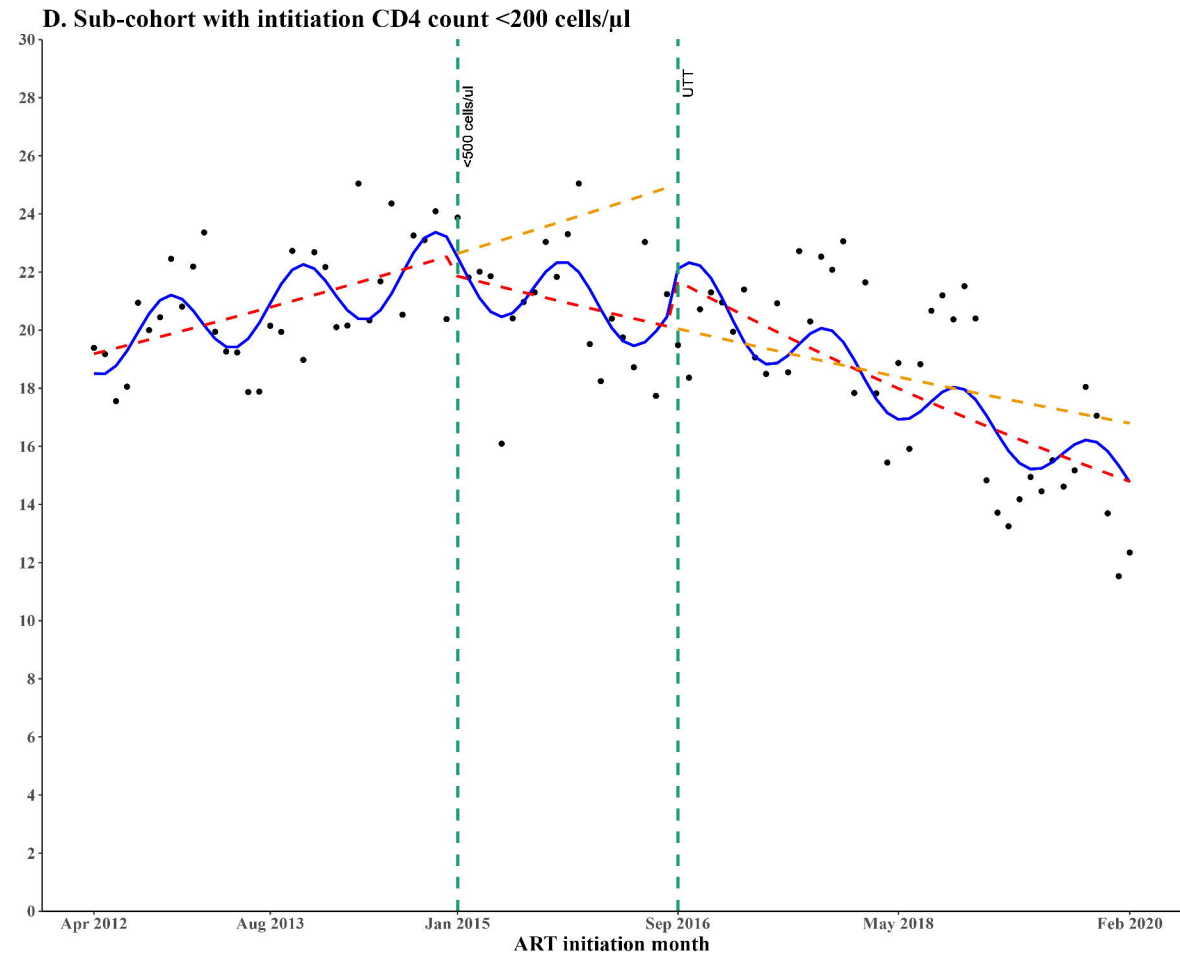
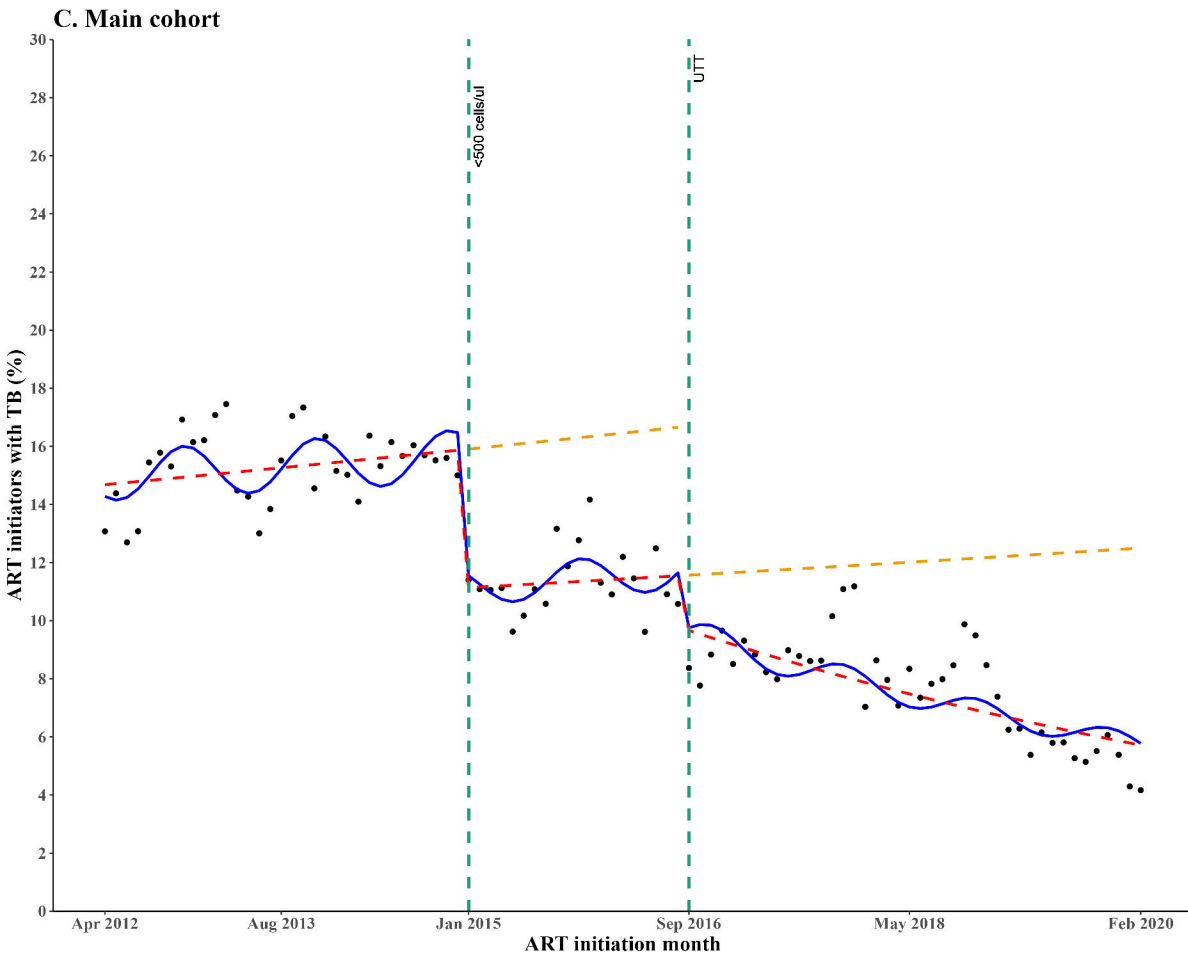
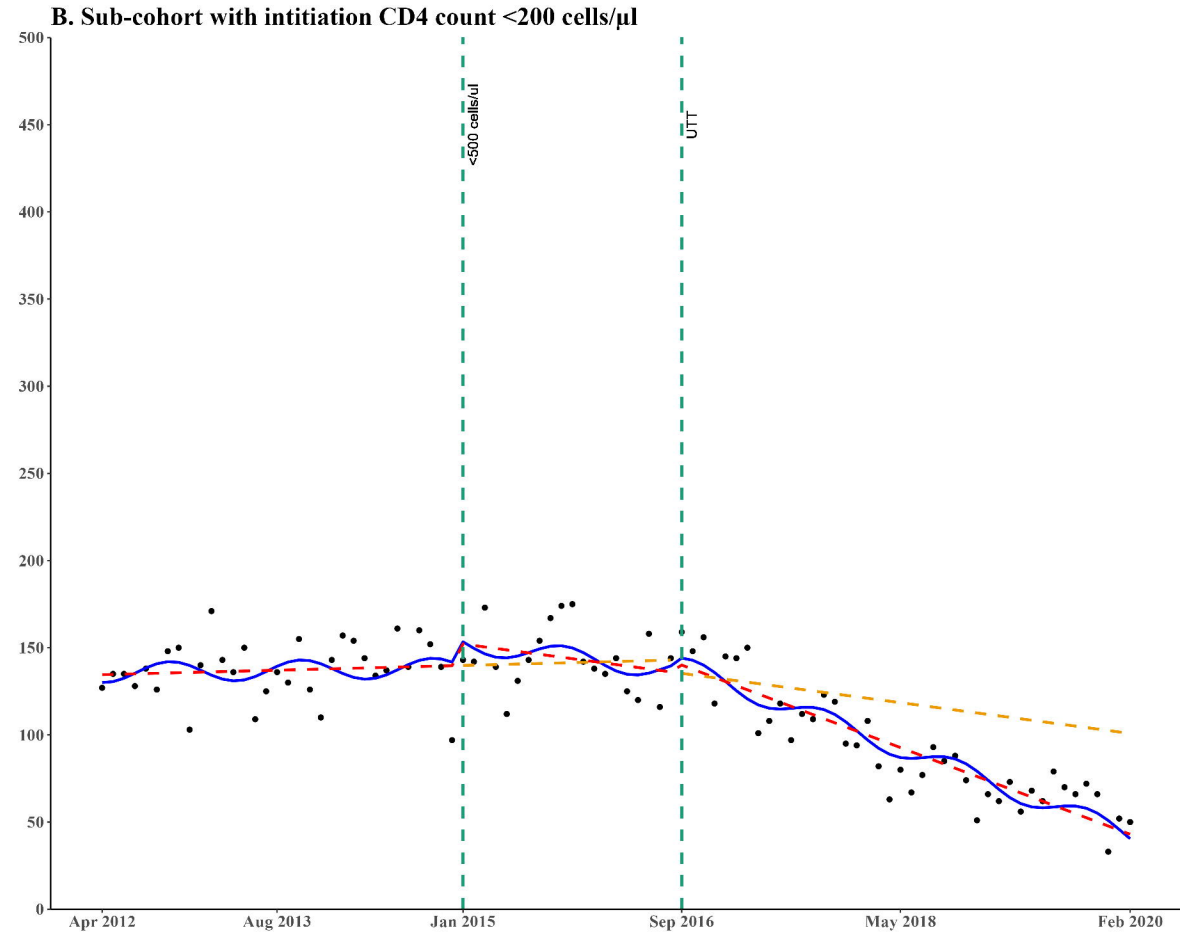
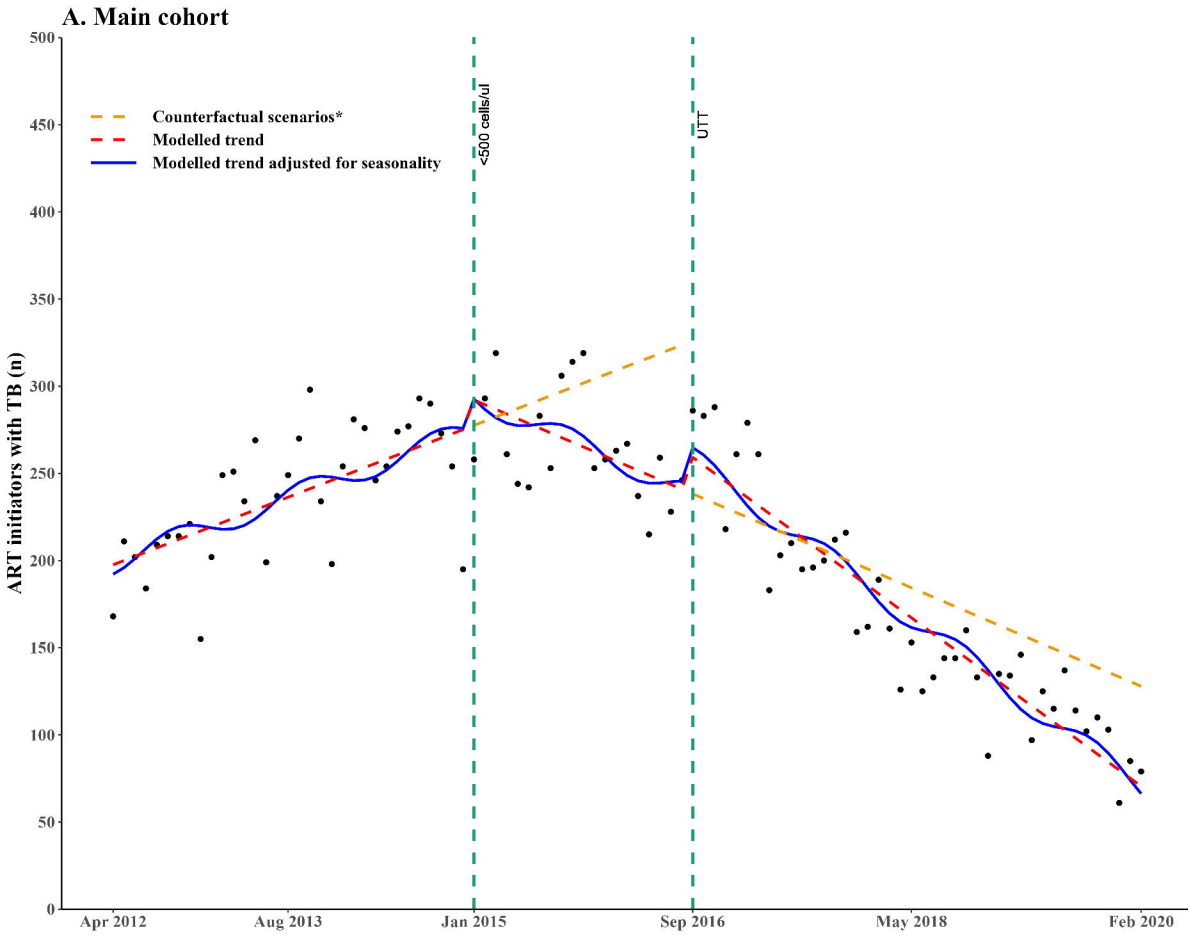


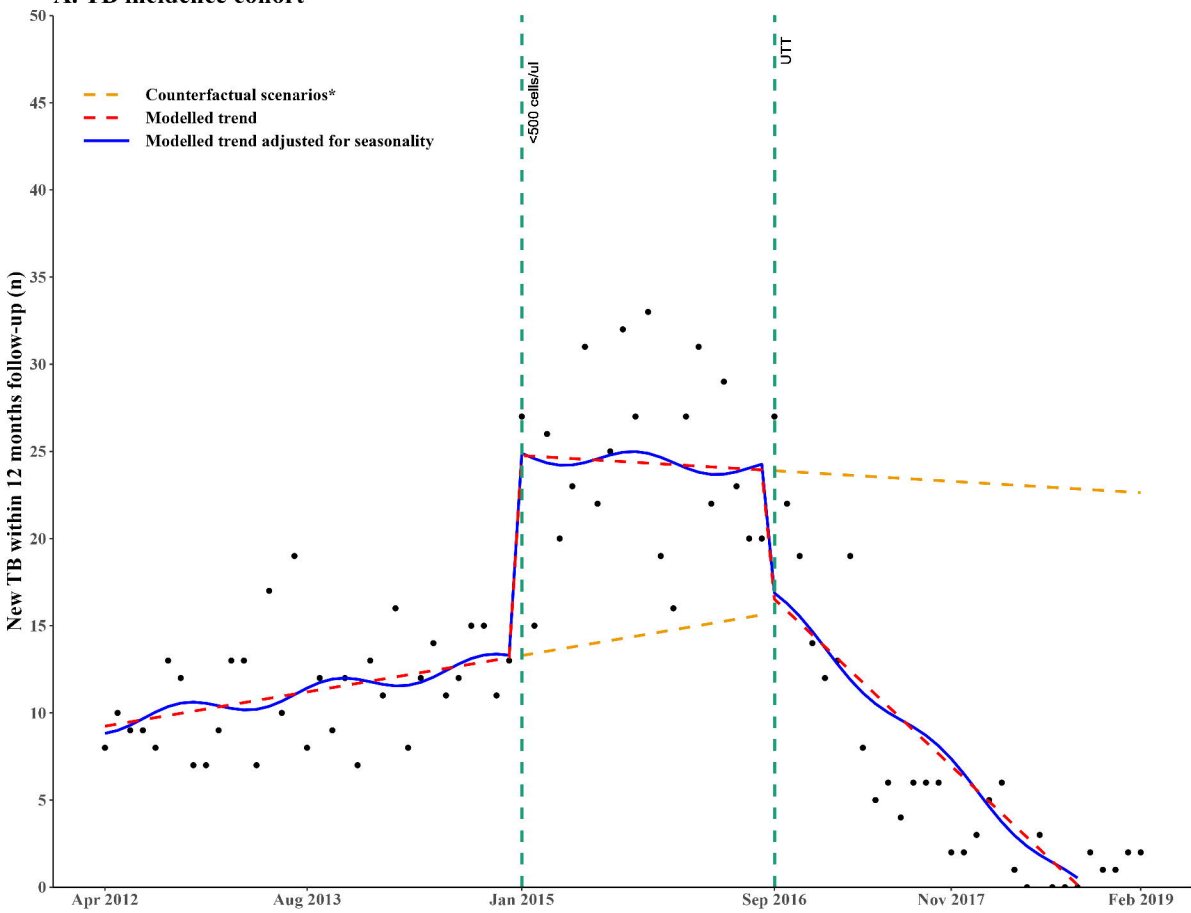
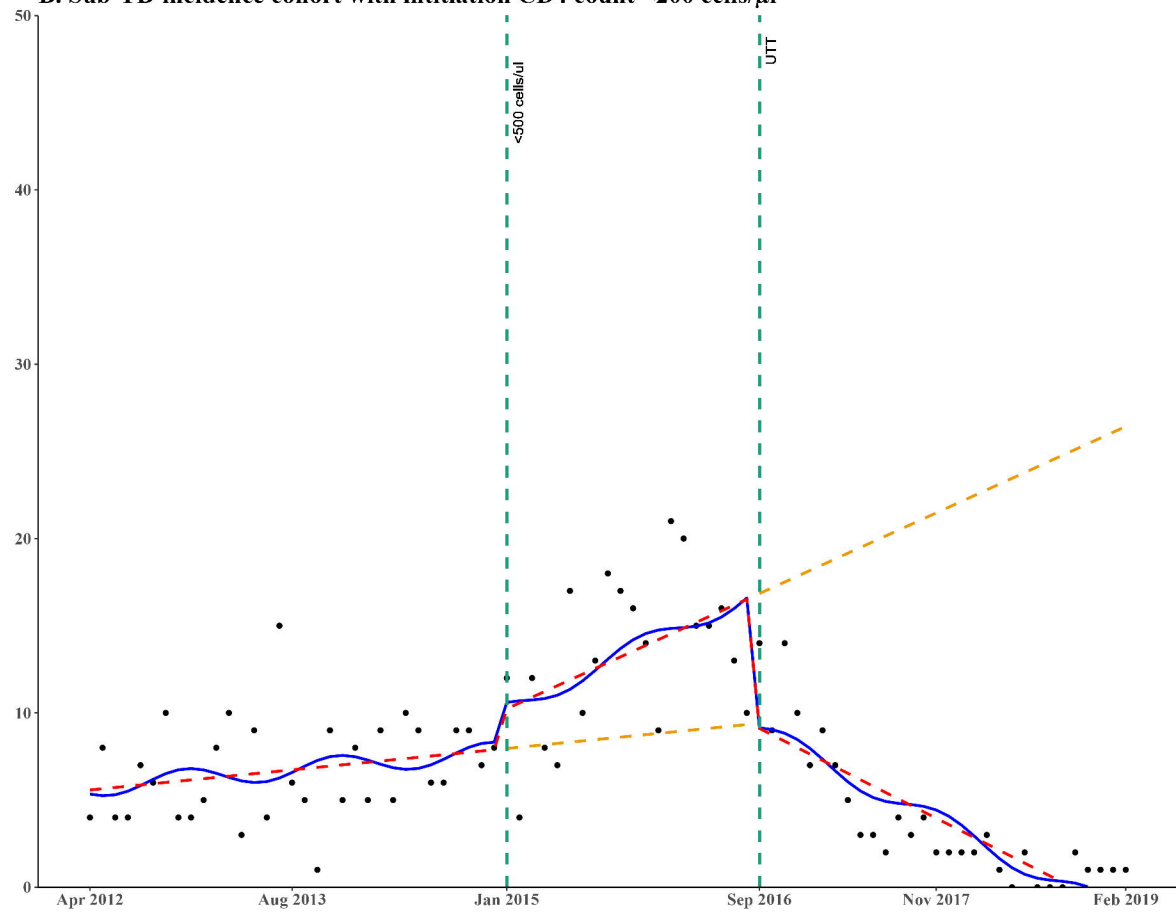
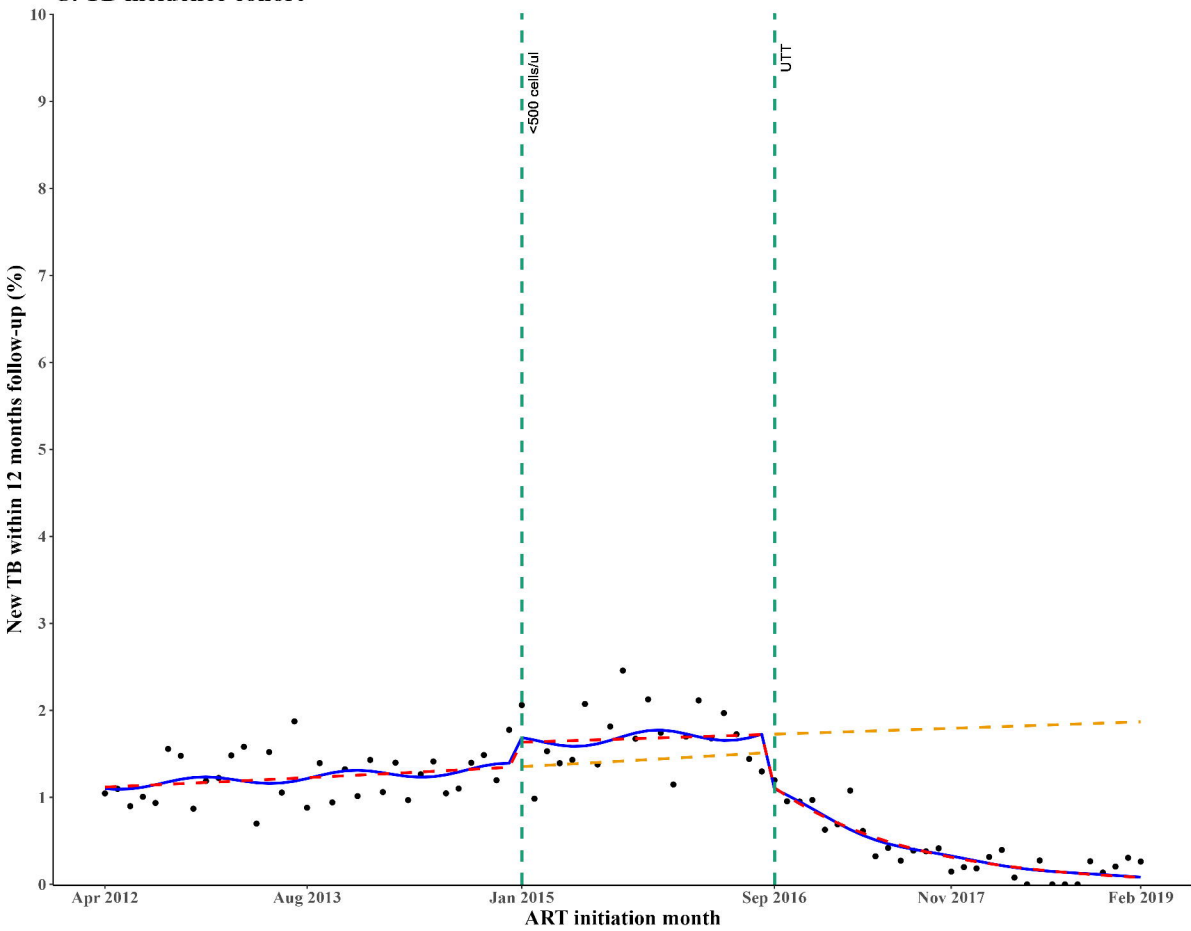
### B. Sub-cohort with initiation CD4 count $<200\text{ cells}/\mu\text{l}$



### C. Main cohort





**A. TB incidence cohort****B. Sub-TB-incidence cohort with initiation CD4 count <math><200\text{ cells}/\mu\text{l}</math>****C. TB incidence cohort****D. Sub-TB-incidence cohort with initiation CD4 count <math><200\text{ cells}/\mu\text{l}</math>**