

1
2
3
4
5
6
7
8
9
10
11
12
13
14
15
16
17
18
19
20
21
22
23
24
25
26
27
28

TITLE PAGE

DEVELOPMENT AND VALIDATION OF A PREDICTION RULE FOR BENEFIT AND HARM OF ORAL ANTICOAGULATION IN NON-VALVULAR ATRIAL FIBRILLATION

**Sergio Raposeiras-Roubin^{1,2}, Tze-Fan Chao³, Emad Abu-Assi^{1,2}, Yi-Hsin Chan⁴,
Inmaculada González Bermúdez^{1,2}, Jo-Nan Liao³, Ling Kuo³, Rocío González
Ferreiro^{1,2}, Andrés Íñiguez-Romo^{1,2}**

(1) Cardiology Department. University Hospital Álvaro Cunqueiro, Vigo, Spain.

(2) Instituto de Investigación Sanitaria Galicia Sur. Vigo, Spain.

(3) Division of Cardiology, Department of Medicine, Taipei Veterans General Hospital and Cardiovascular Research Center, National Yang Ming Chiao Tung University, Taipei, Taiwan

(4) The Cardiovascular Department, Chang Gung Memorial Hospital and College of Medicine, Chang Gung University, Taoyuan, Taiwan

TOTAL WORD COUNT: 4370 words

FUNDING: None

DISCLOSURES: We declare no conflict of interest.

Address for correspondence:

Sergio Raposeiras Roubín

Cardiology Department. Hospital Álvaro Cunqueiro.

Estrada de Clara Campoamor, 341, 36213 Vigo, Pontevedra, Spain.

Phone: 0034620170387. Fax number: 0034986811111.

<https://orcid.org/0000-0002-6462-4715>

NOTE: This preprint reports new research that has not been certified by peer review and should not be used to guide clinical practice.
Email: raposeirasr@ixmail.com, Twitter: @S_Raposeira

29 **ABSTRACT**

30

31 **Background.** Oral anticoagulation therapy (OAC) remains the gold standard for
32 stroke prevention in patients with atrial fibrillation (AF). In real life, there are patients who do
33 not receive OAC due to high bleeding risk. In those patients, left atrial appendage closure
34 (LAAC) has emerged as a potential alternative for stroke prevention. With this study, we
35 aimed to develop a clinical decision tool to identify patients expected to derive harm vs
36 benefit from OAC therapy.

37 **Methods.** Among 14,915 AF patients with CHA₂DS₂-VASc ≥ 1 (2 for women) from
38 CardioCHUVI-AF registry (78% with OAC), a prediction rule was derived using a linear
39 regression model to predict the stroke-bleeding balance. This rule was externally validated in
40 the Taiwan AF registry, with 26,595 patients (70.5% with non OAC therapy).

41 **Results.** A simplified risk score was created using 7 clinical variables. The low-score
42 group (≤ -8 points) was associated with higher rates of bleeding than stroke (7.25 vs 1.11 and
43 3.27 vs 2.58 per 100 patients/year in derivation and validation cohorts, respectively; $p < 0.001$).
44 In those patients, OAC was harmful. In contrast, high-score group ($\geq +6$ points) was
45 associated with higher stroke risk than bleeding risk (2.32 vs 1.71 and 4.19 vs 1.64 per 100
46 patients/year in derivation and validation cohorts, respectively; $p < 0.001$), with great benefit of
47 OAC therapy.

48 **Conclusions.** A prediction rule balancing stroke and bleeding risks correctly identify
49 patients with harm vs benefit from OAC therapy. This rule requires further prospective
50 evaluation to assess potential effects on patient care to select candidates for LAAC.

51

52

KEYWORDS

53

54 Atrial fibrillation; Bleeding; Ischemic Stroke; Oral Anticoagulation; Score.

55

56

57

58

59

60

61

62

63

64

65

66

67

68

69

70

71

72

CLINICAL PERSPECTIVE

73

74 What is new?

75 • We developed and externally validated a simple user-friendly clinical tool -OAC
76 score- to balance both embolic and bleeding risks in atrial fibrillation patients with
77 CHA2DS2-VASC ≥ 1 (excluding female sex).

78 • According to OAC score, we can identify atrial fibrillation patients expected to derive
79 benefit vs harm from anticoagulation therapy.

80 • Patients with a low OAC score have much higher rates of bleeding than stroke, which
81 is exaggerated with anticoagulation. The opposite occurs in patients with a high score.

82

83 What are the clinical implications?

84 • A standardised stratification of both stroke and bleeding risk in atrial fibrillation
85 patients at high embolic risk can be performed using an user-friendly, comprehensive
86 tool (the OAC score) .

87 • In patients with low risk OAC score, despite high risk CHA2DS2-VASC,
88 anticoagulation is not beneficial and left atrial appendage closure could be an
89 alternative.

90 • Further studies are needed to assess the impact of oral anticoagulation and left atrial
91 appendage closure in patients with atrial fibrillation according to the OAC score risk
92 groups.

93

94

ABBREVIATIONS

95

96 **AF:** Atrial Fibrillation

97 **CKD:** Chronic Kidney Disease

98 **HCM:** Hypertrophic Cardiomyopathy

99 **IS:** Ischemic Stroke

100 **LAAC:** Left Atrial Appendage Closure

101 **MB:** Major Bleeding

102 **OAC:** Oral Anticoagulation

103

104

105

106

107

108

109

110

111

112

113

114

TEXT

115 INTRODUCTION

116 The CHA₂DS₂-VASc score has a great clinical impact to select patients with atrial fibrillation
117 (AF) at high embolic risk in order to establish the indication for oral anticoagulation
118 (OAC)(1, 2). Use of OAC in patients with ≥ 1 non-sex CHA₂DS₂-VASc risk factor
119 significantly reduces the chances of thromboembolic cardiovascular events, such as stroke,
120 and mortality in AF patients(3). However, the clinical benefit of anticoagulant treatment is
121 offset by the risk of bleeding. Data from the PREFER-AF(4), GARDFIELD-AF(5), and
122 NCDR-PINNACLE(6) studies, show that 20%, 30%, and 40% of the patients with AF and a
123 CHA₂DS₂-VASc score ≥ 2 are not treated with OAC, respectively. A perceived increased
124 bleeding risk is the most frequent reason for withholding OAC for embolic prevention in non-
125 valvular AF(7). Although guidelines recommend the use of bleeding risk scores –e. g. HAS-
126 BLEED–, those scores do not determine OAC prescription; they only help to identify
127 potentially reversible bleeding risk factors in order to correct them(8).

128 Due to an overlap of risk factors for bleeding and stroke, patients with AF are more usually at
129 an increased bleeding risk (9). Decision-making regarding anticoagulation can be particularly
130 challenging in these patients, especially when both stroke and bleeding risks are high. Left
131 atrial appendage closure (LAAC) could be a reasonable option for those patients, especially
132 when the expected risk associated with OAC is greater than the expected benefit (10). To
133 guide clinical decision-making for patients at high risk of stroke and AF, we designed this
134 study focused on identifying factors that predict whether the expected increase in MB
135 associated with OAC would outweigh the expected benefit of reduced IS for individual
136 patients. Those factors will be used to develop a decision tool to help select AF patients
137 without net benefit from OAC who are candidates for LAAC.

138 **METHODS**

139 **Study population.** A retrospective registry-based cohort study including all consecutive
140 patients (n=16,202) with a diagnosis of AF between January 2014 and January 2018 in the
141 health area of Vigo (Galicia, Spain) was used (*CardioCHUVI-AF* registry; ClinicalTrials.gov
142 identifier: NCT04364516)(11). Patients were identified through administrative databases at
143 both the hospital and ambulatory level, using the regional electronic healthcare records
144 system. Electronic medical records were reviewed in all patients, and diagnosis of AF was
145 confirmed by a compatible electrocardiogram. Clinical, laboratory, and therapeutic data were
146 collected using an encoded database. Patients with missing baseline and follow-up data were
147 excluded (n=146), together with those with valvular AF (moderate-severe mitral stenosis or
148 mechanical prosthesis valve; n=350). Patients without none non-sex CHA₂DS₂-VASc risk
149 factor (n=791) were also excluded. Therefore, the final cohort comprised 14,915 AF patients
150 with CHA₂DS₂-VASc ≥ 1 for men and ≥ 2 for women. The study was conducted in
151 accordance with the principles of the Declaration of Helsinki and was approved by the local
152 ethics committee (*Autonomous Committee of Research Ethics of Galicia*, code HAC-ACO-
153 2018-01, registry 2018/258).

154 **Study Goals.** The goal of this study was to identify clinical variables that determine whether
155 a patient's bleeding risk is lower or higher than the embolic risk, in order to distinguish
156 patients who can derive the greatest benefit from those who can experience the most harm
157 from OAC therapy. Considering individual patient characteristics and their independent
158 associations with Ischemic Stroke (IS) and Major Bleeding (MB), this study sought to stratify
159 outcomes based on a single multivariable risk score. This entailed (1) identifying factors
160 associated with IS and MB, (2) choosing those that selectively predicted either IS or MB to
161 generate a simplified risk score, and (3) assessing the OAC therapy results observed in the
162 registry, stratified by the new risk score. An ideal score would identify patients with

163 simultaneous high stroke risk (and corresponding high benefit with OAC therapy) and low
164 bleeding risk (and corresponding low risk of harm with OAC therapy), and vice versa. In
165 addition, the ability of the score to balance both IS and MB risks within an external sample
166 was assessed, using the Taiwan AF registry with 26,595 patients with AF and CHA₂DS₂-
167 VASc score ≥ 1 for men or ≥ 2 for women.

168 **Embolic and Bleeding End Points.** The primary embolic end point was IS (as defined by the
169 Standardized Data Collection for CV Trials Initiative and the US Food and Drug
170 Administration)(12), and the primary bleeding end point was MB (as defined by the
171 International Society on Thrombosis and Haemostasis)(13). During the follow-up, two data
172 managers independently reviewed the clinical history of each patient to identify possible
173 events. All suspected events were independently reviewed by 2 specialists in the clinically
174 relevant areas of cardiology and internal medicine. Both data managers and specialists
175 underwent a study-specific training on event definitions and the adjudication process. Finally,
176 an independent clinical events committee revised and adjudicated all events.

177 **Statistical Analysis**

178 Development of Stroke and Bleeding Risk Models. Clinical characteristics were compared
179 between patients experiencing events during follow-up and those without events, using Fisher
180 exact or t tests as appropriate. Cox regression was used to develop 2 separate models: the first
181 to predict IS and the second to predict MB. Data were censored at the time of IS or MB, or at
182 the time of death, change in OAC therapy status, or last known contact, whichever was
183 earliest. A total of 40 candidate variables potentially associated with IS or MBs based on a
184 comprehensive literature review and clinical plausibility were identified (Table 1). Candidate
185 variables that differed in bivariable comparisons at a significance level ≤ 0.150 were
186 incorporated. Stepwise selection was then performed, using the 0.050 significance level. To
187 identify possible heterogeneous treatment effects, simple Cox regression models were

188 developed for each outcome including treatment group, variable of interest, and their
189 interaction term. Interactions terms significant at a P value ≤ 0.100 were entered into the
190 stepwise selection process with other candidate variables. Proportionality was evaluated for
191 all variables in the models. Model discrimination was assessed using Harrell's c-statistic, and
192 calibration with the Gronnesby and Borgan goodness-of-fit test.

193 Development of a Simplified Clinical Prediction Score. For each patient, the predicted risks
194 (cumulative incidence) of IS and MB were estimated, assuming OAC therapy and separately
195 assuming non-OAC therapy. The difference between these 2 predicted values represented the
196 predicted balance between IS and MB. A linear regression model was created, using the
197 predicted balance between IS and MB –as the outcome– and all predictors that were selected
198 in the stroke and bleeding models. Baseline variables that statistically accounted for more
199 than 1% of the observed variation in estimated balance between IS and MB were included in a
200 simplified clinical prediction score, called OAC score. All variables were assigned an integer
201 score of 1 or 2 (or -1 to -2) based on β coefficients. The range of potential scores was
202 between -22 and 10 . Clinically relevant score groupings were created, defining patients more
203 likely to be harmed from OAC (low score group) vs those more likely to benefit (moderate-
204 high score groups). Low score was defined as percentile 10 of patients with negative OAC
205 score values (i.e. a score ≤ -8), and high score as percentile 90 of patients with positive OAC
206 score values (i.e. a score ≥ 6). Kaplan-Meier event rates were compared by score groups, and
207 absolute risk differences in IS and MB rates across score groups were assessed. Statistical
208 analyses were conducted using *STATA* software, version 15 (Stata Corp, College Station,
209 Texas, USA).

210

211

212 RESULTS

213 **Derivation cohort.** A total of 14,915 patients with AF and CHA₂DS₂-VASc ≥ 1 for men or
214 ≥ 2 for women were included in this analysis (derivation cohort). Of these, 11,632 patients
215 (78.0%) receiving OAC (86.8% VKA, 13.2% DOAC). During a mean follow up of 4.0 years
216 (IQR 2.4-5.7 years), 801 patients developed IS (1.3 per 100 patients/year) and 1,247 patients
217 developed MB (2.1 per 100 patients/year). Patients who had an IS during follow-up were
218 older, more likely women, had higher rates of prior stroke, aortic stenosis, hypertrophic
219 cardiomyopathy (HCM), chronic kidney disease (CKD), history of cancer and dementia, and
220 were less likely to have been treated with OAC compared with patients without an IS (Table
221 1). Patients with a MB were also older, more likely men, had a higher prevalence of smoking,
222 enolism, and diabetes, had a higher prevalence of cardiovascular disease (including prior heart
223 failure and valvular heart disease), higher comorbidity (including dementia, malnutrition,
224 liver disease, CKD, anemia, trombopenia and prior bleeding admission), and were more likely
225 to have treated with OAC, corticosteroids and NSAIDs compared with patients without a MB
226 (Table 1).

227 **Risk Prediction Models.** In multivariable Cox regression (Table 2), significant predictors of
228 both IS and MB included age, aortic stenosis, dementia, and permanent AF. Variables that
229 predicted only the risk of IS included prior stroke and HCM. Male sex, smoking, diabetes
230 mellitus, mitral regurgitation, CKD, liver disease, anemia, prior bleeding admission, prior
231 gastrointestinal ulcer, malnutrition, and corticosteroid/NSAID use were significant
232 independent predictors of MB, but not of IS. Both models had moderate discrimination (c
233 statistic 0.687 and 0.671 for stroke and bleeding models, respectively), and were well
234 calibrated (goodness-of-fit P = 0.116 and 0.549 for stroke and bleeding models, respectively).

235 **Clinical Prediction Score.** A simplified risk score –called OAC score– was created using 7
236 clinical variables (age, sex, prior stroke, prior bleeding, anemia, renal function, and liver

237 function) that were independently associated with more than 1% of the variation in the
238 balance between IS and MB in a linear regression model (**Supplementary Table 1**). The score,
239 ranging from -22 to 10, assigned points as follows: for patients younger than 60 years, 0
240 points; for age 60 to 69,+1; for age 70 to 79,+2; for age 80 to 89,+3; for patients 90 years or
241 older,+4; for female sex, +3; for prior stroke, +4; for CKD stage 5, -11; for non-cirrhotic liver
242 disease (ALT or AST > 3 USL), - 6 points; for cirrhotic liver disease, -10 points; for
243 hemoglobin 10 to 11.9 g/dL, -5 points; for hemoglobin lower than 10 g/dL, -9 points; for prior
244 bleeding admission, -4 points. Patients were classified in 3 risk groups according to OAC
245 score: low ($\leq - 8$ points; n=242, 1.6%), moderate (from -8 to +6 points; n=11,264, 75.5%),
246 and high score ($\geq + 6$ points; n=3,409, 22.9%). The low-score group was associated with the
247 highest rates of MB and the most negative balance between IS and MB, whereas the opposite
248 occurred in the high-score group (**Figure 1**). Kaplan Meier curves for MB and IS according
249 the 3 risk groups are showed in **Figure 2A and 2B**. The impact of OAC therapy in stroke-
250 bleeding balance is shown in **Figure 3A**.

251 **External validation of OAC score.** OAC score was validated in a Nationwide Cohort Study
252 from Taiwan, using the National Health Insurance Research Database in Taiwan(14). Among
253 the patients of Taiwan AF registry with CHA2DS2-VASc ≥ 1 (2 for women), data of OAC
254 score were available in 26,595 patients. From them, only 29.5% were treated with OAC
255 therapy. OAC risk score was independently associated with the balance of embolic-
256 hemorrhagic risk (**Figure 4**). According to the OAC score, 19.7%, 74.0%, and 6.3% of
257 patients are classified as low, moderate, and high score. A high OAC score is associated with
258 more IS whereas a low OAC risk score is associated with more MB (**Figures 5A and 5B**).
259 Only patients with a low OAC risk score had a negative embolic-hemorrhagic balance, that
260 was exaggerated in anticoagulated patients (**Figure 3B**).

261
262
263
264
265
266
267
268
269
270
271
272
273
274
275
276
277
278
279
280
281
282
283
284
285

DISCUSSION

This study developed and validated a clinical prediction score based on embolic and bleeding risk factors to help physicians to identify AF patients with greater expected harm vs greater expected benefit from OAC therapy. Despite prior evidence suggesting that embolic and bleeding risk are strongly correlated, our results suggest that it may be possible to identify individual patients with discordant embolic risks and bleeding risks.

In patients with a low OAC score (i.e., ≤ -8 points), the risk of bleeding events was clearly higher than the risk of embolic events in both the derivation cohort (78.0% with OAC therapy) and the validation cohort (70.5% without OAC therapy). This finding was exaggerated in anticoagulated patients. This is very interesting, because we can identify a group of patients in who the benefit of OAC therapy against embolism is compromised by the increased bleeding risk. In those patients, an alternative strategy should be sought, like LAAC. A meta-analysis of 2 randomized clinical trials (PROTECT AF and PREVAIL) comparing LAAC vs anticoagulation with vitamin K antagonists (VKA) in 2,406 patients at high risk for stroke and increased risk of bleeding, showed a significant reduction of almost 50% in nonprocedural bleeding (15). In turn, LAAC was associated with similar rates of nonprocedural stroke, and resulted in improved rates of hemorrhagic stroke and cardiovascular/unexplained death. Recently, data from PRAGUE-17 showed that among patients at high risk for stroke and increased risk of bleeding, LAAC vs direct oral anticoagulants (DOACs) did not increase the rate of stroke (HR 1.00, 95%CI 0.40-2.51; $p=0.99$), whereas showed a trend to decrease the rate of nonprocedural bleeding (HR 0.53, 95%CI 0.26-1.06; $p=0.07$) (10). Current guidelines state that LAAC may be considered in AF patients with contra-indications for long-term OAC therapy. However, with the results of PROTECT-AF, PREVAIL and PRAGUE-17, it seems reasonable to take a step forward and

286 recommend it in those patients in whom the bleeding risk clearly exceeds the embolic risk. In
287 this sense, the OAC score can be very useful for clinicians, helping to the incorporation of
288 transcatheter LAAC into a stroke prevention strategy for patients with an expected excess
289 bleeding rate. OAC score considers the balance between two key elements: the long-term
290 risks of thromboembolic events and the longer-term risk of bleeding. However, for derivation
291 to LAAC, another key element should be considered: the short-term procedure risk of
292 LAAC(16). With that in mind, the risk benefit of an invasive procedure such as LAAC must
293 be balanced against the longer-term issues of continued exposure to anticoagulation and
294 bleeding(17).

295 Other therapeutic option to prevent stroke in patients with high bleeding risk could be Factor
296 XIa (FXIa) inhibitors. Whether FXIa inhibitors can play a role in this clinical scenario is
297 currently a pending challenge. FXIa inhibition represents a promising strategy to reduce
298 stroke risk while preserving a patient's ability to clot when bleeding(18). The recent
299 PACIFIC-AF trial showed that asundexian –a FXIa inhibitor– resulted in lower rates of
300 bleeding compared with apixaban in patients with AF, with similar embolic protection(19).
301 These data support the potential role for FXIa inhibition in patients with AF and make this
302 strategy a promising avenue pending the results of future studies.

303 On the other hand, a high OAC score identifies patients with a very high embolic risk that
304 markedly exceeds the expected risk of bleeding events, both in anticoagulated and non-
305 anticoagulated patients –an aspect that is fulfilled in both derivation and validation cohorts–.
306 In those patients there is a clear benefit of anticoagulation, and even indefinite OAC with
307 LAAC could be useful, giving in consideration that the left atrial appendage is responsible for
308 >90% of embolic strokes(20). Although a targeted approach to exclude this chamber
309 combined with OAC therapy can be beneficial in those patients at very high embolic risk(21),

310 careful consideration of LAAC warrants an individualized discussion between physician and
311 patient.

312 **Limitations.** A number of limitations should be considered in interpreting these findings. As
313 in any observational cohort study, our findings may reflect some degree of residual
314 confounding. First, as it is not a randomized clinical trial, there is a clear selection bias when
315 deciding to prescribe OAC. Therefore, these data could only be used to evaluate whether the
316 score stratified patients according to the balance between embolic and bleeding risk, and not
317 actual benefit or harm with OAC therapy. The usefulness of the OAC score to support clinical
318 decision on the prescription of OAC therapy or LAAC should be regarded as hypothesis
319 generating at this stage and dedicated randomized trials should be carried out to evaluate the
320 validity of this potential application of the OAC score. Second, variables in the predictive
321 score included patient characteristics that have demonstrated an association with either
322 embolic or bleeding events in prior studies. However, common predictive factors for both
323 embolic and bleeding risks were not included in the predictive score because these factors did
324 not help identify discordant bleeding and embolic risks. The incorporation of more variables
325 into the individual bleeding and embolic models may have improved discrimination, at the
326 expense of parsimony. In addition, the estimation of risks based on the use of the separate
327 embolic and bleeding model coefficients rather than use of the simplified score could improve
328 the ability to predict such events and provide the opportunity for clinicians to identify patients
329 with concordantly high embolic and bleeding risks, in addition to those with discordant risks.
330 However, we have searched for a simple and user-friendly score that has clinical implications
331 and widespread use. Third, although there remains a sizable proportion of patients, the
332 patients used to derive the OAC score make up a group of patients –most of them
333 anticoagulated– that may not be representative of those seen in clinical practice. However,
334 validation was performed in a different population of AF patients –most of them non-

335 anticoagulated– with concordant results. Despite our optimism, use of this prediction score
336 should be cautious until further validation is performed in clinical trials, and optimal clinical
337 and procedural care to reduce overall bleeding and ischemic risks should be practiced
338 independent of a patient’s score.

339 In conclusion, we have developed and tested the OAC score, a user-friendly tool to balance
340 bleeding and embolic risks in AF patients. OAC score is feasible and effective with
341 potentially important implications on the selection of patients for LAAC.

342

343

344

345

346

347

348

349

350

351

352

353

354

355

356

357

358

359 **Contributors.**

- 360 • SRR, TFC, EAA, and AIR conceived and designed the study.
- 361 • IGF, RGF, YHC, JNL, and LK a did the analysis.
- 362 • SRR, EAA and TFC drafted the manuscript.
- 363 • All authors revised and approved the final version of the manuscript.
- 364 • SRR and EAA had full access to all of the data in the study and take responsibility for
- 365 the integrity of the data and the accuracy of the data analysis.

366

367 **Declaration of interest.**

- 368 • SRR has received honoraria for presentations and advisory boards from Amgen,
- 369 Abbott, Sanofi, AstraZeneca, Daichii, Pfyzer-BMS, Bayer, and Boehringer.
- 370 • The rest of authors declare no competing interests.

371

372 **Founding source**

- 373 • The electronic registry was funded in a unconditioned way by Daiichi Sankyo, Pfyzer-
- 374 BMS, Bayer and Boehringer Ingelheim.

375

376 **Acknowledgment**

- 377 • None.

378

379 **Data sharing.**

- 380 • Due to different data-sharing policies of the two datasets included in this study, not all
- 381 of which provided free access to data, data included in this study will not be made

382 available. Requests for the data from each included dataset should be made to the
383 corresponding author of each single registry.

384 REFERENCES

385

386 1. Hindricks G, Potpara T, Dagres N, et al. 2020 ESC Guidelines for the diagnosis and
387 management of atrial fibrillation developed in collaboration with the European Association
388 for Cardio-Thoracic Surgery (EACTS): The Task Force for the diagnosis and management of
389 atrial fibrillation of the European Society of Cardiology (ESC) Developed with the special
390 contribution of the European Heart Rhythm Association (EHRA) of the ESC. *Eur Heart J*.
391 2021;42(5):373-498.

392 2. January CT, Wann LS, Calkins H, et al. 2019 AHA/ACC/HRS Focused Update of the
393 2014 AHA/ACC/HRS Guideline for the Management of Patients With Atrial Fibrillation: A
394 Report of the American College of Cardiology/American Heart Association Task Force on
395 Clinical Practice Guidelines and the Heart Rhythm Society in Collaboration With the Society
396 of Thoracic Surgeons. *Circulation*. 2019;140(2):e125-e51.

397 3. Lip GYH, Banerjee A, Boriani G, et al. Antithrombotic Therapy for Atrial Fibrillation:
398 CHEST Guideline and Expert Panel Report. *Chest*. 2018;154(5):1121-201.

399 4. Kirchhof P, Ammentorp B, Darius H, et al. Management of atrial fibrillation in seven
400 European countries after the publication of the 2010 ESC Guidelines on atrial fibrillation:
401 primary results of the PREvention of thromboembolic events--European Registry in Atrial
402 Fibrillation (PREFER in AF). *Europace*. 2014;16(1):6-14.

403 5. Martin A, Siegal D, Verbrugge F, et al. Why do clinicians withhold anticoagulation in
404 patients with atrial fibrillation and CHA₂DS₂-VASc score \geq 2? *Arch Card Dis Suppl*.
405 2019;11(1):83-4.

- 406 6. Lubitz SA, Khurshid S, Weng LC, et al. Predictors of oral anticoagulant non-
407 prescription in patients with atrial fibrillation and elevated stroke risk. *Am Heart J.*
408 2018;200:24-31.
- 409 7. Piazza G, Hurwitz S, Carroll B, Goldhaber SZ. Patients with perceived high-bleeding
410 risk and computerized decision support for stroke prevention in atrial fibrillation: an AF-
411 ALERT substudy : Piazza: outcomes of high-bleeding risk AF patients. *J Thromb*
412 *Thrombolysis.* 2021;52(1):281-90.
- 413 8. Edmiston MK, Lewis WR. Bleeding Risk Scores in Atrial Fibrillation: Helpful or
414 Harmful? *JAHA.* 2018;7(18):e010582.
- 415 9. Raposeiras-Roubín S, Abu-Assi E, Cespón Fernández M, et al. Trade-off between the
416 effects of embolic versus bleeding events on mortality in elderly patients with atrial
417 fibrillation. *Rev Esp Cardiol (Engl Ed).* 2022;75(4):334-42.
- 418 10. Osmancik P, Herman D, Neuzil P, et al. Left Atrial Appendage Closure Versus Direct
419 Oral Anticoagulants in High-Risk Patients With Atrial Fibrillation. *J Am Coll Cardiol.*
420 2020;75(25):3122-35.
- 421 11. Raposeiras-Roubin S, Abu-Assi E, Marchán A, et al. Validation of Embolic and
422 Bleeding Risk Scores in Patients With Atrial Fibrillation and Cancer. *Am J Cardiol.*
423 2022;180:44-51.
- 424 12. Hicks KA, Mahaffey KW, Mehran R, et al. 2017 Cardiovascular and Stroke Endpoint
425 Definitions for Clinical Trials. *Circulation.* 2018;137(9):961-72.
- 426 13. Schulman S, Angerås U, Bergqvist D, Eriksson B, Lassen MR, Fisher W. Definition
427 of major bleeding in clinical investigations of antihemostatic medicinal products in surgical
428 patients. *J Thromb Haemost.* 2010;8(1):202-4.

- 429 14. Chao TF, Liu CJ, Wang KL, et al. Should atrial fibrillation patients with 1 additional
430 risk factor of the CHA₂DS₂-VASc score (beyond sex) receive oral anticoagulation? *J Am*
431 *Coll Cardiol.* 2015;65(7):635-42.
- 432 15. Holmes DR, Jr., Doshi SK, Kar S, et al. Left Atrial Appendage Closure as an
433 Alternative to Warfarin for Stroke Prevention in Atrial Fibrillation: A Patient-Level Meta-
434 Analysis. *J Am Coll Cardiol.* 2015;65(24):2614-23.
- 435 16. Murtaza G, Boda U, Turagam MK, et al. Risks and Benefits of Removal of the Left
436 Atrial Appendage. *Curr Cardiol Rep.* 2020;22(11):129.
- 437 17. Holmes DR, Reddy VY, Turi ZG, et al. Percutaneous closure of the left atrial
438 appendage versus warfarin therapy for prevention of stroke in patients with atrial fibrillation:
439 a randomised non-inferiority trial. *Lancet.* 2009;374(9689):534-42.
- 440 18. Liuzzo G, Patrono C. A novel inhibitor of Factor XIa as potential haemostasis-sparing
441 anticoagulant for patients with atrial fibrillation. *Eur Heart J.* 2022;43(25):2354-5.
- 442 19. Piccini JP, Caso V, Connolly SJ, et al. Safety of the oral factor XIa inhibitor
443 asundexian compared with apixaban in patients with atrial fibrillation (PACIFIC-AF): a
444 multicentre, randomised, double-blind, double-dummy, dose-finding phase 2 study. *Lancet.*
445 2022;399(10333):1383-90.
- 446 20. Collado FMS, Buchwald CMLV, Anderson CK, et al. Left Atrial Appendage
447 Occlusion for Stroke Prevention in Nonvalvular Atrial Fibrillation. *JAHA.*
448 2021;10(21):e022274.
- 449 21. Freixa X, Cruz-González I, Regueiro A, et al. Left Atrial Appendage Occlusion as
450 Adjunctive Therapy to Anticoagulation for Stroke Recurrence. *J Invasive Cardiol.*
451 2019;31(8):212-6.

452

453

454

455

456

TABLES

457 **Table 1.** Baseline characteristics of patients with vs without ischemic stroke or major

458 bleeding during the follow-up in the derivation cohort (n = 14,915)

Measure	Ischemic stroke, No. (%)			Major bleeding, No. (%)		
	Event (n=801)	No Event (n=14,114)	P Value	Event (n=1,247)	No Event (n=13,668)	P Value
Demographic						
Age, men (SD)	79.8 (8.7)	77.0 (9.5)	<0.001	77.1 (8.4)	77.2 (9.6)	0.769
Age, groups			<0.001			<0.001
<60	23 (2.9)	711 (5.0)		35 (2.8)	699 (5.1)	
60-69.9	77 (9.6)	2,420 (17.1)		215 (17.2)	2,282 (16.7)	
70-79.9	259 (32.3)	4,935 (35.0)		508 (40.7)	4,686 (34.3)	
80-89.9	367 (45.8)	5,237 (37.1)		403 (32.3)	5,201 (38.1)	
>=90	75 (9.4)	811 (5.7)		86 (6.9)	800 (5.9)	
Women	471 (57.9)	7,528 (50.6)	<0.001	539 (42.6)	7,460 (51.7)	<0.001
Overweight/obesity	677 (84.5)	11,932 (84.5)	0.987	1,061 (85.1)	11,548 (84.5)	0.578
Medical history						
Cigarette smoker	34 (4.2)	595 (4.2)	0.968	74 (5.9)	555 (4.1)	0.002
Alcohol abuse ^a	129 (16.1)	2,578 (18.3)	0.123	291 (23.3)	2,416 (17.7)	<0.001
Hypertension	596 (74.4)	10,669 (75.6)	0.448	931 (74.7)	10,334 (75.6)	0.456
Dyslipemia	385 (48.1)	6,896 (48.9)	0.662	612 (49.1)	6,669 (48.8)	0.848
Diabetes mellitus	172 (21.5)	2,847 (20.2)	0.372	303 (24.3)	2,716 (19.9)	<0.001
Peripheral artery disease	35 (4.4)	522 (3.7)	0.330	54 (4.3)	503 (3.7)	0.246
Prior stroke	95 (11.9)	899 (6.4)	<0.001	75 (6.0)	919 (6.7)	0.336
Coronary artery disease	91 (11.4)	1,544 (10.9)	0.710	156 (12.5)	1,479 (10.8)	0.068
Prior heart failure	76 (9.5)	1,196 (8.5)	0.317	125 (10.0)	1,147 (8.4)	0.048
LVEF ≤ 40%	46 (5.9)	771 (5.7)	0.807	72 (5.9)	745 (5.7)	0.680
Moderate-severe aortic stenosis	42 (5.2)	511 (3.6)	0.018	78 (6.3)	475 (3.5)	<0.001
Moderate-severe MR	30 (3.7)	479 (3.4)	0.594	60 (4.8)	449 (3.3)	0.004
Bioprosthesis	13 (1.6)	146 (1.0)	0.115	22 (1.8)	137 (1.0)	0.012
HCM	15 (1.9)	169 (1.2)	0.092	20 (1.6)	164 (1.2)	0.216
Pacemaker	43 (5.4)	727 (5.2)	0.787	84 (6.7)	686 (5.0)	0.009
COPD	86 (10.7)	1,641 (11.6)	0.444	144 (11.5)	1,583 (11.6)	0.971
Kidney disease ^b			0.009			<0.001
Stage 1	94 (11.7)	2,267 (16.1)		186 (14.9)	2,175 (15.9)	
Stage 2	440 (54.9)	7,674 (54.4)		640 (51.3)	7,474 (54.7)	
Stage 3a	147 (18.4)	2,392 (16.9)		228 (18.3)	2,311 (16.9)	
Stage 3b	93 (11.6)	1,282 (9.1)		123 (9.9)	1,252 (9.2)	
Stage 4	23 (2.9)	418 (3.0)		52 (4.2)	389 (2.8)	
Stage 5	4 (0.5)	81 (0.6)		18 (1.4)	67 (0.5)	

Liver disease ^c			0.281			<0.001
Mild liver disease	10 (1.2)	279 (2.0)		45 (3.6)	244 (1.8)	
Cirrhosis	7 (0.9)	157 (1.1)		31 (2.5)	133 (1.0)	
Anemia ^d			0.948			<0.001
Mild	102 (12.7)	1,798 (12.7)		221 (17.7)	1,679 (12.3)	
Moderate-severe	19 (2.4)	361 (2.4)		63 (5.1)	317 (2.3)	
Thrombopenia ^e			0.127			0.002
Mild	68 (8.5)	1,496 (10.6)		158 (12.7)	1,406 (10.3)	
Moderate-severe	7 (0.9)	159 (1.1)		22 (1.8)	144 (1.1)	
Prior bleeding admission	44 (5.5)	751 (5.3)	0.833	100 (8.0)	695 (5.1)	<0.001
History of GI ulcer	10 (1.2)	139 (1.0)	0.466	19 (1.5)	130 (1.0)	0.052
Corticosteroid/NSAID use	122 (15.3)	2,425 (17.2)	0.158	241 (19.3)	2,306 (16.9)	0.028
History of past cancer ^f	34 (4.2)	1,092 (7.3)	0.001	100 (7.9)	1,026 (7.1)	0.294
Active cancer ^f	11 (1.4)	317 (2.2)	0.101	31 (2.5)	297 (2.2)	0.463
Prior radiotherapy	11 (1.4)	319 (2.3)	0.097	34 (2.7)	296 (2.2)	0.193
Prior chemotherapy	8 (1.0)	214 (1.5)	0.239	15 (1.2)	207 (1.5)	0.389
Cognitive impairment ^g	101 (12.6)	1,117 (7.9)	<0.001	139 (11.1)	1,079 (7.9)	<0.001
Parkinson disease	16 (2.0)	248 (1.8)	0.616	27 (2.2)	237 (1.7)	0.269
Moderate-severe malnutrition ^h	48 (6.0)	733 (5.2)	0.323	92 (7.4)	689 (5.0)	0.001
AF type and management						
AF type			<0.001			<0.001
Paroxysmal	114 (14.2)	2,379 (16.9)		160 (13.0)	2,333 (17.1)	
Persistent	96 (12.0)	3,068 (21.7)		239 (19.5)	2,925 (21.4)	
Permanent	591 (73.8)	8,667 (61.4)		848 (67.5)	8,410 (61.5)	
CHA ₂ DS ₂ -VASC score, points	3.8 (1.4)	3.4 (1.3)	<0.001	3.4 (1.3)	3.4 (1.4)	0.924
HASBLED score, points	2.8 (1.1)	2.7 (1.1)	0.204	3.0 (1.2)	2.7 (1.1)	<0.001
Antithrombotic therapy						
Anticoagulation therapy	584 (72.9)	11,048 (78.3)	<0.001	1,058 (84.8)	10,574 (77.4)	<0.001
Antiplatelet therapy	194 (24.2)	2,701 (19.1)	<0.001	220 (17.6)	2,675 (19.6)	0.099

459

460 AF: Atrial Fibrillation; COPD: Chronic Obstructive Pulmonary Disease; GI: Gastrointestinal; HCM:
 461 Hypertrophic Cardiomyopathy; LVEF: Left Ventricular Ejection Fraction; MR: Mitral Regurgitation; NSAID:
 462 Non-Steroidal Anti-Inflammatory Drugs; SD: Standard Deviation.

463 ^a Defined by National Institute on Alcohol Abuse and Alcoholism as consuming ≥ 4 alcoholic drinks on any day or ≥ 14 alcoholic
 464 drinks per week for men, or consuming ≥ 3 alcoholic drinks on any day or ≥ 7 alcoholic drinks per week for women, in the past
 465 month.

466 ^b Categories of chronic kidney disease according to the National Kidney Foundation classification, using the Chronic Kidney
 467 Disease Epidemiology Collaboration (CKD-EPI) equation to estimate the glomerular filtrate rate

468 ^c Mild liver disease was defined as elevations of aspartate transaminase (AST) and/or alanine transaminase (ALT) more than 3
 469 times the upper limit of normal. Cirrhosis was defined by clinical, biochemical, and radiological parameters, endoscopic results,
 470 ultrasonography, and/or even histology.

471 ^d Anemia was defined According to the World Health Organization as hemoglobin levels < 12.0 g/dL in women and < 13.0 g/dL
 472 in men. Moderate-severe anemia was defined as hemoglobin levels < 10 g/dL.

473 ^e Thrombopenia was subdivided into mild (platelet count 100,000 to 150,000/microL) and moderate-severe ($< 100,000$ /microL)

474 ^f Active cancer was defined according to the last definition proposed by the Scientific and Standardization Committee of the
 475 International Society on Thrombosis and Haemostasis, as cancer diagnosed within the 6 months before the medical evaluation for
 476 AF, cancer with local progression, metastasis, or lack of complete remission in the last 6 months, as well as patients receiving
 477 specific cancer therapy within the previous 6 months

478 [§] Equivalent to moderate-to-severe dementia, defined as cognitive decline between stages 5 and 7 of the Reisberg Global
 479 Deterioration Scale, which corresponds to stages of the Functional Assessment Staging scale 5
 480 ^h Based on a CONUT (Controlling Nutritional status) score 5 points.
 481
 482

483 **Table 2.** Ischemic stroke prediction model and major bleeding prediction model.

Predictors of Events	Predictor of ischemic stroke		Predictor of major bleeding	
	HR (95% CI)	P Value	HR (95% CI)	P Value
Age, per year	1.06 (1.05-1.07)	<0.001	1.02 (1.01-1.03)	<0.001
Female sex			0.70 (0.61-0.78)	<0.001
Cigarette smoker			1.40 (1.10-1.79)	0.008
Alcohol abuse ^a			1.17 (1.01-1.35)	0.036
Diabetes mellitus			1.21 (1.06-1.39)	0.004
Prior stroke	1.92 (1.54-2.38)	<0.001		
Moderate-severe aortic stenosis	1.50 (1.08-2.07)	0.014	1.56 (1.22-1.99)	<0.001
Moderate-severe MR			1.33 (1.02-1.73)	0.032
HCM	1.69 (1.01-2.82)	0.044		
CKD ^b			Ref	Ref
Stage 1				
Stage 2			0.92 (0.77-1.10)	0.342
Stage 3a			1.04 (0.84-1.30)	0.691
Stage 3b			1.05 (0.82-1.35)	0.702
Stage 4			1.47 (1.05-2.04)	0.024
Stage 5			2.62 (1.59-4.33)	<0.001
Non cirrhotic Liver disease ^c			1.51 (1.12-2.04)	0.007
Cirrhosis ^c			2.40 (1.65-3.50)	<0.001
Mild Anemia ^d			1.73 (1.48-2.02)	<0.001
Moderate-severe Anemia ^d			2.47 (1.88-3.25)	<0.001
Prior bleeding admission			1.55 (1.26-1.91)	<0.001
Prior GI ulcer			1.64 (1.04-2.58)	0.034
Cognitive impairment ^e	1.40 (1.20-1.83)	<0.001	1.41 (1.18-1.69)	<0.001
Malnutrition ^f			1.30 (1.03-1.63)	0.025
Permanent AF	1.60 (1.35-1.89)	<0.001	1.23 (1.08-1.39)	0.001
Corticosteroid/NSAID			1.23 (1.07-1.42)	0.004
Anticoagulation	0.70 (0.56-0.86)	<0.001	1.64 (1.36-1.99)	<0.001
Predictive ability of the model	Harrel C-Index 0.687 Grønnesby and Borgan P-value=0.116		Harrel C-Index 0.671 Grønnesby and Borgan P-value=0.549	

484
 485 AF: Atrial Fibrillation; CKD: Chronic Kidney Disease; GI: Gastrointestinal; HCM: Hypertrophic
 486 Cardiomyopathy; HR: Hazard Ratio; MR: Mitral Regurgitation; NSAID: Non-Steroidal Anti-Inflammatory
 487 Drugs.

488 ^a Defined by National Institute on Alcohol Abuse as consuming ≥ 4 alcoholic drinks on any day or ≥ 14 alcoholic drinks per week
 489 for men, or consuming ≥ 3 alcoholic drinks on any day or ≥ 7 alcoholic drinks per week for women, in the past month.

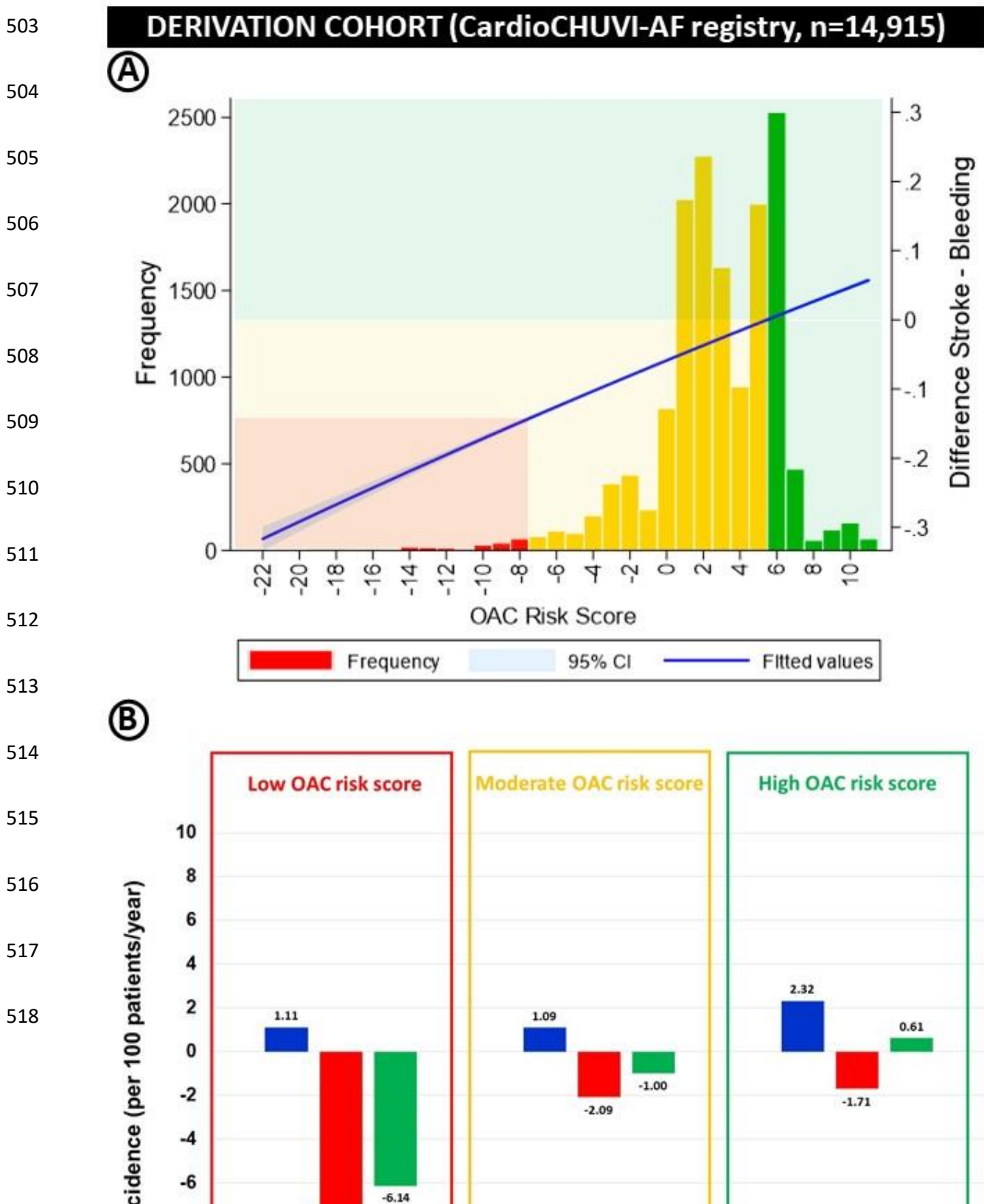
490 ^b Categories of chronic kidney disease according to the National Kidney Foundation classification, using the Chronic Kidney
 491 Disease Epidemiology Collaboration (CKD-EPI) equation to estimate the glomerular filtrate rate

492 ^c Mild liver disease was defined as elevations of aspartate transaminase (AST) and/or alanine transaminase (ALT) more than 3
 493 times the upper limit of normal. Cirrhosis was defined by clinical, biochemical, and radiological parameters, endoscopic results,
 494 ultrasonography, and/or even histology.

495 ^d Anemia was defined According to the World Health Organization as hemoglobin levels < 12.0 g/dL in women and < 13.0 g/dL
496 in men. Moderate-severe anemia was defined as hemoglobin levels < 10 g/dL.
497 ^e Equivalent to moderate-to-severe dementia, defined as cognitive decline between stages 5 and 7 of the Reisberg Global
498 Deterioration Scale, which corresponds to stages of the Functional Assessment Staging scale 5
499 ^f Based on a CONUT (Controlling Nutritional status) score 5 points.

500 **FIGURES**

501 **Figure 1.** Distribution of OAC score among patients of derivation cohort (n = 14,915) with
502 annual incidence of events according to risk score groups.



519

520

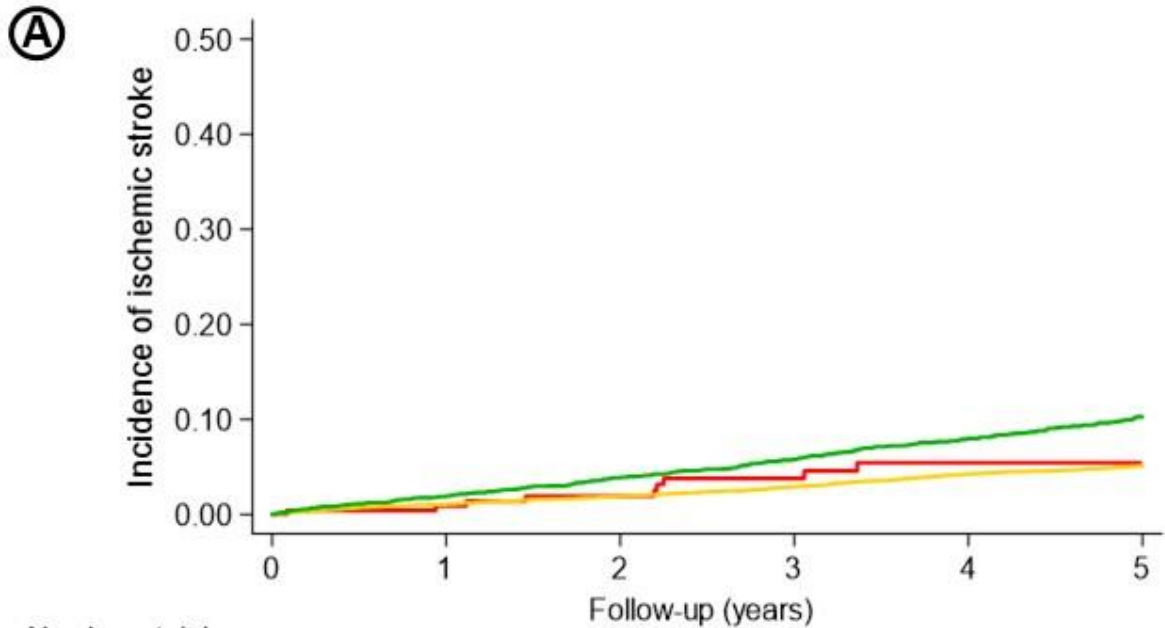
521 **Figure 2.** Observed rates of embolic (A) and bleeding (B) outcomes during the follow-up by

522 OAC score groups in derivation cohort.

523

DERIVATION COHORT (CardioCHUVI-AF registry, n=14,915)

524



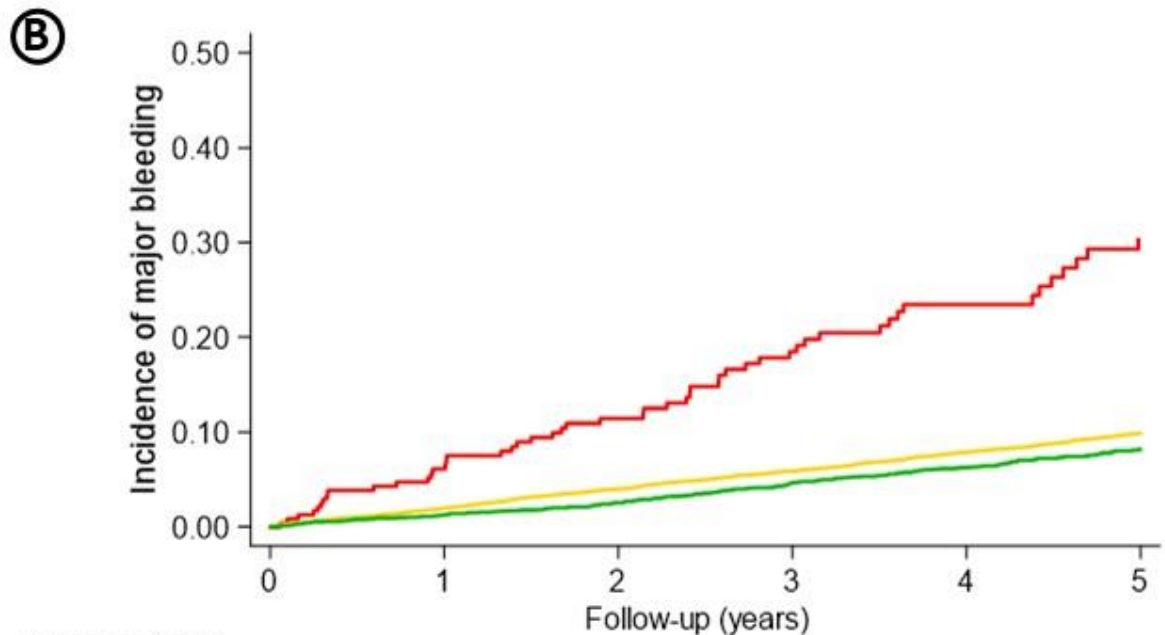
Number at risk

Low score	242	203	166	128	88	67
Moderate score	11264	10484	9277	7934	6583	5247
High score	3409	3066	2534	2034	1590	1010

532

— Low score — Moderate score — High score

533



Number at risk

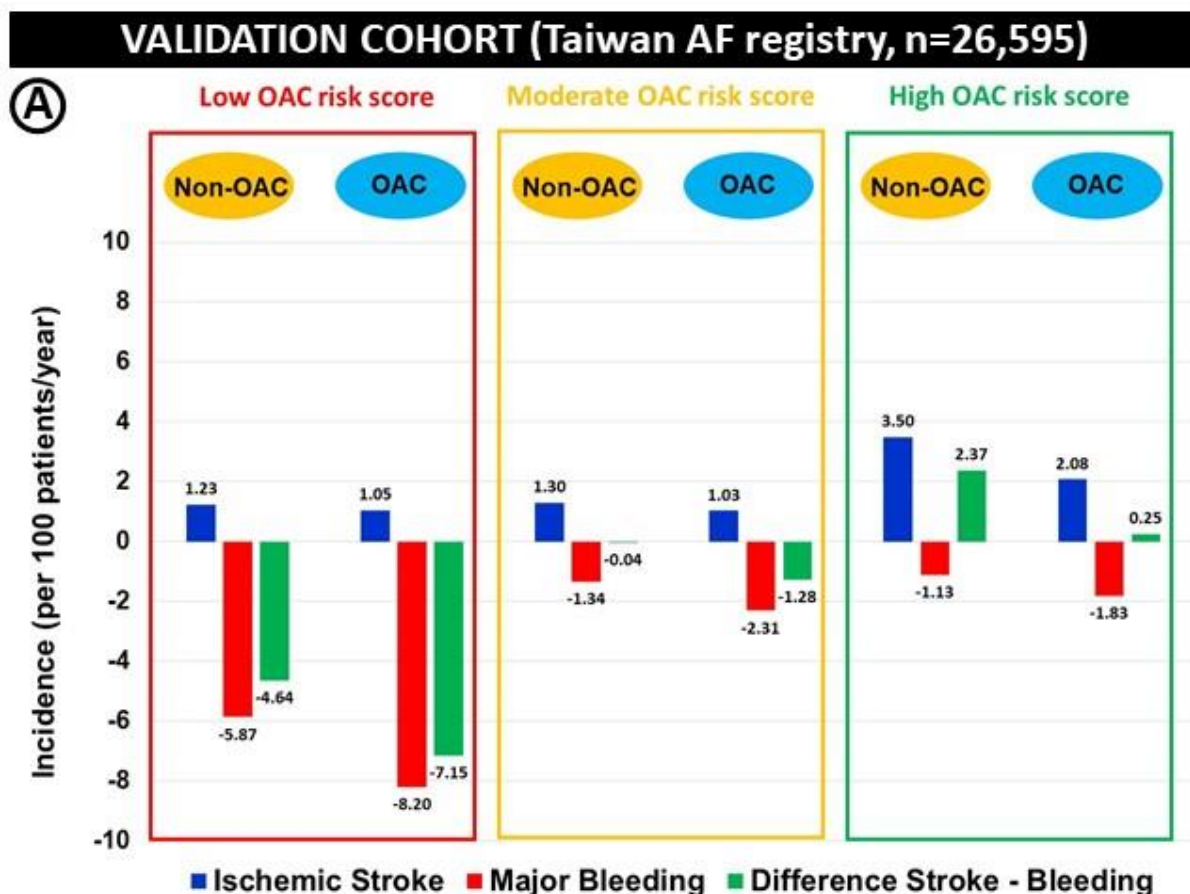
Low score	242	203	166	128	88	67
Moderate score	11264	10484	9277	7934	6583	5247
High score	3409	3066	2534	2034	1590	1010

540

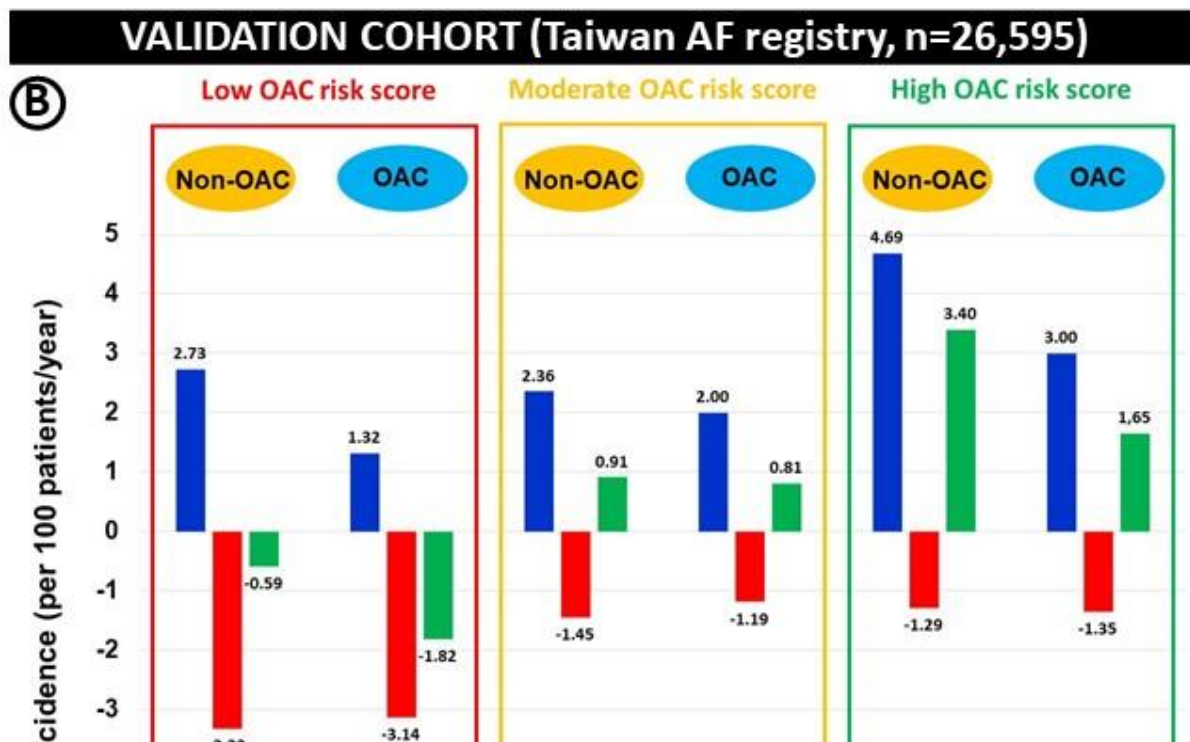
541

542 **Figure 3.** Balance between embolic and bleeding outcomes in anticoagulated and non-
 543 anticoagulated patients according to OAC score groups in both derivation and validation
 544 cohorts.

545



555



556

557

558

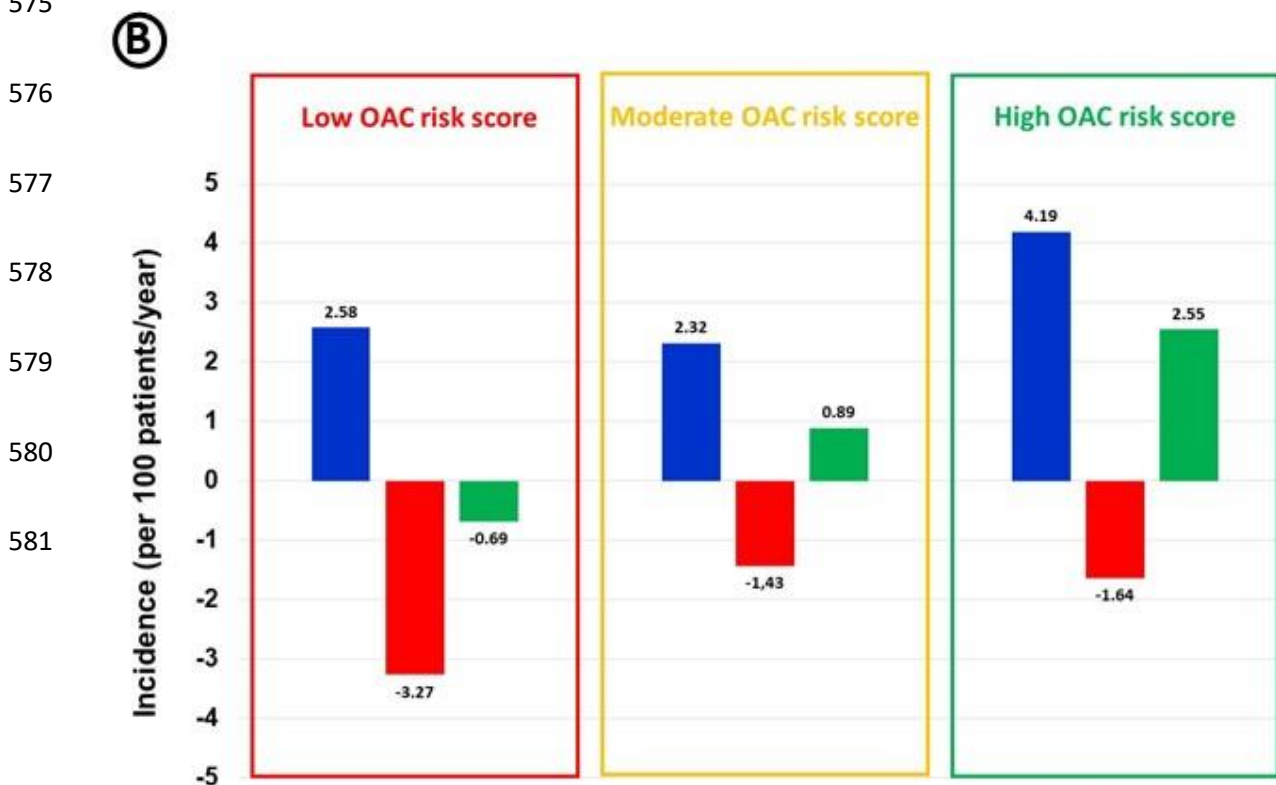
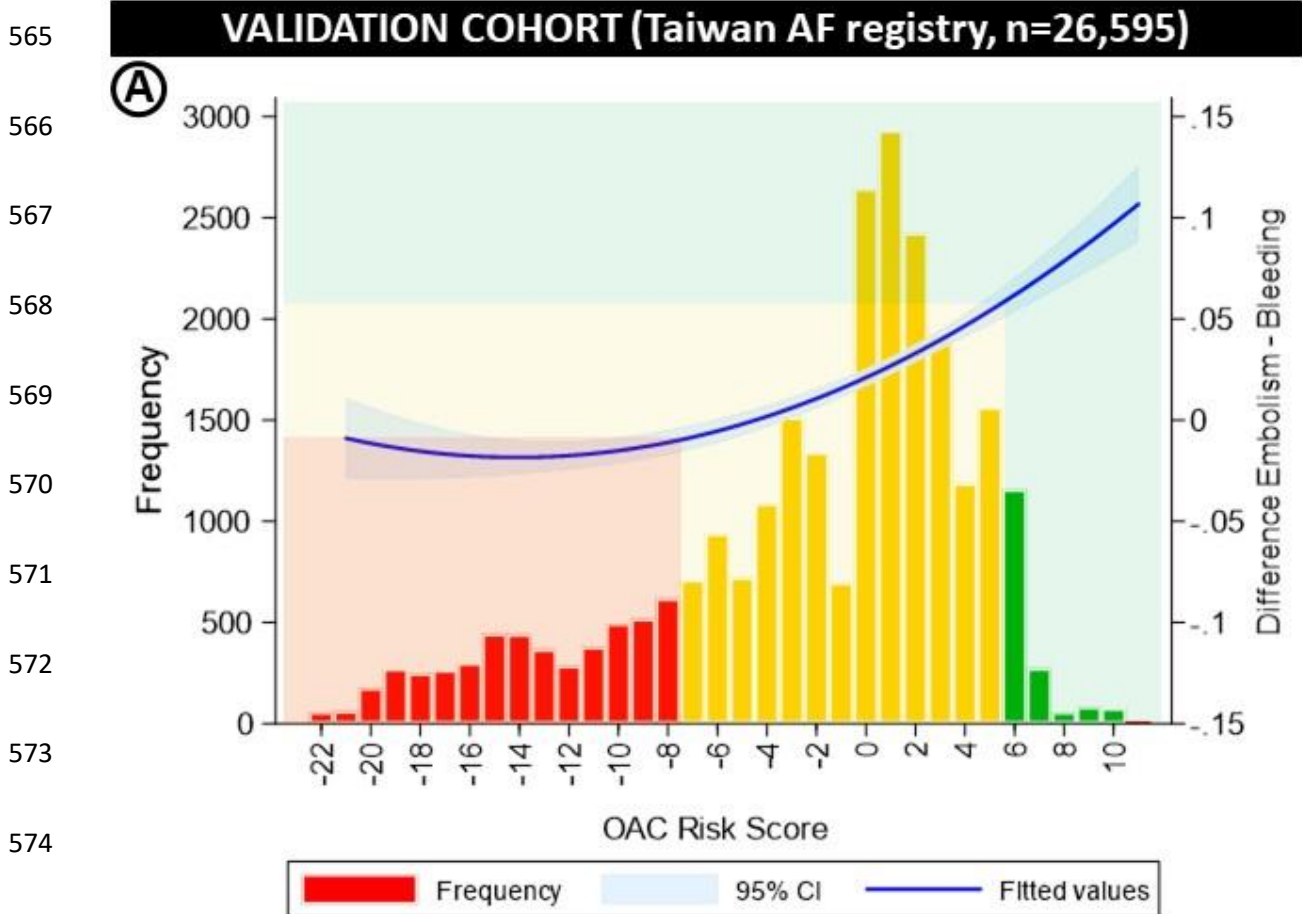
559

560

561

562

563 **Figure 4.** Distribution of OAC score among patients of validation cohort (n = 26,595) with
564 annual incidence of events according to risk score groups.



582

583

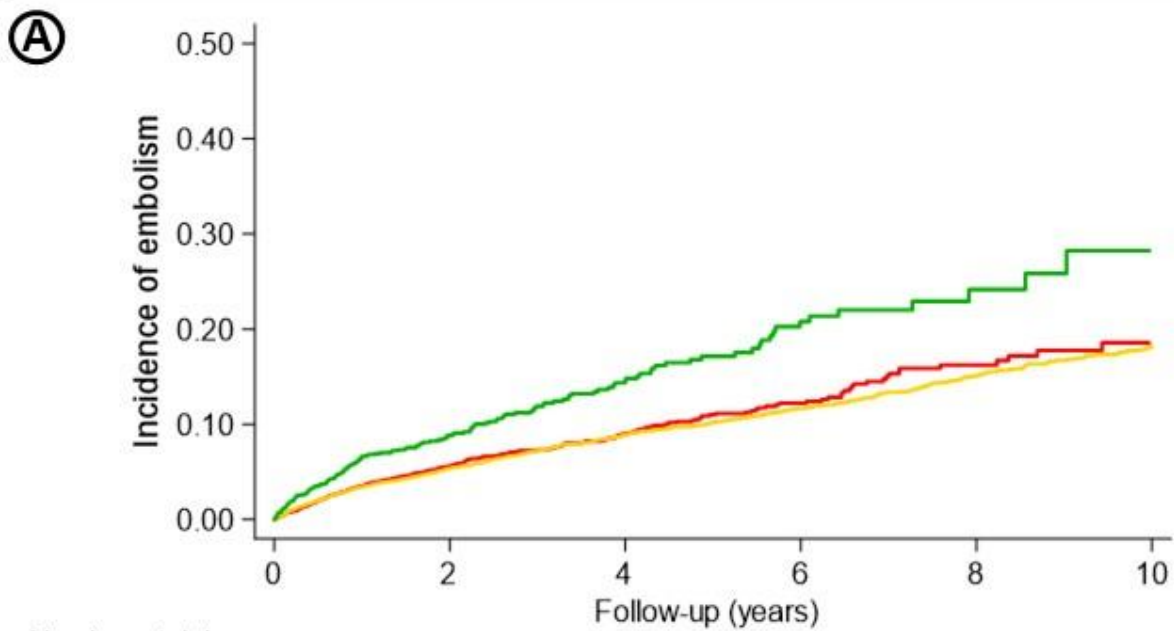
584 **Figure 5.** Observed rates of embolic (A) and bleeding (B) outcomes during the follow-up by

585 OAC score groups in validation cohort.

586

VALIDATION COHORT (Taiwan AF registry, n=26,595)

587

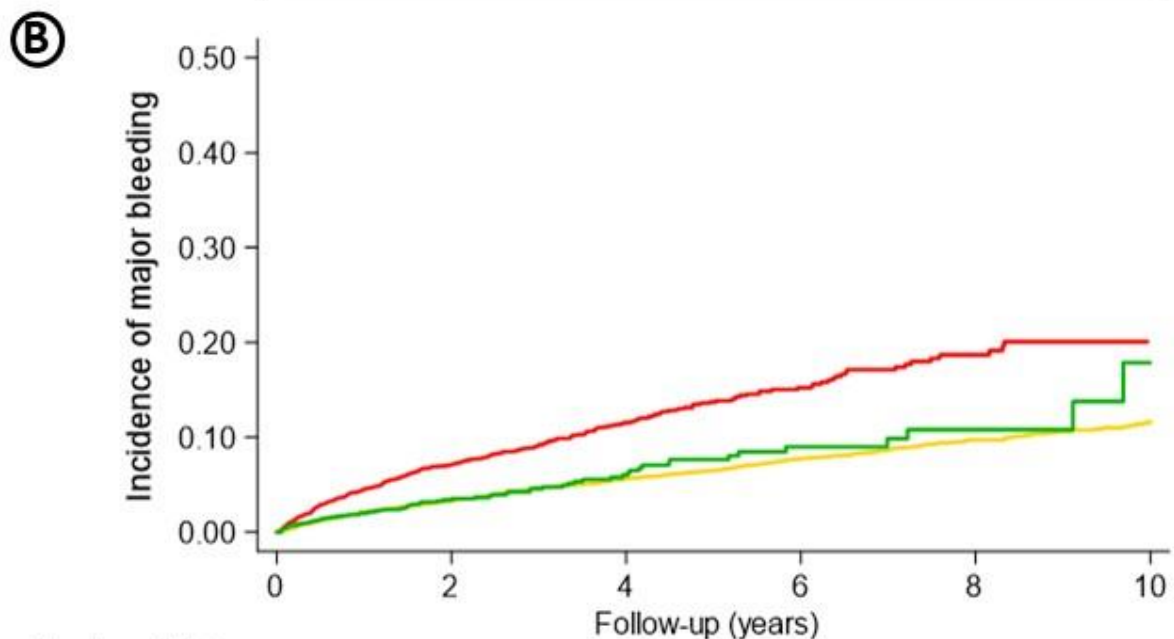


Number at risk

Low score	6893	2153	1007	465	198	74
Moderate score	18041	8639	4981	2691	1254	577
High score	1661	733	351	147	59	18

— Low score — Moderate score — High score

589



Number at risk

Low score	6893	2090	975	450	193	71
Moderate score	18041	8811	5121	2786	1325	627
High score	1661	780	383	163	62	18