

1 Effectiveness and efficiency of 2 immunisation strategies to prevent RSV 3 among infants and older adults in 4 Germany: a modelling study

5
6 Authors:

7 Fabienne Krauer^{1*}, Felix Guenther^{2*}, Marina Treskova-Schwarzbach², Viktoria Schoenfeld²,
8 Mihaly Koltai¹, Mark Jit¹, David Hodgson¹, Udo Schneider³, Ole Wichmann², Thomas Harder²,
9 Frank G. Sandmann², Stefan Flasche^{1,4}

10

11 Affiliations:

12 1 Centre for Mathematical Modelling of Infectious Diseases, London School of Hygiene &
13 Tropical Medicine, London, UK

14 2 Immunisation Unit, Robert Koch Institute, Berlin, Germany

15 3 Techniker Krankenkasse, Hamburg, Germany

16 4 Centre for Global Health, Charite – Universitaetsmedizin Berlin

17

18 * shared first authorship

19 Declarations

20 Ethics approval and consent to participate

21 Due to the aggregated nature of the data, no personal patient information was disclosed and no
22 informed consent or ethics approval was necessary for this study.

23

24 Availability of data and materials

25 This study uses claims data from a German health insurance company that are subject to strict
26 data protection rules according to the German Code of Social Law (SGB V). Therefore, these
27 data cannot be made publicly accessible. Public data of the sentinel surveillance can be found
28 online at <https://influenza.rki.de>. Public data on intensive care stays and in-hospital mortality are
29 available online at <https://datenbrowser.inek.org>. The programming code for the model and
30 other, public data are available at <https://github.com/fkrauer/RSV-VACC-DE>.

31

32 Competing interests

33 The authors declare no competing interests.

34

35 Funding

36 FK, MTS, US, OW, MK, TH, MJ, VS and SF received funding for a modelling project of RSV
37 immunisation strategies in Germany from the Federal Joint Committee in 2019-2023 (grant
38 number: 01VSF18015). SF was supported by a Sir Henry Dale Fellowship jointly funded by
39 the Wellcome Trust and the Royal Society (Grant number 208812/Z/17/Z). MJ received funding
40 from NIHR Health Protection Research Unit in Modelling and Health Economics (grant code
41 NIHR200908) and Immunisation (NIHR200929). DH received funding from NIHR Health
42 Protection Research Unit in Modelling and Health Economics (grant code NIHR200908). FGS
43 holds an honorary, non-remunerated role at LSHTM.

44

45 Role of the funding source

46 The funding sources had no role in this study.

47

48 Authors' contributions

49 FK: Conceptualization, Methodology, Software, Validation, Formal analysis, Investigation,

50 Writing - Original Draft, Writing - Review & Editing, Visualization, Project administration

51 FG: Methodology, Software, Validation, Formal analysis, Investigation, Writing - Original Draft,

52 Writing - Review & Editing, Visualization

53 MTS: Formal analysis, Investigation, Writing - Review & Editing

54 VS: Methodology, Writing - Review & Editing, Project administration

55 MK: Methodology, Writing - Review & Editing

56 MJ: Methodology, Writing - Review & Editing

57 DH: Methodology, Resources, Writing - Review & Editing

58 US: Resources, Investigation, Writing - Review & Editing

59 OW: Conceptualization, Methodology, Writing - Review & Editing, Supervision, Funding

60 acquisition

61 TH: Conceptualization, Methodology, Writing - Review & Editing, Supervision, Project

62 administration, Funding, acquisition

63 FGS: Methodology, Investigation, Writing - Original Draft, Writing - Review & Editing,

64 Supervision, Project administration

65 SF: Conceptualization, Methodology, Formal analysis, Investigation, Writing - Original Draft,

66 Writing - Review & Editing, Visualization, Supervision, Project administration

67

68 Acknowledgements

69 The authors thank the members of the working group on RSV at the German National

70 Immunisation Technical Advisory Group called 'Standing Committee on Vaccination' (STIKO) as

71 well as the STIKO Secretariat at RKI for helpful comments. We thank Ulrich Reinacher (RKI) for

72 the technical support in getting the dynamic transmission model running at RKI. We are grateful

73 for all staff and colleagues who tirelessly continue collecting the hospital and sentinel
74 surveillance data. The views expressed in this paper are exclusively those of the authors.

75

76 **Abstract**

77 **Background**

78 Recently, several novel RSV immunisation products that protect infants and older adults against
79 RSV disease have been licensed in Europe. We estimated the effectiveness and efficiency of
80 introducing these RSV immunisation strategies in Germany.

81

82 **Methods**

83 We used a Bayesian framework to fit an age-structured dynamic transmission model of RSV to
84 sentinel surveillance and RSV-specific hospitalisation data in Germany from 2015-2019. The
85 calibrated model was used to evaluate different RSV intervention strategies over five years:
86 long-acting, single-dose monoclonal antibodies (mAbs) in high-risk infants aged 1-5 months;
87 long-acting mAbs in all infants aged 1-5 months; seasonal vaccination of pregnant women and
88 one-time seasonal vaccination of older adults (75+/65+/55+ years). We performed sensitivity
89 analysis on vaccine uptake, seasonal vs. year-round maternal vaccination, and the effect of
90 under-ascertainment for older adults.

91

92 **Results**

93 The model was able to match the various RSV datasets. Replacing the current short-acting
94 mAB for high-risk infants with long-acting mAbs prevented 1.1% of RSV-specific hospitalisations
95 in infants per year at the same uptake. Expanding the long-acting mAB programme to all infants
96 prevented 39.3% of infant hospitalisations per year. Maternal vaccination required a larger

97 number to be immunised to prevent one additional hospitalisation than a long-acting mAB for
98 the same uptake. Vaccination of adults older than 75 years at an uptake of 40% in addition to
99 Nirsevimab in all infants prevented an additional 4.5% of all RSV-hospitalisations over five
100 years, with substantial uncertainty in the correction for under-ascertainment of the RSV burden.

101

102 Conclusions

103 Immunisation has the potential to reduce the RSV disease burden in Germany.

104

105 Keywords

106 Immunisation, mAb, mathematical modelling, RSV, strategy

107

108 Introduction

109

110 Respiratory syncytial virus (RSV) infection is a major health problem globally and can cause
111 severe disease in infants and older adults. Annually, an estimated 3.6 million children globally
112 are admitted to hospital for RSV-associated lower respiratory tract infection and over 100,000
113 die ¹. In high-income countries, almost half a million adults aged 60 years or older are estimated
114 to be hospitalised each year due to RSV ². In Germany, the annual hospitalisation rate in <2
115 year-olds is at least 28.6 per 1000 population ³ (almost 46,000 infants per year). For older
116 adults, the estimated hospitalisations are ~5,400 per year in 65-74-year-old and ~14,000 in 75
117 years and older ⁴, although these numbers may underestimate the true disease burden due to
118 underdiagnosing of RSV in older adults.

119

120 For infants, the current strategy for RSV prevention relies on the monoclonal antibody
121 Palivizumab, which is administered as a series of up to five injections in one-month intervals
122 during RSV seasons. In Germany, Palivizumab has been indicated since 2002 for use in young
123 infants with high risk of severe disease (born before gestational week 35, and younger than 6
124 months at the beginning of the season, and infants up to 2 years born with bronchopulmonary
125 dysplasia (BPD) or congenial heart disease (CHD))⁵. Until recently, no other product was
126 available to protect infants or adults from RSV.

127
128 In 2023, a novel long-lasting monoclonal antibody, Nirsevimab (Beyfortus®), as well as a
129 maternal vaccine, Abrysvo®, have been licensed in the EU for the prevention of RSV.
130 Nirsevimab is given as a single dose in early infancy and has been shown to prevent about 70-
131 80% of RSV-associated hospital admissions in healthy young children, including those born
132 prematurely, for the first 150 days after immunisation⁶⁻⁸. Abrysvo® is administered during
133 pregnancy and was found to have a 70% efficacy in preventing severe medically attended RSV-
134 associated lower respiratory tract diseases in term born infants in the first 180 days of life⁹.
135 Abrysvo® is also licensed to immunise older adults, together with another vaccine, Arexvy®.
136 Both showed vaccine efficacy (VE) of at least 66% against lower respiratory tract infection
137 (LRTI)^{10,11}, and an continued effect into the second season after administration^{12,13}.

138
139 In this study, we used mathematical modelling to synthesize evidence on the RSV-associated
140 burden of disease in Germany and used this framework to estimate the potential impact of
141 different RSV immunisation strategies, which use these newly available products to prevent
142 RSV disease in young children and older adults.

143

144 Methods

145 RSV burden estimates

146 Sentinel surveillance data from primary care providers

147 We used data from the ‘Arbeitsgemeinschaft Influenza’ (AGI), which is a sentinel network for
148 acute respiratory infections (ARI) in a primary care setting. This sentinel network of around 700
149 paediatricians and general practitioners covers about 1% of the population of Germany.
150 Participating physicians report the number of cases with ARI. A proportion of these cases are
151 swabbed (nasal or nasopharyngeal) and tested through PCR for various respiratory viruses
152 including RSV. For this study, we used only the weekly number of laboratory-confirmed RSV
153 cases, which were originally stratified by broad age groups (<1 year, 1-2 years, 2-4 years, 5-14
154 years, 15-34 years, 35-49 years, 50-59 years, 60+ years). Due to the small numbers in the
155 individual age groups, we fit the model to the total of the weekly cases as well as to the
156 proportional distribution of the different age groups (over all time points).

157 Hospitalisation data

158 We also used RSV-specific hospitalisation data from the largest health insurance company in
159 Germany, the ‘Techniker Krankenkasse’ (TK). The data comprise all insurance claims submitted
160 to TK between 2015–2019 in an inpatient setting and with an RSV-specific ICD10 code as the
161 main or secondary diagnosis. The selected RSV-specific ICD-10 codes were J12.1, 20.5, J21.0,
162 B97.4. The data were stratified by 25 age groups to match the age structure in the model (see
163 model structure). The hospitalisation case data were extrapolated to the total population of
164 Germany adjusting for the different coverages by TK in the different age groups. For the fitting,
165 the final dataset was aggregated twofold. First, we summed the hospitalizations over all age
166 groups and fitted it by quarter and year, and second, we summed the hospitalisations over time
167 and fitted the proportional distribution of the age group.

168 Intensive care unit (ICU) and in-hospital mortality data

169 To quantify ICU stays and in-hospital mortality, we sourced routinely collected hospitalisation
170 data from the ‘Institut fuer das Entgeltsystem im Krankenhaus’ (InEK). We used primary
171 diagnosis codes of yearly RSV-specific admissions to all hospitals in Germany in 2019-2023 to
172 estimate age-specific hospitalisation-ICU and hospitalisation-mortality ratios. These are used as
173 scaling factors for a more refined quantification of disease burden from our dynamic
174 transmission model (for details see supplement).

175 Seroconversion data

176 For a better calibration of the model in the infant age groups, we additionally used
177 seroconversion data from a cross-sectional seroprevalence study in the Netherlands (named
178 “Pienter”).¹⁴ These data were aggregated in monthly age groups for months 0-11 and the
179 proportion of not-yet-seroconverted individuals was calculated.

180 Under-ascertainment of RSV hospitalisations in older adults

181 RSV is strongly underdiagnosed in older adults¹⁵. We therefore assumed that the RSV-specific
182 hospitalisations only represent a small fraction of the true burden. To account for under-
183 ascertainment, we multiplied the RSV-specific hospitalisations in older adults simulated in the
184 vaccination strategies with a scaling factor to estimate the true burden (for details see
185 supplement). The scaling factor was estimated as the ratio of age-specific published RSV-
186 related hospitalisations and our age-specific model-derived hospitalisations.

187

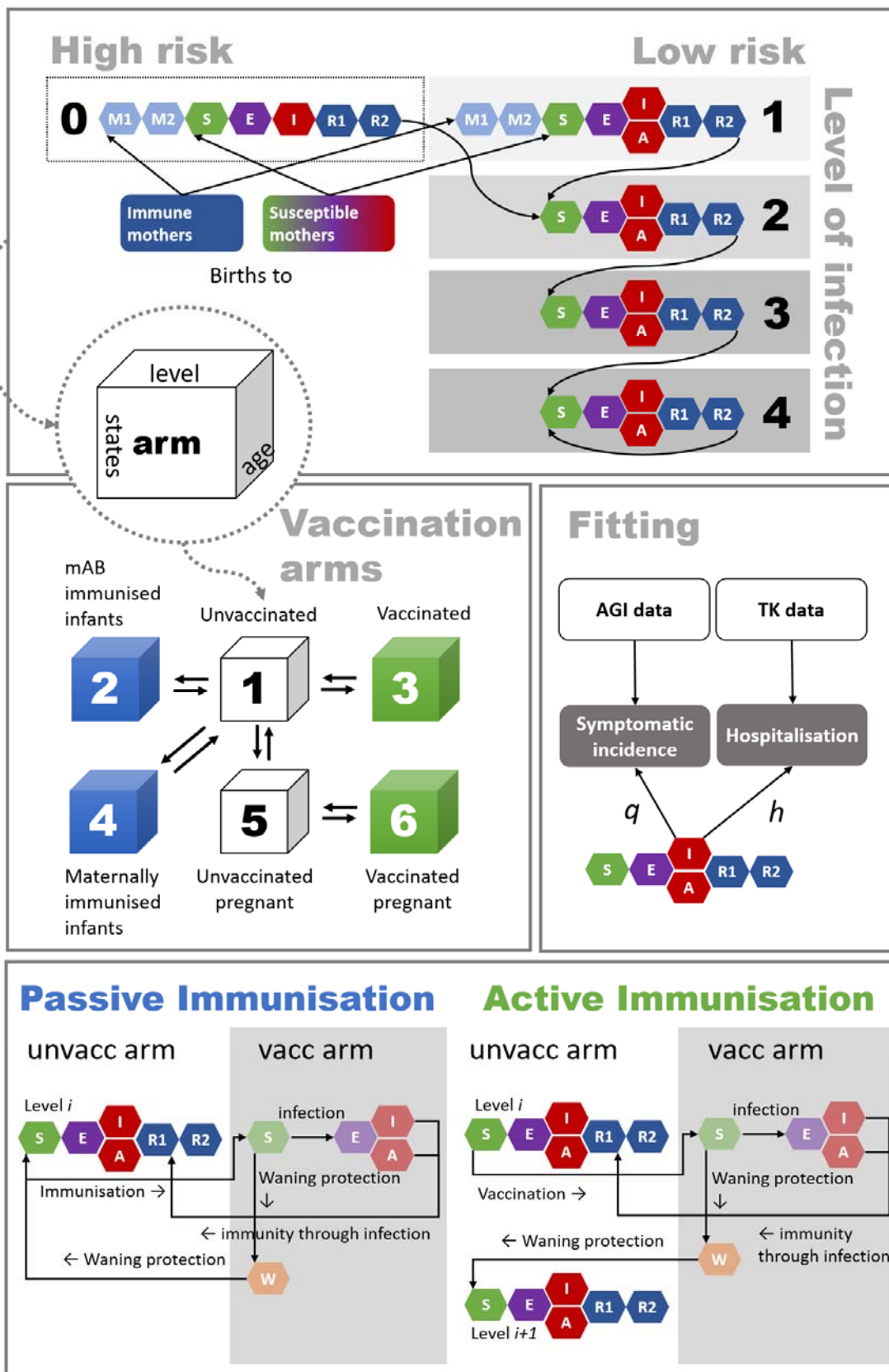
188 Model structure

189 We defined a deterministic compartmental ODE model stratified by age, number of past RSV
190 infections and immunisation status (Fig. 1). For the full list of equations, see supplementary
191 tables S2-S8. The 25 age groups include monthly age groups for up to one year, yearly age

192 groups for up to 5 years, 5-year intervals for up to 15 years and 10-year intervals for 15+ year-
193 old. The epidemiological states in the model represent maternal immunity after birth (M),
194 susceptibility (S), latent infection (E), symptomatic infectiousness (I), asymptomatic
195 infectiousness (A) and temporary but full immunity (R). To allow for realistic durations of
196 immunity, we split the maternal and immune/recovered compartments (M1, M2, R1, R2) and
197 divided the corresponding rates by 2 to allow for an Erlang distributed duration of immunity.
198 Susceptible individuals become infected (S -> E) and symptomatically (E -> I) or
199 asymptotically (E -> A) infectious, and recover with temporary but full immunity (I or A -> R1 -
200 > R2). After waning of immunity, they can become susceptible again (R2 -> S). Infants are born
201 with maternal protection from infection (M1) if the mother was immune during the third trimester,
202 otherwise infants are born unprotected (S). Maternal immunity (M1, M2) is considered full
203 protection against infection during a short time period. The model also comprises 6 mutually
204 exclusive immunisation status arms: non-immunised/unvaccinated individuals (1), infants
205 immunised with mAbs (passive immunisation) (2), vaccinated individuals (active immunisation)
206 (3), infants immunised through maternal vaccination (passive immunisation) (4), unvaccinated
207 pregnant women in the third trimester (5), vaccinated pregnant women in the third trimester
208 (active immunisation) (6). The immunisation status arms also have a W compartment to allow
209 for waning of immunity after vaccination or mAbs. Individuals move between age groups, states,
210 levels and arms at rates specified in supplementary tables S9-S12. For a detailed description of
211 the structure, see supplement. All analyses were performed in the programming languages Julia
212 and R. Simulated model outputs (such as numbers of hospitalisations) are summarised by
213 median and 2.5th and 97.5th percentile of the prediction interval (PI), marginal posterior
214 estimates are summarised as median and 95% credible intervals (CrI). All code is available in a
215 public GitHub repository (<https://github.com/fkrauer/RSV-VACC-DE>).
216
217

218 Model assumptions

- 219 - Individuals have 4 levels (1-4) of infection with decreasing susceptibility (i.e. increasing
220 immune memory) after each re-infection. The number of levels of infection was chosen
221 to match prior RSV models ^{16,17}. Further reinfections are possible in the model but do
222 not lead to additional immunity.
- 223 - A proportion of all infants are considered high risk (≤ 35 weeks gestational age, BPD,
224 CHD) and are born into an extra level 0 (high risk, first infection), the rest are born into
225 level 1 (low risk, first infection).
- 226 - High-risk infants have maternal immunity when born to mothers who were recently
227 infected, but the duration of maternal protection is reduced by 50% compared to low-risk
228 infants ¹⁸.
- 229 - High-risk infants also have a 3 times higher risk of hospitalisation in the first year of life
230 than low-risk infants ¹⁹⁻²², and do not experience asymptomatic infection. After the first
231 infection, high risk infants progress to the regular, second level of reinfection.
- 232 - The immunisation products do not prevent infection but reduce the risk of symptomatic
233 disease and hospitalisation with efficacy estimates based on clinical trials.
- 234 - After the protection from an immunisation product wanes, individuals move back to the
235 unvaccinated arms to either the same level of infection (for passive immunisation, i.e. no
236 gain of immunity) or the next level of infection (for active immunisation, i.e. gain of
237 immunity).
- 238 - Passive immunisation through maternal vaccination is assumed to initially lead to full
239 protection against infection with the same duration as immunity from maternal infection,
240 followed by a period of reduced probability of hospitalisation. In pre-term infants,
241 maternal immunisation is assumed to have no additional effect besides the 50% reduced
242 immunity of high risk infants.



244 **Figure 1. Model structure of RSV transmission and disease progression, and**
245 **mechanisms of immunisation.**

246

247 Model fitting

248 The fitted model represents RSV epidemiology in Germany during the RSV seasons 2015-2019,
249 when Palivizumab was given seasonally to high risk infants in months 1-5 of their life and with
250 up to 5 monthly doses. For computational reasons, we assumed exponential waning of the
251 protective effect of Palivizumab in the short interval between doses. The model was fitted to five
252 datasets:

- 253 - Weekly incident outpatient cases, unstratified (“AGI”)
- 254 - Proportional distribution of the age groups among the incident outpatient cases (“AGI”)
- 255 - Quarterly hospitalisations, unstratified (“TK”)
- 256 - Proportional distribution of the age groups among the hospitalisations (“TK”)
- 257 - Proportion of not-yet-seroconverted (“Pienter”)

258

259 The weekly and quarterly time series data were fitted assuming a Negative-Binomial likelihood,
260 the age distributions were fitted assuming a multinomial likelihood, the seroconversion data was
261 fitted assuming a binomial likelihood. The total likelihood was calculated as the product of the
262 individual likelihoods (see supplement for more details).

263

264 Immunisation strategies

265 In consultation with the working group of RSV at the German National Immunization Technical
266 Advisory Group (“STIKO”), we modelled different RSV immunisation strategies (see Table 1).
267 We considered two monoclonal antibodies (Palivizumab and Nirsevimab) for infants as well as a
268 maternal and an elderly protein-based vaccine. We used the published estimates for VE and

269 duration of protection for all immunisation products from clinical trials, and adjusted them for use
270 in our model (see supplement text and table S12). The adjustment ensured that the average VE
271 observed in the trial time period matched the average VE in the model resulting from an Erlang-
272 2 distributed waning of protection. All strategies were modelled over a time horizon of five years.
273 It was not possible to model a sequential roll-out of vaccination, instead we assumed that all
274 eligible individuals could be immunised at the beginning of the season or as soon as they age
275 into the eligible age group during the immunisation period.

276 Infant RSV immunisation: Monoclonal antibodies and maternal vaccination

277 Infants are immunised seasonally from November to March with mAbs (both short and long-
278 acting) in months 1-5 of their life (but not in the first 30 days of life) to reflect the current situation
279 with Palivizumab where the median age at first injection is at 3.2 months (25th percentile 1.8
280 months, 75th percentile 5.5)²³. The maternal vaccine is modelled to be given seasonally from
281 November to March to a proportion of pregnant people in the third trimester (25 to 45-year old
282 women). The infant strategies were compared to the current base strategy (0).

283 RSV vaccination of older adults

284 The vaccine in older adults is modelled to be given seasonally from October to February to
285 individuals aged 75+, 65+, or 55+ year olds. Since there is currently no evidence of the
286 effectiveness of booster doses, we modelled this strategy as a one-time single dose (rather than
287 seasonally repeated like the influenza vaccine for example). In the first simulated year, all
288 available individuals in the targeted age group are vaccinated simultaneously at the beginning of
289 the year, after that only individuals ageing into the eligible age groups are vaccinated. RSV-
290 specific hospitalisations in older adults were scaled up to account for under-ascertainment (see
291 supplement). In addition to vaccinating older adults, we assumed that all infants aged month 1-5
292 were given Nirsevimab. The older adult strategies were thus compared to the infant strategy 2
293 (only Nirsevimab for all infants).

294

295 Table 1: **Overview of strategies** of potential RSV immunisation strategies investigated for
 296 Germany.

Strategy vs. comparator	Immunisation strategy	RSV intervention and eligible population	Assumed uptake
0 (current)	Short-acting mAbs in high-risk infants	Palivizumab; high-risk infants aged 1-5 months; seasonal	90%
1 vs. 0	Long-acting mAbs in high-risk infants	Nirsevimab, high-risk infants aged 1-5 months; seasonal	90%
2 vs. 0	Long-acting mAbs in all infants	Nirsevimab, infants aged 1-5 months ^{**} ; seasonal	70% [*]
3 vs. 0	Maternal vaccination & Palivizumab in high risk infants	Vaccine, pregnant women aged 25-45 years; seasonal	40% ^{**}
4 vs. 2	Older adult vaccination & Nirsevimab in all infants	Vaccine, single dose, adults aged 75+ years, administered during the season	40% ^{**}
5 vs. 2	Older adult vaccination & Nirsevimab in all infants	Vaccine, single dose, adults aged 65+ years, administered during the season	40% ^{**}
6 vs. 2	Older adult vaccination & Nirsevimab in all infants	Vaccine, single dose, adults aged 55+ years, administered during the season	40% ^{**}

297 * Similar to Rotavirus/MenC vaccination in children in Germany.

298 ** Similar to Pertussis vaccination in pregnant women or Influenza vaccination in older adults in
 299 Germany.

300

301 Sensitivity analysis

302 We performed multiple additional sensitivity analyses to investigate the effect of central
 303 assumptions and certain specifications regarding the different immunisation strategies. First, we
 304 investigated the effect of varying the uptake for Nirsevimab in all infants and for the maternal
 305 vaccination. Second, we compared the effects of a seasonal maternal vaccination programme
 306 to a year-round strategy. For the older adult vaccination, we investigated different ages of
 307 eligibility and the under-ascertainment scaling factor, which we varied from 1 to 15.

308 Results

309

310 Model calibration

311 The model was able to fit the different datasets (Fig. 2): it replicated the seasonal pattern both in
312 hospitalisations (Fig 2A) and outpatient numbers (Fig. 2C). Reported RSV hospitalisations at
313 peak were lower in the first three seasons than in the last, which was not fully reflected in the
314 model. The hospitalisation incidence in the last season however was matched well. Similarly,
315 during 2016–19 there was an apparent biennial pattern in the number of outpatient RSV cases
316 reported which was not replicated by the model (Fig. 2C), however the model matched the
317 average seasonal pattern well. The symptomatic outpatient visits and the hospitalisation
318 incidences by age group were not directly fitted (only indirectly through the proportion of cases
319 in the individual age groups), but the model was still able to match these time series (Fig. S8).
320 Model diagnostics confirmed that all chains converged (Fig. S9). The marginal posterior
321 estimates are given in table S13.

322

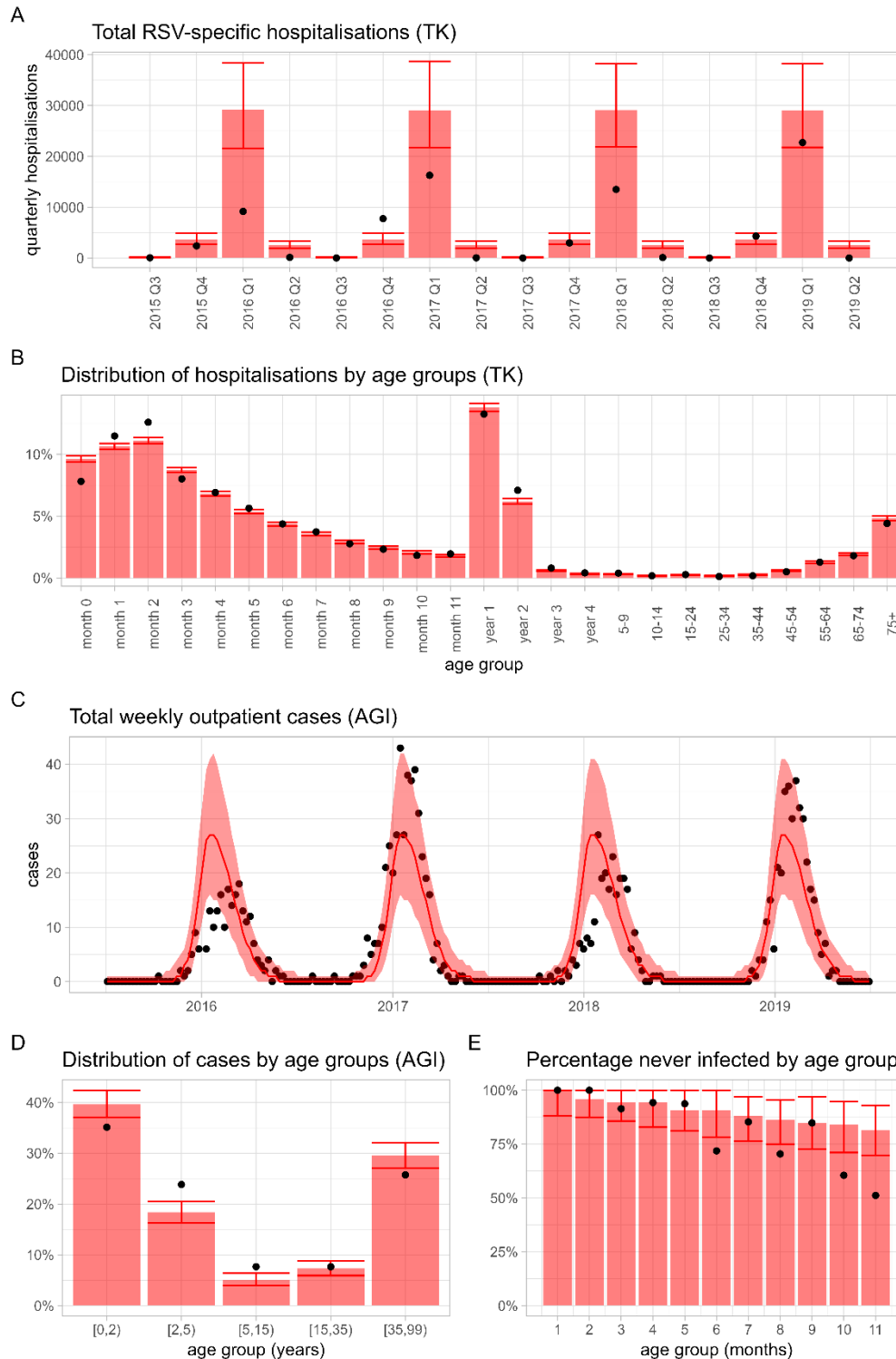
323 Current disease burden

324 We find that with the current RSV prevention strategy (Palivizumab for high risk infants), on
325 average 12.5 million symptomatic cases, at-least 35,800 RSV-specific hospitalisations, 2600
326 intensive care (ICU) cases and 213 RSV-specific deaths occur in Germany each year in all age
327 groups together (not accounting for under-ascertainment) (for age-specific estimates see
328 supplementary table S14). 10.0-11.4 % of all hospitalisations in infants occur in high risk
329 individuals. The probability of hospitalisation in high risk infants was estimated as 100% in the
330 first three months of life but decreasing to 15% at month 11 (Fig. S10).

331

332 Under-ascertainment in older adults

333 The comparison of published hospitalisation rates with our model derived estimates suggest
334 that the RSV-specific ICD-10 codes underestimate the true burden in older adults of 55+ years
335 by a factor 8 - 14 (Fig. S11). For older adults we thus scaled the hospitalisations and ICU
336 admissions by a factor of 8 (strategies 1-3) or 8 and 14, respectively (strategies 4-6).



337

338 **Figure 2. Fitting results of the dynamic transmission model to the data using Bayesian**
 339 **inference.** The plots show the median model prediction and the 95% posterior prediction
 340 intervals (PPI) (red ribbon or error bar) compared to data (black points). The model was fitted to
 341 German RSV-specific hospitalisation data (TK, Fig. 2A, 2B), German sentinel outpatient RSV
 342 cases (AGI, Fig. 2C, 2D) and seroconversion data from the Netherlands in <1 year olds (2E).

343

344 Immunisation strategies to protect infants

345 Our results indicate that switching from Palivizumab to Nirsevimab for high-risk infants aged 1-5
346 months (strategy 1) would prevent only median 288 (95% PI 275-301) RSV-specific
347 hospitalisations annually in all age groups (Figure 3A), corresponding to 0.79% of all RSV-
348 specific hospitalisations (Fig. 3B) and 1.1% of all hospitalisations in <1 year old under the
349 current strategy. This strategy prevents also 20 (95% PI 19-21) ICU cases (1.1% of infants in
350 the ICU).

351

352 Expanding the eligibility for Nirsevimab to all infants aged 1-5 months with an assumed uptake
353 of 70% (strategy 2) prevents a median of 10,090 (95% PI 9556 - 10561) RSV-specific
354 hospitalisations annually as well as 702 (95% PI 663-738) ICU cases compared to the current
355 standard of care (Fig. 3A). This corresponds overall to a relative reduction of median 17.3%
356 (95% PI 17.1-17.5) of all hospitalisations and ICU admissions and 39.3% (95% PI 39.1-39.5%)
357 of hospitalisations and ICU admissions in infants <1 year. Under this strategy, 42 (95% 41-48)
358 infants would need to be immunised in addition to how many are immunised in the current
359 strategy to prevent one hospitalisation (number needed to vaccinate, NNV), and 609 (95% PI
360 579-645) to prevent one ICU case (Figure 3C).

361

362 Seasonal vaccination of pregnant women with an assumed uptake of 40% (strategy 3) was
363 estimated to prevent on average 3,259 (95% PI 3,075 – 3,489) hospitalisations per year, and
364 227 (95% PI 215-245) ICU cases (Fig. 3A), with a NNV of 63 (95% PI 58-66) per prevented
365 hospitalisation and 895 (832-948) per ICU case. Overall, this corresponds to a relative reduction
366 of 5.6% of all hospitalisations (95% PI 5.3-5.9), and to a relative reduction of 12.9% (95% PI
367 12.2-13.7%) of hospitalisations and ICU cases in <1 year olds.

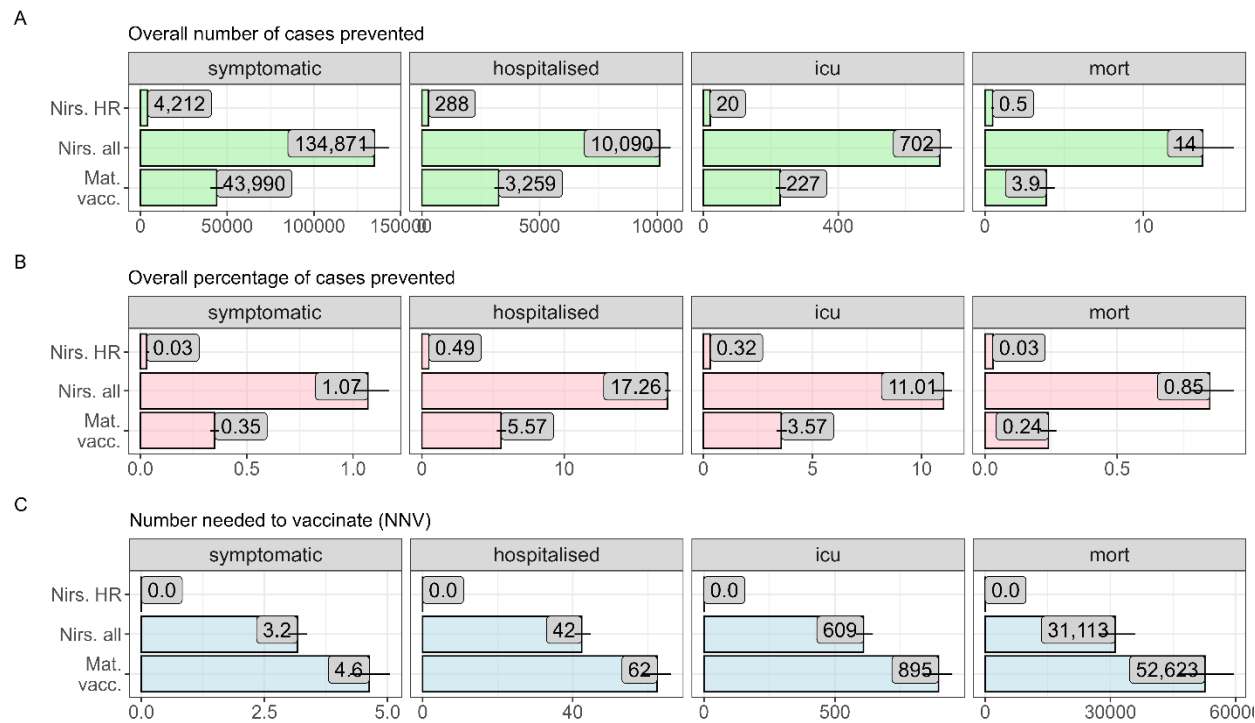
368

369 For all infant immunisation strategies, the reduction in disease burden resulted mostly from
370 direct protection among immunised individuals with small indirect effects because of the
371 reduced number of symptomatic infected in the population. Furthermore, the effect of the infant
372 immunisation was stable over the 5 year simulation period for any strategy (fig. S16). The
373 prevented number of cases by age group and strategy over the five years are shown in
374 supplementary figures S12-S15.

375

376 Our sensitivity analyses showed that the impact of an immunisation strategy changes
377 proportionally with immunisation uptake because of the limited indirect effects (Fig. S17). We
378 also observed that the seasonal Nirsevimab strategy for all infants aged 1-5 months prevents
379 substantially more cases than the seasonal maternal vaccination for the same uptake. This is
380 due to the circumstance, that infants born before the start of the RSV-season and who are
381 within the target age band during the season are still being immunised with mAbs, while these
382 same infants could not be passively immunised with a maternal vaccine during the season
383 (because they are already born before the season). Hence, seasonal immunisation with mAbs
384 always has the advantage of a larger reach than seasonal maternal vaccination for any uptake
385 level. We also found that year-round maternal vaccination could prevent additional RSV burden
386 but that it has a reduced efficiency (i.e. a higher NNV) compared to a seasonal programme
387 (Supplementary Figure S18).

388



389

390 **Figure 3: Forward-simulation results for the infant RSV immunisation strategies in**
 391 **Germany over five years compared to the base strategy (Palivizumab for high risk**
 392 **infants).** The panels show the overall average number of cases prevented (A), the percentage
 393 of cases prevented (B) and the number needed to vaccinate (NNV) (C). The numbers represent
 394 the prediction medians, the horizontal lines the 95% prediction interval.
 395

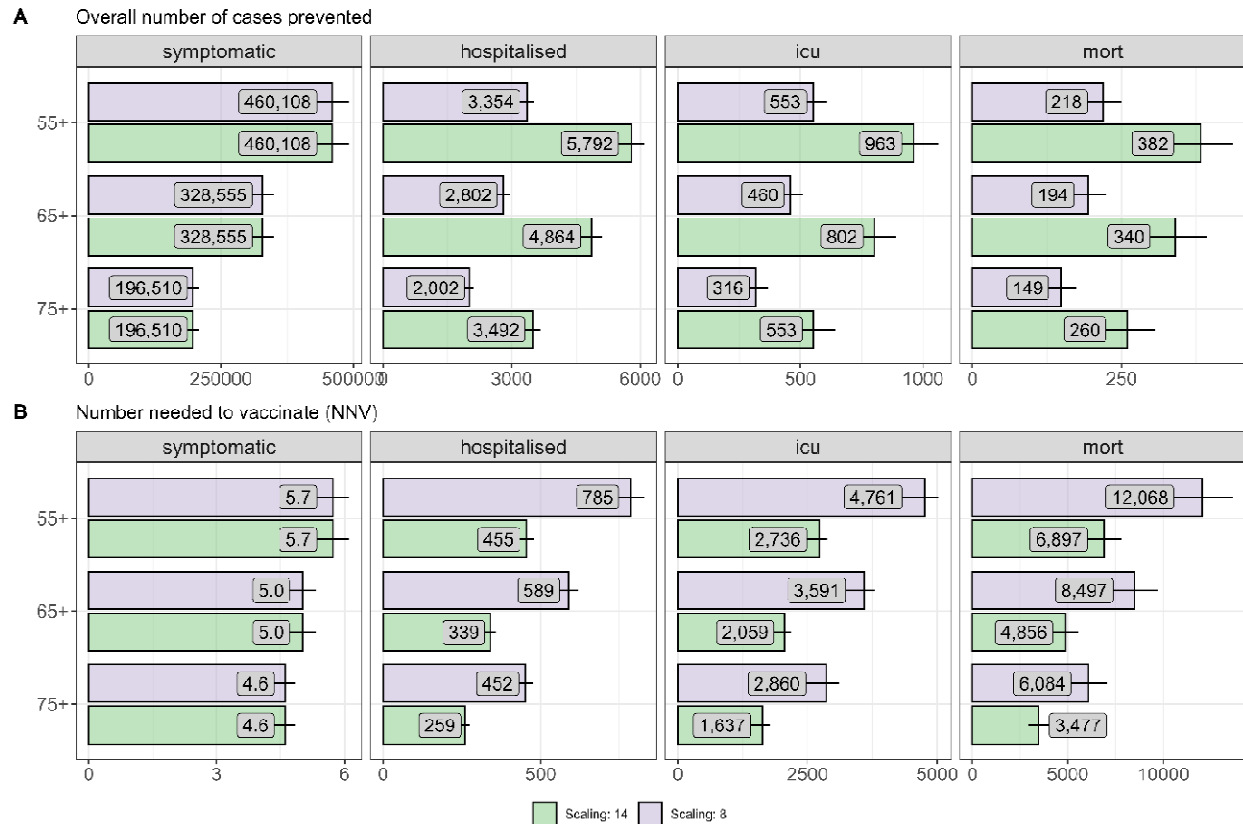
396 Immunisation strategies to protect older adults

397 Depending on the assumed under-ascertainment of RSV-related hospital admissions,
 398 vaccinating older adults aged 75+ years at 40% uptake in addition to immunising all infants with
 399 Nirsevimab at 70% uptake (strategy 5) was estimated to prevent between an annual mean of
 400 2,002 and 3,492 RSV hospitalisations and 319-557 ICU cases additionally in the first five years
 401 after introducing the vaccination (Figure 5A). This corresponds to 259-452 additional
 402 immunisations needed to prevent one RSV-associated additional hospitalisation, and 1,625-
 403 2,840 to prevent one additional ICU case (Figure 5B). Vaccinating all individuals aged 65+ once
 404 in the first season followed by vaccinating all individuals turning 65 in the following seasons (in
 405 addition to Nirsevimab for all infants, strategy 4) prevented slightly more cases (2802-4864) but
 406 also requires a larger NNV to prevent one additional hospitalisation (339-589). Overall, we

407 found that the impact and efficiency of the RSV immunisation programme decreases
408 substantially in these age groups (Figure 5A/B) due to a roughly 4 times higher burden of
409 disease in 75+ compared to 55-64-year-old. The absolute reduction in disease burden through
410 vaccination in older adults is largely explained through direct protection in the immunised
411 individuals although there is also a small reduction in disease burden in other non-immunised
412 age-groups when a large share of the older adult population is protected from symptomatic
413 disease during the first simulated years (Figs. S19-S22). The overall reduction of disease
414 burden from the simulated one-time vaccination strategy is mostly driven by effects in the first
415 simulation year when the largest share in the older adult population is protected. It drops
416 substantially in simulation years 3-5 when only individuals who newly age into the target age
417 group are vaccinated (Fig. S16). A repeated seasonal vaccination after a specified time would
418 lead to a larger decrease in the burden, but this was not modelled here since there is no safety
419 or efficacy data on booster vaccination.

420

421



422

423 **Figure 4: Forward-simulation results for the single dose vaccination of older adults over**
 424 **five years in addition to Nirsevimab for all infants, compared to a base strategy of no**
 425 **adult vaccination (only Nirsevimab for all infants).** The panels represent the annual average
 426 number of prevented symptomatic cases (A), the percentages prevented (B) and the
 427 corresponding numbers needed to vaccinate (C). The numbers represent the prediction
 428 medians, the horizontal lines represent the 95% prediction intervals. Under-ascertainment of
 429 adult RSV-hospitalisations was accounted for by scaling the RSV-specific hospitalisations with
 430 two different scaling factors: 8 and 14 (purple/green).

431 Discussion

432 This study estimated the potential impact of the recently-licensed RSV immunisation products
 433 on the RSV disease burden in Germany. We found that changing the current programme for
 434 high-risk infants from a short-acting, multi-dose mAB (Palivizumab) to a long-acting, single-dose
 435 mAB (Nirsevimab) would reduce the burden of disease in addition to the logistical benefits of
 436 administering only a single dose. Expanding eligibility for Nirsevimab to all infants aged 1-5
 437 months prevented a further 18% of RSV-related hospitalisations annually, despite limited
 438 indirect effects of immunisation. However, compared to other childhood vaccines, the number

439 needed to immunise to prevent a single death was high due to the relatively low mortality of
440 RSV in this age group. Maternal vaccination would need to achieve a much larger uptake than
441 Nirsevimab to have an impact comparable to Nirsevimab for all infants. We also found that in
442 older adults vaccination in addition to Nirsevimab for all infants could prevent an additional
443 substantial disease burden, although the precise extent of that burden in Germany is not well
444 defined due to under-ascertainment. One of the main drivers of the differences in the projected
445 impact of the strategies for RSV prevention in infants was the assumption that administration of
446 Nirsevimab to all infants would achieve substantially higher coverage than maternal vaccination.
447 Recent experience in Spain has shown an average uptake of 72%²⁴, which suggests our
448 assumption may have been realistic. Higher coverage of maternal vaccination for RSV may be
449 achieved that could substantially reduce the difference in impact compared to mAbs.

450
451 The passive protection provided to infants largely disappears within 6-8 months, requiring
452 administration just before the RSV season to optimise the impact. This is particularly
453 challenging for a maternal vaccination programme as the anticipated duration of immunity is
454 shorter than with Nirsevimab. In the UK, seasonal administration was deemed too challenging
455 logistically, for Germany there are no preferences yet. As observed during the COVID-19
456 pandemic, RSV seasonality can also be disturbed by external factors^{25,26}, which potentially
457 pose additional challenges for a seasonal RSV programme.

458
459 While we found that RSV vaccination in older adults could be effective, there is much
460 uncertainty in the underlying disease burden. RSV-associated hospitalisations were estimated
461 based on ICD10 codes with RSV-specific case definitions and then adjusted for under-reporting
462 based on the assumption that in older adults only one in 8 to 14 RSV cases was diagnosed as
463 such during the time period of the empirical data that were used. Moreover, there is residual
464 uncertainty with regards to the duration of protection from the vaccines in this age group.

465 Recent evidence suggests that a substantial amount of the protection is carried over into the
466 second season,²⁷ which could make vaccine administration less time sensitive. However, the
467 number of doses needed has not been determined yet.

468
469 The modelling framework allowed us to synthesise diverse pieces of evidence on the
470 epidemiology of RSV in Germany and reflect its uncertainty while quantifying the likely impact of
471 different immunisation strategies. The project was conceived with sufficient lead time to allow for
472 regular stakeholder input into model design and parameterisation. In 2024, the model has been
473 used as part of the evidence-gathering process for the STIKO deliberations on RSV
474 immunisation strategies.

475
476 In our analyses, we focused solely on the benefits of vaccination without considering potential
477 risks. While all products assessed here have been licensed and thus deemed by regulatory
478 authorities safe and effective to use, an increase in premature delivery has been reported from
479 Phase III trial after maternal vaccination. The increase was observed only in low- and middle-
480 income countries (i.e. not in high-income countries), and there was no observed increase in
481 mortality. Nevertheless, this may support a more cautious approach e.g. by restricting its use to
482 later in the pregnancy, as recommended in the USA²⁸. Additional studies will be required to
483 assess the validity of the safety signal and to quantify the risk. Our estimates of the benefits can
484 be considered conservative as we did not take into account secondary benefits that may arise
485 from an infant RSV immunisation programme, e.g. through the preservation of scarce bed
486 capacity in paediatric intensive care units²⁹ or the prevention of secondary bacterial pneumonia
487 or antibiotic prescribing³⁰. We also did not consider immunisation of infants in the first 30 days
488 of life due to the current late immunisation with Palivizumab. Including immunisation
489 immediately after birth will likely have an even larger impact on the prevention of cases. The
490 model did not account explicitly for older individuals in high-risk groups or residents in long-term

491 care facilities, who could also be considered a specific target group for vaccination to
492 vaccination against other respiratory pathogens³¹. Lastly, we assessed the likely impact of
493 RSV immunisation in Germany with the underlying assumption that as of 2024 RSV
494 epidemiology will have largely reverted to pre-pandemic dynamics. As in many other countries,
495 RSV epidemiology in Germany has been heavily perturbed by the Covid19 pandemic. In
496 addition, RSV became notifiable only as of July 2023, making it difficult to interpret post-
497 pandemic changes in RSV incidence due to the enhanced sensitivity of surveillance. However,
498 a number of countries have reported return to pre-pandemic RSV epidemiology in the last year,
499 which supports our modelling assumption of regular RSV dynamics³².

500 Conclusions

501 We find that all three newly available immunisation products against RSV disease have
502 substantial scope to improve health in Germany. The relative merits of the products will depend
503 on yet-uncertain factors, including achievable uptake, the ability to overcome logistical
504 challenges in seasonal administration, the exact burden of disease and the cost of the products.
505

506 References

- 507 1. Li Y, Wang X, Blau DM, Caballero MT, Feikin DR, Gill CJ, et al. Global, regional, and
508 national disease burden estimates of acute lower respiratory infections due to respiratory
509 syncytial virus in children younger than 5 years in 2019: a systematic analysis. *The Lancet*.
510 2022 May 28;399(10340):2047–64.
- 511 2. Savic M, Penders Y, Shi T, Branche A, Pirçon JY. Respiratory syncytial virus disease
512 burden in adults aged 60 years and older in high-income countries: A systematic literature
513 review and meta-analysis. *Influenza Other Respir Viruses*. 2023 Jan;17(1):e13031.
- 514 3. Wick M, Poshtiban A, Kramer R, Bangert M, Lange M, Wetzke M, et al. Inpatient burden of
515 respiratory syncytial virus in children ≤ 2 years of age in Germany: A retrospective
516 analysis of nationwide hospitalization data, 2019–2022. *Influenza Other Respir Viruses*.
517 2023 Nov 24;17(11):e13211.
- 518 4. Osei-Yeboah R, Spreeuwenberg P, Del Riccio M, Fischer TK, Egeskov-Cavling AM, Bøås
519 H, et al. Estimation of the Number of Respiratory Syncytial Virus–Associated

- 520 Hospitalizations in Adults in the European Union. *The Journal of Infectious Diseases*. 2023
521 Dec 1;228(11):1539–48.
- 522 5. Ärzteblatt DÄG Redaktion Deutsches. Bekanntmachungen: Therapiehinweis nach Ziffer 14
523 Arzneimittel-Richtlinien Palivizumab (z. B. Synagis™) [Internet]. Deutsches Ärzteblatt.
524 2002 [cited 2024 Mar 27]. Available from:
525 [https://www.aerzteblatt.de/archiv/30220/Bekanntmachungen-Therapiehinweis-nach-Ziffer-](https://www.aerzteblatt.de/archiv/30220/Bekanntmachungen-Therapiehinweis-nach-Ziffer-14-Arzneimittel-Richtlinien-Palivizumab-(z-B-Synagis-))
526 [14-Arzneimittel-Richtlinien-Palivizumab-\(z-B-Synagis-\)](https://www.aerzteblatt.de/archiv/30220/Bekanntmachungen-Therapiehinweis-nach-Ziffer-14-Arzneimittel-Richtlinien-Palivizumab-(z-B-Synagis-))
- 527 6. Hammitt LL, Dagan R, Yuan Y, Baca Cots M, Bosheva M, Madhi SA, et al. Nirsevimab for
528 Prevention of RSV in Healthy Late-Preterm and Term Infants. *New England Journal of*
529 *Medicine*. 2022 Mar 3;386(9):837–46.
- 530 7. Griffin MP, Yuan Y, Takas T, Domachowske JB, Madhi SA, Manzoni P, et al. Single-Dose
531 Nirsevimab for Prevention of RSV in Preterm Infants. *N Engl J Med*. 2020 Jul
532 30;383(5):415–25.
- 533 8. Drysdale SB, Cathie K, Flamein F, Knuf M, Collins AM, Hill HC, et al. Nirsevimab for
534 Prevention of Hospitalizations Due to RSV in Infants. *New England Journal of Medicine*.
535 2023 Dec 28;389(26):2425–35.
- 536 9. Kampmann B, Madhi SA, Munjal I, Simões EAF, Pahud BA, Llapur C, et al. Bivalent
537 Prefusion F Vaccine in Pregnancy to Prevent RSV Illness in Infants. *N Engl J Med*. 2023
538 Apr 20;388(16):1451–64.
- 539 10. Walsh EE, Pérez Marc G, Zareba AM, Falsey AR, Jiang Q, Patton M, et al. Efficacy and
540 Safety of a Bivalent RSV Prefusion F Vaccine in Older Adults. *N Engl J Med*. 2023 Apr
541 20;388(16):1465–77.
- 542 11. Papi A, Ison MG, Langley JM, Lee DG, Leroux-Roels I, Martinon-Torres F, et al.
543 Respiratory Syncytial Virus Prefusion F Protein Vaccine in Older Adults. *New England*
544 *Journal of Medicine*. 2023 Feb 16;388(7):595–608.
- 545 12. Pfizer Announces Positive Top-Line Data for Full Season Two Efficacy of ABRYSVO® for
546 RSV in Older Adults [Internet]. [cited 2024 May 15]. Available from:
547 [https://www.pfizer.com/news/press-release/press-release-detail/pfizer-announces-positive-](https://www.pfizer.com/news/press-release/press-release-detail/pfizer-announces-positive-top-line-data-full-season-two)
548 [top-line-data-full-season-two](https://www.pfizer.com/news/press-release/press-release-detail/pfizer-announces-positive-top-line-data-full-season-two)
- 549 13. GSK shares positive data for Arexvy, its respiratory syncytial virus (RSV) older adult
550 vaccine, indicating protection over two RSV seasons [Internet]. [cited 2024 May 15].
551 Available from: [https://www.gsk.com/en-gb/media/press-releases/gsk-shares-positive-data-](https://www.gsk.com/en-gb/media/press-releases/gsk-shares-positive-data-for-arexvy-its-respiratory-syncytial-virus-older-adult-vaccine-indicating-protection-over-two-rsv-seasons/)
552 [for-arexvy-its-respiratory-syncytial-virus-older-adult-vaccine-indicating-protection-over-two-](https://www.gsk.com/en-gb/media/press-releases/gsk-shares-positive-data-for-arexvy-its-respiratory-syncytial-virus-older-adult-vaccine-indicating-protection-over-two-rsv-seasons/)
553 [rsv-seasons/](https://www.gsk.com/en-gb/media/press-releases/gsk-shares-positive-data-for-arexvy-its-respiratory-syncytial-virus-older-adult-vaccine-indicating-protection-over-two-rsv-seasons/)
- 554 14. Andeweg SP, Schepp RM, van de Kasstele J, Mollema L, Berbers GAM, van Boven M.
555 Population-based serology reveals risk factors for RSV infection in children younger than 5
556 years. *Scientific Reports*. 2021 Apr 26;11(1):8953.
- 557 15. Rozenbaum MH, Begier E, Kurosky SK, Whelan J, Bem D, Pouwels KB, et al. Incidence of
558 Respiratory Syncytial Virus Infection in Older Adults: Limitations of Current Data. *Infect Dis*
559 *Ther*. 2023 Jun;12(6):1487–504.

- 560 16. Hodgson D, Pebody R, Panovska-Griffiths J, Baguelin M, Atkins KE. Evaluating the next
561 generation of RSV intervention strategies: a mathematical modelling study and cost-
562 effectiveness analysis. *BMC Med.* 2020 Nov 18;18(1):348.
- 563 17. Weber A, Weber M, Milligan P. Modeling epidemics caused by respiratory syncytial virus
564 (RSV). *Mathematical Biosciences.* 2001 Aug;172(2):95–113.
- 565 18. Atwell JE, Lutz CS, Sparrow EG, Feikin DR. Biological factors that may impair
566 transplacental transfer of RSV antibodies: Implications for maternal immunization policy
567 and research priorities for low- and middle-income countries. *Vaccine.* 2022 Jul
568 30;40(32):4361–70.
- 569 19. Hall CB, Geiman JM, Biggar R, Kotok DI, Hogan PM, Douglas GR. Respiratory syncytial
570 virus infections within families. *N Engl J Med.* 1976 Feb 19;294(8):414–9.
- 571 20. Gijtenbeek RGP, Kerstjens JM, Reijneveld SA, Duiverman EJ, Bos AF, Vrijlandt EJLE.
572 RSV infection among children born moderately preterm in a community-based cohort. *Eur*
573 *J Pediatr.* 2015 Apr;174(4):435–42.
- 574 21. Figueras-Aloy J, Manzoni P, Paes B, Simões EAF, Bont L, Checchia PA, et al. Defining the
575 Risk and Associated Morbidity and Mortality of Severe Respiratory Syncytial Virus Infection
576 Among Preterm Infants Without Chronic Lung Disease or Congenital Heart Disease. *Infect*
577 *Dis Ther.* 2016 Dec 1;5(4):417–52.
- 578 22. Boyce T, Mellen B, Mitchel E, Wright P, Griffin M. Rates of hospitalization for respiratory
579 syncytial virus infection among children in medicaid. *The Journal of pediatrics [Internet].*
580 2000 Dec [cited 2023 Jan 15];137(6). Available from:
581 <https://pubmed.ncbi.nlm.nih.gov/11113845/?dopt=Abstract>
- 582 23. Simon A, Gehrman S, Wagenpfeil G, Wagenpfeil S. Use of Palivizumab in Germany -
583 Report from the German Synagis™ Registry 2009 - 2016. *Klin Padiatr.* 2018
584 Sep;230(5):263–9.
- 585 24. López-Lacort M, Muñoz-Quiles C, Mira-Iglesias A, López-Labrador FX, Mengual-Chuliá B,
586 Fernández-García C, et al. Early estimates of nirsevimab immunoprophylaxis effectiveness
587 against hospital admission for respiratory syncytial virus lower respiratory tract infections in
588 infants, Spain, October 2023 to January 2024. *Eurosurveillance.* 2024 Feb
589 8;29(6):2400046.
- 590 25. Meslé MMI, Sinnathamby M, Mook P, Group TWERRN, Pebody R. Seasonal and inter-
591 seasonal RSV activity in the European Region during the COVID-19 pandemic from
592 autumn 2020 to summer 2022. *Influenza and Other Respiratory Viruses.*
593 2023;17(11):e13219.
- 594 26. Krauer F, Fjelde TE, Koltai M, Hodgson D, Treskova-Schwarzbach M, Harvey C, et al.
595 Estimating RSV seasonality from pandemic disruptions: a modelling study. *medRxiv.* 2022
596 Jan 1;2022.06.18.22276591.
- 597 27. Ison MG, Papi A, Athan E, Feldman RG, Langley JM, Lee DG, et al. Efficacy and Safety of
598 Respiratory Syncytial Virus (RSV) Prefusion F Protein Vaccine (RSVPreF3 OA) in Older
599 Adults Over 2 RSV Seasons. *Clinical Infectious Diseases.* 2024 Jan 22;ciae010.

- 600 28. Fleming-Dutra KE. Use of the Pfizer Respiratory Syncytial Virus Vaccine During Pregnancy
601 for the Prevention of Respiratory Syncytial Virus–Associated Lower Respiratory Tract
602 Disease in Infants: Recommendations of the Advisory Committee on Immunization
603 Practices — United States, 2023. *MMWR Morb Mortal Wkly Rep* [Internet]. 2023 [cited
604 2024 May 17];72. Available from:
605 <https://www.cdc.gov/mmwr/volumes/72/wr/mm7241e1.htm>
- 606 29. De Luca D, Sanchez-Luna M, Schettler K, Bont L, Baraldi E. Universal infant immunisation
607 against respiratory syncytial virus and European inequalities: the pandemics lesson has
608 not been learnt. *The Lancet Regional Health - Europe*. 2023 Nov 1;34:100753.
- 609 30. Feikin DR, Karron RA, Saha SK, Sparrow E, Srikantiah P, Weinberger DM, et al. The full
610 value of immunisation against respiratory syncytial virus for infants younger than 1 year:
611 effects beyond prevention of acute respiratory illness. *Lancet Infect Dis*. 2024
612 May;24(5):e318–27.
- 613 31. Empfehlungen der Ständigen Impfkommision beim Robert Koch-Institut 2024. *Epid Bull*
614 [Internet]. (4). Available from:
615 [https://www.rki.de/DE/Content/Infekt/EpidBull/Archiv/2024/Ausgaben/04_24.pdf?__blob=p
616 ublicationFile](https://www.rki.de/DE/Content/Infekt/EpidBull/Archiv/2024/Ausgaben/04_24.pdf?__blob=publicationFile)
- 617 32. Cong B, Koç U, Bandeira T, Bassat Q, Bont L, Chakhunashvili G, et al. Changes in the
618 global hospitalisation burden of respiratory syncytial virus in young children during the
619 COVID-19 pandemic: a systematic analysis. *Lancet Infect Dis*. 2024 Apr;24(4):361–74.
- 620