

1
2
3
4
5
6
7
8
9
10
11
12
13
14
15
16
17
18
19
20
21
22
23
24
25
26
27
28
29
30
31
32
33

The appropriateness of empirical antibiotic therapy in the management of symptomatic urinary tract infection patients-A cross sectional study in Nairobi County, Kenya

Hellen A. Onyango^{1,2,3*}, Derek J Sloan¹, Katherine Keenan², Mike Kesby², Caroline Ngugi³, Humphrey Gitonga⁴, Robert Hammond¹.

¹School of Medicine, University of St Andrews, Scotland, United Kingdom.

²School of Geography and Sustainable Development, University of St Andrews, Scotland, United Kingdom.

³College of Health Sciences, Jomo Kenyatta University of Agriculture and Technology, Nairobi, Kenya.

⁴Centre for Microbiology Research, Kenya Medical Research Institute, Nairobi, Kenya.

Corresponding author*

Hellen A. Onyango; E-mail: haol@st-andrews.ac.uk, helenonyango@jkuat.ac.ke

34 **Abstract**

35 **Background:** In low- and- middle income countries, symptomatic urinary tract infection (UTI)
36 patients are often prescribed antibiotics without microbiological confirmation. UTIs caused by
37 antibiotic resistant bacteria are increasingly common and this heightens the risk of empirical
38 treatment failure. This study evaluates the appropriateness of empirical antibiotic therapy to
39 symptomatic UTI patients.

40 **Methods:** A hospital-based, cross-sectional study was conducted in Nairobi County, Kenya
41 among symptomatic adult and child patients. UTI was defined as a monoculture growth with
42 colony counts of $\geq 10^4$ cfu/ml. Antimicrobial susceptibility testing (AST) was performed by
43 the Kirby-Bauer disc diffusion method. Empirical therapy was considered appropriate if the
44 pathogen isolated was susceptible to the prescribed antibiotic and inappropriate if pathogen
45 was resistant to prescribed antibiotic.

46 **Results:** A total of 552 participants were enrolled with a median age of 29 years (IQR:24-36).
47 The majority were female; 398 (72%). Of the 552, 274 (50%) received empirical antibiotic
48 therapy, 95/274 (35%) were confirmed to have UTI by culture. The antibiotics most frequently
49 prescribed were fluoroquinolones [ciprofloxacin in 80 (30%) and levofloxacin 43 (16%)],
50 amoxicillin-clavulanic-acid in 48 (18%), and nitrofurantoin in 32 (12%). Amongst the 95
51 patients with bacteriological confirmation of UTI, 50 (53%) received appropriate empirical
52 antibiotic therapy, whilst for 38 (40%) participants, the therapy was inappropriate.
53 Appropriateness of empirical therapy to 7 (7%) patients could not be determined as the
54 antibiotics prescribed were not in the AST panel.

55 **Conclusion:** The complexity of appropriate empirical treatment for UTIs is compounded by
56 high levels of resistance in UTI pathogens. AMR surveillance strategies that could help in
57 designing appropriate empirical regimens in resource constrained settings should be adopted
58 for optimal empiric therapy.

59 **1. Introduction**

60 Antimicrobial resistance (AMR) is the ability of microorganisms to circumvent the toxic action
61 of antimicrobial substances that otherwise would kill or inhibit them.¹ The prevalence of
62 resistance in common disease-causing bacteria has increased globally, both in healthcare and
63 community settings.² Consequently, the WHO has now listed AMR as an emerging public
64 health threat believed to account for over 700,000 deaths per year.³ The burden of AMR is
65 estimated to be highest in low-and-middle income countries (LMICs), particularly in Africa,⁴
66 where morbidity and mortality from infectious diseases is high, and health facilities less well-
67 resourced than those in high income regions.^{5,6} Large regional, interdisciplinary studies,
68 including the Holistic Approach to Unravel Antimicrobial resistance in East Africa (HATUA)
69 project which was run across Kenya, Uganda, and Tanzania, have reported multiple drivers of
70 AMR. Relevant factors ranged from inappropriate antibiotic prescriptions, to widespread non-
71 prescription-based dispensing of antimicrobials for self-medication, antibiotic use in animals,
72 environmental factors such as sanitation, as well as social-economic and structural drivers
73 including the cost of seeking healthcare.⁷⁻⁹ In hospital settings, factors such as inadequate
74 diagnostic capabilities, poor antibiotic stewardship practices, poor adherence to treatment
75 guidelines and lack of AMR surveillance have been associated with resistance.^{6,10}

76 Urinary tract Infections (UTIs) are among the most common community-acquired bacterial
77 infections, and are the second most frequent clinical indication for antibiotic use.¹¹ after
78 respiratory infections.¹² Patients with suspected UTI are often initiated on antibiotic treatment
79 before culture results are available. However, in some cases, approximately 40% of the bacteria
80 that cause UTI are resistant to the antimicrobials prescribed.¹³ In the recent past, the prevalence
81 of multi-drug resistant (MDR) bacteria associated with UTI has increased,¹⁴ making selection
82 of therapy for community acquired UTI complex. Guidelines for uncomplicated UTI treatment
83 recommend customization of therapy based on local practice, circulating resistant organisms,

84 drug availability and price.¹⁵ In Nairobi County, Kenya where this study was undertaken,
85 nitrofurantoin 100mg, amoxicillin-clavulanic-acid 625mg, and amikacin 15-30mg/kg are
86 recommended empirical antimicrobial therapy for community acquired UTIs.¹⁶ For recurrent
87 infections, the guideline recommends that empirical therapy be guided by previous culture
88 results pending urine culture and sensitivity results. Once available, therapy is tailored to
89 prescribe the most narrow spectrum efficacious antibiotic wherever possible.¹⁶

90 The selection of empirical therapy for UTI management is dependent on knowledge of
91 circulating pathogens and their antimicrobial resistance patterns.¹⁷ Of concern, therefore, is the
92 lack of susceptibility data for community acquired UTI's in many LMICs, including Kenya.
93 This is mostly due to challenges with culture and susceptibility testing, some of which include
94 infrastructural constraints, limited funding, prolonged turnaround times (TAT), and lack of
95 skilled personnel.^{4,18} There is relatively limited information on the appropriateness of empirical
96 antibiotic therapy in the management of community acquired UTI's in LMICs. This study seeks
97 to address the paucity of microbiological information on management of microbiologically
98 confirmed UTI in symptomatic patients and evaluates the appropriateness of empirical UTI
99 treatment based on culture and susceptibility results.

100 **2. Materials and Methods**

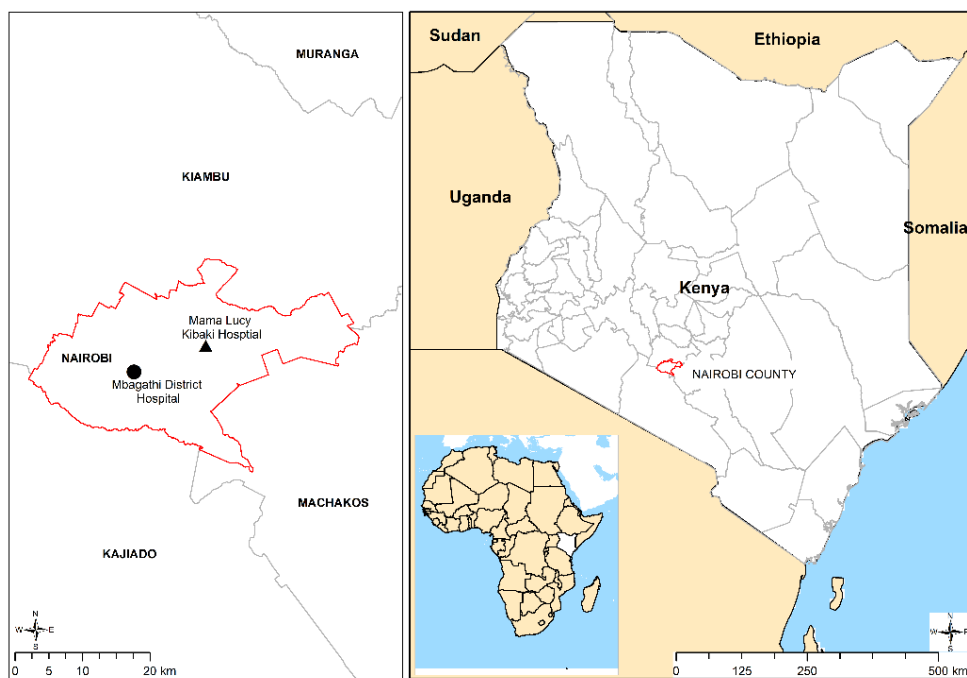
101 **2.1. Study design**

102 A hospital-based cross-sectional study design was employed to recruit adult and child patients
103 with UTI-like symptoms between July 2022 to April 2023.

104 **2.2 Study setting**

105 The participants were recruited from Mama Lucy Kibaki Hospital (MLKH) and Mbagathi
106 County Hospital (MCH) located within Nairobi County, as shown in **Figure 1**. The Kenyan

107 healthcare system is structured in a hierarchical manner consisting of six levels I-VI in
108 ascending order. MLKH and MCH are Level - V public referral hospitals. MCH and MLKH
109 serve a large catchment area comprising both the middle and low socio-economic groups. The
110 two hospitals were selected as there was limited information on the resistance profiles of
111 circulating uropathogens and UTI patients are often treated empirically without culture
112 confirmation.



113

114 **Figure 1:** Location of study sites, MLKH and MCH within Nairobi County, Kenya.

115 **2.3 Participant recruitment and sample collection**

116 A resident clinician identified adult (≥ 18 years) and child (5-17 years) outpatients presenting
117 with one or more symptoms suggestive of UTI or for other causes that made the clinician to
118 believe they might also have a UTI. The symptoms included lower abdominal pain, dysuria,
119 strong persistent urge to urinate, haematuria, frequent micturition and/or unexplained fever
120 ($\geq 38^{\circ}\text{C}$), persistent irritability, and suprapubic pain/tenderness to palpation in children. In
121 addition to meeting the criteria of a presumptive UTI case, the participants had to meet the
122 following criteria: report living within a 50 km radius from the hospital facility, have a mobile

123 telephone number, and be able to speak/understand/write either English or Kiswahili. The study
124 objectives were explained and patients willing to participate were taken through informed
125 consent document (ICD) in their preferred language. Consent was obtained from adult patients
126 (≥ 18 years). Assent and consent were obtained for participants aged 13-17 years. Parents/
127 guardians of participants aged < 13 years consented on their behalf. Consenting participants
128 signed and dated the consent forms. Participants/guardians who were not able to sign marked
129 the consent with a thumb print. Consenting participants were issued with a unique identifiable
130 number which linked their bar-coded consent form, demographic data questionnaire, and urine
131 sample collection container. Self-collected midstream urine on a 20 mL sterile plain screw-
132 capped universal bottles was obtained from each patient after guidance on the collection
133 procedure. Parents/guardians were guided on how to collect midstream urine from their
134 children. The samples were stored in a cool box (4°C) and transported to the Kenya Medical
135 Research Institute (KEMRI) laboratory for processing within 2 hours.

136 **2.4 Data collection**

137 A questionnaire was used to collect self-reported demographic information (age, gender), and
138 previous antimicrobial use. Data regarding empirical antibiotic treatment was obtained from
139 prescriptions administered to the patients during the hospital visit. All data were captured
140 electronically into an epicollect database (<https://five.epicollect.net> is a free open-source data
141 [collection tool](#)) and later linked to the laboratory urine culture results.

142 **2.5 Microbiological tests**

143 **2.5.1 Urine culture**

144 Using a standard sterile loop, an aliquot ($10\mu\text{l}$) of urine was plated directly on Cystine lactose
145 electrolyte deficient agar (CLED), blood agar (BA), and MacConkey agar (Oxoid, Basingstoke,
146 UK), and incubated aerobically at $35\text{-}37^{\circ}\text{C}$ for 24 hours. After an overnight incubation,

147 quantification of colony forming units (cfu's) was done by counting the number of colonies on
148 a plate and multiplying by the dilution factor, as previously described by Miles and Misra.¹⁹
149 Pure bacterial growth yielding colony counts of $\geq 10,000$ (10^4) cfu/ml was interpreted as a
150 confirmed UTI case. A mixed culture (with more than one colony type) or growth of $< 10,000$
151 (10^4) cfu/ml were non-confirmatory for UTI.

152 The organisms were identified to the species level using colonial morphological characteristics
153 on CLED, BA, MacConkey agar (Oxoid, Basingstoke, UK), Gram-stain (Sigma-Aldrich, USA)
154 and standard biochemical tests. Sulfide Indole Motility test, Methyl Red, Oxidase, Urease,
155 Triple Sugar Iron, and citrate utilization was used to identify Gram negative organisms.²⁰
156 Coagulase, Catalase, and haemolytic patterns on BA was used to confirm the presence of Gram-
157 positive bacteria. Where necessary, the analytical profile index (API 20E) test was used to
158 confirm the identity of strains following the manufacturer's guidelines (BioMerieux,
159 Charbonnieres, LesBains, France).

160 **2.5.2 Antimicrobial susceptibility test**

161 Antimicrobial susceptibility testing (AST) was performed according to the Kirby Bauer disc
162 diffusion method.²¹ The panel of antibiotic discs (Oxoid, Basingstoke, UK) tested included first
163 line; amoxicillin-clavulanic-acid (20/10 μg), nitrofurantoin (300 μg), sulfamethoxazole
164 trimethoprim (23.75/1.25 μg), and second- line; ciprofloxacin (5 μg) antibiotics used in the
165 treatment of UTI as per local practice.¹⁶ Other antibiotics included in the panel were
166 ceftazidime (30 μg), ceftriaxone (30 μg), cefepime (30 μg), ceftoxitin (30 μg), gentamycin (10
167 μg), cefuroxime (30 μg), erythromycin (15 μg), and linezolid (30 μg). Susceptibility or
168 resistance to the tested antibiotics were determined using the zone diameter interpretative
169 criteria (breakpoints) according to the CLSI guidelines.²² Isolates that showed intermediate
170 resistance to a given antibiotic were interpreted as resistant to that antibiotic. *E. coli* (ATCC-

171 25922) and *S. aureus* (ATCC-25923) were used as quality control organisms to validate
172 antibiotic discs potency and quality of the test media.

173 **2.6 Evaluation of the appropriateness of empirical treatment**

174 Appropriateness of empiric treatment was assessed by evaluating the treatment prescribed
175 during the initial hospital visit with the subsequent laboratory urine culture and susceptibility
176 results. The hospital visit during which the patient was recruited, and urine sample obtained,
177 was defined as the initial visit. Empirical treatment was taken as any antibiotic treatment
178 prescribed to the patient during the initial visit prior to urine culture results. Appropriateness
179 was assessed on an individual patient basis for those patients whose urine specimen yielded
180 significant bacterial growth for UTI ($\geq 10^4$ cfu/ml). Appropriate empirical antibiotic therapy
181 (AEAT) was considered if a UTI was confirmed on urine culture and the antibiotics prescribed
182 were effective in inhibiting growth of the isolated pathogen *in vitro*.²³ Inappropriate empirical
183 antibiotic therapy (IEAT) was defined as UTI confirmed on laboratory culture, but with an
184 isolated pathogen which was resistant to the antibiotic prescribed *in vitro*.²³ AEAT was
185 expressed as the percentage of patients with a culture positive urine specimen, and isolated
186 pathogen tested as sensitive to the antibiotic prescribed. Conversely, IAET was expressed as
187 the percentage of patients with a culture positive urine specimen who had an empiric
188 prescription for which the isolated pathogen was tested as resistant.

189 **2.7 Statistical analysis**

190 Data were downloaded from epicollect into Microsoft Excel (Microsoft Corp, Redmond,
191 Washington, USA) and were analysed using STATA 16 (StataCorp. 2019. Stata 183 Statistical
192 Software: Release 16. College Station, TX: StataCorp LLC). The questionnaire data were
193 linked to urinalysis, empirical prescription and AST data using anonymous patient identifiers.
194 Baseline characteristics of the study population were reported as median (interquartile range

195 [IQR]) for age, or as counts and percentages for categorical data. Differences between
196 categorical variables were compared using the χ^2 test or Fishers exact test where applicable.
197 Statistical significance was considered at probability value of < 0.05 .

198 **2.8 Ethical approval**

199 This study received approval from University of St. Andrews Teaching and Research Ethics
200 Committee, United Kingdom [Approval no. MD15749]; Jomo Kenyatta University of
201 Agriculture and Technology Institutional Ethics Review Board, Kenya [Approval no.
202 JKU/IERC/02316/0166], National Commission for Science Technology and Innovation,
203 Kenya [Approval no. P/21/12520]. Nairobi Metropolitan services, MLKH and MDH provided
204 approvals for access to the study sites. Informed consent was obtained from each participant
205 included in the study.

206 **3. Results**

207 **3.1. Characteristics of study participants**

208 Participants characteristics are shown in **Table 1**. Five hundred and fifty-two were enrolled.
209 The majority were adult outpatients 494 (89.4%), and females accounted for 398 (72%). The
210 most frequent age bracket was 21-30 with a median age of 29 years (IQR:24-36). Among the
211 552 enrolled patients, 236 (43%) had taken medication 2 weeks prior to enrolment, 168 (71%)
212 of these had taken antibiotics, while 68 (29%) had taken medications other than antibiotics.

213

214

215

216

217

218 **Table 1: Basic demographic characteristics of participants**

Variable	Response	UTI (+) *	UTI (-) *
		n (%)	n= (%)
Average		124 (22.5)	428 (77.5)
Gender	Male	32 (26)	122 (29)
	Female	92 (74)	306 (71)
Age	5-10	9 (7.2)	21 (5)
	11-20	12 (9.6)	37 (8.6)
	21-30	56 (45)	183 (43)
	31-40	25 (20)	103 (24)
	41-50	12 (9.6)	54 (13)
	>50	10 (8)	30 (7)
Medication taken in two weeks prior to recruitment	No medication	76 (61)	240 (56)
	Yes-antibiotics	37 (30)	131 (31)
	Yes-other medications	11 (8.8)	57 (13)

219

220 Demographic and clinical characteristics of study participants. KEY: UTI (+) *-Culture
 221 confirmed UTI positive, UTI (-) *-Culture confirmed UTI negative.

222 **3.2 Proportion of microbiologically confirmed UTI**

223 The overall proportion of culture confirmed UTI among the studied population was 22.5%,
 224 (124/552), being significantly higher in females than males, **Table 1**. Of these, 274 (49.6%)
 225 received empirically prescribed antibiotic treatment, 242 (43.8%) did not receive any antibiotic
 226 treatment, while for 36 (6.5%), it was not known whether they received an antibiotic or not
 227 (participants could not be reached by phone or failed to come back to the hospital for the
 228 laboratory results). Amongst the 274 that received empirical antibiotic therapy, urine culture
 229 confirmed UTI in 95 (35%). Of the 242 that didn't receive therapy, 27 (11.1%) had UTI
 230 confirmed. Among those whose therapy status was not known, 2 (5.5%) had confirmed UTI.
 231 There was a significant difference in UTI detection between those who received empirical
 232 therapy and those who did not, p-value of <0.05.

233 **3.3 Microbiological characteristics**

234 A total of 124 bacterial isolates were characterised from the 552 urine samples analysed, 97
235 (78%) of which were Gram-negative. The predominant uropathogen was *Escherichia coli* 64
236 (52%); followed by *Klebsiella* spp. 21 (17%); *Staphylococcus aureus*, 14 (11.3%); coagulase
237 negative *Staphylococcus* (CoNS), 7 (5.6%); *Enterococcus faecalis*, 6 (4.8%), *Proteus* spp. 7
238 (5.6%); and *Acinetobacter baumannii*, 1 (0.8%). *Pseudomonas aeruginosa* 2 (1.6), and
239 *Citrobacter koseri* 2 (1.6%).

240 **3.4 Antimicrobial resistance patterns**

241 Antimicrobial resistance profiles of the 124 isolated UTI pathogens are shown in **Table 2**. For
242 Gram negative organisms, resistance towards common UTI treatments - β -lactams,
243 fluoroquinolones, and aminoglycosides (BFQA) ranged from 24% to 57%. Within the bacterial
244 groups, *E. coli*, the predominant uropathogen, showed high resistance to
245 sulfamethoxazole/trimethoprim at 77%, ciprofloxacin at 61%, amoxicillin-clavulanic acid at
246 47%, and ceftriaxone at 52%, while nitrofurantoin was the most effective agent for *E. coli*. The
247 overall resistance of Gram-positive bacteria was 52% for sulfamethoxazole trimethoprim, 67%
248 for ciprofloxacin, and 26% for amoxicillin-clavulanic-acid. Nitrofurantoin and linezolid were
249 the most effective agents against Gram-positive isolates.

250

251

252
253

Table 2: Antimicrobial resistance profiles of isolated UTI pathogens

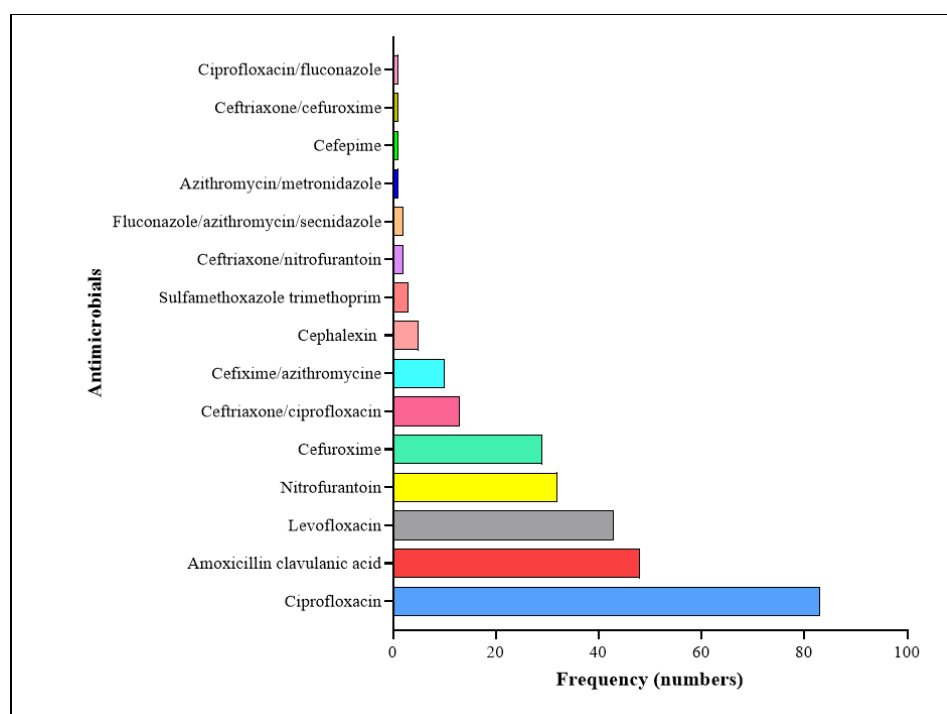
Organism groups	No. of Organisms tested	Antimicrobial resistance n (%) ²													
		n ¹	AMP	AMC	CAZ	CRO	FEP	FOX	GEN	CIP	SXT	NIT	CXM	ERY	LNZ
<i>E. coli</i>	64	53(83)	30(47)	29(45)	33(52)	29(45)	8(12)	15(22)	39(61)	49(77)	3(5)	58(91)	N/A	N/A	
<i>Klebsiella</i> spp.	21	20(95)	13(62)	13(62)	14(67)	14(67)	6(29)	7(33)	19(91)	14(67)	10(48)	19(91)	N/A	N/A	
<i>Proteus</i> spp.	7	4(57)	4(57)	0	0	0	0	1(14)	2(29)	4(57)	7(100)	3(43)	N/A	N/A	
<i>P. aeruginosa</i>	2	2(100)	2(100)	1(50)	1(50)	0	2(100)	0	0	2(100)	2(100)	2(100)	N/A	N/A	
<i>C. koseri</i>	2	1(50)	0	0	1(50)	0	0	0	0	0	1(50)	1(50)	N/A	N/A	
<i>A. baumannii</i>	1	1(100)	1(100)	1(100)	1(100)	1(100)	1(100)	1(100)	1(100)	1(100)	1(100)	1(100)	N/A	N/A	
<i>S. aureus</i>	14	12(86)	4(29)	N/A	N/A	N/A	3(21)	3(21)	8(57)	11(79)	1(7)	N/A	8(57)	0	
CoNS	7	7(100)	3(43)	N/A	N/A	N/A	3(43)	1(14)	5(71)	1(14)	1(14)	N/A	5(71)	0	
<i>E. faecalis</i>	6	0	0	N/A	N/A	N/A	6(100)	6(100)	5(83)	2(33)	1(17)	N/A	6(100)	0	

254 **KEY:** AMP-Ampicillin; AMC-Amoxicillin-clavulanic acid; CAZ-Ceftazidime; CRO-Ceftriaxone; FEP-Cefepime; FOX- Cefoxitin; GEN-Gentamycin; CIP-Ciprofloxacin;
 255 SXT-Sulfamethoxazole/Trimethoprim; NIT-Nitrofurantoin; CXM-Cefuroxime; ERY-Erythromycin; LNZ-Linezolid; CoNS-Coagulase negative staphylococci; n¹ -Number of
 256 isolates within a particular species; n (%)² -frequency of resistant isolates in relation to n¹ expressed in percentage for individual antibiotics; N/A -not applicable, antibiotics not
 257 tested in the isolates.

258 3.5 Empirical antimicrobial prescribing

259 There were 15 antibiotics and antibiotic combinations prescribed empirically. Most of the
260 patients 244 (89.0%) received one antibiotic, 28 (10.2%) received 2 antibiotics, while 2 (0.7%)
261 received 3 antibiotics, **Figure 2**. Antimicrobial treatment was prescribed to 49.6% of all
262 patients, with a first line empirical treatment recommended in national guidelines utilised in
263 29.6% of cases. The most frequently prescribed antibiotics were ciprofloxacin (30.3%),
264 amoxicillin clavulanic acid (17.5%), levofloxacin (15.7%), nitrofurantoin (11.6%), and
265 cefuroxime (10.6%), while the least prescribed were sulfamethoxazole trimethoprim (1.1%),
266 and cefepime at (0.4%). Ceftriaxone/ciprofloxacin and cefixime/azithromycin were the most
267 prescribed combination therapies at 4.7% and 3.2% respectively.

268



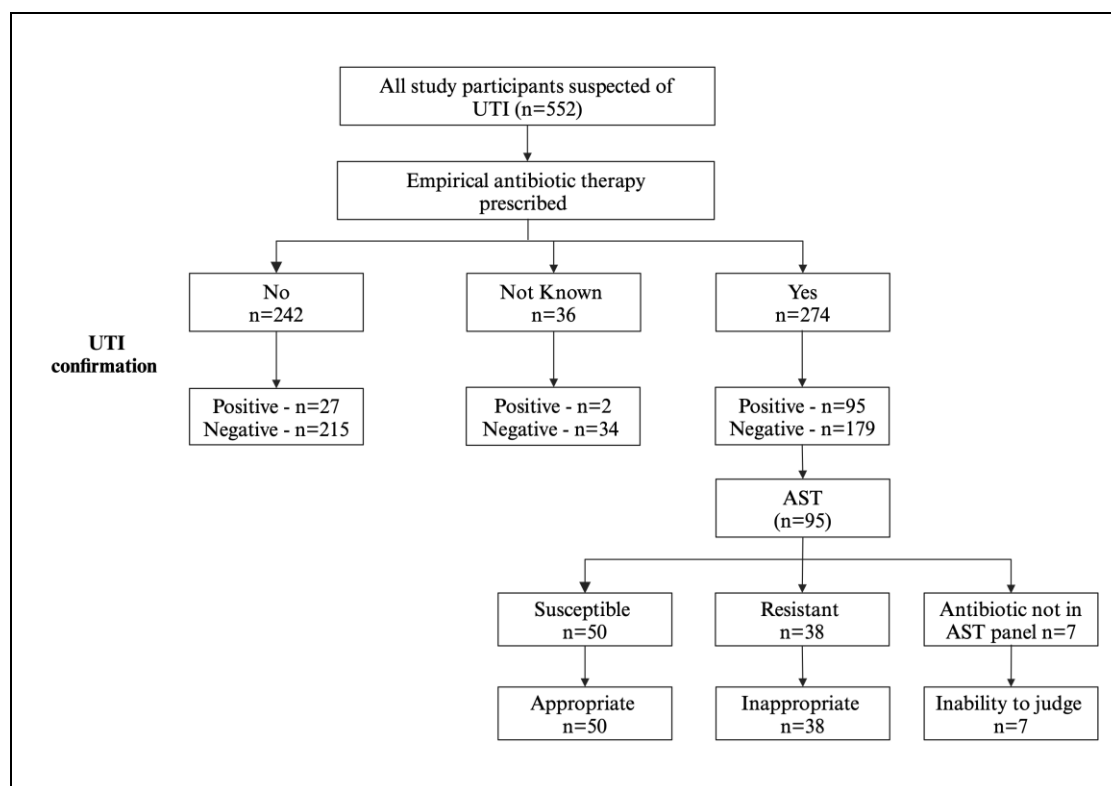
269

270 **Figure 2:** An overview of empirical antimicrobial prescribing at the outpatient departments of
271 MLKH and MCH, Nairobi County, Kenya.

272

273 3.6. Appropriateness of empirical antibiotic treatment (AEAT)

274 Of the 95 patients with bacteriological confirmation of UTI, the antimicrobial susceptibility
275 results were compared with the empirical therapy prescribed. The most prescribed antibiotics
276 empirically were found to be inappropriate as follows: Ciprofloxacin was prescribed 27 times
277 but in 11 cases (41%), the isolated organisms were resistant; for amoxicillin clavulanic acid, in
278 12 (40%) out of the 30 prescriptions, organisms were resistant; for nitrofurantoin, 4 (27%) of
279 the 15 prescriptions proved to be inappropriate, and finally, cefuroxime was prescribed 7 times,
280 but 6 (88%) cases were inappropriate. Overall, most patients 50 (53%) received appropriate
281 empirical therapy, while for 38 (40%), the therapy was found to be inappropriate. The
282 appropriateness of empirical therapy to 7 (7%) patients could not be determined as the
283 antibiotics prescribed (levofloxacin, cefixime/azithromycin) were not in the AST panel, **Figure**
284 **3.**



285

286 **Figure 3: Evaluation of appropriateness of empirical therapy.** Appropriateness or inappropriateness
287 was expressed as a percentage based on n=95 patients who had laboratory confirmed UTI and had
288 susceptible or resistant AST results respectively.

289 4. Discussion

290 This study determined the proportion of microbiologically confirmed UTI cases among 552
291 symptomatic patients and evaluated the appropriateness of empiric antibiotic therapy
292 prescribed to symptomatic UTI patients. Our findings suggest that in about 40% of cases,
293 empirical antimicrobial prescribing for UTI proves inappropriate in the context of subsequent
294 urine culture and susceptibility results. IEAT can be associated with significant adverse
295 outcomes. While changing to the right antibiotic upon receipt of the culture results is beneficial
296 and necessary for targeted therapy, it may not fully mitigate the disadvantages of not having
297 the correct antibiotic from the onset.²³ IEAT may promote selection pressures that can result in
298 the growth of resistant bacterial populations, which not only affects the individual patient, but
299 also poses a broader public health threat to everyone. Furthermore, IEAT can result in
300 unnecessary healthcare costs including expenses associated with additional tests and treatment
301 for complications.²⁴ These consequences underscore the importance of judicious antibiotic
302 prescribing to optimize patient outcomes and preserve the effectiveness of antibiotics for future
303 generations.

304 It is challenging to find comparable studies because of the wide variation in the way that IEAT
305 is defined. Nevertheless, a recent study by Maina *et al* investigated the appropriateness of
306 antibiotic use across a range of disease conditions among 1502 patients in Kenyan public
307 hospitals. Among other findings, these results showed that 26% of 94 patients who had UTI
308 and 68% of 135 patients in the surgical unit received empirical treatment that was inappropriate
309 for the pathogens isolated.²⁵ Higher rates ranging from 54% to 87% of IEAT in UTI have been
310 reported by other studies.²⁶⁻³⁰ However, while our study defined inappropriate treatment
311 according to the criteria outlined by Davey *et al*,²³ these studies had a combination of
312 definitions which included: antibiotic prescriptions without bacteriological confirmation,

313 prescription of an antibiotic to which isolated pathogen was resistant, inappropriate antibiotic
314 dosage, lack of sensitivity testing, and therapy not being within the treatment guidelines.
315 Overall, only 1 in 5 patients suspected of having UTI had bacteriological confirmation by the
316 criteria applied in this study (monoculture growth of 10^4 cfu/ml). However, a considerable
317 proportion of the patients 168 (30%), had taken antibiotics prior to the initial hospital visit.
318 This highlights the challenge of conducting and interpreting microbiology culture results in
319 patients previously exposed to antibiotics, as prior research has demonstrated that antibiotic
320 exposure is a strong predictor of negative culture outcomes.³¹ This further illustrates the
321 difficulty healthcare providers face in deciding on the need for antibiotic prescriptions based
322 solely on clinical symptoms. Evidence on how well symptoms predict the true presence of UTI
323 when compared with urine culture has shown varied results, and is estimated to have an error
324 rate of up to 33%.³¹ In this study, 11% of patients had laboratory confirmation of UTIs, yet they
325 did not receive empirical treatment. These findings are comparable to those reported by Zhue
326 *et al* and Rama *et al*, in which 15.7% and 12.5% patients respectively, did not receive empirical
327 treatment but were confirmed to have UTI by the culture method.^{26,29} While treating only after
328 the microbiological results are obtained ensures that the correct antimicrobial therapy is chosen,
329 the strategy increases the risk of a worse outcome. These findings highlights the need of a near
330 point-of-care test that can detect UTI and provide preliminary antimicrobial susceptibility
331 reports to guide decision-making in UTI management.

332 There was a wide variation of empirical antimicrobial prescribing practise among prescribers,
333 with differences in preference for certain antimicrobials seen. This was most striking in relation
334 to the prescription of fluoroquinolones (ciprofloxacin, levofloxacin), β -lactam/ β -lactamase
335 inhibitor combinations (AMC), and nitrofurantoin. Despite being a second line therapy, more
336 than half 140 (51%) of the patients received fluoroquinolones. This is high considering the
337 already reported high resistance³² and adverse ecological effects³³ associated with this class of

338 antimicrobials. A further 6.3% of the patients received sulfamethoxazole trimethoprim despite
339 this antibiotic not being among the recommended empirical treatments,¹⁶ and local resistance
340 patterns already exceeding 20%.³² One possible explanation to these findings is the absence
341 of sufficient laboratory support, which influences prescription pattern and choice, leading to a
342 predominance of broad-spectrum prescriptions and polypharmacy.³⁴ The high-grade resistance
343 exhibited against amoxicillin-clavulanic-acid makes this agent suboptimal for UTI treatment
344 in the absence of laboratory support, notwithstanding that it is recommended in the national
345 guidelines as first-line empirical therapy. This illustrates a clear need for more comprehensive
346 national surveillance and perhaps a review of the guidelines. In contrast, nitrofurantoin was an
347 appropriate agent for both Gram-positive and Gram-negative bacteria, and its empirical use is
348 encouraged in the absence of any contraindication.³⁵

349 The high proportion of resistance amongst UTI pathogens reported in this study and in
350 neighbouring countries,^{17,36} can likely be explained by records of inappropriate antibiotic use
351 which is one of the key drivers of AMR. This could be caused by inadequate microbiology
352 diagnostics, lack of updated antibiotic susceptibility data, and self-treatment using over-the-
353 counter antibiotics, a wide-spread practise in many LMICs.³⁷ Some challenges identified in
354 laboratory diagnostics have been the long turnaround time (TAT), high cost of investigation
355 and the lack of trust in and utilization of laboratory results by clinicians.³⁸ Performing culture
356 and susceptibility tests may contribute to higher healthcare costs for patients. However, its
357 essential to consider this added expense in light of the potential savings from avoiding
358 inappropriate or unnecessary treatment that are not supported by laboratory data.

359 This study has some limitations. First, the patients were only recruited from the outpatient
360 departments of two health facilities, so generalisation of findings to other settings, even within
361 Kenya, should be made with caution. Nevertheless, patients were sequentially recruited without
362 stringent selection criteria and the same approach was taken to investigation of every

363 participant which minimised bias and increased the likelihood that the results reflected the
364 general population and routine medical practices. Further, the findings do not give insights into
365 the appropriateness of prescription in private health facilities or in inpatients. However, it is
366 considered satisfactory to provide background information on appropriateness of empirical
367 treatment. Secondly, the population of outpatients who presented with symptoms suggestive of
368 UTI may have had other underlying conditions given that UTI symptoms may over-lap with
369 those of other diseases. However, we assumed that all antibiotics prescribed during initial
370 hospital visit before the AST results (when each patient was recruited into the study and urine
371 collected) were for the UTI episode.

372 **5. Conclusion**

373 The study has demonstrated that achieving appropriate empirical antibiotic treatment for UTIs
374 is a difficult task, especially in the era of increased AMR in clinical infections, situations of
375 limited resource, and much habitual over-the counter antibiotic use. At present, optimal empiric
376 therapy is not being achieved. This situation could be improved if capacity for delivering
377 accurate and timely susceptibility results to clinicians to aid their clinical decision making
378 could be achieved. Finally, it is crucial to enhance routine AMR surveillance to support
379 effective antimicrobial stewardship practices in healthcare facilities.

380 **Authors contribution**

381 HAO.: conceptualization, laboratory investigations, data curation, formal analysis, and original
382 drafting of the manuscript. RJHH.: Conceptualization, supervision, reviewing and editing. DS.:
383 Conceptualization, supervision, reviewing and editing MK.: Conceptualization, supervision,
384 reviewing and editing KK.: Conceptualization, supervision, reviewing and editing. CWN.:
385 Supervision of laboratory data collection in Kenya. HG.: Laboratory investigations and data
386 curation.

387 **Acknowledgements**

388 The authors would like to thank all patients for their participation, and the laboratory and
389 clinical teams at MLKH, MDH and KEMRI-CMR for their support during the study period.

390 **Funding**

391 This work was supported by the Scottish Funding Council (SFC) through the Global
392 Challenges Research Fund (GCRF).

393 **Transparency declarations**

394 None to declare

395

396

397

398

399

400

401

402

403

404

405

406

407

408

409

410

411 References

- 412 1. Harbottle H, Thakur S, Zhao S *et al.* Genetics of antimicrobial resistance. *Anim*
413 *Biotechnol.* 2006;**17**:111–24.
- 414 2. World Health Organization. Global Antimicrobial Resistance and Use Surveillance
415 System 2022. <https://www.who.int/publications/i/item/9789240062702>
- 416 3. Neill JO'. Antimicrobial Resistance: Tackling a crisis for the health and wealth of
417 nations. The Review on Antimicrobial Resistance, 2014.
- 418 4. Murray CJ, Ikuta KS, Sharara F *et al.* Global burden of bacterial antimicrobial resistance
419 in 2019: a systematic analysis. *Lancet.* 2022;**399**:629–55.
- 420 5. Petti CA, Polage CR, Quinn TC *et al.* Laboratory Medicine in Africa: A Barrier to
421 Effective Health Care. *Clin Infect Dis* 2006;**42**:377–82.
- 422 6. Elbireer AM, Jackson JB, Sendagire H *et al.* The Good, the Bad, and the Unknown:
423 Quality of Clinical Laboratories in Kampala, Uganda. *PLoS One.* 2013;**8**:1–6.
- 424 7. Asiimwe BB, Kiiru J, Mshana SE *et al.* Protocol for an interdisciplinary cross-sectional
425 study investigating the social, biological and community-level drivers of antimicrobial
426 resistance (AMR): Holistic Approach to Unravel Antibacterial Resistance in East Africa
427 (HATUA). *BMJ Open*2021;**11**:414-18. <http://bmjopen.bmj.com/>
- 428 8. Ndaki PM, Mushi MF, Mwangi JR *et al.* Dispensing antibiotics without prescription at
429 community pharmacies and accredited drug dispensing outlets in tanzania: A cross-
430 sectional study. *Antibiotics.* 2021;**10**:1–15.
- 431 9. Green DL, Keenan K, Fredricks KJ *et al.* The role of multidimensional poverty in
432 antibiotic misuse: a mixed-methods study of self-medication and non-adherence in
433 Kenya, Tanzania, and Uganda. *Lancet Glob Heal.* 2023;**11**:59–68.
- 434 10. Doron S, Davidson LE. Antimicrobial stewardship. *Mayo Clin Proc.* 2011;**86**:1113–23.
- 435 11. Morgan MG, McKenzie H. Controversies in the laboratory diagnosis of community-
436 acquired urinary tract infection. *Eur J Clin Microbiol Infect Dis.* 1993;**12**:491–504.
- 437 12. Llor C, Bjerrum L. Antimicrobial resistance: Risk associated with antibiotic overuse and
438 initiatives to reduce the problem. *Ther Adv Drug Saf.* 2014;**5**:229–41.
- 439 13. McCowan C, Bakhshi A, McConnachie A *et al.* *E. coli* bacteraemia and antimicrobial

- 440 resistance following antimicrobial prescribing for urinary tract infection in the
441 community. *BMC Infect Dis.* 2022;**22**:1–10.
- 442 14. Mazzariol A, Bazaj A, Cornaglia G. Multi-drug-resistant Gram-negative bacteria
443 causing urinary tract infections: a review. *J Chemother* 2017;**29**:2–9.
444 <https://doi.org/10.1080/1120009X.2017.1380395>
- 445 15. Gupta K, Hooton TM, Naber KG *et al.* International clinical practice guidelines for the
446 treatment of acute uncomplicated cystitis and pyelonephritis in women: A 2010 update
447 by the Infectious Diseases Society of America and the European Society for
448 Microbiology and Infectious Diseases. *Clin Infect Dis* 2011;**52**:103–20.
449 <https://academic.oup.com/cid/article/52/5/e103/388285>
- 450 16. KNH. Kenyatta National Hospital-Guidelines for empiric antimicrobial therapy 2023.
451 [https://healthsciences.uonbi.ac.ke/sites/default/files/2023-06/KNH](https://healthsciences.uonbi.ac.ke/sites/default/files/2023-06/KNH_Empiric_Antimicrobial_Therapy_Guidelines.pdf) Empiric
452 Antimicrobial Therapy Guidelines.pdf
- 453 17. Maldonado-barragán AA, Mshana SE, Keenan K *et al.* Predominance of multidrug-
454 resistant (MDR) bacteria causing urinary tract infections (UTIs) among symptomatic
455 patients in East Africa: a call for action. *JAC-Antimicrobial Resist* 2023;**6**:1–36.
456 <https://doi.org/10.1101/2023.06.13.23291274>
- 457 18. Iskandar K, Molinier L, Hallit S *et al.* Surveillance of antimicrobial resistance in low-
458 and middle-income countries: a scattered picture. *Antimicrob Resist Infect Control.* 2021
459 ;**10**: 63-82.
- 460 19. Miles AA, Misra SS, Irwin JO. The estimation of the bactericidal power of the blood. *J*
461 *Hyg (Lond).* 1938;**38**:732–49.
- 462 20. Chesbrough M. District Laboratory Practice in Tropical countries, Part 2, Second
463 Edition. Cambridge University Press, UK; 2006.
- 464 21. Bauer, A. W., Kirby, W. M. M., *et al* Antibiotic susceptibility testing by a standardized
465 single disk method. *Am J Clin Pathol.* 1966;**45**:493.
- 466 22. CLSI. Performance Standards for Antimicrobial Disk Suspectibility Tests, Approved
467 Standard-Thirteenth Edition. M02. 2018.
- 468 23. Davey PG, Marwick C. Appropriate vs. inappropriate antimicrobial therapy. *Clin*
469 *Microbiol Infect* 2008;**14**:15–21. <http://dx.doi.org/10.1111/j.1469-0691.2008.01959.x>

- 470 24. Esparcia A, Artero A, Eiros JM *et al.* Influence of inadequate antimicrobial therapy on
471 prognosis in elderly patients with severe urinary tract infections. *Eur J Intern Med*
472 2014;**25**:523–7. <http://dx.doi.org/10.1016/j.ejim.2014.04.009>
- 473 25. Maina M, Mwaniki P, Odira E *et al.* Antibiotic use in Kenyan public hospitals:
474 Prevalence, appropriateness and link to guideline availability. *Int J Infect Dis*
475 2020;**99**:10–18. <https://doi.org/10.1016/j.ijid.2020.07.084>
- 476 26. Alkhawaldeh R, Farha RA, Hammour KA *et al.* The Appropriateness of Empiric
477 Treatment of Urinary Tract Infections in a Tertiary Teaching Hospital in Jordan: A Cross-
478 Sectional Study. *Antibiotics*. 2022;**11**: 629.
- 479 27. Vellinga A, Cormican M, Hanahoe B *et al.* Antimicrobial management and
480 appropriateness of treatment of urinary tract infection in general practice in Ireland.
481 *BMC Fam Pract*. 2011;**12**:108
- 482 28. Tünger Ö, Dinç G, Özbakkaloglu B *et al.* Evaluation of rational antibiotic use. *Int J*
483 *Antimicrob Agents*. 2000;**15**:131–5.
- 484 29. Zhu H, Chen Y, Hang Y *et al.* Impact of inappropriate empirical antibiotic treatment on
485 clinical outcomes of urinary tract infections caused by Escherichia coli: a retrospective
486 cohort study. *J Glob Antimicrob Resist* 2021;**26**:148–53.
487 <https://doi.org/10.1016/j.jgar.2021.05.016>
- 488 30. Marquet K, Liesenborgs A, Bergs J *et al.* Incidence and outcome of inappropriate in-
489 hospital empiric antibiotics for severe infection: A systematic review and meta-analysis.
490 *Crit Care* 2015;**19**:63.
- 491 31. Schmiemann G, Kniehl E, Gebhardt K *et al.* The Diagnosis of Urinary Tract Infection.
492 *Dtsch Ärzteblatt Int* 2010;**107**:361–7.
- 493 32. Kiiru S, Maina J, Katana J *et al.* Bacterial etiology of urinary tract infections in patients
494 treated at Kenyan health facilities and their resistance towards commonly used
495 antibiotics. *PLoS One* 2023;**18**:277–279.
496 <http://dx.doi.org/10.1371/journal.pone.0277279>
- 497 33. Stahlmann R, Lode HM. Risks associated with the therapeutic use of fluoroquinolones.
498 *Expert Opin Drug Saf* 2013;**12**:497–505.
499 <https://www.tandfonline.com/doi/abs/10.1517/14740338.2013.796362>

- 500 34. Chokshi A, Sifri Z, Cennimo D, *et al.* Global contributors to antibiotic resistance. *J Glob*
501 *Infect Dis* 2019;**11**:36–42.
- 502 35. Pouwels KB, Freeman R, Muller-Pebody B *et al.* Association between use of different
503 antibiotics and trimethoprim resistance: Going beyond the obvious crude association. *J*
504 *Antimicrob Chemother* 2018;**73**:1700–7.
- 505 36. Silago V, Moremi N, Mtebe M *et al.* Multidrug-Resistant Uropathogens Causing
506 Community Acquired Urinary Tract Infections among Patients Attending Health
507 Facilities in Mwanza and Dar es Salaam, Tanzania. *Antibiotics*. 2022;**11**:1–13.
- 508 37. Do NTT, Vu HTL, Nguyen CTK *et al.* Community-based antibiotic access and use in
509 six low-income and middle-income countries: a mixed-method approach. *Lancet Glob*
510 *Heal*. 2021;**9**:610–9.
- 511 38. Alemnji GA, Zeh C, Yao K *et al.* Strengthening national health laboratories in sub-
512 Saharan Africa: A decade of remarkable progress. *Trop Med Int Heal*. 2014;**19**:450–8.
- 513
- 514
- 515
- 516
- 517
- 518
- 519
- 520
- 521
- 522
- 523