

State Anxiety Alters Exploration in Affective Disorders

1 **Directed exploration is elevated in affective disorders but reduced by an aversive**  
2 **interoceptive state induction**

3 Ning Li<sup>1\*</sup>, Claire A. Lavalley<sup>1\*</sup>, Ko-Ping Chou<sup>1</sup>, Anne E. Chuning<sup>1</sup>, Samuel Taylor<sup>1</sup>, Carter M.  
4 Goldman<sup>1</sup>, Taylor Torres<sup>1</sup>, Rowan Hodson<sup>1</sup>, Robert C. Wilson<sup>3,4</sup>, Jennifer L. Stewart<sup>1</sup>, Sahib S.  
5 Khalsa<sup>1,2</sup>, Martin P. Paulus<sup>1,2</sup> & Ryan Smith<sup>1,2</sup>

6 \*Co-first authorship

7 <sup>1</sup>Laureate Institute for Brain Research, Tulsa, OK.

8 <sup>2</sup>Oxley College of Health and Natural Sciences, University of Tulsa, Tulsa, OK.

9 <sup>3</sup>Department of Psychology, University of Arizona, Tucson, AZ.

10 <sup>4</sup>Cognitive Science Program, University of Arizona, Tucson, AZ.

11

12

13

14

15

16

17 Corresponding author: Ryan Smith, [rsmith@laureateinstitute.org](mailto:rsmith@laureateinstitute.org)

18 Laureate Institute for Brain Research. 6655 S. Yale Ave. Tulsa, Oklahoma, 74136, United States

19

## State Anxiety Alters Exploration in Affective Disorders

20  
21  
22  
23  
24  
25  
26  
27  
28  
29  
30  
31  
32  
33  
34  
35  
36  
  
37  
  
38

### Abstract

Elevated anxiety and uncertainty avoidance are known to exacerbate maladaptive choice in individuals with affective disorders. However, the differential roles of state vs. trait anxiety remain unclear, and underlying computational mechanisms have not been thoroughly characterized. In the present study, we investigated how a somatic (interoceptive) state anxiety induction influences learning and decision-making under uncertainty in individuals with clinically significant levels of trait anxiety. A sample of 58 healthy comparisons (HCs) and 61 individuals with affective disorders (iADs; i.e., depression and/or anxiety) completed a previously validated explore-exploit decision task, with and without an added breathing resistance manipulation designed to induce state anxiety. Computational modeling revealed a pattern in which iADs showed greater information-seeking (i.e., directed exploration; Cohen's  $d=.39$ ,  $p=.039$ ) in resting conditions, but that this was reduced by the anxiety induction. The affective disorders group also showed slower learning rates across conditions (Cohen's  $d=.52$ ,  $p=.003$ ), suggesting more persistent uncertainty. These findings highlight a complex interplay between trait anxiety and state anxiety. Specifically, while elevated trait anxiety is associated with persistent uncertainty, acute somatic anxiety can paradoxically curtail exploratory behaviors, potentially reinforcing maladaptive decision-making patterns in affective disorders.

*Keywords:* decision-making; computational modeling; exploration; anxiety; depression

## State Anxiety Alters Exploration in Affective Disorders

### 39 **Introduction**

40 Persistent uncertainty and maladaptive avoidance are key maintenance factors in anxiety  
41 disorders and a major focus of psychotherapy (1, 2). While considerable progress has been made  
42 in understanding the neural and cognitive mechanisms associated with anxiety, underlying  
43 computational processes have only been examined in a limited number of studies to date (3, 4).  
44 For example, subclinical levels of trait anxiety have been associated with reduced flexibility in  
45 learning rates when there is a change in the stability of environmental statistics (5), and  
46 individuals with anxiety disorders show elevated learning rates in general (6), suggesting a belief  
47 that action-outcome contingencies often change unexpectedly. Both depression and anxiety have  
48 also been associated with elevated learning from punishment in particular (7). More recently,  
49 trait anxiety has been linked to a greater tendency to infer changes in the underlying causes of  
50 aversive outcomes during extinction learning – which may facilitate return of fear and reduce the  
51 long-term efficacy of behavioral therapies (8).

52 While such studies provide important insights into the learning processes that may contribute to  
53 depression and anxiety disorders, they do not fully account for avoidance or other behaviors  
54 driven by intolerance of uncertainty. There could also be multiple computational mechanisms  
55 underlying avoidance behavior, each representing distinct hypotheses and possible treatment  
56 targets. For example, individuals must often seek information to learn that a feared situation is  
57 tolerable. Avoidance prevents such learning, which can in turn maintain avoidance. This speaks  
58 to the explore-exploit dilemma (9, 10), which has begun to receive attention in psychiatry and  
59 substance use research (11-13). This dilemma reflects the need to judge whether one has  
60 sufficient information to maximize reward, or whether one should first seek more information. In  
61 avoidance, an individual may hold the confident belief that avoided situations are dangerous,  
62 while, in fact, exploration would allow them to learn otherwise. Yet, there are multiple types of  
63 exploration, and factors that could deter exploration, which have not been thoroughly evaluated.

64 To date, only a few studies have examined the relationship between affective disorders and  
65 information-seeking. For example, one study found that ‘directed’ exploration (DE) in a  
66 community sample was lower in those with higher anxiety and depression symptoms (14), while  
67 another study associated lower DE with greater somatic anxiety in particular (15). This type of  
68 exploration is strategically directed toward situations and actions for which an individual has had

## State Anxiety Alters Exploration in Affective Disorders

69 fewer past experiences. Further studies examining effects of traumatic/unpredictable childhood  
70 environments (16, 17) – which often correlate with affective disorders (18-20) – also suggest  
71 negative effects on DE. Other supportive work has shown that: higher stress/anxiety is associated  
72 with less exploration in a virtual-reality plus-maze (21), agoraphobia and anxiety sensitivity are  
73 associated with less exploratory behavior (22), and increases in cortisol in response to an acute  
74 stressor and scores on a chronic stress questionnaire are both associated with under-exploration  
75 in foraging tasks (23). Aversive arousal states are also generally known to reduce cognitive  
76 control network activity in neuroscience studies (24-28), consistent with reduced cognitive  
77 reflection tendencies seen in those who display lower DE (14). Notably, a distinct exploratory  
78 strategy – ‘random’ exploration (i.e., where choices become less reward-driven as a means of  
79 gaining information) – has not shown such associations.

80 Past research therefore suggests that anxiety may selectively reduce DE, consistent with  
81 maintained avoidance. Yet, these studies are largely correlational and have tended to focus on  
82 trait anxiety, and they have primarily investigated sub-clinical symptoms in community samples.  
83 There are also some reasons to expect relationships in the opposite direction. Namely, the  
84 cognitive aspects of anxiety involve elevated uncertainty and worry, which could promote over-  
85 exploration. Indeed, intolerance of uncertainty could drive over-exploration as a means of  
86 continually attempting to reduce it. This is consistent with some work instead suggesting greater  
87 DE in those with higher trait/cognitive aspects of anxiety (29, 30) and increased exploratory  
88 behavior in depression (30, 31). Combined with the work reviewed above, this suggests the  
89 possibility that somatic anxiety might reduce exploration, while uncertainty- or worry-related  
90 cognitive anxiety could instead promote it.

91 Here we sought to build on this previous work by manipulating state anxiety with a somatic  
92 anxiety induction while individuals performed an explore-exploit task. By comparing exploration  
93 and learning with vs. without this induction, while also gathering information about trait anxiety  
94 and other clinical, cognitive, and affective dimensions, we aimed to disentangle the role of state-  
95 and trait-related anxiety and relationships with cognitive vs. somatic aspects of anxiety. By doing  
96 this in both healthy comparison (i.e., low-anxiety) and clinical (i.e., high-anxiety) groups, we  
97 also sought to clarify potential differences between subclinical variation in anxiety and that  
98 associated with psychopathology. We hypothesized that anxiety induction would reduce DE and

## State Anxiety Alters Exploration in Affective Disorders

99 that somatic vs. cognitive components of anxiety sensitivity might show negative and positive  
100 relationships with exploration, respectively. Given the mixed results described above with  
101 respect to trait anxiety, we did not have a confident directional hypothesis regarding group  
102 differences. As secondary aims, we also sought to reproduce the aforementioned relationships  
103 found between DE and both cognitive reflectiveness (14) and early adversity (16, 17), as these  
104 associations could offer additional explanatory power if present in our sample.

## 105 **Methods**

### 106 **Participants**

107 Data were collected as part of a larger, multi-visit study to investigate the cognitive and neural  
108 correlates of psychiatric disorders at the Laureate Institute for Brain Research (LIBR), with  
109 participants recruited from the community in and surrounding Tulsa, OK, USA. Clinical  
110 diagnoses were assessed by a licensed clinician according to the Mini International  
111 Neuropsychiatric Interview 7 (MINI; (32)). Healthy comparisons (HCs) were not previously  
112 diagnosed with, or treated for, any mental health disorder and had a score of  $< 8$  on the Overall  
113 Anxiety Severity and Impairment Scale (OASIS; (33)). Individuals within the high-anxiety  
114 affective disorders group (iADs) had a current diagnosis of one or more anxiety or depressive  
115 disorders and scored  $\geq 8$  on the OASIS in a pre-visit screening. Any iADs who were taking  
116 psychiatric medications (e.g., SSRIs, SNRIs, etc.) were required to have a stable dosage for at  
117 least 6 weeks prior to study entry. No other neurological medications (e.g., antipsychotics,  
118 stimulants, or anticonvulsive medications) were allowed; nor were the following diagnoses:  
119 bipolar disorder, personality disorders, substance use disorders, eating disorders, schizophrenia,  
120 or obsessive-compulsive disorder. Recruitment aimed to match participants in the two groups by  
121 age, sex, and education level. Participants were asked not to consume any drugs (e.g.,  
122 benzodiazepines, marijuana) or alcohol in the 48 hours preceding participation and were required  
123 to pass a drug panel during their study visit.

124 Seven individuals withdrew from participation due to discomfort with the anxiety induction  
125 paradigm (2 HCs, 5 iADs, all female; details in **Supplementary Materials**), leading to a final  
126 sample of 119 participants: 58 HCs, 61 iADs (see **Table 1** below). A power analysis (using the  
127 *wp.rmanova* function in the *WebPower* package in R (34)) indicated that this sample size would

## State Anxiety Alters Exploration in Affective Disorders

128 afford 80% power to detect a medium effect size of  $\eta_p^2 = .063$  for the effect of the anxiety  
 129 induction.

130 It is important to note here that data from the healthy sample in this study was previously used  
 131 for comparison to a different clinical population (methamphetamine use disorders) (45). Here,  
 132 we instead focus on differences between this group and iADs.

### 133 *Measures*

134 Primary measures were chosen to assess state and trait anxiety (State-Trait Anxiety Inventory  
 135 [STAI]; (35)) and to account for clinical symptoms of depression (Patient-Health Questionnaire  
 136 [PHQ]; (36)). Our secondary aim of replicating prior work motivated inclusion of measures to  
 137 test links between DE and both childhood adversity (Childhood Trauma Questionnaire [CTQ];  
 138 (37)) and cognitive reflectiveness (Cognitive Reflection Test [CRT]; (14, 16, 17)) – the tendency  
 139 to ‘think things through’ before responding based on intuition. Detailed descriptions of each  
 140 measure are included in **Supplementary Methods**. Descriptive information for all participants is  
 141 shown in **Table 1**, as well as preliminary group comparisons. Additional sample demographics  
 142 are included in **Supplementary Table S1** and a diagnostic breakdown for iADs is shown in  
 143 **Supplementary Table S2**.

144  
 145 **Table 1.** Demographic and clinical characteristics (mean and SD).

Measure	Healthy Comparisons (N=58)	Affective Disorders (N=61)	Statistic
Age	35.41 (13.08)	33.44 (10.97)	$t(117) = 0.89, p = .374$
Sex	72% Female	75% Female	$\chi^2(1) = 0.03, p = .870$
PHQ	1.66 (2.27)	9.46 (5.15)	$t(117) = 10.60, p < .001$
OASIS	1.07 (1.52)	8.41 (3.02)	$t(117) = 16.62, p < .001$
QIDS	2.17 (1.77)	8.77 (4.01)	$t(117) = 11.52, p < .001$
STAI Trait	29.17 (7.4)	51.87 (9.06)	$t(117) = 14.92, p < .001$
CTQ Total*	34.44 (10.36)	48.07 (16.19)	$t(112) = 5.31, p < .001$
Physical Neglect	6.18 (2.14)	8.41 (3.79)	$t(112) = 3.82, p < .001$
Physical Abuse	6.67 (2.33)	7.95 (3.26)	$t(112) = 2.39, p = .019$
Emotional Neglect	8.76 (3.88)	13.03 (5.02)	$t(112) = 5.05, p < .001$
Emotional Abuse	6.89 (2.98)	10.59 (4.59)	$t(112) = 5.07, p < .001$
Sexual Abuse	5.93 (3.05)	8.08 (5.01)	$t(112) = 2.75, p = .007$
CRT	3.33 (2.18)	2.18 (1.93)	$t(117) = 3.05, p = .003$

146 **Note.** While OASIS scores at screening were required to be  $\geq 8$  for inclusion in the Affective Disorders  
 147 group, values shown here are at the later date of study participation. As OASIS scores are rated with  
 148 respect to the prior week, some scores represented here were  $< 8$  in this group. Legend: PHQ = Patient  
 149 Health Questionnaire-9 (depressive symptoms); OASIS = Overall Anxiety Severity and Impairment

## State Anxiety Alters Exploration in Affective Disorders

150 Scale; STAI = State-Trait Anxiety Inventory, CTQ = Childhood Trauma Questionnaire; CRT = Cognitive  
151 Reflection Test (scores correspond to number of correct answers).  
152 \*This measure was collected as part of the larger study at an earlier date (35 days prior to participation on  
153 average).  
154

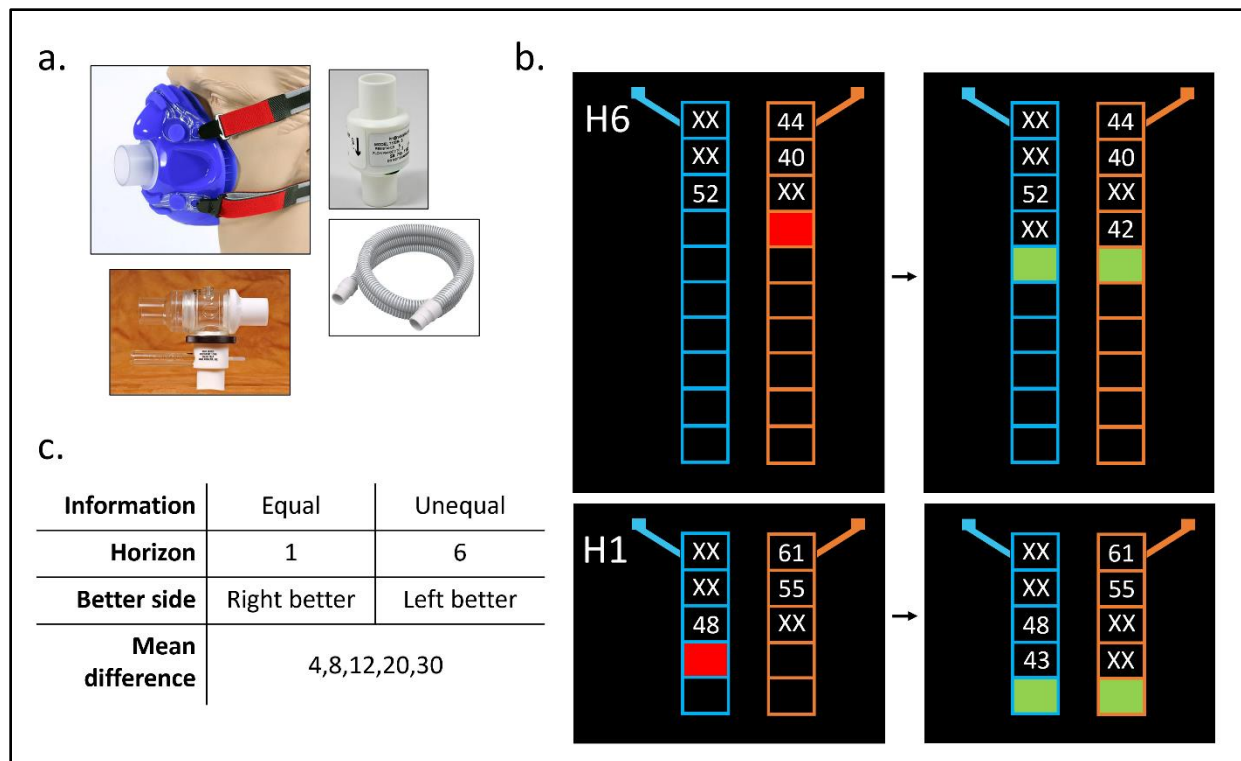
### 155 **Somatic Anxiety Induction and Sensitivity Assessment**

156 To manipulate state anxiety, we utilized a previously established interoceptive (breathing-based)  
157 anxiety induction paradigm (38-40). In this paradigm, participants are asked to breathe through a  
158 silicon mask attached to a valve (**Figure 1a**) that allows application of different levels of  
159 inspiratory resistance, creating air hunger-related sensations that induce anxiety. To provide  
160 participants a chance to familiarize themselves with the paradigm, and assess baseline sensitivity,  
161 participants were first exposed to a series of resistances in ascending order (0, 10, 20, 40, 60, and  
162 80 cmH<sub>2</sub>O/L/sec) applied for 60 seconds each. Participants were asked to rate their anxiety level  
163 after each exposure from 0 (“no anxiety”) to 10 (“maximum possible anxiety”). Other questions  
164 relating to subjective breathing difficulty, arousal, and other affective states were also presented  
165 (see **Supplementary Methods**).

166 This induction was later applied using a moderate resistance level (40 cmH<sub>2</sub>O/L/sec) during  
167 performance of one run of the behavioral task. This level of resistance was chosen because of  
168 prior work demonstrating its effectiveness and feasibility (41); we also confirmed that it induced  
169 moderate (roughly 5 out of 10) levels of anxiety within our clinical sample (**Supplementary**  
170 **Figure S1**).

171

## State Anxiety Alters Exploration in Affective Disorders



172  
173 **Figure 1.** A) Equipment used for anxiety induction including silicon mask with adjustable straps and  
174 single breathing port, and an example resistor used to create resistance on inhalation. B) Graphical  
175 depiction of the Horizon Task. Shown are the two horizon conditions (H1 and H6) at the last forced  
176 choice (red box) and the first free choice (green boxes). The H1 example also shows an equal information  
177 trial (2 outcomes for each choice), while the H6 example shows an unequal information trial (3 forced  
178 choices on the right, 1 on the left). C) Table outlining each of the trial type combinations, counterbalanced  
179 across the task.

180

### 181 Behavioral Task

182 Participants completed two runs of the Horizon Task (42), a previously validated task used to  
183 measure explore-exploit decision-making. During each task run, players repeatedly choose  
184 between two slot machines in 80 games. Each game involves either 5 or 10 sequential choices.  
185 The first four choices in all games are “forced”, meaning the player is told which option to  
186 choose (see **Figure 1b**). The remaining choices are “free”, where either option can be chosen.  
187 Trials with one free choice (H1) and those with six free choices (H6) appear an equal number of  
188 times throughout the task.

189 Forced-choice patterns create two different information conditions: *equal*, in which each option  
190 is chosen twice; and *unequal*, in which one option is chosen three times and the other is chosen  
191 only one time. The goal of the task is to maximize the number of points won by repeatedly



## State Anxiety Alters Exploration in Affective Disorders

192 choosing the option expected to provide higher point values on average. Point values were  
193 sampled (and rounded to the nearest integer) from a Gaussian distribution with a mean of either  
194 of 40 or 60 on one option (standard deviation of 8). Then, for each game, the other option had a  
195 mean point value difference of +/- 4, 8, 12, 20, or 30 from the first. The same pseudorandom  
196 sequences of forced-choice outcomes were shown to each participant, consistent with the  
197 generative means. All game dimensions (length, information type, mean difference, and  
198 better/worse side) were counterbalanced across the task (**Figure 1c**).

199 Participants wore the mask for each task run. In the *no-resistance run*, resistance was not added  
200 (0 cmH<sub>2</sub>O/L/sec). In the *resistance run*, a moderate resistance (40 cmH<sub>2</sub>O/L/sec) was  
201 consistently applied throughout the run. The order was counterbalanced across participants in  
202 each group. The first six participants played a version of the task with different outcome values  
203 than the rest in a small number of games (but still sampled from the same underlying  
204 distributions). To ensure this did not confound results below, this difference in task version was  
205 evaluated as a potential covariate.

### 206 **Computational Model and Model Fitting**

207 The computational model used here is outlined in Zajkowski, Kossut (43). We present this in  
208 detail in **Supplementary Methods**. Brief definitions of each computational parameter are  
209 provided in **Table 2**.

210 **Table 2.** Descriptions of model parameters.

<b>Model Parameter</b>	<b>General Description</b>
Information Bonus (IB)	IB parameters (separated by horizon condition to yield IB1 and IB6) quantify an individual's tendency to choose the option that maximizes information gain. This parameter only affects decisions in the unequal information condition, where selecting the option that was chosen only once during the forced choices provides more information about its average reward value. Directed exploration (DE) is derived from these parameters (IB6 minus IB1). This is because information gain in H1 cannot guide future choices, while information gain in H6 can guide future choices. Thus, DE can be seen as the tendency to increase information-seeking when it would be useful.
Decision Noise (DN)	The DN parameters (separated by horizon condition to yield DN1 and DN6) quantify an individual's tendency to choose the option with a lower observed mean reward. Random exploration (RE) is derived by subtracting DN1 from DN6

## State Anxiety Alters Exploration in Affective Disorders

---

Spatial Bias	in the equal information condition. Thus, RE can be seen as the tendency to make less reward-sensitive choices when information gain would be useful. These parameters (one per horizon/information condition) account for the possibility that an individual prefers to choose one option over the other simply because of which side it is on.
Initial Learning Rate ( $\alpha_0$ )	The initial value of the learning rate before making the first forced choice.
Asymptotic Learning Rate ( $\alpha_\infty$ )	The learning rate an individual would converge to if the game were played indefinitely (i.e., when uncertainty about mean reward values would be minimal).

---

211

## 212 **Statistical Analyses**

### 213 ***Resistance sensitivity***

214 To verify that the anxiety induction was effective, we examined affective responses to each  
215 resistance level in the initial exposure protocol. To this end, we estimated linear mixed effects  
216 models (LMEs) with self-reported anxiety (i.e., the single anxiety question on a scale from 0 to  
217 10) as the outcome variable and resistance level and group as predictors (and their interaction).

### 218 ***Primary model-based analyses***

219 Before addressing our primary hypotheses, we checked for outliers using an iterative Grubbs  
220 method (threshold:  $p < .01$ ; using *grubbs.test* from the *outliers* package in R (44)). This resulted in  
221 one data point being removed for IB1 (in the resistance condition), two for DN6 in the equal  
222 information condition (one in each resistance condition), and two for RE (one in each resistance  
223 condition). Then, we estimated LMEs that included group, resistance condition, and their  
224 interaction as sum-coded predictors for each model parameter (HCs=-1, iADs=1; no-resistance=-  
225 1, resistance=1). All models predicting  $\alpha_\infty$  also accounted for  $\alpha_0$  values. To rule out possible  
226 alternative explanations, we also re-ran these models including covariates to confirm that any  
227 group or resistance effects could not be explained by age, sex (Male=-1, Female=1), or task  
228 version (new=-1, old=1).

229 We then assessed continuous relationships between computational parameters and affective  
230 symptoms. We first tested separate models using PHQ scores or STAI Trait scores. These LMEs  
231 contained interactions with resistance condition and any covariates found to be significant

## State Anxiety Alters Exploration in Affective Disorders

232 predictors in the group models. Then, we included both symptom measures in the same models  
233 (and their interactions with resistance) to establish potentially independent effects.

### 234 *Model-free task performance*

235 To better interpret observed effects on task behavior and assess relationships between task  
236 performance and model parameters, we also performed additional supportive analyses examining  
237 overall accuracy on free choices (as measured by the number of times participants chose the  
238 option with the higher underlying mean reward). We first restricted analyses to first free choice  
239 and estimated an LME predicting accuracy based on horizon, information condition, resistance,  
240 and group as predictors. We also included possible three-way interactions between group,  
241 horizon, and information condition, and between group, horizon, and resistance (and associated  
242 two-way interactions). This allowed us to explore whether groups might show greater differences  
243 depending on horizon, information condition, or anxiety induction. As commonly observed in  
244 this task, we expected accuracy in H1 trials would be higher than in H6 trials (i.e., reflecting  
245 random exploration).

246 A subsequent model was run predicting accuracy across free choice trials in H6 (choices 5-10).  
247 We also tested three-way interactions between group, free choice number, and information  
248 condition, and between group, free choice number, and resistance (and associated two-way  
249 interactions) to explore whether groups might differ in the slope of accuracy improvement over  
250 time depending on information condition or anxiety induction.

251 To evaluate whether some parameter values might be considered more optimal than others, we  
252 then tested LMEs with parameters predicting accuracy on H6 free choice trials, excluding the  
253 first free choice to which model parameters were fit. As information bonus (IB) is only  
254 calculated in the unequal information condition, accuracy on the unequal information trials alone  
255 was predicted in these models, with resistance condition, group, free choice number, IB for H6  
256 (IB6), and the interaction between free choice number and IB6 as predictors. Analogous models  
257 were used to test relationships between accuracy and the other model parameters within the  
258 relevant trial types (i.e., decision noise for H6 with equal information condition accuracy;  
259 learning rates and accuracy in both information conditions).

### 260 *Secondary replication analyses*

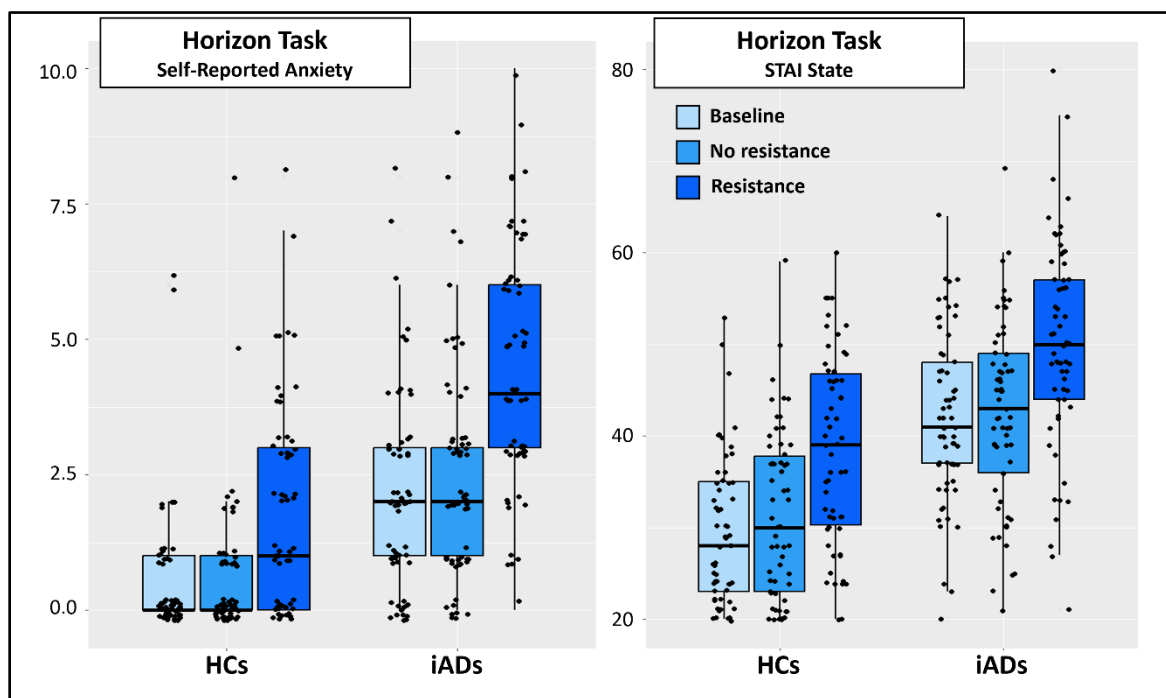
## State Anxiety Alters Exploration in Affective Disorders

261 Additional LMEs were run to accomplish our secondary aim of replicating prior relationships  
262 found between DE and both early adversity (16, 17) and cognitive reflectiveness (14). First,  
263 separate LMEs were run predicting DE based on each subscale of the CTQ, while also including  
264 group, resistance condition, and their interaction as predictors (while controlling for known  
265 effects of age). Analogous LMEs were run instead using CRT scores as predictors.

## 266 Results

### 267 The Breathing Resistance Protocol Successfully Induced Anxiety During Task Performance

268 Anxiety ratings during the initial breathing resistance sensitivity protocol are shown in  
269 **Supplementary Figure S1**. Briefly, anxiety increased as the resistance level increased, anxiety  
270 ratings were higher in iADs than HCs, and iADs showed greater increases in anxiety compared  
271 to HCs as resistance levels increased. LMEs predicting self-reported anxiety scores at baseline  
272 and during both task runs showed the same pattern (**Figure 2**). See **Supplementary Materials**  
273 for full results.



274  
275 **Figure 2.** Self-reported anxiety and STAI State at baseline and during each run of the Horizon  
276 Task (i.e., with and without the added breathing resistance of 40 cmH<sub>2</sub>O/L/sec). Results showed  
277 greater anxiety in iADs, greater anxiety with higher resistance level, and greater increases in  
278 anxiety in iADs than HCs when resistance was added. Boxplots show median and quartile values  
279 along with individual datapoints.

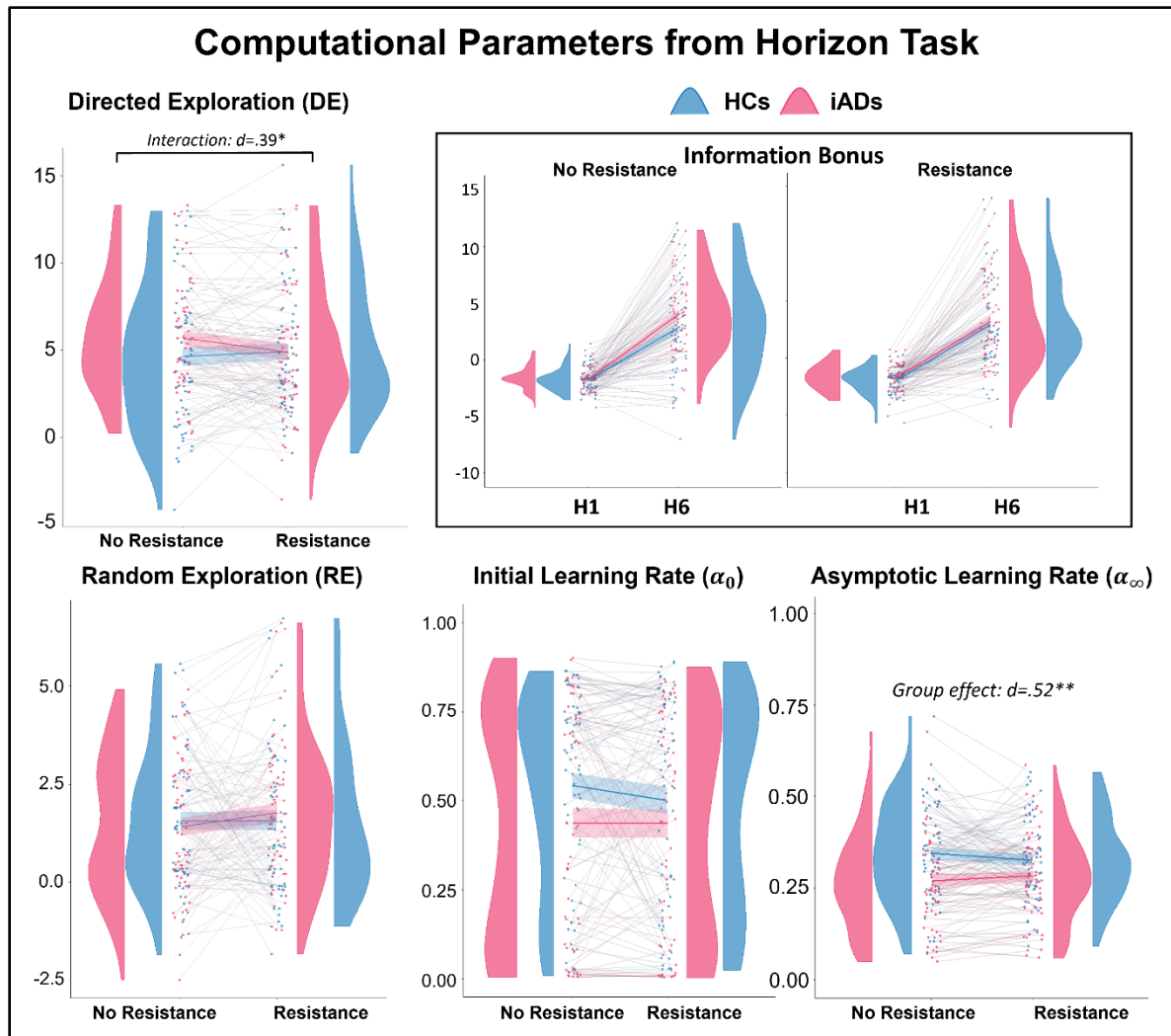
## State Anxiety Alters Exploration in Affective Disorders

280

### 281 **Directed Exploration was Elevated in Affective Disorders Patients, but Reduced by State** 282 **Anxiety Induction**

283 Plots depicting parameter values by group and condition are shown in **Figure 3**. In an initial  
284 LME predicting DE, there was a significant *Group x Resistance Condition* interaction  
285 ( $F(1,117)=3.98, p=.048, \eta_p^2=.03$ ), such that iADs showed higher DE in the no-resistance  
286 condition (estimated marginal mean [EMM]=5.69) than in the resistance condition (EMM=4.89;  
287  $t(117)=-2.09, p=.039$ ), while DE in HCs remained at lower values and did not change between  
288 conditions ( $t(117)=0.75, p=.456$ ). Further exploration suggested this was driven primarily by  
289 greater IB values in iADs compared to HCs in H6 games within the no-resistance condition (see  
290 **Supplementary Figure S2**). Main effects of group or resistance were nonsignificant. In a  
291 subsequent model accounting for age, sex, and task version, this interaction remained significant  
292 ( $F(1,117)=3.98, p=.048, \eta_p^2=.03$ ). There was also a negative association with age ( $b=-0.06$ ;  
293  $F(1,114)=5.65, p=.019, \eta_p^2=.05$ ).

State Anxiety Alters Exploration in Affective Disorders



294  
 295 **Figure 3.** Individual data points and density plots by group and resistance condition for each  
 296 parameter. HCs showed stable DE values in both conditions. Those with ADs instead showed  
 297 elevated DE in the no-resistance condition, which then decreased after application of the  
 298 resistance. For illustrative purposes, the individual information bonus (IB) values underlying DE  
 299 for each horizon condition (H1 and H6) are shown in the top-right (recall that DE corresponds to  
 300 the difference in information bonuses between horizon conditions;  $DE = IB_6 - IB_1$ ). As can be  
 301 seen, the H6 information bonus is higher in the no-resistance condition than in the resistance  
 302 condition for iADs only. RE did not differ by group or condition (bottom left). Learning rates  
 303 tended to show lower values in iADs than HCs across conditions. As visible in the lower middle  
 304 panel,  $\alpha_0$  showed a bimodal distribution, which motivated the cluster-based analysis approach  
 305 described in the text. Asymptotic learning rates ( $\alpha_\infty$ ) were significantly lower in iADs than HCs  
 306 in both conditions (bottom right). Note that stars and Cohen's  $d$  effect sizes correspond to the  
 307 interaction between group and resistance for DE (upper left) and for the group difference in  $\alpha_\infty$   
 308 across resistance conditions (bottom right) in post-hoc comparisons.

309  
 310 No significant effects were found in LMEs predicting RE ( $F_s \leq 3.45$ ,  $p_s \geq .067$ ).

## State Anxiety Alters Exploration in Affective Disorders

311 Because of bimodality in the distributions for  $\alpha_0$  (see **Figure 3**), we used *k*-means clustering (46)  
312 across resistance conditions to divide participants into groups with high vs. low values and  
313 treated this as a 2-level categorical variable (low=-1; high=1). In logistic regression models  
314 predicting high vs. low  $\alpha_0$  values (using *glmer* in the *lme4* package; (47)), there were no  
315 significant effects before or after adding covariates ( $z_s \leq |1.60|$ ,  $p_s \geq .110$ ).

316 The LME predicting  $\alpha_\infty$  (accounting for  $\alpha_0$ ) revealed a significant main effect of group  
317 ( $F(1,117)=7.73$ ,  $p=.006$ ,  $\eta_p^2=.06$ ; see **Figure 3**), such that HCs (EMM=.33) had higher learning  
318 rates than iADs (EMM=.28,  $t(117)=-2.79$ ,  $p=.006$ ). The expected positive association with  $\alpha_0$   
319 was also observed ( $F(1,200)=15.64$ ,  $p<.001$ ,  $\eta_p^2=.07$ ;  $b=.11$ ). Both effects remained significant  
320 when accounting for covariates, and no additional effects were observed ( $F_s \leq 1.73$ ,  $p_s \geq .192$ ).

321 We also evaluated within-group associations with symptom severity. This was done to explore  
322 potentially differential effects of depression and anxiety, noting that associated measures (PHQ  
323 and STAI Trait) were highly correlated ( $r_s=.83-.86$ ; see **Supplementary Figure S3**). In models  
324 predicting DE in iADs alone (based on PHQ, STAI Trait, or both measures in a single model) no  
325 significant effects were found. However, marginal effects of resistance condition recapitulated  
326 the *Group x Resistance* interaction effects observed in our primary analyses above ( $F_s \geq 3.76$ ,  
327  $.05 < p \leq .058$ ).

328 Within HCs, models predicting DE with either PHQ or STAI Trait showed no significant effects.  
329 However, when both symptom measures were included in the same model, there was a  
330 significant interaction between resistance condition and STAI Trait ( $F(1,55)=5.48$ ,  $p=.023$ ,  
331  $\eta_p^2=.09$ ). This reflected a greater positive association between anxiety and DE in the no-  
332 resistance condition than in the resistance condition (no-resistance: estimated trend [ET]=.236;  
333 resistance: ET=.072;  $t(55)=2.34$ ,  $p=.023$ ), with a nonsignificant positive association with STAI  
334 Trait overall ( $F(1,54)=2.85$ ,  $p=.097$ ,  $\eta_p^2=.05$ ). PHQ instead showed a marginal negative  
335 association with DE that interacted with resistance ( $F(1,55)=3.43$ ,  $p=.069$ ,  $\eta_p^2=.06$ ), suggesting  
336 this negative relationship was stronger in the no-resistance condition (no-resistance: ET=-.484;  
337 resistance: ET=-.060;  $t(55)=-1.85$ ,  $p=.070$ ).

## State Anxiety Alters Exploration in Affective Disorders

338 Equivalent analyses were also carried out for other model parameters, which suggested potential  
 339 opposing associations between PHQ, STAI Trait, and RE when included in the same model  
 340 (detailed in **Supplementary Results**).

### 341 **Higher Levels of Directed and Random Exploration are Associated with Greater Task** 342 **Performance**

343 In LMEs predicting H6 accuracy (on choices 6-10) using each model parameter, we found main  
 344 effects of learning rates (**Table 3**). Specifically,  $\alpha_0$  predicted accuracy on equal information  
 345 trials, while  $\alpha_\infty$  predicted accuracy on unequal information trials. Additionally, there was an  
 346 interaction between IB6 and free choice number indicating that, in unequal information trials,  
 347 those with higher IB6 showed steeper increases in accuracy from early to later choices. Similar  
 348 results were found for decision noise when predicting accuracy on equal information trials.

349 We also tested an analogous model using DE as a predictor of free choice accuracy and saw  
 350 comparable results to those seen for IB6 (i.e., main effect of free choice number and a significant  
 351 interaction with DE;  $F_{s} \geq 9.69$ ,  $p_{s} \leq .002$ ). Similarly, results when using RE to predict equal  
 352 information accuracy corroborated those found for decision noise (main effect of free choice:  
 353  $F(1,1057)=114.74$ ,  $p < .001$ ;  $RE \times free\ choice: F(1,1057)=15.78$ ,  $p < .001$ ; main effect of group:  
 354  $F(1,117)=5.67$ ,  $p = .019$ ). Finally, motivated by the effect of resistance on DE observed above in  
 355 iADs, we tested a model including a  $DE \times Resistance\ Condition$  interaction term. This revealed a  
 356 significant interaction ( $F(1,1089)=4.46$ ,  $p = .035$ ), such that greater DE was positively predictive  
 357 of accuracy in the resistance condition (ET=0.002) but not in the no-resistance condition (ET=-  
 358 0.001;  $t(1089)=2.11$ ,  $p = .035$ ). Jointly, these results suggest higher values for DE were more  
 359 optimal.

360 **Table 3.** Free choice accuracy (separated by information condition) predicted by model parameters.

	Parameter	Resistance	Group	Free Choice Number	Parameter*Free Choice
<b>IB6</b> (unequal IC)	$F(1,992)=0.01$ , $p=.913$	$F(1,1071)=0.03$ , $p=.853$	$F(1,117)=1.82$ , $p=.181$	$F(1,1067)=91.96$ , $p < .001$ ; $b=0.012$	$F(1,1067)=9.89$ , $p=.002$ ; $b=0.001$
<b>DN6</b> (equal IC)	$F(1,1174)=1.54$ , $p=.215$	$F(1,1059)=2.66$ , $p=.103$	$F(1,117)=5.65$ , $p=.019$	$F(1,1057)=113.83$ , $p < .001$ ; $b=0.007$	$F(1,1057)=9.93$ , $p=.002$ ; $b=0.03$
<b><math>\alpha_0</math> Cluster</b> (equal IC)	$F(1,1167)=4.54$ , $p=.033$ ; $b=0.021$	$F(1,1068)=2.84$ , $p=.092$	$F(1,117)=5.65$ , $p=.019$	$F(1,1067)=114.37$ , $p < .001$ ; $b=0.022$	$F(1,1067)=1.37$ , $p=.242$
<b><math>\alpha_0</math> Cluster</b> (unequal IC)	$F(1,1165)=0.94$ , $p=.332$	$F(1,1068)=0.01$ , $p=.909$	$F(1,117)=1.77$ , $p=.186$	$F(1,1067)=91.36$ , $p < .001$ ;	$F(1,1067)=6.26$ , $p=.013$ ; $b=-0.009$



## State Anxiety Alters Exploration in Affective Disorders

$\alpha_\infty$ (equal IC)	$F(1,1301)=1.18,$ $p=.278$	$F(1,1309)=2.21,$ $p=.137$	$F(1,119)=4.90,$ $p=.029$	$b=0.021$ $F(1,1304)=86.60,$ $p<.001; b=0.015$	$F(1,1304)=0.20,$ $p=.656$
$\alpha_\infty$ (unequal IC)	$F(1,1194)=18.88,$ $p<.001; b=0.145$	$F(1,1310)=0.01,$ $p=.928$	$F(1,120)=1.06,$ $p=.305$	$F(1,1304)=128.71,$ $p<.001; b=0.025$	$F(1,1304)=12.67,$ $p<.001;$ $b= -0.038$

361 **Note.** For each significant effect of group, contrasts indicated that accuracy in the iADs (EMM=0.80) was  
 362 lower than accuracy in the HCs (EMM=0.85;  $p<.05$ ). The models predicting accuracy including  $\alpha_\infty$  also  
 363 saw positive effects of  $\alpha_0$  ( $F_s \geq 6.77, p_s < .01, b_s \geq 0.046$ ). IC=information condition.

364

### 365 Task Performance was Reduced in Affective Disorders in Specific Conditions

366 Secondary analyses of free choice accuracy indicated high performance across both groups  
 367 (HCs:  $M=.84, SD=.13$ ; iADs:  $M=.80, SD=.16$ ; see **Supplementary Figure S4**). LMEs  
 368 predicting first free choice accuracy (**Supplementary Table S3**) revealed significant effects of  
 369 horizon type (greater accuracy in H1;  $F(1,823)=278.81, p<.001$ ) and information condition  
 370 (greater accuracy in equal information trials;  $F(1,823)=72.08, p<.001$ ). The *Group x Horizon x*  
 371 *Information Condition* interaction was also significant ( $F(1,823)=4.18, p=.041$ ), indicating that  
 372 HCs had significantly greater accuracy than iADs in H1/equal information trials and in  
 373 H6/unequal information trials only (see post-hoc contrasts). Subsequent LMEs predicting  
 374 accuracy across free choices in H6 showed significant effects of choice number (greater accuracy  
 375 in later choices;  $F(1,2727)=201.30, p<.001$ ), information condition (greater accuracy in equal  
 376 information trials;  $F(1,2727)=51.37, p<.001$ ), and a *Group x Information Condition* interaction  
 377 (greater accuracy in HCs only in the equal information condition;  $F(1,2727)=8.93, p=.003$ ).

### 378 Replication Analyses Confirm Associations with Early Adversity and Cognitive

#### 379 Reflectiveness

380 CTQ scores were greater in iADs than HCs ( $t(112)=5.31, p<.001$ ). In separate LMEs predicting  
 381 DE with each subscale of the CTQ, group, resistance condition, and their interaction as  
 382 predictors (also controlling for age), and after correcting for multiple comparisons ( $p \leq .01$ ), there  
 383 was a significant negative association with physical abuse ( $b=-.26; F(1,109)=6.96, p=.010,$   
 384  $\eta_p^2=.06$ ) such that exploration was lower in those who experienced greater physical abuse. This

## State Anxiety Alters Exploration in Affective Disorders

385 remained significant in iADs alone ( $b=-.32$ ;  $F(1,56)=7.27$ ,  $p=.009$ ,  $\eta_p^2=.11$ ). No effects were  
386 observed for any other parameter.

387 CRT scores were lower in iADs than HCs ( $t(117)=3.05$ ,  $p=.003$ ). In an LME assessing the effect  
388 of CRT on DE across all participants, there was a significant positive association ( $b=.32$ ;  
389  $F(1,116)=5.06$ ,  $p=.026$ ,  $\eta_p^2=.04$ ). The effect of CRT was directionally the same in iADs alone  
390 (and stronger in effect size), but only marginally significant due to smaller sample size ( $b=.40$ ;  
391  $F(1,58)=3.89$ ,  $p=.053$ ,  $\eta_p^2=.06$ ). There were no significant effects of CRT on RE or  $\alpha_\infty$  in either  
392 the full sample or in the clinical group alone ( $ps>.054$ ). CRT scores positively predicted  $\alpha_0$   
393 cluster membership in the full sample ( $z=-2.91$ ,  $p=.004$ ; log-odds=-.41, CI=[-0.68,-0.13]), but  
394 not in iADs alone ( $z=-1.57$ ,  $p=.115$ ; log-odds=-.38, CI=[-0.86,0.09])).

395

396

## Discussion

397 In this study, we compared decision-making behavior on an explore-exploit task in participants  
398 with and without clinically elevated levels of trait anxiety and depression. A somatic  
399 (interoceptive) anxiety induction was also used to allow dissociation of the influences of state vs.  
400 trait anxiety. We hypothesized that state anxiety induction would reduce direction exploration  
401 (DE) as a potential mechanism promoting avoidance behavior. Results were mixed, offering only  
402 partial support for our primary hypotheses. In particular, there was a significant interaction in  
403 which elevated DE in iADs at baseline was reduced by the anxiety induction, while DE in HCs  
404 remained stable between conditions. The elevated DE at baseline suggests more persistent and  
405 exaggerated uncertainty in iADs, similar to that observed in some previous work in non-clinical  
406 samples (29). The reduction in DE after anxiety induction also appears consistent with  
407 correlational work suggesting anxiety and depression are associated with less exploration (14), as  
408 well as with work showing that stress reduces exploration (21-23). It is also somewhat in line  
409 with a previous study showing lower DE in those with higher trait somatic anxiety (15). Thus,  
410 our results show partial consistency with findings of multiple previous studies and suggest a  
411 general differentiation between state and trait effects.

412 While the reduction in DE with state anxiety induction in iADs is consistent with our initial  
413 hypothesis, the expected decrease in HCs was not observed. This suggests the change in iADs

## State Anxiety Alters Exploration in Affective Disorders

414 could be viewed as a normalization toward healthy levels. On the other hand, higher levels of DE  
415 were also associated with steeper improvements in task performance over time, suggesting the  
416 anxiety induction had a maladaptive effect. This interpretation is also not entirely supported,  
417 however, as choice accuracy was not significantly different between resistance conditions, and  
418 task performance was marginally worse in iADs overall. This would therefore suggest greater  
419 exploratory behavior in the no-resistance condition did not in fact improve performance, or that  
420 there were other counteracting factors (e.g., differences in learning rates). Thus, differences in  
421 DE did not relate to optimality in task performance in a clear way.

422 The finding that iADs showed slower asymptotic learning rates across conditions may offer  
423 some additional explanatory insights. First, depression and anxiety symptoms (and particularly  
424 trait anxiety levels in the no-resistance condition) were negatively associated with asymptotic  
425 learning rates, while these learning rates were positively associated with task performance. This  
426 suggested that slower learning may have contributed to worse performance in iADs. Here,  
427 slower learning implies that beliefs remained closer to uninformative prior values; thus,  
428 confidence in the better choice would increase more slowly (similar to less flexible learning rates  
429 previously associated with higher anxiety; (5)). Within this task, slower learning rates might thus  
430 support a type of persistent uncertainty about the best course of action, with suboptimal effects  
431 on decision-making. Interpreting this result in light of previous findings is subtle, however, as  
432 faster learning rates are theoretically linked to greater uncertainty, and prior work has linked  
433 anxiety to both faster learning (6) and a greater tendency to infer changes in context (8). On the  
434 other hand, the type of uncertainty in these studies pertains to volatility, or how frequently  
435 environmental contingencies are expected to change. Thus, if anxious individuals believe the  
436 world is ever-changing, then learning rates should be high.

437 However, if “uncertainty” instead pertains to the estimated stochasticity of (i.e., noise in) the  
438 mapping from underlying states to observations, learning rate should instead be low, so as not to  
439 overfit beliefs to random outcomes (48). Thus, in the present task, slower learning in iADs could  
440 represent greater uncertainty about the informativeness of each outcome when inferring the  
441 underlying reward mean. This could offer a complementary means by which uncertainty is  
442 maintained in anxious individuals, consistent with the previous findings reviewed above. It could  
443 also relate to another recent study showing that individuals who experienced greater early

## State Anxiety Alters Exploration in Affective Disorders

444 adversity, itself a predictor of subsequent affective disorders (49-51), also showed a slower  
445 learning rate (16). It should be kept in mind, however, that our sample includes individuals with  
446 affective disorders, while most prior work has examined sub-clinical anxiety levels. Thus, some  
447 results between studies may not be fully comparable. This was suggested by our follow-up  
448 results in which, for HCs, DE showed potentially opposing positive associations with trait  
449 anxiety and negative associations with depression in the no-resistance condition (i.e., when both  
450 symptom measures were included in the same models), while no such relationships were found  
451 in the clinical sample.

452 In line with our secondary aims, we were also able to successfully replicate prior results showing  
453 higher DE in those with greater cognitive reflectiveness (14) and lower DE in those who  
454 experienced greater childhood adversity (physical abuse) and environmental unpredictability (16,  
455 17). These findings suggest that less reflection on uncertainty and greater exposure to  
456 unpredictable early environments could each contribute to clinical differences seen here in  
457 exploration and learning. It is also worth noting that cognitive reflectiveness has been shown to  
458 improve with training (52-54). Thus, future studies could examine whether improving  
459 reflectiveness also optimizes exploratory behavior or reduces affective symptoms. Another  
460 consideration is that multiple previous studies have shown strong relationships between physical  
461 abuse in childhood and later avoidance behavior (55, 56). Results here suggest associated  
462 differences in DE could contribute to this avoidance behavior, perhaps especially in relation to  
463 somatic anxiety and physical abuse, potentially highlighting DE as a possible treatment target for  
464 those recovering from childhood trauma.

465 There are important limitations to consider. First, the breathing resistance only induced mild  
466 anxiety in HCs and moderate anxiety in iADs. While we intentionally chose a tolerable level of  
467 resistance for patients, it is possible that effects would be larger with a stronger induction  
468 approach. Additionally, the sample size was only moderate and may not have afforded sufficient  
469 power to detect some effects within the clinical group alone. Future research will also be needed  
470 to see whether results generalize to other explore-exploit tasks as well as tasks designed to  
471 distinguish learning rates in relation to volatility vs. stochasticity (48).

472 ***Conclusions***

## State Anxiety Alters Exploration in Affective Disorders

473 The results of this study suggest elevated directed exploration and slower learning rates in  
474 individuals with affective disorders, as well as a causal role of somatically focused state anxiety  
475 in reducing directed exploration in this population. It also replicates potential links to cognitive  
476 reflection and early adversity that may be of clinical relevance. These findings highlight potential  
477 computational mechanisms underlying both persistent uncertainty and maladaptive avoidance. If  
478 confirmed in future work, this could suggest potential benefits of treatments aimed at optimizing  
479 levels of information-seeking and belief testing in relation to current affective states as well as  
480 adjusting beliefs about the reliability of new experiences in revising expectations.

### 481 **Conflict of interest or competing financial interests**

482 The authors have no competing interests to disclose.

### 483 **Funding**

484 This project was funded by National Institute of General Medical Sciences (P20GM121312 [R.S.  
485 and M.P.P.]) and the Laureate Institute for Brain Research.

### 486 **Author contributions**

487 NL and CAL took the lead in data analysis and writing the manuscript. RS designed the study,  
488 planned and oversaw analyses, and played a major role in writing the manuscript. ST, AEC,  
489 CMG, and TT assisted analyses and in data collection. All authors contributed to the manuscript.

## State Anxiety Alters Exploration in Affective Disorders

490

### References

- 491 1. Barlow DH, Allen LB, Choate ML. Toward a unified treatment for emotional disorders -  
492 republished article. *Behav Ther.* 2016;47(6):838-53.
- 493 2. Hayes S, Strosahl K, Wilson K. Acceptance and commitment therapy: An experiential approach to  
494 behaviour change. 2003.
- 495 3. Sharp PB, Eldar E. Computational models of anxiety: nascent efforts and future directions.  
496 *Current Directions in Psychological Science.* 2019;28(2):170-6.
- 497 4. Lloyd A, Roiser JP, Skeen S, Freeman Z, Badalova A, Agunbiade A, et al. Reviewing explore/exploit  
498 decision-making as a transdiagnostic target for psychosis, depression, and anxiety. *Cogn Affect Behav*  
499 *Neurosci.* 2024.
- 500 5. Browning M, Behrens TE, Jocham G, O'Reilly JX, Bishop SJ. Anxious individuals have difficulty  
501 learning the causal statistics of aversive environments. *Nat Neurosci.* 2015;18(4):590-6.
- 502 6. Huang H, Thompson W, Paulus MP. Computational dysfunctions in anxiety: failure to differentiate  
503 signal from noise. *Biol Psychiatry.* 2017;82(6):440-6.
- 504 7. Pike AC, Robinson OJ. Reinforcement learning in patients with mood and anxiety disorders vs  
505 control individuals: A systematic review and meta-analysis. *JAMA psychiatry.* 2022;79(4):313-22.
- 506 8. Zika O, Wiech K, Reinecke A, Browning M, Schuck NW. Trait anxiety is associated with hidden  
507 state inference during aversive reversal learning. *Nat Commun.* 2023;14(1):4203.
- 508 9. Wilson RC, Bonawitz E, Costa VD, Ebitz RB. Balancing exploration and exploitation with  
509 information and randomization. *Curr Opin Behav Sci.* 2021;38:49-56.
- 510 10. Schulz E, Gershman SJ. The algorithmic architecture of exploration in the human brain. *Current*  
511 *opinion in neurobiology.* 2019;55:7-14.
- 512 11. Addicott MA, Pearson JM, Wilson J, Platt ML, McClernon FJ. Smoking and the bandit: a  
513 preliminary study of smoker and nonsmoker differences in exploratory behavior measured with a  
514 multiarmed bandit task. *Exp Clin Psychopharmacol.* 2013;21(1):66-73.
- 515 12. Addicott MA, Pearson JM, Froeliger B, Platt ML, McClernon FJ. Smoking automaticity and  
516 tolerance moderate brain activation during explore-exploit behavior. *Psychiatry Res.* 2014;224(3):254-61.
- 517 13. Addicott MA, Pearson JM, Sweitzer MM, Barack DL, Platt ML. A Primer on Foraging and the  
518 Explore/Exploit Trade-Off for Psychiatry Research. *Neuropsychopharmacology.* 2017;42(10):1931-9.
- 519 14. Smith R, Taylor S, Wilson RC, Chuning AE, Persich MR, Wang S, et al. Lower levels of directed  
520 exploration and reflective thinking are associated with greater anxiety and depression. *Frontiers in*  
521 *Psychiatry.* 2022;12:782136.
- 522 15. Fan H, Gershman SJ, Phelps EA. Trait somatic anxiety is associated with reduced directed  
523 exploration and underestimation of uncertainty. *Nature Human Behaviour.* 2023;7(1):102-13.
- 524 16. Lloyd A, McKay RT, Furl N. Individuals with adverse childhood experiences explore less and  
525 underweight reward feedback. *Proceedings of the National Academy of Sciences.*  
526 2022;119(4):e2109373119.
- 527 17. Xu Y, Harms MB, Green CS, Wilson RC, Pollak SD. Childhood unpredictability and the  
528 development of exploration. *Proceedings of the National Academy of Sciences.*  
529 2023;120(49):e2303869120.
- 530 18. Chorpita BF, Barlow DH. The development of anxiety: The role of control in the early  
531 environment. *The Neurotic Paradox, Vol 2.* 2018:227-64.
- 532 19. Nelson CA, Gabard-Durnam LJ. Early adversity and critical periods: neurodevelopmental  
533 consequences of violating the expectable environment. *Trends in neurosciences.* 2020;43(3):133-43.
- 534 20. Spadoni AD, Vinograd M, Cuccurazzu B, Torres K, Glynn LM, Davis EP, et al. Contribution of  
535 early - life unpredictability to neuropsychiatric symptom patterns in adulthood. *Depression and anxiety.*  
536 2022;39(10-11):706-17.

## State Anxiety Alters Exploration in Affective Disorders

- 537 21. Biedermann SV, Biedermann DG, Wenzlaff F, Kurjak T, Nouri S, Auer MK, et al. An elevated plus-  
538 maze in mixed reality for studying human anxiety-related behavior. *BMC Biol.* 2017;15(1):125.
- 539 22. Walz N, Muhlberger A, Pauli P. A Human Open Field Test Reveals Thigmotaxis Related to  
540 Agoraphobic Fear. *Biol Psychiatry.* 2016;80(5):390-7.
- 541 23. Lenow JK, Constantino SM, Daw ND, Phelps EA. Chronic and Acute Stress Promote  
542 Overexploitation in Serial Decision Making. *J Neurosci.* 2017;37(23):5681-9.
- 543 24. Teigen K. Yerkes-Dodson: A law for all seasons. *Theory and Psychology.* 1994;4:525-47.
- 544 25. Arnsten AF. Stress weakens prefrontal networks: molecular insults to higher cognition. *Nat*  
545 *Neurosci.* 2015;18(10):1376-85.
- 546 26. Robbins TW, Arnsten AF. The neuropsychopharmacology of fronto-executive function:  
547 monoaminergic modulation. *Annu Rev Neurosci.* 2009;32:267-87.
- 548 27. Arnsten A, Robbins T. Neurochemical modulation of prefrontal cortical function in humans and  
549 animals. *Principles of frontal lobe function* 2002. p. 51-84.
- 550 28. Arnsten AF. Catecholamine modulation of prefrontal cortical cognitive function. *Trends Cogn Sci.*  
551 *1998;2(11):436-47.*
- 552 29. Aberg KC, Toren I, Paz R. A neural and behavioral tradeoff underlies exploratory decisions in  
553 normative anxiety. *Molecular Psychiatry.* 2022;27:1573–87.
- 554 30. Witte K, Wise T, Huys QJ, Schulz E. Exploring the Unexplored: Worry as a Catalyst for Exploratory  
555 Behavior in Anxiety and Depression. 2024.
- 556 31. Blanco NJ, Otto AR, Maddox WT, Beevers CG, Love BC. The influence of depression symptoms on  
557 exploratory decision-making. *Cognition.* 2013;129(3):563-8.
- 558 32. Sheehan DV, Lecrubier Y, Sheehan KH, Amorim P, Janavs J, Weiller E, et al. The Mini-International  
559 Neuropsychiatric Interview (MINI): the development and validation of a structured diagnostic psychiatric  
560 interview for DSM-IV and ICD-10. *Journal of clinical psychiatry.* 1998;59(20):22-33.
- 561 33. Campbell-Sills L, Norman SB, Craske MG, Sullivan G, Lang AJ, Chavira DA, et al. Validation of a  
562 brief measure of anxiety-related severity and impairment: the Overall Anxiety Severity and Impairment  
563 Scale (OASIS). *Journal of affective disorders.* 2009;112(1-3):92-101.
- 564 34. Zhang Z, Mai Y. WebPower: Basic and Advanced Statistical Power Analysis. R package version  
565 0.9.4 ed2023.
- 566 35. Spielberger C, Gorsuch R, Lushene R, Vagg P, Jacobs G. *Manual for the State-Trait Anxiety*  
567 *Inventory*; Palo Alto, CA, Ed. Palo Alto: Spielberger. 1983.
- 568 36. Sun Y, Fu Z, Bo Q, Mao Z, Ma X, Wang C. The reliability and validity of PHQ-9 in patients with  
569 major depressive disorder in psychiatric hospital. *BMC Psychiatry.* 2020;20:1-7.
- 570 37. Bernstein DP, Stein JA, Newcomb MD, Walker E, Pogge D, Ahluvalia T, et al. Development and  
571 validation of a brief screening version of the Childhood Trauma Questionnaire. *Child abuse & neglect.*  
572 *2003;27(2):169-90.*
- 573 38. Stewart JL, May AC, Poppa T, Davenport PW, Tapert SF, Paulus MP. You are the danger:  
574 attenuated insula response in methamphetamine users during aversive interoceptive decision-making.  
575 *Drug Alcohol Depend.* 2014;142:110-9.
- 576 39. Kruschwitz JD, Kausch A, Brovkin A, Keshmirian A, Paulus MP, Goschke T, et al. Self-control is  
577 linked to interoceptive inference: Craving regulation and the prediction of aversive interoceptive states  
578 induced with inspiratory breathing load. *Cognition.* 2019;193:104028.
- 579 40. Berk L, Stewart JL, May AC, Wiers RW, Davenport PW, Paulus MP, et al. Under pressure:  
580 adolescent substance users show exaggerated neural processing of aversive interoceptive stimuli.  
581 *Addiction.* 2015;110(12):2025-36.
- 582 41. Paulus MP, Flagan T, Simmons AN, Gillis K, Kotturi S, Thom N, et al. Subjecting elite athletes to  
583 inspiratory breathing load reveals behavioral and neural signatures of optimal performers in extreme  
584 environments. *PLoS one.* 2012;7(1):e29394.

## State Anxiety Alters Exploration in Affective Disorders

- 585 42. Wilson RC, Geana A, White JM, Ludvig EA, Cohen JD. Humans use directed and random  
586 exploration to solve the explore–exploit dilemma. *Journal of Experimental Psychology: General*.  
587 2014;143(6):2074.
- 588 43. Zajkowski WK, Kossut M, Wilson RC. A causal role for right frontopolar cortex in directed, but not  
589 random, exploration. *Elife*. 2017;6:e27430.
- 590 44. Komsta L. outliers: Tests for Outliers. R package version 0.15 ed2022.
- 591 45. Goldman CM, Takahashi T, Lavalley CA, Li N, Taylor S, Chuning AE, et al. Individuals with  
592 Methamphetamine Use Disorder Show Reduced Directed Exploration and Learning Rates Independent of  
593 an Aversive Interoceptive State Induction. *medRxiv*. 2024:2024.05.17.24307491.
- 594 46. Jain AK, Dubes RC. Algorithms for clustering data: Prentice-Hall, Inc.; 1988.
- 595 47. Kuznetsova A, Brockhoff PB, Christensen RHB. lmerTest package: tests in linear mixed effects  
596 models. *Journal of statistical software*. 2017;82(13).
- 597 48. Piray P, Daw ND. A model for learning based on the joint estimation of stochasticity and volatility.  
598 *Nat Commun*. 2021;12(1):6587.
- 599 49. Heim C, Newport DJ, Mletzko T, Miller AH, Nemeroff CB. The link between childhood trauma and  
600 depression: insights from HPA axis studies in humans. *Psychoneuroendocrinology*. 2008;33(6):693-710.
- 601 50. Heim C, Binder EB. Current research trends in early life stress and depression: review of human  
602 studies on sensitive periods, gene-environment interactions, and epigenetics. *Exp Neurol*.  
603 2012;233(1):102-11.
- 604 51. Springer KW, Sheridan J, Kuo D, Carnes M. Long-term physical and mental health consequences  
605 of childhood physical abuse: results from a large population-based sample of men and women. *Child*  
606 *Abuse Negl*. 2007;31(5):517-30.
- 607 52. Lachaud L, Jacquet B, Bourlier M, Baratgin J. Mindfulness-based stress reduction is linked with an  
608 improved Cognitive Reflection Test score. *Frontiers in Psychology*. 2023;14:1272324.
- 609 53. Calvillo DP, Bratton J, Velazquez V, Smelter TJ, Crum D. Elaborative feedback and instruction  
610 improve cognitive reflection but do not transfer to related tasks. *Thinking & Reasoning*. 2023;29(2):276-  
611 304.
- 612 54. Orona GA, Trautwein U. Thinking Disposition Education Improves Cognitive Reflection:  
613 Experimental Results from Two Intervention Studies. 2023.
- 614 55. Fiorillo D, Papa A, Follette VM. The relationship between child physical abuse and victimization in  
615 dating relationships: The role of experiential avoidance. *Psychological trauma: theory, research, practice,*  
616 *and policy*. 2013;5(6):562.
- 617 56. Unger JAM, De Luca RV. The relationship between childhood physical abuse and adult  
618 attachment styles. *Journal of family violence*. 2014;29:223-34.

619

620



State Anxiety Alters Exploration in Affective Disorders

621

## Supplementary Materials

622 **Supplementary Methods**

623 **Table S1. Sample Demographics**

Demographics	Healthy Comparisons (n = 58)	Affective Disorders (n = 61)	Sample Comparison
Age (mean (SD))	35.41 (13.08)	33.44 (10.97)	$t(117) = 0.89, p = 0.374$
Gender Identity = Woman (counts)	42 (72.4%)	46 (75.4%)	$\chi^2(1) = 0.03, p = .870$
Sexual Orientation (counts)			$\chi^2(3) = 4.07, p = 0.254$
Bisexual	3 (5.2%)	5 (8.5%)	
Lesbian	0 (0.0%)	3 (5.1%)	
None of these describe me	1 (1.7%)	2 (3.4%)	
Straight, that is, not gay or lesbian, etc.	54 (93.1%)	49 (83.1%)	
Education (counts)			$\chi^2(7) = 4.47, p = 0.724$
GED or equivalent	0 (0.0%)	1 (1.6%)	
High school graduate	1 (1.7%)	4 (6.6%)	
Some college, no degree	6 (10.3%)	8 (13.1%)	
Associate's degree: occupational, technical, or vocational program	4 (6.8%)	5 (8.2%)	
Associate's degree: academic program	3 (5.2%)	4 (6.6%)	
Bachelor's degree	25 (43.1%)	18 (29.5%)	
Master's degree	7 (12.1%)	7 (11.5%)	
Doctoral degree	1 (1.7%)	1 (1.6%)	
Information Unavailable	11 (19.0%)	13 (21.3%)	
Ethnicity = Not Hispanic/Latino (counts)	52 (89.7%)	54 (88.5%)	$\chi^2(1) = 0, p = 1$
Race (counts)			$\chi^2(5) = 1.327, p = 0.932$
American Indian or Alaska Native	8 (13.8%)	8 (13.6%)	
Asian	4 (6.9%)	3 (5.1%)	
Black or African American	3 (5.2%)	4 (6.8%)	

## State Anxiety Alters Exploration in Affective Disorders

Native Hawaiian or Pacific Islander	1 (1.7)	0 (0.0)
Other	3 (5.2)	3 (5.1)
White	39 (67.2)	41 (69.5)

624

625 **Table S2. Diagnostic breakdown of individuals with high anxiety (N=61).**

iADs (N=61)	MDD	GAD	Social	PTSD	Panic
<b>MDD</b>	<b>58*</b>				
<b>GAD</b>	20	<b>22</b>			
<b>Social</b>	12	6	<b>13</b>		
<b>PTSD</b>	12	4	1	<b>12</b>	
<b>Panic</b>	1	0	0	1	<b>1</b>

626 **Note.** MINI diagnoses were given up to 12 months prior to study participation. Participants in this group  
 627 were required to have a lifetime diagnosis of one or more anxiety/depressive disorder(s) and OASIS  $\geq$  8  
 628 for eligibility. MDD=major depressive disorder, GAD=generalized anxiety disorder, Social=social anxiety  
 629 disorder, PTSD=post-traumatic stress disorder, Panic=panic disorder. Numbers on the diagonal indicate  
 630 the total number of participants with a lifetime occurrence of a given diagnosis. Numbers below the  
 631 diagonal indicate participants with a given comorbidity.

632 \*Of those with a lifetime diagnosis of MDD, 20 had current MDD, 30 were in partial remission, and 8  
 633 were in full remission.

634

### 635 **Participant Withdrawals**

636 The sensitivity assessment served not only as a way to obtain individual anxiety ratings to the  
 637 breathing resistances, but also to allow initial exposure to the mask before participants began the  
 638 Horizon Task. Seven participants who consented for the study withdrew either during or after the  
 639 sensitivity assessment because of discomfort with the breathing mask. Of the 7 individuals who  
 640 consented for this project and withdrew before completion due to tolerability of the breathing  
 641 resistance, 5 were iADs and 2 were HCs. The iADs who withdrew were numerically older  
 642 (M=44, SD=14.09) than those who did not and had comparable OASIS scores (M=8.5, SD=1.29)  
 643 and numerically lower PHQ scores (M=8.25, SD=4.79). All 5 were diagnosed with MDD, 4  
 644 GAD, 1 PTSD, and 1 social anxiety disorder. Two were taking psychiatric medications. All 7  
 645 participants who withdrew were female. The small number of individuals who withdrew did not  
 646 allow for formal statistical comparison to those who remained in the study.

647

## State Anxiety Alters Exploration in Affective Disorders

### 648 **Measure Details**

649 **State-Trait Anxiety Inventory (STAI-State/Trait).** The STAI consists of two sets of 20 items  
650 designed to assess state and trait anxiety, respectively. Respondents were asked to rate each item  
651 on a scale of 1 (“not at all” for state anxiety; “almost never” for trait anxiety) to 4 (“very much  
652 so” for state anxiety; “almost always” for trait anxiety) based on how much they agree or  
653 disagree with the associated statement. The STAI has shown good to excellent internal  
654 consistency (Cronbach’s alphas ranging from .86 to .96; (38)).

655 **Overall Anxiety Severity and Impairment Scale (OASIS).** The OASIS is a 5-item self-report  
656 measure designed to assess anxiety-related impairment across various areas of life over the past  
657 week. Total scores are obtained by summing scores of individual items (0-4), ranging from 0 to  
658 20, where higher scores indicate greater impairment. The OASIS has shown a high internal  
659 consistency, with a Cronbach’s alpha of .80 (39).

660 **Patient Health Questionnaire (PHQ-9).** The PHQ is a screening tool for depression and  
661 includes 9 self-report items, which correspond to the diagnostic criteria of major depressive  
662 disorder. Each item statement is rated on a 4-point Likert Scale, ranging from 0 (not at all) to 3  
663 (nearly every day) to describe the extent to which a depressive symptom has bothered them in  
664 the past 2 weeks. The total score reflects level of depression severity. The PHQ-9 has been found  
665 to show good internal consistency ( $\alpha = .89$ ; (40)).

666 **Childhood Trauma Questionnaire (CTQ).** The CTQ short form (41) includes 28 self-report  
667 items that measure childhood abuse and neglect through five subscales: physical abuse,  
668 emotional abuse, sexual abuse, physical neglect, and emotional neglect. Each item is scored  
669 using a Likert scale, ranging from 1 (“never true”) to 5 (“very often true”), with relevant items  
670 summed to provide each subscale score. The total score is the mean of the subscale scores.  
671 Higher scores indicate higher levels of childhood abuse and neglect.

672 **Cognitive Reflection Test (CRT-7).** The CRT-7 (42) is comprised of 7 short questions that are  
673 designed to assess trait cognitive reflectiveness. Lower reflectiveness is operationalized as an  
674 individual’s tendency to provide an immediate intuitive answer that is incorrect, when more  
675 detailed reflection on the content of the question would lead to a less intuitive but correct answer.  
676 Example item: “Jerry received both the 15<sup>th</sup> highest and the 15<sup>th</sup> lowest mark in the class. How

## State Anxiety Alters Exploration in Affective Disorders

677 many students are in the class?” (intuitive answer: 30; correct answer: 29). Scores are based on  
678 the number of correct answers. The CRT-7 has shown acceptable reliability ( $\alpha=.72$ ; (42)).

### 679 *Sensitivity Assessment*

680 In addition to self-reported anxiety levels, participants also gave responses to a series of other  
681 related questions immediately after exposure to each breathing resistance during the sensitivity  
682 protocol (exact wording listed below). Self-Assessment Manikin items assessed happiness and  
683 excitement (1) rated on a 5-point scale, while the others were rated similarly to self-reported  
684 anxiety (11-point scale). See **Figure S1** below for associated bar plots demonstrating ratings  
685 across resistance levels.

686 “How calm or excited did you feel during loaded breathing?” (on the scale from 1 to 5)

687 “How happy or unhappy did you feel during loaded breathing?” (on the scale from 1 to  
688 5)

689 “How difficult did it feel to breathe?” (0-no difficulty; 10-maximal difficulty you could  
690 tolerate)

691 “How much fear did you feel while breathing?” (0-no fear at all; 10-maximal fear you  
692 could tolerate)

693 “How unpleasant did it feel to breathe?” (0-not at all unpleasant; 10-maximal  
694 unpleasantness you could tolerate)

### 695 **Computation Model and Model Fitting**

#### 696 *Learning Model*

697 The learning model is designed to reflect how the participant estimates the mean reward of both  
698 bandits during forced-choice trials. In order to estimate the mean reward values, the model, based  
699 on a Kalman filter (Kalman, 1960), assumes that rewards  $r$  are generated from a Gaussian  
700 distribution with a fixed standard deviation  $\sigma_r$  and a mean  $\mu$  that differs between bandits and can  
701 change over time. Changes in the mean estimate are determined by a Gaussian random walk with  
702 mean 0 and standard deviation  $\sigma_d$ . Importantly, the dynamic mean assumptions made by this  
703 model do not reflect the true generative model of the Horizon Task (where means are constant

## State Anxiety Alters Exploration in Affective Disorders

704 throughout a game; i.e.,  $\sigma_d = 0$ ) allowing for the possibility of suboptimal learning as well as a  
705 recency bias in mean estimates.

706 For bandit  $i$  on trial  $t$ , estimation of mean reward  $R_t^i$  is updated based on the reward prediction  
707 error (i.e., difference between the observed reward and prior mean), which is scaled by a time  
708 varying learning rate  $\alpha_t^i$ . This gives the following:

$$709 \quad R_{t+1}^i = R_t^i + \alpha_t^i (r_t - R_t^i)$$

710 and

$$711 \quad \frac{1}{\alpha_t^i} = \frac{1}{\alpha_{t-1}^i + \alpha_d} + 1$$

712 where

$$713 \quad \alpha_t^i = \frac{(\sigma_{t+1}^i)^2}{\sigma_r^2} \quad \text{and} \quad \frac{1}{(\sigma_{t+1}^i)^2} = \frac{1}{(\sigma_t^i)^2 + \sigma_d^2} + \frac{1}{\sigma_r^2}.$$

714 The learning rate, as shown here, is defined by uncertainty in: 1) the estimated mean of a bandit  
715 ( $\sigma_t^i$ ), 2) the drift in this mean over time ( $\sigma_d$ ), and 3) the assumed standard deviation of the  
716 generative distribution ( $\sigma_r$ ). If bandit  $i$  is not played on trial  $t$ , the estimated mean is assumed to  
717 stay the same, while the uncertainty in that estimate grows in accordance with  $\sigma_d$ :

$$718 \quad (\sigma_{t+1}^i)^2 = (\sigma_t^i)^2 + \sigma_d^2.$$

719 The dynamic learning rate can be decomposed into two free parameters that are fit to individual  
720 behavior. The starting learning rate is defined by:

$$721 \quad \alpha_0 = \frac{\sigma_0^2 + \sigma_d^2}{\sigma_r^2}.$$

722 The “asymptotic” learning rate, or the value of  $\alpha_t^i$  if bandit  $i$  is chosen ad infinitum, is instead:

$$723 \quad \alpha_\infty = \frac{1}{2} \left( -\alpha_d + \sqrt{\alpha_d^2 + 4\alpha_d} \right),$$

724 where

## State Anxiety Alters Exploration in Affective Disorders

725 
$$\alpha_d = \frac{\sigma_d^2}{\sigma_r^2}.$$

726 This reparameterization then constrains both learning rate values to  $[0,1]$ .

### 727 *Decision Model*

728 After estimating the mean reward of each bandit,  $R_t^i$ , the participant uses it to choose between  
729 two bandits probabilistically according to a logistic choice rule:

730 
$$p(\text{choose right}) = \frac{1}{1 + \exp\left(\frac{\Delta R + A\Delta I + B}{\sigma}\right)},$$

731 where  $\Delta R$  is denoted as the differences in expected reward between two bandits and  $\Delta I$  is denoted  
732 as the differences in information between two bandits. Here, +1 is specified when the left bandit  
733 is more informative, -1 when the right bandit is more informative, and 0 when both bandits  
734 convey equal information. The decision process is characterized by three parameters:  $A$  (i.e., the  
735 information bonus),  $B$  (i.e., the spatial bias), and  $\sigma$  (i.e., the decision noise). Separate values of each  
736 parameter are estimated for each horizon (i.e., H1 and H6) and the spatial bias and decision noise  
737 parameters are further separated by uncertainty conditions (i.e., equal and unequal information),  
738 while information bonus is only calculated in the unequal information condition.

### 739 *Model Fitting*

740 A previously used hierarchical Bayesian model was used to fit each parameter to the behavior of  
741 each participant. In this approach to model fitting, it is assumed that each parameter for each  
742 participant is taken from the same group-level prior distribution, and is estimated using a Markov  
743 Chain Monte Carlo (MCMC) sampling procedure. Group-level prior distributions are  
744 parameterized by hyperpriors set to have broad, minimally informative distributions.

745 Model fitting was performed using the JAGS package (Plummer, 2003) to run Markov Chain  
746 Monte Carlo simulations in MATLAB ([psiexp.ss.uci.edu/research/programs\\_data/jags/](https://psiexp.ss.uci.edu/research/programs_data/jags/)). This  
747 package draws samples from the posterior distribution given the observed behavioral data to  
748 approximate the posterior distribution over model parameters. Specifically, 1000 samples were  
749 generated from the posterior distribution over model parameters for each of 4 independent  
750 Markov chains (i.e., 4000 samples in total). We discarded the first 500 samples of each chain

## State Anxiety Alters Exploration in Affective Disorders

751 (i.e., burn-in = 500) that might impact the posterior distribution and generated posterior samples  
752 at a thin rate of 1.

753

### 754 **Supplementary Results**

#### 755 **Breathing Resistance Sensitivity**

756 Anxiety ratings during the breathing resistance sensitivity protocol are shown in **Figure S1**. In  
757 the LME predicting anxiety including resistance level, group, and their interaction as predictors,  
758 all effects were significant ( $F_s \geq 5.77$ ,  $p_s < .001$ ). Post-hoc contrasts indicated that 1) iADs had  
759 higher self-reported anxiety levels than HCs at each resistance level ( $p_s < .013$ ), 2) that anxiety at  
760 resistance levels 40, 60, and 80 were not significantly different from each other in HCs  
761 ( $p_s \geq .076$ ), and 3) that each increase in resistance level resulted in a significant increase in  
762 anxiety for the iADs, but anxiety in HCs did not change from 40 through 80. These results  
763 indicate that anxiety induction was successful across participants, and that iADs showed greater  
764 sensitivity than HCs.

765 LMEs predicting self-reported anxiety scores at baseline and during both task runs (**Figure 2**)  
766 showed significant effects of group ( $F(1,117)=49.44$ ,  $p < .001$ ), resistance condition  
767 ( $F(2,234)=105.89$ ,  $p < .001$ ), and their interaction ( $F(2,234)=8.04$ ,  $p < .001$ ). Post-hoc analysis  
768 revealed that: 1) iADs (estimated marginal mean [EMM]=3.06) reported higher anxiety ratings  
769 than HCs (EMM=1.03;  $t(117)=7.03$ ,  $p < .001$ ); 2), anxiety ratings were highest during the task  
770 condition with the added resistance (EMM=3.20), followed by the task condition without the  
771 resistance (EMM=1.63) and baseline ratings (EMM=1.31;  $p_s < .022$ ); and 3) self-reported anxiety  
772 ratings did not increase from baseline to the no-resistance task run for HCs (EMM<sub>baseline</sub>=0.53,  
773 EMM<sub>no-resistance</sub>=0.69;  $p = .440$ ), but did for iADs (EMM<sub>baseline</sub>=2.08, EMM<sub>no-resistance</sub>=2.57;  
774  $p = .013$ ).

775 Similar results were found for complementary STAI-State ratings. Here there were main effects  
776 of group ( $F(1,117)=54.93$ ,  $p < .001$ ) and resistance ( $F(2,234)=85.51$ ,  $p < .001$ ), but no interaction  
777 ( $F(2,234)=0.56$ ,  $p = .570$ ). Post-hoc contrasts indicated that iADs reported higher anxiety  
778 (EMM=44.9) than HCs (EMM=33.1;  $t(117)=7.41$ ,  $p < .001$ ) and that anxiety during the run with  
779 the added breathing resistance (EMM=44.3) was higher than anxiety at baseline (EMM=35.7)

## State Anxiety Alters Exploration in Affective Disorders

780 and when no resistance was added ( $p < .001$ ), but baseline was not significantly different from  
781 the no resistance condition ( $t(234) = 1.73, p = .085$ ).

### 782 **Disentangling Depression and Anxiety for Other Parameters**

783 In models predicting RE in iADs based on effects of depression (PHQ) alone or anxiety (STAI  
784 Trait) alone, only a negative effect of age was found ( $F_{s} \geq 3.92, p_{s} \leq .052$ ). With PHQ and STAI in  
785 the same model, there was a significant interaction between PHQ and resistance condition  
786 ( $F(1,58) = 4.40, p = .040$ ). Post-hoc analysis indicated that this was driven by a stronger negative  
787 association between PHQ and RE in the resistance condition than in the no-resistance condition  
788 (resistance condition:  $ET = -.178$ ; no-resistance condition:  $ET = -.016$ ;  $t(58) = 2.10, p = .040$ ). The  
789 interaction between resistance condition and STAI Trait was also significant in this model  
790 ( $F(1,58) = 4.67, p = .035$ ). This reflected a positive association between anxiety and RE in the  
791 resistance condition and no relationship between these variables in the no-resistance condition  
792 (resistance condition:  $ET = .102$ ; no-resistance condition:  $ET = .007$ ;  $t(58) = -2.16, p = .035$ ). There  
793 were also a marginal overall positive effect of STAI ( $F(1,57) = 3.38, p = .071, b = .055$ ) and negative  
794 effect of PHQ ( $F(1,57) = 3.46, p = .068, b = -.098$ ) driven by the above interactions.

795 When analogous models of RE were run in HCs, those containing only effects of depression  
796 (PHQ) or anxiety (STAI Trait) separately showed no significant effects. However, when both  
797 PHQ and STAI were included in the same model, results showed a marginal effect of STAI Trait  
798 ( $F(1,53) = 3.30, p = .075$ ) suggesting a possible positive association ( $b = .043$ ).

799 In logistic regression models predicting  $\alpha_0$  in iADs, no significant effects were found in separate  
800 or combined models. Analogous models in HCs found no significant effects when PHQ and  
801 STAI were included alone. However, in a model containing both symptom measures together,  
802 there were a couple noteworthy marginal effects. Namely, higher STAI Trait was suggestively  
803 associated with higher  $\alpha_0$  ( $z = -1.93, p = .054$ ; log-odds =  $-.23, CI = [-.47, .00]$ ), and there was an  
804 interaction between STAI Trait and resistance condition ( $z = 1.769, p = .077$ ; log-odds =  $.22, CI = [-$   
805  $.02, .46]$ ). This interaction suggested higher STAI scores predicted higher  $\alpha_0$ , but only in the no-  
806 resistance condition.

807 All analogous models predicting  $\alpha_\infty$  in iADs showed no significant effects. In HCs, there were  
808 similarly no significant effects in models including either PHQ or STAI alone. However, in a



## State Anxiety Alters Exploration in Affective Disorders

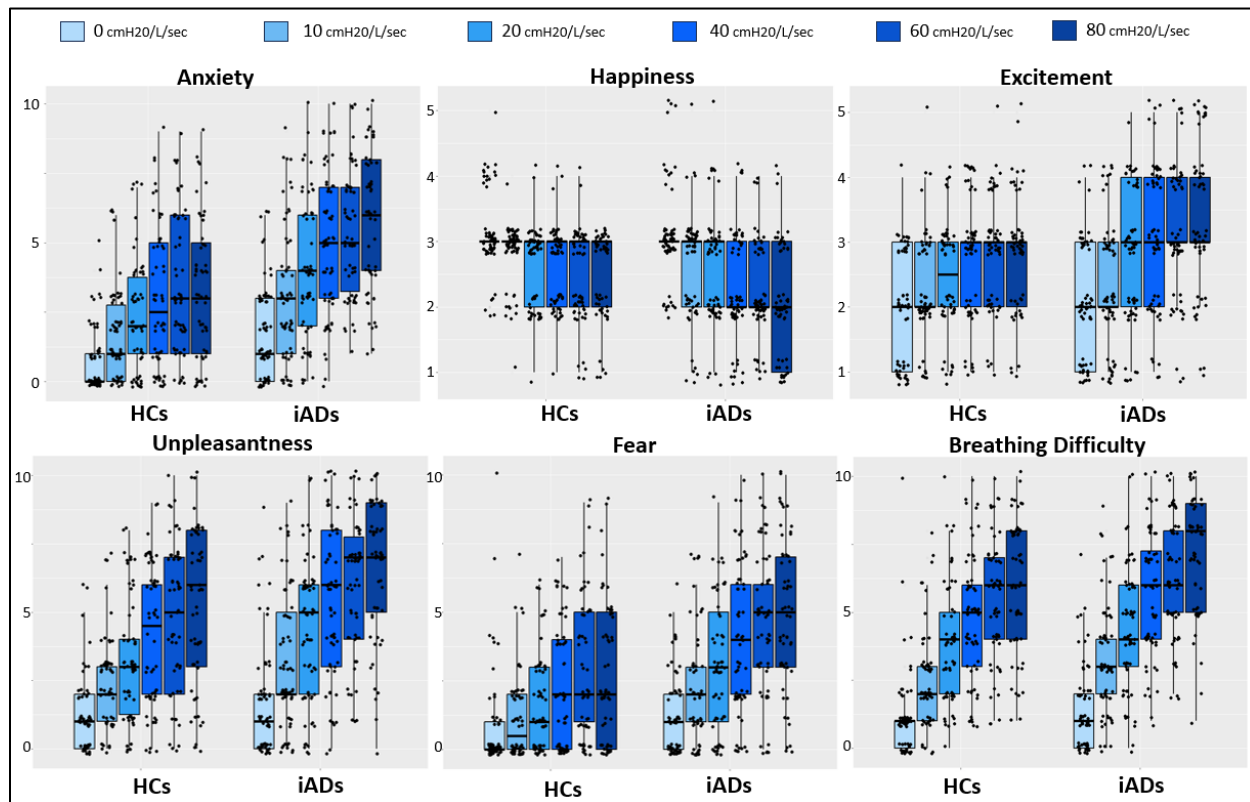
809 model predicting  $\alpha_{\infty}$  with both PHQ and STAI together, the interaction between PHQ and  
810 resistance condition was marginal ( $F(1,55)=2.85, p=.097$ ), suggesting a positive association  
811 between PHQ and  $\alpha_{\infty}$  in the no-resistance condition ( $ET=.009$ ), but a negative association in the  
812 resistance condition ( $ET=-.010; t(55)=1.69, p=.097$ ). Additionally, the interaction between STAI  
813 Trait and resistance condition was marginal ( $F(1,55)=3.23, p=.078$ ), suggesting a negative  
814 association between STAI and  $\alpha_{\infty}$  in the no-resistance condition ( $ET=-.001$ ), but a positive  
815 association in the resistance condition ( $ET=.005; t(55)=-1.80, p=.078$ ).

816 Finally, while main results of models predicting DE based on symptoms are reported in the main  
817 text, we provide some additional statistical details here in relation to secondary resistance effects.  
818 Namely, when predicting DE in iADs, specific statistics included marginal effects of resistance  
819 condition in the models with PHQ alone ( $F(1,59)=3.94, p=.052, \eta_p^2=.06, b=-.525$ ), STAI Trait  
820 alone ( $F(1,59)=3.90, p=.053, \eta_p^2=.06, b=-.627$ ), and both together ( $F(1,58)=3.89, p=.053,$   
821  $\eta_p^2=.06, b=-.716$ ).

822

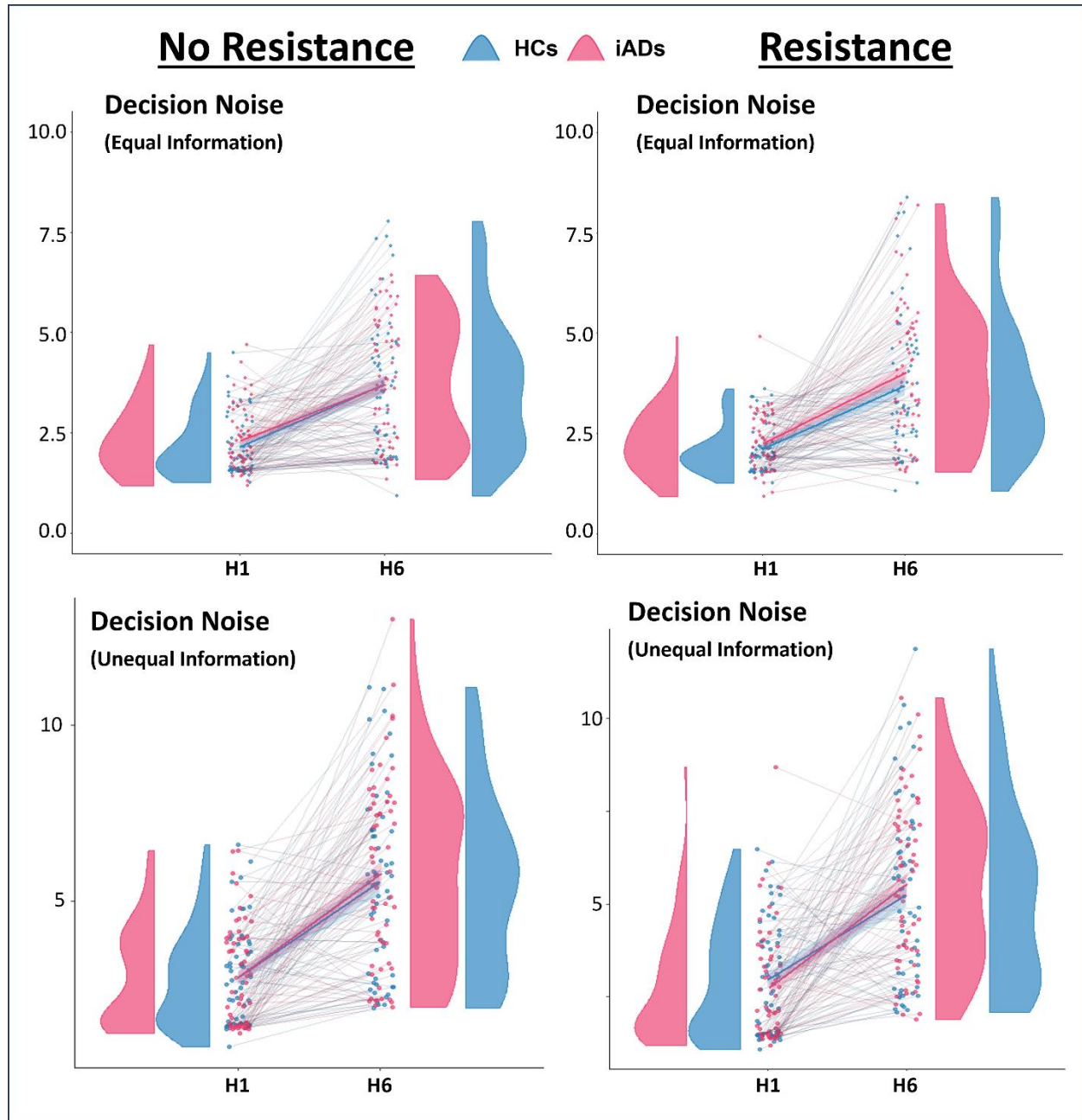
## State Anxiety Alters Exploration in Affective Disorders

### 823 **Supplementary Figures**



824  
825 **Figure S1.** Participant ratings during the breathing resistance sensitivity protocol across 6 levels  
826 of breathing resistance (0 to 80 cmH<sub>2</sub>O/L/sec). Boxplots show medians and quartiles as well as  
827 individual datapoints.

State Anxiety Alters Exploration in Affective Disorders

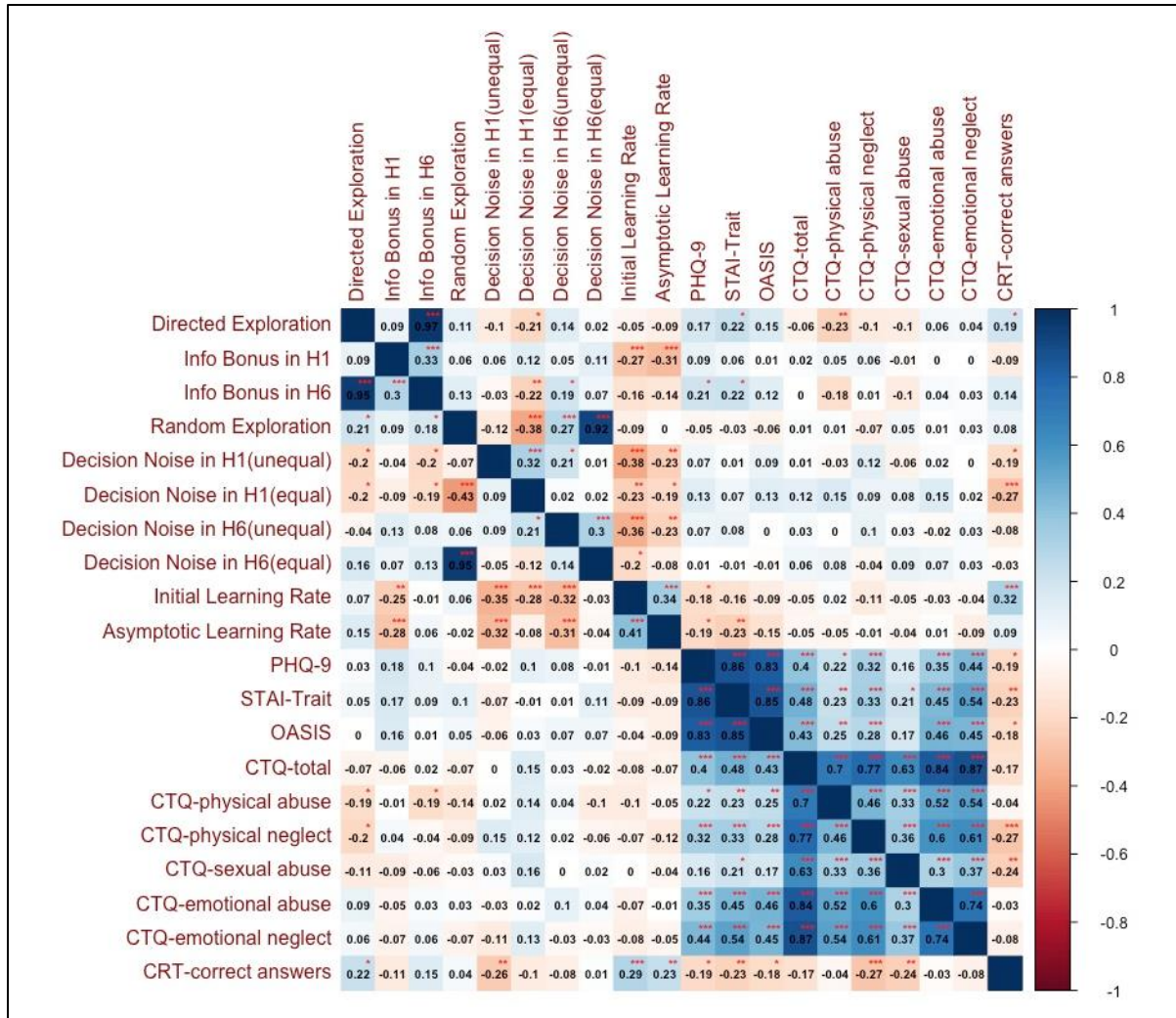


828

829 **Figure S2.** Decision noise parameters separated by horizon, group, and resistance condition.

830

State Anxiety Alters Exploration in Affective Disorders

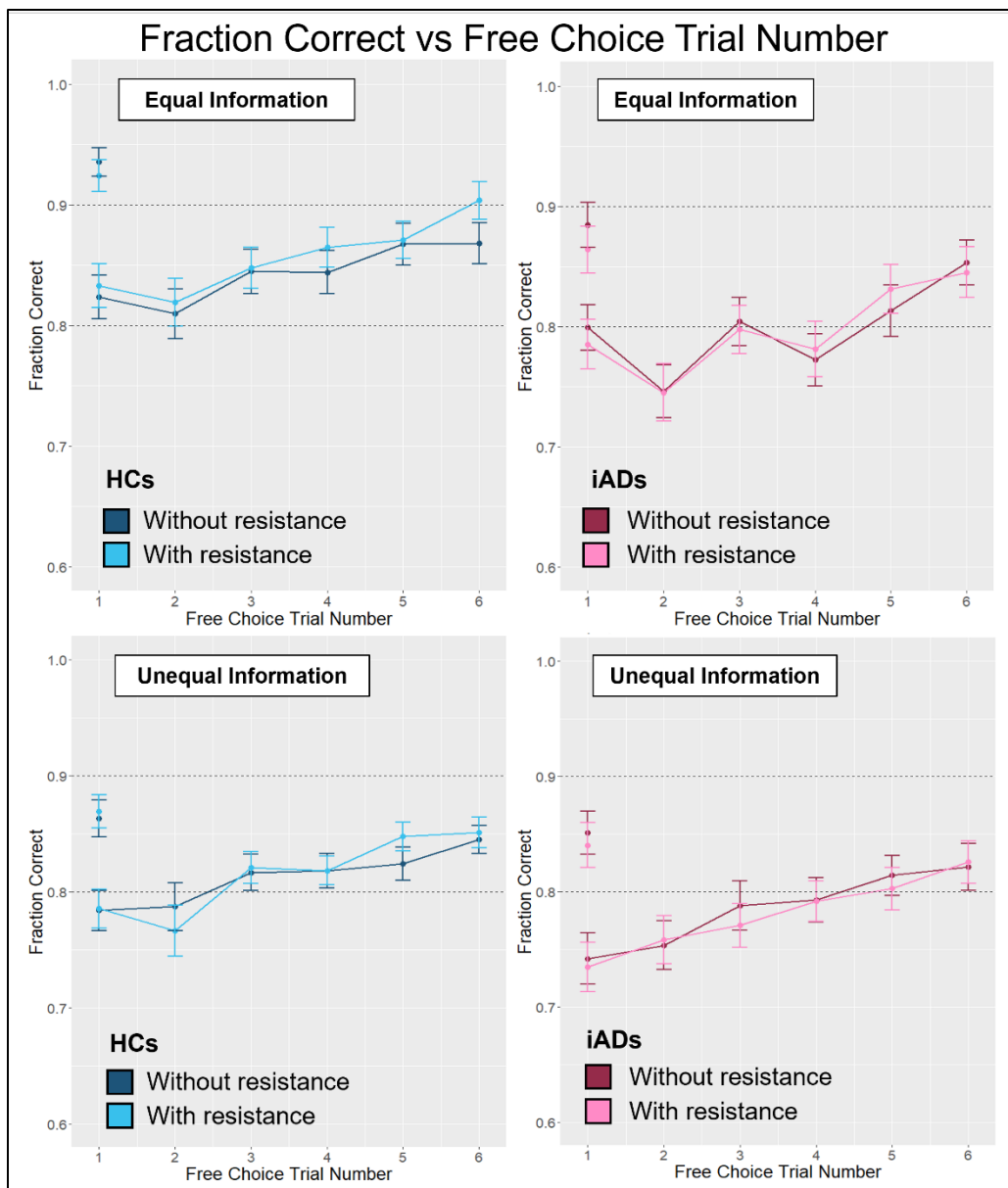


831

832 **Figure S3.** Post-hoc correlations between model parameters and self-report measures for the  
 833 interested reader. Statistics below the diagonal indicate correlations with parameters in the  
 834 resistance condition, while those above the diagonal are from the no-resistance condition. Note  
 835 that the correlation between  $\alpha_0$  and other variables were conducted using Spearman correlations  
 836 due to non-normality.

837

### State Anxiety Alters Exploration in Affective Disorders



838  
839 **Figure S4.** Fraction of correct responses (i.e., option with higher generative mean) for each free  
840 choice in H1 and H6 trials. Color shades indicate task performance with (light) and without  
841 (dark) breathing resistance separately in the HCs (left/blue) and iADs (right/pink). Plots are also  
842 shown separately for equal (top) or unequal (bottom) information conditions.

843

844