

21

22 ORCID IDs and emails:

23 Alan Woodall: 0000-0003-2933-0508 alan.woodall@wales.nhs.uk

24 Alex Gampel: 0000-0001-6923-5818 alexandra.gampel@wales.nhs.uk

25 Huw Collins (deceased; no ORCID/email provided)

26 Lauren Walker: 0000-0002-3827-4387 lauren.walker@liverpool.ac.uk

27 Frances Mair: 0000-0001-9780-1135 frances.mair@glasgow.ac.uk

28 Sally Sheard: 0000-0001-8116-9120 sheard@liverpool.ac.uk

29 Pyers Symon: 0009-0001-6499-8442 pyers.symon@zen.co.uk (public advisor)

30 Iain Buchan: 0000-0003-3392-1650 buchan@liverpool.ac.uk

31

32

33 **Abbreviations**

34 APM- Antipsychotic Medication

35 GP- General Practitioner (Family Medicine physician outside the UK)

36 NICE- National Institute of Health and Care Excellence

37 OPDW- Outpatient Dataset for Wales (secondary care outpatient appointment dataset)

38 PEDW- Patient Episode Dataset for Wales (hospital admission dataset)

39 QOF- Quality and Outcomes Framework

40 SAIL - Secure Anonymised Information Linkage

41 SMI- Serious Mental Illness

42 WLGP- Welsh Longitudinal General Practice (dataset)

43

44 **Abstract**

45 **Background:** The use of antipsychotics in primary care is increasing, and more are being
46 used for non-psychotic illnesses. Long-term use of antipsychotics confers increased risk of
47 cardiometabolic disease, so ongoing need should be reviewed regularly by psychiatrists. This
48 study explored changes over time in antipsychotic management and prescribing in primary
49 care, and proportions of patients (≥ 18 years) prescribed antipsychotics receiving psychiatrist
50 review.

51 **Methods and Findings:** This was a retrospective, population-based observational study
52 using data from the Secure Anonymised Information Linkage databank of approximately 3
53 million people in Wales (2011 to 2020). Outcomes were prevalence of patients who had
54 received ≥ 6 antipsychotic prescriptions per year, proportion of patients prescribed
55 antipsychotics who had received psychiatrist review in the preceding 12 months, and
56 proportion of patients prescribed antipsychotics who were registered on the UK Primary
57 Care Serious Mental Illness, Depression and/or Dementia registers, or were not on these
58 registers. The prevalence of adults prescribed antipsychotics increased from 1.06% (95%CI
59 1.04 to 1.07%) in 2011 to 1.45% (95%CI 1.43 to 1.46%) in 2020; 1 in 69 adults were
60 prescribed antipsychotics in 2020. The proportion of adults taking antipsychotics solely
61 managed by primary care increased from 40% (95%CI 39 to 41%) in 2011 to 48% (95%CI 47
62 to 49%) by 2020. The proportion of antipsychotics prescribed to patients not on the Serious
63 Mental Illness register increased from 50% (95%CI 49 to 51%) in 2011 to 56% (95%CI 56 to
64 57%) by 2020, meaning many patients may not be monitored for the cardiometabolic risk
65 from antipsychotics.

66 **Conclusions:** Antipsychotic prescribing is increasing. More people are solely managed by
67 general practitioners without psychiatrist review and are not on relevant disease registers,
68 so are less likely to undergo vital cardiometabolic monitoring. These trends pose risks for
69 patients and need to be addressed urgently.

70 Introduction

71 Antipsychotic medication (APM) is licenced in the United Kingdom (UK) for the management
72 of serious mental illness (SMI) such as schizophrenia and bipolar disorder [1]. Some atypical
73 APMs have extended U.K. licences for treatment of depression (quetiapine) and short-term
74 behavioural management in dementia (risperidone) [2]. APMs are increasingly prescribed
75 off-licence by psychiatrists, often long-term for the management of other conditions,
76 including personality disorder [3], behavioural management in learning disability [4],
77 autism[5] and anxiety [6], despite this contravening best practice guidelines issued by the
78 U.K. National Institute of Health and Care Excellence (NICE) [3, 7, 8]. APMs are effective
79 medications for SMI, but increase risk of obesity [9], type-2 diabetes mellitus [10] and
80 cardiovascular disease [11] when used long-term [12]. Specialist psychiatric review of APM
81 should be undertaken regularly to prevent inappropriate overuse, given patients with SMI
82 die 15-20 years earlier, mainly due to increased rates of cardiovascular disease [13-15], of
83 which APM use is an independent risk factor [16, 17].

84 General practitioners (GPs) in the U.K. mainly provide physical health reviews of patients
85 with psychotic illness taking APMs [13, 18]. These are conducted via annual recall of patients
86 with diagnostic codes that include them on the U.K. Quality Outcomes Framework (QOF)
87 primary care serious mental illness (QOF SMI) register (which is termed a ‘mental health’
88 register but focusses entirely on patients with psychotic illnesses and those prescribed
89 lithium). QOF is a national performance management and funding mechanism to establish
90 disease registers of patients who require additional monitoring and support due to existing
91 chronic disease, and forms part of the GP primary care contract in the UK (now excluding
92 Scotland) [19] (see Table S1). The QOF SMI annual review includes monitoring of alcohol

93 consumption, smoking, body mass index, blood pressure, blood glucose and lipids, to detect
94 patients with SMI at risk of developing cardiometabolic diseases [13]. However, patients
95 taking APM for dementia, depression and conditions such as anxiety or personality disorder
96 are not captured on the QOF SMI register, and so risk being missed for cardiometabolic
97 monitoring: a cohort study of 47,724 patients in 2016 reported that <50% patients taking
98 APM are using these for a psychotic diagnosis and thus may miss monitoring [7]. GPs report
99 they lack the skills needed to manage APM independently (e.g., alter dose, switch, or stop
100 APM) that is normally provided by psychiatrists who have the expertise to undertake this
101 review [18, 20, 21]. Patients who are initiated on APM by psychiatrists are often then
102 discharged and followed up by primary care; a cohort study estimated that 31% of patients
103 with SMI were managed solely by primary care in 2009 [22]. These patients may take APM
104 long-term with no opportunity for regular psychiatric review. This study aims to answer the
105 following questions:

- 106 1. Has the prevalence of long-term APM use in primary care changed over the decade
107 just before the COVID-19 pandemic?
- 108 2. Has the proportion of patients prescribed long-term APM receiving specialist
109 psychiatric review changed over this period?
- 110 3. Are there differences in the proportion of people prescribed APMs that are included
111 on QOF SMI, depression, and dementia registers in 2020 compared to 2011?

112

113

114 **Methods**

115 *Study design*

116 This is a longitudinal, retrospective observational study, undertaken with reference to the
117 ‘Strengthening the Reporting of Observational Studies in Epidemiology’ (STROBE) guidelines
118 [23].

119

120 *Study population and setting*

121 Individuals registered with a GP practice providing data to the Secure Anonymised
122 Information Linkage (SAIL) databank formed the population. Analysis focused on adult use
123 (≥ 18 years), broken down by main psychiatric speciality: general adult psychiatry (patients
124 aged 18-64 years) and older adult psychiatry (patients aged ≥ 65 years). The prevalence of
125 long-term APM use was defined by identifying patients who had APM prescriptions issued
126 on ≥ 6 separate days in each calendar year. For each individual, their status on the annual
127 date of 1st January was used to determine age (calculated using their week of birth).

128 We defined psychiatrist review as occurring where there is a record of a psychiatrist clinic
129 contact with a registered medical practitioner or advanced nurse practitioner (including
130 general adult-, older adult-, child and adolescent-, forensic- or learning disability psychiatry,
131 and psychotherapy subspecialties), or psychiatric hospital admission in the 12 months
132 preceding the year of long-term APM use. If neither outpatient contact nor hospital
133 admission occurred, then we defined APM management as being solely provided by GPs. So,
134 for example, an individual who on 1st January 2019 had ≥ 6 calendar events of APM issue,
135 was counted as a denominator case, and if in the 12 months preceding this date, they had

136 either psychiatric hospital admission or outpatient contact, they would be counted as a
137 numerator case. Two health boards of the seven in Wales did not provide complete
138 psychiatric outpatient clinic returns for the entire study period; therefore, analysis of the
139 proportions of patients prescribed APM who had received psychiatrist review was limited to
140 the five health boards providing complete returns for 2011-2020. The COVID-19 pandemic
141 resulted in the suspension of many hospital outpatient clinic services, hence we focused on
142 APM management between 1/1/2011 and 1/1/2020.

143

144 *Data sources*

145 The SAIL databank was used in this study. This is an expanding data repository of 500 million
146 anonymised and encrypted individual-level records from primary and secondary health care
147 sources, and sociodemographic data relevant to health and well-being. This includes
148 national datasets covering the whole of Wales (approximately 3 million population) [24-28].
149 Patients registered with GP practices providing data to SAIL were examined using the Welsh
150 Longitudinal General Practice (WLGP) dataset. Currently (2024), 86% of Welsh general
151 practices provide data to SAIL, covering 83% of the Welsh population. Attendance at
152 outpatient psychiatric clinic was determined from the Outpatient Dataset for Wales (OPDW).
153 Admission to psychiatric hospital was ascertained using the Patient Episode Dataset for
154 Wales (PEDW). SAIL databank has been validated for use in studies on SMI in earlier studies
155 [15].

156

157 Relevant diagnoses for inclusion in QOF SMI, depression and dementia registers recorded in
158 GP records and prescriptions for APMs (with a licence for use in the UK in the study period
159 as listed in the British National Formulary [2]) were extracted using 5-digit Read Codes (v2) in
160 WLGP (see repository for all relevant coding algorithms:
161 <https://github.com/alanwoodall/AMP-Epidemiology>). Discussion with two independent
162 consultant psychiatrists from general adult and old-age psychiatry subspecialties confirmed
163 that two APMs were rarely prescribed for psychiatric purposes in the UK and are almost
164 exclusively used for non-psychiatric purposes: prochlorperazine (antiemetic) and
165 levomepromazine (palliative care); these were excluded from analysis of total APM use.

166

167 *Analysis*

168 The primary outcome measure was the number of adults issued a prescription for an APM
169 on ≥ 6 separate days in each calendar year. Further analysis was undertaken to determine
170 variation in annual prevalence of APM prescribing, QOF disease register coding and main
171 locus of care by psychiatric speciality cohort as age (categorised into those aged 18-64 years,
172 and those aged ≥ 65 years) for most analyses, to mirror the conventional UK division of care
173 between general adult- and old-age psychiatric subspecialties. The prevalence of the six
174 most common APMs prescribed from primary care over the study period were determined.
175 With regard to the number of people on APM receiving psychiatrist review, we undertook
176 sensitivity analysis varying the period to capture psychiatric review occurrence. The number
177 of patients who had a lifetime history of relevant psychiatric diagnostic codes that would
178 cause inclusion on the QOF SMI, QOF dementia and/or QOF depression registers was
179 determined, along with the number of patients on each disease register prescribed long-

180 term APM. These three psychiatric illness QOF registers cover diagnoses for the majority of
181 potential licensed uses of APM in the United Kingdom [2]. The number of patients
182 prescribed APM not on any of these three psychiatric QOF-registers was also determined.
183 For each year, we determined the proportion of total APM use for patients included in these
184 four register subsets.

185

186 *Statistical analysis*

187 Statistical analysis was undertaken using StatsDirect (Version 4.0.1, www.statsdirect.com).
188 The Clopper-Pearson method was used for confidence intervals of binomial proportions [29].
189 Differences between binomial proportions were evaluated using the Miettinen-Nurminen
190 method [30]. Results are presented as the main effect with a 95% confidence interval. A 5%
191 significance level was used to test specific, pre-defined comparisons.

192

193 *Patient and public involvement*

194 Oversight of the study, data analysis and reporting were made with patient and public
195 advisors who serve on advisory panels for research with the Mental Health Research for
196 Innovation Centre (M-RIC). One author (PS) is a public advisor.

197 **Results**

198 *Changes in Prevalence of APM prescribing between 2011 and 2020*

199 Table 1 shows the prevalence of long-term APM exposure in the population in 2011 and
200 2020 (annual trends are shown in Figure S1). The number of adults ≥ 18 years exposed to
201 APM increased from 1.06% to 1.45%. This increase is more marked in the 18-64 years
202 population (0.92% in 2011 increasing to 1.46% in 2020). Of individual APMs, quetiapine was
203 the most prescribed APM in this population (increasing from 0.27% in 2011 to 0.64% in
204 2020), accounting for 75% of the relative increase in APM exposure. For the ≥ 65 years
205 population, the prevalence of APM exposure has fallen from 1.51% in 2011 to 1.42% in 2020.
206 Risperidone is now the most prescribed APM in the ≥ 65 years population (increasing from
207 0.17% in 2011 to 0.36% in 2020). Table S2 shows the counts of patients (all ages) receiving
208 long-term APM listed in the British National Formulary in 2011 and 2020, and their licensed
209 indications. The proportion of total long-term APM exposure that is accounted for by
210 'second generation' or 'atypical' APMs increased from 79.7% in 2011 to 91.7% in 2020.
211 Approximately 94% of total APM exposures in 2020 are accounted for by 6 individual APMs:
212 quetiapine (37.3%), olanzapine (22.6%), risperidone (15.3%) aripiprazole (12.9%),
213 amisulpride (3.6%) and haloperidol (2.5%).

	Year	All antipsychotics		Quetiapine		Olanzapine		Risperidone		Amisulpride		Aripiprazole		Haloperidol	
		2011	2020	2011	2020	2011	2020	2011	2020	2011	2020	2011	2020	2011	2020
All adults (≥ 18 years)	Counts, (r/n)	21,907/ 2,076,839	31,946/ 2,206,635	6,349/ 2,076,839	12,328/ 2,206,635	5,412/ 2,076,839	7,520/ 2,206,635	3,236/ 2,076,839	5,020/ 2,206,635	1,531/ 2,076,839	1,190/ 2,206,635	1,354/ 2,076,839	4,263/ 2,206,635	991/ 2,076,839	825/ 2,206,635
	Prevalence, % (95% CI)	1.055 (1.041, 1.069)	1.448 (1.432, 1.464)	0.306 (0.298, 0.313)	0.559 (0.549, 0.569)	0.261 (0.254, 0.268)	0.341 (0.333, 0.348)	0.156 (0.150, 0.161)	0.227 (0.221, 0.234)	0.074 (0.070, 0.078)	0.054 (0.051, 0.057)	0.065 (0.062, 0.069)	0.193 (0.187, 0.199)	0.044 (0.041, 0.047)	0.038 (0.035, 0.040)
	Difference, %, (95% CI)	+0.393 (+0.372, +0.414)		+0.253 (+0.241, +0.266)		+0.080 (+0.070, +0.091)		+0.071 (+0.063, +0.080)		-0.020 (-0.025, -0.015)		+0.128 (+0.121, +0.135)		-0.007 (-0.014, -0.006)	
General Adults (18-64 years)	Counts, (r/n)	14,781/ 1,605,559	23,838/ 1,634,511	4,290/ 1,605,559	10,453/ 1,634,511	4,237/ 1,605,559	5,509/ 1,634,511	2,457/ 1,605,559	2,938/ 1,634,511	800/ 1,605,559	809/ 1,634,511	1,097/ 1,605,559	3,398/ 1,634,511	535/ 1,605,559	534/ 1,634,511
	Prevalence, % (95% CI)	0.921 (0.906, 0.936)	1.458 (1.444, 1.477)	0.267 (0.259, 0.275)	0.640 (0.627, 0.652)	0.264 (0.256, 0.272)	0.337 (0.328, 0.346)	0.153 (0.147, 0.159)	0.180 (0.173, 0.186)	0.050 (0.047, 0.053)	0.050 (0.046, 0.053)	0.068 (0.064, 0.072)	0.204 (0.197, 0.211)	0.033 (0.031, 0.036)	0.033 (0.030, 0.036)
	Difference, %, (95% CI)	+0.537 (+0.514, +0.561)		+0.373 (+0.358, +0.387)		+0.073 (+0.061, +0.085)		+0.027 (+0.018, +0.036)		0.000 (-0.005, +0.005)		+0.136 (+0.131, +0.148)		0.000 (-0.000, +0.000)	
Older Adults (≥ 65 years)	Counts, (r/n)	7,126/ 471,280	8,108/ 572,124	1,914/ 471,280	1,876/ 572,124	1,175/ 471,280	2,011/ 572,124	779/ 471,280	2,082/ 572,124	730/ 471,280	381/ 572,124	267/ 471,280	875/ 572,124	456/ 471,280	291/ 572,124
	Prevalence, % (95% CI)	1.512 (1.477, 1.547)	1.417 (1.387, 1.448)	0.406 (0.388, 0.424)	0.328 (0.313, 0.343)	0.249 (0.236, 0.264)	0.352 (0.337, 0.367)	0.165 (0.154, 0.177)	0.364 (0.348, 0.380)	0.155 (0.144, 0.167)	0.067 (0.060, 0.073)	0.057 (0.050, 0.064)	0.153 (0.143, 0.163)	0.097 (0.088, 0.111)	0.051 (0.045, 0.057)
	Difference, %, (95% CI)	-0.095 (-0.141, -0.049)		-0.078 (-0.101, -0.055)		+0.103 (+0.081, +0.124)		+0.199 (+0.178, 0.219)		-0.088 (-0.101, -0.076)		+0.096 (+0.835, +0.109)		-0.046 (-0.056, -0.037)	

214

215 **Table 1: APM prevalence changes between 2011 and 2020.** Analysis based on number of patients prescribed regular APM, (r), as a proportion

216 of the at-risk population in a calendar year, (n).

217

218

219

220

221 *Proportion of patients prescribed APM receiving psychiatric specialist review.*

222 The percentage of adult patients taking APM who received specialist psychiatric review in
223 the 12 months preceding each year (2011-2020) fell from 59.6% to 52.0%; nearly half of all
224 adults prescribed APM were not receiving annual psychiatrist review (Table 2; annual trends
225 are shown in Figure S2). When analysed by psychiatric subspecialty, the proportion of 18–64
226 year old patients taking regular APM between 2011-2020 that received psychiatrist review in
227 the previous year fell from 65.7% to 55.0%. The greatest decrease in psychiatrist review
228 occurred in patients prescribed quetiapine (-17.0%). For the ≥65 years population, less than
229 half of patients underwent specialist psychiatric review, decreasing from 47.5% in 2011 to
230 43.4% in 2020. The greatest decrease was seen for those taking amisulpride (-18.2%).

	Year	All antipsychotics		Quetiapine		Olanzapine		Risperidone		Amisulpride		Aripiprazole		Haloperidol	
		2011	2020	2011	2020	2011	2020	2011	2020	2011	2020	2011	2020	2011	2020
Adults (≥18 years)	Patients reviewed by psychiatrist, r/n	9,574/ 16,053	11,894/ 22,855	2,978/ 4,786	4,539/ 8,940	2,362/ 3,698	2,736/ 5,272	1,428/ 2,466	1,750/ 3,607	751/ 1,146	504/ 919	787/ 974	2,102/ 3,191	390/ 813	311/ 593
	Patients reviewed by psychiatrist, %, (95% CI)	59.6 (58.9-60.4)	52.0 (51.4-52.7)	62.2 (60.8-63.6)	50.8 (49.7-51.8)	63.9 (62.3-65.4)	51.9 (50.6-53.2)	57.9 (56.0-59.8)	48.5 (46.9-50.2)	65.5 (62.7-68.2)	54.8 (51.6-58.0)	80.8 (78.2-83.2)	65.9 (64.2-67.5)	48.0 (44.6-51.4)	52.5 (48.4-56.5)
	Difference, %, (95% CI)	-7.6 (-8.6, -6.6)		-11.4 (-13.2, -9.7)		-12.0 (-14.0, -9.9)		-9.4 (-12.0, -6.8)		-10.7 (-14.9, -6.5)		-14.9(-17.8, -11.9)		+4.5 (-0.8, +9.8)	
General Adults (18-64 years)	Patients reviewed by psychiatrist, r/n	7,028/ 10,691	9,358/ 17,013	2,315/ 3,339	3,945/ 7,538	1,901/ 2,900	2,104/ 3,882	1,124/ 1,903	1,110/ 2,141	432/ 585	384/ 609	679/ 818	1,775/ 2,593	263/ 431	223/ 357
	Patients reviewed by psychiatrist, %, (95% CI)	65.7 (64.8-66.6)	55.0 (54.3-55.8)	69.3 (67.8-70.9)	52.3 (51.2-53.5)	65.6 (63.8-67.3)	54.2 (52.6-55.8)	59.1 (56.9-61.3)	51.8 (49.7-54.0)	73.8 (70.3-77.4)	63.1 (59.2-66.9)	83.0 (80.4-85.6)	68.5 (66.7-70.2)	61.0 (56.4-65.6)	62.5 (57.4-67.5)
	Difference, %, (95% CI)	-10.7 (-11.7, -9.5)		-17.0 (-19.0, -15.0)		-11.4 (-13.7, -9.0)		-7.3 (-10.3, -4.2)		-10.7 (-16.1, -5.5)		-14.5 (-18.1, -11.0)		+1.5 (-8.3, +5.4)	
	Patients reviewed by psychiatrist, r/n	2,546/ 5,362	2,536/ 5,842	663/ 1,447	594/ 1,402	461/ 798	632/ 1,370	304/ 563	640/ 1,466	319/ 561	120/ 310	108/ 156	327/ 598	127/ 382	88/ 236
Older Adults (≥65 years)	Patients reviewed by psychiatrist, %, (95% CI)	47.5 (46.1-48.8)	43.4 (42.1-44.7)	45.8 (43.3-48.4)	42.4 (39.8-45.0)	57.8 (54.3-61.2)	46.1 (43.5-48.8)	54.0 (49.9-58.1)	43.7 (41.1-46.2)	56.9 (52.8-61.0)	38.7 (33.3-44.1)	69.2 (62.0-76.5)	54.7 (50.7-58.7)	33.2 (28.5-38.0)	37.3 (31.1-43.5)
	Difference, %, (95% CI)	-4.1 (-5.9, -2.2)		-3.4 (-7.1, +2.0)		-11.7 (-16.0, -7.3)		-10.3 (-15.2, -5.5)		-18.2 (-25.1, -11.2)		-14.5 (-23.3, -5.8)		+4.1 (-11.8, +3.7)	

232

233 **Table 2: Proportion of patients taking regular APM who have had a specialist psychiatrist review in previous 12 months.** Analysis based on

234 number of patients prescribed APM who had received psychiatrist review, (r), as a proportion of the number of patients prescribed APM in that

235 calendar year, (n).

236

237 We conducted a sensitivity analysis of psychiatric follow up by varying the period of time
238 allowed between 1 week and up to 5 years prior to 1/1/2020 to confirm data patterns
239 (Figure S3). Of those aged 18-64 years prescribed long-term APM in 2020, 22.9% had no
240 psychiatrist review in the previous 5 years. There was variability based on individual APM;
241 those most likely to have had psychiatric review were prescribed aripiprazole (88.5%), while
242 those least likely were prescribed risperidone (70.9%). For those aged >65 years, 29.9% of
243 those taking APM long-term in 2020 had no evidence of psychiatrist review in the previous 5
244 years. Again, there was variability based on individual APM: those most likely to have had a
245 review were prescribed aripiprazole (84.4%), while those least likely were prescribed
246 haloperidol (61.9%).

247

248 *Proportions of patients on the psychiatric QOF registers prescribed long-term APM.*

249 In 2020, nearly 1 in 63 (1.59%) adults ≥ 18 years had a lifetime diagnostic code that triggered
250 inclusion on the QOF SMI register, (+0.17% since 2011); 1 in 5 adults (20.7%) had a lifetime
251 diagnostic code that triggered inclusion on the QOF depression register (+5.6% since 2011); 1
252 in 130 adults (0.77%) had a lifetime diagnostic code that triggered inclusion on the QOF
253 dementia register (+ 0.1% since 2011) (Table 3). For adults not on these three psychiatric
254 illness QOF registers, the proportion fell from 83.7% in 2011, to 78.1% in 2020.

255

QOF Registers	Year	2011	2020
Serious Mental Illness	Counts (r/n)	29,487 / 2,076,839	35,105 / 2,206,635
	Prevalence (95% CI) %	1.42 (1.40, 1.44)	1.59 (1.57, 1.61)
	Difference (95%CI)%	+0.17 (+0.15, +0.19)	
Depression	Counts (r/n)	313,156 / 2,076,839	457,709 / 2,206,635
	Prevalence (95% CI) %	15.1 (15.0, 15.1)	20.7 (20.7, 20.8)
	Difference (95%CI) %	+5.6 (+5.6, +5.7)	
Dementia	Counts (r/n)	14,028 / 2,076,839	16,902 / 2,206,635
	Prevalence (95% CI) %	0.68 (0.66, 0.69)	0.77 (0.76, 0.78)
	Difference (95%CI) %	+0.09 (+0.07, +0.11)	
None of the above	Counts (r/n)	1,739,328 / 2,076,839	1,722,532 / 2,206,635
	Prevalence (95% CI) %	83.8 (83.7, 83.8)	78.1 (78.0, 78.1)
	Difference (95%CI) %	-5.7 (-5.8, -5.6)	

256

257 **Table 3: Quality and Outcomes Framework registration prevalence changes for persons**

258 **aged ≥18 years between 2011 and 2020.** Analysis is based on the number of patients (r)

259 who have ever been the relevant register, as a proportion of the at-risk population (n) in the

260 calendar year.

261

262 Table 4 shows the proportion of adults (≥18 years) prescribed long-term APM listed in the

263 different QOF register categories (annual trends are shown in Figure S4). For patients on the

264 QOF SMI register, the proportion prescribed APM increased to 39.6% in 2020 (+2.6% since

265 2011), with olanzapine being the most common exposure in 2020 (11.9%; +0.08% since

266 2011). For those on the QOF dementia register, the proportion prescribed APM decreased

267 significantly from 16.7% in 2011 to 12.9% in 2020. Risperidone was the most common APM

268 exposure in this group in 2020 (5.45%; +3.85% since 2011). For those on the QOF depression

269 register, the proportion prescribed APM increased from 3.37% in 2011 to 4.12% by 2020; the

270 most common APM exposure in this group in 2020 was to quetiapine (1.91%; +0.78% since

271 2011). For patients not on any of these three QOF psychiatric illness registers, the proportion
272 prescribed APM increased from 0.26% in 2011 to 0.36% in 2020;. the most common APM
273 exposure in this group in 2020 was to quetiapine (0.13%, +0.06% since 2011).

Registers	Year	All antipsychotics		Quetiapine		Olanzapine		Risperidone		Amisulpride		Aripiprazole		Haloperidol	
		2011	2020	2011	2020	2011	2020	2011	2020	2011	2020	2011	2020	2011	2020
Serious Mental Illness	Counts (r/n)	10,960/ 29,487	13,915/ 35,105	2,614/ 29,487	4,024/ 35,105	3,498/ 29,487	4,180/ 35,105	1,680/ 29,487	1,771/ 35,105	846/ 29,487	846/ 35,105	974/ 29,487	2,549/ 35,105	423/ 29,487	448/ 35,105
	Proportion (95% CI)%	37.17 (36.62, 37.72)	39.74 (39.23, 40.25)	8.87 (8.54, 9.19)	11.49 (11.16, 11.83)	11.86 (11.49, 12.23)	11.94 (11.60, 12.28)	5.70 (5.43, 5.96)	5.06 (4.83, 5.29)	2.87 (2.68, 3.06)	2.42 (2.26, 2.58)	3.30 (3.10, 3.51)	7.28 (7.01, 7.55)	1.44 (1.30, 1.57)	1.28 (1.16, 1.40)
	Difference (95%CI)%	+2.57 (+1.72, +3.22)		+2.62 (+2.13, +3.07)		+0.08 (-0.46, +0.55)		-0.64 (-1.17, -0.48)		-0.45 (-0.71, -0.21)		+3.98 (+3.61, +4.31)		-0.16 (-0.34, +0.02)	
Depression	Counts (r/n)	10,552/ 313,156	18,852/ 457,709	3,546/ 313,156	8,754/ 457,709	2,773/ 313,156	4,371/ 457,709	1,336/ 313,156	2,028/ 457,709	619/ 313,156	559/ 457,709	738/ 313,156	2,529/ 457,709	307/ 313,156	329/ 457,709
	Proportion (95% CI)%	3.37 (3.31, 3.43)	4.12 (4.06, 4.18)	1.13 (1.10, 1.17)	1.91 (1.87, 1.95)	0.89 (0.85, 0.92)	0.96 (0.93, 0.98)	0.43 (0.41, 0.45)	0.44 (0.42, 0.46)	0.20 (0.18, 0.21)	0.12 (0.11, 0.13)	0.24 (0.22, 0.25)	0.55 (0.53, 0.57)	0.10 (0.09, 0.11)	0.07 (0.06, 0.08)
	Difference (95%CI)%	+0.75 (+0.66, +0.83)		+0.78 (+0.72, +0.84)		+0.07 (+0.03, +0.11)		+0.01 (-0.01, +0.05)		-0.08 (-0.09, -0.06)		+0.31 (+0.29, +0.35)		-0.03 (-0.04, -0.01)	
Dementia	Counts (r/n)	2,344/ 14,028	2,174/ 16,902	951/ 14,028	430/ 16,902	165/ 14,028	326/ 16,902	210/ 14,028	904/ 16,902	304/ 14,028	100/ 16,902	70/ 14,028	209/ 16,902	161/ 14,028	72/ 16,902
	Proportion (95% CI)%	16.71 (16.10, 17.34)	12.86 (12.37, 13.38)	6.78 (6.36, 7.20)	2.54 (2.32, 2.79)	1.18 (1.01, 1.37)	1.93 (1.73, 2.15)	1.50 (1.30, 1.70)	5.35 (5.02, 5.70)	2.17 (1.94, 2.42)	0.59 (0.48, 0.71)	0.50 (0.40, 0.63)	1.24 (1.07, 1.40)	1.15 (0.98, 1.34)	0.43 (0.33, 0.52)
	Difference (95%CI)%	-3.85 (-4.64, -3.06)		-4.24 (-4.70, -3.77)		+0.75 (+0.47, +1.03)		+3.85 (+3.43, +4.27)		-1.58 (-1.83, -1.32)		+0.74 (+0.53, +0.95)		-0.72 (-0.92, -0.53)	
None of the above	Counts (r/n)	4,441/ 1,739,328	6,147/ 1,722,532	1,206/ 1,739,328	2,170/ 1,722,532	750/ 1,739,328	1,120/ 1,722,532	872/ 1,739,328	1,585/ 1,722,532	245/ 1,739,328	149/ 1,722,532	144/ 1,739,328	611/ 1,722,532	315/ 1,739,328	205/ 1,722,532
	Proportion (95% CI)%	0.255 (0.248, 0.263)	0.357 (0.348, 0.366)	0.069 (0.065, 0.0730)	0.126 (0.012, 0.013)	0.043 (0.040, 0.046)	0.065 (0.061, 0.069)	0.050 (0.047, 0.054)	0.092 (0.088, 0.097)	0.014 (0.012, 0.016)	0.009 (0.007, 0.010)	0.008 (0.007, 0.010)	0.036 (0.033, 0.038)	0.018 (0.016, 0.0200)	0.012 (0.010, 0.014)
	Difference (95%CI)%	+0.102 (+0.090, +0.011)		+0.057 (+0.051, +0.063)		+0.022 (+0.017, +0.027)		+0.042 (+0.036, +0.048)		-0.005 (-0.008, -0.003)		+0.028 (+0.024, 0.030)		-0.006 (-0.009, -0.004)	

275

276 **Table 4: Changes in APM use in adult patients (≥18 years) with a lifetime code on the QOF Serious Mental Illness, depression and/or**

277 **dementia registers, and those who are not on any of these three psychiatric illness QOF registers, between 2011 and 2020.** The number of

278 patients with a lifetime code on the relevant QOF registers exposed to APM, (r), is expressed as a proportion of the total population with a

279 lifetime code for inclusion on each QOF register, (n).

280

281 *Proportion of overall long-term APM use by QOF register status*

282 Table 5 shows the proportion of overall long-term APM use for patients who are registered
283 on the QOF SMI, QOF dementia, and/or QOF depression registers, and the proportion of
284 overall long-term APM use for patients not on any of these three QOF psychiatric illness
285 registers (annual trends are shown in Figure S5). The proportion of overall APM use
286 prescribed for patients on the QOF SMI register fell from 50.0% in 2011 to 43.6% by 2020;
287 the lowest proportion was quetiapine (32% in 2020). The proportion of overall APM use for
288 patients on the QOF dementia register fell from 10.7% in 2011 to 6.8% in 2020;; nearly 18%
289 of all long-term risperidone use is for patients on the QOF dementia register. The proportion
290 of APM use prescribed to patients who are registered on the QOF depression register
291 increased from 48.2% in 2011 to 59.0% by 2020; For quetiapine, 71% of total use in 2020
292 was for patients who have been on the QOF depression register during their life, a 15%
293 increase from 2011 to 2020. The proportion of APM prescribed for patients not on these
294 three registers fell slightly (20.2% in 2011 to 19.2% in 2020). The proportion of haloperidol
295 use was greatest for this group (34.6% in 2011, decreasing to 24.9% in 2020).

	QOF Registers	Year	All antipsychotics		Quetiapine		Olanzapine		Risperidone		Amisulpride		Aripiprazole		Haloperidol	
			2011	2020	2011	2020	2011	2020	2011	2020	2011	2020	2011	2020	2011	2020
Proportion of total APM prescribing by register	Serious Mental Illness	Counts (r/n)	10,960/ 21,907	13,915/ 31946	2,614/ 6,349	4,024/ 12,328	3,498/ 5,412	4,180/ 7,520	1,680/ 3,236	1,771/ 5,020	846/ 1,530	846/ 1,190	974/ 1,354	2,549/ 4,263	423/ 911	448/ 825
		Prevalence (95% CI) %	50.03 (49.37, 50.69)	43.56 (43.01, 44.10)	41.17 (39.97, 42.39)	32.64 (31.82, 33.47)	64.63 (63.35, 65.90)	55.59 (54.46, 56.71)	51.92 (50.19, 53.63)	35.28 (33.97, 36.61)	55.29 (52.79, 57.77)	71.09 (68.45, 73.67)	71.94 (69.48, 74.33)	59.79 (58.31, 61.27)	46.43 (43.22, 49.68)	54.30 (50.89, 57.67)
		Difference (95%CI) %	-6.47 (-7.33, -5.61)		-8.53 (-9.98, -7.08)		-9.04 (-10.77, -7.33)		-16.64 (-18.82, -14.46)		+15.80 (+12.12, +19.47)		-12.15 (-15.10, -9.18)		+7.87 (+3.16, +12.58)	
	Depression	Counts (r/n)	10,552/ 21,907	18,852/ 31,946	3,546/ 6,349	8,754/ 12,328	2,773/ 5,412	4,371/ 7,520	1,336/ 3,236	2,028/ 5,020	619/ 1,530	559/ 1,190	738/ 1,354	2,529/ 4,263	307/ 911	329/ 825
		Prevalence (95% CI) %	48.17 (47.51, 48.83)	59.01 (58.47, 59.55)	55.85 (54.63, 57.07)	71.01 (70.21, 71.80)	51.24 (49.91, 52.57)	58.18 (57.01, 59.24)	41.29 (39.59, 42.98)	40.40 (39.05, 41.76)	40.46 (38.00, 42.92)	46.97 (44.15, 49.82)	54.51 (51.84, 57.16)	59.32 (57.85, 60.80)	33.70 (30.70, 36.83)	39.98 (36.59, 43.26)
		Difference (95%CI) %	+10.84 (+9.99, +11.70)		+15.16 (+13.72, +16.59)		+6.94 (+5.15, +8.63)		-0.89 (-3.06, +1.28)		+6.51 (+2.76, +10.27)		+4.81 (+1.80, +7.84)		+6.28 (+1.64, +10.72)	
	Dementia	Counts (r/n)	2,344/ 21,907	2,174/ 31,946	951/ 6,349	430/ 12,328	165/ 5,412	326/ 7,520	210/ 3,236	904/ 5,020	304/ 1,530	100/ 1,190	70/ 1,354	209/ 4,263	161/ 911	72/ 825
		Prevalence (95% CI) %	10.70 (10.29, 11.11)	6.81 (6.53, 7.09)	14.98 (14.11, 15.88)	3.49 (3.18, 3.83)	3.05 (2.62, 3.54)	4.34 (3.90, 4.82)	6.49 (5.69, 7.39)	18.01 (16.97, 19.07)	19.87 (17.95, 21.94)	8.40 (6.96, 10.13)	5.17 (4.11, 6.48)	4.90 (4.29, 5.59)	17.67 (15.33, 20.28)	8.73 (7.00, 10.85)
		Difference (95%CI) %	-3.89 (-4.37, -3.42)		-11.49 (-12.28, -10.70)		+1.29 (+0.60, +1.94)		+11.52 (+10.01, +13.03)		-11.47 (-14.16, -8.77)		-0.27 (-1.60, +1.06)		-8.94 (-12.16, -5.73)	
	None of the above	Counts (r/n)	4,441/ 21,907	6,147/ 31,946	1,206/ 6,349	2,170/ 12,328	750/ 5,412	1,120/ 7,520	872/ 3,236	1,585/ 5,020	245/ 1,530	149/ 1,190	144/ 1,354	611/ 4,263	315/ 911	205/ 825
		Prevalence (95% CI) %	20.27 (19.74, 20.81)	19.24 (18.81, 19.67)	19.00 (18.05, 19.98)	17.60 (16.94, 18.28)	13.86 (12.96, 14.80)	14.89 (14.11, 15.72)	26.95 (25.42, 28.48)	31.57 (30.29, 32.86)	16.01 (14.26, 17.94)	12.52 (10.76, 14.52)	10.64 (9.10, 12.39)	14.33 (13.31, 15.42)	34.58 (31.56, 37.72)	24.85 (22.02, 27.91)
		Difference (95%CI) %	-1.03 (-1.71, -0.35)		-1.70 (-2.56, -0.23)		+1.03 (-0.19, +2.27)		+4.62 (+2.61, +6.65)		-3.49 (-6.16, -0.83)		+3.69 (+1.61, +5.78)		-9.73 (-14.05, -5.41)	

296

297 **Table 5: Changes in proportion of overall APM use in adult patients (≥18 years) with a lifetime code on the QOF Serious Mental Illness,**

298 **depression and/or dementia registers, and those who are not on any of these three psychiatric illness QOF registers, between 2011 and**

299 **2020.** The number of patients with a lifetime code on the relevant QOF registers exposed to APM, (r), is expressed as a proportion of the total

300 number of patients exposed to APM (n).

301

302 Discussion

303 *Principal findings*

304 Our study has shown that:

305 (1) The prevalence of long-term APM use increased substantially in the adult population

306 (approximately 1 in 69 adults aged ≥ 18 years were prescribed long-term APM by 2020),

307 with rises most marked in the 18-64 years group (relative increase between 2011 and

308 2020 was 58%). There is a slight fall in the prevalence of APM use in the ≥ 65 years

309 population (relative decrease between 2011 and 2020 is 6%).

310 (2) For patients prescribed long-term APM, the proportion who had an annual review by a

311 psychiatrist fell (relative decrease between 2011 and 2020 was 13%); nearly half of all

312 adults did not have any annual psychiatric review in 2019-2020. This is more pronounced

313 for the ≥ 65 years than the 18-64 years group.

314 (3) The proportion of people prescribed long-term APM, who are not on the QOF SMI

315 register increased from 50% in 2011 to 56% by 2020, so decreasing the likelihood of

316 cardiometabolic monitoring and increasing the risk of experiencing adverse effects from

317 APM in the adult population.

318 Our work suggests that APM are increasingly used for unlicensed and/or non-psychotic

319 conditions. The decrease in psychiatric reviews of patients prescribed APM, along with

320 increasing use for conditions that are not captured on the QOF SMI register and thus

321 automatically subject to cardiometabolic monitoring, may combine to increase the risk of

322 people becoming 'trapped' on APM in primary care, thus increasing their risk of

323 cardiometabolic morbidity and premature mortality.

324

325 *Strengths and weaknesses of the study*

326 To our knowledge, this is the first assessment of APM management trends to report the
327 proportions of patients taking these medications who are managed solely in primary care,
328 and first to compare AMP prescribing patterns between different national QOF psychiatric
329 illness registers, and for licenced vs unlicensed use. This study has particular strengths: (1)
330 we focus only on patients who have had ≥ 6 prescription events annually, to identify patients
331 prescribed long-term APM who are most at risk of cardiometabolic disease. (2) SAIL is a large
332 databank with rich cross-referencing between primary and secondary care (inpatient and
333 outpatient contact) datasets for each patient, so identifying shared management trends by
334 primary care and psychiatric services. Limitations of this study include: (1) SAIL databank
335 obtains data exclusively from NHS Wales services, so caution should be applied when
336 generalising findings to other populations. (2) SAIL databank cannot provide number of
337 tablets issued per script, so quantification of APM burden is limited. (3) We only capture
338 APM exposure where the patient receives a prescription from NHS primary care and do not
339 capture where prescriptions are issued to patients privately, those registered with Armed
340 Forces or prison primary health care services, and those issued directly by secondary care
341 (which will include most intramuscular depot APM prescriptions); the oral APM clozapine is
342 also classified as high risk and licensed in the UK only for issue by psychiatrists so would not
343 be routinely captured [31]; these represent potential missing data in the population we are
344 not able to measure. (4) We have not identified patients being prescribed ≥ 2 APMs
345 concurrently. (5) With regards to psychiatrist review, our case definitions will not have
346 identified indirect patient management between GPs and psychiatrists (e.g. communication

347 without seeing the patient), nor will it have identified patient contact with non-prescribing
348 mental health team members who may provide input into APM review (these are, however
349 not able to make APM prescribing changes). (7) Use of lifetime prevalence of diagnostic
350 codes to determine patient exposure to QOF SMI, QOF Dementia and QOF Depression
351 registers, as other studies have done [7], will not detect changes in psychiatric diagnoses
352 that can happen over time (e.g., a person may initially have a diagnosis of schizoaffective
353 disorder (and so be recorded on the QOF SMI register) that is later revised to personality
354 disorder (a diagnosis not captured on the QOF-SMI register, but the patient will still be
355 counted on the QOF-SMI register due to lifetime coding). However, psychiatric codes are
356 often inaccurate and not maintained regularly [32], or removed from GP records when an
357 updated one is added (e.g. the above patient with personality disorder may still have a code
358 of schizoaffective disorder which is not replaced with the new diagnostic code); up to 32% of
359 psychiatric indications for APM use could not be clearly established in a recent study, which
360 limits accuracy [33].

361

362 *Comparison with other studies and need for future research*

363 We found a significant increase in adults exposed to long-term APM. The prevalences we
364 report are consistent with other studies; Marston *et al* reported that 0.6-0.7% of the
365 population had exposure to APM in their cohort study which ended in 2011 [7]; Shoham *et*
366 *al* report an APM prevalence of 1.2% in 2014 in a questionnaire survey of those aged ≥ 16
367 years [34]. The greatest increase is for quetiapine, which accounted for 44% of all APM
368 exposures in the 18-64 years group by 2020. Despite this increase in APM use, rates of
369 psychiatric illness prevalence (as reported on the 3 psychiatric illness QOF registers) have not

370 increased proportionally in this population; this suggests increasing APM use is for non-
371 psychotic disorders, such as anxiety, depression and personality disorder, as has been
372 reported elsewhere [3, 7, 33]. Lack of access to appropriate psychological therapies is
373 reported as driving increasing APM use in non-psychotic disorders [18]. Prevalence of long-
374 term APM exposure in the ≥ 65 years population has decreased slightly, with significant falls
375 in patients with dementia (-3.85% (95%CI: -4.64, -3.06)); this is promising, given the
376 increased risk of mortality reported when APM are used long term in patients with
377 Alzheimer's disease [35]. However, use of long-term risperidone in dementia patients has
378 increased significantly (+3.85% (95%CI +3.43, +4.27)). The UK licence for risperidone is for
379 *'short-term treatment (up to 6 weeks) of persistent aggression in patients with moderate to*
380 *severe Alzheimer's dementia unresponsive to non-pharmacological interventions and when*
381 *there is a risk of harm to self or others'* [2], and yet nearly 1 in 19 patients with dementia are
382 prescribed risperidone long-term; studies report pressure on clinicians to use APM for
383 patients with dementia in care homes, often as a result of shortages of staff trained in non-
384 pharmacological interventions [18].

385

386 We found decreasing proportions of patients prescribed APM have had a psychiatric review
387 in the preceding 12 months. One possible explanation may be more APM being prescribed
388 independently by GPs; this study does not allow determination of which clinician initiated
389 APM, but qualitative studies suggest that GPs are not confident to initiate APM without
390 psychiatrist input [18, 21, 36], so we suspect this is unlikely. However, much of the rise in
391 APM use in the 18-64 year group is due to quetiapine; one possibility is the use of low doses
392 quetiapine for sedation instead of benzodiazepines [37] and/or as an adjunct to difficult-to-

393 treat depression by GPs and psychiatrists. Another possible explanation is that more
394 patients are discharged on APM by psychiatrists to primary care, either when the patients
395 with SMI are “stable” from a psychiatric perspective, or when APM are prescribed to
396 patients who do not have psychotic illness, such as personality disorder, anxiety, or
397 depression. This may be due to psychiatrists feeling they do not need to continue specialist
398 input in the patient’s care, but many psychiatrists report pressure from managers to
399 discharge all those patients who do not have SMI from their outpatient clinics [18]. Further
400 research to determine APM initiation rates in primary care and management of APM for
401 non-psychotic illness is required. [18, 21, 36]

402 While the prevalence of APM exposure is rising, the proportion of total APM use for
403 patients with a psychotic illness history (inclusion on QOF SMI register) is decreasing; only
404 44% of APM use in 2020 was for patients with a history of SMI; this is similar to the
405 proportion used for SMI (36%) reported by Marston *et al* [7]. This supports our concern that
406 APM is being increasingly used long-term for non-psychotic disorders, often off-licence and
407 in contravention of NICE guidelines (e.g. for personality disorder where APM should only be
408 used short-term) [38].

409 Only the QOF SMI register funds GPs to undertake cardiometabolic monitoring of patients
410 taking APM; 56% of patients prescribed long-term APM are not on this disease register, and
411 GPs are not funded to undertake cardiometabolic monitoring for these patients. We suspect
412 many GPs still perform unfunded cardiometabolic monitoring when APM are used in non-
413 SMI conditions. However, with most cardiometabolic monitoring devolved to GP practices
414 even when a patient remains under secondary care, there is a risk patients taking APM long-
415 term may not have cardiometabolic monitoring undertaken, as primary care utilise

416 automated QOF SMI register recalls to facilitate this. A patient coded on the QOF SMI
417 register will get annual recall for cardiometabolic monitoring and GP review, whereas
418 patients taking APM who are coded only on the QOF dementia or QOF depression registers
419 do not get automatic recall, as there is no QOF requirement to undertake cardiometabolic
420 monitoring, so this is less likely to happen. For a patient prescribed long-term APM for
421 personality disorders, anxiety, or autism, and thus who is not captured on any QOF
422 psychiatric illness register, there is no funding or automatic recall for GP review, or for
423 cardiometabolic monitoring. GPs are supposed to conduct annual medication reviews, but
424 research shows that these are often incomplete, often of variable effectiveness, and
425 limited action occurs particularly when APM is involved and there is no ongoing psychiatric
426 input due to GP reluctant to change these medications [18, 21, 36, 39].

427

428 *Implications for clinicians and policymakers*

429 This study confirms that there is a rising burden of APM use in primary care in the UK, up to
430 2020. Fewer patients receive annual psychiatric review, as more are discharged to primary
431 care for sole management. More APM is prescribed for off-licence and/or non-psychotic
432 illness that are not captured on the QOF SMI register, meaning cardiometabolic monitoring
433 and specialist review may not occur. There is an urgent need for appropriate resources to be
434 provided so that patients taking APM long-term have access to an annual review with a
435 psychiatrist able to optimise, switch or withdraw APM, and that primary care funding for
436 cardiometabolic monitoring is based on the use of APM, rather than solely due to inclusion
437 on the QOF-SMI register due to diagnosis. Without changes in the provision of such
438 safeguards, there is a risk that increasing numbers of people will remain 'trapped' on APMs

439 long-term without effective psychiatrist review affording the opportunities to stop these
440 medications, increasing their risk of developing cardiometabolic disease and contributing to
441 premature mortality in patients with psychiatric illnesses.

442

443 *Contributors:* AW, IB, SS, LW and FSM conceived and designed the study. AW, IB, SS, LW and
444 FSM obtained funding. AW, AG, and HC acquired and analysed the data. AW interpreted the
445 data. AW drafted the initial manuscript. PS provided patient and public oversight. AW, FSM,
446 LW, IB, SS, AG and PS critically revised the manuscript for important intellectual content. AW
447 and IB did the statistical analyses. AW, AG, and HC had full access to all the data in the study.
448 AW and IB take responsibility for the integrity of the data and the accuracy of the data
449 analysis. They are the guarantors. The corresponding author attests that all listed authors
450 meet authorship criteria and that no others meeting the criteria have been omitted.

451 *Funding:* AW is funded by a Health and Care Wales Research Time Award (RTA-NHS-21-02)

452 *Ethical Approval:* The use of data from the SAIL databank was approved by the SAIL
453 Information Governance Research Panel. As this study did not use person identifiable data
454 no formal NHS research ethics committee approval was required. No data were reported
455 where an output would have <5 individual counts.

456 *Dedication:* This work is dedicated to the memory of our friend and research colleague, Huw
457 Collins, who sadly died unexpectedly during this project.

458 *Acknowledgements:* This study makes use of anonymised data held in the Secure
459 Anonymised Information Linkage (SAIL) Databank. We would like to acknowledge all the data
460 providers who make anonymised data available for research. We want to thank members of
461 SAIL, especially Dr Sarah Rees, who supported the researchers during this project. We are
462 also grateful to consultant psychiatrist colleagues Dr Ben Shooter, and Dr Adnan Sharaf, who
463 provided insight into psychiatric APM use in the UK , clinic appointment structures and recall
464 methods.

465 References

- 466 1. Roberts R, Neasham A, Lambrinudi C, Khan A. A quantitative analysis of antipsychotic
467 prescribing trends for the treatment of schizophrenia in England and Wales. *JRSM Open*.
468 2018; 9(4):2054270418758570. doi: 10.1177/2054270418758570. PubMed PMID: 29707225.
- 469 2. Joint Formulary Committee. British National Formulary. Treatment Summaries: Psychoses
470 and related disorders (online) [Internet]. BMJ and Pharmaceutical Press, c2023 [cited 2024
471 Jun 1]. Available from: [https://bnf.nice.org.uk/treatment-summaries/psychoses-and-related-](https://bnf.nice.org.uk/treatment-summaries/psychoses-and-related-disorders/)
472 [disorders/](https://bnf.nice.org.uk/treatment-summaries/psychoses-and-related-disorders/).
- 473 3. Hardoon S, Hayes J, Viding E, McCrory E, Walters K, Osborn D. Prescribing of antipsychotics
474 among people with recorded personality disorder in primary care: a retrospective
475 nationwide cohort study using The Health Improvement Network primary care database.
476 *BMJ Open*. 2022; 12(3): e053943. Epub 2022/03/11. doi: 10.1136/bmjopen-2021-053943.
477 PubMed PMID: 35264346; PubMed Central PMCID: PMCPCMC8968526.
- 478 4. Alexander RT, Shankar R, Cooper SA, Bhaumik S, Hastings R, Kapugama CL, et al. Challenges
479 and pitfalls of antipsychotic prescribing in people with learning disability. *Br J Gen Pract*.
480 2017; 67(661): 372-3. doi: 10.3399/bjgp17X692081.
- 481 5. Posey DJ, Stigler KA, Erickson CA, McDougale CJ. Antipsychotics in the treatment of autism. *J*
482 *Clin Invest*. 2008; 118(1):6-14. Epub 2008/01/04. doi: 10.1172/jci32483. PubMed PMID:
483 18172517; PubMed Central PMCID: PMCPCMC2171144.
- 484 6. Comer JS, Mojtabei R, Olfson M. National Trends in the Antipsychotic Treatment of
485 Psychiatric Outpatients With Anxiety Disorders. *Am J Psychiatry*. 2011; 168(10): 1057-65. doi:
486 10.1176/appi.ajp.2011.11010087. PubMed PMID: 21799067.
- 487 7. Marston L, Nazareth I, Petersen I, Walters K, Osborn DPJ. Prescribing of antipsychotics in UK
488 primary care: a cohort study. *BMJ Open*. 2014; 4(12):e006135. doi: 10.1136/bmjopen-2014-
489 006135.
- 490 8. National Institute for Health and Care Excellence. Psychosis and schizophrenia in adults:
491 prevention and management. Clinical guideline. [Internet]. London: NICE, 2014. [cited 2024
492 Jun 1] Available from: <https://www.nice.org.uk/guidance/cg178>.
- 493 9. Osborn DP, Petersen I, Beckley N, Walters K, Nazareth I, Hayes J. Weight change over two
494 years in people prescribed olanzapine, quetiapine and risperidone in UK primary care:
495 Cohort study in THIN, a UK primary care database. *J Psychopharmacol*. 2018; 32(10): 1098-
496 103. Epub 2018/06/26. doi: 10.1177/0269881118780011. PubMed PMID: 29938561.
- 497 10. Holt RIG. Association Between Antipsychotic Medication Use and Diabetes. *Curr Diab Rep*.
498 2019; 19(10): 96. Epub 2019/09/04. doi: 10.1007/s11892-019-1220-8. PubMed PMID:
499 31478094; PubMed Central PMCID: PMCPCMC6718373.
- 500 11. Correll CU, Solmi M, Veronese N, Bortolato B, Rosson S, Santonastaso P, et al. Prevalence,
501 incidence and mortality from cardiovascular disease in patients with pooled and specific
502 severe mental illness: a large-scale meta-analysis of 3,211,768 patients and 113,383,368
503 controls. *World Psychiatry*. 2017; 16(2): 163-80. Epub 2017/05/13. doi: 10.1002/wps.20420.
504 PubMed PMID: 28498599; PubMed Central PMCID: PMCPCMC5428179.
- 505 12. Ashworth M, Schofield P, Das-Munshi J. Physical health in severe mental illness. *Br J Gen*
506 *Pract* 2017; 67(663): 436-7. doi: 10.3399/bjgp17X692621.
- 507 13. Woodall A. Managing patients on atypical antipsychotics in primary care. *Prescriber*. 2021;
508 32(11-12): 18-23. doi: <https://doi.org/10.1002/psb.1952>.
- 509 14. Hayes JF, Marston L, Walters K, King MB, Osborn DPJ. Mortality gap for people with bipolar
510 disorder and schizophrenia: UK-based cohort study 2000-2014. *Br J Psychiatry* 2017; 211(3):
511 175-81. Epub 2017/07/08. doi: 10.1192/bjp.bp.117.202606. PubMed PMID: 28684403;
512 PubMed Central PMCID: PMCPCMC5579328.
- 513 15. John A, McGregor J, Jones I, Lee SC, Walters JTR, Owen MJ, et al. Premature mortality among
514 people with severe mental illness - New evidence from linked primary care data. *Schizophr*

- 515 Res. 2018; 199: 154-62. Epub 2018/05/08. doi: 10.1016/j.schres.2018.04.009. PubMed
516 PMID: 29728293.
- 517 16. Woodall A, Prosser A, Griffiths M, Shooter B, Garfitt J, Walker L, et al. Cardiovascular risk
518 estimation in rural psychiatric inpatient populations: Cross-sectional preliminary study.
519 Psychiatry Res Commun. 2023; 3(1): 100103. doi:
520 <https://doi.org/10.1016/j.psycom.2023.100103>.
- 521 17. Hippisley-Cox J, Coupland C, Brindle P. Development and validation of QRISK3 risk prediction
522 algorithms to estimate future risk of cardiovascular disease: prospective cohort study. BMJ.
523 2017; 357 :j2099. Epub 2017/05/26. doi: 10.1136/bmj.j2099. PubMed PMID: 28536104;
524 PubMed Central PMCID: PMCPMC5441081
- 525 18. Woodall AA, Abuzour AS, Wilson SA, Mair FS, Buchan I, Sheard SB, et al. Management of
526 antipsychotics in primary care: Insights from healthcare professionals and policy makers in
527 the United Kingdom. PLoS One. 2024; 19(3): e0294974. Epub 2024/03/01. doi:
528 10.1371/journal.pone.0294974. PubMed PMID: 38427674; PubMed Central PMCID:
529 PMCPMC10906843 203986.
- 530 19. NHS England. Quality and outcomes framework guidance for 2023/24. 2024 [updated 15th
531 April 2024; cited 13th June 2024]. Available from: [https://www.england.nhs.uk/long-
532 read/quality-and-outcomes-framework-guidance-for-2023-24/](https://www.england.nhs.uk/long-read/quality-and-outcomes-framework-guidance-for-2023-24/)
- 533 20. Cooper RE, Hanratty É, Morant N, Moncrieff J. Mental health professionals' views and
534 experiences of antipsychotic reduction and discontinuation. PLoS One. 2019; 14(6)
535 :e0218711. Epub 2019/06/21. doi: 10.1371/journal.pone.0218711. PubMed PMID:
536 31220160; PubMed Central PMCID: PMCPMC6586401.
- 537 21. Nash A, Kingstone T, Farooq S, Tunmore J, Chew-Graham C, A. Switching antipsychotics to
538 support the physical health of people with severe mental illness: a qualitative study of
539 healthcare professionals' perspectives. BMJ Open. 2021;11(2):e042497. doi:
540 10.1136/bmjopen-2020-042497.
- 541 22. Reilly S, Planner C, Hann M, Reeves D, Nazareth I, Lester H. The role of primary care in service
542 provision for people with severe mental illness in the United Kingdom. PLoS One. 2012; 7(5):
543 e36468. Epub 2012/05/23. doi: 10.1371/journal.pone.0036468. PubMed PMID: 22615769;
544 PubMed Central PMCID: PMCPMC3352919.
- 545 23. von Elm E, Altman DG, Egger M, Pocock SJ, Gøtzsche PC, Vandenbroucke JP. Strengthening
546 the Reporting of Observational Studies in Epidemiology (STROBE) statement: guidelines for
547 reporting observational studies. BMJ. 2007; 335(7624): 806-8. Epub 2007/10/20. doi:
548 10.1136/bmj.39335.541782.AD. PubMed PMID: 17947786; PubMed Central PMCID:
549 PMCPMC2034723.
- 550 24. Jones KH, Ford DV, Jones C, Dsilva R, Thompson S, Brooks CJ, et al. A case study of the Secure
551 Anonymous Information Linkage (SAIL) Gateway: a privacy-protecting remote access system
552 for health-related research and evaluation. J Biomed Inform. 2014; 50(100): 196-204. Epub
553 2014/01/21. doi: 10.1016/j.jbi.2014.01.003. PubMed PMID: 24440148; PubMed Central
554 PMCID: PMCPMC4139270.
- 555 25. Ford DV, Jones KH, Verplancke JP, Lyons RA, John G, Brown G, et al. The SAIL Databank:
556 building a national architecture for e-health research and evaluation. BMC Health Serv Res.
557 2009; 9: 157. Epub 2009/09/08. doi: 10.1186/1472-6963-9-157. PubMed PMID: 19732426;
558 PubMed Central PMCID: PMCPMC2744675.
- 559 26. Lyons RA, Jones KH, John G, Brooks CJ, Verplancke JP, Ford DV, et al. The SAIL databank:
560 linking multiple health and social care datasets. BMC Med Inform Decis Mak. 2009; 9: 3.
561 Epub 2009/01/20. doi: 10.1186/1472-6947-9-3. PubMed PMID: 19149883; PubMed Central
562 PMCID: PMCPMC2648953.
- 563 27. Rodgers SE, Demmler JC, Dsilva R, Lyons RA. Protecting health data privacy while using
564 residence-based environment and demographic data. Health Place. 2012; 18(2): 209-17.
565 Epub 2011/10/15. doi: 10.1016/j.healthplace.2011.09.006. PubMed PMID: 21996431.

- 566 28. Rodgers SE, Lyons RA, Dsilva R, Jones KH, Brooks CJ, Ford DV, et al. Residential Anonymous
567 Linking Fields (RALFs): a novel information infrastructure to study the interaction between
568 the environment and individuals' health. *J Public Health (Oxf)*. 2009; 31(4): 582-8. Epub
569 2009/05/19. doi: 10.1093/pubmed/fdp041. PubMed PMID: 19447812.
- 570 29. Newcombe RG. Two-sided confidence intervals for the single proportion: comparison of
571 seven methods. *Stat Med*. 1998; 17(8): 857-72. Epub 1998/05/22. doi: 10.1002/(sici)1097-
572 0258(19980430)17:8<857::aid-sim777>3.0.co;2-e. PubMed PMID: 9595616.
- 573 30. Miettinen O, Nurminen M. Comparative analysis of two rates. *Stat Med*. 1985; 4(2): 213-26.
574 Epub 1985/04/01. doi: 10.1002/sim.4780040211. PubMed PMID: 4023479.
- 575 31. Whiskey E, Barnard A, Oloyede E, Dzahini O, Taylor DM, Shergill SS. An evaluation of the
576 variation and underuse of clozapine in the United Kingdom. *Acta Psychiatr Scand*. 2021;
577 143(4): 339-47. doi: <https://doi.org/10.1111/acps.13280>.
- 578 32. Mansour H, Mueller C, Davis KAS, Burton A, Shetty H, Hotopf M, et al. Severe mental illness
579 diagnosis in English general hospitals 2006-2017: A registry linkage study. *PLoS Med*. 2020;
580 17(9): e1003306. Epub 2020/09/18. doi: 10.1371/journal.pmed.1003306. PubMed PMID:
581 32941435; PubMed Central PMCID: PMC7498001
- 582 33. Radojčić MR, Pierce M, Hope H, Senior M, Taxiarchi VP, Trefan L, et al. Trends in antipsychotic
583 prescribing to children and adolescents in England: cohort study using 2000-19 primary care
584 data. *Lancet Psychiatry*. 2023; 10(2): 119-28. Epub 2023/01/14. doi: 10.1016/s2215-
585 0366(22)00404-7. PubMed PMID: 36638816.
- 586 34. Shoham N, Cooper C, Lewis G, Bebbington P, McManus S. Temporal trends in psychotic
587 symptoms: Repeated cross-sectional surveys of the population in England 2000-14.
588 *Schizophr Res*. 2021; 228: 97-102. doi: <https://doi.org/10.1016/j.schres.2020.11.057>.
- 589 35. Mok PLH, Carr MJ, Guthrie B, Morales DR, Sheikh A, Elliott RA, et al. Multiple adverse
590 outcomes associated with antipsychotic use in people with dementia: population based
591 matched cohort study. *BMJ*. 2024; 385: e076268. doi: 10.1136/bmj-2023-076268.
- 592 36. Grünwald LM, Duddy C, Byng R, Crellin N, Moncrieff J. The role of trust and hope in
593 antipsychotic medication reviews between GPs and service users a realist review. *BMC*
594 *Psychiatry*. 2021; 21(1): 390. Epub 2021/08/06. doi: 10.1186/s12888-021-03355-3. PubMed
595 PMID: 34348680; PubMed Central PMCID: PMC7869656.
- 596 37. Kelly M, Dornan T, Pringsheim T. The lesser of two evils: a qualitative study of quetiapine
597 prescribing by family physicians. *CMAJ Open*. 2018; 6(2): E191-e6. Epub 2018/05/02. doi:
598 10.9778/cmajo.20170145. PubMed PMID: 29712643; PubMed Central PMCID:
599 PMC7869656.
- 600 38. National Institute for Health and Care Excellence. Borderline Personality Disorder: recognition
601 and treatment. Clinical guideline. [Internet]. London: NICE, 2009. [cited 2024 Jun 1] Available
602 from: <https://www.nice.org.uk/guidance/cg78>
- 603 39. Abuzour AS, Wilson SA, Woodall AA, Mair FS, Clegg A, Shantsila E, et al. A qualitative
604 exploration of barriers to efficient and effective Structured Medication Reviews in Primary
605 Care: Findings from the DynAIRx study. *medRxiv*. 2024: 2024.04.18.24303004. Available
606 from: doi: 10.1101/2024.04.18.24303004.

	QOF Register (annual contract requirements)			
	SMI	Dementia	Depression	No register
Patients taking APM with typical diagnoses	Schizophrenia; Bipolar disorder; Psychotic depression	Vascular dementia; Alzheimer’s disease	Moderate depressive disorder	Generalised anxiety disorder; Autism
Registration	Yes	Yes	Yes	No
GP review	Yes	Yes	Yes	No
Blood pressure	Yes	No	No	No
BMI	Yes	No	No	No
Lipids	Yes	No	No	No
HBA1c /glucose	Yes	Yes	No	No
Alcohol consumption	Yes	No	No	No

607

608 **Table S1: Typical QOF register contractual requirements in the Primary Care GP Contract.**

609 These contractual requirements varied from UK nation to nation over the study period. The
 610 table shows the typical monitoring that a patient with a diagnosis would experience
 611 according to each register.

612

Table S2: Counts of patients (all ages) on long-term APM and licenced indications in UK national formulary.

613

Antipsychotic	Read code (5-digit)	Count (2011)	Relative proportion (%) (2011)	Count (2020)	Relative Proportion (%) (2020)	First or Second Generation	Licensed indication in UK British National Formulary (2024)						
							Psychosis/agitation in Serious Mental Illness (Schizophrenia, Bipolar Disorder, Psychotic Depression)	Psychosis in Parkinson's Disease	Management of Behavioural and Psychological Symptoms in Dementia	Depression (adjunctive treatment, psychosis not required)	Anxiety	Control of deviant antisocial sexual behaviour	Non-psychiatric uses (e.g. nausea)
Quetiapine	d4s..	6362	28.0	12338	37.1	2	YES	NO	NO	YES	NO	NO	NO
Olanzapine	d4r.. OR d58..	5430	23.9	7527	22.6	2	YES	NO	NO	NO	NO	NO	NO
Risperidone	d4p..	3377	14.8	5106	15.3	2	YES	NO	NO	NO	NO	NO	NO
Amisulpride	d4t..	1531	6.7	1190	3.6	2	YES	NO	NO	NO	NO	NO	NO
Aripiprazole	d4v..	1381	6.1	4303	12.9	2	YES	NO	NO	NO	NO	NO	NO
Haloperidol	d47.. OR d55..	997	4.4	825	2.5	1	YES	NO	YES	NO	NO	NO	YES
Chlorpromazine	d41..	971	4.3	633	1.9	1	YES	NO	NO	NO	YES	NO	YES
Trifluoperazine	d4h..	669	2.9	117	0.4	1	YES	NO	NO	NO	YES	NO	YES
Pericyazine	d4a..	576	2.5	176	0.5	1	YES	NO	NO	NO	YES	NO	NO
Promazine	d4e..	508	2.2	244	0.7	1	YES	NO	NO	NO	NO	NO	YES
Sulpride	d4f..	490	2.2	271	0.8	1	YES	NO	NO	NO	NO	NO	NO
Zuclopenthixol	d4j.. OR d57	211	0.9	257	0.8	1	YES	NO	NO	NO	NO	NO	NO
Flupentixol	d51..	159	0.7	104	0.3	1	YES	NO	NO	YES	NO	NO	NO
Benperidol	d42..	39	0.2	34	0.1	1	NO	NO	NO	NO	NO	YES	NO
Pimozide	d4c..	23	0.1	10	0.0	1	YES	NO	NO	NO	NO	NO	NO
Clozapine	d4l..	14	0.1	8	0.0	2	YES	YES	NO	NO	NO	NO	NO
Paliperidone	d4w..	<5	0.0	14	0.0	2	YES	NO	NO	NO	NO	NO	NO
Asenapine	d4x..	<5	0.0	<5	0.0	2	YES	NO	NO	NO	NO	NO	NO
Cariprazine	not listed in d4..	<5	0.0	<5	0.0	2	YES	NO	NO	NO	NO	NO	NO
Lurasidone	d4y..	<5	0.0	<5	0.0	2	YES	NO	NO	NO	NO	NO	NO
Droperidol	d44..	<5	0.0	<5	0.0	1	NO	NO	NO	NO	NO	NO	YES

Loxapine	d4k..	<5	0.0	<5	0.0	1	YES	NO	NO	NO	NO	NO	NO
Zuclopenthixol acetate	d4n..	<5	0.0	<5	0.0	1	YES	NO	NO	NO	NO	NO	NO
Prochlorperazine as antipsychotic (excluded from 'total APM count as not used as an antipsychotic in UK)*	D4d.. (Dhe.. Antiemetic code use is not captured under d4 code)	<5	N/A	<5	N/A	N/A	YES	NO	NO	NO	YES	NO	YES
Levomepromazine (excluded from 'total APM count as not used as an antipsychotic in UK)*	d48..	68	N/A	158	N/A	N/A	YES	NO	NO	NO	NO	NO	YES
Total (individual APM counts)		22773	100.1	33187	99.7	N/A							
Total (top 6 APM used in 2020)		19078	83.9	31289	94.0	N/A							
Total 1 st Generation APM		4658	20.5	2686	8.1	N/A							
Total 2 nd Generation APM		18115	79.7	30501	91.7	N/A							
"ALL APM Total"	codes d4... and d5... excluding any prochlorperazine antiemetic codes (dhe..) and levomepromazine codes (22119	N/A	32086	N/A	N/A							
All APM total as a % of summation of individual APM count		97.1	N/A	96.7	N/A	N/A							

614

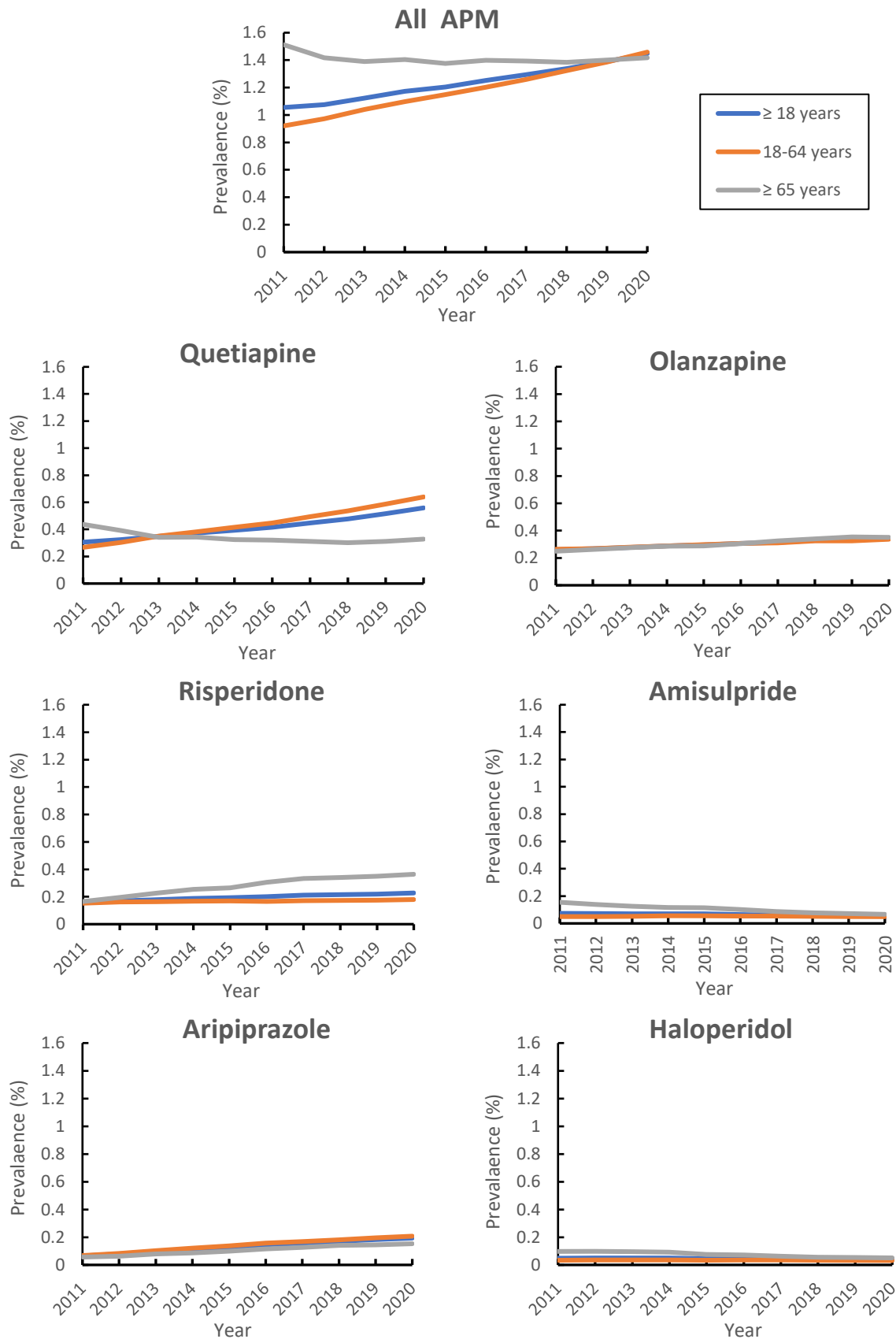


Figure S1: Prevalence of long-term APM use between 2011 and 2020

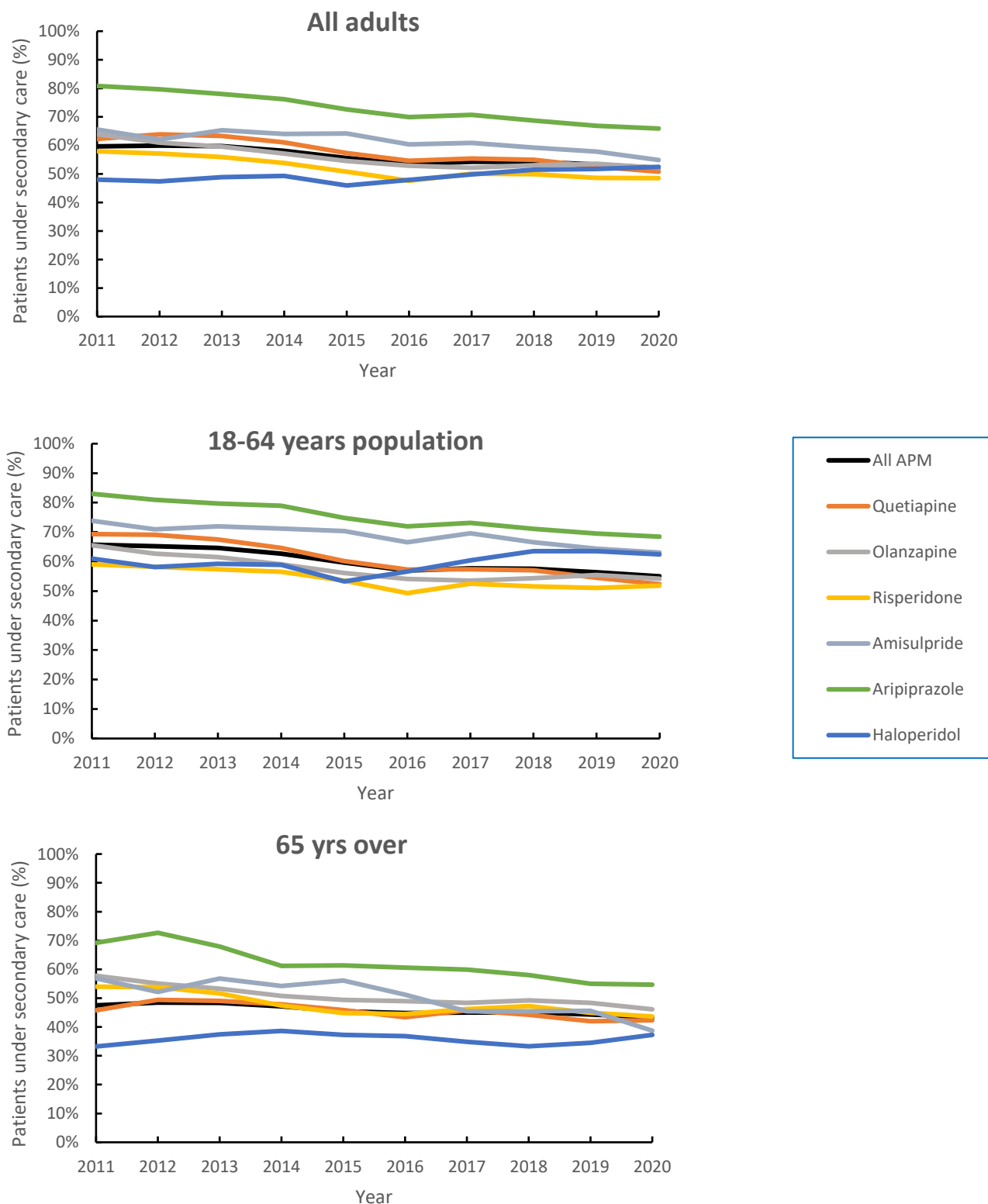


Figure S2: Proportions of patients taking long-term APM who have had psychiatric review in previous 12 months

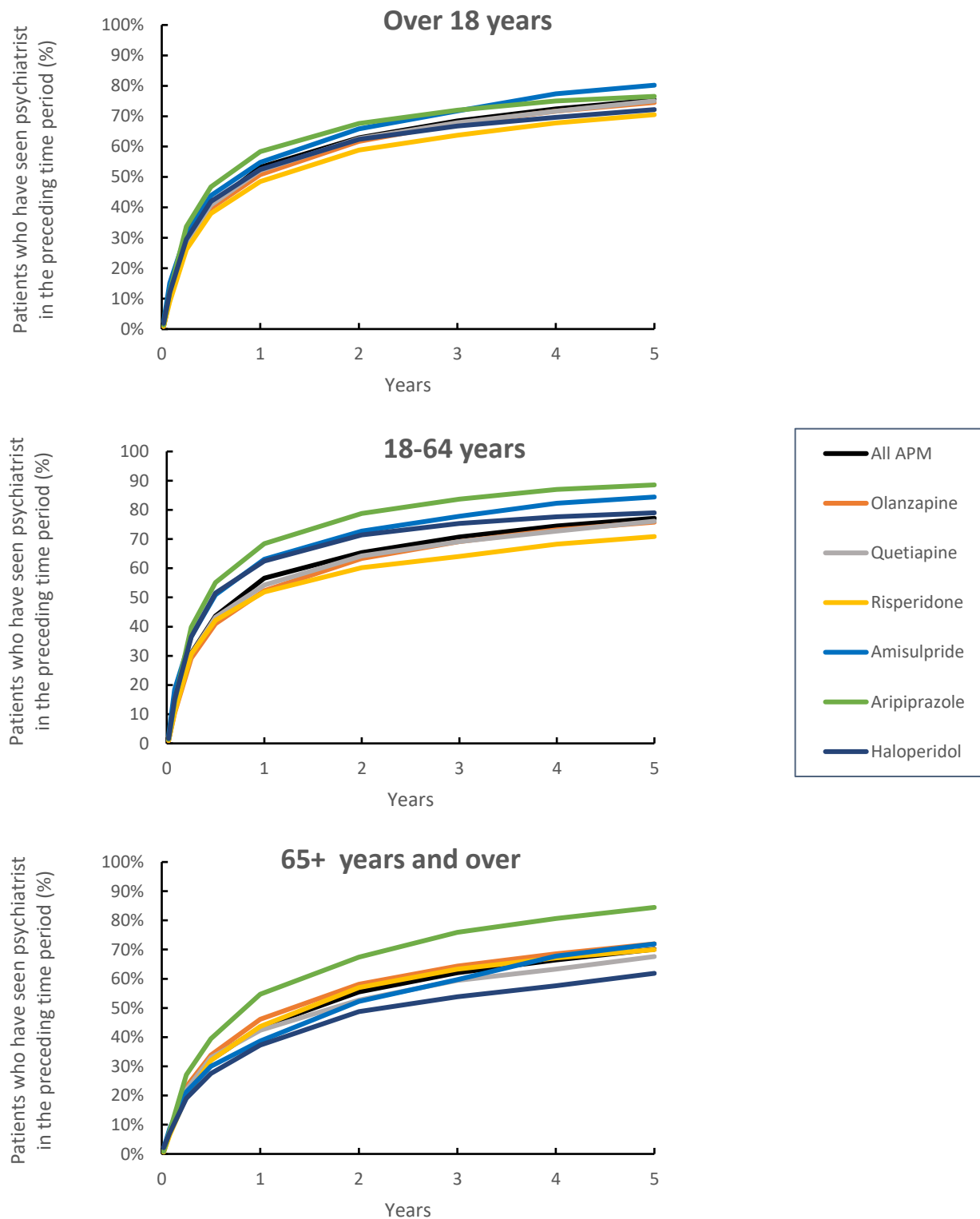


Figure S3: Proportions of patients in 2020 prescribed -long APM who have had psychiatric review in the preceding time period of up to 5 years

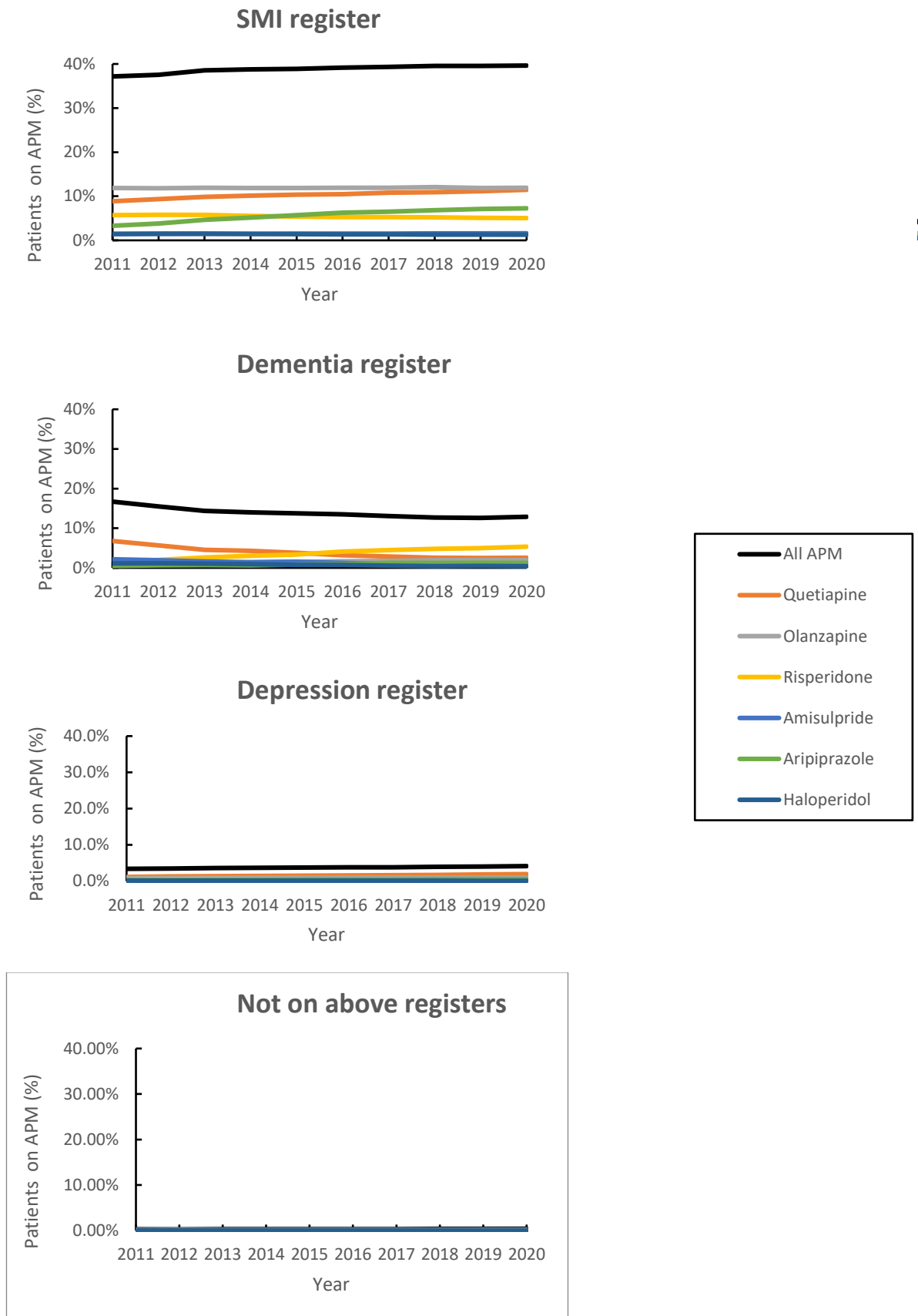


Figure S4: Proportions of patients on QOF registers prescribed long-term APM

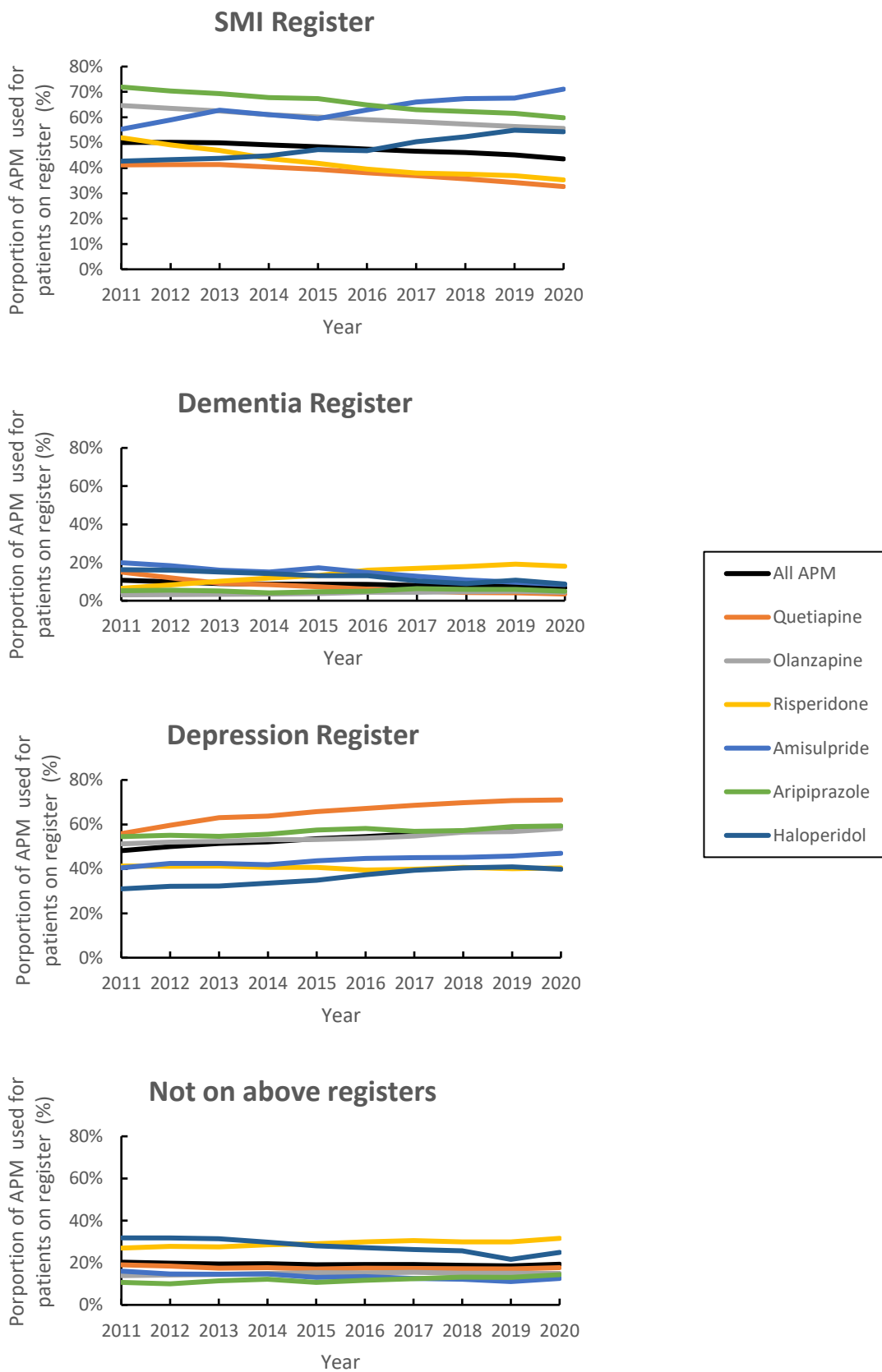


Figure S5: Proportion of total APM prescribed to patients on each QOF register