

Antipsychotic management in general practice: serial cross-sectional study (2011-2020)

Short title: Trends in antipsychotic management in general practice

Alan Woodall, Alex Gampel, Huw Collins[†], Lauren E Walker, Frances S Mair, Sally Sheard,
Pyers Symon, Iain Buchan*

[†]Deceased

*Corresponding author

Author Information

Alan Woodall, PhD MRCGP, Honorary Clinical Senior Lecturer¹ and Clinical Lead for Integrated Care², ORCID: 0000-0003-2933-0508; alan.woodall@wales.nhs.uk

Alex Gampel, PhD, Information Reporting and Analytics Manager², ORCID: 0000-0001-6923-5818; alexandra.gampel@wales.nhs.uk

Huw Collins, BA, Data Analyst³ (deceased; no ORCID/email)

Lauren Walker, PhD MRCP, Reader in Clinical Pharmacology and General Internal Medicine⁴, ORCID: 0000-0002-3827-4387; lauren.walker@liverpool.ac.uk

Frances Mair, MD FRCGP FRSE, Norie Millar Professor of General Practice⁵, ORCID: 0000-0001-9780-1135 frances.mair@glasgow.ac.uk

Sally Sheard, PhD, Andrew Geddes & John Rankin Professor of Modern History, and Wellcome Trust Senior Investigator (Health Policy)⁶, ORCID: 0000-0001-8116-9120; sheard@liverpool.ac.uk

Pyers Symon, BSc, Public Advisor⁷, ORCID: 0009-0001-6499-8442; pyers.symon@zen.co.uk

NOTE: This preprint reports new research that has not been certified by peer review and should not be used to guide clinical practice.

Iain Buchan, MD FFPH, W.H Duncan Professor of Public Health Systems⁷and Director⁸, ORCID: 0000-0003-3392-1650; buch@liverpool.ac.uk

¹Department of Primary Care and Mental Health, Institute of Population Health, University of Liverpool, Liverpool, United Kingdom.

²Powys Teaching Health Board, Bronllys, Powys, United Kingdom.

³Secure Anonymised Information Linkage Databank, Data Science Building, Swansea University, Swansea, United Kingdom

⁴Centre for Experimental Therapeutics, University of Liverpool, Liverpool, United Kingdom

⁵Department of General Practice and Primary Care, School of Health and Wellbeing, University of Glasgow, Glasgow, United Kingdom

⁶Department of Public Health, Policy and Systems, Institute of Population Health, University of Liverpool, Liverpool, United Kingdom

⁷NIHR Mental Health Research for Innovation Centre, University of Liverpool, Liverpool, United Kingdom

⁸Civic Health Innovation Labs, University of Liverpool, Liverpool, United Kingdom

Abbreviations

APM-	Antipsychotic Medication
GP-	General Practitioner (Family Medicine physician outside the UK)
NICE-	National Institute of Health and Care Excellence
OPDW-	Outpatient Dataset for Wales (secondary care outpatient dataset)
PEDW-	Patient Episode Dataset for Wales (hospital admission dataset)
QOF-	Quality and Outcomes Framework
SAIL-	Secure Anonymised Information Linkage
SMI-	Serious Mental Illness
WIMD-	Welsh Index of Multiple Deprivation
WLGP-	Welsh Longitudinal General Practice (dataset)

Abstract

Background: Long-term use of antipsychotics confers increased risk of cardiometabolic disease. Ongoing need should be reviewed regularly by psychiatrists.

Aim: To explore trends in antipsychotic management in general practice, and proportions of patients prescribed antipsychotics receiving psychiatrist review.

Design and Setting: A serial cross-sectional study using linked general practice and hospital data in Wales (2011-2020).

Method: Participants were adults (≥ 18 years) registered with general practices in Wales. Outcome measures were prevalence of patients receiving ≥ 6 antipsychotic prescriptions annually, proportion of patients prescribed antipsychotics receiving annual psychiatrist review, and proportion of patients prescribed antipsychotics registered on UK Serious Mental Illness, Depression and/or Dementia registers, or not on any of these registers.

Results: Prevalence of adults prescribed long-term antipsychotics increased from 1.06% (95%CI 1.04 to 1.07%) in 2011 to 1.45% (95%CI 1.43 to 1.46%) in 2020. The proportion receiving annual psychiatrist review decreased from 59.6% (95%CI 58.9 to 60.4%) in 2011 to 52.0% (95%CI 51.4 to 52.7%) in 2020. The proportion of antipsychotics prescribed to patients not on the Serious Mental Illness register increased from 50% (95%CI 49 to 51%) in 2011 to 56% (95%CI 56 to 57%) by 2020.

Conclusions: Prevalence of long-term antipsychotic use is increasing. More patients are managed by general practitioners without psychiatrist review and are not on monitored disease registers; they thus may be less likely to undergo cardiometabolic monitoring and

miss opportunities to optimise or deprescribe antipsychotics. These trends pose risks for patients and need to be addressed urgently.

Keywords: antipsychotics; general practice; cardiometabolic risk factors; psychiatry; medication review; cross-sectional studies

How this fits in:

Antipsychotics are effective treatments for serious mental illness, but long-term use increases the risk of cardiometabolic disease, therefore ongoing use should be reviewed regularly. There is increasing use of these medications for non-psychotic mental illness by psychiatrists who then discharge patients to sole care by GPs, often for patients who are not captured on disease registers that automate recall for cardiometabolic risk monitoring. This study demonstrates a rising burden of long-term antipsychotic prescribing in general practice, with nearly half of all adult patients not under annual psychiatrist review, and only 44% of long-term antipsychotic prescriptions being issued to patients coded on the Quality and Outcomes Framework (QOF) Serious Mental Illness register. This means many patients taking antipsychotics may be missed for cardiometabolic screening and expert review. Policy changes are required to ensure regular effective review and monitoring to prevent increasing morbidity and early mortality for patients prescribed long-term antipsychotics.

Introduction

Antipsychotics are licenced in the United Kingdom (UK) for the management of serious mental illness (SMI) such as schizophrenia and bipolar disorder [1]. Some antipsychotics have UK licences for treatment of depression (quetiapine) and behavioural management in dementia (risperidone) [2]. Antipsychotics are also often prescribed, off-licence and long-term, for personality disorder [3], behavioural management in learning disability [4], autism[5] and anxiety [6], in contravention of guidelines issued by the National Institute of Health and Care Excellence (NICE) [3, 7, 8].

Antipsychotics are effective medications for SMI, but long-term use increases risk of obesity [9], diabetes mellitus [10] and cardiovascular disease [11, 12]. Psychiatrist-led review of antipsychotics should occur regularly to prevent overuse; patients with SMI die 15-20 years prematurely, mainly due to cardiovascular disease and cancer [13-17], but their mortality is higher in many other conditions such as severe COVID-19 infection [18]. Avoidable early mortality for patients with SMI is of significant international public health concern [19]; patients with SMI experience lower screening rates, less monitoring for cardiometabolic risk, and fewer interventions when cardiovascular disease occurs [20]. Poorer physical health outcomes for patients with SMI remain problematic, even in countries with universal healthcare [21]

General practitioners (GPs) in the UK provide physical health reviews of patients with SMI [13, 22]. These are conducted via annual recall of patients with diagnoses that encode them on the Quality Outcomes Framework (QOF) serious mental illness (QOF-SMI) register (termed a 'mental health' register, but only includes patients with psychotic illnesses and/or prescribed lithium). QOF is a performance management programme to establish registers of

patients with chronic illnesses who require enhanced care, and forms part of the UK GP contract (now excluding Scotland) [23] (Supplementary Table 1). The QOF-SMI annual review includes monitoring of alcohol consumption, smoking, body mass index, blood pressure, blood glucose and lipids, to detect patients at risk of developing cardiometabolic diseases [13]. However, patients taking antipsychotics for dementia, depression, or conditions such as anxiety or personality disorder are not captured on the QOF-SMI register and may not receive cardiometabolic monitoring; a cohort study of 47,724 patients in 2016 found <50% patients prescribed antipsychotics had an SMI diagnosis [7]. GPs report they lack competencies to optimise antipsychotics (e.g., alter dose, switch, or stop) without input from psychiatrists undertaking regular reviews [22, 24, 25]. Patients who are commenced on antipsychotics by psychiatrists are frequently discharged to general practice; 31% of patients with SMI were managed solely by general practice in 2009 [26], and may take antipsychotics long-term without further psychiatric review. We addressed 3 main research questions:

1. Has the prevalence of long-term antipsychotic use in general practice changed over the decade just before the COVID-19 pandemic?
2. Has the proportion of patients prescribed long-term antipsychotics receiving psychiatrist review changed?
3. Has the proportion of people prescribed antipsychotics that are included on QOF-SMI register changed?

Methods

Study design

A serial cross-sectional population study was undertaken with reference to the 'Strengthening the Reporting of Observational Studies in Epidemiology' (STROBE) guidelines [27]. This methodology has been used in international studies of antipsychotic prescribing [28, 29].

Study population and setting

Individuals registered with GP practices providing data to the Secure Anonymised Information Linkage (SAIL) databank formed the population. Analysis focused on adult use (≥ 18 years), subdivided by subspeciality: general adult psychiatry (18-64 years) and older adult psychiatry (≥ 65 years). Patient age was calculated on 1st January each year.

We defined psychiatrist review as occurring where a record of psychiatrist outpatient clinic contacts with a registered medical practitioner or advanced nurse practitioner (including general adult-, older adult-, child and adolescent-, forensic- or learning disability psychiatry, and psychotherapy subspecialties), or psychiatric hospital admission, occurred in the 12 months preceding each 1st January. If neither contact occurred, then we defined antipsychotic management as being solely provided by GPs. Two health boards of the seven in Wales could not provide psychiatric outpatient clinic returns for the study period; therefore, analysis of the proportions of patients prescribed antipsychotics who had received psychiatrist review was limited to five health boards providing clinic returns for 2011-2020. These seven health boards all had similar prevalences of SMI, depression and

dementia from QOF returns to Welsh government [30]. The COVID-19 pandemic disrupted normal outpatient services; hence we focused on psychiatrist review up to 1/1/2020.

Data sources

The SAIL databank was the data source. This is an expanding data repository of 500 million anonymised and encrypted individual-level records from primary and secondary health care sources, and sociodemographic data relevant to health. This includes national datasets covering the whole of Wales (approximately 3 million population) [31-35]. Patients registered with general practices providing data to SAIL were examined using the Welsh Longitudinal General Practice (WLGP) dataset. As of 2023, 87% of Welsh general practices provide historical electronic health record data to SAIL for each patient, covering 83% of the population [36]. Outpatient clinic attendance was determined from the Outpatient Dataset for Wales (OPDW). Psychiatric hospital admission was ascertained using the Patient Episode Dataset for Wales (PEDW). SAIL databank has been validated for use in studies on mental illness [15].

Diagnoses for inclusion in QOF-SMI, depression and dementia registers recorded in GP records and prescriptions for antipsychotics (with a UK licence for use during the study period as listed in the British National Formulary [2]) were extracted using 5-digit Read Codes (v2) from WLGP (see repository <https://github.com/alanwoodall/AMP-Epidemiology>). Discussion with two psychiatrists confirmed that two antipsychotics were rarely prescribed for psychiatric purposes and are mainly used for physical health: prochlorperazine (antiemetic) and levomepromazine (palliative care); these were excluded from analysis.

Parenteral ('depot') antipsychotics or clozapine issued by GPs were also captured, but these are usually prescribed directly by psychiatrists.

Analysis

The primary outcome measure was prevalence of adults issued antipsychotics on ≥ 6 separate days in each calendar year. Analysis by gender, ethnicity and index of deprivation quintile (2019 Welsh Index of Deprivation, WIMD) was also undertaken. We undertook sensitivity analysis of antipsychotic script events per annum to examine patterns of use (see repository); we defined ≥ 6 script events in a 12 month period as long-term antipsychotic use conservatively, based on the frequency of psychiatric outpatient review (usually biannually) and on definition of regular use in other studies [37]. Further analysis was undertaken to examine antipsychotic by age (18-64 years and ≥ 65 years), to mirror the UK division between general adult- and old-age psychiatry subspecialities. The prevalence of the six most common antipsychotics prescribed was also determined.

For the proportion of people on antipsychotics receiving psychiatrist review, we undertook sensitivity analysis, varying the period to capture review occurrence up to 5 years. We chose 12 months as the period to define antipsychotic review by psychiatry.

The number of patients who had a lifetime history of diagnostic codes in the QOF SMI, QOF dementia and/or QOF depression registers was determined, along with the number of patients on each disease register prescribed long-term antipsychotics. These three psychiatric illness QOF registers cover diagnoses for almost all licensed uses of antipsychotics

in the UK [2]. The number of patients prescribed antipsychotics not on any of these three psychiatric QOF-registers was also determined.

Statistical analysis

Statistical analysis was undertaken using StatsDirect (Version 4.0.1, www.statsdirect.com).

The Clopper-Pearson method was used for confidence intervals of binomial proportions [38].

Differences between binomial proportions were evaluated using the Miettinen-Nurminen method [39]. Results are presented as the main effect with a 95% confidence interval. A 5% significance level was used for hypothesis tests.

Patient and public involvement

Public advisors for research with the Mental Health Research for Innovation Centre, University of Liverpool, provided oversight of the study.

Results

Changes in prevalence of long-term antipsychotic prescribing

Table 1 shows the prevalence of long-term antipsychotic exposure in 2011 and 2020 (also see Supplementary Figure 1). Prevalence of adults ≥ 18 years exposed to antipsychotics increased from 1.06% to 1.45%; this increase is exclusively in those 18-64 years (0.92% in 2011 increasing to 1.46% in 2020). Of individual antipsychotics, quetiapine was the most prescribed in those ≥ 18 years (increasing from 0.31% in 2011 to 0.56% in 2020). For those ≥ 65 years, antipsychotic prevalence fell from 1.51% in 2011 to 1.42% in 2020. Risperidone was the most prescribed antipsychotic in this group (increasing from 0.17% in 2011 to 0.36% in 2020).

Table 2 shows prevalence of antipsychotics analysed by sex, deprivation quintile and ethnicity. Females were more likely than males to be prescribed long-term antipsychotics (2020 female/male prevalence ratio 1.10 (95% CI: 1.07-1.12)). There was increasing prevalence of antipsychotic use in the most deprived compared to least deprived quintiles (prevalence ratio in 2011 was 2.30, increasing to 2.58 in 2020). When analysed by ethnicity, white individuals had a higher prevalence of antipsychotic use than other ethnic groups, with Asian individuals having the lowest prevalence (2020 prevalence ratio Asian/White: 0.37 (95%CI: 0.33 - 0.42))

Supplementary Table 2 shows the counts of patients receiving long-term antipsychotics listed in the British National Formulary in 2011 and 2020, and their licensed indications. The proportion of long-term antipsychotic exposure that is accounted for by 'second generation' or 'atypical' antipsychotics increased from 79.7% in 2011 to 91.7% in 2020. Approximately 94% of antipsychotic exposures in 2020 are accounted for by 6 individual antipsychotics:

quetiapine (37.3%), olanzapine (22.6%), risperidone (15.3%) aripiprazole (12.9%), amisulpride (3.6%) and haloperidol (2.5%).

Proportion of patients prescribed long-term antipsychotics receiving psychiatric specialist review.

The percentage of adults ≥ 18 years taking long-term antipsychotics who received psychiatrist review in the 12 months preceding each year (2011-2020) fell from 59.6% to 52.0% (Table 3; also see Supplementary Figure 2). The proportion of 18–64-year-olds taking long-term antipsychotics that received psychiatrist review decreased from 65.7% in 2011 to 55.0% in 2020. The greatest decrease in psychiatrist review occurred in patients prescribed quetiapine (-17.0%). For patients ≥ 65 years, less than half underwent psychiatrist review, decreasing from 47.5% in 2011 to 43.4% in 2020. The greatest decrease was seen for those taking amisulpride (-18.2%).

We conducted sensitivity analysis of psychiatrist review by varying the period of time allowed up to 5 years prior to 1/1/2020 (Supplementary Figure 3). For patients aged 18-64 years prescribed long-term antipsychotics in 2020, 22.9% had no psychiatrist contact in the previous 5 years. For patients aged >65 years, 29.9% of those taking antipsychotics long-term in 2020 had no psychiatrist contact in the previous 5 years.

Proportions of patients on the psychiatric QOF registers prescribed long-term antipsychotics.

In 2020, 1 in 63 (1.59%) adults ≥ 18 years had a lifetime diagnostic code for inclusion on the QOF SMI register, (+0.17% since 2011); 1 in 5 adults (20.7%) had a code for inclusion on the

QOF depression register (+5.6% since 2011); 1 in 130 adults (0.77%) had a code for inclusion on the QOF dementia register (+ 0.1% since 2011) (Table 4). For adults without codes for inclusion on these three psychiatric illness QOF registers, the proportion fell from 83.7% in 2011, to 78.1% in 2020

Table 5 shows the proportion of patients ≥ 18 years prescribed long-term antipsychotics in each QOF register (also see Supplementary Figure 4). The proportion of patients on the QOF SMI register prescribed antipsychotics increased to 39.6% in 2020 (+2.6% since 2011), with olanzapine the most common exposure in 2020 (11.9%; +0.08% since 2011). The proportion of patients on the QOF dementia register prescribed antipsychotics decreased from 16.7% in 2011 to 12.9% in 2020, with risperidone the most common exposure in this group in 2020 (5.45%; +3.85% since 2011). The proportion of patients on the QOF depression register prescribed antipsychotics increased to 4.12% in 2020 (+0.75% since 2011), with quetiapine the most common exposure in 2020 (1.91%; +0.78% since 2011). The proportion of patients not on any of these three QOF psychiatric illness registers prescribed antipsychotics increased from 0.36% in 2020 (+0.10% since 2011), with quetiapine the most common exposure in 2020 (0.13%, +0.06% since 2011).

Proportion of overall long-term antipsychotic use by QOF register status

Table 6 shows the proportion of overall long-term antipsychotic use for patients who are registered on the QOF SMI, QOF dementia, and/or QOF depression registers, and the proportion of overall long-term antipsychotic use for patients not on any of these three QOF registers (also see Supplementary Figure 5). The proportion of overall antipsychotic use for patients on the QOF SMI register fell to 43.6% by 2020 (-7.4% since 2011); the lowest

proportion was quetiapine (32.6% in 2020). The proportion of overall antipsychotic use for patients on the QOF dementia register fell to 6.8% in 2020 (- 3.9% since 2011); 18.0% of total risperidone use was for patients on the QOF dementia register. The proportion of antipsychotic use for patients on the QOF depression register increased to 59.0% by 2020 (+10.8% since 2011); 71.0% of total quetiapine use in 2020 was for patients who have ever been on the QOF depression register, a 15.2% increase from 2011 to 2020. The proportion of antipsychotic prescribed for patients not on these three registers fell slightly to 19.2% in 2020 (-1.0% since 2011). The proportion of overall haloperidol use was greatest for this group (34.6% in 2011, decreasing to 24.9% in 2020).

Discussion

Summary

This study shows:

- (1) Long-term antipsychotic prevalence increased in adults, with rises in those 18-64 years, and decreased in the ≥ 65 years population. Prevalence was higher in females, those from the most deprived fifth of the population, and white ethnicity groups.
- (2) For adults prescribed long-term antipsychotics, the proportion who had annual psychiatrist review decreased from 60% to 52%; this decrease was more pronounced among older patients.
- (3) The proportion of patients prescribed long-term antipsychotics who are not on the QOF Serious Mental Illness register increased from 50% in 2011 to 56% by 2020, meaning fewer patients would receive QOF recall for cardiometabolic monitoring.

Our work suggests that antipsychotics are increasingly used for unlicensed and/or non-psychotic conditions. The decrease in psychiatrist reviews of patients prescribed antipsychotics, along with increasing use for conditions that are not on the QOF SMI register, may act synergistically to increase risk of people becoming ‘trapped’ on antipsychotics in general practice and increasing their risk of cardiometabolic morbidity. This risk is worse for more deprived patients - antipsychotic prevalence was 2.58 (2.48 - 2.68) times higher in the most deprived compared with the least deprived fifth - and these inequalities have increased over the past decade. Given the prevalence of cardiometabolic disease is highest in the most deprived populations [40], this compounds the multimorbidity risk for this group.

Strengths and limitations

We believe this is the first study of long-term antipsychotic use to report the proportions of patients who are managed solely in general practice, the first to compare antipsychotic prescribing patterns between different QOF psychiatric illness registers, and of patients not on any psychiatric illness registers. Strengths include: (1) we focus on patients prescribed long-term antipsychotics who are most at risk of cardiometabolic disease; (2) SAIL databank allows patient record linkage between general practice and secondary care datasets, so identifying management trends between general practice and psychiatric services.

Limitations include: (1) SAIL obtains data exclusively from Wales, so caution is needed extrapolating findings to other populations. (2) SAIL cannot extract number of tablets issued per script, so accurate quantification of antipsychotic burden is not possible. (3) SAIL only captures antipsychotic exposure when patients receive prescriptions from NHS general

practice; it does not capture prescriptions issued from private services, for patients registered with prison or military general practices, and when scripts are issued by secondary care, as is the case for most parenteral antipsychotic prescriptions. Additionally, clozapine is licensed in the UK only for issue by psychiatrists so would not be routinely captured; only 8 patients received long-term clozapine scripts from general practice in 2020 (Table S2), but the clozapine monitoring service for Wales had 1,984 patients registered in 2019 [41]; these represent missing data of antipsychotic exposure we are not able to capture. (4) We have not identified patients prescribed ≥ 2 antipsychotics concurrently. (5) For psychiatrist review, we cannot identify 'indirect' management between GPs and psychiatrists (e.g. communication without patient contact), nor will it have identified patient contact with non-prescribing mental health professionals, who may provide indirect input into antipsychotic review. (6) While we have used lifetime prevalence of diagnostic codes to determine patient exposure to QOF SMI, QOF Dementia and QOF Depression registers, as other studies have done [7], this will not detect changes in psychiatric diagnoses that can happen over time. Further, psychiatric codes may be inaccurate [42]. Erroneous diagnoses may not be removed from GP records when a subsequent correct one is added [43]. Incomplete, inaccurate or non-contemporaneous coding of psychiatric conditions to measure effectiveness of registers to improve health outcomes is a concern of many UK and international studies, and must be considered when drawing conclusions from data [44-47]. (7) Finally, limited ethnicity coding capture for the population within SAIL databank (61% had ethnicity coding in 2020 using primary and secondary care datasets) reduced our ability to draw conclusions for this subgroup, although the tentative trends we report of similar or higher rates of antipsychotic use for whites compared with other ethnic groups have been previously reported [48]. Studies confirm Wales has relatively poor primary care coding of

ethnicity (40%) compared with England (75%), and work is underway to improve ethnicity recording in SAIL to nearly 95% [49].

Comparison with existing literature

We found an increased prevalence of adults prescribed long-term antipsychotics. The prevalences are consistent with other studies; Marston *et al* reported that 0.7% of the population had exposure to antipsychotics in their cohort study which ended in 2011 [7]; Shoham *et al* reported antipsychotic prevalences of 1.2% in 2014, from a questionnaire survey of patients aged ≥ 16 years [50]. The greatest increase is for quetiapine, which accounted for 44% of all antipsychotic exposures in the 18-64 years group by 2020. This mirrors findings from international cross-sectional studies: Wilkinson *et al* found prevalence had risen from 1.88% to 2.81% between 2008 and 2015 in New Zealand [28]; Hálfðánarson *et al* report increasing prevalence in 16 countries ranging from 0.32% (Columbia) and 7.8% (Taiwan) by 2014 [29] ; these studies report antipsychotic prescribing from primary and secondary care. Despite this increase in antipsychotic use, psychiatric illness QOF register prevalences have not increased proportionately; this suggests increasing antipsychotic use for non-psychotic disorders, such as anxiety, depression and personality disorder, as has been reported [3, 7, 43]. Limited access to psychological therapies may be increasing antipsychotic use for non-psychotic disorders [22]. Prevalence of long-term antipsychotic exposure in patients ≥ 65 years has decreased slightly, with significant falls in patients with dementia (-3.85% (95%CI: -4.64 to -3.06%); this is promising, given the increased risk of mortality when antipsychotics are used in Alzheimer's dementia[51]. However, long-term risperidone prevalence in dementia has increased (+3.85% (95%CI +3.43, +4.27). The UK

licence for risperidone is for '*short-term treatment (up to 6 weeks) of persistent aggression in patients with moderate to severe Alzheimer's dementia*' [2], and yet 1 in 19 patients with dementia were prescribed risperidone long-term; studies report pressure on clinicians to use antipsychotics for patients with dementia in care homes[22]. Recent studies suggest this trend of decreasing overall antipsychotic use in patients with dementia was not maintained during the COVID pandemic [52], and international studies have not all reported this decrease [28, 29]. We suspect the UK decrease in long-term antipsychotic prescribing in those ≥ 65 years we observed was a result of UK governments utilising national prescribing indicators to limit use of antipsychotics in the dementia population to reduce risk of stroke [53].

We found decreasing proportions of patients prescribed antipsychotics have annual psychiatrist review. One explanation may be more antipsychotics are being prescribed by GPs independently; we cannot determine which clinicians initiated antipsychotics, but qualitative studies suggest GPs lack confidence to initiate and manage antipsychotics without psychiatrist input, so we suspect this is unlikely [22, 25, 54]. Another possible explanation is that more patients are discharged on antipsychotics by psychiatrists to general practice, either when patients with SMI are 'stable' from a psychiatric perspective, or when antipsychotics are prescribed to patients who do not have psychotic illness.

While the prevalence of antipsychotic exposure is increasing, the proportion of total antipsychotic use for patients with a history of SMI is decreasing; only 44% of antipsychotic use in 2020 was for patients with a history of SMI, similar to the proportion used for SMI (36%) reported by Marston *et al* [7]. This supports our concern that more antipsychotics are

being used long-term for non-psychotic disorders in contravention of NICE guidelines (e.g. for personality disorder, where antipsychotics should only be used short-term) [55]. Our data shows the greatest increase in antipsychotic prescribing was for patients with a history of depression; whether antipsychotics are used solely to treat depressive disorders, or the patient has a co-morbid SMI or dementia code cannot be determined; cohort studies are needed to examine antipsychotic use for patients with exclusive depressive diagnoses to determine trends.

Only the QOF SMI register funds GPs to undertake cardiometabolic monitoring of patients taking antipsychotics; 56% of patients prescribed long-term antipsychotics are not on this register, and GPs are not funded to undertake cardiometabolic monitoring for them. We suspect many GPs still perform unfunded cardiometabolic monitoring when antipsychotics are used in non-SMI conditions. However, with most cardiometabolic monitoring devolved to GP practices, even when a patient remains under psychiatrist care, there is a risk that patients taking antipsychotics long-term may not have cardiometabolic monitoring undertaken, as general practice utilises automated QOF SMI register recalls. Patients on the QOF SMI register will get annual recalls for cardiometabolic monitoring and GP review. For patients on the QOF dementia or QOF depression registers taking antipsychotics, there is no QOF requirement to undertake cardiometabolic monitoring, so this is less likely to happen. For patients prescribed long-term antipsychotics not captured on any QOF psychiatric illness register (e.g. personality disorder, anxiety, or autism), there is no funding or automated recall for GP review or cardiometabolic monitoring. GPs are supposed to conduct annual medication reviews, but research shows that these are often of variable effectiveness, particularly when antipsychotics are prescribed and there is no ongoing psychiatric input [22,

25, 54, 56]. A recent study in Scotland shows specialist pharmacist-led physical-health monitoring of patients prescribed antipsychotics can improve cardiometabolic monitoring and proactive intervention to ameliorate risk factors [57].

Implications for research and/or practice

This study demonstrated a rising burden of antipsychotic use in UK general practice. Further research is required to determine antipsychotic initiation rates by general practitioners as opposed to psychiatrists, and to determine antipsychotic prevalence in different ethnic groups, and specific use of antipsychotics for non-psychotic conditions such as anxiety, depression, autism and learning disability. [22, 25, 54]. As healthcare services recover from the COVID pandemic, future studies will need to determine if these concerning trends in antipsychotic management continue to worsen, to further inform future health and social care policy.

However, we have shown worrying findings: fewer patients are receiving annual psychiatric review, as more are discharged to general practice for sole management. We estimate that in 2020, based on a UK mid-point population estimate of those >18 years of 52 million [58], an antipsychotic prevalence of 1.45%, and 48% of these patients solely cared for by GPs, approximately 360,000 patients are prescribed antipsychotics long-term without psychiatric review. Furthermore antipsychotics are being prescribed for non-psychotic illnesses that are not captured on the QOF SMI register, meaning cardiometabolic monitoring may not occur. There is therefore an urgent need for targeting of resources to enable patients taking antipsychotics long-term to have access to an annual review with a psychiatrist able to optimise or withdraw antipsychotics. Furthermore, general practice funding for

cardiometabolic monitoring should be based on antipsychotic use rather than diagnosis.

Changes in policy are needed to prevent patients being ‘trapped’ on antipsychotics long-term without psychiatrist review, and ensure adequate cardiometabolic monitoring if we are to address the premature mortality experienced by patients with psychiatric illnesses.

Funding: AW is funded by a Health and Care Wales Research Time Award (RTA-NHS-21-02). IB is funded by a National Institute of Health Research (NIHR) Senior Investigator award (NIHR 205131).

Ethical Approval: The use of data from the SAIL databank was approved by the SAIL Information Governance Research Panel. As this study did not use person identifiable data no formal NHS research ethics committee approval was required. No data were reported where an output would have <5 individual counts.

Competing interests: AW, LEW, IB, and FSM receive funding from the NIHR DynAIRx project (NIHR 203986) investigating the use of artificial intelligence to optimize prescribing. IB has acted as an advisor to AstraZeneca plc, on behalf of University of Liverpool.

Acknowledgements: This study makes use of anonymised data held in the Secure Anonymised Information Linkage (SAIL) Databank. We would like to acknowledge all the data providers who make anonymised data available for research. We want to thank members of SAIL, especially Dr Sarah Rees, who supported the researchers during this project. We are also grateful to consultant psychiatrist colleagues Dr Ben Shooter, and Dr Adnan Sharaf, who provided insight into psychiatric antipsychotic use in the UK, clinic appointment structures, and outpatient recall methods.

Dedication: This work is dedicated to the memory of our friend and research colleague, Huw Collins, who sadly died unexpectedly during this project.

References

1. Roberts R, Neasham A, Lambrinudi C *et al.* A quantitative analysis of antipsychotic prescribing trends for the treatment of schizophrenia in England and Wales. *JRSM Open*. 2018;9(4):2054270418758570.
2. Joint Formulary Committee *British National Formulary* (online) London. BMJ and Pharmaceutical Press Available at <http://www.medicinescomplete.com> [Accessed on 19th August 2024].
3. Haroon S, Hayes J, Viding E, *et al.* Prescribing of antipsychotics among people with recorded personality disorder in primary care: a retrospective nationwide cohort study using The Health Improvement Network primary care database. *BMJ Open*. 2022;12(3):e053943.
4. Alexander RT, Shankar R, Cooper SA, *et al.* Challenges and pitfalls of antipsychotic prescribing in people with learning disability. *Br J Gen Pract* 2017;67(661):372-3.
5. Posey DJ, Stigler KA, Erickson CA, *et al.* Antipsychotics in the treatment of autism. *J Clin Invest* 2008;118(1):6-14.
6. Comer JS, Mojtabai R, Olfson M. National Trends in the Antipsychotic Treatment of Psychiatric Outpatients With Anxiety Disorders. *Am J Psychiatry* 2011;168(10):1057-65.
7. Marston L, Nazareth I, Petersen I, *et al.* Prescribing of antipsychotics in UK primary care: a cohort study. *BMJ Open* 2014;4(12):e006135.
8. National Institute for Health and Care Excellence (2014). *Psychosis and schizophrenia in adults: prevention and management* (NICE guideline CG178). <https://www.nice.org.uk/guidance/cg178>
9. Osborn DP, Petersen I, Beckley N, *et al.* Weight change over two years in people prescribed olanzapine, quetiapine and risperidone in UK primary care: Cohort study in THIN, a UK primary care database. *J Psychopharmacol* 2018;32(10):1098-103.
10. Holt RIG. Association Between Antipsychotic Medication Use and Diabetes. *Curr Diab Rep* 2019;19(10):96.
11. Correll CU, Solmi M, Veronese N, *et al.* Prevalence, incidence and mortality from cardiovascular disease in patients with pooled and specific severe mental illness: a large-scale meta-analysis of 3,211,768 patients and 113,383,368 controls. *World Psychiatry* 2017;16(2):163-80.
12. Ashworth M, Schofield P, Das-Munshi J. Physical health in severe mental illness. *Br J Gen Pract* 2017;67(663):436-7.
13. Woodall A. Managing patients on atypical antipsychotics in primary care. *Prescriber* 2021;32(11-12):18-23.
14. Hayes JF, Marston L, Walters K, *et al.* Mortality gap for people with bipolar disorder and schizophrenia: UK-based cohort study 2000-2014. *Br J Psychiatry*.2017;211(3):175-81.
15. John A, McGregor J, Jones I, *et al.* Premature mortality among people with severe mental illness - New evidence from linked primary care data. *Schizophr Res* 2018;199:154-62.
16. Woodall A, Prosser A, Griffiths M, *et al.* Cardiovascular risk estimation in rural psychiatric inpatient populations: Cross-sectional preliminary study. *Psychiatry Res Commun*. 2023;3(1):100103.
17. Hippisley-Cox J, Coupland C, Brindle P. Development and validation of QRISK3 risk prediction algorithms to estimate future risk of cardiovascular disease: prospective cohort study. *BMJ* 2017;357:j2099.
18. Das-Munshi J, Bakolis I, Bécares L, *et al.* Severe mental illness, race/ethnicity, multimorbidity and mortality following COVID-19 infection: nationally representative cohort study. *Br J Psychiatry* 2023;223(5):518-25.
19. O'Connor RC, Worthman CM, Abanga M, *et al.* Gone Too Soon: priorities for action to prevent premature mortality associated with mental illness and mental distress. *Lancet Psychiatry* 2023;10(6):452-64.
20. McGinty EE, Baller J, Azrin ST, *et al.* Quality of medical care for persons with serious mental illness: A comprehensive review. *Schizophr Res* 2015;165(2-3):227-35.

21. Forbes LJ, Marchand C, Doran T, *et al.* The role of the Quality and Outcomes Framework in the care of long-term conditions: a systematic review. *Br J Gen Pract* 2017;67(664):e775-e84.
22. Woodall AA, Abuzour AS, Wilson SA *et al.* Management of antipsychotics in primary care: Insights from healthcare professionals and policy makers in the United Kingdom. *PLoS One* 2024;19(3):e0294974.
23. NHS England (2024) *Quality and outcomes framework guidance for 2023/24* [online]. Available at [NHS England » Quality and outcomes framework guidance for 2023/24](#) [Accessed on 19th August 2024].
24. Cooper RE, Hanratty É, Morant N, *et al.* Mental health professionals' views and experiences of antipsychotic reduction and discontinuation. *PLoS One* 2019;14(6):e0218711.
25. Nash A, Kingstone T, Farooq S, *et al.* Switching antipsychotics to support the physical health of people with severe mental illness: a qualitative study of healthcare professionals' perspectives. *BMJ Open* 2021;11(2):e042497.
26. Reilly S, Planner C, Hann M, *et al.* The role of primary care in service provision for people with severe mental illness in the United Kingdom. *PLoS One* 2012;7(5):e36468.
27. von Elm E, Altman DG, Egger M, *et al.* Strengthening the Reporting of Observational Studies in Epidemiology (STROBE) statement: guidelines for reporting observational studies. *BMJ* 2007;335(7624):806-8.
28. Wilkinson S, Mulder RT. Antipsychotic prescribing in New Zealand between 2008 and 2015. *N Z Med J* 2018;131(1480):61-7.
29. Hálfðánarson Ó, Zoëga H, Aagaard L, Bernardo M, Brandt L, Fusté AC, *et al.* International trends in antipsychotic use: A study in 16 countries, 2005-2014. *Eur Neuropsychopharmacol* 2017;27(10):1064-76.
30. Welsh Government (2019) *Patients on Quality and Outcomes Framework (QOF) disease registers by local health board* [online]. Available at [Patients on Quality and Outcomes Framework \(QOF\) disease registers by local health board \(gov.wales\)](#) [Accessed on 19th August 2024].
31. Jones KH, Ford DV, Jones C, *et al.* A case study of the Secure Anonymous Information Linkage (SAIL) Gateway: a privacy-protecting remote access system for health-related research and evaluation. *J Biomed Inform* 2014;50(100):196-204.
32. Ford DV, Jones KH, Verplancke JP, *et al.* The SAIL Databank: building a national architecture for e-health research and evaluation. *BMC Health Serv Res* 2009;9:157.
33. Lyons RA, Jones KH, John G, *et al.* The SAIL databank: linking multiple health and social care datasets. *BMC Med Inform Decis Mak* 2009;9:3.
34. Rodgers SE, Demmler JC, Dsilva R, *et al.* Protecting health data privacy while using residence-based environment and demographic data. *Health Place* 2012;18(2):209-17.
35. Rodgers SE, Lyons RA, Dsilva R, *et al.* Residential Anonymous Linking Fields (RALFs): a novel information infrastructure to study the interaction between the environment and individuals' health. *J Public Health (Oxf)* 2009;31(4):582-8.
36. Swansea University (2024). *Welsh Longitudinal General Practice (WLGP) dataset coverage reports* [online]. Available from: <https://docs.hiru.swan.ac.uk/display/SATP/WLGP+coverage+reports>. [Accessed on 19th August 2024].
37. Barnett K, Mercer SW, Norbury M, *et al.* Epidemiology of multimorbidity and implications for health care, research, and medical education: a cross-sectional study. *Lancet* 2012;380(9836):37-43.
38. Newcombe RG. Two-sided confidence intervals for the single proportion: comparison of seven methods. *Stat Med* 1998;17(8):857-72.
39. Miettinen O, Nurminen M. Comparative analysis of two rates. *Stat Med* 1985;4(2):213-26.
40. Conrad N, Molenberghs G, Verbeke G, *et al.* Trends in cardiovascular disease incidence among 22 million people in the UK over 20 years: population based study. *BMJ* 2024;385:e078523.
41. Whiskey E, Barnard A, Oloyede E, *et al.* An evaluation of the variation and underuse of clozapine in the United Kingdom. *Acta Psychiatr Scand* 2021;143(4):339-47.

42. Mansour H, Mueller C, Davis KAS, *et al.* Severe mental illness diagnosis in English general hospitals 2006-2017: A registry linkage study. *PLoS Med* 2020;17(9):e1003306.
43. Radojčić MR, Pierce M, Hope H, *et al.* Trends in antipsychotic prescribing to children and adolescents in England: cohort study using 2000-19 primary care data. *Lancet Psychiatry* 2023;10(2):119-28.
44. Ride J, Kasteridis P, Gutacker N, *et al.* Do care plans and annual reviews of physical health influence unplanned hospital utilisation for people with serious mental illness? Analysis of linked longitudinal primary and secondary healthcare records in England. *BMJ Open* 2018;8(11):e023135.
45. Gutacker N, Mason AR, Kendrick T, *et al.* Does the quality and outcomes framework reduce psychiatric admissions in people with serious mental illness? A regression analysis. *BMJ Open* 2015;5(4):e007342.
46. First MB, Rebelló TJ, Keeley JW, *et al.* Do mental health professionals use diagnostic classifications the way we think they do? A global survey. *World Psychiatry* 2018;17(2):187-95.
47. Brhlikova P, Pollock AM, Manners R. Global Burden of Disease estimates of depression--how reliable is the epidemiological evidence? *J R Soc Med* 2011;104(1):25-34.
48. Wang T, Codling D, Bhugra D, *et al.* Unraveling ethnic disparities in antipsychotic prescribing among patients with psychosis: A retrospective cohort study based on electronic clinical records. *Schizophr Res* 2023;260:168-79..
49. Akbari A, Torabi F, Bedston S *et al.* Exploring ethnicity dynamics in Wales: a longitudinal population-scale linked data study and development of a harmonised ethnicity spine. *BMJ Open* 2024;14(8):e077675.
50. Shoham N, Cooper C, Lewis G, *et al.* Temporal trends in psychotic symptoms: Repeated cross-sectional surveys of the population in England 2000–14. *Schizophr Res* 2021;228:97-102.
51. Mok PLH, Carr MJ, Guthrie B, Morales DR, Sheikh A, Elliott RA, *et al.* Multiple adverse outcomes associated with antipsychotic use in people with dementia: population based matched cohort study. *BMJ* 2024;385:e076268.
52. Luo H, Lau WCY, Chai Y, *et al.* Rates of Antipsychotic Drug Prescribing Among People Living With Dementia During the COVID-19 Pandemic. *JAMA Psychiatry* 2023;80(3):211-9.
53. National Institute for Health and Care Excellence (2018). *Dementia: assessment, management and support for people living with dementia and their carers*. NICE guideline (NG97). <https://www.nice.org.uk/guidance/ng97>
54. Grünwald LM, Duddy C, Byng R, *et al.* The role of trust and hope in antipsychotic medication reviews between GPs and service users a realist review. *BMC Psychiatry* 2021;21(1):390.
55. National Institute for Health and Care Excellence (2009). *Borderline personality disorder: recognition and management* (NICE guideline CG78). <https://www.nice.org.uk/guidance/cg78>
56. Abuzour AS, Wilson SA, Woodall AA, *et al.* A qualitative exploration of barriers to efficient and effective Structured Medication Reviews in Primary Care: Findings from the DynAIRx study. *medRxiv* 2024:2024.04.18.24303004.
57. Johnson CF, Ingram F, Thomson F, *et al.* General practice pharmacist-led antipsychotic physical health monitoring: a prospective intervention scoping study. *Fam Pract* 2024;41(1):41-9.
58. Welsh Government (2024) *National level population estimates by year, age and UK country* [online]. Available from: <https://statswales.gov.wales/Catalogue/Population-and-Migration/Population/Estimates/nationallevelpopulationestimates-by-year-age-ukcountry> [Accessed on 19th August 2024].

	Year	All antipsychotics		Quetiapine		Olanzapine		Risperidone		Amisulpride		Aripiprazole		Haloperidol	
		2011	2020	2011	2020	2011	2020	2011	2020	2011	2020	2011	2020	2011	2020
All adults (≥ 18 years)	Counts, (r/n)	21,907/ 2,076,839	31,946/ 2,206,635	6,349/ 2,076,839	12,328/ 2,206,635	5,412/ 2,076,839	7,520/ 2,206,635	3,236/ 2,076,839	5,020/ 2,206,635	1,531/ 2,076,839	1,190/ 2,206,635	1,354/ 2,076,839	4,263/ 2,206,635	991/ 2,076,839	825/ 2,206,635
	Prevalence, % (95% CI)	1.055 (1.041, 1.069)	1.448 (1.432, 1.464)	0.306 (0.298, 0.313)	0.559 (0.549, 0.569)	0.261 (0.254, 0.268)	0.341 (0.333, 0.348)	0.156 (0.150, 0.161)	0.227 (0.221, 0.234)	0.074 (0.070, 0.078)	0.054 (0.051, 0.057)	0.065 (0.062, 0.069)	0.193 (0.187, 0.199)	0.044 (0.041, 0.047)	0.038 (0.035, 0.040)
	Difference, %, (95% CI)	+0.393 (+0.372, +0.414)		+0.253 (+0.241, +0.266)		+0.080 (+0.070, +0.091)		+0.071 (+0.063, +0.080)		-0.020 (-0.025, -0.015)		+0.128 (+0.121, +0.135)		-0.007 (-0.014, -0.006)	
General Adults (18-64 years)	Counts, (r/n)	14,781/ 1,605,559	23,838/ 1,634,511	4,290/ 1,605,559	10,453/ 1,634,511	4,237/ 1,605,559	5,509/ 1,634,511	2,457/ 1,605,559	2,938/ 1,634,511	800/ 1,605,559	809/ 1,634,511	1,097/ 1,605,559	3,398/ 1,634,511	535/ 1,605,559	534/ 1,634,511
	Prevalence, % (95% CI)	0.921 (0.906, 0.936)	1.458 (1.444, 1.477)	0.267 (0.259, 0.275)	0.640 (0.627, 0.652)	0.264 (0.256, 0.272)	0.337 (0.328, 0.346)	0.153 (0.147, 0.159)	0.180 (0.173, 0.186)	0.050 (0.047, 0.053)	0.050 (0.046, 0.053)	0.068 (0.064, 0.072)	0.204 (0.197, 0.211)	0.033 (0.031, 0.036)	0.033 (0.030, 0.036)
	Difference, %, (95% CI)	+0.537 (+0.514, +0.561)		+0.373 (+0.358, +0.387)		+0.073 (+0.061, +0.085)		+0.027 (+0.018, +0.036)		0.000 (-0.005, +0.005)		+0.136 (+0.131, +0.148)		0.000 (-0.000, +0.000)	
Older Adults (≥ 65 years)	Counts, (r/n)	7,126/ 471,280	8,108/ 572,124	1,914/ 471,280	1,876/ 572,124	1,175/ 471,280	2,011/ 572,124	779/ 471,280	2,082/ 572,124	730/ 471,280	381/ 572,124	267/ 471,280	875/ 572,124	456/ 471,280	291/ 572,124
	Prevalence, % (95% CI)	1.512 (1.477, 1.547)	1.417 (1.387, 1.448)	0.406 (0.388, 0.424)	0.328 (0.313, 0.343)	0.249 (0.236, 0.264)	0.352 (0.337, 0.367)	0.165 (0.154, 0.177)	0.364 (0.348, 0.380)	0.155 (0.144, 0.167)	0.067 (0.060, 0.073)	0.057 (0.050, 0.064)	0.153 (0.143, 0.163)	0.097 (0.088, 0.111)	0.051 (0.045, 0.057)
	Difference, %, (95% CI)	-0.095 (-0.141, -0.049)		-0.078 (-0.101, -0.055)		+0.103 (+0.081, +0.124)		+0.199 (+0.178, 0.219)		-0.088 (-0.101, -0.076)		+0.096 (+0.835, +0.109)		-0.046 (-0.056, -0.037)	

Table 1: Antipsychotic prevalence changes between 2011 and 2020. Analysis based on number of patients prescribed regular antipsychotics, (r), as a proportion of the at-risk population in a calendar year, (n)

Subgroup		2011			2020			2020 - 2011
		Counts (r/n)	Prevalence, % (95%CI)	Prevalence ratio (95%CI)	Counts (r/n)	Prevalence, % (95%CI)	Prevalence ratio (95%CI)	Prevalence difference, % (95% CI)
WIMD quintile	1 (most deprived)	6,112 / 397,630	1.54 (1.50 – 1.58)	2.30 (2.20 – 2.40)	9,156 / 421,284	2.17 (2.13 – 2.21)	2.58 (2.48 – 2.68)	0.64 (0.58 – 0.69)
	2	5,136 / 411,764	1.25 (1.22 – 1.28)	1.87 (1.78 – 1.95)	7,033 / 419,569	1.68 (1.64 – 1.72)	1.99 (1.91 – 2.07)	0.43 (0.38 – 0.48)
	3	3,828 / 407,578	0.94 (0.91 – 0.97)	1.40 (1.33 – 1.46)	5,069 / 410,416	1.24 (1.21 – 1.27)	1.46 (1.40 – 1.53)	0.30 (0.25 – 0.34)
	4	3,200 / 377,925	0.85 (0.82 – 0.88)	1.27 (1.21 – 1.33)	4,284 / 390,523	1.10 (1.07 – 1.13)	1.30 (1.24 – 1.36)	0.25 (0.21 – 0.29)
	5 (least deprived)	2,843 / 425,334	0.67 (0.65 – 0.69)	1.00 (0.95 – 1.05)	3,582 / 424,598	0.84 (0.81 – 0.87)	1.00 (0.96 – 1.05)	0.18 (0.14 – 0.21)
	Missing	788 / 56,608	1.39 (1.30 – 1.49)	2.08 (1.93 – 2.25)	2,822 / 140,245	2.01 (1.94 – 2.08)	2.39 (2.27 – 2.51)	0.62 (0.50 – 0.74)
Gender [‡]	Female	11,741 / 1,048,240	1.12 (1.10 – 1.14)	1.13 (1.10 – 1.16)	16,826 / 1,114,501	1.51 (1.49 – 1.53)	1.09 (1.07 – 1.12)	0.39 (0.36 – 0.42)
	Male	10,166 / 1,028,599	0.99 (0.97 – 1.01)	1.00 (0.97 – 1.03)	15,120 / 1,092,134	1.38 (1.36 – 1.40)	1.00 (0.98 – 1.02)	0.40 (0.37 – 0.43)
Ethnicity	Asian	142 / 29,749	0.48 (0.41 – 0.57)	0.33 (0.28 – 0.39)	273 / 37,339	0.73 (0.65 – 0.82)	0.37 (0.33 – 0.42)	0.25 (0.14 – 0.37)
	Black	118 / 9,854	1.20 (1.00 – 1.43)	0.83 (0.69 – 0.99)	185 / 12,876	1.44 (1.25 – 1.66)	0.73 (0.63 – 0.84)	0.24 (-0.06 – 0.05)
	Mixed	65 / 6,102	1.07 (0.84 – 1.36)	0.74 (0.58 – 0.94)	126 / 8,712	1.45 (1.22 – 1.73)	0.73 (0.62 – 0.87)	0.38 (0.01 – 0.74)
	Other	60 / 8,652	0.69 (0.53 – 0.89)	0.48 (0.37 – 0.62)	133 / 13,635	0.98 (0.83 – 1.16)	0.50 (0.42 – 0.59)	0.28 (0.03 – 0.52)
	White	17,309 / 1,200,276	1.44 (1.42 – 1.46)	1.00 (0.98 – 1.02)	24,862 / 1,261,529	1.97 (1.95 – 1.99)	1.00 (0.98 – 1.02)	0.53 (0.50 – 0.56)
	Missing	4,213 / 822,176	0.51 (0.49 – 0.53)	0.36 (0.34 – 0.37)	6,367 / 872,544	0.73 (0.71 – 0.75)	0.37 (0.36 – 0.38)	0.22 (0.19 – 0.24)

Table 2: Prevalence of antipsychotic use in 2011 and 2020 by subgroup characteristic of sex, ethnicity and quintile of 2019 Welsh Index of Multiple Deprivation (WIMD) score Analysis based on number of patients prescribed regular antipsychotics (r), as a proportion of the at-risk population (n), in the calendar year. [‡]Secondary suppression was used for <10 missing gender codes by imputing the values equally between male and females to reduce risk of disclosure.

	Year	All antipsychotics		Quetiapine		Olanzapine		Risperidone		Amisulpride		Aripiprazole		Haloperidol	
		2011	2020	2011	2020	2011	2020	2011	2020	2011	2020	2011	2020	2011	2020
Adults (≥18 years)	Patients reviewed by psychiatrist, r/n	9,574/ 16,053	11,894/ 22,855	2,978/ 4,786	4,539/ 8,940	2,362/ 3,698	2,736/ 5,272	1,428/ 2,466	1,750/ 3,607	751/ 1,146	504/ 919	787/ 974	2,102/ 3,191	390/ 813	311/ 593
	Patients reviewed by psychiatrist, %, (95% CI)	59.6 (58.9-60.4)	52.0 (51.4-52.7)	62.2 (60.8-63.6)	50.8 (49.7-51.8)	63.9 (62.3-65.4)	51.9 (50.6-53.2)	57.9 (56.0-59.8)	48.5 (46.9-50.2)	65.5 (62.7-68.2)	54.8 (51.6-58.0)	80.8 (78.2-83.2)	65.9 (64.2-67.5)	48.0 (44.6-51.4)	52.5 (48.4-56.5)
	Difference, %, (95% CI)	-7.6 (-8.6, -6.6)		-11.4 (-13.2, -9.7)		-12.0 (-14.0, -9.9)		-9.4 (-12.0, -6.8)		-10.7 (-14.9, -6.5)		-14.9(-17.8, -11.9)		+4.5 (-0.8, +9.8)	
General Adults (18-64 years)	Patients reviewed by psychiatrist, r/n	7,028/ 10,691	9,358/ 17,013	2,315/ 3,339	3,945/ 7,538	1,901/ 2,900	2,104/ 3,882	1,124/ 1,903	1,110/ 2,141	432/ 585	384/ 609	679/ 818	1,775/ 2,593	263/ 431	223/ 357
	Patients reviewed by psychiatrist, %, (95% CI)	65.7 (64.8-66.6)	55.0 (54.3-55.8)	69.3 (67.8-70.9)	52.3 (51.2-53.5)	65.6 (63.8-67.3)	54.2 (52.6-55.8)	59.1 (56.9-61.3)	51.8 (49.7-54.0)	73.8 (70.3-77.4)	63.1 (59.2-66.9)	83.0 (80.4-85.6)	68.5 (66.7-70.2)	61.0 (56.4-65.6)	62.5 (57.4-67.5)
	Difference, %, (95% CI)	-10.7 (-11.7, -9.5)		-17.0 (-19.0, -15.0)		-11.4 (-13.7, -9.0)		-7.3 (-10.3, -4.2)		-10.7 (-16.1, -5.5)		-14.5 (-18.1, -11.0)		+1.5 (-8.3, +5.4)	
	Patients reviewed by psychiatrist, r/n	2,546/ 5,362	2,536/ 5,842	663/ 1,447	594/ 1,402	461/ 798	632/ 1,370	304/ 563	640/ 1,466	319/ 561	120/ 310	108/ 156	327/ 598	127/ 382	88/ 236
Older Adults (≥65 years)	Patients reviewed by psychiatrist, %, (95% CI)	47.5 (46.1-48.8)	43.4 (42.1-44.7)	45.8 (43.3-48.4)	42.4 (39.8-45.0)	57.8 (54.3-61.2)	46.1 (43.5-48.8)	54.0 (49.9-58.1)	43.7 (41.1-46.2)	56.9 (52.8-61.0)	38.7 (33.3-44.1)	69.2 (62.0-76.5)	54.7 (50.7-58.7)	33.2 (28.5-38.0)	37.3 (31.1-43.5)
	Difference, %, (95% CI)	-4.1 (-5.9, -2.2)		-3.4 (-7.1, +2.0)		-11.7 (-16.0, -7.3)		-10.3 (-15.2, -5.5)		-18.2 (-25.1, -11.2)		-14.5 (-23.3, -5.8)		+4.1 (-11.8, +3.7)	

Table 3: Proportion of patients taking long-term antipsychotics who have had a specialist psychiatrist review in previous 12 months. Analysis based on number of patients prescribed antipsychotics who had received psychiatrist review, (r), as a proportion of the number of patients prescribed antipsychotics in that calendar year, (n).

QOF Registers	Year	2011	2020
Serious Mental Illness	Counts (r/n)	29,487 / 2,076,839	35,105 / 2,206,635
	Prevalence (95% CI) %	1.42 (1.40, 1.44)	1.59 (1.57, 1.61)
	Difference (95%CI) %	+0.17 (+0.15, +0.19)	
Depression	Counts (r/n)	313,156 / 2,076,839	457,709 / 2,206,635
	Prevalence (95% CI) %	15.1 (15.0, 15.1)	20.7 (20.7, 20.8)
	Difference (95%CI) %	+5.6 (+5.6, +5.7)	
Dementia	Counts (r/n)	14,028 / 2,076,839	16,902 / 2,206,635
	Prevalence (95% CI) %	0.68 (0.66, 0.69)	0.77 (0.76, 0.78)
	Difference (95%CI) %	+0.09 (+0.07, +0.11)	
None of the above	Counts (r/n)	1,739,328 / 2,076,839	1,722,532 / 2,206,635
	Prevalence (95% CI) %	83.8 (83.7, 83.8)	78.1 (78.0, 78.1)
	Difference (95%CI) %	-5.7 (-5.8, -5.6)	

Table 4: Quality and Outcomes Framework registration prevalence changes for persons aged ≥ 18 years between 2011 and 2020. Analysis is based on the number of patients, (r), who have ever been the relevant register, as a proportion of the at-risk population, (n), in the calendar year.

Registers	Year	All antipsychotics		Quetiapine		Olanzapine		Risperidone		Amisulpride		Aripiprazole		Haloperidol		
		2011	2020	2011	2020	2011	2020	2011	2020	2011	2020	2011	2020	2011	2020	
Proportion of patients on QOF registers prescribed antipsychotic	Serious Mental Illness	Counts (r/n)	10,960/ 29,487	13,915/ 35,105	2,614/ 29,487	4,024/ 35,105	3,498/ 29,487	4,180/ 35,105	1,680/ 29,487	1,771/ 35,105	846/ 29,487	846/ 35,105	974/ 29,487	2,549/ 35,105	423/ 29,487	448/ 35,105
		Proportion (95% CI)%	37.17 (36.62, 37.72)	39.74 (39.23, 40.25)	8.87 (8.54, 9.19)	11.49 (11.16, 11.83)	11.86 (11.49, 12.23)	11.94 (11.60, 12.28)	5.70 (5.43, 5.96)	5.06 (4.83, 5.29)	2.87 (2.68, 3.06)	2.42 (2.26, 2.58)	3.30 (3.10, 3.51)	7.28 (7.01, 7.55)	1.44 (1.30, 1.57)	1.28 (1.16, 1.40)
		Difference (95%CI)%	+2.57 (+1.72, +3.22)		+2.62 (+2.13, +3.07)		+0.08 (-0.46, +0.55)		-0.64 (-1.17, -0.48)		-0.45 (-0.71, -0.21)		+3.98 (+3.61, +4.31)		-0.16 (-0.34, +0.02)	
		Counts (r/n)	10,552/ 313,156	18,852/ 457,709	3,546/ 313,156	8,754/ 457,709	2,773/ 313,156	4,371/ 457,709	1,336/ 313,156	2,028/ 457,709	619/ 313,156	559/ 457,709	738/ 313,156	2,529/ 457,709	307/ 313,156	329/ 457,709
	Proportion (95% CI)%	3.37 (3.31, 3.43)	4.12 (4.06, 4.18)	1.13 (1.10, 1.17)	1.91 (1.87, 1.95)	0.89 (0.85, 0.92)	0.96 (0.93, 0.98)	0.43 (0.41, 0.45)	0.44 (0.42, 0.46)	0.20 (0.18, 0.21)	0.12 (0.11, 0.13)	0.24 (0.22, 0.25)	0.55 (0.53, 0.57)	0.10 (0.09, 0.11)	0.07 (0.06, 0.08)	
	Difference (95%CI)%	+0.75 (+0.66, +0.83)		+0.78 (+0.72, +0.84)		+0.07 (+0.03, +0.11)		+0.01 (-0.01, +0.05)		-0.08 (-0.09, -0.06)		+0.31 (+0.29, +0.35)		-0.03 (-0.04, -0.01)		
	Dementia	Counts (r/n)	2,344/ 14,028	2,174/ 16,902	951/ 14,028	430/ 16,902	165/ 14,028	326/ 16,902	210/ 14,028	904/ 16,902	304/ 14,028	100/ 16,902	70/ 14,028	209/ 16,902	161/ 14,028	72/ 16,902
		Proportion (95% CI)%	16.71 (16.10, 17.34)	12.86 (12.37, 13.38)	6.78 (6.36, 7.20)	2.54 (2.32, 2.79)	1.18 (1.01, 1.37)	1.93 (1.73, 2.15)	1.50 (1.30, 1.70)	5.35 (5.02, 5.70)	2.17 (1.94, 2.42)	0.59 (0.48, 0.71)	0.50 (0.40, 0.63)	1.24 (1.07, 1.40)	1.15 (0.98, 1.34)	0.43 (0.33, 0.52)
		Difference (95%CI)%	-3.85 (-4.64, -3.06)		-4.24 (-4.70, -3.77)		+0.75 (+0.47, +1.03)		+3.85 (+3.43, +4.27)		-1.58 (-1.83, -1.32)		+0.74 (+0.53, +0.95)		-0.72 (-0.92, -0.53)	
	None of the above	Counts (r/n)	4,441/ 1,739,328	6,147/ 1,722,532	1,206/ 1,739,328	2,170/ 1,722,532	750/ 1,739,328	1,120/ 1,722,532	872/ 1,739,328	1,585/ 1,722,532	245/ 1,739,328	149/ 1,722,532	144/ 1,739,328	611/ 1,722,532	315/ 1,739,328	205/ 1,722,532
		Proportion (95% CI)%	0.255 (0.248, 0.263)	0.357 (0.348, 0.366)	0.069 (0.065, 0.0730)	0.126 (0.012, 0.013)	0.043 (0.040, 0.046)	0.065 (0.061, 0.069)	0.050 (0.047, 0.054)	0.092 (0.088, 0.097)	0.014 (0.012, 0.016)	0.009 (0.007, 0.010)	0.008 (0.007, 0.010)	0.036 (0.033, 0.038)	0.018 (0.016, 0.0200)	0.012 (0.010, 0.014)
		Difference (95%CI)%	+0.102 (+0.090, +0.011)		+0.057 (+0.051, +0.063)		+0.022 (+0.017, +0.027)		+0.042 (+0.036, +0.048)		-0.005 (-0.008, -0.003)		+0.028 (+0.024, 0.030)		-0.006 (-0.009, -0.004)	

Table 5: Changes in long-term antipsychotic use in adult patients (≥18 years) with a lifetime code on the QOF Serious Mental Illness, depression and/or dementia registers, and those who are not on any of these three psychiatric illness QOF registers, between 2011 and 2020. The number of patients with a lifetime code on the relevant QOF registers exposed to antipsychotics, (r), is expressed as a proportion of the total population with a lifetime code for inclusion on each QOF register, (n).

	QOF Registers	Year	All antipsychotics		Quetiapine		Olanzapine		Risperidone		Amisulpride		Aripiprazole		Haloperidol	
			2011	2020	2011	2020	2011	2020	2011	2020	2011	2020	2011	2020	2011	2020
Proportion of total antipsychotic use by QOF register	Serious Mental Illness	Counts (r/n)	10,960/ 21,907	13,915/ 31946	2,614/ 6,349	4,024/ 12,328	3,498/ 5,412	4,180/ 7,520	1,680/ 3,236	1,771/ 5,020	846/ 1,530	846/ 1,190	974/ 1,354	2,549/ 4,263	423/ 911	448/ 825
		Prevalence (95% CI) %	50.03 (49.37, 50.69)	43.56 (43.01, 44.10)	41.17 (39.97, 42.39)	32.64 (31.82, 33.47)	64.63 (63.35, 65.90)	55.59 (54.46, 56.71)	51.92 (50.19, 53.63)	35.28 (33.97, 36.61)	55.29 (52.79, 57.77)	71.09 (68.45, 73.67)	71.94 (69.48, 74.33)	59.79 (58.31, 61.27)	46.43 (43.22, 49.68)	54.30 (50.89, 57.67)
		Difference (95%CI) %	-6.47 (-7.33, -5.61)		-8.53 (-9.98, -7.08)		-9.04 (-10.77, -7.33)		-16.64 (-18.82, -14.46)		+15.80 (+12.12, +19.47)		-12.15 (-15.10, -9.18)		+7.87 (+3.16, +12.58)	
	Depression	Counts (r/n)	10,552/ 21,907	18,852/ 31,946	3,546/ 6,349	8,754/ 12,328	2,773/ 5,412	4,371/ 7,520	1,336/ 3,236	2,028/ 5,020	619/ 1,530	559/ 1,190	738/ 1,354	2,529/ 4,263	307/ 911	329/ 825
		Prevalence (95% CI) %	48.17 (47.51, 48.83)	59.01 (58.47, 59.55)	55.85 (54.63, 57.07)	71.01 (70.21, 71.80)	51.24 (49.91, 52.57)	58.18 (57.01, 59.24)	41.29 (39.59, 42.98)	40.40 (39.05, 41.76)	40.46 (38.00, 42.92)	46.97 (44.15, 49.82)	54.51 (51.84, 57.16)	59.32 (57.85, 60.80)	33.70 (30.70, 36.83)	39.98 (36.59, 43.26)
		Difference (95%CI) %	+10.84 (+9.99, +11.70)		+15.16 (+13.72, +16.59)		+6.94 (+5.15, +8.63)		-0.89 (-3.06, +1.28)		+6.51 (+2.76, +10.27)		+4.81 (+1.80, +7.84)		+6.28 (+1.64, +10.72)	
	Dementia	Counts (r/n)	2,344/ 21,907	2,174/ 31,946	951/ 6,349	430/ 12,328	165/ 5,412	326/ 7,520	210/ 3,236	904/ 5,020	304/ 1,530	100/ 1,190	70/ 1,354	209/ 4,263	161/ 911	72/ 825
		Prevalence (95% CI) %	10.70 (10.29, 11.11)	6.81 (6.53, 7.09)	14.98 (14.11, 15.88)	3.49 (3.18, 3.83)	3.05 (2.62, 3.54)	4.34 (3.90, 4.82)	6.49 (5.69, 7.39)	18.01 (16.97, 19.07)	19.87 (17.95, 21.94)	8.40 (6.96, 10.13)	5.17 (4.11, 6.48)	4.90 (4.29, 5.59)	17.67 (15.33, 20.28)	8.73 (7.00, 10.85)
		Difference (95%CI) %	-3.89 (-4.37, -3.42)		-11.49 (-12.28, -10.70)		+1.29 (+0.60, +1.94)		+11.52 (+10.01, +13.03)		-11.47 (-14.16, -8.77)		-0.27 (-1.60, +1.06)		-8.94 (-12.16, -5.73)	
	None of the above	Counts (r/n)	4,441/ 21,907	6,147/ 31,946	1,206/ 6,349	2,170/ 12,328	750/ 5,412	1,120/ 7,520	872/ 3,236	1,585/ 5,020	245/ 1,530	149/ 1,190	144/ 1,354	611/ 4,263	315/ 911	205/ 825
		Prevalence (95% CI) %	20.27 (19.74, 20.81)	19.24 (18.81, 19.67)	19.00 (18.05, 19.98)	17.60 (16.94, 18.28)	13.86 (12.96, 14.80)	14.89 (14.11, 15.72)	26.95 (25.42, 28.48)	31.57 (30.29, 32.86)	16.01 (14.26, 17.94)	12.52 (10.76, 14.52)	10.64 (9.10, 12.39)	14.33 (13.31, 15.42)	34.58 (31.56, 37.72)	24.85 (22.02, 27.91)
		Difference (95%CI) %	-1.03 (-1.71, -0.35)		-1.70 (-2.56, -0.23)		+1.03 (-0.19, +2.27)		+4.62 (+2.61, +6.65)		-3.49 (-6.16, -0.83)		+3.69 (+1.61, +5.78)		-9.73 (-14.05, -5.41)	

Table 6: Changes in proportion of overall antipsychotic use in adult patients (≥18 years) with a lifetime code on the QOF Serious Mental Illness, depression and/or dementia registers, and those who are not on any of these three psychiatric illness QOF registers, between 2011 and 2020. The number of patients with a lifetime code on the relevant QOF registers exposed to antipsychotics, (r), is expressed as a proportion of the total number of patients exposed to antipsychotics, (n).

	QOF Register (annual contract requirements)			
	SMI	Dementia	Depression	No register
Patients taking antipsychotic with typical diagnoses	Schizophrenia; Bipolar disorder; Psychotic depression	Vascular dementia; Alzheimer’s disease	Moderate depressive disorder	Generalised anxiety disorder; Autism
Registration	Yes	Yes	Yes	No
GP review	Yes	Yes	Yes	No
Blood pressure	Yes	No	No	No
BMI	Yes	No	No	No
Lipids	Yes	No	No	No
HBA1c /glucose	Yes	Yes	No	No
Alcohol consumption	Yes	No	No	No

Table S1: QOF register contractual requirements in the Primary Care GP Contract. These contractual requirements varied from UK nation to nation over the study period. The table shows the typical monitoring that a patient with a diagnosis would experience according to each register.

Table S2: Counts of patients (all ages) on long-term antipsychotics and licenced indications in UK national formulary.

Antipsychotic	Read code (5-digit)	Count (2011)	Relative proportion (%) (2011)	Count (2020)	Relative Proportion (%) (2020)	First or Second Generation	Licensed indication in UK British National Formulary (2024)						
							Psychosis/agitation in Serious Mental Illness (Schizophrenia, Bipolar Disorder, Psychotic Depression)	Psychosis in Parkinson's Disease	Management of Behavioural and Psychological Symptoms in Dementia	Depression (adjunctive treatment, psychosis not required)	Anxiety	Control of deviant antisocial sexual behaviour	Non-psychiatric uses (e.g. nausea)
Quetiapine	d4s..	6362	28.0	12338	37.1	2	YES	NO	NO	YES	NO	NO	NO
Olanzapine	d4r.. OR d58..	5430	23.9	7527	22.6	2	YES	NO	NO	NO	NO	NO	NO
Risperidone	d4p..	3377	14.8	5106	15.3	2	YES	NO	NO	NO	NO	NO	NO
Amisulpride	d4t..	1531	6.7	1190	3.6	2	YES	NO	NO	NO	NO	NO	NO
Aripiprazole	d4v..	1381	6.1	4303	12.9	2	YES	NO	NO	NO	NO	NO	NO
Haloperidol	d47.. OR d55..	997	4.4	825	2.5	1	YES	NO	YES	NO	NO	NO	YES
Chlorpromazine	d41..	971	4.3	633	1.9	1	YES	NO	NO	NO	YES	NO	YES
Trifluoperazine	d4h..	669	2.9	117	0.4	1	YES	NO	NO	NO	YES	NO	YES
Pericyazine	d4a..	576	2.5	176	0.5	1	YES	NO	NO	NO	YES	NO	NO
Promazine	d4e..	508	2.2	244	0.7	1	YES	NO	NO	NO	NO	NO	YES
Sulpride	d4f..	490	2.2	271	0.8	1	YES	NO	NO	NO	NO	NO	NO
Zuclopenthixol	d4j.. OR d57	211	0.9	257	0.8	1	YES	NO	NO	NO	NO	NO	NO
Flupentixol	d51..	159	0.7	104	0.3	1	YES	NO	NO	YES	NO	NO	NO
Benperidol	d42..	39	0.2	34	0.1	1	NO	NO	NO	NO	NO	YES	NO
Pimozide	d4c..	23	0.1	10	0.0	1	YES	NO	NO	NO	NO	NO	NO
Clozapine	d4l..	14	0.1	8	0.0	2	YES	YES	NO	NO	NO	NO	NO
Paliperidone	d4w..	<5	0.0	14	0.0	2	YES	NO	NO	NO	NO	NO	NO
Asenapine	d4x..	<5	0.0	<5	0.0	2	YES	NO	NO	NO	NO	NO	NO
Cariprazine	not listed in d4..	<5	0.0	<5	0.0	2	YES	NO	NO	NO	NO	NO	NO
Lurasidone	d4y..	<5	0.0	<5	0.0	2	YES	NO	NO	NO	NO	NO	NO
Droperidol	d44..	<5	0.0	<5	0.0	1	NO	NO	NO	NO	NO	NO	YES
Loxapine	d4k..	<5	0.0	<5	0.0	1	YES	NO	NO	NO	NO	NO	NO

Zuclopenthixol acetate	d4n..	<5	0.0	<5	0.0	1	YES	NO	NO	NO	NO	NO	NO
Prochlorperazine as antipsychotic (excluded from 'total count as not used as an antipsychotic in UK)*	D4d.. (Dhe.. Antiemetic code use is not captured under d4 code)	<5	N/A	<5	N/A	N/A	YES	NO	NO	NO	YES	NO	YES
Levomepromazine (excluded from 'total count as not used as an antipsychotic in UK)*	d48..	68	N/A	158	N/A	N/A	YES	NO	NO	NO	NO	NO	YES
Total (individual antipsychotic counts)		22773	100.1	33187	99.7	N/A							
Total (top 6 antipsychotic used in 2020)		19078	83.9	31289	94.0	N/A							
Total 1 st Generation antipsychotic		4658	20.5	2686	8.1	N/A							
Total 2 nd Generation antipsychotic		18115	79.7	30501	91.7	N/A							
"ALL antipsychotic Total"	codes d4... and d5... excluding any prochlorperazine antiemetic codes (dhe..) and levomepromazine codes	22119	N/A	32086	N/A	N/A							
All antipsychotics (total as a % of summation of individual antipsychotic count)		97.1	N/A	96.7	N/A	N/A							

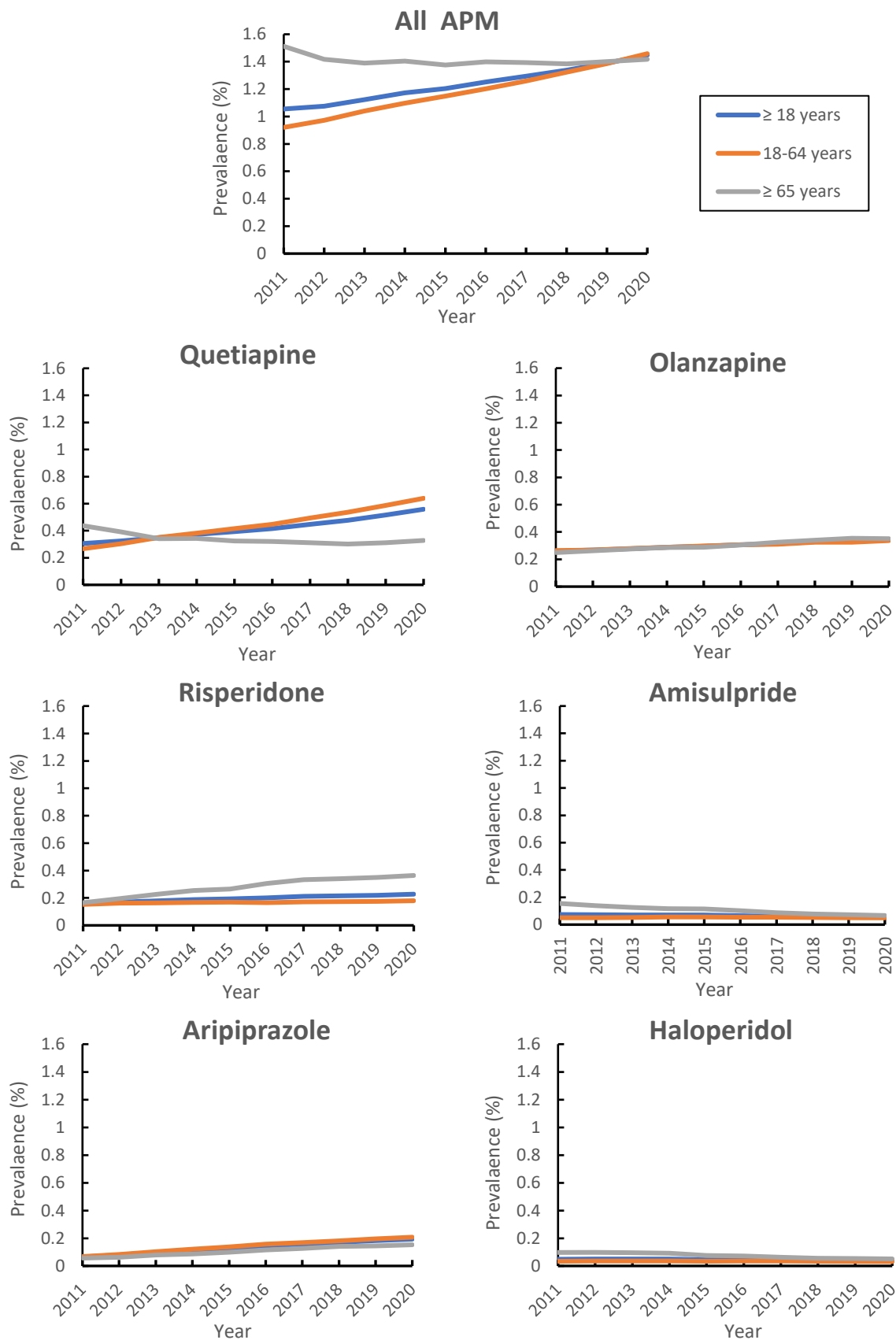


Figure S1: Prevalence of long-term antipsychotic use between 2011 and 2020

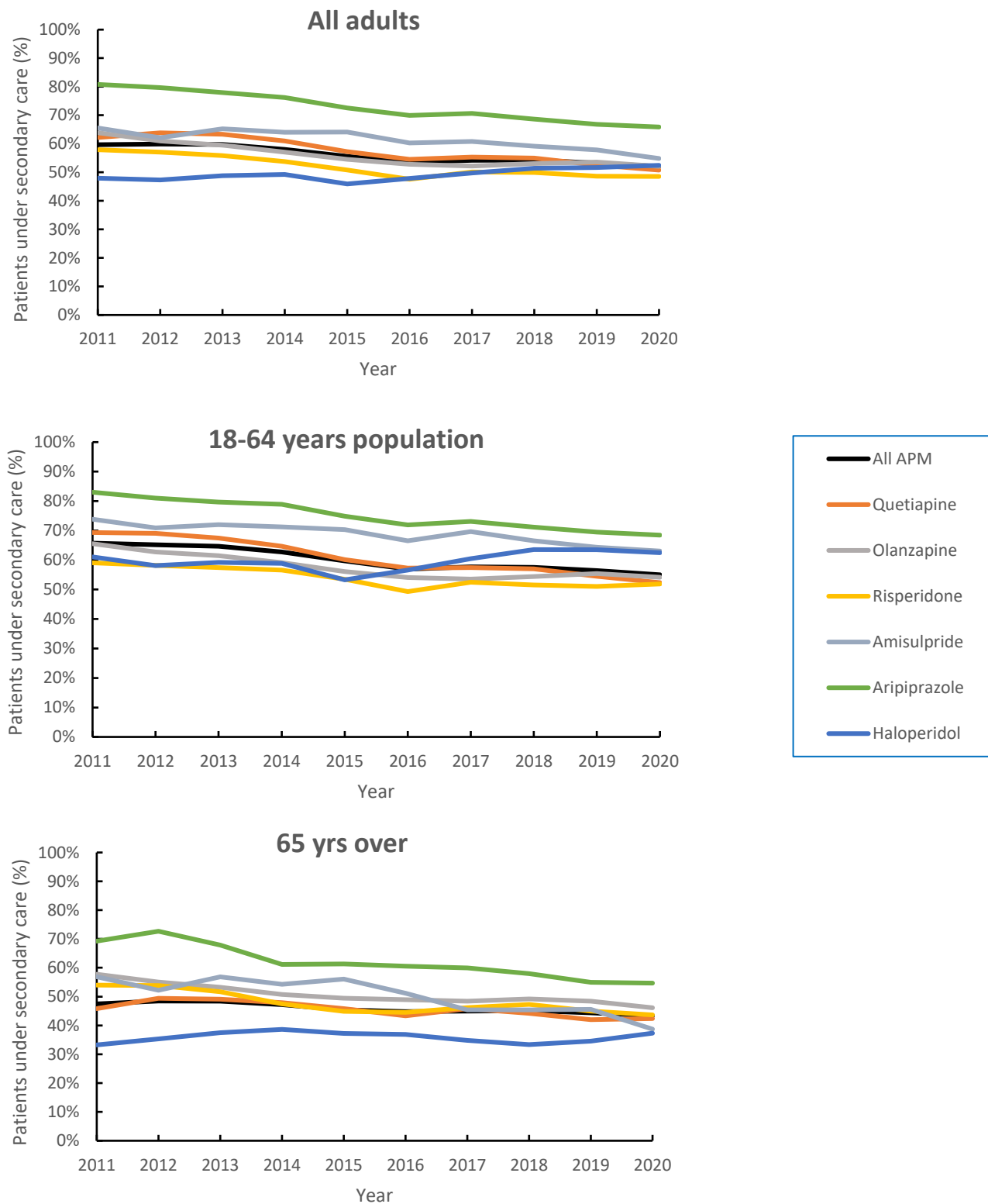


Figure S2: Proportions of patients taking long-term antipsychotics who have had psychiatric review in previous 12 months

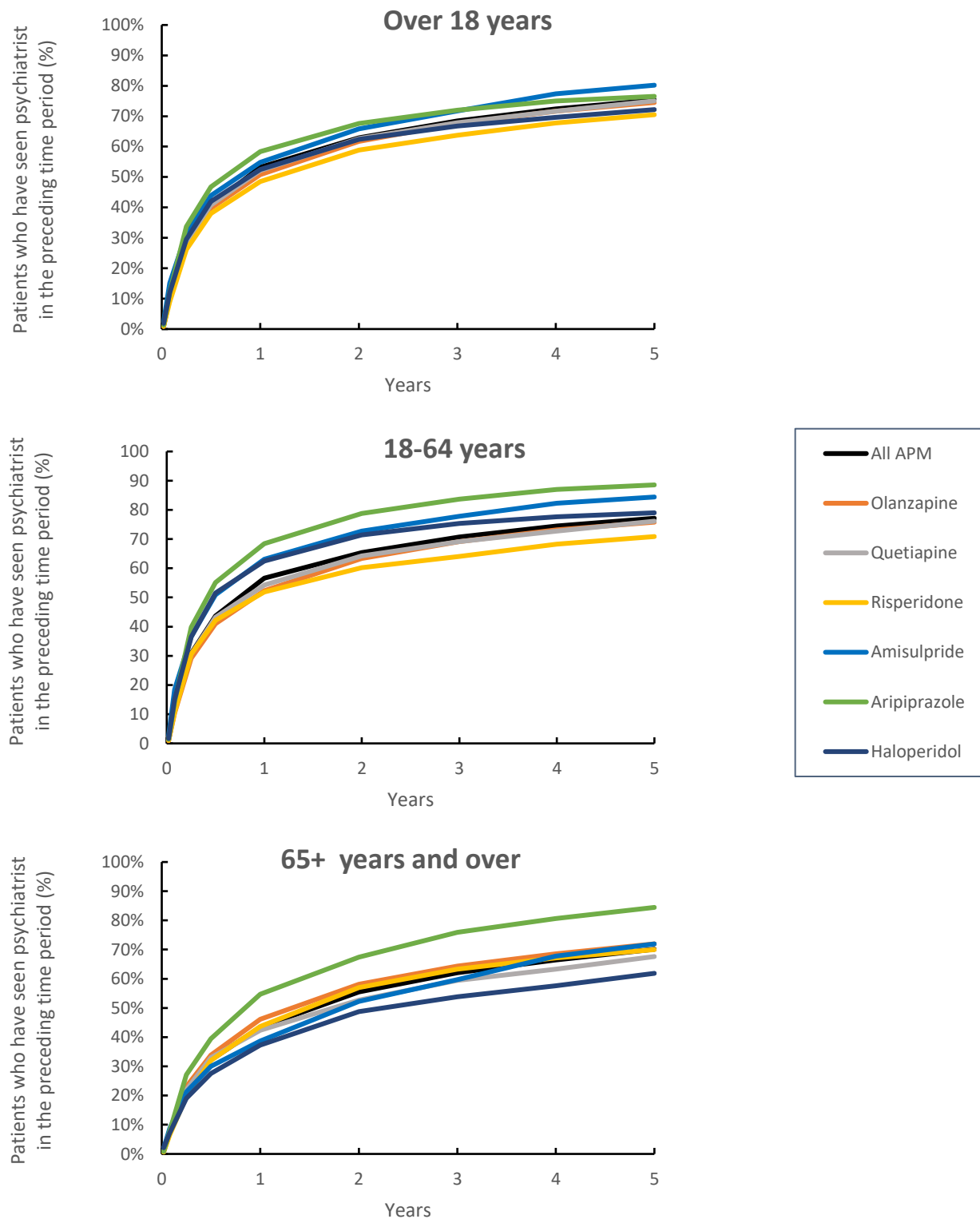


Figure S3: Proportions of patients in 2020 prescribed long-term antipsychotics who have had psychiatric review in the preceding time period of up to 5 years

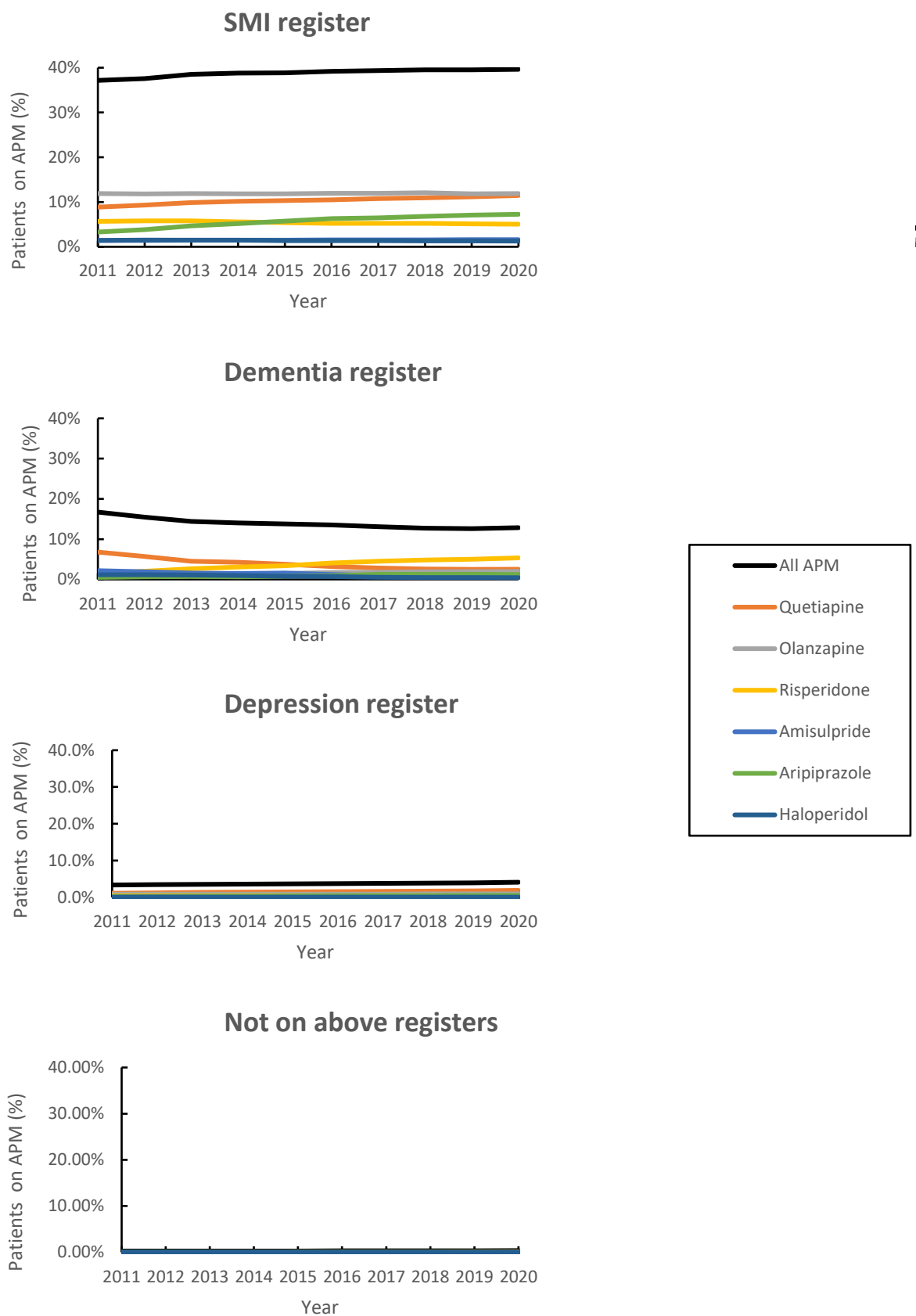


Figure S4: Proportions of patients on QOF registers on long-term antipsychotics

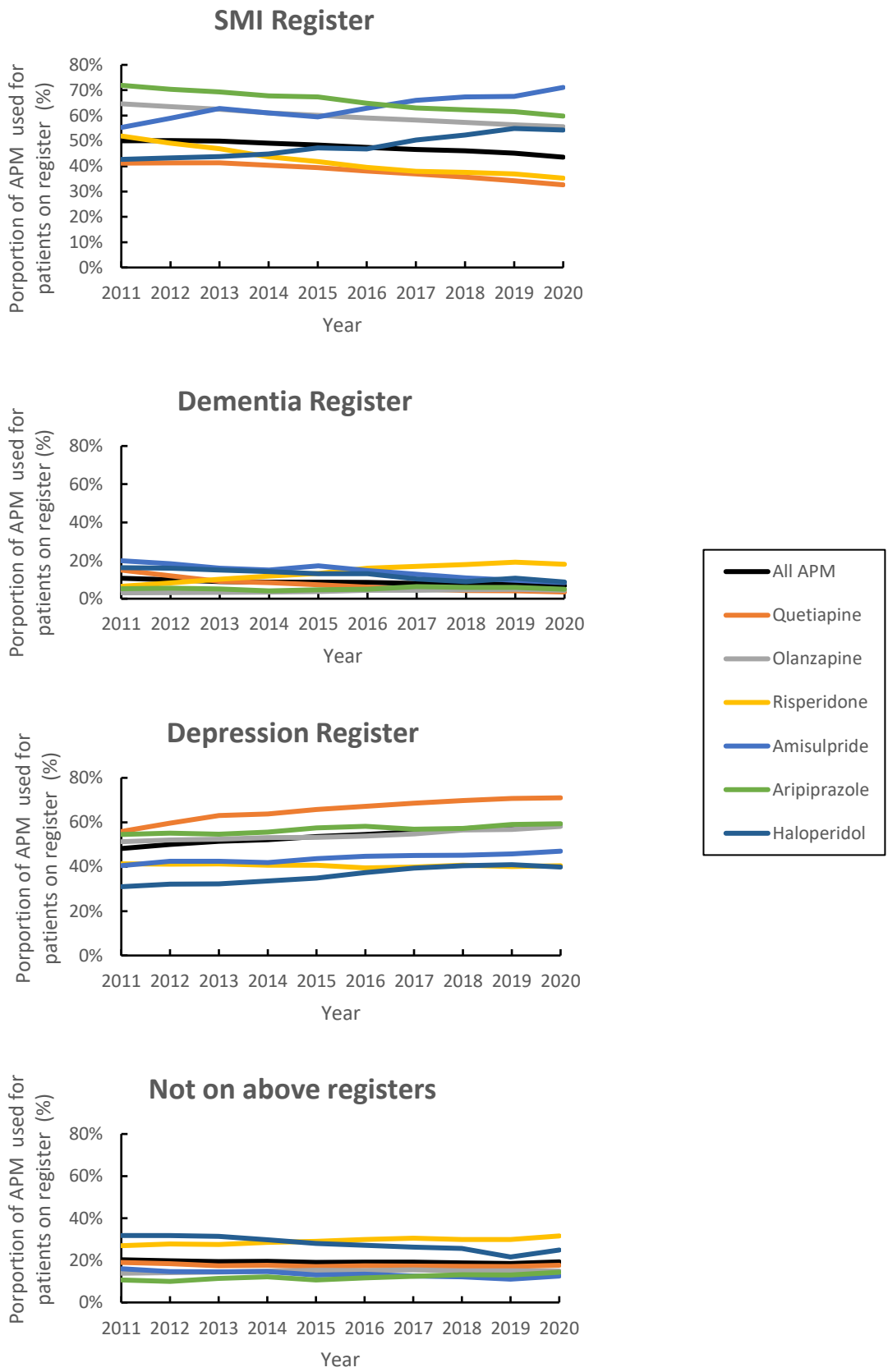


Figure S5: Proportion of overall antipsychotic use prescribed to patients on each QOF register