

Molecular epidemiology of recurrent zoonotic transmission of mpox virus in West Africa

Delia Doreen Djuicy*¹, Ifeanyi F. Omah*^{2,3}, Edyth Parker*^{4,5}, Christopher H Tomkins-Tinch⁶, James Richard Otieno⁷, Moïse Henri Moumbeket Yifomnjou¹, Loique Landry Messanga Essengue¹, Akeemat Opeyemi Ayinla⁴, Ayotunde E. Sijuwola⁴, Muhammad I. Ahmed⁴, Oludayo O. Ope-ewe⁴, Olusola Akinola Ogunsanya⁴, Alhaji Olono⁴, Philomena Eromon⁴, Martial Gides Wansi Yonga¹, Gael Dieudonné Essima¹, Ibrahim Pascal Touoyem¹, Landry Jules Mouliem Mouchili¹, Sara Irene Eyangoh¹, Linda Ezzo⁸, Inès Mandah Emah Nguidjol⁸, Steve Franck Metomb⁸, Cornelius Chebo⁸, Samuel Mbah Agwe⁸, Hans Makembe Mossi⁸, Chanceline Ndongo Bilounga⁸, Alain Georges Mballa Etoundi¹, Olusola Akanbi⁹, Abiodun Egwuenu⁹, Odianosen Ehiakhamen⁹, Chimaobi Chukwu⁹, Kabiru Suleiman⁹, Afolabi Akinpelu⁹, Adama Ahmad⁹, Khadijah Isa Imam⁹, Richard Ojedele⁹, Victor Oripenaye⁹, Kenneth Ikeata⁹, Sophiyah Adelakun⁹, Babatunde Olajumoke⁹, Áine O'Toole², Andrew Magee¹⁰, Mark Zeller⁵, Karthik Gangavarapu⁵, Patrick Varilly⁶, Daniel J Park⁶, Gerald Mboowa¹¹, Sofonias Kifle Tessema¹¹, Yewew Kebede Tebeje¹¹, Onikepe Folarin^{4,12}, Anise Happi⁴, Philippe Lemey¹³, Marc A Suchard^{10,14,15}, Kristian G. Andersen^{5,16}, Pardis Sabeti^{6,17}, Andrew Rambaut², Chikwe Ihekweazu⁹, Idriss Jide⁹, Ifedayo Adetifa⁹, Richard Njourn¹, Christian T Happi^{4,12,17+}

*These authors contributed equally to this work

+ Correspondences: Christian T Happi (happic@run.edu.ng)

1. Virology Service, Centre Pasteur du Cameroun, 451 Rue 2005, Yaounde 2, P.O. Box 1274
2. Institute of Ecology and Evolution, University of Edinburgh, The King's Buildings, Edinburgh EH9 3FL, UK.
3. Department of Parasitology and Entomology, Nnamdi Azikiwe University, Awka, Nigeria.
4. African Center of Excellence for Genomics of Infectious Diseases, Redeemer's University, Ede, Osun State, Nigeria
5. Department of Immunology and Microbiology, The Scripps Research Institute, La Jolla, CA, USA
6. The Broad Institute of MIT and Harvard, Cambridge, MA 02142, USA
7. Theiagen Genomics, Highlands Ranch, CO, USA
8. Department for the Control of Disease, Epidemics and Pandemics, Ministry of Public Health, Yaounde, Cameroon
9. Nigeria Centre for Disease Control and Prevention., Abuja, Nigeria
10. Department of Human Genetics, David Geffen School of Medicine, University of California, Los Angeles, Los Angeles, CA 90095, USA
11. Africa Centres for Disease Control and Prevention (Africa CDC), Addis Ababa, Ethiopia
12. Department of Biological Sciences, Redeemer's University, Ede, Osun State, Nigeria.
13. Department of Microbiology, Immunology and Transplantation, Rega Institute, KU Leuven, Leuven, Belgium
14. Department of Biomathematics, David Geffen School of Medicine, University of California, Los Angeles, Los Angeles, CA 90095, USA.
15. Department of Biostatistics, Fielding School of Public Health, University of California, Los Angeles, Los Angeles, CA 90095, USA
16. Scripps Research Translational Institute, La Jolla, CA 92037, USA.
17. Department of Immunology and Infectious Diseases, Harvard T H Chan School of Public Health, Boston, MA 02115, USA

1 **Nigeria and Cameroon reported their first mpox cases in over three decades in 2017**
2 **and 2018 respectively. The outbreak in Nigeria is recognised as an ongoing human**
3 **epidemic. However, owing to sparse surveillance and genomic data, it is not known**
4 **whether the increase in cases in Cameroon is driven by zoonotic or sustained**
5 **human transmission. Notably, the frequency of zoonotic transmission remains**
6 **unknown in both Cameroon and Nigeria. To address these uncertainties, we**
7 **investigated the zoonotic transmission dynamics of the mpox virus (MPXV) in**
8 **Cameroon and Nigeria, with a particular focus on the border regions. We show that**
9 **in these regions mpox cases are still driven by zoonotic transmission of a newly**
10 **identified Clade IIb.1. We identify two distinct zoonotic lineages that circulate**
11 **across the Nigeria-Cameroon border, with evidence of recent and historic cross**
12 **border dissemination. Our findings support that the complex cross-border forest**
13 **ecosystems likely hosts shared animal populations that drive cross-border viral**
14 **spread, which is likely where extant Clade IIb originated. We identify that the**
15 **closest zoonotic outgroup to the human epidemic circulated in southern Nigeria in**
16 **October 2013. We also show that the zoonotic precursor lineage circulated in an**
17 **animal population in southern Nigeria for more than 45 years. This supports**
18 **findings that southern Nigeria was the origin of the human epidemic. Our study**
19 **highlights the ongoing MPXV zoonotic transmission in Cameroon and Nigeria,**
20 **underscoring the continuous risk of MPXV (re)emergence.**

21
22 Mpox is a viral zoonosis resulting from infection with the *Orthopoxvirus* mpox virus
23 (MPXV) that is endemic in as-yet-unknown animal reservoirs in West and Central
24 Africa.^{1,2} Since MPXV was first characterized in humans in the Democratic Republic of
25 the Congo (DRC) in 1970, there have been limited outbreaks and sporadic cases in rural
26 regions of endemic countries.^{3–5} However, since 2016, there have been a marked
27 increase in mpox cases in endemic as well as non-endemic countries in Africa.² It is
28 unclear whether the increase in cases across the region is driven by increased zoonotic
29 infections, or whether MPXV may have cryptically emerged to sustained transmission in
30 the human population.^{6,7} Notably, Nigeria and Cameroon reported their first mpox cases
31 in over three decades in September 2017 and May 2018 respectively.^{5,7–9} The Nigerian
32 outbreak has now been recognised as an ongoing human epidemic, driven by sustained
33 transmission after emergence in the human population around 2014.^{10–12} MPXV has two
34 major clades: Clade 1, which is endemic to non-human animals in Central Africa, and

35 Clade II with subclades Clade IIa and Clade IIb, which are endemic in Nigeria and the
36 wider West Africa.^{1,13} The Clade IIb sequences representing the sustained human-to-
37 human transmission in Nigeria from 2017 onwards are referred to as hMPXV-1.^{10,11,14}

38
39 Contrastingly, Cameroon's recent increased incidence was driven by sporadic cases and
40 limited outbreaks resulting from zoonotic transmission.⁷ Recent work has shown that
41 zoonotic cases in Cameroon are driven by Clade I and Clade IIb.⁷ The clade distribution
42 in Cameroon is structured by the biogeographic barrier of the Sanaga river as well as
43 segregated forest systems, including the Congo Basin Forests, the Cameroonian
44 Highlands Forests, and the Lower Guinean Forests.⁷ The Nigeria-Cameroon border is
45 covered by the contiguous Cameroonian Highlands forest belt that extends into both
46 countries. These forest ecosystems provide suitable ecological conditions to host animal
47 reservoirs that may move across borders.^{15,16} In these regions, agricultural activities,
48 subsistence hunting, the consumption of wild game and human settlements in forested
49 areas owing to internal displacement heightens exposure at the human-animal interface
50 as well as the associated risk of zoonotic transmission.^{7,9} There is also a high level of
51 human movement across the long and porous Nigeria-Cameroon border. This can
52 potentially drive bidirectional transmission across the border, especially as the human
53 epidemic in Nigeria and incidence in Cameroon continues to grow.^{9,12}

54
55 However, the transmission dynamics of MPXV across the Nigeria-Cameroon border
56 remains obscured with limited sampling. With sparse genomic data from the region, the
57 frequency of continued zoonotic transmission and the associated risk of re-emergence in
58 Nigeria and Cameroon remains unknown.¹² It is unclear whether the increased number

59 of cases in Cameroon were introductions from the ongoing human epidemic in Nigeria, if
60 they were driven by zoonotic spillover events, or cryptic sustained human-to-human
61 transmission as observed in Nigeria.^{7,9} It is vital to improve our understanding of the
62 transmission dynamics across the border to better understand the risk of bidirectional
63 transmission and recurrent spillover events in both countries. Enhanced genomic
64 surveillance of MPXV in Cameroon and Nigeria, particularly from the forested border
65 regions, could provide insight into these questions. To address this, we generated new
66 genomic data to investigate the zoonotic transmission dynamics of MPXV in Cameroon
67 and Nigeria as part of a Pan-African consortium formed to collate the largest MPXV
68 dataset from Africa to date.¹²

69 70 **Results**

71 **Ongoing mpox cases in Cameroon are driven by** 72 **zoonotic transmission of newly identified Clade IIb.1**

73
74 In 2022, Cameroon saw a large increase in mpox cases.⁷ It is unclear whether the
75 reported increase was driven by enhanced surveillance attributable to the global B.1
76 outbreak, or to increased zoonotic transmission or cryptic sustained human-to-human
77 transmission as observed in Nigeria.⁷ Towards understanding this, we generated 10 new
78 sequences from samples collected from 2018 to 2022 in Cameroon. All 10 of our
79 sequences were identified as Clade IIb. The majority of our Cameroonian sequences
80 were sampled from the rural South-West and North-West regions that border Nigeria
81 (Figure 1A). The South-West and North-West regions account for the second and third
82 highest number of mpox cases in Cameroon after the Centre region, where Clade I
83 predominantly circulates.⁷ We also included four Clade IIb genomes sampled from

84 Nigeria from 2022 to 2023 as part of a complementary study from our consortium (Figure
85 1A).¹² Our four Nigerian sequences were sampled from states that border Cameroon,
86 namely Abia and Akwa Ibom (Figure 1A).

87
88 To understand the relationship of our sequences to the human epidemic in Nigeria, we
89 reconstructed the Clade IIb phylogeny (Figure 1B). We found that all ten Cameroonian
90 sequences form a divergent basal sister lineage to hMPXV-1 and its zoonotic outgroup,
91 the oldest zoonotic sequence sampled in Nigeria in 1971 (KJ642617) (Figure 1B). We
92 term this divergent zoonotic lineage Clade IIb.1, and lineage encompassing zoonotic
93 outgroup KJ642617 and hMPXV-1 as Clade IIb.2 (Figure 1B).

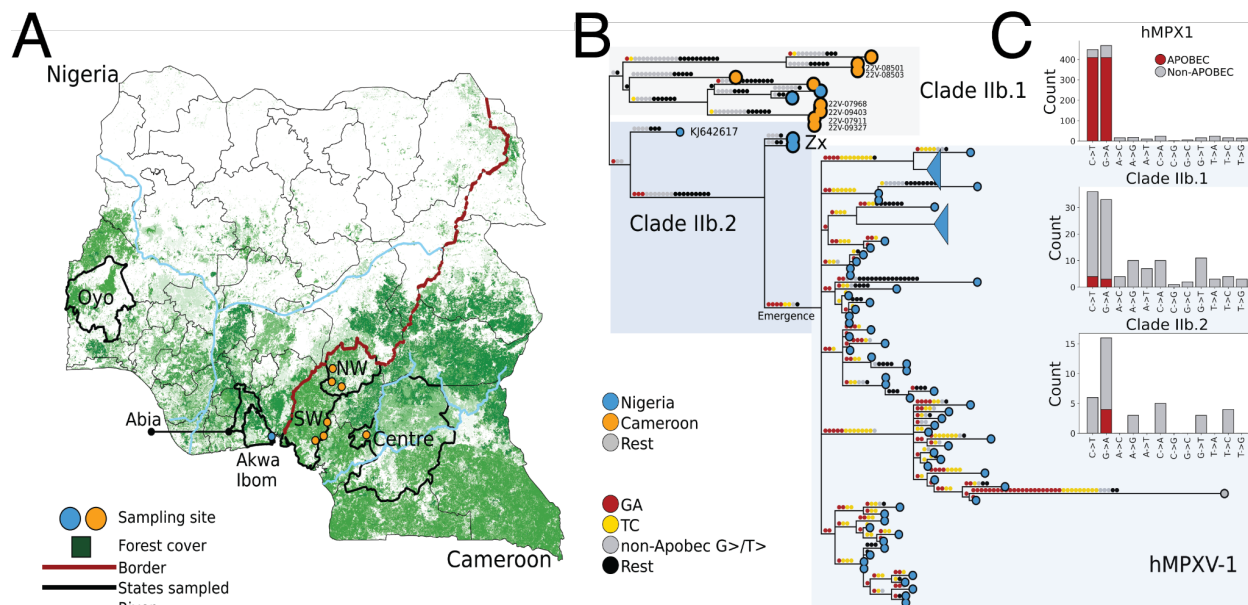
94
95 To investigate whether the sampled cases in Cameroon were a result of sustained
96 human-to-human transmission or zoonotic infection, we investigated the APOBEC3
97 mutational bias characteristic of sustained human transmission in our sequences.^{10,17,18}
98 We reconstructed all single nucleotide polymorphisms (SNPs) across our Clade IIb
99 phylogeny. We mapped mutations to their applicable branches, and quantified the
100 proportion of APOBEC3 mutations (C→T or G→A in the correct dimer context) across the
101 branches of Clade IIb (Figure 1B, C). We found that only 7 of the 124 SNPs (5.7%) on
102 the internal branches of Clade IIb excluding hMPXV-1 were consistent with APOBEC3
103 editing (Figure 1C). This strongly suggests that all of the Clade IIb.1 cases sampled in
104 Cameroon are the result of zoonotic transmission (Figure 1C). Taken together, it suggests
105 that ongoing cases in Cameroon are driven by continued zoonotic events by the newly

106 identified Clade IIb.1, not sustained human-to-human transmission as observed in
107 Nigeria.^{7,10,12}

108

109 However, we did find likely cases of secondary human transmission in Cameroon. Two
110 cases (22V-08501 and 22V-08503) represented a likely household transmission between
111 a parent and their child from the Bangem health district in the South-West region (Figure
112 1A, B). The parent reported contact with and consumption of wild game meat. These two
113 sequences are most closely related to 18V-04552, which represents the first confirmed
114 case in the 2018 outbreak from Njikwa in the North-West region.⁹ The patient had no
115 reported contact with wild animals or an mpox-like case, and no travel history to Nigeria.

116 There were another two sequences that were identical after masking the alignment (see
117 Methods), but with uncertain epidemiological linkage. One was a driver (22V-07911) who
118 reported symptom onset in the South-West locality of Tombel, but sought care in the
119 Littoral region (Figure 1A). The patient reported no other travel history, no contact with
120 symptomatic mpox cases, and no contact with wild animals. The second case was an
121 infant in Nkwen, North-West Region (22V-09327), who had been infected through intra-
122 familial transmission from their sibling (not sampled). There were two other cases that
123 were respectively separated by one and two SNPs from the driver and infant. The first
124 (22V-09403) was the nurse at a hospital in the North-West region who cared for the infant
125 (22V-09327). The second (22V-07968) case was a community health worker in Tombel
126 in the South-West, who reported contact with a bike-rider presenting Mpox-like rashes.
127 The two cases from Tombel had no confirmed contact.



128

129 **Figure 1: A)** Map of Nigeria and Cameroon showcasing the ecological setting of zoonotic MPXV in Nigeria and
 130 Cameroon. The forest cover, including the discontinuous cross-border forest belt referenced in the text, are highlighted
 131 in green. The border between Nigeria and Cameroon is annotated in deep red, with the Rivers Niger in Nigeria and
 132 Sanaga in Cameroon highlighted in light blue. Our sampling sites across the border are annotated in orange and blue
 133 respectively for Cameroon and Nigeria, and states of interest annotated with highlighted borders. **B)** Reconstructed
 134 SNPs mapped onto the branches of the Clade IIb phylogeny. APOBEC3 mutations are annotated in yellow and red,
 135 with non-APOBEC3 mutations in gray and black. The novel lineage sampled from Cameroon and Akwa Ibom in Nigeria
 136 named Clade IIb.1, is highlighted in the gray box and annotated. Our new zoonotic outgroup from Abia is annotated as
 137 “Zx”, and forms part of Clade IIb.2 which is annotated in the darker blue box. Lineage A, representing the sustained
 138 human epidemic in Nigeria, is highlighted in the light blue box as hMPXV-1. **C)** The number of APOBEC3 SNPs out of
 139 all mutations for the novel zoonotic lineage Clade IIb.1, the hMPXV-1 subtree (highlighted and annotated in Figure B)
 140 and the Zoonotic subtree of Clade IIb.2 (KJ642617 and Zx annotated in Figure B).
 141

142 Clade IIb zoonotic lineages circulate across the 143 Nigeria-Cameroon border

144 The Nigeria-Cameroon border is covered by a complex forest belt extending into both
 145 countries that hosts many animal populations susceptible to MPXV infection (Figure
 146 1A).^{15,16} There is also a lot of trans-border human movement, potentially driving viral
 147 spread between the two countries.⁹ To better understand viral spread across the Nigeria-
 148 Cameroon border, including from animal populations that may freely move across border
 149 i.e. a shared host reservoir, we particularly included four sequences from Abia and Akwa
 150 Ibom in southern Nigeria that was not part of the ongoing hMPXV-1 epidemic in Nigeria.¹²

151 All save one of our Cameroonian sequences were sampled from the rural areas in the
152 North-West and South-West regions that border southern Nigeria (Figure 1A).

153
154 In our phylogeny, we found that the two sequences from Akwa Ibom in southern Nigeria
155 cluster in the newly identified Clade IIb.1 with the sequences from Cameroon (Figure 1B).

156 The sequences from Akwa Ibom showed no evidence of APOBEC3 editing, indicating
157 they were a result of zoonotic infection as well (Figure 1 B, C).^{10,11} They represented

158 independent spillover events from a shared animal population, as the sequences were
159 separated by 10 SNPs and the cases were reported from different local government areas

160 (Figure 1B). The Akwa Ibom sequences were most closely related to a sequence (22V-
161 07739) we sampled in Mbongue in the South-West region of Cameroon (Figure 1A). Akwa

162 Ibom is a state in southern Nigeria adjacent to Cross River state, which shares a forested
163 border with the regions in Cameroon from where our cases were sampled (Figure 1A).

164 The two Akwa Ibom sequences and the one from Mbongue were very divergent from one
165 another, separated by 25 and 29 SNPs respectively. The sequence 22V-07739 was

166 sampled from a farmer who reported contact with only bats, with no history of travel or
167 exposure to mpox cases in the community. Taken together, this supports that in both

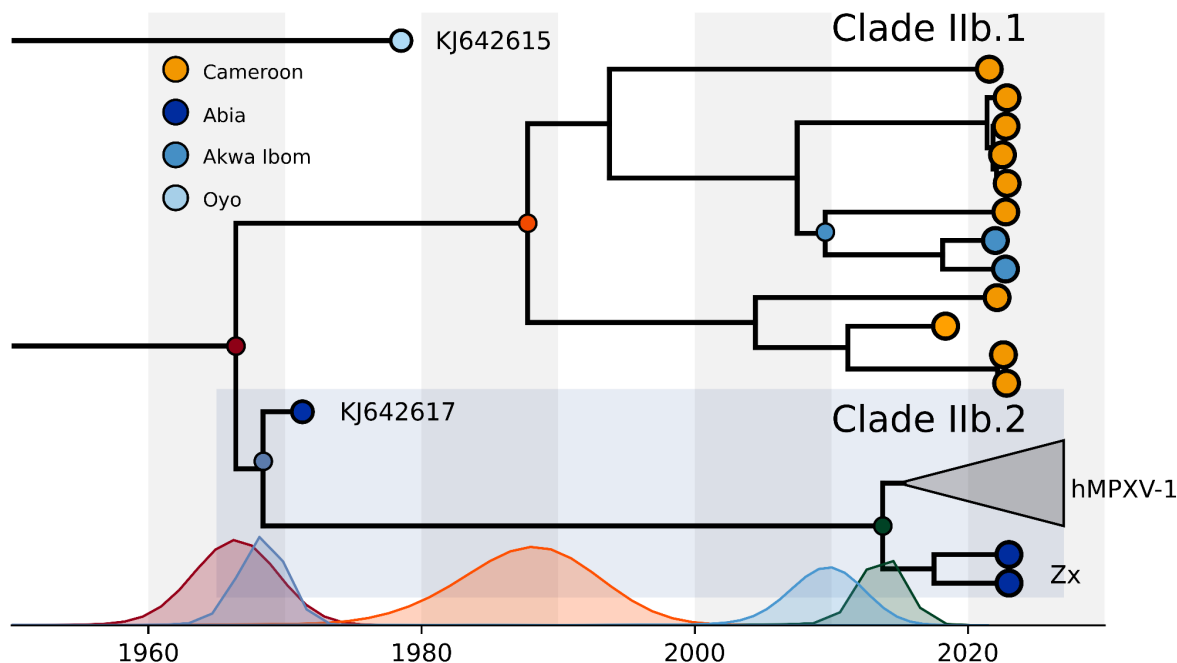
168 Nigeria and Cameroon Clade IIb.1 predominantly represents independent zoonotic
169 transmissions from a diverse viral population that has diverged over time in a shared

170 animal reservoir in the the cross-border forest ecosystems of southern Nigeria and
171 Western Cameroon.

172
173 The single Clade IIb.1 sequence (21V-04877) we sampled from the Centre region of
174 Cameroon, which is normally predominated by Clade I, was from an internally displaced

175 person (IDP). Epidemiological data confirms that the IDP was from the North-West, and
176 was likely infected in the Littoral region where the patient was residing at time of disease
177 onset before being referred to a health facility in the Centre region.

178
179 In light of the high divergence observed between Clade IIb.1 and Clade IIb.2 (Figure 1B),
180 we next investigated how long Clade IIb has been circulating in the cross-border animal
181 population. We performed Bayesian phylogenetic reconstructions under the two-epoch
182 model of O'Toole *et al.* implemented in BEAST, combining our sequences with the
183 dataset we produced from the Nigerian epidemic.^{10,12} We found that Clade IIb.1 diverged
184 from Clade IIb.2 around six decades ago in the animal reservoir (Figure 2). The common
185 ancestor of Clade IIb.1 and Clade IIb.2 circulated in January 1966 (median time to the
186 most recent common ancestor or tMRCA, 95% HPD October 1962 to December 1968).
187 There is also evidence of more recent cross-border viral spread in Clade IIb.1, as the
188 Akwa Ibom sequences diverged from the Mbongue sequence in March of 2009 (tMRCA,
189 95% HPD November 2004 to August 2013). Sparse sampling limits our ability to
190 definitively resolve the geographic origin of the common ancestor of all of Clade IIb
191 (Figure 2). However, the country of origin and direction of spread is less meaningful for a
192 virus in an animal population in a cross-border ecosystem. Taken together, our Clade IIb
193 sequences support both recent and historic viral spread across a porous Nigeria-
194 Cameroon border, likely originating in a shared animal population hosting significant
195 diversity in the cross-border forest ecosystem.



196

197 **Figure 2:** The time-resolved phylogeny of Clade IIb. hMPXV-1, representing the human epidemic in Nigeria, is
198 collapsed. Our new zoonotic outgroup from Abia is annotated as “Zx”, with Clade IIb.2 annotated in the dark blue box.
199 Clade IIb.1 is annotated in text. Distributions on the x-axis represent the tMRCA of the color matching node.

200

201 **Zoonotic ancestor of hMPXV-1 circulated in southern** 202 **Nigeria in late 2013**

203 Before this study, the closest zoonotic outgroup to hMPXV-1 (KJ642617) was sampled in
204 1971 in Abia province in southern Nigeria (Figure 1A, 2A). This suggests that the
205 precursor lineage of hMPXV-1 may have circulated in the animal population in the cross-
206 border forest belt in the south. To determine whether we’ve sampled a closer zoonotic
207 outgroup to hMPXV-1 from this precursor lineage, we investigated the relationship of our
208 four zoonotic sequences from Nigeria to hMPXV-1.

209

210 In our Clade IIb phylogeny, we found that two sequences of our sequences from Abia in
211 southern Nigeria formed a more recent Clade IIb.2 outgroup to hMPXV-1 than KJ642617
212 (“Zx” in Figure 1B).¹² There was no evidence of APOBEC3 mutational bias in the Abia

213 sequences, indicating they represented zoonotic infections (Figure 1 B,C). We refer to
214 our new outgroup sequences as the zoonotic outgroup hereafter (“Zx” in Figure 1-2). As
215 the zoonotic outgroup shares a common ancestor with hMPXV-1, they represent the
216 closest sequences to the zoonotic precursor of hMPXV-1 (Figure 1B). The zoonotic
217 outgroup breaks up the long stem branch from the common ancestor of KJ642617 and
218 hMPXV-1, reducing it from 27 to 8 SNPs (Figure 1B). The two sequences are separated
219 by 8 non-APOBEC3 SNPs, signifying they represent independent zoonotic transmissions
220 (Figure 1B). The zoonotic Clade IIb.2 from Abia, including the new outgroup and
221 KJ642617, is phylogenetically distinct from Clade IIb.1 circulating in Akwa Ibom and
222 Cameroon. This indicates that we’ve sampled two distinct zoonotic lineages in the regions
223 in proximity to the Nigeria-Cameroon border (Figure 1A, B). Notably, Abia is a neighboring
224 state to Akwa Ibom and Cross River state, which borders Cameroon and shares the
225 contiguous forest belt that likely hosts the shared animal population that drove the cross-
226 border dissemination of Clade IIb.1 (Figure 1A).

227
228 The recent divergence between our new zoonotic outgroup and hMPXV-1 places a tight
229 bound on when the zoonotic ancestor of hMPXV-1 was circulating in an animal population
230 in the region. In our Bayesian phylogenetic reconstructions, we estimated that the
231 outgroup shared a common ancestor with hMPXV-1 that circulated in November 2013
232 (95%HPD April 2012 - April 2015) (Figure 2). In a complementary study, we used the
233 additional phylogenetic information of the outgroup to estimate that hMPXV-1 initially
234 emerged in humans July 2014 (95% HPD 6 October 2013 - 23 February 2015).¹² This
235 suggests that the ancestor of hMPXV-1 circulated in animals in Abia or southern Nigeria
236 for less than a year before emergence, though credible intervals overlap. This is

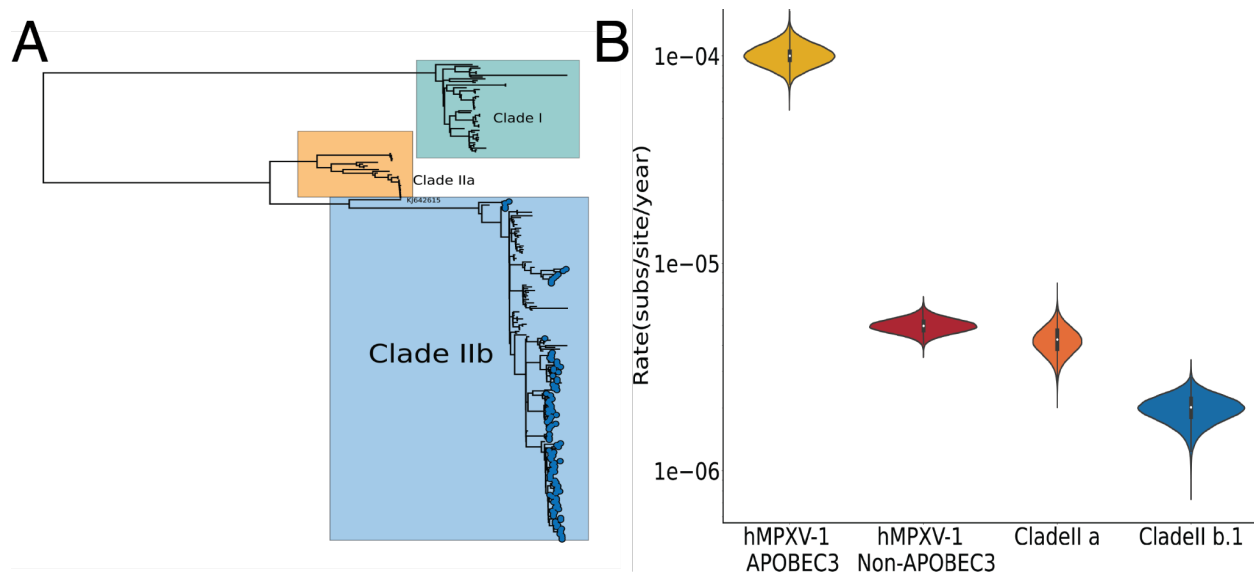
237 consistent with our complimentary work that found that hMPXV-1 most likely originated in
238 Rivers State in Nigeria, which borders Abia.¹² It is also consistent with the epidemiological
239 data, which shows that the southern states were the epicenter of the early stages of the
240 Nigerian mpox epidemic.¹²

241
242 Both the new zoonotic outgroup and KJ642617 (sampled in 1971) from Clade IIb.2 were
243 sampled in Abia state. This suggests that the zoonotic lineage from which hMPXV-1
244 descended may have persistently circulated in the animal reservoir in southern Nigeria
245 for decades. In our Bayesian phylogenetic analysis, we found that the Zx zoonotic
246 outgroup diverged from the older zoonotic KJ642617 around March 1968 (95%HPD
247 December 1965 - February 1970) (Figure 2). This suggests that the hMPXV-1 precursor
248 lineage circulated in an animal population in Abia or southern Nigeria for at least 45 years.

249 **The zoonotic evolutionary rate is 20-50 times lower** 250 **than the APOBEC3-mediated rate in humans**

251 In our previous work under a partitioned epoch model, we found that APOBEC3 activity
252 increased the evolutionary rate of hMPXV-1 20-fold across sustained human
253 transmission.¹² To compare the evolutionary rates from the human epidemic to the rate
254 in animals, where APOBEC3-mediated evolution is absent, we estimated the rate for the
255 novel zoonotic Clade IIb.1, and the zoonotic Clade IIa combined (Figure 3A). We
256 performed model selection to compare four clock models: the strict clock, the uncorrelated
257 relaxed clock with a lognormal (UCL) and gamma (UCG) distribution respectively and the
258 fixed local clock (FLC), allowing the two clades to evolve at different rates.^{19,20} Model
259 testing showed strong positive support for a FLC over the UCG (Bayes Factor - BF - 177),
260 strict clock (BF 189) and the UCL (BF 204) (Extended Data table 1).

261
262 Under the FLC model, we estimated an evolutionary rate of 4.3×10^{-6} (95% HPD 3.1×10^{-6}
263 $- 5.6 \times 10^{-6}$) for Clade IIa, and 2×10^{-6} (95% HPD $1.5 \times 10^{-6} - 2.6 \times 10^{-6}$) for zoonotic Clade
264 IIb (Figure 3B). The background rate estimated for Clade IIb hMPXV-1 i.e. the human
265 epidemic 4.8×10^{-6} (95% HPD $4.2 \times 10^{-6} - 5.5 \times 10^{-6}$) is consistent with our Clade IIa rate.¹²
266 These rates translate to 1-2 substitutions a year. However, our zoonotic Clade IIb rate is
267 slower than the background rate estimated for hMPXV-1 and the rate of Clade IIa,
268 equating to ~ 1 substitution every 2-3 years. The Clade IIb zoonotic rate is consistent with
269 the rate previously estimated by Patrono *et al.* for a Clade IIa outbreak in chimpanzees,
270 and marginally higher than the rate estimate for zoonotic Clade I.^{21,22} All of our non-
271 APOBEC3 rates are within the expectation of double-stranded DNA viruses, but are lower
272 than the rates estimated for smallpox.²³⁻²⁵ The relatively lower Clade IIb zoonotic rate
273 indicates that there was no elevation in the evolutionary rate in non-human animals before
274 emergence. Most notably, the APOBEC3 rate estimated from the human epidemic ($1 \times 10^{-}$
275 4 (95% HPD $8.8 \times 10^{-5} - 1.14 \times 10^{-4}$) is approximately 20-50 times higher than the
276 evolutionary rate estimated from non-human animals.¹² Our results were consistent
277 across all clock models (Extended Data Figure 1).



278

279 **Figure 3: A)** Global MPXV phylogeny of Clade I, Clade IIa and Clade IIb. Our Clade IIb sequences are annotated as
280 tip points **B)** Comparison of the evolutionary rate of the hMPXV-1 APOBEC3, hMPXV-1 Non-APOBEC3, Zoonotic
281 Clade IIa and Zoonotic Clade IIb.1 under the two-epoch partitioned model the local clock model (Clade IIa, Clade IIb.1)
282 respectively.
283

284 Discussion

285 The ongoing MPXV zoonotic transmission events in Cameroon and Nigeria identified in
286 this study underscores the continuous risk of MPXV emergence and re-emergence, which
287 is likely still significantly underestimated owing to under-ascertainment of cases and
288 sparse genomic data. In our Cameroonian dataset, we found that all ten sampled cases
289 resulted from zoonotic infections or secondary transmission of the novel Clade IIb.1, with
290 no evidence of sustained human-to-human transmission in Cameroon.¹⁰⁻¹² Combined
291 with our larger dataset¹², we found only four of the 112 sequences from Nigeria were
292 zoonotic in origin, with the remainder part of the ongoing hMPXV-1 human epidemic.¹²
293 However, our samples only represent 4.2% and 7.5% of all suspected mpox cases in
294 Nigeria and Cameroon respectively from 2017 onwards. It is likely that enhanced
295 surveillance in the human population, especially in border-adjacent communities at the
296 animal-human interface, will reveal more zoonotic transmission events.

297

298 In this study, all of our Cameroonian sequences were sampled from individuals living in
299 rural areas in the South-West and North-West regions, whereas our sequences from
300 Nigeria were sampled in the southern states of Akwa Ibom and Abia. The North-West and
301 South-West of Cameroon is dominated by the Cameroonian Highlands and Guinean
302 Lower forest ecosystems, which extends into southern Nigeria.¹⁵ These cross-border
303 forest ecosystems are areas of high biodiversity, hosting a wide range of potential hosts
304 susceptible to MPXV. The precise animal reservoir for MPXV currently remains unknown.
305 However, various small mammals, primarily squirrel and other rodent species, have
306 shown serological or viral evidence of infection.^{13,26–30} It is likely that a diverse group of
307 squirrel and rodent species maintain the reservoir, while non-human primates and other
308 species act as intermediate hosts.³¹ Our findings support that the cross-border forest
309 ecosystems likely hosts the shared reservoir driving cross-border viral dispersal, where
310 Clade IIb likely originated. In light of this, we need improved surveillance in the wildlife
311 population in the forest systems along the Nigeria-Cameroon border to better understand
312 the transmission and maintenance of MPXV in animal hosts. Additional sampling is likely
313 to reveal significant unsampled viral diversity in the reservoir, as observed in the deep
314 divergences just in the sampled tree.

315

316 The factors that drove hMPXV-1's recent emergence in the human population are still
317 unclear. Previous studies have established that hMPXV-1 resulted from a single zoonotic
318 event.^{10,12} Most spillover events result in sporadic human cases or stuttering transmission
319 chains that largely go unobserved without establishing substantial human-to-human
320 transmission.^{32,33} It remains unclear why this zoonotic event successfully established

321 sustained transmission. There are a few factors that may have contributed to MPXV's
322 recent emergence.

323

324 *Declining herd immunity from smallpox vaccination*

325 Vaccination against fellow *Orthopoxvirus* smallpox offers some degree of cross-
326 protection against MPXV.^{34,35} In Africa, large scale smallpox vaccination campaigns
327 stopped in the early 1980s after global eradication in 1977.³⁶ As a result, herd immunity
328 has significantly declined over recent decades and the population of susceptibles have
329 concurrently increased. This is particularly relevant to African countries, where the
330 median age is below 18 years.³⁷ A lack of protective immunity not only increases the
331 chances of a successful zoonotic infection, but also increases the probability of onward
332 transmission after the initial zoonotic event.^{35,36}

333

334 *Increased exposure at the animal-human interface*

335 Humans are exposed to potentially infected MPXV hosts at the human-animal interface
336 through various activities, with exposure increasing in recent years. Crucially, wild game
337 consumption is common for subsistence in many regions of Africa, with many of the
338 commonly targeted mammalian species susceptible to MPXV infection.^{13,38,39} The rising
339 demand for wild game meat, along with population growth, socioeconomic conditions,
340 and internal displacement has led to greater exposure through increased hunting,
341 consumption, and trade.^{36,40} Notably, the Nigeria-Cameroon forest belt hosts a substantial
342 amount of hunting and wild game trade due to its rich species abundance and diversity.⁴¹
343 Trade of shared animal sources or shared markets may facilitate cross-border
344 transmission.^{42,43} The North-West and South-West of Cameroon have been severely

345 affected by conflict since 2017, resulting in large-scale internal displacement and
346 increased movements to the neighboring countries including Nigeria.⁷ This large-scale
347 and undocumented trans-border human movement may drive viral introductions to new
348 populations. Many IDPs have been forced to settle in forested areas to escape conflict,
349 resulting in increased exposure for an already vulnerable community.⁴⁴ Two of our
350 sampled cases were IDPs, including the farmer who reported leaving the South-West five
351 years ago. The patient reported that approximately 10 000 other people left their villages
352 and homes due to the social unrest to live in the same settlement area in the bush.
353 Additionally, ecosystems have been disrupted by land use intensification, including
354 deforestation, expanding agriculture and urbanization.^{7,15,36,45}

355

356 *Initial zoonotic transmission in a mobile, connected subpopulation*

357 Heterogeneities in the basic reproductive number, particularly superspreading dynamics,
358 are strong determinants of emergence and early epidemic spread.⁴⁶ MPXV's emergence
359 and successful onward transmission was most likely driven by an initial zoonotic
360 transmission within a connected, mobile subpopulation, where subsequent transmission
361 was more probable owing to behavioral and demographic factors driving rapid
362 dissemination.^{47,48} Our previous work supports that hMPXV-1 still only circulates in a
363 restricted subpopulation in Nigeria.¹² Our previous findings also strongly suggest that
364 these early events occurred in a subpopulation in southern Nigeria.¹²

365

366 *Viral adaptation in the natural reservoir or in humans following zoonotic transmission*

367 We think it's unlikely that adaptation in the natural reservoir drove emergence. The two
368 non-synonymous non-APOBEC3 substitutions along the stembranch to hMPXV-1 from

369 our close zoonotic outgroup are both relatively conservative. However, it is not possible
370 to infer that any of the stem or deeper branch substitutions in the tree did not confer an
371 advantage for human infection and transmission without experimental characterization. It
372 is also possible that MPXV's emergence was facilitated by adaptation in the human
373 population after the initial zoonotic transmission. However, prior work showed that the set
374 of nucleotide and amino acid substitutions accessible by APOBEC3 activity is restricted.¹⁰
375 This may constrain viral adaptation, as substitution options at non-deleterious target sites
376 become saturated over time. However, adaptation is more probable across extended
377 chains of transmission, driven by founder effects and selection.^{10,49} Potentially adaptive
378 changes have been observed in later descendants of the hMPXV-1 Lineage A, including
379 disruption of immunomodulatory genes.^{11,12} However, these changes occurred after
380 prolonged circulation in the human population. We have estimated that MPXV circulated
381 cryptically in the human population in Nigeria for approximately three years before
382 detection.¹² Nonetheless, we find it unlikely that any of the early substitutions in the
383 human epidemic facilitated sustained transmission. Of the earliest six APOBEC3
384 mutations that occurred in the human population, only two are non-synonymous. Without
385 experimental characterization, we cannot conclude that any of the early substitutions did
386 not confer an adaptive advantage that facilitated transmission after the initial zoonotic
387 transmission. However, we consider this scenario improbable.

388

389 **Methods**

390 **Ethics declaration**

391 No ethical approval was required for this study as it is based on collecting data from
392 Cameroon's national surveillance program, for which Centre Pasteur du Cameroun (CPC)
393 is the National Reference Laboratory (NRL). The surveillance program includes genomic
394 surveillance as provided in this study to inform public health preparedness. Under the
395 program, Individual written or oral informed consent was obtained from all mpox
396 suspected cases after detailed information and explanations of the sampling purpose
397 were provided. Informed consent for children was obtained from their parents or
398 recognized guardians. All samples from Nigeria were similarly collected during national
399 outbreak surveillance by the Nigerian CDC. Under the surveillance program, individual
400 written or oral informed consent was obtained as detailed above.

401 **Sampling**

402 From 2018 to 2022, a total of 28 human mpox cases were identified by the national
403 surveillance program in Cameroon. Suspected cases were identified by community health
404 workers (CHWs) or clinicians and samples collected by a Rapid Response and
405 Investigation Team (RRIT) equipped with appropriate personal protective equipment
406 (PPE) under the guidance of Regional Centers for Epidemic Prevention and Control
407 (CERPLE) and following the national guidelines for surveillance and response to mpox
408 outlined by the the Department for the Control of Disease, Epidemics and Pandemics
409 (DLMEP) of the Cameroonian MoH. Cases were confirmed by standard and genotyping
410 real-time PCR at the CPC which host the NRL for mpox in Cameroon.⁷ From the total

411 cases, we selected ten for sequencing based on Clade genotyping by rtPCR, cycle
412 threshold (value < 30) and sample availability. Samples were screened for DNA
413 concentration and quality (total DNA >500 ng and absorbance ratio >1.8 260/230 and
414 260/280). Samples represented maculopapular vesicles, skin crust or blood samples.
415 The four Nigerian sequences are from a complementary study.¹² For this dataset,
416 samples were collected by laboratory personnel and Local Government Area (LGA)
417 Disease Surveillance and Notification Officers (DSNOs) equipped with appropriate
418 personal protective equipment (PPE), adhering to the guidelines outlined in the Nigeria
419 Centre for Disease Control and Prevention (NCDC) National Monkeypox Public Health
420 Response Guidelines.⁵⁰ Samples from both sites comprised: swabs from the exudate of
421 vesicular or pustular lesions, lesion crusts obtained during the acute rash phase, whole
422 blood collected in ethylenediaminetetraacetic acid (EDTA) or plain/non-anticoagulated
423 tubes. All samples were labeled with case information and stored at 2-8°C during
424 transport to either the NCDC NRL (Gaduwa-Abuja) or the Central Public Health
425 Laboratory (Yaba-Lagos) for Nigeria, and the NRL at CPC in Cameroon (Yaounde). On
426 arrival, the crusts and swabs were eluted, while the serum/plasma was separated from
427 the red cells. Subsequently, these components were stored at ultralow temperatures of
428 $\leq -70^{\circ}\text{C}$ at the NCDC and CPC biorepositories.

429 **Sequencing**

430 Enrichment bead-linked transposomes were used to tagment the extracted DNA and
431 enriched using the Illumina- rna -prep enrichment with the VSP panel. Libraries were
432 quantified using dsDNA BR Assay, normalized to a concentration of 0.6nM and
433 sequenced on the Illumina NovaSeq 6000 platform with a read length of 151 base pair

434 paired end at the African Centre of Excellence for Genomics of Infectious Diseases
435 (ACEGID), based at Redeemer's University, Ede, Nigeria.

436 **Genome assembly**

437 We performed the initial assembly *de novo* with the viral-ngs pipeline. We subsequently
438 performed reference based assembly with an in-house pipeline.⁵¹ We mapped reads
439 against a Clade IIb reference genome (NC_063383) with *bwa-mem*⁵², and called
440 consensus using samtools⁵³ and iVar.⁵⁴

441 **Genomic dataset curation**

442 We combined our 10 sequences from Cameroon with four zoonotic sequences from
443 Nigeria identified as part of a larger study.¹² We combined these 14 sequences with our
444 109 sequences reported elsewhere, and all available Clade IIb MPXV genomes of high
445 quality from Genbank.¹² We included a single sequence representing the global B.1
446 outbreak, as it was not our focus. In total, our dataset consists of 202 sequences.

447 **Phylogenetic Analysis**

448 We used the 'squirrel' package (<https://github.com/aineniamh/squirrel>) developed by
449 O'Toole *et al.* (2022) to align our sequences to the Clade IIb reference genome
450 (NC_063383), which represents an early hMPXV-1 sequence. We trimmed the alignment,
451 and masked repeat regions or regions of low complexity. We reconstructed the Clade IIb
452 phylogeny with IQ-TREE v2.0, under the Jukes-Cantor substitution model.⁵⁵ We rooted
453 the tree to KJ642615, a zoonotic sequence sampled in Nigeria in 1978, as it is notably
454 divergent from the remaining Clade IIb diversity and collapsed all zero branch lengths.
455 We performed ancestral state reconstruction across the Clade IIb phylogeny with IQ-
456 TREE2.⁵⁵ We mapped all of the nucleotide mutations that occurred unambiguously

457 across the phylogeny to internal branches. Additionally, we cataloged the dimer genomic
458 context of all C→T or G→A mutation, as described by O’Toole *et al.*⁸ We classified our
459 sequences into lineages under the nomenclature developed in Happi *et al.*¹⁴ using
460 Nextclade.⁵⁶

461 **Modeling APOBEC3-mediated evolution**

462 We adopted a similar approach to the Bayesian phylogenetic analyses as described in
463 O’Toole *et al.*¹⁰ using the BEAST 1.10⁵⁷ platform powered through the BEAGLE high-
464 performance computing library.⁵⁸ Briefly, we partitioned the Clade IIb alignment into two
465 partitions representing 1) sites with potential APOBEC3 modifications (specifically C→T
466 and G→A substitutions in the dimer context TC and GA) together with fully conserved C
467 and G target sites, with all other sites masked, and 2) sites with the APOBEC3 target sites
468 masked inversely. The APOBEC3 partition was 24 680 unmasked sites, whereas the non-
469 APOBEC3 partition was 172 529 sites. We used the GTR+G substitution model with four
470 rate categories for the non-APOBEC partition. For the APOBEC partition, we used a
471 substitution model where the nucleotides are characterized as modified (T) and
472 unmodified (C). We use a two-state continuous-time Markov chain with an asymmetric
473 rate to permit C→T mutations but not the reverse.

474
475 In the two-epoch mode, we allow the evolutionary rate to shift from the background rate
476 (driven by the polymerase error rate) to the APOBEC3 rate at a specific time point for the
477 APOBEC3 partition. We incorporated a local clock to scale the mutation proportion
478 attributed to APOBEC3 activity across the branches up to the transition time. We allowed
479 the non-APOBEC3 partition to evolve under the background evolutionary rate across the
480 entire phylogeny.¹² We used a two-phase coalescent model, where the tree from the

481 MRCA of hMPXV-1 onward was modeled with an exponential growth model, and the
482 earlier phase was modeled as a constant-population size coalescent model. For each
483 model, we ran two independent chains of 100 million states to ensure convergence,
484 discarding the initial 10% of each chain as burn-in. The chains were then combined with
485 LogCombiner. For all subsequent analyses, we assessed convergence using Tracer, and
486 constructed a maximum clade credibility (MCC) tree in TreeAnnotator 1.10.⁵⁹

487 **Estimating the evolutionary rate of Clade IIa and Clade** 488 **IIb zoonotic sequences**

489 We estimated the evolutionary rates of the zoonotic Clade IIa and Clade IIb using the
490 BEAST 1.10 software.⁵⁷ We modeled the substitution process under a GTR+G model.⁶⁰
491 We employed three different models: the strict clock; a fixed local clock that constrained
492 Clade IIa and Clade IIb into respective monophyletic clades with different evolutionary
493 rates; the uncorrelated relaxed clock with a lognormal distribution (UCL).^{19,61,62} For each
494 of the models we employed both the noninformative continuous time markov chain
495 (CTMC) prior on the overall rate scalar which is a default in BEAST1.10.5 and then used
496 an overall rate 10^{-6} for pox viruses^{20, 22, 23} with gamma distribution that imposes a stronger
497 penalty for the rates than the default prior.⁶³ Both prior produced similar results. We ran
498 two independent MCMC chains of 50 million states, sampling every 1000 states and
499 combining post burn-in samples (10% burn-in). We assessed convergence using Tracer,
500 ensuring that all effective sample sizes were above 200.⁵⁹ To perform model selection,
501 we inferred the log marginal likelihood using the generalized stepping-stone sampling
502 (GSS).^{64,65} We excluded the KJ642615 sequence sampled in 1978 from Nigeria as it is

503 significantly divergent from the remaining Clade IIb. We only included one sequence of
504 the four sequences from the 2018 Chimpanzee outbreak in Cote d'Ivoire.^{20, 22, 24}

505 **Geographic data**

506 All shapes files were obtained from the FAO geoNetwork ([https://www.fao.org/land-
507 water/databases-and-software/geonetwork/en/](https://www.fao.org/land-water/databases-and-software/geonetwork/en/))

508 **Data availability**

509 All sequences are available on Genbank under Accession numbers PP860025-
510 PP860033. All other data are available at [https://github.com/andersen-
511 lab/MPXV_zoonotic_transmission_West_Africa](https://github.com/andersen-lab/MPXV_zoonotic_transmission_West_Africa), or upon request.

512 **Code availability**

513 All code to run the analyses is available in [https://github.com/andersen-
514 lab/MPXV_zoonotic_transmission_West_Africa](https://github.com/andersen-lab/MPXV_zoonotic_transmission_West_Africa)

515

516

517 **References**

- 518 1. Nakazawa, Y. *et al.* A phylogeographic investigation of African monkeypox. *Viruses* **7**, 2168–2184
519 (2015).
- 520 2. Durski, K. N. *et al.* Emergence of monkeypox in West Africa and Central Africa, 1970-
521 2017/Emergence de l'orthopoxvirose simienne en Afrique de l'Ouest et en Afrique centrale, 1970-
522 2017. *Weekly Epidemiological Record* **93**, 125–133 (2018).
- 523 3. Breman, J. G. *et al.* Human monkeypox, 1970-79. *Bull. World Health Organ.* **58**, 165–182 (1980).
- 524 4. McCollum, A. M. & Damon, I. K. Human monkeypox. *Clin. Infect. Dis.* **58**, 260–267 (2014).
- 525 5. Yinka-Ogunleye, A. *et al.* Reemergence of Human Monkeypox in Nigeria, 2017. *Emerg. Infect. Dis.* **24**,
526 1149–1151 (2018).
- 527 6. World Health Organization. Mpox (monkeypox)-Democratic Republic of the Congo. 2023- 11-
528 23)[2023- 12- 18]. <https://www.who.int>.
- 529 7. Djuicy, D. D. *et al.* Concurrent Clade I and Clade II Monkeypox Virus Circulation, Cameroon, 1979-
530 2022. *Emerg. Infect. Dis.* **30**, (2024).
- 531 8. Yinka-Ogunleye, A. *et al.* Outbreak of human monkeypox in Nigeria in 2017–18: a clinical and
532 epidemiological report. *Lancet Infect. Dis.* **19**, 872–879 (2019).
- 533 9. Sadeuh-Mba, S. A. *et al.* Monkeypox virus phylogenetic similarities between a human case detected
534 in Cameroon in 2018 and the 2017-2018 outbreak in Nigeria. *Infect. Genet. Evol.* **69**, 8–11 (2019).
- 535 10. O'Toole, Á. *et al.* APOBEC3 deaminase editing in mpox virus as evidence for sustained human
536 transmission since at least 2016. *Science* **382**, 595–600 (2023).
- 537 11. Ndodo, N. *et al.* Distinct monkeypox virus lineages co-circulating in humans before 2022. *Nat. Med.*
538 **29**, 2317–2324 (2023).
- 539 12. Parker, E *et al.* *Genomic Epidemiology Uncovers the Timing and Origin of the Emergence of Mpox in*
540 *Humans*. doi:10.5281/zenodo.11652886.
- 541 13. Doty, J. B. *et al.* Assessing Monkeypox Virus Prevalence in Small Mammals at the Human–Animal
542 Interface in the Democratic Republic of the Congo. *Viruses* **9**, 283 (2017).

- 543 14. Happi, C. *et al.* Urgent need for a non-discriminatory and non-stigmatizing nomenclature for
544 monkeypox virus. *PLoS Biol.* **20**, e3001769 (2022).
- 545 15. Molua, E.L. and Lambi, C.M. Climate, Hydrology and Water Resources in Cameroon. *Environmental*
546 *Issues: Problems and Prospects, Bamenda: Unique Printers, 45-66.* (2001).
- 547 16. Reynolds, M. G., Doty, J. B., McCollum, A. M., Olson, V. A. & Nakazawa, Y. Monkeypox re-emergence
548 in Africa: a call to expand the concept and practice of One Health. *Expert Rev. Anti. Infect. Ther.* **17**,
549 129–139 (2019).
- 550 17. Isidro, J. *et al.* Phylogenomic characterization and signs of microevolution in the 2022 multi-country
551 outbreak of monkeypox virus. *Nat. Med.* **28**, 1569–1572 (2022).
- 552 18. Gigante, C. M. *et al.* Multiple lineages of monkeypox virus detected in the United States, 2021-2022.
553 *Science* **378**, 560–565 (2022).
- 554 19. Drummond, A. J., Ho, S. Y. W., Phillips, M. J. & Rambaut, A. Relaxed phylogenetics and dating with
555 confidence. *PLoS Biol.* **4**, e88 (2006).
- 556 20. Sinsheimer, J. S., Lake, J. A. & Little, R. J. Bayesian hypothesis testing of four-taxon topologies using
557 molecular sequence data. *Biometrics* **52**, 193–210 (1996).
- 558 21. Patrono, L. V. *et al.* Monkeypox virus emergence in wild chimpanzees reveals distinct clinical
559 outcomes and viral diversity. *Nat Microbiol* **5**, 955–965 (2020).
- 560 22. Berthet, N. *et al.* Genomic history of human monkey pox infections in the Central African Republic
561 between 2001 and 2018. *Sci. Rep.* **11**, 13085 (2021).
- 562 23. Duggan, A. T. *et al.* 17th Century Variola Virus Reveals the Recent History of Smallpox. *Curr. Biol.* **26**,
563 3407–3412 (2016).
- 564 24. Porter, A. F., Duggan, A. T., Poinar, H. N. & Holmes, E. C. Comment: Characterization of Two Historic
565 Smallpox Specimens from a Czech Museum. *Viruses* vol. 9 (2017).
- 566 25. Duffy, S., Shackelton, L. A. & Holmes, E. C. Rates of evolutionary change in viruses: patterns and
567 determinants. *Nat. Rev. Genet.* **9**, 267–276 (2008).
- 568 26. Khodakevich, L., Jezek, Z. & Kinzanzka, K. Isolation of monkeypox virus from wild squirrel infected in
569 nature. *Lancet* **1**, 98–99 (1986).
- 570 27. Radonić, A. *et al.* Fatal monkeypox in wild-living sooty mangabey, Côte d'Ivoire, 2012. *Emerg. Infect.*

- 571 *Dis.* **20**, 1009–1011 (2014).
- 572 28. Curaudeau, M. *et al.* Identifying the Most Probable Mammal Reservoir Hosts for Monkeypox Virus
573 Based on Ecological Niche Comparisons. *Viruses* **15**, (2023).
- 574 29. Khodakevich, L., Jezek, Z. & Messinger, D. Monkeypox virus: ecology and public health significance.
575 *Bull. World Health Organ.* **66**, 747–752 (1988).
- 576 30. Nolen, L. D. *et al.* Introduction of Monkeypox into a Community and Household: Risk Factors and
577 Zoonotic Reservoirs in the Democratic Republic of the Congo. *Am. J. Trop. Med. Hyg.* **93**, 410–415
578 (2015).
- 579 31. Breman, J. G., Bernadou, J. & Nakano, J. H. Poxvirus in West African nonhuman primates: serological
580 survey results. *Bull. World Health Organ.* **55**, 605–612 (1977).
- 581 32. Pekar, J. E. *et al.* The molecular epidemiology of multiple zoonotic origins of SARS-CoV-2. *Science*
582 **377**, 960–966 (2022).
- 583 33. Glennon, E. E., Jephcott, F. L., Restif, O. & Wood, J. L. N. Estimating undetected Ebola spillovers. *PLoS*
584 *Negl. Trop. Dis.* **13**, e0007428 (2019).
- 585 34. Titanji, B. K. *et al.* Effectiveness of Smallpox Vaccination to Prevent Mpox in Military Personnel. *N.*
586 *Engl. J. Med.* **389**, 1147–1148 (2023).
- 587 35. Fine, P. E., Jezek, Z., Grab, B. & Dixon, H. The transmission potential of monkeypox virus in human
588 populations. *Int. J. Epidemiol.* **17**, 643–650 (1988).
- 589 36. Rimoin, A. W. *et al.* Major increase in human monkeypox incidence 30 years after smallpox
590 vaccination campaigns cease in the Democratic Republic of Congo. *Proc. Natl. Acad. Sci. U. S. A.* **107**,
591 16262–16267 (2010).
- 592 37. Median age (years). *WHO Data* [https://platform.who.int/data/maternal-newborn-child-adolescent-](https://platform.who.int/data/maternal-newborn-child-adolescent-ageing/indicator-explorer-new/MCA/median-age-(years))
593 [ageing/indicator-explorer-new/MCA/median-age-\(years\)](https://platform.who.int/data/maternal-newborn-child-adolescent-ageing/indicator-explorer-new/MCA/median-age-(years)).
- 594 38. Fa, J. E., Ryan, S. F. & Bell, D. J. Hunting vulnerability, ecological characteristics and harvest rates of
595 bushmeat species in afrotropical forests. *Biol. Conserv.* **121**, 167–176 (2005).
- 596 39. Silva, N. I. O., de Oliveira, J. S., Kroon, E. G., Trindade, G. de S. & Drumond, B. P. Here, There, and
597 Everywhere: The Wide Host Range and Geographic Distribution of Zoonotic Orthopoxviruses. *Viruses*
598 **13**, (2020).

- 599 40. Effiom, E. O., Nuñez-Iturri, G., Smith, H. G., Ottosson, U. & Olsson, O. Bushmeat hunting changes
600 regeneration of African rainforests. *Proc. Biol. Sci.* **280**, 20130246 (2013).
- 601 41. Macdonald, D. W. *et al.* Bushmeat trade in the Cross–Sanaga rivers region: Evidence for the
602 importance of protected areas. *Biol. Conserv.* **147**, 107–114 (2012).
- 603 42. Friant, S., Paige, S. B. & Goldberg, T. L. Drivers of bushmeat hunting and perceptions of zoonoses in
604 Nigerian hunting communities. *PLoS Negl. Trop. Dis.* **9**, e0003792 (2015).
- 605 43. Fa, J. E. *et al.* Getting to grips with the magnitude of exploitation: Bushmeat in the Cross–Sanaga
606 rivers region, Nigeria and Cameroon. *Biol. Conserv.* **129**, 497–510 (2006).
- 607 44. Gessain, A., Nakoune, E. & Yazdanpanah, Y. Monkeypox. *N. Engl. J. Med.* **387**, 1783–1793 (2022).
- 608 45. Khodakevich, L. *et al.* Monkeypox virus in relation to the ecological features surrounding human
609 settlements in Bumba zone, Zaire. *Trop. Geogr. Med.* **39**, 56–63 (1987).
- 610 46. Lloyd-Smith, J. O., Schreiber, S. J., Kopp, P. E. & Getz, W. M. Superspreading and the effect of
611 individual variation on disease emergence. *Nature* **438**, 355–359 (2005).
- 612 47. Borges, V. *et al.* Viral genetic clustering and transmission dynamics of the 2022 mpox outbreak in
613 Portugal. *Nat. Med.* **29**, 2509–2517 (2023).
- 614 48. Laurenson-Schafer, H. *et al.* Description of the first global outbreak of mpox: an analysis of global
615 surveillance data. *The Lancet Global Health* **11**, e1012–e1023 (2023).
- 616 49. Ulaeto, D. O., Dunning, J. & Carroll, M. W. Evolutionary implications of human transmission of
617 monkeypox: the importance of sequencing multiple lesions. *Lancet Microbe* **3**, e639–e640 (2022).
- 618 50. Nigeria Centre for Disease Control. National monkeypox public health response guidelines. Preprint
619 at https://ncdc.gov.ng/themes/common/docs/protocols/96_1577798337.pdf.
- 620 51. Park, D. *et al.* *Broadinstitute/viral-Ngs: v1.19.2.* (Zenodo, 2018). doi:10.5281/zenodo.1167849.
- 621 52. Li, H. & Durbin, R. Fast and accurate short read alignment with Burrows–Wheeler transform.
622 *Bioinformatics* **25**, 1754–1760 (2009).
- 623 53. Li, H. *et al.* The Sequence Alignment/Map format and SAMtools. *Bioinformatics* **25**, 2078–2079
624 (2009).
- 625 54. Grubaugh, N. D. *et al.* An amplicon-based sequencing framework for accurately measuring intrahost
626 virus diversity using PrimalSeq and iVar. *Genome Biol.* **20**, 8 (2019).

- 627 55. Minh, B. Q. *et al.* IQ-TREE 2: New Models and Efficient Methods for Phylogenetic Inference in the
628 Genomic Era. *Mol. Biol. Evol.* **37**, 1530–1534 (2020).
- 629 56. Aksamentov, I., Roemer, C., Hodcroft, E. & Neher, R. Nextclade: clade assignment, mutation calling
630 and quality control for viral genomes. *J. Open Source Softw.* **6**, 3773 (2021).
- 631 57. Suchard, M. A. *et al.* Bayesian phylogenetic and phylodynamic data integration using BEAST 1.10.
632 *Virus Evol* **4**, vey016 (2018).
- 633 58. Ayres, D. L. *et al.* BEAGLE 3: Improved Performance, Scaling, and Usability for a High-Performance
634 Computing Library for Statistical Phylogenetics. *Syst. Biol.* **68**, 1052–1061 (2019).
- 635 59. Rambaut, A., Drummond, A. J., Xie, D., Baele, G. & Suchard, M. A. Posterior summarization in
636 Bayesian phylogenetics using tracer 1.7. *Syst. Biol.* **67**, 901–904 (2018).
- 637 60. Tavaré, S. Some probabilistic and statistical problems in the analysis of DNA sequences. *Some*
638 *mathematical question in biology-DNA* (1986).
- 639 61. Zuckerkandl, E. Molecular disease, evolution, and genic heterogeneity. *Horiz. Biochem. Biophys.*
640 (1962).
- 641 62. Yoder, A. D. & Yang, Z. Estimation of primate speciation dates using local molecular clocks. *Mol. Biol.*
642 *Evol.* **17**, 1081–1090 (2000).
- 643 63. Ferreira, M. A. R. & Suchard, M. A. Bayesian analysis of elapsed times in continuous-time Markov
644 chains. *Can. J. Stat.* **36**, 355–368 (2008).
- 645 64. Baele, G., Lemey, P. & Suchard, M. A. Genealogical Working Distributions for Bayesian Model Testing
646 with Phylogenetic Uncertainty. *Syst. Biol.* **65**, 250–264 (2016).
- 647 65. Xie, W., Lewis, P. O., Fan, Y., Kuo, L. & Chen, M.-H. Improving marginal likelihood estimation for
648 Bayesian phylogenetic model selection. *Syst. Biol.* **60**, 150–160 (2011).

649 Acknowledgements

650 This work is made possible by support from Flu Lab and a cohort of generous donors
651 through TED's Audacious Project, including the ELMA Foundation, MacKenzie Scott, the
652 Skoll Foundation, and Open Philanthropy. This work was supported by the Centre
653 Pasteur of Cameroon. This work was supported by grants from the National Institute of
654 Allergy and Infectious Diseases grants U01HG007480 (H3Africa), U54HG007480

655 (H3Africa), U01AI151812 (WARN-ID), U19AI135995 (CViSB), U19AI110818 (GCID),
656 R01AI153044 and R01AI162611). This work was also supported by the World Bank
657 grants projects ACE-019 and ACE-IMPACT; The Rockefeller Foundation (Grant #2021
658 HTH); The Africa CDC through the African Society of Laboratory Medicine [ASLM] (Grant
659 #INV018978), and the Science for Africa Foundation. We thank the Africa CDC for Mpx
660 diagnostic reagents provided to the surveillance system in Cameroon. We thank
661 Advanced Micro Devices, Inc. for the donation of massively parallel computing hardware.
662 Ifeanyi Omah is supported by the Wellcome Trust Hosts, Pathogens & Global Health
663 program [Wellcome Trust, Grant number 218471/Z/19/Z] in partnership with Tackling
664 infectious Disease to Benefit Africa, TIBA.

665 **Author Contributions**

666 C.H., R.N., P.S., I.J., I.A. conceptualized the study. D.D.D., I.F.O., E.P., A.O.T., M.A.S.,
667 P.L., K.G.A., A.R., C.H. contributed the methodology. K.G., A.O.T., P.L., M.A.S., A.R.,
668 P.V. provided software. D.D.D, I.F.O., E.P. performed formal analysis. D.D.D., I.F.O.,
669 E.P., L.L.M.E, M.H.M.Y, F.M.F.C, A.O.A., A.E.S, M.I.A., O.O.E, O.A.O., A.O., P.E.,
670 O.A., A.E., O.E., C.C, K.S., A.Akinpelu , A.Ahmad, K.I.I., P.V., A.M., M.Z., A.R. M.G.Y,
671 G.D.E., I.P.T., L.M., S.I.E., L.E., I.M.E.N., S.F.M., C.C., S.M.A., H.M.M., C.N.B.,
672 A.G.M.E. conducted the investigation. D.D.D., L.L.M.E, M.H.M.Y, F.M.F.C, A.O.A,
673 A.E.S, M.I.A., O.O.E, O.A.O, A.O., P.E., O.A., A.E., O.E., C.C, K.S., A.Akinpelu ,
674 A.Ahmad, K.I.I., D.J.P, P.L., G.M., S.K.T., Y.K.T., O.F., A.H., M.A.S., K.G.A., A.R., R.N.,
675 C.I., I.J., I.A., S.I.E., provided resources. E.P., I.F.O., D.D.D., A.R., C.T.T., J.R.O.
676 curated data. E.P., I.F.O., D.D.D wrote the original draft of the manuscript. All authors
677 reviewed and edited the manuscript. I.F.O., E.P. performed visualization. R.N., C.H.,
678 C.I., I.J., I.A., P.S., A.R., K.G.A supervised the study. D.D.D., S.I.E., E.P., O.F., C.H.
679 undertook project administration. C.H., P.S., R.N., S.I.E., K.G.A. acquired funding.

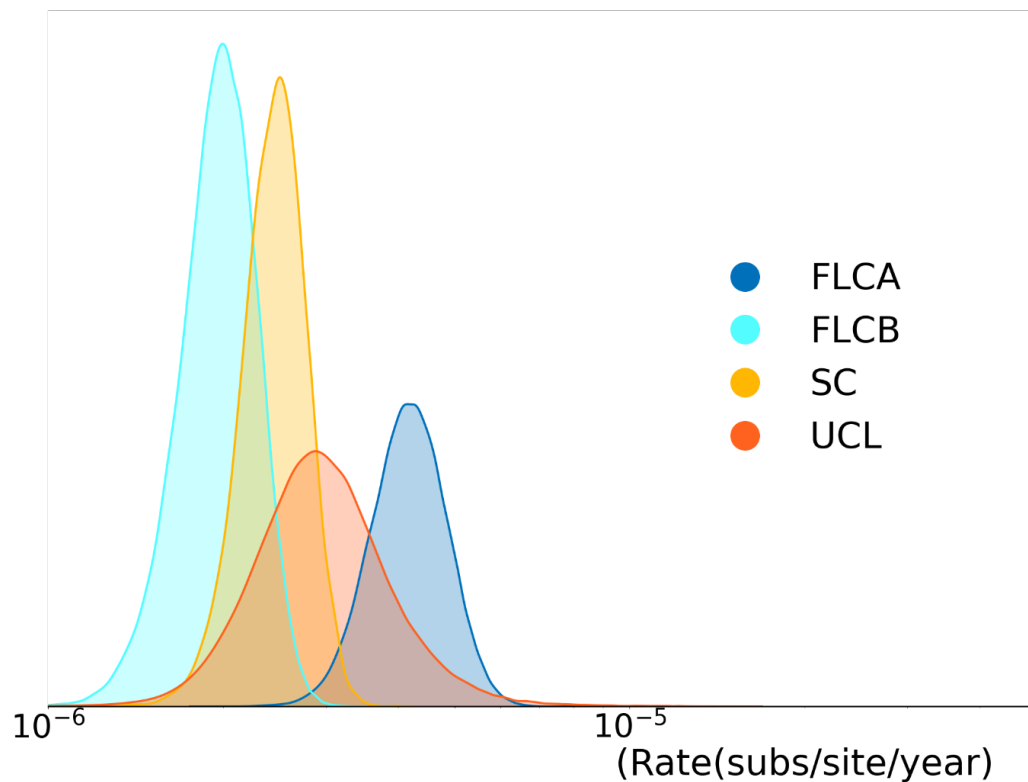
680

681 **Competing interest declaration**

682 MAS received grants and contracts from the U.S. Food & Drug Administration, the U.S.
683 Department of Veterans Affairs and Johnson & Johnson outside the scope of this work.
684

685

686 Extended Data



688 **Extended Data Figure 1:** Estimates of the evolutionary rate for zoonotic Clade IIb and
 689 Clade IIa combined under the different clock models
 690

691 **Extended Data table 1:** Model testing for analyses of evolutionary rate in the natural reservoir

Model	Clock rate (95% HPD x10 ⁻⁶)	Cladell tMRCA	Log MLE	Log BF
FLC	4.29(3.11–5.55)	May 30, 1908, (July 6, 1886, to February 24, 1928)	-259654.2406	--
FLC	2.02(1.45–2.59)	October 20, 1542, (June 18, 1401, to October 7, 1664)	-259654.2406	–
SC	2.49(1.90–3.10)	April 27, 1624, (April 15, 1523, to October 30, 1712)	-259843.2503	189.01 vs FLC
UCL	3.33(1.76–6.19)	May 24, 1669, (April 17, 1410, to November 18, 1892)	-259858.1452	203.905 vs FLC

692