

Genome-wide association study reveals the unique genetic structure of active blood donors

Jonna Clancy*¹, Jarkko Toivonen¹, Jouni Lauronen¹, Satu Koskela¹, Jukka Partanen¹, FinnGen², Mikko Arvas¹, Jarmo Ritari¹

¹ Finnish Red Cross Blood Service, Vantaa, Finland

² List of FinnGen members is available as a supplementary file

* jonna.clancy@veripalvelu.fi

1 Abstract

2

3 The healthy donor effect (HDE) refers to the observed lower mortality rate among blood donors
4 compared to the general population. While membership biases such as HDE arise due to healthier
5 individuals being more likely to participate, the extent to which it is influenced by genetic differences
6 remains largely unclear. To elucidate the genetic basis of HDE, we conducted a genome-wide
7 association study (GWAS) involving 53,688 active blood donors with extensive donation histories and
8 228,060 controls from biobank cohorts within the FinnGen project. Our results identified 2,973
9 genome-wide significant loci associated with repeated blood donation and impacting several health-
10 related endpoints. Importantly, significant variants related not only to blood groups but also
11 influenced the predisposition to somatic and mental diseases, suggesting that HDE is not solely tied
12 to blood donation eligibility criteria. In conclusion, in this work we show that HDE is partially
13 explained by genetic factors affecting various disease categories.

14

15

16

17

18

19

20

21

22

23

24

25

26

27 Keywords: blood donor, biobank, healthy donor effect, GWAS, blood group, HLA

28 Introduction

29 Blood donors play an important role as an excellent healthy control cohort in genetics and
30 biomedical research due to their commitment and altruistic nature¹. Their voluntary and frequent
31 blood donations offer unique opportunities for longitudinal sampling. In addition, blood donors
32 exhibit positive attitudes toward the use of their samples and data in scientific research, if not
33 directly required in patient care^{2,3}.

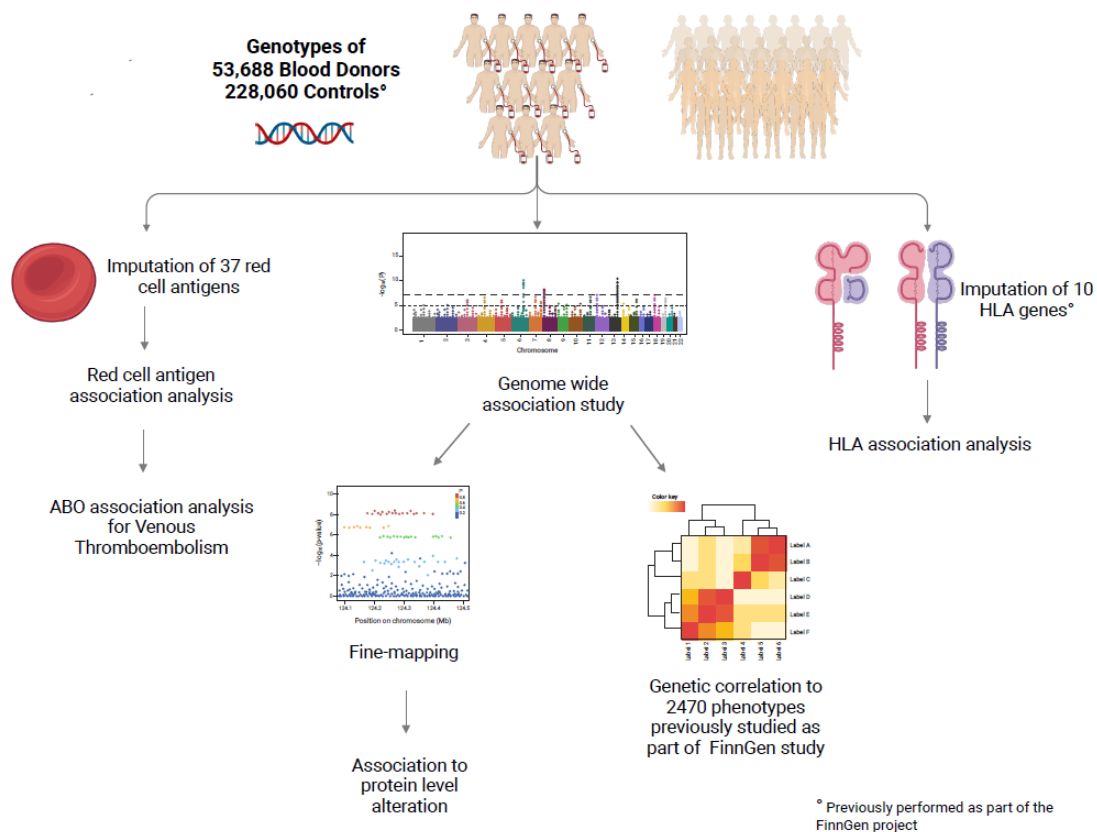
34 However, blood donors are a highly selected population due to the health status criteria they must
35 meet to be eligible to donate blood. Along with a general survey of the donor's current state of
36 health, basic restrictions on blood donation suitability include serious illnesses such as severe
37 cardiovascular conditions, cancer and epilepsy⁴. Some conditions that restrict blood donation
38 suitability have strong well-known genetic background, such as the association of *HLA* genes in type
39 1 diabetes (T1D)⁵ or in certain autoimmune diseases⁶⁻⁸. As a minimum hemoglobin level is required
40 for donation eligibility, genetic variants affecting iron and hemoglobin levels may also cause donor
41 selection. Due to these factors, blood donor selection results in a known phenomenon, *healthy*
42 *donor effect*, HDE, which can lead to detrimental effects in a research setting if not taken into
43 account⁹.

44 Comprehensive selection of different blood groups, and especially a sufficient amount of emergency
45 blood type O RhD neg suitable for most recipients, are basic requirements in blood banks. Due to the
46 high need for emergency blood O RhD neg and strong immunogenicity of certain blood group
47 antigens, such as ABO, Rh and Kell¹⁰⁻¹³, donor recruitment is partially based on blood group
48 genotype and results in enrichment of certain blood group antigens in a blood donor pool. Well
49 known associations between ABO blood group antigens and cardiovascular conditions exist, more
50 precisely between red cell antigen O and reduced thromboembolic diseases^{14,15}. Risk for bleeding
51 disorder, Von Willebrand disease, is known to be higher among individuals with red cell O antigen¹⁶.
52 Pregnancy-induced hypertension has been previously described to occur more in RhD positive

53 individuals¹⁵. Moreover, in certain medical conditions, such as in hemochromatosis, blood donation
54 may be beneficial, and donors with these conditions may be enriched in the blood donor
55 population¹⁷.

56 Enrichment of genetic variants with known disease associations or biological functions may result in
57 unpredicted effects in biomedical research. To reveal the genetic qualities of blood donors and to
58 understand the possible genetic selection leading to the HDE, we conducted a genome-wide
59 association study (GWAS) between the Finnish Red Cross Blood Service Biobank, and FinnGen (Figure
60 1). In addition, our aim was to discover genetic variants potentially contributing to blood transfusion
61 efficacy.

62 To our knowledge, no previous genome studies have focused on the possible selection bias caused
63 by blood group and health questionnaire-based requirement of blood donors. We found altogether
64 2,973 genome-wide significant associations. Genetic correlation analysis revealed strong negative
65 correlation between blood donorship and diseases such as mental disorders, pain disorders,
66 cardiovascular diseases, addiction disorders, autoimmune disorders, and Alzheimer's disease. *HLA*
67 association analysis confirmed the enrichment of hemochromatosis related *HLA* alleles and the
68 lower occurrence of autoimmune related *HLA* alleles in the blood donor population and indicated a
69 risk SNP tagging both hemochromatosis and autoimmune related *HLA* alleles. The genome-wide
70 significant variants associated with 112 plasma protein level alterations. The results of this study
71 demonstrate the genetic basis of the HDE, which is not limited to immediate blood donorship
72 inclusion criteria.



73

74 Figure 1 General workflow of the study. GWAS was performed on 53,688 cases (blood donors) and
75 228,060 controls. Genome wide significant GWAS results were fine-mapped and further used for
76 several association analyses. Genetic correlation of 2470 phenotypes to blood donorship were
77 calculated based on GWAS results. In addition, we imputed red cell antigens and tested their
78 association to blood donorship. Previously imputed HLA alleles in FinnGen project were used to
79 perform association analysis to blood donorship. Figure is created with BioRender.com

80

81

82 Results

83 Demographic information and differences in diagnoses between the two cohorts are described in

84 Table 1. In both sexes the blood donors were younger, taller and in males also heavier. More female
85 participants were seen in the blood donor cohort. A clear and significant difference between the two

86 cohorts was seen in both sexes in all the diagnose groups apart from 'XVI Certain conditions

87 originating in the perinatal period' where more incidents were found among blood donors in both

88 genders. FinnGen cohort consisted of donors in hospital biobanks but also donors in population
 89 cohorts and in occupational health (Supplementary Table 1).

90

	Females		Males	
	Blood donors	FinnGen	Blood donors	FinnGen
Median age at sampling, years (IQR)	44.47 (18.2-70.8)	62.7 (36.2-89.2)	50.26 (25.5-75.0)	70.46 (51.3-89.6)
Female sex, n (%)	32,460 (60.46)	120,279 (52.74)	21,228 (39.54)	107,781 (47.26)
Median weight, kg (IQR)	72 (54-90) ^a	72 (51-93) ^a	86 (68-104)	84 (64-104)
Median height, cm (IQR)	167 (159-175)	164 (156-172)	180 (171-189)	177 (168-186)
Median BMI (IQR)	25.83 (19.3-32.4)	26.64 (19.1-34.2)	26.58 (21.6-31.6)	26.88 (21.2-32.6)
FinnGen endpoint category ^b				
I Certain infectious and parasitic diseases (AB1)	7,466 (23)	47,901 (39.82)	5,565 (26.22)	48,487 (44.99)
II Neoplasms from cancer register (ICD-O-3)	968 (2.98)	34,299 (28.52)	791 (3.73)	38,891 (36.08)
II Neoplasms from hospital discharges (CD2)	6,960 (21.44)	67,026 (55.73)	2,804 (13.21)	52,708 (48.9)
III Blood and immune system (D3)	964 (2.97)	17,017 (14.15)	534 (2.52)	15,606 (14.48)
IV Endocrine, nutritional and metabolic (E4)	10,269 (31.64)	83,780 (69.65)	3,029 (14.27)	58,530 (54.3)
IX Circulatory system (I9)	6,276 (19.33)	69,429 (57.72)	4,587 (21.61)	78,876 (73.18)
V Mental and behavioural disorders (F5)	7,871 (24.25)	42,676 (35.48)	3,648 (17.18)	33,080 (30.69)
VI Nervous system (G6)	6,431 (19.81)	54,710 (45.49)	4,501 (21.2)	51,142 (47.45)
VII Eye and adnexa (H7)	8,088 (24.92)	58,567 (48.69)	4,660 (21.95)	47,174 (43.77)
VIII Ear and mastoid process (H8)	5,316 (16.38)	29,249 (24.32)	3,893 (18.34)	26,561 (24.64)
X Respiratory system (J10)	14,408 (44.39)	69,022 (57.38)	11,532 (54.32)	69,209 (64.21)
XI Digestive system (K11)	27,542 (84.85)	106,938 (88.91)	17,037 (80.26)	90,482 (83.95)
XII Skin and subcutaneous tissue (L12)	7,710 (23.75)	43,402 (36.08)	4,096 (19.3)	32,486 (30.14)
XIII Musculoskeletal and connective tissue (M13)	13,715 (42.25)	83,931 (69.78)	9,118 (42.95)	68,570 (63.62)
XIV Genitourinary system (N14)	17,334 (53.4)	91,665 (76.21)	4,463 (21.02)	49,729 (46.14)
XIX Injury, poisoning, external (ST19)	15,936 (49.09)	73,725 (61.29)	13,051 (61.48)	70,375 (65.29)
XV Pregnancy, childbirth and the puerperium (O15)	20,560 (63.34)	86,799 (72.16)	0 (0)	0 (0)
XVI Perinatal period (P16)	535 (1.65)	1,000 (0.83)	263 (1.24)	514 (0.48)
XVII Congenital malformations (Q17)	2,018 (6.22)	10,032 (8.34)	1,231 (5.8)	7,258 (6.73)
XVIII Abnormal clinical and laboratory findings (R18)	16,800 (51.76)	93,458 (77.7)	9,125 (42.99)	80,419 (74.61)
XX External causes of mortality (VWXYZ0)	13,025 (40.13)	64,874 (53.94)	10,741 (50.6)	62,034 (57.56)
XXI Contact with health services (Z21)	24,581 (75.73)	10,4068 (86.52)	10,544 (49.67)	72,915 (67.65)
XXII Codes for special purposes (U22)	1,417 (4.37)	5,906 (4.91)	595 (2.8)	4,310 (4)

^a Not significant

^b Shortened for clarity

91

92 Table 1 Demographic information of the cohorts. Age, sex, height, weight, BMI and FinnGen
 93 endpoint categories in blood donors and FinnGen cohort are shown. Apart from weight in females,
 94 difference between the cohorts in each phenotype was statistically significant.

95

96

97 Genome-wide association analysis

98 Genome-wide association analysis revealed 2,973 significant ($p < 5 \times 10^{-8}$) genetic loci associated with

99 blood donorship. After fine-mapping, 5 coding (4 missense and 1 inframe deletion) and 36 non-

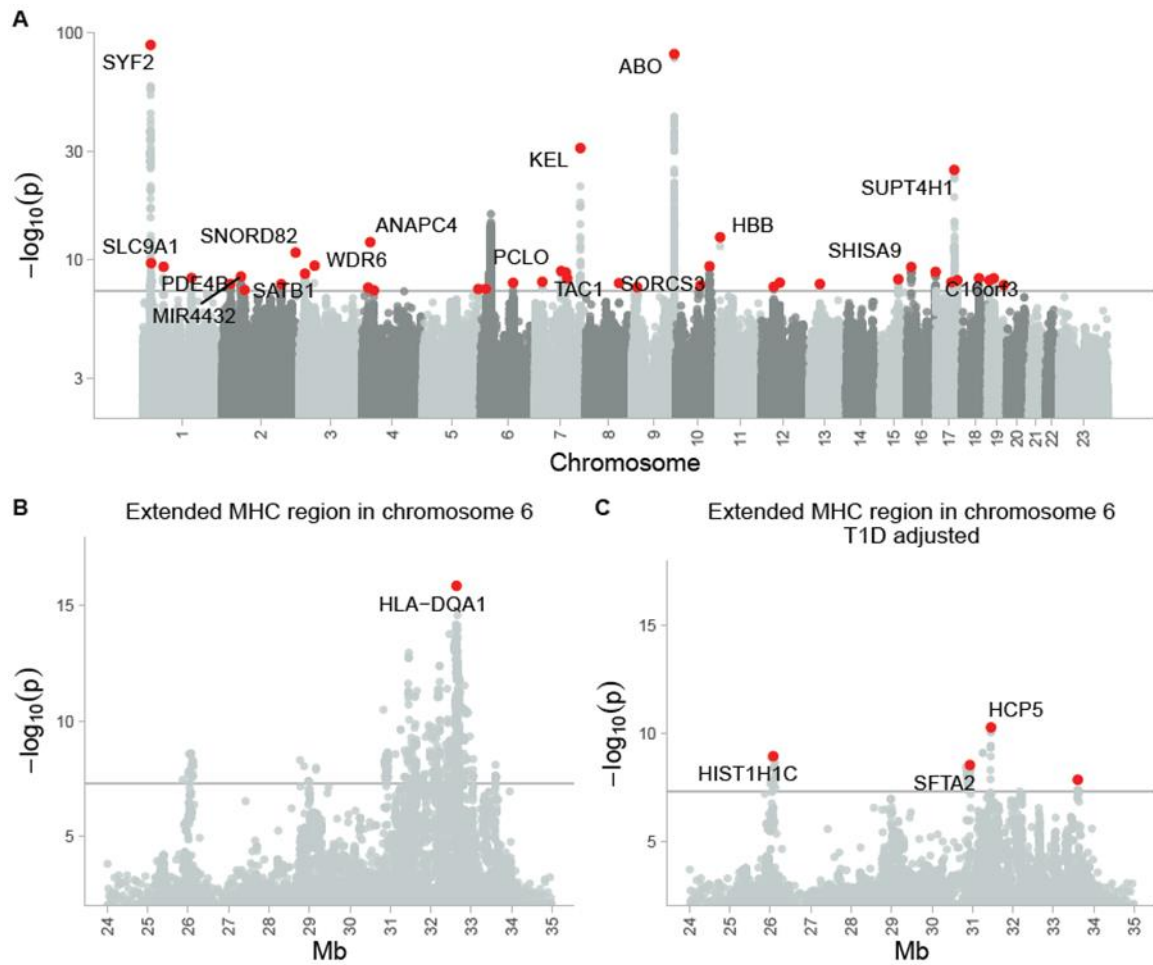
100 coding variants were detected (Figure 2A). In addition to these 41 variants, 5 non-coding lead

101 variants in the extended MHC region (Figure 2B and C) were included in the downstream analyses
102 (Table 2).

103 The strongest genome-wide associations were seen in variants related to blood group antigens:
104 rs55794721, $p = 8.88 \times 10^{-89}$, in chromosome 1, rs687621, $p = 5.70 \times 10^{-81}$, in chromosome 9 in *ABO* and
105 rs8176058, $p = 1.16 \times 10^{-31}$, in chromosome 7 in *KEL* (Figure 1A, Table 2).

106 Despite of the adjustment of the GWAS for BMI, we observed significant GWAS variants known to
107 influence height, weight, and BMI. rs66781921, an inframe deletion variant in chr2, previously
108 shown to have a negative association to height, weight and body mass index¹⁸, was rarer in blood
109 donors (beta = -1.97, $p = 1.89 \times 10^{-11}$). Missense variant rs34811474, previously shown to be
110 negatively associated with body mass index¹⁸, was seen to be more frequent in blood donors (beta =
111 0.064, $p = 1.21 \times 10^{-12}$). Variants rs10947114 ($p = 2.88 \times 10^{-09}$, beta = 0.055), rs3130906 ($p = 5.17 \times 10^{-$
112 ¹¹, beta = 0.055) and rs4713637 ($p = 1.39 \times 10^{-08}$, beta = -0.047), previously described to be
113 associated with spondylopathies and celiac disease¹⁸, were negatively associated with blood
114 donorship. A rare intron variant, rs528492111, in chromosome 3 previously shown to have a weak
115 association to benign neoplasm of conjunctiva¹⁸, was more frequent in blood donors (beta = 1.87, p
116 = 4.09×10^{-10}).

117 All the fine-mapped and MHC lead variants in the are listed in Table 2.



118

119 Figure 2 A) Manhattan plot of the genome-wide association study of blood donorship. B) Extended
120 MHC region of the chromosome 6 of the GWAS. C) Chromosome 6 association study adjusted for
121 type 1 diabetes, T1D. Red dot indicates fine-mapped variants in panel A and in panels B and C the
122 highest variant in each peak reaching the genome wide significance, $<5 \times 10^{-8}$. The name of the
123 nearest gene is shown for these variants if the p-value is $\leq 5 \times 10^{-9}$. The horizontal line has been set to
124 5×10^{-8} .

125

126

127

128

129

130

131

132

rs ID	Genome wide association study					pQTL	
	p-value	Beta	Effect	Target gene	Nearest	Target protein	
rs66781921	1,89E-11	-1,973	inframe deletion	NCL	SNORD82	-	
rs1135071	2,93E-13	-0,573	missense	HBB	HBB	AHSP	
rs199598395	1,55E-25	-0,383	missense	RNF43	SUPT4H1	FTL, HAMP, FGF23	
rs8176058	1,16E-31	-0,327	missense	KEL	KEL	KEL	
rs191302298	3,89E-08	-0,292	intron	LINC01411	MSX2	-	
rs10096658	1,35E-08	-0,277	intron	ZFPM2	LRP12	-	
rs62113181	8,06E-09	-0,135	intron	KDM4B	KDM4B	-	
rs75738358	4,89E-08	-0,080	intergenic	NA	MIR4801	-	
rs12539059	5,68E-09	-0,071	downstream gene	COL26A1	LINC01007	KLK11	
rs9272324	1,36E-16	-0,064	intron		HLA-DQA1	HERC5, METTL2B, MICB, HLA-DRA, C4B*	
rs36035346	5,48E-09	-0,062	intron	CRTC1	CRTC1	-	
rs60678519	1,06E-08	-0,055	downstream gene	AC079780 ,1	RPS2P32	GPNMB	
rs10947114	2,88E-09	-0,055	intron		SFTA2	DDR1	
rs3130906	5,17E-11	-0,055	intron		HCP5	MICA, CDSN, MICB	
rs80319585	1,92E-08	-0,055	intron	KCNMA1	KCNMA1	-	
rs7795945	1,28E-09	-0,049	intron	PCLO	PCLO	-	
rs34483988	1,65E-08	-0,049	intron	FAM171B	FAM171B	-	
rs6775319	2,17E-09	-0,048	intron	SATB1-AS1	SATB1	-	
rs7907026	4,63E-10	-0,048	intergenic	NA	SORCS3	-	
rs3806234	5,16E-09	-0,047	upstream gene	SNAPIN	SNAPIN	-	
rs4713637	1,39E-08	-0,047	intergenic		LINC00336	-	
rs62083414	5,35E-09	-0,046	intron	DCC	DCC	-	
rs207350	3,03E-08	-0,045	intergenic	NA	LCORL	-	
rs594398	1,18E-08	-0,044	intron	SUMO2P17	ATP5G1	-	
rs10880819	2,64E-08	0,043	downstream gene	RF00019	ALG10B	-	
rs35440643	4,54E-08	0,044	intron	ZNF638	ZNF638	-	
rs10166897	1,57E-08	0,044	intron	MAPRE3	MAPRE3	CGREF1	
rs113236240	6,53E-09	0,045	intron	PPCDC	PPCDC	MPI, PPCDC	
rs55763604	2,84E-08	0,049	intron	BNC2	BNC2	-	
rs55732343	2,31E-10	0,049	regulatory region	NA	SLC9A1	-	
rs9968910	1,12E-09	0,050	intergenic	NA	HIST1H1C	-	
rs5821444	7,98E-09	0,051	3 prime UTR	C17orf58	C17orf58	-	
rs6498415	5,47E-10	0,053	intron	U91319 ,1	SHISA9	-	
rs12444334	1,51E-09	0,053	intron	GAS8	C16orf3	CDH15	
rs11675100	3,88E-09	0,054	intron	AC007100 ,1	MIR4432	-	
rs9367942	3,81E-08	0,055	intron	STMND1	STMND1	-	
rs61937595	1,25E-08	0,062	intron	R3HDM2	R3HDM2	INHBC	
rs34811474	1,21E-12	0,064	missense	ANAPC4	ANAPC4	-	
rs1500956	5,14E-10	0,075	intron	PDE4B	PDE4B	-	
rs77448558	1,28E-08	0,078	intergenic	NA	GRIK2	-	
rs10268629	1,71E-09	0,078	intergenic	NA	TAC1	-	
rs75350584	1,58E-08	0,094	intron	DLEU1	ST13P4	-	
rs687621	5,70E-81	0,147	intron	ABO	ABO	63 different	
rs55794721	8,88E-89	0,157	upstream gene	SYF2	SYF2	ICAM4	
rs118101548	1,90E-08	0,299	intron	POLD1	POLD1	-	
rs528492111	4,09E-10	1,875	intron	WDR6	WDR6	-	

133

134 Table 2. Fine-mapped and MHC lead variants. Significance, effect size, the most serious effect and
 135 nearest gene for each variant is shown. If the variant was associated with altering protein expression
 136 levels, the target proteins are shown.

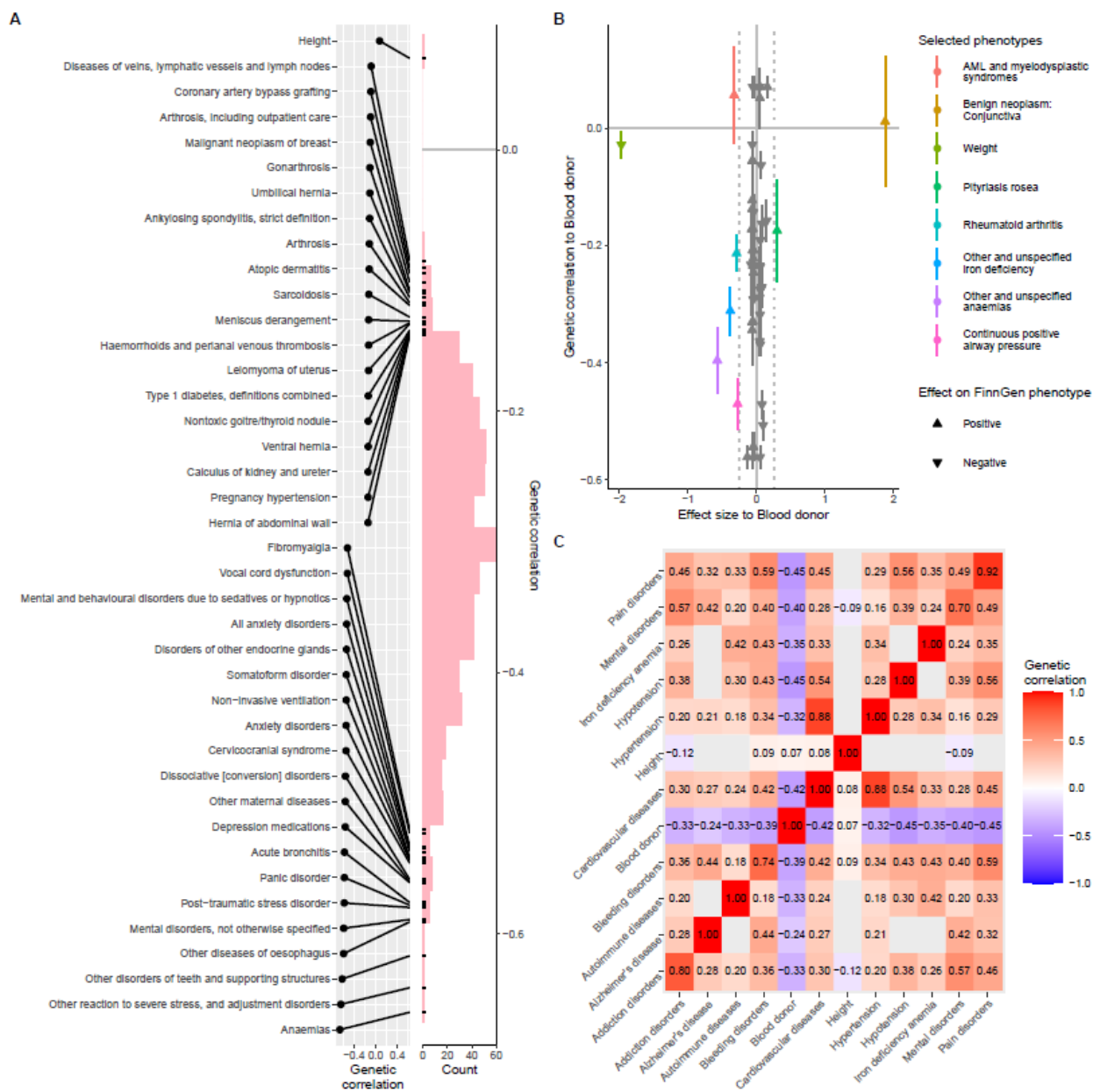
137

138

139 Genetic correlation

140 Altogether 593 phenotypes were negatively correlated with blood donorship (FDR < 0.05,
141 Supplementary file 2). Height was the only phenotype showing weak positive correlation with blood
142 donorship, $r_g = 0.07$ (Figure 3A) despite the GWAS having been adjusted for BMI. Phenotypes
143 associated with some of the individual variants detected by the GWAS with a relatively strong effect
144 size did not show strong correlation with blood donorship. In turn, some phenotypes associated with
145 individual variants with small effect size in GWAS were relatively strongly correlated to blood
146 donorship (Figure 3B).

147 Blood donorship was negatively correlated with $r_g < -0.5$ to 30 phenotypes (Supplementary file 2).
148 The strongest negative correlation ($r_g < -0.6$) in blood donors was seen with Anemias ($r_g = -0.66$, FDR
149 = 2.81×10^{-112}), 'Other reaction to severe stress and adjustment disorders' ($r_g = -0.64$, FDR = $3.36 \times$
150 10^{-40}) and 'Other disorders of teeth and supporting structures' ($r_g = -0.62$, FDR = 2.74×10^{-03}).
151 Furthermore, negative correlation was observed in phenotypes such as autoimmune diseases ($r_g = -$
152 0.33 , FDR = 1.87×10^{-52}), cardiovascular diseases (excluding rheumatic etc) ($r_g = -0.42$, FDR = $3.79 \times$
153 10^{-64}) and bleeding disorders ($r_g = -0.39$, largest FDR = 7.10×10^{-11}) (Figure 3C). In addition, negative
154 correlation to blood donorship was observed in phenotypes such as addiction disorders ($r_g = -0.33$,
155 largest FDR = 7.09×10^{-04}), pain disorders ($r_g = -0.45$, largest FDR = 1.41×10^{-10}) and Alzheimer's
156 disease ($r_g = -0.24$, FDR = 0.03) which are not directly restricted by blood donation eligibility criteria,
157 but which undeniably effect on donation suitability or donor's knowledge on their current state of
158 health. Another example of phenotypes not directly restricted by blood donation eligibility but with
159 relatively strong negative correlation towards blood donorship are infectious phenotypes, such as
160 acute bronchitis ($r_g = -0.58$, FDR = 1.76×10^{-16}) and 'other or unspecified bacterial infection' ($r_g = -$
161 0.50 , FDR = 1.83×10^{-09}) (Figure 3A, Supplementary file 2).



162

163 Figure 3. Genetic correlation of blood donorship to 594 phenotypes. A) Genetic correlation of 40
 164 phenotypes representing the strongest negative and strongest positive correlation to blood
 165 donorship. B) For each of the 46 variants and their most significantly associated FinnGen phenotypes
 166 the effect size of the variant and the genetic correlation of the phenotype to blood donorship is
 167 shown. The phenotype is labeled when the absolute value of the effect size is higher than 0.25.
 168 The vertical bars indicate the standard error of the genetic correlation estimate. C) Genetic
 169 correlation matrix of selected phenotypes. Pain disorders, mental disorders, bleeding disorders and
 170 addiction disorders have been grouped from several phenotypes belonging to same phenotype
 171 category and average genetic correlation is shown. This results in some of the diagonal elements
 172 being less than one.

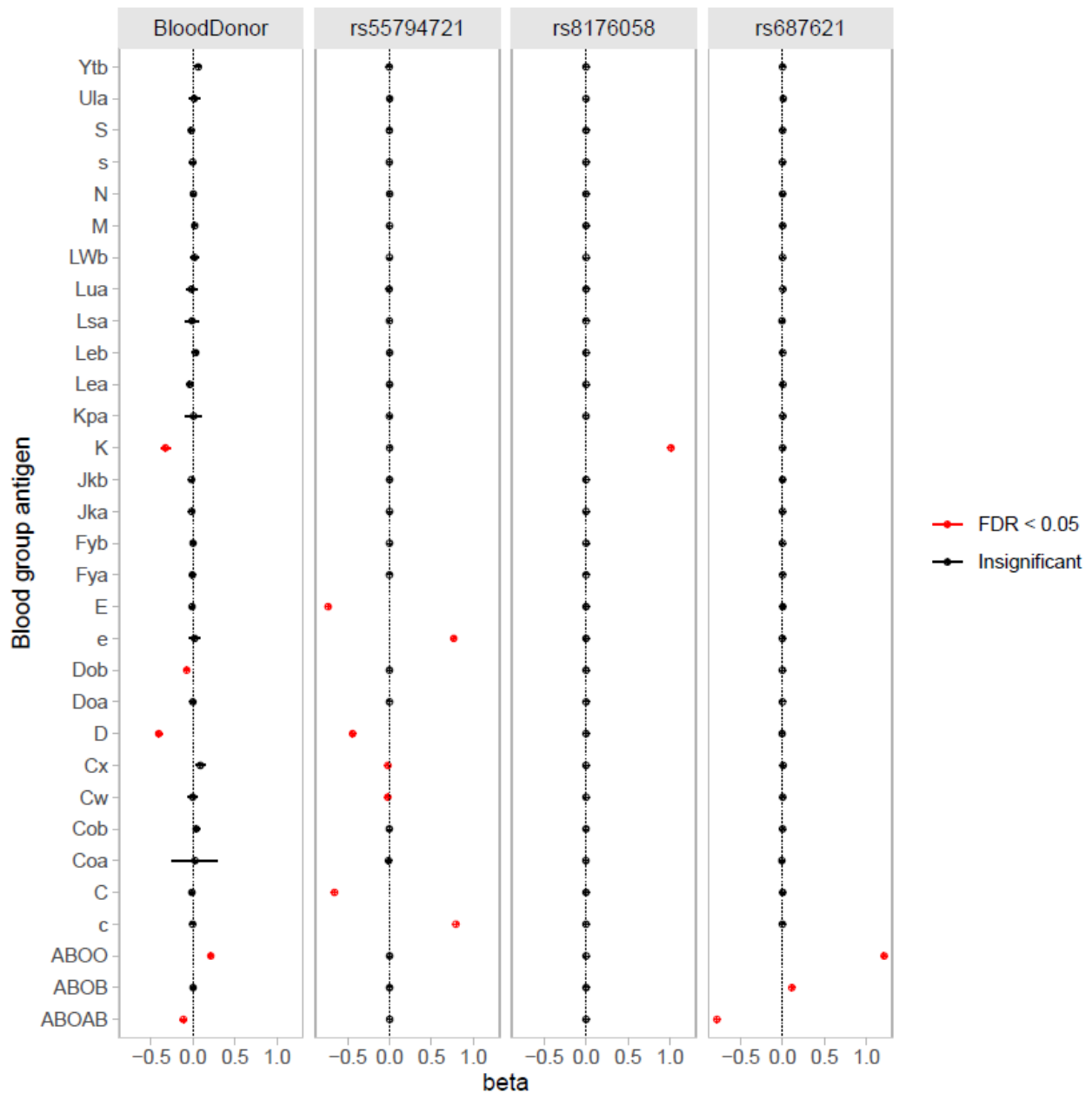
173

174

175 Red cell antigen related associations

176 To understand whether blood donor selection leads to enrichment of blood groups in the blood
177 donors, we evaluated the association of imputed red cell antigens with blood donorship using a
178 logistic regression model. The model revealed a strong negative association for blood group antigens
179 Kell, RhD, and AB and a positive association for blood group antigen O (Figure 4A). Results of the
180 GWAS covariates and red cell antigens are available in Supplementary file 2.

181 We further analyzed the blood group related significant GWAS variants in chromosomes 1, 7 and 9
182 with linear regression models. Lead variant in chromosome 1, rs55794721, was associated with the
183 Rh blood group system (previously shown to be associated with height¹⁸). Rh antigens E, C and D
184 were negatively associated with rs55794721, whereas e and c antigens of the most common Rh
185 negative haplotype in the Caucasoid population, dce¹¹, were positively associated with rs55794721
186 (Figure 4B). 91% of individuals that were positive for Rh c and e alleles and had no Rh D, C or E
187 alleles, were homozygotes (dosage value > 1.5) for rs55794721. rs55794721 is in LD¹⁹ ($R^2 = 0.39$) with
188 variant rs586178 tagging certain RhCE blood group alleles²⁰. Lead variant in chromosome 7,
189 rs8176058, a known tag SNP for Kell blood group antigen²⁰ was positively associated with K antigen
190 (Figure 4C). Lead variant in chromosome 9, rs687621¹⁹, is in strong LD, $R^2 = 1$ with blood group O
191 tagging SNP rs687289²¹. We could also see a strong positive association of rs687621 with blood
192 group O, a positive association with blood group antigen B and a negative association with blood
193 group antigen AB (Figure 4D).



194

195 Figure 4 Association of red blood cell antigens with blood donorship, rs55794721, rs8176058 and
 196 rs687621. Red cell antigens K, Dob, D and AB were negatively, and red cell antigen O positively
 197 associated to blood donorship. Red cell antigens c and e belonging to the most common Rh-negative
 198 haplotype Rh dce were positively associated to rs55794721, whereas red cell antigens D, C and E
 199 were negatively associated with rs55794721. Red cell antigens Cw and Cx were negatively associated
 200 with rs55794721. Red cell antigen K was positively associated with rs8176058. Red cell antigens O
 201 and B were positively associated and red cell antigen AB negatively associated with rs687621 in ABO
 202 gene.

203

204

205

206 Hemoglobin related associations

207 As hemoglobin value within a specified interval is a required for blood donation eligibility, we
208 investigated whether some of the genome-wide significant variants were associated with
209 hemoglobin. Hemoglobin-related associations were seen in chromosomes 6, 9, 11 and 17 in variants
210 rs9968910, rs3130906, rs687621, rs1135071 and rs199598395, respectively (Supplementary Figure
211 1). We observed a negative association between rs199598395 in RNF43 gene in chromosome 17 and
212 blood donorship. rs199598395 has been previously shown to be Finnish enriched and associated
213 with iron deficiency anemia²² and to have an effect on blood donation eligibility²³. Negative
214 association in blood donorship was also seen with rs1135071 in chromosome 11, in a known Finnish
215 enriched Hb variant, Hb Tacoma²⁴, in HBB gene. Linear regression analysis of blood service
216 operational finger-prick Hb measurements showed a decreasing effect of rs199598395, rs1135071
217 and rs3130906 to hemoglobin level -2.99 g/L ($p = 6.43 \times 10^{-30}$, 95% CI [-3.49, -2.5]), -6.46 g/L ($p = 6.66$
218 $\times 10^{-28}$, 95% CI [-7.57, -5.35]) and -0.22 g/L ($p = 0.002$, 95% CI [-0.32, -0.11]) respectively, and
219 moderate increasing effect of rs9968910 and rs687621, 0.52 g/L ($p = 4.03 \times 10^{-22}$, 95% CI [0.42-0.62])
220 and to 0.25 g/L ($p = 1.72 \times 10^{-05}$, 95% CI [0.15-0.35]), respectively (Supplementary file 2). In summary,
221 all the alleles of these five variants that had an increasing effect on hemoglobin, were more frequent
222 in blood donors (Table 2).

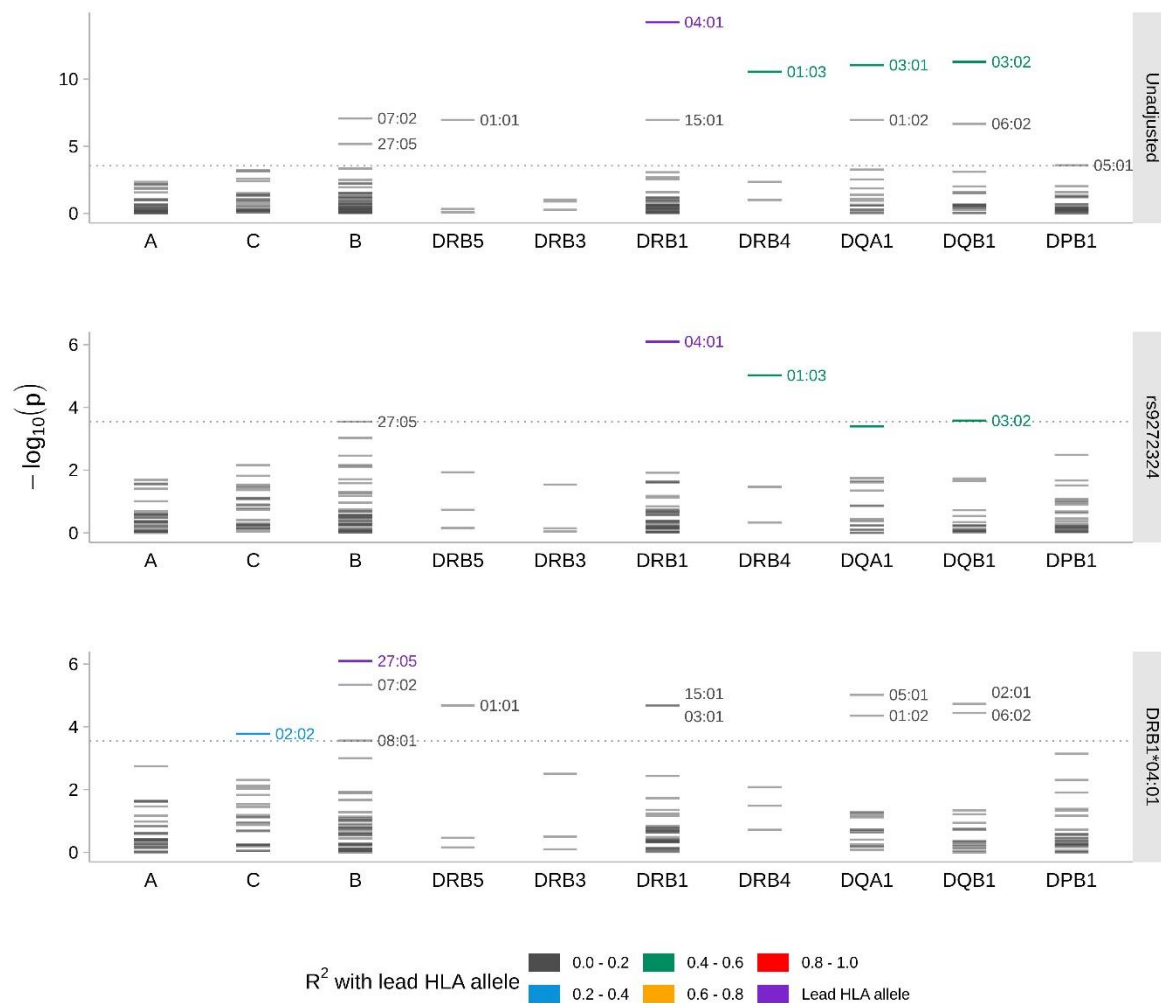
223 We detected a higher allele frequency, 0.69, of rs9968910, previously shown to be associated with
224 diseases of iron metabolism¹⁸, among patients with clinical hereditary hemochromatosis (ICD10 code
225 E83.1) in FinnGen (N=477) compared to population level in Finland, 0.33²⁵. rs9968910 is in weak LD
226 with known HFE mutations causing hemochromatosis: rs1799945 (H63D, $R^2 = 0.18$) and rs1800562
227 (C282Y, $R^2 = 0.1$)¹⁹.

228

229 Association of the *HLA* alleles

230 Because of the known strong role of the HLA region in immunology and the predisposing risk of
231 certain HLA alleles in autoimmunity^{5-8,26}, we performed an association study with imputed HLA
232 alleles for blood donor endpoint. We could see a strong association ($p = 1.36 \times 10^{-16}$) with rs9272324
233 in chromosome 6 in HLA-DQA1 gene in the genome-wide association study of blood donorship
234 (Figure 1B). However, after adjusting with T1D (ICD10 E10 and ICD9 250), no significant association
235 in *HLA-DQA1* gene was seen (Figure 1C). *HLA* association analysis for the blood donor phenotype
236 (Figure 5, upper panel) revealed negative association with HLA-alleles of the well-known T1D risk
237 genotypes *HLA-DQ2* and *DQ8* which are in linkage with HLA haplotypes *DRB1*03:01-DRB3*01:01-*
238 *DQA1*05:01-HLADQB1*02:01* and *DRB1*04:01-DRB4*01:03-DQA1*03:01-DQB1*03:02*,
239 respectively. The *HLA* alleles in linkage with HLA-DQ8 were negatively associated with blood
240 donorship: *DRB1*04:01* (beta = -0.12, $p = 2.2 \times 10^{-11}$), *DRB4*01:03* (beta = -0.06, $p = 2.75 \times 10^{-8}$),
241 *DQA1*03:01* (beta = -0.09, $p = 1.16 \times 10^{-8}$) and *DQB1*03:02* (beta = -0.09, $p = 9.99 \times 10^{-9}$). *HLA-*
242 alleles previously shown to be associated with HFE C282Y allele in Finland¹⁷ *B*07:02* (beta = 0.07, $p =$
243 5.45×10^{-5}), *DRB1*15:01* (beta = 0.06, $p = 5.45 \times 10^{-5}$), *DQA1*01:02* (beta = 0.05, $p = 5.45 \times 10^{-5}$) and
244 *DQB1*06:02* (beta = 0.06, $p = 9.24 \times 10^{-5}$) were positively associated with blood donorship. *HLA-*
245 *DRB5*01:01* (beta = 0.06, $p = 5.45 \times 10^{-5}$) and *HLA-DPB1*05:01* (beta = 0.1, $p = 0.04$) were positively
246 associated with blood donorship. Furthermore, *HLA-B*27:05* (beta = -0.07, $p = 1.96 \times 10^{-3}$), a well-
247 known ankylosing spondylitis risk allele²⁶, was negatively associated with blood donorship.
248 Adjustment with chr6 lead variant, rs9272324 (Figure 5, middle panel), decreased the effect sizes
249 and increased p-values of the above-mentioned *HLA* alleles in linkage with *HLA-DQ8* and *HLA-*
250 *B*27:05* and increased the p-values of the above mentioned HFE C282Y related *HLA*-alleles above
251 the significance level (Supplementary file 2). Furthermore, when adjusted with the lead *HLA*-allele,
252 *DRB1*04:01* (Figure 5, lower panel), *HLA-B*27:05* (beta = -0.08, $p = 2.84 \times 10^{-4}$) and *HLA-C*02:02*
253 (beta = -0.06, $p = 2.95 \times 10^{-2}$) in LD ($r^2 = 0.3$) with *HLA-B*27:05*, *HLA*-alleles in linkage with the T1D
254 risk genotype *HLA-DQ2*; *DRB1*03:01* (beta = -0.05, $p = 4.31 \times 10^{-3}$), *DQA1*05:01* (beta = -0.06, $p =$
255 2.45×10^{-3}), *DQB1*02:01* (beta = -0.06, $p = 4.31 \times 10^{-3}$) and *HLA-B*08:01* (beta = -0.05, $p = 4.2 \times 10^{-3}$)

256 ⁰²), a known *HLA-B* allele in linkage with *HLA-DQ2* in Finland, were negatively associated with
 257 blood donorship (Figure 4, lower panel). In *HLA-DRB1*04:01* adjusted analysis, HFE C282Y related
 258 *HLA* alleles *B*07:02*, *DRB1*15:01*, *DQA1*01:02* and *DQB1*06:02* were positively associated with
 259 blood donorship, but with lower p-values than in *HLA*-association analysis without any adjustment
 260 (Supplementary file 2).



261

262

263 Figure 5. Conditional *HLA* association analysis. Upper panel: *HLA* association analysis for blood
 264 donorship. Middle panel: *HLA* association analysis for blood donorship adjusted with rs9272324.
 265 Lower panel: *HLA* association analysis for blood donorship adjusted with *HLA-DRB1*04:01*.
 266 Covariates used in all the analysis: age, sex, BMI, PC1-10, birth region and FinnGen genotyping array
 267 version. Dotted horizontal line corresponds to the highest p-value that still fits the FDR limit of 0.05.

268

269

270

271 Variants altering protein expression levels

272 To investigate the function of the lead GWAS variants more closely, we employed protein

273 quantitative trait loci (pQTL) and functional enrichment analyses. Of the 41 fine-mapped and five

274 MHC region variants (Table 2), 14 were found to be significantly associated (FDR <0.05) with 81

275 unique plasma protein expression levels. Most of the associations, comprising 63 unique proteins,

276 were found with rs687621 located in the *ABO* gene. These included genes that encode for proteins

277 fundamental to the histo-blood group ABO formation, such as *ABO* antigens, and *FUT1*, the *H-*

278 antigen. The latter is converted by glycosyltransferase expressed by individuals with *A*, *B* or *AB* into

279 antigen *A* or *B* while individuals with the *O* blood group antigen lack this activity²⁷. Decreasing effects

280 on expression were seen for e.g. *FUT1*, *VWF*, *F8* and *CLEC4M*, and increasing effects for *ALPI* and

281 *SELE*. Importantly, rs55794721 exerted a decreasing effect on *ICAM4*, a gene encoding for LW

282 glycoprotein present in the RhD protein complex (Figure 6). In addition, two variants were

283 associated with protein expression levels of genes putatively associated with carcinogenesis (Figure

284 6). rs12539059 regulates protein levels of *KLK11*, a kallikrein suspected to play a role in

285 carcinogenesis in human tissues²⁸. Another putatively cancer-related²⁷ protein association was seen

286 for rs60678519 and *GPNMB*. Overexpression of *GPNMB* has been shown to lead into

287 immunosuppression within tumor immune microenvironment and further into poorer prognosis in

288 variety of cancers²⁹.

289 The STRING³⁰ functional enrichment analysis tool identified several functional processes (PPI

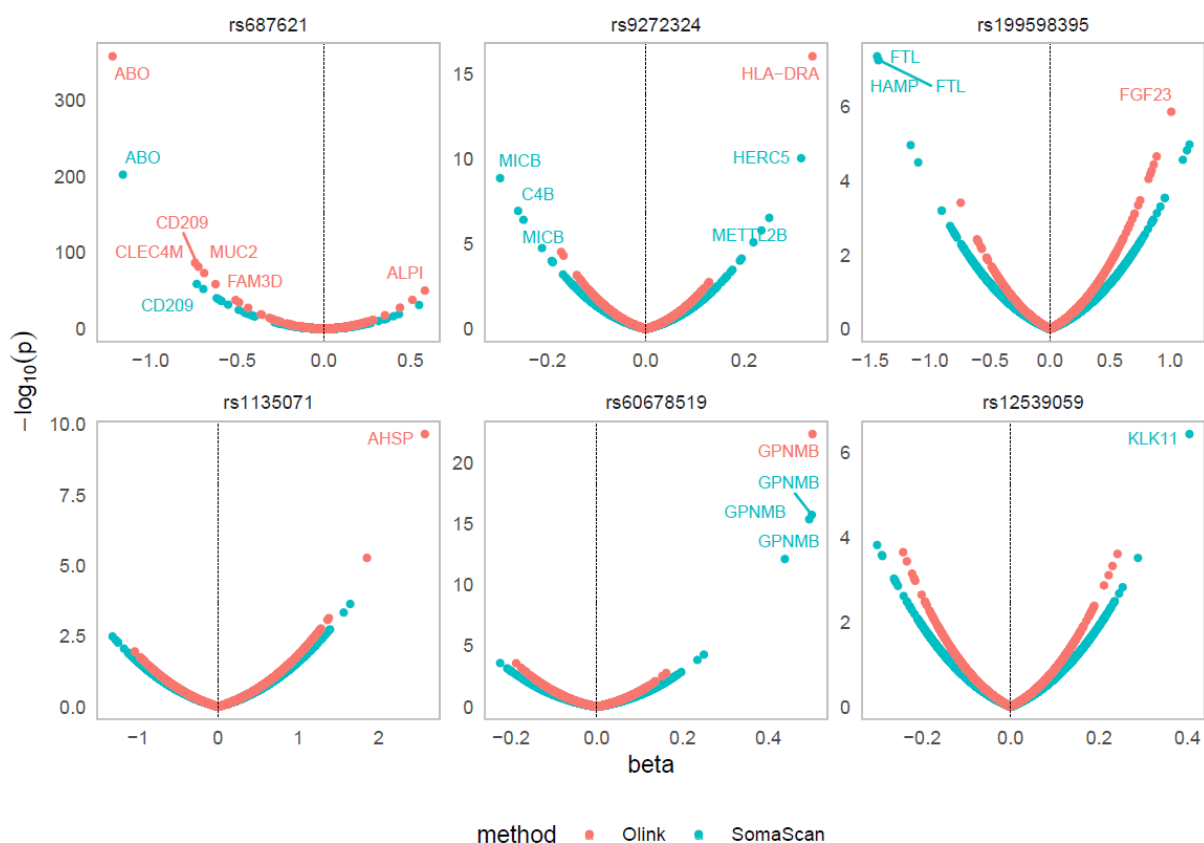
290 enrichment p-value < 1 x 10⁻¹⁶) among the 81 proteins. Gene Ontology (GO) revealed the enrichment

291 of cell adhesion molecules in biological processes and molecular functions. These molecules were

292 further refined to ICAM, C-type lectin and immunoglobulins in protein domains. Other functional

293 categories were blood groups, hemoglobin and iron metabolism, immunology, and cell-cell adhesion
 294 (Supplementary file 3).

295 We detected three associations with protein expression level alteration that weren't involved with
 296 any of the enriched biological or cellular processes (Supplementary file 3). rs113236240 showed an
 297 increasing effect (beta = 0.36) on *PPCDC*, encoding for a protein needed in coenzyme A
 298 biosynthesis²⁷. rs687621 showed a decreasing effect (beta = -0.4) on *GOLM2*, a proto-oncogene
 299 whose overexpression associates with proto-oncogene *HER2/neu*, found in human breast and
 300 ovarian cancers²⁷. rs1135071 showed a strong increasing effect (beta 2.57) on *AHSP* (Figure 6), which
 301 encodes for chaperone protein binding free alpha-globin and therefore having a stabilizing effect in
 302 hemoglobin assembly²⁷.



303
 304 Figure 6 Association of the variants to protein expression level alteration. Six variants with
 305 association to protein level alteration in pQTL analysis are shown in the figure. The lead variant in
 306 ABO gene rs687621, was found to be associated to 63 unique protein level alterations. Lead variant
 307 in MHC region in unadjusted GWAS, rs9272324, showed association mainly to immunity related
 308 protein level alteration. Variants with decreasing effect on hemoglobin level (Supplementary file 2)

309 rs199598395 and rs1135071 showed association to iron metabolism genes and hemoglobin related
310 gene, respectively. rs6067859 and rs12539059 showed increasing effect on expression of putative
311 cancer-related genes. All the variants effecting on protein levels can be found in Table 2 and in more
312 detail in Supplementary file 3.
313

314 Putative bias caused by red cell antigen enrichment in research setting

315 Protective association of red cell antigen O to venous thromboembolism (VTE) has been shown
316 previously by multiple studies¹⁴⁻¹⁶. To investigate the putative bias an ABO enrichment could cause
317 to VTE association study, we conducted an association analysis with VTE as an endpoint in
318 chromosome 9 (Supplementary Figure 2A) by adjusting for imputed ABO antigens (Supplementary
319 Figure 2). Our results showed that after the adjustment, the p-value of the lead variant failed to
320 reach the genome-wide significance level 5×10^{-8} (rs582118 unadjusted $p = 3.28 \times 10^{-115}$, ABO
321 adjusted $p = 1.16 \times 10^{-6}$) but the signal was not completely removed as some genome-wide
322 significant variants still remained (Supplementary Figure 2A-B). The adjustment not only removed
323 associations of some SNPs but also made visible other variants not detected in the basic analysis
324 (Supplementary Figure 2C).

325 We could see a strong association of rs55794721 ($\beta = 0.16$, $p = 8.88 \times 10^{-89}$) to blood donorship
326 and furthermore we showed the association of this variant to RhD negative haplotype, Rh dce
327 (Figure 4). rs55794721 is previously shown to be associated with height¹⁸. The blood donors are
328 taller than the control population (Table 1) and due to the strong immunogenicity of RhD blood group
329 system¹¹, the Rh dce tagging rs55794721 is enriched in blood donor population (Table 2). To
330 understand the possible bias the RhD negative enrichment could cause, we conducted an association
331 study for height and adjusted the primary analysis with cohort information. Our results show that
332 RhD dce enrichment can cause bias in research setting. Prior the adjustment, rs55794721 was
333 statistically significant ($p = 1.74 \times 10^{-13}$) but after the adjustment failed to reach reduced the
334 genome-wide significance level 5×10^{-8} (after adjustment $p = 6.86 \times 10^{-7}$). Furthermore, the effect

335 size of the variant varied depending on the adjustment (rs55794721 unadjusted beta = 0.14,
336 adjusted beta = 0.09) (Supplementary Figure 3).

337

338

339 Discussion

340 In the present study we conducted a genome-wide comparison between blood donor biobank
341 donors with relatively long and active blood donation history¹⁷ and FinnGen. The FinnGen control
342 population included biobank participants from hospital biobanks as well as from population cohorts
343 and patients at occupational health clinics. As the latter two cohorts comprise largely healthy
344 individuals, and the disease-specific legacy cohorts were excluded from the analysis, the study
345 controls are likely representative of the general Finnish population.

346 Negative genetic correlation towards blood donorship was observed with several phenotypes, which
347 could be a consequence of HDE. Strong negative correlation to anaemias in blood donors could be a
348 result of blood donation eligibility but just as well certain autoimmune diseases, such as Crohn's
349 disease, which may cause anaemia through secondary blood loss.

350 The observed protection of blood donors from certain diseases can be directly explained by donor
351 eligibility criteria that selects healthy individuals. For example, blood donors lack viral hepatitis due
352 to the exclusion of infected individuals. Surprisingly, our results reveal that blood donors not only
353 exhibit a protective genetic profile against viral hepatitis, but also a broader negative genetic
354 correlation extending beyond viral hepatitis to infectious diseases in general, even though these are
355 not explicitly targeted by donor eligibility criteria. This kind of negative genetic correlation also
356 manifests in various mental illnesses and Alzheimer's disease. While pleiotropic effects may explain
357 the phenomenon, our analyses indicate that genetic correlation with the phenotype targeted by the
358 eligibility criteria is not consistently strong. Further detailed investigations are needed to fully

359 understand pleiotropy in blood donor selection and to explore the potential benefits of an active
360 blood donor population for genetic and biomedical research.

361 Expectedly, genetic variants in the MHC region played strong role in several genetic associations as
362 well as in genetic correlation. HLA alleles with known autoimmune associations occurred with lower
363 frequency in the blood donor population than in the control population, whereas hemochromatosis
364 related HLA alleles were more frequent among the blood donors. We have previously shown the
365 enrichment of *HFE C282Y* homozygotes and certain *HLA* haplotype within these donors in the Blood
366 Service Biobank¹⁷. These findings were repeated in the present study with new variants, rs9968910,
367 more frequent among patients with clinical hemochromatosis diagnosis (ICD10: E83.1) and
368 rs9272324 tagging several autoimmune related *HLA* haplotypes, including hemochromatosis related
369 *HLA* haplotype. However, we could not see the ancestral hemochromatosis marker *HLA-A*03:01*^{31,32}
370 in the HLA-association analysis. *HLA-DPB1*05:01* hasn't been previously shown to be associated with
371 the *HLA-A*03:01-C*07:02-B*07:02-DRB1*15:01-DQA1*01:02-DQB1*06:02* haplotype but instead
372 has been shown to be enriched in with *HLA-A*02:01-C*07:02-B*07:02-DRB1*15:01-DQA1*01:02-*
373 *DQB1*06:02*³³. However, our unpublished data shows that *HLA-A*03:01-C*07:02-B*07:02-*
374 *DRB1*15:01-DQA1*01:02-DQB1*06:02-DPB1*05:01* haplotype occurs in the Blood Service Biobank
375 with a frequency of 0.00011. Taken the enrichment of *C282Y* homozygotes in the Blood Service
376 Biobank and the positive association of these *HLA* alleles with blood donorship in this study into
377 consideration, it could be possible that this haplotype is associated with clinical hemochromatosis.
378 However, more studies are needed to confirm the *HLA* haplotype among donors with clinical
379 hemochromatosis.

380 In addition to tagging certain autoimmune related haplotypes, rs9272324 was shown to enhance the
381 protein levels of *HLA-DRA* encoding the nonpolymorphic *DR* alpha-chain³⁴ essential for the stable
382 expression of DR molecules on cell surface. Taken this and the known autoimmune associations of
383 *HLA-DRB1*15:01* into consideration, it could be possible that rs9272324 plays a role in the known

384 immunological abnormalities often met in patients with clinical hemochromatosis. Furthermore, the
385 significantly higher frequency of rs9968910 and rs9272324 among individuals with clinical
386 hemochromatosis diagnosis, could shed a light in the long discussed low penetrance of the well
387 described *HFE* variants *C282Y* and *H63D* in clinical hemochromatosis.

388 The strong immunogenicity of certain blood group antigens^{10–13} as well as the constant need of the
389 emergency blood, O RhD neg, causes enrichment of these red cell antigens into the blood donor
390 population as demonstrated in the present study. Multiple studies have shown the relationship
391 between ABO blood group and cardiovascular conditions and more precisely the decreased risk of
392 blood group O to thromboembolic end points^{15,35}. In research setting where blood donors are used
393 as a healthy control population, confounding factors as the blood group O enrichment should be
394 taken into consideration as shown in this study by VTE association analysis (Supplementary Figure 2).
395 Furthermore, the blood group antigen related variants rs55794721 allele A and rs687621 allele A
396 decreased the expression level of genes known to have a role in the function or structure of the
397 cognate blood group molecule, such as RhD accessory protein ICAM4, a Landsteiner-Wiener
398 glycoprotein¹¹, and FUT1, fucosyltransferase needed in the synthesis of red cell antigens A and B^{27,36}.
399 rs687621 alone altered expression levels of 63 genes, whose products are involved in various of
400 biological pathways (Supplementary file 3). Due to the blood group O enrichment in the blood donor
401 pool, these included e.g., decreasing effect on proteins with a role in hemostasis and thrombosis
402 such as VWF and F8. An increasing effect of protein levels of rs687621 allele A was seen with ALPI
403 and SELE, the former having a role in the defense system of gut mucosal and is thought to prevent
404 bacterial translocation and the latter been speculated to have role in atherosclerosis. Both of these
405 immunity and cardiovascular related biological functions are well-known roles of ABO blood group
406 antigens^{14,15,36,37}. Furthermore, another red cell antigen related finding in this work was the variant
407 rs55794721, which was shown to tag the most frequent RhD negative haplotype in the European
408 ancestry, Rh dce.

409 In addition to hemochromatosis, the results of the present study highlight genetic factors with
410 possible effect on recipient matching or donation activity. We show a lower expression level of AHSP
411 protein in blood donors due to the lower occurrence of rs1135071 allele A, which was also shown to
412 decrease the hemoglobin level in this work. Consequently, blood donors had higher hemoglobin
413 levels. AHSP plays a role in hemoglobin assembly by stabilizing the α Hb subunits and preventing the
414 self-aggregation of the excess α Hb subunits prior the formation of HbA1 subunit³⁸. To our
415 understanding, no earlier studies indicate the increasing effect of *Hb Tacoma* variant rs1135071 on
416 AHSP levels. Taken the speculated role of AHSP as a genetic modifier in β thalassemia^{38,39} and the
417 described normal clinical phenotype of *Hb Tacoma* heterozygotes in account⁴⁰, rs1135071 could be
418 of further interest in β thalassemia related research. Furthermore, regarding the donor health, it
419 may be useful to analyze whether blood donation is a harmless event for *Hb Tacoma* heterozygotes
420 or whether the blood products are suitable for recipients with e.g. sickle cell disease⁴¹. The known
421 association of rs199598395 with iron deficiency¹⁸, its effect on blood donation eligibility²³ and the
422 decreasing effect on hemoglobin level demonstrated in this study support the need for evaluating its
423 role in blood donation eligibility or interval in more detail.

424 In biomedical research, active blood donors offer valuable opportunities due to their positive
425 attitude toward research, availability for longitudinal sampling and unique genetic makeup.
426 However, when using blood donors exclusively as a control group, critical evaluation and
427 interpretation of results are essential. For instance, our VTE and height association analysis
428 highlights the need to consider possible blood group enrichment and its impact on disease risk to
429 adjust for cohort information to minimize biases. Moreover, genome-wide association studies in
430 FinnGen have been conducted without adjustment for the cohort information. Hence, the possibility
431 of HDE or blood group enrichment caused biases in the FinnGen results and therefore also in the
432 phenotype associations of this study, cannot be completely excluded for all the variants as was
433 shown with our height association study. In addition, Blood Service Biobank is one of the cohorts
434 used for FinnGen association studies^{18,22}, which results are utilized on this study. Although blood

435 donors represent minority in FinnGen project, the putative accumulating impact on the effect sizes
436 and p-values of this study, cannot be completely excluded.

437 In this study we present, to our knowledge for the first time, the genetic underpinnings of HDE and
438 blood group-based selection in active blood donors. Our findings highlight the unique genetic
439 makeup of this donor population and its impact on health and blood donation suitability. The results
440 demonstrate the role of genetics in maintaining good health status and active blood donation career
441 that is also connected to a better mental health at the genetic level. Furthermore, research using
442 blood donors as a control group should account for this distinct genetic structure, even after
443 donation ceases. Additionally, the enrichment of specific blood group antigens among blood donors
444 warrants consideration in research. Further investigations are necessary to fully elucidate the
445 implications of these discoveries, but they underscore the genetic structure behind HDE and the
446 potential of active blood donor cohorts for advancing biomedical genetic research.

447

448 Material and Methods

449 Ethics statement

450 Study subjects in FinnGen provided informed consent for biobank research, based on the Finnish
451 Biobank Act. Alternatively, separate research cohorts, collected prior the Finnish Biobank Act came
452 into effect (in September 2013) and start of FinnGen (August 2017), were collected based on study-
453 specific consents and later transferred to the Finnish biobanks after approval by Fimea (Finnish
454 Medicines Agency), the National Supervisory Authority for Welfare and Health. Recruitment
455 protocols followed the biobank protocols approved by Fimea. The Coordinating Ethics Committee of
456 the Hospital District of Helsinki and Uusimaa (HUS) statement number for the FinnGen study is Nr
457 HUS/990/2017. Full list of permits numbers are listed in Supplementary information.

458 All the sample donors had given a written biobank consent. The use of the data in the present study
459 is in accordance with the biobank consent and meets the requirements of the Finnish Biobank Act
460 688/2012. A formal biobank decision 004-2022 for the research project has been granted by the
461 Finnish Red Cross Blood Service Biobank. The use of the FinnGen data has been accepted with
462 FinnGen proposal F_2022_086.

463

464 Data acquisition

465 Genome data used in the present study originated from samples that were genotyped in the
466 FinnGen project with the FinnGen ThermoFisher Axiom custom array v1 or v2 and genome
467 imputation version R12. Genotyping, quality control, and genome imputation protocols are
468 described in detail in FinnGen Gitbook⁴². In short, genotype calling was performed with GenCall or
469 zCall algorithm for Illumina and AxiomGT1 algorithm for Affymetrix arrays. Prior the imputation,
470 genotyped samples were pre-phased with Eagle 2.3.5 with the default parameters, except the
471 number of conditioning haplotypes was set to 20,000. Genotype imputation was performed using
472 the population-specific imputation reference panel SISu v4.2 with Beagle 4.1 (version 27Jan18.7e1).

473 In addition to genome data, the following electronic health registry data and supplementing data
474 were utilized: ICD (ICD9 and 10) code for type 1 diabetes, occurrence of venous thromboembolism,
475 age, BMI, sex, region of birth and genetic principal components (PC) 1-10. Blood donation data
476 contained blood donation history and hemoglobin value measured at the point of each blood
477 donation event and was used when applicable. Donors with three or less donation events were
478 filtered from the hemoglobin analyses. Blood donation data was available from 44,675 donors.

479 Due to the known selection of healthy individuals as blood donors, legacy samples⁴², highly enriched
480 in certain common diseases, were filtered out from the study cohort to minimize possible bias in
481 downstream analyses. Individuals under 18 years of age were removed as 18 is the age limit of blood

482 donation. In addition, individuals born in regions in Finland that were ceded to Soviet Union were
483 filtered out due to age structure of the region and the maximum blood donation age of 70 years. As
484 BMI might influence donor eligibility, individuals lacking BMI information were filtered out. After
485 filtering, total number of FinnGen genome data used in this study was 53,688 cases (blood donors)
486 and 228,060 controls (other FinnGen participants).

487

488 Methods

489 Statistical analyses

490 If not stated otherwise, all statistical analyses were performed in R⁴³ version 4.3 or 4.4, with
491 RStudio⁴⁴. The genome-wide significance p-value threshold $p < 5 \times 10^{-8}$ was used in GWAS. In all
492 other analyses p-values were adjusted with the Benjamini–Yekutieli procedure⁴⁵, and significance
493 threshold of 0.05 was used. All the phenotypes described here, have been previously studied and
494 described in FinnGen in DF12 dataset. At the present, only DF10 data set is publicly available¹⁸.

495

496 Association analysis and fine-mapping

497 Genome-wide association study, GWAS, with an additive genetic model, was performed in FinnGen
498 pipeline with Regenie^{46,47} v2.2.4 with blood donor status as a binary endpoint. Sex, age, BMI, PC1-10,
499 birth region, and FinnGen genotyping array version were used as covariates in the GWAS. To
500 discover associations independent of type 1 diabetes (T1D) in chromosome 6, the FinnGen T1D
501 endpoint²² was used as an additional covariate in the chromosome 6 association analysis.

502 Fine-mapping for the genome wide significant signals ($p < 5 \times 10^{-8}$) of the association study was
503 performed in FinnGen pipeline⁴⁷ with SuSiE⁴⁸ excluding MHC region (GRCh38, chr6:25-34 Mb)^{22,42}.

504 For each fine-mapped locus we accepted the credible set as an independent hit if the strongest
505 primary p-value was $p < 5 \times 10^{-8}$. In case of multiple credible sets within a single locus, to accept the

506 secondary hit, we required genome-wide significance and $\log_{10}(\text{Bayes factor}) > 2$. As the MHC region
507 is excluded from the fine-mapping pipeline due to its strong LD, the lead variants from the T1D
508 adjusted association analysis, rs9968910, rs10947114, rs3130906 and rs4713637, were selected for
509 the downstream analysis. Moreover, the lead variant in the MHC region in GWAS, rs9272324, was
510 included in the further analyses due to its strong association in autoimmunity¹⁸ and the
511 hypothesized lower association with autoimmunity among blood donors.

512 Association analysis for all the covariates used in GWAS and the imputed blood groups to the blood
513 donor end point was performed with logistic regression in R. We further analyzed the association of
514 all the covariates used in GWAS and imputed blood group antigens to the lead variants in dosage
515 form in chromosomes 1 (rs55794721), 7 (rs8176058) and 9 (rs687621) by using linear regression.

516 Association testing of each classical HLA allele *HLA-A*, *-B*, *-C*, *-DRB1*, *-DQA1*, *-DQB1*, *DPB1* and *HLA-*
517 *DRB3-5* for the blood donor endpoint was performed using Regenie v3.0.1. First, a genotype data set
518 for fitting Regenie null models was formed with Plink2 v2.00a4LM using FinnGen DF12 HapMap3
519 variants as a basis and randomly thinning the variants to 500 000 with further filtering for minor
520 allele frequency at least 0.1, Hardy-Weinberg equilibrium greater than p-value $1e-15$ and minimum
521 allele count at least 100. Second, the Regenie null models were fitted on the filtered genotype data
522 and used in the association step to take consanguinity into account. To dissect the HLA signal
523 further, two additional association tests were performed: i) conditioning for GWAS chromosome 6
524 lead variant rs9272324 allele dosage and ii) conditioning for the HLA allele dosage with the strongest
525 association, *HLA-DRB1*04:01*, in the primary HLA association analysis.

526 To understand the putative bias caused by red cell antigen, ABO, enrichment in the blood donor
527 pool, we conducted an association study in chromosome 9 in FinnGen pipeline with Regenie^{46,47}
528 v2.2.4 with FinnGen venous thromboembolism²² as a binary endpoint. Sex, age, PC1-10, FinnGen
529 genotyping array version, and FinnGen batch information were used as covariates. In the primary
530 analysis there were 19,957 cases and 344,672 controls. The primary analysis was conditioned with

531 imputed ABO red cell antigens. After filtering out 20 individuals based on low posterior probability of
532 the imputed ABO antigens, 19,956 cases and 344,653 controls remained in the conditional analysis.

533 To further understand putative bias in FinnGen association results, we conducted an association
534 study in chromosome 1 in FinnGen pipeline with Regenie^{46,47} v2.2.4 with FinnGen height²² as a non-
535 binary endpoint. Sex, age, PC1-10, FinnGen genotyping array version, and FinnGen batch information
536 were used as covariates. The study had 364,629 cases. The primary analysis was conditioned with
537 cohort information, to minimize the possible bias of RhD dce enriched haplotype in blood donors.

538

539 Genetic correlation

540 All pair-wise genetic correlations between blood donorship, hemoglobin and all the 2470
541 phenotypes previously studied as part of FinnGen study were computed using LD Score Regression
542 v1.0.1 using Finnish LD panel in FinnGen pipeline⁴⁷. The computation was based on the GWAS
543 summary statistics previously obtained using Regenie for each phenotype. We used the Benjamini-
544 Yekutieli method to control FDR of genetic correlation at level 0.05. Genetic correlation between
545 groups of phenotypes was approximated as the average of all the pair-wise genetic correlations
546 between the groups.

547

548 HLA and blood group imputation

549 The alleles of the classical HLA genes, *HLA-A*, *-C*, *-B*, *-DRB1*, *DRB3-5*, *-DQA1*, *-DQB1*, and *-DPB1*, had
550 been previously imputed at four-field resolution (i.e., defining protein sequence variation) in
551 FinnGen using HIBAG⁴⁹ algorithm with population-specific reference panel as reported earlier⁵⁰. The
552 dosage value of each HLA-allele was used in downstream analyses. Altogether 37 Red Blood cell,
553 *RBC*, antigens in 14 different blood group systems were imputed using random forest models as
554 described by Hyvärinen et al⁵¹. After imputation, *P1*, *A1* and *A2* antigens were excluded from

555 downstream analyses due to uncertain frequency at the population level. In addition, blood group
556 antigens *HrS* and *HrB*, occurring mainly in African population, are in high correlation with blood
557 group antigen *e* and have low clinical significance (consultation with expert at Finnish Red Cross
558 Blood Service), hence they were excluded from further analyses. After imputation, the samples were
559 filtered based on the posterior probability, PP, value; samples with $PP < 0.5$ were considered as
560 antigen negative and samples with $PP \geq 0.5$ were considered as antigen positive. Altogether 13
561 individuals were excluded from downstream blood group related analyses due to all PP values in
562 ABO being < 0.5 .

563

564 pQTL

565 Protein quantitative trait loci, pQTL, analysis had been previously performed in FinnGen^{47,52} with
566 multiplex antibody-based immunoassay and multiplex aptamer-based immunoassay, Olink and
567 SomaScan⁵³, respectively, to detect associations between genetic variants and measured protein
568 levels. We extracted the proteomics summary statistics data for the 41 fine-mapped and the five
569 MHC lead variants in the present study from both datasets, Olink and SomaScan, and filtered the
570 results for statistical significance at $FDR < 0.05$ level.

571 To evaluate the enrichment of the associated proteins in functional processes, we used STRING
572 interaction network and functional enrichment analysis tool³⁰.

573

574

575 Data Availability

576 FinnGen summary statistics are available at www.finnngen.fi. Data supporting the current study are
577 available from the authors upon reasonable request and with permission of FinnGen.

578 The GWAS results for the blood donor phenotype are available at GWAS catalogue under accession
579 number XXXXX.

580

581 Code Availability

582 Code is available in GitHub XXXXXX

583

584

585 References

- 586 1. Mitchell, R. Blood banks, biobanks, and the ethics of donation. *Transfusion* **50**, 1866–1869
587 (2010).
- 588 2. Raivola, V., Snell, K., Helén, I. & Partanen, J. Attitudes of blood donors to their sample and
589 data donation for biobanking. *Eur. J. Hum. Genet.* **27**, 1659–1667 (2019).
- 590 3. Raivola, V., Snell, K., Helen, I. & Partanen, J. Attitudes of blood donors to their sample and
591 data donation for biobanking. *Eur. J. Hum. Genet.* **27**, 1659–1667 (2019).
- 592 4. Finnish Red Cross Blood Service - donation eligibility.
593 <https://www.veripalvelu.fi/en/faq/?search=&category=eligibility>.
- 594 5. Hu, X. *et al.* Additive and interaction effects at three amino acid positions in HLA-DQ and
595 HLA-DR molecules drive type 1 diabetes risk. *Nat. Genet.* **47**, 898–905 (2015).
- 596 6. De Silvestri, A. *et al.* The Involvement of HLA Class II Alleles in Multiple Sclerosis: A Systematic
597 Review with Meta-analysis. *Dis. Markers* **2019**, 1409069 (2019).
- 598 7. Dendrou, C. A., Petersen, J., Rossjohn, J. & Fugger, L. HLA variation and disease. *Nat. Rev.*
599 *Immunol.* **18**, 325–339 (2018).
- 600 8. Ritari, J., Koskela, S., Hyvärinen, K., FinnGen & Partanen, J. HLA-disease association and
601 pleiotropy landscape in over 235,000 Finns. *Hum. Immunol.* **83**, 391–398 (2022).
- 602 9. Atsma, F., Veldhuizen, I., Kort, W. De & Vegt, F. De. Healthy donor effect: its magnitude in
603 health research among blood donors. *Transfusion* **51**, 1820–1828 (2011).
- 604 10. Marsh, W. L. & Redman, C. M. The Kell blood group system: a review. *Transfusion* **30**, 158–
605 167 (1990).
- 606 11. Avent, N. D. & Reid, M. E. The Rh blood group system: a review. *Blood* **95**, 375–387 (2000).
- 607 12. Levine, P. & Stetson, R. E. Landmark article July 8, 1939. An unusual case of intra-group
608 agglutination. By Philip Levine and Rufus E Stetson. *JAMA* **251**, 1316–1317 (1984).
- 609 13. GIBLETT, E. R. A critique of the theoretical hazard of inter vs. intra-racial transfusion.
610 *Transfusion* **1**, 233–238 (1961).
- 611 14. Stowell, S. R. & Stowell, C. P. Biologic roles of the ABH and Lewis histo-blood group antigens
612 part II: thrombosis, cardiovascular disease and metabolism. *Vox Sang.* **114**, 535–552 (2019).
- 613 15. Dahlén, T., Clements, M., Zhao, J., Olsson, M. L. & Edgren, G. An agnostic study of associations

- 614 between ABO and RhD blood group and phenome-wide disease risk. *Elife* **10**, (2021).
- 615 16. Ward, S. E., O'Sullivan, J. M. & O'Donnell, J. S. The relationship between ABO blood group,
616 von Willebrand factor, and primary hemostasis. *Blood* **136**, 2864–2874 (2020).
- 617 17. Clancy, J. *et al.* Blood donor biobank as a resource in personalised biomedical genetic
618 research. *Eur. J. Hum. Genet.* (2024) doi:10.1038/s41431-023-01528-0.
- 619 18. FinnGen. FinnGen Result Browser. <https://r10.finnngen.fi/> (2024).
- 620 19. National Institutes of Health LDlink. <https://ldlink.nih.gov/?tab=home>.
- 621 20. ISBT Blood Group Allele Tables. [https://www.isbtweb.org/isbt-working-parties/rcibgt/blood-](https://www.isbtweb.org/isbt-working-parties/rcibgt/blood-group-allele-tables.html)
622 [group-allele-tables.html](https://www.isbtweb.org/isbt-working-parties/rcibgt/blood-group-allele-tables.html).
- 623 21. Li, S. & Schooling, C. M. A phenome-wide association study of ABO blood groups. *BMC Med.*
624 **18**, 334 (2020).
- 625 22. Kurki, M. I. *et al.* FinnGen provides genetic insights from a well-phenotyped isolated
626 population. *Nature* **613**, 508–518 (2023).
- 627 23. Toivonen, J., Allara, E., Castrén, J., di Angelantonio, E. & Arvas, M. The value of genetic data
628 from 665,460 individuals in managing iron deficiency anaemia and suitability to donate
629 blood. *Vox Sang.* **119**, 34–42 (2024).
- 630 24. Kangastupa, P. *et al.* The prevalence of hemoglobin Tacoma in Finland detected by HbA1c
631 capillary electrophoresis. *Scand. J. Clin. Lab. Invest.* **83**, 51–57 (2023).
- 632 25. Karczewski, K. J. *et al.* The mutational constraint spectrum quantified from variation in
633 141,456 humans. *Nature* **581**, 434–443 (2020).
- 634 26. Bowness, P. HLA-B27. *Annu. Rev. Immunol.* **33**, 29–48 (2015).
- 635 27. Sayers, E. W. *et al.* Database resources of the national center for biotechnology information.
636 *Nucleic Acids Res.* **50**, D20–D26 (2022).
- 637 28. Borgoño, C. A., Michael, I. P. & Diamandis, E. P. Human tissue kallikreins: physiologic roles
638 and applications in cancer. *Mol. Cancer Res.* **2**, 257–280 (2004).
- 639 29. Lazaratos, A.-M., Annis, M. G. & Siegel, P. M. GPNMB: a potent inducer of
640 immunosuppression in cancer. *Oncogene* **41**, 4573–4590 (2022).
- 641 30. Szklarczyk, D. *et al.* The STRING database in 2023: protein-protein association networks and
642 functional enrichment analyses for any sequenced genome of interest. *Nucleic Acids Res.* **51**,
643 D638–D646 (2023).
- 644 31. Simon, M. *et al.* A study of 609 HLA haplotypes marking for the hemochromatosis gene: (1)
645 mapping of the gene near the HLA-A locus and characters required to define a heterozygous
646 population and (2) hypothesis concerning the underlying cause of hemochromatosis-HLA
647 associa. *Am. J. Hum. Genet.* **41**, 89–105 (1987).
- 648 32. Simon, M., Bourel, M., Fauchet, R. & Genetet, B. Association of HLA-A3 and HLA-B14 antigens
649 with idiopathic haemochromatosis. *Gut* **17**, 332 LP – 334 (1976).
- 650 33. Linjama, T. *et al.* Extended HLA Haplotypes and Their Impact on DPB1 Matching of Unrelated
651 Hematologic Stem Cell Transplant Donors. *Biol. Blood Marrow Transplant.* **25**, 1956–1964
652 (2019).
- 653 34. Brown, J. H. *et al.* Three-dimensional structure of the human class II histocompatibility

- 654 antigen HLA-DR1. *Nature* **364**, 33–39 (1993).
- 655 35. Groot, H. E. *et al.* Genetically Determined ABO Blood Group and its Associations With Health
656 and Disease. *Arterioscler. Thromb. Vasc. Biol.* **40**, 830–838 (2020).
- 657 36. Stowell, C. P. & Stowell, S. R. Biologic roles of the ABH and Lewis histo-blood group antigens
658 Part I: infection and immunity. *Vox Sang.* **114**, 426–442 (2019).
- 659 37. Franchini, M., Favaloro, E. J., Targher, G. & Lippi, G. ABO blood group, hypercoagulability, and
660 cardiovascular and cancer risk. *Crit. Rev. Clin. Lab. Sci.* **49**, 137–149 (2012).
- 661 38. Che Yaacob, N. S., Islam, M. A., Alsaleh, H., Ibrahim, I. K. & Hassan, R. Alpha-hemoglobin-
662 stabilizing protein (AHSP): a modulatory factor in β -thalassemia. *Int. J. Hematol.* **111**, 352–
663 359 (2020).
- 664 39. dos Santos, C. O. & Costa, F. F. AHSP and beta-thalassemia: a possible genetic modifier.
665 *Hematology* **10**, 157–161 (2005).
- 666 40. Giardine, B. *et al.* Updates of the HbVar database of human hemoglobin variants and
667 thalassemia mutations. *Nucleic Acids Res.* **42**, D1063-9 (2014).
- 668 41. Rutherford-Parker, N. J., Colby, J. M., Gehrie, E. A. & Booth, G. S. Unrecognized Hemoglobin
669 Variants in the Donor Blood Supply Are Detectable in the Transfused Population. *Am. J. Clin.*
670 *Pathol.* **154**, 494–498 (2020).
- 671 42. FinnGen. FinnGen Documentation of data release.
672 <https://finngen.gitbook.io/documentation/> (2024).
- 673 43. R Core Team. <https://www.r-project.org/>.
- 674 44. R studio. <https://www.rstudio.com/>.
- 675 45. Benjamini, Y. & Yekutieli, D. The control of the false discovery rate in multiple testing under
676 dependency. *Ann. Stat.* **29**, 1165–1188 (2001).
- 677 46. Mbatchou, J. *et al.* Computationally efficient whole-genome regression for quantitative and
678 binary traits. *Nat. Genet.* **53**, 1097–1103 (2021).
- 679 47. FinnGen gitbook. <https://github.com/FINNGEN/>.
- 680 48. Wang, G., Sarkar, A., Carbonetto, P. & Stephens, M. A Simple New Approach to Variable
681 Selection in Regression, with Application to Genetic Fine Mapping. *J. R. Stat. Soc. Ser. B Stat.*
682 *Methodol.* **82**, 1273–1300 (2020).
- 683 49. Zheng, X. *et al.* HIBAG - HLA genotype imputation with attribute bagging. *Pharmacogenomics*
684 *J.* **14**, 192–200 (2014).
- 685 50. Ritari, J. *et al.* Increasing accuracy of HLA imputation by a population-specific reference panel
686 in a FinnGen biobank cohort. *NAR Genomics Bioinforma.* **2**, (2020).
- 687 51. Hyvärinen, K. *et al.* A machine-learning method for biobank-scale genetic prediction of blood
688 group antigens. *PLoS Comput. Biol.* **20**, e1011977 (2024).
- 689 52. FinnGen. FinnGen Documentation. <https://finngen.gitbook.io/finngen-handbook> (2024).
- 690 53. Suhre, K., McCarthy, M. I. & Schwenk, J. M. Genetics meets proteomics: perspectives for large
691 population-based studies. *Nat. Rev. Genet.* **22**, 19–37 (2021).
- 692

693

694

695 **Acknowledgements:**

696 We want to acknowledge the participants and investigators of FinnGen study. The FinnGen project is
697 funded by two grants from Business Finland (HUS 4685/31/2016 and UH 4386/31/2016) and the
698 following industry partners: AbbVie Inc., AstraZeneca UK Ltd, Biogen MA Inc., Bristol Myers Squibb
699 (and Celgene Corporation & Celgene International II Sàrl), Genentech Inc., Merck Sharp & Dohme
700 LCC, Pfizer Inc., GlaxoSmithKline Intellectual Property Development Ltd., Sanofi US Services Inc.,
701 Maze Therapeutics Inc., Janssen Biotech Inc, Novartis Pharma AG, and Boehringer Ingelheim
702 International GmbH. Following biobanks are acknowledged for delivering biobank samples to
703 FinnGen: Auria Biobank (www.auria.fi/biopankki), THL Biobank (www.thl.fi/biobank), Helsinki
704 Biobank (www.helsinginbiopankki.fi), Biobank Borealis of Northern Finland
705 ([https://www.pppshp.fi/Tutkimus-ja-opetus/Biopankki/Pages/Biobank-Borealis-briefly-in-](https://www.pppshp.fi/Tutkimus-ja-opetus/Biopankki/Pages/Biobank-Borealis-briefly-in-English.aspx)
706 [English.aspx](https://www.pppshp.fi/Tutkimus-ja-opetus/Biopankki/Pages/Biobank-Borealis-briefly-in-English.aspx)), Finnish Clinical Biobank Tampere ([www.tays.fi/en-](http://www.tays.fi/en-US/Research_and_development/Finnish_Clinical_Biobank_Tampere)
707 [US/Research_and_development/Finnish_Clinical_Biobank_Tampere](http://www.tays.fi/en-US/Research_and_development/Finnish_Clinical_Biobank_Tampere)), Biobank of Eastern Finland
708 (www.ita-suomenbiopankki.fi/en), Central Finland Biobank (www.ksshp.fi/fi-FI/Potilaalle/Biopankki),
709 Finnish Red Cross Blood Service Biobank (www.veripalvelu.fi/verenluovutus/biopankkitoiminta),
710 Terveystalo Biobank (www.terveystalo.com/fi/Yritystietoa/Terveystalo-Biopankki/Biopankki/) and
711 Arctic Biobank ([https://www oulu.fi/en/university/faculties-and-units/faculty-medicine/northern-](https://www oulu.fi/en/university/faculties-and-units/faculty-medicine/northern-finland-birth-cohorts-and-arctic-biobank)
712 [finland-birth-cohorts-and-arctic-biobank](https://www oulu.fi/en/university/faculties-and-units/faculty-medicine/northern-finland-birth-cohorts-and-arctic-biobank)). All Finnish Biobanks are members of BBMRI.fi
713 infrastructure (www.bbmri.fi). Finnish Biobank Cooperative -FINBB (<https://finbb.fi/>) is the
714 coordinator of BBMRI-ERIC operations in Finland. The Finnish biobank data can be accessed through
715 the Fingenious® services (<https://site.fingenious.fi/en/>) managed by FINBB.

716 In addition, we want to acknowledge Dr Katri Haimila for her valuable advice with red cell antigen
717 immunogenetics, Dr Kati Hyvärinen for her expertise and kind help with red cell antigen imputation
718 and the personnel of Blood Service Biobank for their kind help and support for the study.

719

720 Author Contributions

721 Original study concept by JC and JR. Genetic and statistical analysis of the study: JC, JT, MA and JR.

722 Visualization: JC, JT and JR. Medical expertise: JL. FinnGen: data curation and resources. Procedures

723 in the Blood Service Biobank: SK. Original manuscript: JC. JC, JT, JL, SK, JP, FinnGen, MA, JR read,

724 commented, and approved the final manuscript.

725 Competing Interests

726 The authors declare no competing interests.