

1 **A novel cortical biomarker signature predicts individual pain sensitivity**

2 Nahian S Chowdhury PhD^{*1,2}, Chuan Bi PhD^{*3, 4}, Andrew J Furman PhD^{5,6}, Alan KI Chiang
3 PhD^{1,2}, Patrick Skippen PhD^{1,7,8}, Emily Si MSc¹, Samantha K Millard PhD^{1,2}, Sarah M
4 Margerison BA^{5,6}, Darrah Spies BSc^{5,6}, Michael L Keaser BA^{5,6}, Joyce T Da Silva PhD^{5,6},
5 Shuo Chen PhD³, Siobhan M Schabrun PhD^{**9,10}, David A Seminowicz PhD^{**5,6,11}

6 *Co-first author

7 **Co-senior author

8 ¹Center for Pain IMPACT, Neuroscience Research Australia, Sydney, New South Wales,
9 Australia

10 ²University of New South Wales, Sydney, New South Wales, Australia

11 ³Division of Biostatistics and Bioinformatics, Department of Epidemiology and Public
12 Health, University of Maryland School of Medicine

13 ⁴Division of Biostatistics, Center for Devices and Radiological Health, U.S. Food and Drug
14 Administration, USA

15 ⁵Department of Neural and Pain Sciences, University of Maryland School of Dentistry,
16 Baltimore, USA

17 ⁶Center to Advance Chronic Pain Research, University of Maryland Baltimore, USA

18 ⁷Data Sciences, Hunter Medical Research Institute, Newcastle, NSW, Australia

19 ⁸School of Medicine and Public Health, University of Newcastle, Newcastle, NSW, Australia

20 ⁹The Gray Centre for Mobility and Activity, Parkwood Institute, St. Joseph's Healthcare
21 London, Canada

22 ¹⁰School of Physical Therapy, University of Western Ontario, London, Canada

23 ¹¹Department of Medical Biophysics, Schulich School of Medicine & Dentistry, University
24 of Western Ontario, London, Canada

25

26 **Date of Revision: 11/04/2024**

27 **Word Count: 3016**

28 **Keywords: Pain, Biomarker, Electroencephalography, Transcranial Magnetic Stimulation**

29

30 **Corresponding Author:**

31 Professor David A Seminowicz

32 Department of Medical Biophysics

33 Schulich School of Medicine & Dentistry

34 University of Western Ontario, London, Canada,

35 E-mail: dseminow@uwo.ca

36

37

38

39

40

41

Key Points

42 **Question:** Can individuals be accurately classified as high or low pain sensitive based on two
43 features of cortical activity: sensorimotor peak alpha frequency (PAF) and corticomotor
44 excitability (CME)?

45 **Findings:** In a cohort study of 150 healthy participants, the performance of a logistic
46 regression model was outstanding in a training set (n=100) and excellent in a test set (n=50),
47 with the combination of slower PAF and CME depression predicting higher pain. Results
48 were reproduced across a range of methodological parameters.

49 **Meaning:** A novel cortical biomarker can accurately distinguish high and low pain sensitive
50 individuals, and may predict the transition from acute to chronic pain

51

52

53

54

55

56

57

58

59

60

61

62

Abstract

63 **Importance:** Biomarkers would greatly assist decision making in the diagnosis, prevention
64 and treatment of chronic pain.

65 **Objective:** The present study aimed to undertake analytical validation of a sensorimotor
66 cortical biomarker signature for pain consisting of two measures: sensorimotor peak alpha
67 frequency (PAF) and corticomotor excitability (CME).

68 **Design:** In this cohort study (recruitment period: November 2020-October 2022), participants
69 experienced a model of prolonged temporomandibular pain with outcomes collected over 30
70 days. Electroencephalography (EEG) to assess PAF and transcranial magnetic stimulation
71 (TMS) to assess CME were recorded on Days 0, 2 and 5. Pain was assessed twice daily from
72 Days 1-30.

73 **Setting:** Data collection occurred at a single centre: Neuroscience Research Australia.

74 **Participants:** We enrolled 159 healthy participants (through notices placed online and at
75 universities across Australia), aged 18-44 with no history of chronic pain, neurological or
76 psychiatric condition. 150 participants completed the protocol.

77 **Exposure:** Participants received an injection of nerve growth factor (NGF) to the right
78 masseter muscle on Days 0 and 2 to induce prolonged temporomandibular pain lasting up to
79 4 weeks.

80 **Main Outcomes and Measures:** We determined the predictive accuracy of the PAF/CME
81 biomarker signature using a nested control-test scheme: machine learning models were run on
82 a training set (n = 100), where PAF and CME were predictors and pain sensitivity was the
83 outcome. The winning classifier was assessed on a test set (n = 50) comparing the predicted
84 pain labels against the true labels.

85 **Results:** The final sample consisted of 66 females and 84 males with a mean age of $25.1 \pm$
86 6.2. The winning classifier was logistic regression, with an outstanding area under the curve
87 (AUC=1.00). The locked model assessed on the test set had excellent performance
88 (AUC=0.88[0.78-0.99]). Results were reproduced across a range of methodological
89 parameters. Moreover, inclusion of sex and pain catastrophizing as covariates did not
90 improve model performance, suggesting the model including biomarkers only was more
91 robust. PAF and CME biomarkers showed good-excellent test-retest reliability.

92 **Conclusions and Relevance:** This study provides evidence for a sensorimotor cortical
93 biomarker signature for pain sensitivity. The combination of accuracy, reproducibility, and
94 reliability, suggests the PAF/CME biomarker signature has substantial potential for clinical
95 translation, including predicting the transition from acute to chronic pain.

96

97

98

99

100

101

102

103

104

105

106

107 Several objective pain biomarkers have been proposed, including neuroimaging
108 markers of mechanistic/structural abnormalities¹⁻³, neural oscillatory rhythms⁴ and “multi-
109 omics” metrics of micro RNA⁵, proteins⁶, lipids and metabolites⁷. Such biomarkers would
110 greatly assist decision making in the diagnosis, prevention and treatment of chronic pain⁸.
111 However, attempts at establishing pain biomarkers have suffered from either insufficient
112 sample sizes to conduct full-scale analytical validation using machine learning⁸⁻¹⁰, failure to
113 use clinically relevant pain models¹¹⁻¹³ or lack of assessment of reproducibility or test-retest
114 reliability^{14,15}. These factors have hindered the clinical translatability of prospective pain
115 biomarkers.

116 Research suggests that the neural oscillatory rhythms involved in processing
117 nociceptive input, and the corticospinal signalling involved in the subsequent motor response,
118 are both critical in shaping the subjective experience of pain^{4,16}. This work has culminated to
119 the identification of a promising sensorimotor cortical biomarker signature for predicting pain
120 sensitivity involving two metrics: 1) sensorimotor peak alpha frequency (PAF), defined as the
121 dominant sensorimotor cortical oscillation in the alpha (8-12Hz) range¹⁷ and 2) corticomotor
122 excitability (CME), defined as the efficacy at which signals are relayed from primary motor
123 cortex (M1) to peripheral muscles¹⁸. Previous work has shown that slower PAF prior to pain
124 onset and reduced CME during prolonged pain (“depression”) are associated with more pain,
125 while faster PAF and increased CME (“facilitation”) are associated with less pain¹⁹⁻²³. Given
126 individuals who experience higher pain in the early stages of a prolonged pain episode (e.g.
127 post-surgery) are more likely to develop chronic pain in the future²⁴, slow PAF prior to an
128 anticipated prolonged pain episode and/or CME depression during the acute stages of pain
129 could be predictors for the transition to chronic pain.

130 This paper presents the main outcomes of the PREDICT trial, a pre-registered
131 (NCT04241562²⁵) analytical validation of the PAF/CME biomarker signature using a model

132 of prolonged myofascial temporomandibular pain (masseter intramuscular injection of nerve
133 growth factor [NGF]). Repeated NGF injections induce progressively developing prolonged
134 pain lasting up to 4 weeks^{23,26}, and has been shown to mimic chronic pain characteristics such
135 as time course (gradual development), type of pain (movement-evoked), functional
136 impairments, hyperalgesia (decreased pressure pain thresholds) and mechanism of
137 sensitization^{27,28}. This makes the NGF model a highly standardised prolonged pain model
138 with which to undertake biomarker validation.

139 The aim of the PREDICT trial was to determine whether individuals could be
140 accurately classified as high or low pain sensitive based on baseline PAF and CME
141 facilitator/depressor classification. We predicted the area under the curve (AUC) of the
142 receiver operator characteristic (ROC) curve for distinguishing high and low pain sensitive
143 individuals would be at least 70% (which represents an acceptable AUC)²⁹.

144

145

Methods

146 Participants

147 The PREDICT trial enrolled 159 healthy participants (70 females, 89 males, mean age
148 25.1 ± 6.1), with 150 participants remaining after dropouts. Ethical approval was obtained
149 from the University of New South Wales (HC190206) and the University of Maryland
150 Baltimore (HP-00085371). Written, informed consent was obtained. The supplementary
151 appendix contains all additional details regarding participant characteristics and
152 methodology. We followed the “Strengthening the Reporting of Observational Studies in
153 Epidemiology” (STROBE) reporting guidelines for cohort studies.

154

155 **Experimental Protocol**

156 Outcomes were collected over a period of 30 days. Participants attended the
157 laboratory on Day 0, 2, and 5. Baseline questionnaire data were collected on Day 0. Pressure
158 pain thresholds, PAF and CME were measured on Day 0, 2 and 5. PAF was obtained via a 5-
159 minute eyes-closed resting-state EEG recording from 63 electrodes. Sensorimotor PAF was
160 computed by identifying the component in the signal (transformed by independent
161 component analysis) that had a clear alpha peak (8-12Hz) upon frequency decomposition and
162 a scalp topography suggestive of a sensorimotor source. CME was obtained using
163 transcranial magnetic stimulation (TMS) mapping; single pulses of TMS delivered to the left
164 primary motor cortex (M1), and motor evoked potentials (MEPs) recorded from the right
165 masseter muscle using electromyography (EMG) electrodes. TMS was delivered at each site
166 on a 1cm-spaced grid superimposed over the scalp, and a map of the corticomotor
167 representation of the masseter muscle was generated. Corticomotor excitability was indexed
168 as map volume, which is calculated by summing MEP amplitudes from all “active sites” on
169 the grid. NGF was injected into the right masseter muscle at the end of the Day 0 and 2
170 laboratory sessions. Electronic pain diaries were collected from Days 1 to 30 at 10am and
171 7pm each day, where participant rated their pain (0-10) during various activities. Pain upon
172 functional jaw movement is a key criterion for the diagnosis of TMD³⁰ and pain during
173 chewing and yawning are higher compared to other activities after an NGF injection to the
174 masseter muscle^{28,31}. As such, the primary outcomes were pain upon chewing and yawning.
175 The protocol and methodology are shown in Figure 1A and 1B.

176 **Statistical Analysis**

177 **Division of the Data.** Analysis was conducted in R, MATLAB and Python, with code
178 publicly available https://github.com/DrNahianC/PREDICT_Scripts. Figure 1C details the

179 analysis plan. We adopted a nested-control-testing scheme by partitioning 150 participants
180 into the first 100 (training set) and second 50 (test set) individuals to participate in the study.

181 **Growth Mixture Modelling.** We used growth mixture modelling (GMM) in R³²⁻³⁴ to
182 form two classes: high and low pain sensitive. For this categorization, we used the sum of
183 pain upon chewing and yawning data, and pain data from Days 1-7, as this was the timeframe
184 when pain was most prominent (eFigure 3). As such, participants would more reliably fall
185 into high and low pain sensitive classes during this timeframe. The first and last 40
186 participants (80 in total) in the training set, based on the ordering of probabilities of the pain
187 intensity trajectory belonging to one of the classes, were labelled as high and low pain
188 sensitive. The trained GMM model, once established, was locked and utilized to label the test
189 set. Consequently 38 out of 50 test set participants were labelled, with a different proportion
190 of high and low pain sensitive (24 high and 14 low pain) compared to the training set since
191 the classifications were based on the probability thresholds established in the training set.
192 These labels were recorded for subsequent comparison with the predicted labels produced by
193 the trained machine learning model.

194 **Machine Learning Model Selection and Fine Tuning.** We utilized five machine
195 learning models on the labelled training set —logistic regression, random forest, gradient
196 boosting, support vector machine, and neural network. The dependent variable was pain
197 sensitivity label (high/low) identified from the GMM and independent variables were
198 sensorimotor PAF and Δ CME: the latter was typified as facilitator and depressor, depending
199 on whether they showed an increase or decrease in map volume on Day 5 relative to Day 0,
200 respectively. For each model, we identified optimized parameters through 5-fold cross-
201 validation: we randomly divided the 80 participants into an internal training set of 64
202 participants (consisting of four equal folds of 16) and a validation set of 16. The optimized
203 models in the internal training set were then employed to predict labels in the validation set to

204 facilitate model selection. The model with the best performance (area under the curve) on the
205 validation set was then locked in.

206 **Test Set Prediction.** The locked machine learning model was assessed on the test set.
207 The participant IDs in this set did not coincide with those in the pain diary data, thereby
208 preserving the double-blind nature of the analysis. By using the ground-truth labels
209 (shuffled), predicted labels (unshuffled), and the shuffling order for the test set, we were able
210 to evaluate the model's performance by comparing the reordered predicted labels against the
211 ground-truth labels established by the GMM. Performance was assessed via receiver
212 operating characteristic (ROC) area under the curve (AUC), with 95% confidence intervals
213 reported. AUC values between 0.7-0.8, 0.8-0.9 and 0.9-1 were considered “acceptable”,
214 “excellent”, and “outstanding” respectively²⁹.

215

216 **Results**

217 **PAF/CME demonstrated good-excellent test-retest reliability**

218 PAF and Δ CME showed good to excellent test-retest reliability across sessions
219 (eFigures 5 and 7).

220 **Outstanding performance on the training validation set**

221 Figure 2A shows the pain scores for participants in the training and test set classified
222 as high and low pain sensitive. Figure 2B (upper) shows the performances of the models
223 across the internal training and validation sets. Logistic regression was the winning classifier
224 based on its outstanding performance (AUC=1.00[1.00-1.00]) when applied to the validation
225 set (Figure 2B lower), with slower PAF and CME depression predicting higher pain with
226 regression coefficients of -1.25 and -1.27 for PAF and CME respectively.

227 **Excellent performance on the test set**

228 When the locked logistic regression model was applied to the test set, performance
229 (Figure 2C upper) was excellent (AUC=0.88[0.78-0.99]). The optimal probability threshold
230 for being classified as high pain sensitive was 0.40, with an associated sensitivity of 0.875
231 and specificity of 0.79. Applying this 0.40 probability threshold to our data, to be labelled as
232 high pain sensitive, a facilitator would need a PAF<9.56, and a depressor would need a
233 PAF<10.57. Figure 2C (lower) shows the differences in pain scores between participants
234 predicted to have high or low pain. Visually one can observe slower PAF in those predicted
235 to have high vs. low pain sensitivity (Figure 2D), This was statistically significant according
236 to a two-sample t-test ($t(48)=5.8$, $p<.001$). Moreover, one can observe a decrease in CME
237 within the masseter motor maps in those predicted to have high pain (Figure 2E), whereas
238 those predicted to have low pain exhibited an increase in CME. The differences in Δ CME
239 between these groups was statistically significant ($t(48)=2.81$, $p=.007$).

240 **A benefit for a *combined* signature**

241 We reran the models to determine whether the combined PAF/CME signature out-
242 performed each measure individually (eFigure 10). The performance of the PAF-only logistic
243 regression model on the training validation and test set were respectively excellent
244 (AUC=0.95[0.84-1.00]) and outstanding (AUC=0.83[0.70-0.96]). The performance of the
245 CME-only logistic regression model for the training validation and test set were respectively
246 excellent (AUC=0.88[0.69-1.00]) and acceptable (AUC=0.75[0.60-0.91]).

247 **Inclusion of covariates did not improve model performance**

248 We evaluated the performance of the biomarker combined with covariates. As there
249 were many variables, we applied feature selection, i.e. filtering features by inspecting p-
250 values when associating predictors and labels, and using parameter tuning to optimize the

251 coefficients associated with the filtered features. Five features were subsequently selected and
252 optimized – Sensorimotor PAF, CME, Sex, Pain Catastrophizing Scale (PCS) Total and PCS
253 Helplessness. The associations between labels and biomarkers/covariates in the training vs.
254 test set, and performance of the models are shown in Figure 3A and 3B. When including
255 these five features, the performance of the logistic regression model (regression coefficients
256 of -0.86, -0.69, 0.64, 0.02 and 0.06 for PAF, CME, Sex, PCS Total and PCS Helplessness
257 respectively) was outstanding (AUC=1.00[1.00-1.00]) and excellent (AUC=0.81[0.67-0.95])
258 for the training validation and test set were respectively. Thus, the model with biomarkers
259 only outperformed the model including covariates.

260 **Results were reproducible across methodological choices**

261 To determine whether our results were robust across different methodological
262 choices, we repeated the analysis using different PAF calculation methods, including
263 component level data (with the sensorimotor component chosen manually or using an
264 automated script) vs. sensor level data (with a sensorimotor region of interest), using different
265 frequency windows (8-12Hz vs. 9-11Hz) and using different CME calculation methods (map
266 volume vs. map area). We found that, regardless of the choices, logistic regression was the
267 best or equal-best performing model when applied to the training-validation set (Figure 3C),
268 with AUCs varying from acceptable (AUC=0.77) to outstanding (AUC=1.00). When the
269 locked models were applied to the test set, performance varied from acceptable (AUC=0.73)
270 to excellent (AUC=0.88) (Figure 3D). Lastly, excellent performance was demonstrated when
271 the data was analysed two other ways (eFigure 11 and 12): where GMM pain labels were
272 established using the whole 30 days rather than the first 7 days (training validation
273 AUC=0.84[0.64-1], test AUC =0.89[0.79-0.99]), and when missing pain diary data was not
274 imputed (training validation AUC=0.81[0.6-1], test AUC=0.89[0.79-0.99]).

275

Discussion

276 A full-scale analytical validation of the PAF and CME biomarker signature was
277 conducted using a prolonged pain model. In an initial training set (n=100), we found that a
278 logistic regression was the optimal classifier based on its outstanding performance
279 (AUC=100%), with slower PAF and CME depression predicting higher pain. When this
280 model was applied to an independent test set, the AUC was excellent (AUC=88%).
281 PAF/CME showed good-excellent test-retest reliability, and results were reproduced across a
282 range of methodological parameters. Inclusion of covariates did not improve model
283 performance, suggesting the model including biomarkers only was more robust. Overall, the
284 combination of sample size, pain model validity, and biomarker accuracy, reproducibility and
285 reliability suggest the PAF/CME biomarker signature has substantial potential for clinical
286 translation.

287 Our results suggest that individuals who have slow PAF prior to an anticipated
288 prolonged pain episode and show corticomotor depression during a prolonged pain episode,
289 are more likely to experience higher pain. Model performance was higher combining the two,
290 suggesting consideration of both ascending sensory and descending motor pain processing
291 mechanisms provides more information regarding pain sensitivity. Note that our study used a
292 cohort of healthy participants with strict inclusion/exclusion criteria and an experimental pain
293 model. While this may limit generalizability to clinical populations, the use of a standardized
294 sample/design is a requirement of pre-clinical analytical validation, and an essential first step
295 in the discovery pipeline toward a clinical biomarker signature. Moreover, there is already
296 evidence that the proposed biomarker is generalizable to clinical contexts. A recent study
297 showed that individuals with slower PAF experienced more pain following a thoracotomy²⁰.
298 Furthermore, individuals with lower CME during the acute stages of low back pain were
299 more likely to develop chronic pain at 6-months follow-up³⁵. This suggests PAF and CME

300 shows promise in being used in pre-operative and/or post-operative/post-injury contexts to
301 classify high or low pain sensitive individuals. Given that higher acute pain predicts the
302 development of chronic pain²⁴ PAF and CME could potentially be used as susceptibility
303 biomarkers for the transition from acute to chronic pain.

304 There are several aspects of our study which stand out. The first is sample size: with
305 recent advancements in machine learning, it has become possible to conduct analytical
306 validation of pain biomarkers. However, deep learning requires a large amount of labelled
307 samples to conduct rigorous training on validation and test sets⁸. Unfortunately, many pain
308 susceptibility biomarker studies have not been sufficiently sampled to adopt such
309 approaches^{9,10}, and the ones that have used machine learning failed to reach the sample sizes
310 similar to that of the present study^{1,2}.

311 Another strength of our findings is reproducibility. Previous work has shown similar
312 associations between slower PAF and higher upper limb pain, post-operative thoracic pain
313 and chronic pain in various body regions^{17,19,20} as well as CME depression and higher upper
314 limb pain, chronic patellofemoral pain and development of chronic low back pain^{22,23,36,37}.
315 The present study replicated these results in a model of jaw pain, suggesting the biomarker
316 signature may be generalizable to pain more broadly. Note that some studies have not shown
317 a negative relationship between PAF and pain sensitivity^{38,39} or a positive relationship
318 between CME depression and pain sensitivity³¹. However, these studies were not sufficiently
319 sampled to conduct analytical validation of the kind presented in this study. Nonetheless, the
320 mixed findings could also arise from differences in methodological choices in the estimation
321 of PAF e.g. frequency windows³⁹ and use of sensor vs. component space data⁴⁰ and
322 estimation of CME e.g. map volume²² vs. area³¹. For this reason, we repeated the main
323 analysis using different methodological choices and found at least acceptable AUCs,
324 supporting the reproducibility of our results.

325 The PAF/CME measures demonstrated good-excellent reliability. Reliability is a
326 desirable characteristic which assists in the widespread application of pain biomarkers⁸. We
327 found that participants exhibit stable PAF across days despite the presence of pain, and even
328 when considering different methodological factors that may influence the reliability such as
329 pre-processing pipeline, recording length and frequency window¹⁴. Indeed, reliable PAF was
330 found with a recording length as short as 2 minutes and minimal data pre-processing. We also
331 showed that those who show CME depression on Day 2 are also likely to show CME
332 depression on Day 5 (and vice versa for those who show CME facilitation). This was shown
333 even when an automated method of determining MEP amplitude on each trial was applied.
334 Thus, our work not only shows that PAF and CME can predict pain, but the relative ease with
335 which reliable PAF/CME data can be obtained is promising for subsequent clinical
336 translation.

337 Another strength of this study is our pain model. While other pain biomarker studies
338 have shown promising results, these studies were restricted to pain models utilizing transient
339 painful stimuli lasting seconds to minutes¹¹⁻¹³. The brief nature of the painful stimuli
340 questions the external validity of these findings and limits generalizability to clinical
341 populations. In contrast, the present study used a prolonged pain model lasting weeks.
342 Several other studies have shown that injections of NGF to the neck, elbow or masseter
343 muscles can mimic symptoms of clinical neck pain⁴¹, chronic lateral epicondylalgia²⁷ and
344 TMD²⁸ respectively. Thus, the observed relationships between PAF/CME and pain in the
345 present study show promise in terms of clinical applicability.

346 Lastly, the PAF/CME biomarker demonstrated high performance. A previous study
347 found that connectivity between medial prefrontal cortex and nucleus accumbens in 39 sub-
348 acute low back pain patients (pain duration 6-12 weeks) could predict future pain persistence
349 at ~7, 29 and 54 weeks, with AUCs of 67-83%¹. Another study on 24 sub-acute low back

350 pain patients showed that white matter fractional anisotropy measures in the superior
351 longitudinal fasciculus and internal capsule predicted pain persistence over the next year,
352 with an AUC of 81%². Though the present did not directly assess the transition to chronic
353 pain, our AUCs of 100% (validation set) and 88% (test set) appear comparatively high. We
354 therefore encourage future clinical studies to determine whether PAF/CME can predict the
355 transition from acute to chronic pain.

356 **Conclusions**

357 A novel biomarker signature comprised of PAF and CME accurately and reliably
358 distinguishes high and low pain sensitive individuals during prolonged jaw pain with an
359 excellent AUC of 88% in an independent test set. No other pain biomarker study has shown
360 this combination of biomarker accuracy, reproducibility, reliability and pain model validity,
361 suggesting high potential for clinical translation, particularly in predicting the transition from
362 acute to chronic pain.

363 **Acknowledgements**

364 This project was funded by the National Institutes of Health (R61
365 NS113269/NIH/NINDS HHS/United States). Clinical Trial Registration: NCT04241562
366 <https://classic.clinicaltrials.gov/ct2/show/results/NCT04241562?view=results>. The authors
367 have no conflicts to declare. The corresponding author had full access to all the data in the
368 study and takes responsibility for the integrity of the data and accuracy of the data analysis.
369 Code and relevant diary, questionnaire, and demographic data are available at
370 https://github.com/DrNahianC/PREDICT_Scripts. The raw data supporting the findings of
371 this study are available on OpenNeuro
372 (<https://openneuro.org/datasets/ds005486/versions/1.0.0>) for the EEG data and OSF
373 (<https://osf.io/r3m9g/>) for the TMS data.

References

- 375 1. Baliki MN, Petre B, Torbey S, et al. Corticostriatal functional connectivity predicts transition
376 to chronic back pain. *Nature neuroscience*. 2012;15(8):1117-1119.
- 377 2. Mansour AR, Baliki MN, Huang L, et al. Brain white matter structural properties predict
378 transition to chronic pain. *PAIN®*. 2013;154(10):2160-2168.
- 379 3. Vachon-Preseau E, Tétreault P, Petre B, et al. Corticolimbic anatomical characteristics
380 predetermine risk for chronic pain. *Brain*. 2016;139(7):1958-1970.
- 381 4. Green A, Wang S, Stein J, et al. Neural signatures in patients with neuropathic pain.
382 *Neurology*. 2009;72(6):569-571.
- 383 5. Wang W-T, Zhao Y-N, Han B-W, Hong S-J, Chen Y-Q. Circulating microRNAs identified in a
384 genome-wide serum microRNA expression analysis as noninvasive biomarkers for endometriosis.
385 *The Journal of Clinical Endocrinology & Metabolism*. 2013;98(1):281-289.
- 386 6. Singh JA, Noorbaloochi S, Knutson KL. Cytokine and neuropeptide levels are associated with
387 pain relief in patients with chronically painful total knee arthroplasty: a pilot study. *BMC*
388 *Musculoskeletal Disorders*. 2017;18(1):1-6.
- 389 7. Sasamoto N, Zeleznik OA, Vitonis AF, et al. Presurgical blood metabolites and risk of
390 postsurgical pelvic pain in young patients with endometriosis. *Fertility and Sterility*.
391 2022;117(6):1235-1245.
- 392 8. Zhang Z, Gewandter JS, Geha P. Brain imaging biomarkers for chronic pain. *Frontiers in*
393 *Neurology*. 2022;12:734821.
- 394 9. Sluka KA, Wager TD, Sutherland SP, et al. Predicting chronic postsurgical pain: current
395 evidence and a novel program to develop predictive biomarker signatures. *Pain*. 2023;164(9):1912-
396 1926.
- 397 10. Eldabe S, Obara I, Panwar C, Caraway D. Biomarkers for chronic pain: significance and
398 summary of recent advances. *Pain Research and Management*. 2022;2022
- 399 11. Lee J-J, Kim HJ, Čeko M, et al. A neuroimaging biomarker for sustained experimental and
400 clinical pain. *Nature medicine*. 2021;27(1):174-182.
- 401 12. Woo C-W, Schmidt L, Krishnan A, et al. Quantifying cerebral contributions to pain beyond
402 nociception. *Nature communications*. 2017;8(1):14211.
- 403 13. Wager TD, Atlas LY, Lindquist MA, Roy M, Woo C-W, Kross E. An fMRI-based neurologic
404 signature of physical pain. *New England Journal of Medicine*. 2013;368(15):1388-1397.
- 405 14. Chowdhury NS, Skippen P, Si E, et al. The reliability of two prospective cortical biomarkers
406 for pain: EEG peak alpha frequency and TMS corticomotor excitability. *Journal of Neuroscience*
407 *Methods*. 2023/02/01/ 2023;385:109766. doi:<https://doi.org/10.1016/j.jneumeth.2022.109766>
- 408 15. Davis KD, Aghaeepour N, Ahn AH, et al. Discovery and validation of biomarkers to aid the
409 development of safe and effective pain therapeutics: challenges and opportunities. *Nature Reviews*
410 *Neurology*. 2020;16(7):381-400.
- 411 16. van Dieen JH, Reeves NP, Kawchuk G, van Dillen LR, Hodges PW. Motor Control Changes in
412 Low Back Pain: Divergence in Presentations and Mechanisms. *The Journal of orthopaedic and sports*
413 *physical therapy*. Jun 2019;49(6):370-379. doi:10.2519/jospt.2019.7917
- 414 17. Furman AJ, Meeker TJ, Rietschel JC, et al. Cerebral peak alpha frequency predicts individual
415 differences in pain sensitivity. *NeuroImage*. 2018;167:203-210.
- 416 18. Weavil JC, Amann M. Corticospinal excitability during fatiguing whole body exercise.
417 *Progress in brain research*. 2018;240:219-246.
- 418 19. Furman AJ, Prokhorenko M, Keaser ML, et al. Sensorimotor peak alpha frequency is a
419 reliable biomarker of prolonged pain sensitivity. *Cerebral Cortex*. 2020;30(12):6069-6082.
- 420 20. Millard SK, Furman AJ, Kerr A, et al. Predicting postoperative pain in lung cancer patients
421 using preoperative peak alpha frequency. *British Journal of Anaesthesia*. 2022;128(6):e346-e348.
- 422 21. Seminowicz DA, Thapa T, Furman AJ, et al. Slow peak alpha frequency and corticomotor
423 depression linked to high pain susceptibility in transition to sustained pain. *bioRxiv*. 2018:278598.

- 424 22. Seminowicz DA, Thapa T, Schabrun SM. Corticomotor depression is associated with higher
425 pain severity in the transition to sustained pain: A longitudinal exploratory study of individual
426 differences. *The Journal of Pain*. 2019;20(12):1498-1506.
- 427 23. Chowdhury NS, Chang W-J, Millard SK, et al. The Effect of Acute and Sustained Pain on
428 Corticomotor Excitability: A Systematic Review and Meta-analysis of group-and individual-level data.
429 *The Journal of Pain*. 2022;23(10):1680-1696.
- 430 24. Hah JM, Cramer E, Hilmoe H, et al. Factors associated with acute pain estimation,
431 postoperative pain resolution, opioid cessation, and recovery: secondary analysis of a randomized
432 clinical trial. *JAMA network open*. 2019;2(3):e190168-e190168.
- 433 25. Seminowicz DA, Bilska K, Chowdhury NS, et al. A novel cortical biomarker signature for
434 predicting pain sensitivity: protocol for the PREDICT longitudinal analytical validation study. *Pain*
435 *Reports*. 2020;5(4)
- 436 26. Svensson P, Cairns BE, Wang K, Arendt-Nielsen L. Injection of nerve growth factor into
437 human masseter muscle evokes long-lasting mechanical allodynia and hyperalgesia. *Pain*.
438 2003;104(1-2):241-247.
- 439 27. Bergin MJG, Hirata R, Mista C, et al. Movement evoked pain and mechanical hyperalgesia
440 after intramuscular injection of nerve growth factor: a model of sustained elbow pain. *Pain*
441 *Medicine*. 2015;16(11):2180-2191.
- 442 28. Schabrun SM, Si E, Millard SK, et al. Intramuscular injection of nerve growth factor as a
443 model of temporomandibular disorder: nature, time-course, and sex differences characterising the
444 pain experience. *Neurobiology of Pain*. 2023;13:100117.
- 445 29. Hosmer Jr DW, Lemeshow S, Sturdivant RX. *Applied logistic regression*. vol 398. John Wiley &
446 Sons; 2013.
- 447 30. Schiffman E, Ohrbach R, Truelove E, et al. Diagnostic criteria for temporomandibular
448 disorders (DC/TMD) for clinical and research applications: recommendations of the International
449 RDC/TMD Consortium Network and Orofacial Pain Special Interest Group. *Journal of oral & facial*
450 *pain and headache*. 2014;28(1):6.
- 451 31. Costa YM, Exposto FG, Kothari M, et al. Masseter corticomotor excitability is decreased after
452 intramuscular administration of nerve growth factor. *Eur J Pain*. Oct 2019;23(9):1619-1630.
453 doi:10.1002/ejp.1438
- 454 32. Proust-Lima C, Philipps V, Lique B. Estimation of extended mixed models using latent classes
455 and latent processes: the R package lcmm. *arXiv preprint arXiv:150300890*. 2015;
- 456 33. Li F, Duncan TE, Duncan SC, Acock A. Latent growth modeling of longitudinal data: A finite
457 growth mixture modeling approach. *Structural Equation Modeling*. 2001;8(4):493-530.
- 458 34. Ram N, Grimm KJ. Methods and measures: Growth mixture modeling: A method for
459 identifying differences in longitudinal change among unobserved groups. *International journal of*
460 *behavioral development*. 2009;33(6):565-576.
- 461 35. Jenkins LC, Chang W-J, Buscemi V, et al. Cortical function and sensorimotor plasticity are
462 prognostic factors associated with future low back pain after an acute episode: the UPWaRD
463 prospective cohort study. *Pain*. 2022;10.1097.
- 464 36. Jenkins LC, Chang W-J, Buscemi V, et al. Low Somatosensory Cortex Excitability in the Acute
465 Stage of Low Back Pain Causes Chronic Pain. *The Journal of Pain*. 2022/02/01/ 2022;23(2):289-304.
466 doi:<https://doi.org/10.1016/j.jpain.2021.08.003>
- 467 37. Te M, Baptista AF, Chipchase LS, Schabrun SM. Primary motor cortex organization is altered
468 in persistent patellofemoral pain. *Pain Medicine*. 2017;18(11):2224-2234.
- 469 38. Nir R-R, Sinai A, Raz E, Sprecher E, Yarnitsky D. Pain assessment by continuous EEG:
470 association between subjective perception of tonic pain and peak frequency of alpha oscillations
471 during stimulation and at rest. *Brain research*. 2010;1344:77-86.
- 472 39. De Martino E, Gregoret L, Zandalasini M, Graven-Nielsen T. Slowing in peak-alpha frequency
473 recorded after experimentally-induced muscle pain is not significantly different between high and
474 low pain-sensitive subjects. *The Journal of Pain*. 2021;22(12):1722-1732.

- 475 40. Millard SK, Chiang AKI, Humburg P, et al. Effects of nicotine compared to placebo gum on
476 sensitivity to pain and mediating effects of peak alpha frequency. eLife Sciences Publications, Ltd;
477 2023.
478 41. Christensen SWM, Elgueta-Cancino E, Simonsen MB, et al. Effect of prolonged experimental
479 neck pain on exercise-induced hypoalgesia. *Pain*. 2022;163(12):2411-2420.

480

481

482

483

484

485

486

487

488

489

490

491

492

493

494

495

496

497

Figure Captions

499 **Figure 1. Study methodology, including study design, data collection procedures and**
500 **analysis plan.** (A) Experimental protocol showing timeline of data collection procedures. On
501 Day 0, we measured peak alpha frequency (PAF) and corticomotor excitability (CME). At
502 the end of the session, an injection of nerve growth factor (NGF) was administered to the
503 right masseter muscle. On Day 2, PAF and CME were measured, followed by a second NGF
504 injection. On Day 5, PAF and CME were measured. From Days 1-30, electronic diaries
505 measuring jaw pain were sent to participants at 10AM and 7PM each day. (B) Details of the
506 methodology. Sensorimotor PAF was measured using a 5 minutes eyes closed resting state
507 EEG recording. Sensorimotor PAF was computed by identifying the component in the signal
508 (transformed by independent component analysis) that had a clear alpha peak in the 8–12 Hz
509 range upon frequency decomposition and a scalp topography suggestive of a source
510 predominately over the sensorimotor cortex. TMS mapping was conducted by stimulating the
511 scalp area over left M1 to obtain a map of the representation of the right masseter muscle.
512 The map consists of the motor-evoked potential (MEP) amplitude at each stimulated location,
513 with CME corresponding to the map volume (sum of all MEPs from active sites). Pain data
514 was collected via electronic diaries sent to participants at 10am and 7pm each day for 30
515 days. The Pain score was quantified as the sum of scores for pain upon chewing and yawning.
516 (C) Details of the analysis plan. We adopted a nested-control-test scheme by partitioning the
517 150 subjects into a training set consisting of 100 subjects and an independent test set of 50
518 subjects. We labelled a subset of participants in the training ($n = 80$) and test set ($n = 38$) as
519 high or low pain sensitive using growth mixture modelling (GMM) to establish “ground-
520 truth” labels. We then ran various machine learning models on the labelled training set (with
521 PAF/CME as predictors, and pain severity labels as outcome), and determined optimized
522 parameters through 5-fold cross-validation i.e. randomly dividing the 80 subjects into an
523 internal training set of 64 subjects (with 4 equal folds of 16) and a validation set of 16. The
524 optimized models in the internal training set were employed to predict labels in the validation
525 set to facilitate model selection. The model with the best performance on the validation set
526 was then locked in, and applied to the labelled test set, comparing the predicted labels of
527 high/low pain sensitive with the ground-truth labels of high/low pain sensitive.

528 **Figure 2. Performance of the combined PAF and CME biomarker on training and test**
529 **set.** (A) Results of the growth mixture modelling which categorized 80 participants in the
530 training set (left) and 38 participants in the test (right) as high or low pain sensitive. Data
531 shows mean pain score (chew + yawn pain rating) for each timepoint, while the shaded area
532 shows 95% confidence intervals. (B) The upper panel shows performances (AUC [95%
533 confidence intervals]) of various machine learning models for the internal training set and
534 validation set. Logistic regression (LR) was chosen as the optimal classifier based on
535 outstanding AUC of 100% as shown in the lower panel. (C) The upper panel shows the
536 performance of the locked logistic regression model when applied to the test set, which was
537 in the excellent range (AUC of 88%). The lower panel shows the pain trajectories (mean
538 chew + yawn pain and 95% confidence intervals) of participants predicted to have high or
539 low pain sensitivity based on the locked logistic regression model. (D) The left panel shows
540 the individual and mean z-transformed spectral plots and topography of the sensorimotor
541 alpha component on Day 0 for participants predicted to have high or pain sensitivity based on
542 the locked logistic regression model. The right panel shows the mean motor cortex maps on

543 Day 0 and Day 5 showing normalized motor evoked potential (MEP) amplitude (expressed as
544 a proportion of the maximal MEP amplitude) for participants predicted to have high or low
545 pain sensitivity based on the locked logistic regression model.

546

547 **Figure 3. Performance of the combined PAF and CME biomarker on training and test**
548 **set when including covariates, and across PAF/CME calculation methods. (A)**
549 Visualisation of biomarkers and covariates for the training and test sets across high (red) and
550 low (blue) pain labels identified from the GMM. Data on PAF, PCS total and PCS
551 helplessness are plotted as boxplots, while data on CME and Sex are plotted according to
552 facilitator: depressor and female: male split respectively, including odd ratios. A lower odds
553 ratio means a lower probability of high pain sensitive individuals belonging to the facilitator
554 or female categories. For PAF and CME, low pain was associated with fast PAF and CME
555 facilitation for both training and test sets. In contrast, the relationship between covariates and
556 labels were in the opposite direction for the training and test set, suggesting the relationship
557 between biomarkers and labels was consistent. **(B)** The left panel shows the performance of
558 the locked logistic regression model on the test set when including covariates in the model.
559 The right panel shows pain trajectories (mean chew + yawn score and 95% confidence
560 intervals) of participants predicted to have high or low pain sensitivity based on the locked
561 logistic regression model including covariates. **(C)** The performance of each machine
562 learning model (AUC [95% confidence intervals]) on the training validation set across
563 different PAF/CME calculation methods. This includes the sensorimotor component chosen
564 manually after an independent component analysis, component identified using an automated
565 script after an independent component analysis, or using a sensorimotor region of interest
566 (ROI, mean of Cz, C3 and C4) in electrode space, to calculate PAF. We also looked at
567 different frequency windows for computing PAF (8-12Hz vs. 9-11Hz) or CME calculated
568 using map area or map volume. **(D)** The performance of the locked logistic regression model
569 (AUC [95% confidence intervals]) when applied to the test set, across different PAF/CME
570 calculation methods.

571

572

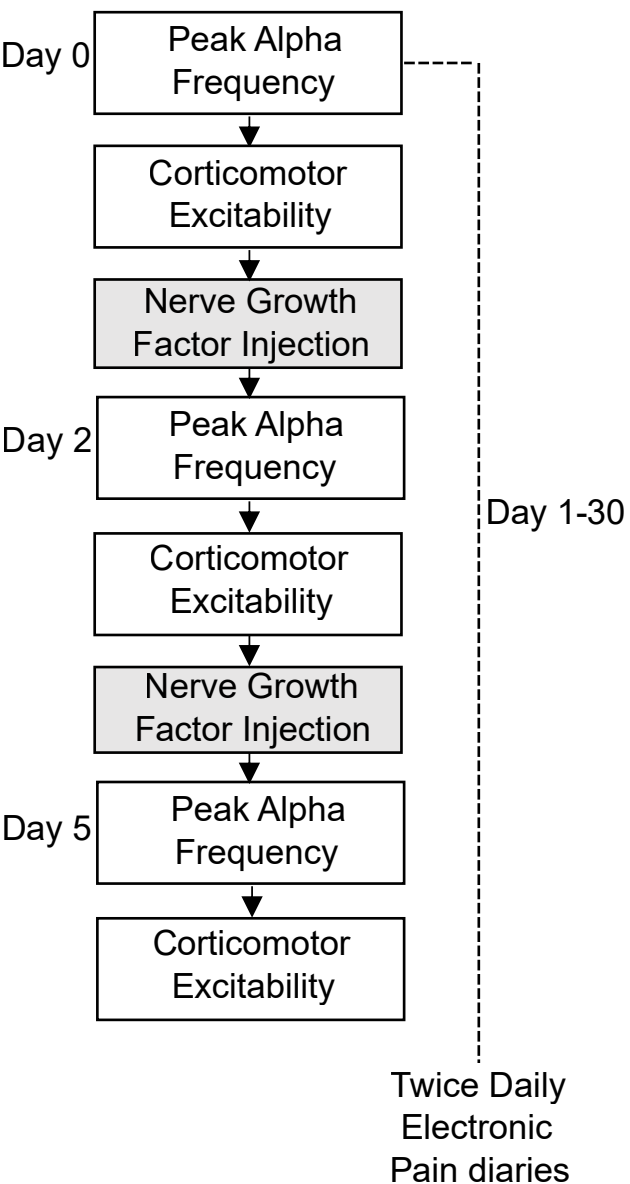
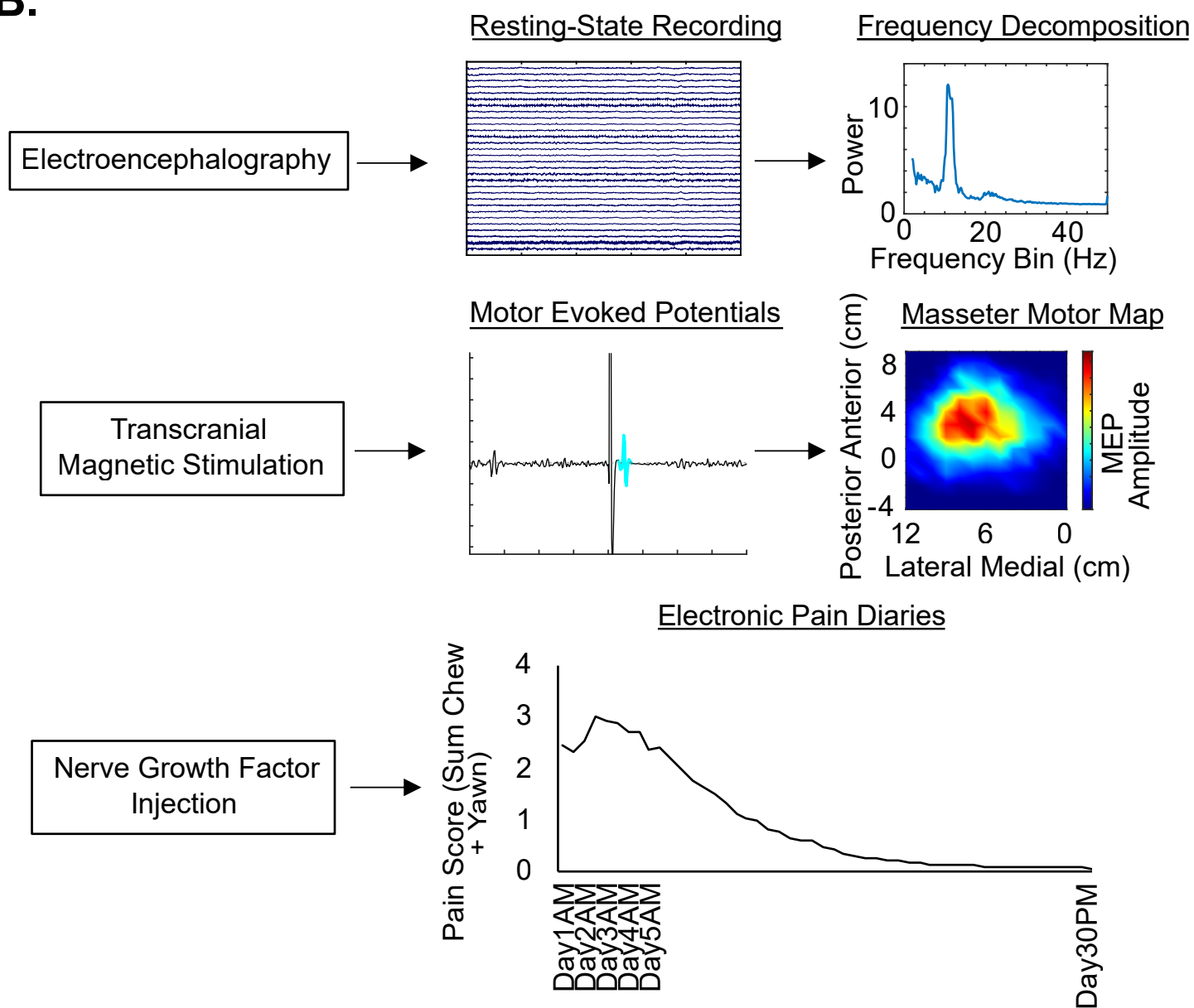
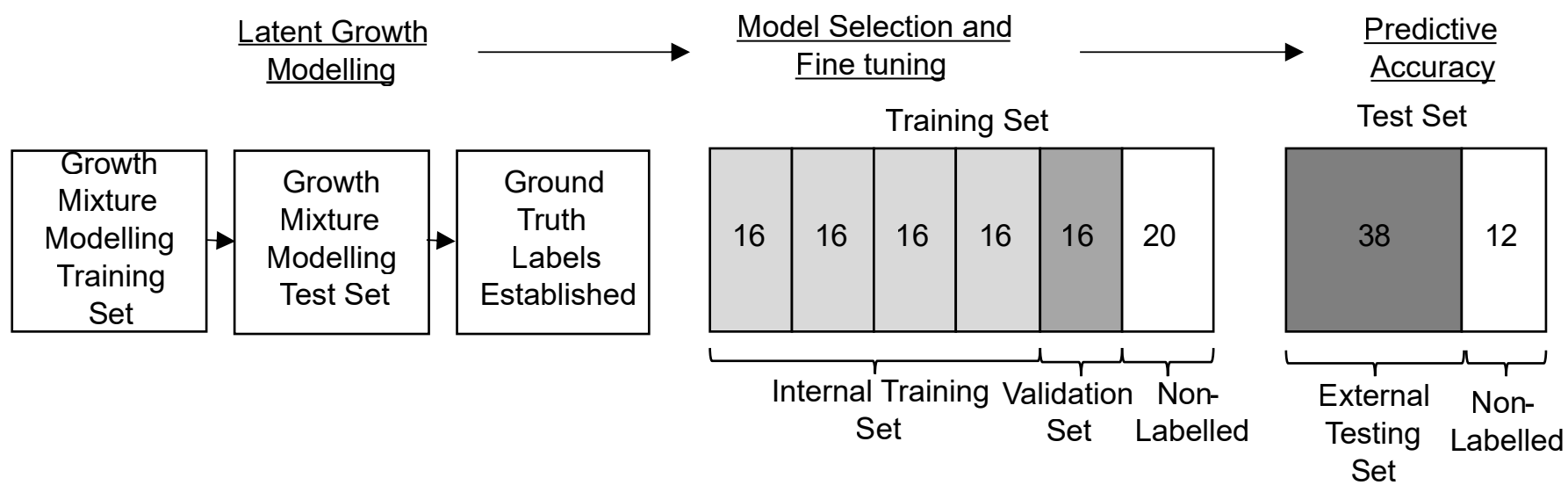
573

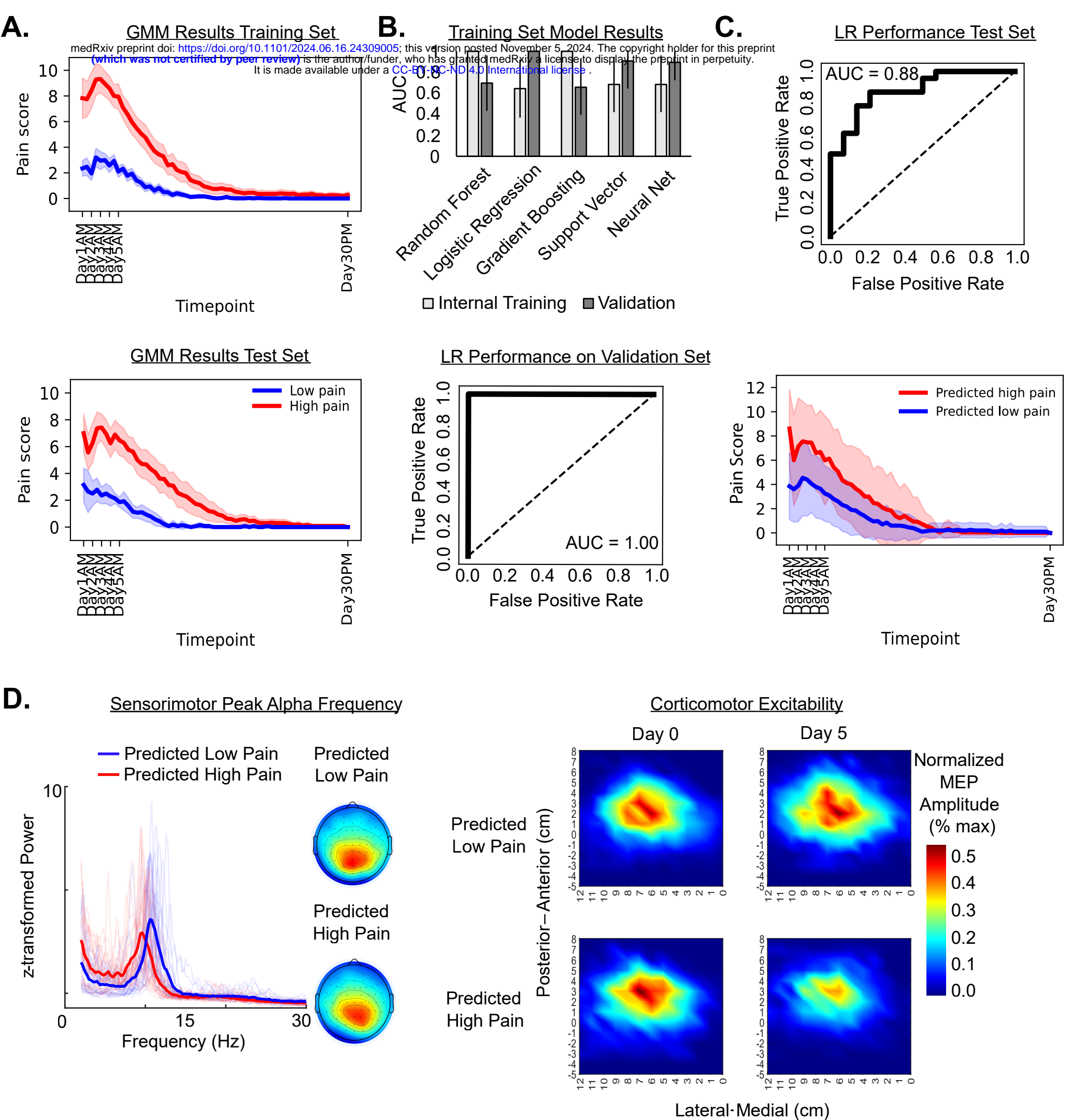
574

575

576

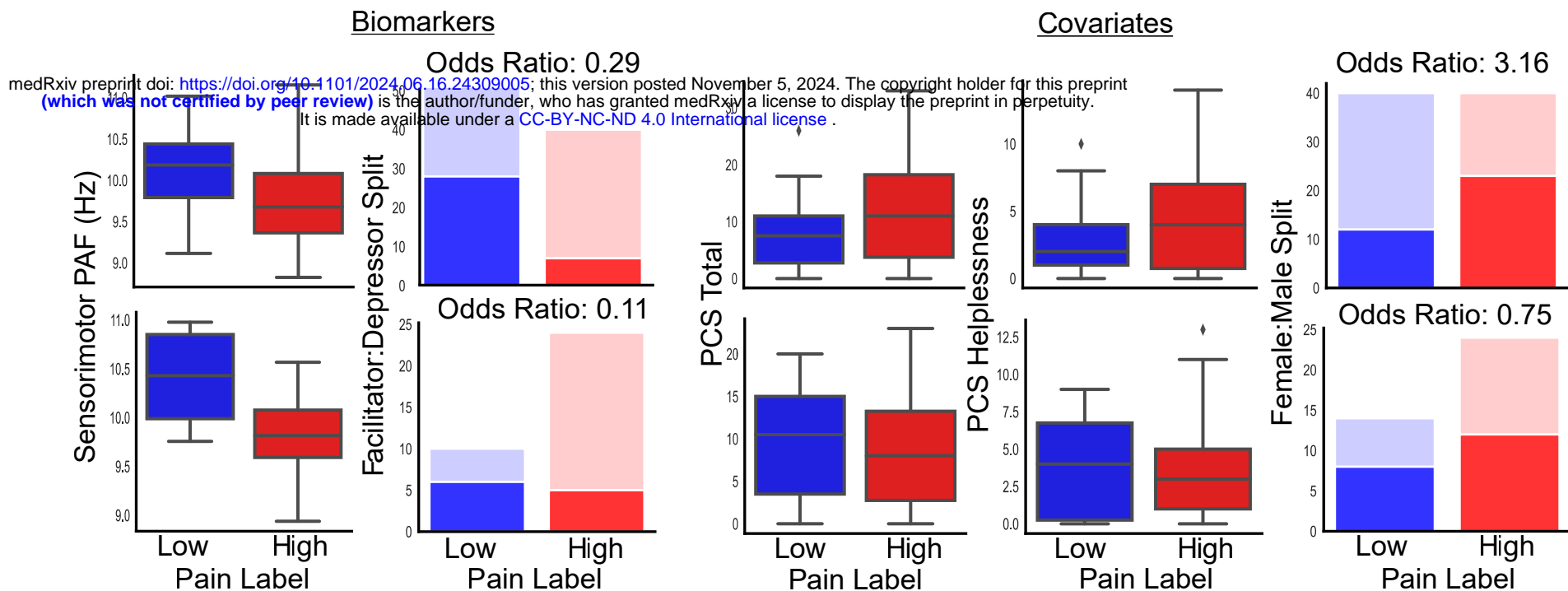
577

A.**B.****C.**



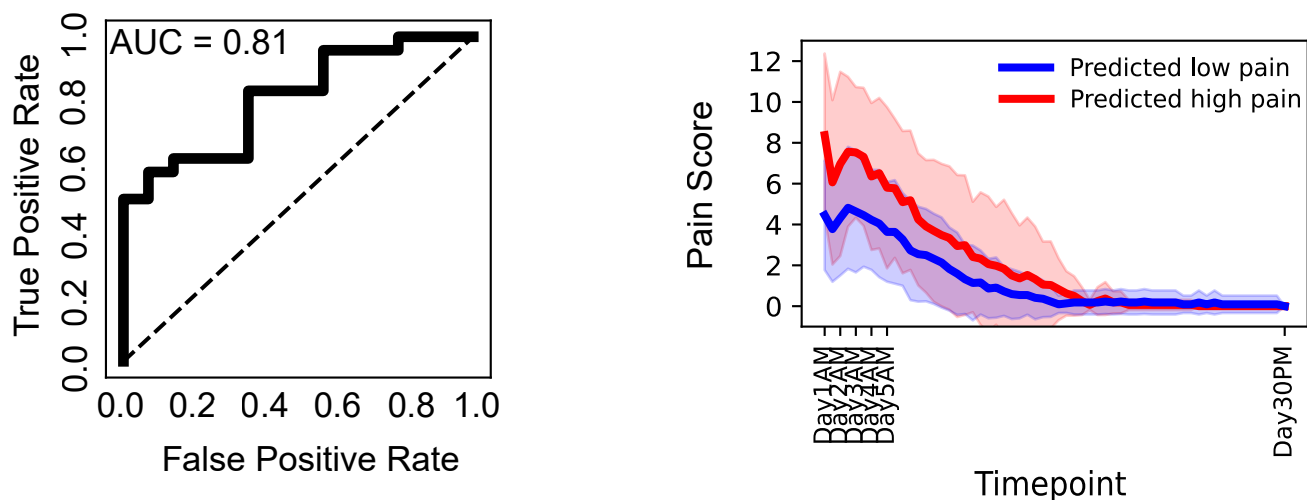
A.

Relationship between Biomarkers/Covariates and Labels



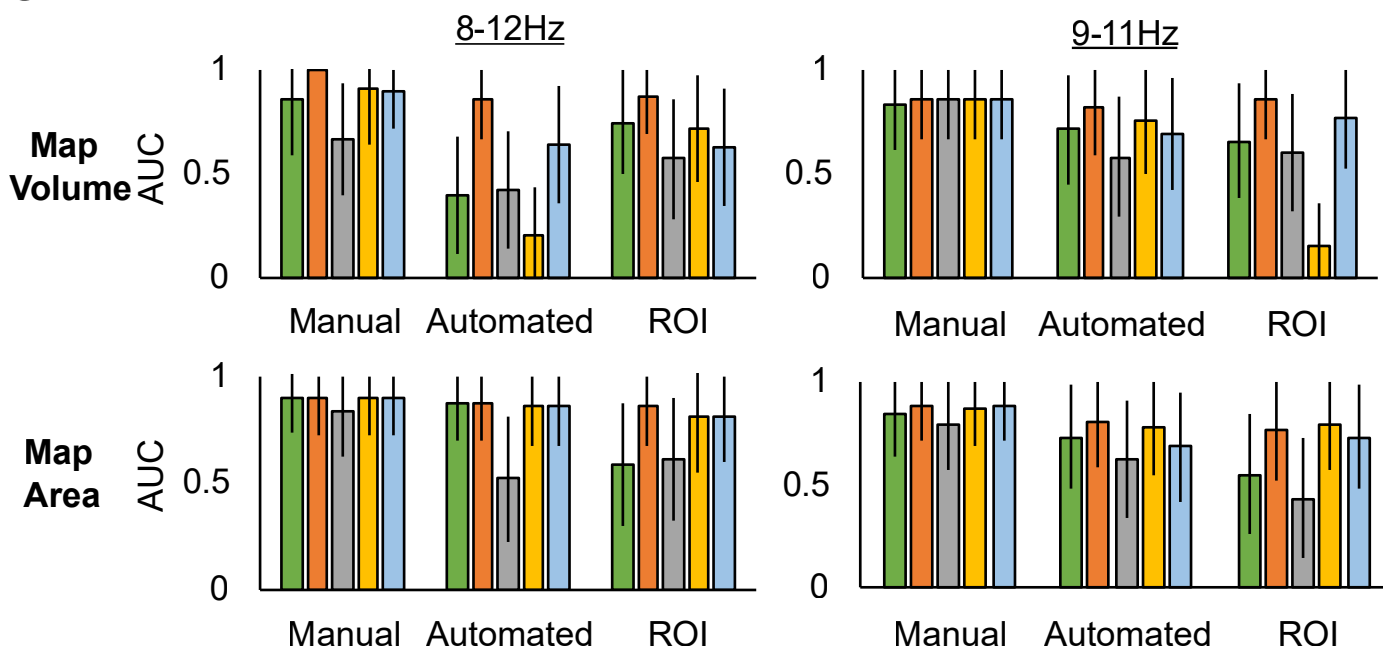
B.

LR Performance with Covariates

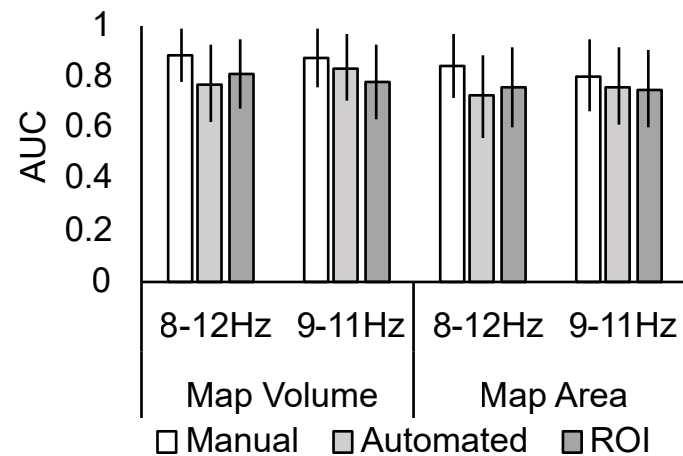


C.

Training Set Model Results Across PAF/CME Methods



D. Test Set Results Across PAF/CME Methods



Legend: Random Forest (Green), Logistic Regression (Orange), Gradient Boosting (Grey), Support Vector (Yellow), Neural Net (Blue)