

1 **A novel cortical biomarker signature predicts individual pain sensitivity**

2 Nahian S Chowdhury PhD\*<sup>1,2</sup>, Chuan Bi PhD\*<sup>3, 4</sup>, Andrew J Furman PhD<sup>5,6</sup>, Alan KI Chiang  
3 PhD<sup>1,2</sup>, Patrick Skippen PhD<sup>1,7,8</sup>, Emily Si MSc<sup>1</sup>, Samantha K Millard PhD<sup>1,2</sup>, Sarah M  
4 Margerison BA<sup>5,6</sup>, Darrah Spies BSc<sup>5,6</sup>, Michael L Keaser BA<sup>5,6</sup> Joyce T Da Silva PhD<sup>5,6</sup>,  
5 Shuo Chen PhD<sup>3</sup>, Siobhan M Schabrun PhD\*\*<sup>9,10</sup>, David A Seminowicz PhD\*\*<sup>5,6,11</sup>

6 \*Co-first author

7 \*\*Co-senior author

8 <sup>1</sup>Center for Pain IMPACT, Neuroscience Research Australia, Sydney, New South Wales,  
9 Australia

10 <sup>2</sup>University of New South Wales, Sydney, New South Wales, Australia

11 <sup>3</sup>Division of Biostatistics and Bioinformatics, Department of Epidemiology and Public  
12 Health, University of Maryland School of Medicine

13 <sup>4</sup>Division of Biostatistics, Center for Devices and Radiological Health, U.S. Food and Drug  
14 Administration, USA

15 <sup>5</sup>Department of Neural and Pain Sciences, University of Maryland School of Dentistry,  
16 Baltimore, USA

17 <sup>6</sup>Center to Advance Chronic Pain Research, University of Maryland Baltimore, USA

18 <sup>7</sup>Data Sciences, Hunter Medical Research Institute, Newcastle, NSW, Australia

19 <sup>8</sup>School of Medicine and Public Health, University of Newcastle, Newcastle, NSW, Australia

20 <sup>9</sup>The Gray Centre for Mobility and Activity, Parkwood Institute, St. Joseph's Healthcare  
21 London, Canada

22 <sup>10</sup>School of Physical Therapy, University of Western Ontario, London, Canada

23 <sup>11</sup>Department of Medical Biophysics, Schulich School of Medicine & Dentistry, University  
24 of Western Ontario, London, Canada

25

26 **Date of Revision: 09/21/2024**

27 **Word Count: 2990**

28 **Keywords:** Pain, Biomarker, Electroencephalography, Transcranial Magnetic Stimulation

29

30 **Corresponding Author:**

31 Professor David A Seminowicz

32 Department of Medical Biophysics

33 Schulich School of Medicine & Dentistry

34 University of Western Ontario, London, Canada,

35 E-mail: [dseminow@uwo.ca](mailto:dseminow@uwo.ca)

36

37

38

39

40

41

## Key Points

42 **Question:** Can individuals be accurately classified as high or low pain sensitive based on two  
43 features of cortical activity: sensorimotor peak alpha frequency (PAF) and corticomotor  
44 excitability (CME)?

45 **Findings:** In a cohort study of 150 healthy participants, the performance of a logistic  
46 regression model was outstanding in a training set (n=100) and excellent in a test set (n=50),  
47 with the combination of slower PAF and CME depression predicting higher pain. Results  
48 were reproduced across a range of methodological parameters, and inclusion of covariates did  
49 not improve model performance

50 **Meaning:** A novel cortical biomarker comprised of PAF and CME can accurately distinguish  
51 high and low pain sensitive individuals

52

53

54

55

56

57

58

59

60

61

62

## Abstract

63 **Background:** Biomarkers would greatly assist chronic pain management. The present study  
64 aimed to undertake analytical validation of a sensorimotor cortical biomarker signature for  
65 pain consisting of two measures: sensorimotor peak alpha frequency (PAF) and corticomotor  
66 excitability (CME), using a human model of prolonged temporomandibular pain (masseter  
67 intramuscular injection of nerve growth factor [NGF]).

68 **Methods:** 150 participants received an injection of NGF to the right masseter muscle on Days  
69 0 and 2, inducing prolonged pain lasting up to 4 weeks. Electroencephalography (EEG) to  
70 assess PAF and transcranial magnetic stimulation (TMS) to assess CME were recorded on  
71 Days 0, 2 and 5. We determined the predictive accuracy of the PAF/CME biomarker  
72 signature using a nested control-test scheme: machine learning models were run on a training  
73 set ( $n = 100$ ), where PAF and CME were predictors and pain sensitivity was the outcome.  
74 The winning classifier was assessed on a test set ( $n = 50$ ) comparing the predicted pain labels  
75 against the true labels.

76 **Results:** The winning classifier was logistic regression, with an outstanding area under the  
77 curve ( $AUC=1.00$ ). The locked model assessed on the test set had excellent performance  
78 ( $AUC=0.88$ ). Results were reproduced across a range of methodological parameters.  
79 Moreover, inclusion of sex and pain catastrophizing as covariates did not improve model  
80 performance, suggesting the model including biomarkers only was more robust. PAF and  
81 CME biomarkers showed good-excellent test-retest reliability.

82 **Conclusions:** This study provides evidence for a sensorimotor cortical biomarker signature  
83 for pain sensitivity. The combination of accuracy, reproducibility, and reliability, suggests the  
84 PAF/CME biomarker signature has substantial potential for clinical translation.

85           Several objective pain biomarkers have been proposed, including neuroimaging  
86 markers of mechanistic/structural abnormalities<sup>1-3</sup>, neural oscillatory rhythms<sup>4</sup> and “multi-  
87 omics” metrics of micro RNA<sup>5</sup>, proteins<sup>6</sup>, lipids and metabolites<sup>7</sup>. Such biomarkers would  
88 greatly assist decision making in the diagnosis, prevention and treatment of chronic pain<sup>8</sup>.  
89 However, attempts at establishing pain biomarkers have suffered from either insufficient  
90 sample sizes to conduct full-scale analytical validation using machine learning<sup>8-10</sup>, failure to  
91 use clinically relevant pain models<sup>11-13</sup> or lack of assessment of reproducibility or test-retest  
92 reliability<sup>14,15</sup>. These factors have hindered the clinical translatability of prospective pain  
93 biomarkers.

94           Research suggests that the neural oscillatory rhythms involved in processing  
95 nociceptive input, and the corticospinal signalling involved in the subsequent motor response,  
96 are both critical in shaping the subjective experience of pain<sup>4,16</sup>. This work has culminated to  
97 the identification of a promising sensorimotor cortical biomarker signature for predicting pain  
98 sensitivity involving two metrics: 1) sensorimotor peak alpha frequency (PAF), defined as the  
99 dominant sensorimotor cortical oscillation in the alpha (8-12Hz) range<sup>17</sup> and 2) corticomotor  
100 excitability (CME), defined as the efficacy at which signals are relayed from primary motor  
101 cortex (M1) to peripheral muscles<sup>18</sup>. Previous work has shown that slower PAF prior to pain  
102 onset and reduced CME during prolonged pain (“depression”) are associated with more pain,  
103 while faster PAF and increased CME (“facilitation”) are associated with less pain<sup>19-23</sup>. Given  
104 individuals who experience higher pain in the early stages of a prolonged pain episode (e.g.  
105 post-surgery) are more likely to develop chronic pain in the future<sup>24</sup>, slow PAF prior to an  
106 anticipated prolonged pain episode and/or CME depression during the acute stages of pain  
107 could be predictors for the transition to chronic pain.

108           This paper presents the main outcomes of the PREDICT trial, a pre-registered  
109 (NCT04241562<sup>25</sup>) analytical validation of the PAF/CME biomarker signature using a model

110 of prolonged myofascial temporomandibular pain (masseter intramuscular injection of nerve  
111 growth factor [NGF]). Repeated NGF injections induce progressively developing prolonged  
112 pain lasting up to 4 weeks<sup>23,26</sup>, and has been shown to mimic chronic pain characteristics such  
113 as time course (gradual development), type of pain (movement-evoked), functional  
114 impairments, hyperalgesia (decreased pressure pain thresholds) and mechanism of  
115 sensitization<sup>27,28</sup>. This makes the NGF model a highly standardised prolonged pain model  
116 with which to undertake biomarker validation.

117 The aim of the PREDICT trial was to determine whether individuals could be  
118 accurately classified as high or low pain sensitive based on baseline PAF and CME  
119 facilitator/depressor classification. We predicted the area under the curve (AUC) of the  
120 receiver operator characteristic (ROC) curve for distinguishing high and low pain sensitive  
121 individuals would be at least 70% (which represents an acceptable AUC)<sup>29</sup>.

122

123

## Methods

### 124 Participants

125 The PREDICT trial enrolled 159 healthy participants (70 females, 89 males, mean age  
126  $25.1 \pm 6.1$ ), with 150 participants remaining after dropouts. Ethical approval was obtained  
127 from the University of New South Wales (HC190206) and the University of Maryland  
128 Baltimore (HP-00085371). Written, informed consent was obtained. The supplementary  
129 appendix contains all additional details regarding participant characteristics and  
130 methodology.

131

132

## 133 **Experimental Protocol**

134 Outcomes were collected over a period of 30 days. Participants attended the  
135 laboratory on Day 0, 2, and 5. Baseline questionnaire data were collected on Day 0. Pressure  
136 pain thresholds, PAF and CME were measured on Day 0, 2 and 5. PAF was obtained via a 5-  
137 minute eyes-closed resting-state EEG recording from 63 electrodes. Sensorimotor PAF was  
138 computed by identifying the component in the signal (transformed by independent  
139 component analysis) that had a clear alpha peak (8-12Hz) upon frequency decomposition and  
140 a scalp topography suggestive of a sensorimotor source. CME was obtained using  
141 transcranial magnetic stimulation (TMS) mapping; single pulses of TMS delivered to the left  
142 primary motor cortex (M1), and motor evoked potentials (MEPs) recorded from the right  
143 masseter muscle using electromyography (EMG) electrodes. TMS was delivered at each site  
144 on a 1cm-spaced grid superimposed over the scalp, and a map of the corticomotor  
145 representation of the masseter muscle was generated. Corticomotor excitability was indexed  
146 as map volume, which is calculated by summing MEP amplitudes from all “active sites” on  
147 the grid. NGF was injected into the right masseter muscle at the end of the Day 0 and 2  
148 laboratory sessions. Electronic pain diaries were collected from Days 1 to 30 at 10am and  
149 7pm each day, where participant rated their pain (0-10) during various activities. Pain upon  
150 functional jaw movement is a key criterion for the diagnosis of TMD<sup>30</sup> and pain during  
151 chewing and yawning are higher compared to other activities after an NGF injection to the  
152 masseter muscle<sup>28,31</sup>. As such, the primary outcomes were pain upon chewing and yawning.  
153 The protocol and methodology are shown in Figure 1A and 1B.

## 154 **Analytical Validation Plan**

155 **Division of the Data.** Analysis was conducted in R, MATLAB and Python, with code  
156 publicly available [https://github.com/DrNahianC/PREDICT\\_Scripts](https://github.com/DrNahianC/PREDICT_Scripts). Figure 1C details the

157 analysis plan. We adopted a nested-control-testing scheme by partitioning 150 participants  
158 into the first 100 (training set) and second 50 (test set) individuals to participate in the study.

159 **Growth Mixture Modelling.** We used growth mixture modelling (GMM) in R<sup>32-34</sup> to  
160 form two classes: high and low pain sensitive. For this categorization, we used the sum of  
161 pain upon chewing and yawning data, and pain data from Days 1-7, as this was the timeframe  
162 when pain was most prominent (eFigure 3). As such, participants would more reliably fall  
163 into high and low pain sensitive classes during this timeframe. The first and last 40  
164 participants (80 in total) in the training set, based on the ordering of probabilities of the pain  
165 intensity trajectory belonging to one of the classes, were labelled as high and low pain  
166 sensitive. The trained GMM model, once established, was locked and utilized to label the test  
167 set. Consequently 38 out of 50 test set participants were labelled, with a different proportion  
168 of high and low pain sensitive (24 high and 14 low pain) compared to the training set since  
169 the classifications were based on the probability thresholds established in the training set.  
170 These labels were recorded for subsequent comparison with the predicted labels produced by  
171 the trained machine learning model.

172 **Machine Learning Model Selection and Fine Tuning.** We utilized five machine  
173 learning models on the labelled training set —logistic regression, random forest, gradient  
174 boosting, support vector machine, and neural network. The dependent variable was pain  
175 sensitivity label (high/low) identified from the GMM and independent variables were  
176 sensorimotor PAF and  $\Delta$ CME: the latter was typified as facilitator and depressor, depending  
177 on whether they showed an increase or decrease in map volume on Day 5 relative to Day 0,  
178 respectively. For each model, we identified optimized parameters through 5-fold cross-  
179 validation: we randomly divided the 80 participants into an internal training set of 64  
180 participants (consisting of four equal folds of 16) and a validation set of 16. The optimized  
181 models in the internal training set were then employed to predict labels in the validation set to

182 facilitate model selection. The model with the best performance (area under the curve) on the  
183 validation set was then locked in.

184 **Test Set Prediction.** The locked machine learning model was assessed on the test set.  
185 The participant IDs in this set did not coincide with those in the pain diary data, thereby  
186 preserving the double-blind nature of the analysis. By using the ground-truth labels  
187 (shuffled), predicted labels (unshuffled), and the shuffling order for the test set, we were able  
188 to evaluate the model's performance by comparing the reordered predicted labels against the  
189 ground-truth labels established by the GMM. Performance was assessed via receiver  
190 operating characteristic (ROC) area under the curve (AUC), with 95% confidence intervals  
191 reported. AUC values between 0.7-0.8, 0.8-0.9 and 0.9-1 were considered “acceptable”,  
192 “excellent”, and “outstanding” respectively<sup>29</sup>.

193

## 194 **Results**

### 195 **PAF/CME demonstrated good-excellent test-retest reliability**

196 PAF and  $\Delta$ CME showed good to excellent test-retest reliability across sessions  
197 (eFigures 5 and 7).

### 198 **Outstanding performance on the training validation set**

199 Figure 2A shows the pain scores for participants in the training and test set classified  
200 as high and low pain sensitive. Figure 2B (upper) shows the performances of the models  
201 across the internal training and validation sets. Logistic regression was the winning classifier  
202 based on its outstanding performance (AUC=1.00[1.00-1.00]) when applied to the validation  
203 set (Figure 2B lower), with slower PAF and CME depression predicting higher pain with  
204 regression coefficients of -1.25 and -1.27 for PAF and CME respectively.



## 205 **Excellent performance on the test set**

206           When the locked logistic regression model was applied to the test set, performance  
207 (Figure 2C upper) was excellent (AUC=0.88[0.78-0.99]). The optimal probability threshold  
208 for being classified as high pain sensitive was 0.40, with an associated sensitivity of 0.875  
209 and specificity of 0.79. Applying this 0.40 probability threshold to our data, to be labelled as  
210 high pain sensitive, a facilitator would need a PAF<9.56, and a depressor would need a  
211 PAF<10.57. Figure 2C (lower) shows the differences in pain scores between participants  
212 predicted to have high or low pain. Visually one can observe slower PAF in those predicted  
213 to have high vs. low pain sensitivity (Figure 2D), This was statistically significant according  
214 to a two-sample t-test ( $t(48)=5.8$ ,  $p<.001$ ). Moreover, one can observe a decrease in CME  
215 within the masseter motor maps in those predicted to have high pain (Figure 2E), whereas  
216 those predicted to have low pain exhibited an increase in CME. The differences in  $\Delta$ CME  
217 between these groups was statistically significant ( $t(48)=2.81$ ,  $p=.007$ ).

## 218 **A benefit for a *combined* signature**

219           We reran the models to determine whether the combined PAF/CME signature out-  
220 performed each measure individually (eFigure 10). The performance of the PAF-only logistic  
221 regression model on the training validation and test set were respectively excellent  
222 (AUC=0.95[0.84-1.00]) and outstanding (AUC=0.83[0.70-0.96]). The performance of the  
223 CME-only logistic regression model for the training validation and test set were respectively  
224 excellent (AUC=0.88[0.69-1.00]) and acceptable (AUC=0.75[0.60-0.91]).

## 225 **Inclusion of covariates did not improve model performance**

226           We evaluated the performance of the biomarker combined with covariates. As there  
227 were many variables, we applied feature selection, i.e. filtering features by inspecting p-  
228 values when associating predictors and labels, and using parameter tuning to optimize the

229 coefficients associated with the filtered features. Five features were subsequently selected and  
230 optimized – Sensorimotor PAF, CME, Sex, Pain Catastrophizing Scale (PCS) Total and PCS  
231 Helplessness. The associations between labels and biomarkers/covariates in the training vs.  
232 test set, and performance of the models are shown in Figure 3A and 3B. When including  
233 these five features, the performance of the logistic regression model (regression coefficients  
234 of -0.86, -0.69, 0.64, 0.02 and 0.06 for PAF, CME, Sex, PCS Total and PCS Helplessness  
235 respectively) was outstanding (AUC=1.00[1.00-1.00]) and excellent (AUC=0.81[0.67-0.95])  
236 for the training validation and test set were respectively. Thus, the model with biomarkers  
237 only outperformed the model including covariates.

### 238 **Results were reproducible across methodological choices**

239 To determine whether our results were robust across different methodological  
240 choices, we repeated the analysis using different PAF calculation methods, including  
241 component level data (with the sensorimotor component chosen manually or using an  
242 automated script) vs. sensor level data (with a sensorimotor region of interest), using different  
243 frequency windows (8-12Hz vs. 9-11Hz) and using different CME calculation methods (map  
244 volume vs. map area). We found that, regardless of the choices, logistic regression was the  
245 best or equal-best performing model when applied to the training-validation set (Figure 3C),  
246 with AUCs varying from acceptable (AUC=0.77) to outstanding (AUC=1.00). When the  
247 locked models were applied to the test set, performance varied from acceptable (AUC=0.73)  
248 to excellent (AUC=0.88) (Figure 3D). Lastly, excellent performance was demonstrated when  
249 the data was analysed two other ways (eFigure 11 and 12): where GMM pain labels were  
250 established using the whole 30 days rather than the first 7 days (training validation  
251 AUC=0.84[0.64-1], test AUC =0.89[0.79-0.99]), and when missing pain diary data was not  
252 imputed (training validation AUC=0.81[0.6-1], test AUC=0.89[0.79-0.99]).

253

## Discussion

254 A full-scale analytical validation of the PAF and CME biomarker signature was  
255 conducted using a prolonged pain model. In an initial training set (n=100), we found that a  
256 logistic regression was the optimal classifier based on its outstanding performance  
257 (AUC=100%), with slower PAF and CME depression predicting higher pain. When this  
258 model was applied to an independent test set, the AUC was excellent (AUC=88%).  
259 PAF/CME showed good-excellent test-retest reliability, and results were reproduced across a  
260 range of methodological parameters. Inclusion of covariates did not improve model  
261 performance, suggesting the model including biomarkers only was more robust. Overall, the  
262 combination of sample size, pain model validity, and biomarker accuracy, reproducibility and  
263 reliability suggest the PAF/CME biomarker signature has substantial potential for clinical  
264 translation.

265 Our results suggest that individuals who have slow PAF prior to an anticipated  
266 prolonged pain episode and show corticomotor depression during a prolonged pain episode,  
267 are more likely to experience higher pain. Model performance was higher combining the two,  
268 suggesting consideration of both ascending sensory and descending motor pain processing  
269 mechanisms provides more information regarding pain sensitivity. Note that our study used a  
270 cohort of healthy participants with strict inclusion/exclusion criteria and an experimental pain  
271 model. While this may limit generalizability to clinical populations, the use of a standardized  
272 sample/design is a requirement of pre-clinical analytical validation, and an essential first step  
273 in the discovery pipeline toward a clinical biomarker signature. Moreover, there is already  
274 evidence that the proposed biomarker is generalizable to clinical contexts. A recent study  
275 showed that individuals with slower PAF experienced more pain following a thoracotomy<sup>20</sup>.  
276 Furthermore, individuals with lower CME during the acute stages of low back pain were  
277 more likely to develop chronic pain at 6-months follow-up<sup>35</sup>. This suggests PAF and CME

278 shows promise in being used in pre-operative and/or post-operative/post-injury contexts to  
279 classify high or low pain sensitive individuals. Given that higher acute pain predicts the  
280 development of chronic pain<sup>24</sup> PAF and CME could potentially be used as susceptibility  
281 biomarkers for the transition from acute to chronic pain.

282         There are several aspects of our study which stand out. The first is sample size: with  
283 recent advancements in machine learning, it has become possible to conduct analytical  
284 validation of pain biomarkers. However, deep learning requires a large amount of labelled  
285 samples to conduct rigorous training on validation and test sets<sup>8</sup>. Unfortunately, many pain  
286 susceptibility biomarker studies have not been sufficiently sampled to adopt such  
287 approaches<sup>9,10</sup>, and the ones that have used machine learning failed to reach the sample sizes  
288 similar to that of the present study<sup>1,2</sup>.

289         Another strength of our findings is reproducibility. Previous work has shown similar  
290 associations between slower PAF and higher upper limb pain, post-operative thoracic pain  
291 and chronic pain in various body regions<sup>17,19,20</sup> as well as CME depression and higher upper  
292 limb pain, chronic patellofemoral pain and development of chronic low back pain<sup>22,23,36,37</sup>.  
293 The present study replicated these results in a model of jaw pain, suggesting the biomarker  
294 signature may be generalizable to pain more broadly. Note that some studies have not shown  
295 a negative relationship between PAF and pain sensitivity<sup>38,39</sup> or a positive relationship  
296 between CME depression and pain sensitivity<sup>31</sup>. However, these studies were not sufficiently  
297 sampled to conduct analytical validation of the kind presented in this study. Nonetheless, the  
298 mixed findings could also arise from differences in methodological choices in the estimation  
299 of PAF e.g. frequency windows<sup>39</sup> and use of sensor vs. component space data<sup>40</sup> and  
300 estimation of CME e.g. map volume<sup>22</sup> vs. area<sup>31</sup>. For this reason, we repeated the main  
301 analysis using different methodological choices and found at least acceptable AUCs,  
302 supporting the reproducibility of our results.

303 The PAF/CME measures demonstrated good-excellent reliability. Reliability is a  
304 desirable characteristic which assists in the widespread application of pain biomarkers<sup>8</sup>. We  
305 found that participants exhibit stable PAF across days despite the presence of pain, and even  
306 when considering different methodological factors that may influence the reliability such as  
307 pre-processing pipeline, recording length and frequency window<sup>14</sup>. Indeed, reliable PAF was  
308 found with a recording length as short as 2 minutes and minimal data pre-processing. We also  
309 showed that those who show CME depression on Day 2 are also likely to show CME  
310 depression on Day 5 (and vice versa for those who show CME facilitation). This was shown  
311 even when an automated method of determining MEP amplitude on each trial was applied.  
312 Thus, our work not only shows that PAF and CME can predict pain, but the relative ease with  
313 which reliable PAF/CME data can be obtained is promising for subsequent clinical  
314 translation.

315 Another strength of this study is our pain model. While other pain biomarker studies  
316 have shown promising results, these studies were restricted to pain models utilizing transient  
317 painful stimuli lasting seconds to minutes<sup>11-13</sup>. The brief nature of the painful stimuli  
318 questions the external validity of these findings and limits generalizability to clinical  
319 populations. In contrast, the present study used a prolonged pain model lasting weeks.  
320 Several other studies have shown that injections of NGF to the neck, elbow or masseter  
321 muscles can mimic symptoms of clinical neck pain<sup>41</sup>, chronic lateral epicondylalgia<sup>27</sup> and  
322 TMD<sup>28</sup> respectively. Thus, the observed relationships between PAF/CME and pain in the  
323 present study show promise in terms of clinical applicability.

324 Lastly, the PAF/CME biomarker demonstrated high performance. A previous study  
325 found that connectivity between medial prefrontal cortex and nucleus accumbens in 39 sub-  
326 acute low back pain patients (pain duration 6-12 weeks) could predict future pain persistence  
327 at ~7, 29 and 54 weeks, with AUCs of 67-83%<sup>1</sup>. Another study on 24 sub-acute low back

328 pain patients showed that white matter fractional anisotropy measures in the superior  
329 longitudinal fasciculus and internal capsule predicted pain persistence over the next year,  
330 with an AUC of 81%<sup>2</sup>. Though the present did not directly assess the transition to chronic  
331 pain, our AUCs of 100% (validation set) and 88% (test set) appear comparatively high. We  
332 therefore encourage future clinical studies to determine whether PAF/CME can predict the  
333 transition from acute to chronic pain.

### 334 **Conclusions**

335 A novel biomarker signature comprised of PAF and CME accurately and reliably  
336 distinguishes high and low pain sensitive individuals during prolonged jaw pain with an  
337 excellent AUC of 88% in an independent test set. No other pain biomarker study has shown  
338 this combination of biomarker accuracy, reproducibility, reliability and pain model validity,  
339 suggesting high potential for clinical translation.

### 340 **Acknowledgements**

341 This project was funded by the National Institutes of Health (R61 NS113269/NS/NINDS thH  
342 HHS/United States). Clinical Trial Registration: NCT04241562  
343 <https://classic.clinicaltrials.gov/ct2/show/results/NCT04241562?view=results>.  
344 The authors have no conflicts to declare. The corresponding author had full access to all the  
345 data in the study and takes responsibility for the integrity of the data and accuracy of the data  
346 analysis. The data supporting the findings of this study are available from the corresponding  
347 author upon reasonable request.

348

349

350

351

352

353

354

## References

- 356 1. Baliki MN, Petre B, Torbey S, et al. Corticostriatal functional connectivity predicts transition  
357 to chronic back pain. *Nature neuroscience*. 2012;15(8):1117-1119.
- 358 2. Mansour AR, Baliki MN, Huang L, et al. Brain white matter structural properties predict  
359 transition to chronic pain. *PAIN*<sup>®</sup>. 2013;154(10):2160-2168.
- 360 3. Vachon-Preseu E, Tétreault P, Petre B, et al. Corticolimbic anatomical characteristics  
361 predetermine risk for chronic pain. *Brain*. 2016;139(7):1958-1970.
- 362 4. Green A, Wang S, Stein J, et al. Neural signatures in patients with neuropathic pain.  
363 *Neurology*. 2009;72(6):569-571.
- 364 5. Wang W-T, Zhao Y-N, Han B-W, Hong S-J, Chen Y-Q. Circulating microRNAs identified in a  
365 genome-wide serum microRNA expression analysis as noninvasive biomarkers for endometriosis.  
366 *The Journal of Clinical Endocrinology & Metabolism*. 2013;98(1):281-289.
- 367 6. Singh JA, Noorbaloochi S, Knutson KL. Cytokine and neuropeptide levels are associated with  
368 pain relief in patients with chronically painful total knee arthroplasty: a pilot study. *BMC*  
369 *Musculoskeletal Disorders*. 2017;18(1):1-6.
- 370 7. Sasamoto N, Zeleznik OA, Vitonis AF, et al. Presurgical blood metabolites and risk of  
371 postsurgical pelvic pain in young patients with endometriosis. *Fertility and Sterility*.  
372 2022;117(6):1235-1245.
- 373 8. Zhang Z, Gewandter JS, Geha P. Brain imaging biomarkers for chronic pain. *Frontiers in*  
374 *Neurology*. 2022;12:734821.
- 375 9. Sluka KA, Wager TD, Sutherland SP, et al. Predicting chronic postsurgical pain: current  
376 evidence and a novel program to develop predictive biomarker signatures. *Pain*. 2023;164(9):1912-  
377 1926.
- 378 10. Eldabe S, Obara I, Panwar C, Caraway D. Biomarkers for chronic pain: significance and  
379 summary of recent advances. *Pain Research and Management*. 2022;2022
- 380 11. Lee J-J, Kim HJ, Čeko M, et al. A neuroimaging biomarker for sustained experimental and  
381 clinical pain. *Nature medicine*. 2021;27(1):174-182.
- 382 12. Woo C-W, Schmidt L, Krishnan A, et al. Quantifying cerebral contributions to pain beyond  
383 nociception. *Nature communications*. 2017;8(1):14211.
- 384 13. Wager TD, Atlas LY, Lindquist MA, Roy M, Woo C-W, Kross E. An fMRI-based neurologic  
385 signature of physical pain. *New England Journal of Medicine*. 2013;368(15):1388-1397.
- 386 14. Chowdhury NS, Skippen P, Si E, et al. The reliability of two prospective cortical biomarkers  
387 for pain: EEG peak alpha frequency and TMS corticomotor excitability. *Journal of Neuroscience*  
388 *Methods*. 2023/02/01/ 2023;385:109766. doi:<https://doi.org/10.1016/j.jneumeth.2022.109766>
- 389 15. Davis KD, Aghaeepour N, Ahn AH, et al. Discovery and validation of biomarkers to aid the  
390 development of safe and effective pain therapeutics: challenges and opportunities. *Nature Reviews*  
391 *Neurology*. 2020;16(7):381-400.
- 392 16. van Dieen JH, Reeves NP, Kawchuk G, van Dillen LR, Hodges PW. Motor Control Changes in  
393 Low Back Pain: Divergence in Presentations and Mechanisms. *The Journal of orthopaedic and sports*  
394 *physical therapy*. Jun 2019;49(6):370-379. doi:10.2519/jospt.2019.7917
- 395 17. Furman AJ, Meeker TJ, Rietschel JC, et al. Cerebral peak alpha frequency predicts individual  
396 differences in pain sensitivity. *NeuroImage*. 2018;167:203-210.
- 397 18. Weavil JC, Amann M. Corticospinal excitability during fatiguing whole body exercise.  
398 *Progress in brain research*. 2018;240:219-246.
- 399 19. Furman AJ, Prokhorenko M, Keaser ML, et al. Sensorimotor peak alpha frequency is a  
400 reliable biomarker of prolonged pain sensitivity. *Cerebral Cortex*. 2020;30(12):6069-6082.
- 401 20. Millard SK, Furman AJ, Kerr A, et al. Predicting postoperative pain in lung cancer patients  
402 using preoperative peak alpha frequency. *British Journal of Anaesthesia*. 2022;128(6):e346-e348.
- 403 21. Seminowicz DA, Thapa T, Furman AJ, et al. Slow peak alpha frequency and corticomotor  
404 depression linked to high pain susceptibility in transition to sustained pain. *bioRxiv*. 2018:278598.

- 405 22. Seminowicz DA, Thapa T, Schabrun SM. Corticomotor depression is associated with higher  
406 pain severity in the transition to sustained pain: A longitudinal exploratory study of individual  
407 differences. *The Journal of Pain*. 2019;20(12):1498-1506.
- 408 23. Chowdhury NS, Chang W-J, Millard SK, et al. The Effect of Acute and Sustained Pain on  
409 Corticomotor Excitability: A Systematic Review and Meta-analysis of group-and individual-level data.  
410 *The Journal of Pain*. 2022;23(10):1680-1696.
- 411 24. Hah JM, Cramer E, Hilmoe H, et al. Factors associated with acute pain estimation,  
412 postoperative pain resolution, opioid cessation, and recovery: secondary analysis of a randomized  
413 clinical trial. *JAMA network open*. 2019;2(3):e190168-e190168.
- 414 25. Seminowicz DA, Bilska K, Chowdhury NS, et al. A novel cortical biomarker signature for  
415 predicting pain sensitivity: protocol for the PREDICT longitudinal analytical validation study. *Pain*  
416 *Reports*. 2020;5(4)
- 417 26. Svensson P, Cairns BE, Wang K, Arendt-Nielsen L. Injection of nerve growth factor into  
418 human masseter muscle evokes long-lasting mechanical allodynia and hyperalgesia. *Pain*.  
419 2003;104(1-2):241-247.
- 420 27. Bergin MJG, Hirata R, Mista C, et al. Movement evoked pain and mechanical hyperalgesia  
421 after intramuscular injection of nerve growth factor: a model of sustained elbow pain. *Pain*  
422 *Medicine*. 2015;16(11):2180-2191.
- 423 28. Schabrun SM, Si E, Millard SK, et al. Intramuscular injection of nerve growth factor as a  
424 model of temporomandibular disorder: nature, time-course, and sex differences characterising the  
425 pain experience. *Neurobiology of Pain*. 2023;13:100117.
- 426 29. Hosmer Jr DW, Lemeshow S, Sturdivant RX. *Applied logistic regression*. vol 398. John Wiley &  
427 Sons; 2013.
- 428 30. Schiffman E, Ohrbach R, Truelove E, et al. Diagnostic criteria for temporomandibular  
429 disorders (DC/TMD) for clinical and research applications: recommendations of the International  
430 RDC/TMD Consortium Network and Orofacial Pain Special Interest Group. *Journal of oral & facial*  
431 *pain and headache*. 2014;28(1):6.
- 432 31. Costa YM, Exposto FG, Kothari M, et al. Masseter corticomotor excitability is decreased after  
433 intramuscular administration of nerve growth factor. *Eur J Pain*. Oct 2019;23(9):1619-1630.  
434 doi:10.1002/ejp.1438
- 435 32. Proust-Lima C, Philipps V, Lique B. Estimation of extended mixed models using latent classes  
436 and latent processes: the R package lcmm. *arXiv preprint arXiv:150300890*. 2015;
- 437 33. Li F, Duncan TE, Duncan SC, Acock A. Latent growth modeling of longitudinal data: A finite  
438 growth mixture modeling approach. *Structural Equation Modeling*. 2001;8(4):493-530.
- 439 34. Ram N, Grimm KJ. Methods and measures: Growth mixture modeling: A method for  
440 identifying differences in longitudinal change among unobserved groups. *International journal of*  
441 *behavioral development*. 2009;33(6):565-576.
- 442 35. Jenkins LC, Chang W-J, Buscemi V, et al. Cortical function and sensorimotor plasticity are  
443 prognostic factors associated with future low back pain after an acute episode: the UPWaRD  
444 prospective cohort study. *Pain*. 2022;10.1097.
- 445 36. Jenkins LC, Chang W-J, Buscemi V, et al. Low Somatosensory Cortex Excitability in the Acute  
446 Stage of Low Back Pain Causes Chronic Pain. *The Journal of Pain*. 2022/02/01/ 2022;23(2):289-304.  
447 doi:<https://doi.org/10.1016/j.jpain.2021.08.003>
- 448 37. Te M, Baptista AF, Chipchase LS, Schabrun SM. Primary motor cortex organization is altered  
449 in persistent patellofemoral pain. *Pain Medicine*. 2017;18(11):2224-2234.
- 450 38. Nir R-R, Sinai A, Raz E, Sprecher E, Yarnitsky D. Pain assessment by continuous EEG:  
451 association between subjective perception of tonic pain and peak frequency of alpha oscillations  
452 during stimulation and at rest. *Brain research*. 2010;1344:77-86.
- 453 39. De Martino E, Gregoret L, Zandalasini M, Graven-Nielsen T. Slowing in peak-alpha frequency  
454 recorded after experimentally-induced muscle pain is not significantly different between high and  
455 low pain-sensitive subjects. *The Journal of Pain*. 2021;22(12):1722-1732.



- 456 40. Millard SK, Chiang AKI, Humburg P, et al. Effects of nicotine compared to placebo gum on  
457 sensitivity to pain and mediating effects of peak alpha frequency. eLife Sciences Publications, Ltd;  
458 2023.
- 459 41. Christensen SWM, Elgueta-Cancino E, Simonsen MB, et al. Effect of prolonged experimental  
460 neck pain on exercise-induced hypoalgesia. *Pain*. 2022;163(12):2411-2420.

461

462

463

464

465

466

467

468

469

470

471

472

473

474

475

476

477

478

479

## Figure Captions

480 **Figure 1. Study methodology, including study design, data collection procedures and**  
481 **analysis plan.** (A) Experimental protocol showing timeline of data collection procedures. On  
482 Day 0, we measured peak alpha frequency (PAF) and corticomotor excitability (CME). At  
483 the end of the session, an injection of nerve growth factor (NGF) was administered to the  
484 right masseter muscle. On Day 2, PAF and CME were measured, followed by a second NGF  
485 injection. On Day 5, PAF and CME were measured. From Days 1-30, electronic diaries  
486 measuring jaw pain were sent to participants at 10AM and 7PM each day. (B) Details of the  
487 methodology. Sensorimotor PAF was measured using a 5 minutes eyes closed resting state  
488 EEG recording. Sensorimotor PAF was computed by identifying the component in the signal  
489 (transformed by independent component analysis) that had a clear alpha peak in the 8–12 Hz  
490 range upon frequency decomposition and a scalp topography suggestive of a source  
491 predominately over the sensorimotor cortex. TMS mapping was conducted by stimulating the  
492 scalp area over left M1 to obtain a map of the representation of the right masseter muscle.  
493 The map consists of the motor-evoked potential (MEP) amplitude at each stimulated location,  
494 with CME corresponding to the map volume (sum of all MEPs from active sites). (C) Details  
495 of the analysis plan. We adopted a nested-control-test scheme by partitioning the 150 subjects  
496 into a training set consisting of 100 subjects and an independent test set of 50 subjects. We  
497 labelled a subset of participants in the training (n = 80) and test set (n = 38) as high or low  
498 pain sensitive using growth mixture modelling (GMM) to establish “ground-truth” labels. We  
499 then ran various machine learning models on the labelled training set (with PAF/CME as  
500 predictors, and pain severity labels as outcome), and determined optimized parameters  
501 through 5-fold cross-validation i.e. randomly dividing the 80 subjects into an internal training  
502 set of 64 subjects (with 4 equal folds of 16) and a validation set of 16. The optimized models  
503 in the internal training set were employed to predict labels in the validation set to facilitate  
504 model selection. The model with the best performance on the validation set was then locked  
505 in, and applied to the labelled test set, comparing the predicted labels of high/low pain  
506 sensitive with the ground-truth labels of high/low pain sensitive.

507 **Figure 2. Performance of the combined PAF and CME biomarker on training and test**  
508 **set.** (A) Results of the growth mixture modelling which categorized 80 participants in the  
509 training set (left) and 38 participants in the test (right) as high or low pain sensitive. Data  
510 shows mean pain score (chew + yawn pain rating) for each timepoint, while the shaded area  
511 shows 95% confidence intervals. (B) The upper panel shows performances (AUC [95%  
512 confidence intervals]) of various machine learning models for the internal training set and  
513 validation set. Logistic regression (LR) was chosen as the optimal classifier based on  
514 outstanding AUC of 100% as shown in the lower panel. (C) The upper panel shows the  
515 performance of the locked logistic regression model when applied to the test set, which was  
516 in the excellent range (AUC of 88%). The lower panel shows the pain trajectories (mean  
517 chew + yawn pain and 95% confidence intervals) of participants predicted to have high or  
518 low pain sensitivity based on the locked logistic regression model. (D) Individual and mean  
519 z-transformed spectral plots and topography of the sensorimotor alpha component on Day 0  
520 for participants predicted to have high or pain sensitivity based on the locked logistic  
521 regression model. (E) The mean motor cortex maps on Day 0 and Day 5 showing normalized  
522 motor evoked potential (MEP) amplitude (expressed as a proportion of the maximal MEP

523 amplitude) for participants predicted to have high or low pain sensitivity based on the locked  
524 logistic regression model.

525

526 **Figure 3. Performance of the combined PAF and CME biomarker on training and test**  
527 **set when including covariates, and across PAF/CME calculation methods. (A)**

528 Visualisation of biomarkers and covariates for the training and test sets across high (red) and  
529 low (blue) pain labels identified from the GMM. Data on PAF, PCS total and PCS  
530 helplessness are plotted as boxplots, while data on CME and Sex are plotted according to  
531 facilitator: depressor (Fac: dep) and female: male (fem: mal) split respectively, including odd  
532 ratios. A lower odds ratio means a lower probability of high pain sensitive individuals  
533 belonging to the facilitator or female categories. For PAF and CME, low pain was associated  
534 with fast PAF and CME facilitation for both training and test sets. In contrast, the relationship  
535 between covariates and labels were in the opposite direction for the training and test set,  
536 suggesting the relationship between biomarkers and labels was consistent. **(B)** The left panel  
537 shows the performance of the locked logistic regression model on the test set when including  
538 covariates in the model. The right panel shows pain trajectories (mean chew + yawn score  
539 and 95% confidence intervals) of participants predicted to have high or low pain sensitivity  
540 based on the locked logistic regression model including covariates. **(C)** The performance of  
541 each machine learning model (AUC [95% confidence intervals]) on the training validation set  
542 across different PAF/CME calculation methods. This includes the sensorimotor component  
543 chosen manually after an independent component analysis, component identified using an  
544 automated script after an independent component analysis, or using a sensorimotor region of  
545 interest (ROI, mean of Cz, C3 and C4) in electrode space, to calculate PAF. We also looked  
546 at different frequency windows for computing PAF (8-12Hz vs. 9-11Hz) or CME calculated  
547 using map area or map volume. **(D)** The performance of the locked logistic regression model  
548 (AUC [95% confidence intervals]) when applied to the test set, across different PAF/CME  
549 calculation methods.

550

551

552

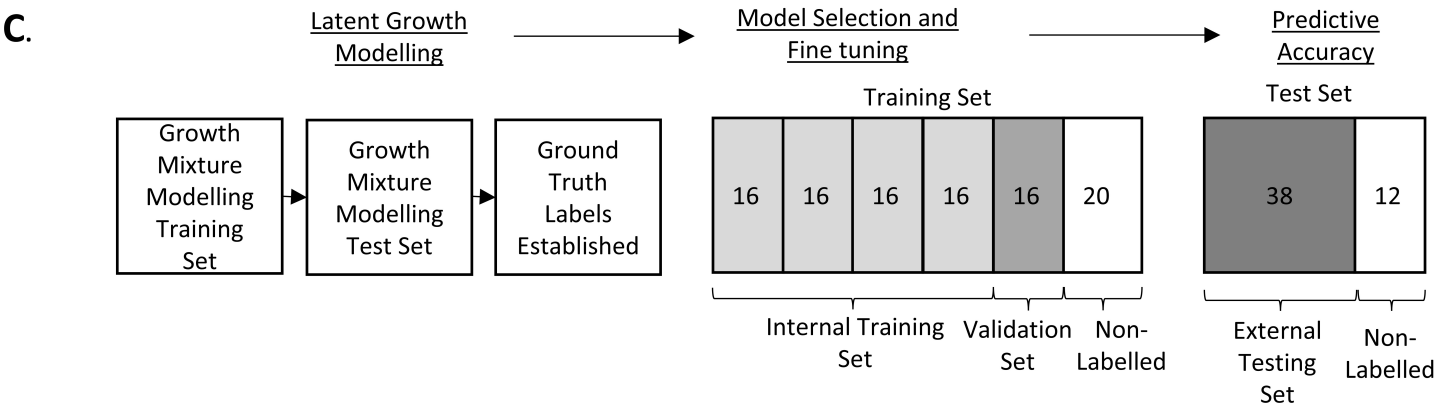
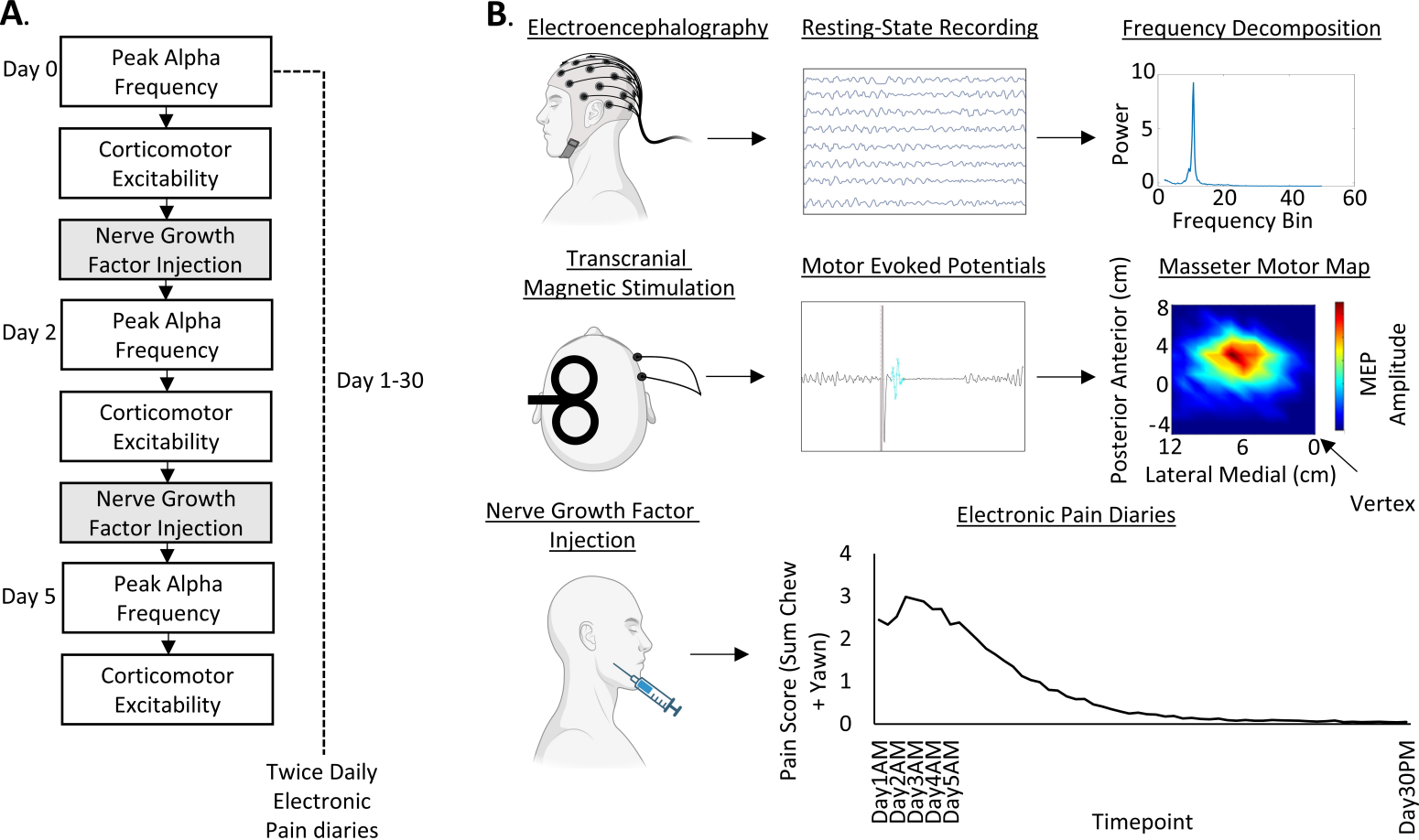
553

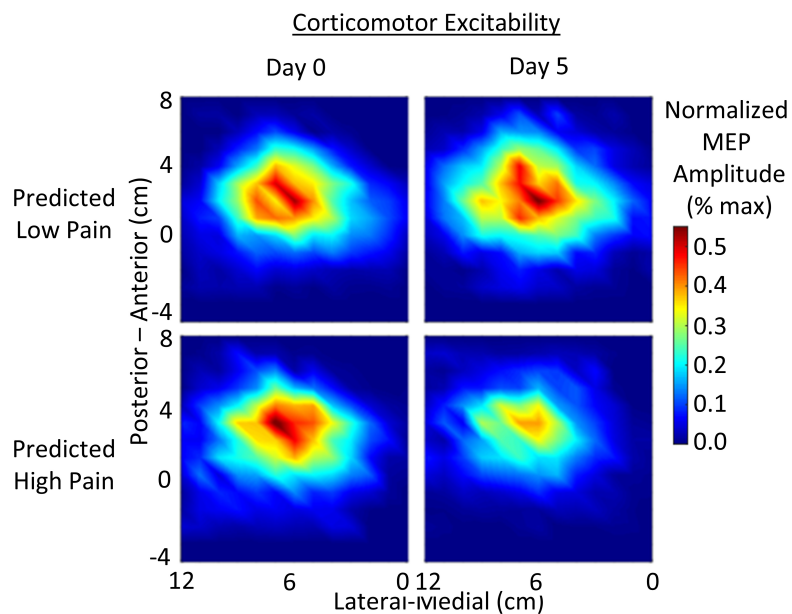
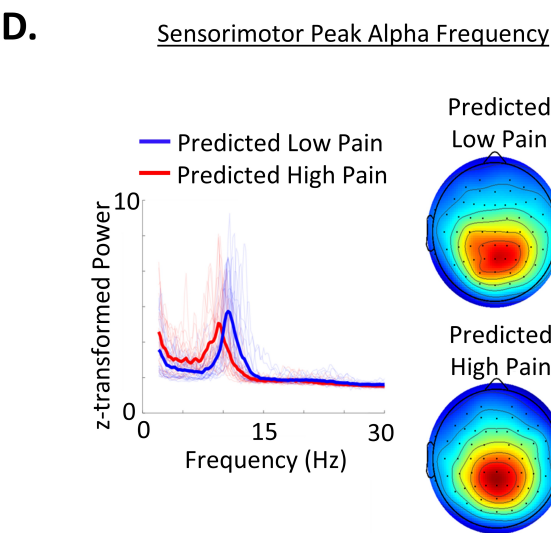
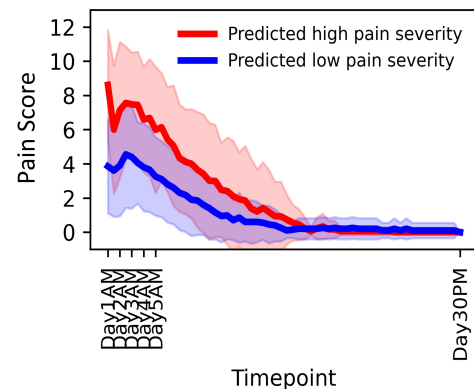
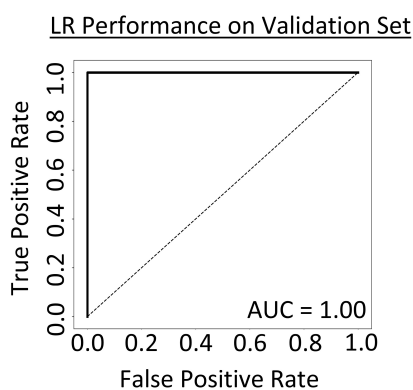
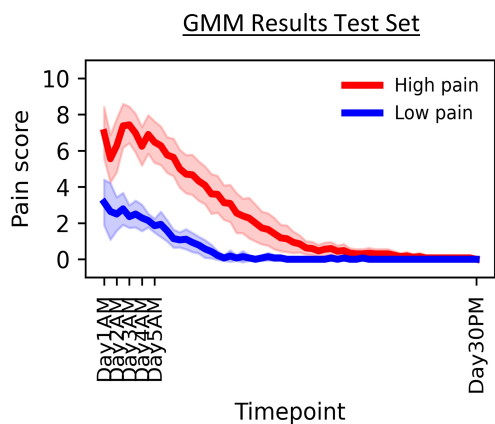
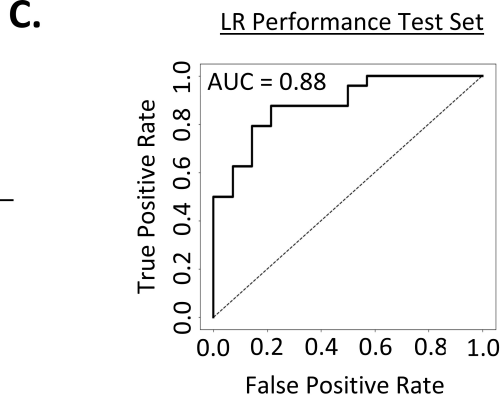
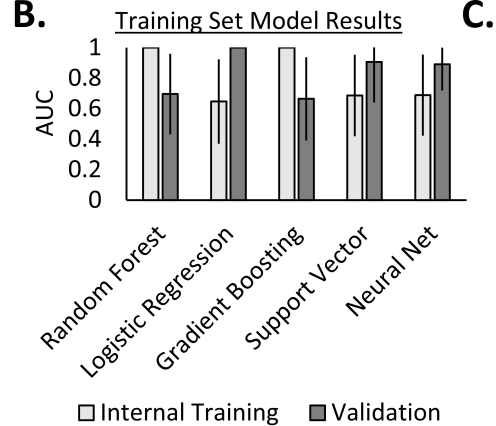
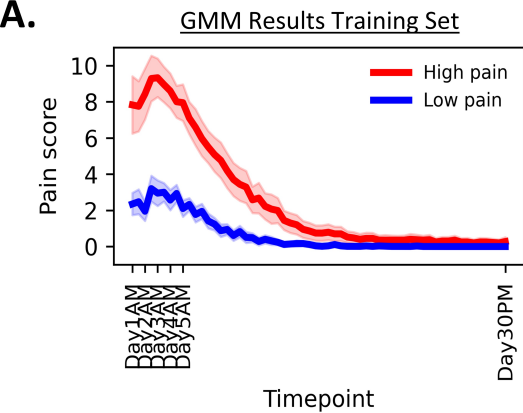
554

555

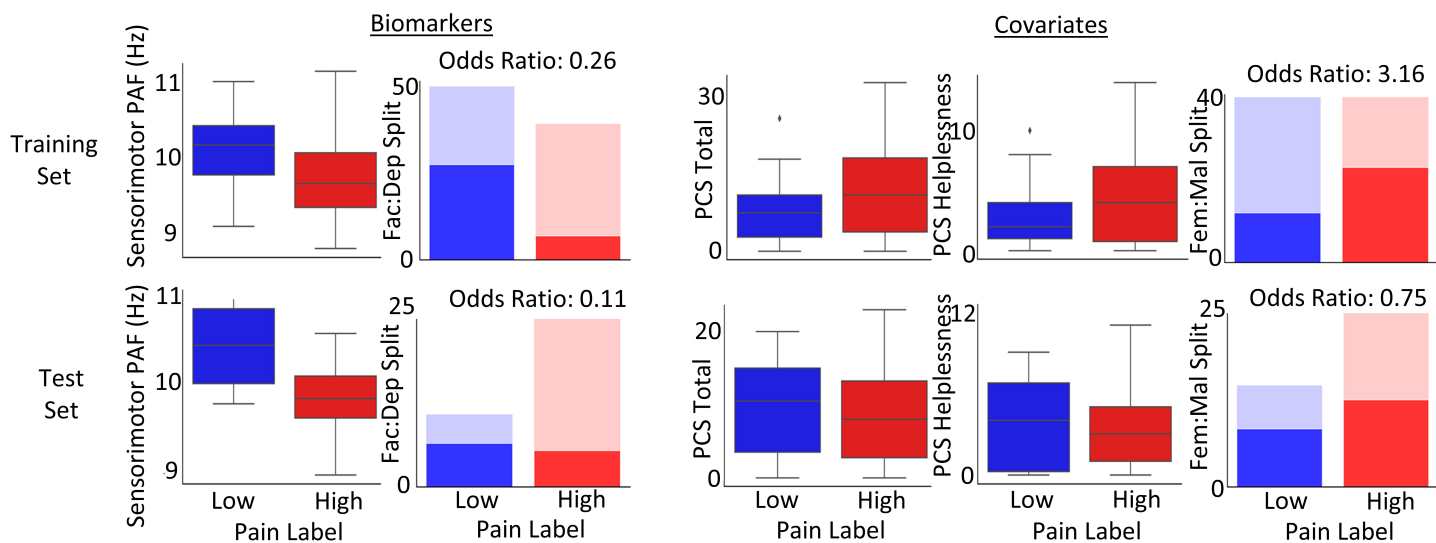
556

557

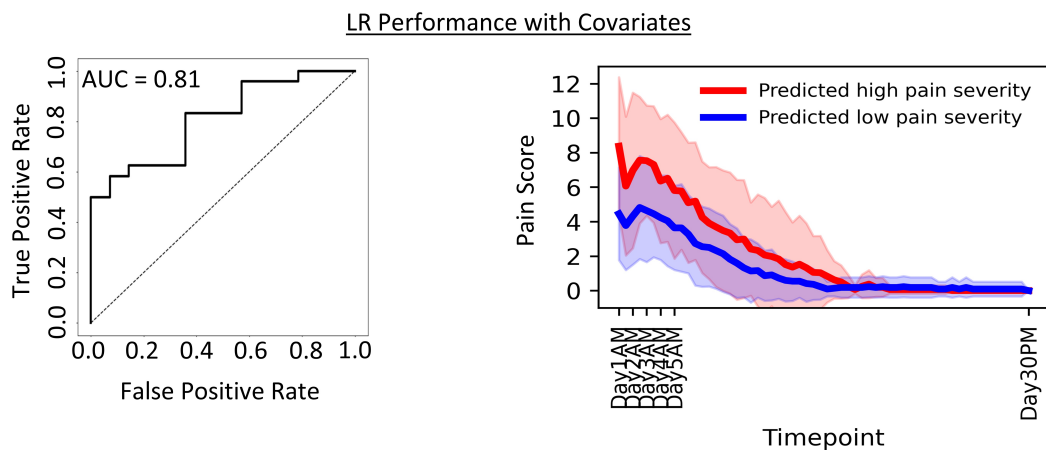




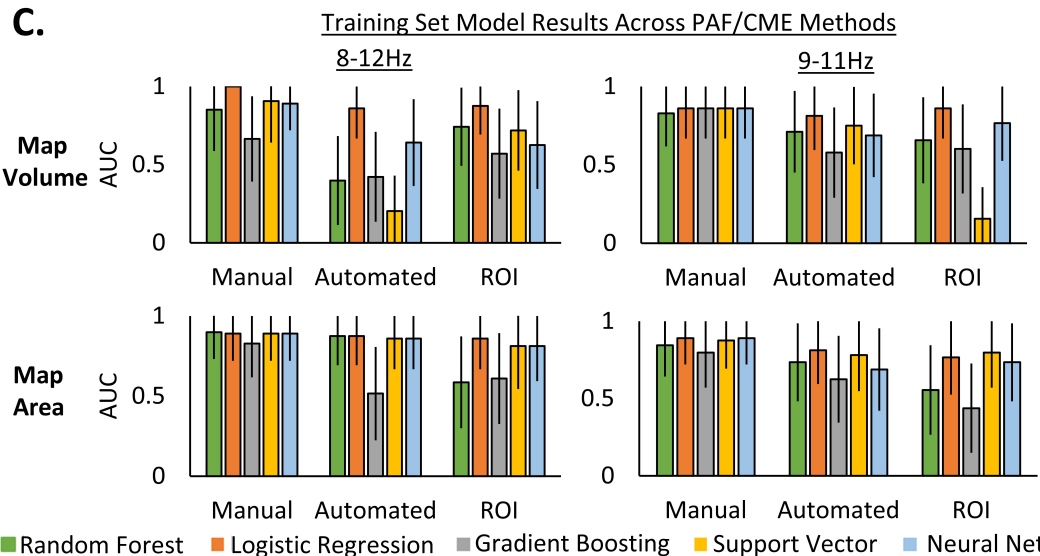
## Relationship between Biomarkers/Covariates and Labels



**B.**



**C.**



**D.**

