

1 Unveiling the gap of heart failure: a DATASUS study

2 Vivian Cardoso Batista<sup>1\*</sup>, Renato Lima Vitorasso<sup>2</sup>, Vicky Nogueira-Pileggi<sup>2</sup>, Renato Mantelli

3 Picoli<sup>2</sup>, Elizabeth Bilevicius<sup>1</sup>

4 <sup>1</sup> Research, Development and Medical Affairs, Viatris, Sao Paulo, SP, Brazil

5 <sup>2</sup> Oracle Life Sciences

6

7 \*Corresponding author

8 [Vivian.batista@viatris.com](mailto:Vivian.batista@viatris.com)

9

10

## 11 Abstract

12 Heart failure (HF) decompensation is the main cause of hospitalizations in developed  
13 countries. In Brazil, it represents the third general cause. Aiming to analyze the treatment journey  
14 for different types of HF in Brazil, the present study seeks to define a flowchart and clinical  
15 rationale that covers the procedures (and their respective frequency) in patients with HF in the  
16 Brazilian Unified Health System (SUS) included in DATASUS database. By doing so, the final  
17 objectives were: a) To identify potential patients with HF to present an estimate of the  
18 underreporting of the disease in the country; b) To describe the estimated mortality of potential  
19 patients with HF in Brazil. We used data from DATASUS, which encompasses information from  
20 the Brazilian Unified Health System (SUS). Specifically, we utilized the SUS-SIM (Mortality  
21 Information System) and SUS-SIA (Ambulatory Information System). Results: According to the  
22 data, we had a potential missing of patients with HF of 54,000 patients per year at diagnosis and  
23 200,000 deaths that could lead to HF (both sexes). Considering the sensitivity analysis when  
24 there was a 20% underestimation in the number of potential HF cases, the underestimation rate  
25 of cases diagnosed with HF was 12%. We also found that when there was an underestimation of  
26 40% in potential cases of death due to HF, there was an average underestimation of 41% in cases  
27 of death diagnosed as HF. the results highlight the importance of accurate diagnosis and a  
28 comprehensive approach to identifying potential cases of HF to improve the recording and  
29 management of this condition. Underestimation of these cases may have significant implications  
30 for public health and clinical management of HF emphasizing the need for strategies to increase  
31 early detection and adequate case recording. The next steps would be how much this  
32 underestimation impacts the public health in Brazil, particularly in terms of financial resources.

33

34

35 Key words: heart failure, public health,

## 36 Introduction

37 According to the World Health Organization (WHO), cardiovascular diseases (CVD) are  
38 a group of diseases whose majority can be prevented through a behavioral approach, which  
39 represent the main cause of deaths worldwide. It is estimated that 17.9 million people in 2019  
40 died from CVD, representing 32% of all deaths globally(1).

41 Heart failure (HF) stands out as a highly prevalent condition among CVDs, presenting  
42 high morbimortality rates. It has been estimated that HF alone affected 23 million people in  
43 2017, with a projected increase of around 46% by 2030 (3). HF is defined as a clinical syndrome  
44 with symptoms and/or signs caused by structural and/or functional cardiac abnormality and  
45 corroborated by elevated natriuretic peptides and/or objective evidence of pulmonary or  
46 systemic congestion(2).

47 In Brazil, between 2008 and 2018, HF was the main cause of hospitalizations for CVD  
48 with more than 2 million hospitalizations having been recorded and more than 252 thousand  
49 deaths. The risk of developing HF is directly proportional to aging. Even though the prevalence  
50 is higher among elderly, an increase in prevalence of this condition in the 50-year-old group is  
51 being observed. This high hospitalization and mortality rates were responsible for health  
52 services expenses that exceeds 3 billion Brazilian Reais (626.5 million US Dollars) only in  
53 2019(3).

54 HF decompensation is the main cause of hospitalizations in developed countries. In  
55 Brazil it represents the third general cause (4). Furthermore, it is believed that there is a high  
56 rate of underdiagnosis due to the presence of other comorbid diseases that can be diagnostic  
57 confounding factors, especially in cases where HF presents with mild symptoms.

58           According to the Brazilian Chronic Heart Failure Treatment Guideline, the patient's  
59 prognosis does not depend on the HF subtype and is worse compared to the general  
60 population(5).Even though it was observed a decrease in hospitalizations due to HF during the  
61 last decade, the number of deaths remained stable. It is important to highlight that mortality  
62 rates are possibly underestimated since more than 50% of HF patients experience sudden  
63 death. (6).

64           Aiming to analyze the treatment journey for different types of HF in Brazil, the present  
65 study seeks to define a flowchart and clinical rationale that covers the procedures (and their  
66 respective frequency) in patients with HF in the Brazilian Unified Health System (SUS) included  
67 in DATASUS database. By doing so, the final objectives were:

68           a) To identify potential patients with HF to present an estimate of the underreporting of  
69 the disease in the country.

70           b) To describe the estimated mortality of potential patients with HF in Brazil.

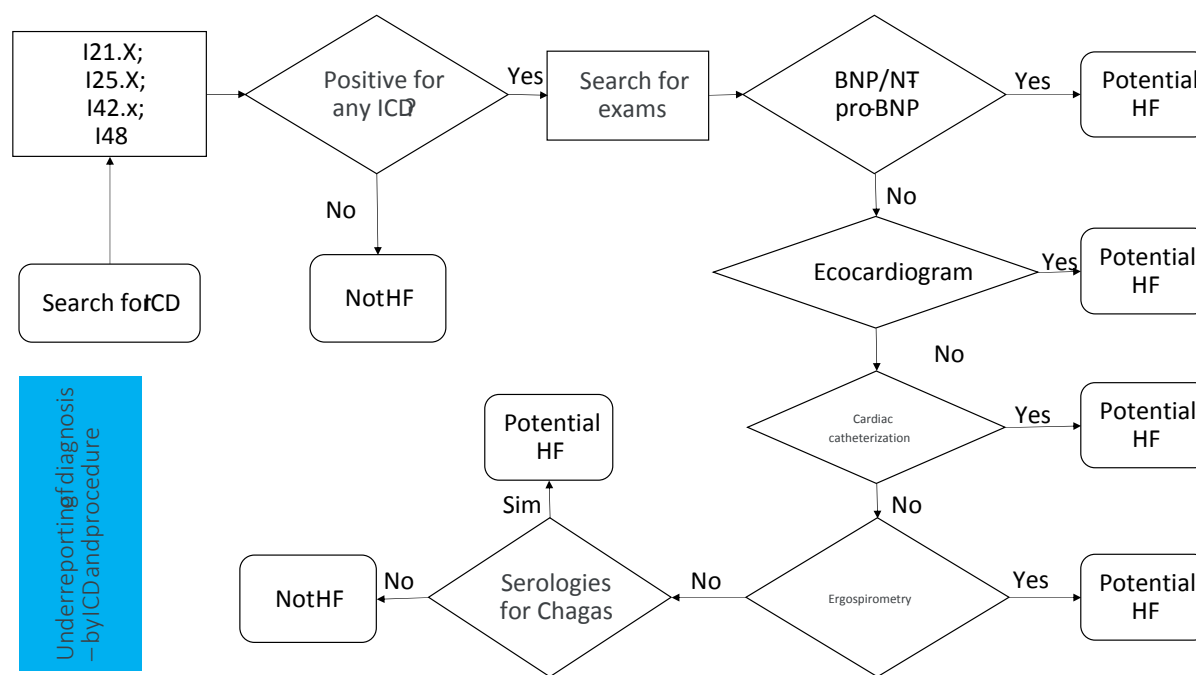
71

## 72 **Materials and Methods**

73           We sought to understand in the literature the patient journey in Brazil. In this study, we  
74 employed data from DATASUS, which encompasses information from the Brazilian Unified  
75 Health System (SUS). Specifically, we utilized the SUS-SIM (Mortality Information System) and  
76 SUS-SIA (Ambulatory Information System). The data from these systems are accessible to the  
77 public via FTP in *.dbc* format, and the SIA-SUS data were converted to *.parquet*. Both data  
78 extraction and variable calculations were conducted in a computational environment using R  
79 (version 4.2.0) and Python (version 3.10.6). There was no need to seek the approval of an  
80 institutional review board before the study began. As previously stated, all the human

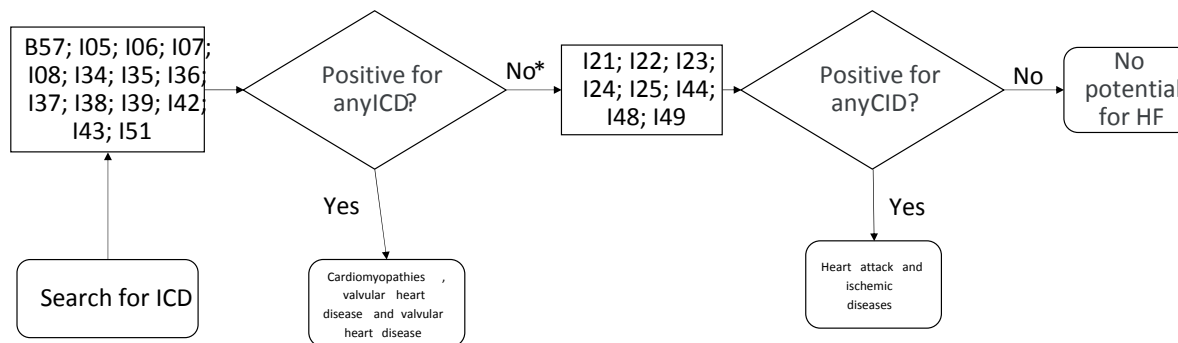
81 participants information utilized in this study was obtained through the DATASUS database, a  
 82 publicly available dataset of the public health system in Brazil. Furthermore, All the data  
 83 contained in the DATASUS database is fully anonymized when it comes to patients' personal  
 84 information. Therefore, no ethical approval or consent was needed. The data utilized was  
 85 accessed and extracted on September 12<sup>th</sup> 2023. In this section, we present flowcharts  
 86 delineating the inclusion criteria for the subgroups under study. This was elaborated according  
 87 to cardiology specialists regarding patient journey.

88 **Fig 1 - Flowchart to be carried out to find underreported patients by ICD and procedure**



92 **Fig 2 - Flowchart to find underreported patients regarding mortality to be carried out in the**  
 93 **next step. HF = heart failure. HF = heart failure**

94



Mortality underreporting  
SIM System

\*There will be a compartmentalization of the search, i.e. classification into two categories: 1) patients purely categorized as patients who died and had a diagnosis of cat1 (Cardiomyopathies, valvular heart diseases and valvular heart diseases) and cat2 (infarction and ischemic diseases)

95

96

97 The inclusion criteria varied according to the group to be studied in the present project.

98 The study interval of the present work is highlighted as being from 2018 to 2022 (However,  
99 since the patient may have had their HF record or potential HF classification prior to 2018, 3  
100 previous years were included in the extraction to obtain the cut-off without a bias towards the  
101 classification of the first years).

102 1) All those who had at least one record of ICD I50 in any APAC (Ambulatory Procedure  
103 Authorization) of DataSUS-SIA were classified as patients with HF.

104 2) all those deaths that had an ICD I50 note on the death certificate in the base cause,  
105 or lines A, B, C, D and II, were classified as HF-related deaths.

106 3) all those who complied with the flowchart in Fig. 1 and did not have an ICD I50 record  
107 were classified as potential patients with HF.

108 4) Finally, all those who were marked as such in Fig. 2 and did not have an ICD I50  
109 record on the certificate were identified as potential deaths related to HF. It is worth noting that  
110 the ICDs indicated in the figure above was searched in all available fields on the death  
111 certificate, except for the underlying cause. Additionally, the cause of death had the following  
112 subclassifications:

113 a) Cardiomyopathies, valvular heart disease, valvular heart disease.

114 b) Heart attack and ischemic diseases.

## 115 Sensitivity Analysis

116 We use as Underestimation rate the following equation:

$$117 \quad \text{Underestimation rate} = \frac{\text{potencial number}}{(\text{potencial} + \text{confirmed numbers})} \quad \text{equation 1}$$

118 where this rate was applied for both cases and number of deaths. The deterministic sensitivity  
119 analysis was conducted to assess the rate of underestimation in A) ambulatorial diagnoses and  
120 B) deaths related to heart failure (HF) over the studied time interval. This analysis involves  
121 considering values ranging from 0% to 100% (0%, 20%, 40%, 60%, 80%, 100%) as the  
122 proportion of potential patients or deaths that are correctly identified as actual patients or deaths  
123 related to HF. For instance, when determining the underestimation rate for deaths, assuming  
124 20% of potential patients are correctly identified as actual heart failure (HF) patients, the  
125 calculation follows this equation:

$$126 \quad \text{Underestimation rate} = \frac{\text{potencial number of HF deaths} * 20\%}{(\text{potencial number of HF deaths} * 20\% + \text{confirmed deaths})} \quad \text{equation 2}$$

127

128 This approach facilitates a thorough investigation into the influence of different  
129 proportions of potential patients accurately classified as HF patients on underestimation rates.

130

## 131 Results

### 132 Population characteristics

133 Table 1 shows the description of the population separated by patients with a diagnosis of  
 134 HF and potential HF patients during the years of 2018 to 2022. Table 2 show the description of  
 135 patients confirmed deaths by HF and those with other types that are potentially HF patients.

136

137 **Table 1. Description of the population of confirmed patients and potential cases of HF.**

	Age at diagnosis (years)	Male n (%)	Patients
Diagnosed			
2018	57.25 ± 21.35	32,674.00 (45.19)	72,309
2019	57.83 ± 21.33	35,637.00 (46.02)	77,445
2020	59.86 ± 19.75	30,663.00 (47.98)	63,905
2021	60.26 ± 19.16	44,431.00 (48.91)	90,842
2022	61.15 ± 18.18	62,291.00 (50.58)	123,155
Potential HF			
2018	61.02 ± 14.55	26,462.00 (53.74)	49,242
2019	61.94 ± 14.06	28,810.00 (54.71)	52,659
2020	62.45 ± 13.41	23,556.00 (55.29)	42,603
2021	62.48 ± 13.96	28,139.00 (55.19)	50,986
2022	62.66 ± 14.49	28,136.00 (54.79)	51,351

138

139 **Table 2. Description of confirmed patient deaths and potential HF-related deaths.**

	Age on day of death (years)	Male n (%)	Number of deaths
Diagnosed			
2018	74.68 ± 17.42	53,239.00 (49.10)	108,430
2019	74.88 ± 17.14	53,935.00 (49.14)	109,758
2020	74.79 ± 15.98	58,719.00 (49.83)	117,849
2021	74.88 ± 16.02	65,535.00 (49.65)	131,981
2022	75.36 ± 16.41	64,342.00 (48.96)	131,411
Potential HF			
2018	70.75 ± 21.57	105,724.00 (56.28)	187,856

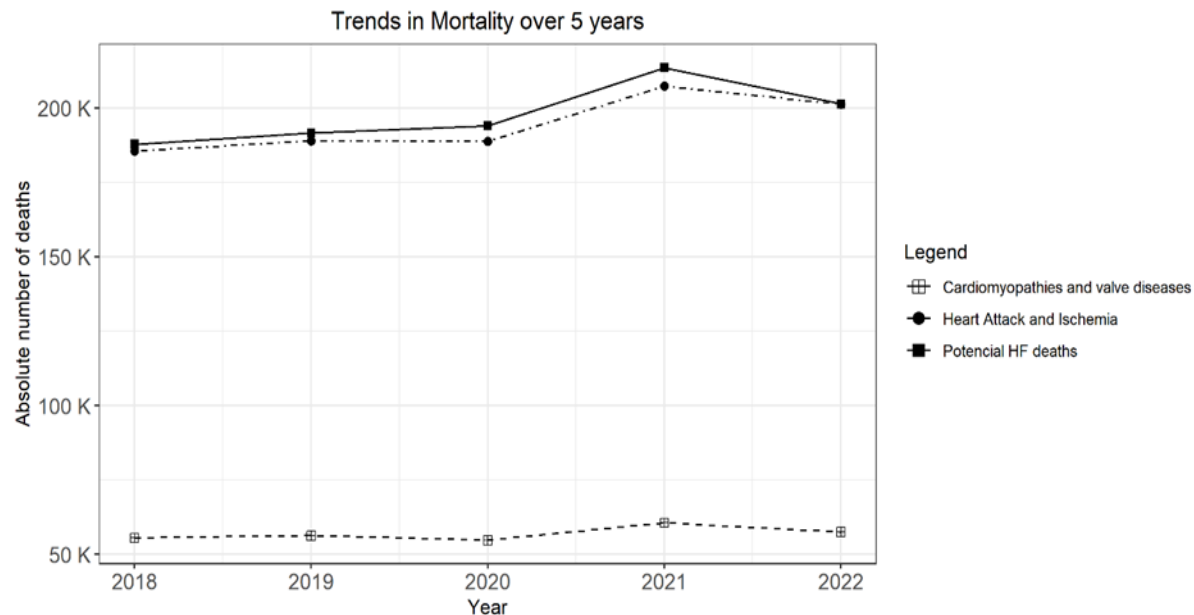


2019	70.97 ± 21.16	107,688.00 (56.20)	191,612
2020	71.30 ± 19.20	110,659.00 (57.01)	194,111
2021	71.12 ± 19.07	120,797.00 (56.55)	213,606
2022	71.47 ± 19.52	113,179.00 (56.19)	201,418

140

141 Fig 3 shows the absolute number of deaths related to potential cases of HF, stratified by  
 142 "proxy" ICDs, specifically cardiomyopathies and heart attacks and ischemia, which are conditions  
 143 that make up potential cases of HF. From an analysis of the figure, it is evident that most deaths  
 144 associated with potential HF cases are attributed to cases of heart attacks and ischemia,  
 145 representing approximately 180,000 to 200,000 cases, which is equivalent to approximately 98%  
 146 of potential HF cases. Furthermore, it is possible to observe a slight increase in the number of  
 147 deaths from the year 2021 onwards.

148 **Fig. 3.** Total number of deaths of patients classified as potential patients with HF divided into the  
 149 following groups: 1) Cardiomyopathy, valvular heart disease and valvular heart disease; and 2)  
 150 Ischemia and heart attacks.



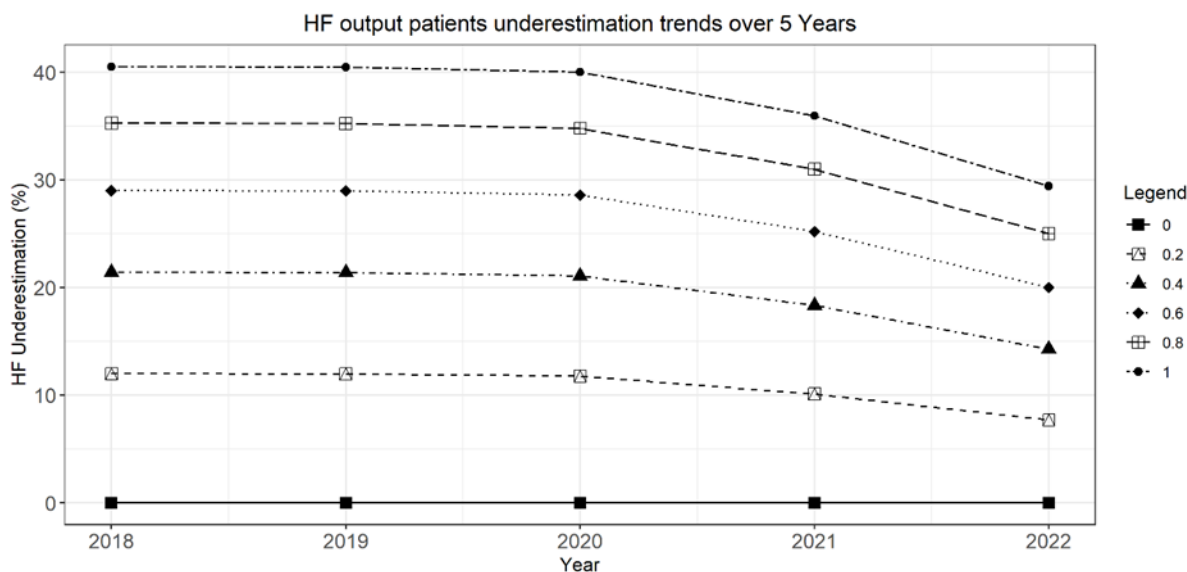
151

152

153 **Fig 4. Sensitivity analysis of the rate of underestimation of A) ambulatorial diagnosis and**  
 154 **B) deaths related to HF over the time interval studied. The sensitivity analysis will be**

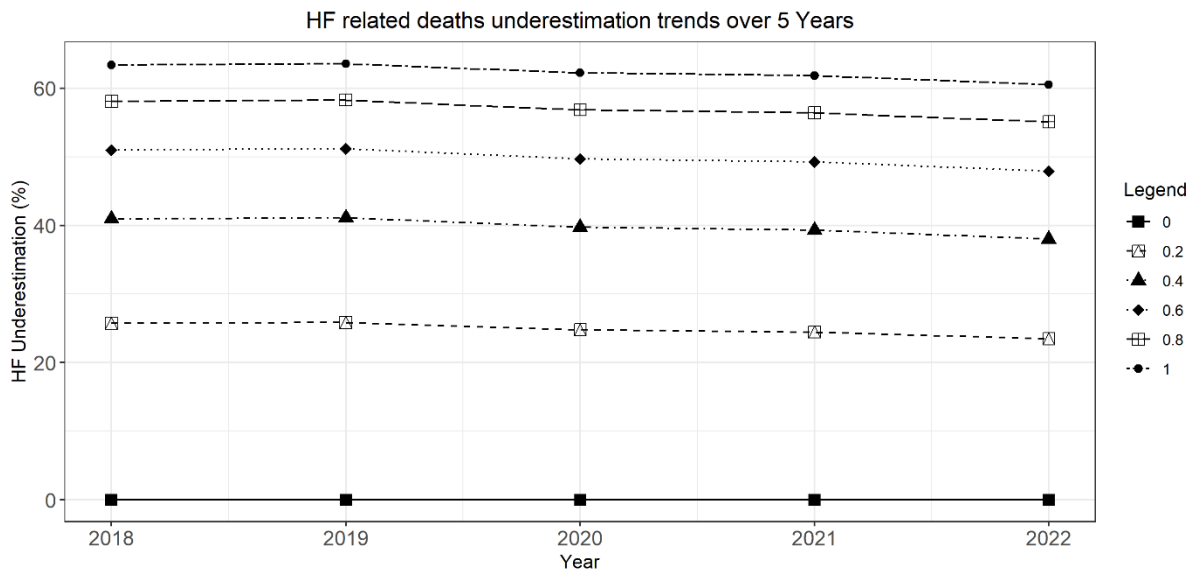
155 carried out considering values from 0% to 100% (0; 20; 40; 60; 80; 100%) as the proportion  
156 of potential patients/deaths as actual patients/deaths related to HF. Example, to calculate  
157 the underestimation rate of deaths at 20%: (potential number of deaths related to HF \* 20%)  
158 / (potential number of deaths related to HF \* 20% + number of deaths with I50 registration).

159



160 A)

161



162 B)

163 Fig 4A presents the representation of the percentage of underestimation of the  
164 ambulatorial patients, while Fig 4B shows the percentage of underestimation of the number of

165 deaths of these patients during the 5-year period. In Fig 4A, it is notable that when there was a  
166 20% underestimation in the number of potential HF cases, the underestimation rate of cases  
167 diagnosed with HF was 12%. To illustrate another example, when there was an underestimation  
168 of 80% in potential HF cases, the underestimation of the number of cases diagnosed with HF  
169 reached 35%. Variations were observed from the year 2021 onwards. Similar results can be seen  
170 in Fig 4B in relation to deaths due to HF. When there was an underestimation of 40% in potential  
171 cases of death due to HF, there was an average underestimation of 41% in cases of death  
172 diagnosed as HF. In the case of all potential patients deaths were actually HF cases,  
173 approximately 63% of the number of deaths diagnosed as HF were also underestimated.

174

## 175 Discussion

176 To the best of our knowledge, this is the first article using public database of Brazil to  
177 hypothesize about the misdiagnosis of heart failure and the mortality burden of this disease. It is  
178 well known that HF is a common syndrome that represents the end stage of several heart  
179 diseases. Decompensation is the main cause of hospitalizations in developed countries and in  
180 Brazil it is the third general cause of hospitalization(4). With the strong possibility that many cases  
181 of hospitalizations due to HF are underreported because they are associated with other  
182 pathologies especially in cases where HF presents with mild symptoms, we create a flowchart to  
183 understand this phenomenon.

184 In our study, the cases of HF were similar between men and women, with a slightly  
185 inclination for cases of men in the potential cases. We also found an increase on number of deaths  
186 in the studied timeline. This phenomenon could be because aging is a significant factor in the  
187 development and progression of heart failure, with the risk increasing as individuals grow older(7)  
188 or due to increased number of diagnosis of the disease(8). It is important to stat that the COVID-

189 19 during 2020 contributed to lower numbers in all diseases around the world including HF. The  
190 decrease in hospitalizations for non-COVID-19 reasons appears to be linked to hospital  
191 overcrowding during periods of COVID-19 surges, coupled with reduced demand for healthcare  
192 from individuals concerned about contracting the virus(9).

193 In 2016 a systematic review analyzed the burden of HF in Latin America countries (10).  
194 The study included 143 studies of which 64% were in Brazil, pointing to an incidence of the  
195 disease of 199 cases per 100,000 persons-years .The mean percentage of men was 61.07%  
196  $\pm 11.48\%$  with a mean age of  $60.34 \pm 8.98$  years(10). Our study showed that the actual diagnose  
197 of HF was in similar age for both HF and potential (around 59 years and 61 years, respectively)  
198 with most men in the potential and equal in actual patients with HF.

199 It is important to emphasize that our study used data from ambulatorial patients, and our  
200 study did not show the prevalence of the disease once the patients who seek primary care in the  
201 public health care system were the ones studied. This gives us reason to infer that the patients  
202 flagged as potential HF cases were in fact cases of HF. That was also the reason we performed  
203 a sensitivity analysis that showed that even smaller number of 20% as potential HF, the  
204 underestimation of actual ambulatorial cases is 12%.

205 A study published in 2021 by Wong et al (11) have already highlighted to the relevance of  
206 HF misdiagnosis (11). In the review, misdiagnosis ranges from 16.1% in the case of patients  
207 discharged from hospital with a diagnosis of HF to 68.5% from general practitioner referrals for  
208 HF who do not have left ventricular dysfunction, valvular heart disease, or atrial fibrillation (11).  
209 These findings suggests that one of the main reasons for misdiagnosis could be the presence of  
210 less severe symptoms. This was the same assumption of our study.

211 HF is frequently misdiagnosed due to several factors inherent in its presentation and  
212 clinical assessment(12). Firstly, HF symptoms such as shortness of breath, fatigue, and edema

213 can overlap with those of other cardiovascular and respiratory conditions, leading to diagnostic  
214 ambiguity(13). Moreover, the clinical manifestations of HF may vary widely among patients,  
215 making it challenging to recognize consistently across different individuals. Additionally,  
216 healthcare providers may encounter difficulties in interpreting diagnostic tests accurately,  
217 especially in cases where imaging and biomarkers yield inconclusive results or where comorbid  
218 conditions complicate the diagnostic process(14,15). Ultimately, the misdiagnosis of HF  
219 underscores the importance of enhanced clinical awareness, comprehensive evaluation  
220 strategies, and continued medical education to improve diagnostic accuracy and optimize patient  
221 outcomes. Our data corroborate with this potential HF underestimation diagnosis.

222         Regarding mortality, we represent in Figure 3 the total of deaths of potential patients with  
223 HF. Also in the sensitivity analysis we reported that if there was an underestimation of 40% in  
224 potential cases of death due to HF, there was an average underestimation of 41% in cases of  
225 death diagnosed as HF. Additionally, we represent the number of deaths in subgroups of diseases  
226 such as heart attack and ischemia and cardiomyopathies, showing that there is a predominance  
227 in the first subgroup over the second. Almost all deaths flagged as potential HF are from patients  
228 with heart attack and ischemia in their main cause. It is well known that heart failure often  
229 accompanies other cardiovascular conditions, compounding the risk of adverse outcomes. Early  
230 diagnosis, comprehensive management strategies, adherence to treatment plans, and lifestyle  
231 modifications play pivotal roles in reducing mortality rates and improving survival outcomes  
232 among individuals living with heart failure.

233         The data of the present study point to an overall increase in HF-related ambulatorial  
234 patients and mortality and potential HF cases over five years, with some notable fluctuations and  
235 significant variations in specific years. Furthermore, the underestimation of potential HF cases  
236 potentially impacted the underestimation of diagnosed cases and deaths from HF, highlighting

237 the importance of an accurate assessment of these data for the effective management of this  
238 health condition.

239

## 240 Conclusions

241 In summary, the results highlight the importance of accurate diagnosis and a  
242 comprehensive approach to identifying potential cases of IC to improve the recording and  
243 management of this condition. Underestimation of these cases may have significant implications  
244 for public health and clinical management of IC, emphasizing the need for strategies to increase  
245 early detection and adequate case recording. The next steps would be how much this  
246 underestimation impacts the public health in Brazil, particularly in terms of financial resources.

247

248 **Funding: Viatris**

249

## 250 References

- 251 1. World Health Organization. Cardiovascular diseases (CVDs) [Internet]. 2021. Disponível em:  
252 [https://www.who.int/news-room/fact-sheets/detail/cardiovascular-diseases-\(cvds\)](https://www.who.int/news-room/fact-sheets/detail/cardiovascular-diseases-(cvds))
- 253 2. Bozkurt B, Coats AJ, Tsutsui H, Abdelhamid M, Adamopoulos S, Albert N, et al. Universal  
254 Definition and Classification of Heart Failure. *J Card Fail.* abril de 2021;27(4):387–413.
- 255 3. Arruda VL de, Machado LMG, Lima JC, Silva PR de S. Trends in mortality from heart failure  
256 in Brazil: 1998 to 2019. *Rev Bras Epidemiol Braz J Epidemiol.* 2022;25:E220021.
- 257 4. Bocchi EA, Vilas-Boas F, Perrone S, Caamaño AG, Clausell N, Moreira M da CV, et al. I  
258 Diretriz Latino-Americana para avaliação e conduta na insuficiência cardíaca  
259 descompensada. *Arq Bras Cardiol* [Internet]. setembro de 2005 [citado 3 de março de  
260 2023];85. Disponível em: [http://www.scielo.br/scielo.php?script=sci\\_arttext&pid=S0066-  
261 782X2005002200001&lng=pt&nrm=iso&tlng=pt](http://www.scielo.br/scielo.php?script=sci_arttext&pid=S0066-782X2005002200001&lng=pt&nrm=iso&tlng=pt)

- 262 5. Rohde LEP, Montera MW, Bocchi EA, Clausell NO, Albuquerque DC de, Rassi S, et al.  
263 Diretriz Brasileira de Insuficiência Cardíaca Crônica e Aguda. Arq Bras Cardiol [Internet].  
264 2018 [citado 1º de março de 2023]; Disponível em:  
265 [https://www.scielo.br/scielo.php?script=sci\\_arttext&pid=S0066-782X2018001500436](https://www.scielo.br/scielo.php?script=sci_arttext&pid=S0066-782X2018001500436)
- 266 6. Alexander R, De Las Casas Bessa L, Dias Silveira AV, Gualberto Souza I, Silveira Ferreira  
267 GF, Pacheco Souza G, et al. Análise Epidemiológica por Insuficiência Cardíaca no Brasil.  
268 Braz Med Stud [Internet]. 12 de abril de 2022 [citado 27 de fevereiro de 2023];6(9).  
269 Disponível em: <https://bms.ifmsabrazil.org/index.php/bms/article/view/224>
- 270 7. Strait JB, Lakatta EG. Aging-associated cardiovascular changes and their relationship to  
271 heart failure. Heart Fail Clin. janeiro de 2012;8(1):143–64.
- 272 8. Eriksson H. Heart failure: a growing public health problem. J Intern Med. fevereiro de  
273 1995;237(2):135–41.
- 274 9. Menezes-Filho N, Komatsu BK, Villares L. The impacts of COVID-19 hospitalizations on non-  
275 COVID-19 deaths and hospitalizations: A panel data analysis using Brazilian municipalities.  
276 PLOS ONE. 14 de dezembro de 2023;18(12):e0295572.
- 277 10. Ciapponi A, Alcaraz A, Calderón M, Matta MG, Chaparro M, Soto N, et al. Burden of  
278 Heart Failure in Latin America: A Systematic Review and Meta-analysis. Rev Espanola  
279 Cardiol Engl Ed. novembro de 2016;69(11):1051–60.
- 280 11. Wong CW, Tafuro J, Azam Z, Satchithananda D, Duckett S, Barker D, et al.  
281 Misdiagnosis of Heart Failure: A Systematic Review of the Literature. J Card Fail. setembro  
282 de 2021;27(9):925–33.
- 283 12. Bottle A, Kim D, Aylin P, Cowie MR, Majeed A, Hayhoe B. Routes to diagnosis of heart  
284 failure: observational study using linked data in England. Heart Br Card Soc. abril de  
285 2018;104(7):600–5.
- 286 13. van Riet EES, Hoes AW, Limburg A, Landman MAJ, van der Hoeven H, Rutten FH.  
287 Prevalence of unrecognized heart failure in older persons with shortness of breath on  
288 exertion. Eur J Heart Fail. julho de 2014;16(7):772–7.
- 289 14. Mant J, Doust J, Roalfe A, Barton P, Cowie MR, Glasziou P, et al. Systematic review  
290 and individual patient data meta-analysis of diagnosis of heart failure, with modelling of  
291 implications of different diagnostic strategies in primary care. Health Technol Assess Winch  
292 Engl. julho de 2009;13(32):1–207, iii.
- 293 15. Barents M, van der Horst ICC, Voors AA, Hillege JL, Muskiet F a. J, de Jongste MJL.  
294 Prevalence and misdiagnosis of chronic heart failure in nursing home residents: the role of B-  
295 type natriuretic peptides. Neth Heart J Mon J Neth Soc Cardiol Neth Heart Found. abril de  
296 2008;16(4):123–8.

297