

1 **Anti-Neuraminidase Antibodies Reduce the Susceptibility to and Infectivity of Influenza** 2 **A/H3N2 Virus**

3 Gregory Hoy¹, Thomas Cortier^{2,3}, Hannah E. Maier¹, Guillermina Kuan^{4,5}, Roger Lopez^{4,6}, Nery
4 Sanchez⁴, Sergio Ojeda⁴, Miguel Plazaola⁴, Daniel Stadlbauer⁷, Abigail Shotwell¹, Angel
5 Balmaseda^{4,6}, Florian Krammer^{7,8,9,10}, Simon Cauchemez^{2*}, and Aubree Gordon^{1*}

6 ¹School of Public Health, University of Michigan, Ann Arbor, Michigan, USA; ²Mathematical Modelling of Infectious
7 Diseases Unit, Institut Pasteur, Université Paris Cité, UMR 2000 CNRS, Paris, France; ³Collège Doctoral, Sorbonne
8 Université, Paris, France; ⁴Sustainable Sciences Institute, Managua, Nicaragua; ⁵Centro de Salud Sócrates Flores
9 Vivas, Ministry of Health, Managua, Nicaragua; ⁶Laboratorio Nacional de Virología, Centro Nacional de Diagnóstico y
10 Referencia, Ministry of Health, Managua, Nicaragua ⁷Department of Microbiology, Icahn School of Medicine at Mount
11 Sinai, New York, New York, USA ⁸Center for Vaccine Research and Pandemic Preparedness (C-VaRPP), Icahn
12 School of Medicine at Mount Sinai, New York, NY, USA. ⁹Department of Pathology, Molecular and Cell-Based
13 Medicine, Icahn School of Medicine at Mount Sinai, New York, NY, USA. ¹⁰Ignaz Semmelweis Institute,
14 Interuniversity Institute for Infection Research, Medical University of Vienna, Vienna, Austria
15 *Denotes co-senior authors
16

17 **Abstract**

18 Immune responses against neuraminidase (NA) are of great interest for developing more
19 robust influenza vaccines, but the role of anti-NA antibodies on influenza infectivity has not been
20 established. We conducted household transmission studies in Managua, Nicaragua to examine
21 the impact of anti-NA antibodies on influenza A/H3N2 susceptibility and infectivity. Analyzing
22 these data with mathematical models capturing household transmission dynamics and their
23 drivers, we estimated that having higher preexisting antibody levels against the hemagglutinin
24 (HA) head, HA stalk, and NA was associated with reduced susceptibility to infection (relative
25 susceptibility 0.67, 95% Credible Interval [CrI] 0.50-0.92 for HA head; 0.59, 95% CrI 0.42-0.82
26 for HA stalk; and 0.56, 95% CrI 0.40-0.77 for NA). Only anti-NA antibodies were associated with
27 reduced infectivity (relative infectivity 0.36, 95% CrI 0.23-0.55). These benefits from anti-NA
28 immunity were observed even among individuals with preexisting anti-HA immunity. These
29 results suggest that influenza vaccines designed to elicit NA immunity in addition to
30 hemagglutinin immunity may not only contribute to protection against infection but reduce
31 infectivity of vaccinated individuals upon infection.

32
33
34
35
36
37
38
39
40
41

42 **Introduction**

43 Influenza virus infection remains an important cause of human disease burden,
44 with upwards of one billion infections and up to 650,000 deaths occurring globally every
45 year from disease caused by the influenza virus¹. Vaccination against influenza virus is
46 one of the most effective approaches for reducing the overall morbidity and mortality of
47 seasonal influenza in communities, and improving the effectiveness of influenza
48 vaccines is an important goal²⁻⁵. There are two important components of transmission;
49 *susceptibility* refers to an individual or group's propensity to become infected with
50 influenza, assuming adequate exposure. *Infectivity* refers to an individual or group's
51 propensity to infect others, assuming that they themselves are infected. Conditional on
52 the first person already being infected, the overall risk of transmission from one person
53 to another depends on the infectivity of the first person and the susceptibility of the
54 second. Much of the effort for influenza vaccine improvement has focused on the
55 induction of immune responses that reduce susceptibility to infection or disease, to
56 moderate effectiveness; much less attention has been given to the development of
57 vaccines that reduce individual-level infectivity among the vaccinated; in other words,
58 vaccines that generate an immune response that decreases the infectivity of vaccinees,
59 even if they are not fully protected from infection^{3,4,6-8}. Population-level vaccination
60 efforts clearly reduce overall community transmission, likely because vaccinated
61 individuals show reduced susceptibility to infection, which breaks transmission chains⁹⁻
62 ¹¹. However, there is no evidence that current-generation influenza vaccines reduce
63 individual-level infectivity directly, and little is known about if and how immune
64 responses that protect against influenza virus infection affect individual infectivity. The
65 identification of immune responses that both reduce susceptibility to infection and

66 reduce infectivity among vaccinated individuals who are infected would allow for the
67 development of influenza vaccinations that lower overall influenza circulation in
68 communities and that provide additional indirect protection to individuals who are
69 unvaccinated or under vaccinated for influenza, including infants and
70 immunocompromised individuals.

71 Antibody responses against neuraminidase (NA), an influenza surface
72 glycoprotein, are thought to protect against severe disease caused by the influenza
73 virus, and high pre-infection anti-NA antibody levels have been shown to reduce the
74 overall duration of influenza viral shedding¹²⁻¹⁹. Additionally, studies in animal models
75 have demonstrated a reduction in viral shedding occurring in animals immunized
76 against neuraminidase^{20,21}. However, viral shedding does not always consistently
77 correlate with infectivity, and direct transmission reduction of anti-NA immunity has not
78 been demonstrated in human populations²². Additionally, the role of the anti-NA
79 response on infectivity, relative to other important immune targets such as
80 hemagglutinin, has not been investigated. This study aims to explore the impact of pre-
81 existing antibody levels against the hemagglutinin (HA) head, HA stalk, and NA on
82 influenza virus A/H3N2 transmission in a household setting, with particular interest in
83 the role of anti-neuraminidase responses in modulating transmission risk.

84

85 **Results**

86 **Participant and household characteristics**

87 Over three influenza seasons (2014, 2016, 2017), a total of 171 households (171
88 index cases and their 664 households contacts) were recruited following the detection
89 of an infected individual (i.e. the index case) and followed up for an average duration of

90 36.7 days. 148 out of 664 (22.3%) household contacts were infected during the follow-
91 up period. Households were enrolled through identification of an index case at the study
92 clinic (2014, 2016), or pre-enrolled households were activated after detection of
93 influenza virus via polymerase chain reaction (PCR) in a member of an enrolled
94 household (2017). Once activated, index cases and household contacts were tested for
95 influenza virus every 2-3 days using PCR, and serology was done on blood samples
96 collected on the first day of household activation (the initial/acute sample) and 30-45
97 days after household activation (the final/convalescent sample). More information about
98 the study design and case ascertainment is available in the Online Methods. The
99 number of infections per household ranged from 1 to 10, with an average of 1.87 total
100 infections and 0.87 secondary infections per household. The serial interval (i.e. the
101 average time between index case onset and onset of cases in household contacts) was
102 3.4 days (SD 2.8 days). A visualization of the intensive monitoring periods by household
103 is presented in Figure 1.

104 Less than 10% of individuals had ever been vaccinated against influenza, and
105 only two individuals had been vaccinated for influenza in the 6 months prior to the start
106 of the monitoring period. Positive individuals were younger. Overall, a higher proportion
107 of infected individuals had anti-HA head, HA stalk, and NA pre-existing antibody levels
108 in the lower quartiles when compared to uninfected individuals (Table 1). There was no
109 difference in the pre-existing antibody levels between index cases and secondary cases
110 for hemagglutination inhibition assay titers (HAI) and HA stalk antibody levels; however,
111 index cases had slightly lower anti-NA antibody levels when compared to secondary
112 cases (median AUC 29.7 and 45.4, respectively, $p = 0.042$) (Figure 2a). The secondary

113 attack rate in households with an index case with low-to-undetectable anti-NA
114 antibodies was 23.4%, compared to 17.1% in households with an index case with
115 higher anti-NA antibodies ($p=0.15$); there was no difference in secondary attack rates in
116 households by index case anti-HA head or anti-HA stalk antibodies (Figure 2b).

117 **Effect of pre-existing antibody levels on susceptibility and infectivity**

118 A mathematical model, calibrated to the data with Bayesian data augmentation
119 methods, was used to reconstruct the unobserved chains of transmission accounting for
120 the possibility of community (i.e. household member infected outside the household)
121 and tertiary (i.e. household member infected by another household member who is not
122 the index case) infections, estimate household transmission rates and determine factors
123 affecting individual relative susceptibility and infectivity (see Online Methods)²³.

124 Compared to adults 15+ years of age, children aged 0-14 years had higher relative
125 susceptibility (relative susceptibility 1.63, 95% CrI 1.22-2.18). High initial antibody levels
126 against the HA head (0.67, 95% CrI 0.50-0.92), HA stalk (0.59, 95% CrI 0.42-0.82), and
127 NA (0.56, 95% CrI 0.40-0.77) were associated with reduced susceptibility to influenza
128 A/H3N2 virus infection (Figure 3a). In infected A/H3N2 individuals, high initial antibody
129 levels against NA were associated with reduced infectivity (relative infectivity 0.36, 95%
130 CrI 0.23-0.55). In contrast, high initial antibody levels against the HA head and the HA
131 stalk were not associated with reduced infectivity (1.33, 95% CrI 0.90-1.90 for the HA
132 head, 1.08, 95% CrI 0.75-1.59 for the HA stalk)(Figure 3b). The probability of infection
133 from the community was estimated to be 5.8% per month (95% CrI 2.7%-10.8%).

134

135

136 **Necessity of robust antibody responses to reduce susceptibility**

137 Because antibodies against all three antigens were associated with reduced
138 susceptibility, we next explored whether high antibody levels against a single antigen
139 could significantly impact susceptibility and infectivity, or whether a combination of
140 immune responses was needed. We therefore compared the A/H3N2 susceptibility and
141 infectivity of individuals who had high antibody levels for zero antibody measures, one
142 antibody measure, two antibody measures where none are against NA, and two or more
143 antibody measures where one is against NA. This model allows us to test the
144 hypothesis of an additive protective effect of anti-HA head, anti-HA stalk and anti-NA
145 antibodies made in our baseline model, as well as any dose-response pattern observed
146 in the relationship between antibody levels and susceptibility/infectivity. Furthermore, by
147 splitting the high-responder categories by those with anti-NA antibodies and those with
148 low-to-undetectable anti-NA antibodies, we are able to further test whether anti-NA
149 immunity is uniquely associated with reduced infectivity in influenza virus A/H3N2.
150 Individuals with higher antibody levels for one measure did not see their susceptibility or
151 infectivity modified compared to individuals with low antibody levels for all measures
152 (relative susceptibility 0.83, 95% CrI 0.49-1.38; relative infectivity 0.95, 95% CrI 0.56-
153 1.52), nor did individuals with higher antibody levels for both the anti-HA measures
154 (relative susceptibility 0.62, 95% CrI 0.34-1.10; relative infectivity 1.17, 95% CrI 0.62-
155 2.03). However, individuals with high antibody levels for two or more measures, one of
156 which is a response against NA, demonstrate reduced susceptibility to and infectivity of
157 influenza virus A/H3N2 (relative susceptibility 0.32, 95% CrI 0.21-0.48; relative
158 infectivity 0.46, 95% CrI 0.29-0.70)(Figure 4).

159 **Effect of anti-NA antibodies in individuals with existing anti-HA antibodies**

160 Finally, we asked whether the benefit of anti-NA immunity was only seen in those
161 with little-to-no anti-HA immunity, or whether anti-NA immunity was beneficial even in
162 individuals with high pre-existing antibody levels to HA. To do this, we investigated the
163 relative contribution of anti-NA antibody levels on influenza virus A/H3N2 infections
164 among individuals who have existing high anti-HA antibodies to understand what, if any,
165 benefit that high anti-NA antibodies have on susceptibility and infectivity among
166 individuals who already have some anti-HA immunity. Among individuals with high anti-
167 HA head and/or anti-HA stalk preexisting antibodies, those who also had higher anti-NA
168 antibody levels had reduced susceptibility (relative susceptibility 0.43, 95% CrI 0.30-
169 0.61) and infectivity (relative infectivity 0.42, 95% CrI 0.27-0.67) to influenza A/H3N2
170 virus infection, relative to those with low anti-NA antibody levels.

171

172 **Simulation analyses**

173 Simulating epidemics in households from the model, we found that the
174 transmission model was able to capture the observed patterns of secondary attack rates
175 (SARs) by household size, even among large households (Supplemental Figure 1). In
176 households of size 4, the most common household size in this study, the observed SAR
177 was 0.18, and the estimated SAR across 100 simulations was 0.19 (95% CrI 0.14-0.26).

178 When we used our inference framework on data simulated from our model with
179 known parameter values, parameter values were recovered consistently and with little
180 directional bias. The simulation value fell within the 95% credible interval in 85%+ of
181 simulations for all parameters, except for the NA infectivity parameter (70%) (Figure 5).

182 In sensitivity analyses, we checked that the association between higher anti-NA

183 antibody levels and reduced infectivity remains under different assumptions about
184 distribution of the incubation and infectivity periods (Supplemental Table 1).

185 **Discussion**

186 Through intensive monitoring of households with known influenza A/H3N2 virus
187 infection in combination with statistical transmission modeling, this study was able to
188 reconstruct household transmission chains and assess the impact of individual-level
189 factors, such as pre-existing antibody levels, on the susceptibility and infectivity of
190 influenza A/H3N2 virus in a household setting.

191 Individuals who were infected with influenza A/H3N2 virus and who had high pre-
192 existing antibodies against NA demonstrated reduced infectivity relative to infected
193 individuals with low preexisting antibodies against NA. The magnitude of this difference
194 is substantial, with high-anti-NA individuals having 64% (95% CrI 40-79%) reduced
195 infectivity compared to low-anti-NA individuals. Importantly, preexisting antibodies
196 against the HA head and HA stalk were not associated with reduced infectivity,
197 indicating that a reduction in influenza infectivity may depend on anti-NA responses
198 alone. This specificity is biologically plausible, as NA, not HA, is responsible for viral
199 egress, and thus it is reasonable that anti-NA responses alone contribute to a reduction
200 in overall viral load, viral shedding, and subsequent transmission¹⁶.

201 We found that all the factors of interest included in the transmission model,
202 namely age and pre-existing antibody levels against the HA head, HA stalk, and NA,
203 were associated with influenza susceptibility. Specifically, children aged 14 years and
204 younger were 63% more susceptible to infection than adults aged 15 years and older.
205 This is in line with a large body of work indicating that children are more susceptible to
206 influenza virus infection but suggests that this susceptibility is not entirely due to a lack

207 of influenza exposure history and immune response, as we observe a large association
208 between age and susceptibility even when accounting for anti-HA head, anti-HA stalk,
209 and anti-NA antibody levels^{22,24–28}. Individuals with high preexisting antibodies
210 demonstrated reduced susceptibility to influenza A/H3N2 virus infection, with reductions
211 of 33%, 41%, and 44%, respectively, for antibodies against the HA head, HA stalk, and
212 NA, which is in line with previous work on the correlates of protection against influenza
213 viruses, including influenza A/H3N2^{12,13,29,30}.

214 We found that susceptibility to and the infectivity of influenza A/H3N2 virus was
215 not reduced when individuals had higher antibodies for only one target (HA head, HA
216 stalk, or NA), nor were they reduced when individuals had higher antibodies for multiple
217 HA targets but not NA. However, having higher antibodies for two or more targets, with
218 one being NA, was associated with a 68% (52%-79%) reduction in susceptibility and
219 54% (30%-71%) reduction in infectivity, respectively, compared to individuals with low-
220 to-undetectable antibodies against all targets. These findings emphasize the importance
221 of generating robust, multi-epitope immune responses in vaccine-development efforts to
222 generate vaccinations that protect adequately against infection and transmission. They
223 also suggest that the induction of robust anti-NA immunity may be especially important.

224 Among individuals with existing immunity to HA, high anti-NA antibody levels are
225 associated with a reduction in influenza A/H3N2 virus infectivity and susceptibility,
226 indicating that the induction of better anti-NA response may be beneficial even in
227 individuals with strong anti-HA immunity. Though current-generation influenza vaccines
228 typically include a neuraminidase component, the immunogenicity of the NA component
229 of vaccines is inconsistent, and anti-NA responses are often not utilized as an endpoint

230 in the projection of vaccine efficacy against seasonal influenza^{5,31}. These results
231 suggest that, to generate next-generation influenza vaccines that are effective at
232 reducing susceptibility as well as infectivity, the anti-NA response generated by vaccine
233 candidates needs to be emphasized, measured, and assessed.

234 The secondary attack rate (the proportion of household contacts that become
235 infected) in the study population was 22.3%, which is consistent with that found from
236 other studies, especially given that there is a large proportion of children who have been
237 associated with higher influenza SARs, in this population relative to that of other
238 studies^{28,32}. As expected, individuals who remained negative for influenza A/H3N2 virus
239 throughout the monitoring period had higher initial levels for antibodies against the HA
240 head, HA stalk, and NA when compared to individuals who became positive. Index
241 cases had a similar distribution of pre-existing antibody levels compared to secondary
242 cases for anti-HA head and stalk antibodies, indicating that there is likely not a large bias
243 in the ascertainment of index cases vs. secondary cases relative to preexisting antibody
244 levels. The small difference in distribution observed for NA may be due to differing age
245 and symptom distributions between index cases and secondary cases.

246 This study is strengthened by the relatively large sample size, robust
247 immunologic characterization of participants before and after infection, and methods
248 that allow for probabilistic chains of transmission to be reconstructed to assess
249 individual-level risk factors for infectivity and susceptibility, rather than assuming all
250 secondary cases arise from the index case. Furthermore, the unvaccinated nature of
251 the population allows us to specifically examine infection-induced immunity.

252 This study is limited by the low number of vaccinated participants, which makes
253 stratification by vaccination status impossible; the relative contribution of anti-NA
254 antibodies on A/H3N2 transmission may differ between vaccine-induced and infection-
255 induced immunity in ways that we cannot assess. Furthermore, even though our
256 modelling accounts for the possibility of community infections, we cannot rule out the
257 possibility that some household contacts infected in the community might have been
258 misattributed to in-household transmission; however, we would not expect this to be
259 specific to higher or low-to-undetectable antibody levels for any of the targets and would
260 not expect a directional bias in these estimates.

261 **Conclusions**

262 Using data from two large household transmission studies, we found that, though
263 pre-existing anti-HA head, stalk, and anti-NA antibodies are important for reduced
264 susceptibility to influenza A/H3N2 virus infection, only anti-NA antibodies are associated
265 with reduced infectivity in a household transmission setting. Our results suggest that the
266 induction of a better humoral immune response against NA may improve next-
267 generation vaccines' effectiveness at preventing infection and disease and may reduce
268 individual infectivity even in the event of a breakthrough infection. These findings
269 reinforce the need for continued development of influenza vaccinations that target NA in
270 addition to HA in order to develop next-generation influenza vaccines that protect
271 against influenza virus infection and reduce influenza infectivity.

272

273

274

275

276 **Online Methods**

277 **Study Population and Design**

278 This study uses data from two household influenza transmission studies based in
279 Managua, Nicaragua: the Household Influenza Transmission Study (HITS) and the
280 Household Influenza Cohort Study (HICS). HITS is a case-ascertained study, meaning
281 that influenza-positive individuals are identified, and other members of their household
282 recruited for enrollment, that ran from 2012 to 2017, and HICS is a prospective
283 household-based cohort study that began in 2017 and is currently ongoing. In both
284 studies, influenza A/H3N2 virus-positive individuals, the index cases, are initially
285 detected at a health center, where household members are enrolled (HITS) or activated
286 (HICS) into intensive monitoring for a period of ~14 days. During this period, household
287 members are tested repeatedly for influenza virus, allowing for a reconstruction of likely
288 transmission chains within each household. Blood samples are collected both at the
289 beginning of the monitoring period and 30-45 days after³³. These studies were approved
290 by the institutional review boards at the Nicaraguan Ministry of Health and the University
291 of Michigan and are in accordance with the Helsinki Declaration of the World Medical
292 Association. Written consent to participate or parental permission was obtained for all
293 participants; in children older than 6 years, verbal assent was obtained.

294 **Laboratory Methods**

295 Nasal/oropharyngeal swabs collected from household members were tested for
296 influenza virus with real-time reverse-transcription polymerase chain reaction (RT-PCR)
297 using validated Centers for Disease Control and Prevention (CDC) protocols. If positive
298 for influenza virus, subtype or lineage determination was performed using additional RT-
299 PCR assays³⁴⁻³⁶. Several serological assays were conducted on each blood sample to

300 measure the initial and final antibody levels against various influenza antigens;
301 hemagglutination inhibition assays (HAIs), and enzyme-linked immunosorbent assays
302 (ELISAs) against full-length HA, the HA stalk, and NA. Details about the specific
303 antigens used for each assay are available in the supplement (Supplemental Table 2).

304 **Statistical Methods**

305 Preexisting antibody levels were divided into quartiles, with the lowest quartile
306 corresponding to low antibody levels and the remaining quartiles corresponding to high
307 antibody levels. The distribution of initial antibody levels for index cases, secondary
308 infections within the household of the index case, and uninfected household members
309 were compared using two-sided Wilcoxon rank-sum tests.

310 We used a mathematical model to assess the impact of individual-level age and
311 immune characteristics and contact structure on the person-to-person probability of
312 transmission. The model estimated the risk of transmission between all household
313 members including the risk from secondary cases. The risk of transmission from an
314 infected individual depended on time after infection with by lognormal distribution^{23,37,38}.
315 This risk was modulated by infectivity factors, namely individual pre-existing anti-HA
316 head, anti-HA stalk, and anti-NA antibody levels of the infector. It was also modulated
317 by the susceptibility factors being the individual characteristics of the susceptible
318 contact, namely individual age and pre-existing anti-HA head, anti-HA stalk, and anti-NA
319 levels. Finally the risk depended on the household size. We also estimated the risk of
320 infection from the community. This transmission model accounts for chains of
321 transmission within households, namely that additional household infections beyond the
322 index case may occur due to community transmission or due to infection from a non-
323 index household member, which is advantageous relative to other common statistical

324 approaches to transmission, approaches including logistic models^{23,24,39,40}. Additional
325 information about the transmission model, including the functional forms and
326 mathematical formalism, are included in the Supplement.

327 Model parameters were estimated using Bayesian Markov chain Monte Carlo
328 (MCMC)^{23,41}. The statistical model has a hierarchical structure with three levels²³: i) the
329 observation level ensures consistency between observed and augmented data (based
330 on the probabilistic distribution assumed for the incubation period^{23,41-43}), ii) the
331 transmission model (described above), characterizes within household transmission
332 dynamics, iii) the prior model describe prior distribution for model parameters.
333 Transmission parameters and augmented times of infection were iteratively updated
334 using a Metropolis-Hastings algorithm^{23,41-45}. Each MCMC chain was iterated 50,000
335 times, and the first 500 iterations were burned out. We report the median of the
336 posterior distribution with the 95 credible interval (CrI) for each estimated transmission
337 parameter.

338 Additionally, 100 datasets of simulated infection events were generated by an
339 agent-based model by retaining household structure, index case assignment, and
340 individual characteristics such as age and antibody levels. Infection events at each time
341 step were drawn randomly from the probability of transmission derived from the
342 transmission model. Transmission parameters used were the posterior medians. We
343 assessed model adequacy by comparing secondary attack rates at each household size
344 generated by the model to those generated by the observed data, and examined the
345 bias of estimated parameters, including the proportion of the 95% credible interval from
346 the original posterior distributions that covered the median simulation values. Analyses

347 were conducted using SAS 9.4, R version 4.3.1-4.3.2, and Visual Studio Code version

348 1.87.2

349

350

351

352

353

354

355

356

357

358

359

360

361

362

363

364

365

366

367

368

369

370

371

372

373

374

375 **Tables**

376 **Table 1. Description of Study Population**

	A/H3N2 positive (n=319) n (%)	A/H3N2 negative (n=516) n (%)	Total (n=835) n (%)
Gender			
Female	176 (55.2)	342 (66.3)	518 (62.0)
Male	143 (44.8)	174 (33.7)	317 (38.0)
Age (mean, SD)	14.7 (14.9)	27.1 (19.0)	22.3 (18.6)
0-1 year	27 (8.5)	9 (1.7)	36 (4.3)
2-4 years	66 (20.7)	32 (6.2)	98 (11.7)
5-14 years	120 (37.6)	147 (28.5)	267 (32.0)
15+ years	106 (33.2)	328 (63.6)	434 (52.0)
Vaccination			
Ever vaccinated	40 (12.5)	36 (7.0)	76 (9.1)
Recently Vaccinated*	2 (0.6)	0 (0.0)	2 (0.2)
Season			
2014-2015	44 (13.8)	90 (17.4)	134 (16.0)
2016-2017	122 (38.2)	164 (31.8)	286 (34.3)
2017-2018	153 (48.0)	262 (50.8)	415 (49.7)
HAI			
Quartile 1	122 (38.2)	143 (27.7)	265 (31.7)

377

Quartile 2	74 (23.2)	107 (20.7)	181 (21.7)
Quartile 3	92 (28.8)	171 (33.1)	263 (31.5)
Quartile 4	31 (9.7)	95 (18.4)	126 (15.1)
HA stalk			
Quartile 1	117 (36.7)	91 (17.6)	208 (24.9)
Quartile 2	89 (27.9)	123 (23.8)	212 (25.4)
Quartile 3	61 (19.1)	142 (27.5)	203 (24.3)
Quartile 4	52 (16.3)	160 (31.0)	212 (25.4)
NA			
Quartile 1	128 (40.1)	83 (16.1)	211 (25.3)
Quartile 2	79 (24.8)	130 (25.2)	209 (25.0)
Quartile 3	64 (20.1)	144 (27.9)	208 (24.9)
Quartile 4	48 (15.1)	159 (30.8)	207 (24.8)

378 *Vaccinated within 6 months of the start of the intensive monitoring period.

379

380

381

382

383 **Figures**

384

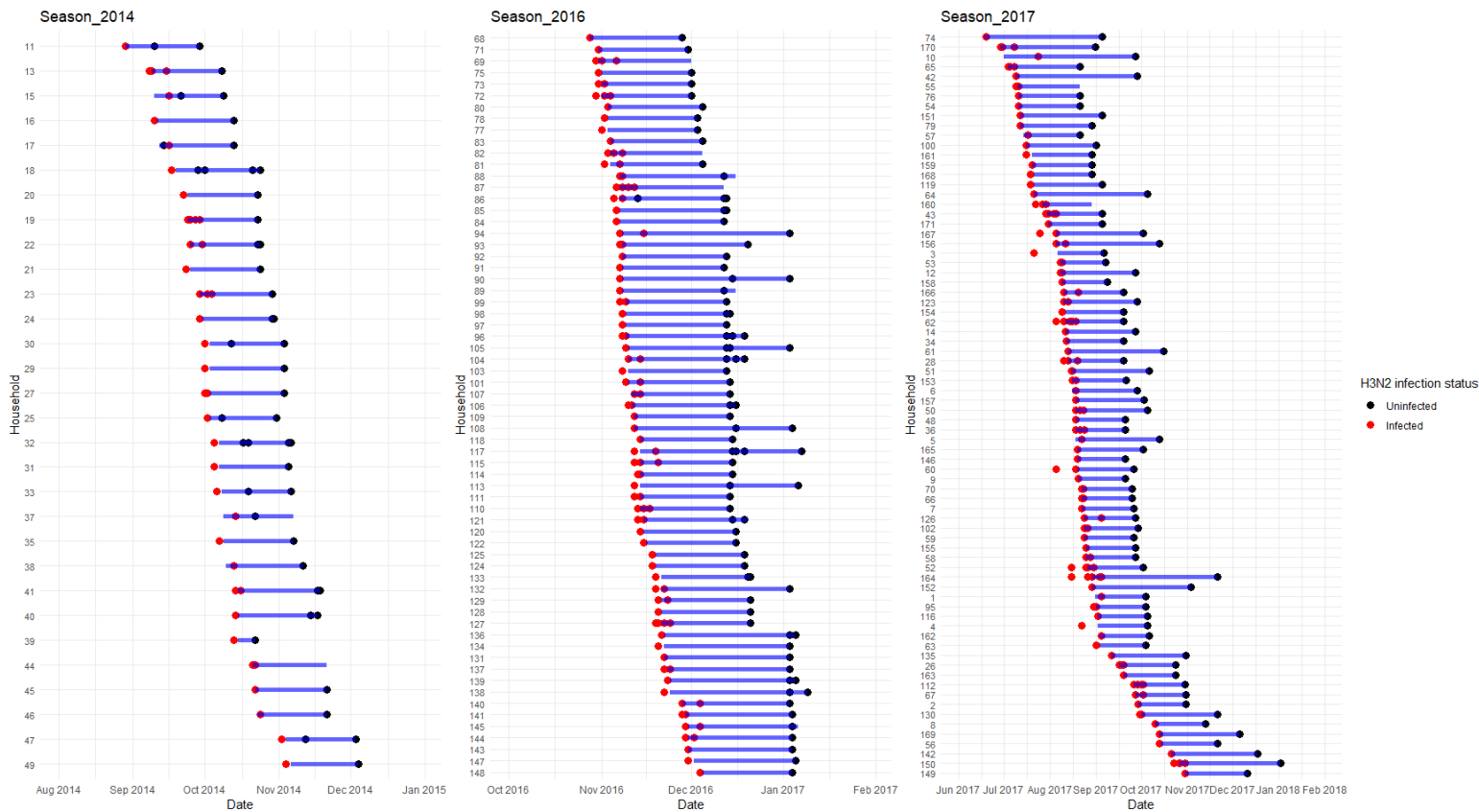


Figure 1. Intensive monitoring periods by household. Infected individuals represented with red dots; uninfected individuals are represented in blue dots. The blue bars represent the duration of the influenza intensive monitoring period within the household.

385

386

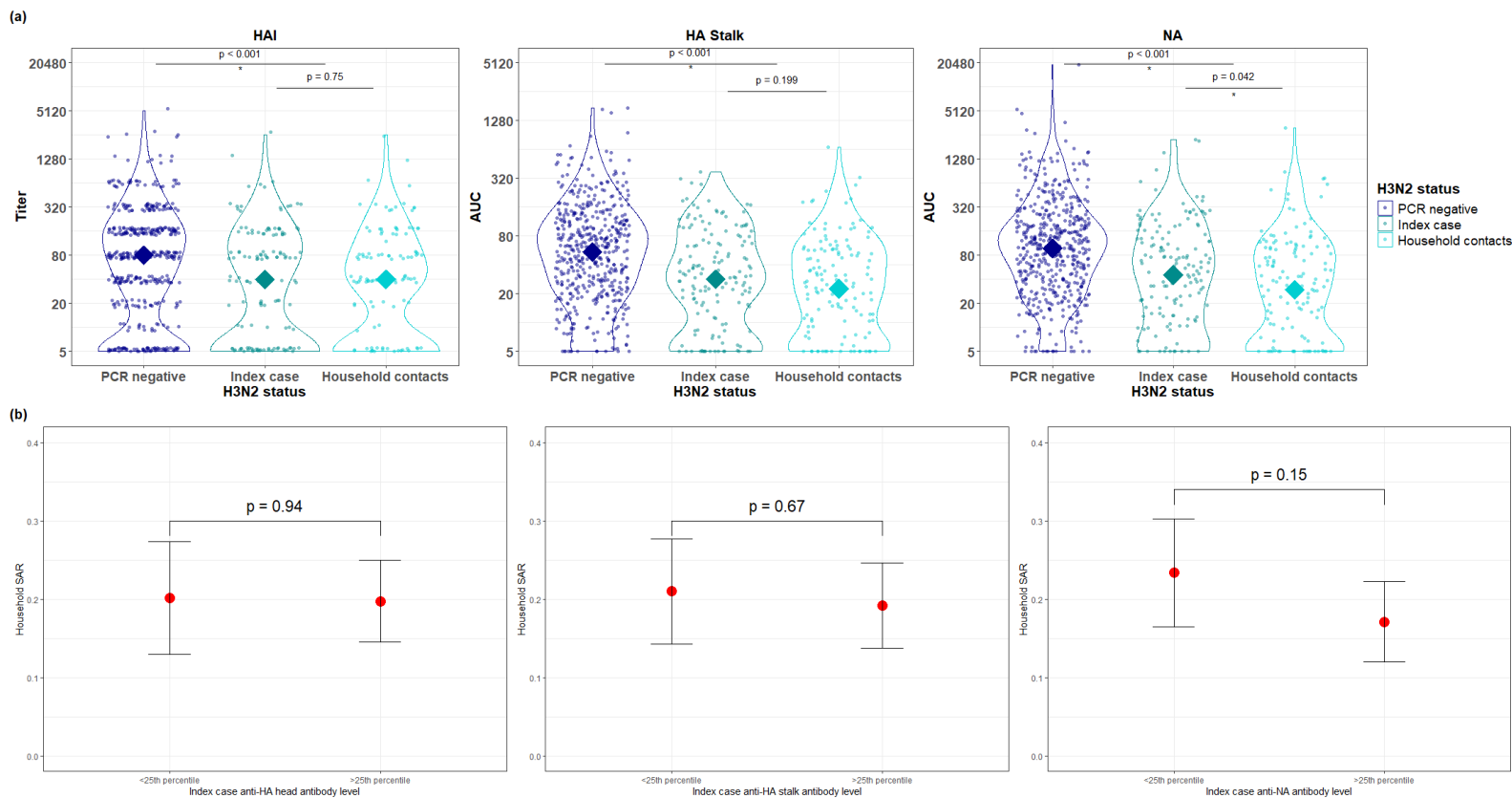
387

388

389

390

391



392

393

394

Figure 2. Antibody levels by PCR status and household SAR. (a) Distribution of pre-infection antibody titers by PCR-negative individuals, probable index cases, and probable secondary/tertiary cases (chevrons representing mean antibody level). (b) Mean and 95% confidence intervals for the secondary attack rates by household, stratified by the antibody levels of the household index case. P-values are calculated from generalized estimating equations (GEEs) with weighting by household size.

395

396

397

398

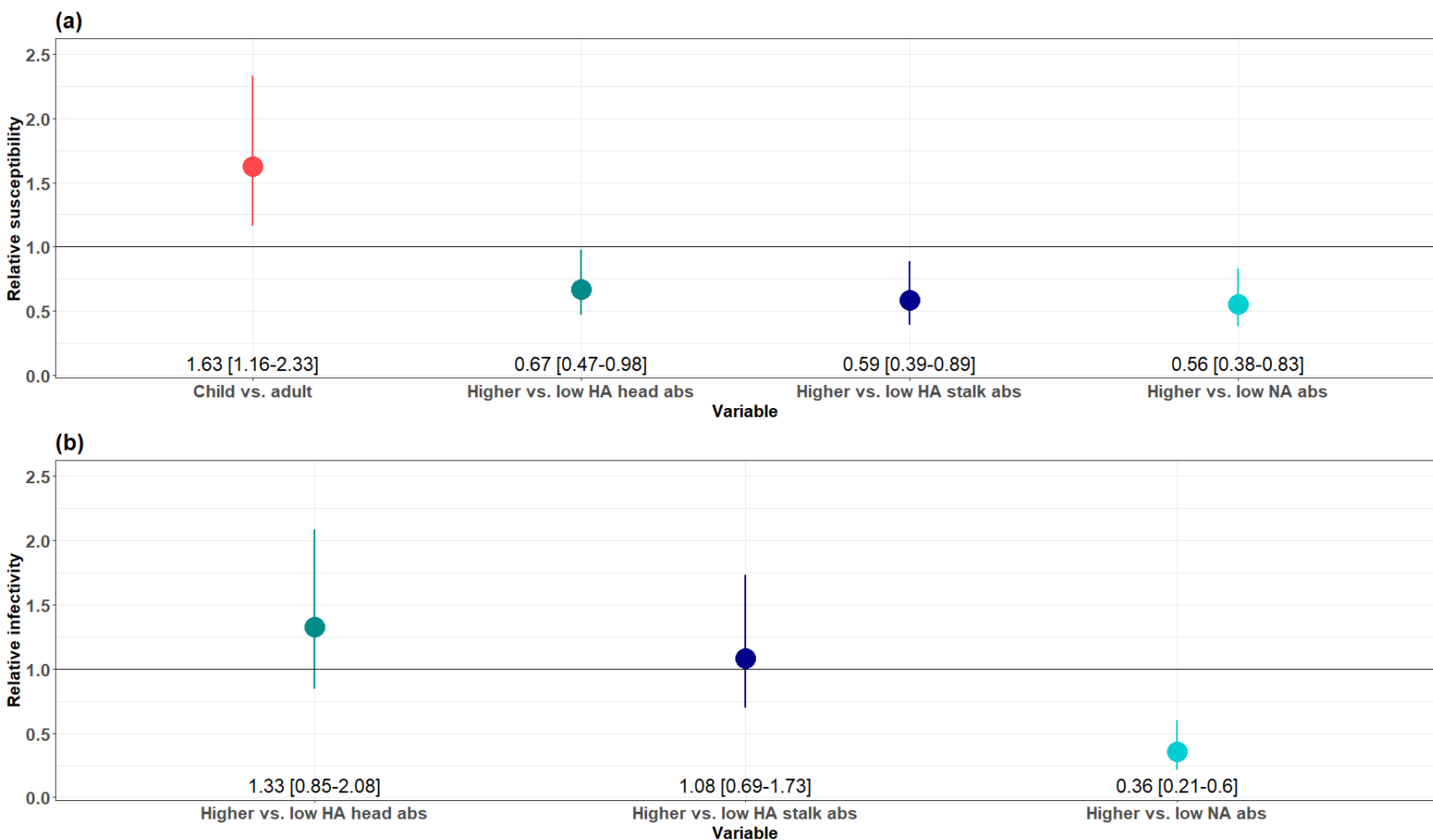
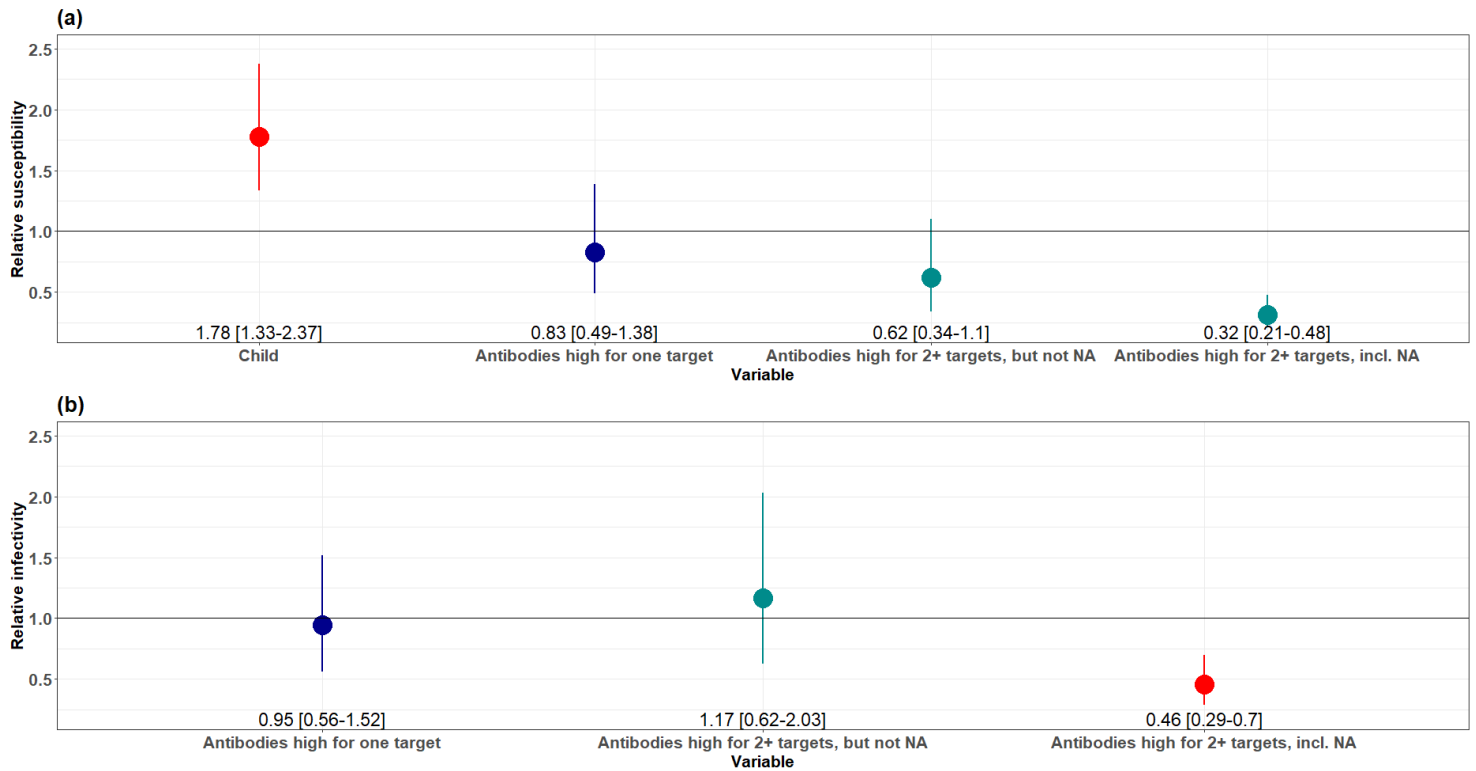


Figure 3. Relative susceptibility and infectivity of A/H3N2 by age and antibody levels (a) Point estimate and 95% credible interval for relative susceptibility to A/H3N2 as a function of age and high versus low initial antibody levels against the HA head, HA stalk, and NA. (b) Point estimate and 95% credible interval for relative infectivity of A/H3N2 as a function of high versus low initial antibody levels against the HA head, HA stalk, and NA.

399
400
401
402
403



404

Figure 4. Effect of cumulative antibody levels on susceptibility and infectivity Point estimate and 95% credible interval for (a) relative susceptibility to A/H3N2 as a function of age and categorical higher-versus-low antibody levels for zero (reference), one, two or more (not including NA), or two or more (including NA) antibody targets, and (b) relative infectivity of A/H3N2 as a function of categorical, higher-versus-low antibody levels for zero (reference), one, two or more (not including NA), or two or more (including NA) antibody targets.

405

406

407

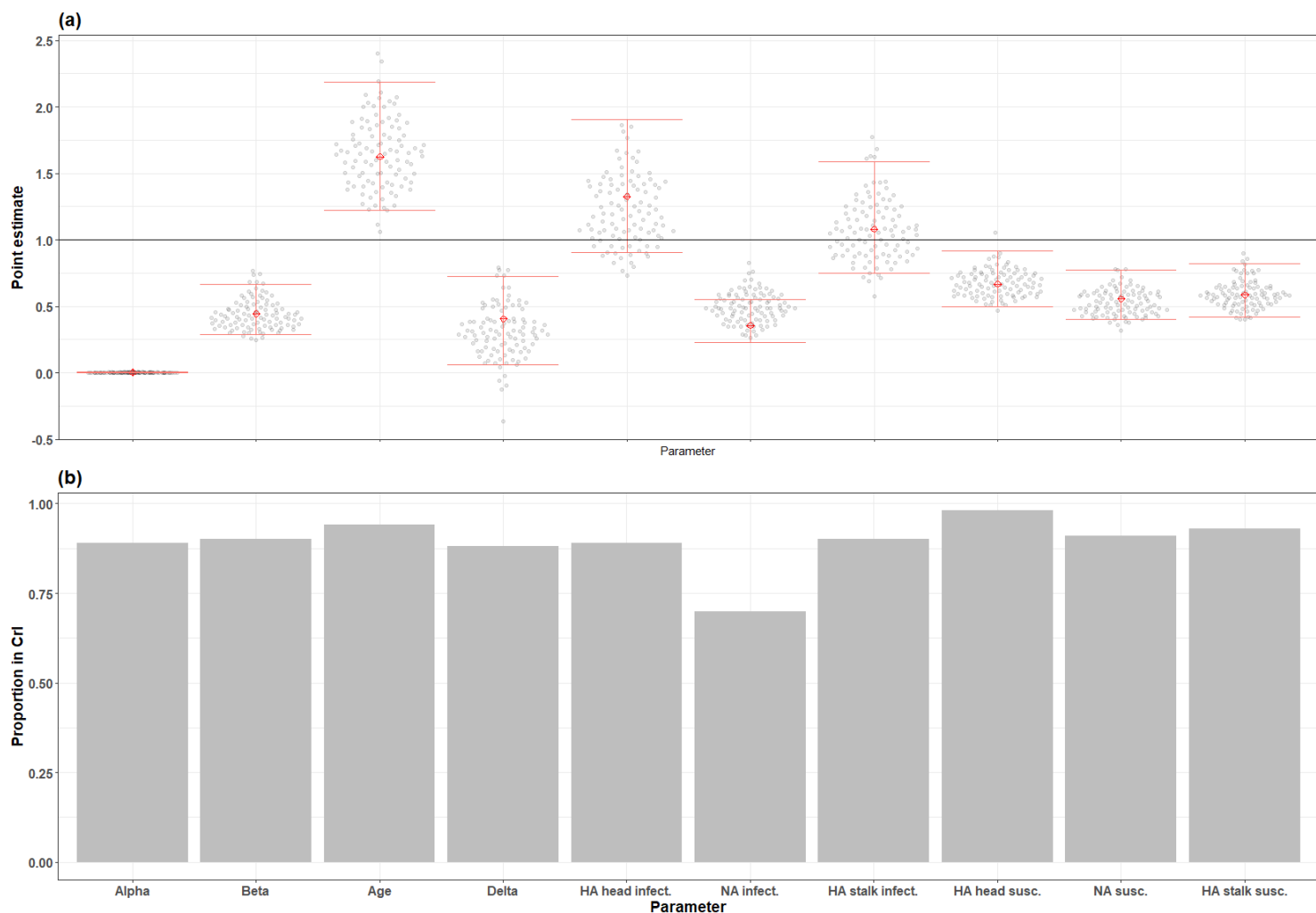
408

409

410

411

412



413

414

Figure 5. Parameter estimates in simulated datasets. (a) Point estimate and 95% credible interval for each parameter from the actual data, compared to the parameter point estimates recovered from running the MCMC on each simulated dataset. (b) proportion of simulations where the parameter point estimates recovered from the simulated dataset falls within the 95% credible interval of the parameters run on the actual data. Alpha is the community transmission parameter, beta is the household transmission parameter, and delta is a parameter for relating beta to household size.

415

416

417

418

419 **Acknowledgements**

420 This work was supported by the National Institutes of Allergy and Infectious Diseases
421 through the Collaborative Influenza Vaccine Innovation Centers [75N93019C00051 to
422 F.K. and A.G.]the St. Jude Center of Influenza Research and Surveillance
423 [HHSN272201400006C to A.G.]; the St. Jude Center of Excellence for Influenza
424 Research and Response [75N93021C00016 to A.G.]and grant R01 AI120997 to A.G.
425 Aubree Gordon is supported by the Biosciences Initiative at the University of Michigan
426 through a Mid-career Biosciences Faculty Achievement Award (MBioFAR). S.C.
427 acknowledges support by the European Commission under the EU4Health programme
428 2021-2027, Grant Agreement - Project: 101102733 — DURABLE, the Laboratoire
429 d'Excellence Integrative Biology of Emerging Infectious Diseases program (grant ANR-
430 10-LABX-62-IBEID) the European Union's Horizon 2020 research and innovation
431 programme under VEO grant agreement No. 874735, and the INCEPTION project
432 (PIA/ANR16-CONV-0005). The funding agencies had no role in the design and conduct
433 of the study, collection, management, analysis or interpretation of the data; preparation,
434 review, or approval of the manuscript; or decision to submit the manuscript for
435 publication.

436

437 We thank the study participants and the many dedicated study personnel in Nicaragua
438 at the Centro Nacional de Diagnóstico y Referencia and the Sócrates Flores Vivas
439 Health Center.

440

441 **Author Contributions**

442 Gregory Hoy: Data curation; formal analysis; methodology; software; validation;
443 visualization; writing—original draft; writing—review and editing. Thomas Cortier: formal
444 analysis; methodology; software; validation; visualization; writing-original draft; writing-
445 review and editing. Hannah E. Maier: data curation; methodology; software; validation;
446 visualization; writing-review and editing. Guillermina Kuan: Investigation; project
447 administration; writing—review and editing. Roger Lopez: Investigation; writing—review
448 and editing. Nery Sanchez: Investigation; writing—review and editing. Sergio Ojeda:
449 Investigation; project administration; writing—review and editing. Miguel Plazaola:
450 Investigation; project administration; writing—review and editing. Daniel Stadlbauer:
451 Data curation; writing—review and editing. Abigail Shotwell: data curation; writing-
452 review and editing. Angel Balmaseda: Investigation; methodology; supervision; project
453 administration; writing—review and editing. Florian Krammer: funding acquisition;
454 investigation; ; supervision; writing—review and editing. Simon Cauchemez:
455 Conceptualization; investigation; methodology; project administration; resources;
456 supervision; writing—review and editing. Aubree Gordon: Conceptualization; funding
457 acquisition; investigation; methodology; project administration; resources; supervision;
458 writing—review and editing.

459

460 **Conflict of interest statement**

461 The Icahn School of Medicine at Mount Sinai has filed patent applications relating to
462 SARS-CoV-2 serological assays, NDV-based SARS-CoV-2 vaccines influenza virus
463 vaccines and influenza virus therapeutics which list Florian Krammer as co-inventor.
464 Mount Sinai has spun out a company, Kantaro, to market serological tests for SARS-CoV-
465 2 and another company, CastleVax, to develop SARS-CoV-2 vaccines. Florian Krammer
466 is a co-founder and scientific advisory board member of CastleVax. Florian Krammer has
467 consulted for Merck, Curevac, Seqirus, GSK and Pfizer and is currently consulting for 3rd
468 Rock Ventures, Gritstone and Avimex. The Krammer laboratory is collaborating with
469 Dynavax on influenza vaccine development. Aubree Gordon has served on an RSV
470 vaccine advisory board for Janssen.

471 **Inclusion and ethics in global research statement**

472 This study has included local researchers throughout the research process and is locally
473 relevant as determined in partnership with local partners. Roles and responsibilities were
474 agreed upon amongst collaborators ahead of the research, including capacity building for
475 local researchers. This research was approved by the Nicaraguan Ministry of Health.

476

477 **Data availability statement**

478

479 The data that support the findings of this study are available from the corresponding
480 author upon reasonable request and following IRB approval.

481

482 **Code availability statement**

483 Code supporting the findings of this research can be found at
484 https://github.com/gehoy/H3N2_NA_transmission.

485

486

487

488

489

490

491

492

493 **References**

494

495 1. WHO launches new global influenza strategy. [https://www.who.int/news/item/11-](https://www.who.int/news/item/11-03-2019-who-launches-new-global-influenza-strategy)
496 03-2019-who-launches-new-global-influenza-strategy.

497 2. Belongia, E. A. *et al.* Variable influenza vaccine effectiveness by subtype: a
498 systematic review and meta-analysis of test-negative design studies. *Lancet Infect Dis*
499 **16**, 942–951 (2016).

500 3. Berlanda Scorza, F., Tsvetnitsky, V. & Donnelly, J. J. Universal influenza
501 vaccines: Shifting to better vaccines. *Vaccine* **34**, 2926–2933 (2016).

502 4. Doherty, P. C. & Kelso, A. Toward a broadly protective influenza vaccine. *J Clin*
503 *Invest* **118**, (2008).

504 5. Krammer, F. *et al.* NAction! How Can Neuraminidase-Based Immunity Contribute
505 to Better Influenza Virus Vaccines? *mBio* **9**, e02332-17 (2018).

506 6. Nachbagauer, R. *et al.* A universal influenza virus vaccine candidate confers
507 protection against pandemic H1N1 infection in preclinical ferret studies. *npj Vaccines* **2**,
508 1–13 (2017).

509 7. Past Seasons Vaccine Effectiveness Estimates | CDC.
510 <https://www.cdc.gov/flu/vaccines-work/past-seasons-estimates.html> (2022).

511 8. Paules, C. I., Marston, H. D., Eisinger, R. W., Baltimore, D. & Fauci, A. S. The
512 Pathway to a Universal Influenza Vaccine. *Immunity* **47**, 599–603 (2017).

513 9. Nichol, K. L. Efficacy and effectiveness of influenza vaccination. *Vaccine* **26**,
514 D17–D22 (2008).

515 10. Jackson, C., Vynnycky, E., Hawker, J., Olowokure, B. & Mangtani, P. School
516 closures and influenza: systematic review of epidemiological studies. *BMJ Open* **3**,
517 e002149 (2013).

518 11. Jordan, R. *et al.* Universal vaccination of children against influenza: are there
519 indirect benefits to the community? A systematic review of the evidence. *Vaccine* **24**,
520 1047–1062 (2006).

521 12. Monto, Arnold S. & Kendal, Alan P. EFFECT OF NEURAMINIDASE ANTIBODY
522 ON HONG KONG INFLUENZA. *The Lancet* **301**, 623–625 (1973).

523 13. Monto, A. S. *et al.* Antibody to Influenza Virus Neuraminidase: An Independent
524 Correlate of Protection. *The Journal of Infectious Diseases* **212**, 1191–1199 (2015).

- 525 14. Giurgea, L. T., Morens, D. M., Taubenberger, J. K. & Memoli, M. J. Influenza
526 Neuraminidase: A Neglected Protein and Its Potential for a Better Influenza Vaccine.
527 *Vaccines (Basel)* **8**, 409 (2020).
- 528 15. Maier, H. E. *et al.* Pre-existing Antineuraminidase Antibodies Are Associated
529 With Shortened Duration of Influenza A(H1N1)pdm Virus Shedding and Illness in
530 Naturally Infected Adults. *Clinical Infectious Diseases* **70**, 2290–2297 (2020).
- 531 16. Bouvier, N. M. & Palese, P. THE BIOLOGY OF INFLUENZA VIRUSES. *Vaccine*
532 **26**, D49–D53 (2008).
- 533 17. McMahon, M. *et al.* Immunity induced by vaccination with recombinant influenza
534 B virus neuraminidase protein breaks viral transmission chains in guinea pigs in an
535 exposure intensity-dependent manner. *J Virol* **97**, e0105723 (2023).
- 536 18. Tan, J. *et al.* Murine Broadly Reactive Antineuraminidase Monoclonal Antibodies
537 Protect Mice from Recent Influenza B Virus Isolates and Partially Inhibit Virus
538 Transmission in the Guinea Pig Model. *mSphere* **7**, e0092721 (2022).
- 539 19. Tan, J. *et al.* Human Anti-neuraminidase Antibodies Reduce Airborne
540 Transmission of Clinical Influenza Virus Isolates in the Guinea Pig Model. *J Virol* **96**,
541 e0142121 (2022).
- 542 20. Romagosa, A. *et al.* Vaccination of influenza a virus decreases transmission
543 rates in pigs. *Vet Res* **42**, 120 (2011).
- 544 21. McMahon, M. *et al.* Mucosal Immunity against Neuraminidase Prevents Influenza
545 B Virus Transmission in Guinea Pigs. *mBio* **10**, e00560-19 (2019).
- 546 22. Tsang, T. K. *et al.* Individual Correlates of Infectivity of Influenza A Virus
547 Infections in Households. *PLOS ONE* **11**, e0154418 (2016).
- 548 23. Cauchemez, S., Carrat, F., Viboud, C., Valleron, A. J. & Boëlle, P. Y. A Bayesian
549 MCMC approach to study transmission of influenza: application to household
550 longitudinal data. *Stat Med* **23**, 3469–3487 (2004).
- 551 24. Tsang, T. K. *et al.* Influenza A Virus Shedding and Infectivity in Households. *J*
552 *Infect Dis* **212**, 1420–1428 (2015).
- 553 25. Nayak, J., Hoy, G. & Gordon, A. Influenza in Children. *Cold Spring Harb*
554 *Perspect Med* a038430 (2019) doi:10.1101/cshperspect.a038430.
- 555 26. Cauchemez, S. *et al.* Determinants of Influenza Transmission in South East Asia:
556 Insights from a Household Cohort Study in Vietnam. *PLOS Pathogens* **10**, e1004310
557 (2014).
- 558 27. Mettelman, R. C. & Thomas, P. G. Human Susceptibility to Influenza Infection
559 and Severe Disease. *Cold Spring Harb Perspect Med* **11**, a038711 (2021).

- 560 28. Huang, Q. S. *et al.* Risk Factors and Attack Rates of Seasonal Influenza
561 Infection: Results of the Southern Hemisphere Influenza and Vaccine Effectiveness
562 Research and Surveillance (SHIVERS) Seroepidemiologic Cohort Study. *J Infect Dis*
563 **219**, 347–357 (2019).
- 564 29. Hobson, D., Curry, R. L., Beare, A. S. & Ward-Gardner, A. The role of serum
565 haemagglutination-inhibiting antibody in protection against challenge infection with
566 influenza A2 and B viruses. *Epidemiology & Infection* **70**, 767–777 (1972).
- 567 30. Ng, S. *et al.* Novel correlates of protection against pandemic H1N1 influenza A
568 virus infection. *Nat Med* **25**, 962–967 (2019).
- 569 31. Weir, J. P. & Gruber, M. F. An overview of the regulation of influenza vaccines in
570 the United States. *Influenza and Other Respiratory Viruses* **10**, 354–360 (2016).
- 571 32. Azman, A. S. *et al.* Household transmission of influenza A and B in a school-
572 based study of non-pharmaceutical interventions. *Epidemics* **5**, 181–186 (2013).
- 573 33. Gordon, A. *et al.* Influenza Transmission Dynamics in Urban Households,
574 Managua, Nicaragua, 2012–2014. *Emerg Infect Dis* **24**, 1882–1888 (2018).
- 575 34. World Health Organization. WHO manual on animal influenza diagnosis and
576 surveillance. (2002).
- 577 35. World Health Organization. WHO information for the molecular detection of
578 influenza viruses. (2020).
- 579 36. Centers for Disease Control and Prevention. CDC Real-time RT-PCR (rRT-PCR)
580 Protocol for Detection and Characterization of Influenza – Influenza A and Influenza B.
- 581 37. Ghani, A. *et al.* The Early Transmission Dynamics of H1N1pdm Influenza in the
582 United Kingdom. *PLoS Curr* **1**, RRN1130 (2010).
- 583 38. Carrat, F. *et al.* Time lines of infection and disease in human influenza: a review
584 of volunteer challenge studies. *Am J Epidemiol* **167**, 775–785 (2008).
- 585 39. Tsang, T. K., Lau, L. L. H., Cauchemez, S. & Cowling, B. J. Household
586 Transmission of Influenza Virus. *Trends in Microbiology* **24**, 123–133 (2016).
- 587 40. Tsang, T. K. *et al.* Association Between Antibody Titers and Protection Against
588 Influenza Virus Infection Within Households. *The Journal of Infectious Diseases* **210**,
589 684–692 (2014).
- 590 41. Cauchemez, S. *et al.* Household Transmission of 2009 Pandemic Influenza A
591 (H1N1) Virus in the United States. *New England Journal of Medicine* **361**, 2619–2627
592 (2009).
- 593 42. Nishiura, H. & Inaba, H. Estimation of the incubation period of influenza A (H1N1-
594 2009) among imported cases: Addressing censoring using outbreak data at the origin of
595 importation. *Journal of Theoretical Biology* **272**, 123–130 (2011).

- 596 43. Nishiura, H. Early efforts in modeling the incubation period of infectious diseases
597 with an acute course of illness. *Emerg Themes Epidemiol* **4**, 2 (2007).
- 598 44. Virlogeux, V. *et al.* Estimating the Distribution of the Incubation Periods of Human
599 Avian Influenza A(H7N9) Virus Infections. *American Journal of Epidemiology* **182**, 723–
600 729 (2015).
- 601 45. *Markov Chain Monte Carlo in Practice*. (Chapman and Hall/CRC, New York,
602 1995). doi:10.1201/b14835.
- 603