

1 **Sex-specific association of epicardial adipose tissue with coronary**
2 **artery disease in an Indian cohort: a cross-sectional study**

3

4 Can Xu ^{1, *}, Rishabh Khurana ^{2, *}, Xuan Gao ^{3, *}, Constanze Lehertshuber ^{4, 5}, Ling Li ^{4, 5, 6},
5 Amos Romer ^{4, 5}, Luigi Filippo Brizzi ⁴, Moritz von Scheidt ^{4, 5}, Anurag Yadav ², TBS Buxi ²,
6 Teresa Trenkwalder ^{4, 5}, Jason Zhensheng Qu ^{7, 8}, Dongjin Wang ^{1, 8} and Zhifen Chen ^{4, 5, 8}

7 1 Department of Cardio-Thoracic Surgery, Nanjing Drum Tower Hospital, The Affiliated
8 Hospital of Nanjing University Medical School, Nanjing 210008, China

9 2 Department of CT & MRI, Sir Ganga Ram Hospital, New Delhi 110060, India

10 3 Department of Anaesthesiology, German Heart Centre Munich, Technical University of
11 Munich (TUM), Munich 80636, Germany

12 4 Department of Cardiology, German Heart Centre Munich, Technical University of
13 Munich, Munich 80636, Germany

14 5 Deutsches Zentrum für Herz- und Kreislaufforschung (DZHK), Partner Site Munich Heart
15 Alliance, Munich, Germany

16 6 TUM School of Computation, Information and Technology, Technical University of
17 Munich, Garching bei Munich 85748, Germany

18 7 Department of Anesthesia, Critical Care and Pain Medicine, Massachusetts General
19 Hospital, Harvard Medical School, Boston, MA 02114, United States

20 8 Corresponding authors

21 * The three authors contributed equally to this work.

22

23

24 **Address for correspondence:**

25 Jason Zhensheng Qu, MD

26 55 Fruit Street, Jackson 4-418

27 Boston, Massachusetts, 02114

28 Tel: +1 617-643-4401

29 E-Mail: jqu@mgh.harvard.edu

30

31 Dongjing Wang, MD, PhD

32 Nanjing Drum Tower Hospital, Nanjing University

33 No.321 Zhongshan Road, Nanjing, Jiangsu Province, China

34 Tel.: +86 25 83106666

35 E-Mail: wangdongjin@njglyy.com

36

37 Zhifen Chen, PhD

38 German Heart Center Munich, Technical University Munich

39 Lazarettstraße 36, 80636 Munich, Germany

40 Tel.: +49 89 1218 2599

41 **NOTE: This preprint reports new research that has not been certified by peer review and should not be used to guide clinical practice.**

E-Mail: chenz@dhhm.mun.de

1 **Abstract**

2 **Background:** Epicardial adipose tissue (EAT) plays an important role in the pathogenesis of
3 coronary artery disease (CAD). The correlation of EAT volume with CAD or its risk factors,
4 especially the sex-specific correlation, has not been fully characterized. Such a knowledge gap
5 was even larger in the South Asian population given the scarcity of ethnic-specific data. This
6 study intended to evaluate the sex-specific relationship between EAT volume and CAD or its
7 risk factors in an Indian cohort.

8 **Methods:** The retrospective study included 950 subjects who underwent coronary computed
9 tomography angiography (CCTA) from 2013 to 2016 at Sir Ganga Ram Hospital in India. The
10 EAT volume and CAD status were examined. Values of CAD risk factors were documented for
11 the study subjects, including age, sex, body mass index (BMI), smoking, hypertension, diabetes
12 mellitus, family history of CAD, total cholesterol (TC), low-density lipoprotein cholesterol
13 (LDL-C), and high-density lipoprotein cholesterol (HDL-C) and triglycerides (TG). In a sex-
14 specific fashion, the generalized additive model and multivariable logistic regression analyses
15 were applied to assess the correlation between EAT volume and CAD or its risk factors. The
16 two-piecewise linear regression model was applied to identify the inflection point for the
17 nonlinear correlations.

18 **Results:** In the 950 subjects, EAT volume was larger in men than in women (67.66 ± 31.83
19 ($n=623$) vs 61.93 ± 28.90 ($n=327$); $P = 0.007$). After adjusting for confounders, a nonlinear
20 relationship was detected between EAT volume and CAD in the overall subjects and men, but
21 not in women. The inflection point for men was 90ml. The effect sizes and the confidence
22 intervals of EAT volume on CAD were larger when EAT volume was < 90 ml. Moreover, we
23 found a linear correlation between EAT volume and BMI in men of the current cohort. In
24 multivariable analysis, either as a continuous or a categorized variable, EAT volume was
25 significantly associated with CAD and BMI by crude, partially adjusted-, and fully adjusted-
26 models in overall subjects and men. Every 1-SD (31.8ml) increase in EAT of men was
27 associated with a higher risk of CAD (odds ratio (OR): 1.76; 95% CI: 1.36 to 2.28; $p < 0.00001$)
28 by a fully adjusted model. However, EAT volume was not associated with other risk factors.
29 In women of this cohort, EAT volume was not associated with CAD. Interaction analysis
30 indicated BMI influenced the EAT and CAD association specifically in men. EAT volume and
31 CAD showed a stronger association in men with a BMI < 30 kg/m² than ≥ 30 kg/m² (Interaction
32 $P=0.0381$).

33 **Conclusion:** EAT volume, an indicator of organ obesity, was positively and independently
34 correlated with CAD in men of the current Indian cohort. In the male subjects, the correlation
35 of EAT volume with CAD was nonlinear, and with BMI was linear. EAT and CAD showed a
36 stronger association in men with EAT volume less than 90 ml or BMI less than 30 kg/m². In
37 women of the current cohort, EAT was not associated with CAD and investigated risk factors,
38 suggesting sex-specific effects of EAT volume on cardiovascular diseases.

39 **Keywords:** epicardial adipose tissue (EAT) volume; coronary artery disease (CAD); CAD-
40 relevant risk factors; body mass index (BMI).

41

1 **Introduction**

2 Coronary artery disease (CAD) represents the leading cause of death worldwide which is
3 caused by blockages of cardiac blood vessels (coronary arteries) due to the build-up of lipid-
4 rich inflammatory plaques, i.e., atherosclerosis. General obesity, defined by body mass index
5 (BMI $\geq 30\text{kg/m}^2$), is an independent risk factor for CAD. Ectopic fat distribution, visceral fat
6 accumulation, organ obesity, and abdominal or central obesity increase the CAD risk
7 independently of BMI [1]. South Asian countries (India, Pakistan, Nepal, Bhutan, Bangladesh,
8 Sri Lanka, and Maldives) account for approximately ~25% of the world's population, yet they
9 contribute >50% of global cardiovascular deaths [2–4]. Of note, India, accounting for ~76% of
10 the South Asian population [4], is almost as populated as China. According to a recent
11 Nationally Representative Study of India (2023) [5], 13.85% of Indians are obese, doubled
12 since 2008 [6]. Despite the high prevalence, the obesity rate among Indians is approximately
13 one-third less than American and European [7]. However, in India, the prevalence of central
14 obesity (57.71%) is higher than the global average (41.5%) and represents a main driver for
15 obesity-associated CAD in India [5][7–9]. Central obesity, also known as trunk obesity, is
16 known as an excessive accumulation of visceral adipose tissue (VAT) surrounding organs.
17 Epicardial adipose tissue (EAT), a type of VAT, is referred to as the adipose depot beneath the
18 pericardium, and in direct contact with the myocardium and coronary arteries without fibrous
19 fascia separation. Cytokines, adipokines, gaseous molecules, and extracellular vesicles from
20 EAT directly interact with coronary arteries and myocardium via paracrine, endocrine, and
21 vasocrine effects [10]. Proinflammatory EAT was proven to alter vascular tone and promote
22 endothelial dysfunction and progression of cardiovascular diseases (CVDs) [11]. Statin therapy
23 and lifestyle improvement were shown to decrease the accumulation and inflammatory profile
24 of EAT [12–14]. Thus, EAT represents both a predictive maker and a modifiable risk factor for
25 CAD prevention [15].

26 Recent years have witnessed a growing interest in the relationship between the EAT and CAD
27 risk [16–18]. With the rapid development of imaging technologies, the spatial and temporal
28 resolution of computed tomography scanning has significantly improved in recent years,
29 popularizing its applications in the clinical diagnosis of visceral adipose content and CAD.

1 Coronary computed tomography angiography (CCTA) represents a non-invasive imaging
2 approach to assess and quantify both CAD severity and EAT volume [19]. The correlation
3 between EAT volume and CAD risk has been previously investigated by CCTA and other
4 imaging techniques [20]. However, whether EAT can be considered a predictive marker for
5 CAD occurrence and development remains controversial and the clinical significance of EAT
6 volume on CAD is largely unknown. Of note, ethnic differences in EAT volume have been
7 observed and therefore ethnicity might be considered when EAT volume is used as a predictor
8 for CAD risk [21–23]. While many studies on EAT-CAD correlation were conducted in Western
9 and Eastern Asian cohorts [24,25], such studies in South Asia are scarce. Further, both the
10 associations between EAT volume with CAD risk factors and the sex-specific effect of EAT
11 have not been studied in South Asian cohorts. In the current study, we investigated the sex-
12 specific correlation of EAT volume with not only CAD but also its risk factors in a large Indian
13 clinical imaging cohort.

14

15 **Methods**

16 **Study subjects**

17 This analysis utilized data from the prospective cum retrospective cross-sectional observational
18 study from 2013 to 2016 at Sir Ganga Ram Hospital in India, which, by CCTA, examined
19 symptomatic subjects, who were suspicious for CAD but unsuitable for functional tests or with
20 an uninterpretable electrocardiogram. Subjects examined by CCTA were screened for inclusion
21 in the current study. The demographic data, the status of CAD, CAD risk factors (smoking
22 status, family history of CAD, BMI, hypertension, diabetes mellitus, lipid levels, and other
23 CVDs), and the clinical symptoms at the time of the CCTA study were documented. After
24 excluding the individuals with missing values, 950 subjects with parameters of EAT volume,
25 status of CAD and the related risk factors, and lipid levels were retained for our analysis.
26 Hypertension was referred to as treated hypertension, untreated diastolic blood pressure ≥ 90
27 mm Hg, or untreated systolic blood pressure ≥ 140 mm Hg. Diabetes mellitus was defined as
28 treatment with insulin or oral hypoglycemic medications or fasting glucose ≥ 126 mg/dl. For
29 lipid parameters, the cut-off values for total cholesterol (TC), serum low-density lipoprotein

1 cholesterol (LDL-C), serum high-density lipoprotein cholesterol (HDL-C), and serum
2 triglycerides (TG) were 200 mg/dL, 100 mg/dL, 40 mg/dL, and 150 mg/dl, respectively.
3 Smoking was defined as current or former smokers. The study has been approved by the
4 Institutional Review Board of the Sir Ganga Ram Hospital following the guidelines of the
5 Declaration of Helsinki. All patients provided written informed consent before data collection.

6 **CCTA-based evaluation of EAT volume and CAD status**

7 At the time of the study, all enrolled subjects were in sinus rhythm, and for individuals with
8 heart rate > 60 beats/min, a β -blocker and/or an anxiolytic was provided. The β -blocker was
9 replaced by a calcium channel blocker in case of intolerance. Sorbitrate Sublingual (2.5 mg)
10 was administered 2 min before the initial scout image. A prospective ECG-triggered scan
11 without a contrast agent was acquired. Retrospective ECG-triggered contrast-enhanced CCTA
12 scan was conducted after intravenous administration of 80-110 ml of 350 mg/ml nonionic
13 water-soluble agent Omnipaque (iohexol, GE Healthcare, Shanghai, China), at a rate of 5.5 ml/s.
14 CCTA scan was acquired between tracheal bifurcation (above the coronary arteries) and the
15 dome of the diaphragm, on a low-dose 128-slice MDCT scanner (Ingenuity Philips, Philips
16 Medical System, Netherlands), using voltage 100-120 kVp, current of 400-450mAs (auto
17 modulated), exposure time of 480 to 600 ms, and helical scan with pitch: 0.2. After manually
18 adjusting the field of view, acquired data was reconstructed at various phases of the cardiac
19 cycle, using slice thickness of 0.8 mm and reconstruction increment of 0.4 mm in dedicated
20 soft-tissue kernel settings.

21 EAT was quantified based on the CCTA end-systolic phase images. A batch film was
22 reconstructed with a 3 mm slice thickness and a 1.5 mm increment. The EAT area was measured
23 between the origin of the left main coronary artery and the cardiac apex. We utilized volume
24 analysis software on the GE Advantage Window workstation to manually delineate the outer
25 contour (the pericardium) and specified the density range of -250 to -30 Hounsfield units (H.U.)
26 to isolate adipose tissue (Fig. 1). CAD absent was defined as no stenosis and CAD as any degree
27 of stenosis in coronary artery segments.

28 **Statistical analysis**

1 Continuous variables were expressed as mean \pm standard deviation (normal distribution) or
2 median (interquartile range) (skewed distribution), and categorical variables were presented in
3 frequency or as a percentage. We log-transformed EAT volume and evaluated EAT as
4 continuous (per SD increase) and categorical variables (quantified). The One-Way ANOVA
5 (normal distribution), Kruskal Wallis H (skewed distribution), and chi-square tests (categorical
6 variables) were used to determine any statistical differences between the means and proportions
7 of the groups in a sex-specific manner. We used the generalized additive model to identify the
8 non-linear relationship between EAT volume and CAD risk or other risk factors. If the non-
9 linear correlation was observed, a two-piecewise linear regression model was performed to
10 calculate the threshold effect of the OR on CAD in terms of the smoothing plot. When the ratio
11 between CAD and OR appears obvious in a smoothed curve, the recursive method
12 automatically calculates the inflection point, where the maximum model likelihood will be used.
13 The univariate linear regression model was used to evaluate the associations between EAT
14 volume and CAD incidence . Further, both non-adjusted and multivariable-adjusted models
15 were implemented. According to the recommendation of the STROBE statement, we
16 simultaneously showed the results of crude-, partially- and fully- adjusted analyses. Whether
17 the covariances would be adjusted, was determined by $>10\%$ of odds ratio (OR) when added to
18 the model. The subgroup analyses were performed using stratified linear regression models.
19 The modification and interaction of subgroups were inspected by the likelihood ratio test. All
20 the analyses were performed using the statistical software packages R ([http://www.R-](http://www.R-project.org)
21 [project.org](http://www.R-project.org), The R Foundation, Version 4.2.0) and EmpowerStats
22 (<http://www.empowerstats.com>, X&Y Solutions, Inc., Boston, MA). P values less than 0.05
23 (two-sided) were considered statistically significant.

24

25 **Results**

26 **Characteristics of the study subjects**

27 A total of 950 subjects were included in the cross-sectional observational study. The baseline
28 statistics of the study subjects are shown in Table 1. In the overall subjects, the mean EAT
29 volume was 65.7 ± 31.0 ml, the mean age was 51.10 ± 11.2 years, and the mean BMI was 26.2

1 $\pm 3.5 \text{ kg/m}^2$. Among the 950 subjects, 623 (65.6%) were men and 118 (12.4%) were smokers.
2 220 (23.2%) subjects were with a family history of CAD, 400 (42.1%) with hypertension, 203
3 (21.4%) with diabetes, 218 (22.9%) with high total cholesterol, 211 (22.2%) with high LDL-C,
4 147(15.5%) with high TG, and 65 (6.8%) with low HDL-C. a . 458 (48.2%) individuals had
5 CAD. Compared to women, men had significantly higher EAT volume (67.7 ± 31.8 vs $61.9 \pm$
6 28.9 , $P < 0.001$), larger BMI (27.0 ± 4.2 vs 25.8 ± 3.1 , $P < 0.001$), more smokers (18.6% vs
7 0.6%, $P = 0.007$), more individuals with high TG level (17.3% vs 11.9%, $P = 0.029$) and higher
8 CAD incidence (54.3% vs 36.7%, $P < 0.001$) (Table 1). The results of the univariate analysis
9 showed that age, sex, smoking, hypertension, diabetes mellitus, family history of CAD, TC,
10 LDL-C, HDL-C, TG, and EAT volume were significantly and positively correlated with CAD
11 in the overall subjects (Table 2).

12 **Nonlinear correlation of EAT volume with CAD risk in men**

13 Using EAT volume as a continuous variable in the generalized additive model, we visualized
14 the correlation between EAT volume and CAD in the overall subjects, women and men,
15 respectively (Fig. 2). In the overall subjects, we found that the relationship between EAT
16 volume and CAD was non-linear after adjusting for age, sex, smoking, hypertension, diabetes
17 mellitus, family history of CAD, TG, TC, LDL-C and HDL-C (Fig. 2A, Table 3). A similar non-
18 linear correlation in men was observed, but not in women (Fig. 2B, 2C). In women, the
19 correlation of EAT volume with CAD was trend in linear but without significance (Fig. 2C),
20 suggesting the non-linear correlation in overall subjects was driven by men.

21 By applying the two-piecewise linear regression model, we found that the EAT volume
22 inflection points for CAD were 90ml in both the overall subjects and men (Fig.2A and 2B,
23 Table 3). In men, on the right of the CAD-EAT volume inflection point (EAT volume ≥ 90 ml),
24 the correlation between EAT volume and CAD was not significant, and the effect size (OR),
25 95% CI and P value were 1.12, 0.70-1.79 and 0.6293, respectively (Fig.2B, Table 3).
26 Interestingly, we observed a significant and positive correlation between EAT volume and CAD
27 on the left side of the inflection point (< 90 ml) with more than doubled effect size, OR =2.42,
28 95% CI =1.85 to 3.17, and P value < 0.0001 (Fig.2B, Table 3). In the overall subjects, the results
29 were similar to that of men (Fig.2A, Table 3).

1 **Sex-specific association of EAT volume with CAD risk**

2 By the multivariable logistic regression analysis, the associations between EAT volume and
3 CAD risk were further investigated using EAT volume as both a continuous and a categorized
4 variable in a sex-specific manner (Table 4). Three models were used: crude, partially-adjusted
5 (adjusted for age), and fully-adjusted (adjusted for age, sex, smoking, hypertension, diabetes
6 mellitus, family history of CAD, TG, TC, LDL-C, and HDL-C). In the sex-specific analysis,
7 the sex was not adjusted in the third model. As a continuous variable, EAT volume was
8 significantly associated with CAD in the overall subjects and in men by all three models (Fig.
9 3), but not in women, suggesting a sex-specific effect. In the partially-adjusted model, every 1-
10 SD increment in EAT volume increased the risk of CAD by 54% (95% CI: 31% to 82%; $p <$
11 0.001) in the overall subjects and 62% (95% CI: 27% to 107%; $p <$ 0.001) in men (Table 4).
12 Additional adjustment for variables in fully adjusted models increased the odds ratio (OR) from
13 1.54 (95% CI: 1.31 to 1.82; $P <$ 0.0001) to 1.56 (1.31 to 1.85, $P <$ 0.0001) in the overall subjects
14 and 1.67 (1.23 to 2.10, $P =$ 0.00012) to 1.76 (1.36 to 2.28, $P =$ 0.00002) in men.

15 As the categorized variables, the study subjects were divided into four groups according to EAT
16 volume quartile (Q1-Q4), namely Q1 (7.0-43.6ml), Q2 (43.7-59.5ml), Q3 (59.7-82.5ml) and
17 Q4 (82.7-203.9ml) (Supp Table 1). Participants with high EAT volume were older and more
18 males and had higher levels of TC, LDL-C, and TG, and higher prevalence of hypertension,
19 diabetes, and CAD (Supp Table 1). As a categorized variable, an increase in EAT volume was
20 associated with CAD by the crude model in the overall subjects (Table 4). Using Q1 as the
21 reference, EAT volume of Q2-Q3 subjects had an increased effect on CAD with OR=2.76 (1.87
22 to 4.08; $P <$ 0.0001), 3.75 (2.54 to 5.54; $P <$ 0.0001) and 5.67 (3.81 to 8.43, $P <$ 0.0001)
23 respectively. Further adjustment reduced the odd ratio, but the effect remained significant.
24 When this analysis was independently conducted in men and women (Supp Table 2 and 3),
25 again only in men, the association was significant (Table 4), further confirming the sex-specific
26 association. In men, EAT volume as a categorical variable, comparing with Q1 subjects, Q2-
27 Q3 subjects were respectively associated with 2.39 (1.04 to 5.50; $P =$ 0.04082), 3.44 (1.53 to
28 7.71; $P =$ 0.00279) and 6.87 (3.06 to 15.42; $P <$ 0.00001) folds of risk increase by the crude
29 model, and even greater risk by the fully-adjusted model, with 2.40 (0.97 to 5.92; $P <$ 0.05695),

1 3.67 (1.53 to 8.81; $P < 0.00356$) and 7.55 (3.14 to 18.14; $P < 0.00001$) folds respectively (Table
2 4).

3 **Sex-specific effect of BMI on the association of EAT volume and CAD risk**

4 We further tested the associations between EAT volume and CAD risk factors by multivariable
5 logistic regression analysis in a sex-specific manner, including age, sex, smoking, BMI,
6 hypertension, diabetes mellitus, family history of CAD, TG, TC, LDL-C, and HDL-C. In the
7 partially adjusted, age was adjusted, except when age was as the tested variate in the analysis.
8 In the fully adjusted model, except for the tested variate, the rest covariates were adjusted
9 correspondingly. In addition to CAD, EAT volume was significantly associated with BMI, not
10 other risk factors and the significance was exclusive to the overall subjects and men. Similar to
11 the previous correlation between EAT volume and the risk of CAD, EAT volume was
12 significantly associated with BMI by all three models in the overall subjects and men. Every 1-
13 SD increment in EAT volume increased the BMI by 1.84 folds (95% CI: 1.41 to 2.40; $p < 0.001$)
14 in the overall subjects and 2.12 folds (95% CI: 1.50 to 2.98; $p < 0.001$) in men by the partially
15 adjusted model (Fig.4, Supp Table 4). Additional adjustment for variables in fully adjusted
16 models decreased the OR from 1.84 (1.41 to 2.40; $P < 0.0001$) to 1.71 (1.29 to 2.27; $P = 0.0002$)
17 in the overall subjects and 2.12 (1.50 to 2.98; $P < 0.0001$) to 1.74 (1.20, 2.52; $P = 0.0036$) in
18 men (Fig.4, Supp Table 4).

19 When the overall subjects and women were stratified by any of the studied risk factors, the odds
20 ratio between EAT volume and CAD remained similar (Supp Fig.1 and 2). Namely, as shown
21 in Supp Fig.1 and 2, the interaction tests for any of the stratifications were not statistically
22 significant and the interaction P values for age, BMI, sex, smoking, hypertension, diabetes
23 mellitus, family history CAD, TC, LDL-C, HDL-C, TG, respectively were all larger than 0.1
24 (Supp Fig.1 and 2). Of note, in men, the subgroup analysis of BMI was significant ($P=0.0381$).
25 EAT volume showed a stronger association with CAD in men with $BMI < 30$ than those with
26 $BMI \geq 30$ (Fig.5), which was not observed in women. This was in line with previous data,
27 namely, EAT showed a strong correlation with CAD in men when the volume was smaller ($<$
28 90ml) (Fig. 2, Table 3). In fact, EAT volume had a linear correlation with BMI in men (Fig 2D).
29 These results suggested that BMI influenced the association of EAT volume and CAD

1 specifically in men of the current South Asian cohort.

2

3 **Discussion**

4 In the present study, we used generalized linear and additive models to elucidate the relationship
5 between EAT volume and CAD or its risk factors in a sex-specific fashion in 950 Indian
6 subjects. Firstly, compared to non-CAD subjects, CAD patients had higher levels of EAT
7 volume, TC, LDL-C, and TG, but a lower level of HDL-C, were composite of more smoking,
8 hypertensive and diabetic subjects, and were more likely to have a family history of CAD
9 (Table 2). CAD prevalence, age, and BMI increased with quantiles of EAT volume (Supp Table
10 1-3). Secondly, we explored potential curvilinear relationships between EAT volume and CAD
11 or its risk factors in both women and men. By generalized additive model, we found EAT
12 volume was linearly correlated with BMI but nonlinearly correlated with CAD in overall and
13 male subjects, but not in women (Fig.2, Table 3). The inflection points of EAT-CAD
14 correlations in overall and male subjects were 90ml (Table 3). Thirdly, in the crude, partially-,
15 or fully-adjusted models, EAT volume was significantly associated with CAD and BMI in
16 overall and male subjects, but not in women (Fig 3 and 4, Table 4, Supp Table 4). The EAT-
17 CAD associations in overall and woman subjects did not interact with other traditional risk
18 factors of CAD. However, in men, BMI affects the association of EAT volume and CAD risk,
19 especially in men with BMI < 30 kg/m² (Fig.5). These data suggested that in men with BMI <
20 30 kg/m², visceral obesity (indicated here by large EAT, or ‘heart obesity’) play a stronger role
21 in CAD than general obesity (indicated by large BMI). Conversely, in men with BMI ≥ 30
22 kg/m², the large BMI might attenuate the effect of EAT on CAD.

23 **EAT volume correlated with CAD and other cardiometabolic phenotypes**

24 The association between EAT volume and CAD is still debatable [26]. Tanami et al analyzed
25 320 patients with suspected CAD undergoing 320-detector row CT angiography and found no
26 correlation between EAT volume and the presence or severity of CAD [27]. Likewise, Yin R
27 et al enrolled a total of 61 patients who underwent CT scanning for EAT volume and CAD and
28 found no association between EAT volume and CAD based on the Gensini scores [28]. Despite
29 the negative results, the majority of studies proved a significant positive correlation of EAT

1 volume with CAD risk [20]. In the present study, we found that the correlation between EAT
2 volume and CAD was non-linear in overall subjects. Further, by using a two-piecewise linear
3 regression model, we calculated that the inflection point of the EAT-CAD correlation was 90
4 ml. Moreover, no studies assessed the relationship between EAT volume and the CAD risk
5 factors in the South Asian population. Despite negative results of other investigated risk factors,
6 we found linear correlations between EAT volume and BMI in men of the current Indian cohort.
7 Our data showed EAT-CAD association was stronger when BMI was less than 30kg/m^2 in men
8 (Fig. 5), suggesting EAT volume as a better predictive maker for the disease in non-obese men.
9 This phenomenon agrees with the fact that ectopic fat distribution or visceral fat deposition
10 shows stronger correlations to CVDs [29,30]. Certainly, the unobstructed contiguity of EAT
11 with the coronary arteries supports its stronger local effect than subcutaneous adipose tissue. In
12 addition to the vicinity, the quantity and activity of EAT play more significant roles in CAD
13 [20]. The complex mechanisms through which EAT causes CAD include adipocyte
14 hypertrophy and hyperplasia, chronic inflammation, exaggerated innate immunity, endothelial
15 damage, vascular remodeling, oxidative stress, lipotoxicity, and glucotoxicity [31].

16 **Comparison of data from different ethnic groups**

17 Interestingly, the median EAT volume in the South Asian population (65.69ml) was similar to
18 that of Japanese [32], but smaller than Chinese and European populations [24][33–36] and
19 larger than populations with African ancestry [37,38] (Supp Table 5). Likewise, EAT volume
20 had a larger effect size on CAD in Indian than in European [33–36]. In India, opposite to the
21 global trend, the prevalence of central obesity is higher than general obesity and excessive
22 visceral fat accumulation represents a stronger driver for obesity-associated CVD [7–9].
23 Indeed, in our analysis, EAT, a type of VAT, displayed a stronger association with CAD when
24 BMI, the measure for general obesity, was less than 30kg/m^2 . The BMI cutoff of obesity for
25 Asian and South Asian populations was recommended to be $\geq 25\text{kg/m}^2$ [39][40]. However, we
26 only observed the influence of BMI on the association of EAT volume and CAD in men when
27 a BMI cutoff of 30kg/m^2 was used (Supp Table 6). For women, neither a cutoff of 25 nor
28 30kg/m^2 indicated an impact of BMI on the EAT-CAD association (Supp Table 6). The data
29 suggested that a sex-specific BMI definition of obesity might be considered for cardiovascular

1 risk stratification. In fact, for a given BMI, women tend to have a higher body fat percentage
2 than men.

3 **Sex-specific effects of EAT on CAD**

4 We found a male-specific association of EAT volume with CAD in the current Indian cohort.
5 Matched with our data, in the European population, men displayed larger EAT volume
6 compared to women [41], and EAT volume was independently associated with coronary artery
7 calcification in men but not in women [42]. In Japanese, EAT volume is one of the determinants
8 for coronary artery bypass grafting (CABG) only in men [43], and EAT volume/body surface
9 area was higher among male CAD patients, not in female patients [32]. The sex-specific
10 difference in EAT volume or EAT-CAD association might be due to differences in lifestyle,
11 hormonal level, and adipose tissue subtypes, cellular composition and molecular profile. In the
12 current study cohort, for instance, male smokers were dramatically more than their female
13 counterparts (n= 116 vs 2). Smoking induces multiple pathological changes in adipogenic
14 differentiation, lipolysis and immune cell activation and infiltration in adipose tissue,
15 contributing to CAD/atherosclerosis [44]. At the hormonal level, estrogen can promote insulin
16 sensitivity, glucose metabolism and the fitness of adipocytes [45]. At the tissue level, the
17 subcutaneous adipose tissue of females holds the better capability of fat deposition, preventing
18 ectopic fat distribution around the organs including the heart [46]. Perivascular adipose tissue
19 (PVAT) of women was shown to have features of brown or beige adipose tissue [47]. At the
20 cellular and molecular levels, women showed a significantly smaller adipocyte size and lower
21 lipoprotein lipase activity, which could reduce the free fatty acid production of EAT and
22 therefore decrease the accumulation of lipids in the atherosclerotic plaques [43][48][49]. These
23 reasons might partially explain a smaller EAT volume and insignificant EAT-CAD association
24 in women of the current cohort.

25 **Strengths**

26 Our study has several strengths. First, it was specifically conducted in the South Asian
27 population, which, despite the large population number and high CVD incidence, represented
28 an under-studied ethnic group. Our study was conducted in a sex-specific fashion allowing
29 pinpoint the higher correlation between EAT volume and CAD risk in South Asian men than

1 in women. The results might facilitate personalized medicine in this high-risk population.
2 Second, for the first time, the association between EAT volume and CAD-related risk factors
3 was investigated in a sex-specific manner among South Asians. Third, we not only use the
4 generalized linear model to evaluate the relationship between EAT volume and CAD or its risk
5 factors but also the generalized additive model to clarify the nonlinear relationship. A
6 generalized additive model has obvious advantages in visualizing with non-linear correlation,
7 smoothing the non-parametric values, and fitting a regression spline to the data. The use of a
8 generalized additive model allowed us to better discover the real relationships between the
9 exposure and the outcome. Fourth, although the cross-sectional design of the current study
10 holds unavoidable potential confounding, we used strict statistical adjustment to minimize it.
11 In addition, our subgroup analyses excluded the modification of EAT volume -CAD
12 associations by traditional risk factors in the overall and woman subjects (Supp Fig. 1 and 2)
13 but specified the effect of BMI on the association in men (Fig.5).

14 **Limitations**

15 Certain limitations exist in our study. First, the paracardial adipose tissue, the other adipose
16 depot in close contact with the heart and the coronary arteries, was not investigated in the
17 current study. However, the epi- and para-cardial adipose volumes were highly correlated
18 [50,51] and our result might also be suggestive of the effect of paracardial adipose volume on
19 CAD as well as its risk factors. Second, body surface area (BSA) represents another good way
20 to test the effect of EAT on CAD[52]. Unfortunately, we did not document the BSA. However,
21 reports have shown similar results when EAT, EAT/BSA or EAT/BMI were used to test the
22 effect of EAT on CAD [53]. Third, no guidelines have officially specified the attenuation
23 threshold for EAT quantification. We specified the density range of -250 to -30 Hounsfield
24 units to isolate adipose tissue, which was similar to many studies (Supp Table 5) but slightly
25 differed from a few other studies [54][55]. However, as the EAT volume of our research subjects
26 was measured with the same threshold range, our conclusion will remain the same. Fourth, this
27 study is a cross-sectional study and thus provides only weak evidence between the exposure
28 and the outcome. Further prospective follow-up studies are needed to verify the findings.

1 Finally, despite the advantage of population specificity in this study, the results may not be
2 generalized to other ethnic groups.

3 **Conclusions**

4 EAT volume was significantly and positively correlated with CAD and BMI in men, not in
5 women, in the current South Asian population. The correlation of EAT volume with BMI was
6 linear, but with CAD was non-linear in men. BMI affected the association of EAT volume with
7 CAD risk when it is less than 30kg/m^2 , suggesting that EAT volume might be a better predictor
8 or biomarker for CAD in non-obese men. These associations and sex differences should be
9 considered in CAD prognostic models. Further well-designed, large-scale longitudinal studies
10 are needed to confirm our conclusions and evaluate the underlying mechanisms of the
11 association.

12

13 **Author contribution**

14 ZC, DW, and TT conceptualized the study. ZC, RK, DW, TT, and CX designed the study and
15 wrote the manuscript. CX, XG, LL, CL, AR and LFB ran analyses. RK, AY, and TB provided
16 human data. MVS, AY, and TBS gave technical support and conceptual advice.

17

18 **Funding**

19 The work was funded by the German Research Foundation (DFG, 510049865), the General
20 Program of the National Natural Science Foundation of China (82270346) and China
21 Scholarship Council (202006190268), and as part of the Sonderforschungsbereich SFB TRR
22 267 (B05). We acknowledge the support of DZHK with a Postdoc Start-up Grant
23 (“Förderkenzeichen”), DZHK Doctoral Scholarships, and the scholarship of Kaltenbach-
24 Doktorandenstipendium (Herzstiftung).

25

26 **Disclosures**

27 None

28

1 **References**

- 2 1. Chen GC, Arthur R, Iyengar NM, Kamensky V, Xue X, Wassertheil-Smoller S, et al.
3 Association between regional body fat and cardiovascular disease risk among
4 postmenopausal women with normal body mass index. *Eur Heart J*. 2019;**40**(34).
- 5 2. Sucato V, Coppola G, Manno G, Vadalà G, Novo G, Corrado E, et al. Coronary Artery
6 Disease in South Asian Patients: Cardiovascular Risk Factors, Pathogenesis and
7 Treatments. *Current Problems in Cardiology*. 2022.
- 8 3. Kalra DK, Sikand G, Vijayaraghavan K, Guyton JR. JCL roundtable: South Asian
9 atherosclerotic risk. *Journal of Clinical Lipidology*. 2020.
- 10 4. Martinez-Amezcuca P, Haque W, Khera R, Kanaya AM, Sattar N, Lam CSP, et al. The
11 Upcoming Epidemic of Heart Failure in South Asia. *Circulation: Heart Failure*. 2020.
- 12 5. Gupta R Das, Tamanna N, Siddika N, Haider SS, Apu EH, Haider MR. Obesity and
13 Abdominal Obesity in Indian Population: Findings from a Nationally Representative
14 Study of 698,286 Participants. *Epidemiologia*. 2023;
- 15 6. Malik VS, Willet WC, Hu FB. Nearly a decade on — trends, risk factors and policy
16 implications in global obesity. *Nature Reviews Endocrinology*. 2020.
- 17 7. Boutari C, Mantzoros CS. A 2022 update on the epidemiology of obesity and a call to
18 action: as its twin COVID-19 pandemic appears to be receding, the obesity and
19 dysmetabolism pandemic continues to rage on. *Metabolism: Clinical and Experimental*.
20 2022.
- 21 8. Wong MCS, Huang J, Wang J, Chan PSF, Lok V, Chen X, et al. Global, regional and
22 time-trend prevalence of central obesity: a systematic review and meta-analysis of 13.2
23 million subjects. *Eur J Epidemiol*. 2020;
- 24 9. Sreenivas Kumar A, Sinha N. Cardiovascular disease in India: A 360 degree overview.
25 *Medical Journal Armed Forces India*. 2020.
- 26 10. Oikonomou EK, Antoniadou C. The role of adipose tissue in cardiovascular health and
27 disease. *Nature Reviews Cardiology*. 2019.

- 1 11. Girerd N, Scridon A, Bessiere F, Chauveau S, Geloën A, Boussel L, et al. Epicardial fat
2 is associated with the level of endothelial dysfunction in patients with atrial fibrillation.
3 *Eur Heart J*. 2013;
- 4 12. Raggi P, Gadiyaram V, Zhang C, Chen Z, Lopaschuk G, Stillman AE. Statins Reduce
5 Epicardial Adipose Tissue Attenuation Independent of Lipid Lowering: A Potential
6 Pleiotropic Effect. *J Am Heart Assoc*. 2019;
- 7 13. Christensen RH, Wedell-Neergaard AS, Lehrskov LL, Legaard GE, Dorph E, Larsen
8 MK, et al. Effect of Aerobic and Resistance Exercise on Cardiac Adipose Tissues:
9 Secondary Analyses from a Randomized Clinical Trial. *JAMA Cardiol*. 2019;
- 10 14. Colonetti T, Grande AJ, Amaral MC, Colonetti L, Uggioni ML, da Rosa MI, et al. Effect
11 of exercise on epicardial adipose tissue in adults: a systematic review and meta-analyses.
12 *Heart Failure Reviews*. 2021.
- 13 15. Mahabadi AA, Dykun I, Erbel R, Kälsch H, Lehmann N, Pundt N, et al. Noncoronary
14 Measures Enhance the Predictive Value of Cardiac CT Above Traditional Risk Factors
15 and CAC Score in the General Population. *JACC Cardiovasc Imaging*. 2016;
- 16 16. Fitzgibbons TP, Czech MP. Epicardial and perivascular adipose tissues and their
17 influence on cardiovascular disease: Basic mechanisms and clinical associations.
18 *Journal of the American Heart Association*. 2014.
- 19 17. Vacca M, Di Eusanio M, Cariello M, Graziano G, D'Amore S, Petridis FD, et al.
20 Integrative miRNA and whole-genome analyses of epicardial adipose tissue in patients
21 with coronary atherosclerosis. *Cardiovasc Res*. 2016;
- 22 18. Cheng VY. Plugging Epicardial Fat Into a Prediction Algorithm. *Circulation*.
23 *Cardiovascular imaging*. 2019.
- 24 19. Guglielmo M, Lin A, Dey D, Baggiano A, Fusini L, Muscogiuri G, et al. Epicardial fat
25 and coronary artery disease: Role of cardiac imaging. *Atherosclerosis*. 2021.
- 26 20. Iacobellis G. Epicardial adipose tissue in contemporary cardiology. *Nature Reviews*
27 *Cardiology*. 2022.

- 1 21. Salami SS, Tucciarone M, Bess R, Kolluru A, Szpunar S, Rosman H, et al. Race and
2 epicardial fat: The impact of anthropometric measurements, percent body fat and sex.
3 *Ethn Dis.* 2013;
- 4 22. Sun DF, Kangaharan N, Costello B, Nicholls SJ, Emdin CA, Tse R, et al. Epicardial and
5 subcutaneous adipose tissue in Indigenous and non-Indigenous individuals:
6 Implications for cardiometabolic diseases. *Obesity Research and Clinical Practice.* 2020.
- 7 23. Moharram MA, Aitken-Buck HM, Reijers R, Van Hout I, Williams MJA, Jones PP, et
8 al. Correlation between epicardial adipose tissue and body mass index in New Zealand
9 ethnic populations. *N Z Med J.* 2020;
- 10 24. Yu W, Liu B, Zhang F, Wang J, Shao X, Yang X, et al. Association of epicardial fat
11 volume with increased risk of obstructive coronary artery disease in chinese patients
12 with suspected coronary artery disease. *J Am Heart Assoc.* 2021;
- 13 25. Shah R V., Anderson A, Ding J, Budoff M, Rider O, Petersen SE, et al. Pericardial, But
14 Not Hepatic, Fat by CT Is Associated With CV Outcomes and Structure: The Multi-
15 Ethnic Study of Atherosclerosis. *JACC Cardiovasc Imaging.* 2017;**10**(9):1016–27.
- 16 26. Kim SH, Chung JH, Kwon BJ, Song SW, Choi WS. The associations of epicardial
17 adipose tissue with coronary artery disease and coronary atherosclerosis. *Int Heart J.*
18 2014;
- 19 27. Tanami Y, Jinzaki M, Kishi S, Matheson M, Vavere AL, Rochitte CE, et al. Lack of
20 Association between Epicardial Fat Volume and Extent of Coronary Artery
21 Calcification, Severity of Coronary Artery Disease, or Presence of Myocardial
22 Perfusion Abnormalities in a Diverse, Symptomatic Patient Population: Results from
23 the CORE320 Mu. *Circ Cardiovasc Imaging.* 2015;
- 24 28. Yin R, Tang X, Wang T, Shi H, Wang X, Wang X, et al. Cardiac CT scanning in
25 coronary artery disease: Epicardial fat volume and its correlation with coronary artery
26 lesions and left ventricular function. *Exp Ther Med.* 2020;
- 27 29. Emdin CA, Khera A V., Natarajan P, Klarin D, Zekavat SM, Hsiao AJ, et al. Genetic

- 1 association of waist-to-hip ratio with cardiometabolic traits, type 2 diabetes, and
2 coronary heart disease. *JAMA - J Am Med Assoc.* 2017;**317**(6):626–34.
- 3 30. Dale CE, Fatemifar G, Palmer TM, White J, Prieto-Merino D, Zabaneh D, et al. Causal
4 Associations of Adiposity and Body Fat Distribution with Coronary Heart Disease,
5 Stroke Subtypes, and Type 2 Diabetes Mellitus: A Mendelian Randomization Analysis.
6 *Circulation.* 2017;**135**(24):2373–88.
- 7 31. Iacobellis G. Local and systemic effects of the multifaceted epicardial adipose tissue
8 depot. *Nat Rev Endocrinol.* 2015;**11**(6):363–71.
- 9 32. Dagvasumberel M, Shimabukuro M, Nishiuchi T, Ueno J, Takao S, Fukuda D, et al.
10 Gender disparities in the association between epicardial adipose tissue volume and
11 coronary atherosclerosis: A 3-dimensional cardiac computed tomography imaging study
12 in Japanese subjects. *Cardiovasc Diabetol.* 2012;
- 13 33. Milanese G, Silva M, Ledda RE, Goldoni M, Nayak S, Bruno L, et al. Validity of
14 epicardial fat volume as biomarker of coronary artery disease in symptomatic
15 individuals: Results from the ALTER-BIO registry. *Int J Cardiol.* 2020;
- 16 34. Roest S, Budde RPJ, Brugts JJ, von der Thüsen J, van Walsum T, Taverne YJHJ, et al.
17 Epicardial fat volume is related to the degree of cardiac allograft vasculopathy. *Eur*
18 *Radiol.* 2023;
- 19 35. Goeller M, Achenbach S, Marwan M, Doris MK, Cadet S, Commandeur F, et al.
20 Epicardial adipose tissue density and volume are related to subclinical atherosclerosis,
21 inflammation and major adverse cardiac events in asymptomatic subjects. *J Cardiovasc*
22 *Comput Tomogr.* 2018;
- 23 36. Mahabadi AA, Balcer B, Dykun I, Forsting M, Schlosser T, Heusch G, et al. Cardiac
24 computed tomography-derived epicardial fat volume and attenuation independently
25 distinguish patients with and without myocardial infarction. *PLoS One.* 2017;
- 26 37. Apfaltrer P, Schindler A, Schoepf UJ, Nance JW, Tricarico F, Ebersberger U, et al.
27 Comparison of epicardial fat volume by computed tomography in black versus white

- 1 patients with acute chest pain. *Am J Cardiol.* 2014;
- 2 38. El Khoudary SR, Shin C, Masaki K, Miura K, Budoff M, Edmundowicz D, et al. Ectopic
3 cardiovascular fat in middle-aged men: Effects of race/ethnicity, overall and central
4 adiposity. The ERA JUMP study. *Int J Obes.* 2015;
- 5 39. Wen CP, David Cheng TY, Tsai SP, Chan HT, Hsu HL, Hsu CC, et al. Are Asians at
6 greater mortality risks for being overweight than Caucasians? Redefining obesity for
7 Asians. *Public Health Nutr.* 2009;
- 8 40. Nishida C, Barba C, Cavalli-Sforza T, Cutter J, Deurenberg P, Darnton-Hill I, et al.
9 Appropriate body-mass index for Asian populations and its implications for policy and
10 intervention strategies. *Lancet.* 2004;
- 11 41. Ebersberger U, Bauer MJ, Straube F, Fink N, Schoepf UJ, Varga-Szemes A, et al.
12 Gender Differences in Epicardial Adipose Tissue and Plaque Composition by Coronary
13 CT Angiography: Association with Cardiovascular Outcome. *Diagnostics.* 2023;
- 14 42. Mancio J, Pinheiro M, Ferreira W, Carvalho M, Barros A, Ferreira N, et al. Gender
15 differences in the association of epicardial adipose tissue and coronary artery
16 calcification: EPICHEART study: EAT and coronary calcification by gender. *Int J*
17 *Cardiol.* 2017;
- 18 43. Maimaituxun G, Shimabukuro M, Salim HM, Tabata M, Yuji D, Morimoto Y, et al.
19 Gender-linked impact of epicardial adipose tissue volume in patients who underwent
20 coronary artery bypass graft surgery or noncoronary valve surgery. *PLoS One.* 2017;
- 21 44. Wang Z, Wang D, Wang Y. Cigarette Smoking and Adipose Tissue: The Emerging Role
22 in Progression of Atherosclerosis. *Mediators of Inflammation.* 2017.
- 23 45. Fuente-Martín E, Argente-Arizón P, Ros P, Argente J, Chowen JA. Sex differences in
24 adipose tissue: It is not only a question of quantity and distribution. *Adipocyte.* 2013;
- 25 46. Bredella MA. Sex differences in body composition. In: *Advances in Experimental*
26 *Medicine and Biology.* 2017.
- 27 47. Iacobellis G, Malavazos AE, Corsi MM. Epicardial fat: From the biomolecular aspects

- 1 to the clinical practice. *International Journal of Biochemistry and Cell Biology*. 2011.
- 2 48. Waddell HMM, Moore MK, Herbert-Olsen MA, Stiles MK, Tse RD, Coffey S, et al.
3 Identifying sex differences in predictors of epicardial fat cell morphology. *Adipocyte*.
4 2022;
- 5 49. Blaak E. Gender differences in fat metabolism. *Current Opinion in Clinical Nutrition*
6 *and Metabolic Care*. 2001.
- 7 50. Ding J, Hsu FC, Harris TB, Liu Y, Kritchevsky SB, Szklo M, et al. The association of
8 pericardial fat with incident coronary heart disease: The Multi-Ethnic Study of
9 Atherosclerosis (MESA). *Am J Clin Nutr*. 2009;
- 10 51. Ueda Y, Shiga Y, Idemoto Y, Tashiro K, Motozato K, Koyoshi R, et al. Association
11 between the presence or severity of coronary artery disease and pericardial fat,
12 paracardial fat, epicardial fat, visceral fat, and subcutaneous fat as assessed by multi-
13 detector row computed tomography. *Int Heart J*. 2018;
- 14 52. Shmilovich H, Dey D, Cheng VY, Rajani R, Nakazato R, Otaki Y, et al. Threshold for
15 the upper normal limit of indexed epicardial fat volume: Derivation in a healthy
16 population and validation in an outcome-based study. *Am J Cardiol*. 2011;
- 17 53. Saad Z. Quantification of epicardial fat: Which method can predict significant coronary
18 artery disease? *World J Cardiol*. 2015;
- 19 54. Marwan M, Koenig S, Schreiber K, Ammon F, Goeller M, Bittner D, et al.
20 Quantification of epicardial adipose tissue by cardiac CT: Influence of acquisition
21 parameters and contrast enhancement. *Eur J Radiol*. 2019;
- 22 55. Xu L, Xu Y, Coulden R, Sonnex E, Hrybouski S, Paterson I, et al. Comparison of
23 epicardial adipose tissue radiodensity threshold between contrast and non-contrast
24 enhanced computed tomography scans: A cohort study of derivation and validation.
25 *Atherosclerosis*. 2018;

Figures and Tables

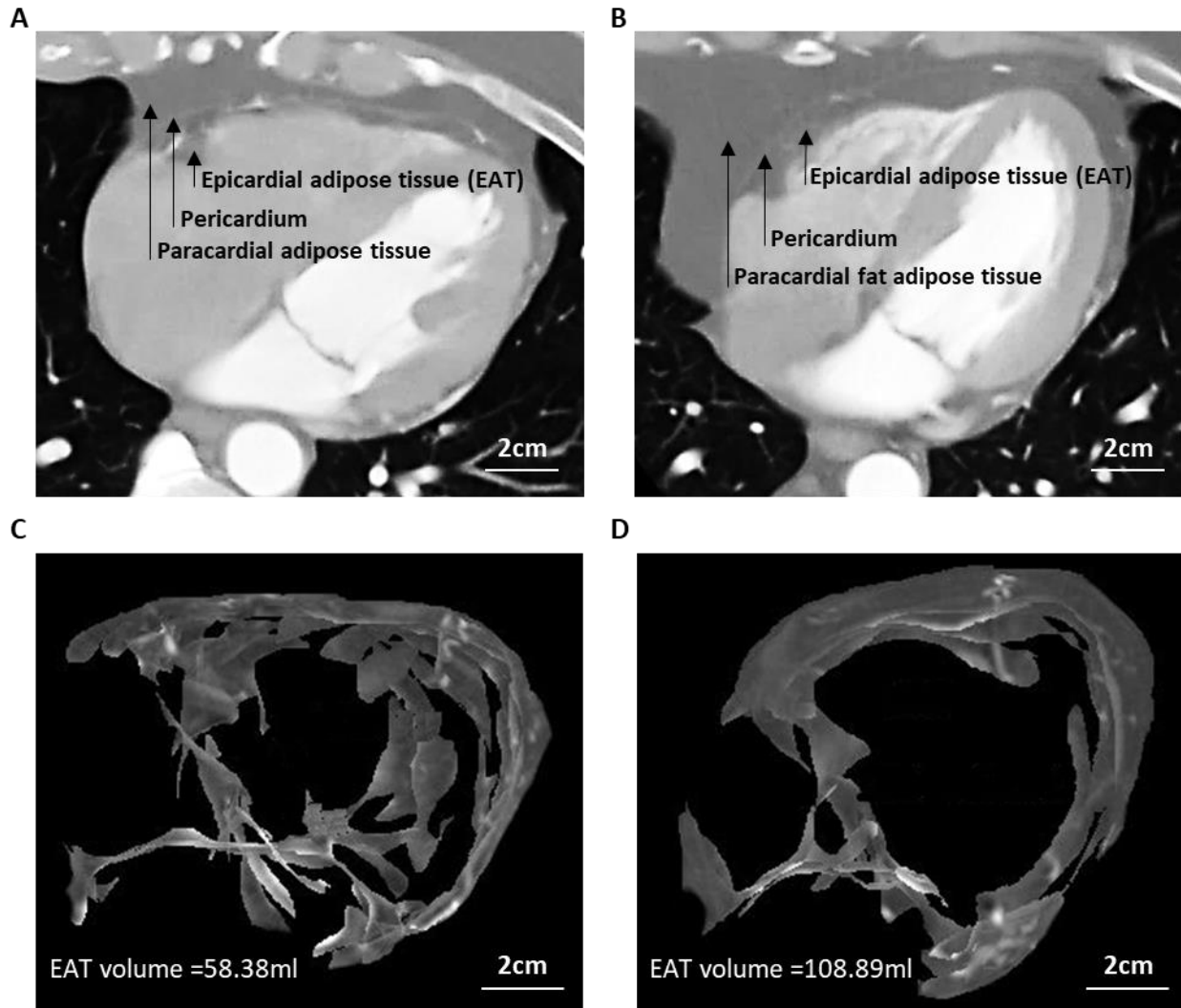


Figure 1. Representative coronary computed tomography angiography (CCAT) images of epicardial adipose tissue (EAT) of a control and a patient with coronary artery disease (CAD). (A-B) Thoracic CCAT images of a control (A) and a CAD patient (B). EAT, Pericardium, and paracardial adipose tissue are indicated by the arrows. (C-D) Isolated EAT fraction of the same control (C) and the same CAD patient (D).

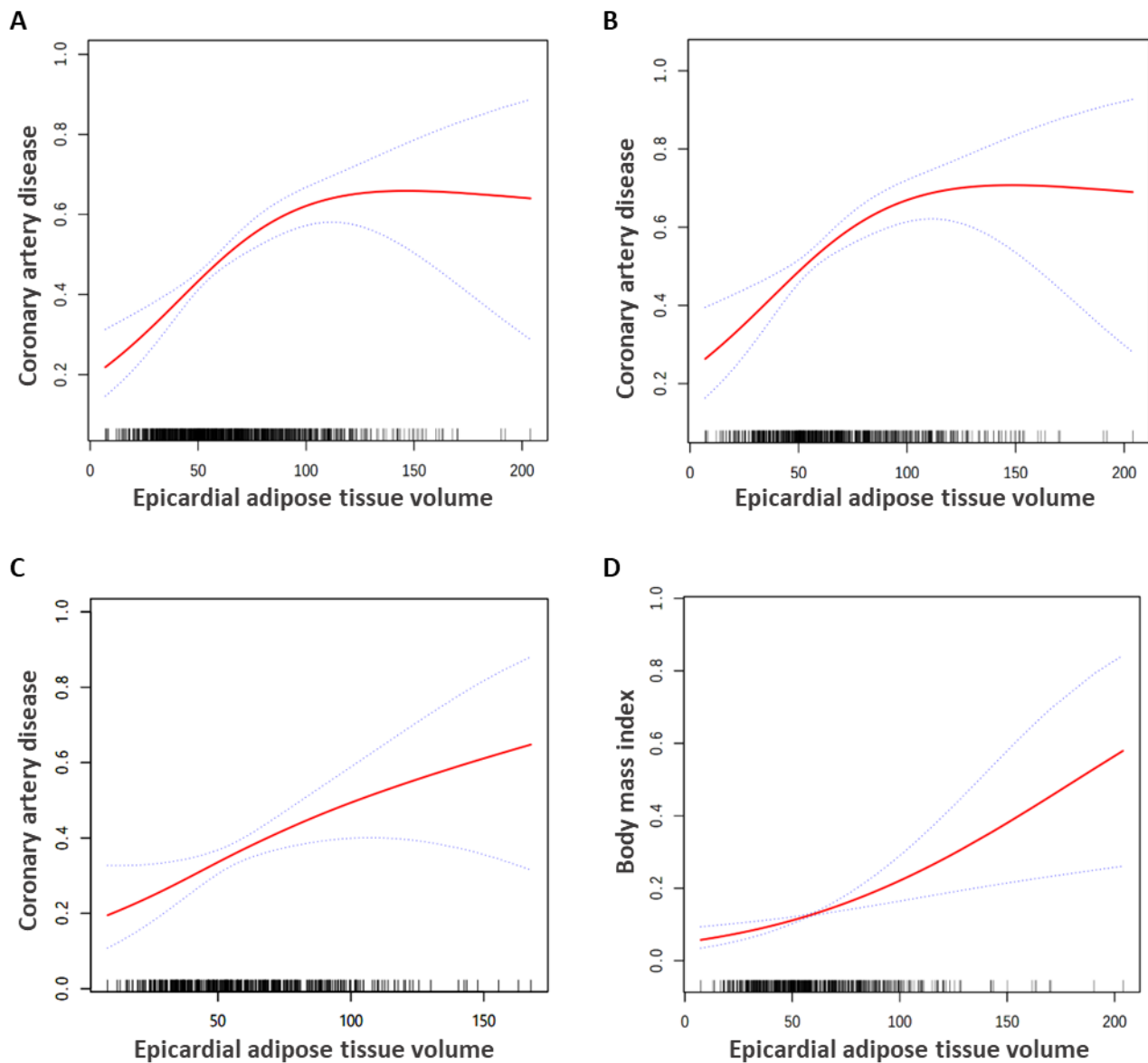


Figure 2. Association between epicardial adipose tissue (EAT) volume and coronary artery disease (CAD) or its risk factors. The generalized additive model (GAM) identified a nonlinear association of EAT volume with CAD in overall subjects (A) and in men (B), but not in women (C). GAM determined a linear correlation between EAT volume and BMI in men (D). Among the covariates (age, gender, body mass index, smoking, triglycerides, hypertension, diabetes mellitus, family history CAD, total cholesterol, low-density lipoprotein cholesterol, and high-density lipoprotein cholesterol), except the tested outcome, the rest covariates were adjusted correspondingly. The red solid lines show the estimated risk, and the purple dotted lines represent pointwise 95% CI.

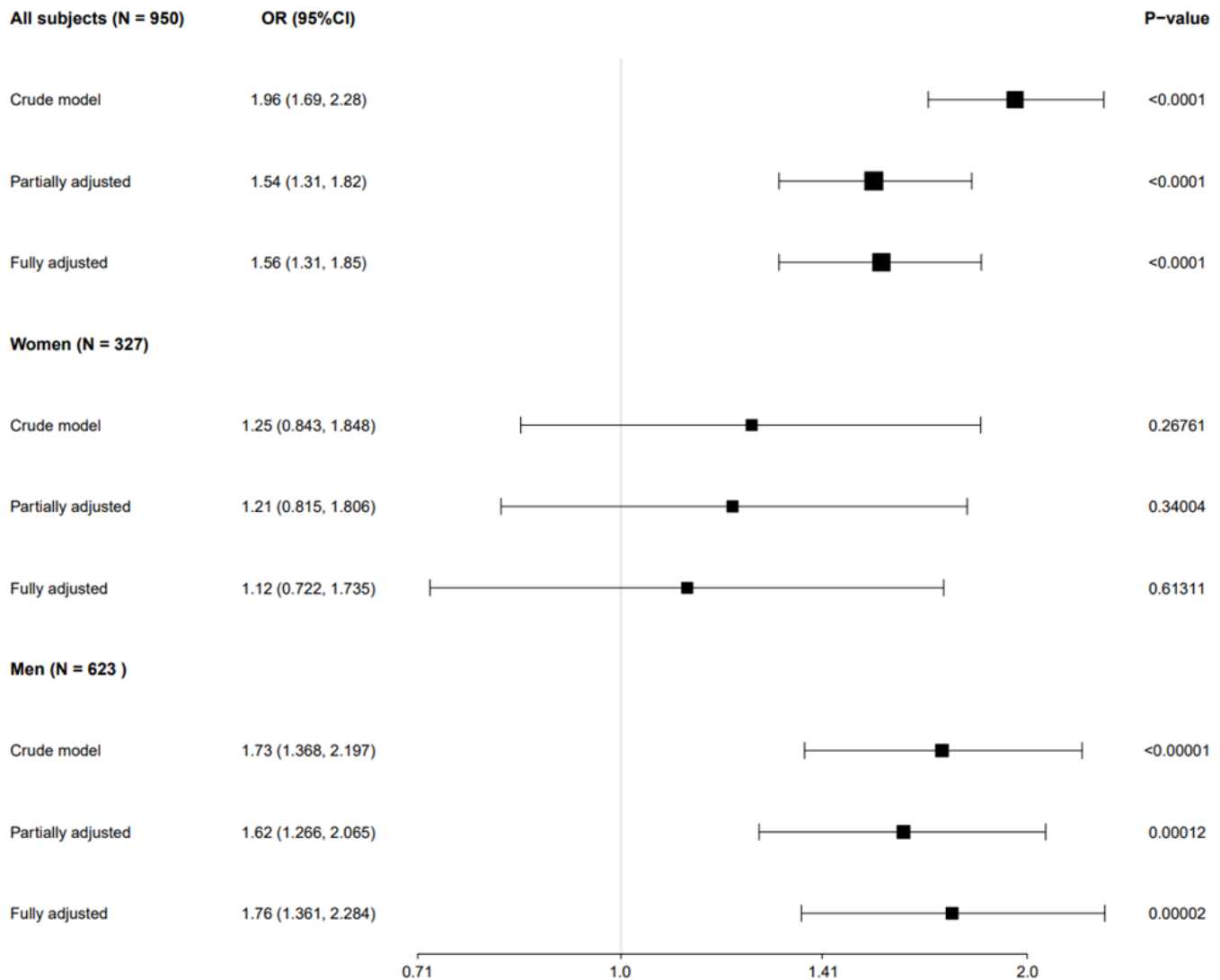


Figure 3. The association EAT volume and CAD risk by multivariable logistic regression analysis. In the partially-adjusted model, age was adjusted. In fully-adjusted models, age, smoking, hypertension, diabetes mellitus, family history of CAD, TG, TC, LDL-C and HDL-C were adjusted. Horizontal error bars denote 95% confidence intervals from the data using EAT as the continuous variable (Table 4).

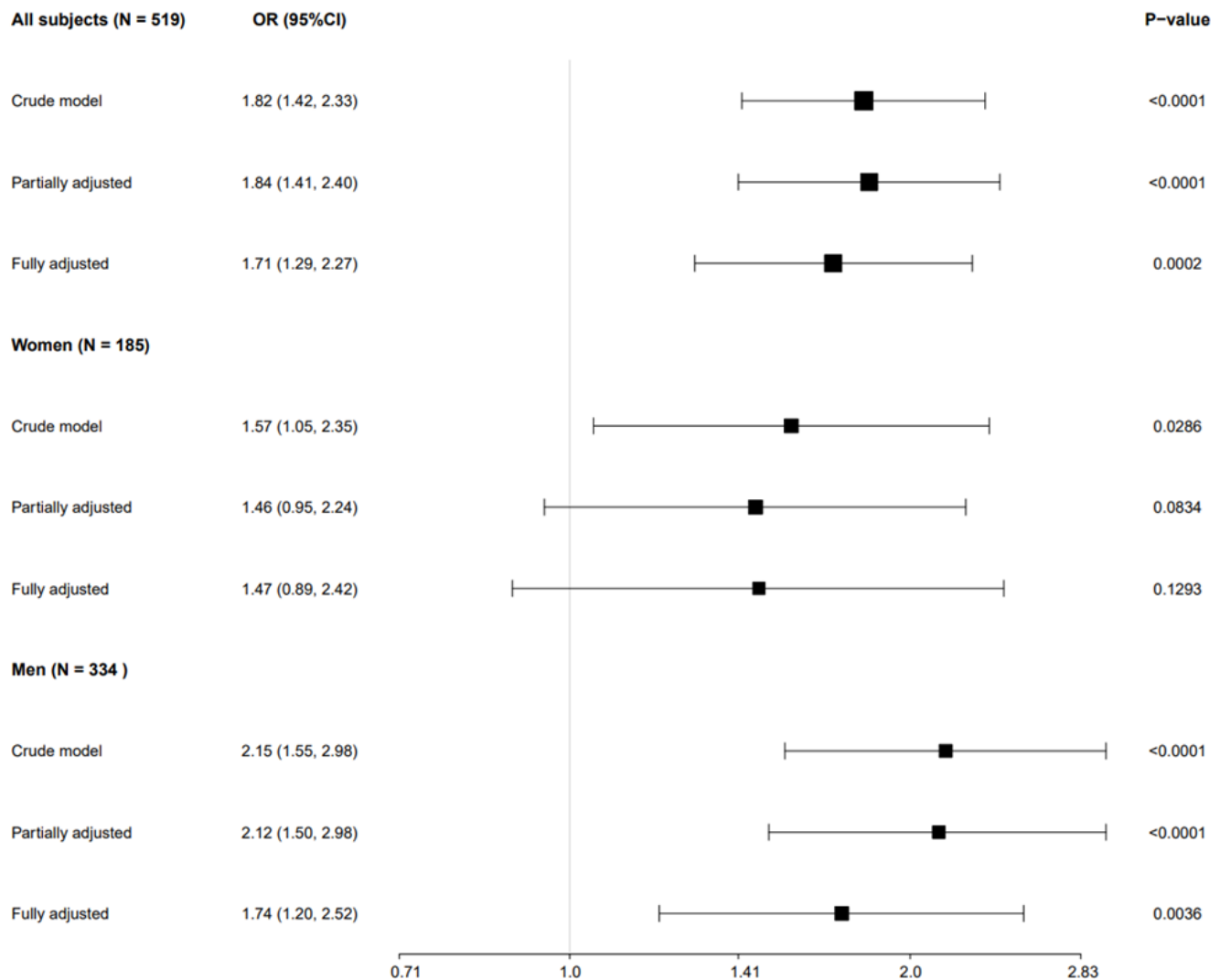


Figure 4. The association of EAT volume and BMI by multivariable logistic regression analysis. In the partially-adjusted model, age was adjusted. In fully-adjusted models, age, smoking, hypertension, diabetes mellitus, family history of CAD, TG, TC, LDL-C and HDL-C were adjusted. Horizontal error bars denote 95% confidence intervals from the data using EAT as the continuous variable (Supplementary Table 4).

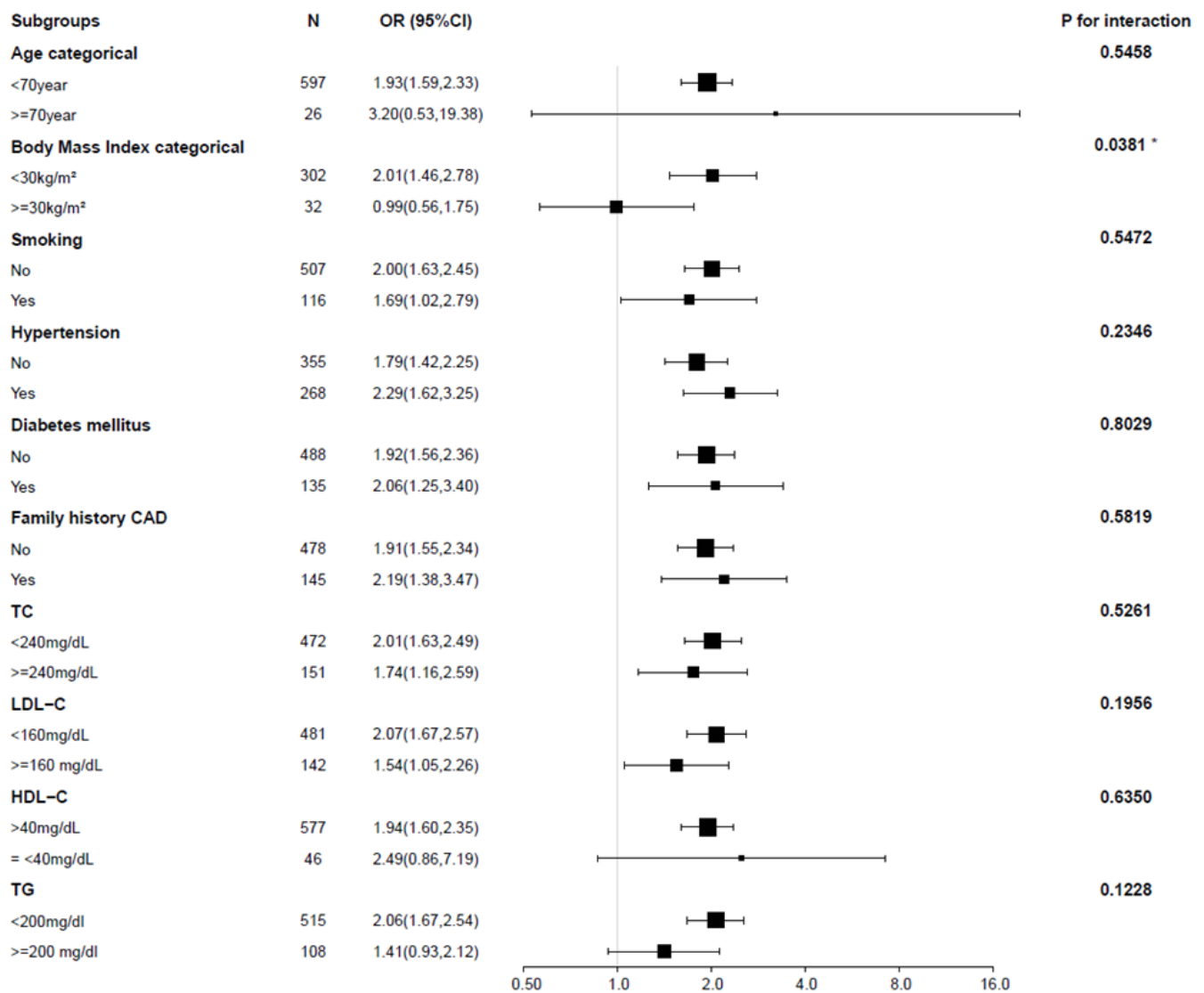


Figure 5. The association of EAT volume and CAD risk according to subgroups in men. The effect of EAT volume on the risk of CAD was similar in various subgroups. All analyses were adjusted for age, smoking, BMI, hypertension, diabetes mellitus, family history of CAD, TG, TC, LDL-C and HDL-C. Risk estimates were for every 1-SD increase (31.8 ml) in EAT volume. The size of squares is proportional to CAD prevalence in the specified subgroup. Horizontal error bars indicate 95% confidence intervals. N=subjects in each subgroup. OR, odds ratio.

Table 1: Basic characteristics of the study subjects

Characteristic	All subjects N = 950	Men N = 623 (65.6%)	Women N = 327 (34.4%)	P-value
EAT volume (mL)	950 (65.7 ± 31.0)	623 (67.7 ± 31.8)	327 (61.9 ± 28.9)	0.007
Age (years)	950 (51.1 ± 11.2)	623 (50.6 ± 11.7)	327 (52.0 ± 10.2)	0.071
Body Mass Index	519 (26.2 ± 3.5)	334 (25.8 ± 3.1)	185 (27.0 ± 4.2)	<0.001
Smoking				<0.001
No	832 (87.6%)	507 (81.4%)	325 (99.4%)	
Yes	118 (12.4%)	116 (18.6%)	2 (0.6%)	
Hypertension				0.432
No	550 (57.9%)	355 (57.0%)	195 (59.6%)	
Yes	400 (42.1%)	268 (43.0%)	132 (40.4%)	
Diabetes mellitus				0.755
No	747 (78.6%)	488 (78.3%)	259 (79.2%)	
Yes	203 (21.4%)	135 (21.7%)	68 (20.8%)	
Family history CAD				0.906
No	730 (76.8%)	478 (76.7%)	252 (77.1%)	
Yes	220 (23.2%)	145 (23.3%)	75 (22.9%)	
Total cholesterol				0.192
< 240 mg/dL	732 (77.1%)	472 (75.8%)	260 (79.5%)	
≥ 240 mg/dL	218 (22.9%)	151 (24.2%)	67 (20.5%)	
LDL-C				0.551
< 160 mg/dL	739 (77.8%)	481 (77.2%)	258 (78.9%)	
≥ 160 mg/dL	211 (22.2%)	142 (22.8%)	69 (21.1%)	
HDL-C				0.361
> 40 mg/dL	885 (93.2%)	577 (92.6%)	308 (94.2%)	
≤ 40 mg/dL	65 (6.8%)	46 (7.4%)	19 (5.8%)	
Triglycerides				0.029
< 200 mg/dl	803 (84.5%)	515 (82.7%)	288 (88.1%)	
≥ 200 mg/dl	147 (15.5%)	108 (17.3%)	39 (11.9%)	
CAD				<0.001
No	492 (51.8%)	285 (45.7%)	207 (63.3%)	
Yes	458 (48.2%)	338 (54.3%)	120 (36.7%)	

Values are N (Mean±SD) or N (%). EAT, epicardial adipose tissue; CAD, coronary artery disease; LDL-C, low density lipoprotein cholesterol; HDL-C, high density lipoprotein cholesterol; TG, triglycerides.

Hypertension was referred as treated hypertension, or untreated diastolic blood pressure ≥ 90 mm Hg, or untreated systolic blood pressure ≥ 140 mm Hg. Diabetes mellitus was defined as treatment with insulin or oral hypoglycemic medications or fasting glucose ≥ 126 mg/dl.

Table 2: Univariate analysis for coronary artery disease

Covariate	All subjects (N = 950)			Men (N = 623)			Women (N = 327)		
	Statistics	OR (95%CI)	P-value	Statistics	OR (95%CI)	P-value	Statistics	OR (95%CI)	P-value
EAT volume (mL)	65.69 ± 30.96	1.96 (1.69, 2.28)	<0.0001	67.66 ± 31.83	1.95 (1.62, 2.35)	<0.0001	61.93 ± 28.90	1.92 (1.48, 2.50)	<0.0001
Age (years)	51.10 ± 11.23	1.09 (1.08, 1.11)	<0.0001	50.62 ± 11.72	1.10 (1.08, 1.12)	<0.0001	52.00 ± 10.18	1.10 (1.07, 1.13)	<0.0001
Smoking			<0.0001			0.001			0.9807
No	832 (87.58%)	Reference		507 (81.38%)	Reference		325 (99.39%)	Reference	
Yes	118 (12.42%)	2.64 (1.75, 3.99)		116 (18.62%)	2.04 (1.33, 3.14)		2 (0.61%)	NA	
Hypertension			<0.0001			<0.0001			<0.0001
No	550 (57.89%)	Reference		355 (56.98%)	Reference		195 (59.63%)	Reference	
Yes	400 (42.11%)	2.84 (2.18, 3.71)		268 (43.02%)	2.62 (1.89, 3.65)		132 (40.37%)	3.47 (2.17, 5.55)	
Diabetes mellitus			<0.0001			<0.0001			0.0021
No	747 (78.63%)	Reference		488 (78.33%)	Reference		259 (79.20%)	Reference	
Yes	203 (21.37%)	2.83 (2.04, 3.93)		135 (21.67%)	3.30 (2.15, 5.08)		68 (20.80%)	2.34 (1.36, 4.03)	
Family history of CAD			0.0008			0.0194			0.0104
No	730 (76.84%)	Reference		478 (76.73%)	Reference		252 (77.06%)	Reference	
Yes	220 (23.16%)	1.69 (1.24, 2.29)		145 (23.27%)	1.58 (1.08, 2.31)		75 (22.94%)	1.98 (1.17, 3.35)	
Total cholesterol			0.0013			0.1847			0.0005
< 240 mg/dL	732 (77.05%)	Reference		472 (75.76%)	Reference		260 (79.51%)	Reference	
≥ 240 mg/dL	218 (22.95%)	1.65 (1.22, 2.24)		151 (24.24%)	1.29 (0.89, 1.86)		67 (20.49%)	2.63 (1.52, 4.55)	
LDL-C			0.0072			0.1827			0.0071
< 160 mg/dL	739 (77.79%)	Reference		481 (77.21%)	Reference		258 (78.90%)	Reference	
≥ 160 mg/dL	211 (22.21%)	1.53 (1.12, 2.08)		142 (22.79%)	1.29 (0.89, 1.89)		69 (21.10%)	2.10 (1.22, 3.59)	
HDL-C			0.0003			0.0156			0.0057
> 40 mg/dL	885 (93.16%)	Reference		577 (92.62%)	Reference		308 (94.19%)	Reference	
≤ 40 mg/dL	65 (6.84%)	2.78 (1.60, 4.82)		46 (7.38%)	2.26 (1.17, 4.39)		19 (5.81%)	4.07 (1.50, 11.01)	
Triglycerides			<0.0001			0.0006			0.0469
< 200 mg/dl	803 (84.53%)	Reference		515 (82.66%)	Reference		288 (88.07%)	Reference	
≥ 200 mg/dl	147 (15.47%)	2.21 (1.54, 3.19)		108 (17.34%)	2.18 (1.40, 3.40)		39 (11.93%)	1.98 (1.01, 3.88)	

Values are N (Mean±SD) or N (%). EAT, epicardial adipose tissue; CAD, coronary artery disease; LDL-C, low density lipoprotein cholesterol; HDL-C, high density lipoprotein cholesterol; TG, triglycerides; OR, odds ratio; CI, confidence interval.

Table 3: Identification of inflection point by two-piecewise linear regression model

The inflection point of EAT volume for CAD in overall subjects			
The inflection point of EAT	Effect size (OR)	95%CI	P value
< 90 ml	2.32	1.88 to 2.87	< 0.0001
≥ 90 ml	1.23	0.82 to 1.84	0.3099

The inflection point of EAT volume for CAD in men			
The inflection point of EAT	Effect size (OR)	95%CI	P value
< 90 ml	2.42	1.85 to 3.17	< 0.0001
≥ 90 ml	1.12	0.70 to 1.79	0.6293

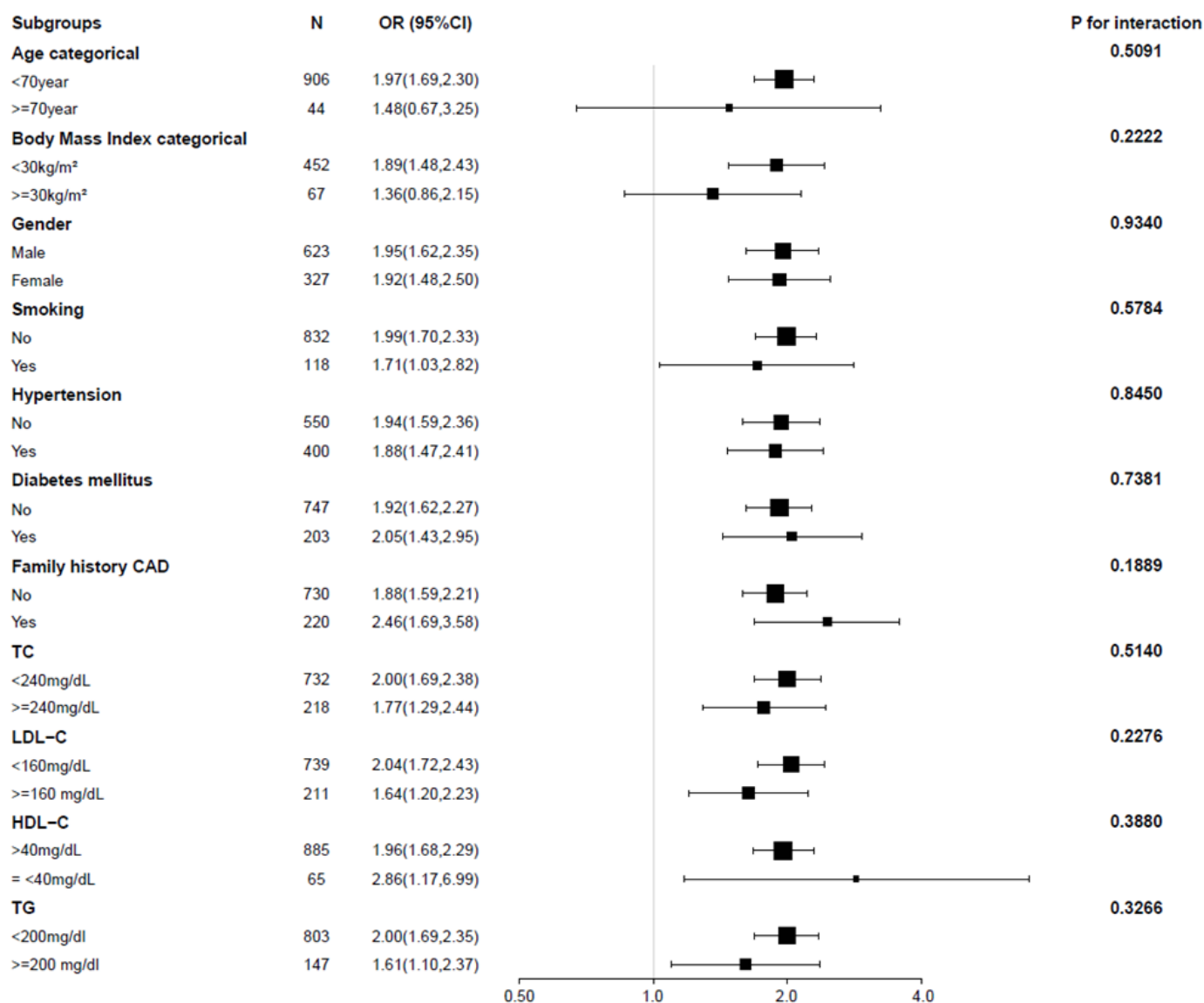
EAT, epicardial adipose tissue; CAD, coronary artery disease; LDL-C, low density lipoprotein cholesterol; HDL-C, high density lipoprotein cholesterol; TG, triglycerides; OR, odds ratio; CI, confidence interval.

Table 4: Multivariate analyses evaluating the association between EAT volume and the risk of CAD

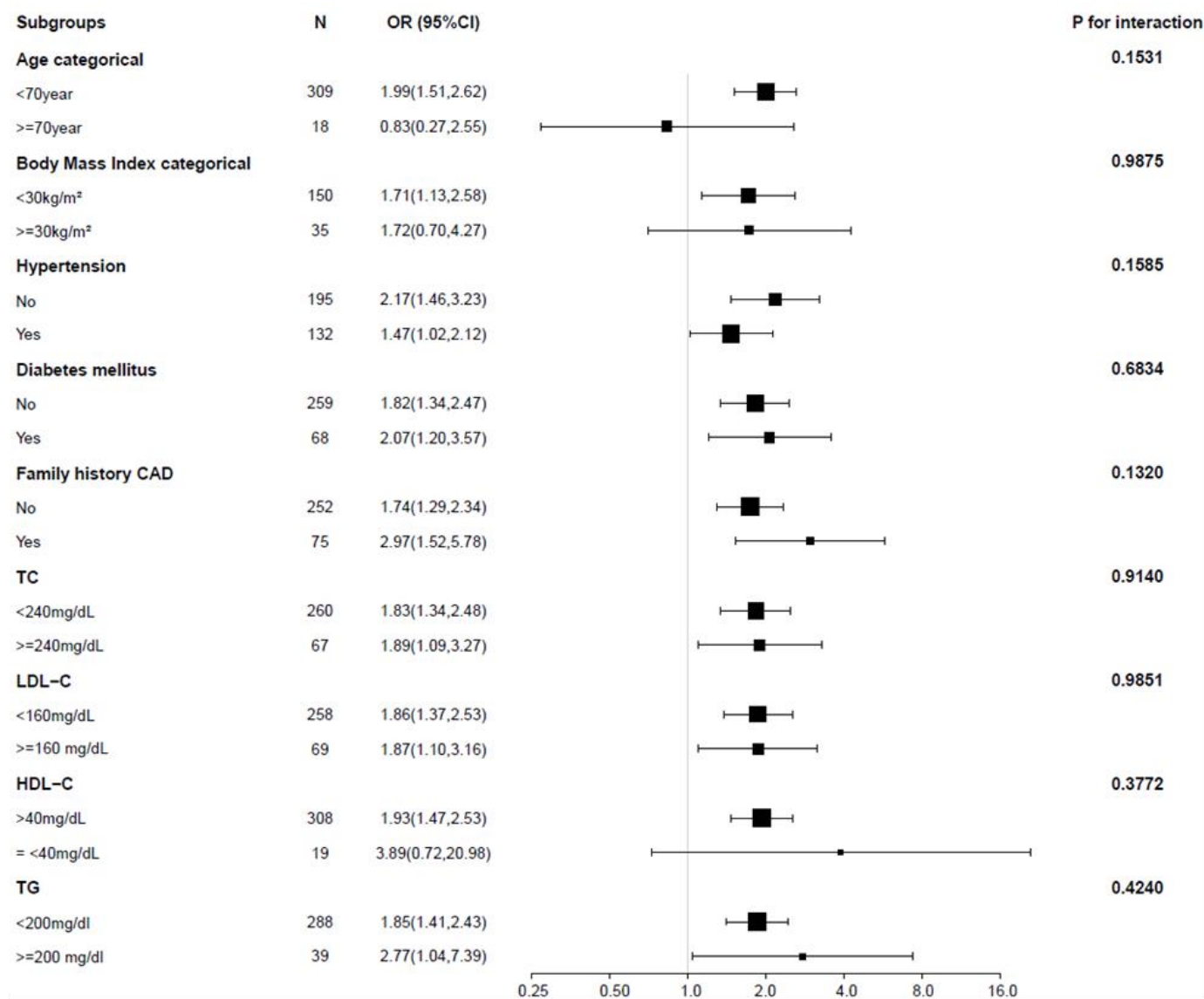
EAT volume and CAD association in overall subjects			
EAT as continuous variable (per 1-SD increment)			
Exposure	Crude model	Partially adjusted model	Fully adjusted model
EAT volume	1.96 (1.69, 2.28) <0.0001	1.54 (1.31, 1.82) <0.0001	1.56 (1.31, 1.85) <0.0001
EAT as a categorical variable			
EAT volume quartile			
Q1	1.00 (referent)	1.00 (referent)	1.00 (referent)
Q2	2.76 (1.87, 4.08) <0.0001	1.89 (1.23, 2.91) 0.0039	1.74 (1.10, 2.74) 0.0173
Q3	3.75 (2.54, 5.54) <0.0001	2.33 (1.51, 3.58) 0.0001	2.26 (1.44, 3.54) 0.0004
Q4	5.67 (3.81, 8.43) <0.0001	3.13 (2.02, 4.85) <0.0001	3.11 (1.97, 4.93) <0.0001
P for trend	<0.0001	<0.0001	<0.0001
EAT volume and CAD association in men			
EAT as continuous variable (per 1-SD increment)			
Exposure	Crude model	Partially adjusted model	Fully adjusted model
EAT volume	1.73 (1.37, 2.20) <0.00001	1.62 (1.23, 2.10) 0.00012	1.76 (1.36, 2.28) 0.00002
EAT as a categorical variable			
EAT volume quartile			
Q1	1.00 (referent)	1.00 (referent)	1.00 (referent)
Q2	2.39 (1.04, 5.50) 0.04082	2.25 (0.96, 5.27) 0.06246	2.40 (0.97, 5.92) 0.05695
Q3	3.44 (1.53, 7.71) 0.00279	3.06 (1.34, 7.00) 0.00793	3.67 (1.53, 8.81) 0.00356
Q4	6.87 (3.06, 15.42) <0.00001	5.91 (2.59, 13.49) 0.00003	7.55 (3.14, 18.14) <0.00001
P for trend	<0.00001	<0.00001	<0.00001
EAT volume and CAD association in women			
EAT as continuous variable (per 1-SD increment)			
Exposure	Crude model	Partially adjusted model	Fully adjusted model
EAT volume	1.25 (0.84, 1.85) 0.26761	1.21 (0.82, 1.81) 0.34004	1.12 (0.72, 1.74) 0.61311
EAT as a categorical variable			
EAT volume quartile			
Q1	1.00 (referent)	1.00 (referent)	1.00 (referent)
Q2	1.80 (0.47, 6.87) 0.38955	1.52 (0.39, 5.96) 0.55205	1.72 (0.34, 8.62) 0.50849
Q3	1.65 (0.43, 6.36) 0.46711	1.43 (0.36, 5.66) 0.61234	1.46 (0.30, 7.16) 0.63935
Q4	1.73 (0.47, 6.34) 0.40742	1.55 (0.41, 5.79) 0.51748	1.41 (0.30, 6.61) 0.65972
P for trend	0.57901	0.63711	0.93151

In the partially-adjusted model, age (for every 1-year increase) was adjusted. In the fully-adjusted model, age, smoking (no, past, and current), hypertension, diabetes mellitus, family history of CAD, TG, TC, LDL-C and HDL-C were adjusted. 1-SD increment = 31.0 ml, 31.8 ml and 28.9 ml for overall, men and women subjects.

Supplementary Materials



Supplementary figure 1. The association of EAT volume and CAD risk according to subgroups in the overall subjects. The effect of EAT volume on the risk of CAD was similar in various subgroups. All analyses were adjusted for age, smoking, BMI, hypertension, diabetes mellitus, family history of CAD, TG, TC, LDL-C and HDL-C. Risk estimates were for every 1-SD increase (31.0 ml) in EAT volume. Size of squares are proportional to CAD prevalence in the specified subgroup. Horizontal error bars indicate 95% confidence intervals. N=subjects in each subgroup. OR, odds ratio.



Supplementary figure 2. The association of EAT volume and CAD risk according to subgroups in women. The effect of EAT volume on the risk of CAD was similar in various subgroups. All analyses were adjusted for age, smoking, BMI, hypertension, diabetes mellitus, family history of CAD, TG, TC, LDL-C and HDL-C. Risk estimates were for every 1-SD increase (28.9 ml) in EAT volume. Size of squares are proportional to CAD prevalence in the specified subgroup. Horizontal error bars indicate 95% confidence intervals. N=subjects in each subgroup. OR, odds ratio.

Supplementary Table 1: Quantile characteristics of overall subjects

Characteristic	Full cohort	Q1 (7.0-43.6)	Q2 (43.7-59.5)	Q3(59.7-82.5)	Q4(82.7-203.9)	P-value
N	950	238	237	237	238	
Age (years)	51.1 ± 11.2	45.1 ± 12.4	51.1 ± 10.8	53.2 ± 9.7	55.0 ± 9.3	<0.001
Body Mass Index	26.2 ± 3.5	25.1 ± 3.2	25.8 ± 2.8	26.7 ± 3.8	28.2 ± 3.9	<0.001
Gender						0.04
Male	623 (65.6%)	138 (58.0%)	163 (68.8%)	159 (67.1%)	163 (68.5%)	
Female	327 (34.4%)	100 (42.0%)	74 (31.2%)	78 (32.9%)	75 (31.5%)	
Smoking						0.168
No	832 (87.6%)	218 (91.6%)	202 (85.2%)	206 (86.9%)	206 (86.6%)	
Yes	118 (12.4%)	20 (8.4%)	35 (14.8%)	31 (13.1%)	32 (13.4%)	
Hypertension						<0.001
No	550 (57.9%)	164 (68.9%)	131 (55.3%)	133 (56.1%)	122 (51.3%)	
Yes	400 (42.1%)	74 (31.1%)	106 (44.7%)	104 (43.9%)	116 (48.7%)	
Diabetes mellitus						0.042
No	747 (78.6%)	201 (84.5%)	188 (79.3%)	176 (74.3%)	182 (76.5%)	
Yes	203 (21.4%)	37 (15.5%)	49 (20.7%)	61 (25.7%)	56 (23.5%)	
Family history CAD						0.299
No	730 (76.8%)	192 (80.7%)	175 (73.8%)	178 (75.1%)	185 (77.7%)	
Yes	220 (23.2%)	46 (19.3%)	62 (26.2%)	59 (24.9%)	53 (22.3%)	
Total cholesterol						0.476
<200mg/dL	732 (77.1%)	186 (78.2%)	189 (79.7%)	181 (76.4%)	176 (73.9%)	
≥200mg/dL	218 (22.9%)	52 (21.8%)	48 (20.3%)	56 (23.6%)	62 (26.1%)	
LDL-C						0.191
<100mg/dL	739 (77.8%)	191 (80.3%)	192 (81.0%)	180 (75.9%)	176 (73.9%)	
≥100 mg/dL	211 (22.2%)	47 (19.7%)	45 (19.0%)	57 (24.1%)	62 (26.1%)	
HDL-C						0.456
>40mg/dL	885 (93.2%)	224 (94.1%)	216 (91.1%)	220 (92.8%)	225 (94.5%)	
≤40mg/dL	65 (6.8%)	14 (5.9%)	21 (8.9%)	17 (7.2%)	13 (5.5%)	
Triglycerides						0.196
<150mg/dl	803 (84.5%)	211 (88.7%)	197 (83.1%)	200 (84.4%)	195 (81.9%)	
≥150 mg/dl	147 (15.5%)	27 (11.3%)	40 (16.9%)	37 (15.6%)	43 (18.1%)	
CAD						<0.001
No	492 (51.8%)	45 (76.3%)	67 (59.3%)	69 (52.7%)	63 (40.6%)	
Yes	458 (48.2%)	14 (23.7%)	46 (40.7%)	62 (47.3%)	92 (59.4%)	

Values are N (Mean±SD) or N (%). EAT, epicardial adipose tissue; CAD, coronary artery disease; LDL-C, low density lipoprotein cholesterol; HDL-C, high density lipoprotein cholesterol; TG, triglycerides.

Supplementary Table 2: Quantile characteristics of men

Epicardial fat volume (mL) quartile	Q1	Q2	Q3	Q4	P-value	
N	623	7.0-43.4	43.7-59.5	59.7-82.5	82.7-203.9	
EFV(mL)	67.7 ± 31.8	31.9 ± 8.8	51.9 ± 4.3	70.8 ± 6.9	110.6 ± 23.7	<0.001
Age (years)	50.6 ± 11.7	43.6 ± 13.7	50.3 ± 10.7	52.9 ± 9.9	54.7 ± 9.7	<0.001
Body Mass Index	25.8 ± 3.1	24.7 ± 2.8	25.3 ± 2.5	26.3 ± 3.4	27.7 ± 3.1	<0.001
Gender						0.429
Male	623 (100.0%)	138 (100.0%)	163 (100.0%)	159 (100.0%)	163 (100.0%)	
Smoking						0.534
No	507 (81.4%)	118 (85.5%)	129 (79.1%)	128 (80.5%)	132 (81.0%)	
Yes	116 (18.6%)	20 (14.5%)	34 (20.9%)	31 (19.5%)	31 (19.0%)	
Hypertension						0.079
No	355 (57.0%)	92 (66.7%)	89 (54.6%)	86 (54.1%)	88 (54.0%)	
Yes	268 (43.0%)	46 (33.3%)	74 (45.4%)	73 (45.9%)	75 (46.0%)	
Diabetes mellitus						0.187
No	488 (78.3%)	117 (84.8%)	127 (77.9%)	119 (74.8%)	125 (76.7%)	
Yes	135 (21.7%)	21 (15.2%)	36 (22.1%)	40 (25.2%)	38 (23.3%)	
Family history CAD						0.6
No	478 (76.7%)	110 (79.7%)	121 (74.2%)	119 (74.8%)	128 (78.5%)	
Yes	145 (23.3%)	28 (20.3%)	42 (25.8%)	40 (25.2%)	35 (21.5%)	
Total cholesterol						0.813
<200mg/dL	472 (75.8%)	102 (73.9%)	127 (77.9%)	118 (74.2%)	125 (76.7%)	
≥200mg/dL	151 (24.2%)	36 (26.1%)	36 (22.1%)	41 (25.8%)	38 (23.3%)	
LDL-C						0.677
<100mg/dL	481 (77.2%)	108 (78.3%)	130 (79.8%)	118 (74.2%)	125 (76.7%)	
≥100 mg/dL	142 (22.8%)	30 (21.7%)	33 (20.2%)	41 (25.8%)	38 (23.3%)	
HDL-C						0.164
>40mg/dL	577 (92.6%)	131 (94.9%)	145 (89.0%)	147 (92.5%)	154 (94.5%)	
≤40mg/dL	46 (7.4%)	7 (5.1%)	18 (11.0%)	12 (7.5%)	9 (5.5%)	
Triglycerides						0.603
<150mg/dl	515 (82.7%)	119 (86.2%)	134 (82.2%)	131 (82.4%)	131 (80.4%)	
≥150 mg/dl	108 (17.3%)	19 (13.8%)	29 (17.8%)	28 (17.6%)	32 (19.6%)	
CAD						<0.001
No	166 (49.1%)	33 (76.7%)	47 (58.0%)	49 (49.0%)	37 (32.5%)	
Yes	172 (50.9%)	10 (23.3%)	34 (42.0%)	51 (51.0%)	77 (67.5%)	

Values are N (Mean±SD) or N (%). EAT, epicardial adipose tissue; CAD, coronary artery disease; LDL-C, low density lipoprotein cholesterol; HDL-C, high density lipoprotein cholesterol; TG, triglycerides.

Supplementary Table 3: Quantile characteristics of women

Epicardial fat volume (mL) quantile statistics	Q1	Q2	Q3	Q4	P-value	
N	327	100	74	78	75	
EFV(mL)	61.9 ± 28.9	8.5-43.6	43.8-58.9	59.9-81.1	83.4-167.7	
Age (years)	52.0 ± 10.2	47.3 ± 10.0	52.8 ± 10.8	53.7 ± 9.3	55.8 ± 8.3	<0.001
Body Mass Index	27.0 ± 4.2	25.6 ± 3.7	26.9 ± 3.2	27.6 ± 4.5	29.1 ± 4.9	<0.001
Smoking						0.493
No	325 (99.4%)	100 (100.0%)	73 (98.6%)	78 (100.0%)	74 (98.7%)	
Yes	2 (0.6%)	0 (0.0%)	1 (1.4%)	0 (0.0%)	1 (1.3%)	
Hypertension						0.005
No	195 (59.6%)	72 (72.0%)	42 (56.8%)	47 (60.3%)	34 (45.3%)	
Yes	132 (40.4%)	28 (28.0%)	32 (43.2%)	31 (39.7%)	41 (54.7%)	
Diabetes mellitus						0.25
No	259 (79.2%)	84 (84.0%)	61 (82.4%)	57 (73.1%)	57 (76.0%)	
Yes	68 (20.8%)	16 (16.0%)	13 (17.6%)	21 (26.9%)	18 (24.0%)	
Family history CAD						0.529
No	252 (77.1%)	82 (82.0%)	54 (73.0%)	59 (75.6%)	57 (76.0%)	
Yes	75 (22.9%)	18 (18.0%)	20 (27.0%)	19 (24.4%)	18 (24.0%)	
Total cholesterol						0.041
<200mg/dL	260 (79.5%)	84 (84.0%)	62 (83.8%)	63 (80.8%)	51 (68.0%)	
≥200mg/dL	67 (20.5%)	16 (16.0%)	12 (16.2%)	15 (19.2%)	24 (32.0%)	
LDL-C						0.059
<100mg/dL	258 (78.9%)	83 (83.0%)	62 (83.8%)	62 (79.5%)	51 (68.0%)	
≥100 mg/dL	69 (21.1%)	17 (17.0%)	12 (16.2%)	16 (20.5%)	24 (32.0%)	
HDL-C						0.859
>40mg/dL	308 (94.2%)	93 (93.0%)	71 (95.9%)	73 (93.6%)	71 (94.7%)	
≤40mg/dL	19 (5.8%)	7 (7.0%)	3 (4.1%)	5 (6.4%)	4 (5.3%)	
Triglycerides						0.453
<150mg/dl	288 (88.1%)	92 (92.0%)	63 (85.1%)	69 (88.5%)	64 (85.3%)	
≥150 mg/dl	39 (11.9%)	8 (8.0%)	11 (14.9%)	9 (11.5%)	11 (14.7%)	
CAD						0.84
No	78 (65.0%)	12 (75.0%)	20 (62.5%)	20 (64.5%)	26 (63.4%)	
Yes	42 (35.0%)	4 (25.0%)	12 (37.5%)	11 (35.5%)	15 (36.6%)	

Values are N (Mean±SD) or N (%). EAT, epicardial adipose tissue; CAD, coronary artery disease; LDL-C, low density lipoprotein cholesterol; HDL-C, high density lipoprotein cholesterol; TG, triglycerides.

Supplementary table 4: Multivariate analyses evaluating the association between EAT volume and BMI

EAT volume and BMI association in overall subjects			
EAT as continuous variable (per 1-SD increment)	Crude model	Partially adjusted model	Fully adjusted model
Exposure			
EAT volume (mL)	1.82 (1.42, 2.33) <0.0001	1.84 (1.41, 2.40) <0.0001	1.71 (1.29, 2.27) 0.0002
EAT as a categorical variable			
EAT volume (mL)			
Q1	1.00 (referent)	1.00 (referent)	1.00 (referent)
Q2	1.01 (0.42, 2.46) 0.9790	1.03 (0.41, 2.56) 0.9520	1.02 (0.40, 2.62) 0.9676
Q3	2.73 (1.22, 6.13) 0.0149	2.77 (1.19, 6.43) 0.0178	2.88 (1.20, 6.91) 0.0176
Q4	5.48 (2.51, 11.97) <0.0001	5.26 (2.29, 12.09) <0.0001	4.62 (1.91, 11.18) 0.0007
P for trend	<0.0001	<0.0001	<0.0001
EAT volume and BMI association in men			
EAT as continuous variable (per 1-SD increment)	Crude model	Partially adjusted model	Fully adjusted model
Exposure			
EAT volume (mL)	2.15 (1.55, 2.98) <0.0001	2.12 (1.50, 2.98) <0.0001	1.74 (1.20, 2.52) 0.0036
EAT as a categorical variable			
EAT volume (mL)			
Q1	1.00 (referent)	1.00 (referent)	1.00 (referent)
Q2	0.76 (0.15, 3.86) 0.7399	0.71 (0.14, 3.66) 0.6813	0.65 (0.12, 3.52) 0.6180
Q3	4.02 (1.06, 15.19) 0.0403	3.67 (0.94, 14.36) 0.0612	3.62 (0.87, 15.10) 0.0776
Q4	9.94 (2.75, 35.98) 0.0005	8.95 (2.36, 33.87) 0.0013	6.72 (1.66, 27.26) 0.0077
P for trend	<0.0001	<0.0001	0.0002
EAT volume and BMI association in women			
EAT as continuous variable (per 1-SD increment)	Crude model	Partially adjusted model	Fully adjusted model
Exposure			
EAT volume (mL)	1.57 (1.05, 2.35) 0.0286	1.46 (0.95, 2.24) 0.0834	1.47 (0.89, 2.42) 0.1293
EAT as a categorical variable			
EAT volume (mL)			
Q1	1.00 (referent)	1.00 (referent)	1.00 (referent)
Q2	1.52 (0.51, 4.53) 0.4490	1.35 (0.44, 4.18) 0.5982	1.70 (0.50, 5.82) 0.3947
Q3	2.57 (0.87, 7.62) 0.0885	2.31 (0.76, 7.04) 0.1407	2.65 (0.80, 8.76) 0.1114
Q4	3.67 (1.27, 10.60) 0.0164	3.09 (1.00, 9.57) 0.0507	3.60 (0.97, 13.29) 0.0550
P for trend	0.0097	0.0289	0.037

In the partially-adjusted model, age was adjusted. In the fully-adjusted model, age, smoking, hypertension, diabetes mellitus, family history of CAD, TG, TC, LDL-C and HDL-C were adjusted. 1-SD increment = 31.0 ml, 31.8 ml and 28.9 ml for overall, men and women subjects.

Supplementary table 5: EAT volume among different racial/ethnic groups

PMID	Ethnic population	Average EAT Volume	NCCT or CCTA	EAT threshold (HU)	Year of publication
25109783	African-Americans	34.6 (23.1 to 47.3) cm ³	NCCT	-190 to -30	2015
	Caucasians	41.7 (32.4 to 57.4) cm ³			
	Koreans	43.5 (34.1 to 54.7) cm ³			
	Japanese	44.9 (33.2 to 56.7) cm ⁴			
	Japanese-Americans	51.9 (37.1 to 70.2) cm ³			
24315112	African American	59 (39 to 84) cm ³	CCTA	-195 to -45	2014
22963346	Japanese	65 ± 21 cm ³ (Women)	CCTA	-600 to -20	2012
		80 ± 33 cm ³ (Men)			
32346001	Australian	72 ± 33 ml	CCTA	-190 to -30	2020
25896357	European	79.5 ± 34.3 cm ³	NCCT	-195 to -45	2015
29233634	American	83.9 ± 38.0 cm ³	NCCT	-190 to -30	2017
28954947	Japanese	86.4 ± 40.9 cm ³	CCTA	-115 to -25	2018
33660521	Chinese	119.47 ± 36.56 cm ³	NCCT	-190 to -30	2021
Note: NCCT, non-contrast tomography angiography ; CCTA, contrast tomography angiography; HU, Hounsfield unit.					

Supplementary table 6: EAT-CAD association in subgroups according to two BMI cutoffs

Subgroups_All	N	OR (95%CI)	P for interaction
Body Mass Index categorical			0.2222
<25kg/m ²	228	1.81(1.24,2.64)	
>=25kg/m ²	291	1.66(1.28,2.16)	
Body Mass Index categorical			0.7158
<30kg/m ²	452	1.89(1.48,2.43)	
>=30kg/m ²	67	1.36(0.86,2.15)	
Subgroups_Men	N	OR (95%CI)	P for interaction
Body Mass Index categorical			0.8940
<25kg/m ²	159	1.58(1.01,2.48)	
>=25kg/m ²	175	1.64(1.17,2.31)	
Body Mass Index categorical			0.0381 *
<30kg/m ²	302	2.01(1.46,2.78)	
>=30kg/m ²	32	0.99(0.56,1.75)	
Subgroups_Women	N	OR (95%CI)	P for interaction
Body Mass Index categorical			0.8940
<25kg/m ²	69	2.32(1.16,4.64)	
>=25kg/m ²	116	1.61(1.01,2.56)	
Body Mass Index categorical			0.9875
<30kg/m ²	150	1.71(1.13,2.58)	
>=30kg/m ²	35	1.72(0.70,4.27)	