

1 **Human and entomological determinants of malaria transmission in the Lihir Islands of Papua**
2 **New Guinea: a cross-sectional study.**

3

4 **Short title:** Malaria transmission in the Lihir Islands, Papua New Guinea.

5

6 **AUTHORS LIST AND AFFILIATIONS**

7 Pere Millat-Martínez^{1¶*}, Michelle Katusele^{2¶}, Bàrbara Baro^{1¶}, Bernadine Kasian², Elias Omera²,

8 Esther Jamea², Lina Lorry², Aina Casellas¹, Dan Ouchi¹, Chilaka Wali³, Sylvia Raulo³, Arthur

9 Elizah³, Peter Kaman², Absalom Dau², Muker Sakur², Lemen Kilepak², Siub Yabu², Nelson

10 Koata², John Kave², Michael Toa², Christopher Urakusie², Charles Kongs², Frank Kisba², Moses

11 Laman², Oriol Mitjà^{4,5,6,7}, William Pomat², Stephan Karl^{2,8&}, Quique Bassat^{1,9, 10,11,12&}

12

13 ¹ ISGlobal, Hospital Clínic—Universitat de Barcelona, Barcelona, Spain.

14 ² Papua New Guinea Institute of Medical Research, Goroka, Eastern Highlands Province, Papua
15 New Guinea.

16 ³ Lihir Malaria Elimination Programme, Lihir Island, New Ireland Province, Papua New Guinea.

17 ⁴ Fight Infectious Diseases Foundation, Hospital Germans Trias i Pujol, Badalona, Spain.

18 ⁵ School of Medicine and Health Sciences, University of Papua New Guinea, Port Moresby,
19 National Capital District, Papua New Guinea.

20 ⁶ Centre for Health and Social Care Research (CESS), Faculty of Medicine, University of Vic -
21 Central University of Catalonia (UVic - UCC), Vic, Catalonia, Spain.

22 ⁷ Lihir Medical Centre, International SOS, Lihir Island, New Ireland Province, Papua New

23 **NOTE:** This preprint reports new research that has not been certified by peer review and should not be used to guide clinical practice.

24 ⁸ Australian Institute of Tropical Health and Medicine, James Cook University, Cairns, Australia.

25 ⁹ ICREA, Pg. Lluís Companys 23, 08010 Barcelona, Spain.

26 ¹⁰ Paediatrics Department, Hospital Sant Joan de Déu, Universitat de Barcelona, Esplugues,

27 Barcelona, Spain.

28 ¹¹ Centro de Investigação em Saúde de Manhiça (CISM), Maputo, Mozambique.

29 ¹² CIBER de Epidemiología y Salud Pública, Instituto de Salud Carlos III, Madrid, Spain.

30

31 ¶These three authors contributed equally and should share first authorship.

32 &These two authors contributed equally and should share senior authorship.

33

34 ***Corresponding author:**

35 Pere Millat-Martínez, PhD. Email address: pere.millat@isglobal.org

36 ISGlobal, Rosselló 132, 5^o2^a (08036) Barcelona, Spain

37

38 **Keywords:** Anopheles; Incidence; Islands; Malaria; Pacific; *Plasmodium vivax*; Prevalence;

39 Transmission.

40

41 **ABSTRACT**

42 **Background:** The Lihir Islands of Papua New Guinea, located in an area with high burden of

43 malaria and hosting a large mining operation, offer a unique opportunity to study

44 transmission. There, we investigated human and vector factors influencing malaria

45 transmission. **Methods:** In 2019, a cross-sectional study was conducted on 2,914 individuals

46 assessing malaria prevalence through rapid diagnostic tests (RDT), microscopy, and

47 quantitative PCR (qPCR). A logistic regression analysis identified infection-associated factors.
48 *Anopheles* species distribution, biting behaviours, and sporozoite carriage were assessed
49 through human landing catches and larval surveys. **Results:** Overall malaria prevalence (any
50 species) was 3.6% by RDT, 4.5% by microscopy, and 15.0% by qPCR. *P. vivax* accounted for
51 37.1% of infections, *P. falciparum* for 34.6%, *P. malariae* for 3.0%, *P. ovale* 0.2%, and mixed
52 infections for 24.5%. Prevalence (qPCR) varied across geographic areas, from 8.5% in the mine-
53 impacted zone (MIZ) to 27.0% in the non-MIZ. Other factors independently associated with
54 infection risk included cohabiting with an infected individual (aOR=1.94, 95%CI: 1.56-2.42), and
55 residing in traditional housing (aOR=1.65, 95%CI: 1.21-2.25). Children had double the infection
56 risk compared to adults, and the use of long-lasting insecticidal-treated nets did not decrease
57 risk of infection. *An. punctulatus* was the major vector in one of the four geographical areas;
58 while *An. farauti* was predominant in the rest of them, both with an early biting behaviour but
59 with different biting intensities by geographical area. Entomological inoculation rates ranged
60 from 26.9 (95%CI: 12.3-45.2) infective bites per person-year in the MIZ to 441.3 (95%CI: 315.7-
61 572.1) in the non-MIZ. **Conclusions:** Malaria transmission and infection was lower in the MIZ
62 compared to other areas, underscoring the potential of the mine company to enhance malaria
63 control in Lihir. Measures focusing on at-risk groups, including vector-control and transmission
64 interruption methods, could be used to reduce malaria burden, especially outside the MIZ.

65 **AUTHOR SUMMARY**

66 The Lihir Islands of Papua New Guinea host a mining operation on Aniolam, the main island,
67 which implements specific vector control strategies in the mine-impacted zone (MIZ); whereas
68 the remaining areas rely solely on distribution of long-lasting insecticidal-treated nets (LLIN).
69 Our study compared transmission dynamics in the different geographic areas and
70 demonstrated lower malaria incidence, prevalence, *Anopheles* density and biting intensities in
71 the MIZ. Living outside the MIZ on Aniolam and on Malie Island was associated with a higher

72 risk of infection, with transmission metrics rarely seen outside high burden countries in sub-
73 Saharan Africa. Besides the geographic area, other risk factors for infection included younger
74 age, cohabiting with infected individuals, and living in traditional housing; while the use of
75 LLINs was not associated with a reduction of infection risk.

76 Our results highlight the need for tailored strategies based on local transmission patterns and
77 could be beneficial for ongoing initiatives aimed at malaria control and elimination. In Lihir,
78 there is an opportunity to invest and improve the collaboration between the mine company
79 and public health authorities. Such a public-private partnership could enhance control efforts,
80 including expansion of diagnostics and treatments, the vector control program and community
81 education beyond the MIZ.

82 **INTRODUCTION**

83 Progress in reducing the global malaria burden has stagnated since 2015, and the milestones
84 proposed by the World Health Organization (WHO) have not been met (1). The WHO Western
85 Pacific region is an example of this lack of progress, since estimates for incidence showed
86 increases by 10% and mortality rates increases by 4% between 2015 and 2021 (2). This is
87 largely due to a rise in the malaria burden in Papua New Guinea (PNG), as it accounts for 87%
88 of all malaria cases and 94% of all malaria deaths in the region (3). It is estimated that 35.7% of
89 the PNG population (approximately 3.33 million inhabitants) live in areas with high to
90 moderate malaria risk (4). Malaria transmission in PNG exhibits geographical heterogeneity,
91 with the northern coast and the islands regions being affected with high levels rarely found
92 outside of Sub-Saharan Africa (5). *Plasmodium falciparum* and *P. vivax* are highly endemic in
93 PNG, although the other two human parasite species, *P. malariae* and *P. ovale*, are also
94 present (6). Hence, improving funding for and focusing malaria control efforts in PNG is
95 warranted for reducing malaria transmission in the region (3).

96 While malaria symptomatic cases can be confirmed by microscopy or rapid diagnostic test
97 (RDT), molecular tools such as polymerase-chain reaction (PCR) are required to confidently
98 detect sub-clinical infections, given many infections present with sub-microscopic parasite
99 densities (7). These sub-microscopic infections constitute a source of ongoing transmission,
100 and are a common feature in malaria endemic areas, involving all *Plasmodium* species and
101 individuals of all ages (8). In PNG, the 2019/2020 malaria indicator surveys showed that
102 prevalence of microscopic parasitaemia in household surveys varied among different
103 geographic areas, ranging from 0.1% in the highlands areas to 10.6% in the coastal areas of the
104 country (9). When PCR is used to include sub-microscopic infections, observed prevalence of
105 malaria parasites increases, as shown in a systematic review for *P. falciparum* infections (10).
106 In *P. vivax* endemic settings, this difference between microscopy and PCR can be even higher.
107 As an example, in a cross-sectional study performed in Madang Province during 2014, *P.*
108 *falciparum* prevalence increased from 2.8% to 9.0% when comparing microscopy to PCR
109 results, while *P. vivax* prevalence increased from 2.7% to 19.0% (11).

110 The main mosquito species transmitting malaria in PNG are members of the *Anopheles*
111 *punctulatus* complex, namely *Anopheles farauti s.s.*, *An. punctulatus s.s.* and *An. koliensis s.s.*
112 (12, 13), and cryptic species within this complex exist that can be hard to morphologically
113 identify (14). Significant variation in vector abundance and infective biting rates are observed
114 between villages, even within the same region (15). While there is no evidence of widespread
115 pyrethroid resistance in the *Anopheles* populations in PNG (16), some studies suggest
116 behavioural adaptation after the first nationwide distribution of long-lasting insecticide
117 treated-nets (LLINs) between 2005 and 2009, resulting in a moderate shift towards an earlier
118 peak biting in *An. punctulatus* and *An. farauti* (17). A survey conducted in 2016, confirmed that
119 25.5–50.8% of the vectors in the studied villages encountered human hosts in the evening,
120 with an increased proportion of anophelines feeding outdoors (15).

121 The Lihir Islands, present unique characteristics to study malaria transmission and evaluate
122 interventions. Aside of being located in one of the provinces with highest malaria transmission
123 in PNG (>200 yearly cases per 1,000 inhabitants) (5), they host the world's fifth largest gold
124 mining operation on their biggest island, Aniolam. Newcrest Mining Ltd, the mine company,
125 provides essential services to communities within the mine impacted zone (MIZ) surrounding
126 the open-pit. In addition, a vector control program has been deployed, which includes regular
127 larval source management in the MIZ and fogging targeting the mining camp areas. As such,
128 since 2006, the company conducts drainage of small water bodies, and larviciding of big water
129 bodies using *Bacillus thuringiensis israelensis* within this area. A prevalence study conducted in
130 2010, showed a marked reduction in malaria positive children found by microscopy in the MIZ
131 (from 31.5% in 2006, to 5.8% in 2010) (18). In contrast, the rest of the Lihir Islands relies only
132 on the services provided by the national malaria control program, which includes mass
133 distribution of LLINs every 3 years to achieve universal coverage. Nevertheless, despite
134 achieving 97%-98% coverage during the distribution campaigns, only 8.7% of households
135 maintained the nets two years after distribution (19).

136 Nearly a decade later, in 2019, we conducted a study to characterize transmission, obtaining
137 incidence data and performing prevalence and entomological surveys in the MIZ, and
138 importantly, in the other geographic areas of the Lihir Islands. Factors associated with high
139 malaria transmission, both in the human and the vector population, were assessed.

140 **METHODS**

141 **Study setting**

142 This study was conducted in the Lihir Islands, which are located 900 km northeast of Port
143 Moresby and include Aniolam, Malie, Masahet and Mahur islands. A map of the Lihir Islands
144 can be seen in S1 Fig. A population census conducted between 2018 and 2020, estimated a
145 population of 26,528 inhabitants. The villages of the MIZ accommodate half of the Islands'

146 population, and there are 2,000-3,000 extra mobile workers staying at the mine housing
147 facilities in Londolovit, in the MIZ. Most of the people staying in the MIZ are migrants from
148 other places of PNG (57% of all inhabitants), living in permanent or makeshift houses and less
149 in traditional houses that are more common in other areas of Lihir.

150 **Ethical statement and informed consent**

151 This study was approved by the PNG Medical Research Advisory Committee (PNG-MRAC) with
152 MRAC No.18.07. The informed consent process followed community and cultural values of
153 PNG. Following consultation with and approval by community leaders, awareness meetings or
154 notes (*tok saves*) were delivered in each village to explain the study. Permission for collecting
155 malaria incidence data registered at health facilities was obtained from the health department
156 of the local level government and from the district level government (Namatanai District, New
157 Ireland Province, PNG).

158 For the cross-sectional study, individual written informed consent was obtained from all
159 participants, or the parent or legal guardian of children below 18 years old, after explanation
160 of the risks and potential benefits of the study. Children under the age of 18 were verbally
161 assented. Those participants unable to read and/or write were verbally consented with a
162 witness countersigning the consent form. For the human landing catches, individual written
163 informed consent was obtained from all participants after explanation of the risks and
164 potential benefits of the study, and chemoprophylaxis was offered to prevent infection from
165 exposure to infectious mosquito bites.

166 **Collection of health system data**

167 The health system in Lihir is highly fragmented. The MIZ contains the Lihir Medical Centre, run
168 by an external health service provider contracted by the mine company. In contrast, in the
169 non-MIZ, there are public health facilities, including a health centre, a health sub-centre and
170 eight aid posts (S1 Fig), which are under-staffed with community health workers and some

171 nursing officers. Passive case detection data registered between January and December of
172 2019 in all the health facilities (public and private) were extracted and digitalized for analysis
173 of malaria incidence.

174 **Study population, data and sample collection**

175 We conducted a cross-sectional study during October and November of 2019. We used a
176 stratified random sampling strategy at village level. The sampling sizes of each stratum were
177 calculated considering the data from the population census. Inside each stratum, all
178 households were enumerated, geo-positioned and randomly selected. All individuals living in
179 the selected households, defined as non-visitor individuals staying in that household for at
180 least the preceding 2 weeks, and present at the moment of the survey, were eligible for
181 recruitment to the study until the achievement of the sample size. A total of 2,914 individuals
182 of all ages above 6 months and residing in 696 households across the 43 villages of Lihir Islands
183 were included.

184 Following informed consent, demographic and clinical data, relation with head of the
185 household, LLIN usage and mobility information were collected from all participants using
186 Open Data Kit. Pregnancy was assessed through asking the pregnancy status to all female
187 participants aged 16 years or older; no confirmatory test was conducted. A finger prick was
188 performed by a health practitioner, and blood drops were collected for a malaria RDT (Malaria
189 Pf/PAN Ag Combo RDT, Carestart™, USA), a blood slide with thin and thick smears for
190 microscopy examination, 2 dry blood spots in filter paper, and a haemoglobin analysis with
191 Hemocue® HB 301 analyser. A short clinical assessment, including axillary temperature
192 measurement, spleen size assessment and history of last malaria episode, was conducted by a
193 clinician, who also interpreted the result of the RDT. In case of a positive RDT result,
194 antimalarial treatment with artemether/lumefantrine (plus full unsupervised course of
195 primaquine if *P. vivax* was detected) was delivered following doses recommended by PNG

196 guidelines (20). In case of anaemia, the participants were referred to the nearest health facility
197 for assessment.

198 The laboratory procedures for the analysis of samples using light microscopy and quantitative
199 PCR (qPCR) were standard and are described in the Supplementary methods in Supporting File
200 S1.

201 **Mosquito and larval sampling**

202 In parallel to the cross-sectional study, we conducted an entomological survey including
203 human landing catches (HLC) and larval collection at eight sentinel sites distributed throughout
204 Lihir: 3 villages in Aniolum MIZ, 3 villages in Aniolum non-MIZ, 1 village in Malie and 1 village in
205 Masahet. These sites were selected after studying the environmental characteristics of Lihir
206 Islands to represent the ecological diversity found within Aniolum, as well as in the outer
207 Islands, and to evenly cover locations within and outside of the MIZ. For the HLC, 20-25
208 healthy consented volunteers were selected in each site. The inclusion criteria were those
209 individuals, male or female, from 18 to 75 years old living in the selected site, and expressing a
210 willingness to participate in HLC. Exclusion criteria were those participants who were not
211 willing to give informed consent, and individuals with any apparent acute or chronic illness.
212 The procedures for the HLC and the analyses of the mosquito biting frequency, biting time,
213 indoor vs. outdoor biting, and the entomological inoculation rate (EIR) are described in the
214 Supplementary methods, in Supporting File S1.

215 All potential larval habitats that could be found at the eight collection sites were surveyed and
216 categorized as confirmed or potential larval habitat depending on the presence of *Anopheles*
217 *spp.* larvae. Two more sites for potential larval habitats were included (one in Aniolum-MIZ and
218 one in Aniolum non-MIZ). Density per habitat was estimated using a larval dipping method,
219 and GPS coordinates and environmental variables were recorded. This allowed for mapping

220 and characterizing each habitat. All larvae were reared to adults in a temporary field insectary,
221 and were identified to species using light microscopy.

222 The molecular identification of Anopheles species and sporozoites from the adult mosquitoes'
223 samples are described in detail in the Supplementary methods, in the Supporting File S1.

224 **Statistical analysis**

225 The sample size for the estimation of malaria prevalence in the general population was
226 calculated for a precision of 1.5% and a confidence interval (CI) of 95%, with an estimated
227 malaria prevalence of 20% based on the 2010 data (18), yielding a minimum required
228 population to screen of 2734 participants. This calculation considered the population
229 distribution by age and village based on a previous population census.

230 Data were described as absolute and relative frequencies for categorical variables. For
231 continuous variables we described mean and standard deviation (SD) for normally distributed
232 data and median and interquartile range (IQR) for skewed data. Chi-squared tests (or Fisher's
233 exact tests) and t-tests were performed to assess differences between groups for categorical
234 and quantitative variables, respectively. Spearman's Rank correlations were calculated to
235 estimate the relationship between quantitative variables. Univariable and multivariable logistic
236 regression models were used to determine the factors that were associated with PCR
237 positivity. For the incidence, a binomial regression model was fitted to estimate the incidence
238 risk ratio (IRR) and the Wald 95% CI; and the Mann-Kendall statistical test was employed for
239 trend analysis to consider for seasonal patterns present in monthly incidence time series.

240 Mosquito collections conducted over the course of one night were considered to be equivalent
241 to one person-night. It was assumed that the number of anopheline mosquitoes landing on a
242 collector was equivalent to the number of mosquito bites. Biting frequency distributions over
243 the course of the night were graphed as the mean frequency of mosquitoes sampled hourly
244 from 6 pm to 6 am. Sporozoite rate was quantified as the proportion of PCR-tested mosquitoes

245 that were positive for malaria parasites. Variation of sporozoite rates was assessed using Chi-
246 squared test. Human biting rate (HBR) was quantified determining the total number of
247 mosquitoes collected divided by the number of nights of collection and the number of
248 collectors (i.e., the total exposure time). It was multiplied by 365.25 to obtain the HBR per
249 person-year. 95% CI of each rate was calculated using the Wald method. EIR was estimated by
250 multiplying the HBR and the sporozoite rate. Variation in vector composition and metrics
251 among sampling location was tested using Chi-squared test.

252 A correlation analysis was performed taking into account the HBR and EIR, and the results of
253 the prevalence and the incidence of the next month after mosquito collection, in each of the
254 eight villages with mosquito collection. Spearman's Rank was used for the calculation of these
255 correlations, and 95% CI and p-values with were reported.

256 The computer packages STATA and R were used for the analysis of epidemiological and
257 entomological data (21, 22). The significance level of all statistical tests was based on type I
258 error rate of 0.05.

259

260 **RESULTS**

261 **Study population**

262 Demographic, geographic and clinical characteristics of participants included in the cross-
263 sectional survey are summarized in S1 Table. Sex and age of the participants were
264 representative of the Lihir Islands population, with 54.5% females and a predominance of
265 younger individuals: <5 years, 12.4%; 5-14 years, 20.8%; 15-24 years, 21.1%; 25-34 years,
266 20.4%; 35-44 years, 11.4%; ≥45 years, 13.9%. Half of the participants (49.2%) were living in the
267 MIZ of Aniolam, 33.5% in the rest of Aniolam (non-MIZ), 8.3% in Masahet Island, 4.9% in
268 Mahur Island, and 4.0% in Malie Island. The type of house differed across Aniolam, with less

269 traditional houses in the MIZ compared to the non-MIZ (9.3% vs 17.7%, $p < 0.001$; Chi-squared
270 test).

271 Of all participants, 649 (22.3%) had a history of fever in the preceding month, but only 23
272 (0.8%) had a documented axillary body temperature ≥ 37.8 °C, and 46 (1.6%) were taking an
273 antimalarial at recruitment. Haemoglobin levels were below 12 g/dL in 70.5% of the
274 participants and increased with age, with a mean of 9.4 g/dL in under 5 years-old, 10.5 g/dL in
275 5-14 years-old, and >11.0 g/dL in all groups older than 15 years-old ($p < 0.0001$; Chi-squared
276 test). Haemoglobin < 8.0 g/dL was detected in 6.8% of the individuals. Pregnant women had
277 lower haemoglobin levels than their non-pregnant child-bearing age counterparts (9.6 g/dL vs
278 10.6 g/dL, $p = 0.0005$; t-test). On the other hand, 71 (4.8%) participants had splenomegaly,
279 which differed with age, being 7.9% in participants under 5 years-old, 7.5% in 5-14 years-old,
280 and $< 4.0\%$ in all age groups older than 15 years-old ($p = 0.0090$; Chi-squared test).

281 Splenomegaly was also more frequent in individuals living in the non-MIZ of Aniolum (7.3%)
282 compared to the other geographic areas, where prevalence of splenomegaly was below 4%
283 ($p = 0.0207$; Chi-squared test).

284 Finally, 37.2% of the participants reported having slept under a LLIN the previous night. LLIN
285 use was more common among females compared to males (41.3% vs 32.3%, $p < 0.0001$; Chi-
286 squared test), while sleeping outdoors was more frequent in males compared to females (6.7%
287 vs 2.9%, $p < 0.0001$). LLIN use also differed across age ($p < 0.0001$), with children under 5 years-
288 old being the ones using LLIN the most (49.3%). When asked on prevention measures to avoid
289 acquiring malaria, less than half of the population (39.6%) responded that sleeping under LLIN
290 prevents malaria.

291 **Malaria prevalence in the Lihir Islands**

292 Overall, 105 participants (3.6%) had a positive malaria RDT, 132 (4.5%) had blood-stage
293 parasites of any *Plasmodium* species detectable by light microscopy, and 437 (15.0%) had a
294 *Plasmodium* positive qPCR.

295 RDT showed in 91 (86.7%) participants a single line for histidine-rich protein 2 (HRP2),
296 indicating *P. falciparum* mono-infection; in 14 (13.3%) participants it showed a single line for
297 *Plasmodium* lactate dehydrogenase (pLDH), indicating non-*P. falciparum* species infection
298 (mainly *P. vivax* in this setting); and there were no RDTs with both lines positive (indicating *P.*
299 *falciparum* or mixed infection). In contrast, microscopy showed 67 (50.8%) cases of *P.*
300 *falciparum* infection, 51 (38.6%) of *P. vivax*, 7 (5.3%) of *P. malariae*, and 7 (5.3%) mixed
301 infections (*P. falciparum* and *P. vivax*). No *P. ovale* infection was detected by microscopy.

302 Gametocytes were detected in 23 (31.1%) of all positive *P. falciparum* samples, with a median
303 (IQR) concentration of 164 (45-1,854) parasites/ μ L; and in 12 (20.7%) of all positive *P. vivax*
304 samples, at 70 (28- 229) parasites/ μ L. Gametocyte prevalence considering both species was
305 1.2% of the overall study population. On the other hand, median asexual parasitaemia was 442
306 (147- 5,313) parasites/ μ L in any *P. falciparum* positive sample, and 164 (78- 853) parasites/ μ L
307 in any *P. vivax* positive sample. Aiming to compare with a previous prevalence study
308 performed in Aniolam (18), we quantified the positive cases found by microscopy in children
309 under 5 years-old, which were 5.0% in the MIZ of Aniolam and 19.9% in the non-MIZ (p
310 <0.0001).

311 Furthermore, from the 2,908 samples with DNA material for qPCR analysis, species
312 differentiation showed 162 (37.1%) cases of *P. vivax* mono-infection, 151 (34.6%) of *P.*
313 *falciparum* mono-infection, 13 (3.0%) of *P. malariae* mono-infection, 1 (0.2 %) of *P. ovale*
314 mono-infection, and 107 (24.5%) of mixed infection. Mixed infections included mostly the
315 main two species, with 83 cases positive for *P. falciparum* and *P. vivax*, 15 for *P. falciparum* and
316 *P. malariae*, 2 for *P. falciparum* and *P. ovale*, and 2 for *P. vivax* and *P. malariae*. In addition,

317 there were 2 cases of a triple combination of species, which included *P. falciparum*, *P. vivax*
318 and *P. malariae*; and 1 infection that included the four species. Positive cases for *P. falciparum*,
319 *P. vivax* or mixed infections detected by qPCR compared with microscopy and age distribution
320 are shown in Fig 1.

321

322 **Fig 1. *Plasmodium* species detected in the cross-sectional survey.**

323 (A) Number of *Plasmodium* infections detected by qPCR classified by age group and species; (B) Prevalence
324 of *P. falciparum* infections by age groups (light microscopy and qPCR); (C) Prevalence of *P. vivax* infections
325 by age groups (light microscopy and qPCR); (D) Prevalence of mixed infections by age groups (light
326 microscopy and qPCR). Prevalence data are shown in percentage and 95% confidence intervals.

327

328 **Factors associated with malaria infection**

329 Associations of the population characteristics with prevalence of *Plasmodium* infection by
330 qPCR are shown in Table 1. Prevalence was higher in males compared to females (17.6% vs
331 12.9%, $p=0.0004$; Chi-squared test), and also varied across age groups, with higher prevalence
332 in children younger than 15 years-old ($p<0.0001$). On the other hand, malaria prevalence was
333 higher in those participants with lower haemoglobin levels ($p=0.0197$). Malaria prevalence by
334 qPCR was also higher in those participants with splenomegaly compared to those without
335 (23.9% vs 13.1%, $p=0.0095$), and in pregnant women compared to the non-pregnant women at
336 childbearing age (19.0% vs 10.9%, $p=0.0493$). On the other hand, presenting a body
337 temperature of ≥ 37.8 °C was not associated with a higher malaria prevalence ($p=0.5623$;
338 Fisher exact test).

339 **Table 1. Variables associations with *Plasmodium* infection by qPCR and logistic regression**
 340 **models for risk factors.**

Variable		qPCR positive		Univariable analysis		Multivariable analysis	
		N (%)	p-value	OR (95% CI)	p-value	aOR (95% CI) [#]	p-value
Sex ^a	Male	233 (17.6)	0.0004	reference group	0.0004	reference group	0.0103
	Female	204 (12.9)		0.69 (0.56-0.85)		0.75 (0.60-0.93)	
Age (years) ^a	< 5	63 (17.5)	< 0.0001	reference group	< 0.0001	reference group	< 0.0001
	≥ 5 to < 15	128 (21.1)		1.26 (0.90-1.76)		1.33 (0.93-1.89)	
	≥ 15 to < 25	102 (16.6)		0.93 (0.66-1.32)		1.00 (0.69-1.44)	
	≥ 25 to < 35	71 (12.0)		0.64 (0.44-0.92)		0.67 (0.46-1.00)	
	≥ 35 to < 45	31 (9.4)		0.49 (0.31-0.77)		0.50 (0.31-0.81)	
	≥ 45	42 (10.4)		0.55 (0.36-0.83)		0.52 (0.34-0.81)	
	Origin ^b	Born outside Lihir	123 (11.6)	0.0001	reference group	0.0001	reference group
	Born in Lihir Islands	314 (17.0)		1.55 (1.24-1.94)		0.96 (0.73-1.24)	
Geographic area ^a	Aniolam MIZ	121 (8.5)	< 0.0001	reference group	< 0.0001	reference group	< 0.0001
	Aniolam non-MIZ	263 (27.0)		3.99 (3.16-5.04)		3.56 (2.72-4.65)	
	Malie Island	17 (14.4)		1.82 (1.05-3.14)		1.83 (1.04-3.21)	
	Masahet Island	21 (8.6)		1.02 (0.63-1.66)		1.13 (0.68-1.89)	
	Mahur Island	15 (10.4)		1.26 (0.71-2.21)		1.36 (0.75-2.49)	
	Type of house ^c	Permanent	226 (14.4)	< 0.0001	reference group	< 0.0001	reference group
	Traditional	84 (25.4)		2.04 (1.54-2.71)		1.65 (1.21-2.25)	
	Makeshift	127 (12.7)		0.87 (0.69-1.10)		0.93 (0.72-1.19)	
Living with a malaria positive ^a	No	196 (10.3)	< 0.0001	reference group	< 0.0001	reference group	< 0.0001
	Yes	241 (23.8)		2.70 (2.20-3.32)		1.94 (1.56-2.42)	
Slept indoors previous night ^b	No	24 (17.8)	0.3627	reference group	0.3635	reference group	0.4349
	Yes	413 (14.9)		0.81 (0.51-1.28)		0.82 (0.50-1.35)	
Slept under LLIN previous night ^b	No	268 (14.7)	0.4528	reference group	0.4529	reference group	0.3085
	Yes	169 (15.7)		1.08 (0.88-1.34)		0.88 (0.70-1.12)	
Haemoglobin (g/dL) ^d	< 8.0	28 (22.0)	0.0197				
	≥ 8.0 to < 10.0	69 (16.0)					

	≥ 10.0 to < 12.0	107 (14.0)	
	≥ 12.0	66 (11.9)	
Splenomegaly ^e	Yes (Hackett 1-5)	17 (23.9)	0.0095
	No	185 (13.1)	

341 Abbreviations: aOR=adjusted odds ratio, MIZ=mine-impacted zone, OR=odds ratio, PNG=Papua New

342 Guinea, qPCR=quantitative polymerase chain reaction. Data included for the Univariable analysis:

343 ^an=2,908 (0% missing), ^bn=2,905 (0.1% missing), ^cn=2,906 (0.1% missing), ^dn=1,877 (35.5% missing),

344 ^en=1,481 (49.1% missing). #Multivariable analysis conducted for all variables in the table except

345 haemoglobin and splenomegaly, including 2,906 observations.

346

347 Regarding the geographic distribution, prevalence of both microscopic and sub-microscopic

348 infections varied across areas ($p < 0.0001$). The lowest prevalence (qPCR) was found in the MIZ

349 of Aniolam (8.5%) and in Masahet Island (8.6%), followed by Mahur Island (10.4%), Malie

350 Island (14.4%) and the non-MIZ of Aniolam (27.0%). Of note, we found highly heterogeneous

351 malaria prevalence across villages and administrative divisions, especially in the non-MIZ,

352 ranging from 12.4% in the south-western coast to 38.9% in the north-western coast of

353 Aniolam. Distribution of positive cases by qPCR across all administrative divisions is shown in

354 Fig 2A.

355

356 **Fig 2. Malaria prevalence and incidence in each geographic area of the Lihir Islands.**

357 (A) Malaria prevalence by qPCR presented in percentages, with the denominator being the number of

358 participants included in each area; (B) Incidence rates presented in annual cases per 1,000 inhabitants,

359 with the denominator being the total population of each area (population census conducted in 2018-

360 2020). In both maps, areas are divided by wards (administrative divisions), and the mine impacted zone

361 comprises wards 1, 2 and 11.

362

363 We performed uni- and multivariable logistic regression analyses to identify the risk associated
364 with being positive for *Plasmodium* parasites by qPCR (Table 1). Haemoglobin levels,
365 splenomegaly, and presence of fever were excluded of the analysis. Females had a decreased
366 risk of infection, with an OR of 0.69 (95% CI: 0.56-0.85). Adults above 25 years-old also had a
367 decreased risk of infection [OR = 0.64 (95% CI: 0.44-0.92) for those between 25 and 34 years-
368 old; OR = 0.49 (95% CI: 0.31-0.77) for those between 35 and 44 years-old; and OR = 0.55 (95%
369 CI: 0.36-0.83) for ≥ 45 years-old individuals]. On the other hand, living with at least one other
370 person infected by malaria increased the risk of infection, with an OR of 2.7 (95% CI: 2.20-
371 3.32). We found an increased risk of infection for individuals living in the non-MIZ of Aniolum
372 [OR=3.99 (95% CI: 3.16-5.04)] and for those living in Malie Island [OR=1.82 (95% CI: 1.05-3.14)].
373 Participants born in Lihir Islands were also more frequently infected [OR = 1.55 (95% CI: 1.24-
374 1.94)], as well as those living in traditional houses [OR = 2.04 (95% CI: 1.54-2.71)]. Individuals
375 that had slept indoors or had slept under LLIN the preceding night did not appear to show a
376 decreased risk of malaria infection.

377 In the multivariable analysis, the strongest independent risk factor for carrying *Plasmodium*
378 parasites was the geographic area, with the highest risk in the non-MIZ of Aniolum, presenting
379 an adjusted OR (aOR) of 3.56 (95% CI: 2.72-4.65). Sex was also independently associated with
380 parasite prevalence, with an aOR of 0.75 (95% CI: 0.60-0.93) in females. Risk of malaria
381 infection also decreased with age older than 35 years-old ($p < 0.0001$). Finally, other
382 independent risk factors associated with parasite prevalence by qPCR were living with a
383 malaria positive individual [aOR = 1.94 (95% CI: 1.56-2.42; $p < 0.0001$)] and living in a
384 traditional type of house [aOR = 1.65 (95% CI: 1.21-2.25; $p = 0.0017$).

385 **Passive case detection and malaria incidence in the Lihir Islands**

386 In 2019, a total of 18,419 patients were attended in the Lihirian health facilities with suspected
387 malaria, of whom 9,207 (50%) were considered positive. Of the positive, 7,774 (84.4%) were

388 diagnosed by RDT, 1,377 (15.0%) by microscopy, and 56 (0.6%) based solely on clinical
389 grounds, without using diagnostic tools. Considering only the confirmed cases, malaria
390 incidence in Lihir was 345 cases per 1,000 inhabitants, with an annual blood examination rate
391 of 69.2%.

392 Incidence was similar across months ($p=0.054$; Mann-Kendall test), with a mean (\pm SD) of 767.3
393 (± 169.7) cases per month. Similar to parasite prevalence, incidence varied substantially by
394 geographic areas ($p<0.001$; Wald test, Fig 2B). In addition, incidence varied across age
395 ($p<0.001$), with 53.6% of malaria cases occurring in children below 15 years-old (S2A Fig).
396 Incidence rates and incidence risk ratios between the different geographic areas and age
397 groups is shown in S2 Table. Incidence of each *Plasmodium spp.* varied depending on the
398 diagnostic tool used. A comparison of diagnosed *Plasmodium* species by microscopy and RDT is
399 shown in S2B Fig.

400 **Larval habitats surveillance**

401 A total of 976 potential larval habitats were surveyed at ten entomological sites (i.e., around the
402 same eight villages used for adult mosquito population, plus two extra villages). Overall, 92
403 (9.4%) of surveyed habitats were positive for *Anopheles* larvae. The distribution of the larval
404 habitats surveyed and those positive for *Anopheles* larvae is shown in Fig 3A. The proportion of
405 habitats positive for *Anopheles* larvae varied across geographic areas ($p<0.0001$; Chi-squared
406 test), with Malie Island having the highest (29.5%), followed by the non-MIZ of Aniolam (14.2%),
407 the MIZ (5.9%) and Masahet Island (3.9%), corresponding well with the observed abundance of
408 adult *Anopheles* mosquitoes. The most frequent habitat for *Anopheles* larvae was the
409 permanent groundwater (e.g., swamps), with 25% of the sampled wells positive for *Anopheles*
410 species, followed by transient puddles (16.7%), and forest swamps (15.4%). *Anopheles* species
411 present in each surveyed habitat are shown in S3 Table.

412

413 **Fig 3. *Anopheles* species and larval habitats in the Lihir Islands.**

414 (A) proportion of *Anopheles* positive larval habitats after entomological identification of larvae grown into
415 adults in the insectary, the number of total potential habitats surveyed and the name of each collection
416 site is described in each chart; (B) proportions of each species of *Anopheles* collected in human landing
417 catches measured by qPCR, the number of total *Anopheles* collected per site and the name of each
418 collection site is described in each chart.

419

420 **Adult vector indicators**

421 A total of 2,549 *Anopheles* mosquitoes were collected with HLCs at the eight villages and over
422 7,821 person-hours of collection. Of these, 2,034 (79.8%) were *An. farauti*, 448 (17.5%) were
423 *An. punctulatus*, 61 (2.4%) were *An. longirostris*, 2 (0.08%) were *An. koliensis*, and 1 (0.04%) was
424 *An. bancroftii*. There were 3 (0.1%) *Anopheles* mosquitoes collected for which the species could
425 not be ascertained morphologically.

426 Vector species across the eight HLC collection villages are shown in Fig 3B. Only 1 anopheline
427 specimen was collected in Masahet (*An. farauti*). Species distribution differed across geographic
428 areas ($p < 0.0001$), with *An. farauti* being the predominant vector in the MIZ of Aniolum (94.2%,
429 95% CI: 88.0-97.3), in Malie Island (100%, 95% CI: 89.9-100.0), and in Masahet Island ($n=1$). In
430 contrast, *An. punctulatus* was the predominant species in the non-MIZ of Aniolum (75.7%, 95%
431 CI: 72.1-79.0), followed by *An. farauti* (13.0%, 95% CI: 10.5-16.0) and *An. longirostris* (10.4%,
432 95% CI: 8.2-13.2).

433 Human biting rates, sporozoite rates, and the resulting entomological inoculation rates are
434 shown in detail in Table 2. The HBR amongst all *Anopheles* collected (any species) varied
435 significantly across areas ($p < 0.0001$; Chi-squared test), with a mean of 8,487.5 bites per person-
436 year in Malie Island, 896.4 bites per person-year in the non-MIZ, and 175.9 bites per person-
437 year in the MIZ of Aniolum.

438 A total of 1,511 *Anopheles* mosquitoes were tested for *Plasmodium* species by qPCR, which
 439 included 1,083 *An. farauti* (53% of all *An. farauti* collected), 368 *An. punctulatus* (82% of all *An.*
 440 *punctulatus* collected), 57 *An. longirostris* (93% of all *An. longirostris* collected), and 2 *An.*
 441 *koliensis* (100% of all *An. koliensis* collected). Of these, a total of 108 (7.1%) mosquitoes were
 442 positive for *Plasmodium spp* sporozoites. Overall, the sporozoite rate was 4.1% (95% CI: 3.1-5.1)
 443 for *P. vivax*, 2.5% (95% CI: 1.7-3.3) for *P. falciparum*, and 0.5% (95% CI: 0.0-0.9) for mixed
 444 infections containing both *Plasmodium* species. The vastly different biting rates within the three
 445 geographical regions surveyed resulted in very different EIR estimates, with Malie Island
 446 exhibited the highest EIR estimates, followed by the non MIZ of Aniolam, and the MIZ having
 447 the lowest EIR estimates (Table 2).

448 **Table 2. Summary of adult vector indicators in each geographic area.**

Collection site	Vector	HBR (95% CI)	All <i>Plasmodium</i> species		<i>Plasmodium falciparum</i>		<i>Plasmodium vivax</i>		Mixed infections	
			SR (95% CI)	EIR (95% CI)	SR (95% CI)	EIR (95% CI)	SR (95% CI)	EIR (95% CI)	SR (95% CI)	EIR (95% CI)
Aniolam MIZ	<i>An. farauti</i>	165.7 (140.5-190.9)	16.3% (8.8-23.9)	27.0 (12.4-45.4)	3.3% (0.0-6.9)	5.5 (0.0-13.2)	12.0% (5.3-18.6)	19.9 (7.4-35.5)	1.1% (0.0-3.2)	1.8 (0.0-6.1)
	<i>An. punctulatus</i>	8.5 (2.8-14.2)	0.0% (0.0-0.0)	0 (0.0-0.0)	0.0% (0.0-0.0)	0 (0.0-0.0)	0.0% (0.0-0.0)	0 (0.0-0.0)	0.0% (0.0-0.0)	0 (0.0-0.0)
	All <i>Anopheles</i>	175.9 (149.9-201.9)	15.3% (8.2-22.4)	26.9 (12.3-45.2)	3.1% (0.0-6.5)	5.5 (0.0-13.1)	11.2% (5.0-17.5)	19.7 (7.9-35.3)	1.0% (0.0-3.0)	1.8 (0.0-6.1)
Aniolam non-MIZ	<i>An. farauti</i>	117.2 (96.0-138.4)	13.4% (5.3-21.6)	15.7 (5.1-29.9)	3.0% (0.0-7.1)	3.5 (0.0-9.8)	10.4% (3.1-17.8)	12.3 (3.0-24.6)	0.0% (0.0-0.0)	0 (0.0-0.0)
	<i>An. punctulatus</i>	681.8 (630.6-733.0)	8.3% (5.4-11.1)	56.6 (34.1-81.4)	1.4% (0.2-2.6)	9.5 (1.3-19.1)	6.3% (3.8-8.8)	43.0 (24.0-65.2)	0.6% (0.0-1.3)	4.1 (0.0-9.5)
	<i>An. longirostris</i>	92.8 (73.9-111.7)	10.5% (2.6-18.5)	9.7 (1.9-20.7)	0.0% (0.0-0.0)	0 (0.0-0.0)	10.5% (2.6-18.5)	9.7 (1.9-20.7)	0.0% (0.0-0.0)	0 (0.0-0.0)
	All <i>Anopheles</i>	896.4 (837.7-955.1)	9.2% (6.6-11.8)	82.5 (55.3-112.7)	1.4% (0.4-2.5)	12.5 (3.4-23.9)	7.4% (5.0-9.7)	66.3 (41.9-92.6)	0.4% (0.0-1.0)	3.6 (0.0-9.6)
Malie Island	<i>An. farauti</i>	8487.5 (8306.9-8668.1)	5.2% (3.8-6.6)	441.3 (315.7-572.1)	3.0% (1.9-4.1)	254.6 (157.8-355.4)	1.6% (0.8-2.4)	135.8 (66.5-208.0)	0.5% (0.1-1.0)	42.4 (8.3-86.7)

	8487.5 (8306.9- 8668.1)	5.2% (3.8-6.6)	441.3 (315.7- 572.1)	3.0% (1.9- 4.1)	254.6 (157.8- 355.4)	1.6% (0.8- 2.4)	135.8 (66.5- 208.0)	0.5% (0.1- 1.0)	42.4 (8.3- 86.7)
--	-------------------------------	----------------	----------------------------	--------------------	----------------------------	--------------------	---------------------------	--------------------	---------------------

449 Legend: Human biting rate (expressed in bites per person-year), sporozoite rate (percentage of
 450 sporozoite infected mosquitoes) and entomological inoculation rate (percentage of infective bites per
 451 person-year) are shown in proportions and 95% confidence intervals (CI) per each of the species of
 452 *Anopheles* collected, *Plasmodium* species, and geographical areas in Lihir Islands. Masahet was excluded
 453 from this analysis as only 1 *Anopheles* was collected. Abbreviations: EIR = entomological inoculation
 454 rate, HBR = Human Biting Rate, MIZ = mine-impacted zone, SR = sporozoite rate.

455
 456 Only 26.3% of mosquitoes were captured indoors despite balanced collection effort indoors and
 457 outdoors, with *An. farauti* (26.5%), *An. punctulatus* s.s. (25%), and *An. longirostris* (26.2%) all
 458 exhibiting similar preference for outdoor biting. There was no apparent difference in the
 459 preference for outdoor biting in the different geographical zones.

460 Biting behaviour over the course of the night was only analysed for the two most abundant
 461 *Anopheles* species, *An. farauti* and *An. punctulatus* s.s, as shown in Fig 4. *An. farauti* on Malie
 462 Island exhibited an early biting behaviour with a peak at 6-7pm. *An. punctulatus*, most abundant
 463 in the non-MIZ of Aniolum, exhibited the typical late-biting profile characteristic for this species.
 464 The very low abundance of either *Anopheles* species in the other zones precluded an accurate
 465 determination of their biting profiles in these zones.

466

467 **Fig 4. Human landing catch rates for the major vectors found in the Lihir Islands.**

468 The graphs use combined indoor and outdoor HLC rates for each night of collection per zone (Malie Island:
 469 4 nights; MIZ and non-MIZ of Aniolum: 12 nights). (A) and (B), Malie Island; (C) and (D), the Mine impacted
 470 zone (MIZ) of Aniolum; (E) and (F), Aniolum out of the Mine impacted zone (Aniolum non-MIZ). The box
 471 and whisker plots present the median, interquartile ranges and ranges of the catch rates. The black dots

472 represent the mean of the catch rates. Both statistics are presented to account for the highly skewed
473 nature of the data.

474

475 **Correlation between vector and human indicators**

476 We assessed the relationship between HBR and EIR with malaria prevalence in each of the
477 villages where both entomological and human indicators were collected; as well as the
478 relationship between EIR and incidence data from the month after the collection. Data on
479 human and vector indicators at village level are shown in Table 3. Although not statistically
480 significant, there was a clear trend towards a positive correlation between the HBR and the
481 incidence ($\rho = 0.63$, 95% CI: -0.15,0.93; Spearman test), as well as between the EIR and the
482 incidence ($\rho = 0.52$, 95% CI: -0.32,0.90) with the village in Malie being the one with higher
483 entomological indicators and higher malaria incidence, and Upper Londolovit in the MIZ on the
484 opposite position. On the other hand, there was no association between the entomological
485 indicators and the prevalence of *Plasmodium spp* by qPCR. The results of this analysis can be
486 seen in S3 Fig.

487 **Table 3. Summary of vector and human metrics in each of the entomological sites**

Geographic area	Village	Vector metrics			Human metrics	
		SR	HBR	EIR	Prevalence	Incidence
Aniolam MIZ	Londolovit	0.207	534.83	110.88	8.4%	1.1
	Upper Londo	0	31.96	0	8.5%	1.1
	Kunaye 2	0	70.24	0	18.1%	14.1
Aniolam non-MIZ	Lienbel	0.053	318.42	16.76	38.5%	42.9
	Matakues	0.077	716.8	55.14	32.8%	20.3
	Sianius	0.115	1664.43	190.92	20.0%	18.9
Malie Island	Malie (Sinambiet)	0.063	8487.5	532.76	14.4%	87.5

Masahet Island	Masahet (Ton)	0	4.57	0	9.5%	9.7
----------------	---------------	---	------	---	------	-----

488 Legend: Vector metrics such as human biting rate (in bites per person-year), sporozoite rate and
489 entomological inoculation rate (percentage of infective bites per person-year), and human prevalence
490 (percentage of infected individuals in the cross-sectional survey) and incidence of the month of
491 December 2019 (number of cases per 1,000 inhabitants) for each of the villages with entomological
492 surveillance. Abbreviations: EIR = entomological inoculation rate, HBR = Human Biting Rate, MIZ = mine-
493 impacted zone, SR = sporozoite rate.

494

495 **DISCUSSION**

496 This study characterized the human and vector determinants behind the different intensities
497 of malaria transmission on the Lihir Islands of PNG, which are influenced by a gold mining
498 operation. The MIZ of Aniolum, previously exhibiting lower prevalence (18), maintained a
499 reduced burden with similar prevalence rates by microscopy. However, there has been a
500 three-fold decrease in infection incidence in this area over the past decade. In contrast, the
501 non-MIZ of Aniolum and Malie Island exhibited significantly higher infection rates, comparable
502 to the highest endemicity areas in PNG such as the East Sepik (23). Notably, the north-western
503 zone of Aniolum showed prevalence rates similar to those observed in heavily malaria-
504 burdened countries in Africa (3). In this context, the study population, especially children,
505 presented characteristics associated with high malaria exposure, such as moderate and severe
506 anaemia, and splenomegaly (24). These clinical characteristics were more common outside the
507 MIZ and were associated with carrying malaria parasites. Indeed, the strongest independent
508 risk factor for carrying malaria parasites was the geographic location of the participants'
509 households.

510 As this study was conducted at the household level, we were able to demonstrate that, after
511 geographic location, sharing a household with a positive individual was the strongest risk

512 factor for malaria infection. This finding aligns with other studies conducted in Equatorial
513 Guinea and Kenya (25, 26). Additionally, living in a traditional house was associated with a
514 higher risk of infection, attributed to the open housing structures inherent in traditional
515 dwellings, known to exacerbate malaria transmission (27). Of note, use of LLIN was low across
516 the Lihir Islands, with only 37.2% of the participants sleeping under an LLIN the previous night.
517 Although this percentage is higher than a previous study reporting a mere 13.6% LLIN use (19),
518 LLINs remained insufficient as we did not observe any association between their use and the
519 prevalence of infection.

520 *P. falciparum* and *P. vivax* were the most prevalent species identified in both the prevalence
521 survey and the passive case detection analyses. Mixed infections were detected in a quarter of
522 the positive cases when using qPCR, mainly due to the revealed *P. vivax* submicroscopic
523 infections, and they were more frequent in children. These findings are consistent with reports
524 from other regions of PNG and the Solomon Islands (28, 29). A previous study in PNG
525 demonstrated that one of the factors contributing to this higher rate of *P. vivax* sub-
526 microscopic infections in children is the occurrence of frequent relapses (30). A limitation of
527 our study stems from assessing prevalence only once, hence not considering climatic patterns
528 throughout the year. However, incidence of malaria in Lihir during 2019 showed no significant
529 variations across months. Of note, we observed few discrepancies between microscopy and
530 RDT in the prevalence survey. We could explain the additional *P. falciparum* infections
531 detected by RDT due to persistence of HRP2 antigen during antimalarial treatment, while the
532 non-*falciparum* infections missed by RDT were attributed to the lower sensitivity of this tool in
533 detecting these species compared to microscopy (31). On the other hand, the incidence data
534 showed a higher number of mixed infections when using RDT, probably due to some pLDH
535 lines caused by high *P. falciparum* parasitaemia (32).

536 The entomology surveys confirmed a worryingly high outdoor and early biting feeding
537 behaviour for the anopheline populations, particularly *An. furaoti*, consistent with previous
538 findings in PNG (15). While a nationwide study showed no increase in the proportion of
539 infective bites occurring before 10 pm (17), a subsequent study conducted in Madang Province
540 highlighted the epidemiological significance of this earlier feeding behaviour by *An. furaoti*
541 (33). This discovery challenges the effectiveness of universal coverage with LLINs as the main,
542 and often only, vector control strategy in our setting. People in PNG often spend a significant
543 portion of their evenings and early nights engaged in outdoor activities without protection
544 (27). The early biting behaviour of *An. furaoti* has also been observed in the Solomon Islands
545 (34), emphasizing the need for innovative vector control strategies targeting these species.
546 Hence, our study supports that LLINs alone are insufficient to reduce malaria transmission in
547 the Pacific; also, because many of the *P. vivax* infections are caused by relapses as explained
548 above EIR are higher in the non-MIZ of Aniolum and Malie Island, areas of Lihir relying solely
549 on LLINs, compared to the MIZ of Aniolum benefiting from alternative vector control
550 interventions implemented by the mining operator.

551 Moreover, vector composition, proportion of larvae colonized sites, and transmission
552 intensities were also different across the areas, aligning with malaria burden variations as seen
553 in the correlation analysis, especially for the incidence data. Despite the open-pit mine and the
554 abundant human dwellings in the MIZ of Aniolum, larvae colonized sites and HBR/EIR are low,
555 possibly due to the specific larviciding conducted in this area (35), as well as better housing
556 conditions (36). Conversely, Malie Island exhibits the highest HBR and EIR among the Lihir
557 Islands, with most of the breeding sites found colonized by anophelines. The numerous
558 mangroves located in this area may contribute to the highest density of *An. furaoti*, as it is
559 known to breed on brackish water and coastal streams (37). In contrast, the non-MIZ of
560 Aniolum exhibits a diverse mosquito ecology with *An. punctulatus* as the main vector, which is
561 considered more efficient (38) and potentially more anthropophilic (39). The environmental

562 changes on Aniolum, including road extension, may explain the predominant presence of *An.*
563 *punctulatus* outside the MIZ (40). Surprisingly, Masahet Island, relying solely on LLINs for
564 vector control, had the lowest mosquito and larvae densities, along with a lower human
565 burden. Masahet Island has reduced mangroves and swamps areas, and villages are coastal,
566 with residents keeping livestock fenced several metres away from houses, unlike other areas
567 of the Lihir Islands. A link between proximity of cattle to human dwellings and a higher risk of
568 infection has been showed before (41). Hence, this distinct behaviour could explain the lower
569 vector densities on Masahet Island, especially as the only vector identified there was *An.*
570 *farauti*, a highly generalist mosquito (39).

571 Identifying human and vector factors for malaria risk serves for locating areas of concentrated
572 malaria transmission and directing targeted measures to reduce the disease burden (42). Data
573 on prevalence and incidence of *P. vivax* infections, particularly among children, underscore the
574 need to enhance radical cure implementation to prevent relapses and maximize transmission
575 reduction, as recommended by a cohort study in East Sepik (43). Focusing on the paediatric
576 population is crucial in moderately to highly transmissive settings like Lihir, where
577 interventions targeting transmission reduction would have the most significant impact (44). It
578 may also be beneficial to explore specific measures for reducing intrahousehold transmission,
579 such as reactive focal mass drug administration at the household and neighbouring levels;
580 even though its effectiveness has been better demonstrated in low-endemicity settings (45).

581 Despite reported changes in *Anopheles* biting behaviours, it remains advisable to improve the
582 usage of LLINs; however, the decreased bioefficacy of distributed nets in recent campaigns in
583 PNG (46) encourages the need for regular monitoring of this strategy (47) and increase of
584 funding, commitment, and innovative strategies (48). The evidence of lower malaria burden
585 and reduced entomological metrics in Masahet and the MIZ of Aniolum supports the
586 implementation of specific vector control strategies across the Lihir Islands. This could include
587 measures like segregating livestock from the human population (49), exploring endectocidal

588 treatments such as ivermectin for livestock (50), and expanding larviciding and environmental
589 management to target breeding sites beyond the MIZ (51).

590 **CONCLUSION**

591 The current study unveils unique transmission patterns within the Lihir Islands, emphasizing
592 the necessity for customized strategies tailored to the specific characteristics of each area.
593 However, considering the high permeability of these areas, both inside and outside the MIZ, it
594 is crucial for the mine company to strengthen existing malaria control strategies and introduce
595 innovative approaches across the whole group of Islands. This comprehensive analysis holds
596 the potential to guide ongoing malaria control efforts and provide a roadmap for addressing
597 similar challenges in New Ireland Province and other high-transmission coastal zones across
598 the Western Pacific region.

599 **ACKNOWLEDGEMENTS**

600 We acknowledge all the participants in the study and the Lihirian communities for the
601 acceptance and collaboration in this research. We thank Newcrest Mining Limited and
602 Medicines for Malaria venture (MMV) for the research grant provided to PNG-IMR and
603 ISGlobal as part of its collaborative agreement to support the Lihir Malaria Elimination
604 Programme. We acknowledge support from the grant CEX2018-000806-S funded by MCIN/AEI/
605 10.13039/501100011033, and support from the Generalitat de Catalunya through the CERCA
606 Programme. CISM is supported by the Government of Mozambique and the Spanish Agency
607 for International Development (AECID). BB is a Beatriu de Pinós postdoctoral fellow granted by
608 the Government of Catalonia's Secretariat for Universities and Research, and by Marie
609 Sklodowska-Curie Actions COFUND Programme (BP3, 801370). SK was supported by a National
610 Health and Medical Research Council Career Development Fellowship (GNT1141441).

611 REFERENCES

- 612 1. Noor AM, Alonso PL. The message on malaria is clear: progress has stalled. *Lancet*
613 (London, England). 2022;399(10337):1777.
- 614 2. World Health Organization. Global Health Observatory data repository: World Health
615 Organization; 2021 [Available from:
616 <https://apps.who.int/gho/data/view.main.MALARIAINCIDENCEv>.
- 617 3. World Health Organization. World malaria report 2022. Geneva: World Health
618 Organization; 2022.
- 619 4. Seidahmed O, Jamea S, Kurumop S, Timbi D, Makita L, Ahmed M, et al. Stratification of
620 malaria incidence in Papua New Guinea (2011-2019): Contribution towards a sub-national
621 control policy. *PLOS Glob Public Health*. 2022;2(11):e0000747.
- 622 5. Papua New Guinea National Department of Health. Sector Performance Annual Review
623 for 2019.: Government of Papua New Guinea; 2020 [Available from:
624 https://www.health.gov.pg/pdf/SPAR_2019.pdf.
- 625 6. Cleary E, Hetzel MW, Clements ACA. A review of malaria epidemiology and control in
626 Papua New Guinea 1900 to 2021: Progress made and future directions. *Frontiers in*
627 *Epidemiology (Online)*. 2022;2.
- 628 7. The malERA Refresh Consultative Panel. malERA: An updated research agenda for
629 characterising the reservoir and measuring transmission in malaria elimination and
630 eradication. *PLoS Med*. 2017;14(11):e1002452.
- 631 8. Okell LC, Bousema T, Griffin JT, Ouedraogo AL, Ghani AC, Drakeley CJ. Factors
632 determining the occurrence of submicroscopic malaria infections and their relevance for
633 control. *Nature communications*. 2012;3:1237.
- 634 9. Seidahmed O, Kurumop S, Jamea S, Tandrapah A, Timbi D, Hetzel M, et al. Papua New
635 Guinea malaria indicator survey 2019-2020: final report on malaria prevention, infection

- 636 prevalence, and treatment seeking. Goroka: Papua New Guinea Institute of Medical Research;
637 2021.
- 638 10. Whittaker C, Slater H, Nash R, Bousema T, Drakeley C, Ghani AC, et al. Global patterns
639 of submicroscopic *Plasmodium falciparum* malaria infection: insights from a systematic review
640 and meta-analysis of population surveys. *Lancet Microbe*. 2021;2(8):e366-e74.
- 641 11. Koepfli C, Ome-Kaius M, Jally S, Malau E, Maripal S, Ginny J, et al. Sustained malaria
642 control over an eight-year period in Papua New Guinea: the challenge of low-density
643 asymptomatic infections. *The Journal of infectious diseases*. 2017.
- 644 12. Burkot TR, Graves PM, Paru R, Wirtz RA, Heywood PF. Human malaria transmission
645 studies in the *Anopheles punctulatus* complex in Papua New Guinea: sporozoite rates,
646 inoculation rates, and sporozoite densities. *The American journal of tropical medicine and*
647 *hygiene*. 1988;39(2):135-44.
- 648 13. Cooper RD, Waterson DG, Frances SP, Beebe NW, Pluess B, Sweeney AW. Malaria
649 vectors of Papua New Guinea. *International journal for parasitology*. 2009;39(13):1495-501.
- 650 14. Beebe NW, Saul A. Discrimination of all members of the *Anopheles punctulatus*
651 complex by polymerase chain reaction--restriction fragment length polymorphism analysis.
652 *The American journal of tropical medicine and hygiene*. 1995;53(5):478-81.
- 653 15. Keven JB, Katusele M, Vinit R, Rodríguez-Rodríguez D, Hetzel MW, Robinson LJ, et al.
654 Vector composition, abundance, biting patterns and malaria transmission intensity in Madang,
655 Papua New Guinea: assessment after 7 years of an LLIN-based malaria control programme.
656 *Malar J*. 2022;21(1):7.
- 657 16. Katusele M, Lagur S, Endersby-Harshman N, Demok S, Goi J, Vincent N, et al.
658 Insecticide resistance in malaria and arbovirus vectors in Papua New Guinea, 2017-2022.
659 *Parasit Vectors*. 2022;15(1):426.

- 660 17. Reimer LJ, Thomsen EK, Koimbu G, Keven JB, Mueller I, Siba PM, et al. Malaria
661 transmission dynamics surrounding the first nationwide long-lasting insecticidal net
662 distribution in Papua New Guinea. *Malar J.* 2016;15:25.
- 663 18. Mitjà O, Paru R, Selve B, Betuela I, Siba P, De Lazzari E, et al. Malaria epidemiology in
664 Lihir Island, Papua New Guinea. *Malar J.* 2013;12:98.
- 665 19. Millat-Martínez P, Gabong R, Balanza N, Luana S, Sanz S, Raulo S, et al. Coverage,
666 determinants of use and repurposing of long-lasting insecticidal nets two years after a mass
667 distribution in Lihir Islands, Papua New Guinea: a cross-sectional study. *Malar J.*
668 2021;20(1):336.
- 669 20. Papua New Guinea National Department of Health. National Malaria Treatment
670 Protocol. National Department of Health Papua New Guinea; 2009.
- 671 21. StataCorp. Stata Statistical Software: Release 17. College Station, TX: StataCorp LLC;
672 2021.
- 673 22. R Core Team. R: A language and environment for statistical computing. Vienna,
674 Austria: R Foundation for Statistical Computing 2022.
- 675 23. Kattenberg JH, Gumal DL, Ome-Kaius M, Kiniboro B, Philip M, Jally S, et al. The
676 epidemiology of Plasmodium falciparum and Plasmodium vivax in East Sepik Province, Papua
677 New Guinea, pre- and post-implementation of national malaria control efforts. *Malar J.*
678 2020;19(1):198.
- 679 24. Hetzel MW, Pulford J, Ura Y, Jamea-Maiasa S, Tandrapah A, Tarongka N, et al.
680 Insecticide-treated nets and malaria prevalence, Papua New Guinea, 2008-2014. *Bulletin of the*
681 *World Health Organization.* 2017;95(10):695-705b.
- 682 25. García GA, Janko M, Hergott DEB, Donfack OT, Smith JM, Mba Eyono JN, et al.
683 Identifying individual, household and environmental risk factors for malaria infection on Bioko
684 Island to inform interventions. *Malar J.* 2023;22(1):72.

- 685 26. Stresman GH, Baidjoe AY, Stevenson J, Grignard L, Odongo W, Owaga C, et al. Focal
686 Screening to Identify the Subpatent Parasite Reservoir in an Area of Low and Heterogeneous
687 Transmission in the Kenya Highlands. *The Journal of infectious diseases*. 2015;212(11):1768-
688 77.
- 689 27. Rodríguez-Rodríguez D, Katusele M, Auwun A, Marem M, Robinson LJ, Laman M, et al.
690 Human Behavior, Livelihood, and Malaria Transmission in Two Sites of Papua New Guinea. *The*
691 *Journal of infectious diseases*. 2021;223(12 Suppl 2):S171-s86.
- 692 28. Mehlotra RK, Lorry K, Kastens W, Miller SM, Alpers MP, Bockarie M, et al. Random
693 distribution of mixed species malaria infections in Papua New Guinea. *The American journal of*
694 *tropical medicine and hygiene*. 2000;62(2):225-31.
- 695 29. Waltmann A, Darcy AW, Harris I, Koepfli C, Lodo J, Vahi V, et al. High Rates of
696 Asymptomatic, Sub-microscopic *Plasmodium vivax* Infection and Disappearing *Plasmodium*
697 *falciparum* Malaria in an Area of Low Transmission in Solomon Islands. *PLoS neglected tropical*
698 *diseases*. 2015;9(5):e0003758.
- 699 30. Robinson LJ, Wampfler R, Betuela I, Karl S, White MT, Li Wai Suen CS, et al. Strategies
700 for understanding and reducing the *Plasmodium vivax* and *Plasmodium ovale* hypnozoite
701 reservoir in Papua New Guinean children: a randomised placebo-controlled trial and
702 mathematical model. *PLoS Med*. 2015;12(10):e1001891.
- 703 31. Maltha J, Gillet P, Bottieau E, Cnops L, van Esbroeck M, Jacobs J. Evaluation of a rapid
704 diagnostic test (CareStart Malaria HRP-2/pLDH (Pf/pan) Combo Test) for the diagnosis of
705 malaria in a reference setting. *Malar J*. 2010;9:171.
- 706 32. Maltha J, Gillet P, Cnops L, van den Ende J, van Esbroeck M, Jacobs J. Malaria rapid
707 diagnostic tests: *Plasmodium falciparum* infections with high parasite densities may generate
708 false positive *Plasmodium vivax* pLDH lines. *Malar J*. 2010;9:198.

- 709 33. Thomsen EK, Koimbu G, Pulford J, Jamea-Maiasa S, Ura Y, Keven JB, et al. Mosquito
710 Behavior Change After Distribution of Bednets Results in Decreased Protection Against Malaria
711 Exposure. *The Journal of infectious diseases*. 2017;215(5):790-7.
- 712 34. Bugoro H, Hii JL, Butafa C, Iro'ofa C, Apairamo A, Cooper RD, et al. The bionomics of
713 the malaria vector *Anopheles farauti* in Northern Guadalcanal, Solomon Islands: issues for
714 successful vector control. *Malar J*. 2014;13:56.
- 715 35. World Health Organization. Guidelines for malaria vector control. Geneva: World
716 Health Organization; 2019.
- 717 36. Tusting LS, Bottomley C, Gibson H, Kleinschmidt I, Tatem AJ, Lindsay SW, et al. Housing
718 Improvements and Malaria Risk in Sub-Saharan Africa: A Multi-Country Analysis of Survey
719 Data. *PLoS medicine*. 2017;14(2):e1002234.
- 720 37. Charlwood JD, Graves PM, Alpers MP. The ecology of the *Anopheles punctulatus* group
721 of mosquitoes from Papua New Guinea: a review of recent work. *Papua and New Guinea*
722 *medical journal*. 1986;29(1):19-26.
- 723 38. Nigel W. Beebe, Tanya L. Russell, Thomas R. Burkot, Neil F. Lobo, Cooper RD. The
724 Systematics and Bionomics of Malaria Vectors in the Southwest Pacific. *Anopheles*
725 *Mosquitoes: InTech*; 2013. p. 357-94.
- 726 39. Keven JB, Reimer L, Katusele M, Koimbu G, Vinit R, Vincent N, et al. Plasticity of host
727 selection by malaria vectors of Papua New Guinea. *Parasit Vectors*. 2017;10(1):95.
- 728 40. Ebsworth P, Bryan JH, Foley DH. Ecological distribution of mosquito larvae of the
729 *Anopheles punctulatus* group on Niolam (Lihir) Island, Papua New Guinea. *J Am Mosq Control*
730 *Assoc*. 2001;17(3):181-5.
- 731 41. Zeru MA, Shibru S, Massebo F. Exploring the impact of cattle on human exposure to
732 malaria mosquitoes in the Arba Minch area district of southwest Ethiopia. *Parasit Vectors*.
733 2020;13(1):322.

- 734 42. Gul D, Rodríguez-Rodríguez D, Nate E, Auwan A, Salib M, Lorry L, et al. Investigating
735 differences in village-level heterogeneity of malaria infection and household risk factors in
736 Papua New Guinea. *Sci Rep.* 2021;11(1):16540.
- 737 43. Ome-Kaius M, Kattenberg JH, Zaloumis S, Siba M, Kiniboro B, Jally S, et al. Differential
738 impact of malaria control interventions on *P. falciparum* and *P. vivax* infections in young Papua
739 New Guinean children. *BMC medicine.* 2019;17(1):220.
- 740 44. Koepfli C, Nguitragool W, de Almeida ACG, Kuehn A, Waltmann A, Kattenberg E, et al.
741 Identification of the asymptomatic *Plasmodium falciparum* and *Plasmodium vivax* gametocyte
742 reservoir under different transmission intensities. *PLoS neglected tropical diseases.*
743 2021;15(8):e0009672.
- 744 45. Bansil P, Yeshiwondim AK, Guinovart C, Serda B, Scott C, Tesfay BH, et al. Malaria case
745 investigation with reactive focal testing and treatment: operational feasibility and lessons
746 learned from low and moderate transmission areas in Amhara Region, Ethiopia. *Malar J.*
747 2018;17(1):449.
- 748 46. Vinit R, Timinao L, Bubun N, Katusele M, Robinson LJ, Kaman P, et al. Decreased
749 bioefficacy of long-lasting insecticidal nets and the resurgence of malaria in Papua New
750 Guinea. *Nature communications.* 2020;11(1):3646.
- 751 47. Karl S, Katusele M, Freeman TW, Moore SJ. Quality Control of Long-Lasting Insecticidal
752 Nets: Are We Neglecting It? *Trends in parasitology.* 2021;37(7):610-21.
- 753 48. Moore S, Karl S. Is the next generation of mosquito nets surviving expectations? *The*
754 *Lancet Infectious diseases.* 2024.
- 755 49. Hasyim H, Dhimal M, Bauer J, Montag D, Groneberg DA, Kuch U, et al. Does livestock
756 protect from malaria or facilitate malaria prevalence? A cross-sectional study in endemic rural
757 areas of Indonesia. *Malar J.* 2018;17(1):302.

758 50. Foley DH, Bryan JH, Lawrence GW. The potential of ivermectin to control the malaria
759 vector *Anopheles farauti*. Transactions of the Royal Society of Tropical Medicine and Hygiene.
760 2000;94(6):625-8.

761 51. World Health Organization. Handbook for integrated vector management 2012
762 [Available from: <https://apps.who.int/iris/handle/10665/44768>.

763

764 **SUPPORTING MATERIAL CAPTIONS**

765 **S1 Fig. Map of the Lihir Islands of Papua New Guinea.**

766 Located in the New Ireland Province, the Lihir Islands group is formed by three raised coral
767 platform islands and two low coralline islets. The map shows the limits of the mine-impacted
768 zone and the location of all the health facilities inside and outside this area.

769

770 **S2 Fig. Malaria cases diagnosed at the Lihirian health facilities.**

771 (A) Total number of malaria cases by age groups (unspecified group are adults' patients
772 without identified age); (B): *Plasmodium* species diagnosed by light microscopy and Rapid
773 Diagnostic Test (RDT) in patients presented at the health facilities. For the RDT results, the
774 health facilities recorded *P. falciparum* if the test showed a single line for histidine-rich protein
775 2 (HRP2), non *P. falciparum* (*P. vivax* in the figure) if the test showed a single line for
776 *Plasmodium* lactate dehydrogenase (pLDH), and mixed infection if the test showed the two
777 lines.

778

779 **S3 Fig. Correlation analysis between vector and human indicators in the Lihirian villages.**

780 (A) Correlation analysis between EIR and prevalence; (B) Correlation analysis between EIR and
781 incidence; (C) Correlation analysis between HBR and prevalence; (D) Correlation analysis
782 between HBR and incidence. HBR are expressed in bites per person-year, EIR are expressed in

783 percentages, prevalence is expressed in percentage, and incidence is expressed in number of
784 cases per 1,000 inhabitants. Abbreviations: CI = confidence interval, EIR = entomological
785 inoculation rate, HBR = Human Biting Rate, MIZ = mine-impacted zone, p = correlation p-value,
786 S = Spearman test value, rho = correlation coefficient.

787

788 **S1 Table. Characteristics of the participants included in the prevalence survey.**

789 Abbreviations: MIZ = mine-impacted zone, SD = Standard deviation. ^an = 2911 (0.1% missing),
790 ^bn = 1116 (0% missing, only for females with ≥ 16 years-old), ^cn = 805 (0% missing, only for
791 participants between 5-18 years-old), ^dn = 2,912 (0.1 % missing), ^en = 2,884 (1.0 % missing), ^fn =
792 1486 (49.0% missing), ^en = 1877 (35.6% missing).

793

794 **S2 Table. Malaria incidence risks in the Lihir Islands by age groups and geographic areas.**

795 Abbreviations: CI (Confidence Interval), IR (Incidence Risk), IRR (Incidence Risk Ratio), MIZ
796 (Mine-impacted zone). Binomial regression model was used to estimate IRR with 95% CI and p-
797 values.

798

799 **S3 Table. Type of habitats where anophelines were found in the Lihir Islands.**

800 Abbreviations: CI (Confidence Interval), N (number), Prop (proportion).

801

802 **S1 File. Supplementary methods.**

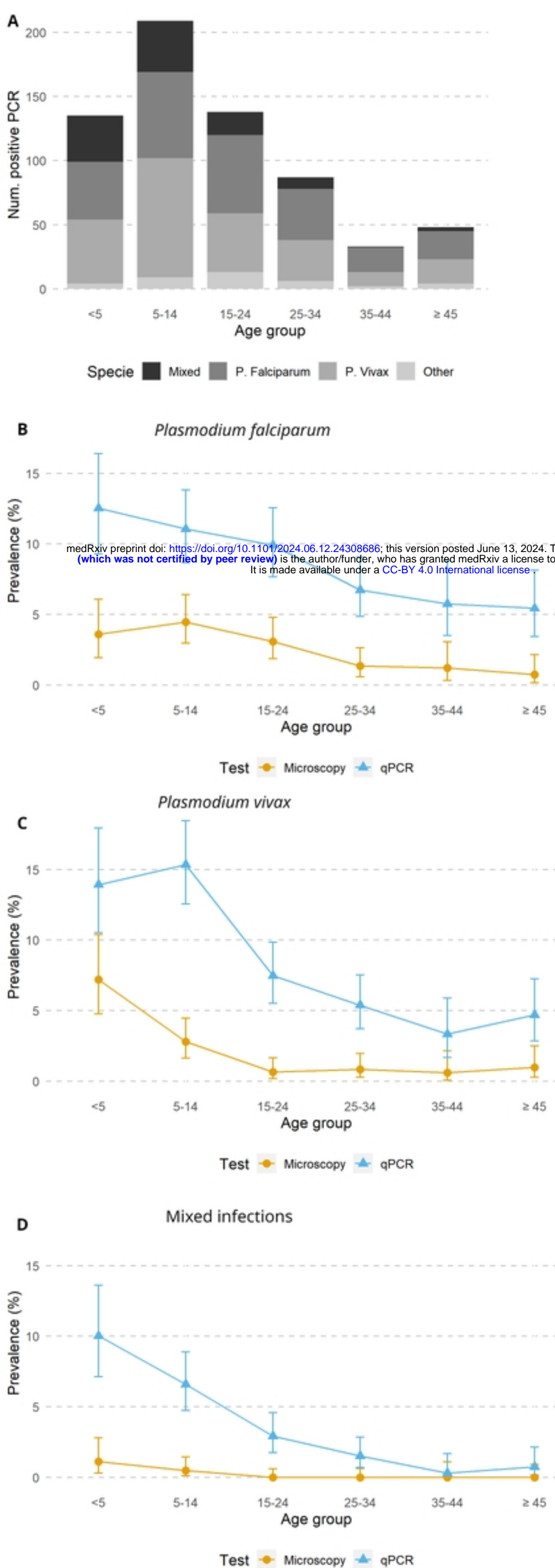


Figure 1

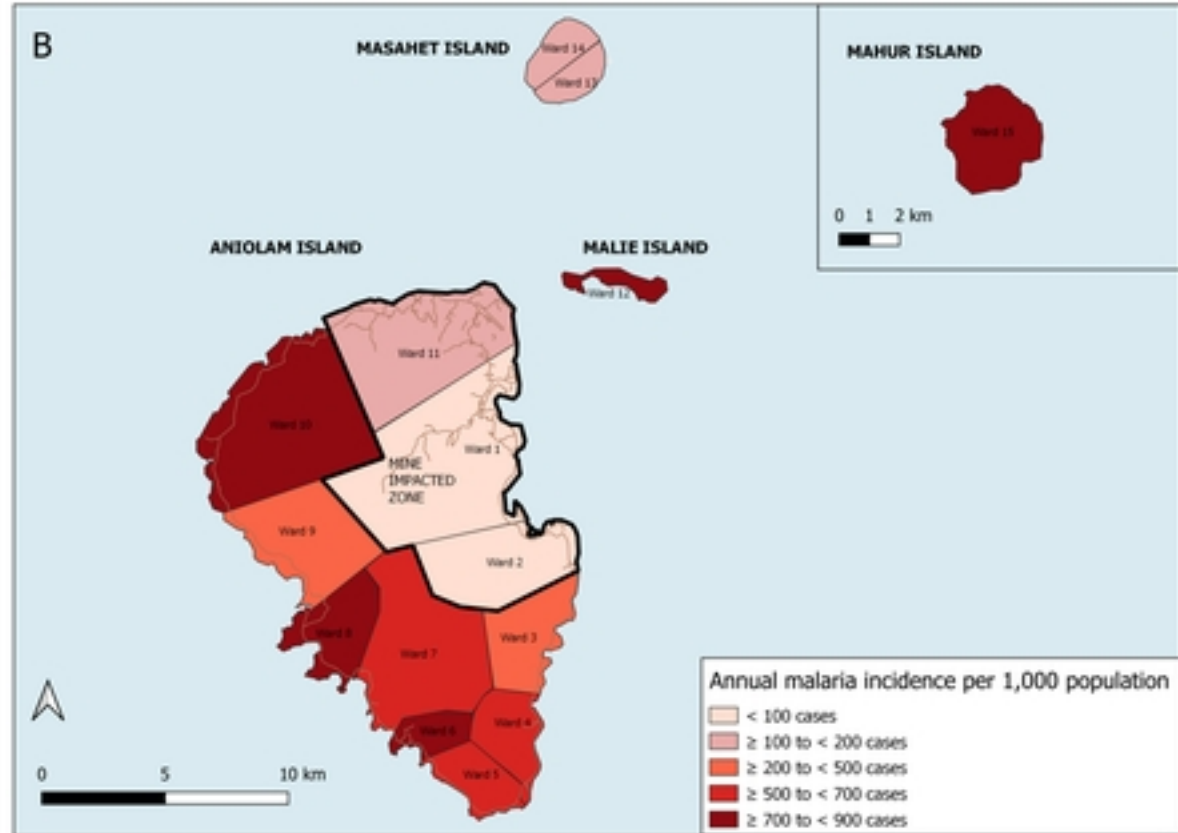
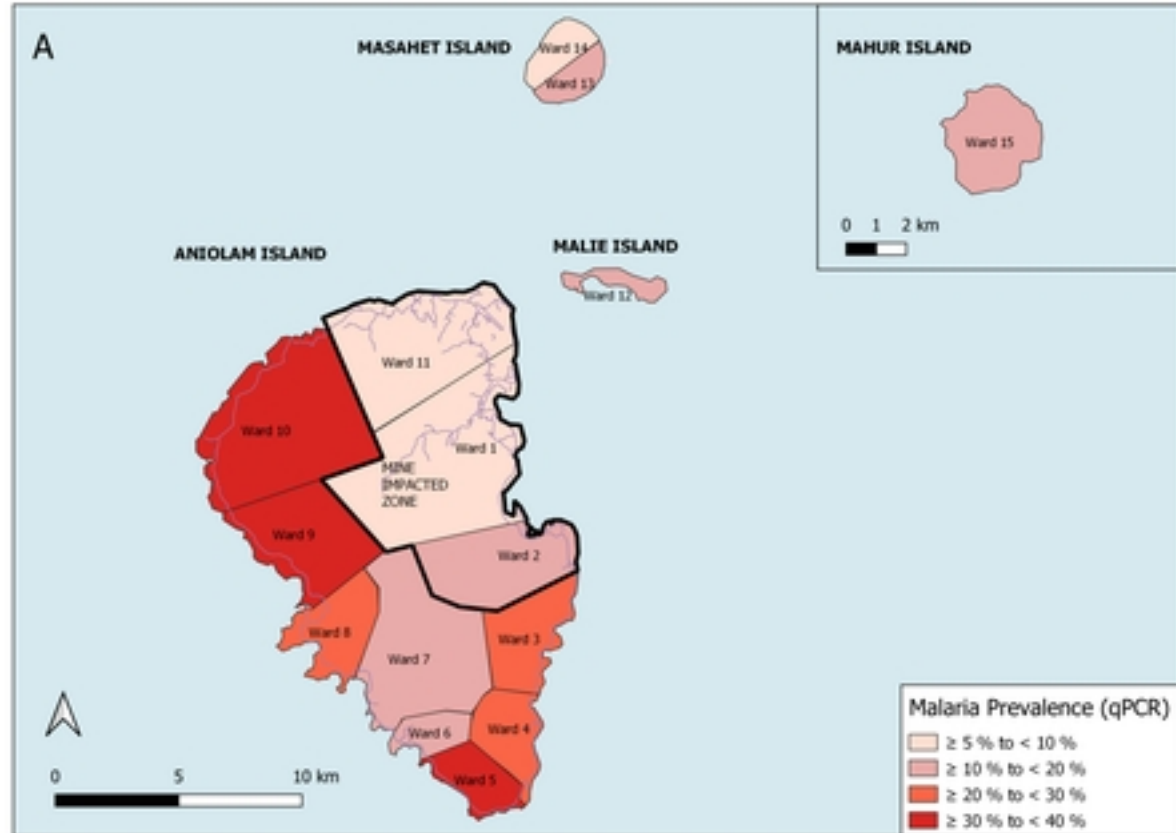


Figure2

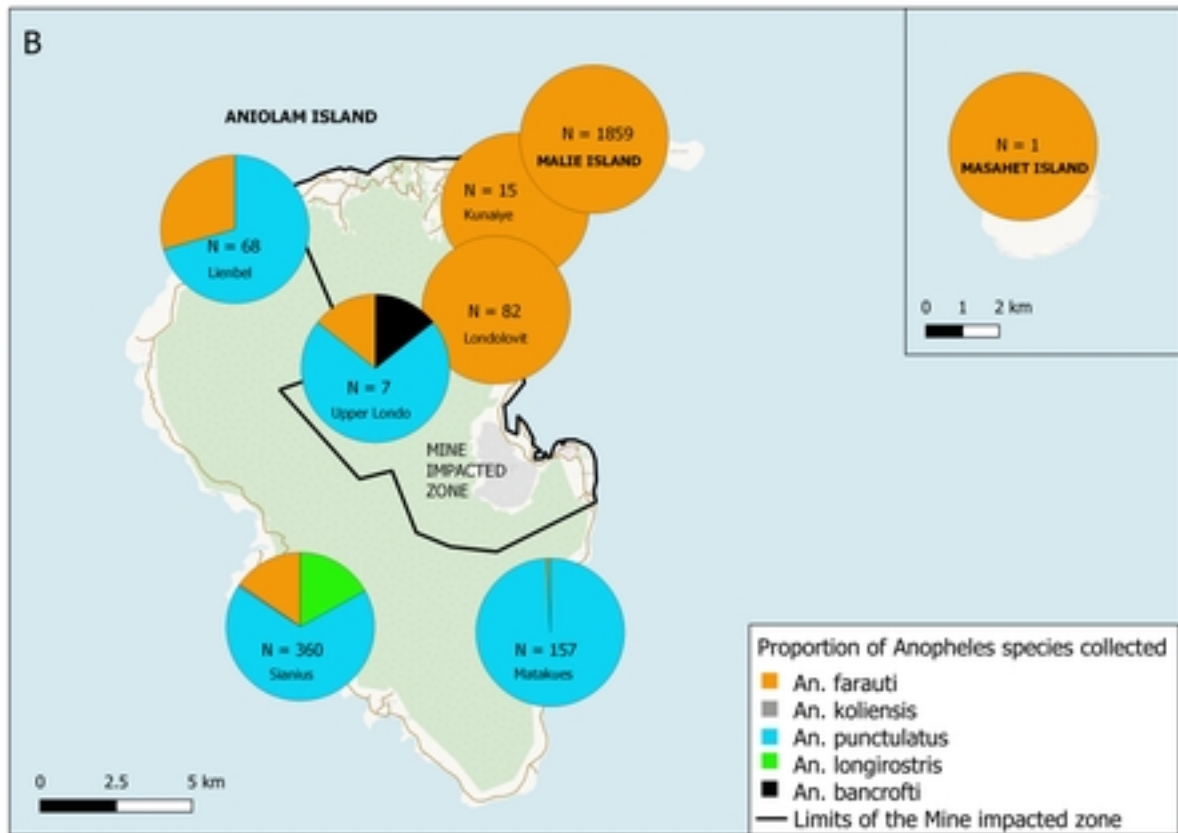
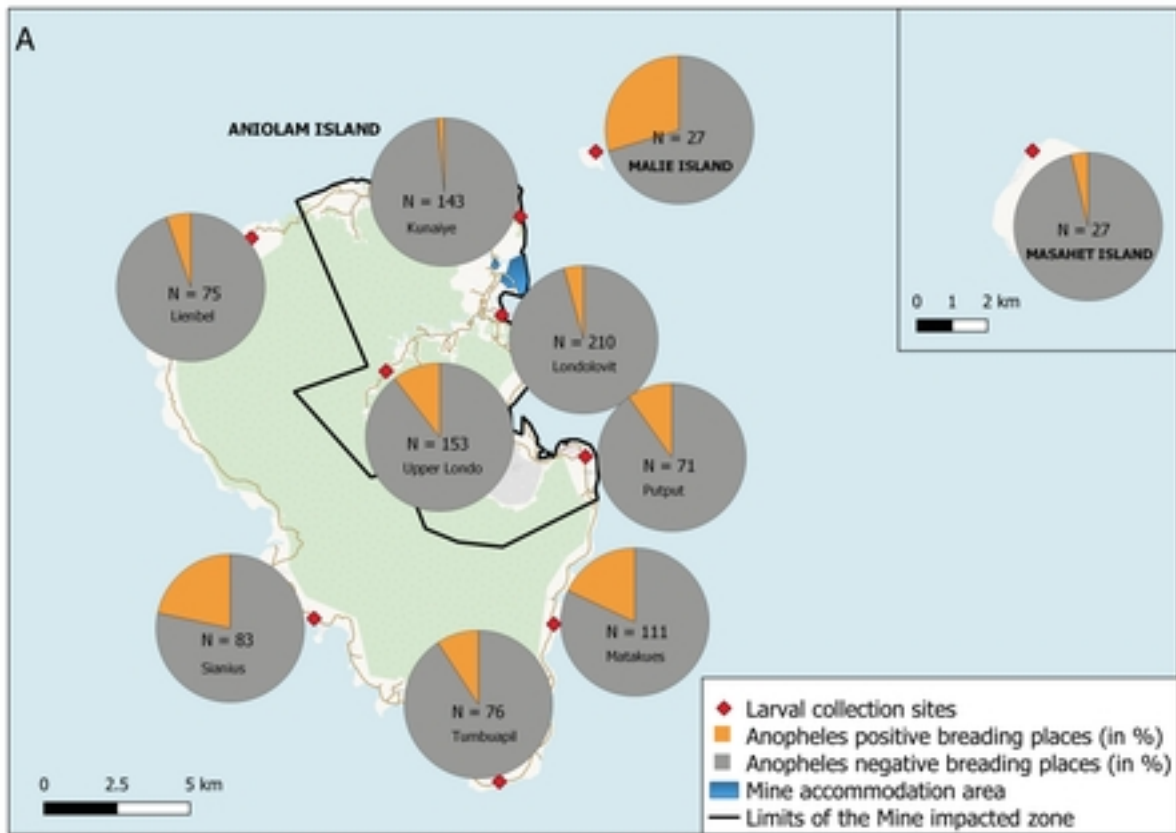
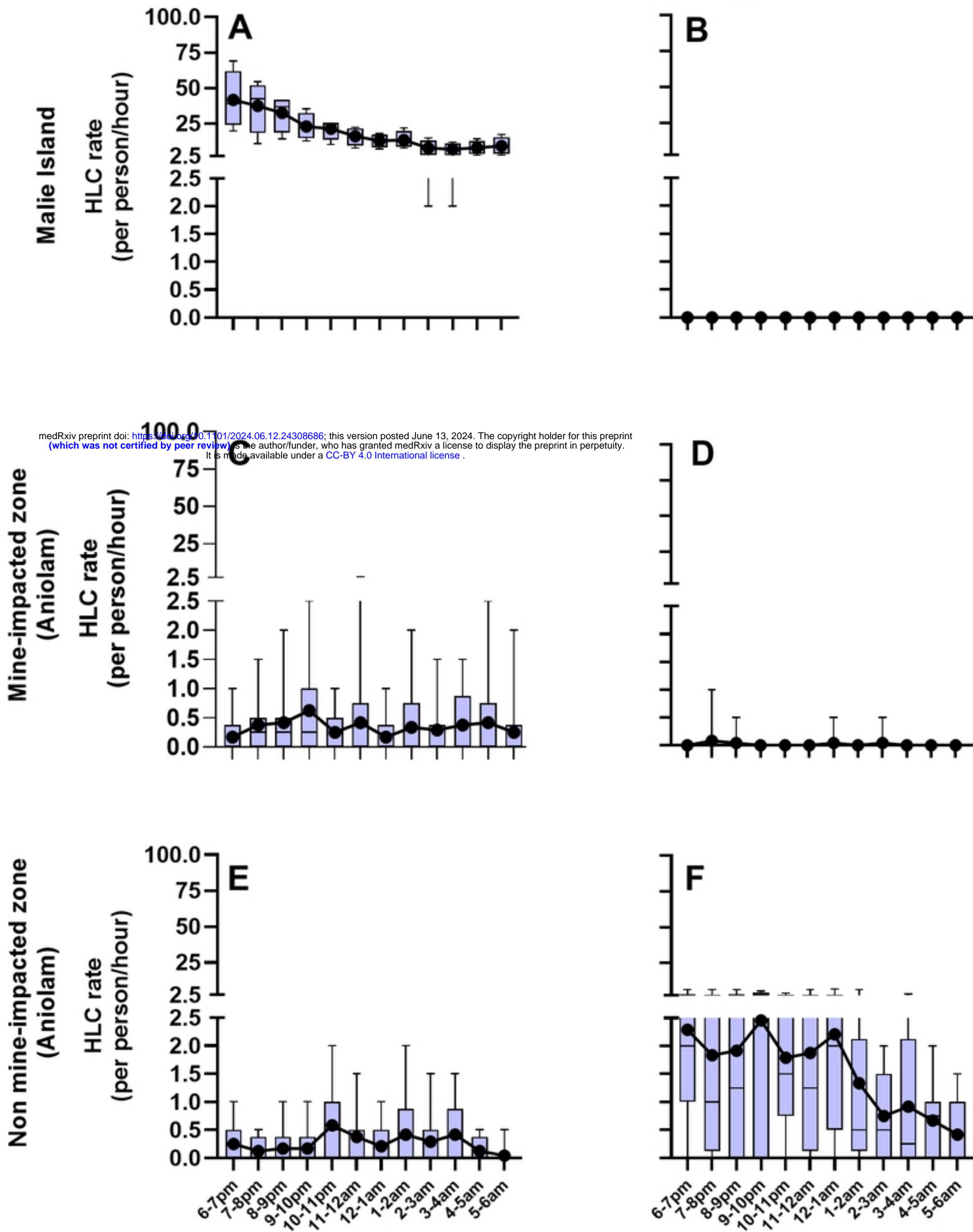


Figure 3

An. farauti

An. punctulatus s.s.



medRxiv preprint doi: <https://doi.org/10.1101/2024.06.12.24308686>; this version posted June 13, 2024. The copyright holder for this preprint (which was not certified by peer review) is the author/funder, who has granted medRxiv a license to display the preprint in perpetuity. It is made available under a [CC-BY 4.0 International license](https://creativecommons.org/licenses/by/4.0/).

Figure4