

## **Title Page**

**Title: Estimation of Sexual and Gender Minorities in the adult population of Japan:**

**Descriptive Epidemiological Study utilizing a Nationwide Cross-Sectional Internet**

**Survey**

Tetsuji Minami, MD, PhD<sup>1</sup>; Manami Inoue, MD, PhD<sup>2</sup>; Midori Matsushima, PhD<sup>3</sup>; Takashi

Yoshioka MD, PhD<sup>4</sup>; Takahiro Tabuchi, MD, PhD<sup>5, 6</sup>.

1 Division of Quality Assurance Programs, Institute for Cancer Control, National Cancer Center, Tokyo, Japan.

2 Division of Prevention, Institute for Cancer Control, National Cancer Center, Tokyo, Japan.

3 Faculty of Humanities and Social Sciences, University of Tsukuba. Ibaragi, Japan.

4 Department of Preventive Medicine and Public Health, Keio University School of Medicine, Shinjuku-ku, Tokyo, Japan.

5 Cancer Control Center, Osaka International Cancer Institute, Osaka, Japan

6 Division of Epidemiology, School of Public Health, Tohoku University Graduate School of Medicine, Miyagi, Japan.

**Email addresses and Orcid ID:**

Tetsuji Minami: [teminami@ncc.go.jp](mailto:teminami@ncc.go.jp) 0000-0003-4418-0237

Manami Inoue: [mnminoue@ncc.go.jp](mailto:mnminoue@ncc.go.jp) 0000-0003-1276-2398

Takahiro Tabuchi: [tabuchitak@gmail.com](mailto:tabuchitak@gmail.com) 0000-0002-1050-3125

**Acknowledgments:**

No conflicts of interest are disclosed.

**Correspondence to:**

Tetsuji Minami MD, PhD

Division of Quality Assurance Programs, Institute for Cancer Control, National Cancer Center,

Tokyo, Japan

Email: [teminami@ncc.go.jp](mailto:teminami@ncc.go.jp); Tel: +81-3-3812-2111

**Running Head:**

## Abstract

**Background:** Descriptive study of Japanese sexual and gender minority (SGM) population with national representativeness have not been conducted. We sought to estimate the proportion of the Japanese SGM, and to describe those demographic, socioeconomic, and health-related variables.

**Methods:** Utilizing data on a nationwide cross-sectional internet survey from September 12th to October 19th, 2022, we conducted a comprehensive descriptive study by applying inverse probable weighting method for national representativeness. Participants self-reported as heterosexual, homosexual, bisexual, or gender minority (GM) and responded to questions on various demographic, socioeconomic, and health-related concerns.

**Findings:** Among Japanese adults, 4.8% identified as homosexuals, 1.3% as bisexuals, and 3.8% as GMs. SGMs were less likely to be married/partnered compared to heterosexuals, though a certain proportion were in opposite-sex marriages/partnerships. SGMs had lower household equivalent income, insurance coverage, home ownership, current smoking rates, good self-rated health, and full COVID-19 vaccination rates. They also exhibited higher rates

of substance use, severe psychological distress, feelings of loneliness, and fear of COVID-19 compared to heterosexuals. When divided by assigned sex at birth, SGM males had poorer employment status, lower academic attainment, and higher body mass index compared to their heterosexual counterparts, while SGM females showed opposite trends.

**Interpretation:** Differences in demographic, socioeconomic, and health status between heterosexuals and SGMs underscore the need for targeted health policies and interventions to address health disparities among Japanese SGMs. Additionally, these results suggest that directly applying Western health policies to the Japanese context may not always be appropriate.

**Funding:** Funded by the Japan Society for the Promotion of Science, the Research Support Program to Apply the Wisdom of the University to tackle COVID-19 Related Emergency Problems, University of Tsukuba, and Health Labour Sciences Research Grant and the Japan Agency for Medical Research and Development.

## Introduction

Sexual and gender minorities (SGMs), commonly known as lesbian, gay, bisexual, and transgender (LGBT) individuals, have been a marginalized population across the globe, often facing discrimination, stigma, and prejudice, leading to health disparities. Minority stress framework theory, which emphasizes the marginalization of SGM, has been widely used to understand the underlying mechanisms of these health disparities.<sup>1</sup> Various resolutions relating to sexual orientation and gender identity (SOGI) have been endorsed by the United Nations<sup>2</sup>, and safeguarding the rights of SGM has now become a paramount concern globally. A growing body of SGM research has documented health disparities, such as higher rates of mental health problems, substance use, physical illness, and so on.

The Japanese government, as a member of the United Nations LGBT Core Group<sup>3</sup>, is actively advocating for the implementation of policy guidelines for safeguarding the rights of SGM in both workplace and educational settings (e.g., laws to prevent LGBT harassment and outing).<sup>4,5</sup> Some activists criticized that Japan, as the only G7 nation, has yet to enact legislation prohibiting discrimination against SGM and legalizing same-sex marriage.<sup>6</sup> Nevertheless, unlike in the past West, in Japan's context of philosophic (Confucianism), religious (Shintoism and Buddhism), and cultural norms, homosexuality had been neither criminalized, tabooed nor stigmatized, but rather partially accepted as high-society culture

(*shudō*, *kagama*, and so on) and popular art form (*yaoi*, *yuri*, and so on).<sup>7</sup> If the familial norms of marriage and procreation are adhered to, the diversity of SOGI is tolerated, and SGM sometimes enjoys same-sex relationships with social confidentiality while being married to the opposite sex.<sup>7,8</sup> Furthermore, Japan reportedly had a lower level of both country-level structural stigma for SGM and the concealment of SOGI among Asian countries.

9

To the best of our knowledge, there are no Asian or Japanese studies regarding SGM with national representativeness. A few Asian studies evaluating specific cohorts have reported that SGM is marginalized<sup>10-12</sup>, whereas much of the literature has been conducted in Western countries. The paucity of evidence could be attributed to certain Asian countries' opposition to the aforementioned United Nations resolution regarding SGM.<sup>2</sup> Furthermore, criminalization and penalty still exist regarding movements and expressions affiliated with SGM and the prohibition and penalization of same-sex sexual acts in certain Asian countries.<sup>13</sup> Some studies of SGM Asian Americans revealed their increased marginalization relative to both SGM and heterosexual ethnic majorities; nevertheless, such an effect was modified by the intersectionality of racism and heterosexism.<sup>8,14</sup> Previous studies give it little generalizability to Asian countries.

In Japan, as an industrialized country with a unique culture that differed from the West,

ascertaining the proportion of SGM, and evaluating demographic characteristics, household relationships, and health outcomes would provide essential information and insight to policymakers, healthcare professionals, and researchers, contributing to developing appropriate interventions to improve the health disparities if exists. Furthermore, filling the knowledge gap between Western countries and Japan would advance establishing international policies to safeguard SGM's rights, freedom, and dignity. Here, we aimed to estimate the proportion of the Japanese SGM population and describe those demographic characteristics using nationwide internet-based survey data.

## **Materials and methods**

### *Data collection, study participants, and exclusion*

This study used data from the 3rd wave of the COVID-19 and Society Internet Survey in Japan (JACSIS 2022), conducted by Rakuten Insight Inc. <sup>15</sup> from September 12 to October 19, 2022. Participants were recruited from a panel of 2.3 million Japanese individuals, ensuring diverse representation. They provided demographic information upon registration and consented to participate, with minors providing parental consent. The initial JACSIS study used multistage sampling, stratifying by age and sex, and reached a sample size of 28,000 through email invitations. For JACSIS 2022, the target sample size was 32,000, with priority

invitations sent to previous respondents, achieving a 65.7% response rate (27,327 respondents).

Two algorithms excluded ineligible respondents. Initially, 3,370 were excluded based on unrealistic household sizes, incorrect responses to a directed question, and straight-line responses on comorbidities and substance use. Subsequently, 592 were excluded for reporting non-binary sex assigned at birth for themselves or their partners. The final sample consisted of 28,038 respondents. Detailed methodology of the JACSIS study series is in previous studies, with further details in the **Supplementary Methods**. A summary flowchart of participants is shown in **Figure 1**.

### *Ascertainment of sexual orientation and gender identity*

**Table 1** presents a survey questionnaire to determine SOGI. The questionnaire design followed a "two-step approach" frequently employed in previous research<sup>16</sup>. Due to the agency's programmatic setup of the survey, each sub-question within a single main question was assigned the same response items, causing inappropriate response items for the respondents' and their partners' assigned sex at birth. As per the "two-step approach", respondents should answer with "male" or "female" for these sub-questions. The sentence



"Choose either 1 (male) or 2 (female)" was added following these sub-questions to serve as a directed question scale for the exclusion criteria, as previously mentioned.

Initially, individuals whose sex assigned at birth did not match their gender identity were categorized into "gender minority" (GM), such as those who identified as transgender, questioning, or asexual. Subsequently, respondents whose gender identity aligned with their assigned sex at birth were categorized based on their sexual orientation as "heterosexual" "homosexual" or "bisexual".

### *Variables measure*

The JACSIS 2022 survey consists of 92 main questionnaires. To ensure complete responses, incentives were only provided to participants who answered all questions, resulting in no missing values in the collected data. The variables utilized in this descriptive epidemiological study are as follows: age, marital status, household components and composition, household equivalent income, academic attainment, employment status, housing tenure, health insurance coverage, housing tenure, body mass index (BMI), smoking status, alcohol consumption, substance use, medical comorbidities, self-rated health, psychological distress measured by the Kessler-6 Scale, Short-term UCLA Loneliness Scale Japanese version, the Fear of

COVID-19 Scale, and COVID-19 vaccination status. The precise questionnaire and precise categorization of each variable are given in the **Supplementary Methods**.

### *Study approval*

The research ethics committees of the Osaka International Cancer Institute and National Cancer Center approved the study protocol (approval number: 20084 and 2020-447, respectively).

### *Role of Funding Source*

This study was supported by the Japan Society for the Promotion of Science (JSPS) KAKENHI grants (grant numbers 17H03589, 19K10671, 19K10446, 18H03107, 18H03062, 19H03860), the JSPS Grant-in-Aid for Young Scientists (grant number 19K19439), the Research Support Program to Apply the Wisdom of the University to tackle COVID-19 Related Emergency Problems, University of Tsukuba, and Health Labour Sciences Research Grant (grant numbers 19FA1005, 19FG2001, 19FA1012) and the Japan Agency for Medical Research and Development (AMED; grant number 2033648).

## *Statistical analyses*

Sampling weights for this study were derived from nationally representative samples of Comprehensive Survey of Living Conditions of People on Health and Welfare 2019 (CSLCPHW) obtained from the Ministry of Health, Labour, and Welfare. JACSIS 2022 and CSLCPHW 2019 data were merged and used in a logistic regression model to estimate propensity scores. The sampling weights, calculated for 28,630 respondents after initial exclusions, were predicted from a logistic model adjusting for several socio-economic variables using CSLCPHW 2019 data. The outcome variable in the logistic model was the type of survey (JACSIS 2022 or CSLCPHW 2019), and the sampling weight represented the probability of "being an internet survey respondent."

An inverse probability weighting method was applied to adjust for potential sampling bias<sup>17</sup>. Descriptive analyses included unweighted numbers and weighted proportions (henceforth, written as "proportion") with 95% confidence intervals (CIs) for discrete variables and weighted means with 95% CIs for continuous variables, calculated using a robust variance estimator to account for inverse probability weighting. Analyses by sex assigned at birth and SOGI categories were also performed. All analyses were conducted using STATA version 17 (Stata Corp).

## Results

Among Japanese adults, 4.8% identified as homosexual, 1.3% as bisexual, and 3.8% as GM.

There were more homosexuals and fewer bisexuals and GMs among males than females.

SGMs were more common in younger age groups under age 30, although there was no age-related variability in the proportion of SGM after age 30. SGM females were more common in all age groups over 20 compared to males (**Table 2**, Supplementary Table 1, &

**Figure 2**).

SGMs were less likely to be married or in a partnership compared to heterosexuals (65.1% heterosexuals, 43.3% homosexuals, 39.1% bisexuals, 26.7% GMs). More male same-sex couples existed compared to females (56.3% vs. 33.3%). In bisexual and GM groups, same-sex marriage was higher in males (6.7% and 7.2%) compared to females (0% and 0.7%), with most females in opposite-sex marriages. Same-sex marriage was more common in reproductive-aged SGMs. No generational differences were observed for GMs (**Table 2** & Supplementary Table 2).

SGMs had higher proportions of single households (14.9% heterosexuals, 27.2% homosexuals, 17.1% bisexuals, 28.9% GMs). Bisexuals had fewer parenting households than heterosexuals, homosexuals, and GMs (31.0% vs. 43.9%, 45.1%, and 39.6%).

Married/partnered male SGMs had higher parenting rates across all categories, with no female bisexual same-sex marriages. Married/partnered male GMs and female homosexuals had higher parenting proportions in same-sex than opposite-sex marriages (56.9% vs 30.8% and 42.5% vs 31.0%, respectively) (**Table 2** & Supplementary Table 3).

SGMs had lower household equivalent income than heterosexuals (354 [JPY/10,000] heterosexuals, 322 homosexuals, 312 bisexuals, 294 GMs), even if divided by assigned sex at birth. Female GMs and male bisexuals had the lowest income among the same assigned sexes. High-income quintiles (4th and 5th quintiles) were least common among GMs, and the lowest-income quintile was more common across all SGMs than heterosexuals (**Table 2**, Supplementary Table 4, **Figure 3**).

Degree holders were less prevalent among SGMs than heterosexuals, with females outnumbering males in each category (46.9% vs. 42.8% heterosexuals, 49.3% vs. 38.1% homosexuals, 39.5% vs. 37.4% bisexuals, 44.2% vs. 35.3% GMs). In any SGM category, bachelor's and higher degree holders showed little difference, but among heterosexuals, males had higher proportions than females (31.5% vs. 19.7%). Divided assigned sex at birth, degree holders were the most prevalent among heterosexual males and homosexual females (42.8% and 49.3%) (**Table 2** & Supplementary Table 5 & **Figure 4**).

Employees/employed/self-employed was higher among homosexuals and bisexuals than heterosexuals (67.8%, 67.3% vs. 64.3%), with GMs having the lowest rates (57.2%). Heterosexual, homosexual, and bisexual males showed a decreasing and increasing trend in the proportion for employee/employed/self-employed and for unemployed, respectively. On the other hand, the opposite trend was seen for females. GMs had the lowest employment rates (27.4% males, 21.1% females) (**Table 2** & **Supplementary Table 6**, **Figure 5**).

SGMs had lower health insurance coverage than heterosexuals (96.1% heterosexuals, 87.4% homosexuals, 89.4% bisexuals, 86.3% GMs), with males having less coverage than females in all SOGI categories. (**Table 2** & **Supplementary Table 7**, **Figure 6**).

Home ownership was lower among SGMs than heterosexuals (74.9% heterosexuals, 68.5% homosexuals, 70.4% bisexuals, 70.3% GMs), with bisexual males and homosexual

females having the lowest among males and females, respectively (64% and 66.6%) (**Table 2 & Supplementary Table 8**).

The weighted average BMI was about 22 for all SOGI categories, with females less overweight/obese and more underweight than males. Homosexual and bisexual males were more likely to be obese and underweight than heterosexuals (8.0%, 14.7% obese vs. 4.7%; 7.5%, 12.9% underweight vs. 5.3%), and GMs were more likely to be underweight (13.1% vs. 5.3%). SGM females were more underweight than heterosexuals (25.2%, 29.3%, 26.7% vs. 19.0%) (**Table 2, Supplementary Table 9 & Supplementary Figure 1**).

Fewer GMs were current smokers than other SOGI categories. Bisexual and GM males were less likely to smoke than heterosexuals (21.3%, 25.9% vs. 31.0%), while bisexual females were more likely to smoke than others (20.4% vs. 31.0% heterosexuals, 9.3% homosexuals, 8.5% GMs) (**Table 2 & Supplementary Table 10 & Supplementary Figure 2**).

Fewer SGMs were habitual drinkers compared to heterosexuals, with a similar trend in males (40.6%, 35.2%, 34.4% vs. 51.7%). Among females, the trend was less pronounced (21.3%, 19.6%, 23.1% vs. 25.3%). Substance use was slightly higher among SGMs than heterosexuals (**Table 2 & Supplementary Table 11**).

SGMs had more medical comorbidities, including pneumonia/bronchitis, caries, COPD, chronic hepatitis/cirrhosis, immunodeficiency diseases, and psychiatric diseases. Allergic disease, cardiovascular disease, chronic renal failure, immunodeficiency disease, and cancer were more prevalent among SGM males (**Table 2 & Supplementary Table 12**).

SGMs reported lower self-rated health and higher psychological distress than heterosexuals. Bisexuals and GMs scored higher on the UCLA Loneliness Scale than heterosexuals and homosexuals. On the Fear of COVID-19 Scale, homosexual and GM males scored higher than heterosexual males (18.2, 18.8 vs. 16.9). Homosexual females scored higher than heterosexual females (19.4 vs. 17.8). SGMs were less likely to be fully vaccinated

or boosted against COVID-19 compared to heterosexuals (males: 79.3% homosexuals, 81.4% bisexuals, 81.2% GMs vs. 88.0%; females: 83.3%, 80.9%, 85.4% vs. 87.3%) (Table 2 & **Supplementary Table 13**)

## **Discussion**

This is the first study aimed to estimate the proportion of SGM in Japan and describe their socioeconomic status, health-related conditions, and COVID-19-related variables using nationwide internet survey data. Our primary finding revealed that 4.8% of Japanese adults identified as homosexual, 1.3% as bisexual, and 3.8% as GM, providing nationally representative data. This indicates a significant portion of the Japanese adult population identifies as SGM, emphasizing the need to address their specific needs and concerns. Our study enhances the current literature by offering a more precise and representative estimate of the SGM population in Japan. Additionally, we found notable differences in socioeconomic and health-related status between SGM individuals and their heterosexual counterparts. Despite Japan's relatively accepting cultural stance towards homosexuality, SGMs experienced partially worse socioeconomic and health-related outcomes.

The increased proportion of SGMs among younger generations, along with a higher proportion of homosexuals among men and a higher proportion of bisexuals and GMs among women, aligns with prior research conducted in the West.<sup>18-22</sup>

We found that a substantial proportion of Japanese SGMs, even homosexuals, were involved in opposite-sex marriages/partnerships. While in same-sex marriages/partnerships, homosexuals formed parenting households with comparable proportion to opposite-sex ones. The opposite-sex marriages/partnerships and parenting households in Japanese SGM may underlie “the familial norms of marriage and procreation” in Confucianism culture or may

reflect the parallel between being in opposite-sex marriages/partnerships and conducting a same-sex relationship.<sup>7</sup>

On the other hand, there is scant research detailing opposite-sex marriages among SGMs. Similarly, mixed orientation marriages/relationships, namely those in a marriage/relationship whose sexual orientations do not match, are not well-studied to date<sup>23</sup>. The heterosexual marriages/relationships proportion of males who have sex with males was reported to be 3-9% in the US<sup>24,25</sup>, 11-60% in India<sup>26</sup>, and 33-51% in China.<sup>27</sup> In contrast, those of females with sex with females were unclear despite qualitative studies encompassing limited participants.<sup>28,29</sup> Such studies were less generalizable due to the sampling bias of the study participants, although the proportion of mixed-orientation marriages/relationships was higher in Asian countries compared to the West. Some studies revealed that SGM males in a mixed orientation marriage suffered from relationship distress<sup>30</sup> or less satisfaction than in a heterosexual marriage<sup>31</sup>; meanwhile, those in China were associated with fewer anxiety symptoms than single.<sup>10</sup> These inconsistent results could be attributed to the diverse norms of each country.

Concerning the association between income and SOGI category, this study was comparable to existing studies. Although there was variability in the reported income indicators, in general, SGMs were reported to have lower incomes, with bisexual women reported to have the lowest incomes, mainly based on Western studies.<sup>19,20,32</sup> In addition, females had lower incomes than males in each SOGI category. Furthermore, in the study that included the 'something else' category (equivalent to GM in this study)<sup>20</sup>, this category was reported to have the lowest income of all SOGI categories.

This study demonstrated disparities in academic attainment between SOGI categories in Japan and different distributions between Japan and other countries. Existing studies have consistently indicated that homosexual and bisexual males exhibit higher educational



achievement than heterosexual males.<sup>19,20,32</sup> However, in the case of Japan, the opposite trend was observed among males. Conversely, among females, prior studies have shown inconsistent results, suggesting that homosexual and bisexual females tend to possess higher academic attainment than heterosexual females<sup>20</sup>, or they were ranked in the order of homosexuals, heterosexuals, and bisexuals, similar to the results of this study<sup>19</sup>. In Japan, our findings align with the latter pattern.

Previous studies have found that male and female SGMs were less likely to be employed<sup>18-20</sup>; however, SGMs excluded from GM were more likely to be employed in Japan. This was mainly reflected in the high employment proportions of homosexual and bisexual females. GM males and females had the worst employment status, consistent with a previous study.<sup>20</sup>

Male and female SGMs in Japan had a higher proportion for the uninsured than heterosexuals, although the numbers are minimal. This result was consistent with US studies<sup>18,19</sup>, which do not apply to universal health coverage. The burden of access to healthcare due to uninsured in Japan could be a potential contributor to health inequalities between SGMs and heterosexuals.

It has been reported that SGMs were at a higher risk of housing instability, especially homelessness.<sup>33</sup> However, regarding housing tenure, we showed that bisexual males and homosexual females were less likely to own a home than other SOGI categories. Nonetheless, substantial differences were not observed between the SOGI categories concerning housing instability, that is, freeloader or temporary housing, which could be evaluated in this study.

The distribution of BMI among SGMs compared to heterosexuals was inconsistent with previous Western studies.<sup>34,35</sup> Interestingly, this study showed the opposite of the association that homosexual and bisexual females tended to be overweight/obese<sup>34</sup>, and SGM males were less likely to be overweight/obese.<sup>35</sup>

Curiously, the prevalence of current smokers and habitual drinkers was less in SGMs than in heterosexuals among each sex, unlike previous studies.<sup>21,22</sup> The prevalence of substance users was greater in SGMs than in heterosexuals, as in previous Western studies<sup>36</sup>, but at a very low prevalence.

Comorbidities among SGMs include immunodeficiency diseases such as HIV and HCV, as well as diabetes, asthma, respiratory disease, cardiovascular disease, cancer, and psychiatric disease have been reported to be related socioeconomic status, health care access, tobacco, and substance use.<sup>37-39</sup> The disparity between heterosexuals and SGM regarding comorbidities in Japan might be explained in the same way.

Like this study, SGMs reportedly have poorer self-rated health, feel lonelier, and experience psychological distress than heterosexuals.<sup>19,40</sup> Interestingly, no differences in loneliness were observed between homosexuals and heterosexuals in the description of this study, so future research with covariate adjustment is warranted.

The SGM population suffered more vulnerabilities due to the COVID-19 pandemic.<sup>41</sup> In a study with Fear of COVID-19 as the outcome, SGM was significantly worse than heterosexuals<sup>42</sup>, while vaccination coverage did not differ between SGM and heterosexuals.<sup>43</sup>

This study has several limitations. Firstly, as it relies on self-reported data, results may be influenced by recall and social desirability biases. While prior SGM studies used trained interviewers to reduce such biases, web-based surveys are promising for investigating sensitive behaviors like SOGI.<sup>44</sup> Comparison with interview-based surveys is needed. Secondly, the inverse probability weighting method may overestimate attributes with few respondents, such as minors or older females.<sup>45</sup> It's important to assess if the covariates used for sampling weights ensure national representativeness. Further studies with other cohorts or surveys are needed for better national representativeness. Thirdly, the SOGI category classification might be inaccurate.<sup>16β</sup> While this study classified SOGI by sexual attraction

and respondents' gender, future surveys should also ask about sexual expressions and behaviors. Directed questions in the SOGI questionnaire might exclude “questioning,” “asexual,” etc., underestimating GM. Finally, web-based surveys include variables unsuitable for questionnaires (e.g., asymptomatic comorbidities) or that cannot be measured (e.g., homelessness).

## **Conclusion**

We estimated the percentage of SGMs in the Japanese population and described and compared several demographic variables between heterosexuals and SGMs. We clarified the differences in socioeconomic status and health status, then we also found that marital status, academic attainment, employment status, BMI, and smoking and drinking status differ from those in previous Western studies. The results of our descriptive epidemiological study will motivate policy makers, health care providers, and researchers to generate, analyze, and evaluate hypotheses in SGM research in Japan. We also hope that the results will contribute to an important step towards ensuring the well-being of SGM and defending their rights in a society that respects diversity and promotes equality.

## **Figures and Tables**

## **References**

## **Research in Context Panel**

### *Evidence before this study:*

Previous research on sexual and gender minorities (SGMs) has primarily focused on Western populations, revealing significant health disparities, socioeconomic challenges, and varying degrees of acceptance and discrimination. Limited studies have been conducted in Asia, particularly in Japan, where cultural, philosophical, and religious contexts differ. Existing data are often not nationally representative, and there is a lack of comprehensive understanding of the demographic, socioeconomic, and health-related status of SGMs in Japan. No prior studies have utilized a nationally representative sample to examine these aspects comprehensively.

### *Added value of this study:*

This study is the first to provide a nationally representative estimate of the proportion of SGMs in the Japanese adult population, along with a detailed description of their demographic, socioeconomic, and health-related variables. By using a large-scale internet survey and applying inverse probability weighting for national representativeness, this study offers a more accurate and comprehensive understanding of the SGM population in Japan. It highlights differences in socioeconomic and health-related outcomes between SGMs and heterosexual individuals, contributing valuable data to the limited body of research on SGMs in non-Western contexts.

### *Implications of all the available evidence:*

The findings underscore the necessity for targeted health policies and interventions to address the unique needs and disparities faced by SGMs in Japan. The study's results suggest that while there are similarities between the challenges faced by SGMs in Japan and those in Western countries, there are also distinct differences shaped by cultural and societal factors. This highlights the importance of developing culturally appropriate policies and interventions rather than directly applying Western models. Policymakers, healthcare providers, and researchers should consider these findings to promote equality, improve health outcomes, and ensure the well-being of SGMs in Japan. Future research should continue to build on this study to further understand the dynamics of SGMs in Japan and other non-Western contexts.

### **Data Sharing Statement**

The original data can be shared at a reasonable request to the corresponding author for research and academic propose.

### **Declaration of Interest**

None

1. Meyer IH. Prejudice, social stress, and mental health in lesbian, gay, and bisexual populations: conceptual issues and research evidence. *Psychol Bull* 2003; **129**(5): 674-97.
2. OHCHR. Resolutions on sexual orientation, gender identity and sex characteristics. 2023. <https://www.ohchr.org/en/sexual-orientation-and-gender-identity/resolutions-sexual-orientation-gender-identity-and-sex-characteristics> (accessed 11/10 2023).
3. Group TUNLC. The United Nations LGBTI Core Group. 2023. <https://unlgbticoregroup.org/> (accessed 11/10 2023).
4. The ministry of Education C, Sports, Science and Technology, Japan. [https://www.mext.go.jp/a\\_menu/shotou/jinken/sankosiryoy/1415166\\_00004.htm](https://www.mext.go.jp/a_menu/shotou/jinken/sankosiryoy/1415166_00004.htm).

5. Justice Mo. For harassment measures for foreign workers. 2023. [https://www.moj.go.jp/JINKEN/jinken04\\_00126.html](https://www.moj.go.jp/JINKEN/jinken04_00126.html) (accessed 11/10 2023).
6. LGBTQ groups demand Japan adopt equal rights law by G7. The Mainichi. 2023.
7. Laurent E. Sexuality and human rights: an Asian perspective. *J Homosex* 2005; **48**(3-4): 163-225.
8. Okazaki S. Influences of culture on Asian Americans' sexuality. *J Sex Res* 2002; **39**(1): 34-41.
9. Pachankis JE, Branstrom R. How many sexual minorities are hidden? Projecting the size of the global closet with implications for policy and public health. *PloS one* 2019; **14**(6): e0218084.
10. Yang Z, Li S, Zhang R, et al. Current heterosexual marriage is associated with significantly decreased levels of anxiety symptoms among Chinese men who have sex with men. *BMC Psychiatry* 2020; **20**(1): 151.
11. Huang YT, Liang Z. Effects of Same-Sex Marriage Legalization for Sexual Minority Men in Taiwan: Findings From a Prospective Study. *Int J Public Health* 2022; **67**: 1604489.
12. Xu W, Huang Y, Tang W, Kaufman MR. Heterosexual Marital Intention: The Influences of Confucianism and Stigma Among Chinese Sexual Minority Women and Men. *Arch Sex Behav* 2022; **51**(7): 3529-40.
13. The International Lesbian, Gay, Bisexual, Trans and Intersex Association. Maps - sexual orientation laws. 2023. <https://ilga.org/maps-sexual-orientation-laws> (accessed 11/10 2023).
14. Le TP, Bradshaw BT, Wang MQ, Boekeloo BO. Discomfort in LGBT Community and Psychological Wellbeing for LGBT Asian Americans: The Moderating Role of Racial/Ethnic Identity Importance. *Asian Am J Psychol* 2022; **13**(2): 149-57.
15. Rakuten.
16. Badgett MVL, Goldberg N, Conron KJG, Gary J. Best Practices for Asking Questions about Sexual Orientation on Surveys (SMART). 2009. <https://williamsinstitute.law.ucla.edu/publications/smart-so-survey/> (accessed 11/10 2023).
17. Hoshino T. Statistics for observational data and survey data -Causal inference, selection bias and data fusion.-: Iwanami Shoten; 2009.
18. Operario D, Gamarel KE, Grin BM, et al. Sexual Minority Health Disparities in Adult Men and Women in the United States: National Health and Nutrition Examination Survey, 2001-2010. *Am J Public Health* 2015; **105**(10): e27-34.
19. Gonzales G, Przedworski J, Henning-Smith C. Comparison of Health and Health Risk Factors Between Lesbian, Gay, and Bisexual Adults and Heterosexual Adults in the United States: Results From the National Health Interview Survey. *JAMA Intern Med* 2016; **176**(9): 1344-51.
20. Jackson CL, Agenor M, Johnson DA, Austin SB, Kawachi I. Sexual orientation identity disparities in health behaviors, outcomes, and services use among men and women in the United States: a cross-sectional study. *BMC Public Health* 2016; **16**(1): 807.
21. Shahab L, Brown J, Hagger-Johnson G, et al. Sexual orientation identity and tobacco and hazardous alcohol use: findings from a cross-sectional English population survey. *BMJ Open* 2017; **7**(10): e015058.
22. Shokoohi M, Kinitz DJ, Pinto D, et al. Disparities in alcohol use and heavy episodic drinking among bisexual people: A systematic review, meta-analysis, and meta-regression. *Drug Alcohol Depend* 2022; **235**: 109433.
23. Vencill JA, Wiljamaa SJ. From MOM to MORE: Emerging Research on Mixed Orientation Relationships. *Current Sexual Health Reports* 2016; **8**(3): 206-12.
24. Catania JA, Osmond D, Stall RD, et al. The continuing HIV epidemic among men who have sex with men. *Am J Public Health* 2001; **91**(6): 907-14.

25. Jeffries WLt. Sociodemographic, sexual, and HIV and other sexually transmitted disease risk profiles of nonhomosexual-identified men who have sex with men. *Am J Public Health* 2009; **99**(6): 1042-5.
26. Godbole S, Sane S, Kamble P, et al. Predictors of bisexual behaviour among MSM attending intervention sites may help in prevention interventions for this bridge to the heterosexual epidemic in India: data from HIV sentinel surveillance. *PloS one* 2014; **9**(9): e107439.
27. Wen G, Zheng L. Relationship Status and Marital Intention Among Chinese Gay Men and Lesbians: The Influences of Minority Stress and Culture-Specific Stress. *Arch Sex Behav* 2020; **49**(2): 681-92.
28. Buxton AP. Counseling Heterosexual Spouses of Bisexual Men and Women and Bisexual-Heterosexual Couples. *Journal of Bisexuality* 2006; **6**(1-2): 105-35.
29. Reinhardt R. Bisexual Women in Heterosexual Relationships: A Study of Psychological and Sociological Patterns: A Reflective Paper. *Journal of Bisexuality* 2011; **11**: 439-47.
30. Kays JL, Yarhouse MA, Ripley JS. Relationship factors and quality among mixed-orientation couples. *J Sex Marital Ther* 2014; **40**(6): 512-28.
31. Tornello SL, Farr RH, Patterson CJ. Predictors of parenting stress among gay adoptive fathers in the United States. *J Fam Psychol* 2011; **25**(4): 591-600.
32. Branstrom R, Hatzenbuehler ML, Tinghog P, Pachankis JE. Sexual orientation differences in outpatient psychiatric treatment and antidepressant usage: evidence from a population-based study of siblings. *Eur J Epidemiol* 2018; **33**(6): 591-9.
33. LoSchiavo C, Krause KD, Singer SN, Halkitis PN. The Confluence of Housing Instability and Psychosocial, Mental, and Physical Health in Sexual Minority Young Adults: The P18 Cohort Study. *J Health Care Poor Underserved* 2020; **31**(4): 1693-711.
34. VanKim NA, Laska MN. Sexual Orientation and Obesity: What Do We Know? *Curr Obes Rep* 2021; **10**(4): 453-7.
35. Lopez Castillo H, Blackwell CW, Schrimshaw EW. Paradoxical Obesity and Overweight Disparities Among Sexual Minority Men: A Meta-Analysis. *Am J Mens Health* 2022; **16**(2): 15579883221095387.
36. Fish JN, Bishop MD, Russell ST. Developmental Differences in Sexual Orientation and Gender Identity-Related Substance Use Disparities: Findings From Population-Based Data. *J Adolesc Health* 2021; **68**(6): 1162-9.
37. Beach LB, Elasy TA, Gonzales G. Prevalence of Self-Reported Diabetes by Sexual Orientation: Results from the 2014 Behavioral Risk Factor Surveillance System. *LGBT Health* 2018; **5**(2): 121-30.
38. Evans-Polce RJ, Kcomt L, Veliz PT, Boyd CJ, McCabe SE. Alcohol, Tobacco, and Comorbid Psychiatric Disorders and Associations With Sexual Identity and Stress-Related Correlates. *Am J Psychiatry* 2020; **177**(11): 1073-81.
39. Streed C, Jr., Caceres B, Mukherjee M. Preventing cardiovascular disease among sexual and gender minority persons. *Heart* 2021.
40. Elmer EM, van Tilburg T, Fokkema T. Minority Stress and Loneliness in a Global Sample of Sexual Minority Adults: The Roles of Social Anxiety, Social Inhibition, and Community Involvement. *Arch Sex Behav* 2022; **51**(4): 2269-98.
41. Li L, Taeihagh A, Tan SY. A scoping review of the impacts of COVID-19 physical distancing measures on vulnerable population groups. *Nat Commun* 2023; **14**(1): 599.
42. Duarte M, Pereira H. The Impact of COVID-19 on Depressive Symptoms through the Lens of Sexual Orientation. *Brain Sci* 2021; **11**(4).

43. McNaghten AD, Brewer NT, Hung MC, et al. COVID-19 Vaccination Coverage and Vaccine Confidence by Sexual Orientation and Gender Identity - United States, August 29-October 30, 2021. *MMWR Morb Mortal Wkly Rep* 2022; **71**(5): 171-6.
44. Burkill S, Copas A, Couper MP, et al. Using the Web to Collect Data on Sensitive Behaviours: A Study Looking at Mode Effects on the British National Survey of Sexual Attitudes and Lifestyles. *PloS one* 2016; **11**(2): e0147983.
45. Schonlau M, van Soest A, Kapteyn A, Couper M. Selection Bias in Web Surveys and the Use of Propensity Scores. *Sociological Methods & Research* 2009; **37**: 291-318.

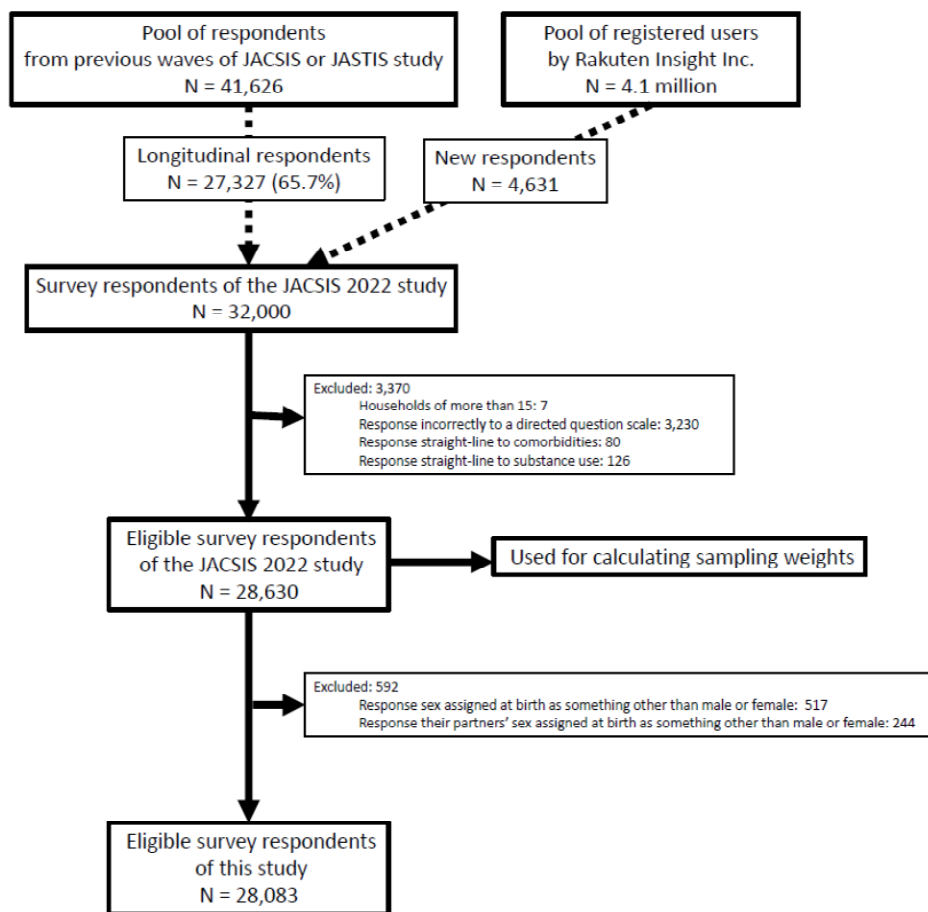


## List of figures

- 1
- 2 Figure 1. Flowchart for eligible study participants.
- 3 Figure 2. Sexual Orientation and Gender Identity Categories According to Age Group and Sex.
- 4 Figure 3. Household equivalent income by SOGI category and sex.
- 5 Figure 4. Academic attainment by SOGI category and sex.
- 6 Figure 5. Employment status by SOGI category and sex.
- 7 Figure 6. Health insurance coverage by SOGI category and sex.
- 8 Figure 7. Body mass index by SOGI category and sex.
- 9 Figure 8. Smoking status by SOGI category and sex.
- 10

1

12 Figure 1. Flowchart for eligible study participants



Abbreviation:

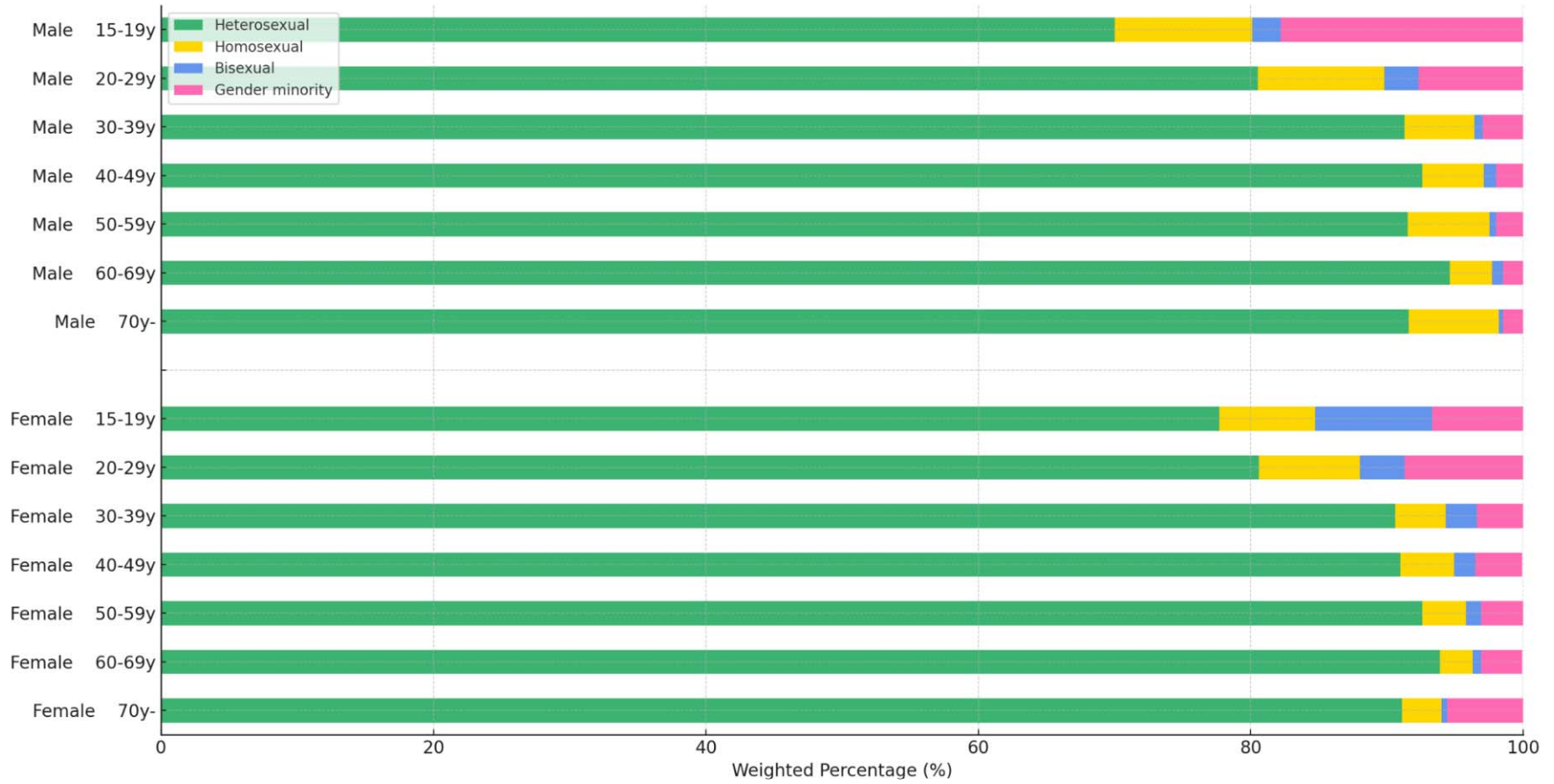
JACSIS, the Japan COVID-19 and Society Internet Survey  
JASTIS, the Japan "Society and New Tobacco" Internet Survey

13

14

2

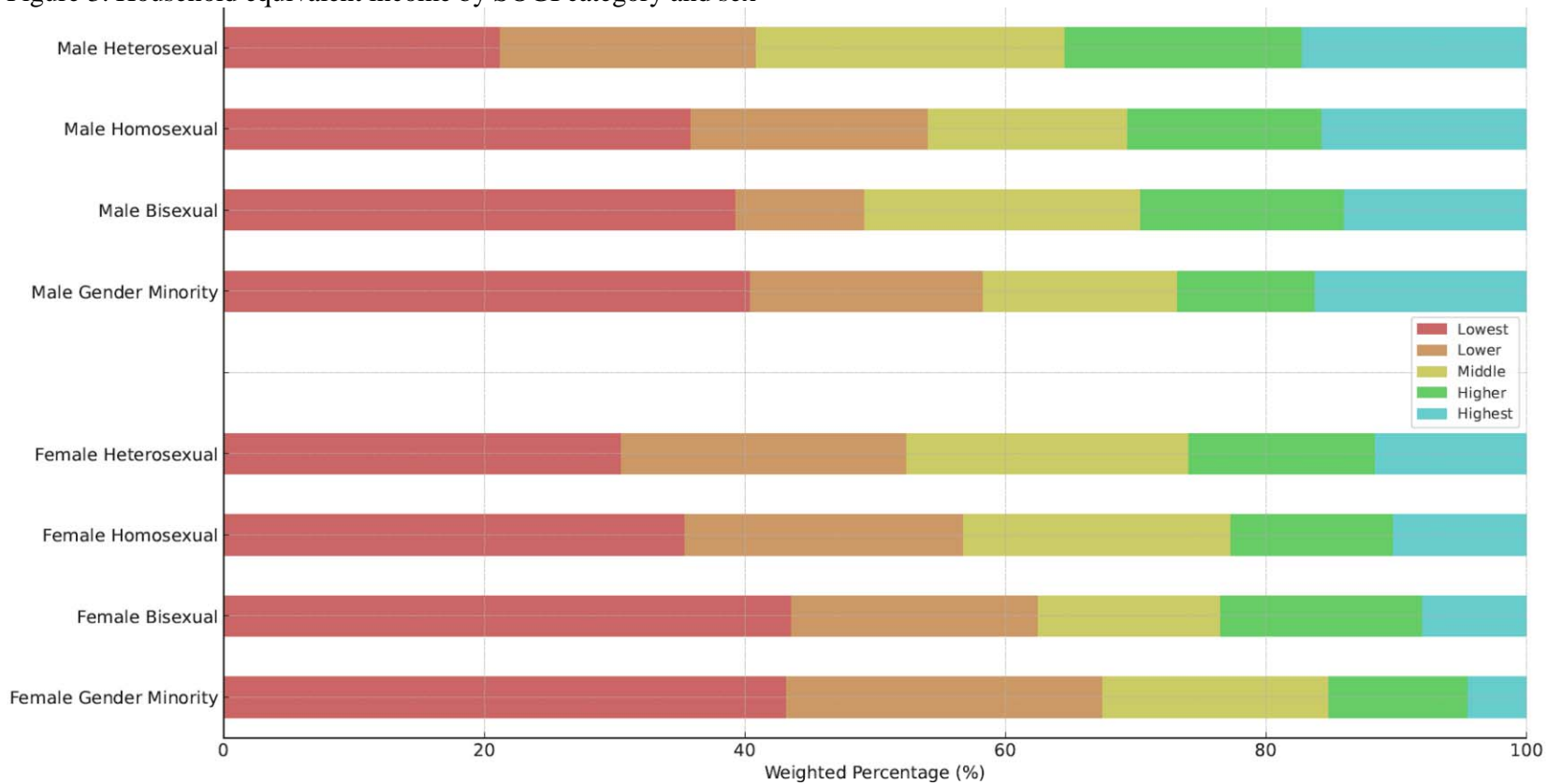
15 Figure 2. Sexual Orientation and Gender Identity Categories According to Age Group and Sex.



16

17

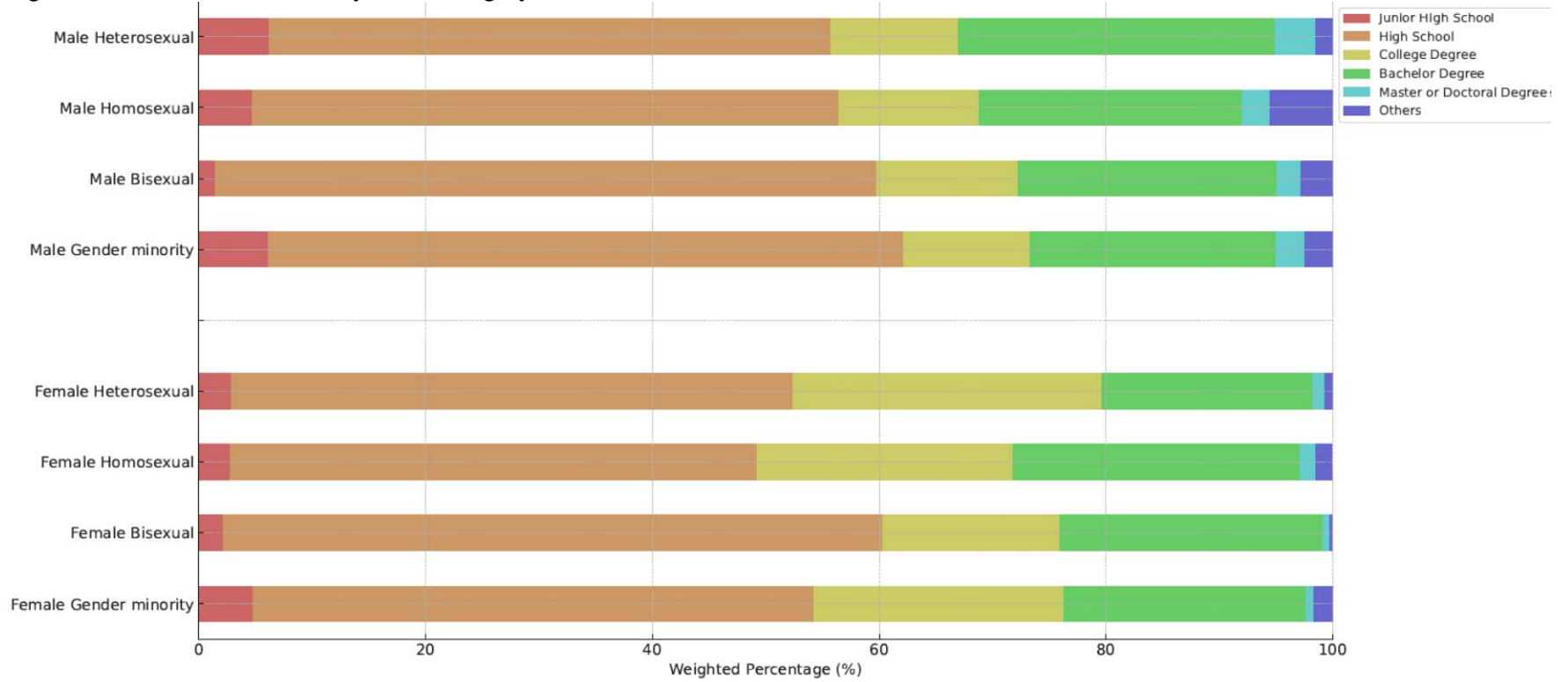
18 Figure 3. Household equivalent income by SOGI category and sex



19  
20 Abbreviation: SOGI, sexual orientation and gender identity

21

22 Figure 4. Academic attainment by SOGI category and sex.

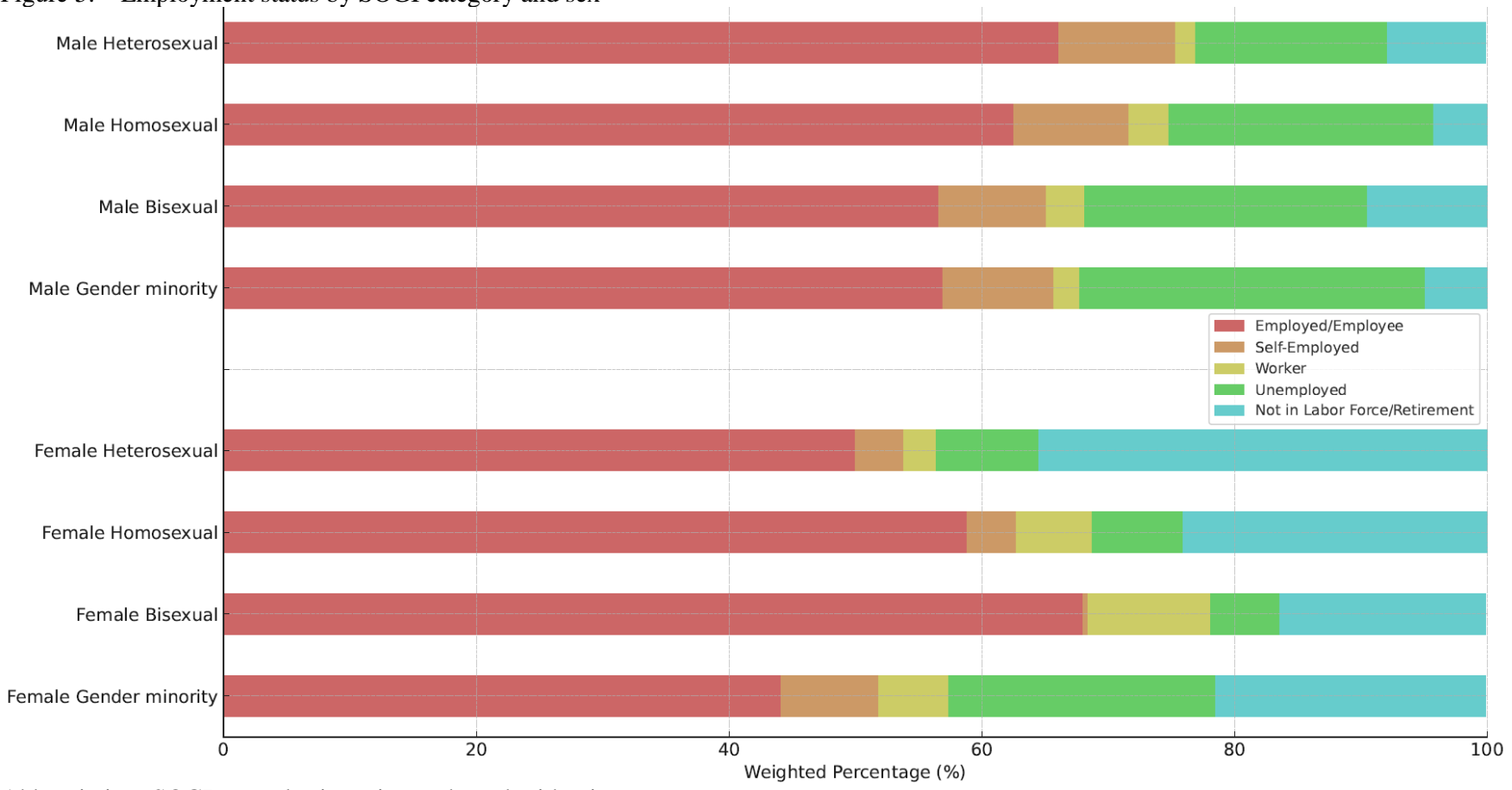


23  
24 Abbreviation: SOGI, sexual orientation and gender identity

25  
26

27

28 Figure 5. Employment status by SOGI category and sex



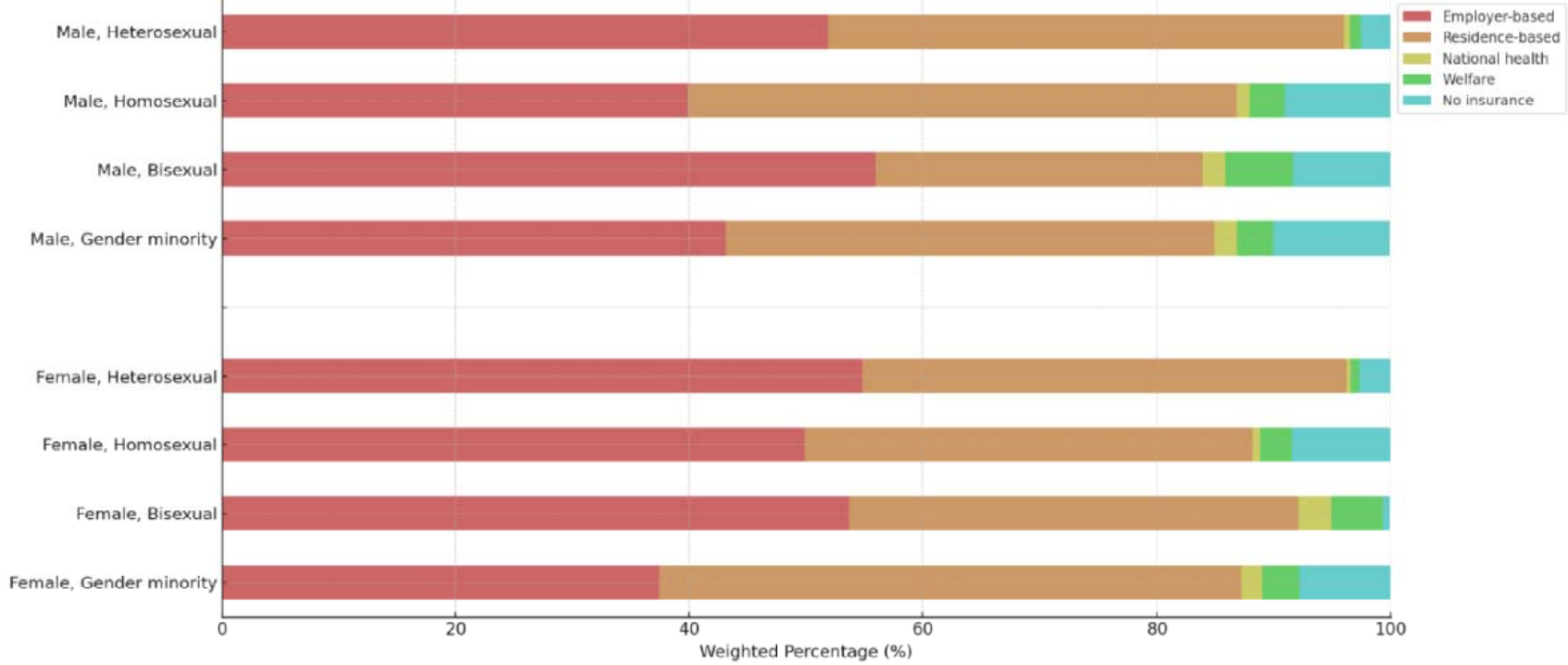
29

30 Abbreviation: SOGI, sexual orientation and gender identity

31

32

33 Figure 6. Health insurance coverage by SOGI category and sex

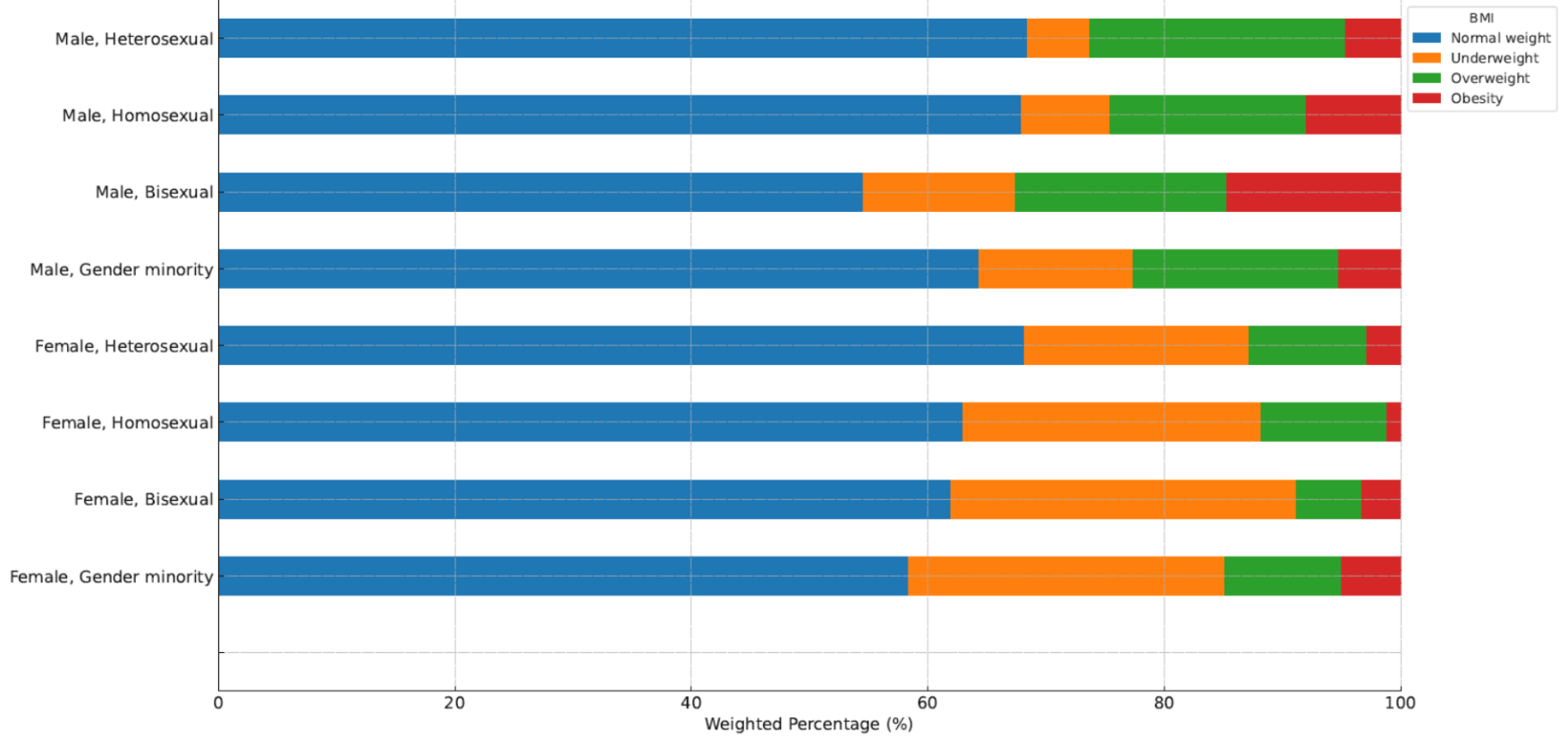


34  
35 Abbreviation: SOGI, sexual orientation and gender identity

36  
37  
38

39

40 Figure 7. Body mass index by SOGI category and sex



41

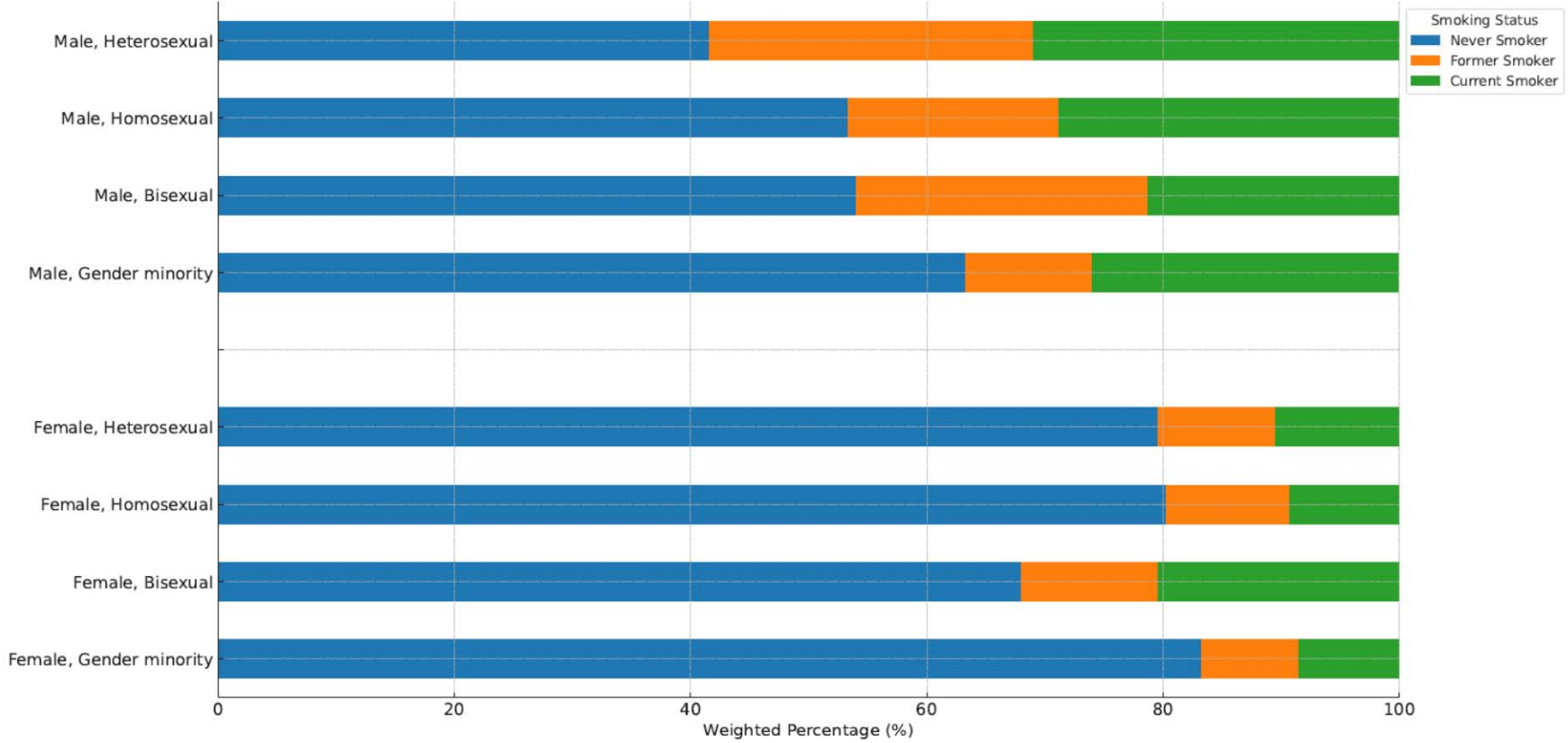
42 Abbreviation: BMI, body mass index: SOGI, sexual orientation and gender identity

43

44



45 Figure 8. Smoking status by SOGI category and sex



46  
47 Abbreviation: SOGI, sexual orientation and gender identity

48  
49

## List of tables

- 1
- 2
- 3 Table 1. Summary characteristics of respondents by sexual orientation and gender identity.
- 4 Table 2. SOGI category by age group and sex.
- 5 Table 3. Same-sex marriages/partnership among married/partnered respondents by SOGI category and sex.
- 6 Table 4. Parenting household among married/partnered respondents by SOGI category and sex.
- 7 Table 5. Household equivalent income by SOGI category and sex.
- 8 Table 6. Academic attainment by SOGI category and sex.
- 9 Table 7. Employment status by SOGI category and sex.
- 10 Table 8. Health insurance coverage by SOGI category and sex
- 11 Table 9. Housing tenure by SOGI category and sex
- 12 Table 10. Residents in municipalities that acknowledged same-sex partnerships by SOGI category and sex.

- 13 Table 11. Body mass index by SOGI category and sex
- 14 Table 12. Smoking status by SOGI category and sex
- 15 Table 13. Substance use by SOGI category and sex.
- 16 Table 14. Comorbidity by SOGI category and sex.
- 17 Table 15. Health-related and COVID-19-related variables by SOGI category and sex.
- 18

19 Table 1. Summary characteristics of respondents by sexual orientation and gender identity.

	Total			Heterosexual			Homosexual			Bisexual			Gender minority		
	n			n	%	(95% CI)	n	%	(95% CI)	n	%	(95% CI)	n	%	(95% CI)
	28,038			25,468	90	(89.0-91.1)	1,294	4.8	(4.4-5.3)	354	1.3	(1.1-1.6)	922	3.8	(3.4-4.2)
Individual- and household-related variables															
Male	13,662			12,436	48.9	(47.8-49.9)	720	57.4	(52.6-62.1)	132	33.2	(24.9-41.4)	374	38.3	(33.2-43.3)
Age*	48.2	(47.9-48.6)			48.8	(48.4-49.2)		44.7	(42.6-46.8)		37.8	(35.1-40.4)		42.7	(40.5-44.8)
Married/partnered, yes	17,450			16,507	65.1	(64.1-66.1)	545	43.3	(38.5-48)	137	39.1	(29.9-48.3)	261	26.7	(22.2-31.3)
Same-sex married/partnered, yes	302			68	0.3	(0.2-0.3)	216	16.7	(14.7-18.7)	4	1.1	(0.0-2.2)	14	1.5	(0.7-2.3)
No of households*	2.8	(2.7-2.8)			2.8	(2.8-2.8)		2.5	(2.4-2.7)		3	(2.7-3.2)		2.5	(2.4-2.6)
Single household, yes	5,690			4,864	14.9	(14.2-15.6)	412	27.2	(22.9-31.5)	94	17.1	(11.6-22.6)	320	28.9	(24.2-33.7)
Parenting household, yes	12,427			11,236	43.9	(42.9-44.9)	628	45.1	(40.4-49.9)	146	31	(23.3-38.7)	417	39.6	(34.5-44.8)
Socioeconomic variables															
Household equivalent income (JPY/10,000)*	350	(345-355)		354	(349-359)		322	(297-346)		312	(273-351)		294	(246-342)	
Academic attainment, degree holder	20,239			18,467	44.9	(43.9-45.9)	903	42.9	(38.5-47.3)	243	38.8	(30.4-47.2)	626	40.8	(35.9-45.6)
Employer/employee/self-employee, yes	18,178			16,488	64.3	(63.3-65.3)	909	67.8	(62.9-72.7)	228	67.3	(58.8-75.9)	553	57.2	(51.8-62.5)
Health insurance coverage, yes	26,977			24,655	96.1	(95.7-96.5)	1,165	87.4	(83.5-91.3)	329	89.4	(83.2-95.6)	828	86.3	(82.2-90.4)
Housing tenure, owning house	18,901			17,325	74.9	(74-75.7)	813	68.5	(64-73)	202	70.4	(63-77.8)	561	70.3	(66-74.7)
Health-related and COVID-19-related variables															
Body mass index*	22.2	(22.2-22.3)		22.3	(22.2-22.3)		22.4	(22.0-22.7)		21.7	(20.9-22.5)		21.7	(21.3-22.1)	
Current smoker, yes	4,884			4,434	20.5	(19.7-21.4)	260	20.5	(17-24)	55	20.7	(10-31.4)	135	15.2	(11.3-19)
Habitual drinker	14,282			13,192	38.2	(37.3-39.2)	589	32.4	(28.4-36.3)	154	24.8	(18-31.5)	347	27.4	(23.1-31.7)

Habitual substance user, yes	2,711	2,302	9.1 (8.4-9.7)	187	12.7 (10.1-15.3)	70	15.4 (10-20.9)	152	16.2 (12.2-20.3)
Medical comorbidity, yes	17,346	15,844	63.2 (62.2-64.2)	696	57.9 (53.4-62.5)	238	63.2 (53.9-72.6)	568	62.5 (57.4-67.7)
Self-rated health, good	15,857	14,621	40 (39-40.9)	689	37.3 (33.1-41.5)	157	31.3 (23.3-39.2)	393	32.9 (28.1-37.7)
Serious psychological distress (Kessler-6 Scale $\geq$ 13)	2,776	2,291	9.3 (8.7-10.0)	199	15.7 (12.5-18.9)	93	23.4 (15.8-30.9)	193	18.4 (14.4-22.4)
Short-term UCLA Loneliness Scale*	5.8 (5.8-5.9)		5.8 (5.7-5.8)		5.5 (5.2-5.7)		7.1 (6.6-7.6)		6.6 (6.3-6.9)
Fear of COVID-19 Scale*	17.4 (17.3-17.5)		17.4 (17.2-17.5)		18.7 (18.1-19.3)		17.4 (16.6-18.3)		17.7 (17.1-18.3)
COVID-19 vaccination status, not fully vaccinated	3,283	2,847	12.4 (11.7-13.1)	224	19 (14.7-23.2)	57	18.9 (11.1-26.8)	155	16.2 (12.5-19.9)

- 20 Abbreviation: CI, confidential interval
- 21 All %'s represents weighted percentages.
- 22 \* Presents as weighted mean and weighted 95% CI
- 23

24 Table 2. SOGI category by age group and sex.

		Total	Heterosexual		Homosexual			Bisexual		Gender minority				
Assigned sex at birth														
Male		13,662												
15-19	n, %, (95% CI)	83	65	70.0	(44.6-95.4)	8	10.1	(-0.6-20.9)	4	2.1	(-0.3-4.5)	6	17.8	(-9.1-44.6)
20-29	n, %, (95% CI)	1,932	1,605	80.5	(78.2-82.8)	168	9.3	(7-11.6)	42	2.5	(1.7-3.3)	117	7.7	(5.6-9.8)
30-39	n, %, (95% CI)	3,098	2,820	91.3	(89.7-92.9)	152	5.1	(4-6.3)	29	0.6	(0.3-0.8)	97	3	(2.1-3.9)
40-49	n, %, (95% CI)	2,318	2,141	92.6	(91-94.2)	101	4.5	(3.3-5.7)	25	0.9	(0.5-1.4)	51	2	(1.4-2.5)
50-59	n, %, (95% CI)	2,053	1,870	91.5	(89.8-93.1)	127	6.0	(4.8-7.2)	12	0.5	(0.1-1)	44	2	(1.2-2.8)
60-69	n, %, (95% CI)	2,065	1,949	94.6	(93.2-95.9)	76	3.1	(2.1-4.2)	14	0.8	(0.2-1.5)	26	1.5	(0.7-2.2)
70-	n, %, (95% CI)	2,113	1,986	91.6	(88.8-94.4)	88	6.6	(3.8-9.3)	6	0.3	(0-0.6)	33	1.6	(0.9-2.2)
Female		14,376												
15-19	n, %, (95% CI)	130	95	77.7	(63.3-92.1)	12	7.0	(1.5-12.4)	9	8.6	(-1.3-18.6)	14	6.7	(-0.1-13.5)
20-29	n, %, (95% CI)	2,442	2,016	80.6	(77.9-83.2)	185	7.4	(5.8-9)	89	3.3	(1.9-4.8)	152	8.7	(6.5-10.9)
30-39	n, %, (95% CI)	3,077	2,857	90.6	(88.2-93)	94	3.7	(1.8-5.6)	45	2.3	(0.9-3.8)	81	3.4	(2.2-4.5)
40-49	n, %, (95% CI)	2,356	2,161	91.0	(88.8-93.3)	81	3.9	(2.5-5.4)	33	1.6	(0.7-2.5)	81	3.4	(2-4.8)
50-59	n, %, (95% CI)	2,044	1,878	92.6	(90.6-94.6)	65	3.2	(2.2-4.1)	21	1.1	(0.3-2)	80	3.1	(1.5-4.7)
60-69	n, %, (95% CI)	2,155	2,020	93.9	(91.7-96.2)	62	2.4	(1.2-3.6)	15	0.6	(0-1.3)	58	3	(1.6-4.3)
70-	n, %, (95% CI)	2,172	2,005	91.1	(89-93.1)	75	2.9	(1.6-4.2)	10	0.4	(-0.1-0.8)	82	5.6	(4.1-7.2)

25 Abbreviation: SOGI, sexual orientation and gender identity; CI, confidential interval

26 All %'s represents weighted percentages.

27

Table 3. Same-sex marriages/partnership among married/partnered respondents by SOGI category and sex.

	Heterosexual (N=16507)			Homosexual (N=545)			Bisexual (N=137)			Gender minority (N=261)		
	n/total*	%	(95% CI)	n/total*	%	(95% CI)	n/total*	%	(95% CI)	n/total*	%	(95% CI)
Assigned sex at birth												
Male	29/7950	0.4	(0.2-0.6)	128/287	56.2	(46.7-65.7)	4/44	6.7	(-0.7-14.2)	10/106	7.2	(1.8-12.6)
aged 15-49 years	18/3406	0.7	(0.3-1.1)	60/104	64.4	(51.0-77.8)	4/23	14.3	(-1.1-29.8)	7/53	7.0	(1.3-12.7)
aged over 50 years	11/4544	0.2	(0.0-0.4)	68/183	51.1	(37.8-64.4)	0/21	0.0		3/53	7.4	(-1.8-16.5)
Female	39/8557	0.3	(0.2-0.5)	88/258	32.6	(22.9-42.3)	0/93	0.0		4/155	0.7	(-0.1-1.6)
aged 15-49 years	20/4541	0.4	(0.2-0.7)	51/125	42.2	(27.3-57.2)	0/67	0.0		2/63	1.0	(-0.6-2.6)
aged over 50 years	19/4016	0.2	(0.1-0.4)	35/128	21.9	(12.5-31.3)	0/23	0.0		2/89	0.6	(-0.2-1.4)

Abbreviation: SOGI, sexual orientation and gender identity; CI, confidential interval

All %'s represents weighted percentages.

\* Presents as total of married/partnered respondents



1

2 Table 4. Parenting household among married/partnered respondents by SOGI category and sex.

	Heterosexual			Homosexual			Bisexual			Gender minority		
	n/total*	%	(95% CI)	n/total*	%	(95% CI)	n/total	%	(95% CI)	n/total	%	(95% CI)
Assigned sex at birth												
Male		43.9	(42.2-45.7)		40.6	(31.2-50.1)		30.7	(12.6-48.9)		32.7	(19.4-46.0)
Same-sex marriage	13/29	45.1	(19.9-70.2)	56/128	41.5	(27.2-55.8)	1/4	29.5	(-20.2-79.2)	6/10	56.9	(18.1-95.6)
Opposite-sex marriage	3237/7921	43.9	(42.2-45.7)	59/159	39.5	(27.6-51.3)	15/40	30.8	(11.7-50.0)	27/95	30.8	(16.8-44.9)
Female		37.4	(35.7-39.2)		34.8	(24.4-45.2)		30.5	(15.3-45.7)		28.1	(16.8-39.4)
Same-sex marriage	7/39	29.0	(4.5-53.5)	28/86	42.5	(23.7-61.4)	0			1/4	11.2	(-12.0-34.3)
Opposite-sex marriage	2857/8518	37.5	(35.7-39.2)	54/170	31	(19.1-43.0)	27/93	30.5	(15.3-45.7)	44/151	28.3	(16.9-39.6)

3

4 Abbreviation: SOGI, sexual orientation and gender identity; CI, confidential interval

5 All %'s represents weighted percentages.

6

7

8  
9

Table 5. Household equivalent income by SOGI category and sex.

	Total		Heterosexual			Homosexual			Bisexual			Gender minority		
	n		n	%	(95% CI)	n	%	(95% CI)	n	%	(95% CI)	n	%	(95% CI)
Assigned sex at birth														
Male	13,662		12,436			720			132			374		
Household equivalent income (JPY/10,000) *	374	(367-381)	377		(371-384)	337		(305-369)	328		(269-388)	347		(241-452)
Q1 (lowest)	2,206		1,951	21.2	(19.8-22.6)	135	35.9	(27.5-44.2)	29	39.3	(25.8-52.8)	91	40.4	(31.3-49.4)
Q2	1,999		1,834	19.7	(18.5-21)	97	18.2	(13.1-23.3)	17	9.9	(4-15.8)	51	17.9	(11-24.8)
Q3	2,628		2,456	23.7	(22.4-25)	100	15.3	(10.9-19.6)	25	21.2	(11.3-31.1)	47	14.9	(8.9-20.8)
Q4	2,189		2,019	18.2	(17-19.3)	103	14.9	(10.8-18.9)	25	15.6	(7.6-23.6)	42	10.6	(6.6-14.6)
Q5 (highest)	2,595		2,397	17.2	(16.1-18.3)	134	15.8	(11.9-19.7)	15	14	(1.7-26.3)	49	16.2	(9.2-23.2)
Missing	2,045		1,779			151			21			94		
Female	14,376		13032			574			222			548		
Household equivalent income (JPY/10,000) *	323	(317-330)	328		(321-335)	297		(261-351)	302		(252-351)	255		(232-279)
Q1 (lowest)	2,630		2,330	30.5	(28.8-32.2)	110	35.4	(26.3-44.5)	46	43.6	(25.6-61.5)	144	43.2	(34.2-52.2)
Q2	2,295		2,103	21.9	(20.5-23.4)	79	21.4	(13.7-29)	40	18.9	(9.6-28.3)	73	24.3	(16.4-32.2)
Q3	2,556		2,375	21.7	(20.3-23)	87	20.5	(14.7-26.3)	37	14	(6.7-21.3)	57	17.3	(9.4-25.1)
Q4	1,826		1,695	14.3	(13.2-15.4)	61	12.5	(8.2-16.9)	21	15.5	(4.5-26.4)	49	10.7	(5.9-15.5)
Q5 (highest)	1,708		1,568	11.7	(10.7-12.7)	74	10.2	(6.6-13.8)	27	8	(3.2-12.9)	39	4.6	(2.7-6.4)
Missing	3,361		2,961			163			51			186		

10 Abbreviation: SOGI, sexual orientation and gender identity; CI, confidential interval  
11 All %'s represents weighted percentages.

12 \* Presents as weighted mean and weighted 95% CI  
13

14 Table 6. Academic attainment by SOGI category and sex.

	Total	Heterosexual			Homosexual			Bisexual			Gender minority		
		n	%	(95% CI)	n	%	(95% CI)	n	%	(95% CI)	n	%	(95% CI)
Assigned sex at birth													
Male	13,662	12,436			720			132			374		
Non degree holder	3,375	3,025	55.6	(54.3-57)	202	56.4	(50.4-62.4)	38	59.8	(48.3-71.3)	110	62.1	(55.2-69.1)
Junior high school	250	223	6.2	(5-7.4)	12	4.7	(-0.4-9.8)	2	1.5	(-0.6-3.6)	13	6.1	(2.1-10.1)
High school	3,125	2802	49.5	(48-50.9)	190	51.7	(45.4-57.9)	36	58.3	(46.5-70)	97	56	(48.4-63.7)
Degree holder	10,185	9,338	42.8	(41.5-44.1)	501	38.1	(32.9-43.4)	90	37.4	(26.4-48.5)	256	35.3	(28.7-42)
College degree	1,647	1489	11.3	(10.6-12)	96	12.4	(9.3-15.5)	16	12.4	(5.2-19.6)	46	11.2	(6.4-15.9)
Bachelor's degree	7,410	6800	27.9	(27-28.9)	358	23.2	(19.6-26.8)	64	22.9	(15.2-30.7)	188	21.7	(17.2-26.1)
Master or Doctoral degree	1,128	1049	3.6	(3.3-3.9)	47	2.5	(1.7-3.4)	10	2.1	(0.6-3.7)	22	2.5	(1.3-3.7)
Others	102	73	1.6	(1-2.1)	17	5.5	(0.4-10.6)	4	2.8	(-0.2-5.7)	8	2.5	(0.5-4.5)
Female	14,376	13032			574			222			548		
Non degree holder	4,259	3,857	52.4	(50.9-53.9)	165	49.2	(41.9-56.6)	67	60.3	(48.9-71.8)	170	54.2	(47.4-60.9)
Junior high school	235	194	2.9	(2.2-3.7)	13	2.8	(0.3-5.3)	6	2.2	(0-4.4)	22	4.8	(2.1-7.5)
High school	4024	3663	49.5	(47.9-51)	152	46.4	(38.9-54)	61	58.1	(46.3-69.9)	148	49.4	(42.3-56.4)
Degree holder	10,054	9,129	46.9	(45.4-48.4)	402	49.3	(42-56.6)	153	39.5	(28-50.9)	370	44.2	(37.5-50.8)
College degree	4,353	4,014	27.2	(26-28.4)	149	22.6	(17.1-28)	44	15.6	(8.6-22.7)	146	22.1	(17.1-27.1)
Bachelor's degree	5,358	4,798	18.6	(17.7-19.4)	243	25.3	(20-30.6)	104	23.2	(14.9-31.6)	213	21.3	(16.8-25.9)
Master or Doctoral degree	343	317	1.1	(0.9-1.2)	10	1.4	(0.2-2.7)	5	0.6	(0-1.2)	11	0.7	(0.1-1.3)

Others	63	46	0.7 (0.4-1.1)	7	1.4 (0.2-2.7)	2	0.2 (-0.1-0.5)	8	1.7 (0.2-3.1)
--------	----	----	---------------	---	---------------	---	----------------	---	---------------

15  
16 Abbreviation: SOGI, sexual orientation and gender identity; CI, confidential interval  
17 All %'s represents weighted percentages.  
18 \* Presents as weighted mean and weighted 95% CI  
19

20  
21

Table 7. Employment status by SOGI category and sex.

	Total	Heterosexual			Homosexual			Bisexual			Gender minority		
	n	n	%	(95% CI)	n	%	(95% CI)	n	%	(95% CI)	n	%	(95% CI)
Assigned sex at birth													
Male	13,662	12,436			720			132			374		
Employer/employee/self-employee	10,327	9,412	75.3	(73.9-76.7)	559	71.6	(64.7-78.5)	92	65.1	(52.0-78.2)	264	65.6	(57.6-73.7)
Employed/employee	9,108	8,307	66.1	(64.3-67.9)	493	62.5	(55.1-70)	80	56.6	(42.6-70.7)	228	56.9	(48.3-65.4)
Self-employed	1,219	1,105	9.2	(8.5-9.9)	66	9.1	(6-12.1)	12	8.5	(2.1-14.9)	36	8.8	(4.6-13)
Worker/unemployed	3,335	3,024	16.8	(15.6-18.0)	161	24.2	(17.2-31.2)	40	25.4	(12.8-38.0)	110	29.4	(21.4-37.4)
Worker	306	260	1.6	(1.2-2.1)	21	3.2	(1.2-5.2)	10	3	(0.3-5.7)	15	2	(0.4-3.7)
Unemployed	1,934	1,745	15.2	(14.0-16.4)	105	21	(14.0-28.0)	21	22.4	(9.7-35.0)	72	27.4	(19.4-35.3)
Not in labor force/retirement	1,086	1,019	7.8	(6.9-8.7)	35	4.2	(2.3-6.1)	9	9.5	(2.0-16.9)	23	5	(2.1-7.8)
Female	14,376	13,032			574			222			548		
Employer/employee/self-employee	7,851	7,076	53.8	(52.3-55.3)	350	62.7	(55.7-69.7)	136	68.4	(57.6-79.3)	289	51.9	(44.9-58.9)
Employed/employee	7,233	6,539	50	(47.8-52.3)	317	58.8	(52.2-65.4)	131	68	(55.3-80.7)	246	44.1	(36.6-51.7)
Self-employed	618	537	3.8	(3.2-4.3)	33	3.9	(1.8-6.1)	5	0.4	(0-0.9)	43	7.7	(3.7-11.8)
Worker/unemployed	6,525	5,956	10.7	(9.7-11.7)	224	13.1	(9.0-17.3)	86	15.3	(7.8-22.8)	259	26.7	(20.6-32.8)
Worker	464	358	2.6	(1.9-3.2)	39	6	(3.1-8.8)	26	9.7	(3-16.5)	41	5.6	(3-8.1)
Unemployed	1,082	924	8.1	(7.2-9.1)	43	7.2	(4.0-10.4)	16	5.5	(1.5-9.6)	99	21.1	(15.3-26.9)

Not in labor force/retirement	4,979	4,674	35.5	(34.1-36.9)	142	24.1	(17.7-30.6)	44	16.3	(7.9-24.6)	179	21.4	(15.7-27.2)
-------------------------------	-------	-------	------	-------------	-----	------	-------------	----	------	------------	-----	------	-------------

22  
23  
24  
25

Abbreviation: SOGI, sexual orientation and gender identity; CI, confidential interval  
All %'s represents weighted percentages.

26 Table 8. Health insurance coverage by SOGI category and sex

	Total	Heterosexual			Homosexual			Bisexual			Gender minority		
	n	n	%	(95% CI)	n	%	(95% CI)	n	%	(95% CI)	n	%	(95% CI)
Assigned sex at birth													
Male	13,662	12,436			720			132			374		
Health insurance coverage, yes			95.9	(95.3-96.5)		86.8	(81.4-92.3)		83.9	(71.3-96.5)		84.9	(79.4-90.5)
Employer-based health insurance	7,275	6,704	51.9	(50.4-53.3)	328	39.9	(34.2-45.7)	77	56	(42.9-69.1)	166	43.1	(34.9-51.4)
Residence-based National health insurance	5,823	5,309	44.1	(42.6-45.5)	315	46.9	(40.6-53.2)	44	27.9	(17.7-38.2)	155	41.8	(34-49.6)
Health insurance coverage, no			4.1	(3.5-4.7)		13.2	(7.7-18.6)		16.1	(3.5-28.7)		15.1	(9.5-20.6)
Welfare	62	43	0.5	(0.2-0.8)	9	1.1	(0.3-1.9)	2	1.9	(-1.3-5)	8	1.9	(0.1-3.7)
No insurance	137	106	0.9	(0.6-1.2)	20	3	(1.2-4.8)	2	5.8	(-3.5-15.1)	9	3.1	(-0.1-6.4)
Others	365	274	2.6	(2.2-3.1)	48	9.1	(3.8-14.4)	7	8.4	(-1.1-17.9)	36	10	(5.6-14.4)
Female	14,376	13,032			574			222			548		
Health insurance coverage, yes			96.2	(95.6-96.8)		88.2	(82.6-93.8)		92.2	(85.6-98.7)		87.1	(81.4-92.9)
Employer-based health insurance	7,933	7,297	54.8	(53.3-56.3)	274	49.9	(42.6-57.3)	124	53.7	(40.8-66.6)	238	37.4	(30.8-43.9)
Residence-based National health insurance	5,946	5,345	41.4	(39.9-43)	248	38.3	(31.2-45.3)	84	38.4	(26.2-50.6)	269	49.8	(42.7-56.8)
Health insurance coverage, no			3.8	(3.2-4.4)		11.8	(6.2-17.4)		7.8	(1.3-14.4)		12.9	(7.1-18.6)
Welfare	54	42	0.4	(0.2-0.6)	3	0.6	(-0.3-1.5)	4	2.8	(-1.1-6.8)	5	1.8	(-1.3-4.8)
No insurance	116	84	0.7	(0.5-1)	14	2.7	(0.8-4.7)	5	4.4	(-0.9-9.7)	13	3.2	(0.9-5.4)
Others	327	264	2.7	(2.2-3.2)	35	8.5	(3.1-13.8)	5	0.6	(0-1.2)	23	7.9	(3.2-12.7)

27  
 28 Abbreviation: SOGI, sexual orientation and gender identity; CI, confidential interval  
 29 All %'s represents weighted percentages.





Table 9. Housing tenure by SOGI category and sex

	Total	Heterosexual			Homosexual			Bisexual			Gender minority		
	n	n	%	(95% CI)	n	%	(95% CI)	n	%	(95% CI)	n	%	(95% CI)
Assigned sex at birth													
Male	13,662	12,436			720			132			374		
Type of residence													
Owning house			75.4	(74.3-76.5)		69.9	(64.1-75.7)		64	(52.4-75.6)		67.6	(60.8-74.4)
Detached house	7,398	6,811	63	(61.6-64.3)	357	59.8	(53.6-66)	56	47.2	(33.9-60.6)	174	60.5	(53-67.9)
Condominiums	1,859	1,717	12.4	(11.6-13.3)	91	10.2	(7.2-13.3)	14	16.3	(5.3-27.4)	37	6.3	(3.2-9.3)
Not owning house			24.6	(23.5-25.7)		30.1	(24.3-35.9)		36	(24.4-47.6)		32.4	(25.6-39.2)
Rental housing (Private Apartments)	3,257	2,913	17.7	(16.7-18.7)	186	17.4	(13.7-21)	43	28.4	(17.3-39.6)	115	22.3	(16.6-28.1)
Rental housing (Public Apartments)	467	400	3.1	(2.6-3.6)	36	6.3	(1.1-11.6)	10	4.9	(1.1-8.7)	21	4.2	(1.3-7.1)
Boarding	17	16	0.1	(0-0.1)	1	0.1	(-0.1-0.4)	0	0	(0-0)	0	0	(0-0)
Company housing	445	401	2.2	(1.9-2.5)	27	3.3	(1.5-5)	5	1.7	(0-3.5)	12	3.7	(1.1-6.3)
Freeload	15	12	0.1	(0-0.3)	2	0.1	(-0.1-0.3)	1	0.2	(-0.2-0.7)	0	0	(0-0)
Temporary house (i.e., internet café)	9	3	0	(0-0)	4	0.4	(-0.2-1.1)	0	0	(0-0)	2	0.2	(-0.1-0.5)
Others	195	163	1.4	(1-1.8)	16	2.4	(0.7-4)	3	1.2	(-0.3-2.7)	13	2.9	(0.7-5)
Areal deprivation index (Residence) 4Q													
Lowest	3,298	3,009	21.1	(20-22.3)	166	21.5	(16.8-26.1)	26	28	(14.5-41.4)	97	21.7	(15.5-27.9)
Second	3,394	3,122	26.1	(24.8-27.4)	153	23.8	(17.6-29.9)	22	21.3	(10-32.7)	97	24.5	(18-31.1)
Third	3,304	3,020	26.3	(25-27.6)	174	27.3	(21.1-33.5)	40	24.8	(14.6-35)	70	21.3	(14.6-28)
Highest	3,326	2,987	26.5	(25.2-27.8)	197	27.5	(22.3-32.6)	40	25.9	(15.4-36.4)	102	32.5	(24.3-40.6)
Residence urbanization level 4Q													

Lowest (live in rural area)	3,774	3,456	31.7	(30.3-33.1)	187	28.9	(22.5-35.3)	38	31.3	(18.7-44)	93	28.1	(20.6-35.6)
Second	3,285	2,954	19.1	(18.1-20.2)	184	21.3	(16.8-25.7)	42	30	(17.8-42.1)	105	25.5	(18.9-32.2)
Third	3,310	3,014	26.3	(25.1-27.6)	185	26.8	(21.6-31.9)	22	13.4	(6.4-20.3)	89	26.2	(18.3-34.1)
Highest	3,293	3,012	22.8	(21.7-24)	164	23.1	(17.1-29.1)	30	25.3	(13.3-37.4)	87	20.1	(14.4-25.9)
Female	14,376	13032			574			222			548		
Type of residence													
Owning house			74.4	(73.1-75.6)		66.6	(59.4-73.8)		73.6	(64.5-82.7)		72	(66.4-77.7)
Detached house	7,390	6,741	63.8	(62.4-65.2)	271	53.9	(46.4-61.5)	106	69.5	(59.6-79.5)	272	60	(53.3-66.6)
Condominiums	2,254	2,056	10.6	(9.8-11.4)	94	12.2	(8.7-15.7)	26	6.4	(1.5-11.3)	78	11.8	(7.4-16.2)
Not owning house			25.6	(24.4-26.9)		33.4	(26.2-40.6)		26.4	(17.3-35.5)		28	(22.3-33.6)
Rental housing (Private Apartments)	3,523	3,170	18.5	(17.4-19.5)	142	20.3	(14.2-26.4)	70	18.3	(11.3-25.2)	141	18.8	(14.1-23.4)
Rental housing (Public Apartments)	602	534	3.8	(3.3-4.4)	29	6.6	(2.2-10.9)	6	0.8	(0-1.6)	33	5.9	(2.6-9.2)
Boarding	22	15	0.1	(0-0.1)	5	0.9	(-0.3-2.1)	1	0.5	(-0.5-1.4)	1	0.1	(-0.1-0.3)
Company housing	324	292	1.4	(1.1-1.6)	19	2.8	(1-4.6)	7	1.8	(0.1-3.4)	6	1.5	(0-2.9)
Freeload	17	10	0.2	(0-0.4)	3	0.2	(-0.1-0.5)	1	0.5	(-0.5-1.6)	3	0.5	(-0.2-1.1)
Temporary house (ie internet cafe)	1	0			1	0.1	(-0.1-0.3)	0			0		
Others	243	214	1.7	(1.3-2.1)	10	3.1	(-0.8-7)	5	2.2	(-0.7-5.2)	14	1.6	(0.4-2.8)
Areal deprivation index (Residence) 4Q													
Lowest	3,553	3,222	17.8	(16.7-18.9)	152	17	(13-21)	53	15.7	(6.6-24.8)	126	15	(10.6-19.4)
Second	3,452	3,129	24.2	(22.9-25.5)	133	24.4	(18.1-30.7)	60	21.9	(12.6-31.2)	130	21.3	(15.8-26.9)
Third	3,544	3,260	29.2	(27.8-30.6)	108	23.2	(16.6-29.7)	52	43.3	(28.9-57.7)	124	24	(18.1-29.9)
Highest	3,522	3,161	28.9	(27.4-30.3)	152	35.5	(27.7-43.3)	52	19.1	(11.4-26.8)	157	39.6	(32.4-46.9)

Residence urbanization level 4Q

Lowest (live in rural area)	3,849	3,519	38.3	(36.8-39.9)	140	35	(27.3-42.8)	51	26.7	(16-37.4)	139	40.7	(33.4-48)
Second	3,520	3,169	11.5	(10.7-12.2)	159	13.9	(10.6-17.2)	56	10.6	(5.7-15.4)	136	10.6	(7.7-13.4)
Third	3,543	3,214	32.7	(31.2-34.2)	131	34.5	(26.9-42.1)	61	45.9	(31.8-60.1)	137	30.6	(24.1-37.1)
Highest	3,464	3,130	17.5	(16.5-18.5)	144	16.6	(12.4-20.8)	54	16.8	(8.9-24.6)	136	18.1	(13.2-23.1)

33  
34  
35  
36

Abbreviation: SOGI, sexual orientation and gender identity; CI, confidential interval  
All %'s represents weighted percentages.

37 Table 10. Residents in municipalities that acknowledged same-sex partnerships by SOGI category and sex.

	Total			Heterosexual			Homosexual			Bisexual			Gender minority		
	n	%	(95% CI)	n	%	(95% CI)	n	%	(95% CI)	n	%	(95% CI)	n	%	(95% CI)
Assigned sex at birth															
Male	13662			12436			720			132			374		
Reside in municipality acknowledge same-sex partnerships.															
Total	8,028	55.3	(53.9-56.6)	7,296	55.3	(53.9-56.8)	430	55.2	(48.7-61.7)	76	50.4	(37.3-63.5)	226	54.5	(46.3-62.8)
except Tokyo, Osaka, and Fukuoka	4,730	34.9	(33.6-36.2)	4,344	35.3	(34-36.7)	244	31.2	(25.9-36.6)	40	29.9	(18.1-41.7)	122	31.2	(24.1-38.4)
Male aged 15-49 year	7,431			6,631			429			100			271		
Reside in municipality acknowledge same-sex partnerships.															
Total	4,486	56.9	(55.2-58.6)	3,998	56.9	(55.1-58.7)	271	57.3	(50.1-64.5)	62	57.6	(42.6-72.7)	165	56.8	(46.9-66.8)
except Tokyo, Osaka, and Fukuoka	2,525	35.1	(33.5-36.8)	2,272	35.5	(33.8-37.2)	134	31.9	(25.2-38.6)	33	34.1	(19.6-48.6)	86	32.2	(23.6-40.8)
Male with marriage	8,387			7,950			287			44			106		
Reside in municipality acknowledge same-sex partnerships.															
Total	4,876	54.8	(53.1-56.5)	4,630	55.0	(53.2-56.7)	158	54.1	(43.9-64.3)	23	28.4	(13.5-43.3)	65	57.2	(43-71.3)
except Tokyo, Osaka, and Fukuoka	2,951	35.6	(33.9-37.2)	2,809	35.8	(34.1-37.5)	93	33.4	(24.6-42.1)	13	15.1	(4.8-25.4)	36	34.9	(21.1-48.6)
Female	14376			13032			574			222			548		
Reside in municipality acknowledge same-sex partnerships.															
Total	8,439	50.0	(48.5-51.4)	7,632	50.0	(48.5-51.5)	345	47.5	(40.3-54.7)	132	49.3	(36.1-62.4)	330	51.7	(44.7-58.8)
except Tokyo, Osaka, and Fukuoka	4,878	35.0	(33.6-36.4)	4,449	35.2	(33.7-36.7)	168	28.9	(22.8-35.1)	72	34.4	(20.6-48.1)	189	36.9	(30.2-43.6)

Female aged 15-49 year	8,005			7,129			372			176			328		
Reside in municipality acknowledge same-sex partnerships.															
Total	4,772	49.9	(47.9-51.8)	4,238	50.1	(48-52.2)	230	49.8	(40.8-58.7)	108	51.7	(36.9-66.5)	196	45.0	(36.5-53.5)
except Tokyo, Osaka, and Fukuoka	2,698	34.6	(32.7-36.5)	2,426	35.2	(33.2-37.2)	107	29.0	(21.4-36.5)	60	37.7	(21.9-53.5)	105	28.9	(21.7-36)
Female with marriage	9,063			8,557			258			93			155		
Reside in municipality acknowledge same-sex partnerships.															
Total	5,277	49.2	(47.5-50.9)	4,989	49.5	(47.8-51.3)	154	47.9	(37.3-58.4)	55	40.6	(24-57.1)	80	40.6	(28.5-52.7)
except Tokyo, Osaka, and Fukuoka	3,170	35.2	(33.5-36.8)	3,001	35.4	(33.7-37.1)	88	35.8	(25.7-45.8)	29	22.9	(9.3-36.4)	52	29.7	(19-40.3)

38  
39  
40  
41

Abbreviation: SOGI, sexual orientation and gender identity; CI, confidential interval  
All %'s represents weighted percentages.

42

43 Table 11. Body mass index by SOGI category and sex.

	Total	Heterosexual			Homosexual			Bisexual			Gender minority		
	n	n	%	(95% CI)	n	%	(95% CI)	n	%	(95% CI)	n	%	(95% CI)
Assigned sex at birth													
Male	13,662	12,436			720			132			374		
18.5-25 Normal weight	9,437	8,618	68.4	(67.1-69.7)	490	67.9	(62.5-73.3)	73	54.5	(41.4-67.7)	256	64.3	(56.5-72.2)
<18.5 Underweight	788	675	5.3	(4.7-6)	61	7.5	(4.8-10.2)	11	12.9	(2.7-23.1)	41	13.1	(7.6-18.7)
25-30 Overweight	2,841	2,617	21.6	(20.4-22.8)	134	16.6	(12.7-20.5)	31	17.9	(9.4-26.4)	59	17.3	(10.9-23.6)
>30 Obesity	596	526	4.7	(4.1-5.3)	35	8	(4.8-11.2)	17	14.7	(4.1-25.3)	18	5.3	(1.8-8.7)
Female	14,376	13032			574			222			548		
18.5-25 Normal weight	9,900	9,030	68.2	(66.8-69.6)	387	63	(55.7-70.4)	144	61.9	(48.3-75.6)	339	58.4	(51.3-65.4)
<18.5 Underweight	2,917	2,590	19	(17.8-20.1)	147	25.2	(18.9-31.4)	51	29.3	(15.3-43.3)	129	26.7	(20.2-33.3)
25-30 Overweight	1,242	1,138	9.9	(8.9-10.8)	30	10.6	(4.8-16.5)	19	5.5	(0.9-10.2)	55	9.9	(5.7-14.1)
>30 Obesity	317	274	3	(2.4-3.5)	10	1.2	(0.1-2.2)	8	3.2	(0-6.4)	25	5	(1.7-8.2)

44

45 Abbreviation: SOGI, sexual orientation and gender identity; CI, confidential interval

46 All %'s represents weighted percentages.

47

48 Table 12. Smoking status by SOGI category and sex

	Total	Heterosexual			Homosexual			Bisexual			Gender minority		
	n	n	%	(95% CI)	n	%	(95% CI)	n	%	(95% CI)	n	%	(95% CI)
<b>Assigned sex at birth</b>													
Male	13,662	12,436			720			132			374		
Never smoker	6,487	5,804	41.6	(40.2-43)	368	53.3	(47.1-59.4)	75	54	(41-67)	240	63.3	(55.6-71.1)
Former smoker	3,595	3,362	27.4	(26-28.8)	156	17.9	(13.8-22)	24	24.7	(12.4-37)	53	10.7	(6.4-15)
Current smoker	3,580	3,270	31	(29.6-32.3)	196	28.8	(23.5-34.1)	33	21.3	(12-30.7)	81	25.9	(18.6-33.2)
Only combustible tobacco user	1,499	1,382	13.3	(12.3-14.3)	82	10.9	(7.5-14.3)	10	5.9	(0.9-10.9)	25	7.7	(3.5-11.8)
Only HTP or e-Cigarettes user	929	861	8.6	(7.8-9.4)	42	6.2	(3.8-8.6)	6	4.7	(-0.4-9.8)	20	7.8	(2.6-13)
Other tobacco user	83	73	0.5	(0.3-0.7)	4	1.2	(-0.3-2.7)	1	0.2	(-0.2-0.6)	5	0.8	(-0.1-1.6)
Multiple tobacco user	1,069	954	8.5	(7.7-9.4)	68	10.6	(6.9-14.2)	16	10.4	(3.9-17)	31	9.8	(5-14.5)
Female	14,376	13032			574			222			548		
Never smoker	11,417	10,352	79.6	(78.3-80.8)	459	80.3	(74.1-86.5)	171	68	(53.3-82.7)	435	83.3	(78-88.7)
Former smoker	1,655	1,516	9.9	(9.1-10.8)	51	10.4	(4.9-15.9)	29	11.6	(4.6-18.7)	59	8.2	(4.3-12.1)
Current smoker	1,304	1,164	10.5	(9.5-11.6)	64	9.3	(5.6-13)	22	20.4	(5-35.7)	54	8.5	(4.4-12.6)
Only combustible tobacco user	614	561	5.4	(4.6-6.2)	23	3.1	(0.6-5.6)	9	9.8	(4.7-24.3)	21	4.5	(1.1-7.9)
Only HTP or e-Cigarettes user	362	329	3.3	(2.7-3.9)	14	2.1	(0.4-3.8)	4	7.2	(1.3-15.7)	15	2	(0.2-3.8)
Other tobacco user	47	41	0.3	(0.2-0.5)	4	0.2	(0-0.4)	0	0	(0-0)	2	0.1	(0-0.2)
Multiple tobacco user	281	233	1.5	(1.2-1.9)	23	3.9	(1.7-6.1)	9	3.4	(0.5-7.2)	16	1.9	(0.3-3.6)



50 Table 13. Substance use by SOGI category and sex.

	Total	Heterosexual			Homosexual			Bisexual			Gender minority		
	n	n	%	(95% CI)	n	%	(95% CI)	n	%	(95% CI)	n	%	(95% CI)
Assigned sex at birth													
Male	13,662	12,436			720			132			374		
Alcohol consumption													
Never drinker	4,292	3793	40.9	(39.4-42.4)	276	49.9	(43.6-56.2)	50	53.9	(41.3-66.6)	173	57.7	(50-65.4)
Former drinker	1,073	937	7.4	(6.6-8.2)	81	9.5	(6.3-12.8)	16	10.9	(4-17.7)	39	7.9	(4.1-11.7)
Habitual drinker	8,297	7706	51.7	(50.2-53.1)	363	40.6	(34.8-46.4)	66	35.2	(23.8-46.5)	162	34.4	(27.2-41.5)
Sedatives or tranquilizers													
Never user	11,958	10,948	88.5	(87.5-89.4)	597	85.2	(81.4-89)	103	84.1	(76.8-91.3)	310	84.4	(78.6-90.2)
Former user	557	480	3.5	(3-3.9)	46	5.6	(3.2-8)	10	6.7	(1.8-11.6)	21	5.9	(1.4-10.5)
Current user	1,147	1,008	8.1	(7.2-8.9)	77	9.2	(6.1-12.2)	19	9.2	(3.9-14.5)	43	9.7	(5.6-13.7)
Non-prescription opioids													
Never user	13,425	12,279	98.7	(98.4-99)	666	92.2	(89.1-95.4)	125	94.2	(88.3-100)	355	93.8	(89.1-98.4)
Former user	139	92	0.8	(0.6-1.1)	30	5.2	(2.3-8.2)	5	3.8	(-0.8-8.4)	12	5.4	(0.8-10)
Current user	98	65	0.4	(0.3-0.6)	24	2.5	(1.2-3.9)	2	2.1	(-1.7-5.9)	7	0.8	(0.1-1.6)
Organic solvents													
Never user	13,396	12,261	98.5	(98.2-98.9)	659	91.8	(88.8-94.9)	122	94.1	(89-99.2)	354	91.1	(85.6-96.6)
Former user	176	120	1.1	(0.8-1.3)	37	6.0	(3.2-8.8)	7	5.0	(0.1-10)	12	4.0	(0-8.1)
Current user	90	55	0.4	(0.3-0.6)	24	2.2	(1-3.4)	3	0.9	(-0.3-2)	8	4.9	(0.8-9)
Illicit drug													

Never user	13,427	12,282	98.5	(98.2-98.8)	667	93.4	(90.6-96.2)	124	92.6	(86.3-99)	354	93.7	(89.9-97.6)
Former user	153	102	1.0	(0.7-1.3)	35	5.0	(2.4-7.6)	5	3.3	(-0.9-7.5)	11	4.1	(0.7-7.4)
Current user	82	52	0.5	(0.3-0.6)	18	1.6	(0.6-2.5)	3	4.1	(-0.8-8.9)	9	2.2	(0.2-4.3)
Cannabis (Marijuana)													
Never user	13,404	12,258	98.5	(98.2-98.8)	671	94.3	(91.9-96.7)	123	92.5	(86.3-98.7)	352	90.6	(85-96.1)
Former user	155	107	1.0	(0.7-1.2)	28	2.8	(1.1-4.5)	7	4.9	(0.2-9.7)	13	4.4	(0.8-7.9)
Current user	103	71	0.6	(0.4-0.8)	21	2.9	(1.2-4.7)	2	2.6	(-1.6-6.8)	9	5.1	(0.5-9.6)
Stimulants/Cocaine/Heroin													
Never user	13,443	12,293	98.7	(98.3-99)	669	94.7	(92.8-96.6)	124	93.0	(86.8-99.1)	357	93.0	(88-98)
Former user	138	90	0.9	(0.6-1.2)	33	3.0	(1.7-4.3)	5	5.5	(-0.3-11.3)	10	1.8	(0.3-3.2)
Current user	81	53	0.4	(0.3-0.6)	18	2.3	(0.9-3.7)	3	1.6	(-0.5-3.7)	7	5.3	(0.4-10.1)
Female	14,376	13,032			574			222			548		
Alcohol consumption													
Never drinker	7,055	6,317	69.0	(67.8-70.2)	298	72.4	(66.9-77.8)	114	76.4	(67.8-85)	326	73.6	(68-79.2)
Former drinker	1,336	1,229	5.7	(5.2-6.2)	50	6.3	(3.3-9.4)	20	4.0	(1.5-6.6)	37	3.4	(1.7-5)
Habitual drinker	5,985	5,486	25.3	(24.2-26.4)	226	21.3	(16.7-25.9)	88	19.6	(11.6-27.5)	185	23.1	(17.7-28.4)
Sedatives or tranquilizers													
Never user	12426	11341	87.1	(86.1-88.1)	485	82.7	(77.3-88.1)	165	81.2	(73.5-88.9)	435	80.4	(74.9-86)
Former user	654	569	4.2	(3.7-4.8)	32	8.7	(4.1-13.4)	23	6.4	(2.4-10.5)	30	5.5	(2.3-8.6)
Current user	1296	1122	8.6	(7.8-9.5)	57	8.6	(5.3-11.8)	34	12.4	(6-18.8)	83	14.1	(9.2-19)
Non-prescription opioids													
Never user	14262	12958	99.4	(99.1-99.7)	548	95.3	(92.7-97.8)	213	95.9	(92.2-99.6)	543	99.8	(99.7-100)

Former user	66	43	0.4	(0.2-0.7)	17	4.0	(1.5-6.4)	5	2.4	(-0.5-5.3)	1	0.0	(0-0.1)
Current user	48	31	0.2	(0.1-0.3)	9	0.8	(0.2-1.4)	4	1.7	(-0.6-4)	4	0.2	(0-0.3)
Organic solvents													
Never user	14251	12954	99.3	(99-99.6)	548	95.4	(92.9-97.9)	213	96.1	(92.5-99.8)	536	98.0	(95.6-100.5)
Former user	75	50	0.4	(0.2-0.6)	15	3.2	(1-5.4)	6	2.6	(-0.3-5.5)	4	0.3	(0-0.6)
Current user	50	28	0.3	(0-0.5)	11	1.5	(0.3-2.6)	3	1.3	(-0.9-3.5)	8	1.7	(-0.8-4.1)
Illicit drug													
Never user	14257	12957	99.5	(99.2-99.7)	547	95.4	(93-97.8)	214	97.5	(94.7-100.3)	539	99.5	(99.1-99.9)
Former user	66	41	0.3	(0.1-0.5)	16	2.9	(1-4.9)	4	1.7	(-1-4.3)	5	0.4	(0-0.7)
Current user	53	34	0.2	(0.1-0.3)	11	1.6	(0.2-3.1)	4	0.9	(-0.1-1.9)	4	0.1	(0-0.2)
Cannabis (Marijuana)													
Never user	14258	12956	99.6	(99.4-99.7)	548	96.4	(94.4-98.4)	216	97.1	(93.7-100.5)	538	99.6	(99.4-99.9)
Former user	69	46	0.3	(0.2-0.5)	13	1.4	(0.4-2.3)	4	2.7	(-0.7-6.1)	6	0.2	(0-0.4)
Current user	49	30	0.1	(0.1-0.2)	13	2.2	(0.4-4)	2	0.1	(-0.1-0.3)	4	0.2	(0-0.3)
Stimulants/Cocaine/Heroin													
Never user	14269	12966	99.4	(99.1-99.7)	549	95.9	(93.7-98.2)	216	97.8	(95.1-100.6)	538	99.6	(99.2-99.9)
Former user	60	36	0.4	(0.1-0.7)	15	2.2	(0.5-3.8)	5	0.8	(-0.1-1.7)	4	0.2	(0-0.4)
Current user	47	30	0.2	(0.1-0.3)	10	1.9	(0.4-3.4)	1	1.3	(-1.3-3.9)	6	0.3	(0-0.5)

51  
52  
53  
54

Abbreviation: SOGI, sexual orientation and gender identity; CI, confidential interval  
All %'s represents weighted percentages.

55 Table 14. Comorbidity by SOGI category and sex.

	Total	Heterosexual			Gay/Lesbian			Bisexual			Gender minority		
	n	n	%	(95% CI)	n	%	(95% CI)	n	%	(95% CI)	n	%	(95% CI)
Assigned sex at birth													
Male	13,662	12,436			720			132			374		
Metabolic syndrome													
Hypertension	3,537	3,269	26.6	(25.2-27.9)	166	21.9	(16.1-27.7)	34	22.8	(11.4-34.3)	68	18.9	(12.7-25)
Diabetes mellitus	1,295	1,184	10.9	(9.9-12)	59	6.6	(3.8-9.4)	17	18.5	(6.7-30.2)	35	9.2	(4.6-13.8)
Dyslipidemia	2,179	2,012	16.2	(15.1-17.3)	100	14.0	(8.4-19.6)	19	9.7	(3.5-15.9)	48	13.1	(7.3-18.9)
Pneumonia/bronchitis	250	183	1.7	(1.3-2.2)	40	5.0	(2.5-7.5)	8	4.0	(-0.3-8.3)	19	8.8	(3.2-14.4)
Allergic disease													
Asthma	442	363	3.0	(2.5-3.5)	46	6.3	(3.6-8.9)	9	11.2	(2.8-19.7)	24	8.6	(3.4-13.7)
Atopic dermatitis	696	591	4.4	(3.8-4.9)	57	7.1	(4.1-10.2)	9	5.4	(0.7-10.2)	39	15.1	(7.5-22.7)
Allergic rhinitis	2,751	2,517	19.5	(18.4-20.6)	120	17.1	(12.6-21.7)	36	21.3	(12.5-30.2)	78	22.5	(15.5-29.4)
Dental disease													
Periodontal disease	2,083	1,901	16.0	(14.9-17.1)	110	18.5	(11.7-25.3)	15	11.3	(3.8-18.9)	57	16.3	(10.3-22.3)
Caries	1,874	1,685	14.3	(13.3-15.3)	111	16.5	(10.9-22.1)	20	16.7	(7.8-25.5)	58	17.1	(10.9-23.4)
Cataract	633	547	4.0	(3.5-4.6)	51	5.2	(3.1-7.3)	5	2.9	(-1-6.8)	30	9.6	(4.3-14.8)
Cardio-cerebrovascular disease													
Angina pectoris/myocardial infarction	403	331	3.2	(2.7-3.8)	39	10.8	(3.8-17.8)	9	5.7	(0.8-10.6)	24	9.0	(3.6-14.4)
Stroke, Cerebral infarction/hemorrhage	204	149	1.3	(1-1.7)	31	5.7	(0.5-10.8)	6	5.1	(0.1-10)	18	5.5	(1.9-9.2)
Chronic obstructive pulmonary disease	191	138	1.3	(0.9-1.7)	28	4.0	(1.8-6.2)	7	4.9	(0.2-9.5)	18	7.4	(2.3-12.6)
Chronic kidney disease	289	222	1.8	(1.4-2.2)	33	4.8	(2.3-7.3)	12	10.5	(3-18)	22	10.2	(4.3-16.1)

Chronic hepatitis/Cirrhosis	221	163	1.2	(0.9-1.5)	31	3.8	(1.7-5.9)	10	6.4	(1.3-11.5)	17	6.7	(1.7-11.6)
Immunodeficiency disease	230	181	1.7	(1.3-2.1)	32	2.8	(1.2-4.4)	5	1.8	(-0.2-3.8)	12	6.2	(1.3-11.2)
Cancer/Malignancy	300	247	2.3	(1.7-2.8)	27	2.7	(1.1-4.3)	10	7.6	(1.7-13.6)	16	6.6	(1.9-11.4)
Chronic pain/headache/backache	2,175	2,005	16.7	(15.6-17.7)	82	9.2	(6.2-12.1)	23	15.9	(7.5-24.4)	65	18.1	(11.8-24.3)
Mental disease													
Depression	647	532	4.0	(3.4-4.6)	54	5.5	(3.3-7.8)	18	7.8	(3-12.6)	43	11.9	(6.5-17.3)
Psychiatric disorders other than depression	539	434	3.8	(3.1-4.4)	41	4.5	(2.3-6.7)	22	12.3	(5.9-18.8)	42	15.1	(8.9-21.3)
Female	14,376	13032			574			222			548		
Metabolic syndrome													
Hypertension	2021	1840	15.8	(14.7-17)	81	17.8	(11.2-24.4)	25	9.0	(3.5-14.5)	75	15.8	(10.3-21.2)
Diabetes mellitus	487	421	4.0	(3.4-4.5)	28	7.7	(3.1-12.4)	10	3.9	(0.5-7.2)	28	3.5	(1.5-5.5)
Dyslipidemia	1875	1719	13.9	(12.8-14.9)	60	9.5	(5.6-13.4)	28	8.8	(3.4-14.2)	68	11.5	(7-15.9)
Pneumonia/bronchitis	185	148	1.4	(1-1.8)	18	3.9	(1.6-6.2)	4	1.6	(-1-4.2)	15	1.8	(0.5-3.1)
Allergic disease													
Asthma	483	422	3.6	(3-4.2)	27	4.4	(2.2-6.6)	10	1.8	(0.3-3.2)	24	3.2	(1.2-5.3)
Atopic dermatitis	807	697	4.9	(4.3-5.6)	49	10.2	(5.5-15)	13	4.1	(0.7-7.5)	48	8.6	(5.1-12.1)
Allergic rhinitis	2845	2574	19.5	(18.3-20.7)	100	15.2	(10.2-20.1)	51	27.7	(13.5-41.8)	120	21.4	(15.8-27)
Dental disease													
Periodontal disease	2187	1993	16.4	(15.3-17.6)	76	15.5	(9.8-21.3)	38	22.1	(8-36.2)	80	15.3	(9.8-20.8)
Caries	1,766	1,548	12.9	(11.8-13.9)	80	16.7	(10.8-22.6)	45	18.7	(10.4-27)	93	15.5	(10.2-20.8)
Cataract	700	618	5.3	(4.6-6)	37	7.2	(3.6-10.8)	5	0.9	(-0.1-1.8)	40	8.2	(4.1-12.3)
Cardio-cerebrovascular disease													

Angina pectoris/myocardial infarction	160	124	1.3	(0.9-1.7)	20	4.7	(1.4-8)	5	2.0	(-0.8-4.7)	11	1.2	(0.2-2.2)
Stroke, Cerebral infarction/hemorrhage	100	74	0.7	(0.4-0.9)	16	3.5	(1.3-5.6)	2	0.9	(-0.4-2.3)	8	0.4	(0.1-0.8)
Chronic obstructive pulmonary disease	72	47	0.3	(0.2-0.5)	13	2.4	(0.5-4.2)	5	2.2	(-0.6-4.9)	7	0.4	(0.1-0.8)
Chronic kidney disease	168	135	1.4	(1-1.8)	17	2.5	(0.7-4.3)	4	2.1	(-0.7-4.8)	12	1.1	(0.2-1.9)
Chronic hepatitis/Cirrhosis	114	87	0.6	(0.4-0.8)	12	1.9	(0.2-3.7)	4	2.0	(-0.7-4.7)	11	0.6	(0.2-1)
Immunodeficiency disease	320	278	2.4	(2-2.8)	18	4.0	(0.9-7.1)	10	5.5	(0.4-10.5)	14	2.1	(0.5-3.7)
Cancer/Malignancy	280	246	2.1	(1.6-2.5)	15	2.1	(0.4-3.9)	3	1.8	(-0.9-4.5)	16	2.1	(-0.1-4.4)
Chronic pain/headache/backache	2,726	2,445	20.4	(19.2-21.7)	83	16.3	(10.9-21.7)	54	21.5	(12.8-30.3)	144	28.1	(21.8-34.3)
Mental disease													
Depression	574	461	3.7	(3-4.3)	37	5.4	(3.1-7.8)	17	9.9	(3.1-16.7)	59	10.1	(6.3-13.8)
Psychiatric disorders other than depression	631	500	4.6	(3.9-5.3)	40	6.0	(3.3-8.7)	25	8.1	(3.7-12.5)	66	8.7	(5.5-11.8)

56  
57  
58  
59  
60

Abbreviation: SOGI, sexual orientation and gender identity; CI, confidential interval  
All %'s represents weighted percentages.

61  
62

Table 15. Health-related and COVID-19-related variables by SOGI category and sex.

	Total		Heterosexual			Homosexual			Bisexual			Gender minority		
	n		n	%	(95% CI)	n	%	(95% CI)	n	%	(95% CI)	n	%	(95% CI)
Assigned sex at birth														
Male	13,662		12,436			720			132			374		
Self-rated health, good	7,592		7,001	41.2	(39.9-42.5)	362	36.4	(31-41.7)	59	33.8	(22.9-44.8)	170	38.9	(31-46.9)
Serious psychological distress	1,319		1,096	8.2	(7.4-9.0)	111	16	(11.8-20.1)	32	16.2	(8.6-23.9)	80	19.2	(12.1-26.4)
Short-term UCLA Loneliness Scale*	5.6	(5.5-5.6)		5.5	(5.5-5.6)		5.2	(4.9-5.5)		6.8	(6.1-7.5)		6.3	(5.8-6.9)
Fear of COVID-19 Scale*	17.0	(16.9-17.2)		16.9	(16.8-17.0)		18.2	(17.4-19.0)		17	(16.0-18.1)		18.8	(17.8-19.8)
COVID-19 vaccination status														
Not fully vaccinated	1,567		1,335	12	(11.1-13)	135	20.7	(14.9-26.4)	17	18.6	(5.7-31.4)	77	18.8	(13.4-24.1)
Fully vaccinated	1,737		1,559	13.1	(12.1-14)	98	16.4	(11.9-21)	25	19.9	(9.8-30)	55	15.3	(9.5-21)
Boosted vaccinated	10,361		10,361	74.9	(73.7-76.1)	487	62.9	(56.6-69.2)	90	61.5	(48.1-75)	242	66	(58.7-73.2)
Female	14,376		13032			574			222			548		
Self-rated health, good	8,265		7,620	38.8	(37.4-40.3)	327	38.6	(31.9-45.2)	95	30	(18.7-41.3)	223	29.2	(23.4-35.1)
Serious psychological distress	1,457		1,195	10.4	(9.3-11.4)	88	15.4	(10.4-20.4)	61	26.9	(16.2-37.6)	113	17.9	(13.1-22.6)
Short-term UCLA Loneliness Scale*	6.0	(6.0-6.1)		6.0	(5.9-6.1)		5.8	(5.4-6.2)		7.2	(6.5-7.9)		6.8	(6.4-7.2)
Fear of COVID-19 Scale*	17.8	(17.7-18.0)		17.8	(17.6-18.0)		19.4	(18.4-20.3)		17.6	(16.4-18.8)		17	(16.3-17.7)
COVID-19 vaccination status														
Not fully vaccinated	1,719		1,512	12.7	(11.6-13.8)	89	16.7	(10.5-23)	40	19.1	(9.3-29)	78	14.6	(9.6-19.6)
Fully vaccinated	2,089		1,881	14.7	(13.7-15.8)	86	14.8	(9.9-19.7)	45	25.5	(14.9-36)	77	18.3	(12.3-24.4)
Boosted vaccinated	10,568		9,639	72.5	(71.1-73.9)	399	68.5	(61.4-75.6)	137	55.4	(42.6-68.2)	393	67.1	(60.2-73.9)

63  
64 Abbreviation: SOGI, sexual orientation and gender identity; CI, confidential interval  
65 All %'s represents weighted percentages.  
66