

1 Title

2 **Geospatial analysis of malaria burden in Kagera region, North-western Tanzania using**
3 **health facility and community survey data**

4 Authors

5 **Daniel A. Petro, Nyimvua Shaban, Sijenunu Aaron, Frank Chacky, Samwel Lazaro,**
6 **Maciej F. Boni, and Deus S. Ishengoma**

7 Corresponding author: Daniel Anderson Petro

8 Phone number: +255762001943

9 Email address: petrodaniel945@gmail.com

10 Author affiliations: University of Dar es Salaam, Dar es Salaam, Tanzania (D.A. Petro, N.
11 Shaban); National Malaria Control Programme, Dodoma, Tanzania (S. Aaron, F. Chacky, S.
12 Lazaro); Temple University, Philadelphia, USA (M.F. Boni); National Institute for Medical
13 Research; Kampala International University, Dar es Salaam, Tanzania (D.S. Ishengoma)

14 Running title: Geospatial burden of malaria in Kagera region, TZ

15 Keywords: Malaria, malaria hotspots, artemisinin partial resistance, spatial autocorrelation,
16 Kagera, Tanzania

17 **Abstract**

18 Generating evidence of malaria burden in areas with confirmed artemisinin partial resistance
19 (ART-R) is the first step before developing a response strategy to the resistance. In this study,
20 we assessed the burden of malaria in Kagera region (with recently confirmed ART-R) by
21 geospatial analysis using data from health facilities (HFs) and community surveys from 2017 to

22 2023. In 2983717/8124363 patients from HFs, rapid diagnostic test positivity rate was 36.7%
23 (range: 0-80%) and was similar in patients aged under-fives (33.1%, range: 0-79%) and ≥ 5
24 years (33.7%, range: 3-80%). The prevalence of malaria was 10.0% (range: 0-40.5%,
25 $n=84999/ 853761$) in pregnant women but it was 26.1% (3409/13065) in school children
26 (range: 0-78.4%). We identified hotspots and coldspots, and persistently high burden in 69/192
27 wards, school children, and patients aged ≥ 5 years, providing evidence for planning and
28 developing an ART-R response for the region.

29 Tanzania is one of the priority countries defined by the World Health Organization (WHO) as a
30 high-burden high-impact country; it accounted for an estimated 3.2% of all malaria cases and
31 4.4% of deaths reported worldwide in 2022 (1). In Tanzania, about 96% of all cases are
32 caused by *Plasmodium falciparum*, and the remaining are due to other species (*P. malariae*
33 and *P. ovale*) individually or in mixed infections (2–4). The National Malaria Control
34 Programme’s (NMCP) strategy is to reduce the malaria burden and progress to substantially
35 control and eliminate using different effective interventions. The main strategies include
36 integrated malaria vector control (mainly with insecticide-treated nets), case management,
37 preventive therapies, and other supportive strategies (5). However, progress to malaria
38 elimination is under key biological threats such as the emergence and spread of insecticide (6)
39 and antimalarial drug resistance (7), emergence of parasites with histidine-rich protein 2/3
40 (*hrp2/3*) gene deletions (8), and invasive vector species (*Anopheles stephensi*) in some
41 malaria-endemic countries in Africa (1).

42 Malaria transmission in Tanzania is heterogeneous with 93% of the population living in
43 areas where transmission occurs (5). Regions with very low and low transmission risk are
44 located in the central, northeastern, and southwestern parts surrounded on both sides by

45 moderate transmission regions and high transmission in the northwestern, southern, and
46 western parts (9). Various factors including the types of mosquito vectors, environmental
47 conditions, and other human-related factors are responsible for the current pattern of malaria
48 transmission in Tanzania (10–12).

49 Over the past four decades, malaria-endemic countries in sub-Saharan Africa have
50 reported resistance of *P. falciparum* to all major antimalarial drugs, including chloroquine,
51 sulfadoxine-pyrimethamine (SP) (7), and artemisinin derivatives and their currently used
52 partner drugs (13,14). Nevertheless, artemisinin-based combination therapies (ACTs) are still
53 highly effective against parasites of African origin (7). However, artemisinin partial resistance
54 (ART-R) has been confirmed in Rwanda (15,16), Uganda (17), Tanzania (18) and Eritrea (19),
55 and one particular genotype has only been detected in the Horn of Africa, in Ethiopia (20),
56 Somalia (21) and Sudan (22,23). In addition, the mutation that originated in Rwanda has been
57 also reported in Kenya (24). In Tanzania, little was known about ART-R until in 2021 when a
58 country-wide survey through the project on molecular surveillance of malaria in Tanzania
59 (MSMT) reported a focus in Kagera region only, with high frequency (0.077) of parasites with
60 mutations in Kelch13 gene (*K13*) and as high as 0.22 in Karagwe District Council (DC) which
61 are linked to ART-R in Africa (25). Based on WHO's criteria (7), a follow-up therapeutic
62 efficacy study conducted in 2022 confirmed the presence of ART-R in the region although the
63 tested drugs still had high efficacy exceeding 98.0% (18).

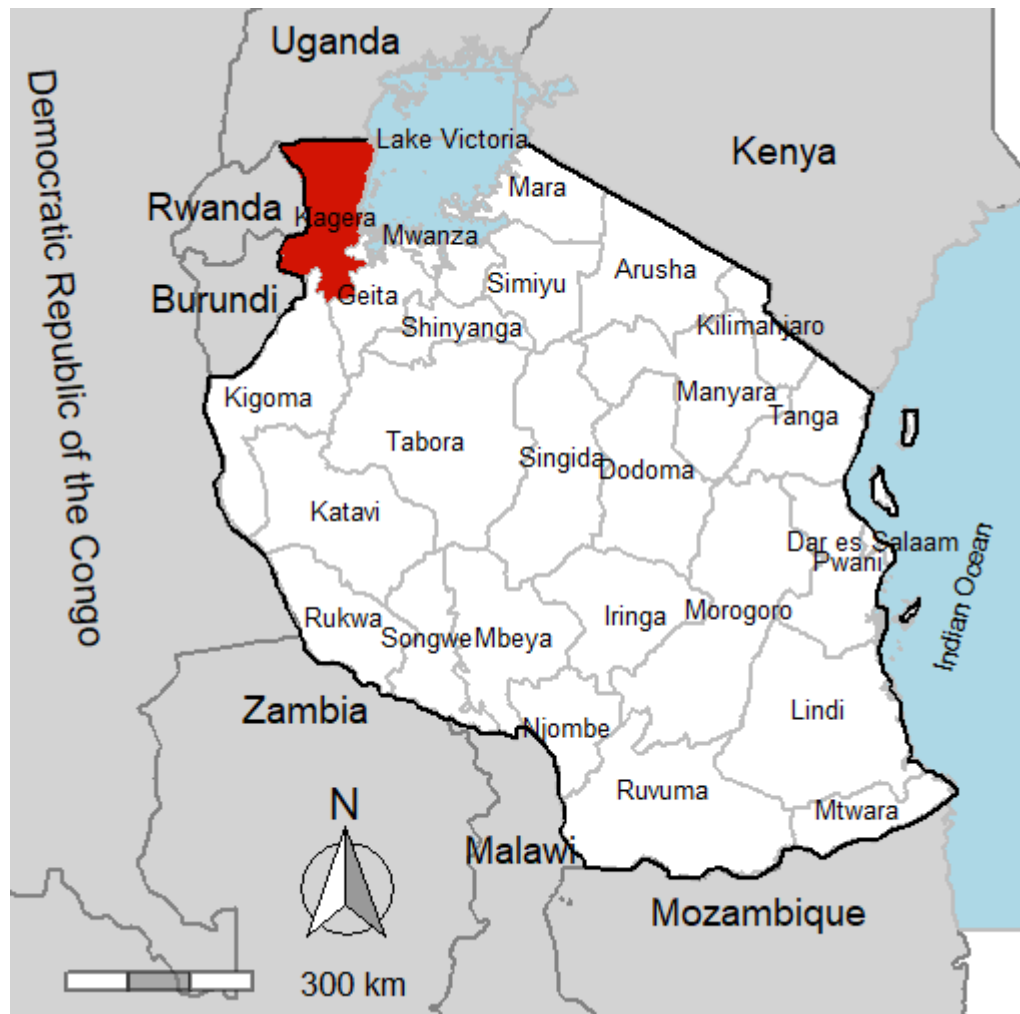
64 As per WHO's strategy to respond to ART-R in Africa, when resistance is confirmed,
65 new strategies to contain, prevent, and mitigate the spread and consequences of ART-R must
66 be considered urgently (26). As the first step towards the development of a response strategy,
67 WHO recommends mapping and providing a detailed profile of the disease burden and its

68 spread in different areas (27). Therefore, this study aimed to investigate the temporal trends
69 and spatial patterns of malaria burden in Kagera region and identify areas at the highest or
70 lowest risk of malaria transmission as an initial stage towards the development of a response
71 to ART-R in Tanzania. The findings from this study provide the government and other
72 stakeholders with evidence to support the designing, deployment, and implementation of
73 interventions to monitor, prevent, and contain the spread of ART-R within the region and to
74 other areas of Tanzania.

75 **Material and Methods**

76 **Study design and site**

77 This study utilized aggregated secondary data collected retrospectively from health facilities
78 (HFs) and community surveys in Kagera region of north-western Tanzania. The region
79 consists of 8 councils, 192 wards, and 734 villages covering an area of approximately 35868
80 square kilometers. A description of the region's geographical boundaries and the source of its
81 economy is provided in Appendix A.



82

83 **Figure 1.** A map showing the 26 regions of Mainland Tanzania (white) and Kagera region (red), Lake Victoria and
84 Indian Ocean (lightblue), and neighboring countries (gray).

85 **Data collation, management, and analysis**

86 The data for this were downloaded from the District Health Information System – version 2
87 (DHIS2), a web-based software platform for reporting, analyzing, storing, and disseminating
88 health data. This (DHIS2) is an electronic format for the paper-based Health Management
89 Information System of the Tanzania Ministry of Health which is used by HFs to collect and
90 report their routine data (5). The description of how the information is entered and maintained
91 as well as quality control of the data is given elsewhere (9,28). The data used in this study

92 included monthly malaria testing of pregnant women attending first antenatal care (ANC)
93 clinics, symptomatic malaria patients seeking care at HFs (aged under-fives and ≥ 5 years)
94 both from 2017 to 2023 and school children through school malaria parasitological surveys
95 (SMPS) of 2015, 2017, 2019, and 2021 from the 37 selected wards in all councils of Kagera
96 region.

97 Using Excel ([Office 2013](#)) and R software version 4.3.2: (www.r-project.org), data
98 cleaning and preprocessing were done to ensure accuracy and consistency (Appendix B).
99 Monthly data of total malaria tests performed and positive tests (by RDTs) reported by all HFs
100 in the region were aggregated to provide annualized estimates. Malaria test-positivity rate
101 (TPR) and prevalence were defined as the proportion of positive malaria tests among all
102 malaria tests in patients aged under-fives and ≥ 5 years, and pregnant women, respectively.
103 For school children, the average prevalence for each council and ward was used. Using R
104 software, data analysis was done for overall, per year and study group, council-wise, and at
105 ward level, and the results presented in tables, figures or text. Python plotting tools (pandas
106 v2.2.0, matplotlib v3.8.2, numpy v1.26.3) (Python.org) were used to show temporal trends of
107 TPR and prevalence in the councils.

108 Kruskal-Wallis test was used to assess for any significant differences in malaria burden
109 among councils, wards, and across years. Data on administrative boundaries of Tanzania at
110 lower levels and its neighboring countries were downloaded from various sources including the
111 Tanzanian [National Bureau of Statistics](#) (NBS), gadm.org, and naturalearthdata.com accessed
112 via the R package *rnaturalearth* v1.0.1. These were used to create the study site and used for
113 choropleth mapping, spatial autocorrelation (SA), and hotspot analysis. The spatial distribution
114 of malaria burden in the region was mapped using R packages *ggplot2* v3.5.1 and *sf* v1.0.15.

115 To investigate the spatial and temporal patterns of malaria burden in the region, the Global
116 Moran's Index was calculated for each group and year. The value of this index ranges from -1
117 (negative SA) to +1 (positive SA) (29,30). For hotspot analysis, local spatial statistical methods
118 were applied through a *spdep* package v1.3.3 found in R software. The description of wards
119 and HFs included in the analysis is found in Appendix B and Figure 1, while the cut-offs
120 applied to characterize malaria prevalence were; <1% (very low), 1 - <5% (low), 5 -<30%
121 (moderate), and $\geq 30\%$ (high) as previously described (31,32). For malaria TPR, the cut-offs
122 were <5% (very low), 5-<15% (low), 15-<30% (moderate), and $\geq 30\%$ (high) (Appendix C and
123 Table 1). The formulae and illustration of how SA and hotspot analysis were conducted can be
124 found elsewhere (29,30) and in Appendix D.

125 **Results**

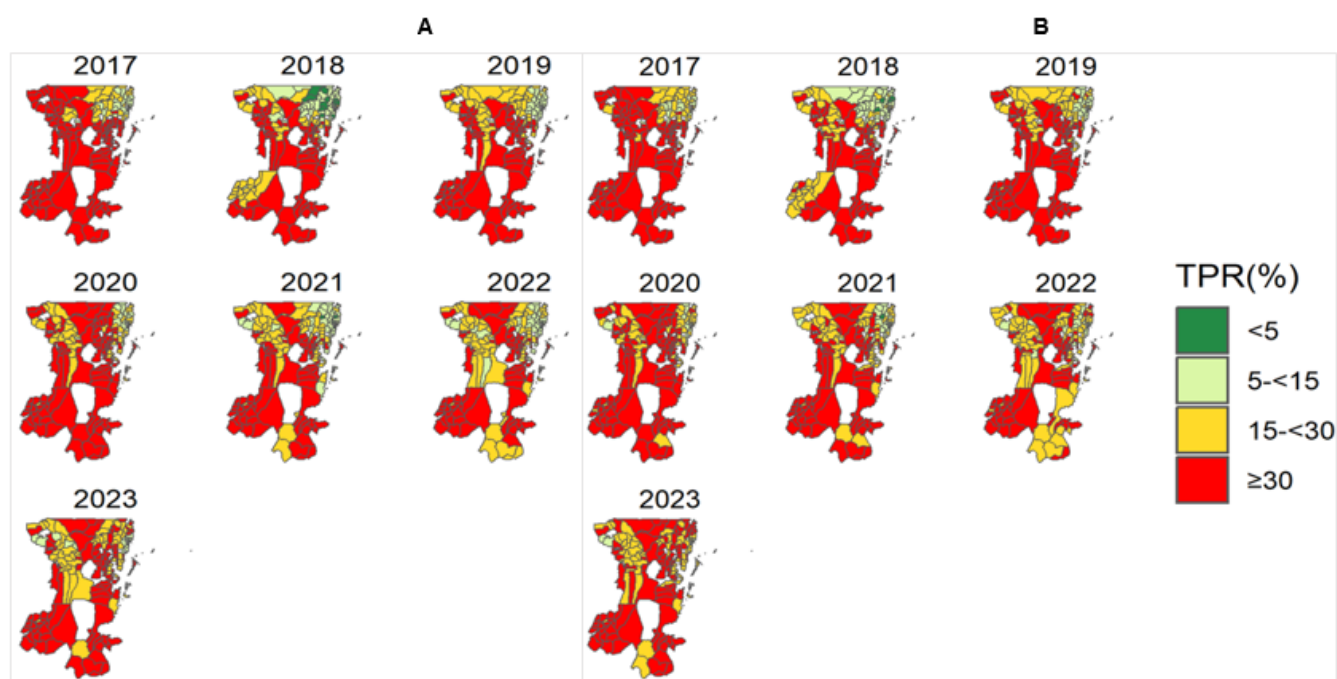
126 **Reported malaria cases from Health Facilities (HFs)**

127 In the HFs in Kagera region, 36.7% of patients (range: 0-80%; n = 2983717/8124363) with
128 malaria-like symptoms seeking care from 2017 to 2023, had RDT-positive results. The TPRs
129 were similar in patients aged under-fives (33.1%, range: 0-79%) and ≥ 5 years (33.7%, range:
130 3-80%), with clear geographic and temporal variations ($p < 0.001$). Among under-fives, most of
131 the wards in the high stratum (TPR $\geq 30\%$) were from rural areas while wards in the very low
132 stratum (TPR <5%) came from urban areas (Appendix Table 2). Furthermore, five councils had
133 >10% of the wards with consistently high TPR ($\geq 30\%$) throughout the years. These included
134 6/17 (35.3%) wards in Biharamulo DC, 12/43 (27.9%) in Muleba DC, 5/22 (22.7%) in Ngara
135 DC, 4/23 (17.4%) in Karagwe DC and 4/29 (13.8%) in Bukoba DC. In Kyerwa DC, only 2/24
136 (8.3%) wards had consistently higher TPRs while only one ward (Kashai in Bukoba MC)
137 recorded the lowest TPR (<5%) (Appendix Table 4).

138

139 Among patients aged ≥ 5 years, the pattern was similar to that of under-fives, with a
140 large number of wards observed in the high stratum throughout the years (Appendix Table 3).
141 Similar to under-fives, the same five councils had $>10\%$ of the wards with consistently high
142 TPRs ($\geq 30\%$) over the years and these included, 7/17 (41.2%) wards in Biharamulo DC, 7/23
143 (30.4%) in Karagwe DC, 11/43 (25.6%) in Muleba DC, 5/22 (22.7%) in Ngara DC, and 4/29
144 (13.8%) wards in Bukoba DC. Only 1/24 (4.2%) ward in Kyerwa DC had consistently higher
145 TPR ($\geq 30\%$) (Appendix Table 4) (**Figure 2B**).

146

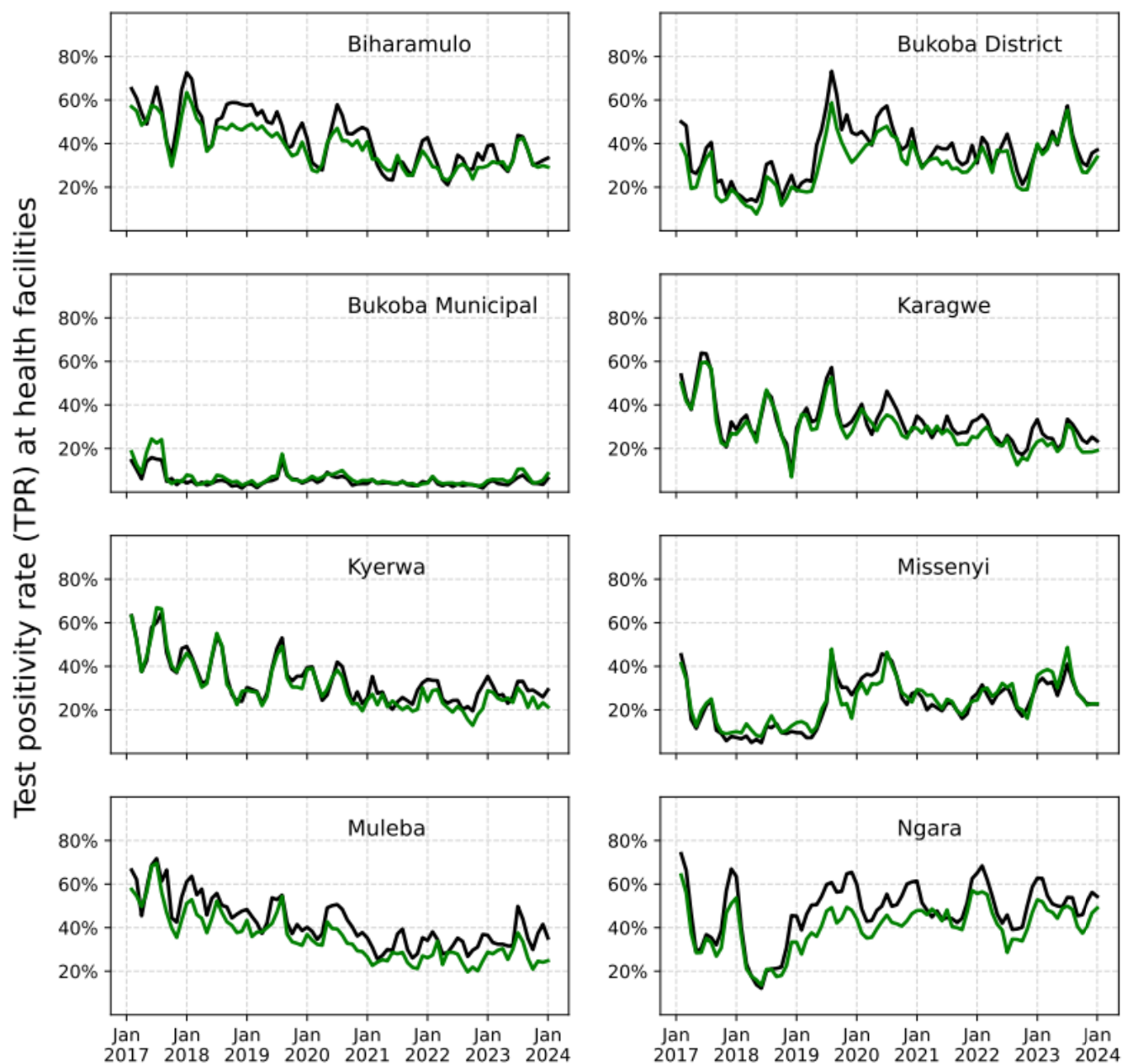


147 **Figure 2.** Spatial distribution of malaria test positivity rates (TPRs) in (A) under-fives (B) patients aged ≥ 5 years at
148 ward level in Kagera region from 2017 to 2023. White areas are wards excluded from the analysis

149 **Monthly variations of test positivity rates (TPRs) at health facility level**

150 Monthly malaria TPR was higher ($\geq 30\%$) in patients aged ≥ 5 years compared to under-fives in
151 all councils (in Muleba DC, Ngara DC, Biharamulo DC, Bukoba DC, and Karagwe DC) and the
152 pattern was similar in all years, except in Bukoba MC which recorded the lowest TPR ($<5\%$) in

153 both age groups. In all councils except Bukoba MC and Missenyi DC, TPRs less than 20%
154 were rarely observed (**Figure 3**).



155

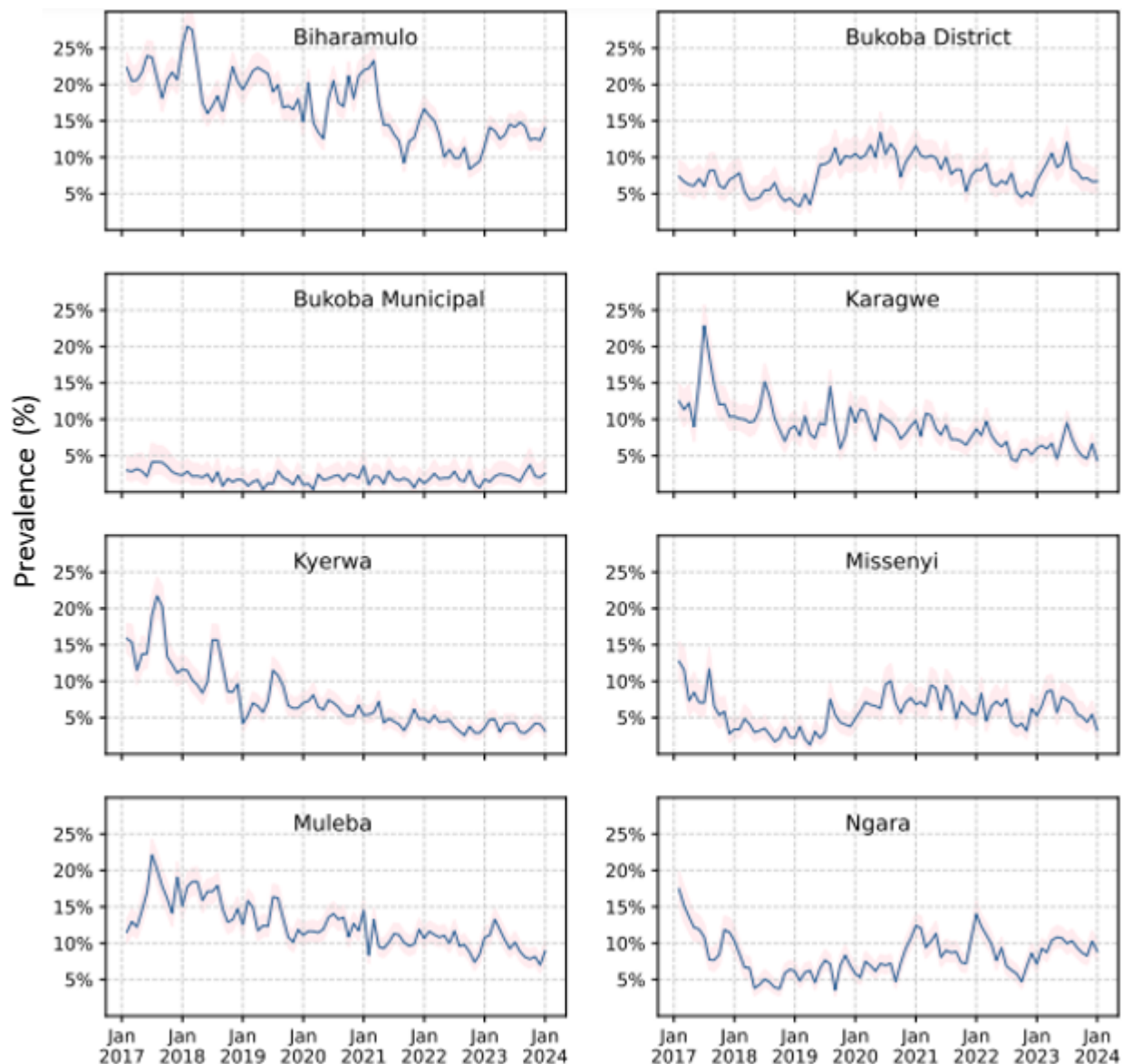
156 **Figure 3.** Monthly test positivity rates (TPRs) at health facility level in eight councils of Kagera region in patients
157 aged under-fives (green) and ≥ 5 years (black) from 2017 to 2023.

158

159

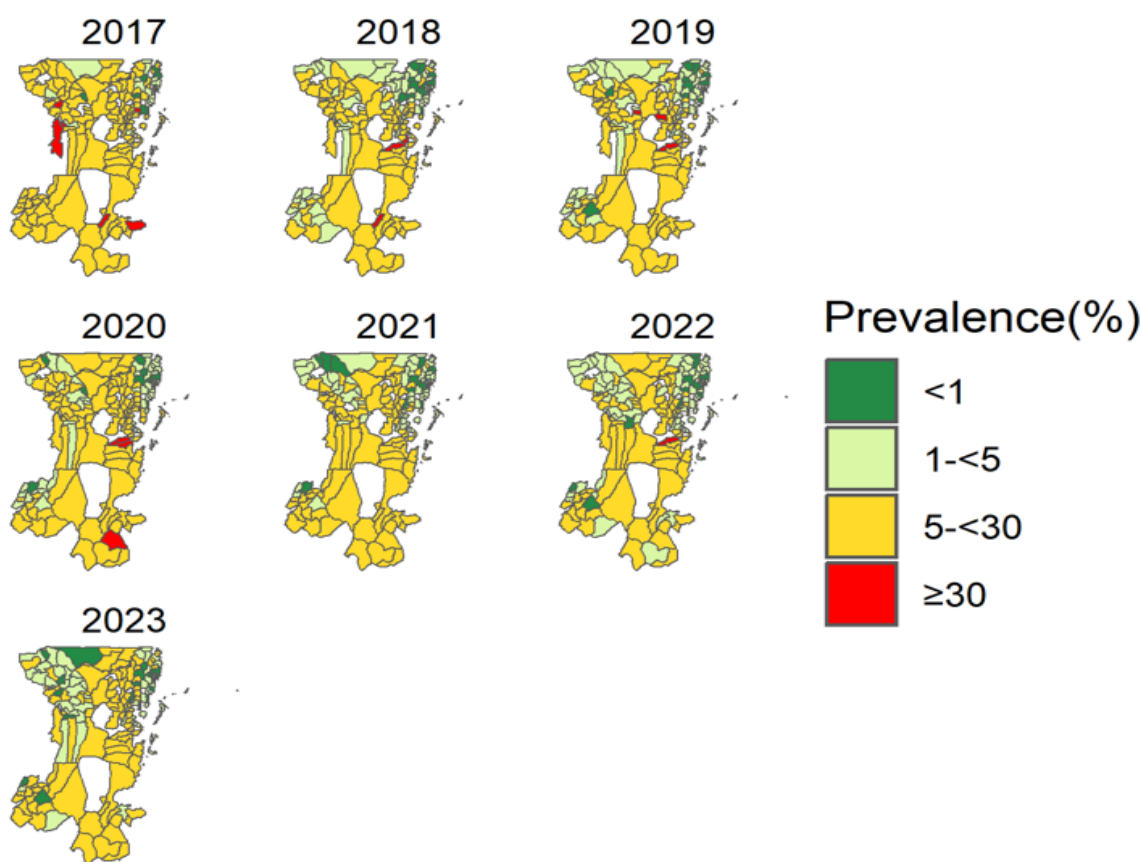
160 **Malaria prevalence among pregnant women**

161 From 2017 to 2023, the prevalence of malaria in pregnant women was 10.0% (range: 0-40.5%,
162 n=84999/ 853761), with significant differences among wards and across years ($p < 0.001$). The
163 prevalence was consistently higher in Biharamulo DC, Karagwe DC, Muleba DC, and Kyerwa
164 DC, and low in Bukoba MC (<1%) throughout the years (**Figure 4**).



165
166 **Figure 4.** Trends of malaria prevalence in pregnant women by council, in Kagera region from 2017 to 2023. The
167 pink-shaded regions show the Clopper-Pearson 95% confidence bands.

168 The largest number of wards (76.8%, n=116/151) were located in the moderate stratum
169 while the lowest (0.6%, n=1/159) was in the high-risk stratum of prevalence (Appendix Table
170 5). In addition, only 3/8 (37.5%) councils had $\geq 5\%$ of the wards with higher prevalence ($\geq 30\%$)
171 (including 3/17 (17.6%) wards in Biharamulo DC, 4/43 (9.3%) in Muleba DC and 2/23 (8.7%)
172 wards in Karagwe DC) while Kyerwa DC (n=1/24, 4.2%) and Bukoba DC (n=1/29, 3.4%) had
173 $<5\%$ of the wards with high prevalence. At least 5% of the wards from Bukoba DC (n=2/29,
174 6.9%) and Missenyi DC (n = 1/20, 5%) consistently recorded the lowest prevalence (Appendix
175 Table 6) (**Figure 5**).



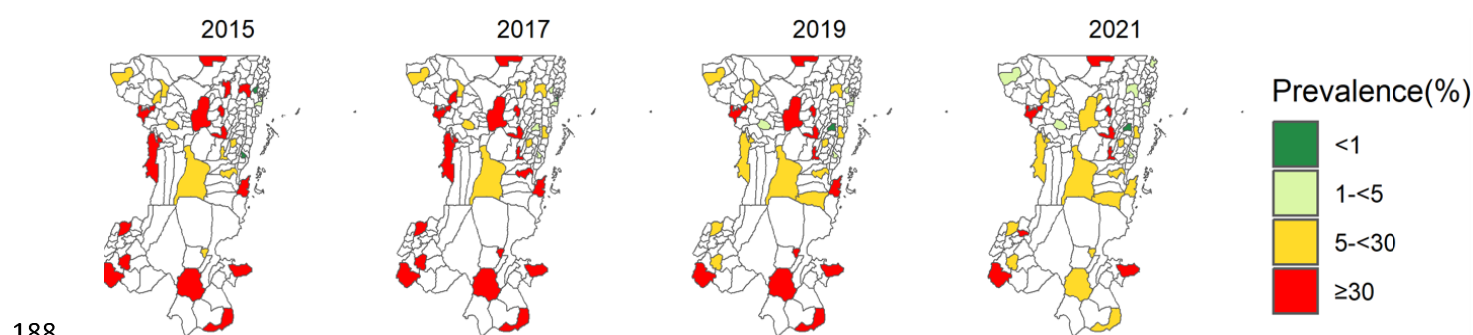
176
177 **Figure 5.** Spatial distribution of malaria prevalence in pregnant women at ward level in Kagera region from
178 2017 to 2023. White areas are wards excluded from the analysis.

179

180

181 Malaria prevalence in school children

182 The prevalence of malaria in school children was 26.1% (range: 0-78.4%; n=3409/1306)
183 (Appendix E). A large number of wards (19/34, 55.9%) were located in the high stratum
184 ($\geq 30\%$) and few wards (1/34, 2.9%) came from areas with very low stratum ($<1\%$) (Appendix
185 Table 7). Furthermore, two wards from Ngara DC and two from Bukoba DC had persistently
186 higher prevalence ($\geq 30\%$) throughout the study period, while no ward recorded the lowest
187 prevalence ($<1\%$) for all years (Appendix Table 8) (**Figure 6**).



189 **Figure 6.** Spatial distribution of malaria prevalence in school children at ward level in Kagera region for 2015,
190 2017, 2019, and 2021 surveys. White areas are wards not selected for the survey or excluded from the
191 analysis.

192 Overall malaria test positivity rates at ward level

193 Among patients aged between under-fives and ≥ 5 years, a declining trend was observed in
194 under-fives and started to shift to older patients at the same time (Appendix Table 9). In both
195 age groups, an increasing trend was observed in 2023 (Appendix Figure 2).

196 Overall malaria prevalence at ward level

197 Malaria prevalence was higher in school children than in pregnant women, a trend that was
198 similar across years (Appendix Figure 3). Furthermore, prevalence in pregnant women showed
199 a decreasing trend with minor variability before 2022 but increased by approximately 15% in
200 2023 (Appendix Table 9).

201 **Global spatial autocorrelation analysis of malaria burden**

202 Malaria burden in the region was clustered in under-fives, patients aged ≥ 5 years, and
203 pregnant women. Councils/wards with high/low burden were surrounded by other areas
204 with high/low values as well for all years and the observed patterns were statistically
205 significant ($p < 0.05$) in all groups except school children (**Tables 1 and 2**).

206 **Table 1.** Results of global spatial autocorrelation of malaria test positivity rates in patients aged under-fives
207 and ≥ 5 years in Kagera region

Group	Year	Global moran's index	z score	p value	Pattern
Under-fives	2017	0.7281	12.621	<0.0001	Clustered
	2018	0.7522	13.263	<0.0001	Clustered
	2019	0.7815	13.771	<0.0001	Clustered
	2020	0.7391	13.528	<0.0001	Clustered
	2021	0.6745	12.331	<0.0001	Clustered
	2022	0.6724	12.084	<0.0001	Clustered
	2023	0.5229	9.440	<0.0001	Clustered
≥ 5 years	2017	0.6561	11.392	<0.0001	Clustered
	2018	0.6852	12.091	<0.0001	Clustered
	2019	0.6806	11.995	<0.0001	Clustered
	2020	0.6104	11.197	<0.0001	Clustered
	2021	0.6324	11.572	<0.0001	Clustered
	2022	0.5779	10.413	<0.0001	Clustered
	2023	0.4784	8.709	<0.0001	Clustered

208

209

210

211

212 **Table 2.** Year-wise results of global spatial autocorrelation of malaria prevalence in Kagera region

Group	Year	Global Moran's Index	z-score	p-value	Pattern
ANC*	2017	0.3556	6.2041	<0.0001	Clustered
	2018	0.5267	9.2397	<0.0001	Clustered
	2019	0.5518	9.663	<0.0001	Clustered
	2020	0.5383	9.990	<0.0001	Clustered
	2021	0.5706	10.294	<0.0001	Clustered
	2022	0.4961	9.275	<0.0001	Clustered
	2023	0.3487	6.589	<0.0001	Clustered
SMPS [†]	2015	0.1688	0.7905	0.4292	Clustered
	2017	0.0465	0.4611	0.6448	Clustered
	2019	-0.0445	0.1648	0.8691	Dispersed
	2021	-0.0313	0.1626	0.8709	Dispersed

213 *ANC, Antenatal Care,

214 [†]SMPS, School malaria parasitological survey

215 Hotspot analysis of malaria burden

216 Malaria hotspots were concentrated in the southern, central, and northwestern parts of Kagera
 217 region. Four councils (Ngara DC, Biharamulo DC, Muleba DC, and Bukoba DC) had >17% of
 218 the wards classified as malaria hotspots in patients aged under-fives and ≥5 years, and
 219 pregnant women while Karagwe DC and Kyerwa DC had <17% of wards as malaria hotspots
 220 in the same groups. The number of wards classified as hotspots of malaria in each group at
 221 95% and 99% confidence levels (CLs) is presented in **Table 3** (Appendix Table 10).

222

223

224

225 **Table 3.** Number of wards per council classified as malaria hotspots in patients aged under-fives
 226 and ≥ 5 years, and pregnant women in Kagera region at 95 and 99% confidence levels

Group	Council	Hotspot wards	Hotspot wards
		at 95% CL [†] (n/N, %)	at 99% CL (n/N, %)
Under-fives	Ngara DC*	(19/22, 86.4)	(17/22, 77.3)
	Biharamulo DC	(11/17, 64.7)	(8/17, 47.1)
	Muleba DC	(15/43, 34.9)	(12/43, 27.9)
	Bukoba DC	(9/29, 31.0)	(6/29, 20.7)
	Karagwe DC	(2/23, 8.7)	(1/23, 4.3)
	Kyerwa DC	(1/24, 4.2)	-
≥ 5 years	Ngara DC	(20/22, 90.9)	(16/22, 72.7)
	Biharamulo DC	(9/17, 52.9)	(7/17, 41.2)
	Muleba DC	(16/43, 37.2)	(13/43, 30.2)
	Bukoba DC	(8/29, 27.6)	(5/29, 17.2)
	Kyerwa DC	(3/24, 12.5)	(1/24, 4.2)
	Karagwe DC	(1/23, 4.3)	(1/23, 4.3)
Pregnant women	Biharamulo DC	(13/17, 76.5)	(11/17, 64.7)
	Ngara DC	(7/22, 31.8)	(4/22, 18.2)
	Muleba DC	(13/43, 30.2)	(10/43, 23.3)
	Bukoba DC	(7/29, 24.1)	(7/29, 24.1)
	Karagwe DC	(4/23, 17.4)	(3/23, 13.0)
	Kyerwa DC	(3/24, 12.5)	(1/24, 4.2)
	Missenyi DC	(2/20, 10)	-

227 *DC, district council, [†]CL, confidence level. N, number of wards within a council,
 228 n, number of wards identified as hotspots

229 On the other hand, malaria coldspots were situated in the northeast and few in the
 230 remaining parts of the region. Three councils (Bukoba MC, Missenyi DC, and Bukoba DC) had
 231 $>20\%$ of the wards classified as malaria coldspots in patients aged under-fives, ≥ 5 years, and

232 pregnant women while Kyerwa DC and Muleba DC had <20% of the wards. The number of
 233 wards classified as malaria coldspots in each group at 95% and 99% CLs is presented in
 234 **Table 4** (Appendix Table 11).

235 **Table 4.** Number of wards per council classified as malaria coldspots in patients aged under-fives
 236 and ≥5 years, and pregnant women

Group	Council	Coldspot wards	Coldspot wards
		at 95% CL (n/N, %)	at 99% CL (n/N, %)
Under-fives	Bukoba MC*	(13/14, 92.9)	(12/14, 85.7)
	Missenyi DC [†]	(17/20, 85)	(14/20, 70)
	Bukoba DC	(15/29, 51.7)	(12/29, 41.4)
	Karagwe DC	(1/23, 4.3)	-
	Kyerwa DC	(1/24, 4.2)	-
	Muleba DC	(1/43, 2.3)	-
≥5 years	Bukoba MC	(12/14, 85.7)	(11/14, 78.6)
	Missenyi DC	(17/20, 85)	(14/20, 70)
	Bukoba DC	(14/29, 48.3)	(11/29, 37.9)
	Kyerwa DC	(1/24, 4.2)	-
	Muleba DC	(1/43, 2.3)	(1/43, 2.3)
Pregnant women	Bukoba MC	(10/14, 71.4)	(3/14, 21.4)
	Bukoba DC	(11/29, 37.9)	(9/29, 31.0)
	Missenyi DC	(8/20, 40)	(2/20, 10)
	Kyerwa DC	(4/24, 16.7)	-
	Ngara DC	(1/22, 4.5)	-

237 *DC, district council

238 [†]MC, municipal council,

239 [‡]CL, confidence level. N, number of wards within a council, n, number of wards identified as coldspot

240 The locations of malaria hotspots and coldspots at 95% and 99% CLs in under-fives, ≥5
 241 years, and pregnant women respectively are indicated in Appendix Figures S4 to S6.

242 **Discussion**

243 This study was conducted as an initial stage to respond to ART-R as recommended by WHO
244 (26) and aimed to undertake an assessment to generate, and provide evidence of the current
245 burden of malaria in Kagera region where ART-R was recently confirmed (18). We used
246 spatial statistical and disease mapping techniques to assess the local burden of malaria and
247 identify potential malaria hotspots in Kagera region to support NMCP's efforts of developing a
248 response strategy against ART-R. Using aggregated secondary data from multiple sources,
249 we showed that over 35% (69/192) of all wards in Kagera region, mostly from rural areas, had
250 a high malaria burden, with these wards being clustered across years. The TPR was higher in
251 patients aged ≥ 5 years than under-fives and this is comparable to previous studies conducted
252 in Tanzania (11, 12). The findings reported here provide important evidence to support the
253 designing and implementation of mitigation and response strategies to recently confirmed
254 ART-R in Kagera region and Tanzania in general.

255 Consistent with previous studies (12), this study reported high temporal and spatial
256 heterogeneity of malaria burden at council and ward levels within the region. Most of the
257 wards, especially from rural areas, recorded a high malaria burden for most of the years; while
258 some wards mainly in urban and mixed/rural areas recorded the lowest burden (see Appendix
259 Tables 4,6, and 8). This finding was consistent across years and study groups possibly due to
260 conditions supporting malaria transmission in rural compared to urban areas as previously
261 reported (33–35). The higher burden of malaria in rural areas is normally attributed to several
262 factors including the presence of favorable conditions for malaria transmission in rural areas
263 such as stagnant water bodies that tend to create desirable breeding sites for mosquito
264 vectors (35). In addition, a large proportion of poor people tend to reside in rural areas and

265 normally live in poorly constructed houses which support higher mosquito biting rates and
266 transmission of malaria (12,36,37). To reduce the burden in these areas, various interventions
267 such as distribution of insecticide-treated nets (ITNs), house improvement strategies, bio-
268 larviciding in areas that are surrounded by water bodies, and behavioral change and
269 communication strategies need to be implemented, as these have been reported to
270 significantly reduce malaria transmission and the burden (38,39). On the other hand, the low
271 burden of malaria in urban areas observed in this study is consistent with previous studies
272 (33,35). This is possibly due to the high socio-economic status of the urban population and,
273 the availability and access to malaria treatment and control measures when compared to rural
274 areas (35).

275 A significant clustered spatial pattern of malaria burden reported in patients aged under-
276 fives and ≥ 5 years, and pregnant women within the region aligns with other studies conducted
277 elsewhere (29,30). The reports of areas with persistently high malaria burden in the southern,
278 central, and north-western parts of the region as reported in this study may be attributed to the
279 presence of similar risk factors such as environmental conditions, socio-economic status,
280 healthcare infrastructures, and the presence of suitable mosquito breeding sites that tend to
281 create foci of malaria transmission (10,12,40). Hence, future interventions in the region to
282 reduce the local disease burden need to be designed based on these results to target the
283 areas that have been identified to have a persistently high burden of malaria.

284 Malaria prevalence in Kagera region was high in school children compared to pregnant
285 women, reaching as high as 78.4% in some wards. In previous studies, it was reported that
286 school children spend most of their time in the evening playing outside and less often use bed
287 nets, which tends to increase their chances of mosquito bites and hence increase the risk of

288 malaria infections (41–43). To reduce malaria transmission in school children, various
289 initiatives have been undertaken by NMCP and other stakeholders to protect this risky group
290 including the distribution of ITNs through different channels like the school net program (5,44).
291 However, the prevalence of malaria infections in this asymptomatic group is still high (12,45).
292 Future studies are needed to explore more reasons and factors for this recurring observation in
293 the region and the whole country and whether this will support the spread of the reported ART-
294 R. On the other hand, pregnant women in Tanzania are normally given two or more doses of
295 SP for intermittent preventive treatment as well as ITNs during their first ANC visits in HFs,
296 which might have significantly contributed to reducing the risk of malaria infections in this
297 group (28). However, the increasing trend of malaria prevalence in pregnant women observed
298 in 2023 needs further follow-up to uncover all possible reasons for this change.

299 The overall malaria TPR at the ward level was high ($\geq 30\%$) in both under-fives and
300 patients aged ≥ 5 years with minor differences. These findings are comparable to what has
301 been reported by previous studies in Tanzania and elsewhere (11, 12). The year-wise
302 comparison of TPR revealed a shift of TPR from under-fives to ≥ 5 years, similar to previous
303 studies (46). This may be attributed to various efforts that have been undertaken by NMCP to
304 implement effective malaria interventions in vulnerable groups like under-fives while these
305 interventions may not have been widely considered in older age groups (11,28). This might
306 have led to the shift of malaria infections to individuals aged ≥ 5 years, with the peak of malaria
307 prevalence reported in children aged between 5 and 15 years (11). In addition, malaria TPR in
308 under-fives and ≥ 5 years showed an increasing trend in 2023. An in-depth analysis to uncover
309 possible reasons for these epidemiological changes in the region is required so that
310 appropriate measures can be planned, now that ART-R has been confirmed.

311 Malaria transmission in Kagera region was observed throughout the year with some of
312 the months recording high values of TPR compared to others. This indicates that malaria
313 transmission in the region was not seasonal; an observation that can signify the presence of
314 other factors like population movements, changes in malaria control, or unexpected
315 increases/decreases in breeding sites or mosquito populations (12,47,48). Causal effects for
316 these factors are in general difficult to establish, future studies are needed to explore and
317 uncover the key drivers of persistent malaria transmission in this malaria-endemic region in the
318 country.

319 The findings presented here had some limitations that may be addressed in future
320 studies. Since this study included HFs with a reporting rate of 50% or more, future studies may
321 consider including all HFs during analysis and use different geostatistical methods to account
322 for monthly missing data, differences in utilization of HFs, treatment-seeking behaviors, and
323 distance to HFs. In addition, the HF data did include personal information such as age and
324 sex, and this limited additional analysis. For instance, previous studies showed a high burden
325 of malaria in school children (aged 5 - 15 years) but this could not be teased out because all
326 patients aged ≥ 5 years were put in one group. Future studies may also include populations at
327 risk and use incidence to track changes in the disease burden within the region.

328 Overall, malaria infections in the region were higher in most of the wards from rural
329 areas compared to urban areas, among school children compared to pregnant women, and
330 among patients aged ≥ 5 years than in under-fives. The observed heterogeneity of malaria
331 burden underscores prioritization of Kagera region for additional malaria control mainly due to
332 the currently circulating *P. falciparum* parasites with K13 561H genotypes in the region (18).
333 As early and preemptive action is preferred to late response (49), identifying specific

334 resistance containment strategies (50) for 2024 and 2025 – in addition to general malaria
335 control strategies– will be critical for slowing down the spread of artemisinin-resistant parasites
336 from Kagera region to other parts of Tanzania.

337

338

339 **Biographical Sketch**

340 Mr. Petro is a doctoral student at the University of Dar es Salaam, Dar es Salaam. His
341 research interests focus on malaria epidemiology.

342 **Acknowledgment**

343 The authors would like to thank the MoH through NMCP, and all members of the Department
344 of Mathematics, University of Dar es Salaam, and MSMT project team for their participation
345 and invaluable support to make this work complete.

346 This study was partially funded by the National Institute for Medical Research (NIMR)
347 under the MSMT project. The MSMT project is funded in whole, by the Bill & Melinda Gates
348 Foundation [grant number INV 02202]. Under the grant conditions of the Foundation, a
349 Creative Commons Attribution 4.0 Generic License has already been assigned to the author of
350 the accepted Manuscript version that might arise from this submission.

351 PAP and DSI designed the study, and SA, FC and SL supported the acquisition and
352 cleaning of the data. DAP conducted the initial analysis under the supervision of DSI and NS.
353 DSI, NS, and MFB were involved in the interpretation of the results. DAP and MFB performed
354 a final analysis of the data under the guidance of DSI, and DAP drafted the initial manuscript.
355 All co-authors contributed to the revision of the initial draft and subsequent versions of the

356 manuscript. All authors read and approved the final manuscript, and declared no competing
357 interest.

358 **References**

- 359 1. World Health Organization. World Malaria Report 2023 [Internet]. World Health
360 Organization; 2023. Available from:
361 <https://www.who.int/publications/i/item/9789240086173>
- 362 2. Popkin Hall ZR, Seth MD, Madebe RA, Budodo R, Bakari C, Francis F, et al. Malaria
363 species positivity rates among symptomatic individuals across regions of differing
364 transmission intensities in Mainland Tanzania. *J Infect Dis* [Internet]. 2023 Nov 22;
365 Available from: <http://dx.doi.org/10.1093/infdis/jiad522>
- 366 3. Popkin-Hall ZR, Seth MD, Madebe RA, Budodo R, Bakari C, Francis F, et al. Prevalence
367 of non-falciparum malaria infections among asymptomatic individuals in four regions of
368 Mainland Tanzania. *Parasit Vectors* [Internet]. 2024;17(1):153. Available from:
369 <https://doi.org/10.1186/s13071-024-06242-4>
- 370 4. Sendor R, Mitchell CL, Chacky F, Mohamed A, Mhamilawa LE, Molteni F, et al. Similar
371 Prevalence of Plasmodium falciparum and Non-P. falciparum Malaria Infections among
372 Schoolchildren, Tanzania¹. *Emerg Infect Dis* [Internet]. 2023 Jun;29(6):1143–53.
373 Available from: <http://dx.doi.org/10.3201/eid2906.221016>
- 374 5. National Malaria Control Programme (NMCP). “National Malaria Strategic Plan 2021-
375 2025: Transitioning to Malaria Elimination Phase”, Tanzania Ministry of Health,
376 Community Development, Gender, Elderly and Children. Dodoma; 2020 p. 1–179.
- 377 6. World Health Organization. Global-report-on-insecticide-resistance-in-malaria-vectors-
378 2010-2016 [Internet]. 2018. Available from: <https://fundacionio.com/wp->

- 379 content/uploads/2020/11/Global-report-on-insecticide-resistance-in-malaria-vectors-2010-
380 2016.pdf
- 381 7. World Health Organization. Report on antimalarial drug efficacy, resistance and response:
382 10 years of surveillance (2010-2019). World Health Organization; 2020.
- 383 8. Watson OJ, Tran TNA, Zupko RJ, Symons T, Thomson R, Visser T, et al. Global risk of
384 selection and spread of Plasmodium falciparum histidine-rich protein 2 and 3 gene
385 deletions. medRxiv. 2023;
- 386 9. Thawer SG, Golumbeanu M, Munisi K, Aaron S, Chacky F, Lazaro S, et al. The use of
387 routine health facility data for micro-stratification of malaria risk in mainland Tanzania.
388 Malar J [Internet]. 2022 Nov;21(1):345. Available from: [http://dx.doi.org/10.1186/s12936-](http://dx.doi.org/10.1186/s12936-022-04364-7)
389 022-04364-7
- 390 10. Rumisha SF, Shayo EH, Mboera LEG. Spatio-temporal prevalence of malaria and
391 anaemia in relation to agro-ecosystems in Mvomero district, Tanzania. Malar J.
392 2019;18(1):1–14.
- 393 11. Ishengoma DS, Mmbando BP, Mandara CI, Chiduo MG, Francis F, Timiza W, et al.
394 Trends of Plasmodium falciparum prevalence in two communities of Muheza district
395 North-eastern Tanzania: correlation between parasite prevalence, malaria interventions
396 and rainfall in the context of re-emergence of malaria after two decades of progressive.
397 Malar J [Internet]. 2018 Jul;17(1):252. Available from: [http://dx.doi.org/10.1186/s12936-](http://dx.doi.org/10.1186/s12936-018-2395-1)
398 018-2395-1
- 399 12. Mandai SS, Francis F, Challe DP, Seth MD, Madebe RA, Petro DA, et al. High prevalence
400 and risk of malaria among asymptomatic individuals from villages with high rates of
401 artemisinin partial resistance in Kyerwa district, North-western Tanzania. medRxiv.

- 402 2023;2010–23.
- 403 13. Dondorp AM, Nosten F, Yi P, Das D, Phyo AP, Tarning J, et al. Artemisinin resistance in
404 *Plasmodium falciparum* malaria. *N Engl J Med*. 2009;361(5):455–67.
- 405 14. Noedl H, Se Y, Schaecher K, Smith BL, Socheat D, Fukuda MM. Evidence of artemisinin-
406 resistant malaria in western Cambodia. *N Engl J Med*. 2008;359(24):2619–20.
- 407 15. Uwimana A, Legrand E, Stokes BH, Ndikumana JLM, Warsame M, Umulisa N, et al.
408 Emergence and clonal expansion of in vitro artemisinin-resistant *Plasmodium falciparum*
409 kelch13 R561H mutant parasites in Rwanda. *Nat Med*. 2020;26(10):1602–8.
- 410 16. Uwimana A, Umulisa N, Venkatesan M, Szigel SS, Zhou Z, Munyaneza T, et al.
411 Association of *Plasmodium falciparum* kelch13 R561H genotypes with delayed parasite
412 clearance in Rwanda: an open-label, single-arm, multicentre, therapeutic efficacy study.
413 *Lancet Infect Dis*. 2021;21(8):1120–8.
- 414 17. Balikagala B, Fukuda N, Ikeda M, Katuro OT, Tachibana SI, Yamauchi M, et al. Evidence
415 of artemisinin-resistant malaria in Africa. *N Engl J Med*. 2021;385(13):1163–71.
- 416 18. Ishengoma DS, Mandara CI, Bakari C, Fola AA, Madebe RA, Seth MD, et al. Evidence of
417 artemisinin partial resistance in North-western Tanzania: clinical and drug resistance
418 markers study. *medRxiv [Internet]*. 2024 Feb 1; Available from:
419 <http://dx.doi.org/10.1101/2024.01.31.24301954>
- 420 19. Mihreteab S, Platon L, Berhane A, Stokes BH, Warsame M, Campagne P, et al.
421 Increasing Prevalence of Artemisinin-Resistant HRP2-Negative Malaria in Eritrea. *N Engl*
422 *J Med [Internet]*. 2023 Sep 28;389(13):1191–202. Available from:
423 <http://dx.doi.org/10.1056/NEJMoa2210956>
- 424 20. Fola AA, Feleke SM, Mohammed H, Brhane BG, Hennelly CM, Assefa A, et al.

- 425 Plasmodium falciparum resistant to artemisinin and diagnostics have emerged in Ethiopia.
426 Nat Microbiol [Internet]. 2023 Oct;8(10):1911–9. Available from:
427 <http://dx.doi.org/10.1038/s41564-023-01461-4>
- 428 21. Jalei AA, Na-Bangchang K, Muhamad P, Chaijaroenkul W. Monitoring antimalarial drug-
429 resistance markers in Somalia. Parasites Hosts Dis [Internet]. 2023 Feb;61(1):78–83.
430 Available from: <http://dx.doi.org/10.3347/PHD.22140>
- 431 22. Mohamed AO, Hussien M, Mohamed A, Suliman A, Elkando NS, Abdelbagi H, et al.
432 Assessment of Plasmodium falciparum drug resistance molecular markers from the Blue
433 Nile State, Southeast Sudan. Malar J [Internet]. 2020 Feb 18;19(1):78. Available from:
434 <http://dx.doi.org/10.1186/s12936-020-03165-0>
- 435 23. Molina-de la Fuente I, Sagrado Benito MJ, Ousley J, Gisbert F de B, García L, González
436 V, et al. Screening for K13-Propeller Mutations Associated with Artemisinin Resistance in
437 Plasmodium falciparum in Yambio County (Western Equatoria State, South Sudan). Am J
438 Trop Med Hyg [Internet]. 2023 Nov 1;109(5):1072–6. Available from:
439 <http://dx.doi.org/10.4269/ajtmh.23-0382>
- 440 24. Owoloye A, Olufemi M, Idowu ET, Oyebola KM. Prevalence of potential mediators of
441 artemisinin resistance in African isolates of Plasmodium falciparum. Malar J [Internet].
442 2021 Dec 2;20(1):451. Available from: <http://dx.doi.org/10.1186/s12936-021-03987-6>
- 443 25. Juliano JJ, Giesbrecht DJ, Simkin A, Fola AA, Lyimo BM, Pereus D, et al. Country wide
444 surveillance reveals prevalent artemisinin partial resistance mutations with evidence for
445 multiple origins and expansion of high level sulfadoxine-pyrimethamine resistance
446 mutations in northwest Tanzania. medRxiv [Internet]. 2023 Nov 30; Available from:
447 <http://dx.doi.org/10.1101/2023.11.07.23298207>

- 448 26. World Health Organization. Strategy to respond to antimalarial drug resistance in Africa
449 2022 [Internet]. Vol. 04. Geneva, Switzerland: World Health Organization; 2022. Available
450 from:
451 [https://www.who.int/publications/i/item/9789240060265%0Ahttps://cdn.who.int/media/docs](https://www.who.int/publications/i/item/9789240060265%0Ahttps://cdn.who.int/media/docs/default-source/malaria/who-antimalarial-drug-resistance-strategy-for-consultation.pdf?sfvrsn=9d4eaa0_6)
452 [/default-source/malaria/who-antimalarial-drug-resistance-strategy-for-](https://www.who.int/publications/i/item/9789240060265%0Ahttps://cdn.who.int/media/docs/default-source/malaria/who-antimalarial-drug-resistance-strategy-for-consultation.pdf?sfvrsn=9d4eaa0_6)
453 [consultation.pdf?sfvrsn=9d4eaa0_6](https://www.who.int/publications/i/item/9789240060265%0Ahttps://cdn.who.int/media/docs/default-source/malaria/who-antimalarial-drug-resistance-strategy-for-consultation.pdf?sfvrsn=9d4eaa0_6)
- 454 27. Zupko RJ, Nguyen TD, Ngabonziza JCS, Kabera M, Li H, Tran TNA, et al. Modeling policy
455 interventions for slowing the spread of artemisinin-resistant pfcy27D mutations in
456 Rwanda. *Nat Med* [Internet]. 2023 Nov;29(11):2775–84. Available from:
457 <http://dx.doi.org/10.1038/s41591-023-02551-w>
- 458 28. National Malaria Control Programme (NMCP). Ministry Of Health, Community
459 Development, Gender, Elderly and Children, “National Guidelines For Malaria Diagnosis,
460 Treatment And Preventive Therapies.” Dodoma; 2020.
- 461 29. Tewara MA, Mbah-Fongkimeh PN, Dayimu A, Kang F, Xue F. Small-area spatial statistical
462 analysis of malaria clusters and hotspots in Cameroon;2000–2015. *BMC Infect Dis*
463 [Internet]. 2018 Dec 7;18(1):636. Available from: [https://doi.org/10.1186/s12879-018-](https://doi.org/10.1186/s12879-018-3534-6)
464 [3534-6](https://doi.org/10.1186/s12879-018-3534-6)
- 465 30. Saxena R, Nagpal BN, Das MK, Srivastava A, Gupta SK, Kumar A, et al. A spatial
466 statistical approach to analyze malaria situation at micro level for priority control in Ranchi
467 district, Jharkhand. *Indian J Med Res* [Internet]. 2012 Nov;136(5):776–82. Available from:
468 <https://www.ncbi.nlm.nih.gov/pubmed/23287124>
- 469 31. Ministry of Health Community Development Gender Elderly & Children, National Malaria
470 Control Programme. Supplementary malaria midterm strategic plan 2018–2020. 2019.

- 471 32. Ministry of Health, Community Development, Gender, Elderly and Children, National
472 Malaria Control Programme. Consultative Malaria Expert Meeting Report 2018. 2018.
- 473 33. Nundu SS, Culleton R, Simpson SV, Arima H, Muyembe JJ, Mita T, et al. Malaria parasite
474 species composition of Plasmodium infections among asymptomatic and symptomatic
475 school-age children in rural and urban areas of Kinshasa, Democratic Republic of Congo.
476 *Malar J.* 2021;20:1–13.
- 477 34. Sultana M, Sheikh N, Mahumud RA, Jahir T, Islam Z, Sarker AR. Prevalence and
478 associated determinants of malaria parasites among Kenyan children. *Trop Med Health.*
479 2017;45:1–9.
- 480 35. Mbah CE, Ambe LA, Ngwewondo A, Kidzeru EB, Akwah L, Mountchissi C, et al. A
481 Comparative Study of Asymptomatic Malaria in a Forest Rural and Depleted Forest Urban
482 Setting during a Low Malaria Transmission and COVID-19 Pandemic Period. *Biomed Res*
483 *Int.* 2022;2022.
- 484 36. Bofu RM, Santos EM, Msugupakulya BJ, Kahamba NF, Swilla JD, Njalambaha R, et al.
485 The needs and opportunities for housing improvement for malaria control in southern
486 Tanzania. *Malar J.* 2023;22(1):69.
- 487 37. Tusting LS, Rek J, Arinaitwe E, Staedke SG, Kanya MR, Cano J, et al. Why is malaria
488 associated with poverty? Findings from a cohort study in rural Uganda. *Infectious*
489 *Diseases of Poverty* [Internet]. 2016 Aug;5(1):78. Available from:
490 <http://dx.doi.org/10.1186/s40249-016-0164-3>
- 491 38. McCann RS, van den Berg H, Diggle PJ, van Vugt M, Terlouw DJ, Phiri KS, et al.
492 Assessment of the effect of larval source management and house improvement on
493 malaria transmission when added to standard malaria control strategies in southern

- 494 Malawi: study protocol for a cluster-randomized controlled trial. BMC Infect Dis [Internet].
495 2017 Sep 22;17(1):639. Available from: <http://dx.doi.org/10.1186/s12879-017-2749-2>
- 496 39. Orkoh E, Efobi U. Effects of Behaviour Change Communication on Knowledge and
497 Prevention of Malaria Among Women in Ghana. Eval Rev [Internet]. 2023 Aug
498 11;193841X231194565. Available from: <http://dx.doi.org/10.1177/0193841X231194565>
- 499 40. Dabaro D, Birhanu Z, Negash A, Hawaria D, Yewhalaw D. Effects of rainfall, temperature,
500 and topography on malaria incidence in elimination targeted district of Ethiopia. Malar J.
501 2021;20(1):1–10.
- 502 41. Finda MF, Moshi IR, Monroe A, Limwagu AJ, Nyoni AP, Swai JK, et al. Linking human
503 behaviors and malaria vector biting risk in south-eastern Tanzania. PLoS One.
504 2019;14(6):e0217414.
- 505 42. Kihwele F, Gavana T, Makungu C, Msuya HM, Mlacha YP, Govella NJ, et al. Exploring
506 activities and behaviors potentially increases school-age children’s vulnerability to malaria
507 infections in south-eastern Tanzania. Malar J. 2023;22(1):293.
- 508 43. Kihwele F, Gavana T, Makungu C, Msuya HM, Govella NJ, Mlacha YP, et al. Outdoor
509 activities and behaviors increase the vulnerability of school-age children to malaria
510 infections in south-eastern Tanzania [Internet]. Research Square. 2023. Available from:
511 <https://www.researchsquare.com/article/rs-2832075/v1>
- 512 44. Yukich J, Stuck L, Scates S, Wisniewski J, Chacky F, Festo C, et al. Sustaining LLIN
513 coverage with continuous distribution: the school net programme in Tanzania. Malar J
514 [Internet]. 2020;19:158. Available from: <http://dx.doi.org/10.1186/s12936-020-03222-8>
- 515 45. Chacky F, Runge M, Rumisha SF, Machafuko P, Chaki P, Massaga JJ, et al. Nationwide
516 school malaria parasitaemia survey in public primary schools, the United Republic of

- 517 Tanzania [Internet]. Vol. 17, Malar J. 2023. Available from:
518 <http://dx.doi.org/10.1186/s12936-018-2601-1>
- 519 46. Kigozi SP, Kigozi RN, Epstein A, Mpimbaza A, Sserwanga A, Yeka A, et al. Rapid shifts in
520 the age-specific burden of malaria following successful control interventions in four
521 regions of Uganda. Malar J [Internet]. 2020 Mar 30;19(1):128. Available from:
522 <http://dx.doi.org/10.1186/s12936-020-03196-7>
- 523 47. Dida GO, Anyona DN, Abuom PO, Akoko D, Adoka SO, Matano AS, et al. Spatial
524 distribution and habitat characterization of mosquito species during the dry season along
525 the Mara River and its tributaries, in Kenya and Tanzania. Infectious diseases of poverty.
526 2018;7(1):1–16.
- 527 48. Fornace KM, Diaz AV, Lines J, Drakeley CJ. Achieving global malaria eradication in
528 changing landscapes. Malar J. 2021;20(1):1–14.
- 529 49. Boni MF, White NJ, Baird JK. The Community As the Patient in Malaria-Endemic Areas:
530 Preempting Drug Resistance with Multiple First-Line Therapies. PLoS Med [Internet]. 2016
531 Mar;13(3):e1001984. Available from: <http://dx.doi.org/10.1371/journal.pmed.1001984>
- 532 50. Boni MF. Breaking the cycle of malaria treatment failure. Front Epidemiol [Internet]. 2022
533 Dec 14;2:1041896. Available from: <http://dx.doi.org/10.3389/fepid.2022.1041896>

534 **Appendices**

535 **Appendix A.** Description of the study site

536 **Appendix B.** Administrative units and health facilities in Kagera region that were included in the analysis

537 **Appendix C:** Stratification of malaria burden in Kagera region

538 **Appendix D:** Description of spatial autocorrelation analysis

539 **Appendix E:** Description of wards and schools selected for school malaria parasitological surveys

540 **Appendix Figure 1.** Descriptive summary of the wards and health facilities included in the analysis

541 **Appendix Figure 2** Comparison of malaria test positivity rates in Kagera region from 2017 to 2023 based on
542 the data from health facilities

543 **Appendix Figure 3.** Comparison of malaria prevalence in Kagera region from 2017 to 2023 based on the
544 data from pregnant women and school children

545 **Appendix Figure 4** Locations of hotspots and coldspots of malaria in under-fives at ward level in Kagera
546 region from 2017 to 2023

547 **Appendix Figure 5** Locations of hotspots and coldspots of malaria in patients aged ≥ 5 years at ward level in
548 Kagera region from 2017 to 2023

549 **Appendix Figure 6.** Locations of hotspots and coldspots of malaria in pregnant women at ward level in
550 Kagera region from 2017 to 2023

551 **Appendix Table 1.** Cut-offs adopted to categorize councils/wards in Kagera region into different risk strata

552 **Appendix Table 2.** Number of wards by year in each stratum of malaria test positivity rates in under-fives in
553 Kagera region from 2017 to 2023

554 **Appendix Table 3.** Number of wards by year in each stratum of malaria test positivity rates in patients aged ≥ 5
555 years in Kagera region from 2017 to 2023

556 **Appendix Table 4.** Ward names by council that had a high, moderate, low, and very low malaria test positivity
557 rates in under-fives and ≥ 5 years from 2017 to 2023, Kagera region

558 **Appendix Table 5.** Number of wards by year in each stratum of malaria prevalence in pregnant women in Kagera
559 region from 2017 to 2023

560 **Appendix Table 6.** Ward names by council that had a high, moderate, low, and very low malaria prevalence in
561 pregnant women from 2017 to 2023, Kagera region

562 **Appendix Table 7.** Number of wards by year in each stratum of malaria prevalence in school children in Kagera
563 region from 2017 to 2023

564 **Appendix Table 8.** Ward names by council that had a high, moderate, low, and very low malaria prevalence in
565 school children from 2017 to 2023, Kagera region

566 **Appendix Table 9.** Overall malaria burden at ward level in Kagera region by years and study groups from
567 2015 to 2023

568 **Appendix Table 10.** Names of hotspots of malaria burden at ward level in Kagera region at 95% and 99%
569 confidence levels from 2017 to 2023

570 **Appendix Table 11.** Names of coldspots of malaria burden at ward level in Kagera region at 95% and 99%
571 confidence levels from 2017 to 2023