

1  
2  
3  
4  
5  
6  
7  
8  
9  
10  
11  
12  
13  
14  
15  
16  
17  
18  
19  
20  
21  
22  
23  
24  
25  
26  
27  
28  
29  
30  
31

## A comprehensive bioinformatics analysis to identify potential prognostic biomarkers among TNFSF superfamily in breast cancer

Abolfazl Moradi<sup>1\*¶</sup>, Farinaz Vafadar Esfahani<sup>2¶</sup>, Ali Mohammadian<sup>3</sup>

1. Member of R&D Group, Behyaar Sanaat Sepahan Company, Isfahan, Iran. ORCID: 0000-0002-7352-7546. Mail: [moradiabolfazl1993@gmail.com](mailto:moradiabolfazl1993@gmail.com)
2. Nour Danesh Institute of Higher Education, Meymeh, Isfahan, Iran. ORCID: 0000-0003-2045-2808E. Mail: [fz21654@gmail.com](mailto:fz21654@gmail.com)
3. Department of Medical Biotechnology, Faculty of Medical Sciences, Tarbiat Modares University, Tehran, Iran, Faculty of Biotechnology, Amol University of Special Modern Technologies, Amol, 49767, Iran. Mail: [mohammadian02@gmail.com](mailto:mohammadian02@gmail.com)

**\* Corresponding author**  
[moradiabolfazl1993@gmail.com](mailto:moradiabolfazl1993@gmail.com)

¶ These authors contributed equally to this work.

## 32 Abstract

33 Breast cancer (BC) is one of most important mortality factors among women therefore to find important  
34 genes in BC can help early diagnosis, treatment or prevention. *TNFSF* or tumor necrosis factor  
35 Superfamily have an important role in various cancers. In BC, some of studies have found dual roles for  
36 these genes. In this research, we conducted a comprehensive and detailed bioinformatics study on this  
37 family. UALCAN, TNMplot, UCSC Xena, GEPIA, The Human Protein Atlas, Kaplan–Meier plotter, bc-  
38 GenExMiner, cBioPortal, STRING, GeneMANIA, Enrichr, TIMER and shinyDepMap were used for  
39 analysis. We found that these genes play their role through the immune system and the high expression of  
40 eight *FASLG*, *LTB*, *TNF*, *TNFSF8*, *TNFSF10*, *TNFSF11*, *TNFSF12*, *TNFSF13* genes were positively  
41 associated with OS and RFS. Overall, our data showed that these genes can be considered as prognostic  
42 biomarkers. Further, our results suggest that this family has anti-tumor activity.

## 43 1. Introduction

44 Globally, Breast cancer (BC) is the most commonly diagnosed cancer with approximately 2.3 million new  
45 cases in 2020, accounting for 11.7% of all cancer cases(1). BC is an uncontrolled proliferation of breast  
46 cells, beginning in different areas of the breast and leading to malignancy(2). Based on receptor status and  
47 the gene expression pattern, BC is divided into four molecular subtypes including, Luminal A, Luminal  
48 B, human epidermal growth factor 2 (HER2), and Triple-negative breast cancer (TNBC).

49 Immunotherapy is one of the most exciting treatment strategies for breast cancer(3). To date, the US Food  
50 and Drug Administration has approved several immune-targeted therapies(4,5). Immune checkpoint  
51 inhibitors (ICIs), including inhibitors of cytotoxic T lymphocyte-associated antigen-4 (CTLA-4),  
52 programmed death-1 (PD1), and programmed death ligand-1 (PD-L1) have demonstrated a positive effect  
53 in the treatment of some cancers(6).

54 Although the methods of treatment and early detection of breast cancer have progressed, the prognosis of  
55 some patients remains poor due to metastasis and resistance to chemotherapy. Therefore, better  
56 therapeutic and prognostic biomarkers should be identified in breast cancer(7,8).

57 Tumor necrosis factor superfamily (TNFSF) has 19 members. The members of this family are expressed  
58 by immune cells and regulate the immune response and inflammation, proliferation, differentiation and  
59 apoptosis(9,10). During tumor development, inflammation in the tumor microenvironment (TME) causes  
60 tumor initiation, promotion, and progression(11).

61 In 1975 Carols discovered that *TNF* can inhibit cancer(12). Also, members of the TNFSF superfamily  
62 show pro-inflammatory activities by activating the NF- $\kappa$ B signaling pathway. Apart from these, it has  
63 been seen that they can activate apoptosis pathways and cause cell death. For example, some studies show  
64 that TNFSFs are tumor suppressor but others demonstrate they promote cancer(13).

65 *APRIL* (*TNFSF13*) has been found to be expressed in breast cancer cells, and Silencing experiments  
66 decreased cell proliferation, suggesting that *APRIL* is a critical factor for breast tumor growth(14) .

67 However *TNFSF10*, *TNFSF14* and *TNFSF15* directly play a role in apoptosis(15). Some members of this  
68 family have been identified in lung cancer and kidney cancer(16,17).

69 According to different studies, this family have variety of roles(13). Therefore, we decided to investigate  
70 the role and activity of TNFSF family members comprehensively and more precisely in breast cancer.

## 71 **2. Results**

### 72 **2.1 The mRNA expression analysis of TNFSF family in BC** 73 **patients.**

74 The mRNA expression levels of TNFSF between primary tumor and normal tissues in BC patients were  
75 assessed using UALCAN on TCGA data. The mRNA expression levels of, *FASLG*, *LTA*, *LTB*, *TNF*,  
76 *TNFSF4*, *TNFSF8*, *TNFSF13B*, *TNFSF13* were found to be elevated in primary tumors compared to  
77 normal specimens, while *EDA*, *TNFSF12* were significantly downregulated in tumor samples (Fig 1).  
78 Also, the results showed that *TNFSF10* has the highest level of expression in breast cancer (fig 2).

### 79 **2.2 Differential gene expression analysis in Tumor, and** 80 **Metastatic tissue.**

81 Using the TNMplot site, the expression level of TNFSF superfamily genes was obtained, which genes  
82 *EDA*, *CD40LG*, *LTA*, *CD70*, *LTB*, *TNFSF4*, *TNFSF10*, *TNFSF11*, *TNFSF12*, *TNFSF13B*, *TNFSF14*,  
83 *TNFSF15* had a significant expression difference (P.value < 0.05). The analysis of *FASLG*, *TNF*,  
84 *TNFSF8*, *TNFSF9*, *TNFSF13*, *TNFSF18* genes did not show significant expression differences (P.value >  
85 0.05), (fig 3).

## 86 **2.3 TNFSFs Protein expression pattern analysis**

87 In this study, we analyzed the expression pattern of proteins with the HPA database. *FASLG*, *CD40LG*,  
88 *LTB* proteins are not expressed in either normal or cancer tissues. Also, the expression of *LTA*, *TNF*,  
89 *TNFSF4* and *TNFSF12* proteins were not observed in normal tissue, but they were detected by antibodies  
90 in cancer tissue. Although *TNFSF10*, *TNFSF13* and *TNFSF13B* proteins were detected in normal tissue,  
91 they were present at higher levels in cancer tissue, and *TNFSF11*, *TNFSF15* proteins in both normal  
92 tissue and cancer tissue did not show difference in expression (fig 4).

## 93 **2.4 Association of TNFSFs mRNA levels with** 94 **clinicopathological features in BC patients.**

95 By examining the results obtained from bC-genexminer (SBR), we found that the expression of *EDA*,  
96 *TNFSF10*, *TNFSF11*, *TNFSF12* and *TNFSF13* decreased with tumor progression and the gene *TNFSF18*  
97 remained unchanged, while other family members showed an increase in expression with tumor  
98 progression ( $P < 0.05$ ) (fig 5). The relationship between the expression TNFSFs and age showed that in  
99 younger patients ( $\text{age} \leq 51$ ), *TNFSF11* and *TNFSF15* had an increased expression, while in older patients  
100 ( $\text{age} > 51$ ) *TNFSF10* and *TNFSF13* an increase in expression was observed ( $P < 0.05$ ). In positive lymph  
101 nodes, the expression level of *ADE* was higher, but in negative lymph nodes, the expression level of *LTB*,  
102 *TNF*, *TNFSF14* was higher ( $P < 0.05$ ). By comparing the results of ER+/ER- and PR+/PR-, in ER-/PR-  
103 the expression of *CD70*, *FASLG*, *LTA*, *LTB*, *TNF*, *TNFSF9*, *TNFSF13B*, *TNFSF14*, *TNFSF15* and in  
104 PR+/ER+, *TNFSF4*, *TNFSF10*, *TNFSF12*, *TNFSF13* were higher. Among common ER+/ER- and  
105 PR+/PR- genes, *CD40LG* showed lower expression in ER+, while higher expression was observed for  
106 this gene in PR+. *TNFSF8* was also higher expressed only in PR+ group ( $P < 0.05$ ). In HER2, only the  
107 expression of *EDA*, *TNF*, *TNFSF12*, *TNFSF18*, *TNFSF4* and *TNFSF10* were significant ( $P < 0.05$ ). The  
108 results indicate that in HER2<sup>-</sup> the expression of *EDA*, *TNF*, *TNFSF12*, *TNFSF18* are higher than HER2<sup>+</sup>,  
109 but the *TNFSF4* and *TNFSF10* are less expressed. Similar results were observed in TNBC and Basal-like  
110 subtypes. Both models have a significant association with higher expression *CD40LG*, *CD70*, *FASLG*,

111 *LTA, LTB, TNF, TNFSF9, TNFSF13B, TNFSF14, TNFSF15* and lower expression *TNFSF4, TNFSF10,*

112 *TNFSF12, TNFSF13* ( $P < 0.05$ ). All the results are presented in the table 1.

113 **Table 1 : Association of TNFSFs mRNA levels with clinicopathological features in BC patients.**

Criteria		Age		Nodal status		ER(IHC)		PR(IHC)		HER2(IHC)			TNBC	Basal-like BC	
		≤51	>51	(-)	(+)	(-)	(+)	(-)	(+)	(-)	(+)	Not	TNBC	Not	Basal-like
<b>No.</b>		267	476	332	358	187	530	243	470	396	109	578	87	605	136
<b>CD40LG</b>	mRna	-	-	-	-	↑	-	-	↑	-	-	-	↑	-	↑
	P-value	0.0643		0.9995		<b>0.0019</b>		<b>0.0455</b>		0.2442		<b>0.0123</b>		<b>0.0102</b>	
<b>CD70</b>	mRna	-	-	-	-	↑	-	↑	-	-	-	-	↑	-	↑
	P-value	0.5767		0.061		<b>0.0001</b>		<b>0.0001</b>		0.3145		<b>0.0001</b>		<b>0.0001</b>	
<b>EDA</b>	mRna	-	-	-	↑	-	-	-	-	↑	-	-	-	-	-
	P-value	0.8397		<b>0.0458</b>		0.1625		0.6614		<b>0.0001</b>		0.4528		0.8725	
<b>FASLG</b>	mRna	-	-	-	-	↑	-	↑	-	-	-	-	↑	-	↑
	P-value	0.8256		0.2115		<b>0.0001</b>		<b>0.0137</b>		0.7380		<b>0.0010</b>		<b>0.0002</b>	
<b>LTA</b>	mRna	-	-	-	-	↑	-	↑	-	-	-	-	↑	-	↑
	P-value	0.3227		0.0713		<b>0.0001</b>		<b>0.0001</b>		0.5161		<b>0.0001</b>		<b>0.0001</b>	
<b>LTB</b>	mRna	-	-	↑	-	↑	-	↑	-	-	-	-	↑	-	↑
	P-value	0.1399		<b>0.0476</b>		<b>0.0001</b>		<b>0.0001</b>		0.1034		<b>0.0001</b>		<b>0.0001</b>	
<b>TNF</b>	mRna	-	-	↑	-	↑	-	↑	-	↑	-	-	↑	-	↑
	P-value	0.3435		<b>0.0011</b>		<b>0.0001</b>		<b>0.0001</b>		<b>0.0034</b>		<b>0.0001</b>		<b>0.0001</b>	
<b>TNFSF4</b>	mRna	-	-	-	-	-	↑	-	↑	-	↑	↑	-	↑	-
	P-value	0.8480		0.9974		<b>0.0011</b>		<b>0.0001</b>		<b>0.0008</b>		<b>0.0006</b>		<b>0.0001</b>	
<b>TNFSF8</b>	mRna	-	-	-	-	-	-	-	↑	-	-	-	-	-	-
	P-value	0.9179		0.7221		0.3911		0.0240		0.2112		0.5226		0.2062	
<b>TNFSF9</b>	mRna	-	-	-	-	↑	-	↑	-	-	-	-	↑	-	↑
	P-value	0.6572		0.7787		<b>0.0001</b>		<b>0.0001</b>		0.0597		<b>0.0003</b>		<b>0.0001</b>	
<b>TNFSF10</b>	mRna	-	↑	-	-	-	↑	-	↑	-	↑	↑	-	↑	-
	P-value	<b>0.0032</b>		0.7554		<b>0.0001</b>		<b>0.0001</b>		0.0075		0.0007		<b>0.0001</b>	
<b>TNFSF11</b>	mRna	↑	-	-	-	-	-	-	-	-	-	-	-	-	-
	P-value	<b>0.0001</b>		0.1164		0.6868		0.1989		0.3689		0.9446		0.3443	
<b>TNFSF12</b>	mRna	-	-	-	-	-	↑	-	↑	↑	-	↑	-	↑	-

	P-value	0.256 2		0.17 27		<b>0.0001</b>		<b>0.0001</b>		<b>0.0001</b>		<b>0.0003</b>		<b>0.0001</b>	
<b>TNFSF13</b>	mRna	-	↑	-	-	-	↑	-	↑	-	-	↑	-	↑	-
	P-value	<b>0.004</b> 2		0.21 11		<b>0.0001</b>		<b>0.0001</b>		0.127 5		<b>0.0001</b>		<b>0.0001</b>	
<b>TNFSF13 B</b>	mRna	-	-	-	-	↑	-	↑	-	-	-	-	↑	-	↑
	P-value	0.913 1		0.15 23		<b>0.0001</b>		<b>0.0006</b>		0.664 1		<b>0.0001</b>		<b>0.0001</b>	
<b>TNFSF14</b>	mRna	-	-	↑	-	↑	-	↑	-	-	-	-	↑	-	↑
	P-value	0.460 3		0.02 36		<b>0.0001</b>		<b>0.0001</b>		0.209 2		<b>0.0001</b>		<b>0.0001</b>	
<b>TNFSF15</b>	mRna	↑	-	-	-	↑	-	↑	-	-	-	-	↑	-	↑
	P-value	<b>0.001</b> 0		0.15 35		<b>0.0001</b>		<b>0.0001</b>		0.601 5		<b>0.0001</b>		<b>0.0001</b>	
<b>TNFSF18</b>	mRna	-	-	-	-	-	-	-	-	↑	-	-	-	-	-
	P-value	0.077 9		0.50 43		0.1489		0.8882		<b>0.035</b> 1		0.4528		0.2337	

114

## 115 **2.5 Genomic alterations and GO enrichment analysis of** 116 **TNFSF members in BC patients.**

117 The data extracted from cBioportal database and 1180 cancer samples (TCGA, Firehose Legacy) showed  
118 that in breast cancer genes *TNF* (4%), *LTA* (4%), *LTB* (3%), *TNFSF4* (12%), *CD40LG* (3%), *FASLG*  
119 (11%), *CD70* (3%), *TNFSF8* (3%), *TNSF9* (3%), *TNFSF10* (7%), *TNFSF11* (4%), *TNFSF12* (5%),  
120 *TNFSF13* (1%), *TNFSF13B* (4%), *TNFSF14* (3%), *TNFSF15* (3%), *TNFSF18* (11%), *EDA* (4%) were  
121 altered (fig 6A). In addition, by using the STRING, GeneMANIA database and Cytoscape software, the  
122 protein-protein interaction network and Interaction at the gene level of the TNFSF superfamily members  
123 and the top 50 frequently altered neighbor genes co-expressed genes were mapped (fig 6 D,F). Genomic  
124 alterations of the top 50 frequently co-altered genes with TNFSF Superfamily members in BC patients are  
125 presented in S 1 Table. In the next step, the function and pathway of the respiratory superfamily proteins  
126 and the altered neighbor genes were investigated. According to the results obtained from Enrichr, the  
127 most important function of members of this family with altered neighbor genes is tumor necrosis factor  
128 receptor superfamily binding (fig 6C). In KEGG pathway analysis, we found that TNFSFs and their  
129 neighbor genes were most commonly enriched in Cytokine-cytokine receptor interaction (Fig 6B).

## 130 **2.6 Prediction of transcription factors (TFs) and miRNA** 131 **related to TNFSF superfamily**

132 Transcription factors and microarrays regulating TNFSF genes were identified using ChEA and  
133 miRTarBase databases, and the obtained results are reported in tables 2 and 3.

134 **Table 2: transcription factors (TFs) related to TNFSF superfamily**

<b>Term</b>	<b>P-value</b>	<b>Genes</b>
<b>RELA</b>	7.35E-09	CD40LG,CD70,TNFSF15,TNFSF13,LTA,TNFSF10,FASLG,LTB,TNF,TNFSF13B
<b>STAT4</b>	1.30E-06	CD40LG, TNFSF14, LTA, TNFSF10, TNFSF11, TNFSF8, LTB, TNF
<b>RELB</b>	2.48E-04	TNFSF14, TNFSF9, TNF
<b>POU5F1</b>	6.85E-04	TNFSF12, TNFSF13, LTA, TNFSF11, LTB
<b>STAT3</b>	7.12E-04	CD40LG, TNFSF15, TNFSF4, LTA, TNFSF8
<b>RUNX</b>	9.27E-04	TNFSF18, CD40LG, FASLG, TNFSF8
<b>TP63</b>	0.002356405	TNFSF18, TNFSF14, CD70, TNFSF15, TNFSF10, TNFSF11, FASLG, TNFSF8
<b>SOX11</b>	0.004392584	TNFSF14, TNFSF12, TNFSF13, LTA
<b>SRY</b>	0.00710859	LTA, TNF
<b>FOXA1</b>	0.007718892	TNFSF18, TNFSF15, TNFSF10

135

136 **Table 3: miRNA related to TNFSF superfamily**

<b>Term</b>	<b>P-value</b>	<b>Genes</b>
<b>hsa-miR-34a-5p</b>	3.80E-04	CD40LG, CD70, LTA, FASLG, TNF
<b>hsa-miR-6510-5p</b>	0.004722	TNFSF9, TNFSF8
<b>hsa-miR-4480</b>	0.005553	TNFSF14, TNFSF9
<b>hsa-miR-3619-5p</b>	0.007901	TNFSF15, TNFSF9
<b>hsa-miR-761</b>	0.008106	TNFSF15, TNFSF9
<b>mmu-miR-296-3p</b>	0.01075	TNF
<b>hsa-miR-9500</b>	0.013963	CD40LG, TNFSF8
<b>hsa-miR-202-3p</b>	0.014493	TNFSF9, TNFSF13B
<b>hsa-miR-214-3p</b>	0.014493	TNFSF15, TNFSF9
<b>mmu-miR-212-3p</b>	0.016083	TNFSF10

137

## 138 **2.7 The prognostic value of TNFSF in patients with BC.**

139 The Kaplan–Meier curves revealed that among TNFSFs, high mRNA expression of *FASLG*, *LTB*, *TNF*,  
140 *TNFSF8*, *TNFSF10*, *TNFSF11*, *TNFSF12*, *TNFSF13* were significantly associated with better OS ( $P <$   
141  $0.05$ ) (fig 7).

142 In addition, regarding RFS, BC patients with increased mRNA levels of *CD40LG*, *EDA*, *FASLG*, *LTA*,  
143 *LTB*, *TNF*, *TNFDF8*, *TNFDF9*, *TNFDF10*, *TNFDF11*, *TNFDF12*, *TNFDF13*, *TNFDF14*, *TNFDF15*,  
144 *TNFDF18* were significantly correlated with favorable RFS ( $P < 0.05$ ) (fig 8). On the other hand, elevated  
145 expression of *TNFSF4*, *CD70*, *TNFSF13B* were remarkably correlated with unfavorable RFS ( $P < 0.05$ ).  
146 curves of chemokines in which mRNA expression levels are significantly associated with OS and RFS  
147 (fig 8).

148 Considering that *FASLG*, *LTB*, *TNF*, *TNFSF8*, *TNFSF10*, *TNFSF11*, *TNFSF12*, *TNFSF13* genes were  
149 correlated with favorable both OS and RFS, their correlation with OS in breast cancer subtypes (fig 9) and  
150 also in different grades (fig 10) was checked. The results showed that the high expression of *TNFSF11*  
151 gene in luminal A has a favorable correlation with OS ( $P < 0.05$ ), but patients with luminal B and lower  
152 expression of *TNFSF11* had better survival. The results of *TNFSF8* analysis in breast cancer subgroup  
153 showed a significant correlation with luminal A, luminal B and Basal-Like, and the group of patients with  
154 higher expression had better OS ( $P < 0.05$ ). For *TNFSF12*, only one significant correlation was observed  
155 in breast cancer subgroups, and its high expression showed a favorable correlation with OS in patients  
156 with HER2 ( $P < 0.05$ ). Patients with lower expression of *LTB*, *TNFSF8*, *TNFSF10*, *TNFSF13*, *FASLG*  
157 genes all had shorter survival.

158 Survival analysis based on different grades of breast cancer showed that *LTB* only in grade 3, *TNFSF8* in  
159 grade 1 and *TNF* had a significant correlation with OS in all disease grade ( $P < 0.05$ ).

160 Among these three genes, the lower expression of *TNF* in grade 1 had a favorable correlation with OS,  
161 but in grades 2 and 3 it is completely opposite.



162 **2.8 The prognostic value of TNFSF in patients with**  
 163 **metastases.**

164 Survival analysis and data extracted from UCSC Xena (Breast Cancer (Vijver 2002) didn't show any  
 165 significant correlation between the expression of TNFSF (except *TNFSF14*) in metastatic tissue and  
 166 survival of patients. *TNFSF14* had a P-value less than 0.05. (Fig 11).

167 **2.9 Correlation between TNFSFs and immune cell infiltration**  
 168 **in BC.**

169 The results obtained from the TIMER database prove that apart from *TNF* with macrophage infiltration  
 170 (P.value = 0.591), EDA with B cell infiltration (P.value = 0.079), *TNFSF13* with CD8<sup>+</sup> Tcell  
 171 infiltration(P.value = 0.0601) and *TNFSF12* with B cell and CD8<sup>+</sup> Tcell infiltration(P.value = 0.208) the  
 172 expression of the genes TNFSFs are positively correlated with the infiltration of immune cells (B cell,  
 173 CD8<sup>+</sup> T cell, CD4<sup>+</sup> T cell, macrophage cells, neutrophil cells, and dendritic cells) (all with P<0.05) ( S 2  
 174 and 3 Figs). Also, the table 4 shows the expression of TNFSFs was mostly correlated with high infiltration  
 175 abundances of which of immune cells.

176 **Table 4: : Correlation between TNFSFs and immune cell infiltration in BC.**

Criteria	B cell		CD8+ T cell		CD4+ T cell		Macrophage cells		Neutrophil cells		Dendritic cells	
P.value	---	---	TNFSF10	7.03e-14	LTB	1.6e-96	TNFSF4	1.9e-45	TNF	2.9e-35	LTA	1.4e-127
P.cor				0.237				0.604				0.45

<b>P.value</b>	---	---	<b>TNFSF11</b>	3.8e-17	<b>CD40LG</b>	1.9e-124	<b>TNFSF13</b>	1.3e-7	<b>TNFSF8</b>	6.3e-149	<b>FASLG</b>	3.5e-119
<b>P.cor</b>				0.265		0.666		0.167		0.714		0.658
<b>P.value</b>	---	---	<b>TNFSF18</b>	5.5e-37	<b>TNFSF12</b>	1.5e-16	---	----	<b>TNFSF9</b>	2.8e-31	<b>CD70</b>	2.1e-60
<b>P.cor</b>				0.391		0.262		----		0.365		0.497
<b>P.value</b>	---	---	<b>EDA</b>	4.7e-12	----	----	----	----	<b>TNFSF10</b>	5.9e13	<b>TNFSF9</b>	3.3e-31
<b>P.cor</b>				0.219		----		----		0.231		0.364
<b>P.value</b>	---	---	----	----	----	----	----	----	<b>TNFSF13B</b>	4.3e-170	<b>TNFSF14</b>	9.5e-109
<b>P.cor</b>				----		----		----		0.747		0.636
<b>P.value</b>	---	---	----	----	----	----	----	----	<b>TNFSF15</b>	5.2e-43	----	----
<b>P.cor</b>				----		----		----		0.425		----

177

## 178 **2.10 Gene essentiality of TNFSF family genes**

179 DepMap analysis confirmed none of TNFSFs weren't essential for breast cancer, even these genes are not  
 180 suitable targets for drugs. According to the obtained results and Fig 12, even the efficiency and selectivity  
 181 factor have not reached the threshold of the software. Only in one case, *TNFSF10*, more selectivity and  
 182 efficiency were observed, but the analysis states that this gene is essential for kidney cancer than breast  
 183 cancer.

## 184 **3. Discussion**

185 Considerable data have clearly shown that the TNFSF family can promote cancer development, while in  
 186 some cases the opposite result has been obtained. In the current study, we applied a bioinformatic  
 187 approach to elucidate the prognostic values of the whole TNFSF family in BC. At first, we found that  
 188 10 genes (*EDA*, *FASLG*, *LTA*, *LTB*, *TNF*, *TNFSF4*, *TNFSF8*, *TNFSF12*, *TNFSF13*, *TNFSF13B*) are  
 189 differently expressed in TCGA breast cancer data. The expression of five these 10 genes were also  
 190 assessed in different SBR stages. Five genes (*EDA*, *TNFSF10/11/12/13*), were found to decrease with

191 tumor progression. *TNFSF18* expression was constant during tumor progression. The other genes showed  
192 increased expression. In addition, according to the obtained results from TNMplot, *CD40LG*, *LTA*, *CD70*,  
193 *LTB*, *TNFSF4*, *TNFSF10*, *TNFSF11*, *TNFSF12*, *TNFSF13B*, *TNFSF14*, *TNFSF15* genes were down-  
194 regulated in metastatic tissue relative to tumor cells. The rest of the genes did not show significant  
195 difference. The most genetic alternation among TNFSF family members was amplification.

196 Survival analysis and Kaplan-meier plotter confirmed prognostic value of *LTB*, *FASLG*, *TNF*,  
197 *TNFSF8/10/11/12/13*. Higher expression of these genes was associated with both longer overall survival  
198 and recurrence-free survival. Although *CD40LG*, *LTA*, *TNFSF9/14/15/18* genes had weak association  
199 with OS but high expression of those genes had favorable correlation with RFS. The prognostic value of  
200 the TNFSFs was significant just for *TNFSF14* in metastatic tissue that patients with lower expression  
201 showed better survival.

202 The results obtained from bc-GenExMiner v4.8 showed that TNF gene had a better correlation with nodal  
203 status<sup>-</sup>, PR<sup>-</sup>, ER<sup>-</sup>, HER2<sup>-</sup>, TNBC and Basal-like. In addition, higher expression of *TNF* was observed in  
204 TNBC, Basal-Like, nodal status<sup>-</sup>, PR<sup>-</sup>, ER<sup>-</sup>, HER2<sup>-</sup>. Our results confirmed that the expression of this gene  
205 increases with progression of cancer. Immunohistochemistry also shows an increase in expression in  
206 cancer cells. Better OS by increasing the expression of this gene states that *TNF* plays an important role in  
207 suppressing cancer or tumor, although recent researches have envisioned a dual role for this gene. In  
208 1975, it was shown that *TNF* is a necrosis factor and destructs tumor cells indirect (18,19). It has been  
209 found that administration of *TNF* may induce apoptosis in malignant cells(19,20). In addition, it has the  
210 ability to cause inflammation(21) and tumor growth(22–24) but in certain cases it induces apoptosis. *TNF*  
211 performs different activities depending on the specific cell. For example, this gene stimulates the  
212 proliferation of *T47D*(25,26) and it has apoptotic(27–29) and anti-mitogenic(30,31) roles for *MCF7*. For  
213 this reason, we tried to investigate the expression level of this gene in metastatic tissue compared to tumor  
214 tissue and the correlation the expression of *TNF* with patient survival in metastatic tissues that our data  
215 didn't show any significant difference in expression compared to tumor tissue and metastasis. Also, the  
216 expression of this gene had no significant correlation with OS in metastatic tissues.

217 According to the results extracted from the SBR analysis, the expression of *TNF* increases with the  
218 progress of the tumor, therefore, survival analysis was conducted in different grades and subtypes of  
219 breast cancer to understand function of *TNF*. We found out the expression of *TNF* didn't had any  
220 correlation with OS in none of subtype of breast cancer but there was a correlation with OS in grade 1  
221 where the patients with lower expression had better OS while everything was opposite in other grads. It is  
222 good to know, the result of DepMap stats that *TNF* is not an essential gene for breast cancer and even It

223 has no medicinal value in different cancer so it seems that *TNF* exerts its effect on breast cancer through  
224 immune cells.

225 Tumor cells in the tumor microenvironment (TME) can directly invade the surrounding tissues or  
226 metastasize through blood and lymphatic vessels, and infiltrated cells can release cytokines, cytokine  
227 receptors, and other factors that directly or indirectly inhibit and promote tumor progression. Tumor cells  
228 progress, induce the immune response(32). In this study, we understood that *TNF* is related to the  
229 infiltration of immune cells into the tumor microenvironment, especially neutrophils (P.val = 2.9e-35,  
230 P.cor = 0.387). It has even been stated that this influence can contribute to the development of cancer and  
231 reduce survival of patients(33,34) so it should be studied how does cancer cells use immune cells because  
232 DepMap analysis introduces TNF as an unnecessary gene for breast cancer.

233 *FASLG* starts apoptosis by binding to their receptor (FAS) (35) as a result *FASLG* consider as tumor  
234 suppressor in different cancers by initiating and inducing apoptosis signaling(35–37). Although the  
235 increased expression of *FASLG* was not observed in the immunohistochemical data, these results are  
236 consistent with the data obtained from UALCAN and survival analysis. In addition, Clinical-pathological  
237 features and SBR results showed increased expression of *FASLG* and also, we found out it is correlated  
238 with TNBC, and survival of Basal-Like patients. Survival analysis confirmed the prognostic value of this  
239 gene and showed increased expression of *FASLG* are correlated with favorable OS and RFS. However,  
240 experiments have proven that this gene is involved in development of cancer. *FASLG* gene expression is  
241 increased in breast cancer. Also, this increasing causes apoptosis in T cells carrying Fas, which provides  
242 an advantage for cancer cells (38,39). Therefore, the survival analysis in different cancer grades and  
243 metastatic tissues was investigated. No correlation was found. Moreover, no significant expression  
244 difference was observed in metastatic tissues compared to tumor and normal tissues. We came to the  
245 conclusion that *FASLG* gene expression is related to infiltration of immune cells, especially dendritic cells  
246 (P.val = 3.5e-119, P.cor = 0.658). Dendritic cells infiltrating the tumor microenvironment have a good  
247 correlation with PFS and these cells initiate the immune response in breast cancer(40). Other studies  
248 confirm this result, for example, Coventry and Morton observed greater survival in breast cancer patients  
249 with a higher density of dendritic cells(41). It turns out this gene also plays its role in breast cancer  
250 through the immune system because DepMap does not consider this gene necessary for breast cancer.

251 *TNFSF10*, the other member of TNFSFs which is a Apoptosis inducer factor in cancer cells(42,43).  
252 *TNFSF10* can destroy the cell components and cause the process of apoptosis by binding to its receptor  
253 and by recruiting the adapter molecule FADD and activating caspases. There are some evidence that show  
254 the anti-tumor role this gene in cancer cells and microenvironment in addition not only this gene regulate  
255 apoptosis but also it has on effect on proliferation of immune cells and It stimulates the growth of M2

256 macrophages(44). There weren't any significant changes in UALCAN data but increased expression of  
257 *TNFSF10* was observed in obtained data from Human Protein Atlas database and survival analysis  
258 expresses that higher level of *TNFSF10* mRNA has better correlation with survival of patients. We  
259 observed a significant correlation between expression of this gene and infiltration of immune cells,  
260 especially neutrophils (P.val =5.9e13, P.cor = 0.231) in TIMER result. According to explanations for  
261 TNF, Neutrophils has a role in the progression of cancer in the tumor microenvironment and it seems  
262 *TNFSF10* do its tasks in breast cancer through the immune system because DepMap does not consider  
263 this gene necessary for breast cancer. We found that as the tumor progresses, the expression of this gene  
264 decreases in cancer cells. Our results are the same as those obtained from the study on uveal melanoma.  
265 The expression of this gene decreases with the progression of metastasis and has been introduced as a  
266 tumor suppressor gene(45). These results are completely consistent with the data extracted from TNMplot.  
267 We observed that metastatic tissues have lower expression than tumor tissues in breast cancer. At the  
268 same time, its Kaplan-Meier diagram didn't show a significant correlation in metastatic tissues and disease  
269 grades.

270 *TNFSF11*, known as *RANKL*, is a ligand for the *RANK* receptor. This ligand plays an important role in the  
271 activation of factor- $\kappa$ B (*RANK*) pathway and breast growth, however, the results show that targeting this  
272 signal can prevent breast cancer(46). In general, mammary tumors are reduced by disrupting or inhibiting  
273 this pathway(47–49). *TNFSF11* plays a very important role in the development of breast cancer by  
274 activating NF- $\kappa$ B and cyclin D1 cascades and downstream pathways(46,49)and studies have shown that  
275 increased expression of this gene has a positive correlation with development of breast cancer(50). The  
276 increased expression of *TNFSF11* was not confirmed by Immunohistochemistry, but it was observed in  
277 the UALCAN results. We also found that the gene expression changes of *TNFSF11* in TNBC and Basal-  
278 Like are not significant but its high expression in luminal A and its lower expression in luminal B have a  
279 better OS. In general, the high expression of this gene is correlated with better OS and RFS. These results  
280 are inconsistent with previous trials, and the clinical data extracted from the survival analysis contradict  
281 previous research. However, no study was found to show that *TNFSF11* suppresses cancer cells in breast  
282 cancer. So, we were encouraged to investigate the expression level of this gene in metastatic tissues and  
283 compare its difference with tumor and healthy tissue. We found that the gene expression level in  
284 metastatic tissues was lower than in tumor tissue, and the SBR results also confirmed this. However, no  
285 significant was observed between gene expression and survival of patients in metastatic tissue even in  
286 grades of disease. Looking at the results of the TIMER database, we found that this gene has a significant  
287 correlation with the of immune cells, especially CD8+ (P.val = 3.8e-17, P.cor = 0.265). CD8+ can kill  
288 tumor cells in various types of cancers through several mechanisms(51) and it has been proven that the  
289 infiltration of this cell into the tumor environments in breast cancer is correlated with better OS(52).

290 Therefore, according to the results of DepMap, we can say that this gene exerts its effects on breast cancer  
291 through immune cells because it is not considered an essential gene for breast cancer.

292 *TNFSF12* is another member of the superfamily of TNFSFs known as *TWEAK* or *CD255*. In our studies,  
293 it was found that the low expression of this gene has a weak correlation with the poor survival of patients.  
294 Therefore, the expression of this gene helps the survival of patients, which is similar to the results  
295 obtained by Dan Tao(53). As a tumor necrosis factor, *TNFSF12* can induce multiple cell death pathways,  
296 including caspase-dependent apoptosis, cathepsin B-dependent necrosis, and TNF-alpha-mediated cell  
297 death(54,55). However, some studies have reported that *TNFSF12* plays an angiogenic role and stimulates  
298 tumor growth(56–58). Therefore, its protective role in breast cancer has been confirmed and it has  
299 different functions in different cancers. Ying-Wei Zheng showed that *TNFSF12* gene expression is higher  
300 in cancer cells than in normal cells(59), which is confirmed by the results obtained by  
301 immunohistochemical data in the present study. But UALCAN and clinical-pathological data show the  
302 complete opposite of this issue. So that the higher expression of *TNFSF12* has a negative correlation with  
303 TNBC and Basal-Like. However, it has a higher expression in cancer cells that express estrogen and  
304 progesterone receptors and has a negative correlation with cancer cells that express HER2. While in the  
305 HER2 cancer subtype, patients with higher expression have shown better survival. In general, increased  
306 expression of this gene has a positive correlation with better OS. According to the SBR data, the gene  
307 expression decreases with the progress of the tumor, and this issue is confirmed by the data obtained from  
308 TNMplot because the gene expression in the metastatic tissue was lower than in the tumor tissue. TIMER  
309 data shows a significant correlation between the expression of this gene and the infiltration of immune  
310 cells, especially CD4+ (P.val = 1.5e-16, P.cor = 0.262). Research by Zhang shows that the presence of  
311 memory CD4+ in ER- patients is associated with increased DFS(60) and it destroys tumor the By  
312 promoting the growth of CD8+(61) and this gene seems to play its role through the immune system like  
313 the previous genes.

314 *TNFSF13* or *APRIL* (a proliferation-inducing ligand), which is known by this name because of its ability  
315 to stimulate tumor cell proliferation in vitro(62–64). The expression of this gene and its receptors causes  
316 the autocrine proliferation of tumor cells, and it helps their proliferation by binding HSPG on tumor  
317 cells(65). After *APRIL* binds, it phosphorylates ERR1/2, JNK1/2, and P38, and increases the proliferation  
318 of cancer cells by activating them(66). In addition, breast cancer cells maintain their proliferation by  
319 expressing *BCMA*, *TACA* and *APRIL* and these genes are related to invasion, growth and metastasis of  
320 tumor cells(14) but survival analysis (OS & RFS), which is the output of clinical data, has completely  
321 opposite results. We found that increased expression of this gene has a better correlation with patients'  
322 survival, while these other studies don't confirm this and all of them state that increased expression of



323 *TNFSF13* leads to invasion and metastasis. It is true that UALCAN and immunohistochemical data show  
324 increased expression of *TNFSF13* in cancer, and clinical-pathological data note the positive correlation  
325 between *TNFSF13* expression in TNBC and Basal-Like. We even observed that increased expression of  
326 this gene in Basal-Like is related to better OS. But it seems that more research is needed to find the role of  
327 this gene in breast cancer because its expression decreases with tumor progression and no significant  
328 correlation was found with the nodal status of cancer cells, even TNMplot didn't show a significant  
329 difference in gene expression. Also, TIMER data shows a significant correlation between the expression  
330 of this gene and the infiltration of immune cells, especially macrophages. Macrophages are divided into  
331 two categories based on their function: classic M1 and alternative M2, where M1 macrophages have  
332 antitumor properties and M2 have tumorigenic properties(67). The results obtained from the studies of  
333 Janak state that M0 macrophages reduce the OS rate of ER<sup>+</sup> breast cancers and the increase of M0  
334 macrophages can contribute to the progression of this disease in higher grades of breast cancer(68).  
335 However, the results regarding the infiltration of macrophages are very scattered. In some studies, it has  
336 been stated that the infiltration of macrophages in ER<sup>+</sup> samples and TNBC patients have a lower survival  
337 rate(69,70) but another study shows the complete opposite of these results. There are even studies that  
338 consider macrophage infiltration unrelated to patient survival(71,72). In general, according to DepMape  
339 analysis, we can say that this gene exerts its effects through immune cells because *TNFSF13* is not an  
340 essential gene for breast cancer.

341 We examined the function of TNFSFs and the top 50 alternated genes using GO enrichment analysis and  
342 KEGG pathway enrichment analysis. The results showed that these genes have the most activity in  
343 Cytokine-cytokine receptor interaction, NF-kappa B signaling pathway. Inflammation is associated with  
344 activation of the NF-kappa B pathway(73). In general, inflammation and the NF-kappa B pathway can  
345 cause tumor suppression and destruction of altered cells(74) and on the other hand, help the development  
346 of cancer(73,74,74–79). NF-kappaB also regulates 500 genes involved in inflammation, proliferation, cell  
347 transformation, angiogenesis and metastasis(80,81) and NF-kappaB activation and abnormal expression of  
348 its subunits have been observed in breast cancer, which contributes to cancer progression and  
349 development(82–89).

350 transcription factors and microRNAs regulating TNFSFs were identified by using ChEA and miRTarBase  
351 databases. It seems that two transcription factors *RELA* and *STAT4* are among the most important and key  
352 regulatory factors. *RELA* phosphorylation plays a role in disease progression, especially inflammatory  
353 diseases and cancer by regulating NF-κB signaling(90). Meanwhile, in the absence of the *RELA* subunit of  
354 NF-κB, TNF transcription responses are weakened and the cell goes towards apoptosis or cell death(91–  
355 93). For example, it has been confirmed that *FASLG* gene expression is increased in breast cancer, and

356 increased expression of this gene causes apoptosis in T cells carrying Fas, which is an advantage for  
357 cancer cells(38,39). So *RELA*, as a *FASLG* gene transcription regulatory factor, can help tumor and breast  
358 cancer progress, but *FASLG* can lead cancer cells to apoptosis. *STAT* proteins are known as signal  
359 transducer and transcription activator molecules. These DNA binding proteins activate gene transcription  
360 in response to cytokines(94). *STAT4* is one of the members of this family, which is very important for  
361 promoting immune responses by activating the Janus kinase (JAK)-STAT pathway(95). But according to  
362 the studies conducted by Rongquan He, the expression of *STAT4* in breast cancer is much higher than in  
363 healthy tissue, and with the progress of cancer, the expression of *STAT4* also increases, which indicates  
364 that this protein may play an important role in the development of breast cancer(96). In addition, it is  
365 possible to suppress the proliferation and invasion of cancer cells in colon cancer by silencing the *STAT4*  
366 gene(97). We observed that *STAT4* can affect *TNFSF10*, *TNFSF11*, *TNFSF8*, *LTB*, *TNF*, so it is possible  
367 to study the effects and role of TNFSFs in breast cancer better and more precisely by examining the  
368 introduced transcription factors more closely. Or in other words, by specifically targeting the discussed  
369 genes, the effects of their expression changes in breast cancer should be investigated, or even the  
370 introduced transcription factors were considered as drug candidates. Unfortunately, no research has been  
371 done on hsa-miR-34a-5p and its effects on TNFSFs, so considering that it is one of the important  
372 regulatory factors of TNFSFs, it is suggested to conduct studies on this microRNA.

## 373 **4. Conclusion**

374 The investigations carried out by us in some cases were consistent with the data and results of previous  
375 research, or in some cases the results were contrary to the results of previous experiments. In all the genes  
376 examined by us, it was shown that these genes are related to the survival of patients in breast cancer and  
377 play their role with the help of the immune system rather than directly causing the suppression or  
378 progression of the disease. Therefore, it is suggested to conduct more tests in this field to achieve more  
379 accurate and reliable results.

380

## 381 **5. Materials and Method**

### 382 **5.1 UALCAN**

383 UALCAN (<http://ualcan.path.uab.edu/analysis.html>), is an interactive web resource for analyzing cancer  
384 transcriptome data(98). It was used to analyze the transcriptional expression of TNFSF superfamily genes  
385 in healthy cells and BC cells. Student's t test was used and a P value cutoff of 0.05 was used.



## 386 **5.2 TNMplot**

387 TNMplot (<https://tnmplot.com/analysis>), is a web-based tool which shows expression differences  
388 between normal, tumor and metastatic tissues. We used this database to understand gene expression  
389 levels of TNFSFs and compare it to primary tumors(99). Student's t test was used to generate a p value. The p  
390 value cutoff was 0.05.

## 391 **5.3 UCSC Xena**

392 UCSC Xena (<https://xena.ucsc.edu>), is an online discovery tool that stores more than 1,500 cancer  
393 datasets and 50 cancer types. One can visualize Cancer Genome Atlas (TCGA), International Cancer  
394 Genome Consortium (ICGC) and Genomics Data Collaborative (GDC) data using this tool(100). With the  
395 help of this database, survival analysis for the TNFSF family was performed in 101 metastatic breast  
396 cancer patients (Breast Cancer (Vijver 2002)). Breast Cancer Student's t test was used to generate a  
397 Pvalue. The p value cutoff was 0.05.

## 398 **5.4 GEPIA**

399 GEPIA (<http://gepia.cancer-pku.cn/>), is an interactive web server for analyzing the RNA sequencing  
400 expression data of 9,736 tumors and 8,587 normal samples from the TCGA and the GTEx projects(101).  
401 Using this site, the difference in the expression of the superfamily was Quantitatively compared in breast  
402 cancer.

## 403 **5.5 The Human Protein Atlas**

404 The Human Protein Atlas (<https://www.proteinatlas.org/>) (HPA), is a program with the aim to map all the  
405 human proteins in cells, tissues, and organs using an integration of various omics technologies, including  
406 antibody-based imaging, mass spectrometry-based proteomics, transcriptomics, and systems biology(102).  
407 In this study, the expression of TNFSF family members was compared between normal and BC tissues  
408 was obtained from HPA.

## 409 **5.6 bc-GenExMiner v4.8**

410 The bc-GenExMiner v4.8 database ([www.bcgenex.centregauducheau.fr/BCGEM/](http://www.bcgenex.centregauducheau.fr/BCGEM/)), Breast cancer gene-  
411 expression miner(103). It was used to find the association between the expression of TNFSF superfamily  
412 members and clinicopathological parameters of breast cancer including age, nodal status, estrogen  
413 receptor (ER), progesterone receptor (PR), human epidermal growth factor 2 (HER2), molecular subtype,  
414 and Scarff, Bloom & Richardson grade. (SBR) grade. The mRNA expression difference of TNFSFs in BC  
415 patients with various clinical and molecular parameters was evaluated using Welch's tests and Dunnett-  
416 Tukey-Kramer's tests, and  $p < 0.05$  was considered as statistically significant.

## 417 **5.7 cBioPortal**

418 Using cBioPortal, a breast invasive carcinoma dataset (TCGA, Firehose legacy) containing data from  
419 1108 samples was analyzed. Then, genetic alterations and co-expression were obtained. The P-value  
420 of  $< 0.05$  was considered as the cut-off

## 421 **5.8 STRING**

422 The STRING contains information from numerous sources, including experimental repositories,  
423 computational prediction methods and public text collections(104). The protein-protein interactions of the  
424 TNFSF superfamily members and the top 50 frequently co-expressed genes (obtained from cBioPortal)  
425 (105) were plotted by the STRING (<https://string-db.org/>) database and Cytoscape (version 3.8.2)  
426 software.

## 427 **5.9 GeneMANIA**

428 GeneMANIA (<http://www.genemania.org>) is a flexibleweb interface for generating hypotheses about  
429 gene function, analyzing gene lists and prioritizing genes for functional assays. Given a query list,  
430 GeneMANIA extends the list with functionally similar genes that it identifies using available genomics

431 and proteomics data(106). This database shows interactions of the TNFSF superfamily members and the  
432 top 50 frequently altered genes.

### 433 **5.10 Enrichr**

434 This database (<https://maayanlab.cloud/Enrichr>) is a web-based tool for enrichment analysis. Enrichr was  
435 applied to perform gene ontology (GO) functional annotation and Kyoto Encyclopedia of Genes and  
436 Genomes (KEGG) pathway enrichment analysis, transcription factor analysis using Chip Enrichment  
437 Analysis (ChEA) database, and miRNA prediction using miRTarBase from the TNFSF superfamily. The  
438 results were visualized using ggplot2 R package. P-values less than 0.05 were considered significant.

### 439 **5.11 Kaplan–Meier plotter**

440 Kaplan-Meier plotter ([www.kmplot.com](http://www.kmplot.com)) database, which contains gene expression profiles and survival  
441 information of cancer patients, in this database all genes were divided into high and low expression  
442 groups based on the median mRNA expression in order to analyze the overall survival (OS) and  
443 recurrence-free survival (RFS) (107). The prognostic values of TNFSF superfamily was evaluated by  
444 Kaplan–Meier plotter and log-rank P value of  $< 0.05$  was considered significant.

### 445 **5.12 Timer**

446 In this study, Timer was used for systematic analysis of the infiltration of different immune cells and their  
447 impact on breast cancer. Timer’s “gene module” was used to evaluate the correlation between TNFSFs  
448 and infiltration of immune cell and the survival module was used to evaluate the correlation among  
449 clinical outcomes and the infiltration of immune cell and TNFSFs expression.

### 450 **5.13 shinyDepMap**

451 shinyDepMap (<https://labsyspharm.shinyapps.io/depmap>) combines CRISPR and shRNA data to  
452 determine, for each gene, the growth reduction caused by the knockout/knockdown and the selectivity of  
453 this effect among cell lines(108). We measured the efficiency, the efficacy and selectivity of drugs based  
454 on efficiency and selectivity data provided for TNFSF genes in this site.

## 455 **6. References**

1. Sung H, Ferlay J, Siegel RL, Laversanne M, Soerjomataram I, Jemal A, et al. Global Cancer Statistics 2020: GLOBOCAN Estimates of Incidence and Mortality Worldwide for 36 Cancers in 185 Countries. *CA Cancer J Clin.* 2021;71(3):209–49.
2. Majeed W, Aslam B, Javed I, Khaliq T, Muhammad F, Ali A, et al. Breast cancer: Major risk factors and recent developments in treatment. *Asian Pac J Cancer Prev.* 2014;15(8):3353–8.
3. García-Aranda M, Redondo M. Immunotherapy: A Challenge of Breast Cancer Treatment. *Cancers.* 2019 Dec;11(12):1822.
4. Arora S, Velichinskii R, Lesh RW, Ali U, Kubiak M, Bansal P, et al. Existing and Emerging Biomarkers for Immune Checkpoint Immunotherapy in Solid Tumors. *Adv Ther.* 2019 Oct 1;36(10):2638–78.
5. Shindo Y, Hazama S, Tsunedomi R, Suzuki N, Nagano H. Novel Biomarkers for Personalized Cancer Immunotherapy. *Cancers.* 2019 Sep;11(9):1223.
6. Current Status and Future Directions of the Immune Checkpoint Inhibitors Ipilimumab, Pembrolizumab, and Nivolumab in Oncology - Meagan S. Barbee, Adebayo Ogunniyi, Troy Z. Horvat, Thu-Oanh Dang, 2015 [Internet]. [cited 2022 Sep 26]. Available from: <https://journals.sagepub.com/doi/10.1177/1060028015586218>
7. Maruthanila VL, Elancheran R, Kunnumakkara AB, S. Kabilan, Kotoky J. Recent development of targeted approaches for the treatment of breast cancer. *Breast Cancer.* 2017 Mar 1;24(2):191–219.
8. Immunotherapy and targeted therapy combinations in metastatic breast cancer - PubMed [Internet]. [cited 2022 Sep 26]. Available from: <https://pubmed.ncbi.nlm.nih.gov/30842061/>
9. Cellular and Molecular Immunology - 9th Edition [Internet]. [cited 2022 Sep 26]. Available from: <https://www.elsevier.com/books/cellular-and-molecular-immunology/abbas/978-0-323-47978-3>
10. The Evolution of the Immune System: Conservation and Diversification: 9780128019757: Medicine & Health Science Books @ Amazon.com [Internet]. [cited 2022 Sep 26]. Available from: <https://www.amazon.com/Evolution-Immune-System-Conservation-Diversification/dp/0128019751>
11. Coussens LM, Werb Z. Inflammation and cancer. *Nature.* 2002 Dec 19;420(6917):860–7.
12. Carswell EA, Old LJ, Kassel RL, Green S, Fiore N, Williamson B. An endotoxin-induced serum factor that causes necrosis of tumors. *Proc Natl Acad Sci.* 1975 Sep;72(9):3666–70.
13. Bodmer JL, Schneider P, Tschopp J. The molecular architecture of the TNF superfamily. *Trends Biochem Sci.* 2002 Jan 1;27(1):19–26.
14. (PDF) APRIL promotes breast tumor growth and metastasis and is associated with aggressive basal breast cancer [Internet]. [cited 2022 Sep 26]. Available from: [https://www.researchgate.net/publication/273324004\\_APRIL\\_promotes\\_breast\\_tumor\\_growth\\_and\\_metastasis\\_and\\_is\\_associated\\_with\\_aggressive\\_basal\\_breast\\_cancer](https://www.researchgate.net/publication/273324004_APRIL_promotes_breast_tumor_growth_and_metastasis_and_is_associated_with_aggressive_basal_breast_cancer)

15. Loss of tumor necrosis factor superfamily genes in breast cancer cell lines (1047.8) - Hunter - 2014 - The FASEB Journal - Wiley Online Library [Internet]. [cited 2022 Sep 26]. Available from: [https://faseb.onlinelibrary.wiley.com/doi/abs/10.1096/fasebj.28.1\\_supplement.1047.8](https://faseb.onlinelibrary.wiley.com/doi/abs/10.1096/fasebj.28.1_supplement.1047.8)
16. Association of a novel functional promoter variant (rs2075533 C>T) in the apoptosis gene TNFSF 8 with risk of lung cancer—a finding from Texas lung cancer genome-wide association study | Carcinogenesis | Oxford Academic [Internet]. [cited 2022 Sep 26]. Available from: <https://academic.oup.com/carcin/article/32/4/507/2463971>
17. Detection of the TNFSF members BAFF, APRIL, TWEAK and their receptors in normal kidney and renal cell carcinomas - PubMed [Internet]. [cited 2022 Sep 26]. Available from: <https://pubmed.ncbi.nlm.nih.gov/21483105/>
18. Carswell EA, Old LJ, Kassel RL, Green S, Fiore N, Williamson B. An Endotoxin-Induced Serum Factor that Causes Necrosis of Tumors. *Proc Natl Acad Sci U S A*. 1975;72(9):3666–70.
19. Balkwill F. Tumour necrosis factor and cancer. *Nat Rev Cancer*. 2009 May;9(5):361–71.
20. Sugarman BJ, Aggarwal BB, Hass PE, Figari IS, Palladino MA, Shepard HM. Recombinant human tumor necrosis factor-alpha: effects on proliferation of normal and transformed cells in vitro. *Science*. 1985 Nov 22;230(4728):943–5.
21. Sethi G, Sung B, Aggarwal BB. TNF: a master switch for inflammation to cancer. *Front Biosci J Virtual Libr*. 2008 May 1;13:5094–107.
22. Anti-tumor necrosis factor therapy inhibits pancreatic tumor growth and metastasis. - Abstract - Europe PMC [Internet]. [cited 2022 Nov 12]. Available from: <https://europepmc.org/article/med/18316608>
23. Stathopoulos GT, Kollintza A, Moschos C, Psallidas I, Sherrill TP, Pitsinos EN, et al. Tumor necrosis factor-alpha promotes malignant pleural effusion. *Cancer Res*. 2007 Oct 15;67(20):9825–34.
24. Zins K, Abraham D, Sioud M, Aharinejad S. Colon cancer cell-derived tumor necrosis factor-alpha mediates the tumor growth-promoting response in macrophages by up-regulating the colony-stimulating factor-1 pathway. *Cancer Res*. 2007 Feb 1;67(3):1038–45.
25. Rivas MA, Carnevale RP, Proietti CJ, Rosembli C, Beguelin W, Salatino M, et al. TNF alpha acting on TNFR1 promotes breast cancer growth via p42/P44 MAPK, JNK, Akt and NF-kappa B-dependent pathways. *Exp Cell Res*. 2008 Feb 1;314(3):509–29.
26. Rubio MF, Werbajh S, Cafferata EGA, Quagliano A, Coló GP, Nojek IM, et al. TNF- $\alpha$  enhances estrogen-induced cell proliferation of estrogen-dependent breast tumor cells through a complex containing nuclear factor-kappa B. *Oncogene*. 2006 Mar;25(9):1367–77.
27. Simstein R, Burow M, Parker A, Weldon C, Beckman B. Apoptosis, chemoresistance, and breast cancer: insights from the MCF-7 cell model system. *Exp Biol Med Maywood NJ*. 2003 Oct;228(9):995–1003.

28. Donato NJ, Klostergaard J. Distinct stress and cell destruction pathways are engaged by TNF and ceramide during apoptosis of MCF-7 cells. *Exp Cell Res*. 2004 Apr 1;294(2):523–33.
29. Wang Y, Wang X, Zhao H, Liang B, Du Q. Clusterin confers resistance to TNF-alpha-induced apoptosis in breast cancer cells through NF-kappaB activation and Bcl-2 overexpression. *J Chemother Florence Italy*. 2012 Dec;24(6):348–57.
30. Antiproliferative action of tumor necrosis factor-alpha on MCF-7 breastcancer cells is associated with increased insulin-like growth factor binding protein-3 accumulation. [Internet]. [cited 2022 Nov 12]. Available from: <https://www.spandidos-publications.com/ijo/13/4/865>
31. Jeoung D il, Tang B, Sonenberg M. Effects of Tumor Necrosis Factor- $\alpha$  on Antimitogenicity and Cell Cycle-related Proteins in MCF-7 Cells \*. *J Biol Chem*. 1995 Aug 4;270(31):18367–73.
32. Profiles of immune cell infiltration and immune-related genes in the tumor microenvironment of colorectal cancer - ScienceDirect [Internet]. [cited 2022 Nov 13]. Available from: <https://www.sciencedirect.com/science/article/pii/S0753332219316245>
33. Breast Cancer Cell–Neutrophil Interactions Enhance Neutrophil Survival and Pro-Tumorigenic Activities - PMC [Internet]. [cited 2023 Mar 5]. Available from: <https://www.ncbi.nlm.nih.gov/pmc/articles/PMC7599756/>
34. Role of chemokine receptor CXCR2 expression in mammary tumor growth, angiogenesis and metastasis - PubMed [Internet]. [cited 2023 Mar 5]. Available from: <https://pubmed.ncbi.nlm.nih.gov/22368515/>
35. The genetic landscape of the FAS pathway deficiencies - PubMed [Internet]. [cited 2022 Nov 13]. Available from: <https://pubmed.ncbi.nlm.nih.gov/34171534/>
36. Kadam CY, Abhang SA. Apoptosis Markers in Breast Cancer Therapy. *Adv Clin Chem*. 2016;74:143–93.
37. Liu Y, Wen QJ, Yin Y, Lu XT, Pu SH, Tian HP, et al. FASLG polymorphism is associated with cancer risk. *Eur J Cancer Oxf Engl* 1990. 2009 Sep;45(14):2574–8.
38. Müllauer L, Mosberger I, Grusch M, Rudas M, Chott A. Fas ligand is expressed in normal breast epithelial cells and is frequently up-regulated in breast cancer. *J Pathol*. 2000 Jan;190(1):20–30.
39. Mor G, Kohen F, Garcia-Velasco J, Nilsen J, Brown W, Song J, et al. Regulation of fas ligand expression in breast cancer cells by estrogen: functional differences between estradiol and tamoxifen. *J Steroid Biochem Mol Biol*. 2000 Aug;73(5):185–94.
40. Szpor J, Streb J, Glajcar A, Frączek P, Winiarska A, Tyrak KE, et al. Dendritic Cells Are Associated with Prognosis and Survival in Breast Cancer. *Diagnostics*. 2021 Apr 14;11(4):702.
41. Bj C, J M. CD1a-positive infiltrating-dendritic cell density and 5-year survival from human breast cancer. *Br J Cancer* [Internet]. 2003 Aug 4 [cited 2023 Mar 5];89(3). Available from: <https://pubmed.ncbi.nlm.nih.gov/12888826/>

42. Wiley SR, Schooley K, Smolak PJ, Din WS, Huang CP, Nicholl JK, et al. Identification and characterization of a new member of the TNF family that induces apoptosis. *Immunity*. 1995 Dec;3(6):673–82.
43. Wang S, El-Deiry WS. TRAIL and apoptosis induction by TNF-family death receptors. *Oncogene*. 2003 Nov 24;22(53):8628–33.
44. Sag D, Ayyildiz ZO, Gunalp S, Wingender G. The Role of TRAIL/DRs in the Modulation of Immune Cells and Responses. *Cancers* [Internet]. 2019;11(10). Available from: <https://www.mdpi.com/2072-6694/11/10/1469>
45. Identification of a Small Cohort of Genes That Might Drive Metastases in Uveal Melanoma | IOVS | ARVO Journals [Internet]. [cited 2022 Nov 15]. Available from: <https://iovs.arvojournals.org/article.aspx?articleid=2272148>
46. Physiology and pathophysiology of the RANKL/RANK system - PubMed [Internet]. [cited 2022 Nov 15]. Available from: <https://pubmed.ncbi.nlm.nih.gov/21087090/>
47. Beleut M, Rajaram RD, Caikovski M, Ayyanan A, Germano D, Choi Y, et al. Two distinct mechanisms underlie progesterone-induced proliferation in the mammary gland. *Proc Natl Acad Sci U S A*. 2010 Feb 16;107(7):2989–94.
48. Schramek D, Leibbrandt A, Sigl V, Kenner L, Pospisilik JA, Lee HJ, et al. Osteoclast differentiation factor RANKL controls development of progestin-driven mammary cancer. *Nature*. 2010 Nov 4;468(7320):98–102.
49. Gonzalez-Suarez E, Jacob AP, Jones J, Miller R, Roudier-Meyer MP, Erwert R, et al. RANK ligand mediates progestin-induced mammary epithelial proliferation and carcinogenesis. *Nature*. 2010 Nov 4;468(7320):103–7.
50. Kiechl S, Schramek D, Widschwendter M, Fourkala EO, Zaikin A, Jones A, et al. Aberrant regulation of RANKL/OPG in women at high risk of developing breast cancer. *Oncotarget*. 2017 Jan 17;8(3):3811–25.
51. Martínez-Lostao L, Anel A, Pardo J. How Do Cytotoxic Lymphocytes Kill Cancer Cells? *Clin Cancer Res Off J Am Assoc Cancer Res*. 2015 Nov 15;21(22):5047–56.
52. Mahmoud SMA, Paish EC, Powe DG, Macmillan RD, Grainge MJ, Lee AHS, et al. Tumor-infiltrating CD8+ lymphocytes predict clinical outcome in breast cancer. *J Clin Oncol Off J Am Soc Clin Oncol*. 2011 May 20;29(15):1949–55.
53. Frontiers | Identification of Angiogenesis-Related Prognostic Biomarkers Associated With Immune Cell Infiltration in Breast Cancer [Internet]. [cited 2022 Nov 20]. Available from: <https://www.frontiersin.org/articles/10.3389/fcell.2022.853324/full>
54. Fibroblast growth factor-inducible 14 mediates multiple pathways of TWEAK-induced cell death - PubMed [Internet]. [cited 2022 Nov 20]. Available from: <https://pubmed.ncbi.nlm.nih.gov/12496418/>



55. TWEAK induces apoptosis through a death-signaling complex comprising receptor-interacting protein 1 (RIP1), Fas-associated death domain (FADD), and caspase-8 - PubMed [Internet]. [cited 2022 Nov 20]. Available from: <https://pubmed.ncbi.nlm.nih.gov/21525013/>
56. Ho DH, Vu H, Brown SAN, Donohue PJ, Hanscom HN, Winkles JA. Soluble tumor necrosis factor-like weak inducer of apoptosis overexpression in HEK293 cells promotes tumor growth and angiogenesis in athymic nude mice. *Cancer Res*. 2004 Dec 15;64(24):8968–72.
57. Kawakita T, Shiraki K, Yamanaka Y, Yamaguchi Y, Saitou Y, Enokimura N, et al. Functional expression of TWEAK in human hepatocellular carcinoma: possible implication in cell proliferation and tumor angiogenesis. *Biochem Biophys Res Commun*. 2004 Jun 4;318(3):726–33.
58. Shimada K, Fujii T, Tsujikawa K, Anai S, Fujimoto K, Konishi N. ALKBH3 contributes to survival and angiogenesis of human urothelial carcinoma cells through NADPH oxidase and tweek/Fn14/VEGF signals. *Clin Cancer Res Off J Am Assoc Cancer Res*. 2012 Oct 1;18(19):5247–55.
59. Zheng YW, Mi XY, Fang CQ, Liu SL, Liu N, Wei MJ. [Expression of TNF-like weak inducer of apoptosis (TWEAK) and its relationship to microvessel density in breast cancer]. *Ai Zheng Aizheng Chin J Cancer*. 2008 Nov;27(11):1177–81.
60. Zhang R, Li F, Li H, Yu J, Ren X. The clinical significance of memory T cells and its subsets in gastric cancer. *Clin Transl Oncol Off Publ Fed Span Oncol Soc Natl Cancer Inst Mex*. Vol. Mar;16(3):257–65. 2014.
61. Novy P, Quigley M, Huang X, Yang Y. CD4 T cells are required for CD8 T cell survival during both primary and memory recall responses. *J Immunol Balt Md*. 1950 Dec;15;179(12):8243–51.
62. Planelles L, Medema JP, Hahne M, Hardenberg G. The expanding role of APRIL in cancer and immunity. *Curr Mol Med*. 2008 Dec;8(8):829–44.
63. He B, Xu W, Santini PA, Polydorides AD, Chiu A, Estrella J, et al. Intestinal bacteria trigger T cell-independent immunoglobulin A(2) class switching by inducing epithelial-cell secretion of the cytokine APRIL. *Immunity*. 2007 Jun;26(6):812–26.
64. Alexaki VI, Notas G, Pelekanou V, Kampa M, Valkanou M, Theodoropoulos P, et al. Adipocytes as immune cells: differential expression of TWEAK, BAFF, and APRIL and their receptors (Fn14, BAFF-R, TACI, and BCMA) at different stages of normal and pathological adipose tissue development. *J Immunol Baltim Md 1950*. 2009 Nov 1;183(9):5948–56.
65. Heparan sulfate proteoglycan binding promotes APRIL-induced tumor cell proliferation - PubMed [Internet]. [cited 2022 Nov 21]. Available from: <https://pubmed.ncbi.nlm.nih.gov/15846369/>
66. Adeyinka A, Nui Y, Cherlet T, Snell L, Watson PH, Murphy LC. Activated mitogen-activated protein kinase expression during human breast tumorigenesis and breast cancer progression. *Clin Cancer Res Off J Am Assoc Cancer Res*. 2002 Jun;8(6):1747–53.
67. Chao J, Zhang Y, Du L, Zhou R, Wu X, Shen K, et al. Molecular mechanisms underlying the involvement of the sigma-1 receptor in methamphetamine-mediated microglial polarization. *Sci Rep*. 2017 Sep 14;7(1):11540.

68. Clinical Implications of Tumor-Infiltrating Immune Cells in Breast Cancer - PMC [Internet]. [cited 2023 Mar 5]. Available from: <https://www.ncbi.nlm.nih.gov/pmc/articles/PMC6856577/>
69. Mahmoud SMA, Lee AHS, Paish EC, Macmillan RD, Ellis IO, Green AR. Tumour-infiltrating macrophages and clinical outcome in breast cancer. *J Clin Pathol*. 2012 Feb;65(2):159–63.
70. Tiainen S, Tumelius R, Rilla K, Hämäläinen K, Tammi M, Tammi R, et al. High numbers of macrophages, especially M2-like (CD163-positive), correlate with hyaluronan accumulation and poor outcome in breast cancer. *Histopathology*. 2015 May;66(6):873–83.
71. Li D, Ji H, Niu X, Yin L, Wang Y, Gu Y, et al. Tumor-associated macrophages secrete CC-chemokine ligand 2 and induce tamoxifen resistance by activating PI3K/Akt/mTOR in breast cancer. *Cancer Sci*. 2020 Jan;111(1):47–58.
72. Sousa S, Brion R, Lintunen M, Kronqvist P, Sandholm J, Mönkkönen J, et al. Human breast cancer cells educate macrophages toward the M2 activation status. *Breast Cancer Res BCR*. 2015 Aug 5;17(1):101.
73. Immune Regulation of Cancer | Journal of Clinical Oncology [Internet]. [cited 2022 Oct 30]. Available from: <https://ascopubs.org/doi/10.1200/JCO.2009.27.2146>
74. Ben-Neriah Y, Karin M. Inflammation meets cancer, with NF- $\kappa$ B as the matchmaker. *Nat Immunol*. 2011 Aug;12(8):715–23.
75. Perkins ND. Achieving transcriptional specificity with nf-kb. *Int J Biochem Cell Biol*. 1997 Dec 1;29(12):1433–48.
76. Guttridge DC, Albanese C, Reuther JY, Pestell RG, Baldwin AS. NF- $\kappa$ B Controls Cell Growth and Differentiation through Transcriptional Regulation of Cyclin D1. *Mol Cell Biol*. 1999 Aug;19(8):5785–99.
77. Huber MA, Azoitei N, Baumann B, Grünert S, Sommer A, Pehamberger H, et al. NF- $\kappa$ B is essential for epithelial-mesenchymal transition and metastasis in a model of breast cancer progression. *J Clin Invest*. 2004 Aug 16;114(4):569–81.
78. Liou GY, Storz P. Reactive oxygen species in cancer. *Free Radic Res*. 2010 Jan 1;44(5):479–96.
79. La Rosa FA, Pierce JW, Sonenshein GE. Differential regulation of the c-myc oncogene promoter by the NF-kappa B rel family of transcription factors. *Mol Cell Biol*. 1994 Feb;14(2):1039–44.
80. Gupta SC, Kim JH, Prasad S, Aggarwal BB. Regulation of survival, proliferation, invasion, angiogenesis, and metastasis of tumor cells through modulation of inflammatory pathways by nutraceuticals. *Cancer Metastasis Rev*. 2010 Sep;29(3):405–34.
81. Gilmore TD. Multiple myeloma: lusting for NF-kappaB. *Cancer Cell*. 2007 Aug;12(2):95–7.
82. Cogswell PC, Guttridge DC, Funkhouser WK, Baldwin AS. Selective activation of NF-kappa B subunits in human breast cancer: potential roles for NF-kappa B2/p52 and for Bcl-3. *Oncogene*. 2000 Feb 24;19(9):1123–31.

83. Demicco EG, Kavanagh KT, Romieu-Mourez R, Wang X, Shin SR, Landesman-Bollag E, et al. RelB/p52 NF- $\kappa$ B Complexes Rescue an Early Delay in Mammary Gland Development in Transgenic Mice with Targeted Superrepressor I $\kappa$ B- $\alpha$  Expression and Promote Carcinogenesis of the Mammary Gland. *Mol Cell Biol*. 2005 Nov;25(22):10136–47.
84. Huber MA, Azoitei N, Baumann B, Grünert S, Sommer A, Pehamberger H, et al. NF- $\kappa$ B is essential for epithelial-mesenchymal transition and metastasis in a model of breast cancer progression. *J Clin Invest*. 2004 Aug 16;114(4):569–81.
85. Wu JT, Kral JG. The NF-kappaB/IkappaB signaling system: a molecular target in breast cancer therapy. *J Surg Res*. 2005 Jan;123(1):158–69.
86. Ling J, Kumar R. Crosstalk between NF $\kappa$ B and glucocorticoid signaling: a potential target of breast cancer therapy. *Cancer Lett*. 2012 Sep 28;322(2):119–26.
87. Sovak MA, Bellas RE, Kim DW, Zanieski GJ, Rogers AE, Traish AM, et al. Aberrant nuclear factor-kappaB/Rel expression and the pathogenesis of breast cancer. *J Clin Invest*. 1997 Dec 15;100(12):2952–60.
88. Srivastava S, Matsuda M, Hou Z, Bailey JP, Kitazawa R, Herbst MP, et al. Receptor activator of NF-kappaB ligand induction via Jak2 and Stat5a in mammary epithelial cells. *J Biol Chem*. 2003 Nov 14;278(46):46171–8.
89. Romieu-Mourez R, Kim DW, Min Shin S, Demicco EG, Landesman-Bollag E, Seldin DC, et al. Mouse Mammary Tumor Virus c-rel Transgenic Mice Develop Mammary Tumors. *Mol Cell Biol*. 2003 Aug;23(16):5738–54.
90. Lu X, Yarbrough WG. Negative regulation of RelA phosphorylation: emerging players and their roles in cancer. *Cytokine Growth Factor Rev*. 2015 Feb;26(1):7–13.
91. Beg AA, Baltimore D. An essential role for NF-kappaB in preventing TNF-alpha-induced cell death. *Science*. 1996 Nov 1;274(5288):782–4.
92. Beg AA, Sha WC, Bronson RT, Ghosh S, Baltimore D. Embryonic lethality and liver degeneration in mice lacking the RelA component of NF-kappa B. *Nature*. 1995 Jul 13;376(6536):167–70.
93. Doi TS, Takahashi T, Taguchi O, Azuma T, Obata Y. NF- $\kappa$ B RelA-deficient Lymphocytes: Normal Development of T Cells and B Cells, Impaired Production of IgA and IgG1 and Reduced Proliferative Responses. *J Exp Med*. 1997 Mar 3;185(5):953–62.
94. Darnell JE, Kerr IM, Stark GR. Jak-STAT pathways and transcriptional activation in response to IFNs and other extracellular signaling proteins. *Science*. 1994 Jun 3;264(5164):1415–21.
95. Gao B. Cytokines, STATs and liver disease. *Cell Mol Immunol*. 2005 Apr;2(2):92–100.
96. He R, Chen H, Feng Z, Dang Y, Gan T, Chen G, et al. High level of STAT4 expression is associated with the deterioration of breast cancer. :7.

97. Down-regulation of miR-141 induced by helicobacter pylori promotes the invasion of gastric cancer by targeting STAT4 - PubMed [Internet]. [cited 2022 Oct 30]. Available from: <https://pubmed.ncbi.nlm.nih.gov/24732377/>
98. UALCAN: A Portal for Facilitating Tumor Subgroup Gene Expression and Survival Analyses - PubMed [Internet]. [cited 2022 Sep 26]. Available from: <https://pubmed.ncbi.nlm.nih.gov/28732212/>
99. Bartha Á, Gyórfy B. TNMplot.com: A Web Tool for the Comparison of Gene Expression in Normal, Tumor and Metastatic Tissues. *Int J Mol Sci*. 2021 Mar 5;22(5):2622.
100. The UCSC Xena platform for public and private cancer genomics data visualization and interpretation | bioRxiv [Internet]. [cited 2023 Mar 4]. Available from: <https://www.biorxiv.org/content/10.1101/326470v6>
101. Tang Z, Li C, Kang B, Gao G, Li C, Zhang Z. GEPIA: a web server for cancer and normal gene expression profiling and interactive analyses. *Nucleic Acids Res*. 2017 Jul 3;45(W1):W98–102.
102. Antibodies for profiling the human proteome—The Human Protein Atlas as a resource for cancer research | Semantic Scholar [Internet]. [cited 2022 Sep 26]. Available from: <https://www.semanticscholar.org/paper/Antibodies-for-profiling-the-human-proteome%E2%80%94The-as-Asplund-Edqvist/a7fe072fe7eb1fc3b63679ef2ef2b268d6d41f8c>
103. Jézéquel P, Frénel JS, Champion L, Guérin-Charbonnel C, Gouraud W, Ricolleau G, et al. bc-GenExMiner 3.0: new mining module computes breast cancer gene expression correlation analyses. *Database*. 2013 Jan 1;2013:bas060.
104. STRING v11: protein–protein association networks with increased coverage, supporting functional discovery in genome-wide experimental datasets | *Nucleic Acids Research* | Oxford Academic [Internet]. [cited 2022 Sep 26]. Available from: <https://academic.oup.com/nar/article/47/D1/D607/5198476>
105. A comprehensive bioinformatics analysis to identify potential prognostic biomarkers among CC and CXC chemokines in breast cancer | *Scientific Reports* [Internet]. [cited 2023 Sep 27]. Available from: <https://www.nature.com/articles/s41598-022-14610-2>
106. Warde-Farley D, Donaldson SL, Comes O, Zuberi K, Badrawi R, Chao P, et al. The GeneMANIA prediction server: biological network integration for gene prioritization and predicting gene function. *Nucleic Acids Res*. 2010 Jul 1;38(Web Server issue):W214–20.
107. Gyórfy B. Survival analysis across the entire transcriptome identifies biomarkers with the highest prognostic power in breast cancer. *Comput Struct Biotechnol J*. 2021;19:4101–9.
108. shinyDepMap, a tool to identify targetable cancer genes and their functional connections from Cancer Dependency Map data | *eLife* [Internet]. [cited 2023 Mar 5]. Available from: <https://elifesciences.org/articles/57116>

## 7. Supporting information

**S1 Table.** Genomic alterations of the top 50 frequently co-altered genes with TNFSF Superfamily members in BC patients.

**S2 Fig.** Correlation between the expression of TNFSFs genes and infiltration of immune cells.

**S2 Fig.** Correlation between the expression of TNFSFs genes and infiltration of immune cells.

**Fig 1 :** The difference in expression of TNFSFs in cancer and normal cells.

**Fig 2:** The difference in expression of TNFSFs in breast cancer.

**Fig 3 :** Differential gene expression analysis in Tumor, Normal, and Metastatic tissues

**Fig 4 :** the expression pattern of proteins with the HPA database.

**Figure 5 :** Association of TNFSFs mRNA levels with clinicopathological features in BC patients,

\*\*\*\* =  $P < 0.0001$ , \*\*\* =  $P < 0.001$ , \*\* =  $P < 0.01$ , \* =  $P < 0.05$

**Fig 6 :** Genomic alterations and GO enrichment analysis of TNFSF members in BC patients. (A): Genomic alteration of TNFSFs, (B): KEGG pathway analysis, (C): function analysis, (D): Gene Interactions analysis, (F): the protein-protein interaction network.

**Fig 7 :** The prognostic value (OS) of TNFSF in patients with BC.

**Fig 8 :** The prognostic value (RFS) of TNFSF in patients with BC.

**Figure 9 :** The prognostic value (OS) of TNFSF in sub-type of BC.

**Fig 10 :** The prognostic value (OS) of TNFSF in grade of BC.

**Fig 11 :** The prognostic value of TNFSF in patients with metastases.

**Fig 12 :** Gene essentiality of TNFSF family genes



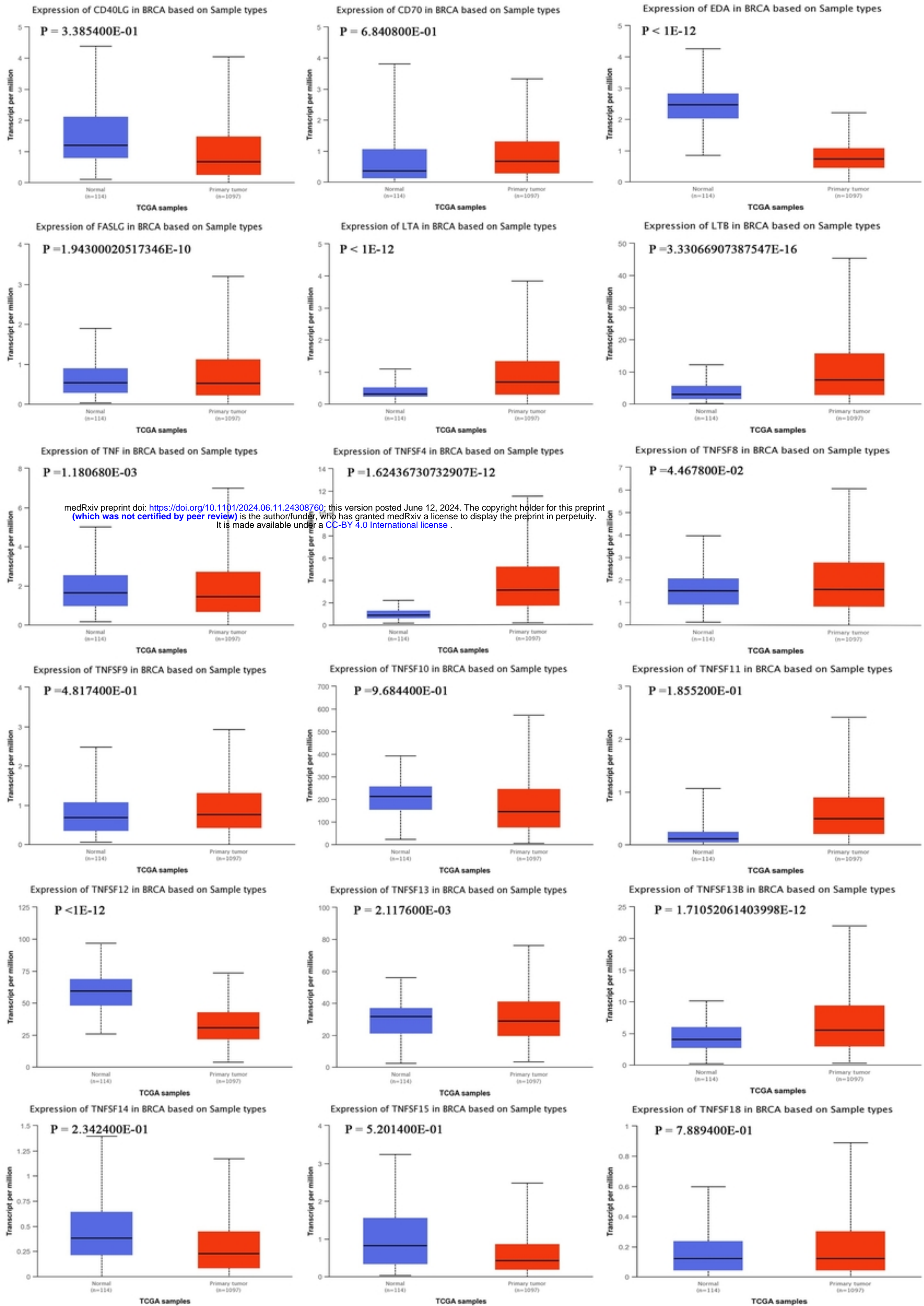
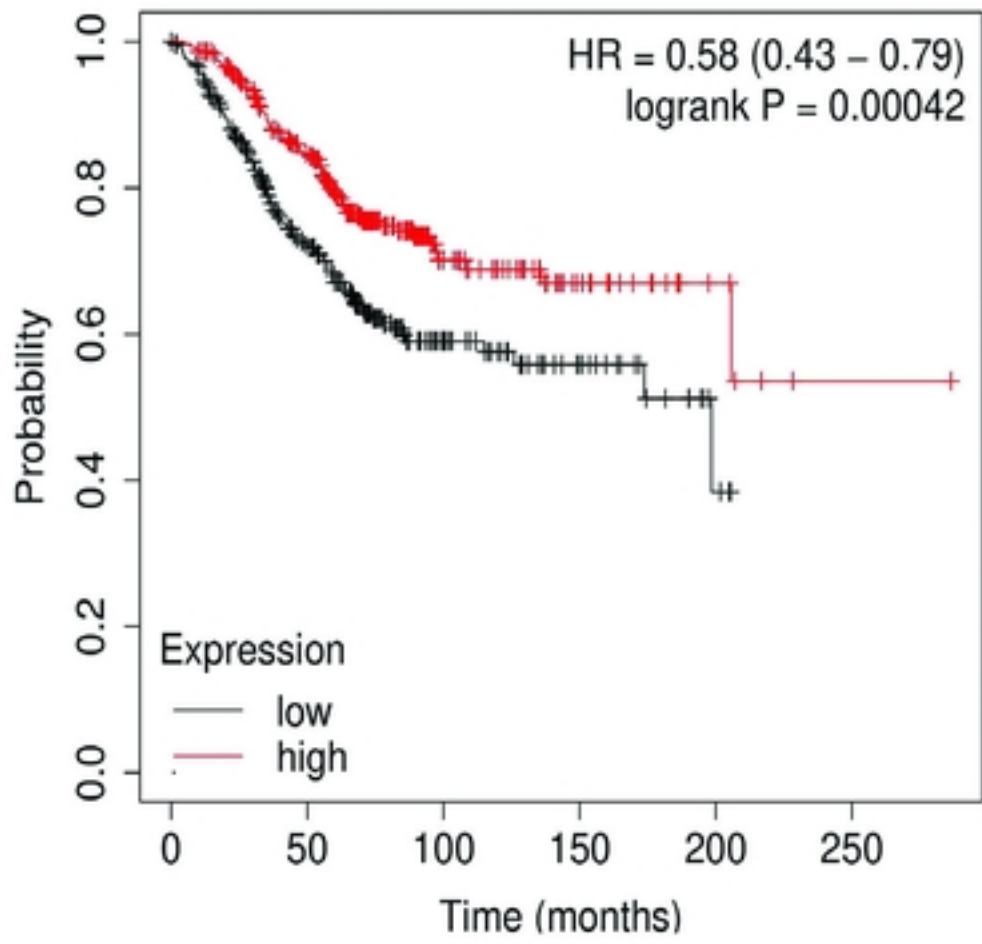
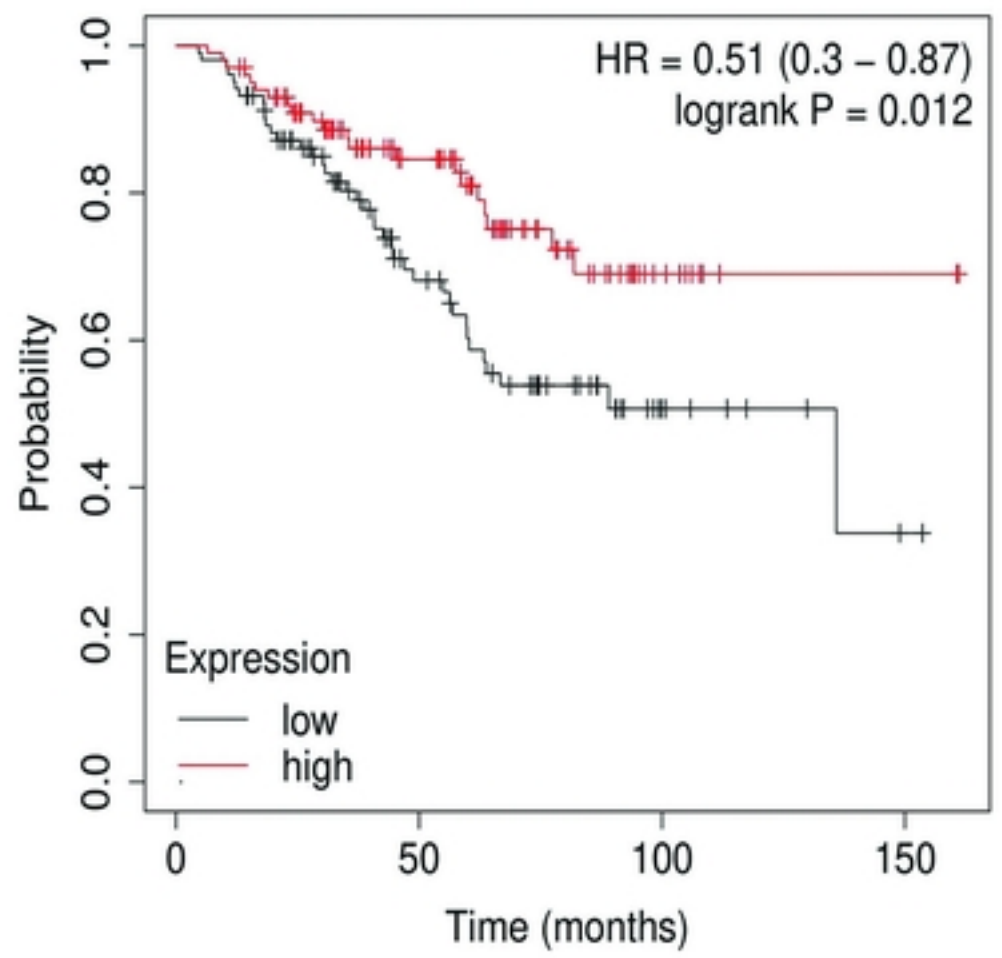


Fig 1 : The difference in expression of TNFSFs in cancer and normal

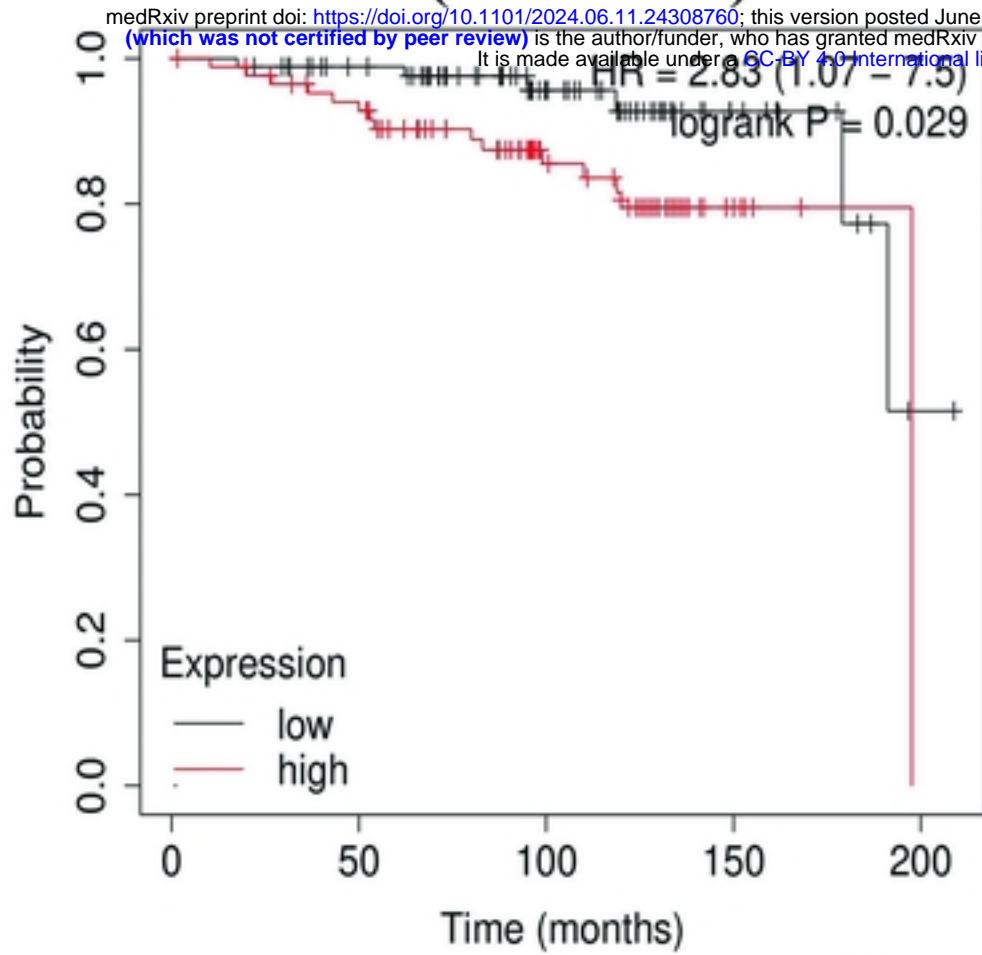
### LTB (GRADE3)



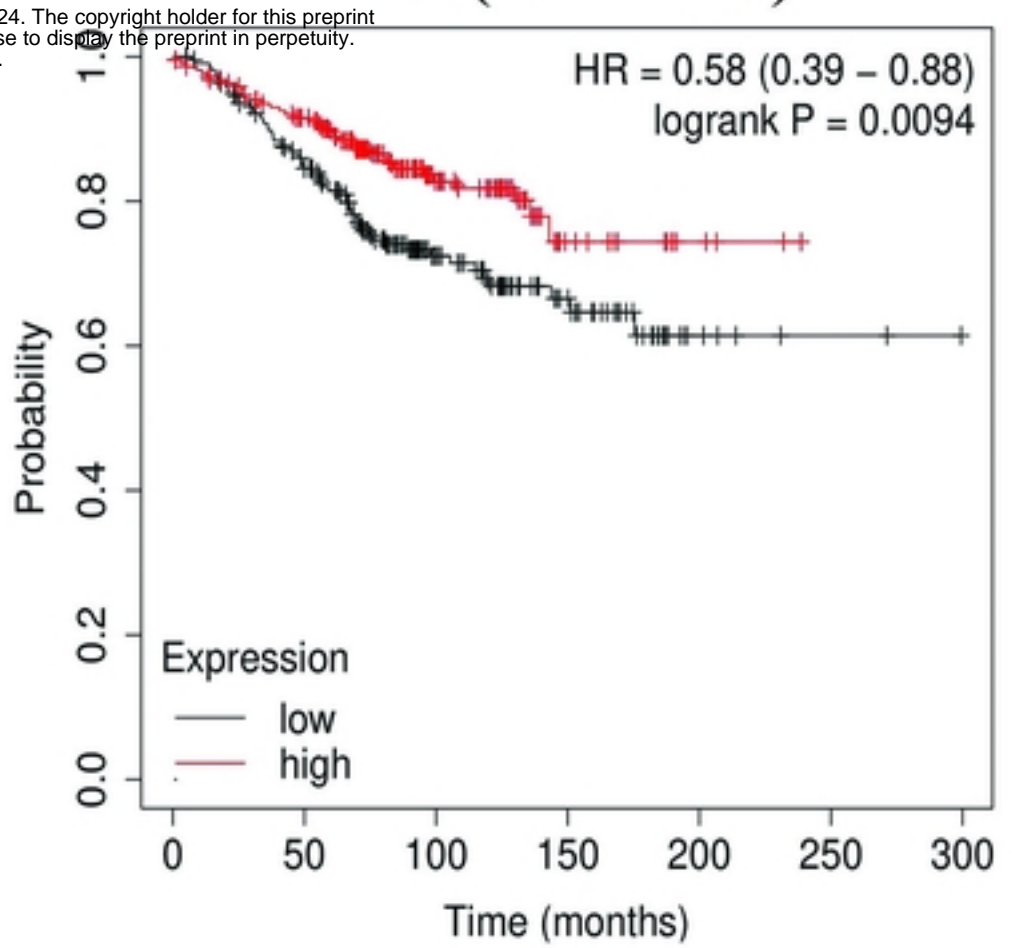
### TNFSF8 (GRADE1)



### TNF(GRADE1)



### TNF(GRADE2)



### TNF(GRADE3)

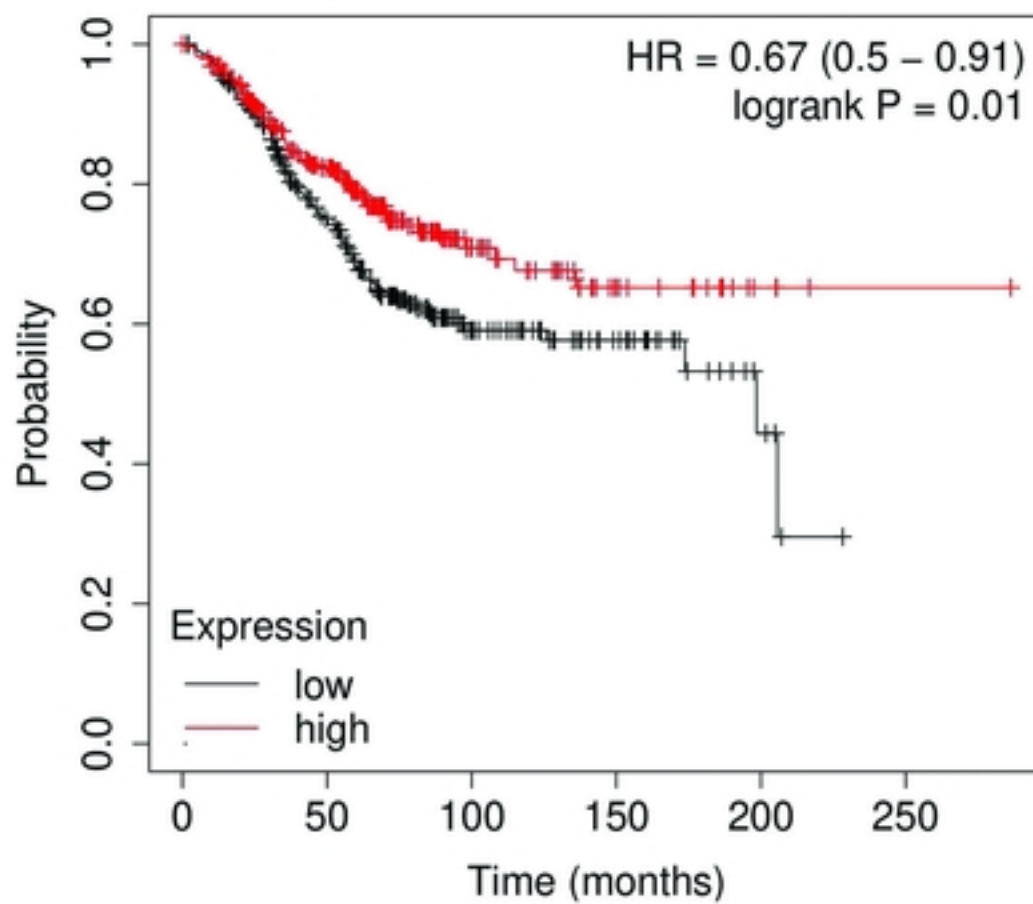


Fig 10 : The prognostic value (OS) of TNFSF in grade of BC.



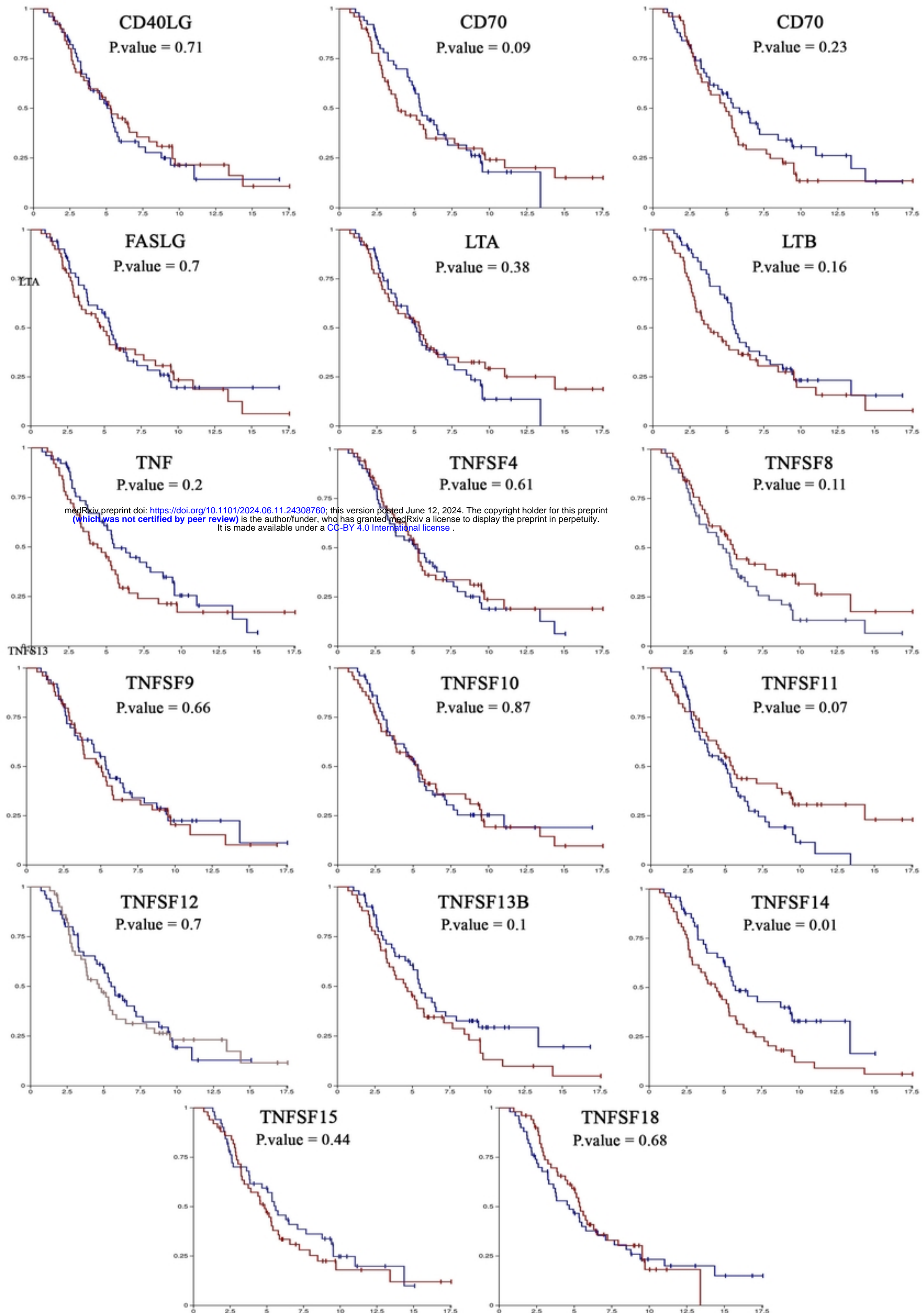


Fig 11 : The prognostic value of TNFSF in patients with metast

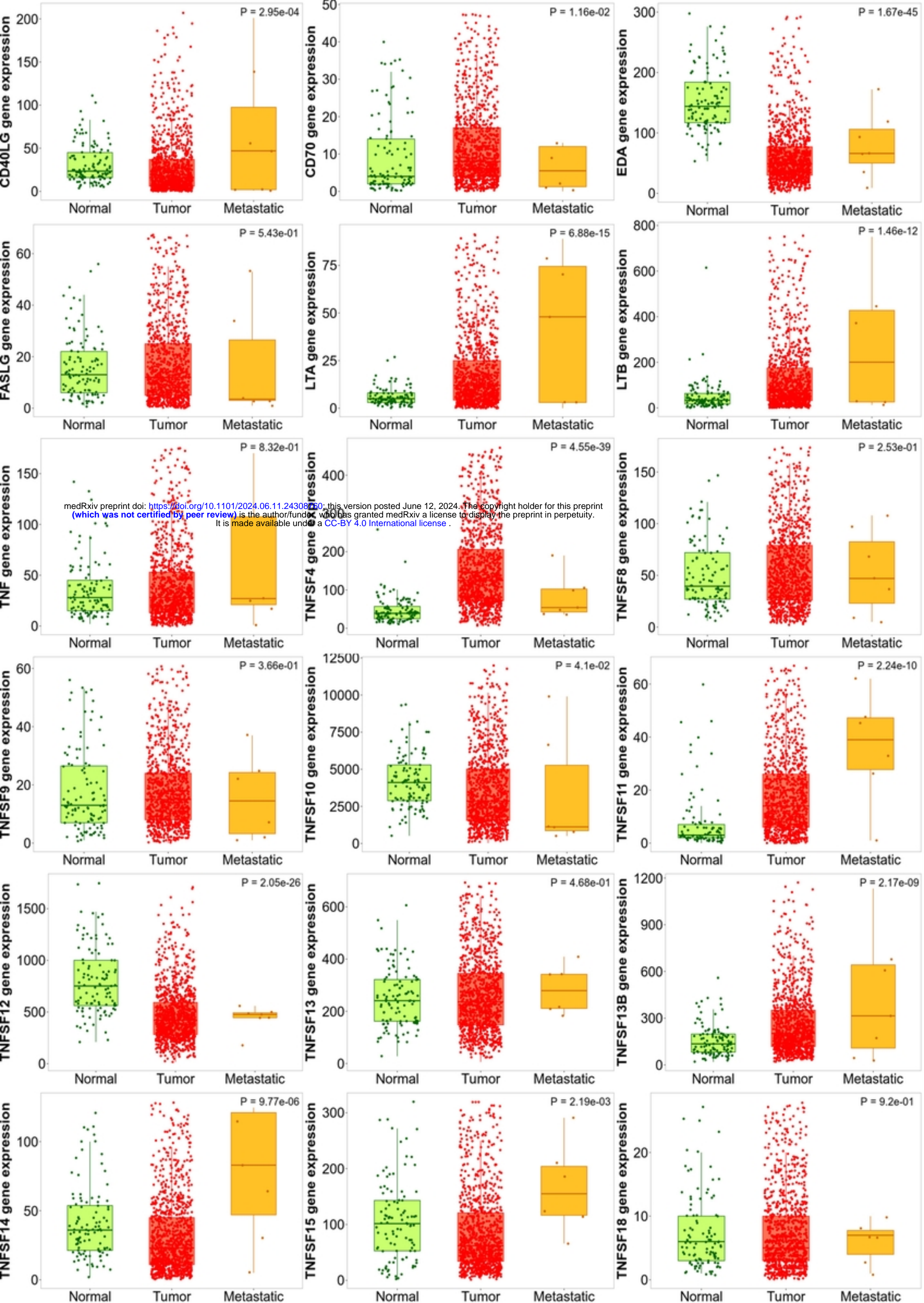






Fig 2: The difference in expression of TNFSFs in breast cancer





medRxiv preprint doi: <https://doi.org/10.1101/2024.06.11.24308760>; this version posted June 12, 2024. The copyright holder for this preprint (which was not certified by peer review) is the author/funder, who has granted medRxiv a license to display the preprint in perpetuity. It is made available under a [CC-BY 4.0 International license](https://creativecommons.org/licenses/by/4.0/).

Fig 3 : Differential gene expression analysis in Tumor, Normal



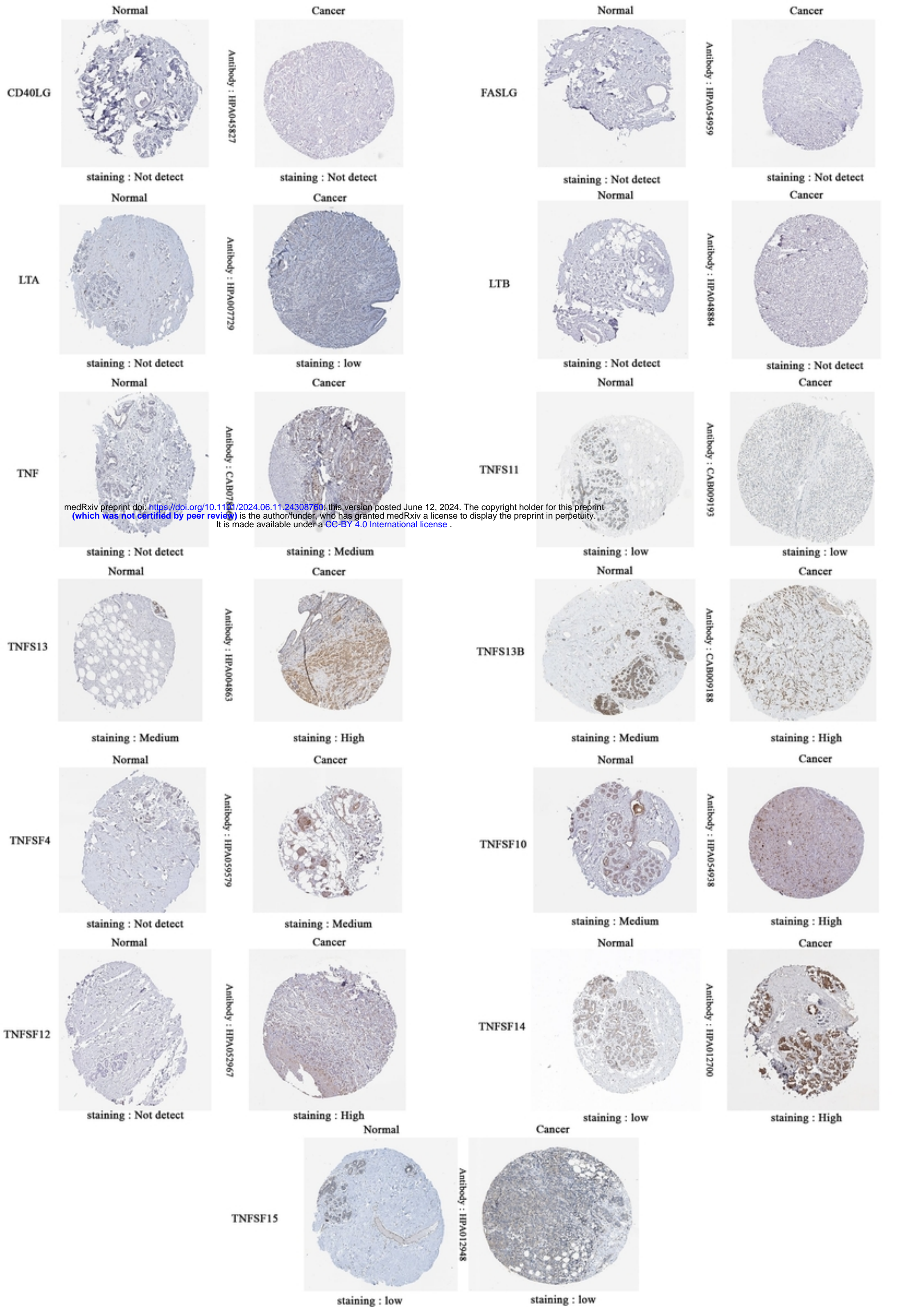
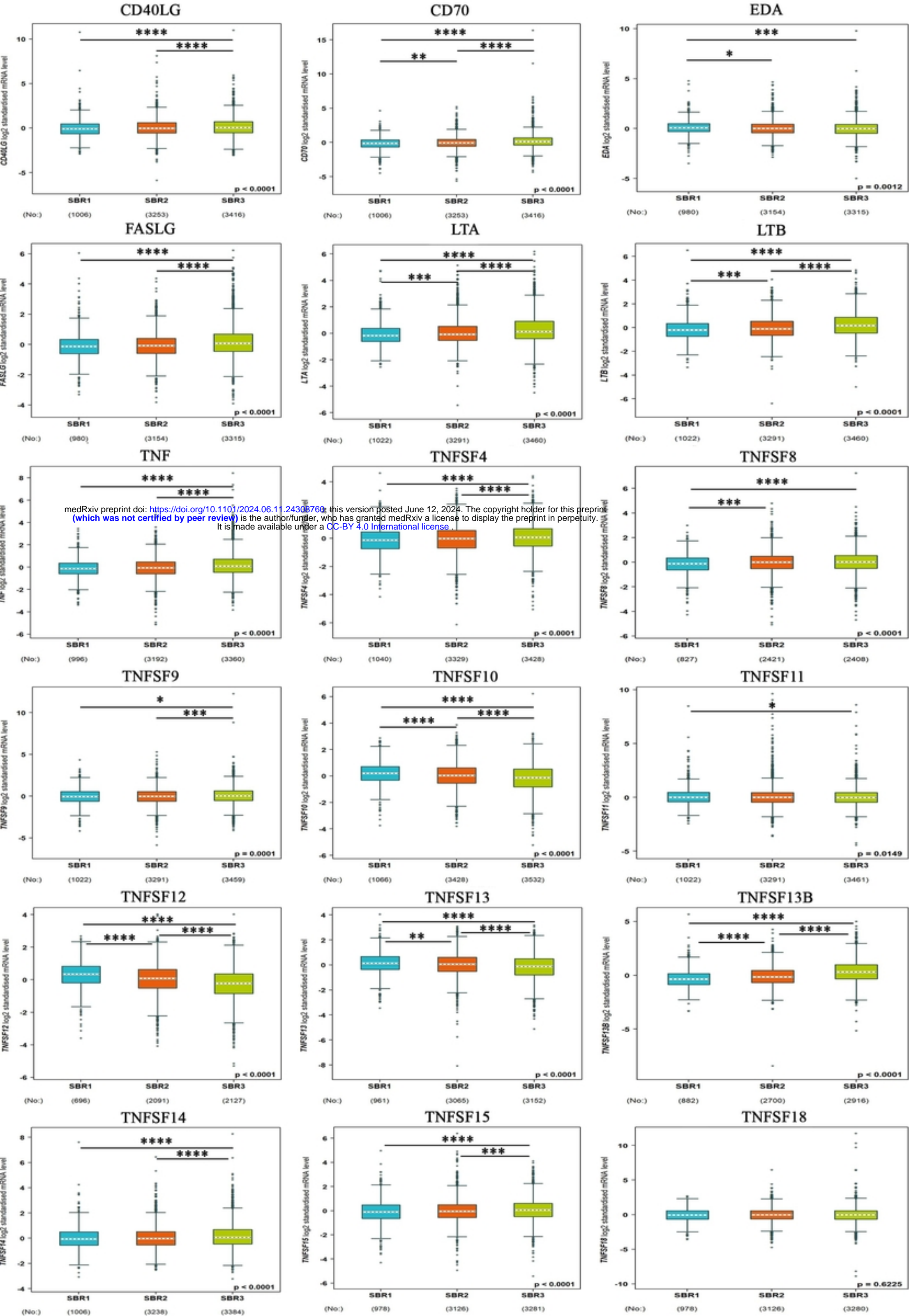


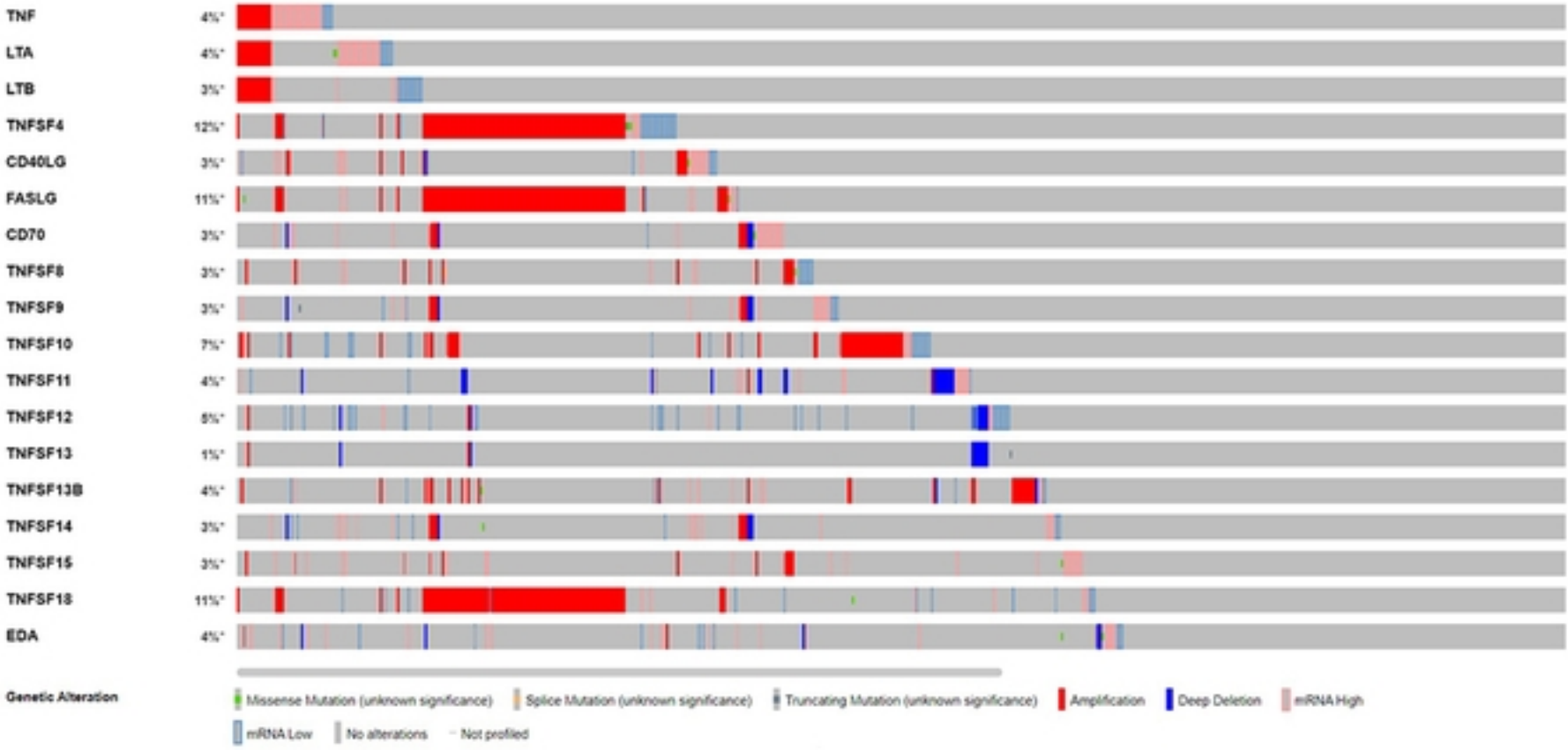
Fig 4 : the expression pattern of proteins with the HPA database



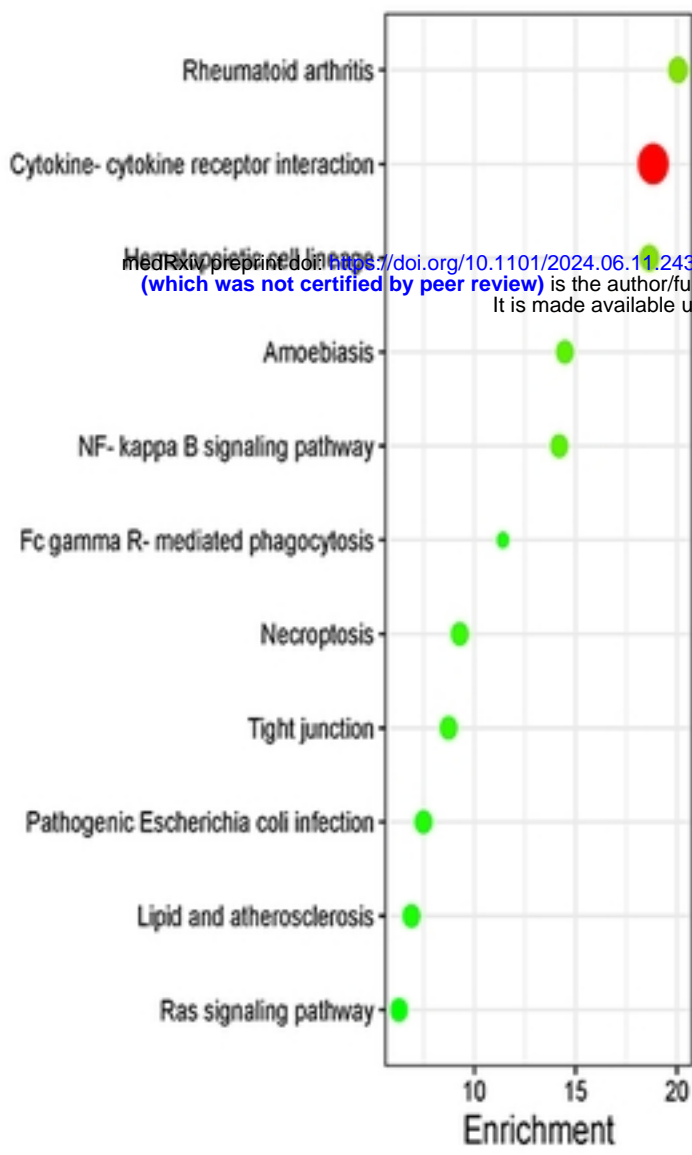


medRxiv preprint doi: <https://doi.org/10.1101/2024.06.11.24308760>; this version posted June 12, 2024. The copyright holder for this preprint (which was not certified by peer review) is the author/funder, who has granted medRxiv a license to display the preprint in perpetuity. It is made available under a [CC-BY 4.0 International license](https://creativecommons.org/licenses/by/4.0/).

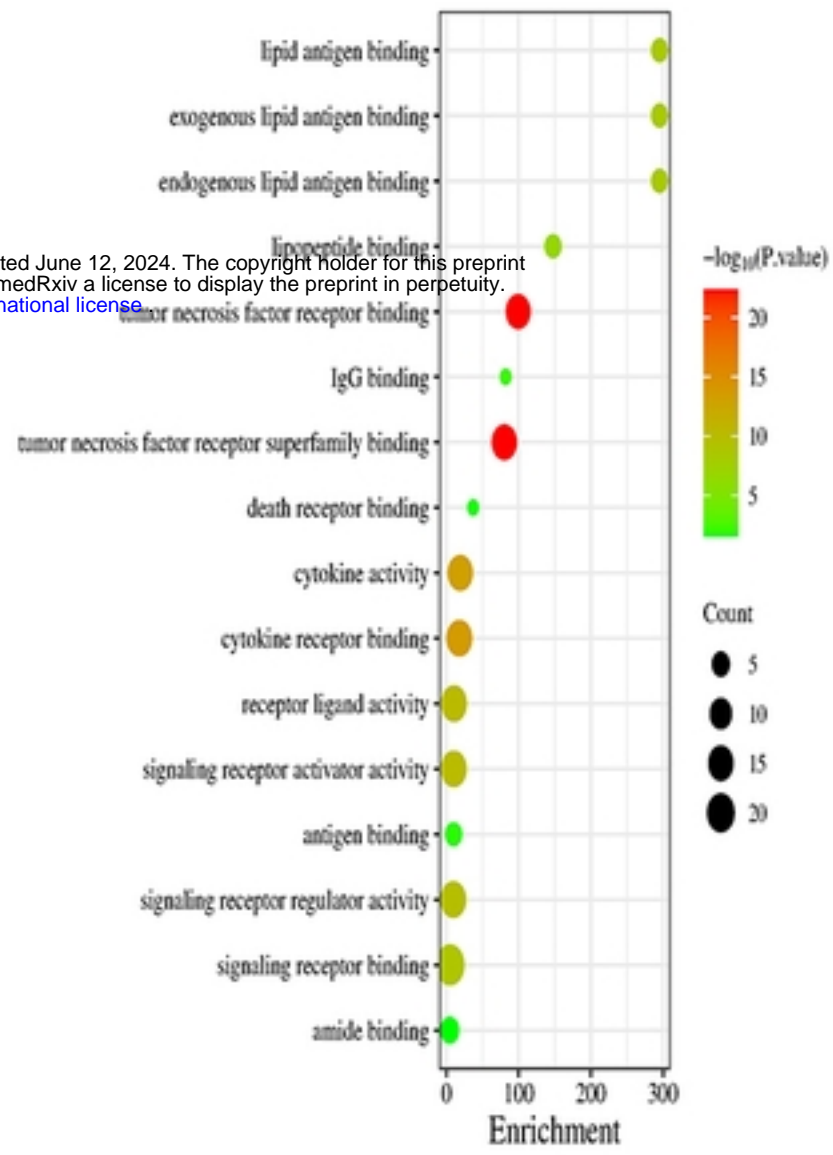
Figure 5 : Association of TNFSFs mRNA levels with clinicopath



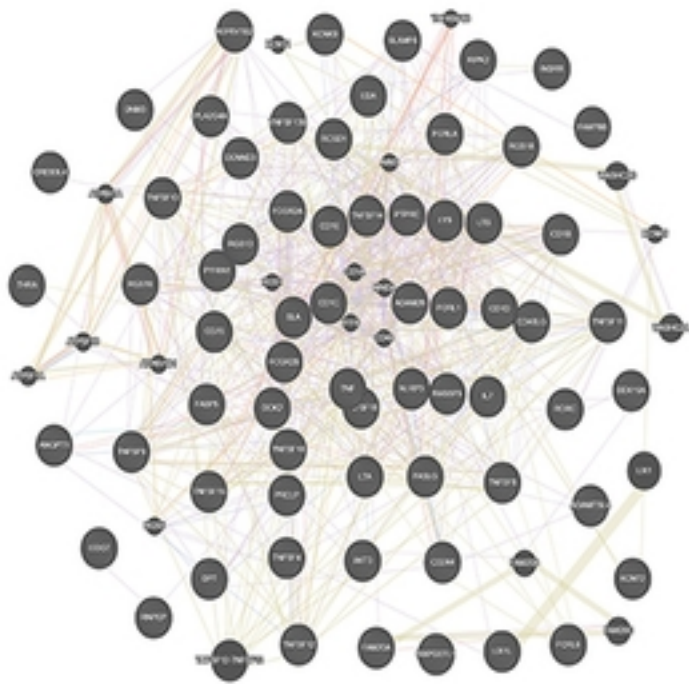
**A**



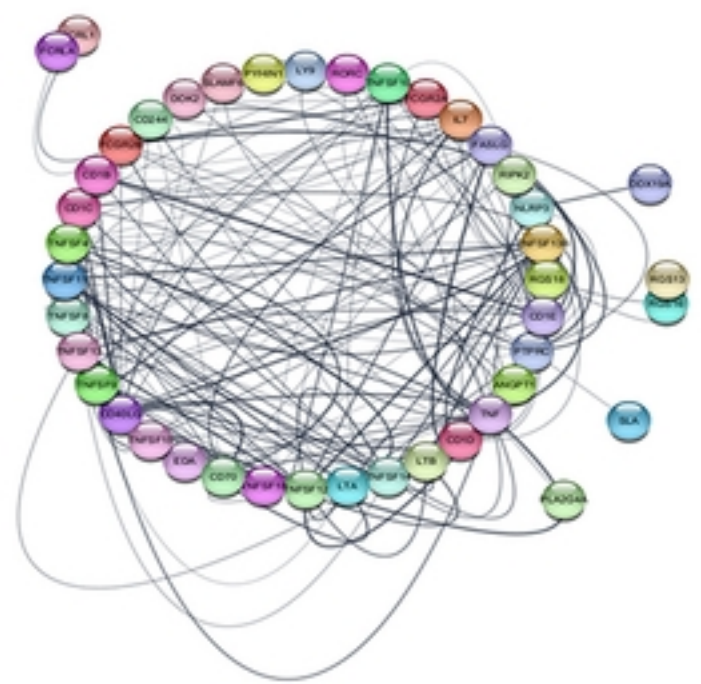
**B**



**C**



**D**



**E**

Fig 6 : Genomic alterations and GO enrichment a



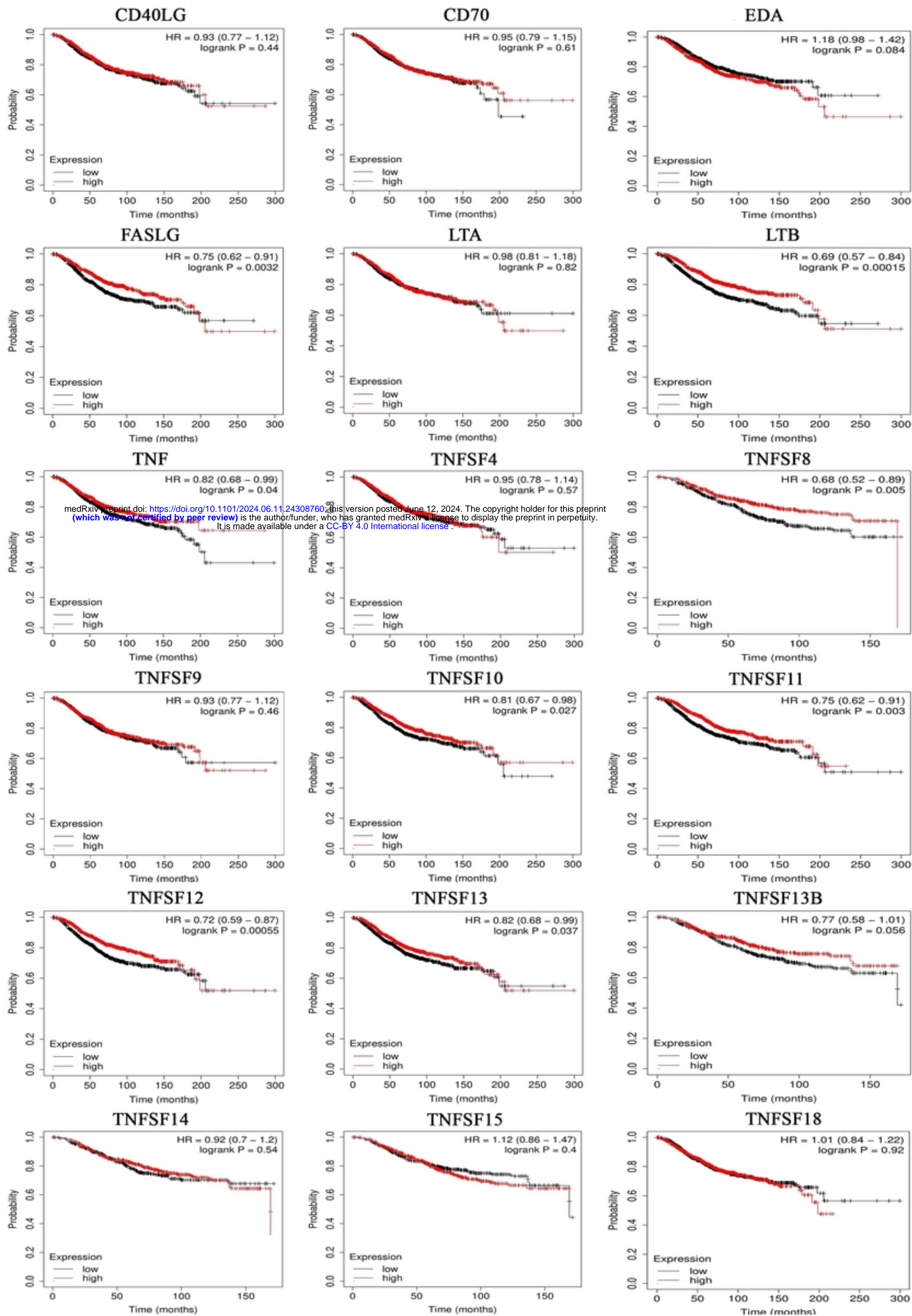


Fig 7 : The prognostic value (OS) of TNFSF in patients with BC.



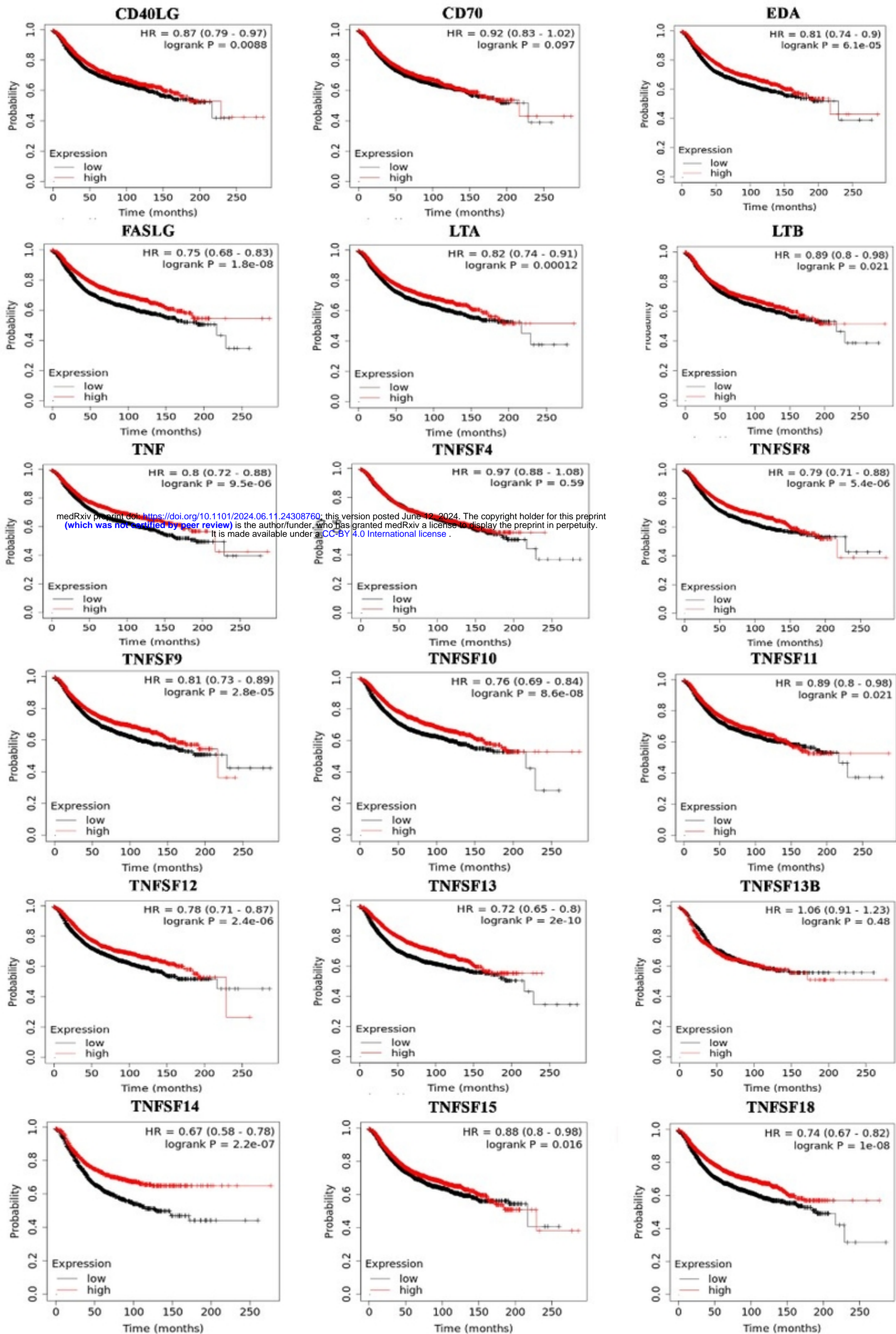
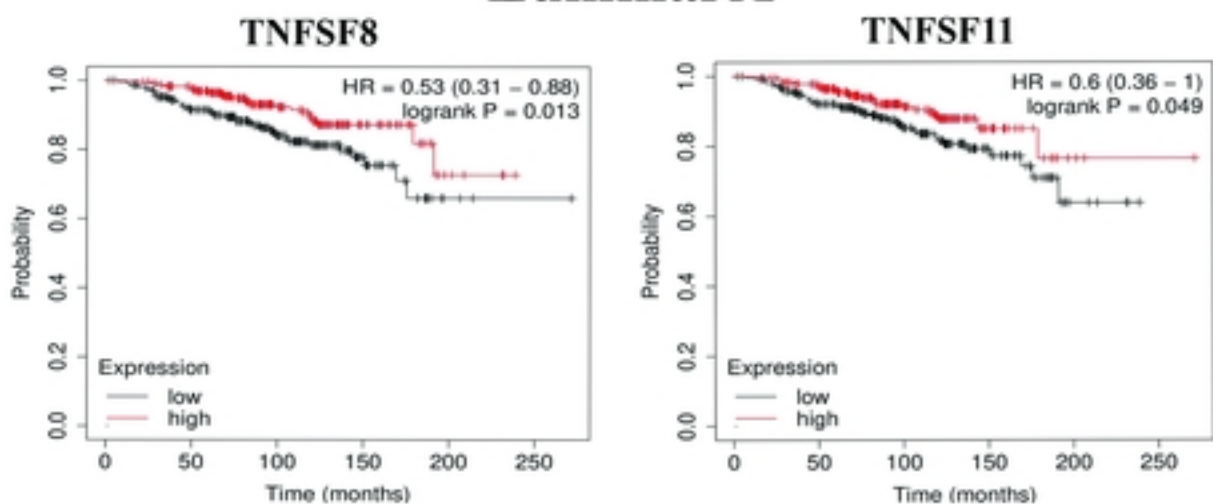


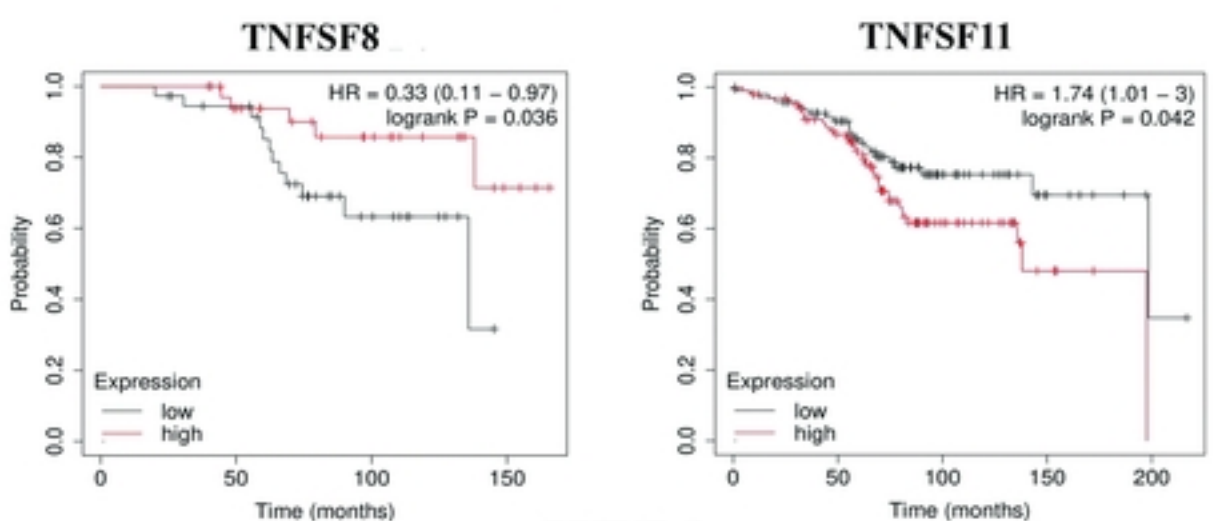
Fig 8 : The prognostic value (RFS) of TNFSF in patients with BC



## Luminal A

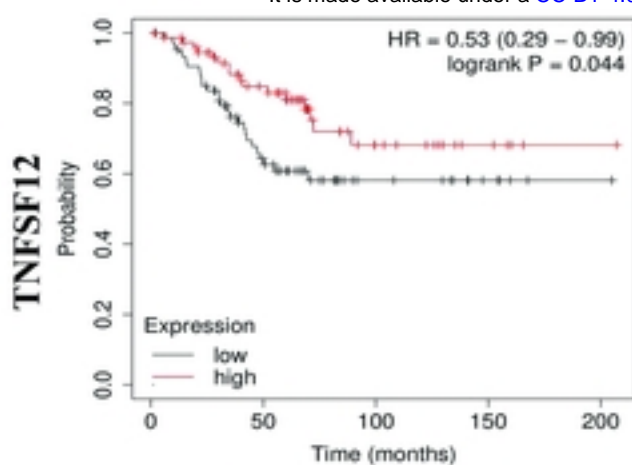


## Luminal B



## HER2

medRxiv preprint doi: <https://doi.org/10.1101/2024.06.11.24308760>; this version posted June 12, 2024. The copyright holder for this preprint (which was not certified by peer review) is the author/funder, who has granted medRxiv a license to display the preprint in perpetuity. It is made available under a [CC-BY 4.0 International license](https://creativecommons.org/licenses/by/4.0/).



## Basal-Like

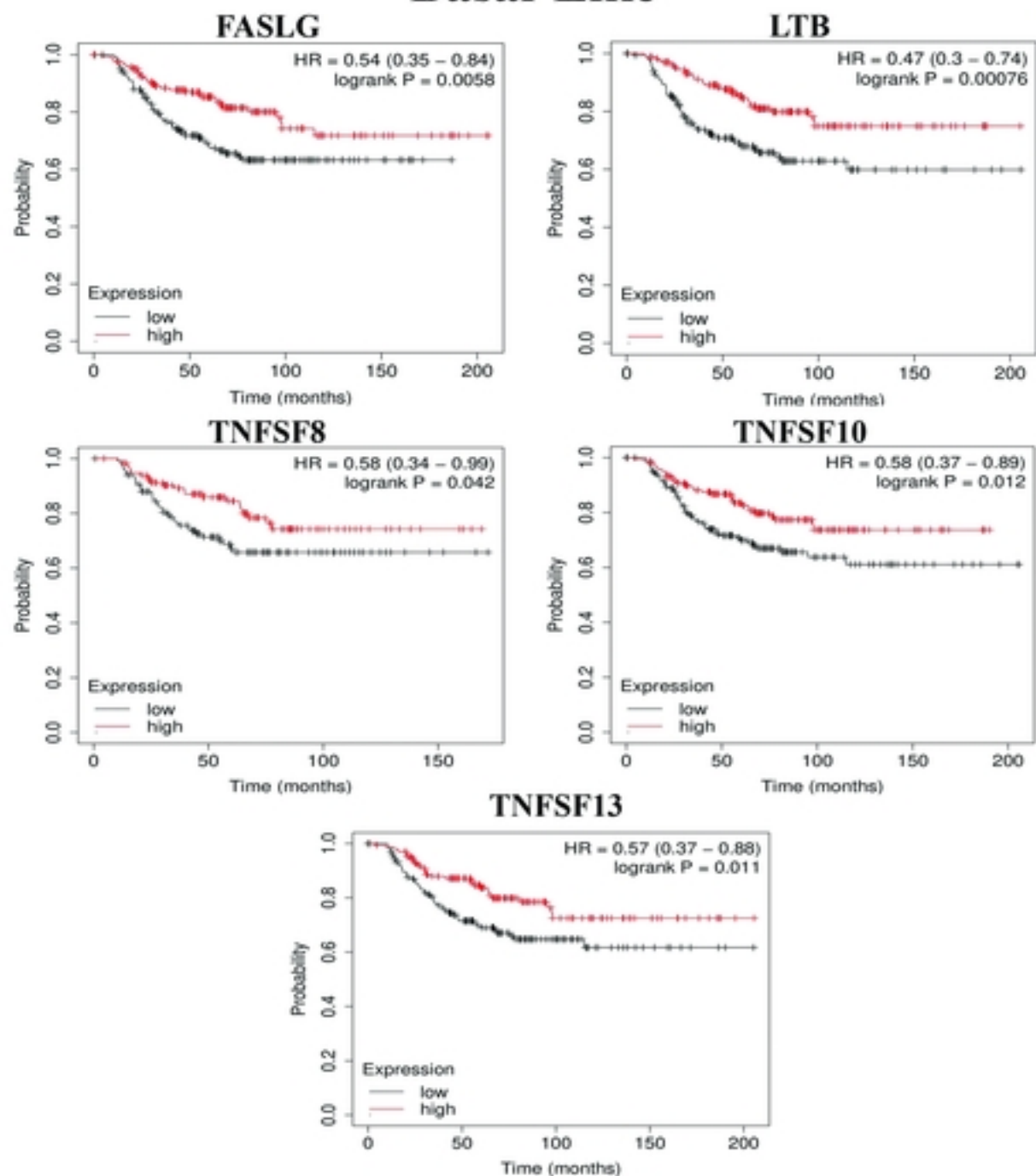


Figure 9 : The prognostic value (O