

A dynamic transmission model for assessing the impact of pneumococcal vaccination

Tufail M Malik^{1*}, Kevin M Bakker¹, Rachel J Oidtman¹, Oluwaseun Sharomi¹, Giulio Meleleo²,
Robert B Nachbar², Elamin H Elbasha¹

¹Merck & Co., Inc., Rahway, NJ, USA

²Wolfram Research, Inc., Champaign, IL, USA

* Corresponding author

E-mail: tufail.malik@merck.com (TM)

Abstract

Streptococcus pneumoniae (SP) is a bacterial pathogen that kills more than 300,000 children every year across the globe. Multiple vaccines exist that prevent pneumococcal disease, with each vaccine covering a variable number of the more than 100 known serotypes. Due to the high effectiveness of these vaccines, each new pneumococcal conjugate vaccine (PCV) introduction has resulted in a decrease in vaccine-type disease and a shift in the serotype distribution towards non-vaccine types in a phenomenon called serotype replacement. Here, an age-structured

21 compartmental model was created to capture the carriage transmission dynamics of SP and
22 subsequent progression to pneumococcal disease in the presence of vaccines introduced at
23 different times to different age groups. The model incorporates co-colonization and serotype
24 competition, which drives replacement of the vaccine types by the non-vaccine types. The model
25 was calibrated to historical age- and serotype-specific invasive pneumococcal disease (IPD) data
26 from the United States. Vaccine-specific coverage and effectiveness were integrated in
27 accordance with the recommended timelines for each age group. Demographic parameters were
28 derived from US-population-specific databases, while population mixing patterns were informed
29 by US-specific published literature on age-group based mixing matrices. The calibrated model
30 was then used to project the epidemiological impact of PCV15, a 15-valent pneumococcal
31 vaccine, compared with the status quo vaccination with PCV13 and demonstrated the value of
32 added serotypes in PCV15. Projections revealed that PCV15 would reduce IPD incidence by
33 6.04% (range: 6.01% to 6.06%) over 10 years when compared to PCV13.

34

35 **Introduction**

36 Despite the widespread use of pneumococcal vaccines in the United States (US), *Streptococcus*
37 *pneumoniae* (SP) caused nearly 17,400 cases of invasive pneumococcal disease (IPD) in 2021,
38 and nearly 3,000 associated deaths [1]. Globally the number of deaths in children under 5 is
39 approximately 300,000 [2]. Vaccines are only able to target a portion of the more than 100
40 circulating serotypes (STs) [3], and serotype-specific vaccine effectiveness has been observed.
41 Only a small fraction of these cause majority of disease. Asymptomatic or symptomatic
42 nasopharyngeal carriage (NPC) of SP in an individual, which is relatively common in young

43 children [4], may result in SP transmission to other individuals through person-to-person contact
44 via respiratory droplets. NPC can lead to multiple disease outcomes, including invasive
45 pneumococcal disease (IPD), non-bacteremic pneumococcal pneumonia (NBPP), and acute otitis
46 media (AOM) [5]. IPD, which includes meningitis and bacteremic pneumonia, primarily afflicts
47 extremes of ages and those with risk factors [6]. Vaccines play a role in preventing NPC but the
48 necessary immune response is higher than what is required to prevent disease.

49 In the US a pediatric vaccination program with a 7-valent pneumococcal conjugate vaccine
50 (PCV) was introduced in 2000, and building on this composition, a 13-valent PCV was
51 introduced in 2010, followed by a 15-valent vaccine in 2022, and a 20-valent vaccine in 2023.
52 Since 1983, a 23-valent pneumococcal polysaccharide vaccine (PPSV23) had been
53 recommended for all adults 65 years or older. Vaccines targeting additional or different
54 serotypes, along with those based on other technologies, are currently in development. Since the
55 introduction of PCVs, the US has seen a dramatic reduction in IPD across all age groups in
56 vaccine-type (VT) serotypes [6]. There has also been replacement of VTs with non-vaccine types
57 (NVTs) [7]. Globally, there have been higher levels of replacement than those seen in the US,
58 sometimes leading to higher overall incidence levels than the pre-vaccine period (for example in
59 France following PCV13 introduction [8]).

60 Dynamic transmission models (DTMs) have been used extensively to describe the
61 epidemiological and biological dynamics of SP transmission in the presence or absence of
62 vaccination (Table S1 summarizes a review of published models). In this study,, a DTM was
63 developed to quantify the epidemiological impact of ST-specific and age-based vaccination
64 programs. The model is driven by carriage transmission and assigns each ST into one of 11
65 serotype classes (STCs, Table S7), which were determined based on their inclusion in different

66 pneumococcal vaccines. Additionally, the model features indirect effects such as herd immunity
67 and competition between ST classes, which determines replacement dynamics following vaccine
68 introduction. The model is flexible, so that it can be used in countries that report disease
69 incidence with different age-groups, incorporated different vaccines into their vaccine schedules
70 (e.g., PCV10), want to examine different vaccination policies, or are interested in other
71 pneumococcal diseases of interest. The model was fitted to historical (2000–2019) US IPD
72 incidence (per 100,000) data and the epidemiological impact of the continued use of PCV13
73 versus implementing PCV15 in the pediatric immunization program was assessed (at the time of
74 this study PCV20 was not yet recommended in peds in the US).

75 **Methods**

76 A model was developed that described SP carriage transmission dynamics and disease
77 progression in the presence of age- and serotype-specific pneumococcal vaccines. Real-world
78 data was used to inform parameters for vaccine effectiveness against disease, coverage rates,
79 duration of protection, carriage clearance rates, and a mixing within and between age groups.
80 Real-world data are lacking for PCV15 given recent introduction. Population data was used to
81 parameterize the demographic aspects of the model.

82 The model was calibrated to national-level IPD data in the US to estimate the probability of SP
83 carriage acquisition per contact, competition between STCs, progression rate from carriage to
84 disease, and vaccine effectiveness against carriage. Disease incidence data were stratified by age
85 and grouped into STCs, based on inclusion in various vaccines (Table S7). Previous studies have
86 employed a similar approach of grouping STs into classes and have embraced similar
87 assumptions [9, 10, 11, 12]. With the calibrated model, epidemiological projections were made

88 under different pediatric vaccination scenarios keeping a realistic mix of vaccination regime in
89 the adult population.

90 **Model overview**

91 A deterministic age-structured DTM was constructed to describe pneumococcal carriage
92 transmission dynamics and disease progression in the presence of age- and STC-specific
93 pneumococcal vaccines. In addition to the brief description of the model here, additional details
94 can be found in the Supplementary Appendix. Given the lack of data to parameterize the model
95 for all serotypes and disease outcomes, it was assumed that parameter values were constant
96 across serotypes within the same STC and age group. Each STC was further categorized into 6
97 age groups (0–1, 2–4, 5–17, 18–49, 50–64, and 65+). This age grouping is chosen based on the
98 availability of historic IPD incidence data in the US, which was used as the calibration target.
99 Additionally, these age groups align with vaccination policy recommendations by the Advisory
100 Committee on Immunization Practices (ACIP) of the Centers for Disease Control and Prevention
101 (CDC). For instance, pediatric vaccination historically targets children aged 0–2 years, adult
102 vaccination covers individuals aged 65 and older, and at-risk groups include those aged 19–64.
103 Future policy considerations related to adult vaccination may involve expanding age-based
104 vaccination to include adults aged 50 and older.

105 The model was based on a system of ordinary differential equations and distinguished
106 pneumococcal carriage from disease as well as their vaccine protection status, which varied by
107 age and vaccine type (Fig 1). For example, an unvaccinated person can be either susceptible non-
108 colonized or colonized with up to three STCs. A fraction of infants are born into the
109 unvaccinated susceptible non-colonized compartment and remain there until they are vaccinated,

110 become colonized, or die from causes other than pneumococcal disease. Individuals acquire one
111 or two STCs simultaneously at an age-specific and time-dependent rate (i.e., per capita force of
112 carriage acquisition), progressing from non-colonized status to single or double colonization,
113 from single to double or triple colonization, and from double to triple colonization. It was
114 assumed that an individual could be colonized by up to three STCs concurrently.

Fig 1. Model flowchart. Individuals are born into the non-colonized compartments and can move throughout the system during their lifetime. Upon carriage acquisition, individuals move to the colonized (with a single ST), co-colonized with two STs, or triple-colonized compartments. Colonized individuals can clear carriage of one ST at a time. A proportion of colonized individuals will develop a pneumococcal disease. Vaccination (right arm of flowchart) reduces the chance of carriage acquisition and disease development for vaccine STCs. Vaccine can wane over time, but vaccination history is tracked. Compartments in the left arm of the flowchart are composed of vaccine-naïve and vaccine-waned individuals. Detailed model flowchart is provided in Figure S3-S5.

115 The rate at which uncolonized persons of a given age group acquire SP and become colonized
116 depends on the number and type of contacts, the fraction of colonized, co-colonized, and tri-
117 colonized contacts, and the transmission probability per contact, which varies by age. The
118 number and type of contacts are governed by a conditional probability mixing matrix, where
119 each cell represents the probability of a person of a given age class having contact with a person
120 in another age class (Table S4). Upon recovery, it is assumed that the person does not develop
121 immunity and becomes completely susceptible again.

122 Individuals leave the unvaccinated compartments through cohort and continuous vaccination at
123 given rates and enter the appropriate vaccinated compartment, based on their colonization status.
124 They remain in the vaccinated compartments until they die, acquire SP, or their immunity wanes.
125 Since typical colonization is asymptomatic, individuals can be vaccinated from any of the four

126 (uncolonized, colonized, double colonized, or triple-colonized) unvaccinated compartments.
127 Vaccination reduces the risk of carriage acquisition and disease progression.
128 In the DTM, the rate of acquisition of a second or third STC is reduced due to competition from
129 the currently carried STC(s). The competition parameter is determined by the relationship
130 between the current and the invading STC, and can range from zero competition (i.e.,
131 independence) to complete competition (i.e., exclusion), where the acquisition of the invading
132 STC is completely blocked by the currently carried STC(s).
133 Disease occurrence was modeled using a case-carrier ratio that varies by disease manifestation,
134 age, STC, and vaccine-status. Progression to IPD, AOM, or NBPP were included here, while
135 other manifestations (such as sinusitis) or further classification (such as bacteremia) could be
136 included in future analyses.
137 In addition to the scenarios evaluated here, the model is flexible and can evaluate other vaccine
138 scenarios, such as reducing the vaccination age in adults, having sequential vaccination of
139 different vaccines in an age group, other vaccines, or other potential policy questions.
140 Numerical simulations, including model calibration and projections, were implemented using
141 Mathematica® 14.0 (<https://reference.wolfram.com/mathematica>,
142 <https://reference.wolfram.com/language/ref/NDSolve.html>,
143 <https://reference.wolfram.com/language/ref/NIntegrate.html>,
144 <https://reference.wolfram.com/language/ref/NMinimize.html>).

145 **Model parameters and data sources**

146 Baseline values for demographic, epidemiologic, and vaccine inputs of the model were identified
147 through a targeted search of the published literature and public databases.

148 **Demographic parameters**

149 A stable equilibrium age distribution (with 2017 as the baseline year) and constant mortality
150 hazards for each age group were assumed, using data from the US Census Bureau website
151 (<https://www.census.gov/>). Since the implied growth rate was insignificant, constant population
152 was assumed over the analysis time horizon to reduce model complexity.

153 **Contact mixing matrix**

154 Mixing patterns among the population impact the transmission dynamics of an infectious
155 pathogen. Mixing patterns from Prem *et al.* [13] were derived to create the 6-age group contact
156 matrix (see Section 3.1.3 of the Supplementary Appendix). Although transmission among adults
157 was allowed, it was assumed that there was no transmission of SP from adults to the pediatric
158 population due to limited evidence of adult-to-child transmission and vast evidence that child-to-
159 child transmission drives SP dynamics [14, 15, 16].

160 **Vaccine parameters**

161 The model assumed full vaccine compliance (i.e., 3+1 doses in pediatric population) and used
162 the respective age-specific observed vaccine coverage rates (VCRs) over the historical period
163 and anticipated VCRs for projections. VCR in each vaccine-target age group is discussed in
164 Supplementary Appendix. In the model, a distinction between two types of vaccine effectiveness
165 (VE) was made: VEC against carriage acquisition and VED against pneumococcal disease (VED
166 was unique for each disease outcome of IPD, AOM, and NBPP). VEs vary by vaccine (PCV13,
167 PCV15, PCV20, and PPSV23), STC, and age group. VEDs against NBPP and AOM can be seen
168 in Supplementary Table S10 and S11. VECs were calibrated in the model.
169 STC- and age-specific VEDs against IPD of all vaccines considered in the model were based on
170 clinical trials and real-world-evidence studies (Table 1). VED of PCV13 against STC1-type (i.e.,

171 PCV7 STs) IPD in children was assumed to be identical to published PCV7 VEd [17]. ST-
172 specific VEds for the additional PCV13 serotypes were taken from Moore *et al.* [18]. Since
173 VEds within an STC may vary, VEds for each STC in children were estimated as the incidence-
174 weighted average of individual VEds. There is no consensus regarding the VEd of PCV13 on
175 serotype 3 [19]. Despite high pediatric coverage levels, real world evidence reveals that the long-
176 term impact of PCV13 has had little to no effect on population-level ST3 incidence. Therefore,
177 VEd against ST3 in the base case was assumed to be equal to the left end point of the 95%
178 confidence interval from Moore *et al.* [18].

Table 1. Vaccine effectiveness against IPD by age and serotype class. (PCV20 was only considered for adult vaccination).

		Age (years)			
PCV13	STC	0-17	18-49	50-64	65+
	1	0.96	0.739	0.713	0.677
	2	0.87	0.739	0.713	0.677
	3	0.303*	0.256	0.247	0.235
	4	0.883	0.739	0.713	0.677
	5	0.86	0.739	0.713	0.677
	6-11	0			
PCV15	1-5	Identical to PCV13 VE			
	6	0.86	0.739	0.713	0.677
	7-11	0			
PCV20	1-6	Identical to PCV15 VE			
	7	0			
	8, 9	NA	0.739	0.713	0.677
	10, 11	0			
PPSV23	1-4, 6-9	NA	0.585	0.559	0.521
	5,10,11	NA	0	0	0

IPD: Invasive Pneumococcal Disease; STC: Serotype Class; NA: Not Applicable;

PCV13: 13-valent pneumococcal conjugate vaccine; PCV15: 15-valent pneumococcal conjugate vaccine; PCV20: 20-valent pneumococcal conjugate vaccine; PPSV23: 23-valent pneumococcal polysaccharide vaccine; ST3 = serotype 3; STCs = serotype classes;

*: left end point of 95%CI.

179 Populations in each adult age group include those at low risk for pneumococcal disease (healthy
180 individuals) as well as those with increased risk due to immunocompromising conditions. The
181 VEd of PCV13 for IPD in healthy adults was based on Bonten *et al.* [20] and in high-risk adults
182 on Cho *et al.* [21], and VEd of PPSV23 was based on. These were incorporated into the age-
183 based population-level VEds based on risk distribution by age (Table S9).

184 Equivalency was assumed for the new vaccines, which is that new PCVs with additional STs (e.g
185 PCV15 and PCV20) have equivalent VEds as previous PCVs (PCV13) for shared serotypes.
186 Overall VEd of PCV13 [18] was used as VEd of PCV15 against STC6-type IPD in children.
187 PCV13 VEd in adults was not ST-specific and was extended to additional PCV15 and PCV20
188 STCs (Table 1).

189 In a scenario analysis STC-specific VEd for PCV15 was based on immune response of PCV15
190 relative to PCV13. Results of this scenario analysis are presented in the Supplementary
191 Appendix.

192 It was assumed that mean duration of protection from any PCV was 10 years, while PPSV23 was
193 assumed to have a mean duration of protection of 7.5 years [22].

194 **Carriage clearance rates**

195 Annual carriage clearance rates for a given serotype were calculated as the inverse of carriage
196 duration. A literature review was performed to collect data on age and serotype-specific carriage
197 durations. For each age-STC combination the total carriage duration across studies was divided
198 by the total population across studies and normalized by age group. More details on these
199 derivations are available in Section 3.2.4.1.1 of the Supplementary Appendix.

200 **Model calibration**

201 To infer the values of the age- and STC-specific probability of acquisition, age- and STC-
202 specific case-carrier ratios, STC-specific competition parameters, and the STC-specific V_{Ec} for
203 the VTs, the model was calibrated to historical US IPD incidence data from 2000–2019. The
204 model's fit to historical data of IPD incidence was formally conducted to minimize the sum of
205 squared errors. Figure S11 of the Supplementary Appendix provides a visual validation of the
206 model's fit to the data, with the fit error shown in each plot. The calibration results, i.e., the
207 values of fitted parameters, such as invasiveness and carriage transmission probability are higher
208 in extreme age groups, consistent with conventional wisdom and existing modeling literature.
209 Pneumococcal dynamics were impacted from the COVID-19 pandemic [23] through reduced
210 transmission due to non-pharmaceutical interventions and disruption of routine healthcare
211 services including vaccination. Since the model does not account for such dynamics, data after
212 2019 was not included in model calibration. Calibration methodology and detailed results are
213 described further in the Supplementary Appendix.

214 **Calibration target**

215 Age-stratified STC-specific IPD incidence per 100,000 in the US from 1998-2019 was used as
216 calibration target. The annual IPD incidence per 100,000 in the US by age group and STC was
217 generated based on two sources: (i) the available overall (all serotypes) incidence data and (ii)
218 the serotype distribution data. Overall incidence was obtained from the annual CDC surveillance
219 reports [24] and the annual serotype distribution data came from Active Bacterial Core
220 surveillance, CDC [25].

221 For calibration to NBPP data, pediatric NBPP incidence per 100,000 from 1998–2018 was
222 obtained from Hu *et al.* [26]. To obtain the counterpart data in adults, all-cause pneumonia

223 (ACP) incidence was acquired from Truven MarketScan Commercial Claims and Encounters
224 (January 1, 2012 to December 2020) – a healthcare claims database that contains information
225 about clinical utilization over time [27]. It was assumed that 11% of ACP had pneumococcal
226 etiology—NBPP—in US adults [28]. For pediatrics, it was assumed that ST distribution for
227 NBPP followed that of IPD. For adults, the proportion of NBPP attributable to STCs was
228 calculated using data from two recent studies [29, 30] and the STC- and age-specific data was
229 constructed (see Section 5.1 of Supplementary Appendix for additional details).

230 For AOM calibration, pediatric all-cause AOM incidence per 100,000 from 1998-2018 was
231 obtained from Hu *et al.* [31] of which 23.8% was pneumococcal attributable [32]. Studies with
232 ST distribution information for AOM cases [32, 33, 34] were used to construct the STC- and
233 age-specific data (see Section 5.2 in Supplementary Appendix for additional details).

234 Using the carriage prevalence profile that corresponded to calibrated IPD incidence, case-carrier
235 ratios for NBPP and AOM were then calibrated using the historical incidence of each
236 manifestation. Details on NBPP and AOM calibration, procedure, and results are provided in the
237 Supplementary Appendix.

238 **Model projections**

239 The calibrated model was then used to compare pneumococcal disease burden assuming either
240 pediatric PCV13 or PCV15 vaccination. In adults, both PCV15 with PPSV23 or PCV20 have
241 been recommended for use [35]. A hypothetical combination of these vaccines was constructed.
242 In addition, given the historic practice, we assumed that healthcare providers may continue to
243 administer PPSV23 alone. Therefore, to design an adult vaccination scenario (which would be
244 kept same while comparing the two pediatric vaccination scenarios) it was assumed that of the
245 vaccinated US adults 80% receive PCV20, 10% receive PCV15+PPSV23, and 10% receive

246 PPSV23 alone. Since adult vaccination was identical between these two scenarios, the
247 differences in model outcomes were solely caused by pediatric vaccination. A different adult
248 vaccination scenario of 50% vaccinated adults receiving PCV20, 25% receiving
249 PCV15+PPSV23 and 25% receiving PPSV23 (50-25-25 scenario) was examined in scenario
250 analysis.

251 The two scenarios are summarized below:

- 252 1. Scenario PCV13: Children 0-2 receive PCV13 according to assumed VCR. Given
253 assumed VCR among adults 18+, 80% receive PCV20, 10% receive PPSV23, and 10%
254 receive PCV15+PPSV23.
- 255 2. Scenario PCV15: Children 0-2 receive PCV15 according to assumed VCR. Given
256 assumed vaccination coverage among adults 18+, 80% receive PCV20, 10% receive
257 PPSV23, and 10% receive PCV15+PPSV23.

258 **Results**

259 **IPD data calibration results**

260 As shown in Fig 2 and 3, the model was able to capture historical trends in each of the STCs for
261 each age group (detailed model fit by STC/age group is given by Figure S11 in the
262 Supplementary Appendix). Before the introduction of a PCV in the US, PCV7 serotypes (STC1)
263 dominated the IPD landscape. However, after the introduction of PCV7 in 2000 and prior to the
264 introduction of PCV13 in 2010, replacement occurred, with the additional PCV13 (excluding
265 ST3) serotypes increasing in incidence. This replacement behavior was captured by the model
266 due to the inclusion of a competition parameter. In 2010 PCV13 was introduced and all PCV13
267 STCs, other than ST3, declined. ST3, both in the model and data, remained relatively constant

268 across the calibration period. Following PCV13 introduction, all non-vaccine STCs trended
269 upward.

270 Prior to PCV7, STC1 outcompeted other STs, but following PCV7 introduction, and the
271 reduction in STC1 STs, STCs 4,7, &10 were able to spread due to the reduced competitive
272 pressure from STC1 STs

273 **Fig 2. Calibrated versus IPD incidence per 100,000 over time in children age groups.** Dashed lines: data; Solid
274 lines: model outcome.

275 **Fig 3. Calibrated versus IPD incidence per 100,000 over time in adult age groups.** Dashed lines: data; Solid lines:
276 model outcome.

277

IPD = invasive pneumococcal disease; PCV7 = 7-valent pneumococcal conjugate vaccine; PCV13 = 13-valent pneumococcal conjugate vaccine; PCV15 = 15-valent pneumococcal conjugate vaccine; PPSV23 = 23-valent pneumococcal polysaccharide vaccine; ST3 = serotype 3; STCs = serotype classes; V116 = an investigational 21-valent pneumococcal conjugate vaccine.

278

279 Years of real-world data following the introduction of new vaccines will be necessary to estimate
280 how new vaccine type STs, such as 22F and 33F (STC6) compete and interact with other STCs.

281 The model estimated age- and serotype-specific VEc, which revealed PCV7 to have a greater
282 impact against the 7 serotypes it targeted than PCV13 had on the additional 6 serotypes it
283 targeted (TableS18). The model also calculated age- and serotype-specific case-to-carrier ratios
284 for IPD (Table S17). Results indicated that these case-carrier ratios were highest in the youngest
285 and oldest age groups.

286 Following the calibration of the model to IPD incidence, which generated age- and STC-specific
287 carriage acquisition rates, the model was then calibrated to estimate the age- and STC-specific
288 case-carrier ratios for each of AOM and NBPP. The model captured changes in the serotype
289 distribution associated with AOM after different vaccine introductions, such as the decline of 5
290 of the additional serotypes included in PCV13 (excluding STC3) (Figure S14). Similarly, the
291 model replicated reductions in PCV7 STs in 2000 and STC4 (7F, 19A) in 2010 in pediatric
292 NBPP following the introduction of PCV7 and PCV13 (Figure S13).

293 **Epidemiological projections**

294 The calibrated model was used to make projections for the two scenarios described above (Fig
295 4). Projections revealed that PCV15 prevented more cases of IPD, AOM, and NBPP than PCV13
296 across all age groups. The reduced incidence of IPD in pediatric age groups under the PCV15
297 scenario reflected the direct and indirect benefit due to the added vaccine type serotypes 22F and
298 33F, while the lower incidence in adult age groups was due to indirect protection (i.e., herd
299 immunity) from the pediatric population. It was estimated that over 10 years, PCV15 would
300 reduce about 6% more cases of IPD when compared to PCV13. This includes around 13.54 more
301 cases averted in children under 2 and 4.82% more cases averted in adults over the age of 65.
302 With the 50-25-25 scenario (50% vaccinated adults receiving PCV20 and 25% receiving
303 PCV15+PPSV23 and 25% receiving PPSV23), PCV15 saved about 6.1% more cases of IPD than
304 PCV13 over 10 years, including 4.9% more cases saved in adults over 65 years of age. As
305 expected, the number of pediatric IPD cases averted remained unchanged.

306 **Fig 4. IPD incidence per 100,000 projected by the calibrated model.** Top: IPD burden, children < 5; Bottom: Overall
307 IPD burden by age group. Vaccination in adults: 80% receive PCV20, 10% receive PPSV23, and 10% receive

308 PCV15+PPSV23. Vaccine coverage used in these projections is given by Figure S6. Reduced IPD incidence in adults
309 is a result of indirect protection of pediatric PCV15 vaccination.

310 IPD = invasive pneumococcal disease; PCV13 = 13-valent pneumococcal conjugate vaccine; PCV15 = 15-valent
311 pneumococcal; STs = serotypes; VE = vaccine effectiveness

312 The model estimated that after 10 years, compared to PCV13, PCV15 will also reduce the
313 number of NBPP cases by 5.5% and the number of AOM cases by about 3%.

314 **Projected IPD STC distribution**

315 Fig 5 shows the pre-PCV, 2019, and 10 year-projections of IPD incidence. By 2019, PCV7 and
316 PCV13 reduced overall IPD, however ST-distributions shifted with NVTs replacing VTs over
317 this same period. The third column shows the projected shift in this distribution following 10
318 years of PCV15 utilization. STs 22F and 33F (PCV15 non-PCV13) are diminished with PCV15.
319 There is a clear shift from vaccine-types towards NVTs (Other STs) through ST replacement.
320 Since PCV20 was implemented in adult age groups (18 and above) in projection period, IPD in
321 the PCV20 non-PCV15 STC was reduced in adults.

Fig 5. IPD incidence (cases per 100,000) attributed to each STC grouped by vaccine in each model age group.

Model calibrated STC distributions and data at the start and end of calibration period (2000 and 2019 respectively),
and model projected STC distributions after 10 years of PCV15 in children.

322 IPD = invasive pneumococcal disease; PCV7 = 7-valent pneumococcal conjugate vaccine; PCV13 = 13-valent
323 pneumococcal conjugate vaccine; PCV15 = 15-valent pneumococcal conjugate vaccine; PPSV23 = 23-valent
324 pneumococcal polysaccharide vaccine; ST3 = serotype 3; STCs = serotype classes

325 Discussion

326 An age-structured dynamic model of pneumococcal carriage transmission was developed to
327 evaluate the epidemiological impact of age-based vaccine policies on pneumococcal diseases.
328 Serotypes were divided into serotype classes (STCs) which allowed disease incidence to be
329 examined by each age and STC combination.

330 The model was calibrated to the historical age-specific US IPD incidence data from 2000 to 2019
331 and used to project future outcomes under different vaccine strategies. The results of this
332 calibration revealed age- and serotype-specific carriage acquisition probabilities, competition
333 parameters between STCs, age- and serotype-specific vaccine efficacies against carriage, and
334 age- and serotype specific case-to-carrier ratios for invasive and non-invasive pneumococcal
335 disease (IPD, NBPP, and AOM). Calibrated values fell within the range of published estimates
336 where available or were aligned with calibration estimates of published models.

337
338 Probability of carriage acquisition per contact with a colonized individual, which is an age- and
339 STC-specific parameter, was highest in the youngest and oldest age groups due to weak immune
340 systems (i.e., immature in children [36] and deficient due to age in older adults [37]). This
341 implies that children in the first two age groups (aged 0-4) and individuals in the oldest age
342 group (aged 65+) are most likely to acquire carriage upon contact with a colonized individual of
343 any age. These results are consistent with other literature (for example, see [10, 16, 38]). Case-
344 to-carrier ratios for IPD followed a similar pattern, with those in the youngest and oldest age
345 groups most likely to develop disease from carriage acquisition [39]. Calibration estimates of
346 case-to-carrier ratios for IPD also fall within the range of published estimates [39, 40, 41, 42].

347 The calibrated competition parameter estimates correctly reflected the ST replacement in the US
348 whereby NVTs increased to fill the niche that arose due to target STs declining following PCV7
349 and PCV13 implementation. Modeling literature highlights the role of ST competition [43] and
350 some pneumococcal transmission models have included this feature at a higher level or in some
351 aggregation [11, 44, 45]. However, calibrated ST competition between PCV7 STs against non-
352 PCV7 STs, and PCV13 STs against non-PCV13 STs, to our knowledge, has not been examined
353 at such granularity before.

354 Our parameter estimates of STC-specific V_{Ec} aligned with those reported in published literature
355 [46, 47]. Like pneumococcal disease, PCVs are also less protective against ST3 acquisition [48].
356 This is evident from the relatively low calibrated V_{Ec} against ST3 which was also the case with
357 other published model calibrations that reported ST-specific V_{Ec} [10]. Additionally, V_{Ec} in
358 adults is lower than the respective STC-specific V_{Ec} in children. Since carriage acquisition is a
359 precursor for pneumococcal disease, protection against acquisition is the first level of defense
360 that PCVs offer; reduction in acquisition will lead to reduction in disease.

361 Since dynamic transmission models estimate the time-dependent dynamics of population-level
362 susceptibility along with factors that affect the transmission rate (e.g., vaccination status and
363 carriage acquisition in response to mixing patterns), they are well suited to provide insights into
364 the indirect protection provided from interventions, such as including vaccination. For example,
365 a recent study [9] used dynamic transmission models to compare the epidemiologic impact of
366 switching from PCV13 to PCV15 or PCV20 in infant schedule in England. One of the research
367 findings of this study reveals that transitioning from PCV13 to PCV15 in the pediatric
368 vaccination program in the UK resulted in the unintended consequence of increased incidence of
369 IPD. However, the implementation of our model to the US data using a different structure and

370 assumptions demonstrated a decline in IPD cases if a transition from PCV13 to PCV15 were to
371 occur. Indirect protection of pediatric vaccination on adults which has been observed in
372 programs where pneumococcal vaccines have been implemented in pediatric programs [49], can
373 be analyzed in detail using this model. Here, identical vaccination strategies in adults were kept
374 and the two different vaccination programs in children, PCV13 versus PCV15, were compared.
375 Due to indirect protection (i.e., herd immunity), the implementation of PCV15 in pediatrics led
376 to additional reductions in adult disease attributed to 22F and 33F.

377 The model does have some limitations. First, because of lack of data to estimate some parameters
378 such as STC-specific probability of SP acquisition we inferred the values of some of these
379 parameters by calibrating the model outcomes to historical data. Second, certain serotypes, such
380 as serotype 3, have evolved under pressure from vaccination [50, 51] but the model does not
381 account for such evolution, assuming the same properties of STCs throughout the calibration and
382 projection horizons. Since there is very little evidence of meaningful transmission from adults to
383 children, our model assumes no transmission from adults to children [14] so there is no indirect
384 effect of vaccinating adults on children. Though this conservative assumption helps prevent any
385 overstatement of the potential value for adult vaccines, it may limit any implications on model
386 projections arising from possible adults-to-children transmission. It is also worth highlighting
387 that including several STs into a single STC entails strong assumption that STs in the same STC
388 have identical properties.

389 The flexibility and accuracy of the model demonstrates promise for future adaptations in other
390 settings, where local pneumococcal epidemiology may vary, such as different age-reporting,
391 vaccine history, vaccine dosing, vaccine efficacies, different STs of interest, or different policy
392 questions. The model implemented here focused on epidemiological outcomes, but in future

393 work the model could additionally be used to evaluate the cost-effectiveness of different
394 vaccines or vaccination strategies. Understanding that certain viral pathogens, such as respiratory
395 syncytial virus, influenza, and human metapneumovirus may facilitate IPD [52, 53, 54, 55],
396 historical data from these pathogens can also be included into the model to capture some of the
397 unexplained inter-annual variation in IPD incidence.

398 **Conflicts of Interest:** TM, KB, RO, OS, and EE are full-time employees of Merck Sharp &
399 Dohme LLC, a subsidiary of Merck & Co., Inc., Rahway, NJ, USA and may hold stock or stock
400 options in Merck & Co., Inc., Rahway, NJ, USA. GM and RN are consultants whose institution
401 (Wolfram Research, Inc., Champaign IL, USA) is paid by Merck Sharp & Dohme. RN may hold
402 stock or stock options in Merck & Co., Inc., Rahway, NJ, USA.

403 **References**

404

- [1] "Active Bacterial Core Surveillance Report, Emerging Infections Program Network, Streptococcus pneumoniae," Centers for Disease Control and Prevention, 1998-2021. [Online]. Available: https://www.cdc.gov/abcs/downloads/SPN_Surveillance_Report_2021.pdf. [Accessed 17 April 2024].
- [2] Wahl B, O'Brien KL, Greenbaum A, Majumder A, Liu L, Chu Y, et al., "Burden of Streptococcus pneumoniae and Haemophilus influenzae type b disease in children in the era of conjugate vaccines: global, regional, and national estimates for 2000-15," *Lancet Glob Health*, vol. 6, pp. e744-e757, 2018.
- [3] Hausdorff W, Feikin D and Klugman K, "Epidemiological differences among pneumococcal serotypes," *Lancet Infect Dis*, vol. 5, pp. 83-93, 2005.
- [4] Jagne I, von Mollendorf C, Wee-Hee A, Ortika B, Satzke C and Russell F, "A systematic review of pneumococcal conjugate vaccine impact on pneumococcal nasopharyngeal colonisation density in children under 5 years of age," *Vaccine*, vol. 41, pp. 3028-37, 2023.
- [5] Simell B, Auranen K, Kayhty H, Goldblatt D, Dagan R, O'Brien K, et al., "The fundamental link between pneumococcal carriage and disease," *Expert Rev Vaccines*, vol. 11, pp. 841-55, 2012.

- [6] Gierke R, Wodi AP and Kobayashi M, "Epidemiology and Prevention of Vaccine-Preventable Diseases," Centers for Disease Control and Prevention, 18 August 2021. [Online]. Available: <https://www.cdc.gov/vaccines/pubs/pinkbook/pneumo.html>. [Accessed 17 April 2024].
- [7] Weinberger DM, Malley R and Lipsitch M, "Serotype replacement in disease after pneumococcal vaccination," *Lancet*, vol. 6736, no. 10, pp. 1962-73, 2011.
- [8] Ouldali N, Varon E, Levy C, Angoulvant F, Georges S, Ploy M-C, et al., "Invasive pneumococcal disease incidence in children and adults in France during the pneumococcal conjugate vaccine era: an interrupted time-series analysis of data from a 17-year national prospective surveillance study," *Lancet Infect Dis*, vol. 21, pp. 137-47, 2021.
- [9] Choi YH, Bertran M, Litt DJ, Ladhani SN and Miller E, "Potential impact of replacing the 13-valent pneumococcal conjugate vaccine with 15-valent or 20-valent pneumococcal conjugate vaccine in the 1 + 1 infant schedule in England: a modelling study," *Lancet Public Health*, vol. 9, pp. e654-e663, 2024.
- [10] Wasserman M, Lucas A, Jones D, Wilson M, Hilton B, Vyse A, et al., "Dynamic transmission modelling to address infant pneumococcal conjugate vaccine schedule modifications in the UK," *Epidemiol Infect*, vol. 146, no. 14, pp. 1797-806, 2018.
- [11] Melegaro A, Choi Y, George R, Edmunds W, Miller E and Gay N, "Dynamic models of pneumococcal carriage and the impact of the Heptavalent Pneumococcal Conjugate Vaccine on invasive pneumococcal disease," *BMC Infect Dis*, vol. 90, p. 10, 2010.
- [12] Bottomley C, Roca A, Hill P, Greenwood B and Isham V, "A mathematical model of serotype replacement in pneumococcal carriage following vaccination.," *J R Soc Interface*, vol. 10, no. 89, p. 20130786., 2013.
- [13] Prem K, Cook A and Jit M, "Projecting social contact matrices in 152 countries using contact surveys and demographic data," *PLoS Comput Biol*, vol. 13, 2017.
- [14] Althouse B, Hammitt L, Grant L, Wagner B, Reid R, Larzelere-Hinton F, et al., "Identifying transmission routes of *Streptococcus pneumoniae* and sources of acquisitions in high transmission communities," *Epidemiol Infect*, vol. 145, no. 13, pp. 2750-8, 2017.
- [15] Steurer LM, Hetzmanseder M, Willinger B, Starzengruber P, Mikula-Pratschke C, Kormann-Klement A, et al., "Streptococcus pneumoniae colonization in health care professionals at a tertiary university pediatric hospital," *Clin Microbiol Infect Dis*, vol. 41, pp. 971-976, 2022.
- [16] Mosser JF, Grant LR, Millar EV, Weatherholtz RC, Jackson DM, Beall B, et al., "Nasopharyngeal carriage and transmission of *Streptococcus pneumoniae* in American Indian households after a decade of pneumococcal conjugate vaccine use," *PLoS One*, vol. 9, 2014.
- [17] Whitney CG, Pilishvili T, Farley MM, Schaffner W, Craig AS, Lynfield R, et al., "Effectiveness of seven-valent pneumococcal conjugate vaccine against invasive pneumococcal disease: a matched case-

- control study," *Lancet*, vol. 368, no. 9546, pp. 1495-502, 2006.
- [18] Moore MR, Link-Gelles R, Schaffner W, Lynfield R, Holtzman C, Harrison LH, et al., "Effectiveness of 13-valent pneumococcal conjugate vaccine for prevention of invasive pneumococcal disease in children in the USA: a matched case-control study," *Lancet Respir Med*, vol. 4, no. 5, pp. 399-406, 2016.
- [19] Pilishvili T, "13-valent pneumococcal conjugate vaccine (PCV13) effects on disease caused by serotype 3 (Advisory Committee on Immunization Practices)," 28 February 2019. [Online]. Available: <https://stacks.cdc.gov/view/cdc/78091>.
- [20] Bonten MJM, Huijts SM, Bolkenbaas M, Webber C, Patterson S, Gault S, et al., "Polysaccharide conjugate vaccine against pneumococcal pneumonia in adults," *N Engl J Med*, vol. 372, no. 12, pp. 1114-25, 2015.
- [21] Cho BH, Stoecker C, Lin-Gelles R and Moore MR, "Cost-effectiveness of administering 13-valent pneumococcal conjugate vaccine in addition to 23-valent pneumococcal polysaccharide vaccine to adults with immunocompromising conditions," *Vaccine*, vol. 31, pp. 6011-6021, 2013.
- [22] Treskova M, Scholz SM and Kuhlmann A, "Cost Effectiveness of Elderly Pneumococcal Vaccination in Presence of Higher-Valent Pneumococcal Conjugate Childhood Vaccination: Systematic Literature Review with Focus on Methods and Assumptions," *Pharmacoeconomics*, vol. 37, pp. 1093-1127, 2019.
- [23] Dagan R, Danino D and Weinberger D, "The Pneumococcus-Respiratory Virus Connection- Unexpected Lessons From the COVID-19 Pandemic," *JAMA Netw Open*, vol. 5, 2022.
- [24] "Active Bacterial Core surveillance; Surveillance Reports," Centers for Disease Control and Prevention, 13 09 2024. [Online]. Available: <https://www.cdc.gov/abcs/reports/index.html>. [Accessed 10 10 2024].
- [25] "1998-2022 Serotype Data for Invasive Pneumococcal Disease Cases by Age Group from Active Bacterial Core surveillance," Active Bacterial Core Surveillance, 22 07 2024. [Online]. Available: https://data.cdc.gov/Public-Health-Surveillance/1998-2022-Serotype-Data-for-Invasive-Pneumococcal/qvzb-qs6p/about_data. [Accessed 19 09 2024].
- [26] Hu T, Sarpong EM, Song Y, Done N, Liu Q, Lemus-Wirtz E, et al., "Incidence of non-invasive all-cause pneumonia in children in the United States before and after the introduction of pneumococcal conjugate vaccines: a retrospective claims database analysis," *Pneumonia (Nathan)*, vol. 15, no. 1, 2023.
- [27] Butler AM, Nickel KB, Overman RA and Brookhart MA, "IBM MarketScan Research Databases," in *Sturkenboom, M., Schink, T. (eds) Databases for Pharmacoepidemiological Research. Springer Series on Epidemiology and Public Health ((SSEH))*, Springer, 2021, pp. 243-251.
- [28] Choi MJ, Song JY, Cheong HJ, Jeon JH, Kang SH, Jung EJ, et al., "Clinical usefulness of pneumococcal urinary antigen test, stratified by disease severity and serotypes," *J Infect Chemother*, vol. 21, no. 9,

- pp. 672-9, 2015.
- [29] Isturiz R, Grant L and Gray S, et al., "Expanded Analysis of 20 Pneumococcal Serotypes Associated With Radiographically Confirmed Community-acquired Pneumonia in Hospitalized US Adults," *Clin Infect Dis*, vol. 73, no. 7, pp. 1216-22, 2021.
- [30] Isturiz RE, Ramirez J, Self WH, Grijalva CG, Counselman FL, Volturo G, et al., "Pneumococcal epidemiology among us adults hospitalized for community-acquired pneumonia," *Vaccine*, vol. 37, no. 25, pp. 3352-61, 2019.
- [31] Hu T, Done N, Petigara T, Mohanty S, Song Y, Liu Q, et al., "Incidence of acute otitis media in children in the United States before and after the introduction of 7- and 13-valent pneumococcal conjugate vaccines during 1998-2018," *BMC Infect Dis*, vol. 22, no. 1, 2022.
- [32] Kaur R, Fuji N and Pichichero ME, et al., "Dynamic changes in otopathogens colonizing the nasopharynx and causing acute otitis media in children after 13-valent (PCV13) pneumococcal conjugate vaccination during 2015-2019," *Eur J Clin Microbiol Infect Dis*, vol. 41, no. 1, pp. 37-44, 2022.
- [33] Block SL, Hedrick J, Harrison CJ, Tyler R, Smith A, Findlay R, et al., "Pneumococcal serotypes from acute otitis media in rural Kentucky," *Pediatr Infect Dis J*, vol. 21, no. 9, pp. 859-65, 2002.
- [34] Casey JR, Adlowitz DG and Pichichero ME, et al., "New patterns in the otopathogens causing acute otitis media six to eight years after introduction of pneumococcal conjugate vaccine," *Pediatr Infect Dis J*, vol. 29, no. 4, pp. 304-9, 2010.
- [35] Kobayashi M, Farrar JL, Gierke R, Leidner AJ, Campos-Outcalt D, Morgan RL, et al., "Use of 15-Valent Pneumococcal Conjugate Vaccine Among U.S. Children: Updated Recommendations of the Advisory Committee on Immunization Practices - United States, 2022," *MMWR*, vol. 71, pp. 1174-81, 2022.
- [36] Lambert L and Culley F, et al., "Innate Immunity to Respiratory Infection in Early Life," *Front Immunol*, vol. 8, 2017.
- [37] Krone C, van-de-Groep K, Trzcinski K, Sanders E and Bogaert D, et al., "Immunosenescence and pneumococcal disease: an imbalance in host-pathogen interactions," *Lancet Respir Med*, vol. 2, pp. 141-53, 2014.
- [38] Melegaro A, Gay N and Medley G, "Estimating the transmission parameters of pneumococcal carriage in households," *Epidemiol Infect*, vol. 132, pp. 433-41, 2004.
- [39] Choi Y, Jit M, Flasche S, Gay N and Miller E, "Mathematical modelling long-term effects of replacing Prevnar7 with Prevnar13 on invasive pneumococcal diseases in England and Wales," *PLoS One.*, vol. 7, no. 7, p. e39927, 2012.
- [40] Southern J, Andrews N, Sandu P, Sheppard CL, Waight PA, Fry NK, et al., "Pneumococcal carriage in children and their household contacts six years after introduction of the 13-valent pneumococcal

conjugate vaccine in England," *PLoS One*, vol. 13, 2018.

- [41] Yildirim I, Little B, Finkelstein J, Lee G, Hanage W, Shea K, et al., "Surveillance of pneumococcal colonization and invasive pneumococcal disease reveals shift in prevalent carriage serotypes in Massachusetts' children to relatively low invasiveness," *Vaccine*, vol. 35, pp. 4002-9, 2017.
- [42] Lochen A and Anderson R, "Dynamic transmission models and economic evaluations of pneumococcal conjugate vaccines: a quality appraisal and limitations," *Clin Microbiol Infect*, vol. 26, no. 1, pp. 60-70, 2020.
- [43] Lipsitch M, "Vaccination against colonizing bacteria with multiple serotypes," *Proc Natl Acad Sci U.S.A.*, vol. 94, no. 12, pp. 6571-6, 1997.
- [44] Masala G, Lipsitch M, Bottomley C and Flasche S, "Exploring the role of competition induced by non-vaccine serotypes for herd protection following pneumococcal vaccination," *J R Soc Interface*, vol. 14, no. 136, 2017.
- [45] De-Cao E, Melegaro A, Klok R and Postma M, "Optimising assessments of the epidemiological impact in The Netherlands of paediatric immunisation with 13-valent pneumococcal conjugate vaccine using dynamic transmission modelling," *PLoS One*, vol. 9, no. 4, p. e89415., 2014.
- [46] Gjini E, "Geographic variation in pneumococcal vaccine efficacy estimated from dynamic modeling of epidemiological data post-PCV7," *Sci Rep*, vol. 7, no. 1, p. 3049, 2017.
- [47] Rinta-Kokko H, Dagan R, Givon-Lavi N and Auranen K, "Estimation of vaccine efficacy against acquisition of pneumococcal carriage," *Vaccine*, vol. 27, no. 29, pp. 3831-7, 2009.
- [48] Lapidot R, Shea K, Yildirim I, Cabral H, Pelton S and The Massachusetts Department of Public Health, "Characteristics of Serotype 3 Invasive Pneumococcal Disease before and after Universal Childhood Immunization with PCV13 in Massachusetts," *Pathogens*, vol. 9, 2020.
- [49] Miller E, Andrews N, Waight P, Slack M and George R, "Herd immunity and serotype replacement 4 years after seven-valent pneumococcal conjugate vaccination in England and Wales: an observational cohort study," *Lancet Infect Dis*, vol. 11, pp. 760-8, 2011.
- [50] Groves N, Sheppard CL, Litt D, Rose S, Njoku ASN, Rodrigues S, et al., "Evolution of *Streptococcus pneumoniae* Serotype 3 in England and Wales: A Major Vaccine Evader," *Genes (Basel)*, vol. 10, 2019.
- [51] Azarian T, Mitchell PK, Georgieva M, Thompson CM, Ghouila A, Pollard AJ, et al., "Global emergence and population dynamics of divergent serotype 3 CC180 pneumococci," *PLoS Pathog*, vol. 14, 2018.
- [52] Ben-Shimol S, Greenberg D, Hazan G, Shemer-Avni Y, Givon-Lavi N and Dagan R, "Seasonality of both bacteremic and nonbacteremic pneumonia coincides with viral lower respiratory tract infections in early childhood, in contrast to nonpneumonia invasive pneumococcal disease, in the pre-pneumococcal conjugate vaccine era," *Clin Infect Dis*, vol. 60, no. 9, pp. 1984-7, 2015.

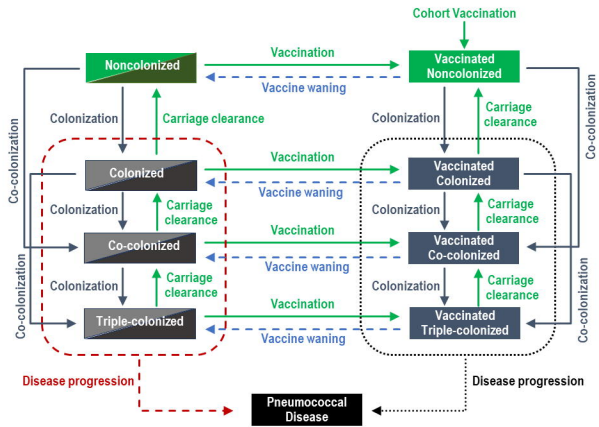
- [53] Weinberger DM, Grant LR, Steiner CA, Weatherholtz R, Santosham M, Viboud C, et al., "Seasonal Drivers of Pneumococcal Disease Incidence: Impact of Bacterial Carriage and Viral Activity," *CID*, vol. 584, 2014.
- [54] Weinberger DM, Harboe ZB, Viboud C, Krause TG, Miller M, Mølbak K, et al., "Serotype-specific effect of influenza on adult invasive pneumococcal pneumonia," *J Infect Dis*, vol. 208, no. 8, pp. 1274-80, 2013.
- [55] Stensballe LG, Hjuler T, Andersen A, Kaltoft M, Ravn H, Aaby P, et al., "Hospitalization for respiratory syncytial virus infection and invasive pneumococcal disease in Danish children aged <2 years: a population-based cohort study," *Clin Infect Dis*, vol. 46, no. 8, pp. 1165-71, 2008.

405

406

407 **Supporting information**

408 **S1 Text. Supplementary Appendix**



PCV7

PCV13 non-PCV7 non-ST3

ST3

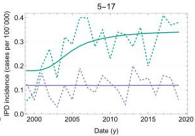
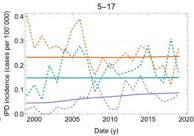
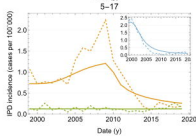
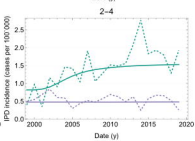
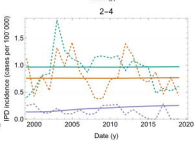
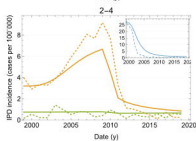
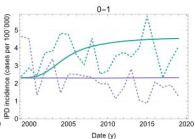
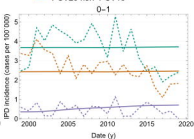
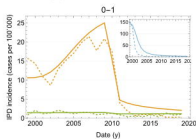
PCV15 non-PCV13

PPSV23

PCV20 non-PCV15

Unique V116 STs

NVT



PCV7

PCV13 non-PCV7 non-ST3

ST3

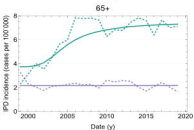
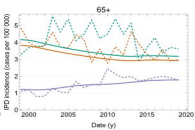
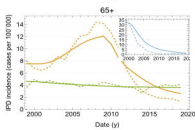
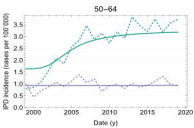
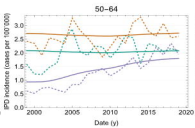
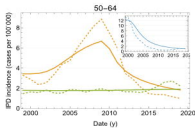
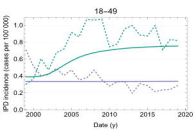
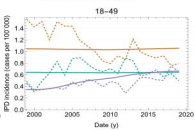
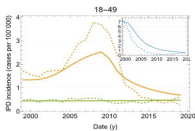
PCV15 non-PCV13

PPSV23

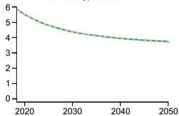
PCV20 non-PCV15

Unique V116 STs

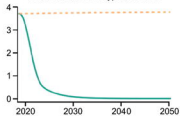
NVT



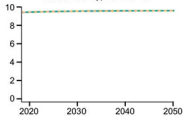
PCV13-type IPD in <2



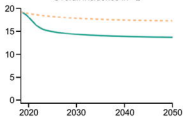
PCV15 non-PCV13-type IPD in <2



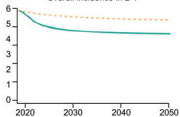
Non-PCV15-type IPD in <2



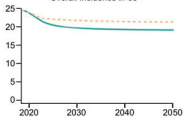
Overall incidence in <2



Overall incidence in 2-4



Overall incidence in 65+



— PCV15 in children <2
 - - - PCV13 in children <2

