

1 **Seroprevalence of SARS-CoV-2 and risk factors for infection among children in Uganda:**  
2 **a serial cross-sectional study**

3  
4 Irene Bagala<sup>\*1,2</sup>, Jane Frances Namuganga<sup>\*2</sup>, Patience Nayebare<sup>2</sup>, Gloria Cuu<sup>2</sup>, Thomas  
5 Katairo<sup>2</sup>, Isaiah Nabende<sup>2</sup>, Samuel Gonahasa<sup>2</sup>, Martha Nassali<sup>2</sup>, Stephen Tukwasibwe<sup>2</sup>, Grant  
6 Dorsey<sup>3</sup>, Joaniter Nankabirwa<sup>1,2</sup>, Sabrina Bakeera Kitaka<sup>1</sup>, Sarah Kiguli<sup>1</sup>, Bryan Greenhouse<sup>3</sup>,  
7 Isaac Ssewanyana<sup>2,4</sup>, Moses R Kamy, <sup>1,2</sup> Jessica Briggs<sup>3</sup>

8  
9 \*co-first authors

10  
11 1 Makerere University College of Health Sciences, Kampala, Uganda

12 2 Infectious Diseases Research Collaboration, Kampala, Uganda

13 3 University of California, San Francisco, USA

14 4 Central Public Health Laboratory, Butabika, Uganda

15  
16 Corresponding author: Irene Bagala [[bglirene@gmail.com](mailto:baglirene@gmail.com)]

17  
18 **Keywords:** COVID-19, SARS-CoV-2, seroprevalence, serosurvey, COVID-19 vaccination,  
19 COVID-19 risk factors in children

20  
21  
22 **ABSTRACT (300 words max):**

23  
24 **Background:** Understanding COVID-19's impact on children is vital for public health policy, yet  
25 age-specific data is scarce, especially in Uganda. This study examines SARS-CoV-2  
26 seroprevalence and risk factors among Ugandan children at two timepoints, along with COVID-  
27 19-related knowledge and practices in households, including adult vaccination status.

28  
29 **Methods:** Baseline surveys were conducted in 12 communities from April to May 2021 (post-  
30 Alpha wave) and follow-up surveys in 32 communities from November 2021 to March 2022  
31 (Omicron wave). Household questionnaires and blood samples were collected to test for malaria  
32 by microscopy and for SARS-CoV-2 using a Luminex assay. Seroprevalence was estimated at  
33 both the survey and community level. Mixed-effects logistic regression models assessed the  
34 association between individual and household factors and SARS-CoV-2 seropositivity in  
35 children, adjusting for household clustering.

36

37 **Results:** More households reported disruptions in daily life at baseline compared to follow-up,  
38 though economic impacts lingered. By the follow-up survey, 52.7% of adults had received at  
39 least one COVID-19 vaccine dose. Overall seroprevalence in children was higher at follow-up  
40 compared to baseline (71.6% versus 19.2%,  $p < 0.001$ ). Seroprevalence in children ranged  
41 across communities from 6-37% at baseline and 50-90% at follow-up. At baseline, children from  
42 the poorest households were more likely to be infected. Increasing age remained the only  
43 consistent risk factor for SARS-CoV-2 seroconversion at both timepoints.

44

45 **Conclusions:** Results indicate that a larger number of children were infected by the Delta and  
46 Omicron waves of COVID-19 compared to the Alpha wave. This study is the largest  
47 seroprevalence survey in children in Uganda, providing evidence that most children were  
48 infected with SARS-CoV-2 before the vaccine was widely available to pediatric populations.  
49 Pediatric infections were vastly underreported by case counts, highlighting the importance of  
50 seroprevalence surveys in assessing disease burden when testing and reporting rates are  
51 limited and many cases are mild or asymptomatic.

52

53 **MANUSCRIPT:**

54

55 **Background**

56 The emergence of the SARS-CoV-2 virus in 2019 led to a global pandemic in 2020, with  
57 countries around the world grappling with its impact. Uganda registered its first case of COVID-  
58 19 in March 2020, marking the onset of the Alpha wave (1). In recognition of the potential for  
59 COVID-19 causing significant morbidity and mortality in Uganda, the government responded by  
60 instituting lock-down measures including the closure of schools, workplaces, border crossings,  
61 and travel restrictions on March 18, 2020 (2).

62           However, as in many other sub-Saharan African nations, reported cases in Uganda were  
63 significantly lower than initially expected (3–5). As of March 14, 2024, only 172,149 confirmed  
64 cases have been reported in Uganda (1), numbers that are likely to be a gross under-estimation  
65 of the true extent of the country’s COVID-19 disease burden because access to confirmatory  
66 testing for SARS-CoV-2 was not widespread and existing surveillance systems were ill-  
67 equipped to capture all cases (6). Notably, there are few age-stratified data available to  
68 understand the burden of COVID-19 infection in children, including in Uganda.

69           Understanding the true burden of COVID-19 infection in pediatric populations is  
70 especially challenging because children are more likely to have asymptomatic or mild COVID-19  
71 infection and may therefore be less likely to be captured by surveillance systems that rely on  
72 case counts (7–9). Seroprevalence surveys, which capture both asymptomatic and symptomatic  
73 infections, play a vital role in understanding the true burden of SARS-CoV-2 infection (6,10,11) .  
74 Evidence from other seroprevalence surveys in Uganda and sub-Saharan Africa suggest high  
75 rates of infection despite low national case counts; however, there are no published studies that  
76 focus on seroprevalence in children (10–13). Data from seroprevalence surveys can help  
77 policymakers assess the scale of transmission among children and inform public health  
78 strategies.

79           Herein we describe the seroprevalence of SARS-CoV-2 and risk factors for infection  
80 among children across Uganda using data from cross-sectional household surveys conducted  
81 at two timepoints; April-May 2021 (after the Alpha wave) and November 2021-March 2022  
82 (during the Omicron wave). In addition, these surveys also collected data on COVID-19 related  
83 knowledge, attitudes, and practices from an adult member of the household.

## 84 **Methods**

### 85 **Study sites and timeline**

86

87           This COVID-19 sub-study was embedded within a cluster-randomized trial to evaluate  
88 the impact of two types of long-lasting insecticidal bed nets (LLINs) distributed as part of  
89 Uganda's 2020-2021 national universal coverage campaign. The parent study included 64  
90 clusters from 32 districts (2 clusters per district). A cluster was defined as a target area  
91 surrounding public health facilities with enhanced malaria surveillance, known as Malaria  
92 Reference Centres (MRCs). Target areas included the village in which the MRC was located  
93 and adjacent villages that met the following criteria: (1) did not contain another government-run  
94 health facility, (2) located in the same sub-county as the MRC, and (3) similar incidence of  
95 malaria as the MRC's village. All households within the MRC target areas were mapped and  
96 enumerated to generate a sampling frame for the cross-sectional surveys. Baseline cross-  
97 sectional community surveys were carried out in the target areas of 12 of the 64 MRCs from  
98 April to May 2021, and follow-up surveys were carried out in the target areas of all 64 MRCs  
99 from November 2021 to March 2022, 12 months following LLIN distribution (**Figure 2**). For each  
100 cluster for each survey, 50 households with at least one child aged 2-10 were randomly enrolled  
101 from those enumerated, using criteria previously published (14).

102           For the cross-sectional surveys, a household questionnaire was administered to the  
103 heads of household or other designated adult using pre-programmed tablets. Information was  
104 gathered on characteristics of households and residents, proxy indicators of wealth including  
105 ownership of assets, and LLIN ownership. For this sub-study, additional questions on COVID-19  
106 attitudes, beliefs, and behaviors were added. Questions about vaccination status were asked of  
107 the household head about every individual in the household.

108

### 109 **Sample collection**

110           During the baseline survey of 12 MRC target areas, a finger prick blood sample was  
111 collected from all children in the household aged 2-10 who were present. During the follow-up

112 survey, sample collection was expanded, and finger prick blood samples were collected from all  
113 children less than 18 years of age from 32 of the 64 MRC target areas. At both timepoints, blood  
114 samples were used to prepare a thick blood smear and prepare a dried blood spot (DBS). For  
115 both cross-sectional surveys, informed consent was obtained at the time of the evaluation  
116 including consent for future use of biological specimens, along with assent if the child was 8  
117 years old or older. Individual level demographic and clinical data were collected from all children  
118 eligible for sample collection.

119

## 120 **Laboratory Methods**

121 To determine the presence of malaria parasites, thick blood smears were stained with  
122 2% Giemsa for 30 min and read by experienced laboratory technologists. A thick blood smear  
123 was considered negative when the examination of 100 high-power fields did not reveal asexual  
124 parasites. For quality control, all slides were read by a second microscopist and discrepant  
125 readings were settled by a third reviewer.

126 For serologic evaluation, serum was eluted from a 6-mm DBS punch using a previously  
127 described method (15). To assess total IgG responses to the receptor-binding domain (RBD) of  
128 the spike protein, a Luminex bead assay previously described for SARS-CoV-2 serologic  
129 studies (13) was optimized for DBS samples. Samples were assayed at 1:400 dilution to  
130 determine antibody seropositivity, with the results expressed as mean fluorescent intensity. A  
131 standard curve using a pool of positive serum was included on each plate to normalize for plate-  
132 to-plate variations and to infer relative antibody concentrations using a 4-parameter logistic  
133 model (16). For negative controls, 80 DBS were used from the PRISM-2 cohort study in Tororo  
134 District, Uganda collected in 2017 and 2018 (17). For positive controls, 151 DBS were used from  
135 volunteers enrolled in the UCSF Long-term Impact of Infection with Novel Coronavirus study  
136 (18).

137

## 138 **Statistical Analysis**

139 STATA (version 17) and R (version 4.3.1) were used for data analysis. Responses to the  
140 household survey about COVID-19 knowledge, attitudes, and behaviors were tabulated for each  
141 survey time point as simple proportions and compared using the Chi-squared test. Survey data  
142 were included for all 12 communities surveyed at baseline and for the 32 communities with  
143 expanded sample collection at follow up.

144 To determine the cut off for seropositivity, receiver-operator curve analysis was performed using  
145 R package ROCR (19) to maximize both sensitivity and specificity of the assay based on the  
146 relative antibody concentration data from positive and negative controls. A sample from an  
147 individual was determined to be seropositive if the mean fluorescent intensity was above the  
148 cutoff. Assay sensitivity was 94.7% and specificity was 97.5%. Raw SARS-CoV-2  
149 seroprevalence at each MRC was calculated as the number of samples that tested positive over  
150 all samples tested from that MRC. We then calculated seroprevalence at the MRC level  
151 adjusted for sensitivity and specificity.

152

153 Univariate and multivariate mixed-effects logistic regression models were used to measure  
154 associations between household-level and individual-level factors with SARS-CoV-2  
155 seropositivity among children, accounting for clustering within households. Statistical  
156 significance was assessed using two-tailed tests with a p-value threshold of less than 0.05.  
157 Confidence intervals for odds ratios were set at 95%.

158

## 159 **Ethical approval**

160 The parent (LLINEUP2, ClinicalTrials.gov: NCT04566510) study was approved by the  
161 Institutional Review Boards (IRBs) at Makerere University School of Medicine Research and

162 Ethics Committee (SOMREC), the Uganda National Council for Science and Technology  
163 (UNCST), the University of California San Francisco and London School of Hygiene and  
164 Tropical Medicine. Written informed consent to participate in the study was obtained from adults  
165 or from parents/guardians for their child(ren). A second written consent form was used to  
166 consent adults or parents/guardians for the future use of biological specimens obtained during  
167 the study. Written assent to participate in the study was also obtained from children aged 8  
168 years and older. A request for waiver of consent to conduct laboratory analysis was obtained  
169 from SOMREC. For this sub-study, laboratory analysis was only conducted on samples for  
170 which participants had given consent for future use of biological specimens.

171

## 172 RESULTS

173

### 174 Study Profile

175 **Figure 2** shows daily reported cases of SARS-CoV-2 at the national level; clear peaks in  
176 reported cases are consistent with infections caused by the Alpha variant (December  
177 2020–January 2021), the Delta variant (May–July 2021), and the Omicron variant (December  
178 2021–February 2022) (1). Data for this study came from cross-sectional surveys performed  
179 across Uganda in the target area of 12 MRCs from 10 April to 6 May 2021 (blue bar, **Figure 2**)  
180 and the target areas of 32 MRCs from 24 November 2021 to 27 March 2022 (green bar, **Figure**  
181 **2**). Therefore, the baseline survey data were collected after the Alpha wave and before the  
182 surge of the Delta wave, and the follow-up survey data was collected throughout the Omicron  
183 wave. Details of the study participants with DBS samples collected at each survey time point are  
184 shown in **Figure 1**. In the baseline survey, children ages 2-10 were eligible for sample  
185 collection, while in the follow-up survey, all children <18 years of age were eligible for sample  
186 collection. Serology data were successfully generated for 96.8% of eligible participants in the  
187 baseline study and for 99.4% of eligible participants in the follow-up survey. At the baseline

188 survey, 423 (52.3%) of the children were ages 2-5 years and 386 (47.7%) of the children aged  
189 6-10 years. During the follow-up survey, 561 (20.1%) of the children were aged less than 2  
190 years, 973 (34.8%) between 2 to 5 years, 1026 (36.7%) between 6 to 10 years and 233 (8.3%)  
191 between 11 to 17 years.

## 192 **COVID-19 related knowledge, attitudes, and behaviors**

193 Table 1 presents data on knowledge, perceptions and behaviors related to COVID-19 from the  
194 baseline and the follow-up household surveys. Avoidance of crowds, increased hand washing,  
195 and masking outside the home were reported at very high rates (>80%) during the baseline  
196 survey and generally remained high, though there was less hand washing reported during the  
197 Omicron wave (**Table 1**). Knowledge about the modes of transmission of COVID-19 was also  
198 high; > 80% of household heads reported understanding that coughing/sneezing promoted the  
199 spread of COVID-19. Face to face talking and indirect spread through fomites were also  
200 correctly identified as routes of transmission, though fewer households were aware of fomites  
201 as a possible means of transmission. More households reported disruptions in daily life in the  
202 baseline survey compared to the follow-up survey (41.3% vs 25.6%). The largest disruptions in  
203 daily life at baseline included lost income (21.5%), restricted movement (7.6%), children being  
204 unable to attend school (4.6%), and not visiting friends or family (3.2%). All reported disruptions  
205 in day-to-day life improved during the follow-up survey; however, 15.8% of households still  
206 reported a loss of income, implying that the pandemic had an economic impact still felt at the  
207 time of the follow up survey. Compared to the baseline survey, an improvement in ability to  
208 travel was reported in the follow-up survey (63.4% vs 49.4% reporting difficulty traveling from  
209 baseline to follow-up). Importantly, nearly half of household heads reported health facility  
210 medication stockouts at baseline, and 33% reported staff shortages. Both availability of  
211 medicines and staff were improved at follow-up but rates of disrupted services remained high.

212



213 **Table 1. COVID-19 related knowledge, attitudes, and behaviors**

Questions	Categories	Baseline survey (n = 634)	Follow-up survey (n = 1729)	
Do you avoid crowds? Do you wash your hands more often? Do you wear a mask outside the home?		539 (85.0%)	1,545 (89.2%)	<b>CO VID -19</b>
		551 (86.9%)	1,280 (74.0%)	
		553 (87.2%)	1,419 (82.1%)	
Can COVID-19 be spread the following way?	Coughing/sneezing	514 (81.1%)	1,530 (88.4%)	<b>Vac cin atio n</b>
	Face to face talking	415 (65.5%)	1,036 (59.9%)	
	Indirect contact / fomites	128 (20.2%)	523 (30.2%)	
	Doesn't know how COVID-19 is spread	23 (3.6%)	19 (1.1%)	
If your daily life has been changed by COVID-19, how has it changed?	Greater food insecurity	15 (2.4%)	23 (1.3%)	<b>Vac cin atio n to pre ven t SA</b>
	Lost income	136 (21.5%)	274 (15.8%)	
	Not visiting friends or family	20 (3.2%)	11 (0.6%)	
	Higher prices	4 (0.6%)	16 (0.9%)	
	Children at home from school	31 (4.9%)	31 (1.8%)	
	Masks required/hand washing/social distancing	9 (1.4%)	6 (0.3%)	
	Movement restricted	48 (7.6%)	63 (3.6%)	
	Lack of medication	0 (0%)	0 (0%)	
	Fear of getting sick	11 (1.7%)	28 (1.6%)	
Can't go to church	2 (0.3%)	12 (0.7%)		
Travel has been more difficult due to COVID-19 lockdowns		402 (63.4%)	854 (49.4%)	
Changes noticed regarding care available at local health facilities	No medications available	303 (47.8%)	455 (26.3%)	
	Less staff available	211 (33.3%)	221 (12.8%)	

231 RS-CoV-2 infection was not available in Uganda at the time of the baseline survey and was not  
 232 available for children during the time period of either survey (20). Vaccination status was  
 233 assessed in follow-up surveys from November 2021 to March 2022 by asking the household  
 234 head if each individual member of the household was vaccinated. 1,753 individuals out of 3,326  
 235 adults (52.7%) were reported to be vaccinated. The majority of individuals received one dose,  
 236 while 24.6% had received two doses. The most commonly received first vaccine was the Astra-  
 237 Zeneca vaccine (40.5%), followed by the Johnson and Johnson vaccine (29.5%) and mRNA  
 238 vaccines (Pfizer, Moderna, or not otherwise specified) (17.4%) (**Supplemental Table 1**). Astra-

239 Zeneca remained the most commonly received second vaccine (59.9%) followed by  
240 Sinovac/Sinopharm (18.3%).

241

## 242 **Seroprevalence of SARS-CoV-2 in children at baseline and follow-up surveys**

243 SARS-CoV-2 seroprevalence in children was estimated in the target areas around each MRC  
244 for both survey timepoints (**Figure 3**). Overall adjusted seroprevalence was higher at follow-up  
245 compared to baseline (71.6% versus 19.2%,  $p < 0.001$ ). In the baseline survey, seroprevalence  
246 in the communities surrounding the surveyed MRCs ranged from 5.7% at Butagaya to 37.3% at  
247 Namokora. Seroprevalence increased at all sites in the follow-up survey; the lowest  
248 seroprevalence at follow-up was 50.0% at Kigandalo, and 9 sites had a seroprevalence  $>81\%$  in  
249 the follow-up survey, with the highest seroprevalence at Kibaale (89.6%).

250

Variable	Categories	Seroprevalence	Baseline survey				Follow-up survey				
			Univariate analysis*		Multivariate analysis*		Seroprevalence	Univariate analysis*		Multivariate analysis*	
			OR (95% CI)	p-value	aOR (95% CI)	p-value		OR (95% CI)	p-value	aOR (95% CI)	p-value
<b>Individual level risk factors</b>											
Age in years	≤ 2	--	--	--	--	371/561 (66.1%)	reference group	reference group	reference group	reference group	
	3-5	68/423 (16.1%)	reference group	reference group	reference group	695/973 (71.4%)	1.39 (1.05-1.85)	0.02	1.42 (1.07-1.90)	0.015	
	6-10	89/386 (23.1%)	1.72 (1.13-2.64)	0.01	1.69 (1.11-2.57)	0.02	797/1026 (77.7%)	2.03 (1.52-2.72)	0.00	2.11 (1.56-2.84)	0.000
	11-17	--	--	--	--	190/233 (81.6%)	3.13 (1.95-5.04)	0.00	3.16 (1.96-5.09)	0.000	
Gender	Male	72/401 (18.0%)	reference group	reference group	reference group	973/1340 (72.6%)	reference group	reference group	reference group	reference group	
	Female	85/408 (20.8%)	1.21 (0.81-1.81)	0.35	1.16 (0.78-1.74)	0.46	1080/1453 (74.3%)	1.16 (0.94-1.44)	0.16	1.11 (0.89-1.38)	0.34
Parasitemia by microscopy	No	115/588 (19.6%)	reference group	reference group	reference group	1579/2151 (73.4%)	reference group	reference group	reference group	reference group	
	Yes	42/220 (19.1%)	0.82 (0.60-1.5)	0.82	0.83 (0.52-1.32)	0.43	474/642 (73.8%)	1.04 (0.80-1.34)	0.76	0.89 (0.68-1.17)	0.42
<b>Household level risk factors</b>											
Wealth index	Least poor	36/260 (13.9%)	reference group	reference group	reference group	772/1037 (74.5%)	reference group	reference group	reference group	reference group	
	Middle	54/282 (19.2%)	1.51 (0.89-2.56)	0.125	1.55 (0.88-2.72)	0.128	652/896 (72.8%)	0.96 (0.72-1.29)	0.79	0.89 (0.65-1.22)	0.48
	Poorest	67/265 (25.3%)	2.27 (1.34-3.84)	0.002	2.51 (1.37-4.60)	0.003	629/860 (73.1%)	0.98 (0.73-1.31)	0.88	0.82 (0.57-1.17)	0.27
House construction	Modern	44/215 (20.5%)	reference group	reference group	reference group	831/1144 (72.6%)	reference group	reference group	reference group	reference group	
	Traditional	113/594 (19.0%)	0.88 (0.55-1.42)	0.62	0.61 (0.36-1.06)	0.08	1222/1649 (74.1%)	1.10 (0.86-1.41)	0.44	1.00 (0.71-1.41)	0.99
Number of residents per room used for sleeping	<2	30/185 (16.2%)	reference group	reference group	reference group	390/527 (74.0%)	reference group	reference group	reference group	reference group	
	2-3	77/399 (19.3%)	1.29 (0.75-2.23)	0.36	1.11 (0.64-1.94)	0.71	1097/1498 (73.2%)	0.96 (0.70-1.31)	0.79	1.00 (0.72-1.53)	0.99
	>3	50/225 (22.2%)	1.58 (0.86-2.90)	0.14	1.32 (0.71-2.46)	0.39	566/768 (73.7%)	1.00 (0.70-1.44)	1.00	1.05 (0.71-1.53)	0.82
Presence of windows	Uncovered windows	14/62 (22.6%)	reference group	reference group	reference group	59/92 (64.1%)	reference group	reference group	reference group	reference group	
	Covered windows	62/360 (17.2%)	0.67 (0.30-1.49)	0.32	62/360 (17.2%)	0.48	1000/1380 (72.5%)	1.50 (0.76-2.97)	0.25	1.38 (0.69-2.77)	0.36
	No windows present	81/387 (20.9%)	0.88 (0.40-1.93)	0.74	81/387 (20.9%)	0.58	994/1321 (75.3%)	1.88 (0.95-4.62)	0.07	1.97 (0.96-4.02)	0.64

medRxiv preprint doi: <https://doi.org/10.1101/2024.06.09.24308673>; this version posted June 21, 2024. The copyright holder for this preprint (which was not certified by peer review) is the author/funder, who has granted medRxiv a license to display the preprint in perpetuity. It is made available under a [CC-BY-NC-ND 4.0 International license](https://creativecommons.org/licenses/by-nc-nd/4.0/).

257 **Individual and household level risk factors associated with seropositivity to SARS-CoV-2**  
258 **among Ugandan children**

259 **Table 2** presents associations between individual and household risk factors and SARS-CoV-2  
260 seroprevalence among children in Uganda by univariate and multivariate analysis. At baseline,  
261 older age was associated with seroconversion (aOR 1.69, CI 1.11-2.57). In addition, children in  
262 the poorest households were more likely to have seroconverted compared to those in the  
263 wealthiest households (aOR 2.51, CI 1.37 - 4.60). At follow-up, only increasing age was  
264 associated with SARS-CoV-2 seroconversion; there was no longer an association between  
265 household wealth index and seroconversion.

266 Gender was not associated with seroconversion at baseline or at follow up. Microscopic malaria  
267 parasitemia had no association with SARS-CoV-2 seroconversion at either survey timepoint. At  
268 the household level, there was no association between house construction type, household  
269 crowding as measured by the number of residents per room for sleeping, or type of windows  
270 and SARS-CoV-2 seroprevalence at baseline or follow up.

271 **Discussion**

272 Results from the study indicate a drastic increase in the SARS-CoV-2 seroprevalence in  
273 children from the baseline survey to the follow up survey, indicating that a larger proportion of  
274 children were infected by the Delta and Omicron waves of COVID-19 compared to the Alpha  
275 wave. Overall seroprevalence at the follow-up survey was 72%, showing that the majority of  
276 children had been infected by SARS-CoV-2 by early 2022. Older age was associated with  
277 increasing SARS-CoV-2 seroprevalence both at baseline and during the follow-up survey.  
278 Interestingly, in the baseline survey children from the poorest households were more likely to  
279 have been infected by SARS-CoV-2 compared to children from the wealthiest households, but  
280 this association was no longer evident later in the epidemic after additional waves of infection. In

281 addition, disruptions to daily life and access to medications and healthcare were more  
282 significant earlier in the epidemic but improved over time, with the exception of lingering  
283 economic impacts such as lost income. COVID-19 vaccination had reached over half of  
284 surveyed adults by the time of the follow-up survey.

285

286 While there are no other published studies from Uganda on SARS-CoV-2 seroprevalence  
287 exclusively in children, our finding of an overall seroprevalence of 72 % in a survey conducted  
288 from November 2021-March 2022 (during the Omicron wave) is consistent with seroprevalence  
289 studies conducted in Uganda in other age groups. A blood donor study that evaluated donors  
290 aged 16 and over between October 2019 and April 2022 found that N and S seropositivity  
291 increased throughout the pandemic, reaching 83% in January-April 2022 (12). A cohort study in  
292 eastern Uganda that included both children and adults found that by the end of the Delta wave  
293 (before widespread vaccination) 68% of the cohort had been infected, and after the Omicron  
294 wave, 85% had been infected (13). While the seroprevalence estimate of 72% from this study is  
295 lower than that found by the two other studies in Uganda after the Omicron wave, this might be  
296 expected since this study was conducted during and not after the Omicron wave. In addition,  
297 since increasing age is correlated with increasing seroprevalence, a lower seroprevalence may  
298 be expected in a study that only includes children compared to studies including adults.

299

300 The finding that increasing age is associated with higher seroprevalence in children is in  
301 agreement with seroprevalence studies in Uganda and elsewhere that have indicated  
302 seroprevalence is lowest in young children (8,11–13,21–23). Higher seroprevalence with  
303 increasing age could be due to differences in behavior, with older children more likely to attend  
304 gatherings outside the household (24,25), immunity (26–28), or case severity (7,29,30). We  
305 also found evidence that children from poorer households were more likely to be infected with  
306 SARS-CoV-2 earlier in the pandemic. This is consistent with studies from other countries where

307 lower socioeconomic status was associated with a higher risk of infection early in the pandemic  
308 (21,25,31). However, by the time of the follow-up survey, this association was no longer  
309 evident, likely because the majority children had been infected. While it is possible that the  
310 poorest children remained at higher risk and were re-infected at higher rates than children in  
311 wealthier households, we were unable to test this hypothesis.

312  
313 Survey findings indicated severe disruptions in daily life, including inability to travel and lack of  
314 access to medications at local public health facilities. Other significant reported disruptions  
315 included loss of income and food insecurity. These disruptions improved over time but had not  
316 normalized to the pre-COVID era by the follow-up survey. This is consistent with findings in a  
317 previous study in Uganda, Ghana and other low income countries that reported negative effects  
318 on finances and food insecurity as well as limited access to medical services during the COVID-  
319 19 pandemic (32–35). Previous studies have also reported disruptions in medical service  
320 provision including stockouts of drugs (35) and disruptions in health service utilization (36). One  
321 modeling study using district-level DHIS2 data from Uganda reported negative effects of  
322 COVID-19 on utilization of health services, including outpatient attendance at public health  
323 facilities and child health services, which were most severe early in the pandemic (37). This is in  
324 contrast with another study by Namuganga et al. showing no major effects on the total number  
325 of visits to 17 sentinel malaria surveillance outpatient health facilities in the first year after the  
326 COVID-19 pandemic (2). Most studies that do report disruptions due to the COVID-19  
327 pandemic report the highest effect in the earliest months of the pandemic, consistent with the  
328 trend seen in this study and with the timing of the strictest lockdown policies in Uganda.

329  
330 Our study is the largest seroprevalence survey in children in Uganda, providing evidence that  
331 most children were infected with SARS-CoV-2 before the vaccine was available to pediatric  
332 populations. Though only 12 districts were included in the baseline survey, data was available

333 from 32 districts in the follow-up survey, providing good geographic representation of most  
334 regions in Uganda except for the southwest. A limitation is that SARS-CoV-2 seroprevalence  
335 may have been underestimated in this study because SARS-CoV-2 antibodies wane over time,  
336 particularly in asymptomatic or mild infection (38,39). In addition, most study sites were rural,  
337 and therefore some more urban areas such as Wakiso District and Kampala that registered  
338 higher numbers of SARS-CoV-2 cases (due to higher transmission or better access to testing)  
339 during pandemic waves were not represented in this survey. This would also likely bias our  
340 seroprevalence estimate toward underestimation. Our study highlights the usefulness of  
341 seroprevalence surveys to estimate the true burden of infection, especially in rural populations  
342 with less access to molecular testing for SARS-CoV-2 where using case reports alone would  
343 severely underestimate the burden of SARS-CoV-2 infection in children.

344

## 345 **Conclusions**

346 In summary, SARS-CoV-2 seroprevalence among children in Uganda was high by early 2022,  
347 providing evidence that the majority of children in Uganda were infected before the availability of  
348 pediatric vaccination. Assessment of risk factors associated with SARS-CoV-2 infection  
349 revealed increasing risk with increasing age, and higher risk in poorer children. These findings  
350 may be useful to direct public health preventative strategies to protect vulnerable pediatric  
351 populations in the next global pandemic. In addition, because COVID-19 disease in children is  
352 often asymptomatic or mild and molecular testing for infection was not easily accessible, case  
353 reports of infection in children vastly underrepresented the true infection rate in children in  
354 Uganda. Seroprevalence surveys remain an important way of assessing the true burden of  
355 disease when testing and reporting rates are not readily available.

356

357

358

359

360 FIGURE AND TABLE TITLES AND LEGENDS:

361

362 **Figure 1: Study profile of participants enrolled in the study**

363 **Figure 2. Timing of the baseline (blue) and follow-up (green) cross-sectional surveys.**

364

365 **Table 1. COVID-19 related knowledge, attitudes, and behaviors**

366

367 **Figure 3. SARS-CoV-2 seroprevalence in the target areas surrounding MRCs in the**  
368 **baseline and follow-up cross-sectional surveys.**

369 **A.** RBD seroprevalence in children ages 2-10 in the baseline survey. **B.** RBD seroprevalence in  
370 children 0-17 in the follow-up survey.

371

372 **Table 2. Risk factors associated with seropositivity to SARS-COV-2 among Ugandan**  
373 **children at baseline and follow-up surveys**

374

375

376

377

378

379

380

381

382

383

384



385    DECLARATIONS

386    **Ethical approval and consent to participate**

387    All methods were carried out in accordance with relevant guidelines and regulations including  
388    the Declaration of Helsinki. Study procedures were approved by Institutional Review Boards  
389    (IRBs) at Makerere University School of Medicine Research and Ethics Committee (SOMREC),  
390    the Uganda National Council for Science and Technology (UNCST), the University of California  
391    San Francisco and London School of Hygiene and Tropical Medicine. Written informed consent  
392    to participate in the study was obtained from adults or from parents/guardians for their  
393    child(ren). A second written consent form was used to consent adults or parents/guardians for  
394    the future use of biological specimens obtained during the study. Written assent to participate in  
395    the study was also obtained from children aged 8 years and older. A request for waiver of  
396    consent to conduct laboratory analysis was obtained from SOMREC.

397    **Author Contributions**

398    IB, JFN, and JB drafted the manuscript; IB, JFN, BG, JB, ST, and IS conceived the idea; JB and  
399    IB performed the analysis; PN, GC, TK and ST performed laboratory assays; the LLINEUP2  
400    study staff (SG, MN, JFN and IN) performed the cross-sectional surveys; BG, IS, JB, MK, JN  
401    and GD obtained funding; JB, IS, MK, SK, SBK, and JN provided supervision over study staff,  
402    laboratory work, and analysis; everyone reviewed the manuscript and edited.

403    **Funding**

404    We acknowledge sources of funding support including Makerere University Research and  
405    Innovations Fund (MAKRIF/DVCFA/026/20) (IB, JFN, JN, MK, PN, IN); Fogarty International  
406    Center of the National Institutes of Health (D43TW010526) (IB, JFN, GC, PN, TK, SG, MN, Dr.  
407    ST); the Bill and Melinda Gates Foundation, INV-017893 and INV-023690 (JB, IS, BG); and  
408    NIH/NIAID (K23 AI166009) to JB.

409    **Competing Interest Declaration**

410    The authors have no competing interests.

411

412

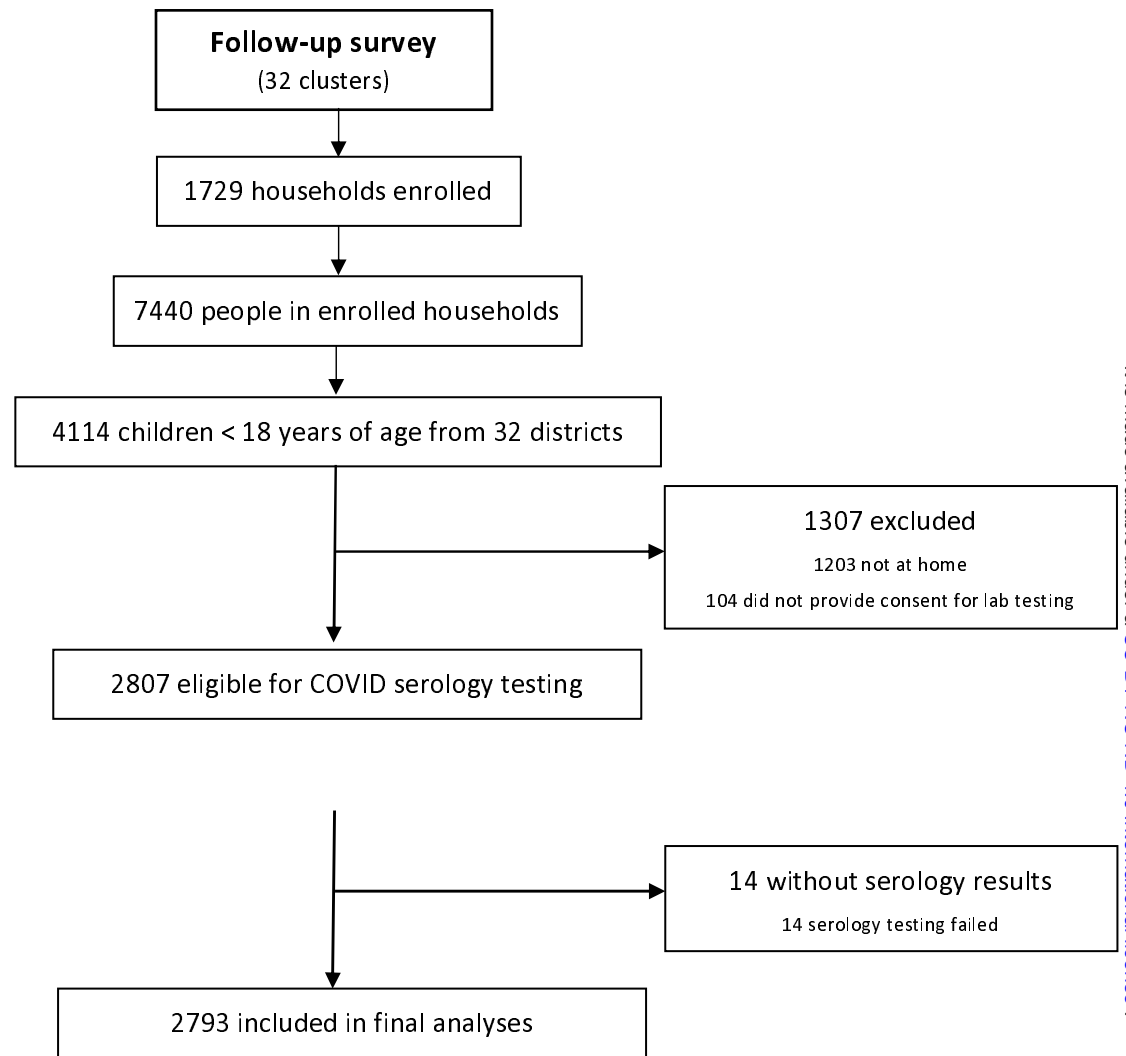
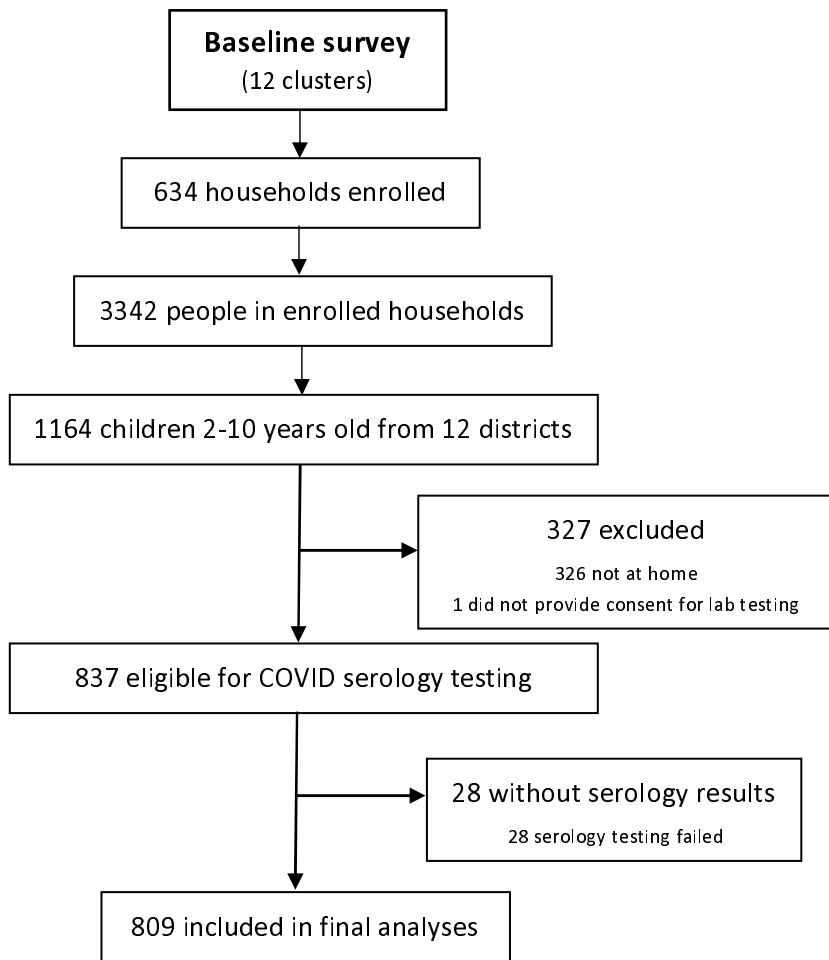
413 **REFERENCES**

- 414 1. World Health Organization. Coronavirus (COVID-19) Dashboard, Uganda [Internet]. [cited  
415 2024 Mar 14]. Available from: <https://covid19.who.int/region/afro/country/ug>
- 416 2. Namuganga JF, Briggs J, Roh ME, Okiring J, Kisambira Y, Sserwanga A, et al. Impact of  
417 COVID-19 on routine malaria indicators in rural Uganda: an interrupted time series  
418 analysis. *Malar J*. 2021 Dec 20;20(1):1–11.
- 419 3. Massinga Loembé M, Tshangela A, Salyer SJ, Varma JK, Ouma AEO, Nkengasong JN.  
420 COVID-19 in Africa: the spread and response. *Nat Med*. 2020 Jul;26(7):999–1003.
- 421 4. Salyer SJ, Maeda J, Sembuche S, Kebede Y, Tshangela A, Moussif M, et al. The first and  
422 second waves of the COVID-19 pandemic in Africa: a cross-sectional study. *Lancet*.  
423 2021;397(10281):1265.
- 424 5. Bamgboye EL, Omiye JA, Afolaranmi OJ, Davids MR, Tannor EK, Wade S, et al. COVID-  
425 19 Pandemic: Is Africa Different? *J Natl Med Assoc*. 2021 Jun;113(3):324–35.
- 426 6. Tessema SK, Nkengasong JN. Understanding COVID-19 in Africa. *Nat Rev Immunol*.  
427 2021;21(8):469.
- 428 7. Lu X, Zhang L, Du H, Zhang J, Li YY, Qu J, et al. SARS-CoV-2 Infection in Children. *N*  
429 *Engl J Med*. 2020 Apr 23;382(17):1663–5.
- 430 8. Viner RM, Mytton OT, Bonell C, Melendez-Torres GJ, Ward J, Hudson L, et al.  
431 Susceptibility to SARS-CoV-2 Infection Among Children and Adolescents Compared With  
432 Adults: A Systematic Review and Meta-analysis. *JAMA Pediatr*. 2021 Feb 1;175(2):143–  
433 56.
- 434 9. Li J, Thoon KC, Chong CY, Maiwald M, Kam KQ, Nadua K, et al. Comparative analysis of  
435 symptomatic and asymptomatic SARS-CoV-2 infection in children. *Ann Acad Med*  
436 *Singapore*. 2020 Aug;49(8):530–7.
- 437 10. Chisale MRO, Ramazanu S, Mwale SE, Kumwenda P, Chipeta M, Kaminga AC, et al.  
438 Seroprevalence of anti-SARS-CoV-2 antibodies in Africa: A systematic review and meta-  
439 analysis. *Rev Med Virol*. 2022 Mar;32(2):e2271.
- 440 11. Naeimi R, Sepidarkish M, Mollalo A, Parsa H, Mahjour S, Safarpour F, et al. SARS-CoV-2  
441 seroprevalence in children worldwide: A systematic review and meta-analysis.  
442 *EClinicalMedicine*. 2023 Feb;56:101786.
- 443 12. Bloch EM, Kyeyune D, White JL, Ddungu H, Ashokkumar S, Habtehyimer F, et al. SARS-  
444 CoV-2 seroprevalence among blood donors in Uganda: 2019–2022. *Transfusion*. 2023 Jul  
445 1;63(7):1354–65.
- 446 13. Briggs J, Takahashi S, Nayebare P, Cuu G, Rek J, Zedi M, et al. Seroprevalence of  
447 Antibodies to SARS-CoV-2 in Rural Households in Eastern Uganda, 2020-2022. *JAMA*  
448 *Netw Open*. 2023 Feb 1;6(2):e2255978.

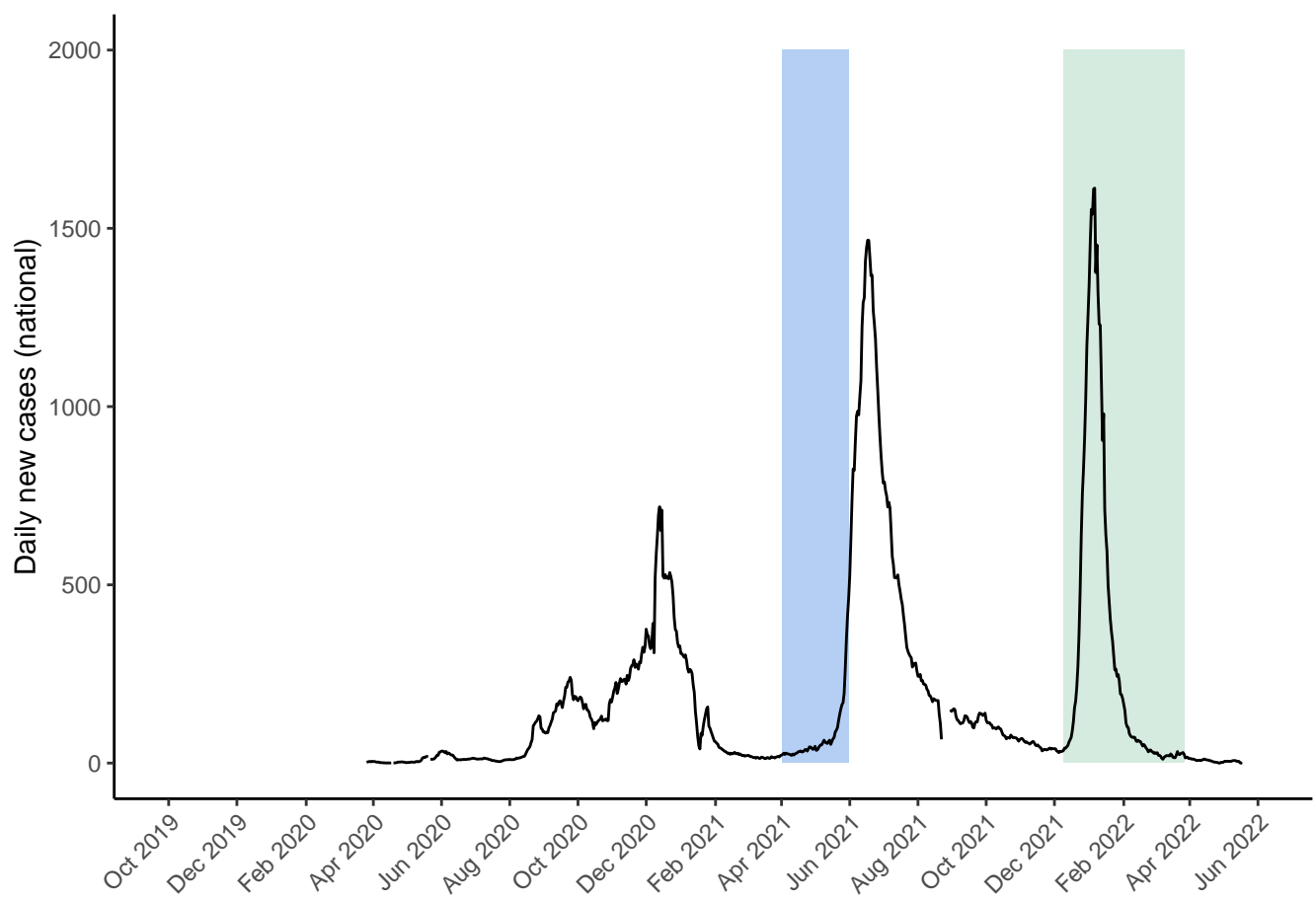
- 449 14. Okiring J, Gonahasa S, Nassali M, Namuganga JF, Bagala I, Maiteki-Sebuguzi C, et al.  
450 LLIN Evaluation in Uganda Project (LLINEUP2)—Factors associated with coverage and  
451 use of long-lasting insecticidal nets following the 2020–21 national mass distribution  
452 campaign: a cross-sectional survey of 12 districts. *Malar J.* 2022 Oct 19;21(1):1–12.
- 453 15. Wu L, Hall T, Ssewanyana I, Oulton T, Patterson C, Vasileva H, et al. Optimisation and  
454 standardisation of a multiplex immunoassay of diverse *Plasmodium falciparum* antigens to  
455 assess changes in malaria transmission using sero-epidemiology. *Wellcome Open*  
456 *Research* [Internet]. 2019 [cited 2023 Nov 12];4. Available from:  
457 <https://www.ncbi.nlm.nih.gov/pmc/articles/PMC7255915/>
- 458 16. Website [Internet]. Available from: Github. Flexfit: flexible format standard curve fitting and  
459 data processing (R Package). Accessed July 31, 2022.  
460 <https://github.com/EPPIcenter/flexfit>
- 461 17. Nankabirwa JI, Bousema T, Blanken SL, Rek J, Arinaitwe E, Greenhouse B, et al.  
462 Measures of malaria transmission, infection, and disease in an area bordering two districts  
463 with and without sustained indoor residual spraying of insecticide in Uganda. *PLoS One*  
464 [Internet]. 2022 Dec 30 [cited 2024 Apr 28];17(12). Available from:  
465 <https://pubmed.ncbi.nlm.nih.gov/36584122/>
- 466 18. Peluso MJ, Takahashi S, Hakim J, Kelly JD, Torres L, Iyer NS, et al. SARS-CoV-2 antibody  
467 magnitude and detectability are driven by disease severity, timing, and assay. *Sci Adv*  
468 [Internet]. 2021 Jul;7(31). Available from: <http://dx.doi.org/10.1126/sciadv.abh3409>
- 469 19. Website [Internet]. Available from: Sing T, Sander O, Beerewinkel N, Lengauer T (2005).  
470 “ROCR: visualizing classifier performance in R.” *Bioinformatics*, 21(20), 7881.  
471 <http://rocr.bioinf.mpi-sb.mpg.de>.
- 472 20. Ministry of Health | Government of Uganda [Internet]. 2021 [cited 2024 Mar 31]. Update on  
473 covid-19 vaccination in Uganda - Ministry of Health. Available from:  
474 <https://www.health.go.ug/cause/update-on-covid-19-vaccination-in-uganda/>
- 475 21. Sebastian T, Carlson JJ, Gaensbauer J, Podewils LJ. Epidemiology and Transmission  
476 Dynamics of COVID-19 in an Urban Pediatric US Population. *Public Health Rep.* 2022 Jul  
477 4;137(5):1013–22.
- 478 22. Misra P, Kant S, Guleria R, Rai SK, Kishore S, Baidya S, et al. Serological prevalence of  
479 SARS-CoV-2 antibody among children and young age group (between 2 and 17 years) in  
480 India: An interim result from a large multicentric population-based seroepidemiological  
481 study. *Journal of Family Medicine and Primary Care.* 2022 Jun;11(6):2816.
- 482 23. Seroprevalence of anti-SARS-CoV-2 IgG antibodies in Geneva, Switzerland (SEROCoV-  
483 POP): a population-based study. *Lancet.* 2020 Aug 1;396(10247):313–9.
- 484 24. Hobbs CV. Factors Associated with Positive SARS-CoV-2 Test Results in Outpatient  
485 Health Facilities and Emergency Departments Among Children and Adolescents Aged 18  
486 Years — Mississippi, September–November 2020. *MMWR Morb Mortal Wkly Rep*  
487 [Internet]. 2020 [cited 2024 Mar 15];69. Available from:  
488 <https://www.cdc.gov/mmwr/volumes/69/wr/mm6950e3.htm>

- 489 25. Reicher S, Ratzon R, Ben-Sahar S, Hermoni-Alon S, Mossinson D, Shenhar Y, et al.  
490 Nationwide seroprevalence of antibodies against SARS-CoV-2 in Israel. *Eur J Epidemiol.*  
491 2021;36(7):727.
- 492 26. Rotulo GA, Palma P. Understanding COVID-19 in children: immune determinants and post-  
493 infection conditions. *Pediatr Res.* 2023 Mar 6;94(2):434–42.
- 494 27. Yoshida M, Worlock KB, Huang N, Lindeboom RGH, Butler CR, Kumasaka N, et al. Local  
495 and systemic responses to SARS-CoV-2 infection in children and adults. *Nature.*  
496 2022;602(7896):321.
- 497 28. Weisberg SP, Connors TJ, Zhu Y, Baldwin MR, Lin WH, Wontakal S, et al. Distinct  
498 antibody responses to SARS-CoV-2 in children and adults across the COVID-19 clinical  
499 spectrum. *Nat Immunol.* 2021 Jan;22(1):25.
- 500 29. Ludvigsson JF. Systematic review of COVID-19 in children shows milder cases and a  
501 better prognosis than adults. *Acta Paediatr.* 2020 Jun;109(6):1088–95.
- 502 30. She J, Liu L, Liu W. COVID-19 epidemic: Disease characteristics in children. *J Med Virol.*  
503 2020 Jul;92(7):747–54.
- 504 31. O'Neill B, Kalia S, Hum S, Gill P, Greiver M, Kirubarajan A, et al. Socioeconomic and  
505 immigration status and COVID-19 testing in Toronto, Ontario: retrospective cross-sectional  
506 study. *BMC Public Health [Internet].* 2022 May 29 [cited 2024 Mar 11];22(1). Available  
507 from: <https://pubmed.ncbi.nlm.nih.gov/35643450/>
- 508 32. Pattnaik J, Jalongo MR. The Impact of COVID-19 on Early Childhood Education and Care:  
509 International Perspectives, Challenges, and Responses. Springer Nature; 2022. 505 p.
- 510 33. Nuwematsiko R, Nabiryo M, Bomboka JB, Nalinya S, Musoke D, Okello D, et al.  
511 Unintended socio-economic and health consequences of COVID-19 among slum dwellers  
512 in Kampala, Uganda. *BMC Public Health.* 2022 Jan 13;22(1):88.
- 513 34. Josephson A, Kilic T, Michler JD. Socioeconomic impacts of COVID-19 in low-income  
514 countries. *Nat Hum Behav.* 2021 May;5(5):557–65.
- 515 35. Kabwama SN, Wanyenze RK, Kiwanuka SN, Namale A, Ndejjo R, Monje F, et al.  
516 Interventions for Maintenance of Essential Health Service Delivery during the COVID-19  
517 Response in Uganda, between March 2020 and April 2021. *Int J Environ Res Public Health*  
518 [Internet]. 2022 Sep 30;19(19). Available from: <http://dx.doi.org/10.3390/ijerph191912522>
- 519 36. Andia-Biraro I, Baluku JB, Olum R, Bongomin F, Kyazze AP, Ninsiima S, et al. Effect of  
520 COVID-19 pandemic on inpatient service utilization and patient outcomes in Uganda. *Sci*  
521 *Rep.* 2023 Jun 15;13(1):9693.
- 522 37. Angeles G, Silverstein H, Ahsan KZ, Kibria MG, Rakib NA, Escudero G, et al. Estimating  
523 the effects of COVID-19 on essential health services utilization in Uganda and Bangladesh  
524 using data from routine health information systems. *Front Public Health.* 2023 Sep  
525 27;11:1129581.
- 526 38. Khaitan A, Datta D, Bond C, Goings M, Co K, Odhiambo EO, et al. Level and Duration of

- 527 IgG and Neutralizing Antibodies to SARS-CoV-2 in Children with Symptomatic or  
528 Asymptomatic SARS-CoV-2 Infection. *Immunohorizons*. 2022 Jun 1;6(6):408–15.
- 529 39. Javier Ibarondo F, Fulcher JA, Goodman-Meza D, Elliott J, Hofmann C, Hausner MA, et  
530 al. Rapid Decay of Anti–SARS-CoV-2 Antibodies in Persons with Mild Covid-19. *N Engl J*  
531 *Med* [Internet]. 2020 Jul 21 [cited 2024 Mar 15]; Available from:  
532 <https://www.nejm.org/doi/full/10.1056/nejmc2025179>
- 533





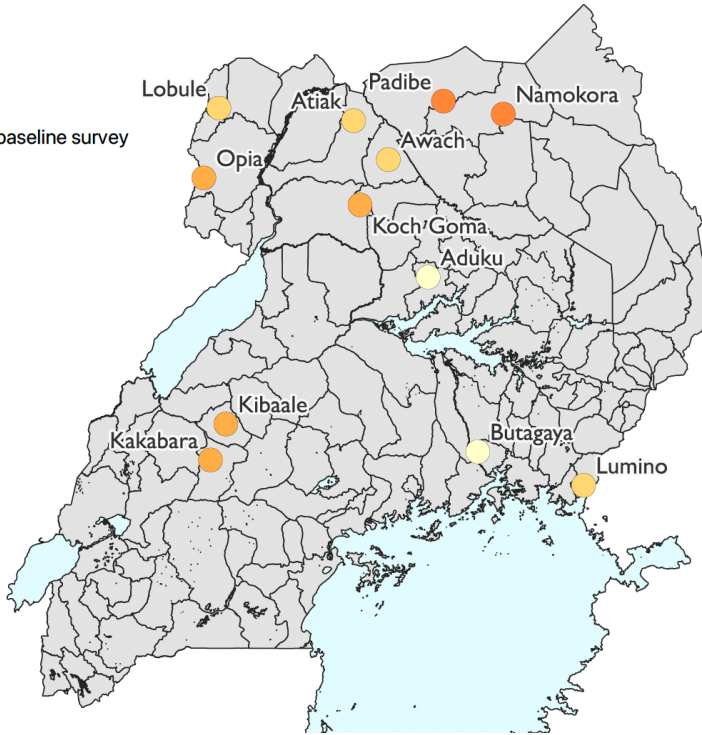




RBD seroprevalence at baseline survey

- 0-10%
- 11-20%
- 21-30%
- 31-40%

- Waterbodies
- Districts



RBD seroprevalence at follow-up survey

- 51-60%
- 61-70%
- 71-80%
- 81-90%

- Waterbodies
- Districts

