

# 1 Assessing the impact of testing for COVID-19 using lateral flow 2 devices in NHS acute trusts in England

3 **Running title:** COVID-19 testing in NHS acute trusts using lateral flow devices

4 **Author names and affiliations:** Siyu Chen<sup>1†</sup>, Rachel Hounsell<sup>2†</sup>, Liberty Cantrell<sup>3†</sup>, Lok Hei  
5 Tsui<sup>4†</sup>, Reshania Naidoo<sup>2,5†</sup>, Prabin Dahal<sup>2,6</sup>, Richard Creswell<sup>7</sup>, Sumali Bajaj<sup>4</sup>, Jennifer A.  
6 Flegg<sup>9</sup>, Tom Fowler<sup>10,11</sup>, Susan Hopkins<sup>10,12</sup>, Ben Lambert<sup>8</sup>, Merryn Voysey<sup>3</sup>, Lisa J. White<sup>4</sup>,  
7 EY-Oxford Health Analytics Consortium<sup>\*\*</sup>, Kasia Stepniewska<sup>2,6</sup>, Rima Shretta<sup>2</sup>

8 <sup>1</sup>Big Data Institute, Nuffield Department of Medicine, University of Oxford, UK

9 <sup>2</sup>Nuffield Department of Medicine, University of Oxford, Oxford, UK

10 <sup>3</sup>Department of Paediatrics, University of Oxford, Oxford, UK

11 <sup>4</sup>Department of Biology, University of Oxford, Oxford, UK

12 <sup>5</sup>Ernst & Young LLP London, UK

13 <sup>6</sup>Centre for Tropical Medicine and Global Health, University of Oxford, Oxford, UK

14 <sup>7</sup>Department of Computer Science, University of Oxford, Oxford, UK

15 <sup>8</sup>Department of Statistics, University of Oxford, Oxford, UK

16 <sup>9</sup>School of Mathematics and Statistics, University of Melbourne, Melbourne, Australia

17 <sup>10</sup>UK Health Security Agency, London, UK

18 <sup>11</sup>William Harvey Research Institute, Queen Mary University of London, London, UK

19 <sup>12</sup>NIHR Health Protection Research Unit in Healthcare associated infections and  
20 Antimicrobial Resistance, University of Oxford, Oxford, UK

21 † These authors contributed equally.

22 \***Corresponding author:** [siyu.chen@princeton.edu](mailto:siyu.chen@princeton.edu) ; Tel: 1-609-532-4532

23

24 \*\*EY-Oxford Health Analytics Consortium membership list

25 Ricardo Aguas, Ma'ayan Amswych, Billie Andersen-Waine, Sumali Bajaj, Kweku Bimpong,

26 Adam Bodley, Liberty Cantrell, Siyu Chen, Richard Creswell, Prabin Dahal, Sophie Dickinson,

27 Sabine Dittrich, Tracy Evans, Angus Ferguson-Lewis, Caroline Franco, Bo Gao, Rachel

---

<sup>1</sup> Present address: High Meadows Environmental Institute, Princeton University, US

NOTE: This preprint reports new research that has not been certified by peer review and should not be used to guide clinical practice.

28 Hounsell, Muhammad Kasim, Claire Keene, Ben Lambert, Umar Mahmood, Melinda Mills,  
29 Ainura Moldokmatova, Sassy Molyneux, Reshania Naidoo, Randolph Ngwafor Anye, Jared  
30 Norman, Wirichada Pan-Ngum, Sarah Pinto-Duschinsky, Sunil Pokharel, Anastasiia Polner,  
31 Katarzyna Przybylska, Emily Rowe, Sompob Saralamba, Rima Shretta, Sheetal Silal, Kasia  
32 Stepniewska, Joseph Tsui, Merryn Voysey, Marta Wanat, Lisa J. White, Gulsen Yenidogan  
33

## 34 Abstract

### 35 Background

36 Twice-weekly lateral flow device (LFD) testing was introduced for routine asymptomatic  
37 testing of healthcare workers (HCWs) in the National Health Service (NHS) in England in  
38 November 2020, with the primary aim of reducing nosocomial infections among staff and  
39 patients and a secondary aim of reducing absenteeism among HCWs. Here, we describe  
40 the burdens of HCW absenteeism and nosocomial infections in NHS acute trusts and the  
41 reported testing intensity of LFDs and associated costs from October 2020 to March 2022 and  
42 assess the impact of LFD testing on reducing these burdens.

### 43 Methods and Findings

44 We collected 16 million LFD testing results (total cost GBP 1.64 billion) reported in NHS acute  
45 trusts through England's Pillar 1 and 2 testing programmes from 1 October 2020 to 30 March  
46 2022. We estimated the prevalence of nosocomial COVID-19 infections in NHS acute trusts  
47 using data from the International Severe Acute Respiratory and emerging Infection  
48 Consortium (ISARIC). Testing data were linked with nosocomial infections and full-time  
49 equivalent (FTE) days lost by trust for NHS acute trusts.

50 We used a mixed-effects linear model to examine the association between FTE days lost and  
51 LFD test coverage. The relationship between weekly prevalence of nosocomial infections and

52 LFD test coverage in the previous week was modelled using logistic regression weighted by  
53 the number of new COVID-19 cases reported in the ISARIC dataset for that week. We adjusted  
54 both models for community prevalence of COVID-19 infections, average income deprivation  
55 score, prevalence of variants of concern and LFD test positivity.

56 FTE days lost among HCWs varied considerably by trust type, staff group, geographical  
57 location of trusts, and progress of the pandemic in England. Increased LFD test coverage was  
58 associated with decreases in FTE days lost due to COVID-19 from November 2020 to July 2021,  
59 with no association observed from August 2021 to March 2022. Higher community prevalence  
60 levels were associated with significant increases in FTE days lost due to COVID-19 in all periods  
61 except the pre-vaccination period (last two months of 2020). The model predicted that  
62 changes in testing levels (50–150%) would have resulted in modest changes in FTE days lost  
63 due to COVID-19 for all time periods.

64 We identified 3,794 nosocomial infections (if patients developed COVID-19 symptoms 7 days  
65 or more after their hospital admission) among 106,377 hospitalised COVID-19 patients in 136  
66 NHS acute trusts. The proportion of nosocomial infections among new weekly cases in  
67 hospitalised patients was negatively associated with reported LFD testing levels. The strength  
68 of the association varied over time and was estimated to be highest during the Omicron  
69 period, although no effect of testing on HCW absenteeism was found. The observed HCW  
70 testing/reporting was estimated to be associated with a 16.8% (95% confidence interval 8.2%,  
71 18.8%) reduction in nosocomial infections compared with a hypothetical testing scenario at  
72 25% of actual levels, translating to a cost saving per quality-adjusted life-year (QALY) gained  
73 of GBP 18,500–46,400.

## 74 Conclusions

75 LFD testing was an impactful public health intervention for reducing HCW absenteeism and  
76 nosocomial infections in NHS acute trusts and was cost effective in preventing nosocomial  
77 infections.

## 78 Author Summary

### 79 Why was this study done?

- 80 • In any pandemic response, mass diagnostic testing plays a key role.
- 81 • We sought to evaluate the burdens of healthcare worker absenteeism and  
82 nosocomial infections in NHS acute trusts, the reported testing intensity using lateral  
83 flow devices (LFDs) and associated costs, and the impact of LFD testing on reducing  
84 these burdens.

### 85 What did the researchers do and find?

- 86 • We collected 16 million LFD testing results and full-time equivalent (FTE) days lost due  
87 to COVID-19, obtained from healthcare workers (HCWs) in NHS acute trusts in England  
88 between 1 October 2020 and 30 March 2022.
- 89 • We estimated the number of nosocomial COVID-19 infections in NHS acute trusts  
90 using data from the International Severe Acute Respiratory and emerging Infection  
91 Consortium (ISARIC).
- 92 • Testing data were linked with nosocomial infections and FTE days lost due to COVID-  
93 19 by trust for NHS acute trusts.
- 94 • We used a mixed-effects linear model to examine the association between FTE days  
95 lost due to COVID-19 and LFD test coverage and applied a logistic regression to assess  
96 the association between nosocomial infections and LFD test coverage.

97       • We found that LFD testing in the healthcare setting was an impactful public health  
98       intervention.

99       • LFD testing reduced HCW absenteeism and nosocomial infections in NHS acute trusts;  
100       it was also cost effective in preventing nosocomial infections.

### 101   **What do these findings mean?**

102       • Our analysis of the available data indicated that testing HCWs had varying impacts (on  
103       both nosocomial infections and HCW FTE days lost due to COVID-19) throughout the  
104       pandemic, possibly influenced by external factors such as community prevalence and  
105       vaccination.

106       • In any future pandemic, HCW testing interventions should incorporate collection of  
107       and/or timely access to relevant data, including HCW absenteeism, routine test  
108       results, community prevalence, and hospitalisation and mortality data.

109       • The lessons learnt from this study could be used by relevant authorities to support the  
110       real-time assessment of any testing service and adjustment of the testing regimen;  
111       they could also be used to help develop more targeted and agile testing systems,  
112       which operationally would require the ability to turn mass testing off and on as an  
113       epidemic progressed.

114

### 115   **Abbreviations**

116   ACT acute trust

117   AIC Akaike information criterion

118   AMT ambulance trust

119   CI confidence interval

120   CMT community trust

- 121 COVID-19 coronavirus disease 2019
- 122 FY financial year
- 123 HCHS Hospital and Community Health Service
- 124 HCW healthcare worker
- 125 ICER incremental cost-effectiveness ratio
- 126 IQR interquartile range
- 127 ISARIC International Severe Acute Respiratory and emerging Infection Consortium
- 128 LFD lateral flow device
- 129 LTLA lower-tier local authority
- 130 MHU mental health trust
- 131 NHS National Health Service
- 132 NIMS National Immunisation Management System
- 133 ONS Office for National Statistics
- 134 OR odds ratio
- 135 PCR polymerase chain reaction
- 136 QALY quality-adjusted life-year
- 137 SARS-CoV-2 severe acute respiratory syndrome coronavirus 2
  
- 138 **Introduction**
- 139 The COVID-19 pandemic led to a huge increase in the number of people requiring medical
- 140 care, putting immense pressure on healthcare workers (HCWs) and highlighting the
- 141 importance of their resilience and well-being. In England, SARS-CoV-2 infection rates among
- 142 HCWs were estimated to be at their highest between April and September 2020 and
- 143 decreased progressively over time until October 2021 [1]. HCWs were seven times more likely

144 to experience severe COVID-19 infection than individuals with other, ‘non-essential’ jobs  
145 during the first UK-wide lockdown [2]. This was due to HCWs’ higher frequency of contact  
146 with suspected or confirmed COVID-19 cases, leading to a substantial burden of HCW  
147 absenteeism. Infected HCWs could inadvertently transmit the virus to vulnerable patients,  
148 exacerbating the spread of the disease; during the early stages of the pandemic, nosocomial  
149 infections were estimated to be responsible for 20% of all identified COVID-19 cases in  
150 hospitalised patients [3]. Regular testing for COVID-19 helped identify asymptomatic or pre-  
151 symptomatic cases among the healthcare workforce, allowing for prompt isolation and  
152 reducing the risk of transmission within healthcare settings [4].

153 Table 1 provides a summary of the time periods of the different stages of the COVID-19  
154 pandemic and their associated testing policies and epidemiological features. Lateral flow  
155 device (LFD) testing was introduced for routine asymptomatic testing of HCWs in England in  
156 November 2020; HCWs were requested to undertake twice-weekly LFD testing at home with  
157 a follow-up confirmatory polymerase chain reaction (PCR) test in the case of a positive LFD  
158 result [5]. This large-scale testing campaign was initially conducted by NHS Trace and Trace,  
159 and later by the UK Health Security Agency (UKHSA), with the intention to support the NHS in  
160 its infection control risk reduction strategy and reduce staff absenteeism [6]. HCWs with  
161 confirmed COVID-19 infections were initially required to self-isolate for 10 days [7], which  
162 was the same as the self-isolation guidance for the general population [8]. Testing policy  
163 changed over time in response to the evolving epidemic and the vaccination campaign. The  
164 length of isolation was reduced from 10 to 7 days in December 2021 in the event of a negative  
165 LFD test result, with a further reduction to 5 days in January 2022 [9]. Confirmatory PCR tests  
166 following a positive LFD test result were no longer required from January 2022 [10].

167 **Table 1.** Summary of time periods during the COVID-19 pandemic and their associated  
 168 testing policies and epidemiological features.  
 169

Time period	Testing policy	Circulating variant	Vaccination availability
November 2020–December 2020	Testing at home with an LFD twice weekly, with a follow-up confirmatory PCR in case of a positive LFD result; testing was voluntary, reporting of all results was a statutory duty; in the case of a positive LFD and PCR result, staff were required to self-isolate in line with the government guidance at that time (10 days).	Wild-type	No vaccine available.
January 2021–July 2021	The testing policy was as before.	Alpha	Vaccination rollout to HCWs was ongoing, but there were no available data on HCWs' vaccination levels per trust.
August 2021–November 2021	Fully vaccinated members of staff who were identified as a contact of a positive COVID-19 case were no longer expected to isolate, while unvaccinated staff members were required to self-isolate for the full 10-day period.	Delta	High coverage of vaccination; monthly data on vaccination coverage among staff were available at the trust level.
December 2021–March 2022	Confirmatory PCR testing was temporarily suspended for people who received a positive LFD result; individuals who tested positive via an LFD were required to self-isolate for seven days; self-isolation in the case of a positive LFD result was reduced from seven to six days.	Omicron	High coverage of vaccination; monthly data on vaccination coverage among staff were available at the trust level.

170  
 171 Here, we sought to determine the burden of absenteeism and nosocomial infections due to  
 172 COVID-19 among HCWS in England between November 2020 and March 2022. We also



173 explored correlations between these burdens and LFD test coverage in National Health  
174 Service (NHS) acute trusts in England and the associated costs.

## 175 **Materials and Methods**

### 176 **Data acquisition and sources**

#### 177 **LFD test volume and costs**

178 LFD test volume data obtained via England's Pillar 1 and Pillar 2 testing programmes [11] from  
179 1 October 2020 to 30 March 2022 in healthcare settings were provided by UKHSA, in the  
180 context of a retrospective evaluation of England's COVID-19 testing policy [12, 13]. Only data  
181 from NHS acute trusts were identifiable in both datasets, so only these data from the  
182 healthcare sector were analysed. LFD test costs during the evaluation period were extracted  
183 from internal UKHSA documents and derived from the Cost Allocation Project (an unpublished  
184 internal project) conducted by UKHSA for the UK's Office for National Statistics (ONS); an  
185 analysis of these costs was performed as part of the retrospective evaluation [13].

#### 186 **NHS trust headcount and full-time-equivalent days lost**

187 Monthly numbers of NHS Hospital and Community Health Service (HCHS) staff working in NHS  
188 trusts in England, presented as headcount and full-time equivalent (FTE) figures from 1  
189 October 2020 to 30 March 2022, were retrieved from NHS Digital [14]. FTE days lost due to  
190 COVID-19, defined as the proportion of FTE days available that were lost due to COVID-19,  
191 were also downloaded from NHS Digital. As test data at the trust level were not available by  
192 staff groups, and as there were no specific recommendations throughout the evaluation  
193 period regarding which staff groups should be testing, we conducted the analysis with  
194 reference to FTE days lost due to COVID-19 for all staff.

## 195 COVID-19 community prevalence in England

196 We calculated weekly estimates of COVID-19 community prevalence for each lower-tier local  
197 authority (LTLA) within which each NHS acute trust was situated. These estimates were  
198 generated using a causal debiasing methodology [15], which used high-quality, randomised  
199 surveillance measures of swab-positive results provided via the REACT-1 survey [16] to debias  
200 PCR testing data obtained through Pillar 2.

## 201 Variants of concern (VOCs)

202 Weekly counts of SARS-CoV-2 lineages by week and LTLA were obtained from the Sanger  
203 Institute website [17]. These counts were then binned according to whether they  
204 corresponded to the Alpha (B.1.1.7), Delta (B.1.617.2) or Omicron (B.1.1.529) variant or  
205 whether they were from 'other' lineages. These data were then used to determine weekly  
206 LTLA-level proportions of each of these VOCs.

## 207 Healthcare worker vaccination

208 Data held in the NHS Electronic Staff Record (ESR) regarding the numbers of NHS acute trust  
209 HCWs who had been vaccinated for COVID-19 were retrieved from the NHS National  
210 Immunisation Management System (NIMS) [18]. Cumulative vaccination data for HCWs were  
211 available from the end of August 2021, when high coverage for the first (85%) and second  
212 dose (75%) had already been achieved.

## 213 Average income deprivation scores

214 The English indices of deprivation provide information on the prevalence of multiple types of  
215 deprivation in England at the LTLA level. We extracted these data from the UK ONS on 1  
216 November 2022. LFD test data, community COVID-19 prevalence and average income  
217 deprivation scores were provided per LTLA rather than per acute trust. Therefore, we used a

218 function from the covid19.nhs.data package [19] to calculate the number of tests per NHS  
219 acute trust in England, based on the proportional contribution of the number of tests  
220 conducted in LTLA regions within trusts (henceforth we refer to this as the ‘mapping  
221 function’).

222 [ISARIC \(International Severe Acute Respiratory and emerging Infection Consortium\)](#)  
223 [database](#)

224 We requested the relevant dataset from the ISARIC Data Access Committee. Weekly numbers  
225 of new COVID-19 admissions or hospitalised patients newly diagnosed with COVID-19 from  
226 136 NHS acute trusts were extracted. Among these cases, COVID-19 infections were classified  
227 as nosocomial infections if patients developed COVID-19 symptoms seven days or more  
228 following their hospital admission. For a sensitivity analysis, we repeated these analyses using  
229 a 14-day cut-off. We included in our analysis all patients who were tested, had confirmed  
230 COVID-19 infection and were treated in an NHS acute trust in England. We excluded any re-  
231 admissions, records with conflicting dates, admissions outside of the study period (date of  
232 admission later than 31 March 2022 or date of discharge earlier than 1 October 2020), and  
233 COVID-19 cases outside of the study period (date of onset before 1 October 2020 or after 14  
234 April 2022). For each week and for each acute trust in the ISARIC database (after exclusions),  
235 the total number of new COVID-19 infections, defined as new COVID-19 admissions or  
236 hospitalised patients with new COVID-19 symptoms, was calculated.

237 [Hospitalisations and deaths data](#)

238 Daily new hospitalised cases of COVID-19 in acute trusts in England were extracted from NHS  
239 Digital on 28 February 2023. Weekly total numbers of new cases per trust were calculated.  
240 COVID-19-related hospitalisations and deaths data in England between October 2020 and  
241 March 2022 were extracted from ONS. We used these data to calculate hospitalisation fatality

242 ratios (HFRs) for our economic analysis. More details about the data accession processes are  
243 provided in the S1 Appendix Methods, 1.1–1.4.

## 244 Statistical analysis

### 245 Analysis timeline

246 All analyses were conducted for four time periods to account for changes in healthcare testing  
247 policies, the vaccine rollout and the availability of data (Table 1). The four time periods were  
248 November 2020 to December 2020, January 2021 to July 2021, August 2021 to November  
249 2021, and December 2021 to March 2022.

### 250 Association between testing and HCW absenteeism

251 The primary outcome for our study was FTE days lost due to COVID-19, expressed as a  
252 proportion of total FTE days. This was calculated for each acute trust and month of the study,  
253 as only monthly absenteeism data were available. The primary exposure variable was LFD test  
254 coverage, calculated as the number of tests reported per HCW, for each trust and month. (For  
255 further details see S1 Appendix – Methods, 1.5.) We used a mixed-effects linear model to  
256 examine the association between FTE days lost and LFD test coverage. The model was  
257 adjusted for community prevalence of COVID-19, average income deprivation score, relative  
258 prevalence of Alpha/Delta/Omicron variants (on a scale of 0 to 1) in England and acute trust  
259 LFD positivity rate (defined as the number of positive LFDs per headcount, calculated for each  
260 trust and month). Random intercepts for trust and month were included to account for data  
261 clustering. Vaccination data were not included in the final model, due to the sparsity of  
262 relevant data and low variability over time.

## 263 Association between testing and nosocomial infections

264 The secondary outcome of our investigation was the prevalence of nosocomial COVID-19  
265 infections in NHS acute trusts, as reported to the ISARIC database. (For further details see S1  
266 Appendix – Methods, 1.6.) The relationship between weekly prevalence of nosocomial  
267 infections and LFD test coverage in the previous week was modelled using logistic regressions  
268 weighted by the number of new COVID-19 cases reported in the ISARIC dataset for that week.  
269 Week and trust were fitted as fixed effects (due to identifiability issues in fitting random  
270 effects). The model was adjusted for the total number of new COVID-19 cases reported per  
271 trust/week. It was also adjusted for possible confounders: community prevalence, average  
272 income deprivation score, relative prevalence of Alpha/Delta/Omicron variants (on a scale of  
273 0 to 1) and LFD positivity rate per trust-month in the previous week (defined as the number  
274 of positive LFD tests for a given trust and month/headcount for a given trust and  
275 month  $\times$  1000).

276 The model structures were compared by including cluster covariates (trust, month or week)  
277 and nonlinear forms of covariates and interaction terms with transmission, and the final  
278 models were selected based on the Akaike information criterion (AIC) and residuals. These  
279 models were then used to predict FTE days lost due to COVID-19 and the number of  
280 nosocomial infections in counterfactual scenarios where the LFD test intensity was set at 50%,  
281 75%, 125% and 150% of the observed test level.

## 282 Economic analysis

283 The primary outputs of our economic analyses were the quality-adjusted life-years (QALYs)  
284 gained due to nosocomial infections averted within NHS acute trusts compared with various  
285 counterfactual LFD testing scenarios (50%, 75%, 125%, 150%, and 200% of the actual testing

286 volume). The evaluation was conducted from the healthcare provider’s perspective, as the  
287 UK government funded all direct costs of testing and treatment for COVID-19. The time  
288 horizon of the analysis (October 2020 to March 2022) was determined by the period of  
289 interest for the UKHSA-commissioned retrospective independent evaluation of COVID-19  
290 testing in England [13]. The secondary outputs of our economic analyses were the cost savings  
291 per nosocomial infection averted, per death averted, and QALYs gained within NHS acute  
292 trusts under various counterfactual LFD testing scenarios. We also conducted a sub-analysis  
293 for the two financial years (FY) in England covered by the study period, i.e. FY21, comprising  
294 the six-month period from October 2020 to March 2021; and FY22, comprising the full  
295 financial year from April 2021 to March 2022.

296 We present here the incremental costs per nosocomial infection averted, incremental costs  
297 per death averted and incremental cost-effectiveness ratio (ICER) (defined as the incremental  
298 cost per QALY gained) due to testing. Given the short time-horizon of the study, no  
299 discounting or adjustment for inflation was carried out. All costs and results were collected  
300 and are presented in pounds sterling (GBP). (For further details see S1 Appendix – Methods,  
301 1.7.)

## 302 Results

### 303 HCW absenteeism

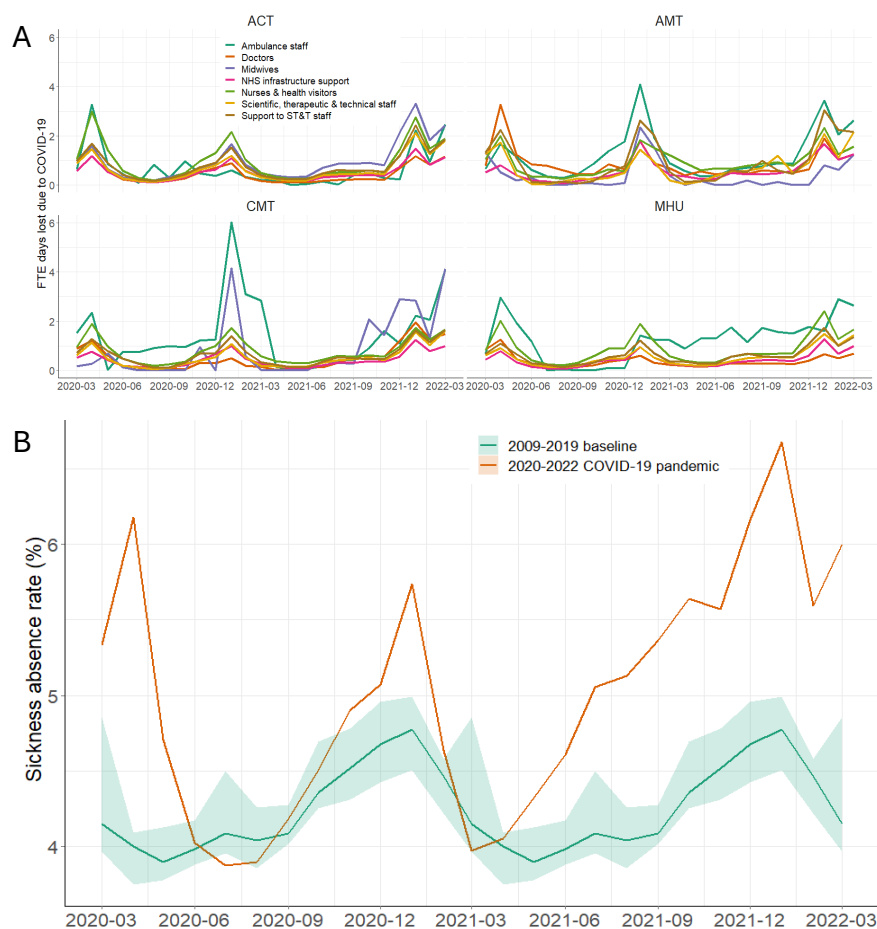
304 Monthly FTE days lost due to COVID-19 varied over time, by trust type and by staff group,  
305 ranging between 0% and 4% of the total corresponding FTE days available (Fig 1A). Monthly  
306 FTE days lost due to COVID-19 accounted for 0% to 60% of the total monthly FTE days lost for  
307 any reason (Fig S1). FTE days lost peaked at three timepoints: April 2020, January 2021 and  
308 January 2022, at 6.1%, 5.7% and 6.7%, respectively, with corresponding relative increases of

309 1.7-fold (90% confidence interval (CI) 1.5, 1.9), 1.2-fold (90% CI 1.2, 1.3) and 1.4-fold (90% CI  
310 1.3, 1.5), respectively, compared with the median level from 2009 to 2019 (Fig 1B).

311 NHS staff absences due to sickness varied geographically, reflecting the sweep of the  
312 pandemic across England. In London and the southeast, absence rates increased more rapidly  
313 and to a higher peak than in other regions. Staff groups were also impacted differently by  
314 absences related to COVID-19, with doctors hit particularly hard in the first and third epidemic  
315 waves in England, in April 2020 and January 2022, respectively, when more than 40% of all  
316 doctors' absences were due to COVID-19 (Fig S2). During the winter wave of January 2021,  
317 ambulance staff experienced the greatest number of FTE days lost due to COVID-19 (Fig S3).

318 In acute trusts, variability between trusts was small and could possibly be explained by  
319 differences in staff composition (Table S1).

320



321

322 **Fig 1. Monthly absenteeism in NHS trusts in England during the COVID-19 pandemic from**  
 323 **March 2020 to March 2022. (A) The percentage of monthly full-time equivalent (FTE) days**  
 324 **lost due to COVID-19 by trust type and staff group over time (= monthly FTE days lost due**  
 325 **to COVID-19 / monthly FTE days available × 100%). (B) Sickness absence rates in all staff**  
 326 **groups at NHS acute trusts (= number of days off sick as a percentage of total workforce**  
 327 **days contracted). The orange line represents the overall percentage of FTE days lost; the**  
 328 **green line with the shaded area indicates the median and 90% range of sickness absence rates**  
 329 **from 2009 to 2019. ACT, acute trust; AMT, ambulance trust; CMT, community trust; MHU,**  
 330 **mental health trust.**

331

### 332 Reported LFD test volumes, coverage and costs

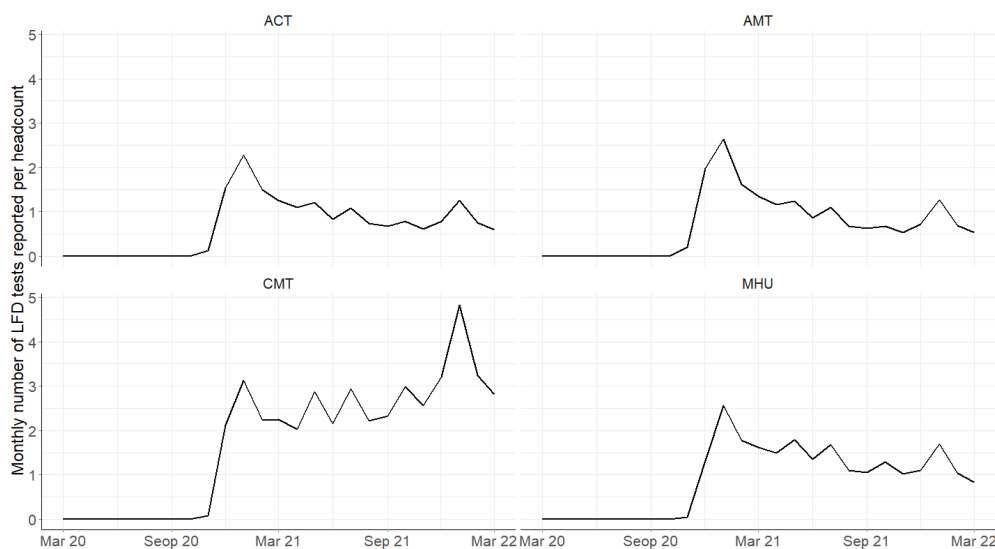
333 Overall monthly volumes of reported LFDs followed similar trends across all healthcare  
 334 settings except for community trusts and varied among the four time periods (Fig 2). A total  
 335 of 16,352,554 LFDs were reported from October 2020 to March 2022, across the 136 acute  
 336 trusts. A median of 0.83 (interquartile range, IQR 0.16–1.50) LFDs per HCW per week was  
 337 reported between November and December 2020; 1.21 (IQR, 0.87–2.17) between January



338 and July 2021; 0.71 (IQR, 0.62–0.79) between August and November 2021; and 0.77 (IQR,  
339 0.60–1.2) between December 2021 and March 2022. The level of reporting also varied among  
340 trusts across the four evaluation periods, with the second time period (January 2021 to July  
341 2021) having the highest average coverage (Table S2). Furthermore, 7 out of 136 trusts (5.0%)  
342 presented with less than one test per month for at least one month (Fig S4).

343 The total financial cost of the healthcare testing service for the full evaluation period was GBP  
344 1.77 billion, representing 7.6% of the total testing expenditure in England. This cost did not  
345 include payments made to HCWs for isolating following a contact with a positive COVID-19  
346 case. LFD costs comprised approximately 92.5% (GBP 1.64 billion) of the total costs of the  
347 HCW testing service. Approximately 55% of these costs were direct costs, 19% were indirect  
348 costs and the remainder were overhead costs. Overhead and indirect costs were marginally  
349 higher in FY21 than in FY22 due to the initial costs of setting up the testing service. The  
350 average unit cost of an LFD distributed under the healthcare testing service was GBP 11.68.  
351 Overhead costs were only attributed to Pillar 2 testing.

352



353

354 **Fig 2. Monthly number<sup>1</sup> of LFDs reported per HCW by trust type from March 2020 to**  
355 **March 2022<sup>1</sup>.** ACT, acute trust; AMT, ambulance trust; CMT, community trust; MHU, mental  
356 health trust.

357

358 <sup>1</sup>LFDs were reported in MHU trusts in England, with a median 1.0 (interquartile range 0–2.0)  
359 tests per HCW per week; 0.68 (0.081–1.29) in November–December 2020; 1.69 (1.37–2.45)  
360 in January–July 2021; 1.08 (1.03–1.28) in August 2021–November 2021; and 1.07 (0.85–  
361 1.65) in December 2021–March 2022. LFDs were reported in AMT trusts in England, with a  
362 median 0.58 (0–2.2) tests per HCW per week; 1.09 (0.24–1.93) in November–December  
363 2020; 1.25 (0.90–2.50) in January–July 2021; 0.65 (0.53–0.68) in August 2021–November  
364 2021; and 0.71 (0.55–1.23) in December 2021–March 2022. LFDs were reported in CMT  
365 trusts in England, with a median 2.1 (0–3.8) tests per HCW per week; 1.10 (0.13–2.07) in  
366 November–December 2020; 2.25 (2.05–3.09) in January–July 2021; 2.45 (2.22–2.96) in  
367 August 2021–November 2021; and 3.23 (2.85–4.71) in December 2021–March 2022.

### 368 Association between FTE days lost and test coverage

369 Associations between the proportion of FTE days lost due to COVID-19 and test coverage, as  
370 well as other covariates, are shown in Fig S5–S10. No apparent associations between test  
371 coverage and percentage FTE days lost due to COVID-19 were observed except during the  
372 time period January 2021 to July 2021 (Fig S11). The increase in LFD test coverage was  
373 associated with decreases in FTE days lost due to COVID-19 during the first two time periods  
374 (Table 2, models 1 and 2). During the next two periods (Table 2, models 3 and 4), no such  
375 association was observed. Higher community prevalence levels were associated with  
376 significant increases in FTE days lost due to COVID-19 in all periods except for the pre-  
377 vaccination period. Effect sizes ranged from 0.23% to 0.46% increases in FTE days lost for each  
378 1% relative increase in the community prevalence of COVID-19. Similarly, LFD positivity rates  
379 in HCWs were positively associated with FTE days lost due to COVID-19. Average income  
380 deprivation scores were not associated with lost FTE days. The changes in testing levels (50–  
381 150%) were estimated to result in modest changes in FTE days lost due to COVID-19 for all  
382 time periods (Fig 3A).

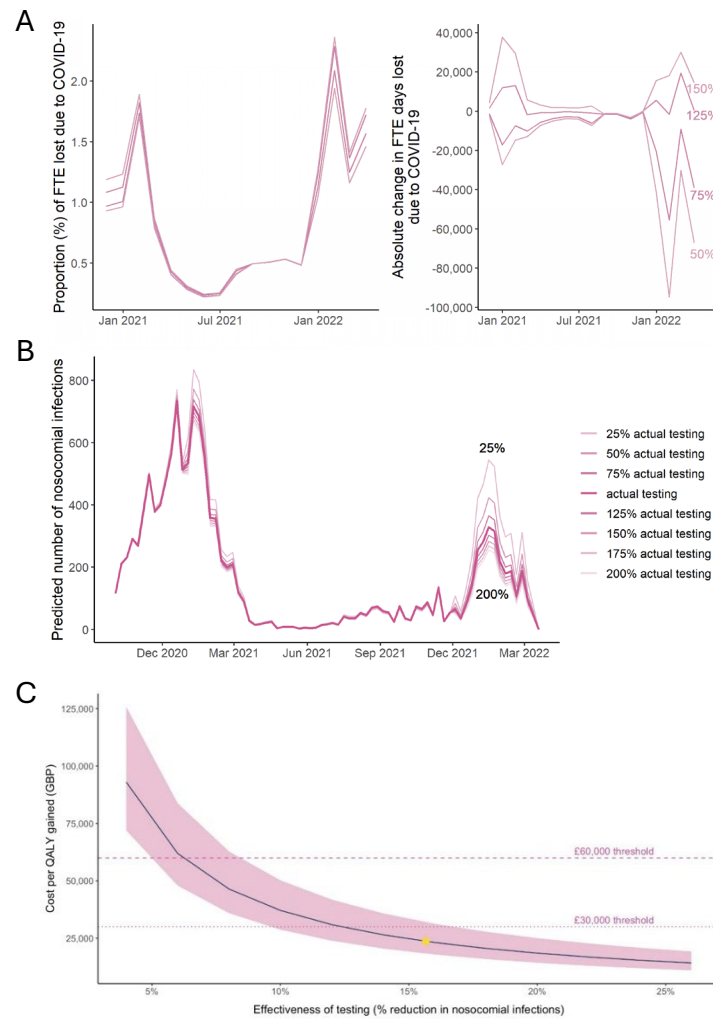
383 **Table 2.** Estimated relative change (% , with 95% CI) in the proportion of the total available  
 384 FTE days lost due to COVID-19 in the four time periods examined. These estimates are from  
 385 linear regression models as described in the text.

	November 2020– December 2020 (pre-vaccination) (Model 1)	January 2021– July 2021 (vaccine rollout) (Model 2)	August 2021– November 2021 (Delta) (Model 3)	December 2021– March 2022 (Omicron) (Model 4)
Number of observations <sup>1</sup>	134	832	432	490
LFD coverage (per 1% increase)	-0.29 (-0.50; -0.07)	-0.11 (-0.18; -0.04)	-0.03 (-0.13; 0.08)	-0.02 (-0.16; 0.12)
Acute trust LFD positivity (per 1% increase)	0.28 (0.06; 0.51)	0.19 (0.13; 0.25)	0.07 (-0.01; 0.15)	0.30 (0.21; 0.39)
Local COVID-19 prevalence (per 1% increase)	0.07 (-0.54; 0.68)	0.23 (0.12; 0.35)	0.29 (0.14; 0.44)	0.46 (0.24; 0.68)
Alpha variant prevalence (per 0.1 increase)	8.44 (-1.88; 19.84)	4.39 (-0.01; 8.99)	N/A	N/A
Delta variant prevalence (per 0.1 increase)	N/A	1.92 (-2.96; 7.04)	N/A	-0.30 (-11.71; 12.58)
Omicron variant prevalence (per 0.1 increase)	N/A	N/A	N/A	8.11 (-5.19; 23.28)
Average income deprivation score <sup>2</sup> per trust (per 0.01 unit increase)	1.51 (-3.72; 7.03)	-2.47 (-5.48; 0.64)	2.53 (-1.02; 6.21)	0.10 (-4.12; 4.51)

386 <sup>1</sup>Number of trust/months observations included in the model.

387 <sup>2</sup>Average income deprivation score: median (range) 0.123 (0.053–0.239) across trusts included in the analysis.

388 A higher score means greater deprivation. 95% confidence intervals are shown in brackets.



389

390 **Fig 3. (A) Predicted proportion and absolute FTE days lost due to COVID-19 in all acute**  
 391 **trusts. (B) Weekly number of nosocomial infections predicted for different testing**  
 392 **scenarios, for 136 trusts included in the analysis. (C) Cost effectiveness of weekly testing**  
 393 **at different levels of testing effectiveness with respect to averting nosocomial COVID-19**  
 394 **infections in England.** The shaded area indicates the cost per QALY gained at an upper value  
 395 of 8.8 QALYs per death averted and a lower value of 4.98 QALYs per death averted. The line  
 396 shows the analysis conducted at a value of 6.78 QALYs per death averted. The yellow point  
 397 at 16.8% represents the statistically modelled level of testing effectiveness in reducing  
 398 nosocomial infections.  
 399

400 **Nosocomial infections in NHS acute trusts**

401 In the ISARIC database, 136 NHS acute trusts were represented, with data available for a  
 402 median of 54 (range 1–75) weeks. Overall, 3794 nosocomial infections after 7 days of  
 403 admission (2049 after 14 days of admission, Table S3) were identified among 106,377  
 404 hospitalised COVID-19 patients (Table S4). The median (range) number of new COVID-19  
 405 cases per week was 9 (1–531) with a median (range) of 0 (0–40) nosocomial infections  
 406 identified using 7 days as the cut off. Table 3 shows the distribution of trust-level parameters  
 407 for hospitalised COVID-19 patients with/without nosocomial infections.

408 **Table 3.** Summary statistics for measured covariates in hospitalised COVID-19 cases, by type  
 409 of COVID-19 infection.

Parameter	Nosocomial infection	Summary statistics				
		Minimum	p25*	Median	p75*	Maximum
November–December 2020						
LFD coverage (per 1000)	No	0	0	0.052	68.7	2121
	Yes	0	0	0	84.3	2121
Acute trust LFD positivity (per 1000)	No	0	0	0	1.37	64.4
	Yes	0	0	0	1.45	64.4
Local COVID-19 prevalence	No	0.001	0.008	0.011	0.016	0.031
	Yes	0.001	0.007	0.010	0.014	0.030
Alpha variant prevalence	No	0	0	0.008	0.215	1
	Yes	0	0	0.014	0.264	1
Average income deprivation score	No	0.053	0.115	0.141	0.167	0.240
	Yes	0.053	0.108	0.126	0.154	0.235
January–July 2021						
LFD coverage (per 1000)	No	0	176	352	523	1848
	Yes	0	221	417	618	1478
Acute trust LFD positivity (per 1000)	No	0	1.25	5.38	17.6	134
	Yes	0	2.00	7.43	22.9	134
Local COVID-19 prevalence	No	0.0001	0.007	0.010	0.015	0.034
	Yes	0.0001	0.006	0.010	0.015	0.029
Alpha variant prevalence	No	0	0.335	0.872	0.949	1
	Yes	0	0.699	0.898	0.956	1
Delta variant prevalence	No	0	0	0	0.323	1
	Yes	0	0	0	0	1
	No	0	0	0	0	0.012

Omicron variant prevalence	Yes	0	0	0	0	0.011
Average income deprivation score	No	0.053	0.110	0.137	0.167	0.239
	Yes	0.053	0.108	0.122	0.147	0.235
August–November 2021						
LFD coverage (per 1000)	No	0	58.8	127	225	1432
	Yes	0	75.3	126	220	1305
Acute trust LFD positivity (per 1000)	No	0	0.739	2.01	3.53	289
	Yes	0	0.858	2.22	3.58	14.6
Local COVID-19 prevalence	No	0.003	0.009	0.011	0.013	0.026
	Yes	0.003	0.010	0.011	0.013	0.021
Alpha variant prevalence	No	0	0	0	0	0.004
	Yes	0	0	0	0	0.0002
Delta variant prevalence	No	0.964	0.997	1	1	1
	Yes	0.975	0.998	1	1	1
Omicron variant prevalence	No	0	0	0	0	0.013
	Yes	0	0	0	0	0.008
Average income deprivation score	No	0.057	0.108	0.135	0.168	0.239
	Yes	0.057	0.108	0.141	0.184	0.235
December 2021–March 2022						
LFD coverage (per 1000)	No	0	61.9	146	276	2437
	Yes	0	85.1	158	276	1240
Acute trust LFD positivity (per 1000)	No	0	2.49	14.9	33.3	479
	Yes	0	5.13	24.1	41.9	144
Local COVID-19 prevalence	No	0.006	0.023	0.033	0.041	0.057
	Yes	0.008	0.028	0.035	0.039	0.051
Delta variant prevalence	No	0	0.001	0.015	0.199	1
	Yes	0	0.0002	0.006	0.038	1
Omicron variant prevalence	No	0	0.768	0.962	0.981	1
	Yes	0	0.936	0.976	0.985	1
Average income deprivation score	No	0.057	0.116	0.141	0.170	0.235
	Yes	0.066	0.122	0.141	0.166	0.235

410 \*p25 = 25% centile; p75 = 75% centile.

411 LFD coverage, LFD positivity and prevalence data are per week.

#### 412 Association between nosocomial infections and test coverage

413 The proportion of nosocomial infections among new weekly cases in hospitalised patients  
 414 (which included new admissions and cases diagnosed in hospital) was negatively associated  
 415 with reported LFD testing levels (Fig 3B). However, the strength of the association varied over

416 time and was estimated to be highest during the Omicron period, with a doubling of the test  
 417 coverage associated with 22% (95% CI 4%, 37%) fewer nosocomial infections (Table 4). Our  
 418 model predicted that the observed HCW testing/reporting was associated with a 16.8% (95%  
 419 CI 8.2%, 18.8%) reduction in nosocomial infections compared with a hypothetical test  
 420 scenario at 25% of actual levels (Fig 3B, Fig S11 and Table S5). A 0.1% increase in the  
 421 prevalence of the Omicron variant, compared with circulating wild-type or Delta variants, was  
 422 associated with a 35% increase in the odds of nosocomial infections among hospitalised  
 423 COVID-19 cases (odds ratio (OR) = 1.35, 95% CI 1.07, 1.70, presented in Table 4 when changes  
 424 in Omicron were compared with any other circulating variants). No association between  
 425 nosocomial infections and LFD positivity rate in HCWs, or the population prevalence, was  
 426 observed for any of the time periods. A negative association was observed between  
 427 nosocomial infections and average income deprivation score, although this analysis was only  
 428 conducted for the first two time periods, due to identifiability issues. Similar results were  
 429 obtained in the sensitivity analysis when a nosocomial infection was defined as a patient who  
 430 developed COVID-19 symptoms after 14 days since their admission (Table S6).

431 **Table 4.** Logistic regression model for the prevalence of nosocomial COVID-19 infections  
 432 among all COVID-19 infections in hospitalised patients. Odds ratios (95% CI) are shown.

	November 2020– December 2020 (pre-vaccination) (1)	January 2021– July 2021 (vaccine rollout) (2)	August 2021– November 2021 (Delta) (3)	December 2021–March 2022 (Omicron) (4)
Number of observations <sup>1</sup>	1314	2852	1489	829
LFD coverage (per 100% increase)	0.98 (0.96, 0.99)	0.92 (0.89, 0.95)	1.06 (0.89, 1.26)	0.78 (0.63, 0.96)
Acute trust LFD positivity (per 1/100 increase)	0.90 (0.82, 1.00)	0.96 (0.89, 1.04)	0.87 (0.53, 1.42)	1.03 (0.97, 1.09)
Local COVID-19 prevalence (per 1/100 increase)	0.90 (0.74, 1.09)	0.76 (0.53, 1.11)	0.84 (0.45, 1.53)	1.02 (0.82, 1.27)

Alpha variant prevalence (per 0.1 increase)	1.02 (0.96, 1.08)	1.00 (0.92, 1.08)	N/A	N/A
Delta variant prevalence (per 0.1 increase)	N/A	1.00 (0.80, 1.24)	Delta variant prevalent	1.33 (0.67, 2.66)
Omicron variant prevalence (per 0.1 increase)	N/A	N/A	N/A	1.72 (0.90, 3.27)
Average income deprivation score <sup>2</sup> per acute trust (per 0.01-unit increase)	0.16 (0.07, 0.33)	0.53 (0.27, 1.07)	N/A	N/A

433 <sup>1</sup>Number of acute trust/week observations included in the model.

434 <sup>2</sup>Average income deprivation score, median (range) 0.130 (0.053–0.239) across trusts included in the analysis.  
 435 A higher score means greater deprivation; 95% confidence intervals are shown in brackets. The results are  
 436 adjusted for trust and calendar week (as fixed effects) and the number of new COVID-19 cases identified at the  
 437 trust that week.

438 N/A, not applicable

### 439 Economic analysis of LFD testing on nosocomial infections averted

440 At a testing effectiveness of 8% to 20%, between 17,500 and 43,800 nosocomial infections  
 441 were averted during weekly testing of HCWs. The number of deaths averted ranged from  
 442 5500 to 13,800, with a saving per death averted of GBP 127,900–320,800. Between 38,100  
 443 and 95,100 QALYs were gained, translating to a value per QALY gained of GBP 18,500–46,400.  
 444 A sensitivity analysis of the QALY values for deaths generated a saving of GBP 25,000–62,800  
 445 per QALY gained at a value of 4.98 QALYs per death averted and GBP 14,300–35,900 per QALY  
 446 gained at a value of 8.8 QALYs per death averted at a testing effectiveness of 4% to 26% (Table  
 447 5).

448 At a daily testing effectiveness of 15% to 30%, between 32,800 and 65,700 nosocomial  
 449 infections were averted due to testing of HCWs. The number of deaths averted ranged from  
 450 10,300 to 20,700, with a cost per death averted of GBP 314,800–630,300. The cost per QALY  
 451 gained was GBP 45,600–91,300. A sensitivity analysis of the QALY values per death averted  
 452 found this would cost GBP 61,600–123,400 per QALY gained at a value of 4.98 QALYs per



453 death averted and GBP 35,300–70,600 per QALY gained at a value of 8.8 QALYs per death  
 454 averted (Table 5).

455 **Table 5.** Summary of the cost effectiveness of weekly and daily testing with respect to  
 456 nosocomial infections averted during the evaluation period (October 2020 to March 2022).

Testing level	Weekly testing			Daily testing		
	8%	16%	20%	25%	15%	30%
Number of nosocomial infections averted	17,500	35,000	43,800	50,400	32,800	65,700
Number of deaths averted due to nosocomial infections averted	5,500	11,000	13,800	15,800	10,300	20,700
Cost per nosocomial infection averted (GBP)	101,100	50,600	40,5500	35,200	53,900	27,000
Cost per death averted (GBP)	320,800	160,000	127,900	410,800	630,300	314,800
Number of QALYs gained	38,000	76,100	95,100	109,400	71,400	142,700
Cost per QALY gained (GBP)	46,400	23,200	18,500	59,500	91,300	45,600

457 The statistical analysis presented estimated that HCW testing was associated with a 16.8% (95% CI 8.2%,  
 458 18.8%) reduction in nosocomial infections compared with a testing scenario at 25% of actual levels.  
 459

460 The ICER (incremental costs per QALY gained) for various assumptions of testing effectiveness  
 461 with respect to reducing nosocomial COVID-19 infections in acute trusts in England are  
 462 illustrated in Fig 3C. The range (shaded area) shown in the plot indicates the cost per QALY  
 463 gained at an upper value of 8.8 QALYs per death averted and a lower value of 4.98 QALYs per  
 464 death averted. The HCW testing service was estimated to be cost effective at reducing  
 465 nosocomial infections at values of effectiveness of 5.5% or more, at a willingness to pay  
 466 threshold of GBP 70,000. Our statistical analysis estimated that HCW testing was associated  
 467 with a 16.8% (95% CI 8.2%, 18.8%) reduction in nosocomial infections compared with a testing  
 468 scenario at 25% of actual levels. This suggests that for all values of effectiveness predicted in  
 469 the 95% CI, the HCW testing service was cost effective.

470 The yellow dot in Fig 3C indicates that at an overall 16.8% decrease in nosocomial infections,  
 471 the HCW testing service was cost effective, at a cost of GBP 22,100 per QALY gained. This is  
 472 well below the willingness to pay threshold of GBP 70,000 published by the UK government

473 [20]. The HCW testing service was also cost effective at reducing nosocomial infections at  
474 values of effectiveness of 12.5% or more at the National Institute for Health and Care  
475 Excellence (NICE) threshold of GBP 30,000 [21]. Compared with a hypothetical scenario of no  
476 testing, the HCW testing service contributed to an even greater reduction in nosocomial  
477 infections and hence was highly cost effective.

## 478 Discussion

479 During the COVID-19 pandemic, in the UK and worldwide, HCWs suffered from consistently  
480 high rates of exposure [22], a lack of personal protective equipment (PPE) [23] and high levels  
481 of mental anxiety [24], among other stressors. The UK's NHS subsequently experienced major  
482 disruption due to staff absences and the burden of nosocomial infections [25, 26]. A better  
483 understanding of the burden of staff absenteeism and nosocomial infections among HCWs  
484 due to COVID-19 and the practical impact of large-scale LFD testing on reducing this burden  
485 will be integral to future pandemic preparedness plans in healthcare settings.

486 We have presented a timeline of FTE days lost among NHS staff due to COVID-19, from  
487 October 2020 to March 2022, which accounted for more than 50% of the total monthly FTE  
488 days lost for any reason, an average 1.5-fold increase during the first peak of the COVID-19  
489 epidemic in March 2020 compared with the 2009–2019 median level. This situation worsened  
490 across certain trusts during the Omicron phase in February 2022. There was substantial  
491 heterogeneity in FTE days lost by geographical locations of trusts, trust type and staff group,  
492 likely reflecting the heterogeneity of COVID-19 transmission and the risks associated with  
493 being an HCW [27]. Among 136 NHS acute trusts, we identified that nosocomial infections  
494 accounted for 2.9% to 3.5% of the total 106,377 hospitalised COVID-19 patients from October  
495 2020 to March 2022. These estimates are around 1% higher than a previous estimate of

496 nosocomial infections in England between June 2020 and March 2021 [28] but dramatically  
497 lower than reported from other studies that focused on the early days of the pandemic [3,  
498 29-31]. The reported number of LFD tests from NHS acute trusts was likely to be an  
499 underestimate of the actual number of tests performed. Possible reasons for this discrepancy  
500 include biases in reporting, e.g. some negative results may not have been reported as there  
501 was no infection prevention and control (IPC) action required for the individual HCW  
502 themselves or for their trust; furthermore, some individuals may not have reported positive  
503 results if there would have been an impact on their personal income or the income of their  
504 family due to them having to isolate.

505 Testing could potentially have two different effects on absenteeism, which work in opposite  
506 directions, where nosocomial infection is also an important mediator. Testing meant more  
507 cases would be identified and would need to isolate (both necessary isolation of  
508 asymptomatic cases and isolation of individuals who received false-positive results), leading  
509 to an increase in absenteeism. On the other hand, the isolation of individuals with true-  
510 positive results would reduce onward transmission and subsequent isolations, leading to a  
511 reduction in staff absenteeism. The balance of these two dynamics might change over time  
512 and at different comparator levels of testing. Our modelling results imply that increasing the  
513 volume of asymptomatic testing prior to August 2021 reduced absence rates among HCWs,  
514 but this impact was subsequently diminished by the high level of vaccination coverage. Similar  
515 observations have been reported elsewhere. For example, a hospital in the Canadian city of  
516 Campinas experienced a significantly reduced level of hospital absenteeism due to COVID-19  
517 from March 2020 to September 2020 by using PCR tests for screening and then requiring the  
518 isolation of asymptomatic HCWs who had tested positive, resulting in a reduction in  
519 transmission of COVID-19 to hospitalised patients [32]. Using a computational model of SARS-

520 CoV-2 transmission in a hospital in England, another study estimated that testing  
521 asymptomatic patients on admission would reduce the rate of nosocomial SARS-CoV-2  
522 infection by 8.1% to 21.5% [33]. On the other hand, another modelling study showed that,  
523 compared with no testing, testing all HCWs would prevent most transmission, but at the  
524 expense of greatly increased staff absences and greater capacity for testing needed [34]. That  
525 study found that the optimal testing strategy to reduce staff absences would be to test HCWs  
526 in household quarantine if they had been exposed to symptomatic household contacts. This  
527 would increase the risk of workplace transmission; however, the authors noted that this risk  
528 could be mitigated, although not eliminated, by re-testing initially negative samples of staff  
529 who were quarantining [34].

530 Our model suggests that high levels of vaccination coverage might dilute the effect of testing  
531 on reducing absenteeism, which could be attributed to the vaccine's efficacy in blocking  
532 infections/transmissions and resultant changes in isolation policies (after vaccination the  
533 isolation period following a positive test result could be shortened) [35]. An observational  
534 study involving a prospective cohort of 4964 HCWs in Canada showed that vaccination was  
535 strongly related to shorter absences due to COVID-19-related illness [36].

536 Although the rollout of vaccination may have made ongoing testing appear to be marginally  
537 less cost effective, continued testing should be considered a reasonable and overall cost-  
538 effective insurance strategy given the uncertainties around the long-term effectiveness of  
539 vaccines and the potential for future VOCs. This also raises the question of whether a standard  
540 health economics approach is appropriate for analyses such as this, post-vaccination rollout.  
541 In England, testing was continued based on the precautionary principle and because the  
542 potential impact of new variants was unknown. Traditional cost-effectiveness analyses do not

543 take into account the willingness to pay for this type of assurance. We used a provider  
544 approach for our economic analysis. A societal approach that incorporates the economic cost  
545 of illness, including losses due to absenteeism, while not accounting for the assurance against  
546 uncertainty, is likely to result in testing being more cost effective even after vaccination. At  
547 the same time, an analysis conducted for different time periods may have shown that the  
548 intervention was not cost effective, especially with VOCs that were less severe or  
549 transmissible, e.g. Omicron.

550 Higher community prevalence levels were associated with significant HCW absenteeism even  
551 after adjusting for testing levels. This suggested that although testing could have a positive  
552 impact on mitigating outbreaks within healthcare settings and reducing HCWs' absenteeism  
553 at a given level of community transmission rate, the overall community prevalence placed  
554 greater external pressure on outbreak management and HCW attendance. We might  
555 anticipate HCW absence rates to be higher when there is greater community transmission,  
556 but if testing is particularly protective at that point, then testing would play a key role in  
557 outbreak mitigation within healthcare settings.

558 We estimated LFD test coverage was negatively correlated with nosocomial infections,  
559 although the strength of this correlation varied over time and was estimated to be highest  
560 during the Omicron period. These findings are consistent with mechanistic modelling results,  
561 which estimated nosocomial incidence could be reduced by up to 40–47% (range of means)  
562 with routine symptomatic testing using reverse transcriptase PCR (RT-PCR), 59–63% with the  
563 addition of a timely round of antigen rapid diagnostic testing screening and 69–75% with well-  
564 timed two-round screening [37]. The risk of developing nosocomial infections was estimated  
565 to vary for different VOCs. Another modelling study demonstrated that the risk of a highly

566 transmissible (including pre-symptomatic transmission) variant could amplify nosocomial  
567 infections, e.g. it was estimated a variant with 56% higher transmissibility would increase  
568 nosocomial transmissions by 303% [38]. Our model predicted that the observed HCW  
569 testing/reporting was associated with a 16.8% (95% CI 8.2%, 18.8%) reduction in nosocomial  
570 infections compared with a hypothetical testing scenario at 25% of actual levels. This was in  
571 line with the findings from an internal modelling exercise carried out by UKHSA in 2022, which  
572 estimated that the reductions in nosocomial infections due to weekly and daily testing were  
573 16% and 25.4%, respectively. Combined with testing and treatment costs, our cost-  
574 effectiveness analysis estimated that the HCW testing service was cost effective at reducing  
575 nosocomial infections when effectiveness attained 5.5% or more, at a willingness to pay  
576 threshold of GBP 70,000.

577 Our study has some strengths and limitations. To the best of our knowledge, this is the first  
578 study to examine the association between test coverage and nosocomial COVID-19  
579 transmission in England, incorporating an economic analysis. The data on 16 million LFDs  
580 represent a uniquely large source of information, with high coverage of the HCW population  
581 who could access tests for free during the pandemic. However, data were not available that  
582 would have enabled us to quantify the impact of patients with undetected COVID-19 being  
583 released into the community and potentially infecting others through secondary  
584 transmission. We could also not account for the effects of long COVID-19 in our economic  
585 analysis, as these effects could not be quantified. Furthermore, the nosocomial infections  
586 estimated using the ISARIC dataset are likely to be biased by the inclusion criteria, in that only  
587 individuals who consented to participate in the study were included.

588 Our study has implications for the development of testing policies in the healthcare setting  
589 for future pandemics, particularly for respiratory pathogens similar to COVID-19. Our  
590 evaluation also showed that there was a discrepancy between the numbers of LFD tests  
591 distributed and reported in NHS trusts, likely suggesting a gap between testing and test  
592 reporting, a general issue across various settings [39]. Our analysis of the available data  
593 indicated that HCW testing interventions had varying impacts (on both nosocomial infections  
594 and HCW FTE days lost) throughout the pandemic, possibly influenced by external factors  
595 such as community prevalence and vaccination. This finding highlights the importance and  
596 necessity of developing more targeted and agile testing systems, which operationally would  
597 require the ability to turn mass testing off and on as an epidemic progress and was described  
598 as the primary intention of the retrospective pan-evaluation of the mass testing conducted  
599 during the COVID-19 pandemic [13]. The rollout of HCW testing interventions through pilot  
600 studies, with collection of and/or timely access to data relating to suitable endpoints  
601 (including HCW absenteeism, routine test results, community prevalence, and hospitalisation  
602 and mortality data), could be used by relevant authorities to support the real-time  
603 assessment of any testing service and adjustment of testing interventions.

604

#### 605 **EY-Oxford Health Analytics Consortium membership list**

606 Ricardo Aguas, Ma'ayan Amswych, Billie Andersen-Waine, Sumali Bajaj, Kweku Bimpong,  
607 Adam Bodley, Liberty Cantrell, Siyu Chen, Richard Creswell, Prabin Dahal, Sophie Dickinson,  
608 Sabine Dittrich, Tracy Evans, Angus Ferguson-Lewis, Caroline Franco, Bo Gao, Rachel  
609 Hounsell, Muhammad Kasim, Claire Keene, Ben Lambert, Umar Mahmood, Melinda Mills,  
610 Ainura Moldokmatova, Sassy Molyneux, Reshania Naidoo, Randolph Ngwafor Anye, Jared  
611 Norman, Wirichada Pan-Ngum, Sarah Pinto-Duschinsky, Sunil Pokharel, Anastasiia Polner,

612 Katarzyna Przybylska, Emily Rowe, Sompob Saralamba, Rima Shretta, Sheetal Silal, Kasia  
613 Stepniewska, Joseph Tsui, Merryn Voysey, Marta Wanat, Lisa J. White, Gulsen Yenidogan

## 614 Author Contributions

615 LJW, KS and RS conceived and designed the study. LJW, MV, RS, and KS supervised the work.  
616 SC, RH, LC, LHT, KS and RS coded the models and analysed the data. SC and RN collected the  
617 testing policy data. KS, MV, LJW, and RS advised on the methodologies. SC, RH, LC, RS and  
618 KS wrote the initial draft of the manuscript. All authors contributed to guiding the research  
619 questions, interpretation of results, and reviewing and approving the manuscript. The data  
620 were restricted due to privacy concerns and only available to a subset of the authors. The  
621 corresponding and lead authors had full access to all data used in the study.

## 622 Data reporting

623 The data supporting the findings of this study are available within the paper and its supporting  
624 information. The data were made available by UKHSA to the manuscript's authors as part of  
625 a retrospective evaluation of England's COVID-19 testing programme. The authors cannot  
626 make the underlying datasets publicly available for ethical and legal reasons, particularly  
627 given the sensitive nature of the information included. Applications for access to the  
628 anonymised data should be submitted to UKHSA.

## 629 Ethics approval

630 The study protocol for the evaluation project, which this research fed into, was granted ethics  
631 approval by the UKHSA Research Ethics and Governance Group, reference number NR0347.  
632 All relevant ethics guidelines were followed throughout.



## 633 Competing interests

634 This work was funded by the Secretary of State for Health and Social Care acting as part of  
635 the Crown through UKHSA, reference number C80260/PRO5331. All authors working for EY  
636 and the University of Oxford had financial support from UKHSA for the submitted work; EY  
637 LLP London has previously received payment for consultancy and advisory work on the NHS  
638 Test & Trace response from the UK Department of Health and Social Care, now known as  
639 UKHSA. Susan Hopkins is supported by the National Institute for Health Research (NIHR)  
640 Health Protection Research Unit in Healthcare Associated Infections and Antimicrobial  
641 Resistance (NIHR200915), a partnership between UKHSA and the University of Oxford. The  
642 views expressed are those of the authors and not necessarily those of NIHR, UKHSA or the  
643 Department of Health and Social Care. All authors declare no other competing interests.

## 644 Acknowledgements

645 Medical editing support in the preparation of this paper was provided by Adam Bodley,  
646 according to Good Publication Practice. The authors would like to express their gratitude to  
647 Oliver Munn, Sarah Tunkel, Nick Sharp, Sariyu Shoge and Olutoye Olatunbosun of UKHSA for  
648 sponsoring this research and enabling access to the data used in this study.

## 649 Financial Disclosure Statement

650 This work was funded by the Secretary of State for Health and Social Care acting as part of  
651 the Crown through UKHSA, reference number C80260/PRO5331. All authors working for EY  
652 and the University of Oxford had financial support from UKHSA for the submitted work; EY  
653 LLP London has previously received payment for consultancy and advisory work on the NHS  
654 Test & Trace response from the UK Department of Health and Social Care, now known as  
655 UKHSA. Susan Hopkins is supported by the National Institute for Health Research (NIHR)

656 Health Protection Research Unit in Healthcare Associated Infections and Antimicrobial  
657 Resistance (NIHR200915), a partnership between UKHSA and the University of Oxford.

## 658 References

- 659 1. GOV.UK. COVID-19 and Occupational Impacts 2022 [2 May 2024]. Available from:  
660 [https://www.gov.uk/government/publications/covid-19-and-occupational-impacts/covid-](https://www.gov.uk/government/publications/covid-19-and-occupational-impacts/covid-19-and-occupational-impacts)  
661 [19-and-occupational-impacts](https://www.gov.uk/government/publications/covid-19-and-occupational-impacts/covid-19-and-occupational-impacts).
- 662 2. Mutambudzi M, Niedwiedz C, Macdonald EB, Leyland A, Mair F, Anderson J, et al.  
663 Occupation and risk of severe COVID-19: prospective cohort study of 120 075 UK Biobank  
664 participants. *Occup Environ Med*. 2020;78(5):307-14. Epub 20201209. doi: 10.1136/oemed-  
665 2020-106731. PubMed PMID: 33298533; PubMed Central PMCID: PMCPMC7611715.
- 666 3. Knight GM, Pham TM, Stimson J, Funk S, Jafari Y, Pople D, et al. The contribution of  
667 hospital-acquired infections to the COVID-19 epidemic in England in the first half of 2020.  
668 *BMC Infect Dis*. 2022;22(1):556. Epub 2022/06/19. doi: 10.1186/s12879-022-07490-4.  
669 PubMed PMID: 35717168; PubMed Central PMCID: PMCPMC9206097.
- 670 4. Black JRM, Bailey C, Przewrocka J, Dijkstra KK, Swanton C. COVID-19: the case for  
671 health-care worker screening to prevent hospital transmission. *Lancet*.  
672 2020;395(10234):1418-20. Epub 2020/04/20. doi: 10.1016/s0140-6736(20)30917-x.  
673 PubMed PMID: 32305073; PubMed Central PMCID: PMCPMC7162624.
- 674 5. NHS England, NHS Improvement. Novel coronavirus (COVID-19) standard operating  
675 procedure - NHS England and NHS Improvement rollout of lateral flow devices for  
676 asymptomatic staff testing for SARS CoV-2 (phase 2: trusts) 2020 [updated 16 November  
677 2020/18 October 2022]. Available from: [https://www.england.nhs.uk/coronavirus/wp-](https://www.england.nhs.uk/coronavirus/wp-content/uploads/sites/52/2020/11/C0873_i_SOP_LFD-rollout-for-asymptomatic-staff-testing_phase-2-trusts-v1.1_16-nov20.pdf)  
678 [content/uploads/sites/52/2020/11/C0873\\_i\\_SOP\\_LFD-rollout-for-asymptomatic-staff-](https://www.england.nhs.uk/coronavirus/wp-content/uploads/sites/52/2020/11/C0873_i_SOP_LFD-rollout-for-asymptomatic-staff-testing_phase-2-trusts-v1.1_16-nov20.pdf)  
679 [testing\\_phase-2-trusts-v1.1\\_16-nov20.pdf](https://www.england.nhs.uk/coronavirus/wp-content/uploads/sites/52/2020/11/C0873_i_SOP_LFD-rollout-for-asymptomatic-staff-testing_phase-2-trusts-v1.1_16-nov20.pdf).
- 680 6. UK Health Security Agency. Managing healthcare staff with symptoms of a  
681 respiratory infection or a positive COVID-19 test result 2023 [2 May 2024]. Available from:  
682 [https://www.gov.uk/government/publications/covid-19-managing-healthcare-staff-with-](https://www.gov.uk/government/publications/covid-19-managing-healthcare-staff-with-symptoms-of-a-respiratory-infection/managing-healthcare-staff-with-symptoms-of-a-respiratory-infection-or-a-positive-covid-19-test-result)  
683 [symptoms-of-a-respiratory-infection/managing-healthcare-staff-with-symptoms-of-a-](https://www.gov.uk/government/publications/covid-19-managing-healthcare-staff-with-symptoms-of-a-respiratory-infection/managing-healthcare-staff-with-symptoms-of-a-respiratory-infection-or-a-positive-covid-19-test-result)  
684 [respiratory-infection-or-a-positive-covid-19-test-result](https://www.gov.uk/government/publications/covid-19-managing-healthcare-staff-with-symptoms-of-a-respiratory-infection/managing-healthcare-staff-with-symptoms-of-a-respiratory-infection-or-a-positive-covid-19-test-result).
- 685 7. Department of Health and Social Care. Overview of adult social care guidance on  
686 coronavirus (COVID-19) [Withdrawn] 2020 [19 October 2022]. Available from:  
687 [https://www.gov.uk/guidance/overview-of-adult-social-care-guidance-on-coronavirus-](https://www.gov.uk/guidance/overview-of-adult-social-care-guidance-on-coronavirus-covid-19)  
688 [covid-19](https://www.gov.uk/guidance/overview-of-adult-social-care-guidance-on-coronavirus-covid-19).
- 689 8. Department of Health and Social Care. Self-isolation for those with COVID-19 can  
690 end after 5 full days following 2 negative LFD tests 2022 [2 January 2023]. Available from:  
691 [https://www.gov.uk/government/news/self-isolation-for-those-with-covid-19-can-end-](https://www.gov.uk/government/news/self-isolation-for-those-with-covid-19-can-end-after-five-full-days-following-two-negative-lfd-tests)  
692 [after-five-full-days-following-two-negative-lfd-tests](https://www.gov.uk/government/news/self-isolation-for-those-with-covid-19-can-end-after-five-full-days-following-two-negative-lfd-tests).

- 693 9. BBC. Covid self-isolation in England being cut to five full days 2022 [2 May 2024].  
694 Available from: <https://www.bbc.co.uk/news/uk-59980505>.
- 695 10. NHS England. Updated UK Health Security Agency guidance – confirmatory PCR tests  
696 to be temporarily suspended for positive lateral flow test results 2022 [8 November 2022].  
697 Available from: [https://www.england.nhs.uk/coronavirus/documents/updated-uk-health-  
698 security-agency-guidance-confirmatory-pcr-tests-to-be-temporarily-suspended-for-positive-  
699 lateral-flow-test-results/](https://www.england.nhs.uk/coronavirus/documents/updated-uk-health-security-agency-guidance-confirmatory-pcr-tests-to-be-temporarily-suspended-for-positive-lateral-flow-test-results/).
- 700 11. UK Health Security Agency. NHS Test and Trace statistics (England): methodology  
701 2022 [26 March 2024]. Available from: [https://www.gov.uk/government/publications/nhs-  
702 test-and-trace-statistics-england-methodology/nhs-test-and-trace-statistics-england-  
703 methodology](https://www.gov.uk/government/publications/nhs-test-and-trace-statistics-england-methodology/nhs-test-and-trace-statistics-england-methodology).
- 704 12. Naidoo R, Andersen-Waine B, Dahal P, Dickinson S, Lambert B, Mills MC, et al. A  
705 multistage mixed-methods evaluation of the UKHSA testing response during the COVID-19  
706 pandemic in England. medRxiv. 2022:2022.10.27.22281604. doi:  
707 10.1101/2022.10.27.22281604.
- 708 13. EY–Oxford Health Analytics Consortium. Evaluation of the national COVID-19 testing  
709 programme in England between October 2020 and March 2022 2023 [26 March 2024].  
710 Available from: [https://assets.ey.com/content/dam/ey-sites/ey-  
711 com/en\\_uk/resources/evaluation-of-covid-19-testing-in-england-eoha-conference-  
712 edition.pdf](https://assets.ey.com/content/dam/ey-sites/ey-com/en_uk/resources/evaluation-of-covid-19-testing-in-england-eoha-conference-edition.pdf).
- 713 14. NHS Digital. NHS workforce statistics nd [9 May 2024]. Available from:  
714 [https://digital.nhs.uk/data-and-information/publications/statistical/nhs-workforce-  
715 statistics](https://digital.nhs.uk/data-and-information/publications/statistical/nhs-workforce-statistics).
- 716 15. Nicholson G, Lehmann B, Padellini T, Pouwels KB, Jersakova R, Lomax J, et al.  
717 Improving local prevalence estimates of SARS-CoV-2 infections using a causal debiasing  
718 framework. Nature Microbiology. 2022;7(1):97-107. doi: 10.1038/s41564-021-01029-0.
- 719 16. Riley S, Atchison C, Ashby D, Donnelly CA, Barclay W, Cooke GS, et al. REal-time  
720 Assessment of Community Transmission (REACT) of SARS-CoV-2 virus: Study protocol.  
721 Wellcome Open Res. 2020;5:200. Epub 2021/05/19. doi:  
722 10.12688/wellcomeopenres.16228.2. PubMed PMID: 33997297; PubMed Central PMCID:  
723 PMCPMC8095190.
- 724 17. Sanger Institute. COVID–19 Genomic Surveillance nd [26 March 2024]. Available  
725 from: <https://covid19.sanger.ac.uk/lineages/raw>.
- 726 18. NHS England. Vaccinations: COVID-19 nd [9 May 2024]. Available from:  
727 <https://www.england.nhs.uk/statistics/statistical-work-areas/covid-19-vaccinations/>.
- 728 19. Meakin S, Abbott S, Choi H, Funk S. NHS trust level Covid-19 data aggregated to a  
729 range of spatial scales 2020 [2 May 2024]. Available from:  
730 <https://epiforecasts.io/covid19.nhs.data/index.html>.

- 731 20. HM Treasury. The Green Book (2022) 2022 [13 March 2023]. Available from:  
732 [https://www.gov.uk/government/publications/the-green-book-appraisal-and-evaluation-in-](https://www.gov.uk/government/publications/the-green-book-appraisal-and-evaluation-in-central-government/the-green-book-2020)  
733 [central-government/the-green-book-2020](https://www.gov.uk/government/publications/the-green-book-appraisal-and-evaluation-in-central-government/the-green-book-2020).
- 734 21. NICE. NICE health technology evaluations: the manual 2023. Available from:  
735 [https://www.nice.org.uk/process/pmg36/resources/nice-health-technology-evaluations-](https://www.nice.org.uk/process/pmg36/resources/nice-health-technology-evaluations-the-manual-pdf-72286779244741)  
736 [the-manual-pdf-72286779244741](https://www.nice.org.uk/process/pmg36/resources/nice-health-technology-evaluations-the-manual-pdf-72286779244741).
- 737 22. Pople D, Monk EJM, Evans S, Foulkes S, Islam J, Wellington E, et al. Burden of SARS-  
738 CoV-2 infection in healthcare workers during second wave in England and impact of  
739 vaccines: prospective multicentre cohort study (SIREN) and mathematical model. *Bmj*.  
740 2022;378:e070379. Epub 20220720. doi: 10.1136/bmj-2022-070379. PubMed PMID:  
741 35858689; PubMed Central PMCID: PMCPMC9295077.
- 742 23. Galanis P, Vraka I, Fragkou D, Bilali A, Kaitelidou D. Impact of personal protective  
743 equipment use on health care workers' physical health during the COVID-19 pandemic: A  
744 systematic review and meta-analysis. *Am J Infect Control*. 2021;49(10):1305-15. Epub  
745 20210507. doi: 10.1016/j.ajic.2021.04.084. PubMed PMID: 33965463; PubMed Central  
746 PMCID: PMCPMC8102386.
- 747 24. De Kock JH, Latham HA, Leslie SJ, Grindle M, Munoz SA, Ellis L, et al. A rapid review of  
748 the impact of COVID-19 on the mental health of healthcare workers: implications for  
749 supporting psychological well-being. *BMC Public Health*. 2021;21(1):104. Epub 20210109.  
750 doi: 10.1186/s12889-020-10070-3. PubMed PMID: 33422039; PubMed Central PMCID:  
751 PMCPMC7794640.
- 752 25. Appleby J. NHS sickness absence during the covid-19 pandemic. *Bmj*. 2021;372:n471.  
753 Epub 20210303. doi: 10.1136/bmj.n471. PubMed PMID: 33658183.
- 754 26. Hunter DJ. At Breaking Point or Already Broken? The National Health Service in the  
755 United Kingdom. *N Engl J Med*. 2023;389(2):100-3. Epub 20230708. doi:  
756 10.1056/NEJMp2301257. PubMed PMID: 37428450.
- 757 27. van der Plaats DA, Madan I, Coggon D, van Tongeren M, Edge R, Muiry R, et al. Risks  
758 of COVID-19 by occupation in NHS workers in England. *Occup Environ Med*. 2022;79(3):176-  
759 83. Epub 20210830. doi: 10.1136/oemed-2021-107628. PubMed PMID: 34462304.
- 760 28. Cooper BS, Evans S, Jafari Y, Pham TM, Mo Y, Lim C, et al. The burden and dynamics  
761 of hospital-acquired SARS-CoV-2 in England. *Nature*. 2023;623(7985):132-8. Epub 20231018.  
762 doi: 10.1038/s41586-023-06634-z. PubMed PMID: 37853126; PubMed Central PMCID:  
763 PMCPMC10620085.
- 764 29. Bhattacharya A, Collin SM, Stimson J, Thelwall S, Nsonwu O, Gerver S, et al.  
765 Healthcare-associated COVID-19 in England: A national data linkage study. *J Infect*.  
766 2021;83(5):565-72. Epub 20210830. doi: 10.1016/j.jinf.2021.08.039. PubMed PMID:  
767 34474055; PubMed Central PMCID: PMCPMC8404398.

- 768 30. Lumley SF, Constantinides B, Sanderson N, Rodger G, Street TL, Swann J, et al.  
769 Epidemiological data and genome sequencing reveals that nosocomial transmission of SARS-  
770 CoV-2 is underestimated and mostly mediated by a small number of highly infectious  
771 individuals. *J Infect.* 2021;83(4):473-82. Epub 20210728. doi: 10.1016/j.jinf.2021.07.034.  
772 PubMed PMID: 34332019; PubMed Central PMCID: PMC8316632.
- 773 31. Mo Y, Eyre DW, Lumley SF, Walker TM, Shaw RH, O'Donnell D, et al. Transmission of  
774 community- and hospital-acquired SARS-CoV-2 in hospital settings in the UK: A cohort study.  
775 *PLoS Med.* 2021;18(10):e1003816. Epub 2021/10/13. doi: 10.1371/journal.pmed.1003816.  
776 PubMed PMID: 34637439; PubMed Central PMCID: PMC8509983 following competing  
777 interests: DWE declares personal fees from Gilead outside the submitted work.
- 778 32. Teixeira Mendes E, Neto D, Ferreira GM, Valença IN, Lima M, de Freitas M, et al.  
779 Impact of COVID-19 RT-PCR testing of asymptomatic health care workers on absenteeism  
780 and hospital transmission during the pandemic. *Am J Infect Control.* 2023;51(3):248-54.  
781 Epub 20221112. doi: 10.1016/j.ajic.2022.10.014. PubMed PMID: 36375707; PubMed Central  
782 PMCID: PMC9671504.
- 783 33. Evans S, Naylor NR, Fowler T, Hopkins S, Robotham J. The effectiveness and  
784 efficiency of asymptomatic SARS-CoV-2 testing strategies for patient and healthcare workers  
785 within acute NHS hospitals during an omicron-like period. *BMC Infect Dis.* 2024;24(1):64.  
786 Epub 20240108. doi: 10.1186/s12879-023-08948-9. PubMed PMID: 38191324; PubMed  
787 Central PMCID: PMC810775431.
- 788 34. Sandmann FG, White PJ, Ramsay M, Jit M. Optimizing Benefits of Testing Key  
789 Workers for Infection with SARS-CoV-2: A Mathematical Modeling Analysis. *Clin Infect Dis.*  
790 2020;71(12):3196-203. doi: 10.1093/cid/ciaa901. PubMed PMID: 32634823; PubMed  
791 Central PMCID: PMC7454477.
- 792 35. Raza M, Giri P, Basu S. Surveillance and return to work of healthcare workers  
793 following SARS-CoV-2 Omicron variant infection, Sheffield, England, 17 January to 7  
794 February 2022. *Euro Surveill.* 2022;27(11). doi: 10.2807/1560-7917.Es.2022.27.11.2200164.  
795 PubMed PMID: 35301977; PubMed Central PMCID: PMC8971920.
- 796 36. Adishes A, Durand-Moreau Q, Labrèche F, Ruzycki S, Zadunayski T, Cherry N.  
797 Determinants of Sickness Absence Duration After Mild COVID-19 in a Prospective Cohort of  
798 Canadian Healthcare Workers. *J Occup Environ Med.* 2023;65(11):958-66. Epub 20230812.  
799 doi: 10.1097/jom.0000000000002945. PubMed PMID: 37590394; PubMed Central PMCID:  
800 PMC10662618.
- 801 37. Smith DRM, Duval A, Zahar JR, Opatowski L, Temime L. Rapid antigen testing as a  
802 reactive response to surges in nosocomial SARS-CoV-2 outbreak risk. *Nat Commun.*  
803 2022;13(1):236. Epub 20220111. doi: 10.1038/s41467-021-27845-w. PubMed PMID:  
804 35017499; PubMed Central PMCID: PMC8752617.
- 805 38. Pham TM, Tahir H, van de Wijgert J, Van der Roest BR, Ellerbroek P, Bonten MJM, et  
806 al. Interventions to control nosocomial transmission of SARS-CoV-2: a modelling study. *BMC*

807 Med. 2021;19(1):211. Epub 20210827. doi: 10.1186/s12916-021-02060-y. PubMed PMID:  
808 34446011; PubMed Central PMCID: PMCPMC8390112.

809 39. UK Health Security Agency. COVID-19: general public testing behaviours 2023 [2 May  
810 2024]. Available from: <https://www.gov.uk/government/publications/lfid-tests-how-and-why-they-were-used-during-the-pandemic/covid-19-general-public-testing-behaviours>.

812