

1 Workplace transmission of SARS-CoV-2 among health- 2 care workers in Malaysia

3 Chan Yean Yean PhD^{1,2*}, Muhammad Zarul Hanifah Md Zoqratt BSc^{3*}, Nyok-Sean Lau PhD⁴, Nurfadhlna Musa PhD⁵, Muhammad Fazli
4 Khalid MSc², Lim Shu Yong MSc³, Wan Mohd Zahiruddin Wan Mohammad MPH⁶, Sadequr Rahman PhD³, Wilhelm Wei Han Eng BSc³,
5 Zaini bin Hussin MPH⁷, Abdul Haris bin Muhammad MPH⁷, Maizun Binti Mohd Zain MPH⁸, Suhaiza Binti Sulaiman MPH⁹, Nik Mohd
6 Hafiz Bin Mohd Fuzi DrPH¹⁰, Noor Hafizan Binti Mat Salleh DrPH¹¹, Syahida binti Omar BSc¹², Ahmad Sukari Halim FCCP^{13,14}, Zakuan
7 Zainy Deris PhD¹, Kirnpal Kaur Banga Singh PhD¹, Azian Harun PhD¹, Muhammad Nashrul Farhan Samsudin BSc¹, Chua Wei Lian BSc¹⁵,
8 Nazmi Liana Binti Azmi BSc¹⁵, Engku Nur Syafirah bt Engku Abd Rahman MSc¹, Naveed Ahmed MPhil¹, Nor Azwany Yaacob MPH⁶,
9 Aliff Ridzwan Hamidun MPH⁶, Mohd Hazwan Baharuddin MPH⁶, Mohd Nasrullah Nik Ab. Kadir MPH⁶, Munira Hj Mahmud MPH⁶,
10 Mohd Azmi Suliman MPH⁶, Qasim Ayub PhD^{3,†} and Rosline Hassan MMed^{16,‡}

11 Author affiliations: ¹Department of Medical Microbiology and Parasitology, School of Medical Sciences, Universiti Sains Malaysia, Kubang
12 Kerian 16150, Kelantan, Malaysia; ²Institute for Research in Molecular Medicine (INFORMM), Universiti Sains Malaysia, 16150 Kubang
13 Kerian, Kelantan, Malaysia; ³Monash University Malaysia Genomics Facility, School of Science, Jalan Lagoon Selatan, 47500 Bandar
14 Sunway, Selangor Darul Ehsan, Malaysia; ⁴Centre for Chemical Biology, Universiti Sains Malaysia, Bayan Lepas, 11900 Penang, Malaysia;
15 ⁵Human Genome Centre, School of Medical Sciences, Universiti Sains Malaysia, 16150 Kubang Kerian, Kelantan, Malaysia; ⁶Department
16 of Community Medicine, School of Medical Sciences, Universiti Sains Malaysia, 16150 Kubang Kerian, Kelantan, Malaysia; ⁷Kelantan
17 State Health Department, Kelantan, Malaysia; ⁸Head of Public Health Unit HRPZ2, Medical Division, Kelantan State Health Department,
18 Kelantan, Malaysia; ⁹Surveillance Unit, Kelantan State Health Department, Kelantan, Malaysia; ¹⁰Communicable Disease Control (CDC)
19 Unit, Kelantan State Health Department, Malaysia; ¹¹Kota Bharu Public Health Laboratory, Kelantan, Malaysia; ¹²Molecular lab, Disease
20 Division, Kota Bharu Public Health Laboratory, Jalan Kuala Krai, 16010 Kota Bharu, Kelantan, Malaysia; ¹³Hospital Universiti Sains
21 Malaysia, Universiti Sains Malaysia, Kubang Kerian 16150, Kelantan, Malaysia; ¹⁴Reconstructive Sciences Unit, School of Medical
22 Sciences, Universiti Sains Malaysia, Kubang Kerian 16150, Kelantan, Malaysia; ¹⁵Department of Pharmacy, Raja Perempuan Zainab II
23 Hospital, Ministry of Health Malaysia, Kota Bharu, Kelantan, Malaysia; ¹⁶Department of Haematology, School of Medical Sciences,
24 Universiti Sains Malaysia, 16150, Kubang Kerian, Kelantan, Malaysia.

25 *Joint first authors

26 †Joint corresponding authors

27 Corresponding author

28 1 Prof. Rosline Hassan,
29 Department of Haematology,
30 School of Medical Sciences,
31 Universiti Sains Malaysia, 16150, Kubang Kerian, Kelantan,
32 Malaysia.
33 Phone # +60199151520
34 Email: roslin@usm.my

35 2 Prof. Qasim Ayub
36 Director, Monash University Malaysia Genomics Facility
37 Deputy Head of School (Research)
38 Room Number 4-8-11, School of Science
39 Monash University Malaysia www.monash.edu.my
40 Jalan Lagoon Selatan, 47500 Bandar Sunway
41 Selangor Darul Ehsan, MALAYSIA
42 E-mail: qasim.ayub@monash.edu

43
44
45 Keyword: COVID-19; viral genomics; molecular epidemiology; genetic cluster

46 **Abstract**

47 COVID19 genomic surveillance is instrumental to better understand transmission dynamics
48 in a setting, detect emergence of new variants and monitor spread of variants at the national,
49 regional and global levels. Complete viral genome sequences are powerful enough to
50 approximate epidemiology and enable informed public health response policies and
51 determine their success. Between 24th November to 9th December 2020, a workplace
52 COVID-19 outbreak, assigned as the Hilir cluster, occurred among healthcare workers
53 (HCWs) in a northeast Malaysian university teaching hospital that was not designated for
54 COVID-19 treatment. Mass screening of 1,292 individuals based on case interviews, contact
55 tracings and nucleic acid testing detected 17 cases from various hospital wards and units. To
56 investigate how COVID19 transmission occurred we whole genome sequenced 14 samples
57 collected from healthcare workers and 5 samples from the concurrent community outbreaks.
58 The genomes of these samples were compared with closely-related publically available
59 genomes from GISAID to gain insights into COVID19 transmission in the hospital and at the
60 local and global scale. The 14 viral sequences obtained from the Hilir cluster were assigned
61 to Pango lineages B.1.524 (7 samples) and B.1.36.16 (7 samples) whereas the community
62 samples were assigned as either B.1.524 and B.1. Phylogenetics revealed multiple
63 introduction of B.1.524 into the workplace, while close relatedness of all B.1.36.16 samples
64 suggested that the introduction of these lineages into the workplace likely stemmed from a
65 single introduction. These lines of genomic evidences contradicted with the proposed
66 transmission route, underlining the central role of genomics in COVID-19 or any future
67 pandemics surveillance. The study also highlight the difficulty in enforcing and maintaining
68 isolation methods in a hospital setting.

69

70 **Impact statement**

71 Epidemiological outbreak investigation and sequencing of SARS-CoV-2 viral genomes was
72 employed to study a healthcare workplace outbreak of COVID-19 that occurred in a
73 Northeast Malaysian hospital between 24th November to 9th December 2020. We sought to
74 understand the transmission dynamics of this Hilir cluster by sequencing samples obtained
75 from 14 infected HCW and five infected individuals from the local community. The
76 phylogeny of the viral sequences was studied using publically available SARS-CoV-2
77 genomes. We found two major COVID-19 lineages with possibly different transmission
78 dynamics. The B.1.524 lineage was widespread in the community and possibly entered the
79 workplace more than once whereas the B.1.36.16 lineages clustered together indicating a
80 single introduction into the workplace. We also investigated COVID-19 transmission of the
81 two lineages in the global context and found contradicting results between Pango lineage
82 assignment and phylogenetic relatedness of B.1.36.16 genomes of Thailand-Malaysia-
83 Singapore versus Bangladesh. This underlines the importance of integrating whole viral
84 genome phylogenetics to complement epidemiological investigations and understand the
85 spread of a disease in the community and guide national policies during pandemics.

86

87 Outcome

88 ☐ The 14 sequences from the Hilir cluster and five community outbreak samples fall
89 into two Pango lineages B.1.524 and B.1.36.16.

90 ☐ Phylogenetic analyses suggest that B.1.524 possibly entered the workplace multiple
91 times as evidenced by distant phylogenetic relatedness of B.1.524 Hilir genomes into
92 four separate subclades. The community samples were clustered within a B.1.524
93 subclade which also includes three samples from the Hilir healthcare workers cluster.

94 ☐ The viral sequence relatedness of B.1.36.16 Hilir genomes suggest a single entry into
95 the workplace. None of the community samples were assigned as B.1.36.16

96

97 Data summary

98 Details on public genomes, metadata used and contributing authors are available from
99 GISAID using EPI_SET ID EPI_SET_230904pv (Pango lineage B.1.524),
100 EPI_SET_230904ps (Pango lineage B.1.36) and EPI_SET_230904ky (Pango lineage
101 B.1.36.16).

102 The genome sequences generated from this project are accessible through GISAID and
103 GenBank accession IDs; refer to Supplementary Table 1. Full details and reproduction of the
104 genome assembly and variant analysis is accessible through the Github repository:
105 https://github.com/ZarulHanifah/snakepit_COVID19.

106

107 Introduction

108 Coronavirus disease 2019 (COVID-19) was declared a Public Health Emergency of
109 International Concern by the World Health Organization (WHO) on 30th January 2020 [1, 2].
110 COVID-19 was first confirmed in Malaysia among travellers from China to Johor, in
111 southern Peninsula Malaysia via Singapore on 25th January 2020 [3]. The infection hit
112 Malaysia in three waves. The first wave lasted from 25th January to 16th February 2020
113 (Supplementary Figure 1). The second from 27th February and 30th June 2020.
114 Subsequently, the third wave began on 8th September 2020, marked by a sudden four-fold
115 increase in cases within two months. This surge was primarily attributed due significant
116 outbreaks from the Benteng Lahad Datu and Tembok clusters located in the states of Sabah
117 and Kedah, respectively (<https://covid-19.moh.gov.my>).

118 Healthcare workers (HCWs) are at high risk and vulnerable to COVID-19 infection and may
119 play a significant role in hospital transmissions. For instance, hospital outbreaks were
120 responsible for around half of the confirmed MERS-CoV infections, with HCWs accounting
121 for about 40% of the cases [4, 5]. While the outbreak was initially limited to imported cases,
122 several local clusters also emerged, including workplace transmission clusters among HCWs
123 especially in major hospitals beginning in late September 2020. Towards the end of
124 December 2020, there were 1,771 HCWs (1.2% of all HCWs) in Malaysia who contracted
125 COVID-19 since the beginning of the pandemic. There was an increase in cases among
126 HCWs during the third wave which led to the recording of nearly 80% relative to prior
127 HCWs COVID-19 cases. One possible explanation was that it was due to the super-spreader

128 characteristics of the SARS-CoV-2 virus identified in the third wave and the drastic rise in
129 cases was believed to be closely linked with the increase in community transmissions. The
130 HCWs were also suspected to acquire the infection not only through community
131 transmissions but also from other HCWs and the transmission links were unclear [6].

132 This study aimed to understand a workplace transmission of COVID-19 at an
133 epidemiologically-linked cluster in a tertiary care hospital in Northeast Malaysia that
134 occurred in late 2020.

135

136 **Methods**

137 **Ethical clearance**

138 This study was approved by the Human Research Ethics Committee, Universiti Sains
139 Malaysia (USM/JEPeM/COVID19-44) and National Medical Research Registration,
140 Malaysia (NMRR-20-1645-55277 (IIR)).

141 **Study design and sites**

142 An epidemiological outbreak investigation was conducted in a non-designated COVID-19
143 university teaching hospital in Northeast Peninsula Malaysia after an index case was reported
144 in late November 2020 (Figure 1, individual K1). This was later identified a cluster of
145 workplace transmission among HCWs and their family members, an outbreak that was later
146 declared by the Ministry of Health Malaysia as the “Hilir” cluster, and named after it was
147 identified among the population living a nearby locality. The outbreak investigation was
148 conducted by the COVID-19 Public Health Unit managed by Hospital Universiti Sains
149 Malaysia.

150 Prior to the outbreak, the hospital had no reported COVID-19 positive cases among HCWs as
151 determined through its enhanced surveillance and screening of symptomatic workers and of
152 those with recognized contact risk in the community. However, around the same time there
153 were a few concurrent COVID-19 clusters within nearby communities, reported by the
154 Ministry of Health. This includes local clusters called “Kube” declared on 7th November
155 2020 with 17 cases; “Mengketil” identified on 17th November 2020 with 24 cases, as well as
156 the “Kaya” cluster detected on 24th October 2020 with 55 cases ([https://covid-
157 19.moh.gov.my](https://covid-19.moh.gov.my)).

158 **Contact tracings and mass screenings**

159 The index case (K1) of COVID-19 was determined using real-time reverse transcriptase-
160 polymerase chain reaction (RT-PCR) from nasopharyngeal (NP) swabs. Close contacts of
161 HCWs were defined as co-workers who worked in close proximity with the confirmed case
162 during in-patient management, medical procedure trainings, or attendance in meetings held in
163 closed areas or had social contact during work breaks, such as eating together in the pantry,
164 or café, and sharing common rooms such as on-call and prayer rooms. Case interviews were
165 done to determine the onset of symptoms. Asymptomatic cases were detected by close
166 contact screening to identify high and medium risk close contacts based on the risk
167 assessment guidelines. Such screening was conducted on close contact HCW as well as other
168 non-staff household members or low risk contacts. Those who fulfilled the criteria of
169 exposure included persons exposed to a case from 3 days prior to the onset of symptoms or,
170 for asymptomatic cases, the day the swab was taken and screened using RT-PCR. High-risk
171 contacts were home quarantined for 14 days from the last date of contact and repeat NP

172 swabs were done after day 8, if the initial swab test result was negative for COVID-19
173 infection,

174 As part of containment and surveillance strategies, mass screenings were conducted
175 concurrently between 26th November and 9th December 2020 among all low risk HCWs from
176 relevant hospital departments and units including symptomatic screenings. The department
177 head and the nurse supervisors traced back the ward schedule and patients list to identify
178 potential HCWs. Workplace activities, mapping as well as personal information were
179 analysed to find out possible epidemiological link between the cases either within or outside
180 the same workplaces. A total of 1,292 HCWs, including household members, were screened
181 during this process.

182 All individuals consented to participate in the study. For those younger than 16 years
183 permission of a parent or legal guardian was obtained

184 **Clinical presentation staging**

185 The severity and five clinical stages, or categories of COVID-19 infection were determined
186 based on the National Ministry of Health classification guidelines, Malaysia [7]; These
187 included; Category 1, asymptomatic; Category 2, Symptomatic, No Pneumonia; Category 3,
188 Symptomatic, Pneumonia; Category 4, Symptomatic, Pneumonia, Requiring supplemental
189 oxygen; and Category 5, Critically ill with multi-organ involvement.

190 **Clinical specimens and RT-qPCR detection of SARS-CoV-2**

191 The NP swab specimens were collected in viral transport medium (VTM) and screened using
192 Lytestar 2019-nCoV RT-PCR Kit (IDT, Malaysia) which targets the viral *E* and *RdRP* genes
193 with an internal control to rule out false negative results for confirmation. Fourteen SARS-
194 CoV-2-positive Hilir cluster samples were positive and were later subjected to whole genome
195 sequencing (WGS). In addition, five community samples from three local clusters (“Kube”,
196 “Mengketil” and “Kaya”) detected at the same time point as the “Hilir” cluster (between
197 November 2020 to December 2020) were also detected to be positive for SARS-CoV-2 and
198 were included in the whole genome sequencing.

199 SARS-CoV-2 genome sequencing

200 RNA was extracted from SARS-CoV-2 positive samples using the QIAamp viral RNA
201 minikit (QIAGEN, Germany). The sequencing libraries were prepared following the ARTIC
202 SARS-CoV-2 V3 amplification protocol (<https://artic.network/ncov-2019>) [8]. Briefly, cDNA
203 was synthesized using the SuperScript IV first-strand synthesis system (Invitrogen, USA)
204 with random hexamers and PCR was performed using Q5 Hot Start High-Fidelity DNA
205 Polymerase (NEB, USA) with two pools of ARTIC V3 primers targeting the SARS-CoV-2
206 genome. The amplicons were combined, purified using AMPure XP beads (Beckman
207 Coulter, USA), quantified with a Qubit 2.0 fluorometer and subjected to library construction
208 using Nextera XT Library Prep Kit (Illumina, USA). Sequencing was performed on an
209 Illumina MiSeq System (San Diego, CA, USA) with 2 × 250-bp paired-end reads
210 configuration.

211 **Genome assembly and variant analysis**

212 Raw sequencing data was trimmed to remove adapter sequences and low-quality bases using
213 Trimmomatic (version 0.39) [9] and mapped to the reference genome Wuhan-Hu-1
214 (NC_045512.2) using Bowtie2 (version 2.4.2) [10]. The consensus genome sequences were

215 generated from the aligned BAM files using iVar (version 1.3) [11]. The genomic sequences
216 from this study were deposited in GISAID and GenBank (Supplementary Table 1). The
217 consensus genomes were assigned to lineages with the PANGOLIN software (version 3.1.16)
218 with pangolearn 2021-11-09 [12]. The BAM files were sorted by SAMtools (version 1.11)
219 [13] and variants were called by BCFtools mpileup and call functions (version 1.11) [14],
220 assuming a ploidy of 1. Full details and reproduction of the analysis is accessible through the
221 Github repository: https://github.com/ZarulHanifah/snakefile_COVID19.

222 **Phylogenetic analysis**

223 Phylogenetic tree for lineages B.1.524 and B.1.36.16 lineages were performed using all
224 genomes of corresponding lineages from the GISAID database at date 15th April 2022, using
225 the Nextstrain SARS-CoV-2 workflow on Augur (version 14.0.0) [15]. Briefly, genome
226 sequences were aligned to the reference genome using mafft (version 7.490) [16] against the
227 Wuhan-Hu-1 reference genome. Then, phylogenetic trees were constructed using IQ-TREE
228 (version 2.2.0_beta) [17]. A time tree was generated by adjusting the phylogenetic tree
229 branch lengths to reflect the date of sample collection using TreeTime, with parameters
230 substitution-model = GTR, clock_rate = 0.0008 per site per year, clock_std_dev = 0.0004,
231 coalescent = opt, date_inference = marginal, divergence_unit = mutations, clock_filter_iqd =
232 8, keep-polytomies = True and no_covariance = True [18]. Annotations were further
233 incorporated into the tree such as ancestral traits, nucleotide mutations and amino acid
234 mutations. The final tree was then visualised using Auspice (version 2.29.1) [19] and Baltic
235 (version 0.1.6).

236

237 **Results**

238 **Epidemiological investigation finding**

239 The index case (K1) was a HCW in their 50s whose onset of symptoms occurred in the
240 middle of November 2020. The personnel underwent screening and was subsequently
241 confirmed to be COVID-19 positive by RT-qPCR. Close contacts among his colleagues and
242 clinical teams, meeting participants, selected patients and those sharing common places
243 (pantries, on-call room and prayer room) within the hospital units were identified and
244 screened for COVID-19. Between the end of November and early December 2020, a total of
245 17 HCWs were diagnosed to be infected with COVID-19 (Figure 1). Their sociodemographic
246 characteristics are shown in Table 1. Epidemiological data of the confirmed cases revealed
247 that majority of cluster cases were from the intensive care units (ICU) and surgical ICU
248 (SICU) as well as the surgical high dependency unit (SHDU). The HCW categories ranged
249 from specialist, staff nurses, medical assistants and ward medical attendants. Meanwhile, two
250 HCWs (K7 and K9) were not working in either ICU, SICU or SHDU. Also, one non-HCW
251 (K8), working in the record unit of the hospital is a household member of two HCWs (K3
252 and K6) who were found to be positive during the close contact screening. Figure 1 shows the
253 probable epidemiological transmission among HCWs in various hospital units during the
254 outbreak.

255 **Identification of B.1.524 and B.1.36.16 lineages in the Hilir cluster.**

256 SARS-CoV-2 genome sequencing results of the cluster “Hilir” individuals and concurrent
257 community-based samples are shown in Supplementary Table 1. Three of the samples (K4,
258 K15, and K17) were unavailable for sequencing analysis.

259 The PANGOLIN database grouped the Hilir cluster samples into two major lineages; the
260 B.1.36.16 (7 samples) and the B.1.524 lineages (7 samples). The community samples Kube1,

261 Mengketil2 and Kaya1 falls under the B.1524 lineage, whereas Mengketil1 and Kaya2
262 belongs to the B.1 lineage. No community samples were assigned as B.1.36.16. This agrees
263 with the fact that between October and December of 2020, B.1.524 was the most prevalent
264 lineage at 44.8 % in Malaysia, followed by B.1.36.16 at 10.4 % (Supplementary Figure 1).
265 The high prevalence of the two lineages suggests their entry from the community into the
266 workplace setting.

267 The detection of these two lineages suggests at least two introductions into the workplace had
268 to happen, contradicting proposed epidemiological route in Figure 1. This also highlights the
269 power of whole genome sequencing in confirming and complementing epidemiological
270 approximation.

271 **Multiple entrance of B.1.524 into the workplace**

272 The SAR-CoV-2 genome sequences generated from Kelantan, Malaysia were
273 disproportionately low given the higher number of cases in the third wave as compared to the
274 first two waves. Therefore, careful interpretation is required to determine whether the lineage
275 distribution truly represents true Malaysian SARS-CoV-2 lineage distribution. Based on the
276 genome sequences available, B.1.524 was the major lineage in Malaysia during the third
277 wave (Supplementary Figure 1). Based on cov-lineages (<https://cov-lineages.org>), Malaysia
278 has the highest number of genomes assigned as B.1.524 (74.8%), followed by neighbouring
279 Singapore (12.9%), Thailand (4.2%) and Indonesia (1.0 %). This suggests that B.1.524 most
280 likely originated from Malaysia and points towards the success of international travel ban to
281 curb its spread into other countries (Figure 2).

282 The B.1.524 lineage was first reported in USA Texas at 29th July 2020 (Figure 2, clade C).
283 Since clades A and D are basal to clade C, this suggests that the variant has been spreading
284 around Malaysia even earlier (Figure 2). The B.1.524 lineage was first reported in Malaysia
285 on 1st September 2020, with as many as 22 genomes (Supplementary Figure 1). The basal
286 root of the B.1.524 tree is predicted to originate at 9th April 2020 (date confidence interval:
287 10th August 2019 until 13th June 2020) (Figure 2). The lack of genome sequencing efforts in
288 Malaysia at the beginning of the pandemic could explain the failure to detect this lineage
289 earlier, from April until September 2020.

290 Seven Hilir samples were assigned as B.1.524, but fall into four separate clades in the
291 phylogenetic tree (Figure 2). Interstate spread cannot be inferred from samples generated by
292 Institute for Medical Research (IMR) because the information was not made available in
293 GISAID. There are other samples that were collected from the Kelantan state with sample
294 IDs containing “USM_Monash_JKNK”, but was not part of the HCW surveillance effort.
295 The results suggest at least four introductions of B.1.524 into workplace took place. If strictly
296 each introduction forms a cluster that contains samples that are not distant by at most two
297 weeks, then every B.1.524 Hilir sample comes from separate introductions. All Hilir samples
298 have branch lengths of at least a bit over two months. These long isolated branches suggest
299 undersampling, otherwise we would expect nodes that are closely related and sampled at
300 around the same period. Clade A contains three Hilir samples and two community samples,
301 all within November. There are also genomes from Singapore (October) and Philippines
302 (January until March 2021). Clade B contains sample K3. A single clade from Thailand was
303 also found comprising 31 genomes. This suggests a singular introduction from Malaysia to
304 Thailand, possibly before September. Later from January 2021, there is probably
305 international spread of B.1.524 to other countries like Singapore, New Zealand and Belgium,
306 spanning from January until May, although limited to only eight genomes. Clade C contains
307 sample K8. This clade also contained genomes from other countries such as USA, South

308 Africa, Switzerland, Turkey, Qatar, France, Pakistan and Germany. Finally Clade D contains
309 sample K2.

310 **B.1.36.16 lineages in the Hilir cluster**

311 B.1.36.16 was the second most prevalent SARS-CoV-2 lineage in the Malaysian third
312 COVID-19 wave. Globally B.1.36.16 were reported from Bangladesh, Malaysia, Thailand
313 and Singapore. Phylogenetic tree comprising of B.1.36 and B.1.36.16 genomes shows that the
314 Bangladeshi samples are phylogenetically distant from those in Malaysia, Thailand and
315 Singapore (Figure 3A). Focusing on the B.1.36.16 clade in the Southeast Asian region, we
316 observed a strong regional clustering by country. We observed a broad distinct clustering of
317 Malaysian clades and also a 98 genome clade exclusively from Thailand (Figure 3B). By
318 scaling branches lengths to mutations, it is apparent that one of the Malaysian clades,
319 including the samples from the Hilir cluster, accumulated 13 of mutations (Supplementary
320 Figure 2). These nucleotide mutations include A1T, A4T, G11083T, G18756T, G27917A,
321 G29881A, A29882G, G29884A, G29886A, A29887G, while the other three are reversion to
322 reference genotype at positions 1947 (T), 25494 (T) and 29888 (G). Mutations X and Y
323 resulted in two amino acid changes (X561V, L3606F) in ORF1a. This clade was sampled
324 since August 2020 and includes 5 genomes that were obtained from Myanmar. Meanwhile,
325 the 98-genomes Thailand clade was sampled from October 2020. Despite that this clade was
326 found earlier, it accumulated more mutations than the Thailand clade. Narrowing down to
327 clade containing Hilir samples, we found regional transmission patterns by state which are
328 Kelantan and Negeri Sembilan (Figure 3C and 3D). Hilir samples fall under the Kelantan
329 clade. This suggests success of interstate travel ban in curbing spread. Seven Hilir samples
330 assigned as B.1.36.16 all fall into one single lineage with common ancestral node in
331 November. The parent node to this clade dates back to August, indicating lack of genome-
332 based surveillance especially in the third wave (Supplementary Figure 1). Otherwise, we
333 expect to find genomes of this clade from August to November 2020.

334 **Variant analysis**

335 Analysis of variants occurring in the SARS-CoV-2 strains sequenced in this study identified
336 147 non-synonymous mutations within the viral coding sequences, with most of the
337 nucleotide substitutions located in the *ORF1ab* gene (Table 3). Mutations at amino acids
338 P323L of the NSP12 protein, D614G of the spike (S) protein, and S194L of the nucleocapsid
339 (N) protein were found to be most common in the strains sequenced in this study. Based on
340 the phylogenetic tree, S194L arose independently in the two lineages B.1.524 and B.1.36.16
341 (<https://genome.ucsc.edu/cgi-bin/hgPhyloPlace>). Meanwhile, S194L of the N gene arose in
342 B.1.36, which was later inherited to sub-lineages including B.1.36.16.

343 A 9-nucleotide sequence deletion was found at the position 656 to 664 (codon 131 of *nsp1*) in
344 genomes K1, K2, K3, K9, K13, Mengketil2 and Kaya1 from the B.1.524 lineage, K6 and
345 K11 from the B. 1.36.16 lineage, and Mengketil1 from the B.1 lineage.

346 **COVID-19 severity and spike protein gene mutations in the “Hilir” cluster**

347 Based on the COVID-19's severity, the majority ($n = 8/14$ or 57.1%) were categorised as
348 Category 2 (symptomatic without pneumonia). Others were in Category 1 ($n=3$, 21.4%),
349 Category 4 ($n=1$, 7.1%) and Category 5 ($n=2$, 14.3%). Both Category 5 COVID-19
350 workplace cluster HCWs were intubated, and one of them died after 12 days of hospital
351 admission.

352 The epidemiological link and metadata such as clinical symptoms, date SARS-CoV-2 virus
353 was detected, date of appearance of first symptoms, RT-PCR results, comorbidity
354 background are provided by timeline and transmission chain in Table 4. The spike protein
355 gene mutations of SARS-CoV-2 cluster “Hilir” clinical samples found the D614G mutation
356 in all samples (100% of the 14 sequenced samples) and 79% of these samples had the A701V
357 mutation [20].

358 Discussion

359 COVID-19 workplace transmissions, especially among HCWs, mainly occurs through direct
360 or indirect exposures to infected patients or their co-workers [21]. In view of concurrent
361 COVID-19 transmission in the community, workplace transmission induced by community-
362 infected HCWs is a major concern especially for non-COVID-19 designated hospitals [22,
363 23]. In this study, we conducted a thorough epidemiological outbreak investigation and
364 management of a local cluster that involved prompt contact tracing, screenings and isolation
365 of HCWs as well as enhanced surveillance and mass screenings.

366 Molecular diagnostic and viral genome sequencing approaches in combination with
367 epidemiological data have proven to be instrumental for investigating outbreaks of COVID-
368 19 in health-care settings [23, 24]. However, in Malaysia, viral sequencing has not been
369 routinely used for investigating the cause of transmission and spread of this disease. The
370 current study is among the first in the country. The focus of this study was on a HCWs
371 cluster, termed “Hilir” cluster, that was identified in a state hospital in north eastern
372 Malaysia. The cluster comprised of 17 individuals and complete viral sequences were
373 obtained from 14/17 samples. Three of the samples were not sequenced because the sample
374 was either insufficient (K4) or unavailable (K15 and K17).

375 The Hilir HCW cluster samples belonged to two major lineages, B.1.524 and B.1.36.16 and
376 B.1.524. Both lineages were present in Malaysia between October-December 2020, with
377 B.1.524 being the dominant lineage [25]. The presence of these two lineages suggests at least
378 two introductions into the hospital and contradicts the proposed epidemiological route shown
379 in Figure 1A.

380 The Hilir B.1.524 lineages fall into 4 separate clades (Figure 2) suggesting multiple
381 introduction of the virus into the workplace and failure of the strict control measures enforced
382 to stop the spread of COVID-19. The seven Hilir B.1.36.16 all share a common ancestral
383 node indicating clonal relatedness between these cases. This highlights the power of whole
384 genome sequencing in confirming and complementing epidemiological approximation.

385 Preliminary genomic analysis during the third wave in Malaysia showed the presence of the
386 spike protein mutant variants D614G and A701V. These are typical of known super-spreader
387 strains which caused an increase in the number of cases from 2,234 cases on 10th December
388 2020 to 5,728 cases on 30th January 2021. Since national level vaccination started on 1st
389 March 2021, the numbers have decreased to around 1200 cases per day as of April, 2021
390 [26]. A previous study conducted in the Netherlands used WGS for hospital outbreak
391 investigations and demonstrated that hypothesis about viral transmission routes based
392 exclusively on epidemiological data can be erroneous [27]. The same study also reported that
393 infection control strategies can be improved with viral genome sequencing, especially if the
394 results can be provided rapidly and compared to viral reference sequences currently available
395 in different databases.

396 This study also found a clustering of cases from the ICU and high dependency unit where the
397 first case mainly worked. HCWs at ICU and high dependency units had to comply with the
398 SOPs on personal protective equipment (PPE) when handling patients. However, their
399 compliance to workplace SOP during COVID-19 with other co-workers such as wearing face
400 mask, physical distancing may not have been strict, especially during non-clinical duties and
401 social contacts in common places such as pantries and prayer rooms. This increased the
402 likelihood of community infection and most likely led to occupational workplace
403 transmissions. Similar findings had been reported in a multinational study involving six
404 Asian countries that earlier local transmission had resulted in a significant increase in
405 occupational infections [28]. Several studies have also shown that around 85% of HCWs
406 were exposed while wearing a usual surgical mask during an aerosol-generating procedure
407 [27, 29] and current recommendations include wearing precise surgical masks (e.g., N95),
408 hand hygiene, and other standard precautions to keep HCWs safe from this viral infection
409 [30].

410 The probable epidemiological linkages of the cluster as shown in Figure 2 could improve the
411 understanding of transmissibility of the virus based on workplace setting and exposure risk
412 activities. However, the secondary attack rate could not be determined based on the
413 incubation and infectivity period as well as the epidemic curve due to the concurrent mass
414 screenings done among different levels of contacts, exposure risks and symptoms. The mass
415 screening was able to identify cases among low-risk contacts, irrespective of whether they
416 had evident occupational exposure to patients or co-workers, or possible linkages to
417 concurrent community-based clusters. A similar study from the United States of America
418 reported that the major risk factors associated with COVID-19 infection among HCWs are
419 community attack rates and ethnicities [31].

420 NSP1 has been considered a key pathogenic determinant of coronaviruses that serves to
421 suppress both host's anti-viral innate immune response and global gene expression level [32].
422 We observed a 9 bp deletion in *nsp1* in 10/19 samples and its effect on viral function merit
423 further investigation. The frequency of mutations within SARS-CoV-2 examined in this work
424 could broadly classify these strains into two main groups: the B.1.524 strains were
425 distinguished by the absence of Q57H mutation, and the B.1.36.16 strains by the absence of
426 the T11981, T281, T24A and L428F mutations. K8 shows a distinct variants profile from the
427 other B.1.524 strains by the absence of deletion in *nsp1* and T281 nonsynonymous mutation.

428 During the WHO and China Joint research mission on COVID-19, 2,055 laboratory
429 confirmed cases were reported among HCWs from 476 hospitals across China, with Hubei
430 province accounting for 88% of the cases. However, there was insufficient evidence for
431 nosocomial infections and most of the HCWs were considered to have been infected in their
432 homes rather than in the hospital [28]. The transmission of COVID-19 among HCWs does
433 not necessarily indicate the non-compliance of SOPs inside the wards, operation theatres or
434 procedure rooms. One of the reasons could be that there is comparatively less compliance of
435 SOPs while the HCWs are outside their duty stations for example, during the lunch or tea
436 breaks, and in the prayer rooms. The other risk of transmission could be when the HCWs visit
437 outside places like shopping malls or picnic areas. To minimise workplace transmission,
438 compliance with SOPs should be strictly maintained throughout the hospital settings. The
439 HCWs should also minimise their social gatherings to reduce the chances of hospital
440 transmissions.

441 We acknowledge the untimely release of this work, which is almost two years since the Hilir
442 cluster. To enable real-time informed decision making, national effort to streamline COVID-
443 19 analysis, dissemination of information and concerted research efforts are paramount.

444 **Conclusion**

445 The Hilir cluster actually comprised of two SARS-CoV-2 lineages which are B.1.524 and
446 B.1.36.16. Genomics-based pandemic surveillance plays an important role as a specific tool
447 in understanding SARS-CoV-2 transmission, particularly the possibility of more than two
448 transmission events of SARS-CoV-2 among a HCWs workplace cluster in Malaysia.

449 **Author statements**

450 **Authors and contributors**

451 **Conceptualization:** (C.Y.Y), (L.N.S), (M.Z.H.M.Z), (A.S.H), (A.H), (A.C.S.C), (Q.A.),
452 (R.H.)

453 **Data curation:** (C.Y.Y), (M.Z.H.M.Z), (L.N.S), (N.M), (L.S.Y), (W.M.Z.W.M), (S.R),
454 (W.E.W.H), (A.H), (C.W.L), (N.L.B.A), (A.C.S.C), (Q.A.), (R.H.)

455 **Formal analysis:** (C.Y.Y), (M.Z.H.M.Z), (L.N.S), (N.M), (M.F.B.K), (W.M.Z.W.M), (A.H),
456 (N.A.Y), (A.R.H), (M.H.B), (M.N.N.A.K), (M.H.M), (A.M.S), (A.C.S.C), (Q.A.), (R.H.)

457 **Funding acquisition:** (C.Y.Y), (A.S.H), (Z.Z.D), (A.H), (A.C.S.C), (Q.A.), (R.H.)

458 **Investigation:** (C.Y.Y), (M.Z.H.M.Z), (L.N.S), (N.M), (M.F.B.K), (L.S.Y), (W.M.Z.W.M),
459 (Z.B.H), (A.H.B.M), (M.B.M.Z), (S.B.S), (N.M.H.B.M.F), (N.H.B.M.S), (S.B.O), (A.H),
460 (M.N.F.S), (E.N.S.B.E.A.R), (N.A.Y), (A.R.H), (M.H.B), (M.N.N.A.K), (M.H.M), (A.M.S)

461 **Methodology:** (M.Z.H.M.Z), (L.N.S), (N.M), (M.F.B.K), (L.S.Y), (S.R), (W.E.W.H),
462 (Z.B.H), (A.H.B.M), (M.B.M.Z), (S.B.S), (N.M.H.B.M.F), (N.H.B.M.S), (S.B.O), (A.S.H),
463 (Z.Z.D), (K.K.B.S), (A.H), (M.N.F.S), (C.W.L), (N.L.B.A), (E.N.S.B.E.A.R), (N.A.Y),
464 (A.R.H), (M.H.B), (M.N.N.A.K), (M.H.M), (A.M.S)

465 **Project administration:** (C.Y.Y), (E.N.S.B.E.A.R), (A.C.S.C), (Q.A.), (R.H.)

466 **Resources:** (C.Y.Y), (N.M), (M.F.B.K), (W.M.Z.W.M), (Z.B.H), (A.H.B.M), (M.B.M.Z),
467 (S.B.S), (N.M.H.B.M.F), (N.H.B.M.S), (S.B.O), (A.S.H), (Z.Z.D), (K.K.B.S), (M.N.F.S),
468 (C.W.L), (N.L.B.A), (A.C.S.C), (Q.A.), (R.H.)

469 **Software:** (M.Z.H.M.Z), (L.N.S)

470 **Supervision:** (A.C.S.C), (Q.A.), (R.H.)

471 **Validation:** (C.Y.Y), (M.Z.H.M.Z), (L.N.S), (N.M), (L.S.Y), (S.R), (W.E.W.H), (A.H),
472 (A.C.S.C), (Q.A.), (R.H.)

473 **Visualization:** (C.Y.Y), (N.M), (A.H), (N.A)

474 **Writing – original draft:** (C.Y.Y), (L.N.S), (N.M), (W.M.Z.W.M), (A.H), (N.A), (N.A.Y),
475 (R.H.)

476 **and Writing – review & editing:** (C.Y.Y), (M.Z.H.M.Z), (W.M.Z.W.M), (S.R), (W.E.W.H),
477 (A.S.H), (K.K.B.S), (A.H), (N.A), (N.A.Y), (A.C.S.C), (Q.A.), (R.H.)

478 **Conflicts of interest**

479 The authors declare that there are no conflicts of interest.

480 **Funding information**

481 Universiti Sains Malaysia Short-term grants (304/PCCB/6315450 and 304/PPSP/6315459)
482 and Monash University Malaysia Genomics Facility core grant from the School of Science.

483 **Ethical approval**

484 This study was approved by the Human Research Ethics Committee, Universiti Sains
485 Malaysia (USM/JEPeM/COVID19-44) and National Medical Research Registration,
486 Malaysia (NMRR-20-1645-55277 (IIR)).

487 **Acknowledgements**

488 All authors would like to acknowledge the HUSM for the SARS-COV-2 laboratory facilities.
489 M.Z.H.M.Z was supported by Monash Malaysia R&D Sdn. Bhd. E.N.S.B.E.A.R was
490 supported by the USM Fellowship Scheme. N.A was supported by USM's Graduate Research
491 Assistant Scheme.

492 **References**

- 493 1. **Koh D, Goh HP.** Occupational health responses to COVID-19: What lessons can we
494 learn from SARS? *Journal of occupational health* 2020;62:e12128.
- 495 2. **Musa KI, Arifin WN, Mohd MH, Jamiluddin MS, Ahmad NA, et al.** Measuring
496 Time-Varying Effective Reproduction Numbers for COVID-19 and Their
497 Relationship with Movement Control Order in Malaysia. *Int J Environ Res Public*
498 *Health*;18. Epub ahead of print March 2021. DOI: 10.3390/ijerph18063273.
- 499 3. **Khoo LS, Hasmi AH, Ibrahim MA, Mahmood MS.** Management of the dead during
500 COVID-19 outbreak in Malaysia. *Forensic Sci Med Pathol* 2020;16:463–470.
- 501 4. **Niemeyer D, Mösbauer K, Klein EM, Sieberg A, Mettelman RC, et al.** The papain-
502 like protease determines a virulence trait that varies among members of the SARS-
503 coronavirus species. *PLoS Pathog* 2018;14:e1007296.
- 504 5. **Rivett L, Sridhar S, Sparkes D, Routledge M, Jones NK, et al.** Screening of
505 healthcare workers for SARS-CoV-2 highlights the role of asymptomatic carriage in
506 COVID-19 transmission. *Elife*;9. Epub ahead of print May 2020. DOI:
507 10.7554/eLife.58728.
- 508 6. **Safuan S, Edinur HA.** Sri Petaling COVID-19 cluster in Malaysia: challenges and the
509 mitigation strategies. *Acta bio-medica □: Atenei Parmensis* 2020;91:e2020154.
- 510 7. **Rampal L, Liew BS.** Malaysia's third COVID-19 wave - a paradigm shift required.
511 *The Medical journal of Malaysia* 2021;76:1–4.
- 512 8. **Tyson JR, James P, Stoddart D, Sparks N, Wickenhagen A, et al.** Improvements to
513 the ARTIC multiplex PCR method for SARS-CoV-2 genome sequencing using
514 nanopore. Epub ahead of print September 2020. DOI: 10.1101/2020.09.04.283077.
- 515 9. **Bolger AM, Lohse M, Usadel B.** Trimmomatic: a flexible trimmer for Illumina
516 sequence data. *Bioinformatics* 2014;30:2114–2120.
- 517 10. **Langmead B, Salzberg SL.** Fast gapped-read alignment with Bowtie 2. *Nat Methods*
518 2012;9:357–359.

- 519 11. **Grubaugh ND, Gangavarapu K, Quick J, Matteson NL, Jesus JG De, et al.** An
520 amplicon-based sequencing framework for accurately measuring intrahost virus
521 diversity using PrimalSeq and iVar. *Genome Biol*;20. Epub ahead of print 2019. DOI:
522 10.1186/s13059-018-1618-7.
- 523 12. **O’Toole Á, Scher E, Underwood A, Jackson B, Hill V, et al.** Assignment of
524 epidemiological lineages in an emerging pandemic using the pangolin tool. *Virus*
525 *Evol*;7. Epub ahead of print 2021. DOI: 10.1093/ve/veab064.
- 526 13. **Li H, Handsaker B, Wysoker A, Fennell T, Ruan J, et al.** The Sequence
527 Alignment/Map format and SAMtools. *Bioinformatics* 2009;25:2078–2079.
- 528 14. **Danecek P, Bonfield JK, Liddle J, Marshall J, Ohan V, et al.** Twelve years of
529 SAMtools and BCFtools. *Gigascience*;10. Epub ahead of print 2021. DOI:
530 10.1093/gigascience/giab008.
- 531 15. **Huddleston J, Hadfield J, Sibley TR, Lee J, Fay K, et al.** Augur: a bioinformatics
532 toolkit for phylogenetic analyses of human pathogens. *J Open Source Softw*
533 2021;6:2906.
- 534 16. **Katoh K, Standley DM.** MAFFT multiple sequence alignment software version 7:
535 Improvements in performance and usability. *Mol Biol Evol*. Epub ahead of print 2013.
536 DOI: 10.1093/molbev/mst010.
- 537 17. **Minh BQ, Schmidt HA, Chernomor O, Schrempf D, Woodhams MD, et al.** IQ-
538 TREE 2: New Models and Efficient Methods for Phylogenetic Inference in the
539 Genomic Era. *Mol Biol Evol* 2020;37:1530–1534.
- 540 18. **Sagulenko P, Puller V, Neher RA.** TreeTime: Maximum-likelihood phylodynamic
541 analysis. *Virus Evol* 2018;4:vex042.
- 542 19. **Hadfield J, Megill C, Bell SM, Huddleston J, Potter B, et al.** Nextstrain: real-time
543 tracking of pathogen evolution. *Bioinformatics* 2018;34:4121–4123.
- 544 20. **Korber B, Fischer WM, Gnanakaran S, Yoon H, Theiler J, et al.** Tracking Changes
545 in SARS-CoV-2 Spike: Evidence that D614G Increases Infectivity of the COVID-19
546 Virus. *Cell* 2020;182:812-827.e19.
- 547 21. **Black JRM, Bailey C, Przewrocka J, Dijkstra KK, Swanton C.** COVID-19: the
548 case for health-care worker screening to prevent hospital transmission. *Lancet*
549 *(London, England)* 2020;395:1418–1420.
- 550 22. **Lan F-Y, Wei C-F, Hsu Y-T, Christiani DC, Kales SN.** Work-related Covid-19
551 transmission. *medRxiv*. Epub ahead of print 2020. DOI:
552 10.1101/2020.04.08.20058297.
- 553 23. **Heinzerling A, Stuckey MJ, Scheuer T, Xu K, Perkins KM, et al.** Transmission of
554 COVID-19 to Health Care Personnel During Exposures to a Hospitalized Patient
555 Solano County, California, February 2020. *Morb Mortal Wkly Rep* 2020;69:472–476.

- 556 24. **Treibel TA, Manisty C, Burton M, McKnight Á, Lambourne J, et al.** COVID-19:
557 PCR screening of asymptomatic health-care workers at London hospital. *Lancet*
558 (*London, England*) 2020;395:1608–1610.
- 559 25. **Zainulabid UA, Mat Yassim AS, Hussain M, Aslam A, Soffian SN, et al.** Whole
560 genome sequence analysis showing unique SARS-CoV-2 lineages of B.1.524 and
561 AU.2 in Malaysia. *PLoS One* 2022;17:e0263678.
- 562 26. **Aw SB, Teh BT, Ling GHT, Leng PC, Chan WH, et al.** The COVID-19 Pandemic
563 Situation in Malaysia: Lessons Learned from the Perspective of Population Density.
564 *International journal of environmental research and public health*;18. Epub ahead of
565 print June 2021. DOI: 10.3390/ijerph18126566.
- 566 27. **Sikkema RS, Pas SD, Nieuwenhuijse DF, O’Toole Á, Verweij J, et al.** COVID-19
567 in health-care workers in three hospitals in the south of the Netherlands: a cross-
568 sectional study. *Lancet Infect Dis* 2020;20:1273–1280.
- 569 28. **Lan F-Y, Wei C-F, Hsu Y-T, Christiani DC, Kales SN.** Work-related COVID-19
570 transmission in six Asian countries/areas: A follow-up study. *PLoS One*
571 2020;15:e0233588.
- 572 29. **Adams JG, Walls RM.** Supporting the Health Care Workforce During the COVID-19
573 Global Epidemic. *JAMA* 2020;323:1439–1440.
- 574 30. **Hurst KR, Koetzner CA, Masters PS.** Characterization of a critical interaction
575 between the coronavirus nucleocapsid protein and nonstructural protein 3 of the viral
576 replicase-transcriptase complex. *J Virol* 2013;87:9159–9172.
- 577 31. **Lan F-Y, Filler R, Mathew S, Buley J, Iliaki E, et al.** Sociodemographic risk factors
578 for coronavirus disease 2019 (COVID-19) infection among Massachusetts healthcare
579 workers: A retrospective cohort study. *Infect Control Hosp Epidemiol* 2021;42:1473–
580 1478.
- 581 32. **Yuan S, Balaji S, Lomakin IB, Xiong Y.** Coronavirus Nsp1: Immune Response
582 Suppression and Protein Expression Inhibition. *Front Microbiol* 2021;12:752214.

583

584

585

586 **Figure legends**

587 **Figure 1.** A) Probable epidemiological transmission among 17 COVID-19 Hilir cluster. B)
588 Distribution of the 17 individuals from a Malaysia COVID-19 cluster investigated in this
589 study. The HCWs were segregated according to their hospital departmental affiliations and
590 date of diagnosis.

591 **Figure 2.** Phylogenetic tree of COVID19 genomes from GISAID with Pango lineage
592 B.1.524. Many of genomes from the Hilir cluster are interspersed in the global B.1.524 tree.

593 Different insets A-D display the different clades with genomes from the Hilir cluster. Sample
594 K7 forms a singular polytomic branch, isolated from the other samples (red asterisk).

595 **Figure 3.** A) Phylogenetic tree of COVID19 genomes from GISAID with Pango lineage
596 B.1.36 and B.1.36.16. The nodes of the left phylogenetic tree are coloured by Pango lineage,
597 while the nodes of the right phylogenetic tree are coloured by country of origin. B) Inset from
598 (A), focusing on clade with B.1.36.16 Pango lineage, many from Malaysia, Thailand and
599 Singapore. C) and D) refers to inset from Figure 3B. Nodes from Figure 3C phylogenetic tree
600 are coloured by relation to this study, and also by country of origin.

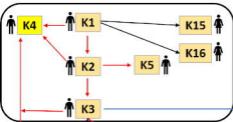
601 **Supplementary Figure 1.** Distribution of major Malaysian COVID19 Pango lineages in
602 2020, obtained from GISAID. Inset: Barplots displaying the number of new cases per week in
603 Malaysia, obtained from Our World in Data (<https://ourworldindata.org/>). The red line shows
604 the proportion of samples that were sequenced at that week. Both y-axis are log-transformed.

605 **Supplementary Figure 2.** Inset from Figure 3B, x-axis represents number of mutations

606 **Supplementary Table 1.** SARS-CoV-2 genome sequencing of cluster “Hilir” and concurrent
607 community-based clusters. Asterisks refer to cases of concurrent community-based cluster

608 **Supplementary Table 2.** Mutation profiles of 19 Malaysian SARS-CoV-2 genomes obtained
609 from the Hilir (n = 14) and community (n = 5) clusters. Samples were sorted by Pango
610 lineage. Asterisks refer to non-Hilir cluster.

Surgical/Intensive Care Unit (SICU/ICU)



Labour Rooms



Record Unit



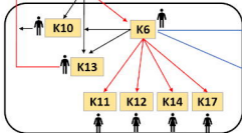
Surgical ward

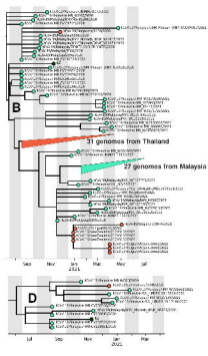
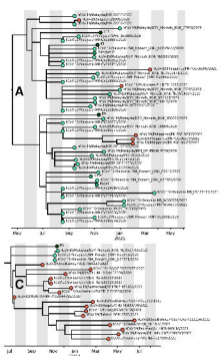
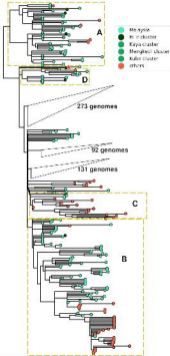


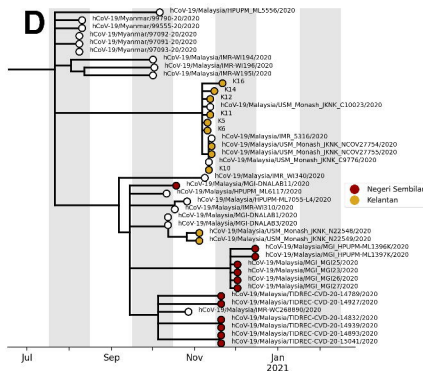
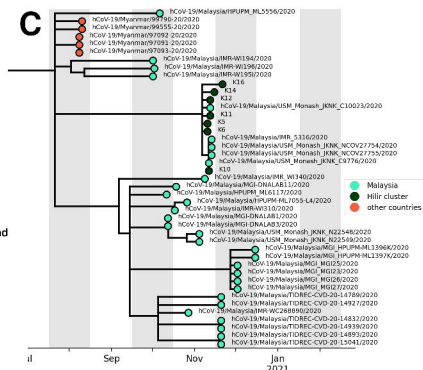
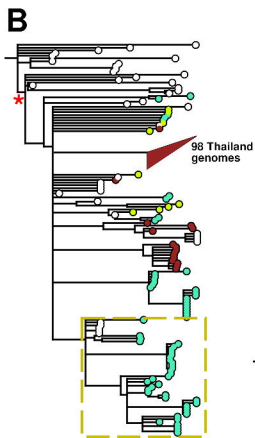
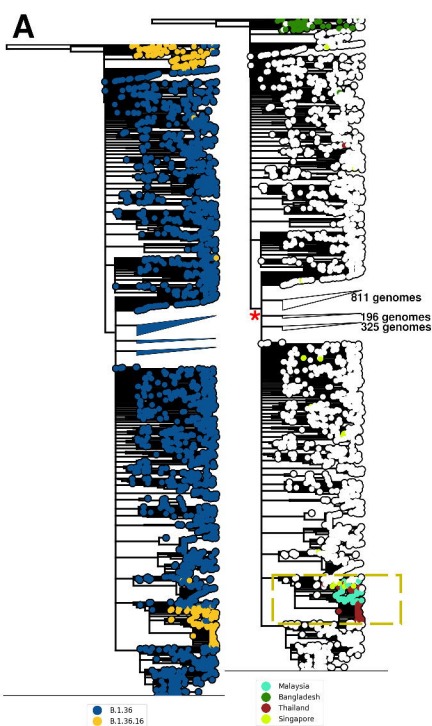
Legends:

- K#** Case label number
- Yellow box** Patient
- Light yellow box** Health-care workers (HCWs)
- Blue box** Household members
- Black outline** Hospital units
- Red arrow** Highly probable workplace transmission
- Black arrow** Probable workplace transmission
- Blue arrow** Probable household link

Surgical High Dependency Unit (SHDU)







Distribution of Malaysian COVID19 Pango lineages of 2020

