

1 **Smoking Cessation after Transitioning from Hospital to**
2 **Community Stop Smoking Services: Insights from Real-world**
3 **Data Analysis**

4
5 Rowan Cherodian¹, Matthew Franklin¹, Susan Baxter¹, James Chilcott¹, Duncan Gillespie^{1,2*}

6
7 ¹ Sheffield Centre for Health and Related Research (SCHARR), School of Medicine and
8 Population Health, University of Sheffield, UK

9 ² Sheffield Addictions Research Group

10
11 *Corresponding author: Duncan Gillespie, duncan.gillespie@sheffield.ac.uk

12
13 **Word count (excl. abstract, tables, figure legends): 4,989**

14
15 Figures: 2

16 Tables: 3

17
18 **Supplementary Information:**

19 - Word document containing all supplementary information

20
21 **Keywords:** secondary care, treating tobacco dependency in hospital, real-world evidence,
22 community stop smoking services

23
24 **Short title:** quitting smoking after hospital tobacco dependence treatment

25

1 **ABSTRACT**

2 **Background**

3 Patients seen by National Health Service (NHS) hospitals in England should now be asked if
4 they smoke on admission. People who smoke should be treated for tobacco dependence in
5 hospital, then offered support to quit outside of hospital. One way to support post-hospital
6 quitting is through referring patients to community stop smoking services (CSSS). In 2024, the
7 government announced a doubling of CSSS funding for five-years to improve reach and
8 outcomes. Our study aimed to describe the quit rates of people referred from hospital to CSSS,
9 alongside investigating individual characteristics associated with quitting success to inform the
10 potential for more cost-effective, targeted support in the future.

11 **Methods**

12 The study was part of a service evaluation using real-world data collected via a CSSS electronic
13 record system in England, which received referrals from hospital-based tobacco teams. We
14 compared CSSS activity and quitting outcomes to local and national reporting data.
15 Generalised Linear Models were used to investigate quitting outcomes 4-weeks after baseline
16 in relation to demographic, socio-economic, nicotine dependence, intervention, and health
17 factors hypothesised to be associated with quitting outcomes.

18 **Results**

19 Hospital-referred patients comprised 26% of CSSS referrals, tended to be older, with lower
20 socio-economic status and more long-term health conditions. Overall quitting success by
21 people who made a CSSS supported quit attempt was 61% at 4-weeks, slightly lower than local
22 averages, but similar to national averages. Our analysis sample contained records of 1,326 quit
23 attempts that were supported by CSSS. Of the variables investigated, we found that receiving
24 free NHS prescriptions was consistently associated with lower quitting success (Odds Ratio
25 [OR] 0.55, 95% Confidence Interval [CI] 0.33–0.92), potentially because this is a proxy for
26 lower socio-economic and health status. After accounting for other factors, having cancer
27 relative to no health conditions was associated with higher quitting success (OR 2.26, 95%CI
28 1.18–4.33).

29 **Conclusion**

30 Ensuring patients continue seeking support to quit smoking after their interaction with hospital-
31 based services can lead to quit rates comparable to other CSSS attendees who make a quit
32 attempt. Our analyses highlight the importance of hospital and CSSS investment in improving
33 the transfer of care between services.

1 1. INTRODUCTION

2 Tobacco smoking remains a leading cause of morbidity and mortality worldwide.¹ In England,
3 smoking prevalence has been declining since the 1998 “Smoking Kills” White Paper.²⁻⁴ This
4 decline has been attributed to treating individual tobacco addiction alongside population-level
5 tobacco control measures.⁵ Current government goals are for a smokefree England by 2030,
6 i.e. smoking prevalence <5%.⁶ However, modelling indicates that to reach this <5% goal, more
7 intervention is needed.^{5,7} Interventions should be directed to more disadvantaged groups in
8 which smoking rates remain high, such as those on low-income, unemployed, social housing
9 residents, poverty stricken, and experiencing homelessness.^{8,9}

10

11 The NHS Long Term Plan aims to offer NHS-funded tobacco dependence treatment services
12 to all identified smokers admitted to NHS hospitals who may not have previously considered
13 quitting smoking.¹⁰ The logic being that a hospital contact, particularly smoking-related
14 contacts (e.g. cancer diagnosis), can represent an important moment in which people may be
15 more motivated to quit smoking.^{11,12} This service-based intervention involves informing
16 patients identified as smokers about the hospital’s smoke-free policy, then incorporating
17 treatment of their tobacco dependency into their personal care plans.^{13,14} With their consent,
18 they are then offered ongoing support to stop smoking outside of hospital. Evidence suggests
19 that an attempt to quit smoking initiated through a hospital-delivered intervention is more
20 successful when followed-up with at least one month of support.¹⁵ For example, the Ottawa
21 model for smoking cessation suggests inpatients should receive eight phone calls from the
22 hospital-based tobacco teams over 6-months after discharge^{16,17}; the CURE model suggests up
23 to 12-weeks of follow-up support.¹⁸

24

1 However, in England the available support outside hospital varies depending on local resources
2 and policy.¹³ The main option for onwards support are community stop smoking services
3 (CSSS), which since 2013 have been funded by local governments in England and are generally
4 commissioned to support anybody in the local area who is seeking quit support.¹⁹⁻²¹ In 2023,
5 63% of local governments in England commissioned CSSSs.²² With steadily declining
6 investment over the last decade, in 2024 the government committed an additional £350-million
7 over 5-years (£70-million per year) through the “Stopping the start” programme, which would
8 more than double existing funding.²³ This additional funding is intended to support local
9 governments to improve CSSS reach, accessibility, and outcomes. With new in-hospital
10 tobacco dependence treatment services referring patients to CSSS in certain areas, this new
11 funding will provide an opportunity to explore how CSSS support can be customised to better
12 engage hospital-referred clients, e.g. examining the timing, location and methods through
13 which CSSS support is provided.^{19,24}

14
15 The current study is part of an evaluation of the QUIT hospital-based tobacco dependence
16 treatment service in South Yorkshire, England (<https://sybics-quit.co.uk>; Supplementary
17 Information).²⁵ The evaluation described in this article focuses on quitting outcomes for people
18 engaged with the QUIT service that are referred to a CSSS and subsequently go on to make a
19 CSSS supported quit attempt,²⁵ for which there were three objectives: (1) describe the workload
20 (number of people) impact of the QUIT service on the CSSS; (2) compare quit rates between
21 hospital-referred individuals and the general population using CSSS support; (3) investigate
22 the factors that influenced quitting outcomes among hospital-referred individuals. For (3), we
23 used regression-based analyses to identify factors that might be associated with quitting
24 smoking success, to identify patient or service characteristics that could be targeted to improve
25 quitting outcomes.

1

2 **2. METHODS**

3 **2.1. The QUIT service and associated study sample**

4 The QUIT service began May 2021 to deliver hospital-based tobacco dependence treatment
5 across four acute hospitals, three specialist mental health, and one children's hospital, which
6 also includes treatment of tobacco dependency in hospital-based NHS staff, with staggered
7 deployment across hospital sites up to May 2022.²⁵ The scope of the service excludes patients
8 on maternity wards who receive support to stop smoking via a different service pathway. Our
9 evaluation data corresponds to patients who had their tobacco dependence treatment care
10 transferred from an acute hospital to the NHS Yorkshire Smokefree CSSS
11 (<https://yorkshiresmokefree.nhs.uk/>) over a 21-month period: 1st July 2021 to 31st March 2023.
12 The three acute hospitals referring patients to this CSSS were Barnsley Hospital NHS
13 Foundation Trust, Doncaster and Bassetlaw Hospitals NHS Foundation Trust, and Sheffield
14 Teaching Hospitals NHS Foundation Trust.

15

16 During the first year of the QUIT service, tobacco treatment advisors were gradually becoming
17 active on hospital wards and the tobacco treatment advisor electronic record systems were
18 beginning to be used.²⁵ Subsequently, the QUIT service underwent a series of improvement
19 processes, part of which focused on improving the transfer of patient care for tobacco
20 dependency to CSSS. These patients could have been inpatients or outpatients who had contact
21 with the QUIT hospital-based tobacco team and, if they consented, were referred to CSSS for
22 continued support. Patients could be referred to CSSS after either receiving Very Brief Advice
23 or having a specialist assessment involving motivational interviewing by a hospital-based
24 tobacco dependence treatment advisor.¹³ After discharge, the hospital team routinely calls
25 patients who have had an assessment, confirming the CSSS referral. If a patient identified as a

1 smoker is discharged before seeing the hospital’s tobacco team, they are contacted by phone
2 and offered a specialist assessment and referral to CSSS.

3

4 Our evaluation used CSSS real-world data collected for the purposes of service monitoring and
5 improvement, i.e. the CSSS added data fields to their electronic record system that notify them
6 of a hospital-referred client alongside other relevant information (e.g. smoking-related details).

7 The CSSS attempted to contact each referred patient, some of whom were not contactable, and
8 of those who could be contacted, some did not accept the offer of support. Those who did

9 accept the offer of support were registered with the service. However, not everyone who
10 registered went on to make a CSSS support quit attempt. This statistical analysis of quitting

11 outcomes in this study was conducted on the subset of people who made a CSSS supported
12 quit attempt.

13

14 **2.2. Ethical approval**

15 Ethical approval was obtained from the Division of Population Health ethics committee, School
16 of Medicine and Population Health, University of Sheffield (ref: 056472).

17

18 **2.3. Outcome measure: 4-week quit**

19 A “4-week quit” is defined according to the nationally adopted standard, as an individual not
20 having smoked at all in the last 2-weeks when asked at 4-weeks (28-days) from their “quit
21 date”, marking the start of their quit attempt.^{26,27} A person is counted as having achieved a self-

22 reported 4-week quit if they are assessed (face-to-face or by telephone) and state that they have
23 not smoked according to this standard. A person is counted as having achieved a Carbon

24 Monoxide (CO) verified 4-week quit if they self-report having quit and their expired air CO is
25 assessed 4-weeks after their quit date (−3 or +14 days) and found to be less than 10 parts per

1 million. During the study period, CO monitoring of quits was not required due to COVID-19
2 related restrictions. CO monitoring might also not be appropriate for people feeling unwell, as
3 is likely in our hospital-based sample. Someone was therefore counted as having quit if their
4 quit was either self-reported or CO validated.

5
6 For inpatients who had a specialist assessment by a hospital-based tobacco dependence
7 treatment advisor, the hospital discharge date is initially set as the patient's quit date. If the
8 patient was transferred to the CSSS, and they had smoked since discharge, then a new quit date
9 is agreed with the CSSS. If a patient relapsed back to smoking while under CSSS care, then
10 they could reset their quit date. We used data on quitting outcomes at 4-weeks after setting the
11 latest quit date. Individuals are recorded as either "Quit", "Lost to Follow-up" (LTF) or "Not
12 Quit". For our primary analysis all "LTF" were set as "Not Quit"; the influence of this
13 assumption on our results was tested by repeating the analysis with "LTF" people excluded
14 from the analysis sample.

15

16 **2.4. Workload impact on community stop smoking services**

17 To address study objective (1), the NHS Yorkshire Smokefree CSSS provided summary
18 statistics on the numbers of people referred to and engaging with their service, in total and from
19 the QUIT service from July 2021 to March 2023 (Supplementary Information). These data
20 showed the number of people contactable after referral, accepting the service and hence
21 registered, setting a quit date, and achieving a 4-week quit. There were also monthly statistics
22 on referrals, quit dates set, and 4-week quits.

23

1 **2.5. General cohort quitting with community stop smoking services support**

2 To address study objective (2), we compared the age, sex (male/female), and occupation profile
3 of people who made a quit attempt in our analysis sample to national and local profiles using
4 publicly available, national CSSS reporting data from 1st April 2022 to 31st March 2023
5 (Supplementary Information).²⁸ We expect that local CSSS supported 4-week quit rates will be
6 higher than the national average because the Yorkshire and the Humber region (that includes
7 Barnsley, Doncaster and Sheffield) has the highest quit rates nationally, potentially due to high-
8 levels of local CSSS investment.²⁹

9

10 **2.6. Explanatory variables for regression analyses**

11 The explanatory variables for regression analysis to address study objective (3) were
12 determined through a systematic process.²⁵ First, we conducted a literature review that was
13 designed to identify factors that could be related to quitting outcomes.³⁰ Second, we cross-
14 referenced the literature review's suggested variables with the available CSSS data fields,
15 which we grouped into four categories: “demographic and socio-economic factors”, “tobacco
16 smoking factors”, “intervention characteristics” and “health and healthcare setting”. These
17 categories are described below, with further details in the Supplementary Information.

18

19 ***Demographic and socio-economic factors***

20 We investigated the association of age (18–34, 35–44, 45–59, 60+), sex, and occupation on 4-
21 week quits. We also investigated the association with being exempt from NHS prescription
22 payments, given that in England someone is eligible for free prescriptions if they meet certain
23 criteria that are potentially proxies for low socio-economic and health status; i.e. being aged
24 60+, pregnant or a recent mother, having a specified disability or medical condition, or
25 receiving social welfare benefits.³¹

1
2
3
4
5
6
7
8
9
10
11
12
13
14
15
16
17
18
19
20
21
22
23
24
25

Tobacco smoking factors

The Fagerström score of nicotine dependence was dichotomised into a binary variable representing low (0–4) and high (5+) nicotine dependence.²⁵

Community stop smoking service support

The support provided by CSSS was measured by the number of support sessions attended and an index that we derived to represent the intensity of NRT supplied.²⁵ During the study period, Varenicline was not available as a smoking cessation medication.³² In their sessions, people could be recorded as receiving up to two different types of NRT, such as patches, sprays, and lozenges in different quantities, with most clients receiving a combination of types over the course of their sessions. Due to high variability in the types and amounts of NRT given, it was not feasible to account for all variations. Thus, an intensity index of NRT given was calculated by dividing the total number of times NRT was given by the number of sessions attended, with a higher value indicating more intensive pharmacotherapy. We dichotomised this index into: people who on average received ≤ 1 NRT items per session vs. > 1 item.

Hospital-based intervention

We summarised each patient’s interaction with the hospital-based service into a single variable with four categories:

- i. Specialist assessment conducted in-person during the inpatient stay;
- ii. Specialist assessment or Very Brief Advice over the phone post-discharge;
- iii. Specialist assessment or Very Brief Advice given as an outpatient;
- iv. Unknown.

1 ***Health and healthcare setting variables***

2 Medical conditions were recorded as binary variables of having (or not) any of 16 medical
3 conditions caused or made worse by smoking with no additional details (e.g. sub-condition
4 type, treatment type, time of diagnosis). For analysis, these 16 conditions were grouped to
5 represent: (i) the government's Major Conditions Strategy as five binary variables for
6 overarching condition categories:³³ cardiovascular disease, diabetes, mental ill health, cancer,
7 and chronic respiratory condition; (ii) a co-morbidities categorial variable with three
8 categories: 0, 1–2, 3+ conditions.

9

10 **2.7. Data analysis**

11 Data analysis followed the pre-registered analysis plan,²⁷ with refinements to suit the
12 limitations of the available data. The mechanism of missingness with respect to quitting
13 outcomes was assessed using two-way t-tests, the results from which informed what missing
14 data method might be suitable, e.g. if the data is plausibly missing at random, using multiple
15 imputation via chained regression equations would be suitable.³⁴ Subsequent statistical analysis
16 of the 4-week quit outcome used Generalised Linear Models with logit link functions. The
17 analysis was based on five model structures that sequentially added additional explanatory
18 variables:

- 19 - (Model-1) individual demographic and socio-economic characteristics;
- 20 - (Model-2) Model-1 with the Fagerström score for nicotine dependence;
- 21 - (Model-3) Model-2 with CSSS support (i.e. support sessions and pharmacotherapy);
- 22 - (Model-4) Model-3 with hospital-based contact type (i.e. inpatient vs. post-discharge vs.
23 outpatient);
- 24 - (Model 5) Model-4 with health co-morbidities.

25

1 The model structures were compared based on the Akaike's Information Criterion (AIC) and
2 Likelihood Ratio Tests of the difference in residual deviance between models. Statistical effect
3 sizes are reported in terms of adjusted odds ratios (ORs). These odds ratios provide a
4 quantification of association strength between the outcome of interest (4-week quits) and the
5 explanatory variables of interest, holding all other variables in the regression model at their
6 respective means. An odds ratio is interpreted relative to a value of 1, whereby 1 suggests there
7 is no difference in odds between groups being compared. An odds ratio <1 indicates a decrease
8 in odds relative to the comparison group, whereas an odds ratio >1 indicates an increase in
9 odds. Thus, if a factor is associated with a decrease in odds of quitting success the odds ratio
10 is below one, and if it is associated with an increase in quitting success the odds ratio is above
11 one. The threshold for statistical significance was set at 0.05 (two-way) to produce 95%
12 confidence intervals. When a 95% confidence interval overlaps one, this indicates that there is
13 more than a 5% probability that the observation of an effect is due to chance. Reporting of
14 statistical uncertainty around the effect estimates adjusted for the multiple imputation of
15 missing data using Rubin's Rule.³⁵

16

17 **3. RESULTS**

18 **3.1. Patient flows through hospital and community stop smoking services**

19 Of the 3,223 patients referred to the CSSS from the hospital-based service, 72.0% could be
20 contacted by the CSSS, of whom 72.9% went on to register with the CSSS, and of these 78.8%
21 set a quit date, with a 4-week quit success rate of 61.1% (Supplementary Table S3). For the
22 first 10 months of the hospital-based service implementation, there was a steady rise in the
23 percentage of all referrals to the CSSS originating from hospital (Figure 1). After this initial
24 period, from April 2022, the monthly statistics were relatively stable, with the hospital-based

1 service accounting for 26% of all CSSS referrals (191 referrals/month), translating to 19% of
2 quit dates set (81 quit dates/month) and 17% of 4-week quits (49 quits/month).

3

4 Put in the context of patient flows through the inpatient tobacco dependence treatment pathway,
5 based on the Key Performance Indicators for the QUIT service from November 2022 to March
6 2023 (Supplementary Information), for every 100,000 inpatient admissions, there were 9,700
7 people identified as currently smoking tobacco, of whom 3,700 lived locally and had a
8 specialist assessment by a hospital-based tobacco treatment advisor. Of these specialist
9 assessments, 1,250 people consented to CSSS referral after discharge, resulting in 520 quit
10 dates being set and 320 4-week quits (Supplementary Table S11).

11

12 **3.2. Descriptive statistics and comparison to the national and local samples**

13 Table 1 provides descriptive statistics for the analysis sample with respect to quitting outcomes
14 and the explanatory variables investigated (further details in the Supplementary Information).

15

16 Compared to the national data on people attempting to quit smoking with CSSS support, our
17 data sample of people referred from hospital included a higher percentage of people who were
18 retired, sick or disabled and unable to work, or eligible for free NHS prescriptions
19 (Supplementary Table S5). Among those arriving from hospital who made a CSSS supported
20 quit attempt, 61.3% achieved a 4-week quit ($n=813/1,326$; Supplementary Tables S5 and S6).

21 Compared to the local average quit rate with CSSS support of 69.6% (3,540/5,083), the odds
22 of quitting in people who made a quit attempt after being referred from hospital were on
23 average 30.9% lower ($\chi^2=33.1$, $df=1$, $p < 0.01$; Supplementary Table S6). However, rates of
24 quitting in our data sample were similar to national averages (Supplementary Table S6).

1 Supplementary Tables S5 and S6 also present these comparisons separately for each
2 demographic and socio-economic subgroup.

3

4 **3.3. Missing data assessment**

5 Across all chosen variables, missing data was mainly associated with the Fagerström score
6 which had 252 missing values (19% of the analysis sample). This missingness was assessed to
7 be “missing at random” with respect to quitting outcomes (non-missing 61.9%, missing 58.7%,
8 t -statistic = -1.026 , $df = 251$, p -value = 0.306). Missing values for the Fagerström score were
9 therefore imputed using multivariate imputation, based on information from all other analysis
10 dataset variables.³⁴ The result was nineteen imputed datasets (same as the percentage missing),
11 accounting for the statistical uncertainty in imputation.

12

13 **3.4. Statistical analyses**

14 Overall, Model-5 with the most complex structure also had the best data fit (Table 2). Table 3
15 presents the coefficient estimates (odds ratios) for the five model structures considered, with
16 Figure 2 presenting just Model-5’s odds ratios. Model-5’s estimates were robust to assumptions
17 about quitting outcomes for people lost to follow-up and restricting the data sample to only
18 people with no missing Fagerström scores (Supplementary Table S12).

19

20 ***Model-1: demographic and socio-economic variables***

21 The odds of achieving a 4-week quit increased with age and were lower for people who were
22 eligible for free NHS prescriptions (Table 3). The odds of quitting by someone with free NHS
23 prescriptions were 28% lower than without.

24

1 ***Model-2: Model-1 with nicotine dependence score***

2 Adding nicotine dependence to Model-1 did not significantly improve model fit (Table 2).

3

4 ***Model-3: Model-2 with CSSS support variables***

5 Adding the number of CSSS support sessions and the use of pharmacotherapy resulted in large
6 improvements in model fit (Table 2), also associated with increased odds of quitting success
7 (Table 3). On average, individuals in our analysis sample attended 6.3 CSSS support sessions
8 (range: 1 to 26). While most people tended to have ≤ 1 NRT items given per session, 31.0%
9 were on average given more than one type of NRT per session, indicating more intensive
10 pharmacotherapy (see Section 2.6 for the definition of this index). Furthermore, accounting for
11 CSSS support variation removed the statistically significant association between older age and
12 higher odds of quitting. At the same time, the association between having free NHS
13 prescriptions and lower odds of quitting became stronger. Higher nicotine dependence also
14 became significantly associated with lower odds of quitting (Table 3). These changes in
15 association happened because individuals with these characteristics received more CSSS
16 support. Consequently, when we accounted for this extra support, the odds of quitting
17 associated with these characteristics decreased.

18

19 ***Model-4: Model-3 with hospital contact type***

20 Adding hospital contact type did not produce a statistically significant improvement in model
21 fit (Table 3). There was a trend for people who arrived at CSSS after a hospital outpatient
22 contact to have relatively higher odds of quitting, but this was not statistically significant (Table
23 3). Supplementary Table S13 gives the observed percentages of quits according to hospital-
24 based contact type and health condition.

25

1 ***Model-5: Model-4 with co-morbid health conditions***

2 Adding information on health conditions significantly improved model fit (Table 2). In our
3 analysis sample, 71.9% of people had at least one health condition, and 25.4% of people had
4 three or more health conditions. The five most common conditions were chronic respiratory
5 conditions (37.6%), mental ill health (26.3%), cardiovascular disease (25.2%), diabetes
6 (12.4%), and cancer (9.3%). Compared to having no health conditions, the model estimated
7 that having cancer significantly increased the odds of quitting by a factor of 2.26 (Table 3).
8 None of the associations between quitting and the other health conditions reached statistical
9 significance. There was a trend towards having a greater number of co-morbid health
10 conditions decreasing the odds of quitting, but not with statistical significance (Table 3).

11

12 **4. DISCUSSION**

13 This study investigated the numbers of people identified by the QUIT hospital-based tobacco
14 dependence treatment service who were then referred to a CSSS, and what patient- and service-
15 related factors were associated with a successful quit attempt. After the initial phase-in of
16 hospital-based services, hospital-referred people accounted for 26% of all referrals to the
17 CSSS. Of the hospital-referred people who then made a CSSS supported quit attempt, 61%
18 achieved a 4-week quit. This quitting rate was slightly below the local average for people
19 quitting with CSSS support, but similar to the national average. Extrapolating these results
20 based on the estimated relapse rates over time for people using NRT in clinical trials,³⁶ this 4-
21 week quit rate equates to an expected 6-month quit rate of 33%. This quit rate is similar to the
22 quit rates of ~35% among people who received the Ottawa style intervention, in which support
23 was given by phone for 6-months post-discharge.^{16,17} Compared to the general cohort of people
24 quitting with CSSS support, those transferred from QUIT hospital tobacco teams to CSSS had
25 a higher representation of older people, lower socio-economic status, and long-term health

1 conditions. Thus, the hospital-based service is likely to be facilitating a greater reach of CSSS
2 to priority population subgroups.

3

4 **4.1. Implications for service improvement**

5 *Who might require additional support to quit?*

6 While research has identified factors influencing quitting among smokers in general³⁷ and those
7 receiving CSSS support,^{38,39} there is limited evidence on how people's health and hospital
8 contact types are associated with quitting outcomes.³⁰ Previous studies have suggested lower
9 odds of quitting success for patients with higher cardiovascular risk,²⁵ more co-morbidities,⁴⁰
10 and certain mental health histories.⁴¹⁻⁴³ People referred to CSSS from hospital with poorer
11 health status (e.g. more co-morbid conditions) could have lower capability (e.g. mental
12 strength) to quit, although for others the hospital contact might be a catalyst that supports
13 quitting (e.g. due to a cancer diagnosis).⁴⁴ Our findings showed that people who were eligible
14 for free NHS prescriptions consistently had lower odds of quitting, which matched previous
15 findings from English CSSSs.³⁹ Eligibility for free prescriptions depends on a range of health
16 and socio-economic factors, which potentially acts as a proxy for others factors associated with
17 lower odds of quitting (e.g. lower socio-economic status). In addition, whilst ethnicity in our
18 analysis sample was almost entirely "White", a recent analysis from another English hospital-
19 based tobacco dependence treatment service found that people whose ethnicity was classified
20 as "Mixed/Asian/Other" had a lower chance of quitting successfully.¹⁷ Given such patient
21 characteristics are associated with lower odds of quitting, additional research and then service
22 tailoring is needed to better understand why, and then support people with these characteristics
23 to quit successfully.

24

1 *The importance of flexible and personalised smoking cessation support*

2 In keeping with the challenges faced by other acute hospitals,^{17,45,46} the QUIT service has
3 experienced challenges with high levels of patient drop-out after leaving hospital.²⁵ The
4 findings reveal that out of every 1,000 referrals, the CSSS were unable to contact 280 people,
5 195 declined support after being contacted, and 111 registered with the service but did not
6 attempt to quit, resulting in a total dropout of 586 people, or 59%. It is important that hospital-
7 based services do what they can to maximise patient motivation to quit, and in doing so increase
8 the likelihood that patients will go on to engage with support to stop smoking outside of the
9 hospital environment. Having the right kind of interaction to prompt someone to think about
10 their smoking is therefore an important part of hospital-based tobacco dependence treatment.⁴⁴
11 Potentially more challenging is understanding the barriers to making a quit attempt and
12 accessing the right kind of support to stop smoking for people recently discharged from
13 hospital, who might be acutely unwell.

14

15 For example, cancer patients can encounter a range of barriers when seeking support to quit
16 smoking, even though they are potentially more motivated.⁴⁷ We found that people with cancer
17 receiving CSSS support had relatively higher odds of quitting, suggesting the current pathway
18 is potentially working well for this patient population. This aligns with recent findings that
19 receiving hospital treatment for a smoking-related disease, which included cancer, increased
20 the probability of not smoking when assessed 6-months after discharge.¹⁷ These findings
21 suggest the benefits of hospital tobacco teams facilitating referral to CSSSs for people whose
22 hospital contact is potentially smoking-related (e.g. cancer diagnosis/care), as this could be
23 acting as a catalyst that increases their motivation to quit. These benefits of facilitating referral
24 to CSSSs should also apply to stop smoking support for individuals who smoke and attend
25 cancer screening.⁴⁸ In the national English service specification, hospital-based tobacco teams

1 should make personalised plans for patients' ongoing support to stop smoking prior to their
2 discharge, with follow-up calls at 7–14 days and 28-days after discharge.¹³ The discharge plan
3 and follow-up calls provide an opportunity to highlight the flexibility and choice in support
4 options, which could help facilitate engagement.²⁴ They also provide an opportunity to assess
5 whether a patient is ready to be referred to CSSS with a view to making a quit attempt. If a
6 patient is referred, CSSS might also benefit from enhanced information sharing, e.g. about
7 health status and the integration of smoking into care plans. This information would help
8 CSSSs to be able to continue personalised care from hospital, and to tailor their approach to
9 hospital-referred patients in an effort to decrease the initial dropout. Such initiatives to improve
10 the personalisation of care could also help to improve quitting outcomes for other groups
11 supported by hospital-based tobacco teams, such as children, parents and carers of children,
12 and NHS staff who smoke.

13

14 **4.2. Strengths and limitations of the study**

15 Our study's strengths include its systematic approach to analysis development and conduct
16 using real-world CSSS data. Our statistical analysis plan development was supported by a
17 literature review to identify factors that might be associated with quitting outcomes.³⁰ Further
18 details of population eligibility criteria and the covariates of interest were developed in the
19 interim QUIT service evaluation report.²⁵ The evaluation team refined the analysis plan through
20 regular discussions with the QUIT service team, including the programme director and
21 manager, through the stages of evaluation planning, data collection, and data curation. These
22 discussions addressed various challenges, including constraints on data collection within
23 service settings, navigating information governance, data sharing and completeness, and
24 understanding the collected data fields. The QUIT service and CSSS teams aided with
25 interpreting the study findings, to provide service-context to our quantitative analyses.

1

2 There were four main study limitations, which primarily concern the study and analysis sample.

3 First, we could not investigate quitting outcomes beyond whether someone achieved a 4-week

4 quit, although achieving a 4-week quit is predictive of longer-term quitting success.^{36,49}

5 Second, the size of the data sample was limited because logistical constraints imposed by CSSS

6 commissioning arrangements meant that the study was only able to use data from one of two

7 CSSSSs receiving patients from the acute hospitals implementing the QUIT service. This meant

8 that CSSS activity resulting from referrals from The Rotherham Hospital NHS Foundation

9 Trust could not be included in this study. Third, due to data sharing restrictions, it was not

10 possible to use individual-level data to compare the characteristics and quitting outcomes of

11 hospital-referred people to other people quitting with support from the CSSS. To overcome

12 this, we used aggregate summary statistics from the CSSS that provided data for this study and

13 the national CSSS reporting data as the comparator, although the national reporting data has its

14 own data quality limitations and may not be a wholly fair comparator.²⁹ Fourth, although we

15 intended to, it was not possible for us to link a sufficiently large sample of individuals between

16 the hospital-based records and the CSSS records. This meant that for our analyses it was not

17 possible to use the information on smoking status and treatment throughout a patient's stay in

18 hospital, as recommended in the standard evaluation framework for these services (see also

19 Section 4.3).⁵⁰ See the Supplementary Information for a discussion of implications for service

20 monitoring and evaluation.

21

22 **4. CONCLUSION**

23 People referred to CSSS from hospital made up around 26% of all CSSS referrals and may not

24 have attempted to quit before their hospital contact. As such, identifying smokers during a

1 hospital-based contact then offering ongoing smoking cessation support is likely to be
2 increasing the number of people quitting smoking.

3

4 However, there was a high drop-out rate between hospital referrals and CSSS. Some patients
5 could not be contacted (28%), and of those who were contacted many declined support or did
6 not then go on to make a quit attempt even after accepting support (43%).

7

8 *Actions to improve transfer of care*

9 Hospital:

- 10 • While motivation to quit is assessed pre-referral and patients are followed-up with post-
11 discharge phone calls from the hospital-based team to confirm the wish to be referred,
12 some patients may experience barriers to quitting smoking after their hospital stay.
13 Hospitals should explore ways to maximise patient motivation to quit by understanding
14 the potential barriers to quitting before a referral to CSSS.

15

16 CSSS:

- 17 • Hospital-referred patients may have different motivations for quitting than the general
18 CSSS population. CSSS should consider tailoring their initial approach to acknowledge
19 these motivations and potential barriers related to recent hospitalisation.
- 20 • Improved information sharing from hospitals could help to personalise CSSS support.
21 Sharing details about a patient's medical history, social situation, and initial
22 motivations for quitting could help CSSS in tailoring their approach and identifying
23 those who might require additional support.

24

1 *Implications for quitting success*

2 The study found that hospital-referred patients who engaged with CSSS achieved quit rates
3 similar to the general CSSS population. However, quit rates were lower among patients with
4 eligibility for free NHS prescriptions, a potential indicator of long-term health conditions or
5 socio-economic disadvantage. This finding suggests a need for additional support for this
6 subgroup within both hospital and community settings.

7

8 Overall, collaboration between hospital and community stop smoking services is key. By
9 jointly focusing on optimising the transfer of care and tailoring support to individual needs,
10 both hospital and community stop smoking services can improve patient engagement and
11 ultimately increase quit rates.

12

13 **ACKNOWLEDGMENTS**

14 We would like to thank the teams at the NHS South Yorkshire Integrated Care Board and at
15 the NHS hospital trusts who are implementing the QUIT service. In particular, Dr Lisa Wilkins,
16 the QUIT Programme Director and Leanne Sparks, Senior Prevention Programme Manager,
17 NHS South Yorkshire Integrated Care Board. Thanks to the QUIT Oversight Group and Dr
18 Richard Jenkins, Senior Responsible Officer for the QUIT Programme for support and
19 feedback on the evaluation. Community Stop Smoking Service data was provided by the NHS
20 Yorkshire Smokefree Service, delivered by South West Yorkshire Foundation Trust. Data
21 transfer was facilitated by Laura Boast at the NHS Yorkshire Smokefree service and managed
22 by Andy Eames at the South Yorkshire Integrated Care Board, both of whom provided support
23 with understanding the data and interpreting the findings. We acknowledge helpful ongoing
24 discussions with Paul Lambert from Yorkshire Cancer Research. Comments that helped to

1 improve the manuscript were given by John Holmes, John Robins, Debbie Robson and Nick
2 Woodrow.

3

4 **DECLARATION OF INTERESTS**

5 The authors declare no conflict of interest.

6

7 **FUNDING**

8 This study was supported by charity funding from Yorkshire Cancer Research as part of a
9 commissioned evaluation of the QUIT hospital-based tobacco dependence treatment service
10 (<https://sybics-quit.co.uk/>) (SA/R117).

11

12 **OPEN ACCESS STATEMENT**

13 For the purpose of open access, the author has applied a CC BY public copyright licence to
14 any Author Accepted Manuscript version arising from this submission.

15

16 **DATA AVAILABILITY STATEMENT**

17 The data underlying this article cannot be shared publicly to protect the privacy of participants.

18 An anonymised version of the data, restricted to include only the variables used for analysis,
19 will be shared on reasonable request to the corresponding author.

20

21 **CONTRIBUTORSHIP STATEMENT**

22 Conceptualization (DG, MF), Data curation (DG, RC), Formal Analysis (RC), Funding
23 acquisition (DG, MF, SB, JC), Methodology (DG, MF), Project administration (DG),
24 Supervision (DG), Validation (DG), Visualization (RC), Writing – original draft (DG, RC),
25 Writing – review & editing (DG, RC, MF, SB, JC).

1

2 REFERENCES

- 3 1. Reitsma MB, Kendrick PJ, Ababneh E, et al. Spatial, temporal, and demographic
4 patterns in prevalence of smoking tobacco use and attributable disease burden in 204
5 countries and territories, 1990–2019: a systematic analysis from the Global Burden of
6 Disease Study 2019. *The Lancet*. 2021;397(10292):2337-2360.doi:
7 [https://doi.org/10.1016/S0140-6736\(21\)01169-7](https://doi.org/10.1016/S0140-6736(21)01169-7)
- 8 2. Department of Health. *Smoking Kills: a White Paper on Tobacco*. London: Stationary
9 Office;1998.
10 [https://assets.publishing.service.gov.uk/government/uploads/system/uploads/attachme
11 nt_data/file/260754/4177.pdf](https://assets.publishing.service.gov.uk/government/uploads/system/uploads/attachment_data/file/260754/4177.pdf)
- 12 3. Beard EV, West R, Jarvis M, Michie S, Brown J. ‘S’-shaped curve: modelling trends
13 in smoking prevalence, uptake and cessation in Great Britain from 1973 to 2016.
14 *Thorax*. 2019;74(9):875-881.doi: <https://doi.org/10.1136/thoraxjnl-2018-212740>
- 15 4. Opazo Breton M, Gillespie D, Pryce R, et al. Understanding long-term trends in
16 smoking in England, 1972–2019: an age–period–cohort approach. *Addiction*.
17 2022;117(5):1392-1403.doi: <https://doi.org/10.1111/add.15696>
- 18 5. Tobacco Advisory Group of the Royal College of Physicians. *Smoking and health
19 2021: A coming of age for tobacco control?* London: Royal College of
20 Physicians;2021. [https://www.rcplondon.ac.uk/projects/outputs/smoking-and-health-
21 2021-coming-age-tobacco-control](https://www.rcplondon.ac.uk/projects/outputs/smoking-and-health-2021-coming-age-tobacco-control)
- 22 6. Department of Health and Social Care. *Advancing our health: prevention in the
23 2020s—consultation document*. 2019.
24 [https://www.gov.uk/government/consultations/advancing-our-health-prevention-in-
25 the-2020s/advancing-our-health-prevention-in-the-2020s-consultation-document](https://www.gov.uk/government/consultations/advancing-our-health-prevention-in-the-2020s/advancing-our-health-prevention-in-the-2020s-consultation-document)
- 26 7. Cancer Research UK. *Smoking prevalence projections for England based on data to
27 2021*. 2023.
28 [https://www.cancerresearchuk.org/sites/default/files/cruk_smoking_projections_inclu
29 ding_deprivation_england_2021.pdf](https://www.cancerresearchuk.org/sites/default/files/cruk_smoking_projections_including_deprivation_england_2021.pdf)
- 30 8. Cox S, Murray J, Ford A, Holmes L, Robson D, Dawkins L. A cross-sectional survey
31 of smoking and cessation support policies in a sample of homeless services in the
32 United Kingdom. *BMC Health Serv Res*. 2022;22(1):635.doi:
33 <https://doi.org/10.1186/s12913-022-08038-7>
- 34 9. Hiscock R, Bauld L, Amos A, Platt S. Smoking and socioeconomic status in England:
35 the rise of the never smoker and the disadvantaged smoker. *J Public Health (Oxf)*.
36 2012;34(3):390-396.doi: <https://doi.org/10.1093/pubmed/fds012>
- 37 10. UK National Health Service (NHS). *The NHS long term plan*. 2019.
38 <https://www.longtermplan.nhs.uk/publication/nhs-long-term-plan/>
- 39 11. Tobacco Advisory Group of the Royal College of Physicians. *Hiding in plain sight:
40 Treating tobacco dependency in the NHS*. London: Royal College of Physicians;2018.

- 1 [https://www.rcplondon.ac.uk/projects/outputs/hiding-plain-sight-treating-tobacco-](https://www.rcplondon.ac.uk/projects/outputs/hiding-plain-sight-treating-tobacco-dependency-nhs)
2 [dependency-nhs](https://www.rcplondon.ac.uk/projects/outputs/hiding-plain-sight-treating-tobacco-dependency-nhs)
- 3 12. Li L, Borland R, Cummings KM, et al. Are health conditions and concerns about
4 health effects of smoking predictive of quitting? Findings from the ITC 4CV Survey
5 (2016–2018). *Tobacco Prevention & Cessation*. 2020;6.doi:
6 <https://doi.org/10.18332/tpc/127471>
- 7 13. National Centre for Smoking Cessation and Training. *NHS Standard Treatment Plan*
8 *for Inpatient Tobacco Dependence: A guide to support delivery of the Inpatient*
9 *Tobacco Dependence Treatment Care Bundle*. 2023.
10 [https://www.ncsct.co.uk/library/view/pdf/NHS-Standard-Treatment-Plan-for-Acute-](https://www.ncsct.co.uk/library/view/pdf/NHS-Standard-Treatment-Plan-for-Acute-Inpatient-Tobacco-Dependence.pdf)
11 [Inpatient-Tobacco-Dependence.pdf](https://www.ncsct.co.uk/library/view/pdf/NHS-Standard-Treatment-Plan-for-Acute-Inpatient-Tobacco-Dependence.pdf)
- 12 14. National Institute for Health and Care Excellence (NICE). *Tobacco: preventing*
13 *uptake, promoting quitting and treating dependence*. *NICE guideline [NG209]*. 2023.
14 <https://www.nice.org.uk/guidance/ng209>
- 15 15. Rigotti NA, Clair C, Munafo MR, Stead LF. Interventions for smoking cessation in
16 hospitalised patients. *Cochrane Database Syst Rev*. 2012(5):CD001837.doi:
17 <https://doi.org/10.1002/14651858.CD001837.pub3>
- 18 16. Mullen KA, Manuel DG, Hawken SJ, et al. Effectiveness of a hospital-initiated
19 smoking cessation programme: 2-year health and healthcare outcomes. *Tobacco*
20 *Control*. 2017;26(3):293-299.doi: [https://doi.org/10.1136/tobaccocontrol-2015-](https://doi.org/10.1136/tobaccocontrol-2015-052728)
21 [052728](https://doi.org/10.1136/tobaccocontrol-2015-052728)
- 22 17. Robins J, Patel I, McNeill A, et al. Evaluation of a hospital-initiated tobacco
23 dependence treatment service: uptake, smoking cessation, readmission and mortality.
24 *BMC medicine*. 2024;22(1):139.doi: <https://doi.org/10.1186/s12916-024-03353-8>
- 25 18. Evison M, Pearse C, Howle F, et al. Feasibility, uptake and impact of a hospital-wide
26 tobacco addiction treatment pathway: Results from the CURE project pilot. *Clin Med*
27 *(Lond)*. 2020;20(2):196-202.doi: <https://doi.org/10.7861/clinmed.2019-0336>
- 28 19. Action on Smoking and Health. *Reaching Out: Tobacco control and stop smoking*
29 *services in local authorities in England*. 2021. [https://ash.org.uk/uploads/Reaching-](https://ash.org.uk/uploads/Reaching-Out-1.pdf?v=1643633584)
30 [Out-1.pdf?v=1643633584](https://ash.org.uk/uploads/Reaching-Out-1.pdf?v=1643633584)
- 31 20. Action on Smoking and Health, Cancer Research UK. *A changing landscape: stop*
32 *smoking services and tobacco control in England*. 2019. [https://ash.org.uk/wp-](https://ash.org.uk/wp-content/uploads/2019/03/2019-LA-Survey-Report.pdf)
33 [content/uploads/2019/03/2019-LA-Survey-Report.pdf](https://ash.org.uk/wp-content/uploads/2019/03/2019-LA-Survey-Report.pdf)
- 34 21. West R, May S, West M, Croghan E, McEwen A. Performance of English stop
35 smoking services in first 10 years: analysis of service monitoring data. *BMJ*.
36 2013;347.doi: <https://doi.org/10.1136/bmj.f4921>
- 37 22. Cancer Research UK, Action on Smoking and Health. *Local authority stop smoking*
38 *services and wider tobacco control in England, 2023*. 2023.
39 <https://ash.org.uk/uploads/The-first-ten-years.pdf?v=1709211047>

- 1 23. Department of Health and Social Care. *Stopping the start: our new plan to create a*
2 *smokefree generation*. 2023. [https://www.gov.uk/government/publications/stopping-](https://www.gov.uk/government/publications/stopping-the-start-our-new-plan-to-create-a-smokefree-generation)
3 [the-start-our-new-plan-to-create-a-smokefree-generation](https://www.gov.uk/government/publications/stopping-the-start-our-new-plan-to-create-a-smokefree-generation)
- 4 24. Woodrow N, Gillespie D, Kitchin L, et al. Reintroducing face-to-face support
5 alongside remote support to form a hybrid stop smoking service in England: a
6 formative mixed methods evaluation. *BMC Public Health*. 2024;24(1):1-11.doi:
7 <https://doi.org/10.1186/s12889-024-18235-0>
- 8 25. Gillespie D, Baxter S, Franklin M, Hock E, Flight L, Bright S, Chilcott J. *Evaluation*
9 *of the QUIT hospital-based smoking cessation service: Interim report - covering the*
10 *setup phase of the evaluation*. 2023. <https://doi.org/10.15131/shef.data.23622864>
- 11 26. West R. *Assessing smoking cessation performance in NHS stop smoking services: The*
12 *Russell standard (clinical)*. London: National Centre for Smoking Cessation and
13 Training;2005. [https://www.ncsct.co.uk/usr/pub/assessing-smoking-cessation-](https://www.ncsct.co.uk/usr/pub/assessing-smoking-cessation-performance-in-nhs-stop-smoking-services-the-russell-standard-clinical.pdf)
14 [performance-in-nhs-stop-smoking-services-the-russell-standard-clinical.pdf](https://www.ncsct.co.uk/usr/pub/assessing-smoking-cessation-performance-in-nhs-stop-smoking-services-the-russell-standard-clinical.pdf)
- 15 27. Gillespie D, Franklin M, Flight L. Statistical and Health Economic Analysis Plan for
16 the QUIT hospital-based smoking cessation service. 2023.doi:
17 <https://doi.org/10.15131/shef.data.22010159>
- 18 28. NHS Digital. *Statistics on NHS Stop Smoking Services in England April 2022 to*
19 *March 2023 - Data tables*. 2023. [https://digital.nhs.uk/data-and-](https://digital.nhs.uk/data-and-information/publications/statistical/statistics-on-nhs-stop-smoking-services-in-england/april-2022-to-march-2023-q4/datasets)
20 [information/publications/statistical/statistics-on-nhs-stop-smoking-services-in-](https://digital.nhs.uk/data-and-information/publications/statistical/statistics-on-nhs-stop-smoking-services-in-england/april-2022-to-march-2023-q4/datasets)
21 [england/april-2022-to-march-2023-q4/datasets](https://digital.nhs.uk/data-and-information/publications/statistical/statistics-on-nhs-stop-smoking-services-in-england/april-2022-to-march-2023-q4/datasets)
- 22 29. McNeill A, Brose L, Robson D, et al. *Nicotine vaping in England: an evidence update*
23 *including health risks and perceptions, 2022*. 2022.
24 [https://assets.publishing.service.gov.uk/media/633469fc8fa8f5066d28e1a2/Nicotine-](https://assets.publishing.service.gov.uk/media/633469fc8fa8f5066d28e1a2/Nicotine-vaping-in-England-2022-report.pdf)
25 [vaping-in-England-2022-report.pdf](https://assets.publishing.service.gov.uk/media/633469fc8fa8f5066d28e1a2/Nicotine-vaping-in-England-2022-report.pdf)
- 26 30. Hock E, Franklin M, Baxter S, Clowes M, Chilcott J, Gillespie D. Covariates of
27 success in quitting smoking: a systematic review of studies from 2008 to 2021
28 conducted to inform the statistical analyses of quitting outcomes of a hospital-based
29 tobacco dependence treatment service in the United Kingdom [version 2; peer review:
30 2 approved]. *NIHR Open Research*. 2023;3(28).doi:
31 <https://doi.org/10.3310/nihropenres.13427.2>
- 32 31. NHS Business Services Authority. *Eligibility for free NHS prescriptions*. 2023.
33 <https://www.nhsbsa.nhs.uk/help-nhs-prescription-costs/free-nhs-prescriptions>
- 34 32. Jackson SE, Brown J, Tattan-Birch H, Shahab L. Impact of the disruption in supply of
35 varenicline since 2021 on smoking cessation in England: A population study.
36 *Addiction*.n/a(n/a).doi: <https://doi.org/10.1111/add.16485>
- 37 33. Department of Health and Social Care. *Major conditions strategy: case for change*
38 *and our strategic framework*. 2023.
39 [https://www.gov.uk/government/publications/major-conditions-strategy-case-for-](https://www.gov.uk/government/publications/major-conditions-strategy-case-for-change-and-our-strategic-framework/major-conditions-strategy-case-for-change-and-our-strategic-framework--2)
40 [change-and-our-strategic-framework/major-conditions-strategy-case-for-change-and-](https://www.gov.uk/government/publications/major-conditions-strategy-case-for-change-and-our-strategic-framework/major-conditions-strategy-case-for-change-and-our-strategic-framework--2)
41 [our-strategic-framework--2](https://www.gov.uk/government/publications/major-conditions-strategy-case-for-change-and-our-strategic-framework/major-conditions-strategy-case-for-change-and-our-strategic-framework--2)

- 1 34. Van Buuren S, Groothuis-Oudshoorn K. mice: Multivariate imputation by chained
2 equations in R. *Journal of statistical software*. 2011;45:1-67.doi:
3 <https://doi.org/10.18637/jss.v045.i03>
- 4 35. Little RJ, Rubin DB. Statistical analysis with missing data. *John Wiley & Sons, Inc.*
5 2002.doi: <https://doi.org/10.1002/9781119013563>
- 6 36. Jackson SE, McGowan JA, Ubhi HK, Proudfoot H, Shahab L, Brown J, West R.
7 Modelling continuous abstinence rates over time from clinical trials of
8 pharmacological interventions for smoking cessation. *Addiction*. 2019;114(5):787-
9 797.doi: <https://doi.org/10.1111/add.14549>
- 10 37. Vangeli E, Stapleton J, Smit ES, Borland R, West R. Predictors of attempts to stop
11 smoking and their success in adult general population samples: a systematic review.
12 *Addiction*. 2011;106(12):2110-2121.doi: [https://doi.org/10.1111/j.1360-](https://doi.org/10.1111/j.1360-0443.2011.03565.x)
13 [0443.2011.03565.x](https://doi.org/10.1111/j.1360-0443.2011.03565.x)
- 14 38. Brose LS, McEwen A. Neighbourhood deprivation and outcomes of stop smoking
15 support - An observational study. *PLoS ONE*. 2016;11(1):e0148194.doi:
16 <http://dx.doi.org/10.1371/journal.pone.0148194>
- 17 39. Brose LS, McEwen A, West R. Does it matter who you see to help you stop smoking?
18 Short-term quit rates across specialist stop smoking practitioners in England.
19 *Addiction*. 2012;107(11):2029-2036.doi: [https://doi.org/10.1111/j.1360-](https://doi.org/10.1111/j.1360-0443.2012.03935.x)
20 [0443.2012.03935.x](https://doi.org/10.1111/j.1360-0443.2012.03935.x)
- 21 40. Salman A, Doherty P. Predictors of quitting smoking in cardiac rehabilitation. *Journal*
22 *of Clinical Medicine*. 2020;9(8):1-12.doi: <http://dx.doi.org/10.3390/jcm9082612>
- 23 41. Okoli CT, Khara M, Torchalla I, Ensom MH, Oliffe JL, Bottorff JL, Stanley PJ. Sex
24 differences in smoking cessation outcomes of a tailored program for individuals with
25 substance use disorders and mental illness. *Addictive Behaviors*. 2011;36(5):523-
26 526.doi: <https://doi.org/10.1016/j.addbeh.2010.12.029>
- 27 42. Okoli CTC, Khara M. Smoking cessation outcomes and predictors among individuals
28 with co-occurring substance use and/or psychiatric disorders. *Journal of Dual*
29 *Diagnosis*. 2014;10(1):9-18.doi: <http://dx.doi.org/10.1080/15504263.2013.866860>
- 30 43. Zawertailo L, Voci S, Selby P. Depression status as a predictor of quit success in a
31 real-world effectiveness study of nicotine replacement therapy. *Psychiatry research*.
32 2015;226(1):120-127.doi: <https://dx.doi.org/10.1016/j.psychres.2014.12.027>
- 33 44. West R, Michie S. A brief introduction to the COM-B Model of behaviour and the
34 PRIME Theory of motivation [v1]. *Qeios*. 2020.doi:
35 <https://doi.org/10.32388/WW04E6>
- 36 45. Wearn A, Haste A, Haighton C, Mallion V, Rodrigues AM. Barriers and facilitators to
37 implementing the CURE stop smoking project: a qualitative study. *BMC health*
38 *services research*. 2021;21(1):1-13.doi: <https://doi.org/10.1186/s12913-021-06504-2>
- 39 46. Agrawal S, Mangera Z, Murray RL, Howle F, Evison M. Successes and Challenges of
40 Implementing Tobacco Dependency Treatment in Health Care Institutions in England.

- 1 *Current Oncology*. 2022;29(5):3738-3747.doi:
2 <https://doi.org/10.3390/curroncol29050299>
- 3 47. Wells M, Aitchison P, Harris F, et al. Barriers and facilitators to smoking cessation in
4 a cancer context: A qualitative study of patient, family and professional views. *Bmc*
5 *Cancer*. 2017;17.doi: <https://doi.org/10.1186/s12885-017-3344-z>
- 6 48. Caini S, Del Riccio M, Vettori V, et al. Quitting smoking at or around diagnosis
7 improves the overall survival of lung cancer patients: a systematic review and meta-
8 analysis. *Journal of Thoracic Oncology*. 2022;17(5):623-636.doi:
9 <https://doi.org/10.1016/j.jtho.2021.12.005>
- 10 49. Hughes JR, Keely J, Naud S. Shape of the relapse curve and long-term abstinence
11 among untreated smokers. *Addiction*. 2004;99(1):29-38.doi:
12 <https://doi.org/10.1111/j.1360-0443.2004.00540.x>
- 13 50. Robson D, Richardson S, Howle F, et al. *Developing and testing a standardised*
14 *evaluation framework for hospital-initiated tobacco dependence treatment services*.
15 Cancer Research UK;2020.
16 [https://www.cancerresearchuk.org/sites/default/files/cruk_report_hospital_evaluation](https://www.cancerresearchuk.org/sites/default/files/cruk_report_hospital_evaluation_framework_final.pdf)
17 [framework_final.pdf](https://www.cancerresearchuk.org/sites/default/files/cruk_report_hospital_evaluation_framework_final.pdf)
18

1 TABLES

2 **Table 1.** Description of the analysis sample.

	Number of observations	Percentage
Total	1,326	
Quitting outcome		
4-week quit achieved ¹	813	61.3%
Demographic and socio-economic variables		
Sex (male, female)		
Male	691	52.1%
Age		
18–34	112	8.4%
35–44	190	14.3%
45–59	504	38.0%
60+	520	39.2%
Occupation		
Routine and manual occupations	411	31.0%
Retired	321	24.2%
Sick/disabled and unable to work	297	22.3%
Never worked or unemployed for over 1 year	196	14.8%
Other	102	7.7%
Eligible for free NHS prescriptions	1,076	81.1%
Fagerström score for nicotine dependence (0–4, 5+) ²		
0–4	542	40.8%
5+	784	59.2%
Community stop smoking service support		
Number of support sessions attended (whole sample average)		6.3 (range: 1 to 26)
Nicotine Replacement Therapy items per session (≤ 1 item, >1 item)		
>1 item	412	31.0%
Type of contact with the hospital-based service		
Specialist assessment in-person whilst an inpatient	584	44.0%
Post-discharge specialist assessment or Very Brief Advice	66	5.0%
Outpatient specialist assessment or Very Brief Advice	173	13.0%
Unknown	503	37.9%
Health variables		
Specific health conditions		
Chronic respiratory condition	498	37.6%
Mental ill health	349	26.3%
Cardiovascular disease	334	25.2%
Diabetes	165	12.4%
Cancer	123	9.3%
Number of co-morbid health conditions		
0	373	28.1%
1–2	616	46.5%
3+	337	25.4%

3 ¹ 10.0% of the sample were lost to follow-up and so had unknown quitting outcomes.

4 ² Missing values imputed; statistics generated from the average of 19 imputed data sets, each with $N = 1,326$.

1 **Table 2.** The five alternative model structures investigated and statistics showing comparative model fit.

Model:	1	2	3	4	5
Model structure					
Demographic and socio-economic variables	Included	Included	Included	Included	Included
Nicotine dependence score		Included	Included	Included	Included
CSSS support			Included	Included	Included
Type of contact with the hospital-based service				Included	Included
Health variables					Included
Akaike's Information Criterion ¹	1759.2	1760.4	928.7	929.7	926.3
P-values from Likelihood Ratio Tests of the difference in residual deviance between models					
vs. Model 1		0.365	0.000	0.000	0.000
vs. Model 2			0.000	0.000	0.000
vs. Model 3				0.667	0.002
vs. Model 4					0.015

2 ¹ Smaller values of Akaike's Information Criterion indicate a better model fit to the data.

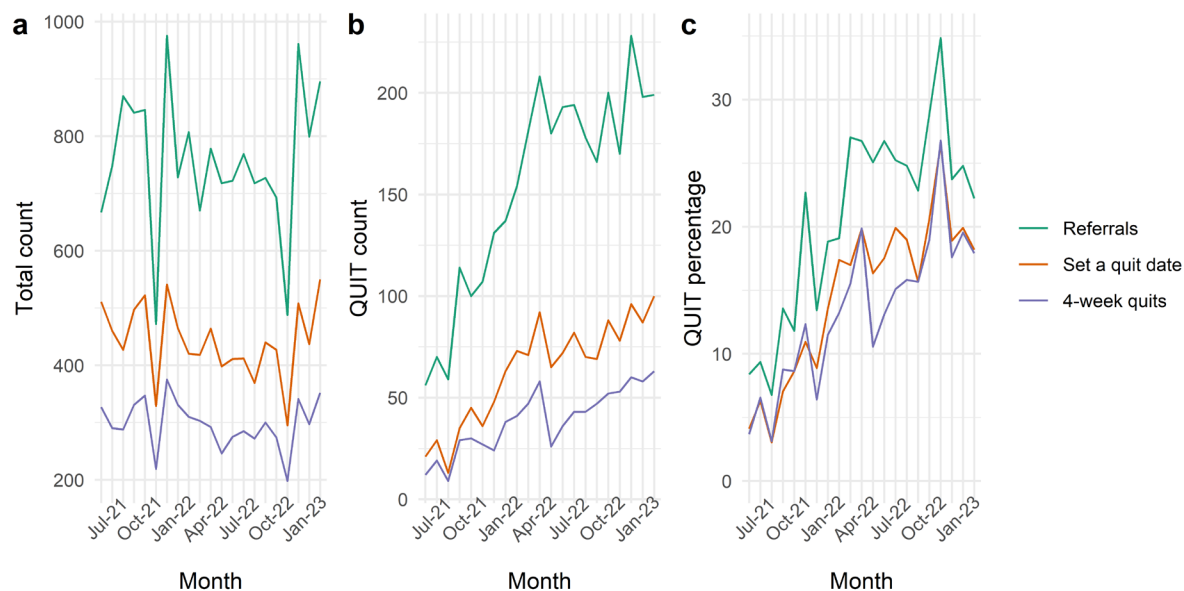
1 **Table 3.** Coefficient estimates (odds ratios) from the five model structures considered. Numbers in parenthesis
 2 are 95% confidence intervals.

Model:	1	2	3	4	5
Constant	1.1 (0.69,1.74)	1.04 (0.64,1.69)	4.93 (2.29,10.61)	4.73 (2.16,10.35)	6.72 (2.91,15.52)
Demographic and socio-economic variables					
Male (vs. Female)	1.1 (0.88,1.38)	1.1 (0.88,1.39)	0.86 (0.61,1.21)	0.86 (0.61,1.2)	0.78 (0.55,1.11)
Age group (vs. 18–34)					
35–49	1.51 (0.94,2.44)	1.52 (0.94,2.45)	2.05 (0.99,4.23)	2.05 (0.99,4.24)	1.78 (0.85,3.73)
50–59	1.74 (1.14,2.65)	1.74 (1.14,2.65)	1.39 (0.73,2.64)	1.34 (0.71,2.55)	1.3 (0.67,2.51)
60+	2.42 (1.51,3.88)	2.45 (1.52,3.93)	1.97 (0.97,4.01)	1.94 (0.96,3.95)	1.82 (0.87,3.79)
Occupation (vs. Routine and manual)					
Retired	0.78 (0.54,1.13)	0.78 (0.54,1.12)	0.72 (0.42,1.22)	0.69 (0.41,1.19)	0.79 (0.46,1.36)
Sick/disabled and unable to work	1.47 (0.92,2.38)	1.46 (0.9,2.35)	1.12 (0.56,2.24)	1.17 (0.58,2.36)	1.19 (0.58,2.43)
Never worked/long term unemployed	1 (0.68,1.46)	0.99 (0.67,1.46)	0.76 (0.44,1.33)	0.76 (0.43,1.32)	0.79 (0.45,1.39)
Other	0.91 (0.65,1.26)	0.9 (0.65,1.26)	0.65 (0.39,1.07)	0.67 (0.4,1.11)	0.77 (0.46,1.31)
Eligible for free NHS prescriptions (vs. not)	0.73 (0.52,1.01)	0.72 (0.52,1.01)	0.56 (0.34,0.92)	0.56 (0.34,0.92)	0.55 (0.33,0.92)
Fagerström score for nicotine dependence ¹					
5+ (vs. 1–4)		1.10 (0.86,1.41)	0.58 (0.39,0.88)	0.61 (0.4,0.93)	0.67 (0.43,1.03)
CSSS support variables					
Effect per additional support session attended			2.37 (2.16,2.6)	2.38 (2.17,2.62)	2.46 (2.23,2.72)
NRT items per session					
>1 item (vs. ≤1 item)			1.69 (1.15,2.48)	1.68 (1.14,2.46)	1.71 (1.16,2.52)
Type of contact with the hospital-based service (vs. Specialist assessment in-person whilst an inpatient)					
Post-discharge specialist assessment or Very Brief Advice				0.90 (0.42,1.96)	0.78 (0.35,1.73)
Outpatient specialist assessment or Very Brief Advice				1.64 (0.99,2.72)	1.62 (0.97,2.7)
Unknown				0.94 (0.63,1.4)	0.89 (0.6,1.34)
Health variables					
Specific health conditions (vs. no health conditions)					
Chronic respiratory condition					0.96 (0.61,1.53)
Mental ill health					0.87 (0.49,1.54)
Cardiovascular disease					0.96 (0.59,1.56)
Diabetes					0.84 (0.48,1.49)
Cancer					2.26 (1.18,4.33)
Number of health conditions (vs. no health conditions)					
1–2					0.81 (0.46,1.42)
3+					0.5 (0.2,1.26)

3 ¹ Missing values imputed; estimates generated from 19 imputed data sets, each with $N = 1,326$.

1 **FIGURES**

2

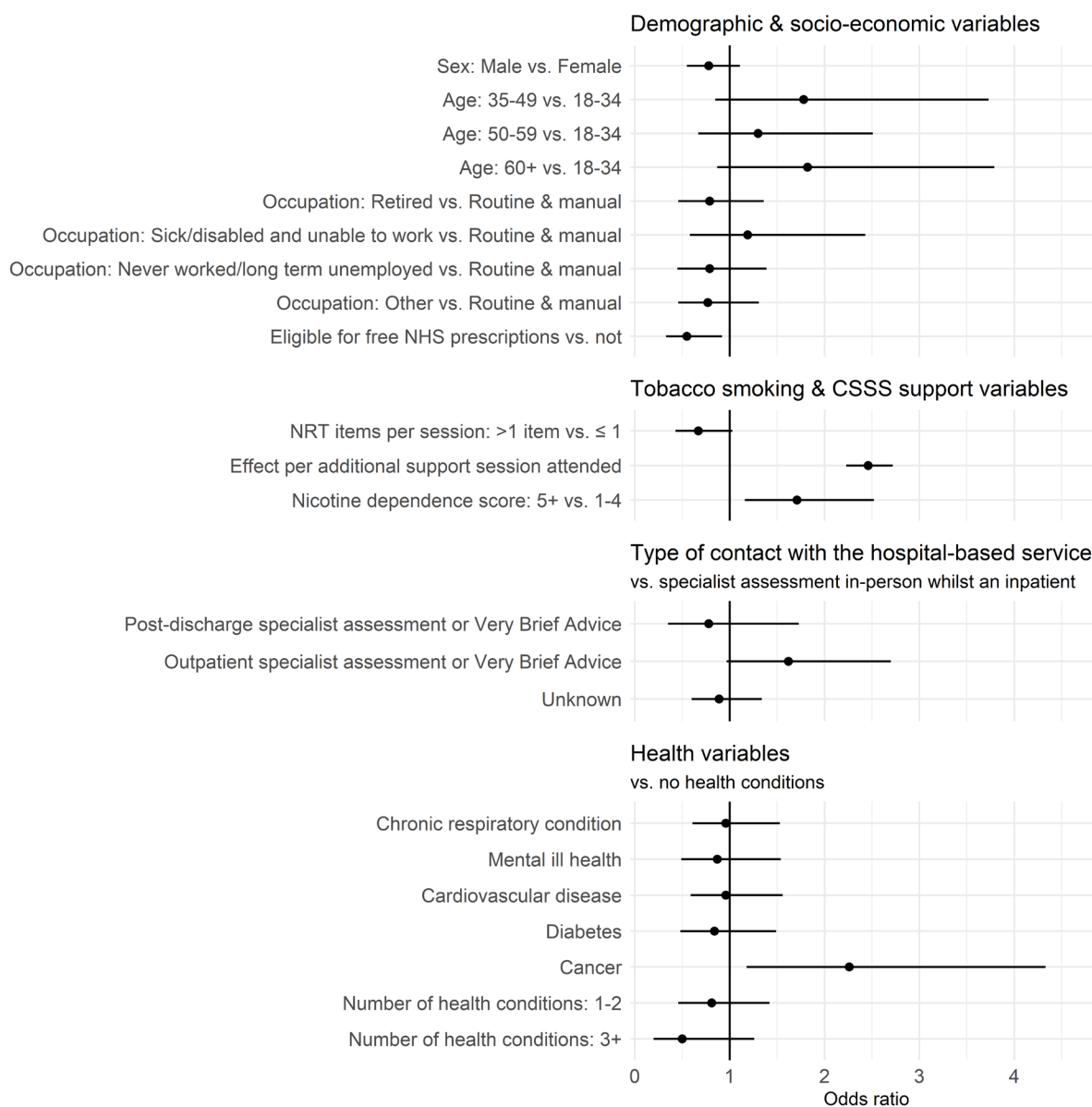


3

4 **Figure 1.** Monthly activity for the community stop smoking service overall and the percentage resulting from
5 hospital referrals.

6

1



2

3 **Figure 2.** Adjusted odds ratios with 95% confidence intervals showing the relative effects of the explanatory
 4 variables from Model 5.

5