

1 **Partner Dynamics at Maternal and New born Continuum of Care Enrollment among a Panel of Six**  
2 **Weeks Postpartum Women in Ethiopia, Community based Longitudinal Study; A Multinomial**  
3 **Logistics Regression Analysis**

4  
5 Solomon Abrha Damtew<sup>\*1</sup> Mahari Yihdego Gidey<sup>2</sup>Fitsum Tariku Fantaye<sup>3</sup>–Niguse Tadele Atianfu<sup>4</sup>–Tariku  
6 Dejene<sup>5</sup> Kelemua Mengesha Sene<sup>6</sup>Tefamichael Awoke<sup>7</sup>, Hailay G/kidan<sup>8</sup> Assefa Seme<sup>9</sup>Solomon Shiferaw<sup>10</sup>

7  
8 <sup>\*1</sup>correspondence: [abrsole2006@gmail.com](mailto:abrsole2006@gmail.com) <https://orcid.org/0000-0002-0758-7348>

9 <sup>\*1</sup> [\\_Wolaita](#) Sodo University, Wolaita Sodo, Ethiopia

10 <sup>3</sup>- FTF Research consult; [godislove1996@gmail.com](mailto:godislove1996@gmail.com)

11 <sup>2 7</sup> [mahariyihdego@gmail.com](mailto:mahariyihdego@gmail.com), [tesjesus@gmail.com](mailto:tesjesus@gmail.com) PMA Project at Addis Ababa University, Addis  
12 Ababa, Ethiopian

13 <sup>6</sup> Kotebe Metropolitan University: [mengeshakelem@gmail.com](mailto:mengeshakelem@gmail.com) Addis Ababa, Ethiopia

14 <sup>8</sup> Mekelle University, Mekelle, Ethiopia; [hailaygeb23@gmail.com](mailto:hailaygeb23@gmail.com), Mekelle, Ethiopia

15 ~~4–5–9–10~~ Addis Ababa University: [solomonshiferaw@gmail.com](mailto:solomonshiferaw@gmail.com), [assefaseme@gmail.com](mailto:assefaseme@gmail.com) and  
16 [niguse99@gmail.com](mailto:niguse99@gmail.com), [tarikud@gmail.com](mailto:tarikud@gmail.com), <https://orcid.org/0000-0001-8626-1305>, Addis Ababa University,  
17 Addis Ababa Ethiopia

18  
19 **Abstract**

20 **Introduction:** In this era of SDG countries relatively achieving maternal and newborn health geographic  
21 coverage are moving to a new paradigm called completion of maternal and new born care continuum (MN-  
22 CoC). Measuring the influence of significant others: partner/or husband and community engagement are  
23 considered as pivotal and one of the pillar strategies to achieve of completion of MN-CoC. Unfortunately,  
24 there is a lack of policy framework for partner and/or husband involvement in pregnancy, childbirth and  
25 postnatal care and when exists there is a gap in policy and practice in developing countries context.  
26 Articulating and endorsing such policy is likely to promote husband and/or partner encouragement and  
27 support during at the enrollment to maternal and newborn care continuum (MN-CoC). Hence, quantifying the  
28 level of MN-CoC partner dynamics on antenatal care visit and/or discussion about where to deliver the index  
29 child at and identifying its correlates among a panel of six weeks postpartum women provides evidence for  
30 the policy articulation endeavor by the Federal Health Ministry of the Federal Democratic Republic of  
31 Ethiopian and developmental partners working on reproductive and maternal and newborn health care.

32 **Methods:** Community based nationally representative longitudinal data collected from a panel of pregnant  
33 and six weeks postpartum women were further analyzed. A total of 2,207 six weeks postpartum women who  
34 were married and/or living a partner were included in this analysis which was adequate to yield an unbiased

35 estimates for MN-CoC partner dynamics. Multinomial logistics regression was run to identify correlates of  
36 partner Dynamics. Results were presented in the form percentages and odds ratio with 95% Confidence  
37 Intervals. Statistical significance was declared at p-value of 0.05.

38 **Results:** The proportion of partner and/or husband dynamics on MN-CoC of among six weeks postpartum  
39 women who reported that their partner and/or husband encouraged them to go to clinic for ANC and  
40 discussed with them about place of delivery for the index child was nearly 2/3 (64.67%; 62.21%,  
41 67.04%). Besides, nearly one in 5 of them reported that their husband and/or partner did not encourage  
42 (18.2%; 16.64%, 20.33) and encouraged either of the first two MN-CoC two domains (17.08%, 15.25%,  
43 19.10%). The region women residing, being in a polygamy marriage, contraceptive ever use history,  
44 attainment secondary/higher education and index child delivery place were found to contribute for the  
45 variation in MN-CoC partner dynamics.

46 The finding calls up on regionally sensitive activities and efforts with public-private partnership in service  
47 provision and targeting women with polygamy which in turn empower women to control over their fertility  
48 through increasing higher education enrollment, and diversifying access to contraceptive commodities are  
49 hoped to improve MN-CoC partner dynamics thereby enabling women in completing maternal and new born  
50 care continuum. Such endeavors and interventions are hoped to facilitate the ministry and other  
51 developmental partners' comprehensive efforts to address the MN-CoC partner and/or partner dynamics in  
52 terms of policy articulation, advocacy, implementation, evaluation and revising it to fit its purpose and attain  
53 the desired targets.

54

55 Key words: Women Health, Partner Dynamics, Maternal and newborn Continuum of care, MN-CoC  
56 enrollment and retained, PMA Ethiopia, Community based Longitudinal Survey

57 [Author Plain English Summary](#)

58

### 59 **Purpose of Conducting the Study**

60 In every community, pregnancy and childbirth are expected to be joyful and positive experiences for the  
61 mother, the newborn and as well as for the families, however, neonatal, infant and maternal mortality is  
62 unacceptably high in low and middle income countries including Ethiopia. It is experienced not as the joyful  
63 event it should be, but as a dangerous and frightening time in their lives.

64 In order to address such considerable problem, in the SDG era the focus of policy articulation, program  
65 concentration and research undertaking in maternal and newborn health care has shown a paradigm shift of  
66 measuring the completion of maternal, newborn care continuum (MN-CoC) by streamlining resources that  
67 were invested independently on each care continuum domains.

68 Besides, WHO recommended completion of the three main domains of the maternal and newborn care  
69 continuum as pivotal strategy to improved maternal and new born health outcomes.

70 Accordingly, partner encouragement, support and accompany during antenatal care, childbirth and postnatal  
71 care is one of the proposed strategy for pregnant women to be enrolled, retained and complete the maternal  
72 and new born care continuum including in sought care in the extended six postpartum period in particular

73 and the inter pregnancy period in general. This is based on the evidence pool on the influence of significant  
74 others surrounding the women, notably; the community where they are residing and their partner and/or  
75 husband on health service use is considerably high.

76 Determining the level of partner dynamics on the MN-CoC domains and identify its correlates is critical to  
77 track the progress of the proposed strategy. Nationally representative data collected from a panel of pregnant  
78 and six weeks the six post-partum women were used.

#### 79 **Added Value of the Study:**

80 Nearly 1 in 5 panel of women by their six week postpartum reported that they did not received any  
81 encouragement on the two first domains MN-CoC during their index pregnancy. Regional variation was  
82 observed in the level of partner dynamics at maternal and newborn care continuum enrollment domains (MN-  
83 CoC) and the variation was also explained by contraceptive ever use history as well. Women in polygamy  
84 marriage were less encouraged to go to clinic for ANC and lower opportunity to discuss where to deliver the  
85 index child with their partner and/or husband. .

#### 86 **Implication of the Study:**

87 The Federal Democratic Republic of Ethiopian Health Ministry and developmental partners need to articulate  
88 and endorse male involvement policy with region specific integrated public private strategies which improve  
89 women autonomy to control over their fertility and women higher education enrollment with a focus on women  
90 with polygamy so as to increase partner dynamics on MN-CoC.

91 Partner encouragement on the first two domains of is key to enroll and retain pregnant women within the MN-  
92 CoC.

93 There is a need to strengthen postpartum family planning counseling and diversifying the provision. Similarly  
94 women in polygamy needs attention.

95 The need for installing preconception care in the health system to be provided in and around pregnancy and  
96 child birth; particularly the inter pregnancy preconception care package.

97

#### 98 **Introduction**

99 In the era of SDG were countries relatively achieving maternal and newborn health geographic coverage are  
100 moving to a new paradigm of completion of maternal and new born care continuum (MN-CoC) (1, 2).  
101 Completion of various maternal and new born care continuum (MN-CoC) is proved to improve maternal and  
102 new born health outcomes (3). Measuring the influence of significant others: community and partner/or  
103 husband is a considered as pivotal and one of the pillar strategies towards the level of completion of MN-  
104 CoC which is very critical to address the sustained higher level of maternal and neonatal mortality in lower  
105 and middle income countries in general and Sub Saharan Africa in particular (4).

106 Partner dynamics in maternal and new born care continuum is the involvement of husbands and/or partner  
107 in the pregnancy and child birth care (5, 6): consisting of encourage their wives to go to clinic for antenatal  
108 care (ANC), discuss and plan where to deliver and in seeking post natal care; companionship during  
109 antenatal care (ANC), accompany in his wife during child birth and postnatal care (7), taking part in the

110 process of maternal and child health care continuum in particular and in reproductive health service use in  
111 general (4, 8). However, husband and /or partners misconceive this engagement as financial support and  
112 physical help alone (9) while overlooking their actual in person engagement, encouragement and discussion  
113 on maternal and health service use (10). WHO recommended that partner and/or husband involvement is a  
114 key strategy to improve uptake and completion of maternal and newborn care continuum (4).

115 Studies on male involvement showed that rate of male attendance at ANC with their pregnant wives was  
116 69.4 in antenatal care showed that 69.4% and 57.00% male involved in antenatal care (6, 11) and delivery  
117 service use but only 23.1% entered ANC room with an overall involvement of 9% (12) while 66.2% involved  
118 in maternal, neonatal and child health care (13), however, these studies are based on cross sectional data  
119 and seldom addressed the emotional attachment of partner encouragement on ANC service use and  
120 discussion where to deliver during the index pregnancy which is very critical in accomplishing the maternal  
121 and new born care continuum (MN-CoC) while this study used a longitudinal data; merged baseline and six  
122 weeks postpartum, collected from cohort of pregnant and six week postpartum women. Such a robust  
123 evidence contributes much in filling the evidence gap to formulate policy framework for partner and/or  
124 husband engagement and encouragement during pregnancy, child birth and no and when exists there is a  
125 gap in policy and practice in developing country context (14-16).

126 In low and middle income countries such as Ethiopia where maternal, neonatal and infant mortality (17, 18)  
127 is unacceptably high, where most women prefer traditional birth attendant (19, 20), home delivery (21, 22) is  
128 very common, where the influence of the community on maternal and newborn health care continuum use  
129 has been shown considerable; measuring husband and/or partner influence is critical determinant in  
130 completing the of maternal and newborn care continuum (MN-CoC) (12, 16).

131 Evidences also shown that the active engagement of husband and/or partner ranging from encouragement  
132 and discussion along with serving as companion in matters related with pregnancy and child birth improves  
133 maternal and new born health outcome. According to WHO interventions to promote the involvement of  
134 husband and/or partner during pregnancy, childbirth and after birth are recommended to facilitate and support  
135 improved self-care of the woman, improved home care practices for the woman and newborn, and improved  
136 use of skilled care during pregnancy, childbirth and the postnatal period for women and newborns (5,  
137 8).Despite such strong recommendation on husband and/or partner on involvement in his wife maternal and  
138 health service use, there is a lack of policy framework for husband and/or partner involvement in pregnancy,  
139 child birth and when exists there is a gap in policy and practice in developing countries context (1, 2, 4, 14,

140 23). Hence, articulating and endorsing such policy and strategy is pivotal to further improve maternal and  
141 newborn health care continuum (MN-CoC) (16).

142 In the midst of this policy and strategy gap context, determining the magnitude of partner dynamics in terms  
143 of encouraging their wives during their pregnancy to go to clinic for ANC and discussing with them where to  
144 deliver the index pregnancy will provide evidence for the ministry of health and developmental partners to  
145 design and articulate strategies on husband and/or partner involvement along the maternal and newborn  
146 care continuum domains thereby improving maternal and new born health outcomes.

147 The objective of this study was to determine the level of partner and/or husband encouragement on the first  
148 two domains of the maternal and new born care continuum (MN-CoC) in Ethiopia and identifying the  
149 correlates contributing the variation in the encouragement.

150

## 151 [Methods and Data Sources](#)

### 152 [Population and Study Design](#)

153 Nationally representative merged cohort one baseline and the six weeks postpartum data collected from  
154 pregnant and six weeks postpartum women were used and in terms of follow up, it accounts half of the total  
155 follow up period, 12 or 13 months. The baseline and the six week follow up surveys were conducted from  
156 Nov 2019 to Jan 2021. The study was conducted in six regions of the country. The study employed a two  
157 stage stratified cluster sampling method. After the complete census was conducted in the selected  
158 enumeration areas all pregnant women with gestational age of 1 to 9 months who were either usual residents  
159 in the selected EAs or who came to the EA to deliver were enrolled and followed one year postpartum. Those  
160 who were within six weeks postpartum were also enrolled in the study. A total of **2,207** six weeks postpartum  
161 women were included in this analysis from a total of 217 enumeration areas. This analysis was restricted to  
162 women who were married or live together to better lean more on the influence of partner dynamics at  
163 enrolment of maternal and new born care continuum. The overall sample size and cell sample size adequacy  
164 was checked and found to be adequate enough in generating unbiased estimate for partner dynamics at  
165 maternal and newborn care continuum enrollment (MN-CoC).

### 166 [Field Work Procedure](#)

167

168 Addis Ababa University's School of Public Health in collaborative efforts with the Ethiopian Public Health  
169 Association, the Federal Health Ministry, Ethiopian Statistical Services, Bill & Melinda Gates Institute for  
170 Population and Reproductive Health (Johns Hopkins Bloomberg School of Public Health) were the

171 implementers. The main sample units or enumeration areas (EAs) were chosen using the most recent frame  
 172 to Ethiopia Population and Housing Census (PHC).

173 The first field work of the panel baseline survey was started by screening pregnant women and women who  
 174 were less than 6 weeks post-partum. Data were collected at baseline and three follow up points, 6 week, 6  
 175 month and one year postpartum interviews. The details of field work implementation operations, sampling  
 176 procedure, relevant methodological issues, measured indicators are were well articulated elsewhere. The  
 177 protocol of PMA Ethiopia contains all the details on sample design and selection methods (24).

## 178 Variables

### 179 Outcome variable

180

181 The main outcome variable was partner dynamics at enrolment of maternal and new born care continuum  
 182 (MN-CoC) among a panel of six week postpartum women. The following two question items asked women  
 183 at the extended six week postpartum survey about their partner dynamics experience during the index  
 184 pregnancy which is one of the criteria for their enrollment in this 2 years follow up study: 1. Partner  
 185 encouraged you to go to clinic for antenatal care and 2. You & your partner discussed where to deliver  
 186 (postpartum women). See the details of the question type and answer options and further recoding in the  
 187 following table (**Table 1**).

188 **Table 1: Items used to create the used to measure Partner Dynamic at maternal and new born continuum**  
 189 **of care Enrollment among a Panel of Six Weeks Postpartum women, Baseline with Six Week**  
 190 **Postpartum Data sets, Nov 2019 to Jan 2021**

191

	Variable	Question Items and Responses	Recode Outcome Category
Partner Dynamics at maternal	1. Partner encouraged you to	1. Yes 2. No, did Not discouraged 3. No, actively discourage 4. No partner	Four observation with no partner are excluded since this study restrict the study participants who are currently married and living as a partner.
		-88. Do Not Know	

<p>and new born continuum of care Enrollment</p>	<p>go to clinic for antenatal care AND 2. You &amp; your partner discussed where to deliver (postpartum women)</p>	<p>-77. partner not involved 0. No 1. Yes <b>MN-CoC</b> Nominal composite variable was create with the following categories: 0 partner do not encourage both MN-CoC domains, base category 1 partner encourage either of the MN-CoC domains 2 partner encourage both MN-CoC domains</p>	<p>15 observations (2 with DNK response and 13 partner not involved) were excluded from the Analysis</p>
--	--	---	--

192

193

### 194 Independent Variables

195

196 Independent variables were classified into individual-level variables and enumeration area-level variables.  
197 Individual-level independent variables further categorized into socio-demographic/economic characteristics  
198 variables, parity and other RH characteristics and contraception ever use were considered in the study.

199 Group or enumeration area (EA) level variables included two integral variables namely, region and place of  
200 residence while two derived EA level variables, EA level wealth derived from the household level wealth,  
201 while proportion of women who completed secondary or above educational level per EA were derived from  
202 the respective women and husband/partner educational status. "Region" was grouped into six categories,  
203 1=Tigray 2 = Afar, 3= Amhara, 4=Oromia, 7= SNNPRs and 10= Addis Ababa city administration. Place of  
204 residence follows the default urban/rural classification.

205 Health service use during the index pregnancy and in the post-partum period such as antenatal care seeking  
206 from health professional, HEW and place the index child delivered, birth attendant of the index child, starting  
207 using contraceptive by six week postpartum and contraceptive ever us history are also include as covariates  
208 in this this study.

### 209 Analysis and Measurement

210 A merged cohort one data consisting baseline data and six week data from cohort one PMA survey conducted  
211 from Nov 2019 to Jan 2021 were used for this study (24). Stata v16 was used for this analysis. Frequencies  
212 and percentages were computed to characterize the study population. Chi-square test statistics was  
213 computed to check cell sample size adequacy and the sample size was found to be adequate to provide  
214 unbiased estimates.

215 Exploratory data analysis was run for data cleaning thereby checking item nonresponse rate for every  
216 variable considered in this analysis and don't know response which were later excluded from the analysis.  
217 Following this variable were recoded to create biological plausible categories along with checking distribution  
218 of the recoded variables using mean and proportion as appropriate. No sign of multicollinearity detected  
219 among variables in the final model. Multinomial logistics regression was used to identify important predictors  
220 of partner dynamics at maternal and new born care continuum (MN-CoC). At bivariate analysis a p value cut  
221 off point of 0.25 was used to select candidate variable for multinomial multivariable logistics regression  
222 analysis. Results were presented in the form of percentage, and odds ratio with 95% CI. Significance was  
223 declared at a significance level of 0.05. Results were reported based on weighted count.

## 224 **Data Quality Management and Control**

225 PMA Ethiopia data were collected using standard and pretested tool which was translated in to three local  
226 languages (Tigrigna, Afan Oromo and Amharic) after the provision of hands-on intensive ToT, RE training  
227 with mock interviews. Close supervision during filed work, timely progress report and hierarchal errors  
228 correction, 10% random check with dedicated re interview form were some of the modalities used to maintain  
229 the quality of the collected data, the detail is reported somewhere else (24). Data completeness for variables  
230 and items for creating composite variables was checked by exploratory analysis following which any item  
231 nonresponse was excluded from the analysis. Frequency run to exclude responses with do not know (DNK)  
232 and no response (NR).

## 233 **Ethical consideration**

234 This study involved a secondary analysis of de\_identified data from the PMA Ethiopia. The PMA Ethiopia  
235 survey was conducted strictly under the ethical rules and regulations of world health organization and IIRB  
236 of Ethiopian Health and Nutrition Research Institute (EHNRI). Informed consent was obtained from  
237 respondents during the data collection process of PMA Ethiopia on data collection on Nov 2019 to Jan 2021.  
238 PMA survey has been also conducted after obtained ethical approval from the College of Health Sciences at  
239 Addis Ababa University and Bloomberg School of Public Health at Johns Hopkins University in Baltimore,  
240 USA. PMA\_ETH Publicly available Cohort one baseline and six weeks postpartum datasets were accessed  
241 after submitting a concept note for this piece of specific work form the PMA data cloud server archive via.  
242 <https://www.pmadata.org/data/request-access-datasets>.

243 Since this study involves analysis of already collected secondary data there is no need to consent, rather,  
244 concept note was submitted to get permission for data use.

245 "Minors less than 15 years as per the law were not included in this study. Informed verbal consent was take  
246 from study participants." Moreover, women of reproductive age group or women child bearing age were  
247 include in the study. The survey includes topics on related on family planning, sexual history and other  
248 reproductive health issues which is declared are right of women by international declarations and as  
249 supported by evidence: Rimon JGII, Tsui AO. Regaining momentum in family planning. *Global Health  
250 Science Practice*. 2018; 6(4):626–628. <https://doi.org/10.9745/GHSP-D-18-00483>. 2018 and related  
251 documents. Hence, asking consent another person or guardian for women girls 15 to 17 years will contradict  
252 with waived room to direct ask the herself about her sexual and reproductive issues. Moreover standard  
253 surveys including Demographic and health surveys include women of child bearing age as this study did.



254

## 255 Results

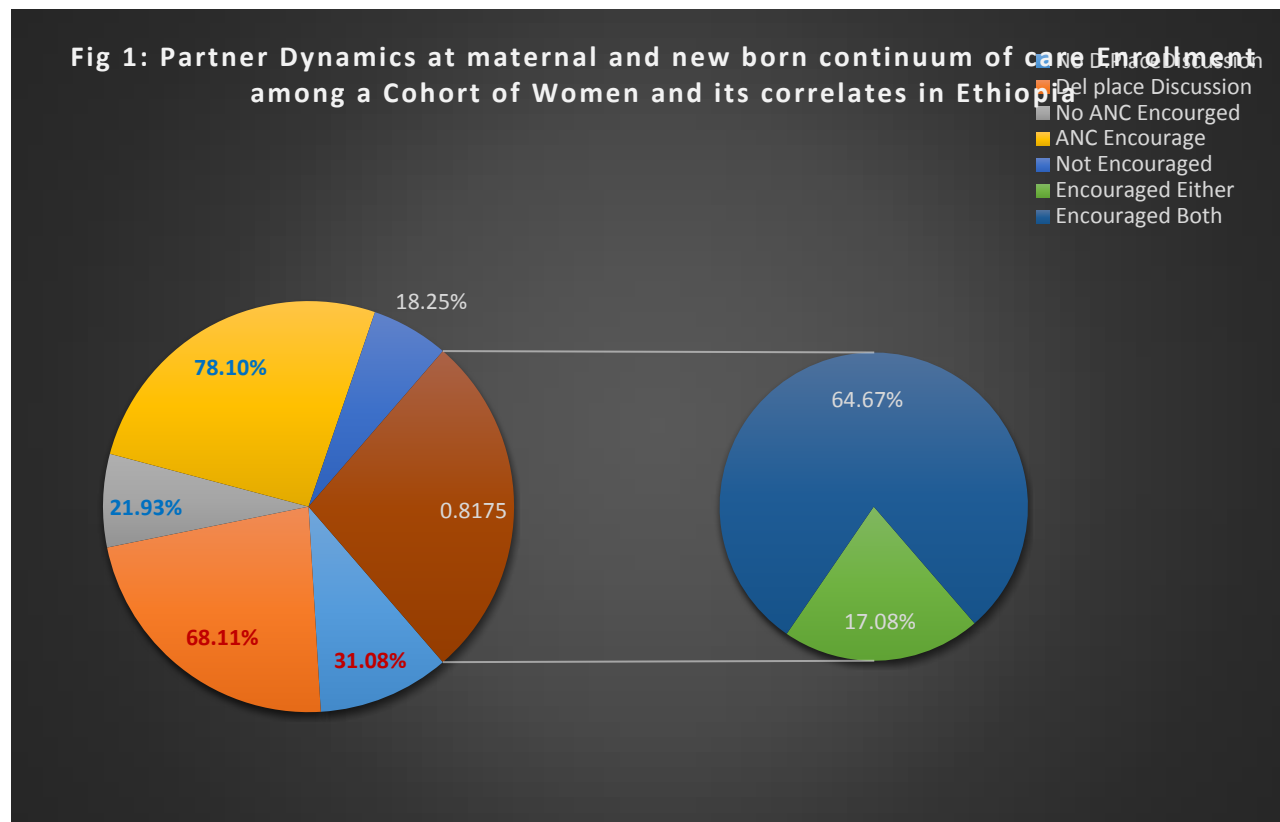
### 256 Magnitude of Partner Dynamics at Maternal and Newborn Continuum Care Enrollment (MN-CoC) 257 among a panel of six weeks postpartum Women

258

259 This study generated findings on partner dynamics on the first two domains of maternal and newborn care  
260 continuum (MN-CoC) among a panel of women at their six weeks postpartum. This study reported the  
261 proportion of partner dynamics at the maternal and newborn care continuum enrollment (MN-CoC) as  
262 measured by creating a composite variable called partner dynamics from the two question items asked  
263 namely: women reported that her husband and/or partner encouraged her to go to clinic for antenatal care  
264 (ANC) and discussed with them where to deliver the index child. Three categories were created from these  
265 two domains: do not encourage both the first two domains, encouraged either of the first two domains and  
266 encourage both the first two domains.

267 The proportion of partner and/or husband dynamics on MN-CoC of among six weeks postpartum women  
268 who reported that their partner and/or husband encouraged them to go to clinic for ANC and discussed with  
269 them about place of delivery for the index child was nearly 2/3 (64.67%; 62.21%, 67.04%). Besides, nearly  
270 one in 5 of them reported that their husband and/or partner did not encourage (18.2%; 16.64%, 20.33) and  
271 encouraged either of the first two MN-CoC two domains (17.08%, 15.25%, 19.10%). (**Fig1**).

272 The proportion of a panel of six weeks postpartum who reported that their husbands and/or partner  
273 encouraged them to go to clinic for ANC was 78.10% (75.90%, 80.01%) while 68.11% (65.70%, 70.44%) six  
274 week post-partum panel women reported that they have discussed with their partner and/or husband where  
275 to deliver the index child during the index pregnancy (**Fig1**).



276

277

278 **Distribution of Partner Dynamics at Maternal and Newborn Care Continuum Enrollment among a**  
 279 **Cohort of Women, Evidence from PMA Cohort One and Six Weeks Postpartum Surveys**

280

281 This study generated findings on partner Dynamics for a panel of women at their six weeks postpartum follow  
 282 up. Partner dynamics among a panel of six weeks postpartum women at the maternal and newborn  
 283 continuum care enrollment (MN-CoC) was measured as the composite of the first two domains of the  
 284 maternal and newborn care continuum: women reported that her husband and/or partner encouraged her to  
 285 go clinic for ANC and discussed with her where to deliver about the index child during their index pregnancy  
 286 **(Table 1)**.

287 This study identified correlates of partner dynamics at maternal and new care continuum enrollment (MN-  
 288 CoC) for the partner encourage both of the first two domains, encourage either of first two domains and  
 289 not encouraged both first two domains . In absolute terms the partner dynamics among a panel of six weeks  
 290 postpartum women showed variation across the selected covariates **(Table 2)**.

291 The partner dynamics (MN-CoC ) showed an increasing pattern with age for the did not encouraged category  
 292 of the outcome, accordingly, among women in the elders (40 to 49 age category), one third (34.96%), 14.14%  
 293 and half (50.91%) reported that their husband and/or partner do not encourage both domains of the partner  
 294 dynamics; encourage either to go to clinic for ANC or discuss about place of delivery for the index child; and  
 295 partner encourage both domains of partner dynamics at the maternal and newborn care continuum  
 296 enrollment. For Muslims religion followers, this respective figure was 25.41%, 20.31% and 54.29% while no

297 women reported that their partner did not encouraged for the other religion followers. Similarly, among urban  
298 residents 3.68%, 9.41% and 86.91% reported that their partner and/or husband did not encourage,  
299 encourage either and encourage both of the first two MN-CoC domains respectively. Likewise, this same  
300 figure stood 2.44%, 11.57% and 85.99% for residents of Tigraye and 14.13%, 9.37% and 76.51% for  
301 residents of Amhara regions (**Table 2**).

302 In terms of wealth quintile, the proportion of women from the well to do households who reported that their  
303 partner and/or husband did not encouraged, encourage either of the two domains and encouraged both the  
304 first two MN-CoC domains was 2.60%,8.82% and 88.58% respectively. This same figure was 26.44%,  
305 18.92% and 54.65% for those living with a larger family size of 6 or more. Similarly, the proportion for the  
306 respective MN-CoC partner dynamics domains among those women with no formal education stood for  
307 30.97%, 18.59%, 50.44% respectively (**Table 2**).

308 The proportion of six weeks postpartum women who reported that their partner and/or husband do not  
309 encouraged, encouraged either domains and encouraged both domains of the partner dynamics among  
310 those with higher birth order was 26.19%, 19.56% and 54.25% respectively. This proportion was 18.52%,  
311 18.47% and 63.00% for those who have not decided to have an additional child. In a similar fashion, for those  
312 reported who felt happy when learned their index pregnancy, this figure stood for 13.42%, 14.80% and  
313 71.78% respectively while the respective proportion was 24.24%, 18.80% and 56.96% of for women reported  
314 that whose husbands felt unhappy when learned about the index pregnancy. Similarly, the respective partner  
315 dynamics proportion for women who were married more than once was 21.75%,12.92% and 65.33%  
316 respectively while the respective figure for those whose husband had other was 18.26% 17.10% and 64.64%  
317 respectively (**Table 2**).

318 For those who delivered the index pregnancy at the government health facilities, 7.42%, 8.58 and 83.99% of  
319 them reported that did not received encouragement, receive either domain encouragement and both domain  
320 encouragement from their partner on the first two MN\_ CoC partner dynamics domains while for those who  
321 received their first ANC from professional heath care provider other than health extension workers (HEW)  
322 during the first trimester the respective proportion was 4.51%, 7.67% and 87.82% for the respective partner  
323 dynamics domains. The respective figure for those who obtained their first visit in the first trimester form  
324 HEW, was 13.89%, 8.10% 78.01%. Besides among those who started to use contraceptive at six weeks  
325 post-partum, 83.71% reported that their partner encouraged to go to clinic for ANC and discuss where to  
326 deliver; 10.21% reported either of the two partner dynamics while 6.08% reported that got encourage neither  
327 of the first two MN-CoC domains.

328 This MN-CoC partner dynamics figure for those who have ever used contraceptive commodities was 74.08%,  
329 13.82% and 12.10% respectively. Besides, among those whose desired place of delivery for the index was  
330 home/not decided 1/3 (36.39%) reported that their partner never encourage and encouraged both domains  
331 while 27.23% of them reported that their husband encourage either of the partner dynamics domains.  
332 Similarly, for those whose desired birth assistant for the index child was no one or did not decided 26.73%,  
333 23.66% 49.61% reported that their partner did not encourage, encourage either of the two and encourage  
334 both of the partner dynamics domains at maternal and newborn care continuum enrollment respectively  
335 (**Table 2**).

336 **Table 2: Partner Dynamics at maternal and new born continuum of care Enrollment among a Cohort**  
 337 **of Women in Ethiopia and its correlates in Ethiopia, Community based Follow Up Study; evidence**  
 338 **from PMA Cohort One Merged Baseline and Six Week Postpartum Data Sets, Nov 2019 to Jan 2021**  
 339 **(n= 2,207)**

Variables		Not Encouraged	%	Encouraged Either	%	Encouraged Both	%	Total	%
<b>Age Category</b>	15 to 19 years	40	17.67	52	22.99	134	59.33	226	10.23
	20 to 24 years	63	11.79	109	20.43	360	67.78	531	24.06
	25 to 29 years	112	16.69	88	13.13	472	70.19	673	30.50
	30 to 34 years	90	21.54	79	18.90	249	59.56	418	18.95
	35 to 39 years	69	24.94	37	13.59	169	61.48	275	12.46
	40 to 49 years	29	34.96	12	14.14	43	50.91	84	3.80
	<b>Total</b>	403	18.25	377	17.08	1427	64.67	2207	100.00
<b>Religion</b>	Other Religion**	—	—	13	31.32	29	68.68	42	1.90
	Orthodox	109	12.96	104	12.42	627	74.62	840	38.07
	Protestant	102	17.93	106	18.64	362	63.43	571	25.87
	Muslim	192	25.41	153	20.31	409	54.29	754	34.16
	<b>Total</b>	403	18.25	377	17.08	1427	64.67	2207	100.00
<b>Place of Residence</b>	Urban	18	3.68	47	9.41	430	86.91	495	22.42
	Rural	385	22.46	330	19.30	997	58.24	1712	77.58
	<b>Total</b>	403	18.25	377	17.08	1427	64.67	2207	100.00
<b>Region</b>	Tigray	4	2.44	17	11.57	129	85.99	150	6.79
	Afar	30	66.78	9	19.53	6	13.69	45	2.05
	Amhara	65	14.13	43	9.37	354	76.51	463	20.97
	Oromiya	213	22.52	195	20.62	537	56.87	945	42.83
	SNNPR**	89	17.21	104	20.13	324	62.67	517	23.44
	<b>Addis Total</b>	2	1.97	9	9.86	76	88.17	87	3.92
<b>Total</b>	403	18.25	377	17.08	1427	64.67	2207	100.00	
<b>Wealth Index</b>	Lowest quintile	128	29.51	111	25.53	195	44.96	434	19.67
	Lower quintile	114	26.88	89	20.87	222	52.25	425	19.27
	Middle quintile	83	18.14	73	15.88	302	65.98	458	20.74
	Higher quintile	66	14.81	65	14.73	313	70.45	444	20.11
	Highest quintile	12	2.60	39	8.82	395	88.58	446	20.21
	<b>Total</b>	403	18.25	377	17.08	1427	64.67	2207	100.00
<b>Family Size</b>	1 to 3 members	87	12.01	120	16.52	520	71.47	728	33.00
	4 to 5 members	126	16.54	121	15.90	516	67.56	764	34.61
	6 to 14 members	189	26.44	135	18.92	391	54.65	715	32.39
	<b>Total</b>	403	18.25	377	17.08	1427	64.67	2207	100.0
<b>Educational Status</b>	No Education	286	30.97	171	18.59	465	50.44	922	41.78
	Primary	110	12.73	179	20.59	579	66.68	868	39.31

Variables		Not Encourage	%	Encouraged Either	%	Encouraged Both	%	Total	%
	<b>Secondary/Higher</b>	7	1.61	27	6.47	384	91.92	417	18.90
	<b>Total</b>	403	18.25	377	17.08	1427	64.67	2207	100.00
<b>Birth Order</b>	<b>No Child</b>	43	9.71	64	14.48	334	75.81	441	19.97
	<b>1_2 Children</b>	110	13.51	127	15.61	575	70.88	812	36.78
	<b>3_14 Children</b>	250	26.19	186	19.56	517	54.25	953	43.16
	<b>Total</b>	402	18.23	377	17.09	1426	64.68	2205	99.91
<b>Husband has other Wife's</b>	<b>No</b>	313	15.57	346	17.23	1349	67.19	2008	90.97
	<b>Yes</b>	90	45.94	31	15.67	75	38.38	195	8.85
	<b>Total</b>	402	18.26	377	17.10	1424	64.64	2203	99.82
<b>Husband Reaction to index Pregnancy</b>	<b>Very Unhappy</b>	75	24.24	58	18.80	177	56.96	311	14.08
	<b>A Sort Happy</b>	135	17.80	147	19.43	476	62.77	759	34.39
	<b>Very Happy</b>	148	14.14	155	14.76	745	71.10	1047	47.45
	<b>Total</b>	358	16.93	361	17.03	1398	66.04	2117	95.92
<b>Women Index Pregnancy Reaction</b>	<b>Very unhappy</b>	45	28.43	39	24.48	75	47.09	158	7.18
	<b>Sort of unhappy</b>	33	18.28	39	21.90	107	59.82	179	8.11
	<b>Mixed Feeling</b>	84	24.34	64	18.55	197	57.11	345	15.62
	<b>Sort of happy</b>	111	19.30	95	16.52	369	64.18	575	26.06
	<b>Very happy</b>	127	13.42	140	14.80	678	71.78	945	42.81
	<b>Total</b>	399	18.14	377	17.11	1426	64.75	2202	99.77
<b>Fertility Intention</b>	<b>Undecided/DNK</b>	33	18.52	33	18.47	113	63.00	179	8.10
	<b>Have a/another child</b>	208	15.50	235	17.50	898	67.00	1340	60.73
	<b>Prefer no children</b>	97	25.54	58	15.17	226	59.28	381	17.26
	<b>Total</b>	338	17.80	325	17.12	1236	65.08	1900	86.09
<b>Marriage Type</b>	<b>Only once</b>	339	17.72	339	17.72	1237	64.57	1916	86.80
	<b>More than once</b>	63	21.75	38	12.92	190	65.33	291	13.20
	<b>Total</b>	403	18.25	377	17.08	1427	64.67	2207	100.00
<b>Six Week delivery Place</b>	<b>Home</b>	316	31.91	270	27.24	404	40.85	990	44.85
	<b>Gov't Health Facility</b>	86	7.42	100	8.58	977	83.99	1163	52.72
	<b>Private Facility</b>	1	1.17	8	14.01	46	84.82	54	2.44
	<b>Total</b>	403	18.25	377	17.08	1427	64.67	2207	100.00
<b>ANC timing HP</b>	<b>1-3 months</b>	16	4.51	28	7.67	316	87.82	360	16.32
	<b>4 to 10 months</b>	112	10.25	175	15.97	810	73.78	1098	49.74
	<b>Total</b>	129	8.83	203	13.92	1126	77.25	1458	66.06
<b>HEW ANC Timing</b>	<b>1-3 months</b>	15	13.89	9	8.10	86	78.01	110	5.00
	<b>4 to 9 months</b>	71	13.49	99	18.74	357	67.77	527	23.87
	<b>Total</b>	86	13.56	108	16.90	443	69.54	637	28.86
<b>Contraceptive Ever Use</b>	<b>No</b>	239	27.90	190	22.23	427	49.87	857	38.82
	<b>Yes</b>	163	12.10	186	13.82	1000	74.08	1349	61.13

Variables		Not Encourage	%	Encouraged Either	%	Encouraged Both	%	Total	%
	<b>Total</b>	402	18.24	377	17.09	1427	64.68	2206	99.95
<b>Commence Contraceptive at Six Week</b>	<b>No</b>	380	20.80	338	18.52	1107	60.67	1824	82.66
	<b>Yes</b>	23	6.08	39	10.21	320	83.71	383	17.34
	<b>Total</b>	403	18.25	377	17.08	1427	64.67	2207	100.00
<b>Desired Delivery Place</b>	<b>Home/ND</b>	260	36.39	194	27.23	260	36.39	714	32.37
	<b>Health Facility</b>	78	6.60	131	11.03	977	82.36	1186	53.72
	<b>Total</b>	338	17.80	325	17.12	1236	65.08	1900	86.09
<b>Desired Birth Assistant</b>	<b>No One/ND</b>	30	26.73	26	23.66	55	49.61	111	5.03
	<b>HP</b>	84	6.86	132	10.85	1003	82.29	1219	55.22
	<b>Family Mem_TBA</b>	225	39.52	167	29.30	177	31.18	569	25.79
	<b>Total</b>	338	17.81	325	17.13	1236	65.06	1899	86.04

340

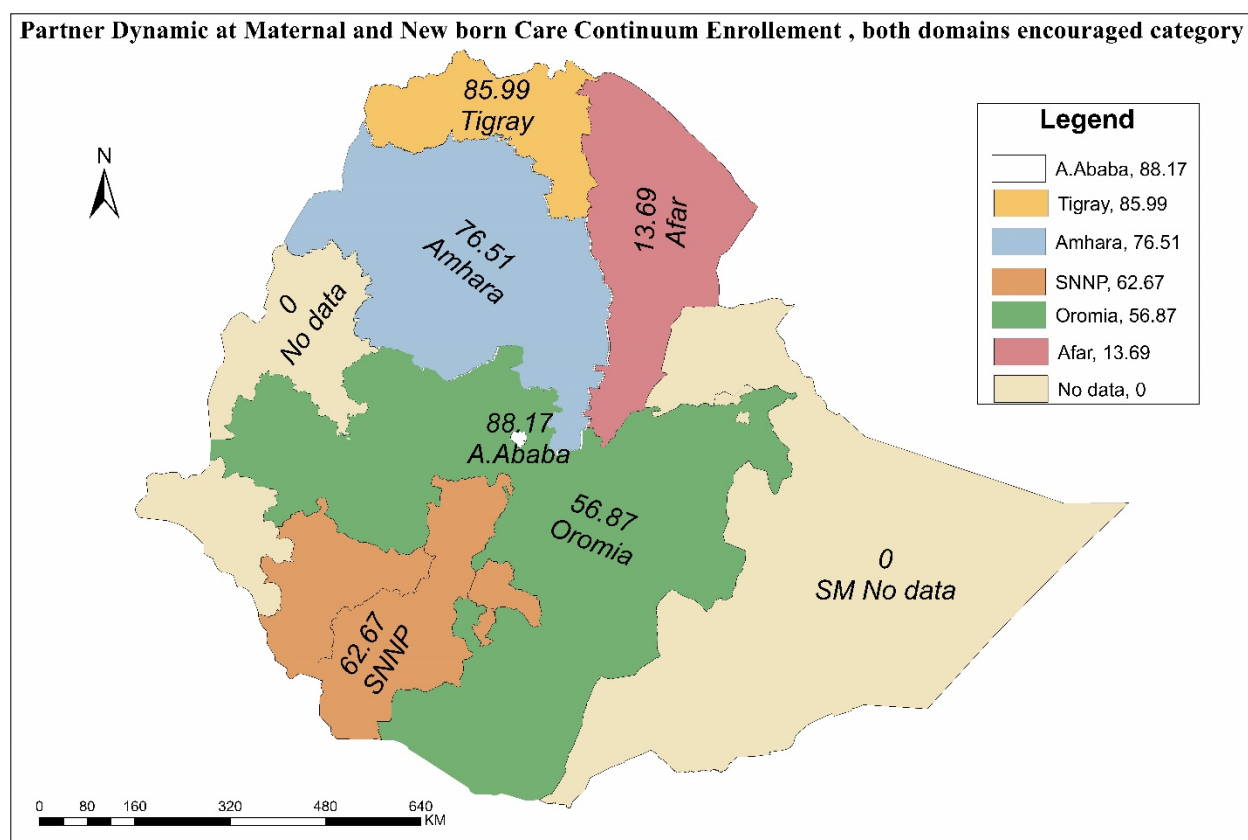
341 \*— No religion/Non-believer, Catholic, Traditional, Wakefeta, Other

342 \*\*— Former Southern Nations, Nationalities People Region

343

344 **Regional variation of Partner Dynamics at Maternal and Newborn Care Continuum, for both domains**  
345 **encouraged category, evidence from PMA cohort 1 Baseline and Six weeks postpartum merged Data**  
346

347 As can be seen in figure 2 below, the level of partner dynamic as measured in terms of the encouragement  
348 for both MN-CoC domains: to go to clinic for antenatal care and discuss where to deliver the index child  
349 showed substantial regional variation from 13.69% among residents of Afar region to 88.17% in Addis Ababa.  
350 The MN-CoC regional variation ranged from 1 in 7 women among residents of Afar region to 1 in 2, higher  
351 than 7 in 10, close to 9 in 10 and 6 in 10 among residents of Oromiya, Amahara, Tigraye and the former  
352 SNNPR regions respectively (**Fig2**).



353 **Fig 2. Partner Dynamics at maternal and new born care continuum Enrollment, for both domains**  
354 **encouraged category, evidence PMA cohort 1 Baseline and Six weeks postpartum Data. (Source:**  
355 **updated shape file obtained from humanitarian data exchange <https://data.humdata.org>)**

356

357

358 **Correlates of Partner Dynamics at maternal and new born care continuum Enrollment among a Cohort**  
359 **of Six Weeks Postpartum Women in Ethiopia, Community based Follow Up Study**  
360

361 This study identified correlates of partner dynamics at maternal and new care continuum of enrollment (MN-  
362 CoC), in terms of encouragement their pregnant wives to go to clinic for ANC and discuss where to deliver  
363 during the index pregnancy. This study identified and reported correlated of partner dynamics for the  
364 composite variable created: encourage either domains and encourage both domains using do not encourage  
365 both as a base outcome category in the multinomial regression modeling procedure

366 The finding showed that there is regional variation in partner dynamics towards maternal and new born care  
367 continuum enrollment (MN-CoC) and variation by whether husband has other wives and women educational  
368 attainment as well. It also showed variation by the place the women gave birth of the index child and by  
369 contraceptive use history (explain variation for the either encourage category alone) (**Table 3**).

370 The finding showed that there is regional variation in partner dynamics (MN-CoC). The likelihood of partner  
371 dynamics (MN-CoC encouraged both domains) at maternal and newborn health care continuum enrollment  
372 among women who are from Afar, Oromia and the former SNNPR Regions was (ARRR: 0.07 (0.02, 0.23)),  
373 (ARRR: 0.20 (0.07, 0.56)) and (ARRR: 0.25 (0.10, 0.67)) times lower respectively. Similarly, those women  
374 living with a husband and/or partner who had other wives had 69% ((ARRR: 0.31 (0.17, 0.55)) lower odds of  
375 partner encouragement of both of the partner dynamics domains at maternal new born care enrollment (**Table**  
376 **3**).

377 On the other hand, the likelihood was (ARRR: 3.30 (2.00, 5.51)) and (AOR: 10.11 (1.61, 63.23)) times higher  
378 among six weeks postpartum women who reported that they have gave birth of their index child in  
379 governmental and private facilities respectively. Similarly, this likelihood was (ARRR: 1.60 (1.02, 2.49)) times  
380 higher among women who were contraceptive ever users compared with life time non users. Besides, women  
381 with primary education and secondary plus educational attainment had (ARRR: 2.09 (1.29, 3.41)) and (10.92  
382 (3.42, 34.92)) times higher likelihood of the MN-CoC partner encouragement of both of the partner dynamics  
383 domains at maternal new born care enrollment compared with their non-educated counterparts (**Table 3**).

384 For partner encouraged either of the domains, the finding showed that there is regional variation in partner  
385 dynamics on MN-CoC. The likelihood of partner dynamics (encouraged either domains) at maternal and  
386 newborn health care continuum enrollment among a panel of six weeks postpartum women was (ARRR:  
387 0.031 (0.01, 0.10)), ((ARRR: 0.16 (0.06, 0.44)) and Amhara ((ARRR: 0.17 (0.05, 0.54)) times lower in Afar,  
388 Oromia and Amhara regions respectively. Similarly, those women living with a husband and/or partner who  
389 had other wives had 60% ((ARRR: 0.40 (0.20, 0.70)) lower odds of partner encouragement of either of the  
390 partner dynamics domains at maternal new born care enrollment (**Table 3**).

391 On the other hand, women who achieved primary education had (ARRR: 1.91 (1.14, 3.21)) and secondary  
392 plus education had ARRR: (4.86 (1.41, 16.34)) higher odds. Besides those who gave birth of their index child  
393 at private facilities (AOR: 6.60 (1.22, 35.62)) times higher likelihood of partner encouragement on either of  
394 the partner dynamics domains at maternal new born care enrollment (**Table 3**).

395



396 **Table 3: Correlates of Partner Dynamics at maternal and new born continuum of care Enrollment**  
 397 **among a Cohort of Women in Ethiopia and its correlates in Ethiopia, Community based Follow Up**  
 398 **Study; A multinomial Logistics regression Analysis, Nov 2019 to Jan 2021**

Variables		Partner Encourage Either	Partner Encourage Both
<b>Age Cat</b>	15 to 19 Years	1	1
	20 to 24 years	1.11 (0.45,2.78)	1.31 (0.56,3.10)
	25 to 29 years	0.51 (0.19,1.34)	1.17 (0.50,2.85)
	30 to 34 years	0.72 (0.23, 2.22)	1.43 (0.51,4.00)
	35 to 39 years	0.47 (0.15,1.53)	1.57 (0.55,4.53)
	40 to 49 years	0.65 (0.16,2.67)	1.03 (0.30,3.60)
<b>Place of Residence</b>	Urban	1	1
	Rural	0.85 (0.33,2.16)	1.00 (0.41,2.24)
<b>Region</b>	Tigray	1	1
	Afar	0.07 (0.02,0.23)***	0.031 (0.01, 0.10)***
	Amhara	0.17 (0.05,0.54)**	0.33 (0.11,0.93)*
	Oromiya	0.20 (0.07,0.56)**	0.16 (0.06,0.44)***
	SNNP	0.32 (0.11,0.89)*	0.25 (0.10,0.67)**
	Addis	0.69 (0.09,5.19)	0.45 (0.06,3.08)
<b>House Hold Wealth Index</b>	Lowest quintile	1	1
	Lower quintile	0.72 (0.40,1.30)	0.71 (0.40,1.23)
	Middle quintile	0.69 (0.35,1.33)	1.12 (0.60,2.10)
	Higher quintile	1.00 (0.51,1.93)	1.66 (0.88,3.10)
	Highest quintile	0.80 (0.24,2.73)	0.85 (0.28,2.54)
<b>Family Size</b>	1 to 3 members	1	1
	4 to 5 members	0.77 (0.40,1.53)	1.15 (0.62,2.15)
	6 to 14 members	0.82 (0.38,1.79)	0.97 (0.48,1.94)
<b>Educational Status</b>	No Education	1	1
	Primary Education	1.91 (1.14,3.21)*	2.09 (1.29,3.41)**
	Secondary+_ Education	4.86 (1.41, 16.34)*	10.92 (3.42,34.92)***
<b>Parity</b>	No Child	1	1
	1_2 Children	1.20 (0.50,2.85)	1.02 (0.45,2.29)
	3_14 Children	1.72 (0.57,5.18)	1.02 (0.35,2.90)
<b>Husband Has Other Wife</b>	No	1	1
	Yes	0.40 (0.20,0.70)**	0.31 (0.17,0.55)***
<b>Husband Reaction to index Pregnancy</b>	Not Happy	1	1
	A Sort Happy	1.42 (0.76,2.65)	1.58 (0.88,2.85)
	Very Happy	1.19 (0.62,2.26)	1.59 (0.88,2.89)
<b>Fertility Desire</b>	No Decided	1	1
	Have a/another child	0.82 (0.35,1.93)	1.15 (0.50,2.62)
	Prefer no children	0.60 (0.23,1.50)	1.04 (0.42,2.62)
<b>Marriage History</b>	Only Once	1	1
	More than once	0.80 (0.41,1.46)	0.71 (0.38,1.35)

Variables		Partner Encourage Either	Partner Encourage Both
<b>Contraceptive Ever Use</b>	<b>No</b>	1	1
	<b>Yes</b>	1.34 (0.83, 2.18)	1.60 (1.02,2.49)*
<b>Commence Contraceptive at Six Week</b>	<b>No</b>	1	1
	<b>Yes</b>	1.13 (0.51,2.48)	1.62 (0.78,3.36)
<b>Delivery Place</b>	<b>Home</b>	1	1
	<b>Government Heath Facility</b>	0.83 (0.46,1.50)	3.30 (2.00,5.51)***
	<b>Private Facility</b>	6.60 (1.22,35.62)*	10.11 (1.61,63.23)*
<b>Desired Delivery Place</b>	<b>Home Government Private HF</b>	2.31 (0.73,7.32)	2.17 (0.80,5.93)
<b>Desired Birth Attendant</b>	<b>No One</b>	1	1
	<b>HP</b>	0.80 (0.22,2.87)	1.15 (0.40,3.53)
	<b>Family Mem_TBA</b>	1.23 (0.51,3.00)	0.54 (0.24,1.23)

399

400 \*p <0.05 \*\*p<0.01, \*\*\* p<0.001

401

## 402 Discussion

403

404 Maternal and new born health outcomes can be greatly improved with cost effective intervention among  
 405 others completing the maternal and newborn care continuum plays pivotal role in improving maternal and  
 406 newborn health outcomes. Besides, in midst of the SDG era there is a paradigm shift in terms of policy  
 407 articulation, service provision and research focus on maternal and new born health service; which calls  
 408 service provision as continuum of maternal and new born health care which call all pregnant women enrolled  
 409 to ANC care should be retained to get there recommended cares namely; ANC4+ and skilled birth care and  
 410 immediate post natal care. This is not achievable without the involvement of partner and/or husband.  
 411 Evidences showed that one of the bottlenecks for such the persistent poor maternal and fetal outcome despite  
 412 the visible efforts in maternal and child health (MCH) service provision is scarce partner and/or husband  
 413 involvement and encouragement on their wives to be enrolled and retained in the maternal an newborn  
 414 continuum of care to get the recommended three domains of the care continuum.

415 In the midpoint of the SDG era and at this time when modern primary health care services are being available  
 416 and accessible near to the community to a larger extents; and the government of Ethiopia has been showing  
 417 very committed to provide delivery care, most antenatal and postnatal care services with exemption from  
 418 charge; and most importantly being at the era when the role of husbands involvement and the community  
 419 support on maternal and newborn health service use has been catching policy makers, program managers  
 420 and researchers attention and their direction of focus; documenting the proportion of partners and/or  
 421 husbands who encouraged their wives to go to clinic for ANC use and discussing with their wives where to

422 deliver the index child and identifying the correlates contributing for the variation of such partner dynamics  
423 is very critical in availing actionable evidence to improve maternal and new born outcome by increasing  
424 skilled delivery care at health facilities. Therefore, this study focused on determining the level of partner  
425 dynamics which was measured as ANC use encouragement and discussing where to deliver the index child  
426 and identified its correlates by further analyzing a follow up data from PMA for action Ethiopia.

427 In addition, to the conventional discussion method, the authors mainly write the discussion using an indirect  
428 method of discussion such as comparing the finding with accomplishment goals stated in the national and  
429 international relevant policy and program endorsed documents and targets such as the success and  
430 challenge of the Ethiopian health extension program, the national Health sector transformation plans.

431 The finding that nearly two third (64.67%; 62.21%, 67.04%) of six weeks postpartum women reported that  
432 their husband and/or partner encouraged them to go to clinic for ANC and discussed with them about place  
433 of delivery for the index child, while nearly one in 5 women reported that their husband and/or partner not  
434 encourage the first two MN-CoC partner dynamics domains (18.2%; 16.64%, 20.33) and either encouraged  
435 either of the two (17.08%, 15.25%, 19.10%). This considerable proportion in partner dynamics in terms of  
436 encouragement to go to clinic for ANC and discuss where to deliver the index child might be related with  
437 the success of health extension program (HEP) in Ethiopia, Health Sector Transformational Plans I\_II (HSTP  
438 2) (18, 25, 26) and the endorsement and implementation of the new reproductive health strategy running  
439 2021 to 25 in which preconception care related targets were embedded (25). The finding nearly one third of  
440 the six week postpartum did not received encouragement on both MN-CoC partner dynamic domains might  
441 be related women experiencing low quality antenatal care (ANC) and did not seek the recommended four or  
442 more ANC visits during their most recent pregnancy and childbirth (26) in which case less likely to received  
443 counseling on the role and involvement of their husband their care during pregnancy and childbirth ; a recent  
444 study based entitled “Effective coverage of antenatal care services in Ethiopia: a population-based cross-  
445 sectional study. BMC Pregnancy Childbirth. 2024;24(1):330” indicated that the overall effective ANC  
446 coverage was low, primarily due to a considerable drop in the proportion of women who completed four or  
447 more ANC visits.

448 To this end, the implication of the finding that nearly two third (64.67%; 62.21%, 67.04%) of women reported  
449 that their husband and/or partner encouraged them to go to clinic for ANC and discussed with them about  
450 place of delivery indicated that Ethiopia has a long way to go to escalate partner encouragement and  
451 engagement along the maternal and new born care continuum care (4, 8). Furthermore, the expansion of the  
452 urban Health extension professional and addition of level IV Health extension workers in rural set up should  
453 be used as a stepping stone to improve the provision and completion of care for maternal and newborn care

454 continuum (27) at community level thereby enabling women to get informed counseling about their role of  
455 husband and/or partner encouragement and involvement at maternal and new born care continuum  
456 enrollment thereby improving continuum of maternal and new born care. Moreover, the government's effort  
457 to improve quality of maternal and child health care and respectful maternity care (28) along with the  
458 continuum of care is likely to encourage women to plan their pregnancies and subsequently to be to be  
459 encouraged by their husband and/or partner and the variation in community support for pregnant and  
460 postpartum women to utilize the three domains of the maternal and new born continuum of care packages  
461 also contributes for this observed variation in the partner dynamics: Community based 2 year Cohort follow  
462 up Study (29) as well as lack of partner encouragement that his wife to clinic for ANC, discuss where to  
463 deliver and seek postnatal care for the index pregnancy as reported by a study (30) entitled "The impact of  
464 partner autonomy constraints on women's health-seeking across the maternal and newborn continuum of  
465 care." : the fact that nearly one in 5 (18.2%; 16.64%, 20.33%) women reported that their husband and/or  
466 partner not encourage to go to clinic for ANC and is in line with a study (30).

467 The regional variation in the finding that partner dynamics among six weeks postpartum women might be  
468 related with the varying degree of birth preparedness and complication readiness activities across regions  
469 and better implementation of the health sector transformation plans in general and the reproductive health  
470 policy running 2021 to 25 in particular (18, 25, 31). The observed regional variation might be further related  
471 with the engagement and support of developmental partners working with the Federal Health Ministry Health  
472 and Regional health bureaus in terms of direct support in maternal and reproductive commodities provision  
473 by push strategy and research fund support. The variation in provision of male friendly service (32) across  
474 regions along with sociocultural and religious influence on male involvement and/or encouragement might  
475 also contribute for the observed regional variation (33).

476 The finding that educational attainment increased the likelihood of partner dynamics was in line with the  
477 assertion that attending higher education tend to improve women reproductive autonomy (34). Education  
478 increase partner dynamics in terms of encouraging women to go to clinic for ANC and discuss place of deliver  
479 for the index child might be related with educated women are like to have persuasive ability and have good  
480 communication skill, hence, resulting a good couples communication (35) and showing the role of women  
481 decision making ability on their perception of their status in the family (36).

482 In line with a study (37) type of health facility where the index child delivered was found to be related with  
483 improved partner dynamics: nearby health facility increase male involvement and in this study place of  
484 delivery being health facility increased the likelihood of partner dynamics, it might also be related with  
485 proximity to health facilities to get delivery service and receive reproductive commodities (38). It might also  
486 be re related with getting quality delivery care since the government of Ethiopia has given due attention on  
487 quality of care provide in recent years (39). It might also be related that such women are aware of their  
488 reproductive service use right (40, 41) making the partner and/or husband to engage his wife in matters

489 related with reproductive health including encouraging her to go to clinic for ANC and discuss where to deliver  
490 and as part of couples birth preparedness and complication readiness (42).

491 Contraceptive ever use only increase the likelihood of partners dynamics might be emanated from women  
492 alone decision making power on contraceptive commodities use (43-48) and reproductive service use  
493 autonomy (49) which enable women to aware of their reproductive rights and health service need alarming  
494 their partner and/or husband to encourage them to go to clinic for ANC and discuss with them about where  
495 to deliver the index child as part of couples birth preparedness and complication readiness (42).

496 The finding that husbands has other wives lower MN-CoC partner dynamic on the first two domains was  
497 mentioned in a study entitled “The practice of polygamy on the utilization of reproductive health services  
498 among married women in Ghana” reported that women have lower likelihood of maternal health service  
499 namely; the recommended antenatal care visit and skilled birth uptakes. Besides the study recommended  
500 interventions on reproductive health may need to priorities women in polygamous marriages in order to  
501 improve the utilization of skilled ANC, assisted skilled birth, and modern contraceptive services (50). Another  
502 study showed that polygamous marriage had psychological sequel on women and children health outcomes  
503 (51).

## 504 **Conclusions:**

505  
506 The proportion of partner and/or husband dynamics on MN-CoC of among six weeks postpartum women  
507 who reported that their partner and/or husband encouraged them to go to clinic for ANC and discussed with  
508 them about place of delivery for the index child was nearly 2/3. Moreover, nearly 1 in 5 women reported that  
509 their husband and/or partner did not encourage (18.2%; 16.64%, 20.33%) and either encouraged either of  
510 the two MN-CoC domains (17.08%, 15.25%,19.10%) calls up on key actors to design and implement  
511 regionally sensitive collaborative public private partnership activities and efforts that empower women  
512 through secondary or higher education enrollment and which also addressed polygamy are hoped to improve  
513 husband and/or partner involvement in their wives pregnancy and child birth in general and maternal and  
514 new both care continuum service use encouragement in particular. Contraceptive use history is also another  
515 source of variation for partner dynamics of the both encourage category, hence, diversifying access to  
516 contraceptive commodities is likely to help the ministry and other developmental parents to address the  
517 husband and/or partner MN-CoC dynamics in terms of policy articulation, advocacy implementation, ,  
518 evaluation and revising it to fit its purpose and attain the desired targets.

## 519 **List of Abbreviations**

520

521 ARRR: Adjusted Relative Risk

522 MN-CoC: Maternal and Newborn Care Continuum

523 EA: Enumeration Areas

524 HEW: Health Extension Worker

525 HH: households

526 PMA: Performance for Monitoring for Action Ethiopia  
527 RE: Resident Enumerator  
528 SNNPR: Southern Nations, nationalities and Peoples Region.  
529 ToT: Trainer of Trainees.

530

### 531 **Declarations**

#### 532 Ethics approval and consent to participate:

533 This study involved a secondary analysis of deidentified data from the PMA Ethiopia. The PMA Ethiopia  
534 survey was conducted strictly under the ethical rules and regulations of world health organization and  
535 Research Ethics Review board of the College Health Sciences and Medicine of Addis Ababa University.  
536 Informed consent was obtained from respondents during the data collection process of PMA Ethiopia on the  
537 baseline data collection on Oct 2021. Minors less than 15 years as per the law were not included in this study.  
538 Informed verbal consent was take from study participants. PMA survey has been also conducted after  
539 obtained ethical approval from Bloomberg School of Public Health at Johns Hopkins University in Baltimore,  
540 USA.

541 Consent for publication: N/A not applicable

542 Availability of data and materials: The datasets generated during the study are publicly available from  
543 the PMA website. <https://www.pmadata.org/data/request-access-datasets>.

544 Competing interests: the authors declare that they have no competing interest.

545 Funding: The authors did not obtained any funding.

546

### 547 **Author Contributions**

548

549 **Conceptualization:** Solomon Abrha Damtew.

550 **Data curation:** Solomon Abrha Damtew, Tesfamichael Awoke, Tariku Dejene.

551 **Formal analysis:** Solomon Abrha Damtew.

552 **Investigation:** Assefa Semen, Solomon Shiferaw.

553 **Methodology:** Solomon Abrha Damtew,

554 **Software:** Solomon Abrha Damtew, Tariku Dejene

555 **Supervision:** Assefa Semen, Solomon Shiferaw.

556 **Funding acquisition and Resources:** Assefa Seme, Solomon Shiferaw.

557 **Project administration:** Solomon Abrha Damtew, Mahari Yihdego Gidey, Niguse Tadele Atinafu, Hailay  
558 G/Kidan

559 **Validation:** Solomon Shiferaw, Assefa Seme.

560 **Visualization:** Solomon Abrha Damtew, Fitsum Tariku Fantaye, Tariku Dejene.

561 **Writing – original draft:** Solomon Abrha Damtew.

562 **Writing – review & editing:** Solomon Abrha Damtew, Tariku Dejene, Fitsum Tariku Fantaye, Tesfamichael  
563 Awoke, Mahari Yihdego Gidey, Niguse Tadele Atinafu, Hailay G/Kidan Kelemua Mengesha Sene, Assefa  
564 Seme, Solomon Shiferaw.

565 All authors reviewed and approved the final version of the manuscript.

566

#### 567 **Acknowledgement:**

568 The authors are very thankful for Performance Monitoring for Action (PMA) Project. The very cooperative  
569 respondents and dedicated field team deserves a heartfelt acknowledgement. We would like to extend our  
570 heartfelt appreciation to staff of all Ethiopian Red Cross Training Center Kereyu resort\_Adama for their  
571 hospitality in facilitating PMA staff trainings Staff and for hosting two round PMA large scale data analysis  
572 and use trainings. Last but not least the trainers from AAU and JHU deserve recognition as well as Linnea  
573 A.Zimmerman's mentorship following the training and fellow trainees' inspiration.

#### 574 **ORCID**

575 Solomon Abrha Damtew <https://orcid.org/0000-0002-0758-7348>

576 Tariku Dejene: <https://orcid.org/0000-0001-8626-1305>

577 Fitsum Tariku Fentaye <https://orcid.org/0000-0003-1790-7269>

578 Assefa Seme Derese <https://orcid.org/0000-0001-9667-4859>

579 Solomon Shiferwa Yesuf <https://orcid.org/0000-0002-9285-1480>

580

581

- 582
- 583
- 584 1. Moran AC, Kerber K, Sitrin D, Guenther T, Morrissey CS, Newby H, et al. Measuring coverage in  
585 MNCH: indicators for global tracking of newborn care. *PLoS Med.* 2013;10(5):e1001415.
- 586 2. Bryce J, Arnold F, Blanc A, Hancioglu A, Newby H, Requejo J, et al. Measuring coverage in MNCH:  
587 new findings, new strategies, and recommendations for action. *PLoS Med.* 2013;10(5):e1001423.
- 588 3. Shibanuma A, Ansah EK, Kikuchi K, Yeji F, Okawa S, Tawiah C, et al. Evaluation of a package of  
589 continuum of care interventions for improved maternal, newborn, and child health outcomes and service  
590 coverage in Ghana: A cluster-randomized trial. *PLoS Med.* 2021;18(6):e1003663.
- 591 4. WHO. WHO recommendations on health promotion interventions for maternal and newborn health;  
592 Recommendation 2. Male involvement interventions for maternal and newborn health (MNH) ([www.who.int](http://www.who.int))  
593 or can be purchased from WHO Press, World Health Organization, 20 Avenue Appia, 1211 Geneva 27,  
594 Switzerland. WHO Library Cataloguing-in-Publication Data ISBN 978 92 4 150874 2
- 595 2015:25 to 9.
- 596 5. WHO. WHO recommendations on health promotion interventions for maternal and newborn health,  
597 Recommendation 2. Male involvement interventions for MNH. 2015:16 -22.
- 598 6. Alemi S, Nakamura K, Rahman M, Seino K. Male participation in antenatal care and its influence on  
599 their pregnant partners' reproductive health care utilization: insight from the 2015 Afghanistan Demographic  
600 and Health Survey. *Journal of Biosocial Science.* 2020;53(3):436-58.
- 601 7. Widarsson M, Engstrom G, Tyden T, Lundberg P, Hammar LM. 'Paddling upstream': Fathers'  
602 involvement during pregnancy as described by expectant fathers and mothers. *J Clin Nurs.* 2015;24(7-  
603 8):1059-68.
- 604 8. World Health Organization. WHO RECOMMENDATIONS ON Maternal Health GUIDELINES  
605 APPROVED BY THE WHO GUIDELINES REVIEW COMMITTEE UPDATED MAY 2017. 2017.
- 606 9. Kamau T, Riang'a RM, Mwanzia L, Buluku E, Sawe C, Wambugu B, et al. Pregnancy and childbirth:  
607 male partner involvement in Uasin Gishu, Kenya. *African Journal of Midwifery and Women's Health.*  
608 2022;16(4):1-10.
- 609 10. Matseke MG, Ruiters RAC, Rodriguez VJ, Barylski NA, Weiss SM, Jones DL, et al. A Qualitative  
610 Exploration of the Meaning and Understanding of Male Partner Involvement in Pregnancy-Related Care  
611 Among Men in Rural South Africa. *Journal of Social, Behavioral, and Health Sciences.* 2017;11(1).
- 612 11. Degefa N, Dure A, Getahun D, Bukala Z, Bekelcho T. Male partners involvement in their wives'  
613 antenatal care and its associated factors in southern Ethiopia. A community-based cross-sectional study.  
614 *Heliyon.* 2024;10(7).



- 615 12. Mohammed BH, Johnston JM, Vackova D, Hassen SM, Yi H. The role of male partner in utilization  
616 of maternal health care services in Ethiopia: a community-based couple study. BMC Pregnancy and  
617 Childbirth. 2019;19(1).
- 618 13. Kebede AA, Gessesse DN, Tsega NT, Akiil MB, Abegaz MY, Anteneh TA, et al. Husband  
619 Involvement in Maternal, Neonatal, and Child Health Care among Women who Have a Child Less Than one  
620 Year in Gondar City, Northwest Ethiopia, 2021. Health Serv Res Manag Epidemiol.  
621 2022;9:23333928221124807.
- 622 14. Kaye et al. Male involvement during pregnancy and childbirth: men's perceptions, practices and  
623 experiences during the care for women who developed childbirth complications in Mulago Hospital, Uganda.  
624 BMC Pregnancy and Childbirth 2014, 14:54 <http://www.biomedcentral.com/1471-2393/14/54>. 2014.
- 625 15. Peneza AK, Maluka SO. 'Unless you come with your partner you will be sent back home': strategies  
626 used to promote male involvement in antenatal care in Southern Tanzania. Glob Health Action.  
627 2018;11(1):1449724.
- 628 16. Gopal P, Fisher D, Seruwagi G, Taddese HB. Male involvement in reproductive, maternal, newborn,  
629 and child health: evaluating gaps between policy and practice in Uganda. Reprod Health. 2020;17(1):114.
- 630 17. Central Statistical Agency Addis Ababa E, ICF TDP, Rockville M, USA,. Demographic and Health  
631 Survey 2016. 2017.
- 632 18. FMOH. Health Sector Transformation Plan II (HSTP-II). 2021.
- 633 19. Gurara M, Muyldermans K, Jacquemyn Y, Van Geertruyden JP, Draulans V. Traditional birth  
634 attendants' roles and homebirth choices in Ethiopia: A qualitative study. Women Birth. 2020;33(5):e464-e72.
- 635 20. Garces A, McClure EM, Espinoza L, Saleem S, Figueroa L, Bucher S, et al. Traditional birth  
636 attendants and birth outcomes in low-middle income countries: A review. Semin Perinatol. 2019;43(5):247-  
637 51.
- 638 21. Shiferaw et al. Why do women prefer home births in Ethiopia? 2013; BMC Pregnancy and Childbirth  
639 2013, 13:5 <http://www.biomedcentral.com/1471-2393/13/5>.
- 640 22. L.F.C. Ntoimo, F.E. Okonofua, al. CEe. Why women utilize traditional rather than skilled birth  
641 attendants for maternity care in rural Nigeria: Implications for policies and programs. Midwifery 104 (2022)  
642 103158.
- 643 23. Alio et al. A community perspective on the role of fathers during pregnancy: a qualitative study. BMC  
644 Pregnancy and Childbirth 2013, 13:60 <http://www.biomedcentral.com/1471-2393/13/60>. 2013.
- 645 24. Zimmerman L, Desta S, Yihdego M, Rogers A, Amogne A, Karp C, et al. Protocol for PMA-Ethiopia:  
646 A new data source for cross-sectional and longitudinal data of reproductive, maternal, and newborn health.  
647 Gates Open Res. 2020;4:126.

- 648 25. FMOH. RH Strategic Plan - Ethiopia 2021-2025. 2021.
- 649 26. Assefa Y, Gelaw YA, Hill PS, Taye BW, Van Damme W. Community health extension program of  
650 Ethiopia, 2003-2018: successes and challenges toward universal coverage for primary healthcare services.  
651 *Global Health*. 2019;15(1):24.
- 652 27. Federal Democratic Republic of Ethiopia Ministry of Health. Ethiopian Health Care Quality Bulletin:  
653 Continuous Health Care Quality Improvement through Knowledge Management, Vol 1 May 2019. 2019.
- 654 28. Habte A, Tamene A, Woldeyohannes D, Endale F, Bogale B, Gizachew A. The prevalence of  
655 respectful maternity care during childbirth and its determinants in Ethiopia: A systematic review and meta-  
656 analysis. *PLoS ONE* 17(11): e0277889. <https://doi.org/10.1371/journal.pone.0277889>. 2022.
- 657 29. Damtew SA, Fantaye FT, Sene KM. Pregnant Women Perceived Community Acceptance for  
658 Deliveries attended by Traditional Birth attendants and its Correlates in Ethiopia: Community based  
659 longitudinal follow up Study. 2024.
- 660 30. Shannon N Wood, Shiferaw S et.al. The impact of partner autonomy constraints on women's health-  
661 seeking across the maternal and newborn continuum of care. 2022.
- 662 31. FMOH. Ethiopia National Reproductive Health Strategy 2016-2020. 2016.
- 663 32. Munisi G, Mbele S, Ngoye, , E. K, J., , Mfugale L, and, Agarwal A. The Importance of Male  
664 Engagement and Male-Friendly Services for Improving Uptake of Health Services: EngenderHealth's  
665 Experience through the USAID Boresha Afya Programs in Tanzania. Washington, DC: EngenderHealth.  
666 2021.
- 667 33. Sakala D, Kumwenda MK, Conserve DF, Ebenso B, Choko AT. Socio-cultural and economic barriers,  
668 and facilitators influencing men's involvement in antenatal care including HIV testing: a qualitative study from  
669 urban Blantyre, Malawi. *BMC Public Health*. 2021;21(1):60.
- 670 34. Al Riyami A, Afifi M, Mabry RM. Women's autonomy, education and employment in Oman and their  
671 influence on contraceptive use. *Reproductive health matters*. 2004;12(23):144-54.
- 672 35. Zelalem D, Worku A, Alemayehu T, Dessie Y. Association of Effective Spousal Family Planning  
673 Communication with Couples' Modern Contraceptive Use in Harar, Eastern Ethiopia. *Open Access Journal  
674 of Contraception*. 2021;12:45.
- 675 36. Erci B. Women's efficiency in decision making and their perception of their status in the family. *Public  
676 health nursing (Boston, Mass)*. 2003;20(1):65-70.
- 677 37. Mamo ZB, Kebede SS, Agidew SD, Belay MM. Determinants of Male Partner Involvement during  
678 Antenatal Care among Pregnant Women in Gedeo Zone, South Ethiopia: A Case-Control Study. *Ann Glob  
679 Health*. 2021;87(1):19.

- 680 38. Shiferaw S, Spigt M, Seme A, Amogne A, Skrovseth S, Desta S, et al. Does proximity of women to  
681 facilities with better choice of contraceptives affect their contraceptive utilization in rural Ethiopia? PLoS One.  
682 2017;12(11):e0187311.
- 683 39. FMOH. Ethiopian Health Care Quality Bulletin; Continuous Health Care Quality Improvement through  
684 Knowledge Management. 2019.
- 685 40. Aliyu AA, Dahiru T. Reproductive Health and Family Planning Services in Africa: Looking beyond  
686 Individual and Household Factors. Family planning and reproductive health. 2020.
- 687 41. Rimon JG II, Tsui AO. Regaining momentum in family planning. Global Health Science Practice.  
688 2018; 6(4):626–628. <https://doi.org/10.9745/GHSP-D-18-00483>. 2018.
- 689 42. JHPIEGO. monitoring birth preparedness and complication readiness tools and indicators for  
690 maternal and newborn health. 2004.
- 691 43. Damtew SA, Fantaye FT. Women alone modern contraceptive use decision making and its  
692 correlates, evidence from PMA CS 2021 survey. BMC Women's Health. 2024;24(1).
- 693 44. Edossa ZK, Debela TF, Mizana BA. Women's Decision on Contraceptive Use in Ethiopia: Multinomial  
694 Analysis of Evidence From Ethiopian Demographic and Health Survey. Health Serv Res Manag Epidemiol.  
695 2020;7:2333392820924565.
- 696 45. Fantaye FT, Damtew SA. Women decision making on use of modern family planning methods and  
697 associated factors, evidence from PMA Ethiopia. PLoS One. 2024;19(2):e0298516.
- 698 46. Mare KU, Aychiluhm SB, Tadesse AW, Abdu M. Married women's decision-making autonomy on  
699 contraceptive use and its associated factors in Ethiopia: A multilevel analysis of 2016 demographic and health  
700 survey. SAGE Open Med. 2022;10:20503121211068719.
- 701 47. Demissie GD, Akalu Y, Gelagay AA, Alemnew W, Yeshaw Y. Factors associated with decision-  
702 making power of married women to use family planning in sub-Saharan Africa: a multilevel analysis of  
703 demographic health surveys. BMC Public Health. 2022;22(1):837.
- 704 48. Anbesu EW, Alemayehu M, Asgedom DK, Jeleta FY. Women's decision-making power regarding  
705 family planning use and associated factors in Ethiopia: A systematic review and meta-analysis. SAGE Open  
706 Med. 2023;11:20503121231162722.
- 707 49. Butler MG, Walker M, Pablo LA, Bartels SA. Relationship between women's decision-making power  
708 over their own health care and use of modern contraception in the Democratic Republic of the Congo: a  
709 cross-sectional secondary data analysis. BMC Womens Health. 2021;21(1):309.
- 710 50. Kumbeni MT, Alem JN, Ziba FA, Afaya A, Apanga PA. The practice of polygyny on the utilisation of  
711 reproductive health services among married women in Ghana. J Biosoc Sci. 2024:1-12.

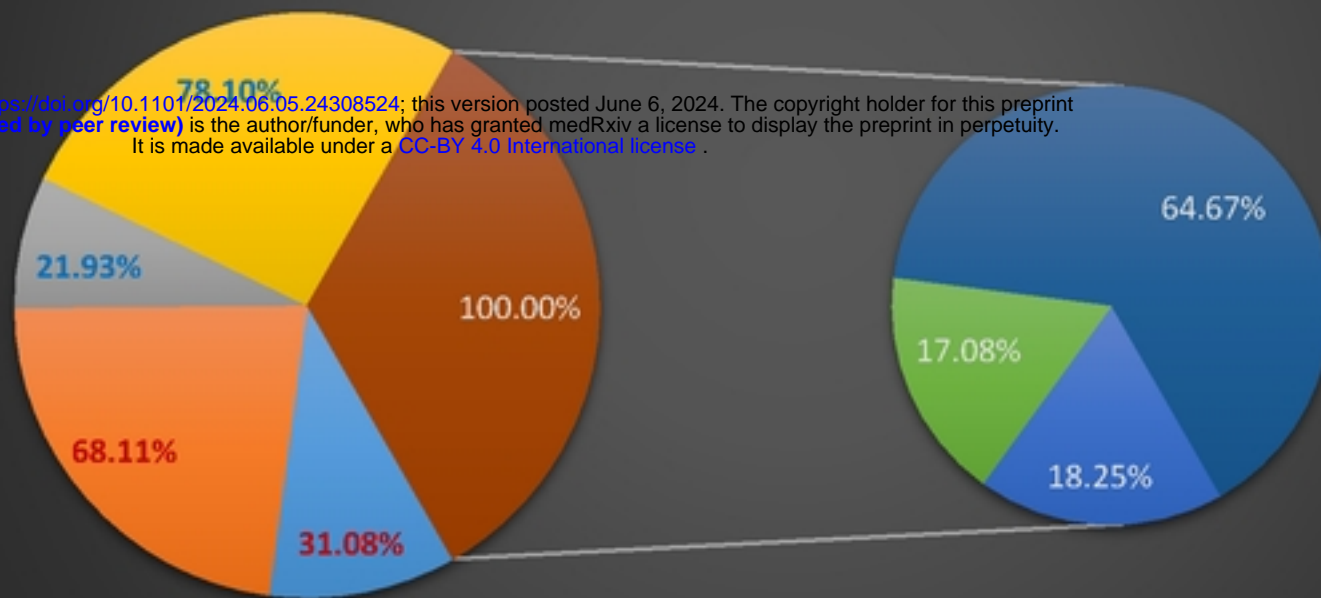
712 51. Shaiful Bahari I, Norhayati MN, Nik Hazlina NH, Mohamad Shahirul Aiman CAA, Nik Muhammad Arif  
713 NA. Psychological impact of polygamous marriage on women and children: a systematic review and meta-  
714 analysis. BMC Pregnancy Childbirth. 2021;21(1):823.

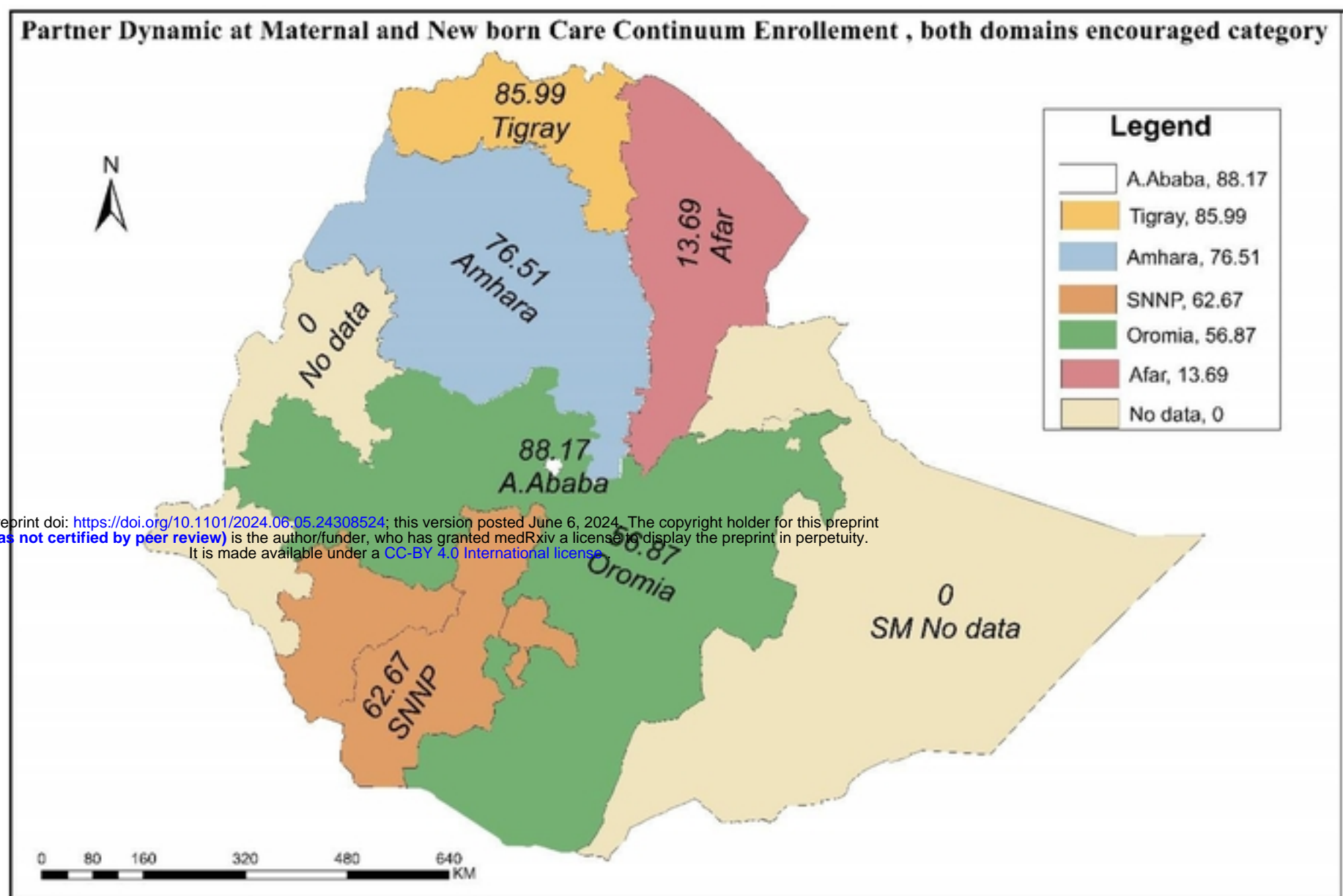
715

**Fig 1: Partner Dynamics at maternal and new born continuum of care Enrollment among a Cohort of Women and its correlates in Ethiopia**

- No D.PlaceDiscussion
- Del place Discussion
- No ANC Encourged
- ANC Encourage
- Not Encouraged
- Encouraged Either

medRxiv preprint doi: <https://doi.org/10.1101/2024.06.05.24308524>; this version posted June 6, 2024. The copyright holder for this preprint (which was not certified by peer review) is the author/funder, who has granted medRxiv a license to display the preprint in perpetuity. It is made available under a [CC-BY 4.0 International license](https://creativecommons.org/licenses/by/4.0/).





medRxiv preprint doi: <https://doi.org/10.1101/2024.06.05.24308524>; this version posted June 6, 2024. The copyright holder for this preprint (which was not certified by peer review) is the author/funder, who has granted medRxiv a license to display the preprint in perpetuity. It is made available under a [CC-BY 4.0 International license](https://creativecommons.org/licenses/by/4.0/).

**Fig 2. Partner Dynamics at maternal and new born care continuum Enrollment, for both domains encouraged category, evidence PMA cohort 1 Baseline and Six weeks postpartum Data. (Source: updated shape file obtained from humanitarian data exchange <https://data.humdata.org>)**

**Table 2: Partner Dynamics at maternal and new born continuum of care Enrollment among a Cohort of Women in Ethiopia and its correlates in Ethiopia, Community based Follow Up Study; evidence from PMA Cohort One Merged Baseline and Six Week Postpartum Data Sets**

Variables		Not Encourage	%	Encouraged Either	%	Encouraged Both	%	Total	%
Age Category	15 to 19 years	40	17.67	52	22.99	134	59.33	226	10.23
	20 to 24 years	63	11.79	109	20.43	360	67.78	531	24.06
	25 to 29 years	112	16.69	88	13.13	472	70.19	673	30.50
	30 to 34 years	90	21.54	79	18.90	249	59.56	418	18.95
	35 to 39 years	69	24.94	37	13.59	169	61.48	275	12.46
	40 to 49 years	29	34.96	12	14.14	43	50.91	84	3.80
	<b>Total</b>	<b>403</b>	<b>18.25</b>	<b>377</b>	<b>17.08</b>	<b>1427</b>	<b>64.67</b>	<b>2207</b>	<b>100.00</b>
Religion	Other Religion	—	—	13	31.32	29	68.68	42	1.90
	Orthodox	109	12.96	104	12.42	627	74.62	840	38.07
	Protestant	102	17.93	106	18.64	362	63.43	571	25.87
	Muslim	192	25.41	153	20.31	409	54.29	754	34.16
	<b>Total</b>	<b>403</b>	<b>18.25</b>	<b>377</b>	<b>17.08</b>	<b>1427</b>	<b>64.67</b>	<b>2207</b>	<b>100.00</b>

medRxiv preprint doi: <https://doi.org/10.1101/2024.06.05.24308524>; this version posted June 6, 2024. The copyright holder for this preprint (which was not certified by peer review) is the author/funder, who has granted medRxiv a license to display the preprint in perpetuity. It is made available under a [CC-BY 4.0 International license](https://creativecommons.org/licenses/by/4.0/).

Variables		Not Encourage	%	Encouraged Either	%	Encouraged Both	%	Total	%
Place of Residence	Urban	18	3.68	47	9.41	430	86.91	495	22.42
	Rural	385	22.46	330	19.30	997	58.24	1712	77.58
	Total	403	18.25	377	17.08	1427	64.67	2207	100.00
Region	Tigray	4	2.44	17	11.57	129	85.99	150	6.79
	Afar	30	66.78	9	19.53	6	13.69	45	2.05
	Amhara	65	14.13	43	9.37	354	76.51	463	20.97
	Oromiya	213	22.52	195	20.62	537	56.87	945	42.83
	SNNP	89	17.21	104	20.13	324	62.67	517	23.44
	Addis	2	1.97	9	9.86	76	88.17	87	3.92
	Total	403	18.25	377	17.08	1427	64.67	2207	100.00
Wealth Index	Lowest quintile	128	29.51	111	25.53	195	44.96	434	19.67
	Lower quintile	114	26.88	89	20.87	222	52.25	425	19.27
	Middle quintile	83	18.14	73	15.88	302	65.98	458	20.74
	Higher quintile	66	14.81	65	14.73	313	70.45	444	20.11
	Highest quintile	12	2.60	39	8.82	395	88.58	446	20.21
	Total	403	18.25	377	17.08	1427	64.67	2207	100.00
Family Size	1 to 3 members	87	12.01	120	16.52	520	71.47	728	33.00
	4 to 5 members	126	16.54	121	15.90	516	67.56	764	34.61
	6 to 14 members	189	26.44	135	18.92	391	54.65	715	32.39
	Total	403	18.25	377	17.08	1427	64.67	2207	100.00
Educational Status	No Education	286	30.97	171	18.59	465	50.44	922	41.78
	Primary	110	12.73	179	20.59	579	66.68	868	39.31
	Secondary/Higher	7	1.61	27	6.47	384	91.92	417	18.90
	Total	403	18.25	377	17.08	1427	64.67	2207	100.00
Family Size	No Child	43	9.71	64	14.48	334	75.81	441	19.97
	1_2 Children	110	13.51	127	15.61	575	70.88	812	36.78
	3_14 Children	250	26.19	186	19.56	517	54.25	953	43.16
	Total	402	18.23	377	17.09	1426	64.68	2205	99.91
Husband has other Wives	No	313	15.57	346	17.23	1349	67.19	2008	90.97
	Yes	90	45.94	31	15.67	75	38.38	195	8.85
	Total	402	18.26	377	17.10	1424	64.64	2203	99.82
Husband Reaction to index Pregnancy	Very Unhappy	75	24.24	58	18.80	177	56.96	311	14.08
	A Sort Happy	135	17.80	147	19.43	476	62.77	759	34.39
	Very Happy	148	14.14	155	14.76	745	71.10	1047	47.45
	Total	358	16.93	361	17.03	1398	66.04	2117	95.92
Women Index Pregnancy Reaction	Very unhappy	45	28.43	39	24.48	75	47.09	158	7.18
	Sort of unhappy	33	18.28	39	21.90	107	59.82	179	8.11
	Mixed Feeling	84	24.34	64	18.55	197	57.11	345	15.62
	Sort of happy	111	19.30	95	16.52	369	64.18	575	26.06

Variables		Not Encourage	%	Encouraged Either	%	Encouraged Both	%	Total	%
	Very happy	127	13.42	140	14.80	678	71.78	945	42.81
	Total	399	18.14	377	17.11	1426	64.75	2202	99.77
Fertility Intention	Undecided/DNK	33	18.52	33	18.47	113	63.00	179	8.10
	Have a/another child	208	15.50	235	17.50	898	67.00	1340	60.73
	Prefer no children	97	25.54	58	15.17	226	59.28	381	17.26
	Total	338	17.80	325	17.12	1236	65.08	1900	86.09
Marriage Type	Only once	339	17.72	339	17.72	1237	64.57	1916	86.80
	More than once	63	21.75	38	12.92	190	65.33	291	13.20
	Total	403	18.25	377	17.08	1427	64.67	2207	100.00
Six Week delivery Place	Home	260	31.91	270	27.24	404	40.85	990	44.85
	Gov't Health Facility	86	7.42	100	8.58	977	83.99	1163	52.72
	Private Facility	1	1.17	8	14.01	46	84.82	54	2.44
	Total	403	18.25	377	17.08	1427	64.67	2207	100.00
ANC timing H+	1-3 months	16	4.51	28	7.67	316	87.82	360	16.32
	4 to 10 months	112	10.25	175	15.97	810	73.78	1098	49.74
	Total	129	8.83	203	13.92	1126	77.25	1458	66.06
HEW ANC	1-3 months	15	13.89	9	8.10	86	78.01	110	5.00
	4 to 9 months	71	13.49	99	18.74	357	67.77	527	23.87
	Total	86	13.56	108	16.90	443	69.54	637	28.86
Contraceptive Ever Use	No	239	27.90	190	22.23	427	49.87	857	38.82
	Yes	163	12.10	186	13.82	1000	74.08	1349	61.13
	Total	402	18.24	377	17.09	1427	64.68	2206	99.95
Commence Contraceptive at Six Week	No	380	20.80	338	18.52	1107	60.67	1824	82.66
	Yes	23	6.08	39	10.21	320	83.71	383	17.34
	Total	403	18.25	377	17.08	1427	64.67	2207	100.00
Desired Delivery Place	Home/ND	260	36.39	194	27.23	260	36.39	714	32.37
	Health Facility	78	6.60	131	11.03	977	82.36	1186	53.72
	Total	338	17.80	325	17.12	1236	65.08	1900	86.09
Desired Birth Assistant	No One/ND	30	26.73	26	23.66	55	49.61	111	5.03
	HP	84	6.86	132	10.85	1003	82.29	1219	55.22
	Family Mem_TBA	225	39.52	167	29.30	177	31.18	569	25.79
	Total	338	17.81	325	17.13	1236	65.06	1899	86.04

medRxiv preprint doi: <https://doi.org/10.1101/2024.06.05.24308524>; this version posted June 6, 2024. The copyright holder for this preprint (which was not certified by peer review) is the author/funder, who has granted medRxiv a license to display the preprint in perpetuity. It is made available under a [CC-BY 4.0 International license](https://creativecommons.org/licenses/by/4.0/).



**Table 3: Correlates of Partner Dynamics at maternal and new born continuum of care Enrollment among a Cohort of Women in Ethiopia and its correlates in Ethiopia, Community based Follow Up Study; A multinomial Logistics regression Analysis**

Variables		Partner Encourage Either	Partner Encourage Both
<b>Age Cat</b>	15 to 19 Years	1	1
	20 to 24 years	1.11 (0.45,2.78)	1.31 (0.56,3.10)
	25 to 29 years	0.51 (0.19,1.34)	1.17 (0.50,2.85)
	30 to 34 years	0.72 (0.23, 2.22)	1.43 (0.51,4.00)
	35 to 39 years	0.47 (0.15,1.53)	1.57 (0.55,4.53)
	40 to 49 years	0.65 (0.16,2.67)	1.03 (0.30,3.60)
<b>Place of Residence</b>	Urban	1	1
	Rural	0.85 (0.33,2.16)	1.00 (0.41,2.24)
<b>Region</b>	Tigray	1	1
	Afar	0.07 (0.02,0.23)***	0.031 (0.01, 0.10)***
	Amhara	0.17 (0.05,0.54)**	0.33 (0.11,0.93)*
	Oromiya	0.20 (0.07,0.56)**	0.16 (0.06,0.44)***
	SNNP	0.32 (0.11,0.89)*	0.25 (0.10,0.67)**
	Addis	0.69 (0.09,5.19)	0.45 (0.06,3.08)
<b>House Hold Wealth Index</b>	Lowest quintile	1	1
	Lower quintile	0.72 (0.40,1.30)	0.71 (0.40,1.23)
	Middle quintile	0.69 (0.35,1.33)	1.12 (0.60,2.10)
	Higher quintile	1.00 (0.51,1.93)	1.66 (0.88,3.10)
	Highest quintile	0.80 (0.24,2.73)	0.85 (0.28,2.54)
<b>Family Size</b>	1 to 3 members	1	1
	4 to 5 members	0.77 (0.40,1.53)	1.15 (0.62,2.15)
	6 to 14 members	0.82 (0.38,1.79)	0.97 (0.48,1.94)
<b>Educational Status</b>	No Education	1	1
	Primary Education	1.91 (1.14,3.21)*	2.09 (1.29,3.41)**
	Secondary+ Education	4.86 (1.41, 16.34)*	10.92 (3.42,34.92)***
<b>Parity</b>	No Child	1	1
	1_2 Children	1.20 (0.50,2.85)	1.02 (0.45,2.29)
	3_14 Children	1.72 (0.57,5.18)	1.02 (0.35,2.90)
<b>Husband Has Other Wife</b>	No	1	1
	Yes	0.40 (0.20,0.70)**	0.31 (0.17,0.55)***
<b>Husband Reaction to index Pregnancy</b>	Not Happy	1	1
	A Sort Happy	1.42 (0.76,2.65)	1.58 (0.88,2.85)
	Very Happy	1.19 (0.62,2.26)	1.59 (0.88,2.89)
<b>Fertility Desire</b>	No Decided	1	1
	Have a/another child	0.82 (0.35,1.93)	1.15 (0.50,2.62)
	Prefer no children	0.60 (0.23,1.50)	1.04 (0.42,2.62)
<b>Marriage History</b>	Only Once	1	1
	More than once	0.80 (0.41,1.46)	0.71 (0.38,1.35)

medRxiv preprint doi: <https://doi.org/10.1101/2024.06.05.24308524>; this version posted June 6, 2024. The copyright holder for this preprint (which was not certified by peer review) is the author/funder, who has granted medRxiv a license to display the preprint in perpetuity. It is made available under a [CC-BY 4.0 International license](https://creativecommons.org/licenses/by/4.0/).

Variables		Partner Encourage Either	Partner Encourage Both
Contraceptive Ever Use	No	1	1
	Yes	1.34 (0.83, 2.18)	1.60 (1.02, 2.49)*
Commence Contraceptive at Six Week	No	1	1
	Yes	1.13 (0.51, 2.48)	1.62 (0.78, 3.36)
Delivery Place	Home	1	1
	Government Health Facility	0.83 (0.46, 1.50)	3.30 (2.00, 5.51)***
	Private Facility	6.60 (1.22, 35.62)*	10.11 (1.61, 63.23)*
Desired Delivery Place	Home	1	1
	Government Private HF	2.31 (0.73, 7.32)	2.17 (0.80, 5.93)
Desired Birth Attendant	No One	1	1
	HP	0.80 (0.22, 2.87)	1.15 (0.40, 3.53)
	Family Mem_TBA	1.23 (0.51, 3.00)	0.54 (0.24, 1.23)

medRxiv preprint doi: <https://doi.org/10.1101/2024.06.05.24065224>; this version posted June 6, 2024. The copyright holder for this preprint (which was not certified by peer review) is the author/funder, who has granted medRxiv a license to display the preprint in perpetuity. It is made available under a [CC-BY 4.0 International license](https://creativecommons.org/licenses/by/4.0/).