

1  
2  
3  
4  
5  
6  
7  
8  
9  
10  
11  
12  
13  
14  
15  
16  
17  
18  
19  
20  
21  
22  
23  
24  
25  
26  
27  
28  
29  
30  
31  
32  
33  
34  
35  
36

Testing effectiveness and implementation of a standardized approach to sexual dysfunction screening among adolescent and young adult-aged survivors of childhood cancer: A type I hybrid, mixed methods trial protocol

Effectiveness of sexual dysfunction screening among AYA cancer survivors: a study protocol

Jenna Demedis MD MS<sup>1,2</sup>, Julia Reedy MA<sup>3</sup>, Kristen Miller MS<sup>1</sup>, Junxiao Hu, PhD<sup>1</sup>, James L. Klosky PhD ABPP<sup>4,5</sup>, Brooke Dorsey Holliman PhD<sup>3,6</sup>, Pamela N. Peterson MD MPH<sup>7,8</sup>, Eric J. Chow MD MPH<sup>9</sup>, Christina Studts PhD, MSPH, LCSW<sup>1,3</sup>

<sup>1</sup> Department of Pediatrics, University of Colorado School of Medicine, Aurora, CO, USA

<sup>2</sup> Center for Cancer and Blood Disorders at Children's Hospital Colorado, Aurora, CO, USA

<sup>3</sup> Adult & Child Center for Health Outcomes Research & Delivery Science (ACCORDS), University of Colorado School of Medicine, Aurora, CO, USA

<sup>4</sup> Aflac Cancer and Blood Disorders Center at Children's Healthcare of Atlanta, Atlanta, GA, USA

<sup>5</sup> Department of Pediatrics, Emory University School of Medicine, Atlanta, GA, USA

<sup>6</sup> Department of Family Medicine, University of Colorado School of Medicine, Colorado, USA

<sup>7</sup> Department of Internal Medicine, University of Colorado School of Medicine, Colorado, USA

<sup>8</sup> Denver Health Medical Center, Denver, Colorado, USA

<sup>9</sup> Clinical Research and Public Health Sciences Divisions, Fred Hutchinson Cancer Center, Washington, USA

\*Corresponding author

Email: [Jenna.Demedis@childrenscolorado.org](mailto:Jenna.Demedis@childrenscolorado.org) (JD)

1

37 **Abstract**

38 Background: Approximately 20-50% of adolescent and young adult-aged childhood cancer  
39 survivors (AYA-CCS) experience sexual dysfunction (SD), although this healthcare need is  
40 widely underrecognized. Previous research from both AYA-CCS patients and their providers  
41 report that SD needs are unaddressed despite patient desires for SD discussions to be  
42 incorporated as part of their care. Patients and providers agree that standardized use of a  
43 patient-reported outcome measure may facilitate SD discussions; an SD screening approach  
44 was developed with patient and provider input. This study will measure the effectiveness of a  
45 standardized SD screening intervention and assess implementation outcomes and multilevel  
46 barriers and facilitators to guide future research.

47

48 Methods: This multi-site, mixed methods, type 1 effectiveness-implementation hybrid trial will be  
49 evaluated using a pre-post design (NCT05524610). The trial will enroll 86 AYA-CCS (ages 15-  
50 39) from two cancer centers in the United States. The SD intervention consists of core  
51 fundamental functions with a “menu” of intervention options to allow for flexibility in delivery and  
52 tailoring in variable contexts. Effectiveness of the intervention on facilitating SD communication  
53 will be measured through patient surveys and clinical data; multivariable logistic regression will  
54 be used for the binary outcome of self-reported SD screening, controlling for patient-level  
55 predictors. Implementation outcomes will be assessed using mixed methods (electronic health  
56 record abstraction, patient and provider surveys, and provider interviews. Quantitative and  
57 qualitative findings will be merged using a joint display to understand factors affecting  
58 intervention success.

59

60 Implications: Identification and treatment of SD in AYA-CCS is an important and challenging  
61 quality of life concern. The type 1 hybrid design will facilitate rapid translation from research to  
62 practice by testing the effects of the intervention while simultaneously identifying multilevel

63 barriers and facilitators to real-world implementation. This approach will inform future testing  
64 and dissemination of the SD screening intervention.

65

## 66 **Introduction**

67 Sexual dysfunction (SD) is estimated to occur in 20-50% of adolescent and young adult-  
68 aged childhood cancer survivors (AYA-CCS) but is widely underrecognized [1-8]. SD  
69 encompasses lack of desire for sex, arousal difficulties (erection, lubrication), inability to achieve  
70 climax/ejaculation, anxiety about sexual performance, climaxing/ejaculating too rapidly, physical  
71 pain during intercourse, and lack of pleasure [9]. In AYA-CCS, SD may occur as a result of  
72 physiologic and psychosexual reasons, and while certain treatment factors (e.g., cranial or  
73 pelvic irradiation, central nervous system tumors, chemotherapy) exist, demographic,  
74 developmental, psychologic and social factors also contribute [1-8, 10-13]. SD is associated  
75 with poorer quality of life, including physical, social, and mental health; therefore, providing  
76 assessment, education, and counseling for AYA-CCS experiencing SD is critical [1-4, 9-12].  
77 While data are limited in cancer patients of all ages generally, two studies have suggested that  
78 addressing SD may improve psychological distress [14, 15]. Because the multidisciplinary  
79 pathophysiology of SD in this population makes estimating individual SD risk difficult, all AYA-  
80 CCS warrant SD-focused education and evaluation.

81 Despite the prevalence and impact of SD among AYA-CCS, patients largely report that  
82 their needs in this area are unaddressed by their primary care providers and oncologists [7, 16-  
83 19]. This is consistent with findings from providers, with 50% of pediatric oncologists reporting  
84 rarely or never discussing sexual function with their AYA-CCS [20]. Patient- and provider-level  
85 barriers are well described, including discomfort, lack of provider knowledge, and lack of patient  
86 understanding of how to broach the topic [19, 21-23]. Multiple qualitative studies have  
87 demonstrated that patients would like their providers to initiate conversations to address SD

88 directly, privately and regularly [16, 19, 23]. Further, national guidelines recommend regular  
89 discussions of sexuality and cancer throughout cancer care and follow-up [24-26].

90         Given the aforementioned barriers, which may be particularly salient in younger  
91 populations, our prior research evaluated the utility of using a patient-reported outcome  
92 measure for SD screening in AYA-CCS followed in pediatric settings (age 15-24 years), eliciting  
93 patient and provider perspectives in qualitative interviews [22, 27]. Both groups were in favor of  
94 using a patient-reported outcome measure to address barriers and facilitate SD conversations.  
95 While no SD screening tools have been specifically validated in the AYA-CCS population, our  
96 prior research qualitatively evaluated the National Institute of Health-developed Patient-  
97 Reported Outcomes Measurement Information System (PROMIS®) Sexual Function and  
98 Satisfaction (SexFS) Brief v2.0 tool in the AYA-CCS population [27, 28]. The SexFS Brief was  
99 found to be acceptable and useful, with demonstrated response process and content validity  
100 [27]. In addition to evaluating the utility of the SexFS Brief, patients and providers offered  
101 perspectives for how the SexFS Brief could be implemented into clinical use, including  
102 recommendations for delivery, results storage and review, and needed resources [22, 27].  
103 These recommendations were included in an SD screening intervention prototype that is being  
104 iteratively adapted in an ongoing phase of research. Once iterative adaptations are completed,  
105 the study described here will simultaneously test effectiveness and implementation outcomes of  
106 this screening intervention.

107         Clinical use of the SexFS Brief has the potential to improve screening and detection of  
108 SD among AYA-CCS, which is the first step toward providing SD-related healthcare and  
109 ultimately improving related quality of life concerns. However, because SD screening utilizing  
110 the SexFS Brief is not yet part of routine care with the AYA-CCS population, and because  
111 patient-reported outcomes are not commonly used in this population, additional research is  
112 required to evaluate the effectiveness of the screening intervention in facilitating SD  
113 communication, as well as its potential for implementation in clinical settings.

114

## 115 **Study Purpose**

116 The purpose of this pilot type 1 hybrid effectiveness-implementation trial is to 1)  
117 demonstrate preliminary effectiveness of the standardized SD screening intervention in  
118 improving SD communication between AYA-CCS (current ages 15-24 years) and their  
119 providers, and to 2) assess implementation outcomes and multilevel barriers and facilitators to  
120 guide future research. Use of a hybrid trial design will facilitate rapid translation from research to  
121 practice by addressing implementation, service, and client outcomes [29]. This study will use  
122 mixed methods to quantitatively measure effectiveness and implementation outcomes in a large  
123 sample while simultaneously contextualizing these outcomes by integrating them with  
124 complementary in-depth qualitative data analysis. Quantitative data at the patient and provider  
125 levels will be obtained through surveys and from electronic health record (EHR) data.  
126 Quantitative data will be supplemented with qualitative data collection via concurrent open-  
127 ended survey questions as well as nested sequential explanatory qualitative interviews with  
128 providers. The following quantitative, qualitative, and mixed methods research questions will  
129 guide the study:

130

### 131 Quantitative:

132 *Effectiveness:* What effects does the SD screening intervention have on patient-reported  
133 SD communication and patient satisfaction with SD healthcare? What impact does the  
134 intervention have on clinical care (e.g., documentation of SD, referral patterns)?

135 *Implementation:* How do patients and providers rate the SD screening intervention's  
136 preliminary implementation outcomes (acceptability, appropriateness, feasibility and fidelity)?  
137 How often is the intervention utilized by patients and providers?

138

### 139 Qualitative:

140 *Effectiveness:* What are providers' impressions of the SD screening interventions'  
141 effectiveness? What are providers' perceptions of barriers and facilitators affecting the  
142 interventions' effectiveness?

143 *Implementation:* What are the barriers and facilitators to adopting and implementing the  
144 SD screening intervention? How does the intervention fit in a pediatric oncology clinic context?  
145 Are there other contextual factors that affect its use and utility? Are changes to the intervention  
146 needed?

147

#### 148 Mixed Methods:

149 *Effectiveness:* What barriers and facilitators exist that may explain or expand upon  
150 effectiveness results, including variability in clinical effects? What changes to the SD screening  
151 intervention could improve its effectiveness?

152 *Implementation:* What contextual factors are contributing to the SD screening  
153 intervention's implementation outcomes? What changes to the intervention could improve its  
154 reach, acceptability, feasibility, and other implementation/process outcomes?

### 155 **Methods and analysis**

#### 156 Study Frameworks

157 The overall structure and outcomes of this study are guided by the implementation  
158 science framework, RE-AIM (Reach, Effectiveness, Adoption, Implementation and  
159 Maintenance) [30]. RE-AIM is used to systematically assess multiple outcomes of intervention  
160 implementation, including effectiveness, with the overarching goal of increasing the population  
161 impact of interventions through widespread adoption, implementation, and maintenance  
162 reaching all patients who could benefit. In this study, RE-AIM will inform our assessment of  
163 screening intervention effectiveness, reach, adoption and implementation across settings and  
164 patient subgroups, as well as its potential for scaling up and spreading to additional settings.

165 While RE-AIM will guide planning and evaluation of effectiveness and implementation, the  
166 updated Consolidated Framework for Implementation Research (CFIR 2.0) will inform  
167 evaluation of contextual factors, including multilevel barriers and facilitators, that may influence  
168 RE-AIM domains, informing future intervention adaptation and implementation [30-36]. Use of  
169 RE-AIM and CFIR 2.0 is further described in the Data Collection section below.

170

## 171 Study Design

172 A multi-site type 1 effectiveness-implementation hybrid trial design will be used to  
173 simultaneously establish preliminary effectiveness and implementation outcomes (Table 1;  
174 Figure 1; S1 Protocol). As a type 1 hybrid trial, the primary objective of this study is to determine  
175 the effectiveness of the SD screening intervention at improving the occurrence SD-focused  
176 patient-provider communication. Additional effectiveness and implementation outcomes will be  
177 secondary/exploratory and are detailed below.

178

179 **Figure 1. Schedule of patient participant enrollment, screening intervention, and**  
180 **assessment.**

181 **Table 1. Protocol Overview**

Data Category	Information
Primary registry and trial identifying number	ClinicalTrials.gov NCT05524610
Date of registration in primary registry	2022-09-01
Secondary identifying numbers	COMIRB 22-0709
Funding source	NIH K08 CA263192 (PI JD)
Contact for public and scientific queries	Jenna Demedis, MD, MS <a href="mailto:Jenna.Demedis@cuanschutz.edu">Jenna.Demedis@cuanschutz.edu</a>
Study Locations	Children's Hospital Colorado (USA) Seattle Children's Hospital (USA)
Title	Development and Evaluation of a Screening Approach for Sexual Dysfunction in Childhood Cancer Survivors
Intervention	Standardized sexual dysfunction screening using PROMIS SexFS Brief vs. usual care
Key inclusion and exclusion criteria	AYA-CCS: 15-24 years old; current or prior history of cancer; cancer was diagnosed prior to age 18; received cancer-directed treatment. Patients will be excluded if they are unable to read/speak English; have insufficient cognitive function to complete study measures; are at end of life

	<i>Medical providers:</i> pediatric oncology physicians, nurse practitioners, physician assistants, registered nurses, and medical assistants at study sites
Study type	Interventional (clinical trial)
Study design	Pilot type 1 hybrid effectiveness-implementation study with pre-post design
Date of first enrollment	2023-02-14
Target sample size	AYA-CCS: Minimum of 86 off-therapy participants (43 pre- and 43 post-intervention) for the primary outcome, with additional on-therapy participants) <i>Medical providers:</i> 16-24 (surveys), 10-15 (interviews)
Recruitment status	Recruiting
Primary outcome	<i>SD screening intervention effectiveness:</i> Comparison of pre- and post- intervention percentage of off-therapy AYA-CCS reporting that his/her provider has communicated with them about sexual function
Key secondary outcomes	SD screening intervention effectiveness across cancer care continuum; patient satisfaction; patient report of needs being met; Intervention reach; provider adoption of intervention; patient-reported acceptability, feasibility, appropriateness; provider-reported acceptability, feasibility, appropriateness; provider-identified barriers; observed intervention fidelity; adaptations

182 AYA-CCS: Adolescent and young-adult aged childhood cancer survivors  
 183 COMIRB: Colorado Multiple Institutional Review Board  
 184 NIH: National Institute of Health  
 185 PI: Principal Investigator  
 186 PROMIS SexFS Brief: National Institute of Health-developed Patient-Reported Outcomes Measurement  
 187 Information System (PROMIS®) Sexual Function and Satisfaction (SexFS) Brief v2.0  
 188 SD: Sexual dysfunction

189  
 190 The standardized SD screening intervention will be tested in a pre-post study design in  
 191 which the SD screening intervention will be implemented with all patients as standard of care;  
 192 this is justified by national guidelines recommending universal sexual health conversations for  
 193 all age-appropriate oncology patients. Prior to initiating the SD screening intervention, patient  
 194 surveys will be used to collect baseline data on SD communication and clinical care.  
 195 Subsequently, the SD screening intervention will begin. After intervention initiation, quantitative  
 196 (survey, EHR) and qualitative (interviews, open-ended questions) data will be collected to  
 197 evaluate effectiveness and implementation outcomes.

198

199 *Intervention Design and Implementation Package*



200           The standardized SD screening intervention is a multicomponent intervention composed  
201 of required components with flexible delivery, tailored to each study site based on a “menu” of  
202 options (Table 2). This approach follows the implementation science concept of functions and  
203 forms of an intervention: functions are the fundamental purpose or desired effect of the  
204 intervention, while forms are the intervention details, modalities, and activities that may vary  
205 based on contextual factors [37, 38]. The core functions of the SD screening intervention,  
206 detailed in Table 2, include (1) routine/standardized SD screening using the SexFS Brief, (2)  
207 consistent follow-up and management of screening results, and (3) patient and provider  
208 education. These functions address the key barriers driving inadequate SD-focused healthcare:  
209 AYA patients’ uncertainty about SD risks and ability to address these with the medical team,  
210 and clinicians’ lack of awareness of SD risks and how to address/manage these. Examples of  
211 the “forms” that each function may take, such as details of the target population or modality of  
212 delivery, are detailed in Table 2. At study initiation, the research team will work with each clinical  
213 site to adapt the SD screening intervention to their context, selecting from the “menu” of forms.  
214 The research team will provide relevant background information from prior phases of research  
215 (e.g., patient- and provider-recommendations and preferences) to inform tailoring to each site’s  
216 unique context, including existing resources, workflows and barriers.

217

218

219

220

221

222

223

224

225

226

227

228

Table 2. Core functions and forms of the sexual function screening intervention

PATIENT LEVEL		
MOTIVATING NEED/PROBLEM	CORE FUNCTIONS	FORMS - DECISIONS AND EXAMPLES
AYA oncology patients are uncertain of sexual dysfunction (SD) risks or ability to address them with their medical team	Patient knowledge of SD risks is increased through education	I. Patient Education - Examples: <ul style="list-style-type: none"> <li>· Primary team educates patients during treatment discussion with fertility education</li> <li>· Standard patient education sessions (e.g. Oncology Class) includes section on sexual health/function</li> <li>· Reminders and re-introduction with each screening event</li> <li>· Non-in-person modalities: video, pamphlets or other reading materials, website</li> </ul>
	Patients participate in regular written screening for SD concerns using a patient-reported outcome measure (e.g. PROMIS SexFS Brief)	II. Target population - Decisions and Examples: <ul style="list-style-type: none"> <li>· Age of inclusion (e.g. 12 years of age and older, 15 years of age and older)</li> <li>· Treatment status: patients actively receiving therapy, survivors only</li> <li>· Patient choice: Opt out vs. opt-in</li> </ul>
		III. Screening delivery - Decisions and Examples: <ul style="list-style-type: none"> <li>· Technology-based (e.g. through medical record, separate website) delivery (e.g. tablet/phone in clinic, text, email, mobile application)</li> <li>· Paper-based delivery (e.g. in clinic, mailed)</li> <li>· Non-English readers (translate tool, deliver verbally)</li> <li>· Non-readers (omit, deliver verbally)</li> </ul>
	Patients are enabled to address SD concerns through increased comfort and privacy	IV. Patient Privacy and Comfort - Decisions and Examples: <ul style="list-style-type: none"> <li>· Location of screening (e.g. at home, in clinic waiting room, in clinic private room)</li> <li>· Timing of screening (e.g. before visit, during rooming of patient, while waiting for provider or other services, at end of visit)</li> <li>· Minimizing parent/guardian presence during screening and conversations (asking parents to step out of room, providing separate space for screening or education, bringing patients back separately for screening)</li> <li>· Consideration of patient choice in who addresses SF concerns (e.g., specific member of team, provider of same sex, etc.)</li> </ul>
PROVIDER LEVEL		
MOTIVATING NEED/PROBLEM	CORE FUNCTIONS (Standardized)	FORMS (Tailored)
Clinicians are	Increase	V. Provider Education - Decisions and Examples:

<p>unaware of AYA oncology patients' SD needs and how to address them</p>	<p>provider awareness, knowledge and comfort of SD needs</p>	<ul style="list-style-type: none"> <li>· <i>Modality of education (e.g. written education such as handouts/powerpoints or interactive education such as computer modules/lectures/meetings)</i></li> <li>· <i>Target provider population (e.g. physicians, advanced practice providers, nurses, medical assistants)</i></li> <li>· <i>Amount of education provided to each provider (e.g. universal materials, or graduated depending on role in clinic or role within sexual health care)</i></li> <li>· <i>Timing/frequency of provider education (e.g. single time point, regular interval re-education/reminders, performance-based education)</i></li> </ul>
	<p>Consistently and periodically screen for SD needs using the PROMIS SexFS Brief</p>	<p>VI. Screening Timing - Examples</p> <ul style="list-style-type: none"> <li>· <i>Initiation of screening (e.g. upon diagnosis, 1 month after diagnosis, at completion of therapy)</i></li> <li>· <i>Screening frequency: single time point, systematic interval (e.g., every 3 months or as frequently as patient comes) or patient tailored (e.g., frequency depends on diagnosis, patients' sexual history, etc.)</i></li> </ul> <p>VII. Consistency and Sustainability - Decisions and Examples</p> <ul style="list-style-type: none"> <li>· <i>Engaged personnel: established clinical champion(s), dedicated team, obtaining provider input/feedback on implementation</i></li> <li>· <i>Clear process for triggering screening (e.g. systematizing screening (automatic in medical record) or dedicated care manager/role)</i></li> <li>· <i>Provider reminders (e.g. in medical record manually or automatized via EHR functionality), on chemotherapy roadmaps)</i></li> <li>· <i>Provider feedback (e.g. regular updates on screening rates, notification of missed screening)</i></li> </ul>
	<p>Consistently address SD needs once identified</p>	<p>VIII. Management of screening results - Decisions and Examples</p> <ul style="list-style-type: none"> <li>· <i>Results storage modality: electronic (e.g. medical record, other database), paper (patient charts), or omit longitudinal storage)</i></li> <li>· <i>Results/management storage and privacy: secure notes for minors vs. avoidance of documentation vs. normal documentation, limited vs. unrestricted access to results by medical providers</i></li> <li>· <i>Follow-up of screening results with patient: conversation with patient (in person, on phone, electronic), provide materials to patient (pamphlet/materials/website), automatic referral to specialists</i></li> <li>· <i>Responsible providers: existing oncology team, internal dedicated care manager or team, external specialist</i></li> <li>· <i>Management resources: evidence-based clinical decision-making tools, referral guides, established specialist partnerships</i></li> </ul>

230 PROMIS SexFS Brief: National Institute of Health-developed Patient-Reported Outcomes Measurement Information System (PROMIS®) Sexual  
231 Function and Satisfaction (SexFS) Brief v2.0  
232 SD: Sexual dysfunction

233 Similarly, strategies for implementing the SD screening intervention, such as the plan for  
 234 provider education and support, will be tailored by site (Table 3). The intervention and  
 235 implementation menus were developed based on prior patient- and provider-engaged stages of  
 236 research. Further, the implementation menu was informed using established implementation  
 237 science strategies to target known barriers [19, 22, 39]. For example, to address lack of provider  
 238 knowledge, implementation should include provider education and resources, which can take  
 239 several forms including education sessions, written education, clinical decision-making tools, or  
 240 development of a dedicated expert team. Each strategy is intended to target study outcomes  
 241 including effectiveness, adoption, and implementation (acceptability, appropriateness).

242 **Table 3. Implementation strategies**

Component	Sub-component	Options	Outcome Target
Intervention design	Planning	-Selection of key partners (providers, patients, clinical leadership, RNs, MAs) in selecting flexible intervention components and implementation plan	Effectiveness Reach Adoption Implementation (Acceptability, feasibility)
	Iteration/Scale-up/Stage	-Optional stage	
Provider education	Modality	-Emails -Written education document -Presentations/meetings -Online modules	Effectiveness Adoption Implementation (acceptability, appropriateness)
	Content	-In depth vs. Overview	
	Who	-Only dedicated team members -All providers	
Provider Resources	Written	-Evidence-based clinical decision-making tools -Referral guides/work-up flow diagram	Effectiveness Reach Adoption Implementation (acceptability, appropriateness)
	Personnel	-Development of clinical team -Established specialist partnerships	
Reminders	Written	-EHR-based questionnaire automatic triggers -Dedicated team monitors at patient-level -EHR-Based (Best Practice Alerts, notes in chart) -Paper based/existing clinic documents (roadmaps, care pathways)	Reach Adoption Implementation (fidelity) (Sustainability)
	Verbal	-Clinical champions	

	Auditing/feedback	-Regular updates on screening rates -Notification of missed screening	
--	-------------------	--	--

243 EHR: electronic health record

244 MA: medical assistant

245 RN: Registered nurse

246

## 247 Study Setting and Population

248 This trial will occur in four clinical settings at two academic stand-alone children's

249 hospitals: Children's Hospital Colorado and Seattle Children's Hospital.

250 Both patients and medical providers will be recruited for participation. Patients will be

251 eligible for the study if they are 1) 15-24 years old at time of enrollment; 2) Have a current or

252 prior history of cancer (International Classification of Diseases for Oncology (ICD-O) with

253 behavior code  $\geq 2$ ); 3) Cancer was diagnosed prior to age 18; and 4) Have received cancer-

254 directed treatment (chemotherapy, immunotherapy, radiotherapy, or partial/total resection). Due

255 to the nature of study procedures, patients will be excluded if they are 1) Unable to read/speak

256 English; 2) Have insufficient cognitive function to complete study measures; 3) At end of life.

257 Further, patients who participated in intervention development will be excluded and participants

258 who do not receive the intervention will not answer implementation-focused survey questions.

259 Of note, while AYA-CCS both receiving and having completed therapy will be included for

260 secondary and exploratory outcomes, the primary outcome will evaluate effectiveness of the

261 intervention among participants who have completed therapy ("off-therapy"). The population for

262 the primary outcome was designed to mirror the inclusion criteria of our preceding qualitative

263 study; the population was expanded to include patients currently on-therapy for secondary

264 analyses based on subsequent recommendations from providers [22, 40].

265 Importantly, while the study will only include patients who can read and speak English

266 because the SexFS has only been validated in English, the clinical intervention will still be

267 available to non-English speakers, through verbal screening delivery via an interpreter.

268 All providers caring for patients at the study sites, including physicians, nurse  
 269 practitioners, physician assistants, registered nurses, and medical assistants, will be eligible for  
 270 participation.

271

272 *Sample Size*

273 As a type 1 hybrid effectiveness-implementation trial, this study is powered to detect  
 274 preliminary effectiveness of the SD screening intervention. The primary outcome is the  
 275 proportion of off-therapy AYA-CCS participants reporting SD conversations with their providers  
 276 (Table 4); on-therapy patients are included in this study as an exploratory aim but are not  
 277 included in minimal sample size based on power calculation. To detect a clinically relevant  
 278 difference of 25% (5% pre-intervention vs. 30% post-intervention) in SD conversations with a  
 279 multivariable logistic regression assuming 20% of variability is explained by other predictors,  
 280 80% power, and alpha = .05, 86 participants will be required (43 pre- and 43 post-  
 281 implementation of screening approach) [7, 19, 23].

282 **Table 4. RE-AIM outcome measurement**

RE-AIM Domain	Outcome/Measure(s)	Method
Reach	Proportion of eligible patients who completed SD screening	EHR abstraction
	Reason for missed screening (when relevant)	Surveys (providers)
	Representativeness: comparison of sociodemographic characteristics of patients receiving/not receiving intervention	EHR abstraction
Effectiveness (primary outcome)	Primary: off-therapy AYA-CCS-report of SD communication	Surveys (patients)
	Secondary: All participant-report and on-therapy participant report of SD communication Patient satisfaction Patient-report of needs being met	Surveys (patients)
	Exploratory: Incidence of documented SD Incidence of referral to SD-related specialty care	EHR abstraction
Adoption	Provider-reported incidence of viewing SD screening results	Surveys (providers)
	Provider-reported incidence of discussing SD results	Surveys (providers)

	Solicitation of description of adoption, explanations for quantitative findings	Interviews (providers)
	<u>Exploratory:</u> Objective survey viewing data (e.g., EHR clicks)	EHR abstraction
Implementation	<u>Acceptability:</u> Acceptability of Implementation Measure (AIM)	Surveys (patients, providers) Interviews (providers)
	<u>Appropriateness:</u> Implementation Appropriateness Measure (IAM)	Surveys (patients, providers) Interviews (providers)
	<u>Feasibility:</u> Feasibility of Intervention Measure (FIM)	Surveys (patients, providers) Field notes (research team) Interviews (providers)
	<u>Fidelity:</u> extent to which each core function, and site-adapted form, was followed	Fidelity checklist (patient-report, research team observation sampling)
	<u>Adaptation:</u> intervention and implementation adaptation details tracked following FRAME and FRAME-IS	Observation, research/clinical team communication
	<u>Contextual factors:</u> barriers, facilitators, recommendations	Open-ended survey questions (patients, providers) Field notes (research team) Interviews (providers)
Maintenance	Continuation beyond study	

283 AIM: Acceptability of Implementation Measure  
 284 AYA-CCS: Adolescent and young-adult aged childhood cancer survivors  
 285 EHR: electronic health record  
 286 FIM: Feasibility of Intervention Measure (FIM)  
 287 FRAME: Framework for Reporting Adaptations and Modifications-Expanded  
 288 FRAME-IS: Framework for Reporting Adaptations and Modifications to Evidence-based Implementation  
 289 Strategies  
 290 IAM: Implementation Appropriateness Measure  
 291 RE-AIM: Reach, Effectiveness, Adoption, Implementation and Maintenance  
 292 SD: Sexual dysfunction

293  
 294 This study will secondarily explore preliminary implementation outcomes through patient  
 295 implementation surveys administered in conjunction with assessment of effectiveness (n=43 off-  
 296 therapy AYA-CCS, with additional on-therapy participants). Provider implementation surveys will  
 297 be administered to consenting providers (anticipating an 80% response rate, approx. n=16-24),  
 298 and semi-structured interviews with be completed with 10-15 providers directly involved in the  
 299 SD screening intervention. Additional brief interviews may be performed to capture experiences  
 300 of providers affected by, but not directly involved in, the intervention delivery (n=5-10). Because  
 301 interviews will be focused on experiences with the screening approach and barriers/facilitators,  
 302 we anticipate reaching thematic saturation with these sample sizes [41, 42].



303

#### 304 *Recruitment*

305 Recruitment will occur on a rolling basis during existing clinic visits or via phone within 4  
306 weeks of the existing appointment. Sampling will be purposive to achieve variation across age  
307 categories (age 15-19 and 20-24), patient treatment status (on- vs. off-therapy), and gender. In  
308 the pre-intervention phase, patient participants will be given the opportunity to consent and  
309 complete the survey at the same visit. However, post-intervention, consent and survey  
310 completion will be delayed up to 4 weeks after the patient is “due” for the SD screening  
311 intervention, to allow for buffer time for both screening and follow-up by the clinical team.  
312 Participation will be compensated with a gift card totaling \$10 pre-intervention (effectiveness  
313 survey only) and \$20 post-intervention (effectiveness and implementation surveys).

314 Provider participants will be recruited for surveys via a variety of methods, including  
315 email or in person requests. Enrollment of providers will occur at the end of the post-  
316 implementation study phase, with all eligible medical stakeholders approached for participation  
317 in surveys. However, for sites that choose to have a limited number of providers responsible for  
318 survey delivery and follow-up/management, only those responsible providers will receive  
319 complete surveys, with other providers completing abbreviated surveys. Medical stakeholders  
320 will receive \$10 gift card compensation for survey completion if the local site allows provider  
321 incentives. A subset of providers will be recruited to complete qualitative, semistructured  
322 interviews; recruitment will be purposeful to include provider participants with a range of survey  
323 responses as well as proportional representation across roles and clinics. Interview participants  
324 will receive a \$40 gift card as compensation if the local site allows provider incentives.

325

#### 326 Data Collection

327 RE-AIM outcome measurement for this study is detailed in Table 4 and below. Basic  
328 demographic data, including gender identity, will be collected for all patient participants, and  
329 details about providers' roles and experience will be collected for all provider participants.

330

### 331 *Effectiveness*

332 Effectiveness will be measured quantitatively via patient surveys (S2 Appendix). The  
333 primary outcome is a patient-reported indicator that his/her provider has communicated with them  
334 about SD. Secondary outcomes include patient satisfaction with SD communication [43] and  
335 patient-report that an SD need was met. This study will also assess the feasibility of collecting  
336 EHR data in all eligible patients via retrospective chart review, specifically collecting exploratory  
337 outcomes: 1) incidence of documented/detected SD; and 2) referral patterns to SD-related  
338 specialty care (fertility team, urology, gynecology/oncology, sexual health clinic, endocrinology,  
339 etc.).

### 340 *Implementation*

341 Mixed methods will be used to assess RE-AIM outcomes in a multistage design, with  
342 both explanatory sequential and convergent steps (Figure 2) [44]. Quantitative data collection  
343 will include patient and provider participant surveys assessing reach, adoption, implementation  
344 (fidelity, feasibility, acceptability, appropriateness), as well as fidelity checklist observation by  
345 the research team (S2 Appendix). EHR abstraction will be used to measure reach, adoption and  
346 representativeness (Table 4). Qualitative data will include patient and provider responses to  
347 open-ended survey questions, tracking of adaptations, observation by the research team, and  
348 nested explanatory sequential provider interviews further exploring implementation, barriers,  
349 and facilitators. Interview guides will be informed by CFIR 2.0 and will be modified as needed  
350 based on survey results; a preliminary guide is available in S2 Appendix. Adaptations to the SD  
351 screening intervention and to the implementation plan for each site will be tracked using the

352 FRAME (Framework for Reporting Adaptations and Modifications-Expanded) and FRAME-IS  
353 (Framework for Reporting Adaptations and Modifications to Evidence-based Implementation  
354 Strategies), which are frameworks to characterize modifications to interventions (type of  
355 modification, reason for modification, timing, etc.) [45, 46].

356 **Figure 2. Mixed Methods evaluation of implementation of a sexual function screening**  
357 **intervention using patient and provider stakeholder input**

358 Study timeline

359 Pre-intervention phase study recruitment began at Children’s Hospital Colorado in  
360 February 2023 and at Seattle Children’s Hospital in December 2023, and is ongoing. The SD  
361 screening intervention phase is expected to commence in Fall 2024 after completion of ongoing  
362 iterative refinement of the prototype.

363 Analysis

364

365 *Effectiveness*

366 Descriptive statistics (means, standard deviations, medians, ranges, frequencies,  
367 percentages) will be computed for patient characteristics, overall and stratified by study period.  
368 Differences in patient characteristics between study periods will be assessed using chi-squared  
369 and t-tests (or appropriate bivariable tests based on variable type and distribution).

370 The primary analysis will compare the effect of the SD screening intervention on the  
371 proportion of off-therapy AYA-CCS that self-report SD screening. We will use a multivariable  
372 logistic regression model for the binary outcome of self-reported SD screening, controlling for  
373 patient-level predictors identified a priori to be potential confounders (e.g., age, gender,  
374 presence of SD concerns, endocrinopathies, clinic site, treatment status). Although there is  
375 correlation due to the hierarchical structure of the data (patients within sites), due to the limited  
376 number of sites (<5), we will include a fixed effect for site rather than a random effect. Similar  
377 exploratory analysis will occur for on-therapy participants. We will perform a subgroup analysis

378 by key variables (site, treatment status) using an interaction between the subgroup variable and  
379 the intervention period. The secondary outcome of whether a patient reported that their SD  
380 need was met will be analyzed similarly, overall and in the subgroup of those that indicated that  
381 they had a SD need, which will be assessed using an interaction with the SD need indicator and  
382 the pre-/post- indicator.

383 We will also use similar multivariable regression models adjusted for the same  
384 covariates to assess the effect of the intervention on secondary and exploratory outcomes:  
385 patient satisfaction, feasibility of collecting EHR data, and number of referral patterns. The  
386 specific link function for each regression model will be chosen appropriately based on the  
387 outcome type.

388 Goodness-of-fit tests and model-fitting diagnostics will be performed for proposed  
389 analyses to assess for influential points, outliers, and to evaluate alternative model  
390 specifications. All hypothesis tests will be two-sided with  $\alpha=0.05$ , and p-values and  
391 confidence intervals will be reported. Statistical analyses will be conducted using R or SAS  
392 version 9.4 (SAS Institute Inc., Cary, N.C.).

### 393 *Implementation*

394 Because this is a pilot type 1 hybrid trial, analyses of implementation outcomes and  
395 contextual factors are descriptive, aiming to inform a future multicenter randomized hybrid trial.  
396 Mixed methods integration will occur over several steps using connecting, building, merging and  
397 embedding approaches (Figure 1) [44]. In merging steps, quantitative and qualitative survey  
398 data will be merged using a joint display [47]. Then, merged survey results will inform qualitative  
399 data collection, including nested sampling and adaptation of the CFIR-informed interview guide.  
400 Interviews will be analyzed using thematic content analysis, using both inductive and deductive  
401 coding following CFIR 2.0 [48]. We will follow a team-based, inductive process in which two  
402 team members will independently review and identify codes for the first several interview

403 transcripts. The research team will review respective code lists and transcripts, reconciling  
404 discrepancies in code definitions and applications. Iteration will continue during data collection  
405 until the research team is calibrated and a final codebook is established. Subsequently, a  
406 minimum of 20% of transcripts will be double-coded. ATLAS.ti 24 qualitative data management  
407 software will be used. Complete qualitative and quantitative results will then be summarized in a  
408 joint display to support development of implementation strategies to strengthen future testing  
409 and delivery of the screening approach [47].

#### 410 Quality assurance

411 This study aims to measure preliminary effectiveness of a flexible SD screening  
412 intervention. Our sample size was selected to ensure ability to detect a clinically meaningful  
413 improvement in SD communication. By assessing the intervention across multiple clinics in two  
414 separate hospitals, the external validity of our findings will be strengthened; however, this is still  
415 considered a pilot study and assessment across more sites with varied cultural settings will be  
416 required in future studies. Further, we will use purposeful sampling to achieve maximum variation  
417 across demographic groups and sites, though future research will be required to specifically  
418 evaluate effectiveness and implementation by subgroups (e.g., gender, race, sexual orientation),  
419 and to evaluate the intervention in populations with a language preference other than English.

420 In this type 1 hybrid trial, use of established implementation science frameworks (RE-  
421 AIM, CFIR 2.0, FRAME, FRAME-IS) strengthens our study design. Use of mixed methods to  
422 assess implementation outcomes is expected to yield rich data to inform future implementation  
423 and dissemination. Quantitative implementation data will use validated tools for provider  
424 partners (Acceptability of Implementation Measure (AIM), Feasibility of Intervention Measure  
425 (FIM), Implementation Appropriateness Measure (IAM) increasing internal and external validity.  
426 Patient-reported acceptability, feasibility, and appropriateness will be measured with study-  
427 specific, patient-focused questions following the AIM, FiM, and IAM format [49].

428 All study staff have undergone training to ensure fidelity across sites. Data will be  
429 managed using REDCap and a data management plan will be used throughout the study to  
430 track data collection and ensure adherence to the study protocol [50]. Upon study completion,  
431 data will be available with request.

432 To increase the credibility and trustworthiness of qualitative and mixed data, we will  
433 follow the Consolidated Criteria for Reporting Qualitative Research (COREQ), with particular  
434 attention to the research team and reflexivity, study design, and analysis, and the Good  
435 Reporting of Mixed Methods (GRAMM) criteria [51, 52]. Our team-based approach, described  
436 above, will ensure analysis quality. Member checking may be implemented with a subset of  
437 participants. Use of mixed methods with multiple points of data merging, including use of  
438 quantitative data to inform qualitative interviews, also improves validity.

439 This protocol paper is intended to demonstrate neutrality; we will report deviations that  
440 may occur throughout the study.

441

#### 442 Ethics and dissemination

443 This trial is approved by each sites' institutional review board (COMIRB 22-0709) and is  
444 registered at ClinicalTrials.gov (NCT05524610). This project is supported by research funds  
445 from the NIH (K08 CA263192). Informed consent will be obtained from participants prior to  
446 completing any aspect of the study. All data will be collected and stored through the password  
447 protected and secure REDCap database; audio recordings and transcripts for qualitative  
448 interviews will be stored in password protected files on the secure University of Colorado server.  
449 At each participating site, access to data will be restricted to approved study team members and  
450 study-related files will be stored in password protected files. Data will be deidentified whenever  
451 possible through the use of assigned study identification numbers. Data-sharing across sites will  
452 not include personal health information.

453 Findings from this study will be disseminated through presentation at academic

454 and professional conferences and in peer-reviewed journals. Deidentified research data will be  
455 made publicly available when the study is completed and published.

456

457

## 458 **Discussion**

459 Identification and treatment of SD in AYA CCS is an important and challenging quality of  
460 life concern. This study will determine if our patient-centered SD screening approach and  
461 implementation strategies are preliminarily effective and will describe implementation outcomes  
462 and opportunities. By developing and testing the intervention while simultaneously exploring  
463 implementation outcomes and factors, this study will inform the development of a multisite  
464 hybrid randomized trial testing clinical effectiveness and implementation strategies for the  
465 screening approach. Future studies will also employ the screening approach in a multicenter SD  
466 treatment intervention study, as well as evaluate use of the screening approach for other  
467 sensitive AYA CCS issues. Ultimately, the goal of these endeavors is to improve detection,  
468 treatment and quality of life related to SD, and other unmet concerns, in AYA CCS.

469

## 470 **Declaration of Interests**

471 The authors have declared that no competing interests exist.

472

## 473 **Funding Source**

474 This project is supported by research funds from the NIH (K08 CA263192). The sponsor does  
475 not have a role in study design, conduct or publication.

476

## 477 **Author Contributions**

478 **Conceptualization:** Jenna Demedis, James L. Klosky, Brooke Dorsey Holliman, Pamela N.  
479 Peterson, Christina Studts, Eric J. Chow

480 **Data curation:** Jenna Demedis, Julia Reedy, Kristen Miller, Junxiao Hu

481 **Funding acquisition:** Jenna Demedis

482 **Investigation:** Jenna Demedis, Julia Reedy, Kristen Miller, Junxiao Hu, Brooke Dorsey

483 Holliman, Pamela N. Peterson, Christina Studts, Eric J. Chow

484 **Methodology:** Jenna Demedis, Julia Reedy, Junxiao Hu, James L. Klosky, Brooke Dorsey

485 Holliman, Pamela N. Peterson, Christina Studts, Eric J. Chow

486 **Writing – Original Draft:** Jenna Demedis, Julia Reedy

487 **Writing – review & editing:** Jenna Demedis, Julia Reedy, Kristen Miller, Junxiao Hu, James L.

488 Klosky, Brooke Dorsey Holliman, Pamela N. Peterson, Christina Studts, Eric J. Chow

489

## 490 **References**

- 491 1. Wettergren L, Kent EE, Mitchell SA, Zebrack B, Lynch CF, Rubenstein MB, et al. Cancer negatively  
492 impacts on sexual function in adolescents and young adults: The AYA HOPE study. *Psychooncology*.  
493 2017;26(10):1632-9.
- 494 2. Zebrack BJ, Foley S, Wittmann D, Leonard M. Sexual functioning in young adult survivors of  
495 childhood cancer. *Psychooncology*. 2010;19(8):814-22.
- 496 3. Bober SL, Zhou ES, Chen B, Manley PE, Kenney LB, Recklitis CJ. Sexual function in childhood  
497 cancer survivors: a report from Project REACH. *J Sex Med*. 2013;10(8):2084-93.
- 498 4. Haavisto A, Henriksson M, Heikkinen R, Puukko-Viertomies LR, Jahnukainen K. Sexual function in  
499 male long-term survivors of childhood acute lymphoblastic leukemia. *Cancer*. 2016;122(14):2268-76.
- 500 5. Ritenour CW, Seidel KD, Leisenring W, Mertens AC, Wasilewski-Masker K, Shnorhavorian M, et  
501 al. Erectile Dysfunction in Male Survivors of Childhood Cancer-A Report From the Childhood Cancer  
502 Survivor Study. *J Sex Med*. 2016;13(6):945-54.
- 503 6. Ford JS, Kawashima T, Whitton J, Leisenring W, Laverdiere C, Stovall M, et al. Psychosexual  
504 functioning among adult female survivors of childhood cancer: a report from the childhood cancer  
505 survivor study. *J Clin Oncol*. 2014;32(28):3126-36.
- 506 7. Bjornard KL, Howell CR, Klosky JL, Chemaitilly W, Srivastava DK, Brinkman TM, et al.  
507 Psychosexual Functioning of Female Childhood Cancer Survivors: A Report From the St. Jude Lifetime  
508 Cohort Study. *J Sex Med*. 2020.
- 509 8. Sopfe J, Gupta A, Appiah LC, Chow EJ, Peterson PN. Sexual Dysfunction in Adolescent and Young  
510 Adult Survivors of Childhood Cancer: Presentation, Risk Factors, and Evaluation of an Underdiagnosed  
511 Late Effect: A Narrative Review. *J Adolesc Young Adult Oncol*. 2020.
- 512 9. Laumann EO, Paik A, Rosen RC. Sexual dysfunction in the United States: prevalence and  
513 predictors. *JAMA*. 1999;281(6):537-44.
- 514 10. Sundberg KK, Lampic C, Arvidson J, Helstrom L, Wettergren L. Sexual function and experience  
515 among long-term survivors of childhood cancer. *Eur J Cancer*. 2011;47(3):397-403.



- 516 11. Acquati C, Zebrack BJ, Faul AC, Embry L, Aguilar C, Block R, et al. Sexual functioning among  
517 young adult cancer patients: A 2-year longitudinal study. *Cancer*. 2018;124(2):398-405.
- 518 12. Carpentier MY, Fortenberry JD. Romantic and sexual relationships, body image, and fertility in  
519 adolescent and young adult testicular cancer survivors: a review of the literature. *J Adolesc Health*.  
520 2010;47(2):115-25.
- 521 13. Children's Oncology Group. Long-Term Follow Up Guidelines for Survivors of Childhood,  
522 Adolescent and Young Adult Cancer, Version 5.0 Monrovia, CA: Children's Oncology Group: Children's  
523 Oncology Group; 2018 [updated October. Available from: [www-survivorshipguidelines.org](http://www-survivorshipguidelines.org).
- 524 14. Canada AL, Schover LR, Li Y. A pilot intervention to enhance psychosexual development in  
525 adolescents and young adults with cancer. *Pediatr Blood Cancer*. 2007;49(6):824-8.
- 526 15. Bober SL, Recklitis CJ, Michaud AL, Wright AA. Improvement in sexual function after ovarian  
527 cancer: Effects of sexual therapy and rehabilitation after treatment for ovarian cancer. *Cancer*.  
528 2018;124(1):176-82.
- 529 16. Frederick NN, Recklitis CJ, Blackmon JE, Bober S. Sexual Dysfunction in Young Adult Survivors of  
530 Childhood Cancer. *Pediatr Blood Cancer*. 2016;63(9):1622-8.
- 531 17. Krouwel EM, Albers LF, Nicolai MPJ, Putter H, Osanto S, Pelger RCM, et al. Discussing Sexual  
532 Health in the Medical Oncologist's Practice: Exploring Current Practice and Challenges. *J Cancer Educ*.  
533 2019.
- 534 18. Park ER, Bober SL, Campbell EG, Recklitis CJ, Kutner JS, Diller L. General internist communication  
535 about sexual function with cancer survivors. *J Gen Intern Med*. 2009;24 Suppl 2:S407-11.
- 536 19. Sopfe J, Marsh R, Frederick NN, Klosky JL, Chow EJ, Dorsey Holliman B, et al. Adolescent and  
537 young adult childhood cancer survivors' preferences for screening and education of sexual function.  
538 *Pediatr Blood Cancer*. 2021:e29229.
- 539 20. Frederick NN, Bingen K, Bober SL, Cherven B, Xu X, Quinn GP, et al. Pediatric oncology clinician  
540 communication about sexual health with adolescents and young adults: A report from the children's  
541 oncology group. *Cancer Med*. 2021;10(15):5110-9.
- 542 21. Frederick NN, Campbell K, Kenney LB, Moss K, Speckhart A, Bober SL. Barriers and facilitators to  
543 sexual and reproductive health communication between pediatric oncology clinicians and adolescent  
544 and young adult patients: The clinician perspective. *Pediatr Blood Cancer*. 2018;65(8):e27087.
- 545 22. Demedis J, Reedy J, Chow EJ, Dorsey Holliman B, Peterson PN, Studts CR. Provider perspectives  
546 and recommendations on standardized sexual function screening intervention in adolescent/young  
547 adult oncology patients. *Pediatr Blood Cancer*. 2024:e30872.
- 548 23. Frederick NN, Revette A, Michaud A, Bober SL. A qualitative study of sexual and reproductive  
549 health communication with adolescent and young adult oncology patients. *Pediatr Blood Cancer*.  
550 2019:e27673.
- 551 24. Denlinger CS, Sanft T, Baker KS, Baxi S, Broderick G, Demark-Wahnefried W, et al. Survivorship,  
552 Version 2.2017, NCCN Clinical Practice Guidelines in Oncology. *J Natl Compr Canc Netw*.  
553 2017;15(9):1140-63.
- 554 25. Carter J, Lacchetti C, Andersen BL, Barton DL, Bolte S, Damast S, et al. Interventions to Address  
555 Sexual Problems in People With Cancer: American Society of Clinical Oncology Clinical Practice Guideline  
556 Adaptation of Cancer Care Ontario Guideline. *J Clin Oncol*. 2018;36(5):492-511.
- 557 26. Coccia PF, Pappo AS, Beaupin L, Borges VF, Borinstein SC, Chugh R, et al. Adolescent and Young  
558 Adult Oncology, Version 2.2018, NCCN Clinical Practice Guidelines in Oncology. *J Natl Compr Canc Netw*.  
559 2018;16(1):66-97.
- 560 27. Sopfe J, Marsh R, Ziniel SI, Klosky JL, Chow EJ, Dorsey Holliman B, et al. Evaluation of the v2.0  
561 Brief Profiles for Sexual Function and Satisfaction PROMIS in Adolescent and Young Adult Childhood  
562 Cancer Survivors. *J Adolesc Young Adult Oncol*. 2020.

- 563 28. Flynn KE, Reeve BB, Lin L, Cyranowski JM, Bruner DW, Weinfurt KP. Construct validity of the  
564 PROMIS(R) sexual function and satisfaction measures in patients with cancer. *Health Qual Life*  
565 *Outcomes*. 2013;11:40.
- 566 29. Proctor E, Silmere H, Raghavan R, Hovmand P, Aarons G, Bunger A, et al. Outcomes for  
567 implementation research: conceptual distinctions, measurement challenges, and research agenda. *Adm*  
568 *Policy Ment Health*. 2011;38(2):65-76.
- 569 30. Glasgow RE, Harden SM, Gaglio B, Rabin B, Smith ML, Porter GC, et al. RE-AIM Planning and  
570 Evaluation Framework: Adapting to New Science and Practice With a 20-Year Review. *Front Public*  
571 *Health*. 2019;7:64.
- 572 31. Damschroder LJ, Aron DC, Keith RE, Kirsh SR, Alexander JA, Lowery JC. Fostering implementation  
573 of health services research findings into practice: a consolidated framework for advancing  
574 implementation science. *Implement Sci*. 2009;4:50.
- 575 32. Damschroder LJ, Reardon CM, AuYoung M, Moin T, Datta SK, Sparks JB, et al. Implementation  
576 findings from a hybrid III implementation-effectiveness trial of the Diabetes Prevention Program (DPP)  
577 in the Veterans Health Administration (VHA). *Implement Sci*. 2017;12(1):94.
- 578 33. Arrossi S, Paolino M, Orellana L, Thouyaret L, Kohler RE, Viswanath K. Mixed-methods approach  
579 to evaluate an mHealth intervention to increase adherence to triage of human papillomavirus-positive  
580 women who have performed self-collection (the ATICA study): study protocol for a hybrid type I cluster  
581 randomized effectiveness-implementation trial. *Trials*. 2019;20(1):148.
- 582 34. King DK, Shoup JA, Raebel MA, Anderson CB, Wagner NM, Ritzwoller DP, et al. Planning for  
583 Implementation Success Using RE-AIM and CFIR Frameworks: A Qualitative Study. *Front Public Health*.  
584 2020;8:59.
- 585 35. Moullin JC, Dickson KS, Stadnick NA, Albers B, Nilsen P, Broder-Fingert S, et al. Ten  
586 recommendations for using implementation frameworks in research and practice. *Implement Sci*  
587 *Commun*. 2020;1:42.
- 588 36. Damschroder LJ, Reardon CM, Widerquist MAO, Lowery J. The updated Consolidated  
589 Framework for Implementation Research based on user feedback. *Implement Sci*. 2022;17(1):75.
- 590 37. Perez Jolles M, Lengnick-Hall R, Mittman BS. Core Functions and Forms of Complex Health  
591 Interventions: a Patient-Centered Medical Home Illustration. *J Gen Intern Med*. 2019;34(6):1032-8.
- 592 38. Esmail LC, Barasky R, Mittman BS, Hickam DH. Improving Comparative Effectiveness Research of  
593 Complex Health Interventions: Standards from the Patient-Centered Outcomes Research Institute  
594 (PCORI). *J Gen Intern Med*. 2020;35(Suppl 2):875-81.
- 595 39. Powell BJ, McMillen JC, Proctor EK, Carpenter CR, Griffey RT, Bunger AC, et al. A compilation of  
596 strategies for implementing clinical innovations in health and mental health. *Med Care Res Rev*.  
597 2012;69(2):123-57.
- 598 40. Sopfe J, Marsh R, Appiah LC, Klosky JL, Peterson PN, DorseyHolliman B. Evaluating sexual  
599 function in adolescent and young adult childhood cancer survivors. *Journal of Clinical Oncology*.  
600 2020;38(15\_suppl):e24180-e.
- 601 41. Guest G, Bunce A, Johnson L. How Many Interviews Are Enough?: An Experiment with Data  
602 Saturation and Variability. *Field Methods*. 2006;18(1):59-82.
- 603 42. Faulkner L. Beyond the five-user assumption: benefits of increased sample sizes in usability  
604 testing. *Behav Res Methods Instrum Comput*. 2003;35(3):379-83.
- 605 43. Olagunju TO, Liu Y, Liang LJ, Stomber JM, Griggs JJ, Ganz PA, et al. Disparities in the survivorship  
606 experience among Latina survivors of breast cancer. *Cancer*. 2018;124(11):2373-80.
- 607 44. Feters MD, Curry LA, Creswell JW. Achieving integration in mixed methods designs-principles  
608 and practices. *Health Serv Res*. 2013;48(6 Pt 2):2134-56.
- 609 45. Wiltsey Stirman S, Baumann AA, Miller CJ. The FRAME: an expanded framework for reporting  
610 adaptations and modifications to evidence-based interventions. *Implement Sci*. 2019;14(1):58.

- 611 46. Miller CJ, Barnett ML, Baumann AA, Gutner CA, Wiltsey-Stirman S. The FRAME-IS: a framework  
612 for documenting modifications to implementation strategies in healthcare. *Implement Sci.*  
613 2021;16(1):36.
- 614 47. Guetterman TC, Feters MD, Creswell JW. Integrating Quantitative and Qualitative Results in  
615 Health Science Mixed Methods Research Through Joint Displays. *Ann Fam Med.* 2015;13(6):554-61.
- 616 48. Vaismoradi M, Turunen H, Bondas T. Content analysis and thematic analysis: Implications for  
617 conducting a qualitative descriptive study. *Nurs Health Sci.* 2013;15(3):398-405.
- 618 49. Weiner BJ, Lewis CC, Stanick C, Powell BJ, Dorsey CN, Clary AS, et al. Psychometric assessment of  
619 three newly developed implementation outcome measures. *Implement Sci.* 2017;12(1):108.
- 620 50. Harris PA, Taylor R, Thielke R, Payne J, Gonzalez N, Conde JG. Research electronic data capture  
621 (REDCap)--a metadata-driven methodology and workflow process for providing translational research  
622 informatics support. *J Biomed Inform.* 2009;42(2):377-81.
- 623 51. Tong A, Sainsbury P, Craig J. Consolidated criteria for reporting qualitative research (COREQ): a  
624 32-item checklist for interviews and focus groups. *Int J Qual Health Care.* 2007;19(6):349-57.
- 625 52. O'Cathain A, Murphy E, Nicholl J. The quality of mixed methods studies in health services  
626 research. *J Health Serv Res Policy.* 2008;13(2):92-8.

627

## 628 **Supporting information captions**

629 S1. Study Protocol: Aims 2-3 of this protocol represent the described clinical trial. Aim 1  
630 represents a separate intervention adaptation phase.

631

632 S2. Study Appendix: Example participant surveys and interview guides

633

634 S3. Model consent forms

635

636 S4. SPIRIT Checklist

	Recruitment and Allocation	Post-allocation	Closeout
TIMEPOINT	0	0-4 weeks	4-8 weeks
<b>ENROLLMENT:</b>			
Eligibility screen	X		
Study presentation	X		
Informed consent		X	
Allocation	X		
<b>INTERVENTIONS:</b>			
<i>Pre-Intervention Arm</i>	N/A (Pre-Intervention)		
<i>Post-Intervention Arm</i>	X		
<b>ASSESSMENTS:</b>			
<i>Patient-reported demographics</i>		X	
<i>Effectiveness Survey</i>		X	
<i>Implementation Survey</i>		X (Post-Int. Arm only)	
<i>EHR Data Abstraction</i>			X

EHR: Electronic Health Record

Figure 1 SPIRIT Schedule

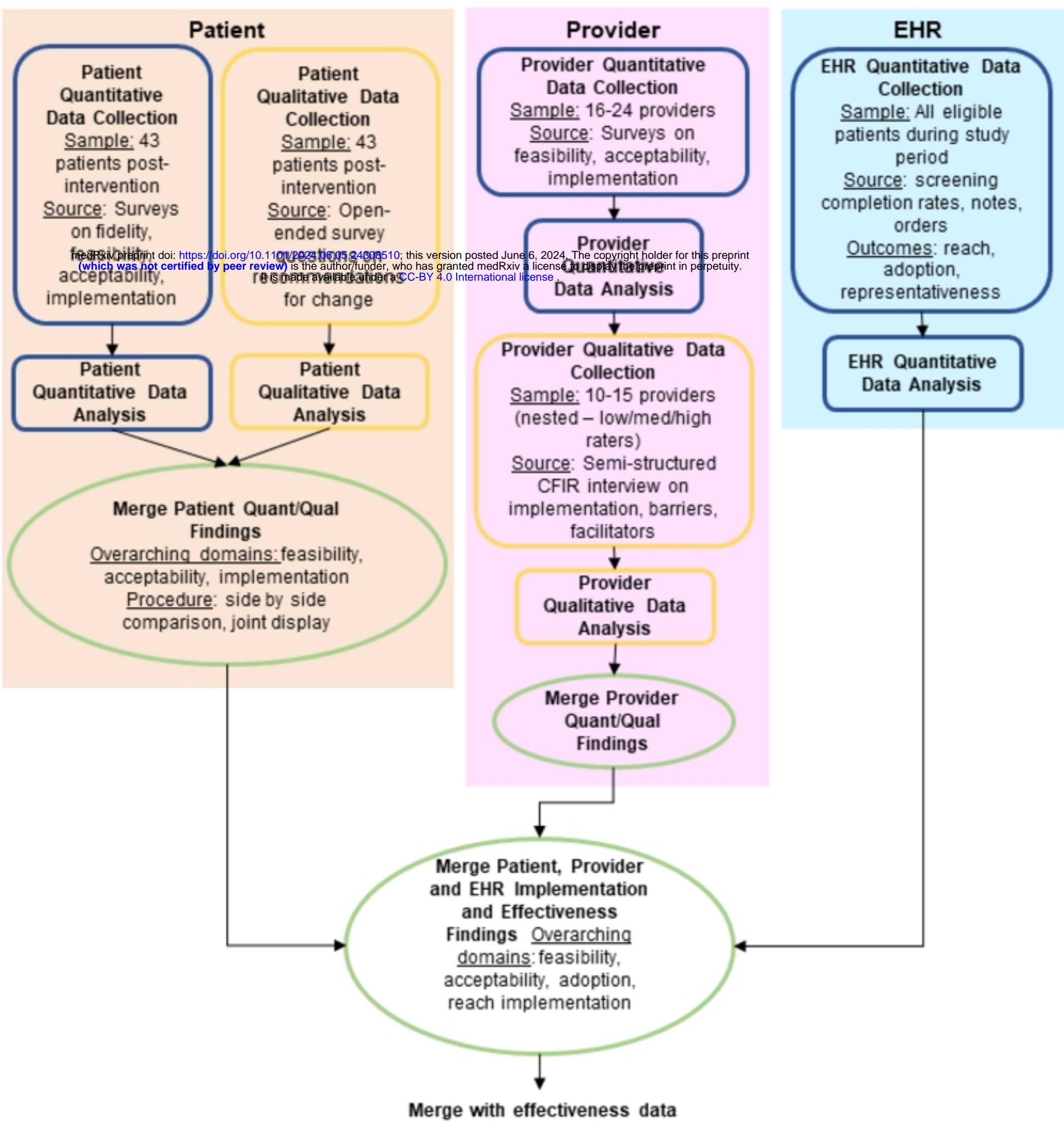


Figure 2 Mixed Methods