

Title: Transition probabilities for dental caries in a school-based prevention program: A randomized clinical trial

Author: Ryan Richard Ruff, PhD¹²

Affiliations:

1. Department of Epidemiology & Health Promotion, New York University College of Dentistry, New York, NY, 10010
2. New York University School of Global Public Health, New York, NY, 10010

Address for correspondence:

Ryan Richard Ruff
380 2nd Avenue, Room 3-09
New York, NY, 10010
ryan.ruff@nyu.edu
212-998-9663

Abstract

Background: School-based caries prevention using silver diamine fluoride (SDF) has been shown to effectively prevent and control dental caries. To better inform program design and implementation, this paper estimated transition probabilities for dental caries in a school SDF program. *Methods:* The CariedAway project was a pragmatic, cluster-randomized trial of school-based caries prevention interventions conducted in predominately low-income minority children. For children in CariedAway receiving SDF, transition probabilities were computed between sound, carious, and arrested states for 6-year molars using multistate Markov models. Subject-level transition probabilities over one- and two-year periods were then calculated by aggregating states of all 6-year molars and first and second bicuspids. *Results:* A total of 7418 children were enrolled in CariedAway, of which 1352 met inclusion criteria for this study. Of eligible participants, the baseline prevalence of untreated decay was 29% and the prevalence of dental sealants was 8%. The probability of transitioning between sound and carious states in 6-year molars ranged from 0.0022 to 0.0074. At the subject-level, the sound to carious transition probabilities were 0.07 and 0.12 after one and two years, respectively. Once in a fully arrested state, the probability of remaining arrested was 0.72 and 0.60 after one and two years. *Conclusions:* The overall probabilities of teeth remaining in diseased-free or arrested states was high after receiving silver diamine fluoride, although multiple applications might be needed for consistent caries arrest.

Introduction

Dental caries is a highly prevalent and inequitable public health crisis ¹, negatively affecting quality of life ² and educational performance ³. The disproportionate burden of caries often stems from a lack of access to affordable dental care ⁴. School-based caries prevention can increase access to dental services, providing cost-effective and cost-saving interventions to disadvantaged children ⁵. Known approaches to school caries prevention include dental sealants ⁶, fluoride varnish ⁷, toothbrushing and outpatient services ⁸, and atraumatic restorations ⁹, each of which has demonstrated effectiveness in reducing the risk of caries.

Silver diamine fluoride (SDF) is recommended by the American Academy of Pediatric dentistry a cost-effective approach for comprehensive caries management in children ¹⁰, and has published guidelines for provision by primary care providers ¹¹. Available in multiple concentrations, prior studies indicate that a 38% SDF solution is the most efficacious, and arrest rates increase with semiannual application ¹². It is also effective in the prevention of new caries ¹³. When used as part of a school-based program, SDF has been shown to be comparable to dental sealants in the prevention ¹⁴ and control ¹⁵ of dental caries, can be provided by school nurses ¹⁶, and can minimize the time required for children to be out of class ¹⁷.

The large-scale use of silver diamine fluoride for school-based caries prevention has the potential to dramatically increase the reach and effectiveness of care, and understanding anticipated patient needs can better support program planning and sustainability. Identifying the likelihood of individuals developing new caries, post-initial treatment, can help inform the scheduling of subsequent school visits and maximize the utility of limited resources. In this paper, we estimate the transition probabilities of teeth treated with SDF in a school-based caries prevention program using multistate Markov models, focusing on a traditionally underserved population consisting of predominately low-income minority

children with both a high baseline prevalence of caries and a low prevalence of dental sealants.

Methods

Design and Participants

CariedAway was a cluster-randomized, longitudinal, pragmatic clinical trial that investigated the feasibility of using silver diamine fluoride in school-based caries prevention¹⁸. The CariedAway study received approval from the New York University School of Medicine Institutional Review Board and is registered at clinicaltrials.gov (#NCT03442309). CariedAway was conducted from February 1 2019 to June 1 2023 in 48 primary schools located in New York City with a total student population consisting of at least 50% Black or Hispanic students and at least 80% of students receiving free or reduced lunch. Any child with parental informed consent and child assent was eligible to receive care.

Interventions

Each study participant received either silver diamine fluoride followed by fluoride varnish (to mask the bitter aftertaste of SDF) or dental sealants, atraumatic restorations, and fluoride varnish. For the SDF group, one to two drops of SDF were dispensed into a mixing well and applied with a microapplicator to all pits and fissures of premolars and molars. SDF was also applied to all posterior asymptomatic cavitated lesions. One unit dose of fluoride varnish was then applied. For the sealant group, cavity conditioner was first applied followed by application of glass ionomer sealants using the finger-sweep technique to all pits and fissures of bicuspid and molars. Atraumatic restorations were then placed on any asymptomatic cavitated lesions, and fluoride varnish was then applied to all teeth. SDF was reapplied at every subsequent observation, and sealants were reapplied to any unsealed or partially sealed molars and bicuspid.

Randomization and Blinding

Children were block randomized at the school level using a random number generator. As a pragmatic trial, participants were unable to be blinded.

Examination and Diagnosis

Each participant in the CariedAway trial received a full visual-tactile examination prior to receiving the assigned interventions. Dental caries diagnosis followed the International Caries Detection and Assessment System (ICDAS). Any tooth with lesions determined to meet ICDAS score of 5 (distinct cavity with visible dentin) or 6 (extensive, more than half the surface, distinct cavity with visible dentin) was classified as decay. Arrest was classified as frank absence of tooth structure to the level of the dentin, the surface of which is black, with or without shine, that was hard and smooth when moving an explorer tip gently across the surface. Otherwise, teeth were assessed as intact/sound, sealed, or restored (e.g., silver or porcelain filling).

Impact of COVID-19

The original protocol for CariedAway stipulated biannual examination and treatment. However, as a school-based trial, study activities were suspended from March 2020 through September 2021 due to the COVID-19 pandemic. As a result, some children enrolled in CariedAway had approximately two years before their first follow-up observation. Upon resumption of study procedures following the lifting of pandemic restrictions, the biannual schedule was resumed.

Statistical Analysis

Using longitudinal data from the CariedAway trial, we estimated transition probabilities via multi-state Markov models in those children assigned to the SDF arm who completed at least two follow-up observations. Tooth state progression was treated as a relapsing-remitting condition consisting of discrete state transitions from sound to carious, carious to arrested, or arrested to carious (Figure 1), reflecting both primary and secondary effects of silver diamine fluoride treatment and the intermittently observed nature of the data.

Individual state transitions were computed separately for each 6-year molar, selected as these teeth are often the focus of school-based caries prevention. Following tooth-level analyses, we computed person-level transitions as an aggregate of all 6-year molars and first and second bicuspid over a period of one and two years. For this whole-mouth transition, any teeth with caries would result in a transition from either sound to carious or arrested to carious. If all previously carious teeth were arrested at any follow-up observation, a fully arrested state would be achieved. For instances where teeth were missing, the state from the previous observation was maintained. Analysis was conducted using R v3.3.0.

Results

The total number of enrolled participants in the CariedAway trial was 7418 (Figure 2). After removing those who did not receive silver diamine fluoride (3679) and did not complete at least two follow-up observations (2387), the analytic sample consisted of 1352 children. The baseline prevalence of decay for the analytic set was 28.5%, and the baseline sealant prevalence (on any tooth) was 8%. Approximately 47% of the sample was male, predominately from Hispanic/Latino (59%) or black (21%) race/ethnicity. The average age at baseline was 6.44 years (SD=1.3).

For state transitions of 6-year molars (Table 2), probabilities for sound to carious transitions were 0.0037 (95% CI = 0.001, 0.006), 0.0022 (95% CI = 0.001, 0.004), 0.0058 (95% CI = 0.003, 0.009), and 0.007 (95% CI = 0.005, 0.011), while the initial probability of transitioning from carious to arrested ranged from 0.269 (95% CI = 0.125, 0.400) to 0.382 (95% CI = 0.255, 0.510). Once arrested, the probability of remaining in the arrested state (secondary prevention) ranged from 0.44 (95% CI = 0.287, 0.993) to 0.88 (95% CI = 0.633, 0.997).

At the subject level (Table 3), the probability of remaining in a sound state (primary prevention) after one and two years was 0.916 (95% CI = 0.905, 0.925) and 0.840 (95% CI = 0.818, 0.855), respectively, for an annual prevention rate of approximately 7% and 12%. The

probability of remaining in a carious state (any 6-year molar, 1st bicuspid, or 2nd bicuspid with caries, regardless of the states of the others) was 0.70 and 0.58 after one and two years. Once in a completely arrested state (no caries on any included teeth), the probability of reverting back to a carious state was 0.276 (95% CI = 0.222, 0.324) and 0.395 (95% CI = 0.530, 0.680) after one and two years, respectively. Predicted versus observed probability plots for each subject-level transition are shown in Figure 3, with tooth-level plots available as supplementary material.

Discussion

In this analysis of high-risk, low access children enrolled in a school-based clinical trial of caries prevention using silver diamine fluoride and fluoride varnish, the person-level transition probabilities from healthy to carious states were 0.07 and 0.12 for one and two-year periods, respectively. Once individuals with caries were in a fully arrested state, there was a 72% chance of remaining arrested after one year and a 60% chance after two years, suggesting high success rates of both preventing and managing dental caries.

All first permanent molars had high probabilities of remaining sound following initial treatment (> 0.99), while the first permanent molar in the lower left quadrant had the highest rate of arrest failure (0.437). This may be due to a higher overall risk of caries in lower molars, which is similar to data reported from epidemiologic studies¹⁹ and clinical trials of SDF²⁰. Additionally, prior analysis of longitudinal caries risk estimated probabilities for transitioning from caries-free to caries-active ranging from 0.0046 to 0.047²¹, and treatment with fluoride varnish resulted in transition probabilities of 2.5% from sound to enamel caries and 0.3% from sound to dentine caries²². Our results indicate similar transitions for high-risk children receiving school-based caries prevention.

As many chronic diseases follow a staged process, use of multi-state Markov models can effectively describe the course of a disease²³. The present application also highlights the natural progression of disease incidence and management in school-based caries

prevention, which results in intermittently spaced observations of a continuous-time caries process. In these situations, providers are likely to observe mixtures of sound, carious, and arrested dentition when using an intervention with both preventive and control properties, such as silver diamine fluoride or dental sealants with atraumatic restorations, both of which have been used in school-based caries prevention^{9,14}. Additionally, other research has used semi-parametric multi-state frailty models in the analysis of clustered survival data with interval censoring, which may have multiple benefits for school caries prevention²⁴. Regardless of approach, modeling disease transitions at both the tooth and child levels can be useful for targeted planning of prevention in schools and minimize educational disruptions.

This study benefitted from using data from a randomized trial of school-based caries prevention that included a diverse mix of participants, with particular focus on those traditionally underserved in oral health. However, there are notable limitations. Dental caries severity was based off of clinical diagnosis following an ICDAS score of 5 or 6. While this supports a distinct state transition, it ignores potentially interesting earlier stages such as localized enamel breakdown due to caries. As this was also a diagnostic criterion that resulted in a recorded state of either carious or not carious, we were further unable to differentiate between adjacent stages of transitioning from ICDAS 5 to ICDAS 6, which would inform a more granular understanding of the caries process in school-based prevention. Furthermore, for analysis of 6-year molars, models could not account for possible intraoral correlation which may result in the estimated probabilities being attenuated. We attempted to address this through a person-level analysis, which is useful for planning and implementation of school caries prevention as the primary cost and time considerations for care is predominantly due logistics (e.g., estimating needed supplies, visiting a school, setting up mobile dental chairs, and identifying children in need), and not on the treatment itself. However in this approach, state transitions from arrested to carious no longer reflect only secondary prevention, as new carious teeth would force the participant into a carious state when it may have been due to a sound to carious (from

another tooth) transition. Despite this limitation, this approach can still be useful for program planning, as disease prevalence is the fundamental concern rather than the underlying process.

In conclusion, use of silver diamine fluoride for school-based caries prevention demonstrated high probabilities of primary prevention and caries management over one to two-years. These results can better inform strategic implementation of a school SDF program and maximize resources to treat the most children in need.

Table 2 – Tooth-level transition probabilities

Transition	Probability	95% CI Lower	95% CI Upper
3 ₁₁	0.9960	0.9934	0.9985
3 ₁₂	0.0037	0.0014	0.0058
3 ₁₃	0.0007	0.0001	0.0012
3 ₂₂	0.7306	0.5996	0.8754
3 ₂₃	0.2694	0.1246	0.4004
3 ₃₂	0.1978	0.0063	0.4899
3 ₃₃	0.8022	0.5101	0.9937
14 ₁₁	0.9974	0.9948	0.9991
14 ₁₂	0.0022	0.0007	0.0043
14 ₁₃	0.0005	0.0002	0.0009
14 ₂₂	0.6806	0.5338	0.8140
14 ₂₃	0.3194	0.1860	0.4662
14 ₃₂	0.1205	0.0029	0.3672
14 ₃₃	0.8795	0.6328	0.9971
19 ₁₁	0.9926	0.9885	0.9957
19 ₁₂	0.0058	0.0034	0.0091
19 ₁₃	0.0017	0.0009	0.0025
19 ₂₂	0.6178	0.4902	0.7454
19 ₂₃	0.3821	0.2546	0.5098
19 ₃₂	0.2604	0.0056	0.5436
19 ₃₃	0.7396	0.4564	0.9944
30 ₁₁	0.9905	0.9867	0.9939
30 ₁₂	0.0074	0.0048	0.0113
30 ₁₃	0.0020	0.0012	0.0029
30 ₂₂	0.6781	0.5629	0.7921
30 ₂₃	0.3219	0.2079	0.4371
30 ₃₂	0.5629	0.0073	0.7132
30 ₃₃	0.4371	0.2868	0.9927

Table 3 – Person-level transition probabilities

Transition	Probability	95% CI Lower	95% CI Upper
<i>1-year</i>			
M ₁₁	0.9164	0.9054	0.9250
M ₁₂	0.0696	0.0619	0.0787
M ₁₃	0.0141	0.0118	0.0162
M ₂₂	0.7077	0.6783	0.7360
M ₂₃	0.2923	0.2640	0.3217
M ₃₂	0.2762	0.2215	0.3242
M ₃₃	0.7238	0.6759	0.7788
<i>2-year</i>			
M ₁₁	0.8397	0.8179	0.8553
M ₁₂	0.1168	0.1045	0.1345
M ₁₃	0.0434	0.0379	0.0492
M ₂₂	0.5816	0.5446	0.6202
M ₂₃	0.4184	0.3798	0.4554
M ₃₂	0.3954	0.3203	0.4698
M ₃₃	0.6046	0.5302	0.6797

M = whole mouth transition, reflecting any change in 6-year molars, 1st bicuspid, and 2nd bicuspid

Figure 1: State transition model

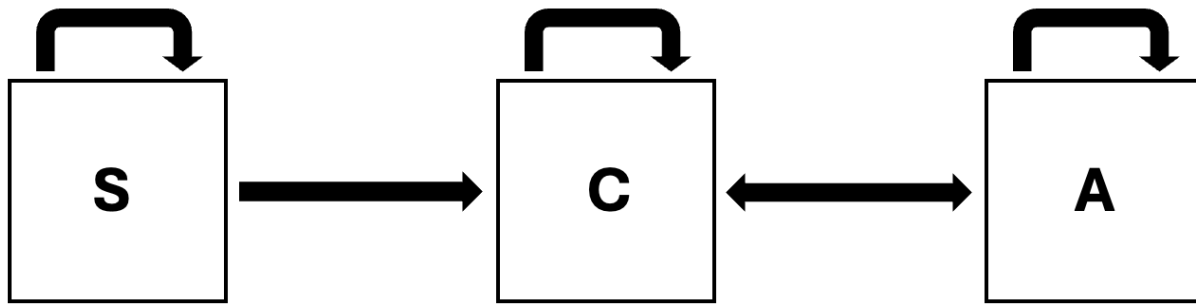


Figure 2: Study enrollment flowchart

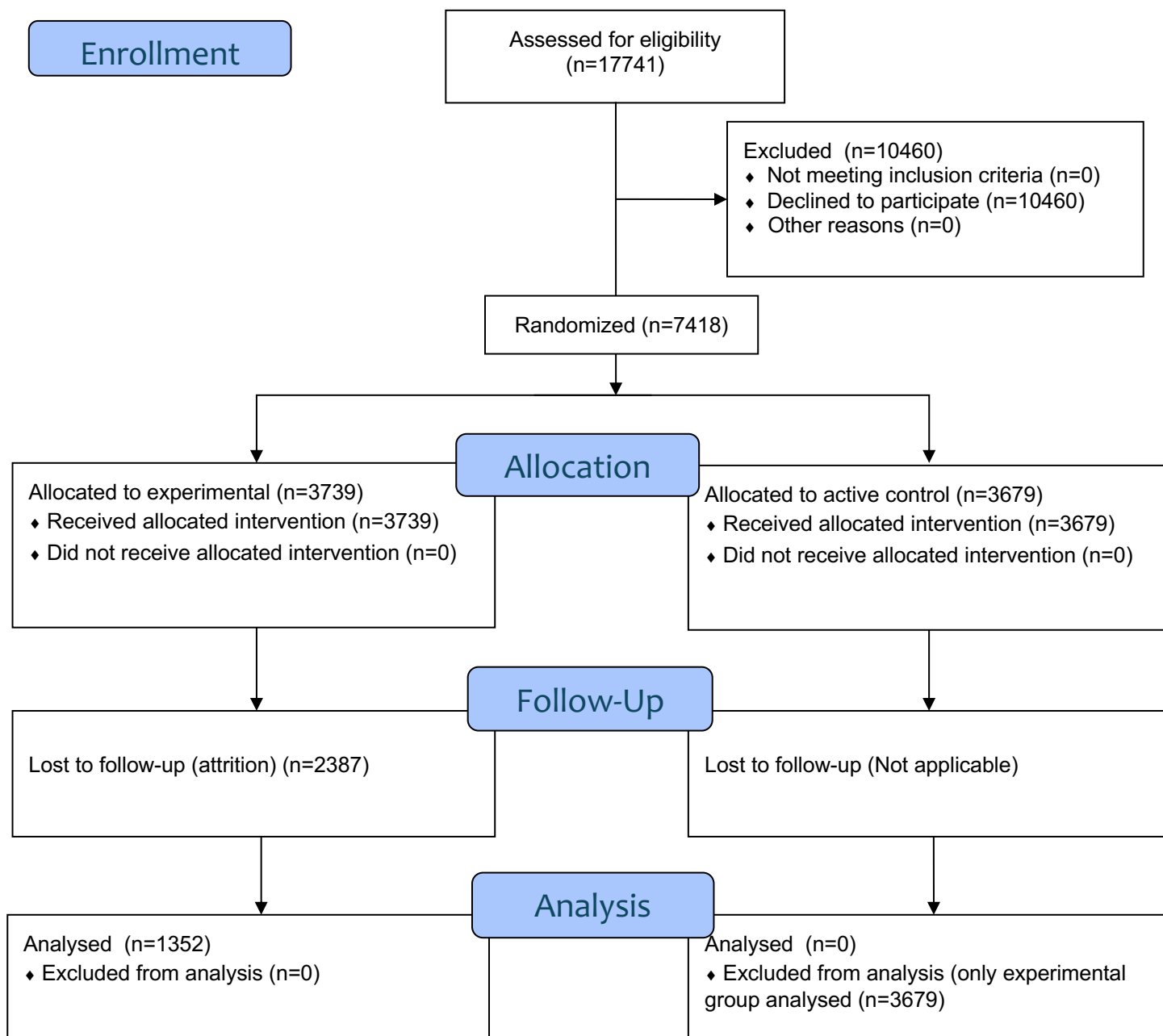
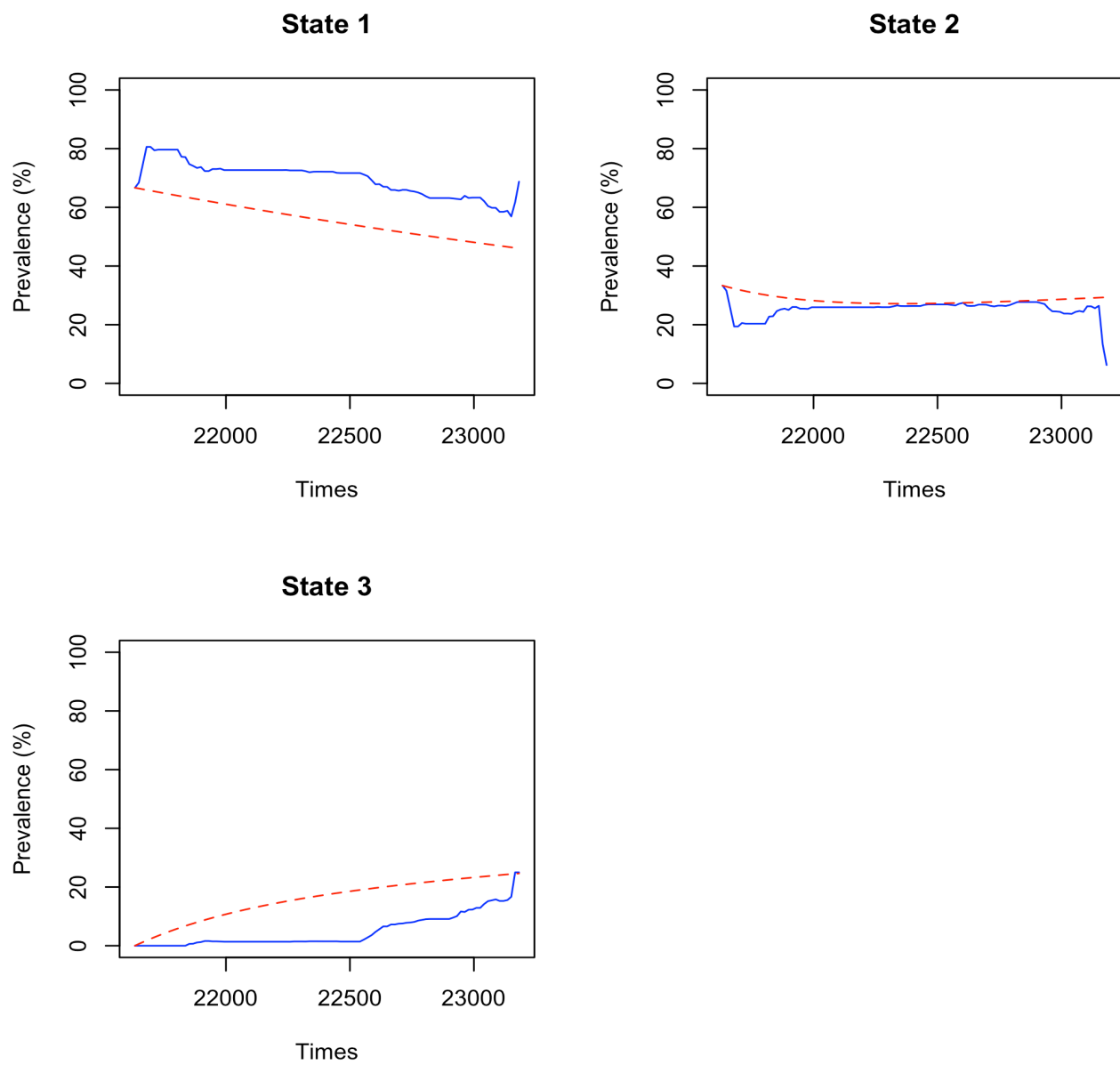


Figure 3: Predicted versus observed probabilities for person-level transition



Supplementary Material

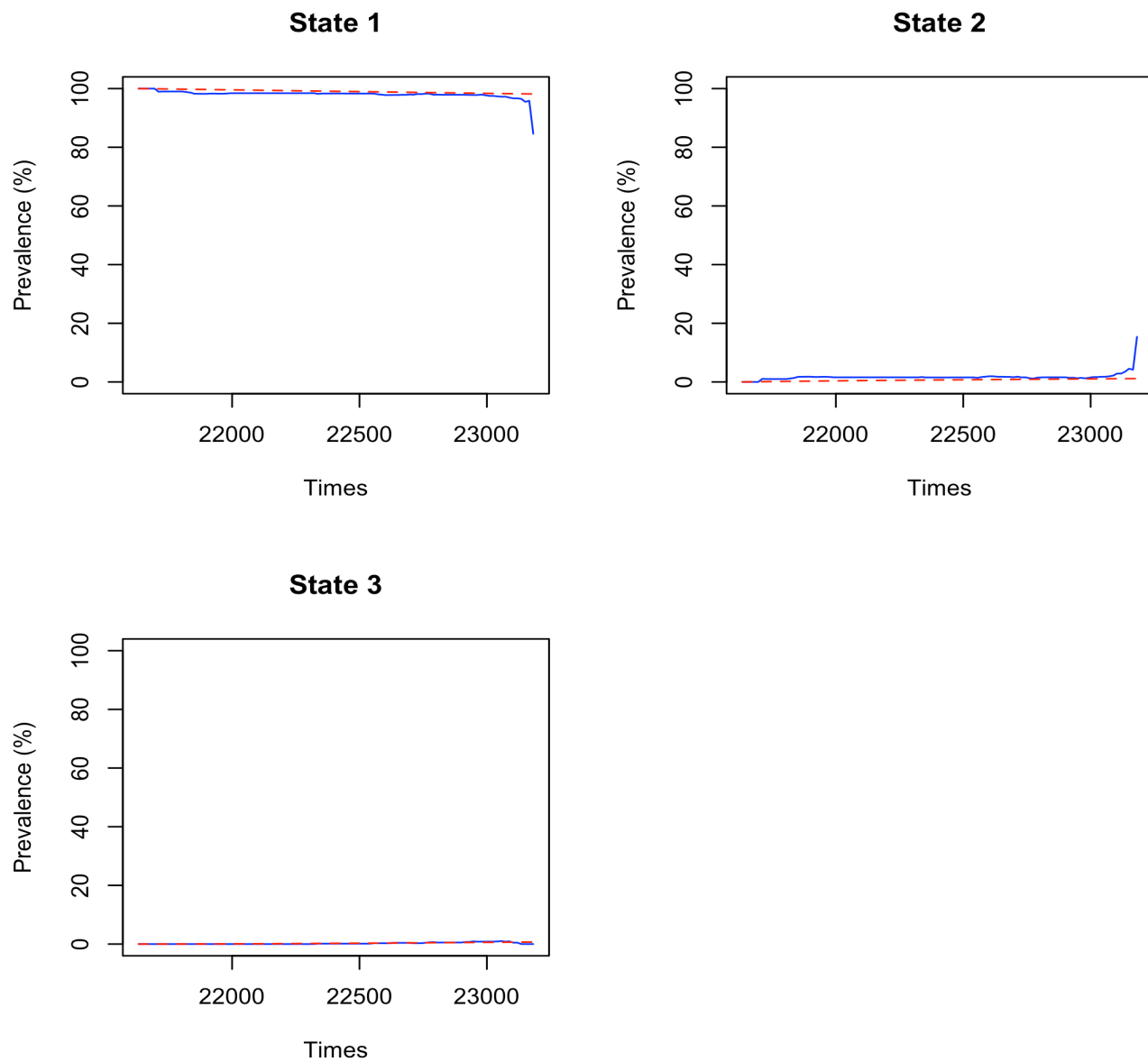
Supplementary Figure 1: Predicted versus observed probabilities for tooth 3

Supplementary Figure 2: Predicted versus observed probabilities for tooth 14

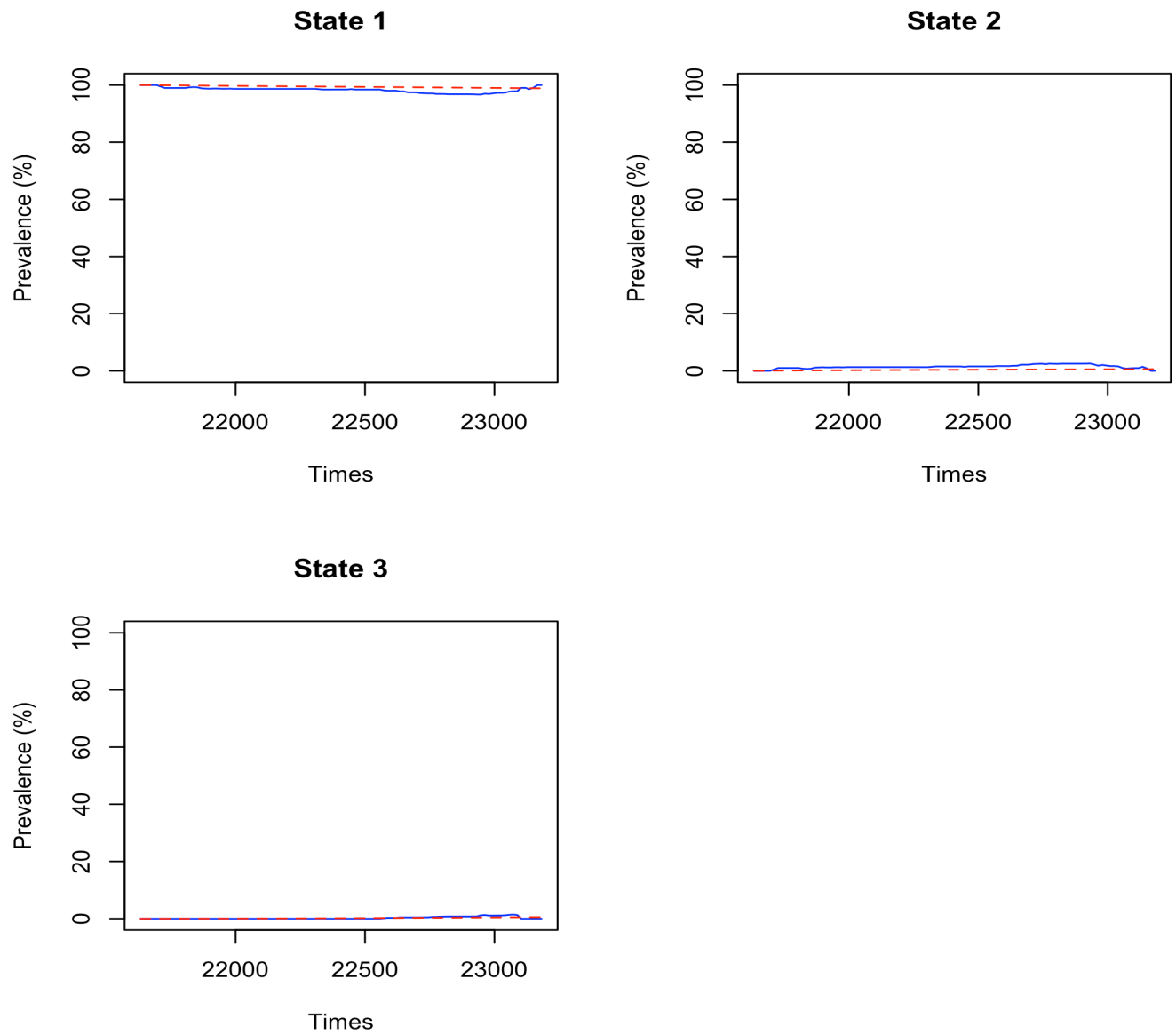
Supplementary Figure 3: Predicted versus observed probabilities for tooth 19

Supplementary Figure 4: Predicted versus observed probabilities for tooth 30

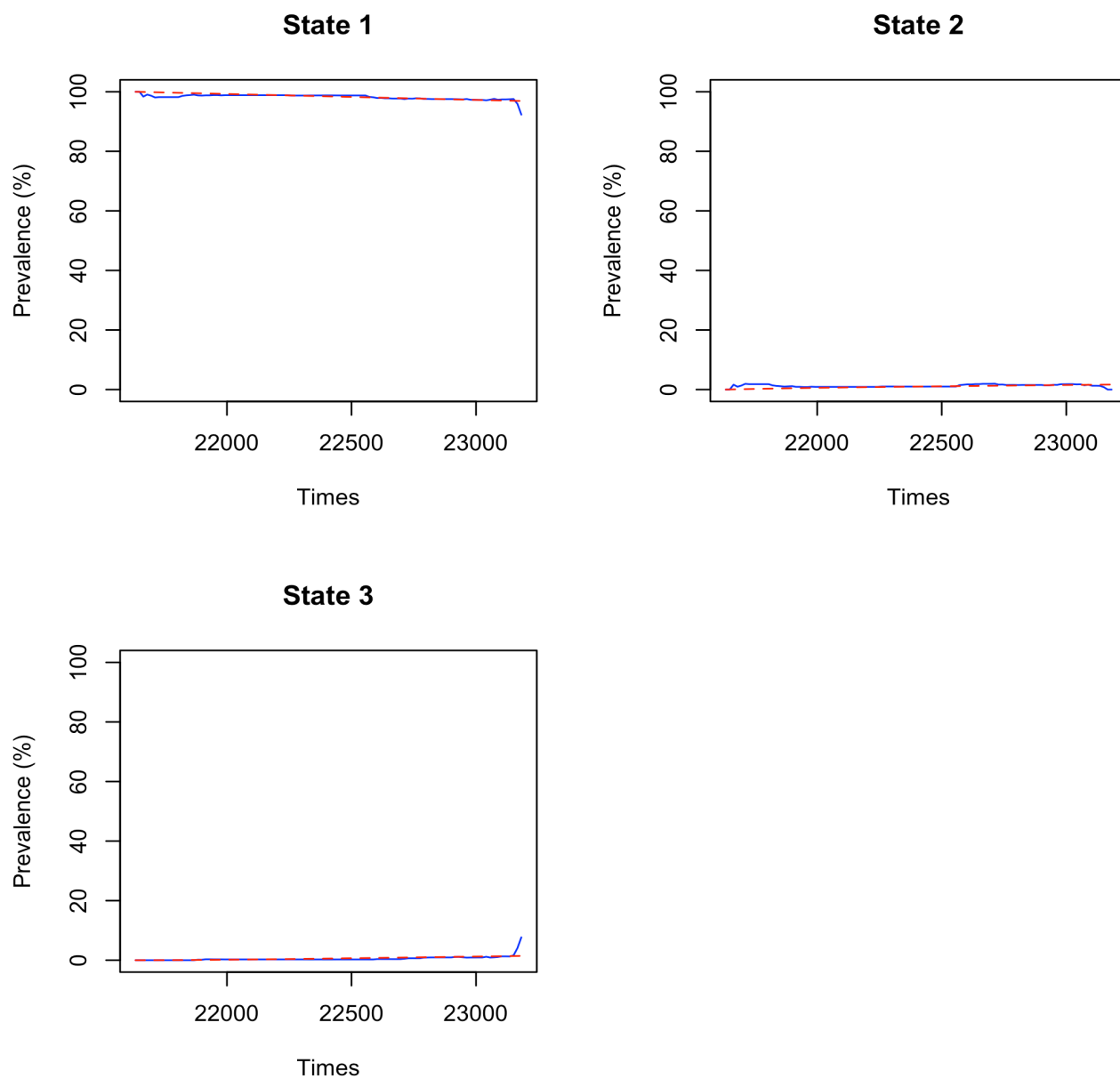
Supplementary Figure 1



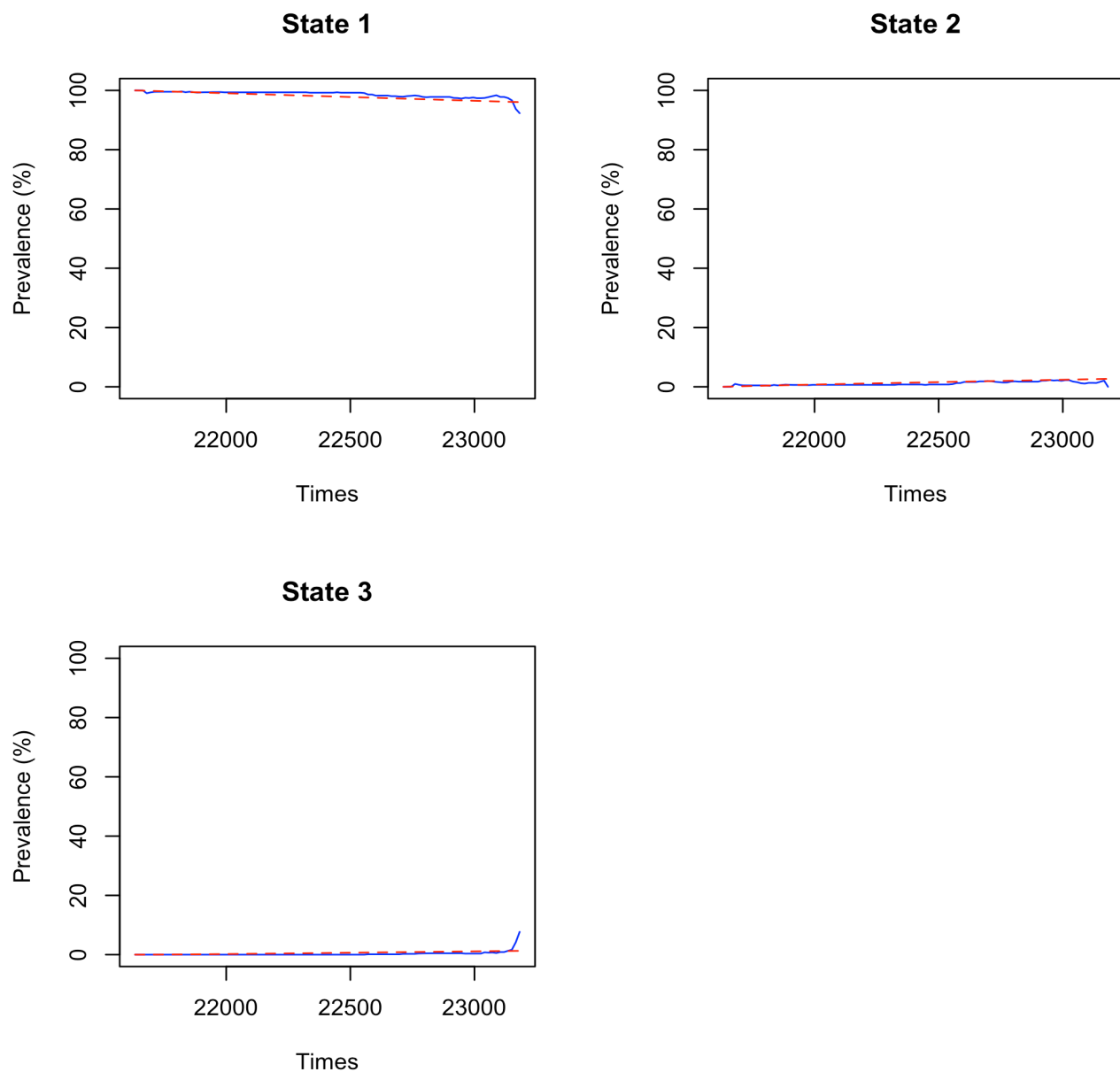
Supplementary Figure 2



Supplementary Figure 3



Supplementary Figure 4



References

1. Wen PYF, Chen MX, Zhong YJ, Dong QQ, Wong HM. Global Burden and Inequality of Dental Caries, 1990 to 2019. *Journal of dental research*. Apr 2022;101(4):392-399. doi:10.1177/00220345211056247
2. Zaror C, Matamala-Santander A, Ferrer M, Rivera-Mendoza F, Espinoza-Espinoza G, Martínez-Zapata MJ. Impact of early childhood caries on oral health-related quality of life: A systematic review and meta-analysis. *Int J Dent Hyg*. Feb 2022;20(1):120-135. doi:10.1111/idh.12494
3. Ruff RR, Senthil S, Susser SR, Tsutsui A. Oral health, academic performance, and school absenteeism in children and adolescents: A systematic review and meta-analysis. *J Am Dent Assoc*. Feb 2019;150(2):111-121 e4. doi:10.1016/j.adaj.2018.09.023
4. Northridge ME, Kumar A, Kaur R. Disparities in Access to Oral Health Care. *Annual review of public health*. Apr 2020;41:513-535. doi:10.1146/annurev-publhealth-040119-094318
5. Amilani U, Carter HE, Senanayake S, Hettiarachchi RM, McPhail SM, Kularatna S. A scoping review of cost-effectiveness analyses of school-based interventions for caries. *Community dentistry and oral epidemiology*. Oct 2020;48(5):357-363. doi:10.1111/cdoe.12553
6. Gooch BF, Griffin SO, Gray SK, et al. Preventing dental caries through school-based sealant programs: updated recommendations and reviews of evidence. *J Am Dent Assoc*. Nov 2009;140(11):1356-65.
7. Sköld UM, Petersson LG, Birkhed D, Norlund A. Cost-analysis of school-based fluoride varnish and fluoride rinsing programs. *Acta odontologica Scandinavica*. 2008;66(5):286-92.
8. Ruff RR, Monse B, Duijster D, Itchon GS, Naliponguit E, Benzian H. Effectiveness of school-based strategies to prevent tooth decay in Filipino children: A cluster-randomized trial. *Community dentistry and oral epidemiology*. Apr 2023;51(2):219-227. doi:10.1111/cdoe.12729
9. Starr JR, Ruff RR, Palmisano J, Goodson JM, Bukhari OM, Niederman R. Longitudinal caries prevalence in a comprehensive, multicomponent, school-based prevention program. *J Am Dent Assoc*. Mar 2021;152(3):224-233 e11. doi:10.1016/j.adaj.2020.12.005
10. Crystal YO, Marghalani AA, Ureles SD, et al. Use of Silver Diamine Fluoride for Dental Caries Management in Children and Adolescents, Including Those with Special Health Care Needs. *Pediatr Dent*. Sep 15 2017;39(5):135-145.
11. Physician Use of Silver Diamine Fluoride (SDF) in Dental Caries Management: Guidance from the American Academy of Pediatric Dentistry American Academy of Pediatric Dentistry. Accessed 17 December, 2023. https://www.aapd.org/globalassets/sdf-guidance-for-physicians_aapd_2023.pdf
12. Fung MHT, Duangthip D, Wong MCM, Lo ECM, Chu CH. Randomized Clinical Trial of 12% and 38% Silver Diamine Fluoride Treatment. *Journal of dental research*. Feb 2018;97(2):171-178. doi:10.1177/0022034517728496
13. Horst JA, Heima M. Prevention of Dental Caries by Silver Diamine Fluoride. *Compend Contin Educ Dent*. Mar 2019;40(3):158-163; quiz 164.

14. Ruff RR, Barry Godin TJ, Niederman R. Noninferiority of Silver Diamine Fluoride vs Sealants for Reducing Dental Caries Prevalence and Incidence: A Randomized Clinical Trial. *JAMA Pediatr.* Apr 1 2024;178(4):354-361. doi:10.1001/jamapediatrics.2023.6770
15. Ruff RR, Barry-Godin T, Niederman R. Effect of Silver Diamine Fluoride on Caries Arrest and Prevention: The CariedAway School-Based Randomized Clinical Trial. *JAMA Netw Open.* Feb 1 2023;6(2):e2255458. doi:10.1001/jamanetworkopen.2022.55458
16. Ruff RR, Godin TB, Niederman R. The effectiveness of medical nurses in treating children with silver diamine fluoride in a school-based caries prevention program. *Community dentistry and oral epidemiology.* Oct 24 2023;doi:10.1111/cdoe.12925
17. Chairside Guide: Silver Diamine Fluoride in the Management of Dental Caries Lesions. *The Reference Manual of Pediatric Dentistry* American Association of Pediatric Dentistry. https://www.aapd.org/media/Policies_Guidelines/R_ChairsideGuide.pdf
18. Ruff RR, Niederman R. Silver diamine fluoride versus therapeutic sealants for the arrest and prevention of dental caries in low-income minority children: study protocol for a cluster randomized controlled trial. *Trials.* Sep 26 2018;19(1):523. doi:10.1186/s13063-018-2891-1
19. Batchelor PA, Sheiham A. Grouping of tooth surfaces by susceptibility to caries: a study in 5-16 year-old children. *BMC oral health.* Oct 28 2004;4(1):2. doi:10.1186/1472-6831-4-2
20. Liu BY, Lo EC, Chu CH, Lin HC. Randomized trial on fluorides and sealants for fissure caries prevention. *Journal of dental research.* Aug 2012;91(8):753-8. doi:10.1177/0022034512452278
21. Kopycka-Kedzierawski DT, Billings RJ. Application of nonhomogenous Markov models for analyzing longitudinal caries risk. Research Support, N.I.H., Extramural. *Community dentistry and oral epidemiology.* Apr 2006;34(2):123-9. doi:10.1111/j.1600-0528.2006.00268.x
22. Nguyen TM, Tonmukayakul U, Warren E, Cartwright S, Liew D. A Markov cost-effective analysis of biannual fluoride varnish for preventing dental caries in permanent teeth over a 70-year time horizon. *Health Promot J Austr.* Apr 2020;31(2):177-183. doi:10.1002/hpja.283
23. Jackson C. Multi-State Models for Panel Data: The msm Package for R. *Journal of Statistical Software.* 01/04 2011;38(8):1 - 28. doi:10.18637/jss.v038.i08
24. Pak D, Li C, Todem D, Sohn W. A Multistate Model for Correlated Interval-Censored Life History Data in Caries Research. *Journal of the Royal Statistical Society Series C: Applied Statistics.* 2016;66(2):413-423. doi:10.1111/rssc.12186