

Title: School-based caries prevention using silver diamine fluoride: A pragmatic randomized trial in low-income rural children

Authors: Ryan Richard Ruff, PhD^{12*}; Richard Niederman, DMD¹

Affiliations:

1. Department of Epidemiology & Health Promotion, New York University College of Dentistry, New York, NY, 10010
2. New York University School of Global Public Health, New York, NY, 10010

*Address for correspondence:

Ryan Richard Ruff
380 2nd Avenue, Room 3-09
New York, NY, 10010
ryan.ruff@nyu.edu
212-998-9663

Richard Niederman
380 2nd Avenue, Room 3-03
New York, NY, 10010
r.niederman@nyu.edu
917-280-5920

June 2024

Abstract

Background: Dental caries is the world's most prevalent noncommunicable disease, disproportionately affecting children from low-income rural areas. This study assessed the effectiveness of using silver diamine fluoride (SDF) for school-based caries prevention.

Methods: The CariedAway 3.0 study was a cluster-randomized pragmatic non-inferiority trial comparing SDF to sealants and atraumatic restorations (ART) for the prevention and control of dental caries. All participants also received fluoride varnish. Analysis consisted of multilevel mixed-effects logistic and negative binomial regression for the prevalence and incidence of dental caries, respectively, and a non-inferiority margin of 10% for the difference between groups was used. Dental caries was defined as an ICDAS score of four or greater.

Results: A total of 3345 children were enrolled in the trial, however there was a large proportion of children who were noncompliant and received external dental care. In adjusted analyses of compliant participants (n=1083, consisting of 543 in the SDF group and 540 in the sealant and ART group), there was no difference in the weighted risk difference between treatment groups (B=0.003, 95% CI = -0.0001, 0.0008). The odds of caries was elevated in the SDF group in longitudinal analyses (OR = 1.35, 95% CI = 0.86, 2.11) but was not significant and was below the non-inferiority margin. There were no significant differences between groups for caries incidence in adjusted models (IRR = 1.19, 95% CI = 0.81, 1.74). Results for intent to treat analyses were similar to that of per-protocol.

Discussion: In this school-based clinical trial, the prevalence of dental caries in children treated with SDF and fluoride varnish was non-inferior compared to those treated with sealants, ART, and fluoride varnish, although the overall risk was slightly higher. Unfortunately, a high rate of dropout and participant noncompliance was observed, likely due to the impacts of COVID-19 on study procedures. As a result, observed effects may be unreliable beyond the short-term.

Trial Registration: NCT03448107

Introduction

Dental caries is a public health crisis and is the world's most common non-communicable disease¹, with more than 2.5 billion people having caries in the primary or permanent dentition². In addition to infection and pain, poor oral health is associated with reduced academic performance³ and lower quality of life⁴. Over fifty years ago, the “inverse care law” demonstrated that as the need for healthcare increases in a population, access decreases⁵. This inequity largely persists today, with those living in rural areas facing lower access to dental care⁶ and being less likely to have dental insurance^{7,8}. As a result, these populations are disproportionately affected by caries and other oral diseases^{9,10}.

Common interventions to reduce oral health access barriers in rural populations include mobile dental clinics, teledentistry, and dental outreach programs and educational initiatives⁶. Similarly, school-based caries prevention can successfully promote healthy behaviors and prevent oral diseases, providing toothbrushing, fluoride supplementation, and outpatient services¹¹, dental screening and oral health education¹², dental sealants¹³, and atraumatic restorations¹⁴. These approaches can support the complete integration of oral health in school systems, designing interventions together with the educational sector to leverage schools in advancing oral health¹⁵. However, the implementation and sustainability of these programs remains a consistent challenge¹⁶.

In 2022, the WHO added silver diamine fluoride (SDF) to its Model List of Essential Medicines¹⁷. As an effective strategy to control and manage existing dental caries¹⁸, SDF is cost-efficient¹⁹, fast to apply²⁰, and can be effectively administered by both dental hygienists and nurses²¹. More recently, data indicates that SDF is also effective in preventing dental caries^{22,23}. Introducing silver diamine fluoride into school caries prevention may dramatically increase access to care and obviate existing implementation barriers. The objective of the *CariedAway 3.0* trial was to assess the feasibility and effectiveness of integrating silver diamine fluoride into a rural, school-based caries

prevention program²⁴. We present findings on the prevalence and incidence of dental caries in predominantly low-income children receiving SDF, compared to dental sealants.

Methods

Design and Participants

The CariedAway 3.0 (“CariedAway”) study was a longitudinal, cluster-randomized, pragmatic non-inferiority trial conducted from 20 September 2017 to 30 June 2023. The study is reported using the Enhancing the Quality and Transparency of Health Research (EQUATOR) guidelines, was registered at www.clinicaltrials.gov (#NCT03448107), and was approved by the New York University School of Medicine Institutional Review Board (#17-01221). A trial protocol is available²⁴.

CariedAway was conducted in eligible primary schools in five counties in New Hampshire, USA, with a student population consisting of predominantly rural white children. Any primary school with a previously employed caries prevention program, with at least 40% of enrolled children being from low-income families (“Title 1”), and located in a health professional shortage area was eligible for inclusion. Within participating schools, all children with informed consent and assent were eligible to receive care, however inclusion into the research study was restricted to children between the ages of 5 and 12 years.

Clinical Assessment

All study participants received a dental screening, toothbrush cleaning, and oral hygiene instruction, followed by the allocated interventions. Screening and treatment were provided in a room designated by the school (e.g., library, empty classroom, or conference room). Visual-tactile assessments of all tooth surfaces were performed with the child supine in a portable dental chair using a disposable mirror, disposable plastic explorer, and dental light. No hard or soft tissue was removed from carious lesions beyond cleaning with a toothbrush or explorer.

Interventions

This two-arm trial included an experimental condition of silver diamine fluoride (Elevate Oral Care, Advantage Arrest Silver Diamine Fluoride 38%, 2.24 F-ion mg/dose) and an active comparator of dental sealants (GC Equia Forte) and atraumatic restorations. Both groups also received fluoride varnish (Benco Iris 5% NaF, or Elevate Oral Care FluoriMax 2.5% NaF for those with nut allergies). The original protocol stipulated a twice-yearly dosage frequency.

For the experimental treatment, one drop (0.05 ml) of silver diamine fluoride was dispensed for each participant. Posterior tooth surfaces were dried, after which SDF was applied using a micro-brush to all asymptomatic carious lesions and to all pits and fissures on primary and permanent posterior teeth for thirty seconds. Fluoride varnish was then applied to all teeth to mask the bitter, metallic aftertaste of SDF.

For the active control, pits and fissures on all posterior teeth (primary and permanent) were treated for 10 seconds with 20% polyacrylic acid (GC Cavity Conditioner), dried with a cotton roll or 2"x2" swab. Glass ionomer capsules, triturated for 8-10 seconds, was then delivered with a capsule applicator (CG Capsule Applicator). A moistened finger then pressed the glass ionomer into the pits and fissures, followed by a moistened, cotton-tipped applicator to ensure margin sealing. Subsequent flossing removed any excess interproximal material. All asymptomatic, frank cavitated lesions were treated similarly to pits and fissures, simultaneously, with the same material and technique. For Class II lesions, the applicator tip was placed at the base of the interproximal lesion, moved occlusally, and then mesially or distally. Moist finger pressure and moist cotton tip applicator pressure secured the glass ionomer in a manner similar to sealants. Subsequent interproximal flossing removed excess interproximal material. Fluoride varnish was then placed on all teeth.

Diagnosis and Outcomes

The primary outcome for the CariedAway trial was dental caries, assessed via the total number of participants presenting with new decay and the number of sound teeth treated with either SDF or sealants and ART that developed new caries over time. At each study observation, each tooth surface was assessed as sound (no evidence of decay), sealed (fossa, pits, and fissures visibly and completely sealed), restored (including fillings with amalgam, resin, glass ionomer, or crowns), decayed, or arrested decay (hard black surface). Decay diagnosis was determined by frank cavitated lesions defined as a score of 4 or higher on the International Caries Detection and Assessment System²⁵ (ICDAS).

Randomization and Masking

Schools participating in CariedAway were block-randomized to either condition using a random number generator. As a pragmatic trial, blinding was not feasible.

Impact of COVID-19

Due to COVID-19, schools participating in the CariedAway trial were closed from 15 March 2020 to 1 January 2021 and all study procedures were suspended. As a result, the biannual treatment schedule was unable to be maintained. Additionally, study enrollment and follow-up with participants was affected, as schools and subjects were either unable to be enrolled or lost to follow-up due to the extended duration between study observations.

Statistical Analysis

Participants were first ordered sequentially by observational period and descriptive statistics for sociodemographic (e.g., sex, race/ethnicity, age) and clinical (baseline decay, preexisting sealants) variables were computed (N/% for categorical indicators, mean/SD for continuous ones). For teeth treated with either SDF or sealants and ART, we first calculated the person-level prevalence of untreated decay at each observation and the total number of decayed teeth diagnosed, estimating the crude incidence rate. Given the variable rates of follow-up in study participants, we computed the rate difference using weighted least squares regression, adjusting for age and sex, and report estimates of any

new decay that was observed²⁶. As decay could have occurred at any point between observations, we subsequently modeled the prevalence and incidence of caries by study observation using multilevel mixed-effects logistic and negative binomial regression, respectively, including random intercepts for school and patient. Longitudinal analyses further adjusted for the presence of baseline decay and the number of teeth with verified fillings, reflecting treatment for caries that was received outside of the study. Since the prevalence of subjects with caries is a negative outcome, we compared the upper limit of the $(1-2\alpha)$ confidence interval of silver diamine fluoride to the inverse non-inferiority margin on the odds ratio scale (2.22)²⁷.

We also conducted a series of supplementary analyses. We first compared the prevalence of caries for all participants six months after their baseline treatment, which avoids disparities in attrition between groups that was observed in later visits. Differences in caries prevalence used two-sample proportion tests with bootstrapped confidence intervals (10,000 replications), adjusting for the clustering effect of schools. In multilevel analyses, we then considered multiple interaction effects including treatment group and baseline decay, observational period and baseline decay, and the quadratic effect of the observational period. Finally, although participant crossover in this study was minimal there was a substantial loss to follow-up and treatment noncompliance, the latter of which being due to receiving dental care outside of the school-based program. To supplement estimates for the potential causal effect of treatment, we compared study dropouts between treatment groups and conducted an intent to treat analysis²⁸. For this latter approach, we first estimated inverse probability weights using regression conditioning on continuation, followed by weighted generalized estimating equations for caries prevalence. Analysis was performed in Stata v18 (StataCorp, LLC) and R v 4.3 (R Foundation).

Results

A total of 3670 children enrolled in CariedAway New Hampshire to receive care, of which 3345 met inclusion criteria for evaluation. There were 1558 (46.58%) participants in the

SDF group and 1787 (53.42%) in the sealant and ART group (Table 1, Figure 1). The intraclass correlation for school-level (n=35) clustering of decay prevalence was 0.019. The overall baseline prevalence of untreated caries in treatable teeth was 14.9%, or 14.2% (95% CI = 12.5, 15.9) in the SDF group and 15.4% (95% CI = 13.8, 17.1) in the sealant and ART group. Over 70% of the sample did not report race/ethnicity, and 26% of participants were white. The average age at baseline was 7.2y (SD=1.78). The prevalence of preexisting sealants was 49.8% (44% in the SDF group, 54.8% in the sealant and ART group). These subjects were removed prior to adjusted analyses (n=1665).

There were 487 participants who did not complete a post-baseline observation (229 [47%] in the SDF group, 258 [53%] in the sealant and ART group). There were no significant differences in the prevalence of baseline decay between groups in those lost to follow-up (Supplementary Table 1), however dropouts in the sealant group were more likely to be white, while those in the SDF were more likely to have race/ethnicity unreported. Additionally, 10 (1.8%) participants in the analytic set originally assigned to receive sealants and ART would later crossover to a school assigned to receive SDF, and 22 (3.4%) of those assigned to receive SDF switched to receive sealants and ART. Finally, 184 (28%) participants in the SDF group presented at a follow-up observation with dental sealants (indicative of having received them from an external provider), 52 (13%) of which were observed at the first post-baseline visit. In these cases, proceeding observations for noncompliant participants were removed from analysis.

For the remaining subjects (n=1083; 543 in the experimental group and 540 in the active control), the prevalence of untreated decay was 16.7% (95% CI = 14.5, 18.9), or 14.7% (95% CI = 11.7, 17.7) in the SDF group and 18.7% (95% CI = 15.4, 22.0) in the sealant and ART group. A total of 732 (68%) subjects had a maximum of one post-baseline observation, 138 (13%) had two, 108 (10%) had three, and 66 (6%) had four. The average number of days between each of these observational periods was 203, 351, 370, and 321, respectively (3.4 years). Less than 4% of study participants had more than four post-baseline observations.

The total number of teeth with caries (Table 2) observed in the SDF group was 210 over 186,235 days, whereas tooth-level caries incidence in the sealant and ART group was 179 over 281,154 days, resulting in a crude incidence rate difference of 0.0005 (95% CI = .0003, .0007) and a ratio of 1.77 (95% CI = 1.44, 2.17), indicating higher incidence in the SDF group.

In adjusted analyses, the weighted risk difference (Table 3) for the number of carious teeth between the two groups was not significantly different (B = .0003, 95% CI = -0.0001, 0.0008). For caries prevalence (Table 4), the overall odds significantly decreased over time (OR = 0.75, 95% CI = 0.64, 0.88). Compared to those receiving sealants and ART, the odds of decay in the SDF group was 1.35 (95% CI = 0.86, 2.11; 90% CI = 0.92, 1.97), below the non-inferiority threshold. Similarly, the incidence of caries decreased over time (IRR = 0.82, 95% CI = 0.75, 0.90), and there were no significant differences between treatment groups (IRR = 1.19, 95% CI = 0.81, 1.74).

For supplementary analyses, the difference in caries prevalence six months after initial treatment was 0.8% (95% CI = -5.4, 3.9), below the non-inferiority threshold. Results from multiplicative models in adjusted analyses indicate that those in the SDF group had a significantly higher rate of caries over time compared to those receiving sealants (IRR = 1.27, 95% CI = 1.06, 1.53). Those with baseline decay had lower rates over time (IRR = 0.45, 95% CI = 0.38, 0.54), reflecting the effect of the initial treatment of existing lesions. Finally in ITT analyses (Supplementary Table 2), the odds of decay significantly decreased over time (OR = 0.70, 95% CI = 0.61, 0.80), and the odds comparing SDF to sealants and ART was 1.28 (95% CI = 0.97, 1.70; 90% CI = 1.02, 1.62).

Discussion

In this randomized clinical trial and school-based caries prevention program, we observed no differences in caries prevalence six months after initial treatment with either silver diamine fluoride or dental sealants with atraumatic restorations. In adjusted analyses, the

overall prevalence of untreated decay and the incidence rate of new caries significantly decreased over time, and SDF was non-inferior to dental sealants and ART over 3.5 years. Results for adjusted ITT analyses were similar to per-protocol. We conclude that integrating silver diamine fluoride into school-based caries prevention may be an effective strategy to increase access to care and mitigate the burden of caries. However, due to many study disruptions from COVID-19, observed effects may be unreliable beyond short-term findings.

Growing evidence supports the suitability of silver diamine fluoride for the primary prevention of dental caries. Prior estimates of the incidence of caries in children treated with SDF ranges between 23% to 52% less than those receiving placebo²², compared to 65% to 70% less in those receiving dental sealants²². Similarly, a 2023 randomized trial concluded that SDF was more effective in preventing caries in primary teeth compared to fluoride varnish²⁹, a review of SDF prevention studies estimated a preventive fraction of 61% for SDF compared to controls and a tooth number needed to treat of 4 and 12.1 for preventing caries in the primary dentition and first permanent molars, respectively²², and no differences were found between SDF, fluoride varnish, and resin sealants in the two-year incidence of caries in permanent molars³⁰. More recently, a large pragmatic trial conducted in predominantly low-income minority children living in urban areas reported nearly identical prevalence and incidence of caries over time in participants receiving SDF or dental sealants^{23,31}. Caries diagnosis in this prior study was determined by ICDAS scores of 5 (distinct cavity with visible dentin) or 6 (extensive, more than half the surface, distinct cavity with visible dentin). In contrast, the present results expand caries diagnosis to ICDAS scores of >3, including lesions with underlying dark shadow from dentin with or without enamel breakdown. This additional criteria may have contributed to the higher estimates of caries prevalence and incidence in the presented study.

School-based caries prevention with dental sealants reduces caries risk and disability-adjusted life years³². However, this approach can be underused due to prohibitive costs or

local policies requiring that dentists be present in a supervisory capacity¹⁶. Considering the other benefits of SDF including cost-effectiveness¹⁹, patient tolerability³³, efficiency of treatment time²⁰, and relative ease of application²², integrating silver diamine fluoride into school-based programs may result in more children being treated in less time and cost. Indeed, prior studies for SDF notes particular utility for dental public health programs and community approaches to caries prevention, especially amongst those in dental shortage areas or where sealants are otherwise infeasible³⁰. Additionally, while the US Preventive Services Task Force currently holds that there is insufficient data to assess the benefits and harms of oral disease prevention conducted by primary care clinicians³⁴, there is preliminary evidence that SDF can be effectively applied by physicians³⁵ and nurses^{21,23}. With training and support, schools in extremely under-resourced areas may be able to leverage existing school nurse personnel and SDF in creating a sustainable approach to school-based caries prevention. Alternatively, the use of SDF in school-based caries prevention can be implemented as an early interventional strategy, providing efficient options for caries prevention and control while preserving more limited and comprehensive resources, such as dental sealants, for children with permanent dentition.

There are multiple limitations in this study that limit the validity and generalizability of our results. First, our outcomes for decay did not consider prior states of individual teeth, and as a result could reflect decay emerging either from previously sound teeth (primary prevention failure) or those that were decayed and treated (secondary prevention or caries management failure). It is also possible that permanent teeth erupting between observational visits could have developed decay prior to treatment. Additionally, disruptions in study activities due to school closures resulting from COVID-19 meant that the original protocol for treatment frequency could not be followed, and the planned biannual treatment was inconsistent. As a result, the time between observations ranged from 7 to 13 months. These disruptions also negatively influenced follow-up in study participants: the overall follow-up rate was approximately 33%, there were considerable reductions in the number of participants who were observed at successive visits, and a

number of schools were unable to be seen for follow-up observations. There was also a high prevalence of preexisting sealants in both groups, and their exclusion substantially reduced the number of participants viable for analysis. Although the crossover rate between treatment groups was minimal, a large proportion of children in the SDF group were noncompliant due to receiving dental sealants from providers outside of the school-based program. This exclusion resulted in greater loss to follow-up in the experimental group, and could further bias results. As noncompliance primarily resulted in SDF participants receiving the interventions provided in the active control arm, it might be expected that the effect of treatment assignment is more biased towards the null than the effect of treatment itself, and this was indeed observed. While our methods considered a number of approaches to mitigate these limitations, it is likely that unobservable characteristics introduced bias into our results, and the presented findings must be considered with caution.

In conclusion, despite negative impacts of COVID-19, there may be potential benefits of incorporating silver diamine fluoride into school-based caries prevention in order to increase access to critical oral healthcare for high-risk, low-resource populations. Further study is warranted.

Funding

National Institute on Minority Health and Health Disparities (NIMHD) #R01MD011526,
National Institutes of Health

Author Contributors

Concept and design: All authors

Acquisition, analysis, or interpretation of the data: All authors

Drafting of the Manuscript: RRR

Critical review of manuscript: All authors

Statistical Analysis: RRR

Obtained funding: All authors

Administrative, technical, or material support: All authors

Supervision: All authors

Data Sharing

Data available: Yes

Data types: Data dictionary

How to access data: Data dictionaries will be available to interested researchers upon request to the authors (ryan.ruff@nyu.edu)

When available: beginning date: 06-01-2025

Supporting Documents

Document types: Informed consent form

How to access documents: Informed consent forms will be available to interested researchers upon request to the authors (ryan.ruff@nyu.edu)

When available: beginning date: 06-01-2025

Additional Information

Who can access the data: Interested researchers upon request to the authors (ryan.ruff@nyu.edu)

Types of analyses: For any purpose

Mechanisms of data availability: After approval of a proposal and a signed data access agreement.

Declaration of Interest

The authors declare no competing interests.

Acknowledgements

To be added.

References

1. Qin X, Zi H, Zeng X. Changes in the global burden of untreated dental caries from 1990 to 2019: A systematic analysis for the Global Burden of Disease study. *Heliyon*. Sep 2022;8(9):e10714. doi:10.1016/j.heliyon.2022.e10714
2. Global oral health status report: towards universal health coverage for oral health by 2030 (World Health Organization) (2023).
3. Ruff RR, Senthil S, Susser SR, Tsutsui A. Oral health, academic performance, and school absenteeism in children and adolescents: A systematic review and meta-analysis. *J Am Dent Assoc*. Feb 2019;150(2):111-121 e4. doi:10.1016/j.adaj.2018.09.023
4. Ozsin Ozler C, Cocco P, Cakir B. Dental caries and quality of life among preschool children: a hospital-based nested case-control study. *British Dental Journal*. 2020/11/26 2020;doi:10.1038/s41415-020-2317-9
5. Hart JT. The inverse care law. *Lancet*. Feb 27 1971;1(7696):405-12. doi:10.1016/s0140-6736(71)92410-x
6. Theriault H, Bridge G. Oral health equity for rural communities: where are we now and where can we go from here? *British dental journal*. Jul 2023;235(2):99-102. doi:10.1038/s41415-023-6058-4
7. Henderson-Frost J, Deutchman M. Eight Ways to Mitigate US Rural Health Inequity. *AMA J Ethics*. Jan 1 2022;24(1):E73-79. doi:10.1001/amajethics.2022.73
8. Northridge ME, Kumar A, Kaur R. Disparities in Access to Oral Health Care. *Annual review of public health*. Apr 2 2020;41:513-535. doi:10.1146/annurev-publhealth-040119-094318
9. Crouch E, Nelson J, Merrell MA, Martin A. The oral health status of America's rural children: An opportunity for policy change. *J Public Health Dent*. Dec 2021;81(4):251-260. doi:10.1111/jphd.12444
10. Nath S, Sethi S, Bastos JL, et al. The Global Prevalence and Severity of Dental Caries among Racially Minoritized Children: A Systematic Review and Meta-Analysis. *Caries Res*. 2023;57(4):485-508. doi:10.1159/000533565
11. Ruff RR, Monse B, Duijster D, Itchon GS, Naliponguit E, Benzian H. Effectiveness of school-based strategies to prevent tooth decay in Filipino children: A cluster-randomized trial. *Community dentistry and oral epidemiology*. Apr 2023;51(2):219-227. doi:10.1111/cdoe.12729
12. Amalia R, Schaub RM, Stewart RE, Widyanti N, Groothoff JW. Impact of school-based dental program performance on the oral health-related quality of life in children. *J Investig Clin Dent*. Feb 2017;8(1)doi:10.1111/jicd.12179
13. Gooch BF, Griffin SO, Gray SK, et al. Preventing dental caries through school-based sealant programs: updated recommendations and reviews of evidence. *J Am Dent Assoc*. Nov 2009;140(11):1356-65.
14. Starr JR, Ruff RR, Palmisano J, Goodson JM, Bukhari OM, Niederman R. Longitudinal caries prevalence in a comprehensive, multicomponent, school-based prevention program. *J Am Dent Assoc*. Mar 2021;152(3):224-233 e11. doi:10.1016/j.adaj.2020.12.005
15. Wordley V, Vasthare R, Lee H. Oral Health for all Schools: A Call to Integrate Oral Health in School Systems. *J Sch Health*. Apr 2 2024;doi:10.1111/josh.13450

16. Patel N, Griffin SO, Linabarger M, Lesaja S. Impact of school sealant programs on oral health among youth and identification of potential barriers to implementation. *The Journal of the American Dental Association*. 2022;doi:10.1016/j.adaj.2022.05.011
17. WHO Model Lists of Essential Medicines. Accessed 10 August, 2022. <https://www.who.int/groups/expert-committee-on-selection-and-use-of-essential-medicines/essential-medicines-lists>
18. Crystal YO, Niederman R. Evidence-Based Dentistry Update on Silver Diamine Fluoride. *Dent Clin North Am*. Jan 2019;63(1):45-68. doi:10.1016/j.cden.2018.08.011
19. Johnson B, Serban N, Griffin PM, Tomar SL. Projecting the economic impact of silver diamine fluoride on caries treatment expenditures and outcomes in young U.S. children. *J Public Health Dent*. Sep 2019;79(3):215-221. doi:10.1111/jphd.12312
20. Chairsides Guide: Silver Diamine Fluoride in the Management of Dental Caries Lesions. *The Reference Manual of Pediatric Dentistry* American Association of Pediatric Dentistry. https://www.aapd.org/media/Policies_Guidelines/R_ChairsidesGuide.pdf
21. Ruff RR, Godin TB, Niederman R. The effectiveness of medical nurses in treating children with silver diamine fluoride in a school-based caries prevention program. *Community dentistry and oral epidemiology*. Oct 24 2023;doi:10.1111/cdoe.12925
22. Horst JA, Heima M. Prevention of Dental Caries by Silver Diamine Fluoride. *Compend Contin Educ Dent*. Mar 2019;40(3):158-163; quiz 164.
23. Ruff RR, Barry Godin TJ, Niederman R. Noninferiority of Silver Diamine Fluoride vs Sealants for Reducing Dental Caries Prevalence and Incidence: A Randomized Clinical Trial. *JAMA Pediatr*. Apr 1 2024;178(4):354-361. doi:10.1001/jamapediatrics.2023.6770
24. Ruff RR, Niederman R. Comparative effectiveness of treatments to prevent dental caries given to rural children in school-based settings: protocol for a cluster randomised controlled trial. *BMJ Open*. Apr 13 2018;8(4):e022646. doi:10.1136/bmjopen-2018-022646
25. Ismail AI, Sohn W, Tellez M, et al. The International Caries Detection and Assessment System (ICDAS): an integrated system for measuring dental caries. *Community dentistry and oral epidemiology*. Jun 2007;35(3):170-8. doi:10.1111/j.1600-0528.2007.00347.x
26. Xu Y, Cheung YB, Lam KF, Tan SH, Milligan P. A simple approach to the estimation of incidence rate difference. *Am J Epidemiol*. Aug 1 2010;172(3):334-43. doi:10.1093/aje/kwq099
27. Tunes da Silva G, Logan BR, Klein JP. Methods for equivalence and noninferiority testing. *Biol Blood Marrow Transplant*. Jan 2009;15(1 Suppl):120-7. doi:10.1016/j.bbmt.2008.10.004
28. Walker E, Nowacki AS. Understanding equivalence and noninferiority testing. *J Gen Intern Med*. Feb 2011;26(2):192-6. doi:10.1007/s11606-010-1513-8
29. Deshpande A, Tailor B, Jain A, Shah YS, Jaiswal V. Effectiveness of Silver Diamine Fluoride and Sodium Fluoride Varnish in Preventing New Carious Lesion in Preschoolers: A Randomized Clinical Trial. *International Journal of Clinical Pediatric Dentistry*. 2023;16(1):1-8. doi:10.5005/jp-journals-10005-2488
30. Liu BY, Lo EC, Chu CH, Lin HC. Randomized trial on fluorides and sealants for fissure caries prevention. *Journal of dental research*. Aug 2012;91(8):753-8. doi:10.1177/0022034512452278
31. Ruff RR, Barry-Godin T, Niederman R. Effect of Silver Diamine Fluoride on Caries Arrest and Prevention: The CariedAway School-Based Randomized Clinical Trial. *JAMA Netw Open*. Feb 1 2023;6(2):e2255458. doi:10.1001/jamanetworkopen.2022.55458

32. Griffin S, Naavaal S, Scherrer C, Griffin PM, Harris K, Chattopadhyay S. School-Based Dental Sealant Programs Prevent Cavities And Are Cost-Effective. *Health Aff (Millwood)*. Dec 1 2016;35(12):2233-2240. doi:10.1377/hlthaff.2016.0839
33. Seifo N, Cassie H, Radford JR, Innes NPT. "I guess it looks worse to me, it doesn't look like there's been a problem solved but obviously there is": a qualitative exploration of children's and their parents' views of silver diamine fluoride for the management of carious lesions in children. *BMC oral health*. Jul 23 2021;21(1):367. doi:10.1186/s12903-021-01730-w
34. Barry MJ, Nicholson WK, Silverstein M, et al. Screening and Preventive Interventions for Oral Health in Children and Adolescents Aged 5 to 17 Years: US Preventive Services Task Force Recommendation Statement. *JAMA : the journal of the American Medical Association*. Nov 7 2023;330(17):1666-1673. doi:10.1001/jama.2023.21408
35. Bernstein RS, Johnston B, Mackay K, Sanders J. Implementation of a primary care physician-led Cavity Clinic using silver diamine fluoride. *J Public Health Dent*. Sep 2019;79(3):193-197. doi:10.1111/jphd.12331

Table 1: Participant descriptive statistics

	Overall		SDF		Sealants	
	N	%	N	%	N	%
Full sample	3345	100	1565	46.79	1780	53.21
Baseline decay (treatable teeth)	497	14.86 (13.7, 16.1)	221	14.12 (12.4, 15.8)	276	15.5 (13.8, 17.2)
Preexisting sealants	1665	49.78	688	43.96	977	54.89
Sex (male)	1686	50.40	778	49.71	908	51.01
Race/Ethnicity						
Hispanic/Latino	36	1.08	13	0.83	23	1.29
Black	30	1.97	16	1.02	14	0.79
White	868	25.95	346	22.11	522	29.33
Asian	29	0.87	10	0.64	19	1.07
More than one	19	0.57	10	0.64	9	0.51
Other	10	0.30	1	0.06	9	0.51
Unreported	2353	70.34	1169	74.40	1184	66.52
Baseline age (years)	7.2	1.8	7.0	1.8	7.3	1.8

Table 2: Caries prevalence and incidence over time (for teeth receiving treatment)

Obs. # (Exp/Control)	Caries Prevalence				Caries Incidence	
	Sealant		SDF		Sealant	SDF
	N	%	N	%	N	N
1 (543/540)	101	18.70	80	14.73	242	183
2 (543/540)	63	11.67	67	12.43	131	150
3 (145/202)	19	9.41	24	16.55	33	42
4 (78/133)	4	3.01	8	10.26	7	10
5 (29/76)	4	5.26	5	17.24	6	8
6 (5/34)	1	2.94	0	0	1	0

Table 3: Weighted risk difference of dental caries comparing SDF to sealant participants

Variable	B	SE	p	95%L	95%U
SDF (vs sealant)	.0003	.0002	.127	-.0001	.0008
Age	-.0002	.0001	.003	-.0004	-.0001
Sex	.0004	.0002	.072	-.00004	.0008
Baseline decay	.003	.0004	< .001	.002	.004

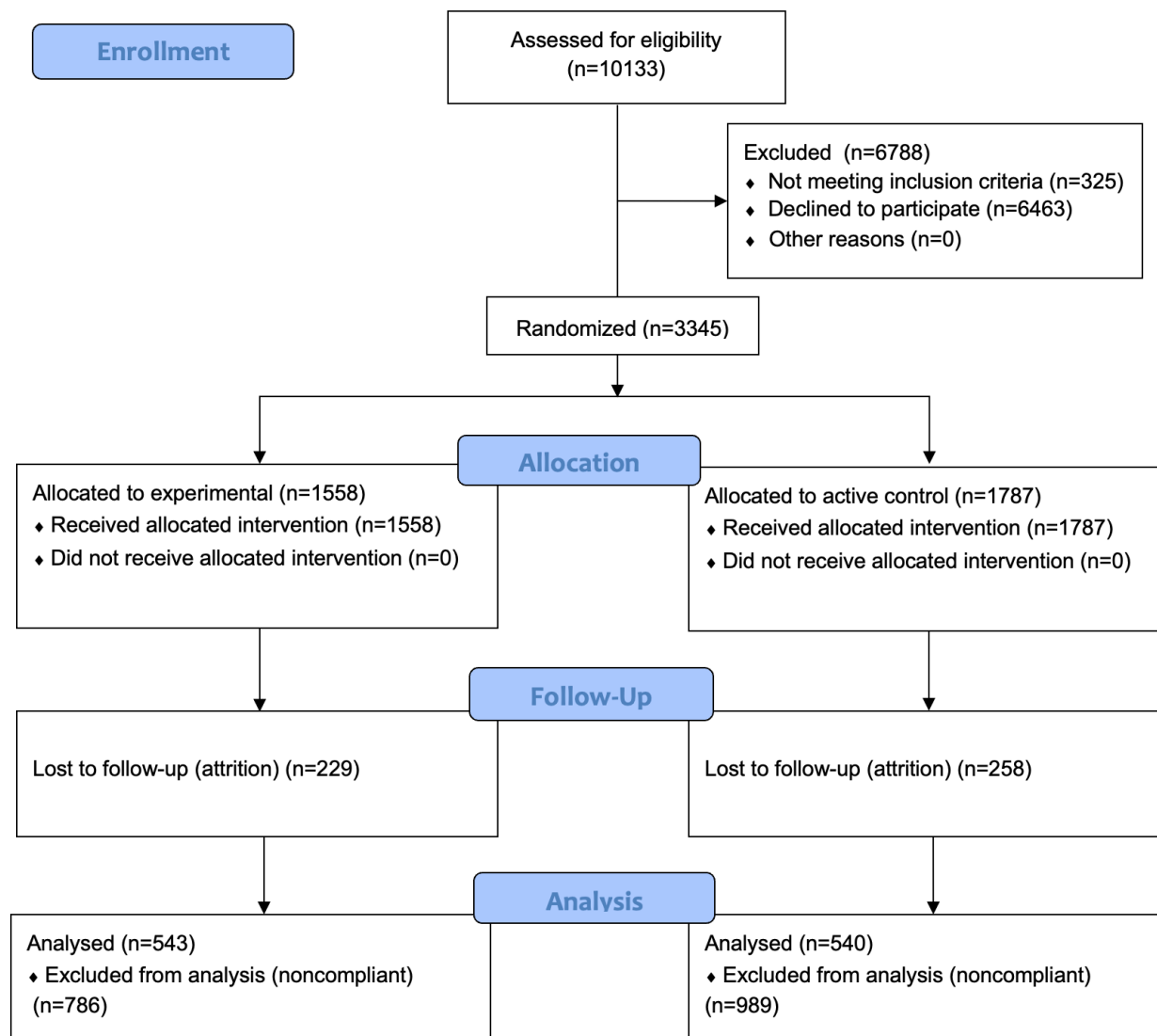
Table 4: Prevalence of untreated caries, adjusted

Variable	OR	SE	p	95%L	95%U
Observational visit	0.75	.06	< .001	0.64	0.88
SDF (vs sealant)	1.35	.31	.194	0.86	2.11
Baseline decay	145.0	50.1	< .001	78.0	288.5
Number of fillings	0.77	.03	< .001	0.70	0.83

Table 5: Incidence of untreated caries, adjusted

Variable	IRR	SE	p	95%L	95%U
Observational visit	0.82	.04	< .001	0.75	0.90
SDF (vs sealant)	1.19	.23	.373	0.81	1.74
Baseline decay	50.25	8.93	< .001	35.48	71.18
Number of fillings	0.80	.02	< .001	0.76	0.85

Figure 1: CONSORT Flow Diagram



Supplementary Table 1: Characteristics of participants lost to follow-up

	Overall		SDF		Sealants	
	N	%	N	%	N	%
Full sample	487	100	229	47.02	258	52.98
Baseline decay (treatable teeth)	94	19.30 (15.8, 22.8)	42	18.34 (13.3, 23.4)	52	20.16 (15.2, 25.1)
Preexisting sealants	1716	46.76	703	41.62	1013	51.14
Sex (male)	259	53.18	130	56.77	129	50.0
Race/Ethnicity						
Hispanic/Latino	10	2.05	4	1.75	6	2.33
Black	11	2.26	6	2.62	5	1.94
White	310	63.66	125	54.59	185	71.71
Asian	13	2.67	4	1.75	9	3.49
More than one	5	1.03	3	1.31	2	0.78
Other	2	0.41	0	0	2	0.78
Unreported	136	27.93	87	37.99	49	18.99
Baseline age (years)	6.6	1.72 (SD)	6.7	1.73 (SD)	6.5	1.71 (SD)

Supplementary Table 2: Prevalence of dental caries, adjusted (ITT)

Variable	OR	SE	p	95%L	95%U
Observational visit	0.70	.05	< .001	0.61	0.80
SDF (vs sealant)	1.28	.18	.079	0.97	1.70
Baseline decay	54.13	10.08	< .001	37.58	77.97
Number of fillings	0.83	.03	< .001	0.78	0.89