

## **Serum anti-nucleocapsid antibody level induced after primary infection is an immunological surrogate of protection against SARS-CoV-2 re-infection in hybrid immunity holders**

Sho Miyamoto DVM PhD<sup>1</sup>, Koki Numakura<sup>1</sup>, Ryo Kinoshita PhD<sup>2</sup>, Takeshi Arashiro MD<sup>1</sup>, Hiromizu Takahashi MD PhD<sup>3</sup>, Hiromi Hibino MD MPH<sup>4</sup>, Minako Hayakawa DDS<sup>1</sup>, Takayuki Kanno MD PhD<sup>1</sup>, Akiko Sataka<sup>1</sup>, Akira Ainai PhD<sup>1</sup>, Satoru Arai DVM PhD<sup>2</sup>, Motoi Suzuki MD PhD<sup>2</sup>, Daisuke Yoneoka PhD<sup>2</sup>, Takaji Wakita MD PhD<sup>5</sup>, Tadaki Suzuki MD PhD<sup>1,\*</sup>

<sup>1</sup>Department of Pathology, National Institute of Infectious Diseases, Tokyo, Japan

<sup>2</sup>Center for Surveillance, Immunization, and Epidemiologic Research, National Institute of Infectious Diseases, Tokyo, Japan

<sup>3</sup>Department of General Medicine, Juntendo University Faculty of Medicine, Tokyo, Japan

<sup>4</sup>Research and Development Coordination Office, National Center for Global Health and Medicine, Tokyo, Japan

<sup>5</sup>National Institute of Infectious Diseases, Tokyo, Japan

\*Correspondence:

Tadaki Suzuki, MD PhD

Department of Pathology

National Institute of Infectious Diseases

Toyama 1-23-1, Shinjuku, Tokyo 162-8640, Japan

Tel: +81-3-5285-1111; Fax: +81-3-5285-1189

E-mail: [tk Suzuki@niid.go.jp](mailto:tk Suzuki@niid.go.jp)

**NOTE: This preprint reports new research that has not been certified by peer review and should not be used to guide clinical practice.**

1 **Summary**

2 **Background**

3 In 2024, there was quite high seroprevalence of anti-spike (S) protein antibodies against SARS-CoV-2 in  
4 Japanese adults, owing to the high vaccination coverage by spike-based vaccines. Nevertheless, the  
5 COVID-19 epidemic continues, albeit with low rates of severe illness, and hybrid immunity holders are  
6 becoming more common in these populations. It is necessary to determine the immunological protection  
7 correlates against SARS-CoV-2 re-infection in individuals with hybrid immunity because the currently  
8 available immune correlates were established by analyzing individuals possessing vaccine-induced  
9 immunity only.

10

11 **Methods**

12 We conducted an ad hoc prospective cohort study to measure serum anti-SARS-CoV-2 antibody levels in  
13 4,496 Japanese adults as part of the national COVID-19 seroepidemiological survey. This ad hoc study  
14 evaluated the correlation between anti-S and anti-nucleocapsid (N) antibody levels at the first visit and their  
15 effectiveness in infection prevention until the second visit, including undiagnosed re-infections during the  
16 Omicron BA.5 epidemic period from December 2022 to March 2023.

17

18 **Findings**

19 We assessed the combined effect of anti-N and anti-S antibody levels and found that the reduced infection  
20 risk associated with anti-S antibody levels was limited. Contrastingly, higher levels of anti-N antibodies  
21 were strongly linked to a reduced infection risk in the entire cohort and in individuals with hybrid immunity.

22

23 **Interpretation**

24 We demonstrate a high correlation between reduced re-infection risk in hybrid immunity holders and high  
25 serum anti-N antibody levels, highlighting its potential as an immunological surrogate of protection against  
26 SARS-CoV-2 re-infection. The findings indicate that individuals with hybrid immunity are protected by a  
27 distinct form of immunity, beyond the presence of serum anti-S antibodies, which correlates with serum  
28 anti-N antibody levels.

29

30 **Funding**

31 The national COVID-19 seroepidemiological survey as a public health investigation was funded by the  
32 Ministry of Health, Labour and Welfare of Japan (MHLW). The ad hoc study based on the survey data as  
33 a research activity was funded by the Japan Agency for Medical Research and Development (AMED).

34

35

36 **Research in context**

37 **Evidence before this study**

38 We searched PubMed for studies published between January 1, 2022, and April 18, 2024, using the search  
39 terms “SARS-CoV-2” in combination with the search terms “antibody,” “Omicron,” AND “Correlate(s) of  
40 Protection,” with no language restrictions. Studies on the correlates of protection (CoP) using antibody  
41 titers to prevent Omicron infection have primarily been performed during Omicron BA.1/2 waves. One  
42 report indicated serum correlates of protection involving anti-spike (S) antibodies against Omicron BA.5,  
43 but the anti-S antibody titer thresholds varied according to previous infection histories. The investigation  
44 of quantitative immunological markers that serve as correlates of protection against infection among  
45 populations with various immune histories through vaccination and infection should include asymptomatic  
46 or undiagnosed re-infected cases, which would be useful for the development of next-generation COVID-  
47 19 vaccines that would control future COVID-19 epidemics. However, the immune correlates of protection  
48 against re-infection, especially among hybrid immunity holders with a history of infections and vaccination,  
49 remains unclear.

50

51 **Added value of this study**

52 Our study evaluated immunological markers for infection prevention in adults with both vaccination and  
53 infection histories during the Omicron sublineage epidemic period. The reduction in re-infection risk during  
54 the Omicron BA.5 epidemic period correlated with higher anti-nucleocapsid (N) antibody levels.  
55 Conversely, anti-S antibody titers induced by both vaccines and infections were less strongly correlated  
56 with protection. These results may account for the variation in anti-S antibody titers' effectiveness in  
57 protecting against Omicron sublineages, highlighting the usefulness of anti-N antibody levels for estimating  
58 the antiviral immunity level in hybrid immunity holders, the majority of the population with high  
59 vaccination coverage.

60

61 **Implications of all the available evidence**

62 Previously established immunological correlates for the prevention of SARS-CoV-2 infection are serum  
63 anti-S antibody levels and neutralization titers induced by vaccination or infection. In contrast, serum anti-  
64 N antibody responses are considered to be immune responses induced by infection. Our findings suggest  
65 that infection-induced anti-N antibody levels represent a non-mechanical immunological surrogate for  
66 protection against re-infection. According to the study's results, people with hybrid immunity have an  
67 unique immunity that correlates with serum anti-N antibody levels above and beyond the presence of serum  
68 anti-S antibodies, suggesting the potential for the development of a next-generation COVID-19 vaccine  
69 that can induce more effective immunity by mimicking hybrid immunity.

70

71 **Introduction**

72 Several spike-based vaccines against SARS-CoV-2 with mRNA or viral vector modalities were developed  
73 during the early COVID-19 pandemic and showed high efficacy in early clinical trials and during the pre-  
74 Omicron epidemic period. However, since the emergence of Omicron variants at the end of 2021, there  
75 have been continuous reports of Omicron sublineages with high resistance to humoral immunity induced  
76 by spike-based vaccines,<sup>1,2</sup> leading to a decline in vaccine effectiveness against infection.<sup>3,4</sup> Anti-spike (S)  
77 antibody titers against the ancestral strain induced by vaccination were identified as immunological  
78 correlates for protection against SARS-CoV-2 infection and severe disease during the pre-Omicron  
79 epidemic period.<sup>5-7</sup> While the prevention of severe disease through vaccination has been confirmed even  
80 during the Omicron BA.1/2 and BA.4/5 epidemic periods<sup>8</sup>, higher anti-spike (S) antibody titers against the  
81 ancestral strain were required for protection against infection during these periods compared to the pre-  
82 Omicron epidemic period.<sup>9-12</sup> Omicron sublineages tend to be selected for mutations with high humoral  
83 immune evasion capabilities,<sup>13</sup> and the protective effect of anti-S antibody titers against the ancestral strain  
84 needs to be re-evaluated in response to changes in the antigenicity of the emerging variants.<sup>14</sup> Recently,  
85 with the increase in the proportion of infected individuals, it has been reported that not only the neutralizing  
86 antibody titers and anti-S antibody titers induced by vaccination but also past infection history are  
87 significantly associated with a reduction in infection risk.<sup>15,16</sup> Additionally, recent reports have shown that  
88 mucosal secretory IgA antibody levels, elicited after infection, are associated with the prevention of SARS-  
89 CoV-2 infection and shedding.<sup>17,18</sup> Therefore, to accurately estimate the extent of the COVID-19 epidemic  
90 in the post-COVID-19 pandemic era, it is necessary to determine the immunological correlates of protection  
91 against SARS-CoV-2 re-infection in individuals with hybrid immunity due to both vaccination and  
92 infection.<sup>19</sup>

93 Evaluating the accurate potential of immunological correlates for preventing infection requires the  
94 assessment of asymptomatic and undiagnosed re-infected cases, which also influence the COVID-19  
95 epidemic dynamics. Recently, undiagnosed re-infections were reported to be prevalent, implying that  
96 analyses focusing only on symptomatic infections risk underestimating the re-infection risk.<sup>20,21</sup> Against  
97 this backdrop, this study conducted a nationwide cohort survey in Japan that involved two blood samplings  
98 and antibody tests during the Omicron BA.5 epidemic period (<https://cov-spectrum.org>) from December  
99 2022 to March 2023. By identifying infected individuals through diagnosis and seroconversion of infection-  
100 derived anti-nucleocapsid (N) antibodies, we included undiagnosed primary infections and re-infections as  
101 newly infected cases during the study period. We then evaluated the infection prevention efficacy of anti-  
102 S antibody titers and the combined effect of infection-related anti-N antibody levels during the Omicron  
103 BA.5 epidemic period by analyzing the association of combined serum anti-S and anti-N antibody levels  
104 with newly infected cases.

105

## 106 Results

### 107 Characteristics of the study participants and the antibody responses in newly infected cases

108 Of the 15,000 invitees for the national COVID-19 seroepidemiological survey conducted as a public health  
109 investigation, 8,157 participated in the December 2022 survey and 5,627 participated in the February to  
110 March 2023 survey (response rate: 37.5%; **Fig. 1**). We targeted the 5,627 individuals who participated in  
111 both surveys. Those who received any COVID-19 vaccine during the observation period were excluded  
112 (1,044 individuals) to eliminate the influence of the vaccination immune response during the study period.  
113 In addition, 87 individuals with a history of infection within 30 days before the initial test date were  
114 excluded (87 individuals) because the antibody response up to 30 days after infection is dynamic and  
115 difficult to accurately assess at this blood collection interval. Therefore, 4,496 individuals were enrolled for  
116 the ad hoc study. Additionally, hybrid immunity holders were defined as vaccinated individuals with a  
117 history of prior diagnoses of COVID-19 or the anti-N antibodies positive (anti-N antibody levels  $> 1.0$ ;  
118 cutoff index, [COI]) at the initial test.

119 Among participants without a history of infection at the time of the initial test, those who were diagnosed  
120 with COVID-19 after the initial test date or whose anti-N antibodies were seroconverted were regarded as  
121 newly infected cases. The median fold increase in anti-N antibody levels from the initial to the second test  
122 in newly infected cases with no hybrid immunity at the initial test date was 288.3 (IQR, 150.0–784.0; **Fig.**  
123 **2A**). In contrast, anti-S antibody titers in newly infected cases with no hybrid immunity at the initial test  
124 showed a limited increase (5.6-fold increase; IQR, 2.3–10.9; **Fig. 2B**) because the baseline level of anti-S  
125 antibody titers in this cohort was comparable with that of the booster vaccination due to high booster  
126 vaccination rate (71.2%; **Table 1**). Additionally, the correlation between the anti-S and anti-N antibody  
127 levels among all participants was low (**Fig. 2C**). This suggests that the anti-N antibody response induced  
128 by infection during the Omicron BA.5 endemic period is significantly larger and superior for the detection  
129 of infection compared to the anti-S antibody response induced by infection in this cohort.

130 Next, we estimated the dynamics of anti-N antibody responses in individuals diagnosed with primary  
131 infection or re-infection to understand the differences in anti-N antibody responses. We applied a statistical  
132 model for the anti-N antibody response dynamics after diagnosis for all primary infected and re-infected  
133 cases using data obtained from cases with only the listed diagnosis date (primary infection,  $n = 1218$ ; re-  
134 infection,  $n = 26$ ) (**Fig. 2D**). For primary infected cases, anti-N titers were estimated to peak 69 days post-  
135 diagnosis and drop below the positive threshold of 1.0 at 621 days (95% credible interval (CredI), 522–  
136 754). For re-infected cases, the peak level of anti-N-antibody was estimated as 4.8 times higher than that  
137 of primary infected cases, and the duration of antibody levels above 1.0 COI was estimated to be longer  
138 than that of primary infected cases. Using this model, we calculated the fold-increase in anti-N antibody  
139 levels from the pre-reinfection level to the level up to 200 days post-re-infection (**Fig. 2E**). Because the  
140 interval from the initial to the second test in this cohort was approximately 2 months the lowest fold-increase  
141 in anti-N antibody level from the pre-reinfection state to 60 days after re-infection was estimated to be four-  
142 fold or higher. These anti-N antibody response dynamics in those who were re-infected were consistent  
143 with previous reports using the same anti-N antibody detection kit.<sup>22,23</sup> These results suggest that a four-

144 fold increase in anti-N antibody levels from the initial test to the second test in this cohort was considered  
145 a re-infection during the study period. In individuals with hybrid immunity, the anti-N antibody levels of  
146 newly infected cases were lower in the initial test but higher in the second test than those in non-infected  
147 cases (**Fig. 2F**). The median anti-N antibody levels' fold-increase from the initial to second tests in cases  
148 with COVID-19 diagnosis during the study period was 14·0 (IQR, 6·8–29·6) for those with hybrid  
149 immunity before the study (**Fig. 2F**). In contrast, among newly-infected cases with hybrid immunity, no  
150 clear increase in anti-S antibody titers from the initial to the second tests was observed, and anti-S antibody  
151 titers in cases with COVID-19 diagnosis during the study period hardly changed from the initial to second  
152 tests (1·1-fold increase; IQR, 0·8–1·3; **Fig. 2G**). Taken together, these results justify the use of the criteria  
153 of a four-fold increase in anti-N antibody levels during the study period to identify newly infected cases  
154 with or without hybrid immunity before the study period, including undiagnosed cases.

155 The characteristics of newly infected and non-infected cases are presented in Table 1, and the characteristics  
156 of newly infected cases acquiring hybrid immunity before the study period are shown in Table 2. Among  
157 the newly infected cases, the proportions of elderly individuals aged over 70 years, those with comorbidities,  
158 individuals who had received five vaccine doses, those who had received the Omicron-adapted bivalent  
159 vaccine, and individuals with a history of infection were relatively low (**Table 1**). No apparent differences  
160 were observed between patients with or without hybrid immunity regarding comorbidity or vaccination  
161 status (**Table 2**). Of the patients without hybrid immunity, 51·0% were diagnosed with COVID-19 during  
162 the study period. In contrast, only 5·6% of the re-infected patients with hybrid immunity were diagnosed  
163 with COVID-19, indicating that most of the re-infected patients with hybrid immunity were undiagnosed  
164 and undetectable without serological testing (**Table 2**). Similarly, only 5·6% of the re-infected cases with  
165 hybrid immunity were symptomatic, suggesting that most re-infected cases were asymptomatic and less  
166 likely to be recognized by symptom-based case identification (**Table 2**).

167

### 168 **Estimating the infection prevention efficacy, including re-infections, based on anti-S and anti-N** 169 **antibody levels**

170 The absolute risk reduction in newly infected individuals with or without hybrid immunity during the study  
171 period, which was the Omicron BA.5 endemic period, by combined serum anti-S and anti-N antibody levels  
172 at the initial test was estimated using a generalized additive model with inverse probability weighting (**Fig.**  
173 **3A, B**). The conditional effect of the anti-N antibody levels indicated that the risk of infection decreased  
174 logarithmically with increasing anti-N antibody levels (**Fig. 3A**). For reference value, individuals with more  
175 than 10·1 COI anti-N antibody levels, which is close to the median (12·2 COI) of those of hybrid immunity  
176 holders at the initial test, were estimated to have an 80% relative risk reduction of new infections compared  
177 with a control group with no vaccination or prior infection history. As shown above, anti-N antibody levels  
178 peaked 1-2 months post-infection and declined over time (**Fig. 2D**). The estimated median duration for  
179 which anti-N antibody levels remained over 10·1 COI was 193 (CredI, 179–211) days after primary  
180 infection and 680 (CredI, 355–>1000) days after re-infection (**Fig. 2D**). While higher anti-S antibody titers  
181 were associated with a decreased risk of infection, the impact of this relationship was modest (**Fig. 3A**).

182 Even when the anti-S antibody titer reached its highest level of 523,000 BAU/mL, the estimated reduction  
183 in relative risk was 75%. Evaluation of the combined impact of anti-N and anti-S antibody levels revealed  
184 a modest decrease in the absolute risk of infection attributable to anti-S antibody titers, whereas a reduction  
185 in the absolute risk of infection was significantly associated with an increase in anti-N antibody levels (**Fig.**  
186 **3B**).

187 Each antibody level at the time of the initial test was assessed to determine the impact of vaccine dosage  
188 and previous infection history before the study period. Anti-N antibody levels at the time of the initial test  
189 in patients with a prior infection history were not affected by variations in the vaccination dosage (**Fig. 3C**).  
190 In contrast, the anti-S antibody titers increased as the number of vaccinations increased, and individuals  
191 who were previously infected before the study period tended to have greater anti-S antibody titers than  
192 those vaccinated, regardless of the number of vaccinations (**Fig. 3C, D**). Similarly, a higher association of  
193 prior infection, rather than Omicron-adapted bivalent vaccination or booster vaccinations, with a reduction  
194 in the risk of primary and re-infection was observed (**Fig. 3E**). These results indicate that the reduced risk  
195 of infection at high anti-S antibody titers was associated with infection-induced immunity and correlated  
196 more strongly with anti-N antibody levels than with vaccine-induced anti-ancestral S antibody titers.

197 Finally, we estimated the absolute risk reduction for new infections, including only those with hybrid  
198 immunity, during the study period (**Fig. 4A, B**). The conditional effect of anti-N antibody levels indicated  
199 that the risk of re-infection decreased on a logarithmic scale with an increase in anti-N antibody levels, as  
200 shown in Fig. 2A (**Fig. 4A**). However, the conditional effect of anti-S antibody titers or the combined effect  
201 of anti-N antibody levels did not show a link between high anti-S antibody titers and a reduced risk of re-  
202 infection (**Fig. 4A, B**). Taken together, given that anti-N antibody levels reflect the level of the immune  
203 response induced after viral infection,<sup>24</sup> it suggests that the level of serum anti-N antibodies determined  
204 using this method is a more reliable immunological correlate than the level of anti-S antibodies in  
205 determining the effectiveness of preventing SARS-CoV-2 re-infection in individuals with hybrid immunity.

206

207 **Discussion**

208 This study evaluated the protective effect of serum anti-N and anti-S antibody levels against SARS-CoV-2  
209 infection during the Omicron BA.5 epidemic period and showed that reducing re-infection risk was  
210 correlated with anti-N antibody levels, induced by previous infection, on a logarithmic scale in hybrid  
211 immunity holders with a history of infections and vaccination. In contrast, anti-S antibody titers against the  
212 ancestral spike antigen induced by both vaccines and infections showed relatively low protective effects  
213 against infection during the BA.5 epidemic period. These results suggest that the risk of re-infection can be  
214 assessed based on anti-N antibody titers in individuals with hybrid immunity. Moreover, this finding  
215 implies that infection-induced immunity in individuals with hybrid immunity includes a distinct and potent  
216 immunity beyond the presence of serum anti-S antibodies, which correlates with serum anti-N antibody  
217 levels. This would indicate the possibility for the development of next-generation COVID-19 vaccines that  
218 induce more effective immunity.

219 Anti-N antibodies recognize the nucleocapsid proteins inside virions or infected cells and do not directly  
220 neutralize infectious virus particles, suggesting that anti-N antibody levels are non-mechanical  
221 immunological correlates of protection (nCoPs), which are associated with some protective immunity  
222 against infection.<sup>25</sup> The potential of anti-N antibody levels as immunological markers against re-infection  
223 has also been reported in children aged 4 to 15 years, consistent with the findings of this study.<sup>26</sup>  
224 Immunological markers induced by infection, such as nasal mucosal S-specific secretory IgA antibodies,<sup>17</sup>  
225 which are also associated with a reduction in the duration of virus shedding after infection<sup>18</sup> and blood  
226 circulating N-specific CD4<sup>+</sup> and CD8<sup>+</sup> T cells induced by infection, but not spike-based current vaccination,  
227 associated with the prevention of infection, have been reported to negatively correlate with peak upper  
228 respiratory tract viral loads.<sup>27</sup> Importantly, these immunological markers represent humoral and cellular  
229 immune responses to viral infections in the upper respiratory tract. Serum anti-N antibody responses are  
230 similarly considered to be indicative of an immune response to viral infections in the upper respiratory tract.  
231 Previously, we reported a positive correlation between the serum anti-N antibody response and upper  
232 respiratory viral load at the onset of breakthrough infections,<sup>24</sup> and revealed that the upper respiratory viral  
233 load determines the magnitude of antiviral humoral immune responses after infection. Taken together, these  
234 previous findings indicate that serum anti-N antibody levels serve as a quantitative proxy for the magnitude  
235 of antiviral humoral immune responses induced after infection.

236 For individuals who experienced a single infection, the time for anti-N antibody levels to become negative  
237 (below 1·0 COI) was estimated to be approximately 621 days (**Fig. 2D**). These anti-N antibody waning  
238 dynamics are consistent with a recent longitudinal sampling cohort study using the same method of anti-N  
239 antibody measurement as in this study, which showed that many participants maintained positive anti-N  
240 antibody levels for more than 500 days.<sup>22,28</sup> In addition, a previous report found that anti-N antibody levels  
241 were higher in re-infections than in primary infection,<sup>23</sup> which is consistent with the findings of this study.  
242 Notably, the anti-N antibody levels induced by the primary infection were relatively low and below an 80%  
243 risk reduction level for re-infection at 193 days after the primary infection (**Fig. 2D**). This suggests that a  
244 single infection does not induce robust long-term immunity for re-infection prevention. This is consistent



245 with systematic reviews indicating that the efficacy of infection prevention in previously infected  
246 individuals against re-infection with Omicron declines to approximately 50% within 20 weeks.<sup>16</sup> Nasal anti-  
247 S IgA has been reported to persist for approximately nine months, and strong correlations were observed  
248 between nasal anti-S IgA and nasal anti-N IgA titers at six or 12 months after infection, but not with plasma  
249 anti-N IgA titers.<sup>29</sup> Currently, the long-term relationship between serum anti-N antibodies and mucosal-  
250 specific secretory IgA or T cell immunity is unclear, and further research is needed to identify the long-  
251 term immune responses associated with anti-N antibody levels.

252 Several studies conducted during the pre-Omicron epidemic period following vaccine introduction have  
253 reported associations between elevated anti-S antibody or neutralizing antibody titers and strong protection  
254 against SARS-CoV-2 infection.<sup>5-7</sup> Feng et al. demonstrated 80% protection against SARS-CoV-2 infection  
255 when the anti-S antibody level was 247 BAU/ml in a ChAdOx1 study cohort. During the Omicron  
256 BA.1/BA.2 epidemic period, reductions in infection risk were reported for anti-S antibody titers above 2000  
257 BAU/mL, 800 BAU/mL, and 4810–11233 BAU/mL for symptomatic infections<sup>9-11</sup> Additionally, during  
258 the Omicron BA.4/5 epidemic period, reductions in infection risk were reported for anti-S antibody titers  
259 above 380–1560 BAU/mL, but the anti-S antibody titer thresholds varied according to previous infection  
260 histories, and the association between the anti-S antibody titers and the infection risk was not observed in  
261 individuals with previous Omicron BA.2 infection.<sup>12</sup> Our results did not estimate an 80% relative risk  
262 reduction against infection, even at anti-S antibody titers above 100,000 BAU/mL during the Omicron BA.5  
263 epidemic period. This might reflect the increasing difficulty in estimating infection prevention efficacy  
264 using ancestral strain S antibody levels because of the antigenic discrepancy of Omicron sublineages that  
265 have acquired greater immune evasion capabilities and confounding factors of local upper respiratory  
266 immune responses due to prior infection.

267 In this study, we found that, during the Omicron BA.5 epidemic period, the reduction in re-infection risk  
268 was significantly correlated with higher anti-N antibody levels induced by prior infection. Conversely, anti-  
269 S antibody titers induced by both vaccines and infections were less strongly correlated with protection.  
270 These findings suggest that immunity correlated with anti-N antibody levels—such as mucosal antibodies,  
271 T-cell responses, and other unknown factors—may be good target immunity induced by the next-generation  
272 COVID-19 vaccines aiming the control the future COVID-19 epidemic.

273

#### 274 **Limitations**

275 The observation period of this study was limited to approximately two months; therefore, a longer  
276 observation period could provide a better estimation of the long-term protective effects and the precise  
277 duration of immunity for infection protection. In this study, anti-S antibody titers against Omicron spikes,  
278 which are expected to contribute to the prevention of Omicron infection, were not measured, and the  
279 correlation between anti-N antibody levels and anti-Omicron S antibody titers remains unknown. We did  
280 not evaluate the effect of antibody titers on the prevention of severe disease since the questionnaire did not  
281 include the severity in this survey, although the prevention of severe disease through vaccination has been  
282 confirmed even during the Omicron BA.1/2 and BA.4/5 epidemic periods. While the participants with a

283 prior infection history included pre-Omicron-infected individuals, most were Omicron-infected cases. The  
284 quality of immunity induced by infection may vary with the variant, but it has not been determined which  
285 variant infection induced immunity in each prior-infected individual. We have not examined the correlation  
286 between serum anti-N antibody levels and infection prevention efficacy for variant infections outside the  
287 BA.5 epidemic period. Further investigation is needed to determine if the correlation between anti-N  
288 antibody titers and infection prevention can be applied to Omicron sublineages post-BA.5.

289

## 290 **Methods**

### 291 **Survey design, participants and ad hoc study design**

292 For the national COVID-19 seroepidemiological survey, residents of Miyagi, Tokyo, Aichi, Osaka, and  
293 Fukuoka prefectures were randomly selected using the Basic Resident Register via multistage sampling as  
294 described previously.<sup>30</sup> For each prefecture, at least one municipality from each of the following three  
295 municipality types was chosen for the surveys: small (<100 000 population), medium ( $\geq$ 100 000  
296 population), and large (ordinance-designated city/special ward). The samples were divided according to the  
297 relative population sizes of the municipalities, and residents were randomly sampled from each  
298 municipality. We planned to enroll 15,000 individuals from five prefectures (3,000 individuals per  
299 prefecture). Assuming a response rate of 20%, we randomly sampled 75,000 individuals aged 20 years or  
300 older and invited them via mail. Only one participant from each household participated in the study. No  
301 financial incentives are provided for the participants except for travel subsidy to the study sites and feedback  
302 of the serologic test results. Individuals who agreed to participate in the study answered a self-administered  
303 questionnaire, visited the designated site where they provided written consent, and had their blood drawn.  
304 Briefly, the questionnaire included the demographic information (age, biological sex, occupation,  
305 municipality, etc.), comorbidities, COVID-19 vaccination status, and history of SARS-CoV-2 infection.  
306 The survey was conducted as a public health investigation under the Act on the Prevention of Infectious  
307 Diseases and Medical Care for Patients with Infectious Diseases (Infectious Diseases Control Law) and  
308 planned by the Ministry of Health, Labor, and Welfare of Japan (MHLW) and the National Institute of  
309 Infectious Disease (NIID). The survey assessed the prevalence of anti-N and anti-S antibodies. The MHLW  
310 randomly selected the potential study participants and mailed invitations to them to participate in the survey,  
311 which was carried out as a public health investigation under the Infectious Diseases Control Law.  
312 Descriptive results of the national COVID-19 seroepidemiological survey for the entire cohort have been  
313 published in Japanese on the MHLW/NIID websites.<sup>31</sup>

314 The ad hoc study as a research activity evaluated the protective efficacy of anti-N antibodies against  
315 reinfection, based on the survey data. Consent for this ad hoc study was obtained as part of the survey  
316 consent process, which included agreement to use data for further research.

317

### 318 **Ethical approval**

319 All the samples, protocols, and procedures described herein were approved by the Medical Research Ethics  
320 Committee of the NIID and involved human participants, based on the principles of the Declaration of  
321 Helsinki (approval numbers 1457, 1472 and 1730).

322

### 323 **Electrochemiluminescence immunoassay**

324 Serum samples were heat-inactivated at 56 °C for 30 min before use. Antibody titers for the ancestral spike  
325 (S) receptor-binding domain and nucleocapsid (N) were measured using Elecsys Anti-SARS-CoV-2 S  
326 (Roche, Basel, Switzerland) and Elecsys Anti-SARS-CoV-2 (Roche) kits, respectively, according to the  
327 manufacturer's instructions. A cutoff index (COI) of 1.0 and a cutoff value of 0.8 BAU/mL, as determined  
328 by the manufacturer, were used to determine the presence/absence of anti-N antibody levels and anti-S  
329 antibody titers, respectively. Since the COVID-19 vaccines approved in Japan are only spike-based  
330 vaccines, anti-N antibodies are induced by infection but not by vaccines, whereas anti-S antibodies are  
331 induced by both infection and vaccines. The numerical results in U/mL of the Elecsys Anti-SARS-CoV-2  
332 S assay and the WHO BAU/mL are equivalent.

333

### 334 **Definition of newly infected individuals**

335 The study included 5,627 individuals who participated in two consecutive tests. Those who were newly  
336 vaccinated during the observation period were excluded (1,044 individuals). To use anti-N antibody  
337 seroconversion to determine infection, we excluded 87 individuals with a history of infection within 30  
338 days of the initial antibody test (87 individuals). Consequently, there were 4,496 subjects eligible for the  
339 study.

340 Participants who tested positive for COVID-19, who were diagnosed after the baseline initial test date, or  
341 who had an anti-N titer turn positive to 1.0 COI or higher were considered newly infected. In addition,  
342 participants who showed a four-fold or higher increase in anti-N antibody levels in the second antibody test  
343 compared to baseline were considered newly infected, including those with re-infections (**Fig. 2**).

344

### 345 **Definition of symptomatic individuals**

346 Symptomatic individuals were defined as individuals with any of the following, based on a previous study:<sup>4</sup>  
347 malaise, chills, joint pain, headache, runny nose, cough, sore throat, shortness of breath, gastrointestinal  
348 symptoms (vomiting, diarrhea, or stomach ache), and loss of taste or smell. Those who answered that they  
349 were infected with SARS-CoV-2 but were asymptomatic were classified as "asymptomatic." Those who  
350 did not report a SARS-CoV-2 infection or any symptoms but met the criteria for a new infection were  
351 classified as "Unaware of any symptoms and infection."

352

### 353 **Infection risk estimation**

354 The immune correlates of the infection risk analysis were conducted based on a previous study.<sup>6</sup> Log-  
355 transformed anti-S and anti-N antibody titers were analyzed using Bayesian generalized additive models  
356 (GAM) for binary data, with cubic spline smoothing applied to antibody titers to allow a nonlinear effect.

357 No adjustments were made for multiple comparisons. Combined models were fitted for anti-S and anti-N  
358 antibody levels, controlling for baseline exposure risk, and weighted using inverse probability weights as  
359 described below.

360 In addition to antibody titers, we assumed that each participant's absolute risk of new infections varied  
361 depending on region and demographics. To adjust the estimates of the absolute risk of infection due to each  
362 participant's characteristics, we used a Poisson regression model to predict the probability of infection. The  
363 predictors were age group (20–64 years or 65 years or older), biological sex, presence of comorbidities,  
364 Omicron BA.1/BA.5 bivalent vaccination, vaccination count, prior infection history, and municipality. The  
365 inverse probability from this model was used to weigh the correlates of the risk models and eliminate the  
366 source of bias. In the model with hybrid immunity alone, we excluded the municipality from the predictors  
367 to avoid excessive weight.

368 The newly infected response variable was modeled as a function of smooth terms for anti-S and anti-N  
369 antibody levels using cubic splines with three basis functions ( $k = 3$ ). To account for the overdispersion  
370 and potential zero inflation in the count data, we specified a zero-inflation Poisson distribution for the  
371 response.

372 Parameter estimation was performed using the Markov chain Monte Carlo (MCMC) approach implemented  
373 in *rstan* 2.26 (<https://mc-stan.org>). Four independent MCMC chains were run with 5,000 steps including a  
374 warm-up period of 1,000 steps, with subsampling every five iterations. We confirmed that all the estimated  
375 parameters showed  $<1 \cdot 01$  R-hat convergence diagnostic values and  $>1600$  effective sampling size values,  
376 indicating that the MCMC runs were convergent. Information on the model estimates is summarized in  
377 **Tables S1 and S2**.

378

### 379 **Modeling the antibody response**

380 To model the anti-N antibody response in individuals diagnosed with the first infection and re-infection  
381 with SARS-CoV-2, a Bayesian model was used based on a previous study.<sup>32</sup> The measurement (*i.e.*,  $\log_{10}$   
382 anti-N)  $y_i$  was modeled as  $y_i \sim Normal(hf(t_i, \alpha, \beta) \exp(-\lambda t_i), \sigma)$ , where  $Normal(a, b)$  indicates normal  
383 distribution with mean  $a$  and standard deviation  $b$ ,  $t_i$  is the time of the measurement,  $f(t_i, \alpha, \beta)$  is the  
384 cumulative gamma distribution function at time  $t_i$  with shape  $\alpha$  and inverse scale  $\beta$ ,  $\lambda$  is the decay rate,  $\sigma$  is  
385 standard deviation of the normal distribution, and  $h$  is the maximum response if  $\lambda = 0$ .<sup>32</sup> The posterior  
386 distribution of each parameter was sampled for each infection group. For the prior distribution of  $h$ , we  
387 used weakly informed priors,  $Normal(0, 5)$ . For the prior distributions of  $\alpha$ ,  $\beta$ ,  $\lambda$ , and  $\sigma$ , we used a Student's  
388  $t$  distribution with four degrees of freedom, instead of a normal distribution, to reduce the effects of outlier  
389 values.<sup>33</sup>

390 Parameter estimation was performed using an MCMC approach implemented in *rstan*. Four independent  
391 MCMC chains were run with 4,000 steps including a warm-up period of 2,000 steps, with subsampling at  
392 every five iterations. We confirmed that all estimated parameters showed  $<1 \cdot 01$  R-hat convergence  
393 diagnostic values and  $>1000$  effective sampling size values, indicating that the MCMC runs were  
394 convergent. The estimated means are summarized in **Table S3**.

395

### 396 **Statistical analysis**

397 We performed logistic regression with the high anti-S antibody titer holder as the outcome, adjusting for  
398 age group (20–64 years or 65 years or above), biological sex, prior-infection history, bivalent vaccination,  
399 and  $\geq 3$  times vaccination. The confidence intervals (CIs) of the categorical variables in the tables were  
400 calculated using two-sided Fisher's exact test. Pearson's correlation coefficients were used to assess  
401 correlations between continuous variables. All statistical analyses were performed using R (version 4.3),  
402 and antibody titers below the detection limit were converted to half of the detection limit. The infection risk  
403 estimation model was constructed using *brms* 2.20.

404

### 405 **Role of the funding source**

406 The MHLW funded and was involved in the survey design and selection of the participants for the national  
407 COVID-19 seroepidemiological survey to estimate SARS-CoV-2 seroprevalence in Japan as a public health  
408 investigation. The MHLW and other funders had no role in the ad hoc study design, data curation and data  
409 analysis, and preparation of the manuscript as a research activity.

410

### 411 **Authors' contributions**

412 Conceptualization, SM, RK, TA, HT, HH, SA, MS, DY, TW, and TS; Methodology, SM, RK, TA, DY,  
413 and TS; Research investigation, SM, KN, RK, TA, MH, MS, DY, TW, and TS; Public health investigation,  
414 SM, RK, HT, HH, TK, AS, AA, SA, MS, DY, TW, and TS; Data curation, SM, KN, MH and TS;  
415 Computational analysis, SM and KN; Formal analysis, SM, KN, MH, and TS; Visualization, SM; Research  
416 funding acquisition, SM, RK, MS, DY, TW, and TS; Project administration, MS, and TS; Supervision, MS,  
417 YD, and TS; Writing the original draft, SM and TS; Writing – review & editing, SM, KN, RK, MS, DY,  
418 and TS. All authors agreed to submit the manuscript, read and approved the final draft, and take full  
419 responsibility for its content, including data accuracy and statistical analysis.

420

### 421 **Data sharing**

422 Research data reported in this paper is available from the corresponding author upon request.

423

### 424 **Declaration of interests**

425 The authors declare no conflicts of interest associated with this manuscript.

426

### 427 **Acknowledgments**

428 We thank the Miyagi, Tokyo, Aichi, Osaka, and Fukuoka prefecture governments for their support in  
429 implementing the national COVID-19 seroepidemiological survey. We also thank Shoko Sakuraba and Jun  
430 Sugihara for support in implementing the survey from the Ministry of Health, Labour and Welfare, Japan.  
431 We also thank the staff members at the Survey Research Center, Mitsubishi Research Institute, SRL, Inc.,  
432 and Benefit One Inc. for their administrative and technical assistance for the survey. The national COVID-

433 19 seroepidemiological survey was funded by the MHLW as a public health investigation. The ad hoc study  
434 based on the survey data as a research activity was supported in part by a Grant-in-Aid for JSPS Scientific  
435 Research (KAKENHI) (23K27422 (to TS), 21K20768 (to SM), 23K14534 (to SM), and 21K17307 (to  
436 RK)); AMED Research Program on Emerging and Re-emerging Infectious Diseases (JP23fk0108637 (to  
437 TS), JP22fk0108509 (to TS), JP 23fk0108684 (to TS), and JP22fk0108568 (to SM)); MHLW  
438 Emerging/Reemerging Infectious Diseases and Vaccination Policy Promotion Research Project  
439 (24HA2009 (to TS), 22HA2006 (to TS), 21HA2005 (to TS) and 20HA2001 (to TS)); the JST, PRESTO  
440 (JPMJPR21RC (to DY)).

## 441 References

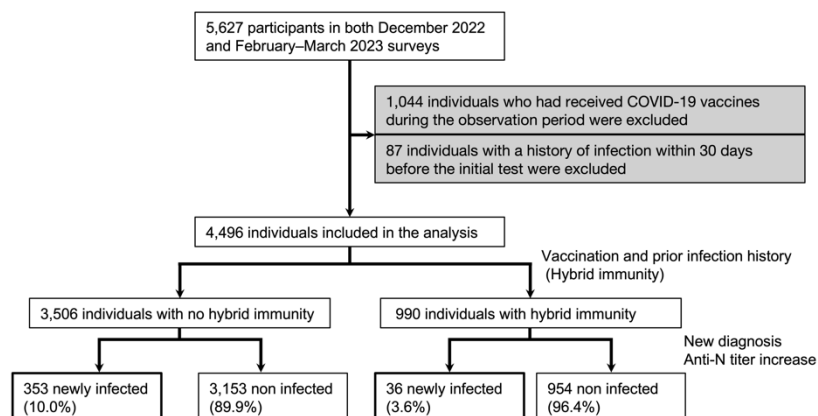
- 442 1. Schmidt F, Muecksch F, Weisblum Y, et al. Plasma Neutralization of the SARS-CoV-2 Omicron  
443 Variant. *N Engl J Med* 2021; **386**(6): 599-601.
- 444 2. Miyamoto S, Arashiro T, Adachi Y, et al. Vaccination-infection interval determines cross-  
445 neutralization potency to SARS-CoV-2 Omicron after breakthrough infection by other variants. *Med* 2022;  
446 **3**(4): 249-61.e4.
- 447 3. Altarawneh HN, Chemaitelly H, Ayoub HH, et al. Effects of Previous Infection and Vaccination  
448 on Symptomatic Omicron Infections. *N Engl J Med* 2022; **387**(1): 21-34.
- 449 4. Arashiro T, Arima Y, Muraoka H, et al. Coronavirus Disease 19 (COVID-19) Vaccine  
450 Effectiveness Against Symptomatic Severe Acute Respiratory Syndrome Coronavirus 2 (SARS-CoV-2)  
451 Infection During Delta-Dominant and Omicron-Dominant Periods in Japan: A Multicenter Prospective  
452 Case-control Study (Factors Associated with SARS-CoV-2 Infection and the Effectiveness of COVID-19  
453 Vaccines Study). *Clin Infect Dis* 2022; **76**(3): e108-e15.
- 454 5. Earle KA, Ambrosino DM, Fiore-Gartland A, et al. Evidence for antibody as a protective  
455 correlate for COVID-19 vaccines. *Vaccine* 2021; **39**(32): 4423-8.
- 456 6. Feng S, Phillips DJ, White T, et al. Correlates of protection against symptomatic and  
457 asymptomatic SARS-CoV-2 infection. *Nat Med* 2021; **27**(11): 2032-40.
- 458 7. Khoury DS, Cromer D, Reynaldi A, et al. Neutralizing antibody levels are highly predictive of  
459 immune protection from symptomatic SARS-CoV-2 infection. *Nat Med* 2021; **27**(7): 1205-11.
- 460 8. Tartof SY, Slezak JM, Puzniak L, et al. Effectiveness of BNT162b2 BA.4/5 bivalent mRNA  
461 vaccine against a range of COVID-19 outcomes in a large health system in the USA: a test-negative case  
462 control study. *Lancet Respir Med* 2023; **11**(12): 1089-100.
- 463 9. Gilboa M, Gonen T, Barda N, et al. Factors Associated With Protection From SARS-CoV-2  
464 Omicron Variant Infection and Disease Among Vaccinated Health Care Workers in Israel. *JAMA Netw*  
465 *Open* 2023; **6**(5): e2314757-e.
- 466 10. Marking U, Havervall S, Norin NG, et al. Correlates of protection and viral load trajectories in  
467 omicron breakthrough infections in triple vaccinated healthcare workers. *Nat Commun* 2023; **14**(1): 1577.
- 468 11. Perez-Saez J, Zaballa M-E, Lamour J, et al. Long term anti-SARS-CoV-2 antibody kinetics and  
469 correlate of protection against Omicron BA.1/BA.2 infection. *Nat Commun* 2023; **14**(1): 3032.
- 470 12. Wei J, Matthews PC, Stoesser N, et al. Protection against SARS-CoV-2 Omicron BA.4/5 variant  
471 following booster vaccination or breakthrough infection in the UK. *Nat Commun* 2023; **14**(1): 2799.
- 472 13. Ito J, Suzuki R, Uriu K, et al. Convergent evolution of SARS-CoV-2 Omicron subvariants  
473 leading to the emergence of BQ.1.1 variant. *Nat Commun* 2023; **14**(1): 2671.
- 474 14. Gilbert PB, Donis RO, Koup RA, Fong Y, Plotkin SA, Follmann D. A Covid-19 Milestone  
475 Attained — A Correlate of Protection for Vaccines. *N Engl J Med* 2022; **387**(24): 2203-6.
- 476 15. Kitamura N, Otani K, Kinoshita R, et al. Protective effect of previous infection and vaccination  
477 against reinfection with BA.5 Omicron subvariant: a nationwide population-based study in Japan. *Lancet*  
478 *Reg Health West Pac* 2023; **41**.

- 479 16. Stein C, Nassereldine H, Sorensen RJD, et al. Past SARS-CoV-2 infection protection against re-  
480 infection: a systematic review and meta-analysis. *Lancet* 2023; **401**(10379): 833-42.
- 481 17. Marking U, Bladh O, Havervall S, et al. 7-month duration of SARS-CoV-2 mucosal  
482 immunoglobulin-A responses and protection. *Lancet Infect Dis* 2023; **23**(2): 150-2.
- 483 18. Miyamoto S, Nishiyama T, Ueno A, et al. Infectious virus shedding duration reflects secretory  
484 IgA antibody response latency after SARS-CoV-2 infection. *Proc Natl Acad Sci U S A* 2023; **120**(52):  
485 e2314808120.
- 486 19. WHO. Interim statement on hybrid immunity and increasing population seroprevalence rates.  
487 2022. [https://www.who.int/news/item/01-06-2022-interim-statement-on-hybrid-immunity-and-increasing-](https://www.who.int/news/item/01-06-2022-interim-statement-on-hybrid-immunity-and-increasing-population-seroprevalence-rates)  
488 [population-seroprevalence-rates](https://www.who.int/news/item/01-06-2022-interim-statement-on-hybrid-immunity-and-increasing-population-seroprevalence-rates) (accessed 2024/05/01).
- 489 20. Mizoue T, Yamamoto S, Oshiro Y, et al. Cumulative and undiagnosed SARS-CoV-2 infection  
490 among the staff of a medical research centre in Tokyo after the emergence of variants. *Epidemiol Infect*  
491 2023; **151**: e48.
- 492 21. Richard L, Nisenbaum R, Colwill K, et al. Enhancing detection of SARS-CoV-2 re-infections  
493 using longitudinal sero-monitoring: demonstration of a methodology in a cohort of people experiencing  
494 homelessness in Toronto, Canada. *BMC Infect Dis* 2024; **24**(1): 125.
- 495 22. Loesche M, Karlson E, Talabi O, et al. Longitudinal SARS-CoV-2 Nucleocapsid Antibody  
496 Kinetics, Seroreversion, and Implications for Seroepidemiologic Studies. *Emerg Infect Dis* 2022; **28**(9):  
497 1859.
- 498 23. Yamamoto S, Mizoue T, Konishi M, et al. Kinetics and durability of nucleocapsid-specific  
499 antibodies after SARS-CoV-2 reinfection. *J Infect* 2023; **87**(6): 581-3.
- 500 24. Miyamoto S, Arashiro T, Ueno A, et al. Non-Omicron breakthrough infection with higher viral  
501 load and longer vaccination-infection interval improves SARS-CoV-2 BA.4/5 neutralization. *iScience*  
502 2023; **26**(2): 105969.
- 503 25. Plotkin SA, Gilbert PB. Nomenclature for Immune Correlates of Protection After Vaccination.  
504 *Clin Infect Dis* 2012; **54**(11): 1615-7.
- 505 26. Dowell AC, Waiblinger D, Wright J, Ladhani SN, Moss P. Nucleocapsid-specific antibodies as  
506 a correlate of protection against SARS-CoV-2 reinfection in children. *J Infect* 2023; **87**(3): 267-9.
- 507 27. Eser TM, Baranov O, Huth M, et al. Nucleocapsid-specific T cell responses associate with  
508 control of SARS-CoV-2 in the upper airways before seroconversion. *Nat Commun* 2023; **14**(1): 2952.
- 509 28. Swartz MD, DeSantis SM, Yaseen A, et al. Antibody Duration After Infection From SARS-  
510 CoV-2 in the Texas Coronavirus Antibody Response Survey. *J Infect Dis* 2022; **227**(2): 193-201.
- 511 29. Liew F, Talwar S, Cross A, et al. SARS-CoV-2-specific nasal IgA wanes 9 months after  
512 hospitalisation with COVID-19 and is not induced by subsequent vaccination. *EBioMedicine* 2023; **87**:  
513 104402.
- 514 30. Arashiro T, Arai S, Kinoshita R, et al. National seroepidemiological study of COVID-19 after  
515 the initial rollout of vaccines: Before and at the peak of the Omicron-dominant period in Japan. *Influenza*  
516 *Other Respir Viruses* 2023; **17**(2): e13094.

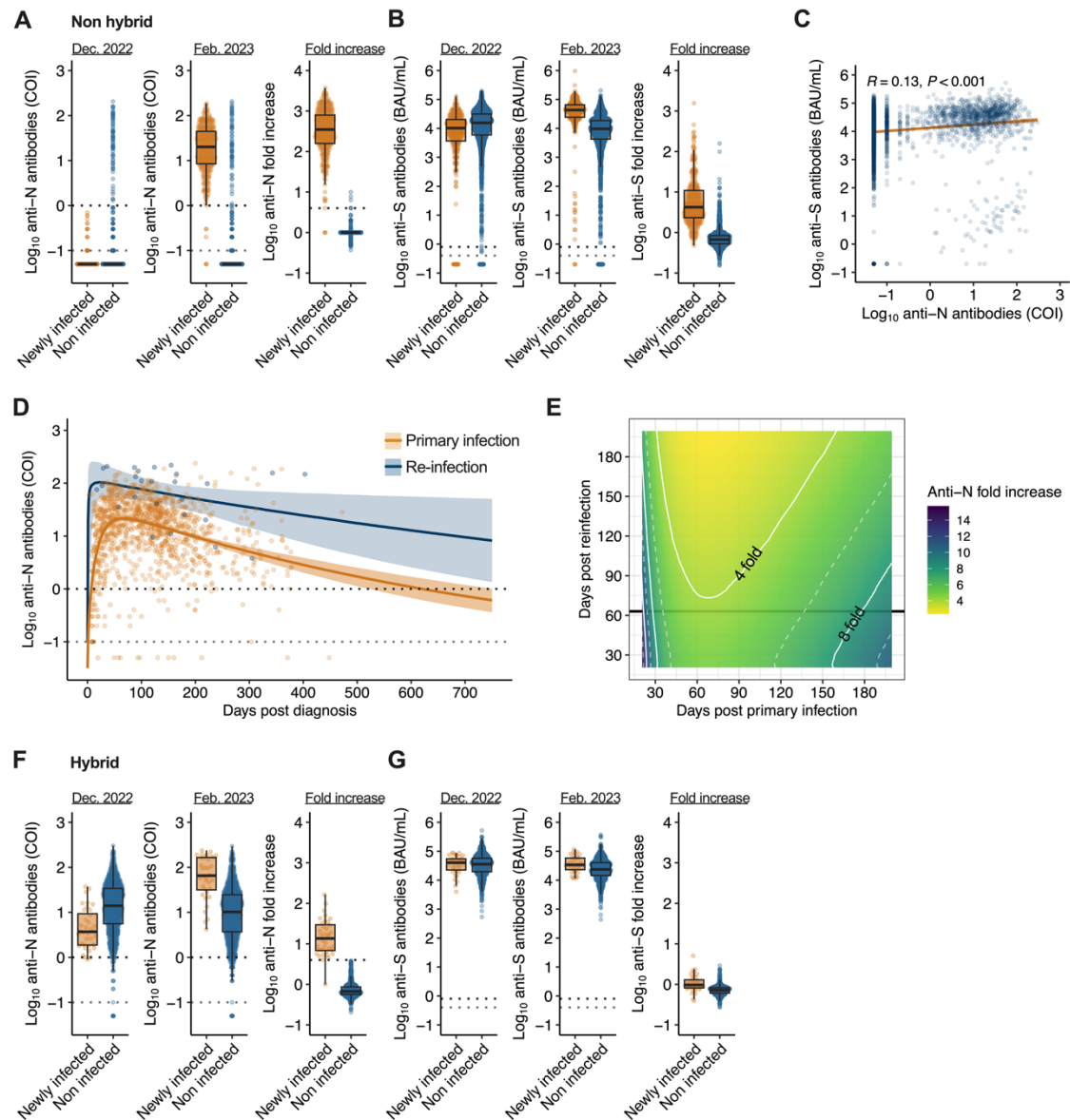


- 517 31. MHLW. Report on seroepidemiological surveillance in Japan for COVID-19 during the fiscal  
518 year 2022. 2023. <https://www.mhlw.go.jp/content/001142097.pdf> (accessed 2024/5/1).
- 519 32. Yamayoshi S, Yasuhara A, Ito M, et al. Antibody titers against SARS-CoV-2 decline, but do not  
520 disappear for several months. *EClinicalMedicine* 2021; **32**: 100734.
- 521 33. Miyamoto S, Kuroda Y, Kanno T, et al. Saturation time of exposure interval for cross-  
522 neutralization response to SARS-CoV-2: Implications for vaccine dose interval. *iScience* 2023; **26**(5):  
523 106694.  
524

## Figures

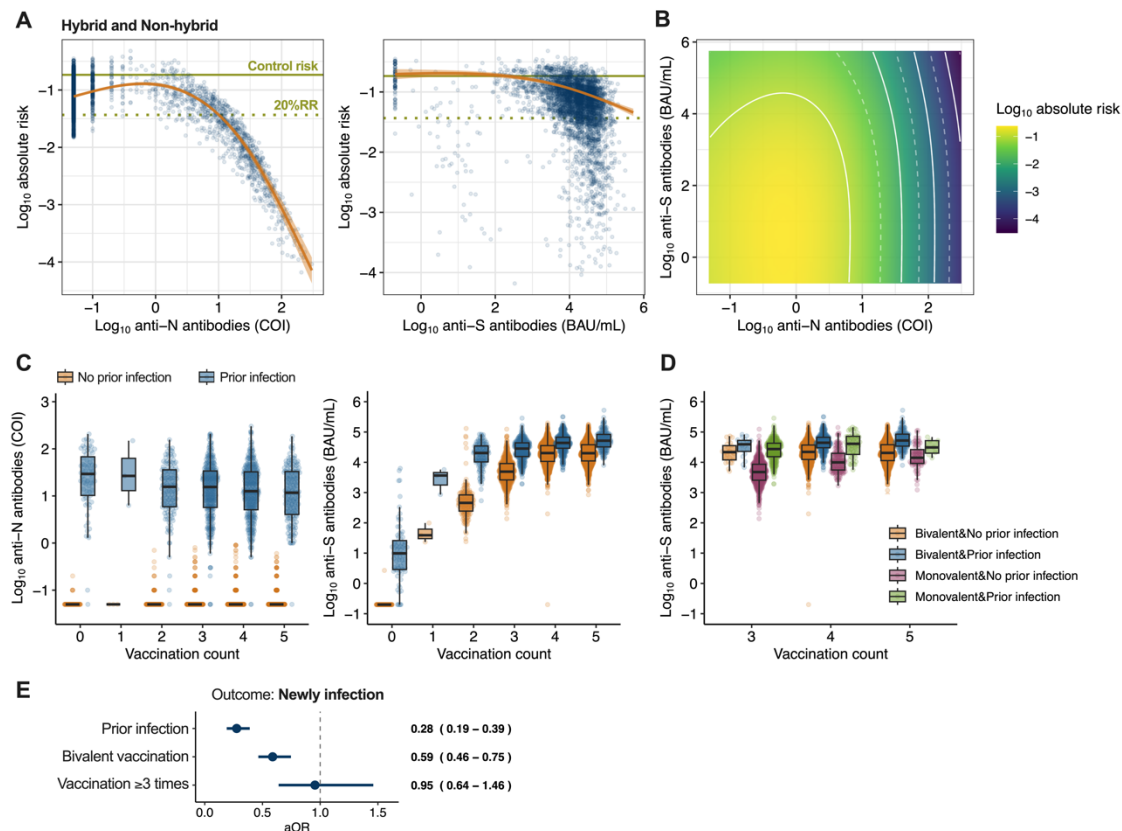


**Fig. 1. Flow diagram of the study design and the included participants.**

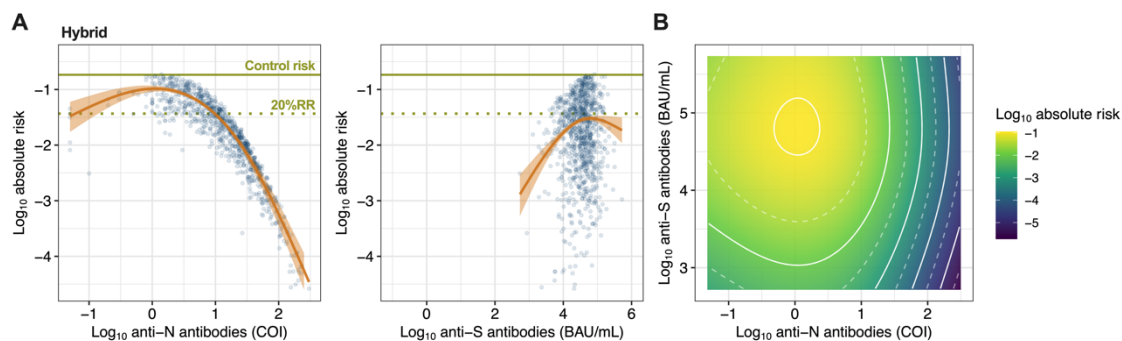


**Fig. 2. Serum anti-S and anti-N antibody levels in the presence or absence of new infections and the anti-N antibody level dynamics for each infection history.** (A, B) The antibody levels and their fold increase for participants without hybrid immunity at baseline (Dec. 2022) and the end of observation (Feb. 2023). (A) Anti-N antibody levels and (B) anti-S antibody titers. (C) Correlation between serum anti-S and anti-N antibody levels for all participants. Correlation coefficients and P values, along with regression lines and 95% confidence intervals, are shown. (D) A model of the dynamics of anti-N antibody levels in primary infection and re-infection. Each data point, along with the median and 95% credible intervals (ribbon) for the mean anti-N antibody levels, are shown. (E) Estimation of the fold increase in anti-N antibody levels induced by re-infection. The fold increase was calculated from the ratio of estimated anti-N antibody levels on the days post primary diagnosis (infection) at re-infection to the titers at any days post-re-infection. The white dotted and solid lines show a 2x and 4x fold increase, respectively, in the anti-N antibody level. The black line shows the median observation period (63 days). (F, G) The baseline (Dec. 2022) and end-of-

observation (Feb. 2023) antibody titers and their fold increase in individuals with hybrid immunity. (F) Anti-N antibody levels and (G) anti-S antibody titers. In antibody levels, the dark gray dotted line indicates the cutoff value according to the manufacturer's manual, and the light gray dotted line represents the detection limit.



**Fig. 3. Estimation of the effect of baseline anti-N and anti-S antibody levels on infection risk during the study period.** (A) The conditional effects of anti-N antibody levels (left) and anti-S antibody titers (right) during the observation period on the absolute risk of infection. Each predicted data point (blue), along with the median absolute risk and 95% credibility intervals (ribbon), are shown. The overall risk of a control group with no vaccination or prior infection history in this cohort (0.184) (green solid line) and the 80% reduction of relative risk (i.e., 20% relative risk [20%RR]) (green dotted line) are shown. (B) The combined effect of anti-N and anti-S antibody levels during the observation period on the absolute risk of infection. The logarithmic absolute risk of infection is indicated by the color bar. The white dotted and solid lines show the  $\log_{10}$  absolute risk decrease for every 0.5 and 1.0, respectively. (C) Baseline anti-N antibody levels (left) and anti-S antibody titers (right) by the number of vaccine doses and infection history. (D) Baseline anti-S antibody titers by the number of vaccine doses, Omicron-adapted bivalent vaccination, and infection history. (E) Logistic regression involving factors contributing to reduction of primary and re-infection. The adjusted odds ratio (aOR) and the 95% confidence intervals are shown.



**Fig. 4. Estimation of the effect of baseline anti-N and anti-S antibody levels on re-infection risk during the study period.** (A) The conditional effects of anti-N antibody levels (left) and anti-S antibody titers (right) during the observation period on the absolute risk of re-infection in individuals with hybrid immunity at baseline. The overall risk of a control group with no vaccination or prior infection history in this cohort (0-184) (green solid line) and the 80% reduction of relative risk (i.e., 20% relative risk [20%RR]) (green dotted line) are shown. (B) The combined effect of anti-N and anti-S antibody levels during the observation period on the absolute risk of re-infection.

## Tables

**Table 1. Characteristics of individuals with and without infection during the study period.**

	<b>Newly infected</b> (n = 389) Median (IQR); n (%)	<b>95% CI</b>	<b>Non-infected</b> (n = 4,107) Median (IQR); n (%)	<b>95% CI</b>
<b>Age in years</b>				
20-29	20 (5.1%)	3.2 – 7.8%	133 (3.2%)	2.7 – 3.8%
30-39	52 (13.4%)	10.1 – 17.2%	381 (9.3%)	8.4 – 10.2%
40-49	108 (27.8%)	23.4 – 32.5%	830 (20.2%)	19.0 – 21.5%
50-59	104 (26.7%)	22.4 – 31.4%	1,079 (26.3%)	25.0 – 27.7%
60-69	65 (16.7%)	13.1 – 20.8%	842 (20.5%)	19.3 – 21.8%
70-79	31 (8.0%)	5.5 – 11.1%	634 (15.5%)	14.4 – 16.6%
80-	9 (2.3%)	1.1 – 4.4%	204 (5.0%)	4.3 – 5.7%
No response	0		4	
<b>Sex</b>				
Female	259 (66.6%)	61.7 – 71.3%	2,521 (61.5%)	60.0 – 63.0%
Male	130 (33.4%)	28.7 – 38.3%	1,579 (38.5%)	37.0 – 40.0%
Other/no response	0		7	
<b>Prefecture</b>				
Miyagi	67 (17.2%)	13.6 – 21.4%	896 (21.8%)	20.6 – 23.1%
Tokyo	82 (21.1%)	17.1 – 25.5%	1,057 (25.7%)	24.4 – 27.1%
Aichi	85 (21.9%)	17.8 – 26.3%	729 (17.8%)	16.6 – 19.0%
Osaka	88 (22.6%)	18.6 – 27.1%	723 (17.6%)	16.5 – 18.8%
Fukuoka	67 (17.2%)	13.6 – 21.4%	702 (17.1%)	16.0 – 18.3%
<b>Comorbidity</b>				
No comorbidity	222 (58.3%)	53.1 – 63.3%	2,059 (51.4%)	49.8 – 52.9%
Asthma	9 (2.4%)	1.1 – 4.4%	65 (1.6%)	1.3 – 2.1%
Cancer	6 (1.6%)	0.6 – 3.4%	69 (1.7%)	1.3 – 2.2%
Chronic obstructive pulmonary disease	0 (0.0%)	0.0 – 1.0%	7 (0.2%)	0.1 – 0.4%
Diabetes mellitus	10 (2.6%)	1.3 – 4.8%	120 (3.0%)	2.5 – 3.6%
Heart disease	6 (1.6%)	0.6 – 3.4%	63 (1.6%)	1.2 – 2.0%
Hypertension	41 (10.8%)	7.8 – 14.3%	556 (13.9%)	12.8 – 15.0%
Immunodeficiency/immunosuppressant use	0 (0.0%)	0.0 – 1.0%	24 (0.6%)	0.4 – 0.9%
Kidney disease	2 (0.5%)	0.1 – 1.9%	13 (0.3%)	0.2 – 0.6%
Liver disease	3 (0.8%)	0.2 – 2.3%	15 (0.4%)	0.2 – 0.6%
Obesity	2 (0.5%)	0.1 – 1.9%	30 (0.7%)	0.5 – 1.1%
Combined	25 (6.6%)	4.3 – 9.5%	394 (9.8%)	8.9 – 10.8%
Others	55 (14.4%)	11.1 – 18.4%	593 (14.8%)	13.7 – 15.9%
No response	8		99	
<b>Vaccination status</b>				
None	19 (4.9%)	3.0 – 7.5%	143 (3.5%)	2.9 – 4.1%
Once	1 (0.3%)	0.0 – 1.4%	5 (0.1%)	0.0 – 0.3%
Twice	32 (8.2%)	5.7 – 11.4%	260 (6.3%)	5.6 – 7.1%
Three times	110 (28.3%)	23.9 – 33.0%	844 (20.6%)	19.3 – 21.8%
Four times	132 (33.9%)	29.2 – 38.9%	1,378 (33.6%)	32.1 – 35.0%
Five times	95 (24.4%)	20.2 – 29.0%	1,477 (36.0%)	34.5 – 37.5%
<b>Vaccine type</b>				
Bivalent (BA.1 or BA.5)	200 (51.4%)	46.3 – 56.5%	2,630 (64.0%)	62.5 – 65.5%
Ancestral monovalent	170 (43.7%)	38.7 – 48.8%	1,334 (32.5%)	31.0 – 33.9%
Unvaccinated	19 (4.9%)	3.0 – 7.5%	143 (3.5%)	2.9 – 4.1%
<b>Prior infection history/period</b>				
No prior-Infection	350 (90.0%)	86.5 – 92.8%	3,081 (75.0%)	73.7 – 76.3%

Omicron (after Jan. 2022)	10 (2.6%)	1.2 – 4.7%	616 (15.0%)	13.9 – 16.1%
Pre-Omicron (before Dec. 2021)	1 (0.3%)	0.0 – 1.4%	30 (0.7%)	0.5 – 1.0%
Prior-infection with unknown date	28 (7.2%)	4.8 – 10.2%	380 (9.3%)	8.4 – 10.2%
<b>Hybrid immunity</b>				
Hybrid	36 (9.3%)	6.57 – 12.6%	954 (23.2%)	21.9 – 24.6%
Non-hybrid	353 (90.7%)	87.4 – 93.4%	3,153 (76.8%)	75.4 – 78.1%
<b>Days from the first to the second test</b>	63 (56 – 70)		62 (56 – 69)	
<b>Days from last vaccination to first test</b>	23 (12 – 48)		35 (17 – 63)	
Missing/no response	381		3,796	
<b>Days from the last infection to the first test</b>	192 (162 – 223)		121 (82 – 147)	
Missing/no response	387		3,827	
<b>Days from last exposure (vaccination or infection) to first test</b>	77 (30 – 252)		42 (24 – 124)	
Missing/no response	86		818	



**Table 2. Characteristics of newly infected cases during the study period.**

	Non-hybrid (n = 353) n (%)	95% CI	Hybrid (n = 36) n (%)	95% CI
<b>Age in years</b>				
20-29	17 (4.8%)	2.8 – 7.6%	3 (8.3%)	1.8 – 22.5%
30-39	47 (13.3%)	10.0 – 17.3%	5 (13.9%)	4.7 – 29.5%
40-49	96 (27.2%)	22.6 – 32.2%	12 (33.3%)	18.6 – 51.0%
50-59	96 (27.2%)	22.6 – 32.2%	8 (22.2%)	10.1 – 39.2%
60-69	59 (16.7%)	13.0 – 21.0%	6 (16.7%)	6.4 – 32.8%
70-79	30 (8.5%)	5.8 – 11.9%	1 (2.8%)	0.1 – 14.5%
80-	8 (2.3%)	1.0 – 4.4%	1 (2.8%)	0.1 – 14.5%
<b>Sex</b>				
Female	236 (66.9%)	61.7 – 71.7%	23 (63.9%)	46.2 – 79.2%
Male	117 (33.1%)	28.3 – 38.3%	13 (36.1%)	20.8 – 53.8%
<b>Prefecture</b>				
Miyagi	65 (18.4%)	14.5 – 22.9%	2 (5.6%)	0.7 – 18.7%
Tokyo	75 (21.2%)	17.1 – 25.9%	7 (19.4%)	8.2 – 36.0%
Aichi	76 (21.5%)	17.4 – 26.2%	9 (25%)	12.1 – 42.2%
Osaka	77 (21.8%)	17.6 – 26.5%	11 (30.6%)	16.3 – 48.1%
Fukuoka	60 (17%)	13.2 – 21.3%	7 (19.4%)	8.2 – 36.0%
<b>Vaccination status</b>				
None	19 (5.4%)	3.27 – 8.28%	0 (0.0%)	0.0 – 9.7%
Once	1 (0.3%)	0.0 – 1.6%	0 (0.0%)	0.0 – 9.7%
Twice	30 (8.5%)	5.8 – 11.9%	2 (5.6%)	0.7 – 18.7%
Three times	97 (27.5%)	22.9 – 32.5%	13 (36.1%)	20.8 – 53.8%
Four times	121 (34.3%)	29.3 – 39.5%	11 (30.6%)	16.3 – 48.1%
Five times	85 (24.1%)	19.7 – 28.9%	10 (27.8%)	14.2 – 45.2%
<b>Comorbidity</b>				
No comorbidity	195 (56.5%)	51.1 – 61.8%	27 (75%)	57.8 – 87.9%
Asthma	9 (2.6%)	1.2 – 4.9%	0 (0.0%)	0.0 – 9.7%
Cancer	6 (1.7%)	0.6 – 3.8%	0 (0.0%)	0.0 – 9.7%
Chronic obstructive pulmonary disease	0 (0.0%)	0.0 – 1.0%	0 (0.0%)	0.0 – 9.7%
Diabetes mellitus	9 (2.6%)	1.2 – 4.9%	1 (2.8%)	0.1 – 14.5%
Heart disease	6 (1.7%)	0.6 – 3.8%	0 (0.0%)	0.0 – 9.7%
Hypertension	39 (11.3%)	8.2 – 15.1%	2 (5.6%)	0.7 – 18.7%
Immunodeficiency/immunosu ppressant use	0 (0.0%)	0.0 – 1.0%	0 (0.0%)	0.0 – 9.7%
Kidney disease	2 (0.6%)	0.1 – 2.1%	0 (0.0%)	0.0 – 9.7%
Liver disease	2 (0.6%)	0.1 – 2.1%	1 (2.8%)	0.1 – 14.5%
Obesity	1 (0.3%)	0.0 – 1.6%	1 (2.8%)	0.1 – 14.5%
Combined	25 (7.2%)	4.7 – 10.5%	0 (0.0%)	0.0 – 9.7%
Others	51 (14.8%)	11.2 – 19.0%	4 (11.1%)	3.1 – 26.1%
No response	8		0	
<b>Vaccine type</b>				
Bivalent (BA.1 or BA.5)	178 (50.4%)	45.1 – 55.8%	22 (61.1%)	43.5 – 76.9%
Ancestral monovalent	156 (44.2%)	38.9 – 49.5%	14 (38.9%)	23.1 – 56.5%
Unvaccinated	19 (5.4%)	3.3 – 8.3%	0 (0.0%)	0.0 – 9.7%
<b>Prior infection history</b>				
No prior-Infection	350 (99.2%)	97.5 – 99.8%	0 (0.0%)	0.0 – 9.7%
Prior-infection	3 (0.8%)	0.2 – 2.5%	36 (100%)	90.3 – 100.0%
<b>Newly diagnosis</b>				
Newly diagnosed	180 (51%)	45.6 – 56.3%	2 (5.6%)	0.7 – 18.7%

Non newly diagnosed	173 (49%)	43.7 – 54.4%	34 (94.4%)	81.3 – 99.3%
<b>Newly anti-N positive (<math>\geq 1</math> COI)</b>				
Already anti-N positive	2 (0.6%)	0.1 – 2.0%	35 (97.2%)	85.5 – 99.9%
Newly anti-N positive	341 (96.6%)	94.1 – 98.2%	1 (2.8%)	0.1 – 14.5%
Anti-N negative	10 (2.8%)	1.4 – 5.2%	0 (0.0%)	0.0 – 9.7%
<b>Anti-N fold increase</b>				
$\geq 4$ fold increase	350 (99.2%)	97.5 – 99.8%	35 (97.2%)	85.5 – 99.9%
$< 4$ fold increase	3 (0.8%)	0.2 – 2.5%	1 (2.8%)	0.1 – 14.5%
<b>Subjective symptoms</b>				
Symptomatic	167 (47.3%)	42.0 – 52.7%	2 (5.6%)	0.7 – 18.7%
Asymptomatic	12 (3.4%)	1.8 – 5.9%	0 (0.0%)	0.0 – 9.7%
Unaware of any symptoms and infection	166 (47%)	41.7 – 52.4%	23 (63.9%)	46.2 – 79.2%
Unknown/No response	8 (2.3%)	1.0 – 4.4%	11 (30.6%)	16.3 – 48.1%

### **Supplementary Materials**

**Table S1. Summary of the model estimates from total infection risk estimation**

**Table S2. Summary of the model estimates from re-infection risk estimation**

**Table S3. Summary of the model estimates from anti-N antibody response**

**Table S1. Summary of the model estimates from total infection risk estimation**

Parameter	Estimate	Standard Error	95% CI	Rhat	Effective sample size
Intercept	-2.95	0.02	-2.99, -2.91	1.00	3138
Log <sub>10</sub> anti-S	0.81	0.08	0.66, 0.97	1.00	3326
Log <sub>10</sub> anti-N	5.73	0.22	5.31, 6.16	1.00	3290
Zero Inflation	0.01	0.01	0.00, 0.02	1.00	3056
SD <sub>anti-S</sub>	1.86	1.75	0.35, 6.48	1.00	2758
SD <sub>anti-N</sub>	3.93	2.15	1.56, 9.62	1.00	3057

SD, standard derivation

**Table S2. Summary of the model estimates from re-infection risk estimation**

Parameter	Estimate	Standard Error	95% CI	Rhat	Effective sample size
Intercept	-4.20	0.07	-4.35, -4.06	1.00	3184
Log <sub>10</sub> anti-S	-2.53	0.31	-3.15, -1.94	1.00	3187
Log <sub>10</sub> anti-N	3.70	0.20	3.29, 4.09	1.00	3412
Zero Inflation	0.03	0.02	0.00, 0.09	1.00	3033
SD <sub>anti-S</sub>	2.51	1.92	0.61, 7.39	1.00	3126
SD <sub>anti-N</sub>	4.47	2.57	1.76, 11.6	1.00	3088

SD, standard derivation

**Table S3. Summary of the model estimates from anti-N antibody response**

Infection history	Parameter	Estimate	Standard Error	95% CI	Rhat	Effective sample size
Primary infection	$h$	3.16	0.00	3.02, 3.36	1.00	1416
Primary infection	$\alpha$	0.59	0.00	0.41, 0.81	1.00	1425
Primary infection	$\beta$	0.04	0.00	0.02, 0.06	1.00	1409
Primary infection	$\lambda$	0.00	0.00	0.00, 0.00	1.00	1469
Primary infection	$\sigma$	0.56	0.00	0.54, 0.59	1.00	1581
Re-infection	$h$	3.09	0.00	2.76, 3.51	1.00	1532
Reinfection	$\alpha$	0.47	0.01	0.02, 1.57	1.00	1733
Reinfection	$\beta$	0.51	0.01	0.05, 1.70	1.00	1557
Reinfection	$\lambda$	0.00	0.00	0.00, 0.00	1.00	1580
Reinfection	$\sigma$	0.52	0.00	0.39, 0.69	1.00	1612