

Validation of the GCS-Pupil scale in Traumatic Brain Injury

Incremental prognostic performance of pupillary reactivity with GCS in the prospective observational cohorts CENTER-TBI and TRACK-TBI

Rick J.G. Vreeburg¹, Florian D. van Leeuwen², Geoffrey T. Manley³, John K. Yue³, Paul M. Brennan^{4,5}, Xiaoying Sun⁶, Sonia Jain⁶, Thomas A. van Essen^{1,7}, Wilco C. Peul¹, Andrew I.R. Maas^{8,9}, David K. Menon¹⁰, Ewout W. Steyerberg², on behalf of the CENTER-TBI, TRACK-TBI participants and investigators and the members of the clinical working group of the NIH-NINDS initiative on classification and nomenclature of TBI‡

Author affiliations

1. University Neurosurgical Center Holland, Leiden University Medical Center, Haaglanden Medical Center and Haga Teaching Hospital, Leiden and the Hague, the Netherlands
2. Department of Biomedical Data Sciences, Leiden University Medical Center, Leiden, the Netherlands
3. Department of Neurosurgery, University of California, San Francisco, San Francisco, CA, United States
4. Department of Clinical Neurosciences, Royal Infirmary of Edinburgh, Edinburgh, United Kingdom
5. Translational Neurosurgery, Centre for Clinical Brain Sciences, University of Edinburgh, United Kingdom
6. Herbert Wertheim School of Public Health and Human Longevity Science University of California, San Diego
7. Department of Surgery, Division of Neurosurgery, QEII Health Sciences Center and Dalhousie University, Halifax, Nova Scotia, Canada
8. Department of Neurosurgery, Antwerp University Hospital, Edegem, Belgium
9. Department of Translational Neuroscience, Faculty of Medicine and Health Science, University of Antwerp, Antwerp, Belgium
10. Division of Anaesthesia, University of Cambridge, Addenbrooke's Hospital, Cambridge, United Kingdom

‡ The CENTER-TBI and TRACK-TBI Investigators and Participants as well as the members of the clinical working group of the NIH-NINDS initiative on classification and nomenclature of TBI and their affiliations are

NOTE: This preprint reports new research that has not been certified by peer review and should not be used to guide clinical practice.

INCC at the end of the manuscript

Abstract word count: 231

Text word count: 2970

Number of references: 24

Number of tables: 3

Number of figures: 4

Number of supplemental tables: 4

Number of supplemental figures: 2

Abstract

Objective: To compare the incremental prognostic value of pupillary reactivity as captured in the GCS-Pupils score (GCS-P) or added as separate variable to the Glasgow Coma Scale (GCS) in traumatic brain injury (TBI).

Methods: We analyzed patients enrolled between 2014 and 2018 in the Collaborative European NeuroTrauma Effectiveness Research in Traumatic Brain Injury (CENTER-TBI, n=3521) and the Transforming Research and Clinical Knowledge in Traumatic Brain Injury (TRACK-TBI, n=1439) cohorts. We used logistic regression to quantify the prognostic performances of GCS-P versus GCS according to Nagelkerke's R^2 . Endpoints were mortality and unfavorable outcome (Glasgow Outcome Scale-Extended score 1-4) at 6 months after injury. We estimated 95% confidence intervals with bootstrap resampling to summarize the improvement in prognostic capability.

Results: GCS as a linear score had a R^2 of 24% (95% confidence interval [CI] 17-30) and 30% (95%CI 17-43) for mortality and 29% (95%CI 25-34) and 38% (95%CI 29-47) for unfavorable outcome in CENTER-TBI and TRACK-TBI respectively. In the meta-analysis, pupillary reactivity as a separate variable improved the R^2 by an absolute value of 6% and 2% for mortality and unfavorable outcome (95%CI 4.0-7.7 and 1.2-3.0, respectively), with half the improvement captured in the GCS-P score (3%, 95%CI 2.1-3.3 and 1%, 95%CI 1-1.7, respectively).

Conclusions: GCS-P has a stronger association with outcome after TBI than the GCS alone. However, for prognostic models, inclusion of GCS and pupillary reactivity as separate scores is preferable.

Background

Traumatic brain injury (TBI) is a pressing, multifaceted health concern affecting millions of people worldwide annually.¹⁻³ The initial clinical severity of TBI is commonly reported according to the Glasgow Coma Scale (GCS), which is often trichotomized into three classes of severity: mild (GCS 13-15), moderate (GCS 9-12) and severe (GCS \leq 8). This tripartite division is embedded in clinical practice and research, but neglects patient experiences and the relevant heterogeneity within the divisions. Consequently, therapeutic nihilism may result in patients with presumed “severe” injuries, while disabling complaints and symptoms may be disregarded in patients with presumed “mild” injuries.^{4,5,6} The NIH-NINDS has implemented an international initiative to develop a novel approach to TBI classification, culminating in a workshop in Bethesda, USA in January 2024.⁷

In preparation of this workshop, the working group on clinical assessment considered the relative value of using the full GCS or the GCS-Pupils score (GCS-P) for classifying the clinical severity of TBI. The GCS-P was proposed by Brennan and colleagues in 2018.^{8,9} In this novel scale one point is deducted from the GCS score for each unreactive pupil, resulting in a score ranging from 1 to 15, which intuitively has merit. Both the GCS and pupillary reactivity serve as important features in surgical decision-making, and lower scores are associated with poorer outcome. Moreover, the GCS (or its motor component), and pupillary reactivity are important components of well validated multifactorial prognostic models, such as the International Mission for Prognosis and Analysis of Clinical Trials in TBI (IMPACT) and Corticosteroid Randomization after Significant Head Injury (CRASH) models.¹⁰⁻¹²

With the simplicity of the GCS-P being comparable to the GCS and the information yield potentially greater, it shows potential to better characterize TBI. Studies conducted on the IMPACT and CRASH datasets have shown that merging of GCS and pupillary reactivity into the GCS-P may have comparable information yield compared to using GCS and

pupillary reactivity as separate factors, but these were mainly focused on patients with moderate to severe TBI, and it is uncertain if this may hold across all severities.^{8,9}

Uncertainty further exists if a summary score like the GCS-P provides similar prognostic information as the inclusion of these features separately in a prognostic model. We aimed to analyze the association of GCS and GCS-P with outcome in large contemporaneous datasets including TBI of all severities and to explore their prognostic performance relative to each other and to a model including GCS and pupillary reactivity as separate prognostic factors.

Methods

Study population

This study used data from 2 large multicenter, prospective, observational cohorts: the Collaborative European NeuroTrauma Effectiveness Research in TBI (CENTER-TBI) and the Transforming Research and Clinical Knowledge in Traumatic Brain Injury (TRACK-TBI) studies.^{13,14} CENTER-TBI included TBI patients between 2014 and 2017 presenting to one of 65 participating centers across Europe. TRACK-TBI enrolled TBI patients presenting to the emergency department between 2014 and 2019 from 18 United States (US) level 1 trauma centers through convenience sampling. CENTER-TBI and TRACK-TBI are registered on ClinicalTrials.gov (number NCT02210221 and NCT02119182 respectively).

All adults (≥ 18 years) with a TBI recruited to these two studies were included in the current analysis. Exclusion criteria were: (1) missing baseline motor score or pupillary reactivity scorings or (2) missing Glasgow Outcome Scale-Extended (GOS-E) scores.

GCS(-P) & Pupillary reactivity

For CENTER-TBI, baseline GCS and pupillary reactivity were defined, using IMPACT methodology as the most recent not missing value between emergency room (ER) discharge (post-stabilisation) and pre-hospital assessment. Untestable eye (swelling) and verbal

(intubation) components of the GCS were imputed with the number “1”.¹⁵ In TRACK-TBI, the baseline GCS and pupillary reactivity were defined as the assessment at ER presentation.

Missing eye and verbal components were imputed as follows:

In case only verbal score is untestable: Total GCS = $0.55 + 1.45 * [\text{eye}] + 1.44 * [\text{mot}]$.

In case both Eye and verbal score is untestable: Total GCS = $0.6 + 2.4 * [\text{mot}]$.

The GCS was analyzed as an ordinal scale starting at 3 (lowest score) and ending at 15 (highest score). Pupillary reactivity was expressed using the Pupil Reactivity Score (PRS) which is scored based on 3 levels, namely both reacting, one reacting and none reacting, resulting in a score of 0, -1 or -2. The GCS and PRS were combined into an integrated GCS-P score, according to predefined methodology in the initial GCS-P study, subtracting the PRS from the GCS, yielding scores from 1 to 15.⁸

Outcomes

Patient (long-term) functional outcome was expressed using the GOS-E scale at 6 months after injury. GOS-E is an extended measure used to quantify functional outcome and consists of an 8-point scale ranging from 1 (death) to 8 (upper good recovery).¹⁶ The categories 2 (vegetative state) and 3 (lower severe disability) were merged as these could not be differentiated on assessments performed by postal questionnaire. In CENTER-TBI, missing outcomes at 6 months after injury were imputed using a multinomial model if assessments at one or more other time points were available. In TRACK-TBI, only patients with available GOSE scores at 6 months were included. The primary outcomes are unfavorable outcome, which was defined as a GOS-E score lower than “lower moderate disability” (<5) and mortality, defined as patient death within 6 months after injury.

Statistical analysis

Logistic regression modelling was used to analyze the relationships between GCS, PRS, GCS-P and patient outcome (GOS-E and mortality). Nagelkerke's pseudo R^2 was used as primary measure to quantify the prognostic capability of the included parameters.¹⁷

Nagelkerke's R^2 is calculated at the log likelihood scale. It is a measure of how much better the model fits the data compared to a model with no predictors. Nagelkerke's R^2 can be interpreted as a measure of the proportion of variation explained in the dependent variable (the six-month outcome) that is explained by the independent variables (predictors) in a logistic regression model.^{18,19} The uncertainty of the R^2 estimate was quantified by bootstrap resampling (5000 repetitions). We also estimated the increase in R^2 , the ΔR^2 , for GCS-P versus GCS models and GCS plus PRS versus GCS-P models within each bootstrap sample. The distribution of bootstrapped R^2 estimates was used to estimate 95% confidence intervals (CI) for R^2 and differences between R^2 estimates. A pooled estimate across the CENTER-TBI and TRACK-TBI studies was estimated with inverse variance weighting. The regression analyses yielded estimations of odds ratios (OR) and 95% CI. The OR indicates the odds of unfavorable outcome (over favorable outcome) per 1-point increase in the GCS, PRS or GCS-P scales.

A subgroup analysis was performed to assess the prognostic capabilities (mortality and unfavorable outcome) of GCS and GCS-P versus a model with both GCS and PRS in patients with moderate to severe TBI (GCS 3-12). Moreover, an additional age-stratified subgroup analysis was performed on 3 different age groups based on the age distribution in the cohorts, namely age <45, age 45-64, age \geq 65 years.

Statistical analysis was performed using R version 4.1.2.²⁰

Results

Demographics and baseline characteristics

The total CENTER-TBI and TRACK-TBI cohorts consisted of 4509 and 2552 patients respectively. Of those patients, 3521 from CENTER-TBI and 1439 from TRACK-TBI were eligible for primary analysis (Figure 1).

The included patients from both studies were similar in sex, median GCS, PRS and CT imaging variables such as the presence of epidural hematoma (EDH), acute subdural hematoma (ASDH), traumatic subarachnoid hemorrhage (tSAH) and diffuse axonal injury (DAI) (Table 1). TRACK-TBI patients were generally younger than CENTER-TBI patients (median age: 39 years vs 51 years, respectively). Furthermore, mild TBI was more frequent in TRACK-TBI (78%) patients compared to CENTER-TBI (67%). Moreover, cerebral contusions (36% and 25%, respectively) and midline shift (16% and 11%, respectively) were more prevalent in CENTER-TBI compared to TRACK-TBI respectively.

Distribution of outcomes

Mortality and unfavorable outcome were more frequent in CENTER-TBI (12% and 25%) versus TRACK-TBI (7% and 14%). However, there were no large differences in the distribution of unfavorable outcome and mortality per GCS and PRS and within GCS-P scores (Supplemental Table 1 & 2). In CENTER-TBI, a small decrease in mortality at both GCS and GCS-P = 7 and 8 was observed while mortality increased again at GCS and GCS-P = 9 (Figure 2). Moreover, low GCS-P (1-2) displayed higher percentages of mortality and unfavorable outcome compared to low GCS (3-4). Mild and moderate TBI displayed similar distributions (Figure 2). In TRACK-TBI, low GCS-P (1-2) displayed lower mortality percentages at 6 months compared to CENTER-TBI (Figure 2 and Supplemental Table 3).

Associations of GCS(-P) and PRS with outcome

The explained variance was higher for the regression model containing GCS and PRS (R^2 30% and 35%, Table 2) as separate predictors compared to the model containing GCS-P alone (R^2 27% and 33%) for mortality in both CENTER-TBI and TRACK-TBI respectively (Figure 3).

A model containing only GCS had the lowest model performance in CENTER-TBI and TRACK-TBI (R^2 24% and 30%, respectively). GCS had a lower range of predicted risk compared to GCS-P and GCS together with PRS (Supplemental Figure 1). Regarding unfavorable outcome, explained variance was highest in the model containing GCS and PRS as separate predictors compared to GCS-P in both CENTER-TBI and TRACK-TBI (GCS and PRS: R^2 32% and 40% & GCS-P: R^2 31% and 39%, respectively, Table 2). Moreover, a model containing only GCS had the lowest model performance in both cohorts (R^2 29 % and 38% for CENTER-TBI and TRACK-TBI respectively). In a meta-analysis across studies, pupils as a separate variable improved the R^2 by an absolute value of 6% and 2% for mortality and unfavorable outcome, with half the improvement captured in the GCS-P score (3% and 1%, respectively, Table 2, Figure 3 and 4).

For both cohorts, in a logistic regression model containing GCS, an incremental 1-point increase in GCS significantly decreased the odds for mortality within 6 months after injury (OR 0.79, 95%CI 0.77-0.81 and OR 0.75, 95%CI 0.72-0.79 for CENTER-TBI and TRACK-TBI respectively, Table 3). Similarly, more favorable GCS-P showed comparable odds ratios in both CENTER-TBI and TRACK-TBI (OR 0.79, 95%CI 0.77-0.81 and OR 0.76, 95%CI 0.73-0.79, respectively). In a model with both GCS and PRS, incremental 1-point decreases in PRS decreased the odds of mortality more strongly (OR 0.4, 95%CI 0.33-

0.45 and OR 0.43, 95% CI 0.32-0.58 for CENTER-TBI and TRACK-TBI, respectively) than the odds for GCS (OR 0.84, 95%CI 0.82-0.86 and 0.80, 95%CI 0.76-0.85).

When predicting unfavorable outcome (GOS-E 1-4) using comparable models, similar associations were found (Table 3). Again, in a model with both GCS and PRS, a poorer PRS was more strongly associated with a lower odds of unfavorable outcome in both CENTER-TBI and TRACK-TBI patients (OR 0.5, 95%CI 0.42-0.59 and OR 0.56, 95%CI 0.42-0.76, respectively) than a lower GCS score (OR 0.81, 95%CI 0.-0. and OR 0.77, 95%CI 0.-0., respectively).

Subgroup analysis

In the subgroup of 1161 patients in CENTER-TBI and 317 patients in TRACK-TBI with moderate and severe TBI (GCS 3-12), strong correlations were confirmed for both GCS-P, GCS and GCS and PRS with similar differences in explained variability (Supplemental Tables 4, Supplemental Figure 2). In the age-stratified subgroups, similar differences in explained variability between GCS-P, GCS and GCS and PRS were found, with greater explained variance in younger patients in CENTER-TBI and older patients in TRACK-TBI (Supplemental Table 4).

Discussion

This study confirmed that in all models explored, pupillary reactivity adds important prognostic information over the GCS. However, the usage of PRS and GCS alone attributed to the greatest increment in ΔR^2 for mortality and unfavorable outcome (5.8% and 2.1%), with half of this variance being captured by GCS-P (2.7% and 1.3%).

These results are largely in line with those reported in the original paper on GCS-P using the IMPACT and CRASH cohorts.⁸ In these studies, the addition of PRS to GCS as

separate predictors in a regression model increased the ΔR^2 by 4% and 3.2% with a ΔR^2 of 3.4% and 2.2% between GCS and GCS-P for mortality and unfavorable outcome, respectively, leading the authors of the original paper to suggest that the GCS-P is a valuable summary score over the GCS alone. Both studies show an incremental advantage of the GCS and PRS as separate predictors across the broader spectrum of TBI included in the CENTER-TBI and TRACK-TBI studies. The replication of the seminal results of Brennan and colleagues in our study is remarkable in the presence of disparities between cohorts. A major difference is the fraction of mild TBI patients (GCS>8): 78% in CENTER-TBI and 67% in TRACK-TBI compared to 21% in the combined IMPACT and CRASH cohorts.¹¹ Our primary analysis included all TBI patients with available GCS, PRS and GOSE, and thus were inclusive also of patients with GCS 15. Furthermore, patients in the original IMPACT and CRASH cohorts were considerably younger compared to CENTER-TBI and TRACK-TBI, with the median age in CENTER-TBI over 20 years higher than the median age in IMPACT.¹¹ Pupillary abnormalities were also more common in the IMPACT cohort.

Subgroup analyses

We performed a subgroup analysis on patients with moderate and severe TBI (GCS 3-12) to improve comparability between our study and that of Brennan and colleagues^{9,10}. Comparable to the primary analysis, similar trends were observed in the prognostic information from GCS, PRS and GCS-P, but differences in explained variance between groups were more pronounced in moderate and severe TBI (Supplemental Table 4). The age-stratified subgroup analysis displayed variance between age groups regarding explained variability by the logistic regression models, but comparable trends and ΔR^2 for the predictor variables in CENTER-TBI and TRACK-TBI

Pros and cons of a summary score

Simplifications of the GCS inevitably convey less information and therefore loss of clinical value. Such considerations hold, for example, for the trichotomy of the GCS into mild, moderate and severe categories versus use of the full ordinal GCS sum score, but also to the GCS sum score compared to use of the underpinning eye, motor and verbal components, as their cumulative prognostic value is higher than that of the sum score alone.²¹

The integration of multiple clinical characteristics into a single score attempts to provide a single integrated articulation of TBI severity and status, without the loss of information. A careful consideration should be made whether any loss of information is acceptable in favor of utility and simplicity. A strength of the GCS-P is that it combines two of the most relevant clinical predictors for TBI into a summary score, and yet maintains the simplicity and ease of use of the GCS. Relative disadvantages include some loss of information compared to the use of GCS and PRS as separate predictors. Its utility as an overall parameter of injury severity is influenced by its “skewed” discrimination towards the high end of the severity spectrum. However, the subtraction of PRS from the GCS across the entire GCS range potentially reduces efficacy when non-reactive pupils occur at higher GCS scores. Therefore, GCS-P mainly provides additional value in patients with moderate to severe TBI which is in line with the index study by Brennan and Teasdale and the current study. Any decision about the use of an integrated score must also be balanced against potential implementation barriers, which may be substantial when introducing a modification of the GCS, which is deeply embedded in clinical practice.

Finally, different contributions from pupillary unreactivity and motor responses may add up to identical GCS-P scores but may have widely different clinical import and outcome. For example, a patient with a GCS of 3 and two reactive pupils (GCS-P = 3) may indeed have a very severe brain injury but could also have relatively less severe injury with examination confounded by alcohol, residual sedative drugs or a post-ictal state. However, a patient who

has extensor motor responses and one unreactive pupil (E1 V1 M2 P-1) would be more uniformly likely to have a severe brain injury. Indeed, despite a small sample size and missing combinations, a comparison of outcomes of categories equaling a GCS-P score of 3 confirmed the variability in outcome in the first category, and a more dominant poor outcome in the second (Supplemental Table 2).

On balance, we consider the superiority of the GCS-P over the GCS modest, and from a prognostic perspective scoring of GCS and pupillary reactivity should be preferred. We further emphasize on a more general note that we would not recommend use of summary scores as replacements for the separate assessment of neurological status using GCS and PRS in individual patients.⁸

Study strengths and weaknesses

The major strength of this study is its usage of prospectively collected data from 2 large multicenter observational studies across all severities in different continents with standardized data collection, thus ensuring generalizability of findings.

Limitations of our study include the restriction of data collection to North America and Europe, while the majority of TBI worldwide occurs in low- and middle-income countries. Further limitations stem from its observational design with pragmatic data collection. The broad inclusion criteria improve generalizability but potentially result in significant disparities between the CENTER-TBI and TRACK-TBI cohorts.²²⁻²⁴ CENTER-TBI patients were generally older and suffered more severe TBI compared to TRACK-TBI patients. These factors potentially delineate the apparent differences in mortality and unfavorable outcome between both cohorts. Care should be taken comparing the model performance between the CENTER-TBI and TRACK-TBI models. Discrepancies in case-

mix, however, do not preclude comparative analysis of GCS versus GCS-P or GCS and PRS separately, and may even increase generalizability.

We cannot exclude the possibility that some imputation bias may have occurred. In CENTER-TBI a derived baseline GCS score was used with imputation of missing GCS scores according to IMPACT methodology. In TRACK-TBI the GCS scores were always calculated using the GCS ED admission scores and only imputed if the motor score was available.¹⁴

Conclusions

GCS-P has a stronger association with outcome after TBI than the GCS alone, and provides a single integrated score. However, this comes at a loss of some information, and for prognostic models, inclusion of GCS and pupillary reactivity as separate scores is preferable to the use of a GCS-P summary score.

Acknowledgements

We would like to gratefully thank The Clinical Assessment Work Group of the NIH-NINDS on classification and nomenclature of TBI and the CENTER-TBI and TRACK-TBI participants and investigators listed below.

The Clinical Assessment Work Group of the NIH-NINDS

Workgroup Leads

Adam R Ferguson (University of California San Francisco; Adam.Ferguson@ucsf.edu)

David K Menon (University of Cambridge; dkm13@cam.ac.uk)

Noah D Silverberg (University of British Columbia; noah.silverberg@ubc.ca)

Workgroup Members

Thomas J Bayuk (HCOS/NICoE/WRNMMC; thomas.j.bayuk.mil@health.mil)

Matt Breiding (Centers for Disease Control and Prevention; dvi8@cdc.gov)

David L Brody (Uniformed Services University of the Health Sciences; david.brody@usuhs.edu)

Todd A Cesar (TBICoE DHA; todd.a.cesar.mil@health.mil)

Scott A Cota (TBICoE DHA; scott.a.cota.mil@health.mil)

Ari Ercole (University of Cambridge; ae105@cam.ac.uk)

Anthony Figaji (University of Cape Town; Anthony.Figaji@uct.ac.za)

Guoyi Gao (Capital Medical University, Beijing; guoyigao@gmail.com)

Christopher Giza (University of California Los Angeles; cgiza@mednet.ucla.edu)

Fiona Lecky (University of Sheffield; f.e.lecky@sheffield.ac.uk)

Rebekah Mannix (Boston Children's Hospital; Rebekah.Mannix@childrens.harvard.edu)

Kasey Moritz (Combat Casualty Care Research Program; kasey.e.moritz.civ@health.mil)

Claudia S Robertson (Baylor College of Medicine; claudiar@bcm.tmc.edu)

John Yue (University of California San Francisco; yuej@neurosurg.ucsf.edu)

Affiliate Members

Shubhayu Bhattacharyay (University of Cambridge; sb2406@cam.ac.uk)

Carl Marincowitz (University of Sheffield; c.marincowitz@sheffield.ac.uk)

Ana Mikolic (University of British Columbia; ana.mikolic@ubc.ca)

Abel Torres-Espin (University of Waterloo; abel.torresespin@uwaterloo.ca)

Spyridoula Tsetsou (Baylor College of Medicine; Spyridoula.Tsetsou@bcm.edu)

CENTER-TBI participants and investigators (to be indexed as “Collaborators” in PubMed):

Cecilia Åkerlund¹, Krisztina Amrein², Nada Andelic³, Lasse Andreassen⁴, Audny Anke⁵, Anna Antoni⁶, Gérard Audibert⁷, Philippe Azouvi⁸, Maria Luisa Azzolini⁹, Ronald Bartels¹⁰, Pál Barzó¹¹, Romuald Beauvais¹², Ronny Beer¹³, Bo-Michael Bellander¹⁴, Antonio Belli¹⁵, Habib Benali¹⁶, Maurizio Berardino¹⁷, Luigi Beretta⁹, Morten Blaabjerg¹⁸, Peter Bragge¹⁹, Alexandra Brazinova²⁰, Vibeke Brinck²¹, Joanne Brooker²², Camilla Brorsson²³, Andras Buki²⁴, Monika Bullinger²⁵, Manuel Cabeleira²⁶, Alessio Caccioppola²⁷, Emiliana Calappi²⁷, Maria Rosa Calvi⁹, Peter Cameron²⁸, Guillermo Carbayo Lozano²⁹, Marco Carbonara²⁷, Simona Cavallo¹⁷, Giorgio Chevallard³⁰, Arturo Chierogato³⁰, Giuseppe Citerio^{31, 32}, Hans Clusmann³³, Mark Coburn³⁴, Jonathan Coles³⁵, Jamie D. Cooper³⁶, Marta Correia³⁷, Amra Čović³⁸, Nicola Curry³⁹, Endre Czeiter²⁴, Marek Czosnyka²⁶, Claire Dahyot-Fizelier⁴⁰, Paul Dark⁴¹, Helen Dawes⁴², Véronique De Keyser⁴³, Vincent Degos¹⁶, Francesco Della Corte⁴⁴, Hugo den Boogert¹⁰, Bart Depreitere⁴⁵, Đula Đilvesi⁴⁶, Abhishek Dixit⁴⁷, Emma Donoghue²², Jens Dreier⁴⁸, Guy-Loup Dulière⁴⁹, Ari Ercole⁴⁷, Patrick Esser⁴², Erzsébet Ezer⁵⁰, Martin Fabricius⁵¹, Valery L. Feigin⁵², Kelly Foks⁵³, Shirin Frisvold⁵⁴, Alex Furmanov⁵⁵, Pablo Gagliardo⁵⁶, Damien Galanaud¹⁶, Dashiell Gantner²⁸, Guoyi Gao⁵⁷, Pradeep George⁵⁸, Alexandre Ghuysen⁵⁹, Lelde Giga⁶⁰, Ben Glocker⁶¹, Jagoš Golubovic⁴⁶, Pedro A. Gomez⁶², Johannes Gratz⁶³, Benjamin Gravesteijn⁶⁴, Francesca Grossi⁴⁴, Russell L. Gruen⁶⁵, Deepak Gupta⁶⁶, Juanita A. Haagsma⁶⁴, Iain Haitsma⁶⁷, Raimund Helbok¹³, Eirik Helseth⁶⁸, Lindsay Horton⁶⁹, Jilske

Huijben⁶⁴, Peter J. Hutchinson⁷⁰, Bram Jacobs⁷¹, Stefan Jankowski⁷², Mike Jarrett²¹, Ji-yao Jiang⁵⁸, Faye Johnson⁷³, Kelly Jones⁵², Mladen Karan⁴⁶, Angelos G. Kolias⁷⁰, Erwin Kompanje⁷⁴, Daniel Kondziella⁵¹, Evgenios Kornaropoulos⁴⁷, Lars-Owe Koskinen⁷⁵, Noémi Kovács⁷⁶, Ana Kowark⁷⁷, Alfonso Lagares⁶², Linda Lanyon⁵⁸, Steven Laureys⁷⁸, Fiona Lecky^{79, 80}, Didier Ledoux⁷⁸, Rolf Lefering⁸¹, Valerie Legrand⁸², Aurelie Lejeune⁸³, Leon Levi⁸⁴, Roger Lightfoot⁸⁵, Hester Lingsma⁶⁴, Andrew I.R. Maas⁴³, Ana M. Castaño-León⁶², Marc Maegele⁸⁶, Marek Majdan²⁰, Alex Manara⁸⁷, Geoffrey Manley⁸⁸, Costanza Martino⁸⁹, Hugues Maréchal⁴⁹, Julia Mattern⁹⁰, Catherine McMahon⁹¹, Béla Melegh⁹², David Menon⁴⁷, Tomas Menovsky⁴³, Ana Mikolic⁶⁴, Benoit Misset⁷⁸, Visakh Muraleedharan⁵⁸, Lynnette Murray²⁸, Ancuta Negru⁹³, David Nelson¹, Virginia Newcombe⁴⁷, Daan Nieboer⁶⁴, József Nyirádi², Otesile Olubukola⁷⁹, Matej Oresic⁹⁴, Fabrizio Ortolano²⁷, Aarno Palotie^{95, 96, 97}, Paul M. Parizel⁹⁸, Jean-François Payen⁹⁹, Natascha Perera¹², Vincent Perlbarg¹⁶, Paolo Persona¹⁰⁰, Wilco Peul¹⁰¹, Anna Piippo-Karjalainen¹⁰², Matti Pirinen⁹⁵, Dana Pisica⁶⁴, Horia Ples⁹³, Suzanne Polinder⁶⁴, Inigo Pomposo²⁹, Jussi P. Posti¹⁰³, Louis Puybasset¹⁰⁴, Andreea Radoi¹⁰⁵, Arminas Ragauskas¹⁰⁶, Rahul Raj¹⁰², Malinka Rambadagalla¹⁰⁷, Isabel Retel Helmrich⁶⁴, Jonathan Rhodes¹⁰⁸, Sylvia Richardson¹⁰⁹, Sophie Richter⁴⁷, Samuli Ripatti⁹⁵, Saulius Rocka¹⁰⁶, Cecilie Roe¹¹⁰, Olav Roise^{111, 112}, Jonathan Rosand¹¹³, Jeffrey V. Rosenfeld¹¹⁴, Christina Rosenlund¹¹⁵, Guy Rosenthal⁵⁵, Rolf Rossaint⁷⁷, Sandra Rossi¹⁰⁰, Daniel Rueckert⁶¹, Martin Rusnák¹¹⁶, Juan Sahuquillo¹⁰⁵, Oliver Sakowitz^{90, 117}, Renan Sanchez-Porras¹¹⁷, Janos Sandor¹¹⁸, Nadine Schäfer⁸¹, Silke Schmidt¹¹⁹, Herbert Schoechl¹²⁰, Guus Schoonman¹²¹, Rico Frederik Schou¹²², Elisabeth Schwendenwein⁶, Charlie Sewalt⁶⁴, Ranjit D. Singh¹⁰¹, Toril Skandsen^{123, 124}, Peter Smielewski²⁶, Abayomi Sorinola¹²⁵, Emmanuel Stamatakis⁴⁷, Simon Stanworth³⁹, Robert Stevens¹²⁶, William Stewart¹²⁷, Ewout W. Steyerberg^{64, 128}, Nino Stocchetti¹²⁹, Nina Sundström¹³⁰, Riikka Takala¹³¹, Viktória Tamás¹²⁵, Tomas Tamosuitis¹³², Mark Steven Taylor²⁰, Aurore Thibaut⁷⁸, Braden Te Ao⁵², Olli Tenovuo¹⁰³, Alice Theadom⁵², Matt Thomas⁸⁷, Dick Tibboel¹³³, Marjolein Timmers⁷⁴, Christos Toliás¹³⁴, Tony Trapani²⁸, Cristina Maria Tudora⁹³, Andreas Unterberg⁹⁰, Peter Vajkoczy¹³⁵, Shirley Vallance²⁸, Egils Valeinis⁶⁰, Zoltán Vámos⁵⁰, Mathieu van der Jagt¹³⁶, Gregory Van der Steen⁴³, Joukje van der Naalt⁷¹, Jeroen T.J.M. van Dijck¹⁰¹, Inge A. M. van Erp¹⁰¹, Thomas A. van Essen¹⁰¹, Wim Van Hecke¹³⁷, Caroline van Heugten¹³⁸, Dominique Van Praag¹³⁹, Ernest van Veen⁶⁴, Thijs Van de Vyvere¹³⁷, Roel P. J. van Wijk¹⁰¹, Alessia Vargiolu³², Emmanuel Vega⁸³, Kimberley Velt⁶⁴, Jan Verheyden¹³⁷, Paul M. Vespa¹⁴⁰, Anne Vik^{123, 141}, Rimantas Vilcinis¹³², Victor Volovici⁶⁷, Nicole von Steinbüchel³⁸, Daphne Voormolen⁶⁴, Rick J.G. Vreeburg¹⁰¹, Petar Vulekovic⁴⁶, Kevin K.W. Wang¹⁴², Daniel Whitehouse⁴⁷, Eveline Wiegers⁶⁴, Guy Williams⁴⁷, Lindsay Wilson⁶⁹, Stefan Winzeck⁴⁷, Stefan Wolf¹⁴³, Zhihui Yang¹¹³, Peter Ylén¹⁴⁴, Alexander Younsi⁹⁰, Frederick A. Zeiler^{47, 145}, Veronika Zelinkova²⁰, Agate Ziverte⁶⁰, Tommaso Zoerle²⁷

¹ Department of Physiology and Pharmacology, Section of Perioperative Medicine and Intensive Care, Karolinska Institutet, Stockholm, Sweden

² János Szentágothai Research Centre, University of Pécs, Pécs, Hungary

³ Division of Clinical Neuroscience, Department of Physical Medicine and Rehabilitation, Oslo University Hospital and University of Oslo, Oslo, Norway

⁴ Department of Neurosurgery, University Hospital Northern Norway, Tromsø, Norway

⁵ Department of Physical Medicine and Rehabilitation, University Hospital Northern Norway, Tromsø, Norway

⁶ Trauma Surgery, Medical University Vienna, Vienna, Austria

⁷ Department of Anesthesiology & Intensive Care, University Hospital Nancy, Nancy, France

⁸ Raymond Poincaré hospital, Assistance Publique – Hôpitaux de Paris, Paris, France

⁹ Department of Anesthesiology & Intensive Care, S Raffaele University Hospital, Milan, Italy

¹⁰ Department of Neurosurgery, Radboud University Medical Center, Nijmegen, The Netherlands

¹¹ Department of Neurosurgery, University of Szeged, Szeged, Hungary

¹² International Projects Management, ARTTIC, Munchen, Germany

¹³ Department of Neurology, Neurological Intensive Care Unit, Medical University of Innsbruck, Innsbruck, Austria

¹⁴ Department of Neurosurgery & Anesthesia & intensive care medicine, Karolinska University Hospital, Stockholm, Sweden

- ¹⁵ NIHR Surgical Reconstruction and Microbiology Research Centre, Birmingham, UK
- ¹⁶ Anesthésie-Réanimation, Assistance Publique – Hôpitaux de Paris, Paris, France
- ¹⁷ Department of Anesthesia & ICU, AOU Città della Salute e della Scienza di Torino - Orthopedic and Trauma Center, Torino, Italy
- ¹⁸ Department of Neurology, Odense University Hospital, Odense, Denmark
- ¹⁹ BehaviourWorks Australia, Monash Sustainability Institute, Monash University, Victoria, Australia
- ²⁰ Department of Public Health, Faculty of Health Sciences and Social Work, Trnava University, Trnava, Slovakia
- ²¹ Quesgen Systems Inc., Burlingame, California, USA
- ²² Australian & New Zealand Intensive Care Research Centre, Department of Epidemiology and Preventive Medicine, School of Public Health and Preventive Medicine, Monash University, Melbourne, Australia
- ²³ Department of Surgery and Perioperative Science, Umeå University, Umeå, Sweden
- ²⁴ Department of Neurosurgery, Medical School, University of Pécs, Hungary and Neurotrauma Research Group, János Szentágothai Research Centre, University of Pécs, Hungary
- ²⁵ Department of Medical Psychology, Universitätsklinikum Hamburg-Eppendorf, Hamburg, Germany
- ²⁶ Brain Physics Lab, Division of Neurosurgery, Dept of Clinical Neurosciences, University of Cambridge, Addenbrooke's Hospital, Cambridge, UK
- ²⁷ Neuro ICU, Fondazione IRCCS Cà Granda Ospedale Maggiore Policlinico, Milan, Italy
- ²⁸ ANZIC Research Centre, Monash University, Department of Epidemiology and Preventive Medicine, Melbourne, Victoria, Australia
- ²⁹ Department of Neurosurgery, Hospital of Cruces, Bilbao, Spain
- ³⁰ NeuroIntensive Care, Niguarda Hospital, Milan, Italy
- ³¹ School of Medicine and Surgery, Università Milano Bicocca, Milano, Italy
- ³² NeuroIntensive Care Unit, Department Neuroscience, IRCCS Fondazione San Gerardo dei Tintori, Monza, Italy
- ³³ Department of Neurosurgery, Medical Faculty RWTH Aachen University, Aachen, Germany
- ³⁴ Department of Anesthesiology and Intensive Care Medicine, University Hospital Bonn, Bonn, Germany
- ³⁵ Department of Anesthesia & Neurointensive Care, Cambridge University Hospital NHS Foundation Trust, Cambridge, UK
- ³⁶ School of Public Health & PM, Monash University and The Alfred Hospital, Melbourne, Victoria, Australia
- ³⁷ Radiology/MRI department, MRC Cognition and Brain Sciences Unit, Cambridge, UK
- ³⁸ Institute of Medical Psychology and Medical Sociology, Universitätsmedizin Göttingen, Göttingen, Germany
- ³⁹ Oxford University Hospitals NHS Trust, Oxford, UK
- ⁴⁰ Intensive Care Unit, CHU Poitiers, Poitiers, France
- ⁴¹ University of Manchester NIHR Biomedical Research Centre, Critical Care Directorate, Salford Royal Hospital NHS Foundation Trust, Salford, UK
- ⁴² Movement Science Group, Faculty of Health and Life Sciences, Oxford Brookes University, Oxford, UK
- ⁴³ Department of Neurosurgery, Antwerp University Hospital and University of Antwerp, Edegem, Belgium
- ⁴⁴ Department of Anesthesia & Intensive Care, Maggiore Della Carità Hospital, Novara, Italy
- ⁴⁵ Department of Neurosurgery, University Hospitals Leuven, Leuven, Belgium
- ⁴⁶ Department of Neurosurgery, Clinical centre of Vojvodina, Faculty of Medicine, University of Novi Sad, Novi Sad, Serbia
- ⁴⁷ Division of Anaesthesia, University of Cambridge, Addenbrooke's Hospital, Cambridge, UK
- ⁴⁸ Center for Stroke Research Berlin, Charité – Universitätsmedizin Berlin, corporate member of Freie Universität Berlin, Humboldt-Universität zu Berlin, and Berlin Institute of Health, Berlin, Germany
- ⁴⁹ Intensive Care Unit, CHR Citadelle, Liège, Belgium
- ⁵⁰ Department of Anaesthesiology and Intensive Therapy, University of Pécs, Pécs, Hungary

- 51 Departments of Neurology, Clinical Neurophysiology and Neuroanesthesiology, Region Hovedstaden Rigshospitalet, Copenhagen, Denmark
- 52 National Institute for Stroke and Applied Neurosciences, Faculty of Health and Environmental Studies, Auckland University of Technology, Auckland, New Zealand
- 53 Department of Neurology, Erasmus MC, Rotterdam, the Netherlands
- 54 Department of Anesthesiology and Intensive care, University Hospital Northern Norway, Tromsø, Norway
- 55 Department of Neurosurgery, Hadassah-hebrew University Medical center, Jerusalem, Israel
- 56 Fundación Instituto Valenciano de Neurorehabilitación (FIVAN), Valencia, Spain
- 57 Department of Neurosurgery, Shanghai Renji hospital, Shanghai Jiaotong University/school of medicine, Shanghai, China
- 58 Karolinska Institutet, INCF International Neuroinformatics Coordinating Facility, Stockholm, Sweden
- 59 Emergency Department, CHU, Liège, Belgium
- 60 Neurosurgery clinic, Pauls Stradins Clinical University Hospital, Riga, Latvia
- 61 Department of Computing, Imperial College London, London, UK
- 62 Department of Neurosurgery, Hospital Universitario 12 de Octubre, Madrid, Spain
- 63 Department of Anesthesia, Critical Care and Pain Medicine, Medical University of Vienna, Austria
- 64 Department of Public Health, Erasmus Medical Center-University Medical Center, Rotterdam, The Netherlands
- 65 College of Health and Medicine, Australian National University, Canberra, Australia
- 66 Department of Neurosurgery, Neurosciences Centre & JPN Apex trauma centre, All India Institute of Medical Sciences, New Delhi-110029, India
- 67 Department of Neurosurgery, Erasmus MC, Rotterdam, the Netherlands
- 68 Department of Neurosurgery, Oslo University Hospital, Oslo, Norway
- 69 Division of Psychology, University of Stirling, Stirling, UK
- 70 Division of Neurosurgery, Department of Clinical Neurosciences, Addenbrooke's Hospital & University of Cambridge, Cambridge, UK
- 71 Department of Neurology, University of Groningen, University Medical Center Groningen, Groningen, Netherlands
- 72 Neurointensive Care , Sheffield Teaching Hospitals NHS Foundation Trust, Sheffield, UK
- 73 Salford Royal Hospital NHS Foundation Trust Acute Research Delivery Team, Salford, UK
- 74 Department of Intensive Care and Department of Ethics and Philosophy of Medicine, Erasmus Medical Center, Rotterdam, The Netherlands
- 75 Department of Clinical Neuroscience, Neurosurgery, Umeå University, Umeå, Sweden
- 76 Hungarian Brain Research Program - Grant No. KTIA_13_NAP-A-II/8, University of Pécs, Pécs, Hungary
- 77 Department of Anaesthesiology, University Hospital of Aachen, Aachen, Germany
- 78 Cyclotron Research Center , University of Liège, Liège, Belgium
- 79 Centre for Urgent and Emergency Care Research (CURE), Health Services Research Section, School of Health and Related Research (ScHARR), University of Sheffield, Sheffield, UK
- 80 Emergency Department, Salford Royal Hospital, Salford UK
- 81 Institute of Research in Operative Medicine (IFOM), Witten/Herdecke University, Cologne, Germany
- 82 VP Global Project Management CNS, ICON, Paris, France
- 83 Department of Anesthesiology-Intensive Care, Lille University Hospital, Lille, France
- 84 Department of Neurosurgery, Rambam Medical Center, Haifa, Israel
- 85 Department of Anesthesiology & Intensive Care, University Hospitals Southampton NHS Trust, Southampton, UK
- 86 Cologne-Merheim Medical Center (CMMC), Department of Traumatology, Orthopedic Surgery and Sportmedicine, Witten/Herdecke University, Cologne, Germany
- 87 Intensive Care Unit, Southmead Hospital, Bristol, Bristol, UK
- 88 Department of Neurological Surgery, University of California, San Francisco, California, USA
- 89 Department of Anesthesia & Intensive Care, M. Bufalini Hospital, Cesena, Italy
- 90 Department of Neurosurgery, University Hospital Heidelberg, Heidelberg, Germany

- 91 Department of Neurosurgery, The Walton centre NHS Foundation Trust, Liverpool, UK
- 92 Department of Medical Genetics, University of Pécs, Pécs, Hungary
- 93 Department of Neurosurgery, Emergency County Hospital Timisoara , Timisoara, Romania
- 94 School of Medical Sciences, Örebro University, Örebro, Sweden
- 95 Institute for Molecular Medicine Finland, University of Helsinki, Helsinki, Finland
- 96 Analytic and Translational Genetics Unit, Department of Medicine; Psychiatric & Neurodevelopmental Genetics Unit, Department of Psychiatry; Department of Neurology, Massachusetts General Hospital, Boston, MA, USA
- 97 Program in Medical and Population Genetics; The Stanley Center for Psychiatric Research, The Broad Institute of MIT and Harvard, Cambridge, MA, USA
- 98 Department of Radiology, University of Antwerp, Edegem, Belgium
- 99 Department of Anesthesiology & Intensive Care, University Hospital of Grenoble, Grenoble, France
- 100 Department of Anesthesia & Intensive Care, Azienda Ospedaliera Università di Padova, Padova, Italy
- 101 Dept. of Neurosurgery, Leiden University Medical Center, Leiden, The Netherlands and Dept. of Neurosurgery, Medical Center Haaglanden, The Hague, The Netherlands
- 102 Department of Neurosurgery, Helsinki University Central Hospital
- 103 Division of Clinical Neurosciences, Department of Neurosurgery and Turku Brain Injury Centre, Turku University Hospital and University of Turku, Turku, Finland
- 104 Department of Anesthesiology and Critical Care, Pitié -Salpêtrière Teaching Hospital, Assistance Publique, Hôpitaux de Paris and University Pierre et Marie Curie, Paris, France
- 105 Neurotraumatology and Neurosurgery Research Unit (UNINN), Vall d'Hebron Research Institute, Barcelona, Spain
- 106 Department of Neurosurgery, Kaunas University of technology and Vilnius University, Vilnius, Lithuania
- 107 Department of Neurosurgery, Rezekne Hospital, Latvia
- 108 Department of Anaesthesia, Critical Care & Pain Medicine NHS Lothian & University of Edinburgh, Edinburgh, UK
- 109 Director, MRC Biostatistics Unit, Cambridge Institute of Public Health, Cambridge, UK
- 110 Department of Physical Medicine and Rehabilitation, Oslo University Hospital/University of Oslo, Oslo, Norway
- 111 Division of Orthopedics, Oslo University Hospital, Oslo, Norway
- 112 Institute of Clinical Medicine, Faculty of Medicine, University of Oslo, Oslo, Norway
- 113 Broad Institute, Cambridge MA Harvard Medical School, Boston MA, Massachusetts General Hospital, Boston MA, USA
- 114 National Trauma Research Institute, The Alfred Hospital, Monash University, Melbourne, Victoria, Australia
- 115 Department of Neurosurgery, Odense University Hospital, Odense, Denmark
- 116 International Neurotrauma Research Organisation, Vienna, Austria
- 117 Klinik für Neurochirurgie, Klinikum Ludwigsburg, Ludwigsburg, Germany
- 118 Division of Biostatistics and Epidemiology, Department of Preventive Medicine, University of Debrecen, Debrecen, Hungary
- 119 Department Health and Prevention, University Greifswald, Greifswald, Germany
- 120 Department of Anaesthesiology and Intensive Care, AUVA Trauma Hospital, Salzburg, Austria
- 121 Department of Neurology, Elisabeth-TweeSteden Ziekenhuis, Tilburg, the Netherlands
- 122 Department of Neuroanesthesia and Neurointensive Care, Odense University Hospital, Odense, Denmark
- 123 Department of Neuromedicine and Movement Science, Norwegian University of Science and Technology, NTNU, Trondheim, Norway
- 124 Department of Physical Medicine and Rehabilitation, St.Olavs Hospital, Trondheim University Hospital, Trondheim, Norway
- 125 Department of Neurosurgery, University of Pécs, Pécs, Hungary
- 126 Division of Neuroscience Critical Care, John Hopkins University School of Medicine, Baltimore, USA

- ¹²⁷ Department of Neuropathology, Queen Elizabeth University Hospital and University of Glasgow, Glasgow, UK
- ¹²⁸ Dept. of Department of Biomedical Data Sciences, Leiden University Medical Center, Leiden, The Netherlands
- ¹²⁹ Department of Pathophysiology and Transplantation, Milan University, and Neuroscience ICU, Fondazione IRCCS Cà Granda Ospedale Maggiore Policlinico, Milano, Italy
- ¹³⁰ Department of Radiation Sciences, Biomedical Engineering, Umeå University, Umeå, Sweden
- ¹³¹ Perioperative Services, Intensive Care Medicine and Pain Management, Turku University Hospital and University of Turku, Turku, Finland
- ¹³² Department of Neurosurgery, Kaunas University of Health Sciences, Kaunas, Lithuania
- ¹³³ Intensive Care and Department of Pediatric Surgery, Erasmus Medical Center, Sophia Children's Hospital, Rotterdam, The Netherlands
- ¹³⁴ Department of Neurosurgery, Kings college London, London, UK
- ¹³⁵ Neurologie, Neurochirurgie und Psychiatrie, Charité – Universitätsmedizin Berlin, Berlin, Germany
- ¹³⁶ Department of Intensive Care Adults, Erasmus MC– University Medical Center Rotterdam, Rotterdam, the Netherlands
- ¹³⁷ icoMetrix NV, Leuven, Belgium
- ¹³⁸ Movement Science Group, Faculty of Health and Life Sciences, Oxford Brookes University, Oxford, UK
- ¹³⁹ Psychology Department, Antwerp University Hospital, Edegem, Belgium
- ¹⁴⁰ Director of Neurocritical Care, University of California, Los Angeles, USA
- ¹⁴¹ Department of Neurosurgery, St.Olavs Hospital, Trondheim University Hospital, Trondheim, Norway
- ¹⁴² Department of Emergency Medicine, University of Florida, Gainesville, Florida, USA
- ¹⁴³ Department of Neurosurgery, Charité – Universitätsmedizin Berlin, corporate member of Freie Universität Berlin, Humboldt-Universität zu Berlin, and Berlin Institute of Health, Berlin, Germany
- ¹⁴⁴ VTT Technical Research Centre, Tampere, Finland
- ¹⁴⁵ Section of Neurosurgery, Department of Surgery, Rady Faculty of Health Sciences, University of Manitoba, Winnipeg, MB, Canada

TRACK-TBI Investigators (to be indexed as “Collaborators” in PubMed): Neeraj Badjatia, MD, MS (Department of Neurology, University of Maryland, Baltimore, Maryland, US); Jason Barber, MS (Department of Neurological Surgery, University of Washington, Seattle, Washington, US); Yelena G. Bodien, PhD (Department of Neurology, Harvard Medical School, Boston, Massachusetts, US); Brian Fabian, MPA (Department of Neurological Surgery, University of California, San Francisco, San Francisco, California, US); Adam R. Ferguson, PhD (Department of Neurological Surgery, University of California, San Francisco, San Francisco, California, US); Brandon Foreman, MD (Department of Neurology, University of Cincinnati, Cincinnati, Ohio, US); Raquel C. Gardner, MD (Department of Neurology, University of California, San Francisco, San Francisco, California, US); Shankar Gopinath, MD (Department of Neurological Surgery, Baylor College of Medicine, Houston, Texas, US); Ramesh Grandhi, MD, MS (Department of Neurological Surgery, University of Utah Medical Center; Salt Lake City, Utah, US); J. Russell Huie, PhD (Department of Neurological Surgery, University of California, San Francisco, San Francisco, California, US); C. Dirk Keene, MD, PhD (Department of Laboratory Medicine and Pathology, University of Washington, Seattle, Washington, US); Hester F. Lingsma, PhD (Department of Public Health, Erasmus Medical Center, Rotterdam, The Netherlands); Christine L. Mac Donald, PhD (Department of Neurological Surgery, University of Washington, Seattle, Washington, US); Amy J. Markowitz, JD (Department of Neurological Surgery, University of California, San Francisco, San Francisco, California, US); Randall Merchant, PhD (Department of Anatomy, Virginia Commonwealth University, Richmond, Virginia, US); Laura B. Ngwenya, MD, PhD (Department of Neurological Surgery, University of Cincinnati, Cincinnati, Ohio, US); Richard B. Rodgers, MD (Department of Neurosurgery, Goodman Campbell Brain and Spine, Indianapolis, Indiana, US); Andrea L. C. Schneider, MD, PhD (Department of Neurology, University of Pennsylvania, Philadelphia, PA, US); David M. Schnyer, PhD (Department of Psychology, University of Texas at Austin, Austin, Texas, US); Sabrina R. Taylor, PhD (Department of Neurological Surgery,

University of California, San Francisco, San Francisco, California, US); Nancy R. Temkin, PhD (Department of Neurological Surgery, University of Washington, Seattle, Washington, US); Abel Torres-Espin, PhD (Department of Neurological Surgery, University of California, San Francisco, San Francisco, California, US); Mary J. Vassar, RN, MS (Department of Neurological Surgery, University of California, San Francisco, San Francisco, California, US); Kevin K. W. Wang, PhD (Department of Neurobiology, Morehouse School of Medicine, Atlanta, Georgia, US); Justin C. Wong, BS (Department of Neurological Surgery, University of California, San Francisco, San Francisco, California, US); Ross D. Zafonte, DO (Department of Rehabilitation Medicine, Harvard Medical School, Boston, Massachusetts, US)

References

1. Brazinova A, Rehorcikova V, Taylor MS, et al. Epidemiology of Traumatic Brain Injury in Europe: A Living Systematic Review. *J Neurotrauma*. May 15 2021;38(10):1411-1440. doi:10.1089/neu.2015.4126
2. Guan B, Anderson DB, Chen L, Feng S, Zhou H. Global, regional and national burden of traumatic brain injury and spinal cord injury, 1990-2019: a systematic analysis for the Global Burden of Disease Study 2019. *BMJ Open*. Oct 6 2023;13(10):e075049. doi:10.1136/bmjopen-2023-075049
3. James SL, Theadom A, Ellenbogen RG, et al. Global, regional, and national burden of traumatic brain injury and spinal cord injury, 1990–2016: a systematic analysis for the Global Burden of Disease Study 2016. *The Lancet Neurology*. 2019/01/01/ 2019;18(1):56-87. doi:[https://doi.org/10.1016/S1474-4422\(18\)30415-0](https://doi.org/10.1016/S1474-4422(18)30415-0)
4. Tenovuo O, Diaz-Arrastia R, Goldstein LE, Sharp DJ, van der Naalt J, Zasler ND. Assessing the Severity of Traumatic Brain Injury-Time for a Change? *J Clin Med*. Jan 4 2021;10(1)doi:10.3390/jcm10010148
5. Silverberg ND, Iverson GL, Cogan A, et al. The American Congress of Rehabilitation Medicine Diagnostic Criteria for Mild Traumatic Brain Injury. *Archives of Physical Medicine and Rehabilitation*. 2023/08/01/ 2023;104(8):1343-1355. doi:<https://doi.org/10.1016/j.apmr.2023.03.036>
6. Stroke NIoNDa. Focus on Traumatic Brain Injury Research; NINDS TBI Classification and Nomenclature Workshop. NIH. Accessed 09-04-2024, 2024. <https://www.ninds.nih.gov/current-research/focus-disorders/focus-traumatic-brain-injury-research>
7. NIH-NINDS. NINDS TBI Classification and Nomenclature Workshop. NINDS NIH. Accessed 09-04-2024, 2024. <https://www.ninds.nih.gov/news-events/events/ninds-tbi-classification-and-nomenclature-workshop>
8. Brennan PM, Murray GD, Teasdale GM. Simplifying the use of prognostic information in traumatic brain injury. Part 1: The GCS-Pupils score: an extended index of clinical severity. *J Neurosurg*. Jun 2018;128(6):1612-1620. doi:10.3171/2017.12.Jns172780
9. Murray G, Brennan P, Teasdale G. Simplifying the use of prognostic information in traumatic brain injury. Part 2: Graphical presentation of probabilities. *Journal of Neurosurgery*. 04/10 2018;128:1-14. doi:10.3171/2017.12.JNS172782
10. Roozenbeek B, Lingsma HF, Lecky FE, et al. Prediction of outcome after moderate and severe traumatic brain injury: external validation of the International Mission on Prognosis and Analysis of Clinical Trials (IMPACT) and Corticoid Randomisation After Significant Head injury (CRASH) prognostic models. *Crit Care Med*. May 2012;40(5):1609-17. doi:10.1097/CCM.0b013e31824519ce
11. Steyerberg EW, Mushkudiani N, Perel P, et al. Predicting outcome after traumatic brain injury: development and international validation of prognostic scores based on admission characteristics. *PLoS Med*. Aug 5 2008;5(8):e165; discussion e165. doi:10.1371/journal.pmed.0050165
12. Collaborators MCT. Predicting outcome after traumatic brain injury: practical prognostic models based on large cohort of international patients. *BMJ*. 2008;336(7641):425-429. doi:10.1136/bmj.39461.643438.25
13. Maas AI, Menon DK, Steyerberg EW, et al. Collaborative European NeuroTrauma Effectiveness Research in Traumatic Brain Injury (CENTER-TBI): a prospective longitudinal observational study. *Neurosurgery*. Jan 2015;76(1):67-80. doi:10.1227/neu.0000000000000575
14. Transforming Research and Clinical Knowledge in Traumatic Brain Injury Pilot: Multicenter Implementation of the Common Data Elements for Traumatic Brain Injury. *Journal of Neurotrauma*. 2013;30(22):1831-1844. doi:10.1089/neu.2013.2970
15. Ercole A, Dixit A, Nelson DW, et al. Imputation strategies for missing baseline neurological assessment covariates after traumatic brain injury: A CENTER-TBI study. *PLoS One*. 2021;16(8):e0253425. doi:10.1371/journal.pone.0253425

16. Wilson JT, Pettigrew LE, Teasdale GM. Structured interviews for the Glasgow Outcome Scale and the extended Glasgow Outcome Scale: guidelines for their use. *J Neurotrauma*. Aug 1998;15(8):573-85. doi:10.1089/neu.1998.15.573
17. Nagelkerke N, Smits J, le Cessie S, van Houwelingen H. Testing goodness-of-fit of the logistic regression model in case-control studies using sample reweighting. *Stat Med*. Jan 15 2005;24(1):121-30. doi:10.1002/sim.1997
18. EW S. *Clinical Prediction Models a Practical Approach to Development, Validation, and Updating*. Springer International Publishing; 2019.
19. Harrell F. *Regression Modeling Strategies: With Applications to Linear Models, Logistic and Ordinal Regression, and Survival Analysis*. SPRINGER; 2016.
20. *R: A Language and Environment for Statistical Computing*. Version 4.1.2. R Foundation for Statistical Computing; 2021. Accessed 2024. <https://www.R-project.org>
21. Reith FCM, Lingsma HF, Gabbe BJ, Lecky FE, Roberts I, Maas AIR. Differential effects of the Glasgow Coma Scale Score and its Components: An analysis of 54,069 patients with traumatic brain injury. *Injury*. Sep 2017;48(9):1932-1943. doi:10.1016/j.injury.2017.05.038
22. van Essen TA, Lingsma HF, Pisciă D, et al. Surgery versus conservative treatment for traumatic acute subdural haematoma: a prospective, multicentre, observational, comparative effectiveness study. *Lancet Neurol*. Jul 2022;21(7):620-631. doi:10.1016/s1474-4422(22)00166-1
23. van Essen TA, Menon DK, Lingsma HF. Unmeasured Confounding in Observational Studies of Management of Cerebellar Intracranial Hemorrhage. *Jama*. Feb 18 2020;323(7):665-666. doi:10.1001/jama.2019.20851
24. van Essen TA, den Boogert HF, Cnossen MC, et al. Variation in neurosurgical management of traumatic brain injury: a survey in 68 centers participating in the CENTER-TBI study. *Acta Neurochir (Wien)*. Mar 2019;161(3):435-449. doi:10.1007/s00701-018-3761-z

CENTER-TBI cohort
(n = 4509)

TRACK-TBI cohort
(n = 2552)

Missing GCS scores
(n = 177 [4%])

Missing PRS
(n = 262 [6%])

Missing GOS-E
scores
(n = 698 [15%])

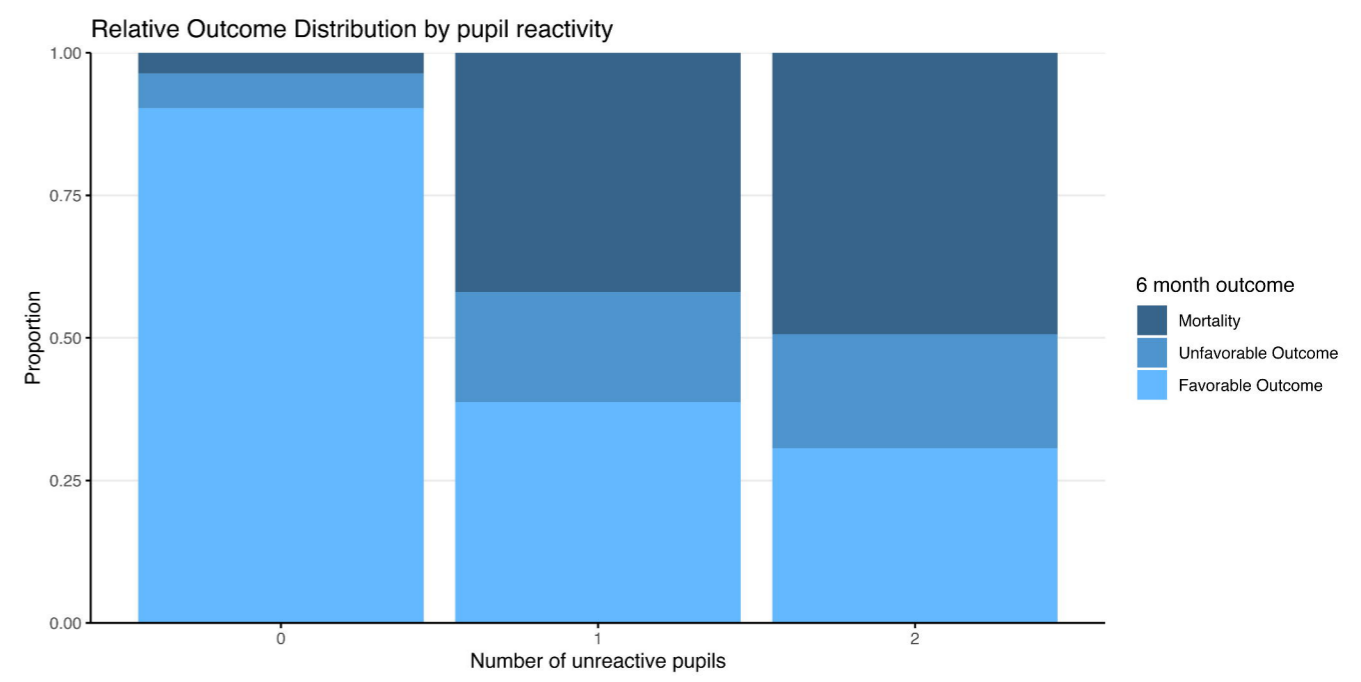
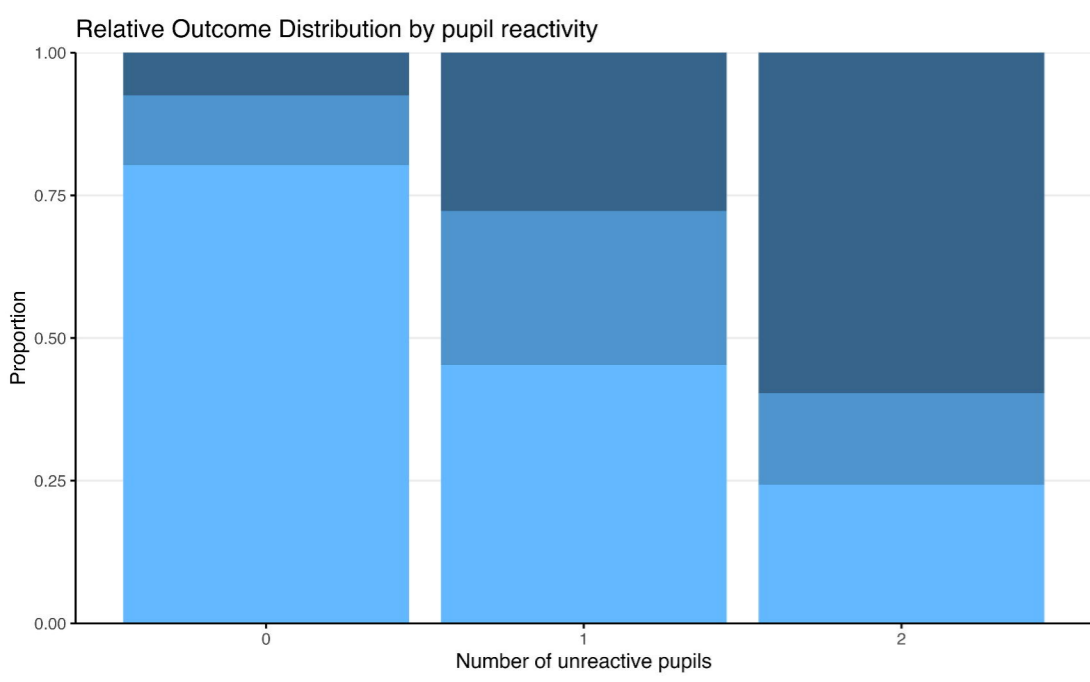
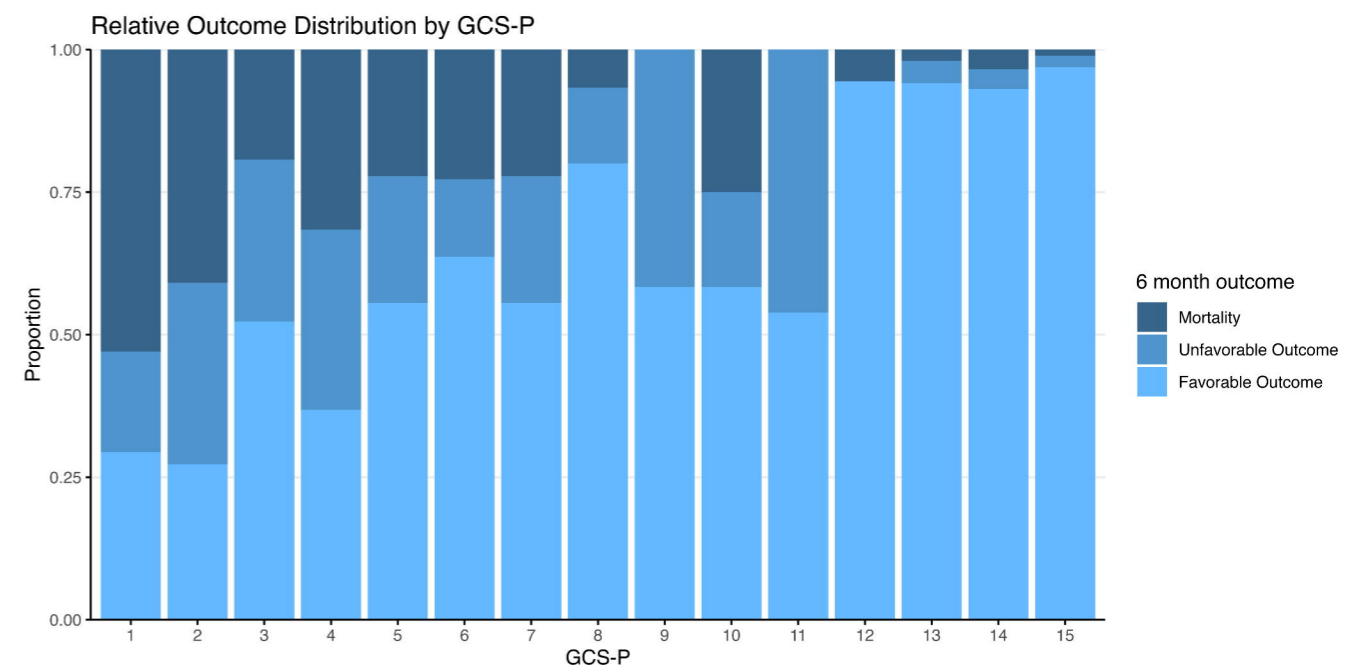
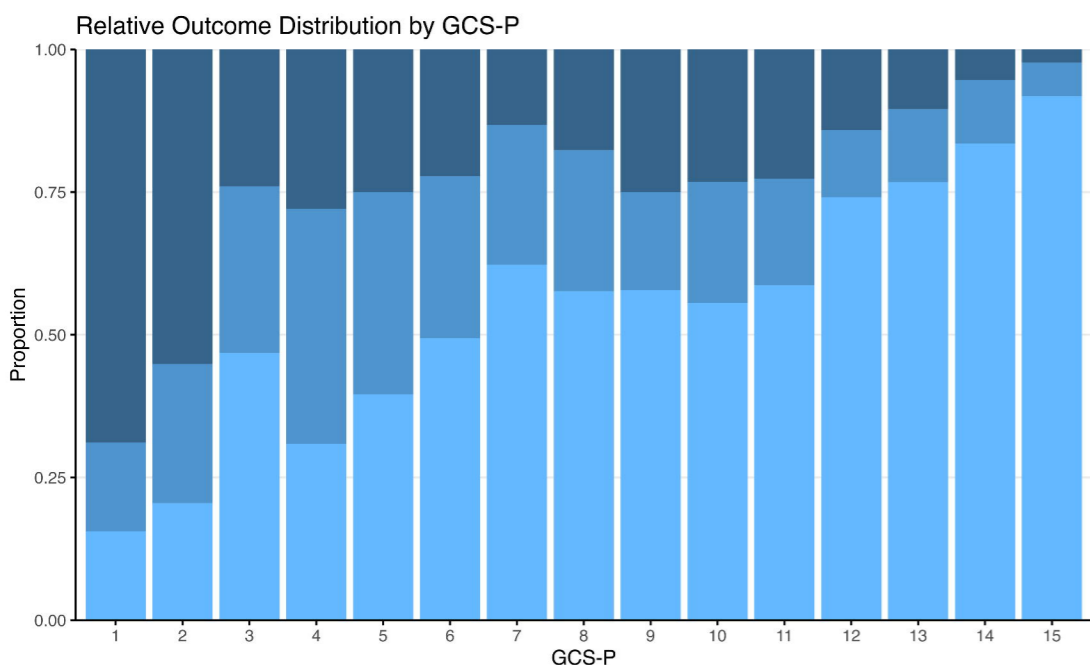
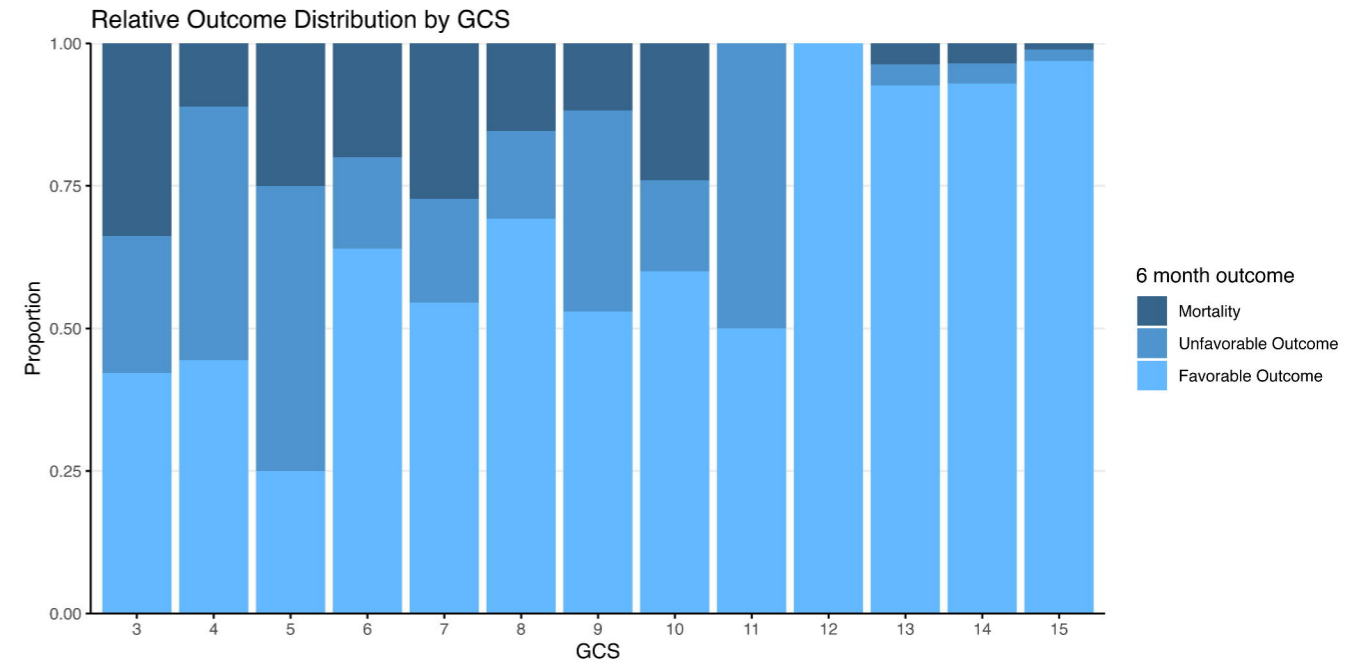
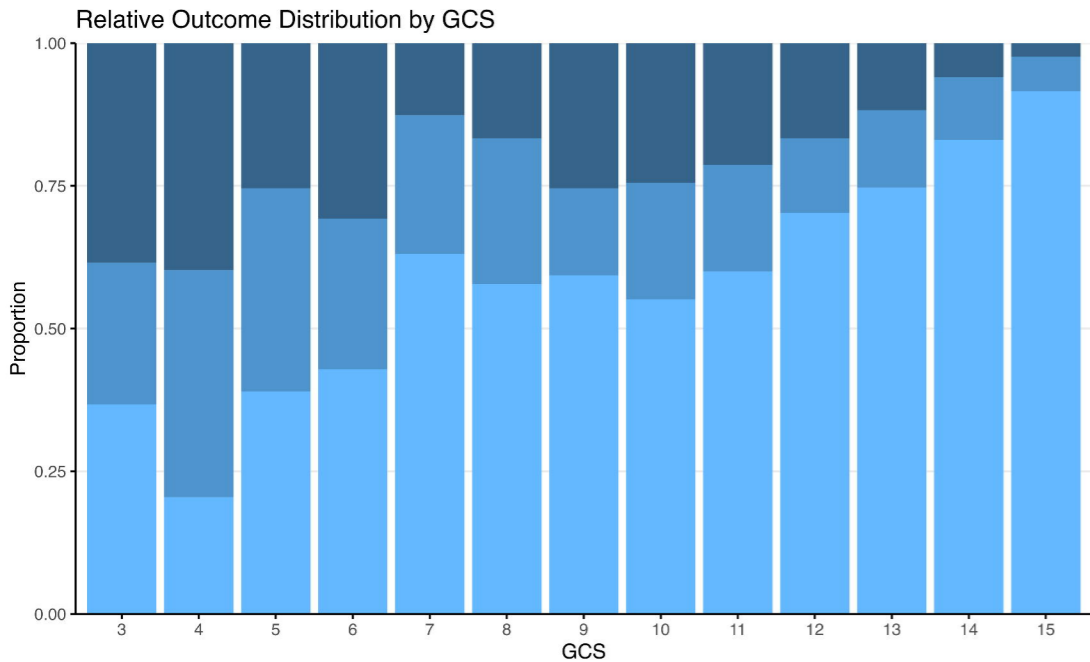
Missing GCS scores
(n = 67 [3%])

Missing PRS
(n = 327 [13%])

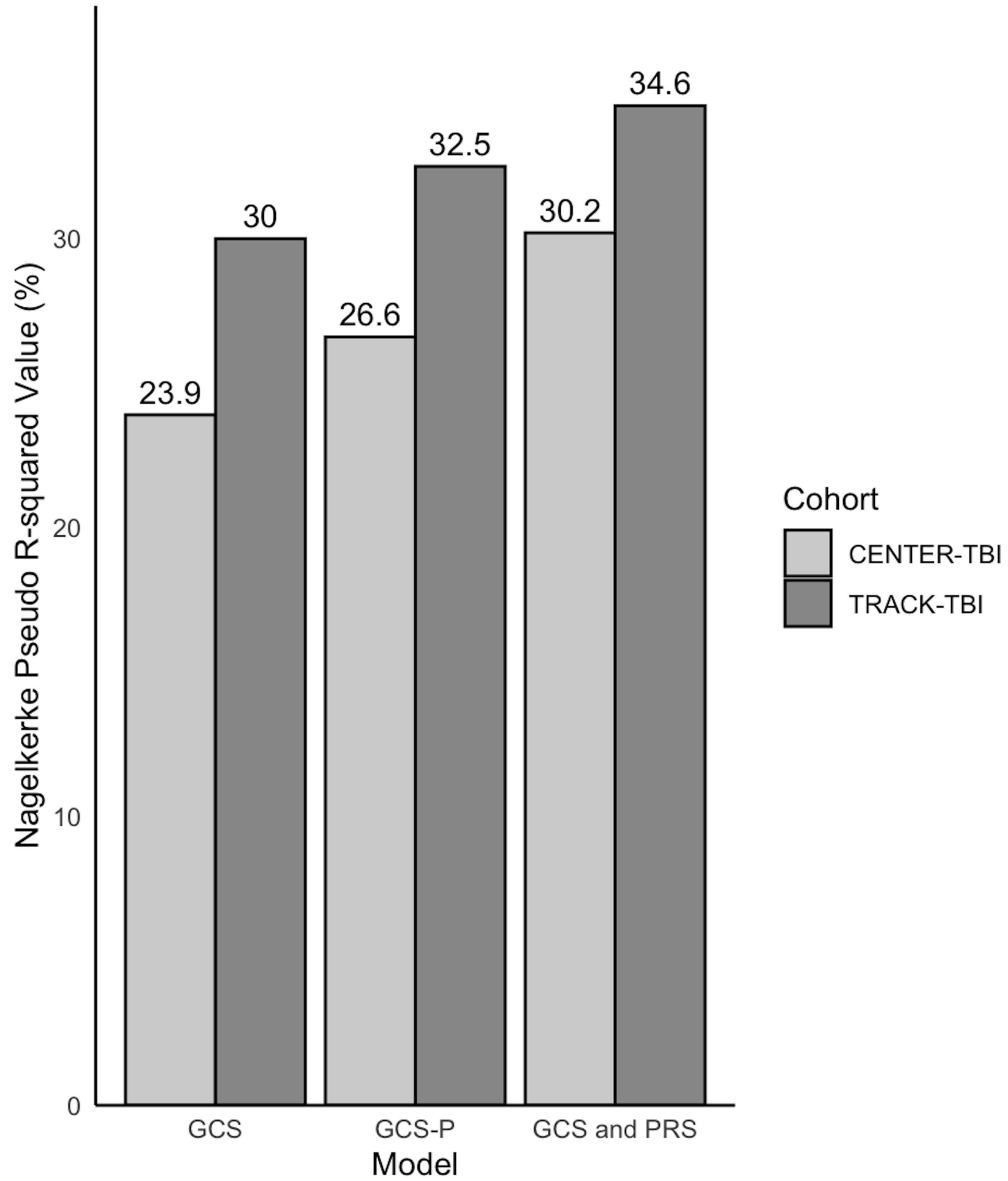
Missing GOS-E
scores
(n = 849 [33%])

CENTER-TBI
inclusions
(n = 3521^a)

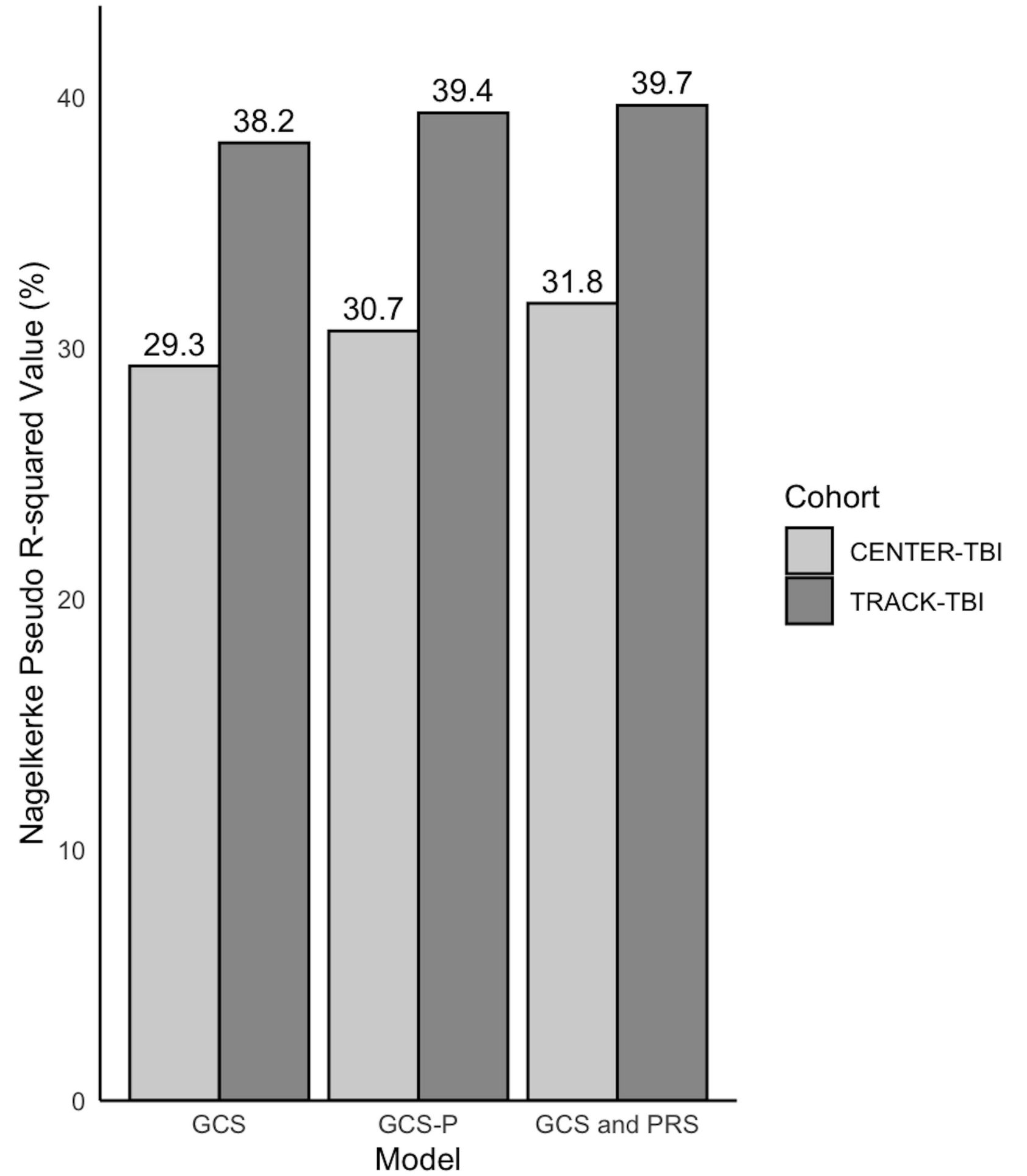
TRACK-TBI
inclusions
(n = 1439^a)



Mortality at 6 months



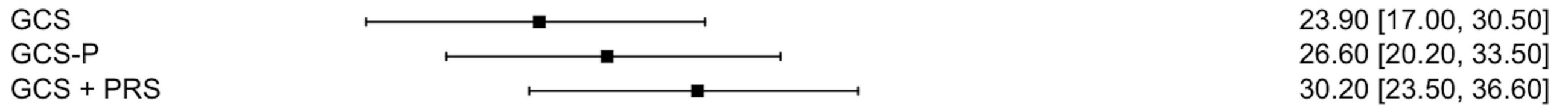
Unfavorable outcome at 6 months



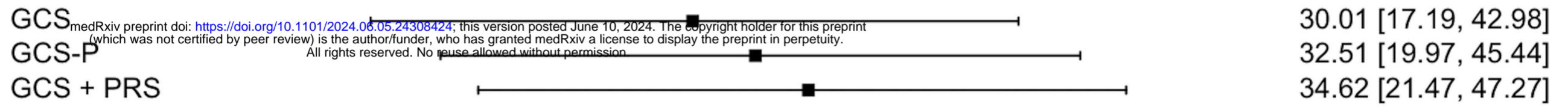
Model specification

R² of mortality [95% CI]

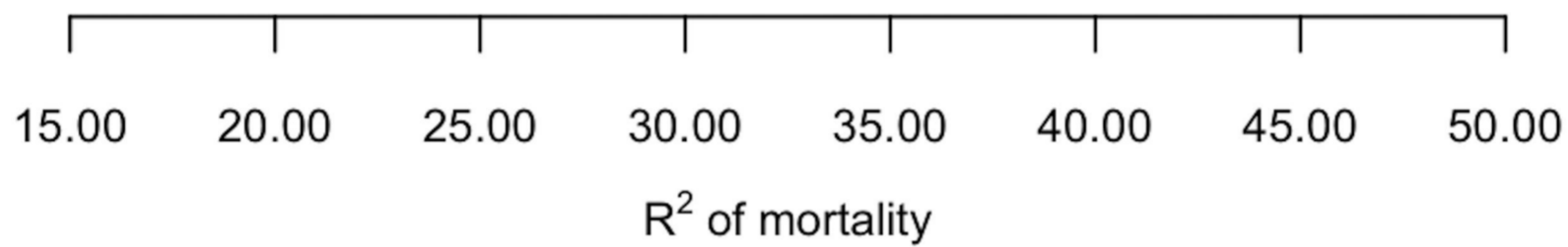
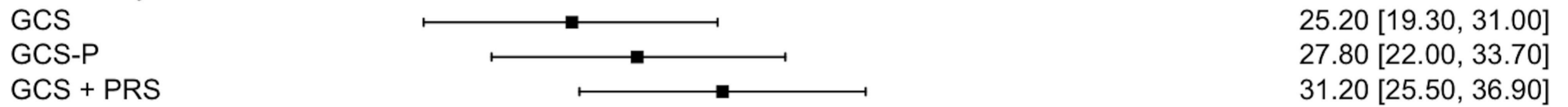
CENTER-TBI



TRACK-TBI



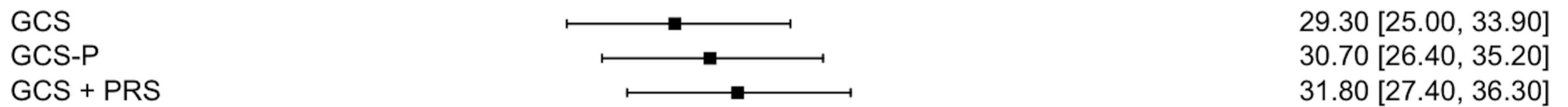
Meta-analysis



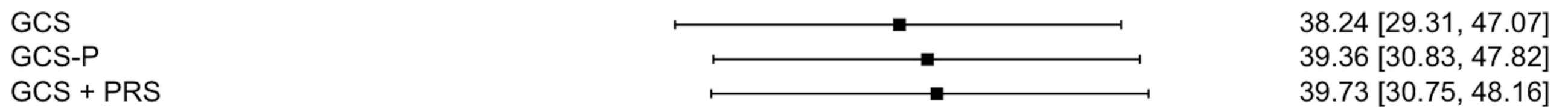
Model specification

R² of unfavorable outcome [95% CI]

CENTER-TBI



TRACK-TBI



Meta-analysis

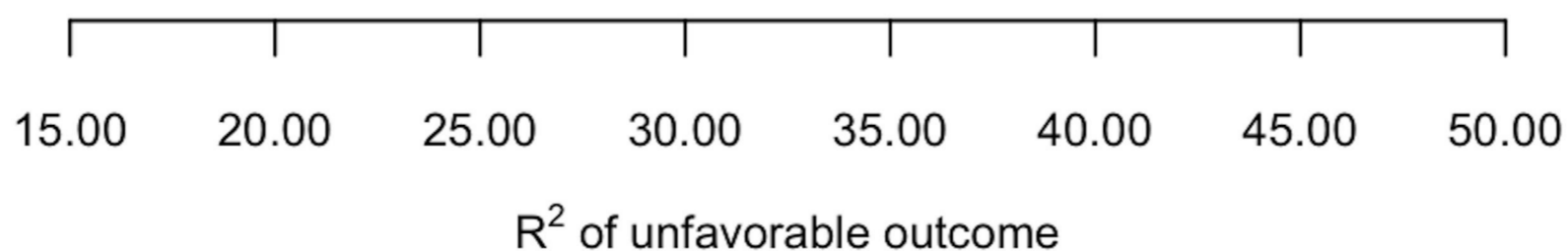
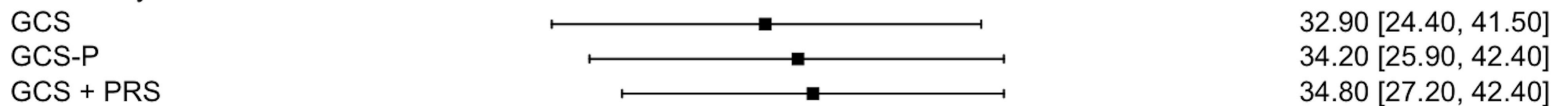


Table 1 | Baseline patient characteristics

	CENTER-TBI	TRACK-TBI
No of patients	3521	1439
Age (median [IQR])	51 [30, 67]	39 [26, 56]
Male sex (%)	2341 (67)	982 (68)
GCS scores (median [IQR])	15 [9, 15]	15 [13, 15]
TBI severity		
Mild (GCS 13-15)	2360 (67)	1122 (78)
Moderate (GCS 9-12)	316 (9)	70 (5)
Severe (GCS < 9)	845 (24)	247 (17)
Pupils (%)		
Both reacting	3141 (89)	1333 (93)
One reacting	137 (4)	31 (2)
Both unreacting	243 (7)	76 (5)
Epidural hematoma (%)	382 (11)	122 (9)
Subdural hematoma, acute (%)	1107 (33)	431 (31)
Cerebral contusion (%)	1219 (36)	341 (25)
Traumatic subarachnoid haemorrhage (%)	1092 (35)	536 (39)
Midline shift^b (%)	540 (16)	154 (11)
Diffuse axonal injury (%)	341 (11)	132 (10)
6-month unfavorable outcome (GOS-E < 5)	878 (25)	200 (14)

6-month mortality (GOS-E = 1)	418 (12)	98 (7)
--	----------	--------

Abbreviations: CENTER-TBI, Collaborative European NeuroTrauma Effectiveness Research in Traumatic Brain Injury; GOS-E, Glasgow Outcome Scale Extended; IQR, interquartile range; No, number; TRACK-TBI, Transforming Research and Clinical Knowledge in Traumatic Brain Injury

Table 2 | Overall predictive performance of different regression models

Model Specifications	Nagelkerke's R ² (%) for Mortality ^a	Absolute ΔR ² for Mortality ^{a,b}	Nagelkerke's R ² (%) for Unfavorable outcome ^a	Absolute ΔR ² for Unfavorable outcome ^{a,b}
<i>CENTER-TBI</i>				
GCS	24 [17 - 30]		29 [25 - 34]	
GCS-P	27 [20 - 33]	2.7 [2.1 - 3.4]	31 [26 - 35]	1.4 [1 - 1.8]
GCS + PRS	30 [24 - 37]	6.3 [4.4 - 8.7]	32 [27 - 36]	2.4 [1.4 - 3.7]
<i>TRACK-TBI</i>				
GCS	30 [17 - 43]		38 [29 - 47]	
GCS-P	33 [20 - 45]	2.5 [1.4 - 3.9]	39 [31 - 48]	1.1 [0.3 - 2.0]
GCS + PRS	35 [21 - 47]	4.6 [1.8 - 8.9]	40 [31 - 48]	1.5 [0.2 - 3.5]
<i>Meta analysis</i>				
GCS	25 [19 - 31]		33 [24 - 42]	
GCS-P	28 [22 - 34]	2.7 [2.1 - 3.3]	34 [26 - 42]	1.3 [1 - 1.7]
GCS + PRS	31 [25 - 37]	5.8 [4 - 7.7]	35 [27 - 42]	2.1 [1.2 - 3]

Abbreviations: CENTER-TBI, Collaborative European NeuroTrauma Effectiveness Research in Traumatic Brain Injury; GCS, Glasgow Coma Scale; GCS-P, Glasgow Coma Scale – Pupils; Mo, month; No, number; PRS, Pupil Reactivity Score; TRACK-TBI, Transforming Research and Clinical Knowledge in Traumatic Brain Injury

^aEstimates and bracketed 95% CI are bootstrapped unless mentioned otherwise

^bΔR² values are based on the model containing only GCS

Table 3 | Odds ratios & coefficients of independent baseline variables predicting outcome

Model Specifications	Odds ratio for Mortality (95%CI interval)	Model Coefficient for Mortality	Odds ratio for Unfavorable outcome (95%CI interval)	Model Coefficient for Unfavorable outcome
<i>CENTER-TBI</i>				
GCS	0.79 (0.77 – 0.81)	-0.24	0.78 (0.77 – 0.8)	-0.24
GCS-P	0.79 (0.77 – 0.81)	-0.23	0.79 (0.78 – 0.8)	-0.24
GCS + PRS ^a	0.84 (0.82 – 0.86) & 0.4 (0.33 – 0.45) respectively	-0.18 & -0.92 respectively	0.81 (0.79 – 0.83) & 0.5 (0.42 – 0.59) respectively	-0.21 & -0.68 respectively
<i>TRACK-TBI</i>				
GCS	0.75 (0.72 – 0.79)	-0.28	0.74 (0.71 – 0.77)	-0.3
GCS-P	0.76 (0.73 – 0.79)	-0.28	0.75 (0.73 – 0.78)	-0.29
GCS + PRS ^a	0.8 (0.76 – 0.85) & 0.43 (0.32 – 0.58) respectively	-0.22 & -0.84	0.77 (0.74 – 0.8) & 0.56 (0.42 – 0.76) respectively	-0.27 & -0.58

Abbreviations: CENTER-TBI, Collaborative European NeuroTrauma Effectiveness Research in Traumatic Brain Injury; CI, confidence interval; GCS, Glasgow Coma Scale; GCS-P, Glasgow Coma Scale – Pupils; IQR, interquartile range; Mo, month; No, number; PRS, Pupil Reactivity Score

^aOdds ratios are expressed using decreases in PRS score, e.g. lower number of unreactive equally lower odds of mortality and unfavorable outcome