

1 **Competing Risk Survival analysis of time to in-hospital mortality or Recovery among**
2 **Covid-19 Patients in South-East Ethiopia: a hospital-based multisite study**

3 Addis Wordofa¹, Ayalneh Demissie^{1*}, Abdurehman Kalu¹, Abdurehman Tune², Mohammed
4 Suleiman², Abay Kibret³, Zerihun Abera⁴, Yonas Mulugeta⁴

5 **Details**

6 ¹Department of Public Health, College of Health Science, Arsi University, Ethiopia

7 ²Department of Anesthesia, College of Health Science, Arsi University, Ethiopia

8 ³Department of Nursing, College of Health Science, Arsi University, Ethiopia

9 ⁴Department of Biomedical, College of Health Science, Arsi University, Ethiopia

10

11 **Corresponding Author:** Ayalneh Demissie: *ayalnehdemissis@gmail.com

12 AW: Addis Wordofa: addisdemese@gmail.com

13 AD: Ayalneh Demissie: ayalnehdemissis@gmail.com

14 AKa: Abdurehman Kalu : abdurehmankelu@gmail.com

15 AT: Abdurahman Tune: abdurahmantune@gmail.com

16 MS: Mohammed Suleiman: msuleiman43@gmail.com

17 AKi: Abay Kibret: zbluenile2121@gmail.com

18 ZA: Zerihun Abera: zeriabe21@gmail.com

19 YM: Yonas Mulugeta: yonasm.balcha@gmail.com

20

21 **Abstract**

22

23 **Background:** To date, survival data on risk factors for COVID-19 mortality in south-
24 Ethiopia is limited, and none of the published survival studies have used a competing risk
25 approach. This study aims to identify risk factors for in-hospital mortality in COVID-19
26 patients hospitalized at one of the six hospitals in southeast -Ethiopia, considering
27 recovery as a competing risk.

28 **Methods:** This observational multisite study included a medical record of 827 confirmed
29 SARS-CoV-2 cases hospitalized at one of the six hospitals in southeast-Ethiopia from
30 October 1, 2022 to May 31, 2023. We compiled data on the patients' socio-demographic
31 characteristics, clinical manifestation, comorbidity, treatment status, treatment outcomes, and
32 length of stay. We performed a Cox regression analysis for competing risks, presenting
33 cause-specific hazard ratios (HR_{CS}) for the effect of preselected factors on the absolute
34 risk of death and recovery.

35 **Results:** 827 patients were included (51.9% male; median age 50 years, IQR: 38—65).
36 Patients were hospitalized for a median duration of 5 days (IQR: 1—7); 139 (17%) of
37 them died, while 516 (62%) were recovered and discharged alive, the rest 172 (21%) were
38 censored. Patients with higher age (HR_{CS} 2.62, 95% CI 1.29—5.29), immune-
39 compromised state (HR_{CS} 1.46, 95% CI 1.08—1.98) had increased risk of death, whereas male
40 sex paradoxically (HR_{CS} 0.45, 95% CI 0.22—0.91) associated with decreased risk of death. We
41 found no increased mortality risk in diabetes patients.

42 **Conclusion:** This competing risk survival analysis allows us to corroborate specific pattern of
43 risk factors about COVID-19 mortality and its progression among different groups of
44 individuals (differentiated by age and immune-compromised state). 62% presenting cases
45 recovered within a median duration of 5 days; where as 17% die within the first 72 hours,
46 most with immune-compromised conditions. This should be considered while planning and
47 allocating the distribution of care services for effective health service delivery

48 **Keywords:** Time to death, Recovery, Censoring, COVID- 19, Competing risks, Survival
49 analysis, Ethiopia

50 Introduction

51 Despite limited access to healthcare [1,2] and relatively milder social distancing restrictions
52 compared to those imposed in most high-income countries [3,4], corona virus disease 2019
53 (COVID-19) mortality rates have been relatively low throughout Africa [5]. As of June 23,
54 2021, the World Health Organization (WHO) reports 3,852,707 diagnosed cases and 92,719
55 deaths in the continent [5]. However, severe acute respiratory syndrome corona virus 2
56 (SARS-CoV-2) transmission and survival dynamics have been highly heterogeneous across
57 different African countries in terms of timing and implemented interventions [6].

58 In sub-Saharan Africa, Ethiopia is second only to South Africa in terms of the number of
59 recorded cases and deaths, with an overall case fatality ratio (CFR) of about 1.5% compared
60 to about 2.2% in the rest of the world [5]. The first COVID-19 case was confirmed on March
61 13, 2020, meanwhile, the Ethiopian government declared a state of emergency on April 8,
62 2020 in the country [7]. Since then, rigorous contact tracing, isolation, and compulsory
63 quarantine have been established [8,9]. Schools and borders closed, public institutions and
64 firms operated at minimum capacity or closed completely, and people informed to stay at
65 home [8]. Nevertheless, in November 2020, schools reopened in the entire country, and social
66 gatherings up to 50 individuals were allowed again. As of June 23, 2021, 275,391 Covid-19
67 cases and 4290 deaths [5] were recorded nationally, with thousands of cases reported in all
68 the 12 regions of Ethiopia [9]. In Ethiopia, a syndromic surveillance is carried out to identify
69 Covid-19 infected individuals.

70 Samples from suspected cases and case contacts are collected at different health facilities
71 displaced in the country (including health centers serving the most rural areas) and cases are
72 confirmed via real-time reverse transcription–polymerase chain reaction (RT-PCR) test.

73 Collected samples are analyzed by 38 national, regional, hospital, and private laboratories
74 [10]. Both suspected and confirmed cases are admitted to isolation centers and discharged

75 after a negative laboratory test [9]. Although swab testing was initially applied to both
76 symptomatic patients and all close contacts of cases, it is possible that, due to limited
77 resources and the increased number of cases in the country, only symptomatic case contacts
78 are currently tested. Active monitoring of cases conducted by the Ethiopian Public Health
79 Institute suggested that 52% of the identified positive cases were asymptomatic [11]. As of
80 January 10, 2021, the overall rate for positive laboratory test results since the first detection
81 of the epidemic in the country was 6.9%, likewise 1,054 and 524 Intensive Care Unit(ICU)
82 beds and mechanical ventilators in the COVID-19 treatment centers for an estimated
83 population of 117million [11].

84 The possible spread of COVID-19 in rural areas of the country is especially dangerous
85 because of the sparse presence of well-resourced health facilities implying long travel
86 distances for remote populations, which is an important barrier to universal access to primary
87 care[2].

88 Moreover, the healthcare workforce in Ethiopia is 5 times lower than the minimum threshold
89 defined by the WHO for Sustainable Development Goals health targets [12] and far below
90 the African average [13].

91 Unfortunately, new facts come with a lag compared to the virus spread and governments are
92 forced to make prompt decisions based on limited evidence which changes at a staggering
93 pace.

94 The fight against a practically unknown enemy has been and still is the major obstacle. Aside
95 from studying the virus's biology, infecting mechanisms, probable treatments and of course
96 vaccine development, epidemic modeling has stepped forward.

97 In a trade-off between recovery and death, competing risk modeling strategies provide a
98 sharp suit that allows exploring a variety of scenarios and provides an intuitive understanding
99 of the most critical factors governing disease dynamics.

100 Recent modeling studies have made a difference for public health care decision making by
101 providing, for example, estimations of the impact of Non-Pharmaceutical Interventions (NPI)
102 in a number of sub-Saharan African countries, highlighting the difficulties in defining
103 effective, feasible, and sustainable strategies for suppression or mitigation of COVID-19
104 epidemics [14-17].

105 The main challenge is to create a model that predicts plausible scenarios for a disease we
106 have known for only a few months. One of the most important barriers for the provision of
107 solid epidemiological parameters has been the different management strategies that each
108 country has taken in response to this outbreak.

109 Variation in survival cannot be explained only by the different population age structure,
110 symptom data, specific clinical parameters or available critical care beds.

111 Because of the increase in mortality due to COVID-19 and the increase in the speed of its
112 spread, many methods have been developed to reliably predict patient survival based on
113 symptom data and specific clinical parameters. Studies describing the clinical features of
114 COVID-19 and risk factors associated with incidence and timing of poor outcome have been
115 extensively published [18], but survival data regarding risk factors for COVID-19 mortality
116 in south-east Ethiopia is limited. Further- more, to our knowledge, none of the published
117 survival studies have considered recovery as competing risk for mortality. Not taking
118 competing risks into account leads to biased mortality estimates and to overestimation of
119 survival curves [19,20] . Analyzing mortality data with a more accurate competing risk
120 analysis adds to the growing body of evidence on disease course and risk factors of a poor
121 COVID-19 outcome. More robust knowledge about these risk factors is crucial to inform
122 local prediction research [18] . Calculating the probability to survive and the effect of each
123 feature like symptoms (competing risks) in our case on survival probability was done using
124 survival analysis. Survival analysis is a model for time until a certain “event”. Time-to-event

125 data encounters several research challenges such as censoring, symptoms correlations, high-
126 dimensionality, temporal dependencies, and difficulty in acquiring sufficient event data in a
127 reasonable period of time [21]. Most importantly not taking, competing risks into account
128 leads to biased mortality estimates and to overestimation of survival curves. Therefore,
129 evidence showing the duration of recovery and pace of death from COVID-19 in different
130 contexts and settings is necessary for tailoring appropriate treatment and prevention
131 measures.

132 There are many current literature techniques for conducting this sort of survival study.
133 Among them, the Fine and Gray model have been deployed for computing infection risks,
134 performing survival analysis and classification [22]. Therefore, the above model should be
135 able to take these variables into account.

136 The present study aimed to analyze the socio-demographic and clinical profile of COVID-19
137 patients that were hospitalized to one of the six hospitals in the southeast-Ethiopia,
138 characterized by different levels of access to healthcare while accounting for the effect of
139 gender, location, clinical presentation, and co-morbid conditions on mortality and recovery.

140 **Methods**

141 **Study setting**

142 The study was conducted at six hospitals in southeast Ethiopia: Bishoftu, Modjo, Adama,
143 Negele Arsi, Bekoji and Shashamane hospitals, also COVID-19 isolation and treatment
144 Centers located in southeast Ethiopia, 35, 75,85,229,232 and 270kms from Addis Ababa (the
145 capital), respectively. The isolation and treatment centers were the place where all Ethiopian
146 and non-Ethiopian citizens with COVID-19 were admitted for isolation, care and support.
147 There are 82 functional public hospitals in the region of which 44 are primary hospitals and
148 34 are general hospitals and 4 are comprehensive specialized hospitals [23].

149 **Study design**

150 We performed an observational multisite study using a medical record of 827 confirmed
 151 SARS-CoV-2 cases hospitalized at one of the six sites: Bishoftu, Modjo, Adama, Negele
 152 Arsi, Bekoji and Shashamane, also called COVID-19 treatment centers from October 1, 2022
 153 to May 31, 2023. The sample size for duration of recovery was calculated taking the
 154 following assumptions into account: 95% Confidence Interval (CI), 46% survival
 155 probability, 5% margin of error and 10% withdrawal, and equal proportion of individuals in
 156 each group [24]. The minimum sample size required to conduct this study was 419 with a
 157 design effect 2 due to differences in the size of the hospitals, the final sample size become
 158 838.

159 **Sampling procedures:** To select the records studied, we consecutively included confirmed
 160 adult patients record with COVIC-19, and who were admitted to one of the six hospitals in
 161 Oromia region from Bishoftu to Shashemene for at least 24 hours between October1, 2022
 162 and May 31, 2023. In the current analysis, we excluded patients if data regarding duration of
 163 hospital admission were missing for those who died or recovered. A sample of 827 patients
 164 allocated proportional to their catchment population size (PPs) to each center = $n_x * n/N$

165	1. Bishoftu (KTC)	$n_1=750$	final n_{1f}	171
166		$\frac{750}{3631} * 827 = 171$		
167	2. Modjo PH	$n_2=605$	final n_{2f}	138
168		$\frac{605}{3631} * 827 = 138$		
169	3. Adama (AHMC)	$n_3=931$	final n_{3f}	212
170		$\frac{931}{3631} * 827 = 212$		
171	4. Bekoji PH	$n_4=650$	final n_{4f}	148
172		$\frac{650}{3631} * 827 = 148$		
173	5. Shashamane RH	$n_5=396$	final n_{5f}	90
174		$\frac{396}{3631} * 827 = 90$		
175	6. Negele Arsi PH	$n_6=299$	final n_{6f}	68
176		$\frac{299}{3631} * 827 = 68$		
177	Total	<u>$N=3631$</u>		<u>$n= 827$</u>

178

179 **Variables collected and definitions**

180 Outcome variables (dependent variables)

181 The possible outcomes categorized as a recovered case or death. The primary outcome was
182 COVID-19 death that reported as a death occurring in a confirmed COVID-19 case.
183 Recovery/ survival were analyzed as competing event/ secondary endpoint. COVID-19
184 patients who were discharged due to clinical improvement, for medical rehabilitation, or
185 transfer to a nursing home were considered ‘recovered’. COVID-19 patients who were
186 transferred to a non-study hospital, who were lost to follow-up because of other reasons, or
187 whose reason of discharge is unknown or missing were considered ‘censored’.

188 Covariates (independent variables)

189 The socio-demographic factors, health-related factors, co-morbidities, clinical manifestation,
190 laboratory -result and treatment-related factors were considered independent variables.

191 Outcome variables: The possible outcomes categorized as a recovered case or death. The
192 primary outcome was in-hospital mortality. Recovery/ survival were analyzed as competing
193 event/ secondary endpoint. COVID-19 patients who were discharged due to clinical
194 improvement, for medical rehabilitation, or transfer to a nursing home were considered
195 ‘recovered’. COVID-19 patients who were transferred to a non-study hospital, who were lost
196 to follow-up because of other reasons, or whose reason of discharge is unknown or missing
197 were considered ‘censored’.

198 **Data collection**

199 We extracted routine data of all confirmed COVID-19 patients that were followed from
200 admission to one of the six treatment sites till discharge using a structured datasheet. It
201 includes socio-demographic characteristics, status during admission, information on clinical

202 presentation, diagnostic procedure, comorbidity, type of co-morbidity, disease course,
203 treatments, type of drug used, treatment outcomes and length of stay. Five public health
204 officers collected the data after we provided them two-days training on the data collection
205 instruments. Patient data were entered anonymously into electronic case form (using Epidata
206 Entry client), only using a study identifier. The middle six authors (AD, AKa, AT, MS, AKi
207 and ZA) supervised the data collection and entry for completeness in real-time.

208 **Statistical analysis**

209 Collected data were coded, entered, cleaned and analyzed using STATA software Version
210 16.1. Descriptive summary statistics such as: mean, standard deviations (SD) and inter
211 quartile range (IQR) were calculated for continuous variables, while frequencies, and
212 percentages for categorical variables. Moreover, we used a competing risks regression model
213 to evaluate the effect of risk factors for time-to-event analyses or on the time from admission
214 to death and on the time from admission to recovery [25,26]. A study evidenced the
215 occurrence of competing risk if subjects experience one or more events or outcomes which
216 compete with the outcome of interest [26]. In our study, recovery is considered a competing
217 risk for mortality and is taken into account as an extra outcome, whereas in standard survival
218 analyses, patients who recover are censored. However, the latter violates the assumption of
219 non informative censoring, i.e. the recovered patients are not representative of those who are
220 still admitted to the hospital in terms of their risk of dying. Censoring recovered patients
221 induces bias and overestimation of survival curves, i.e. Kaplan Meier estimate incidence of
222 death with upwards biases [25,26]. For the competing risk analysis, we estimated
223 univariable and multivariable cause-specific hazard ratios (HR_{CS}) for death and recovery for
224 selected risk factors [20,25]. These risk factors were pre-selected based on literature and
225 expert opinion to be clinically relevant and routinely available at time of presentation, rather

226 than based on statistical significance [27]. Variables with a P-value of less than or equal to
227 0.25 were considered as candidates for multivariate analysis. Variables in the final model
228 with a p-value < 0.05 were considered statistically significant. The results were expressed as
229 adjusted hazard ratios (HR) and their 95% confidence intervals (CI). Furthermore, cumulative
230 incidence probabilities were estimated using the Fine and Gray approach [20,25]. Gray's
231 test was used to compare equality of cumulative incidence curves (CIFs) across subgroups
232 [28,29]. The proportional hazards assumption was checked by an evaluation of the
233 Schoenfeld residuals.

234 Multivariable HRcs were also estimated for a subpopulation of patients with a 'non ICU
235 admission '. The cause-specific hazard (CSH) model was fitted again for this subpopulation,
236 to assess the influence of risk factors on the outcome in these patients. Variables with a P-
237 value of less than or equal to 0.25 were considered as candidates for multivariate analysis.
238 Variables with a P-value of less than 0.05 were considered statistically significant.

239 **Missing data**

240 Missing data in the variables 'age, gender, religion, smoking status, clinical manifestation,
241 type of co morbidity, status at admission, dexamethasone use and length of stay were
242 assumed to be missing at random (MAR) and the missed count were dropped from the
243 analysis in these nine datasets.

244 **Results**

245 A total of 827 confirmed COVID-19 patient records were included for analysis, the rest 11
246 patient records that had fragmentary data were excluded. Among them, 516 (62%) patients
247 were recovered, 172 (21%) were censored and the remaining 139 (17%) patients were dead
248 of COVID-19 in the hospital.

249 The median follow-up time were 17.7 (95% CI: 14.5–21.4) days. The cumulative incidence
250 of both death and recovery increased over time. The median duration of hospital admission
251 until death and recovery was 5 days (IQR: 1—7) and 11 days (IQR: 5—16), respectively. The
252 median age of patients were 50years (IQR: 58—77), most 429 (51.9%), 601(72.7%) and 637
253 (77%) were male, from urban and presented with clinical manifestations, respectively. Nearly
254 half patients 384(46.4%) had one or more co morbidities as shown in [Table 1](#).

255

256

257 **Table 1 Characteristics of the study population in hospitals, south eastern Ethiopia 2024**

	Total number (n = 827)	Missing n (%)	Status last recorded					
			Death		Recovery		Censored	
			n	%	n	%	n	%
Age (Years Old)	50(38-65)	138(16.7%)	40	29%	294	57%	15	44%
Gender, male	429(51.9%)	140(16.9%)	96	70%	308	60%	25	74%
Location, urban	601(72.7%)	27(3.3%)	93	68%	402	81%	106	63%
Smoking status, no	412(49.8%)	377(45.6%)	69	82%	316	94%	27	93%
Clinical manifestation, yes	637(77%)	147(17.8%)	136	99%	472	92%	29	97%
Co morbidity, yes	384(46.4%)	38(4.6%)	81	61%	210	43%	93	56%
Most frequent co morbidities	Hypertension	113 (31%)	26	31%	78	31%	9	38%
	Chronic cardiac disease	15(4%)	5	6%	10	4%	0	0%
	Pulmonary disease	16(4%)	8	9%	8	3%	0	0%
	Asthma	33(9%)	4	5%	26	10%	3	12%
	Chronic kidney disease	6 (2%)	1	1%	5	2%	0	0%
	Diabetic mellitus	103(29%)	23	27%	73	29%	7	29%
	Other	73(20%)	18	21%	50	20%	5	21%
Status at admission, symptomatic	695(84%)	21 (2.5%)	136	99%	452	91%	107	63%
Antibiotics use, yes	732(92.1%)	0(0%)	135	97%	456	88%	171	99%
Dexamethasone use, yes	494(59.7%)	142(17.2%)	129	93%	338	66%	27	82%
Ventilatory support, yes	522(63%)	20(2.4%)	123	90%	304	60%	93	55%
Length of stay, <15 days	502(60.7%)	156(18.9%)	116	87%	356	71%	30	91%
Duration of hospital admission (days)	5(1-7)	0(0%)	0	(0%)	0	(0%)	0	(0%)
Reason for discharge	Death	139(17%)	139	17%	0	0%	0	0%
	Recovery	516(62%)	0	0%	516	62%	0	0%
	Censored	172(21%)	0	0%	0	0%	172	21%
Cause of death	ARDS	82(9.9%)	3	3%	0	0%	1	50%
	Pneumonia	8(1%)	8	7%	0	0%	0	0%
	Cardiopulmonary edema	6(.7%)	4	4%	0	0%	0	0%
	Shock	4(.5%)	81	73%	0	0%	1	50%
	Stroke	4(.5%)	1	1%	0	0%	0	0%
	Chronic liver disease	2(.2%)	2	2%	0	0%	0	0%
	Uremic encephalopathy	2(.2%)	5	5%	1	100%	0	0%
	Traumatic brain injury	1(.1%)	2	2%	0	0%	0	0%
Other	5(.6%)	5	5%	0	0%	0	0%	
Median Age at diagnosis, age < 50 years	349 (42.2%)	138 (16.7%)	40	29%	294	57%	15	44%

258 NB: Other represents, Immunocompromised status which was defined as having a malignancy, auto-immune
 259 disease, HIV/AIDS and/or use of immunosuppressive medication.

260

261

262 **Cumulative incidence curves**

263 The Cumulative Incidence function (CIF) curves of the total patients showed that the
264 probability of death after one, two and three weeks of hospital admission was 22.3% (95%
265 15.2—32.0), 35.1% (95% CI 23.7—49.9), and 51.3% (95% CI 32.1—73.9), respectively (Fig 1).
266 The probabilities of recovery were 7.6% (95% 5.6—10.3), 17.9% (95% CI 14.3—22.2), and 44.7%
267 (95% CI 36.2—54.1), respectively. Patients aged ≥ 50 years had a higher chance of death
268 ($p < 0.01$) and a lower chance of recovery ($p < 0.05$) than patients aged < 50 years (Fig 2). Males
269 had a lower probability of recovery and a higher probability of death ($p = 0.004$ and $p =$
270 0.003) than females (Fig 3).

271
272 **Figure 1 Cumulative incidence plot of death and recovery in south eastern Ethiopia hospitals, 2024**

273
274 As shown in figure 1 cumulative incidence plot of death and recovery in the total patients, the
275 probability of death conditional on not having recovered after one, two and three weeks of
276 hospital admission was 22.3% (95% 15.2—32.0), 35.1% (95% CI 23.7—49.9), and 51.3% (95% CI
277 32.1—73.9), respectively. The probability of recovery conditional on not having died after one,
278 two and three weeks of hospital admission was 7.6% (95% 5.6—10.3), 17.9% (95% CI 14.3—
279 22.2).

280 **Figure 2 Cumulative incidence plots of death and recovery in south eastern Ethiopia**
281 **hospitals, separated by age group 2024**

282
283 As shown in figure 2, the cumulative incidence plot of death and recovery in the total
284 population, separated by age group. Gray's test indicated a significant difference between two
285 groups for both death ($p < 0.01$) and recovery ($p < 0.001$). The probability of death for patients aged
286 < 50 years after one, two and three weeks of hospital admission was 4.6% (95% CI 1.5—13.8),
287 10.1% (95% CI 4.7—21.3), 12.6% (95% CI 6.1—24.9), respectively, whereas for patients aged > 50
288 years and above, the probability of death was 30.9% (95% CI 19.9-46.0), 46.8% (95% CI 31.5—65.2),
289 and 52.7% (95% CI 35.6-72.1), respectively.

290

291 ***Figure 3 Cumulative incidence plots of death and recovery in south eastern Ethiopia***
292 ***hospitals, separated by gender 2024***
293

294 Cumulative incidence plot of death and recovery in the total patients separated, by gender. Gray's
295 test indicated a statistically significant difference between both groups for death ($p = 0.03$), but
296 not for recovery ($p = 0.050$). The probability of death for females after one, two and three weeks
297 of hospital admission was 17.2% (95% CI 8.0—34.6), 21.1% (95% CI 10.5—39.8), and 47.4% (95% CI
298 16.4—90.0), respectively, whereas for males the probability of death was 18.7% (95% CI 11.4—29.8),
299 43.3% (95% CI 26.7-64.6), and 54.6% (95% CI 32.4-79.8), respectively.

300 ***Figure 4 Cumulative incidence plots of death and recovery in south eastern Ethiopia***
301 ***hospitals, separated by type of Co morbidities 2024***
302

303 As shown in [figure 4](#), the cumulative incidence plot of death in the total patients separated, by
304 type of co morbidities. Gray's test indicated a statistically significant difference amongst the three
305 groups for death ($p = 0.03$), but not for recovery ($p = 0.16$). The probability of death for
306 hypertensive patients after one, two and three weeks of hospital admission was 26.2% (95% CI
307 10.7—64.4), and the same 46.2% (95% CI 17.2—1.24) after the rest two weeks, respectively, and for
308 Immunocompromised patients the probability of death was 32.6% (95% CI 12.1—87.8), 52.6%
309 (95% CI 20.0-1.38), and no death after the last week, respectively, whereas for diabetes mellitus
310 patients the probability of death was the same 9.1% (95% CI 2.3—36.5) after all of the three
311 consecutive weeks.

312 **Univariable and multivariable SH model**

313 HR_{CS} from univariable and multivariable SH models are reported in [Table 2](#). Univariable
314 analysis showed that older age increased the risk of death: with every year increase in age,
315 the risk of death increased with 1% (HR_{CS} 1.01, 95% CI 1.00—1.02), and also the chances of
316 recovery insignificantly increased by 0.1% (HR_{CS} 1.00, 95% CI 0.99—1.01). In terms of
317 location, being in urban the risk of death increased with 90% (HR_{CS} 1.90, 95% CI 1.16—
318 3.11), and also the chances of recovery increased by 29% (HR_{CS} 1.29, 95% CI 1.04—1.59),
319 regarding religion, being an Orthodox the risk of death increased with 196% (HR_{CS} 2.96,
320 95% CI 1.50—5.82), and also the chances of recovery increased by 111% (HR_{CS} 2.11, 95%
321 CI 1.44—3.10), whereas, being a smoker the risk of death increased with 96% (HR_{CS} 1.96,
322 95% CI 1.11—3.47), but the chance of recovery non significantly increased by 119% (HR_{CS}
323 2.19, 95% CI 0.98—4.88). In terms of presenting symptom, symptomatic patients had an
324 97.4% increase in the risk of death (HR_{CS} 1.974, 95% CI 1.29—3.01), but the chance of
325 recovery decreased by 28% (HR_{CS} 0.72, 95% CI 0.52—1.01)

326 Generally presence of co-morbidity increases the risk of death: Patients with two or more co
327 morbidities had an 11.7% increase in the risk of death (HR_{CS} 1.117, 95% CI 1.01—1.24), and
328 also the chances of recovery increased by 3.6% (HR_{CS} 1.036, 95% CI 0.98—1.08) but it was
329 not statistical significant.

330
331 Of the co morbidities: Pulmonary disease, hypertension, HIV/AIDS and diabetes mellitus
332 increases risk of death. Patients with pulmonary disease had a 155% increase in the risk of
333 death (HR_{CS} 2.55, 95% CI 1.45—4.84), and a 48% increase in chances of recovery (HR_{CS}
334 1.48, 95% CI 1.03—2.13). Patients with hypertension had a 140.6% increase in the risk of
335 death (HR_{CS} 2.406, 95% CI 1.39—4.15), and a 341.6% increase in chances of recovery

336 (HR_{CS} 4.416, 95% CI 1.563—12.48). Whereas, HIV/AIDs Patients had a 100% increase in
337 the risk of death (HR_{CS} 2.002, 95% CI 1.03—3.91), and an 80.7% non significant increase in
338 chances of recovery (HR_{CS} 1.807, 95% CI 0.64—5.10). Furthermore, patients with diabetes
339 mellitus had a 69% increase in the risk of death (HR_{CS} 1.691, 95% CI 1.01—2.84), and a 39%
340 non significant decrease in chances of recovery (HR_{CS} 0.388, 95% CI 0.09—1.67).

341 In terms of medication, both use of antibiotics or dexamethason medication were associated
342 with an increased risk of death (HR_{CS} 1.85, 95% CI 1.22—2.79, and HR_{CS} 1.88, 95% CI 1.20—
343 2.94, respectively). Regarding length of hospital stay and intranasal oxygen use or ventilatory
344 support, both extended hospital stay and use of intranasal oxygen increased risk of death.
345 Patients admitted ≥ 15 days had a 147% increase in risk of death (HR_{CS} 2.47, 95% CI 1.55—
346 3.93) and patients with intranasal oxygen a 67% increase in risk of death (HR_{CS} 1.67, 95% CI
347 1.05—2.65).

348 In multivariable analyses, the following factors were associated with risk of death: age in
349 general, older age, gender, immunocompromised state, symptomatic state at time of
350 admission, and extended length of stay after admission. Firstly, with every year increase in
351 age, the risk of death increased with 2.3% (HR_{CS} 1.023, 95% CI 1.00—1.05), and the
352 chances of recovery increased with 0.3% (HR_{CS} 1.003, 95% CI 0.993—1.014). In other
353 words, if in two patients all variables except for age are the same, the patient who is one
354 year older has a 2.3% higher risk of dying. Furthermore, patients with immunocompromised
355 state had a 46% increased risk of death (HR_{CS} 1.46, 95% CI 1.08— 1.98), and 24%
356 decrease in chances of recovery (HR_{CS} 0.76, 95% CI 0.62—0.93). Whereas, patients that
357 were symptomatic at the time of admission had a 75% decrease in risk of death (HR_{CS} 0.25,
358 95% CI 0.09—0.68), and a 49 % decrease in chances of recovery (HR_{CS} 0.51, 95% CI 0.26—
359 0.98). Furthermore, aged patients ≥ 50 years at the time of diagnosis had a 162% increase in

360 risk of death (HR_{cs} 2.62, 95% CI 1.29—5.29). Finally, patients that stayed 15 or
361 more days following admission had an 80% decrease in the risk of death (HR_{cs} 0.20,
362 95% CI 0.07—0.56), and an 89% decrease in chances of recovery (HR_{cs} 0.11, 95% CI
363 0.06—0.19).

364 **Discussion**

365 **Summary of findings**

366
367 In south eastern Ethiopia hospitals, approximately 17% of all COVID-19 patients died after
368 a median hospital admission of five days during the hit of the epidemic. Using a competing
369 risk approach, we identified age, gender, residence, status at admission, length of stay, co
370 morbidities, such as pulmonary disease, hypertension, smoking, and use of medication as the
371 most important risk factors in univariate analyses. After adjusting for all relevant factors at
372 baseline, we found that higher age and immunocompromised state were associated with
373 increased risk of death.

374 On the other hand, extended period of admission beyond 15 days was associated with lower
375 mortality. Male sex was a significant protective factor about mortality.

376 **Interpretation of results and comparison to literature**

377 Conventional survival analyses do not take competing risks into account, which leads to
378 biased mortality estimates and to overestimation of survival curves. Using the competing risk
379 approach, we took into account that patients who recovered were no longer at the same risk
380 of dying than those who remained hospitalized, resulting in less biased mortality estimates.
381 Even though death or recovery are the two possible final outcomes of the disease, the time to
382 death and time to recovery may not be the same (i.e. time to death was generally shorter than
383 time to recovery). In addition, 21% of our patients were censored. As a result, the risk factors
384 influencing death may differ from risk factors for recovery [30]. For example, we identified
385 strong risk factors that both increased the risk of dying and reduced the recovery risk, namely
386 higher age and immunosuppression. Male sex has reduced death risk in the final model, and
387 symptomatic patients at admission and length of stay more than 15 days showed equivocal
388 results, reducing the risk of death as well as the risk of recovery.

389
390
391
392
393

Table 2. Univariable and multivariable cause-specific hazard ratios (HRcs) including 95% confidence intervals for death and recovery in south eastern Ethiopia hospitals, 2024

	Univariable		Multivariable	
	Death	Recovery	Death	Recovery
Age ≥ 50(years)	2.53(1.57—4.08)***	0.76 (0.64-0.90) **	2.62 (1.29—5.29)**	0.69 (0.50-0.96)*
Sex, male	1.96(1.21—3.18) **	1.88 (1.43—2.46)***	0.451 (0.22—0.91)*	0.88 (0.64—1.21)
Location, urban	1.90 (1.16—3.11)*	1.29 (1.04—1.59)*	0.75 (0.34—1.61)	1.32 (0.95—1.86)
Religion, Orthodox	2.96(1.50—5.82)**	2.11(1.44—3.10)***	0.98 (0.65—1.48)	0.97 (0.78—1.20)
Smoking, yes	1.96 (1.11—3.47)*	2.19 (0.98—4.88)	0.87 (0.35—2.18)	0.62 (0.37—1.03)
Clinical manifestation, yes	1.93 (1.27—2.91)**	0.84 (0.59—1.18)	1.73(0.22—13.89)	0.59 (0.29—1.19)
Co morbidity, yes	2.505 (1.41—4.46)**	1.11 (0.93—1.33)	3.37(0.76—15.04)	0.98 (0.54—1.77)
Types of co morbidities, generally	1.12 (1.01—1.24)*	1.04 (0.99—1.09)	1.14 (0.99—1.31)	0.98 (0.91—1.05)
Hypertension	4.42(1.56-12.48)**	2.41 (1.39-4.15)**	0.78 (0.56-1.10)	1.15 (0.90-1.48)
Cardiovascular disease	1.58 (1.02—2.42)*	0.65 (0.50—0.85)*	0.97 (0.59—1.60)	1.01 (0.74—1.38)
Pulmonary disease	2.55 (1.45—4.48)*	1.48(1.03—2.13)*	1.33 (0.98—1.80)	0.88 (0.73—1.07)
Diabetes Mellitus	1.69 (1.01—2.84)*	0.39 (0.09—1.67)	1.17 (0.86—1.59)	0.85 (0.69—1.04)
Immunocompromised	2.00 (1.03—3.91) *	1.81 (0.64—5.10)	1.46 (1.08—1.98)*	0.76 (0.62—0.93)
Admission status, symptomatic	1.974 (1.29—3.01)**	0.72 (0.52—1.01)	0.25 (0.09—0.68)**	0.51 (0.26—0.98)*
use of antibiotic medication	1.851 (1.22—2.79)**	1.03 (0.77—1.37)	1.30#	2.42 (0.32—18.37)
Chronic use of Dexamethasone	1.881 (1.20—2.94)**	1.32 (1.09—1.60)**	1.36 (0.51—3.59)	1.22 (0.69—2.15)
Intranasal oxygen use, yes	1.667 (1.05—2.65)*	1.06 (0.88—1.28)	1.23 (0.43—3.51)	1.01 (0.59—1.75)
Length of stay, ≥ 15 days	2.469(1.55—3.93)***	0.78 (0.43—1.41)	0.20 (0.07—0.56)**	0.11(0.06—0.19)***

394 * Statistically significant, i.e. $p < 0.05$.

395 # Collinearity omitted cells

396 Immunocompromised was defined as having a malignancy, auto-immune disease, HIV/AIDS
397 and/or use of immunosuppressive medication.

398 <https://doi.org/10.1371/journal.pone.0249231.t002>

399

400 In our study population, approximately 17% of all patients died, which is consistent with
401 other studies [31,32]. Our study showed that age and low immune status at time of admission
402 were risk factors for in-hospital mortality, which is in line with results of many other studies
403 [18,33-35]. We included both cardiovascular disease and Asthma in our model, which may
404 be subject to collinearity. However, a sensitivity analyses excluding cardiovascular disease
405 from the model did not change our estimates and standard errors, showing that our reported
406 estimates are valid. We found immunosuppression as a risk factor for mortality. This has
407 been reported previously, although the exact role of the immune system in COVID-19 is
408 complex [36-38].

409 Poor outcome could be determined by a declining immune system less able to clear the virus,
410 but lung tissue damage in severe cases could also be caused by an exaggerated immune
411 response, rather than damage inflicted by the virus itself [39-43]. Consequently,
412 immunocompromised patients may be protected from this type of hyper inflammation
413 [37,44,45]. We found that chronic use of antibiotics or dexamethason medication was
414 associated with increased risk of death. Although this may be partially explained by the fact
415 that these medications are used by patients with cardiovascular disease, which has been
416 reported as an individual risk factor for in-hospital mortality [18], anticoagulant medication
417 remained an independent risk factor for death in our multivariable analyses. Thromboembolic
418 events are frequently reported in association with severe COVID-19 disease and mortality
419 [46,47], and current guidelines suggest prophylactic anticoagulants in all hospitalized
420 COVID-19 patients if not contraindicated. However, studies have reported conflicting
421 results regarding the effect of anticoagulants medication on COVID-19 mortality [48],
422 ranging from a protective effect [49] to a harmful effect [50,51], or no association [49,52].
423 Prospective studies and RCTs are needed to explore the true effects of these medications in
424 hospitalized COVID-19 patients.

425 Findings of a living systematic review of 23 prognostic studies about COVID-19 mortality
426 indicated that age, immunocompromising comorbidities, and composite scores of vital
427 parameters are frequently reported predictors of in-hospital mortality, similar to our findings
428 [18]. Blood ferritin levels and anticoagulants medication were scarcely reported [18]. On the
429 other hand, male sex and comorbidities, such as cardiovascular and pulmonary diseases, that
430 were significantly associated with in-hospital mortality in our univariable but not
431 multivariable analyses, were frequently reported in other prognostic studies. This is an
432 important finding and shows that many of these risk factors are interacting with each other.
433 Last, we found no increased risk of dying in patients with male sex, diabetes, which are also

434 risk factors that have been reported previously. Larger studies may be needed to reveal
435 additional risk factors of clinical importance.

436 **Strengths and limitations**

437 The strength of this study is the large, multisite population in an area in which infections
438 were clustered. We analyzed mortality in COVID-19 patients using a competing risk
439 approach, leading to more accurate risk estimates for mortality than when using conventional
440 survival analysis. As previously explained, conventional survival analyses may have resulted
441 in biased estimates and Kaplan-Meier curves presenting overestimated incidence of death.
442 There were some limitations to this study. First, approximately 21% of patients in our study
443 were censored, mainly due to frequent transfer of patients. However, this was considered
444 within acceptable limits [53-55]. Second, our data consisted of routinely collected data,
445 resulting in missing values in several variables. We used multiple imputations to minimize
446 associated bias and analyzing dropping missed values. The advantage of routinely collected
447 data is that the study's predictors are readily available and be used in clinical practice without
448 extra effort. All reported predictors are variables measured at time of hospital admission,
449 which means that these factors can be used to identify patients in need of more intensive care
450 and monitoring in an early stage of hospitalization. Finally, data were collected in multiple
451 centers with differences in manner of reporting in medical records and differences in clinical
452 management. The advantage of this multisite approach is that it increased the
453 generalizability of our findings.

454 **Conclusion**

456 Using a robust, competing risk survival analysis, our study confirmed specific risk factors for
457 in hospital COVID-19 mortality, adding rigor to the current knowledge of risk factors. We
458 confirmed that age and immunocompromised state are important risk factors for death in

459 hospitalized COVID- 19 patients. This allows us to corroborate specific pattern of risk factors
460 about COVID-19 mortality and its progression among different groups of individuals
461 (differentiated by age and immune-compromised state). Clinicians and administrators need to
462 make arrangements to segregate and manage these individuals. Nearly 1 in 5 patients who
463 succumb to illness in the hospitals are likely to do so within the first 72 hours. Further, those
464 who die are likely to be older, with each advancing decade, conferring additional significant
465 mortality risk. This should be considered while planning distribution of services. Nearly 1 of
466 2 patients who succumb to illness has associated immune-compromised state. Our findings
467 reaffirm the need for prompt diagnosis, testing and multidisciplinary case mix management.
468 Within health facilities these thoughts shall allow informed decision making for sound,
469 effective, and sustained health-care services to ease mortality.

470 **Abbreviations**

471 AHMC: Adama Hospital Medical College; AIDS: Acquired immunodeficiency syndrome;
472 ARDS: Acute Respiratory Distress syndrome; AOR: Adjusted Odd Ratio; CI: Confidence
473 Interval; COR: Crude Odd Ratio; HRcs: cause-specific hazard ratios; HIV: Human Immune
474 Virus; ICU: Intensive Care Unit; IQR: Inter Quartile Range; KTC: Kurkura Treatment
475 Center; PH: Primary Hospital; PPs: Proportional population size; OR: Odd Ratio; RH:
476 Regional Hospital; RNA: Ribose Nucleotide Acid; SARS-COV-2: Severe Acute Respiratory
477 Syndrome; SD: Standard Deviation; WHO: World Health Organization

478 **Declarations**

479 **Ethical approval**

480 This study was approved by Arsi University's Health Research Ethical Review Committee,
481 accreditation number ERC No A/CHS/RC/75/2023 and permission was obtained from the
482 treatment sites for the data collection. There was no direct human contact with the
483 respondents in this study. Participant reports/information was already anonymized and de-

484 identified prior to data collection. Data security and confidentiality were maintained at all
485 levels of data management.

486

487 **Consent for publication:** Not applicable

488 **Data Availability Statement:** All relevant data are within the manuscript and the raw
489 datasets used during the analysis were available from the corresponding author on reasonable
490 request.

491 **Funding:** This research work was financed by Arsi University. It supported the work by
492 allocating budget for data collection and per diem for the authors during the data collection
493 period. The funder had no role in study design, data collection and analysis, decision to
494 publish, or preparation of the manuscript.

495 **Competing interests:** The authors have declared that no competing interests exist

496

497 **Authors' contributions**

498 AW, AD, AKa, AT, MS, Aki, ZA and YM designed and worked on the study protocols. AD,
499 AW and AT prepared a data collection tool and provided training to data collectors. AD and
500 AT were conducted data entry to Epidata Entry client. AW, AD, AKa, AT, MS, Aki, ZA, and
501 YM analyzed the data, interpreted the result, and wrote the manuscript's draft and final
502 version. All authors read and approved the final manuscript.

503 **Acknowledgments**

504 Our heartfelt thanks go to Bishoftu, Modjo, Adama, Negele Arsi, Bekoji and Shashamane
505 hospital administrations and staffs for their permission and cooperation during the data
506 collection process.

507

508 References

509

510

511 1. Gilbert M, Pullano G, Pinotti F, Valdano E, Poletto C, et al. (2020) Preparedness and vulnerability
512 of African countries against importations of COVID-19: a modelling study. *The Lancet* 395:
513 871-877.

514 2. Poletti P, Parlamento S, Fayyisaa T, Feyyiss R, Lusiani M, et al. (2018) The hidden burden of
515 measles in Ethiopia: how distance to hospital shapes the disease mortality rate. *BMC*
516 *Medicine* 16: 177.

517 3. IMF (2020) International Monetary Fund. Policy responses to COVID-19. Policy Tracker: IMF.

518 4. Massinga Loembé M, Tshangela A, Salyer SJ, Varma JK, Ouma AEO, et al. (2020) COVID-19 in
519 Africa: the spread and response. *Nature Medicine* 26: 999-1003.

520 5. WHO (2020) WHO COVID-19 dashboard. WHO.

521 6. Makoni M (2020) COVID-19 in Africa: half a year later. *The Lancet Infectious Diseases* 20: 1127.

522 7. WHO (2020) COVID-19 Response Bulletin Ethiopia June 28, 2020.

523 8. Mohammed H, Oljira L, Roba KT, Yimer G, Fekadu A, et al. (2020) Containment of COVID-19 in
524 Ethiopia and implications for tuberculosis care and research. *Infectious Diseases of Poverty* 9:
525 131.

526 9. EIPH (2021) Ethiopian Institute of Public Health. COVID-19 pandemic preparedness and response
527 in Ethiopia - weekly bulletin.

528 10. UNICEF (2020) COVID-19 Response Humanitarian Situation Report #3.

529 11. EIPH (2021) Ethiopian Institute of Public Health. COVID-19 PANDEMIC PREPAREDNESS
530 AND RESPONSE IN ETHIOPIA. 19 p.

531 12. World Health O (2016) Health workforce requirements for universal health coverage and the
532 Sustainable Development Goals. (Human Resources for Health Observer, 17). Geneva: World
533 Health Organization.

534 13. Haileamlak A (2018) How Can Ethiopia Mitigate the Health Workforce Gap to Meet Universal
535 Health Coverage? *Ethiop J Health Sci* 28: 249-250.

536 14. Brand SPC, Aziza R, Kombe IK, Agoti CN, Hilton J, et al. (2020) Forecasting the scale of the
537 COVID-19 epidemic in Kenya. medRxiv: 2020.2004.2009.20059865.

538 15. Quaife M, van Zandvoort K, Gimma A, Shah K, McCreesh N, et al. (2020) The impact of
539 COVID-19 control measures on social contacts and transmission in Kenyan informal
540 settlements. *BMC Medicine* 18: 316.

541 16. van Zandvoort K, Jarvis CI, Pearson CAB, Davies NG, Nightingale ES, et al. (2020) Response
542 strategies for COVID-19 epidemics in African settings: a mathematical modelling study.
543 *BMC Medicine* 18: 324.

544 17. Walker PGT, Whittaker C (2020) The impact of COVID-19 and strategies for mitigation and
545 suppression in low- and middle-income countries. 369: 413-422.

546 18. Wynants L, Van Calster B, Collins GS, Riley RD, Heinze G, et al. (2020) Prediction models for
547 diagnosis and prognosis of covid-19: systematic review and critical appraisal. *BMJ* 369:
548 m1328.

549 19. Oulhaj A, Ahmed LA, Prattes J, Suliman A, Alsuwaidi AR, et al. (2020) The competing risk
550 between in-hospital mortality and recovery: A pitfall in COVID-19 survival analysis research.
551 medRxiv: 2020.2007.2011.20151472.

552 20. Schuster NA, Hoogendijk EO, Kok AA, Twisk JW, Heymans MW (2020) Ignoring competing
553 events in the analysis of survival data may lead to biased results: a nonmathematical
554 illustration of competing risk analysis. *Journal of clinical epidemiology* 122: 42-48.

555 21. R.A.Fadnavis (2019) Application of Machine Learning For Survival Analysis- A
556 Review. *IOSR Journal of Engineering (IOSRJEN)* 9: 5.

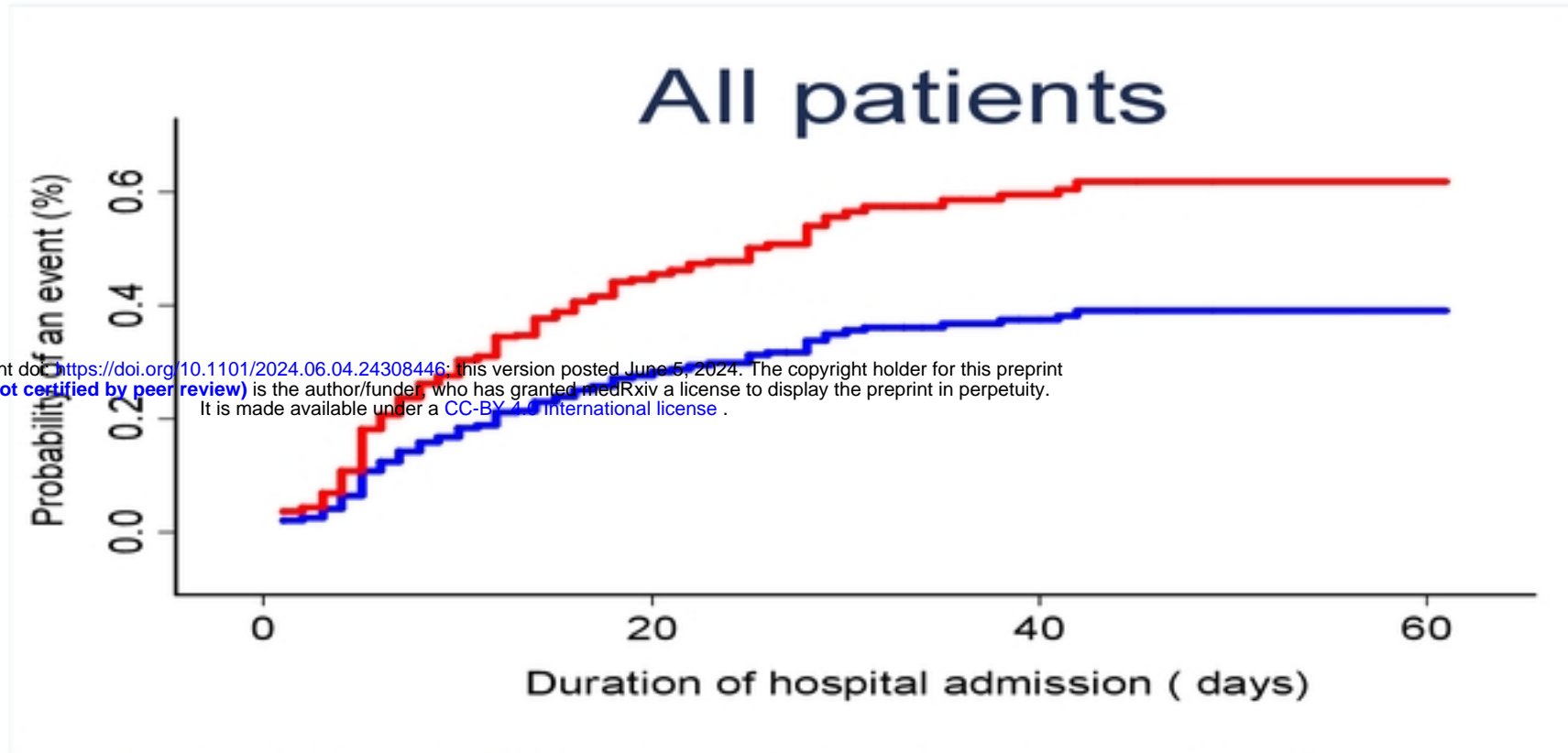
557 22. Fine JP, Gray RJ (1999) A Proportional Hazards Model for the Subdistribution of a Competing
558 Risk. *Journal of the American Statistical Association* 94: 496-509.

559 23. Edae CK, Wabalo EK, Heyi CD (2020) Assessment of preparedness and response of health
560 professionals towards COVID-19 pandemic during early period in public hospitals in Oromia

- 561 regional state, Ethiopia. *Biomedical Journal of Scientific & Technical Research* 32: 15.
- 562 24. Andersen MP, Mills EHA, Meddis A, Sørensen KK, Butt JH, et al. (2023) All-cause mortality
563 among Danish nursing home residents before and during the COVID-19 pandemic: a
564 nationwide cohort study. *Eur J Epidemiol* 38: 523-531.
- 565 25. Austin PC, Lee DS, Fine JP (2016) Introduction to the Analysis of Survival Data in the Presence
566 of Competing Risks. *Circulation* 133: 601-609.
- 567 26. Noordzij M, Leffondré K, van Stralen KJ, Zoccali C, Dekker FW, et al. (2013) When do we need
568 competing risks methods for survival analysis in nephrology? *Nephrology Dialysis
569 Transplantation* 28: 2670-2677.
- 570 27. Steyerberg EW (2019) *Clinical Prediction Models: A Practical Approach to Development,
571 Validation, and Updating*: Springer International Publishing.
- 572 28. Gray RJ (1988) A Class of K-Sample Tests for Comparing the Cumulative Incidence of a
573 Competing Risk. *The Annals of Statistics* 16: 1141-1154.
- 574 29. Scrucca L, Santucci A, Aversa F (2007) Competing risk analysis using R: an easy guide for
575 clinicians. *Bone Marrow Transplant* 40: 381-387.
- 576 30. Dignam JJ, Zhang Q, Kocherginsky M (2012) The use and interpretation of competing risks
577 regression models. *Clin Cancer Res* 18: 2301-2308.
- 578 31. Goel S, Jain T, Hooda A, Malhotra R, Johal G, et al. (2020) Clinical Characteristics and In-
579 Hospital Mortality for COVID-19 Across The Globe. *Cardiol Ther* 9: 553-559.
- 580 32. Wiersinga WJ, Rhodes A, Cheng AC, Peacock SJ, Prescott HC (2020) Pathophysiology,
581 Transmission, Diagnosis, and Treatment of Coronavirus Disease 2019 (COVID-19): A
582 Review. *Jama* 324: 782-793.
- 583 33. Hu H, Yao N, Qiu Y (2020) Comparing Rapid Scoring Systems in Mortality Prediction of
584 Critically Ill Patients With Novel Coronavirus Disease. *Acad Emerg Med* 27: 461-468.
- 585 34. Lu L, Zhong W, Bian Z, Li Z, Zhang K, et al. (2020) A comparison of mortality-related risk
586 factors of COVID-19, SARS, and MERS: A systematic review and meta-analysis. *J Infect* 81:
587 e18-e25.
- 588 35. Parohan M, Yaghoubi S, Seraji A, Javanbakht MH, Sarraf P, et al. (2020) Risk factors for
589 mortality in patients with Coronavirus disease 2019 (COVID-19) infection: a systematic
590 review and meta-analysis of observational studies. *Aging Male* 23: 1416-1424.
- 591 36. Evans RA, Dube S, Lu Y, Yates M, Arnetorp S, et al. (2023) Impact of COVID-19 on
592 immunocompromised populations during the Omicron era: insights from the observational
593 population-based INFORM study. *Lancet Reg Health Eur* 35: 100747.
- 594 37. Fung M, Babik JM (2021) COVID-19 in Immunocompromised Hosts: What We Know So Far.
595 *Clin Infect Dis* 72: 340-350.
- 596 38. Gao Y, Chen Y, Liu M, Shi S, Tian J (2020) Impacts of immunosuppression and
597 immunodeficiency on COVID-19: A systematic review and meta-analysis. *J Infect* 81: e93-
598 e95.
- 599 39. Abdulmir AS, Hafidh RR (2020) The Possible Immunological Pathways for the Variable
600 Immunopathogenesis of COVID—19 Infections among Healthy Adults, Elderly and
601 Children. *ELECTRON J GEN MED* 17: 4.
- 602 40. Coperchini F, Chiovato L, Croce L, Magri F, Rotondi M (2020) The cytokine storm in COVID-
603 19: An overview of the involvement of the chemokine/chemokine-receptor system. *Cytokine
604 Growth Factor Rev* 53: 25-32.
- 605 41. Liu Y, Chen D, Hou J, Li H, Cao D, et al. (2021) An inter-correlated cytokine network identified
606 at the center of cytokine storm predicted COVID-19 prognosis. *Cytokine* 138: 155365.
- 607 42. Mehta P, McAuley DF, Brown M, Sanchez E, Tattersall RS, et al. (2020) COVID-19: consider
608 cytokine storm syndromes and immunosuppression. *Lancet* 395: 1033-1034.
- 609 43. Prompetchara E, Ketloy C, Palaga T (2020) Immune responses in COVID-19 and potential
610 vaccines: Lessons learned from SARS and MERS epidemic. *Asian Pac J Allergy Immunol*
611 38: 1-9.
- 612 44. Abdulla ZA, Al-Bashir SM, Alzoubi H (2023) The Role of Immunity in the Pathogenesis of
613 SARS-CoV-2 Infection and in the Protection Generated by COVID-19 Vaccines in Different
614 Age Groups. 12.

- 615 45. Minotti C, Tirelli F, Barbieri E, Giaquinto C, Donà D (2020) How is immunosuppressive status
616 affecting children and adults in SARS-CoV-2 infection? A systematic review. *J Infect* 81:
617 e61-e66.
- 618 46. Bavaro DF, Poliseño M, Scardapane A, Belati A, De Gennaro N, et al. (2020) Occurrence of
619 Acute Pulmonary Embolism in COVID-19-A case series. *Int J Infect Dis* 98: 225-226.
- 620 47. Malas MB, Naazie IN, Elsayed N, Mathlouthi A, Marmor R, et al. (2020) Thromboembolism risk
621 of COVID-19 is high and associated with a higher risk of mortality: A systematic review and
622 meta-analysis. *EClinicalMedicine* 29: 100639.
- 623 48. Salah HM, Naser JA, Calcaterra G, Bassareo PP, Mehta JL (2020) The Effect of Anticoagulation
624 Use on Mortality in COVID-19 Infection. *Am J Cardiol* 134: 155-157.
- 625 49. Wijaya I, Andhika R, Huang I (2020) The Use of Therapeutic-Dose Anticoagulation and Its Effect
626 on Mortality in Patients With COVID-19: A Systematic Review. 26: 1076029620960797.
- 627 50. Chen F, Sun W, Sun S, Li Z, Wang Z (2020) Clinical characteristics and risk factors for mortality
628 among inpatients with COVID-19 in Wuhan, China. 10: e40.
- 629 51. Giacomelli A, Ridolfo AL, Milazzo L, Oreni L, Bernacchia D, et al. (2020) 30-day mortality in
630 patients hospitalized with COVID-19 during the first wave of the Italian epidemic: A
631 prospective cohort study. *Pharmacol Res* 158: 104931.
- 632 52. Klok FA, Kruip M, van der Meer NJM, Arbous MS, Gommers D, et al. (2020) Confirmation of
633 the high cumulative incidence of thrombotic complications in critically ill ICU patients with
634 COVID-19: An updated analysis. *Thromb Res* 191: 148-150.
- 635 53. Zhu X, Zhou X, Zhang Y, Sun X, Liu H, et al. (2017) Reporting and methodological quality of
636 survival analysis in articles published in Chinese oncology journals. *Medicine (Baltimore)* 96:
637 e9204.
- 638 54. Demler OV, Paynter NP, Cook NR (2018) Reclassification calibration test for censored survival
639 data: performance and comparison to goodness-of-fit criteria. *Diagnostic and Prognostic
640 Research* 2: 16.
- 641 55. Qin J, Shen Y (2010) Statistical methods for analyzing right-censored length-biased data under
642 cox model. *Biometrics* 66: 382-392.
- 643

Event █ Recovery █ Death



medRxiv preprint doi: <https://doi.org/10.1101/2024.06.04.24308446>; this version posted June 5, 2024. The copyright holder for this preprint (which was not certified by peer review) is the author/funder, who has granted medRxiv a license to display the preprint in perpetuity. It is made available under a [CC-BY 4.0 International license](#).

Figure 1 Cumulative incidence plot of death and recovery in hospitals, south eastern Ethiopia 2024

Event █ Recovery █ Death

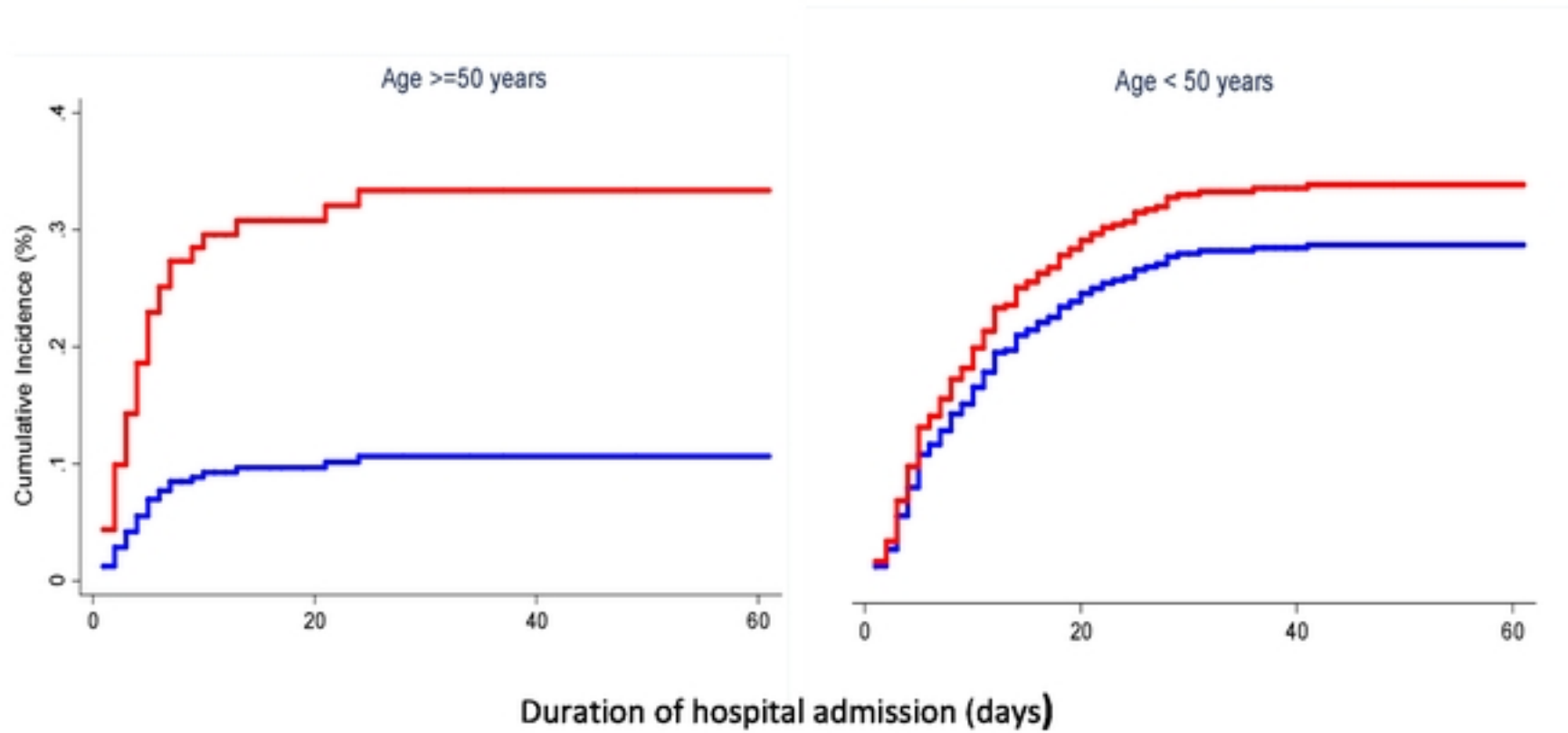
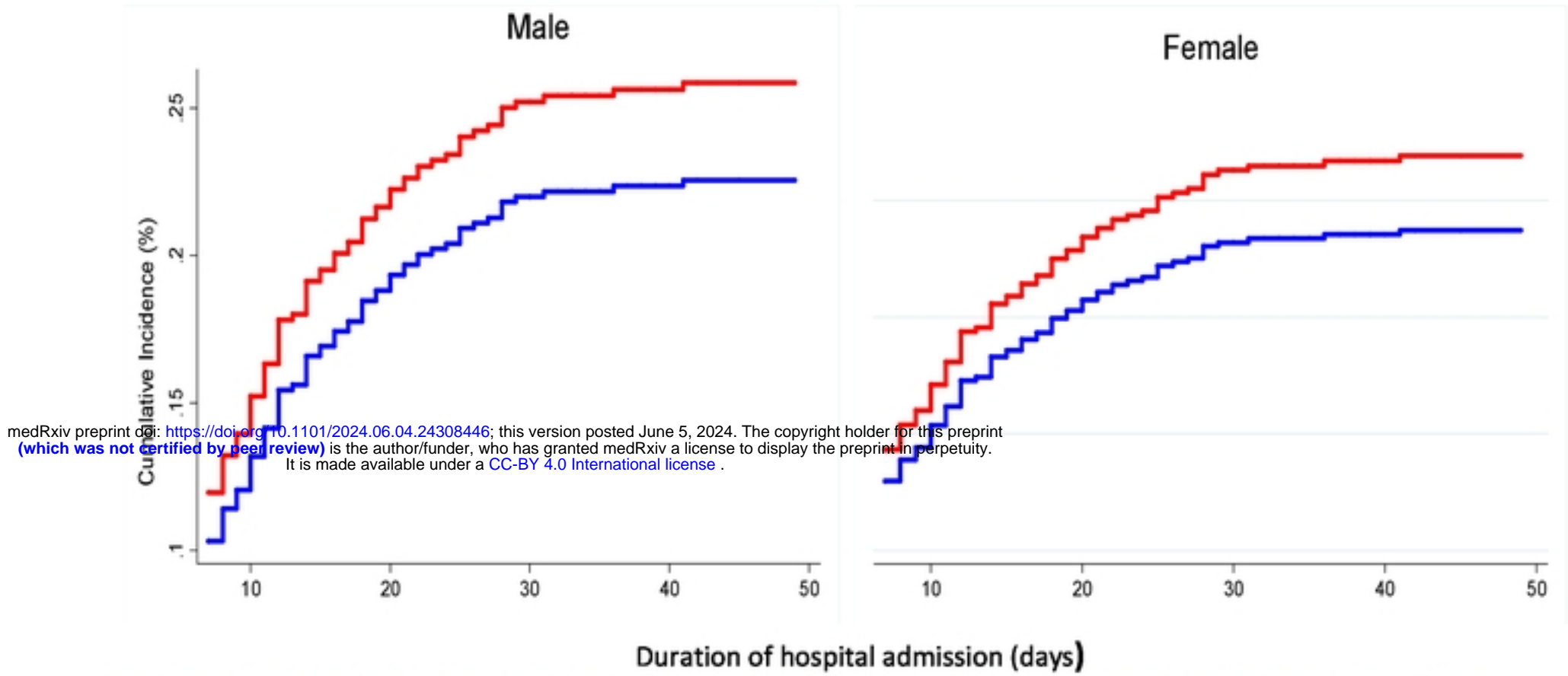


Figure 2 Cumulative incidence plots of death and recovery in south eastern Ethiopia hospitals separated, by age group 2024

Event █ Recovery █ Death



medRxiv preprint doi: <https://doi.org/10.1101/2024.06.04.24308446>; this version posted June 5, 2024. The copyright holder for this preprint (which was not certified by peer review) is the author/funder, who has granted medRxiv a license to display the preprint in perpetuity. It is made available under a [CC-BY 4.0 International license](https://creativecommons.org/licenses/by/4.0/).

Figure 3 Cumulative incidence plots of death and recovery in south eastern Ethiopia hospitals separated, by gender 2024

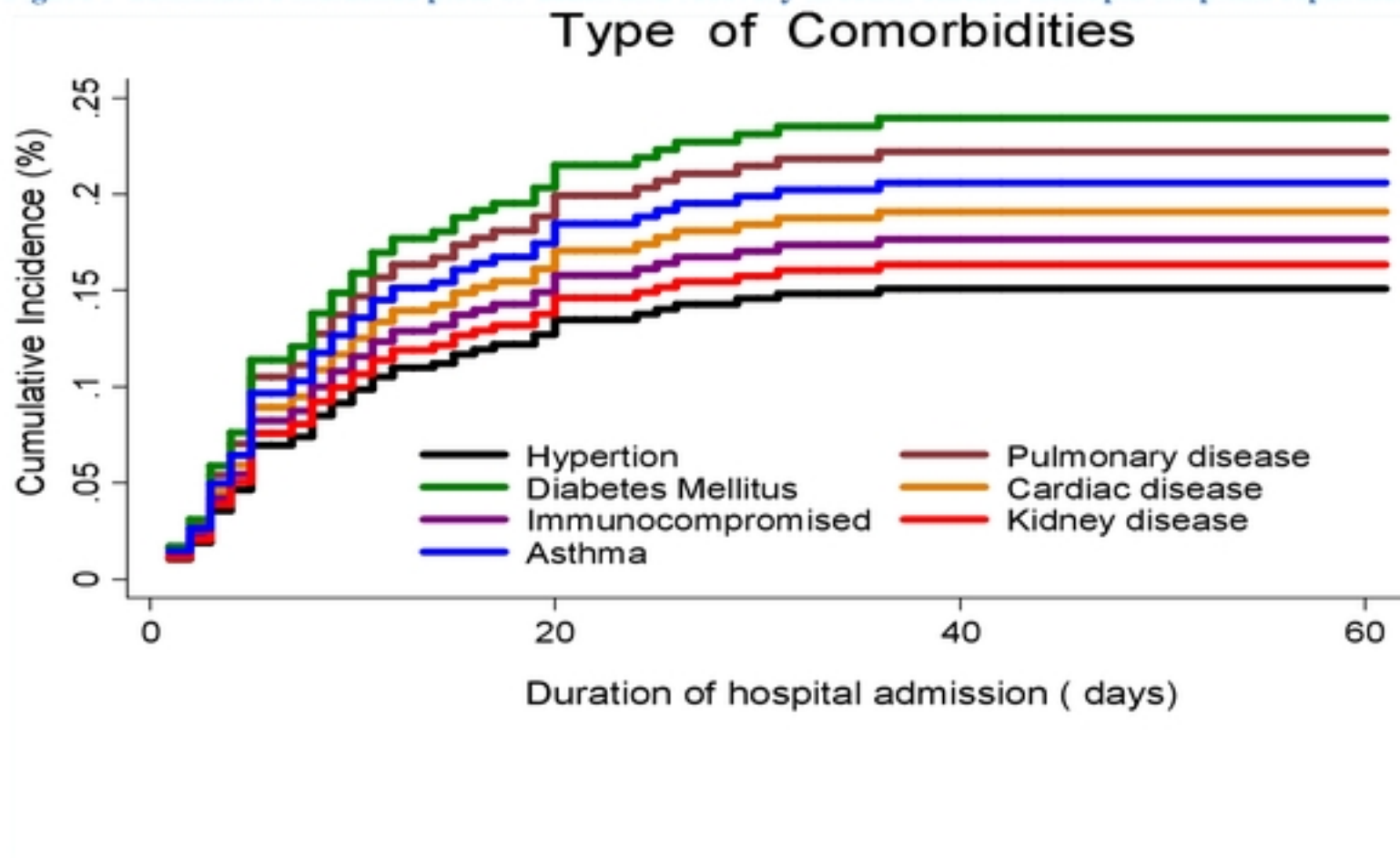


Figure 4 Cumulative incidence plots of death in south eastern Ethiopia hospitals separated, by type of Comorbidities 2024