

1
2 **Title: Impact of Cardiac Position, Morphology and Operative Technique on Long-**
3 **Term Fontan Outcomes in Heterotaxy**

4
5 **Author:** Sachiko Kadowaki, MD, PhD^{1,2}; Zeynep uçar MD, PhD^{1,3}; Chun-Po Steve Fan,
6 PhD, P.Stat⁴; Yasmin Zahiri BSc^{1,2}; Kok Hooi Yap, MD, MSc^{1,2}; Teerapong
7 Tocharoenchok, MD, PhD^{1,2}; Weidan Chen, MD, PhD^{1,5}; Anne I. Dipchand, MD, FRCPC⁶;
8 Osami Honjo, MD, PhD^{1,2}; David J. Barron, MD, PhD^{1,2}

9
10 **Affiliation:** 1 Division of Cardiovascular Surgery, The Labatt Family Heart Centre, The
11 Hospital for Sick Children, Toronto, ON, Canada; 2 Department of Surgery, University of
12 Toronto, ON, Canada; 3 Division of Cardiovascular Surgery, Koç University, GSSE,
13 Istanbul; 4 Ted Rogers Centre for Heart Research, Peter Munk Cardiac Centre, University
14 Health Network, Toronto, ON, Canada; 5 Department of Cardiac Surgery, Guangzhou
15 Women and Children's Medical Center, Guangzhou Medical University, Guangzhou,
16 China; 6 Division of Cardiology, The Hospital for Sick Children, Toronto, ON, Canada

17 **Short title:** Fontan long-term outcome in heterotaxy

18 **Corresponding author:** David J. Barron, M.D., Ph.D., Division of Cardiovascular
19 Surgery, Labatt Family Heart Centre, The Hospital for Sick Children, SickKids Patient
20 Support Centre, 175 Elizabeth St, Toronto, Ontario, Canada. M5G 2G3. E-mail:
21 david.barron@sickkids.ca

22 **Word count:** 5486 words

23 **This submission is for annual Cardiovascular Surgery-Themed Issue.**

24 **Abstract**

25 **Objectives:** Heterotaxy is characterized by complex venous connections and cardiac
26 position requiring individualized strategies for Fontan. This study aimed to assess 25-year
27 outcomes of heterotaxy patients undergone Fontan operation, with particular focus on
28 morphological features and surgical techniques.

29 **Methods:** 82 consecutive heterotaxy patients who underwent Fontan operation from
30 1985 to 2021 were compared to 150 with tricuspid atresia (TA) and 144 with hypoplastic
31 left heart syndrome (HLHS). Kaplan-Meier method and Cox proportional hazard model
32 were used for transplant-free survival and predictor analysis.

33 **Results:** Right Atrial Isomerism (RAI) was present in 45 cases and Left Atrial Isomerism
34 (LAI) in 37. The 20-year transplant-free survival was comparable between the groups
35 (RAI vs. LAI, 76% [95% confidence interval, 57-87%] vs. 68% [47-82%], $p=0.22$).
36 Techniques were extracardiac in 66%, intra-atrial conduit in 9%, lateral tunnel in 18%.
37 More intervention on pulmonary veins occurred in the RAI group. Cardiac position and
38 apicocaval juxtaposition did not influence outcome. The IVC-contralateral PA Fontan was
39 associated with 100% survival, while the IVC-ipsilateral PA Fontan at the side of the
40 cardiac apex showed 67% [34-87%] survival at 20 years. Moderate or severe ventricular
41 dysfunction at 20 years was found in 15% (6-39%) and 0% of RAI and LAI patients among
42 hospital survivors, respectively ($p=0.09$). In-hospital mortality was higher in heterotaxy
43 (9.8% [5-19%]) compared to TA (1.3% [0.3-5.3%], $p<.01$) and HLHS (2.8% [1.1-7.3%],
44 $p=0.02$). There was no in-hospital death after 2000 in any of groups. The 20-year
45 transplant-free survival in heterotaxy (72% [59-82%]) was worse than that in TA (95% [89-
46 97%], $p<0.001$) but was not significantly different from that in HLHS (80% [69-87%],

47 p=0.11). Reintervention rate at 20 years was significantly higher in heterotaxy (18% [11-
48 29%]) vs. HLHS (8% [4-16%]) (p=0.01). Ventricular dysfunction was a predictor for death
49 (univariate p<0.001).

50 **Conclusion:** Various routing techniques can be successfully applied to overcome the
51 anatomical challenges of heterotaxy. Although higher in-hospital mortality and
52 reintervention rate were found in heterotaxy in the early era, overall survival post Fontan
53 was similar to that in HLHS. RAI had comparable survival to LAI with greater proportion
54 requiring pulmonary vein intervention at time of Fontan.

55

56

57

58 **Introduction**

59 Heterotaxy is a challenging surgical subtype in congenital heart disease, characterized
60 by abnormal systemic and pulmonary venous (PV) connections, unusual cardiac position,
61 such as apicocaval juxtaposition (ACJ), and high incidence of common atrioventricular
62 (AV) valve [1]. More than 75% of heterotaxy cases have a functional single ventricle, and
63 so are destined for staged single ventricle palliation and subsequent Fontan operation
64 [2,3]. The associated extracardiac anomalies add further challenges to the already
65 suboptimal single ventricle circulation, including hepatic disease and ciliary dyskinesia
66 [4,5]. Consequently, Fontan palliation in heterotaxy, right atrial isomerism (RAI) in
67 particular, is renowned for higher mortality and morbidity [6-12].

68

69 Reports of Fontan outcomes in heterotaxy have been hampered by small case
70 numbers, selection biases, variations in follow-up duration, and a lack of comparable non
71 heterotaxy Fontan counterpart [13-17]. These limitations are summarized in a recent
72 meta-analysis that identified 21 studies, but the median number of patients per study was
73 only 24 with median follow-up of 4 ½ years [18]. The meta-analysis found a significantly
74 higher early mortality (14%) with a 10-year survival of 74%. A notable finding was that
75 early mortality remains high even among the recent studies, whereas survival has been
76 improved in other anatomic subgroups undergoing Fontan operation [18].

77

78 There are few large single centre studies in which consistent techniques for the
79 Fontan procedure have been used [17,19]. However, the role of the different techniques
80 of Fontan modification in heterotaxy have never been studied in detail with respect to their

81 influence on long-term outcomes. This study aimed to analyze the impact of cardiac
82 structures and individualized operative approaches, including a low threshold to intervene
83 on PV stenosis in the setting of RAI, at the time of Fontan operation. To assess these
84 outcomes in context, the heterotaxy group were compared with two contemporaneous
85 cohorts, the ‘ideal’ Fontan (Tricuspid Atresia cohort, TA), and a higher risk Fontan group
86 (Hypoplastic Left Heart Syndrome cohort, HLHS) [20-22].

87

88 **Patients and Methods**

89 The study protocol was approved by the Research Ethics Board, the Hospital for
90 Sick Children, Toronto, Ontario, Canada (ID 1000071680). The cardiovascular surgery
91 database at the Hospital for Sick Children was reviewed for all patients with heterotaxy
92 syndrome, TA, and HLHS undergone a Fontan operation. Among the 551 patients who
93 underwent Fontan operation between January 1985 to September 2021: 82 with
94 heterotaxy (15%), 150 with TA (27%), and 144 with HLHS (26%) were reviewed.
95 Heterotaxy was diagnosed in preoperative imaging modalities, including
96 echocardiography, magnetic resonance imaging and computed tomography, and by
97 intraoperative findings.

98 Data collected included demographics, underlying anatomy, operative details,
99 and long-term follow-up data. The analysis included the subset of patients with heterotaxy,
100 subdivided into those with RAI (n=45) and those with left atrial isomerism (LAI) (n=37).
101 Reoperation was defined as all cardiac surgical interventions except for permanent
102 pacemaker implantation, generator change, and heart transplantation (HTx). The term
103 “the IVC” in the manuscript is defined as the IVC or hepatic veins (HVs) with interrupted

104 IVC draining into the atrium. ACJ was a morphologic feature of the cardiac apex pointing
105 toward the ipsilateral side of the IVC [23]. The IVC-ipsilateral pulmonary artery (PA)
106 Fontan indicates a Fontan route placed between the IVC and ipsilateral PA at the side of
107 the cardiac apex or a Fontan route running between the IVC draining into the mid-atrium
108 to the PA behind the ventricular mass, as opposed to the standard Fontan, in which a
109 Fontan route is placed in the opposite side of the cardiac apex between the IVC and
110 ipsilateral PA. The IVC-contralateral PA Fontan represents an extracardiac Fontan conduit
111 passing over the vertebra to run to the contralateral PA. Although it has been routine to
112 create a fenestration since early 2000's, the decision to create a fenestration in heterotaxy
113 was individualized based on multiple factors, including physiology, anatomical limitations,
114 and surgical judgement. A fenestration was typically not created in patients with
115 arteriovenous malformation (AVM) or who previously underwent Kawashima procedure.
116 Early death or reoperation are defined as death or surgical intervention within one-month
117 post-Fontan, while late death represents death later than one-month post-Fontan.

118

119 **Data analysis**

120 Clinical characteristics at the index surgery were summarized using descriptive statistics.
121 Continuous variables were summarized using median, the first and third quartile,
122 categorical variables were summarized by frequencies. The freedom from death or HTx
123 was characterized using the Kaplan-Meier survival method, and between-group
124 differences in HTx-free survival were evaluated using log rank tests. The length of stay
125 (LOS), reoperation and the incidence of moderate or greater systolic dysfunction and AV
126 valve regurgitation (AVVR) were characterized using Fine and Gray's subdistribution

127 method, in which death or HTx was considered a competing risk, in terms of cumulative
128 incidence function (CIF). Between-group differences in CIF were evaluated using Gray's
129 tests.

130 The associations of heterotaxy with the HTx-free survival was assessed and
131 quantified using a Cox proportional hazard model in terms of hazard ratios (HRs). The
132 association of heterotaxy with the LOS, reoperation and the incidence of moderate or
133 greater systolic ventricular dysfunction and AVVR using the subdistribution regression
134 method was quantified in terms of subdistribution HRs. We conducted each analysis with
135 and without covariate adjustment. The covariates included the year of the Fontan, age
136 and sex at the Fontan, the presence of fenestration, and other concomitant AV valve
137 repair. In all regression analyses, the year of the Fontan and age at the Fontan, were
138 modeled using natural cubic splines to account for their potential nonlinear associations
139 with the outcomes; hence, the corresponding results were shown graphically. The
140 corresponding 95% confidence interval (CI) and p-values was evaluated using Wald's
141 statistics. Finally, we conducted an exploratory analysis to assess clinical risk factors
142 specified *a priori* on HTx-free survival using a Cox proportional hazard model. The risk
143 factors under consideration included ventricular morphology, laterality of the apex of the
144 heart, laterality of Fontan pathway, the IVC on the same side as the apex, repair of
145 pulmonary venous obstruction, AV valve repair and Fontan route on the same side as the
146 apex. Missing values were imputed using multivariable imputation with a chained
147 equation. The imputed results were pooled using Rubin's method. Statistical analyses
148 assumed a significance level of 5% and were conducted in R v4.0.3.

149

150 **Results**

151 The median (Q1-Q3) follow-up was 11 (3.9-20), 12 (5.3-24), and 13 (4.3-18) years for
152 heterotaxy, TA, and HLHS, respectively. Clinical characteristics of these cohorts are
153 described in Table S1.

154

155 **Anatomical Features and Fontan Techniques in Heterotaxy**

156 Baseline characteristics, anatomical features, Fontan techniques in the RAI and LAI are
157 shown in Table 1. Representative figures of Fontan pathway in each technique: standard
158 extracardiac, intra-atrial conduit, IVC-ipsilateral PA, and IVC-contralateral PA Fontan, are
159 shown in Figure 1. Applied surgical approaches according to locations of the IVC to the
160 cardiac apex are summarized in Figure S1. Atrioventricular septal defect was present in
161 most patients (76%) and in similar rate between RAI and LAI. The dominant ventricle was
162 RV in 50% of RAI and in 70% of LAI. Dextrocardia was present in 29% of RAI and in 46%
163 of LAI. ACJ was present in 22% of the whole cohort.

164 The IVC was interrupted in 84% of LAI and in 2% of RAI. All patients with interrupted IVC
165 underwent Kawashima procedure. There was no difference in age at Fontan completion
166 between the patients who previously underwent Kawashima procedure and the patients
167 who did not (age in years at the Fontan completion with vs. without previous Kawashima,
168 4.7 [3.2-7.3] vs. 4.2 [3.1-6.8], years old, $p=0.82$). The IVC (or HVs in the setting of
169 interrupted IVC) drained to the right-sided atrium in approximately 50%, to the left-sided
170 atrium in 35%, and to the midline in 12%.

171 An extracardiac Fontan was the commonest technique, used in 66% of the cases (71%
172 RAI and 59% LAI) with a polytetrafluoroethylene (PTFE) graft (GORE-TEX Stretch

173 Vascular Graft, GORE, Flagstaff, AZ) with the size ranging from 16 to 22mm. A Y-graft
174 was used in 5 cases (all LAI) who had unilateral or bilateral AVM to ensure IVC flow to
175 both lungs. The second commonest Fontan type was a lateral tunnel, used in 18% of
176 cases, which were equally distributed in both RAI and LAI. An intra-atrial conduit Fontan
177 was used in seven cases (9%) (no difference in RAI vs. LAI). Of which two woven double
178 velour graft (20 and 24mm, respectively, Hemashield, GETINGE, Göteborg, Sweden) was
179 used and a PTFE graft (16 to 18 mm) was used in 5 patients in order to avoid pulmonary
180 venous compression typically in cases of midline IVC or ACJ (see Fig 1c). Three patients
181 in the very early cohort had an atrio-pulmonary connection.

182 In terms of laterality of the Fontan route, 37% of RAI and 41% of LAI patients had a left
183 sided conduit. This was strongly correlated with the incidence of dextrocardia (37%) and
184 with the IVC (or HVs in the case of interrupted IVC) draining into the left-sided atrium
185 (35%). There were six (8%) and 12 patients (15%) undergone IVC-contralateral PA
186 Fontan and IVC-ipsilateral PA Fontan, respectively.

187

188 **Concomitant Procedures**

189 Fenestration was performed in 65% of cases and was commoner in RAI (84%) than LAI
190 (41%) ($p < 0.001$). PV repair was performed in 18% of RAI patients and 0% of LAI
191 ($p < 0.001$) with zero recurrence of PV obstruction postoperatively. PA plasty and AV valve
192 repair were performed for 18% and 15% of the patients, respectively, without significant
193 difference between RAI and LAI.

194

195 **Control Groups: TA and HLHS**

196 Clinical characteristics of the comparison cohorts with TA or HLHS undergoing Fontan
197 are described, in Table S1. In comparison to patients with TA and HLHS, weight and age
198 at the Fontan for patients with heterotaxy were larger and older. Fenestration creation
199 was more common in the HLHS cohort than heterotaxy.

200

201 **Early outcomes**

202 The competing risk analysis showed that hospital (4-week) mortality (95% CI) was
203 significantly higher in heterotaxy (9.8% [5.1-19%]) than TA (1.3% [0.3-5.3%], $p < 0.01$) or
204 HLHS (2.8% [1.1-7.3%], $p = 0.02$) patients, while there was no significant difference
205 between RAI and LAI (11% [4.3-27%] vs. 8.9% [3.5-23%], $p = 0.72$) (Figure 2.1). The
206 estimated proportion (95% CI) of patients discharged from hospitalization alive within 4
207 weeks was significantly lower in heterotaxy (79%, [71-89%]) than TA (91%, [86-95%],
208 $p = 0.008$) or HLHS (90%, [86-95%], $p = 0.003$); there was no significant difference between
209 RAI and LAI (78% [66-93%]; 80% [69-93%]; $p = 0.77$) (Figure S2).

210 Moreover, the results of subdistribution regression analysis showed that heterotaxy was
211 significantly associated with a reduced likelihood of being discharged alive (thus more
212 likely to die during the index hospitalization) (Table 3) compared to TA or HLHS. It was
213 estimated that heterotaxy was associated with an approximate 40% reduction in the
214 likelihood of a live discharge compared to TA (HR [95% CI] = 0.64 [0.47, 0.89], $p = 0.007$)
215 or compared to HLHS (0.75 [0.54, 1.03], $p = 0.08$). It is also noteworthy that significant
216 improvement in terms of the incidence of live discharges year over year in all groups (RAI
217 and LAI, heterotaxy and TA, and heterotaxy and HLHS) (Figure 3) and that the covariate-
218 adjusted effect of Fontan year on HTx-free survival was not statistically significant (Figure

219 S3). Modes of early death in heterotaxy are summarized in Figure S4. Notably, three out
220 of 11 early deaths occurred in the IVC-ipsilateral PA group, of which two occurred during
221 the index hospitalization due to failed Fontan circulation, and the other patient died at
222 home nine days post-Fontan.

223 Early reoperation was required for six (7.3%) heterotaxy, two (1.3%) TA, and one (0.7%)
224 HLHS patient (Table S1, Figure 4). Among those with early reoperation, Fontan takedown
225 was required in two heterotaxy, one TA, and one HLHS patient during the index admission
226 with three in-hospital deaths except for one TA post-Fontan takedown.

227

228 **Late outcomes**

229 There were in total 20 heterotaxy, 8 TA and 22 HLHS patients who subsequent died or
230 received HTx during the follow-up. The proportion of deceased or transplanted patients
231 in each group is shown in Figure 2.2 and modes of late death or HTx are shown in Figure
232 S4. There was no significant difference in the 20-year HTx-free survival between RAI and
233 LAI populations. The HTx-free survival (95% CI) at 20 years after Fontan was significantly
234 better in TA (95%, [89-97%]) than that in heterotaxy (72%, [59-82%], $p < 0.001$) and not
235 significantly different between heterotaxy and HLHS (80%, [69-87%], $p = 0.11$). The
236 findings remained consistent among hospital survivors, in which the 20-year HTx-free
237 survival remained significantly lower in heterotaxy (82% [67-90%]) than that in TA (96%
238 [90-98%], $p < 0.01$) and not significantly different from that in HLHS (82% [71-89%],
239 $p = 0.94$). The multivariable Cox proportion hazard regression showed that the risk of death
240 or HTx was significantly higher in the heterotaxy than the TA patients (adjusted HR [95%
241 CI] = 4.2 [1.5, 12], $p = 0.007$) and not significantly different from the HLHS patients

242 (adjusted HR [95% CI] = 1.2 [0.5, 2.7], $p = 0.63$) (Table S2).

243 There were in total 13 heterotaxy, 13 TA and 8 HLHS patients who received reoperations
244 during the follow up. The estimated proportion (95% CI) of reoperation at 20 years after
245 Fontan in the heterotaxy group (18%, [11-29%]) was not significantly different from that
246 in TA (11%, [6.0-21%], $p=0.07$) but was significantly higher than that in HLHS (7.5% [3.7-
247 16%], $p=0.01$) (Figure 4). There were no significant differences in the incidence of
248 reoperation between RAI and LAI. Moreover, late reoperation was required for seven
249 (9%), eleven (7%), and seven patients (5%) in heterotaxy, TA, and HLHS, respectively
250 (Table S1). One of two Fontan revisions in heterotaxy was attributed to PV obstruction
251 caused by the intra-atrial Fontan conduit, for which mobilization of the conduit and repair
252 of the PV obstruction were performed. Another Fontan revision was thrombectomy from
253 the Fontan conduit. Retrieval of a fenestration closure device was needed in one patient.

254

255 **Ventricular Dysfunction and AVVR in Heterotaxy**

256 The impact of moderate or greater systolic ventricular dysfunction and moderate or
257 greater AVVR among the hospital survivors in the heterotaxy group are shown in Figure
258 5. None of the LAI patient developed moderate or greater ventricular dysfunction, while
259 the estimated proportions of RAI patients who developed moderate or greater ventricular
260 dysfunction were 2% (0.3-15%), 6% (2-24%), 15% (6-39%) at 10-, 15-, and 20-years post-
261 Fontan. The proportions of patients with moderate or greater AVVR were 17% (9-34%) at
262 10 and 15 years and 42% (27-65%) at 20 years in RAI, while those in LAI were 6% (2-
263 25%) at 10 years and 16% (6-40%) at 15 and 20 years. There was no statistical
264 significance in the incidence of ventricular dysfunction ($p=0.09$) and AVVR ($p=0.10$)

265 between RAI and LAI.

266

267

268 **Risk Analysis for HTx-free Survival**

269 The univariate analysis showed no anatomical and Fontan characteristics associated with
270 HTx-free survival in heterotaxy (Table 2). The technique of routing the extracardiac
271 conduit to the contralateral side of the cardiac mass (n=6) was associated with no early
272 or late mortality and no pathway obstruction, although there was no statistical significance
273 compared to other routing techniques. By contrast, there were 4 deaths out of 12 patients
274 with IVC-ipsilateral PA Fontan over the period, showing HTx-free survival at 67% [34-
275 87%] at 20 years.

276

277 **Discussion**

278 This series constitutes a large single-centre experience of Fontan operation for patients
279 with heterotaxy with median follow up of over 11 years. Despite concerns over the long-
280 term outcomes for RAI, the study showed improved outcomes for RAI that are
281 comparable to those of LAI. This may have been achieved through the aggressive
282 treatment for PV stenosis at the time of Fontan operation and individualized Fontan
283 configurations, such as the intra-atrial conduit to avoid compression on PVs. The majority
284 of early mortality in the cohort occurred before 2000 and all three groups have universally
285 excellent survival in the current era. Compared with HLHS, the heterotaxy group had an
286 early hazard of death and HTx and but similar constant low late hazard, making equivalent
287 survival between heterotaxy and HLHS among the hospital survivors.

288

289 **Individualized Fontan Techniques**

290 The study demonstrated no significant impact of the ventricular morphology and
291 positioning, presence of ACJ, laterality of the Fontan route, types of Fontan modifications,
292 and requirement of concomitant PV repair or AV valve repair at Fontan on HTx-free
293 survival in patients with heterotaxy. Although no single technique of Fontan had superior
294 outcomes, one important message was that, in the setting of ACJ, routing an extracardiac
295 conduit to the contralateral side to the apex showed no mortality and reoperation, while
296 routing the conduit to the ipsilateral side to the apex was associated with some mortalities.
297 Previous reports of Fontan for patients with ACJ showed various strategies and mixed
298 results. A small study of seven heterotaxy patients favored ipsilateral conduit (in 77% of
299 the cohort) with excellent survival [10] whereas the other studies favored contralateral
300 conduit in 54% and 86% of the cohorts, respectively [12, 24]. These practice variations
301 may stem from the efforts to mitigate the risks of PV obstruction in the IVC-ipsilateral PA
302 Fontan and systemic venous obstruction in the IVC-contralateral PA Fontan [12,23,25,26].
303 To address these drawbacks of the techniques, intra-atrial conduit and intra-extracardiac
304 Fontan techniques have gained renewed interest, even in more standard anatomy as they
305 allow for anterior positioning of the conduit away from the PVs and can be reliably
306 fenestrated [27-29].

307

308 **Heterotaxy vs TA and HLHS**

309 One of the main objectives of this study is to compare outcomes of heterotaxy patients
310 to a contemporaneous cohort of ideal and high-risk Fontan categories – TA and HLHS.

311 We found that HTx-free survival and hospital mortality in TA were superior to those in
312 heterotaxy, while the reoperation rate was comparable between TA and heterotaxy
313 groups. Despite having the higher hospital mortality and reoperation rate, heterotaxy had
314 comparable HTx-free survival to HLHS over 20 years. The era effect needs to be taken
315 into consideration as a potential factor to alleviate early mortality in heterotaxy. Despite
316 no statistical difference in the covariate-adjusted year effect on HTx-free survival over the
317 20 years (Figure S3). There has been no hospital death since 2000 in any subgroups.
318 Therefore, future study to analyze contemporary cohort may look different than the
319 outcomes shown in this study.

320

321 **Impact of Ventricular Dysfunction and AVVR**

322 In univariate analysis, moderate or greater systolic dysfunction was revealed as a
323 significant risk factor for death or HTx in patients with heterotaxy. Moderate or greater
324 AVVR was not identified as the predictor for death or HTx in this study, which could partly
325 be explained by the shorter follow-up period. In the longer follow-up, more patients with
326 significant AVVR might have functional deterioration, as AVVR was identified as an
327 independent risk factor of the long-term outcomes in previous reports [30,31]. The
328 important facts in this study are well-maintained systolic function for the first 13 years after
329 Fontan and steady increase in the rate of significant AVVR over time particularly among
330 the patients with RAI. Since there is a significant negative impact of systolic dysfunction
331 on HTx-free survival and significant AVVR can lead to ventricular functional deterioration,
332 early intervention for AVVR in heterotaxy should be considered to prevent ventricular
333 dysfunction and poor outcomes.

334

335 **Study limitations**

336 There are two major limitations of this study: its retrospective nature and a small number
337 of Fontan patients with heterotaxy, despite this being one of the largest single-centre
338 series to date. Thus, regression analysis for short-term outcomes, including the era effect,
339 was not conducted. Future analysis might be beneficial in identifying potential risks to
340 early Fontan mortality and rather in describing if heterotaxy remains a high-risk group for
341 the early post-Fontan outcome considering the era effect. In the present study, eligibility
342 criteria for Fontan's candidacy were not considered and patients in the heterotaxy cohort
343 were pre-selected, excluding the ones who had not successfully undergone the Fontan
344 completion.

345

346 **Conclusions**

347 Heterotaxy remains a high-risk group for Fontan completion, characterized by a high early
348 mortality compared to other Fontan substrates. The individualized Fontan routing strategy
349 effectively prevented systemic venous and PV obstruction. Routing the conduit to the
350 contralateral side of the ventricular mass is potentially beneficial to the patients with ACJ
351 and related abnormalities. The potential higher risk of RAI can be mitigated by
352 concomitant correction of any PV anomaly at time of Fontan and use of fenestration.
353 Heterotaxy Fontan outcomes is equivalent to those of HLHS, and the late incidence of
354 reintervention is low. Ventricular dysfunction is associated with late death and HTx.

355

356 **Acknowledgement:** None

357

358 **Sources of Funding:** No funding

359

360 **Disclosure:** None

361

362 **References:**

- 363 1. Jacobs JP, Anderson RH, Weinberg PM, Walters HL 3rd, Tchervenkov CI, Del
364 Duca D, Franklin RC, Aiello VD, Béland MJ, Colan SD, Gaynor JW, Krogmann ON,
365 Kurosawa H, Maruszewski B, Stellin G, Elliott MJ. The nomenclature, definition and
366 classification of cardiac structures in the setting of heterotaxy. *Cardiol Young*. 2007;17
367 Suppl 2:1-28.
- 368 2. Lim HG, Bacha EA, Marx GR, Marshall A, Fynn-Thompson F, Mayer JE, Del
369 Nido P, Pigula FA. Biventricular repair in patients with heterotaxy syndrome. *J Thorac
370 Cardiovasc Surg*. 2009 Feb;137(2):371-379.e3.
- 371 3. Graham G, Dearani JA, Niaz T, Crow S, Cetta F, Stephens EH. Outcomes of
372 Biventricular and Single Ventricle Heterotaxy Patients: A Single Center Five-Decade
373 Experience. *Ann Thorac Surg*. 2023 May;115(5):1206-1211.
- 374 4. Nakhleh N, Francis R, Giese RA, Tian X, Li Y, Zariwala MA, Yagi H, et al. High
375 prevalence of respiratory ciliary dysfunction in congenital heart disease patients with
376 heterotaxy. *Circulation* 2012;125:2232-42.
- 377 5. Sutherland MJ, Ware SM. Disorders of left-right asymmetry: heterotaxy and
378 situs inversus. *Am J Med Genet C Semin Med Genet* 2009;151C:307-17.

- 379 6. Driscoll DJ, Offord KP, Feldt RH, Schaff HV, Puga FJ, Danielson GK. Five- to
380 fifteen-year follow-up after Fontan operation. *Circulation* 1992;85:469-96.
- 381 7. Gentles TL, Mayer JE Jr, Gauvreau K, Newburger JW, Lock JE, Kupferschmid
382 JP, et al. Fontan operation in five hundred consecutive patients: factors influencing early
383 and late outcome. *J Thorac Cardiovasc Surg* 1997;114:376-91.
- 384 8. Hashmi A, Abu-Sulaiman R, McCrindle BW, Smallhorn JF, Williams WG,
385 Freedom RM. Management and outcomes of right atrial isomerism: a 26-year
386 experience. *J Am Coll Cardiol* 1998;31:1120-6.
- 387 9. Gaynor JW, Collins MH, Rychik J, Gaughan JP, Spray TL. Long-term outcome
388 of infants with single ventricle and total anomalous pulmonary venous connection. *J*
389 *Thorac Cardiovasc Surg* 1999;117:506-13.
- 390 10. Gilljam T, McCrindle BW, Smallhorn JF, Williams WG, Freedom RM. Outcomes
391 of left atrial isomerism over a 28-year period at a single institution. *J Am Coll Cardiol*
392 2000;36:908-16.
- 393 11. Culbertson CB, George BL, Day RW, Laks H, Williams RG. Factors influencing
394 survival of patients with heterotaxy syndrome undergoing the Fontan procedure. *J Am*
395 *Coll Cardiol* 1992;20:678-84.
- 396 12. Chen W, Lu Y, Ma L, Yang S, Xia Y, Zou M, et al. Conduit Route Selection for
397 Total Cavopulmonary Connection in Patients With Apicocaval Juxtaposition. *Semin*
398 *Thorac Cardiovasc Surg* 2019;31:104-109.
- 399 13. Jonas RA. Surgical management of the neonate with heterotaxy and long-term
400 outcomes of heterotaxy. *World J Pediatr Congenit Heart Surg* 2011;2:264-74.
- 401 14. Azakie A, Merklinger SL, Williams WG, Van Arsdell GS, Coles JG, Adatia I.

- 402 Improving outcomes of the Fontan operation in children with atrial isomerism and
403 heterotaxy syndromes. *Ann Thorac Surg*. 2001;72:1636-40.
- 404 15. Stamm C, Friehs I, Duebener LF, Zurakowski D, Mayer JE Jr, Jonas RA, et al.
405 Improving results of the modified Fontan operation in patients with heterotaxy syndrome.
406 *Ann Thorac Surg* 2002;74:1967-77.
- 407 16. d'Udekem Y, Xu MY, Galati JC, Lu S, Iyengar AJ, Konstantinov IE, et al. Predictors
408 of survival after single-ventricle palliation: the impact of right ventricular dominance. *J Am
409 Coll Cardiol* 2012 27;59:1178-85.
- 410 17. Stephens EH, Graham G, Dearani JA, Niaz T, Cetta F. Fontan Palliation in
411 Patients with Heterotaxy Syndrome: A Five Decade Experience. *World J Pediatr Congenit
412 Heart Surg* 2022;13:436-442.
- 413 18. Marathe SP, Cao JY, Celermajer D, Ayer J, Sholler GF, d'Udekem Y, et al.
414 Outcomes of the Fontan Operation for Patients With Heterotaxy: A Meta-Analysis of 848
415 Patients. *Ann Thorac Surg* 2020;110:307-315.
- 416 19. Marathe SP, Zannino D, Cao JY, du Plessis K, Marathe SS, Ayer J, et al.
417 Heterotaxy Is Not a Risk Factor for Adverse Long-Term Outcomes After Fontan
418 Completion. *Ann Thorac Surg*. 2020;110(2):646-653.
- 419 20. Iyengar AJ, Winlaw DS, Galati JC, Gentles TL, Weintraub RG, Justo RN, et al.
420 The Australia and New Zealand Fontan Registry: description and initial results from the
421 first population-based Fontan registry. *Intern Med J* 2014;44:148-55.
- 422 21. Iyengar AJ, Winlaw DS, Galati JC, Wheaton GR, Gentles TL, Grigg LE, et al. The
423 extracardiac conduit Fontan procedure in Australia and New Zealand: hypoplastic left
424 heart syndrome predicts worse early and late outcomes. *Eur J Cardiothorac Surg*

425 2014 ;46:465-73.

426 22. Iyengar AJ, Winlaw DS, Galati JC, Celermajer DS, Wheaton GR, Gentles TL,
427 Grigg LE, Weintraub RG, Bullock A, Justo RN, d'Udekem Y. Trends in Fontan surgery and
428 risk factors for early adverse outcomes after Fontan surgery: the Australia and New
429 Zealand Fontan Registry experience. *J Thorac Cardiovasc Surg.* 2014 Aug;148(2):566-
430 75.

431 23. Sakurai T, Kado H, Nakano T, Hinokiyama K, Oda S, Sugiura J, et al. The impact
432 of extracardiac conduit-total cavopulmonary connection on apicocaval juxtaposition. *Eur*
433 *J Cardiothorac Surg* 2010;38:439-44.

434 24. Imai K, Hoashi T, Shimada M, Komori M, Nakata T, Kurosaki K, Ichikawa H. Long-
435 term Outcomes of Extracardiac Total Cavopulmonary Connection for Apicocaval
436 Juxtaposition. *Ann Thorac Surg.* 2021 Oct;112(4):1326-1333.

437 25. Yoshida M, Menon PG, Chrysostomou C, Pekkan K, Wearden PD, Oshima Y, et
438 al. Total cavopulmonary connection in patients with apicocaval juxtaposition: optimal
439 conduit route using preoperative angiogram and flow simulation. *Eur J Cardiothorac Surg*
440 2013;44:e46-52.

441 26. Kawahira Y, Nishigaki K, Ueno T. Extracardiac Fontan procedure bridging the
442 vertebra for apico-caval juxtaposition. *Ann Thorac Surg.* 2006;82:350-2.

443 27. Michielon G, Gharagozloo F, Julsrud PR, Danielson GK, Puga FJ. Modified
444 Fontan operation in the presence of anomalies of systemic and pulmonary venous
445 connection. *Circulation* 1993;88:II141-8.

446 28. Zhu ZQ, Hong HF, Chen HW, Zhang HB, Lu ZH, et al. Intraatrial conduit Fontan
447 procedure: indications, operative techniques, and clinical outcomes. *Ann Thorac Surg*

448 2015;99:156-61.

449 29. Hirose K, Ikai A, Murata M, Ito H, Koshiyama H, Ishidou M, et al. Intra-
450 Extracardiac Total Cavopulmonary Connection for Patients With Anatomical Complexity.
451 Ann Thorac Surg 2021;111:958-965.

452 30. Zou MH, Cao F, Ma L, Chen WD, Li WL, Li J, Chen XX. Outcomes of the Surgical
453 Management of Atrial Isomerism and Functional Single Ventricle: A Single-Centered
454 Cohort From China. Front Cardiovasc Med. 2021 Sep 22;8:664752.

455 31. Alongi AM, Kirklin JK, Deng L, Padilla L, Pavnica J, Romp RL, Mauchley DC,
456 Cleveland DC, Dabal RJ. Surgical Management of Heterotaxy Syndrome: Current
457 Challenges and Opportunities. World J Pediatr Congenit Heart Surg. 2020 Mar;11(2):166-
458 176.

459

460 **Tables**

461 Table 1. Demographic and operative variables in RAI and LAI.

Variables	Heterotaxy		RAI		LAI		P-value
	N		N		N		
Sex	82		45		37		0.04
Male		48 (59%)		31 (69%)		17 (46%)	
Female		34 (41%)		14 (31%)		20 (54%)	
Anatomical features							
Atrioventricular septal defect	82	62 (76%)	45	34 (76%)	37	28 (76%)	1
Ventricular morphorogy	81		44		37		0.12
Right ventricle		48 (59%)		22 (50%)		26 (70%)	
Left ventricle		23 (28%)		17 (39%)		6 (16%)	
Biventricle in single ventricle physiology		8 (10%)		4 (9%)		4 (11%)	
Indetermined		2 (2%)		1 (2%)		1 (3%)	
The position of the cardiac apex	82		45		37		0.29
dextrocardia		30 (37%)		13 (29%)		17 (46%)	
levocardia		49 (60%)		30 (67%)		19 (51%)	
mesocardia		3 (4%)		2 (4%)		1 (3%)	
Location of the IVC or HVs with interrupted IVC	82		45		37		0.01
R		42 (51%)		22 (49%)		20 (54%)	
L		29 (35%)		21 (47%)		8 (22%)	
mid-portion		10 (12%)		2 (4%)		8 (22%)	
R and L HVs drain separately		1 (1%)		0 (-)		1 (3%)	
HVs draining into the atrium separately from the IVC	82	13 (16%)	45	11 (24%)	37	2 (5%)	
Apicocaval juxtaposition	82	18 (22%)	45	10 (22%)	37	8 (22%)	1.00
Fontan characteristics							
Age at Fontan (years)*	82	4.3 (3.1 – 7.3)	45	4.3 (3.1 – 7.5)	37	4.6 (3.1 – 6.7)	0.79
Weight at Fontan (kg)*	82	15.1 (13.0 – 20.4)	45	14.3 (13.1 – 20.5)	37	16.0 (12.9 – 20.0)	0.41
Laterality of Fontan route	80		43		37		0.82
R		49 (61%)		27 (63%)		22 (59%)	
L		31 (39%)		16 (37%)		15 (41%)	
Type of Fontan procedure	82		45		37		0.31
Extracardiac		54 (66%)		32 (71%)		22 (59%)	
Lateral tunnel		15 (18%)		7 (16%)		8 (22%)	
Intra-atrial conduit		7 (9%)		3 (7%)		4 (11%)	
Atrio-pulmonary connection		3 (4%)		3 (7%)		0 (-)	
Others		3 (4%)		0(-)		3 (8%)	
IVC-contralateral PA Fontan	80	6 (8%)	43	5 (12%)	37	1 (3%)	0.44
IVC-ipsilateral PA Fontan at the cardiac apex side	80	12 (15%)	44	5 (11%)	36	7 (19%)	0.36
Type of Fontan conduit	61**		35		26		0.02
PTFE graft		44 (72%)		29 (83%)		15 (58%)	
Aortic homograft		8 (13%)		5 (14%)		3 (12%)	
Y-shaped PTFE graft		5 (7%)		0 (-)		5 (19%)	
Dacron graft		4 (7%)		1(3%)		3(12%)	
Associated procedures at Fontan							
Fontan with fenestration	82	53 (65%)	45	38 (84%)	37	15 (41%)	<0.001
PA plasty at Fontan	82	15 (18%)	45	11 (24%)	37	4 (11%)	0.15
Atrioventricular valve repair at Fontan	82	12 (15%)	45	6 (13%)	37	6 (16%)	0.76
Repair of pulmonary venous obstruction at Fontan	82	8 (10%)	45	8 (18%)	37	0 (-)	<0.01
Reoperation post-Fontan	82	13 (16%)	45	6 (13%)	37	7 (19%)	0.55

463 HVs, hepatic veins; IVC, inferior vena cava; L, left; PA, pulmonary artery; PTFE,
 464 Polytetrafluoroethylene; R, right. *Median with interquartile range, **Removing 21 cases
 465 with lateral tunnel (n=15), atrio-pulmonary connection (n=3), and others (n=3).

466

Variable	HR [95% CI]	P-value
Ventricular morphorogy		0.46
Biventricle in single ventricle physiology vs. Left ventricle	0.0 [0.0, Inf]	
Right vs. Left ventricle	2.0 [0.6, 6.7]	
Laterality of the apex of the heart		0.98
Dextrocardia vs. Levocardia	0.9 [0.3, 2.5]	
Mesocardia vs. Levocardia	0.0 [0.0, Inf]	
Hepatic veins draining into the atrium separately from the IVC	0.7 [0.1, 5.9]	0.71
Apicocaval juxtaposition	0.6 [0.2, 2.2]	0.41
Laterality of Fontan pathway (Left vs. Right)	0.8 [0.3, 2.3]	0.68
IVC-ipsilateral PA Fontan at the side of the cardiac apex	1.5 [0.5, 5.0]	0.47
IVC-contralateral PA and intra-atrial conduit Fontan	0.2 [0.02, 2.2]	0.19
Repair of pulmonary venous obstruction at the Fontan	0.5 [0.1, 4.0]	0.45
Atrialventricular valve repair at the Fontan	1.1 [0.3, 4.3]	0.84

467

468 IVC, inferior vena cava; PA, pulmonary artery.

469

470 Table S1. Clinical characteristics of patients at and post-Fontan in Heterotaxy vs. TA or

471 HLHS

Variables	Heterotaxy		TA		P-value*	HLHS		P-value**
	N		N			N		
Sex	82		150		1	144		0.056
Male		48 (59%)		88 (59%)			103 (72%)	
Female		34 (42%)		62 (41%)			41 (29%)	
Age at Fontan (years)	82	4.3 (3.1 – 7.3)	150	3.1 (2.6 – 3.9)	<0.001	144	3.2 (2.5 – 3.8)	<0.001
Body weight at Fontan (kg)	82	15.1 (13.0 – 20.4)	150	13.6 (12.0 – 15.4)	<0.001	144	13.5 (12.5 –	<0.001
Fontan with fenestration	82	53 (65%)	150	102 (68%)	0.66	144	124 (86%)	<0.001
Reoperation post-Fontan	82	13 (16%)	150	13 (9%)	0.13	144	8 (6%)	0.02
Early reoperation								
Fontan takedown		2 (2%)		1 (0.7%)			1 (0.7%)	
Fontan revision		2 (2%)		-			-	
Pulmonary artery plasty		-		1 (0.7%)			-	
Subaortic stenosis repair		1 (1%)		-			-	
Late reoperation								
Fontan takedown		-		1 (0.7%)			2 (1%)	
Fontan revision		2 (2%)		1 (0.7%)			3 (2%)	
Fontan conversion		-		6 (4%)			-	
Fenestration closure device retrieval		1 (1%)		-			-	
Atrioventricular valve repair		2 (2%)		1 (0.7%)			1 (0.7%)	
Atrioventricular valve replacement		1 (1%)		-			-	
Pulmonary artery plasty		-		1 (0.7%)			-	
Pericardial drainage		1 (1%)		-			-	
Arterio-venous fistula creation		1 (1%)		-			-	
Bentall		-		1 (0.7%)			1 (0.7%)	

472

473 * Heterotaxy vs. TA, **Heterotaxy vs. HLHS

474

475 Table S2. The regression results on transplant-free survival

476

Variable	Unadjusted		Covariate-adjusted	
	HR [95% CI]	P-value	HR [95% CI]	P-value
LAI vs. RAI	1.6 [0.6, 3.9]	0.32	1.9 [0.6, 6.0]	0.25
Year of Fontan			Figure 4a	0.33
Age at Fontan (years)			Figure S4a	0.05
Female vs. male			0.4 [0.1, 1.1]	0.08
Fenestration			2.1 [0.4, 10.4]	0.35
Concomitant AV valve repair			1.2 [0.2, 6.5]	0.8
Heterotaxy vs. TA	5.3 [2.2, 12.5]	<0.001	4.2 [1.5, 11.9]	0.007
Year of Fontan			Figure 4b	0.15
Age at Fontan (years)			Figure S4b	0.004
Female vs. male			0.8[0.4, 1.9]	0.68
Fenestration			1.8 [0.5, 6.1]	0.32
Concomitant AV valve repair			1.3 [0.3, 5.0]	0.75
Heterotaxy vs. HLHS	1.7 [0.9, 3.3]	0.09	1.2 [0.5, 2.7]	0.63
Year of Fontan			Figure 4c	0.18
Age at Fontan (years)			Figure S4c	0.004
Female vs. male			1.0 [0.5, 2.0]	1
Fenestration			1.0 [0.4, 2.5]	0.95
Concomitant AV valve repair			1.1 [0.4, 2.8]	0.92

477

478 AV valve, atrioventricular valve.

479

480 Table S3. The regression results on discharge alive

Variable	Unadjusted		Covariate-adjusted	
	Subdistrict HR [95% CI]	P-value	Subdistrict HR [95% CI]	P-value
LAI vs. RAI	0.9 [0.6, 1.5]	0.72	0.6 [0.3, 1.0]	0.07
Year of Fontan			Figure S5.1a	0.03
Age at Fontan (years)			Figure S5.2a	0.54
Female vs. male			2.2 [1.2, 3.8]	<0.01
Fenestration			0.5 [0.2, 1.0]	0.06
Concomitant AV valve repair			0.6 [0.3, 1.2]	0.15
Heterotaxy vs. TA	0.6 [0.5, 0.8]	0.001	0.6 [0.5, 0.9]	<0.01
Year of Fontan			Figure S5.1b	<0.001
Age at Fontan (years)			Figure S5.2b	0.5
Female vs. male			1.2 [0.9, 1.6]	0.21
Fenestration			0.8 [0.6, 1.2]	0.3
Concomitant AV valve repair			0.7[0.4, 1.4]	0.38
Heterotaxy vs. HLHS	0.6 [0.5, 0.8]	<0.001	0.7 [0.5, 1.0]	0.08
Year of Fontan			Figure S5.1c	<0.001
Age at Fontan (years)			Figure S5.2c	0.36
Female vs. male			1.1 [0.8, 1.5]	0.54
Fenestration			0.6 [0.4, 0.9]	<0.01
Concomitant AV valve repair			0.8 [0.6, 1.3]	0.39

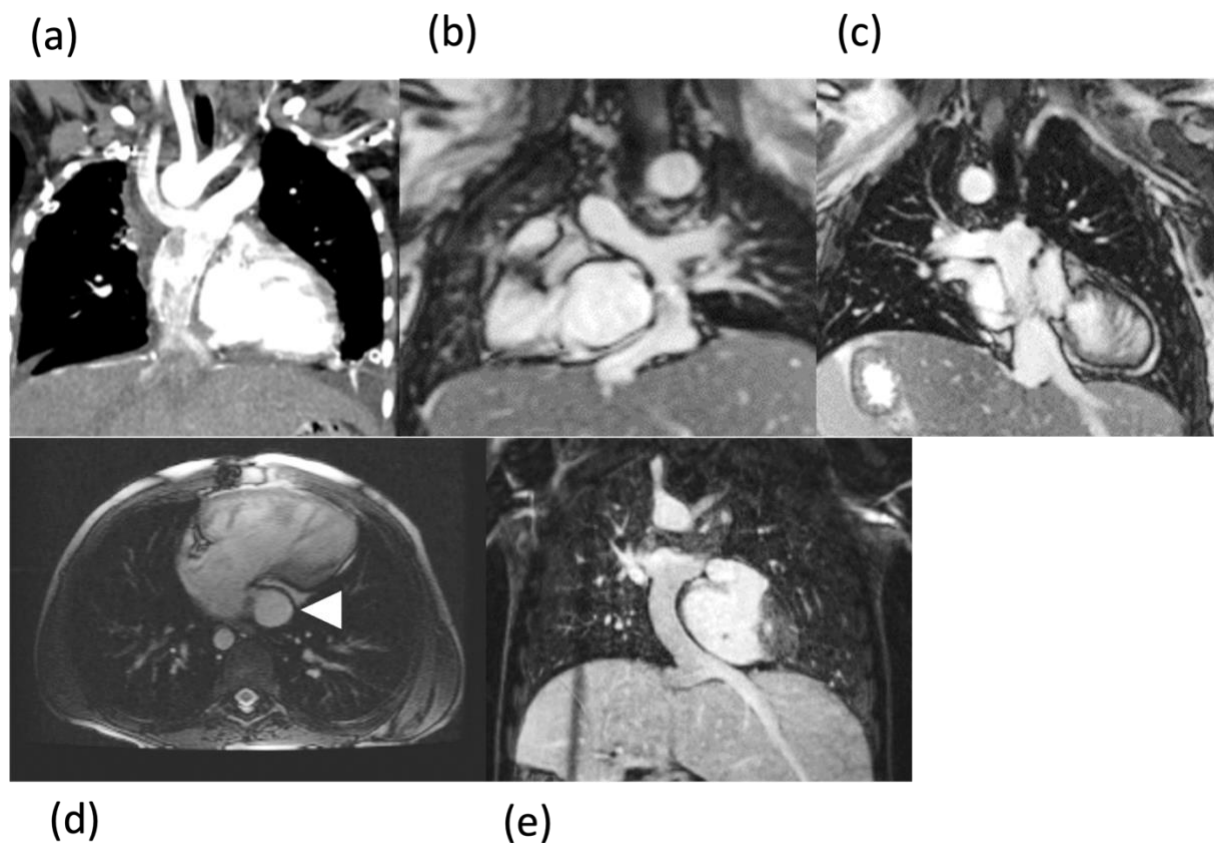
481

482 AV valve, atrioventricular valve.

483

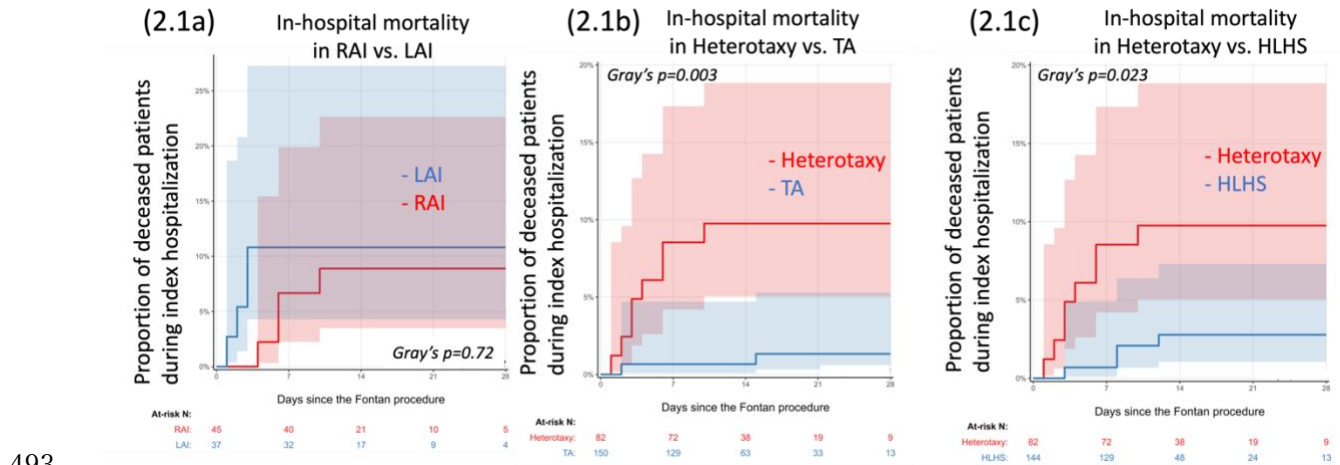
484

485 **Figures and Figure Legends**

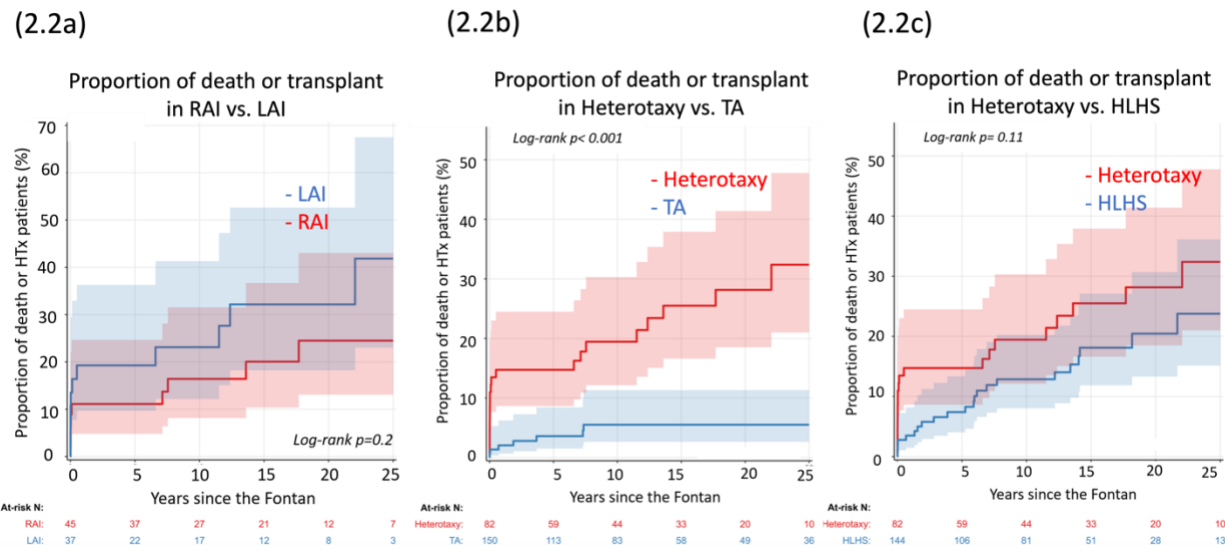


486
487 Figure 1. Fontan modifications. (a) right-sided extracardiac Fontan, (b) left-sided
488 extracardiac Fontan, (c) intra-atrial conduit Fontan, (d) the IVC-ipsilateral PA Fontan, in
489 which the arrow head indicates the conduit running behind the ventricular mass and on
490 the same side as the cardiac apex, (e) the IVC-contralateral PA Fontan. IVC, inferior vena
491 cava; PA, pulmonary artery.

492



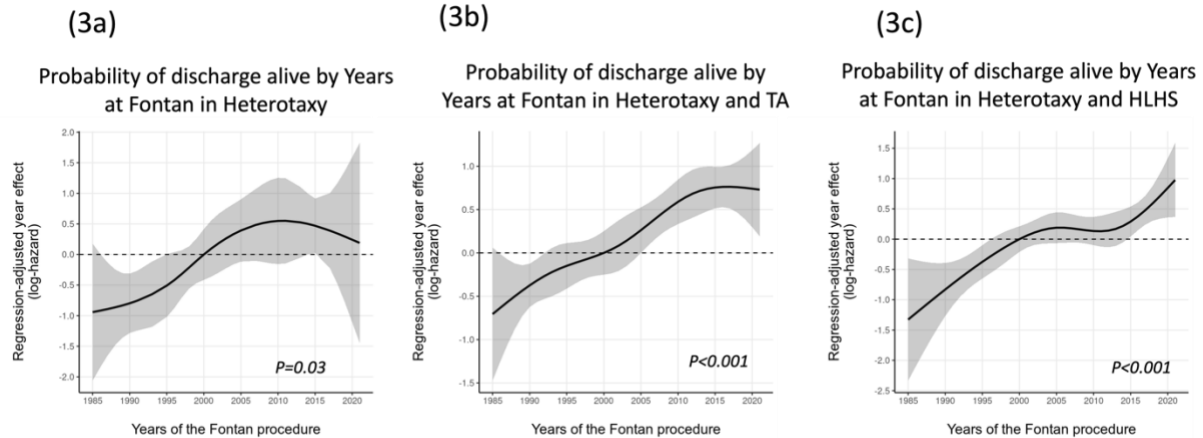
493



494

495 Figure 2. The proportion of deceased or transplanted patients after Fontan operation. The
 496 follow-up period was during hospitalization post-Fontan (2.1) and over the period post-
 497 Fontan (2.2). (a) RAI vs. LAI, (b) Heterotaxy vs. TA, and (c) Heterotaxy vs. HLHS.

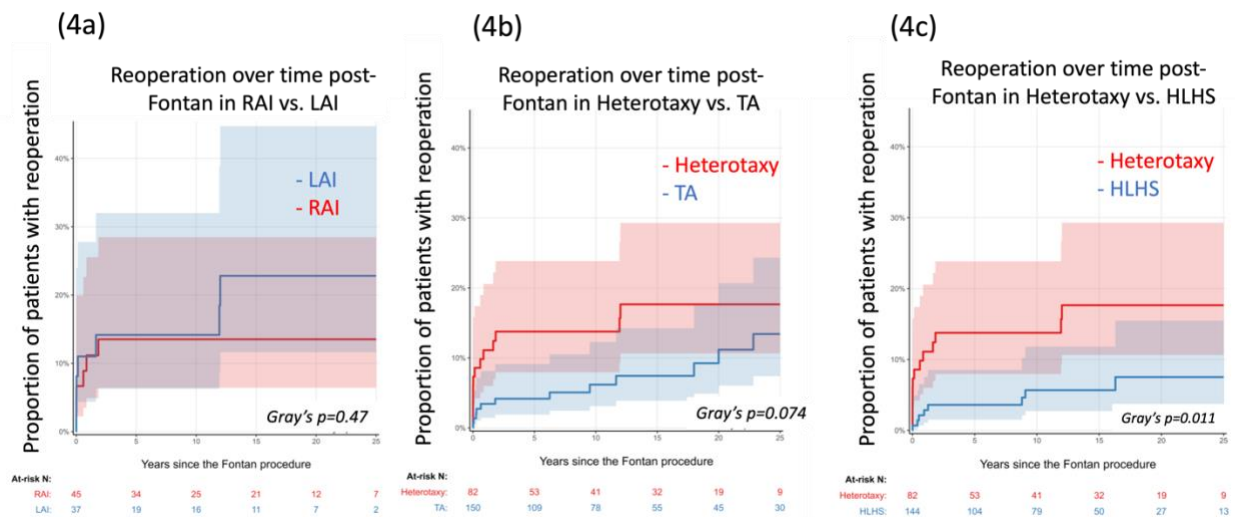
498



499

500 Figure 3. Regression-adjusted year effect for discharge alive. In the combined cohorts of
 501 RAI and LAI (a), Heterotaxy and TA (b), and Heterotaxy and HLHS (c).

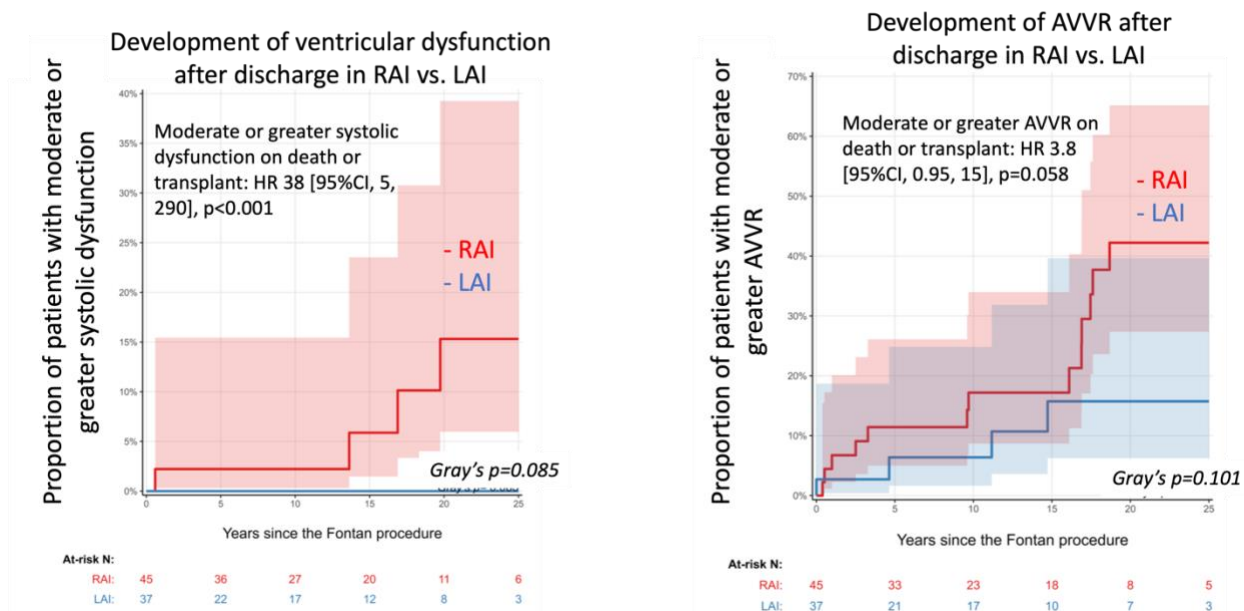
502



503

504 Figure 4. Reoperation rate over time following Fontan operation. (a) RAI vs. LAI, (b)
 505 heterotaxy vs. TA, and (c) heterotaxy vs. HLHS.

506



507

508 Figure 5. Development of systolic dysfunction and atrioventricular regurgitation

509 (AVVR) in heterotaxy patients who survived to hospital discharge post-Fontan. (a)

510 moderate or greater systolic dysfunction, (b) moderate or greater AVVR. The univariate

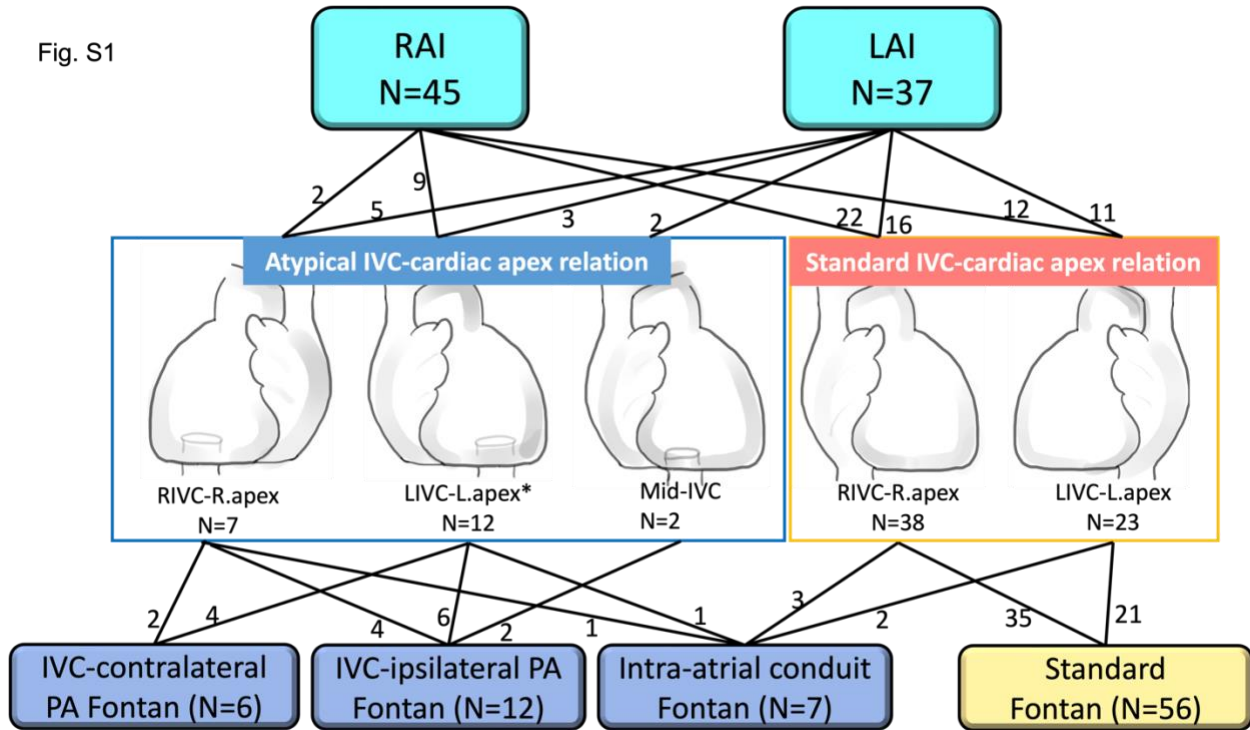
511 analysis on death or transplant by development of moderate or greater ventricular

512 dysfunction and AVVR after discharge are described in each figure. AVVR, atrioventricular

513 valve regurgitation; CI, confidence interval; HR, hazard ratio.

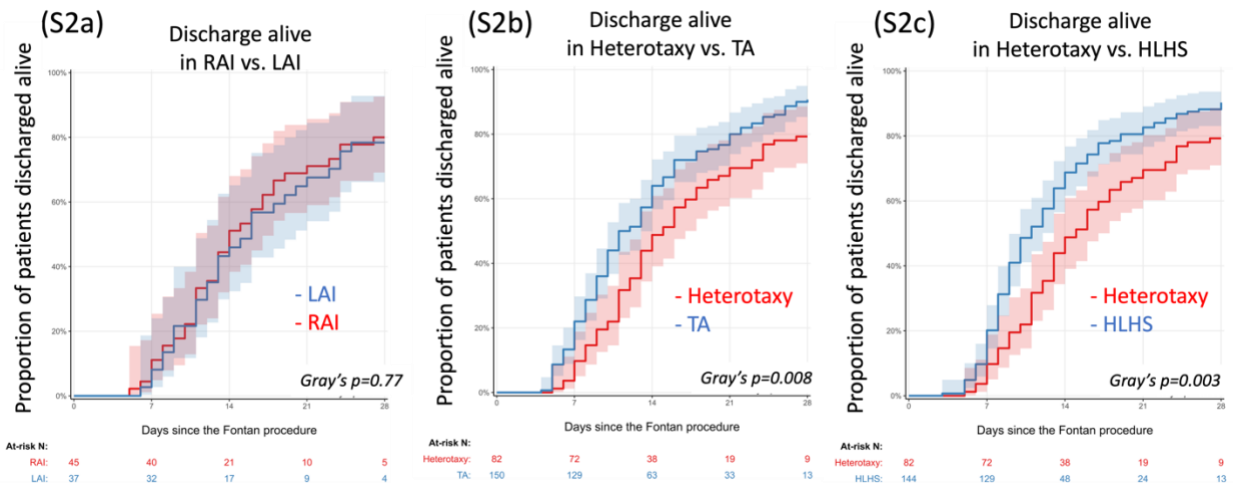
514

Fig. S1



515
 516 Figure S1. Surgical approaches using IVC-contralateral PA Fontan, IVC-ipsilateral PA
 517 Fontan, and intra-atrial conduit Fontan. *One of the patients with LIVC-L.apex relation is
 518 unknown which Fontan modification was used. HV, hepatic vein; IVC, inferior vena cava;
 519 L, left; PA, pulmonary artery; R; right.

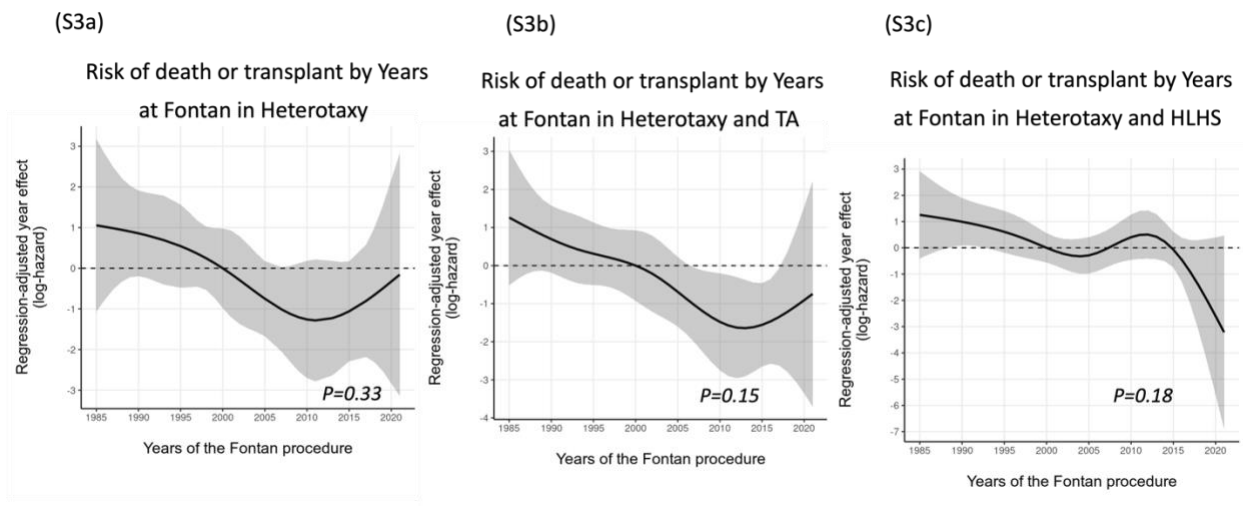
520



521
 522 Figure S2. Discharge alive within a month post-Fontan. (a) RAI vs. LAI, (b) heterotaxy vs.

523 TA, and (c) heterotaxy vs. HLHS.

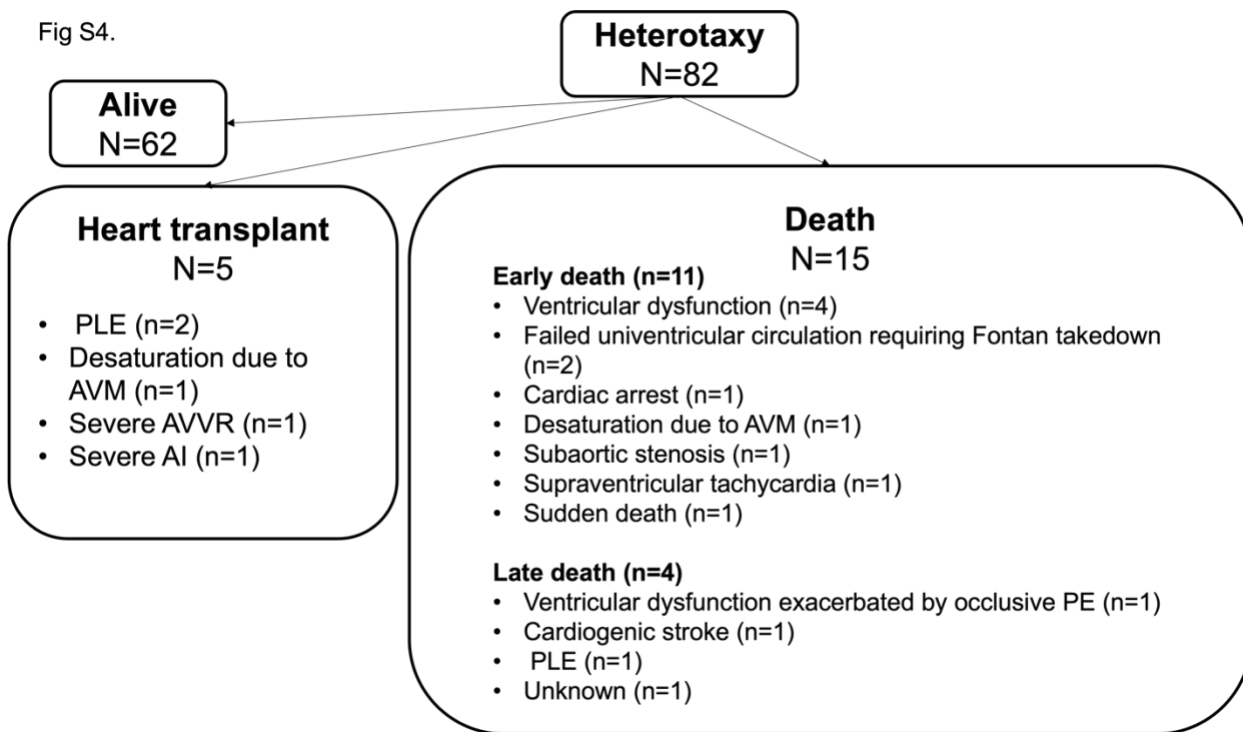
524



525

526 Figure S3. Regression-adjusted year effect for transplant-free survival. In the combined
 527 cohorts of RAI and LAI (a), Heterotaxy and TA (b), and Heterotaxy and HLHS (c).

528

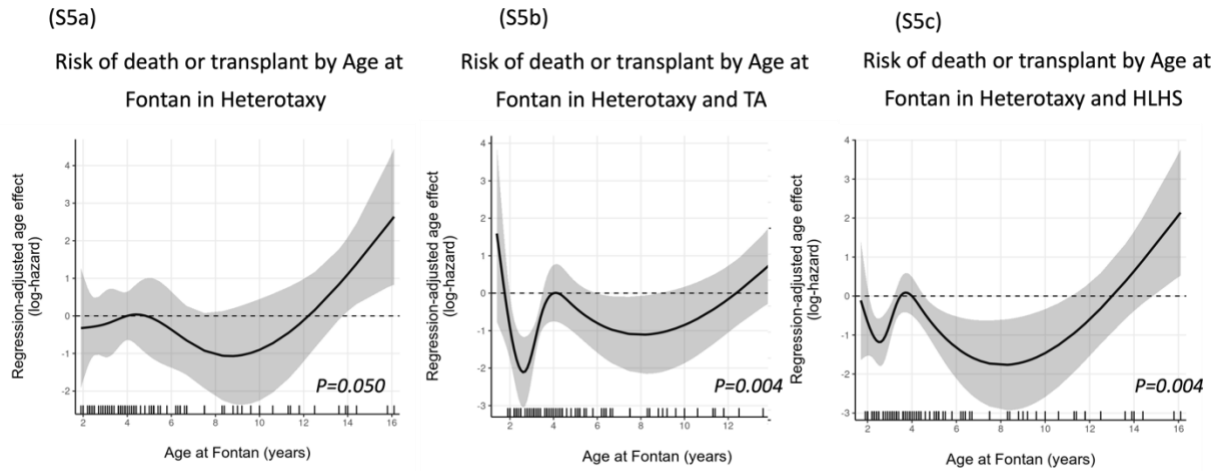


529

530 Figure S4. Mode of death or heart transplant post-Fontan in the heterotaxy cohort. AI,

531 aortic insufficiency; AVM, arteriovenous malformation; AVVR, atrioventricular valve
532 regurgitation; PE, pulmonary thromboembolism; PLE, protein losing enteropathy.

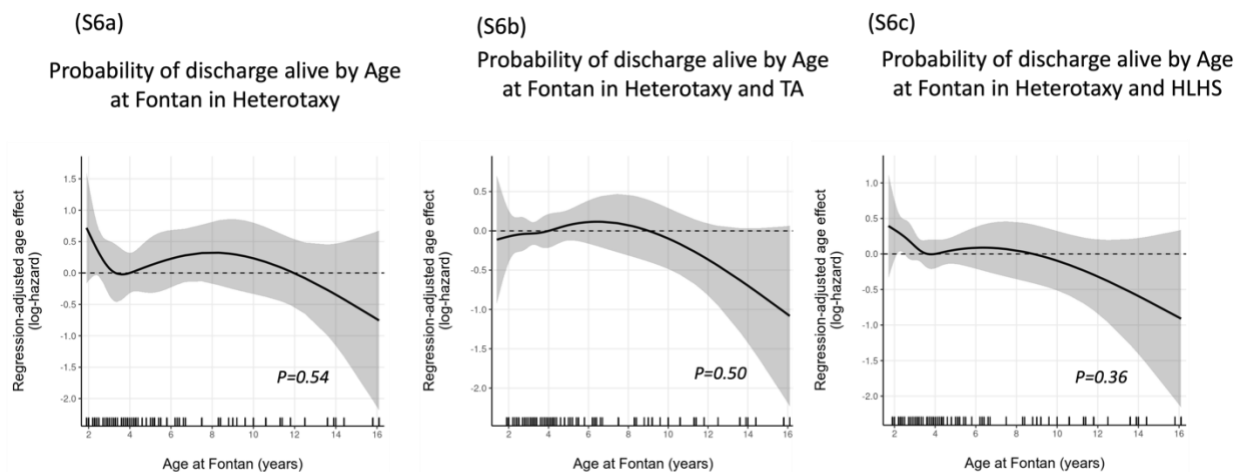
533



534

535 Figure S5. Regression-adjusted age effect for transplant-free survival. In the combined
536 cohorts of RAI and LAI (a), Heterotaxy and TA (b), and Heterotaxy and HLHS (c).

537



538

539 Figure S6. Regression-adjusted age effect for discharge alive. In the combined cohorts
540 of RAI and LAI (a), Heterotaxy and TA (b), and Heterotaxy and HLHS (c).