

# 1 Understanding the impact of the COVID-19 pandemic

## 2 and its control measures on women and children: A

### 3 Zimbabwe case study

4

5 Tinotenda Taruvinga<sup>1,2</sup>; Rudo S. Chingono<sup>1</sup>, Ioana D. Olaru<sup>1,3</sup>; Kenneth Masiye<sup>4</sup>; Claudius  
6 Madanhire<sup>1,4</sup>; Sharon Munhenzva<sup>1,4</sup>; Sibusisiwe Sibanda<sup>1,4</sup>; Lyton Mafuva<sup>1,4</sup>, Natasha  
7 O'Sullivan<sup>5,6</sup>; Abdinasir Y. Osman<sup>5,7,8</sup>; Kevin Deane<sup>5</sup>; Tsitsi Brandson<sup>1</sup>; Manes Munyanyi<sup>9</sup>;  
8 Annamercy C. Makoni<sup>10</sup>; Solwayo Ngwenya<sup>11,12</sup>; Karen Webb<sup>4</sup>, Theonevus T. Chinyanga<sup>4</sup>;  
9 Rashida A. Ferrand<sup>1,3</sup>; Justin Dixon<sup>1,2</sup>, Katharina Kranzer<sup>1,3,13</sup>, David McCoy<sup>5,14</sup>

10

- 11 1. The Health Research Unit Zimbabwe (THRU-ZIM), Biomedical Research & Training  
12 Institute (BRTI), Harare, Zimbabwe
- 13 2. Department of Global Health and Development, London School of Hygiene and  
14 Tropical Medicine (LSHTM), London, UK
- 15 3. Clinical Research Department, London School of Hygiene and Tropical Medicine,  
16 London, UK
- 17 4. Organisation for Public Health Interventions and Development (OPHID) Harare,  
18 Zimbabwe
- 19 5. Queen Mary University of London (QMUL), London, UK

1

- 20 6. MRC Epidemiology Unit, University of Cambridge, Cambridge, UK
- 21 7. Pathobiology and Population Science, Royal Veterinary College, London, UK
- 22 8. Ministry of Health, Mogadishu, Somalia
- 23 9. Ministry of Health and Childcare, Harare, Zimbabwe
- 24 10. Harare City Council, Harare, Zimbabwe
- 25 11. Mpilo Central Hospital, Bulawayo, Zimbabwe
- 26 12. National University of Science and Technology (NUST), Bulawayo, Zimbabwe
- 27 13. Division of Infectious Diseases and Tropical Medicine, LMU University Hospital, LMU
- 28 Munich,
- 29 14. United Nations University, Shibuya, Tokyo, Japan

30

31 **Corresponding author**

32 Tinotenda Taruvinga

33 The Health Research Unit Zimbabwe (THRU ZIM)

34 Biomedical Research and Training Institute

35 10, Seagrave Road

36 Harare, Zimbabwe

37 E-Mail: [Tinotenda.Taruvinga1@lshtm.ac.uk](mailto:Tinotenda.Taruvinga1@lshtm.ac.uk)

38

39

40 **Authors' contributions**

41 TT, JD, KK, and DM conceptualized the study. IO, TB, TT, MM, and KM cleaned and curated the  
42 data. TT, IO, RSC, AOY, and NO with support from KD, KK, JD, and DM analysed the data. DM,  
43 KW, and RAF acquired the funds for the study. SS, LM, CM, and SM supported by RSC, AYO,  
44 NO, AM, and TT performed the qualitative data collection. Study coordination and supervision  
45 of field teams were done by RSC, TT, SN, ACM and TC. TT wrote the first draft of the manuscript  
46 with feedback from JD, KK, and DM. All authors provided feedback on the manuscript and  
47 read and approved the final version of the manuscript.

48

49

50

51

52

53

54

55

56

57

58

59 **ABSTRACT**

60 COVID-19 presented countries with unprecedented health policy challenges. For low-income  
61 countries in particular, policymakers had to contend with both the direct threats posed by  
62 COVID-19 as well as the social, educational, and economic harms associated with lockdown  
63 and other infection prevention and control measures. We present a holistic and contextualised  
64 case study of the direct and indirect impacts of COVID-19 on women and children, with some  
65 assessment of their uneven distribution across socio-economic, age and gender groups. We  
66 used different types of primary and secondary data from multiple sources to produce a holistic  
67 descriptive analysis. Primary data included: qualitative data obtained from 28 in-depth  
68 interviews of key informants, six focus group discussions; and 40 household interviews. We  
69 also extracted data from government reports and announcements, the District Health  
70 Information Software version 2 (DHIS2), newspaper articles and social media, as well as from  
71 published research articles. Our findings show that the direct and indirect adverse impacts of  
72 COVID-19 were compounded by many years of severe political economic challenges, and  
73 consequent deterioration of the healthcare system. The indirect effects of the pandemic had  
74 the most severe impacts on the poorest segment of society and widened age and gender  
75 inequalities. The pandemic and its accompanying infection prevention and control measures  
76 negatively affected health service delivery and uptake. The management of COVID-19  
77 presented enormous challenges to policymakers and public health specialists. These included  
78 managing the greatest tension between direct and indirect harms; short-term and long-term  
79 effects; and the unequal distribution of harms across different segments of society.

80

## 81 INTRODUCTION

82 The SARS-CoV-2 (COVID-19) pandemic presented all countries with major health challenges  
83 [1,2]. These included ensuring adequate epidemiological surveillance of COVID-19,  
84 implementing infection prevention and control (IPC) measures, providing care for both COVID-  
85 19 and non-COVID-19 patients, and procuring including delivering COVID-19 vaccines. Low-  
86 and-middle-income countries (LMICs) were also faced with having to implement draconian  
87 lockdown measures without having the resources to mitigate their social, educational, and  
88 economic harms [3,4], and the disruption caused to normal healthcare provision [5,6].

89 Importantly, countries had to consider how the harms associated with the pandemic would  
90 be unevenly distributed [1,7,8]. For example, wealthier households would be better able to  
91 withstand the psychological and emotional stresses of lockdown compared to poorer  
92 households [6,9]. Additionally, there were reasons to think that women and girls would  
93 experience lockdown measures differently from men and boys [8]. Finally, the early  
94 observation that infection fatality rates varied substantially across age groups raised  
95 challenges to policymakers about balancing the different needs of children and adults [10,11].

96 We conducted research aimed at presenting a holistic and contextualised case study of the  
97 direct and indirect impacts of COVID-19 on women and children in Zimbabwe, with some  
98 assessment of their uneven distribution across socio-economic, age and gender groups. As is  
99 typical of case studies seeking to understand complex phenomena, we used different types of  
100 primary and secondary data from multiple sources [12] to produce an integrated descriptive  
101 analysis of the COVID-19 epidemic, the policy responses to it, and their impacts on maternal,  
102 child and women's health.

103

## 104 **METHODS**

105 To produce a chronological narrative account of policies related to COVID-19 from February  
106 2020 to August 2021, we collected data from government policy documents and  
107 announcements, newspaper articles, social media, and the Oxford COVID-19 response tracker  
108 (OxCGRT), a project that collated data on COVID-19 control measures from countries across  
109 the world [13].

110 To present an account of the COVID-19 pandemic, we obtained official data on the number of  
111 COVID-19 tests done, confirmed cases and deaths from the daily situational reports and the  
112 official Twitter (now X) handle of the Ministry of Health and Child Care (MoHCC). Given the  
113 limited disease surveillance and low testing rates, we also drew on data from other research  
114 to assess COVID-19 transmission in Zimbabwe.

115 To describe the effects and impacts of COVID-19 and its control measures on maternal and  
116 child healthcare, we extracted routinely collected health service data on antenatal care (ANC),  
117 growth monitoring of children and childhood vaccinations from the District Health  
118 Information Software version 2 (DHIS2) for the period January 2016 to August 2021 in  
119 Bulawayo and Harare metropolitan provinces. Harare the capital city and Bulawayo the second  
120 biggest city in the country have estimated populations of 1,896,134 and 676,650, respectively,  
121 and together accounted for about 30% of the country's recorded COVID-19 cases [14]. Primary  
122 health services in the two cities are primarily administered by the city council whilst tertiary  
123 and quaternary hospitals are administered by the central government. We selected 20 public

124 primary health clinics in Harare and 18 in Bulawayo to study trends in healthcare provision  
125 and utilisation.

126 We selected two child and two maternal services: growth monitoring (GM), child vaccinations,  
127 antenatal care (ANC) and HIV testing of pregnant women. Several data items are routinely  
128 collected to monitor child vaccination services indicators, and we chose to analyse trends in  
129 the number of children aged 9-12 months who have received their final measles, mumps,  
130 rubella (MMR) vaccine which is captured in the DHIS2 as 'primary course complete' (PCC). For  
131 maternal health services, we chose to analyse trends in the number of pregnant women  
132 attending a 4<sup>th</sup> ANC visit (a proxy indicator of adequate ANC visits according to the WHO) as  
133 well as the number of women who received an HIV test at their first ANC visit. However, data  
134 for the latter was only available from 2019 onwards.

135 Changes over time in the four indicators of healthcare utilisation are shown graphically for  
136 each clinic, stratified by city, with trend lines using loess smoothing and 95% confidence  
137 intervals. Clinic-level changes in healthcare utilisation are shown as ratios computed by  
138 dividing monthly counts by the clinic-specific monthly average for the period starting January  
139 2016 up to the end of 2019. The ratios were colour-coded using shades of orange to mark  
140 counts that were lower than the pre-COVID-19 average and shades of green for higher counts.  
141 Some clinics had missing values for some months, especially in 2021, and these were coloured  
142 in grey. These missing values include a combination of instances where there was no service  
143 uptake (e.g. the clinic was open but there was no service utilisation, or the clinic was shut)  
144 and when there was service uptake, but data were not recorded or uploaded onto the DHIS2.

145 We also collected primary qualitative data between April 2021 and December 2021 in Harare  
146 and Bulawayo. We conducted a total of 28 in-depth interviews (IDIs) of key informants drawn  
147 from community-based organisations (CBOs) (n=5), city health managers (n=5 Harare, n=3  
148 Bulawayo), national programme managers and policymakers (n=5) and healthcare workers  
149 (n=3 Harare, n=7 Bulawayo). We further conducted two focus group discussions (FGDs) with  
150 healthcare workers from selected primary health facilities in Harare (n=12) and Bulawayo  
151 (n=11), and four FGDs of members of the public (two in Harare with 9 and 10 participants, and  
152 two in Bulawayo with 11 and 13 participants). In addition, we conducted 40 household  
153 interviews, evenly distributed across three economic strata (n=20 Harare and n=20 Bulawayo).  
154 Topic guides were used for all the qualitative interviews. Written informed consent was  
155 obtained from all the participants in the study.

156

157 Finally, we drew data from selected published literature to describe the historical and socio-  
158 economic context of the pandemic and add further information about the impact of COVID-  
159 19 on maternal and child health in Zimbabwe. We identified this literature from the database  
160 of PubMed and Google Scholar for papers using search terms ‘maternal and child health’,  
161 ‘COVID-19’ and ‘Africa’ or ‘Zimbabwe’ up to the period January 2023.

162

## 163 **FINDINGS**

### 164 **1. The context of Zimbabwe’s COVID-19 epidemic**



165 Zimbabwe is a low-income landlocked country of about 15 million people, with 42% of the  
166 population under the age of 15 [14]. In 2019, its Human Development Index was only 0.571,  
167 ranking 150<sup>th</sup> out of 189 countries [15]. Approximately 71% of the population lives below the  
168 international poverty line of \$1.90 per day [16] leading to poor health indicators. Over 80% of  
169 income earners operate in the informal sector [17] which contributes to over 60% of gross  
170 domestic product (GDP) [18,19]. One in four of the urban population (about 1.25 million  
171 people) live in settlements with poor water and sanitation infrastructure as defined by UNICEF  
172 [20]. However, Zimbabwe has a highly literate population with 94% of men and women aged  
173 15-49 years able to read, and 91% of all children of primary school age attending school [19].  
174 Moreover, Zimbabwe's Gender Development Index (GDI) was 0.952 in 2018, suggesting  
175 relatively good gender equity, with secondary school attendance among girls being higher  
176 than boys [21].

177 The country had experienced severe political and economic challenges for the three decades  
178 before the COVID-19 pandemic. An unsustainable external debt burden and a structural  
179 adjustment programme resulted in a severe contraction of public expenditure in the 1990s  
180 which weakened most public services [22]. The turn of the millennium saw the country enter  
181 a period of protracted political turmoil and the imposition of targeted sanctions by several  
182 European countries [22,23] further undermined the economy. Just before the pandemic,  
183 Zimbabwe's GDP had declined by 11.3% in 2019 compared to 2018 and continued to contract  
184 in 2020 [24].

185 Although Zimbabwe's health system was once considered among the best in Africa, [18,25] it  
186 deteriorated due to reductions in public spending, the out-migration of health professionals,

187 mismanagement, and industrial action [26,27]. By 2021 the doctor and nurse persons ratios  
188 had deteriorated to 1:12,000 and 0.39:1,000 respectively, far below the World Health  
189 Organization's (WHO) recommended developing countries' minimum threshold density of  
190 2.28 doctors, nurses and midwives per 1,000 persons [28]. Today, there are high levels of out-  
191 of-pocket payments and donor dependency [29]. The maternal mortality ratio was 458 per  
192 100,000 live births [30] and the child mortality rate was 55 per 1000 live births [30] in 2020  
193 [31,32].

194 On top of this chronic deterioration of the health system, there were a series of acute crises  
195 in the run-up to the pandemic (see Figure 1). This included doctors and nurses engaging in  
196 intermittent industrial action [33], typhoid and cholera outbreaks in 2018, a major natural  
197 disaster (cyclone Idai) [34] in 2019, an acute worsening of inflation from April 2020 causing  
198 shortages of fuel and water. The precarious state of the health system at the time of the  
199 pandemic was noted in our qualitative data.

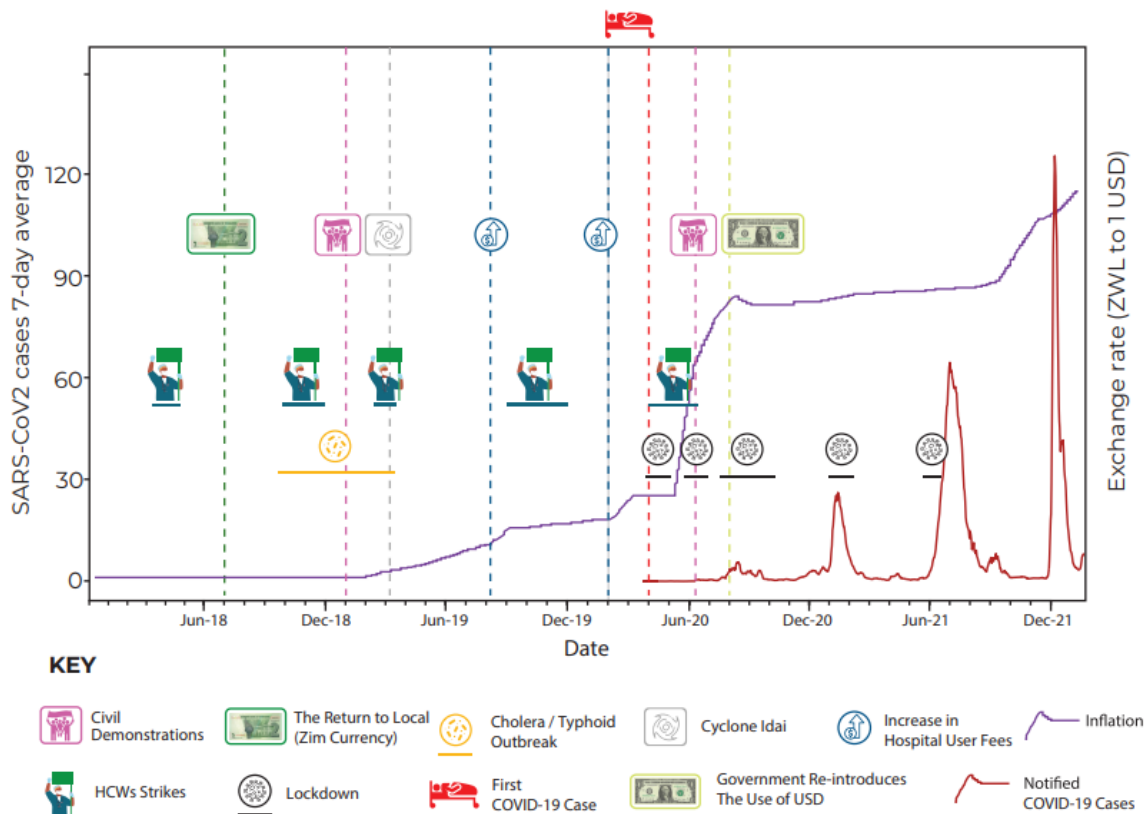
200 *"Most of our stream mates have gone to the UK where there are better jobs. Others*  
201 *are in the process of applying; we are all trying to leave for greener pastures (laughs).*  
202 *Those of us who stay, we are mostly working out of duty...people are disgruntled, and*  
203 *this can be sometimes seen through our attitudes and, umm, the strikes."* (Nurse, HCW  
204 FGD, Bulawayo).

205 *"Unfortunately, in Bulawayo when COVID-19 was declared and it hit us, we were facing*  
206 *water challenges and other related things."* (Doctor, KII, Bulawayo).

207

208 **Figure 1: Timeline of key events concerning the period between January 2018 to December**

209 **2021**



210

211

212 **2. Evolution of the COVID-19 epidemic and control measures**

213 **(i) January to May 2020**

214 Following WHO's call to prepare for the containment of COVID-19 in January 2020, the  
 215 government of Zimbabwe quickly started developing a National Preparedness and Response  
 216 (NPR) Plan and established an Interagency Coordination on Health and Epidemic  
 217 Preparedness and Response Task Force [35]. Screening for SARS-CoV-2 infections at major

218 entry points was quickly implemented for all incoming individuals. A series of inter-ministerial  
219 meetings on COVID-19 also took place in February and March with the involvement of the  
220 private sector, civil society, academia, professional associations, technical and donor partners  
221 and the media.

222 The NPR Plan was informed by a Preparedness and Response Plan for Pandemic Influenza A  
223 H1N1 formulated in 2009, recent simulation exercises, a comprehensive review of the 2018  
224 cholera outbreak and a rapid assessment of the state of preparedness at major points of entry  
225 into the country and major health facilities in February. The Plan was aligned with WHO's  
226 COVID-19 Strategic Preparedness and Response Plan and finalised in March.

227 On March 17<sup>th</sup>, a state of national emergency was declared prior to any detectable surge in  
228 SARS-CoV-2 infections. In fact, the first case of COVID-19 was only reported on 20<sup>th</sup> March in  
229 an individual who had recently returned from the United Kingdom. Two days later, two  
230 additional cases, imported from the United States, were documented. The first recorded  
231 fatality occurred on 23<sup>rd</sup> March [36], the same day the Civil Protection (Declaration of State of  
232 Disaster: Rural and Urban Areas of Zimbabwe) (COVID-19) Notice was issued [37].

233 A Public Health Act (COVID-19 Containment and Treatment) was also enacted on the 24<sup>th</sup> of  
234 March, mandating compulsory testing of individuals suspected of infection and the quarantine  
235 of those who tested positive [38]. Subsequently, a Statutory Instrument (SI) was introduced  
236 imposing a 21-day lockdown from the 28<sup>th</sup> of March during which time public gatherings of  
237 more than two people were prohibited. While 'essential services' were allowed to operate,  
238 retail outlets were only allowed to open during specific hours, with mandatory screening and  
239 hand sanitising at entrances. Although initially, schools and universities were slated to remain

240 open until the end of the term, a later announcement mandated the closure of all educational  
241 institutions from 24<sup>th</sup> March 2020. The sale of alcohol was banned, and the stockpiling of  
242 medical supplies and food was explicitly prohibited with strict penalties for any violations.

243 During this phase, the government also designated certain health facilities as quarantine and  
244 isolation centres, adopted and adapted WHO's COVID-19 case management guidelines [39],  
245 organised training for health workers and upgraded several government and private hospitals.  
246 Surveillance teams were created to facilitate case investigation and contact tracing. Over  
247 4,000 health sector posts were unfrozen, and an additional 200 new medical posts were  
248 created and funded through a reallocation of funds [40] from other departments and from  
249 the proceeds of the 2% Intermediated Money Transfer Tax which is normally used for social  
250 protection and capital development projects. However, despite efforts to strengthen the  
251 health system's capacity to respond to COVID-19, the shortage of PPE and inadequate pay led  
252 many healthcare workers to feel vulnerable and undervalued [41] and precipitated a fresh  
253 round of industrial action beginning on 25<sup>th</sup> March with a nurses' strike [42].

254 *“An association representing the City of Harare nurses went around to check if there*  
255 *was adequate PPE...After they observed that there was nothing that's when they called*  
256 *for the nursing staff or for the healthcare worker to stop going to work, tools down*  
257 *guys there is no PPE until proper adequate PPE is in place. So, you find that most nurses*  
258 *of the city of Harare went home and stayed...The situation was also aggravated by the*  
259 *fact that we were being poorly remunerated, we were not getting our salaries on time.”*  
260 (Nurse, HCW FGD, Harare).

261 Lockdown measures were eventually extended for a further four weeks to 17<sup>th</sup> May, although  
262 from 3<sup>rd</sup> May, the formal commercial and industrial sectors were allowed to operate between  
263 08:00 and 15:00, provided IPC measures were in place. Throughout this period, numerous SIs  
264 were gazetted to amend or extend the initial lockdown measures. For example, on April 3<sup>rd</sup>,  
265 facemasks were made compulsory in public and transport services were required to check the  
266 temperatures of boarding passengers and implement disinfection protocols on all vehicles.  
267 While initially, residents were allowed to return home from abroad provided they quarantined  
268 at designated facilities, on May 4<sup>th</sup> all international travel was banned. Land border crossings  
269 at Beitbridge (bordering South Africa) and Plumtree (bordering Botswana) were also closed,  
270 and internal travel by road was restricted, with exemption letters required at road checks.

271 Throughout this period, reported case numbers remained low. When lockdown was lifted on  
272 May 17<sup>th</sup>, Zimbabwe had only recorded 46 cases and six deaths. However, because public  
273 sector testing capacity was limited and the cost of private testing was unaffordable for most  
274 people, the true number of cases during this period is unknown. Further, there were no formal  
275 or informal reports of any surge in hospital admissions and mortality during the period.

#### 276 (ii) June 2020 – November 2020

277 After the first lockdown was lifted, the number of recorded cases remained low for about eight  
278 weeks. Despite this, the government imposed a two-week lockdown from June 20 to July 4.  
279 This followed extensive civil society protests following the arrest of the health minister on  
280 allegations of graft. It is widely believed that the lockdown was used to suppress political  
281 opposition rather than the epidemic [43,44], with many protestors arrested for contravening  
282 the new COVID-19 regulations.

283 However, when case numbers started rising, the government introduced a third lockdown on  
284 July 24<sup>th</sup>. Night-time curfews (from 6 pm to 6 am) and travel restrictions were implemented.  
285 However, essential services continued to operate as usual and non-essential businesses and  
286 low-risk sports were allowed to operate from 9 am to 3 pm. Restaurants, hotels and other  
287 tourism services were allowed to operate at 50% capacity; and schools were kept open until  
288 July 30<sup>th</sup> to allow the completion of national examinations. Although the rise in case numbers  
289 was partly due to increased testing capacity [45] there was some evidence of a real increase  
290 in the incidence of infection with rising COVID-19 mortality and hospitalisations [46] including  
291 some high-profile fatalities.

292 The third lockdown continued until September but with a progressive easing of restrictions as  
293 case numbers started falling. Government quarantine centres were phased out in August and  
294 replaced with self-isolation in private premises, and a phased opening of schools commenced  
295 on the 8<sup>th</sup> of September and was completed in November. The sale of alcohol for consumption  
296 off-premises was allowed on 30 September, and international airports started operating again  
297 in October. While initially, only Zimbabwean residents were allowed to return (provided they  
298 tested negative and self-quarantined at home for 14 days), entry was later allowed for foreign  
299 travellers. In December land ports of entry were opened.

### 300 (iii) December 2020 – April 2021

301 In late November 2020, a new wave of cases emerged, driven by the Beta variant [47]. This  
302 coincided with the reopening of schools, where some large outbreaks were reported [48]. As  
303 numbers rose, and with several high-profile deaths including that of five cabinet ministers  
304 [49], the government introduced a fourth national lockdown for 30-days on January 3, which

305 was extended to February 16 and then again to February 28. The government closed schools,  
306 prohibited gatherings, reintroduced curfew hours and stopped intercity travel. Mask-wearing,  
307 hand sanitisation/washing, and temperature checks remained mandatory in public. As the  
308 country started recording a reduced number of cases, lockdown measures were eased in  
309 March, inter-city travel resumed, and schools re-opened in a phased manner. April saw a  
310 relaxation of most remaining IPC measures although international travel to and from countries  
311 such as India that had reported the Delta variant were not permitted while travellers from  
312 other countries were required to present a negative COVID-19 test result and self-quarantine  
313 at home or in designated quarantine centres for 10 days [50].

314 During this period the country also began a COVID-19 vaccination program with a target of  
315 vaccinating 10 million people by December 2021 [51]. The first phase prioritised frontline  
316 healthcare workers, the elderly, and those with chronic medical conditions [52]. The second  
317 phase which began in March 2021 extended coverage to uniformed forces, all civil servants  
318 and those offering essential services in the private sector. The last phase was introduced in  
319 July and extended coverage initially to everyone over 18 years, then to anyone over 16 years  
320 and finally to anyone over 12 years [53].

#### 321 (iv) May 2021 – September 2021: Third wave and fourth lockdown

322 In the middle of May, the new (Delta) variant was detected in the Kwekwe district, Midlands  
323 province. A new SI was introduced to allow for a localised lockdown of the Kwekwe district  
324 and then in two (Hurungwe and Kariba) other districts [54]. Eventually on June 27th, due to  
325 rising cases, a fifth full lockdown was implemented across the whole country. However,  
326 despite the increase in cases, the government came under pressure from parents and opened



327 schools in the first week of August 2021. This was followed on August 10 by the reopening of  
328 some social activities with, for example, vaccinated congregants being allowed to attend  
329 church services.

330 Meanwhile, by the end of September, 3,051,371 first vaccine doses and 2,211,880 second  
331 vaccine doses had been administered nationally translating to national coverage of 35.7% and  
332 25.8% respectively [55]. At about the same time the Global Fund pledged USD 75-150 million  
333 [56] to be used to mitigate the impact of the COVID-19 pandemic on HIV, tuberculosis, and  
334 malaria. From September onwards, the country gradually moved into a post-pandemic phase  
335 even though there was no official declaration of the pandemic being over. However, the  
336 government emphasised more on 'living with the new normal'.

337

### 338 **3. Policy implementation**

339 According to our key informants, a notable feature of the response to COVID-19 was that  
340 policies were made and implemented in a centralised and top-down manner with little  
341 bottom-up and contextualised input.

342 *"There was centralisation of decision making and policy formulation .... everything was*  
343 *moved to the centre ...and ours was just to implement. Then we had a situation where*  
344 *there was a take-over ... of local authority institutions by central government. It had its*  
345 *downside and upside. But the formulation of that policy, unfortunately, we didn't input*  
346 *in."* (Doctor, KII, Bulawayo).

347 *“Let’s not take that one size fits all or... maybe some African countries are doing this,*  
348 *you just follow suit and do this .... We should design our measures to suit our people,*  
349 *to suit our needs and to suit our country and our resources.”* (Nurse in charge, IDI,  
350 Harare).

351 *“I still insist that we must not have a lockdown that stretches from Zambezi to Limpopo,*  
352 *that is being the same. Let’s modify it and say we are now in Gweru. How do we make*  
353 *this lockdown work? When we get to Chirundu, there it must not look like the one in*  
354 *Chiredzi. There must be that distinction. I feel that with the localised input and the*  
355 *modifications we make, the lockdowns will be more effective. Such that it will allow us*  
356 *to even open the economy in one part of the country whilst the other part is under*  
357 *lockdown.”* (Doctor, KII, Bulawayo).

358 Informants also noted that public health communication (mainly conducted through the  
359 Zimbabwean broadcasting cooperation’s television and radio channels) was not fully effective  
360 and that misinformation and disinformation on various social media platforms contributed to  
361 poor compliance with COVID-19 control measures, despite rapid response teams being  
362 established to respond swiftly to rumours and false information, albeit limited capacities to  
363 deal with all the rumours due to shortage of human and material resources. Others indicated  
364 that many people felt overloaded with conflicting information [41].

365 *“What was our challenge was people didn’t have information. So, you would just see*  
366 *like a uniformed person come to you to hit you and you don't have information,*  
367 *especially at the beginning. People were just being hit for COVID, but if you would have*  
368 *educated people ... “this is COVID, people are affected this way, we need to prevent*

369           *using these methods” ... I think we are an educated nation that can actually follow*  
370           *through and take instructions”* (CBO representative, KII, Bulawayo).

371           *“We communicated, we talked, we tried to send messages, but I don’t think it was*  
372           *effective because people had their own expectations, and they had their own other*  
373           *sources of information. And they did not trust the figures that were coming out of the*  
374           *Ministry of Health and situational reports eeh however, localised or frequent, people*  
375           *still did not feel that they, they were in as much danger as it was being portrayed.”*  
376           (Doctor, KII, Bulawayo).

377   Another theme that emerged from our primary data was the impracticality and impossibility  
378   of implementing social distancing measures, especially in high-density and overcrowded  
379   informal settlements with inadequate water and sanitation infrastructure [57]. Other  
380   measures such as the use of hand sanitisers were unaffordable for many. According to one  
381   study in Harare and Mashonaland East, between 18% and 53% of healthcare workers reported  
382   a lack of soap, water, and masks across the period from June 2020 to the middle of 2021 [58].  
383   Other studies similarly described how communities could not comply with social distancing  
384   measures because of the need to secure food, water, and income [41].

385           *“We expect the government not to implement water cuts and to improve water supply*  
386           *during such a time because we are having a difficult time, social distance is not possible*  
387           *[in the queues], we are at risk of contracting COVID-19”* (Participant, household IDI,  
388           Harare).

389            *“It was impossible to comply with the social distancing measure, at a time when there*  
390            *were food shortages and one had to stand in long queues. I still remember there was*  
391            *a time I went to a queue to get mealie-meal at Malbereign. The soldiers had to come*  
392            *and space out the people.”* (Participant, household IDI, Harare).

393    Another cause for poor compliance with lockdown measures was the inability to monitor and  
394    enforce travel restrictions. Despite the police and army being deployed, resources were  
395    insufficient to enforce quarantine and ensure adherence to travel restrictions. For example,  
396    despite major points of entry being manned by armed security, many people were able to  
397    enter the country illegally without being quarantined [59].

398    The relative ineffectiveness of lockdown measures may also be deduced from seroprevalence  
399    studies which found that by the end of March 2021, a high proportion of the population had  
400    been infected. In one study of randomly selected households from three high-density  
401    communities in Harare, seroprevalence was found to have risen from 19% in November-  
402    December 2020 to 53% in Feb-April 2021 [59], suggesting high levels of community  
403    transmission during the second wave. A survey of healthcare workers as early as June 2020  
404    reported that 39.1% had a history of COVID-19 symptoms and a SARS-CoV-2 seroprevalence  
405    of 8.9% [60].

406    A systematic review of seroprevalence studies in Africa between January 2020 and December  
407    2021 also estimated that seroprevalence in Southern Africa was 56.1% (95% CI 44.6% - 66.9%)  
408    by the third quarter of 2021, with lower rates in rural areas and high heterogeneity between  
409    countries [61]. Of note is a study from Malawi that found seroprevalence increasing from 11%  
410    in December 2020 to 65% in April 2021 [61]. A similar increase in seroprevalence was

411 observed in a study from Harare conducted between November 2020 and April 2021 [59]. The  
412 reported data also indicated a less severe disease profile in Africa with more asymptomatic  
413 cases compared to other parts of the world [62].

414 Another feature of the policy response to COVID-19 was the government's efforts to mitigate  
415 the social and economic harms of lockdown. Crucially, in May 2020 a COVID-19 Economic  
416 Recovery and Stimulus Package worth about 9% of GDP was announced and included income  
417 support for all vulnerable groups (US\$5 monthly for everyone in a vulnerable household) and  
418 fiscal support to key sectors of the economy such as manufacturing, agriculture, mining, and  
419 tourism [63]. The government also put in temporary measures to defer rent and mortgage  
420 payments during lockdown. However, the income support payments were not fully  
421 implemented or implemented for long enough. Dzawanda citing Buckle and Mpfu reported  
422 that the government's promise of a once-off allowance for vulnerable people was only  
423 partially delivered and that four months into the lockdown, only 202,000 of the 1 million  
424 eligible households had received the allowance [18]. Similarly, a promised compensation  
425 scheme for civil servants who lost their lives while on duty was only partially delivered,  
426 although all civil servants were given a US\$75 COVID-19 monthly allowance for over 36  
427 months in addition to their salaries.

428 *"I think maybe what probably might have lacked...are the necessary support systems*  
429 *to make sure that we take care of the most vulnerable in society, for example, if we say*  
430 *there is no public transport that is going to be operating, we should then be able to*  
431 *provide transport for those that want to seek health services."* (NGO representative,  
432 KII, Harare).

433            *“For an economy that is largely informal, if we then say we are closing everything else*  
434            *all the markets non-informal business and everything else, we should then put in place*  
435            *a system where we can then support those in the informal sector so that at the end of*  
436            *the day, they don’t uhm starve.”* (CBO representative, KII, Bulawayo).

437

#### 438    **4. Impact of COVID-19 control measures**

439    This section looks at the pandemic’s impact on maternal and child health (MCH) services  
440    provision and utilisation; interpersonal and household relations; social and economic well-  
441    being; and child education and well-being.

##### 442    *(i) Maternal and child healthcare*

443    Our analysis of routinely collected data from July 2016 to July 2021 in Harare and Bulawayo  
444    found evidence of a reduction in healthcare utilisation. Figure 2 presents data on the number  
445    of fourth antenatal care visits by pregnant women and the number of HIV tests conducted  
446    among pregnant women at their first antenatal visit.

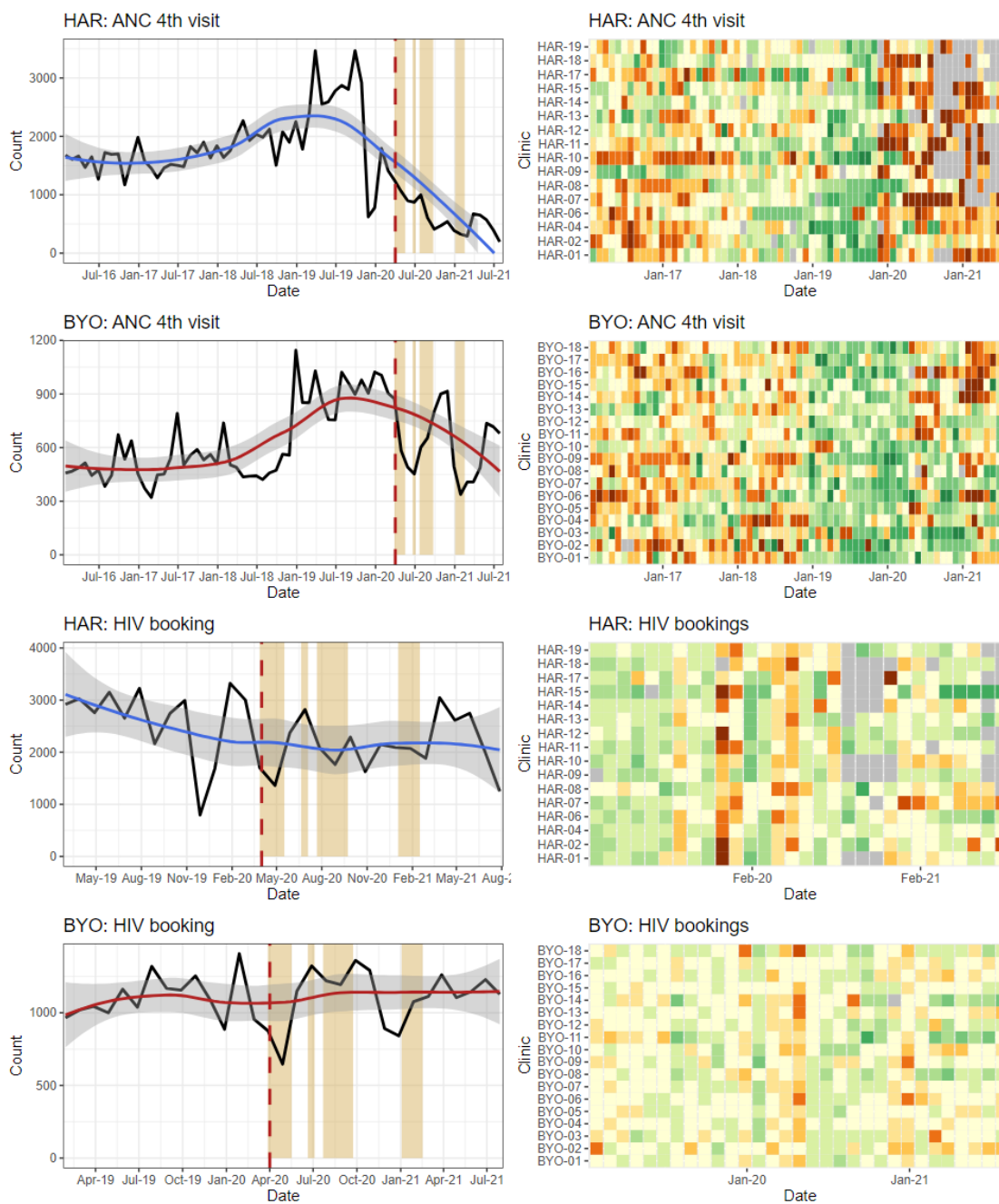
447    The data show a reduction in the number of ANC fourth visits in both provinces, with a steeper  
448    decline in Harare compared to Bulawayo. However, there was no observable reduction in the  
449    number of HIV tests on women attending antenatal care. Key informants had explained that  
450    the HIV programme which is largely donor-funded and relatively well resourced was better  
451    able to maintain their pre-COVID-19 level of service. In one study conducted in Harare, the  
452    number of pregnant women accessing HIV services was shown to have stayed the same except  
453    for a slight decline during the first lockdown [5].

454 Figure 3 presents data on the number of GM visits by children under-5 years and the number  
455 of child PCCs. The data show that the number of GM visits decreased in both Harare and  
456 Bulawayo after the first COVID-19 case, and that in between lockdowns, GM visits rebounded  
457 to some extent in Bulawayo but not in Harare. The number of PCCs decreased substantially in  
458 Harare from March 2020 onwards but not in Bulawayo.

459

460 **Figure 2: Source: Zimbabwe District Health Information Software Version 2 maternal**

461 **indicators**



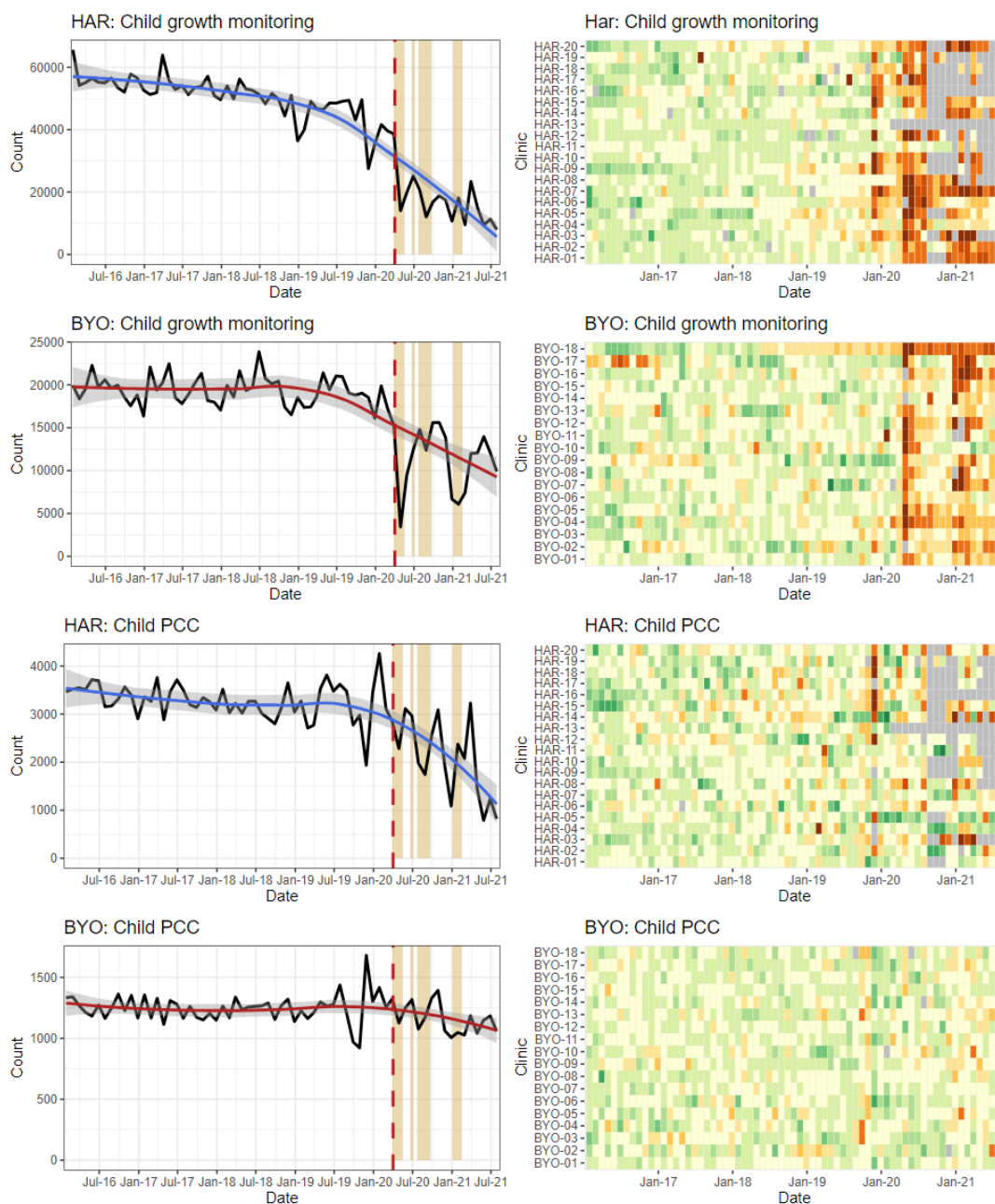
462

463



464 **Figure 3: Source: Zimbabwe District Health Information Software Version 2 child indicators**

465 **data**



466

467 Other studies also report that healthcare utilisation declined in 2020 and 2021 compared to  
 468 earlier years [64,65]. One study from Harare found that the number of people registered for  
 469 TB treatment had decreased by 34% and the number of individuals tested for HIV had dropped

470 by 63% in 2020 and 2021 compared to the period between 2016 and 2019 [66]. TB treatment  
471 completion was found to have decreased from 81% to 70%, while treatment of people living  
472 with HIV with antiretroviral therapy dropped from 96% to 92% [66,67]. In a study at Mpilo  
473 Hospital in Bulawayo, although the mean number of monthly deliveries reduced from 747 in  
474 the first quarter of 2020 to 681 in the second quarter, the overall reduction was not substantial  
475 [68].

476 Our qualitative data pointed to several reasons for the reduction in healthcare utilisation. In  
477 some places, clinics were closed because staff went off sick because of COVID-19 [69], or  
478 because of industrial action. Some informants explained that healthcare utilisation also  
479 dropped because health facilities were perceived as “hotspots” for COVID-19 transmission,  
480 especially those that had been repurposed for COVID-19 services.

481 *“People are not coming as they used to because staff tested positive and the*  
482 *community heard about it, and so maybe they are fearing that maybe when they come*  
483 *here, they might eh contract COVID-19” (Nurse, IDI, Harare).*

484 *“I have a young sister who was pregnant at the time... she had to go to Murehwa*  
485 *because we thought it was safer than here in Harare, ...” (Participant, Household IDI,*  
486 *Harare).*

487 Police roadblocks and checkpoints were highlighted as barriers to healthcare due to fear and  
488 unwillingness to disclose one’s health status. Healthcare workers reported finding it difficult  
489 to access public transport because they were perceived to be a risk to others, especially whilst  
490 wearing a uniform.

491 *“You find someone could not access the hospital easily especially someone from the*  
492 *rural areas ... there was no transport for them to come. Even those who are in town*  
493 *they couldn’t access the hospital there was no transport... some mothers could not take*  
494 *their babies for review even to the baby clinics, though it was said that the baby card*  
495 *was also a pass for them.”* (Nurse, IDI, Harare).

496 *“Then people started to have difficulties in attending health centres, funerals, no*  
497 *hospital visits, this is the period from July to August. Whereby we are saying even HIV*  
498 *status disclosure on a roadblock. People were now forced to disclose... So, this was a*  
499 *forced disclosure...”* (NGO representative, KII, Bulawayo).

500 *"And other people ended up not even attempting to go .... we have other people who*  
501 *are on ARVs whom we know that have defaulted because they don't want to be*  
502 *harassed because you gave them a lift and you get there, they are asked to produce a*  
503 *card by the police, at times they would want to hide their status and not produce that*  
504 *card so end up not going to the hospital.”* (Nurse, HCW FGD, Harare).

505 Health services were especially disrupted by operating times being reduced from 07:30-17:30  
506 to 08:00-14:00 and by the capping of the number of patients seen per day. In some instances,  
507 operating hours were reduced even more because healthcare workers struggled to get to work  
508 or had to leave early to comply with the curfew.

509 *“Yes, at the clinic, they would serve a certain number of people per day, so that people*  
510 *don’t get crowded there. So, if they reach the number of people that they wanted per*

511 *day, some would be returned home and be advised to come the next day ...”*

512 (Participant, Household IDI, Harare).

513 *“Our staff couldn’t get transport to work, no one was willing to give them a lift as*

514 *people considered them to be a high-risk group...We also had 6 staff members who*

515 *tested positive and the news spread in the local communities and people were avoiding*

516 *this facility for fear of getting the virus...”* (Nurse in charge, IDI, Harare).

517 The pandemic diverted resources and attention away from MCH services. Informants reported

518 that in some clinics, GM was completely suspended to allow for prioritisation of other health

519 services. Stockouts particularly affected immunisation and family planning services [70].

520 *“Then in those findings, it was noticed that there was growth monitoring reduction.*

521 *Then we also go to maternity health services whereby during the COVID era, we are*

522 *saying only ANC bookings were done. No subsequent visits were done, limited*

523 *monitoring of BP checks. If you remember we were no longer doing these BP checks,*

524 *no physical examinations were done. Then om HIV and AIDS testing, the numbers*

525 *started to reduce, viral load collection we stopped doing it, CD4 count was stopped, the*

526 *updating of green books was also stopped.”* (Nurse, IDI, Bulawayo).

527 Access to healthcare was also restricted by some facilities implementing a policy of patients,

528 including pregnant women, showing a negative SARS-CoV-2 test before being admitted. This

529 led to patients being turned away from hospitals and ambulances refusing to transport

530 patients:

531 *“Pregnant mothers were requested to have results for COVID-19 first before admission*  
532 *to a facility and the test price was very high some of the mothers could not afford it...*  
533 *and even the ambulance services would request you to produce results first before they*  
534 *carry you. If you didn't have the results, they would test you at a fee. I remember it was*  
535 *USD 60 for the COVID-19 test before you get into an ambulance.” (Nurse, HCW FGD,*  
536 *Harare).*

537 Some healthcare workers believed that an increase in the number of home deliveries without  
538 a skilled birth attendant resulted in an increased number of largely unreported maternal and  
539 neonatal deaths.

540 *“I don't have statistics, but as I was on night duty, you would see that some people did*  
541 *not come for their regular reviews, some would come already complicated which if we*  
542 *had seen them on time, we could have prevented those complications.” (Nurse in*  
543 *charge, IDI, Bulawayo).*

544 *“I'm not sure in terms of statistics of women who could have been unfortunate to die*  
545 *during childbirth because of lack of access to health care, we don't really have access*  
546 *to such information, but we know that happened.” (CBO representative, KII, Bulawayo).*

547 *“I know plenty who needed maternity services but could not get them...in fact, I know*  
548 *someone who even died. They wanted to give birth...but they were supposed to get*  
549 *COVID-19 tests before accessing health services...that process was costly and trying to*  
550 *find money took long and she died before she could even be given medical attention.”*  
551 *(Participant, household IDI, Harare).*

552 Other studies reported similar findings of women and children struggling to access MCH  
553 services during the pandemic [10,68]. In Nyanga, Manicaland province, Nyashanu *et al* (2021)  
554 describe transport problems, roadblocks, shortage of medication and personal protective  
555 equipment, and lack of routine healthcare services affected routine health access such as  
556 antiretroviral therapy [41]. Chimhunya *et al* (2021) viewed strikes by healthcare workers at  
557 Sally Mugabe Hospital in Harare as an indirect consequence of COVID-19 which caused a  
558 decline in neonatal admissions [65].

559 *(ii) Inter-personal and household relations*

560 Another theme explored in our qualitative research was the impact of lockdown on  
561 interpersonal and domestic relationships against a backdrop of increasing stress and mental  
562 illness due to prolonged periods of home confinement and increasing levels of poverty and  
563 economic insecurity. Our findings indicated that gender-based violence (GBV) had increased.

564 *"But with men, I would not say it's domestic violence, I would have said I think men*  
565 *suffered emotional trauma because obviously when your woman is sitting at home,*  
566 *you are not providing as much as you used to, they would not be violent, but they would*  
567 *go through more of emotional trauma."* (Participant, community FGD, Harare).

568 *"It could have been there before COVID-19 but with the lockdown restrictions the GBV*  
569 *got worse. So, those things are now like permanent scars in the community."* (CBO  
570 representative, KII, Bulawayo).

571 *"We also saw an upsurge of gender-based violence cases, some of them were reported*  
572 *through the normal channels, through the police and also health facilities but we also*

573 *see an upsurge of some of these cases that were reported in the media”* (NGO  
574 representative, KII, Harare).

575 *“Yes. You would notice that where we would expect that maybe the children, the girls*  
576 *are safe within the home, they were not even safe...We got reports of cases of rape by*  
577 *family members... Mobility restriction to survivors to access services then resulted in*  
578 *some cases of rape being reported late because people didn't know.”* (CBO  
579 representative, KII, Bulawayo).

580 These findings are supported by other studies. A cross-sectional online survey conducted in  
581 May 2020 among 507 Zimbabwean adults found signs and symptoms of generalised anxiety  
582 disorder present in almost half (40%) of the participants [71]. A qualitative study among rural  
583 women in Nyanga concluded that COVID-19 exacerbated domestic violence through the  
584 effects of financial stress, hunger, frustrations and spending more time together and that child  
585 marriages increased [72]. Others observed that as families spent more time in close contact  
586 while experiencing economic and job losses, women were exposed to more violence [73].  
587 According to the Zimbabwe Gender Commission, domestic violence more than doubled [74]  
588 and some security personnel abused their authority by requesting favours from women in  
589 exchange for permission to sell their wares amidst lockdown restrictions [72].

590 Unfortunately, we were not able to obtain official data on reports of GBV to the police. To  
591 date, there is no official account of a rise in domestic violence in Zimbabwe. But even if such  
592 data showed a rise in the incidence of GBV, this would likely be an under-representation of  
593 the true picture because lockdown measures had created barriers to survivors of GBV making  
594 reports to the police or accessing services.

595 *(iii) Social and economic well-being*

596 Our primary research confirmed severe negative impacts on household income due to  
597 reduced economic activity and rising unemployment, a situation that was accentuated by the  
598 rising price of medicines, food, and other commodities [75]. One consequence was a  
599 reduction in both the number of meals and the quantity of food, disproportionately affecting  
600 those from the lowest socioeconomic strata, as well as women and children.

601 *"On the issue of livelihoods, many people lost their jobs due to the closure of*  
602 *companies, most companies closed, even those that have since opened they are only*  
603 *taking a limited number. Most people were retrenched and came to just sit at home;*  
604 *this affected food security". (Participant, Community FGD, Bulawayo).*

605 *"Then there was near starvation, we were not prepared for such a lockdown, it just*  
606 *emerged from nowhere, we were no longer able to travel, we were not able to buy*  
607 *enough food, some of us had no money, some of us were vendors we expected the day-*  
608 *to-day income", (FGD participant, Bulawayo).*

609 *"Livelihoods were affected in a way such that in families there was a shortage of food*  
610 *due to lack of money as some of the breadwinners became jobless.... Basic*  
611 *commodities were in short supply especially mealie meal and cooking oil." (Nurse, HCW*  
612 *FGD, Harare).*

613 *"Before the lockdown period, we would eat porridge in the morning, tea later, then*  
614 *have sadza [Zimbabwe staple food made from maize meal flour] for lunch. But because*



615 *of lockdown we would eat once per day, or sometimes not find anything to eat at all.”*

616 (Participant, household IDI, Bulawayo).

617 According to the World Bank, the pandemic added 1.3 million to the global number of people  
618 defined as extremely poor [76]. A cross-sectional online survey of 507 adults conducted at the  
619 beginning of the COVID-19 pandemic in May 2020 found that lockdown had increased food  
620 prices (95%) and decreased availability of nutritious foods (64%) [71]. The prevalence of  
621 wasting increased from 3.6% in 2019 to 4.5% in 2020 [20]. Other qualitative studies confirmed  
622 such negative impacts and noted a disproportionate negative impact on women whose  
623 caregiving roles had increased during lockdown [18,72].

624 *(iv) Education and child wellbeing*

625 School closure meant that many children received little to no formal school education during  
626 the COVID-19 lockdowns. Feelings of stress and anxiety about the lack of learning, especially  
627 for those in exam years, were expressed by many participants. Many informants also  
628 described how school and college/university closures widened existing educational  
629 inequalities between private versus public institutions and urban and rural settings because  
630 of the differential abilities to access teaching provided through online platforms and television  
631 or radio broadcasts [72].

632 *"The government introduced in some schools online learning which does not apply to*  
633 *a rural child. And even if it's urban, electricity, or issues of data, that's a challenge as*  
634 *well. So, there are selected few students that can access school online depending on*  
635 *the background of the child...Then, there are radio programs that were scheduled and*

636 *shared to all the schools...That was a good initiative, but again the issue of how many*  
637 *have radios, how many have electricity” (CBO representative, KII, Bulawayo).*

638 *“The closing of schools resulted in a big divide between the poor and the rich, so the*  
639 *students who could afford extra lessons learnt and those who could not afford did not*  
640 *and the results were devastating” (NGO representative, KII, Harare).*

641 The long period of school closures, especially during the first lockdown, was also said to have  
642 increased smoking, use of alcohol and illicit drugs and sexual behaviour, as well as  
643 participation in so-called ‘gang behaviour’.

644 *“Now we have a surge of drug abuse, school dropouts and the like. To be honest crimes*  
645 *have increased.” (CBO representative, KII, Bulawayo).*

646 *“Since children were not going to school, they would spend time sitting at bridges,*  
647 *smoking marijuana, yet if they were in school, they could have been busy with their*  
648 *homework, but at that time they had no homework. The girls also were all over and*  
649 *ended up being impregnated.” (Participant, household IDI, Harare).*

650 *“We work with children who are disadvantaged as a charity organization, but we*  
651 *noticed that during the lockdown, there were lots of unwanted pregnancies among*  
652 *teenagers and also alcohol abuse among the boys” (Participant, household IDI,*  
653 *Harare).*

654 We were unable to obtain routinely collected raw data on school attendance before and  
655 during the COVID-19 period. However, a 2022 Ministry of Primary and Secondary Education  
656 report provided some details on school enrolments, dropouts, transition, completion and

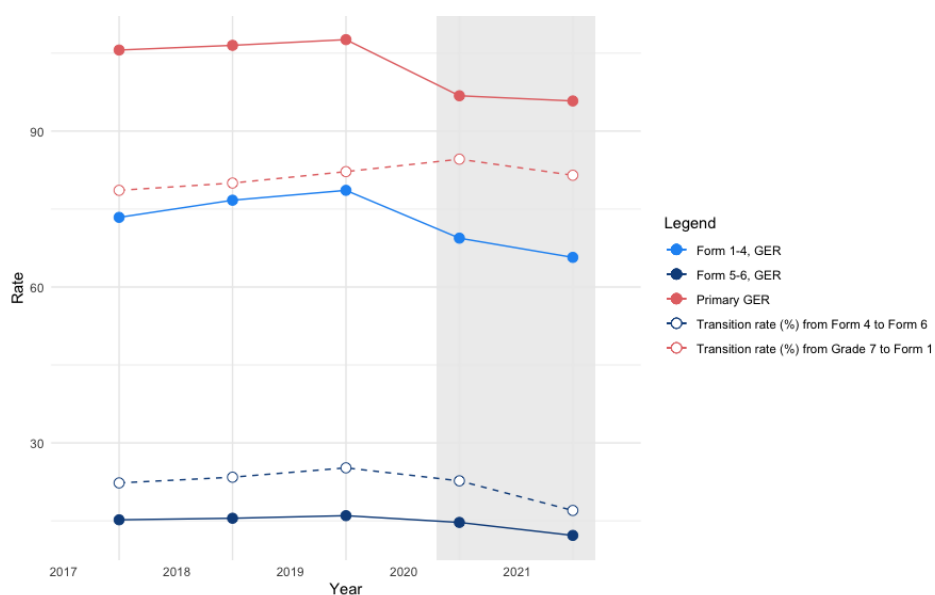
657 examination pass rates over five years (2017-2021).[73] Gross Enrolment Ratio (GER) is a  
658 measure of participation in the education system and defined as the number of students  
659 enrolled at the beginning of the school year in specific levels of education, regardless of age,  
660 expressed as a percentage of the official eligible school-age population of a given level of  
661 education. Transition conveys information on the degree of access or transition from one cycle  
662 or level of education to a higher one, namely from Grade 7 to Form 1 and from Form 4 to Form  
663 5. Completion rates indicate the proportion of persons completing a given level of education.  
664 Primary education has two levels: infant (early child development (ECD) A/B and Grade 1/2)  
665 and junior (Grade 3-7) [77]. Transition into secondary school is after sitting for the Grade 7  
666 national examination. The secondary education has also two levels, which are lower  
667 secondary (Form 1-4) and upper secondary (Form 5-6). Transition to upper secondary is only  
668 after attaining good grades at competitive national examinations. National ordinary level ('O'  
669 level) exams are completed after Form 4 and national advance ('A' level) exams are a  
670 requirement for university admission. While the total number of pupils enrolled in ECD and  
671 primary school have steadily increased from 2017-2021, the number of new entrants into  
672 Grade 1 decreased by more than 30,000 between 2020 and 2021. The number enrolled in  
673 higher secondary school also decreased by 14,941 (-14.7%) between 2020 and 2021. GER  
674 decreased across primary, lower secondary and higher secondary in 2020 and 2021 compared  
675 to previous years (Figure 4). Most other indicators also worsened in 2020 and 2021 compared  
676 to years 2017-2019 (which had seen a steady improvement year after year) including  
677 increased school dropouts, lower transition rates from Grade 7 to Form 1 and Form 4 to Form

678 6, lower completion rates across primary and secondary school and lower pass rates across all  
679 national exams. Worsening indicators seem to have affected boys and girls similarly.

680

681 **Figure 4: School indicators between 2017-2021**

682 **A: Number of children enrolled, new entrants and drops out across education levels**



683

684

685

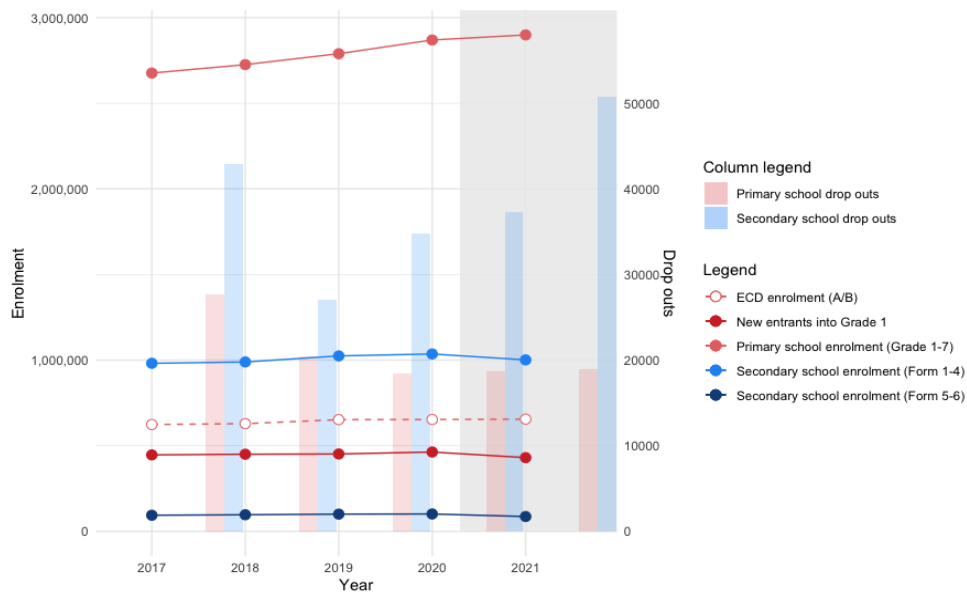
686

687

688

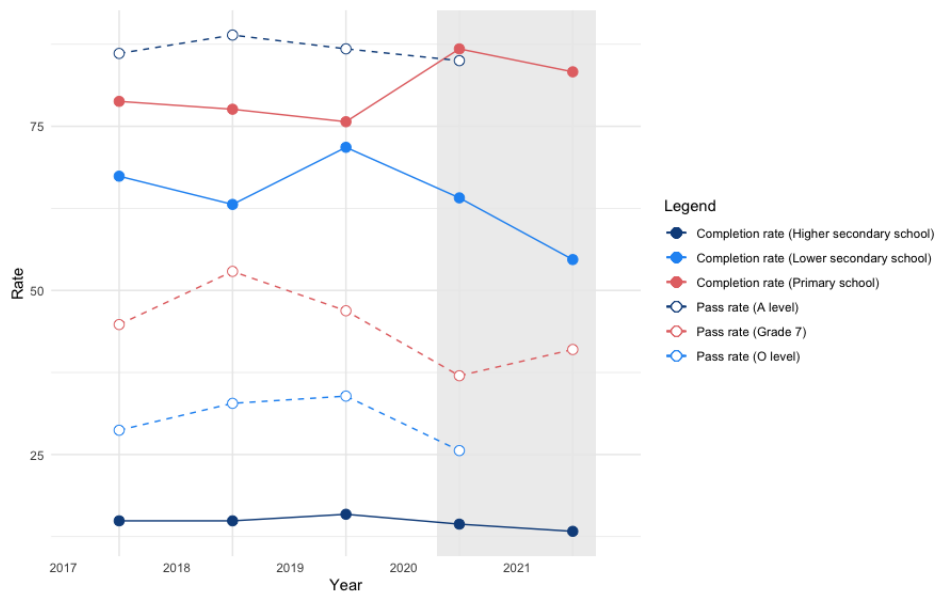
689

690 **B: Gross enrolment ratio and transition rates across education levels**



691

692 **C: Completion and pass rates across education levels**



693

694

695

696

## 697 **DISCUSSION**

698 The COVID-19 pandemic occurred in Zimbabwe at a time when the country had experienced  
699 decades of economic decline and a chronic deterioration of its health system. Around seven  
700 out of every ten people were living below the international poverty line and health status  
701 indicators were among the poorest in Sub-Saharan Africa [16]. Furthermore, in the years  
702 immediately preceding the COVID-19 pandemic, the health system experienced intermittent  
703 industrial action by nurses and doctors, a series of natural disasters, and outbreaks of cholera,  
704 typhoid and measles [78]. Although the government increased its budgets for healthcare and  
705 unfroze healthcare worker posts to help cope with the pandemic [40], the fragility of the  
706 health system also made it likely that lockdown measures would only further reduce both the  
707 supply and demand for healthcare [79].

708 Given this background, Zimbabwe faced considerable challenges when COVID-19 emerged. As  
709 with all countries, policymakers had to contend with a lack of knowledge about the natural  
710 history, virulence and transmissibility of the virus [80]. The high rates of hospitalisation and  
711 mortality observed in China, Italy, and other countries as well as WHO's declaration of a Public  
712 Health Emergency of International Concern on January 30<sup>th</sup>, 2020, led many countries to  
713 implement stringent lockdown measures before they experienced any upsurge in COVID-19  
714 cases. Underpinning these decisions was the belief amongst public health specialists and  
715 policymakers that any harms produced through the imposition of lockdown measures would  
716 be less than the harms produced by the virus itself.

717 Early estimates of the infection fatality rate were such that the enforcement of lockdown,  
718 including the cessation of important social and economic activities, was felt to be justified.

719 However, from the middle of 2020, differences in the incidence of cases and deaths were  
720 being observed across the world [62]. The relatively low incidence of cases and deaths in parts  
721 of Africa was especially notable [62] leading to several hypotheses as to what might be the  
722 cause. Among them was the low prevalence of risk factors such as obesity, low infection rate,  
723 effective mitigation measures, youthful age structure, favourable warm weather, and  
724 preexisting immunity from previous coronavirus infection. In Zimbabwe, by the end of 2020,  
725 only 13,867 cases and 363 deaths had been officially recorded and by the end of 2021, the  
726 number of deaths attributed to COVID-19 was only 5,004 [81]. While there would have been  
727 many unrecorded deaths due to COVID-19, there was no period when hospitals were overrun  
728 by COVID-19 patients or when morgues struggled to cope with a sudden rise in deaths as  
729 experienced by many other countries. Furthermore, seroprevalence studies indicate that  
730 substantial transmission had occurred by the end of 2020 [59], indicating that the relatively  
731 low mortality rates were possibly not due to effective prevention of transmission.

732 The importance of reliable, timely and context-specific data to manage infectious diseases  
733 outbreaks and epidemics cannot be understated. In Zimbabwe, the gaps in the health  
734 information system meant that a timely, accurate and detailed account of the epidemic and  
735 its direct impacts were unavailable. Throughout the pandemic, policymakers and public health  
736 specialists had to make educated guesses as to how the epidemic was evolving and what  
737 impact it was having. The not-so-perfect health information systems in the country also meant  
738 that policymakers and public health specialists could not adequately assess the harmful and  
739 sometimes devastating impact of the lockdown measures. Even now, estimates of the size and  
740 the causes of the increase in all-cause mortality since the pandemic are unclear.

741 A key question emerging from this research is whether Zimbabwe adopted the right set of  
742 measures to effectively manage both the direct and indirect threats to health that were posed  
743 by COVID-19, including the harms associated with lockdown. Here one must be wary of the  
744 benefit of hindsight and the lack of reliable and timely data available to policymakers and  
745 public health experts at the time. However, given the pre-existing and high levels of poverty  
746 and food insecurity before the pandemic [17], the economic stagnation, reduced household  
747 income and rising prices for basic commodities caused by the lockdowns were inevitably going  
748 to be impactful. The inability of many households to generate an adequate income during  
749 lockdown had drastic and detrimental effects on access to food and basic amenities and was  
750 compounded by mounting loneliness, distress, and mental illness, fuelling a degradation of  
751 social relations within households and an increase in interpersonal violence and antisocial  
752 behaviour. Although the government created a support fund for poorer households, the  
753 budget was inadequate, and many eligible households did not receive the promised support.  
754 Studies from other LMICs have shown similar findings [6,8,82] and many countries are  
755 currently still experiencing the long-term consequences of the economic contraction and  
756 increased levels of indebtedness that occurred in 2020 and 2021 [83].

757 Similarly, a negative impact on an already fragile, under-resourced and under-utilised health  
758 system was inevitable as were the significant and long-term negative effects on students and  
759 their families due to the prolonged closure of education facilities. The disproportionate impact  
760 on children is of particular importance. While COVID-19 was considerably much less harmful  
761 to children, the converse is true for the effects of the lockdown measures, including the  
762 cessation or reduction of essential child healthcare services; the heightened vulnerability of



763 infants and young children to reductions in food intake; and the cessation of school. Thus,  
764 many children were deprived of essential care and services as a result of measures that mostly  
765 benefited adults.

766 A further important point is that for large segments of the population, lockdown measures  
767 were not feasible. Many informants explained how safe and adequate social distancing was  
768 impractical in high-density areas and informal settlements. If true, for many households,  
769 prolonged quarantine and social isolation were arguably unjustified, especially considering  
770 the harmful effects of lockdown measures described above. Moreover, lockdown measures of  
771 the kind experienced with COVID-19 involve extraordinary curtailments on civil liberties that  
772 should only be implemented in extreme and valid circumstances. The coercive powers claimed  
773 by governments across the world in the name of public safety may not only be abused during  
774 a pandemic but also used to establish permanent systems and mechanisms of surveillance  
775 and social control. Indeed, lockdown measures were used in Zimbabwe to curtail political  
776 protest, and there were also accounts of security sector actors abusing their power to commit  
777 corruption and sexual harassment to the population.

778 Firm conclusions about the full impact of COVID-19 and its associated communicable disease  
779 control measures are not possible due to the lack of reliable and complete data. Crucially, any  
780 future strengthening of the health information system must include a focus not just on the  
781 future ability to conduct infectious diseases surveillance and control, but also on the ability to  
782 avoid or mitigate negative social, economic, and educational impacts. Nonetheless, plenty of  
783 data and evidence exist to suggest that the indirect impacts of COVID-19 were at least as  
784 harmful if not greater than its direct impacts especially so for women and children.

785 **Conflicts of interest**

786 SN was one of the health experts working on the ground who called for the lockdowns as he  
787 had first-hand information on the healthcare preparedness to face such a new novel  
788 coronavirus.

789

790 **Funding statement**

791 This work was supported through the Queen Mary University of London (QMUL) with funding  
792 from the United Kingdom Research Institute (UKRI) under reference number GCRF\_NF391 and  
793 implemented through the Organisation of Public Health Interventions and Development  
794 (OPHID) Zimbabwe. The views expressed do not necessarily reflect the policies of the  
795 respective organisations. The funders had no role in study design, data collection and analysis,  
796 the decision to publish, or manuscript preparation.

797 Tinotenda Taruvinga is supported by the Fogarty International Centre of the National  
798 Institutes of Health (NIM; Bethesda, Maryland, MD, USA) under Award Number *D43*  
799 *TW009539*. The content therein is solely the responsibility of the authors and does not  
800 necessarily represent the official views of the National Institutes of Health.

801

802

803

804

## 805 **Acknowledgements**

806 The study would like to acknowledge the support we got from the Zimbabwe research  
807 authorities, government departments and local authorities. In addition, the study also  
808 acknowledges Professor John Metcalfe, Thokozile Masha, Jane Mususa, and the OPHID and  
809 BRTI team led by Dr Shungu Munyati, Thomas Godfrey-Faussett who helped with valuable  
810 reference materials on education and most importantly the participants who spared their time  
811 to share this valuable experience. AYO, OD, is a member of and acknowledges support from,  
812 the Pan-African Network for Rapid Research, Response, Relief and Preparedness for Infectious  
813 Disease Epidemics, funded by the European and Developing Countries Clinical Trials  
814 Partnership, under the EU Horizon 2020 Framework Programme for Research and Innovation.

## 815 References

- 816 1. Zweig SA, Zapf AJ, Xu H, Li Q, Agarwal S, Labrique AB, et al. Impact of Public Health and  
817 Social Measures on the COVID-19 Pandemic in the United States and Other Countries:  
818 Descriptive Analysis. *JMIR Public Health Surveill.* 2021;7: e27917. doi:10.2196/27917
- 819 2. Haider N, Osman AY, Gadzekpo A, Akipede GO, Asogun D, Ansumana R, et al. Lockdown  
820 measures in response to COVID-19 in nine sub-Saharan African countries. *BMJ Glob*  
821 *Health.* 2020;5: e003319. doi:10.1136/bmjgh-2020-003319
- 822 3. Rosenberg J, Strauss I, Isaacs G. COVID-19 impact on SADC labour markets: Evidence  
823 from high-frequency data and other sources. *Afr Dev Rev Rev Afr Dev.* 2021;33: S177–  
824 S193. doi:10.1111/1467-8268.12528
- 825 4. ECLAC. The effects of the coronavirus disease (COVID-19) pandemic on international  
826 trade and logistics. 2020; 7.
- 827 5. Chappell E, Chimwaza A, Manika N, Wedderburn CJ, Nenguke ZM, Gannon H, et al.  
828 Impact of the COVID-19 pandemic on the provision and uptake of services for the  
829 prevention of mother-to-child transmission of HIV in Zimbabwe. *PLOS Glob Public*  
830 *Health.* 2023;3: e0002296. doi:10.1371/journal.pgph.0002296
- 831 6. Kotlar B, Gerson EM, Petrillo S, Langer A, Tiemeier H. The impact of the COVID-19  
832 pandemic on maternal and perinatal health: a scoping review. *Reprod Health.* 2021;18:  
833 10. doi:10.1186/s12978-021-01070-6
- 834 7. Chan JF-W, Yuan S, Kok K-H, To KK-W, Chu H, Yang J, et al. A familial cluster of  
835 pneumonia associated with the 2019 novel coronavirus indicating person-to-person  
836 transmission: a study of a family cluster. *Lancet Lond Engl.* 2020;395: 514–523.  
837 doi:10.1016/S0140-6736(20)30154-9
- 838 8. Wenham C. The oversecuritization of global health: changing the terms of debate. *Int*  
839 *Aff.* 2019;95: 1093–1110. doi:10.1093/ia/iiz170
- 840 9. Katsidzira L, Gwaunza L, Hakim JG. The Severe Acute Respiratory Syndrome Coronavirus  
841 2 (SARS-CoV-2) Epidemic in Zimbabwe: Quo Vadis? *Clin Infect Dis Off Publ Infect Dis Soc*  
842 *Am.* 2020;71: 2180–2183. doi:10.1093/cid/ciaa552
- 843 10. Plotkin MK, Williams KM, Mbinda A, Oficiano VN, Nyauchi B, Walugembe P, et al.  
844 Keeping essential reproductive, maternal and child health services available during  
845 COVID-19 in Kenya, Mozambique, Uganda and Zimbabwe: analysis of early-pandemic  
846 policy guidelines. *BMC Public Health.* 2022;22: 577. doi:10.1186/s12889-022-12851-4
- 847 11. Manyera A, Zinyama T, Sachikonye L. The Impact of Covid-19 Pandemic on Results-  
848 Based Finance Programmes in Developing Countries: A Literature Review. *J Public Adm*  
849 *Dev Altern JPADA.* 2021;6: 65–81. doi:10.55190/USGD9952

- 850 12. Baxter P, Jack S. Qualitative Case Study Methodology: Study Design and  
851 Implementation for Novice Researchers. *Qual Rep.* 2010;13. doi:10.46743/2160-  
852 3715/2008.1573
- 853 13. Oxford COVID-19 Government Response Tracker (OxCGRT) | Country Planning Cycle  
854 Database. [cited 28 Apr 2024]. Available:  
855 [https://extranet.who.int/countryplanningcycles/reportsportal/oxford-covid-19-](https://extranet.who.int/countryplanningcycles/reportsportal/oxford-covid-19-government-response-tracker-oxcgrt)  
856 [government-response-tracker-oxcgrt](https://extranet.who.int/countryplanningcycles/reportsportal/oxford-covid-19-government-response-tracker-oxcgrt)
- 857 14. *Census2022\_Preliminary\_Report.pdf*. Available: [https://www.zimstat.co.zw/wp-](https://www.zimstat.co.zw/wp-content/uploads/2022/07/Census2022_Preliminary_Report.pdf)  
858 [content/uploads/2022/07/Census2022\\_Preliminary\\_Report.pdf](https://www.zimstat.co.zw/wp-content/uploads/2022/07/Census2022_Preliminary_Report.pdf)
- 859 15. Nations U. Human Development Report 2020. *Hum Dev Rep.* United Nations; 2020 Dec.  
860 Available: <https://hdr.undp.org/content/human-development-report-2020>
- 861 16. Chirisa I, Mavhima B, Nyevera T, Chigudu A, Makochekanwa A, Matai J, et al. The  
862 impact and implications of COVID-19: Reflections on the Zimbabwean society. *Soc Sci*  
863 *Humanit Open.* 2021;4: 100183. doi:10.1016/j.ssaho.2021.100183
- 864 17. Scoones I. Surviving COVID-19: Fragility, Resilience and Inequality in Zimbabwe. In:  
865 *African Arguments* [Internet]. 27 Mar 2020 [cited 19 Oct 2023]. Available:  
866 [https://africanarguments.org/2020/03/surviving-covid-19-fragility-resilience-and-](https://africanarguments.org/2020/03/surviving-covid-19-fragility-resilience-and-inequality-in-zimbabwe/)  
867 [inequality-in-zimbabwe/](https://africanarguments.org/2020/03/surviving-covid-19-fragility-resilience-and-inequality-in-zimbabwe/)
- 868 18. Dzawanda B, Matsa M, Nicolau M. Poverty on the rise: The impact of the COVID-19  
869 lockdown on the informal sector of Gweru, Zimbabwe. *Int Soc Sci J.* 2021;71: 81–96.  
870 doi:10.1111/issj.12285
- 871 19. Mpfu J, Chimhenga S. Unemployment and Implications to Social and Political Conflict:  
872 Perspectives from Zimbabwe. *IOSR J Res Method Educ IOSR-JRME.* 2016;Vol 6.  
873 Available: [https://iosrjournals.org/iosr-jrme/papers/Vol-6%20Issue-3/Version-](https://iosrjournals.org/iosr-jrme/papers/Vol-6%20Issue-3/Version-1/B0603010813.pdf)  
874 [1/B0603010813.pdf](https://iosrjournals.org/iosr-jrme/papers/Vol-6%20Issue-3/Version-1/B0603010813.pdf)
- 875 20. Humanitarian Action for Children 2021 Overview | UNICEF. 3 Dec 2020 [cited 19 Oct  
876 2023]. Available: [https://www.unicef.org/reports/humanitarian-action-children-2021-](https://www.unicef.org/reports/humanitarian-action-children-2021-overview)  
877 [overview](https://www.unicef.org/reports/humanitarian-action-children-2021-overview)
- 878 21. Zimbabwe Demographic and Health Survey 2015: Final Report – TB DIAH. [cited 19 Oct  
879 2023]. Available: [https://www.tbdiiah.org/resources/publications/zimbabwe-](https://www.tbdiiah.org/resources/publications/zimbabwe-demographic-and-health-survey-2015-final-report/)  
880 [demographic-and-health-survey-2015-final-report/](https://www.tbdiiah.org/resources/publications/zimbabwe-demographic-and-health-survey-2015-final-report/)
- 881 22. Mazwi F, Chemura A, Mudimu GT, Chambati W. Political Economy of Command  
882 Agriculture in Zimbabwe: A State-led Contract Farming Model. *Agrar South J Polit Econ.*  
883 2019;8: 232–257. doi:10.1177/2277976019856742

- 884 23. Zvobgo, C.J.M. A History of Zimbabwe 1890-2000 and Postscript, Zimbabwe, 2000-  
885 2008. Cambridge Scholars Publishers; 2009. Available:  
886 <https://www.cambridgescholars.com/resources/pdfs/978-1-4438-1360-0-sample.pdf>
- 887 24. Macrotrends. Zimbabwe GDP Growth Rate 1961-2024. [cited 17 Jan 2024]. Available:  
888 <https://www.macrotrends.net/countries/ZWE/zimbabwe/gdp-growth-rate>
- 889 25. Dixon J, Manyau S, Kandiye F, Kranzer K, Chandler CIR. Antibiotics, rational drug use and  
890 the architecture of global health in Zimbabwe. *Soc Sci Med* 1982. 2021;272: 113594.  
891 doi:10.1016/j.socscimed.2020.113594
- 892 26. Castella T de. Health workers struggle to provide care in Zimbabwe. *The Lancet*.  
893 2003;362: 46–47. doi:10.1016/S0140-6736(03)13848-2
- 894 27. Wakabi W. Zimbabwe’s sick public health-care system fuels disease. *Lancet Infect Dis*.  
895 2009;9: 147. doi:10.1016/S1473-3099(09)70033-7
- 896 28. World Health Organisation (WHO)-The State of Health Workforce in the African Region  
897 2021. Available: [https://iris.who.int/bitstream/handle/10665/348855/9789290234555-](https://iris.who.int/bitstream/handle/10665/348855/9789290234555-eng.pdf?sequence=1)  
898 [eng.pdf?sequence=1](https://iris.who.int/bitstream/handle/10665/348855/9789290234555-eng.pdf?sequence=1)
- 899 29. Mangundu M, Roets L, van Rensberg EJ. Accessibility of healthcare in rural Zimbabwe:  
900 The perspective of nurses and healthcare users. *Afr J Prim Health Care Fam Med*.  
901 2020;12: 2245. doi:10.4102/phcfm.v12i1.2245
- 902 30. Zimbabwe (ZWE) - Demographics, Health & Infant Mortality. In: UNICEF DATA  
903 [Internet]. [cited 19 Oct 2023]. Available: <https://data.unicef.org/country/zwe/>
- 904 31. SDG Target 3.1 Maternal mortality. [cited 16 Nov 2023]. Available:  
905 <https://www.who.int/data/gho/data/themes/topics/sdg-target-3-1-maternal-mortality>
- 906 32. Under-five mortality rate - Sustainable Development Goals - United Nations Economic  
907 Commission for Europe. [cited 16 Nov 2023]. Available:  
908 <https://w3.unece.org/SDG/en/Indicator?id=91>
- 909 33. Mutizwa-Mangiza D. *Doctors and the State: The Struggle for Professional Control in*  
910 *Zimbabwe*. Routledge; 2018.
- 911 34. Ian S. *Surviving COVID-19: Fragility, Resilience and Inequality in Zimbabwe*. African  
912 Arguments 2020: 2020.
- 913 35. projects W-F web. UPDATED: President appoints Covid-19 taskforce. In: *The Chronicle*  
914 [Internet]. 25 Mar 2020 [cited 9 Feb 2024]. Available:  
915 <https://www.chronicle.co.zw/president-launches-covid-19-ministerial-task-force/>
- 916 36. Reporter S. Zororo Makamba dies of covid-19. In: *The Zimbabwe Mail* [Internet]. 23  
917 Mar 2020 [cited 9 Feb 2024]. Available:

- 918 [https://www.thezimbabwemail.com/zimbabwe/zororo-makamba-becomes-zimbabwe-  
919 first-covid-19-death/](https://www.thezimbabwemail.com/zimbabwe/zororo-makamba-becomes-zimbabwe-919 first-covid-19-death/)
- 920 37. SI 2020-076 Civil Protection (Declaration of State of Disaster Rural and Urban Areas of  
921 Zimbabwe) (COVID-19) Notice, 2020.pdf. Available:  
922 [https://www.veritaszim.net/sites/veritas\\_d/files/SI%202020-  
923 076%20Civil%20Protection%20%28Declaration%20of%20State%20of%20Disaster%20R  
924 ural%20and%20Urban%20Areas%20of%20Zimbabwe%29%20%28COVID-  
925 19%29%20Notice%2C%202020.pdf](https://www.veritaszim.net/sites/veritas_d/files/SI%202020-076%20Civil%20Protection%20%28Declaration%20of%20State%20of%20Disaster%20Rural%20and%20Urban%20Areas%20of%20Zimbabwe%29%20%28COVID-19%29%20Notice%2C%202020.pdf)
- 926 38. SI 2020-077 Public Health (COVID-19 Prevention, Containment and Treatment)  
927 Regulations, 2020.pdf. Available:  
928 [https://www.veritaszim.net/sites/veritas\\_d/files/SI%202020-  
929 077%20Public%20Health%20\(COVID-  
930 19%20Prevention,%20Containment%20and%20Treatment\)%20Regulations,%202020.p  
931 df](https://www.veritaszim.net/sites/veritas_d/files/SI%202020-077%20Public%20Health%20(COVID-19%20Prevention,%20Containment%20and%20Treatment)%20Regulations,%202020.pdf)
- 932 39. World Health Organization. Operational considerations for case management of COVID-  
933 19 in health facility and community. Interim guidance. *Pediatr Med Rodz.* 2020;16: 27–  
934 32. doi:10.15557/PiMR.2020.0004
- 935 40. projects W-F web. Govt unfreezes 4000 posts – Avails \$500 million, redirects 2020  
936 budget allocations to fight Covid-19. In: *The Chronicle* [Internet]. 31 Mar 2020 [cited 19  
937 Oct 2023]. Available: [https://www.chronicle.co.zw/govt-unfreezes-4000-posts-avails-  
938 500-million-redirects-2020-budget-allocations-to-fight-covid-19/](https://www.chronicle.co.zw/govt-unfreezes-4000-posts-avails-500-million-redirects-2020-budget-allocations-to-fight-covid-19/)
- 939 41. Mackworth-Young CR, Chingono R, Mavodza C, McHugh G, Tembo M, Chikwari CD, et  
940 al. Community perspectives on the COVID-19 response, Zimbabwe. *Bull World Health  
941 Organ.* 2021;99: 85–91. doi:10.2471/BLT.20.260224
- 942 42. Mavhunga C. Zimbabwe Doctors, Nurses Down Tools Over COVID-19 PPEs. In: VOA  
943 [Internet]. 26 Mar 2020 [cited 19 Oct 2023]. Available:  
944 [https://www.voanews.com/a/africa\\_zimbabwe-doctors-nurses-down-tools-over-covid-  
945 19-ppes/6186450.html](https://www.voanews.com/a/africa_zimbabwe-doctors-nurses-down-tools-over-covid-19-ppes/6186450.html)
- 946 43. Kamuti T. Covidisation of oppression: COVID-19 and human rights violations in  
947 Zimbabwe. *Soc Sci Humanit Open.* 2022;6: 100374. doi:10.1016/j.ssaho.2022.100374
- 948 44. Maulani N, Nyadera IN, Wandekha B. The generals and the war against COVID-19: The  
949 case of Zimbabwe. *J Glob Health.* 10: 020388. doi:10.7189/jogh.10.020388
- 950 45. Murewanhema G. COVID-19 control pitfalls and challenges and drivers of SARS-CoV-2  
951 transmission in Zimbabwe. *Pan Afr Med J.* 2021;38: 28.  
952 doi:10.11604/pamj.2021.38.28.25758



- 953 46. Tlotleng N, Cohen C, Made F, Kootbodien T, Masha M, Naicker N, et al. COVID-19  
954 hospital admissions and mortality among healthcare workers in South Africa, 2020–  
955 2021. *IJID Reg.* 2022;5: 54–61. doi:10.1016/j.ijregi.2022.08.014
- 956 47. Chitungo I, Dzinamarira T, Tungwarara N, Chimene M, Mukwenha S, Kunonga E, et al.  
957 COVID-19 Response in Zimbabwe: The Need for a Paradigm Shift? *COVID.* 2022;2: 895–  
958 906. doi:10.3390/covid2070065
- 959 48. Murewanhema G, Mukwenha S, Dzinamarira T, Mukandavire Z, Cuadros D, Madziva R,  
960 et al. Optimising COVID-19 Vaccination Policy to Mitigate SARS-CoV-2 Transmission  
961 within Schools in Zimbabwe. *Vaccines.* 2021;9: 1481. doi:10.3390/vaccines9121481
- 962 49. Mavhunga C. Zimbabweans Blame Government for COVID-19 Deaths of Officials. In:  
963 VOA [Internet]. 23 Jan 2021 [cited 23 Oct 2023]. Available:  
964 [https://www.voanews.com/a/covid-19-pandemic\\_zimbabweans-blame-government-](https://www.voanews.com/a/covid-19-pandemic_zimbabweans-blame-government-covid-19-deaths-officials/6201126.html)  
965 [covid-19-deaths-officials/6201126.html](https://www.voanews.com/a/covid-19-pandemic_zimbabweans-blame-government-covid-19-deaths-officials/6201126.html)
- 966 50. Mhuruyengwe N. FACTSHEET: Zimbabwe’s latest COVID-19 quarantine rules. In: ZimFact  
967 [Internet]. 21 May 2021 [cited 23 Oct 2023]. Available: [https://zimfact.org/factsheet-](https://zimfact.org/factsheet-zimbabwes-latest-covid-19-quarantine-rules/)  
968 [zimbabwes-latest-covid-19-quarantine-rules/](https://zimfact.org/factsheet-zimbabwes-latest-covid-19-quarantine-rules/)
- 969 51. Zimbabwe pledges to start Covid-19 vaccination campaign next week. In: News24  
970 [Internet]. [cited 2 Feb 2024]. Available:  
971 [https://www.news24.com/news24/africa/news/zimbabwe-pledges-to-start-covid-19-](https://www.news24.com/news24/africa/news/zimbabwe-pledges-to-start-covid-19-vaccination-campaign-next-week-20210213)  
972 [vaccination-campaign-next-week-20210213](https://www.news24.com/news24/africa/news/zimbabwe-pledges-to-start-covid-19-vaccination-campaign-next-week-20210213)
- 973 52. Writer S. Ministry of Health information on COVID-19 vaccination in Zimbabwe. In:  
974 Techzim [Internet]. 23 Jul 2021 [cited 2 Feb 2024]. Available:  
975 [https://www.techzim.co.zw/2021/07/ministry-of-health-information-on-covid-19-](https://www.techzim.co.zw/2021/07/ministry-of-health-information-on-covid-19-vaccination-in-zimbabwe/)  
976 [vaccination-in-zimbabwe/](https://www.techzim.co.zw/2021/07/ministry-of-health-information-on-covid-19-vaccination-in-zimbabwe/)
- 977 53. Covid-19 vaccination extended to 12-year-olds. In: The Herald [Internet]. [cited 3 Feb  
978 2024]. Available: [https://www.herald.co.zw/covid-19-vaccination-extended-to-12-year-](https://www.herald.co.zw/covid-19-vaccination-extended-to-12-year-olds/)  
979 [olds/](https://www.herald.co.zw/covid-19-vaccination-extended-to-12-year-olds/)
- 980 54. projects W-F web. Govt places Kwekwe under strict lockdown. In: The Chronicle  
981 [Internet]. 22 May 2021 [cited 23 Oct 2023]. Available:  
982 <https://www.chronicle.co.zw/govt-places-kwekwe-under-strict-lockdown/>
- 983 55. Zimbabwe receives nearly one million COVID-19 vaccine doses from COVAX. [cited 23  
984 Oct 2023]. Available: [https://www.unicef.org/zimbabwe/press-releases/zimbabwe-](https://www.unicef.org/zimbabwe/press-releases/zimbabwe-receives-nearly-one-million-covid-19-vaccine-doses-covax)  
985 [receives-nearly-one-million-covid-19-vaccine-doses-covax](https://www.unicef.org/zimbabwe/press-releases/zimbabwe-receives-nearly-one-million-covid-19-vaccine-doses-covax)
- 986 56. projects W-F web. Global Fund avails funds for Covid-19. In: The Chronicle [Internet]. 11  
987 Jun 2021 [cited 23 Oct 2023]. Available: [https://www.chronicle.co.zw/global-fund-](https://www.chronicle.co.zw/global-fund-avails-funds-for-covid-19/)  
988 [avails-funds-for-covid-19/](https://www.chronicle.co.zw/global-fund-avails-funds-for-covid-19/)



- 989 57. [ad365-zimbabwean\\_vulnerabilities\\_on\\_health\\_care\\_water-afrobarometer-5june20.pdf](https://www.afrobarometer.org/wp-content/uploads/migrated/files/publications/Dispatches/ad365-zimbabwean_vulnerabilities_on_health_care_water-afrobarometer-5june20.pdf). Available: [https://www.afrobarometer.org/wp-](https://www.afrobarometer.org/wp-content/uploads/migrated/files/publications/Dispatches/ad365-zimbabwean_vulnerabilities_on_health_care_water-afrobarometer-5june20.pdf)  
990  
991  
992
- 993 58. Kavenga F, Rickman HM, Chingono R, Taruvinga T, Marembo T, Manasa J, et al. Comprehensive occupational health services for healthcare workers in Zimbabwe during the SARS-CoV-2 pandemic. *PLOS ONE*. 2021;16: e0260261. doi:10.1371/journal.pone.0260261  
994  
995  
996
- 997 59. Fryatt A, Simms V, Bandason T, Redzo N, Olaru ID, Ndhlovu CE, et al. Community SARS-CoV-2 seroprevalence before and after the second wave of SARS-CoV-2 infection in Harare, Zimbabwe. *eClinicalMedicine*. 2021;41: 101172. doi:10.1016/j.eclinm.2021.101172  
998  
999  
1000
- 1001 60. Rusakaniko S, Sibanda EN, Mduluzza T, Tagwireyi P, Dhlamini Z, Ndhlovu CE, et al. SARS-CoV-2 Serological testing in frontline health workers in Zimbabwe. *PLoS Negl Trop Dis*. 2021;15: e0009254. doi:10.1371/journal.pntd.0009254  
1002  
1003
- 1004 61. Lewis HC, Ware H, Whelan M, Subissi L, Li Z, Ma X, et al. SARS-CoV-2 infection in Africa: a systematic review and meta-analysis of standardised seroprevalence studies, from January 2020 to December 2021. *BMJ Glob Health*. 2022;7: e008793. doi:10.1136/bmjgh-2022-008793  
1005  
1006  
1007
- 1008 62. Sayed A, Challa KT, Arja S. Epidemiological Differences of COVID-19 Over the World. *Cureus*. 12: e10316. doi:10.7759/cureus.10316  
1009
- 1010 63. Details on the COVID-19 Economic Recovery and Stimulus Package | veritaszim. [cited 28 Apr 2024]. Available: <https://www.veritaszim.net/node/4112>  
1011
- 1012 64. Seven babies stillborn in one night at Zimbabwe hospital as nurses strike. Reuters. 29 Jul 2020. Available: [https://www.reuters.com/article/health-zimbabwe-](https://www.reuters.com/article/health-zimbabwe-idUKL5N2F06H6)  
1013  
1014
- 1015 65. Chimhuya S, Neal SR, Chimhini G, Gannon H, Cortina Borja M, Crehan C, et al. Indirect impacts of the COVID-19 pandemic at two tertiary neonatal units in Zimbabwe and Malawi: an interrupted time series analysis. *BMJ Open*. 2022;12: e048955. doi:10.1136/bmjopen-2021-048955  
1016  
1017  
1018
- 1019 66. Thekkur P, Takarinda KC, Timire C, Sandy C, Apollo T, Kumar AMV, et al. Operational Research to Assess the Real-Time Impact of COVID-19 on TB and HIV Services: The Experience and Response from Health Facilities in Harare, Zimbabwe. *Trop Med Infect Dis*. 2021;6: 94. doi:10.3390/tropicalmed6020094  
1020  
1021  
1022
- 1023 67. Timire C, Sandy C, Ferrand RA, Mubau R, Shiri P, Mbiriawanda O, et al. Coverage and effectiveness of conditional cash transfer for people with drug resistant tuberculosis in  
1024

- 1025 Zimbabwe: A mixed methods study. PLOS Glob Public Health. 2022;2: e0001027.  
1026 doi:10.1371/journal.pgph.0001027
- 1027 68. Shakespeare C, Dube H, Moyo S, Ngwenya S. Resilience and vulnerability of maternity  
1028 services in Zimbabwe: a comparative analysis of the effect of Covid-19 and lockdown  
1029 control measures on maternal and perinatal outcomes, a single-centre cross-sectional  
1030 study at Mpilo Central Hospital. BMC Pregnancy Childbirth. 2021;21: 416.  
1031 doi:10.1186/s12884-021-03884-5
- 1032 69. Suburban. Marlborough district office, clinic reopen. In: Suburban [Internet]. 12 Feb  
1033 2021 [cited 19 Oct 2023]. Available: [https://www.suburban.co.zw/marlborough-](https://www.suburban.co.zw/marlborough-district-office-clinic-reopen/)  
1034 [district-office-clinic-reopen/](https://www.suburban.co.zw/marlborough-district-office-clinic-reopen/)
- 1035 70. Mavodza CV, Bernays S, Mackworth-Young CRS, Nyamwanza R, Nzombe P, Dauya E, et  
1036 al. Interrupted Access to and Use of Family Planning Among Youth in a Community-  
1037 Based Service in Zimbabwe During the First Year of the COVID-19 Pandemic. Stud Fam  
1038 Plann. 2022; 10.1111/sifp.12203. doi:10.1111/sifp.12203
- 1039 71. Matsungu TM, Chopera P. Effect of the COVID-19-induced lockdown on nutrition,  
1040 health and lifestyle patterns among adults in Zimbabwe. BMJ Nutr Prev Health. 2020;3:  
1041 205–212. doi:10.1136/bmjnph-2020-000124
- 1042 72. Nyahunda L, Chibvura S, Tirivangasi HM. Social Work Practice: Accounting for Double  
1043 Injustices Experienced by Women Under the Confluence of Covid-19 Pandemic and  
1044 Climate Change Impacts in Nyanga, Zimbabwe. J Hum Rights Soc Work. 2021;6: 213–  
1045 224. doi:10.1007/s41134-021-00170-4
- 1046 73. Providing services to survivors of gender-based violence during COVID-19 | United  
1047 Nations in Zimbabwe. [cited 23 Oct 2023]. Available:  
1048 [https://zimbabwe.un.org/en/50660-providing-services-survivors-gender-based-](https://zimbabwe.un.org/en/50660-providing-services-survivors-gender-based-violence-during-covid-19)  
1049 [violence-during-covid-19](https://zimbabwe.un.org/en/50660-providing-services-survivors-gender-based-violence-during-covid-19), [https://zimbabwe.un.org/en/50660-providing-services-](https://zimbabwe.un.org/en/50660-providing-services-survivors-gender-based-violence-during-covid-19)  
1050 [survivors-gender-based-violence-during-covid-19](https://zimbabwe.un.org/en/50660-providing-services-survivors-gender-based-violence-during-covid-19)
- 1051 74. Zimbabwe: Covid-19 Lockdown - Gender-Based Violence Cases Up By 70 Percent. New  
1052 Zimbabwe. 28 Jul 2020. Available: <https://allafrica.com/stories/202007280268.html>.  
1053 Accessed 23 Oct 2023.
- 1054 75. The Zimbabwe Independent - The Leading Business Weekly. In: The Zimbabwe  
1055 Independent [Internet]. [cited 19 Oct 2023]. Available:  
1056 <https://www.newsday.co.zw/theindependent/>
- 1057 76. Overview. In: World Bank [Internet]. [cited 19 Oct 2023]. Available:  
1058 <https://www.worldbank.org/en/country/zimbabwe/overview>

- 1059 77. EMIS 2021 Annual Education Statistics Report.pdf. Available:  
1060 [https://mopse.co.zw/sites/default/files/public/downloads/EMIS%202021%20Annual%](https://mopse.co.zw/sites/default/files/public/downloads/EMIS%202021%20Annual%20Education%20Statistics%20Report.pdf)  
1061 [20Education%20Statistics%20Report.pdf](https://mopse.co.zw/sites/default/files/public/downloads/EMIS%202021%20Annual%20Education%20Statistics%20Report.pdf)
- 1062 78. Poncin M, Marembo J, Chitando P, Sreenivasan N, Makwara I, Machekanyanga Z, et al.  
1063 Implementation of an outbreak response vaccination campaign with typhoid conjugate  
1064 vaccine – Harare, Zimbabwe, 2019. *Vaccine X*. 2022;12: 100201.  
1065 doi:10.1016/j.jvacx.2022.100201
- 1066 79. Caribbean EC for LA and the. The effects of the coronavirus disease (COVID-19)  
1067 pandemic on international trade and logistics. Economic Commission for Latin America  
1068 and the Caribbean; 2020. Available: [https://www.cepal.org/en/publications/45878-](https://www.cepal.org/en/publications/45878-effects-coronavirus-disease-covid-19-pandemic-international-trade-and-logistics)  
1069 [effects-coronavirus-disease-covid-19-pandemic-international-trade-and-logistics](https://www.cepal.org/en/publications/45878-effects-coronavirus-disease-covid-19-pandemic-international-trade-and-logistics)
- 1070 80. Allington D, McAndrew S, Moxham-Hall V, Duffy B. Coronavirus conspiracy suspicions,  
1071 general vaccine attitudes, trust and coronavirus information source as predictors of  
1072 vaccine hesitancy among UK residents during the COVID-19 pandemic. *Psychol Med*.  
1073 2023;53: 236–247. doi:10.1017/S0033291721001434
- 1074 81. Zimbabwe Humanitarian Situation Report, 31 December 2021.pdf. Available:  
1075 [https://www.unicef.org/media/114866/file/Zimbabwe%20Humanitarian%20Situation%](https://www.unicef.org/media/114866/file/Zimbabwe%20Humanitarian%20Situation%20Report,%2031%20December%202021.pdf)  
1076 [20Report,%2031%20December%202021.pdf](https://www.unicef.org/media/114866/file/Zimbabwe%20Humanitarian%20Situation%20Report,%2031%20December%202021.pdf)
- 1077 82. (PDF) Gendered Socio-economic Implications of the COVID-19 Pandemic in Rural  
1078 Zimbabwe. [cited 23 Oct 2023]. Available:  
1079 [https://www.researchgate.net/publication/344711278\\_Gendered\\_Socio-](https://www.researchgate.net/publication/344711278_Gendered_Socio-economic_Implications_of_the_COVID-19_Pandemic_in_Rural_Zimbabwe)  
1080 [economic\\_Implications\\_of\\_the\\_COVID-19\\_Pandemic\\_in\\_Rural\\_Zimbabwe](https://www.researchgate.net/publication/344711278_Gendered_Socio-economic_Implications_of_the_COVID-19_Pandemic_in_Rural_Zimbabwe)
- 1081 83. Josephson A, Kilic T, Michler JD. Socioeconomic impacts of COVID-19 in low-income  
1082 countries. *Nat Hum Behav*. 2021;5: 557–565. doi:10.1038/s41562-021-01096-7
- 1083
- 1084
- 1085
- 1086
- 1087
- 1088