

1 **Detection of obstetric anal sphincter injuries using machine learning-assisted**  
2 **impedance spectroscopy: a prospective, comparative, multicentre clinical**  
3 **study**

4

5 Katarzyna Borycka<sup>1,2</sup>, Marcel Młyńczak<sup>1,3</sup>, Maciej Rosol<sup>1,3</sup>, Kacper Korzeniewski<sup>1,3</sup>,  
6 Piotr Iwanowski<sup>1</sup>, Hynek Heřman<sup>4,5</sup>, Petr Janku<sup>6,7</sup>, Małgorzata Uchman-Musielak<sup>8</sup>,  
7 Erik Dosedla<sup>9</sup>, Enrique Gonzalez Diaz<sup>10</sup>, Iwona Sudół-Szopińska<sup>11,12</sup>, Michał Mik<sup>13</sup>,  
8 Carlo Ratto<sup>14</sup>, Antonino Spinelli<sup>15,16</sup>

9

- 10 <sup>1</sup> OASIS Diagnostics, R&D of Medical Technology, Warsaw, Poland  
11 <sup>2</sup> Centre of Postgraduate Medical Education, Warsaw, Poland  
12 <sup>3</sup> Warsaw University of Technology, Faculty of Mechatronics, Institute of Metrology and  
13 Biomedical Engineering, Warsaw, Poland  
14 <sup>4</sup> Institute for the Care of Mother and Child, Prague, Czech Republic  
15 <sup>5</sup> 3rd Medical Faculty, Charles University, Prague, Czech Republic  
16 <sup>6</sup> Department of Obstetrics and Gynaecology, University Hospital Brno and Medical Faculty,  
17 Masaryk University, Brno, Czech Republic  
18 <sup>7</sup> Department of Health Sciences, Medical Faculty, Masaryk University, Brno, Czech Republic  
19 <sup>8</sup> Department of Obstetrics and Gynaecology, Solec Hospital, Warsaw, Poland  
20 <sup>9</sup> Department of Gynaecology and Obstetrics, Faculty of Medicine, Univerzita Pavla Jozefa  
21 Šafárika, Košice, Slovakia  
22 <sup>10</sup> Department of Obstetrics and Gynaecology, Complejo Asistencial Universitario de Leon,  
23 Spain  
24 <sup>11</sup> Department of Radiology, National Institute of Geriatrics, Rheumatology and Rehabilitation,  
25 Warsaw, Poland  
26 <sup>12</sup> Ultrasound Department, Warsaw Medical University, Poland  
27 <sup>13</sup> Department of General and Colorectal Surgery, Medical University of Lodz, Poland  
28 <sup>14</sup> Proctology and Pelvic Floor Surgery Unit, Isola Tiberina Hospital, Gemelli Isola, Catholic  
29 University, Rome, Italy  
30 <sup>15</sup> Department of Biomedical Sciences, Humanitas University, Via Rita Levi Montalcini 4, 20072  
31 Pieve Emanuele, Milan, Italy  
32 <sup>16</sup> IRCCS Humanitas Research Hospital, via Manzoni 56, 20089 Rozzano, Milan, Italy

33

34

35 **Conflict of Interest statement**

36 K.B. is a founder and board member at OASIS Diagnostics, an author of the related  
37 patent and R&D strategy, independent consultant, and trainer of Takeda.

38 M.M., M.R., K.K., and P.I. are researchers at OASIS Diagnostics.

39 A.S. is an independent consultant of Ethicon, Takeda, Pfizer, Sofar.

40 M.UM. is an independent consultant of Regen Lab.

41 H.H., P.J., M.UM., E.D., and E.GD. received remuneration as a study investigator.

42 H.H., C.R., and A.S. are independent consultants and members of the OASIS  
43 Diagnostics' Scientific Advisory Board.

44 Others declare no conflicts of interest.

45

46

## 47 **Funding**

48 The study was funded by the European Union as part of the Fast Track program,  
49 conducted in Poland by the National Centre for Research and Development  
50 (POIR.01.00.01-00-0726/18).

51

52

## 53 **Abstract**

54

55 **Objective:** To evaluate the clinical performance and safety of the ONIRY system for  
56 obstetric anal sphincter injuries (OASI) detection versus three-dimensional endoanal  
57 ultrasound (EAUS).

58 **Design:** A prospective, comparative, multicentre, international study.

59 **Setting:** Poland, Czechia, Slovakia, and Spain.

60 **Population:** 152 women between the first moments up to 8 weeks after vaginal  
61 delivery.

62 **Methods:** Participants underwent EAUS and were allocated to groups based on  
63 OASIS classification: A (no perineal tear), B (1st or 2nd degree tear), or C (3rd or 4th  
64 degree, anal sphincters affected). Electric impedance was measured in the anal  
65 canal using the ONIRY system. The primary endpoint was the diagnostic outcome of  
66 impedance spectroscopy versus EAUS. Adverse events were collected. Part II  
67 involved in silico modelling and 10-time 10-fold cross-validation for automated  
68 analysis.

69 **Main Outcome Measures:** Accuracy, sensitivity, and specificity.

70 **Results:** 30 women were allocated to group A, 61 to group B, and 61 to group C. The  
71 diagnostic outcome was determined for 147 participants. The accuracy, sensitivity,  
72 and specificity of the ML-assisted impedance spectroscopy were  $87.0 \pm 0.5\%$ ,  $90.6 \pm$   
73  $2.0\%$ , and  $84.6 \pm 1.9\%$ , respectively, compared with EAUS. After data cleaning, the  
74 performance metrics of the proposed final ML model for ONIRY were:  $90.0 \pm 0.4\%$ ,  
75  $90.0 \pm 1.2\%$ , and  $90.0 \pm 0.7\%$ , respectively. No adverse device effects or deficiencies  
76 were observed.

77 **Conclusion:** ML-assisted impedance spectroscopy offers a safe and accurate method  
78 for rapid OASI detection. This approach could effectively complement digital rectal  
79 examination in obstetric settings, supporting timely postpartum care.

80

81

82 **Funding information**

83 The study was financed by the Polish National Centre for Research and  
84 Development (POIR.01.01.01-00-0726/18).

85

86 **Keywords**

87 obstetric anal sphincter injury (OASI), anal sphincter, perineal tear, faecal  
88 incontinence, rapid diagnostics, clinical study, impedance spectroscopy, machine  
89 learning

90

91 **Abbreviations**

92 AE - Adverse Events

93 EAUS - Endoanal Ultrasound

94 FI - Faecal Incontinence

95 MCC - Matthew's Correlation Coefficient

96 ML - Machine Learning

97 OASIs - Obstetric Anal Sphincter Injuries

98

99 **Key Message**

100 With 90% accuracy, the ONIRY system's ML-assisted impedance spectroscopy offers a  
101 reliable, non-invasive method for detecting obstetric anal sphincter injuries, supporting  
102 timely postpartum diagnosis.

## 103        **1. Introduction**

104

105        Obstetric anal sphincter injuries (OASIs) are common complication of vaginal  
106        delivery, directly implicated in various degrees of continence issues, including frank  
107        faecal incontinence (FI). It is estimated that one in four women who undergo vaginal  
108        delivery experience some form of OASI<sup>1-4</sup>, placing them at a 25-50% risk of  
109        developing FI, either shortly after delivery<sup>5,6</sup> or later in life<sup>7-10</sup>. FI has a profoundly  
110        negative impact on quality of life, affecting women's social interactions, professional  
111        activities, family dynamics, and intimate relationships<sup>11-13</sup>.

112        Despite this significant risk, there is no widely accessible diagnostic tool for early  
113        postpartum detection of OASI. Currently, obstetricians rely on digital rectal  
114        examination (DRE), the only option in maternity settings, which is highly dependent  
115        on the examiner's experience and skills. As a subjective assessment tool, it is  
116        inherently imperfect, with primary detection failure rates for OASI as high as 80%<sup>10</sup>.

117        The high prevalence of FI among women with undiagnosed OASI<sup>9,10</sup> underscores the  
118        need to revise maternity care protocols. While endoanal ultrasound (EAUS) is the  
119        gold standard in the specialise diagnosis of anal sphincter injuries<sup>14,15</sup>, with near-  
120        perfect sensitivity in identifying structural abnormalities, it remains limited in terms of  
121        availability and usefulness in obstetric facilities. This limitation stems from both a  
122        scarcity of qualified staff available in maternity settings to interpret perianal imaging,  
123        and the challenging nature of accurate image interpretation in the immediate hours  
124        after birth, when the area is often swollen, blood-filled, and secreting fluids<sup>16</sup>, further  
125        complicating accurate assessment.

126        Nonetheless, as highlighted in a Cochrane review<sup>17</sup>, EAUS shows value in the  
127        obstetric setting; when used immediately after childbirth, before perineal repair, it can  
128        reduce the rate of severe FI at 6-month follow-up. Over the past decade,  
129        transperineal ultrasound (TPUS) has shown promise as an alternative to EAUS for  
130        identifying OASI, demonstrating good correlation with EAUS results<sup>18,19</sup>. Studies  
131        indicate that TPUS, when used immediately postpartum and prior to sphincter repair  
132        (if OASI is detected), can identify more OASIs than digital rectal examination alone<sup>20</sup>.  
133        However, EAUS still remains the most precise imaging modality available<sup>19</sup>.

134        To address these clinical gaps, the challenge of developing a novel device - using  
135        electric impedance spectroscopy technique has been taken up as the latter is an  
136        established physical marker of biostructure/tissue condition<sup>21,22</sup>, already successfully

137 used in other medical applications<sup>23-26</sup>. This technique applies a sinusoidal electrical  
138 current below the sensation threshold to the body at various frequencies, measuring  
139 the impedance response to infer tissue condition. To date, no known experience  
140 exists using impedance spectroscopy for perianal diagnostics. A proof-of-concept  
141 study involving 22 patients, followed by two pilot clinical studies using prototype  
142 devices on a total of 69 postpartum women, demonstrated the validity of this  
143 method<sup>27-30</sup>. Due to subtle differences in impedance values between normal and  
144 injured tissue, high sensitivity and specificity were achieved only through the  
145 application of nonlinear machine learning (ML) algorithms for test interpretation.  
146 Prototypes of such device, called the ONIRY system, with the ML module gradually  
147 trained with the clinical data collected, were designed and developed<sup>27,28</sup>. The overall  
148 concept for this system was to serve as a rapid detection method for OASI that could  
149 be applied in early postpartum period.  
150 This study aims to evaluate the clinical performance and safety of the ONIRY  
151 system—a rapid OASI detection device incorporating impedance spectroscopy and  
152 ML—against EAUS as the reference diagnostic method, following re-training of the  
153 ML model on a larger, balanced postpartum population.

154

## 155 **2. Materials and Methods**

156

157 A prospective, comparative, multicenter, international clinical study was designed,  
158 composed of two parts: the clinical conduct (Part I) and modelling and ML (Part II).  
159 Part I of the study was conducted from 2021 to 2022 at five European centers in  
160 Czech Republic, Slovakia, Poland, and Spain. The study design and conduct were in  
161 line with the Good Clinical Practice guidelines for medical device studies (ISO  
162 14155:2020). All approvals by the national regulatory authorities as well as positive  
163 opinions by the ethics committees, per local regulations, were obtained prior to study  
164 initiation. Written informed consent was collected from each study participant before  
165 enrolment. The study was registered at ClinicalTrials.gov under NCT04903977.

166

### 167 **Study design**

168 The study was designed to enroll a total of approximately 150 women between 18  
169 and 49 years old, primiparous, or multiparous, from the first moments up to 8 weeks  
170 after vaginal (spontaneous or assisted) delivery of a singleton, live fetus, in any

171 presentation, in gestational week 34 or higher. All inclusion and exclusion criteria are  
172 listed in **Supporting Information S1**, along with the detailed study plan.

173 Three study groups were pre-defined, with fixed numbers of participants enrolled as  
174 to ensure generation of balanced data from women with and without OASI.  
175 Participants were initially enrolled in these groups based on the evaluation made  
176 immediately after delivery according to the 4-degree perineal tears scale<sup>31</sup>:  
177 approximately 30 women were planned for group A (no visible perineal tear),  
178 approximately 60 for group B (clinically detectable first- or second-degree perineal  
179 tear, including episiotomy), and approximately 60 for group C (clinically detectable  
180 third- or fourth-degree perineal tear, involving anal sphincters, regardless of primary  
181 repair. Specifically, including women with pre-existing primary repairs in Group C was  
182 intentional and considered necessary for ML training purposes, as muscle tissue that  
183 has been approximated by sutures differs from healthy tissue and should be  
184 distinguishable. Furthermore, even after initial sphincter repair, the sphincters'  
185 integrity may remain compromised (in 40-71% of cases) if their continuity is not fully  
186 restored<sup>32,33</sup>.

187 The study duration for each participant was from 2 days up to 5 weeks and included  
188 3 study visits. The first visit, occurring anytime from the immediate postpartum period  
189 up to 8 weeks post-delivery, involved the collection of medical history, including  
190 pregnancy and birth details, a comprehensive physical examination with proctological  
191 and gynaecological assessment, a 12-lead electrocardiogram (ECG) recording, and  
192 an evaluation of clinical FI symptoms using the Wexner score. At this initial visit,  
193 three dimensional (3-D) EAUS was also performed, serving as the reference  
194 diagnostic method and as the final tool for study group allocation.

195 Following such allocation (per EAUS-based OASIS classification<sup>34,35</sup>), participants  
196 underwent impedance spectroscopy using the ONIRY system at the second visit,  
197 which took place on the same day as the first visit or up to 7 days later. A web-based  
198 application was utilized to provide preliminary test interpretation, allowing the  
199 operator to experience an immediate OASI detection result from the ONIRY system  
200 (indicating either OASI detected or not detected). These preliminary interpretations  
201 were generated from an ML model trained on data from previous pilot studies, which  
202 could differ from the final interpretation based on the refined ML model trained during  
203 Part II of this study.

204 To explore the reproducibility of impedance measurements, two consecutive  
205 measurement runs were conducted per participant. An arbitrary reproducibility  
206 criterion was applied, whereby any difference greater than 1 k $\Omega$  at the frequency of 1  
207 kHz between the first and second runs was noted as a discrepancy.

208 A 12-lead ECG was repeated immediately after impedance measurement with the  
209 ONIRY system. Faecal calprotectin levels and blood morphology parameters were  
210 also measured to assess any correlation with tissue electrical impedance results. At  
211 the third study visit, which occurred between 0 and 28 days after the second visit,  
212 anal sphincter function was evaluated using high-resolution anorectal manometry.  
213 This procedure was optional, depending on availability at each study site. Vital signs  
214 were assessed at each study visit to monitor participant safety throughout. The  
215 sequence of study procedures is summarized in Figure 1.

216 Due to the nature of the study design, no blinding was deemed feasible. However, it  
217 was not considered essential for maintaining objectivity of study outcomes, as the  
218 preliminary interpretation of impedance measurements displayed by the ONIRY  
219 system was generated independently based on the ML model trained in prior pilot  
220 studies. This interpretation was thus uninfluenced by the test operator and unaffected  
221 by knowledge of the EAUS results at study entry. To further minimize any potential  
222 bias associated with using EAUS as the primary reference method, a specific  
223 technical control measure ensured that the ONIRY examination could only proceed  
224 once the EAUS results and interpretation were finalized and entered into the  
225 electronic Case Report Form.

226

227 Study endpoints

228 The diagnostic outcome of the ONIRY examination compared to 3-D EAUS assessed  
229 using the OASIS classification was set as primary endpoint and used for the  
230 conclusion on the diagnostic performance of the ONIRY system (following the  
231 application of the ML algorithms re-trained in Part II of the study). For the EAUS-  
232 based Diagnostic Outcome, OASI was considered detected as long as any depth,  
233 length, or circumference range of either anal sphincter (external or internal) was  
234 captured (score >2 by OASIS classification). OASI was considered detected if any  
235 depth, length, or circumferential involvement of either the external or internal anal  
236 sphincter was observed (OASIS classification score >2).



237 Secondary endpoints related to diagnostic performance assessed in this study,  
238 including Diagnostic Outcomes using other reference methods such as digital rectal  
239 examination and high-resolution anorectal manometry, were used for respective ML  
240 models construction but are not included in this report.

241 Adverse Events (AE) were recorded for each participant from the time of enrolment  
242 until the last study visit.

243

#### 244 **Impedance spectroscopy system**

245 Impedance spectroscopy was performed on each study participant using the ONIRY  
246 system, which consists of three components: the impedance spectrometer, the  
247 endoanal probe, and the ML module. Note that ONIRY is a proprietary name, not an  
248 abbreviation. The spectrometer generates a sinusoidal current in the 1-100 kHz  
249 frequency range with an amplitude below sensation and pain thresholds, enabling  
250 tissue impedance measurement.

251 The endoanal probe, made from biocompatible, rigid plastic, measures 12 mm in  
252 diameter at the electrode site (with a head diameter of up to 19 mm) and contains 8  
253 stainless steel electrodes. These electrodes allow the measurement of impedance  
254 modulus, phase shift, resistance, and reactance within the perianal area. The probe  
255 also features a handle with a positioning marker to ensure correct placement in the  
256 anal canal (see Figure 2).

257 During examination, the probe is inserted into the anal canal for approximately one  
258 minute, remaining stationary throughout the measurement. The examination is  
259 performed with the patient in a supine position or lying on her left side with knees  
260 flexed, depending on operator preference (see Figure 3).

261 The spectrometer captures raw impedance data through the endoanal probe, which  
262 are then processed to determine statistical parameters for various frequency sub-  
263 compartments. These processed parameters serve as an input vector for the ML  
264 model, which is trained to analyze subtle differences in impedance patterns that  
265 distinguish injured tissue from healthy (or repaired) tissue. The ML model processes  
266 these patterns across a complex multi-dimensional dataset, refining its analysis with  
267 each frequency parameter to classify tissue integrity accurately.

268 Following the impedance measurement, the ONIRY system, supported by the ML  
269 model, determines whether OASI is present and outputs either “PASS” (no OASI  
270 detected) or “REFER” (OASI detected). The ML algorithm is also equipped with



271 control protocols that prevent measurement if improper probe placement is detected,  
272 including misalignment or incomplete insertion. The complete ONIRY system setup is  
273 illustrated in Figure 4.

274

### 275 **Endoanal ultrasound**

276 3-D EAUS, although not typically performed immediately postpartum, remains the  
277 only objective, high-precision method for detecting OASI and is thus the gold  
278 standard for OASI diagnosis. Despite practical limitations, EAUS was selected as the  
279 optimal reference standard for obstetric care in this study to train the ML model and  
280 achieve the highest possible diagnostic efficiency for the ONIRY system.

281 All EAUS examinations were conducted by experts with at least 20 years of  
282 experience in perianal imaging. Imaging included assessments of the external and  
283 internal anal sphincters as well as the puborectalis muscle. To ensure consistency,  
284 the 3-D EAUS procedures followed a standardized study-specific protocol (detailed in  
285 a study manual implemented across all centres). The 3-D EAUS results were  
286 interpreted according to the OASIS classification<sup>32,33</sup> for the primary endpoint.

287 In addition to the OASIS classification, each EAUS examination was assessed using  
288 the Starck scale<sup>36</sup> and the Norderval scale<sup>37</sup>, well-regarded semi-quantitative scoring  
289 systems established for EAUS. These alternative assessments allowed for  
290 exploratory analyses to determine whether substituting these scores for the OASIS  
291 classification could enhance the ONIRY system's diagnostic performance.

292 Corresponding ML models were also constructed based on these additional scores,  
293 allowing for further evaluation in exploratory studies.

294

### 295 **Statistical analysis**

296 For calculation of diagnostic performance metrics for ONIRY, the Diagnostic  
297 Outcome was determined separately for each performance endpoint, as:

- 298 1. Diagnostic Success: presence (True Positive) or absence (True Negative) of  
299 OASI consistently detected by the ONIRY examination and the reference  
300 diagnostic method, or
- 301 2. Diagnostic Failure: mismatch (False Positive or False Negative) of the OASI  
302 detection by the ONIRY examination and the reference diagnostic method, or
- 303 3. Diagnostic Indeterminate: no ONIRY or reference diagnostic method result  
304 available or interpretable.

305 For the primary endpoint, 3-D EAUS result (by OASIS classification) served as the  
306 reference method. Evaluation of the exploratory endpoints (diagnostic outcome with  
307 3-D EAUS evaluated with Starck<sup>36</sup> or Norderval<sup>37</sup> scales) was performed accordingly.  
308 Accuracies were defined as Diagnostic Successes/Total, sensitivities as True  
309 Positives/(True positives + False Negatives), and specificities as True  
310 Negatives/(True Negatives + False Positives). Also, the F1 score, and Matthew's  
311 Correlation Coefficient (MCC)<sup>38</sup> were calculated.

312 The safety profile of ONIRY system was evaluated using descriptive statistics.

313

### 314 **Data analysis (Part I) and Machine Learning modelling (Part II)**

315 Details of the algorithm used to interpret impedance examination results in Part I of  
316 the study, based on the preliminary ML model trained with data from two prior pilot  
317 clinical studies, are provided in Supporting Information S2. In Part II, in silico analyses  
318 included exploratory data analysis, dimensionality reduction, ML modeling, and final  
319 performance evaluation with 10-fold cross-validation; full methodological details are  
320 available in Supporting Information S3.

321 For the per-patient reproducibility analysis, if a significant discrepancy was found  
322 between the two impedance measurement runs from the same participant, the  
323 second measurement run was excluded from the analysis dataset used to develop  
324 the final algorithm (note: in real-world application, a single measurement run will be  
325 performed per patient).

326

## 327 **3. Results**

328

### 329 **Study population**

330 Of one hundred fifty-three participants screened, 152 were enrolled (1 screening  
331 failure). Following 3-D EAUS with OASIS classification, participants were allocated  
332 as follows: 30 in Group A (no visible perineal tear and no OASI), 61 in Group B  
333 (clinically detectable first- or second-degree perineal tear but no OASI), and 61 in  
334 Group C (clinically detectable third- or fourth-degree perineal tear with OASI).

335 Table 1 presents the key characteristics of the study population by group and overall.

336

337 Fifteen participants discontinued the study prematurely: 3 in Group A (10.0%; 3/10),  
338 10 in Group B (16.4%; 10/61), and 2 in Group C (3.3%; 2/61), with all

339 discontinuations occurring between the second and last visits. Thus, as all these  
340 participants had undergone both EAUS and impedance examinations, they were  
341 included in the Clinically Evaluated Population.

342

### 343 **Part I (Clinical conduct)**

344 All enrolled participants were evaluable for the primary endpoint as well as safety  
345 outcomes. Diagnostic Success or Failure was determined for 147 participants. For  
346 the remaining 5 participants (enrolled at 3 study sites), the Diagnostic Outcome was  
347 Indeterminate due to electric impedance measurements falling outside the  
348 spectrometer's expected range, unrelated to the anal canal tissue impedance profile.  
349 Thus, the primary endpoint was assessed in 60 participants with OASI (Group C) and  
350 87 participants without OASI (Groups A and B).

351 Using the preliminary ML model trained on data from prior pilot studies, diagnostic  
352 performance metrics were observed as follows: sensitivity of 66.7%, specificity of  
353 57.5%, accuracy of 61.2%, F1 score of 0.58, and MCC of 0.24 (see **Supporting**  
354 **Information S4** for detailed metrics).

355 No significant correlation was found between faecal calprotectin levels and the  
356 results of either EAUS or ONIRY examinations.

357

### 358 **Part II (*In silico* Machine Learning modelling)**

359 The ultimate performance analysis was conducted with an ML model trained on data  
360 generated in Part I of this study, incorporating both raw impedance data from ONIRY  
361 and OASI detection results from EAUS as a reference standard. A total of 298  
362 impedance measurements meeting quality requirements (see **Supporting**  
363 **Information S5**) were included: 122 from participants with OASI (group C) and 176  
364 from participants without OASI (group A and B). Following exploratory data analysis,  
365 dimensionality reduction, and modelling using artificial neural networks, diagnostic  
366 metrics showed marked improvement, achieving sensitivity slightly above 90% and  
367 specificity slightly below 85%, as presented in Table 2 (with individual cross-  
368 validation statistics available in **Supporting Information S6**).

369 The exploratory per-patient reproducibility analysis from Part I revealed  
370 discrepancies between the two impedance measurement runs in 19 participants  
371 (12.8%). In exploratory analyses using alternative EAUS classification scores,  
372 performance metrics based on the Starck<sup>36</sup> and Norderval<sup>37</sup> classifications were

373 assessed. Using the Starck classification sensitivity was 83.8%, specificity 88.1%,  
374 accuracy 86.4 %, F1 score 0.83, and MCC 0.73. For the Norderval classification,  
375 sensitivity reached 84.3%, specificity 89.3 %, accuracy 87.4 %, F1 score 0.84, and  
376 MCC 0.74.

377

### 378 **Safety results**

379 No deaths, serious AE, or AE leading to premature withdrawal from the study were  
380 reported during the study conduct. A total of 22 AE were observed in 21 participants:  
381 4 AE in group A, 5 in group B, and 13 in group C. All AE occurred after the ONIRY  
382 examinations. Four types of AE were reported by more than one participant, with the  
383 most common being nasopharyngitis (2.6%, 4/152) and COVID-19 (2.6%, 4/152).

384 None of AE were considered related to the ONIRY system, and no adverse device  
385 effect were reported.

386 No trends were observed in ECG parameters when comparing baseline recordings  
387 (pre-ONIRY examination) with post-ONIRY recordings. Additionally, no clinically  
388 significant cardiovascular abnormalities were recorded as an AE following ONIRY  
389 application.

390

### 391 **Post-hoc analysis**

392 Following exploratory analyses of per-patient reproducibility in impedance  
393 measurements, 19 measurement files (each from the second measurement per  
394 relevant patient) were excluded from the final ML model for the ONIRY system,  
395 resulting in a “limited dataset” comprising 93.6% (279/298) of the original dataset.

396 The limited dataset included 279 impedance measurements: 117 corresponding to  
397 OASI and 162 with no OASI. A post-hoc performance analysis using cross-  
398 validations on this refined ML model demonstrated diagnostic metrics with both  
399 sensitivity and specificity of ONIRY system at 90.0%, as detailed in Table 3  
400 (individual cross-validation statistics are provided in **Supporting Information S6**).

401

## 402 **4. Discussion**

403

### 404 **Key Findings**

405 The ML-supported impedance spectroscopy using ONIRY system demonstrated high  
406 diagnostic performance for detecting OASI when compared to EAUS (per OASIS

407 classification) in the study population enriched with OASI cases (40.1%, 61/152 of  
408 enrolled women). Following re-training of the ML model in Part II with data generated  
409 in Part I, the system achieved an accuracy of  $87.0 \pm 0.5\%$ , with a sensitivity of  $90.6 \pm$   
410  $2.0\%$ , and specificity of  $84.6\% \pm 1.9\%$ .

411 After refining the dataset by excluding 6.4% (19/298) of impedance measurements  
412 due to measurement discrepancies, the optimized ML model intended for the final  
413 ONIRY system reached an accuracy of  $90.0 \pm 0.4\%$ , with both sensitivity and  
414 specificity at 90% (sensitivity  $90.0 \pm 1.2\%$ , specificity  $90.0 \pm 0.7\%$ ). This substantial  
415 diagnostic improvement highlights the benefit of ML-supported analysis of impedance  
416 data for OASI detection, achieved through re-training with a larger, well-balanced  
417 dataset (OASI vs. no OASI) compared to initial pilot studies.

418 The intermediary performance observed in Part I (accuracy of 61.2%), which used an  
419 ML model trained only on smaller, less balanced pilot datasets (with fewer OASI  
420 cases)<sup>27-30</sup>, underscores the critical role of dataset size and balance in enhancing  
421 diagnostic accuracy. The improved performance of the final ML model in this study  
422 likely reflects the broader variability of raw impedance data collected and the higher  
423 representation of OASI cases, which better supported model optimization.

424 Exploratory analyses using alternative EAUS reference methods (Starck and  
425 Norderval classifications with corresponding alternative ML models) did not  
426 demonstrate additional diagnostic advantages over the primary performance metrics.

427 No safety concerns were identified in association with the ONIRY system.

428

### 429 **Clinical Implications**

430 Currently, no rapid easy-to-use diagnostic tool is available in maternity care settings  
431 for whole obstetric team, beyond digital rectal examination. Although DRE is a  
432 standard procedure, present in most obstetric guidelines<sup>39-43</sup>, it has significant  
433 limitations due to its subjective nature with sensitivity for detecting OASI heavily  
434 dependent on the examiner's experience<sup>44-46</sup>. Hence the crucial importance of  
435 practical training and programmes dedicated to midwives and obstetricians aimed at  
436 increasing the OASI detection rate and the effectiveness of its management<sup>47,48</sup>.

437 Although EAUS, as the gold standard for detecting OASI, is rarely feasible in the  
438 early postpartum period due to resource and operational constraints, as it requires  
439 expert handling and is challenging to interpret images in the immediate postpartum  
440 hours<sup>49</sup> - its value in accurately detecting even minor injuries is undeniable. Typically,

441 EAUS is more suitable later in the postpartum period, around 6-8 weeks after  
442 delivery, when patients return with symptoms of incontinence or perineal wound  
443 healing issues, which are current indications for an EAUS assessment.

444 As demonstrated in this study, the ML-supported impedance spectroscopy, providing  
445 a straightforward interpretation of the perianal tissue impedance results, has shown  
446 high diagnostic accuracy, achieving approximately 90% sensitivity and specificity  
447 (compared with 3-D EAUS, per OASIS classification, the only available objective  
448 reference) during the whole postpartum period (from the first hours up to 8 weeks  
449 after delivery). This level of performance suggests that the impedance spectroscopy  
450 using ONIRY could serve as an effective adjunct to DRE, particularly in settings  
451 where EAUS is unavailable or limited for initial detection. Since a single  
452 measurement run of the impedance (including the automated analysis and  
453 presentation of the results) takes less than a minute, it may have an acceptance  
454 potential for obstetric practice. The use of such diagnostic tool within the first 24  
455 hours after delivery, could provide the greatest clinical benefit by enabling timely  
456 primary repair of OASI, thereby reducing long-term complications.

457 A systematic review by Walsh et al.<sup>17</sup> suggests, that performing EAUS immediately  
458 after delivery, before any perineal repair, significantly increases OASI detection rates  
459 and consequently the rate of primary sphincter repair. Additionally, EAUS conducted  
460 prior to perineal repair may reduce the risk of developing severe faecal incontinence.  
461 This finding highlights a critical gap in routine obstetric practice, where the absence  
462 of efficient tools for OASI detection may prevent timely intervention.

463 Moreover, impedance spectroscopy could be valuable also in the following weeks  
464 postpartum. By bridging the gap until EAUS becomes feasible, the use of ONIRY  
465 could expand diagnostic capabilities to include asymptomatic and occult OASI cases  
466 that would otherwise go undetected until FI symptoms appear. Proper diagnosis  
467 within this time window, even if too late for primary repair, could allow for the  
468 identification of patients who require ongoing monitoring or targeted rehabilitation for  
469 promoting quicker recovery and minimizing the risk of FI.

470 What favours EAUS as the diagnostic method is the possibility to separately visualise  
471 both external and internal anal sphincters. This enables targeted repairs of the  
472 external sphincter alone or combined repair of both sphincters, making EAUS an  
473 essential tool for elective diagnosis before any delayed sphincter repair.

474



475 Therefore, there is an unmet need for establishing an effective, noninvasive or  
476 minimally invasive method of detecting OASI for maternity care facilities and  
477 midwifery practices, where reliable diagnostic tools are often unavailable. Ideally,  
478 such a method would function as a screening tool with clear criteria for extended  
479 diagnosis, tailored to the specific needs and resources of the facility. If impedance  
480 spectroscopy proves successful in clinical practice, it could not only enhance  
481 postpartum management in maternity care settings but also facilitate timely referrals  
482 to specialist surgical units, ultimately improving long-term outcomes for women  
483 affected by OASI. Because ONIRY provides automated, rapid interpretation of  
484 impedance data in a simple binary output (PASS/REFER), it has potential for routine  
485 use by a wider range of maternity care staff, even those with minimal specialized  
486 training.

487 No risks or safety concerns have been identified for the electric impedance-based  
488 method for OASI detection, in particular with the use of the ONIRY system. From the  
489 performance standpoint, the following contraindications for ONIRY examination could  
490 be considered: any implants in the pelvic area, major malformations of the perianal  
491 area, or coincident connection with any electronic medical or surgical equipment or  
492 device generating alternating current above 1 kHz.

493 This study represents the first evaluation of impedance spectroscopy for OASI  
494 detection in a broader postpartum population. Future studies are planned, focusing  
495 on the critical time window within the first few hours postpartum, to further refine the  
496 ML model's efficacy at a point when early OASI detection offers the most benefit—  
497 allowing for timely primary repair.

498

### 499 **Limitations and research implications**

500 This study has several limitations.

501 Firstly, the study population was selectively enriched with OASI cases (Group C,  
502 n=61) to improve the dataset's internal balance and increase the robustness of the  
503 ML model. This approach, common in AI and ML tool development<sup>50</sup>, ensures higher  
504 internal data coherence, enhancing the model's effectiveness within a controlled  
505 dataset structure.

506 Secondly, the primary endpoint focused on OASI detection rather than a clinically  
507 meaningful outcome, such as faecal incontinence (FI) or quality of life measures. The  
508 surrogate endpoint was chosen to facilitate a clear comparison between the ONIRY



509 system and 3-D EAUS, the gold standard, within a manageable timeframe.  
510 Establishing a clinically meaningful benefit for the ONIRY system would require  
511 extended, long-term follow-up studies, spanning years to account for the gradual  
512 development of FI in women with OASI. The potential benefit of rapid OASI detection  
513 hinges on the availability and prompt implementation of therapeutic measures,  
514 notably primary sphincter repair within the optimal 8–12 hour window after  
515 delivery<sup>34,35, 39-43</sup>.

516 Another limitation arises from the high proportion of participants in Group C (52 out of  
517 61) who had already undergone primary sphincter repair before study enrolment.  
518 This factor may have influenced impedance spectroscopy results toward readings  
519 typical of non-injured cases. However, given that the ML models were trained with  
520 this dataset, it is plausible that the ONIRY system's performance could be even  
521 greater in real-world use, where OASI detection would ideally occur before repair.  
522 Newly injured, unrepaired sphincters are likely to present a clearer contrast in  
523 impedance measurements compared to tissues that have already undergone repair.  
524 The difference in median time between delivery and ONIRY examination across  
525 groups (28 days in Group C, versus 2 and 11 days in Groups A and B, respectively)  
526 reflects challenges encountered in recruiting cases of 3rd and 4th degree perineal  
527 tears (Group C) in this challenging study design. This delay also mirrors the lengthy  
528 diagnostic and therapeutic pathway typically experienced by OASI patients in current  
529 practice.

530 In addition, the inclusion of participants with previously repaired OASI in Group C  
531 captures clinical scenarios where underdiagnosed or inadequately repaired OASIs  
532 persist despite initial repair. Literature indicates that primary repair is incomplete in  
533 over 30% of cases, often due to the limited experience of the operator or the  
534 emergency nature of the procedure itself, usually performed during on-call hours<sup>51-53</sup>.  
535 Thus, classifying cases with recent repairs in the "injured" group is methodologically  
536 sound and aligns with real-world conditions.

537

538 Finally, no detailed data were captured for multiparous women on potentially  
539 undetected OASIs from prior deliveries. This could theoretically result in normal  
540 impedance readings due to tissue healing, despite persistent EAUS abnormalities.  
541 Conversely, abnormal impedance with normal EAUS could indicate fibrosis from a  
542 prior injury.

543

## 544 **5. Conclusions**

545 The ML-assisted impedance spectroscopy demonstrated safety and high diagnostic  
546 accuracy, achieving approximately 90% sensitivity and specificity in detecting  
547 obstetric anal sphincter injuries in women after vaginal birth. This approach could  
548 effectively complement digital rectal examination in obstetric settings, supporting  
549 timely postpartum care.

550

## 551 **Ethics Statement**

552 The study was approved by the ethics committees respective for each study site: on  
553 19 March 2021 by Ethics Committee of the Institute for Maternal and Child Care (no.  
554 1/19.03.2021), on 27 April 2021 by Ethics Committee for Research with Medicines of  
555 the Health Areas of León and Bierzo (no. 2186), on 9 June 2021 by Ethics  
556 Committee of the University Hospital of Brno (no. 47/21Zdrav.), on 14 October 2021  
557 by Ethics Committee at the Regional Medical Chamber in Warsaw (no. KB/1362/21)  
558 and on 25 July 2022 by Ethics Committee at AGEL Hospital Košice-Šaca (no. ONIRY  
559 3/2/2020).

560

## 561 **Author contributions**

562 Conceptualization: KB, MM, PI  
563 Data curation: KB, MM, MR, KK, PI  
564 Formal analysis: MM, MR, KK  
565 Funding acquisition: KB, MM  
566 Investigation: HH, PJ, MUM, ED, EGD  
567 Methodology: KB, MM, MR, KK, PI  
568 Project administration: KB, MM  
569 Resources: HH, PJ, MUM, ED, EGD  
570 Software: MM, MR, KK  
571 Supervision: KB, MM, PI, CR, AS  
572 Validation: MM, PI  
573 Visualization: MR, KK  
574 Writing - original draft: KB, MM, MR, KK, PI  
575 Writing - review & editing: All co-authors

576

577 **References**

- 578 [1] Sideris M, McCaughey T, Hanrahan JG, Arroyo-Manzano D, Zamora J, Jha S et  
579 al. Risk of obstetric anal sphincter injuries (OASIS) and anal incontinence: a  
580 meta-analysis. *European Journal of Obstetrics & Gynecology and Reproductive*  
581 *Biology* 2020;252,303-312. Doi: 10.1016/j.ejogrb.2020.06.048
- 582 [2] Gurol-Urganci I, Cromwell DA, Edozien LC, Mahmood TA, Adams EJ,  
583 Richmond DH et al. Third- and fourth-degree perineal tears among primiparous  
584 women in England between 2000 and 2012: time trends and risk factors. *BJOG*  
585 2013;120(12):1516-25. doi: 10.1111/1471-0528.12363
- 586 [3] Dudding TC, Vaizey CJ, Kamm MA. Obstetric anal sphincter injury: incidence,  
587 risk factors, and management. *Ann Surg* 2008;247(2):224-37.  
588 doi:10.1097/SLA.0b013e318142cdf4
- 589 [4] Orlando A., Thomas G., Murphy J. i wsp. A systematic review and a meta-  
590 analysis on the incidence of obstetric anal sphincter injuries during vaginal  
591 delivery. *Colorectal. Dis.* 2024; 26: 227–242.
- 592 [5] Everist R, Burrell M, Mallitt KA, Parkin K, Patton V, Karantanis E Postpartum  
593 anal incontinence in women with and without obstetric anal sphincter injuries.  
594 *Int Urogynecol J.* 2020 Nov;31(11):2269-2275. doi: 10.1007/s00192-020-04267-  
595 8. Epub 2020 Mar 10.
- 596 [6] Richter HE, Nager CW, Burgio KL, Whitworth R, Weidner AC, Schaffer J,  
597 Zyczynski HM, Norton P, Jelovsek JE, Meikle SF, Spino C, Gantz M, Graziano  
598 S, Brubaker L; NICHD Pelvic Floor Disorders Network. Incidence and Predictors  
599 of Anal Incontinence After Obstetric Anal Sphincter Injury in Primiparous  
600 Women. *Female Pelvic Med Reconstr Surg.* 2015;21(4):182-9. doi:  
601 10.1097/SPV.0000000000000160
- 602 [7] Pollack J, Nordenstam J, Brismar S, Lopez A, Altman D, Zetterstrom J. Anal  
603 incontinence after vaginal delivery: a five-year prospective cohort study. *Obstet*  
604 *Gynecol.* 2004;104(6):1397-402. doi: 10.1097/01.AOG.0000147597.45349.e8.
- 605 [8] Jangö H, Langhoff-Roos J, Rosthøj S, Sakse A Recurrent obstetric anal  
606 sphincter injury and the risk of long-term anal incontinence *Am J Obstet*  
607 *Gynecol.* 2017 Jun;216(6):610.e1-610.e8. doi: 10.1016/j.ajog.2017.02.010.  
608 Epub 2017 Feb 13.

- 609 [9] Nilsson IE, Åkervall S, Molin M, Milsom I, Gyhagen M. Symptoms of fecal  
610 incontinence two decades after no, one, or two obstetrical anal sphincter  
611 injuries. *American Journal of Obstetrics and Gynecology*, 2021;224(3), 276-e1.
- 612 [10] Guzmán Rojas RA, Salvesen K Å, Volløyhaug I. Anal sphincter defects and  
613 fecal incontinence 15–24 years after first delivery: a cross-sectional study.  
614 *Ultrasound Obstet Gynecol* 2018; 51(5): 677-683. doi: 10.1002/uog.18827
- 615 [11] Meyer I, Richter HE. Impact of fecal incontinence and its treatment on quality of  
616 life in women. *Women's Health (London)*, 2015; 11(2): 225-238. doi:  
617 10.2217/WHE.14.66
- 618 [12] Jangö H, Langhoff-Roos J, Rosthøj S, et al. Wexner score and quality of life in  
619 women with obstetric anal sphincter injury. *International Urogynecology Journal*,  
620 2020; 31(6): 1115-1121. doi: 10.1007/s00192-019-04134-1
- 621 [13] Lo J, Osterweil P, Li H, Mori T, Eden KB, Guise JM. Quality of life in women  
622 with postpartum anal incontinence. *Obstet Gynecol*. 2010;115(4):809-814. doi:  
623 10.1097/AOG.0b013e3181d4160d.
- 624 [14] Santoro GA, Wieczorek AP, Dietz HP, Mellgren A, Sultan AH, Shobeiri SA,  
625 Stankiewicz A, Bartram C. State of the art: an integrated approach to pelvic  
626 floor ultrasonography. *Ultrasound Obstet Gynecol* 2011; 37: 381–396.
- 627 [15] Albuquerque A. Endoanal ultrasonography in fecal incontinence: Current and  
628 future perspectives. *World J Gastrointest Endosc* 2015;7(6):575-581. doi:  
629 10.4253/wjge.v7.i6.575.
- 630 [16] Sioutis D, Thakar R, Sultan AH. Overdiagnosis and rising rate of obstetric anal  
631 sphincter injuries (OASIS): time for reappraisal. *Ultrasound Obstet Gynecol*  
632 2017;50:642-647. doi: 10.1002/uog.17306
- 633 [17] Walsh KA and Grivell RM. Use of endoanal ultrasound for reducing the risk of  
634 complications related to anal sphincter injury after vaginal birth. *Cochrane*  
635 *Database of Systematic Reviews* 2015;(10):CD010826. doi:  
636 10.1002/14651858.CD010826.pub2
- 637 [18] Ignell C, Örnö AK, Stuart A Correlations of obstetric anal sphincter injury  
638 (OASIS) grade, specific symptoms of anal incontinence, and measurements by  
639 endoanal and transperineal ultrasound. *J Ultrasound* 2021;24(3):261-267. doi:  
640 10.1007/s40477-020-00485-4.
- 641 [19] Taithongchai A, van Gruting IMA, Volløyhaug I, Arendsen LP, Sultan AH,  
642 Thakar R. Comparing the diagnostic accuracy of 3 ultrasound modalities for  
643 diagnosing obstetric anal sphincter injuries. *Am J Obstet Gynecol*. 2019  
644 Aug;221(2):134.e1-134.e9. doi: 10.1016/j.ajog.2019.04.009.
- 645 [20] Wong KW, Thakar R, Sultan AH, Andrews V. Can transperineal ultrasound  
646 improve the diagnosis of obstetric anal sphincter injuries? *Int Urogynecol J*.  
647 2022 Aug 2. doi: 10.1007/s00192-022-05290-7.
- 648 [21] Shiffman CA, Aaron R. Low-impedance localized measurements using standard  
649 bioelectrical impedance analysis instruments. *Ann NY Acad Sci* 2000;904:214–  
650 217. doi: 10.1111/j.1749-6632.2000.tb06453.x

- 651 [22] Aaron R, Shiffman CA. Using localized impedance measurements to study  
652 muscle changes in injury and disease. *Ann NY Acad Sci* 2000;904:171–180.  
653 doi: 10.1111/j.1749-6632.2000.tb06443.x
- 654 [23] Seward B, Rutkove MD, Aaron R, Shiffman CA. Localized bioimpedance  
655 analysis in the evaluation of neuromuscular disease. *Muscle Nerve*  
656 2002;25:390–397. doi: 10.1002/mus.10048
- 657 [24] Młyńczak M, Cybulski G. Decomposition of the cardiac and respiratory  
658 components from impedance pneumography signals. *Proc. of the 10th Int. Joint*  
659 *Conf. on Biomedical Engineering Systems and Technologies – Biodevices*  
660 2017;4:26-33. doi: 10.5220/0006107200260033
- 661 [25] Kushner RF, Schoeller DA. Estimation of total body water by bioelectrical  
662 impedance analysis. *Am J Clin Nutr* 1986;44(3):417-424. doi:  
663 10.1093/ajcn/44.3.417
- 664 [26] Tidy JA, Brown BH, Healey TJ, Daayana S, Martin M, Prendiville W et al.  
665 Accuracy of detection of high-grade cervical intraepithelial neoplasia using  
666 electrical impedance spectroscopy with colposcopy. *BJOG* 2013;120(4):400-10;  
667 discussion 410-1. doi: 10.1111/1471-0528.12096
- 668 [27] Młyńczak M, Borycka-Kiciak K, Uchman-Musielak M, Dziki A. Impedance  
669 Spectroscopy Method to Detect Pelvic Floor Muscle Damage - A Feasibility  
670 Study. In: *World Congress on Medical Physics and Biomedical Engineering*,  
671 Springer, Singapore, 2018;875–878. doi: 10.1007/978-981-10-9038-7\_161.
- 672 [28] Borycka-Kiciak K, Młyńczak M, Kiciak A, Pietrzak P, Dziki A. Non-invasive  
673 obstetric anal sphincter injury diagnostics using impedance spectroscopy.  
674 *Scientific Reports* 2019;9(7097):1–9. doi: 10.1038/s41598-019-43637-1.
- 675 [29] Młyńczak M, Rosoł M, Spinelli A, Dziki A, Wlazlak E, Surkont G, et al. Obstetric  
676 Anal Sphincter Injury Detection Using Impedance Spectroscopy with the ONIRY  
677 Probe; *Appl Sci.*; 2021; 11: 637; doi: 10.3390/app11020637.
- 678 [30] Borycka K, Młyńczak M, Rosoł M, Iwanowski P, Uchman-Musielak M, Mik M,  
679 Sudoł-Szopińska I, Herman H, Ratto C, Dziki A, Wlazlak E, Surkont G, Krzycka  
680 M, Pająk P, Spinelli A. Impedance spectroscopy for the diagnosis of obstetric  
681 anal sphincter injuries: the pilot experience; In: *15 Congress of the European*  
682 *Society of Gynecology*, 2023.
- 683 [31] Cunningham FG, Leveno KJ, Bloom SL, Hauth J, Rouse D, Spong C. *Williams*  
684 *obstetrics (23<sup>rd</sup> Edition)*, 2011. New York: McGraw-Hill Medical.

- 685 [32] Shek KL, Guzman-Rojas R, Dietz HP. Residual defects of the external anal  
686 sphincter following primary repair: an observational study using transperineal  
687 ultrasound. *Ultrasound Obstet Gynecol.* 2014;44(6):704-9. doi:  
688 10.1002/uog.13368.
- 689 [33] Gold S, Paquette J, Sobel M, Alarab M. Residual Defects of the Anal Sphincter  
690 Complex Following Primary Repair of Obstetrical Anal Sphincter Injuries at a  
691 Large Canadian Obstetrical Centre. *J Obstet Gynaecol Can.* 2021  
692 May;43(5):596-600. doi: 10.1016/j.jogc.2021.01.011.
- 693 [34] The Management of Third- and Fourth-Degree Perineal Tears: a Green-top  
694 Guideline No 29; Royal College of Obstetrician and Gynaecologists, London;  
695 2015
- 696 [35] Prevention and Management of Obstetric Lacerations at Vaginal Delivery.  
697 ACOG Practice Bulletin No. 165: American College of Obstetricians and  
698 Gynecologists' Committee on Practice Bulletins—Obstetrics. *Obstet Gynecol*  
699 2016;128(1):e1-e15. doi: 10.1097/AOG.0000000000001523
- 700 [36] Starck M, Bohe, M, Valentin L. Results of endosonographic imaging of the anal  
701 sphincter 2–7 days after primary repair of third or fourth-degree obstetric  
702 sphincter tears. *Ultrasound Obstet Gynecol.* 2003;22:609–615. doi:  
703 10.1002/uog.920
- 704 [37] Norderval S, Markskog A, Rossaak K, Vonen B. Correlation between anal  
705 sphincter defects and anal incontinence following obstetric sphincter tears:  
706 Assessment using scoring systems for sonographic classification of defects.  
707 *Ultrasound Obstet Gynecol* 2008;31: 78–84. doi: 10.1002/uog.5155
- 708 [38] Chicco D, Jurman G. The advantages of the Matthews correlation coefficient  
709 (MCC) over F1 score and accuracy in binary classification evaluation. *BMC*  
710 *genomics*, 2020;21, 1-13.
- 711 [39] Harvey MA, Pierce M, Walter JE, et al. Obstetrical Anal Sphincter Injuries  
712 (OASIS): Prevention, Recognition, and Repair. *Journal of Obstetrics and*  
713 *Gynaecology Canada.* 2015;37(12):1131-1148.  
714 doi:[https://doi.org/10.1016/S1701-2163\(16\)30081-0](https://doi.org/10.1016/S1701-2163(16)30081-0)
- 715 [40] Kropshofer S, T Aigmüller, Beilecke K, et al. Management of Third and Fourth-  
716 Degree Perineal Tears After Vaginal Birth. Guideline of the DGGG, OEGGG  
717 and SGGG (S2k-Level, AWMF Registry No. 015/079, December 2020).  
718 *Geburtshilfe Und Frauenheilkunde.* 2022;83(02):165-183.  
719 doi:<https://doi.org/10.1055/a-1933-2647>
- 720 [41] Department for Health and Wellbeing. South Australian Perinatal Practice  
721 Guideline - Third and fourth degree tear management 2018. Available from:



- 722 [www.sahealth.sa.gov.au/wps/wcm/connect/1faf87004eedec4db635b76a7ac0d6e4/Third+and+Fourth+Degree+Tear+Management\\_PPG\\_v5\\_1.pdf?MOD=AJPERES&CACHEID=ROOTWORKSPACE-1faf87004eedec4db635b76a7ac0d6e4-oc-RC8a](http://www.sahealth.sa.gov.au/wps/wcm/connect/1faf87004eedec4db635b76a7ac0d6e4/Third+and+Fourth+Degree+Tear+Management_PPG_v5_1.pdf?MOD=AJPERES&CACHEID=ROOTWORKSPACE-1faf87004eedec4db635b76a7ac0d6e4-oc-RC8a)
- 723
- 724
- 725
- 726 [42] Queensland Clinical Guidelines. Queensland clinical guidelines: Perineal Care
- 727 2023. Available from:
- 728 [https://www.health.qld.gov.au/\\_\\_data/assets/pdf\\_file/0022/142384/g-](https://www.health.qld.gov.au/__data/assets/pdf_file/0022/142384/g-pericare.pdf)
- 729 [pericare.pdf](https://www.health.qld.gov.au/__data/assets/pdf_file/0022/142384/g-pericare.pdf)
- 730 [43] Danish Association of Obstetrics and Gynaecology. Guideline for obstetric anal
- 731 sphincter injury (OASIS) 2019. Available from: [https://nfog.org/wp-](https://nfog.org/wp-content/uploads/2019/03/190313-obstetric-anal-sphincter-injury.pdf)
- 732 [content/uploads/2019/03/190313-obstetric-anal-sphincter-injury.pdf](https://nfog.org/wp-content/uploads/2019/03/190313-obstetric-anal-sphincter-injury.pdf)
- 733 [44] Jeppson, P. C., Paraiso, M. F. R., Jelovsek, J. E., & Barber, M. D. (2012).
- 734 Accuracy of the digital anal examination in women with fecal incontinence.
- 735 *International urogynecology journal*, 23, 765-768.
- 736 [45] Roper, J. C., Sultan, A. H., & Thakar, R. (2020). Diagnosis of perineal trauma:
- 737 getting it right first time. *British Journal of Midwifery*, 28(10), 710-717.
- 738 [46] Krissi H., Aviram A., Hirsch L. i wsp. Structured hands-on workshop decreases
- 739 the over-detection rate of obstetrical anal sphincter injuries. *Int. J. Colorectal*
- 740 *Dis.* 2016; 31: 45–50.
- 741 [47] De Meutter L, van Heesewijk AD, van der Woerd-Elting I, de Leeuw JW.
- 742 Implementation of a perineal support programme for reduction of the incidence
- 743 of obstetric anal sphincter injuries and the effect of non-compliance. *Eur J*
- 744 *Obstet Gynecol Reprod Biol* 2018;230:119-123. doi:
- 745 10.1016/j.ejogrb.2018.09.021
- 746 [48] Bidwell P, Thakar R, Sevdalis N, Silverton L, Novis V, Hellyer A et al. A multi-
- 747 centre quality improvement project to reduce the incidence of obstetric anal
- 748 sphincter injury (OASI): study protocol. *BMC Pregnancy Childbirth* 2018 Aug
- 749 13;18(1):331. doi: 10.1186/s12884-018-1965-0
- 750 [49] Huber M, Larsson C, Harrysson M, et al. Use of endoanal ultrasound in
- 751 detecting obstetric anal sphincter injury immediately after birth. *Acta Obstet*
- 752 *Gynecol Scand.* 2023; 102: 389-395. doi:10.1111/aogs.14514
- 753 [50] Batista GEAPA, Prati RC, Monard MC. A study of the behavior of several
- 754 methods for balancing machine learning training data. *ACM SIGKDD*
- 755 *Explorations Newsletter.* 2004;6(1):20-29.
- 756 doi:<https://doi.org/10.1145/1007730.1007735>
- 757 [51] Roper JC, Thakar R, Sultan AH. Under-classified obstetric anal sphincter
- 758 injuries. *Int Urogynecol J.* 2022 Jun;33(6):1473-1479. doi: 10.1007/s00192-021-
- 759 05051-y. Epub 2022 Feb 12



- 760 [52] O'Leary BD, Kelly L, Fitzpatrick M, Keane DP. Underdiagnosis of internal anal  
 761 sphincter trauma following vaginal delivery. *Ultrasound Obstet Gynecol.* 2023  
 762 Feb;61(2):251-256. doi: 10.1002/uog.26049
- 763 [53] Kirss J, Pinta T, Böckelman C, Victorzon M. Factors predicting a failed primary  
 764 repair of obstetric anal sphincter injury. *Acta Obstet Gynecol Scand.* 2016  
 765 Sep;95(9):1063-9. doi: 10.1111/aogs.12909. Epub 2016 May 18.
- 766  
 767

	<b>Group A</b>	<b>Group B</b>	<b>Group C</b>	<b>Total</b>
	(N=30)	(N=61)	(N=61)	(N=152)
<b>Age (years)</b>				
Mean ± SD	31.3 ± 5.4	31.9 ± 4.3	30.7 ± 4.6	31.3 ± 4.6
Range (Min/Max)	22 (18/40)	18 (21/39)	20 (22/42)	24 (18/42)
<b>Age categorised (n, %)</b>				
<26 years	5 (16.7)	4 (6.6)	7 (11.5)	16 (10.5)
26<35 years	15 (50.0)	38 (62.3)	41 (67.2)	94 (61.8)
≥35 years	10 (33.3)	19 (31.2)	13 (21.3)	42 (27.6)
<b>Race (n, %)</b>				
Asian	0 (0.0)	1 (1.6)	0 (0.0)	1 (0.7)
Caucasian	30 (100.0)	60 (98.4)	61 (100.0)	151 (99.3)
<b>Weight (kg)</b>				
Mean ± SD	73.3 ± 12.5	70.9 ± 11.4	68.1 ± 9.6	70.2 ± 11.0
Range (Min/Max)	42 (54/96)	56 (49/105)	60 (48/108)	60 (48/108)
<b>BMI (kg/m<sup>2</sup>)</b>				
Mean ± SD	25.8 ± 4.2	25.3 ± 3.3	24.3 ± 3.4	25.0 ± 3.6
Range (Min/Max)	16.2 (18.8/35.0)	18.9 (17.4/36.3)	15.6 (17.7/33.3)	18.9 (17.4/36.3)
<b>Number of pregnancies (including the index one) (n)</b>				
Median	2	1	1	1
Range (Min/Max)	5 (1/6)	3 (1/4)	3 (1/4)	5 (1/6)
Primipara/Multipara	7/23	42/19	46/15	95/57
<b>Risk factors for Obstetric Anal Sphincter Injury from the index delivery (n, %)</b>				
Prolonged second phase of delivery	0 (0.0)	6 (9.8)	10 (16.4)	16 (10.5)

Foetal shoulder dystocia	0 (0.0)	1 (1.6)	0 (0.0)	1 (0.7)
Birth weight of the neonate >4kg	4 (13.3)	5 (8.2)	6 (9.8)	15 (9.9)
Induction of delivery with oxytocin	1 (3.3)	14 (23.0)	9 (14.8)	24 (15.8)
Head circumference of the neonate ≥34 cm	17 (56.7)	39 (63.9)	49 (80.3)	105 (69.1)
<b>Time between the index delivery and ONIRY examination (days)</b>				
Median	2	11	28	14
Range (Min/Max)	53 (1/54)	58 (0/58)	55 (1/56)	58 (0/58)
<b>Time between the index delivery and EAUS examination (days)</b>				
Median	2	11	28	14
Range (Min/Max)	53 (1/54)	58 (0/58)	55 (1/56)	58 (0/58)

768 BMI=Body Mass Index; N=number of participants in the population specified; SD = Standard Deviation

769 Percentages are calculated based on the numbers of participants with nonmissing values.

770 Table 1. Characteristics of the study population.

771

	<b>Accuracy [%]</b>	<b>Sensitivity [%]</b>	<b>Specificity [%]</b>	<b>F1</b>	<b>MCC</b>
<b>Mean ± SD</b>	<b>87.0 ± 0.5</b>	<b>90.6 ± 2.0</b>	<b>84.6 ± 1.9</b>	<b>0.85 ± 0.004</b>	<b>0.75 ± 0.01</b>

772 MCC = Matthew's Correlation Coefficient; SD = Standard Deviation

773 Table 2. Mean performance metrics of the ONIRY system using the models trained  
774 on data from Part I of the study, in the assessment relative to 3-D Endoanal  
775 Ultrasound and OASIS classification.

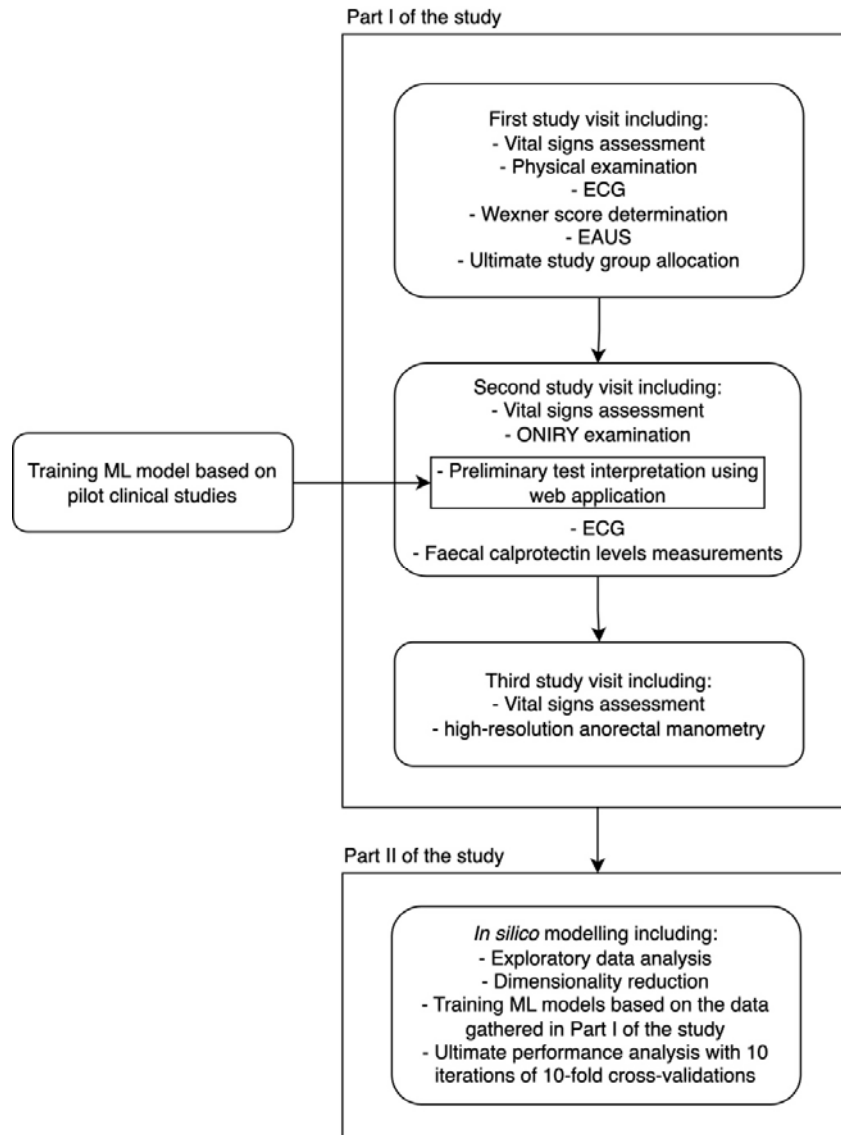
776

	<b>Accuracy [%]</b>	<b>Sensitivity [%]</b>	<b>Specificity [%]</b>	<b>F1</b>	<b>MCC</b>
<b>Mean ± SD</b>	<b>90.0 ± 0.4</b>	<b>90.0 ± 1.2</b>	<b>90.0 ± 0.7</b>	<b>0.88 ± 0.01</b>	<b>0.80 ± 0.01</b>

777 MCC = Matthew's Correlation Coefficient; SD = Standard Deviation

778 Table 3. Mean performance metrics of the ONIRY system using the Machine  
779 Learning model trained based on the limited clinical study dataset in the assessment  
780 relative to 3-D Endoanal Ultrasound and OASIS classification.

781



782

783 Figure 1. The diagram outlining the individual steps of the study.

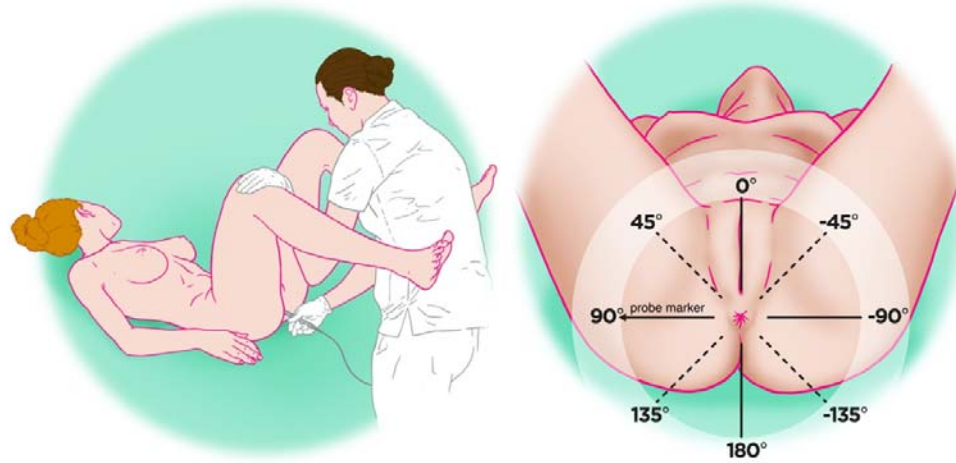
784

785



786

787 Figure 2. ONIRY Probe with the marker location.



788

789 Figure 3. The participant's position during the ONIRY examination (a) along with  
790 position of the probe marker (b).

791



792

793 Figure 4. ONIRY system comprising ONIRY Spectrometer and ONIRY Probe.

794

795

796 **Supporting information**

- 797 S1 – Schedule of assessments of the pivotal study (Part I – clinical conduct) valid at the time  
798 of the study completion (following Amendment no. 2 of the study protocol).  
799 S2 - The description of the heuristics used for Part I of the study  
800 S3 - Details of the in silico analyses conducted within Part II of the study.  
801 S4 - Performance metrics of the ONIRY model trained based on data from the previous  
802 (pilot) clinical studies, depending on the heuristics chosen, with the 3-D Endoanal Ultrasound  
803 and the OASIS classification (>2 vs. ≤2) used as the reference method.  
804 S5 - The quality requirements for the impedance measurements.  
805 S6 - Performance metrics of the ONIRY system using the models trained based on all correct  
806 measurements from the clinical study, in the assessment relative to 3-D Endoanal  
807 Ultrasound and OASIS classification (each row shows the statistics for a single 10-fold cross-  
808 validation).  
809 S7 - Performance metrics of the ONIRY system using the model trained based on the limited  
810 clinical study dataset (discrepant measurements, considered based on the arbitrary criterion  
811 set in Statistical Analysis Plan, were ignored), in the assessment relative to 3-D Endoanal  
812 Ultrasound and OASIS classification (each row shows the statistics for a single 10-fold cross-  
813 validation).